

Dohmen, Thomas; Lehmann, Hartmut; Schaffer, Mark E.

**Working Paper**

## Wage policies of a Russian firm and the financial crisis of 1998: Evidence from personnel data - 1997 to 2002

Quaderni - Working Paper DSE, No. 628

**Provided in Cooperation with:**

University of Bologna, Department of Economics

*Suggested Citation:* Dohmen, Thomas; Lehmann, Hartmut; Schaffer, Mark E. (2008) : Wage policies of a Russian firm and the financial crisis of 1998: Evidence from personnel data - 1997 to 2002, Quaderni - Working Paper DSE, No. 628, Alma Mater Studiorum - Università di Bologna, Dipartimento di Scienze Economiche (DSE), Bologna, <https://doi.org/10.6092/unibo/amsacta/4622>

This Version is available at:

<https://hdl.handle.net/10419/159469>

**Standard-Nutzungsbedingungen:**

Die Dokumente auf EconStor dürfen zu eigenen wissenschaftlichen Zwecken und zum Privatgebrauch gespeichert und kopiert werden.

Sie dürfen die Dokumente nicht für öffentliche oder kommerzielle Zwecke vervielfältigen, öffentlich ausstellen, öffentlich zugänglich machen, vertreiben oder anderweitig nutzen.

Sofern die Verfasser die Dokumente unter Open-Content-Lizenzen (insbesondere CC-Lizenzen) zur Verfügung gestellt haben sollten, gelten abweichend von diesen Nutzungsbedingungen die in der dort genannten Lizenz gewährten Nutzungsrechte.

**Terms of use:**

*Documents in EconStor may be saved and copied for your personal and scholarly purposes.*

*You are not to copy documents for public or commercial purposes, to exhibit the documents publicly, to make them publicly available on the internet, or to distribute or otherwise use the documents in public.*

*If the documents have been made available under an Open Content Licence (especially Creative Commons Licences), you may exercise further usage rights as specified in the indicated licence.*



<https://creativecommons.org/licenses/by-nc/3.0/>

# **Wage policies of a Russian firm and the financial crisis of 1998: Evidence from personnel data – 1997 to 2002\***

Thomas Dohmen (ROA, Maastricht University, IZA and DIW)

Hartmut Lehmann (DARRT, University of Bologna; IZA; CERT; WDI and DIW)\*

Mark E. Schaffer (CERT, Heriot-Watt University, Edinburgh; CEPR; WDI; and IZA)

February 2008

## **Abstract**

We use a rich personnel data set from a Russian firm for the years 1997 to 2002 to analyze how the financial crisis in 1998 and the resulting change in external labor market conditions affect the wages and the welfare of workers inside a firm. We provide evidence that large shocks to external conditions affect the firm's personnel policies, and show that the burden of the shock is not evenly spread across the workforce. The firm takes advantage of a high-inflationary environment and of a fall in workers' outside options after the financial crisis and cuts real wages. Earnings are curbed most for those who earned the highest rents, resulting in a strong compression of real wages. The fact that real wages and real compensation levels never recovered to pre-crisis levels even though the firm's financial situation was better in 2002 than before the crisis and the differential treatment of employee groups within the firm can be taken as evidence that market forces strongly influence the wage policies of our firm.

JEL Classification: J23, J31, P23.

Keywords: Internal labor markets, wage policies of a firm, personnel data, Russia.

---

\* The authors are grateful to David Brown, Tilman Brück, Horst Entorf, Vladimir Gimpelson, Andrea Ichino, Rostislav Kapeliushnikov, Alexander Muravyev and audiences at the Annual Scottish Economic Association Conference in April 2007, in Perth, the 8<sup>th</sup> International Conference of the Higher School of Economics in April 2007, in Moscow, the International Conference "Labor Markets in Developing and Transition Economies: Emerging Policy and Analytical Issues" at the University of Michigan in May 2007, the DFG workshop in Nuremberg in October 2007 and the lunchtime seminar at the University of Bologna for comments and suggestions. Dohmen and Lehmann acknowledge financial support from the Deutsche Forschungsgemeinschaft (DFG) within the research program "Flexibilisierungspotenziale bei heterogenen Arbeitsmärkten" (DFGSP1169). Lehmann and Schaffer are grateful to the European Commission for financial support within the 6th framework project "Economic and Social Consequences of Industrial Restructuring in Russia and Ukraine" (ESCIRRU). Schaffer also thanks the William Davidson Institute and the U.S. Department of State (Title VIII) for financial support.

\* Corresponding author: hartmut.lehmann@unibo.it.

## 1. Introduction

Observing how a firm adjusts its personnel policies in response to a large shock can yield vital insights about the nature of adjustment processes in labor markets. We analyze a rich personnel data set from a Russian firm for a period (1997 to 2002) that spans the Russian financial crisis in 1998, in order to shed light on crucial, but largely unresolved questions about the functioning of labor markets in general. For example, do firms adapt their wage policy to changes in labor market conditions? And if so, are all workers affected in the same way, or are incumbent workers shielded from external labor market shocks as early theoretical work on internal labor markets suggests (see Doeringer and Piore, 1971)?<sup>1</sup>

In particular, we investigate how the firm adjusts employment, wages and other components of pay in response to the crisis, and study how the burden of the crisis is spread across the workforce. The very detailed information on employee remuneration and wage arrears enables us to provide a much clearer and more complete description of the mechanisms that are used to adjust earnings at the firm level than is typically possible. Such an analysis is important for at least two reasons: First, despite some attempts in the literature to assess the costs of economic crises on workers and on households (see, for example, Fallon and Lucas, 2002), we know virtually nothing of how these costs are distributed among employees inside firms during such dramatic macroeconomic upheavals. Second, although several studies have explored to what extent internal labor markets cushion incumbent workers from external labor market shocks (e.g., Baker et al., 1994, Lazear, 1999; Lazear and Oyer, 2004), it is still not well understood how workers' welfare is affected by firm

---

<sup>1</sup> Doeringer and Piore (1971, p. 2) argue that workers in jobs that are filled by promotion or transfer from within are “shielded from the direct influence of competitive forces in the external market”, but that the internal and external labor markets are connected at the ports of entry.

performance over the business cycle. Evidence on the degree to which firms are disciplined by external labor market conditions is mixed. Baker et al. (1994) find that workers are partly shielded against adverse shocks to external market conditions.<sup>2</sup> Lazear and Oyer (2004) find that external market conditions affect wages over the long run in the Swedish labor market. The picture that emerges in the empirical literature suggests (1) that hiring wages track industry wages, but (2) that differences in hiring wages are persistent; indicating that market induced variations in marginal productivity are not fully reflected in wages of incumbent workers.

The empirical literature has found it difficult so far to establish a direct link between shocks to (external) labor market conditions and changes of firm's personnel policies. This is because shocks have typically been small in most advanced Western economies during the last decades. If firms gradually adjust their personnel policies in response to such small but relatively frequent changes in external conditions, the impact of small shocks is typically difficult to measure and hardly observable in available data. If firms, on the other hand, sporadically react to accumulated shocks by major adjustments (see, e.g., Hamermesh and Pfann, 1996), it is difficult for researchers to relate such a policy change to a particular external shock. Therefore, there is much insight to be gained by assessing how firms react to larger exogenous macroeconomic shocks, such as the financial crisis that occurred in Russia in 1998.<sup>3</sup> This crisis had severe consequences, leading to a substantial devaluation of the Ruble, a collapse of a large part of the private banking sector, a surge in inflation and interest rates, and liquidity problems, which adversely affected demand in the goods market.

---

<sup>2</sup> Baker et al. (1994) find cohort effects in starting wages which persist, implying that incumbent workers in their internal labor market are (partly) shielded from shocks to the marginal product.

<sup>3</sup> Large macroeconomic shocks are more frequently observed in developing and emerging economies. Other examples include the financial crises in Latin America and Asia in the 1990s.

Our results show that these changes in economic conditions strongly influence the personnel policies of our firm. Real wages and real compensation fell substantially in the aftermath of the financial crisis. Employment levels at the firm, on the other hand, remained rather stable.<sup>4</sup> The downward adjustment of earnings leads to persistent welfare losses among employees since real wages and real compensation levels had not recovered to pre-crisis levels by 2002, even though the firm's financial situation was then better than before the crisis. These welfare losses were, however, not spread evenly across all employees. In fact, employees at the top of the earnings distribution tend to take the highest real wage cuts in relative terms, which is in part driven by external labor market conditions that limit the scope for cutting wages of employees at the bottom end of the firm's wage distribution. External conditions also appear to affect the firm's recruitment policy as hiring wages track market wages.

The firm, which was a high-wage firm prior to 1998, makes use of the high inflation that manifests during the financial crisis in order to extract rents from employees. It curbs earnings most for those who earned the highest rents, which results in a tremendous compression of real wages. Our findings also indicate that employees with long tenure have lower nominal wage growth, but face fewer wage arrears.<sup>5</sup> The firm seemed to burden accounting staff with a disproportionate share of the costs of the crisis, as evidenced in a much higher incidence of wage arrears in 1998 than for other job categories and relatively low nominal wage growth between 1997 and 2002. It is possible that this personnel policy was a reaction to a rather loose

---

<sup>4</sup> A policy that relies on "price" rather than "quantity" adjustments in response to adverse shock is typical for the Russian economy (see Boeri and Terrell, 2002; Earle and Sabirianova, 2002).

<sup>5</sup> Earle and Sabirianova (2002) investigate wage arrears with a matched employer-employee data set. However, the number of observed workers per firm in their study is small and only permits a crude estimate of the relative importance of intra-firm versus inter-firm determinants of wage arrears. They do not provide any evidence on the distribution of wage arrears across all workers within Russian firms, something that we are able to do, at least for the one Russian firm for which we have personnel data.

firm attachment of accountants, which is demonstrated through their higher turnover rates than those of other employee groups. These higher turnover rates might have been a reflection of better outside options in the local labor market than for other employees.

The findings on real wage changes also contribute to the literature on wage rigidity. So far, this literature has documented compelling evidence that managers intentionally refrain from cutting nominal wages (Bewley, 1999). The resulting nominal rigidity is borne out in personnel data (e.g., Baker et al., 1994; Wilson, 1996 and 1999; Altonji and Devereux, 2000; Dohmen, 2004). Clearly, nominal rigidity brings about real rigidity when there is zero inflation. In fact, Fehr and Goette (2005) provide evidence from personnel records showing that nominal rigidity even persists in a low growth environment with very low inflation, where it limits a firm's discretion to adjust real wages downwards. This indicates that motives for not cutting wages are strong and important. However, it is less clear that real rigidity would also stem from strong intentions for preserving real wages.<sup>6</sup> Our evidence suggests that such intentions are weak: although the firm is reluctant to cut nominal wages, it does not refrain from substantially cutting real wages, taking advantage of a high-inflationary environment. We also complement the existing literature on real wage rigidity since we can – knowing the exact time period in which the 1998 financial crisis in Russia manifests – establish a direct link between the inflation shock and real wage adjustments at the firm.

The remainder of the paper is organized as follows. The next section provides a brief account of the financial crisis and introduces the firm under study. Section 3

---

<sup>6</sup> It is still controversial to what extent real wages are downward rigid. Card and Hyslop (1997) and Bauer et al. (2003) provide evidence for real wage rigidity using administrative micro data on wages. Baker et al. (1994) and Dohmen (2004) do not find that real wages are downward rigid in their analyses of personnel data.

describes the personnel data set. Section 4 presents the main results of our analysis and establishes some robust evidence about the evolution of wages and total compensation in the firm over the period that encompasses the financial crisis. A final section concludes.

## **2. The Russian financial crisis and the firm**

In November 1997 and during 1998 the Russian economy was confronted with two speculative attacks on the ruble. While the Central Bank of Russia (CBR) was able to successfully defend the ruble in the first episode, in August 1998 financial meltdown occurred and on August 17, 1998 the Russian government devalued the ruble, defaulted on domestic debt, and declared a 90 days moratorium on payment to foreign creditors. The classic ingredients of a financial crisis arising from a speculative attack on the currency were all present in the Russian case:<sup>7</sup> (i) an exchange rate peg and the willingness of the CBR to defend it with foreign reserves; (ii) rising uncontrollable fiscal deficits with a prospect of their monetization; (iii) control of the interest rate by the CBR in a fragile credit market; and (iv) expectations of an impending devaluation of the ruble (see Appendix for further details).

When the ruble came under speculative attack in 1998, with hindsight the most sensible political response probably would have been to let the ruble float. The Russian government and the CBR were, however, adamant not to go down this route. Since 1995 Russia had pursued a stabilization policy that was in particular based on the exchange rate as a nominal anchor. This strong anti-inflationary stance had brought inflation down to 11 percent, but at a high cost as the real exchange rate appreciated considerably, putting tremendous pressure on the import-competing

---

<sup>7</sup> For lucid discussions of the Russian financial meltdown, see Chiodo and Owyang (2002) and Kharas et al. (2001) and Summer's and Williamson's (2001) comments on the latter paper.

manufacturing sector. A floating ruble in 1998 was considered by the Russian authorities as out of the question, since it might have reignited inflation and would have completely undone the effects of the anti-inflationary policies that had caused so much pain. Given this political position, the CBR defended the ruble until foreign reserves were exhausted.

The financial crisis had severe short-term consequences, leading to an upsurge of inflation, a collapse of a large part of the private banking sector and a virtual stop of economic activities for some weeks. After this period, however, rising oil prices, a real depreciation of the ruble and a large fall in real wages set the Russian economy on a growth path, which is still ongoing. One main reason why the collapse of the banking had little effect on the real economy after the meltdown can be explained by the fact that private banks pre-crisis played mainly in the stock and bond markets and provided little lending capital to enterprises. In the run-up to and during the crisis, probably only few firms suffered because of decreased access to capital; however, firms did suffer because the overall lack of liquidity in the economy and a collapse in confidence of consumers and producers initiated a temporary standstill in economic activity and a reduction in demand for the products of firms.

The particular firm, for which we have data, is located in a provincial city in Russia and in the sector “machine building and metal works.” After having converted production lines from Soviet times “nearly one hundred percent”, according to the director general of the firm (CEO)<sup>8</sup>, it produces well equipment for gas and oil production and smith-press equipment. More than ninety percent of its production is destined for the Russian market. It has locally no competitors, but nationally it has to compete with more than 5 firms, among them importers from the European Union.

---

<sup>8</sup> Source: Interview with the director general of the firm in the spring of 2002.



The firm was founded in the early fifties of the last century and privatized in 1992. A decade later, in 2002, more than half of the shares were owned by managers and workers, about twenty percent by former employees and roughly a quarter by other Russian entities. While there is collective bargaining at this firm on paper, trade union representatives have virtually no influence on wage policy and wages are set unilaterally by top management.<sup>9</sup> Real output, capacity utilization and profits were all at a trough in 1998, recovered slightly in 1999 and then took off dramatically after the year 2000.

How was the firm affected by the financial crisis? As we have seen, leading up to the crisis there was a sharp drop in oil prices. The ensuing drop in oil production affected the demand for its oil equipment negatively. In addition, even before the fall in oil prices the real appreciation of the ruble made it difficult for the firm to compete with importers. From the interview with the firm's director general it is clear that the shortage of lending capital was less relevant for this firm than the drop in oil production and the high real exchange rate of the ruble. The devaluation of the ruble on August 17, 1998 brought a brief respite to the industry. This is also evident from Figure 1, which shows both the profitability of our firm and the profitability of the sector, in which the firm operates. According to the director general, the "[firm] became competitive in terms of price". Dramatically falling real wages, not mentioned by the top manager, did certainly also their part, as we will see in what follows. By the spring of 2002 (the time of the interview), this advancement in competitiveness had evaporated, and EU firms had increased their market share in the market segment, in which the firm operates. Due to the high oil price demand for oil

---

<sup>9</sup> In a second interview, which took place in April 2007, the CEO hinted at the fact that a large enough slice of shares belongs to top management enabling it to determine all policies of the firm unilaterally.

drilling equipment has, however, remained strong, which explains why profits and capacity utilization rates remained high at our firm even after 1999.

Figure 2 compares average real monthly wages paid by our firm during the period from 1997 to 2002 to real monthly wages in the local labor market, the sector our firm belongs to and to wages in the Russian economy. While wage trends in the sector, region (oblast) and nationwide economy are similar, our firm pays initially substantially higher wages. In the aftermath of the crisis we see a precipitous fall of the real wage in our firm, while real wages in the economy at large, the region and the sector show a more moderate fall. In the years following the crisis average real wages remain virtually unchanged in our firm but rise continuously for the three aggregates. By 2003 the average real wage in the economy and the sector exceed that in our firm. It is noteworthy, though, that the average regional wage remains below the firm's average wage even in 2003.

### **3. The personnel dataset**

We created an electronic file based on records from the personnel archive of the firm, and constructed a year-end panel data set for the years 1997 to 2002. We have records of all employees who were employed at any time during this period, except for top managers whose information is discarded for reasons of confidentiality. The data contain information on individuals' demographic characteristics such as gender, age, marital status and number of children, on their educational attainment, retraining and other skill enhancement activities before joining the firm and during tenure at the firm. We also know the exact date when each employee started work at the firm as well as his/her complete working history before that date. We can trace each employee's career within the firm since we have information on the current position

and on all previous positions and the periods when each of them was filled out by the employee. In addition we also know whether someone worked full-time or part-time. For those who separated from the firm we can distinguish between voluntary quit, transfer to another firm, individual dismissal, group dismissal and retirement.

In Russian firms the workforce is often divided into five employee categories: administration (i.e. management) which we label “managers”; accounting and financial specialists whom we label “accountants”; engineering and technical specialists (including programmers) whom we subsume under the term “engineers”; primary and auxiliary production workers, whom we label “production workers”; and finally, service staff.<sup>10</sup>

For the years 1997 to 2002 we have monthly wages averaged over the year, and information on the three types of bonuses paid to the workforce: (1) a monthly bonus amounting to a fixed percentage of the wage; (2) an extra annual bonus whose level depends on “the results of the year” (i.e. this bonus is a form of profit sharing); (3) an annual bonus labeled “other bonus”. While production workers never receive a monthly bonus, the bonus labeled “other bonus” is paid to production workers only. Wages are reported by the firm as the employee's average monthly wage in rubles for the year (or fraction of the year, if not employed for the full 12 months), with no adjustment for inflation. The monthly bonus is reported as a percentage of the average monthly wage, and the corresponding ruble figure is recovered by applying the percentage to the nominal monthly wage. The other two bonuses are reported in nominal rubles. The inflation rate in Russia during this period was irregular and sometimes quite high - the price level more than doubled between the start of the financial crisis in July 1998 and April 1999, and was 0-2% per month before and after

---

<sup>10</sup> Only production workers are subdivided into levels, primary production workers having eight and auxiliary production workers having six levels.

- and so some care is required to construct appropriate deflators. Because nominal average monthly wage and the nominal monthly bonus are averages for the year, they are deflated into 1997 constant rubles using an annual average CPI, i.e., the average price level for the year relative to the average price level in 1997. The other two bonuses are paid around the end of the year, and so these are converted into 1997 constant rubles using the CPI price level for December of the corresponding year, i.e., the December price level in that year relative to the average 1997 price level.<sup>11</sup>

#### **4. Main Results**

##### *Employment*

Table 1 shows that employment grew steadily from 3032 employees to 3221 employees during the observation period from January 1997 until December 2002, with the exception of the post-crisis year 1999. Yet, the composition of the workforce hardly changed throughout the period. There is a small increase in the share of workers compensated by negligible falls in the shares of service staff, engineers and accountants, with managers retaining the same share of 3.8 percent throughout.

---

<sup>11</sup> We have available monthly data on CPI inflation in Russia overall and in the oblast where the firm is located. In this paper we work primarily with monthly wages averaged over the year, and so we compare average annual inflation rates in the oblast with national rates. This comparison shows that inflation (in percent) in the oblast is very similar to national inflation:

	Russia	Oblast
1997	15.4	14.0
1998	38.1	38.7
1999	98.6	97.9
2000	20.8	20.4
2001	21.6	19.1
2002	16.0	14.5

These indices are based on average monthly price levels calculated using monthly inflation rates. Over the entire period of 1997 to 2002, the cumulative price indices diverge by less than 3 percent. Consequently, results using wages and bonuses deflated by the national CPI are virtually identical to those using the oblast CPI. We use the national CPI in what follows.

Turnover rates, calculated as the sum of hires and separations during a given year normalized by the stock at the beginning of the year, were particularly large in 1997 and 1998 (see Table 2a). After the crisis they fell quite dramatically, in 2002 reaching less than half the level of 1997. This secular pattern holds for all employee categories, but turnover was especially turbulent for accountants, production workers and service staff and much more modest for engineering staff throughout the period. In addition, while there was a large turnover of managers in the crisis year, there are few managers who enter or leave the firm after 1998.

The fall in turnover rates after the crisis year of 1998 comes about because of a fall in separation *and* hiring rates (see Table 2a). The bulk of the separations (about 80 percent) throughout the period are voluntary quits. Therefore the fall in the separation rate in the post-crisis year suggests that the financial crisis restrained many employees from quitting. The firm's employees seem to have been continuously confronted with a more limited array of outside options compared with the situation before the crisis.<sup>12</sup>

Additional evidence that lends support for the conjecture that workers' outside options worsened during the crisis comes from turnover statistics in a sample of 37 industrial firms located in the same city as our firm.<sup>13</sup> Table 2b reveals that the turnover patterns in this regional sample are similar to those for the firm in the years 1998 to 2001. In particular, separation rates fall by similar percentages for all employee categories, while the fall in inflows is more pronounced for our firm than for the regional sample. If we take the turnover rate as an indicator of local labor

---

<sup>12</sup> Many workers in our firm saw these outside opportunities in the "suitcase trade", travelling between Russia and, e.g., China or Turkey and buying and selling certain types of goods informally. Such opportunities were severely reduced after the crisis, resulting in a dramatic fall of the number of "suitcase traders" throughout Russia (Eder, Yakovlev and Çarkoglu, 2003).

<sup>13</sup> We have a balanced panel of 37 firms that represent roughly 15 percent of industrial employment in this city only for these four years. The data of our firm are included in this panel as we want to estimate local labor market turnover rates.

market conditions, we can infer that outside opportunities have diminished in a substantial fashion for all employee types compared to the period before the crisis. These diminished opportunities can also be seen by the movements of the unemployment rate in the given oblast. Being substantially lower in the pre-crisis years 1995-1997 than the average rate in the Russian Federation, it shot up by roughly five percentage points between 1998 and 1999, and then showed a cumulative fall of one percentage point in the years 2000 and 2001. While the local unemployment rate was roughly six percentage points lower than the Russian average in 1998, it was two percentage points higher in 2001. The described trends and relative magnitudes of the unemployment rate as well as the presented turnover patterns estimated from a regional sample of industrial firms demonstrate that local labor market conditions were decisively worse after the crisis year of 1998 and did not recover as rapidly as in the Russian Federation in general.<sup>14</sup>

In order to see what drives separation rates, we estimate Cox proportional hazard models in which we specify calendar time as the duration variable (cf. Dohmen and Pfann, 2004) and assume the same baseline hazard for all five employee specific categories.<sup>15</sup> The results are shown in Table 3. Specifications (1), (3) and (5) differ from (2), (4) and (6) only insofar as the second set of specifications controls for the position in the employee category specific wage distribution. The baseline hazard for specification (1), plotted in figure 3, shows a clear downward trend over the entire period, and is roughly twice as large before and during the crisis as in the years 2000-

---

<sup>14</sup> The sample of firms is not representative in terms of development of total employment in the region, since we have a balanced panel. However, the estimated inflow and outflow rates are indicative of falling outside opportunities after the crisis.

<sup>15</sup> An extension of these models allows for employee category specific baseline hazards. The estimates of such models, available on request, are virtually identical to the estimates of the presented models in the time invariant part of the Cox model. Also the estimated secular patterns of the various baseline hazards in the extended model are very similar to each other. We, therefore, stick to our simple specifications of the Cox model.

2002. Separation rates are typically highest in December in each year (which is reflected by peaks in the baseline hazard), except for the crisis year when the hazard rate shoots up in the two months immediately following the crisis. In order to assess whether the determinants of the hazard rate differ during years of high turnover (1997-1999) and the period of low turnover (2000-2002), we also estimate the Cox proportional hazard models separately for the two sub-periods.

Tenure plays a minor role as far as separations from the firm are concerned. Employees with tenure up to two years and those who have been with the firm between 25 and 30 years have substantially lower hazard rates than workers in the reference category who are in their 10<sup>th</sup> year of employment at the firm; otherwise the tenure hazard profiles are rather flat. It is also noteworthy that the highlighted tenure effects are only significant in the first sub-period. In this period of high turnover educational attainment only weakly affects the separation hazard, while between 2000 and 2002 employees with more than basic education have a higher propensity to leave the firm than those employees with lowest educational attainment, indicating that external labor market options play a role in separation decisions. The very young and those who have reached retirement age have a much higher separation rate than those employees who are between 30 and 35 years of age. The age hazard profiles are also striking insofar as workers over the age of 45, but still far from retirement, have a substantially lower propensity to separate from the firm than other age groups. Female employees have higher separation rates than their male counterparts, especially in the period of high labor turnover. On the other hand, employees with children are more reluctant to leave the firm.

In both periods, service staff and engineers remain more with the firm than production workers and accountants; while in the years 2000 to 2002 there is only one

manager who exits. When turnover is high, hazard rates are highest for those employees located in the polar deciles, while in the second period only persons in the lowest decile have a higher propensity to leave. In addition, *ceteris paribus*, employees in the seventh and eight deciles seem to be more reluctant to leave the firm.

The years leading up to the crisis, 1997 and 1998, saw the largest turnover by far in the firm. As a robustness check, we, therefore, repeat our hazard rates estimations for these two years. The results, which are not shown here but available on request, are in line with the results of the first period shown in columns (3) and (4) of table 4 as far as the signs of the coefficients are concerned and strengthened since some previously insignificant covariates gain predictive power. In particular, the result that workers from the polar deciles of the employee category specific wage distribution have the highest hazard rates in the period 1997 to 1999 comes through even stronger since the proportional hazards are 13 percentage points larger for the lowest decile and 8 percentage points larger for the highest decile in the regression that is limited to the years 1997 and 1998. In summary, while most of the action took place in these two years, the presented results that cover the period 1997 to 1999 seem to reflect well the factors driving separations in our firm before and in the immediate aftermath of the crisis.

### **Wage structure**

Figure 4 plots kernel density estimates of the real wage distributions for different employee categories in 1997. It is immediately obvious that there is substantial heterogeneity in wages within employee categories. Moreover, real wage distributions for different employee categories overlap, so that many high paid production workers,



for example, earned at least as much as lower paid managers. Service staff had the lowest mean wages in 1997 followed, somewhat surprisingly, by engineers, then production workers and accountants. Managers had the highest wages on average. This ranking of employee group-specific wage distributions remains unchanged throughout the observation period.

Estimates from OLS regressions of log wages in 1997, reported in Table 4, show that service staff earn on average 52 percent less than production workers, while the latter earn around 6 percent more than engineering staff. Accountants and managers earn approximately 50 and 95 percent more than production workers (see column (1)). The estimated coefficients from the augmented Mincer wage regression in column (1) also illustrate that workers with longer tenure and more education receive higher wages. Women earn significantly less than men, while marital status and the number of children do not have a significant impact on wages. The mentioned factors significantly determine the wage structure throughout the observation period, but the size of the effects is attenuated over time. For example, while employees with university degree earned about 13 percent higher wages than employees with only basic education (conditional on employee category) in 1997, their wage mark-up falls to only 11 percent in 2002 (see Table A1 in the Appendix). It is also striking that wage tenure profiles are much flatter in 2002 than in 1997. In addition, the gender wage gap is reduced between 1997 and 2002 from 27 to 15 percent, and, with the exception of managers, wage differences between employee categories have diminished as well by 2002, an issue to which we return later. Columns (2) to (6) show wage regressions for the different employee categories.

Quantile regressions (reported in Table A2 in the Appendix) show that the effect of tenure on wages is similar across the entire wage distribution in 1997. As far

as the impact of educational attainment is concerned, we see two results. Employees with higher education (university graduates) have a positive relative return throughout the distribution, while for the other educational groups the highest premia are in the lowest deciles. The gender wage gap is substantially larger in the lower half of the distribution and especially attenuated in the 9-th decile. Relative to production workers service staff encounters a growing “wage penalty” as one goes from lower to higher deciles. It is noteworthy that engineers earn the same as production workers if they find themselves in the lower tail of the distribution but earn less from the third decile onwards. For accountants the “mark-up” over production workers falls from 90 percent in the 1<sup>st</sup> decile to 20 percent in the 8<sup>th</sup> decile, while for managers the mark-up falls from 185 percent in the 1<sup>st</sup> decile to 59 percent in the 9<sup>th</sup> decile. The results of quantile regressions for 2002<sup>16</sup>, though qualitatively in line with the results for 1997, show attenuated differences in the impact of the above discussed covariates on log wages across the wage distribution. This is not surprising given the strong compression of the wage distribution during the studied period.

Real total compensation at our firm developed similarly, since the share of wages, unsurprisingly, made up the lion share of total income in all years as Table 4 shows.<sup>17</sup> In the crisis year of 1998, the wage share rose to more than 90 percent of total income and then declined to slightly more than three quarters of total income in 2002. The shares of all bonus components fell in the crisis year but then more than recovered in the remaining years.

---

<sup>16</sup> These results are not shown here but are available on request from the authors.

<sup>17</sup> The estimates of the quantile regressions on log total real compensation are also very similar to the results for the quantile wage regressions. Several difference are, however, worth commenting on: When bonus payments are added to wages, engineering staff and production workers have nearly the same mark-ups over service staff in 1997. This convergence is, however, reversed in the year 2002. The mark-ups of managers, on the other hand, are larger in both polar data points when total compensation is estimated.

### **Nominal and real rigidity**

An inspection of the data reveals that the firm never cuts nominal wages.<sup>18</sup> Real wages, however, fall markedly in the aftermath of the financial crisis in 1998. Figure 5 and Figure 6 show that real wages and real monthly compensation (measured as the sum of real monthly wages and the monthly share of all real bonus payments for the year) in the upper half of the respective distribution fell most, both in absolute and in relative terms, and recovered least in post crisis years. As a result, kernel density estimates of the wage distributions in 2002, which are plotted in Figure 7, are clearly to the left of the real wage distributions in 1997, for all employee categories. The real wage distributions also seem more compressed.<sup>19</sup>

### **Who bears the burden of the shock? Individual wage mobility**

Even though average real wages fall, not all employees are affected by the crisis in the same way. This becomes evident from Figure 8 which plots the kernel density estimate of the distribution function of real wage growth between 1997 and 2002. These heterogeneous real wage growth rates cause substantial relative wage mobility inside the firm as transition rates between quintiles of the wage distribution in 1997 (the origin state) and in 2002 (the destination state), calculated for the balanced panel of those who were continuously employed during the entire period, in Table 5

---

<sup>18</sup> Sources close to the firm's top management told us that the firm never contemplated to cut nominal wages since such cuts might have resulted in even higher quit rates than the ones observed before the crisis.

<sup>19</sup> Since we are interested in the wage policies of our firm, ideally we would like to deflate nominal wages by a product-specific deflator, which we alas do not have. We do not use the national PPI instead of the CPI for two reasons: first, one of the foci of the paper is the welfare of the firm's employees, for whom real consumption wages are the relevant unit; second, the national PPI is based on a basket of many industrial products, whose price movements might or might not track the price movements of the products of our firm.

reveal.<sup>20</sup> For example, only 35 percent of all employees who found themselves in the third quintile of the wage distribution in 1997 remain there in 2002, while 41 percent move up in the wage distribution and 24 percent move down. This pattern is observed for all employment groups, but is particularly marked for production workers.<sup>21</sup> The transition patterns are also very similar albeit slightly stronger for total compensation. Thus, the firm substantially realigned real wages and total compensation during the inflationary period following the financial crisis, especially for the core group of the firm, the production workers.

In order to assess whether particular characteristics systematically determine relative wage growth, we regress the growth rate of real wages between 1997 and 2002 on various individual characteristics and job characteristics. We restrict the sample to full-time employees who were continuously employed during the entire observation period.

Table 7 contains the regression results with three different specifications of the wage growth equation. Specification (1) estimates wage growth as a function of a cubic in tenure and age, dummies for highest educational attainment, and demographic dummies. This specification assumes that wage growth does not depend on an individual's position in the firm-level wage distribution in 1997. The tenure-wage growth profile looks as follows: tenure and wage growth are inversely related up to approximately 20 years, between 21 and 30 years of tenure wage growth remains flat at roughly minus 22 percent and then turns slightly more negative for longer-tenured employees. On this measure, the firm seemed to favor those employees who have been hired more recently. Holding other factors constant, female

---

<sup>20</sup>Some scholars studying Russian labor markets in the first half of the 1990's maintained that there was substantial relative wage mobility in the economy at large (see, e.g. Commander et al., 1995).

<sup>21</sup> Transition matrices showing wage and compensation dynamics for different employee categories are available from the authors on request.

employees earn a substantial premium if the results of the model in column 1 are to be believed.

Specification (2) adds dummies for the employee's position in the firm-level wage distribution in 1997. This model might still be too simplistic, since it assumes that all employees were confronted with the same wage distribution in 1997. As we have seen, though, the locations and the spreads of the wage distributions for the 5 employee categories were very different in 1997. To take account of this, specification (3) adds controls for the location in the employee category-specific wage distribution and dummies for employee categories. The results of specifications (2) and (3) are similar, and we concentrate our discussion on the results of specification (3).

The impact of tenure, while somewhat attenuated, remains negative throughout the tenure distribution. Secondary professional and higher educational attainment imply higher wage growth, while female employees experience smaller wage growth than their male counterparts. The latter result, reversing the estimated wage growth premium for female employees in specification (1), can be explained by the fact that women find themselves in 1997 in employee and wage segments that exhibit the highest growth throughout the reported period.

The coefficients on the decile dummies strongly confirm our contention that employees positioned in 1997 in the lower deciles of their respective wage distribution experienced relative gains in the reported period. Location in the lower four deciles implies stronger wage growth than for those employees who were positioned in 1997 in the median decile. These relative gains are monotonically decreasing as we go from the bottom to the 4<sup>th</sup> decile. In contrast, employees positioned in 1997 in the highest four deciles of their wage distribution are confronted

with relative wage losses. Relative to production workers, service staff and engineers have wage gains over the period, while accountants and managers have wage losses albeit of a small order.

In Table 8 we relax the assumption that wage growth is equiproportionate for each quantile across all employee categories, and estimate wage growth regressions for each employee category separately. The results show clear differences in the returns to the various deciles for the five employee categories. In particular, the relative returns for service staff show a much larger spread across the wage distribution than for other employee categories. In addition, production workers experience positive wage growth higher up in the wage distribution than other employees. Overall the result is, however, very clear, no matter what the employee category: employees who find themselves in 1997 in the lower part of their respective wage distribution experience substantially higher wage growth than those who are located in the upper part.<sup>22</sup>

We use the sub-sample of those remaining in the firm between 1997 and 2002 in our wage growth regressions, which might raise the issue of sample selection bias. If unobserved factors that influence workers' decisions to remain in the firm are correlated with unobserved determinants of wage growth, our results would be biased. Furthermore, since, in the years 1997 to 1999, workers from the lowest and highest wage deciles leave the firm more frequently than other workers, the observed compression of real wages might be caused predominantly by workers selecting themselves out of the firm. In order to check the robustness of our wage growth results and to see that our story of relative wage gains in the lower part of the distribution is not mainly driven by selection, we proceed in two ways. We estimate

---

<sup>22</sup> The estimated effect of all of these determinants on the growth of total compensation are very similar, which is not surprising, given that the different bonus payments only account for a small share of total compensation.

annual wage growth models, where selection should be less of a problem, and we estimate wage growth between 1997 and 2002 using Heckit (Tobit II) models that try to correct explicitly for self-selection.

The results of the annual real wage growth regressions, which are not presented here<sup>23</sup>, are very much in line with the results of table 7. The covariates that have an impact on wage growth between 1997 and 2002 also influence annual wage growth. What is especially encouraging is the fact that workers who found themselves in the lower deciles of the origin wage distributions have disproportional wage growth also in the annual regressions, even if this effect is somewhat attenuated.

The estimates of the Heckit models are presented in table A3 in the annex. The three specifications of table 7 are replicated with self-selection explicitly modeled. The selection equations use the same covariates as the Cox proportional hazard models.<sup>24</sup> A comparison of the factors determining wage growth in table 7 and in the Heckit regressions finds the same signs and virtually always the same level of significance for the coefficient estimates. The coefficients on the deciles of both the firm-level wage distribution and the employee category specific wage distribution show hardly any differences between the estimates of table 7 and the Heckit estimates. So, our main result still holds: controlling for other factors and controlling for selection, employees in the lower (upper) part of the wage distribution experience relative gains (losses) over the reported period. It is, finally, also noteworthy that the selection term is insignificant in the third specification, i.e., once we condition on location in the employee category specific wage distribution, unobserved factors determining wage growth are not any longer correlated with unobserved factors affecting “participation.”

---

<sup>23</sup> The results are available upon request from the authors.

<sup>24</sup> This is done for consistency but also to easily identify the models.

### **Extraction of rents and approaching the outside option**

As we have seen, local labor market opportunities seem to have fallen substantially after the crisis year of 1998. These falling outside opportunities made it possible for the top management of the firm to use inflation to erode the rents that the firm's employees enjoyed before the crisis. Table 9 shows that the large positive differences between mean wages in the firm and mean wages in the sample of industrial firms located in the same local labor market observed in the years 1997 to 1999 turned either negative towards the end of the period or were tremendously reduced. The convergence of average wages in the firm towards average wages in the local labor market started after 1999 when employees' rents peaked. The extraction of rents during the period of real wage adjustment was quite relentless as a comparison of the entries for 1999 and the entries for 2002 reveals. If we link these relative wage movements to the information that we provided about local labor market conditions, it seems plausible that the top management of the firm uses these local labor market conditions as an important element in its calculus regarding wage setting. This conjecture is confirmed by the CEO when asked directly about the determination of wage levels. According to him, three dimensions are relevant for wage determination: the characteristics of a worker, i.e., her/his qualification, tenure, seniority and work experience in general; labor market conditions, in particular the wage level in the region and the wage level in the sector; and the price of the order in whose production the employee is engaged.

In sum, given our evidence on the time patterns of regional turnover, the regional unemployment rate, declining relative wage gaps and the statement by the CEO of the firm, we are confident that local labor market conditions are of paramount



importance in the calculus of top management when it comes to wage setting. It is also our conjecture that in this Russian firm the causal effect runs from turnover to wages and not vice versa. This might seem counterintuitive as one would surmise that high wages would cause a fall in turnover. However, the efficiency wage models that explained the causal effect going from wages to turnover (see, e.g., Salop, 1979) are embedded in a mature capitalist economy that finds itself in a steady state. The Russian economy in the 1990s was clearly not in a steady state but in great turmoil with a tremendous amount of labor reallocation taking place. The CEO of our firm paints the following picture of this dramatic period when explaining the development of wages in the firm: “Higher than regional wages contributed to retaining and attracting highly qualified personnel after difficult crisis years in the beginning of the 1990s, when episodes of forced downsizing due to the output decline took place. Later, in 1995-1996, the firm started to receive orders, production growth began, and there was a need for qualified personnel. Since economic improvement happened all over the country, the only way to retain and attract personnel was to pay high wages. After the 1998 crisis, it was economically expedient to stabilize wages at the regional level.”<sup>25</sup> In the final analysis market forces work in the case of our Russian firm and that in a relentless fashion.

### **Wage Arrears**

Withholding wages on a regular basis has been the experience of many Russian workers during most of the nineties (see, e.g., Lehmann, Wadsworth and Acquisti, 1999, and Earle and Sabirianova, 2002), and is therefore an important component of a firm’s wage policy. The personnel data of the firm records the stock of wage arrears

---

<sup>25</sup> Cited from the interview of April 2007.

for each employee on the 31<sup>st</sup> of December of the respective year. According to this data, wage arrears were recorded only at the end of 1998. However, we do have information about the monthly stocks of wage arrears by employee type taken from the CERT regional firm panel data. According to this data source, employees at the firm at hand were confronted with wage arrears in the years 1998 and 1999. Figure 9, which is based on the CERT data, shows that wage arrears start to accumulate in January 1998 and peak after roughly one year and then decline continuously until they dissipate at the end of 1999. This suggests that wage arrears were used by the firm to cushion the shock arising from the build-up to the financial crisis, its actual occurrence and its aftermath.

Real wage arrears as a fraction of monthly wages were lowest on average among production workers. Accountants were most adversely affected by arrears. Managers were not spared and also had part of their wages withheld. Compared to the general situation in Russia in 1998, the non-payment of wages in our firm was, however, not dramatic. Goskomstat reports total wage arrears in 1998 in Russia, which amount to roughly two monthly wages, while all average wage arrears in the firm never amounted to more than one tenth of a month of 1997 wages. Even the average accumulated wage arrears for the worst affected group, accountants, never exceeded a third of a month of 1997 wages.<sup>26</sup>

Since wage arrears in the firm only started in 1998 and since they had disappeared by the end of 1999, we only have one cross section (the year 1998) of the stock of arrears of all employees. To the extent that the information derived from the CERT regional firm panel data that accumulated wage arrears peaked in December 1998 is valid, the wage arrears data based on the personnel data capture that moment

---

<sup>26</sup> This is consistent with our interpretation of the crisis as primarily a short-time liquidity crisis for the firm, followed by a medium-term improvement in economic performance driven by the devaluation of the ruble and the consequent improved competitiveness of the firm.

when presumably their incidence, their level and their variation was largest across the population.

The personnel data show that roughly 60 percent of all employees had no arrears at all at the end of 1998 and only 10 percent experienced arrears worth one week of monthly pay or more. The summary statistics of Table 10 show how limited wage arrears are for the entire workforce and give some details of how these limited arrears are distributed across the five types of employees. Arrears are shown in thousands of 1997 rubles (A) and as a fraction of 1997 monthly wages (B). The panel for all employees shows very small mean values and a relatively small spread no matter how arrears are measured. Even at the 90 percentile arrears never amount to more than a third of monthly wages and the maximum value is given by slightly more than one month of wages. What is clear from the table is that production workers had been treated favorably by the firm in 1998, since even at the 75 percentile we do not observe any arrears. The other employee categories have a more even incidence since we find positive wage arrears already at the 25 percentile (not shown in the table). However, the worst treatment seems to have been reserved for accountants, who have the highest levels of wage arrears throughout the distribution.

How are wage arrears correlated with real wages? To answer this question we perform simple Tobit regressions, where those observations with zero wage arrears are left-censored and where real arrears and arrears in terms of wages are regressed on real wages. An extended model includes dummies for the employee types. The bivariate model implies that employees with higher wages have lower levels of wage arrears (column (2) of Table 11); however, once we include controls for employee type there is a positive correlation between real wages and real wage arrears (column 3). Larger wages, on the other hand, imply smaller wage arrears in terms of monthly

wages whether we control for employee type or not (columns (4) and (5)). The coefficients on the dummies in columns 3 and 5 also confirm that, controlling for wages, production workers were best treated while accountants had a particularly bad experience regarding wage arrears.

To see whether the incidence of wage arrears varies across certain characteristics of employees we also perform simple probit regressions for the entire sample and for the different employee categories separately. The results, which are not shown here,<sup>27</sup> show some robust partial correlations. Most noteworthy is the result that employees with longer tenure were less affected by wage arrears than those with average tenure. This result is particularly strong for engineering staff and production workers and seems to indicate that, at least in this firm long-tenured employees were given preferential treatment and thus highly valued. This outcome is in sharp contrast to studies that base their evidence on nation-wide surveys and that suggest that long tenure in the nineties in Russia was associated with a larger incidence of wage arrears resulting from poor labor market prospects for long-serving employees (Lehmann et al., 1999, and Earle and Sabirianova, 2002). It is, therefore, feasible that in our firm (where mass layoffs finished in 1993) long tenure implies having acquired a large stock of firm-specific human capital that is valuable to the firm even under the circumstances of a demand driven economy. A further robust result is the inverse relationship between educational attainment and the incidence of wage arrears, pointing to a better treatment of more educated employees. Female and male employees are equally treated as far as wage arrears are concerned if we look at the entire sample. This result is driven by the fact that male production workers experience smaller arrears than their female counterparts while among the engineering

---

<sup>27</sup> They are available on request from the authors.

staff – the second largest group after production workers – females are less affected. The simple probit regressions make clear in any case that, within this firm, employees were not equally treated when it came to withholding wages and that top management tried to keep content those employees that it valued most.

### **Inequality**

A comparison of Figures 4 and 7 reveals that real wage distributions become more compressed. The difference in the median wage and wages for an employee at the 90<sup>th</sup> percentile of the distribution is reduced by slightly less than 15 percentage points during the period from 1997 to 2002. The gap between the wage of an employee at the 10<sup>th</sup> percentile of the wage distribution and the median wage narrowed by 37 percentage points from 1997 to 2002. Hence, the fall in wage inequality comes about by relative wage gains of employees in the lower part of the wage distribution. Gini coefficients reported in column (1) of Table 12 corroborate the decline in inequality of wages and total compensation for the entire workforce. The Gini coefficients in columns (2) – (6) show that wage and compensation inequality falls also within all employee categories in the aftermath of the financial crisis. However, this process of wage and compensation compression is not monotonic for all employee categories. For example, inequality fell to very low levels for service staff and managers in 2001, but rises again thereafter.

The Gini coefficient can be written as  $G = (2/\mu) \text{cov}(y, F(y))$ , where  $y$  is income,  $F(y)$  is the distribution function of  $y$  and  $\mu$  is mean income (see, e.g., Lambert, 2001). A simple algebraic manipulation then arrives at the decomposition of  $G$  into its components by income source:

$$G = \sum_k R_k G_k S_k \quad (1),$$

where  $R_k$  is the rank correlation of income source  $k$  with the distribution of total income,  $G_k$  is the Gini of income source  $k$  and  $S_k$  is the share of component  $k$  in total income.<sup>28</sup> The decomposition of the Gini coefficient by income source is particularly interesting in our context to establish the contribution of the various components to inequality. The  $k$ -th component of equation (1) divided by  $G$ , i.e.,  $\frac{R_k G_k S_k}{G}$ , gives us the share of income source  $k$  in total inequality. Dividing this expression by  $S_k$  shows the inequality component as a fraction of its income share. Finally,  $\frac{R_k G_k S_k}{G} - S_k$  approximates the impact of a 1 percent change of income source  $k$  on overall inequality. This latter measure can also be understood as income source  $k$ 's marginal effect relative to the overall Gini (see Lerman and Yitzaki, 1985).

The upper panel of Table 13 presents the Gini coefficients for the different compensation components. Inequality in wages and in the extra bonus gradually falls with the exception that inequality in the extra bonus was zero in the crisis year 1998 since no extra bonus was paid at all. The other two bonus types show a more erratic behavior. The compression in total compensation is less pronounced than the compression in wages, not least because the Gini coefficients of bonuses were far higher than the Gini coefficients of wages (see top panel of Table 13). Despite this large difference between the Gini coefficients of bonus payments and the Gini coefficient of wages, bonuses contributed little to overall inequality for two reasons. First, their shares were small relative to the share of wages (see Table 5). Second, the rank correlations of all bonus payments with the distribution of total income were far weaker than the nearly perfect rank correlation of wages (see bottom panel of

---

<sup>28</sup> This decomposition is due to Lerman and Yitzaki (1985) who show that

$$G = (2/\mu) \sum_{k=1}^K \text{cov}(y_k, F) = \sum_{k=1}^K [\text{cov}(y_k, F) / \text{cov}(y_k, F_k)] [2 \text{cov}(y_k, F_k) / \mu_k] [\mu_k / \mu] .$$

Table 13).<sup>29</sup> Wages contributed slightly less to overall inequality than their share in total income, as Table 14 demonstrates, and therefore have had an (hypothetical) attenuating impact on overall inequality in all years as the bottom panel of Table 14 reveals. Monthly bonus payments, in contrast, “aggravated” overall inequality in all years apart from 1999.

Alternative measures of inequality like general entropy indices confirm the findings concerning the compression of wages and total compensation. The general entropy index, which is given by

$$GEI(\alpha) = \left[ \frac{1}{N\alpha(\alpha-1)} \right] \sum_i \left[ \left( \frac{x_i}{\mu} \right)^\alpha - 1 \right] \quad (2),$$

where  $N$  is the number of observational units,  $x_i$  is the level of earnings of the  $i$ -th observational unit, and  $\mu$  is mean earnings, allows us to assess whether the change in inequality is mostly driven by changes at the bottom or by changes at the top of the distribution, by varying the parameter  $\alpha$ . The index is more sensitive to changes at the top of the distribution the larger is  $\alpha$ .<sup>30</sup> Since the fall in the general entropy index for a parameter value of  $-1$  is more pronounced than for a value of  $1$ , we conclude that the relative gains at the bottom of the wage and the compensation distributions are the more important driving factors of the fall in overall inequality. If we give more weight to wages in the lower part of the distribution, our measure of overall wage inequality,  $GEI(-1)$  indicates that inequality fell by 62 percent between 1997 and 2002. If, on the other hand, the index is more sensitive to wages in the upper part of the distribution

---

<sup>29</sup> One might find it puzzling that the Gini of total compensation is very close to the Gini of wages given these far higher Gini coefficients for bonus payments. For example in 1997 the Gini of total compensation amounts to 0.2928 while the Gini of wages is 0.2802. A simple back of the envelope calculation, using equation (1), brings home the point that the large  $G_k$ ’s of the bonus components are “wiped out” by their small  $S_k$ ’s and  $R_k$ ’s.

<sup>30</sup>  $GEI(\alpha)$  encompasses several well known inequality measures: for example,  $GEI(0)$  corresponds to the mean log deviation,  $GEI(1)$  to the Theil index and  $GEI(2)$  to one half of the square of the coefficient of variation. We use a modified version of the Stata module “descogini” by Alejandro Lopez-Feldman for our calculations. See Feldman (2005).

then measured overall wage inequality fell by “only” 44 percent (see columns (1) and (4) of panel a of Table 15). Falling inequality is mostly driven by compression within the lower part of the wage distribution in all employee categories except for managers.<sup>31</sup>

The general entropy index can also be additively decomposed into the within and between parts of inequality. This decomposition reveals that inequality within employee categories dominate overall wage inequality in 1997, while in 2002 within and between group inequality are of roughly equal magnitude (see columns (2) and (3) as well as columns (5) and (6) of top panel of Table 15). The *GEI(-1)* and *GEI(1)* measures indicate that within-inequality fell, respectively, by 69 and 60 percent and that between-inequality was reduced by 37 and 1 percent respectively. Most of the compression in the overall wage distribution between 1997 and 2002 occurred because there was tremendous compression of wages within employee categories. These patterns also hold for inequality of total compensation as the statistics in the bottom panel of Table 15 demonstrate.

## **5. Conclusions**

Having a rich personnel data set of one Russian firm for the years 1997 to 2002 at our disposal, we can trace out the evolution of wages, total compensation and employment in a period that included the financial crisis of 1998. The observed evolution points to “price” rather than “quantity” adjustment within the firm during the crisis as employment remained stable but real wages and real compensation fell

---

<sup>31</sup> For example, wage inequality for service staff and production workers fell by 70 percent and 58 percent if we take *GEI(-1)*, but only by 60 percent and 41 percent respectively if we use *GEI(1)* to calculate percentage changes in inequality. For managers, on the other hand, these percentage changes amount to 64 and 68 percent. Detailed results are available from the authors upon request.



substantially. Our evidence thus shows that the firm does not refrain from substantially cutting real wages, taking advantage of a high-inflationary environment.

The downward adjustment of earnings leads to persistent welfare losses among employees since real wages and real compensation levels had not recovered to pre-crisis levels by 2002, even though the firm's financial situation was then better than before the crisis. The firm, which was a high-wage firm prior to 1998, makes use of the high inflation that manifests during and in the aftermath of the financial crisis in order to extract rents from employees. These welfare losses were, however, not spread evenly across all employees, since the firm curbs earnings most for those who earned the highest rents, which results in a tremendous compression of real wages. Wage growth regressions spanning the years 1997 to 2002 show disproportionate wage growth for those employees located in the lowest four deciles of the wage distribution in 1997 while employees positioned in the highest four deciles are confronted with relative wage losses. Relative to production workers, service staff and engineers have wage gains over the period, while accountants and managers have small wage losses.

The firm was in a position to extract rents from its employees because of a fall in outside opportunities in the local labor market as evidenced by dramatically falling separation rates after 1999. At the bottom end of the firm's wage distribution there are, however, few rents before the crisis and the firm seems to pay a wage close to the opportunity cost for employees at that end of the distribution throughout the reported period.

Wage arrears occur in this firm in 1998 and 1999, but they are a minor issue as the average level of arrears never amounted to more than one tenth of a month of 1997 monthly wages. Our findings also indicate that production workers as well as

employees with long tenure face fewer wage arrears. The worst affected group are accountants who seem further penalized by lower nominal wage growth than other employee categories. It is possible that this treatment by the firm was a reaction to a rather loose firm attachment of accountants which is demonstrated through their higher turnover rates than those of other employee groups.

Our analysis thus shows that the costs of the crisis are unevenly distributed across the firm's workforce and that the firm tries to shelter those workers whom it values most from the fallout of the crisis. All in all, though, we take the differential treatment of employee groups within the firm as evidence that market forces strongly influence the wage policies of our firm.

Since our firm is in manufacturing, the empirical analysis of wages and employment gives us insights that can possibly be generalized to workers in the tradable sector of any developing country undergoing a macroeconomic shock.<sup>32</sup>

---

<sup>32</sup> Fallon and Lucas (2002) assess the impact of financial crises on labor markets and household income and record the different experiences of workers in the traded and non-traded sector during a financial crisis and its aftermath in their sample of developing countries. In these countries agriculture is the main traded sector, while in Russia manufacturing belongs to this sector. In an interview, the CEO of the analyzed Russian firm clearly states that the prospects of the firm are strongly determined by movements in the real exchange rate since the firm competes with importers from the EU in the Russian and other markets of the CIS.

## References

- Altonji, Joseph G. and Paul J. Devereux (2000), "The Extent and Consequences of Downward Nominal Wage Rigidity," in Solomon W. Polachek (ed.), *Research in Labor Economics*, 19, 383-431.
- Baker, George, Michael Gibbs and Bengt Holmstrom (1994), "The Wage Policy of a Firm," *Quarterly Journal of Economics*, 109(4), 921-955.
- Bauer, Thomas, Holger Bonin, Lorenz Goette and Uwe Sunde (2007), "Real and Nominal Wage Rigidities and the Rate of Inflation: Evidence from West German Micro Data," *Economic Journal*, forthcoming.
- Bewley, Truman F. (1999), *Why Wages Don't Fall During a Recession*, Harvard University Press.
- Boeri, Tito and Katherine Terrell (2002), "Institutional determinants of labor reallocation in transition", *Journal of Economic Perspectives*, 16(1), 51-76.
- Card, David and David Hyslop (1997), "Does Inflation Grease the Wheels of the Labor Market?," in Romer, C. and D. Romer (eds.), *Reducing Inflation: Motivation and Strategy*, pp. 71-113. Chicago University Press.
- Chiodo, Abigail J. and Michael T. Owyang, (2002), "A Case Study of a Currency Crisis: The Russian Default of 1998." In The Federal Reserve Bank of St. Louis Review, November/December.
- Commander, Simon, McHale, John, and Yemtsov, Ruslan (1995), "Unemployment, Restructuring and the Labor Market in Eastern Europe and Russia: Russia." In Simon Commander and Fabrizio Coricelli, Eds., *Unemployment, Restructuring, and the Labor Market in Eastern Europe and Russia*, pp. 147-191. Washington, DC: EDI/World Bank, 1995.
- Dohmen, Thomas J. (2004), Performance, Seniority, and Wages: Formal Salary Systems and Individual Earnings Profiles, *Labour Economics*, 11(6), 741-763.
- Dohmen, Thomas J. and Gerard A. Pfann (2004), "Worker Separations in a Nonstationary Corporate Environment," *European Economic Review*, vol. 48(3), 645-663.
- Earle, John S. and Klara Sabirianova (2002), "How Late to Pay? Understanding Wage Arrears in Russia", *Journal of Labor Economics*, 20(3), 661-707.

- Eder, M., Yakovlev, A. and A. Çarkoglu, (2003), “The suitcase trade between Turkey and Russia: microeconomics and institutional structure”, Working Paper WP4/2003/07, Higher School of Economics, Moscow.
- Fallon, Peter R. and Lucas, Robert E.B. (2002), “The Impact of Financial Crises on Labor Markets, Household Incomes and Poverty.” *The World Bank Research Observer*, 17(1), pp. 21-45.
- Fehr, Ernst and Lorenz Goette (2005) “Robustness and Real Consequences of Downward Nominal Wage Rigidity”, *Journal of Monetary Economics* 52, 779 - 804.
- Gibbons, Robert and Michael Waldman (1999), “Careers in Organizations: Theory and Evidence”, in Orley C. Ashenfelter and David Card (eds.), *Handbook of Economics*, Vol. 3b, 2373-2437, Elsevier Science, Amsterdam.
- Hamermesh, Dan. and Gerard Pfann (1996),”Adjustment Costs in Factor Demand,” *Journal of Economic Literature*, September, 1264-1292.
- Kharas, Homi, Brian Pinto and Sergei Ulatov (2001), “An Analysis of Russia’s 1998 Meltdown: Fundamentals and Market Signals.” *Brookings Papers on Economic Activity*, 1, 1-67.
- Lambert, Peter, J. (2001), *The Distribution and Redistribution of Income*, Manchester University Press, Manchester and New York.
- Lazear, Edward P. and Paul Oyer (2004), “Internal and External Labor Markets: A Personnel Economics Approach”, *Labour Economics*, 11(5), 527-554.
- Lazear, Edward P. (1999), “Personnel Economics: Past Lessons and Future Directions” Presidential Address to the Society of Labor Economists, San Francisco, May 1, 1998, *Journal of Labor Economics*, 17(2), 199-236.
- Lehmann, Hartmut, Jonathan Wadsworth and Alessandro Acquisti (1999), “Grime and Punishment: Job Insecurity and Wage Arrears in the Russian Federation.” *Journal of Comparative Economics*, 1999, 27(4), 595-617.
- Lerman, Robert I. and Shlomo Yitzaki (1985), “Income Inequality Effects by Income Source: A New Approach and Applications to the United States.” In *The Review of Economics and Statistics*, 67 (1), 151-156.

Lopez-Feldman, Alejandro (2005), “DESCOGINI: Stata module to perform Gini decomposition by income source”.  
<http://ideas.repec.org/c/boc/bocode/s456001.html>

Summers, Lawrence H. and John Williamson (2001), [“An Analysis of Russia’s 1998 Meltdown: Fundamentals and Market Signals.”] Comments and Discussion. In *Brookings Papers on Economic Activity*, vol. 1, 51-67.

Wilson, Beth Ann (1996), “Movement of Wages over the Business Cycle: an Intra-Firm View,” Board of Governors of the Federal Reserve System (U.S.), Finance and Economics Discussion Paper Series, 1997-1.

Wilson, Beth Ann (1999), Wage Rigidity: A Look Inside the Firm, Board of Governors of the Federal Reserve System, Finance and Economics Discussion Series.

## **Appendix: The causes of the financial crisis**

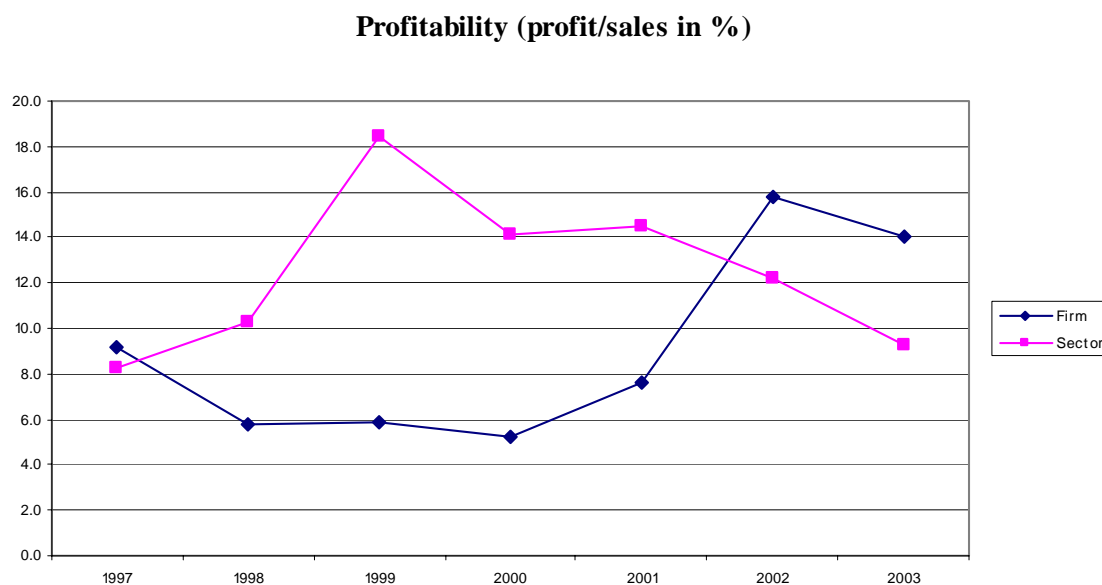
The crux of the problems leading to the financial meltdown were rising public deficits and rising public debt that could not be contained in the medium run. Underlying the dynamics of public debt were structural problems related to tax compliance and tax collection. In addition, the price of oil started its slide in December 1997 and continuously fell in the first half of 1998, leading to less output and less tax revenue. Much of the public deficits had been financed with short-term government securities (so-called GKO's) since 1995. About a third of these GKO's were held by foreigners and a large amount of thus foreign held short-term debt came due in 1998. The attempt to swap most of these short-term securities for longer-termed Eurobonds was only partially successful and given the essentially fixed exchange rate the CBR could fight off the speculative attack on the ruble only through the depletion of foreign reserves.

The CBR tried to contain the currency crisis in the summer of 1998 also by slowing down the growth rate of the money supply and by twice raising the lending rate to banks from 30 to 150 percent. This rise in interest rates aggravated the country's debt problem as interest payments increased substantially. Consequently pressure on the currency grew even more as investors were convinced that Russian authorities would devalue to finance non-denominated debt. Because of the fragile nature of the Russian financial markets, the dramatic jump of the interest rate did not increase the supply of capital to firms, but actually made it nearly impossible for firms to raise capital for new investment projects, leading to a further fall in output, which exacerbated the debt problem even more. Attempts by international organizations to inject some liquidity in the Russian economy at that stage turned out to be too little and too late.

Expectations of Russia's impending devaluation and default were also a crucial factor in the build-up of the crisis. The financial meltdowns in Asia alerted many investors to a possible default in Russia as did public relations disasters perpetrated by Russian authorities. The latter convinced investors that Russian policy makers were divided on how to solve the ensuing debt crisis and were thus more and more convinced of eventual devaluation and default (for details see Chiodo and Owygang,2002).

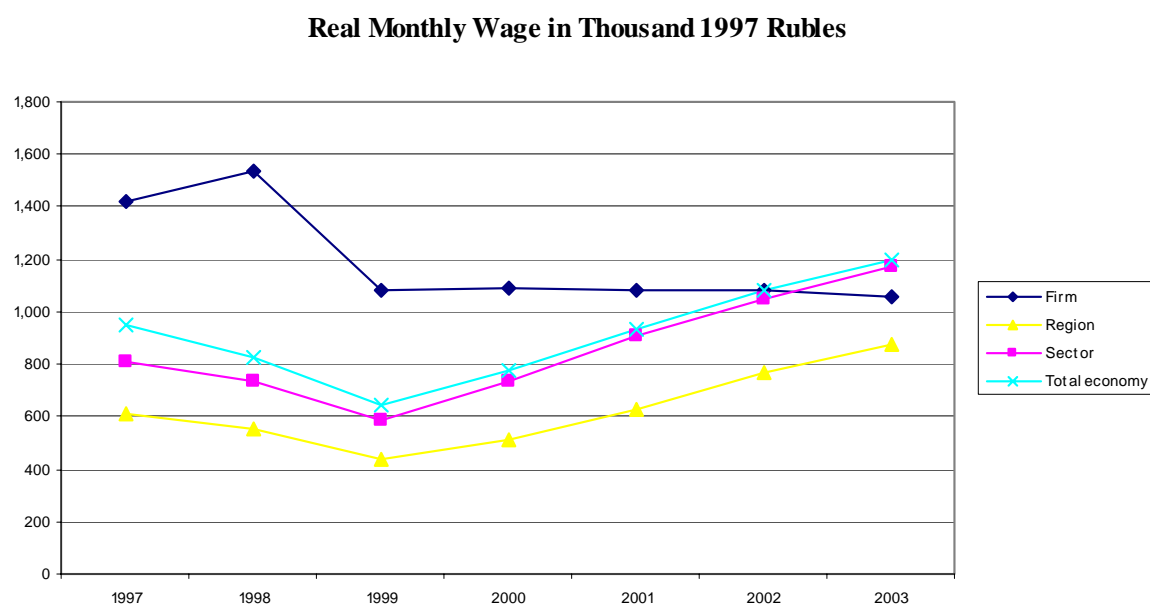
## FIGURES

Figure 1



Notes: The figure shows the percentage of profits relative to sales for the firm and the average percentage of profits to sales for the machine building and metal working sector.  
Source: Rosstat, authors' calculations.

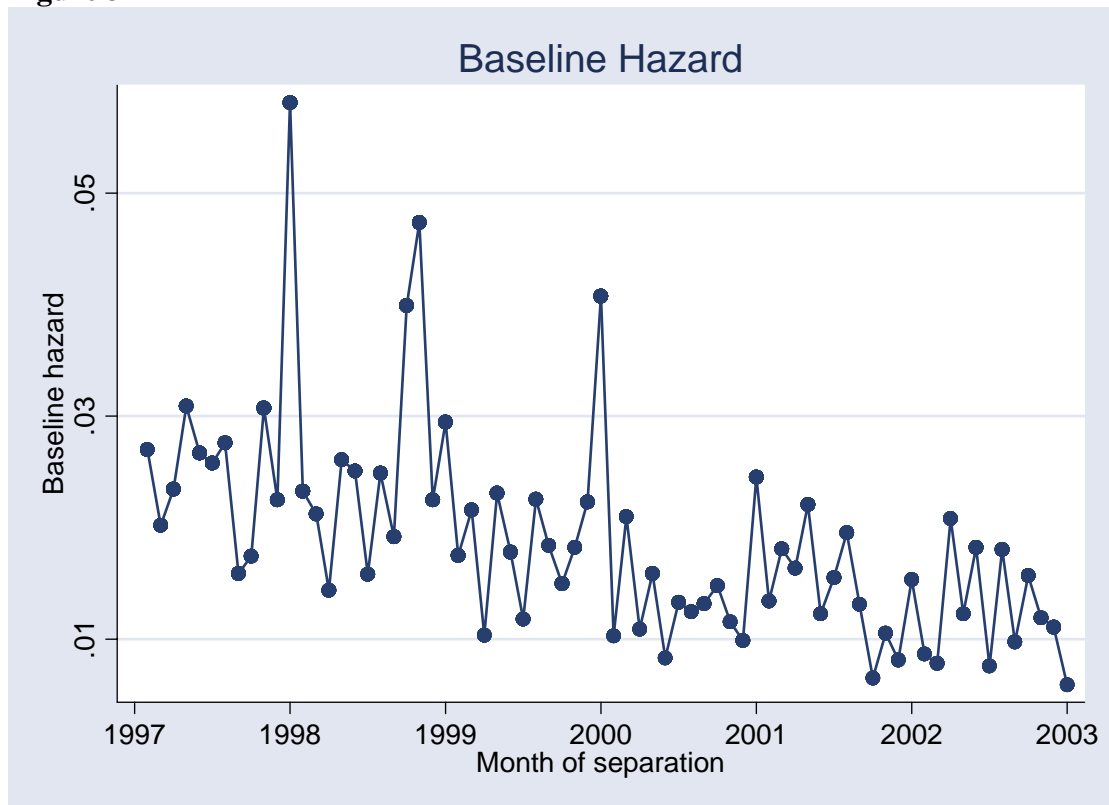
Figure 2



Notes: The figure shows average real monthly wages in thousands of 1997 rubles for the firm, the region in which the firm is located, the machine building and metal working sector and the entire Russian economy.  
Source: Rosstat, authors' calculations.



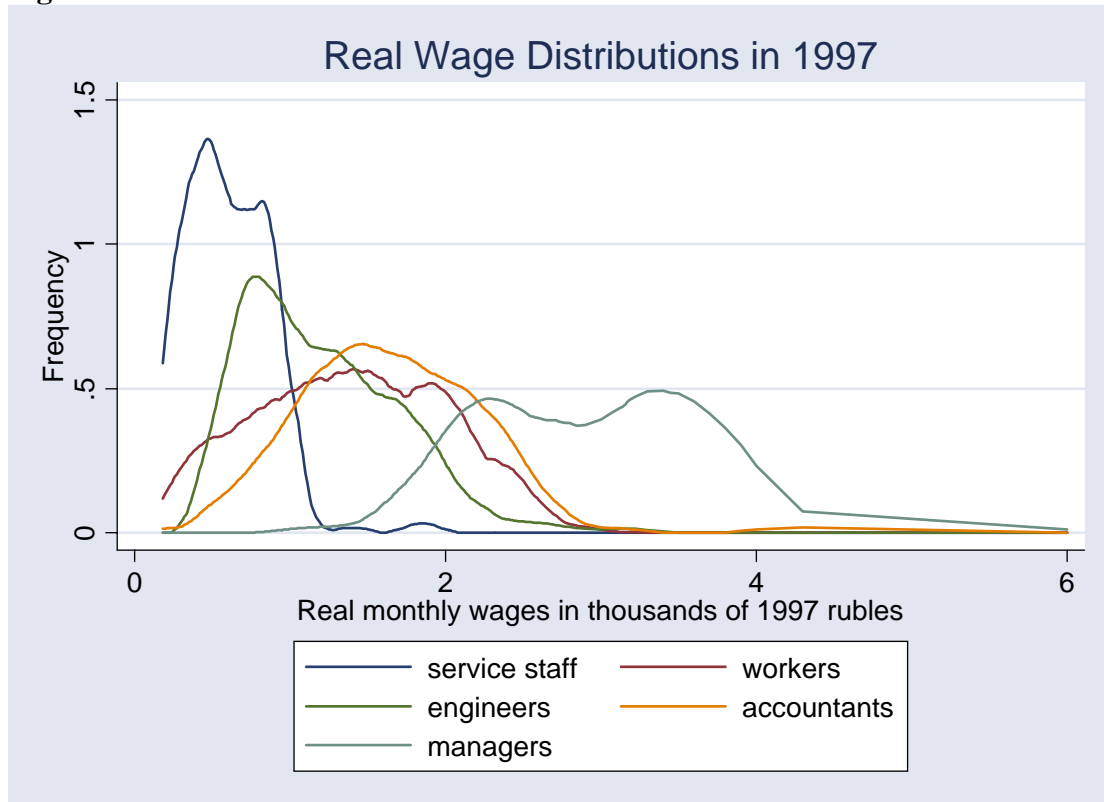
**Figure 3**



The figure plots the baseline hazard rate of a Cox proportional hazard model, where this baseline hazard rate is assumed to be uniform for the five employee categories, “service staff”, “engineers”, “workers”, “accountants” and “managers”, and where calendar time is specified as the duration variable. See text for further explanations.

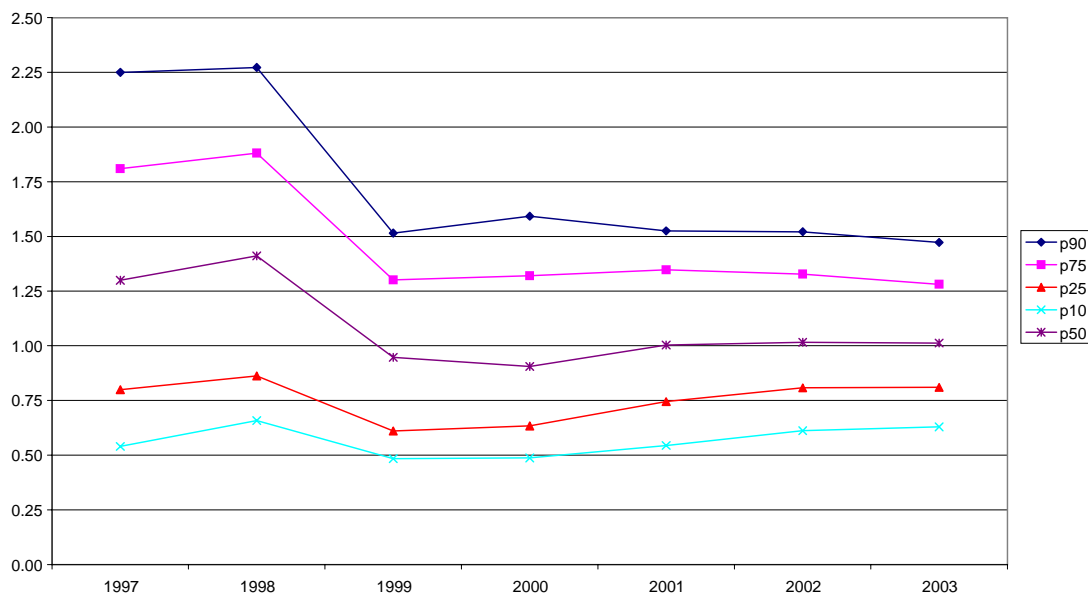
Source: Personnel records of the firm.

**Figure 4**



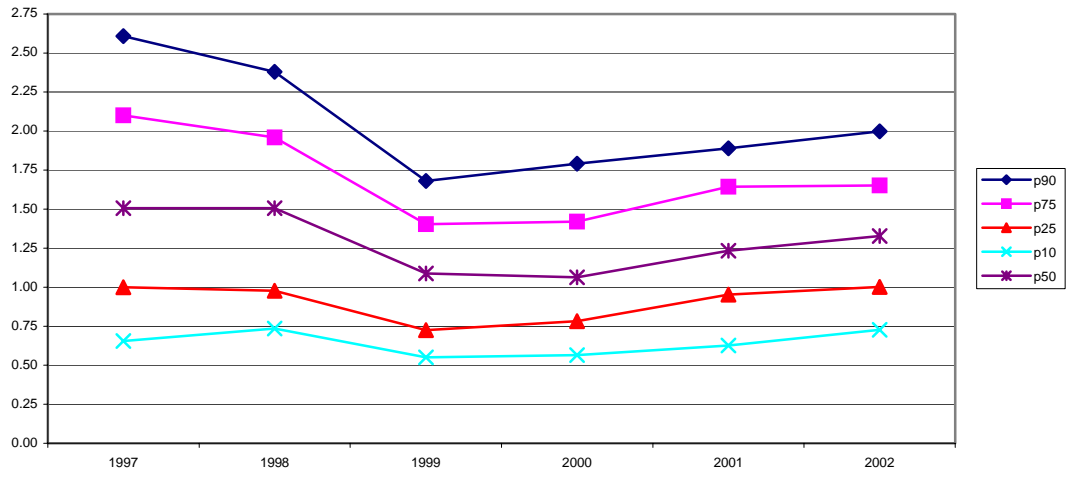
Notes: The figure plots the smoothed density functions of the real wage distributions in 1997 for the five employee categories in 1997 rubles, estimated using a Gaussian kernel. The bandwidth is chosen to minimize the mean integrated squared error under the assumption that data are Gaussian.  
 Source: Personnel records of the firm, national CPI deflator from Rosstat, authors' calculations.

**Figure 5 Distribution of basic real wage in rubles - all employees**



Source: Personnel records of the firm, authors' calculations.

**Figure 6 Distribution of total real compensation in rubles - all employees**



Source: Personnel records of the firm, authors' calculations.

**Figure 7**



Notes: The figure plots the smoothed density functions of the real wage distributions in 2002 for the five employee categories in 1997 rubles, estimated using a Gaussian kernel. The bandwidth is chosen to minimize the mean integrated squared error under the assumption that the data are Gaussian. Source: Personnel records of the firm, national CPI deflator from Rosstat, authors' calculations.

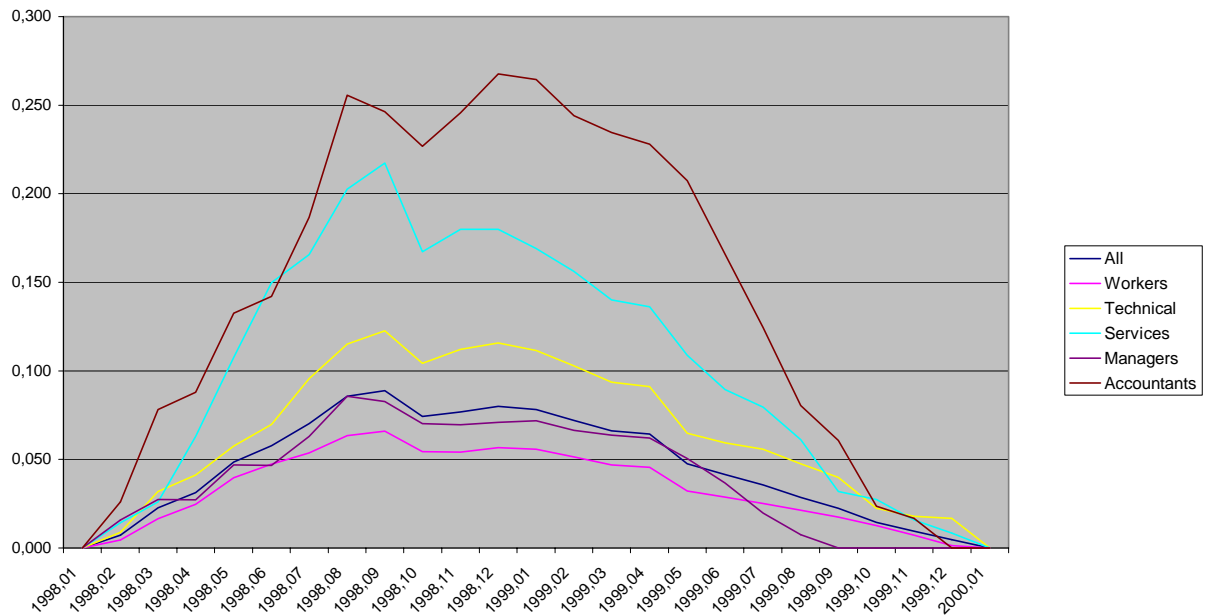
**Figure 8**



Notes: The figure plots the smoothed density functions of the distribution of real wage growth between 1997 and 2002 for the all employees who stayed with the firm during the entire period. Wages were deflated using the national CPI. The density function is estimated using a Gaussian kernel. The bandwidth is chosen to minimize the mean integrated squared error under the assumption that the data are Gaussian.

Source: Personnel records of the firm, CPI deflator from Rosstat, authors' calculations.

**Figure 9 Real Arrears in Months of 1997 Wages**



Source: CERT regional firm panel data

## TABLES

**Table 1: Composition of Workforce (in %), 1997 to 2002**

Year	Service staff	Engineers	Production workers	Accountants	Managers	Total	Absolute number of employees
1997	7.1	24.8	62.1	2.2	3.8	100	3032
1998	7.0	24.4	62.6	2.1	3.8	100	3081
1999	6.9	24.6	62.6	2.1	3.8	100	3077
2000	7.0	24.4	62.8	2.1	3.8	100	3110
2001	6.9	24.0	63.2	2.0	3.8	100	3175
2002	6.9	23.7	63.6	1.9	3.8	100	3221

Notes: The table shows the composition of the workforce in terms of the five employee categories in percentages. The absolute number of employees is displayed in the rightmost column.

Source: Personnel records of the firm, authors' calculations

**Table 2a: Hiring and Separation Rates (in %), 1997-2002**

Year	Service staff			Engineers			Production workers			Accountants			Managers			All Employment		
	In	Out	Total	In	Out	Total	In	Out	Total	In	Out	Total	In	Out	Total	In	Out	Total
1997	13.7	14.2	27.8	7.8	7.8	15.5	16.4	15.2	31.5	19.1	23.5	42.6	10.8	9.9	20.7	13.9	13.2	27.1
1998	13.3	13.3	26.5	6.3	5.8	12.1	18.0	16.1	34.1	20.0	23.1	43.1	16.1	13.4	29.5	14.7	13.5	28.2
1999	7.6	5.7	13.3	5.3	4.9	10.3	11.8	11.8	23.7	11.1	14.3	25.4	4.3	4.3	8.7	9.6	9.5	19.1
2000	9.3	7.4	16.7	6.4	5.7	12.1	10.7	7.6	18.3	8.2	0.0	8.2	3.5	0.0	3.5	9.2	6.7	15.9
2001	7.8	6.8	14.6	5.7	5.1	10.8	11.5	7.4	19.0	13.6	19.7	33.3	5.0	1.7	6.7	9.6	6.5	16.2
2002	5.4	3.6	9.0	2.9	3.0	5.9	8.7	7.8	16.5	8.1	9.7	17.7	0.0	0.0	0.0	6.7	6.1	12.8

Source: Personnel records of the firm, authors' calculations; In=hiring rate; Out=separation rate; Total=turnover rate.

**Table 2b: Hiring and Separation and Turnover Rates (in %) in sample of industrial firms in the region - 1998-2001**

Year	Service staff			Engineers			Production workers			Accountants			Managers			All Employment		
	In	Out	Total	In	Out	Total	In	Out	Total	In	Out	Total	In	Out	Total	In	Out	Total
1998	9.2	21.6	30.8	10.8	13.0	23.8	11.3	12.8	24.1	3.1	4.4	7.5	2.1	5.4	7.5	10.9	12.6	23.5
1999	13.2	15.5	28.7	8.6	7.5	16.1	13.1	13.1	26.2	4.1	3.9	8.0	3.6	4.2	7.6	11.5	11.2	22.7
2000	10.1	13.4	23.5	8.3	9.3	17.6	13.1	10.1	23.2	4.7	4.5	9.2	2.6	0.1	2.7	11.2	9.8	21.0
2001	7.2	10.1	17.3	9.1	5.3	14.4	10.9	8.2	19.1	1.8	1.2	3.0	1.7	1.4	3.1	10.2	7.5	17.7

Source: CERT Regional Data Base, authors' calculations; In=hiring rate; Out=separation rate; Total=turnover rate.

**Table 3: Determinants of exit rates, Estimates of Cox proportional hazard model**

		Entire period		1997-1999		2000-2002	
		(1)	(2)	(3)	(4)	(5)	(6)
<b>Tenure</b>							
	less than 1 year	-0.673*** [0.185]	-0.694*** [0.185]	-1.020*** [0.239]	-1.049*** [0.240]	0.046 [0.292]	0.028 [0.293]
	1-2 years	-0.370** [0.180]	-0.381** [0.181]	-0.552** [0.231]	-0.572** [0.232]	0.079 [0.289]	0.077 [0.290]
	2-3 years	-0.137 [0.178]	-0.145 [0.179]	-0.212 [0.228]	-0.229 [0.229]	0.155 [0.286]	0.158 [0.287]
	3-4 years	-0.138 [0.179]	-0.138 [0.179]	-0.014 [0.227]	-0.026 [0.227]	-0.342 [0.296]	-0.328 [0.297]
	4-5 years	-0.253 [0.184]	-0.256 [0.184]	-0.295 [0.237]	-0.311 [0.238]	-0.355 [0.292]	-0.331 [0.293]
	5-6 years	0.15 [0.182]	0.143 [0.182]	0.276 [0.233]	0.253 [0.233]	-0.34 [0.293]	-0.307 [0.293]
	6-7 years	0.154 [0.188]	0.155 [0.188]	0.29 [0.244]	0.282 [0.244]	-0.319 [0.297]	-0.295 [0.297]
	7-8 years	0.117 [0.196]	0.119 [0.196]	0.395 [0.249]	0.398 [0.249]	-0.426 [0.318]	-0.41 [0.318]
	8-9 years	0.228 [0.202]	0.232 [0.202]	0.244 [0.265]	0.254 [0.266]	0.16 [0.315]	0.157 [0.315]
	10-15 years	-0.212 [0.189]	-0.208 [0.189]	-0.207 [0.241]	-0.212 [0.241]	-0.206 [0.306]	-0.166 [0.306]
	15-20 years	0.021 [0.197]	0.017 [0.197]	-0.124 [0.250]	-0.131 [0.251]	0.278 [0.323]	0.306 [0.323]
	20-25 years	-0.16 [0.218]	-0.187 [0.218]	-0.059 [0.268]	-0.088 [0.268]	-0.518 [0.396]	-0.523 [0.397]
	25-30 years	-0.583** [0.293]	-0.613** [0.293]	-0.720* [0.376]	-0.764** [0.376]	-0.265 [0.468]	-0.281 [0.468]
	30-35 years	-0.259 [0.366]	-0.306 [0.366]	-1.06 [0.749]	-1.121 [0.750]	0.265 [0.455]	0.249 [0.455]
	35-40 years	-1.326 [1.021]	-1.322 [1.021]	-0.369 [1.042]	-0.351 [1.042]		
<b>Education:</b>							
	Basic professional	0.457*** [0.081]	0.456*** [0.081]	0.15 [0.098]	0.141 [0.098]	1.104*** [0.149]	1.108*** [0.149]
	Secondary general	0.08 [0.085]	0.099 [0.085]	-0.009 [0.100]	0.004 [0.101]	0.330** [0.162]	0.349** [0.162]
	Secondary professional	0.463*** [0.085]	0.490*** [0.085]	0.156 [0.105]	0.184* [0.105]	1.037*** [0.153]	1.058*** [0.153]
	Higher incomplete	0.205 [0.218]	0.254 [0.218]	-0.194 [0.292]	-0.129 [0.293]	1.069*** [0.334]	1.088*** [0.334]
	Higher	0.309*** [0.115]	0.326*** [0.116]	-0.024 [0.146]	-0.002 [0.147]	0.956*** [0.194]	0.970*** [0.195]
<b>Age</b>							
	less than 20	-0.115 [0.326]	-0.091 [0.326]	1.384*** [0.335]	1.420*** [0.335]		
	20-25	-0.185* [0.112]	-0.208* [0.112]	0.111 [0.131]	0.082 [0.131]	-1.055*** [0.220]	-1.073*** [0.221]
	25-30	0.072 [0.081]	0.065 [0.081]	0.023 [0.103]	0.021 [0.103]	0.231* [0.134]	0.188 [0.134]
	35-40	-0.284*** [0.091]	-0.273*** [0.091]	-0.15 [0.115]	-0.131 [0.115]	-0.484*** [0.150]	-0.491*** [0.150]
	40-45	-0.341*** [0.093]	-0.331*** [0.094]	-0.250** [0.118]	-0.235** [0.119]	-0.458*** [0.151]	-0.476*** [0.151]
	45-50	-0.613*** [0.115]	-0.617*** [0.116]	-0.405*** [0.146]	-0.405*** [0.147]	-0.922*** [0.194]	-0.957*** [0.195]



	[0.100]	[0.100]	[0.126]	[0.126]	[0.164]	[0.164]
50-55	-0.776***	-0.769***	-0.690***	-0.657***	-0.923***	-0.956***
	[0.122]	[0.123]	[0.180]	[0.181]	[0.170]	[0.170]
55-60	-0.294*	-0.287*	0.154	0.164	-0.770***	-0.794***
	[0.168]	[0.168]	[0.227]	[0.227]	[0.253]	[0.253]
60 or older	1.272***	1.189***	1.848***	1.749***	0.669**	0.573**
	[0.190]	[0.191]	[0.281]	[0.284]	[0.264]	[0.265]
Service staff	-0.531***	-0.531***	-0.537***	-0.512***	-0.309*	-0.361**
	[0.111]	[0.111]	[0.142]	[0.143]	[0.175]	[0.176]
Engineers	-1.121***	-1.106***	-1.170***	-1.148***	-0.765***	-0.772***
	[0.090]	[0.091]	[0.120]	[0.121]	[0.140]	[0.140]
Accountants	-0.221	-0.184	-0.124	-0.07	-0.272	-0.261
	[0.152]	[0.152]	[0.188]	[0.189]	[0.258]	[0.258]
Managers	-0.767***	-0.767***	-0.198	-0.203	-2.602***	-2.598***
	[0.193]	[0.194]	[0.211]	[0.212]	[0.719]	[0.720]
1 if female	0.494***	0.419***	0.650***	0.556***	0.301***	0.241**
	[0.055]	[0.059]	[0.069]	[0.075]	[0.092]	[0.097]
1 if married	-0.128	-0.103	0.018	0.028	-0.472*	-0.458*
	[0.158]	[0.158]	[0.198]	[0.199]	[0.264]	[0.264]
1 if divorced or widowed	-0.469**	-0.422**	-0.695***	-0.659**	-0.386	-0.37
	[0.191]	[0.192]	[0.259]	[0.260]	[0.296]	[0.297]
1 if 1 child	-0.488***	-0.500***	-0.517***	-0.526***	-0.377*	-0.366
	[0.128]	[0.128]	[0.155]	[0.156]	[0.225]	[0.225]
1 if more than 1 child	-0.691***	-0.695***	-0.963***	-0.965***	-0.156	-0.146
	[0.146]	[0.146]	[0.183]	[0.184]	[0.248]	[0.248]
Position in employee category specific wage distribution:						
1st decile		0.431***		0.433***		0.411**
		[0.108]		[0.130]		[0.193]
2nd decile		-0.014		-0.028		-0.01
		[0.118]		[0.142]		[0.215]
3rd decile		0.115		0.159		-0.089
		[0.117]		[0.139]		[0.221]
4th decile		0.000		-0.022		0.048
		[0.124]		[0.151]		[0.218]
6th decile		0.094		0.005		0.331
		[0.120]		[0.146]		[0.212]
7th decile		-0.084		0.036		-0.502**
		[0.128]		[0.150]		[0.253]
8th decile		-0.375***		-0.349**		-0.461*
		[0.139]		[0.164]		[0.272]
9th decile		-0.046		-0.132		0.019
		[0.136]		[0.168]		[0.231]
10th decile		0.366***		0.352**		0.303
		[0.120]		[0.144]		[0.222]
Observations	201659	201659	98736	98736	113100	113100

Standard errors in brackets

\* significant at 10%; \*\* significant at 5%; \*\*\* significant at 1%

**Table 4: Determinants of wages, 1997**

	Dependent Variable: log(real wage) in 1997					
	All employees	Service staff	Engineers	Production workers	Accountants	Managers
	(1)	(2)	(3)	(4)	(5)	(6)
Tenure in years	0.028*** [0.007]	0.020 [0.028]	0.026* [0.014]	0.030*** [0.010]	0.027 [0.041]	0.007 [0.026]
Tenure squared/100 in years	-0.136** [0.067]	-0.269 [0.251]	-0.188 [0.134]	-0.119 [0.089]	-0.471 [0.481]	0.021 [0.237]
Tenure cube /1000 in years	0.025 [0.016]	0.083 [0.055]	0.04 [0.033]	0.014 [0.021]	0.171 [0.152]	-0.007 [0.058]
Age in years	0.034 [0.038]	0.013 [0.176]	0.012 [0.074]	-0.005 [0.049]	-0.479 [0.290]	-0.588 [0.424]
Age squared/100 in years	-0.033 [0.103]	-0.009 [0.469]	-0.001 [0.198]	0.08 [0.133]	1.579* [0.819]	1.541 [1.059]
Age cube /1000 in years	-0.001 [0.009]	-0.001 [0.041]	-0.002 [0.017]	-0.01 [0.012]	-0.162** [0.075]	-0.131 [0.087]
Basic professional	0.037 [0.029]	0.014 [0.087]		0.036 [0.033]		
Secondary general	0.079*** [0.028]	-0.027 [0.089]		0.076** [0.032]		
Secondary professional	0.097*** [0.030]	0.028 [0.104]	-0.123 [0.277]	0.100*** [0.036]	0.615 [0.390]	
Higher incomplete	0.164** [0.069]	-0.088 [0.469]	-0.065 [0.284]	0.180 [0.114]	1.406** [0.559]	0.035 [0.167]
Higher	0.122*** [0.038]	0.187 [0.273]	-0.073 [0.277]	0.110 [0.069]	0.977** [0.396]	-0.042 [0.053]
1 if female	-0.319*** [0.019]	-0.236*** [0.071]	-0.155*** [0.030]	-0.428*** [0.027]	0.584** [0.284]	-0.044 [0.060]
1 if single	0.021 [0.070]	0.476 [0.467]	-0.038 [0.167]	0.074 [0.093]	0.109 [0.236]	
1 if divorced or widowed	-0.009 [0.035]	0.014 [0.093]	-0.081 [0.074]	-0.005 [0.050]	0.004 [0.132]	-0.056 [0.071]
1 if 1 child	-0.011 [0.053]	0.434 [0.507]	-0.064 [0.086]	0.035 [0.071]	0.078 [0.207]	0.418 [0.253]
1 if more than 1 child	0.042 [0.057]	0.487 [0.498]	-0.055 [0.096]	0.080 [0.076]	0.052 [0.236]	0.444* [0.254]
Service staff	-0.731*** [0.034]					
Engineers	-0.064** [0.030]					
Accountants	0.401*** [0.060]					
Managers	0.662*** [0.051]					
Constant	-0.622 [0.456]	-1.281 [2.150]	-0.015 [0.924]	-0.252 [0.583]	3.422 [3.383]	7.886 [5.539]
Observations	3040	213	790	1838	76	123
R-squared	0.35	0.1	0.06	0.24	0.49	0.16

OLS Estimates. Standard errors in brackets

\* significant at 10%; \*\* significant at 5%; \*\*\* significant at 1%

**Table 5: Shares of Monthly Compensation Components**

Year	Monthly Wage	Monthly Bonus	Extra Bonus	Other Bonus
1997	0.830	0.080	0.051	0.039
1998	0.916	0.059	0.000	0.025
1999	0.870	0.066	0.043	0.021
2000	0.854	0.066	0.042	0.038
2001	0.797	0.081	0.098	0.025
2002	0.776	0.095	0.088	0.041

Source: Personnel records of the firm, authors' calculations.

**Table 6: Transition probabilities between quintiles of real wages in 1997 and 2002 (in %); all continuous employees**

		Quintile in real wage distribution (2002)					N (1997)
		1	2	3	4	5	
Quintile in real wage distribution (1997)	1	<b>57.89</b>	30.47	8.59	1.39	1.66	361
	2	28.5	<b>34.35</b>	25	10.28	1.87	428
	3	4.81	19.24	<b>34.87</b>	35.27	5.81	499
	4	0.73	5.13	12.96	<b>49.39</b>	31.78	409
	5	0	0.49	4.62	22.38	<b>72.51</b>	411

Source: Personnel records of the firm, authors' calculations.

**Table 7: Real wage growth 1997-2002**

	(1)	(2)	(3)
Tenure in years	-0.038*** [0.013]	-0.029*** [0.009]	-0.020** [0.009]
Tenure squared/100 in years	0.160** [0.077]	0.155*** [0.053]	0.101** [0.052]
Tenure cube /1000 in years	-0.022* [0.013]	-0.022** [0.009]	-0.013 [0.009]
Age in years	0.04 [0.052]	-0.001 [0.036]	-0.016 [0.034]
Age squared/100 in years	-0.119 [0.124]	-0.005 [0.086]	0.039 [0.081]
Age cube /1000 in years	0.011 [0.010]	0.000 [0.007]	-0.003 [0.006]
Basic professional	0.000 [0.028]	-0.008 [0.019]	0.000 [0.019]
Secondary general	-0.012 [0.024]	0.024 [0.017]	0.016 [0.016]
Secondary professional	0.032 [0.023]	0.097*** [0.016]	0.037** [0.019]
Higher incomplete	0.056 [0.057]	0.144*** [0.039]	0.066* [0.040]
Higher	0.023 [0.024]	0.131*** [0.017]	0.047** [0.022]
1 if female	0.087*** [0.016]	-0.035*** [0.012]	-0.050*** [0.012]
1 if single	-0.061 [0.080]	-0.045 [0.055]	-0.057 [0.053]
1 if divorced or widowed	-0.015 [0.027]	-0.043** [0.019]	-0.044** [0.018]
1 if 1 child	0.098 [0.062]	0.056 [0.043]	0.045 [0.041]
1 if more than 1 child	0.063 [0.064]	0.059 [0.044]	0.047 [0.042]
Position in firm-level wage distribution:			
1st decile		0.563*** [0.022]	
2nd decile		0.218*** [0.024]	
3rd decile		0.119*** [0.023]	
4th decile		0.033 [0.023]	
6th decile		-0.098*** [0.022]	
7th decile		-0.090*** [0.023]	
8th decile		-0.184*** [0.024]	
9th decile		-0.195*** [0.023]	
10th decile		-0.304*** [0.024]	

Position in employee category specific wage distribution:

1st decile			0.559*** [0.021]
2nd decile			0.251*** [0.020]
3rd decile			0.183*** [0.022]
4th decile			0.134*** [0.020]
6th decile			0.01 [0.022]
7th decile			-0.088*** [0.021]
8th decile			-0.193*** [0.022]
9th decile			-0.154*** [0.020]
10th decile			-0.291*** [0.021]
Service staff			0.286*** [0.018]
Engineers			0.151*** [0.018]
Accountants			-0.078** [0.039]
Managers			-0.089*** [0.028]
Constant	-0.425 [0.699]	-0.056 [0.482]	0.015 [0.459]
Observations	1824	1824	1824
R-squared	0.07	0.56	0.61

Standard errors in brackets

\* significant at 10%; \*\* significant at 5%; \*\*\* significant at 1%

Table 8: Real wage growth 1997-2002 by employee category

	Service staff	Engineers	Production workers	Accountants	Managers
	(1)	(2)	(3)	(4)	(5)
Tenure in years	-0.143** [0.069]	0.013 [0.011]	-0.027** [0.013]	-0.239 [0.157]	-0.025 [0.024]
Tenure squared/100 in years	0.982* [0.553]	-0.082 [0.066]	0.141* [0.075]	1.683 [1.089]	0.093 [0.142]
Tenure cube /1000 in years	-0.209 [0.134]	0.015 [0.012]	-0.019 [0.013]	-0.335 [0.231]	-0.008 [0.025]
Age in years	-0.234 [0.148]	-0.02 [0.033]	0.046 [0.055]	-0.532 [1.170]	0.914* [0.468]
Age squared/100 in years	0.55 [0.348]	0.042 [0.076]	-0.103 [0.132]	1.08 [2.834]	-1.978* [1.029]
Age cube /1000 in years	-0.042 [0.027]	-0.003 [0.006]	0.007 [0.010]	-0.071 [0.225]	0.141* [0.075]
Basic professional	0.058 [0.050]	-0.460*** [0.146]	-0.018 [0.023]		
Secondary general	0.004 [0.052]		-0.001 [0.019]		
Secondary professional	0.057 [0.063]	-0.012 [0.026]	0.028 [0.024]	0.172 [0.447]	-0.066 [0.068]
Higher incomplete	-0.029 [0.235]		0.053 [0.103]	-0.011 [0.813]	
Higher	0.125 [0.163]	-0.005 [0.026]	-0.039 [0.047]	0.337 [0.483]	-0.025 [0.068]
1 if female	-0.036 [0.041]	0.006 [0.011]	-0.111*** [0.021]	-0.29 [0.427]	-0.015 [0.028]
1 if single	-0.247 [0.230]	0.031 [0.075]	0.139 [0.087]		
1 if divorced or widowed	-0.101* [0.056]	-0.016 [0.029]	-0.025 [0.026]	-0.441** [0.192]	0.002 [0.028]
1 if 1 child	-0.066 [0.051]	-0.028 [0.035]	0.232*** [0.073]	0.067 [0.166]	-0.013 [0.020]
1 if more than 1 child		-0.012 [0.039]	0.219*** [0.074]		
Position in employee category specific wage distribution:					
1st decile	0.617*** [0.085]	0.403*** [0.022]	0.674*** [0.032]	0.466 [0.294]	0.419*** [0.041]
2nd decile	0.287*** [0.080]	0.213*** [0.022]	0.270*** [0.029]	0.264 [0.275]	0.278*** [0.047]
3rd decile	-0.037 [0.082]	0.161*** [0.022]	0.202*** [0.034]	-0.003 [0.363]	0.254*** [0.043]
4th decile	0.259*** [0.088]	0.085*** [0.022]	0.137*** [0.030]	0.052 [0.286]	0.103** [0.043]
6th decile	-0.083 [0.083]	-0.087*** [0.023]	0.086** [0.035]	0.107 [0.310]	-0.147*** [0.045]
7th decile	-0.314*** [0.084]	-0.140*** [0.022]	-0.033 [0.031]	-0.175 [0.262]	-0.116*** [0.043]
8th decile	-0.550*** [0.085]	-0.186*** [0.023]	-0.162*** [0.034]	-0.043 [0.344]	-0.123*** [0.039]
9th decile	-0.621*** [0.084]	-0.189*** [0.022]	-0.086*** [0.030]	0.042 [0.274]	-0.158*** [0.050]
10th decile	-0.761*** [0.084]	-0.287*** [0.023]	-0.241*** [0.032]	-0.096 [0.295]	-0.268*** [0.044]
Constant	4.054* [2.070]	0.224 [0.438]	-1.018 [0.733]	8.929 [16.054]	-14.044** [7.005]
Observations	151	611	934	36	92
R-squared	0.83	0.75	0.53	0.69	0.9

Standard errors in brackets

\* significant at 10%; \*\* significant at 5%; \*\*\* significant at 1%

**Table 9: Differences between average wages in firm and average wages in sample of industrial firms in the region in 1997 rubles: 1998-2002**

Year	Service workers	Engineers	Workers	Accountants	Managers
1998	100	133	379	792	1468
1999	346	391	803	805	1898
2000	123	-28	261	223	1056
2001	81	-82	195	279	805
2002	-61	-24	119	150	551

Source: Personnel records of the firm and CERT Regional Data Base, authors' calculations.

**Table 10: Summary statistics of real wage arrears for 1998 by employee type in thousands of Rubles (A) and in months of 1997 wages (B)**

Type	N	mean	Std. dev.	50%	75%	90%	max
<i>All employees</i>							
A	3408	0.099	0.198	0	0.120	0.273	2.786
B	3395	0.078	0.130	0	0.116	0.313	1.140
<i>Service workers</i>							
A	237	0.088	0.041	0.094	0.110	0.131	0.210
B	236	0.130	0.051	0.136	0.139	0.194	0.298
<i>Engineers</i>							
A	786	0.112	0.070	0.120	0.168	0.210	0.630
B	779	0.116	0.046	0.115	0.116	0.162	0.670
<i>Workers</i>							
A	2179	0.073	0.212	0	0	0.368	1.840
B	2175	0.051	0.142	0	0	0.333	0.907
<i>Accountants</i>							
A	76	0.436	0.270	0.488	0.625	0.757	0.893
B	75	0.309	0.201	0.371	0.373	0.447	1.140
<i>Managers</i>							
A	130	0.187	0.322	0.160	0.189	0.199	2.786
B	130	0.066	0.112	0.055	0.056	0.056	0.670

Source: Personnel records of the firm, authors' calculations.

**Table 11: Tobit regressions with dependent variables: real wage arrears for 1998  
in thousands of Rubles and in months of 1997 wages**

regressor	Dependent variable			
	real arrears	real arrears	real arrears / monthly 97 wages	real arrears / monthly 97 wages
constant	0.055 (0.018)*	0.024 (0.026)	0.067 (0.011)*	0.140 (0.017)*
real wage	-0.037 (0.011)*	0.051 (0.015)*	-0.089 (0.007)*	-0.039 (0.010)*
engineers		0.030 (0.028)		0.010 (0.018)
workers		-0.405 (0.031)*		-0.272 (0.020)*
accountants		0.293 (0.050)*		0.199 (0.033)*
managers		-0.037 (0.053)		0.002 (0.035)
Diagnostics	N=3395 Chi <sup>2</sup> (1)=10.22 Pseudo R <sup>2</sup> =0.002	N=3395 Chi <sup>2</sup> (5)=846.88 Pseudo R <sup>2</sup> =0.234	N=3395 Chi <sup>2</sup> (1)=129.73 Pseudo R <sup>2</sup> =0.049	N=3395 Chi <sup>2</sup> (5)=997.07 Pseudo R <sup>2</sup> =0.377

Source: Personnel records of the firm, authors' calculations.

**Table 12: Evolution of earnings inequality measured by Gini coefficients**

	(1)	(2)	(3)	(4)	(5)	(6)
Panel a: Wages						
Year	Entire workforce	Service staff	Engineers	Workers	Accountants	Managers
1997	0.2801	0.2474	0.2294	0.2507	0.1912	0.1367
1998	0.251	0.1484	0.2239	0.2003	0.1417	0.1082
1999	0.2453	0.0853	0.1954	0.1854	0.1267	0.1202
2000	0.2456	0.0649	0.1786	0.1945	0.1705	0.072
2001	0.2189	0.055	0.1679	0.1792	0.1583	0.0438
2002	0.1995	0.1618	0.1437	0.1725	0.1409	0.0482
Panel b: Total compensation						
Year	Entire workforce	Service staff	Engineers	Workers	Accountants	Managers
1997	0.2928	0.2416	0.2293	0.2456	0.1903	0.1488
1998	0.2547	0.1474	0.2248	0.2015	0.1423	0.1077
1999	0.2444	0.0855	0.1964	0.1823	0.131	0.1202
2000	0.2464	0.0669	0.1792	0.1972	0.1787	0.073
2001	0.2271	0.0684	0.1681	0.1778	0.1696	0.0447
2002	0.2211	0.162	0.1455	0.1845	0.1454	0.0484

Source: Personnel records of the firm, authors' calculations.



**Table 13: Gini decomposition by income source**

Year	Monthly Wage	Monthly Bonus	Extra Bonus	Other Bonus
<u>Gini by income source</u>				
1997	0.2802	0.8069	0.63	0.725
1998	0.251	0.7933	-	0.7027
1999	0.2453	0.7846	0.5467	0.7788
2000	0.2457	0.7759	0.5488	0.7271
2001	0.219	0.7658	0.352	0.7367
2002	0.1996	0.758	0.2724	0.7209
<u>Gini correlation of income source with distribution of total income</u>				
1997	0.9752	0.6052	0.5787	0.2968
1998	0.9893	0.4063	-	0.4621
1999	0.9895	0.2838	0.5298	0.371
2000	0.9775	0.3499	0.3805	0.5315
2001	0.9711	0.5007	0.6761	0.192
2002	0.9586	0.5955	0.8062	0.3527

Source: Personnel records of the firm, authors' calculations.

**Table 14: Contributions of source incomes on inequality**

Year	Monthly Wage	Monthly Bonus	Extra Bonus	Other Bonus
<u>Share of source income in total inequality</u>				
1997	0.7749	0.1333	0.063	0.0288
1998	0.8929	0.0756	-	0.0315
1999	0.8643	0.06	0.0513	0.0245
2000	0.8324	0.0731	0.0354	0.0591
2001	0.7462	0.1364	0.1021	0.0153
2002	0.6707	0.1947	0.0875	0.047
<u>Inequality components as a fraction of income shares</u>				
1997	0.9333	1.6677	1.2451	0.7349
1998	0.9748	1.2748	-	1.275
1999	0.9932	0.911	1.185	1.1823
2000	0.9745	1.1016	0.8473	1.5682
2001	0.936	1.6878	1.0476	0.6227
2002	0.8649	2.041	0.9928	1.1495
<u>Impact of 1% change in income source on inequality</u>				
1997	-0.0554	0.0534	0.0124	-0.0104
1998	-0.0231	0.0163	-	0.0068
1999	-0.0059	-0.0059	0.008	0.0038
2000	-0.0218	0.0067	-0.0064	0.0214
2001	-0.051	0.0556	0.0046	-0.0093
2002	-0.1048	0.0993	-0.0006	0.0061

Source: Personnel records of the firm, authors' calculations.

**Table 15: General Entropy Index (GEI) and its decomposition into within and between parts**

	(1)	(2)	(3)	(4)	(5)	(6)
	<u>Panel a: Wages</u>					
Year	GEI(-1)			GEI(+1)		
	Total	Within	Between	Total	Within	Between
1997	0.1904	0.1515	0.0389	0.1263	0.0914	0.0348
1998	0.1379	0.097	0.0409	0.1001	0.0637	0.0363
1999	0.1151	0.07	0.0451	0.0958	0.0538	0.042
2000	0.1082	0.0626	0.0456	0.0938	0.0539	0.0399
2001	0.095	0.0528	0.0421	0.076	0.0444	0.0315
2002	0.0762	0.0544	0.0217	0.0645	0.0399	0.0245
	<u>Panel b: Total compensation</u>					
Year	GEI(-1)			GEI(+1)		
	Total	Within	Between	Total	Within	Between
1997	0.195	0.1453	0.0497	0.1446	0.086	0.0348
1998	0.1379	0.0976	0.0402	0.1061	0.0636	0.0363
1999	0.1144	0.0688	0.0456	0.0991	0.0525	0.042
2000	0.1086	0.0651	0.0434	0.0987	0.0546	0.0399
2001	0.1017	0.0554	0.0462	0.0853	0.0435	0.0315
2002	0.0941	0.0636	0.0304	0.0826	0.0433	0.0245

Source: Personnel records of the firm, authors' calculations.

## Appendix

**Table A1: Determinants of wages, 2002**

	Dependent Variable: log(real wage) in 2002					
	All employees (1)	Service staff (2)	Engineers (3)	Production workers (4)	Accountants (5)	Managers (6)
Tenure in years	0.010** [0.004]	0.04 [0.026]	0.035*** [0.009]	0.003 [0.006]	0.027 [0.028]	0.002 [0.013]
Tenure squared/100 in years	-0.039 [0.033]	-0.534* [0.287]	-0.174*** [0.063]	0.008 [0.043]	-0.184 [0.261]	-0.049 [0.081]
Tenure cube /1000 in years	0.008 [0.007]	0.158* [0.087]	0.027** [0.013]	0.000 [0.009]	0.045 [0.069]	0.015 [0.015]
Age in years	0.111*** [0.022]	0.067 [0.084]	-0.100** [0.044]	0.142*** [0.028]	-0.671*** [0.232]	0.935*** [0.196]
Age squared/100 in years	-0.248*** [0.054]	-0.183 [0.207]	0.245** [0.108]	-0.319*** [0.070]	1.781*** [0.597]	-1.935*** [0.447]
Age cube /1000 in years	0.018*** [0.004]	0.015 [0.017]	-0.019** [0.009]	0.024*** [0.006]	-0.152*** [0.050]	0.132*** [0.034]
Basic professional	0.056*** [0.018]	0.094 [0.059]	-0.406 [0.259]	0.033 [0.020]		
Secondary general	0.056*** [0.017]	0.062 [0.060]		0.041** [0.019]		
Secondary professional	0.087*** [0.019]	0.085 [0.070]	-0.011 [0.046]	0.073*** [0.022]	0.711** [0.301]	-0.024 [0.062]
Higher incomplete	0.096** [0.045]	0.34 [0.305]		0.044 [0.080]	1.152*** [0.422]	
Higher	0.107*** [0.023]	0.271 [0.218]	0.026 [0.046]	0.066* [0.038]	0.984*** [0.304]	0.002 [0.061]
1 if female	-0.170*** [0.012]	-0.152*** [0.049]	-0.082*** [0.018]	-0.228*** [0.016]	0.292 [0.204]	0.004 [0.019]
1 if single	-0.032 [0.039]	-0.165 [0.307]	0.063 [0.088]	-0.073 [0.050]	0.153 [0.215]	
1 if divorced or widowed	-0.072*** [0.020]	0.011 [0.063]	-0.059 [0.051]	-0.085*** [0.026]	-0.23 [0.144]	-0.017 [0.024]
1 if 1 child	0.015 [0.034]	-0.379 [0.330]	0.023 [0.052]	0.017 [0.045]	0.563* [0.324]	-0.044 [0.062]
1 if more than 1 child	0.027 [0.037]	-0.388 [0.325]	0.084 [0.061]	0.014 [0.049]	0.568* [0.331]	-0.032 [0.063]
Service staff	-0.516*** [0.021]					
Engineers	-0.014 [0.018]					
Accountants	0.152*** [0.040]					
Managers	0.679*** [0.032]					
Constant	-1.655*** [0.269]	-0.953 [1.094]	1.170** [0.568]	-2.032*** [0.339]	6.433** [2.807]	-14.020*** [2.822]
Observations	3104	213	781	1929	64	117
R-squared	0.42	0.21	0.1	0.24	0.56	0.47

OLS Estimates. Standard errors in brackets

\* significant at 10%; \*\* significant at 5%; \*\*\* significant at 1%

Table A2: Quantile wage regressions

	Dependent variable: log(real wage) in 1997								
	10th percentile	20th percentile	30th percentile	40th percentile	50th percentile	60th percentile	70th percentile	80th percentile	90th percentile
Tenure in years	0.026 [0.016]	0.016 [0.015]	0.022* [0.012]	0.025** [0.011]	0.031*** [0.010]	0.031*** [0.007]	0.029*** [0.008]	0.024*** [0.006]	0.024*** [0.007]
Tenure squared/100 in years	-0.072 [0.135]	-0.003 [0.133]	-0.088 [0.108]	-0.114 [0.096]	-0.154* [0.086]	-0.169*** [0.063]	-0.186** [0.075]	-0.139** [0.055]	-0.121* [0.063]
Tenure cube /1000 in years	0.01 [0.029]	-0.003 [0.032]	0.016 [0.026]	0.022 [0.023]	0.027 [0.020]	0.030** [0.015]	0.037** [0.018]	0.026** [0.013]	0.018 [0.016]
Age in years	0.075 [0.082]	0.003 [0.072]	0.002 [0.061]	0.021 [0.055]	0.034 [0.050]	0.054 [0.037]	0.071 [0.045]	0.04 [0.033]	-0.006 [0.039]
Age squared/100 in years	-0.136 [0.223]	0.048 [0.195]	0.055 [0.165]	0.014 [0.149]	-0.031 [0.134]	-0.077 [0.100]	-0.119 [0.120]	-0.051 [0.089]	0.064 [0.104]
Age cube /1000 in years	0.008 [0.019]	-0.008 [0.017]	-0.009 [0.014]	-0.006 [0.013]	-0.001 [0.012]	0.003 [0.009]	0.006 [0.010]	0.001 [0.008]	-0.008 [0.009]
Basic professional	0.077 [0.066]	0.092 [0.058]	0.03 [0.048]	0.026 [0.042]	0.02 [0.038]	0.01 [0.028]	0.04 [0.032]	0.027 [0.023]	0.016 [0.025]
Secondary general	0.203*** [0.064]	0.08 [0.055]	0.102** [0.046]	0.063 [0.040]	0.061* [0.036]	0.028 [0.027]	0.038 [0.031]	0.066*** [0.022]	0.050** [0.024]
Secondary professional	0.266*** [0.069]	0.197*** [0.060]	0.108** [0.049]	0.067 [0.044]	0.056 [0.039]	0.038 [0.029]	0.036 [0.034]	0.037 [0.024]	0.04 [0.026]
Higher incomplete	0.354** [0.140]	0.191 [0.132]	0.176 [0.112]	0.118 [0.099]	0.135 [0.088]	0.089 [0.065]	0.099 [0.075]	0.130** [0.052]	0.103* [0.054]
Higher	0.151* [0.086]	0.127** [0.075]	0.084 [0.062]	0.106* [0.055]	0.128*** [0.049]	0.117*** [0.036]	0.129*** [0.042]	0.116*** [0.029]	0.093*** [0.031]
1 if female	-0.366*** [0.047]	-0.360*** [0.039]	-0.355*** [0.031]	-0.401*** [0.027]	-0.369*** [0.024]	-0.335*** [0.018]	-0.277*** [0.021]	-0.223*** [0.015]	-0.126*** [0.016]
1 if single	-0.087 [0.153]	-0.008 [0.136]	-0.079 [0.113]	0.014 [0.100]	0.014 [0.090]	0.115* [0.067]	0.1 [0.078]	0.036 [0.056]	0.106* [0.061]
1 if divorced or widowed	0.097 [0.081]	0.052 [0.069]	0.025 [0.058]	-0.003 [0.051]	-0.036 [0.046]	-0.03 [0.034]	-0.06 [0.039]	-0.065** [0.028]	-0.046 [0.029]
1 if 1 child	-0.078 [0.119]	0.023 [0.105]	-0.032 [0.087]	0 [0.077]	0 [0.069]	-0.009 [0.051]	-0.01 [0.059]	-0.035 [0.043]	0.015 [0.046]
1 if more than 1 child	0.002 [0.127]	0.137 [0.113]	0.046 [0.093]	0.056 [0.082]	0.07 [0.074]	0.046 [0.055]	0.017 [0.063]	-0.044 [0.046]	-0.002 [0.049]
Service staff	-0.596*** [0.077]	-0.679*** [0.066]	-0.760*** [0.055]	-0.812*** [0.049]	-0.803*** [0.044]	-0.758*** [0.032]	-0.783*** [0.038]	-0.785*** [0.026]	-0.803*** [0.029]
Engineers	0.079 [0.069]	-0.025 [0.059]	-0.087* [0.048]	-0.085** [0.043]	-0.100*** [0.028]	-0.110*** [0.033]	-0.138*** [0.023]	-0.159*** [0.023]	-0.159*** [0.025]
Accountants	0.644*** [0.140]	0.492*** [0.121]	0.498*** [0.099]	0.459*** [0.088]	0.406*** [0.078]	0.349*** [0.056]	0.271*** [0.065]	0.188*** [0.044]	0.05 [0.050]
Managers	1.046*** [0.110]	0.845*** [0.098]	0.726*** [0.082]	0.602*** [0.073]	0.595*** [0.065]	0.541*** [0.048]	0.528*** [0.056]	0.513*** [0.040]	0.464*** [0.042]
Constant	-1.895** [0.964]	-0.679 [0.844]	-0.375 [0.724]	-0.504 [0.655]	-0.526 [0.589]	-0.672 [0.440]	-0.76 [0.528]	-0.196 [0.392]	0.452 [0.461]
Observations	3040	3040	3040	3040	3040	3040	3040	3040	3040

Quantile regression estimates. Standard errors in brackets  
 \* significant at 10%; \*\* significant at 5%; \*\*\* significant at 1%

**Table A.3 Wage Growth Regressions – Heckit model**

	(1)		(2)		(3)	
	Real Wage Growth	Selection Equation	Real Wage Growth	Selection Equation	Real Wage Growth	Selection Equation
Tenure in years	-0.053*** [0.007]		-0.005 [0.005]		-0.009* [0.005]	
Tenure squared/100 in years	0.347*** [0.064]		0.051 [0.042]		0.07 [0.045]	
Tenure cube /1000 in years	-0.064*** [0.015]		-0.009 [0.010]		-0.012 [0.010]	
Age in years	-0.003 [0.042]		0.03 [0.028]		0.004 [0.027]	
Age squared/100 in years	0.011 [0.113]		-0.099 [0.076]		-0.015 [0.073]	
Age cube /1000 in years	-0.001 [0.010]		0.01 [0.007]		0.001 [0.006]	
Basic professional	-0.124*** [0.031]	-0.452*** [0.082]	0.017 [0.020]	-0.451*** [0.085]	0.003 [0.022]	-0.449*** [0.086]
Secondary general	-0.015 [0.027]	-0.063 [0.077]	0.02 [0.017]	0.009 [0.082]	0.012 [0.016]	0.012 [0.082]
Secondary professional	0.050** [0.026]	-0.194** [0.077]	0.114*** [0.016]	-0.387*** [0.088]	0.041** [0.021]	-0.355*** [0.090]
Higher incomplete	0.09 [0.064]	-0.139 [0.183]	0.123*** [0.040]	-0.312 [0.205]	0.063 [0.040]	-0.245 [0.207]
Higher	0.080*** [0.028]	-0.075 [0.093]	0.138*** [0.017]	-0.398*** [0.111]	0.056** [0.024]	-0.327*** [0.113]
1 if female	0.008 [0.018]	-0.166*** [0.054]	-0.024* [0.012]	-0.547*** [0.058]	-0.036** [0.015]	-0.533*** [0.059]
1 if single	-0.058 [0.082]	-0.035 [0.202]	-0.047 [0.054]	0.133 [0.213]	-0.052 [0.052]	0.114 [0.212]
1 if divorced or widowed	0.071** [0.032]	0.444*** [0.100]	-0.056*** [0.020]	0.528*** [0.108]	-0.051** [0.020]	0.496*** [0.109]
1 if 1 child	0.261*** [0.064]	0.596*** [0.156]	0.004 [0.043]	0.655*** [0.165]	0.045 [0.044]	0.646*** [0.165]
1 if more than 1 child	0.252*** [0.067]	0.800*** [0.165]	0.001 [0.045]	0.900*** [0.177]	0.045 [0.047]	0.879*** [0.176]

Position in firm-level wage distribution:

1st decile	-1.302***	0.670***	-0.346***	-0.394***
	[0.098]	[0.026]	[0.116]	[0.133]
2nd decile	-0.626***	0.267***	-0.001	-0.08
	[0.088]	[0.023]	[0.113]	[0.114]
3rd decile	-0.301***	0.080***	-0.057	-0.129
	[0.081]	[0.023]	[0.109]	[0.114]
4th decile	-0.087	-0.005	-0.028	-0.108
	[0.078]	[0.023]	[0.108]	[0.115]
6th decile	0.327***	-0.160***	0.250**	0.242**
	[0.074]	[0.021]	[0.103]	[0.109]
7th decile	0.258***	-0.165***	0.270**	0.307**
	[0.085]	[0.024]	[0.120]	[0.120]
8th decile	0.384***	-0.257***	-0.027	-0.014
	[0.078]	[0.023]	[0.111]	[0.113]
9th decile	0.367***	-0.245***	0.004	0.087
	[0.078]	[0.023]	[0.115]	[0.113]
10th decile	0.381***	-0.345***	-0.386***	-0.305**
	[0.081]	[0.024]	[0.122]	[0.122]

Position in employee category specific wage distribution:

1st decile	0.569***
	[0.024]
2nd decile	0.291***
	[0.022]
3rd decile	0.158***
	[0.021]
4th decile	0.118***
	[0.022]
6th decile	-0.057***
	[0.022]
7th decile	-0.113***
	[0.020]
8th decile	-0.204***
	[0.020]
9th decile	-0.234***
	[0.022]

	10th decile			-0.300***	
				[0.022]	
Service staff	0.712***	0.329***	0.223***	0.583***	
	[0.078]	[0.109]	[0.019]	[0.103]	
Engineers	0.218***	1.016***	0.082***	1.045***	
	[0.072]	[0.092]	[0.027]	[0.091]	
Accountants	0.045	0.274*	-0.124***	0.269	
	[0.105]	[0.161]	[0.039]	[0.169]	
Managers	0.086	1.020***	-0.092***	0.753***	
	[0.115]	[0.158]	[0.029]	[0.166]	
ten1	-0.490***	-0.757***		-0.673***	
	[0.076]	[0.100]		[0.108]	
ten2	-0.631***	-0.994***		-0.939***	
	[0.081]	[0.101]		[0.114]	
ten3	-0.566***	-0.660***		-0.615***	
	[0.079]	[0.095]		[0.099]	
ten4	-0.932***	-1.195***		-1.180***	
	[0.092]	[0.112]		[0.118]	
ten5	-0.961***	-1.319***		-1.258***	
	[0.114]	[0.149]		[0.157]	
ten6	-1.153***	-1.407***		-1.417***	
	[0.104]	[0.127]		[0.131]	
ten7	-0.825***	-0.789***		-0.804***	
	[0.123]	[0.145]		[0.151]	
ten8	-0.896***	-0.969***		-0.905***	
	[0.129]	[0.162]		[0.171]	
ten9	-0.678***	-0.734***		-0.618***	
	[0.168]	[0.206]		[0.219]	
ten10_	-0.798***	-0.763***		-0.709***	
	[0.101]	[0.115]		[0.120]	
ten15_	-0.865***	-0.761***		-0.731***	
	[0.105]	[0.123]		[0.126]	
ten20_	-0.732***	-0.883***		-0.816***	
	[0.116]	[0.140]		[0.148]	
ten25_	-0.768***	-0.706***		-0.628***	
	[0.147]	[0.180]		[0.188]	
ten30_	-0.789**	0.091		0.213	



ten35		[0.388]		[0.498]		[0.518]
		-1.126***		-0.448		-0.479
old15_		[0.435]		[0.518]		[0.537]
		-0.271		-0.790**		-0.771*
old20_		[0.294]		[0.394]		[0.410]
		-0.032		-0.093		-0.08
old25_		[0.088]		[0.101]		[0.104]
		0		-0.071		-0.061
old35_		[0.065]		[0.083]		[0.087]
		0.148**		0.221**		0.240***
old40_		[0.066]		[0.087]		[0.091]
		0.182***		0.240***		0.228**
old45_		[0.070]		[0.086]		[0.089]
		0.310***		0.430***		0.434***
old50_		[0.079]		[0.093]		[0.095]
		0.285***		0.348***		0.363***
old55		[0.102]		[0.123]		[0.128]
		-0.157		-0.415**		-0.408**
Constant	-0.472	[0.143]	0.216	[0.177]	-0.204	[0.180]
	[0.494]	[0.189]	-0.323	[0.327]	0.369*	[0.312]
Lambda	0.369***		-0.122***	[0.209]	-0.033	[0.213]
	[0.011]		[0.021]		[0.034]	
Observations	3103	3103	3103	3103	3103	3103

Standard errors in brackets  
\* significant at 10%; \*\* significant at 5%; \*\*\* significant at 1%