

Peltonen, Tuomas A.; Sousa, Ricardo M.; Vansteenkiste, Isabel

Working Paper

Wealth effects in emerging market economies

ECB Working Paper, No. 1000

Provided in Cooperation with:

European Central Bank (ECB)

Suggested Citation: Peltonen, Tuomas A.; Sousa, Ricardo M.; Vansteenkiste, Isabel (2009) : Wealth effects in emerging market economies, ECB Working Paper, No. 1000, European Central Bank (ECB), Frankfurt a. M.

This Version is available at:

<https://hdl.handle.net/10419/153434>

Standard-Nutzungsbedingungen:

Die Dokumente auf EconStor dürfen zu eigenen wissenschaftlichen Zwecken und zum Privatgebrauch gespeichert und kopiert werden.

Sie dürfen die Dokumente nicht für öffentliche oder kommerzielle Zwecke vervielfältigen, öffentlich ausstellen, öffentlich zugänglich machen, vertreiben oder anderweitig nutzen.

Sofern die Verfasser die Dokumente unter Open-Content-Lizenzen (insbesondere CC-Lizenzen) zur Verfügung gestellt haben sollten, gelten abweichend von diesen Nutzungsbedingungen die in der dort genannten Lizenz gewährten Nutzungsrechte.

Terms of use:

Documents in EconStor may be saved and copied for your personal and scholarly purposes.

You are not to copy documents for public or commercial purposes, to exhibit the documents publicly, to make them publicly available on the internet, or to distribute or otherwise use the documents in public.

If the documents have been made available under an Open Content Licence (especially Creative Commons Licences), you may exercise further usage rights as specified in the indicated licence.



EUROPEAN CENTRAL BANK

EUROSYSTEM

WORKING PAPER SERIES

NO 1000 / JANUARY 2009

B EZB EKT EKP

2000

**WEALTH EFFECTS IN
EMERGING MARKET
ECONOMIES**

by Tuomas A. Peltonen,
Ricardo M. Sousa
and Isabel S. Vansteenkiste





EUROPEAN CENTRAL BANK

EUROSYSTEM



In 2009 all ECB publications feature a motif taken from the €200 banknote.

WORKING PAPER SERIES

NO 1000 / JANUARY 2009

WEALTH EFFECTS IN EMERGING MARKET ECONOMIES¹

by Tuomas A. Peltonen², Ricardo M. Sousa³
and Isabel S. Vansteenkiste⁴

This paper can be downloaded without charge from <http://www.ecb.europa.eu> or from the Social Science Research Network electronic library at http://ssrn.com/abstract_id=1317625.

¹ Any views expressed represent those of the authors and not necessarily those of the European Central Bank. The authors would like to thank an anonymous referee and seminar participants at the ECB for useful comments.

² Corresponding author: European Central Bank, Kaiserstrasse 29, D-60311 Frankfurt am Main, Germany; e-mail: tuomas.peltonen@ecb.europa.eu

³ University of Minho, Department of Economics and Economic Policies Research Unit (NIPE), Campus of Gualtar, 4710-057 - Braga, Portugal; London School of Economics, Department of Economics and Financial Markets Group (FMG), Houghton Street, London WC2 2AE, United Kingdom; European Central Bank, Kaiserstrasse 29, D-60311 Frankfurt am Main, Germany; e-mail: rjsousa@eeg.uminho.pt; r.j.sousa@lse.ac.uk; ricardo.sousa@ecb.europa.eu

⁴ European Central Bank, Kaiserstrasse 29, D-60311 Frankfurt am Main, Germany; e-mail: isabel.vansteenkiste@ecb.europa.eu

© European Central Bank, 2009

Address

Kaiserstrasse 29
60311 Frankfurt am Main, Germany

Postal address

Postfach 16 03 19
60066 Frankfurt am Main, Germany

Telephone

+49 69 1344 0

Website

<http://www.ecb.europa.eu>

Fax

+49 69 1344 6000

All rights reserved.

Any reproduction, publication and reprint in the form of a different publication, whether printed or produced electronically, in whole or in part, is permitted only with the explicit written authorisation of the ECB or the author(s).

The views expressed in this paper do not necessarily reflect those of the European Central Bank.

The statement of purpose for the ECB Working Paper Series is available from the ECB website, <http://www.ecb.europa.eu/pub/scientific/wps/date/html/index.en.html>

ISSN 1725-2806 (online)

CONTENTS

| | |
|---|----|
| Abstract | 4 |
| Non-technical summary | 5 |
| 1 Introduction | 7 |
| 2 A brief review of the existing literature | 9 |
| 3 Estimation methodology | 10 |
| 4 Data and summary statistics | 11 |
| 5 Estimation results | 13 |
| 6 Conclusion | 18 |
| References | 19 |
| Appendices | 24 |
| European Central Bank Working Paper Series | 38 |

Abstract

We build a panel of 14 emerging economies to estimate the magnitude of housing, stock market, and money wealth effects on consumption. Using modern panel data econometric techniques and quarterly data for the period 1990:1-2008:2, we show that: *(i)* wealth effects are statistically significant and relatively large in magnitude; *(ii)* housing wealth effects tend to be smaller for Asian emerging markets while stock market wealth effects are, in general, smaller for Latin American countries; *(iii)* housing wealth effects have increased for Asian countries in recent years; and *(iv)* consumption reacts stronger to negative than to positive shocks in housing and financial wealth.

Keywords: *wealth effects, consumption, emerging markets.*

JEL Classification: *E21, E44, D12.*

Non-technical summary

Household consumption is affected not only by income but also by wealth, such as real estate and stock ownership. When real estate or stock prices rise, the wealth of homeowners or shareholders increases and household consumption can rise even when labour income remains constant. Such rise in consumption due to the increase in real estate prices is called housing wealth effect, whereas the rise in consumption that is due to the increase in stock market prices is called stock market wealth effect.

There is a large body of literature that studies the effect of asset price fluctuations on private consumption and authors have used different econometric techniques and databases to address the issue. More recently, interest in the topic has regained ground against the background of the current financial turmoil which has led to concerns by numerous academics, central banks and governments about the potential macroeconomic implications of a downturn in house and equity prices.

Despite the wide range of studies, most of the empirical evidence refers to advanced economies and mostly to the United States, where data is more readily available. Extending the existing literature to assess the macroeconomic impact of asset price fluctuations in emerging markets may, however, be important as these economies are becoming a key engine of growth in the world economy and may play an important role in the resolution of global imbalances. In addition, since an increasingly large number of emerging market economies is becoming financially developed (Dorrucci et al, 2008), their access to financial assets and the possibility to extract equity from them has also risen, hence, increasing the potential macroeconomic impact of domestic asset price movements.

Measuring wealth effects for emerging markets is, therefore, of major relevance, and the main goal of the current work. To the best of our knowledge, only Funke (2004) tried to address this question, which we improve and extend upon several directions. First, we look not only at the effects of money and stock market wealth but also at housing wealth effects, therefore capturing the impact of an important component of household wealth. Ignoring this may lead to omitted variable bias and, consequently, to biased estimates of the wealth effects. Second, we use data at high frequency - that is, quarterly data (for 1990:1-2008:2) - and are, therefore, able to obtain more precise estimates of the magnitude of the wealth effects on consumption. Third, we consider labour income (rather than disposable income or real GDP per capita) in our panel of countries. Finally, we build upon modern panel estimation techniques to control for endogeneity.

Using a panel of 14 emerging economies, we show that wealth effects are statistically significant and relatively large: a 10% rise in housing prices leads to an increase in private consumption of between 0.25% and 0.49%; an increase of 10% in stock prices is associated with a 0.29% to 0.35% increase in consumption; and when money wealth rises by 10%, consumption increases by 0.41% to 0.50%. Additionally, the empirical findings suggest that: *(i)* housing wealth effects tend to be smaller for Asian emerging markets while stock market wealth effects are, in general, smaller for Latin American countries; *(ii)* housing wealth effects have increased in recent years for Asian emerging economies and *(iii)* consumption reacts stronger to negative than to positive shocks in housing and financial wealth. Among Asian countries, stock market wealth effects tend to be larger in the most developed financial markets while housing wealth effects are only statistically significant in the cases of Hong Kong, Singapore and Thailand. Finally, the results suggest that consumption growth exhibits a substantial persistence and responds sluggishly to shocks. This may be an important reason for concern

- particularly, in the case of a negative downturn - taking into account that these economies have often witnessed episodes of economic, financial and currency crises. In fact, despite the small short-run elasticity of consumption to asset price changes, the empirical findings show that the long-run elasticities are quite large. As a result, the effects of a slowdown of the economic activity may be amplified by this intrinsic characteristic of consumption in emerging markets.

1 Introduction

Household consumption is affected not only by income but also by wealth, such as real estate and stock ownership. When real estate or stock prices rise, the wealth of homeowners or shareholders increases and household consumption can rise even when labour income remains constant. Such rise in consumption due to the increase in real estate prices is called housing wealth effect, whereas the rise in consumption that is due to the increase in stock market prices is called stock market wealth effect.

There is a large body of literature that studies the effect of asset price fluctuations on private consumption and authors have used different econometric techniques (such as panel versus single equation models) and databases (like micro panel data and aggregate time series) to address the issue.¹ More recently, interest in the topic has regained ground against the background of the current financial turmoil which has led to concerns by numerous academics, central banks and governments about the potential macroeconomic implications of a downturn in house and equity prices.

Despite the wide range of studies, most of the empirical evidence refers to advanced economies and mostly to the United States, where data is more readily available. Extending the existing literature to assess the macroeconomic impact of asset price fluctuations in emerging markets may, however, be important as these economies are becoming a key engine of growth in the world economy and may play an important role in the resolution of global imbalances. In addition, since an increasingly large number of emerging market economies is becoming financially developed (Dorrucci et al, 2008), their access to financial assets and the possibility to extract equity from them has also risen, hence, increasing the potential macroeconomic impact of domestic asset price movements.

The importance of financial assets in emerging economies is *inter alia* reflected both in the rise in stock market capitalization which currently represents more than 20% of the world's stock market capitalization,² and as a share of its domestic size which is in many cases higher than for developed economies. For real estate assets, emerging markets have been recording an important rise in homeownership rates, which are now estimated to be around 62% for Latin America and 55% for Emerging Asian urban areas (see, for example, UN-HABITAT).

Measuring wealth effects for emerging markets is, therefore, of major relevance, and, to the best of our knowledge, only Funke (2004) has tried earlier to address this question. In this study, the author uses a panel of 16 emerging market economies and annual data for the period 1985-2000. He finds some evidence for a small, but statistically significant stock market wealth effect.

In this paper, we intend to quantify the wealth effects in emerging markets whilst improving and extending the existing literature in several directions. First, we look not only at the effects of money and stock market wealth but also at housing wealth effects, therefore capturing the impact of an important component of household wealth. Ignoring this may lead to omitted variable bias and, consequently, to biased estimates of the wealth effects. Second, we use data at high frequency - that is, quarterly data (for 1990:1-2008:2) - and are, therefore, able to obtain more precise estimates of the magnitude of the wealth effects on consumption. Third, we consider labour income (rather than disposable income or real GDP per capita)

¹See, for example, Altissimo et al. (2005) for a review of the literature on wealth effects.

²The stock market capitalization of the 14 emerging market economies studied in this paper accounted for 19.2% of the world's total stock market capitalization in September 2008. Only three years ago, their share of the world stock market capitalization was 12.3%.

for our panel of countries.³ Finally, we build upon modern estimation techniques - namely, by using a system GMM estimator developed by Blundell and Bond (1998) - to control for endogeneity.

Due to the wide coverage of our study, we face a number of data limitations. First, data on housing and equity wealth is not available on a broad basis for emerging economies. We therefore use stock market and house price indices as proxy variables for these wealth components. This is however in line with the studies that have investigated the (in)direct impact of stock market prices on aggregate consumption (Romer, 1990; Poterba and Samwick, 1995; and Ludwig and Slok, 2004) or the role played by housing prices (Miles, 1992; Miles (1995), Girouard and Blöndal (2001), Aoki et al. (2003) as well as Ludwig and Slok (2004).⁴ Second, we consider a measure of aggregate consumption and hence we cannot distinguish between non-durable and durable consumption. Conventional theories look at the flow of non-durable and services consumption, since durable consumption can be thought of as a replacement and addition to the capital stock. In addition, total consumption measures include expenditures on housing services. Nevertheless, as Mehra (2001) points out, total consumption is the variable of interest when investigating the consumption-wealth channel. In particular, stock market crashes are more likely to lead to a postponement of durable consumption decisions, while the reduction of non-durable consumption might be of minor importance (Romer, 1990). Furthermore, durable consumption goods are among the major entities on which resources raised by mortgage refinancing are spent on (Brady et al., 2000).

Using a panel of 14 emerging economies, we show that wealth effects are statistically significant and relatively large: a 10% rise in housing prices leads to an increase in private consumption of between 0.25% and 0.49%; an increase of 10% in stock prices is associated with a 0.29% to 0.35% increase in consumption; and when money wealth rises by 10%, consumption increases by 0.41% to 0.50%. Additionally, the empirical findings suggest that: (i) housing wealth effects tend to be smaller for Asian emerging markets while stock market wealth effects are, in general, smaller for Latin American countries; (ii) housing wealth effects have increased for Asian countries in recent years; and (iii) consumption reacts stronger to negative than to positive shocks in housing and financial wealth. Among Asian countries, stock market wealth effects tend to be larger in the most developed financial markets while housing wealth effects are only statistically significant in the cases of Hong Kong, Singapore and Thailand. Finally, the results suggest that consumption growth exhibits a substantial persistence and responds sluggishly to shocks. This may be an important reason for concern - particularly, in the case of a negative downturn - taking into account that these economies have often witnessed episodes of economic, financial and currency crises. In fact, despite the small short-run elasticity of consumption to asset price changes, the empirical findings show that the long-run elasticity is quite large. As a result, the effects of a slowdown of the economic activity may be amplified by this intrinsic characteristic of consumption in emerging markets.

The rest of the paper is organized as follows. Section 2 reviews the existing literature of wealth effects on consumption. Section 3 presents the estimation methodology. Section 4 describes the data. Section 5 discusses the results. Finally, Section 6 concludes with the main

³In the empirical application, labour income is approximated with wage or salary income.

⁴The reader should note that parts of the equity and housing wealth is owned by non-residents. This implies that parts of domestic asset price changes are not reflected in changes in domestic consumption. The paper acknowledges this caveat, but focuses on the domestic consumption effects of wealth changes caused by asset price changes.

findings and policy implications.

2 A Brief Review of the Existing Literature

An extensive empirical literature has tried to estimate the magnitude of the wealth effects on consumption. For the United States, commonly cited estimates of the marginal propensity to consume out of wealth are typically in the range of 4 to 7 cents increased consumer spending from a dollar increase in aggregate wealth (see, for example, Davis and Palumbo, 2001; Gale and Sabelhaus, 1999; Kiley, 2000). Mankiw and Zeldes (1991) show that the consumption of stockholders is more volatile and more strongly correlated with stock market returns than for non-stockholders. Ludvigson and Steindel (1999) also identify a wealth effect on consumption but show that the effect is unstable over time.

Other studies find modest wealth effects. Cochrane (1994), Mayer and Simons (1994), Brayton and Tinsley (1996), Campbell et al. (1997), Desnoyers (2001), and Lettau and Ludvigson (2001) show that the overall impact on consumption is small and mainly transitory. Poterba and Samwick (1995) suggest that, although patterns of stocks' property have changed, they did not have a significant impact on the relation between stock price fluctuations and private consumption. Caporale and Williams (1997) suggest a small marginal propensity to consume out of wealth, but emphasize that the processes of financial liberalization/deregulation have strengthened wealth effects. Otoo (1999) shows that the correlation between stock prices and the consumer confidence level (either for stockholders or non-stockholders) does not change with the property of stocks, that is, consumers use stocks mainly as a leading indicator of real economic activity. Poterba (2000) points out that the concentrated nature of wealth, the desire to leave bequests, and precautionary motives in the consumer's behavior are important determinants of the modest wealth effects. Starr-McCluer (2002) suggests that concerns relative to trend inversions in stock prices can lead stockholders not to spend realized gains.

At the international level, the evidence is also quite diverse. In Japan, Mutoh et al. (1993) and Ogawa (1992), Horioka (1996) and Ogawa et al. (1996) suggest estimates for the marginal propensity to consume out of wealth of around between 0.01 and 0.04, varying, considerably, with the definitions of wealth and income. In France, Bonner and Dubois (1995) and Grunspan and Sicsic (1997) do not find evidence of a wealth effect. In Italy, Rossi and Visco (1995) present evidence of a marginal propensity to consume wealth that ranges between 0.03 and 0.035. In Australia, McKibbin and Richards (1988), Tan and Voss (2003) and Bertaut (2002) estimate the marginal propensity to consume out of wealth to be between 0.02 and 0.05. In Canada, Macklem (1994), Boone et al. (2001) and Pichette (2000) suggest the existence of a wealth effect of the order of 0.03 to 0.08. For the UK, Fernandez-Corugedo et al. (2003) quantify the marginal propensity to consume out of wealth at 0.05.

The studies mentioned above are based on the life cycle model and the permanent income hypothesis, as they suggest that consumers distribute increases in anticipated wealth over time and that the marginal propensity to consume out of wealth should be the same no matter what asset categories are considered.

A companion literature has, however, argued that shocks to different forms of wealth (such as equity versus housing wealth) can elicit varying consumption responses. There is, in fact, a number of reasons for why the responsiveness of consumers to financial asset shocks and housing asset shocks can be different: liquidity reasons (Pissarides, 1978), utility derived from

the property right of an asset as housing services or bequest motives (Poterba, 2000; Bajari et al., 2005), different distributions of assets across income groups,⁵ expected permanency of changes of different categories of assets, mismeasurement of wealth⁶ and ‘psychological factors’ (Shefrin and Thaler, 1988). Each of these motives suggests a distinction between the impact of financial wealth and housing wealth on consumption (Case et al., 2005).

At this level, the empirical findings are not yet conclusive, namely, in what concerns the significance of housing wealth effect. Elliott (1980), Levin (1998) and Mehra (2001) find essentially that the wealth effect is independent of the category of asset considered. Thaler (1990), Sheiner (1995), and Hoynes and McFadden (1997) investigate the correlation between individual savings rates and changes in house prices and find a weak relation. Slacalek (2006) shows that housing wealth effects are smaller than financial wealth effects for most countries, with the notable exceptions of the US and the UK. In contrast, Case (1992), Kent and Lowe (1998), Skinner (1999), Case et al. (2005), and Dvornak and Kohler (2003) find evidence of a considerable housing wealth effect on consumption. Carroll et al. (2006) exploit the sluggishness of consumption growth to distinguish between short-run and long-run wealth effects, and find that housing wealth effects are substantially larger than for stock market wealth.

Despite the wide evidence on wealth effects for developed countries, little attention has been given to emerging markets, a gap that we try to address in the present work. To the best of our knowledge, the closest to our paper is - as mentioned in section 1 - Funke (2004), who uses an annual panel of 16 emerging economies for the period 1985-2000. By means of feasible generalized least squares (FGLS), the author estimates a panel equation which includes log changes in real GDP per capita, log changes in real money wealth per capita and log real equity returns as explanatory variables for changes in real consumption per capita. Based on this model, the author finds a small, but statistically significant stock market wealth effect: a 10% decline (increase) in stock prices is associated with a 0.2-0.4% decrease (increase) in private consumption over a 3-year period.

3 Estimation Methodology

The empirical model for the estimation of wealth effects on consumption can be summarized as follows⁷:

$$\log C_{i,t} = \beta_0 \log C_{i,t-1} + \beta_1 \log Y_{i,t} + \beta_2 \log W_{i,t} + \log \mathbf{X}'_{j,i,t} \boldsymbol{\beta}_j + v_i + \varepsilon_{i,t} \quad i = 1, \dots, N \quad t = 1, \dots, T_i \quad (1)$$

where $C_{i,t}$ stands for the consumption of country i at time t , $Y_{i,t}$ represents labour income, $W_{i,t}$ is the asset wealth, $X_{j,i,t}$ is a vector of j strictly exogenous covariates, the β s are parameters to estimate, v_i are country-specific effects, and, $\varepsilon_{i,t}$ is the error term. The inclusion of a lag of consumption in (1) is aimed at capturing the presence of habit formation and simultaneously tests the permanent income hypotheses. Empirically, it also captures the high degree of

⁵Housing wealth tends to be held by consumers in all income classes. On the other hand, stock market wealth is, in many countries, concentrated in the high-income groups which are often thought to have a lower propensity to consume out of both income and wealth.

⁶This may be especially so for houses, which are less homogenous and less frequently traded than shares. Also many consumers may not be aware of the exact value of their indirect share holdings. For example, Sousa (2003) shows that directly held stock market wealth effects are significantly different from indirectly held stock holdings.

⁷The more recent literature, such as Campbell and Mankiw (1989), estimate the model in first differences.

persistence of consumption, as noted in Carroll et al. (2008). It is also in line with the findings of Flavin (1981), Campbell and Mankiw (1989) and Lettau and Ludvigson (2001), who show that consumption growth is somewhat predictable by its lag.

When model (1) is estimated using ordinary least squares (OLS), substantial complications arise. In fact, in both the fixed and random effects settings, the lagged dependent variable is correlated with the error term, even if we assume that the disturbances are not themselves autocorrelated. Moreover, the estimation of the dynamic panel defined above suffers from the Nickell (1981) bias, which disappears only if T tends to infinity.

Arellano and Bond (1991) developed a generalized method of moments (GMM) estimator that solves the problems referred above, allowing one to eliminate country specific effects or any time invariant country specific variable. Additionally, it also solves the endogeneity issue that may be due to the correlation of the country specific effects and the independent variables. Consequently, first differencing (1) removes v_i , and produces an equation estimable by instrumental variables:

$$\Delta \log C_{i,t} = \beta_0 \Delta \log C_{i,t-1} + \beta_1 \Delta \log Y_{i,t} + \beta_2 \Delta \log W_{i,t} + \Delta \log \mathbf{X}'_{ji,t} \boldsymbol{\beta}_j + \Delta \varepsilon_{i,t} \quad (2)$$

$$\text{with } i = 1, \dots, N \quad t = 1, \dots, T_i \quad j = 1, \dots, K \quad (3)$$

where Δ is the first difference operator, while the variables and parameters are defined as in (1). Following Holtz-Eakin et al. (1988), Arellano and Bond (1991) instrument the differenced pre-determined and endogenous variables with their available lags in levels: levels of the dependent and endogenous variables, lagged two or more periods; levels of the pre-determined variables, lagged two or more periods. The exogenous variables can be used as their own instruments.

A problem of this difference-GMM estimator is that lagged levels are weak instruments for first-differences if the series are very persistent (Blundell and Bond, 1998). According to Arellano and Bover (1995), efficiency can be increased by adding the original equation in levels to the system. If the first-differences of explanatory variables are uncorrelated with the individual effects, both lagged values of the first-differences of the explanatory variables and of the dependent variable can be used as instruments in the equation in levels. In this case, the estimation combines the set of moment conditions available for the first-differenced equations with the additional moment conditions implied for the levels equation. Blundell and Bond (1998) show that this system GMM estimator is preferable to that of Arellano and Bond (1991) and, for this reason, the current paper uses an estimation methodology based on Blundell and Bond (1998).

4 Data and Summary Statistics

The dataset consists of an unbalanced panel of 14 main emerging economies, 8 from emerging Asia (China, Hong Kong, Indonesia, Korea, Malaysia, Singapore, Taiwan, and Thailand), 4 from Latin America (Argentina, Brazil, Chile and Mexico), and 2 others (Russia and South Africa). These countries account for 45.9% of world GDP, and 97.3% of the emerging economies' GDP, measured in 2007 PPP terms.⁸

⁸The IMF (2008) classifies the Newly Industrialized Economies (Hong Kong, Korea, Singapore and Taiwan) as industrialized economies, but includes them into the aggregate of "emerging Asia". When these economies are included into the emerging economies' category, the total share of "other emerging and developing economies" of the world GDP is 47.2%, measured using 2007 PPP weights.



We use quarterly data for the period 1990:1-2008:2 (where available).⁹ Housing and financial wealth are proxied by the corresponding indices. Housing price (residential property) indices are provided by CEIC data (for the emerging Asian countries), the IMF (for the Latin American countries), and Haver Analytics (for the other two economies). Stock price indices (composite indices) are obtained from the Global Financial Database. Money wealth is proxied by broad money, M_2 , available from Haver Analytics.¹⁰ With regards to the other series, real private consumption (private consumption at constant prices) are the official series from National Accounts statistics, provided by Haver Analytics, with the exception of China, Hong Kong, Indonesia, and Singapore for which the data comes from CEIC. Data on income (either salary or wage income) is obtained from CEIC (for emerging Asian countries), and from Haver Analytics (Latin American economies, Russia, and South Africa). The CPI price index is mainly from Haver Analytics, with the exception of Argentina, Brazil, and Chile, for which the data source is the IMF. Finally, population statistics are obtained from the UN World Population Statistics database. Table A in Appendix provides a detailed description of the variables and data sources used in the analysis.

For the regression analysis, data are transformed in several ways. First, the wealth variables are deflated using the private consumption deflator, with the exception of Singapore, where the CPI index (all items) is used. Moreover, we divide real money by the population in order to express it in per capita terms. Second, income corresponds to real wage or salary provided by National Statistics authorities, except for Argentina, China, Indonesia, Malaysia, Russia, and Thailand, where nominal wages (or salaries) are deflated using the private consumption deflator. Third, data on population for all countries and real private consumption for China are annual, and, therefore, we interpolate them using a cubic conversion method. Fourth, the semi-annual nominal wage data for Hong Kong is interpolated using the same method for the period 1990:1-1998:4.

Given that emerging markets have frequently been the stage for episodes of economic, financial and/or currency crises, we create a dummy for these events and define it as follows: it takes the value of 1 if either the change (year-on-year) of real GDP, real property price, or real equity price index is more than two times the country-specific standard deviation of the variable; and 0, otherwise. In addition, one quarter before and after the peak of crisis are also marked with 1. All other periods (normal periods) are marked with 0.¹¹

Figures 1 to 5 in Appendix A show the evolution in time of all series used in the regression analysis. Tables A1 to A4 also present a range of descriptive statistics. In this context, it is noteworthy to mention Table A4, which reports that the average correlation coefficient between consumption and equity prices is around 0.4 over the entire sample; for property prices, this coefficient is even higher, namely around 0.5.

Finally, we use the panel unit root tests of Levin et al. (2002), Im et al. (2003), and Maddala and Wu (1999) to assess the presence of unit roots in the data. The empirical findings show that the log differences of all key variables are stationary following the rejection

⁹For more details on the data providers, please visit the following web sites: <http://www.ceicdata.com/> for CEIC data, <http://www.haver.com> for Haver Analytics, <http://www.imf.org> for the IMF, and <http://www.globalfinancialdata.com> for Global Financial Data.

¹⁰For Thailand, we use M_3 instead of M_2 .

¹¹Note that there is no uniform definition of currency and financial crisis in the literature (see e.g. Kaminsky et al. (1996)). Our definition of financial crisis follows a "signal approach", developed by Kaminsky and Reinhart (1996) and Kaminsky et al. (1996), where abnormal movements in the key economic and financial variables are used as indicators for financial crisis.

of the null hypothesis of a unit root (see Table A5).

5 Estimation results

We start by considering the GMM estimation of the dynamic panel defined in (2). We include the lag of consumption, the labour income (proxied by wage and salary income), the housing wealth (proxied by the property index), the financial wealth (proxied by the equity price index), and the money wealth (proxied by the per capita broad money) among the set of endogenous variables.¹² In the set of strictly exogenous variables, we include a dummy variable for economic/financial crises, and a constant. In addition, we also include a linear time trend to the specification if it is statistically significant at 10% level, following the approach adopted in Case et al. (2005). The moment conditions in the GMM model use the orthogonality conditions between the differenced errors and lagged values of the dependent variable, which assume that the original disturbances in (2) are serially uncorrelated and that the differenced error is MA(1) with a unit root. In fact, two diagnostics are computed using the Arellano and Bond (1991) GMM procedure to test for first order and second order serial correlation in the disturbances. One should reject the null hypothesis of the absence of first order serial correlation and not reject the null hypothesis of the absence of second order serial correlation. The test results confirm these assumptions.

The estimation results are summarized in Table 1.¹³ Columns 1 to 4 display the point estimates using the entire sample: in Column 1, we include all components of wealth in the estimation; in Columns 2, 3 and 4, we consider only one component of wealth (respectively, housing, financial, and money wealth). Columns 5 and 6 provide a comparison between the wealth effects in Asian and Latin American countries in the period 2001:1-2006:4 (where all variables are available for both regions). Columns 7 and 8 allow us to analyze the wealth effects for Asian countries in two sub-samples: 1990:1-1999:4 and 2000:1-2008:2. In Column 9, we assess the existence of a "ratchet" effect and, therefore, separate between positive and negative changes in financial wealth and housing wealth. The major reason consumer's reaction to a fall in wealth may be greater than to an increase is the assumption of diminishing marginal utility of wealth. Under this assumption, investor preferences can be described by convex marginal utility functions. Such utility functions reflect risk aversion implying that consumer values an increase in wealth less highly than an equivalent decrease.

In all specifications, the lag of consumption is statistically significant, therefore, reflecting the strong persistence of consumption growth and its sluggish response to shocks.¹⁴ In addition, the different components of wealth are statistically significant when all observations are included in the estimation (Columns 1 to 4). In fact, the empirical evidence suggests that: when housing wealth rises by 10%, private consumption increases by 0.25%-0.49%; a 10% increase in stock market wealth leads to an increase in consumption of 0.29%-0.35%; and a rise of 10% in money wealth is associated with a 0.41%-0.50% increase in consumption. The elasticity of consumption with respect to wages is, in general, small and ranges between

¹² All variables are expressed in log differences.

¹³ In the Appendix B, we provide a summary of the results from the pooled OLS regression estimations. The main findings corroborate the ones from the GMM estimation.

¹⁴ The persistence of consumption growth may be due to: household inattention; evaluation of household finances at periodic intervals (such as annual tax reporting times); adjustment costs to change consumption; and habit formation. All these factors can lead to a sluggish response of consumption (see, for example, Kennickell and Starr-McCluer, 1997; Dynan and Maki, 2001).

0.024 and 0.091. This may be signalling the importance of transitory shocks or relevance of precautionary savings in these countries.

When we focus on the period 2001:1-2006:4 (Columns 5 and 6), the results suggest that, in general, wealth effects remain statistically significant, the only exception being housing wealth effects for Asian countries.

Columns 7 and 8 suggest that housing wealth effects have been stronger for Asian countries in the second sub-sample. In fact, one observes an increase of the short-run elasticity of consumption to housing prices from 0.036 (in the period 1990:1-1999:4) to 0.042 (in the period 2000:1-2008:2). In contrast, financial wealth effects were larger in the first sample period (as reflected by the fall of the short-run elasticity of consumption to stock prices from 0.042 to 0.027). Finally, Column 9 suggests that consumption reacts asymmetrically to positive versus negative shocks in housing and/or financial wealth, and that the "ratchet" effect is particularly strong in the case of changes in property prices.¹⁵

Table 2 provides a summary of the long-run elasticities of consumption with respect to the wage, the property price, the equity price and the money wealth. We calculate the long-run elasticities using the (unrestricted) estimates of consumption persistence displayed in Table 1.¹⁶

Given the strong persistence of consumption growth, the estimates show that long-run elasticities of consumption are, in general, large (Columns 1 to 4). The estimates suggest that: (i) the long-run elasticity of consumption with respect to housing wealth ranges between 0.091 and 0.179; (ii) the long-run response of consumption to changes in equity wealth lies between 0.128 and 0.148; and (iii) the long-run elasticity of consumption with respect to money wealth is in the range of 0.151 to 0.227. The estimates of the long-run elasticities with respect to wages are small and range between 0.110 and 0.336. Despite the small magnitude, these results are more in line with the standard theory (than the short-run elasticities) and closer to the findings of other works that use international data (see Case et al., 2005).

When we restrict the analysis to the period 2001:1-2006:4 (Columns 5 and 6), the results show that the long-run elasticity of consumption with respect to equity wealth is stronger for Asian emerging market economies (0.097) than for Latin American countries (0.066). In contrast, the long-response of consumption to changes in property prices is bigger in Latin America (0.323).

Columns 7 and 8 show that the long-run elasticity of consumption with respect to financial wealth did not change significantly over time (an estimate of 0.097 in the period 1990:1-1999:4 that compares with 0.098 in the period 2000:1-2008:2). On the other hand, the long-run elasticity of consumption with respect to housing wealth has strongly increased in the second sub-sample (an estimate of 0.154). The rise in housing wealth effects is in accordance with the increased financial development in the region, which allows easier access to equity from housing than before.

Finally, column 9 highlights the significant differences in consumption responses to positive versus negative wealth shocks. Similarly to the short-run results, the estimated long-run elasticity for a negative property price shock (0.260) is particularly large.

¹⁵We also investigate the response of consumption to small *versus* large shocks in wealth, but the empirical evidence does not corroborate the existence of significantly different response. The results are available upon request.

¹⁶In practice, the long-run elasticity equals short-run elasticity/(1-coefficient on lagged consumption growth).

Table 1: Dynamic Panel Regression (GMM) - Short-Run Elasticities.

| | All | All | All | All | EMAsia | LatAm | EMAsia | EMAsia | All |
|----------------------------|---------------------|---------------------|---------------------|----------------------|---------------------|---------------------|---------------------|----------------------|---------------------|
| | 90-08 | 90-08 | 90-08 | 90-08 | 01-06 | 01-06 | 90-99 | 00-08 | 90-08 |
| Δ Consumption | 0.726*** [0.028] | 0.729*** [0.054] | 0.801*** [0.035] | 0.781*** [0.039] | 0.692*** [0.050] | 0.569*** [0.042] | 0.568*** [0.113] | 0.726*** [0.050] | 0.720*** [0.033] |
| Δ Wage | 0.051** [0.023] | 0.091* [0.051] | 0.047*** [0.014] | 0.024* [0.013] | 0.002 [0.024] | 0.036* [0.022] | 0.202 [0.139] | 0.023 [0.059] | 0.049** [0.022] |
| Δ Property price | 0.025*** [0.007] | 0.049*** [0.012] | | | 0.012 [0.015] | 0.139*** [0.028] | 0.036*** [0.010] | 0.042** [0.021] | -0.001 [0.009] |
| Δ Equity price | 0.035*** [0.004] | | 0.029*** [0.006] | | 0.030*** [0.007] | 0.028*** [0.004] | 0.042*** [0.010] | 0.027*** [0.005] | 0.026*** [0.005] |
| Δ Money | 0.041*** [0.010] | | | 0.050*** [0.016] | 0.081** [0.034] | 0.048*** [0.013] | 0.055 [0.049] | 0.058 [0.051] | 0.050*** [0.010] |
| Δ Property price(-) | | | | | | | | | 0.074*** [0.022] |
| Δ Equity price(-) | | | | | | | | | 0.021** [0.010] |
| Crisis | 0.147 [0.400] | -0.263 [0.568] | -0.095 [0.451] | -1.410*** [0.492] | 0.838*** [0.313] | 1.076 [1.099] | -0.823 [1.054] | 1.027** [0.436] | 0.791* [0.407] |
| Constant | 2.079*** [0.639] | 1.049*** [0.269] | 0.679*** [0.190] | 0.837*** [0.199] | 4.221** [1.887] | 1.335*** [0.334] | 5.808* [3.016] | 5.177*** [1.641] | 2.812*** [0.872] |
| Linear time trend | -0.014** [0.006] | | | | -0.030* [0.017] | | -0.055* [0.029] | -0.040*** [0.013] | -0.017** [0.007] |
| Observations | 555 | 555 | 696 | 690 | 189 | 83 | 131 | 194 | 555 |
| Countries | 14 | 14 | 14 | 14 | 8 | 4 | 6 | 6 | 14 |
| Hansen p-value | 0.99 | 0.99 | 0.99 | 0.99 | 0.99 | 0.99 | 0.99 | 0.99 | 0.99 |
| AR1 p-value | 0.02 | 0.01 | 0.01 | 0.01 | 0.05 | 0.15 | 0.11 | 0.05 | 0.02 |
| AR2 p-value | 0.51 | 0.37 | 0.2 | 0.13 | 0.99 | 0.33 | 0.40 | 0.78 | 0.66 |

Note: Estimation method Blundell-Bond (1998). Heteroscedasticity and serial correlation robust standard errors in brackets.

All series are in log differences. * statistically significant at 10% level; ** at 5% level; *** at 1% level.

Table 2: Dynamic Panel Regression (GMM) - Long-Run Elasticities.

| | All 90-08 | All 90-08 | All 90-08 | All 90-08 | EMAsia 01-06 | LatAm 01-06 | EMAsia 90-99 | EMAsia 00-08 | All 90-08 |
|----------------------------|--------------|--------------|--------------|--------------|-----------------|----------------|-----------------|-----------------|--------------|
| Δ Wage | 0.185** | 0.336* | 0.234** | 0.110* | 0.007 | 0.084* | 0.468 | 0.085 | 0.175** |
| Δ Property price | 0.091*** | 0.179*** | | | 0.040 | 0.323*** | 0.084*** | 0.154** | -0.004 |
| Δ Equity price | 0.128*** | | 0.148*** | | 0.098*** | 0.066*** | 0.097*** | 0.098*** | 0.092*** |
| Δ Money | 0.151*** | | | 0.227*** | 0.263** | 0.111*** | 0.128 | 0.210 | 0.180*** |
| Δ Property price(-) | | | | | | | | | 0.260*** |
| Δ Equity price(-) | | | | | | | | | 0.167** |

Note: Estimation method Blundell-Bond (1998). See more details on sample size and specification tests in the table of short-run elasticities.

Table 3: Dynamic Single Equation Regression (GMM) - Short-Run Elasticities.

| | China 4/99 - 4/07 | Hong Kong 4/90 - 1/08 | Korea 4/90 - 4/07 | Singapore 3/98 - 1/08 | Taiwan 2/93 - 1/08 | Thailand 4/98 - 3/07 |
|-------------------------|----------------------|--------------------------|----------------------|--------------------------|-----------------------|-------------------------|
| Δ Consumption | 0.756*** [0.065] | 0.646*** [0.029] | 0.649*** [0.032] | 0.635*** [0.069] | 0.652*** [0.071] | 0.770*** [0.020] |
| Δ Wage | 0.059*** [0.016] | 0.024 [0.045] | 0.187*** [0.030] | 0.141** [0.069] | 0.191** [0.091] | 0.143*** [0.019] |
| Δ Property price | 0.030 [0.022] | 0.025*** [0.009] | -0.008 [0.017] | 0.055*** [0.018] | -0.028 [0.024] | 0.089*** [0.009] |
| Δ Equity price | 0.012*** [0.002] | 0.030*** [0.005] | 0.037*** [0.003] | 0.049*** [0.009] | 0.016*** [0.004] | 0.020*** [0.002] |
| Δ Money | -0.001 [0.027] | 0.136*** [0.024] | 0.003 [0.032] | -0.031 [0.020] | 0.071 [0.047] | 0.042*** [0.015] |
| Crisis | 0.696*** [0.104] | -2.144*** [0.400] | -0.767*** [0.208] | -1.247 [1.105] | 0.403 [0.557] | 3.092*** [0.293] |
| Constant | 0.763 [0.549] | 1.795*** [0.444] | 4.815*** [1.258] | 11.402*** [1.842] | 0.466** [0.224] | 6.609*** [0.651] |
| Linear time trend | | -0.015*** [0.005] | -0.039*** [0.009] | -0.090*** [0.013] | | -0.051*** [0.005] |
| Observations | 33 | 70 | 69 | 39 | 60 | 36 |
| R-squared | 0.93 | 0.86 | 0.80 | 0.86 | 0.70 | 0.91 |
| Hansen J-stat | 13.09 | 7.36 | 4.2 | 8.25 | 17.11 | 3.03 |
| P-value | 0.79 | 0.99 | 0.99 | 0.97 | 0.52 | 0.99 |

Note: Heteroscedasticity and serial correlation robust standard errors in brackets. All series are in log differences. * statistically significant at 10% level; ** at 5% level; *** at 1% level.

Table 3 provides a summary of the country level evidence, that is, we estimate by GMM and for each country the dynamic model defined in (2).¹⁷ We focus on the analysis of 6 emerging Asian economies (China, Hong Kong, Korea, Singapore, Taiwan and Thailand) for which the number of observations is the largest. Consistently with the previous findings, the lag of consumption is always statistically significant and large in magnitude, revealing a strong persistence in consumption growth. In addition, stock market wealth effects are also statistically significant for all countries, ranging between 0.12% (in the case of China) and 0.49% (in the case of Singapore) of increase in consumption following a 10% rise in stock prices, that is, they tend to be larger in the most developed financial markets. In what concerns the housing wealth effects, the results show that they are only statistically significant in the case of Thailand (0.089), Singapore (0.055) and Hong Kong (0.025). These are the economies where the price changes in the housing markets have been the most dynamic. In the case of money wealth, the empirical findings suggest that this category of wealth is statistically significant only for Hong Kong, where the associated wealth effect is quite large (a 10% increase in money wealth leads to an increase in consumption of around 1.36%), and Thailand, where the point estimate for the elasticity is 0.042. Moreover, the short-run wage

¹⁷In the Appendix, we report the results from the dynamic OLS (DOLS) estimation. The main findings do not change significantly.

Table 4: Dynamic Single Equation Regression (GMM) - Long-Run Elasticities.

| | China 4/99 - 4/07 | Hong Kong 4/90 - 1/08 | Korea 4/90 - 4/07 | Singapore 3/98 - 1/08 | Taiwan 2/93 - 1/08 | Thailand 4/98 - 3/07 |
|-------------------------|----------------------|--------------------------|----------------------|--------------------------|-----------------------|-------------------------|
| Δ Wage | 0.241*** | 0.067 | 0.532*** | 0.386** | 0.548** | 0.623*** |
| Δ Property price | 0.124 | 0.069*** | -0.023 | 0.151*** | -0.081 | 0.386*** |
| Δ Equity price | 0.049*** | 0.085*** | 0.105*** | 0.135*** | 0.047*** | 0.087*** |
| Δ Money | -0.004 | 0.384*** | 0.009 | -0.084 | 0.205 | 0.183*** |

Note: See more details on sample size and specification tests in the table of short-run elasticities.

elasticities range from 0.059 estimated for China to 0.191 for Taiwan, being rather small in magnitude compared to the existing literature on advanced economies. As noted earlier, this could be due to the importance of transitory shocks or precautionary savings in these countries. Finally, for China, Hong Kong, Korea and Thailand, the dummy variable aimed at capturing episodes of economic/financial crises is statistically significant.

Table 4 presents the long-run elasticities of consumption for the Asian economies. As before, consumption is strongly responsive to changes in equity prices, and the long-run elasticity with respect to this component of wealth ranges between 0.047 (in the case of Taiwan) and 0.135 (in the case of Singapore). In addition, the long-run response of consumption to changes in housing prices is larger for Thailand (0.386), Singapore (0.151) and Hong Kong (0.069). Finally, the magnitude of the long-run elasticities with respect to wages are reasonable, ranging between 0.241 (in the case of China) and 0.623 (for Thailand).

6 Conclusion

In this paper, we analyze the relationship between consumption and several wealth components for a panel of 14 main emerging economies. We estimate the magnitude of the effects of stock market wealth (proxied by the equity price index), housing wealth (proxied by the housing price index), and money wealth (proxied by the per capita broad money) on private consumption using modern panel data econometric techniques.

Drawing upon quarterly data for the period 1990:1-2008:2, we show that wealth effects are statistically significant and relatively large: a 10% rise in housing prices leads to an increase in private consumption of between 0.25% and 0.49%; an increase of 10% in stock prices is associated with a 0.29% to 0.35% increase in consumption; and when money wealth rises by 10%, consumption increases by 0.41% to 0.50%. In addition, the empirical findings suggest that housing wealth effects: (i) are, in general, larger for Latin American emerging markets; and (ii) have substantially increased for Asian emerging economies in recent years. In contrast, financial wealth effects: (i) have similar magnitudes for Asian and Latin American countries; and (ii) have fallen for Asian emerging economies.

For both financial and housing wealth we find that consumption reacts asymmetrically, i.e. that a negative shock has a bigger impact than a positive shock.

Among Asian countries, stock market wealth effects tend to be larger in the most developed

financial markets (for instance, Singapore). Moreover, housing wealth effects are particularly important in Thailand, Singapore and Hong Kong.

Finally, our results suggest that consumption growth exhibits a substantial persistence and responds sluggishly to shocks. This may be an important reason for concern - particularly, in case of a negative downturn -, given that these economies have often witnessed episodes of economic, financial and currency crises.

References

- [1] Altissimo F., Georgiou E., Sastre T., Valderrama M.T., Sterne G., Stocker M., Weth M., Whelan K., and A. Willman (2005). Wealth and asset price effects on economic activity. ECB Occasional Paper #29.
- [2] Aoki, K., Proudman J., and G. Vlieghe (2002). Houses as collateral: Has the link between house prices and consumption in the U.K. changed? *Economic Policy Review*, 8(1), 163-177.
- [3] Arellano, M., and S. Bond (1991). Some tests of specification for panel data: Monte Carlo evidence and an application to employment equations. *Review of Economic Studies*, 58, 277-297.
- [4] Arellano, M., and O. Bover (1995). Another look at the instrumental variable estimation of error-component models. *Journal of Econometrics*, 68, 29-51.
- [5] Attanasio, O. P. (1999). Consumption. In Taylor, J. B., and M. Woodford (eds.), *Handbook of Macroeconomics*, 1b, Chap. 11, 741-812. Amsterdam: Elsevier Science B. V.
- [6] Bajari, P., Benkard, C., and J. Krainer (2005). House prices and consumer welfare. *Journal of Urban Economics*, 58(3), 474-487.
- [7] Bertaut, C. (2002). Equity prices, household wealth, and consumption growth in foreign industrial countries: wealth effects in the 1990s. Board of Governors of the Federal Reserve System, International Finance Discussion Papers #724.
- [8] Blundell, R., and S. Bond (1998). Initial conditions and moment restrictions in dynamic panel data models. *Journal of Econometrics*, 87, 115-143.
- [9] Bonner, X., and E. Dubois (1995). Peut-on comprendre la hausse imprévue du taux d'épargne des ménages depuis 1990? Ministère de l'Économie, *Economie et Prévisions*, 121.
- [10] Boone, L., Giorno, C., and P. Richardson (1998). Stock market fluctuations and consumption behavior: some recent evidence, OECD Working Paper #208.
- [11] Boone, L., Girouard, N., and I. Wanner (2001). Financial liberalization, wealth and consumption. OECD, Economics Department Working Papers #308.
- [12] Brayton, F., and P. Tinsley (1996). A guide to FRB/US. Board of Governors of the Federal Reserve System, Finance and Economics Discussion Papers #42.

- [13] Campbell, J., and G. Mankiw (1989). Consumption, income and interest rates: re-interpreting the time series evidence. In Blanchard, O., and S. Fischer (eds.), *NBER Macroeconomics Annual*, MIT Press, Cambridge, MA.
- [14] Campbell, J., Lo, A., and C. MacKinlay (1997). *The Econometrics of Financial Markets*. Princeton: Princeton University Press.
- [15] Caporale, G., and G. Williams (1997). Revisiting Forward Looking Consumption and Financial Liberalization in the United Kingdom. London Business School Discussion Papers #20.
- [16] Carroll, C. D., M. Otsuka, and J. Slacalek (2006), How large is the housing wealth effect? A new approach. NBER Working Paper #12746.
- [17] Carroll, C., J. Slacalek, and M. Sommer (2008), International evidence on sticky consumption growth. ECB Working Paper No. 886.
- [18] Case, K. (1992). The real estate cycle and the economy: consequences of the Massachusetts boom of 1984-1987. *Urban Studies*, 29(2), 171-183.
- [19] Case K., Shiller R., and J. Quigley (2005). Comparing wealth effects: The stock market versus the housing market. *Advances in Macroeconomics*, 5(1), 1-32.
- [20] Cho, S. (2006). Evidence of a stock market wealth effect using household level data. *Economic Letters*, 90(3), 403-406.
- [21] Cochrane, J. (1994). Permanent and transitory components of GDP and stock prices. *Quarterly Journal of Economics*, 109(1), 241-265.
- [22] Davis, M., and M. Palumbo (2001). A primer on the economics and time-series econometrics of wealth effects. Federal Reserve Board of Governors, Finance and Economics Discussion Papers #09.
- [23] Desnoyers, Y. (2001). L'effet de la richesse sur la consommation aux Etats-Unis, Banque du Canada. Document de Travail #14.
- [24] Dorrucci E., Meyer-Cirkel A., Rzepkowski B., and D. Santabarbara (2008). Index of Domestic Financial Development in Emerging Market Economies. ECB Occasional Paper (forthcoming).
- [25] Dvornak, N., and M. Kohler (2003). Housing wealth, stock market wealth and consumption: A panel analysis for Australia. Reserve Bank of Australia, Research Discussion Paper #07.
- [26] Dynan, K., and D. Maki (2001). Does stock market wealth matter for Consumption? Board of Governors of the Federal Reserve System, Finance and Economics Discussion Paper #23.
- [27] Elliott, J. (1980). Wealth and wealth proxies in a permanent income model. *Quarterly Journal of Economics*, 95(3), 509-535.
- [28] Fernandez-Corugedo, E., Price, S., and A. Blake (2003). The dynamics of consumers' expenditure: the UK consumption ECM redux. Bank of England Working Paper #204.

- [29] Flavin, M. (1981). The adjustment of consumption to changing expectations about future income, *Journal of Political Economy*, 89(5), 974-1009.
- [30] Funke, N. (2004). Is there a stock market wealth effect in emerging markets? *Economics Letters*, 83, 417-421.
- [31] Gale, W., and J. Sabelhaus (1999). Perspectives on the Household Savings Rate. *Brookings Papers on Economic Activity*, 1, 1181-224.
- [32] Girouard, N., and S. Blöndal (2001). House prices and economic activity. OECD, Economics Department Working Papers #279.
- [33] Grunspan, T., and P. Sicsic (1997). Les effets de richesse. Conseil National du Cr dit et du Titre, Rapport annuel, 187-192.
- [34] Holtz-Eakin, D., Newey, W., and H. S. Rosen (1988). Estimating vector autoregressions with panel data. *Econometrica*, 56, 1371-1395.
- [35] Horioka, C. (1996). Capital gains in Japan: their magnitude and impact on consumption. *Economic Journal*, 106(436), 560-577.
- [36] Hoynes, H., and D. McFadden (1997). The impact of demographics on housing and nonhousing wealth in the United States. In Hurd, M., and Y. Naohiro (eds.) *The economic effects of aging in the United States and Japan*, Chicago: Chicago University Press, 153-194.
- [37] Im, K. S., M. H. Pesaran, and Y. Shin (2003). Testing for Unit Roots in Heterogeneous Panels, *Journal of Econometrics*, 115, 53-74.
- [38] IMF (2008). *World Economic Outlook*, April 2008. Available at www.imf.org.
- [39] Kaminsky, G., S. Lizondo, and C.M. Reinhart (1998). Leading Indicators of Currency Crises. *IMF Staff Papers* Vol. 45, No. 1 (March 1998).
- [40] Kaminsky, G., and C.M. Reinhart (1999). The Twin Crises: The Causes of Banking and Balance-of-Payments Problems, *American Economic Review* Vol. 89 No. 3 (June 1999).
- [41] Kennickell, A. B., and M. Starr-McCluer (1997). Retrospective Reporting of Household Wealth: Evidence from the 1983-89 Survey of Consumer Finances. *Journal of Business and Economic Statistics*, 15, 452-463.
- [42] Kent, C., and P. Lowe (1998). Property-price cycles and monetary policy. in *The role of asset prices in the formulation of monetary policy*, BIS Papers #5, Basel, 239-263.
- [43] Kiley, M. (2000). Identifying the Effect of Stock Market Wealth on Consumption: Pitfalls and New Evidence. Board of Governors of the Federal Reserve System.
- [44] Lettau, M., Ludvigson, S., and N. Barczi (2001). A primer on the economics and time series econometrics of wealth effects: A comment. Federal Reserve Bank of New York, Working Paper #131.
- [45] Lettau, M., and S. Ludvigson (2001). Consumption, aggregate wealth, and expected stock returns, *Journal of Finance*, 56(9), 815-849.

- [46] Lettau, M., and S. Ludvigson (2004). Understanding trend and cycle in asset values: Reevaluating the wealth effect on consumption. *American Economic Review*, 94(1), 276-299.
- [47] Levin, L. (1998). Are assets fungible? Testing the behavioral theory of life-cycle savings. *Journal of Economic Organization and Behavior*, 36, 59-83.
- [48] Levin, A., Lin, C. F., and C. Chu (2002). Unit Root Tests in Panel Data: Asymptotic and Finite-Sample Properties, *Journal of Econometrics*, 108, 1-24.
- [49] Ludvigson, S., and C. Steindel (1999). How important is the stock market effect on consumption. *FRBNY Economic Policy Review*, 29-51.
- [50] Ludwig, A. and T. Sløk (2002). The impact of changes in stock prices and house prices on consumption in OECD countries. IMF Working Paper #01.
- [51] Macklem, T. (1994). Wealth, disposable income and consumption: some evidence for Canada. Banque du Canada, Rapport technique, 71.
- [52] Maddala, G. S. and S. Wu (1999). A Comparative Study of Unit Root Tests with Panel Data and A New Simple Test, *Oxford Bulletin of Economics and Statistics*, 61, 631-652.
- [53] Mankiw, N., and S. Zeldes (1991). The consumption of stockholders and nonstockholders, *Journal of Financial Economics*, 29(1), 97-112.
- [54] Mayer, C., and K. Simons (1994). Reverse mortgages and the equity of housing wealth. *Journal of the American Real Estate and Urban Economics*, 22(2), 235-255.
- [55] McKibbin, W., and A. Richards (1988). Consumption and permanent income: the Australian case. Reserve Bank of Australia Discussion Paper #8808.
- [56] Mehra, Y. P. (2001). The wealth effect in empirical life-cycle aggregate consumption equations. *Federal Reserve Bank of Richmond Economic Quarterly*, 87(2), 45-68.
- [57] Miles, D. K. (1992). Housing markets, consumption and financial liberalization in the major economies. *European Economic Review*, 36, 1093-1136.
- [58] Mutoh, H., H. Kawai, and M. Sano (1993). Consumption and adverse wealth effect. *Nihon Keizei Kenkyu*, 26, 57-92.
- [59] Nickell, S. (1981). Biases in Dynamic Models with Fixed Effects. *Econometrica*, 49, 1417-1426.
- [60] Ogawa, K. (1992). An econometric analysis of Japanese households behavior. *Financial Review*, 25, 112-134.
- [61] Ogawa, K., Kitasaka, S., Yamaoka, H., and Y. Iwata (1996). An empirical re-evaluation of wealth effect in Japanese household behavior. *Japan and the World Economy*, 8(4), 423-442.
- [62] Otoo, M. (1999). Consumer sentiment and the stock market. Board of Governors of the Federal Reserve System, Finance and Economics Discussion Papers #60.

- [63] Pichette, L. (2000). Les effets réels du cours des actions sur la consommation. Banque du Canada, Document de travail #21.
- [64] Pissarides, C. (1978). Liquidity considerations in the theory of consumption. *Quarterly Journal of Economics*, 92(2), 279-296.
- [65] Poterba, J. M. (2000). Stock market wealth and consumption. *Journal of Economic Perspectives*, 13, 91-118.
- [66] Poterba, J., and A. Samwick (1995). Stock ownership patterns, stock market fluctuations, and consumption, *Brookings Papers on Economic Activity*, 2, 295-372.
- [67] Romer, C. (1990). The great crash and the onset of the great depression. *Quarterly Journal of Economics*, 105, 597-624.
- [68] Rossi, N., and I. Visco (1995). National saving and social security in Italy. *Ricerche Economiche*, 49(4), 329-356.
- [69] Shefrin, H., and R. Thaler (1988). The behavioral life-cycle hypothesis. *Economic Inquiry*, 26(4), 609-643.
- [70] Sheiner, L. (1995). House prices and the savings of renters. *Journal of Urban Economics*, 38(1), 94-125.
- [71] Skinner, J. (1999). Housing wealth and aggregate saving. *Regional Science and Urban Economics*, 19, 305-324.
- [72] Slacalek, J. (2006). What drives personal consumption? The role of housing and financial wealth. DIW Berlin Discussion Paper #647.
- [73] Sousa, R. M. (2003). Property of stocks and wealth effects on consumption. University of Minho, NIPE Working Paper #2/2003.
- [74] Starr-McCluer, M. (1998). Stock market wealth and consumer spending, Board of Governors of the Federal Reserve System, Finance and Economics Discussion Paper #20.
- [75] Starr-McCluer, M. (2002) Stock market wealth and consumer spending. *Economic Inquiry*, 40 (1), 69-79.
- [76] Tan, A., and G. Voss (2003). Consumption and wealth in Australia. *The Economic Record*, 79(244), 39-56.
- [77] Thaler, R. (1990). Anomalies: saving, fungibility and mental accounts. *Journal of Economic Perspectives*, 4, 193-206.

7 Appendix

A Data and Summary Statistics

Table A.1: Sample period and number of observations per country.

| Country | Obs | Sample Period |
|--------------|-----|---------------|
| Argentina | 17 | 2002:4-2006:4 |
| Brazil | 18 | 2002:3-2006:4 |
| Chile | 24 | 2001:1-2006:4 |
| China | 36 | 1999:1-2007:4 |
| Hong Kong | 73 | 1990:1-2008:1 |
| Indonesia | 26 | 2001:4-2008:1 |
| Korea | 72 | 1990:1-2007:4 |
| Malaysia | 28 | 2001:1-2007:4 |
| Mexico | 24 | 2001:1-2006:4 |
| Russia | 21 | 2003:1-2008:1 |
| Singapore | 42 | 1997:1-2008:1 |
| South Africa | 72 | 1990:1-2007:4 |
| Taiwan | 63 | 1992:3-2008:1 |
| Thailand | 39 | 1998:1-2007:3 |

Table A.2: Annual average changes.

| Variable | Obs | Mean | St. Dev. | Min | Max |
|-------------|-----|-------|----------|---------|---------|
| Consumption | 555 | 4.693 | 4.086 | -16.191 | 14.886 |
| Wage | 555 | 3.092 | 5.414 | -28.190 | 25.269 |
| Property | 555 | 0.284 | 10.604 | -50.086 | 42.436 |
| Equity | 555 | 7.292 | 28.578 | -99.015 | 109.946 |
| Money | 555 | 6.783 | 7.790 | -17.268 | 43.652 |

Note: All series are in log differences.

Table A.3: Annual average changes.

| Country | Consumption | Wage | Property | Equity | Money |
|-------------------------|-------------|--------|----------|--------|--------|
| All (555 obs) | 4.693 | 3.092 | 0.284 | 7.292 | 6.783 |
| Emerging Asia (379 obs) | 4.618 | 3.235 | -0.903 | 5.013 | 5.904 |
| Latin America (83 obs) | 4.529 | 1.673 | -1.759 | 16.131 | 8.619 |
| Other (93 obs) | 5.141 | 3.779 | 6.943 | 8.692 | 8.728 |
| Argentina (17 obs) | 7.320 | 2.641 | -1.326 | 25.792 | 19.557 |
| Brazil (18 obs) | 2.922 | 0.730 | -7.687 | 17.796 | 4.911 |
| Chile (24 obs) | 4.939 | 1.686 | 0.931 | 9.714 | 6.134 |
| China (36 obs) | 6.502 | 11.270 | -2.130 | 10.898 | 11.402 |
| Hong Kong (73 obs) | 3.963 | 0.930 | 2.866 | 9.471 | 6.184 |
| Indonesia (26 obs) | 4.101 | 2.325 | -4.213 | 16.279 | -1.734 |
| Korea (72 obs) | 4.659 | 3.745 | -2.529 | -1.920 | 7.499 |
| Malaysia (28 obs) | 7.020 | 1.787 | 1.118 | 5.587 | 7.585 |
| Mexico (24 obs) | 3.348 | 1.682 | -0.310 | 14.455 | 6.136 |
| Russia (21 obs) | 10.337 | 11.325 | 16.886 | 20.400 | 25.463 |
| Singapore (42 obs) | 4.613 | 4.674 | -1.031 | 4.613 | 6.214 |
| South Africa (72 obs) | 3.623 | 1.578 | 4.044 | 5.277 | 3.847 |
| Taiwan (63 obs) | 4.546 | 2.979 | -1.571 | 2.456 | 5.712 |
| Thailand 39 obs) | 2.777 | -0.301 | -1.854 | 0.672 | 1.220 |

Note: All series are in log differences.

Table A.4: Correlation Coefficients.

| Variable | Consumption | Wage | Property | Equity | Money |
|-------------|-------------|-------|----------|--------|-------|
| Consumption | 1.000 | | | | |
| Wage | 0.387 | 1.000 | | | |
| Property | 0.485 | 0.140 | 1.000 | | |
| Equity | 0.415 | 0.081 | 0.268 | 1.000 | |
| Money | 0.348 | 0.354 | 0.219 | 0.220 | 1.000 |

Note: All series are in log differences.

Table A.5: Panel Unit Root Test Results.

| Test | Consumption | Income | Property | Equity | Money |
|-----------------------------|-------------|---------|----------|--------|--------|
| Levin, Lin Chu t-stat | -2.389 | -2.834 | -4.445 | -3.257 | -2.312 |
| p-value | 0.008 | 0.002 | 0.000 | 0.006 | 0.010 |
| Im, Pesaran and Shin W-stat | -4.469 | -6.122 | -5.398 | -4.899 | -4.169 |
| p-value | 0.000 | 0.000 | 0.000 | 0.000 | 0.000 |
| ADF - Fisher Chi-square | 74.078 | 94.630 | 89.726 | 80.283 | 70.363 |
| p-value | 0.000 | 0.000 | 0.000 | 0.000 | 0.000 |
| PP - Fisher Chi-square | 63.666 | 100.014 | 58.657 | 83.848 | 54.745 |
| p-value | 0.000 | 0.000 | 0.000 | 0.000 | 0.002 |

Note: All series are in log differences.

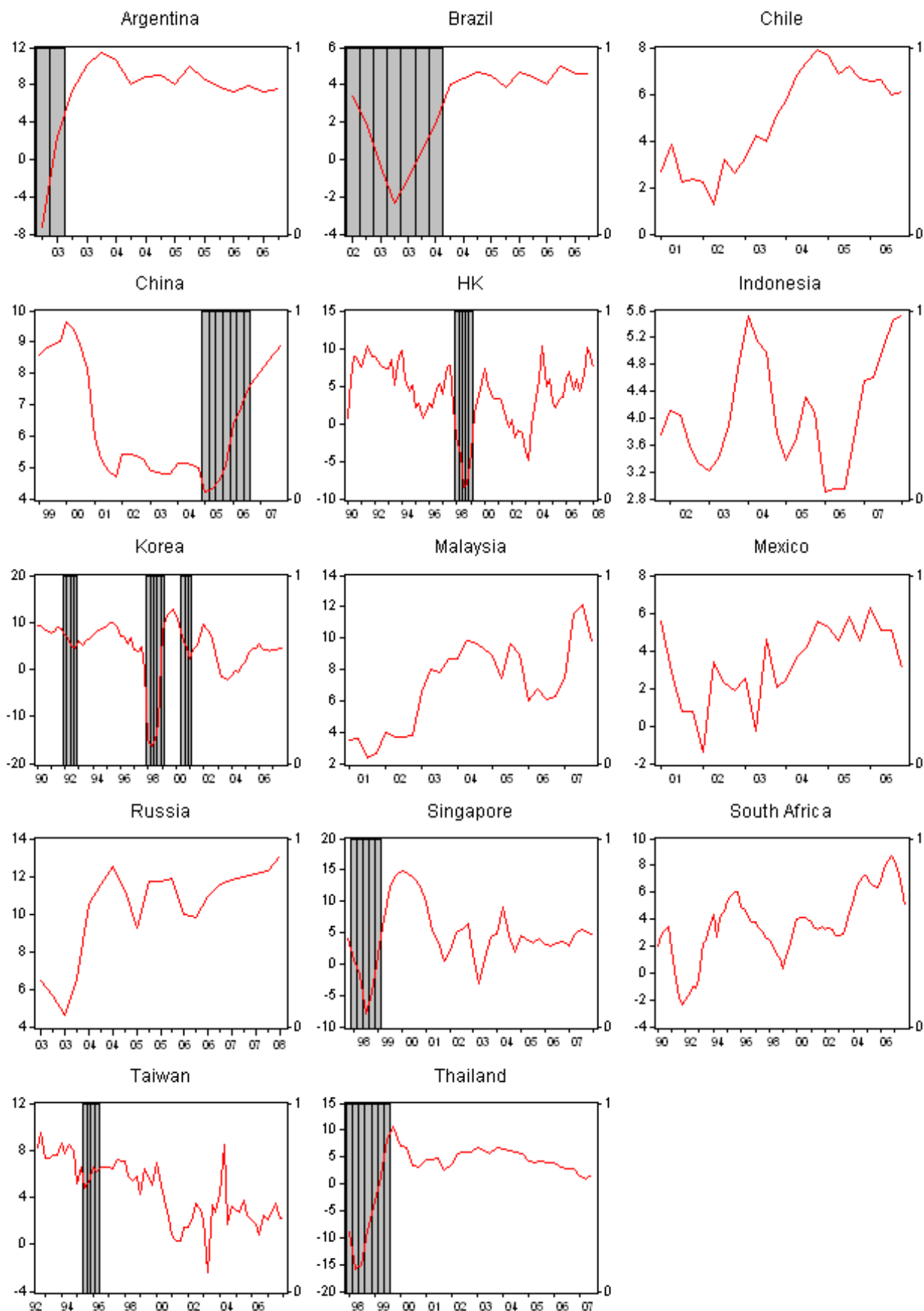


Figure 1: Real private consumption (year-on-year change in logs). Financial crisis periods are shown as shaded areas.

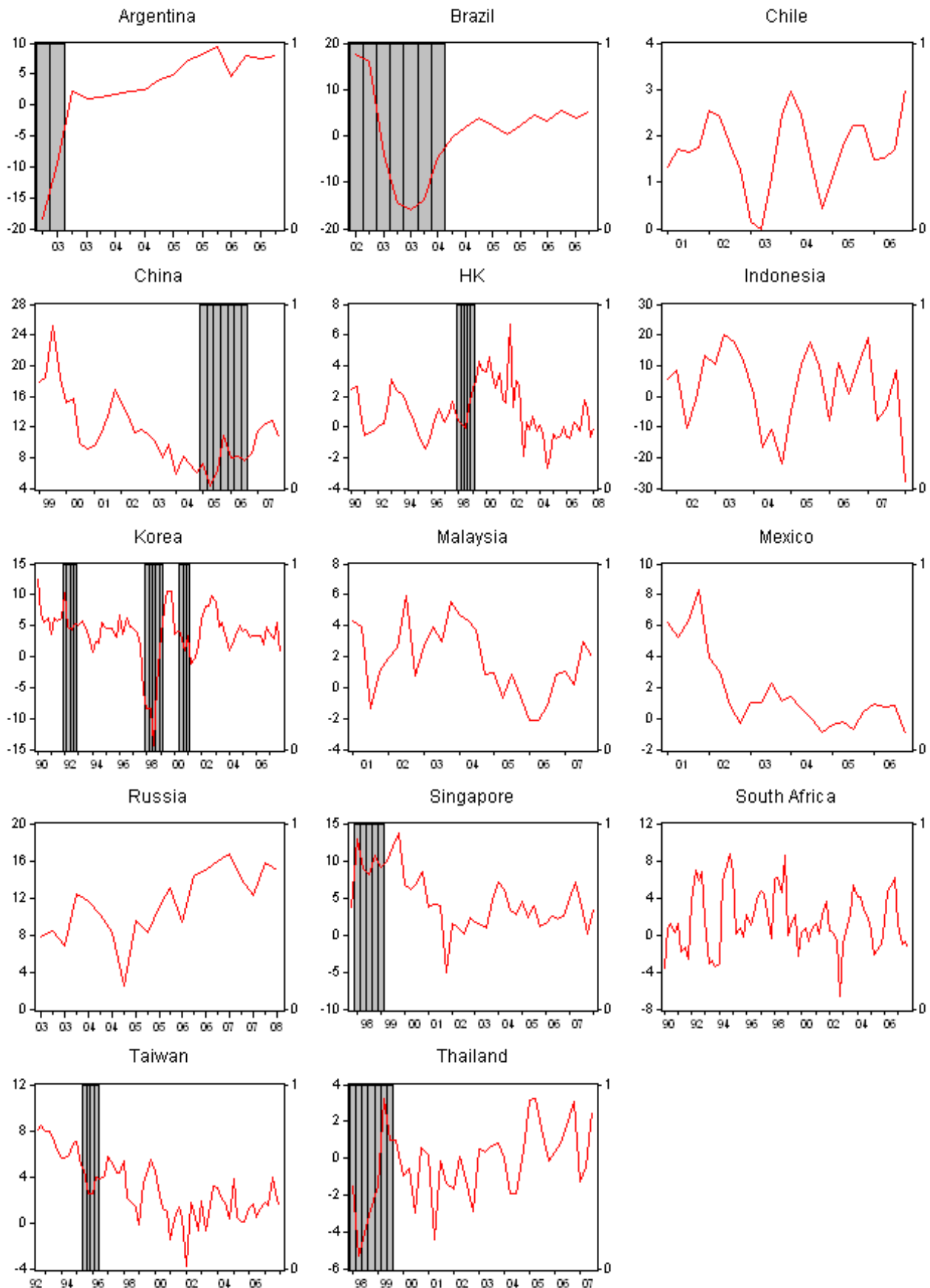


Figure 2: Real wage (year-on-year change in logs). Financial crisis periods are shown as shaded areas.

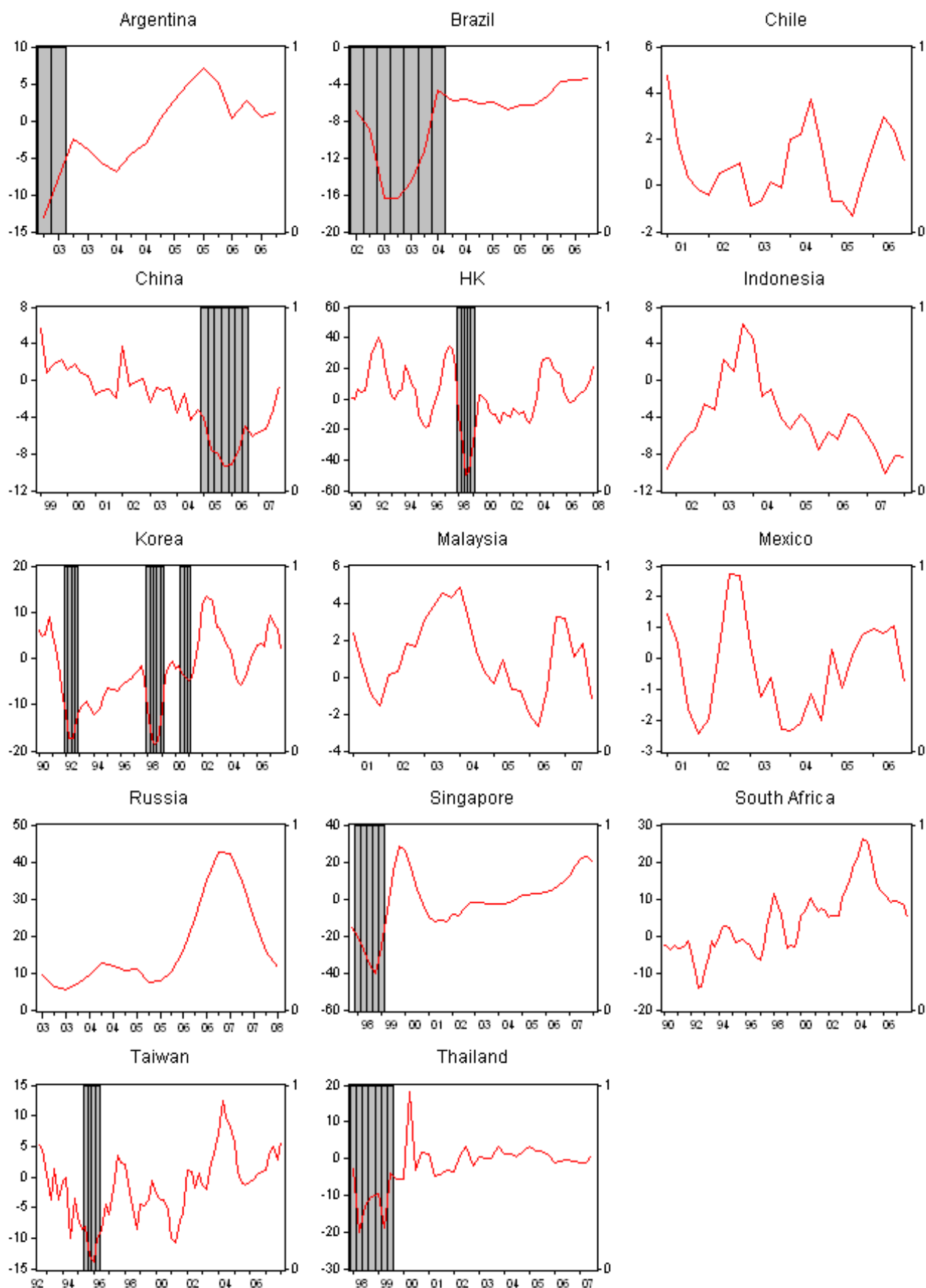


Figure 3: Real property price index (year-on-year change in logs). Financial crisis periods are shown as shaded areas.

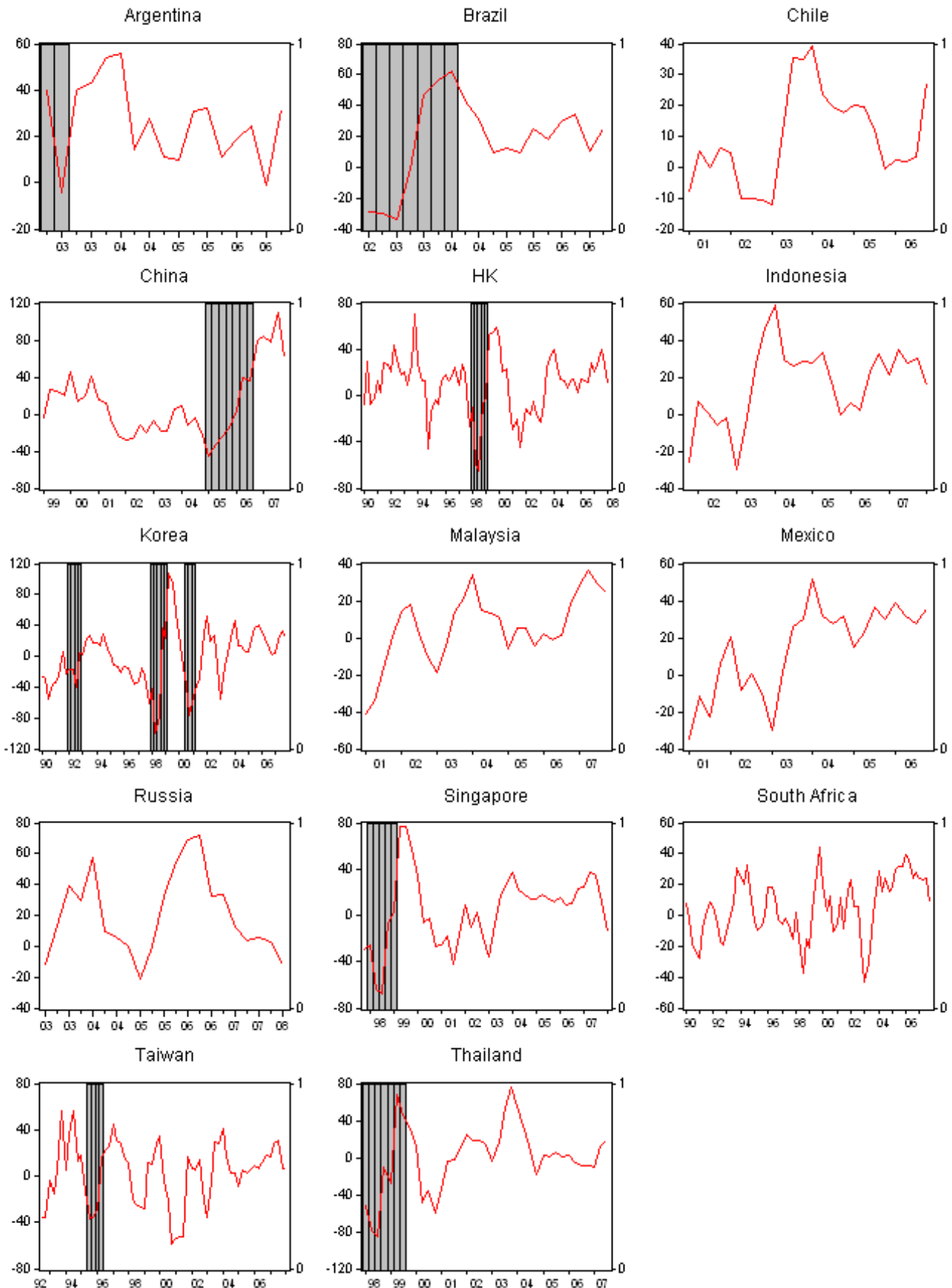


Figure 4: Real equity price index (year-on-year change in logs). Financial crisis periods are shown as shaded areas.

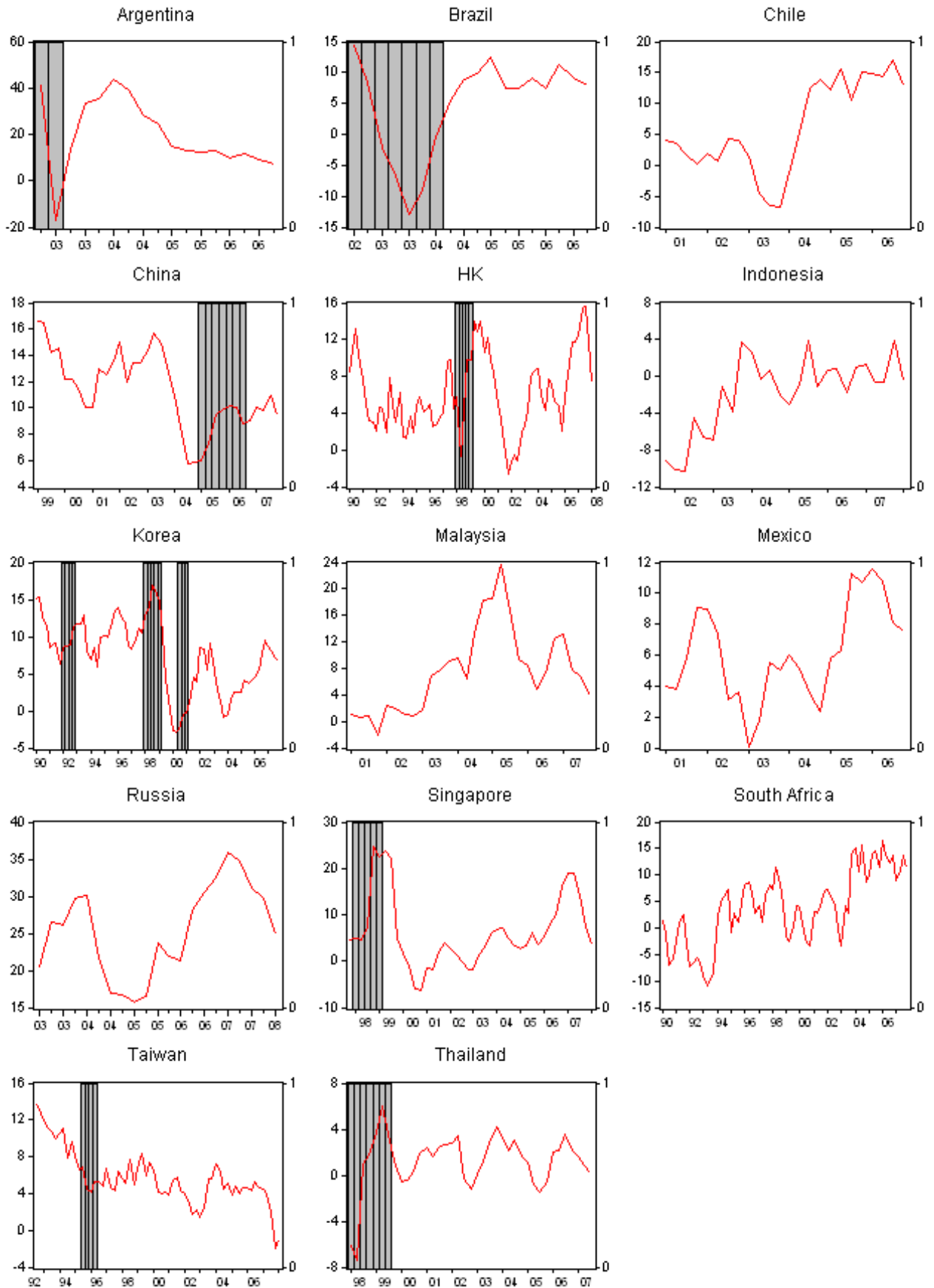


Figure 5: Real money (broad money per capita, year-on-year change in logs). Financial crisis periods are shown as shaded areas.

Table A.6: Variables and data sources.

| Country | Consumption |
|--------------|--|
| Argentina | Haver: private consumption (real GDP) |
| Brazil | Haver: private consumption (real GDP) |
| Chile | Haver: private consumption (real GDP) |
| China | CEIC: private consumption (deflated with GDP deflator, interpolated from annual data) |
| HK | CEIC: private consumption (real GDP) |
| Indonesia | CEIC: private consumption (real GDP) |
| Korea | Haver: private consumption (real GDP) |
| Malaysia | Haver: private consumption (real GDP) |
| Mexico | Haver: private consumption (real GDP) |
| Russia | Haver: private consumption (real GDP) |
| Singapore | CEIC: private consumption (real GDP) |
| South Africa | Haver: private consumption (real GDP) |
| Taiwan | Haver: real GDP: private consumption |
| Thailand | Haver: real GDP: private consumption |
| Country | Income |
| Argentina | Haver: total salary index (deflated by private consumption deflator) |
| Brazil | Haver: real average earnings of employed persons |
| Chile | Haver: real hourly wage index |
| China | CEIC: average earning per employee (deflated by private consumption deflator) |
| HK | CEIC: real wage index, (missing obs interpolated) |
| Indonesia | Haver: average of manufacturing, mining and hotel wages (deflated by private consumption deflator) |
| Korea | CEIC: Monthly Earnings all Industries (deflated by private consumption deflator) |
| Malaysia | CEIC: monthly earnings manufacturing (deflated by private consumption deflator) |
| Mexico | Haver: real remunerations in manufacturing |
| Russia | Haver: nominal accrued monthly wages (deflated by private consumption deflator) |
| Singapore | CEIC: average real monthly earnings, total |
| South Africa | Haver: real remuneration per worker |
| Taiwan | CEIC: average real monthly earnings: industry and service |
| Thailand | CEIC: average monthly wage (deflated by private consumption deflator) |

| Country | Property |
|--------------|---|
| Argentina | IMF: house price index |
| Brazil | IMF: house price index |
| Chile | IMF: house price index |
| China | CEIC: residential property price index |
| HK | CEIC: domestic premise property price index |
| Indonesia | CEIC: residential property price index (either 12, 13 or 14 cities) |
| Korea | CEIC: total housing price index |
| Malaysia | CEIC: house price index |
| Mexico | IMF: house price index |
| Russia | Haver: prices for existing homes |
| Singapore | CEIC: private residential property price index |
| South Africa | Haver: ABSA house price index |
| Taiwan | CEIC: Sinyi residential property price index |
| Thailand | CEIC: average of housing price indices of single detached house and town house including land |

Note: All variables deflated using private consumption deflator.

| Country | Equity |
|--------------|--|
| Argentina | GFD: Buenos Aires SE General Index |
| Brazil | GFD: Brazil Bolsa de Valores de Sao Paulo (BOVESPA) |
| Chile | GFD: Santiago SE Indice General de Precios de Acciones |
| China | GFD: Shanghai SE composite |
| HK | GFD: Hang Seng composite index |
| Indonesia | GFD: Jakarta SE composite index |
| Korea | GFD: Korea SE stock price index (KOSPI) |
| Malaysia | GFD: Malaysia KLSE composite |
| Mexico | GFD: Mexico SE Indice de Precios y Cotizaciones (IPC) |
| Russia | GFD: Moscow Times Rouble index |
| Singapore | GFD: FTSE Straits Times index |
| South Africa | GFD: FTSE JSE all share index |
| Taiwan | GFD: Taiwan SE capitalization weighted index |
| Thailand | GFD: Thailand SET general index |

Note: All variables deflated using private consumption deflator.

| Country | Money |
|--------------|-----------|
| Argentina | Haver: M2 |
| Brazil | Haver: M2 |
| Chile | Haver: M2 |
| China | Haver: M2 |
| HK | Haver: M2 |
| Indonesia | Haver: M2 |
| Korea | Haver: M2 |
| Malaysia | Haver: M2 |
| Mexico | Haver: M2 |
| Russia | Haver: M2 |
| Singapore | Haver: M2 |
| South Africa | Haver: M2 |
| Taiwan | Haver: M2 |
| Thailand | Haver: M3 |

Note: All variables deflated using private consumption deflator.

B Additional Regression Results

Table B.1: Dynamic Panel Regression (OLS) - Short-Run Elasticities.

| | All | All | All | All | EMAsia | LatAm | EMAsia | EMAsia | All |
|----------------------------|----------------------|---------------------|---------------------|----------------------|---------------------|---------------------|---------------------|----------------------|----------------------|
| | 90-08 | 90-08 | 90-08 | 90-08 | 01-06 | 01-06 | 90-99 | 00-08 | 90-08 |
| Δ Consumption | 0.725*** [0.036] | 0.752*** [0.040] | 0.771*** [0.030] | 0.734*** [0.035] | 0.680*** [0.056] | 0.569*** [0.081] | 0.576*** [0.123] | 0.706*** [0.049] | 0.718*** [0.036] |
| Δ Wage | 0.052*** [0.018] | 0.069*** [0.021] | 0.057*** [0.021] | 0.044** [0.021] | 0.015 [0.015] | 0.036 [0.039] | 0.194* [0.117] | 0.029 [0.035] | 0.052*** [0.019] |
| Δ Property price | 0.028*** [0.009] | 0.042*** [0.010] | | | 0.010 [0.027] | 0.139*** [0.048] | 0.036** [0.017] | 0.041** [0.020] | 0.005 [0.010] |
| Δ Equity price | 0.033*** [0.003] | | 0.029*** [0.003] | | 0.031*** [0.005] | 0.028*** [0.008] | 0.043*** [0.007] | 0.029*** [0.004] | 0.024*** [0.004] |
| Δ Money | 0.033** [0.013] | | | 0.054*** [0.015] | 0.073*** [0.020] | 0.048** [0.019] | 0.053 [0.077] | 0.036 [0.029] | 0.041*** [0.014] |
| Δ Property price(-) | | | | | | | | | 0.067*** [0.024] |
| Δ Equity price(-) | | | | | | | | | 0.021** [0.010] |
| Crisis | 0.130 [0.510] | -0.247 [0.588] | -0.340 [0.442] | -1.671*** [0.472] | 0.855*** [0.316] | 1.076 [0.984] | -0.721 [1.182] | 1.079*** [0.337] | 0.754 [0.599] |
| Constant | 2.030*** [0.447] | 1.010*** [0.193] | 0.821*** [0.150] | 0.989*** [0.169] | 3.961** [1.706] | 1.335*** [0.486] | 5.759** [2.764] | 5.437*** [1.504] | 2.729*** [0.552] |
| Linear time trend | -0.012*** [0.004] | | | | -0.028* [0.014] | | -0.035** [0.026] | -0.041*** [0.012] | -0.015*** [0.004] |
| Observations | 555 | 555 | 696 | 690 | 189 | 83 | 131 | 194 | 555 |
| R-squared | 0.82 | 0.77 | 0.8 | 0.77 | 0.69 | 0.78 | 0.85 | 0.78 | 0.82 |

Note: Pooled panel estimation. Heteroscedasticity and serial correlation robust standard errors in brackets.

All series are in log differences. * statistically significant at 10% level; ** at 5% level; *** at 1% level.

Table B.2: Dynamic Panel Regression (OLS) - Long-Run Elasticities.

| | All | All | All | EMAsia | L _{at} Am | EMAsia | EMAsia | All |
|----------------------------|----------|----------|----------|----------|--------------------|----------|----------|----------|
| | 90-08 | 90-08 | 90-08 | 01-06 | 01-06 | 90-99 | 00-08 | 90-08 |
| Δ Wage | 0.188*** | 0.277*** | 0.248*** | 0.048 | 0.084 | 0.459* | 0.098 | 0.184*** |
| Δ Property price | 0.102*** | 0.170*** | | 0.030 | 0.323*** | 0.084** | 0.139** | |
| Δ Equity price | 0.119*** | | 0.124*** | 0.096*** | 0.066*** | 0.101*** | 0.098*** | |
| Δ Money | 0.119** | | | 0.229*** | 0.111** | 0.125 | 0.123 | 0.144*** |
| Δ Property price(-) | | | | | | | | 0.256*** |
| Δ Equity price(-) | | | | | | | | 0.159** |

Note: See more details on sample size and specification tests in the table of short-run elasticities. * statistically significant at 10% level; ** at 5% level; *** at 1% level.

Table B.3: Dynamic Single Equation Regression (OLS) - Short-Run Elasticities.

| | China 1/99 - 4/07 | Hong Kong 1/90 - 1/08 | Korea 1/90 - 4/07 | Singapore 4/97 - 1/08 | Taiwan 3/92 - 1/08 | Thailand 1/98 - 3/07 |
|-------------------------|----------------------|--------------------------|----------------------|--------------------------|-----------------------|-------------------------|
| Δ Consumption | 0.700*** [0.153] | 0.541*** [0.074] | 0.579*** [0.181] | 0.570*** [0.166] | 0.231 [0.146] | 0.762*** [0.113] |
| Δ Wage | 0.052* [0.027] | 0.045 [0.109] | 0.348 [0.246] | 0.183 [0.136] | 0.148 [0.125] | 0.211 [0.143] |
| Δ Property price | 0.065 [0.065] | 0.045** [0.019] | -0.029 [0.054] | 0.056 [0.053] | 0.088 [0.055] | 0.169*** [0.061] |
| Δ Equity price | 0.015** [0.006] | 0.033** [0.014] | 0.031** [0.013] | 0.048** [0.021] | 0.020*** [0.005] | 0.027** [0.011] |
| Δ Money | 0.009 [0.044] | 0.156** [0.061] | -0.010 [0.085] | -0.038 [0.057] | 0.038 [0.068] | 0.451*** [0.122] |
| Crisis | 0.913** [0.398] | -2.207** [1.034] | -0.917 [1.835] | -2.395 [2.492] | 0.923 [0.778] | 1.654 [2.145] |
| Constant | 1.080 [1.061] | 2.541** [1.082] | 4.377* [2.250] | 10.966 [6.608] | 10.537*** [3.058] | 7.333 [4.529] |
| Linear time trend | | -0.020* [0.011] | -0.037** [0.016] | -0.085 [0.051] | -0.075*** [0.022] | -0.062* [0.035] |
| Observations | 36 | 73 | 72 | 42 | 63 | 39 |
| R-squared | 0.94 | 0.86 | 0.81 | 0.86 | 0.79 | 0.95 |

Note: Heteroscedasticity and serial correlation robust standard errors in brackets.

All series are in log differences. * statistically significant at 10% level; ** at 5% level; *** at 1% level.

Table B.4: Dynamic Single Equation Regression (OLS) - Long-Run Elasticities.

| | China 1/99 - 4/07 | Hong Kong 1/90 - 1/08 | Korea 1/90 - 4/07 | Singapore 4/97 - 1/08 | Taiwan 3/92 - 1/08 | Thailand 1/98 - 3/07 |
|-------------------------|----------------------|--------------------------|----------------------|--------------------------|-----------------------|-------------------------|
| Δ Wage | 0.174* | 0.098 | 0.827 | 0.425 | 0.193 | 0.886 |
| Δ Property price | 0.217 | 0.098** | -0.069 | 0.130 | 0.114 | 0.709*** |
| Δ Equity price | 0.049** | 0.071** | 0.074** | 0.112** | 0.026*** | 0.113** |
| Δ Money | 0.030 | 0.340** | -0.023 | -0.088 | 0.050 | 1.893*** |

Note: See more details on sample size and specification tests in the table of short-run elasticities.

* statistically significant at 10% level; ** at 5% level; *** at 1% level.

European Central Bank Working Paper Series

For a complete list of Working Papers published by the ECB, please visit the ECB's website (<http://www.ecb.europa.eu>).

- 944 "The New Area-Wide Model of the euro area: a micro-founded open-economy model for forecasting and policy analysis" by K. Christoffel, G. Coenen and A. Warne, October 2008.
- 945 "Wage and price dynamics in Portugal" by C. Robalo Marques, October 2008.
- 946 "Macroeconomic adjustment to monetary union" by G. Fagan and V. Gaspar, October 2008.
- 947 "Foreign-currency bonds: currency choice and the role of uncovered and covered interest parity" by M. M. Habib and M. Joy, October 2008.
- 948 "Clustering techniques applied to outlier detection of financial market series using a moving window filtering algorithm" by J. M. Puigvert Gutiérrez and J. Fortiana Gregori, October 2008.
- 949 "Short-term forecasts of euro area GDP growth" by E. Angelini, G. Camba-Méndez, D. Giannone, L. Reichlin and G. Rünstler, October 2008.
- 950 "Is forecasting with large models informative? Assessing the role of judgement in macroeconomic forecasts" by R. Mestre and P. McAdam, October 2008.
- 951 "Exchange rate pass-through in the global economy: the role of emerging market economies" by M. Bussière and T. Peltonen, October 2008.
- 952 "How successful is the G7 in managing exchange rates?" by M. Fratzscher, October 2008.
- 953 "Estimating and forecasting the euro area monthly national accounts from a dynamic factor model" by E. Angelini, M. Bańbura and G. Rünstler, October 2008.
- 954 "Fiscal policy responsiveness, persistence and discretion" by A. Afonso, L. Agnello and D. Furceri, October 2008.
- 955 "Monetary policy and stock market boom-bust cycles" by L. Christiano, C. Ilut, R. Motto and M. Rostagno, October 2008.
- 956 "The political economy under monetary union: has the euro made a difference?" by M. Fratzscher and L. Stracca, November 2008.
- 957 "Modeling autoregressive conditional skewness and kurtosis with multi-quantile CAViaR" by H. White, T.-H. Kim, and S. Manganelli, November 2008.
- 958 "Oil exporters: in search of an external anchor" by M. M. Habib and J. Stráský, November 2008.
- 959 "What drives U.S. current account fluctuations?" by A. Barnett and R. Straub, November 2008.
- 960 "On implications of micro price data for macro models" by B. Maćkowiak and F. Smets, November 2008.
- 961 "Budgetary and external imbalances relationship: a panel data diagnostic" by A. Afonso and C. Rault, November 2008.
- 962 "Optimal monetary policy and the transmission of oil-supply shocks to the euro area under rational expectations" by S. Adjemian and M. Darracq Pariès, November 2008.

- 963 “Public and private sector wages: co-movement and causality” by A. Lamo, J. J. Pérez and L. Schuknecht, November 2008.
- 964 “Do firms provide wage insurance against shocks? Evidence from Hungary” by G. Kátay, November 2008.
- 965 “IMF lending and geopolitics” by J. Reynaud and J. Vauday, November 2008.
- 966 “Large Bayesian VARs” by M. Bańbura, D. Giannone and L. Reichlin, November 2008.
- 967 “Central bank misperceptions and the role of money in interest rate rules” by V. Wieland and G. W. Beck, November 2008.
- 968 “A value at risk analysis of credit default swaps” by B. Raunig and M. Scheicher, November 2008.
- 969 “Comparing and evaluating Bayesian predictive distributions of asset returns” by J. Geweke and G. Amisano, November 2008.
- 970 “Responses to monetary policy shocks in the east and the west of Europe: a comparison” by M. Jarociński, November 2008.
- 971 “Interactions between private and public sector wages” by A. Afonso and P. Gomes, November 2008.
- 972 “Monetary policy and housing prices in an estimated DSGE for the US and the euro area” by M. Darracq Pariès and A. Notarpietro, November 2008.
- 973 “Do China and oil exporters influence major currency configurations?” by M. Fratzscher and A. Mehl, December 2008.
- 974 “Institutional features of wage bargaining in 23 European countries, the US and Japan” by P. Du Caju, E. Gautier, D. Momferatou and M. Ward-Warmedinger, December 2008.
- 975 “Early estimates of euro area real GDP growth: a bottom up approach from the production side” by E. Hahn and F. Skudelny, December 2008.
- 976 “The term structure of interest rates across frequencies” by K. Assenmacher-Wesche and S. Gerlach, December 2008.
- 977 “Predictions of short-term rates and the expectations hypothesis of the term structure of interest rates” by M. Guidolin and D. L. Thornton, December 2008.
- 978 “Measuring monetary policy expectations from financial market instruments” by M. Joyce, J. Relleen and S. Sorensen, December 2008.
- 979 “Futures contract rates as monetary policy forecasts” by G. Ferrero and A. Nobili, December 2008.
- 980 “Extracting market expectations from yield curves augmented by money market interest rates: the case of Japan” by T. Nagano and N. Baba, December 2008.
- 981 “Why the effective price for money exceeds the policy rate in the ECB tenders?” by T. Välimäki, December 2008.
- 982 “Modelling short-term interest rate spreads in the euro money market” by N. Cassola and C. Morana, December 2008.
- 983 “What explains the spread between the euro overnight rate and the ECB’s policy rate?” by T. Linzert and S. Schmidt, December 2008.

- 984 “The daily and policy-relevant liquidity effects” by D. L. Thornton, December 2008.
- 985 “Portuguese banks in the euro area market for daily funds” by L. Farinha and V. Gaspar, December 2008.
- 986 “The topology of the federal funds market” by M. L. Bech and E. Atalay, December 2008.
- 987 “Probability of informed trading on the euro overnight market rate: an update” by J. Idier and S. Nardelli, December 2008.
- 988 “The interday and intraday patterns of the overnight market: evidence from an electronic platform” by R. Beaupain and A. Durré, December 2008.
- 989 “Modelling loans to non-financial corporations in the euro area” by C. Kok Sørensen, D. Marqués Ibáñez and C. Rossi, January 2009.
- 990 “Fiscal policy, housing and stock prices” by A. Afonso and R. M. Sousa, January 2009.
- 991 “The macroeconomic effects of fiscal policy” by A. Afonso and R. M. Sousa, January 2009.
- 992 “FDI and productivity convergence in central and eastern Europe: an industry-level investigation” by M. Bijsterbosch and M. Kolasa, January 2009.
- 993 “Has emerging Asia decoupled? An analysis of production and trade linkages using the Asian international input-output table” by G. Pula and T. A. Peltonen, January 2009.
- 994 “Fiscal sustainability and policy implications for the euro area” by F. Balassone, J. Cunha, G. Langenus, B. Manzke, J. Pavot, D. Prammer and P. Tommasino, January 2009.
- 995 “Current account benchmarks for central and eastern Europe: a desperate search?” by M. Ca’ Zorzi, A. Chudik and A. Dieppe, January 2009.
- 996 “What drives euro area break-even inflation rates?” by M. Ciccarelli and J. A. García, January 2009.
- 997 “Financing obstacles and growth: an analysis for euro area non-financial corporations” by C. Coluzzi, A. Ferrando and C. Martinez-Carrascal, January 2009.
- 998 “Infinite-dimensional VARs and factor models” by A. Chudik and M. H. Pesaran, January 2009.
- 999 “Risk-adjusted forecasts of oil prices” by P. Pagano and M. Pisani, January 2009.
- 1000 “Wealth effects in emerging market economies” by T. A. Peltonen, R. M. Sousa and I. S. Vansteenkiste, January 2009.

