

Straub, Roland; Jacquinet, Pascal

Working Paper

Globalisation and the euro area: simulation based analysis using the New Area Wide Model

ECB Working Paper, No. 907

Provided in Cooperation with:

European Central Bank (ECB)

Suggested Citation: Straub, Roland; Jacquinet, Pascal (2008) : Globalisation and the euro area: simulation based analysis using the New Area Wide Model, ECB Working Paper, No. 907, European Central Bank (ECB), Frankfurt a. M.

This Version is available at:

<https://hdl.handle.net/10419/153341>

Standard-Nutzungsbedingungen:

Die Dokumente auf EconStor dürfen zu eigenen wissenschaftlichen Zwecken und zum Privatgebrauch gespeichert und kopiert werden.

Sie dürfen die Dokumente nicht für öffentliche oder kommerzielle Zwecke vervielfältigen, öffentlich ausstellen, öffentlich zugänglich machen, vertreiben oder anderweitig nutzen.

Sofern die Verfasser die Dokumente unter Open-Content-Lizenzen (insbesondere CC-Lizenzen) zur Verfügung gestellt haben sollten, gelten abweichend von diesen Nutzungsbedingungen die in der dort genannten Lizenz gewährten Nutzungsrechte.

Terms of use:

Documents in EconStor may be saved and copied for your personal and scholarly purposes.

You are not to copy documents for public or commercial purposes, to exhibit the documents publicly, to make them publicly available on the internet, or to distribute or otherwise use the documents in public.

If the documents have been made available under an Open Content Licence (especially Creative Commons Licences), you may exercise further usage rights as specified in the indicated licence.



EUROPEAN CENTRAL BANK

EUROSYSTEM

WORKING PAPER SERIES

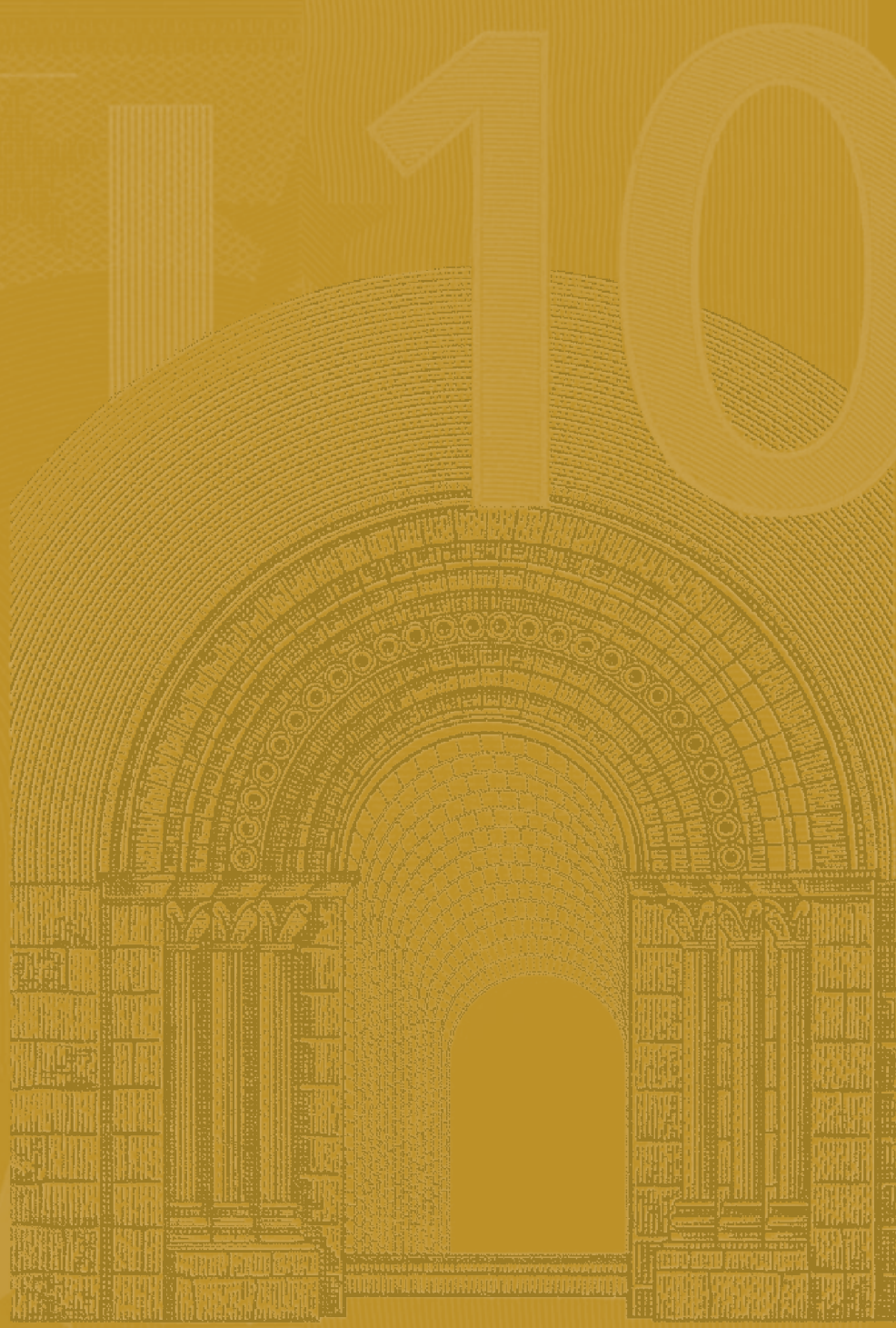
NO 907 / JUNE 2008

ECB EZB EKT EKP

**GLOBALISATION AND
THE EURO AREA**

**SIMULATION BASED
ANALYSIS USING
THE NEW AREA
WIDE MODEL**

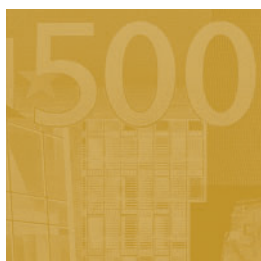
by Pascal Jacquinot
and Roland Straub





EUROPEAN CENTRAL BANK

EUROSYSTEM



WORKING PAPER SERIES

NO 907 / JUNE 2008

**GLOBALISATION AND THE EURO AREA
SIMULATION BASED ANALYSIS USING
THE NEW AREA WIDE MODEL¹**

by Pascal Jacquinot² and Roland Straub³



In 2008 all ECB publications feature a motif taken from the €10 banknote.

This paper can be downloaded without charge from <http://www.ecb.europa.eu> or from the Social Science Research Network electronic library at http://ssrn.com/abstract_id=1138607.

¹ We appreciate comments and suggestions from Robert Anderson, Günter Coenen, Stéphane Déés, Luca Dedola, Ettore Dorrucci, Marcel Fratzscher, Geoff Kenny, Gianni Lombardo, our discussant Junior Maih, Arnaud Mehl, Dirk Muir, Gabor Pula, Christian Thimann, seminar participants of an internal European Central Bank seminar, and conference participants at the 3rd DYNARE conference in Paris, September 10-11, 2007. The opinions expressed are those of the authors and do not necessarily reflect views of the European Central Bank.

Any remaining errors are the sole responsibility of the authors.

² Directorate General Research, Econometric Modelling, European Central Bank, Kaiserstrasse 29, 60311 Frankfurt am Main, Germany; e-mail: pascal.jacquinot@ecb.europa.eu

³ DG-I, International Policy Analysis, European Central Bank, Kaiserstrasse 29, 60311 Frankfurt am Main, Germany; e-mail: roland.straub@ecb.europa.eu



© European Central Bank, 2008

Address

Kaiserstrasse 29
60311 Frankfurt am Main, Germany

Postal address

Postfach 16 03 19
60066 Frankfurt am Main, Germany

Telephone

+49 69 1344 0

Website

<http://www.ecb.europa.eu>

Fax

+49 69 1344 6000

All rights reserved.

Any reproduction, publication and reprint in the form of a different publication, whether printed or produced electronically, in whole or in part, is permitted only with the explicit written authorisation of the ECB or the author(s).

The views expressed in this paper do not necessarily reflect those of the European Central Bank.

The statement of purpose for the ECB Working Paper Series is available from the ECB website, <http://www.ecb.europa.eu/pub/scientific/wps/date/html/index.en.html>

ISSN 1561-0810 (print)

ISSN 1725-2806 (online)

CONTENTS

Abstract	4
Non-technical summary	5
1 Introduction	8
2 The framework	10
2.1 The model	11
3 Model calibration	13
3.1 Domestic dimension	13
3.2 International dimension	14
4 How to measure the impact of globalisation on the euro area?	15
4.1 Model-based definition of globalisation	16
4.2 Identifying the channels of transmission	17
4.2.1 The increase of potential output in emerging Asia	18
4.2.2 An increase in openness in the euro area	19
4.3 Globalisation scenarios	20
5 Transitional dynamics	22
6 Structural reforms in the euro area and globalisation	23
7 Conclusion	24
References	25
Appendix A	26
Appendix B	33
Appendix C	36
European Central Bank Working Paper Series	40

Abstract

In this paper, we utilise the multi-country version of the NAWM to analyse the impact of globalisation on euro area macroeconomic aggregates. We provide alternative model-based definitions of globalisation associated with an increase in potential output in emerging Asia and its impact on total factor productivity in the euro area, and a shift in international specialisation patterns leading to changes in relative demand and import substitutions. The results indicate that globalisation has a positive impact on output, consumption, investment and real labour income in the long-run. This impact is driven by the improvement in the terms of trade and associated positive wealth effects, as well as by spillovers of higher potential output in emerging Asia on euro area total factor productivity. Additionally, we provide evidence that structural reforms in goods and labour markets would amplify the benefits associated with globalisation.

Keywords: DSGE modelling, globalisation, euro area
JEL Classification: E32, E62

Non-technical Summary

In this paper, we argue that globalisation contributes to improve standards of living in the euro area due to the benefits arising from trade with emerging economies. For demonstrating the channels through which globalisation is potentially affecting the euro area, we utilise the recently developed multi-country version of the New Area Wide Model (NAWM). The multi-country version of the NAWM is an open economy dynamic stochastic general equilibrium model (DSGE) calibrated to represent the euro area, United States, emerging Asia, and a remaining countries bloc, respectively.

In the model set up, we define globalisation as an increase in potential output in emerging Asia driven by an increase in total factor productivity and in the rise in the pool of labour force. We also provide some assessment on the impact of a change in comparative advantage pattern in the world.

The wealth created by the increase in potential output are transferred to the euro area via trade in goods. The euro area economy is impacted by the increase in potential output in emerging Asia through (i) a terms-of-trade effect, as goods imported from these economies become cheaper; (ii) a substitution effect, as euro area firms are then induced to produce more efficiently, by substituting cheaper intermediate goods imported from emerging economies to domestic intermediate goods; (iii) a wealth effect, as euro area consumption and investment both increase due to availability of cheaper goods; (iv) in addition, the wealth effect allows to work less for a given level of desired consumption and leads to an increase in leisure.

For instance, assuming that globalisation leads to an increase in output in emerging Asia of 40 percent in the long-run (of which four-fifths is due to higher productivity and the rest to an increase in the available pool of labour), we show that output, consumption and investment in the euro area would also increase by more than 2 percent in the long run, while real wages would rise by more than 3 percent and leisure by close to 1 percent. The benefits from globalisation for the euro are compounded with strong productivity spillovers from the emerging market world.

We also provide evidence that benefits would potentially shrink significantly if devel-

opment in emerging Asia relies less on productivity and more on increasing labour force participation. For instance, assuming that a 1 percent increase in productivity in emerging Asia brings a 0.05 percent increase in productivity in the euro area, a similar increase in output in emerging Asia of 40 percent as under the previous scenario, but based on opposite development patterns (one-fifth due to higher productivity and four-fifths due to an increase in the pool of labour available) would lead to a much smaller gain in euro area output in the long-run (0.3 percent). Likewise, the increase in consumption, investment and real wages would be more limited (around 1 percent). The latter result is driven by the assumption that labour supply driven developments strategy dampens the productivity spillover to the euro area.

Furthermore, we argue that a key challenge for the euro area is also to ensure that it does not lose its competitive edge relative to emerging economies, which would then somewhat dampen the benefits from globalisation. A common concern is that increasing competitiveness and rising quality of goods produced in emerging economies could ultimately lead to a complete shift in euro area consumption away from domestic goods, including for those goods for which euro area producers had a competitive edge thus far. Such an increase in euro area demand for emerging economy goods would lead to: (i) an increase in euro area import prices, and thereby to deterioration in the terms of trade and to a fall in real wages; (ii) in equilibrium, as a result of the deterioration of the terms of trade, to a substitution effect towards euro area goods and away from emerging market goods; (iii) an adverse wealth effect and a fall in real consumption, with a given level of desired consumption requiring a reduction in leisure and longer working hours. For instance, assuming that emerging Asian firms start to produce goods previously produced in the euro area only and that the euro area's imports-to-GDP ratio increases by 2 percent, our simulations suggest that leisure would fall by 0.2 percent, real consumption by 0.5 percent and real wages by close to 1 percent in the long run. The increase in working hours would lead to an increase in euro area output of 0.2 percent, however.

Furthermore, we argue that structural reforms can contribute to maximise the benefits from globalisation, but sequencing is important to address potentially adverse impacts on

labour markets, notably on wages. Reforms in goods markets, which are associated with stronger competition among firms and with a reduction in mark-ups, can compound the positive effects of globalisation. For instance, assuming that such reforms lead to a reduction in goods mark-ups from 15 percent to 5 percent, output increases by 10 percent in the long run - relative to a scenario taking into account globalisation effects solely - as firms are less able to take advantage of their market power. Likewise, real consumption rises by another 3 percent and real wages by a further 20 percent. Reforms in labour markets lead to similar results, with the exception of the real wage impact, as the ability of workers to exploit their market power is lessened. For instance assuming a reduction in wage mark-ups from 25 percent to 15 percent, such reforms would lead to an increase in output by a further 3 percent, as well as to an increase in real consumption by another 3 percent. Conversely, the increase in real wages would fall short of 0.5 percent, relative to a scenario taking into account globalisation effects solely.

1 Introduction

Globalisation is a widely used term in policy debates. Although, there are certainly different dimensions of globalisation, such as the increase in cultural and political linkages between different regions in the world, the term is usually used in context of "economic globalisation". There are several attempts to characterise and define economic globalisation. Wolf (2004), for example, associate globalisation with the "movement in the direction of greater integration, as both natural and manmade barriers to international economic exchange continue to fall". Bernanke (2006) acknowledge that trade between countries has been increasing intermittently in the last centuries, but "(t)he emergence of China, India, and the former communist bloc countries implies that the greater part of the earth's population is now engaged, at least potentially, in the global economy." This dramatic intensification of the globalisation process is transforming the economic structures of the developed and developing world. This goes in line with the reduction of trade barriers and home bias in goods and asset markets, which are reflected by an increasing share of imported goods in the global production process and the rise of cross-border holdings of financial assets in the global economy. As a result, economic globalisation, defined above, can be considered as the largest structural upheaval since the industrial revolution.

In order to give an indication of the rapid pace of developments, we present in Figure 1 the evolution of labour productivity and labour force in China in the previous years. Since 1988, labour productivity in China has increased by more than 150 percent, while the labour force by over 20 percent. These developments are also reflected in the very high average real GDP growth rate in China. Interestingly, the last decade of the previous century were contemporaneously associated by a substantial decline in average tariff rates in the European Union (see lower-left panel of Figure 1). As a result, it is natural to ask how the described developments, which we associate in broader sense with globalisation are likely to affect macroeconomic aggregates in the long-run.

The literature on the effects of real globalisation, i.e. abstracting from the effect of increasing financial integration, on macro aggregates has risen substantially in the recent years. The most comprehensive study so far on the effects of globalisation on Europe has

been produced by the European Commission (Denis, Mc Morrow and Röger, 2006). The academic literature has so far focused mainly on the impact of globalisation on inflation. See for example contributions by Rogoff (2003), or Kamin, Marazzi and Schindler (2006). Chen, Imbs and Scott (2004) argue, using a disaggregated data set for EU manufacturing sectors, that productivity and markup effects, driven by the increase in market shares of low-cost emerging economies, are significant and have equally important impact on euro area macro variables in the short term, whereas the effects of productivity is dominating in the long run.

This paper aims to look at the issue of globalisation through the lens of a dynamic stochastic general equilibrium model. There are various advantages of using macro-models, when analysing such a complex phenomena as globalisation. First and most importantly, in a general equilibrium models the inter-linkages between the different variables provide an important feedback mechanism that is lacking in a partial framework. In addition, in econometric analysis it is difficult to control for all possible shocks affecting historical data and consequently to measure a "pure" effect of a shock. In a model, however it is possible to single out structural shocks, which allow for the identification of independent channels and mechanisms. In this way the impact of globalisation can be disentangled into opposing forces with identified signs and sizes even when net effects are hard to measure. Therefore, in a model framework, assumptions are easier to monitor and transmission mechanisms are easier to identify than in empirical exercise.

Therefore, in this paper, we utilise the multi-country version of the New Area Wide Model (NAWM), recently developed in Jacquinot and Straub (2007) for analysing the impact of globalisation on the euro area. Furthermore, we provide a model-based definition of globalisation, identify the channels through which globalisation is affecting macro aggregates, and provide some quantitative analysis of the potential impact of globalisation on the euro area.

The paper is organised as follows. Section 2 discusses in a nutshell the features of the multi-country version of NAWM. Section 3 presents the calibration of the model. Section 4 provides a set of model-based definitions of globalisation and the corresponding impact of

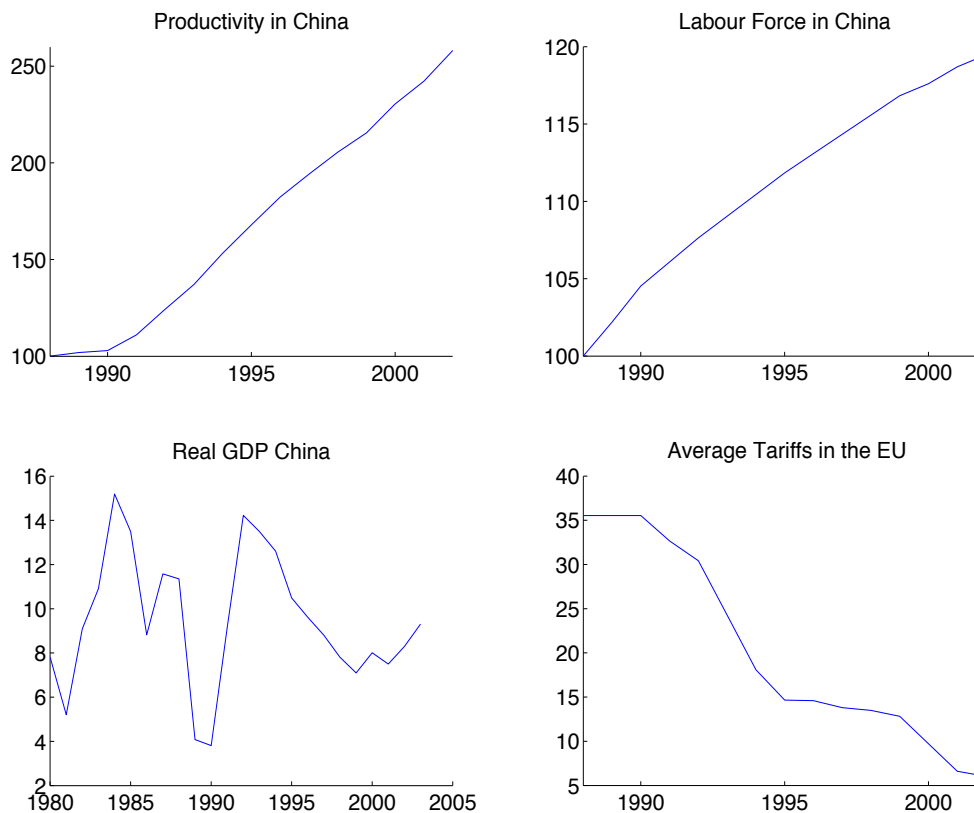


Figure 1: Productivity (defined as valued added divided by labour force), real GDP growth and labour force data in China is calculated using data from the World Development Indicators (WDI) data base of the World Bank. Productivity and Labour Force is an index with the base year 1988. The average tariff data is from the Fraser Institute.

the latter on euro area aggregates. Section 5 discusses the transitional dynamics following the structural changes/ shocks triggered by the process of globalisation, while section 6 assesses whether structural reforms in goods and labour markets are able to amplify the effects associated with globalisation. Section 7 concludes.

2 The Framework

In the following sections, we outline the features of the multi-country version of the NAWM model, as discussed in Jacquinot and Straub (2007) and present the calibration of the model. We provide a detailed description of key parts of the model in Appendix A. The reader that is not interested in modelling details can skip these section and can move immediately to section 4.

2.1 The Model

The multi-country version of the NAWM builds on recent advances in developing micro-founded Dynamic Stochastic General Equilibrium (DSGE) models suitable for quantitative policy analysis, as exemplified by the closed-economy model of the euro area by Smets and Wouters (2003), the International Monetary Fund's Global Economy Model (GEM; cf. Bayoumi, Laxton and Pesenti, 2004), the Federal Reserve Board's new open economy model named SIGMA (cf. Erceg, Guerrieri and Gust, 2005), and the two-country version of NAWM as discussed in Coenen, McAdam and Straub (2007). Thus, it incorporates a relatively large number of nominal and real frictions in an effort to improve its empirical fit regarding both the domestic and the international dimension.

The multi-country version of the NAWM consists of four symmetric countries of different size representing the euro area (EA), United States (US), emerging Asia (EM), and a remaining countries (RW) block respectively. International linkages arise from the trade of goods and international assets, allowing for imperfect exchange-rate pass-through to consumer prices and imperfect risk sharing. In each country, there are four types of economic agents: households, firms, a fiscal and a monetary authority. Extending the setup in Coenen and Straub (2005), the NAWM features two distinct types of households which differ with respect to their ability to participate in asset markets, with one type of household only holding money as opposed to also trading bonds and accumulating physical capital. As a result, also households with limited ability to access asset markets can intertemporally smooth consumption by adjusting their holdings of money. Due to the existence of these two types of households, fiscal policies other than government spending—notably transfers—also have real effects even though both types of households are optimizing consumption and labour supply subject to intertemporal budget constraints. Further, it is assumed that both types of households supply differentiated labour services and act as wage setters in monopolistically competitive markets by charging a markup over their marginal rate of substitution. Specifically, wage setting is characterised by sticky nominal wages and indexation, eventually resulting in two separate wage Phillips curves. Moreover, in order



to establish a more pronounced role of transfer payments made by the fiscal authority, we assume that transfers, in per-capita terms, are unevenly distributed across the two types of households, favouring the constrained households with limited asset-market participation over the unconstrained ones in a proportion of three to one. This also helps to guarantee that the levels of consumption and hours worked are not too dissimilar across households.

Regarding firms, the NAWM distinguishes between producers of tradable and nontradable differentiated intermediate goods and producers of three non-tradable final goods: a private consumption good, a private investment good, and a public consumption good. Final good producers in the consumption good and investment good sector utilize imported intermediate goods in their production process ¹, while public consumption good is only consuming goods of domestic origin. Domestic tradable and nontradable intermediate-good producers sell their differentiated outputs under monopolistic competition, while the final-good producers operate under perfect competition and take prices as given. In the tradable and nontradable intermediate good sector, there is sluggish price adjustment due to staggered price contracts and indexation, yielding two separate price Phillips curves.

The fiscal authority purchases units of the public consumption good and makes transfer payments to the two types of households, in unevenly distributed amounts. These expenses are financed by different types of distortionary taxes, including taxes on consumption spending, labour and capital income, as well as profits. A simple feedback rule is assumed to stabilize the government debt-to-output ratio by appropriately adjusting a suitable fiscal instrument.

Finally, the monetary authority is assumed to follow in all economies but emerging Asia, an inertial Taylor-type interest-rate rule with interest-rate smoothing, which is specified in terms of annual consumer-price inflation and quarterly output growth. In emerging Asia the monetary authority is assumed to follow a fixed exchange rate regime.

¹Imported intermediate goods are a CES aggregate of imported intermediate goods from different regions. For example, the euro area imported intermediate good is an aggregate of US, emerging Asia and remaining countries imported goods, see Jacquinot and Straub (2007) for details

3 Model Calibration

The parametrisation of the model draws heavily on the results of estimated DSGE models such as Smets and Wouters (2003), Christiano, Eichenbaum and Evans (2005), and on the former version of the NAWM described in Coenen, McAdam and Straub (2007). With regards to the international dimension, the model utilises estimated values reported by de Walque, Smets, and Wouters (2005). In what follows, we highlight the differences to Coenen, McAdam and Straub (2007) with particular emphasis on the calibration of the international dimension.

3.1 Domestic Dimension

In Appendix B, Tables A through E document the parametrisation adopted for the four regional blocs. Unless otherwise stated, similar behavioral parameter values apply to all regions. First, Table A presents the main macroeconomic aggregates of the different regions calibrated to match stylized facts in the data. Table B depicts the parameters that are key for the consumers' optimization problem. Although consumers may differ with respect to their access to financing, the preferences of the liquidity-constrained and forward-looking households are taken to be the same. We assume that in US, euro area and in the remaining countries block, the share of liquidity-constrained consumers is 25 percent. The share is much higher in emerging Asia at 50 percent, reflecting the underdeveloped financial markets for domestic consumers. The rate of time preference is in the current version of the model assumed to be equal around 0.993 in all regions. The intertemporal substitution in consumption set at 0.5. The value of habit persistence equals 0.6. Conversely for labour, we assume that the inverse of the Frisch lexicity of labour supply is 2. The values are taken from the previous version of the NAWM, and are not updated given the lack of information on the size of these parameters for the regions of interest. Furthermore, we assume for both households a Calvo parameter determining the persistence of wage adjustment of 0.75, roughly equivalent to a four-quarter contract length under Calvo-style pricing. Similarly, in the labour market households have pricing power, resulting in the wage markups. For US and the euro area markups (16 percent and 30 percent respectively) correspond to Bayoumi,

Laxton and Pesenti (2004). We further assume that RW is somewhere in between US and euro area, with a 20 percent wage markup, while we assume EM has a labour market as competitive as the US. In the production sector, the bias towards the use of capital in both sectors is calibrated to achieve a relatively high investment share of GDP in EM, and a low share in US, in line with their respective historical averages. The calibration can be done by adjusting tax rates or the technology parameter, currently we decided to choose the former, leaving the technology parameter α at 0.3. The depreciation rate is assumed to be 2.5 percent per quarter across all regions. Real rigidities in investment and import adjustment costs align with the parametrization of the baseline NAWM. The estimates for the price markups are taken from Martins, Scarpetta and Pilat (1996). The US bloc has the lowest price markups, indicating the greatest degree of competition, while euro area have the highest. Finally, to provide a nominal anchor for the domestic economy, monetary policy is parameterized as follows. US, euro area and remaining countries block follow an Taylor rule with the calibration borrowed from the baseline NAWM. Emerging Asia is assumed to pursue a fixed exchange rate regime against the US dollar.

3.2 International Dimension

The main results of the model rely heavily upon the calibration of each region's external sector in Table G. For given steady-state net foreign asset positions for each region, it is straightforward to calculate the current account and trade balances consistent with long-term stock-flow equilibrium. Using the IMF's Direction of Trade Statistics on merchandise trade, the national accounts data on the imports of goods and services, and the United Nations' Commodity Trade Statistics (COMTRADE) data on each region's imports of consumer and capital goods, we derive a disaggregated steady-state matrix delineating the pattern and composition of trade for all regions' exports and imports. On the basis of this trade matrix, we derive all the weight coefficients in the demand function for imports and the regional composition of imports (see Table D). For the corresponding trade elasticities, we assume that the elasticity of substitution between domestically-produced and imported tradable consumption goods and investment goods is 2.5. The elasticity of substitution between goods from different regions for imported consumption goods and imported invest-

ment goods is set at 1.5, consistent with existing estimates of import elasticities. Lastly, we need to calibrate the behavior of net foreign assets. For the long-run behavior of net foreign assets our prior is that a permanent increase in government debt by one percentage point of GDP is roughly associated with an increase in the net foreign liability position of the region by 0.5 percentage points of GDP². Moreover, when the US expands its net foreign liabilities as a result of a permanent change in its public debt, the absorption of new issuance by each region is calibrated (on the basis of net foreign asset holdings in recent years) by assigning 24 percent of new issuance by US to emerging Asia, and 38 percent to each of euro area and remaining countries. This calibration implies that for a one percent net foreign liabilities to GDP shock in the US, the emerging Asia's net-foreign-asset-to-GDP rises the most — around 0.8 percent of GDP — while euro area and the remaining countries see their ratios only rise by around 0.3 and 0.5 percent of GDP respectively.

4 How to Measure the Impact of Globalisation on the Euro Area?

As discussed above, we associate globalisation with three main driving factors: (1) increase in productivity and (2) labour supply in emerging Asia and (3) reduction in trade barriers in the industrialised world. While the first two capture one specific aspect of globalisation, namely the increase in potential output in emerging Asia, the latter represents the reduction of institutional and technological constraints in the euro area, which has triggered an increase in demand for goods originating in the rest of the world³. Alternatively, the reduction in home bias could also be interpreted as changes in international specialisation patterns inducing a shift in relative demand of domestically produced goods. With that in mind, we provide in this section a model-based analysis on the impact of globalisation on the euro area in a multi-country version of the New Area Wide Model (NAWM). The results of the scenario analysis are presented in Appendix C.

²Overlapping generations models (particularly those which follow the Blanchard-Weil-Yaari formulation) provide theoretical underpinnings to evaluate this non-Ricardian behavior.

³In the model, the increasing demand for goods associated with the decrease in home bias is captured at the firm level. One could easily argue that the reduction of trade barriers and technological constraints also lead to an increase in final good consumption from emerging Asia. In our model, however, trade integration is modeled at the firm level, so final good consumption/investment is always a product of nontradable, domestic tradable and foreign tradable goods, respectively. We find the latter assumption realistic as every final good, even if it mainly originated in a foreign economy, entails always some portion of a domestic component (e.g. through the distribution sector) before reaching the final consumer.

4.1 Model-Based Definition of Globalisation

First, we provide a model-based definition of globalisation in terms of quantifiable shocks hitting the world economy. Furthermore, given differing views on the nature of globalisation, we will also discuss in this section four alternative "economic globalisation" scenarios.

In scenario (I), the benchmark simulation, we assume that globalisation is associated with a 40 percent long-run increase in GDP in emerging Asia. The increase in GDP is calibrated in such a way that 80 percent of the increase is due to a rise in total factor productivity and 20 percent due to an increase in labour supply in emerging Asia. The increase in productivity in emerging Asia is assumed to have spillovers to euro area total factor productivity (TFP). In particular, a 1 percent increase in emerging Asia TFP has a 0.05 percent impact on TFP in the euro area. We argue that globalisation is closely associated with technological spillovers, with significant implications for productivity, including: (i) direct technology transfer, through imports of capital goods (ii) economies of scale effects, notably the possibility for firms to increase the scale of their operations; (iii) "defensive" innovation, with firms becoming more innovative in response to stronger competitive pressures globally. In this context, the magnitude of the gains for the euro area from globalisation also depends on the extent of the productivity spillovers from emerging economies.

Note that according to the latter scenario, the increase in GDP in emerging Asia does not necessarily induce a fundamental change in the production structure in the euro area. While the technological progress in emerging Asia induces a relative price (terms of trade) effect, it does not trigger an increase in the quasi-share of foreign goods (a reduction in home bias) in production in the long-run. In other words, the increase in TFP and labour supply in emerging Asia does not lead to a shift in demand in favour of emerging Asia goods, beyond the effect induced by the change in the terms of trade.

In scenario (II), we assume that the labour supply shock plays a more prominent role in driving the 40 percent increase in output in emerging Asia. As the role of productivity is dampened, the spillover to euro area TFP are also subdued.

Scenario (III) is similar to scenario (I), but we assume that the euro area is lagging behind the US and the remaining regions in benefiting from the positive (TFP) spillovers associated with globalisation. In particular, we assume that the spillovers from emerging Asia to the US, and the rest of the world block are twice as strong as to the euro area.

In scenario (IV), we assume that the technological progress in emerging Asia is also associated with a contemporaneous reduction in home bias in the euro area. A possible explanation for this could be that the technological progress in emerging Asia allows for production of goods and services, which were previously produced only in the euro area, inducing changes in international specialisation patterns. The latter in isolation leads to a change in relative demand in the euro area with its corresponding impact on relative prices⁴.

In scenario (V), we push the previous argument further assuming that the technological progress in emerging Asia does not only lead to a shift in relative demand in the euro area, but also to an import substitution effect in emerging Asia (increase in home bias).

4.2 Identifying the Channels of Transmission

Before turning to the analysis of the various scenarios, it is helpful to analyse the effects of the *individual* shocks in our model. The latter will help us to understand and to identify the channels through which economic globalisation is affecting macroeconomic aggregates. As a result, we first show separately the effects of productivity and labour supply shocks in emerging Asia, and the impact of a reduction in home bias in the euro area on macro aggregates, before presenting the results of the discussed globalisation scenarios. Total factor productivity and labour supply shocks are calibrated to generate a 40 percent increase in GDP in emerging Asia, while the home bias shock to trigger a 2 percent increase in the import to GDP ratio in the euro area. The results in Table 1 are presented as percentage changes compared to the old steady state of the model.

⁴Alternatively, one could see the fall in home bias, as a reduction in institutional constraints/non-tariff trade barriers in the euro area.

4.2.1 The Increase of Potential Output in Emerging Asia

The permanent increase in productivity has a substantial positive impact on consumption and investment in emerging Asia. At the same time, the rise in total factor productivity reduces hours worked in the long-run through the generated positive wealth effect⁵. The relative increase in the supply of goods from emerging Asia leads to a deterioration of the terms of trade (defined as the relative price of imports to exports) in emerging Asia, and a corresponding improvement in the terms of trade in the euro area. The improvement of the terms of trade in the euro area has three main effects in the long-run: (1) a positive wealth effect associated with the terms of trade improvement, which has a positive impact on consumption and investment; (2) a reduction in hours worked due to the positive wealth effect; (3) a substitution effect due to the relative decrease in the price of goods from emerging Asia, which induces euro area tradable firms to substitute away from domestic to foreign tradable intermediate goods. The latter two factors imply jointly a slightly negative long-run impact on euro area GDP (-0.19 percent compared to the old steady-state). Note, however, that using a model based welfare function (the utility of the households in the model), welfare in the new steady state appears to be higher, as both consumption and leisure increases compared to the old steady-state. In conclusion, while a positive productivity in emerging Asia could have a slightly negative impact on euro area GDP, it leads to overall welfare improvement in particular due to the rise in purchasing power triggered by the improvement in the terms of trade.

Permanent labour supply shock in emerging Asia has the same effect on euro area aggregates, but induces significantly different impact on real wages in emerging Asia. The similar impact of labour supply shock and productivity shocks on the euro area is not surprising as they both affect the long-run potential output in the same way. In fact, note that while real wages react differently in the model, the real income of households (product of real wage and hours worked) are very similar under both scenarios⁶.

⁵In this type of models an increase in hours worked usually indicates the existence of a negative wealth effect on households. Note also that the model-based welfare measure depends positively on consumption and leisure. As a result, and in contrast to the "conventional view", a decrease in hours worked is associated with a rise in welfare in the model.

⁶The decrease in the real wage following the labour supply shock explains partly why real wages in

4.2.2 An Increase in Openness in the Euro Area

A reduction in the home bias parameters ϑ_C and ϑ_I , defined in details below, has a substantially different impact on the euro area in our simulation exercise. The home bias parameter determines the share of imported goods in the final production of tradable consumption and investment goods for a given elasticity of substitution. In particular, considering only the consumption sector, the bundle of tradable goods T_t^C is produced by the following constant elasticity of substitution technology:

$$T_t^C = \left(\vartheta_C^{\frac{1}{\mu_T^C}} (H_t^C)^{\left(1 - \frac{1}{\mu_T^C}\right)} + (1 - \vartheta_C)^{\frac{1}{\mu_T^C}} \left((1 - \Gamma_{IM^C}(IM_t^C/Q_t^C)) IM_t^C \right)^{1 - \frac{1}{\mu_T^C}} \right)^{\frac{\mu_T^C}{\mu_T^C - 1}} \quad (1)$$

where H_t^C is a bundle of domestic produced tradable and IM_t^C is bundle of imported tradable goods, μ_T^C stands for the intratemporal elasticity of substitution between the distinct bundles of tradable domestic and imported goods, and ϑ_C determines the share of domestic tradable goods compared to imported goods. Notice that the consumption-good firm incurs a cost, $\Gamma_{IM^C}(IM_t^C/Q_t^C)$, when varying the use of the bundle of imported goods in producing the tradable consumption good. The corresponding demand functions for IM_t^C is defined as follows:

$$IM_t^C = (1 - \vartheta_C) \left(\frac{P_{IM,t}^C}{P_{T,t}^C \Gamma_{IM^C,t}^\dagger} \right)^{-\mu_T^C} \frac{T_t^C}{1 - \Gamma_{IM^C}(IM_t^C/Q_t^C)}, \quad (2)$$

where $P_{T,t}^C, P_{IM,t}^C$ are the corresponding prices of inputs, while $\Gamma_{IM^C,t}^\dagger = 1 - \Gamma_{IM^C}(IM_t^C/Q_t^C) - \Gamma'_{IM^C}(IM_t^C/Q_t^C) IM_t^C$ represents the first order derivative of the import adjustment cost functions. Note that in the steady state the adjustment cost of imports equals to zero, while the first derivative of import adjustment costs is one. Consequently, in the steady state $(1 - \vartheta_C)$ determines the share of domestic tradable goods for a given value of elasticity of substitution, or jointly with the corresponding parameter in the investment sector $(1 - \vartheta_I)$, the openness of the economy. Correspondingly, ϑ_C and ϑ_I determines

emerging Asia, particularly in China have remained relatively stable despite the rise in productivity. In particular, the migration of an increasing number of workers from central China to the dynamic coastal region could be interpreted as a positive labour supply shock.

the degree of home bias in the model. Home bias can be interpreted as a technological constraint for a firm, determining the relative response of imported goods following an exogenous increase in the demand for the final output produced. The reduction in home bias can therefore be also associated with an increase in quality of goods originated in emerging Asia. Alternatively, it can be also interpreted as an institutional constraint or a preference parameter. As demonstrated in the last column of Table 1, a reduction in home bias has correspondingly a significant impact on the demand for imported goods. The latter leads to a substantial deterioration of the terms of trade, and a corresponding (1) negative wealth effect inducing a rise in hours worked and a fall in consumption, and (2) an expenditure switching effect towards euro area goods both domestically and in the rest of the world. Both effects trigger a rise in euro area output in the long-run ⁷.

4.3 Globalisation Scenarios

After investigating the transmission of the individual shocks in the model, we can turn now to the analysis of the previously described globalisation scenarios. In the first column of Table 2, we report the long-run impact of globalisation scenario (I) on macro aggregates. As we have discussed above, this scenario does not induce a change in specialisation patterns (as the home bias parameters remain unchanged) and is therefore close to the conventional trade and growth view, based on the notion of comparative advantage. Note that the effect of globalisation is positive on output, consumption, investment in the euro area. Comparing the results with the individual shocks presented in Table 1, we can observe that the positive impact on euro area GDP is mainly induced by the TFP spillovers from emerging Asia ⁸. The positive impact of globalisation on euro area consumption is mainly triggered by improvement in the terms of trade (defined as price of imports over the price of exports, hence a negative sign implies an improvement). Note that the decrease in hours worked is also associated with the latter and should be understood as an endogenous reduction in the labour market participation rate due to the positive wealth effect associated with the

⁷The results depend partly on the standard assumption of imperfect international risk sharing in the model. As a result, increasing financial integration might influence the international transmission of home bias shocks.

⁸In the model, as long as the growth of TFP in the Euro area is larger than 0.5 percent of the actual growth of TFP in emerging Asia, the response of euro area GDP is positive.

improvement in terms of trade, rather than an increase in unemployment. The positive wealth effect is also demonstrated by the increase in real wages and real labour income of more than 2 percent in the long-run.

Scenario (II) highlights the importance of TFP spillovers for euro area GDP growth. If the rise in GDP in emerging Asia is driven by labour supply shocks, and the corresponding TFP spillovers are reduced, euro area GDP growth is subdued.

Scenario (III) indicates that higher spillovers to the rest of the world dampens the positive impact of globalisation on euro area GDP, but the GDP growth is still positive. Furthermore, the rise in US and remaining countries productivity improves further euro area terms of trade, and is a fillip for euro area consumption and investment growth.

In scenario (IV), which abstracts again from the spillovers to the US and the rest of the world, we assume that the increase in potential output in emerging Asia leads to a shift in international specialisation patterns characterised by the entrance of goods from emerging Asia, which were previously produced in the EU. The latter is modelled as a reduction in the home bias parameter in the euro area ⁹. While in the literature this scenario is considered to dampen the positive impact of globalisation on the euro area, see for example Denis et al (2006), this is not the case in our model. As discussed in the previous section, an exogenous reduction in the home bias leads to a deterioration in the terms of trade (relative price of imports increase) triggering a negative wealth effect inducing an increase in hours worked in the model. This channel is missing in some of the traditional policy models or partial equilibrium frameworks (see Samuelson, 2004), where labour supply is considered to be either exogenous or inelastic. Comparing with the previous scenarios, the deterioration of the terms of trade and subdued negative response of hours worked leads to a more pronounced response in euro area GDP than in scenario (I).

In scenario (V), we push the argument that globalisation leads to a change in international specialisation patterns further and assume additionally to scenario (III) that technological progress leads to import substitution in emerging Asia (increase in home bias). This

⁹ We assume that in the euro area the home bias parameter is reduced such to generate an increase in the level of total imports by 2 percent. Note that this holds only for the individual home bias shock discussed, as the other shocks will also affect the level of imports in the new steady state.

assumption further amplifies the negative wealth effect on the euro area, associated with the deterioration of terms for trade and a subdued negative response of hours worked, and leads to a even stronger increase in euro area real GDP.

5 Transitional Dynamics

In Table 3, we report the transitional dynamics of scenario (I). In order to get a more realistic path for GDP and real consumption in emerging Asia, we also assume a persistent negative preference shock in the model, generated by an reduction in the time preference rate (discount factor), which triggers a subdued response of consumption and output on impact. Furthermore, we assume that the TFP spillover to the euro area is not taking place contemporaneously, but only 6 quarters after the TFP shock in emerging Asia. Note, however, that the TFP spillover is assumed to be anticipated. The results provide some interesting insights into the transitional dynamics of the globalisation shock.

First, while the response of output and consumption is positive, the reaction of investment is negative for the first 10 years. The latter is driven by the expected rise of productivity in the long-run (determined by the assumed concave path of TFP following the shock) and the corresponding postponement of real investment. Note also that the concave path of level TFP also implies a gradual change in the terms of trade in emerging Asia.

In emerging Asia, the rise in permanent income generates an increase in consumption, which also triggers a demand for imported goods as they are necessary for the production of final consumption goods (level effect in emerging Asia). However, the impact of relative price changes in the rest of the world is subdued due to import adjustment costs, therefore the impact on real exports from emerging Asia is dampened (composition effect in the rest of world). Both factors lead to an initial deterioration of the trade balance.

In the euro area, the relative price of domestic goods falls, as the impact coming from emerging Asia is still limited, but price of imported goods from the US and the remaining countries remain relatively high. Although, import adjustment costs exclude a substantial immediate adjustment, aggregate imports do fall in the first year. Interestingly in both

cases the rise (deterioration) of the terms imply a negative wealth effect also indicated by the rise in hours worked. In the following years, as real quantities adjust, we observe a path for the macroeconomic variables, which are consistent with the long-run behaviour of the model.

6 Structural Reforms in the Euro Area and Globalisation

A widely discussed question in policy circles is how the euro area economy should react to the recent wave of globalisation? Are there any concrete policy measures or recommendations that we can derive from the model based analysis? One widely used argument is that goods and labour markets in the euro area should be made more flexible for being able to adjust faster to challenges and opportunities associated with globalisation. In what follows, we analyse the impact of structural reforms in goods and labour markets on the euro area economy *conditional* on a shock that we have above associated with the process of globalisation (column 1 in Table 2). In table 4, we present the results of this exercise. In particular, we simulate the model following the globalisation scenario for different degrees of monopolistic competition in goods and labour markets in the euro area. Note that all results are in deviation from the benchmark scenario, which has been conducted by assuming a price and wage markup of 20 and 30 percent respectively. The results indicate that structural reforms can amplify the positive effects of globalisation, as exemplified in the relative responses of output, consumption and investment. The results also give an indication that both scenarios would have significantly different impact on real wages in the euro area. While structural reforms in the goods market have a positive impact on real wages, labour market reforms driven by a reduction in the monopoly power on the household side will result in a reduction of real wages.

In analysing these simulations, it is worth recalling the reasons behind the differential impact of goods and labour market reforms on euro area GDP. Increased competition across firms lowers the price markup and these firms increase output since they are now constrained in their ability to exploit their market power. The increase in output affects capital more than labour effort as in the long-run, labour is the less elastic resource. Furthermore, the

rise in hours worked is demand driven as also indicated by the substantial rise in real wages, which also triggers a substantial increase in labour income. Note, however, that these results and therefore the quantitative impact on GDP are sensitive to the assumed labour supply elasticity in the model. By contrast, increased competition in labour markets reduce the ability of workers to exploit their market power, which increases hours worked, but leads to a less pronounced adjustment of capital and output, and even to a reduction of real wages. In addition, note that the change in consumption is closely allied to the change in labour effort as, in steady state, the disutility of work has to be equated with the benefits of consumption.

7 Conclusion

In this paper, we used the multi-country version of the NAWM to assess the impact of globalisation on euro area aggregates. We have provided a model-based definition of globalisation associated with an increase in potential output in emerging Asia and its potential impact on total factor productivity in the euro area, and a reduction in technological and institutional constraints that have previously forced domestic firms and consumers to purchase more goods of domestic origin. The results indicate that globalisation has a positive impact on output, consumption and investment in the long-run. Furthermore, the positive impact of globalisation through the improvement in the terms of trade, and the corresponding positive wealth effect allows households to reduce their labour market participation rate in the long-run, while at the same time experiencing an increase in real income through the rise in real wages. We argue, however, that a change in the relative competitiveness, represented by a change in home bias in our model, might lead to a deterioration of the terms of trade in the long-run triggering a negative wealth effect. While the latter will increase euro area output through a rise in labour supply, aggregate consumption will fall. Additionally, we have provided evidence that structural reforms in the goods and labour markets in the euro area could help amplifying the benefits associated with globalisation.

References

- Bayoumi, T., D. Laxton and P. Pesenti, 2004, “Benefits and Spillovers of Greater Competition in Europe: A Macroeconomic Assessment”, ECB Working Paper No. 341, European Central Bank, April.
- Chen, N., J. Imbs and A. Scott, 2004, “Competition, Globalization and the Decline of Inflation”, CEPR discussion paper, 4695.
- Christiano, L., M. Eichenbaum, and C. Evans, 2005, “Nominal Rigidities and the Dynamic Effects of a Shock to Monetary Policy”, *Journal of Political Economy*, University of Chicago Press, vol. 113(1), pages 1-45, February.
- Coenen, G., P. McAdam and R. Straub, 2005, “Tax Reform and Labour-Market Performance in the Euro Area: A Simulation-Based Analysis Using the New Area-Wide Model”, forthcoming in the *Journal of Economic Dynamics and Control*.
- Coenen, G. and R. Straub, 2005, “Does Government Spending Crowd in Private Consumption? Theory and Empirical Evidence for the Euro Area”, *International Finance*, 8, 435-470.
- Denis, P., K. McMorrow and W. Röger, 2006, “Globalisation: Trends, Issues and Macro Implications for the EU”, European Commission Papers Nr. 254.
- De Walque, G., Smets, F., Wouters, R., 2005, “An Estimated Two-country DSGE Model for the Euro Area and the US Economy”, European Central Bank, mimeo.
- Erceg, C. J., L. Guerrieri and C. Gust, 2005, “SIGMA: A New Open Economy Model for Policy Analysis”, International Finance Discussion Papers No. 835, Board of Governors of the Federal Reserve System, July.
- Jacquinot, P. and R. Straub, 2007, “The multi-country version of the NAWM”, mimeo.
- Kamin, S.B., M. Marazzi, and J.W. Schindler, 2006, “The Impact of Chinese Exports on Global Import Prices”, *Review of International Economics*, 14(2), 179-201.
- Rogoff, K., 2003, “Globalization and global disinflation”, Proceedings, Federal Reserve Bank of Kansas City, pages 77-112.
- Samuelson, P., 2004, “Where Ricardo and Mill Rebut and Confirm Arguments of Mainstream Economists Supporting Globalization”, *Journal of Economic Perspectives*, American Economic Association, vol. 18(3), pages 135-146, Summer.
- Sbordone A.M., 2007, “Globalization and Inflation Dynamics: The Impact of Increased Competition”, NBER, working paper, 13556.
- Smets, F. and R. Wouters, 2003, “An Estimated Stochastic Dynamic General Equilibrium Model of the Euro Area”, *Journal of the European Economic Association*, 1, 1123-1175.

Appendix A

In this section, we define in detail the behaviour of firms in the model, which clarify the role of openness and channels of international transmissions as discussed in the main text. For more details, see Jacquinot and Straub (2007).

Firms

There are three types of firms, tradable intermediate and nontradable intermediate goods firms and final goods firms. In the nontradable intermediate goods market, there are a continuum of monopolistically competitive firms indexed by $\bar{f} \in S^n$, each of which produces a single nontradable differentiated intermediate good, $\bar{H}_{\bar{f},t}$, while tradable goods firms indexed by $f \in S^n$, produce a single tradable differentiated intermediate good, $H_{f,t}$. In the final goods market, there are three types of firms, which combine domestically-produced tradable intermediate and nontradable intermediate goods with imported intermediate goods into three distinct non-tradable final goods, namely a private consumption good, Q_t^C , a private investment good, Q_t^I , and a public consumption good, Q_t^G .

Final-Good Firms

In each country there is a continuum of symmetric firms producing three final goods, Q_t^C (the final consumption good), Q_t^I (the final investment good) and Q_t^G (public good) under perfect competition. For simplification we will drop the firm indices in what follows.

The representative firm producing the non-tradable final private consumption good, Q_t^C , combines purchases of a bundle of domestically-produced non-tradable goods, \bar{H}_t^C , with purchases of a bundle of tradable goods, T_t^C ,

$$Q_t^C = \left((1 - \nu_C)^{\frac{1}{\mu_C}} \bar{H}_t^C \left(1 - \frac{1}{\mu_C}\right) + \nu_C^{\frac{1}{\mu_C}} T_t^C \left(1 - \frac{1}{\mu_C}\right) \right)^{\frac{\mu_C}{\mu_C - 1}}, \quad (3)$$

where the parameter $\mu_C > 1$ denotes the intratemporal elasticity of substitution between the distinct bundles of tradable and non-tradable goods. The weight of the inputs in the consumption basket are defined as $(1 - \nu_C)$ and ν_C respectively. The bundle of tradable goods T_t^C is produced by the following constant elasticity of substitution technology:

$$T_t^C = \left(\vartheta_C^{\frac{1}{\mu_T^C}} (H_t^C)^{\left(1 - \frac{1}{\mu_T^C}\right)} + (1 - \vartheta_C)^{\frac{1}{\mu_T^C}} \left((1 - \Gamma_{IM^C}(IM_t^C/Q_t^C)) IM_t^C \right)^{1 - \frac{1}{\mu_T^C}} \right)^{\frac{\mu_T^C}{\mu_T^C - 1}} \quad (4)$$

where H_t^C is a bundle of domestically produced tradable and IM_t^C is bundle of imported tradable goods, (which is defined, as we will discuss later, as a bundle of imported goods from all remaining economies), μ_T^C stands for the intratemporal elasticity of substitution between the distinct bundles of tradable domestic and imported goods, and ϑ_C determines the share of domestic tradable goods compared to imported goods. Notice that the consumption-good firm incurs a cost, $\Gamma_{IM^C}(IM_t^C/Q_t^C)$, when varying the use of the bundle of imported goods in producing the tradable consumption good.

The final good firm takes as given the prices of three inputs and minimizes its costs subject to the technological constraint defined above. The corresponding demand functions for $\overline{H}_t^C, T_t^C, IM_t^C, H_t^C$ are defined as follows:

$$\begin{aligned} \overline{H}_t^C &= (1 - \nu_C) \left(\frac{P_{\overline{H},t}}{P_{C,t}} \right)^{-\mu_C} Q_t^C, \\ T_t^C &= \nu_C \left(\frac{P_{T,t}^C}{P_{C,t}} \right)^{-\mu_C} Q_t^C, \\ H_t^C &= \nu_C \vartheta_C \left(\frac{P_{H,t}}{P_{C,t}} \right)^{-\mu_T^C} \left(\frac{P_{T,t}^C}{P_{C,t}} \right)^{\mu_T^C - \mu_C} Q_t^C, \\ IM_t^C &= \nu_C (1 - \vartheta_C) \left(\frac{P_{IM,t}^C}{P_{C,t} \Gamma_{IM^C,t}^\dagger} \right)^{-\mu_T^C} \left(\frac{P_{T,t}^C}{P_{C,t}} \right)^{\mu_T^C - \mu_C} \frac{Q_t^C}{1 - \Gamma_{IM^C}(IM_t^C/Q_t^C)}, \end{aligned}$$

where $P_{\overline{H},t}, P_{H,t}, P_{T,t}^C, P_{IM,t}^C$ are the corresponding prices of inputs, while $\Gamma_{IM^C,t}^\dagger = 1 - \Gamma_{IM^C}(IM_t^C/Q_t^C) - \Gamma'_{IM^C}(IM_t^C/Q_t^C) IM_t^C$ represents the first order derivative of the import adjustment cost functions with respect to imports and $P_{T,t}^C$ is the price of the composite basket of domestic and foreign tradables (imports) defined as:

$$P_{T,t}^C = \left(\vartheta_C (P_{H,t})^{1 - \mu_T^C} + (1 - \vartheta_C) (P_{IM,t}^C)^{1 - \mu_T^C} \right)^{\frac{1}{1 - \mu_T^C}} \quad (5)$$

The formal characterization of the investment sectors is similar with self-explanatory changes in the notation. As in Coenen, McAdam and Straub (2007), we assume that the government sector is subject to complete home bias. In our model this implies that the final public good Q_t^G is a composite of different varieties of nontradable goods *only*.

Demand for domestic tradable and nontradable intermediate goods

In the next step, we will consider the composition of the baskets of intermediate tradable and nontradable goods. Intermediate goods come in different varieties (brands) and are produced under monopolistic conditions. Tradable and nontradable intermediate goods are defined over a continuum of mass s , standing for the size of the country. Each nontradable good is produced by a domestic firm indexed by $\bar{f} \in S^n$, while each tradable good is produced by a firm indexed by $f \in S^n$.

In what follows, we will focus first on the production of the final domestically produced nontradable consumption good \bar{H}_t^C , but the formal characterization holds also for the tradable goods sector. Defining as $\bar{H}_{\bar{f},t}^C$ the use of the intermediate goods produced by the domestic firm \bar{f} , we have

$$\bar{H}_t^C = \left(\left(\frac{1}{s^n} \right)^{\frac{1}{\theta_{\bar{H}}}} \int_{S^n} (\bar{H}_{\bar{f},t}^C)^{1-\frac{1}{\theta_{\bar{H}}}} d\bar{f} \right)^{\frac{\theta_{\bar{H}}}{\theta_{\bar{H}}-1}}, \quad (6)$$

where $\theta_{\bar{H}}$ are the intratemporal elasticities of substitution between the differentiated intermediate nontradable goods.

With nominal prices for differentiated intermediate goods \bar{f} being set in monopolistically competitive markets, the consumption-good firm takes prices $P_{\bar{H},\bar{f},t}$ as given and chooses the optimal use of each differentiated intermediate good \bar{f} and by minimising the expenditure for the bundles of intermediate nontradable goods subject to the aggregation constraints defined above. This yields the following demand functions for the domestic intermediate goods \bar{f} :

$$\bar{H}_{\bar{f},t}^C = \frac{1}{s^n} \left(\frac{P_{\bar{H},\bar{f},t}}{P_{\bar{H},t}} \right)^{-\theta_{\bar{H}}} \bar{H}_t^C, \quad (7)$$

where $P_{\bar{H},\bar{f},t}$ is the price for nontradable intermediate good \bar{f} . Correspondingly, $P_{\bar{H},t}$ is

defined as:

$$P_{\bar{H},t} = \left(\frac{1}{s^n} \int_{S^n} (P_{\bar{H},f,t})^{1-\theta_{\bar{H}}} d\bar{f} \right)^{\frac{1}{1-\theta_{\bar{H}}}} \quad (8)$$

Aggregating across firms and accounting for the public demand of nontradables (assumed to have the same composition as private demand), we get the following total demand function for nontradable goods:

$$\bar{H}_{f,t}^C + \bar{H}_{f,t}^I + \bar{H}_{f,t}^G = \left(\frac{P_{\bar{H},f,t}}{P_{\bar{H},t}} \right)^{-\theta_{\bar{H}}} (\bar{H}_t^C + \bar{H}_t^I + \bar{H}_t^G) \quad (9)$$

Following the same steps we can derive the domestic demand schedule for the tradable intermediate good:

$$H_{f,t}^C + H_{f,t}^I + H_{f,t}^G = \left(\frac{P_{H,f,t}}{P_{H,t}} \right)^{-\theta_H} (H_t^C + H_t^I) \quad (10)$$

Imported Goods Sector

The representative domestic firm producing the final imported consumption good, IM_t^C combines purchases of a bundle of imported goods $IM_t^{C,n}$ using a CES technology:

$$IM_t^C = \left(\sum_n (\nu_{IM}^{C,n})^{\frac{1}{\mu_{IM}^C}} (IM_t^{C,n})^{1-\frac{1}{\mu_{IM}^C}} \right)^{\frac{\mu_{IM}^C}{\mu_{IM}^C-1}}, \quad (11)$$

where $0 \leq \nu_{IM}^{C,n} \leq 1$, $\sum_N \nu_{IM}^{C,n} = 1$ and μ_{IM}^C is the elasticity of import substitution across countries. The higher μ_{IM}^C , the easier it is to substitute imports from one country with imports from the other. The parameter $\nu_{IM}^{C,n}$ determines the composition of import baskets across countries. Note that the share of consumption goods imports of total consumption imports from a generic country does not need to be the same as the share of investment goods imports of total investment imports. Looking at the individual components of the final-imported consumption good aggregator, $IM_t^{C,n}$ is in analogy to the domestically produced sector, a CES index of all varieties of all tradable intermediate goods produced by firms f^n in country n . In particular:

$$IM_t^{C,n} = \left(\left(\frac{1}{s^n} \right)^{\frac{1}{\theta_{IM}^n}} \int_{S^n} (IM_{f^n,t}^{C,n})^{1-\frac{1}{\theta_{IM}^n}} df^n \right)^{\frac{\theta_{IM}^n}{\theta_{IM}^n-1}}, \quad (12)$$

note that s^n is the share of a generic country. Furthermore, θ_{IM}^n is the elasticity of substitution between intermediate tradable goods in the generic country n .

Taking the prices of imported goods as given, the final imported-good firm chooses a combination of imported goods that minimizes $\sum_N P_t^n IM_t^n$ subject to aggregation constraint (??). This yields the following demand functions for $IM_{f^n,t}^{C,n}$:

$$IM_{f^n,t}^{C,n} = \frac{1}{s^n} \left(\frac{P_{IM,f^n,t}^{C,n}}{P_{IM,t}^{C,n}} \right)^{-\theta_{IM}^n} IM_t^{C,n}, \quad (13)$$

Correspondingly $P_{IM,t}^{C,n}$ can be defined as:

$$P_{IM,t}^{C,n} = \left(\frac{1}{s^n} \int_{S^n} \left(P_{IM,f^n,t}^{C,n} \right)^{1-\theta_{IM}^n} df^n \right)^{\frac{1}{1-\theta_{IM}^n}} \quad (14)$$

The aggregate imported good price index can be defined as follows:

$$P_{IM,t}^C = \left(\sum_N \nu_{IM}^{C,n} \left(P_{IM,t}^{C,n} \right)^{1-\mu_{IM}^C} \right)^{\frac{1}{1-\mu_{IM}^C}} \quad (15)$$

Similar conditions hold for the investment imported-good sector.

Intermediate Non-tradable Good Firms

Each intermediate-good firm \bar{f} produces its differentiated output using an increasing-returns-to-scale Cobb-Douglas technology,

$$\bar{H}_{\bar{f},t} = \max \left[z_{\bar{H},t} K_{\bar{f},t}^{\bar{\alpha}} N_{\bar{f},t}^{1-\bar{\alpha}} - \psi_{\bar{H}}, 0 \right], \quad (16)$$

utilising as inputs homogenous capital services, $K_{\bar{f},t}$, that are rented from the members of household I in fully competitive markets, and an index of differentiated labour services, $N_{\bar{f},t}$, which combines household-specific varieties of labour supplied in monopolistically competitive markets. The variable z_t represents (total-factor) productivity which is assumed to be identical across firms and which evolves over time according to an exogenous serially correlated process, $\ln(z_{\bar{H},t}) = (1 - \rho_{z,\bar{H}}) z_{\bar{H}} + \rho_{z,\bar{H}} \ln(z_{\bar{H},t-1}) + \varepsilon_{\bar{H},z,t}$, where $z_{\bar{H}}$ determines the steady-state level of productivity. The parameter $\psi_{\bar{H}}$ represents the fixed cost of production.¹⁰

¹⁰The fixed cost of production will be chosen to ensure zero profits in steady state in the tradable and non-tradable sectors respectively. This in turn guarantees that there is no incentive for other firms to enter the market in the long run.

Capital and Labour Inputs

Taking the rental cost of capital $R_{K,t}$ and the aggregate wage index W_t (to be derived below) as given, the firm's optimal demand for capital and labour services must solve the problem of minimising total input cost $R_{K,t} K_{\bar{f},t} + (1 + \tau_t^{W_f}) W_t N_{\bar{f},t}$ subject to the technology constraint defined above. Here, $\tau_t^{W_f}$ denotes the payroll tax rate levied on wage payments (representing the firm's contribution to social security).

Defining as $MC_{\bar{f},t}$ the Lagrange multiplier associated with the technology constraint, the first-order conditions of the firm's cost minimisation problem with respect to capital and labour inputs are given, respectively, by $\bar{\alpha} (\bar{H}_{\bar{f},t} + \psi_{\bar{H}}) / K_{\bar{f},t} MC_{\bar{f},t} = R_{K,t}$ and $(1 - \bar{\alpha}) (\bar{H}_{\bar{f},t} + \psi_{\bar{H}}) / N_{\bar{f},t} MC_{\bar{f},t} = (1 + \tau_t^{W_f}) W_t$, with the payroll tax rate $\tau_t^{W_f}$ introducing a wedge between the firm's effective labour cost and the marginal revenue of labour.

The Lagrange multiplier $MC_{\bar{f},t}$ measures the shadow price of varying the use of capital and labour services; that is, nominal marginal cost. We note that, since all firms \bar{f} face the same input prices and since they all have access to the same production technology, nominal marginal cost $MC_{\bar{f},t}$ are identical across firms; that is, $MC_{\bar{f},t} = MC_{\bar{H},t}$ with

$$MC_{\bar{H},t} = \frac{1}{z_{\bar{H},t} \bar{\alpha}^{\bar{\alpha}} (1 - \bar{\alpha})^{1 - \bar{\alpha}}} (R_{K,t})^{\bar{\alpha}} ((1 + \tau_t^{W_f}) W_t)^{1 - \bar{\alpha}}. \quad (17)$$

Intermediate Tradable Good Firms

Each intermediate-good firm f produces its differentiated output using an increasing-returns-to-scale Cobb-Douglas technology,

$$Y_{f,t} = \max \left[z_t K_{f,t}^{\alpha} N_{f,t}^{1 - \alpha} - \psi_H, 0 \right], \quad (18)$$

utilising as inputs homogenous capital services, $K_{f,t}$, that are rented from the members of household I in fully competitive markets, and an index of differentiated labour services, $N_{f,t}$, which combines household-specific varieties of labour supplied in monopolistically competitive markets. The variable z_t represents (total-factor) productivity which is assumed to be identical across firms and which evolves over time according to an exogenous serially correlated process, $\ln(z_{H,t}) = (1 - \rho_{H,z}) z + \rho_{H,z} \ln(z_{H,t-1}) + \varepsilon_{H,z,t}$, where z_H determines

the steady-state level of productivity. The parameter ψ_H represents the fixed cost of production.¹¹

Capital and Labour Inputs

Taking the rental cost of capital $R_{K,t}$ and the aggregate wage index W_t (to be derived below) as given, the firm's optimal demand for capital and labour services must solve the problem of minimising total input cost $R_{K,t} K_{f,t} + (1 + \tau_t^{W_f}) W_t N_{f,t}$ subject to the technology constraint. Here, $\tau_t^{W_f}$ denotes the payroll tax rate levied on wage payments (representing the firm's contribution to social security).

Defining as $MC_{f,t}$ the Lagrange multiplier associated with the technology constraint, the first-order conditions of the firm's cost minimisation problem with respect to capital and labour inputs are given, respectively, by $\alpha (Y_{f,t} + \psi_H) / K_{f,t} MC_{f,t} = R_{K,t}$ and $(1 - \alpha) (Y_{f,t} + \psi_H) / N_{f,t} MC_{f,t} = (1 + \tau_t^{W_f}) W_t$, with the payroll tax rate $\tau_t^{W_f}$ introducing a wedge between the firm's effective labour cost and the marginal revenue of labour.

The Lagrange multiplier $MC_{f,t}$ measures the shadow price of varying the use of capital and labour services; that is, nominal marginal cost. We note that, since all firms f face the same input prices and since they all have access to the same production technology, nominal marginal cost $MC_{f,t}$ are identical across firms; that is, $MC_{f,t} = MC_{H,t}$ with

$$MC_{H,t} = \frac{1}{z_{H,t} \alpha^\alpha (1 - \alpha)^{1-\alpha}} (R_{K,t})^\alpha ((1 + \tau_t^{W_f}) W_t)^{1-\alpha}. \quad (19)$$

¹¹The fixed cost of production will be chosen to ensure zero profits in steady state. This in turn guarantees that there is no incentive for other firms to enter the market in the long run.

Appendix B

A- Macroeconomic Aggregates

		E A	U S	E M	R W
Output Share in World Output		0.23	0.30	0.09	0.37
Consumption to GDP	C/Y	0.59	0.63	0.54	0.62
Investment to GDP	I/Y	0.22	0.20	0.30	0.23
Government Spending to GDP	G/Y	0.18	0.16	0.16	0.16
Trade Balance to GDP	TB/Y	0.01	0.03	-0.02	-0.02
Net foreign Assets to GDP	Bf/Y	-0.52	-1.12	1.00	0.97

B- Household

		E A	U S	E M	R W
Population size	s	0.200	0.200	0.300	0.300
Subjective discount factor	β	0.993	0.993	0.993	0.993
Inverse of the intertemporal elasticity of substitution	σ	2.000	2.000	2.000	2.000
Habit persistence	κ	0.600	0.600	0.600	0.600
Inverse of the Frish elasticity of labour supply	ζ	2.000	2.000	2.000	2.000
Depreciation rate	δ	0.025	0.025	0.025	0.025
Size of household J	ω	0.250	0.250	0.500	0.250
Households Calvo parameter	ξ_I, ξ_J	0.750	0.750	0.750	0.750
Wage indexation	χ_I, χ_J	0.750	0.750	0.750	0.750

C- Intermediate-good firms

		E A	U S	E M	R W
Share of capital income	α_H, α_O	0.300	0.300	0.300	0.300
Share of fixed cost in production	ψ_H	0.200	0.154	0.143	0.200
	ψ_O				
TFP parameter	z	1.000	1.000	1.000	1.000
Price elasticity of labour demand	η	4.300	7.300	7.300	6.000
Price elasticity of specific labour demand	η_I, η_J	4.300	7.300	7.300	6.000
Firms Calvo parameter	ξ_H	0.900	0.900	0.900	0.900
	ξ_O	0.900	0.900	0.900	0.900
	ξ_X	0.300	0.300	0.300	0.300
Price indexation	χ_H, χ_O	0.500	0.500	0.500	0.500
	χ_X	0.500	0.500	0.500	0.500

Note: The subscript I stands for unconstrained and J for liquidity constrained households in our model. Correspondingly, H stands for tradable, X for the exports sector and O for nontradable sector in the model.

D- Final-goods firms

		E A	U S	E M	R W
Quasi-share of domestic nontradable goods	ν_C	0.650	0.700	0.650	0.700
	ν_I	0.300	0.350	0.300	0.350
Quasi-share of tradable goods	ν_{TC}	0.301	0.617	0.324	0.417
	ν_{TI}	0.873	0.689	0.220	0.467
Price elasticity of goods demand	μ_C, μ_I	0.500	0.500	0.500	0.500
	μ_{IM}^C, μ_{IM}^I	1.500	1.500	1.500	1.500
	μ_{TC}, μ_{TI}	2.500	2.500	2.500	2.500
Price elasticity of intermediate goods demand	θ	6.000	6.000	6.000	6.000

Note: The subscript C stands for consumption goods sector, and I for investment goods sector. Correspondingly, the subscripts TC and TI stand for tradable consumption and investment goods sector, while IM denotes imported goods sector. The parameter μ_{IM}^C denote therefore the elasticity between different type of imported goods in the imported consumption good sector. The parameter μ_{TC} stand for the elasticity of substitution between domestic and imported tradable goods.

E- Fiscal and monetary authorities

		E A	U S	E M	R W
Government debt-to-output ratio	B_Y^*	2.400	2.400	2.400	2.400
Sensitivity of lump-sum taxes to BY	Φ_{TB}	0.100	0.100	0.100	0.100
Inflation target	π^*	1.020	1.020	n.a.	1.020
Interest rate inertia	Φ_{RR}	0.950	0.950	0	0.950
Inflation gap	$\Phi_{R,\Pi}$	2.000	2.000	0	2.000
Output gap	$\Phi_{R,GY}$	0.100	0.100	0	0.100
Response to US dollar FX	$\Phi_{R,S}$	0	0	+ inf	0.100

F- Adjustment and transaction costs

		E A	U S	E M	R W
Transaction cost	γ_{v1}	0.029	0.029	0.029	0.029
	γ_{v2}	0.150	0.150	0.150	0.150
Capital utilisation cost	γ_{u2}	0.007	0.007	0.007	0.007
Investment adjustment cost	γ_I	3.000	3.000	3.000	3.000
Import adjustment cost	$\gamma_{IMC}, \gamma_{IMI}$	5.000	5.000	5.000	5.000
Intermediation cost	γ_B	0.050	-	0.050	0.050

G- Trade matrix (imports as a share of nominal GDP)

	to/from	E A	U S	E M	R W
Consumption goods					
E A		-	0.006	0.023	0.120
U S		0.011	-	0.014	0.049
E M		0.027	0.027	-	0.063
R W		0.051	0.044	0.011	-
Investment goods					
E A		-	0.006	0.004	0.014
U S		0.006	-	0.012	0.023
E M		0.017	0.037	-	0.098
R W		0.032	0.031	0.017	-

H- Import Market Shares (as a percentage of total imports): Benchmark Calibration

	Euro Area	United States	Emerging Asia	Rest of the World
Consumption				
Euro Area	-	4.47	15.54	79.98
United States	14.92	-	19.77	65.30
Emerging Asia	23.10	22.90	-	54.00
Rest of the World	47.46	42.10	10.43	-
Investment				
Euro Area	-	25.74	15.62	58.64
United States	14.46	-	29.24	56.30
Emerging Asia	11.09	24.52	-	64.39
Rest of the World	40.26	39.01	20.73	-

Note: The columns indicate the country of origin, while the rows indicate the consumption and investment sector in a particular market.

Appendix C

In this section, we present the results of the simulation exercise.

Table 1: Long-run Impact of Structural Shocks

	Productivity Shock	Labour Supply Shock	Home Bias Shock
Euro area			
Output	-0.19	-0.19	0.23
Consumption	0.78	0.78	-0.59
Investment	0.27	0.27	0.08
Labour Income			
Hours worked	-0.27	-0.27	0.20
Real wage	0.99	0.99	-0.77
Trade balance	0.01	0.01	0.43
Exports	0.82	0.82	5.40
Imports	4.26	4.26	2.00
Terms of trade	-2.77	-2.77	3.02
Emerging Asia			
Output	40.00	40.00	0.09
Consumption	36.31	36.31	0.20
Investment	29.53	29.53	0.33
Labour Income			
Hours worked	-9.77	47.09	-0.06
Real wage	51.17	-7.27	0.32
Trade balance	0.31	0.31	0.10
Exports	31.97	31.97	0.42
Imports	8.98	8.98	1.03
Terms of trade	25.92	25.92	-0.92

Note: The individual productivity and labour supply shocks in emerging Asia are calibrated to generate a 40 percent increase in real GDP in emerging Asia. While the negative home bias shock in the euro area is calibrated to trigger a 2 percent increase in euro area imports in the long-run.

Table 2: Globalisation Scenarios: Long-run Impact on the Euro Area and Emerging Asia

	(I)	(II)	(III)	(IV)	(V)
Euro area					
Output	2.06	0.38	2.04	2.32	2.35
Consumption	2.67	1.25	2.84	2.09	1.94
Investment	2.37	0.79	2.48	2.51	2.43
Labour Income	2.64	1.20	2.78	2.07	1.94
Hours worked	-0.88	-0.42	-0.94	-0.69	-0.64
Real wage	3.55	1.63	3.77	2.79	2.59
Trade balance	0.00	0.00	-0.01	-0.02	-0.02
Exports	2.72	1.30	2.95	8.25	8.08
Imports	4.89	4.41	5.85	6.98	6.18
Terms of trade	-1.74	-2.50	-2.28	1.21	1.72
Emerging Asia					
Output	40.00	40.00	40.28	40.18	41.30
Consumption	36.41	36.20	36.78	36.64	38.77
Investment	29.65	29.45	30.38	30.01	34.16
Labour Income	36.51	36.30	36.88	36.82	39.22
Hours worked	-1.71	31.20	-1.80	-1.75	-2.24
Real wage	38.88	3.88	39.39	39.27	42.41
Trade balance	0.30	0.30	0.28	0.27	0.38
Exports	32.12	32.00	32.77	32.73	26.64
Imports	9.38	9.05	11.01	10.52	8.58
Terms of trade	25.54	25.74	24.12	24.51	19.79

Note: Scenario (I) presents the results of an increase in potential output (driving up to 80 percent by the increase in productivity and 20 percent by the rise in labour supply) in Emerging Asia calibrated to trigger a 40 percent rise in GDP in the long-run. The associated increase in TFP in emerging Asia is assumed to have spillovers to euro area TFP. In Scenario (II), we assume that the labour supply shock plays a more prominent role in driving the 40 percent increase in output in emerging Asia (80 percent to 20 percent). Scenario III equals Scenario (I) plus the assumption that spillovers to the United States and Rest of the World are stronger (twice on the level of TFP), reflecting the assumption that these regions are benefiting more from globalisation. Scenario (IV) is scenario (I) plus the assumption that relative demand in the euro area switches towards goods from emerging Asia (negative home bias shock), as emerging economies start to produce goods previously only produced by euro area firms. Scenario (V) is scenario (IV) plus the assumption that import substitution is taking place in emerging Asia (positive home bias shock).

Table 3: Transitional Dynamics: Scenario (I)

Euro Area	1 year	5 years	10 years
Output	0.45	0.69	1.74
Consumption	0.77	1.33	1.51
Investment	-2.76	-3.63	-0.91
Labour Income			
Hours worked	0.07	-0.53	-0.28
Real wage	0.52	1.74	2.41
Trade balance	0.17	-0.12	-0.01
Exports	1.08	0.42	1.74
Imports	-0.14	2.33	3.24
Terms of trade	0.23	-1.20	-1.45
Emerging Asia	1 year	5 years	10 years
Output	10.98	18.53	22.93
Consumption	13.09	14.02	16.54
Investment	-2.27	-4.64	11.90
Labour Income			
Hours worked	0.08	-16.11	-16.94
Real wage	14.64	33.44	38.27
Trade balance	-2.22	0.01	0.40
Exports	1.46	16.62	21.84
Imports	8.87	4.67	6.36
Terms of trade	1.18	11.92	13.99

Note: All results report the transitional dynamics of Scenario (I) and a permanent negative preference shock, calibrated to have a negative long-run impact of 2 percent on emerging Asia GDP.

Table 4: Structural Reforms and Globalisation

Price markup	15 percent	10 percent	5 percent
Output	2.94	6.26	10.08
Consumption	0.92	1.95	3.09
Investment	7.24	15.54	25.16
Labour Income	7.06	15.14	24.47
Hours worked	1.10	2.43	4.05
Real wage	5.89	12.40	19.62
Trade balance	0.01	0.01	0.02
Exports	1.81	3.81	6.06
Imports	0.56	1.16	1.83
Terms of trade	0.99	2.08	3.30

Wage markup	25 percent	20 percent	15 percent
Output	1.08	2.15	3.28
Consumption	0.90	1.80	2.74
Investment	1.00	1.99	3.03
Labour Income	0.91	1.82	2.77
Hours worked	1.09	2.18	3.33
Real wage	-0.17	-0.35	-0.53
Trade balance	0.00	0.00	0.00
Exports	0.90	1.79	2.73
Imports	0.29	0.58	0.87
Terms of trade	0.50	0.99	1.51

Note: All results are reported compare to the benchmark scenario presented in the first column of Table 1.

European Central Bank Working Paper Series

For a complete list of Working Papers published by the ECB, please visit the ECB's website (<http://www.ecb.europa.eu>).

- 877 "What are the effects of fiscal policy shocks? A VAR-based comparative analysis" by D. Caldara and C. Kamps, March 2008.
- 878 "Nominal and real interest rates during an optimal disinflation in New Keynesian models" by M. Hagedorn, March 2008.
- 879 "Government risk premiums in the bond market: EMU and Canada" by L. Schuknecht, J. von Hagen and G. Wolswijck, March 2008.
- 880 "On policy interactions among nations: when do cooperation and commitment matter?" by H. Kempf and L. von Thadden, March 2008.
- 881 "Imperfect predictability and mutual fund dynamics: how managers use predictors in changing systematic risk" by G. Amisano and R. Savona, March 2008.
- 882 "Forecasting world trade: direct versus "bottom-up" approaches" by M. Burgert and S. Déés, March 2008.
- 883 "Assessing the benefits of international portfolio diversification in bonds and stocks" by R. A. De Santis and L. Sarno, March 2008.
- 884 "A quantitative perspective on optimal monetary policy cooperation between the US and the euro area" by S. Adjemian, M. Darracq Pariès and F. Smets, March 2008.
- 885 "Impact of bank competition on the interest rate pass-through in the euro area" by M. van Leuvensteijn, C. Kok Sørensen, J. A. Bikker and A. A. R. J. M. van Rixtel, March 2008.
- 886 "International evidence on sticky consumption growth" by C. D. Carroll, J. Slacalek and M. Sommer, March 2008.
- 887 "Labor supply after transition: evidence from the Czech Republic" by A. Bičáková, J. Slacalek and M. Slavík, March 2008.
- 888 "House prices, money, credit and the macroeconomy" by C. Goodhart and B. Hofmann, April 2008.
- 889 "Credit and the natural rate of interest" by F. De Fiore and O. Tristani, April 2008.
- 890 "Globalisation, domestic inflation and global output gaps: evidence from the euro area" by A. Calza, April 2008.
- 891 "House prices and the stance of monetary policy" by M. Jarociński and F. Smets, April 2008.
- 892 "Identification of New Keynesian Phillips Curves from a global perspective" by S. Déés, M. H. Pesaran, L. V. Smith and R. P. Smith, April 2008.
- 893 "Sticky wages: evidence from quarterly microeconomic data" by T. Heckel, H. Le Bihan and M. Montornès, May 2008.
- 894 "The role of country-specific trade and survey data in forecasting euro area manufacturing production: perspective from large panel factor models" by M. Darracq Pariès and L. Maurin, May 2008.
- 895 "On the empirical evidence of the intertemporal current account model for the euro area countries" by M. Ca'Zorzi and M. Rubaszek, May 2008.

- 896 “The Maastricht convergence criteria and optimal monetary policy for the EMU accession countries” by A. Lipińska, May 2008.
- 897 “DSGE-modelling when agents are imperfectly informed” by P. De Grauwe, May 2008.
- 898 “Central bank communication and monetary policy: a survey of theory and evidence” by A. S. Blinder, M. Ehrmann, M. Fratzscher, J. De Haan and D.-J. Jansen, May 2008.
- 899 “Robust monetary rules under unstructured and structured model uncertainty” by P. Levine and J. Pearlman, May 2008.
- 900 “Forecasting inflation and tracking monetary policy in the euro area: does national information help?” by R. Cristadoro, F. Venditti and G. Saporito, May 2008.
- 901 “The usefulness of infra-annual government cash budgetary data for fiscal forecasting in the euro area” by L. Onorante, D. J. Pedregal, J. J. Pérez and S. Signorini, May 2008.
- 902 “Fiscal consolidation in the euro area: long-run benefits and short-run costs” by G. Coenen, M. Mohr and R. Straub, May 2008.
- 903 “A robust criterion for determining the number of static factors in approximate factor models” by L. Alessi, M. Barigozzi and M. Capasso, May 2008.
- 904 “Does money matter in the IS curve? The case of the UK” by B. E. Jones and L. Stracca, June 2008.
- 905 “A persistence-weighted measure of core inflation in the euro area” by L. Bilke and L. Stracca, June 2008.
- 906 “The impact of the euro on equity markets: a country and sector decomposition” by L. Cappiello, A. Kadareja and S. Manganelli, June 2008.
- 907 “Globalisation and the euro area: simulation based analysis using the New Area Wide Model” by P. Jacquinot and R. Straub, June 2008.

ISSN 1561-0810



9 771561 081005