

Bond, Derek; Harrison, Michael J.; O'Brien, Edward J.

**Working Paper**

## Modelling Ireland's exchange rates: from EMS to EMU

ECB Working Paper, No. 823

**Provided in Cooperation with:**

European Central Bank (ECB)

*Suggested Citation:* Bond, Derek; Harrison, Michael J.; O'Brien, Edward J. (2007) : Modelling Ireland's exchange rates: from EMS to EMU, ECB Working Paper, No. 823, European Central Bank (ECB), Frankfurt a. M.

This Version is available at:

<https://hdl.handle.net/10419/153257>

**Standard-Nutzungsbedingungen:**

Die Dokumente auf EconStor dürfen zu eigenen wissenschaftlichen Zwecken und zum Privatgebrauch gespeichert und kopiert werden.

Sie dürfen die Dokumente nicht für öffentliche oder kommerzielle Zwecke vervielfältigen, öffentlich ausstellen, öffentlich zugänglich machen, vertreiben oder anderweitig nutzen.

Sofern die Verfasser die Dokumente unter Open-Content-Lizenzen (insbesondere CC-Lizenzen) zur Verfügung gestellt haben sollten, gelten abweichend von diesen Nutzungsbedingungen die in der dort genannten Lizenz gewährten Nutzungsrechte.

**Terms of use:**

*Documents in EconStor may be saved and copied for your personal and scholarly purposes.*

*You are not to copy documents for public or commercial purposes, to exhibit the documents publicly, to make them publicly available on the internet, or to distribute or otherwise use the documents in public.*

*If the documents have been made available under an Open Content Licence (especially Creative Commons Licences), you may exercise further usage rights as specified in the indicated licence.*



EUROPEAN CENTRAL BANK

EUROSYSTEM

**WORKING PAPER SERIES**

**NO 823 / OCTOBER 2007**

**MODELLING  
IRELAND'S  
EXCHANGE RATES  
FROM EMS TO EMU**

by Derek Bond,  
Michael J. Harrison  
and Edward J. O'Brien



EUROPEAN CENTRAL BANK

EUROSYSTEM



## WORKING PAPER SERIES

NO 823 / OCTOBER 2007

### MODELLING IRELAND'S EXCHANGE RATES

### FROM EMS TO EMU<sup>1</sup>

by Derek Bond<sup>2</sup>,  
Michael J. Harrison<sup>3</sup>  
and Edward J. O'Brien<sup>4</sup>



In 2007 all ECB publications feature a motif taken from the €20 banknote.

This paper can be downloaded without charge from <http://www.ecb.europa.eu> or from the Social Science Research Network electronic library at [http://ssrn.com/abstract\\_id=1020090](http://ssrn.com/abstract_id=1020090).

<sup>1</sup> The authors wish to thank Jonathan H. Wright, Division of Monetary Affairs, The Federal Reserve Board, Washington DC 20551, for providing some of the data used in this study. Constructive discussions with Bernd Schnatz, Directorate General Economics, European Central Bank, along with useful comments from an anonymous referee are also gratefully acknowledged.

The views expressed in this paper do not necessarily reflect those of the European Central Bank or its members.

<sup>2</sup> University of Ulster, Cromore Road, Coleraine, Co.Londonderry, BT52 1SA, United Kingdom; e-mail: [d.bond@ulster.ac.uk](mailto:d.bond@ulster.ac.uk)

<sup>3</sup> School of Economics, University College Dublin, Belfield, Dublin 4, Ireland; e-mail: [mharrison@tcd.ie](mailto:mharrison@tcd.ie)

<sup>4</sup> Corresponding author: European Central Bank, Kaiserstrasse 29, D-60311 Frankfurt am Main, Germany; Tel.: +49 69 1344 3736; fax: +49 69 1344 6232; e-mail: [edward.obrien@ecb.int](mailto:edward.obrien@ecb.int)



© European Central Bank, 2007

**Address**

Kaiserstrasse 29  
60311 Frankfurt am Main, Germany

**Postal address**

Postfach 16 03 19  
60066 Frankfurt am Main, Germany

**Telephone**

+49 69 1344 0

**Website**

<http://www.ecb.europa.eu>

**Fax**

+49 69 1344 6000

**Telex**

411 144 ecb d

*All rights reserved.*

*Any reproduction, publication and reprint in the form of a different publication, whether printed or produced electronically, in whole or in part, is permitted only with the explicit written authorisation of the ECB or the author(s).*

*The views expressed in this paper do not necessarily reflect those of the European Central Bank.*

*The statement of purpose for the ECB Working Paper Series is available from the ECB website, <http://www.ecb.europa.eu/pub/scientific/wps/date/html/index.en.html>*

ISSN 1561-0810 (print)

ISSN 1725-2806 (online)

# CONTENTS

Abstract	4
Non-technical summary	5
1 Introduction	6
2 Purchasing power parity	7
2.1 Nonlinearity and purchasing power parity	8
2.2 The Irish experience	11
2.3 Ireland and the European Monetary System	11
3 Nonstationarity and nonlinearity	12
3.1 Fractional integration and long memory models	13
3.2 The fractional augmented Dickey-Fuller test	14
3.3 Smooth transition autoregressive models	14
3.4 Random field regression models	15
3.5 Multiple structural changes models	19
4 Results and discussion	20
4.1 Data	20
4.2 Preliminary analysis	21
4.3 Fractional integration analysis	22
4.4 Cointegration analysis	23
4.5 Nonlinearity tests	24
4.6 Random field estimation	25
4.7 Multiple structural changes models	27
5 Conclusions	29
References	31
Tables and figures	37
European Central Bank Working Paper Series	53

## Abstract

This paper attempts to model the nominal and real exchange rate for Ireland, relative to Germany and the UK from 1975 to 2003. It offers an overview of the theory of purchasing power parity (PPP), focusing particularly on likely sources of nonlinearity. Potential difficulties in placing the analysis in the standard  $I(1)/I(0)$  framework are highlighted and comparisons with previous Irish studies are made.

Tests for fractional integration and nonlinearity, including random field regressions, are discussed and applied. The results obtained highlight the likely inadequacies of the standard cointegration and STAR approaches to modelling, and point instead to multiple structural changes models. Using this approach, both bilateral nominal exchange rates are effectively modelled, and in the case of Ireland and Germany, PPP is found to be valid not only in the long run, but also in the medium term.

**J.E.L. Classification:** C22, C51, F31, F41.

**Keywords:** Purchasing power parity; fractional Dickey-Fuller tests; smooth transition autoregression; random field regression; multiple structural changes models.

## Non-technical Summary

Purchasing power parity (PPP) continues to be a major subject of applied economic research. Historically, results of empirical studies of PPP have been very heterogeneous, although the theory has generally been cautiously accepted in recent times. This heterogeneity relates, in part, to contemporaneous developments in econometric theory. Another important factor in recent decades has been the changing monetary landscape with the ending of the Bretton-Woods era and the inception of the European Monetary Union.

Early studies of PPP generally took two approaches, examining either the co-movement of price indices or the behaviour of the real exchange rate, with an emphasis on the long run. The perceived difficulties with these approaches were generally attributed to the low power of test procedures used. More recently, two new approaches have grown in importance: the persistence in deviation of the real exchange rate and nonlinearity. Persistence may be due to the aggregated nature of the data used and nonlinearity may arise from asymmetric behaviour in financial markets.

This paper aims to model the nominal and real exchange rates for Ireland, relative to Germany and the United Kingdom, from 1975 to 2003, using modelling approaches yet to be applied in this area. It outlines the theoretical background to PPP, particularly concerning nonlinearity and its likely causes. A link between persistence and data aggregation is also highlighted, as a source of potential deviation from PPP that has been previously overlooked. The analysis begins using standard approaches; unit root tests, including those to test for seasonal unit roots, are applied. Standard cointegration tests, including the CRDW and ECM tests and the more commonly applied Engle-Granger and Johansen approaches are used. The Johansen (2002) small-sample correction is also implemented. Then, several alternative approaches are applied, focusing particularly on nonlinearity.

The results of the estimated models are very close to those theoretically predicted by PPP for the Ireland/Germany case, and to a lesser extent for the Ireland/UK data. They provide strong evidence for nonlinearity in the PPP relationship for these data, resulting from monetary developments. This supports the theory that shocks relating to official intervention in the foreign exchange market may result in nonlinearity, but that when such shocks are modelled, the PPP relationship is linear. This certainly appears to be the case for the Ireland/Germany data, as PPP holds in some of the short periods between structural changes.

# 1 Introduction

Purchasing power parity (PPP) continues to be a major subject of applied economic research. The extensive study of PPP is unsurprising, given its crucial role in international economics; it is fundamental to international finance and plays an important role in the theory and policy of exchange rate determination and the conduct of monetary regimes. Results of empirical studies of PPP, in one form or another, have been very heterogeneous (see, for example, Taylor and Taylor, 2004). From general acceptance in the 1970s to firm rejection in the 1980s, PPP has generally been accepted, albeit cautiously, in more recent decades (Taylor, 2006). These developments are, in part, due to contemporaneous developments in econometric theory. Another important factor throughout this period has been the changing monetary landscape. The 1970s saw the end of the Bretton-Woods era and the inception of the European Monetary System (EMS); more recently, European Monetary Union (EMU) occurred.

Early empirical investigations of PPP generally took one of two approaches, examining either the co-movement of price indices or the behaviour of the real exchange rate, with a particular emphasis on the long run (see, for example, Sarno and Taylor, 2002). The perceived difficulties with these approaches, which frequently employed cointegration techniques, were generally attributed to the low power of unit root test procedures. Efforts to overcome these difficulties focused on obtaining long-span data series, using alternative testing procedures and panel data approaches (see, for example, Culver and Papell, 1999 and Papell, 2006).

More recently, however, two new approaches have grown in importance, focusing on the persistence in deviation of the real exchange rate and nonlinearity. Persistence may be due to aggregation bias in the data and nonlinearity may arise from asymmetric adjustment to PPP (Rogoff, 1996). Several studies have placed PPP in the fractional (co)integration framework in an attempt to capture persistence, but these have not addressed the power issues relating to unit root tests and the estimation of long memory models (see, for example, Villeneuve and Handa, 2006). The most commonly used nonlinear technique has been smooth transition autoregression (Sarno, 2005). Although this approach may be appealing theoretically, it tests the null of linearity against just one nonlinear specification, thereby disregarding any other form of nonlinearity; a more general approach may be more appropriate. Also, these approaches have usually been considered in isolation, although it



is clear from the econometrics literature that nonstationarity, be it fractional or otherwise, and nonlinearity are closely related.

This paper aims to model the nominal and real exchange rates for Ireland, relative to Germany and the United Kingdom (UK), from 1975 to 2003, with a particular emphasis on persistence and nonlinearity. Adopting an approach similar to Johansen and Juselius (1992), the paper initially explores PPP in a cointegration framework. The possibilities of both persistent deviation from PPP and nonlinearity are then considered. Two approaches, which have yet to be employed in the study of PPP and which have the potential to overcome the difficulties encountered in previous studies, are introduced. The first, the fractional augmented Dickey-Fuller test (Dolado, et al., 2002), examines the hypothesis of integer against fractional integration, and may help distinguish between stationary, nonstationary and long memory processes. The second, random field regression (Hamilton, 2001, 2005), offers a new approach to testing for and specifying nonlinear models. Crucially, this technique assumes no prior knowledge of the likely form of nonlinearity.

The structure of the paper is as follows. Section 2 provides relevant background material, describing the theory of PPP, the results of previous studies using Irish data and a brief history of important monetary developments. Section 3 explains the concept of fractional integration and some approaches to modelling nonlinearity, in particular, random field regression. Section 4 describes the data, the precise methodology used in the paper and presents and discusses the results. Finally, Section 5 concludes by considering how the methodology might assist in the development of the general discussion of PPP.

## 2 Purchasing Power Parity

A simple statement of the purchasing power parity hypothesis is that national price levels should be equal when expressed in a common currency. More formally, if  $s_t$  is the logarithm of the nominal exchange rate (expressed as units of foreign currency per unit of domestic currency),  $p_t$  and  $p_t^*$  are the logarithms of the domestic and foreign price levels, respectively, and  $q_t$  is the logarithm of the real exchange rate in period  $t = 1, 2, \dots, T$ , then for all  $t$ ,

$$q_t = s_t + p_t - p_t^*. \quad (1)$$

It follows that  $q_t$  must be stationary for long-run PPP to hold. If the mean of  $q_t$ ,  $E(q_t)$ , is zero, PPP is absolute, whereas if  $E(q_t) \neq 0$ , PPP is relative. Most of the empirical studies

of PPP have either been concerned with testing whether  $q_t$  has a mean reversion tendency over time or whether  $s_t$ ,  $p_t$  and  $p_t^*$  move together over time.

This latter work has generally been concerned with models whose simplest form is

$$s_t = \alpha_0 + \alpha_1 p_t + \alpha_2 p_t^* + \epsilon_t, \quad (2)$$

where  $\epsilon_t$  is white noise. Early studies were concerned with whether the estimated values of the parameters of various versions of Equation (2) were as predicted (see, for example, MacDonald and Taylor, 1992). As awareness of time series dynamics increased, the issue changed to one of whether Equation (2) is a cointegrating regression. Papers such as those by Thom (1989), Wright (1994) and Kenny and McGettigan (1999) take such an approach with Irish data, using the now well-known Engle-Granger (1987) two-step method or Johansen (1988) approach to cointegration.

In recent years, the emphasis has generally shifted from considering models like Equation (2), to considering directly the behaviour of  $\{q_t\}_{t=1}^T$ , the sequence of real exchange rate values. Within the  $I(1)/I(0)$  framework, most initial studies failed to reject the hypothesis that real exchange rates were  $I(1)$  for recent periods of flexible exchange rates.<sup>1</sup> This failure to reject the possibility of unit roots in real exchange rate series implies a lack of mean reversion, which undermines the PPP hypothesis. The explanation often given for this non-rejection is the recognised low power of traditional unit root tests, such as the standard Dickey-Fuller (1981) test. To overcome this problem, two general approaches have been adopted. The first has been the construction and use of long series of exchange rate data and more powerful asymptotic tests (see, for example, Taylor, 2002). The second, using panel data, attempts to estimate the half life of the mean reversion of the real exchange rate (Cashin and McDermott, 2004). There is, though, another possibility that is receiving increasing attention, and this is described in some detail in the following subsection.

## 2.1 Nonlinearity and purchasing power parity

Among the various alternative approaches to modelling the PPP relationship that have been put forward, much recent interest has focused on nonlinearity. Taylor (2006) details

---

<sup>1</sup>In the literature there is some confusion between unit root testing and testing for a random walk. The unit root hypothesis includes the random walk hypothesis but a unit root might exist for reasons other than that the series in question is a random walk. Data may be generated by a more complex unit root dynamic process.

three of the most commonly cited sources of potential nonlinearity in PPP. The first relates to the assumption underlying PPP that transport costs, tariffs and other barriers to trade are negligible or non-existent. If this assumption is false, these costs may cause frictions in the markets for goods and services (see, for example, Rogoff, 1996). Such frictions can lead to so-called ‘bands of inaction’, within which it is unprofitable to arbitrage the deviations from the law of one price. These bands may cause discontinuities in the relationship. Bands of inaction may also arise from sunk costs (Schnatz, 2006). Obstfeld and Taylor (1997), and Taylor (2001) modelled such bands of inaction as two-regime threshold autoregressions. Similarly, Taylor, et al. (2001) used a smooth transition autoregressive model where the speed of adjustment to PPP was proportional to the transaction costs and resulted in smooth rather than discreet adjustments.

A second source of nonlinearity in PPP has been proposed by Kilian and Taylor (2003). They suggest that the interaction of heterogeneous agents in the foreign exchange market may result in nonlinearity. When the exchange rate is close to its PPP equilibrium level, agents would hold a diverse range of views regarding its (mis)alignment. But as the exchange rate deviates further from its equilibrium level, the range of views regarding future movements converge, so ‘one would expect to see the degree of mean reversion of the real exchange rate rising as the degree of misalignment from PPP rises’ (Taylor, 2006, p. 9).

The third possible source of nonlinearity, proposed by Sarno and Taylor (2001) and Taylor (2004, 2005), relates to official intervention in the foreign exchange market. If misalignments in the equilibrium level of exchange rates are viewed as co-ordination problems between traders and monetary authorities, official intervention may be required to correct the misalignment. This view is supported empirically by Taylor (2004, 2005).

The persistence of deviations from PPP has been a source of much study. While these deviations may result from nonlinearities such as those described in previous paragraphs, there is a further possibility. Persistent deviations from PPP may be due to long memory processes in the data and these in turn may arise from data aggregation (Granger, 1980). Taylor (2006) discusses the role of aggregation bias in the PPP ‘puzzle’, but fails to make the link between the aggregation of data and fractional integration. Data aggregation in this context may be temporal or cross-sectional (see Taylor, 2001, Taylor, et al., 2001 and Imbs, et al., 2005). Interestingly, they find that this bias may be more significant for data which excludes the non-traded sector, but that the bias may be overcome by using

nonlinear models.

Taylor and Peel (2000), Taylor, et al. (2001), and Kilian and Taylor (2003) find that both nominal and real exchange rates are well characterised by nonlinear processes, specifically smooth transition models. Several studies have also placed PPP in a fractional integration framework, with varying degrees of success; for example, Villeneuve and Handa (2006) found that deviations from PPP do not follow a fractionally integrated stationary process for the Canadian-US exchange rate, and references therein. It is also of interest to note, however, that Sarno and Taylor (2001) found that it would require very long time series to correctly reject the unit root in real exchange rates, using standard tests, if the true data generating process was indeed stationary with slow mean reversion. This suggests that a potentially more powerful approach, such as the fractional augmented Dickey-Fuller test, may be useful, particularly when long time series are likely to contain numerous structural breaks resulting from fluctuations in exchange rates, international trade and the underlying policy environment (Schnatz, 2006).

While persistent deviations from PPP may result from nonlinearity in the data generating process, what appear to be long memory processes may result from an inability to distinguish between nonstationarity and nonlinearity. From the econometrics literature, it is clear that nonstationarity and nonlinearity are closely related. It has been well known for many years that it is difficult to distinguish statistically between difference stationary series and nonlinear but stationary series (see Perron, 1989 and Harrison and Bond, 1992). Recent works in this area include Lee, et al. (2005), Hong and Phillips (2005), and Basci and Caner (2005). Increasingly, the analysis uses the fractional integration framework rather than the ‘knife-edge’  $I(1)/I(0)$  approach to consider the interaction between nonlinearity and nonstationarity. For example, Diebold and Inoue (2001) and Perron and Qu (2004) investigate the effects of nonlinearity on the estimation of the fractional integration parameter, while Hsu (2001) and Krämmmer and Sibbertsen (2002) examine the impact of long memory on estimates and tests of structural change. Other recent work by Dolado, et al. (2005), Gil-Alana (2004) and Mayoral (2005) has devised new test procedures for fractionality and/or nonlinearity. However, in most cases the form of the nonlinearity needs to be known.

## 2.2 The Irish experience

Empirically testing PPP for Ireland has produced varying results. In some cases, PPP could not be accepted, whereas in others it could not be rejected. Bradley (1977) found evidence in favour of short-run and long-run PPP, using pre-EMS data for Ireland and the UK. Thom (1989) failed to reject the hypothesis of stationarity in the real exchange rate for Ireland, Germany and the United States. This hypothesis was rejected for Ireland and UK data, if the standard PPP restrictions were applied. Callan and Fitzgerald (1989) rejected PPP for Irish, German and UK data.

While rejection was common, particularly when data from the EMS period was used, non-rejection seemed most common when either prices were split into their component parts or other variables were included in the model. For instance, Kenny and McGettigan (1999) distinguished between prices in the traded and non-traded sectors, and Wright (1994) considered interest rate differentials, along with the variables in Equation (2). Finally, Lane and Milesi-Ferretti (2002) found evidence of a time-varying real exchange rate, and identified relative output levels, terms of trade and net foreign assets as important variables.

## 2.3 Ireland and the European Monetary System

In an effort to explore the implied long-run PPP relationship, this study uses data from 1975 to 2003. This period, however, saw the inception of EMS and EMU. It is important, therefore, to understand the events relating to monetary integration in this period.

Ireland joined EMS at its outset in 1979, as did Germany; the UK did not. This brought to an end the period where the Irish pound was pegged to Sterling. During the early years of EMS, the Irish currency depreciated against the basket of European currencies of EMS participants, known as the European Currency Unit (ECU), as the Deutsche-Mark was re-valued in 1979, 1981 and 1982. The Irish pound continued to depreciate against the Deutsche-Mark until 1985, but remained stable within EMS, until its realignment in August 1986, when it devalued by 8 per cent relative to the ECU. This devaluation was brought about by a loss of competitiveness vis-à-vis the UK, due to movements in the Deutsche-Mark/Sterling exchange rate.

From 1987 to 1992, the Irish pound was stable against the Deutsche-Mark and inflation in Ireland converged to German levels. This period was notable, as the UK joined EMS in 1989 and Germany re-unified in 1990. These events were followed by a period of sustained



pressure on the Irish pound within EMS, culminating in another devaluation in January 1993. This followed Sterling's devaluation in September 1992 and ultimate exit from the system shortly after. This was a period of crises for EMS and resulted in a widening of the currency fluctuation bands. These so-called wide bands applied until 1999, when EMS was overtaken by EMU. The penultimate step towards monetary union was taken in 1996-97, in the form of the new exchange rate mechanism.

According to Bini-Smaghi and Ferri (2006), the Irish pound was one of the most frequently attacked currencies during the EMS period, and was also one of the most susceptible to resultant re-alignments. Both Thom (1989) and Honohan and Leddin (2006), however, have argued that these re-alignments should not necessarily be viewed as shocks, but rather as corrective adjustments; '...it is important to note that an adjustable peg policy with EMS is not necessarily inconsistent with PPP. For example, in the context of a Dornbusch-type sticky prices model, the speed of adjustment towards parity may be so slow as to justify direct intervention designed to moderate the extent to which the nominal exchange rate overshoots its long-run equilibrium level' (Thom, 1989, p. 149). This view coincides with that of Sarno and Taylor (2001) and Taylor (2004, 2005) regarding official intervention in the foreign exchange market, and suggests that this may be a likely cause of nonlinearity in the PPP relationship.

### 3 Nonstationarity and Nonlinearity

This section introduces and explains the concept of fractional integration and some approaches to modelling nonlinearity, in particular, random field regression. The augmented fractional Dickey-Fuller (FADF) test, introduced by Dolado, et al. (2002), is a simple-to-implement parametric test that should be attractive to practitioners. The potential benefits of using such an approach in a PPP context have been introduced in previous sections. The random field regression approach to nonlinearity was introduced by Hamilton (2001) and augmented by Dahl and González-Rivera (2003). Applying this technique is considerably more complex than the FADF test, but it is attractive nonetheless. Unlike smooth transition autoregressive (STAR) models, for example, it does not rely on any specific nonlinear functional form being specified prior to estimation.

### 3.1 Fractional integration and long memory models

The concept of long memory can be related to the issues of nonstationarity and nonlinearity. However, long memory has not played a central role in the discussion of PPP, despite being used extensively in other areas of exchange rate analysis, such as the forward rate anomaly (see Bond, et al., 2006), and being used in the early and heavily cited works by Diebold, et al. (1991) and Cheung and Lai (1993). The papers by Robinson and Iacone (2005), and Villeneuve and Handa (2006) are two of the few recently published works that apply the concept to PPP.

A series  $\{y_t\}_{t=0}^{\infty}$  is said to be integrated to order  $d$ , denoted by  $I(d)$ , if the series has to be differenced  $d$  times before it is (asymptotically) stationary,  $I(0)$ . In the classical analysis,  $d$  is an integer and the majority of investigation has involved the  $I(1)/I(0)$  framework. That is, either  $\Delta y_t = y_t - y_{t-1}$  or  $y_t$  is  $I(0)$ . In fractional integration analysis, the restriction that  $d$  is an integer is relaxed. This leads to a more general formula for an integrated series of order  $d$  given by

$$\Delta^d y_t = y_t - d y_{t-1} + \frac{1}{2!} d(d-1) y_{t-2} - \dots + \frac{(-1)^j}{j!} d(d-1) \dots (d-j+1) y_{t-j} + \dots, \quad (3)$$

which is  $I(0)$ . In the case where  $0 < d < 1$ , it follows that not only the immediate past values of  $y$  but values from previous time periods influence the current value. If  $0 < d < 0.5$ , then the series  $\{y_t\}_t^{\infty}$  is stationary; and if  $0.5 \leq d < 1.0$ , then  $\{y_t\}_t^{\infty}$  is nonstationary.<sup>2</sup> Both estimation and inference in the case where  $d$  is not an integer is more complex than in the standard integer  $d$  case (see Bond, et al., 2007a) and this could be an explanation for the lack of uptake of the concept in the analysis of PPP.

The issue of trying to accommodate the possibility of both nonlinearity and nonstationarity has been the subject of some recent research. In particular, Haug and Basher (2003) have used the rank test proposed by Breitung (2001) to test for nonlinear cointegration, while Hong and Phillips (2005) have developed a modified version of the RESET test that has power against both nonlinear cointegration and the absence of cointegration.

---

<sup>2</sup>More formally, series can be classified as stationary with anti-persistence when  $-0.5 < d < 0$ , stationary with long memory when  $0 < d < 0.5$ , nonstationary with long memory when  $0.5 \leq d < 1.0$  and nonstationary with strong long memory when  $1.0 < d < 1.5$ . See, for example, Tsay and Chung (2000) for further details.

### 3.2 The fractional augmented Dickey-Fuller test

The Dolado, et al. (2002) approach to testing for fractionality is based on the distribution of the  $t$ -statistic on  $\phi$  from the generalised ADF regression

$$\Delta^{d_0} y_t = \phi \Delta^{d_1} y_{t-1} + \sum_{i=1}^p \zeta_i y_{t-i} + v_t, \quad (4)$$

where  $v_t$  is a hypothesised white noise error. For testing purposes, Dolado, et al. (2002) set  $d_0$  equal to 1. The test of the null hypothesis  $H_0 : \phi = 0$  is then a test that the series  $\{y_t\}_{t=0}^{\infty}$  is  $I(1)$  against the alternative hypothesis that the series is  $I(d_1)$ . They showed that if  $0.5 \leq d_1 < 1.0$ , the  $t$ -statistic for  $\phi$  under  $H_0$  follows an asymptotic normal distribution, while if  $0 < d_1 < 0.5$ , the  $t$ -statistic follows a non-standard distribution of fractional Brownian motion. However, they also showed that in the practically realistic case in which  $d_1$  is unknown, the  $t$ -statistic has an asymptotic normal distribution for  $0 \leq d_1 < 1.0$ , provided that a  $T^{-\frac{1}{2}}$ -consistent estimator of  $d_1$  is used.

### 3.3 Smooth transition autoregressive models

The standard way to model the nonlinearities in the PPP context has been to use STAR models (see Teräsvirta, 1994). Assuming that the real exchange rate is a stationary process, the STAR representation can be written as

$$q_t = \varphi' \mathbf{z}_t + \theta' \mathbf{z}_t G(\gamma, c, \tau_t) + \epsilon_t, \quad (5)$$

where  $\epsilon_t$  is white noise,  $\mathbf{z}_t = [1 \ q_{t-1} \ \dots \ q_{t-p}]'$ , and  $\varphi$  and  $\theta$  are  $(p+1)$ -vectors of parameters. The transition function  $G(\cdot)$  determines the degree of mean reversion and is a function of  $\gamma$ , the slope coefficient,  $c$ , the location parameter and  $\tau_t$ , the transition variable. Normally,  $\tau_t$  is assumed to be an element of  $\mathbf{z}_t$ .

There has been little discussion about the choice of specification of the transition function,  $G$ , for PPP applications. It is generally accepted, following Taylor, et al. (2001), that its form is exponential:

$$G(\gamma, c, \tau_t) = 1 - \exp[-\gamma(\tau_t - c)^2], \quad (6)$$

and the resultant model is known as the exponential smooth transition autoregressive (ESTAR) model. The reason for this choice is that it is felt that the movement of the real



exchange rate is symmetrical. However others, such as Baharumshah and Liew (2006), argue that the asymmetric logistic function (and hence the LSTAR model) should also be considered, i.e.,

$$G(\gamma, c, \tau_t) = [1 + \exp[-\gamma(\tau_t - c)]]^{-1}, \quad (7)$$

on the grounds that there is little empirical evidence to support the use of ESTAR models.

A more general alternative to the ESTAR model is the LSTAR2 model:

$$G(\gamma, c, \tau_t) = \left[ 1 + \exp \left[ -\gamma \prod_{k=1}^2 (\tau_t - c_k) \right] \right]^{-1}. \quad (8)$$

Using the LSTAR2 model overcomes the problem that, as  $\gamma \rightarrow \infty$ , Equation (6) becomes linear.

Tests for nonlinearity can be derived in this context from the model

$$q_t = \beta_0 + \sum_{j=1}^3 \beta_j \tilde{z}_{tj} \tau_t^j + u_t^*, \quad t = 1, 2, \dots, T, \quad (9)$$

where  $\tau_t$  is the  $t^{\text{th}}$  observation on the transition variable,  $\tilde{z}_{tj}$ ,  $t = 1, 2, 3$ , is the  $t^{\text{th}}$  observation on the  $j^{\text{th}}$  explanatory variable, which in the simple autoregressive case is just the  $j$ -period lagged value of  $q_t$ , and  $u_t^*$  is a white noise disturbance. The lag length for the STAR tests is decided by reference to both the Akaike information criterion (AIC) and the Schwarz information criterion (SIC).

The four standard tests have the null hypotheses  $H_0 : \beta_1 = \beta_2 = \beta_3 = 0$ ,  $H_{04} : \beta_3 = 0$ ,  $H_{03} : \beta_2 = 0 | \beta_3 = 0$  and  $H_{02} : \beta_1 = 0 | \beta_2 = \beta_3 = 0$ . If  $H_{03}$  yields the strongest rejection, the LSTAR or ESTAR model is selected. If one of the other hypotheses yields the strongest rejection, the LSTAR2 model is used. STAR analysis can be easily conducted using the JMULTi package of Lütkepohl and Krätzig (2004).<sup>3</sup> A very different and little-known alternative to modelling nonlinearity, however, is available.

### 3.4 Random field regression models

This alternative approach to modelling nonlinearity is provided by random field regression. Dahl (2002) showed that the random field approach has relatively better small sample fitting abilities than a wide range of parametric and nonparametric alternatives, including LSTAR and ESTAR models. The idea of using random field models to estimate and test

<sup>3</sup>Available at <http://www.jmulti.de/>.

for nonlinear economic relationships was introduced by Hamilton (2001) and is as follows.

If  $y_t$  is a stationary process,  $\epsilon_t \sim \text{n.i.d.}(0, \sigma^2)$ , and  $\mathbf{x}_t$  is a  $k$ -vector, that may include lagged dependent variables, then the basic model is

$$y_t = \mu(\mathbf{x}_t) + \epsilon_t, \quad (10)$$

where the form of the conditional expectation functional,  $\mu(\mathbf{x}_t)$ , is unknown and assumed to be determined by the outcome of a random field. Hamilton suggests representing  $\mu(\mathbf{x}_t)$  as consisting of two components. The first is the usual linear component, while the second, a nonlinear component, is treated as stochastic and hence unobservable. Both the linear and nonlinear components contain unknown parameters that need to be estimated. Following Hamilton, the conditional mean function is written as

$$\mu(\mathbf{x}_t) = \alpha_0 + \boldsymbol{\alpha}'_1 \mathbf{x}_t + \lambda m(\bar{\mathbf{x}}_t), \quad (11)$$

where  $\bar{\mathbf{x}}_t = \mathbf{g} \odot \mathbf{x}_t$ ,  $\mathbf{g}$  is a  $k$ -vector of parameters and  $\odot$  denotes the Hadamard (element-by-element) product of matrices. The function  $m(\bar{\mathbf{x}}_t)$  is referred to as the random field. If the random field is Gaussian, it is defined fully by its first two moments. If  $\mathbf{H}_k$  is the covariance matrix of the random field, with a typical element  $H_k(\mathbf{x}, \mathbf{z}) = E[m(\mathbf{x}) m(\mathbf{z})]$ , Equation (10) can be rewritten as

$$y_t = \alpha_0 + \boldsymbol{\alpha}'_1 \mathbf{x}_t + u_t, \quad (12)$$

where

$$u_t = \lambda m(\bar{\mathbf{x}}_t) + \epsilon_t, \quad (13)$$

or in matrix form

$$\mathbf{y} = \mathbf{X}\boldsymbol{\beta} + \mathbf{u}, \quad (14)$$

where  $\boldsymbol{\beta} = [\alpha_0 \boldsymbol{\alpha}'_1]'$ . It follows that

$$\mathbf{u} \sim N(0, \lambda^2 \mathbf{H}_k + \sigma^2 \mathbf{I}_T). \quad (15)$$

Treating equations (14) and (15) as a generalised least squares problem, the associated profile maximum likelihood function can be obtained and estimated. The only problem is that the form of the covariance matrix is unknown. Hamilton derives  $\mathbf{H}_k$  as a simple

moving average representation of the random field based on  $\mathbf{g}$ , using an  $L_2$ -norm measure. He shows that even under fairly general misspecification, it is possible to obtain consistent estimators of the conditional mean. Additional results on the consistency of the parametric estimators obtained from this approach are given in Dahl, et al. (2005).

The additive random field function used by Hamilton (2001) suggests that a simple method of testing for nonlinearity is to check if  $\lambda$ , or  $\lambda^2$ , is zero or not. Hamilton showed that if  $\lambda^2 = 0$  and the nonlinear model is estimated for a fixed  $\mathbf{g}$ , the maximum likelihood estimator  $\tilde{\lambda}$  is consistent and asymptotically normal. Thus a test based on the use of the standard normal probability table is possible, though it is computationally complex for reasons discussed by Hamilton (2001) and Bond, et al. (2005). Given the assumption of normality and the linearity of Equation (10) under the null hypothesis that  $\lambda^2 = 0$ , a simpler alternative uses the Lagrange multiplier principle. Hamilton showed that provided the covariance function of the random field can be derived, for a fixed  $\mathbf{g}$  (Hamilton uses the mean of its prior distribution), testing only requires a single linear regression to be estimated. Hamilton derived the appropriate score vectors of first derivatives, for  $k = 1, 2, \dots, 5$ , and the associated information matrices, and proposed a form of the LM test for practical application.

The procedure has four steps. Set  $g_i = 2/\sqrt{ks_i^2}$ , excluding the constant term whose variance is zero. This  $g_i$  is approximately the mean of the lognormal Bayesian prior used by Hamilton as the initial value for the parameter. Calculate the  $T \times T$  matrix,  $\mathbf{H}$ , whose typical element is  $H_k(\frac{1}{2}\|\mathbf{g} \odot \mathbf{x}_t - \mathbf{g} \odot \mathbf{x}_s\|)$ , i.e., the function  $H_k(h_{ts})$ . Use OLS to estimate the standard linear regression  $\mathbf{y} = \mathbf{X}\boldsymbol{\beta} + \boldsymbol{\epsilon}$  and obtain the usual residuals,  $\hat{\boldsymbol{\epsilon}}$ , and the standard error of estimate,  $\hat{\sigma} = (T - k - 1)^{-\frac{1}{2}}\sqrt{\hat{\boldsymbol{\epsilon}}'\hat{\boldsymbol{\epsilon}}}$ . Finally, compute the statistic

$$\lambda_H^E(\mathbf{g}) = \frac{[\hat{\boldsymbol{\epsilon}}'\mathbf{H}\hat{\boldsymbol{\epsilon}} - \hat{\sigma}^2\text{tr}(\mathbf{M}_T\mathbf{H})]^2}{\hat{\sigma}^4 [2\text{tr}([\mathbf{M}_T\mathbf{H}\mathbf{M}_T - (T - k - 1)^{-1}\mathbf{M}_T\text{tr}(\mathbf{M}_T\mathbf{H})]^2)]}, \quad (16)$$

where  $\mathbf{M}_T = \mathbf{I}_T - \mathbf{X}(\mathbf{X}'\mathbf{X})^{-1}\mathbf{X}'$  is the familiar symmetric idempotent matrix.

As the test statistic,  $\lambda_H^E(\mathbf{g})$ , is distributed as  $\chi_1^2$  under the null hypothesis, linearity would be rejected if  $\lambda_H^E(\mathbf{g})$  exceeded the critical value  $\chi_{1,\alpha}^2$  for the chosen level of significance,  $\alpha$ .<sup>4</sup> For example, at the  $\alpha = 5$  per cent level, the null hypothesis would be rejected

<sup>4</sup>The notation used here for the  $\lambda$  statistic is that of Dahl and González-Rivera (2003). The superscript  $E$  shows that full knowledge of the parametric nature of the covariance function is assumed. The alternative is superscript  $A$ , which signals that no assumption about the covariance function is assumed. The subscript  $H$  shows that the Hessian of the loglikelihood function is used. The alternative is subscript  $OP$ , which indicates that the outer product of the score function is used.

if  $\lambda_H^E(\mathbf{g}) > 3.84$ .

The usefulness of the Hamilton LM test depends on certain nuisance parameters that are only identified under the alternative hypothesis. As Hansen (1996) shows, dealing with unidentified nuisance parameters by assuming full knowledge of the parameterised stochastic process that determines the random field may have adverse effects on the power of the test. To take account of this, Dahl and González-Rivera (2003) introduce other LM tests that extend the Hamilton approach. The first, based on the statistic  $\lambda_{OP}^E(\mathbf{g})$ , assumes, like Hamilton's test, knowledge of the covariance matrix, but its behaviour is based on the  $L_1$ -norm. The nuisance parameters are still present but now only enter the test in a linear fashion. The second, the  $\lambda_{OP}^A$  test, only assumes that the covariance function is smooth enough to be depicted by a Taylor expansion. The final test is a test of the null hypothesis  $H_0: \mathbf{g} = 0$ ; this  $g_{OP}$  test makes no assumption about either the covariance function or  $\lambda$ . Dahl and González-Rivera (2003) show that in many circumstances, the  $\lambda_{OP}^A$  and  $g_{OP}$  tests have better power than other tests of nonlinearity.

The full importance of Hamilton's random field approach is only realised when the parameters  $\lambda$  and  $\mathbf{g}$  are estimated. In particular, the estimated value of  $\mathbf{g}$  can be used for inference on the form of the nonlinearity. A highly significant  $g_i, i = 1, 2, \dots, k$ , suggests that the corresponding variable plays an important role in the nonlinearity of the model. Hamilton showed that estimating the unknown parameters  $\varphi = \{\alpha_0, \alpha_1, \mathbf{g}, \sigma^2, \lambda\}$  can be reduced to maximum likelihood estimation of a reparameterisation of equations (10) and (11):

$$\eta(\mathbf{y}, \mathbf{X}; \mathbf{g}, \zeta) = -\frac{T}{2} \ln(2\pi) - \frac{T}{2} \ln \sigma^2(\mathbf{g}, \zeta) - \frac{1}{2} \ln |\mathbf{W}(\mathbf{X}; \mathbf{g}, \zeta)| - \frac{T}{2}, \quad (17)$$

and

$$\tilde{\boldsymbol{\beta}}(\mathbf{g}, \zeta) = [\mathbf{X}'\mathbf{W}(\mathbf{X}; \mathbf{g}, \zeta)^{-1} \mathbf{X}]^{-1} [\mathbf{X}'\mathbf{W}(\mathbf{X}; \mathbf{g}, \zeta)^{-1} \mathbf{y}], \quad (18)$$

$$\tilde{\sigma}^2(\mathbf{g}, \zeta) = \frac{1}{T} [\mathbf{y} - \mathbf{X}\tilde{\boldsymbol{\beta}}(\mathbf{g}; \zeta)]' \mathbf{W}(\mathbf{X}; \mathbf{g}; \zeta)^{-1} [\mathbf{y} - \mathbf{X}\tilde{\boldsymbol{\beta}}(\mathbf{g}; \zeta)], \quad (19)$$

where  $\zeta = \frac{\lambda}{\sigma}$  and  $\mathbf{W}(\mathbf{X}; \mathbf{g}, \zeta) = \zeta^2 \mathbf{H}_k + \sigma^2 \mathbf{I}_T$ . The profile likelihood can be maximised with respect to  $(\mathbf{g}, \zeta)$  using standard optimisation algorithms, though as Bond, et al. (2005) point out, care needs to be taken because of computational difficulties. Also, as Hamilton (2005) explains, other computational issues make it possible for the nonlinearity tests based on  $\lambda$  to be strongly significant but the results of the nonlinear maximisation

of the likelihood function to suggest that  $\zeta$  is insignificant. Once estimates for  $\mathbf{g}$  and  $\zeta$  have been obtained, equations (18) and (19) can be used to obtain estimates of  $\boldsymbol{\beta}$  and  $\sigma$ .

The Hamilton (2001) method is concerned with inferring the form of nonlinearity appropriate to a given dataset and can, therefore, aid the specification of a final nonlinear model. While in some cases this may be straightforward, in others, it may lead to the use of further techniques. One such method that may work very well with random field regression is Bai and Perron's (1998, 2003) multiple structural changes approach, and this is the subject of ongoing research.

### 3.5 Multiple structural changes models

The final nonlinear method introduced here is Bai and Perron's (1998, 2003) approach to estimating and testing structural changes models. The usefulness of this approach to exploring PPP for Ireland, in tandem with random field regression, will become evident in later sections. This approach is based on the multiple linear regression

$$y_t = \mathbf{x}'_t \boldsymbol{\beta} + \mathbf{z}'_t \boldsymbol{\delta}_j + u_t, \quad t = T_{j-1} + 1, \dots, T_j, \quad j = 1, \dots, m + 1, \quad (20)$$

where  $y_t$  is the observed dependent variable,  $\mathbf{x}_t$  is a  $p$ -vector of explanatory variables whose corresponding coefficient vector,  $\boldsymbol{\beta}$ , is not subject to change,  $\mathbf{z}_t$  is a  $q$ -vector of explanatory variables, whose corresponding coefficient vector  $\boldsymbol{\delta}_j$ , is subject to change, and  $u_t$  is the disturbance term. The model is tested for  $T_1 - T_m$  break points. This model can be estimated by least squares, as for each regime the least squares estimates of  $\boldsymbol{\beta}$  and  $\boldsymbol{\delta}_j$  are found by minimising the sum of squared residuals

$$\min SSR = \sum_{i=1}^{m+1} \sum_{t=T_{i-1}+1}^{T_i} [y_t - \mathbf{x}'_t \boldsymbol{\beta} - \mathbf{z}'_t \boldsymbol{\delta}_i]^2. \quad (21)$$

To specify such a model, Bai and Perron (1998, 2003) propose a range of tests. The  $\text{sup}F_T$  test examines the null of no structural breaks ( $m = 0$ ) against  $m = k$  breaks. For a partition  $(T_1, \dots, T_k)$ , where  $T_i = [T\lambda_i]$  and  $\lambda_i = T_i/T$ , it can be shown that

$$F_T(\lambda_1, \dots, \lambda_k; q) = \frac{1}{T} \left( \frac{T - (k+1)q - p}{kq} \right) \widehat{\boldsymbol{\delta}}' \mathbf{R}' \left( \mathbf{R} \widehat{\mathbf{V}}(\widehat{\boldsymbol{\delta}}) \mathbf{R}' \right)^{-1} \mathbf{R} \widehat{\boldsymbol{\delta}}, \quad (22)$$

where  $\mathbf{R}$  is defined such that  $(\mathbf{R}\boldsymbol{\delta})' = (\widehat{\delta}_1 - \widehat{\delta}_2, \dots, \widehat{\delta}_k - \widehat{\delta}_{k+1})$  and  $\widehat{\mathbf{V}}(\widehat{\boldsymbol{\delta}})$  is an estimate of the variance-covariance of  $\widehat{\boldsymbol{\delta}}$ . This test can be augmented to provide tests of  $l + 1$  breaks

against  $l$  breaks, as the  $\sup F_T(l+1 | l)$  test. Two further tests explore the data with a pre-specified number of breaks; the *UD max* and *WD max* procedures test sequentially the hypothesis of  $m$  unknown breaks against the null of no break. The *UD max* test is defined as

$$UD \max F_T(M, q) = \max_{1 \leq m \leq M} F_T(\hat{\lambda}_1, \dots, \hat{\lambda}_m; q). \quad (23)$$

The *WD max* test is similar to the *UD max* test, but applies weights to the individual tests so that the marginal  $p$ -values are equal across all values of  $m$ .

## 4 Results and Discussion

Having introduced the main methods to be used in this paper, particularly those likely to be less well known, the paper estimates models for the nominal and real exchange rate for Ireland, Germany and the UK.

This section introduces the data to be used and reports on some preliminary analysis. The fractional augmented Dickey-Fuller test is then implemented, before a more standard cointegration approach is taken, using Engle-Granger (1987) and Johansen (1988) tests. The Johansen (2002) small-sample correction is also implemented, as are the CRDW and ECM tests for cointegration. Nonlinearity tests are then applied to both the nominal and real exchange rates, before random field regressions are estimated. Finally, multiple structural changes models are fitted to the data.

### 4.1 Data

The explanatory model used throughout this analysis follows Johansen and Juselius (1992), and Wright (1994). The specification is

$$s_t = \alpha_0 + \alpha_1 p_t + \alpha_2 p_t^* + \alpha_3 i_t + \alpha_4 i_t^* + \epsilon_t, \quad (24)$$

where, in addition to the variables defined in Section 2,  $i_t$  and  $i_t^*$  are the domestic and foreign short-term interest rates.<sup>5</sup> The real exchange rate series,  $\{q_t\}_{t=1}^T$ , is constructed using Equation (1). Wholesale price indices are used in preference to consumer price indices. Wholesale indices offer a better approximation of price developments in the traded sector, and have frequently been employed in PPP studies, as deviations from PPP are less

<sup>5</sup>The short-term (3-month) interest rates were obtained from **EcoWin**; the remainder of the series were provided by Jonathan H. Wright. The data are available on request from the authors.

likely in the traded sector.

As previously stated, the data are quarterly for the period 1975 Q1 to 2003 Q3, a total of 115 observations. As the period pre-dates EMS and the break with Sterling, the Sterling/Irish Pound nominal exchange rate is constant from 1975 until 1978. Likewise, the Deutsche-Mark/Irish Pound rate is constant from 1999 to the end of the sample, as a result of EMU membership. As discussed earlier, these data clearly span several monetary regimes and crises. Unlike Wright (1994), however, who used data for 1981 to 1992 to avoid regime change and crises, this paper aims to explore the long-run PPP relationship throughout this entire period. Indeed, if nonlinearity in PPP may result from regime change, excluding such data may not prove beneficial.

## 4.2 Preliminary analysis

To place the long memory and random field analysis into context, the standard  $I(1)/I(0)$  analysis using the ADF unit root test was conducted. The strategy of Dolado, et al. (1990), to determine whether the ADF regressions have significant constants or trends, was adopted. The lag length for the ADF test was determined using the modified Akaike information criterion (MAIC), which Ng and Perron (2001) showed to be a generally better decision criteria, as it takes account of the persistence found in many series. The alternative KPSS and NP unit root tests were also applied, the latter being generally more powerful against the alternative of fractional integration than the standard ADF (see Kwiatkowski, et al., 1992 and Perron and Ng, 1996, respectively). These procedures were implemented using the **EViews** package.

The results of this basic unit root analysis are given in Table 1.<sup>6</sup> In half of the cases, the Dolado, et al. (1990) testing strategy suggests that the existence of a trend in the ADF test regressions, or drift in the series in question, cannot be rejected; the associated probabilities given in Table 1 are therefore from the standard normal distribution. In the other half of the cases, the existence of a constant and trend is rejected so the probabilities given are from MacKinnon (1996).

These results generally seem to suggest that most series are  $I(1)$ . The performance of the KPSS test, which has a null hypothesis of stationarity, is strange for the Ireland/UK data as the test does not reject this null in three of the six cases. Also, it is interesting that the traditional ADF test rejects the unit root hypothesis for one of the real exchange

---

<sup>6</sup>All tables are in the Appendix.

rates, whereas the ‘more powerful’ NP test fails to reject for both series.

As the data used here are quarterly, the possibility of seasonal (co)integration arises. Several tests have been developed to examine data for seasonal unit roots. Tests include those by Dickey, Hasza, and Fuller (1984), Osborn, Chui, Smith, and Birchenhall (1988) and Hylleberg, Engle, Granger, and Yoo (1990), widely known as the HEGY test. To examine the data for seasonal unit roots, the HEGY test was used, not least because it can be easily carried out using `JMulTi`.

Results of tests for seasonal unit roots are included in tables 2 and 3. Following Ghysels and Osborn (2001), these tests were carried out for a range of specifications, including various deterministic terms. Interestingly, these results suggest that the German/Irish exchange rate may be stationary; only when an intercept, trend and seasonal dummy variables are included in the HEGY specification does the test reject the null of a unit root. No evidence of unit roots at any other frequency was found, however. In general, results for the remainder of the series suggest the series are in fact  $I(1)$  and that no seasonal integration is present. The only exception is the Irish price level. As with standard ADF tests, there is some evidence to suggest that this series is  $I(0)$ .

### 4.3 Fractional integration analysis

Following this standard analysis, the issue of fractional integration was investigated. Two approaches to applying the FADF test have emerged in the literature. The first, stemming from Hansen (1999), is to run the FADF regression for various values of  $d \in [0, 1)$  and either tabulate or plot the test statistic results before making any inferences (see Heravi and Patterson, 2005). The second, suggested by Dolado, et al. (2002), is to obtain a consistent parametric estimate of  $d$  and apply the FADF test for this value. It is this second approach that was adopted here. The ‘over differenced’ *ARFIMA* model, which uses the first differences of the observations on a variable rather than the raw levels observations themselves, was estimated to avoid the problems associated with drift, as recommended by Smith, et al. (1997). Two parametric estimates of  $d$  were calculated using the Doornik and Ooms (1999) *ARFIMA* package, namely, the exact maximum likelihood (EML) estimate produced by the algorithm suggested by Sowell (1992),<sup>7</sup> and an approximate maximum likelihood estimator based on the conditional sum of squared naïve residuals, developed by Beran (1995) and referred to by Doornik and Ooms (1999) as a nonlinear least squares

---

<sup>7</sup>The Sowell algorithm requires that  $d < 0.5$ , which is another reason for using the ‘over-differenced’ model.



(NLS) estimator. The nonparametric estimate of  $d$  from the logperiodogram method of Geweke and Porter-Hudak (1983) (GPH) and the semiparametric estimate from the Gaussian method (GSP) discussed by Robinson and Henry (1998) are also available in ARFIMA; these were also calculated. The estimates of  $d$  were then used in the FADF test, with the MAIC being used to set the lag length for the test.

Table 4 gives the results of the simple fractional integration analysis. For each series, four different estimates of  $d$  are given, together with their estimated standard errors and associated FADF test statistic values, where computed. The FADF test is only meaningful, and hence reported, if  $d \leq 1$ , when the probabilities to be applied to the test statistics are the standard normal ones. The results are interesting and would seem to imply that the only series that is likely to be unambiguously fractionally integrated is the Irish interest rate. While all the estimates of  $d$  for the nominal exchange rate between Ireland and the UK are less than one, the FADF test fails to reject the null hypothesis of a unit root. For all other series, the estimates of  $d$  gave conflicting values, although the suggestion is of a unit root in the Ireland/UK real exchange rate. The FADF test only gave strong evidence of fractional integration in the case of the Ireland/Germany nominal and real exchange rates when the GPH and GSP estimates of  $d$  were used.

#### 4.4 Cointegration analysis

Standard cointegration analysis was then applied to the simple PPP model of Equation (24). Firstly, the Engle and Granger (1987) two-step procedure was used, with the lagged residuals from the levels regression serving as the error-correction term. Then the Johansen (1988) VAR approach was applied to the data. The effect of applying the Johansen (2002) small-sample correction factor was also investigated. The EViews package was used for the Engle-Granger and Johansen analysis, with RATS being employed for the calculation of the Johansen correction factor, using Johansen's program.<sup>8</sup>

The results of applying the standard Engle-Granger analysis in the context of model (24) are given in tables 5 and 6. Table 5 reports the findings of the levels analysis and in all cases both the traditional ADF test on residuals (augmented Engle-Granger test) and the NP test fail to reject the null hypothesis that the residuals have a unit root. The KPSS test also rejects the null of stationary residuals in all but one case. Therefore, treating the variables as  $I(1)$ , it seems that cointegration of the nominal exchange rate,

<sup>8</sup>This program is available from <http://www.math.ku.dk/~sjo/>.

price levels and interest rates is overwhelmingly rejected for both the Ireland/UK and the Ireland/Germany data. These results are confirmed by the findings of CRDW tests.

Table 6 gives the results of trying to estimate parsimonious error-correction models, using the first lag of the residuals from the corresponding levels model as the error-correction term in each of the two cases. While the coefficients of the error-correction terms have the ‘right’ sign, the  $t$ -ratios are small in absolute value, confirming the conclusion about the lack of cointegration. The ECM test also rejects cointegration in all cases. Dropping the insignificant constant terms has a minimal effect on the results.

Table 7 summarises the Johansen analysis of the data, while more detailed results are given in tables 8 and 9. Table 8 shows evidence of one cointegrating vector in the Ireland/Germany case, when interest rates are excluded from the equation. Importantly, this result is overturned by the trace test when Johansen’s small-sample correction to that test is applied. However, when interest rates are included, one cointegrating vector is suggested whether or not the small-sample correction is used. In this case, the trace and maximal eigenvalue tests concur. Table 9 presents the results for the Ireland/UK relationship. As with the previous case, the finding of one cointegrating vector in the specification without interest rates is overturned by the adjusted trace test. In contrast, two vectors are suggested when the interest rates are included, and this result is unaffected by the small-sample correction factor, which strangely is less than 1.

Taken together, the results so far are rather mixed and indicate that there is little evidence of cointegration in a traditional PPP setting, but that the introduction of interest rates appears to be significant. Overall, as in previous studies, this attempt to place the PPP analysis of Irish data in a cointegrating framework is not entirely satisfactory. We therefore turn to the results from the alternative nonlinear methodologies.

#### 4.5 Nonlinearity tests

The analysis next considered the possibility of nonlinearity in the data. For the causal models, the standard RESET test was applied, together with the random field-based tests described previously. Also, for an autoregressive model involving  $q_t$ , the now standard STAR tests for nonlinearity were applied.

Tables 10 and 11 give the results of the various nonlinearity tests. In all tests, the null hypothesis is that the model/series is linear. For the RESET test, both the  $F$  and LR variants are given. For the STAR nonlinearity test, an  $F$ -test version is used, with  $F$  being

the test statistic for  $H_0$  and  $F4$ ,  $F3$  and  $F2$  being, respectively, the test statistics for the hypotheses  $H_{04}$ ,  $H_{03}$  and  $H_{02}$ , specified previously. The AIC suggested a lag length of three for the STAR test in the case of the Ireland/Germany exchange rate and a lag length of two for the Ireland/UK case. The SIC suggested a lag length of one in both cases.

As can be seen from Table 10, the RESET test and the four random field-based tests emphatically reject linearity at the 5 per cent significance level in the case of the Ireland/Germany model. For the Ireland/UK model, however, there is a marked contrast between the findings from the two test approaches, with the RESET test failing to reject linearity but all of the random field tests strongly rejecting it.

Table 11 contains similar, though opposite findings. The RESET test, STAR tests and random field-based tests all suggest that the assumption of linearity is adequate for the Ireland/UK real exchange rate taken on its own; but whereas the random field tests overwhelmingly support linearity of the Ireland/Germany real exchange rate, the STAR test based on the use of three lags gives some indications of nonlinearity and the RESET test rejects linearity very strongly. It is difficult to explain these conflicting outcomes in tables 10 and 11, especially in the absence of information on the relative power of the different types of test.<sup>9</sup> Nonetheless, there is limited evidence of nonlinearity in the real exchange rate. This suggests that following a STAR approach may not be optimal. The remainder of the paper, therefore, concentrates on modelling the nominal exchange rate.

#### 4.6 Random field estimation

Given the results of the nonlinearity tests, the parameters of the random field model were estimated for the nominal exchange rate. The GAUSS code provided by Hamilton (2001) was adapted to apply the algorithm switching approach to the numerical optimisation suggested by Bond, et al. (2005).<sup>10</sup> Specifically, algorithm switching between the *Steepest Descent* and *Newton* methods were employed. Hamilton's (2001) covariance specification was retained and an initial value of  $\zeta = 0.5$  was used.

Given that the bulk of the results in Table 10 suggest that the linear equation used in the analysis of PPP is not an appropriate specification, interest focuses on the results of the nonlinear estimation of the random field regression. These are given in Table 12.

---

<sup>9</sup>In particular, no results appear to be available on the power of the RESET test relative to random-field based LM tests for nonlinearity. This is a subject of ongoing research and the findings will be presented in a forthcoming paper.

<sup>10</sup>Hamilton's (2001) code, which is available at <http://weber.ucsd.edu/~jhamilto/>, includes the Dahl and González-Rivera (2003) tests. Code for these tests is also available from <http://www.krannert.purdue.edu/faculty/dahlc/>.

The numerical optimisation converged after 36 iterations in the case of both variants of the Ireland/Germany model, and after 42 and 19 iterations in the cases of the basic and interest rate augmented Ireland/UK equations, respectively. Interestingly, in the case of both country pairings, the standard model and the augmented model exhibit nonlinearity with respect to the two price variables, the price coefficients in the nonlinear component of the models being highly significant. However, in the augmented Ireland/Germany model, the German interest rate is nonlinearly significant, while in the Ireland/UK model it is the Irish interest rate that appears to have a significantly nonlinear influence on the nominal exchange rate.

Most strikingly, perhaps, is the fact that when nonlinearity is modelled by means of a random field, the coefficients on the domestic and foreign prices in the specifications with and without interest rates, are not statistically significantly different from their -1 and 1 values under purchasing power parity theory. This finding contrasts with the findings in the earlier Irish studies by, for example, Thom (1989) and Wright (1994), both of whom report cointegrating vectors, corresponding to the vector of variables  $s_t$ ,  $p_t$  and  $p_t^*$ , that are markedly different from (1, -1, 1).

These results have found significant nonlinearity and attributed that nonlinearity to certain variables. The next stage was to infer a suitable nonlinear model. As three variables have been found to be nonlinearly significant in each case, Hamilton's (2001) approach to inference, using the conditional expectation function to infer functional form, is not possible. An alternative approach suggested by Bond, et al. (2007b) is therefore used. This approach exploits the fact that the random field estimation consists of two components: a linear and a nonlinear term. In the context of PPP, these two components can be viewed as a linear long-run approximation to PPP over the sample period and a nonlinear dynamic or deviation component. To explore nonlinearity, this approach suggests plotting an estimate of the 'nonlinear' term, that is  $\lambda m(\mathbf{g} \odot \mathbf{x}_t)$  from Equation (11), against the variables found to be nonlinearly significant. As  $m$  is unobservable, an estimate of the term  $y_t - (\alpha_0 + \boldsymbol{\alpha}'_1 \mathbf{x}_t)$  is plotted, as a substitute for  $\lambda m(\mathbf{g} \odot \mathbf{x}_t)$ .

The procedure outlined above was applied to the Irish/German data.<sup>11</sup> An estimate of the linear term,  $\alpha_0 + \boldsymbol{\alpha}'_1 \mathbf{x}_t$ , was plotted as the 'fitted' term along with the actual dependent variable against time. This is shown in Figure 1. As can be seen, the fit here is reasonably good, and underlines how  $\alpha_0 + \boldsymbol{\alpha}'_1 \mathbf{x}_t$  can be viewed as a linear long-run

<sup>11</sup>For this analysis, the data sample was truncated to exclude the period of constant exchange rates under EMU. The motivation for this will become clear in the next section.

approximation to PPP. Figure 2 plots the ‘residual’ of this, as the difference between actual and linear fitted observations. Several breaks are clearly evident from this plot, particularly around 1978, 1986, and 1996. To infer the form of nonlinearity which may account for these breaks, figures 3, 4 and 5 plot  $s_t - (\alpha_0 + \alpha_1' \mathbf{x}_t)$ , where  $\mathbf{x}_t = (p_t \ p_t^* \ i_t \ i_t^*)$ , against the three significantly nonlinear variables, respectively. Clear evidence of regimes can be seen in figures 3 and 4, which have been roughly identified graphically. They correspond approximately to breaks at 1978, 1986, 1990 and 1996. Although at first glance it may appear that the period 1986 to 1999 represents one regime, it is clear that the 1990-1996 cluster is distinct from those on either side of it. Figure 5, however, shows no clear relationship, contradicting the evidence provided by Hamilton’s approach and suggesting that the German interest rate plays a limited role in the nonlinearity to be found in  $s_t$ . A similar approach was followed for the Ireland/UK data with very similar results; they are excluded here for compactness, but are available from the authors on request.

It should be noted at this point that the break dates suggested by the Hamilton approach are very much in line with monetary developments affecting the Irish nominal exchange rate. The year 1978 saw the end of the peg to Sterling and the commencement of EMS in the following year. The Irish currency was devalued in 1986 and in 1989-1990, the UK joined EMS and Germany re-unified. The final break, 1996, may relate to the introduction of the new exchange rate mechanism around that time, in preparation for EMU.

#### 4.7 Multiple structural changes models

Based on these findings, break-date tests and time-varying parameter estimation, following Bai and Perron (1998, 2003), were used.<sup>12</sup> The sample size was truncated for computational reasons, however, to remove the period of fixed exchange rates under EMU. Table 13 shows the results of this approach for Ireland/Germany. Four significant breaks are identified at 1978 Q2, 1986 Q2, 1990 Q3 and 1995 Q3. The  $\sup F_T(l)$ ,  $\sup F_T(l+1 | l)$ ,  $UD \max$  and  $WD \max$  tests are all significant at the 5 per cent level for four breaks. Figure 6 shows a plot over time of actual versus fitted  $s_t$ . The plot is based on estimates from the time-varying parameter model and is much improved on that seen in Figure 1. Figure 7 plots the residuals and  $\pm 2$  standard error margins. With the exception of several

<sup>12</sup>The GAUSS code to implement these techniques is available from <http://people.bu.edu/perron/code.html>.

observations, the vast majority of the residuals are well within these limits. Even more noteworthy are the coefficients reported in Table 13. In three out of five regimes, the coefficients for  $p_t$  and  $p_t^*$  are not statistically significantly different from  $-1$  and  $1$ , the values predicted by theory. For the second regime, coefficients of  $-0.725$  and  $0.813$ , are statistically significantly different from  $1$ , yet remain plausible in magnitude. It is only for the fourth regime that the parameter estimates deviate substantially from theory, at approximately  $\pm 2$ . This regime is for the period 1990 Q3 to 1995 Q3, and the results remain to be explained. There is some limited evidence of a further break at 1993, but this was not found using the Bai and Perron approach.<sup>13</sup> Recall also that this period can be characterised as one of crisis for EMS, and this may go some way to explaining this result. Nevertheless, these findings do not detract greatly from the overall results, which suggest that PPP does in fact hold for Ireland, in both the medium and long run.

A similar approach was undertaken for the UK, the results of which can be found in Table 14 and figures 8 and 9. Although the fit achieved and the coefficients obtained were not as noteworthy as in the German case, the results are nevertheless encouraging. It appears that modelling PPP for Ireland, Germany and the UK is best done with time-varying parameter models. The breaks found using this method in tandem with the random field approach, are as stated previously, very much in line with monetary developments. The failure to ‘find’ a break a 1993 may result from the fact that this was a period of crisis, making it difficult to separate the effects of the Irish devaluation from volatility in the other series; recall, for example, that around this time the UK devalued its currency and then exited EMS.

These results should not be surprising. As mentioned previously, official intervention by monetary authorities in the foreign exchange market has been proposed as a source of potential nonlinearity in the PPP relationship, and several authors have suggested that this is in line with PPP theory. Several authors have also found evidence to support these findings. Using Irish data, Lane and Milesi-Ferretti (2002) found evidence of time-varying parameters, albeit for the real exchange rate. Lahtinen (2006), using a model that allowed for adjustments towards long-run equilibrium, found that adjustment was sudden rather than smooth for the Dollar/Euro exchange rate. Such sudden adjustment may result from market intervention, as appears to have been the case here. Finally, Sager (2006), using three major exchange rates, also found shocks to be important and that there was no

---

<sup>13</sup>The Irish currency devalued relative to ECU in 1993.

benefit in modelling PPP as a nonlinear process once those shocks were accounted for.

## 5 Conclusions

This paper has empirically modelled the nominal exchange rate for Ireland, relative to Germany and the UK, from 1975 to 2003. It has used new approaches, yet to be applied in this area: the fractional augmented Dickey-Fuller test, random field regression and multiple structural changes models. It has shown that PPP can be effectively modelled for those bilateral exchange rates by using such structural changes models.

The theoretical background to PPP has been sketched, paying particular attention to recent advances in the literature concerning nonlinearity and its likely causes in PPP. Importantly, the link between fractional integration and data aggregation has been highlighted, as a source of potential deviation from PPP that has been previously overlooked. Investigating the occurrence of fractionality in aggregated time series represents an interesting agenda for future research.

A battery of unit root tests, including those to test for seasonal unit roots, was applied and found that most series could be characterised as nonstationary. The fractional augmented Dickey-Fuller test, not before used in this area, was also applied. Little evidence of fractionality was found, however, indicating that there was no persistent deviation in the real exchange rate from its PPP equilibrium.

Attempts to model the nominal exchange rate used standard cointegration techniques, including both the CRDW and ECM tests along with the more standard Engle-Granger and Johansen approaches. Using a similar approach to Johansen and Juselius (1992), this illustrated the potential difficulties inherent in placing the study of PPP in the  $I(1)/I(0)$  framework. These difficulties were implicit in the very mixed results of previous Irish studies using these approaches, an overview of which was provided. The implementation of Johansen's (2002) correction highlighted the need for caution when using small samples, as the correction factor had a significant impact on inference regarding the number of cointegrating vectors found.

Nonlinearity was then tested using a range of approaches. Although these produced varying results, the random field-based tests strongly indicated nonlinearity, while the STAR-based tests were much more ambiguous, frequently failing to reject linearity. It should be borne in mind that the STAR procedure tests the null of linearity against an

alternative of threshold nonlinearity, whereas the random field-based methods test a null of linearity against an alternative of nonspecific nonlinearity. These results suggested that there was little if any nonlinearity in the real exchange rates. This, taken with the evidence of the FADF tests, suggested that modelling the real exchange rate as a long memory or nonlinear process was not warranted in these cases. The remainder of the paper concentrated on the nominal exchange rate, therefore.

Given the findings of nonlinearity in the nominal exchange rate, random field regressions, which had been outlined previously, were estimated. These produced striking results; the estimated coefficients of the linear component of the model were not significantly different from those expected under PPP and both price indices were found to be nonlinearly significant in each case. This further underlines the difficulties likely to be encountered with a STAR approach here, as there are two, if not more transition variables. Specification of STAR models in such cases is not straightforward, although this is the subject of ongoing research.

Using an alternative method of inference with the random field regressions, it was clear that although a series of significant breaks occurred in the data, the long-run approximation to PPP derived from the random field estimation was reasonable. The breaks were found to coincide accurately with monetary developments in the economies in question, and these results suggested that a multiple structural changes model may be appropriate for both bilateral exchange rates. Using Bai and Perron's (1998, 2003) approach, structural changes models were estimated and break dates tested. Interestingly, this approach found very similar breaks to those found previously, and these were highly statistically significant. The estimated coefficients from these models were also very close to those theoretically predicted by PPP in the case of Ireland/Germany, and to a lesser extent for Ireland/UK. The good fit achieved by these models is also noteworthy.

These results provide strong evidence for nonlinearity in the PPP relationship for these data, resulting from monetary developments. This supports the theory that shocks relating to official intervention in the foreign exchange market may result in nonlinearity, but that when such shocks are modelled, the PPP relationship is linear. This certainly appears to be the case for the Ireland/Germany data, as PPP holds in some of the short periods between structural changes. It remains to be seen whether similar findings to these apply to other currencies.



## References

- BAHARUMSHAH, A. Z., AND V. K.-S. LIEW (2006): "Forecasting Performance of Exponential Smooth Transition Autoregressive Exchange Rate Models," *Open Economies Review*, 17, 235–251.
- BAI, J., AND P. PERRON (1998): "Estimating and Testing Linear Models with Multiple Structural Changes," *Econometrica*, 66, 47–78.
- (2003): "Computation and Analysis of Multiple Structural Changes Models," *Journal of Applied Econometrics*, 18, 1–22.
- BASCI, E., AND M. CANER (2005): "Are Real Exchange Rates Nonlinear or Nonstationary? Evidence From a New Threshold Unit Root Test," *Studies in Nonlinear Dynamics and Econometrics*, 9, Article 2.
- BERAN, J. (1995): "Maximum Likelihood Estimation of the Differencing Parameter for Invertible Short and Long Memory Autoregressive Integrated Moving Average Models," *Journal of the Royal Statistical Society, Series B*, 57, 659–672.
- BINI-SMAGHI, L., AND G. FERRI (2006): "Revisiting the European Monetary System Experience: Were Some Members More Equal Than Others?," *Economic Notes*, 35, 151–172.
- BOND, D., M. J. HARRISON, N. HESSON, AND E. J. O'BRIEN (2006): "Some Empirical Observations on the Forward Exchange Rate Anomaly," Trinity Economic Papers, No. 2.
- BOND, D., M. J. HARRISON, AND E. J. O'BRIEN (2005): "Investigating Nonlinearity: A Note on the Estimation of Hamilton's Random Field Regression Model," *Studies in Nonlinear Dynamics and Econometrics*, 9, Article 2.
- (2007a): "Demand for Money: A Study in Testing Time Series for Long Memory and Nonlinearity," *The Economic and Social Review*, 38, 1–24.
- (2007b): "Exploring Nonlinearity With Random Field Regression," Applied Economics Letters, forthcoming.
- BRADLEY, J. (1977): "Lags in Transmission of Inflation," *The Economic and Social Review*, 8, 149–154.
- BREITUNG, J. (2001): "Rank Tests for Nonlinear Cointegration," *Journal of Business & Economic Statistics*, 19, 331–340.
- CALLAN, T., AND J. FITZGERALD (1989): "Price Determination in Ireland: Effects of Changes in Exchange Rates and Exchange Rate Regimes," *The Economic and Social Review*, 20, 165–188.
- CASHIN, P., AND C. J. MCDERMOTT (2004): "Parity Reversion in Real Exchange Rates: Fast, Slow or Not at All?," *International Monetary Fund Working Papers*, No. 128.

- CHEUNG, Y. W., AND K. S. LAI (1993): “A Fractional Cointegration Analysis of Purchasing Power Parity,” *Journal of Business & Economic Statistics*, 11, 103–112.
- CULVER, S. E., AND D. H. PAPELL (1999): “Long-run Purchasing Power Parity with Short-run Data: Evidence With a Null Hypothesis of Stationarity,” *Journal of International Money and Finance*, 18, 751–769.
- DAHL, C. M. (2002): “An Investigation of Tests for Linearity and the Accuracy of Likelihood Based Inference Using Random Fields,” *Econometrics Journal*, 5, 263–284.
- DAHL, C. M., AND G. GONZÁLEZ-RIVERA (2003): “Testing for Neglected Nonlinearity in Regression Models Based on the Theory of Random Fields,” *Journal of Econometrics*, 114, 141–164.
- DAHL, C. M., G. GONZÁLEZ-RIVERA, AND Y. QIN (2005): “Statistical Inference and Prediction in Nonlinear Models using Additive Random Fields,” Working Paper, Department of Economics, Purdue University.
- DICKEY, D. A., AND W. A. FULLER (1981): “Likelihood Ratio Tests for Autoregressive Time Series with a Unit Root,” *Econometrica*, 49, 1057–1072.
- DICKEY, D. A., D. P. HASZA, AND W. A. FULLER (1984): “Testing for Unit Roots in Seasonal Time Series,” *Journal of the American Statistical Association*, 79, 355–367.
- DIEBOLD, F. X., S. HUSTED, AND M. RUSH (1991): “Real Exchange Rates Under the Gold Standard,” *Journal of Political Economy*, 99, 1252–1271.
- DIEBOLD, F. X., AND A. INOUE (2001): “Long Memory and Regime Switching,” *Journal of Econometrics*, 105, 131–159.
- DOLADO, J. J., J. GONZALO, AND L. MAYORAL (2002): “A Fractional Dickey-Fuller Test for Unit Roots,” *Econometrica*, 70, 1963–2006.
- (2005): “What is What?: A Simple Test of Long Memory vs Structural Breaks in the Time Domain,” Working Paper, Universitat Pompeu Fabra.
- DOLADO, J. J., T. JENKINSON, AND S. SOSVILLA-RIVERO (1990): “Cointegration and Unit Roots,” *Journal of Economic Surveys*, 4, 249–273.
- DOORNIK, J. A., AND M. OOMS (1999): “A Package for Estimating, Forecasting and Simulating ARFIMA Models: ARFIMA Package 1.0 for OX,” Discussion Paper, Nuffield College, University of Oxford.
- ENGLE, R. F., AND C. W. J. GRANGER (1987): “Cointegration and Error Correction: Representation, Estimation and Testing,” *Econometrica*, 55, 251–276.
- FRANSES, P. H., AND B. HOBIJN (1997): “Critical Values for Unit Root Tests in Seasonal Time Series,” *Journal of Applied Statistics*, 24, 25–46.
- GEWEKE, J., AND S. PORTER-HUDAK (1983): “The Estimation and Application of Long Memory Time Series Models,” *Journal of Time Series Analysis*, 4, 221–238.

- GHYSELS, E., AND D. R. OSBORN (2001): *The Econometric Analysis of Seasonal Time Series*. Cambridge University Press, Cambridge.
- GIL-ALANA, L. A. (2004): “A Joint Test of Fractional Integration and Structural Breaks at a Known Period of Time,” *Journal of Time Series Analysis*, 25, 691–700.
- GRANGER, C. W. J. (1980): “Long Memory Relationships and the Aggregation of Dynamic Models,” *Journal of Econometrics*, 14, 227–238.
- HAMILTON, J. D. (2001): “A Parametric Approach to Flexible Nonlinear Inference,” *Econometrica*, 69, 537–573.
- (2005): “Comment on ‘Investigating Nonlinearity’,” *Studies in Nonlinear Dynamics and Econometrics*, 9, Article 3.
- HANSEN, B. E. (1996): “Inference When a Nuisance Parameter is Not Identified Under the Null Hypothesis,” *Econometrica*, 64, 413–430.
- (1999): “The Grid Bootstrap and the Autoregressive Model,” *Review of Economics and Statistics*, 81, 594–607.
- HARRISON, M. J., AND D. BOND (1992): “Testing and Estimation in Unstable Dynamic Models: A Case Study,” *The Economic and Social Review*, 24, 25–49.
- HAUG, A. A., AND S. A. BASHER (2003): “Unit Roots, Nonlinear Cointegration and Purchasing Power Parity,” University of York, Working Paper 2003\_1.
- HERAVI, S., AND K. PATTERSON (2005): “Optimal and Adaptive Semi-Parametric Narrowband and Broadband and Maximum Likelihood Estimation of the Long-Memory Parameter for Real Exchange Rates,” *The Manchester School*, 73, 165–213.
- HONG, S. H., AND P. C. B. PHILLIPS (2005): “Testing Linearity in Cointegrating Relations with an Application to Purchasing Power Parity,” Cowles Foundation, Yale University, Discussion Papers, No. 1541.
- HONOHAN, P., AND A. LEDDIN (2006): “Ireland in EMU: More Shocks, Less Insulation?,” *The Economic and Social Review*, 37, 263–294.
- HSU, C. C. (2001): “Change Point Estimation in Regressions with  $I(d)$  Variables,” *Economics Letters*, 70, 147–155.
- HYLLEBERG, S., R. F. ENGLE, C. W. J. GRANGER, AND B. S. YOO (1990): “Seasonal Integration and Cointegration,” *Journal of Econometrics*, 44, 215–248.
- IMBS, J., H. MUMTAZ, M. RAVN, AND H. REY (2005): “PPP Strikes Back: Aggregation and the Real Exchange Rate,” *The Quarterly Journal of Economics*, 120, 1–43.
- JOHANSEN, S. (1988): “Statistical Analysis of Cointegration Vectors,” *Journal of Economic Dynamics and Control*, 12, 231–254.
- (2002): “A Small Sample Correction for the Test of Cointegrating Rank in the Vector Autoregressive Model,” *Econometrica*, 70, 1929–1961.

- JOHANSEN, S., AND K. JUSELIOUS (1992): "Testing Structural Hypotheses in a Multivariate Cointegration Analysis of the PPP and the UIP for UK," *Journal of Econometrics*, 53, 211–244.
- KENNY, G., AND D. MCGETTIGAN (1999): "Modelling Traded, Non-traded and Aggregate Inflation in a Small Open Economy: The Case of Ireland," *The Manchester School*, 67, 60–88.
- KILIAN, L., AND M. P. TAYLOR (2003): "Why is it So Difficult to Beat the Random Walk Forecast of Exchange Rates," *Journal of International Economics*, 60, 85–107.
- KRÄMMER, W., AND P. SIBBERTSEN (2002): "Testing for Structural Changes in the Presence of Long Memory," *International Journal of Business and Economics*, 1, 235–242.
- KWIATKOWSKI, D., P. C. B. PHILLIPS, P. SCHMIDT, AND Y. SHIN (1992): "Testing the Null Hypothesis of Stationarity Against the Alternative of a Unit Root," *Journal of Econometrics*, 54, 159–178.
- LAHTINEN, M. (2006): "The Purchasing Power Parity Puzzle: A Sudden Nonlinear Perspective," *Applied Financial Economics*, 16, 119–125.
- LANE, P. R., AND G. M. MILESI-FERRETTI (2002): "Long-run Determinants of the Irish Real Exchange Rate," *Applied Economics*, 34, 549–553.
- LEE, Y. S., T.-H. KIM, AND P. NEWBOLD (2005): "Spurious Nonlinear Regression in Econometrics," *Economics Letters*, 87, 301–306.
- LÜTKEPOHL, H., AND M. KRÄTZIG (eds.) (2004): *Applied Time Series Econometrics*. Cambridge University Press, Cambridge.
- MACDONALD, R., AND M. P. TAYLOR (1992): "Exchange Rate Economics: A Survey," *International Monetary Fund Staff Papers*, 39, 1–57.
- MACKINNON, J. G. (1996): "Numerical Distribution Functions for Unit Root and Cointegration Tests," *Journal of Applied Econometrics*, 11, 601–618.
- MAYORAL, L. (2005): "Is the Observed Persistence Spurious or Real? A Test for Fractional Integration vs Short Memory and Structural Breaks," Working Paper, Universitat Pompeu Fabra.
- NG, S., AND P. PERRON (2001): "Lag Length Selection and the Construction of Unit Root Tests with Good Size and Power," *Econometrica*, 69, 1519–1554.
- OBSTFELD, M., AND A. M. TAYLOR (1997): "Nonlinear Aspects of Goods-market Arbitrage and Adjustment: Heckscher's Commodity Point Revisited," *Journal of Japanese and International Economics*, 11, 441–479.
- OSBORN, D. R., A. P. L. CHUI, J. P. SMITH, AND C. R. BIRCHENHALL (1988): "Seasonality and the Order of Integration for Consumption," *Oxford Bulletin of Economics and Statistics*, 50, 361–377.

- OSTERWALD-LENUM, M. (1992): “A Note with Quantiles of the Asymptotic Distribution of the Maximum Likelihood Cointegration Rank Test Statistics,” *Oxford Bulletin of Economics and Statistics*, 54, 461–472.
- PAPELL, D. H. (2006): “The Panel Purchasing Power Parity Puzzle,” *Journal of Money, Credit and Banking*, 38, 447–467.
- PERRON, P. (1989): “The Great Crash, the Oil Price Shock and the Unit Root Hypothesis,” *Econometrica*, 57, 1361–1401.
- PERRON, P., AND S. NG (1996): “Useful Modifications to Some Unit Root Tests with Dependent Errors and their Local Asymptotic Properties,” *Review of Economic Studies*, 63, 435–463.
- PERRON, P., AND Z. QU (2004): “An Analytical Evaluation of the Log-Periodogram Estimate in the Presence of Level Shifts and its Implication for Stock Market Volatility,” Working Paper, Department of Economics, Boston University.
- ROBINSON, P. M., AND M. HENRY (1998): “Long and Short Memory Conditional Heteroscedasticity in Estimating the Memory Parameter of Levels,” *Econometric Theory*, 15, 299–336.
- ROBINSON, P. M., AND F. IACONE (2005): “Cointegration in Fractional Systems with Deterministic Trends,” *Journal of Econometrics*, 127, 263–298.
- ROGOFF, K. (1996): “The Purchasing Power Parity Puzzle,” *Journal of Economic Literature*, 34, 647–668.
- SAGER, M. (2006): “Explaining the Persistence of Deviations from PPP: A Nonlinear Harrod-Balassa-Samuelsan Effect?,” *Applied Financial Economics*, 16, 41–61.
- SARNO, L. (2005): “Towards a Solution to the Puzzles in Exchange Rate Economics: Where Do We Stand?,” *Canadian Journal of Economics*, 35, 673–708.
- SARNO, L., AND M. P. TAYLOR (2001): “Official Intervention in the Foreign Exchange Market: Is it Effective and, if So, How Does it Work?,” *Journal of Economic Literature*, 39, 839–868.
- (2002): “Purchasing Power Parity and the Real Exchange Rate,” *International Monetary Fund Staff Papers*, 49, 65–105.
- SCHNATZ, B. (2006): “Is Reversion to PPP in Euro Exchange Rates Non-linear?,” European Central Bank Working Paper Series, No. 682.
- SMITH, A. A., F. SOWELL, AND S. E. ZIN (1997): “Fractional Integration with Drift: Estimation in Small Samples,” *Empirical Economics*, 22, 103–116.
- SOWELL, F. (1992): “Maximum Likelihood Estimation of Stationary Univariate Fractionally Integrated Time Series Models,” *Journal of Econometrics*, 53, 165–188.

- TAYLOR, A. M. (2001): “Potential Pitfalls for the Purchasing Power Parity Puzzle? Sampling and Specification Biases in Mean Reversion Tests of the Law of One Price,” *Econometrica*, 69, 473–498.
- (2002): “A Century of Purchasing Power Parity,” *The Review of Economics and Statistics*, 84, 139–150.
- TAYLOR, A. M., AND M. P. TAYLOR (2004): “The Purchasing Power Parity Debate,” *Journal of Economic Perspectives*, 18, 135–158.
- TAYLOR, M. P. (2004): “Is Official Exchange Rate Intervention Effective?,” *Economica*, 71, 1–12.
- (2005): “Official Foreign Exchange Intervention as a Coordinating Signal in the Dollar-Yen Market,” *Pacific Economic Review*, 10, 73–82.
- (2006): “Real Exchange Rates and Purchasing Power Parity: Mean-Reversion in Economic Thought,” *Applied Financial Economics*, 16, 1–17.
- TAYLOR, M. P., AND D. A. PEEL (2000): “Nonlinear Adjustment, Long-run Equilibrium and Exchange Rate Fundamentals,” *Journal of International Money and Finance*, 19, 33–53.
- TAYLOR, M. P., D. A. PEEL, AND L. SARNO (2001): “Nonlinear Mean-Reversion in Real Exchange Rates: Towards a Solution of the Purchasing Power Parity Puzzle,” *International Economic Review*, 42, 1015–1042.
- TERÄSVIRTA, T. (1994): “Specification, Estimation and Evaluation of Smooth Transition Autoregressive Models,” *Journal of the American Statistical Association*, 89, 208–218.
- THOM, R. (1989): “Real Exchange Rates, Cointegration and Purchasing Power Parity: Irish Experience in the EMS,” *The Economic and Social Review*, 20, 147–163.
- TSAY, W.-J., AND C.-F. CHUNG (2000): “The Spurious Regression of Fractionally Integrated Processes,” *Journal of Econometrics*, 96, 155–182.
- VILLENEUVE, J.-F., AND J. HANDA (2006): “Purchasing Power Parity as a Long-term Memory Process: Evidence From Canada,” *Applied Financial Economics*, 16, 109–117.
- WRIGHT, J. (1994): “A Cointegration Based Analysis of Irish Purchasing Power Parity Relationships using the Johansen Procedure,” *The Economic and Social Review*, 25, 261–278.

# A Appendix

## A.1 Tables

Table 1: Unit Root Tests.

VARIABLES	ADF	<i>P</i> -value	No. of Lags	KPSS <sup>a</sup>	NP <sup>a</sup>
IRELAND & GERMANY					
NOMINAL EXCHANGE RATE	-1.119	0.266	7	Yes	No
IRISH PRICE LEVEL	-2.155	0.034	4	Yes	No
GERMAN PRICE LEVEL	-1.933	0.056	2	Yes	No
IRISH INTEREST RATE	-1.085	0.250 <sup>b</sup>	2	Yes <sup>c</sup>	No <sup>c</sup>
GERMAN INTEREST RATE	-0.936	0.309 <sup>b</sup>	1	Yes	No
REAL EXCHANGE RATE	-3.543	0.000	2	Yes	No
IRELAND & UNITED KINGDOM					
NOMINAL EXCHANGE RATE	-1.221	0.203 <sup>b</sup>	0	No	No
IRISH PRICE LEVEL	-2.155	0.034	4	Yes	No
UK PRICE LEVEL	-1.722	0.088	8	Yes	No
IRISH INTEREST RATE	-1.085	0.250 <sup>b</sup>	2	Yes <sup>c</sup>	No <sup>c</sup>
UK INTEREST RATE	-0.645	0.436 <sup>b</sup>	10	No	No
REAL EXCHANGE RATE	-1.103	0.240 <sup>b</sup>	2	No	No

<sup>a</sup> Yes - significant at 5 per cent level. No - not significant at 5 per cent level.

<sup>b</sup> Trend and constant not included. MacKinnon (1996) *p*-values used.

<sup>c</sup> Not significant at 1 per cent level.

Table 2: Seasonal Unit Root Tests, IRELAND.

VARIABLE	TEST STATISTICS					LAG LENGTH
	$t_{\pi_1}$	$t_{\pi_2}$	$F_{34}$	$F_{234}$	$F_{1234}$	
HEGY test without deterministic terms						
NOMINAL <i>DM</i> EXCHANGE RATE	-3.387 [-1.91]	-5.912 [-1.93]	76.246 [3.11]	146.904 [2.78]	187.824 [2.55]	0
NOMINAL <i>Sterling</i> EXCHANGE RATE	-1.135 [-1.91]	-7.138 [-1.93]	38.512 [3.11]	100.853 [2.78]	75.700 [2.55]	0
PRICE LEVEL	0.007 [-1.91]	-2.734 [-1.93]	6.017 [3.11]	7.025 [2.78]	5.273 [2.55]	5
INTEREST RATE	-1.116 [-1.91]	-7.391 [-1.93]	26.652 [3.11]	83.998 [2.78]	63.790 [2.55]	0
REAL <i>DM</i> EXCHANGE RATE	-0.632 [-1.91]	-5.823 [-1.93]	61.641 [3.11]	114.378 [2.78]	85.838 [2.55]	0
REAL <i>Sterling</i> EXCHANGE RATE	-1.545 [-1.91]	-7.067 [-1.93]	39.566 [3.11]	97.315 [2.78]	73.946 [2.55]	0
HEGY test with intercept and time trend						
NOMINAL <i>DM</i> EXCHANGE RATE	-3.601 [-3.40]	-5.662 [-1.93]	78.263 [3.05]	139.566 [2.74]	122.428 [4.19]	0
NOMINAL <i>Sterling</i> EXCHANGE RATE	-2.182 [-3.40]	-7.145 [-1.93]	38.661 [3.05]	100.673 [2.74]	76.893 [4.19]	0
PRICE LEVEL	-2.681 [-3.40]	-8.505 [-1.93]	35.030 [3.05]	286.926 [2.74]	300.699 [4.19]	0
INTEREST RATE	-3.128 [-3.40]	-7.580 [-1.93]	27.510 [3.05]	87.094 [2.74]	68.634 [4.19]	0
REAL <i>DM</i> EXCHANGE RATE	-2.178 [-3.40]	-4.993 [-1.93]	35.180 [3.05]	32.624 [2.74]	28.359 [4.19]	1
REAL <i>Sterling</i> EXCHANGE RATE	-2.978 [-3.40]	-7.159 [-1.93]	41.123 [3.05]	98.565 [2.74]	76.005 [4.19]	0
HEGY test with intercept and seasonal dummy variables						
NOMINAL <i>DM</i> EXCHANGE RATE	-3.664 [-2.84]	-6.191 [-2.83]	68.397 [6.57]	140.843 [5.95]	163.697 [5.56]	0
NOMINAL <i>Sterling</i> EXCHANGE RATE	-2.230 [-2.84]	-6.970 [-2.83]	40.925 [6.57]	104.682 [5.95]	80.297 [5.56]	0
PRICE LEVEL	-4.024 [-2.84]	-4.189 [-2.83]	7.296 [6.57]	11.596 [5.95]	12.768 [5.56]	9
INTEREST RATE	-1.637 [-2.84]	-7.158 [-2.83]	28.355 [6.57]	85.939 [5.95]	64.681 [5.56]	0
REAL <i>DM</i> EXCHANGE RATE	-2.019 [-2.84]	-6.152 [-2.83]	60.124 [6.57]	122.759 [5.95]	93.294 [5.56]	0
REAL <i>Sterling</i> EXCHANGE RATE	-1.376 [-2.84]	-6.480 [-2.83]	29.642 [6.57]	32.948 [5.95]	26.475 [5.56]	1
HEGY test with intercept, time trend and seasonal dummy variables						
NOMINAL <i>DM</i> EXCHANGE RATE	-3.455 [-3.39]	-6.117 [-2.82]	71.072 [6.55]	144.389 [5.93]	126.485 [6.31]	0
NOMINAL <i>Sterling</i> EXCHANGE RATE	-2.187 [-3.39]	-6.939 [-2.82]	40.556 [6.55]	103.587 [5.93]	79.099 [6.31]	0
PRICE LEVEL	-3.014 [-3.39]	-4.159 [-2.82]	7.165 [6.55]	11.394 [5.93]	11.136 [6.31]	9
INTEREST RATE	-3.140 [-3.39]	-7.280 [-2.82]	29.053 [6.55]	88.190 [5.93]	69.457 [6.31]	0
REAL <i>DM</i> EXCHANGE RATE	-2.107 [-3.39]	-6.138 [-2.82]	58.803 [6.55]	120.107 [5.93]	91.671 [6.31]	0
REAL <i>Sterling</i> EXCHANGE RATE	-2.995 [-3.39]	-6.986 [-2.82]	42.709 [6.55]	100.207 [5.93]	77.247 [6.31]	0

Note: 5 per cent critical values in square brackets (Franses and Hobijn, 1997).



Table 3: Seasonal Unit Root Tests, GERMANY &amp; UK.

VARIABLE	TEST STATISTICS					LAG LENGTH
	$t_{\pi_1}$	$t_{\pi_2}$	$F_{34}$	$F_{234}$	$F_{1234}$	
HEGY test without deterministic terms						
GERMAN PRICE LEVEL	1.914 [-1.91]	-9.041 [-1.93]	28.933 [3.11]	658.690 [2.78]	854.313 [2.55]	0
UK PRICE LEVEL	0.052 [-1.91]	-2.578 [-1.93]	2.063 [3.11]	3.856 [2.78]	2.892 [2.55]	11
GERMAN INTEREST RATE	-0.965 [-1.91]	-6.215 [-1.93]	58.522 [3.11]	336.624 [2.78]	253.665 [2.55]	0
UK INTEREST RATE	-0.645 [-1.91]	-2.916 [-1.93]	15.890 [3.11]	16.685 [2.78]	12.699 [2.55]	7
HEGY test with intercept and time trend						
GERMAN PRICE LEVEL	-2.245 [-3.40]	-8.781 [-1.93]	28.696 [3.05]	503.000 [2.74]	389.947 [4.19]	0
UK PRICE LEVEL	-2.733 [-3.40]	-2.641 [-1.93]	1.956 [3.05]	3.902 [2.74]	4.998 [4.19]	11
GERMAN INTEREST RATE	-2.572 [-3.40]	-6.341 [-1.93]	57.309 [3.05]	341.586 [2.74]	259.467 [4.19]	0
UK INTEREST RATE	-3.096 [-3.40]	-3.454 [-1.93]	25.908 [3.05]	26.385 [2.74]	23.100 [4.19]	3
HEGY test with intercept and seasonal dummy variables						
GERMAN PRICE LEVEL	-2.698 [-2.84]	-7.826 [-2.83]	33.473 [6.57]	535.983 [5.95]	550.008 [5.56]	0
UK PRICE LEVEL	-3.786 [-2.84]	-3.053 [-2.83]	26.872 [6.57]	25.902 [5.95]	30.411 [5.56]	3
GERMAN INTEREST RATE	-2.071 [-2.84]	-6.408 [-2.83]	53.398 [6.57]	352.151 [5.95]	264.977 [5.56]	0
UK INTEREST RATE	-1.769 [-2.84]	-3.453 [-2.83]	27.257 [6.57]	27.694 [5.95]	21.619 [5.56]	3
HEGY test with intercept, time trend and seasonal dummy variables						
GERMAN PRICE LEVEL	-2.117 [-3.39]	-7.884 [-2.82]	32.493 [6.55]	537.680 [5.93]	416.800 [6.31]	0
UK PRICE LEVEL	-2.849 [-3.39]	-3.036 [-2.82]	26.622 [6.55]	25.654 [5.93]	24.598 [6.31]	3
GERMAN INTEREST RATE	-2.560 [-3.39]	-6.437 [-2.82]	52.446 [6.55]	348.839 [5.93]	264.975 [6.31]	0
UK INTEREST RATE	-3.108 [-3.39]	-3.393 [-2.82]	27.830 [6.55]	27.972 [5.93]	24.318 [6.31]	3

Note: 5 per cent critical values in square brackets (Franses and Hobijn, 1997).

Table 4: Fractional Integration Analysis.

VARIABLES	EML	NLS	GPH	GSP
	FADF			
COMMON SERIES				
IRISH PRICE LEVEL	1.46 (0.04)	1.50 (0.07)	1.01 (0.11)	0.89 (0.07)
	-	-	-	4.5
IRISH INTEREST RATE	0.79 (0.10)	0.78 (0.10)	0.97 (0.10)	0.80 (0.06)
	-3.22	-3.21	-3.35	-3.23
IRELAND & GERMANY				
NOMINAL EXCHANGE RATE	1.49 (0.14)	1.89 (0.10)	0.94 (0.11)	0.82 (0.07)
	-	-	-5.48	-5.51
GERMAN PRICE LEVEL	1.46 (0.05)	1.57 (0.09)	1.02 (0.11)	0.92 (0.07)
	-	-	-	2.89
GERMAN INTEREST RATE	0.69 (0.24)	0.65 <sup>a</sup> (0.23)	1.12 (0.11)	1.03 (0.07)
	-1.49	-1.48	-	-
REAL EXCHANGE RATE	1.41 (0.08)	1.48 (0.08)	0.98 (0.11)	0.85 (0.07)
	-	-	-5.05	-5.12
IRELAND & UNITED KINGDOM				
NOMINAL EXCHANGE RATE	0.95 (0.09)	0.95 (0.09)	0.88 (0.11)	0.91 (0.07)
	-1.60	-1.60	-1.608	-1.60
UK PRICE LEVEL	1.48 (0.02)	1.55 (0.06)	0.99 (0.11)	0.87 (0.07)
	-	-	5.03	4.69
UK INTEREST RATE	1.07 (0.09)	1.08 (0.10)	1.00 (0.11)	0.94 (0.07)
	-	-	-	-2.53
REAL EXCHANGE RATE	1.07 (0.09)	1.08 (0.09)	1.15 (0.11)	0.97 (0.07)
	-	-	-	-1.09

<sup>a</sup> Trend and constant not included. McKinnon (1996) *p*-values used.

- Indicates FADF test not applicable.

Note: standard errors in parentheses.

Table 5:  $I(1)/I(0)$  Levels Regression Analysis.

VARIABLES	IRELAND & GERMANY		IRELAND & UNITED KINGDOM	
CONSTANT	2.854 (0.549)	1.804 (0.575)	0.859 (0.108)	0.833 (0.108)
PRICE LEVELS				
IRISH	-0.568 (0.083)	-0.672 (0.081)	-0.875 (0.111)	-1.029 (0.123)
FOREIGN	0.007 (0.200)	0.329 (0.203)	0.670 (0.095)	0.825 (0.110)
INTEREST RATES				
IRISH		0.005 (0.002)		0.007 (0.003)
FOREIGN		0.002 (0.003)		-0.003 (0.003)
AEG	-2.475 [-3.817]	-2.835 [-4.540]	-2.653 [-3.817]	-2.728 [-4.540]
CRDW test	0.186 [0.48]	0.245 [0.68]	0.239 [0.48]	0.250 [0.68]
NG-PERRON <sup>a</sup>	No	No	No	No
KPSS <sup>a</sup>	No	Yes <sup>b</sup>	Yes <sup>b</sup>	Yes <sup>b</sup>

<sup>a</sup> Yes - significant at 5 per cent level. No - not significant at 5 per cent level.

<sup>b</sup> Significant at 5 per cent level but not the 1 per cent level.

Note: standard errors in round brackets; 5 per cent AEG and CRDW critical values in square brackets.

Table 6: Error Correction Analysis.

VARIABLES	IRELAND & GERMANY		IRELAND & UNITED KINGDOM	
CONSTANT	-0.004 (-0.003)	-0.004 (-0.003)	0.004 (0.005)	0.001 (0.004)
$\Delta$ PRICE LEVELS				
IRISH	-0.686 (0.157)	-0.667 (0.164)	-1.105 (0.282)	-1.020 (0.284)
FOREIGN	1.021 (0.428)	0.927 (0.502)	0.831 (0.361)	0.715 (0.357)
$\Delta$ INTEREST RATES				
IRISH		0.0004 (0.001)		0.005 (0.001)
FOREIGN		0.001 (0.004)		0.00006 (0.003)
ECM	-0.108 (0.039)	-0.107 (0.040)	-0.133 (0.049)	-0.124 (0.052)
ECM test critical values	-3.244 [0.134]	-3.787 [0.326]	-3.244 [0.148]	-3.787 [0.444]

Note: standard errors in round brackets;  $p$ -values in square brackets.

Table 7: Johansen's Cointegration Tests Summary.

TEST TYPE	no inpts no trends	rest'd inpts no trends	unrest'd inpts no trends	unrest'd inpts rest'd trends	unrest'd inpts unrest'd trends
IRELAND & GERMANY excluding interest rates					
Trace	1	1	1	0	0
Max-Eig	1	1	1	0	0
IRELAND & GERMANY including interest rates					
Trace	2	2	2	1	1
Max-Eig	2	2	1	1	1
IRELAND & UNITED KINGDOM excluding interest rates					
Trace	1	1	1	1	1
Max-Eig	1	1	1	1	0
IRELAND & UNITED KINGDOM including interest rates					
Trace	2	2	2	2	3
Max-Eig	0	1	1	2	1

Note: 0.05 per cent critical values based on Osterwald-Lenum (1992).

Table 8: Johansen Results for IRELAND & GERMANY.

HYPOTHESES	TEST STATISTIC	0.05 CRITICAL VALUE	0.10 CRITICAL VALUE	MODIFIED 0.05 CRITICAL VALUE
Johansen Results for IRELAND & GERMANY excluding Interest Rates				
Cointegration Rank Test (Trace) <sup>a</sup>				
$r = 0$	$r \geq 1$	39.203	34.870	31.930
$r \leq 1$	$r \geq 2$	13.347	20.180	17.880
$r \leq 2$	$r = 3$	5.903	9.160	7.530
				45.68 <sup>c</sup>
				-
				-
Cointegration Rank Test (Maximum Eigenvalue) <sup>a</sup>				
$r = 0$	$r = 1$	25.856	22.040	19.860
$r \leq 1$	$r = 2$	7.444	15.870	13.810
$r \leq 2$	$r = 3$	5.903	9.160	7.530
Johansen Results for IRELAND & GERMANY including Interest Rates				
Cointegration Rank Test (Trace) <sup>b</sup>				
$r = 0$	$r \geq 1$	111.587	87.170	82.880
$r \leq 1$	$r \geq 2$	57.298	63.000	59.160
$r \leq 2$	$r \geq 3$	31.448	42.340	39.340
$r \leq 3$	$r \geq 4$	15.809	25.770	23.080
$r \leq 4$	$r = 5$	6.057	12.390	10.550
				98.328 <sup>d</sup>
				-
				-
				-
				-
Cointegration Rank Test (Maximum Eigenvalue) <sup>b</sup>				
$r = 0$	$r = 1$	54.290	37.860	35.040
$r \leq 1$	$r = 2$	25.850	31.790	29.130
$r \leq 2$	$r = 3$	15.639	25.420	23.100
$r \leq 3$	$r = 4$	9.751	19.220	17.180
$r \leq 4$	$r = 5$	6.057	12.390	10.550

<sup>a</sup> Cointegration with restricted intercepts and no trends in the VAR.

<sup>b</sup> Cointegration with unrestricted intercepts and restricted trends in the VAR.

<sup>c</sup> The correction factor is 1.310.

<sup>d</sup> The correction factor is 1.128.

Table 9: Johansen Results for IRELAND & UK.

HYPOTHESES	TEST STATISTIC	0.05 CRITICAL VALUE	0.10 CRITICAL VALUE	MODIFIED 0.05 CRITICAL VALUE
Johansen Results for IRELAND & UK excluding Interest Rates				
Cointegration Rank Test (Trace) <sup>a</sup>				
$r = 0$	$r \geq 1$	57.532	42.340	39.340
$r \leq 1$	$r \geq 2$	21.695	25.770	23.080
$r \leq 2$	$r = 3$	4.788	12.390	10.550
Cointegration Rank Test (Maximum Eigenvalue) <sup>a</sup>				
$r = 0$	$r = 1$	35.838	25.420	23.100
$r \leq 1$	$r = 2$	16.907	19.220	17.180
$r \leq 2$	$r = 3$	4.788	12.390	10.550
Johansen Results for IRELAND & UK including Interest Rates				
Cointegration Rank Test (Trace) <sup>a</sup>				
$r = 0$	$r \geq 1$	127.997	87.170	82.880
$r \leq 1$	$r \geq 2$	77.194	63.000	59.160
$r \leq 2$	$r \geq 3$	41.665	42.340	39.340
$r \leq 3$	$r \geq 4$	21.103	25.770	23.080
$r \leq 4$	$r = 5$	4.707	12.390	10.550
Cointegration Rank Test (Maximum Eigenvalue) <sup>a</sup>				
$r = 0$	$r = 1$	50.803	37.860	35.040
$r \leq 1$	$r = 2$	35.530	31.790	29.130
$r \leq 2$	$r = 3$	20.562	25.420	23.100
$r \leq 3$	$r = 4$	16.395	19.220	17.180
$r \leq 4$	$r = 5$	4.707	12.390	10.550

<sup>a</sup> Cointegration with unrestricted intercepts and restricted trends in the VAR.

<sup>b</sup> The correction factor is 1.654.

<sup>c</sup> The correction factor is 0.980.

Table 10: Nonlinearity Tests - Causal Models.

TEST	TEST STATISTIC	P-VALUE	BOOTSTRAP p-VALUE	TEST STATISTIC	P-VALUE	BOOTSTRAP p-VALUE
IRELAND & GERMANY			IRELAND & UNITED KINGDOM			
RESET						
excluding interest rates						
$F$	35.04	0.000		0.948	0.431	
LR	77.646	0.000		3.969	0.414	
including interest rates						
$F$	24.474	0.000		0.882	0.477	
LR	60.085	0.000		3.765	0.439	
RANDOM FIELD						
excluding interest rates						
$\lambda_H^E(\mathbf{g})$	575.388	0.000	0.001	648.928	0.000	0.001
$\lambda_{OP}^A$	324.321	0.000	0.001	151.160	0.000	0.001
$\lambda_{OP}^E(\mathbf{g})$	233.907	0.000	0.001	233.152	0.000	0.001
$g_{OP}$	11.380	0.044	0.001	104.661	0.000	0.001
including interest rates						
$\lambda_H^E(\mathbf{g})$	179.66	0.000	0.001	205.475	0.000	0.001
$\lambda_{OP}^A$	224.382	0.000	0.001	545.731	0.000	0.001
$\lambda_{OP}^E(\mathbf{g})$	180.758	0.000	0.001	161.323	0.000	0.001
$g_{OP}$	156.695	0.000	0.001	211.304	0.000	0.001

Table 11: Nonlinearity Tests - Real Exchange Rates.

TEST	TEST STATISTIC	P-VALUE	BOOTSTRAP p-VALUE	TEST STATISTIC	P-VALUE	BOOTSTRAP p-VALUE	
		IRELAND & GERMANY			IRELAND & UNITED KINGDOM		
RESET							
$F$	8.136	0.000		1.043	0.376		
LR	23.606	0.000		3.969	0.349		
STAR							
lag length 1							
$F$		0.236			0.576		
$F_4$		0.379			0.952		
$F_3$		0.121			0.169		
$F_2$		0.303			0.764		
lag length 3							
$F$		0.010			0.207		
$F_4$		0.054			0.108		
$F_3$		0.010			0.236		
$F_2$		0.039			0.591		
RANDOM FIELD							
$\lambda_H^E(g)$	2.410	0.121	0.058	0.187	0.665	0.653	
$\lambda_{OP}^A$	4.481	0.923	0.369	6.721	0.751	0.394	
$\lambda_{OP}^E(g)$	0.035	0.852	0.922	1.056	0.304	0.562	
$g_{OP}$	4.551	0.871	0.367	2.847	0.970	0.458	



Table 12: Random Field Analysis - IRELAND, GERMANY &amp; UK.

	IRELAND & GERMANY		IRELAND & UNITED KINGDOM	
	ESTIMATES			
LINEAR				
$c$	0.332 (1.488)	0.769 (1.121)	1.176 (0.751)	0.907 (0.213)
$p_t$	-0.896 (0.191)	-0.836 (0.152)	-1.439 (0.308)	-1.093 (0.239)
$p_t^*$	0.892 (0.502)	0.724 (0.390)	1.164 (0.320)	0.882 (0.218)
$i_t$		-0.0004 (0.002)		0.009 (0.004)
$i_t^*$		0.007 (0.005)		-0.009 (0.004)
NONLINEAR				
$\sigma$	0.019 (0.002)	0.010 (0.004)	0.021 (0.003)	0.009 (0.004)
$\zeta$	3.987 (0.817)	5.859 (2.551)	9.572 (2.109)	8.148 (4.368)
$p_t$	4.265 (0.375)	4.609 (1.103)	0.480 (0.116)	2.777 (1.214)
$p_t^*$	11.068 (0.733)	16.971 (3.021)	-1.864 (0.044)	10.454 (1.846)
$i_t$		-0.032 (0.023)		0.118 (0.039)
$i_t^*$		-0.146 (0.052)		-2.26E-7 (0.040)

Note: standard errors in parentheses.

Table 13: Multiple Structural Changes Model Estimation: IRELAND-GERMANY.

		ESTIMATE	STANDARD ERROR	P-VALUE
$\hat{\delta}_1$	$p_t$	-1.034	0.059	0.000
	$p_t^*$	1.077	0.051	0.000
$\hat{\delta}_2$	$p_t$	-0.725	0.043	0.000
	$p_t^*$	0.813	0.042	0.000
$\hat{\delta}_3$	$p_t$	-0.787	0.386	0.045
	$p_t^*$	0.849	0.385	0.030
$\hat{\delta}_4$	$p_t$	-1.961	0.311	0.000
	$p_t^*$	1.999	0.312	0.000
$\hat{\delta}_5$	$p_t$	-0.843	0.499	0.094
	$p_t^*$	0.894	0.499	0.077
	$i_t$	-0.003	0.002	0.070
	$i_t^*$	0.008	0.002	0.000
	$R^2$	0.985		
	$\bar{R}^2$	0.983		
	$F(12, 85)$	468.237		0.000
	DW	0.854		
Confidence Intervals <sup>a</sup>				
$\hat{T}_1$		1978 Q2	1978 Q1–1981 Q2	
$\hat{T}_2$		1986 Q2	1986 Q1–1986 Q3	
$\hat{T}_3$		1990 Q3	1990 Q2–1990 Q4	
$\hat{T}_4$		1995 Q3	1994 Q2–1996 Q2	
Break Tests				
	$\sup F_T(1)$	$\sup F_T(2)$	$\sup F_T(3)$	$\sup F_T(4)$
	90.144 [11.470]	99.056 [9.750]	160.258 [8.360]	110.216 [7.190]
	$\sup F_T(2   1)$	$\sup F_T(3   2)$	$\sup F_T(4   3)$	
	96.265 [11.470]	12.223 [12.950]	19.191 [14.030]	
	$UD \max$	$WD \max$		
	160.258 [11.700]	219.875 [12.810]		

Note: 5 per cent critical values in parenthesis.

<sup>a</sup> The 95 per cent confidence interval for break date.

Table 14: Multiple Structural Changes Model Estimation: IRELAND-UK.

		ESTIMATE	STANDARD ERROR	P-VALUE
$\hat{\delta}_1$	$p_t$	0.348	0.377	0.359
	$p_t^*$	-0.443	0.400	0.272
$\hat{\delta}_2$	$p_t$	-0.354	0.139	0.013
	$p_t^*$	0.313	0.144	0.032
$\hat{\delta}_3$	$p_t$	-0.779	0.387	0.048
	$p_t^*$	0.765	0.388	0.052
$\hat{\delta}_4$	$p_t$	-1.138	0.183	0.000
	$p_t^*$	1.090	0.184	0.000
	$i_t$	0.004	0.002	0.034
	$i_t^*$	0.007	0.003	0.019
	$R^2$	0.796		
	$\bar{R}^2$	0.775		
	$F(10, 89)$	34.648		0.000
	DW	0.760		
Confidence Intervals <sup>a</sup>				
$\hat{T}_1$		1985 Q3	1985 Q2–1987 Q3	
$\hat{T}_2$		1992 Q2	1992 Q1–1993 Q1	
$\hat{T}_3$		1996 Q4	1996 Q3–1997 Q1	
Break Tests				
	$\sup F_T(1)$	$\sup F_T(2)$	$\sup F_T(3)$	
	129.557 [11.470]	90.580 [9.750]	119.234 [8.360]	
	$\sup F_T(2   1)$	$\sup F_T(3   2)$		
	6.833 [11.470]	22.276 [12.950]		
	$UD \max$	$WD \max$		
	147.744 [11.700]	235.691 [11.150]		

Note: 5 per cent critical values in square brackets.

<sup>a</sup> The 95 per cent confidence interval for break date.

## A.2 Figures

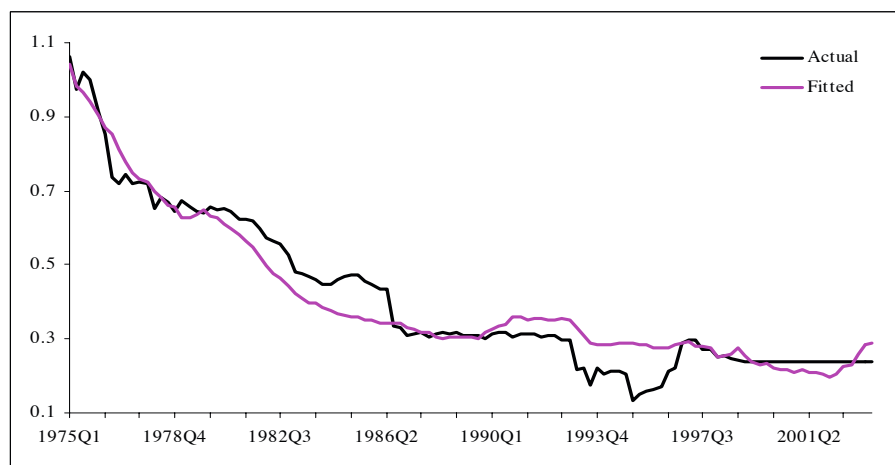


Figure 1: IRELAND/GERMANY: actual versus fitted based on random field regression.

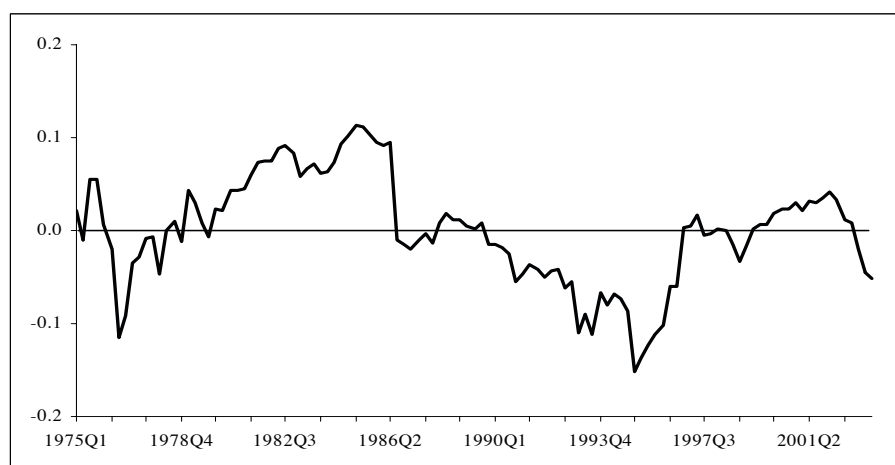


Figure 2: IRELAND/GERMANY: actual *minus* fitted.

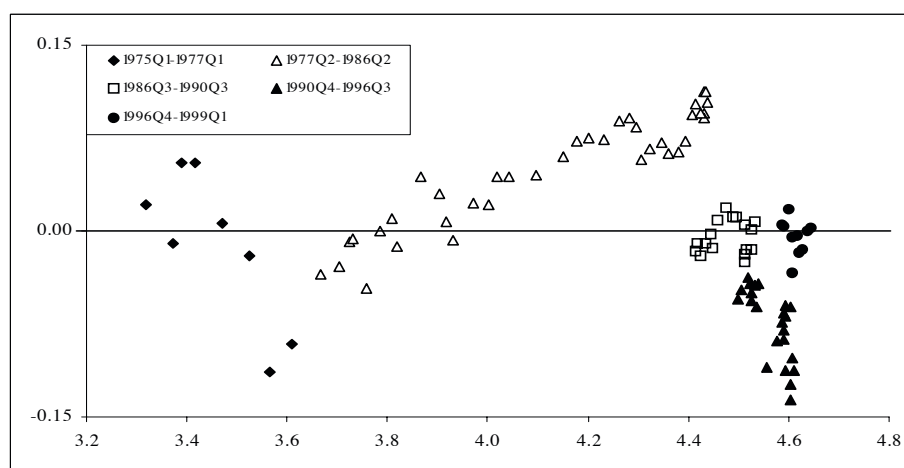


Figure 3: IRELAND prices plotted against actual *minus* fitted.

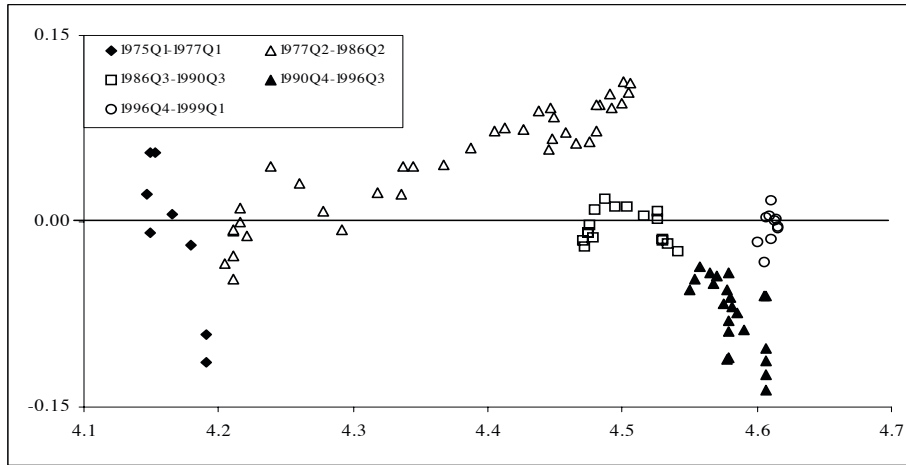


Figure 4: GERMANY prices plotted against actual *minus* fitted.

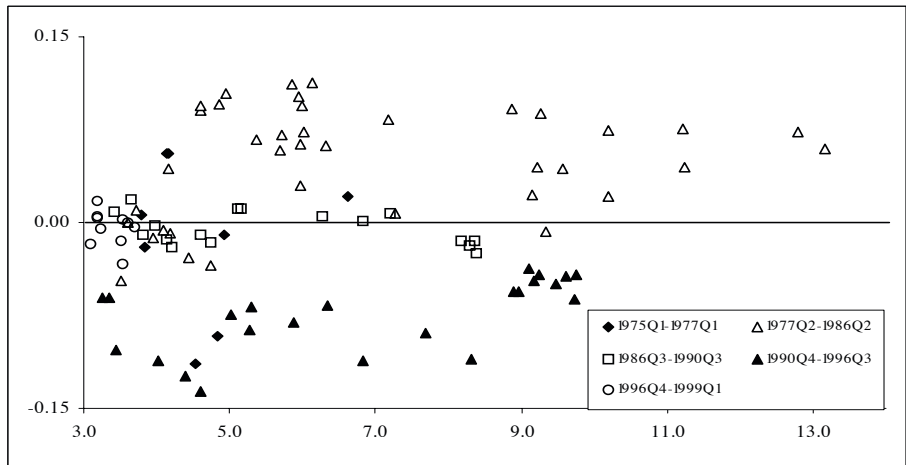


Figure 5: GERMANY interest rate plotted against actual *minus* fitted.

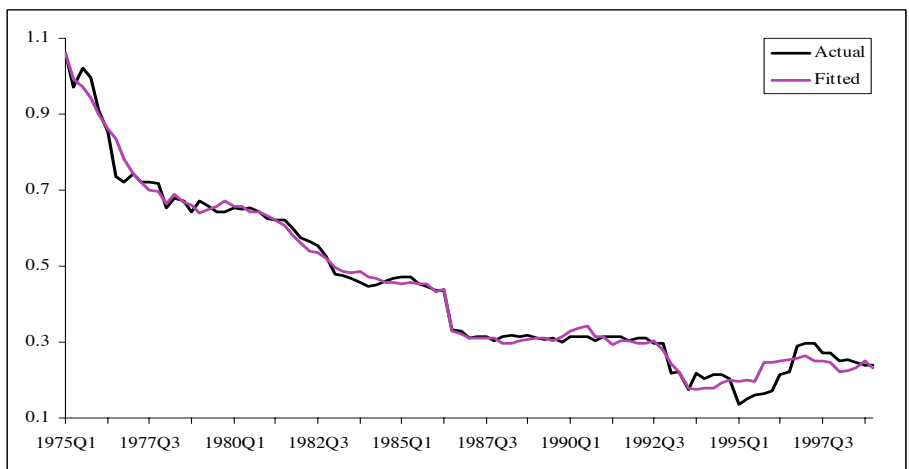


Figure 6: IRELAND/GERMANY: actual versus fitted based on structural changes model.

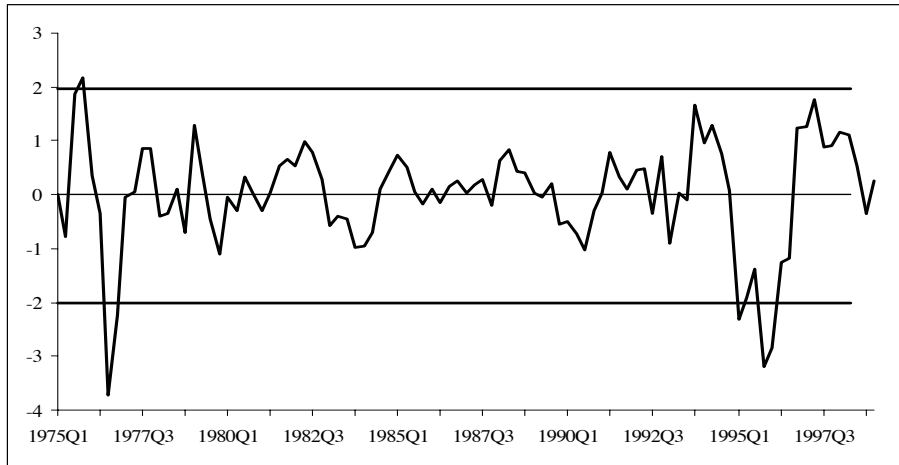


Figure 7: IRELAND/GERMANY: residuals of multiple structural changes model regression.

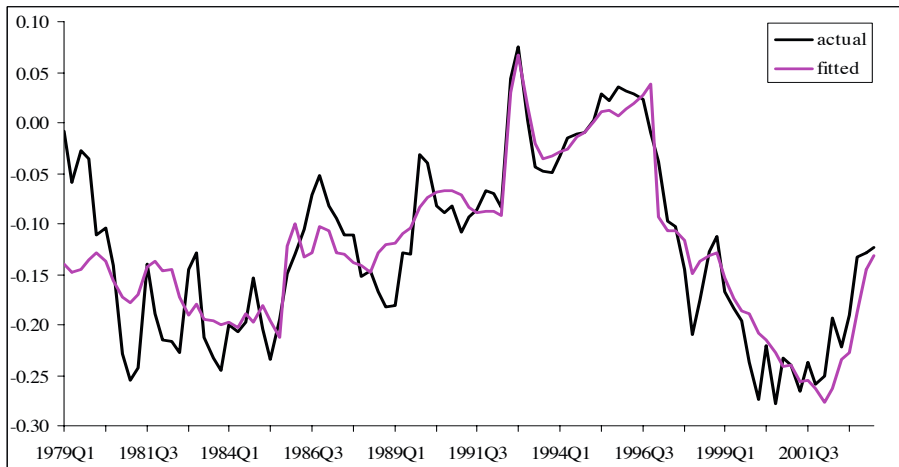


Figure 8: IRELAND/UK: actual versus fitted based on structural changes model.

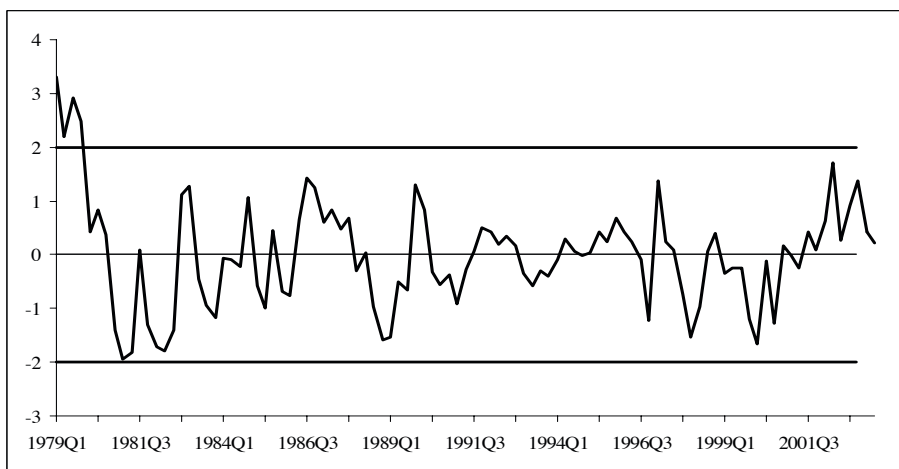


Figure 9: IRELAND/UK: residuals of multiple structural changes model regression.

## European Central Bank Working Paper Series

For a complete list of Working Papers published by the ECB, please visit the ECB's website (<http://www.ecb.europa.eu>)

- 773 “Exchange rate volatility and growth in small open economies at the EMU periphery” by G. Schnabl, July 2007.
- 774 “Shocks, structures or monetary policies? The euro area and US after 2001” by L. Christiano, R. Motto and M. Rostagno, July 2007.
- 775 “The dynamic behaviour of budget components and output” by A. Afonso and P. Claeys, July 2007.
- 776 “Insights gained from conversations with labor market decision makers” by T. F. Bewley, July 2007.
- 777 “Downward nominal wage rigidity in the OECD” by S. Holden and F. Wulfsberg, July 2007.
- 778 “Employment protection legislation and wages” by M. Leonardi and G. Pica, July 2007.
- 779 “On-the-job search and the cyclical dynamics of the labor market” by M. U. Krause and T. A. Lubik, July 2007.
- 780 “Dynamics and monetary policy in a fair wage model of the business cycle” by D. de la Croix, G. de Walque and R. Wouters, July 2007.
- 781 “Wage inequality in Spain: recent developments” by M. Izquierdo and A. Lacuesta, July 2007.
- 782 “Panel data estimates of the production function and product and labor market imperfections” by S. Dobbelaere and J. Mairesse, July 2007.
- 783 “The cyclicity of effective wages within employer-employee matches: evidence from German panel data” by S. Anger, July 2007.
- 784 “Understanding the dynamics of labor shares and inflation” by M. Lawless and K. Whelan, July 2007.
- 785 “Aggregating Phillips curves” by J. Imbs, E. Jondeau and F. Pelgrin, July 2007.
- 786 “The economic impact of merger control: what is special about banking?” by E. Carletti, P. Hartmann and S. Ongena, July 2007.
- 787 “Finance and growth: a macroeconomic assessment of the evidence from a European angle” by E. Papaioannou, July 2007.
- 788 “Evaluating the real effect of bank branching deregulation: comparing contiguous counties across U.S. state borders” by R. R. Huang, July 2007.
- 789 “Modeling the impact of external factors on the euro area’s HICP and real economy: a focus on pass-through and the trade balance” by L. Landolfo, July 2007.
- 790 “Asset prices, exchange rates and the current account” by M. Fratzscher, L. Juvenal and L. Sarno, August 2007.
- 791 “Inquiries on dynamics of transition economy convergence in a two-country model” by J. Brůha and J. Podpiera, August 2007.

- 792 “Euro area market reactions to the monetary developments press release” by J. Coffinet and S. Gouteron, August 2007.
- 793 “Structural econometric approach to bidding in the main refinancing operations of the Eurosystem” by N. Cassola, C. Ewerhart and C. Morana, August 2007.
- 794 “(Un)naturally low? Sequential Monte Carlo tracking of the US natural interest rate” by M. J. Lombardi and S. Sgherri, August 2007.
- 795 “Assessing the impact of a change in the composition of public spending: a DSGE approach” by R. Straub and I. Tchakarov, August 2007.
- 796 “The impact of exchange rate shocks on sectoral activity and prices in the euro area” by E. Hahn, August 2007.
- 797 “Joint estimation of the natural rate of interest, the natural rate of unemployment, expected inflation, and potential output” by L. Benati and G. Vitale, August 2007.
- 798 “The transmission of US cyclical developments to the rest of the world” by S. Déés and I. Vansteenkiste, August 2007.
- 799 “Monetary policy shocks in a two-sector open economy: an empirical study” by R. Llaudes, August 2007.
- 800 “Is the corporate bond market forward looking?” by J. Hilscher, August 2007.
- 801 “Uncovered interest parity at distant horizons: evidence on emerging economies & nonlinearities” by A. Mehl and L. Cappiello, August 2007.
- 802 “Investigating time-variation in the marginal predictive power of the yield spread” by L. Benati and C. Goodhart, August 2007.
- 803 “Optimal monetary policy in an estimated DSGE for the euro area” by S. Adjemian, M. Darracq Pariès and S. Moyen, August 2007.
- 804 “Growth accounting for the euro area: a structural approach” by T. Proietti and A. Musso, August 2007.
- 805 “The pricing of risk in European credit and corporate bond markets” by A. Berndt and I. Obreja, August 2007.
- 806 “State-dependency and firm-level optimization: a contribution to Calvo price staggering” by P. McAdam and A. Willman, August 2007.
- 807 “Cross-border lending contagion in multinational banks” by A. Derviz and J. Podpiera, September 2007.
- 808 “Model misspecification, the equilibrium natural interest rate and the equity premium” by O. Tristani, September 2007.
- 809 “Is the New Keynesian Phillips curve flat?” by K. Kuester, G. J. Müller and S. Stölting, September 2007.
- 810 “Inflation persistence: euro area and new EU Member States” by M. Franta, B. Saxa and K. Šmídková, September 2007.
- 811 “Instability and nonlinearity in the euro area Phillips curve” by A. Musso, L. Stracca and D. van Dijk, September 2007.
- 812 “The uncovered return parity condition” by L. Cappiello and R. A. De Santis, September 2007.



- 813 “The role of the exchange rate for adjustment in boom and bust episodes” by R. Martin, L. Schuknecht and I. Vansteenkiste, September 2007.
- 814 “Choice of currency in bond issuance and the international role of currencies” by N. Siegfried, E. Simeonova and C. Vespro, September 2007.
- 815 “Do international portfolio investors follow firms’ foreign investment decisions?” by R. A. De Santis and P. Ehling, September 2007.
- 816 “The role of credit aggregates and asset prices in the transmission mechanism: a comparison between the euro area and the US” by S. Kaufmann and M. T. Valderrama, September 2007.
- 817 “Convergence and anchoring of yield curves in the euro area” by M. Ehrmann, M. Fratzscher, R. S. Gürkaynak and E. T. Swanson, October 2007.
- 818 “Is time ripe for price level path stability?” by V. Gaspar, F. Smets and D. Vestin, October 2007.
- 819 “Proximity and linkages among coalition participants: a new voting power measure applied to the International Monetary Fund” by J. Reynaud, C. Thimann and L. Gatarek, October 2007.
- 820 “What do we really know about fiscal sustainability in the EU? A panel data diagnostic” by A. Afonso and C. Rault, October 2007.
- 821 “Social value of public information: testing the limits to transparency” by M. Ehrmann and M. Fratzscher, October 2007.
- 822 “Exchange rate pass-through to trade prices: the role of non-linearities and asymmetries” by M. Bussière, October 2007.
- 823 “Modelling Ireland’s exchange rates: from EMS to EMU” by D. Bond, M. J. Harrison and E. J. O’Brien, October 2007.

ISSN 1561-0810



9 771561 081005