

Hondroyiannis, George; Lazaretou, Sophia

Working Paper

Inflation persistence during periods of structural change: an assessment using Greek data

ECB Working Paper, No. 370

Provided in Cooperation with:

European Central Bank (ECB)

Suggested Citation: Hondroyiannis, George; Lazaretou, Sophia (2004) : Inflation persistence during periods of structural change: an assessment using Greek data, ECB Working Paper, No. 370, European Central Bank (ECB), Frankfurt a. M.

This Version is available at:

<http://hdl.handle.net/10419/152804>

Standard-Nutzungsbedingungen:

Die Dokumente auf EconStor dürfen zu eigenen wissenschaftlichen Zwecken und zum Privatgebrauch gespeichert und kopiert werden.

Sie dürfen die Dokumente nicht für öffentliche oder kommerzielle Zwecke vervielfältigen, öffentlich ausstellen, öffentlich zugänglich machen, vertreiben oder anderweitig nutzen.

Sofern die Verfasser die Dokumente unter Open-Content-Lizenzen (insbesondere CC-Lizenzen) zur Verfügung gestellt haben sollten, gelten abweichend von diesen Nutzungsbedingungen die in der dort genannten Lizenz gewährten Nutzungsrechte.

Terms of use:

Documents in EconStor may be saved and copied for your personal and scholarly purposes.

You are not to copy documents for public or commercial purposes, to exhibit the documents publicly, to make them publicly available on the internet, or to distribute or otherwise use the documents in public.

If the documents have been made available under an Open Content Licence (especially Creative Commons Licences), you may exercise further usage rights as specified in the indicated licence.



EUROPEAN CENTRAL BANK

WORKING PAPER SERIES

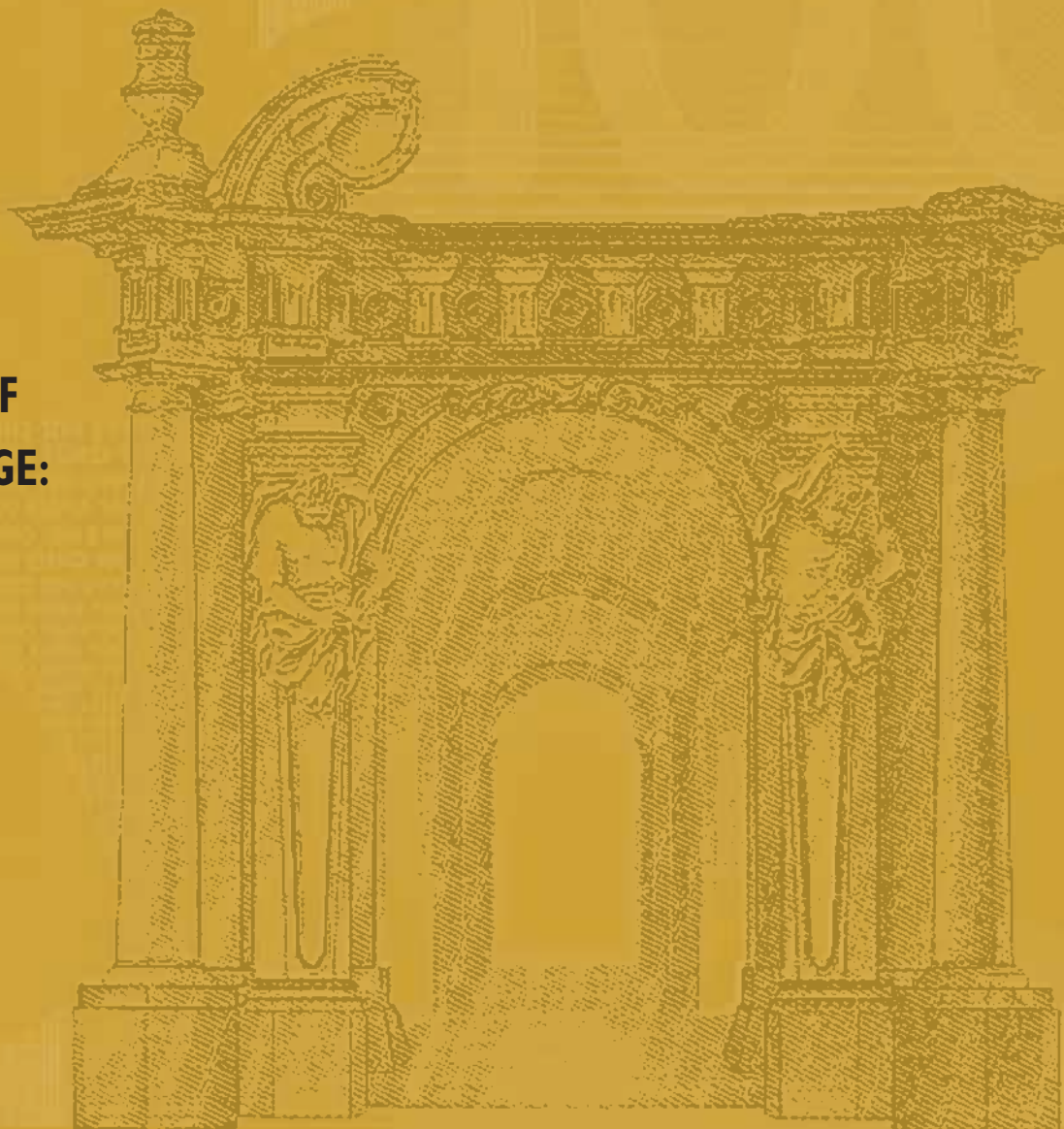
NO. 370 / JUNE 2004

**EUROSYSTEM INFLATION
PERSISTENCE NETWORK**

**INFLATION
PERSISTENCE
DURING PERIODS OF
STRUCTURAL CHANGE:**

**AN ASSESSMENT
USING GREEK DATA**

by George Hondroyiannis
and Sophia Lazaretou





EUROPEAN CENTRAL BANK



WORKING PAPER SERIES

NO. 370 / JUNE 2004

EUROSYSTEM INFLATION
PERSISTENCE NETWORK

INFLATION PERSISTENCE DURING PERIODS OF STRUCTURAL CHANGE: AN ASSESSMENT USING GREEK DATA ¹

by George Hondroyiannis ²
and Sophia Lazaretou ²

In 2004 all publications will carry a motif taken from the €100 banknote.

This paper can be downloaded without charge from <http://www.ecb.int> or from the Social Science Research Network electronic library at http://ssrn.com/abstract_id=533130.

¹ This paper was presented at the Eurosystem Inflation Persistence Network (IPN) Workshop hosted by the European Central Bank on 29-30 September and 1 October 2003. We are grateful to the IPN participants and especially to Andy Levin, Jordi Gali, Benoit Mojon and an anonymous referee for their comments and suggestions. An earlier version of this paper was benefited from the constructive comments and suggestions of Sophocles Brissimis, Heather Gibson, George Tavlas and Philip Vermeulen. We also acknowledge helpful discussions with Steven Hall, Nicos Magginas, Dafni Papadopoulou, George Simigiannis, P.A.V.B. Swamy, Tetti Tzamourani and Hercules Voriadis. We would like to thank the Department of Statistics and the Domestic Economy Division of the Bank of Greece for supplying the data. The views expressed are solely of the authors, and should not be interpreted as reflecting those of the Bank of Greece.

² Bank of Greece, Economic Research Department, 21 El. Venizelos, 102 50 Athens, Greece, Tel. (0030210) 320. 2429, Fax (0030210) 323. 3025. E-mail: ghondroyiannis@bankofgreece.gr

© European Central Bank, 2004

Address

Kaiserstrasse 29
60311 Frankfurt am Main, Germany

Postal address

Postfach 16 03 19
60066 Frankfurt am Main, Germany

Telephone

+49 69 1344 0

Internet

<http://www.ecb.int>

Fax

+49 69 1344 6000

Telex

411 144 ecb d

All rights reserved.

Reproduction for educational and non-commercial purposes is permitted provided that the source is acknowledged.

The views expressed in this paper do not necessarily reflect those of the European Central Bank.

The statement of purpose for the ECB Working Paper Series is available from the ECB website, <http://www.ecb.int>.

ISSN 1561-0810 (print)

ISSN 1725-2806 (online)

CONTENTS

Abstract	4
Non-technical summary	5
1. Introduction	8
2. Inflationary developments and changes in the monetary policy framework: narrative evidence	10
3. Definitions of inflation persistence	12
4. Univariate autoregressive estimates	13
4.1 Classical analysis	13
4.2 Rolling regressions	17
5. RC estimates	21
5.1 RC estimation method	21
5.2 RC empirical results	26
6. Delayed inflation response and monetary policy regime switches	29
7. Concluding remarks	32
Appendix	34
Annex box	35
References	37
European Central Bank working paper series	40

ABSTRACT

The paper estimates inflation persistence in Greece from 1975 to 2003, a period of high variation in inflation and changes in policy regimes. Two empirical methodologies, univariate autoregressive (AR) modelling and second-generation random coefficient (RC) modelling, are employed to estimate inflation persistence. The empirical results from all the procedures suggest that inflation persistence was high during the inflationary period and the first six years of the disinflationary period, while it started to decline after 1997, when inflationary expectations seem to have been stabilised, and thus, monetary policy was effective at reducing inflation. Empirical findings also detect a sluggish response of inflation to changes in monetary policy. This observed delay seems to have changed little over time.

Keywords: CPI inflation, persistence, structural change.

JEL Classification: E31, E37.

Non-Technical Summary

Conceptually and empirically, considerable attention has focused in recent years on the idea that the degree of inflation persistence depends on the monetary policy regime. Empirical studies, mainly dealing with the US economy and other industrial economies and applying different empirical methodologies, have found abundant evidence that post-war inflation in these countries exhibits very high persistence.

We define inflation persistence as the “speed with which inflation returns to baseline after a shock” (Willis 2003). Following the typology proposed by Batini and Nelson (2001) and Batini (2002), measures of inflation persistence refer, first, to positive serial correlation in inflation series, second, to lags between systematic monetary policy actions and their peak effect on inflation, and third, to lagged responses of inflation to policy shocks.

This paper presents a model-free assessment of the time profile of inflation persistence for the Greek economy from 1975 to 2003. Greece is a country with a high variance in inflation which has experienced a variety of policy regimes post-1975 that might have considerably affected the behaviour of inflation process both in the sense of the steady state inflation rate and its autocorrelation properties. In particular, during this period, major inflation peaks occurred, in 1979-80, 1985-86 and 1990; on each occasion, inflation rose to at least 20 per cent. By 1995, however, the annual rate of inflation had fallen for the first time during the period to single-digit levels and, by the late 1990s, had fallen even further to the lower single digits. Moreover, the post-1975 period has also been characterised by changes in the monetary policy regime. Prior to 1990, monetary policy was not effective at reducing inflation. Subsequently, the effectiveness of monetary policy increased while deregulation and expansion of the Greek financial market was set in motion and, beginning in 1995, monetary policy was successful in curbing price pressures and bringing inflation down to a level consistent with the Maastricht criterion.

Based on different definitions of persistence proposed in the empirical literature, we show purely statistical evidence of the autocorrelation properties of the inflation series as well as of the sluggish response of inflation to monetary policy changes using quarterly macro data for CPI inflation in Greece. To this end, two

empirical methodologies, univariate autoregressive (AR) modelling and second generation random coefficient (RC) modelling are employed. The advantage of RC modelling is that it estimates a time varying inflation persistence and relaxes key restrictions, such as a specific functional form, often imposed in empirical literature. The empirical results from all the procedures employed and definitions used indicate that Greek inflation is rather persistent under the period under study. Overall, the methods provide qualitatively similar results even though the RC estimation produces slightly lower estimated values for the persistence parameter.

In particular, according to the autoregressive estimates using classical analysis and the RC estimates, CPI inflation persistence was high during the inflationary period and the first six years of the disinflationary period. Only after 1997, did it start to decline. There appears to have been a sizeable shift in the mean of Greek inflation over the past twenty-five years, but only a small shift in inflation persistence. However, concerning the normative aspects of persistence, inflation persistence does not have the same notion in an inflationary period (vicious circle) as in disinflation (virtuous circle). For example, the persistence of the 1970s and the 1980s is more of the type we would associate with negative effects – a shock occurred which raised inflation and inflation only very slowly returned to its previous low level. By contrast, the persistence of the 1990s results from steadily falling inflation which can hardly have a negative connotation.

Rolling regressions were also applied as an alternative way of analysing the influence of structural breaks in the coefficients of the autoregressive process. We found that the sample mean of the inflation rate had dropped dramatically in the 1990s, while the persistence parameter started to decline only by the end of the sample.

We are also interested in identifying whether inflation responds with a delay to changes in monetary policy and whether this delay varies with monetary policy regime switches. We try to determine the length of the response of inflation, i.e. the number of periods it takes for a change in monetary policy to have its peak effect on inflation. The estimated correlations between CPI inflation and different policy stance measures detect that inflation, in the period under consideration, responded with a certain delay to changes in monetary policy. However, the lead-lag relationships seem

to have changed little over time despite several shifts in the monetary policy framework.

1. Introduction

Conceptually and empirically, considerable attention has focused in recent years on the idea that the degree of inflation persistence depends on the monetary policy regime. Empirical studies, mainly dealing with the US economy and other industrial economies and applying different empirical methodologies, have found abundant evidence that post-war inflation in these countries exhibits very high persistence. In this connection, Alogoskoufis and Smith (1991), looking at historical data for US and UK inflation, point out that the post-Bretton Woods regime of managed floating was associated with more persistent inflation. Bordo (1993) and Bordo and Schwartz (1999) find that inflation was more stable during the heyday of Bretton Woods. More recently, Benati (2002) argues that the degree of inflation persistence in the US and the UK was rather low during the gold standard, peaked in the 1970s, and fell again in the 1990s. Batini (2002), for the euro area countries, and Levin and Piger (2004), for twelve industrial countries, find little or no evidence of an upward shift in inflation persistence in post-1980 data, while there was a substantial downward shift in the average value of inflation. In general, the empirical literature suggests that inflation persistence may not be an intrinsic structural phenomenon of industrial countries, ‘...but rather varies with the stability and transparency of the monetary policy regime’ (Levin and Piger, 2004, p.6).

This paper focuses on the estimation of the time profile of inflation persistence in Greece applying different empirical methodologies.¹ Greece is a country with a high variance in inflation which has experienced a variety of policy regimes post-1975 that might have considerably affected the behaviour of inflation process both in the sense of the steady state inflation rate and its autocorrelation properties. In particular, during this period, major inflation peaks occurred, in 1979-80, 1985-86 and 1990; on each occasion, inflation rose to at least 20 per cent. By 1995, however, the annual rate of inflation had fallen for the first time during the period to single-digit levels and, by the late 1990s, had fallen even further to the lower single digits.

¹ To the best of our knowledge, this paper is the first study of inflation persistence in Greece. In an earlier paper, Lazaretou (1995) presents some historical perspective on the behaviour of inflation in Greece in the pre- and post-WWI periods. The historical data of Greek price indices suggest that there was a positive association between the time series properties of inflation and the country’s choice of nominal exchange rate regime. By employing non-parametric measures of persistence, Kalyvitis and Lazaretou (1997) examine the persistence of Greek inflation under the Bretton Woods system and the subsequent floating rate system. Statistics show that inflation exhibits higher persistence under floating.

We present a model-free assessment of the time profile of inflation persistence for the Greek economy. Specifically, based on two different definitions of persistence proposed in the literature, we show purely statistical evidence of the autocorrelation properties of the inflation series as well as of the sluggish response of inflation to monetary policy changes using quarterly macro data for CPI inflation in Greece. In order to capture possible shifts in inflation persistence, we apply both classical and Bayesian analysis (second generation random coefficients (RC) estimates) to study the dynamic behaviour of the inflationary process post-1975. In particular, we estimate a univariate autoregressive (AR) model for the inflation rate and consider the possibility of a structural break in the slope parameter and the intercept term of the AR equation. The results from the classical analysis are qualitatively confirmed by the RC estimates and the rolling regression methods. The advantage of second generation RC modelling is that it estimates a time varying inflation persistence and relaxes key restrictions, such as a specific functional form, often imposed in the empirical literature.² Thus, the evolution of the degree of inflation persistence can be modelled during a period of structural breaks. Finally, we present evidence on the lag in the response of inflation to monetary policy changes.

The Greek experience may be illustrative for the future of other medium-sized economies, such as the Central and Eastern European countries, entering the EU. The fulfilment of the inflation convergence criterion in order to join the euro area is a significant driving factor in policies aimed at disinflation in acceding countries. In fact, acceding countries have made substantial efforts to bring inflation close to the levels observed in the euro area. Over the last two years, they experienced a slight increase in headline inflation. The main inflation strategies are inflation targeting, a fixed peg or a currency board arrangement. Hence, the conclusions drawn on the basis of the Greek data could be very useful.

The remainder of the paper is organised as follows. Section 2 briefly overviews inflationary developments and changes in the monetary policy framework in post-1975 Greece. Section 3 discusses various definitions of inflation persistence, since there are various views in the economic literature. Section 4 contains the empirical results from univariate autoregressive estimates for inflation persistence using OLS and rolling regressions. Section 5 estimates CPI inflation persistence

² For a detailed analysis on second generation RC estimates, see Swamy and Tavlas (1995, 2001).

following the RC methodology. Section 6 presents evidence on the lag in the response of inflation to changes in monetary policy. Section 7 concludes.

2. Inflationary Developments and Changes in the Monetary Policy Framework: Narrative Evidence

Figure 1 plots the four-quarter changes in the CPI and depicts the major phases of Greek inflation. As the figure suggests, the inflation process has behaved differently through the various phases of Greek inflation; namely, the post-Bretton Woods period of high inflation in the 1970s and the 1980s, and the disinflation of the 1990s. In particular, after averaging 3.5 per cent, with little volatility, in the 20 years prior to 1973, the behaviour of the inflationary process changed substantially after the collapse of the Bretton Woods fixed exchange rate regime.

The pegging of the drachma to the dollar after the collapse of Bretton Woods, in conjunction with the loose economic policy pursued, resulted in the drachma's significant depreciation during the two-year period of 1972-73. This depreciation, combined with a rise in the prices of raw materials (first oil crisis) and the overheating of the economy, led to a rise in the inflation rate double digits. The drachma's uncoupling from the dollar in 1975 and its float against a basket of currencies amounted to a policy of rapid sliding depreciation in order to counterbalance the effect of wage increases on the country's international competitiveness. The process of economic recovery was interrupted, while inflation remained around 20% in the 1970s and the 1980s.

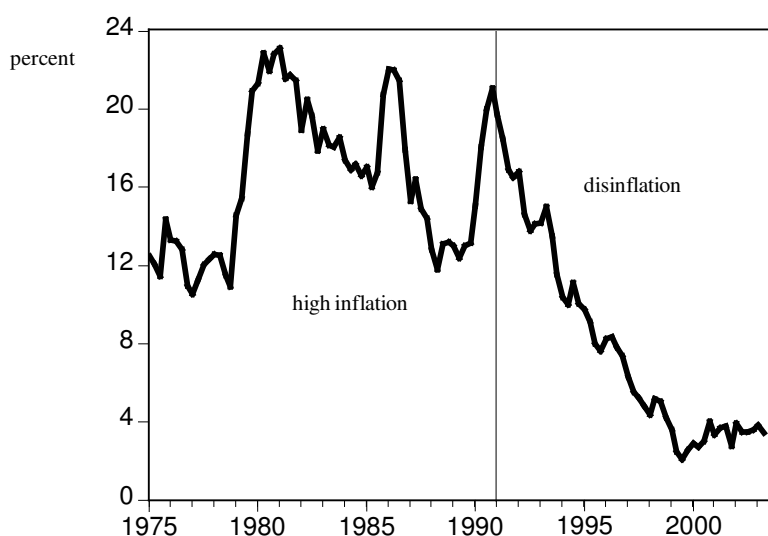
The drachma depreciated rapidly until 1987; thereafter, its sliding depreciation was limited. With the stabilisation programme of 1985 the government switched to an anti-inflationary policy. The limited depreciation of the drachma, the rigorous income policy and the tight monetary policy led to some inflation deceleration. However, the abandonment of the programme at the end of 1987 and the relaxation of wage controls caused a new inflation crisis at the end of the decade.

In the 1990s, economic policy was mainly anti-inflationary. Successive Greek governments had to check fiscal deficits and high inflation so as to meet the Maastricht criteria, a necessary and sufficient condition for the convergence in

nominal terms of the country to the other members of the EMU. The Bank of Greece changed its policy decisively towards fighting inflation, and its control became the major goal of monetary policy. The years 1991-94 marked a transition from a high inflation rate to a more moderate level (11%). Beginning in 1995, the Bank of Greece adopted, for the first time, a nominal exchange rate anchor as an important mechanism for disinflation. As a result, inflation fell to single digit levels for the first time since the early 1970s, reaching a trough of 2.0% in the third quarter of 1999. Thereafter, it increased and remained at a level around 3.5%.

The post-1975 period has also been characterised by changes in monetary policy regime.³ Prior to 1990, monetary policy was not effective in reducing inflation. Subsequently, the effectiveness of monetary policy increased while deregulation and subsequent development of the Greek financial system was set in

Figure 1
Price Inflation in Greece, 1975-2003



Note: The inflation rate has been computed as 4-month percentage change based on quarterly CPI averages.

motion and, in a process that began in 1995, monetary policy was eventually successful in curbing price pressures and bringing inflation down to a level consistent with the Maasricht criterion.

³ For a detailed analysis on inflation performance during this period, see Garganas and Tavlas (2001). For a brief chronology of the major monetary policy changes, see the Annex Box at the end of the paper.



After substantial efforts, Greece met the Maastricht criteria and the drachma successfully entered the euro area on 1st January 2001. Despite strong growth increased fiscal imbalances, over the last two years, have contributed to price pressures. Consumer price inflation is forecast to remain high standing at 3.6% in 2003 and 3.7% in 2004, more than 1.5 percentage points above that of the euro area.

3. Definitions of Inflation Persistence

Following the typology proposed by Batini and Nelson (2001) and Batini (2002), measures of inflation persistence refer, first, to positive serial correlation in inflation series, second, to lags between systematic monetary policy actions and their peak effect on inflation, and third, to lagged responses of inflation to policy shocks. To quote Batini (2002), ‘the first type of persistence is a reduced-form property of inflation that manifests simultaneously the underlying pricing process, the conduct of monetary policy and the expectations’ formation process of price-setting agents. Changes of any of these three factors will influence the autocorrelation properties of inflation’. The second measure of persistence, i.e. the length of the delay between a monetary policy action and its maximum effect on inflation, ‘...determines the costs of disinflation’, while the third measure, i.e. the lagged inflation response to a monetary policy shock, ‘...is often the only one consulted by economic modellers when validating models vis-a-vis the dynamics of real-world data generating process’ (pp.11-12).

Willis (2003, p.7) defines inflation persistence as the ‘speed with which inflation returns to baseline after a shock’. This definition implies that the degree of inflation persistence shows the speed with which inflation responds to a shock. When the value is high, inflation responds quickly to a shock. On the contrary, when the value is small, the speed of adjustment is low, the response of inflation to a shock is slow and the overall variability of inflation is small.

However, concerning the normative aspects of persistence, inflation persistence does not have the same connotation in periods of high inflation as in periods of deflation or price stability. Persistence in high inflation periods has a negative connotation, whereas in low inflation periods it may not. Explicitly, in inflationary periods high inflation rates are accompanied by high inflation in the

future (vicious circle), whereas in disinflation the inertia of inflationary expectations breaks down and inflation is steadily falling (virtuous circle). As measured in the empirical literature, persistence would be high even in the extreme case of complete price stability. This surely has to be distinguished from inflation persisting after a shock.

4. Univariate Autoregressive Estimates

We apply classical analysis, based on the approach by Batini (2002) and Levin and Piger (2004), to study the dynamic behaviour of quarterly CPI inflation data for Greece. We are interested in assessing whether both the steady state of inflation and its serial correlation has changed over time.

4.1 Classical Analysis

To study the autocorrelation properties of inflation, we consider a simple AR(k) process for the inflation series, i.e.

$$\Delta p_t = \text{constant} + \sum_{j=1}^k \alpha_j \Delta p_{t-j} + u_t \quad (1)$$

where Δp_t is annualised quarterly inflation, i.e. $\Delta p_t = (p_t - p_{t-1}) * 4$, p_t is the logarithm of the CPI, α_j is the autoregressive coefficient and u_t is a serially uncorrelated, but possibly heteroskedastic, random error term.

As in Andrews and Chen (1994), a measure of the degree of inflation persistence is the sum of the estimated lagged-terms autoregressive coefficients, i.e. $\rho \equiv \sum \alpha_j$, where ρ indicates the parameter of persistence. To measure persistence in terms of the sum of AR(k) coefficients, we re-write equation (1) as follows,

$$\Delta p_t = \text{constant} + \rho \Delta p_{t-1} + \sum_{j=1}^{k-1} \beta_j \Delta \Delta p_{t-j} + u_t \quad (2)$$

where ρ is the persistence parameter, while β_j parameters are transformations of AR coefficients in equation (1), $\beta_{k-1} = -\alpha_k$. The inflation process has a unit root if ρ takes a

value close to unity. The parameter ρ provides a reduced-form measure of inflation persistence, namely it directly measures the sluggishness with which the inflation process responds to shocks.

Estimating equation (2), we obtain a measure of inflation persistence, while the regression on a constant produces estimates of the sample mean of inflation and its standard deviation. Equation (2) requires a AR(k) lag order to be chosen, with a maximum lag length of $k=4$, given the quarterly frequency of the data. Based on both Akaike Information Criterion and Schwarz Criterion, we choose a lag of 4 for the inflation series. There is some evidence of a change in monetary conditions in the very early 1990s. This change can be considered as a shift towards a more aggressive approach towards fighting inflation and hence a breakpoint date in the time-series properties of inflation. If we had *a priori* knowledge of the date of the structural break, then we could run split-sample autoregressions for the inflation series and then confirm the structural break by using a Chow test. In the absence of *a priori* knowledge, we experiment with a variety of possible dates using the Chow test. The results support the timing of the split in the first quarter of 1991.⁴

In addition, we test for the case of multiple breaks using the test developed by Bai and Perron (1998, 2003).⁵ Bai and Perron (1998) suggested a method based on sequential testing of the null hypothesis of l breaks against the alternative of $l+1$ breaks employing the $\sup F_T(l+1/l)$ type test. In addition, Bai and Perron (2003) showed that the performance of this procedure could be improved by estimating the double maximum tests, namely UD $\max F_T(M,q)$ and WD $\max F_T(M,q)$, where M is the maximum number of breaks and p is the number of parameters allowed to structural change, in order to detect at least one break point. UD and WD are used to

⁴ That is, the break point Chow test and recursive coefficient estimates. In running Chow break point tests for all potential break point dates, we allow for a change both in the intercept and in the autoregressive coefficients. By allowing different intercept and slope coefficients, equation (2) is fitted separately to different sub-samples and then we compare them to the restricted (full-sample) equation by means of a Chow test. However, the timing of a structural change in the inflation series need not have coincided precisely with the formal adoption of a new policy regime. By recursive coefficient estimates we are able to trace the evolution of the persistence coefficient as more and more of the sample data are added to the estimating regression. Recursive estimates suggest that although there is no movement outside the critical values of the 2 percent standard error bands, persistence increases till the mid-1990s, while the sample mean value of the inflation rate declines.

⁵ Over the last decade the analysis of structural breaks in a time series has considerably developed. Different test statistics are proposed in the literature detecting single and multiple breaks. Properly accounting for them is of great importance in the analysis of the time series properties of a macroeconomic variable, such as shifts in the mean rate of inflation and the measure of its persistence. See Altissimo and Corradi (2003) and Altissimo (2003).

test the null hypothesis of no structural break against an unknown number of breaks given some upper bound M . In our empirical analysis, first, we estimate the sup $F_T(l)$ for $l=1,2,3,4,5$. The estimated sup $F_T(l)$ tests are all significant at the 5% level for all l , (sup $F_T(1)=34.47$, sup $F_T(2)=76.25$, etc.). Therefore, we conclude that the series appears to have at least one structural break. Next, the UD max and WD max are estimated, which are also significant at the 5% level, indicating the existence of at least one break point. Finally, the sequential procedure is employed. The estimated sup $F_T(2/1)=0.0789$ using 5% level of significance suggests one break point after the last quarter of 1990. On the basis of these statistics, we can detect one break point between the last quarter of 1990 and the first quarter of 1991. The regressions, therefore, are estimated over the two sub-samples 1975 Q1-1990 Q4 and 1991 Q1-2003 Q2.

Table 1 presents the estimates of persistence and the sample mean in the form of univariate representations of annualised quarterly inflation series. As can be seen in Table 1, Greece primarily experienced a sizeable shift in the average level of CPI inflation but only a small shift in persistence. ρ rises from just a little bit over 0.70 before 1991 to 0.78 thereafter. Importantly, the sample mean of the inflation rate falls significantly between the two periods, as illustrated by the regressions of the inflation rate on a constant alone. The results verify that there is a substantial drop in the sample mean from a yearly average level of 16.9% to 7.2% after 1991, reflecting the fact that inflation convergence with other euro area members took place. By contrast, the volatility of CPI inflation remains almost unchanged. Inflation's standard deviation decreases from 5.5% in the first period to 5.1% in the second period.⁶

Overall, according to the autoregressive estimates using classical analysis, there appears to have been a sizeable shift in the mean of Greek inflation over the past twenty-five years, but only a small shift in inflation persistence. As we have noted, inflation persistence does not have the same notion in an inflationary period as in

⁶ The same behaviour is exhibited by the WPI inflation series. There is a structural break in the intercept, while the serial correlation of the inflationary process remains unchanged. The sample mean of the inflation rate falls to 5.8% in the second period compared with 15.8% pre-1991, whereas there is no variation in persistence over time; it goes from 0.59 to 0.58 after 1991. Furthermore, the variance before and after the break decreases; WPI inflation is 1.4 times less volatile in disinflation relative to the period of high inflation. The results for core CPI inflation reveal a substantial rise in the serial correlation of Greek inflation, with the autoregressive coefficient going from 0.53 to 0.88, before and after 1991. The mean of core inflation is 2.5 times lower after the break, while inflation has approximately the same variance between the two periods.

disinflation. For example, the persistence of the 1970s and the 1980s is more of the type we would associate with negative effects - a shock occurred which raised inflation and inflation only very slowly returned to its previous low level. By contrast, the persistence of the 1990s results from steadily falling inflation, which can hardly have a negative connotation.

Table 1. Estimates of AR representation of CPI Inflation

High inflation

sample period: 1975 Q1-1990 Q4

$$\Delta p_t = 16.878 \quad \text{adj-R}^2=0.000, \text{ se}=5.530, \text{ DW}=1.167 \\ (23.444)$$

$$\Delta p_t = 5.216 + 0.706 \Delta p_{t-1} + \sum \beta_j \Delta \Delta p_{t-j}, \quad j=1 \dots k-1, k=4 \\ (1.846) \quad (4.239)$$

adj-R²=0.247, se=4.797, DW=1.938, LM(1)=2.043, LM(2)=2.237,
ARCH(1)=2.076, ARCH(2)=3.238

Disinflation

sample period: 1991 Q1-2003 Q2

$$\Delta p_t = 7.212 \quad \text{adj-R}^2=0.000, \text{ se}=5.138, \text{ DW}=0.566 \\ (9.926)$$

$$\Delta p_t = 0.655 + 0.781 \Delta p_{t-1} + \sum \beta_j \Delta \Delta p_{t-j}, \quad j=1 \dots k-1, k=4 \\ (0.989) \quad (11.165)$$

adj-R²=0.757, se=2.530, DW=2.174, LM(1)=1.270, LM(2)=3.343,
ARCH(1)=0.299, ARCH(2)=3.718

Notes: annualised quarterly inflation in CPI. *Se* is the standard deviation of price changes, LM(1) and LM(2) are the Breusch-Godfrey (1978) L-statistic for the presence of first- and second-order residual autocorrelation, and ARCH(1) and ARCH(2) are Engle LM test for autoregressive conditional heteroskedasticity.

These results are in line with recent evidence for the euro area and other industrial countries. For example, Batini (2002) finds that there has been very little change in the serial correlation of HICP euro area inflation after 1970, while there is a substantial drop in the mean value of the euro area inflation rate. Gali, Gertler and Lopez-Salido (2000) present evidence on the fit of the New Keynesian Phillips Curve to euro area-wide data and conclude that inflation in the euro area may be less inertial than in the US. Smets and Wouters (2002) and Coenen and Wieland (2000, 2002) reach similar conclusions, whereas O'Reilly and Whelan (2004) detect some evidence of a decline in the autocorrelation coefficients in the US and less evidence of declining autocorrelations for the euro area in the 1990s. Levin and Piger (2004) present results that imply that high inflation persistence is not an inherent characteristic of industrial economies.⁷

4.2 Rolling Regressions

In the preceding analysis, we allowed for a structural break in the regression coefficients by estimating regression (2) across two sub-periods following a Chow test and Bai and Perron multiple breaks tests for structural breaks. An alternative way of analysing the influence of structural breaks in the persistence parameters is to use rolling regressions to estimate the parameters of equation (2). We estimate the constant and the persistence parameter for every sub-sample of a fixed length (known as a data window) following Stock (2001), Pivetta and Reis (2001) and Levin and Piger (2004). By changing the length of the sub-sample, i.e. by shortening or extending the data window, we study whether the conclusions for the parameter estimates change considerably. We use alternative window lengths of 40, 48 and 56 quarters (10, 12 and 14 years).

Figures 2-4 present rolling estimates both of the persistence parameter and the intercept of equation (2). There is evidence of an increase in CPI inflation persistence to 0.8 in the early 1990s. However, with a rolling sample of 40 and 48 quarters, persistence starts roughly to decline by the end of the sample. The decline in inflation

⁷ By contrast, empirical work for the US and the UK detects high inflation persistence, at least for the pre-1990 period. See, for example, Nelson and Plosser (1982), Fuhrer and Moore (1995), Gali and Gertler (1999), Taylor (2000), Cogley and Sargent (2001), Batini and Nelson (2001), Stock (2001) and Sbordone (2002).

Figure 2

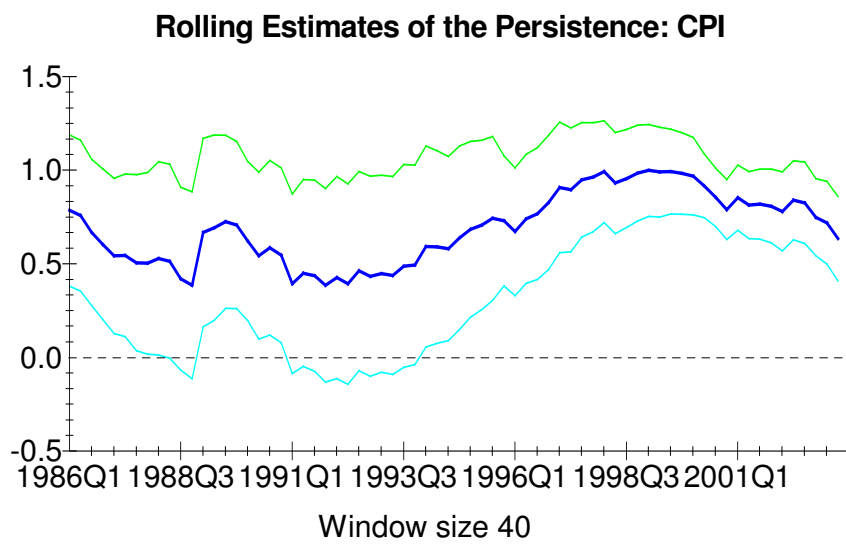
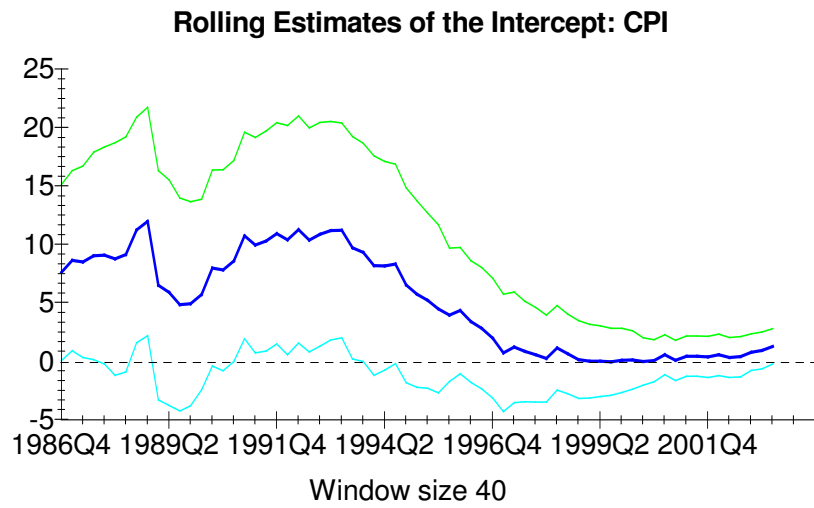


Figure 3

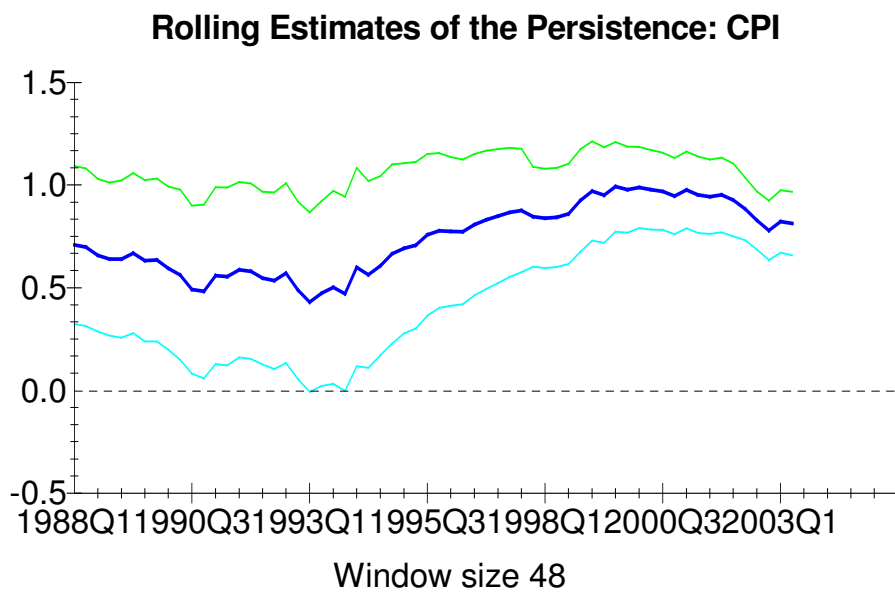
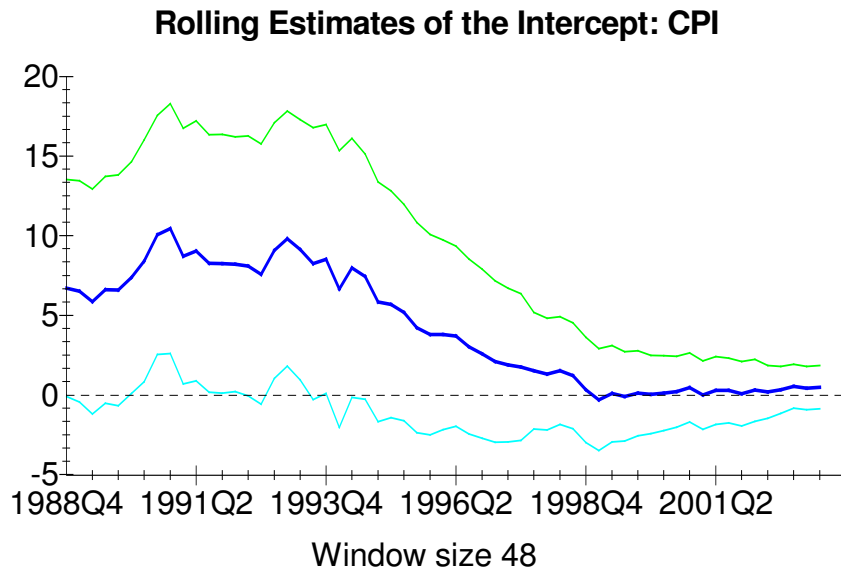
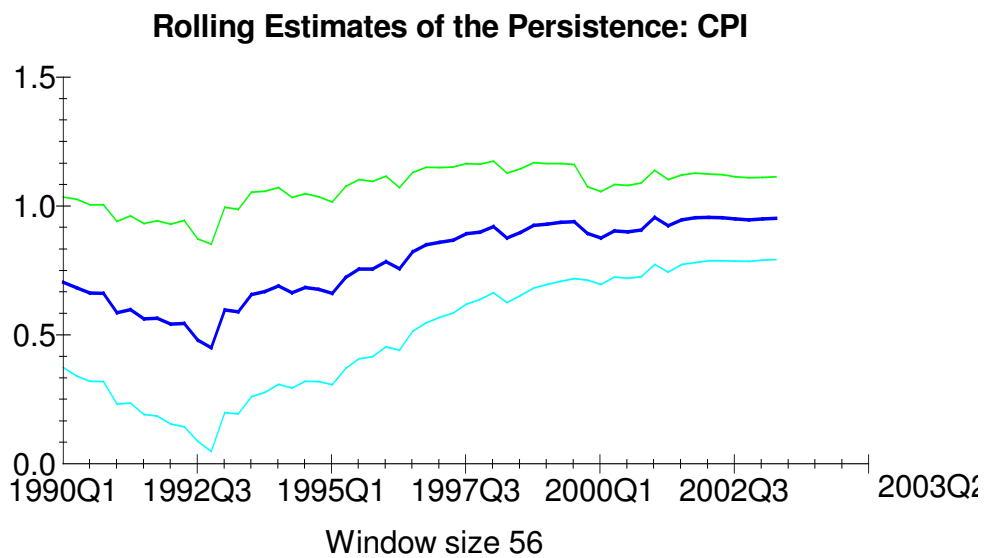
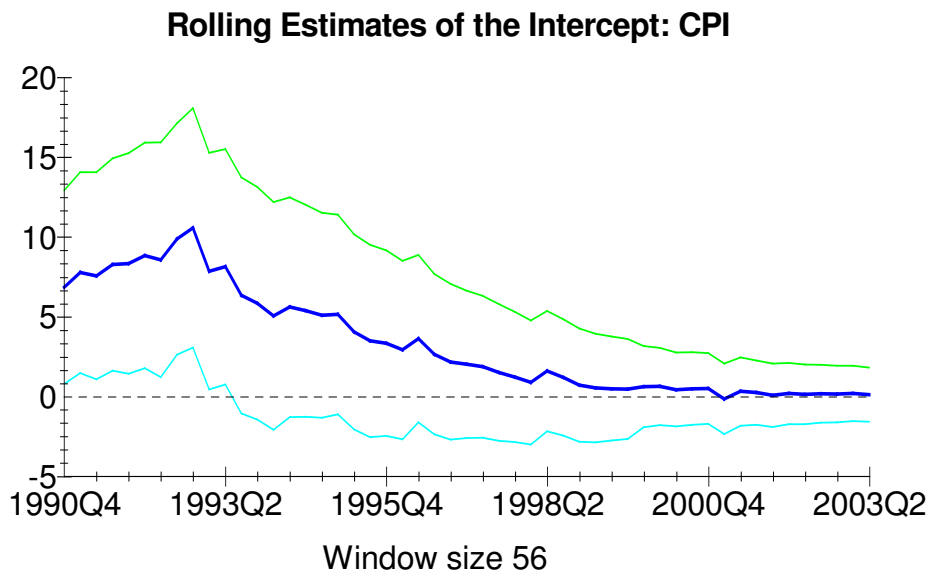


Figure 4



persistence appears earlier when the window size is shortened to 40 quarters, while there is no evidence of a decrease when the data window size is extended to 56 quarters.⁸ Concerning the constant, there is strong evidence, regardless of the data window size, that a substantial drop in the steady state inflation rate occurred in the early 1990s.

5. RC Estimates

5.1 RC Estimation Method

An alternative approach to measuring the degree of inflation persistence is based on RC methodology.⁹ Consider the simple AR(k) process of the previous section, i.e. equation (1), which we reproduce for convenience here,

$$\Delta p_t = \text{constant} + \sum_{j=1}^k \alpha_j \Delta p_{t-j} + u_t \quad (1)$$

where Δp_t is the annual quarterly inflation rate ($\Delta p_t = p_t - p_{t-4}$, p_t is the logarithm of the CPI), α_j is the autoregressive coefficient and u_t is a serially uncorrelated but possibly heteroskedastic random error term. Three lags are used in the estimation. The degree of persistence is equal to the sum of the autoregressive coefficients α_j .

In the RC estimation we employ the year-on-year inflation rate instead of the quarter-on-quarter rate. This choice is motivated by the underlying assumptions of RC methodology employed to eliminate the four restrictions, which are often imposed when classical estimation procedures are used. The estimated model, employing the RC estimation, can only coincide with the true underlying relationship if each of its estimated coefficients is interpreted as the sum of three terms: a “bias free effect”, an “omitted variable bias” and a “measurement-error bias”. The “bias free effect” is the estimated coefficient that would be observed if a) there were no measurement errors, b) there were no omitted variable biases and c) the specified functional form was true. The omitted-variables bias terms arise due to the fact that the true values of included explanatory variables affect those of excluded explanatory variables, which, in turn,

⁸ EMU membership might explain this structural change appeared at the end of the sample. Levin and Piger (2004) run rolling regressions using different data window sizes for US GDP price deflator and also find that with a shorter window the drop in persistence appears earlier.

influence the true value of the dependent variable. The measurement-error bias effect is due to errors in the measurement of the included explanatory variables. From these interpretations it follows that equation (1) can coincide with the true inflation persistence equation only if the coefficients on its included explanatory variables are time-varying and not constant as in the classical model. The sum of the intercept of equation (1) and u_t is also time-varying, since it is equal to the sum of three time-varying terms. Therefore the quarter-on-quarter inflation rate is expected to provide an erratic time-varying persistence coefficient since according to the RC estimation procedure the estimated persistence coefficient constantly is changing at each point in time. In contrast, other methods such as the recursive OLS do not write off the past and hence the estimated persistence coefficient at each point of time is mainly affected by the past observations. Employing the year-on-year inflation rate which is a four quarter moving average of the quarter-on-quarter rate, the estimated time-varying persistence coefficient does not appear erratic.

Standard estimation procedures often impose a number of restrictions when applied to equations such as equation (1) above, including the following: (i) α_0 , α_1 , α_2 , and α_3 are constant; (ii) excluded explanatory variables are proxied by an error term and, therefore, these excluded variables are assumed to have means equal to zero and to be mean independent of the included explanatory variables; (iii) the true functional form is known (whether linear or nonlinear); and (iv) the variables are not subject to measurement error.

Swamy and Tavlas (1995, 2001) and Chang, *et al.* (2000) define, first, any variable or value that is not mis-measured is true (definition I) and, second, any economic relationship with the correct functional form, without any omitted explanatory variable and without mis-measured variables is true (definition II). Using these definitions, we can specify a class of functions which is wide enough to cover the true inflation persistence function (in the sense of definition II) as a member. To rewrite this class in a form that has the same explanatory variables as equation (1), we assume that explanatory variables that are in the true inflation persistence function but excluded from equation (1) are related (linearly or nonlinearly) to the explanatory variables included in equation (1). This assumption is reasonable, given that economic

⁹ For other recent applications of RC methodology on different topics, see Hondroyannis, Swamy and Tavlas (2000, 2001a, b) and Brissimis, *et al.* (2003).

variables are rarely, if ever, uncorrelated and may not be linearly related to each other. To account for measurement errors, we assume that each variable in equation (1) is the sum of the underlying true value and the appropriate measurement error. These assumptions imply that equation (1) does not correspond to the true inflation persistence function unless it is changed to:

$$\Delta p_t = \gamma_{0t} + \gamma_{1t}\Delta p_{t-1} + \gamma_{2t}\Delta p_{t-2} + \gamma_{3t}\Delta p_{t-3}, \quad t=1,2,\dots,T, \quad (3)$$

where the real-world interpretations of the coefficients follow from the derivation of equation (3): γ_{0t} is the sum of three parts: (a) the intercept of the inflation persistence equation; (b) the joint effect on the true value of Δp_t of the portions of excluded variables remaining after the effects of the true values of the included explanatory variables have been removed; and (c) the measurement error in Δp_t . The coefficient γ_{1t} (γ_{2t} or γ_{3t}) is also the sum of three parts: (a) a bias-free effect of the true value of Δp_{t-1} (Δp_{t-2} or Δp_{t-3}) on the true value of Δp_t ; (b) a term capturing omitted-variables bias; and (c) a mis-measurement effect due to mis-measuring Δp_{t-1} (Δp_{t-2} or Δp_{t-3}) (see Chang, *et al.* 2000). The bias-free effects provide economic explanations. An implication of these interpretations is that the explanatory variables of equation (3) are correlated with their coefficients. With these correlations, none of the explanatory variables is exogenous. The effects of such dynamic factors as technical change in economic activity and excluded lagged explanatory variables are captured in the omitted-variables bias component of each of the coefficients of equation (3). Consequently, equation (3) is a dynamic specification.

One question that needs to be answered before estimating equation (3) is that of parametrization: which features of equation (3) ought to be treated as constant parameters? Inconsistencies arise if this parametrization is not consistent with the real-world interpretations of γ 's. To achieve consistency, the γ 's are estimated using concomitants. A formal definition of concomitants is provided in Chang, *et al.* (2000) and Swamy and Tavlas (2001). Intuitively, these may be viewed as variables that are not included in the equation used to estimate inflation persistence, but help deal with the correlations between the γ 's and the included explanatory variables (Δp_{t-1} , Δp_{t-2} , Δp_{t-3}).

Assumption I. The coefficients of equation (3) are linear functions of λ variables, called concomitants, including a constant term with added error terms

which may be contemporaneously and serially correlated. The error terms are mean independent of the concomitants.

Assumption II. The explanatory variables of equation (3) are independent of their coefficients' error terms, given any values of the concomitants.

Assumption II captures the idea that the explanatory variables of equation (3) can be independent of their coefficients conditional on the given values of concomitants even though they are not unconditionally independent of their coefficients. This property provides a useful procedure for consistently estimating the bias-free effects contained in the coefficients of equation (3).

Under Assumptions I and II, equation (3) can be written as

$$\Delta p_t = \pi_{00} z_{0t} + \sum_{j=1}^{\lambda-1} \pi_{0j} z_{jt} + \pi_{10} \Delta p_{t-1} z_{0t} + \sum_{j=1}^{\lambda-1} \pi_{1j} z_{jt} \Delta p_{t-1} + \pi_{20} \Delta p_{t-2} z_{0t} + \sum_{j=1}^{\lambda-1} \pi_{2j} z_{jt} \Delta p_{t-2} + \pi_{30} \Delta p_{t-3} z_{0t} + \sum_{j=1}^{\lambda-1} \pi_{3j} z_{jt} \Delta p_{t-3} + \varepsilon_{0t} + \varepsilon_{1t} \Delta p_{t-1} + \varepsilon_{2t} \Delta p_{t-2} + \varepsilon_{3t} \Delta p_{t-3} \quad (4)$$

where the z 's denote concomitants and the ε 's denote the error terms of the coefficients of equation (3).¹⁰ In our empirical work we set $\lambda=4$, $z_{0t}=1$ for all t , z_{1t} is the short-term bank lending rate, z_{2t} is the annual growth rate of nominal GDP and z_{3t} is the quarterly change in nominal wages.¹¹ This means that we use four concomitants to estimate the γ 's. We are attempting to capture the bias-free effect contained in γ_{1t} by using a linear function ($\pi_{10} + \pi_{11} z_{1t} + \pi_{12} z_{2t}$) of the short term interest rate and annual change of nominal GDP.¹² The biased and mis-measurement effects are captured by using a function ($\pi_{13} z_{3t} + \varepsilon_{1t}$) of the quarterly change of nominal wages and ε_{1t} . The measures of bias-free effects contained in γ_{2t} and γ_{3t} are $\pi_{20} + \pi_{21} z_{1t} + \pi_{22} z_{2t}$ and $\pi_{30} + \pi_{31} z_{1t} + \pi_{32} z_{2t}$, respectively, and those of omitted-variable and mis-measurement effects contained in γ_{2t} and γ_{3t} are $\pi_{23} z_{3t} + \varepsilon_{2t}$ and $\pi_{33} z_{3t} + \varepsilon_{3t}$,

¹⁰ Adding concomitants successively should reduce the RMSE of the estimated regressions.

¹¹ Economic theory provides us with many categories of variables that may, indirectly or directly, influence the inflation process. In particular, interest rates reflect monetary conditions in the economy. Assuming a constant mark-up, wages might be expected to be transmitted to output prices and hence CPI inflation. Output is considered as a measure of demand pressure and thus affects inflation expectations.

¹² Growth rate of nominal GDP and short-term interest rate are broader measures compared to growth rates of wages. Hence, the first two concomitants may give a better measure of the bias-free effect than the latter.

respectively. The components of the coefficients of equation (3) can take different values in different phases of the business cycle. Inflation persistence is estimated as the summation of γ_{1t} , γ_{2t} and γ_{3t} to estimate the total effect (biased effect) and the summation of $(\pi_{10} + \pi_{11}z_{1t} + \pi_{12}z_{2t})$, $(\pi_{20} + \pi_{21}z_{1t} + \pi_{22}z_{2t})$ and $(\pi_{30} + \pi_{31}z_{1t} + \pi_{32}z_{2t})$ to estimate the bias-free effect. Inflation persistence may be lower in periods of low inflation compared to periods of high inflation. Consequently, changes in the values of the included explanatory variables that occur during the peak of a business cycle may exhibit very different effects on persistence than the same changes that occur during the trough of a business cycle. If so, more accurate results can be obtained by taking changing conditions into account.¹³

Note that equation (4) has four error terms, three of which are the products of ε 's and the included explanatory variables of equation (1). The sum of these four terms is both heteroskedastic and serially correlated. Under Assumptions I and II, the right-hand side of equation (4) with the last four terms suppressed gives the conditional expectation of the left-hand side variable as a nonlinear function of the conditioning variables. This conditional expectation is different from the right-hand side of equation (1) with u_t suppressed. This result shows that the addition of a single error term to a equation and the exclusion of the interaction terms on the right-hand side of equation (4) introduce inconsistencies in the usual situations where measurement errors and omitted-variable biases are present and the true functional forms are unknown. A computer program developed by Chang, *et al.* (2000) is used to estimate equation (4).

It might be useful at this point to summarize intuitively the above theoretical discussion. Empirical models often contain problems, such as omitted variables and measurement errors, introducing biases in the estimated coefficients. Each of the estimated coefficients is comprised of three terms: a bias-free coefficient, an omitted variables-bias term and a measurement error. The RC methodology overcomes this problem by introducing two assumptions. According to the first assumption, concomitants are employed in the empirical estimation to explain the variations in each of the three terms of the estimated coefficient. In particular, the set of included concomitants is separated into two subsets. The first subset is used to estimate the

¹³ A richer specification of concomitants might provide different results.

bias-free effect and the second one to estimate the combined omitted-variables-bias and the measurement-error-bias term. The second assumption is used to assure the independence between the explanatory variables and the remainders of the estimated coefficients, after removing the effects of the concomitants on the coefficients.

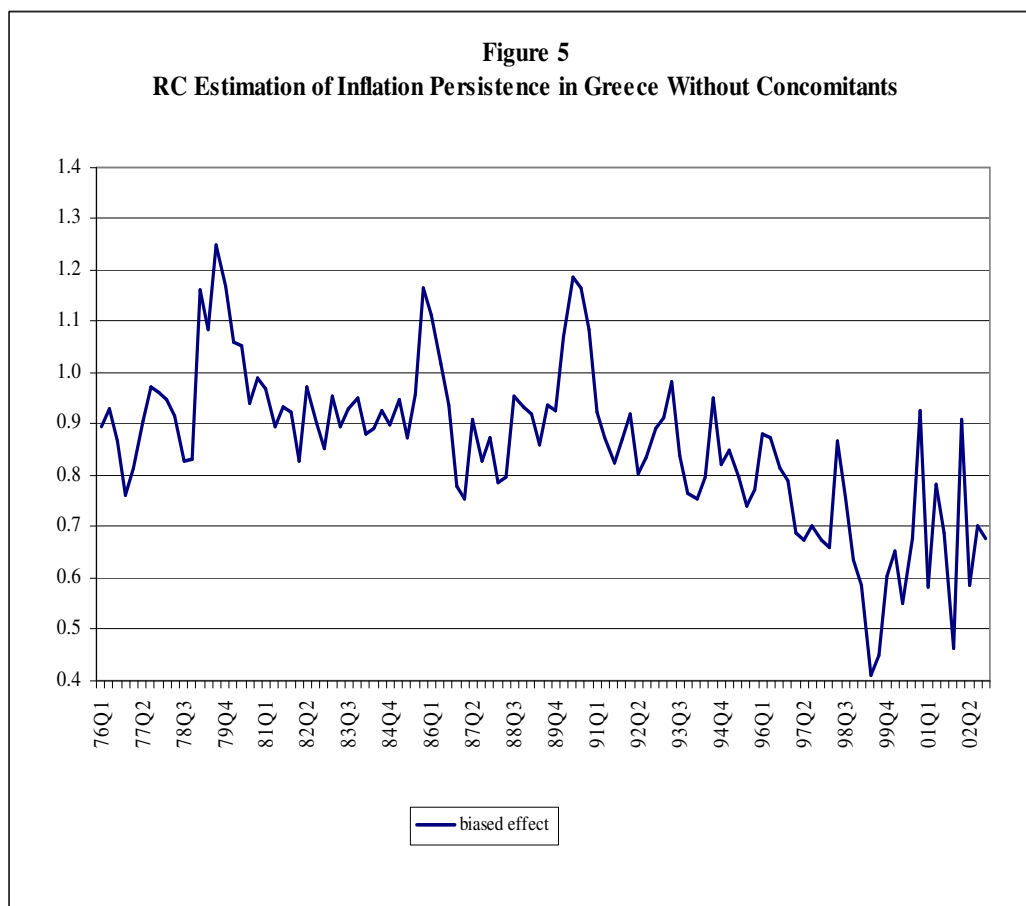
5.2 RC Empirical Results

Figure 5 presents the results from RC estimation without concomitants. The estimated RMSE¹⁴ is equal to 0.772. Next the RC model is estimated employing initially one concomitant that is the short-term bank lending rate (RMSE=0.646) and two concomitants that is the short-term bank lending rate and the annual growth rate of nominal GDP (RMSE=0.548). Finally, the RC model is estimated using three concomitants. Figures 6.a and 6.b present the results from RC estimation, for the intercept and the degree of persistence employing three concomitants: the short-term lending rate, the annual growth of nominal GDP and the quarterly change of nominal wage (RMSE=0.301).

In the post-1975 period, there appears to have been a sizeable shift in inflation persistence as well as in the mean value of inflation. CPI inflation increased on a yearly basis from 13.2% in the first quarter of 1976 to 21.0% in the last quarter of 1990. The RC results also show a sharp rise in the degree of inflation persistence, from 0.6 to 0.9 during this period. The behaviour of inflation changed after 1990. The mean value dropped from a double-digit level (16.9%) to a single-digit one (8.0%). The degree of inflation persistence declined from 0.84 in 1990 Q4 to 0.57 in 2002 Q4 (bias-free effect). Even though there is a considerable shift in the mean value in the post-1990 period and the degree of inflation persistence started to decline in the early 1990s, persistence is still quite high and increases when inflation is high.

Both total and bias-free effects show a tendency for the degree of inflation persistence to decline during the disinflation period. In particular, during the high inflation period (1976 Q1-1990 Q4) the total effect estimates indicate that the average degree of inflation persistence is equal to 0.75, while it decreases to 0.67 during the disinflation period. By contrast, the bias-free effect estimates indicate an increase in the average degree of inflation persistence from 0.70 during the inflation period to

0.76 during the disinflation period. This latter result is qualitatively the same but lower in value compared to the result from OLS estimation for the two different periods.¹⁵



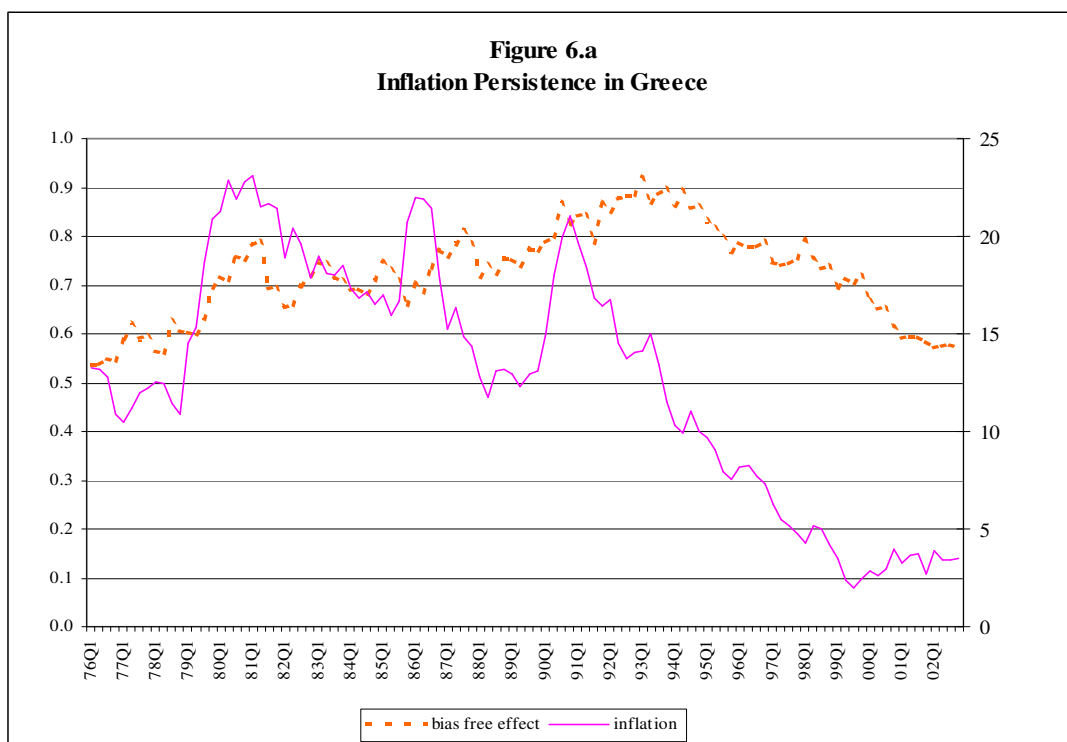
ROLS and recursive OLS provide much higher estimates, which are due to omitted-variables and measurement-error biases. ROLS estimation for different size windows is a way of testing for stability if the structure is changing. However, ROLS estimation does not give consistent estimates of the changing parameters. Unlike RC estimation, an underlying assumption of rolling and recursive estimation is that the coefficients are constant. Also, recursive estimation does not write off the past.

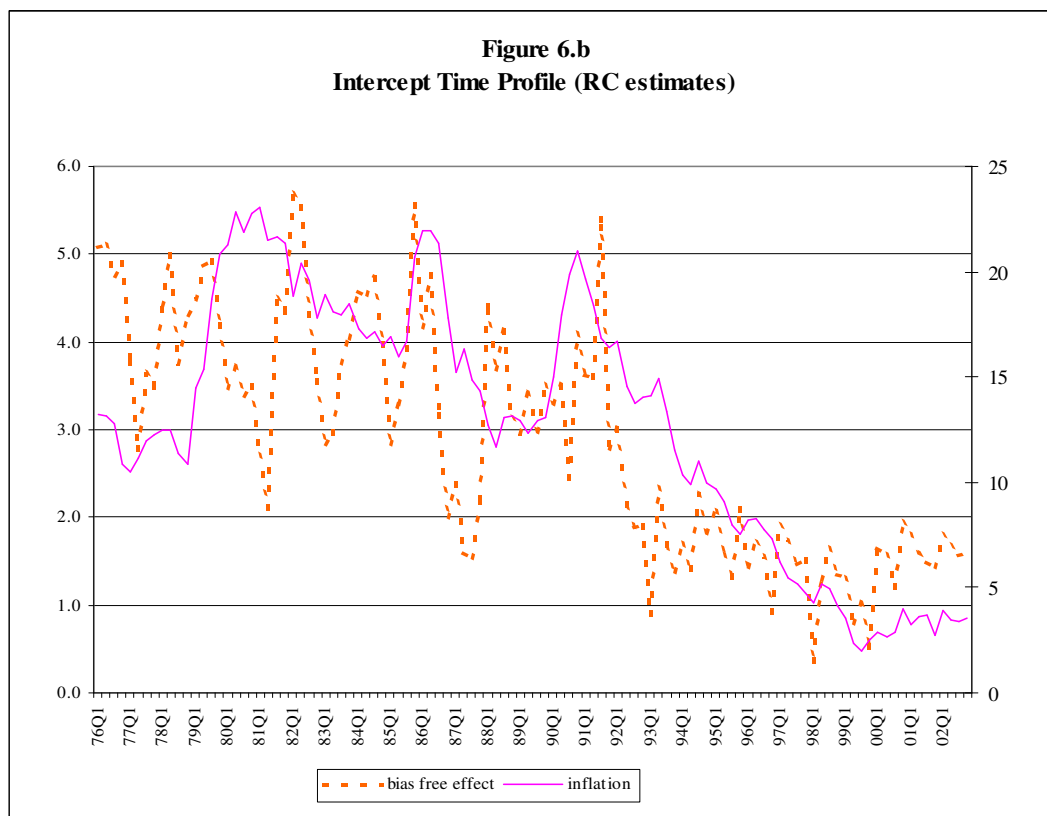
¹⁴ The estimation period for all RC models is 1976 Q1-2000 Q4 and the forecast period is 2001 Q1-2002 Q4. The estimation period for Figures 5 and 6 is 1976 Q1-2002 Q4.

¹⁵ A true comparison of the empirical findings from the RC estimation with those of OLS requires us to re-estimate equation (1) using year-on-year inflation. The estimated inflation persistence is equal to 0.98 for the period 1976 Q1 to 2002 Q4, 0.86 for the period 1976 Q1 to 1990 Q4 and 0.94 for the period 1991 Q1 to 2002 Q4. As expected, the estimates of persistence are higher using year-on-year data since the latter is a four quarter moving average of the quarter-on-quarter rate which in itself introduces some persistence.

Rolling estimation writes off the past slowly as the estimation period changes. If a regime change has occurred, it averages the old regime with the new regime with changing weights; the weight of the new regime becomes larger as more and more observations are added. Using recursive estimation, the best estimate of a model is that produced by the entire sample. In contrast, RC estimation picks up a new regime quickly. By consistently estimating changing coefficients, it attempts to estimate how the true coefficient is changing at each point in time. Therefore, the RC estimates are a better measure of the true degree of persistence implying the true response of inflation to a shock at each point in time.

The total effect (biased effect) in the RC estimation is not purged of omitted-variables and measurement-error biases. The bias-free effect displays much less volatility indicating that a big impact of specification errors on the time profiles of the estimated coefficients of equation (1) is present. The bias-free effect clearly shows the increase in the degree of inflation persistence during the inflation period and the moderate decrease during the disinflation period. The bias-free effect in Figure 6 shows that the degree of inflation persistence remained high (average=0.84) during the first six years of the disinflation period (1991 Q1-1996 Q4) and started to decline (average=0.67) after 1997 Q1.





6. Delayed Inflation Response and Monetary Policy Regime Switches

Having studied the serial correlation properties of Greek inflation, we are now interested in identifying whether inflation responds with a delay to monetary policy moves and whether this observed delay is dependent on changes in the monetary policy regime. In an earlier paper, Gibson and Lazaretou (2001), looking at Greek monthly data over the period 1958-1998, find that money (M0) growth leads CPI inflation at turning points by about 4 months. In this section, we distinguish between a change in monetary stance (systematic monetary policy action) and a monetary policy shock (non-systematic) and we try to determine whether and how much the response of inflation (i.e. the number of periods it takes for a change in monetary policy to have its peak effect on inflation) has changed following changes in the monetary policy framework.

The response of inflation (as well as of output) to changes in monetary policy conditions determines the cost of disinflation and stabilisation. Knowledge of this is therefore essential for the monetary policymaking. Friedman (1972) and Friedman and Schwartz (1982) look at monthly data for the US and the UK and found that monetary changes affected output with a short lag. The lagged effect on prices was found to be longer. Batini and Nelson (2001) extend Friedman's evidence to cover the most recent period and find that it takes over a year before monetary actions have their maximum effect on inflation. More recently, Batini (2002) using the data for the euro area reaffirms Friedman's results.

A simple statistic of the relation between inflation and prior monetary changes is the correlation coefficient $\rho(k)$ of quarterly changes of the CPI with money growth, k periods earlier, where k corresponds to the lead with the highest correlation. As a monetary policy stance measure, we consider quarterly changes in the broad money aggregate (M3). We also compute correlations between inflation and alternative monetary policy stance measures, such as narrow money growth (M1), the short-term *ex ante* real interest rate¹⁶ and the yield spread.¹⁷

Table 2 presents the results for different indicators of systematic monetary policy changes across separate sub-samples.¹⁸ The sub-periods are selected according to the major monetary events occurring in the whole period which might distort the steady-state velocity of money. Thus, the complete sample period 1980 Q1-2003 Q1 is divided into the following sub-samples: 1980 Q1-1987 Q4 (rapidly sliding depreciation of the drachma); 1988 Q1-1994 Q4 (limited sliding depreciation of the

¹⁶ The short-term real interest rate is computed as the difference between the nominal interest rate and the *ex ante* inflation rate. *Ex ante* inflation is approximated by the fitted values of an AR(4) scheme for CPI inflation. A H-P trend of the log of the real GDP is also included in the explanatory variables. We use the short-term bank lending rate (quarterly averages) and inflation is the quarter-on-quarter change of CPI.

¹⁷ The yield spread is the spread of the long-term bond rate over the short-term interest rate. As the long-term interest rate we use the 12-month Treasury bill rate. Fixed income government securities at 5 years and over were issued for the first time in 1997. Initially, Greek markets were thin; it took some time to develop. Therefore, the 12-month Treasury bill rate is used as a proxy for the long-term interest rate.

¹⁸ We also try to determine the number of lags it takes for inflation to have its maximum response to non-systematic monetary changes (i.e. policy shocks). See, for example, Christiano, Eichenbaum and Evans (2001) and Rotemberg and Woodford (1997) for the US economy, and Smets and Wouters (2002) and Fagan, Henry and Mestre (2001) for the euro area. To this end, we estimate an unconstrained VAR model for the Greek economy with three endogenous variables: the quarterly change of CPI, the deviation of the log of the real GDP from its H-P trend and the short-term nominal interest rate. Monetary policy shocks are identified as innovations in the monetary policy reaction function. The short-term lending rate, the 12-month Treasury Bill rate and the reserve money are used as policy instruments. However, impulse response functions produce weak evidence.

drachma); 1995 Q1-2000 Q4 (hard drachma policy; pre-ERM and pre-EMU period); 2001 Q1-2003 Q1 (EMU).

Table 2. Correlations Between CPI Inflation and Systematic Monetary Policy Actions (maximum positive value)

Sample Period	Policy Stance Measure: M3 growth rate $\rho_{\Delta p}^{CPI_{m3}}(k)$	Policy Stance Measure: M1 growth rate $\rho_{\Delta p}^{CPI_{m1}}(k)$	Policy Stance Measure: <i>ex ante</i> real interest rate $\rho_{\Delta p}^{CPI_r}(k)$	Policy Stance Measure: yield spread $\rho_{\Delta p}^{CPI_{spread}}(k)$
1980 Q1-2003 Q1	0.717 (k=1) (9.589)	0.381 (k=3) (3.844)	-0.708 (k=18) (-9.561)	-0.431 (k=17) (-4.556)
1980 Q1- 1987 Q4	0.477 (k=3) (2.761)	0.467 (k=4) (2.693)	-0.557 (k=1) (-3.674)	-0.302 (k=16) (-1.734)*
1988 Q1-1994 Q4	0.597 (k=10) (3.791)	0.355 (k=1) (1.936)	-0.452 (k=6) (-2.584)	-0.597 (k=8) (-3.795)
1995 Q1-2000 Q4	0.459 (k=7) (2.423)	0.250 (k=2) (1.211)	-0.456 (k=1) (-2.403)	-0.439 (k=11) (-2.292)
2001 Q1-2003 Q1	<i>a</i>	<i>a</i>	<i>a</i>	<i>a</i>

Notes: (*) significant at 10% statistical level. Parentheses below the value of the statistic present the value of the t-test. *a*. Due to the small size of the sample, the correlation cannot be computed.

The expected relationship between money growth and inflation is positive. The results for the complete period suggest a very short lead of money growth of one quarter for M3 and three quarters for M1 over inflation. Excluding the 1980s, the lead time increases for M3 money growth at $k=10$ and $k=7$ for the periods of the policy of limited sliding depreciation of the drachma and the pre-ERM period. Looking at M1 growth, the correlations are smaller in size and statistically insignificant. For the period as a whole, the evidence from the interest-rate-based indicator of monetary policy stance reports a delay in the reaction of inflation to changes in policy. The correlation is negative (as expected) and significant; the peak response occurring after around 4 years. We check the robustness of this result using the yield spread as an alternative interest-rate-based-measure (see Gali, Gertler and Lopez-Salido, 2002 and Batini, 2002). As can be seen from the last column of Table 2, the correlation is (correctly) negative and statistically significant, although smaller in size, and the lead-lag relationship appears to last 17 quarters. Concerning the cross-period correlations, the lagged response of inflation to a change in the *ex ante* real interest rate, although

significant, is much shorter, whereas the results display a longish lead of the yield spread over inflation.¹⁹

To sum up, the results reveal that there exists a lagged response of inflation to monetary policy moves. Findings are relatively consistent across different measures of monetary stance, indicating that Greek inflation is rather inertial. However, we detect no major changes in the lead-lag relationships across sub-periods.

7. Concluding Remarks

This paper has presented a model-free assessment of the time profile of inflation persistence for the post-1975 Greek economy. We have adopted alternative definitions of inflation persistence proposed in the empirical literature (see Batini, 2002), i.e. (1) by looking at the autocorrelation properties of the inflation series and (2) by quantifying the lags of the inflation response to monetary policy moves.

The first definition concerns the empirical analysis of inflation dynamics. It asks whether inflation inertia may be an intrinsic structural phenomenon of the economy or a policy regime-variant feature of the inflation time series. The second definition refers to the cost of disinflation. For monetary policymaking, knowledge of the exact extent of transmission lags from monetary policy to the inflation rate is crucial. Since a priority of monetary policy in Greece, as a member of the euro area, is to pursue the objective of price stability, the ability to quantify and model the lagged response of inflation to changes in monetary stance, helps policy makers to determine the cost of reducing inflation in terms of output loss.

However, some reservations arose. A model could not capture the extent of all kinds of inflation persistence. For example, a model might account for the sluggish response accompanied with systematic changes in monetary policy but it could fail to account for the delays in effect of the non-systematic component of monetary policy. Besides, policy shocks are only a minor determinant of inflation persistence compared to real shocks, such as shocks to technology. (For these reservations, see Batini, 2002 and Woodford, 1998).

¹⁹ Correlations between the measures of monetary policy and inflation are also computed using core CPI inflation and WPI inflation. The results confirm the evidence for CPI inflation.

Based on these alternative definitions of persistence, in this paper we have asked, first, whether the positive serial correlation of Greek CPI inflation has changed over time, second, whether there exists a sluggish response of inflation to changes in monetary policy and, third, whether this observed delay has altered across changes in the monetary policy framework. To capture possible shifts in inflation persistence, we utilised different empirical methodologies for Greek inflation using macro data. We found that Greek inflation is rather persistent according to all definitions used and methodologies employed.

Empirical findings can be summarised as follows. First, classical estimations show that CPI inflation persistence was high during the inflationary period and the first six years of the disinflationary period (the persistence parameter took the value of 0.70 and approximately 0.78). Only after 1997, did it start to decline. Second, there appears to have been a sizeable shift in the mean of Greek inflation over the past twenty-five years, but only a small shift in inflation persistence. Third, rolling regressions were applied as an alternative way of analysing the influence of structural breaks in the coefficients of the AR process. We found that the sample mean of the inflation rate dropped dramatically in the 1990s, while the persistence parameter started to decline only by the end of the sample. The decline appeared earlier when the window size was smaller. Fourth, RC estimation (employing the year-on year inflation rate rather than the quarter-on-quarter) produces slightly lower estimated values for the persistence parameter. Fifth, the estimated correlations between CPI inflation and policy stance measures reveal that there was a delay in the inflation response to changes in monetary policy under the period of consideration. This delay seems to have changed little over time, as shown by the results obtained by dividing the sample to cover different sub-periods.

Our analysis has used macro data. However, an interesting topic for further research is to present evidence on the degree of inflation persistence looking at price data on a sectoral level rather on an aggregate level, and explain whether cross-section variance in inflation persistence and/or in the level of the inflation rate can be determined by the structural features of different sectors.

Appendix: Data Sources and Definitions

CPI, Consumer Price Index (1999=100), sample period 1975 Q1-2003 Q2, quarterly averages seasonally adjusted. Source: National Statistical Service of Greece.

Short-term bank lending rate to enterprises (quarterly averages), sample period 1975 Q1-2003 Q1, in percent. Source: Bank of Greece.

Gross Domestic Product, market prices, at 1995 constant prices, in million euro (ESA 95), quarterly data, no seasonal adjustment, sample period 1975 Q1-2003 Q1. Source: National Statistical Service of Greece.

Gross Domestic Product, market prices, at current prices, in million euro (ESA 95), quarterly data, no seasonal adjustment, sample period 1975 Q1-2002 Q4. Source: National Statistical Service of Greece.

M3 money, M1 money, ECB definition, in million euro, no seasonal adjustment, end-of quarter data, sample period 1980 Q1-2003 Q1. Source: Bank of Greece.

Nominal wages, minimum monthly salary of white colour workers in manufacturing, in thousands of drachmas, quarterly data, no seasonal adjustment, sample period 1975 Q1-2002 Q4. Source: National General Collective Agreements.

Annex Box

A Brief Chronology of the Major Monetary Policy Changes in Greece, 1975-2003

Year	Monetary Policy Changes	Comments
1975	Policy of rapid sliding depreciation of the drachma. Inflation rose following an accommodating monetary policy stance. Central bank financing of fiscal deficits.	Managed float. The drachma's uncoupling from the dollar and its float against a basket of currencies amounted to a policy of rapid sliding depreciation, in order to counterbalance the effects of wage increases on the country's international competitiveness.
1982	Abolition of the Currency Committee. Its responsibilities were transferred to the Bank of Greece.	The Committee, comprised of five ministers and the Governor of the Bank of Greece, had decided on monetary and credit policies and targets since 1946.
1983	Drachma's devaluation.	Accommodative macroeconomic policies. A crisis in the balance of payments, stagflationary developments.
1985	Drachma's devaluation in the context of a two-year stabilisation programme.	Switch to an anti-inflationary policy. The programme led to a narrowing of the current account deficit and to a fall in inflation.
1987	Financial liberalization and deregulation.	Deregulation measures improved the functioning of financial markets. The process was gradual and was completed in 1994.
1988	Abandonment of the stabilisation programme.	Relaxation of wage controls, new inflation crisis, fiscal deficits.
1991-94	Attention focused on disinflation. Efforts to meet the Maastricht criteria.	A strict incomes policy, tightened monetary and fiscal policy stance. Inflation fell to a more moderate level, sluggish economic growth.
1995	Hard drachma policy. The attainment of price stability became the primary objective of the monetary policy. To this end, the Bank of Greece relied on two intermediate targets; an exchange rate target and a target range for M3 growth.	The Bank of Greece adopted, for the first time, a nominal exchange rate anchor as the main intermediate target for monetary policy. By limiting the year-on-year depreciation of the drachma against the ECU to a rate that did not fully accommodate the inflation differential between Greece and the EU average, the exchange rate anchor was used as an important mechanism for disinflation.
1997	Central Bank Independence.	The Bank of Greece was given by law control over exchange rate policy and was

		provided with a mandate to attain monetary and price stability.
1998	ERM entry policy.	On 16 March the drachma joined the European Exchange Rate Mechanism (ERM) at a central rate that implied 12.3% devaluation against the ECU. Budgetary measures, a strict incomes policy and the introduction of structural reforms, mainly in the financial sector supported the new exchange rate.
1999	Entry into ERM II	On 1 January the drachma began to participate to ERM II (at a central rate of 353.109 per ECU with a standard fluctuation band of $\pm 15\%$).
2001	Greece entered the euro area.	On 17 January 2000 the drachma's central rate against the euro was revalued by 3.5% to 340.750 drachmas per euro. On 19 June the ECOFIN Council admitted Greece into the euro area, effective 1 January 2001.

References

- Alogoskoufis, G. and Smith, R. (1991), 'The Phillips Curve, the Persistence of Inflation and the Lucas Critique: Evidence from Exchange Rate Regime;', *American Economic Review*, Vol. 81, pp. 1254-1275.
- Altissimo, F. and Corradi, V. (2003), 'Strong Rules for Detecting the Number of Breaks in a Time Series', *Journal of Econometrics*, 117, pp. 207-244.
- Altissimo, F. (2003), 'Testing for Breaks: An Application to Euro Area Inflation', paper presented at the Eurosystem Inflation Persistence Network Workshop, ECB, October.
- Andrews, D. and Chen, W. K. (1994), 'Approximately Median-Unbiased Estimation of Autoregressive Models', *Journal of Business and Economic Statistics*, Vol. 12, pp. 187-204.
- Bai, J. and Perron, E. (1998), 'Estimating and Testing Linear Models with Multiple Structural Changes', *Econometrica*, Vol. 66, pp. 47-78.
- Bai, J. and Perron, E. (2003), 'Computation and Analysis of Multiple Structural Change Models', *Journal of Applied Econometrics*, Vol. 18, pp. 1-22.
- Batini, N. (2002), 'Euro Area Inflation Persistence', *ECB, Working Paper*, No. 201, December.
- Batini, N. and Nelson, E. (2001), 'The Lag from Monetary Policy Actions to Inflation: Friedman Revisited', *International Finance*, Vol. 4, No. 3, pp. 381-400.
- Benati, L. (2002), 'Investigating Inflation Persistence Across Monetary Regimes', Bank of England, *mimeo*.
- Bordo, M. D. (1993), 'The Bretton Woods International Monetary System: An Historical Overview', in M. D. Bordo and Eichengreen, B. (eds.), *A Retrospective on the Bretton Woods System*, Chicago University Press, pp. 3-108.
- Bordo, M. D. and Schwartz, A. J. (1999), 'Under What Circumstances, Past and Present, Have International Rescues of Countries in Financial Distress Been Successful?', *Journal of International Money and Finance*, Vol. 18, pp. 683-708.
- Breusch, T. (1978), 'Testing for Autocorrelation in Dynamic Linear Models', *Australian Economic Papers*, Vol. 17, pp. 334-355.
- Brissimis, S. N., Hondroyannis, G., Swamy, P.A.V.B. and Tavlas, G. S. (2003), 'Empirical Modelling of Money Demand in Periods of Structural Change: The Case of Greece', *Oxford Bulletin of Economics and Statistics*, Vol. 65, No. 5, pp. 605-628.
- Chang, I.L., Swamy, P.A.V.B., Hallaham, C. and Tavlas, G. S. (2000), 'A Computational Approach to Finding Causal Economic Laws', *Computational Economics*, Vol. 16, pp. 105-36.
- Christiano, C., Eichenbaum, M. and Evans, C. (2001), 'Nominal Rigidities and the Dynamic Effects of a Shock to Monetary Policy', *NBER, Working Paper*, No. 8403.
- Cogley, T. and Sargent, T. (2001), 'Evolving Post-World War II US Inflation Dynamics', *NBER Macroeconomics Annual* 2001, pp. 331-372.

- Coenen, G. and Wieland, V. (2000), 'A Small Estimated Euro Area Model With Rational Expectations and Nominal Rigidities', *ECB, Working Paper*, No. 30.
- Coenen, G. and Wieland, V. (2002), 'Inflation Dynamics and International Linkages: A Model of the United States, the Euro Area and Japan', paper presented at the International Research Forum on Monetary Policy, ECB, July.
- Eagle, R. F. (1982), 'Autoregressive Conditional Heteroskedasticity With Estimates of the Variance of UK Inflation', *Econometrica*, Vol. 50, pp. 987-1007.
- Fagan, G., Henry, J. and Mestre, R. (2001), 'An Area-Wide Model (AWM) for the Euro Area', *ECB, Working Paper*, No. 42.
- Friedman, M. (1972), 'Have Monetary Policies Failed?', *American Economic Review, Papers and Proceedings*, Vol. 62, pp. 11-18.
- Friedman, M. and Schwartz, A. J. (1982), *Monetary Trends in the United States and the United Kingdom: Their Relation to Income, Prices and Interest Rates, 1886-1975*, NBER, Chicago University Press.
- Fuhrer, J. and Moore, G. (1995), 'Inflation Persistence', *Quarterly Journal of Economics*, Vol. 110, pp. 127-159.
- Gali, J. and Getler, M. (1999), 'Inflation Dynamics: A Structural Econometric Analysis', *Journal of Monetary Economics*, Vol. 44, pp. 195-222.
- Gali, J. Getler, M. and Lopez-Salido, J. D. (2000), 'European Inflation Dynamics', *European Economic Review*, Vol. 45, pp. 1237-1270.
- Garganas, N. C. and Tavlas, G. S. (2001), 'Monetary Regimes and Inflation Performance: The Case of Greece', in R. Bryant, N.C. Garganas and G.S. Tavlas (eds), *Greece's Economic Performance and Prospects*, Washington, D. C. Brookings Institution, pp. 43-96.
- Gibson, H. D. and Lazaretou, S. (2001), 'Leading Inflation Indicators for Greece', *Economic Modelling*, Vol. 18, pp. 325-328.
- Godfrey, L. (1978), 'Testing Against General Autoregressive and Money Average Error Models When the Regressors Include Lagged Dependent Variables', *Econometrica*, Vol. 46, pp. 1293-1302.
- Hondroyiannis, G., Swamy, P.A.V.B. and Tavlas, G. S. (2000), "Is the Japanese Economy in a Liquidity Trap?", *Economics Letters*, Vol. 66, pp. 17-23.
- Hondroyiannis, G., Swamy, P.A.V.B. and Tavlas, G. S. (2001a), "The Time-Varying Performance of the Long-Run Demand for Money in the United States", *Economic Inquiry*, Vol. 39, No. 1, pp. 111-123.
- Hondroyiannis, G., Swamy, P.A.V.B. and Tavlas, G. S. (2001b), "Modelling the Long-run Demand for Money in the UK: A Random Coefficient Analysis", *Economic Modelling*, Vol. 18, No.3, pp. 475-501.
- Kalyvitis, S. and Lazaretou, S. (1997), 'Persistence of Nominal and Real Variables Under Fixed and Floating Exchange Rates: Evidence from Greece, 1954-1992', *Bulletin of Economic Research*, Vol. 49, No. 2, pp. 153-168.
- Lazaretou, S. (1995), 'Inflation and Real Exchange Rate Behaviour Under Alternative Nominal Exchange Rate Regimes: the Greek Experience of 1877-1936', *Greek Economic Review*, Vol. 17, pp. 1-21.

- Levin, A. T. and Piger, J. M. (2004), 'Is Inflation Persistence Intrinsic in Industrial Economies?', *ECB, Working Paper*, no 334.
- Nelson, C. and Plosser, C. (1982), 'Trends and Random Walks in Macroeconomic Time Series: Some Evidence and Implications', *Journal of Monetary Economics*, Vol. 10, pp. 129-162.
- O' Reilly and Whelan, K. (2004), 'Has Euro Area Inflation Persistence Changed Over Time?', *ECB Working Paper*, no 335.
- Pivetta, F. and Reis, R. (2001), 'The Persistence of Inflation in the United States', *mimeo*, Harvard University.
- Rotemberg, J. J. and Woodford, M. (1997), 'An Optimisation Based Econometric Model for the Evaluation of Monetary Policy', *NBER, Macroeconomics Annual 1997*, pp. 297-346.
- Sbordone, A. M. (2002), 'Prices and Unit Labour Costs: A New Test of Price Stickiness', *Journal of Monetary Economics*, Vol. 49, pp. 265-292.
- Smets, F. and Wouters, R. (2002), 'An Estimated Stochastic General Equilibrium Model of the Euro Area', *ECB, Working Paper*, No. 171.
- Stock, J. (2001), 'Comment on Evolving Post-World War II US Inflation Dynamics', *NBER Macroeconomics Annual 2001*, pp. 379-387.
- Swamy, P.A.V.B. and Tavlas, G. S. (1995), 'Random Coefficient Models: Theory and Applications', *Journal of Economic Surveys*, Vol. 9, pp. 165-96.
- Swamy, P.A.V.B. and Tavlas, G. S. (2001), 'Random Coefficient Models' in Baltagi, B. H. (ed.), *Companion to Theoretical Econometrics*, Basil Blackwell, Oxford, pp. 410-28.
- Taylor, J. B. (2000), 'Low Inflation, Pass-Through and the Pricing Powers of Firms', *European Economic Review*, Vol. 44, pp. 1389-1408.
- Willis, J. L. (2003), 'Implications of Structural Changes in the US Economy for Pricing Behavior and Inflation Dynamics', *Economic Review, Federal Reserve of Kansas City*, First Quarter, pp. 5-24.
- Woodford, M. (1998), 'Comment on John Cochrane, "A Frictionless View of US Inflation"', *NBER Macroeconomics Annual*, Vol. 13, pp. 390-418.

European Central Bank working paper series

For a complete list of Working Papers published by the ECB, please visit the ECB's website (<http://www.ecb.int>).

- 314 "Exchange rate risks and asset prices in a small open economy" by A. Derviz, March 2004.
- 315 "Option-implied asymmetries in bond market expectations around monetary policy actions of the ECB" by S. Vähämaa, March 2004.
- 316 "Cooperation in international banking supervision" by C. Holthausen and T. Rønde, March 2004.
- 317 "Fiscal policy and inflation volatility" by P. C. Rother, March 2004.
- 318 "Gross job flows and institutions in Europe" by R. Gómez-Salvador, J. Messina and G. Vallanti, March 2004.
- 319 "Risk sharing through financial markets with endogenous enforcement of trades" by T. V. Köppl, March 2004.
- 320 "Institutions and service employment: a panel study for OECD countries" by J. Messina, March 2004.
- 321 "Frequency domain principal components estimation of fractionally cointegrated processes" by C. Morana, March 2004.
- 322 "Modelling inflation in the euro area" by E. S. Jansen, March 2004.
- 323 "On the indeterminacy of New-Keynesian economics" by A. Beyer and R. E. A. Farmer, March 2004.
- 324 "Fundamentals and joint currency crises" by P. Hartmann, S. Straetmans and C. G. de Vries, March 2004.
- 325 "What are the spill-overs from fiscal shocks in Europe? An empirical analysis" by M. Giuliadori and R. Beetsma, March 2004.
- 326 "The great depression and the Friedman-Schwartz hypothesis" by L. Christiano, R. Motto and M. Rostagno, March 2004.
- 327 "Diversification in euro area stock markets: country versus industry" by G. A. Moerman, April 2004.
- 328 "Non-fundamental exchange rate volatility and welfare" by R. Straub and I. Tchakarov, April 2004.
- 329 "On the determinants of euro area FDI to the United States: the knowledge-capital-Tobin's Q framework," by R. A. De Santis, R. Anderton and A. Hijzen, April 2004.
- 330 "The demand for euro area currencies: past, present and future" by B. Fischer, P. Köhler and F. Seitz, April 2004.
- 331 "How frequently do prices change? evidence based on the micro data underlying the Belgian CPI" by L. Aucremanne and E. Dhyne, April 2004.
- 332 "Stylised features of price setting behaviour in Portugal: 1992-2001" by M. Dias, D. Dias and P. D. Neves, April 2004.
- 333 "The pricing behaviour of Italian firms: New survey evidence on price stickiness" by S. Fabiani, A. Gattulli and R. Sabbatini, April 2004.

- 334 “Is inflation persistence intrinsic in industrial economies?” by A. T. Levin and J. M. Piger, April 2004.
- 335 “Has eura-area inflation persistence changed over time?” by G. O’Reilly and K. Whelan, April 2004.
- 336 “The great inflation of the 1970s” by F. Collard and H. Dellas, April 2004.
- 337 “The decline of activist stabilization policy: Natural rate misperceptions, learning and expectations” by A. Orphanides and J. C. Williams, April 2004.
- 338 “The optimal degree of discretion in monetary policy” by S. Athey, A. Atkeson and P. J. Kehoe, April 2004.
- 339 “Understanding the effects of government spending on consumption” by J. Galí, J. D. López-Salido and J. Vallés, April 2004.
- 340 “Indeterminacy with inflation-forecast-based rules in a two-bloc model” by N. Batini, P. Levine and J. Pearlman, April 2004.
- 341 “Benefits and spillovers of greater competition in Europe: A macroeconomic assessment” by T. Bayoumi, D. Laxton and P. Pesenti, April 2004.
- 342 “Equal size, equal role? Interest rate interdependence between the euro area and the United States” by M. Ehrmann and M. Fratzscher, April 2004.
- 343 “Monetary discretion, pricing complementarity and dynamic multiple equilibria” by R. G. King and A. L. Wolman, April 2004.
- 344 “Ramsey monetary policy and international relative prices” by E. Faia and T. Monacelli, April 2004.
- 345 “Optimal monetary and fiscal policy: A linear-quadratic approach” by P. Benigno and M. Woodford, April 2004.
- 346 “Perpetual youth and endogenous labour supply: a problem and a possible solution” by G. Ascari and N. Rankin, April 2004.
- 347 “Firms’ investment decisions in response to demand and price uncertainty” by C. Fuss and P. Vermeulen, April 2004.
- 348 “Financial openness and growth: Short-run gain, long-run pain?” by M. Fratzscher and M. Bussiere, April 2004.
- 349 “Estimating the rank of the spectral density matrix” by G. Camba-Mendez and G. Kapetanios, April 2004.
- 350 “Exchange-rate policy and the zero bound on nominal interest rates” by G. Camba-Mendez and G. Kapetanios, April 2004.
- 351 “Interest rate determination in the interbank market” by V. Gaspar, G. P. Quirós and H. R. Mendizábal, April 2004.
- 352 “Forecasting inflation with thick models and neural networks” by P. McNelis and P. McAdam, April 2004.

- 353 "Towards the estimation of equilibrium exchange rates for CEE acceding countries: methodological issues and a panel cointegration perspective" by F. Maeso-Fernandez, C. Osbat and B. Schnatz, April 2004.
- 354 "Taking stock: monetary policy transmission to equity markets" by M. Ehrmann and M. Fratzscher, May 2004.
- 355 "Production interdependence and welfare" by K. X. D. Huang and Z. Liu, May 2004.
- 356 "Developing a euro area accounting matrix: issues and applications" by T. Jellema, S. Keuning, P. McAdam and R. Mink, May 2004.
- 357 "Seasonal adjustment and the detection of business cycle phases" by A. M. Mir and D. R. Osborn, May 2004.
- 358 "Did the pattern of aggregate employment growth change in the euro area in the late 1990s?" by G. Mourre, May 2004.
- 359 "The longer term refinancing operations of the ECB" by T. Linzert, D. Nautz and U. Bindseil, May 2004.
- 360 "Optimal monetary policy rules for the euro area: an analysis using the area wide model" by A. Dieppe, K. Küster and P. McAdam, May 2004.
- 361 "Excess reserves and the implementation of monetary policy of the ECB" by U. Bindseil, G. Camba-Mendez, A. Hirsch and B. Weller, May 2004.
- 362 "Oil price shocks and real GDP growth: empirical evidence for some OECD countries" by R. Jiménez-Rodríguez and M. Sánchez, May 2004.
- 363 "Communication and exchange rate policy" by M. Fratzscher, May 2004.
- 364 "Asset price booms and monetary policy" by C. Detken and F. Smets, May 2004.
- 365 "Exchange rates and fundamentals: new evidence from real-time data" by M. Ehrmann and M. Fratzscher, May 2004.
- 366 "The informational content of over-the-counter currency options" by P. Christoffersen and S. Mazzotta, June 2004.
- 367 "Factor substitution and factor augmenting technical: progress in the US: a normalized supply-side system approach" by R Klump, P. McAdam and A. Willman, June 2004.
- 368 "Capital quality improvement and the sources of growth in the euro area" by P. Sakellaris and F. W. Vijselaar, June 2004.
- 369 "Sovereign risk premia in the European government bond market" by K. Bernoth, J. von Hagen and L. Schuknecht, June 2004.
- 370 "Inflation persistence during periods of structural change: an assessment using Greek data" by G. Hondroyannis and S. Lazaretou, June 2004.

