

Orphanides, Athanasios; Williams, John C.

Working Paper

The decline of activist stabilization policy: natural rate misperceptions, learning, and expectations

ECB Working Paper, No. 337

Provided in Cooperation with:

European Central Bank (ECB)

Suggested Citation: Orphanides, Athanasios; Williams, John C. (2004) : The decline of activist stabilization policy: natural rate misperceptions, learning, and expectations, ECB Working Paper, No. 337, European Central Bank (ECB), Frankfurt a. M.

This Version is available at:

<https://hdl.handle.net/10419/152771>

Standard-Nutzungsbedingungen:

Die Dokumente auf EconStor dürfen zu eigenen wissenschaftlichen Zwecken und zum Privatgebrauch gespeichert und kopiert werden.

Sie dürfen die Dokumente nicht für öffentliche oder kommerzielle Zwecke vervielfältigen, öffentlich ausstellen, öffentlich zugänglich machen, vertreiben oder anderweitig nutzen.

Sofern die Verfasser die Dokumente unter Open-Content-Lizenzen (insbesondere CC-Lizenzen) zur Verfügung gestellt haben sollten, gelten abweichend von diesen Nutzungsbedingungen die in der dort genannten Lizenz gewährten Nutzungsrechte.

Terms of use:

Documents in EconStor may be saved and copied for your personal and scholarly purposes.

You are not to copy documents for public or commercial purposes, to exhibit the documents publicly, to make them publicly available on the internet, or to distribute or otherwise use the documents in public.

If the documents have been made available under an Open Content Licence (especially Creative Commons Licences), you may exercise further usage rights as specified in the indicated licence.



EUROPEAN CENTRAL BANK

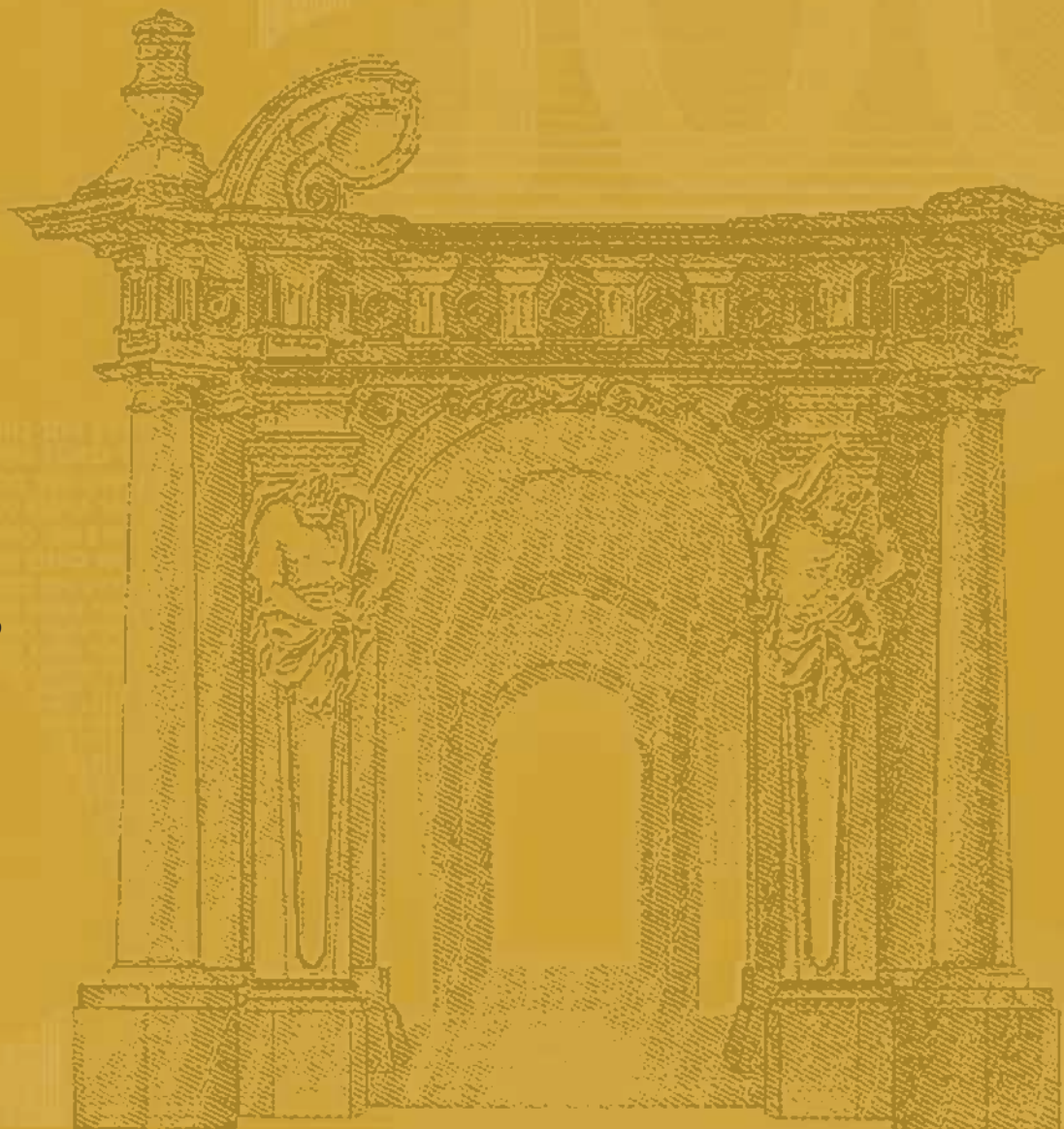
WORKING PAPER SERIES

NO. 337 / APRIL 2004

**INTERNATIONAL RESEARCH
FORUM ON MONETARY POLICY**

**THE DECLINE
OF ACTIVIST
STABILIZATION
POLICY:
NATURAL RATE
MISPERCEPTIONS,
LEARNING, AND
EXPECTATIONS**

by Athanasios Orphanides
and John C. Williams





EUROPEAN CENTRAL BANK



In 2004 all publications will carry a motif taken from the €100 banknote.



WORKING PAPER SERIES

NO. 337 / APRIL 2004

INTERNATIONAL RESEARCH
FORUM ON MONETARY POLICY

THE DECLINE OF ACTIVIST STABILIZATION POLICY: NATURAL RATE MISPERCEPTIONS, LEARNING, AND EXPECTATIONS¹

by Athanasios Orphanides²
and John C. Williams³

This paper can be downloaded without charge from
<http://www.ecb.int> or from the Social Science Research Network
electronic library at http://ssrn.com/abstract_id=532962.

¹ We would like to thank Jim Bullard, Alex Cukierman, Vitor Gaspar, Glenn Rudebusch, Robert Solow, and participants at presentations at Georgetown University, the Workshop on Expectations, Learning and Monetary Policy, Eltville, August 30-31, 2003, the International Research Forum on Monetary Policy, Washington, D.C., November 14-15, 2003, and the Annual Meeting of the American Economic Association, San Diego, CA, January 3-5, 2004, for useful comments and discussions on earlier drafts. Kirk Moore provided excellent research assistance. The opinions expressed are those of the authors and do not necessarily reflect views of the Board of Governors of the Federal Reserve System or the management of the Federal Reserve Bank of San Francisco.

² Board of Governors of the Federal Reserve System, Federal Reserve Board, Washington, D.C. 20551, Tel.: (202) 452-2654, email: Athanasios.Orphanides@frb.gov.

³ Federal Reserve Bank of San Francisco, 101 Market Street, San Francisco, CA 94105, Tel.: (415) 974-2240, email: John.C.Williams@sf.frb.org.

International Research Forum on Monetary Policy

The International Research Forum on Monetary Policy is an initiative organised and sponsored by the European Central Bank, the Board of Governors of the Federal Reserve System, the Center for German and European Studies at Georgetown University and the Center for Financial Studies at Goethe University. The aim of the Forum is to foster discussion on new research on monetary policy issues that are relevant from a global perspective.

The Forum organises regular conferences at locations alternating between the euro area and the United States. The first one took place at the ECB on 5 and 6 July 2002. The second took place at the Board of Governors of the Federal Reserve System in Washington on 14 and 15 November 2003. The issues (336-345) of the ECB Working Paper Series contain the papers presented on that occasion; the programme of the conference and the invited discussions can be accessed at <http://www.ecb.int/events/conf/intforum/intforum2.htm>

Editorial assistance in preparing the papers was provided by Susana Sommaggio.

© European Central Bank, 2004

Address

Kaiserstrasse 29
60311 Frankfurt am Main, Germany

Postal address

Postfach 16 03 19
60066 Frankfurt am Main, Germany

Telephone

+49 69 1344 0

Internet

<http://www.ecb.int>

Fax

+49 69 1344 6000

Telex

411 144 ecb d

All rights reserved.

Reproduction for educational and non-commercial purposes is permitted provided that the source is acknowledged.

The views expressed in this paper do not necessarily reflect those of the European Central Bank.

The statement of purpose for the ECB Working Paper Series is available from the ECB website, <http://www.ecb.int>.

ISSN 1561-0810 (print)

ISSN 1725-2806 (online)

CONTENTS

Abstract	4
Non-technical summary	5
1 Introduction	7
2 Natural rate misperceptions and policy activism	9
3 A simple estimated model of the U.S. economy	11
3.1 The structural model	12
3.2 Historical monetary policy	14
4 Expectations formation	16
4.1 Perpetual learning with least squares	16
4.2 Calibrating the learning rate	17
5 The interaction of learning, misperceptions, and policy	18
5.1 Initial conditions	18
5.2 The role of natural rate misperceptions	19
5.3 The role of learning	20
5.4 The role of policy activism	21
5.5 Robustness	23
6 Conclusion	24
References	25
Figures	29
European Central Bank working paper series	37

Abstract

We develop an estimated model of the U.S. economy in which agents form expectations by continually updating their beliefs regarding the behavior of the economy and monetary policy. We explore the effects of policymakers' misperceptions of the natural rate of unemployment during the late 1960s and 1970s on the formation of expectations and macroeconomic outcomes. We find that the combination of monetary policy directed at tight stabilization of unemployment near its perceived natural rate and large real-time errors in estimates of the natural rate uprooted heretofore quiescent inflation expectations and destabilized the economy. Had monetary policy reacted less aggressively to perceived unemployment gaps, inflation expectations would have remained anchored and the stagflation of the 1970s would have been avoided. Indeed, we find that less activist policies would have been more effective at stabilizing *both* inflation and unemployment. We argue that policymakers, learning from the experience of the 1970s, eschewed activist policies in favor of policies that concentrated on the achievement of price stability, contributing to the subsequent improvements in macroeconomic performance of the U.S. economy.

KEYWORDS: Monetary policy, stagflation, rational expectations, learning.

JEL Classification System: E52

Non-technical summary

The “New Economics” of the 1960s prescribed activist policies aimed at achieving and maintaining full employment of economic resources. According to this view, active management of aggregate demand would counteract any shortfalls or excesses relative to the economy’s potential and thus attain the holy grail of macroeconomic policy: sustained prosperity with price stability. This faith in macroeconomic stabilization policy reflected the culmination of methodological advances in macroeconomic modeling, econometrics, and optimal control. The enviable performance of the U.S. economy in the first half of the 1960s appeared to validate the promise of the “New Economics,” but this success proved to be fleeting. In the second half of the 1960s, prosperity was purchased at the cost of rising inflation. Worse, the prosperity of the 1960s was soon overshadowed by the stagflation—high inflation accompanied by high unemployment—in the 1970s.

In this paper, we reexamine the sources of stagflation in the 1970s, and argue that the combination of monetary policy directed at tight stabilization of the unemployment rate near its perceived natural rate and severe underestimation of the natural rate, rather than adverse supply shocks, explains much of the woeful performance of the U.S. economy in the 1970s. With hindsight, it is clear that policymakers in the 1960s and much of the 1970s were far too optimistic of how low the unemployment rate could go before igniting inflation pressures. Given the activist bent of policymakers influenced by the “New Economics,” these natural rate misperceptions contributed to an extended period of policy being excessively stimulative, resulting in rising inflation (see Orphanides 2002, 2003a,b, 2004, and Orphanides and Williams, 2002).

A key element in our analysis is the endogenous evolution of expectations formation in response to the tumultuous economic developments of the late 1960s and 1970s. We develop an estimated model of the U.S. economy in which private agents have imperfect knowledge of the true structure of the economy and policy. In the model, agents are assumed to continuously update their beliefs about the reduced-form structure of the economy and monetary policy. As discussed in Orphanides and Williams (2003, forthcoming), this process of perpetual learning propagates the direct effects of policy errors onto inflation expectations and back on the economy.

According to our model, the combination of stimulative monetary policy and rising inflation during the late 1960s and 1970s contributed to public confusion regarding the Federal Reserve's objectives and the behavior of inflation. Although inflation expectations were initially well-anchored owing to the period of price stability in the 1950s and early 1960s, this advantage was squandered during the late 1960s as policy errors and the resulting rise in inflation caused inflation expectations to drift upward. By the time that the supply shocks of the 1970s hit, inflation expectations were already unmoored, exacerbating the response to the shocks and contributing to stagflation. It is worth noting that our results do not rely on policy being inherently destabilizing in the pre-1979 period, as emphasized by Clarida, Gali, and Gertler (2000). In fact, the feedback rule that we estimate for the pre-1979 period based on real-time data features a greater than one-for-one response of nominal rates to inflation. What is crucial is that policy responded strongly to perceived unemployment rate gaps during that period.

We find that had monetary policy not reacted as aggressively to perceived unemployment gaps as it did, inflation expectations would have remained anchored and the stagflation of the 1970s would have been avoided, despite the dramatic increases in oil prices and the productivity slowdown during that period. Importantly, according to our model, less activist policies would have done a better job of stabilizing *both* inflation and unemployment in the 1970s. This is a lesson that policymakers themselves appeared to recognize by the end of the 1970s. At that time, with inflation seemingly spiraling out of control, monetary policymakers in the United States changed course, eschewing the fine-tuning of the "New Economics" and concentrating instead on the goal of price stability. Following the costly disinflation of the early 1980s, less activist monetary policy, as evidenced by a reduced policy responsiveness to the perceived unemployment gap, contributed to a new era of relatively stable inflation and unemployment. Our model helps explain this evolution in the understanding of the role of monetary policy and the critical nature of maintaining well anchored inflation expectations as a means for ensuring long-term economic stability.

1 Introduction

The “New Economics” of the 1960s prescribed activist policies aimed at achieving and maintaining full employment of economic resources. According to this view, active management of aggregate demand would counteract any shortfalls or excesses relative to the economy’s potential and thus attain the holy grail of macroeconomic policy: sustained prosperity with price stability. This faith in macroeconomic stabilization policy reflected the culmination of methodological advances in macroeconomic modeling, econometrics, and optimal control.¹ The zeitgeist of the “New Economics” is nicely summarized by Walter Heller (1966):

The promise of modern economic policy, managed with an eye to maintaining prosperity, subduing inflation, and raising the quality of life, is indeed great. And although we have made no startling conceptual breakthroughs in economics in recent years, we *have*, more effectively than ever before, harnessed the existing economics—the economics that has been taught in the nation’s college classrooms for some twenty years—to the purposes of prosperity, stability, and growth. (page 116, emphasis in original.)

The enviable performance of the U.S. economy in the first half of the 1960s appeared to validate the claims of Heller, but this success proved to be fleeting. In the second half of the 1960s, prosperity was purchased at the cost of rising inflation, as seen in Figure 1. Worse, the prosperity of the 1960s was soon overshadowed by the stagflation—high inflation accompanied by high unemployment—in the 1970s.

In this paper, we reexamine the sources of stagflation in the 1970s, and argue that the combination of monetary policy directed at tight stabilization of the unemployment rate near its perceived natural rate and severe underestimation of the natural rate, rather than adverse supply shocks, explains much of the woeful performance of the U.S. economy in the 1970s. With hindsight, it is clear that policymakers in the 1960s and much of the 1970s were far too optimistic of how low the unemployment rate could go before igniting inflation pressures. Given the activist bent of policymakers influenced by the “New Economics,” these natural rate misperceptions contributed to an extended period of policy being excessively stimulative, resulting in rising inflation.²

¹See Heller (1966), Tobin (1966, 1972) and Okun (1970) for discussions of the ideas associated with the “New Economics” of the 1960s. Application of control methods for macroeconomic stabilization had been discussed at least as early as Lerner (1944) and formalized by Phillips (1954). Friedman’s (1947) review of Lerner (1944) offers an early critique of the application of these methods for macroeconomic stabilization.

²See Orphanides (2002, 2003a,b, 2004), Orphanides and Williams (2002), Bullard and Eusepi (2003), Collard and Dellas (2004), and Cukierman and Lippi (2003).

A key element in our analysis is the endogenous evolution of expectations formation in response to the tumultuous economic developments of the late 1960s and 1970s. We develop an estimated model of the U.S. economy in which private agents have imperfect knowledge of the true structure of the economy and policy. In the model, agents are assumed to continuously update their beliefs about the reduced-form structure of the economy and monetary policy. As discussed in Orphanides and Williams (2003, forthcoming), this process of perpetual learning propagates the direct effects of policy errors onto inflation expectations and back on the economy.

According to our model, the combination of stimulative monetary policy and rising inflation during the late 1960s and 1970s contributed to private agent confusion regarding the Federal Reserve's objectives and the behavior of inflation. Although inflation expectations were initially well-anchored owing to the period of price stability in the 1950s and early 1960s, this advantage was squandered during the late 1960s as policy errors and the resulting rise in inflation caused inflation expectations to drift upward.³ By the time that the supply shocks of the 1970s hit, inflation expectations were already unmoored, exacerbating the response to the shocks and contributing to stagflation. It is worth noting that our results do not rely on policy being inherently destabilizing in the pre-1979 period, as emphasized by Clarida, Gali, and Gertler (2000). In fact, the feedback rule that we estimate for the pre-1979 period based on real-time data features a greater than one-for-one response of nominal rates to inflation. What is crucial for our results is that policy responded strongly to perceived unemployment rate gaps during that period as indicated by our estimated policy feedback rule.

We find that had monetary policy not reacted as aggressively to perceived unemployment gaps as it did, inflation expectations would have remained anchored and the stagflation of the 1970s would have been avoided, despite the dramatic increases in oil prices and the productivity slowdown during that period. Importantly, according to our model, less activist policies would have done a better job of stabilizing *both* inflation and unemployment

³The favorable environment of inflation expectations in the early 1960s can be largely attributed to the greater emphasis on price stability relative to economic stabilization before the decade of the 1960s. See Romer and Romer (2002) and Orphanides (2003c) for discussions highlighting some underappreciated positive aspects of the policy environment during this period.

in the 1970s. This is a lesson that policymakers themselves appeared to recognize by end of the 1970s. At that time, with inflation seemingly spiraling out of control, monetary policymakers in the United States changed course, eschewing the fine-tuning of the “New Economics” and concentrating instead on the goal of price stability. Indeed, in 1978, before he became Chairman of the Federal Reserve Board of Governors, Paul Volcker alluded to the nature of the required change:⁴

Wider recognition of the limits on the ability of demand management to keep the economy at a steady full employment path, especially when expectations are hypersensitive to the threat of more inflation, provides a more realistic starting point for policy formulation. (1978 p. 61.)

Following the costly disinflation of the early 1980s, less activist monetary policy, as evidenced by a reduced policy responsiveness to the perceived unemployment gap, contributed to a new era of relatively stable inflation and unemployment. Our model helps explain this evolution in the understanding of the role of monetary policy and the critical nature of maintaining well anchored inflation expectations as a means for ensuring long-term economic stability.

2 Natural Rate Misperceptions and Policy Activism

The success of activist stabilization policy rests on the assumption that the natural rate is a useful policy target. Under that assumption, adjusting aggregate demand relative to the economy’s natural rate becomes the focus of short-term stabilization policy. Many of the policy errors associated with the Great Inflation of the late 1960s and 1970s can be traced to the pursuit of too low of a target of the natural rate of unemployment.

Figure 2 plots the rate of unemployment in the United States since the end of 1965 (the beginning of the Great Inflation) and two measures of the natural rate, a real-time measure, that is, perceptions as of the time shown, and a retrospective measure, that is, a current estimate. We take the current Congressional Budget Office (CBO) (2001, 2002) estimates of the natural rate of unemployment as truth. We construct a real-time series

⁴During the early stages of the disinflationary policy pursued following the 1979 policy change, Chairman Volcker often stressed the importance of policies anchoring inflation expectations.

for the natural rate guided by written documents that offer glimpses of the thinking of policymakers of the 1960s and 1970s. During the 1960s, four percent was widely accepted as a reasonable working definition of the full employment rate of unemployment.⁵ Although we do not have precise information for the evolution of real-time perceptions of the natural rate of unemployment in the early 1970s, we do know that many estimates rose during that period, as reflected in various policy-related studies.⁶ Correspondingly, we posit that perceptions of the natural rate rose to around 4.5 percent in 1970 from the 4 percent estimates that prevailed earlier.⁷ Published accounts of Federal Reserve Board model exercises and estimates by the Council of Economic Advisers reported in the *Economic Report of the President* indicate that natural rate estimates continued to rise during the 1970s. From the late 1970s to the present, the CBO has regularly reported, explicitly or implicitly, its estimates of the natural rate in its publications regarding the economic and budget outlook, and for those years we use the contemporaneous values for our real-time estimates from these CBO publications.⁸

Comparison of the real-time perceptions likely held by policymakers at the time and our best current measures of the natural rate, then, provide a summary indicator of the potential policy errors that may be committed when an activist approach to stabilization policy is pursued. The top panel of Figure 3 shows our real-time and retrospective estimates of the natural rate of unemployment. The bottom panel of the figure plots the implied natural rate misperceptions—measured as the “true” value minus the real-time estimate—from 1965 through 2003. As seen in the figure, natural rate misperceptions have tended to be highly persistent. The first-order serial correlation of this series over this sample is 0.98. Interestingly, the average magnitude of real-time misperceptions has declined over the

⁵Recollections of key policymakers of that period, including Walter Heller, Arthur Okun and Herbert Stein, who served as members and chairs of the Council of Economic Advisers in the 1960s and early 1970s, as well as Federal Reserve Chairman Arthur Burns serve as evidence of the wide acceptance of that estimate. See Burns (1979), Heller (1966), Okun (1962, 1970), and Stein (1984, 1996).

⁶See, for example, the discussion in Hall (1970) and Perry (1970).

⁷As a robustness check, we considered alternative paths for the real-time estimates in the model-based simulation exercises reported below. The precise dating of the evolution of perceptions regarding the rise of the natural rate from 4 percent in the late 1960s to 5 percent in the late 1970s does not materially influence our simulations, as both the pattern and size of the resulting misperceptions remain broadly similar under such alternatives, given that the retrospective estimates for this period, at about 6 percent, are always higher by a considerable margin.

⁸The real-time and retrospective natural rate estimates of the most recent five years are identical, reflecting the fact that the CBO’s estimates are unchanged over that period.

past several decades. This appearance of diminishing errors may be overstated, however, because these calculations of “errors” implicitly assume that the current CBO method of estimating the natural rate is correctly specified. The real-time and retrospective estimates in the latter part of the sample have been constructed by the CBO using the same method (based on a Kalman filter), while the “misperceptions” in the earlier part of the sample also reflect differences in methodology. If the current methodology used by the CBO proves to be inadequate, then the difference between real-time estimates and retrospective estimates in the 1980s and 1990s may widen in the future.⁹

Examples from the 1970s illustrate the problem associated with adopting an activist approach to stabilization policy when one may be mistaken as to the size or even the sign of the unemployment (or output) gap in real time.¹⁰ Consider the policy error of the early 1970s. With unemployment rising during and after the recession that started at the end of 1969, and in light of available estimates of the natural rate of unemployment, policymakers could have reasonably held the view that the economy was operating with considerable slack. The activist policy prescription at the time was clear cut: pursue additional monetary expansion to bring the unemployment rate down. Moreover, the existing slack should have led to some welcome disinflation despite the additional stimulus. Indeed, such a policy was pursued at the time. But, based on the retrospective estimates of the natural rate, it is now clear that that policy prescription represented a large error. The economic expansion pursued in 1971-73 pushed aggregate demand far above the economy’s potential, as this is currently understood, fueling an increase in inflation. A similar error occurred after the 1975 recession, contributing to a further rise in inflation.

3 A Simple Estimated Model of the U.S. Economy

We examine the interaction of natural rate misperceptions, learning, and expectations for alternative monetary policy rules using a simple quarterly forward-looking model we developed in Orphanides and Williams (2002). The specification of the model is unchanged

⁹See Orphanides and Williams (2002) for a detailed discussion of the sensitivity of measures of natural rate misperceptions to the assumption of the correct estimation method.

¹⁰See Orphanides and van Norden (2002) and Orphanides and Williams (2002) for summary documentation of the magnitude of the problem of real-time measurement of the natural rates of output and unemployment, respectively.



from that paper; however, we have reestimated the structural equations using the retrospective and real-time estimates of the natural rate of unemployment reported in the preceding section and, for simplicity, we have imposed a constant implicit natural rate of interest.

3.1 The Structural Model

The model consists of the following two structural equations:

$$\pi_t = \phi_\pi \pi_{t+1}^e + (1 - \phi_\pi) \pi_{t-1} + \alpha_\pi (u_t^e - u_t^*) + e_{\pi,t}, \quad e_\pi \sim \text{iid}(0, \sigma_{e_\pi}^2), \quad (1)$$

$$u_t = \phi_u u_{t+1}^e + \chi_1 u_{t-1} + \chi_2 u_{t-2} + (1 - \phi_u - \chi_1 - \chi_2) u_t^* + \alpha_u (\tilde{r}_{t-1}^a - r^*) + e_{u,t}, \quad e_u \sim \text{iid}(0, \sigma_{e_u}^2), \quad (2)$$

where π denotes the annualized log difference of the GNP or GDP price deflator, u denotes the unemployment rate, u^* denotes the true natural rate of unemployment, \tilde{r}^a denotes the real interest rate based on the one-year Treasury bill, and r^* the natural real rate of interest. This model combines forward-looking elements of the New Synthesis model studied by Goodfriend and King (1997), Rotemberg and Woodford (1999), Clarida, Gali and Gertler (1999), and McCallum and Nelson (1999), and others, with the intrinsic inflation and inertia in the level of economic activity featured in Fuhrer and Moore (1995), Brayton et al (1997), Smets (2000), Fuhrer and Rudebusch (forthcoming), and others.

The “Phillips curve” in this model (equation 1) relates inflation (measured as the annualized percent change in the GNP or GDP price index, depending on the period) during quarter t to lagged inflation, expected future inflation, and expectations of the unemployment gap during the quarter, using the retrospective estimates of the natural rate discussed below. The estimated parameter ϕ_π measures the importance of expected inflation on the determination of inflation. The unemployment equation (equation 2) relates the unemployment gap during quarter t to the expected future unemployment gap, two lags of the unemployment gap, and the lagged real interest rate gap. Here two elements importantly reflect forward-looking behavior. The first element is the estimated parameter ϕ_u , which measures the importance of expected unemployment, and the second is the duration of the real interest rate, which serves as a summary of the influence of interest rates of various maturities on economic activity. Because data on long-run inflation expectations are not available, we limit the duration of the real rate to one year.

One difficulty in estimating this model is that expected inflation and unemployment are not directly observed. Instrumental variable and full-information maximum likelihood methods impose the restriction that the behavior of monetary policy and the formation of expectations be constant over time, neither of which appears tenable over our sample period (1969–2002). Instead, as in Orphanides and Williams (2002), we follow the approach suggested by Roberts (1997), and also employed by Rudebusch (2002), and use the Survey of Professional Forecasters as the source for proxies for expectations. Specifically, we use the median values of the forecasts provided in the Survey and posit that the relevant expectations are those formed in the previous quarter; that is, we assume that the expectations determining π_t and u_t are those collected in quarter $t - 1$. Finally, to match the inflation and unemployment data as best as possible with these forecasts, we use first announced estimates of these series.^{11,12} Our primary sources for our data are the Real-Time Dataset for Macroeconomists and the Survey of Professional Forecasters, both currently maintained by the Federal Reserve Bank of Philadelphia (Zarnowitz and Braun (1993), Croushore (1993) and Croushore and Stark (2001)). Using ordinary least squares, we obtain the following estimates for our model between 1969:1 and 2002:2:¹³

$$\pi_t = \underset{(0.086)}{0.529} \pi_{t+1}^e + \underset{(-)}{0.471} \pi_{t-1} - \underset{(0.093)}{0.304} (u_t^e - u_t^*) + e_{\pi,t}, \quad (3)$$

$$SER = 1.38, DW = 2.09,$$

$$u_t = \underset{(0.080)}{0.221} u_{t+1}^e + \underset{(0.104)}{1.262} u_{t-1} - \underset{(0.068)}{0.529} u_{t-2} + \underset{(0.022)}{0.045} u_t^* + \underset{(0.013)}{0.033} (\tilde{r}_{t-1}^a - r^*) + e_{u,t}, \quad (4)$$

$$SER = 0.29, DW = 2.08,$$

The numbers in parentheses are the estimated standard errors of the corresponding regression coefficients. The estimated unemployment equation also includes a constant term that

¹¹This implies that the relevant expectations surprises influencing current outcomes are those perceived on the basis of first announced data and not those defined retrospectively on the basis of subsequent revisions. We adopt this simplification for its parsimony, recognizing that subsequent revisions of historical data may at times affect economic decisions in a more complicated manner.

¹²This is also common in forecast evaluation experiments; for example, Romer and Romer (2000) use first-announced outcomes in their evaluation of Federal Reserve Board Greenbook forecasts.

¹³The starting point of this sample reflects the availability of the Survey of Professional Forecasters data.

provides an estimate of the natural real interest rate plus the average premium of the one-year Treasury bill rate we use for estimation over the federal funds rate, which corresponds to the natural rate of interest estimates we use in the model. If this premium equals the average difference between the one-year rate and the federal funds rate during this sample, then the estimation suggests that the natural rate of interest in this sample is 3.2 percent. To complete our model for simulations, we impose the expectations theory of the term structure whereby the one-year rate equals the expected average of the federal funds rate over four quarters.

3.2 Historical Monetary Policy

In addition to the equations for inflation and the unemployment rate, we estimate a monetary policy rule according to which the federal funds rate is determined by the lagged funds rate, the forecast of inflation over the next year (defined to be the four-quarter change from $t - 1$ to $t + 3$ where t denotes the period for which the funds rate is set), the forecasted change in the unemployment rate over the next year, and the unemployment gap (the unemployment rate less the real-time estimate of the natural rate) forecasted to occur in three quarters:

$$i_t = \theta_i i_{t-1} + (1 - \theta_i)(r^* + \pi^*) + \theta_\pi (\pi_{t+3}^e - \pi^*) + \theta_u (u_{t+3}^e - \hat{u}_t^*) + \theta_{\Delta u} (u_{t+3}^e - u_{t-1}) + \epsilon_{i,t} \quad (5)$$

For both estimation and simulation purposes, we assume that the central bank responds to the private sector forecasts of inflation and the unemployment rate in setting policy. As discussed in Orphanides (2003c) and Orphanides and Williams (2002), this specification nests both a version of the classic Taylor rule (Taylor, 1993), which excludes the change in unemployment and lagged interest rate terms (that is sets $\theta_i = \theta_{\Delta u} = 0$), as well as rules robust to natural rate misperceptions (the limiting case with $\theta_i = 1$ and $\theta_u = 0$)

To allow the rule to capture the reduction of activism in Federal Reserve policy following the summer of 1979, we allow for a break in the policy rule at that time. To examine this effect in a parsimonious manner, we follow the suggestion in Orphanides (2004) and focus on a specification that allows for a break in the θ_u parameter, keeping remaining parameters of the policy reaction functions fixed. Other things equal, a reduction in the policy responsiveness to the perceived gap in the forecast of unemployment from its natural

rate, θ_u would reflect a reduction in activism in this policy rule.¹⁴ Allowing for this break, our estimated policy rule is given by:

$$\begin{aligned}
 i_t = & 0.750 i_{t-1} + 0.250 (r^* + \pi^*) + 0.779 (\pi_{t+3}^e - \pi^*) - 0.673 (u_{t+3}^e - u_{t-1}) + \\
 & (0.044) \quad (--) \quad (0.130) \quad (0.210) \\
 & (-1.131 + 0.561 D) (u_{t+3}^e - \hat{u}_t^*) + \epsilon_{i,t}, \quad (6) \\
 & (0.197) \quad (0.158)
 \end{aligned}$$

$$SER = 1.02, DW = 1.90,$$

where D is a dummy variable equaling zero before 1979:3 and one thereafter. Conditional on a value for the natural rate of interest, r^* , estimation of this policy rule also provides an estimate of the implicit inflation target, π^* . Assuming $r^* = 3.2$ percent, as suggested by the estimation of equation 2, yields an estimate of 2.7 percent for π^* with a standard error equal to 0.15 percent.

As can be seen, and consistent with the narrative evidence, the estimated policy reaction function points to a substantial reduction in policy activism following the summer of 1979 compared to the earlier period. We note that this policy rule satisfies the standard stability condition in models with adaptive or rational expectations that the long-run response of the nominal interest rate to a change in the inflation rate exceeds unity. We do not find evidence that policy was inherently destabilizing in the pre-1979 sample, but instead that it was more activist. This contrasts with the well-known findings reported by Clarida, Gali and Gertler (2000), based on a similar specification, but employing the output gap (instead of the unemployment gap) and relying on instrumental variables analysis with ex post data (instead of real-time data and forecasts). They suggested that the response of policy to inflation was unstable in the pre-1979 period. However, as documented by Orphanides (2004), their findings are overturned when information actually available to policymakers in real time is used to estimate the policy rule that they specify. Even when we allow for breaks in the policy response to both expected inflation and to the perceived

¹⁴A stability test rejects the constancy of all parameters over the two subsamples. However, once we allow for the break in θ_u , the stability of individual remaining parameters over the two subsamples cannot be rejected. As a robustness check for our model, we also examined simulations based on a specification of the policy rule that allows breaks in two parameters, θ_u and θ_π . In that specification, the point estimates of both θ_π and θ_u are slightly lower in the first subsample, but the difference is small relative to our baseline specification and does not qualitatively influence our simulation results.

unemployment gap in our rule, which, as noted earlier, suggests that the coefficient on the inflation forecast is a bit lower in the pre-1979 sample, we find that the estimation provides no evidence supporting the hypothesis of policy instability.

4 Expectations Formation

Following Orphanides and Williams (2003, forthcoming), we assume that agents reestimate their forecasting models each period using a constant gain algorithm that places more weight on recent observations.¹⁵ Given the structure of the model, agents need to forecast inflation, the unemployment rate, and the federal funds rate for up to four quarters in the future. As noted above, we assume the policymaker uses private agents' forecasts in setting policy.

4.1 Perpetual Learning with Least Squares

Under perfect knowledge with no shocks to the natural rate of unemployment, the predictable components of inflation, the unemployment rate, and the funds rate each depend on a constant, one lag each of the inflation and the ex post real funds rate (the difference between the nominal funds rate and the inflation rate), and two lags of the unemployment rate. We assume that agents estimate forecasting equations for the three variables using a restricted VAR of this form. They then construct multi-period forecasts from the estimated VAR. To fix notation, let Y_t denote the 1×3 vector consisting of the inflation rate, the unemployment rate, and the federal funds rate, each measured at time t : $Y_t = (\pi_t, u_t, i_t)$; let X_t be the 5×1 vector of regressors in the forecast model: $X_t = (1, \pi_{t-1}, u_{t-1}, u_{t-2}, i_{t-1} - \pi_{t-1})$; let c_t be the 5×3 vector of coefficients of the forecasting model.

Using data through period t , the least squares regression parameters for the forecasting model can be written in recursive form:

$$c_t = c_{t-1} + \kappa_t R_t^{-1} X_t (Y_t - X_t' c_{t-1}), \quad (7)$$

$$R_t = R_{t-1} + \kappa_t (X_t X_t' - R_{t-1}), \quad (8)$$

¹⁵See also Sargent (1999), Cogley and Sargent (2001), Evans and Honkapohja (2001), and Gaspar and Smets (2002) for related treatments of learning. A separate strand of the literature has focused on the problem of estimating the implicit inflation target of the central bank, assuming that other parameters are known. See e.g. Bomfim et al (1997), Erceg and Levin (2003), Kozicki and Tinsley (2003), and Rudebusch and Wu (2003).

where κ_t is the gain.

Under the assumption of least squares learning with infinite memory, $\kappa_t = 1/t$, so as t increases, κ_t converges to zero. As a result, as the data accumulate this mechanism converges to the correct expectations functions and the economy converges to the perfect knowledge benchmark solution. As noted above, to formalize perpetual learning—as would be implied by the presence of structural changes such as shifts in the natural rate of unemployment—we replace the decreasing gain in the infinite memory recursion with a small constant gain, $\kappa > 0$.¹⁶

With imperfect knowledge, expectations are based on the perceived law of motion of the inflation process, governed by the perpetual learning algorithm described above. The model under imperfect knowledge consists of the structural equations for inflation, the unemployment gap, the federal funds rate (the monetary policy rule), and the forecasts generated from the forecasting model.

We should emphasize that in the limit of perfect knowledge (that is, as $\kappa \rightarrow 0$) and assuming a constant natural rate of unemployment, the expectations function above converges to rational expectations, and the stochastic coefficients for the forecasting model converge to those implied by the structural model equations under rational expectations. As explained in Orphanides and Williams (forthcoming), this modeling approach accommodates the Lucas critique in the sense that expectations formation is endogenous and adjusts to changes in policy or structure; and, although expectations are “imperfectly” rational, in that agents are required to estimate the reduced form processes needed to form expectations, the resulting expectations are close to being efficient.

4.2 Calibrating the Learning Rate

A key parameter for the constant-gain-learning algorithm is the updating rate κ . To calibrate this parameter we examined how well different values of κ fit either the expectations data from the Survey of Professional Forecasters, or, based on our model, the actual data on inflation and unemployment.

¹⁶In terms of forecasting performance, the “optimal” choice of κ depends on the relative variances of the transitory and permanent shocks, as in the relationship between the Kalman gain and the signal-to-noise ratio in the case of the Kalman filter.

To examine the fit of the Survey of Professional Forecasters (SPF), we generated a time series of forecasts using a recursively estimated VAR for the inflation rate, the unemployment rate, and the federal funds rate. In each quarter we reestimated the model using all historical data available during that quarter (generally from 1948 through the most recent observation). We allowed for discounting of past observations by using geometrically declining weights. This procedure resulted in reasonably accurate forecasts of inflation and unemployment, with root mean squared errors (RMSE) comparable to the residual standard errors from the estimated structural equations, (3) and (4). We found that discounting past data at about 1 percent per quarter yielded forecasts closest on average to the SPF over 1968–2002.¹⁷ This corresponds to an updating gain of about 2 percent per quarter during the 1970s and 1-1/2 percent per quarter in the 1990s.¹⁸ In light of these results, we adopted $\kappa = 0.02$ as a baseline value for our simulations, but also examined sensitivity of our model to somewhat lower and higher values.

5 The Interaction of Learning, Misperceptions, and Policy

We examine a set of alternative counterfactual simulations to investigate the role of learning, natural rate misperceptions, and policy for understanding the behavior of inflation and unemployment and the evolution of policy. We start our simulations at the beginning of 1966, which corresponds to what many observers consider to be the beginning of the Great Inflation in the United States.

5.1 Initial Conditions

The states of the model economy with learning are: the current value and one lag each of the inflation rate and the federal funds rate, the current value and two lags of the unemployment rate, the true natural rate of unemployment, the real-time estimate of the natural rate, the shocks to the structural equations, and the matrices C and R for the forecasting model. We

¹⁷This finding is also in line with the discounting reported by Sheridan (2003) as best for explaining the inflation expectations data reported in the Livingston Survey.

¹⁸As a robustness check, we also examined the degree of discounting that best fits the historical data on inflation and unemployment, given our structural model and learning process. To this end, we simulated our model from 1966 forward for alternative values of κ and examined the mean squared deviations of the simulated path from the actual paths of inflation and unemployment. (Details on simulation of the model and setting of initial conditions are provided below.) These simulations suggested that our model with values of κ between 0.01 and 0.04 matched the data better than when κ was set at lower or higher values.

initialize the C and R matrices using estimates of the forecasting model by ordinary least squares on data from 1948 through 1965.

Based on our calibration of the learning rate using survey data, we set $\kappa = 0.02$ and compute the implied forecasts from our forecasting model of inflation, the unemployment rate, and the federal funds rate over the 1966 – 2002 period. We treat the forecasts generated by the learning model as the true data for agents' expectations and then compute tracking residuals, that is the values of the historical residuals for the equations for the unemployment rate, the inflation rate, and the federal funds rate for 1966–2004. Thus, given these residuals, the model's predictions will exactly match the historical paths for all endogenous variables. We then conduct counterfactual experiments in which we modify assumptions regarding policy or the learning process, but do not change the paths for the equation residuals for unemployment, inflation, and the federal funds rate which we assume are exogenous. Each counterfactual simulation starts in the first quarter of 1966 and ends in the fourth quarter of 2002.

5.2 The Role of Natural Rate Misperceptions

Our first experiment is a simulation in which policy follows the estimated policy rule (including residuals), but the policymaker is assumed to observe the true value of the natural rate of unemployment in real time. That is, there are no natural rate misperceptions. Note that because the policy rule matches history under the assumption that the policy was based on the real-time estimates of the natural rate, the simulation boils down to adding innovations to the policy rule equal to the coefficient on the unemployment gap multiplied by the real-time misperceptions shown in Figure 3.

Absent natural rate misperceptions, inflation would have been relatively stable in the 1970s according to the model. Figure 4 shows the historical paths the simulated paths of the rates of inflation (four-quarter change in the price level) and unemployment. In contrast to the historical experience when inflation reached into double digits, the inflation rate with no natural rate misperceptions remains in a relatively narrow range of about 2 percent to 4 percent during the 1970s. The stability in inflation is achieved through a tighter path for policy starting in 1966 that drives the unemployment rate above its historical path.

This effective stabilization of inflation avoids the rise in unemployment associated with the Volcker disinflation occurring at the end of the decade and into the early 1980s.

The policy without natural rate misperceptions also avoids the damaging shift in the perceived law of motion of inflation evident in the historical data. Absent the rise in inflation in the late 1960s and 1970s, the expected level of inflation also remains subdued. In addition, the perceived persistence in inflation remains moderate. The solid line in Figure 5 shows the estimated coefficient on lagged inflation in the forecasting equation for inflation that incorporates learning, as described above. This statistic usefully summarizes agents' perceptions of the persistence in inflation. Based on the historical data, the perceived persistence in inflation rises to about 0.9 by 1975.¹⁹ In contrast, under the same policy, but absent natural rate misperceptions, the perceived persistence in inflation would have remained moderate throughout the 1960s and 1970s. In this simulation, the trend rise in inflation associated with the "Great Inflation" is avoided and inflation expectations remain well anchored.

5.3 The Role of Learning

Even in the presence of policy errors driven by misperceptions of the natural rate of unemployment, economic outcomes during the Great Inflation could have been much less unfavorable if expectations had remained well anchored and governed by the forecasting processes in place before. In particular, had the policy errors of the late 1960s not resulted in the steep increase in the persistence of inflation (as shown in Figure 5) the inflationary impulses of the late 1960s and early 1970s would have been contained much more easily and price stability restored at a lower cost.

To illustrate the role of learning in this case, in Figure 6 we examine two counterfactual experiments where the historical policy rule is followed, but the process governing the formation of expectations is assumed to remain unchanged and is governed by the reduced form VAR in place at the beginning of the simulation, in 1966. Thus, in these simulations, expectations of inflation remain well anchored through time by design. In the simulation

¹⁹This rise in perceived inflation persistence in our model is a manifestation of the real-world accumulation of evidence against the hypothesis of a long-run tradeoff between unemployment and inflation and in favor of the "accelerationist" view during the 1970s.

shown with the dashed lines we posit that policy continues to make the errors associated with natural rate misperceptions. As can be seen, despite the policy errors due to the natural rate misperceptions, if the favorable expectations mechanism in place before the Great Inflation could have been maintained, that is in the absence of learning, economic outcomes would have been significantly better.

In addition, had the inflation expectations process remained as favorable, the role of the policy errors induced by the misperceptions of the natural rate would have been much less important. To illustrate this point, the dash-dot lines in the figure present a counterfactual simulation in which both expectations formation remains unchanged, and the policymaker is assumed to avoid natural rate misperceptions in setting policy. As can be seen, the difference in the path of inflation in the two simulations is not very dramatic. This confirms the importance of the interaction of policy errors due to natural rate misperceptions with the learning dynamics regarding expectations for understanding the Great Inflation.

5.4 The Role of Policy Activism

The simulations above suggest that under some conditions the activist policy pursued during the Great Inflation could have been successful. In particular, if policymakers could have avoided misperceptions in the natural rate or, if expectations could have remained favorable even in the face of the policy errors caused by the combination of policy activism and natural rate misperceptions, the stagflation of the 1970s would not have occurred. But, of course, neither of these conditions could be taken for granted as the basis for policy design, and the possibility that they might fail, as they did during the Great Inflation, limits the scope for activist stabilization policy. An insufficient understanding of these limits and of the long-term damage to expectations formation resulting from activist policy errors likely contributed to the policy failure of the 1970s.

A natural question is whether a less activist approach, such as the one adopted following the policy change in 1979, would have represented better policy during the Great Inflation as well. To examine the role of policy activism, our third set of experiments examines what the historical outcomes could have been in the presence of learning and of the observed natural rate given by our real-time estimates if policy were driven by a less activist approach than

the one observed.²⁰ Figures 7 and 8 summarize the results from two such experiments. In one, policy does not respond to the unemployment gap at all, and in the other, policy follows the estimated post-1979 reaction function.

If policymakers had followed either of these policies starting in 1966, the rise in inflation in the 1970s would have been less pronounced and the unemployment rate would have been lower on average than it actually was. The finding that both inflation and unemployment would have been lower in the 1970s if the Fed had followed the estimated post-1979 reaction function during the late 1960s and 1970s, or if the Fed had not responded to the unemployment (or output) gap, differs from the results of Judd and Rudebusch (1998) and Orphanides (2003b), respectively, who find that such policies would have implied lower inflation, but at the cost of lower output during the 1970s (implying a higher unemployment rate). An important difference is that these analyses were based on the assumption of backward-looking accelerationist models that implicitly treat inflation expectations as invariant to monetary policy. Our results illustrate the importance of endogenous formation of expectations in affecting the tradeoffs available to policymakers in designing monetary policies.

A key result in our analysis is that under the less activist policies, the natural rate misperceptions of the 1960s and 1970s would not have been sufficient to destabilize the inflation expectations process even with the perpetual learning process governing the formation of expectations. Importantly, as can be seen in Figure 8, the reduced activism would have avoided the dramatic increase in agents' perceptions of the persistence of inflation. By maintaining well-anchored inflation expectations throughout the 1970s, these policies would have avoided the stagflationary outcomes of the decade. Our simulations also suggest that, in line with the results in Orphanides and Williams (forthcoming), the reduced activism would have facilitated the formation of somewhat more accurate forecasts. The RMSE of agent's forecast errors for both inflation and unemployment are smaller under

²⁰This experiment is a first step towards investigating the design of *efficient* monetary policy in our estimated model, accounting for the role of perpetual learning and its influence on the inflation expectations process. An active literature over the past several years has been exploring issues related to efficient policy design in the presence of uncertainty regarding models, data, and natural rates. See e.g. Levin et al (1999, 2003), Orphanides (2003a), Orphanides et al (2000), Orphanides and Williams (2002), Rudebusch (2001, 2002), and references therein.

the alternative simulations relative to the baseline.

Indeed, the realization of the role of the policy mistakes of the 1970s in destabilizing inflation expectations was a key reason leading to the policy change in 1979. As Stephen Axilrod summarized:²¹

Not all exogenous forces are purely exogenous. Rising inflationary expectations in the late 1970s were in part the product of earlier monetary policies (as well as other events) as these policies affected attitudes toward the future, ... but once embedded the expectations were exogenous to and influenced current policies—as in October 1979. (1985, p. 14.)

5.5 Robustness

As a robustness check for our key results regarding the wisdom of reduced policy activism, we also examined counterfactual simulations under alternative assumptions regarding learning and the formation of expectations. We concentrated our attention on the robustness of the finding that if policy during the Great Inflation had followed the less activist approach adopted after 1979, inflation expectations would have remained well behaved during the 1970s and the stagflation experienced during that decade would have been avoided.

We considered the sensitivity of our results to the updating parameter κ by comparing counterfactual simulations for three different values of $\kappa = 0.01, 0.02, 0.03$ for the counterfactual policy rule experiments. Qualitatively, the results are quite similar across the three values of κ . In fact, the rise in the rate of inflation during the late 1970s appears less pronounced both for the smaller and larger values of κ than in the baseline case of $\kappa = 0.02$. In this sense, our baseline choice for κ is conservative in terms of the effects of the interaction of learning and policy errors.

We also examined the sensitivity of our results for the choice of initial conditions governing the formation of expectations. Instead of the initial conditions estimated through the end of 1965, we examined simulations with estimated initial conditions later in the sample. We also considered as initial conditions the reduced-form coefficients corresponding to the model-consistent solution of the model. In either case, these alternative initial conditions are somewhat less favorable than the ones used in the simulations reported before. As a

²¹Stephen Axilrod, a member of the Federal Reserve Board staff, served as the FOMC Economist at the time of the 1979 policy change.

result, inflation outcomes for the early 1970s are worse under these alternatives relative to our baseline specification. However, our simulations suggest that even with these less favorable initial conditions, inflation in the mid- and late-1970s would have been considerably lower if policy had followed the estimated post-1979 rule. As a result the stagflation of the 1970s would not have occurred if the post-1979 policy had been in place in the late 1960s and 1970s as well.

6 Conclusion

In principle, the activist approach to macroeconomic stabilization that underlay the monetary policy decisions of the late 1960s and 1970s could have been successful in stabilizing economic fluctuations while maintaining price stability if policymakers had had accurate assessments of the natural rate of unemployment. In the event, the natural rate estimates proved to be highly inaccurate, and the unemployment gap (and the related output gap) turned out to be a poor guide for policy in practice. On their own, these policy errors would not have been disastrous to macroeconomic performance if inflation expectations had remained as favorable as they were before the Great Inflation got underway. But, in a dynamic economy with agents continuously learning, the rise in inflation resulting from the policy errors and the activist approach to stabilization policy unmoored inflation expectations, eventually resulting in the stagflation of the 1970s. Towards the end of that decade, the fatal flaw in activist policy strategies was recognized. Out of this experience grew the realization that active control of resource utilization should be downplayed and that policies focusing on price stability could achieve better outcomes in terms of the stabilization of both inflation and unemployment.

References

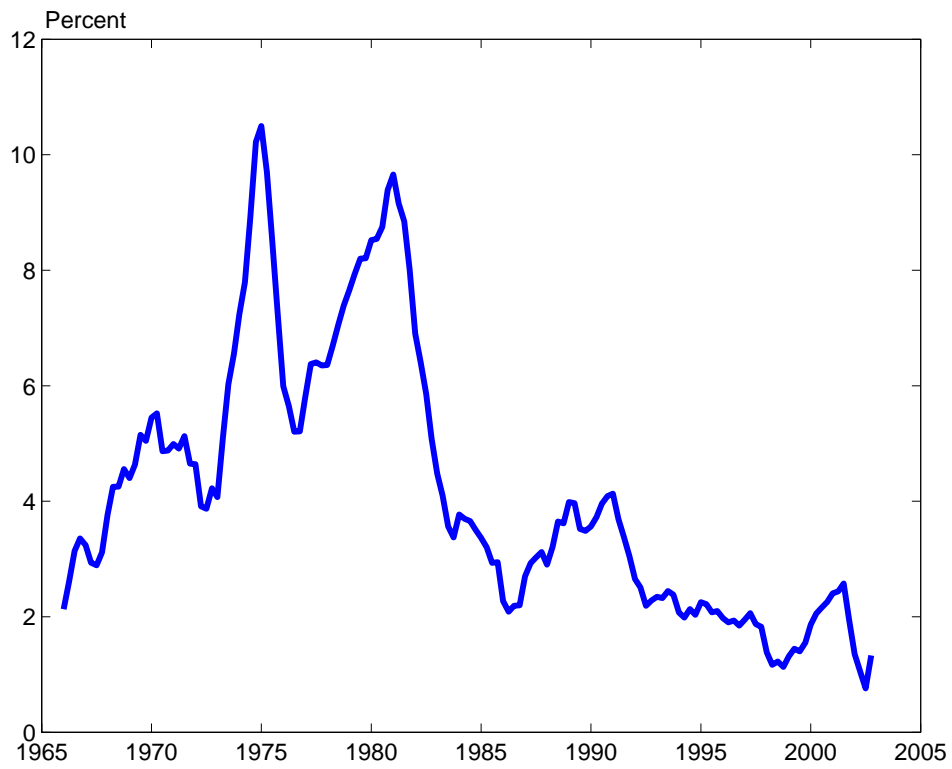
- Axilrod, Stephen (1985), "U.S. Monetary Policy in Recent Years: An Overview," *Federal Reserve Bulletin*, January, 14–24.
- Bomfim, Antulio, Robert Tetlow, Peter von zur Muehlen, and John C. Williams (1997), "Expectations, Learning and the Cost of Disinflation," in: *Monetary Policy and the Inflation Process*, Basel, Switzerland: Bank for International Settlements.
- Brayton, Flint; Mauskopf, Eileen; Reifschneider, David; Tinsley, Peter and Williams, John. "The Role of Expectations in the FRB/US Macroeconomic Model." *Federal Reserve Bulletin*, April 1997, 83(4), pp. 227–245.
- Bullard, James and Stefano Eusepi (2003), "Did the Great Inflation Occur Despite Policymaker Commitment to a Taylor Rule?" Federal Reserve Bank of St. Louis Working Paper 2003-012A, June.
- Burns, Arthur (1979), *The Anguish of Central Banking*, The 1979 Per Jacobsson Lecture, Belgrade, Yugoslavia, September 30.
- Clarida, Richard, Jordi Gali, and Mark Gertler (1999), "The Science of Monetary Policy," *Journal of Economic Literature*, 37(4), 1661–1707, December.
- Clarida, Richard, Jordi Gali, and Mark Gertler (2000), "Monetary Policy Rules and Macroeconomic Stability: Evidence and Some Theory," *Quarterly Journal of Economics*, 147–180, February.
- Cogley, Timothy and Sargent, Thomas (2001), "Evolving Post-World War II U.S. Inflation Dynamics," in *NBER Macroeconomics Annual*.
- Collard, Fabrice and Harris Dellas (2004), "The Great Inflation of the 1970s," European Central Bank Working Paper 336, April.
- Congressional Budget Office (2001), "CBO's Method for Estimating Potential Output: An Update," Washington, DC: Government Printing Office (August).
- Congressional Budget Office (2002), *The Budget and Economic Outlook: An Update*. Washington DC: Government Printing Office (August).
- Croushore, Dean (1993), "Introducing: The Survey of Professional Forecasters," Federal Reserve Bank of Philadelphia *Business Review*, November/December, 3–13.
- Croushore, Dean and Tom Stark (2001), "A Real-Time Data Set for Macroeconomists," *Journal of Econometrics* 105, 111–130, November.
- Cukierman, Alex and Francesco Lippi (2003), "Endogenous Monetary Policy with Unobserved Potential Output," mimeo, December.
- Erceg, Christopher J. and Andrew Levin (2003), "Imperfect Credibility and Inflation Persistence," *Journal of Monetary Economics*. 50(4) 915-944, May.
- Evans, George and Honkapohja, Seppo (2001), *Learning and Expectations in Macroeconomics*. Princeton: Princeton University Press.
- Fuhrer, Jeffrey C. and George R. Moore (1995), "Inflation Persistence," *Quarterly Journal of Economics*, 110(1), 127–59.

- Fuhrer, Jeffrey C. and Glenn D. Rudebusch (forthcoming), "Estimating the Euler Equation for Output," *Journal of Monetary Economics*.
- Friedman, Milton (1947), "Lerner on the Economics of Control," *Journal of Political Economy*, 55(5), October, 405–416.
- Gaspar, Vitor and Smets, Frank (2002), "Monetary Policy, Price Stability and Output Gap Stabilisation," *International Finance*, 5(2), Summer, 193–211.
- Goodfriend, Marvin, and Robert King (1997), "The New Neoclassical Synthesis and the Role of Monetary Policy," *NBER Macroeconomics Annual*, (12), 231–283.
- Hall, Robert E. (1970), "Why Is the Unemployment Rate So High at Full Employment?" *Brookings Papers on Economic Activity*, 3, 369–402.
- Heller, Walter W. (1966), *New Dimensions of Political Economy*, Cambridge, MA: Harvard University.
- Judd, John and Glenn Rudebusch (1998), "Taylor's Rules and the Fed: 1970–1997," *FRBSF Economic Review*, 3, 3–16.
- Kozicki, Sharon and Peter A. Tinsley (2003), "Permanent and Transitory Policy Shocks in Macro Models under Asymmetric Information," Federal Reserve Bank of Kansas City, mimeo.
- Lerner, Abba (1944), *The Economics of Control*, New York: Macmillan.
- Levin, Andrew, Volker Wieland and John Williams (1999), "Robustness of Simple Monetary Policy Rules under Model Uncertainty," in *Monetary Policy Rules*, John B. Taylor (ed.), Chicago: University of Chicago.
- Levin, Andrew, Volker Wieland and John Williams (2003), "The Performance of Forecast-Based Policy Rules under Model Uncertainty," *American Economic Review*, 93(3), 622–645, June.
- McCallum, Bennett T. and Edward Nelson (1999), "Performance of Operational Policy Rules in an Estimated Semiclassical Structural Model." in *Monetary Policy Rules*, John B. Taylor (ed.), Chicago: University of Chicago, 15–45.
- Okun, Arthur (1962), "Potential Output: Its Measurement and Significance," in *American Statistical Association 1962 Proceedings of the Business and Economic Section*, Washington, D.C.: American Statistical Association.
- Okun, Arthur (1970), *The Political Economy of Prosperity*, Brookings, Washington D.C.
- Orphanides, Athanasios (2002), "Monetary Policy Rules and the Great Inflation," *American Economic Review*, 92(2), 115–120, May.
- Orphanides, Athanasios (2003a), "Monetary Policy Evaluation With Noisy Information," *Journal of Monetary Economics*, 50(3), 605–631, April.
- Orphanides, Athanasios (2003b), "The Quest for Prosperity Without Inflation," *Journal of Monetary Economics*, 50(3), 633–663, April.
- Orphanides, Athanasios (2003c), "Historical Monetary Policy Analysis and the Taylor Rule," *Journal of Monetary Economics*, 50(5), 983–1022, July.

- Orphanides, Athanasios (2004), "Monetary Policy Rules, Macroeconomic Stability and Inflation: A View from the Trenches," *Journal of Money, Credit and Banking*, 36(2), 151-175, April.
- Orphanides, Athanasios, Richard Porter, David Reifschneider, Robert Tetlow and Frederico Finan (2000), "Errors in the Measurement of the Output Gap and the Design of Monetary Policy," *Journal of Economics and Business*, 52(1/2), 117-141, January/April.
- Orphanides, Athanasios and Simon van Norden (2002), "The Unreliability of Output Gap Estimates in Real Time," *Review of Economics and Statistics*, 84(4), 569-583, November.
- Orphanides, Athanasios and John C. Williams (2002), "Robust Monetary Policy Rules with Unknown Natural Rates", *Brookings Papers on Economic Activity*, 2:2002, 63-118.
- Orphanides, Athanasios and John C. Williams (2003), "Inflation scares and forecast-based monetary policy", FRB San Francisco Working Paper, 2003-11 and FEDS 2003-41, August.
- Orphanides, Athanasios and John C. Williams (forthcoming) "Imperfect Knowledge, Inflation Expectations and Monetary Policy," in *The Inflation Targeting Debate*, Ben Bernanke and Michael Woodford (eds.), Chicago: University of Chicago Press.
- Perry, George L. (1970), "Changing Labor Markets and Inflation," *Brookings Papers on Economic Activity*, 3, 411-448.
- Phillips, A. W. (1954), "Stabilisation Policy in a Closed Economy," *Economic Journal*, 290-323, June.
- Roberts, John M. (1997), "Is Inflation Sticky?" *Journal of Monetary Economics*, 39, 173-196.
- Romer, Christina D. and David H. Romer (2000), "Federal Reserve Information and the Behavior of Interest Rates," *American Economic Review*, 90(3), June, 429-457.
- Romer, Christina and David Romer (2002), "A Rehabilitation of Monetary Policy in the 1950s" *American Economic Review*, 92(2), May.
- Rotemberg, Julio J. and Michael Woodford (1999), "Interest Rate Rules in an Estimated Sticky Price Model," in *Monetary Policy Rules*, John B. Taylor (ed.), Chicago: University of Chicago Press, 57-119.
- Rudebusch, Glenn (2001), "Is the Fed Too Timid? Monetary Policy in an Uncertain World" *Review of Economics and Statistics*, 83(2), 203-17, May.
- Rudebusch, Glenn (2002) "Assessing Nominal Income Rules for Monetary policy with Model and Data Uncertainty," *Economic Journal*, 112, 402-432, April.
- Rudebusch, Glenn and Tao Wu (2003), "A Macro-Finance Model of the Term Structure, Monetary Policy, and the Economy" FRB/SF Working paper 2003-17, September.
- Sargent, Thomas J. (1999), *The Conquest of American Inflation*, Princeton: Princeton University Press.
- Sheridan, Niamh (2003), "Forming Inflation Expectations," Johns Hopkins University, mimeo, April.

- Smets, Frank (2000), "What Horizon for Price Stability," European Central Bank Working Paper No 24.
- Stein, Herbert (1984), *Presidential Economics*, New York: Simon and Schuster.
- Stein, Herbert (1996), "A Successful Accident: Recollections and Speculations about the CEA," 10(3), 3–21, Summer.
- Taylor, John B. (1993), "Discretion versus Policy Rules in Practice," Carnegie-Rochester Conference Series on Public Policy, 39, December, 195–214.
- Tobin, James (1966), *National Economic Policy*, New Haven: Yale University Press.
- Tobin, James (1972), *New Economics One Decade Older*, Princeton: Princeton University Press.
- Volcker, Paul, A. (1978), *The Rediscovery of the Business Cycle*, New York: The Free Press.
- Zarnowitz, Victor and Phillip A. Braun (1993), "Twenty-two Years of the NBER-ASA Quarterly Economic Outlook Surveys: Aspects and Comparisons of Forecasting Performance," in *Business Cycles, Indicators, and Forecasting*, James H. Stock and Mark W. Watson (eds.), Chicago: University of Chicago Press, 11–84.

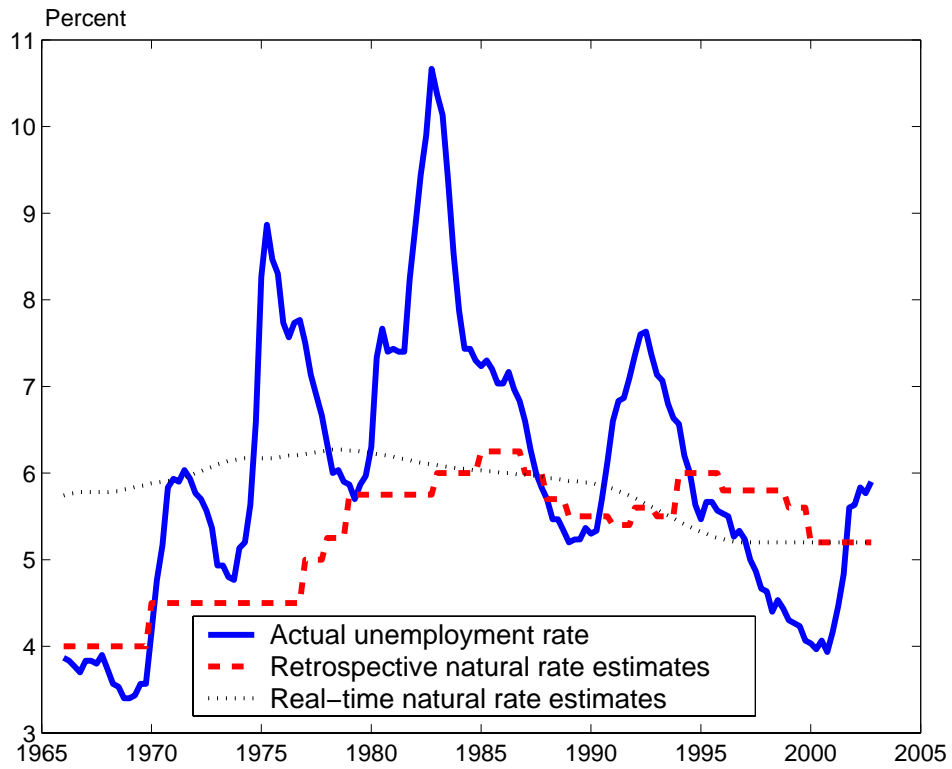
Figure 1
Inflation Rate



Notes: Inflation measured by the change of the output deflator (annual rate).

Figure 2

Unemployment and its Natural Rate



Notes: The retrospective natural rate reflects the current estimate of the NAIRU from the Congressional Budget Office. The real-time series is as described in the text.

Figure 3

The Natural Rate and Natural Rate Misperceptions

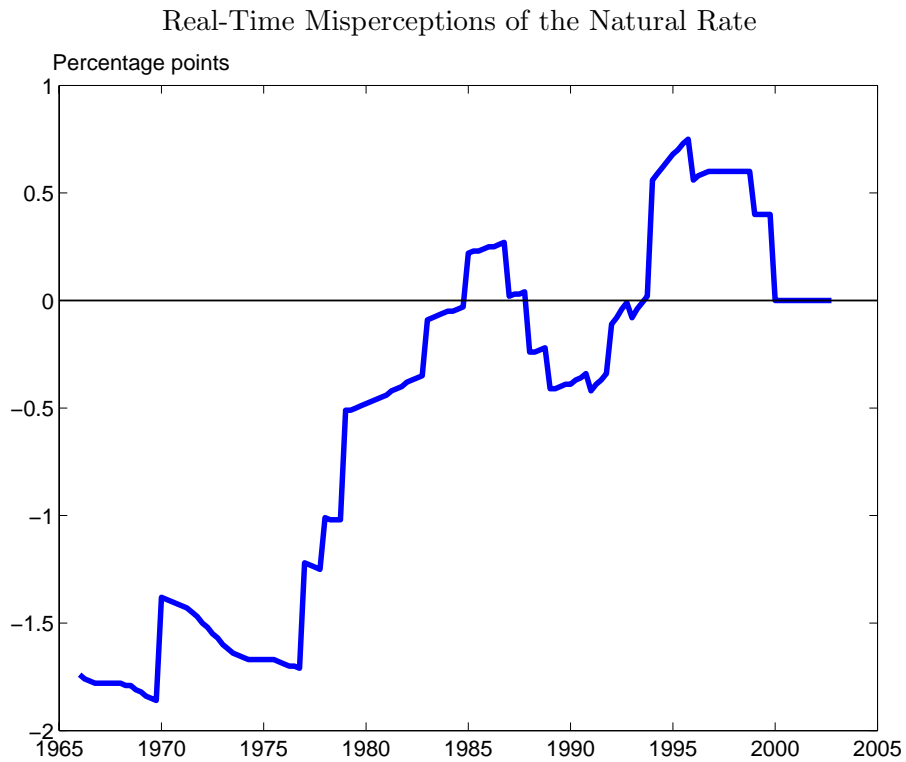
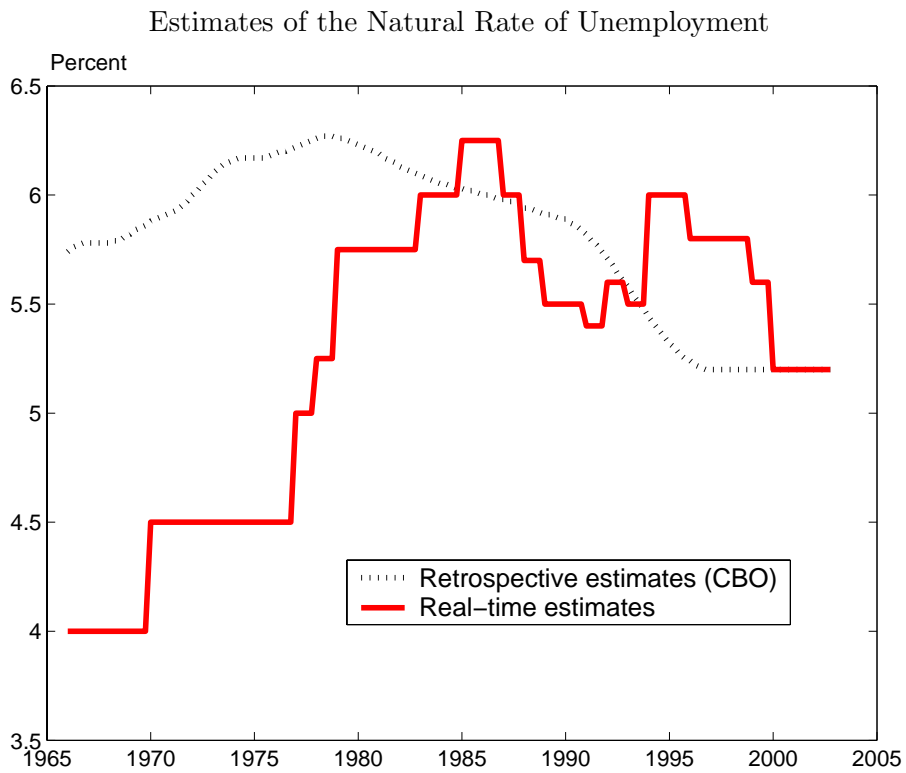
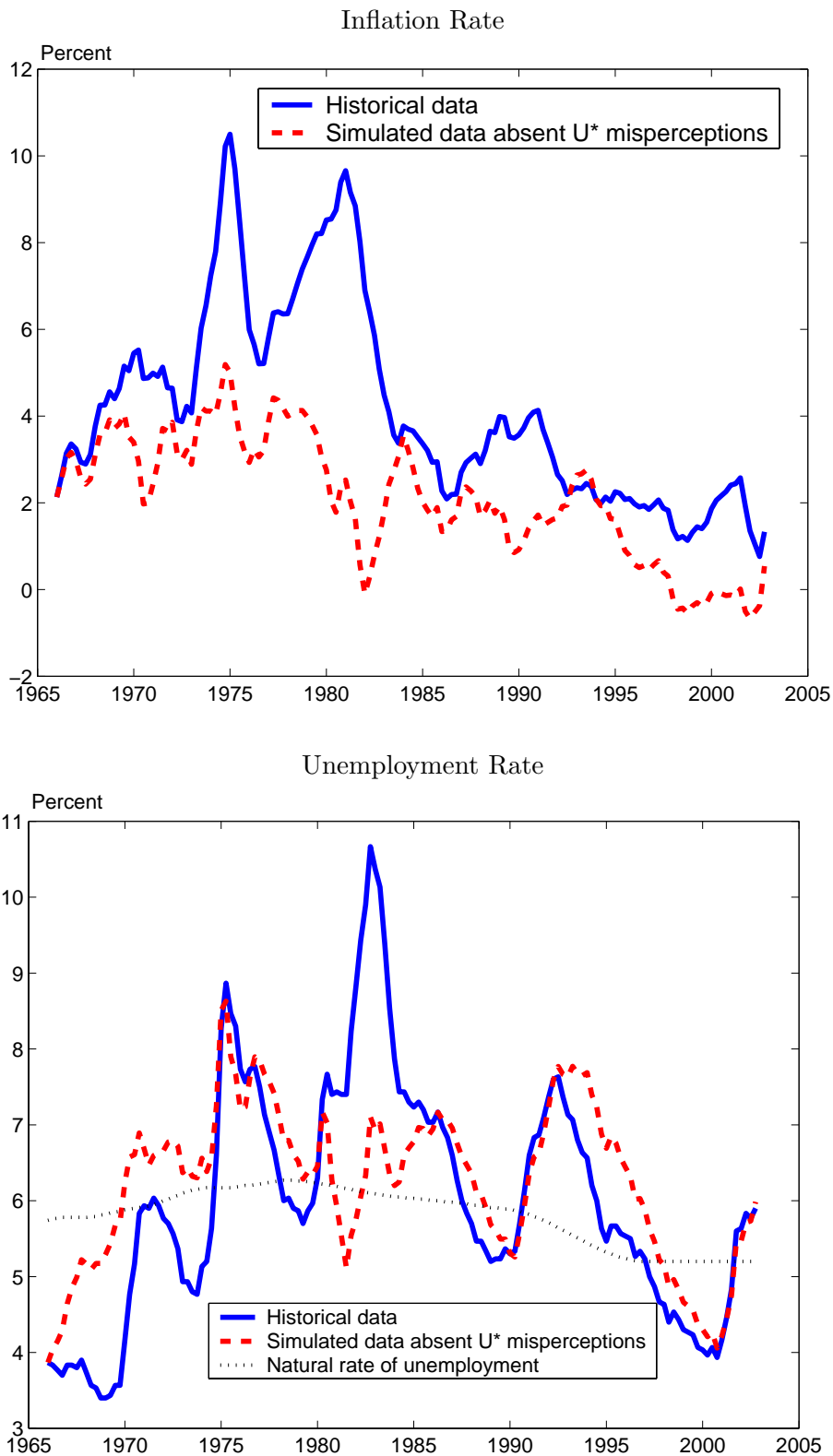


Figure 4

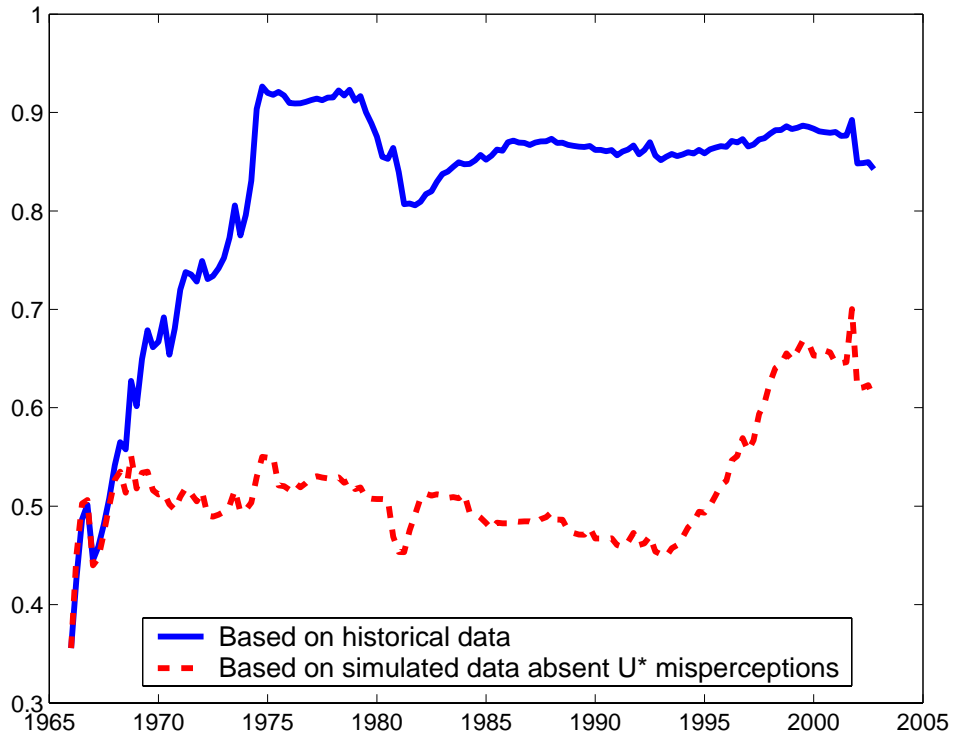
Outcomes with No Natural Rate Misperceptions



Notes: The two panels show historical and simulated paths of the rates of inflation and unemployment. The solid lines show the historical data. The dashed lines show the simulated paths assuming that the monetary policymaker knows the true value of the natural rate of unemployment in real time. Each simulation starts in the first quarter of 1966.

Figure 5

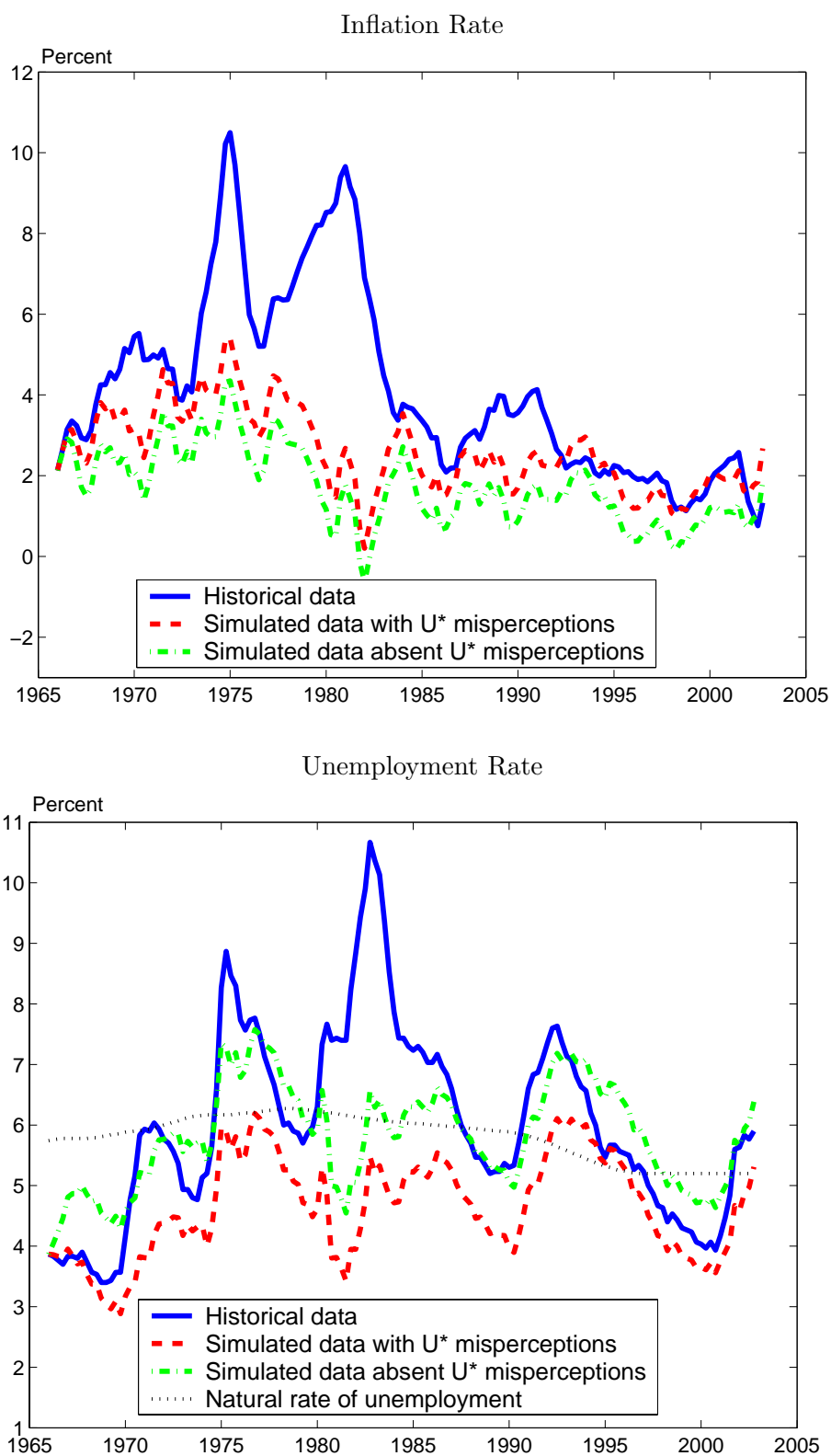
Evolution of Inflation Persistence in the Inflation Forecasting Equation



Notes: The lines show the simulated paths of the coefficient on lagged inflation in agents' inflation forecasting equations. The path shown by the solid line is based on the historical data. The dashed line shows the simulated path in which the policymaker knows the true value of the natural rate of unemployment in real time. Each simulation starts in the first quarter of 1966.

Figure 6

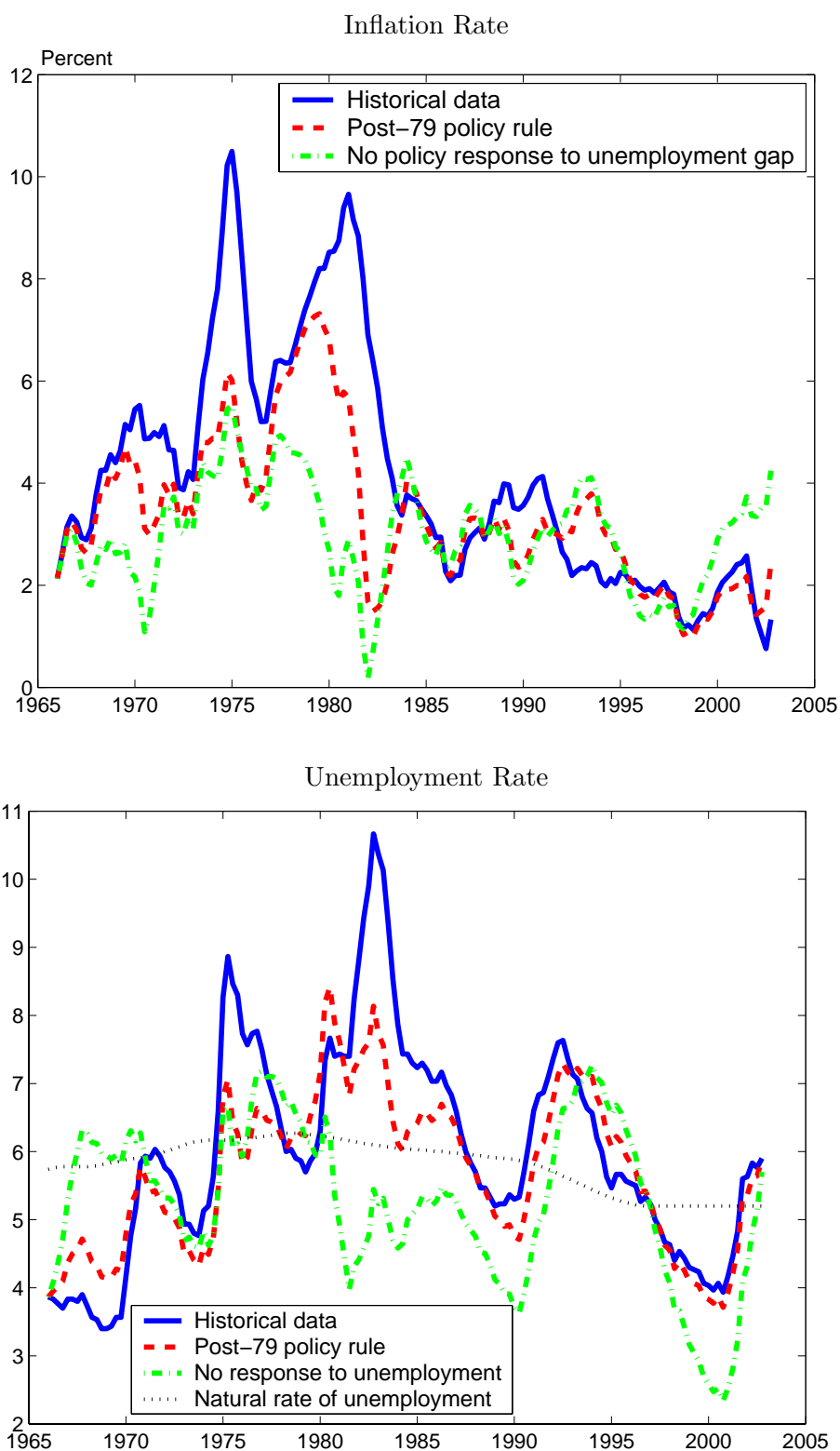
Outcomes with Fixed-Coefficient Expectations



Notes: The two panels show historical and simulated paths of the rates of inflation and unemployment. The solid lines show the historical data. The dashed and dash-dot lines show the simulated paths assuming that the agents do not update their forecasting models from 1966 on. Each simulation starts in the first quarter of 1966.

Figure 7

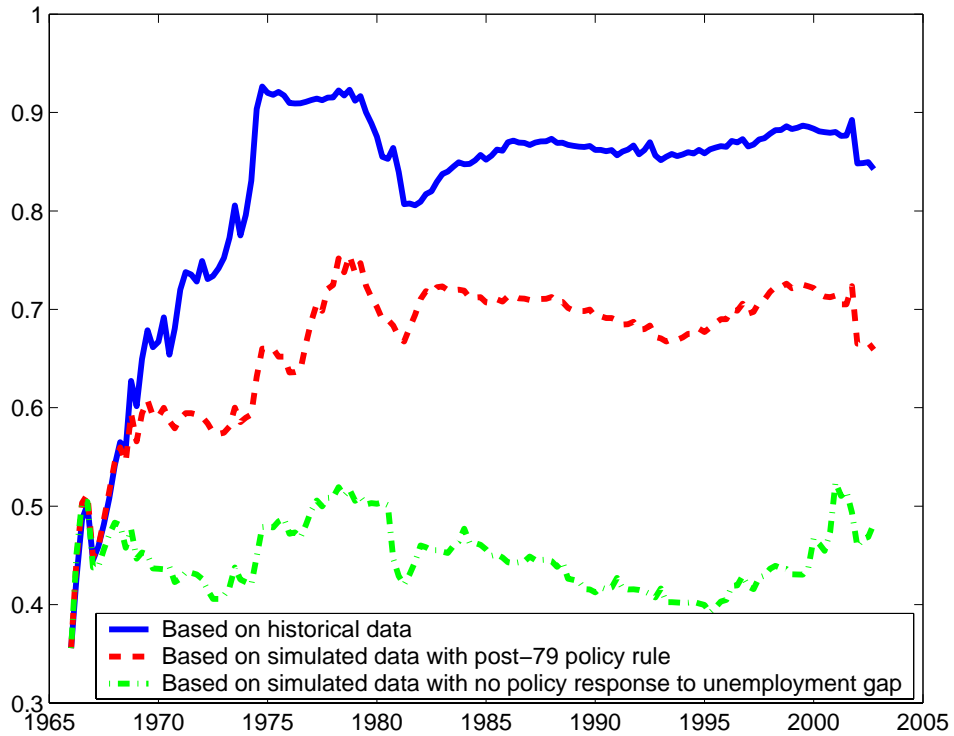
Outcomes with Alternative Policy Rules



Notes: The two panels show historical and simulated paths of the rates of inflation and the unemployment. The paths shown by the solid lines are based on the historical data. The dashed lines show the simulated paths in which monetary policy follows the post-1979 policy rule. The dash-dot lines show the simulated paths when policy does not respond to the unemployment gap. Each simulation starts in the first quarter of 1966.

Figure 8

Evolution of Inflation Persistence with Alternative Policy Rules



Notes: The lines show the simulated paths of the coefficient on lagged inflation in agents' inflation forecasting equations. The path shown by the solid line is based on the historical data. The dashed line shows the simulated path in which monetary policy follows the post-1979 policy rule. The dash-dot line shows the simulated path when policy does not respond to the unemployment gap. Each simulation starts in the first quarter of 1966.

European Central Bank working paper series

For a complete list of Working Papers published by the ECB, please visit the ECB's website (<http://www.ecb.int>).

- 202 "Aggregate loans to the euro area private sector" by A. Calza, M. Manrique and J. Sousa, January 2003.
- 203 "Myopic loss aversion, disappointment aversion and the equity premium puzzle" by D. Fielding and L. Stracca, January 2003.
- 204 "Asymmetric dynamics in the correlations of global equity and bond returns" by L. Cappiello, R.F. Engle and K. Sheppard, January 2003.
- 205 "Real exchange rate in an inter-temporal n-country-model with incomplete markets" by B. Mercereau, January 2003.
- 206 "Empirical estimates of reaction functions for the euro area" by D. Gerdesmeier and B. Roffia, January 2003.
- 207 "A comprehensive model on the euro overnight rate" by F. R. Würtz, January 2003.
- 208 "Do demographic changes affect risk premiums? Evidence from international data" by A. Ang and A. Maddaloni, January 2003.
- 209 "A framework for collateral risk control determination" by D. Cossin, Z. Huang, D. Aunon-Nerin and F. González, January 2003.
- 210 "Anticipated Ramsey reforms and the uniform taxation principle: the role of international financial markets" by S. Schmitt-Grohé and M. Uribe, January 2003.
- 211 "Self-control and savings" by P. Michel and J.P. Vidal, January 2003.
- 212 "Modelling the implied probability of stock market movements" by E. Glatzer and M. Scheicher, January 2003.
- 213 "Aggregation and euro area Phillips curves" by S. Fabiani and J. Morgan, February 2003.
- 214 "On the selection of forecasting models" by A. Inoue and L. Kilian, February 2003.
- 215 "Budget institutions and fiscal performance in Central and Eastern European countries" by H. Gleich, February 2003.
- 216 "The admission of accession countries to an enlarged monetary union: a tentative assessment" by M. Ca'Zorzi and R. A. De Santis, February 2003.
- 217 "The role of product market regulations in the process of structural change" by J. Messina, March 2003.

- 218 “The zero-interest-rate bound and the role of the exchange rate for monetary policy in Japan” by G. Coenen and V. Wieland, March 2003.
- 219 “Extra-euro area manufacturing import prices and exchange rate pass-through” by B. Anderton, March 2003.
- 220 “The allocation of competencies in an international union: a positive analysis” by M. Ruta, April 2003.
- 221 “Estimating risk premia in money market rates” by A. Durré, S. Evjen and R. Pilegaard, April 2003.
- 222 “Inflation dynamics and subjective expectations in the United States” by K. Adam and M. Padula, April 2003.
- 223 “Optimal monetary policy with imperfect common knowledge” by K. Adam, April 2003.
- 224 “The rise of the yen vis-à-vis the (“synthetic”) euro: is it supported by economic fundamentals?” by C. Osbat, R. Ruffer and B. Schnatz, April 2003.
- 225 “Productivity and the (“synthetic”) euro-dollar exchange rate” by C. Osbat, F. Vijselaar and B. Schnatz, April 2003.
- 226 “The central banker as a risk manager: quantifying and forecasting inflation risks” by L. Kilian and S. Manganelli, April 2003.
- 227 “Monetary policy in a low pass-through environment” by T. Monacelli, April 2003.
- 228 “Monetary policy shocks – a nonfundamental look at the data” by M. Klaeffing, May 2003.
- 229 “How does the ECB target inflation?” by P. Surico, May 2003.
- 230 “The euro area financial system: structure, integration and policy initiatives” by P. Hartmann, A. Maddaloni and S. Manganelli, May 2003.
- 231 “Price stability and monetary policy effectiveness when nominal interest rates are bounded at zero” by G. Coenen, A. Orphanides and V. Wieland, May 2003.
- 232 “Describing the Fed’s conduct with Taylor rules: is interest rate smoothing important?” by E. Castelnuovo, May 2003.
- 233 “The natural real rate of interest in the euro area” by N. Giammarioli and N. Valla, May 2003.
- 234 “Unemployment, hysteresis and transition” by M. León-Ledesma and P. McAdam, May 2003.
- 235 “Volatility of interest rates in the euro area: evidence from high frequency data” by N. Cassola and C. Morana, June 2003.

- 236 “Swiss monetary targeting 1974-1996: the role of internal policy analysis” by G. Rich, June 2003.
- 237 “Growth expectations, capital flows and international risk sharing” by O. Castrén, M. Miller and R. Stiegert, June 2003.
- 238 “The impact of monetary union on trade prices” by R. Anderton, R. E. Baldwin and D. Taglioni, June 2003.
- 239 “Temporary shocks and unavoidable transitions to a high-unemployment regime” by W. J. Denhaan, June 2003.
- 240 “Monetary policy transmission in the euro area: any changes after EMU?” by I. Angeloni and M. Ehrmann, July 2003.
- 241 “Maintaining price stability under free-floating: a fearless way out of the corner?” by C. Detken and V. Gaspar, July 2003.
- 242 “Public sector efficiency: an international comparison” by A. Afonso, L. Schuknecht and V. Tanzi, July 2003.
- 243 “Pass-through of external shocks to euro area inflation” by E. Hahn, July 2003.
- 244 “How does the ECB allot liquidity in its weekly main refinancing operations? A look at the empirical evidence” by S. Ejerskov, C. Martin Moss and L. Stracca, July 2003.
- 245 “Money and payments: a modern perspective” by C. Holthausen and C. Monnet, July 2003.
- 246 “Public finances and long-term growth in Europe – evidence from a panel data analysis” by D. R. de Ávila Torrijos and R. Strauch, July 2003.
- 247 “Forecasting euro area inflation: does aggregating forecasts by HICP component improve forecast accuracy?” by K. Hubrich, August 2003.
- 248 “Exchange rates and fundamentals” by C. Engel and K. D. West, August 2003.
- 249 “Trade advantages and specialisation dynamics in acceding countries” by A. Zaghini, August 2003.
- 250 “Persistence, the transmission mechanism and robust monetary policy” by I. Angeloni, G. Coenen and F. Smets, August 2003.
- 251 “Consumption, habit persistence, imperfect information and the lifetime budget constraint” by A. Willman, August 2003.
- 252 “Interpolation and backdating with a large information set” by E. Angelini, J. Henry and M. Marcellino, August 2003.
- 253 “Bond market inflation expectations and longer-term trends in broad monetary growth and inflation in industrial countries, 1880-2001” by W. G. Dewald, September 2003.

- 254 "Forecasting real GDP: what role for narrow money?" by C. Brand, H.-E. Reimers and F. Seitz, September 2003.
- 255 "Is the demand for euro area M3 stable?" by A. Bruggeman, P. Donati and A. Warne, September 2003.
- 256 "Information acquisition and decision making in committees: a survey" by K. Gerling, H. P. Grüner, A. Kiel and E. Schulte, September 2003.
- 257 "Macroeconomic modelling of monetary policy" by M. Klaeffling, September 2003.
- 258 "Interest rate reaction functions and the Taylor rule in the euro area" by P. Gerlach-Kristen, September 2003.
- 259 "Implicit tax co-ordination under repeated policy interactions" by M. Catenaro and J.-P. Vidal, September 2003.
- 260 "Aggregation-theoretic monetary aggregation over the euro area, when countries are heterogeneous" by W. A. Barnett, September 2003.
- 261 "Why has broad money demand been more stable in the euro area than in other economies? A literature review" by A. Calza and J. Sousa, September 2003.
- 262 "Indeterminacy of rational expectations equilibria in sequential financial markets" by P. Donati, September 2003.
- 263 "Measuring contagion with a Bayesian, time-varying coefficient model" by M. Ciccarelli and A. Rebucci, September 2003.
- 264 "A monthly monetary model with banking intermediation for the euro area" by A. Bruggeman and M. Donnay, September 2003.
- 265 "New Keynesian Phillips Curves: a reassessment using euro area data" by P. McAdam and A. Willman, September 2003.
- 266 "Finance and growth in the EU: new evidence from the liberalisation and harmonisation of the banking industry" by D. Romero de Ávila, September 2003.
- 267 "Comparing economic dynamics in the EU and CEE accession countries" by R. Süppel, September 2003.
- 268 "The output composition puzzle: a difference in the monetary transmission mechanism in the euro area and the US" by I. Angeloni, A. K. Kashyap, B. Mojon and D. Terlizzese, September 2003.
- 269 "Zero lower bound: is it a problem with the euro area?" by G. Coenen, September 2003.
- 270 "Downward nominal wage rigidity and the long-run Phillips curve: simulation-based evidence for the euro area" by G. Coenen, September 2003.
- 271 "Indeterminacy and search theory" by N. Giammarioli, September 2003.

- 272 “Inflation targets and the liquidity trap” by M. Klaefferling and V. López Pérez, September 2003.
- 273 “Definition of price stability, range and point inflation targets: the anchoring of long-term inflation expectations” by E. Castelnuovo, S. Nicoletti-Altimari and D. Rodriguez-Palenzuela, September 2003.
- 274 “Interpreting implied risk neutral densities: the role of risk premia” by P. Hördahl and D. Vestin, September 2003.
- 275 “Identifying the monetary transmission mechanism using structural breaks” by A. Beyer and R. Farmer, September 2003.
- 276 “Short-term estimates of euro area real GDP by means of monthly data” by G. Rünstler and F. Sédillot, September 2003.
- 277 “On the indeterminacy of determinacy and indeterminacy” by A. Beyer and R. Farmer, September 2003.
- 278 “Relevant economic issues concerning the optimal rate of inflation” by D. R. Palenzuela, G. Camba-Méndez and J. Á. García, September 2003.
- 279 “Designing targeting rules for international monetary policy cooperation” by G. Benigno and P. Benigno, October 2003.
- 280 “Inflation, factor substitution and growth” by R. Klump, October 2003.
- 281 “Identifying fiscal shocks and policy regimes in OECD countries” by G. de Arcangelis and S. Lamartina, October 2003.
- 282 “Optimal dynamic risk sharing when enforcement is a decision variable” by T. V. Koepl, October 2003.
- 283 “US, Japan and the euro area: comparing business-cycle features” by P. McAdam, November 2003.
- 284 “The credibility of the monetary policy ‘free lunch’” by J. Yetman, November 2003.
- 285 “Government deficits, wealth effects and the price level in an optimizing model” by B. Annicchiarico, November 2003.
- 286 “Country and sector-specific spillover effects in the euro area, the United States and Japan” by B. Kaltenhaeuser, November 2003.
- 287 “Consumer inflation expectations in Poland” by T. Łyziak, November 2003.
- 288 “Implementing optimal control cointegrated I(1) structural VAR models” by F. V. Monti, November 2003.
- 289 “Monetary and fiscal interactions in open economies” by G. Lombardo and A. Sutherland, November 2003.

- 290 "Inflation persistence and robust monetary policy design" by G. Coenen, November 2003.
- 291 "Measuring the time-inconsistency of US monetary policy" by P. Surico, November 2003.
- 292 "Bank mergers, competition and liquidity" by E. Carletti, P. Hartmann and G. Spagnolo, November 2003.
- 293 "Committees and special interests" by M. Felgenhauer and H. P. Grüner, November 2003.
- 294 "Does the yield spread predict recessions in the euro area?" by F. Moneta, December 2003.
- 295 "Optimal allotment policy in the eurosystem's main refinancing operations?" by C. Ewerhart, N. Cassola, S. Ejerskov and N. Valla, December 2003.
- 296 "Monetary policy analysis in a small open economy using bayesian cointegrated structural VARs?" by M. Villani and A. Warne, December 2003.
- 297 "Measurement of contagion in banks' equity prices" by R. Gropp and G. Moerman, December 2003.
- 298 "The lender of last resort: a 21st century approach" by X. Freixas, B. M. Parigi and J.-C. Rochet, December 2003.
- 299 "Import prices and pricing-to-market effects in the euro area" by T. Warmeding, January 2004.
- 300 "Developing statistical indicators of the integration of the euro area banking system" by M. Manna, January 2004.
- 301 "Inflation and relative price asymmetry" by A. Rátfai, January 2004.
- 302 "Deposit insurance, moral hazard and market monitoring" by R. Gropp and J. Vesala, February 2004.
- 303 "Fiscal policy events and interest rate swap spreads: evidence from the EU" by A. Afonso and R. Strauch, February 2004.
- 304 "Equilibrium unemployment, job flows and inflation dynamics" by A. Trigari, February 2004.
- 305 "A structural common factor approach to core inflation estimation and forecasting" by C. Morana, February 2004.
- 306 "A markup model of inflation for the euro area" by C. Bowdler and E. S. Jansen, February 2004.
- 307 "Budgetary forecasts in Europe - the track record of stability and convergence programmes" by R. Strauch, M. Hallerberg and J. von Hagen, February 2004.
- 308 "International risk-sharing and the transmission of productivity shocks" by G. Corsetti, L. Dedola and S. Leduc, February 2004.
- 309 "Monetary policy shocks in the euro area and global liquidity spillovers" by J. Sousa and A. Zaghini, February 2004.
- 310 "International equity flows and returns: A quantitative equilibrium approach" by R. Albuquerque, G. H. Bauer and M. Schneider, February 2004.
- 311 "Current account dynamics in OECD and EU acceding countries – an intertemporal approach" by M. Bussière, M. Fratzscher and G. Müller, February 2004.

- 312 “Similarities and convergence in G-7 cycles” by F. Canova, M. Ciccarelli and E. Ortega, February 2004.
- 313 “The high-yield segment of the corporate bond market: a diffusion modelling approach for the United States, the United Kingdom and the euro area” by G. de Bondt and D. Marqués, February 2004.
- 314 “Exchange rate risks and asset prices in a small open economy” by A. Derviz, March 2004.
- 315 “Option-implied asymmetries in bond market expectations around monetary policy actions of the ECB” by S. Vähämaa, March 2004.
- 316 “Cooperation in international banking supervision” by C. Holthausen and T. Rønde, March 2004.
- 317 “Fiscal policy and inflation volatility” by P. C. Rother, March 2004.
- 318 “Gross job flows and institutions in Europe” by R. Gómez-Salvador, J. Messina and G. Vallanti, March 2004.
- 319 “Risk sharing through financial markets with endogenous enforcement of trades” by T. V. Köppl, March 2004.
- 320 “Institutions and service employment: a panel study for OECD countries” by J. Messina, March 2004.
- 321 “Frequency domain principal components estimation of fractionally cointegrated processes” by C. Morana, March 2004.
- 322 “Modelling inflation in the euro area” by E. S. Jansen, March 2004.
- 323 “On the indeterminacy of New-Keynesian economics” by A. Beyer and R. E. A. Farmer, March 2004.
- 324 “Fundamentals and joint currency crises” by P. Hartmann, S. Straetmans and C. G. de Vries, March 2004.
- 325 “What are the spill-overs from fiscal shocks in Europe? An empirical analysis” by M. Giuliadori and R. Beetsma, March 2004.
- 326 “The great depression and the Friedman-Schwartz hypothesis” by L. Christiano, R. Motto and M. Rostagno, March 2004.
- 327 “Diversification in euro area stock markets: country versus industry” by G. A. Moerman, April 2004.
- 328 “Non-fundamental exchange rate volatility and welfare” by R. Straub and I. Tchakarov, April 2004.
- 329 “On the determinants of euro area FDI to the United States: the knowledge-capital-Tobin's Q framework, by R. A. De Santis, R. Anderton and A. Hijzen, April 2004.
- 330 “The demand for euro area currencies: past, present and future” by B. Fischer, P. Köhler and F. Seitz, April 2004.
- 331 “How frequently do prices change? Evidence based on the micro data underlying the Belgian CPI” by L. Aucremanne and E. Dhyne, April 2004.
- 332 “Stylised features of price setting behaviour in Portugal: 1992-2001” by M. Dias, D. Dias and P. D. Neves, April 2004.

- 333 “The pricing behaviour of Italian firms: New survey evidence on price stickiness” by S. Fabiani, A. Gattulli and R. Sabbatini, April 2004.
- 334 “Is inflation persistence intrinsic in industrial economies?” by A. T. Levin and J. M. Piger, April 2004.
- 335 “Has eura-area inflation persistence changed over time?” by G. O’Reilly and K. Whelan, April 2004.
- 336 “The great inflation of the 1970s” by F. Collard and H. Dellas, April 2004.
- 337 “The decline of activist stabilization policy: Natural rate misperceptions, learning and expectations” by A. Orphanides and J. C. Williams, April 2004.

