

Canova, Fabio; Ciccarelli, Matteo; Ortega, Eva

Working Paper

Similarities and convergence in G-7 cycles

ECB Working Paper, No. 312

Provided in Cooperation with:

European Central Bank (ECB)

Suggested Citation: Canova, Fabio; Ciccarelli, Matteo; Ortega, Eva (2004) : Similarities and convergence in G-7 cycles, ECB Working Paper, No. 312, European Central Bank (ECB), Frankfurt a. M.

This Version is available at:

<https://hdl.handle.net/10419/152746>

Standard-Nutzungsbedingungen:

Die Dokumente auf EconStor dürfen zu eigenen wissenschaftlichen Zwecken und zum Privatgebrauch gespeichert und kopiert werden.

Sie dürfen die Dokumente nicht für öffentliche oder kommerzielle Zwecke vervielfältigen, öffentlich ausstellen, öffentlich zugänglich machen, vertreiben oder anderweitig nutzen.

Sofern die Verfasser die Dokumente unter Open-Content-Lizenzen (insbesondere CC-Lizenzen) zur Verfügung gestellt haben sollten, gelten abweichend von diesen Nutzungsbedingungen die in der dort genannten Lizenz gewährten Nutzungsrechte.

Terms of use:

Documents in EconStor may be saved and copied for your personal and scholarly purposes.

You are not to copy documents for public or commercial purposes, to exhibit the documents publicly, to make them publicly available on the internet, or to distribute or otherwise use the documents in public.

If the documents have been made available under an Open Content Licence (especially Creative Commons Licences), you may exercise further usage rights as specified in the indicated licence.



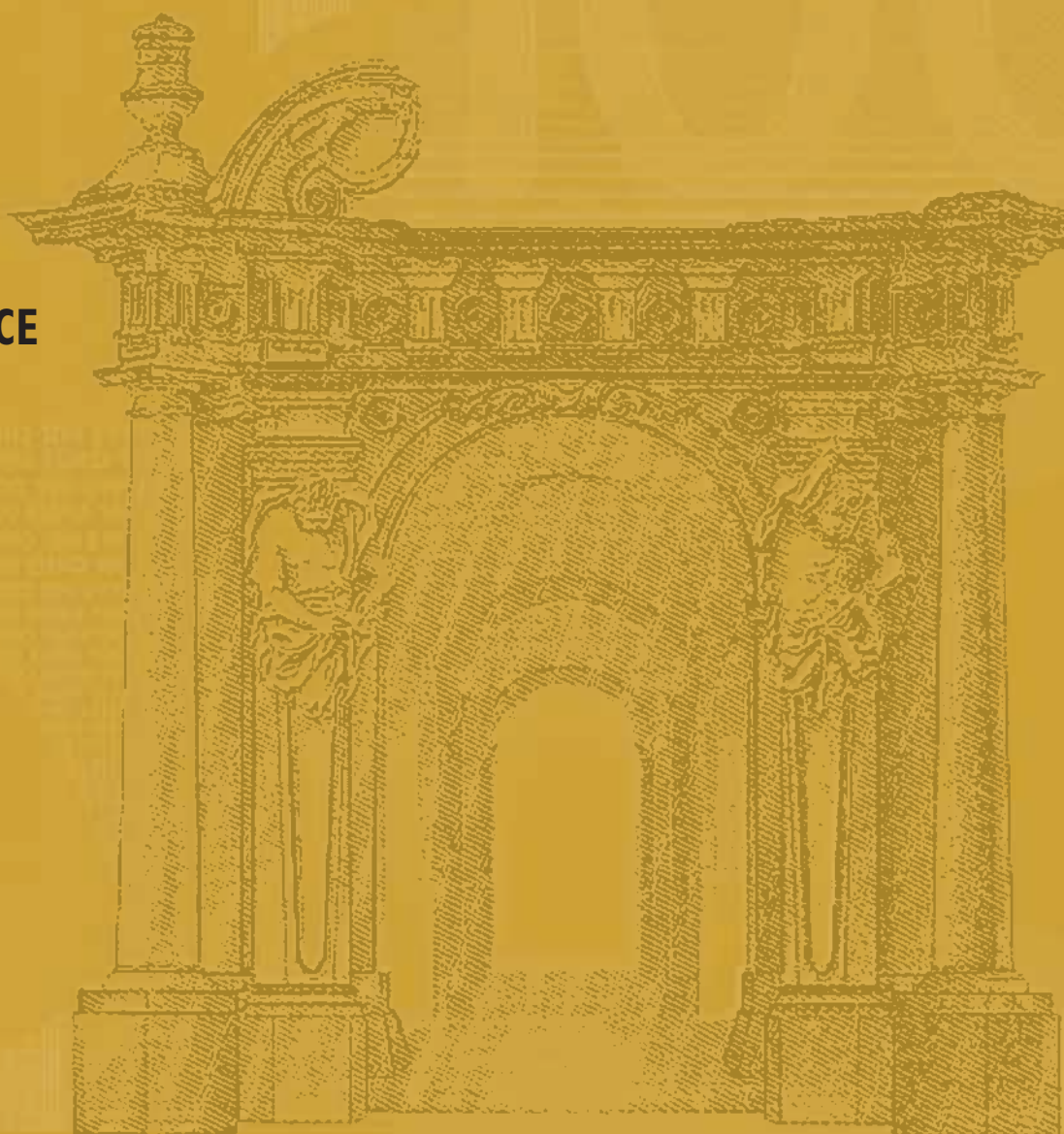
EUROPEAN CENTRAL BANK

WORKING PAPER SERIES

NO. 312 / FEBRUARY 2004

SIMILARITIES AND CONVERGENCE IN G-7 CYCLES

by Fabio Canova,
Matteo Ciccarelli and
Eva Ortega





EUROPEAN CENTRAL BANK



In 2004 all publications will carry a motif taken from the €100 banknote.



WORKING PAPER SERIES

NO. 312 / FEBRUARY 2004

SIMILARITIES AND CONVERGENCE IN G-7 CYCLES¹

by Fabio Canova²,
Matteo Ciccarelli³ and
Eva Ortega⁴

This paper can be downloaded without charge from
<http://www.ecb.int> or from the Social Science Research Network
electronic library at http://ssrn.com/abstract_id=515075.

¹ We thank H. Uhlig, an anonymous referee, and the participants of seminars at the Bank of Spain, Humboldt University, ECB, Universidad de Alicante and the First Workshop of Euro Area Business Cycle Network (EABCN), Madrid, February 2003, the forth colloquium on Methods for Business cycle analysis, Luxemburg, October 2003 and the XXVIII Simposio de Analisis Economico, Seville, December 2003, for comments and suggestions. Part of Ciccarelli's research was undertaken when he was at the University of Alicante and benefitted from funding by Ministerio de Ciencia y Tecnologia and FEDER (Project BEC2002-03097) and Generalitat Valenciana (Project CTIDIB/2002/175). The views expressed in this paper are exclusively those of the authors and not those of the European Central Bank or the Bank of Canada.

² Universitat Pompeu Fabra, IGER, and CEPR

³ European Central Bank

⁴ Bank of Canada

© European Central Bank, 2004

Address

Kaiserstrasse 29
60311 Frankfurt am Main, Germany

Postal address

Postfach 16 03 19
60066 Frankfurt am Main, Germany

Telephone

+49 69 1344 0

Internet

<http://www.ecb.int>

Fax

+49 69 1344 6000

Telex

411 144 ecb d

All rights reserved.

Reproduction for educational and non-commercial purposes is permitted provided that the source is acknowledged.

The views expressed in this paper do not necessarily reflect those of the European Central Bank.

The statement of purpose for the ECB Working Paper Series is available from the ECB website, <http://www.ecb.int>.

ISSN 1561-0810 (print)

ISSN 1725-2806 (online)

CONTENTS

| | |
|---|----|
| Abstract | 4 |
| Non-technical summary | 5 |
| 1 Introduction | 7 |
| 2 The panel VAR model | 10 |
| 2.1 The structure of time variations | 12 |
| 2.2 Verifying the hypotheses of interest | 13 |
| 3 The results | 14 |
| 3.1 The data and some forecasting features of the model | 14 |
| 3.2 Are G-7 cycles (more) similar? | 18 |
| 3.3 Are european cycles different? | 23 |
| 3.4 What drives the world indicator? | 25 |
| 4 Conclusions and directions for future work | 28 |
| Appendix | |
| A Estimation | 31 |
| A.1 Prior information | 31 |
| A.2 Posterior distributions | 32 |
| B Specification searches | 34 |
| References | 36 |
| European Central Bank working paper series | 39 |

Abstract

This paper examines the properties of G-7 cycles using a multicountry Bayesian panel VAR model with time variations, unit specific dynamics and cross country interdependences. We demonstrate the presence of a significant world cycle and show that country specific indicators play a much smaller role. We detect differences across business cycle phases but, apart from an increase in synchronicity in the late 1990s, find little evidence of major structural changes. We also find no evidence of the existence of an Euro area specific cycle or of its emergence in the 1990s.

Key Words: Business cycle, indicators, Panel Data, Bayesian methods

Jel. : C11,C33, E32

Non technical summary

Knowing whether fluctuations in the industrialized world are similar, understanding their sources and characterizing their time variations is important for both academics and policymakers. From an academic point of view one is interested in knowing whether business cycle links are the result of cross countries interdependencies or common shocks. Hence, one may welcome studies empirically documenting similarities in economic fluctuations since the presence of a common cycle facilitates the study of the relationship between national and international policy decisions and the state of the world economy. Policymakers monitoring domestic or regional cycles are typically concerned with the effect of national idiosyncrasies and with the consequences that their actions have on the working of international markets. However, if variations in economic activity in countries with different institutions, economic structures or economic policies are driven by a common cause, markets more than policies are the key to understanding the comovements in economic activity. Moreover, national or regional policies designed to counteract world tendencies may be ineffective. Finally, structural time variations may undermine the usefulness of policies which may have been effective in the past.

This paper breaks ground in the area by explicitly addressing three interrelated questions. First, we ask whether G-7 cycles are driven by a common world cycle or if there is a significant national component in the fluctuations. If the former is the case, we would like to know what are the features of the world cycle and what drives it. Second, we are curious as to whether there is any evidence that Euro cycles are different from those we observe in the rest of the G-7 or if they have become so in the recent past. Third, we would like to know whether there has been any tendency for G-7 cycles to become more similar in the 1990s or if, on the contrary, they tend to be clustered along geographical, regional or other institutional characteristics.

To study these questions we employ a panel VAR model of the type developed in Canova and Ciccarelli (2002). Their approach is useful in our international business cycle context for at least two reasons. First, the econometric methodology is designed for large scale dynamic models displaying unit specific dynamics and cross country lagged interdependencies and it is flexible enough to allow for time variations in the correlation structure of cyclical fluctuations across variables and countries. Second, the parsimonious parametrization they propose endogenously produces an index structure where indicators of world and national specific cycles are recursively constructed and dynamically span cross country interdependencies. Therefore the specification is particularly suited to study the interrelationships and the structural changes present in G-7 cycles and to analyze what drives the common and the idiosyncratic components of G-7 fluctuations.

Five major results emerge from our investigation. First, we find that the common (world) indicator accounts for a significant portion of the fluctuations in sales, industrial production, output and employment of the seven most industrialized countries - roughly speaking, about 30 percent. Therefore, as in Kose, Otrok and Whiteman (2003) or Lumsdaine and Prasad (2003), we find evidence of a significant world business cycle. We also show that this cyclical indicator captures the more persistent portions of the fluctuations in the G-7 and that it has more information than simple average or principal component measures obtained using G-7 GDPs or IPs. Second, we find that country specific indicators are useful in explaining certain GDP and employment episodes across time, but not in tracking the cyclical movements of the four variables in the G-7 over the entire sample.

Third, we do not find evidence of structural breaks in the country indicators in the 1990s: the often cited idea that national cycles are disappearing finds no support from our analysis. These indicators appear to be as significant in explaining the differential growth rate in GDP across countries in the mid 1990s as they were in the mid 1980s and, if anything, slightly more important. These last two results taken together imply that movements in the world indicator have been the stable and consistent reason for the commonalities of the fluctuations in the G-7 economies over time and that structural breaks in both the pattern of transmission across countries and in the sources of structural shocks are probably absent.

Fourth, we find little support for the idea that Euro cycles are different from those of the rest of the world or that a Euro area cycle is emerging in the 1990s. This result should be contrasted with Lumsdaine and Prasad (2003) and Artis et al. (2003) who instead detected the presence of a EU cycle using IP data. Our analysis shows that the Euro signal is much weaker when one considers a broader set of variables and that regional causes have minor explanatory power for G-7 fluctuations throughout the sample. Fifth, we find that both world and country specific fluctuations are much more synchronized in contractions than expansions. That is, the uncertainty surrounding estimates of both world and country specific indicators is an order of magnitude smaller in the former than in the latter. Expansions tend to have large idiosyncratic components, both across variables and countries, while declines in economic activity have common timing and similar dynamics, both within and across countries.

1 Introduction

There is abundant evidence that economic activity in developed countries share a number of characteristics. For example, the real business cycle literature has demonstrated that macroeconomic fluctuations across countries are closely linked (see e.g. Backus, Kehoe and Kydland (1995), Baxter (1995), Canova and Marrinan (1998)) while more structured time series analyses have shown that a large portion of regional and country specific fluctuations are common (see e.g. Gregory et al. (1997), del Negro (2000), Lumsdaine and Prasad (2003) and Kose et al. (2003)) and that a number of linear and non-linear business cycle features among industrialized economies are similar (Harding and Pagan (2002)). Although all existing evidence suggests the presence of a common source of fluctuations in developed countries, results are typically derived using restrictive or conventional assumptions about the nature of the dynamic relationships. In fact, except for Del Negro (2000) or Kose et al. (2003), the issue of whether commonalities are present or not is examined within an empirical framework which does not explicitly allow for cross-country and cross-variables interdependencies.

Recently, the stability of the cross-country business cycle relationships has come under scrutiny. For example, Doyle and Faust (2002) and Helbling and Bayoumi (2003) suggest that the increase in cyclical synchronization observed after 2000 in the advanced economies is the result of common shocks. This apparently represents a major shift relative to the 1980s where the increased similarities in macroeconomic fluctuations were the result of improved trade relationships (see e.g. Canova and Dellas (1992), Rose and Frankel (2000)). It also represents a somewhat different propagation mechanism from the one used to explain the transmission of US shocks to Asia (see Mackowiak (2003)) or Latin America (Canova (2001)). On the other hand, Stock and Watson (2003) document changes in the volatilities of G-7 business cycles in the 1990s and indicate that such changes may have altered the correlation among international macroeconomic variables.

A third issue which has recently attracted attention is the behavior of European cycles in the period leading to the creation of the European Monetary Union, both within the area and in relationship with other developed countries. Casual observation indicates that European cycles have displayed more synchronized movements in the 1990s and, possibly, a larger transatlantic conformity. All in all, commentators suggest that national and/or European specific effects may be slowly but surely vanishing.

Knowing whether fluctuations in the industrialized world are similar, understanding their sources and characterizing their time variations is important for both academics and policymakers. From an academic point of view one is interested in knowing whether business

cycle links are the result of cross countries interdependencies or common shocks. Hence, one may welcome studies empirically documenting similarities in economic fluctuations since the presence of a common cycle facilitates the study of the relationship between national and international policy decisions and the state of the world economy. Policymakers monitoring domestic or regional cycles are typically concerned with the effect of national idiosyncrasies and with the consequences that their actions have on the working of international markets. However, if variations in economic activity in countries with different institutions, economic structures or economic policies are driven by a common cause, markets more than policies are the key to understanding the comovements in economic activity. Moreover, national or regional policies designed to counteract world tendencies may be ineffective. Finally, structural time variations may undermine the usefulness of policies which may have been effective in the past.

This paper breaks ground in the area by explicitly addressing three interrelated questions. First, we ask whether G-7 cycles are driven by a common world cycle or if there is a significant national component in the fluctuations. If the former is the case, we would like to know what are the features of the world cycle and what drives it. Second, we are curious as to whether there is any evidence that Euro cycles are different from those we observe in the rest of the G-7 or if they have become so in the recent past. Third, we would like to know whether there has been any tendency for G-7 cycles to become more similar in the 1990s or if, on the contrary, they tend to be clustered along geographical, regional or other institutional characteristics.

To study these questions we employ a panel VAR model of the type developed in Canova and Ciccarelli (2002). Their approach is useful in our international business cycle context for at least two reasons. First, the econometric methodology is designed for large scale dynamic models displaying unit specific dynamics and cross country lagged interdependencies and it is flexible enough to allow for time variations in the correlation structure of cyclical fluctuations across variables and countries. Second, the parsimonious parametrization they propose endogenously produces an index structure where indicators of world and national specific cycles are recursively constructed and dynamically span cross country interdependencies. Therefore the specification is particularly suited to study the interrelationships and the structural changes present in G-7 cycles and to analyze what drives the common and the idiosyncratic components of G-7 fluctuations.

Five major results emerge from our investigation. First, we find that the common (world) indicator accounts for a significant portion of the fluctuations in sales, industrial production, output and employment of the seven most industrialized countries - roughly speaking, about 30 percent. Therefore, as in Kose, Otrok and Whiteman (2003) or Lumsdaine and Prasad (2003),

we find evidence of a significant world business cycle. We also show that this cyclical indicator captures the more persistent portions of the fluctuations in the G-7 and that it has more information than simple average or principal component measures obtained using G-7 GDPs or IPs. Second, we find that country specific indicators are useful in explaining certain GDP and employment episodes across time, but not in tracking the cyclical movements of the four variables in the G-7 over the entire sample. Third, we do not find evidence of structural breaks in the country indicators in the 1990s: the often cited idea that national cycles are disappearing finds no support from our analysis. These indicators appear to be as significant in explaining the differential growth rate in GDP across countries in the mid 1990s as they were in the mid 1980s and, if anything, slightly more important. These last two results taken together imply that movements in the world indicator have been the stable and consistent reason for the commonalities of the fluctuations in the G-7 economies over time and that structural breaks in both the pattern of transmission across countries and in the sources of structural shocks are probably absent.

Fourth, we find little support for the idea that Euro cycles are different from those of the rest of the world or that a Euro area cycle is emerging in the 1990s. This result should be contrasted with Lumsdaine and Prasad (2003) and Artis et al. (2003) who instead detected the presence of a EU cycle using IP data. Our analysis shows that the Euro signal is much weaker when one considers a broader set of variables and that regional causes have minor explanatory power for G-7 fluctuations throughout the sample. Fifth, we find that both world and country specific fluctuations are much more synchronized in contractions than expansions. That is, the uncertainty surrounding estimates of both world and country specific indicators is an order of magnitude smaller in the former than in the latter. Expansions tend to have large idiosyncratic components, both across variables and countries, while declines in economic activity have common timing and similar dynamics, both within and across countries.

We attempt to characterize the informational content of the indicators we construct using simple correlation analysis. We document that the indicator captures a variety of influences going from the magnitude of world trade, to the behavior of commodity prices, to the stance of monetary policy in the G-7 and to the spending power of consumers. However, oil shocks, US technology shocks, world financial or monetary factors and fiscal policy do not appear to be behind the movements in the world indicator. Because the indicator captures such a variety of sources of disturbances and endogenously allow their mix to change over time, it has been a very stable driver of international business cycles over the 1980-2000 period. We also document that, country indicators capture primarily the differential stance of monetary policy

but, in some cases, are also related to domestic money growth or US variables. Interestingly, their informational content is not related to the stance of local fiscal policy nor to the local spending capabilities, except for Canada.

The rest of the paper is organized as follows: the next section presents the model specification, the technique used to construct the various indicators and the details of our testing approach. Section 3 presents the results and Section 4 concludes.

2 The Panel VAR Model

The empirical model we consider has the form:

$$y_{it} = D_{it}(L)Y_{t-1} + c_{it} + e_{it} \quad (1)$$

where $i = 1, \dots, N$ refers to countries and $t = 1, \dots, T$ to time. y_{it} is a $G \times 1$ vector for each country i and $Y_t = (y'_{1t}, y'_{2t}, \dots, y'_{Nt})'$. $D_{it,j}$ are $G \times G$ matrices for each lag j , c_{it} is a $G \times 1$ vector of intercepts and e_{it} is a $G \times 1$ vector of random disturbances. We assume that there are p lags for the G endogenous variables.

Whenever $D_{it}(L)$ is not block diagonal, the model displays cross-unit lagged interdependencies. Lagged cross-country interdependencies add considerable realism to the specification but it is costly: the number of parameters is greatly increased (we have now $k = NGp + 1$ parameters in each equation). (1) displays two other important features. First, the coefficients are allowed to vary over time. Second, the dynamic relationships are allowed to be unit specific. All three ingredients are crucial when one wants to study similarities, time variations in the transmission of business cycles across countries.

It is convenient to rewrite (1) in a simultaneous equations format:

$$Y_t = X_t \delta_t + E_t \quad E_t \sim N(0, \Omega) \quad (2)$$

where $X_t = I_{NG} \otimes \mathbf{X}'_t$; $\mathbf{X}_t = (Y'_{t-1}, Y'_{t-2}, \dots, Y'_{t-p}, 1)$, $\delta_t = (\delta'_{1t}, \dots, \delta'_{Nt})'$ and δ_{it} are $Gk \times 1$ vectors containing, stacked, the G rows of the matrix D_{it} and c_{it} , while Y_t and E_t are $NG \times 1$ vectors containing the endogenous variables and the random disturbances.

Since δ_t varies with cross-sectional units in different time periods, it is impossible to estimate it using classical methods. Two shortcuts are typically employed: it is assumed that the coefficient vector does not depend on the unit, apart from a time invariant fixed effect, or that there are no interdependencies across units (see e.g. Holtz-Eakin et al. (1988) or Binder et al. (2001)). Neither of these assumptions is appealing in our study. Instead, we assume that δ_t can be factored as:

$$\delta_t = \Xi_1 \lambda_t + \Xi_2 \alpha_t + \Xi_3 \rho_t + u_t \quad (3)$$

where Ξ_1, Ξ_2, Ξ_3 are matrices of ones and zeros of dimensions $NGk \times N_1 \ll N$, $NGk \times N$, $NGk \times G$, respectively and $\lambda_t, \alpha_t, \rho_t$ are assumed to be mutually orthogonal. λ_t captures movements in the coefficient vector which are common across units and variables - for most of this paper λ_t will be a scalar; in the later part it will be a 2×1 vector. α_t captures country specific movements in the coefficient vector (roughly speaking, the fixed effects). Its dimension is equal to the number of countries in the panel, N . ρ_t captures movements in the coefficient vector which are variable specific and its dimension is therefore equal to the number of variables in each country, G . Finally, u_t is an error term capturing all the unmodelled features of the coefficient vector (which may have to do with lag specific, time specific or other effects).

Factoring δ_t as in (3) is advantageous in many respects. Computationally, it reduces the problem of estimating NGk coefficients into the one of estimating $1+N+G$ or $2+N+G$ factors. Therefore, even when the number of interdependent cross sections of countries is large, noise is averaged out and reliable estimates of the features of interest can be obtained. Practically, (3) transforms an overparametrized panel VAR model into a parsimonious SUR model where the regressors are appropriate “averages”. In fact, substituting (3) into (2) we have

$$Y_t = \mathcal{W}_t \lambda_t + \mathcal{A}_t \alpha_t + \mathcal{M}_t \rho_t + v_t \quad (4)$$

where $\mathcal{W}_t = X_t \Xi_1$, $\mathcal{A}_t = X_t \Xi_2$, $\mathcal{M}_t = X_t \Xi_3$ capture respectively, common, country specific and variable specific information present in the VAR. As the notation makes it clear, the regressors in (4) are combinations of lags of the right hand side variables, while $\lambda_t, \alpha_t, \rho_t$ play the role of loadings. Using appropriate averages as regressors is common in index model literature (see e.g. Stock and Watson (1989) or Forni and Reichlin (1998)). However, there are four main differences between (4) and standard index models: the indices here are linear combinations of right hand side variables of the panel VAR; they are therefore observable; they dynamically span lagged interdependencies across units and variables; and they have loadings which are allowed to vary over time.

From an economic point of view, the decomposition in (4) is convenient since it naturally allows us to assess the relative importance of world and country specific influences for fluctuations in Y_t . In fact, $WLI_t = \mathcal{W}_t \lambda_t$ plays the role of a world indicator, while $CLI_t = \mathcal{A}_t \alpha_t$ plays the role of a country specific indicator. Note that both indicators are leading Y_t as they reflect information contained in the predetermined variables of the VAR and can be constructed in real time and recursively. Finally, note that while we treat (3) as a part of the prior, it can be also thought as a part of the model specification. If little prior information on $\lambda_t, \alpha_t, \rho_t$ is employed, then the small sample distributions for WLI and CLI we obtained are the same as those obtained with classical methods on a model composed of (2) and (3).



To complete the specification we need to describe how λ_t , α_t , ρ_t evolve over time and the features of their distribution at time zero.

2.1 The structure of time variations

Write (3) compactly as:

$$\delta_t = \Xi\theta_t + u_t \quad u_t \sim N(0, \Sigma \otimes V) \quad (5)$$

where $\Xi = [\Xi_1, \Xi_2, \Xi_3]$ and V is a $k \times k$ matrix and let

$$\theta_t = \theta_{t-1} + \eta_t \quad \eta_t \sim N(0, B_t) \quad (6)$$

We assume that $\Sigma = \Omega$ and $V = \sigma^2 I_k$, where σ^2 is known; that $B_t = \gamma_1 * B_{t-1} + \gamma_2 * \bar{B} = \xi_t * \bar{B}$, with $\xi_t = \gamma_1^t + \gamma_2 \frac{(1-\gamma_1^t)}{(1-\gamma_1)}$ where γ_1, γ_2 are known; that $\bar{B} = \text{diag}(\bar{B}_1, \bar{B}_2, \bar{B}_3)$, and that E_t , u_t and η_t are mutually independent

In (6) the factors evolve over time as a random walk. Alternative specifications allowing for more complex dynamics or exchangeability across units are possible (see e.g. Canova and Ciccarelli (2002)). We stick to this simple setup since experimentation with more complicated structures did not produce qualitatively important changes in the results. The spherical assumption on V reflects the fact that the factors are measured in common units, while setting $\Omega = \Sigma$ is standard in the literature (see e.g. Kadiyala and Karlsson (1997)). The variance of the innovations in θ_t is allowed to be time varying to account for heteroskedasticity and other generic volatility clustering that may appear in the coefficients of several, or all, series within and across units. Note that time invariant structures ($\gamma_1 = \gamma_2 = 0$), and homoskedastic variance ($\gamma_1 = 0$ and $\gamma_2 = 1$) are special cases of the assumed process. The block diagonality of \bar{B} is needed to guarantee the orthogonality across factors, which is preserved a-posteriori, and hence their identifiability. Finally, independence among the errors is standard.

To summarize, the model we will use in our exercises has the hierarchical structure:

$$\begin{aligned} Y_t &= X_t \Xi \theta_t + v_t \\ \theta_t &= \theta_{t-1} + \eta_t \end{aligned} \quad (7)$$

where $v_t \sim (0, \sigma_t^2 \Omega = (1 + \sigma^2 X_t' X_t) \Omega)$. To compute posterior distributions we need prior densities for $(\Omega, \sigma_t, \bar{B})$. Because we want to minimize the impact of prior choices on the posterior distribution of the indicators, we specify rather loose priors. The exact form of these priors, the numerical approach used to compute posterior distributions and the details of the computations are provided in appendix A.

2.2 Verifying the hypotheses of interest

To evaluate the posterior support for the three main issues of interest in the paper, i.e. whether G-7 cycles are driven by a common world cycle; whether there has been any tendency for G-7 cycles to become more similar in the 1990s and whether cycles in the Euro area are different from those in the other G-7 countries or have become so in the 1990s, we employ two types of evidence. First, we examine the behavior of the posterior distribution of WLI_t and of CLI_t over time. Second, we compare the out-of-sample forecasting performances of restricted and unrestricted specifications.

Since time series plots of the posterior distribution of the indicators are difficult to read and since, in large samples, they are likely to be well approximated by a normal distribution we summarize their information by reporting the median of the distribution and a 68 percent posterior central band - the latter corresponding to one standard deviation around the mean in classical frameworks. Visual evidence in favor or against the first and the third hypotheses will be obtained by examining whether the 68 percent posterior band of one indicator includes zero or not at most or all dates. Evidence in favor of time variations can be obtained when the 68 percent posterior bands includes zero in some time periods but not in others. We will complement this visual information by computing the percentage of variations in the endogenous variables due to the factors and by examining the importance of the two indicators in specific historical episodes.

Since the model has a natural leading indicator structure, we will also examine the posterior support for the three hypotheses by comparing the predictive ability of unrestricted and restricted specifications. Predictive distributions can be compared using Bayes factors which are equivalent to the posterior odds ratios when equal a priori weight is given to alternative models (analog of likelihood ratio tests in our context). The predictive Bayes factor is $\frac{f(Y_{t+\tau}|y_t, M_i)}{f(Y_{t+\tau}|y_t, M_j)}$ where $f(Y_{t+\tau}|y_t, M_i) = \int L(y_{t+\tau}|\theta_t, y_t, M_i)p(\theta_t|M_i, y_t)d\theta_t$ is the predictive density for model M_i and $p(\theta_t|M_i, y_t)$ is the prior on the parameters of model M_i . Model i is preferred if this statistics exceeds 1. Thus, for example, in examining the similarities of cycles across countries, M_j corresponds to a model with three observable indices and M_i to a model which leaves the country specific component CLI_t out; while in examining the differences of EU cycles from non-EU cycles, M_j is model where λ_t is a scalar so that WLI_t has one component and M_i is a model where λ_t is a 2×1 vector so that WLI_t has two distinct components, one for EU countries and one for non-EU ones.

3 The Results

3.1 The data and some forecasting features of the model

For each country we use quarterly growth rates of seasonally adjusted real GDP, employment, sales and industrial production as our basic variables. We choose this four series since they are among the variables used by the NBER when deciding the state of the business cycle in the US, by the CEPR when deciding the state of the business cycle in the Euro area and by the Economic Cycle Research Institute (ECRI) when measuring business cycles around the world.¹ The sample is chosen to maximize the amount of common data and covers the period 1979:1-2002:4.

Real GDP data is measured in constant 1995 prices, except for Canada (the base year is 1997). The Japanese series starts only in 1980 and has been extended backwards using the real GDP series measured in constant 1990 prices. Similarly, the Canadian real GDP was extended backwards from 1981 using real GDP data with base-year 1992. The source of all data is from the Quarterly National Accounts of OECD, except for Germany whose real GDP comes from the Bundesbank database. We prefer this series since it explicitly takes into account the effects of German unification. Employment is measured by the civilian employment index, with base year 1995, and is from the OECD Main Economic Indicators. Sales are measured by the retail sales volume index, with base year 1995, and come from OECD Main Economic Indicators, except for the US, where the source is the Department of Commerce. The industrial production index also has 1995 as base year and comes from OECD Main Economic Indicators. Whenever these series are provided in non-seasonal adjusted form, we seasonally adjusted them using the TRAMO-SEATS program. In the panel VAR we use these four series in growth rates. While information about their long run properties may be lost, our choice avoids distortions in the construction of the indicators due to the different size of various aggregates across countries. This is important since the procedure cannot distinguish if a 2% growth is generated in the countries with a large level (say, the US) or with a smaller one (say, Canada).

We have conducted a number of specification searches to decide the structure of the model. A summary of these exercises appears in Appendix B. Overall, we found that a model which displays lagged cross country interdependencies and time variations in the factors, where the decomposition in (3) includes three elements and V is nondegenerate is preferable to specifications which exclude these features. We would like to emphasize two important aspects of

¹The NBER uses real personal income instead of GDP, but such series are not available on a quarterly basis for all of the G-7 countries. The CEPR also looks at investment and at some other national variables like the unemployment rate.

our specification search. First, a model with lagged cross-country interdependencies has much higher predictive ability than a model without interdependencies (predictive Bayes factor is about 2.0). This implies that static factor models of the type employed e.g. by Stock and Watson (1989) may miss important sources of transmission of fluctuations across countries. Second, time variations in the factors play some role but not a very large one.

To demonstrate the ability of the model to approximate the data we present three types of statistics. In table 1 we report the Theil-U statistics (the ratio of the one step ahead MSE computed using the median of the posterior of our model to the one step ahead MSE of a naive no-change univariate model) for IP and employment growth of the 7 countries. We choose to confront the forecast of our model to those of a no-change model because more complicated specifications, e.g. a VAR (with or without a prior) fail to improve over the no-change model for these two variables. Clearly, the smaller the reported numbers, the larger is the forecasting improvement of our model. The statistics are reported for two types of prior assumptions, a non informative and an informative one. Results for the latter are slightly better, as expected when more information is used. Nevertheless, we prefer the non informative prior, which avoids interference with the data and does not condition much the results. Subsequent discussion and figures are therefore based on the non informative set-up. The values of the hyperparameters under the two types of priors are reported in the appendix.

| Table 1: 1 Step ahead Theil-U statistics, 1990:1-2002:2 | | | | | | | |
|---|------|-------|---------|------|--------|-------|--------|
| | US | Japan | Germany | UK | France | Italy | Canada |
| IP growth | 0.98 | 0.92 | 0.77 | 0.93 | 0.70 | 0.80 | 0.70 |
| Employment growth | 0.67 | 0.60 | 0.57 | 0.78 | 0.87 | 0.91 | 0.93 |
| Sensitivity with informative priors | | | | | | | |
| IP growth | 0.91 | 0.78 | 0.79 | 1.03 | 0.61 | 0.70 | 0.62 |
| Employment growth | 0.46 | 0.48 | 0.56 | 0.52 | 0.70 | 0.84 | 0.69 |

Figure 1 reports the predicted recursive one-step ahead 68 percent central posterior bands (dotted lines) together with the actual growth rates (solid line) for UK GDP growth, US employment growth and Japan IP growth. We choose these three series because the performance of the model for them is close to the median outcome in the sense that they were neither the best nor the worst tracked by our specification.

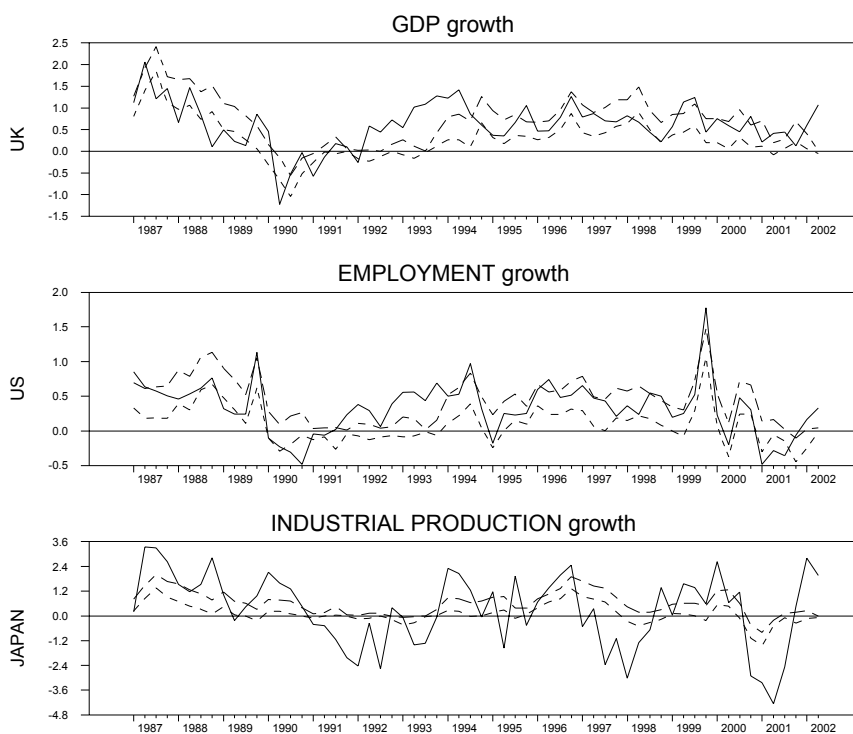


Figure 1. Predictive ability of the model

In figure 2, we report the record of turning point probabilities for US, UK, Canada and Germany GDP in levels. Probabilities of turning points are generated calculating the percentage of times our model generates the pattern predicted by the following simple rule: there is an upturn at t if $gdp_{t-2} < gdp_{t-1} < gdp_t > gdp_{t+1} > gdp_{t+2}$ and there is a downturn if $gdp_{t-2} > gdp_{t-1} > gdp_t < gdp_{t+1} < gdp_{t+2}$. While this rule is extremely simple and does not make the provision for minimum length of a cycle or for consecutive turning point signals as, for example, the Bry and Boschan (1971) procedure, it suffices to give an idea of the ability of the model to replicate important non-linear functions of the data. For readability, we present probabilities of downturns with positive sign and probabilities of upturns with a negative sign. Superimposed on the graph are the level of the series and the downturn (peak to trough) phases as reported by ECRI.

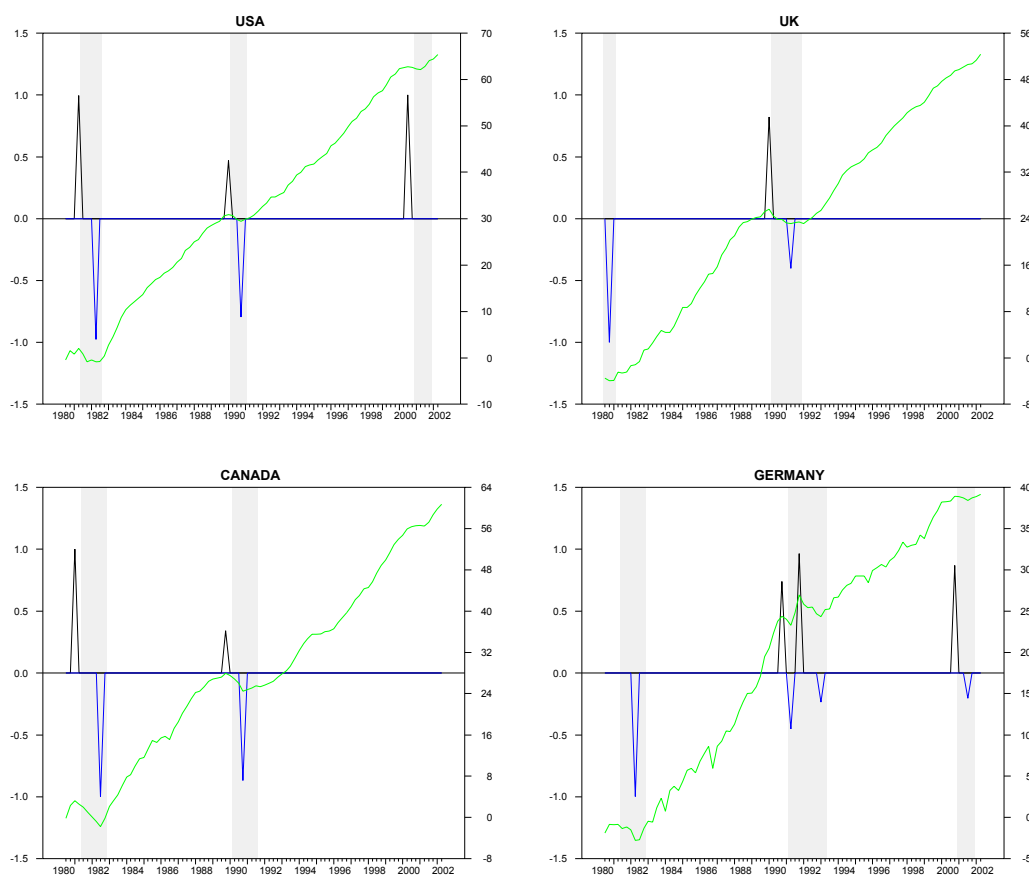


Figure 2. GDP levels, recession phases and Turning Point Probabilities

Table 1 shows that one-step ahead forecast for employment growth are slightly better than those for IP growth (which is considerably more volatile). However, for both series in all countries, our model is superior to the alternative. Gains are, on average, of the order of 20% for IP growth and exceed 25% for employment growth. Note also that the model appears to be particularly suited to forecast Euro area variables. We use a Diebold and Mariano (1995) test to check for the asymptotic significance of the gain vis-a-vis a no-change univariate model: we confirm that the forecasts of the two models are different and that those of our model are better.

The forecasting ability of the model can also be graphically appreciated in figure 1. In general, forecasts are smooth and the model captures the direction of the movements in the three variables reasonably well. Moreover, there are episodes when the model captures the timing and even the size of the changes actually observed.

While our model is designed to capture the features of cycles in the growth rates, it can also reproduce quite well turning points in the level of GDP of several of the G-7 countries. Figure 2 shows that the model generates high probabilities of a turning point in correspondence of the actual ups and downs of the series. In fact, it does not miss any of the recession phases chosen by ECRI for the four countries. However, given the simplicity of the adopted rule, it may miss a particular turning point, like the most recent trough in the US GDP. Therefore, while improvements are possible it is comforting to see that even with this simple dating rule the model does not miss important recession signals present in the data.

3.2 Are G-7 cycles (more) similar?

To answer this question we plot the median and the 68 percent posterior central band for the world indicator WLI_t and for the seven country specific indicators in figure 3, all in growth rates. The country indicators displayed include all the information common to all four variables in each country, i.e., the one shared with the rest of the variables in the model, WLI_t , plus the information specific to that particular country, CLI_{it} .

There are several features of figure 3 that are worth commenting upon. First, the world indicator captures major events occurred in the last 20 years: it displays the double dip experienced by growth rate of output of several countries at the beginning of the 1980s and a sustained growth thereafter; it captures both the US recession of the beginning of the 1990s and the European one a couple of years later; it shows a positive trend growth in the 1990s and drops below zero in the first quarter of 2001. According to this indicator, the 1982 recession is the deepest of all and, apparently, the longest while the (common) growth in the 1980s was slightly larger, on average, than the one experienced in 1990s (Japan's poor performance in the 1990s being partially responsible for this outcome). Second, posterior uncertainty (as measured by the size of the 68 percent band) depends on the state of the world economy. Bands are tighter at the beginning, in the middle and at the end of the sample and these happened to be periods when the world indicator was either negative or very close to zero. Hence, the timing and the size of comovements across variables and countries appears to be more similar in contraction than in expansions. This result agrees e.g. with Artis et al. (2003), who find more synchronization in recessions than in expansions in the Euro Area.

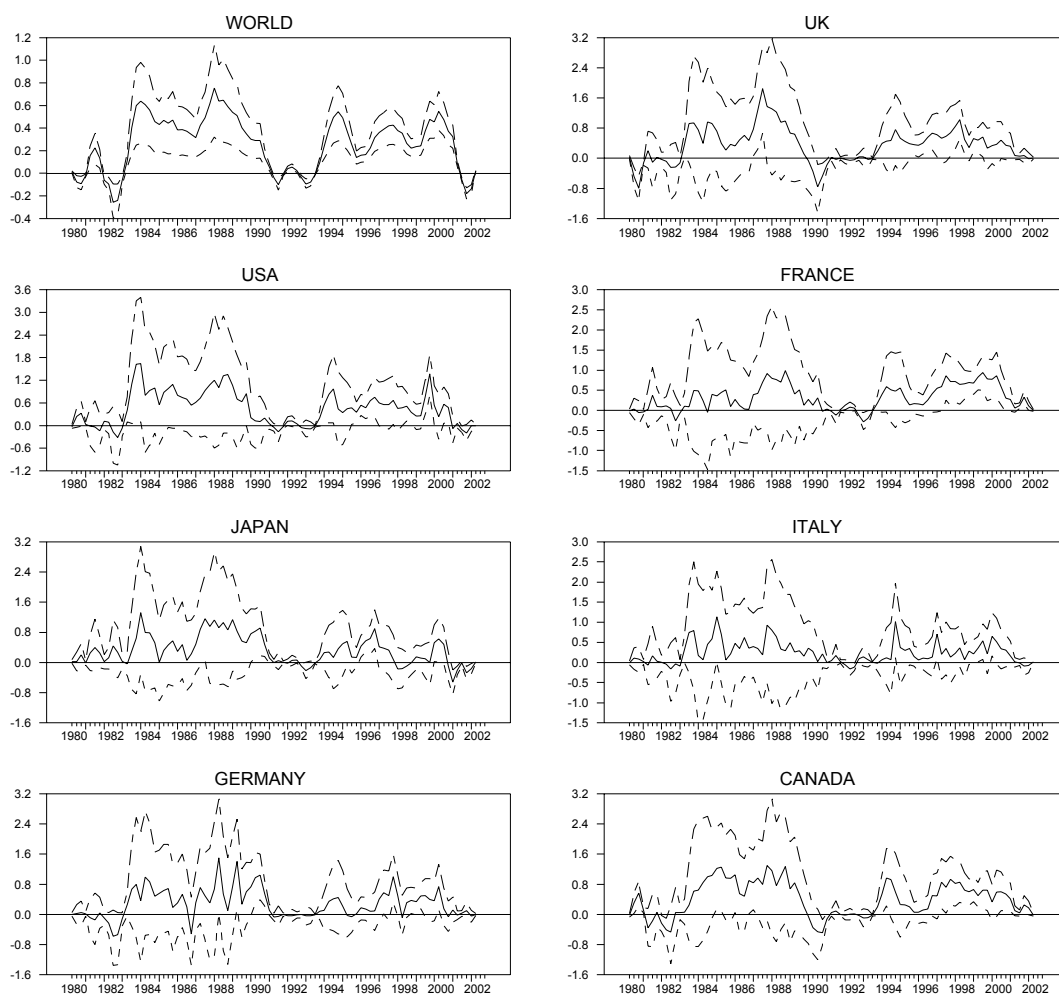


Figure 3. World and Country Indicators

The pattern of comovements observed after 2001 has drawn the attention of several researchers (see e.g. Doyle and Faust (2002), Perlsmann (2002), Helbling and Bayoumi (2003)). In particular, the high synchronicity of the downturn in the industrialized world has been contrasted with the much slower transmission processes experienced early on and commentators have suggested that the sources of international business cycle must have changed. While our analysis confirms the importance of world influences in determining the extent of such a slowdown (the world indicator is entirely responsible for the similarities in the comovements of G-7 GDPs after that date), it also suggests that the contribution of world disturbances is not unusual when compared with other recessionary episodes of the last 20 years. What appears to have drawn

the attention of researchers is not so much a (permanent) structural change in the relationship but the switch in the uncertainty present in recession and expansion phases.

Third, at each t , the world indicator has little posterior probability mass in the symmetric region centered around zero. Therefore, there is posterior evidence that it significantly contributes to the comovements of the 28 variables we consider. A simple way to numerically measure this contribution is to check how much of the variance of each of the four series is explained by the posterior median of the world indicator. We find that, on average across countries, the median value of the world indicator explains about 33% of the fluctuations in the growth rate of GDP, about 56% of the fluctuations in employment growth, 17% of the fluctuations of IP growth and 15% of the fluctuations of sales growth. Similarly, we find that 30% of the fluctuations of the four variables within countries are explained by the indicator, with France (46%) and Japan (23%) being the two opposite extremes. The numbers for GDP are surprisingly similar to those reported by Kose et al (2003) for G-7 countries (36%), despite the fact that the sample and the frequency of the data they use is different. Hence, the changes experienced by the world economy over the last 20 years have not altered the importance of common influences in shaping international business cycle dynamics.

Fourth, the 68 percent posterior band of country indicators includes zero at most dates. This means that their explanatory power for G-7 fluctuations in the last 20 years is probably minor. To put this observation in another way, national variables display important fluctuations but the source does not appear to be distinctively national; rather, world wide influences seem to be the reason behind this commonality. Also for country indicators, posterior uncertainty is significantly smaller in downturns than in upturns. Hence, asymmetries in business cycle phases are also present at national level, with synchronicity being stronger in downturns than upturns.

To explicitly evaluate the contribution of country indicators to cyclical fluctuations in the G-7 economies, we plot in figure 4 the growth rate of GDP ($xxGDPG$, where xx is the acronym of the country), the median value of WLI_t (WLI) and the median value of $WLI_t + CLI_t$ for each country ($WCLI_{xx}$). Sizeable differences between the two indicators will emerge when country specificities are of relevance. One can observe that in the US, Japan and Canada, country specific idiosyncrasies are important in explaining movements in the growth rate of domestic GDP for the period 1983-1990 and, to a smaller extent, in the late 1990s. Confirming conventional wisdom, national specific reasons appear to be behind the poor growth performance of Japan in the late 1990s.

The country specific indicator adds little to explain GDP growth movements in Germany and Italy: roughly speaking, it captures high frequency movements in GDP growth but little else. In France, it significantly deviates from the world indicator in the middle of the 1980s and especially in the late 1990s - in the earlier episode on the negative side, in the more recent one on the positive side. In the UK, country specific disturbances appear to be crucial in capturing the downward trend in GDP growth experienced over the 1986-1992 period and have some power in explaining the above average growth rate experienced in the mid-1990s. Finally, the picture shows that the world indicator captures low frequency comovements in G-7 countries, while country specific indicators tend to replicate more high frequency type fluctuations. In fact, the AR(1) coefficient of the posterior median of the world indicator is 0.91, while the AR(1) coefficient of the posterior median of the country indicators varies from 0.60 for Germany to 0.83 for Canada, with Italy and France close to the lower end. Very similar conclusions are obtained examining employment growth fluctuations across countries.



Figure 4. Actual GDP growth and posterior medians of the indicators

To formally examine whether G-7 cycles are similar, we compare the predictive ability of two models: one without country specific components (M_i) and one which includes them (M_j). The predictive Bayes factor is 0.90 suggesting that country indicators have some role in explaining the dynamics of the data. To understand the meaning of this number, note that one should have a prior odds in excess of 1.11 (attributing 0.53 or more a-priori probability on the model without country specific indicators) to have mild posterior evidence against the existence of country specific cycles. The predictive power of country specific indicators comes almost entirely from the mentioned above episodes. In fact, if we repeat the exercise using only data for the 1990s Bayes factor drops to 0.86, suggesting a higher role for the country component.

Are national cycles disappearing? Figure 3 indicates that there are significant time variations in the posterior distributions of both the world and the country specific indicators. The most evident one concerns the varying level of uncertainty present in recessions and expansions. Another appears to be the decline in the uncertainty surrounding both types of indicators over time. Finally, country specific indicators have become slightly more synchronized and, marginally, more significant in the last decade - probably as a result of greater synchronization in the ups and downs of domestic variables.

While some of these observations have important policy implications - the decline in national uncertainty suggests that the information contained in GDP may suffice to characterize the state of the local economy - and others require further study to sort out alternative explanations - is the slight increase in domestic synchronization the result of policy actions, of domestic specialization, of increased similarities in the sectorial shocks hitting the economies or simply of reduced uncertainty connected with a specific growth episode? - the evidence denies the presence of significant breaks in the structure of comovements across the two parts of the sample. The 1980s are not different from the 1990s as far as sources of business cycles are concerned: national cycles played some role in both decades and their importance does not seem to be vanishing over time.

This result is not necessarily in contrast with any idea concerning the globalization of markets. Conventional wisdom suggests that more globalization should bring a stronger synchronicity in the business cycles of the industrialized world following an increase in trade. However, the possibility of easy trade may also make local production more specialized (along the lines of standard static or dynamic comparative advantage). Specialization may therefore bring less synchronicity in production. There is no reason to expect one of the two effects to dominate the other, and one can envision scenarios where increased globalization leaves the synchronicity of G-7 cycles unaffected.

3.3 Are European cycles different?

One reason for the increased significance of country indicators in the latter part of the sample could be the emergence of a regional element in the fluctuations. For example, if European cycles tend to deviate from say, Rest-of-the-world (ROW) cycles in the late 1990s, the presence of one world indicator may result in significant country specific indicator, because of omitted variable bias. This suspect is partially confirmed by the fact that France and the UK are the countries which display the most significant country specific indicators in the late 1990s and by the analyses of Lumsdaine and Prasad (2003), who find high correlations of EU industrial production indices with the EU factor they construct.

We therefore repeated our exercise allowing for 2×1 vector of world indices: one for Euro area countries (France, Italy and Germany) and one for the Anglo-Saxon countries. The rest of the model is unchanged. We decided to leave Japan out of the two groups since the synchronicity of Japan and the other G-6 cycles dramatically declines from the mid-1980s when other East Asian countries (Korea, Taiwan, China) became the major trading partners of Japan. We also experimented including Japan in a rest of the world (ROW) cycle and switching the UK into the European group, despite evidence of some diversity of Euro area and UK cycles (see e.g. Harding and Pagan (2002) or Artis et al. (2003)). We settled on the above specification since Bayes factors always preferred it and, in both cases, by a large margin.

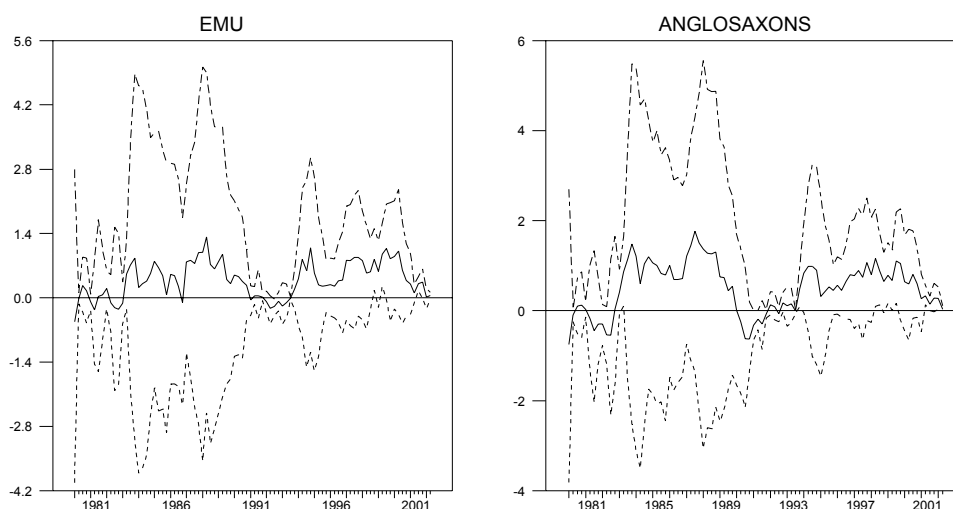


Figure 5. EMU and Anglo-Saxons Indicators

Figure 5 presents the time path of the median and 68 percent posterior central bands for the two regional indicators. Four features of the figure stand out. First, the posterior band of the Euro area indicator almost always includes zero. In fact, out of the 92 data points in

the sample, the posterior 68% band excludes zero only once (at the beginning of the 1990), roughly one percent of the times. Hence, there is little posterior evidence of a significant Euro area indicator. Second, there also little posterior evidence that Euro area cycles differ from the Anglo-Saxon ones: the overlap of the two posterior distributions at each t is substantial. Third, the evolution of the median of the posterior of the two indicators is similar in both the 1980s and the 1990s. Therefore, there is no posterior support for the idea that Euro area cycles became more important in the later part of the sample. Finally, also with this specification, posterior uncertainty is very much reduced during contraction phases. This result is important: the large posterior uncertainty present in the two indicators for most of the sample cannot be due to the lack of information in the two aggregates. That is, enlarging the number of countries in the Euro area group may make uncertainty smaller during expansions phases, but it will not change the basic conclusions significance with respect to the significance of Euro area indicators.

We formally examine whether the inclusion of a Euro area indicator improves the performance of the model by constructing predictive Bayes factors. If European cycles are substantially different from the Anglo-Saxon ones, the predictive power of a model with two indices should be substantially superior to our original specification. It turns out that it is not: Bayes factor is 0.989 suggesting that the data are almost unable to identify a favored model or that there is only a very marginal improvement in the predictive power of the model with separate European and Anglo-Saxons indicators. Given the evidence in figure 5, this is not surprising: even though one extra degree of freedom is gained, the uncertainty in the estimates is so large that the predictive ability does not necessarily improve.

While the lack of a Euro area cycle may appear surprising, it is worth stressing that our finding is not unique. For example, Kose et al.(2003) find no evidence of a second world factor, in general, and of a EU factor, in particular. Interestingly, the absence of this second factor is demonstrated using non-Bayesian techniques. How should one then interpret the evidence? Our favorite interpretation is the following. While Euro area aggregates display common fluctuations across variables and economies, their source is not distinctively European. Euro area and Anglo-Saxon fluctuations are similar in timing, size and amplitude because they are driven by the same source of disturbances. Based on our results and those of Kose et al.(2003) one can conclude that regional causes play a minor role in explaining comovements in cyclical fluctuations in a large cross section of industrialized and less developed countries. The policy implication of this result is clear: Euro area policymakers should closely monitor the state of the international business cycle and de-emphasize Euro area (and national) cycles.

In sum, our analysis has established few important facts. First, there is evidence that cycles in four G-7 variables are driven by a common cause. The importance of the world indicator depends on the variable and the country. On average, it explains about 30% of cyclical fluctuations in each of the G-7 countries. Second, while country specific causes are useful in explaining certain GDP and employment episodes across countries and time, they do not appear to be significant over the entire sample. Movements in the world indicator have been a stable and consistent reason for the commonalities of the fluctuations in the G-7 economies over time. Contrary to the conventional wisdom, we do not find evidence of structural breaks in country indicators for the 1990s (or the late part of the 1990s): the often cited idea that national cycles are disappearing finds no support from our analysis. In fact, national indicators are probably as important to explain the differential growth rate in GDP across countries in the mid 1990s as they were in the mid 1980s. Hence, sources of comovements in G-7 variables do not appear to have dramatically changed over the last 20 years. What appears to change is the uncertainty surrounding the state of the world business cycles in recessions and expansions. Since our approach is a reduced form one, we can not tell whether these difference are due to the structural reasons or to increased idiosyncrasies over expansion phases. Third, we find little support for the idea that Euro area cycles are different from those of the rest of the world or that a Euro area cycle is emerging in the 1990s. Overall, regional causes appear to be of minor importance in explaining G-7 cycles.

3.4 What drives the World indicator?

Before we discuss the informational content of our world indicator, we first examine how it is related to simple arithmetic averages of GDP, IP, employment or sales growth in the G-7. If the behavior of the world indicator we construct can be reproduced with such simple measures, our more complicated setup can be clearly dismissed. We find that such measures share some informational content with our indicator but the overlap is far from perfect. In fact, the point estimate of the bivariate correlation between the posterior median of the world indicator and the simple average at each point in time of the 7 countries' GDP, IP, employment and sales growth rates are 0.58, 0.64, 0.67, 0.37 respectively.

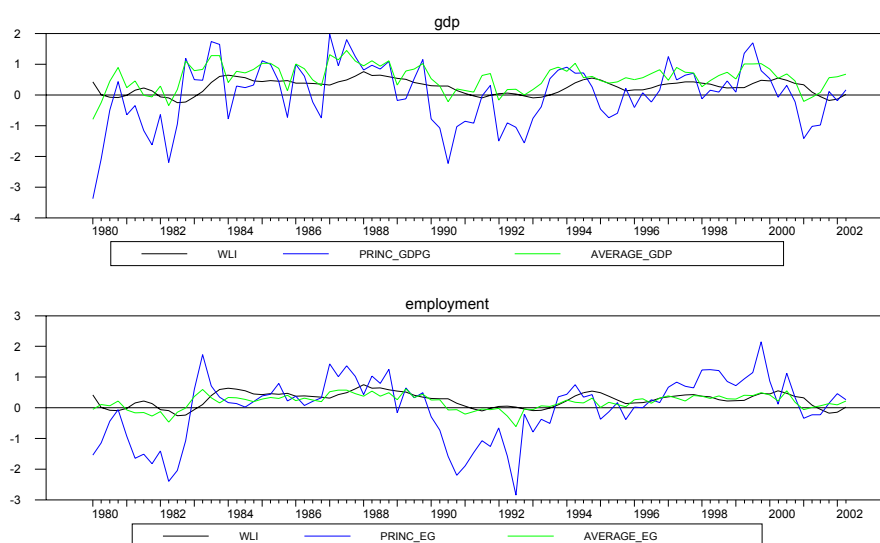


Figure 6. World Indicator, principal components and averages

Similarly, we find that our indicator is correlated with the principal component of GDPs, IPs, employment and sales growth although the association is less strong (point estimates 0.37, 0.35, 0.54, 0.01). Figure 6 graphically provides evidence of this association for GDP and employment growth: the principal component is typically much more volatile than our indicator while simple arithmetic average measures occasionally miss important cyclical movements in the data. Our world indicator is the smoothest and mimics the local trend present in the data better than these standard measures.

To study the informational content of the world indicator we computed a number of simple correlations. Since these correlations are non-structural they are only as suggestive of the possible sources of cyclical movements captured by our world indicator. We have computed correlations with the growth rate of the US real personal non-agricultural income, the growth rate of world commodity price index, the NYSE stock return index, the growth rate of the world market crude petroleum price, the growth rate of the world goods trade, the quarterly US technology shock extracted by Gali, López-Salido and Vallés (2003), the average spread between US and other G-7 short term interest rates, both real and nominal, the average growth rates of real private consumption to GDP ratio, real effective exchange rates and M3, and average G-7 government deficit.

Is the world indicator a stand-in for oil shocks, technology shocks or other types of supply side disturbances? The answer is mixed. While we find that the correlation between the world

indicator and commodity prices is significant² although not very large (point estimate 0.27), the one of oil prices and US technology shocks is small and insignificant (point estimates 0.05 and -0.05). Similarly, the correlation with real exchange rates is low and insignificant. Therefore, while oil shocks may be an important source of national disturbances, and technology shocks in the US may explain an important portion of US fluctuations, it is necessary to go beyond these disturbances to explain and interpret existing world business cycles.

Does the world indicator capture fluctuations originating in financial or monetary markets or the stance of fiscal policy? Once again, the answer is mixed. While the correlation with US stock returns, average G-7 government deficit and average growth of M3 is small and insignificant (point estimates -0.08, 0.10 and 0.15 respectively), the world indicator appears to be significantly correlated with the average short term real and nominal interest rate prevailing in the G-7 (point estimates 0.28 and 0.57, respectively).

Besides average nominal interest rates and commodity prices, what else is behind the movements of the world indicator? It appears that the world trade (point estimate 0.50), the average consumption/output ratio (point estimate -0.46) and US personal income (point estimate 0.27) are the variables with the most significant correlations. Interestingly, as in Cochrane (1994) we find that the consumption/output ratio is almost as good as any other variables in explaining common movements in the G-7.

In sum, our world indicator captures a number of influences (trade, commodity prices, monetary policy, spending capacity) that analysts and academic investigators have indicated to be important to understand the dynamics of business cycles in the industrialized world. One possible explanation for the remarkable stability in its explanatory power may be that it robustly and flexibly captures different sources of fluctuations by allowing for time variations and adaptive changes in the weights.

There are another couple of other interesting facts which our investigation has discovered. First, there seems to be a strong negative relationship between the average explanatory power of the world indicator for national cycles and volatility of GDP (see figure 6). Such a relationship is at times studied in growth literature to evaluate the desirability of stable growth. In our context, this pattern implies that synchronicity with the rest of the G-7 improves (worsens) as the volatility of domestic GDP fluctuations is reduced (increases). Second, the world indicator has larger explanatory power for employment than output (and larger correlation with the average employment growth than with average GDP growth). This result squares well with those derived by the international RBC literature where employment correlations larger than GDP correlations are interpreted as suggestive of the presence of an important world cycle.

²Here and in the following significance means that the 95 percent band around the point estimate does not include zero.

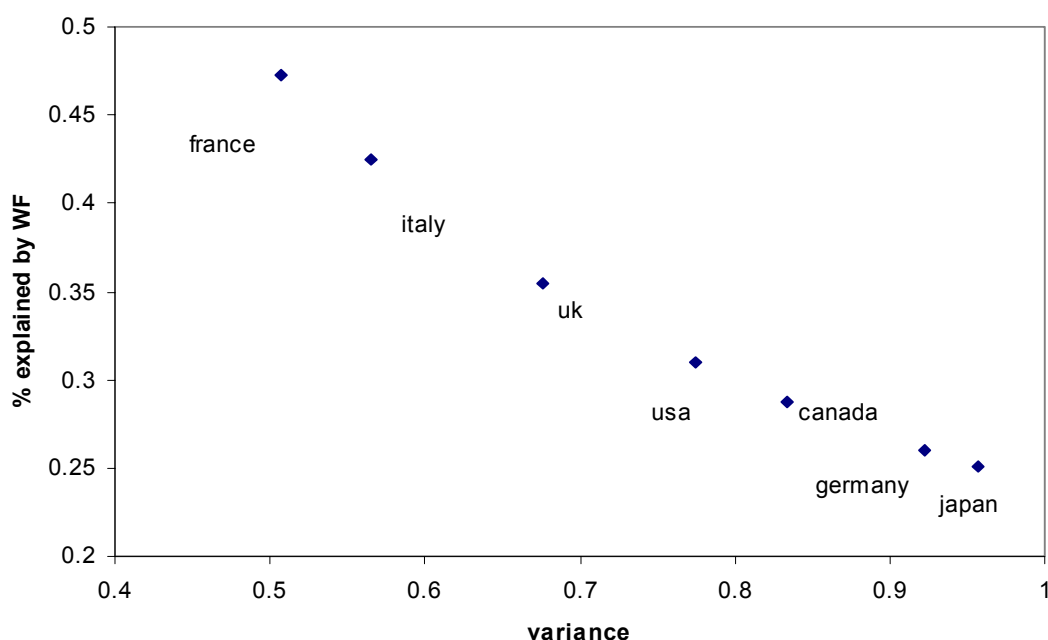


Figure 7. Synchronicity and GDP volatility

We have also attempted to identify the informational content of country specific indicators. We have correlated them with the individual series used in the model (the growth rate of real GDP, industrial production, employment and real retail sales) as well as with other domestic variables like the 3 month interbank nominal interest rate, the nominal yield on 10year bonds, the real short term and long term interest rates, the growth rate of M3, the general government deficit, the consumption output ratio and the real exchange rate and with a few other international variables (the US personal income, the commodity price index, the US technology disturbances, US stock returns). We found that US personal income is significantly correlated with all the country specific indicators. Among the other variables, short term interest rates (either nominal or real) or money growth are those most correlated with the indicators. Interestingly, the informational content of national indicators is not related to the stance of fiscal policy in any country nor to the local consumption to GDP ratio, except in Canada.

4 Conclusions and Directions for future work

This paper studies similarities and convergence of G-7 business cycles using a panel VAR model with cross country interdependencies and time variations. The framework of analysis is advantageous in several respects. First, the structure is flexible and allows for multiple types of

contemporaneous and lagged comovements and for time variations in the correlation structure of cyclical fluctuations across variables and countries. Second, the parsimonious parametrization we use endogenously produces an index structure where indicators of world and national cycles are observable, recursively constructed and dynamically span cross country interdependencies. Third, the specification allows us to verify the posterior support for the hypotheses of interest and to analyze what drives the common and the idiosyncratic components of G-7 fluctuations.

We address three interrelated questions. First, we ask whether G-7 cycles are driven by a common world cycle or if there is a significant national component in the fluctuations. Second, we examine whether Euro area cycles are different from those we observe in the rest of the G-7 or if they have become so in the recent past. Third, we study whether there has been any tendency for G-7 cycles to become more similar in the 1990s or if, on the contrary, they tend to be clustered along geographical, regional or other institutional characteristics.

Five major results emerge from our investigation. First, we find that the common (world) indicator accounts for a significant portion of the fluctuations in sales, industrial production, output and employment of the seven most industrialized countries - roughly speaking, 30 percent of those. We also show that this cyclical indicator captures the more persistent portions of the fluctuations in the G-7 and that it has more information than simple average or principal component measures obtained using G-7 GDPs or IPs. Second, we find that country indicators are useful in explaining specific GDP and employment episodes across countries and time, but not in tracking the cyclical movements of the four variables in the G-7 over the entire sample. Third, we do not find evidence of structural breaks in country indicators for the 1990s: the often cited idea that national cycles are disappearing finds no support from our analysis. These last two results taken together imply that movements in the world indicator have been the stable and consistent reason for the commonalities of the fluctuations in the G-7 economies over time and that structural breaks in both the pattern of transmission across countries and in the sources of structural shocks are probably absent.

Fourth, we find little support for the idea that Euro cycles are different from those of the rest of the world or that a Euro area cycle is emerging in the 1990s. This result should be contrasted with Lumsdaine and Prasad (2003) and Artis et al. (2003) who detected the presence of a EU cycle using IP data. Fifth, we find that both world and country specific fluctuations are much more synchronized in contractions than expansions. That is to say, the uncertainty surrounding estimates of both world and country specific indicators is an order of magnitude smaller in the former than in the latter. Expansions tend to have large idiosyncratic components, both across variables and countries, while declines in economic activity tend to

have common timing and similar dynamics, both within and across countries. This feature is important for turning points recognition: while the information contained in the world indicator gives a reliable downturn signal, this information is likely to be less reliable for upturn signals.

We document that the indicator captures a variety of influences going from the magnitude of world trade, to the behavior of commodity prices, to the stance of monetary policy in the G-7 and to the spending power of consumers. Interestingly, oil shocks, US technology shocks, world financial or monetary indicators and fiscal policy do not appear to be behind the fluctuations of the world indicator.

Our results are important from a policy point of view for several reasons. First, since variations in economic activity in countries with different institutions, economic structures and/or economic policies are driven by a common causes, markets more than policies appear to be the key to understanding the comovements in economic activity. This also means that policy institutions should probably de-emphasize national and regional cycles and instead focus on the identification of the market(s) or channel(s) that foster cross-country transmission. Second, since national or regional variables drive the national but not the world indicator, policies designed to counteract the tendencies dictated by world conditions may be ineffective. In addition, the presence of significant time variations indicates that reliance on policy actions which have been effective in the past is doomed to failure. Third, since cyclical time variations imply important asymmetries in the shape and the dynamics of international cycles, reliance on standard linear models in policy analyses may miss important and pervasive features of the data.

There are several interesting questions that our paper has left unanswered. For example, one would like to know more about the decreased posterior variability present in both the world and the national indicators in the late 1990s. What are the causes of this decrease? Is it the size of the shocks which has declined, the synchronization that has increased? If it is the latter, what can we say about the relative importance of contemporaneous vs. lagged transmission? Similarly, one would like to know why there is such a strong negative relationship between international synchronicity and volatility of GDP. Which way does causality go? What factors drive this correlation? How does this square with specialization and globalization? Furthermore, since the model tracks reasonably well the four macroeconomic variables used in this study, one may want see whether this ability translates also in useful predictions of the future state of the world economy at various horizons. The results reported in Table 1 for forecasting in short horizons are promising. The exercises conducted in Canova and Ciccarelli (2002) suggest that this could be the case using information available up to one or two years in advance, but more evidence is clearly needed. We plan to take up all these questions in future work.

Appendix

A Estimation

A.1 Prior information

We let $\bar{B}_i = b_i * I$, $i = 1, 2, 3$, where b_i is a vector of parameters which controls the tightness of factor i and we let $p(\Omega^{-1}, \sigma_t^{-1}, b_i, \theta_{t-1}) = p(\Omega^{-1})p(\sigma_t^{-1})p(\theta_{t-1}) \prod_i p(b_i)$ with

$$\begin{aligned} p(\Omega^{-1}) &= W(z_1, Q_1) \\ p(\sigma_t^{-1} | \mathcal{F}_{t-1}) &= G\left(\frac{\zeta}{2}, \frac{\zeta s_t}{2}\right) \\ p(b_i^{-1}) &= G\left(\frac{\varpi_0}{2}, \frac{\delta_0}{2}\right) \\ p(\theta_{t-1} | \mathcal{F}_{t-1}) &= N\left(\bar{\theta}_{t-1|t-1}, \bar{\mathbf{R}}_{t-1|t-1}\right) \end{aligned} \quad (8)$$

where N stands for Normal, W for Wishart and G for gamma distributions, \mathcal{F}_{t-1} denotes the information available at time $t-1$, and $s_t = 1 + \sigma^2 X_t' X_t$. The last conditional distribution also implies the following prior for θ_t

$$p(\theta_t | \mathcal{F}_{t-1}) = N\left(\theta_{t|t-1}^*, \mathbf{R}_{t|t-1}^*\right)$$

where $\theta_{t|t-1}^* = \bar{\theta}_{t-1|t-1}$, and $\mathbf{R}_{t|t-1}^* = \bar{\mathbf{R}}_{t-1|t-1} + B_t$.

The prior distribution on Ω is standard and can be made uninformative by letting $Q_1 \rightarrow 0$. The priors for b_i and σ_t are general and can be made uninformative letting $\varpi_0, \delta_0 \rightarrow 0$ and $\zeta \rightarrow 0$ respectively. The prior assumption on σ_t implies that the prior for v_t has the form $(v_t | \sigma_t) \sim N(0, \sigma_t \Omega)$ where $\sigma_t \sim \text{Inv-}\chi^2(\zeta, s_t)$. That is, v_t is distributed as a multivariate t centered at 0, with scale matrix dependent on Ω and degrees of freedom equal to ζ . Such a prior has the potential to account for unusual observations in the data or occasional extreme parameter values which occur in our sample because of structural breaks (for example, the breakdown of the EMU) or unexpected events (German unification). Finally, the prior on θ_t can be derived from normal initial conditions and the Kalman filter.

We collect the hyperparameters of the prior in the vector

$$\mu = \left(z_1, \zeta, \sigma^2, \varpi_0, \delta_0, \gamma_1, \gamma_2, \text{vech}(Q_1), \bar{\theta}_0, \text{vech}(\bar{\mathbf{R}}_0)\right)$$

where $\text{vech}(\cdot)$ denotes the column-wise vectorization of a symmetric matrix. We assume that components of μ are either known or can be estimated in the data, for example, splitting the sample in two pieces, using the first piece (“training” sample) to estimate the μ (by running

univariate constant coefficients AR(p) or country by country VAR(p)) and the second to estimate posterior distributions and to conduct inference. The following table reports the values for the hyperparameters under an informative and a non informative choice:

| Table 2. Prior hyperparameters' set-up | | | | | | | | | | |
|--|---------|------------------|------------------|-------------|------------|------------|------------|------------|------------------|-------------|
| | ζ | σ^2 | z_1 | Q_1 | ϖ_0 | δ_0 | γ_1 | γ_2 | θ_0 | \bar{R}_0 |
| informative | 1.0 | $\hat{\sigma}^2$ | $N \cdot G + 20$ | \hat{Q}_1 | 10 | 1 | 1 | 0 | $\hat{\theta}_0$ | I_J |
| non-informative | 0.0 | $\hat{\sigma}^2$ | $N \cdot G + 1$ | \hat{Q}_1 | 0 | 0 | 1 | 0 | $\hat{\theta}_0$ | I_J |

where $\hat{\sigma}^2$ is calculated averaging the estimated variances of NG AR(p) models, \hat{Q}_1 is the estimated variance-covariance in the time invariant version of (1), $\hat{\theta}_0$ is initialized with a sequential OLS on (1), over the sample 1975-1980, and J is the dimension of θ_t . Notice that the values of the hyperparameters under both the informative and the non informative set-up have been chosen mixing previous experience with the same specification (Canova and Ciccarelli, 2003) and information contained in the sample. They provide the highest posterior density value among other possible choices in a reasonable range.

A.2 Posterior distributions

To calculate the posterior distribution of the unknowns of the model ($\psi = (\Omega, b_i, \{\sigma_t\}_t, \{\theta_t\}_t)$), we combine the above priors with the likelihood of the data, which, with the specification adopted, is proportional to

$$L \propto \left(\prod_{t=1}^T \sigma_t \right)^{-NG/2} |\Omega|^{-T/2} \exp \left[-\frac{1}{2} \sum_t (Y_t - X_t \Xi \theta_t)' (\sigma_t \Omega)^{-1} (Y_t - X_t \Xi \theta_t) \right] \quad (9)$$

where $Y^T = (Y_1, \dots, Y_T)$ denotes the data. Using Bayes rule, we have $p(\psi | Y^T) = \frac{p(\psi) L(Y^T | \psi)}{p(Y^T)} \propto (\psi) L(Y^T | \psi)$. Given $p(\psi | Y^T)$, the posterior distribution for the components of ψ , $p(\Omega | Y^T)$, $p(b_i | Y^T)$, $p(\sigma_t | Y^T)$ and $p(\theta_t | Y^T)$, can then be obtained by integrating out nuisance parameters from $p(\psi | Y^T)$. Once these distributions are obtained, location and dispersion measures for ψ and for any interesting continuous function of them can be obtained.

For the model considered in this paper, it is impossible to compute $p(\psi | Y^T)$ analytically. However, we can numerically simulate a sample from it using Monte Carlo techniques. A method which is particularly useful in our context is the Gibbs sampler since it only requires knowledge of the conditional posterior distribution of $p(\Omega | \psi_{-\kappa}, Y^T)$, $p(\sigma_t | \psi_{-\kappa}, Y^T)$, $p(b_i | \psi_{-\kappa}, Y^T)$ and $p(\theta_t | \psi_{-\kappa}, Y^T)$, where $\psi_{-\kappa}$ denotes the vector of ψ excluding the parameter κ , all of which can be analytically computed in our model. Under regularity conditions (see Geweke(2000)), cycling through these conditional distributions will produce in the limit

draws from the joint posterior of interest. From these, marginal distributions can be computed by averaging over draws.

The conditional distributions of interest are

$$\begin{aligned}\theta_t \mid Y^T, \psi_{-\theta_t}, \mathbf{l}_{t-1} &\sim N\left(\bar{\theta}_{t|t}, \bar{\mathbf{R}}_{t|t}\right) \quad t \leq T, \\ \Omega^{-1} \mid Y^T, \psi_{-\Omega} &\sim W\left(z_1 + T, \left[\frac{\sum_t (Y_t - X_t \Xi \theta_t)(Y_t - X_t \Xi \theta_t)'}{\sigma_t} + Q_1^{-1}\right]^{-1}\right), \\ b_i \mid Y^T, \psi_{-b_i} &\sim IG\left(\frac{T + \varpi_0}{2}, \frac{\sum_t (\theta_t^i - \theta_{t-1}^i)' (\theta_t^i - \theta_{t-1}^i) + \delta_0}{2\xi_t}\right), \\ \sigma_t^{-1} \mid Y^T, \psi_{-\sigma_t} &\sim G\left(\frac{\zeta + NG}{2}, \frac{\zeta s_t + (Y_t - X_t \Xi \theta_t)' \Omega^{-1} (Y_t - X_t \Xi \theta_t)}{2}\right),\end{aligned}$$

where $\bar{\theta}_{t|t}$ and $\bar{\mathbf{R}}_{t|t}$ are the one-period-ahead forecasts of θ_t and the variance-covariance matrix of the forecast error, respectively, calculated by the Kalman Filter as:

$$\begin{aligned}\bar{\theta}_{t|t} &= \theta_{t|t-1}^* + \mathbf{R}_{t|t-1}^* (X_t \Xi)' F_t (Y_t - X_t \Xi \theta_{t|t-1}^*) \\ \bar{\mathbf{R}}_{t|t} &= \mathbf{R}_{t|t-1}^* - \mathbf{R}_{t|t-1}^* (X_t \Xi)' F_t (X_t \Xi) \mathbf{R}_{t|t-1}^* \\ F_t &= \left((X_t \Xi) \mathbf{R}_{t|t-1}^* (X_t \Xi)' + \Omega\right)^{-1}.\end{aligned}$$

and θ_t^i is the i^{th} -subvector of θ , with $i = 1, 2$.

Using posterior draws, the posterior distributions of λ_t and α_t can be estimated using kernel methods and, in turns, the posterior distributions of WLI_t and CLI_t and/or the posterior distribution of the importance of the common components in explaining cyclical fluctuations can be obtained. For example, the posterior mean of WLI can be approximated by $\frac{1}{H} \sum_h \mathcal{W}_t \lambda_t^h$ and a credible 68% interval can be obtained ordering the draws of WLI_t^h for each t .

Because we are not directly sampling from the posterior, it is important to monitor that the Markov chain induced by the sampler converges to the ergotic (posterior) distribution. We have check convergence in several ways: increasing the length of the chain, splitting the chain in two after a burn-in period and calculating whether the mean and the variances are similar; checking if cumulative means settle at some value. The result we present are based on chains with 24000 draws: 600 blocks of 40 draws were made and the last draw for each block is retained after the discarding the first 4000. This means that a total of 500 draws is used at each t to conduct posterior inference.

B Specification searches

We have conducted a number of preliminary checks on the nature of the model to examine if all the bells and whistles we have included in the specification are really necessary to capture the dynamics of the variables under consideration. In particular, we have examined whether the factorization (3) is exact or not and whether the presence of international interdependencies is necessary to capture the dynamics of the four time series for the G-7 countries. Verification of these hypotheses is important because the specification can be considerably simplified if the factorization is exact and interdependencies are absent. The first hypothesis is examined by checking whether the posterior distribution of σ_t is centered around one. The importance of interdependencies is examined by running two different models, one with interdependencies and one without, and using Bayes factors to evaluate the relative quality in approximating the data.

The posterior distribution of σ_t is presented in figure A.1: the evidence indicates, that for most of the sample, the factors we use suffice and little more is left in the error term. On the other hand, the Bayes factor for a model with and without interdependencies is 2.06 indicating that interdependencies are important to capture the dynamics of G-7 cycles. Intuitively, this means that lagged transmission is as important as contemporaneous comovements in generating common fluctuations in the G-7.

We have also examined the performance of a model with three vectors of indicators (a world, a country specific and a variable specific) against a model with only a world and country specific indicators. The Bayes factor in this case is 1.02, suggesting that the contribution of the third vector of indices is small. In economic terms this means that the dynamics of the four variables of the system are relatively similar, a comforting result since sales, employment, industrial production were chosen because they were suspected to be sufficiently coincident with GDP not only in the US (as the NBER practice indicates) but also in the other G-7 countries.

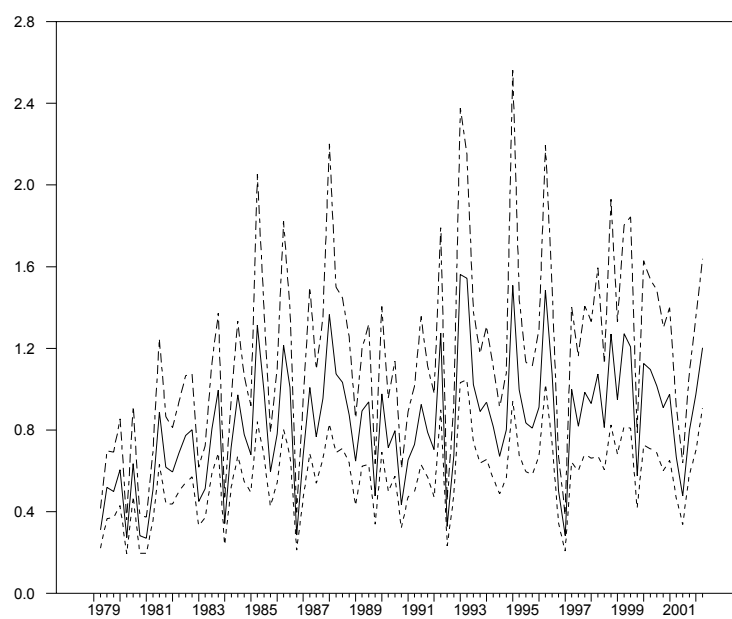


Figure A.1. Testing exactness of the factorization

References

- [1] Artis, M., Marcellino, M. and Proietti, T. (2003), "Dating the Euro Area Business Cycle", CEPR Working Paper No.3696.
- [2] Backus, D., Kehoe, P. and Kydland, F. (1995), "International Business Cycles: Theory and Evidence", in Cooley, T.F. et al. (eds.), *Frontiers of Business Cycle Research*, Princeton University Press.
- [3] Baxter, M. (1995), "International Trade and Business Cycle", in Grossman, G. and Rogoff, K. (eds.) *Handbook of International Economics*, Amsterdam, North Holland, 1801-1864.
- [4] Binder, M., Hsiao, C. and Pesaran, H. (2001), "Estimation and Inference in Short Panel Vector Autoregressions with Unit Roots and Cointegration", University of Maryland, manuscript.
- [5] Bry, G. and Boschan, C. (1971), *Cyclical Analysis of Time Series: Selected Procedures and Computer Programs*, NBER, New York.
- [6] Canova, F. (2003), "The Transmission of US Shocks to Latin America", CEPR working paper No. 3963
- [7] Canova, F. and Ciccarelli, M. (2002), "Bayesian Panel VAR: Specification, Estimation, Forecasting and leading Indicators", CEPR Working paper No. 4033
- [8] Canova, F. and Dellas, H. (1992), "Trade Interdependence and the International Business Cycle ", *Journal of International Economics*, 34, 23-47.
- [9] Canova, F. and Marrinan, J. (1998) "Sources and Propagations of International Output Cycles: Common Shocks or Transmission?", *Journal of International Economics*, 46, 133-166.
- [10] Cochrane, J. (1994) "A simple test of consumption insurance " *Journal of Political Economy*, 99, 957-976.
- [11] Diebold, F., and Mariano, R. (1995), "Predictive Accuracy", *Journal of Business and Economic Statistics*, .
- [12] Doan, T., Litterman R., and C. Sims (1984), "Forecasting and Conditional Projections Using Realist Prior Distributions", *Econometric Review*, 3, 1-100.

- [13] Doyle, B.M. and Faust, J. (2002) "An Investigation of the co-movements among growth rates of the G-7 countries", *Federal Reserve Bulletin*, October, 427-437.
- [14] Forni, M. and Reichlin, (1998) "Let's get Real: A factor Analytic Approach to Disaggregated Business Cycle Dynamics", *Review of Economic Studies*, 65, 453-473.
- [15] Forni, M., Hallin, M., Lippi, M. and Reichlin, L. (2001), "Coincident and Leading Indicators for the Euro Area", *Economic Journal*, 111, C63-C85.
- [16] Gali, J., López-Salido, D. and Vallés, J. (2003), "Technology Shocks and Monetary Policy: Assessing the Fed's Performance", *Journal of Monetary Economics*, 50(4), 723-743.
- [17] Gelfand A.E., Hills, S.E., Racine-Poon, A. and Smith, A.F.M. (1990), 'Illustration of Bayesian Inference in Normal Data Models Using Gibbs Sampling', *Journal of the American Statistical Association*, Vol. 85, pp. 972-985.
- [18] Geweke, J. (2000), "Simulation Based Bayesian Inference for Economic Time Series", in Mariano, R., Schuermann, T. and Weeks, M. (eds.), *Simulation Based Inference in Econometrics: Methods and Applications*, Cambridge University Press.
- [19] Gregory, A., Head, A. and Raynauld, J. (1997) "Measuring World Business Cycles", *International Economic Review*, 38, 677-702.
- [20] Harding, T. and Pagan, A. (2002), "Synchronization of Cycles", University of Melbourne, manuscript, presented at the conference "Common Features in Rio", Rio de Janeiro, 29th-31st July 2002.
- [21] Helbling, T. and Bayoumi, T. (2003) "Are They All in the Same Boat? The 2000-2001 Growth Slowdown and the G-7 Business Cycle Linkages", IMF working paper, 03-46.
- [22] Holtz-Eakin D., Newey, W. and Rosen, H. (1988), "Estimating Vector Autoregressions with Panel Data", *Econometrica*, 56(6) 1371-1395.
- [23] Kadiyala, K.R., and Karlsson, S. (1997), "Numerical Methods for Estimation and Inference in Bayesian-VAR Models", *Journal of Applied Econometrics*, 12(2), 99-132.
- [24] Kose, M., Otrok, C. and Whiteman, C. (2003) "International Business Cycles: World, Region and Country Specific Factors", University of Iowa, forthcoming, *American Economic Review*.

- [25] Lumsdaine, R. and Prasad, E. (2003), "Identifying the Common Component in International Business Cycles", *Economic Journal*, 113, 101-127.
- [26] Mackowiak, B. (2003) "External Shocks, US Monetary Policy, Macroeconomic Fluctuations in Emerging Markets" Humboldt University, manuscript.
- [27] del Negro, M. (2000), "Asymmetric Shocks among US states ", Federal Reserve of Atlanta Working Paper 2000-27.
- [28] Rose, A. and Frankel, J. (2000), "Estimating the Effects of Currency Unions on Trade and Output", NBER working paper No. 7557.
- [29] Stock, J. and Watson, M. (1989) "New Indices of Coincident and Leading Indicators" in Blanchard, O and Fisher, S.(eds.) *NBER Macroeconomic Annual*, 4.
- [30] Stock, J. and Watson, M. (2003), "Understanding Changes in International Business Cycle Dynamics", NBER Working paper No. 9859.

European Central Bank working paper series

For a complete list of Working Papers published by the ECB, please visit the ECB's website (<http://www.ecb.int>).

- 202 "Aggregate loans to the euro area private sector" by A. Calza, M. Manrique and J. Sousa, January 2003.
- 203 "Myopic loss aversion, disappointment aversion and the equity premium puzzle" by D. Fielding and L. Stracca, January 2003.
- 204 "Asymmetric dynamics in the correlations of global equity and bond returns" by L. Cappiello, R.F. Engle and K. Sheppard, January 2003.
- 205 "Real exchange rate in an inter-temporal n-country-model with incomplete markets" by B. Mercereau, January 2003.
- 206 "Empirical estimates of reaction functions for the euro area" by D. Gerdesmeier and B. Roffia, January 2003.
- 207 "A comprehensive model on the euro overnight rate" by F. R. Würtz, January 2003.
- 208 "Do demographic changes affect risk premiums? Evidence from international data" by A. Ang and A. Maddaloni, January 2003.
- 209 "A framework for collateral risk control determination" by D. Cossin, Z. Huang, D. Aunon-Nerin and F. González, January 2003.
- 210 "Anticipated Ramsey reforms and the uniform taxation principle: the role of international financial markets" by S. Schmitt-Grohé and M. Uribe, January 2003.
- 211 "Self-control and savings" by P. Michel and J.P. Vidal, January 2003.
- 212 "Modelling the implied probability of stock market movements" by E. Glatzer and M. Scheicher, January 2003.
- 213 "Aggregation and euro area Phillips curves" by S. Fabiani and J. Morgan, February 2003.
- 214 "On the selection of forecasting models" by A. Inoue and L. Kilian, February 2003.
- 215 "Budget institutions and fiscal performance in Central and Eastern European countries" by H. Gleich, February 2003.
- 216 "The admission of accession countries to an enlarged monetary union: a tentative assessment" by M. Ca'Zorzi and R. A. De Santis, February 2003.
- 217 "The role of product market regulations in the process of structural change" by J. Messina, March 2003.

- 218 “The zero-interest-rate bound and the role of the exchange rate for monetary policy in Japan” by G. Coenen and V. Wieland, March 2003.
- 219 “Extra-euro area manufacturing import prices and exchange rate pass-through” by B. Anderton, March 2003.
- 220 “The allocation of competencies in an international union: a positive analysis” by M. Ruta, April 2003.
- 221 “Estimating risk premia in money market rates” by A. Durré, S. Evjen and R. Pilegaard, April 2003.
- 222 “Inflation dynamics and subjective expectations in the United States” by K. Adam and M. Padula, April 2003.
- 223 “Optimal monetary policy with imperfect common knowledge” by K. Adam, April 2003.
- 224 “The rise of the yen vis-à-vis the (“synthetic”) euro: is it supported by economic fundamentals?” by C. Osbat, R. Ruffer and B. Schnatz, April 2003.
- 225 “Productivity and the (“synthetic”) euro-dollar exchange rate” by C. Osbat, F. Vijselaar and B. Schnatz, April 2003.
- 226 “The central banker as a risk manager: quantifying and forecasting inflation risks” by L. Kilian and S. Manganelli, April 2003.
- 227 “Monetary policy in a low pass-through environment” by T. Monacelli, April 2003.
- 228 “Monetary policy shocks – a nonfundamental look at the data” by M. Klaeffer, May 2003.
- 229 “How does the ECB target inflation?” by P. Surico, May 2003.
- 230 “The euro area financial system: structure, integration and policy initiatives” by P. Hartmann, A. Maddaloni and S. Manganelli, May 2003.
- 231 “Price stability and monetary policy effectiveness when nominal interest rates are bounded at zero” by G. Coenen, A. Orphanides and V. Wieland, May 2003.
- 232 “Describing the Fed’s conduct with Taylor rules: is interest rate smoothing important?” by E. Castelnuovo, May 2003.
- 233 “The natural real rate of interest in the euro area” by N. Giammarioli and N. Valla, May 2003.
- 234 “Unemployment, hysteresis and transition” by M. León-Ledesma and P. McAdam, May 2003.
- 235 “Volatility of interest rates in the euro area: evidence from high frequency data” by N. Cassola and C. Morana, June 2003.

- 236 “Swiss monetary targeting 1974-1996: the role of internal policy analysis” by G. Rich, June 2003.
- 237 “Growth expectations, capital flows and international risk sharing” by O. Castrén, M. Miller and R. Stiebert, June 2003.
- 238 “The impact of monetary union on trade prices” by R. Anderton, R. E. Baldwin and D. Taglioni, June 2003.
- 239 “Temporary shocks and unavoidable transitions to a high-unemployment regime” by W. J. Denhaan, June 2003.
- 240 “Monetary policy transmission in the euro area: any changes after EMU?” by I. Angeloni and M. Ehrmann, July 2003.
- 241 “Maintaining price stability under free-floating: a fearless way out of the corner?” by C. Detken and V. Gaspar, July 2003.
- 242 “Public sector efficiency: an international comparison” by A. Afonso, L. Schuknecht and V. Tanzi, July 2003.
- 243 “Pass-through of external shocks to euro area inflation” by E. Hahn, July 2003.
- 244 “How does the ECB allot liquidity in its weekly main refinancing operations? A look at the empirical evidence” by S. Egerskov, C. Martin Moss and L. Stracca, July 2003.
- 245 “Money and payments: a modern perspective” by C. Holthausen and C. Monnet, July 2003.
- 246 “Public finances and long-term growth in Europe – evidence from a panel data analysis” by D. R. de Ávila Torrijos and R. Strauch, July 2003.
- 247 “Forecasting euro area inflation: does aggregating forecasts by HICP component improve forecast accuracy?” by K. Hubrich, August 2003.
- 248 “Exchange rates and fundamentals” by C. Engel and K. D. West, August 2003.
- 249 “Trade advantages and specialisation dynamics in acceding countries” by A. Zaghini, August 2003.
- 250 “Persistence, the transmission mechanism and robust monetary policy” by I. Angeloni, G. Coenen and F. Smets, August 2003.
- 251 “Consumption, habit persistence, imperfect information and the lifetime budget constraint” by A. Willman, August 2003.
- 252 “Interpolation and backdating with a large information set” by E. Angelini, J. Henry and M. Marcellino, August 2003.
- 253 “Bond market inflation expectations and longer-term trends in broad monetary growth and inflation in industrial countries, 1880-2001” by W. G. Dewald, September 2003.

- 254 "Forecasting real GDP: what role for narrow money?" by C. Brand, H.-E. Reimers and F. Seitz, September 2003.
- 255 "Is the demand for euro area M3 stable?" by A. Bruggeman, P. Donati and A. Warne, September 2003.
- 256 "Information acquisition and decision making in committees: a survey" by K. Gerling, H. P. Grüner, A. Kiel and E. Schulte, September 2003.
- 257 "Macroeconomic modelling of monetary policy" by M. Klaeßling, September 2003.
- 258 "Interest rate reaction functions and the Taylor rule in the euro area" by P. Gerlach-Kristen, September 2003.
- 259 "Implicit tax co-ordination under repeated policy interactions" by M. Catenaro and J.-P. Vidal, September 2003.
- 260 "Aggregation-theoretic monetary aggregation over the euro area, when countries are heterogeneous" by W. A. Barnett, September 2003.
- 261 "Why has broad money demand been more stable in the euro area than in other economies? A literature review" by A. Calza and J. Sousa, September 2003.
- 262 "Indeterminacy of rational expectations equilibria in sequential financial markets" by P. Donati, September 2003.
- 263 "Measuring contagion with a Bayesian, time-varying coefficient model" by M. Ciccarelli and A. Rebucci, September 2003.
- 264 "A monthly monetary model with banking intermediation for the euro area" by A. Bruggeman and M. Donnay, September 2003.
- 265 "New Keynesian Phillips Curves: a reassessment using euro area data" by P. McAdam and A. Willman, September 2003.
- 266 "Finance and growth in the EU: new evidence from the liberalisation and harmonisation of the banking industry" by D. Romero de Ávila, September 2003.
- 267 "Comparing economic dynamics in the EU and CEE accession countries" by R. Süppel, September 2003.
- 268 "The output composition puzzle: a difference in the monetary transmission mechanism in the euro area and the US" by I. Angeloni, A. K. Kashyap, B. Mojon and D. Terlizzese, September 2003.
- 269 "Zero lower bound: is it a problem with the euro area?" by G. Coenen, September 2003.
- 270 "Downward nominal wage rigidity and the long-run Phillips curve: simulation-based evidence for the euro area" by G. Coenen, September 2003.
- 271 "Indeterminacy and search theory" by N. Giammarioli, September 2003.

- 272 “Inflation targets and the liquidity trap” by M. Klaefferling and V. López Pérez, September 2003.
- 273 “Definition of price stability, range and point inflation targets: the anchoring of long-term inflation expectations” by E. Castelnuovo, S. Nicoletti-Altamari and D. Rodriguez-Palenzuela, September 2003.
- 274 “Interpreting implied risk neutral densities: the role of risk premia” by P. Hördahl and D. Vestin, September 2003.
- 275 “Identifying the monetary transmission mechanism using structural breaks” by A. Beyer and R. Farmer, September 2003.
- 276 “Short-term estimates of euro area real GDP by means of monthly data” by G. Rünstler, September 2003.
- 277 “On the indeterminacy of determinacy and indeterminacy” by A. Beyer and R. Farmer, September 2003.
- 278 “Relevant economic issues concerning the optimal rate of inflation” by D. R. Palenzuela, G. Camba-Méndez and J. Á. García, September 2003.
- 279 “Designing targeting rules for international monetary policy cooperation” by G. Benigno and P. Benigno, October 2003.
- 280 “Inflation, factor substitution and growth” by R. Klump, October 2003.
- 281 “Identifying fiscal shocks and policy regimes in OECD countries” by G. de Arcangelis and S. Lamartina, October 2003.
- 282 “Optimal dynamic risk sharing when enforcement is a decision variable” by T. V. Koepl, October 2003.
- 283 “US, Japan and the euro area: comparing business-cycle features” by P. McAdam, November 2003.
- 284 “The credibility of the monetary policy ‘free lunch’” by J. Yetman, November 2003.
- 285 “Government deficits, wealth effects and the price level in an optimizing model” by B. Annicchiarico, November 2003.
- 286 “Country and sector-specific spillover effects in the euro area, the United States and Japan” by B. Kaltenhaeuser, November 2003.
- 287 “Consumer inflation expectations in Poland” by T. Łyziak, November 2003.
- 288 “Implementing optimal control cointegrated I(1) structural VAR models” by F. V. Monti, November 2003.
- 289 “Monetary and fiscal interactions in open economies” by G. Lombardo and A. Sutherland, November 2003.

- 290 "Inflation persistence and robust monetary policy design" by G. Coenen, November 2003.
- 291 "Measuring the time-inconsistency of US monetary policy" by P. Surico, November 2003.
- 292 "Bank mergers, competition and liquidity" by E. Carletti, P. Hartmann and G. Spagnolo, November 2003.
- 293 "Committees and special interests" by M. Felgenhauer and H. P. Grüner, November 2003.
- 294 "Does the yield spread predict recessions in the euro area?" by F. Moneta, December 2003.
- 295 "Optimal allotment policy in the eurosystem's main refinancing operations?" by C. Ewerhart, N. Cassola, S. Ejerskov and N. Valla, December 2003.
- 296 "Monetary policy analysis in a small open economy using bayesian cointegrated structural VARs?" by M. Villani and A. Warne, December 2003.
- 297 "Measurement of contagion in banks' equity prices" by R. Gropp and G. Moerman, December 2003.
- 298 "The lender of last resort: a 21st century approach" by X. Freixas, B. M. Parigi and J.-C. Rochet, December 2003.
- 299 "Import prices and pricing-to-market effects in the euro area" by T. Warmedinger, January 2004.
- 300 "Developing statistical indicators of the integration of the euro area banking system" by M. Manna, January 2004.
- 301 "Inflation and relative price asymmetry" by A. Rátfai, January 2004.
- 302 "Deposit insurance, moral hazard and market monitoring" by R. Gropp and J. Vesala, February 2004.
- 303 "Fiscal policy events and interest rate swap spreads: evidence from the EU" by A. Afonso and R. Strauch, February 2004.
- 304 "Equilibrium unemployment, job flows and inflation dynamics" by A. Trigari, February 2004.
- 305 "A structural common factor approach to core inflation estimation and forecasting" by C. Morana, February 2004.
- 306 "A markup model of inflation for the euro area" by C. Bowdler and E. S. Jansen, February 2004.
- 307 "Budgetary forecasts in Europe - the track record of stability and convergence programmes" by R. Strauch, M. Hallerberg and J. von Hagen, February 2004.
- 308 "International risk-sharing and the transmission of productivity shocks" by G. Corsetti, L. Dedola and S. Leduc, February 2004.
- 309 "Monetary policy shocks in the euro area and global liquidity spillovers" by J. Sousa and A. Zaghini, February 2004.
- 310 "International equity flows and returns: A quantitative equilibrium approach" by R. Albuquerque, G. H. Bauer and M. Schneider, February 2004.
- 311 "Current account dynamics in OECD and EU acceding countries – an intertemporal approach" by M. Bussière, M. Fratzscher and G. Müller, February 2004.

312 “Similarities and convergence in G-7 cycles” by F. Canova, M. Ciccarelli and E. Ortega,
February 2004.

