

Schnatz, Bernd; Osbat, Chiara; Ruffer, Rasmus

**Working Paper**

## The rise of the yen vis--vis the ("synthetic") euro: is it supported by economic fundamentals?

ECB Working Paper, No. 224

**Provided in Cooperation with:**

European Central Bank (ECB)

*Suggested Citation:* Schnatz, Bernd; Osbat, Chiara; Ruffer, Rasmus (2003) : The rise of the yen vis--vis the ("synthetic") euro: is it supported by economic fundamentals?, ECB Working Paper, No. 224, European Central Bank (ECB), Frankfurt a. M.

This Version is available at:

<https://hdl.handle.net/10419/152658>

**Standard-Nutzungsbedingungen:**

Die Dokumente auf EconStor dürfen zu eigenen wissenschaftlichen Zwecken und zum Privatgebrauch gespeichert und kopiert werden.

Sie dürfen die Dokumente nicht für öffentliche oder kommerzielle Zwecke vervielfältigen, öffentlich ausstellen, öffentlich zugänglich machen, vertreiben oder anderweitig nutzen.

Sofern die Verfasser die Dokumente unter Open-Content-Lizenzen (insbesondere CC-Lizenzen) zur Verfügung gestellt haben sollten, gelten abweichend von diesen Nutzungsbedingungen die in der dort genannten Lizenz gewährten Nutzungsrechte.

**Terms of use:**

*Documents in EconStor may be saved and copied for your personal and scholarly purposes.*

*You are not to copy documents for public or commercial purposes, to exhibit the documents publicly, to make them publicly available on the internet, or to distribute or otherwise use the documents in public.*

*If the documents have been made available under an Open Content Licence (especially Creative Commons Licences), you may exercise further usage rights as specified in the indicated licence.*

EUROPEAN CENTRAL BANK  
**WORKING PAPER SERIES**



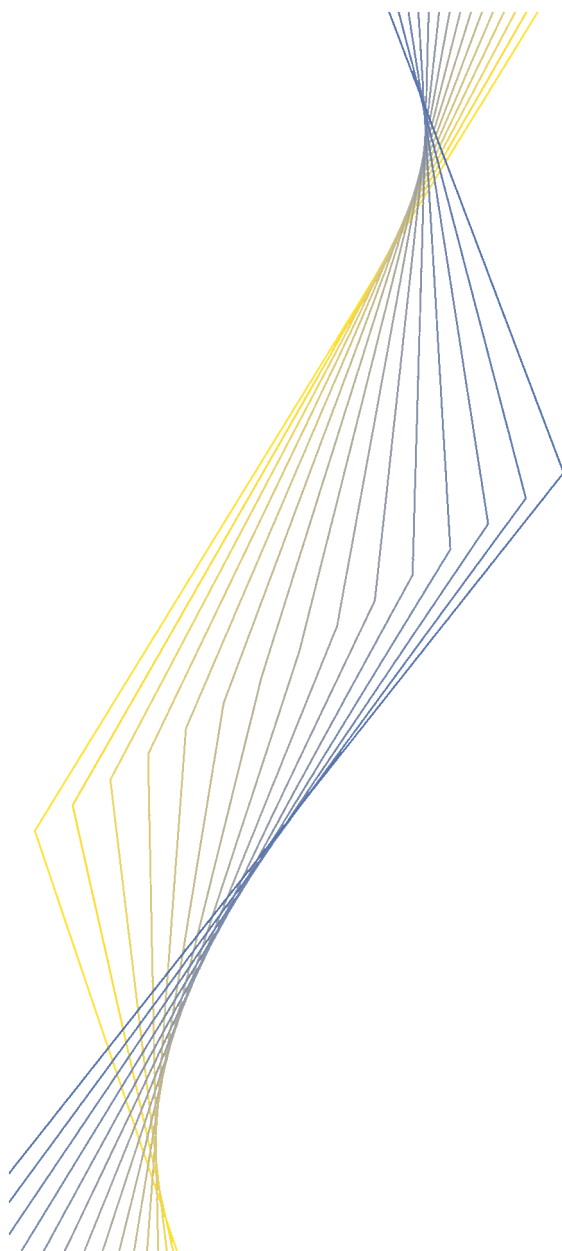
**WORKING PAPER NO. 224**

**THE RISE OF THE YEN  
VIS-À-VIS THE (“SYNTHETIC”)  
EURO: IS IT SUPPORTED BY  
ECONOMIC FUNDAMENTALS?**

**BY CHIARA OSBAT,  
RASMUS RÜFFER AND  
BERND SCHNATZ**

**April 2003**

EUROPEAN CENTRAL BANK  
WORKING PAPER SERIES



**WORKING PAPER NO. 224**

**THE RISE OF THE YEN  
VIS-À-VIS THE (“SYNTHETIC”)  
EURO: IS IT SUPPORTED BY  
ECONOMIC FUNDAMENTALS?¹**

**BY CHIARA OSBAT²,  
RASMUS RÜFFER² AND  
BERND SCHNATZ²**

**April 2003**

<sup>1</sup> An earlier version of this paper has been presented of an internal seminar at the ECB, the 8<sup>th</sup> Convention of the East Asian Economic Association in Kuala Lumpur, the Pacific Rim Conference of the Western Economic Association in Taipei and a seminar at the Bank of Japan. We are grateful to the participants in these seminars as well as Andreas Beyer, Menzie D. Chinn, Jun Nagayasu, Simon van Norden and an anonymous referee for their helpful comments. Of course, any remaining errors are ours. The opinions expressed herein are those of the authors and do not necessarily represent those of the European Central Bank. This paper can be downloaded without charge from <http://www.ecb.int> or from the Social Science Research Network electronic library at: [http://ssrn.com/abstract\\_id=xxxxxx](http://ssrn.com/abstract_id=xxxxxx)

<sup>2</sup> Corresponding author: Bernd Schnatz, European Central Bank, Kaiserstrasse 29, 60311 Frankfurt am Main, Germany (email: [bernd.schnatz@ecb.int](mailto:bernd.schnatz@ecb.int)).

© European Central Bank, 2003

<b>Address</b>	<b>Kaiserstrasse 29</b> <b>D-60311 Frankfurt am Main</b> <b>Germany</b>
<b>Postal address</b>	<b>Postfach 16 03 19</b> <b>D-60066 Frankfurt am Main</b> <b>Germany</b>
<b>Telephone</b>	<b>+49 69 1344 0</b>
<b>Internet</b>	<b><a href="http://www.ecb.int">http://www.ecb.int</a></b>
<b>Fax</b>	<b>+49 69 1344 6000</b>
<b>Telex</b>	<b>411 144 ecb d</b>

*All rights reserved by the author/s.*

*Reproduction for educational and non-commercial purposes is permitted provided that the source is acknowledged.*

*The views expressed in this paper do not necessarily reflect those of the European Central Bank.*

ISSN 1561-0810 (print)

ISSN 1725-2806 (online)

# Contents

Abstract	4
Non-technical summary	5
1 Introduction	7
2 A model for the real exchange rate	8
2.1 Balance of payments equilibrium and the real exchange rate	8
2.2 Real interest rate differential	10
2.3 Productivity developments and the real exchange rate	10
3 Econometric analysis	12
3.1 Data and measurement issues	12
3.2 Cointegration analysis and results	16
4 Conclusions	26
Annexes	27
Bibliography	31
European Central Bank working paper series	34

**Abstract:** *This paper examines the long-run determinants of the euro-yen exchange rate. Using cointegration analysis, we find a consistent and significant relationship between the real exchange rate and relative productivity, the net foreign asset position, relative government spending and terms of trade shocks, as well as a fairly rapid mean reversion of the exchange rate to its equilibrium. The “equilibrium” rate tracks the trends in the actual exchange rate quite well, accounting for a large part of the yen appreciation from the mid-1970s to 2001. Our findings suggest that the euro appreciation against the yen in 2001 represented an equilibrium correction of its previous depreciation. Moreover, the width of the error bands highlights the difficulties arising when attempting to determine the precise equilibrium value of a currency.*

**Keywords:** *Yen, Euro, equilibrium exchange rate, BEER, cointegration.*

**JEL:** *F31, C32*

## Non-technical summary

This paper examines the long-run determinants of the euro-yen exchange rate, thereby complementing the existing literature by an explicit study of the “cross-rate” within the G3 currency triangle, which does not involve the US-dollar. A direct model of this “cross rate” is also useful for understanding the depreciation of the euro vis-à-vis the Japanese yen between January 1999 and September 2000, which, in fact, has been even more pronounced than that against the US-dollar.

The paper presents a stylised model of the various structural relationships between the real exchange rate and macroeconomic fundamentals. According to this model, an increase in the net foreign asset position of a country relative to that of the other country or productivity gains relative to the partner country should lead to an appreciation of its currency. Furthermore, an increase in real interest rates should result in an appreciation. The effects of the real price of oil and of relative government spending are *a priori* ambiguous. The effect of an oil price increase depends on the relative oil dependence of the two countries and should lead to an appreciation of the less dependent country’s currency. As to the effect of government spending, in the short to medium run a spending increase could support the currency through the increased demand for non-traded goods, while in the longer run confidence effects may result in a depreciation of the currency.

The empirical analysis is based on quarterly data covering the period 1975Q1 to 2001Q4. For the period prior to the introduction of the euro, a synthetic euro is constructed by using a trade-weighted average of the various legacy currencies. In addition, the model is estimated for the D-Mark-yen exchange rate in order to assess the robustness of the results.

Using cointegration techniques to estimate a so-called Behavioural Equilibrium Exchange Rate (BEER) for the euro-yen currency pair, the analysis finds a robust relationship between the real exchange rate and various economic fundamentals. In particular, the estimation results confirm the importance of relative productivity developments, the net foreign asset position and government spending (as a share of GDP) as important determinants of the real euro-yen exchange rate. In addition, the real price of oil appears to be an important explanatory variable, while the interest rate differential fails to qualify as an important factor for the real euro-yen exchange rate. The reversal of the actual exchange rate to its equilibrium value is fairly rapid, with half of any deviation from equilibrium being eliminated within less than one year. The robustness of the results notwithstanding, the size of the error bands around the estimated equilibrium exchange rate illustrates the uncertainty surrounding the estimates and suggests a cautious interpretation of the results.

The estimated equilibrium euro-yen exchange rate tracks the development of the actual exchange rate quite well between the mid-1970s and the end of the 1990s, while the relationship between the two rates becomes rather peculiar toward the end of the sample period. In 1999-2000, rising oil prices contributed to the downward pressure on the equilibrium real exchange rate of the yen vis-à-vis the euro, only partly offset by the higher Japanese net foreign asset position resulting from high and rising current account surpluses. As a result, an increasing discrepancy between the actual exchange rate and the estimated equilibrium rate materialised in 2000, and the subsequent depreciation of the yen in 2001 has constituted mainly a correction of its previous deviation from equilibrium.

For the sample period as a whole, the trend rise of the yen appears to be driven by a number of different variables, with the traditional productivity explanation being an important factor but by no means the only one. The estimates suggest that the substantial real appreciation of the yen – especially pronounced during the 1980s – was also driven by the accumulation of foreign assets and developments in oil prices. In the 1990s, the appreciation of the equilibrium exchange rate moderated, reflecting a weakening of productivity developments in Japan relative to those in the euro area, associated at least partly to the burst of the asset price bubble in Japan in the early 1990s.



# 1 Introduction

The depreciation of the euro after its launch in January 1999 triggered a renaissance of academic studies on the determinants of exchange rates. Most of this euro-focused literature has computed so-called equilibrium exchange rates vis-à-vis the US dollar or based on the effective exchange rate of the euro.<sup>1</sup> As these studies assess exchange rate developments from an equilibrium point of view, they necessarily have to take a longer-term perspective based on long-term fundamental exchange rate determinants. For the euro exchange rate, this obviously means that a “synthetic” surrogate has to be employed for the period before 1999.

Unlike the euro-US-dollar and the effective euro exchange rate, the analysis of the exchange rate of the yen vis-à-vis the euro or its legacy currencies has attracted surprisingly little academic interest in the past. There have been several studies on the bilateral equilibrium exchange rate of the yen against the US dollar,<sup>2</sup> but there is to our knowledge no empirical analysis available for assessing the euro-yen exchange rate.<sup>3</sup> Such a framework would be warranted, however, if one wants to assess, for instance, the depreciation of the euro against the Japanese currency between January 1999 and September 2000, which in fact was even steeper than against the US dollar. Moreover, given the tri-polarity in foreign exchange markets – with the US dollar, the euro and the Japanese yen as the major world currencies – the lack of a systematic analysis of the yen-euro exchange rate constitutes an important gap; a gap which this paper attempts to fill by focusing *exclusively* on this currency pair.

The paper is organised as follows: A stylised model is presented in section 2, which suggests that the real exchange rate is a function of various economic fundamentals. A reduced-form specification is subsequently presented and used as the basis for the empirical analysis. In section 3, a VECM is estimated in the tradition of the “Behavioural Equilibrium Exchange Rates (BEER)” modelling framework advocated by Clark and MacDonald (2000). The estimation results confirm the importance of relative productivity developments, the net foreign asset position and government spending (as a share of GDP) for the real euro-yen exchange rate, while the real interest rate differential fails to qualify as a determinant of the real euro-yen exchange rate. In addition, the real price of oil appears to be an important factor for the real euro-yen exchange rate. The reversion of the exchange rate to its equilibrium is

---

<sup>1</sup> See Box 2 in ECB (2002) for an overview.

<sup>2</sup> A study by Kong (2000) analyses the D-mark/yen exchange rate from a PPP perspective. On the yen-dollar exchange rate see, for instance, Yoshikawa (1990), Chinn (1997), MacDonald and Nagayasu (1998), Kasuya and Takagawa (2001) and De Carvalho (2002). On the effective yen exchange rate, see Nagayasu (1998).

<sup>3</sup> In fact, there are only few studies which build on more comprehensive projects and allow to derive implicitly equilibrium exchange rates for the yen against the euro. Driver and Wren-Lewis (1998), for instance, use a globally consistent framework based on “Fundamental Equilibrium Exchange Rates” to compute a FEER for the yen against the D-mark. Alberola et al. (1999) conduct a panel study based on so-called “Permanent Equilibrium Exchange Rates (PEER)” and assess the exchange rate level in 1998Q4.

fairly rapid, with a half-life of less than one year. In section 4 actual exchange rate developments are compared with the estimated BEER and its confidence bands, which are constructed using a method recently proposed by Johansen (2001) and which is theoretically consistent with the VECM framework. We find that the (equilibrium) trend appreciation of the yen moderated in the 1990s as a result of weak productivity developments in Japan, associated at least partially to the burst of the asset price bubble in Japan in the early 1990s. In 1999/2000, rising oil prices have also contributed to the downward pressure on the equilibrium real exchange rate of the yen vis-à-vis the euro, only partly offset by the higher Japanese net foreign asset position resulting from high and rising current account surpluses. As a result, an increasing discrepancy between the actual exchange rate and the BEER materialised in 2000, and the subsequent depreciation of the yen in 2001 has constituted mainly a correction of its previous appreciation.

## 2 A model for the real exchange rate

### 2.1. Balance of payments equilibrium and the real exchange rate

A prominent channel through which fundamentals may influence trends in the real exchange rate is related to macroeconomic balance considerations, as implied in portfolio balance models proposed by Branson (1977), discussed by Frenkel and Mussa (1985) and applied by Faruquee (1995), Fell (1996) and MacDonald (1999). In these models, equilibrium in the balance of payments is a central determinant of the real exchange rate, which moves to equilibrate the individual items in the balance of payments (current and financial account) to ensure stock and flow market equilibrium. In general, the change in the net foreign investment position is equal to the current account balance, which in turn consists of the trade balance and the balance in the income account.<sup>4</sup>

$$(1) \quad \Delta F_t = ca_t = nx_t + r^* F_t,$$

where  $\Delta F_t$  is the change in the net foreign asset position,  $ca_t$  the current account position and  $nx_t$  represents the balance of trade.  $F_t$  is the outstanding stock of net foreign assets which – on average – is assumed to yield an interest rate of  $r^*$ , the given world interest rate. The balance of trade is determined as

$$(2) \quad nx_t = -\lambda q_t + \mu c_t$$

where  $c_t$  is a shift factor, incorporating exogenous variables affecting foreign demand for domestic goods and domestic demand for foreign goods,  $q_t$  is the real exchange rate, and  $\lambda, \mu$

---

<sup>4</sup> Current transfers are, in general, comparatively small and of limited economic content. For modelling purposes, they are therefore excluded in the discussion of the current account.

represent the sensitivity of net exports to movements in these variables.<sup>5</sup> Following Faruquee (1995), this shift factor may include variables such as productivity growth differentials in the non-traded and traded goods sectors or commodity price shocks affecting the terms of trade. Other possible exogenous factors may relate to distortions arising from unbalanced government spending, which may give rise to expectations of distortionary taxes in the future. Net exports are negatively affected by the real exchange rate (defined as  $q_t \equiv s_t + p_t - p_t^*$  where  $s_t$  is the nominal exchange rate expressed in foreign currency per unit of domestic currency and  $p_t$  and  $p_t^*$  are the domestic and the foreign price index, respectively).

The financial account position, which is the counterpart of the current account balance, is assumed to be a function of the discrepancy between the target level of net foreign assets,  $\bar{F}$ , and their current actual level,  $F$ , and of the expected change in the real exchange rate. The target level is assumed to be exogenous and fixed in the current setting but it could also be linked to factors such as the demographic profile of a country. More formally, the financial account ( $fa_t$ ) can be written as:

$$(3) \quad fa_t = \kappa(\bar{F}_t - F_t) + \gamma E_t(\Delta q_t)$$

where  $\kappa$  represents the speed of adjustment from the actual to the desired level of net foreign assets.

Assuming flexible exchange rates, which ensures that the change in foreign exchange reserves equals zero, the current and financial account balance must match. Accordingly, equations (1) and (3) constitute a simultaneous forward-looking system of difference equations that can be solved for the expected future time paths of the endogenous variables  $q_t$  and  $F_t$ , conditional on the current inherited stock of net foreign assets and the expected future time paths of the exogenous variables  $\bar{c}_t$  and  $\bar{F}_t$ . In the long-run equilibrium, the change in net foreign assets has reached its desired level and the trade balance equals interest payments, so that the solution for the current equilibrium real exchange rate is:

$$(4) \quad q_t = \bar{q}_t + \eta(F_t - \bar{F}_t) \quad \text{with } \eta > 0$$

where: 
$$\bar{q}_t = \frac{\mu}{\lambda} \bar{c}_t + \frac{r^*}{\lambda} \bar{F}_t.$$

Bars over the variables indicate long-run equilibrium values, while the other variables reflect current flow equilibrium values.  $\bar{c}_t$  and  $\bar{F}_t$  depend on the present discounted value of their future values in line with the forward-looking character of the model, which underlines the importance of future economic conditions for the determination of exchange rates. The expression in (4) suggests that the actual real exchange rate depends on the long-run

<sup>5</sup> In fact, the parameter  $\lambda$  contains the relevant price elasticities and is assumed to be positive, implicitly assuming that the Marshall-Lerner condition is satisfied. For details, see Frenkel and Mussa (1985).

equilibrium exchange rate,  $\bar{q}_t$ , and the divergence between the current value of net foreign assets holdings and their long-term desired level. The sustainable path for the real exchange rate may differ from its long-run value until full stock equilibrium is attained. The long-run equilibrium exchange rate itself depends on the long-run levels of the net foreign asset position and other exogenous variables.

## 2.2. Real interest rate differential

Following Fell (1996), equation (4) can be linked to the uncovered interest rate parity condition in real terms. Assuming that the real exchange rate reverts only gradually to its long-term equilibrium over the maturity of the bonds, the current real exchange rate can be expressed as a function of its long-term equilibrium, from which it may deviate in the medium-term owing to movements in the real interest rate differential.

$$(5) \quad q_t = \bar{q} - (1/\theta)(r_t^* - r_t).$$

where  $\theta$  represents the (expected) speed of adjustment and maturity coefficient ( $0 < \theta < 1$ ). Without frictions in the economy,  $\theta$  is, in principle, given as the maturity of the bonds. As Edison and Melick (1999) have pointed out, however, a 10-year coupon bond should be a good proxy for a roughly 7-year pure discount bond, suggesting a coefficient of roughly 7. MacDonald and Nagayasu (2000) have shown, moreover, that the parameter  $\theta$  changes if there are rigidities in the economy, and the maturity effect is reduced suggesting a coefficient of less than 7 for the real interest rate differential.

## 2.3. Productivity developments and the real exchange rate

According to the Balassa-Samuelson theorem, productivity advances in the traded goods sector should be associated with a higher long-run real exchange rate, if the latter is based on broad price and cost indices. This effect reflects an equilibrium phenomenon, which works through the prices of non-traded goods affecting the relative internal price ratio between non-traded and traded goods  $q_t^I$ . This term derives from a decomposition of the real exchange rate into a tradable and a non-tradable component, as shown in the following.

The price level is derived from a weighted average of the prices of traded goods ( $p_t^T$ ) and non-traded goods ( $p_t^N$ ), where  $\alpha$  is the share of traded goods in the domestic goods basket and  $\alpha^*$  the share of traded goods in the foreign goods basket. Allowing for the arbitrage condition for internationally traded goods, the real exchange rate can be decomposed into domestic and foreign traded and non-traded goods prices:

$$(6) \quad q_t = q_t^T + q_t^I = q_t^T + (1 - \alpha) \cdot (p_t^N - p_t^T) - (1 - \alpha^*) \cdot (p_t^{N*} - p_t^{T*}),$$

If PPP holds for traded goods,  $q_t^T$  is constant. In reality, however, it might be influenced by terms of trade shocks such as sudden changes in oil prices. The second term  $-q_t^I$  may be influenced by diverging trends in the relative price of traded and non-traded goods in the two

countries, as well as by the relative share of non-traded goods in the baskets for the price indices. This term is directly related to the Balassa-Samuelson result discussed below.

A universal starting point for deriving the Balassa-Samuelson result is the standard Cobb-Douglas production functions:

$$(7) \quad Y_t^T = A^T (L_t^T)^\sigma (K_t^T)^{1-\sigma}, \quad Y_t^N = A^N (L_t^N)^\rho (K_t^N)^{1-\rho}$$

where  $\sigma$  and  $\rho$  represent labour intensity of production in the traded and non-traded sector, respectively. The model assumes that labour is mobile between sectors and is paid according to its marginal product. The first assumption suggests that wages are equalised across sectors and the second implies that the sectoral productivity differential is equal to the sectoral price differential; denoting by  $Z^T$  and  $Z^N$  average labour productivity in the traded and non-traded sector respectively, this can be written as

$$(8) \quad \frac{\partial Y^T / \partial L^T}{\partial Y^N / \partial L^N} = \frac{\sigma Y^T / L^T}{\rho Y^N / L^N} = \frac{\sigma Z^T}{\rho Z^N} = \frac{P^N}{P^T},$$

This results in the following expression in logarithms:

$$(9) \quad p_t^N - p_t^T = \log(\sigma / \rho) + (z_t^T - z_t^N),$$

which can be substituted into (6), yielding

$$(10) \quad q_t = q_t^T + q_t^I = q_t^T + (1 - \alpha) \cdot (\log(\sigma / \rho) + (z_t^T - z_t^N)) - (1 - \alpha^*) \cdot (\log(\sigma^* / \rho^*) + (z_t^{T*} - z_t^{N*}))$$

Abstracting from the issue of different shares of non-tradable goods in the two countries, (10) implies that a productivity gain in the traded goods sector of a country relative to the non-traded goods sector will lead, *ceteris paribus*, to an appreciation of that country's currency. The main reason for this result is that the high productivity growth in the traded goods sector leads to a strong wage increase in both sectors. However, in the non-traded sector the wage increase is not offset by a corresponding productivity increase, pushing up the relative price of non-traded goods. Unlike in the case of price changes for traded goods, the price increase is not completely offset by a nominal depreciation of the exchange rate and the real exchange rate thus appreciates.

In sum, the individual components of the model provide guidance for the choice of variables in the empirical implementation of the theoretical framework as well as for the signs and possible magnitude of the coefficients:<sup>6</sup>

$$(11) \quad q_t = \beta_0 + \beta_1 aca_t + \beta_2 rid_t + \beta_3 (prod_t / tnt_t) + \beta_4 gov_t + \beta_5 tot_t,$$

<sup>6</sup> Obviously, the reduced-form is not derived from a full structural model but rather from a pragmatic examination of potential channels through which economic fundamentals may influence the real exchange rate.

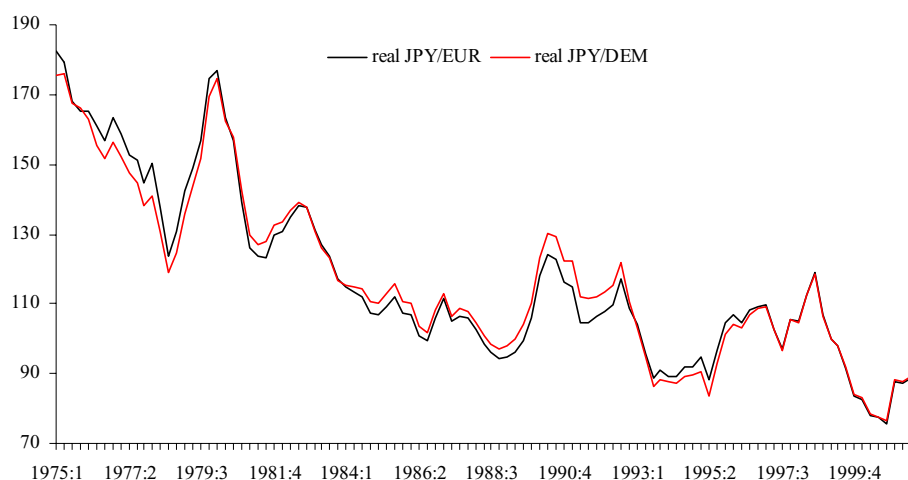
where  $q_t$  is the logarithm of the real exchange rate,  $aca_t$  stands for the relative net foreign asset position (as a ratio of GDP),  $rid_t$  is the real interest rate differential, the third term corresponds to the log of the productivity differential, measured directly as GDP over employment ( $prod_t$ ), or, alternatively, in a more indirect way as the relative price ratio of non-traded and traded goods ( $tnt_t$ ),  $gov_t$  reflects government spending (as a ratio of GDP, and in logs), and  $tot_t$  represents the (log of) terms of trade (captured in our empirical specification by  $oil_t$ , which stands for the log of the real price of oil). All variables are expressed as differentials between the euro area and Japan, except the real price of oil.  $\beta_0$  is a constant term,  $\beta_1$  is expected to be positive, implying that a higher net foreign asset position should be associated with a real appreciation.  $\beta_2$  is expected to be negative and smaller than 7 in magnitude.  $\beta_3$  should be positive and close to 1 if the economies considered are assumed to have non-traded goods sectors of similar sizes. The sign of  $\beta_4$  is ambiguous, since higher government spending can have a positive effect on the real exchange rate in the short to medium run by increasing the price of non-traded goods, but should have a negative impact in the long run owing to confidence effects. The sign and the magnitude of  $\beta_5$  depend on the relative oil dependence of the country under consideration.

### **3. Econometric Analysis**

#### **3.1. Data and measurement issues**

In view of the fairly short period for which data for the euro are available, a “synthetic” euro-yen exchange rate has been computed as a weighted geometric average of yen exchange rates of the individual EMU currencies for the period before 1999. The weights for the “theoretical euro” exchange rate are based on the share of each euro area country in total manufacturing trade of the euro area vis-à-vis non-euro area countries. In Chart 1, the (“synthetic”) real euro-yen exchange rate is compared with the corresponding D-mark-yen real exchange rate. The decline in the index corresponds to a gradual appreciation of the yen. The exchange rates of the D-mark and the euro vis-à-vis the yen exhibit an extremely high degree of correlation. As from the point of view of conceptual consistency over the entire sample, it appears preferable to refer to the “synthetic” yen-euro exchange rate prior to the launch of the euro rather than the D-Mark-yen exchange rate, hence we choose the former for the empirical estimation. Nonetheless, we have carried out robustness checks using the yen-D-mark real exchange rate. Estimating the same model for the yen-D-mark yields very similar coefficients for the variables that turn out to be significant. More detailed results are reported in Annex 2. The time series for the other variables referring to the euro area have been computed on the basis of the methodology described in detail in Maeso-Fernandez et al. (2001). The real exchange rate is based on consumer price indices.

**Chart 1. Real yen-euro and yen-D-mark exchange rate**



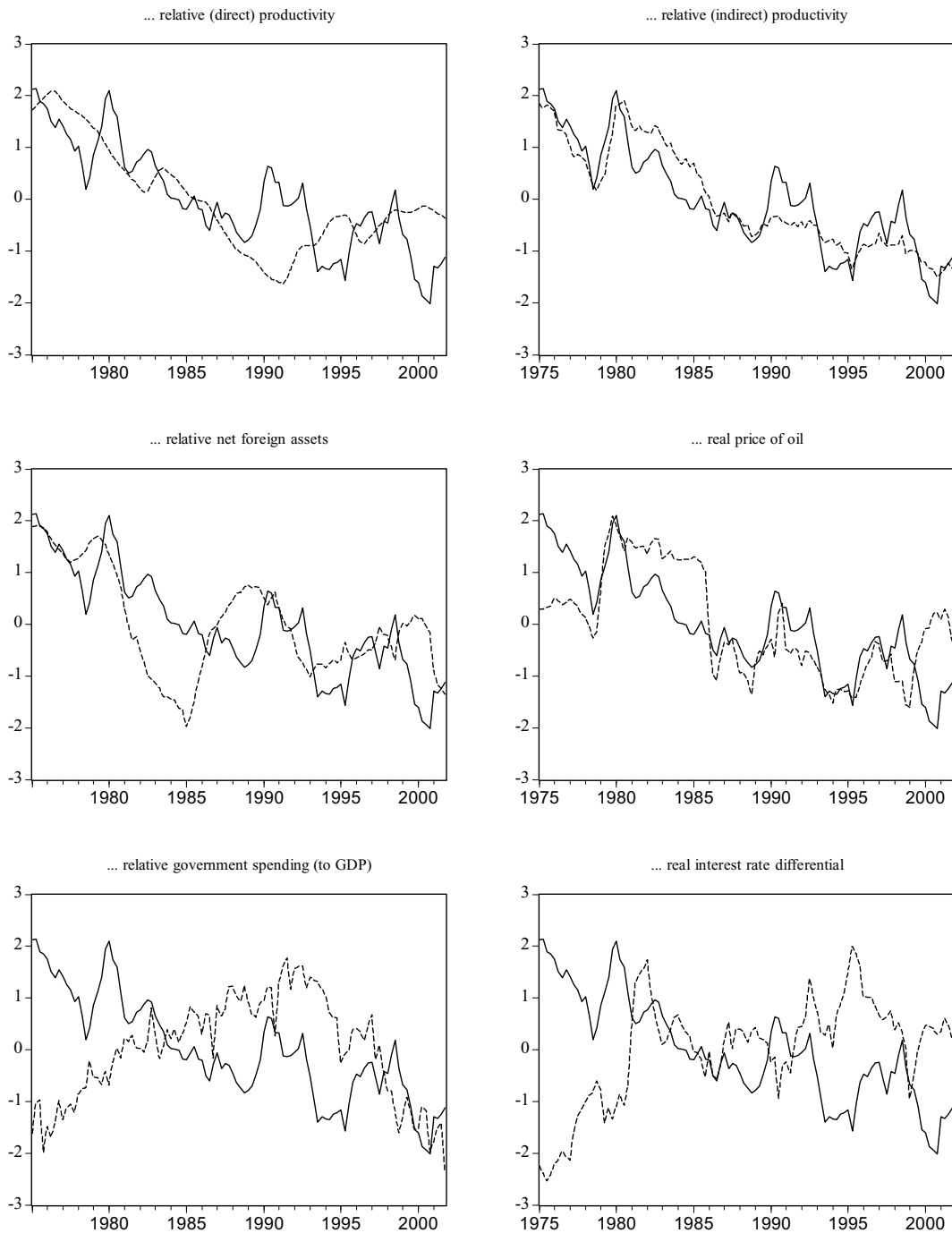
The theoretical framework presented in section 2 suggests that productivity differentials in the traded goods sector between the euro area and Japan may be a determinant of the equilibrium exchange rate, according to the Balassa-Samuelson effect. This argument should, in principle, be more relevant for exchange rates between emerging markets and industrialised countries. The yen exchange rate is a notable exception, however, since Japan experienced a significant catching-up effect in the second half of the last century, prior to the burst of the asset price bubble in the early 1990s. Measuring productivity differentials appropriately is, however, subject to statistical problems due to differences in accounting procedures as well as major conceptual difficulties. A relatively direct measure of diverging productivity trends relies on differences in total labour productivity, measured as real GDP divided by the number of employed persons. This measure has some drawbacks: first, it measures economy-wide productivity rather than productivity advances in the traded sector as implied in the Balassa-Samuelson theory.<sup>7</sup> Secondly, in order to take into account country-specific and time-varying preferences for part-time work, output per hour worked would be a better proxy, but limited data availability precludes this (for the time being). These conceptual difficulties notwithstanding, there is a close correlation between the real appreciation of the yen against the euro and relative total labour productivity (dotted line) up to the late 1980s (Chart 2).

<sup>7</sup> The assumption that total labour productivity is a good proxy for traded goods productivity in Japan may be eroded by the fact that massive public work programmes were initiated in Japan in the 1990s, which might have had a negative impact on non-traded goods productivity.

## Chart 2. Real yen-euro exchange rate and economic fundamentals

(data normalised with  $N(0,1)$ )

Real yen-euro exchange rate (solid line) and ...



Subsequently, this correlation loosened as productivity declined in Japan in the aftermath of the downturn of the Japanese economy following the bursting of the asset price bubble. Since the launch of the euro, relative productivity appears to have stabilised, while the yen appreciated again strongly vis-à-vis the euro. A rather indirect measure of productivity differentials, which attempts to take sectoral considerations into account, is the relative price



of non-traded and traded goods (Kakkar and Ogaki 1999). As outlined in section 2, the relative prices of non-traded and traded goods are inversely related to productivity developments in the two sectors. Since it is difficult to discriminate in practice between traded and non-traded goods, the consumer price index has been frequently used as a proxy for non-traded goods, whereas producer or wholesale prices have been employed as proxies for traded goods. A significant drawback of this measure is that domestic demand shocks in the non-traded goods sector, as well as changes in the tax policy, may conceal the actual productivity information conveyed by this variable. In addition, commodity price shocks may distort this variable if they have systematically a different effect on consumer and producer prices. In the multivariate analysis, therefore, we control for oil price developments. Chart 2 illustrates, however, that there has been a rather close link between the trends in this productivity measure and the real yen-euro exchange rate over the past 25 years.

The international investment position has been calculated as the cumulated current account balance in relation to GDP, and must be interpreted cautiously. First of all, euro area data have been aggregated on the basis of national data. While intra-euro area components of the individual current account position should cancel out in theory, they do not in practice. In addition, “errors and omissions”, which may reflect unrecorded capital or trade flows, may worsen the mis-measurement of the international investment position. Moreover, for bilateral exchange rates, it may be argued that one should use the net foreign asset position between the two countries involved, which is unavailable. Instead, the difference between the overall net foreign asset positions relative to GDP of the euro area and Japan has been used. The simple accumulation of current account positions has the additional drawback that the impact of valuation issues and the effects of debt forgiveness and reinvested earnings on this variable are neglected.<sup>8</sup> The difference in the net foreign asset positions of the euro area and Japan exhibits relatively large and persistent swings. As can be seen from Chart 2, the relative improvement of the Japanese net foreign asset position between 1975 and 1985 coincided with an appreciation of the yen. There is also evidence of correlation between this variable and the real yen-euro exchange rate in the 1990s, when the appreciation of the yen was again reflected in an improvement of the relative net foreign asset position. In the second half of the 1990s, the yen depreciated in real terms as the net foreign asset position of Japan deteriorated.

Terms-of-trade shocks are captured by changes in the real price of oil, which is computed as the US-dollar oil price converted into yen and deflated by Japanese wholesale prices. A rise in this proxy variable represents a rise in production costs, reflecting the fact that oil is an important input in production. Rising oil prices, moreover, reduce the purchasing power of net oil importing countries. Since both the euro area and Japan are net oil importers, a rise in oil prices may generate an appreciation or a depreciation of the exchange rate depending on

---

<sup>8</sup> Lane and Milesi-Feretti (2001) illustrate, however, that the cumulated current account appears to provide an overall good representation of trends in the net foreign investment position.

their relative “oil price vulnerability”.<sup>9</sup> Overall, while the energy intensity of the Japanese economy is slightly lower than in the euro area given its commitment to energy preservation and greater reliance on nuclear power, the oil trade balance is significantly more negative for Japan than for the euro area. As a consequence, a negative effect of higher oil prices on the yen seems more likely. This is also suggested by Chart 2, which shows a rather close correlation between the real price of oil and the yen-euro real exchange rate. However, this correlation has broken down since 1997.

Following the model outlined above, this paper also evaluates whether relative government spending as a ratio of GDP (defined as euro area minus Japan) and the real interest rate differential have a significant effect on the real euro-yen exchange rate.<sup>10</sup> While the charts for these variables do not indicate any clear co-movement, the econometric analysis finds some evidence that relative government spending is an important variable for finding a stable long-run relationship in combination with the other variables.

## 3.2. Cointegration analysis and results

### 3.2.1. The vector-error correction model

Since the data shown in Chart 2 clearly exhibit trending behaviour and high persistence, it seems reasonable to use cointegration analysis to estimate the model. As a consequence, the maximum likelihood approach suggested by Johansen (1995) has been employed. This approach can be briefly summarised as follows. Let  $y_t$  be a vector of  $I(1)$  variables. The estimated model is a Vector Autoregression (VAR) of dimension  $p$  and order  $k$ , which can be written in vector-error-correction (VEC) form:

$$(12) \quad \Delta y_t = \Pi y_{t-1} + \sum_{i=1}^{k-1} \Gamma_i \Delta y_{t-i} + \mu + \varepsilon_t,$$

where  $\Pi$  is a matrix containing the long-run coefficients and the adjustment terms,  $\Gamma_i$  represent matrices of short-run coefficients,  $\mu$  is a vector of constants, and  $\varepsilon_t$  denotes a vector of iid gaussian-distributed errors. If the matrix  $\Pi$  has reduced rank ( $r$ ), it can be expressed as the product of a  $(p \times r)$  matrix of loading coefficients  $\alpha$ , and the  $(p \times r)$  matrix  $\beta$ , containing the  $r$  cointegrating vectors, so that  $\Pi = \alpha\beta'$ . The matrix  $\alpha$  gives an indication of the importance of the cointegration relationships in the individual equations of the system and of the adjustment speed, while the matrix  $\beta$  represents the long-term equilibrium relationships.

<sup>9</sup> See Amano and van Norden (1999) on the relationship between the real exchange rate and the price of oil. The real price of oil was employed as a proxy for terms of trade by e.g. Clostermann and Schnatz (2000), in a study on the euro-dollar exchange rate and by Maeso-Fernandez et al. (2001) in an analysis of the euro effective exchange rate. For some quantitative analyses regarding the importance of oil in individual countries see Davies and Strongin (2000) and Jen et al. (2001).

<sup>10</sup> The real interest rate was computed as the nominal 10-year bond yield minus the consumer price inflation rate in the previous year. The differential is defined as the euro area minus the Japanese real interest rate.

The moving average representation of the VEC model in (12) provides additional information to analyse the properties of the system. It is defined as

$$(13) \quad y_t = C \sum_{i=1}^t \varepsilon_i + C\eta + C(L)(\varepsilon_t + \eta)$$

where:

$$(14) \quad C = \beta_{\perp} (\alpha'_{\perp} \Gamma \beta_{\perp})^{-1} \alpha'_{\perp} = A \alpha'_{\perp}$$

In these equations,  $\alpha_{\perp}$  and  $\beta_{\perp}$  are the orthogonal complements of  $\alpha$  and  $\beta$ .  $\alpha_{\perp}$  spans the space of the common stochastic trends, i.e. it identifies the linear combinations of the cumulated shocks that form the common trends or driving forces of the system. The matrix  $\Gamma = I - \sum_{i=1}^{k-1} \Gamma_i$  is a function of the short-run coefficients. The matrix  $A$  represents the loading factors of the common trends, and indicates to what extent each trend influences each variable. Finally, the  $C$  matrix measures the long-run impact of shocks to the system.

The cointegration model in (12)-(14) forms the analytical basis used to construct behavioural equilibrium exchange rates (BEER), as the fitted value from the estimated equilibrium relationship ( $y_{1t} - \beta' y_t$ ), where  $y_{1t}$  indicates the first variable in the system, i.e. in our case the real exchange rate.

Moreover, based on Johansen (2001), error bands can be derived for the BEER on the basis of the following equation, which builds on the VEC model and its moving average representation discussed above (see annex 1 for details on the derivation):

$$(15) \quad u'_1 \hat{C} \hat{\Gamma} y_t = \pm 2 \sqrt{\left( (I - C\Gamma) \bar{\beta} \text{Var}(\beta' y_t) \bar{\beta}' (I - C\Gamma)' \right)_{11}}$$

where  $y_t$  is the data matrix,  $\bar{\beta} = \beta(\beta'\beta)^{-1}$ , and  $C, \Gamma$  as defined above.

### 3.2.2. Estimation results

The VEC model was estimated over the sample running from 1975Q1 to 2001Q4. The constant has been restricted to the cointegrating space, which is equivalent to assuming that the data have no linear deterministic trend in the levels.<sup>11</sup> This is consistent with the descriptive statistics of the data, which suggest that some variables have non-zero means, while all the growth rates have zero means (see Table 1).<sup>12</sup> The time-series properties of the data have been checked within the cointegration model by having stationarity as the null hypothesis given the cointegration space. This multivariate procedure, which has the

<sup>11</sup> Alternatively, employing – in spite of the descriptive statistics shown in Table 1 – a model including an unrestricted constant and a restricted trend, the trace test results do not change, i.e. the tests always indicates the presence of only one cointegration relationship. Including a restricted trend in the procedure for testing for cointegration rank has the nice property that the trace test result is not contingent on the choice of deterministic specification. Furthermore, the LR test on beta clearly indicates that the restricted trend is insignificant in the cointegration relationship.

<sup>12</sup> Three centred seasonal dummies have been initially included to capture seasonal effects without affecting the inference on the long-run coefficients, but they turned out to be insignificant and were hence excluded from the model.

advantage of taking information from the entire data set into account, employs a LR test, which is distributed as a  $\chi^2$  with  $p-r$  degrees of freedom. For the selected model, the hypothesis of stationarity can be rejected within the VEC model for all variables (see Table 2).

**Table 1. Descriptive Statistics, 1975Q1-2001Q4**

	<i>q</i>	<i>prod</i>	<i>oil</i>	<i>aca</i>	<i>gov</i>	<i>ridl</i>
	<i>Levels</i>					
Mean	0.13626	0.01081	5.38805	-12.0234	0.73414	3.12969
Std. Dev.	0.20097	0.04383	0.48289	7.71044	0.05667	1.23738
	<i>Differences</i>					
Mean	-0.00601	-0.00086	-0.00285	-0.23322	-0.00039	0.02882
Std. Dev.	0.05145	0.00368	0.14447	1.40969	0.02142	0.42135

The lag order has been chosen on the basis of lag exclusion tests (F-test).<sup>13</sup> Accordingly, the VAR was estimated based on four lags, as the exclusion of the fourth lag is rejected at the 5% level, while the F test fails to reject the exclusion of the fifth lag. The number of cointegrating vectors is determined on the basis of the Johansen trace statistics since Cheung and Lai (1993) found that the trace test is more robust to skewness and excess kurtosis in innovations than the maximum eigenvalue test.<sup>14</sup>

Alternative specifications of the VEC model were initially estimated separately for each productivity measure including also all the other variables: the oil price (*oil*), the difference of the accumulated current account of the euro area and Japan (*aca*), relative government spending, and the real interest rate differential. In addition, in order to ensure stability in the relationship, it was necessary to include dummies in the short-run dynamics, which capture outliers for developments in the real price of oil (“oil dummy”) and in the accumulated current account position (“aca dummy”). The entries in both dummies add up to zero, so that they do not affect the inference on the long-run coefficients or the asymptotic distribution of the cointegration trace statistics. On the real price of oil, the “oil dummy” takes the value of -1 in 1986Q1, when oil prices plunged as OPEC oil output increased sharply during a price war as OPEC failed to agree upon a production accord. The “oil dummy” also takes the value of 1 in 1990Q3, when oil prices spiked during the Iraq intervention in Kuwait. The “aca dummy” refers to periods of sudden shifts in the yen exchange rate, which had a strong and immediate impact on the Japanese international investment position. Accordingly, the “aca dummy” was set to 1 in 1998Q4, when the yen appreciated vis-à-vis the US dollar by more than 10%, its largest quarter-on-quarter depreciation in the sample period. The same dummy

<sup>13</sup> The results are broadly unchanged when using instead three lags in the VAR, as suggested by AIC and SIC.

<sup>14</sup> Using the more restrictive statistics proposed by Reinsel and Ahn (1992) and applied by Reimers (1992) in a simulation on cointegration tests, it is more difficult to find cointegration. As Doornik et al. (1999) point out, however, such a small-sample scaling of the trace test is not theoretically founded and may overcorrect the statistics in certain cases.

was set to -1 in 2001Q1, when the yen depreciated by 8% against the US currency and by 14% against the euro.

The specification including the indirect productivity variable was abandoned due to signs of misspecification, given that even the real exchange rate equation exhibits episodes of significant instability within this system. Accordingly, the following analysis focuses on the direct productivity variable, defined as GDP/employment. For this specification, the cointegration trace test based on standard critical values indicates the presence of a single cointegration vector. After imposing the rank restriction and normalising, however, the real interest rate differential was insignificant in both the  $\alpha$  and the  $\beta$  vector, so that this variable was excluded from the specification, and the final model only includes five variables. Table 2 summarises the corresponding estimation results. Specification I refers to the model estimated under the restriction that the cointegration rank is one; specification II also incorporates weak exogeneity restrictions on the adjustment coefficients.<sup>15</sup> The choice of cointegration rank and the long-term estimates are discussed in more detail below.

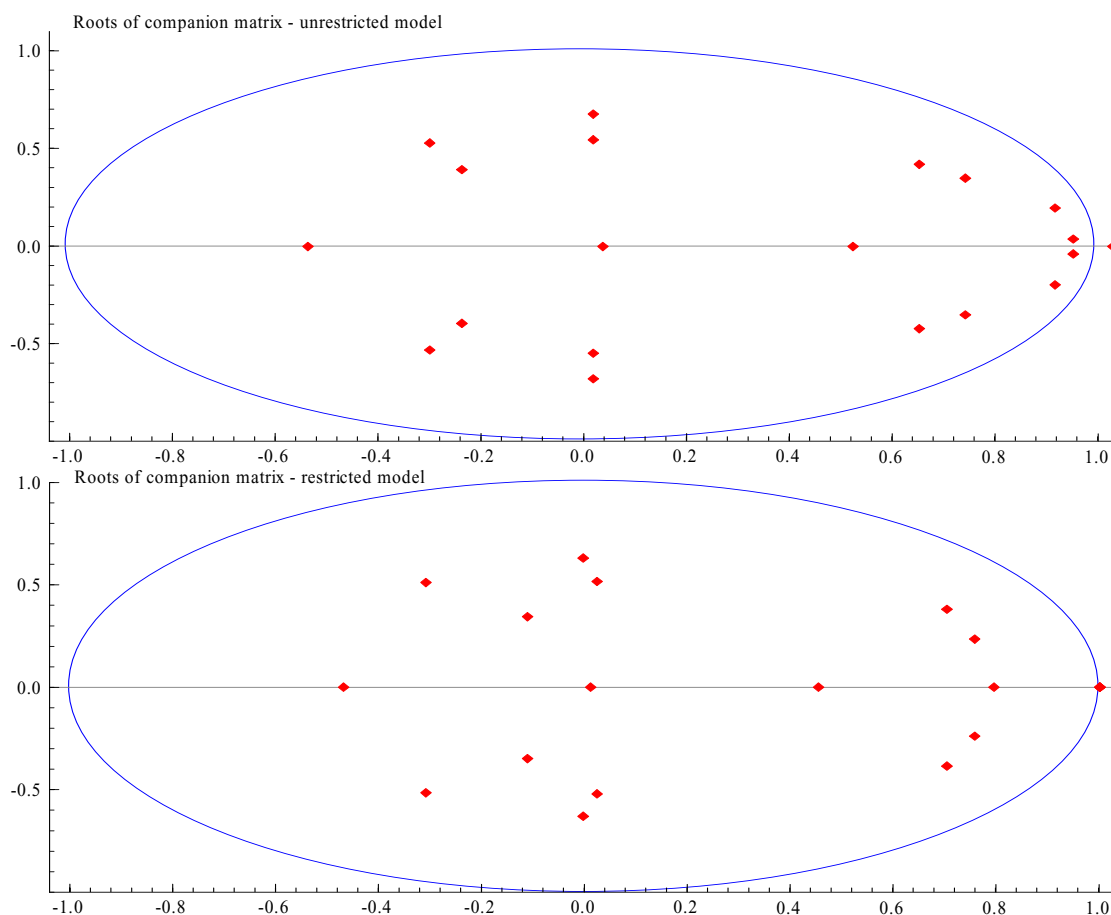
**Table 2: VECM results (t statistics in parentheses)**

	Stationarity test	Specification I		Specification II	
		Long-term coefficients	Adjustment terms	Long-term coefficients	Adjustment terms
q	32.74	1.000	-0.153 -2.616	1.00	-0.166 -3.061
prod	36.00	-2.901 -5.050	0.005 2.973	-2.484 -4.370	0.006 3.48
oil	39.33	-0.128 -2.981	-0.108 -0.723	-0.164 -3.854	-- --
gov	40.34	-1.354 -3.981	0.072 3.281	-1.270 -3.773	0.073 3.270
aca	40.28	-0.009 -4.480	-1.660 -1.282	-0.011 -5.417	-- --
constant		1.445 5.362		1.545 5.794	
<b>Summary Statistics:</b>					
Number of lags:		4		4	
Test on restriction (p-value)				0.39	
LM(1-4) (p-value)		0.06			
White test (p-value)		0.90			
<b>Cointegration test</b>				<b>Standard critical values</b>	
				5%	1%
Trace-test	None	89.14	76.07	84.45	
	1	41.78	53.12	60.16	
	2	20.58	34.91	41.07	
	3	10.11	19.96	24.60	
Constant restricted to the cointegrating space, Critical value for stationarity test: 11.07 Standard critical values for the model with a constant restricted to the cointegrating space as suggested by Osterwald-Lenum (1992),					

<sup>15</sup> Weak exogeneity has been identified by testing whether  $\alpha = 0$  for each variable both separately and jointly. If the restriction holds, a variable is defined as weakly exogenous.

**Choice of cointegration rank:** The trace tests indicate the presence of one cointegration relationship at the 1% level based on standard critical values. The hypothesis of one cointegration relationship is confirmed by looking at the magnitude of the roots of the system, (Chart 3) and by the graph of the cointegration vector, which depicts  $\beta'y_t$  (Chart 4).

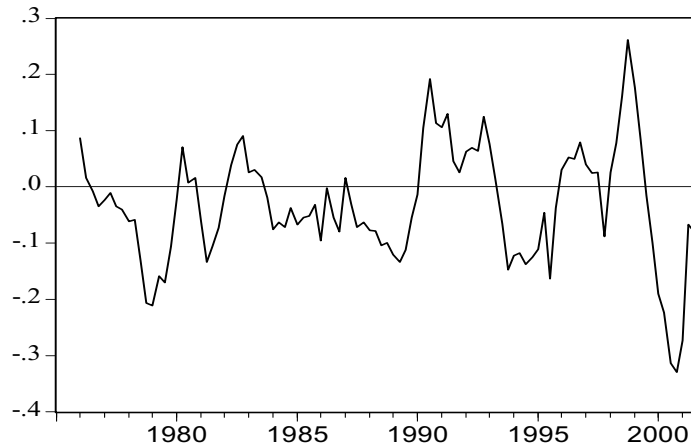
**Chart 3: Companion matrix**



The upper chart shows the position of the estimated roots in the unit circle for the unrestricted system, while the lower chart shows the corresponding picture after imposing the restrictions of a rank of one and two zero restrictions on  $\alpha$ . In the unrestricted model, one root is slightly above one, and two conjugate pairs of roots have modulus larger than 0.93. In the restricted model, which implies that the system contains 4 unit roots, the fifth largest root drops to below 0.8, suggesting that the rank restriction is appropriate, as there seem to be only 4 common trends driving the system.

Chart 4 shows the cointegration vector, which appears indeed to be stationary, both by visual inspection and by standard ADF tests. This additional evidence supports the finding of a rank equal to one suggested by the standard trace test.

**Chart 4: Cointegration vector ( $\beta'y_t$ )**



**Long-term relationship and adjustment:** Tests for exclusion from the long-run relationship confirm that the real exchange rate cannot be excluded in any of the models. Accordingly, it is feasible to normalise its coefficient to one in the long-run relationship (see specification I in Table 2). The standard specification tests broadly suggest white-noise residuals, though there remains some autocorrelation in the errors at the 10% level. All variables are highly significant in the long-term relationship and their signs are in line with the theoretical reasoning described in section 2. *Ceteris paribus*, a 1% rise in euro area productivity is associated with an appreciation of the euro by 3% in the long run. The magnitude of this effect suggests that this variable may capture productivity-induced demand effects in addition to the Balassa-Samuelson-type supply-side effects. Likewise, an increase in the real oil price and the euro area's net foreign asset position support the euro vis-à-vis the yen in the long run. The positive effect of the oil price could be expected *ex ante*, given the higher oil dependency of Japan with respect to the euro area. For the government spending variable, the short to medium-term demand effects supporting the currency appear to be more important in the sample period than the more long-term confidence effects, which should rather weigh on the external value of a currency.

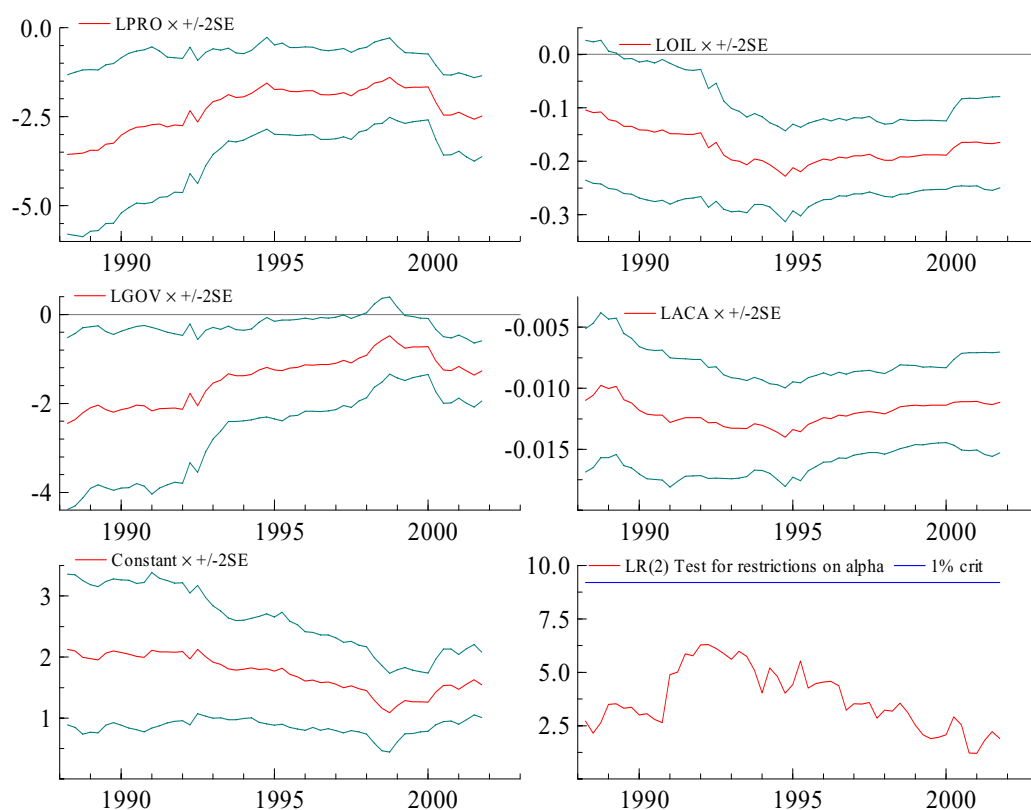
The adjustment term for the real exchange rate is negative and significant, which implies that the real euro-yen exchange rate is indeed one of the variables in the system that adjusts to exogenous shocks. The speed of adjustment is quite fast: following a shock, the half-life of deviations from equilibrium is less than one year.<sup>16</sup> By contrast, the real price of oil and the accumulated current account are individually found to be weakly exogenous with respect to the long-run parameters. The joint hypothesis of weak exogeneity for both the oil price and

<sup>16</sup> The half life is computed as  $\log(0.5)/\log(1-\alpha)$ , where  $\alpha$  is the adjustment term in the equation for the real exchange rate.

the accumulated current account cannot be rejected (tail probability: 0.39). These two variables were thus restricted to be weakly exogenous, and the model was re-estimated under the weak exogeneity restrictions, without having a major impact on the estimates of the coefficients of the long-run vector (specification II).

**Stability of the system:** Recursive parameter estimates and standard errors for this specification, shown in Chart 5, suggest that the system is reasonably stable.<sup>17</sup> The recursive parameter estimates stay consistently in negative territory for the individual variables and in positive territory for the constant term, as suggested by the cointegration results for the whole sample period. Moreover, for most variables the two standard error bands do not cross the zero line, which implies that the statistical significance of the estimated coefficients is stable over time. A marginal exception constitutes the error band for the relative government spending variable, which shortly crosses the zero-line in the second half of the 1990s, possibly reflecting the theoretical ambiguity of the impact of government spending on the real exchange rate. Finally, the bottom-right chart supports the restrictions on the adjustment terms, reinforcing the proposition that developments in real oil prices and the net foreign asset position are weakly exogenous.

**Chart 5. Recursive parameter estimates**



<sup>17</sup> The recursive parameter estimates have been carried out by fixing the short-run dynamics at their full-sample values (see Hansen and Johansen 1999).



More information on the characteristics of the model can be derived from the estimated parameters from the moving average representation. These estimates are derived from the maximum likelihood cointegration estimators, as the corresponding parameters are functions of the parameters in the VECM representation. Table 3 displays the orthogonal complements to  $\alpha$ , which indicate what variables contribute to each common trend in the system. The table also shows the loadings to these common trends and the long-run impact matrix.

**Table 3: The orthogonal complements and the long-run impact matrix**

	q	prod	oil	gov	aca
<i>Orthogonal complements to alpha</i>					
$\alpha_{\perp}^1$	0.000	0.000	<b>1.000</b>	0.000	0.000
$\alpha_{\perp}^2$	0.036	<b>0.999</b>	0.000	-0.008	0.000
$\alpha_{\perp}^3$	0.000	0.000	0.000	0.000	<b>1.000</b>
$\alpha_{\perp}^4$	0.405	-0.008	0.000	<b>0.914</b>	0.000
<i>Loadings to the common trends</i>					
A <sub>1</sub>	0.092	-0.016	1.254	0.003	-6.928
A <sub>2</sub>	<b>5.543</b>	<b>5.296</b>	<b>-10.509</b>	<b>-5.936</b>	<b>147.53</b>
A <sub>3</sub>	0.037	-0.003	0.067	-0.001	3.103
A <sub>4</sub>	1.061	-0.084	1.501	0.423	43.512
<i>C Matrix (long-term impact matrix)</i>					
$\Sigma \varepsilon_q$	<b>0.627</b>	<b>0.155</b>	0.234	-0.040	22.88
	[1.86]	[1.92]	[-0.20]	[-0.43]	[0.99]
$\Sigma \varepsilon_{prod}$	5.531	<b>5.295</b>	-10.513	<b>5.935</b>	147.094
	[0.77]	[3.11]	[-0.43]	[-3.06]	[0.30]
$\Sigma \varepsilon_{oil}$	0.092	-0.016	<b>1.254</b>	0.003	-6.929
	[1.38]	[-1.01]	[5.51]	[0.14]	[-1.52]
$\Sigma \varepsilon_{gov}$	<b>0.928</b>	-0.116	1.451	<b>0.431</b>	38.663
	[2.47]	[-1.30]	[1.13]	[4.21]	[1.50]
$\Sigma \varepsilon_{aca}$	<b>0.037</b>	-0.003	0.067	-0.001	<b>3.102</b>
	[2.68]	[-0.92]	[1.44]	[-0.35]	[3.34]
<b>Note:</b> The figures in bold in the first matrix highlight the common trends, and in the second matrix, they emphasise the common trend which has the strongest influence on a variable. In the third matrix, the bold figures indicate statistically significant relationships according to the t-values which are presented in square brackets below.					

The first rows of Table 3 show the  $\alpha$  orthogonal components, which confirm the proposition that the specification explains the real exchange rate, as the common trends are associated with the productivity differential, the real oil price, relative government spending and the accumulated current account, but not with the real exchange rate itself. As illustrated in the second section of the table, showing which variable is most influenced by common trends, the productivity differential is strongly driven by the common trends.

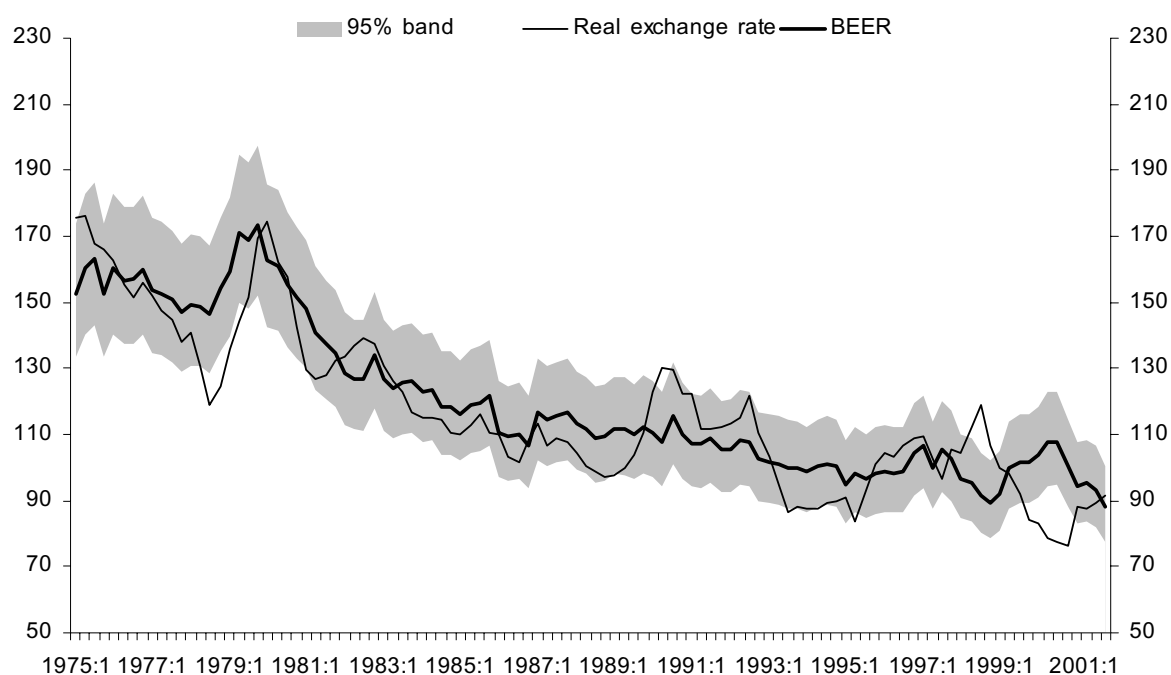
The third matrix – the so-called impact or C matrix – combines this information by multiplying the two matrices mentioned above (see equation (14)) and explains which variables exert a cumulative impact on the real exchange rate. The coefficients of the impact matrix broadly confirm the results of the beta vector in the VECM. The productivity differential, the real price of oil, relative government spending and the relative accumulated current account variable are positively related to the real exchange rate. The productivity variable and the real price of oil are insignificant in this representation, but this does not affect

the interpretation of the significance of the coefficients in the cointegration vector, because the estimator of C and its variance also depends on short-run parameters. Shocks on the real exchange rate have a positive and significant impact on productivity, which is a reasonable result since a real appreciation also puts pressure on the domestic economy to improve productivity. Shocks to productivity seem also to have a positive impact on government spending, reflecting possibly a favourable impact on the tax base which gives them more leeway for spending. Finally, the third and the fifth column of the C matrix support the notion that the real price of oil and the accumulated current account are weakly exogenous, since they are only driven by themselves.

### 3.2.3. Equilibrium exchange rates and error bands

Chart 6 compares the actual real yen-euro exchange rate (Index 1999Q1=100) with the BEER derived from the cointegration vector of specification II. In addition, it shows the two-standard error confidence bands around the estimated BEER. The error bands amount to  $\pm 13\%$ , which documents explicitly how difficult it is to determine a precise “equilibrium value” for a currency. Overall, however, the model portrays the real appreciation of the Japanese yen quite well between the mid-1970s and the end-1980s. For the whole sample period, the correlation of the BEER and the actual real exchange rate amounts to more than 85%.

**Chart 6: The (“synthetic”) yen-euro real exchange rate and its behavioural equilibrium exchange rate (BEER)**



In the first half of the 1990s, the yen-euro exchange rate diverged from its equilibrium schedule over protracted periods; in the medium term, however, it always reverted towards this “centre of gravity” – the equilibrium schedule. In more detail, the sharp depreciation of the yen in 1989/90 is only partially captured by the model. As a result, the yen-euro real exchange rate touched the lower bound of the confidence band, indicating that the yen was against the euro below its equilibrium value (“undervalued”) up to 1993. The BEER estimate also implies that the sudden appreciation of the yen in 1993 may have reflected initially a reversion of the yen to “equilibrium”. Between the second half of 1993 and the first half of 1995, however, the yen was according to these computations by almost the same amount above its equilibrium. Between 1996 and the first half of 1998, the yen fluctuated closely around its equilibrium.

Subsequently, the pattern of the equilibrium schedule of the real yen-euro exchange rate and its actual counterpart becomes rather peculiar. The two series indeed appear to be negatively correlated over the last four years under consideration, but the gravity forces towards the equilibrium schedule still seem to be in place. In 1998, for instance, the yen experienced a strong depreciation vis-à-vis the euro legacy currencies, which catapulted the (real) yen-euro exchange rate shortly outside the confidence bands, but reverted forcefully to its “equilibrium” in 1998Q4 and 1999Q1. Following the launch of the euro, the euro depreciated between the first quarter of 1999 and the fourth quarter of 2000 by roughly 27% vis-à-vis the Japanese currency (in real terms). Over the same period, however, Japan was lagging behind in terms of productivity developments and the surge in oil prices, which traditionally weighed on the yen, failed to support the euro.

These effects may have been partly offset by remarkable current account surpluses in Japan in this period, while the euro area recorded a modest deficit in its current account balance. On the other hand, the net foreign asset positions of both the euro area and Japan were in positive territory according to their accumulated current account balances. As a result, the decline of the euro vis-à-vis most major currencies should have increased the value of foreign assets relative to domestic output. Overall, the BEER rose in this period, implying an equilibrium appreciation of the euro vis-à-vis the Japanese yen, while the Japanese currency appreciated to its highest level in the last 25 years (in the fourth quarter of 2000). Indeed, according to these estimates, the real euro-yen exchange rate was in 2000 persistently outside the confidence band. Since the end of 2000, the euro has appreciated significantly against the yen, reversing to a large extent its earlier depreciation. At the same time, the depreciation of the yen vis-à-vis the US dollar had a positive effect on the Japanese net foreign asset position, which strengthened the BEER of the yen vis-à-vis the euro, and led to a narrowing and finally to a correspondence of the actual exchange rate and the “equilibrium schedule” towards the end of 2001.

Finally, regarding the general appreciation trend of the Japanese yen over the entire sample period it is instructive to use the estimation results to assess the importance of the various fundamental variables in bringing about this strengthening. From 1975Q1 until 2001Q4 the Japanese yen appreciated by 65% vis-à-vis the (“synthetic”) euro in real terms (log percentage changes). While oil price and relative government spending can explain only little of this trend, the relative productivity variable and the relative net foreign asset position both moved in favour of Japan, thus strongly supporting the Japanese yen. The estimated coefficients from the long-run cointegrating relationship suggest that those two factors account for roughly 90% of the yen’s (equilibrium) appreciation. Most of the appreciation over the sample period was actually concentrated in the 1980s, with the Japanese currency appreciating in real terms by more than 30% between 1980Q1 and 1988Q4 alone. During that period, however, the influence of the oil price variable was rather strong. Thus, the rise of the yen appears to be driven by a number of different factors, with the traditional productivity explanation – often cited as the main explanation<sup>18</sup> – being an important but by no means the only factor.

#### **4. Conclusions**

This paper provides an extensive empirical analysis of the “synthetic” euro-yen exchange rate over the period 1975–2001. Using cointegration analysis, we find a consistent and significant relationship between the real exchange rate and relative productivity, net foreign assets, relative government spending and the terms of trade. A fairly rapid mean reversion of the exchange rate to its equilibrium is also detected over the sample period. Overall, the “equilibrium” euro-yen exchange rate derived from this model tracks the development of the actual exchange rate rather well between the mid-1970s and the end of the 1990s. The estimates suggest that the substantial appreciation of the yen over this period – especially pronounced during the 1980s – was not only driven by productivity differential, but also the accumulation of foreign assets and developments in oil prices. Towards the end of the period under consideration, the relationship between the equilibrium schedule of the real yen-euro exchange rate and its actual counterpart has become rather peculiar. The two series indeed appear to be negatively correlated in this episode, but the gravity forces towards the equilibrium schedule still seem to be in place. In particular, the model suggests, that the euro appreciation vis-à-vis the yen in 2001 has represented largely an equilibrium correction of its depreciation in 1999/2000.

---

<sup>18</sup> See, for instance, Yoshikawa (1990).

### Annex 1: “Error bands” for the BEER

Following Johansen (2001) we express the common non-stationary trends as linear combinations of the observable data instead of the unobservable shocks. Disregarding for simplicity the deterministic part, this is done by multiplying (12) by  $\alpha'_{\perp}$  and cumulating:

$$(A.1.) \quad \alpha'_{\perp} \Delta y_t = \sum_{i=1}^{k-1} \alpha'_{\perp} \Gamma_i \Delta y_{t-i} + \alpha'_{\perp} \sum_{i=1}^t \varepsilon_i .$$

Using the definition of  $\Gamma = I - \sum_{i=1}^{k-1} \Gamma_i$ , one can solve for the common trends as a function of levels, differences and initial values:

$$(A.2.) \quad \begin{aligned} \alpha'_{\perp} \sum_{i=1}^t \varepsilon_i &= \alpha'_{\perp} \Gamma y_t - \sum_{i=1}^{k-1} \alpha'_{\perp} \Gamma_i (y_{t-i} - y_t - y_{-i}) - \alpha'_{\perp} y_0 \\ &= \alpha'_{\perp} \Gamma y_t + Z_t + A \end{aligned}$$

where  $Z_t$  is an  $I(0)$  process and  $A$  is a function of initial values. Looking at the definition of

$$(A.3.) \quad C = \beta_{\perp} (\alpha'_{\perp} \Gamma \beta_{\perp})^{-1} \alpha'_{\perp} \quad \text{we get:}$$

$$(A.4.) \quad C \sum_{i=1}^t \varepsilon_i = C \Gamma y_t + \beta_{\perp} (\alpha'_{\perp} \Gamma \beta_{\perp})^{-1} (Z_t + A) .$$

Then a simple non-stationary – stationary decomposition is given by:

$$(A.5.) \quad y_t = C \Gamma y_t + (I - C \Gamma) y_t .$$

One can then use the variance of the stationary part to derive bands around the nonstationary component. Taking a unit vector to select the first variable in the system:  $y_{1t} = u'_1 y_t$ , then

$$(A.6.) \quad \begin{aligned} u'_1 y_t &= u'_1 C \Gamma y_t + u'_1 (I - C \Gamma) y_t \quad \text{or:} \\ y_{1t} - u'_1 C \Gamma y_t &= u'_1 (I - C \Gamma) \bar{\beta} \beta' y_t \end{aligned}$$

Where  $\bar{\beta} = \beta(\beta\beta)'^{-1}$ , such that  $\bar{\beta}\beta' = I$ . Then one can plot the following bands:

$$(A.7.) \quad u'_1 C \Gamma y_t = \pm 2 \sqrt{\left( (I - C \Gamma) \bar{\beta} \text{Var}(\beta' y_t) \bar{\beta}' (I - C \Gamma)' \right)_{11}} .$$

## Annex 2: The determinants of the JPY/DEM exchange rate

In order to conduct a robustness check, we estimated the model discussed above also for the JPY/DEM currency pair. As was the case for the JPY/EUR, the real interest rate differential did not play a role. Both relative productivity and the government expenditure differential have a very similar magnitude as for the JPY/EUR, while neither the real price of oil nor the net foreign assets turned out to be significant. The main results are summarised in Table A, both for the whole sample and for a restricted sample up to 1998q4, when the D-mark was substituted by the euro. For estimation in the later sample we used the JPY/DEM rate implied by the corresponding euro rate and the irrevocably fixed DEM/EUR parity.

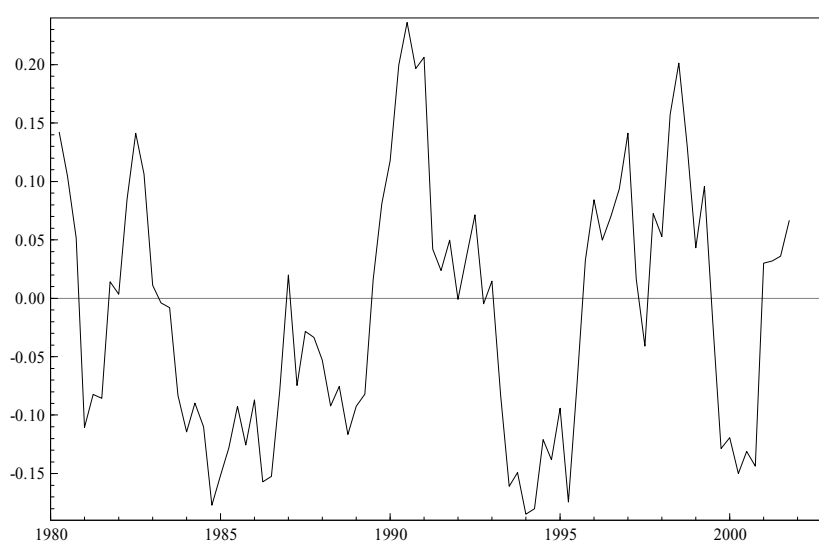
The model was estimated with four lags, including a dummy variable for government expenditure to deal with two outliers of opposite sign, in 1986q1 and 1990q3. Since this dummy sums to one, it does not affect the asymptotics of the trace test. The standard specification tests indicate that the residuals are white noise, the variables are significant in the long-term relationship and their signs are in line with the theoretical reasoning described in section 2. Furthermore, as stated above, the coefficients are very close in magnitude to the coefficients of productivity and government expenditure for the JPY/EUR currency pair, as is evidenced by comparing Table 2 in the text with Table A in this annex.

**Table A: VECM results**

	1980q2-1998q4		1980q2-2001q4	
	Long-term coefficients ( <i>t statistic</i> )	Adjustment terms ( <i>t statistic</i> )	Long-term coefficients ( <i>t statistic</i> )	Adjustment terms ( <i>t statistic</i> )
q	1.000 -	-0.120 (-2.300)	1.000 -	-0.190 (-3.438)
prod	-2.815 (-2.923)	0.044 (2.916)	-2.152 (-2.8119)	0.043 (2.656)
gov	-1.112 (-2.715)	0 -	-0.921 (-4.632)	0 -
constant	10.094 (2.806)		9.602 (2.725)	
<u>Summary Statistics:</u>				
Test on restrictions ( <i>p-value</i> )	1.603 (0.20)		1.4760 (0.22)	
LM(1-5) test	F(45,167) = 0.87 (0.70)			
<u>Cointegration test*</u>				
		Standard critical values		
		5%	1%	
	37.72	34.91	84.45	
	18.19	19.96	24.60	
	3.92	9.24	12.97	
* Test for the longer sample period. Constant restricted to the cointegrating space. Standard critical values for the model with a constant restricted to the cointegrating space as suggested by Osterwald-Lenum (1992).				

**Choice of cointegration rank:** The trace tests indicate the presence of one cointegration relationship (based on standard critical values). The hypothesis of one cointegration relationship is confirmed by looking at the magnitude of the roots of the system, which displays an eigenvalue equal to 1.018 and a smaller one at 0.916 when unrestricted. Once the rank restriction and the weak exogeneity of government expenditure differentials are imposed, the third largest root drops to 0.759, supporting the rank choice. The graph of the cointegration vector, which depicts  $\beta'y_t$ , is displayed in Chart A. The cointegration vector appears indeed to be stationary, and this additional evidence supports the finding of a rank equal to one suggested by the standard trace test.

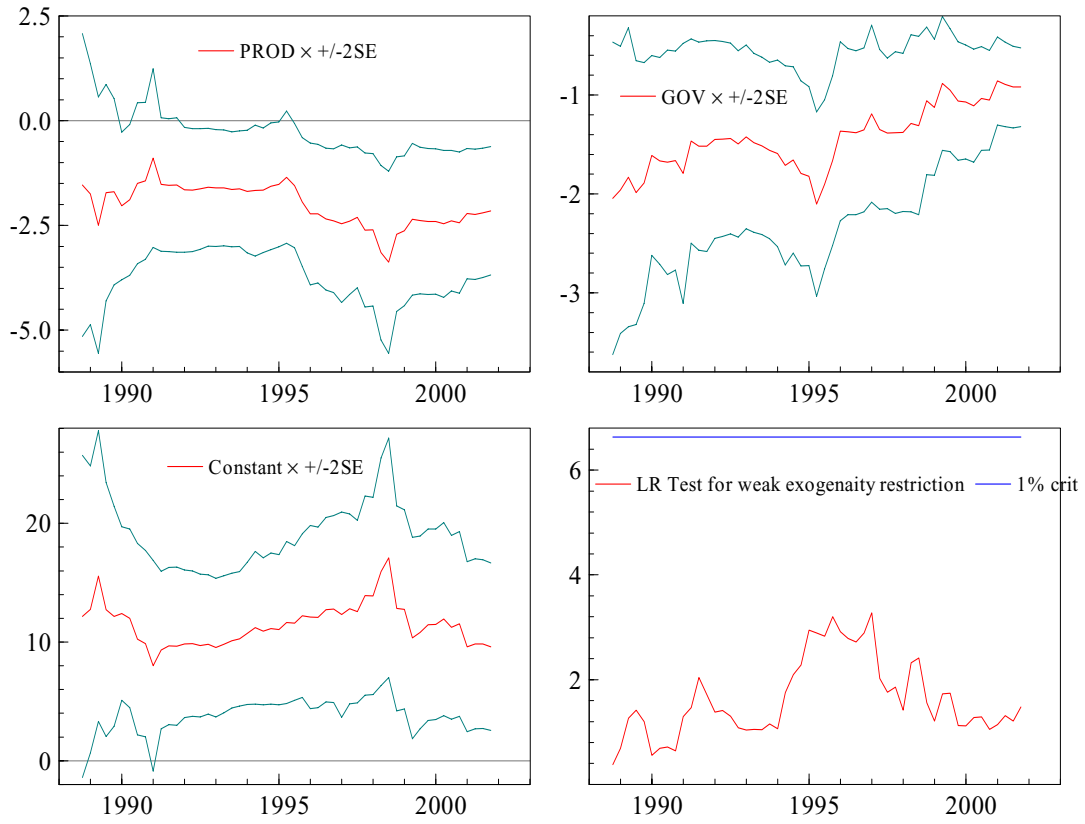
**Chart A: Cointegration vector ( $\beta'y_t$ )**



The adjustment term for the real exchange rate is negative and significant, which implies that the real JPY/DEM exchange rate is indeed one of the variables in the system that adjusts to exogenous shocks. The speed of adjustment is rather fast: following a shock, the half-life of deviations from equilibrium is about one year. In contrast to what is found for the JPY/EUR, the government expenditure differential is weakly exogenous with respect to the long-run parameters.

Recursive parameter estimates and standard errors for this specification, shown in Chart B, suggest that the system is reasonably stable. The recursive parameter estimates stay consistently in negative territory for both individual variables and in positive territory for the constant term, as suggested by the cointegration results for the whole sample period. Moreover, for most variables the two standard error bands do not cross the zero line, which implies that the statistical significance of the estimated coefficients is stable over time.

**Chart B. Recursive parameter estimates**





## BIBLIOGRAPHY

- ALBEROLA, E., S. G. CERVERO, H. LOPEZ and A. UBIDE (1999) "Global equilibrium exchange rates: euro, dollar, 'ins', 'outs' and other major currencies in a panel cointegration framework", *IMF Working Paper*, 175.
- AMANO, R. A. and S. VAN NORDEN (1998) "Oil prices and the rise and fall of the US real exchange rate", *Journal of International Money and Finance*, 17, 299-316.
- BALASSA, B. (1964) "The purchasing power parity doctrine: a reappraisal", *Journal of Political Economy*, 72, 584-96.
- BANERJEE, A., J. J. DOLADO and R. MESTRE (1998) "Error-correction mechanism tests for cointegration in a single-equation framework", *Journal of Time Series Analysis*, 19, 3, 267-283.
- BRANSON, W. (1977) "Asset markets and relative prices in exchange rate determination", *Sozialwissenschaftliche Annalen*, 1, 69-89.
- CHEUNG, Y.-W. and K. S. LAI (1993) "Finite-sample sizes of Johansen's likelihood ratio tests for cointegration", *Oxford Bulletin of Economics and Statistics*, 55, 313-328.
- CHINN, M. D. (1997) "Whither the yen? Implications of an intertemporal model of the dollar/yen rate", *Journal of Japanese and International Economies*, 11, 228-246.
- CLARK, P. B. and R. MACDONALD (1999) "Exchange rates and economic fundamentals: A methodological comparison of BEERs and FEERs", in R. MacDonald and J. L. Stein: *Equilibrium exchange rates*, Norwell, MA., 285-322.
- CLARK, P. B. and R. MACDONALD (2000) "Filtering the BEER: A permanent and transitory decomposition", *IMF Working Paper*, 144.
- CLOSTERMANN, J. and B. SCHNATZ (2000) "The determinants of the euro-dollar exchange rate: Synthetic fundamentals and a non-existing currency", *Konjunkturpolitik, Applied Economics Quarterly*, 44, 207-230.
- DAVIS, G. and S. STRONGIN (2000) "Oil still has the power to shock", *Goldman Sachs, Global Economic Papers No. 53*, 20 September 2000.
- DE CARVALHO, A. (2002) "The Equilibrium Yen-Dollar Rate: 1976-91", *Asian Economic Journal*, 16, 1, 53-70.
- DOORNIK, J. A., D. F. HENDRY and B. NIELSEN (1999) "Inference in cointegrating models: UK M1 revisited", M. McAleer and L. Oxley (eds.): *Practical issues in cointegration analysis*, Oxford, 117-156.
- DRIVER, R. L. and S. WREN-LEWIS (1998) "Real exchange rates for the year 2000", *Institute for International Economics, Policy Analyses in International Economics No. 54*.
- EDISON, H. J. and W. R. MELICK (1999) "Alternative approaches to real exchange rates and real interest rates: three up and three down", *International Journal of Finance and Economics*, 4, 93-111.
- EUROPEAN CENTRAL BANK (2001) "Economic fundamentals and the exchange rate of the euro", *Monthly Bulletin*, January, 41-53.

- FARUQEE, H. (1995) "Long run determinants of the real exchange rate: a stock-flow perspective", *IMF Staff Papers*, 42, 80-107.
- FELL, J. (1996) "Balance of payments equilibrium and long-run real exchange rate behaviour", ECB, mimeo.
- FRENKEL, J. and M. MUSSA (1985) "Asset Markets, Exchange Rates and the Balance of Payments", R. Jones and P. Kenen (eds.) *Handbook of International Economics*, 2, North-Holland.
- HANSEN, H. and S. JOHANSEN (1999) "Some tests for parameter constancy in cointegrated VAR-models", *The Econometrics Journal*, 2, 2, 306-333.
- JEN, S. L., M. BAKER and F. YILMAZ (2001) "A background note on oil & currencies", *Morgan Stanley, Equity Research Global*, 19 October, 2001.
- JOHANSEN, S. (1995) *Likelihood-based inference in cointegrated vector auto-regressive models*, Oxford University Press.
- JOHANSEN, S. (2001) "The interpretation of common trends, impulse responses and cointegrating coefficients in the cointegrated VAR model", mimeo.
- KAKKAR, V. and M. OGAKI (1999) "Real exchange rates and nontradables: A relative price approach", *Journal of Empirical Finance*, 6, 193-215.
- KASUYA, M. and I. TAKAGAWA (2001) "Model uncertainty of the real exchange rate forecasts over mid-term horizons", *Bank of Japan Working Paper* 01-23.
- KONG, Q. (2000) "Predictable movements in yen/DM exchange rates", *IMF Working Paper*, 143.
- LANE, P. R. and G. M. MILESI-FERETTI (2001) "The external wealth of nations: measures of foreign assets and liabilities for industrial and developing countries", *Journal of International Economics*, 55, 263-294.
- MACDONALD, R. (1999) "Asset market and balance of payments characteristics: an eclectic exchange rate model for the dollar, mark and yen", *Open Economies Review*, 10, 5-29.
- MACDONALD, R. and J. NAGAYASU (2000) "The long-run relationship between the real exchange rates and interest rate differentials: A panel study", *IMF Staff Papers*, 47, 116-128.
- MAESO-FERNANDEZ, F., C. OSBAT and B. SCHNATZ (2001) "Determinants of the euro real effective exchange rate: A BEER/PEER approach", *ECB Working Paper*, 85.
- NAGAYASU, J. (1998) "Japanese effective exchange rates and determinants: prices, real interest rates, and actual and optimal current accounts", *IMF Working Paper*, 86.
- OSTERWALD-LENUM, M. (1992) "A note with quantiles of the asymptotic distribution of the maximum likelihood cointegration rank test statistics", *Oxford Bulletin of Economics and Statistics*, 54, 461-472.
- REIMERS, H.-E. (1992) "Comparisons of Tests of Multivariate Cointegration", *Statistical Papers*, 33, 335-339.

- REINSEL, G. C. and S. K. AHN (1992) “Vector autoregressive models with unit roots and reduced rank structure: estimation, likelihood ratio test, and forecasting”, *Journal of Time Series Analysis*, 13, 4, 353-375.
- STOCK, J. H. and M. W. WATSON (1993) “A simple estimator of cointegrating vectors in higher order integrated systems”, *Econometrica*, 61, 4, 783-820.
- SAMUELSON, P. A. (1964) “Theoretical notes on trade problems”, *Review of Economics and Statistics*, 51, 239-46.
- YOSHIKAWA, H. (1990) “On the equilibrium yen-dollar rate”, *American Economic Review*, 80, 3, 576-583.

## European Central Bank working paper series

For a complete list of Working Papers published by the ECB, please visit the ECB's website (<http://www.ecb.int>).

- I 13 "Financial frictions and the monetary transmission mechanism: theory, evidence and policy implications" by C. Bean, J. Larsen and K. Nikolov, January 2002.
- I 14 "Monetary transmission in the euro area: where do we stand?" by I. Angeloni, A. Kashyap, B. Mojon, D. Terlizzese, January 2002.
- I 15 "Monetary policy rules, macroeconomic stability and inflation: a view from the trenches" by A. Orphanides, December 2001.
- I 16 "Rent indices for housing in West Germany 1985 to 1998" by J. Hoffmann and C. Kurz., January 2002.
- I 17 "Hedonic house prices without characteristics: the case of new multiunit housing" by O. Bover and P. Velilla, January 2002.
- I 18 "Durable goods, price indexes and quality change: an application to automobile prices in Italy, 1988-98" by G. M. Tomat, January 2002.
- I 19 "Monetary policy and the stock market in the euro area" by N. Cassola and C. Morana, January 2002.
- I 20 "Learning stability in economics with heterogeneous agents" by S. Honkapohja and K. Mitra, January 2002.
- I 21 "Natural rate doubts" by A. Beyer and R. E. A. Farmer, February 2002.
- I 22 "New technologies and productivity growth in the euro area" by F. Vijselaar and R. Albers, February 2002.
- I 23 "Analysing and combining multiple credit assessments of financial institutions" by E. Tabakis and A. Vinci, February 2002.
- I 24 "Monetary policy, expectations and commitment" by G. W. Evans and S. Honkapohja, February 2002.
- I 25 "Duration, volume and volatility impact of trades" by S. Manganelli, February 2002.
- I 26 "Optimal contracts in a dynamic costly state verification model" by C. Monnet and E. Quintin, February 2002.
- I 27 "Performance of monetary policy with internal central bank forecasting" by S. Honkapohja and K. Mitra, February 2002.
- I 28 "Openness, imperfect exchange rate pass-through and monetary policy" by F. Smets and R. Wouters, February 2002.

- 129 “Non-standard central bank loss functions, skewed risks, and certainty equivalence” by A. al-Nowaihi and L. Stracca, March 2002.
- 130 “Harmonized indexes of consumer prices: their conceptual foundations” by E. Diewert, March 2002.
- 131 “Measurement bias in the HICP: what do we know, and what do we need to know?” by M. A. Wynne and D. Rodríguez-Palenzuela, March 2002.
- 132 “Inflation dynamics and dual inflation in accession countries: a “new Keynesian” perspective” by O. Arratibel, D. Rodríguez-Palenzuela and C. Thimann, March 2002.
- 133 “Can confidence indicators be useful to predict short-term real GDP growth?” by A. Mourougane and M. Roma, March 2002.
- 134 “The cost of private transportation in the Netherlands, 1992-99” by B. Bode and J. Van Dalen, March 2002.
- 135 “The optimal mix of taxes on money, consumption and income” by F. De Fiore and P. Teles, April 2002.
- 136 “Retail bank interest rate pass-through: the new evidence at the euro area level” by G. de Bondt, April 2002.
- 137 “Equilibrium bidding in the eurosystem’s open market operations” by U. Bindseil, April 2002.
- 138 “New” views on the optimum currency area theory: what is EMU telling us?” by F. P. Mongelli, April 2002.
- 139 “On currency crises and contagion” by M. Fratzscher, April 2002.
- 140 “Price setting and the steady-state effects of inflation” by M. Casares, May 2002.
- 141 “Asset prices and fiscal balances” by F. Eschenbach and L. Schuknecht, May 2002.
- 142 “Modelling the daily banknotes in circulation in the context of the liquidity management of the European Central Bank”, by A. Cabrero, G. Camba-Mendez, A. Hirsch and F. Nieto, May 2002.
- 143 “A non-parametric method for valuing new goods”, by I. Crawford, May 2002.
- 144 “A failure in the measurement of inflation: results from a hedonic and matched experiment using scanner data”, by M. Silver and S. Heravi, May 2002.
- 145 “Towards a new early warning system of financial crises”, by M. Fratzscher and M. Bussiere, May 2002.
- 146 “Competition and stability – what’s special about banking?”, by E. Carletti and P. Hartmann, May 2002.

- 147 “Time-to-build approach in a sticky price, sticky wage optimising monetary model, by M. Casares, May 2002.
- 148 “The functional form of yield curves” by V. Brousseau, May 2002.
- 149 “The Spanish block of the ESCB multi-country model” by A. Estrada and A. Willman, May 2002.
- 150 “Equity and bond market signals as leading indicators of bank fragility” by R. Gropp, J. Vesala and G. Vulpes, June 2002.
- 151 “G7 inflation forecasts” by F. Canova, June 2002.
- 152 “Short-term monitoring of fiscal policy discipline” by G. Camba-Mendez and A. Lamo, June 2002.
- 153 “Euro area production function and potential output: a supply side system approach” by A. Willman, June 2002.
- 154 “The euro bloc, the dollar bloc and the yen bloc: how much monetary policy independence can exchange rate flexibility buy in an interdependent world?” by M. Fratzscher, June 2002.
- 155 “Youth unemployment in the OECD: demographic shifts, labour market institutions, and macroeconomic shocks” by J. F. Jimeno and D. Rodriguez-Palenzuela, June 2002.
- 156 “Identifying endogenous fiscal policy rules for macroeconomic models” by J. J. Perez, and P. Hiebert, July 2002.
- 157 “Bidding and performance in repo auctions: evidence from ECB open market operations” by K. G. Nyborg, U. Bindseil and I. A. Strebulaev, July 2002.
- 158 “Quantifying Embodied Technological Change” by P. Sakellaris and D. J. Wilson, July 2002.
- 159 “Optimal public money” by C. Monnet, July 2002.
- 160 “Model uncertainty and the equilibrium value of the real effective euro exchange rate” by C. Detken, A. Dieppe, J. Henry, C. Marin and F. Smets, July 2002.
- 161 “The optimal allocation of risks under prospect theory” by L. Stracca, July 2002.
- 162 “Public debt asymmetries: the effect on taxes and spending in the European Union” by S. Krogstrup, August 2002.
- 163 “The rationality of consumers’ inflation expectations: survey-based evidence for the euro area” by M. Forsells and G. Kenny, August 2002.
- 164 “Euro area corporate debt securities market: first empirical evidence” by G. de Bondt, August 2002.

- 165 “The industry effects of monetary policy in the euro area” by G. Peersman and F. Smets, August 2002.
- 166 “Monetary and fiscal policy interactions in a micro-founded model of a monetary union” by R. M.W.J. Beetsma and H. Jensen, August 2002.
- 167 “Identifying the effects of monetary policy shocks on exchange rates using high frequency data” by J. Faust, J.H. Rogers, E. Swanson and J.H. Wright, August 2002.
- 168 “Estimating the effects of fiscal policy in OECD countries” by R. Perotti, August 2002.
- 169 “Modelling model uncertainty” by A. Onatski and N. Williams, August 2002.
- 170 “What measure of inflation should a central bank target?” by G. Mankiw and R. Reis, August 2002.
- 171 “An estimated stochastic dynamic general equilibrium model of the euro area” by F. Smets and R. Wouters, August 2002.
- 172 “Constructing quality-adjusted price indices: a comparison of hedonic and discrete choice models” by N. Jonker, September 2002.
- 173 “Openness and equilibrium determinacy under interest rate rules” by F. de Fiore and Z. Liu, September 2002.
- 174 “International monetary policy co-ordination and financial market integration” by A. Sutherland, September 2002.
- 175 “Monetary policy and the financial accelerator in a monetary union” by S. Gilchrist, J.O. Hairault and H. Kempf, September 2002.
- 176 “Macroeconomics of international price discrimination” by G. Corsetti and L. Dedola, September 2002.
- 177 “A theory of the currency denomination of international trade” by P. Bacchetta and E. van Wincoop, September 2002.
- 178 “Inflation persistence and optimal monetary policy in the euro area” by P. Benigno and J.D. López-Salido, September 2002.
- 179 “Optimal monetary policy with durable and non-durable goods” by C.J. Erceg and A.T. Levin, September 2002.
- 180 “Regional inflation in a currency union: fiscal policy versus fundamentals” by M. Duarte and A.L. Wolman, September 2002.
- 181 “Inflation dynamics and international linkages: a model of the United States, the euro area and Japan” by G. Coenen and V. Wieland, September 2002.
- 182 “The information content of real-time output gap estimates: an application to the euro area” by G. Rünstler, September 2002.

- 183 “Monetary policy in a world with different financial systems” by E. Faia, October 2002.
- 184 “Efficient pricing of large-value interbank payment systems” by C. Holthausen and J.-C. Rochet, October 2002.
- 185 “European integration: what lessons for other regions? The case of Latin America” by E. Dorrucchi, S. Firpo, M. Fratzscher and F. P. Mongelli, October 2002.
- 186 “Using money market rates to assess the alternatives of fixed versus variable rate tenders: the lesson from 1989-98 data for Germany” by M. Manna, October 2002.
- 187 “A fiscal theory of sovereign risk” by M. Uribe, October 2002.
- 188 “Should central banks really be flexible?” by H. P. Grüner, October 2002.
- 189 “Debt reduction and automatic stabilisation” by P. Hiebert, J. J. Pérez and M. Rostagno, October 2002.
- 190 “Monetary policy and the zero bound to interest rates: a review” by T. Yates, October 2002.
- 191 “The fiscal costs of financial instability revisited” by L. Schuknecht and F. Eschenbach, November 2002.
- 192 “Is the European Central Bank (and the United States Federal Reserve) predictable?” by G. Perez-Quiros and J. Sicilia, November 2002.
- 193 “Sustainability of public finances and automatic stabilisation under a rule of budgetary discipline” by J. Marín, November 2002.
- 194 “Sensitivity analysis of volatility: a new tool for risk management” by S. Manganelli, V. Ceci and W. Vecchiato, November 2002.
- 195 “In-sample or out-of-sample tests of predictability: which one should we use?” by A. Inoue and L. Kilian, November 2002.
- 196 “Bootstrapping autoregressions with conditional heteroskedasticity of unknown form” by S. Gonçalves and L. Kilian, November 2002.
- 197 “A model of the Eurosystem’s operational framework for monetary policy implementation” by C. Ewerhart, November 2002.
- 198 “Extracting risk-neutral probability densities by fitting implied volatility smiles: some methodological points and an application to the 3M EURIBOR futures option prices” by A. B. Andersen and T. Wagener, December 2002.
- 199 “Time variation in the tail behaviour of bund futures returns” by T. Werner and C. Upper, December 2002.



- 200 “Interdependence between the euro area and the United States: what role for EMU?” by M. Ehrmann and M. Fratzscher, December 2002.
- 201 “Euro area inflation persistence” by N. Batini, December 2002.
- 202 “Aggregate loans to the euro area private sector” by A. Calza, M. Manrique and J. Sousa, January 2003.
- 203 “Myopic loss aversion, disappointment aversion and the equity premium puzzle” by D. Fielding and L. Stracca, January 2003.
- 204 “Asymmetric dynamics in the correlations of global equity and bond returns” by L. Cappiello, R.F. Engle and K. Sheppard, January 2003.
- 205 “Real exchange rate in an inter-temporal n-country-model with incomplete markets” by B. Mercereau, January 2003.
- 206 “Empirical estimates of reaction functions for the euro area” by D. Gerdesmeier and B. Roffia, January 2003.
- 207 “A comprehensive model on the euro overnight rate” by F. R. Würtz, January 2003.
- 208 “Do demographic changes affect risk premiums? Evidence from international data” by A. Ang and A. Maddaloni, January 2003.
- 209 “A framework for collateral risk control determination” by D. Cossin, Z. Huang, D. Aunon-Nerin and F. González, January 2003.
- 210 “Anticipated Ramsey reforms and the uniform taxation principle: the role of international financial markets” by S. Schmitt-Grohé and M. Uribe, January 2003.
- 211 “Self-control and savings” by P. Michel and J.P. Vidal, January 2003.
- 212 “Modelling the implied probability of stock market movements” by E. Glatzer and M. Scheicher, January 2003.
- 213 “Aggregation and euro area Phillips curves” by S. Fabiani and J. Morgan, February 2003.
- 214 “On the selection of forecasting models” by A. Inoue and L. Kilian, February 2003.
- 215 “Budget institutions and fiscal performance in Central and Eastern European countries” by H. Gleich, February 2003.
- 216 “The admission of accession countries to an enlarged monetary union: a tentative assessment” by M. Ca’Zorzi and R. A. De Santis, February 2003.
- 217 “The role of product market regulations in the process of structural change” by J. Messina, March 2003.
- 218 “The zero-interest-rate bound and the role of the exchange rate for monetary policy in Japan” by G. Coenen and V. Wieland, March 2003.

- 219 “Extra-euro area manufacturing import prices and exchange rate pass-through” by B. Anderton, March 2003.
- 220 “The allocation of competencies in an international union: a positive analysis” by M. Ruta, April 2003.
- 221 “Estimating risk premia in money market rates” by A. Durré, S. Evjen and R. Pilegaard, April 2003.
- 222 “Inflation dynamics and subjective expectations in the United States” by K. Adam and M. Padula, April 2003.
- 223 “Optimal monetary policy with imperfect common knowledge” by K. Adam, April 2003.
- 224 “The rise of the yen vis-à-vis the (“synthetic”) euro: is it supported by economic fundamentals?” by C. Osbat, R. Ruffer and B. Schnatz, April 2003.