

Beyer, Andreas; Farmer, Roger E. A.

Working Paper

Natural rate doubts

ECB Working Paper, No. 121

Provided in Cooperation with:

European Central Bank (ECB)

Suggested Citation: Beyer, Andreas; Farmer, Roger E. A. (2002) : Natural rate doubts, ECB Working Paper, No. 121, European Central Bank (ECB), Frankfurt a. M.

This Version is available at:

<https://hdl.handle.net/10419/152555>

Standard-Nutzungsbedingungen:

Die Dokumente auf EconStor dürfen zu eigenen wissenschaftlichen Zwecken und zum Privatgebrauch gespeichert und kopiert werden.

Sie dürfen die Dokumente nicht für öffentliche oder kommerzielle Zwecke vervielfältigen, öffentlich ausstellen, öffentlich zugänglich machen, vertreiben oder anderweitig nutzen.

Sofern die Verfasser die Dokumente unter Open-Content-Lizenzen (insbesondere CC-Lizenzen) zur Verfügung gestellt haben sollten, gelten abweichend von diesen Nutzungsbedingungen die in der dort genannten Lizenz gewährten Nutzungsrechte.

Terms of use:

Documents in EconStor may be saved and copied for your personal and scholarly purposes.

You are not to copy documents for public or commercial purposes, to exhibit the documents publicly, to make them publicly available on the internet, or to distribute or otherwise use the documents in public.

If the documents have been made available under an Open Content Licence (especially Creative Commons Licences), you may exercise further usage rights as specified in the indicated licence.

EUROPEAN CENTRAL BANK
WORKING PAPER SERIES



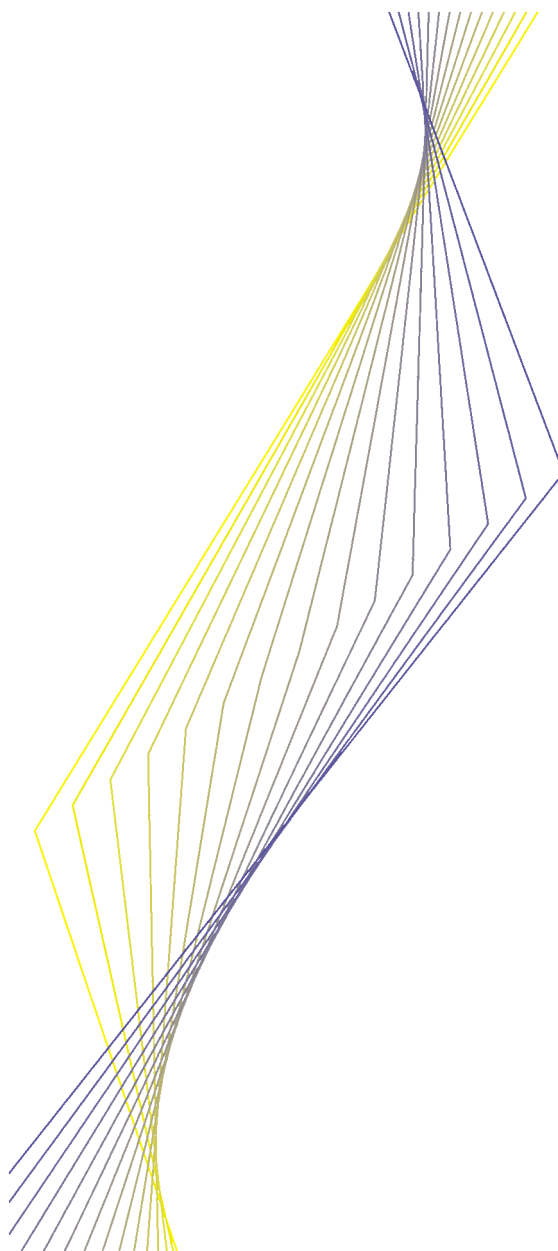
WORKING PAPER NO. 121

NATURAL RATE DOUBTS

**BY ANDREAS BEYER
AND ROGER E.A. FARMER**

February 2002

EUROPEAN CENTRAL BANK
WORKING PAPER SERIES



WORKING PAPER NO. 121

NATURAL RATE DOUBTS¹

BY ANDREAS BEYER²
AND ROGER E.A. FARMER³

February 2002

¹ This project began while Farmer was a guest of the Reserve Bank of Australia in July of 1998 and completed during a visit to the Directorate General Research as part of the European Central Bank's Research Visitor Programme in the summer of 2001. He wishes to thank David Gruen, Graham Voss and the members of the Economic Research and Economic Analysis departments at the Reserve Bank of Australia and Ignazio Angeloni, Gabriel Fagan, Vitor Gaspar, Jérôme Henry and member of DG-Research at the ECB for their kind hospitality during these visits. The paper has benefited from extensive conversations with Soren Johansen in 1999 when Johansen and Farmers were professors and Beyer was a Jean Monnet Fellow at the European University Institute.

² The views in this paper do not necessarily represent those of the European Central Bank.

³ Farmer acknowledges the support of NSF grant 9515036.

© European Central Bank, 2002

Address	Kaiserstrasse 29 D-60311 Frankfurt am Main Germany
Postal address	Postfach 16 03 19 D-60066 Frankfurt am Main Germany
Telephone	+49 69 1344 0
Internet	http://www.ecb.int
Fax	+49 69 1344 6000
Telex	411 144 ecb d

All rights reserved.

Reproduction for educational and non-commercial purposes is permitted provided that the source is acknowledged.

The views expressed in this paper are those of the authors and do not necessarily reflect those of the European Central Bank.

ISSN 1561-0810

Contents

Abstract	4
Non-technical summary	5
1 Introduction	6
2 Characteristics of the data and a statistical model	9
3 A description of the results	12
3.1 Breaking the sample	12
3.2 Developing a statistical model	13
3.3 Testing for nonstationarity	14
3.4 Establishing the cointegrating rank	15
3.5 Estimating the cointegrating space	17
4 A class of structural models	18
4.1 Stationary models	19
4.2 Nonstationary models	20
5 Naming the equations	21
5.1 Aggregate demand	22
5.2 Aggregate supply	23
5.3 Policy rule	23
6 The source of nonstationarity	24
6.1 Modeling nonstationarity in the natural rate	25
6.2 Ireland's explanation	26
6.3 Orphanides' explanation	26
6.4 Are these explanations correct?	26
7 Some implications of nonstationarity in the natural rate	27
7.1 Implications of the strong form of aggregate demand	27
7.2 Implications of the weak form of aggregate demand	30
8 An alternative explanation of the data	31
8.1 Is a Long Run Phillips curve consistent with theory?	32
8.2 Why did inflation and unemployment move together?	33
8.3 How did the Fed Tame inflation?	34
8.4 Why did the real rate increase after 1980?	35
9 Conclusion	36
References	38
European Central Bank Working Paper Series	41

Abstract

We study the low frequency comovements in unemployment, inflation and the federal funds rate in the U.S. From 1970 through 1979 all three series trended up together; after 1979 they all trended down. The conventional explanation for the buildup of inflation in the 1970's is that the Fed reacted to an increase in the natural rate of unemployment by conducting an overly passive monetary policy. We show that this explanation is difficult to reconcile with the observed comovement of the fed funds rate and inflation. We argue instead that the source of the inflation buildup in the 1970's was a downward drift in the real interest rate that was translated into a simultaneous increase in unemployment and inflation by passive Fed policy. Our explanation relies on the existence in the data of an upward sloping long run Phillips curve.

JEL Classification: C32, E3, E43, E58

Key words: Natural rate, Phillips curve, real interest rate, cointegration

Non-technical Summary

According to the Natural Rate Hypothesis (NRH), the long-run unemployment rate is independent of the inflation rate. Since this proposition was advanced by Milton Friedman and Edmund Phelps, it has become a central tenet of monetary economics and is built into the structure of most theoretical and empirical analyses of macroeconomic policy. Advocates of the natural rate hypothesis recognize that there may be a short-run relationship between inflation and unemployment, a so called “statistical Phillips curve”, but the reason for its existence is attributed to errors in the expectations of agents.

In the monetary confusion model of Lucas expectational errors may cause households to supply more labor than justified by economic fundamentals as they confuse real and nominal price changes. In the contract models of Fischer and Taylor, or the price setting model of Calvo, expectational errors have persistence since they are built into wage contracts or pricing decisions. In all three of these models the existence of a relationship between unemployment and inflation is a temporary phenomenon and one would not expect such a relationship to characterize the data at low frequencies.

We do not, however, observe a vertical Phillips curve in low frequency data because - according to most existing work in the area - the natural rate of unemployment has been changing over time. In the period before 1980 the natural rate of unemployment slowly increased and after 1980 it began to fall. We are aware of two explanations, by Orphanides and by Ireland, for the observed low frequency comovements of inflation and the nominal interest rate with the unemployment rate. Although these theories can explain why inflation and unemployment move together, they are unable to account for the low frequency movements in the interest rate and inflation that we find in the data. In contrast to the view of a unit root in the natural rate of unemployment we offer an alternative explanation for the experience of the 1970's and 1980's using the idea that observed nonstationarity arises from drift in the underlying real rate of interest.

1 Introduction

According to the Natural Rate Hypothesis (NRH), the long-run unemployment rate is independent of the inflation rate. Since this proposition was advanced by Milton Friedman [11] and Edmund Phelps [20], it has become a central tenet of monetary economics and is built into the structure of most theoretical and empirical analyses of macroeconomic policy. Advocates of the natural rate hypothesis recognize that there may be a short-run relationship between inflation and unemployment, a so called “statistical Phillips curve”, but the reason for its existence is attributed to errors in the expectations of agents.

In the monetary confusion model of Lucas [16] expectational errors may cause households to supply more labor than justified by economic fundamentals as they confuse real and nominal price changes. In the contract models of Fischer [8] and Taylor [22], or the price setting model of Calvo [5], expectational errors have persistence since they are built into wage contracts or pricing decisions. In all three of these models the existence of a relationship between unemployment and inflation is a temporary phenomenon and one would not expect such a relationship to characterize the data at low

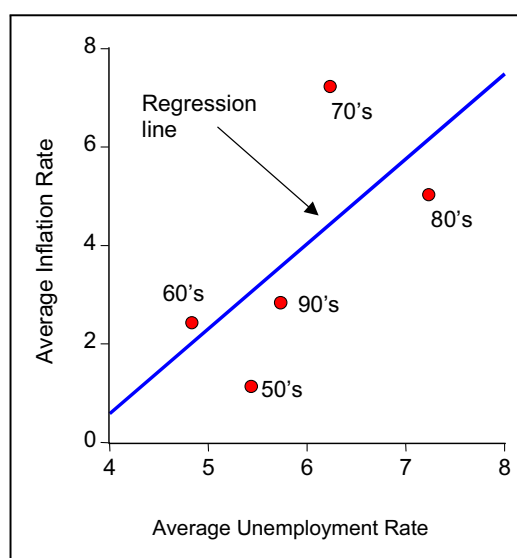


Figure 1: Inflation and Unemployment (Decade Averages)

frequencies.

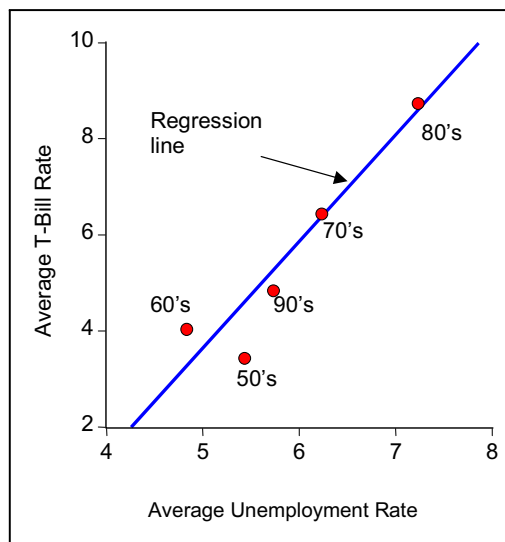


Figure 2: The Federal Funds Rate and Unemployment (Decade Averages)

In Figure 1 we have drawn a scatter plot of the inflation rate against the unemployment rate. Each point on this graph represents a decade average of quarterly data. Figure 2 presents a similar plot of decade averages, this time for the nominal interest rate against the unemployment rate. These figures present a puzzle for advocates of the natural rate hypothesis since one would expect that over a decade there would be as many quarters in which inflation was above average as there were quarters in which it was below average. A scatter plot of average inflation against average unemployment should reveal a vertical line at the position of the long run natural rate of unemployment. Since economic theory predicts that the average real interest rate should be approximately constant one would also expect a plot of the average nominal interest rate against the average unemployment rate to reveal a vertical line at the natural rate of unemployment.

How might one reconcile Figures 1 and 2 with the natural rate hypothesis? According to most existing work in the area we do not observe a vertical Phillips curve in low frequency data because the natural rate of unemployment has been changing over time. In the period before 1980 the natural rate of unemployment slowly increased and after 1980 it began to fall. We

are aware of two explanations for the observed low frequency comovements of inflation and the nominal interest rate with the unemployment rate. According to Orphanides [18], [19], the Fed mistook an increase in the natural rate of unemployment for a recession. This mistake caused policy makers at the Fed to overstimulate the economy leading to a buildup of inflation and a concurrent increase in the nominal interest rate. Ireland [12] uses the Barro-Gordon [2] model of monetary policy as a dynamic game to argue that a unit root in the natural rate was transmitted to a unit root in inflation as a consequence of time inconsistency in the monetary authority's optimal policy. In a related argument, Sargent [21] models the buildup of inflation in the 1970's with a model that replaces the rational expectations assumption with the notion of a self-confirming equilibrium.

In this paper we take a different approach. Section 2 discusses the characteristics of the data and develops a statistical model that can account for these characteristics. Section 3 lays out the results of our data analysis. Our main finding is that when the sample is split in 1980, each subsample is well described by a vector equilibrium correction model with a single common trend and two cointegrating equations. We estimate the parameters of the cointegrating equations for each regime and find that one of them is stable across regimes but the other is different before and after 1980. In Sections 4 – 7 we interpret our statistical results using a class of three equation structural models that embody the natural rate hypothesis. We argue that this class cannot explain the data and we are led to reject existing theories such as those of Orphanides, Ireland and Sargent. Although these theories can explain why inflation and unemployment move together, they are unable to account for the low frequency movements in the interest rate and inflation that we find in the data.

If the Orphanides, Ireland or Sargent explanation were correct, we would expect to see the Fisher equation holding as a cointegrating equation. Our statistical evidence rejects the existence of a single stable Fisher equation for the entire period and we are thus led to reject the standard interpretation of American inflationary experience in the 1970's. According to this interpretation, nonstationarity in unemployment, inflation and the federal funds rate is due to the presence of a unit root in the natural rate of unemployment. In Section 8 we offer an alternative explanation for the experience of the 1970's and 1980's using the idea that observed nonstationarity arises from drift in the underlying real rate of interest. Section 9 presents a short conclusion.

2 Characteristics of the Data and a Statistical Model

In Figure 3 we plot data for the federal funds rate and the unemployment rate and in Figure 4 we plot the federal funds rate and the rate of change in the GDP deflator. All three series represent U.S. data from 1970Q1 to 1999Q3.¹

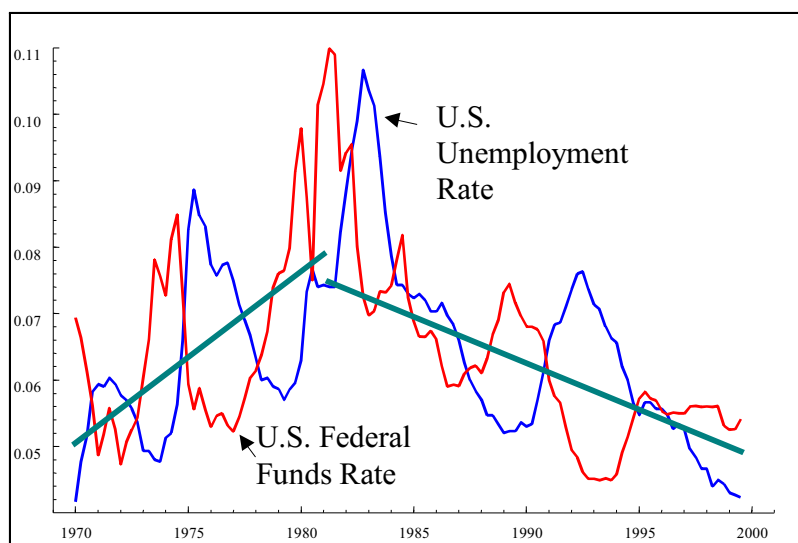


Figure 3: Unemployment and the Federal Funds Rate

We want to draw attention to two features of this data that will be important for our arguments. The first is that although unemployment and

¹In preliminary work we looked at data beginning in the 1950's when a time series on the federal funds rate first becomes available. We chose to exclude this initial period and to begin our analysis instead in 1970Q1 because our methodology requires that we are able to fit a stable parameter model over an extended time period and data before 1970Q1 behaves quite differently from the data in our study. Since 1970Q1 is the date at which Arthur Burns took over as chairman of the board of governors of the Fed. it is perhaps unsurprising that our preliminary results indicated a break in parameter stability at this time. In our most recent work (still in progress) we have included a third regime in our analysis covering the period from 1958Q1 through 1969Q4. We expect to report the results of this work in a forthcoming working paper.

the interest rate move in opposite directions at high frequency, they move together at low frequencies: In the period before 1980 both series are trending up; in the period after 1980 they are trending down. The same low frequency comovement can be seen clearly in the inflation and interest rate data in Figure 4.

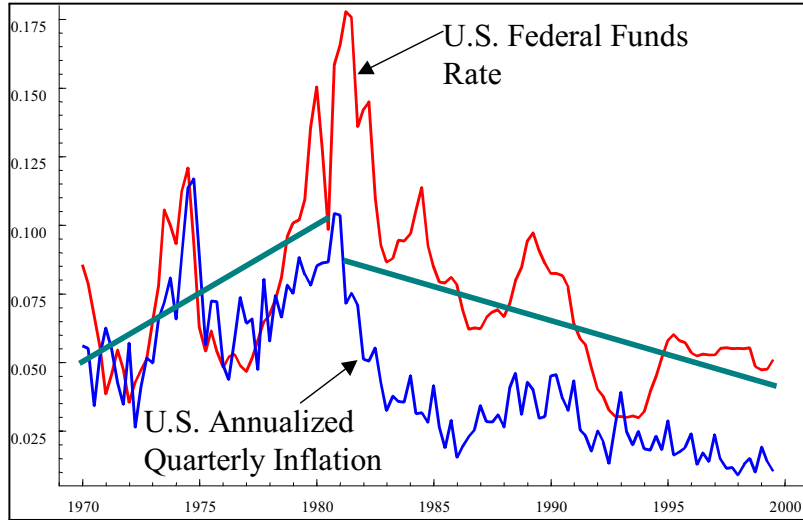


Figure 4: Inflation and the Federal Funds Rate

A second feature of the data that will be significant for our later argument is that the difference between the inflation rate and the nominal interest rate is larger after 1980 than before. Since the difference in these series measures the real interest rate, this fact implies that the average real interest rate was higher in the second part of the sample than the first.

Our approach is to use cointegration analysis to uncover low frequency comovements in unemployment, inflation and the federal funds rate. Let u_t , i_t , and π_t be the unemployment rate, the interest rate and the inflation rate, define $X_t = \{u_t, i_t, \pi_t\}$ and consider the vector autoregressive (VAR) representation

$$X_t = \Pi_1 X_{t-1} + \Pi_2 X_{t-2} \dots + \Pi_k X_{t-k} + \Phi D_t + \epsilon_t, \quad t = 1, \dots, T. \quad (1)$$

The terms Π_i and Φ represent conformable matrices of coefficients and D_t is a vector of deterministic variables. We assume that $\{\epsilon_t\}$ is a sequence of independent Gaussian variables with zero mean and covariance matrix Ω and we write the system as an observationally equivalent Vector Equilibrium Correction Model (VEqCM)

$$\Delta X_t = \sum_{i=1}^{k-1} \Gamma_i \Delta X_{t-i} + \Pi X_{t-1} + \Phi D_t + \epsilon_t \quad (2)$$

where the matrices $\Pi = \sum_{i=1}^k \Pi_i - \mathbf{I}$ and $\Gamma_i = - \sum_{j=i+1}^k \Pi_j$ are each $p \times p$.

The key idea behind cointegration is that the matrix Π that premultiplies the levels variables in equation (2) may not be of full rank. To see why this is interesting, suppose instead that Π did have full rank and consider the simple case where D_t is a vector of constants. In this case the variables in the system would all be stationary and one could represent their long run means as follows,

$$\bar{X} = -\Pi^{-1}\Phi D.$$

One can think of \bar{X} as the non-stochastic steady state of the system and one could recover estimates of the elements of \bar{X} by taking averages of the data.

The situation where Π is of full rank and X_t is stationary is in contrast to the assumption made in the cointegration literature. Here, one assumes that the Π matrix has rank $r < p$. In this case Π can be decomposed as the product of two matrices $\alpha\beta^T$ where α, β are each $(p \times r)$ and have rank r .² The r columns of β are called cointegrating vectors and α is referred to as the loading matrix (see e.g. Johansen, [13]).

For the 3-dimensional process $\{u_t, i_t, \pi_t\}$; in the case that Π has full rank the data clusters around a point (the long run steady state) defined by the intersection of three planes. In the reduced rank model the data clusters around a subspace referred to as β_{\perp} (beta orthogonal) defined by the intersection of two planes. Our focus in this paper is to draw inferences about the class of structural economic models that are consistent with the space β_{\perp} uncovered by our analysis of the data.

²We use boldface to denote matrices and superscript T to denote transpose.

3 A Description of the Results

Section 3 describes the results of our statistical analysis.

3.1 Breaking the Sample

In a preliminary study of the data we attempted to fit a stable VAR with 3 lags over the period 1970Q1 - 1999Q3.³ In this stage of our analysis we found considerable evidence of misspecification. For example, recursive CHOW tests such as the one based on one step ahead forecasts in Figure 5 showed strong evidence of a break around 1980. Other misspecification tests on a model estimated over the whole sample also led us to reject a constant parameter model.

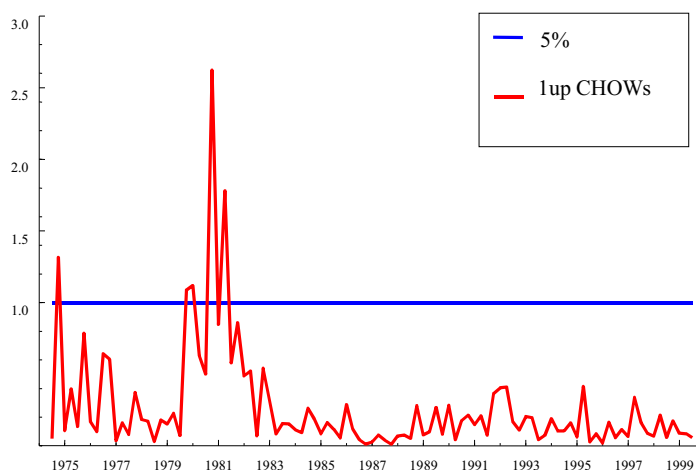


Figure 5: A Structural Break Test

Table 1 presents test statistics for a range of misspecification tests for the full data set from 1970Q1 to 1999Q3. Square brackets represent p-values. These statistics include tests of the residuals of the VAR for the presence of autocorrelation, normality of the errors, and the presence of ARCH effects.

³The empirical analysis in this paper was conducted using PcGive10, [9], and Cats in Rats [10].

$H_0 :$	<i>No AR</i> (1 – 5)	<i>Normality</i>	<i>No ARCH</i> X_i^2	<i>No ARCH</i> 4
Δu	1.58[0.17]	10.48[0.00]	4.04[0.00]	1.78[0.13]
Δi	4.54[0.00]	47.50[0.00]	2.89[0.00]	4.70[0.00]
$\Delta \pi$	1.91[0.09]	2.47[0.28]	1.97[0.01]	3.02[0.02]
Distribution	$F(5, 104)$	$\chi^2(2)$	$F(18, 90)$	$F(4, 101)$
<i>VAR</i>	1.23[0.15]	44.05[0.00]	2.40[0.00]	<i>n.a.</i>
Distribution	$F(45, 265)$	$\chi^2(6)$	$F(108, 494)$	

Table 1: Misspecification Tests for the reduced Form 1970-1999

We performed these tests for each individual equation as well as for the entire system.

Most of the test statistics in Table 1 clearly reject the null hypothesis reported at the head of the column. These rejections caused us to conclude that a VAR with well behaved residuals could not be fitted to the full sample and we chose instead to try fitting two separate regimes using the third quarter of 1979 to break the sample.⁴ This date, suggested by our structural break tests, corresponds to the period when Paul Volcker took over from Arthur Burns' successor William Miller as Chairman of the Fed. Using this break point our two samples run from 1970Q1 to 1979Q3 and 1979Q4 to 1999Q3.

3.2 Developing a Statistical Model

Our next step was to establish data congruent models for each subperiod. We used three criteria, (Hannan-Quinn, Schwarz and Akaike) to test for the optimal lag length in each of our subsamples. Beginning with 4 lags, all three criteria suggested a lag length of 3 for each sub-period. Further restricting the system to 2 lags was rejected by F tests in each case. In order to ensure well behaved residuals, we included three impulse dummies in the system of the second period (fourth quarter of 1980 and 1981 and second quarter of 1981). The period from 1979Q3 to 1982Q4 corresponds to one in which the Fed temporarily abandoned interest rate control and tried instead to control

⁴We also tried to represent the data with a single stable VEqCM by including a variety of dummy variables particularly around the apparent break in 1980. This strategy also was unsuccessful.

$H_0 :$	<i>No</i>	<i>AR</i> (1 – 5)	<i>Normality</i>	<i>No</i>	<i>ARCH</i> X_i^2	<i>No</i>	<i>ARCH</i> 4
Δu		1.20[0.33]	2.66[0.26]		1.10[0.45]		0.69[0.60]
Δi		0.16[0.97]	3.99[0.13]		0.32[0.98]		0.60[0.66]
$\Delta \pi$		0.96[0.45]	0.90[0.63]		0.69[0.76]		0.45[0.76]
Distribution		$F(5, 24)$	$\chi^2(2)$		$F(18, 10)$		$F(4, 21)$
<i>VAR</i>		0.68[0.88]	10.74[0.09]		0.71[0.90]		<i>n.a.</i>
Distribution		$F(45, 36)$	$\chi^2(6)$		$F(108, 35)$		

Table 2: Misspecification Tests for the Reduced Form: 1970-1979

$H_0 :$	<i>No</i>	<i>AR</i> (1 – 5)	<i>Normality</i>	<i>No</i>	<i>ARCH</i> X_i^2	<i>No</i>	<i>ARCH</i> 4
Δu		0.47[0.79]	1.63[0.44]		1.34[0.20]		0.51[0.72]
Δi		2.87[0.02]	2.50[0.28]		3.45[0.00]		1.00[0.41]
$\Delta \pi$		1.26[0.28]	6.51[0.04]		0.60[0.87]		0.97[0.42]
Distribution		$F(5, 62)$	$\chi^2(2)$		$F(18, 48)$		$F(4, 59)$
<i>VAR</i>		1.04[0.41]	11.13[0.08]		1.35[0.03]		<i>n.a.</i>
Distribution		$F(45, 149)$	$\chi^2(6)$		$F(108, 253)$		

Table 3: Misspecification Tests for the Reduced Form: 1979-1999

the rate of growth of the money supply and it is perhaps unsurprising that this period displays considerable instability.

Tables 2 and 3 show results of misspecification tests on the two subperiods. In the first period none of these tests is significant at the 5% level. In the second period there is some evidence of ARCH effects in the interest rate equation but otherwise the residuals are consistent with the existence of two separate well behaved models, one for each period. We decided to proceed on the assumption there were two separate monetary policy regimes by investigating the cointegration properties of the data over each subperiod.

3.3 Testing for Nonstationarity

To test for nonstationarity, we ran Augmented Dickey Fuller (ADF) tests for each of the variables $\{u, i, \pi\}$ over the two regimes. In each period we allowed for a constant and a linear trend and, apart from inflation in the second period where the ADF test statistic is borderline at the 5% level, we were

		u	i	π
$H_0 : \beta' =$		(1, 0, 0)	(0, 1, 0)	(0, 0, 1)
$\chi^2(1)$ Period 1	1	7.55	8.41	11.42
$\chi^2(1)$ Period 2	2	4.09	6.18	6.23

Table 4: Testing for individual variables to be $I(0)$

unable to reject the null hypothesis that the variables contain a unit root. Given that ADF tests have comparatively low power we also ran multivariate tests by checking whether each of the variables was $I(0)$ and hence could be represented as a trivial cointegrating vector within a three variable system. In each case this possibility was rejected by the corresponding $\chi^2(1)$ statistic and we report the results of our tests in Table 4. These results confirm the results of our ADF tests that all of the variables are $I(1)$.

3.4 Establishing the Cointegrating Rank

Having established this fact our next step was to test for cointegration by investigating the rank of the Π matrix. In Figure 6, we present recursive estimates of the eigenvalues of the Π matrix together with 2-standard error bounds. Notice that two of these eigenvalues are different from zero by at least two standard errors for both sub-periods and the third is insignificantly different from zero.⁵

In Table 5 we present the trace statistics,

$$Q_r = -T \sum_{i=r+1}^p \ln(1 - \hat{\lambda}_i),$$

together with their asymptotic critical values as reported in Johansen [14]. For the first sub-period our point estimates of the three roots $\hat{\lambda}_i$ over the full subsample, are equal to 0.66, 0.30 and 0.02. For the second period they are equal to 0.46, 0.14 and 0.06.

To interpret Table 5, the rows should be read sequentially. The row labeled $r = i$ ($i = 0, 1, 2$) reports the statistic Q_r and its 95% confidence

⁵In order to allow for the possibility that the data contains a trend in the level we did not restrict the constant to lie in the cointegrating space, although our conclusions regarding the rank of Π are not sensitive to this assumption.

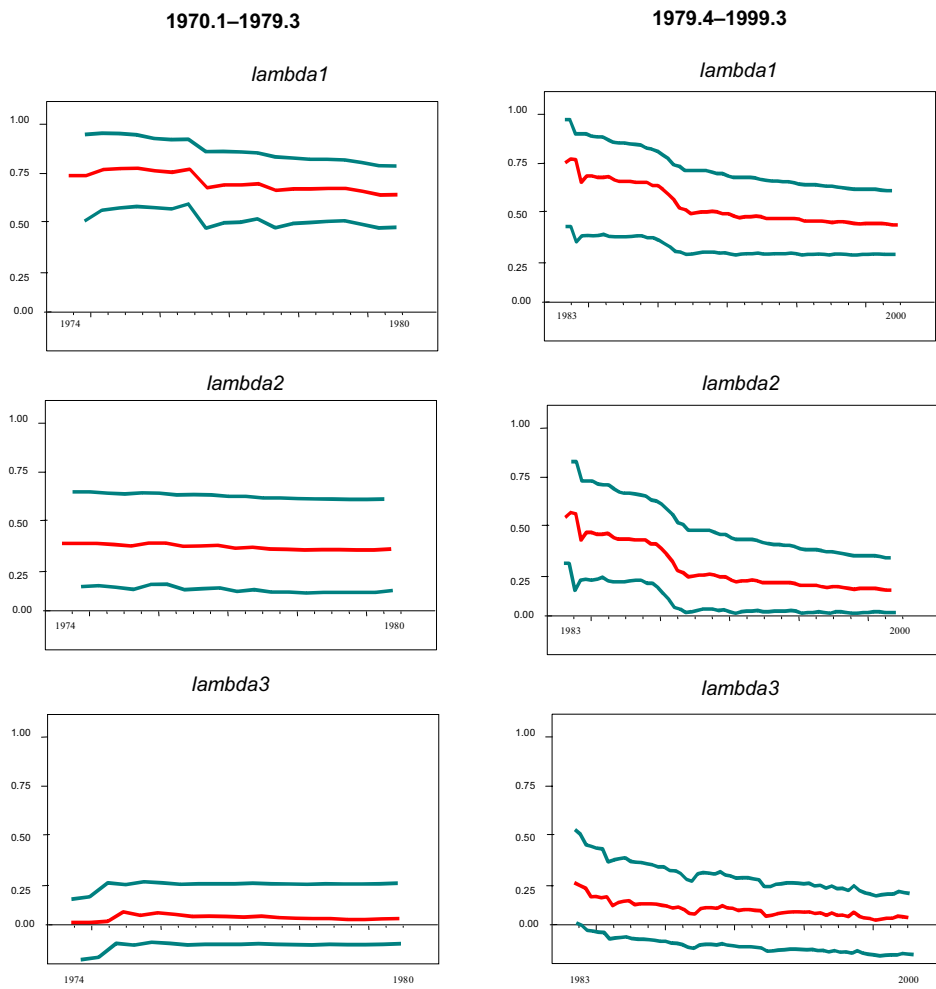


Figure 6: Recursive Estimates of the Roots of Π

	1970-1979		1979-1999		95% c.v.
$H_0 : \text{rank } \Pi = r$	$\hat{\lambda}_i$	Q_r	$\hat{\lambda}_i$	Q_r	
$r = 0$	0.66	56.94	0.46	67.53	29.7
$r \leq 1$	0.30	14.6	0.14	17.92	15.4
$r \leq 2$	0.02	0.67	0.06	5.70	3.8
VAR: $\{X_t = u_t, i_t, \pi_t\}$, 3 lags, unrestricted constant.					

Table 5: Trace Test Statistics Q_r for Cointegrating Rank

value under the null hypothesis that Π has rank i against the alternative of full rank. Reading across the row $r = 0$ it is clear that we can reject the hypothesis of rank 0 for each sub-period and thus at least one eigenvalue is non zero. Reading across row $r \leq 1$, for the first period the Q_r statistic is close to its 95% confidence value for both sub-periods. Finally, reading the row $r \leq 2$ allows us to accept the hypothesis of one zero eigenvalue (rank ≤ 2) for the first sub-period but for the second sub-period the hypothesis of rank ≤ 2 is borderline at the 5% significance level.

Our interpretation of Table 5, in conjunction with Figure 6, is that the data for each subperiod is consistent with the assumption that Π has two non-zero eigenvalues and one eigenvalue equal to zero.

3.5 Estimating the Cointegrating Space

Our next step was to estimate the cointegrating matrix β^i for the two sub-periods, $i = 1, 2$. To identify the space we imposed two zero restrictions,

$$(\beta^i)^T X = \begin{pmatrix} 0 & 1 & \beta_{13}^i \\ 1 & 0 & \beta_{23}^i \end{pmatrix} \begin{pmatrix} u \\ i \\ \pi \end{pmatrix}, \quad i = 1, 2$$

and we estimated the parameters β_{13}^i and β_{23}^i , using reduced rank regression (see e.g. Johansen and Juselius [15]). We refer to β^i (normalized in this way) as the *reduced form* cointegrating matrix to distinguish it from the structural cointegrating matrix from an economic model. In Section 4 we will introduce the notation $\tilde{\beta}^i$ to refer to this second concept.

Table 6 shows our estimates of β^i with standard errors in parentheses and Figures 7 and 8 show the recursive estimates of the freely estimated

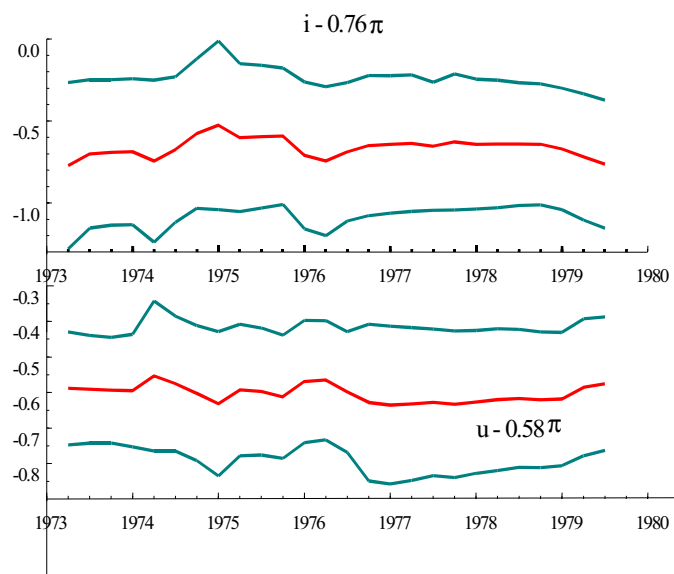


Figure 7: Recursive Estimates of the Cointegrating Vectors (First Subsample)

coefficients $\hat{\beta}_j^i$ together with their ± 2 standard error bands.⁶ Our estimates of the first cointegrating vector show that in the first subperiod the interest rate cointegrates with inflation with a coefficient of 0.76. In the second subperiod it cointegrates with inflation with a coefficient of 1.5. In both periods the low frequency comovements of unemployment with inflation are similar; we find a cointegrating coefficient of 0.58 in the first period and 0.75 in the second. We discuss these estimates further below.

4 A Class of Structural Models

This section describes a class of structural models that we will use to capture the cointegrating properties of the data for each of the two subperiods.

⁶The notation β_j^i refers to cointegrating vector j in subperiod i and for $i, j \in \{1, 2\}$. $\hat{\beta}_j^i$ is our estimate of β_j^i .

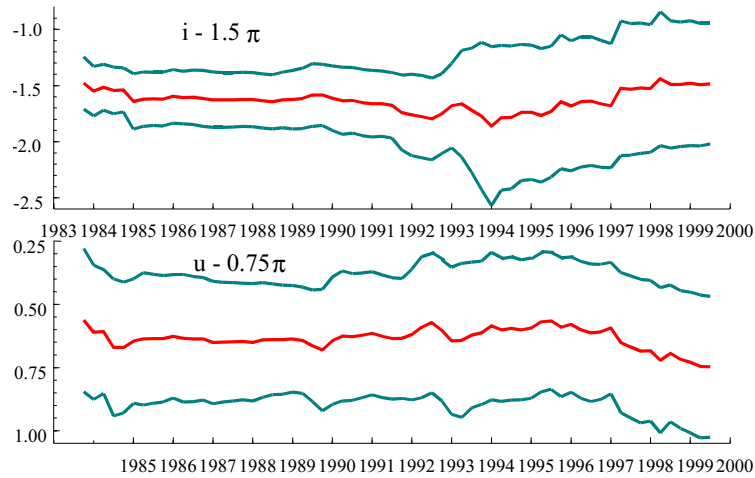


Figure 8: Recursive Estimates of the Cointegrating vectors (Second Subsample)

4.1 Stationary Models

We begin with a class of stationary structural models that is broad enough to include most of the theoretical approaches that have been applied in the literature to explain the time series properties of inflation, unemployment and the interest rate:

$$\begin{aligned} \mathbf{A}_2 E_t[X_{t+1}] + \mathbf{A}_0 X_t + \mathbf{A}_1(L) X_{t-1} + v_t + \bar{v} &= 0, \\ E_t[v_{t+1}] &= 0, \\ E_t[v_{t+1} v'_{t+1}] &= \Sigma. \end{aligned}$$

More compactly we write this system as

$$\mathbf{A}(L) E_t[X_{t+1}] + v_t + \bar{v} = 0. \quad (3)$$

The terms \mathbf{A}_2 , \mathbf{A}_0 , are 3×3 matrices of coefficients, $\mathbf{A}_1(L)$ and $\mathbf{A}(L)$ are matrix polynomials in the lag operator and \bar{v} is a vector of constants.

Although Equation (3) defines a large class of models, it cannot account for the non-stationary behavior of the data since it implies the existence of

	<i>u</i>	<i>i</i>	π	<i>const</i>
β_1^1	0	1	-0.76 (-0.17)	-0.02
β_2^1	1	0	-0.58 (0.10)	-0.03
β_1^2	0	1	-1.50 (-0.29)	-0.026
β_2^2	1	0	-0.75 (0.15)	-0.04

Table 6: Identified Cointegrating Relationships

a vector of long-run means, \bar{X} given by the expression

$$\bar{X} = -\mathbf{A}(0)^{-1} \bar{v}.$$

Since the data on unemployment, the interest rate and the inflation rate is well described as a non-stationary cointegrated system with a single common trend Equation (3) is not a suitable model.

4.2 Nonstationary Models

To arrive at a class of structural models that can be described by a VEqCM we amend Equation (3) by assuming that the error term associated with one of the equations in the system is a random walk. By appropriate ordering of the equations we can always choose the nonstationary error to be in the third equation. Then, by differencing the third equation and rewriting the other two equations in differences and levels, one arrives at the “equilibrium correction” representation described in Equation (4).⁷

$$\mathbf{B}(L)E_t[X_{t+1}] + \tilde{\alpha}\tilde{\beta}^T X_t + w_t + \bar{w} = 0. \quad (4)$$

In Equation (4) the vector of errors w_t is stationary with variance-covariance

⁷We place the terms “equilibrium correction” in parentheses because Equation (4) describes a structural model that contains expectations of future variables. It does not yet describe the data generation process.

matrix $\tilde{\Sigma}$ and the error vectors w_t and v_t are related by the expression

$$\begin{bmatrix} w_t^1 \\ w_t^2 \\ w_t^3 \end{bmatrix} = \begin{bmatrix} v_t^1 \\ v_t^2 \\ v_t^3 - v_{t-1}^3 \end{bmatrix}.$$

The parameters of the matrix $\mathbf{B}(L)$, are functions of the corresponding parameters of $\mathbf{A}(L)$. The matrices $\tilde{\alpha}$ and $\tilde{\beta}$ represent the structural loading matrix and the matrix of structural cointegrating vectors as opposed to the reduced form matrices α and β that we introduced in Section 2.

To arrive at a description of the data generation process one must supplement Equation (4) with a description of how expectations are formed. In this paper we take the stand that expectations are rational in a very weak sense. We do not require that the subjective probability distribution of future variables should coincide with the actual probability distribution at all points in time. We require only that there should be no systematic long run biases in the mechanism generating expectations. Our assumption is consistent with a wide variety of learning mechanisms, as well as with pure rational expectations models, and it implies that we would expect to see the structural cointegrating vectors ($\tilde{\beta}$ from Equation (4)) holding in the data.

5 Naming the Equations

In this section we consider a subset of models in the class defined by the system of equations (4). This subset consists of an aggregate demand equation, an aggregate supply equation and a policy rule. The main idea of our paper is to address the question: Can this class of models explain the cointegrating relationships uncovered in data?

In the following discussion we define the following elements of the matrix $\mathbf{B}(L)$

$$\mathbf{B}(L) \equiv \begin{bmatrix} b_u^D(L) & b_i^D(L) & b_\pi^D(L) \\ b_u^S(L) & b_i^S(L) & b_\pi^S(L) \\ b_u^P(L) & b_i^P(L) & b_\pi^P(L) \end{bmatrix}.$$

where the superscripts D , S and P refer to the equations; *Demand*, *Supply* and *Policy* and the subscripts u , i , and π refer to the variables; unemployment, the interest rate and inflation.

5.1 Aggregate Demand

We model the aggregate demand equation as follows

$$E_t [b_u^D(L) \Delta u_{t+1}] + \tilde{\alpha}^D (i_t - \pi_t - \rho) - \bar{v}^D = v_t^D, \quad (5)$$

where $b_u^D(L)$ is a scalar polynomial in the lag operator that defines the response coefficients of the aggregate demand equation to all lags of differences in the unemployment rate. A similar equation that replaces unemployment with output has been widely used in the literature. Such an equation can be derived from a representative agent model with a single commodity and no capital. This equation, known as an optimization based IS curve,⁸ is obtained from the Euler equation in a representative agent model by making the assumption that all output is consumed. The fact that differences of output rather than levels enters the standard demand equation follows from the fact that, in a linearized Euler equation, the coefficients on future and current consumption are the same.

Since we are not using output in our study we assume instead that output is inversely related to unemployment through a production function and we replace output by the negative of unemployment. Our specification allows for fairly general distributed lags of unemployment to enter the equation and thus it can capture the effects of assumptions such as habit persistence that have been proposed as possible business cycle propagation mechanisms. A key feature of Equation (5) is that it implies, in the long run, that the real interest rate should be constant, that is, the Fisher equation should characterize the data. This feature is a property of the representative agent assumption and it does not hold in more complicated general equilibrium models.

The Fisher equation is a strong assumption to impose on data and there are a variety of alternative models that impose a weaker long run restriction. For example, simple Keynesian macro models imply that there should be an upward sloping relationship between unemployment and the real interest rate in the long run (a downward sloping IS curve in output-interest rate space). A similar implication follows from models, like the overlapping generations model, in which Ricardian equivalence fails to hold. To allow for models in this class we also consider a weaker specification of the aggregate demand

⁸This is the notation used by McCallum and Nelson [17].

equation

$$E_t [b_u^D(L) \Delta u_{t+1}] + \tilde{\alpha}^D \left(-\tilde{\beta}_u^D u_t + i_t - \pi_t - \rho \right) - \bar{v}^D = v_t^D, \quad (6)$$

where the level of unemployment as well as differences of unemployment appear in the equation. In Equation (6) the coefficient $\tilde{\beta}_u^D$ refers to the coefficient on unemployment (subscript u) in the structural cointegrating equation associated with the demand equation (superscript D).

5.2 Aggregate Supply

We model the supply equation with the following fairly general version of an expectations augmented Phillips curve.

$$E_t [b_\pi^S(L) \Delta \pi_{t+1}] + \tilde{\alpha}^S (u_t - u^{NR}) - \bar{v}^S = v_t^S, \quad (7)$$

where u^{NR} is a constant that represents the natural rate of unemployment.⁹

According to the natural rate hypothesis there is no long-run trade-off between inflation and unemployment. To capture this hypothesis we assume that only differences of the inflation rate enter the supply equation. If the equation were written in levels, our assumption would imply that the coefficients on all lags of inflation sum to zero. As a consequence of this assumption our model will have the property that the same constant unemployment rate u^{NR} will be associated with any constant inflation rate.

5.3 Policy Rule

The final equation of our system is a policy rule of the form,

$$E_t [b_i^P(L) \Delta i_{t+1}] + \tilde{\alpha}^P \left(\tilde{\beta}_u^P (u_t - u^{NR}) + i_t - \tilde{\beta}_\pi^P \pi_t + \gamma \right) - \bar{v}^P = v_t^P. \quad (8)$$

The terms $\tilde{\beta}_\pi^P$ and $\tilde{\beta}_u^P$ represent the coefficients of the Fed's reaction function to inflation and to deviations of unemployment from its natural rate and γ is a constant in the policy rule.

⁹There is a large literature on the microfoundations of aggregate supply that discusses whether lagged or expected future inflation should appear in this equation. This literature derives the influence of excess capacity (or unemployment) on inflation in a class of models in which there are nominal rigidities in price or wage setting. See the survey by Clarida, Gali and Gertler [6].

A number of authors have worked with versions of this equation that allow the interest rate to depend on more complicated distributed lags of past or expected future endogenous variables. Since our analysis relies only on the assumption that the policy rule induces a low frequency relationship amongst the three endogenous variables, it is consistent with these more complicated specifications of the dynamics of the policy response.

6 The Source of Nonstationarity

We have argued that unemployment, the interest rate and inflation are nonstationary but cointegrated with two cointegrating relationships. If a structural model in the class of (3) is to be consistent with these facts, one of the error terms, v_t^1 , v_t^2 or v_t^3 must be nonstationary: But which one? If all three error terms were stationary then the following linear combinations of u , i and π would also be stationary. We refer to these stationary linear combinations as $\tilde{\beta}^D$, $\tilde{\beta}^S$ and $\tilde{\beta}^P$.

$$AD : \quad \left(\tilde{\beta}^D\right)^T X = i - \pi - \rho, \quad \rho > 0, \quad (9)$$

$$AS : \quad \left(\tilde{\beta}^S\right)^T X = u - u^{NR}, \quad u^{NR} > 0, \quad (10)$$

$$PR : \quad \left(\tilde{\beta}^P\right)^T X = \tilde{\beta}_u^P (u - u^{NR}) + i - \tilde{\beta}_\pi^P \pi + \gamma; \quad \tilde{\beta}_u^P > 0, \quad \tilde{\beta}_\pi^P > 0, \quad (11)$$

If we replace Equation (5) with the weak form of the aggregate demand equation given by Equation (6), the term $\tilde{\beta}^D X$ would be given by the expression,

$$AD : \quad \left(\tilde{\beta}^D\right)^T X = -\tilde{\beta}_u^D u + i - \pi - \rho; \quad \tilde{\beta}_u^D > 0. \quad (12)$$

If any one of the error terms, v^D , v^S or v^P is nonstationary then the cointegrating vectors associated with the *other two equations* are the ones that one would expect to see in the data. For example, if v^D is nonstationary then we would expect to see that $\tilde{\beta}^S$ and $\tilde{\beta}^P$ should appear as cointegrating vectors. From this argument we see that if either v^D or v^P were nonstationary, $\left(\tilde{\beta}^S\right)^T X$ should appear as one of the two cointegrating equations and hence

unemployment itself should be stationary. Since unemployment is $I(1)$ in the data we can rule out the possibility that either v_t^D or v_t^P is nonstationary. This leaves only the possibility that nonstationarity arises from the supply equation. We turn to this possibility next by examining the implications of assuming that the natural rate of unemployment is a random walk.

6.1 Modeling Nonstationarity in the Natural Rate

To model drift in the natural rate of unemployment, let the natural rate u^{NR} be indexed by t and suppose that it follows the process,

$$\tilde{\alpha}^S (u_t^{NR} - u_{t-1}^{NR}) = w_t^S + \bar{w}^S,$$

where w_t^S is an $I(0)$ variable, \bar{w}^S is a drift parameter and $\tilde{\alpha}^S$ is the structural loading factor in the supply equation. Suppose further that there is no other shock hitting the aggregate supply equation so that v_t^S is identically zero.¹⁰ Under this specification we can rewrite Equation (7) as follows

$$E_t [b_\pi^S(L) \Delta\pi_{t+1}] + \tilde{\alpha}^S u_t = \tilde{\alpha}^S u_t^{NR}. \quad (13)$$

Since $\tilde{\alpha}^S u_t^{NR}$ is nonstationary we must take differences of Equation (13) to arrive at an equation within a stationary error term

$$E_t [\Delta b_\pi^S(L) \Delta\pi_{t+1}] + \tilde{\alpha}^S \Delta u_t = w_t^S + \bar{w}^S. \quad (14)$$

If we accept that the natural rate of unemployment is nonstationary we must explain how a drift in the natural rate was transmitted to a drift in inflation and the fed funds rate. In the following two subsections we will discuss two alternative explanations of this process that have been put forward in the literature and we will explain why we find these explanations lacking. The first is due to Peter Ireland [12] and the second to Athanasios Orphanides [18].¹¹

¹⁰Relaxing this assumption would add an additional stationary moving average error term to Equation (14).

¹¹Sargent [21] presents a third argument also based on time inconsistency of the optimal policy. Sargent's argument is more sophisticated than Ireland's since it can explain the fall in inflation endogenously in a model in which agents form expectations using a least squares learning rule. Sargent's explanation, like that of Ireland and Orphanides, implies that the Fisher equation should hold in the data.

6.2 Ireland's Explanation

In a recent paper Peter Ireland [12] constructs a bivariate model of inflation and unemployment using the Barro-Gordon [2] model of time inconsistent monetary policy. In his work, the Fed plays a game against the public. In this policy game it directly picks the mean of the inflation rate in an attempt to minimize a quadratic loss function. Ireland shows that if the natural rate of unemployment is non-stationary then time inconsistency in the policy game will cause the equilibrium unemployment rate and the equilibrium inflation rate both to inherit nonstationarity from the natural rate of unemployment. However, a linear combination of unemployment and the inflation rate will be stationary. Hence the Barro-Gordon model can account for why the policy maker might transfer a unit root in unemployment into a unit root in inflation and it can also explain why these variables are cointegrated in the data. Notably, Ireland does not model the interest rate.

6.3 Orphanides' Explanation

Athanasios Orphanides [18] has proposed a different mechanism to explain why inflation and unemployment both went up (and came down) together. His explanation relies on the fact that, during the 1970's, most economists did not know that the natural rate of unemployment had increased and he substantiates this claim by looking at real time estimates of potential output. These estimates were much more optimistic about the trend growth path of the economy than were subsequent revisions of the same series. According to the Orphanides explanation, the Fed overstimulated the economy in the 1970's by reducing the Fed Funds Rate because it mistook an increase in the natural rate of unemployment for a recession.

6.4 Are these Explanations Correct?

In our discussion of results in Section 7 we will make use of the Orphanides assumption that the Fed erroneously responded to the unemployment rate instead of to deviations of unemployment from its natural rate. In the absence of this assumption our model has no hope of explaining why inflation and unemployment appear cointegrated. With this assumption we will be able to replicate a version of Orphanides' argument and also explain why we find his argument unconvincing. We will show that if nonstationarity in the

data arose because of a unit root in the natural rate of unemployment then one of the cointegrating equations in the data should be the Fisher equation. Our data analysis strongly rejects the hypothesis that the Fisher equation holds across the two subperiods and so we are led to look for an alternative explanation of the facts.

Our dissatisfaction with Ireland's explanation is based on the same idea. We differ from Ireland's study since we have included the federal funds rate in our analysis whereas Ireland looked at a bivariate model of inflation and unemployment. Since Ireland did not directly model the interest rate, it is always possible that a richer version of his analysis might be able to account for all of the facts; but we find this unlikely since a richer version of Ireland's model is likely to include the Fisher equation just like the models we study in this paper.

7 Some Implications of Nonstationarity in the Natural Rate

What are the implications of the assumption that the natural rate of unemployment is a random walk? In the following two subsections we study this question using two alternative assumptions about the aggregate demand curve.

7.1 Implications of the Strong Form of Aggregate Demand

In our empirical analysis we identify the cointegrating space by excluding unemployment from one cointegrating vector and excluding the interest rate from the other. If we impose this identification scheme on the structural cointegrating vectors $\tilde{\beta}^D$ and $\tilde{\beta}^P$, we arrive at the following mapping that represents the reduced form cointegrating vectors β^1 and β^2 in terms of the

parameters $\tilde{\beta}_j^i$ of the structural cointegrating vectors:

$$\begin{aligned}(\beta^1)^T X &= \begin{pmatrix} 0 & 1 & -1 \\ 1 & 0 & \frac{1-\tilde{\beta}_\pi^{P1}}{\tilde{\beta}_u^{P1}} \end{pmatrix} \begin{pmatrix} u \\ i \\ \pi \end{pmatrix}, \\ (\beta^2)^T X &= \begin{pmatrix} 0 & 1 & -1 \\ 1 & 0 & \frac{1-\tilde{\beta}_\pi^{P2}}{\tilde{\beta}_u^{P2}} \end{pmatrix} \begin{pmatrix} u \\ i \\ \pi \end{pmatrix}.\end{aligned}$$

Consider β_2^i : $i = 1, 2$, which represents the cointegrating relationship between unemployment and the inflation rate in each subperiod. Our model implies that this vector should be given by

$$\begin{aligned}(\beta_2^1)^T X &= \begin{pmatrix} 1 & 0 & \frac{1-\tilde{\beta}_\pi^{P1}}{\tilde{\beta}_u^{P1}} \end{pmatrix} \begin{pmatrix} u \\ i \\ \pi \end{pmatrix}, \\ (\beta_2^2)^T X &= \begin{pmatrix} 1 & 0 & \frac{1-\tilde{\beta}_\pi^{P2}}{\tilde{\beta}_u^{P2}} \end{pmatrix} \begin{pmatrix} u \\ i \\ \pi \end{pmatrix},\end{aligned}$$

and our estimates of β_2^i are given by

$$\begin{aligned}(\hat{\beta}_2^1)^T X &= \begin{pmatrix} 1 & 0 & -0.58 \\ & & (0.10) \end{pmatrix} \begin{pmatrix} u \\ i \\ \pi \end{pmatrix}, \\ (\hat{\beta}_2^2)^T X &= \begin{pmatrix} 1 & 0 & -0.75 \\ & & (0.15) \end{pmatrix} \begin{pmatrix} u \\ i \\ \pi \end{pmatrix}.\end{aligned}$$

The numbers in parentheses are standard errors. These estimates are consistent with Orphanides' argument if the Fed responded to inflation by raising the interest rate with a reaction coefficient $\tilde{\beta}_\pi^P$ that was greater than one in each period and if the response of the Fed to increased unemployment was positive. Evidence from our estimates of the first cointegrating equation (the relationship between unemployment and the inflation rate) is thus supportive of Orphanides' explanation. However, things do not look so good when we consider the first cointegrating vector (the relationship between the federal funds rate and inflation).

Our model implies that β_1^i : $i = 1, 2$ should be equal in both subperiods and should be given by

$$(\beta_1^1)^T = (\beta_1^2)^T = (0, 1, -1).$$

In words, the Fisher equation should hold in both sub-periods. But our point estimates of the elements of these vectors are given by

$$\begin{aligned} (\hat{\beta}_1^1)^T X &= \begin{pmatrix} 0 & 1 & -0.76 \\ & & (0.17) \end{pmatrix} \begin{pmatrix} u \\ i \\ \pi \end{pmatrix}, \\ (\hat{\beta}_1^2)^T X &= \begin{pmatrix} 0 & 1 & -1.50 \\ & & (0.29) \end{pmatrix} \begin{pmatrix} u \\ i \\ \pi \end{pmatrix}. \end{aligned}$$

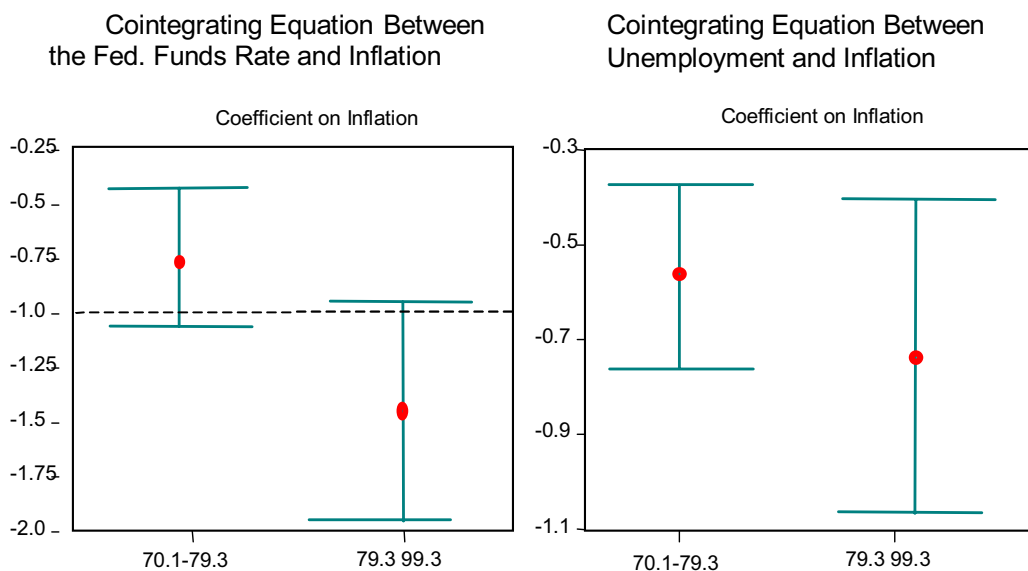


Figure 9: Estimates of the Cointegrating Vectors with 2-Standard Error Bands

Figure 9 illustrates the full sample estimates of the two cointegrating vectors for both subperiods. The Fisher hypothesis requires that the coefficient on inflation in the first cointegrating vector should equal -1 in each subsample and it further requires that the two subsample estimates should be equal.

Notice from the left panel of the figure that one cannot reject the Fisher hypothesis in either period since the dashed line indicating a coefficient of -1 is marginally within the 2-standard error confidence bound in each case. However, the recursive estimates in Figures 7 and 8 show that for the second period this restriction is only accepted at the end of the sample period and clearly rejected over the 80s and the beginning of the 90s.

Further evidence against the Fisher hypothesis comes from the fact the point estimates in each sub sample in Figure 9 lie well outside of the 2-standard error bounds for the other one. This implies that although one cannot reject the hypothesis that the Fisher equation holds over either separate subsample, one *can* reject the joint hypothesis that it holds in both sub-samples together. We are led to reject both the Orphanides and the Ireland explanations for the comovements of inflation and unemployment because their explanations are inconsistent with the observed comovements of the interest rate with inflation.

7.2 Implications of the Weak Form of Aggregate Demand

Consider an alternative weak form of the aggregate demand equation given in Equation (6). If this weak form of the aggregate demand equation holds then the cointegrating equations we would expect to see in the data would be given by (12) and (11). Once again we can impose our identification scheme on the structural cointegrating vectors to arrive at the following mapping from structural to reduced form parameters:

$$\begin{aligned}
 (\beta^1)^T X &= \begin{pmatrix} 0 & 1 & \frac{-(\tilde{\beta}_\pi^{P1} \tilde{\beta}_u^D + \tilde{\beta}_u^{P1})}{\tilde{\beta}_u^D + \tilde{\beta}_u^{P1}} \\ 1 & 0 & \frac{1 - \tilde{\beta}_\pi^{P1}}{\tilde{\beta}_u^D + \tilde{\beta}_u^{P1}} \end{pmatrix} \begin{pmatrix} u \\ i \\ \pi \end{pmatrix}, \\
 (\beta^2)^T X &= \begin{pmatrix} 0 & 1 & \frac{-(\tilde{\beta}_\pi^{P2} \tilde{\beta}_u^D + \tilde{\beta}_u^{P2})}{\tilde{\beta}_u^D + \tilde{\beta}_u^{P2}} \\ 1 & 0 & \frac{1 - \tilde{\beta}_\pi^{P2}}{\tilde{\beta}_u^D + \tilde{\beta}_u^{P2}} \end{pmatrix} \begin{pmatrix} u \\ i \\ \pi \end{pmatrix},
 \end{aligned}$$

where the parameters $\tilde{\beta}_\pi^P, \tilde{\beta}_u^P$ and $\tilde{\beta}_u^D$ are all non-negative. Recall that the estimates of β^1 and β^2 are given by:

$$\begin{aligned} (\hat{\beta}^1)^T X &= \begin{pmatrix} 0 & 1 & -0.76 \\ & & (0.17) \\ 1 & 0 & -0.58 \\ & & (0.10) \end{pmatrix} \begin{pmatrix} u \\ i \\ \pi \end{pmatrix}, \\ (\hat{\beta}^2)^T X &= \begin{pmatrix} 0 & 1 & -1.50 \\ & & (0.29) \\ 1 & 0 & -0.75 \\ & & (0.15) \end{pmatrix} \begin{pmatrix} u \\ i \\ \pi \end{pmatrix}. \end{aligned}$$

In the first subperiod, the point estimate of

$$-\frac{(\tilde{\beta}_\pi^{P1} \tilde{\beta}_u^D + \tilde{\beta}_u^{P1})}{\tilde{\beta}_u^D + \tilde{\beta}_u^{P1}} \quad (15)$$

(the coefficient on inflation in the first cointegrating vector) is equal to -0.76 . But the numerator and denominator of Equation (15) are both weighted sums of the same positive numbers $\tilde{\beta}_u^D$ and $\tilde{\beta}_u^{P1}$ that differ only in the weight $\tilde{\beta}_\pi^{P1}$ attached to $\tilde{\beta}_u^D$ in the numerator. It follows that $\tilde{\beta}_\pi^{P1}$ must be a positive number between 0 and 1. But if $\tilde{\beta}_\pi^{P1}$ is between zero and 1 then the coefficient on inflation in the second cointegrating vector, given by the expression

$$\frac{1 - \tilde{\beta}_\pi^{P1}}{\tilde{\beta}_u^D + \tilde{\beta}_u^{P1}},$$

must be positive. Our point estimate of this parameter is equal to -0.58 with a standard error of 0.1 and hence, under our maintained assumptions, the weak form of the aggregate demand curve is inconsistent with data from the first subperiod.

8 An Alternative Explanation of the Data

We previously rejected the hypothesis that nonstationarity arises from either the demand equation or the policy rule since we could not explain nonstationarity of the unemployment rate under either of these assumptions. But if

the natural rate hypothesis were to be replaced by an equation linking unemployment and the inflation rate, we would need to reassess these possibilities.

In this section we look at the possibility that there is a long run Phillips curve in the data that leads to a cointegrating equation of the form

$$AS : \quad \left(\tilde{\beta}^S\right)^T X = u - \tilde{\beta}_\pi^S \pi - u^{NR}; \quad \tilde{\beta}_\pi^S, u^{NR} > 0. \quad (16)$$

Notice that our hypothesis is that higher inflation is associated with higher unemployment at low frequencies, the opposite slope to the traditional short run Phillips curve.

If (16) holds in the data then if either the demand curve or the policy equation were non-stationary then we could explain the comovement in inflation and unemployment since Equation (16) implies that these variables should be cointegrated. Our preferred specification is one in which v^D , (the error term hitting the aggregate demand curve) is nonstationary since if the policy equation were drifting we would expect to see the Fisher equation in the data. We think it more likely that the break in 1980 was caused by a break in policy than by a break in the behavioral equations of the private sector and if this is the case then the policy equation must be one of the cointegrating equations of the model.

8.1 Is a Long Run Phillips Curve Consistent with Theory?

The idea of a long run relationship between unemployment and inflation is consistent with a model in which money has non-superneutral effects. Non superneutralities are relatively easy to identify in countries that experience hyperinflations since hyperinflation is typically accompanied by high unemployment and severe recessions. Our claim in this paper is that non-superneutralities can also account for the low frequency movements in inflation and unemployment that occurred in the last thirty years in the United States, even though inflation barely reached double digits over this period.

There are many possible mechanisms that might cause high interest rates to be transmitted to the labor market. One explanation is given by the monetary model of Benhabib and Farmer [3] in which the effects of money on equilibrium output can be substantial. But there are many other possibilities. Non neutralities in the tax code would cause changes in the equilibrium supply of labor in an equilibrium model like the monetary real business cycle

model studied by Cooley and Hansen [7]. In search models with liquidity effects such as those studied by Ramey, Den Haan and Watson [4], or in models with hysteresis effects like the one studied by Ball [1], one would expect there to be permanent effects on the equilibrium unemployment rate resulting from changes in monetary policy.

8.2 Why Did Inflation and Unemployment Move Together?

In this subsection we will discuss an interpretation that attributes the common trend in unemployment, the inflation rate and the federal funds rate to non stationarity in the error term v^D .¹² This assumption implies that Equations (17) and (18) should hold as cointegrating equations in the data;

$$AS : \quad (\tilde{\beta}^S)^T X = u - \tilde{\beta}_\pi^S \pi - u^{NR}; \quad \tilde{\beta}_\pi^S, u^{NR} > 0, \quad (17)$$

$$PR : \quad (\tilde{\beta}^P)^T X = \tilde{\beta}_u^P (u - u^{NR}) + i - \tilde{\beta}_\pi^P \pi + \gamma; \quad \tilde{\beta}_u^P > 0, \quad \tilde{\beta}_\pi^P > 0. \quad (18)$$

Our explanation of the buildup of inflation does not require us to assume that the Fed mistakenly targeted the unemployment rate as in the Orphanides explanation and so we revert in this section to the assumption that the Fed correctly targeted deviations of unemployment from its natural rate.

Mapping the structural cointegrating Equations (17) and (18) into the identified reduced form gives the following expressions, one for each subperiod;

$$\begin{aligned} (\beta^1)^T X &= \begin{pmatrix} 0 & 1 & -(\tilde{\beta}_\pi^{P1} + \tilde{\beta}_\pi^S \tilde{\beta}_u^{P1}) \\ 1 & 0 & -\tilde{\beta}_\pi^S \end{pmatrix} \begin{pmatrix} u \\ i \\ \pi \end{pmatrix}, \\ (\beta^2)^T X &= \begin{pmatrix} 0 & 1 & -(\tilde{\beta}_\pi^{P2} + \tilde{\beta}_\pi^S \tilde{\beta}_u^{P2}) \\ 1 & 0 & -\tilde{\beta}_\pi^S \end{pmatrix} \begin{pmatrix} u \\ i \\ \pi \end{pmatrix}. \end{aligned}$$

¹²In a representative agent model our assumption would imply that the agent's rate of time preference is a random walk. In more complex general equilibrium models the equilibrium real interest rate might be non-stationary as a result of cohort effects in an overlapping generations model or as a result of non stationary fiscal policies.

According to these equations the slope of the long run Phillips curve, $\tilde{\beta}_\pi^S$, is exactly identified from $\hat{\beta}_2$. The parameters $\tilde{\beta}_u^{Pi}$ and $\tilde{\beta}_\pi^{Pi}$ are not, however, separately identified and it is not possible to disentangle the effects of a policy response to inflation from the response to unemployment.

Recall that the estimates of the reduced form relationships in each regime are given by

$$\begin{aligned} (\hat{\beta}^1)^T X &= \begin{pmatrix} 0 & 1 & -0.76 \\ & & (0.17) \\ 1 & 0 & -0.58 \\ & & (0.10) \end{pmatrix} \begin{pmatrix} u \\ i \\ \pi \end{pmatrix}, \\ (\hat{\beta}^2)^T X &= \begin{pmatrix} 0 & 1 & -1.50 \\ & & (0.29) \\ 1 & 0 & -0.75 \\ & & (0.15) \end{pmatrix} \begin{pmatrix} u \\ i \\ \pi \end{pmatrix}. \end{aligned}$$

If our model were correct we would expect to see the same cointegrating relationship between unemployment and inflation in both subperiods. According to our hypothesis, this equation is a structural equation representing the long-run Phillips curve. Since we cannot reject the hypothesis that the estimated value of $\tilde{\beta}_\pi^S$ in the first period (equal to 0.58 ± 0.1) is equal to the estimated coefficient in the second period (0.75 ± 0.15) we conclude that our explanation is not contradicted by the data. Our interpretation of the data is also consistent with a change in the cointegrating equation between inflation and the federal funds rate from -0.76 to -1.5 . We interpret this break in the cointegrating vector as the consequence of a change in Fed policy.

8.3 How Did the Fed Tame Inflation?

What led to the buildup of inflation under Arthur Burns in the 1970's and the subsequent taming of inflation in the Volcker-Greenspan regimes? According to our explanation, the real interest rate is non-stationary. If we take first differences of the aggregate demand curve we arrive at the following equation

$$\Delta i - \Delta \pi = \Delta \rho, \tag{19}$$

where $\Delta\rho$ is a stationary variable with mean $\overline{\Delta\rho}$ where $\overline{\Delta\rho}$ represents drift in changes to the real rate.

Suppose that the Fed follows a simple Taylor rule that induces the stationary cointegrating vector $i - \tilde{\beta}_\pi^P \pi$ in the data so that the expression¹³

$$\Delta i - \tilde{\beta}_\pi^P \Delta \pi \quad (20)$$

is stationary with a zero mean. Putting together equations (19) and (20) leads to the expression

$$\Delta \pi = - \left(\frac{1}{1 - \tilde{\beta}_\pi^P} \right) \Delta \rho. \quad (21)$$

What caused inflation in the 1970's and how did the Fed tame inflation after 1979? Our explanation is that $\overline{\Delta\rho}$ is negative and so there has been a downward drift in ρ at least since the beginning of the 1970's. In the 1970's under Arthur Burns, Fed policy was over accommodative in the sense that $\tilde{\beta}_\pi^{P1}$ was less than unity. Since $\tilde{\beta}_\pi^{P1}$ was between zero and one, the coefficient $\left(\frac{1}{1 - \tilde{\beta}_\pi^{P1}} \right)$ was positive and downward drift in the real rate was translated into an upward drift in inflation.

After 1979 the Fed became more aggressive in its response to inflation and the parameter $\tilde{\beta}_\pi^{P2}$ in the second regime was greater than one. This switch in policy stance caused $\left(\frac{1}{1 - \tilde{\beta}_\pi^{P2}} \right)$ to be negative. Although the real interest rate continued to drift down, under an active monetary policy this downward drift in the real rate was translated into a downward drift in inflation.

8.4 Why Did the Real Rate Increase After 1980?

The alert reader will have noticed an apparent inconsistency in our explanation of the history of U.S. inflation. If the parameter ρ was drifting down over the whole period, why does the real rate appear to increase in 1980? The explanation lies with the constant in the cointegrating equation induced by Fed policy. Let the policy rule be given by

$$i = \tilde{\beta}_\pi^{P1} \pi + \gamma_1 \quad (22)$$

¹³To keep our notation to a minimum we assume that the Fed does not respond to unemployment and so $\tilde{\beta}_u^P = 0$. The argument for non zero $\tilde{\beta}_u^P$ is identical with more complicated expressions for the coefficients.

before 1980 and

$$i = \tilde{\beta}_\pi^{P2} \pi + \gamma_2 \quad (23)$$

afterwards. Given our assumption that the parameter ρ is nonstationary, the real rate will be equal to

$$i - \pi = \left(\tilde{\beta}_\pi^{Pj} - 1 \right) \pi + \gamma_j, \quad j = 1, 2. \quad (24)$$

In the period before 1980 inflation is drifting up and the real rate is drifting down. The direction of drift is opposite because $\left(\tilde{\beta}_\pi^{P1} - 1 \right)$ is less than zero. In the period after 1980 inflation and the real rate are both drifting down. The direction of drift is the same because $\left(\tilde{\beta}_\pi^{P2} - 1 \right)$ is greater than zero. At the date of the policy shift the real rate jumps up because the parameter γ_2 is greater than γ_1 .

9 Conclusion

We have argued that the inflation rate, the unemployment rate and the nominal interest rate can be well described as non-stationary but cointegrated variables in U.S. data from 1959 through 1999. The first cointegrating equation linking inflation with the fed funds rate displays a much larger response of the interest rate to inflation after 1980 than before 1980. The cointegrating equation linking unemployment with inflation has been stable over the entire period.

If one accepts our statistical representation of the data, how might one respond to the evidence? In the paper we have made two separate claims, both based on the assumption that one should seek a common cause for the break in data that appears in 1980. The first is that the source of non-stationarity is a unit root in the shock to the aggregate demand equation. The second is that the natural rate hypothesis is false. If one is willing to accept the coincidental and simultaneous change in two different structural equations, then our arguments break down. For example, the trend in the inflation rate may have been caused by a Fed policy that reversed itself in 1980 at the same time that fundamental factors caused a reversal in the upward trend in unemployment. We find dual cause explanations of this kind implausible.

Our primary reason for rejecting alternative models of American inflation in the 1970's is that the alternatives that we have considered imply that the Fisher equation should hold in the data and our statistical analysis rejects this hypothesis. Although one can find alternative explanations for the failure of the Fisher equation we believe that our explanation is the most obvious candidate since it leads to a unified explanation of the American inflation experience. We attribute the buildup of inflation and its subsequent demise to the effects of two different Fed policies in a world in which shocks to aggregate demand are nonstationary. In the period before 1970 a passive monetary policy led these shocks to be transmitted into an upward drift in the inflation rate. After 1980 policy was reversed and a more active policy caused them to be translated in to a downward drift in the inflation rate. A non stationary inflation rate was transmitted to the unemployment rate since the data is characterized by the existence of a long run upward sloping Phillips curve. The evidence leads us to be skeptical of theories that incorporate superneutrality as a maintained assumption of an economic model, hence the title of our paper, natural rate doubts.

References

- [1] Ball, Laurence (1996). “Disinflation and the NAIRU,” NBER working paper 5520.
- [2] Barro, Robert J. and David B. Gordon (1983). “A Positive Theory of Monetary Policy in a Natural Rate Model.” *Journal of Political Economy*, 91:4, 589–610.
- [3] Benhabib, Jess and Roger E. A. Farmer (2000). “The Monetary Transmission Mechanism.” *Review of Economic Dynamics* Vol 3, no. 3, 553–550.
- [4] Den Haan, Wouter J., Gary Ramey and Joel Watson (1999) “Contract-Theoretic Approaches to Wages and Displacement”, *Federal Reserve Bank of St. Louis Review* Vol. 81, no. 3, 55–68.
- [5] Calvo, Guillermo (1983). “Staggered Prices in a Utility Maximizing Framework,” *Journal of Monetary Economics* 12, 383–398.
- [6] Clarida, Richard, Jordi Gali and Mark Gertler (1997). “Monetary Policy Rules and Macroeconomic Stability: Evidence and Some Theory.” Mimeo. Universitat Pompeu Fabra.
- [7] Cooley, Thomas F. and Gary D. Hansen (1989). “The Inflation Tax in a real Business Cycle Model.” *American Economic Review*, September, 733–748.
- [8] Fischer, Stanley (1977). “Long-Term Contracts, Rational Expectations and the Optimal Money Supply Rule,” *Journal of Political Economy*, 191–206.
- [9] Doornik, J.A. and Hendry, D.F. (2001). *Empirical Econometric Modelling using PcGive 10*, London: Timberlake Consultants Press.
- [10] Hansen, Henrik and Katarina Juselius (1995). *CATS in RATS. Manual to Cointegration Analysis of Time Series*. ESTIMA, Evanston, Illinois, USA.
- [11] Friedman, Milton (1968). “The Role of Monetary Policy.” *American Economic Review* 58, 1–17. (Presidential Address, American Economic Association Annual Meeting, 29 December 1967.)

- [12] Ireland, Peter. (1999). "Does the Time-Consistency Problem Explain the Behavior of Inflation in the United States?" *Journal of Monetary Economics*, October 1999.
- [13] Johansen, Søren (1988). "Statistical Analysis of Cointegration Vectors". *Journal of Economic Dynamics and Control* 12, 231-254 Relationships, *Readings in Cointegration*, R.F. Engle and C.W.J. Granger (eds.), Oxford University Press (1991).
- [14] _____ (1996). *Likelihood Based Inference in Cointegrated Vector Autoregressive Models*, Oxford University Press, Oxford (2nd ed.).
- [15] _____ and Katarina Juselius (1994) "Identification of the long-run and the short-run structure: an application to the ISLM model", *Journal of Econometrics*, 63, 7 - 36.
- [16] Lucas, Robert E. Jr. (1972). "Expectations and the Neutrality of Money", *Journal of Economic Theory* 4, 103-124.
- [17] McCallum, Bennett and Edward Nelson (1999). "An Optimizing IS-LM Specification for Monetary Policy and Business Cycle Analysis." *Journal of Money, Credit and Banking*, 31(3) Pt. 1, 296-316.
- [18] Orphanides, Athanasios, (2000). "The Quest for Prosperity Without Inflation". *ECB Working Paper* No. 15, European Centralbank, Frankfurt, Germany.
- [19] _____, (2001) "Macroeconomic Policy Rules, Macroeconomic Stability and Inflation: A View from the Trenches" Mimeo. Board of Governors of the Federal Reserve System, Washington D.C.
- [20] Phelps, Edmund S. (1969). "The New Microeconomics in Inflation and Employment Theory," *American Economic Review: Papers and Proceedings*, Vol. 59; revised version in E.S. Phelps et al., *Microeconomic Foundations of Employment and Inflation Theory*, New York: Norton, 1970.
- [21] Sargent, Thomas J. (1999). *The Conquest of American Inflation*, Princeton University Press.

- [22] Taylor, John B, (1999). *Monetary Policy Rules*. National Bureau of Economic Research, University of Chicago Press, Chicago and London.

European Central Bank Working Paper Series

- 1 “A global hazard index for the world foreign exchange markets” by V. Brousseau and F. Scacciavillani, May 1999.
- 2 “What does the single monetary policy do? A SVAR benchmark for the European Central Bank” by C. Monticelli and O. Tristani, May 1999.
- 3 “Fiscal policy effectiveness and neutrality results in a non-Ricardian world” by C. Detken, May 1999.
- 4 “From the ERM to the euro: new evidence on economic and policy convergence among EU countries” by I. Angeloni and L. Dedola, May 1999.
- 5 “Core inflation: a review of some conceptual issues” by M. Wynne, May 1999.
- 6 “The demand for M3 in the euro area” by G. Coenen and J.-L. Vega, September 1999.
- 7 “A cross-country comparison of market structures in European banking” by O. de Bandt and E. P. Davis, September 1999.
- 8 “Inflation zone targeting” by A. Orphanides and V. Wieland, October 1999.
- 9 “Asymptotic confidence bands for the estimated autocovariance and autocorrelation functions of vector autoregressive models” by G. Coenen, January 2000.
- 10 “On the effectiveness of sterilized foreign exchange intervention” by R. Fatum, February 2000.
- 11 “Is the yield curve a useful information variable for the Eurosystem?” by J. M. Berk and P. van Bergeijk, February 2000.
- 12 “Indicator variables for optimal policy” by L. E. O. Svensson and M. Woodford, February 2000.
- 13 “Monetary policy with uncertain parameters” by U. Söderström, February 2000.
- 14 “Assessing nominal income rules for monetary policy with model and data uncertainty” by G. D. Rudebusch, February 2000.
- 15 “The quest for prosperity without inflation” by A. Orphanides, March 2000.
- 16 “Estimating the implied distribution of the future short term interest rate using the Longstaff-Schwartz model” by P. Hördahl, March 2000.
- 17 “Alternative measures of the NAIRU in the euro area: estimates and assessment” by S. Fabiani and R. Mestre, March 2000.
- 18 “House prices and the macroeconomy in Europe: Results from a structural VAR analysis” by M. Iacoviello, April 2000.

- 19 "The euro and international capital markets" by C. Detken and P. Hartmann, April 2000.
- 20 "Convergence of fiscal policies in the euro area" by O. De Bandt and F. P. Mongelli, May 2000.
- 21 "Firm size and monetary policy transmission: evidence from German business survey data" by M. Ehrmann, May 2000.
- 22 "Regulating access to international large value payment systems" by C. Holthausen and T. Rønde, June 2000.
- 23 "Escaping Nash inflation" by In-Koo Cho and T. J. Sargent, June 2000.
- 24 "What horizon for price stability" by F. Smets, July 2000.
- 25 "Caution and conservatism in the making of monetary policy" by P. Schellekens, July 2000.
- 26 "Which kind of transparency? On the need for clarity in monetary policy-making" by B. Winkler, August 2000.
- 27 "This is what the US leading indicators lead" by M. Camacho and G. Perez-Quiros, August 2000.
- 28 "Learning, uncertainty and central bank activism in an economy with strategic interactions" by M. Ellison and N. Valla, August 2000.
- 29 "The sources of unemployment fluctuations: an empirical application to the Italian case" by S. Fabiani, A. Locarno, G. Oneto and P. Sestito, September 2000.
- 30 "A small estimated euro area model with rational expectations and nominal rigidities" by G. Coenen and V. Wieland, September 2000.
- 31 "The disappearing tax base: Is foreign direct investment eroding corporate income taxes?" by R. Gropp and K. Kostial, September 2000.
- 32 "Can indeterminacy explain the short-run non-neutrality of money?" by F. De Fiore, September 2000.
- 33 "The information content of M3 for future inflation" by C. Trecroci and J. L. Vega, October 2000.
- 34 "Capital market development, corporate governance and the credibility of exchange rate pegs" by O. Castrén and T. Takalo, October 2000.
- 35 "Systemic risk: A survey" by O. De Bandt and P. Hartmann, November 2000.
- 36 "Measuring core inflation in the euro area" by C. Morana, November 2000.
- 37 "Business fixed investment: Evidence of a financial accelerator in Europe" by P. Vermeulen, November 2000.

- 38 “The optimal inflation tax when taxes are costly to collect” by F. De Fiore, November 2000.
- 39 “A money demand system for euro area M3” by C. Brand and N. Cassola, November 2000.
- 40 “Financial structure and the interest rate channel of ECB monetary policy” by B. Mojon, November 2000.
- 41 “Why adopt transparency? The publication of central bank forecasts” by P. M. Geraats, January 2001.
- 42 “An area-wide model (AWM) for the euro area” by G. Fagan, J. Henry and R. Mestre, January 2001.
- 43 “Sources of economic renewal: from the traditional firm to the knowledge firm” by D. R. Palenzuela, February 2001.
- 44 “The supply and demand for eurosystem deposits – The first 18 months” by U. Bindseil and F. Seitz, February 2001.
- 45 “Testing the Rank of the Hankel matrix: a statistical approach” by G. Camba-Mendez and G. Kapetanios, February 2001.
- 46 “A two-factor model of the German term structure of interest rates” by N. Cassola and J. B. Luís, February 2001.
- 47 “Deposit insurance and moral hazard: does the counterfactual matter?” by R. Gropp and J. Vesala, February 2001.
- 48 “Financial market integration in Europe: on the effects of EMU on stock markets” by M. Fratzscher, March 2001.
- 49 “Business cycle and monetary policy analysis in a structural sticky-price model of the euro area” by M. Casares, March 2001.
- 50 “Employment and productivity growth in service and manufacturing sectors in France, Germany and the US” by T. von Wachter, March 2001.
- 51 “The functional form of the demand for euro area M1” by L. Stracca, March 2001.
- 52 “Are the effects of monetary policy in the euro area greater in recessions than in booms?” by G. Peersman and F. Smets, March 2001.
- 53 “An evaluation of some measures of core inflation for the euro area” by J.-L. Vega and M. A. Wynne, April 2001.
- 54 “Assessment criteria for output gap estimates” by G. Camba-Méndez and D. R. Palenzuela, April 2001.

- 55 “Modelling the demand for loans to the private sector in the euro area” by A. Calza, G. Gartner and J. Sousa, April 2001.
- 56 “Stabilization policy in a two country model and the role of financial frictions” by E. Faia, April 2001.
- 57 “Model-based indicators of labour market rigidity” by S. Fabiani and D. Rodriguez-Palenzuela, April 2001.
- 58 “Business cycle asymmetries in stock returns: evidence from higher order moments and conditional densities” by G. Perez-Quiros and A. Timmermann, April 2001.
- 59 “Uncertain potential output: implications for monetary policy” by M. Ehrmann and F. Smets, April 2001.
- 60 “A multi-country trend indicator for euro area inflation: computation and properties” by E. Angelini, J. Henry and R. Mestre, April 2001.
- 61 “Diffusion index-based inflation forecasts for the euro area” by E. Angelini, J. Henry and R. Mestre, April 2001.
- 62 “Spectral based methods to identify common trends and common cycles” by G. C. Mendez and G. Kapetanios, April 2001.
- 63 “Does money lead inflation in the euro area?” by S. N. Altimari, May 2001.
- 64 “Exchange rate volatility and euro area imports” by R. Anderton and F. Skudelny, May 2001.
- 65 “A system approach for measuring the euro area NAIRU” by S. Fabiani and R. Mestre, May 2001.
- 66 “Can short-term foreign exchange volatility be predicted by the Global Hazard Index?” by V. Brousseau and F. Scacciavillani, June 2001.
- 67 “The daily market for funds in Europe: Has something changed with the EMU?” by G. P. Quiros and H. R. Mendizabal, June 2001.
- 68 “The performance of forecast-based monetary policy rules under model uncertainty” by A. Levin, V. Wieland and J. C. Williams, July 2001.
- 69 “The ECB monetary policy strategy and the money market” by V. Gaspar, G. Perez-Quiros and J. Sicilia, July 2001.
- 70 “Central Bank forecasts of liquidity factors: Quality, publication and the control of the overnight rate” by U. Bindseil, July 2001.
- 71 “Asset market linkages in crisis periods” by P. Hartmann, S. Straetmans and C. G. de Vries, July 2001.
- 72 “Bank concentration and retail interest rates” by S. Corvoisier and R. Gropp, July 2001.

- 73 “Interbank lending and monetary policy transmission – evidence for Germany” by M. Ehrmann and A. Worms, July 2001.
- 74 “Interbank market integration under asymmetric information” by X. Freixas and C. Holthausen, August 2001.
- 75 “Value at risk models in finance” by S. Manganelli and R. F. Engle, August 2001.
- 76 “Rating agency actions and the pricing of debt and equity of European banks: What can we infer about private sector monitoring of bank soundness?” by R. Gropp and A. J. Richards, August 2001.
- 77 “Cyclically adjusted budget balances: An alternative approach” by C. Bouthevillain, P. Cour-Thimann, G. van den Dool, P. Hernández de Cos, G. Langenus, M. Mohr, S. Momigliano and M. Tujula, September 2001.
- 78 “Investment and monetary policy in the euro area” by B. Mojon, F. Smets and P. Vermeulen, September 2001.
- 79 “Does liquidity matter? Properties of a synthetic divisia monetary aggregate in the euro area” by L. Stracca, October 2001.
- 80 “The microstructure of the euro money market” by P. Hartmann, M. Manna and A. Manzanares, October 2001.
- 81 “What can changes in structural factors tell us about unemployment in Europe?” by J. Morgan and A. Mourougane, October 2001.
- 82 “Economic forecasting: some lessons from recent research” by D. Hendry and M. Clements, October 2001.
- 83 “Chi-squared tests of interval and density forecasts, and the Bank of England's fan charts” by K. F. Wallis, November 2001.
- 84 “Data uncertainty and the role of money as an information variable for monetary policy” by G. Coenen, A. Levin and V. Wieland, November 2001.
- 85 “Determinants of the euro real effective exchange rate: a BEER/PEER approach” by F. Maeso-Fernandez, C. Osbat and B. Schnatz, November 2001.
- 86 “Rational expectations and near rational alternatives: how best to form expectations” by M. Beeby, S. G. Hall and S. B. Henry, November 2001.
- 87 “Credit rationing, output gap and business cycles” by F. Boissay, November 2001.
- 88 “Why is it so difficult to beat the random walk forecast of exchange rates?” by L. Kilian and M. P. Taylor, November 2001.

- 89 “Monetary policy and fears of financial instability” by V. Brousseau and C. Detken, November 2001.
- 90 “Public pensions and growth” by S. Lambrecht, P. Michel and J.-P. Vidal, November 2001.
- 91 “The monetary transmission mechanism in the euro area: more evidence from VAR analysis” by G. Peersman and F. Smets, December 2001.
- 92 “A VAR description of the effects of monetary policy in the individual countries of the euro area” by B. Mojon and G. Peersman, December 2001.
- 93 “The monetary transmission mechanism at the euro-area level: issues and results using structural macroeconomic models” by P. McAdam and J. Morgan, December 2001.
- 94 “Monetary policy transmission in the euro area: what do aggregate and national structural models tell us?” by P. van Els, A. Locarno, J. Morgan and J.-P. Villetelle, December 2001.
- 95 “Some stylised facts on the euro area business cycle” by A.-M. Agresti and B. Mojon, December 2001.
- 96 “The reaction of bank lending to monetary policy measures in Germany” by A. Worms, December 2001.
- 97 “Asymmetries in bank lending behaviour. Austria during the 1990s” by S. Kaufmann, December 2001.
- 98 “The credit channel in the Netherlands: evidence from bank balance sheets” by L. De Haan, December 2001.
- 99 “Is there a bank lending channel of monetary policy in Spain?” by I. Hernando and J. Martínez-Pagés, December 2001.
- 100 “Transmission of monetary policy shocks in Finland: evidence from bank level data on loans” by J. Topi and J. Vilmunen, December 2001.
- 101 “Monetary policy and bank lending in France: are there asymmetries?” by C. Loupias, F. Savignac and P. Sevestre, December 2001.
- 102 “The bank lending channel of monetary policy: identification and estimation using Portuguese micro bank data” by L. Farinha and C. Robalo Marques, December 2001.
- 103 “Bank-specific characteristics and monetary policy transmission: the case of Italy” by L. Gambacorta, December 2001.
- 104 “Is there a bank lending channel of monetary policy in Greece? Evidence from bank level data” by S. N. Brissimis, N. C. Kamberoglou and G. T. Simigiannis, December 2001.
- 105 “Financial systems and the role of banks in monetary policy transmission in the euro area” by M. Ehrmann, L. Gambacorta, J. Martínez-Pagés, P. Sevestre and A. Worms, December 2001.

- 106 “Investment, the cost of capital, and monetary policy in the nineties in France: a panel data investigation” by J.-B. Chatelain and A. Tiomo, December 2001.
- 107 “The interest rate and credit channel in Belgium: an investigation with micro-level firm data” by P. Butzen, C. Fuss and P. Vermeulen, December 2001.
- 108 “Credit channel and investment behaviour in Austria: a micro-econometric approach” by M. Valderrama, December 2001.
- 109 “Monetary transmission in Germany: new perspectives on financial constraints and investment spending” by U. von Kalckreuth, December 2001.
- 110 “Does monetary policy have asymmetric effects? A look at the investment decisions of Italian firms” by E. Gaiotti and A. Generale, December 2001.
- 111 “Monetary transmission: empirical evidence from Luxembourg firm level data” by P. Lünemann and T. Mathä, December 2001.
- 112 “Firm investment and monetary transmission in the euro area” by J.-B. Chatelain, A. Generale, I. Hernando, U. von Kalckreuth and P. Vermeulen, December 2001.
- 113 “Financial frictions and the monetary transmission mechanism: theory, evidence and policy implications” by C. Bean, J. Larsen and K. Nikolov, January 2002.
- 114 “Monetary transmission in the euro area: where do we stand?” by I. Angeloni, A. Kashyap, B. Mojon, D. Terlizzese, January 2002.
- 115 “Monetary policy rules, macroeconomic stability and inflation: a view from the trenches” by A. Orphanides, December 2001.
- 116 “Rent indices for housing in West Germany 1985 to 1998” by J. Hoffmann and C. Kurz., January 2002.
- 117 “Hedonic house prices without characteristics: the case of new multiunit housing” by O. Bover and P. Velilla, January 2002.
- 118 “Durable goods, price indexes and quality change: an application to automobile prices in Italy, 1988-1998” by G. M. Tomat, January 2002.
- 119 “Monetary policy and the stock market in the euro area” by N. Cassola and C. Morana, January 2002.
- 120 “Learning stability in economics with heterogenous agents” by S. Honkapohja and K. Mitra, January 2002.
- 121 “Natural rate doubts” by A. Beyer and R. E. A. Farmer, February 2002.