

Kruse, Marie; Christensen, Jan

Article

Is quality costly? Patient and hospital cost drivers in vascular surgery

Health Economics Review

Provided in Cooperation with:

Springer Nature

Suggested Citation: Kruse, Marie; Christensen, Jan (2013) : Is quality costly? Patient and hospital cost drivers in vascular surgery, Health Economics Review, ISSN 2191-1991, Springer, Heidelberg, Vol. 3, Iss. 22, pp. 1-13,
<https://doi.org/10.1186/2191-1991-3-22>

This Version is available at:

<https://hdl.handle.net/10419/150527>

Standard-Nutzungsbedingungen:

Die Dokumente auf EconStor dürfen zu eigenen wissenschaftlichen Zwecken und zum Privatgebrauch gespeichert und kopiert werden.

Sie dürfen die Dokumente nicht für öffentliche oder kommerzielle Zwecke vervielfältigen, öffentlich ausstellen, öffentlich zugänglich machen, vertreiben oder anderweitig nutzen.

Sofern die Verfasser die Dokumente unter Open-Content-Lizenzen (insbesondere CC-Lizenzen) zur Verfügung gestellt haben sollten, gelten abweichend von diesen Nutzungsbedingungen die in der dort genannten Lizenz gewährten Nutzungsrechte.

Terms of use:

Documents in EconStor may be saved and copied for your personal and scholarly purposes.

You are not to copy documents for public or commercial purposes, to exhibit the documents publicly, to make them publicly available on the internet, or to distribute or otherwise use the documents in public.

If the documents have been made available under an Open Content Licence (especially Creative Commons Licences), you may exercise further usage rights as specified in the indicated licence.



<http://creativecommons.org/licenses/by/2.0/>

RESEARCH

Open Access

Is quality costly? Patient and hospital cost drivers in vascular surgery

Marie Kruse^{1*} and Jan Christensen²

Abstract

An increasing focus on hospital productivity has rendered a need for more thorough knowledge of cost drivers in hospitals, including a need for quantification of the impact of age, case-mix and other characteristics of patients, as well as establishment of the cost-quality relationship.

The aim of this study is to identify cost drivers for vascular surgery in Danish hospitals with a specific view to quality of the treatment: Is higher quality associated with increased costs, when all other cost drivers are accounted for?

We analyse cost drivers in a register-based study, using patient level data from three sources: The Vascular Register, the hospital cost database, and the National Patient Register with added DRG-information. The analysis follows a multilevel set-up, where cost drivers at patient level are analysed in a set of general linear regression models including complications and mortality as quality measures. At the hospital level of the analysis, we analyse deviations of observed costs from risk-adjusted costs and compare these to deviations of observed quality from risk-adjusted quality.

We find, not surprisingly, that a number of patient characteristics, including case-mix and severity, have a major impact on treatment costs. At patient level, both complications and mortality are associated with increased costs. At hospital department level, results are not straightforward, but could indicate a U-shaped association.

We conclude that the relation between costs and quality is not straightforward, at least not at department level. Our results indicate, albeit vaguely, a U-shaped relation between quality, in terms of fewer surgical complications than expected, and costs at department level, since our results suggest that increasing costs for vascular departments are associated with increased quality when costs are high and decreased quality when costs are low. For mortality however, we have not been able to establish a clear relation to costs.

JEL codes: I12- health production; C33 - Models with Panel Data; Longitudinal Data; Spatial Time Series; D24 - Production; Cost; Capital; Capital, Total Factor, and Multifactor Productivity; Capacity

Keywords: Hospital costs; Treatment quality; Cost drivers; Vascular surgery

Background

Scarcity of health care resources and attempts at increasing competition between hospitals have put an increased focus on hospital productivity. In Denmark, analyses of hospital productivity date back almost 20 years [1], at that time driven by a pure academic interest. In more recent years, policy measures have aimed at creating incentives for increases in productivity [2,3]. Broadly speaking, inter-hospital differences in productivity can be caused by either different values of production (output differences), or cost (input) differences. This study focuses on the latter.

We analyse cost differences between hospitals by identification of cost drivers at two levels: patient level and department level. A similar study of English obstetrics treatment [4,5] found that patient level characteristics constitute the most important cost drivers. In this study we aim to take the analysis a step further and introduce treatment quality in the model. Previous research has shown that quality – measured as the absence of complications – may be among the most important cost drivers for hospitals [6-8]. These analyses define quality by various measures of negative outcomes available in existing registers. Gutacker et. al. [9] include additionally a more direct health effect, based on self-reported pre- and post-measurements of the health status. This type of information is not available for the present analysis, which relies solely on register-based data.

* Correspondence: makr@kora.dk

¹KORA: Danish Institute for Local and Regional Government Research, Købmagergade 22 DK-1150 Copenhagen, Denmark
Full list of author information is available at the end of the article

The actual relation between costs and quality is not established, however. Neither has any kind of optimal level of quality that outweighs the costs and benefits of producing particular levels of quality of treatment been determined. Improving quality may be costly, but poor quality may also render higher costs, as suggested by e.g. [10]. Analysing the relation at different levels has proven to entail results apparently at odds with each other. Based on the same data source, [11] established a negative correlation at patient level, whereas [12] found a positive correlation at hospital level. It is possible, that the quality-related costs in fact follow a U-shaped curve, as suggested by [6,9]. This essentially means that for low levels and high levels of quality, the associated costs are high, while at some intermediate level (at the minimum point of the U-shaped curve) of quality costs are minimized. If that is the case, the next challenge is to identify what part of the curve is reflected in our data: If observations from a department indicates a downward sloping relation between costs and quality, then an increase in quality would reduce costs, because the observed level of quality is below the optimal level. If, on the other hand, the relation between costs and quality is positive, then this is insufficient information to show quality is at a suboptimal level.

Results from the EuroDRG group have established that quality aspects have an impact on treatment costs [13]. For 10 diagnosis-related groups of patients cost driving factors are identified. Significant effects of adverse events are found. For most diagnosis groups, wound infections are associated with increased patient treatment costs [14], pointing towards a negative cost-quality association.

Whereas all the analyses mentioned above estimate relations between costs and quality using the cost side as the dependent variable, as is done in the present analysis, other studies [15,16] model the relation the other way around.

Danish hospital data allow for detailed analyses at individual level. In Denmark, all individuals have a social security number which is used throughout public registers and databases. This allows us to analyse cost data and output information at individual level, while taking clinical and personal information into account. Hence, the data provide a good basis for analysis of cost drivers at the individual level. Due to the small size of the country, and consequently the low number of hospitals, analysis of Danish data at hospital level constitutes a challenge. Another challenge for analysing hospital level cost drivers is the absence of a common production function across hospitals [4], related to hospitals differing in size and scope.

In this study, we concentrate on vascular surgery in order to overcome some of the size and scope differences between hospitals. Vascular departments are chosen due to the availability of detailed data on quality parameters. Hence, we compare departments and not hospitals. In

addition, the analysed patient group appears more homogenous when only one medical specialty is analysed.

The disadvantage of limiting the analysis to vascular departments relates to sample size. We have sufficient data to analyse cost drivers at patient level. However we have data for only 11 hospital departments, rendering a number of challenges for the analysis of department level cost drivers. We tried to overcome these challenges by instead reporting department level results graphically.

The aim of this study is to identify cost drivers for vascular surgery in Danish hospitals with a specific view to quality of the treatment: Does quality increase costs, when all other cost drivers are accounted for?

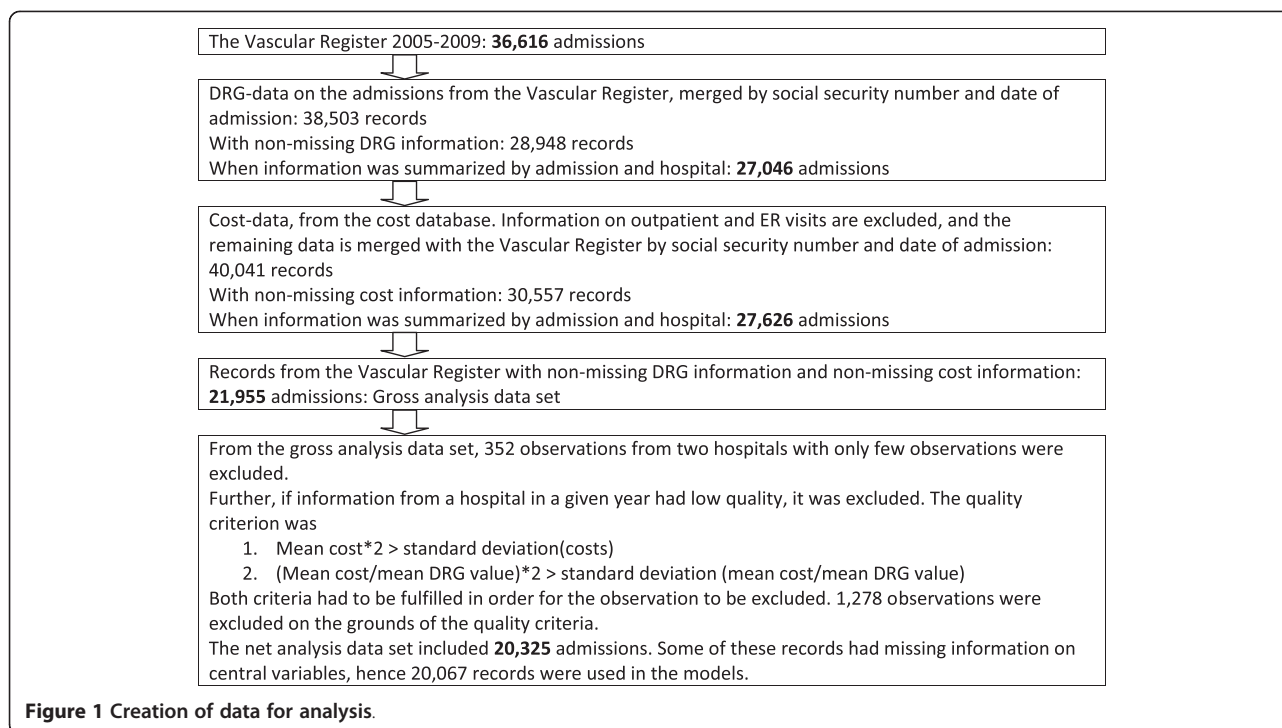
Data

For this analysis, we used a clinical database, the Vascular Register [17], comprising patients admitted for vascular surgery during 2005–09 at Danish hospitals. A wide range of variables are included, including information not available in usual patient registers, in particular ASA score for assessing the severity of illness, information on smoking habits, Body Mass Index (BMI) and registrations of adverse events, such as infections and death. The register contains about 55,500 discharges for about 38,500 patients. Data covers all visits. Our analyses focus on admission of inpatients, of which there are more than 36,000 discharges and hence both outpatient visits and emergency visits are excluded from the analysis of costs and quality. We linked information from the Vascular Register to information about costs, derived from the National Board of Health cost database. This source of data provides information on gender and age, as well as discharge specific costs, enabling targeted modelling of cost drivers on a patient level. The process of linking and filtering data for analysis is illustrated in Figure 1 below. Finally we linked this combined information to the DRG-tariff and DRG-weights for each discharge [18].

The Danish DRG-system contains close to 650 Diagnosis related Groups for inpatients, where only a minor subset is relevant for vascular surgery. DRG is used in this analysis as expression of case-mix. The groups are constructed such that they are clinically meaningful (based on diagnosis and treatment) and homogenous in terms of consumption of resources [1,18].

Information from the three sources was linked by the social security number and the start date of the treatment history. We allowed the start date to vary up to two days in order to capture inpatient visits initiated by either outpatient or emergency room (ER) visits. Since multiple admissions may be related to quality, we performed a sensitivity analysis excluding readmissions within 30 days.

The data set used for analysis was defined as: admissions during 2005–09 in the Vascular Register, with non-



missing cost information from the cost database and non-missing DRG-information. For most departments data coverage was virtually complete for all years. Unfortunately, for some departments data coverage was only good for some years. In addition, one department had only observations for a single year and another department had very few observations, all data for these departments was excluded from the analysis.

Because of the variations in data coverage, we included only data for combinations of departments and years, if the coverage was good. In order to examine the quality of data coverage, we defined some inclusion rules at the department level. The first inclusion rule was that the standard deviation for costs should be less than twice the mean costs for each department in a given year. The second inclusion rule defined the same criterion for the mean cost divided by the mean DRG value. Hence, we excluded a number of years of observations for a group of departments, namely those that did not comply with both rules. These departments did however have valid observations in other years and were only excluded in those years where they did not adhere to the inclusion rules. Since the excluded data represent departments or years with very few data, the inclusion rules did not change much.

The analysis thus uses information on 20,325 admissions, cf. Figure 1. For 258 observations, information on central analysis variables were missing and these observations were excluded from the analysis. In a sensitivity analysis, we included observations from the two omitted departments

and observations that didn't comply with the inclusion rules. In the sensitivity analysis, 21,954 observations were included.

The cost information from the National Cost Database entails a great level of detail, because all major cost-driving events during an admission are recorded for each discharge. Costs at the discharge level constitute a sum of patient level costs and overhead costs distributed amongst the patients. Furthermore, the National Cost Database covers all discharges. Since all data is collected administratively, and permission to use for research purposes has been granted, no patient consent is needed.

Methods

We analysed cost drivers in vascular surgery at patient level using a fixed effects generalised linear regression model. We chose to estimate the model without an intercept term, in order to establish department effects for all departments. All other variables still need reference terms because the department dummy variables act as intercepts for the reference patient.

Identification of cost drivers

$$C_{ij} = \sum_x \beta_x X_{ij} + \sum_{y1} \beta_{y1} Y_{ij}^1 + \sum_j \beta_j Z_j + e_{ij} \quad (1)$$

$$C_{ij} = \sum_x \beta_x X_{ij} + \sum_{y2} \beta_{y2} Y_{ij}^2 + \sum_j \beta_j Z_j + e_{ij} \quad (2)$$

Where subscripts indicate the following: patients *i*, departments *j*, patient level covariates *x*, *y*₁ and *y*₂, and

time invariant department dummy variables z , β_x , β_{y1} , β_{y2} and β_j are vectors of parameters. C_{ij} are costs at patient level. X_{ij} is a vector of variables indicating the following patient characteristics: age (a set of dummy variables per 10 year age interval – reference category 60–70 years), gender (woman), smoking status: a dummy variable for daily smoking, 0 otherwise; Body Mass Index (dummy variables indicating the following BMI levels: less than 18 or underweight, 18–24 or normal weight (reference), 25–29 or overweight and more than 30 or obese), case-mix (reflected by the DRG-value of the individual discharge), dummies for severity reflected by the ASA score (American Society of Anesthesiologists physical classification system): missing, 1 (mild systemic disease and reference), 2 – severe systemic disease, 3 – severe and life-threatening systemic disease; and 4 – very moribund person not expected to survive without operation; a set of dummy variables for whether the patient is admitted acute or not (very acute, acute, subacute (reference), and elective) and finally a time effect, expressed by a variable indicating the year of treatment (2005 was reference).

The two Y_{ij} vectors represent quality, Y_{ij}^1 being complications at patient level (surgical wound complications, other surgery complications, wound infections (e.g. haemorrhage), and general complications including heart or kidney problems, stroke or ICU admission), while Y_{ij}^2 is 30 days mortality. We chose to analyse complications and mortality in two different models since mortality was highly correlated to complications. Z_j is a vector of department dummy variables.

The regression model described in formula 1 and 2 renders information on cost drivers. We expect to find that older patients may be more costly than younger [19], similarly for overweight and obese versus normal weight [20–22], and that smokers are more costly than non-smokers [23,24]. The parameters β_{y1} and β_{y2} indicate the impact of quality on patient level costs. The sign and magnitude of these parameters indicate the association between costs and quality at patient level.

We assessed hospital level productivity in a manner inspired by the approach taken by [4]. In their model of obstetrics treatment in the UK, Laudicella *et al.* illustrate department level variation in costs by plotting actual costs against risk-adjusted costs, or level of inefficiency [4]. When applying this approach in our study, we regard the risk-adjusted costs as equal to the parameter estimates β_j of the dummy variable Z_j in a regression model that accounts for all risk factors but exclude quality, hence:

$$C_{ij} = \sum_x \beta_x X_{ij} + \sum_j \beta_{cj} Z_j + e_{ij} \quad (3)$$

The β_{cj} estimates can be interpreted as the department specific contribution to the cost level, since it explains the risk-adjusted costs, having taken all of the above

mentioned variables, including patient case-mix but excluding quality, into account [6]. This type of unexplained deviation from expected costs is also referred to as the department level of inefficiency [9,16,25,26]. The department fixed effects β_{cj} are interpreted as risk-adjusted costs and used in the department level analysis.

At department level, we subtract the β_j 's from the C_j 's, in order to obtain an estimate of unexplained costs, or inefficiency. Since all patient level characteristics are included in the estimation, the resulting estimates could be interpreted as being risk-adjusted costs [7]. Hence, for the cost variable in the department analysis, we look at what could be called *additional* costs, that is, the difference between observed costs and risk-adjusted costs. If this figure is positive, there are costs that cannot be explained by patient risk factors or case-mix.

In a similar manner, we estimate risk-adjusted (or *additional*) complications – or quality – in a logit model specified by

$$Q_{ij} = \sum_x \beta_x X_{ij} + \sum_j \beta_{qj} Z_j + \vartheta_{ij} \quad (4)$$

Here, the X_{ij} vector includes patient level characteristics, such as age, gender, etc. (as above), the Z_j vector is department dummies, and the β_{qj} are estimates of risk-adjusted quality. We used surgical complications and mortality as measures of quality, and multiplied these by -1 , in order to obtain a measure that was high for high quality and *vice versa*. The logit model renders estimated probabilities of complications or death, and these are used for risk-adjusted complications or death below.

The department level analysis is based on a graphical approach, as in [6]. Here, we plot the difference between observed and risk-adjusted costs $C_j - \beta_{cj}$ against the difference between risk-adjusted complications and observed complications $Q_{ij} - \beta_{qj}$. Thus, a cost level higher than expected is interpreted as higher costs, while fewer complications than expected are interpreted as higher quality. Consequently, an observation in the North-Eastern quadrant expresses high costs and high quality.

If a department is primarily located in the North-Eastern or the South-Western quadrant, it can be interpreted as a positive association between quality and costs. If a department is primarily located in the South-Eastern or North-Western quadrant, the cost-quality association is negative [6].

Generally, when we analyse the impact of quality on costs at patient level, we would expect to find that high levels of complications are positively related to costs, since patients with complications are costly. The association between costs and mortality could go both ways. A high mortality could be inversely related to costs for two reasons. Firstly, patients dying at the hospital could have less time there and therefore being exposed to cost

Table 1 Descriptive statistics

	Department 1	Department 2	Department 3	Department 4	Department 5	Department 6	Department 7	Department 8	Department 9	Department 10	Department 11	Total population
Number of discharges												
2005	271	718	135	660	514	790	815	433	644	139	6	5,125
2006	253	662	124	740	557	758	154	35	0	3	11	3,297
2007	232	742	133	822	557	790	836	428	2	0	83	4,625
2008	281	771	133	786	573	203	193	475	477	0	64	3,956
2009	366	799	133	942	681	796	153	504	531	0	46	4,951
Total	1,403	3,692	658	3,950	2,882	3,337	2,151	1,875	1,654	142	210	21,954
University hospital	no	yes	no	no	no	yes	yes	yes	no	no	no	
DRG index	0.90	1.05	0.78	0.97	0.91	1.13	0.99	1.16	0.92	0.86	0.74	1.00
Average cost per discharge, actual (DKK)	84,956	64,937	57,755	69,828	58,525	80,011	94,845	91,434	63,396	115,497	41,186	73,508
Average cost per discharge, predicted (DKK)	69,050	80,443	59,746	74,609	69,748	85,668	73,956	89,858	69,722	54,223	60,139	76,432
Number of vascular operations as a percentage of total at the department level	98.8	81.6	97.4	95.1	96.1	95.6	97.8	93.4	98.7	83.1	89.5	93.6
Average length of stay (days)	6.1	3.7	3.7	4.8	4.9	6.3	5.2	5.5	4.3	4.1	1.7	4.92
Patients												
Average age	66.0	62.7	68.3	68.2	67.5	66.2	66.5	67.2	67.4	65.7	67.3	66.4
Percentage male	59.4	60.8	57.9	57.0	58.3	62.4	59.8	61.9	53.6	59.9	56.2	59.3
Percentage smokers	47.1	27.0	38.9	35.5	41.4	45.0	37.8	42.3	38.9	36.6	21.9	38.1
Percentage with BMI >25	30.3	21.5	49.4	30.1	39.2	37.4	40.8	37.3	39.1	36.6	9.0	33.3
Percentage with ASA score > 2	40.8	11.5	45.9	29.2	27.4	56.4	29.3	19.9	19.5	28.2	32.9	29.9
Percentage admitted acute	3.7	19.5	1.0	27.7	19.4	46.2	36.1	27.5	26.1	11.3	5.2	26.1
30-day mortality, per cent of discharges	0.93	2.79	1.96	3.31	2.73	5.28	4.66	3.18	2.36	4.93	0.5	3.36

Table 1 Descriptive statistics (Continued)

Wound complications, per cent of discharges	13.78	6.51	8.84	8.60	8.41	14.86	5.05	13.75	11.32	7.04	5.47	9.68
Infections, per cent of discharges	2.04	1.19	1.31	2.05	2.28	3.99	1.05	4.27	2.74	0	0	2.30
Surgical complications, per cent of discharges	1.76	2.87	2.45	4.13	3.43	6.99	5.38	5.20	4.35	5.63	0	4.26
General complications, per cent of discharges	3.70	5.46	4.26	7.34	4.34	14.75	8.38	7.23	6.03	9.15	1.49	7.44

NOTE: Some observations are excluded from the analysis due to poor quality and/or a small number of observations. All observations from departments 10 and 11 are excluded in the analysis. Inclusion rules are explained in the data section. Table 1 includes all observations in data.

Table 2 Cost drivers at patient level – quality included as four complications variables

Variable name	Parameter estimate (2009 EURO's)	Standard error	t value	Probability of estimate = 0
Department 1	1,728*	599	2.88	0.0039
Department 2	1,192	638	1.87	0.0615
Department 3	356	531	0.67	0.5027
Department 4	-187	523	-0.36	0.7200
Department 5	-743	527	-1.41	0.1590
Department 6	2,259*	523	4.32	< .0001
Department 7	-421	862	-0.49	0.6254
Department 8	1,772*	538	3.29	0.0010
Department 9	581	541	1.07	0.2827
2006	475	255	1.87	0.0620
2007	1,819*	222	8.19	< .0001
2008	367	241	1.53	0.1273
2009	1,142*	225	5.07	< .0001
DRG index	4,563*	245	18.88	< .0001
DRG index squared	637*	51	12.47	< .0001
Age less than 50	53	266	0.20	0.8424
Age 50-60	64	226	0.28	0.7760
Age 70-80	111	180	0.62	0.5372
Age 80-90	178	234	0.76	0.4470
Age 90+	-1,146	646	-1.77	0.0760
Woman	-520*	147	-3.55	0.0004
Daily smoker	-51	93	-0.55	0.5853
BMI information missing	1,066*	447	2.39	0.0170
Underweight	-233	437	-0.53	0.5937
Overweight	-41	193	-0.21	0.8300
Obese	318	259	1.23	0.2201
Very obese	-1,505	910	-1.65	0.0983
Diabetes	-105	105	-1.01	0.3143
Cerebral comorbidity	-193*	82	-2.35	0.0186
Hypertension	-399*	123	-3.26	0.0011
Cardiac comorbidity	15	53	0.28	0.7795
Pulmonary comorbidity	494*	175	2.82	0.0048
Very acute admission	2,306*	547	4.21	< .0001
Acute admission	857*	321	2.67	0.0077
Elective	589	300	1.96	0.0500
Severity information missing	-322	403	-0.80	0.4249

Table 2 Cost drivers at patient level – quality included as four complications variables (Continued)

Moderate (ASA = 2)	-481*	201	-2.40	0.0166
Severe (ASA = 3)	-234	237	-0.98	0.3249
Very severe/fatal (ASA > 3)	1,266*	454	2.79	0.0053
Length of stay	493*	10	47.21	< .0001
Wound complications	606*	245	2.45	0.0145
Surgical complications	4,935*	367	13.46	< .0001
Infections	715	470	1.52	0.1281
General complications	5,296*	297	17.80	< .0001
Number of observations	20,067			
R ²	0.63			

NOTE: Parameter estimates that are statistically significant at 5 per cent level have the suffix *.

driving activities for a shorter time span. Secondly, resource prioritization could lead to patients dying. On the other hand, high mortality could be positively correlated with costs. Hospitals may spend more on patients at risk of dying, while employing additional effort attempting to save them, by using more complex or costly equipment and treatments.

Costs are reported as Euros, 2009-price level. Euros were computed from Danish Kroner using the exchange rate EUR 1 = 7.45 DKK, which is an average of annual exchange rates 2005–2009 derived from [27]. SAS™ v. 9.3 was used for all analyses.

Results

In Table 1, data is described at department level. Cells with missing observations indicate that data from the particular department has been excluded in that year, due to poor quality of the data.

There are some variations between departments. Not surprisingly, there are differences in costs and case-mix, also mirrored in the variations in length of stay, severity and acute admissions. There are no great variations in age and gender, but some differences in other risk factors. The quality variables, except for mortality, show rather high variation between departments, generally university hospitals have the highest share of complications.

In Table 2, the results of the first patient level model are shown. Here, cost drivers are identified at patient level. The four complication variables indicate quality in this model.

Table 3 shows the results of the patient level model with mortality instead of complications. Otherwise, as model [1] and [2] reflect, the model specifications are identical.

Table 3 Cost drivers at patient level – quality included as 30 days mortality

Variable name	Parameter estimate (2009 EURO's)	Standard error	t value	Probability of estimate = 0
Department 1	1,374*	607	2.26	0.0236
Department 2	994	646	1.54	0.1240
Department 3	144	538	0.27	0.7891
Department 4	-530	530	-1.00	0.3171
Department 5	-691	534	-1.29	0.1959
Department 6	2,044*	530	3.86	0.0001
Department 7	-753	874	-0.86	0.3889
Department 8	1,494*	545	2.74	0.0061
Department 9	442	548	0.81	0.4199
2006	561*	258	2.18	0.0296
2007	1,827*	225	8.11	< .0001
2008	314	244	1.29	0.1987
2009	1,093*	228	4.79	< .0001
DRG index	4,832*	245	19.75	< .0001
DRG index squared	709*	52	13.72	< .0001
Age less than 50	-42	270	-0.16	0.8764
Age 50-60	9	229	0.04	0.9690
Age 70-80	166	183	0.91	0.3642
Age 80-90	179	238	0.75	0.4505
Age 90+	-1,443*	654	-2.21	0.0275
Woman	-571*	149	-3.84	0.0001
Daily smoker	-85	94	-0.90	0.3681
BMI information missing	1,221*	453	2.70	0.0070
Underweight	-338	443	-0.76	0.4457
Overweight	-2	195	-0.01	0.9935
Obese	340	263	1.29	0.1960
Very obese	-1,378	923	-1.49	0.1354
Diabetes	-168	106	-1.58	0.1132
Cerebral comorbidity	-146	83	-1.76	0.0787
Hypertension	-357*	124	-2.87	0.0041
Cardiac comorbidity	33	53	0.61	0.5390
Pulmonary comorbidity	504*	178	2.84	0.0045
Very acute admission	2,340*	555	4.22	< .0001
Acute admission	1,217*	326	3.74	0.0002
Elective	736*	304	2.42	0.0155

Table 3 Cost drivers at patient level – quality included as 30 days mortality (Continued)

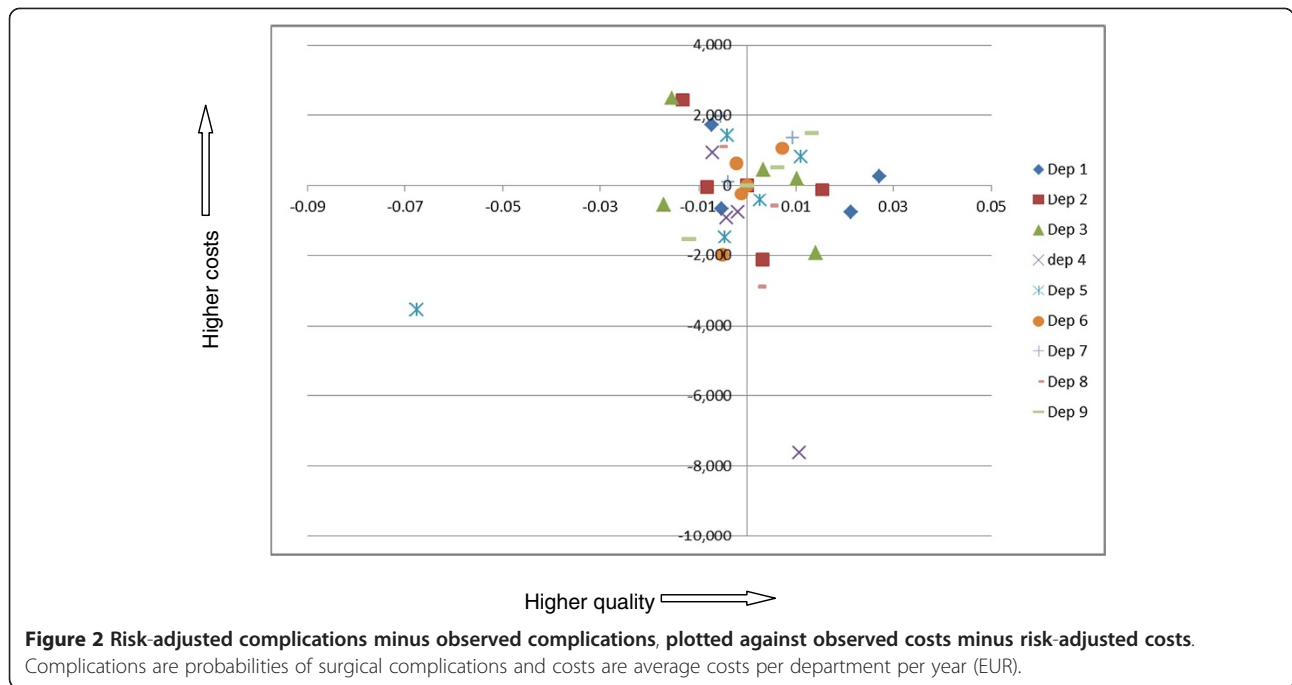
	-322	409	-0.79	0.4301
Severity information missing				
Moderate (ASA = 2)	-476*	204	-2.34	0.0195
Severe (ASA = 3)	-267	241	-1.11	0.2681
Very severe/fatal (ASA > 3)	1,552*	464	3.35	0.0008
Length of stay	549*	10	53.59	< .0001
30 days mortality	3,872*	423	9.15	< .0001
Number of observations	20,067			
R ²	0.62			

NOTE: Parameter estimates that are statistically significant at 5 per cent level have the suffix *.

The explanatory power of the two cost driver models is reasonable, with R²'s above 0.6. Patient case-mix, gender, and acute admission are important cost drivers, with increasing case-mix and cases of acute admission increasing costs. Most patient co-morbidity parameters are statistically significant as well. In both models, the quality variables, except for infections, are statistically significant cost drivers. All are positively related to costs.

In Figures 2 and 3, the observed quality (complications/mortality) minus the risk-adjusted quality is plotted against observed costs minus risk-adjusted costs. This is done for surgical complications as expression of quality (Figure 2) and mortality as expression of quality (Figure 3).

Hospitals located at the origin operate with costs and complications/mortality as expected, judged on the basis of their particular patient characteristics. In the North-Eastern quadrant hospitals have higher costs as well as high quality/low mortality, which seems to indicate that quality comes at a cost. In the North-Western quadrant hospitals have higher costs and lower quality/higher mortality than expected, indicating that low quality comes at a cost. In the South-Western as well as in South-Eastern quadrants hospitals have lower costs. In the former hospitals have lower quality/higher mortality and higher quality/low mortality than average respectively. For most hospitals, it follows from the figures, results are ambiguous. All hospitals are located in at least 2 quadrants, with the majority of observations located around the origin. This seems to indicate that over the years hospitals adjust levels of cost and ways of operating that affect quality and mortality. It follows from Figure 2, that except for the observation with the lowest costs and the one with the lowest quality as outliers, all others are located within a U-shaped area, starting from the North-eastern part of the North-Eastern quadrant, including the corners of



the South-Eastern and South-Western quadrants closest to the origin and ending with the North-Western part of the North-Western quadrant.

The U-shape in Figure 2 illustrates the association between additional costs, i.e. costs minus risk-adjusted costs, and additional quality, i.e. the share of surgical complications minus the risk-adjusted share of surgical complications. The cost figure being positive in Figure 2 indicates that costs are higher than what patient risk factors can explain, and similarly for surgical complications. This, in turn, seems to suggest that high costs for the

vascular departments are associated with either increased quality or decreased quality, in other words, that high quality is costly and so is low quality. Within this U-shaped range, hospital 1 displays an almost uniformly positive association, with high costs associated with high quality. This does not, however, alter the overall picture. The relation between costs and mortality as depicted in Figure 3 has no such clear relation.

In Table 4 the patient level results of the two sensitivity analyses are shown. The first sensitivity analysis excludes all readmissions within 30 days (this leads to the exclusion of

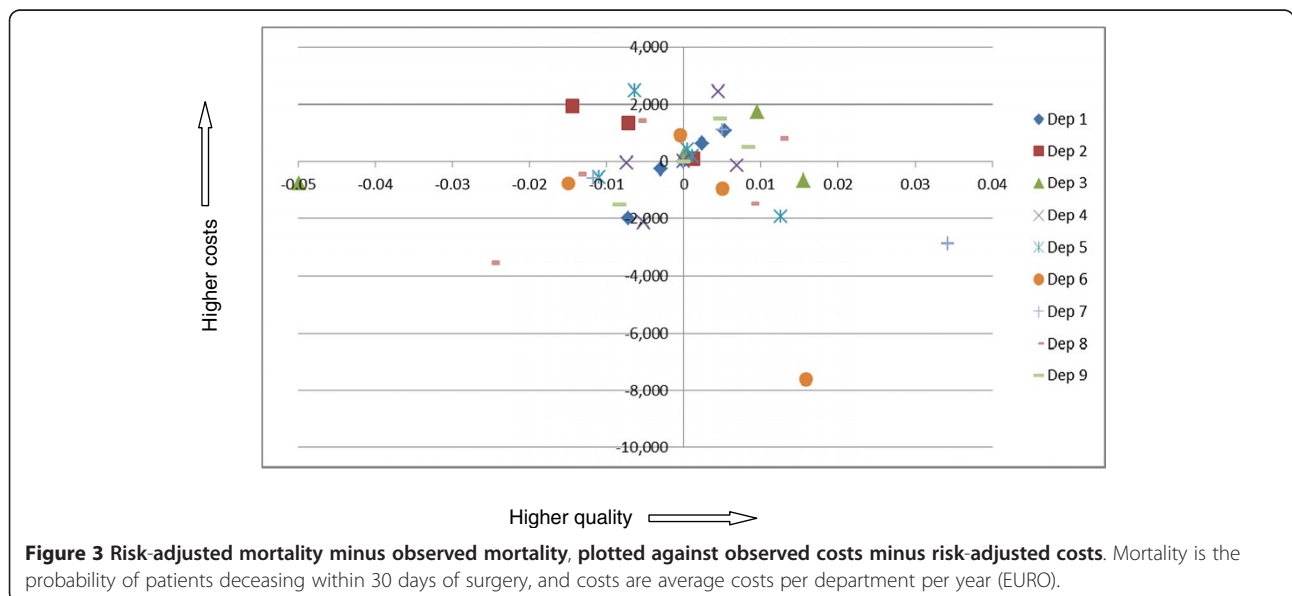


Table 4 Sensitivity analyses, patient level

Variable name	Parameter estimate (2009 EURO's)	Standard error	t value	Probability of estimate = 0
Sensitivity analysis 1: Only the first discharge per patient per year is included				
Department 1	696	618	1.13	0.2599
Department 2	668	658	1.02	0.3096
Department 3	-298	549	-0.54	0.5875
Department 4	-915	540	-1.70	0.0899
Department 5	-1,044	544	-1.92	0.0551
Department 6	1,588*	540	2.94	0.0033
Department 7	-1,152	905	-1.27	0.2034
Department 8	1,157*	555	2.08	0.0372
Department 9	49	558	0.09	0.9300
2006	480	263	1.82	0.0682
2007	1,888*	229	8.25	< .0001
2008	495*	249	1.99	0.0465
2009	1,206*	232	5.19	< .0001
DRG index	4,395*	249	17.65	< .0001
DRG index squared	744*	52	14.32	< .0001
Age less than 50	48	275	0.18	0.8610
Age 50-60	137	234	0.59	0.5585
Age 70-80	178	186	0.96	0.3375
Age 80-90	86	242	0.35	0.7227
Age 90+	-1,344*	668	-2.01	0.0444
Woman	-534*	151	-3.53	0.0004
Daily smoker	-100	96	-1.04	0.2983
BMI information missing	1,440*	459	3.14	0.0017
Underweight	-272	449	-0.61	0.5451
Overweight	37	198	0.19	0.8519
Obese	380	267	1.42	0.1542
Very obese	-1,505	946	-1.59	0.1116
Diabetes	-225	108	-2.08	0.0380
Cerebral comorbidity	-159	84	-1.89	0.0589
Hypertension	-380*	126	-3.01	0.0026
Cardiac comorbidity	20	54	0.37	0.7107
Pulmonary comorbidity	590*	181	3.26	0.0011
Very acute admission	2,748*	575	4.78	< .0001
Acute admission	1,247	334	3.74	0.0002
Elective	896	311	2.88	0.0040

Table 4 Sensitivity analyses, patient level (Continued)

Severity information missing	-126	420	-0.30	0.7640
Moderate (ASA = 2)	-524*	207	-2.53	0.0113
Severe (ASA = 3)	-335	245	-1.37	0.1718
Very severe/fatal (ASA > 3)	1,586*	468	3.39	0.0007
Length of stay	646*	11	58.20	< .0001
30 days mortality	4,113*	426	9.66	< .0001
No. observations	19,185			
Model diagnostics (R ²)	0.63			
Sensitivity analysis 2: All observations are included				
Department 1 d1	1,084	597	1.81	0.0697
Department 2	883	643	1.37	0.1696
Department 3	-156	528	-0.30	0.7672
Department 4	-636	525	-1.21	0.2255
Department 5	-755	530	-1.43	0.1541
Department 6	2,096*	525	3.99	< .0001
Department 7	-930	871	-1.07	0.2854
Department 8	1,423*	541	2.63	0.0085
Department 9	386	544	0.71	0.4774
Department 10	-972	533	-1.82	0.0685
Department 11	6,672*	1,721	3.88	0.0001
2006	840*	251	3.35	0.0008
2007	2,036*	220	9.25	< .0001
2008	566*	237	2.39	0.0169
2009	1,324*	222	5.96	< .0001
DRG index	4,712*	243	19.37	< .0001
DRG index squared	727*	51	14.15	< .0001
Age less than 50	-40	267	-0.15	0.8815
Age 50-60	-43	227	-0.19	0.8513
Age 70-80	138	181	0.76	0.4458
Age 80-90	133	236	0.56	0.5733
Age 90+	-1,426*	650	-2.19	0.0284
Woman	-564*	148	-3.82	0.0001
Daily smoker	-106	94	-1.13	0.2583
BMI information missing	1,096*	450	2.44	0.0148
Underweight	-197	440	-0.45	0.6537
Overweight	-15	194	-0.08	0.9372
Obese	303	261	1.16	0.2445
Very obese	-1,350	922	-1.46	0.1433

Table 4 Sensitivity analyses, patient level (Continued)

Diabetes	-177	105	-1.68	0.0932
Cerebral comorbidity	-149	83	-1.80	0.0716
Hypertension	-334*	123	-2.71	0.0068
Cardiac comorbidity	25	53	0.46	0.6429
Pulmonary comorbidity	485*	176	2.75	0.0060
Very acute admission	2,365*	553	4.28	<.0001
Acute admission	1,206*	323	3.73	0.0002
Elective	790*	301	2.62	0.0088
Severity information missing	-421	407	-1.03	0.3014
Moderate (ASA = 2)	-480*	202	-2.37	0.0177
Severe (ASA = 3)	-269	238	-1.13	0.2579
Very severe/fatal (ASA > 3)	1,600*	460	3.48	0.0005
Length of stay	547*	10	53.62	<.0001
30 days mortality	3,893*	422	9.22	<.0001
No. observations	21,954			
Model diagnostics (R ²)	0.62			

NOTE: Parameter estimates that are statistically significant at 5 per cent level have the suffix *.
 Quality included as 30 days mortality.

883 observations), while the second used all observations from all departments. Hence, in this sensitivity analysis, no observations were excluded on the basis of data shortage or poor quality. Quality is represented by 30-days mortality in both sensitivity analyses.

In the first sensitivity analysis, parameter estimates change only marginally. This is due to few observations being excluded compared to the base case analysis. Most results remain statistically significant. In the second sensitivity analysis, based on 21,954 admissions, the overall result remains, although less parameter estimates are statistically significant. Two departments are added to this analysis, the data for these two departments were of insufficient quality for them to be included in the base case analysis above.

Discussion

We used individual level data for identifying cost drivers at patient and department level in a sample of nine vascular surgery departments. Though the sample size at department level is small, the data set still provides a range of opportunities for analysis.

We introduce quality aspects of patient treatment into the analyses. Defining quality is a complicated task. Donabedian [28] suggests dividing the various concepts of quality into 3 major groups; structure quality, referring to the setting in which the treatment takes place, process quality, referring to the treatment as such and what is being done to the patient, and the outcome quality, referring to the effects of care. The present paper has focus on the outcome quality aspects. Due to the availability of data, the analysis is limited to a small number of quality indicators, while recognizing these measures only account for a fraction of the many outcomes entailed by hospital treatment.

For patients, we found that in particular case-mix and acute admissions were important cost drivers along with mortality and complications. At patient level, complications are associated with increased costs. Since a high level of complications express low quality, and vice versa, the complications term should be multiplied by -1 in order to comprehend the cost-quality association from the findings. If the cost-quality relation is U-shaped, our findings at patient level indicate that in this case we are on the downward sloping side of the U. This, however, is likely to be the case, since a complicated admission requires more resources. At department level, the association is not clear, but could in fact tentatively support the hypothesis of a U-shaped curve, in particular in the case of surgical complications. The sample size prevents us from concluding any further on these results.

The question of causality is, unfortunately, not resolved by the present analysis. In principle, it would be possible to include lagged department characteristics as explanatory variables in the second stage analysis. The small sample size does not, however, allow this way to establish effects that would indicate causal effects at the department level.

We estimate that the presence of wound complications is associated with an increase in patient costs by 8.4%. For comparison, estimates by the EuroDRG group show patient costs caused by wound infections in the range of 13.0% to 94.3% [13]. This seems to suggest that the production function estimated for the Danish vascular departments has characteristics comparable to the Swedish ones included in the EuroDRG study with the lowest impact of wound infections.

The findings on department level may be related to variations in hospitals reporting to the cost database. Comparison of data between hospitals is not straightforward, since the calculation of overhead costs differs between hospitals. As a result, the percentage of overhead costs included in the cost figure may vary, and department cost levels are consequently not directly comparable. The actual level of productivity may thus be affected by reporting practises. A number of other weaknesses of data should be mentioned: Data are of varying quality and the attempts we made in

order to compensate for this may have led to exclusion of good data. The DRG-values we used for expressing case-mix are based on average figures and may be subject to registration errors.

Relying on a limited set of indicators of quality limits the generality of the findings. Even though mortality, complications and infections are important indicators, they are not the only ones relevant. Most importantly, the available indicators applied only cover negative aspects of health outcome, and thus leave out indicators based on positive health measures.

These weaknesses aside, the data material used in this study provides a strong basis for analysing cost drivers including salient quality variables. The data material is constructed via linkage of different data bases at patient level, made possible by the individual social security number.

We conclude that the relation between costs and quality is rather straightforward at patient level, while the department level vaguely displays an indication of a U-shaped relation between quality, in terms of surgical complications, and costs [6]. Our results suggest that rising costs for the vascular departments are associated with either increased quality or decreased quality, i.e. high quality is costly and so is low quality, nothing said about causality. Therefore, we can tentatively reject a uniformly negative association, i.e. that only low quality is costly, as suggested by [10], as such an association is only established for a minority of departments. For the relation between costs and mortality, we have not been able to identify an association at department level.

The question of whether too little or too much is spent on quality, is very complex and is not directly addressed in the literature, nor by the present analysis. However, results could be interpreted such that hospitals react to changes in quality in a rational and systematic way. Whether there is tendency over time remains to be explored.

Competing interests

The authors declare that they have no competing interests.

Authors' contributions

MK drafted the first version of the paper and conducted the analyses in dialogue with JC. JC finalised the paper. Both authors read and approved the final manuscript.

Acknowledgements

We are grateful to the Danish Vascular Register for their collaboration and for giving us the opportunity to use anonymised data from the register. We thank two anonymous reviewers for their valuable inputs to earlier versions of this paper.

Author details

¹KORA: Danish Institute for Local and Regional Government Research, Købmagergade 22 DK-1150 Copenhagen, Denmark. ²Local Government Denmark, Weidekampsgade 10 DK-2300 Copenhagen, Denmark.

Received: 7 March 2013 Accepted: 9 October 2013

Published: 21 October 2013

References

1. Sundhedsministeriet. DRG-analyser for danske sygehuse, 1993: *Sundhedsministeriets case-mix udvalg*. Denmark: Distribution, Nyt Nordisk forlag Arnold Busck; 1996.
2. Hvenegaard A, Sørensen TH: *Dialogbaseret benchmarking af produktivitet og kvalitet på karkirurgiske afdelinger*. Copenhagen: Dansk Sundhedsinstitut; 2008. Report No.: 1.
3. Danske R: *Finansministeriet, Indenrigs- og Sundhedsministeriet. Løbende offentliggørelse af produktivitet i syghusektoren (VI delrapport) udviklingen fra 2008 til 2009*. Copenhagen: Danish Regions; 2010.
4. Laudicella M, Olsen KR, Street A: **Examining cost variation across hospital departments—a two-stage multi-level approach using patient-level data**. *Soc Sci Med* 2010, **71**(10):1872–1881.
5. Laudicella M, Olsen KR, Street A: *What explains variation in the costs of treating patients in english obstetrics specialties? Reseach Papers*. York: Centre for Health Economics; 2009. Report No.: 49.
6. Hvenegaard A, Gyrd-Hansen D, Street A, Olsen KR: *Assessing the association between quality and costs using patient level data in a multilevel model [dissertation]*. Odense: University of Southern Denmark; 2010.
7. Jha AK, Orav EJ, Dobson A, Book RA, Epstein AM: **Measuring efficiency: the association of hospital costs and quality of care**. *Health Aff* 2009, **28**(3):897–906.
8. Jha AK, Orav EJ, Epstein AM: **Low-quality, high-cost hospitals, mainly in south, care for sharply higher shares of elderly-black, hispanic, and medicaid patients**. *Health Aff*. 2011, **30**(10):1904–11.
9. Gutacker N, Bojke C, Daidone S, Devlin NJ, Parkin D, Street A: **TRULY INEFFICIENT OR PROVIDING BETTER QUALITY OF CARE? ANALYSING THE RELATIONSHIP BETWEEN RISK-ADJUSTED HOSPITAL COSTS AND PATIENTS' HEALTH OUTCOMES**. *Health Econ*. 2012, **22**(8):931.
10. Gryna FM, Juran JM: *Quality and costs*. New York: McGraw-Hill; 1999.
11. Schreyögg J, Stargardt T: **The Trade-Off between costs and outcomes: The case of acute myocardial infarction**. *Health Serv Res*. 2010, **45**(6p1):1585–601.
12. Carey K, Burgess JF Jr: **On measuring the hospital cost/quality trade-off**. *Health Econ* 1999, **8**(6):509–520.
13. EuroDRG group - Editors, Reinhard B, Alexander G, Anne M, Zeynep O, David S-K, Andrew S: **Diagnosis-related groups in europe (EuroDRG): Do they explain variation in hospital costs and length of stay across patients and hospitals?** *Health Economics* 2012, **21**(Supplement S2):1.
14. Gaughan J, Kobel C, Linhart C, Mason A, Street A, Ward P: **WHY DO PATIENTS HAVING CORONARY ARTERY BYPASS GRAFTS HAVE DIFFERENT COSTS OR LENGTH OF STAY? AN ANALYSIS ACROSS 10 EUROPEAN COUNTRIES**. *Health Econ* 2012, **21**(S2):77–88.
15. Mukamel DB, Zwanziger J, Tomaszewski KJ: **HMO penetration, competition, and risk-adjusted hospital mortality**. *Health Serv Res* 2001, **36**(6 Pt 1):1019.
16. McKay NL, Deily ME: **Cost inefficiency and hospital health outcomes**. *Health Econ* 2008, **17**(7):833–848.
17. [Internet]. Available from: <http://www.karbase.dk/>.
18. Ankjær-Jensen A, Rosling P, Bilde L: **Variable prospective financing in the danish hospital sector and the development of a danish case-mix system**. *Health Care Management Science* 2006, **9**(3):259–68.
19. Meerding WJ, Bonneux L, Polder JJ, Koopmanschap MA, Van Der Maas PJ: **Demographic and epidemiological determinants of healthcare costs in Netherlands: cost of illness study**. *BMJ* 1998, **317**(7151):111–115.
20. Quesenberry CP Jr, Caan B, Jacobson A: **Obesity, health services use, and health care costs among members of a health maintenance organization**. *Arch Intern Med* 1998, **158**(5):466.
21. Allison DB, Zannolli R, Narayan K: **The direct health care costs of obesity in the United States**. *Am J Public Health* 1999, **89**(8):1194.
22. Raebel MA, Malone DC, Conner DA, Xu S, Porter JA, Lantý FA: **Health services use and health care costs of obese and nonobese individuals**. *Arch Intern Med* 2004, **164**(19):2135.
23. Rasmussen SR, Prescott E, Sørensen TIA, Søgaard J: **The total lifetime health cost savings of smoking cessation to society**. *The European Journal of Public Health* 2005, **15**(6):601–606.
24. Barendregt JJ, Bonneux L, van der Maas PJ: **The health care costs of smoking**. *N Engl J Med* 1997, **337**(15):1052–1057.

25. Deily ME, McKay NL: **Cost inefficiency and mortality rates in Florida hospitals.** *Health Econ* 2006, **15**(4):419–431.
26. McKay NL, Deily ME: **Comparing high- and low-performing hospitals using risk-adjusted excess mortality and cost inefficiency.** *Health Care Manage Rev* 2005, **30**(4):347–60.
27. *Exchange rates [Internet]*; 2013. Available from: <http://nationalbanken.statbank.dk/nbf/100249>.
28. Donabedian A: **The quality of care - how can it be assessed?** *JAMA: the journal of the American Medical Association* 1988, **260**(12):1743.

doi:10.1186/2191-1991-3-22

Cite this article as: Kruse and Christensen: **Is quality costly? Patient and hospital cost drivers in vascular surgery.** *Health Economics Review* 2013 **3**:22.

Submit your manuscript to a SpringerOpen[®] journal and benefit from:

- ▶ Convenient online submission
- ▶ Rigorous peer review
- ▶ Immediate publication on acceptance
- ▶ Open access: articles freely available online
- ▶ High visibility within the field
- ▶ Retaining the copyright to your article

Submit your next manuscript at ▶ springeropen.com
