

Bando, Rosangela; López Bóo, Florencia; Li, Xia

**Working Paper**

## Sex-Differences in Language and Socio-Emotional Skills: Evidence from Large Scale Studies of Very Young Children

IZA Discussion Papers, No. 10315

**Provided in Cooperation with:**

IZA – Institute of Labor Economics

*Suggested Citation:* Bando, Rosangela; López Bóo, Florencia; Li, Xia (2016) : Sex-Differences in Language and Socio-Emotional Skills: Evidence from Large Scale Studies of Very Young Children, IZA Discussion Papers, No. 10315, Institute for the Study of Labor (IZA), Bonn

This Version is available at:

<https://hdl.handle.net/10419/149174>

**Standard-Nutzungsbedingungen:**

Die Dokumente auf EconStor dürfen zu eigenen wissenschaftlichen Zwecken und zum Privatgebrauch gespeichert und kopiert werden.

Sie dürfen die Dokumente nicht für öffentliche oder kommerzielle Zwecke vervielfältigen, öffentlich ausstellen, öffentlich zugänglich machen, vertreiben oder anderweitig nutzen.

Sofern die Verfasser die Dokumente unter Open-Content-Lizenzen (insbesondere CC-Lizenzen) zur Verfügung gestellt haben sollten, gelten abweichend von diesen Nutzungsbedingungen die in der dort genannten Lizenz gewährten Nutzungsrechte.

**Terms of use:**

*Documents in EconStor may be saved and copied for your personal and scholarly purposes.*

*You are not to copy documents for public or commercial purposes, to exhibit the documents publicly, to make them publicly available on the internet, or to distribute or otherwise use the documents in public.*

*If the documents have been made available under an Open Content Licence (especially Creative Commons Licences), you may exercise further usage rights as specified in the indicated licence.*

IZA DP No. 10315

**Sex-Differences in Language and Socio-Emotional Skills: Evidence from Large Scale Studies of Very Young Children**

Rosangela Bando  
Florencia López-Boo  
Xia Li

October 2016

# **Sex-Differences in Language and Socio-Emotional Skills: Evidence from Large Scale Studies of Very Young Children**

**Rosangela Bando**  
*Inter-American Development Bank*

**Florencia López-Boo**  
*Inter-American Development Bank and IZA*

**Xia Li**  
*United States Postal Service*

Discussion Paper No. 10315  
October 2016

IZA

P.O. Box 7240  
53072 Bonn  
Germany

Phone: +49-228-3894-0  
Fax: +49-228-3894-180  
E-mail: [iza@iza.org](mailto:iza@iza.org)

Any opinions expressed here are those of the author(s) and not those of IZA. Research published in this series may include views on policy, but the institute itself takes no institutional policy positions. The IZA research network is committed to the IZA Guiding Principles of Research Integrity.

The Institute for the Study of Labor (IZA) in Bonn is a local and virtual international research center and a place of communication between science, politics and business. IZA is an independent nonprofit organization supported by Deutsche Post Foundation. The center is associated with the University of Bonn and offers a stimulating research environment through its international network, workshops and conferences, data service, project support, research visits and doctoral program. IZA engages in (i) original and internationally competitive research in all fields of labor economics, (ii) development of policy concepts, and (iii) dissemination of research results and concepts to the interested public.

IZA Discussion Papers often represent preliminary work and are circulated to encourage discussion. Citation of such a paper should account for its provisional character. A revised version may be available directly from the author.

## ABSTRACT

### **Sex-Differences in Language and Socio-Emotional Skills: Evidence from Large Scale Studies of Very Young Children\***

This study explores sex differences in language and socio-emotional skills on children 7 months to 6 years old in Latin-America. Females had a significant advantage in both dimensions. To our knowledge, this is the first study to document sex differences in these dimensions at a very young age. In part, we believe this is due to our uniquely large sample size. We found geographical and cultural variation across the countries under study did not affect the gap. Within countries, variation in family characteristics, parenting practices and health investments did not explain the gap. The identification of biological and environmental factors is necessary to inform whether policy should tailor inputs to ensure equality of opportunities.

JEL Classification: I25, J13, J16, O15, Z13

Keywords: gender gaps, sex gaps, language, social skills, emotional skills, early childhood

Corresponding author:

Rosangela Bando  
Office of Strategic Planning and Development Effectiveness  
Inter-American Development Bank  
1300 New York Avenue N.W.  
Washington, D.C. 20577  
USA  
E-mail: [rosangelab@iadb.org](mailto:rosangelab@iadb.org)

---

\* We would like to thank Jane Leer for superb research assistance. We are also grateful to seminar participants at the Inter-American Development Bank and three anonymous referees for comments. All remaining errors are our own. The opinions and views expressed in this publication are those of the authors and do not necessarily reflect the views of the Inter-American Development Bank, its Board of Directors, or the countries they represent. Nor do they represent the views of the United States Postal Service.

## **Introduction**

An assessment of sex differences in early childhood contributes to our understanding of them later in life. Indeed, labor participation among females is lower to that of males across the globe. In 2015, 80 percent of males participated in the labor market, while only 50 percent of females did (International Labor Organization, 2016). In addition, females self-select into fields that leave them at an economic disadvantage. In most countries females dominate in the fields of education, health and welfare (World Bank, 2012). In contrast, males dominate engineering, manufacturing, construction, agriculture and science (World Bank, 2012). These differences come at a cost. Sex differences in the labor market weaken economic growth and human development (World Bank, 2012). Despite its importance, the existence and sources of sex gaps in the labor market is a matter of debate.

One such debate is that on the role of innate fixed attributes versus that of environmental conditions. This debate is known as the “nature” versus “nurture” debate. Both factors play a role to shape skills and preferences. Identifying the role of biological and environmental contributors is important. For example, suppose females had a genetic predisposition to be more sensitive to social stimulus than males. Such attribute would explain why females have an advantage in language and socio-emotional skills (Feldman, 2009; Berglund et al., 2005; Mildner, 2008; Smieja, Orzechowski and Stolarski, 2014; Kret and Gelder, 2012; Thomson and Voyer, 2014; World Bank, 2012). It would also explain why females do not seem to capitalize on this

advantage. Indeed, it would explain why females choose professions where they can respond to the social stimulus around them at the cost of lower pay.<sup>1</sup>

However, such differences could also result from environmental conditions. More specifically, differences may result from discrimination by institutions, social norms, social preferences or information problems (Akerlof and Kranton, 2002; Blau and Kahn, 1999; Becker, 1957; Arrow, 1973; World Bank, 2012). In other words, women may be raised to be more aware of social stimulus. Nevertheless, identifying biological from environmental attributes is difficult. Researchers cannot observe a large number of females receiving male treatment and vice versa. Thus, it is impossible to differentiate between the two. Comparing skills between males and females ignoring environmental factors beyond sex may be misleading. However, the identification of biological and environmental contributors is necessary to inform policy. Indeed, biological factors require addressing specific individual needs. In contrast, non-biological factors require addressing environmental conditions.

In this paper we explore sex differences in child development across two domains. The two are related to sensitivity to social interactions: language and socio-emotional skills. Social interactions pave the way for the development of language and socio-emotional skills in children (Feldman, 2009). Language and socio-emotional skills promote communication. Then, communication provides the base for the more structured social interactions (Feldman, 2009). This study focuses on children 7 months old to 6 years old in Chile and Nicaragua. We find females have an advantage in language and socio-emotional skills relative to males. The average male in Chile scores at -0.13 standard deviations (SD) and -0.20 SD in the distribution of females

---

<sup>1</sup> Females rank occupations where they can aid others higher when compared to men. This is present even before they enter the labor market (Fortin, 2008). Females also tend to be more altruistic and show more pro social behavior in laboratory experiments (Betrand, 2011).

respectively. The results for Nicaragua are similar. The average male scores at  $-0.15$  SD in language and  $-0.16$  SD in socio-emotional skills. These gaps hold across a range of family characteristics and input levels. Moreover, the magnitude of the gaps is not statistically different across the two countries. Therefore, the gap holds despite geographical and cultural variation. Moreover, we found little to no evidence of discriminatory treatment by parents. These findings shed new light into the role of biological and environmental contributors. They contribute to our understanding of sex gaps relative to previous studies for three reasons.

First, data on inputs to human capital production on young children is rich relative to older age groups. Individuals have a relative short history. Compared to data on adults, data for children go beyond family characteristics and health investment. Indeed, data for children includes a wide set of parenting behaviors. For example, it includes information on stimulation, discipline and maltreatment. As a result, this data allows us to test a subset of social discrimination theories to explain the gap. More specifically, the data enables to explore the role of a robust set of environmental factors. It allows exploring the role of the quality of the environment, family traits, care practices, and health investments.

Second, data on child development has become available for large samples in several countries.<sup>2</sup> Despite the prominence of studies that look at sex gaps early in life, these studies are limited by small samples. A small sample limits the ability of a study to statistically detect small gaps and to contrast sex gaps across subgroups. These limitations result in limitations to explore societal, economic and cultural variations to explain the sex gap. This study uses data on 20,564 children from two countries. The first data set is a nationally representative sample of

---

<sup>2</sup> Data exists for four nationally representative datasets on child development in LAC: ELPI from Chile, ELCA from Colombia, ENDIS from Uruguay and the YL dataset from Peru.

12,564 children in Chile, one of the richest countries in LAC. The second data set is a sample of 8,400 children in poor communities in Nicaragua. Nicaragua is the second poorest nation in LAC. To put the sample size of our study in context, consider the Meta-Analytic review by Chaplin and Aldao (2013) on gender differences in emotion expression in Children. The largest sample out of 555 studies was composed of 2,318 children. The majority of the studies in their review were based on samples of less than 200 children

Third, children at this age group allow observing differences net of identity effects. Identity effects are changes in behavior so as to comply with the norms of the group with which an individual identifies. This effect is present regardless of skill. Akerlof and Kranton (2002) propose it as a key driver of behavior. However, this behavior starts around the age of six (Rye, 2011; Wetherell, 1996). Thus, a focus in the first years of life provides measurement net of identity behavioral adjustments.

This study explores a robust set of socialization theories. In addition, this study is one of the first studies on language and socio-emotional skills to focus on children 7 months old to 6 years old. Moreover, this study is one of the first to explore sex gaps in Latin America. Indeed, socioeconomic gaps have been largely explored in the region (Schady et al, 2015). However, to our knowledge, sex gaps early in life and in Latin America are not documented.

In spite of these advantages, this study faces important limitations. One such limitation is its focus on children 7 to 70 months of age. Thus, it is not possible to learn on behavior at later stages. Moreover, it is not possible to make a direct link to labor market outcomes or other welfare related indicators in adulthood. In addition, the study is limited to two countries. Thus, more research is necessary to make an informed policy recommendation. Despite these



limitations, this study provides direction for further studies. Thus, it contributes to the common knowledge on potential contributors for sex gaps.

The organization of the paper is as follows. Section 2 discusses the evidence on sex gaps in language and socio-emotional skills. It also discusses why it is difficult to identify biological and environmental contributors. Section 3 describes the data sources. Section 4 describes the methodology for the analysis of sex gaps. Section 5 describes results from the analysis. Section 6 includes a discussion on the results. Section 7 concludes.

## **2. Other evidence on language and socio-emotional skills across sex groups**

The claim that females have an advantage in language and socio-emotional skills is common. However, this claim is a matter of debate. In this section we describe the evidence that supports such idea and why making such claim is difficult.

Females outperformed males in literacy in all countries that participated in the 2012 PISA test except for Colombia (World Bank, 2012). The sex gap is present in countries across the performance level spectrum. This difference was present despite the fact males and females performed equally well in mathematics (World Bank, 2012). Other studies find females have higher verbal abilities and use more tentative, less assertive language than men (Berglund et al., 2005; Mildner, 2008; Feldman, 2009). In addition, females tend to outperform males to regulate and read emotions and function in social groups (Smieja, Orzechowski and Stolarski, 2014; Kret and Gelder, 2012; Thomson and Voyer, 2014). These differences seem to relate to biological differences. Indeed, electrophysiological studies show that males and females differ in the neural

activation system. A task to identify faces and facial affect activates this system. Males use the right hemisphere, while females activate the left hemisphere (Everhart et al, 2001).

Sex differences in language and socio-emotional skills seem to be present right after birth. For example, neonate males make fewer basic oral rhythmic and lingual movements during sucking (Miller et al. 2006). On the other hand, neonate females are more responsive to sweetened formula with a reflexive "smile" and show more auditory sensitivity (Cassidy and Ditty, 2001; Erickson and Schulkin, 2003). Differences in the subsequent months include pain sensibility, responsiveness to maternal vocalizations, and discrimination of emotional expressions (Guinsburg et al. 2000; Gunnar and Donahue, 1980).

However, even at early stages of development differences do not favor one sex group. For example, some studies find that boys show more joy, look at their mother for a longer time, and make more gestures to be picked up (Weinberg et al. 1999). Moreover, some studies do not find differences in neonatal eye contact, in contagious crying, or in response to maternal still face (Leeb and Rejskind, 2004; Geangu et al. 2010; Mesman et al. 2009; Wager et al. 2003).

Identifying biological and environmental contributors to the sex gap is difficult. Physiological sex characteristics develop at prenatal stages of life. These characteristics remain to adulthood. Thus, sex differences in physiology may establish behavioral predispositions during a lifetime. For example, Baron-Cohen (2003) finds that prenatal exposure to testosterone influences the ability to empathize with others. Thus, it may affect how social a child is.

Brain plasticity makes it difficult to establish how biological differences across sex groups affects behavior. The plasticity of the brain makes it malleable to experiences (Wood et al, 2008; Phillips and Shonkoff, 2010). Studies on twins show that even if about 50 per cent of the

variance in child development is due to genetic factors, a child's genetic expression is influenced by environmental inputs (Teasdale and Owen 1984, Wilson 1983). This is particularly the case at younger ages (Teasdale and Owen 1984, Wilson 1983). Thus, social treatment will affect a sex comparison even at very young ages and even based on anthropometric measures. Thus, social treatment becomes a confounding factor for biological factors.

Differential treatment across sex groups makes it difficult to understand how social and biological factors interact. Males and females get differential treatment (Lopez Boo and Canon, 2014; Qian, 2008; Barcellos et al. 2014). Differences in social treatment affect language and social development (Wester et al. 2002). For example, caregivers are more likely to drop boys during the first 3 months of life, resulting in a higher rate of head injuries (Greenes et al. 2001). By age 32 months, girls hear twice as many diminutives as boys and hear warmer phrases (Gleason et al. 1994, Feldman, 2009). Moreover, mothers are more likely to respond to a child request with a firm "no" to a male. Yet, mothers are more likely to respond with a less direct answer such as "Why don't you do this instead?" to a girl (Feldman, 2009). What is more, discriminatory treatment may be present even at prenatal stages. For example, selective abortion affects the male-female ratio at birth in some countries in Asia (Qian, 2008; Barcellos et al. 2014).

In addition, biological and environmental interactions are cumulative and dynamic (Wallentin, 2009; Bertrand, 2011, Barbu et al., 2011). Bornstein et al. (2004) tested for language differences in English-speaking, European American families in the United States. Focusing on children 1 to 6 years of age, the authors found girls had an advantage at ages 2 to 5 but not at other ages. At age four, girls expressed more sadness and anxiety than males (Brody and Hall, 2008). Barbu et al. (2009) found that girls developed cooperative play around the age of 3 and

earlier than boys. However, the authors found that by age 6, boys showed higher social skills. The authors explored other dimensions. These dimensions included unoccupied behavior, solitary play, parallel play and associative play. They found each dimension progressed at differing rates and sex differences were dynamic. A long term study by Wallentin (2009) found that the advantage for women in language seems to be small and reduced to zero in adulthood.

Another development feature that makes the identification of biological and environmental factors difficult is identity. Individuals adjust their behavior to comply with the norms of the group with which they identify, regardless of skill. This behavior starts around the age of six (Rye, 2011; Wetherell, 1996). It is important to acknowledge the identity effect. Indeed, Akerlof and Kranton (2002) proposed identity as a key driver of behavior. The authors apply their model to explain variation in educational achievement. Basically, once a child is aware of gender social norms, that child will engage in behavior to comply.

Identity differs from an acknowledgement of sex differences. Indeed, children start to enforce gender stereotypes as early as 18 months after birth (Rye, 2011). However, at this age children may think that sex is something that can change. It is only around age 5 that children know that their sex is permanent (Rye, 2011). At age 6 children start showing flexibility in stereotypes and start to segregate. But it is until around age 7 that children develop a gender identity which they consider consistent (Rye, 2011). Therefore, at this age children select behaviors according to gender identity.

In summary, identifying biological from environmental factors is difficult. The difficulty rises due to differential treatment. The brain is plastic. Environmental interactions are cumulative

and dynamic. Individuals develop an identity and adapt behavior. Thus a simple comparison across sex groups is the result of both biological and environmental inputs.

### **3. Data sources**

The *Encuesta Longitudinal de la Primera Infancia* (ELPI) survey provides data for Chile. The 2012 survey consists on a second round of data collection of a sample of approximately 18,000 children. Children were randomly selected from the national birth records. The sample size guaranteed it was representative at the national level (Centro de Microdatos, 2010). This study focuses on children 7 to 71 months. As a result, the sample size for Chile is of 12,564 children.

A baseline survey of a large parenting program in Nicaragua provided data for Nicaragua. Data collection took place between July of 2013 and February of 2014. The sample is representative of the households targeted for the parenting programs. The program targeted households living in communities with an Index of Basic Needs of at least 0.20 (*Índice de Necesidades Básicas Insatisfechas*, NBI). A higher NBI indicates more unsatisfied basic needs (Feres y Mancero, 2001). The elevated cost to collect data in the North and South Autonomous Region resulted on its exclusion from the sample.<sup>3</sup> We focus on children 7 to 71 months. The dataset for Nicaragua consist on 8,400 children.

In Chile, the *Test de Aprendizaje y Desarrollo Infantil* (TADI) assessed child development. In Nicaragua, an amended version of the Denver Developmental Screening Test II

---

<sup>3</sup> A comparison of the asset ownership of households in our sample with the EMNV 2009 (Encuesta de Medición de Nivel de Vida, 2009) and ENDESA 2011 (Encuesta Nicaraguense de Demografía y Salud, 2011) show that the households in the sample excludes the poorest households.

(Denver hereafter) did so. Both instruments demand a set of tasks for children to perform during the interview. Trained enumerators score based on observation of child performance. The tasks included in the tests aimed to focus on sex-neutral skills. As a result, manuals make no discrimination by sex for its application or for the interpretation of results (Frankenburg, Dobbs and Archer, 1992; Pardo et al. 2012).<sup>4</sup>

Survey data complements the measurement for children development. The surveys collected information on family traits, parenting behavior and health investments. The surveys collected basic characteristics of household members including age, sex and education.

#### **4. The methodology**

We estimate sex gaps by taking the average difference in means between males and females. The main hypothesis is males and females are not different on average. To do this, we take the distribution of skills in females as the benchmark. We allow the distribution to vary age in months. Therefore, we standardize scores to the girl's month-of-birth distribution. This standardization allows removing age variation under the null that both groups develop at equal rates. We explore potential factors to explain sex gaps in three steps.

First, we explore if households characteristics explain sex gaps. Indeed, there are studies that show that some households in Asia may choose to have births of a specific sex. For example, boys in India tend to live in larger households resulting from gender stopping rules (Barcellos et al, 2014, Jensen, 2005). We check if quantitatively this is the case. Therefore, we explore

---

<sup>4</sup> We assume that the DENVER II and TADI scores in language and social skills reflect a monotonic underlying scale of development. In other words, we assume that DENVER II and TADI scores will not decrease when an individual increases its skills.

whether the sex balance differs from that in gender neutral countries. We explore if characteristics before the birth of the child can predict sex. We include individual, household, and community characteristics. If these characteristics can predict sex, then differences after children are born can be the result of these and not sex *per se*.

Second, we investigate the explanatory power of household investments on the development of children. This check is important because parents and other members of the society discriminate children from birth based on sex (Smith and Lloyd, 1978; Sroufe et al., 1993; Archey and Lloyd, 2002; Lopez Boo and Canon, 2014). More specifically, we estimate the following equation:

$$z_i = \alpha + \beta M_i + \gamma X_i + \varepsilon_i$$

Where  $z$  denotes the standardized language or socio-emotional score and  $i$  denotes an individual. The letter  $M$  denotes a dicotomical variable for sex with value 1 for males and 0 otherwise. With this specification, the null for no sex differences is  $H_0: \beta = 0$ . The vector  $X$  includes several variables related to early child development. The introduction of these variables as controls allows controlling for observable household characteristics. We classify household characteristics and investments in the following categories:

A. Family traits: Includes an asset index constructed as in Fernald, Gertler and Neufeld (2008), household size, the age of the mother in years, a dummy for whether the mother completed secondary or not, and a dummy for whether both the biological mother and father live in the household at the moment of the observation.

B. Home reported behaviors on stimulation and discipline: Includes a dummy which equals one if parents read to the child, a dummy which equals one if parents tell stories to the child, a second dummy which equals one if the kid was slapped, hit with the hand, or hit with a belt for

disciplinary reasons. For Chile, we include an additional dummy which equals one if parents sing to the child.

C. Home observed environment based on HOME scale: Consists of the HOME harsh and HOME cold indexes built upon on the Home Observation for Measurement of the Environment (HOME) scale (Bradley 1993; Bradley and Caldwell, 1977). A higher harsh score denotes a more hostile interaction between the child and the caregiver. A higher home cold index denotes a warmer environment for the child. The HOME observations relied on spontaneous behavior observed during the home visit.<sup>5</sup> Information for the home harsh score is not available for Chile. Therefore, home observed behaviors for this country include those of the home cold score. Scores for the home indexes range from 0 to 1. The use of this instrument has aided an assessment of parenting practices in other countries in the region. These include Ecuador, Perú and a group of countries in the Caribbean (Paxson and Schady 2010, Macours, Schady, and Vakis 2012 and Chang et al., 2015). There is evidence of a strong correlation between the HOME scores and children's mental development in a number of settings (Aboud et al., 2013, Boivin et al., 2013, Hamadani et al., 2010 and Tofail et al. 2012).

D. Health investment: Includes a dummy which equals one if the child was exclusively breastfed during the first 6 months, a dummy which equals one if the child had a complete and up-to-date vaccine schedule, and a dummy for whether the child had a diversified diet or not. A diversified

---

<sup>5</sup> The home harsh index is composed of the average of the following dummies: a dummy which equals 1 if the caregiver shouts to the child, a dummy which equals 1 if the caregiver expresses hostility towards the child, a dummy which equals 1 if the caregiver beats the child, a dummy which equals 1 if the caregiver scolds the child and a dummy which equals 1 if the caregiver prohibits something to the child. All dummies equal zero otherwise. The home cold index is composed of the average of the following dummies: a dummy which equals 1 if the caregiver expresses affection to the child, a dummy which equals 1 if the caregiver responds verbally in words, a dummy which equals 1 if the caregiver shows or explains something to the child about a thing or a person, a dummy which equals 1 if the caregiver spontaneously talks to the child, a dummy which equals 1 if the caregiver conveys positive sounds to the child, and a dummy which equals 1 if the caregiver hugs or kisses the child.



diet was defined as the caregiver reporting the child ate food from at least four categories in the last 7 days. Food categories included meat, eggs, rice, cheese, vegetables, legumes and fruits.

In a third step, we analyzed gap variation across specific population groups. These tests allow us to explore if sex gaps coincided with specific environmental conditions. Some studies have used this approach to explore sex differences in school age children in the USA. For example, see Fryer and Levit's paper (2010) on sex differences in mathematics. Bertrand and Pan (2013) used it to explore sex differences in disruptive behavior in the USA.

## **5. Results**

In this section we present the main findings. We discuss how household characteristics and parental investments relate to sex gaps. Then, we discuss variation in sex gaps across a number of subpopulations.

### *5.1 Average sex gaps in language and socio-emotional skills*

Girls had a relative advantage both in language and socio-emotional skills. Table 2 shows sex gaps standardized by the girl's month-of-birth distribution. Column (1) shows that boys in Chile scored -0.13 and -0.22 SD relative to girls in the language and socio-emotional dimensions. In Nicaragua, boys scored -0.12 SD and -0.18 SD relative to girls in the language and socio-emotional dimensions. To put these differences in context, we compare to socioeconomic gradients. More specifically, we compare to skill differences between the lowest and highest

socioeconomic quantiles. The sex gaps represent between one fifth and one half of the socioeconomic gap.<sup>6</sup>

### *5.1 The role of household characteristics*

Families may influence the sex of their children. Indeed, this may be the case in some regions in Asia with practices of gender based stopping rules or selective abortion. (Barcellos et al., 2014, Jensen, 2005). However, there is no evidence to favor the existence of these practices in Latin America. Indeed, female ratios at birth in the region are not consistent with sex discrimination before birth (Ueyama, 2007). Table 1 shows the sex ratio at birth in Chile and Nicaragua in column (1). For comparison purposes, the table includes values for the USA and India. The table also includes the sex ratio worldwide. The ratios in Chile and Nicaragua are close to that of the USA and other developed countries. Therefore, these ratios do not favor the idea of sex discrimination before birth.

Table 1 in column (2) shows the gender inequality index by the United Nations Development Programme (2015). The index aims to measure gender inequalities in reproductive health, empowerment and economic status. More generally, it aims to measure the human development cost associated to gender gaps. A higher value in the index indicates more disparities and more human development loss. The index is larger for Nicaragua and equal to the worldwide index. Chile has a lower index than the worldwide average. Still, both countries have larger indexes than the USA, but lower than India. Therefore, sex discrimination may be present.

---

<sup>6</sup> Another way to contextualize the magnitude of the gaps is to estimate back of the envelope returns. Early childhood education is associated to an improvement of about 0.21 standard deviations in child development (Duncan and Magnuson, 2014). In turn, early childhood education is associated to social returns later in life between 7 and 10 percent per year (Heckman, 2012).

However, this discrimination is not as pervasive in these two countries as it is in some countries in Asia.

Together columns (1) and (2) show some sex discrimination was present both in Chile and Nicaragua. However, it did not seem to influence sex ratios at birth. Column 3 shows p-values for individual, household and community characteristics to predict sex. We rejected that observed characteristics predicted the sex of children in the two samples. Therefore, we did not find evidence to support sex discrimination before birth. The table includes the p-value estimated by Barcellos et al. (2014) for India for comparison purposes. In India, children and household characteristics differed across sex groups.

## *5.2 Parental investments*

This section explores the role of discriminatory investments by parents to explain the sex gaps. Table 2 shows gaps in language and socio-emotional skills and how sensible these gaps are to the inclusion of controls. Column (1) shows gaps without controls. Columns (2) to (6) show estimates of gaps introducing controls as indicated in the last five rows of the table.

The gaps vary within 0.005 SD (between -0.131 SD and -0.126 SD) in Chile and 0.018 SD (between -0.119 SD and -0.101 SD) in Nicaragua. The largest variation in point estimates is 12 percent of the gap without controls. More specifically, for language in Nicaragua the change goes from -0.115 to -0.101. This represents a change of -0.014/-0.115 or 12 percent.

The absence of correlation between gaps and investment may be due to no discrimination. To check if this is the case, we tested for discrimination in household characteristics or investments. For the two countries, we found differences in three out of twelve dimensions explored. For example, the percentage of parents that read to their children in Chile was 75

percent for females but 73 percent for males. Harsh punishment was 22 percent for females but 24 percent for males. The percentage of females with all vaccines for their age was 92 percent while it was 91 percent for males. In addition, home scores differed in Nicaragua. The harsh score was 0.04 for females but 0.05 for males. The cold score was 0.70 for females but 0.68 for males. However, we did not find differences in parents telling stories to the child, the home cold score, breastfeeding or diet in Chile. What is more, we did not find differences in reading, telling stories, harsh punishment, breastfeeding, vaccinations, or diet in Nicaragua

Thus, we conclude discrimination was not common. When it was present, it resulted in small differences. The magnitudes of those differences were not large enough to explain the observed gaps. Appendix A shows estimates on differential investments.

### *5.3 Gaps across subpopulation groups*

This section explores how the sex varies across dimensions relevant to development. These dimensions included age, socioeconomic status, and family structure. Overall, we found gaps were not statistically different across the subpopulations we explored. An exception is that of children 24 to 35 months in socio-emotional abilities for Chile.

Table 3 shows gaps according to age. We found that females obtained higher scores for all age groups. We illustrated the results for this table in figures 1 and 2 to ease of exposition. Sex gaps were not statistically different across age groups.

Table 4 shows gaps across socioeconomic quintiles and by family structure. We illustrated the results for this table in figures 1 and 2. We found that sex gaps were not

statistically different across quintiles. Table 4 also shows that the sex gap was not statistically different for families with both parents at home or with only one parent at home. Indeed, family structure shapes children behavior (Bertrand and Pan, 2013).

Finally, note the magnitudes of the gaps were very similar for the two countries. Indeed, raw gaps were not statistically different across the two countries ( $p=0.713$  for language and  $p=0.136$  for socio-emotional).

We conclude that age, socioeconomic status and family structure may have influenced sex gaps, but not in a significant manner. Moreover, cultural and contextual variation between the two countries did not affect the magnitude of the gap.

These results are consistent with other studies. Fenson et al. (1994) found an advantage in language for girls in 1 and 2 year olds of up to 2 percent of the variance. These conclusions are based on a sample of 1,803 children in the USA. However, communicative development was not measured directly. It was rather reported by parents in the MacArthur Communicative Development Inventories. For younger ages, Eriksson et al. (2012) found that girls outperform boys in language skills. Their study was based on 13,783 children ages 9 months to 2 and a half years in ten European communities. Their study was based on an adapted version of the MacArthur-Bates Communicative Development Inventories. They also found the sex gap did not change between language communities. The psychological and neurological literature reports an advantage by females on verbal tests and faster language development (Burton, Henninger and Hafetz, 2005; Hyde and Linn, 1988).

## **6. Discussion**

The analysis shows differences across sex groups. Indeed, the magnitude is slightly sensitive to asset ownership in the household. However, a rich set of observable environmental characteristics could not explain the gaps. These findings could have alternative explanations. In this section, we explore if measurement error, omitted variables, or differential reporting influenced the analysis.

### *6.1 Measurement error*

The field work in both countries had very rigorous protocols for the administration of the tests. Enumerators were trained. In addition, evaluators selected enumerators based on their experience. All had experience working on psychology or a related discipline. Moreover, evaluators conducted pilots to ensure enumerators collected data correctly during the field work. However, it could be the case that tester bias was present during the data collection process. Thus, we tested whether missing data differed across sex groups. Table 5 shows the test for differential share in missing data across sex groups. Column (1) shows the average across females and column (2) the difference of males minus females. We found miss reporting is unlikely to explain results. Another threat could be measurement error. However, non-systematic measurement error bias gaps towards zero. In this case, the estimates in the analysis are a lower bound.

### *6.2 Unobservable explanatory variables*

A reason why the sex gaps were not explained by data could be the dimensions observed were not relevant for development. However, the surveys collect data on this dimensions for its role in child development. Indeed, these factors are those that the literature cites as the most relevant for

child development (Walker et al , 2011). Therefore, the variables in the analysis are relevant for early child development. An alternative explanation could be that children spent most of their time out of the household. In this case the explanatory power of household investments would decrease. We find that in our sample only 19 percent in Chile and 17 percent of children in Nicaragua attended a daycare center. Moreover, sex composition was not different between those that attended and those that did not (pvalue = 0.847 for Chile, and pvalue = 0.328 for Nicaragua). As a result, differential investments out of the household were unlikely to be a significant source of bias.

Another point to note is that the gap was always around 0.02SD of the point estimate without controls. Indeed, the sex gap varies around 12 percent of the raw gap. We use this fact to follow the argument first made by Bellows and Miguel (2006). Assume that survey designers chose variables to observe at random. Assume they make this choice across all explanatory variables for development. In this case, omitted environmental variables would explain up to 12 percent of the observed gap. Indeed, we found evidence of scant discrimination in parental investment. Therefore, this rationale indicates environmental differences are unlikely to explain the observed gap.

### *6.3 Differential reporting*

A reason why parenting practices did not explain the gaps may be due to parental bias in reports. Indeed, if parents had more than one child, their perception may had been influenced by their behavior towards siblings. Indeed, enumerators collected data for the HOME score at the household level. As a result, it assessed parental attitudes without making reference to a specific child. As a result, the average parental behavior may be weakly correlated to that of a specific

child. This could be especially true in households with marked differences in treatment across sex groups. To explore this case, we restricted the sample to households with only one child. Households with one child likely differed from those of households with more children. However, such analysis allows us to isolate potential effects by parental bias in reports. Table 4 shows results. Column (8) shows gaps in households where children had no siblings. The gaps with the restricted sample were not statistically different from those including the full sample as shown by table 2 in column (1).

Another point to add is that gaps held in two countries where the data collection process was independent. We conclude that the data collection process unlikely affected measurement significantly.

## **7. Conclusions**

This study explored the sex gaps in language and socio-emotional skills. It focuses on children 7 to 71 months in Chile and poor communities in Nicaragua. We found females had an advantage relative to males. The average male in Chile scored at  $-0.22$  SD and  $-0.13$  of the socio-emotional and language scores in the distribution of females. Males in Nicaragua scored at  $-0.18$ SD and  $-0.12$ SD of the socio-emotional and language scores. We used a large and rich dataset of based on a sample of 20,564 children in two countries. We explored the role of a set of environmental characteristics to explain sex gaps. However, we did not find evidence of significant household discrimination. In addition, we found the magnitude of the gaps varies up to 12 percent with the introduction of environmental variables as controls. These findings support the idea that a fixed factor net of environmental variation contributed to the gap. In other words, evidence favors the



idea that there is a biological predisposition for females to develop language and socio-emotional skills early in life. However, caution should be taken before making such claim.

This study faced important caveats. The first one is that its focus on early childhood did not allow making a direct link to labor outcomes later in life. Evidence shows sex gaps are dynamic. Thus, more research is necessary to establish if the gaps close later in life or not. In addition, this study observed a limited set of environmental characteristics. One such limitation is that this study relies on samples from only two countries. In addition, both countries used different instruments to measure language and socio-emotional skills. Future work could estimate gaps in more countries and use the same instrument to measure skills. However, this study contributes to the current debate on the existence of sex gaps. More specifically, this study explored if sex gaps in child development might be related to differential investment levels. It explored the role of variation across two cultures. We estimated the gap minimizing psychological identity effects.

The identification of biological and environmental contributors is necessary to inform policy. For example, suppose biological factors influence sex labor gaps. In this case, increasing female labor participation would require policies to address specific needs. A biological predisposition to social stimulus would demand to ensure high-quality care for others. These include children, the elder and the disabled in need. Policies such as flexible work arrangements would improve female labor participation. In addition, educational programs could help. For example, they could make females aware of such difference. Education could enhance female awareness on their potential to contribute to society in male dominated occupations.

On the other hand, suppose the main driver of sex gaps is environmental. In this case, closing sex gaps would require addressing discriminatory environmental conditions. For example, suppose gaps resulted from parental discrimination. Then policies to ensure that families gave equal treatment at the development stage would contribute to close the gap. However, in such case it would remain a question why females do not capitalize on the apparent advantage they enjoy. Indeed, evidence supports that social skills in children predict future social failures and successes (e.g., Beitchman et al., 1996; Elias et al., 1991). Early language skills are predictive of later school performance (Powell and Diamond 2012). Indeed, the ability to communicate well and socialize in adulthood favors education and labor market outcomes (Rubinstein and Heckman 2001; Heckman, Pinto, and Savelyev 2013; Bertrand and Pan 2011; Beaudry and Ethan, 2014; ). However males seem to succeed more in language related fields. For example, a higher share of males publishes in academic journals (Duch et al., 2012; Evans and Bucy, 2010). Thus, such finding would indicate other factors in the labor market may be playing a role to deter females from benefiting. Therefore, more research is necessary to understand how skills and social norms explain choices.

## References

About, F. E., D. R. Singla, M. I. Nahil, and I. Borisova. 2013. "Effectiveness of a Parenting Program in Bangladesh to Address Early Childhood Health, Growth and Development." *Social Science and Medicine* 97(November): 250–58.

Akerlof G. A. and Kranton, R. E. 2002. "Identity and Schooling: Some Lessons for the Economics of Education". *Journal of Economic Literature*. Vol. XL (December) pp. 1167-1201.

Archer, J. and Lloyd, B. 2002. *Sex and Gender*. Second Edition. Cambridge University Press. United Kingdom, UK.

Arrow, K. J. 1973. "The Theory of Discrimination", in O. Ashenfelter and A. Rees (eds.), *Discrimination in Labor Markets*, Princeton, NJ: Princeton University Press.

Barbu S, Cabanes G, Le Maner-Idrissi G (2011) Boys and Girls on the Playground: Sex Differences in Social Development Are Not Stable across Early Childhood. *PLoS ONE* 6(1): e16407. doi:10.1371/journal.pone.0016407

Barcellos, S. H., Carvalho, L. S, and Lleras-Muney, A. 2014. "Child Gender and Parental Investments in India: Are Boys and Girls Treated Differently?" *American Economic Journal: Applied Economics* 2013, 6(1): 157-189. <http://dx.doi.org/10.1257/app.6.1.157>

Baron-Cohen, Simon, 2003. *The Essential Difference. Men, Women, and the Extreme Male Brain*. Allan Lane, London.

Bellows, J. and Miguel, E. 2009. "War and local collective action in Sierra Leone." *Journal of Public Economics*. 93, 1144–1157.

Becker, G. *The Economics of Discrimination*. Chicago: University of Chicago Press, 1957.

Beitchman, J.H., Wilson, B., Brownlie, E.B., Walters, H., Inglis, A., & Lancee, W. (1996). Long-term consistency in speech/language profiles: II. Behavioral, emotional, and social outcomes. *Journal of the American Academy of Child and Adolescent Psychiatry*, 35, 815–825.

Berglund, E., Eriksson, M., & Westerlund, M. (2005). Communicative skills in relation to gender, birth order, childcare and socioeconomic status in 18-month-old children. *Scandinavian Journal of Psychology*, 46, 485–491.

Bertrand, Marianne (2011) “New Perspectives in Gender” in *Handbook of Labor Economics*, Elsevier, edition 1, volume 4, number 5. O. Ashenfelter & D. Card (ed.).

Bertrand, M., and Pan, J. 2013. "The Trouble with Boys: Social Influences and the Gender Gap in Disruptive Behavior." *American Economic Journal: Applied Economics*, 5(1): 32-64.

Beaudry, P., and Ethan L. (2014). "Do Male-Female Wage Differentials Reflect Differences in the Return to Skill? Cross-City Evidence from 1980-2000." *American Economic Journal: Applied Economics*, 6(2): 178-94.

Blau, F. D. & Kahn, L. M., 1999. "Institutions and laws in the labor market," *Handbook of Labor Economics*, in: O. Ashenfelter & D. Card (ed.), *Handbook of Labor Economics*, edition 1, volume 3, chapter 25, pages 1399-1461. Elsevier.

Boivin, M. J., P. Bangirana, N. Nakasujja, C. F. Page, C. Shohet, D. Givon, J. K. Bass, R. O. Opoka, and P. S. Klein. 2013. “A Year-Long Caregiver Training Program to Improve Neurocognition in Preschool Ugandan HIV-Exposed Children.” *Journal of Developmental and Behavioral Pediatrics* 34(4) May: 269–78.

Bornstein, M., Hahn, C. -S., & Haynes, O. (2004). Specific and general language performance across early childhood: Stability and gender considerations. *First Language*, 24 (3), 267–304. doi:10.1177/0142723704045681

Bradley, R. H. 1993. “Children’s Home Environments, Health, Behavior, and Intervention Efforts: A Review Using the HOME Inventory as a Marker Measure.” *Genetic, Social, and General Psychology Monographs* 119(4) November: 437–90.

Bradley, R. H., and B. M. Caldwell. 1977. “Home Observation for Measurement of the Environment: A Validation Study of Screening Efficiency.” *American Journal of Mental Deficiency* 81(5) March: 417–20.

Brody, L. R., & Hall, J. A. (2008). Gender and emotion in context. *Handbook of emotions*, 3, 395-408.

Burton, L. A., D. Henninger, and J. Hafetz, “Gender differences in relations of mental rotation, verbal fluency, and SAT scores to finger length ratios as hormonal indexes,” *Developmental Neuropsychology*, vol. 28, no. 1, pp. 493–505, 2005.

Cassidy, J. W., & Ditty, K. M. (2001). Gender differences among newborns on a transient otoacoustic emissions test for hearing. *Journal of Music Therapy*, 38, 28–35.

Chang, S. M., S. M. Grantham-McGregor, C. A. Powell, M. Vera-Hernández, F. López Boo, H. Baker-Henningham, and S. P. Walker. 2015. “Integrating a Parenting Intervention with Routine Primary Health Care: A Cluster Randomized Trial.” *Pediatrics* 136(2) August: 272–80.

Chaplin, T. M. and Aldao, Am. 2013. “Gender Differences in Emotion Expression in Children: A Meta-Analytic Review.” *Psychological Bulletin*, Vol. 139, No. 4, 735–765

Duch J, Zeng XHT, Sales-Pardo M, Radicchi F, Otis S, et al. (2012) “The Possible Role of Resource Requirements and Academic Career-Choice Risk on Gender Differences in Publication Rate and Impact.” PLoS ONE 7(12): e51332. doi:10.1371/journal.pone.0051332

Duncan, Greg, J. and Magnuson, Katherine. 2014. “ Early Childhood Interventions for Low-Income Children” *Focus*. Institute for Research on Poverty. University of Wisconsin-Madison. Vol. 31 No. 2.

Elias, M.J., Gara, M.A., Schuyler, T.F., Branden-Muller, L.R., & Sayette, M.A. (1991). The promotion of social competence: Longitudinal study of preventive school-based program. *American Journal of Orthopsychiatry*, 61, 409–417

Eriksson, M., Marschik, P. B., Tulviste, T., Almgren, M., Perez P. M., Wehberg, S., Marjanovic-Umek, L., Gayraud, M. K. and Gallego, C. 2012. “Differences between girls and boys in emerging language skills: Evidence from 10 language communities.” *British Journal of Developmental Psychology* 30 (Pt 2) :326-43

Erickson, K., & Schulkin, J. (2003). Facial expressions of emotion: A cognitive neuroscience perspective. *Brain and Cognition*, 52, 52–60.

Evans, H. K., & Bucy, E. P.. (2010). The Representation of Women in Publication: An Analysis of Political Communication and the *International Journal of Press/Politics*. *PS: Political Science and Politics*, 43(2), 295–301. Retrieved from <http://www.jstor.org/stable/40646730>

Everhart DE, Shucard JL, Quatrin T, Shucard DW; Shucard; Quatrin; Shucard (July 2001). "Sex-related differences in event-related potentials, face recognition, and facial affect processing in

prepubertal children". *Neuropsychology* 15 (3): 329–41. doi:10.1037/0894-4105.15.3.329. PMID 11499988.

Feldman , R. S. (2009) *Cognitive Development . Chapter 5 Cognitive Development in Infancy..* Fifth edition. Pearson Prentice Hall. Upper Saddle River, NJ. pp. 171-181. ISBN-13: 978-0-205-65502-1, ISBN: 0-205-65502-5

Fenson, Larry; Philip S. Dale, J. Steven Reznick, Elizabeth Bates, Donna J. Thal, Stephen J. Pethick, Michael Tomasello, Carolyn B. Mervis and Joan Stiles. 1994. "Variability in Early Communicative Development" *Monographs of the Society for Research in Child Development*, Vol. 59, No. 5, *Variability in Early Communicative Development*, pp. i+iii-v+1-185. Published by Wiley on behalf of the Society for Research in Child Development

Feres, Juan Carlos; Mancero, Xavier (2001). *El método de las necesidades básicas insatisfechas (NBI) y sus aplicaciones en América Latina*. Santiago de Chile, CEPAL. ISBN 92-1-321791-9.

Fernald, Lia C.H., Paul J. Gertler, and Lynnette M. Neufeld. 2008. The Importance of Cash in Conditional Cash Transfer Programs for Child Health, Growth and Development: An Analysis of Mexico's Oportunidades. *Lancet* 371(9615): 828–37.

Fortin, Nicole, 2008. The gender wage gap among young adults in the United States: the importance of money vs. people. *Journal of Human Resources* 43 (4), 886–920.

Frankenburg, W.K., Dodds, J., Archer, P. et al.: The DENVER II: A major revision and restandardization of the Denver Developmental Screening Test. *Pediatrics*, 89:91-97, 1992.

Fryer, R. G., Jr. and Levitt D. S. 2010. "An Empirical Analysis of the Gender Gap in Mathematics" *American Economic Journal: Applied Economics*, Vol. 2, No. 2 (April 2010), pp. 210-240. American Economic Association <http://www.jstor.org/stable/25760212>

Geangu, E., Benga, O., Stahl, D., & Striano, T. (2010). Contagious crying beyond the first days of life. *Infant Behavior & Development*, 33, 279–288.

Gleason, B. J., Perlmann, R. Y., Ely, R., & Evans, D. W. (1994). The babytalk register: Parents' use of diminutives. In J. L. Sokolov & C. E. Snow (Eds.), *Handbook of research in language development using CHILDES* (pp. 50–76). Hillsdale, NJ: Lawrence Erlbaum Associates.

Greenes, D. S., Wigotsky, M., & Schutzman, S. A. (2001). Gender differences in rates of unintentional head injury in the first 3 months of life. *Ambulatory Pediatrics*, 1, 178–180.

Guinsburg, R., Araujo Peres, C., Almeida, M., Cassia Xavier Balda, R., Cassia Berenguel, R., Tonelotto, J., & Kopelman, B. I. (2000). Differences in pain expression between male and female newborn infants. *Pain*, 85, 127–133.

Gunnar, M. R., & Donahue, M. (1980). Sex differences in social responsiveness between six months and twelve months. *Child Development*, 51, 262–265.

Hamadani, J. D., S. M. Grantham-McGregor, F. Tofail, B. Nermell, B. Fångström, S. N. Huda, S. Yesmin, M. Rahman, M. Vera-Hernández, S. E. Arifeen, and M. Vahter. 2010. "Pre and Postnatal Arsenic Exposure and Child Development at 18 Months of Age: A Cohort Study in Rural Bangladesh." *International Journal of Epidemiology* 39(5): 1206–16.



Heckman, James, J. 2012. “ Invest in Early Childhood Development: Reduce Deficits, Strengthen the Economy”, The Heckman Equation. National Institute for Early Childhood Education Research.

Heckman, J., Pinto, R. and Savelyev, P.. 2013. "Understanding the Mechanisms through Which an Influential Early Childhood Program Boosted Adult Outcomes." *American Economic Review*, 103(6): 2052-86.

Hyde, J. S. and M. C. Linn, 1988. “Gender differences in verbal ability: ameta-analysis,” *Psychological Bulletin*, vol. 104, no. 1, pp. 53–69,

International Labor Organization (ILO). 2016. “Women at Work: Trends 2016.” International Labour Office – Geneva: ILO, 2016

Jensen, Robert. 2005. “Equal Treatment, Unequal Outcomes? Generating Sex Inequality through Fertility Behavior.” Harvard University, Cambridge, MA. Processed.

Kret, M. E.; De Gelder, B. 2012. "A review on sex differences in processing emotional signals". *Neuropsychologia* 50 (7): 1211–1221. doi:10.1016/j.neuropsychologia.2011.12.022.

Leeb, R. T., & Rejskind, F. G. (2004). Here’s looking at you, kid! A longitudinal study of perceived gender differences in mutual gaze behavior in young infants. *Sex Roles*, 50, 1–14.

López-Boo, F. and Canon M. E. 2014. “Reversal of Gender Gaps in Child Development: Evidence from Young Children in India”, *Economic Letters* 124 (2014) 55-59.  
<http://dx.doi.org/10.1016/j.econlet.2014.04.021>

Macours, K., N. Schady, and R. Vakis. 2012. "Cash Transfers, Behavioral Changes, and Cognitive Development in Early Childhood: Evidence from a Randomized Experiment." *American Economic Journal: Applied Economics* 4(2) April: 247–73.

Mesman, J., van IJzendoorn, M. H., & Bakermans-Kranenburg, M. J. (2009). The many faces of the still-face paradigm: A review and meta-analysis. *Developmental Review*, 29, 120–162.

Mildner, V. (2008). *The cognitive neuroscience of human communication*. New York: Lawrence Erlbaum Associates.

Miller, J. L., Macedonia, C., & Sonies, B. C. (2006). Sex differences in prenatal oral-motor function and development. *Developmental Medicine & Child Neurology*, 48, 465–470.

Pardo, M., Gómez, M. and Edwards, M. 2012. "Test de Aprendizaje y Desarrollo Infantil (TAD). Presentación de un Nuevo Instrumento Chileno para Evaluar el Desarrollo Infantil." Abril de 2012, Serie de reflexiones: Infancia y Adolescencia. Chile. UNICEF. [http://www.unicef.cl/web/wp-content/uploads/doc\\_wp/WD\\_14\\_Tadi\\_web.pdf](http://www.unicef.cl/web/wp-content/uploads/doc_wp/WD_14_Tadi_web.pdf) as retrieved on August 25th, 2015.

Paxon, C., and N. Schady. 2010. "Does Money Matter? The Effects of Cash Transfers on Child Development in Rural Ecuador." *Economic Development and Cultural Change* 59(1) October: 187–229.

Powell, D. R., and Diamond, K. E. 2012. "Promoting literacy and language development." In R. C. Pianta, W. S. Barnett, L. M. Justice, & S. M. Sheridan (Eds.), *Handbook of early childhood education* (pp. 194-216). New York: Guilford

Qian, N. 2008. "Missing Women and the Price of Tea in China: The Effect of Sex-Specific Earnings on Sex Imbalance." *The Quarterly Journal of Economics* (2008) 123 (3): 1251-1285 doi:10.1162/qjec.2008.123.3.1251

Rubinstein, Y. and Heckman, J. J. 2001. "The Importance of Noncognitive Skills: Lessons from the GED Testing Program," *American Economic Review*, American Economic Association, vol. 91(2), pages 145-149, May.

Ryle, R. R. (2011) *Questioning Gender: A Sociological Exploration*. Sage Pub., pp. 130-32. ISBN-10: 1412965942

Schady, Norbert, Jere Behrman, Maria Caridad Araujo, Rodrigo Azuero, Raquel Bernal, David Bravo, Florencia Lopez-Boo, Karen Macours, Daniela Marshall, Christina Paxson and Renos Vakis. 2015. "Wealth Gradients in Early Childhood Cognitive Development in Five Latin American Countries" *Journal of Human Resources* Spring 2015 vol. 50 no. 2 446-463. doi: 10.3368/jhr.50.2.446

Śmieja, Magdalena; Orzechowski, Jarosław; Stolarski, Maciej S. 2014. "TIE: An Ability Test of Emotional Intelligence". *PLoS ONE* 9 (7): e103484. doi:10.1371/journal.pone.0103484. PMC 4114749. PMID 25072656.

Smith, C., & Lloyd, B. 1978. "Maternal behavior and perceived sex of infant: Revisited". *Child Development*, 49, 1263-1265.

Sroufe, L. A., Bennett, C., Englund, M., Urban, J., and Shulman, S. 1993. "The significance of gender boundaries in preadolescence: Contemporary correlates and antecedents of boundary violation and maintenance". *Child Development*, 64(2), 455-466.

Teasdale T.W and David R. Owen, "Heredity And Familial Environment In Intelligence And Educational Level—A Sibling Study," *Nature* CCCIX (June 1984), 620-622.

Thompson, Ashley E.; Voyer, Daniel. 2014. "Sex differences in the ability to recognise non-verbal displays of emotion: a meta-analysis". *Cognition & Emotion* 28 (7): 1164–1195. doi:10.1080/02699931.2013.875889. ISSN 1464-0600. PMID 24400860.

Tofail, F., J. D. Hamadani, A. Z. Ahmed, F. Mehrin, M. Hakim, and S. N. Huda. 2012. "The Mental Development and Behavior of Low-Birth-Weight Bangladeshi Infants from an Urban Low-Income Community." *European Journal of Clinical Nutrition* 66(2) February: 237–43.

Ueyama, Mika. 2007. "Income Growth and Gender Bias in Childhood Mortality in Developing Countries", IFPRI Discussion Paper 00739. International Food Policy Research Institute. Washington, DC.

Wager T.D., Phan K.L., Liberzon I., Taylor S.F. 2003. "Valence, gender, and lateralization of functional brain anatomy in emotion: a meta-analysis of findings from neuroimaging". *Neuroimage*. 2003 Jul;19(3):513-31.

Walker, S. P., S. M. Chang, M. Vera-Hernández, and S. Grantham-McGregor. 2011. "Early Childhood Stimulation Benefits Adult Competence and Reduces Violent Behavior." *Pediatrics* 127(5) May: 849–57.

Wallentin, M. (2009). "Putative Sex Differences in Verbal Abilities and Language Cortex: A Critical Review". *Brain and Language* (108) 175–183.

Weinberg, M. K., Tronick, E. Z., Cohn, J. F., & Olson, K. L. (1999). Gender differences in emotional expressivity and self-regulation during early infancy. *Developmental Psychology*, 35, 175–188.

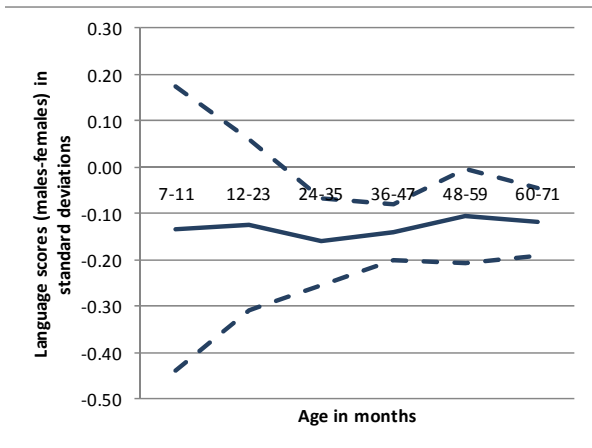
Wester, S., Vogel, D., Pressly, P., & Heesacker, M. (2002). Sex Differences in Emotion: A Critical Review of the Literature and Implications for Counseling Psychology. *The Counseling Psychologist*, 30(4), 630-652.

Wetherell, Margaret. 1996. "Group Conflict and the Social Psychology of Racism," in *Identities, Groups and Social Issues*. Margaret Wetherell, ed. Thousand Oaks, CA: Sage Pub., pp. 219–27.

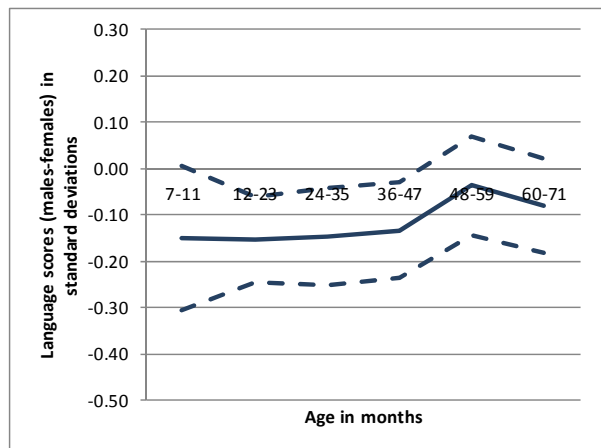
Wilson RS. 1983. The Louisville Twin Study: developmental synchronies in behavior. *Child Dev.* 1983 Apr;54(2):298-316.

Wood, J. L., Heitmiller, D. and Andreasen. N. C. and Nopoulos, P. (2008) "Morphology of the ventral frontal cortex: Relationship to femininity and social cognition". *Cerebral Cortex*. Volume: 18 Issue: 3 Pages: 534-540 Published: MAR 2008

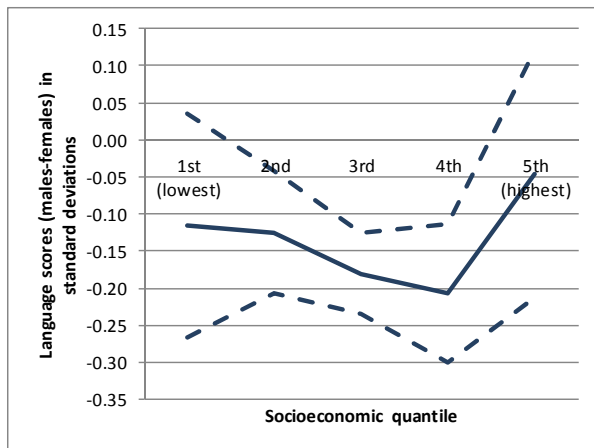
World Bank. 2012. *World Development Report 2012: Gender Equality and Development*. World Bank. © World Bank. <https://openknowledge.worldbank.org/handle/10986/4391> License: CC BY 3.0 IGO.



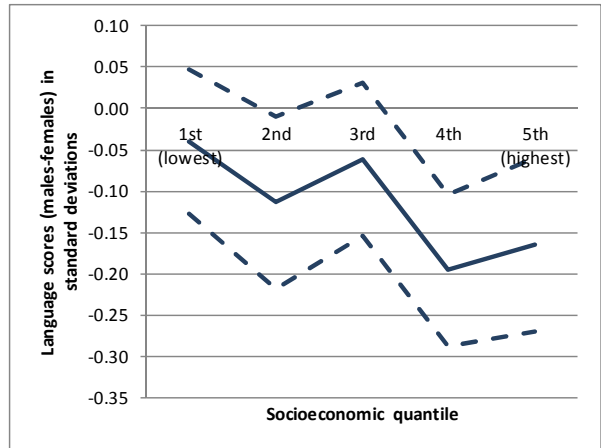
Panel A. Chile by age



Panel B. Nicaragua by age

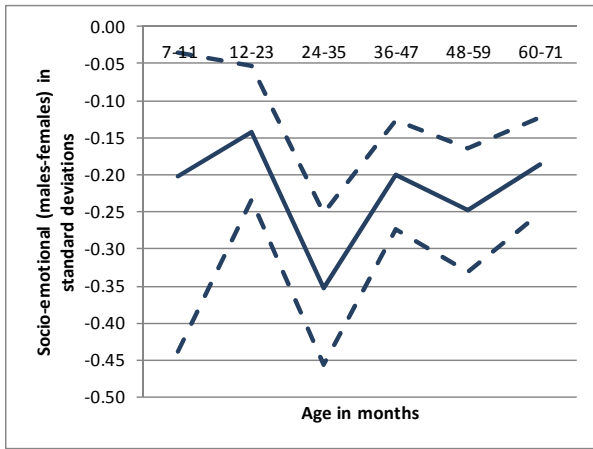


Panel C. Chile by socioeconomic status

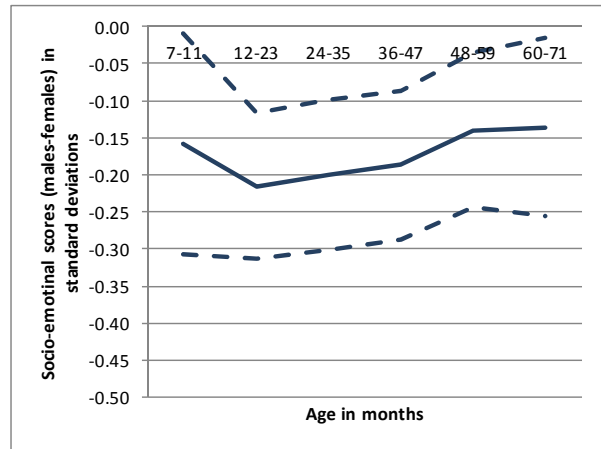


Panel D. Nicaragua by socioeconomic status

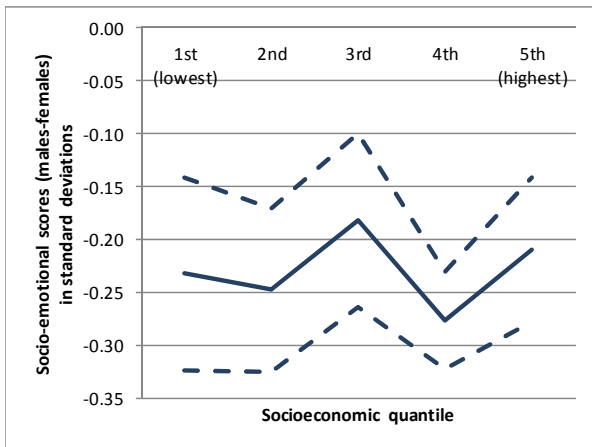
**Figure 1.** Standardized language gaps (males-females). The solid line indicates the average gap. The dashed lines indicate 95 percent confidence intervals.  
Source: Authors' calculations.



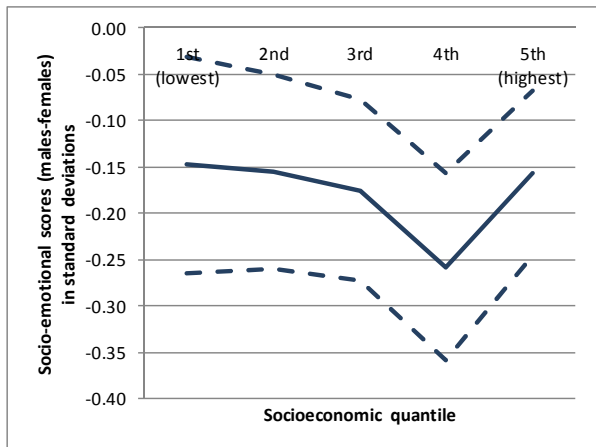
Panel A. Chile by age



Panel B. Nicaragua by age



Panel C. Chile by socioeconomic status



Panel D. Nicaragua by socioeconomic status

**Figure 2.** Standardized socio-emotional skill gaps (males-females). The solid line indicates the average gap. The dashed lines indicate 95 percent confidence intervals.

Source: Authors' calculations.

**Table 1.** The relationship between household composition and sex

---

	Sex ratio at birth (male/female)	Gender inequality index	Power of individual, household and community characteristics on birth of a male (p-value for joint test)
	(1)	(2)	(3)
Chile	1.04	0.338	0.505
Nicaragua	1.05	0.449	0.843
India	1.12	0.563	0.050
USA	1.05	0.280	
World wide	1.07	0.449	

---

Source: Authors' compilation based on sex ratio at birth (column 1) by CIA, the world fact book, <https://www.cia.gov/library/publications/the-world-factbook/fields/2018.html> as in 01/28/2016. Gender index inequality (column 2) by United Nations Development Programme (2015). Power of household characteristics to predict sex (column 3) by authors for Chile and Nicaragua and by Barcellos et al. (2014) for India.



**Table 2.** Estimated gender gaps (males-females)

	Simple differences	Family traits	Home reported	Home observed <sup>†</sup>	Health investment
	(1)	(2)	(3)	(4)	(5)
<i>Chile</i>					
Language	-0.129 (0.032)***	-0.131 (0.034)***	-0.126 (0.033)***	-0.129 (0.032)***	-0.131 (0.032)***
Socio-emotional	-0.224 (0.018)***	-0.225 (0.020)***	-0.221 (0.018)***	-0.224 (0.018)***	-0.225 (0.018)***
Observations			12,564		
<i>Nicaragua</i>					
Language	-0.115 (0.023)***	-0.119 (0.023)***	-0.110 (0.023)***	-0.101 (0.023)***	-0.116 (0.023)***
Socio-emotional	-0.175 (0.025)***	-0.179 (0.025)***	-0.171 (0.024)***	-0.165 (0.025)***	-0.176 (0.025)***
Observations			8,400		
Controls for family traits	no	yes	no	no	no
Controls for home reported	no	no	yes	no	no
Controls for home observed <sup>†</sup>	no	no	no	yes	no
Controls for health investment	no	no	no	no	yes

Notes: Standard errors clustered at the locality level in parenthesis. \*\*\* indicates that the estimates coefficient is significantly statistically different from zero at 0.01 level.

<sup>†</sup> Gaps estimated with home observed controls include controls for home cold score for Chile and home harsh and home cold scores for Nicaragua. Data to construct the home cold scores in Chile is not available.

Source: Authors' calculations.

**Table 3.** Sex gaps by age groups (males-females)

	7-11 months	12-23 months	24-35 months	36-47 months	48-59 months	60-71 months	All (7-71 months)
<i>Chile</i>							
Language	-0.13 (0.14)	-0.13 (0.09)	-0.16 (0.04)***	-0.14 (0.03)***	-0.11 (0.05)**	-0.12 (0.03)***	-0.13 (0.03)***
Socio-emotional	-0.20 (0.08)**	-0.14 (0.04)***	-0.35 (0.05)***	-0.20 (0.03)***	-0.25 (0.04)***	-0.19 (0.03)***	-0.23 (0.02)***
Observations	306	1183	1406	3326	3212	3131	12564
<i>Nicaragua</i>							
Language	-0.15 (0.08)*	-0.15 (0.05)***	-0.15 (0.05)***	-0.13 (0.05)**	-0.04 (0.05)	-0.08 (0.05)	-0.11 (0.02)***
Socio-emotional	-0.16 (0.08)**	-0.22 (0.05)***	-0.20 (0.05)***	-0.19 (0.05)***	-0.14 (0.05)***	-0.14 (0.06)**	-0.18 (0.02)***
Observations	737	1647	1486	1558	1499	1473	8400

Notes: Standard errors in parenthesis.

Source: Authors' calculations.

**Table 4.** Sex gaps by socioeconomic quantile and family structure (male-female).

	Socioeconomic quantile					Family structure		
	1st (lowest) (1)	2nd (2)	3rd (3)	4th (4)	5th (highest) (5)	Both parents at home (6)	One of the parents not at home (7)	Single child (8)
<i>Panel A. Chile</i>								
Language	-0.12 (0.07)	-0.13 (0.04)***	-0.18 (0.03)***	-0.21 (0.04)***	-0.05 (0.08)	-0.116 (0.027)***	-0.131 (0.041)***	-0.179 (0.053)***
Socio-emotional	-0.23 (0.04)***	-0.25 (0.04)***	-0.18 (0.04)***	-0.28 (0.02)***	-0.21 (0.03)***	-0.279 (0.033)***	-0.213 (0.023)***	-0.265 (0.032)***
Observations	2,562	2,497	2,520	2,496	2,489	10,455	2,109	5,078
<i>Panel B. Nicaragua</i>								
Language	-0.04 (0.04)	-0.11 (0.05)**	-0.06 (0.05)	-0.20 (0.05)***	-0.17 (0.05)***	-0.107 (0.038)***	-0.119 (0.029)***	-0.120 (0.027)***
Socio-emotional	-0.15 (0.06)**	-0.15 (0.05)***	-0.18 (0.05)***	-0.26 (0.05)***	-0.16 (0.04)***	-0.178 (0.042)***	-0.174 (0.030)***	-0.177 (0.032)***
Observations	1,702	1,743	1,612	1,671	1,672	5,394	3,006	5,076

Notes: Standard errors in parenthesis. \*\*, \*\*\* indicates that the estimates coefficient is significantly statistically different from zero at the 0.05 and 0.01 level respectively.

Source: Authors' calculations.

**Table 5.** Miss-reporting across sex groups.

	<i>Chile</i>				<i>Nicaragua</i>			
	Males	Females	Difference	p-value	Males	Females	Difference	p-value
Language	0.015 (0.002)	0.015 (0.002)	0.000 (0.005)	0.521				
Socio-emotional	0.014 (0.001)	0.015 (0.002)	-0.001 (0.008)	0.773				
Family traits	0.013 (0.001)	0.012 (0.001)	0.001 (0.005)	0.647	0.163 (0.006)	0.153 (0.006)	0.004 (0.008)	0.650
Home reported	0.000 (0.0002)	0.002 (0.001)	-0.001 (0.001)	0.114	0.001 (0.001)	0.002 (0.001)	-0.001 (0.001)	0.173
Home observed	0.008 (0.001)	0.011 (0.001)	-0.003 (0.009)	0.782	0.008 (0.001)	0.009 (0.001)	-0.002 (0.002)	0.307
Health investment	0.001 (0.0004)	0.000 (0.0002)	0.001 (0.001)	0.535	0.124 (0.005)	0.113 (0.005)	0.007 (0.007)	0.295
Observations	6,385	6,179			4,247	4,153		

Notes: Standard errors clustered at the locality level in parenthesis. There was no missing information for language or socio-emotional in the Nicaragua sample.

Source: Authors' calculations.