

Jousten, Alain; Lefèbvre, Mathieu

**Working Paper**

## Spousal and Survivor Benefits in Option Value Models of Retirement: An Application to Belgium

IZA Discussion Papers, No. 10246

**Provided in Cooperation with:**

IZA – Institute of Labor Economics

Suggested Citation: Jousten, Alain; Lefèbvre, Mathieu (2016) : Spousal and Survivor Benefits in Option Value Models of Retirement: An Application to Belgium, IZA Discussion Papers, No. 10246, Institute for the Study of Labor (IZA), Bonn

This Version is available at:

<http://hdl.handle.net/10419/147932>

**Standard-Nutzungsbedingungen:**

Die Dokumente auf EconStor dürfen zu eigenen wissenschaftlichen Zwecken und zum Privatgebrauch gespeichert und kopiert werden.

Sie dürfen die Dokumente nicht für öffentliche oder kommerzielle Zwecke vervielfältigen, öffentlich ausstellen, öffentlich zugänglich machen, vertreiben oder anderweitig nutzen.

Sofern die Verfasser die Dokumente unter Open-Content-Lizenzen (insbesondere CC-Lizenzen) zur Verfügung gestellt haben sollten, gelten abweichend von diesen Nutzungsbedingungen die in der dort genannten Lizenz gewährten Nutzungsrechte.

**Terms of use:**

*Documents in EconStor may be saved and copied for your personal and scholarly purposes.*

*You are not to copy documents for public or commercial purposes, to exhibit the documents publicly, to make them publicly available on the internet, or to distribute or otherwise use the documents in public.*

*If the documents have been made available under an Open Content Licence (especially Creative Commons Licences), you may exercise further usage rights as specified in the indicated licence.*

IZA DP No. 10246

**Spousal and Survivor Benefits in Option Value Models  
of Retirement: An Application to Belgium**

Alain Jousten  
Mathieu Lefebvre

September 2016

# **Spousal and Survivor Benefits in Option Value Models of Retirement: An Application to Belgium**

**Alain Jousten**

*University of Liege,  
IZA and NETSPAR*

**Mathieu Lefebvre**

*University of Strasbourg*

Discussion Paper No. 10246  
September 2016

IZA

P.O. Box 7240  
53072 Bonn  
Germany

Phone: +49-228-3894-0  
Fax: +49-228-3894-180  
E-mail: [iza@iza.org](mailto:iza@iza.org)

Any opinions expressed here are those of the author(s) and not those of IZA. Research published in this series may include views on policy, but the institute itself takes no institutional policy positions. The IZA research network is committed to the IZA Guiding Principles of Research Integrity.

The Institute for the Study of Labor (IZA) in Bonn is a local and virtual international research center and a place of communication between science, politics and business. IZA is an independent nonprofit organization supported by Deutsche Post Foundation. The center is associated with the University of Bonn and offers a stimulating research environment through its international network, workshops and conferences, data service, project support, research visits and doctoral program. IZA engages in (i) original and internationally competitive research in all fields of labor economics, (ii) development of policy concepts, and (iii) dissemination of research results and concepts to the interested public.

IZA Discussion Papers often represent preliminary work and are circulated to encourage discussion. Citation of such a paper should account for its provisional character. A revised version may be available directly from the author.

## ABSTRACT

### **Spousal and Survivor Benefits in Option Value Models of Retirement: An Application to Belgium<sup>1</sup>**

We study retirement incentives with augmented option value model à la Stock and Wise (1990). We propose methodological extensions to better reflect the respective incentives faced by singles and couples. Our results show that a more comprehensive modelling of couples' incentives leads to very different patterns of retirement incentives – particularly for women. We apply the new indicators to data from the Survey of Health, Ageing and retirement in Europe (SHARE) in Belgium and find two key results. First, contrary to several previous studies, we obtain a positive signed income effects. Second, we find very different retirement incentives for men and women, with little flexibility in the retirement decision for men and substantially more flexibility for women as a function of financial incentives and household composition.

JEL Classification: H55, J21, J26

Keywords: retirement, social security, dependent benefits

Corresponding author:

Alain Jousten  
Department of Economics  
Université de Liège  
Boulevard du Rectorat 7, Bât. B31  
4000 Liege  
Belgium  
E-mail: [ajousten@ulg.ac.be](mailto:ajousten@ulg.ac.be)

---

<sup>1</sup> The authors acknowledge financial support from the Belspo project EMPOV (TA/00/45). This paper uses data from the European Union Labour Force Survey (Eurostat, European Union). Eurostat has no responsibility for the results and conclusions which are the authors' only. It also uses data from SHARE Wave 5 release 1.0.0, as of March 31<sup>st</sup> 2015 (DOI: 10.6103/SHARE.w5.100) or SHARE Wave 4 release 1.1.1, as of March 28<sup>th</sup> 2013 (DOI: 10.6103/SHARE.w4.111) or SHARE Waves 1 and 2 release 2.6.0, as of November 29<sup>th</sup> 2013 (DOI: 10.6103/SHARE.w1.260 and 10.6103/SHARE.w2.260) or SHARELIFE release 1.0.0, as of November 24<sup>th</sup> 2010 (DOI: 10.6103/SHARE.w3.100). The SHARE data collection has been primarily funded by the European Commission through the 5<sup>th</sup> Framework Programme (project QLK6-CT-2001-00360 in the thematic programme Quality of Life), through the 6<sup>th</sup> Framework Programme (projects SHARE-I3, RII-CT-2006-062193, COMPARE, CIT5-CT-2005-028857, and SHARELIFE, CIT4-CT-2006-028812) and through the 7<sup>th</sup> Framework Programme (SHARE-PREP, N° 211909, SHARE-LEAP, N° 227822 and SHARE M4, N° 261982). Additional funding from the U.S. National Institute on Aging (U01 AG09740-13S2, P01 AG005842, P01 AG08291, P30 AG12815, R21 AG025169, Y1-AG-4553-01, IAG BSR06-11 and OGHA 04-064) and the German Ministry of Education and Research as well as from various national sources is gratefully acknowledged (see [www.share-project.org](http://www.share-project.org) for a full list of funding institutions).

## 1. Introduction

In the face of demographic ageing, numerous countries have implemented policies whose main target is to increase labor market participation and delay retirement. For example, numerous European countries have over the last several years implemented reforms increasing the full retirement age from 65 to 67 or beyond (OECD, 2015). Numerous countries have further reformed their legislation and/or changed implementing regulations in order to decrease demand for early exits, and this both from the labor demand and the labor supply side. On the demand side, this has sometimes translated into tighter conditions regarding company-level old-age layoff criteria, but also into larger financial contributions to the cost of early retirement schemes.<sup>2</sup> On the supply side, numerous measures have been taken to tighten conditions that individuals have to fulfill in order to access (early-) retirement benefits, and generosity of some types of benefits has been decreased (if not discontinued altogether).

The paper contributes to the large and rich literature on supply-side factors. With their largely cited study of a dozen developed countries, Gruber and Wise (1999) provided a first large-scale investigation of labor supply factors. The work highlighted a strong positive correlation between (financial) retirement incentives and labor exits across their panel of countries. In follow-up work, Gruber and Wise (2004) studied the econometric link between individual-level retirement incentives and labor supply. Using an option value specification à la Stock and Wise (1990), the contributors to the volumes found a strong empirical link between dynamic retirement incentives and labor market behavior: stronger marginal rewards to work lead to later retirement.<sup>3</sup> Two other results of the econometric analysis remain less conventional and harder to rationalize... to this day. First, an often negative (wrong) signed wealth/income effect (Gruber and Wise, 2004). Second, a large disparity between the sexes in the way incentives impact retirement decisions (e.g., Brugiavini and Peracchi 2004, Kapteyn and de Vos 2004).

We propose methodological improvements to the often-used option value specification and test the models using recent survey data for Belgium. On the methodological front, our main contribution is a modification of the option value model to better recognize differences between singles and couples both in their income streams and their retirement incentives. On the empirical front, we apply our specifications to recent Belgian data from the Survey on Health, Ageing and Retirement in Europe (SHARE). Belgium is a particularly interesting case study as it has a rich set of dependent and spousal benefits not only for the pension system itself, but also for several early retirement benefits (such as unemployment and disability insurance benefits). We provide results of the classical option value approach and of our augmented ones. This allows us to compare our results with previous estimations obtained for Belgium by Dellis et al (2004), Jousten and Lefebvre (2013) as well as Jousten et al (2016). The paper's main point of interest is whether the modified specifications improve results in a country like Belgium with its strong spousal/dependent benefit component.

The paper is structured as follows. The following section gives an overview of the Belgian retirement landscape and summarizes the Belgian SHARE data. Section 3 outlines our methodological

---

<sup>2</sup> See, e.g. the Belgian *Tax Shift* adopted by the Parliament on 18 December 2015 and published on 30 December 2015, increasing special employer levies in case of some forms of early retirement.

<sup>3</sup> Blondal and Scarpetta (1999) and Duval (2003) have obtained similar results in cross-country studies. See Coile (2015) for a review of the literature on economic determinants of retirement decisions.

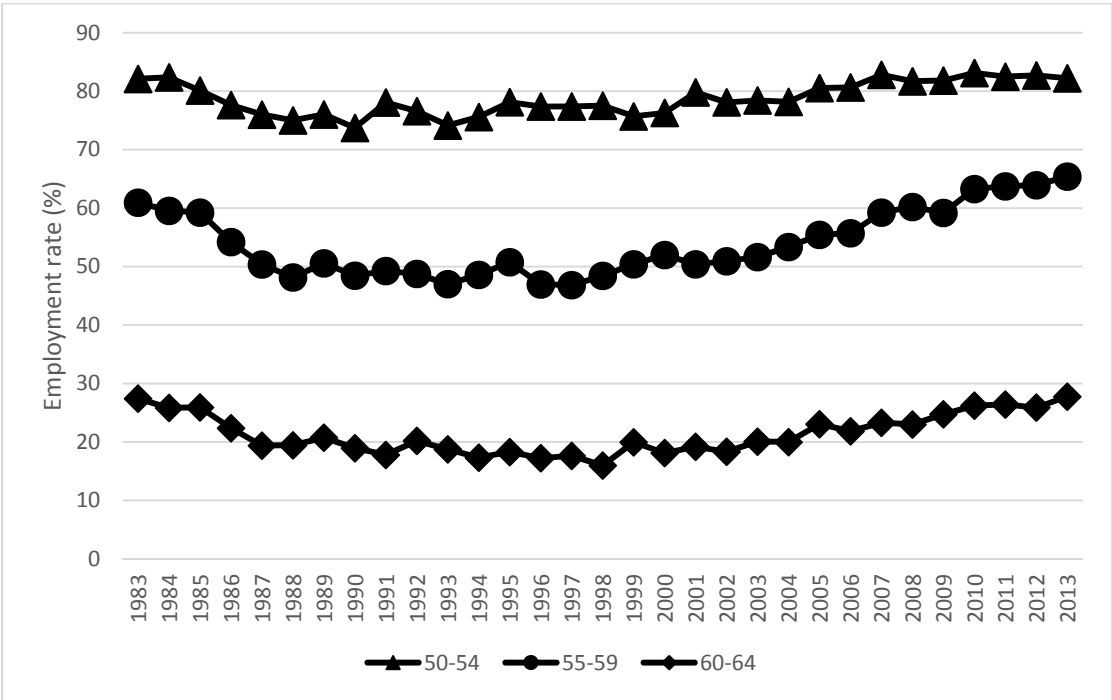
improvements to the option value model and provides various summary statistics for various indicators of retirement incentives. Section 4 contains the empirical analysis of retirement decisions. Finally, section 5 concludes.

## 2. Belgian retirement landscape and data

### 2.1. Employment in Belgium<sup>4</sup>

The Belgian labor market has undergone profound changes over the last several decades. Figures 1 and 2 summarize employment rates for three older cohorts since the beginning of standardized labor-market recordings in 1983 for both sexes. Since the 1970’s until the mid 1990’s, male old-age employment displayed a sharp downward trend. For women, the situation was somewhat different, partly as a result of generally lower (but increasing) labor market attachment for women of all age cohorts, and partly as a result of a lower full retirement age for women (60) that has only gradually been aligned to the one for men (65) over the course of the period 1997-2009.

Figure 1: Men’s employment rate, ages 50-64



Source: EU-LFS

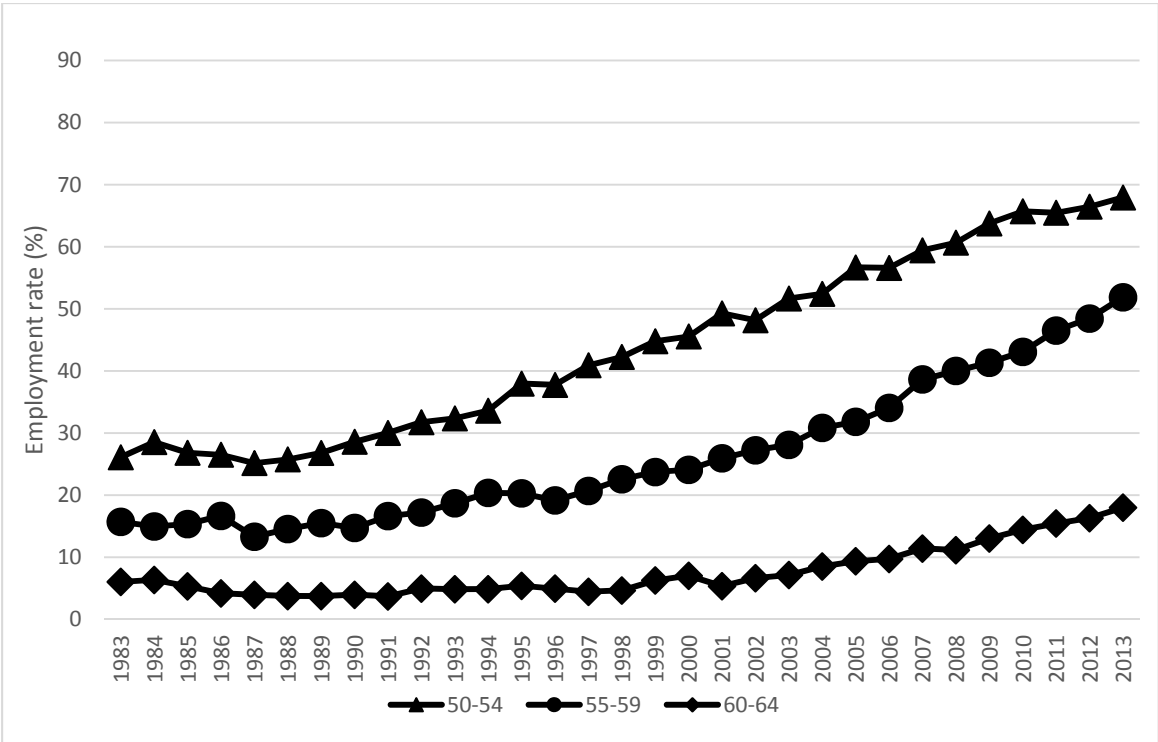
Previous empirical studies of old age labor supply in Belgium considered different time-periods. The initial work of Dellis et al (2004) used data from the period 1989-1996 – a time where Belgium displayed employment rates that were at their historical lows for men and upward trending for women of ages 50-59. Later work by Jousten and Lefebvre (2013) as well as Jousten et al (2016) relied on more recent SHARE data, but used somewhat different methodologies.

Still, employment rates remain low by international standards. Figures 3 and 4 plot the changes in employment rate for the population aged 50-64. It shows that both for men and women – while

<sup>4</sup> Sections 2.1 and 2.2 draw on Jousten and Lefebvre (2016).

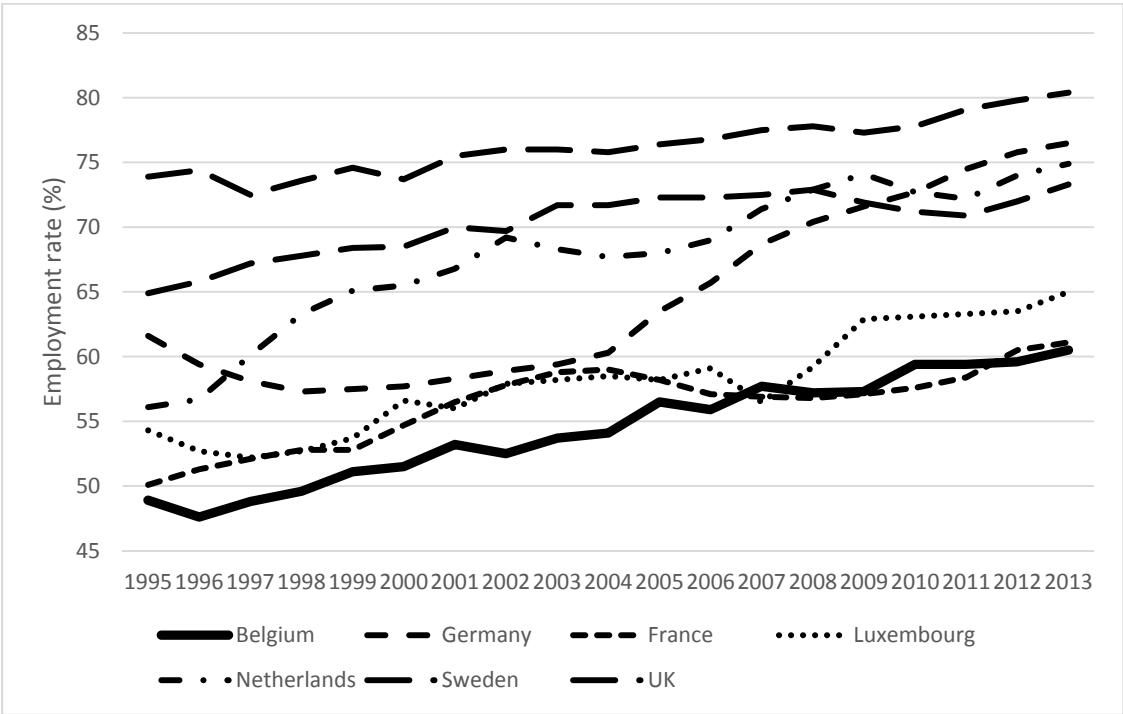
there has been some catching-up – Belgium still remains, in most years, sub-par as compared to some of its main economic partners.

Figure 2: Women’s employment rate, ages 50-54 to 60-64



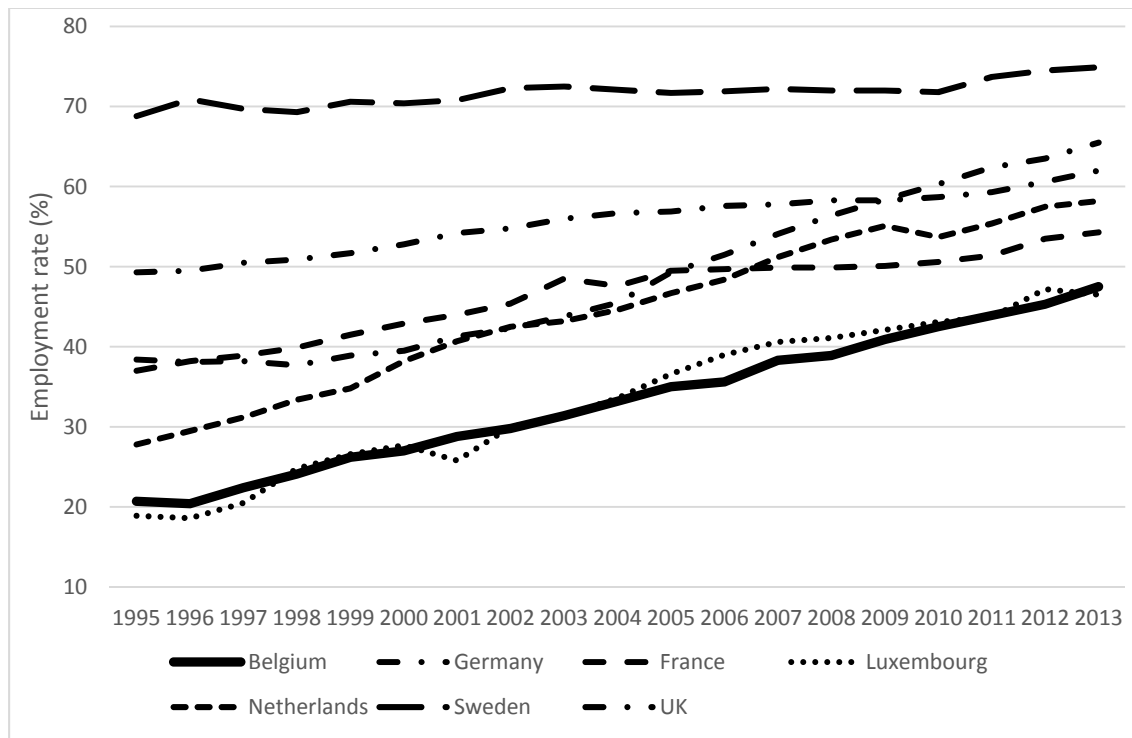
Source: EU-LFS

Figure 3 : International comparison men’s employment rate, ages 50-64



Source: EU-LFS

Figure 4 : International comparison women's employment rate, ages 50-64



Source: EU-LFS

## 2.2. Retirement and early retirement programs

What are the reasons for this labor market performance? Some of the answers can be found in the architecture of the Belgian social insurance schemes.

The Belgian social protection landscape can be grouped into three main schemes: the scheme for contractual wage-earners, the scheme for the self-employed and the scheme for civil servants. In what follows, we will focus on the first one of these: the scheme for wage-earners which is the largest both in terms of current enrollment and in terms of its beneficiary populations. In terms of generosity, it can be positioned in between the somewhat less generous scheme for the self-employed and the overall more generous scheme for civil servants. Each scheme proposes coverage against a set of risks. For our purposes, we focus on insurance programs that have a special relevance for the early-retirement decision. In this context, the wage-earner scheme offers the full set of unemployment, (early-) retirement, and sickness and disability benefits, while the self-employed and civil servant schemes do not provide some covers (such as, e.g., unemployment insurance – though for different reasons for the two schemes).<sup>5</sup>

The four main components of the wage-earner scheme of interest to the retirement decision are the unemployment, the early retirement, the sickness and disability and the pension insurance systems.<sup>6</sup> In the present section, we describe the system as it was applicable during the period 2004-2009

<sup>5</sup> In a recent legislative proposal dated July 2016, the Belgian federal government proposes the introduction of a *de facto* unemployment insurance scheme for the self-employed – though *de jure* it would not be one.

<sup>6</sup> We focus on full retirement, and hence leave partial retirement options such as time-credit and career break out of consideration.



which corresponds to the relevant timespan during which the SHARE waves 1 and 2 were collected (see below).<sup>7</sup>

First, unemployment benefits were (and still are) not time limited in Belgium. During our period of study, two types of unemployment benefits were available to older workers: regular unemployment benefits and old-age unemployment benefits. The two key differences between both types of benefits reside in (i) that regular unemployed have to remain available for the job market and look for a job while old-age unemployed enjoy a sparing provision, and (ii) old-age unemployed enjoyed higher benefits. Since 2004, conditions for access to both provision has been tightened (starting in 2004 with a minimum of 20 years of qualifying career for the old-age supplement and a minimum age 58 for the job search waiver).

Though unemployment benefits have undergone a steady flow of reforms, some overarching features have remained intact and can be highlighted: First, regular and old-age unemployment benefits are a function of career length, unemployment duration and household status. During a first phase, unemployed with dependents reach a replacement rate of 60 percent, single unemployed 55 percent and cohabitants 40 percent of their last gross wage. Similarly, minimum and maximum unemployment benefits vary by household status and are decreasing in unemployment duration – with progressively stronger decreases for unemployed with dependents, singles and cohabitants.<sup>8</sup> Maximum and minimum old-age unemployment benefits display a similar conceptual structure – with increasing age further entering the picture as a third and attenuating dimension. Implicitly, Belgium thus has a single-earner supplement, though it is formally organized by means of a reduced duration-dependent generosity.

Second, early retirement programs have also been available to numerous older Belgian workers. Eligibility has been a function of age, career length and of the industry or company of employment. Access to the regular early retirement was set at 58 until 2007 and reached 60 as of 2008 until 2011. Career requirements have also simultaneously been tightened from 20 to 30 years. Earlier exits with lower career requirements were (and are) still possible for companies in restructuring or difficulties. Early retirement benefits consist of (i) a special unemployment insurance benefit corresponding to a replacement rate of 60 percent of the last gross wage and (ii) a top-up payment from the former employer (generally corresponding to half of the difference between the previous wage and the unemployment benefit). Contrary to regular or old-age unemployment benefits, the special early retirement unemployment benefits are neither dependent on the family situation nor duration dependent. Over most of the period of study, the normal access age was of 58 and was only raised to 60 as of 2008. raised over time, conditions have been tightened depends as part of the unemployment insurance system.

Third, sickness and disability benefits may also serve as early retirement pathways as described in Jousten et al (2012) and Jousten et al (2016). Sickness benefits are payable for the first 12 months of a sickness spell, period after which the individual will be rolled over into the disability insurance system. Sickness benefits rely on a complicated multi-stage process, with a first period covered by former employer (1 month for white collar workers, 14 days for blue collar workers), the second

---

<sup>7</sup> For information on more recent legislative changes, including an increase in the early and normal retirement ages, we refer the readers to Jousten and Lefebvre (2016).

<sup>8</sup> As duration increases, regular and old-age benefits actually reach the respectively applicable minima.

period up to and including the 12<sup>th</sup> month covered by the health insurance fund (with funds originating in the public social security system), and the third and final period of disability is covered by the social security system.

Regarding sickness and disability benefits, family status intervenes at two stages. Intriguingly, while sickness benefits are not household-status-dependent until month 6, the picture changes in month 7 where minimum and maximum sickness (and later disability) benefits start to take the household composition into account – through progressively lower benefits for singles and cohabitants as compared to those with dependents. Also more explicitly, the regular replacement rate for disability benefits is modulated as a function of the household type: 65 percent for people with dependents, 55 percent for singles, and 40 percent for cohabitants.

Last, but not least, regular retirement benefits provide for three types of benefits: old-age and survivor benefits. Eligibility conditions have differed for men and women over the period of observation. For men, the key elements have been the following: a complete career consists of 45 years, the full retirement age is set at 65 and early retirement is possible as early as 60 without (no actuarial adjustment, career condition of 35 years). The full retirement age is particularly important insofar as it corresponds to the age that people on other social insurance benefits are automatically rolled over into the regular retirement system. For women, the period of observation corresponds to a transition phase where the full retirement age and the full career conditions were progressively adjusted upwards from their historical levels of 60<sup>9</sup> and 40 to 65 and 45 respectively – to align them to those applicable to men. More specifically, the full retirement age was of 63 in 2004-2005, 64 in 2006-2008 and 65 in 2009. Similarly, the early retirement career condition was satisfied in 34 years in 2004 and 35 years in 2005 and later.

Old-age retirement benefits offer a replacement rate to average indexed career earnings of 60 percent for singles or 75 percent for a retiree with a dependent spouse.<sup>9</sup> The 25 percent supplement is thus economically equivalent to a “spousal benefit” payable to the primary earner. In case the spouse has a pension entitlement of her own that is smaller the spousal benefit, then this own pension entitlement is dropped and the spousal supplement is payable to the primary earner. If the own entitlement is larger than the spousal benefit, the latter one is dropped.<sup>10</sup>

Survivor benefits were available to surviving spouses of workers insofar as the survivor was aged more than 45. The benefit level of the survivor pensions corresponds to the level of the single retiree pension and can be combined with a person’s own retirement pension up to an amount of 110 percent of the survivor pension.

### 2.3. SHARE data

In this paper we present new estimations of the effect of social security incentives on labor supply using data for Belgium collected by the Survey of Health, Ageing and Retirement in Europe (SHARE). It is a cross-national panel database of micro data on health, socio-economic status, and social and family networks of European individuals aged 50 and more. It covers a broad range of variables of

---

<sup>9</sup> Between 2007 and 2015, the « pension bonus » granted an extra lump-sum increment for each month of continued work beyond age 62.

<sup>10</sup> Technically, the topping up procedure is slightly different in case of mixed careers including periods of self-employment – but with the same economic result.

interest for employment and retirement analysis. Beyond more classical labor market data, the SHARE data has two distinct advantages as compared to other datasets available in Belgium: in contrast to the European Labor Force Survey (EU-LFS) or the European Survey on income and Living Conditions (EU-SILC) it contains detailed information on health status and work histories of the respondent and his partner; contrary to Belgian administrative data, it contains information on education level – though the latter comes at the cost of a loss of precision in terms of the richness and the sample size of administrative data.

We use SHARE data for Belgium that were collected between 2004/2005 and 2008/2009. While the first two waves mostly collect information on current situation of individuals, wave 3 (a.k.a. SHARELIFE) mostly targets life-cycle information, most notably work career data. We pool individuals from waves 1 and 2 and limit the sample to initially active individuals for whom we can reconstruct a lifetime earnings profile using information from SHARELIFE. More specifically, SHARELIFE contains information on current earnings, the start and end date of each past job, as well as the starting salary for each such job. We use this information to re-construct the earnings history of the individual over the entire life-cycle from his labor market entry until the year of interview – using linear interpolation in case of missing values. We then calculate the various hypothetical entitlements of individuals associated with each exit route.

Our focus is on the retirement behavior of individuals working under the contractual wage earner scheme – by far the largest system in Belgium. Our sample consists of all individuals between the ages of 50 and 64 that are working as contractual wage-earners in either wave 1 or wave 2 of SHARE.<sup>11</sup> We exclude self-employed and civil servants as well as retired, unemployed, sick and disabled people from the sample. We also exclude individuals who were not present anymore in SHARELIFE and for whom we do not have retrospective data. In total our sample consists of 1403 observations, whose key characteristics are summarized in Table 1. The average age is 55 and a large majority of working men and women are living in couples. The average length of career is 33 years. While observed labor force exit is relatively low at 7.6 percent, there is a strong age-dependency with exit rates reaching 26% at 59, 25% at 60 and 50% at 64.<sup>12</sup>

### 3. Methodology

The previous section illustrated that the retirement income of married individuals is strongly intertwined, rendering a purely individual approach problematic. However, the mechanical use of a Stock and Wise (1990) model would precisely do that by considering each person's own entitlements as separate from the spouses. The Belgian system is a good illustration of the issues that arise: when a spouse has an own pension that is lower than the spousal supplement of the partner, the spouse would show up with ZERO income in administrative data (and likely also in surveys), though economically speaking the person is collecting benefits – though on the name and the account of his or her partner.

---

<sup>11</sup> We pool observations and treat multiple years of observation for an individual as separate observations.

<sup>12</sup> Labor force exit is defined as a person leaving any gainful employment through one of the exit routes outlined above.

**Table 1: Descriptive statistics SHARE sample**

	All population	Men	Women
N	1403	751	652
Age	55.0	55.1	54.9
Education			
Primary	22.4%	24.5%	20.1%
Secondary	48.2%	47.9%	48.5%
Tertiary	29.4%	27.6%	31.4%
Marital status			
Living with a spouse	78.5%	81.8%	74.7%
Living with a partner	4.1%	4.3%	3.8%
Living as a single	17.4%	14.0%	21.4%
Number of children	2.1	2.2	1.9
Children at home	39.4%	48.2%	28.6%
Years career	33.1	36.2	29.5
Wage	30,398€	37,596€	22,119€
Lifetime earnings	22.030€	27,436€	15,813€
Health			
More than 2 chronic diseases	25.2%	23.8%	26.8%
Self-rate health status			
Excellent	14.5%	14.4%	15.5%
Very good	30.6%	30.4%	31.2%
Good	44.3%	44.3%	43.9%
Fair/poor	10.6%	10.9%	9.4%
% of exit	7.6%	8.4%	6.6%
Partner/spouse			
Age of the spouse/partner	53.3	51.7	55.2
Partner/spouse is employed	53.1%	49.4%	57.7%
Years career	31.0	25.5	37.6
Partner self-rate health status			
Excellent	10.9%	10.8%	11.1%
Very good	28.3%	30.0%	26.2%
Good	44.9%	44.3%	45.8%
Fair/poor	16.1%	14.9%	16.9%
Partner education			
Primary	35.9%	37.2%	34.3%
Secondary	45.7%	42.1%	50.3%
Tertiary	18.4%	20.7%	15.4%
Household financial variables			
Household income	60,135€	64,323€	55,316€
Total household financial assets	104,749€	113,733€	94,417€
Total household real assets	299,845€	345,723€	247,081€

Source: Authors' own calculations using SHARE

We propose to revisit the incentive debate by using a couple-based incentive indicator rather than a purely individual one. The way (retirement) benefit systems takes into account the spouse's situation has an obvious impact on the household budget constraint and also on the individual's and the spouse's work and retirement decisions (see, e.g., Atalay and Barrett, 2016). In many cases, the amount of current and future retirement benefits is directly related to the household composition and the employment and income status of the spouse. Blundell et al (2005) and Cherchye et al (2012) illustrated the importance of collective models of labor supply decision-making at a general level, while Michaud and Vermeulen (2011) worked on the special case of older workers' labor supply. Blau (1998), Gustman and Steinmeier (2000) and Maestas (2001) found evidence of joint retirement, defined as the coincidence in time of spouses' retirement dates, which could be interpreted as complementarity in leisure among spouses.

In this paper we propose a consistent approach, whereby each partner considers optimizing his retirement date in order to maximize household-level resources taking the other partner's behavior as given. If the other spouse has not yet retired, we suppose that (s)he will do so at the earliest possible date, given available retirement options. We compute retirement incentives explicitly

integrating the impact of a partner's retirement decision on the other partner's retirement income.<sup>13</sup> For ease of notation, we illustrate our approach below using the case of a married couple of retirees. Given the eligibility rules described in Section 2, the total couple pension income,  $P^{couple}$ , at any given point in time—irrespectively on who is the payment beneficiary corresponds to

$$P^{couple} = P_{men}^{single} + P_{women}^{single} + \max[\max(P_{men}^{single}, P_{women}^{single}) * 0.25 - \min(P_{men}^{single}, P_{women}^{single}), 0]$$

rather than the mere  $P_{men}^{single}$  or  $P_{women}^{single}$ .

How does this change of pension concept affect key incentives? As a first indicator, we define couple pension or Social Security Wealth (SSW) as the present discounted value of all future entitlements that a person – or the couple – could have within the context of the various relevant (early-) retirement programs. The SSW takes into account the respective survival probabilities<sup>14</sup> of the relevant individuals and a financial discount rate across time (that we fix at 3 percent real, for illustrative purposes) and integrates also spousal and survivor benefits. Again, using a stylized notation, we can summarize the SSW of the couple as the weighted sum of the SSW of the different retirement income pathways (where  $q$  represents the respective probability weight of the respective pathway).

$$\begin{aligned} SSW^{couple} = & q_{individual}^{pension} SSW_{couple}^{pension} + q_{individual}^{unem} SSW_{individual}^{unem} + q_{individual}^{disab} SSW_{individual}^{disab} \\ & + q_{individual}^{early} SSW_{individual}^{early} + q_{spouse}^{unem} SSW_{spouse}^{unem} + q_{spouse}^{disab} SSW_{spouse}^{disab} \\ & + q_{spouse}^{early} SSW_{spouse}^{early} \end{aligned}$$

$SSW^{couple}$  thus improves on the individual SSW indicator as it integrates both partners' survival-contingent income streams. Figure 5 proposes an illustration of the impact of this change in indicators. It compares the individual and couple SSW computed for a sample of Belgian SHARE respondents, separated by sex. We allocate weights to the different pathways using administrative records on beneficiaries aged 50-64 in any given year as in Jousten et al (2016).<sup>15</sup> The graph illustrates that the couple notion leads to a substantial increase in evaluated financial resources as compared to a purely individualistic setting – and this particularly for women. Women's  $SSW^{individual}$  is low in line with lower observed labor force participation and lower hours of work over the lifecycle, as documented in Aliaj et al (2016) and Fraikin and Jousten (2016) with survey and administrative data respectively. The improvement linked to the use of  $SSW^{couple}$  rather than  $SSW^{individual}$  is most pronounced for married women, who represent a large majority (93 percent) of the cohort under study. Expressed differently, it means that numerous married women are part of rather high income households, even if their own incomes taken individually would make them look like low income individuals. The results clearly show the importance of taking spousal and survivor benefits into consideration when evaluating people's future income levels.

To complete the analysis, we propose couple income and SSW indicators that include equivalence scales. We use the modified OECD equivalence scale that assigns a value of 1 to the household head,

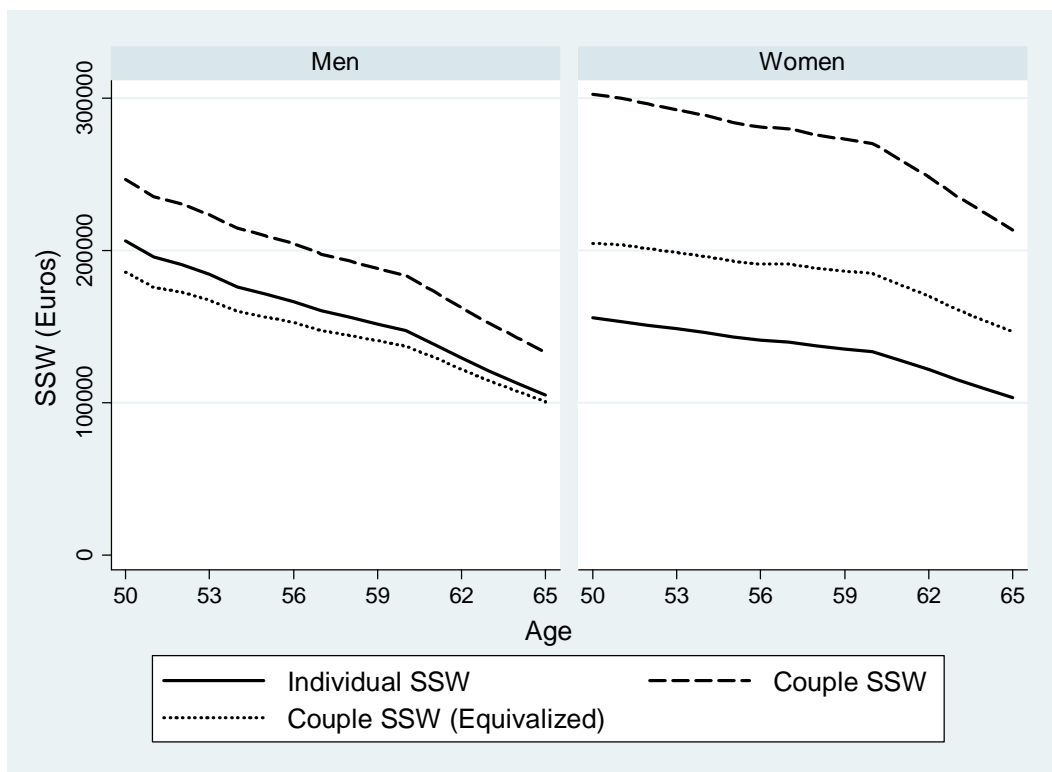
<sup>13</sup> In what follows, we do not consider the impact of other household members.

<sup>14</sup> Life tables are taken from the Human Mortality Database.

<sup>15</sup> See Appendix 1 for more details on the specific assumptions taken.

of 0.5 to each additional adult member and of 0.3 to each child.<sup>16</sup> In our case, this implies that a couples' total income is divided by a factor of 1.5 if both partners are alive, and by a factor of 1 in all other cases. The corresponding curves in Figure 5 document that scaling the SSW at the couple level has a substantial impact on the resources assigned to an individual. For women, the effect is most pronounced as a large share of household income is originating in the work and retirement income of their husbands: equalized couple SSW is substantially lower than total couple SSW, but remains higher than individual SSW. For men, the situation is different, with equalized couple SSW dropping to levels below the individual –level indicator – a sign that men's resources are contributing in a more pronounced way to both partner's well-being.

Figure 5: Average individual and couple SSW, by age and sex



Note: Prospective calculation for a sample of individuals aged 50 in wave 1  
Source: Authors' calculations using SHARE

Beyond SSW, the change in our income retirement income variable also affects the specification of the Option Value (OV) model itself. In the classical OV model (Stock and Wise, 1991), the value (utility) function of an individual when contemplating alternative retirement dates  $h$  at any given time  $a$  is specified to be

$$V^{single} = \sum_{a=t}^h (wage)^{\gamma} + \sum_h^T k(pension)^{\gamma}$$

<sup>16</sup> Household equivalence scales are often used to allocate purchasing power in multi-person household to individual members, with the specific numeric values for the equivalence scales reflecting different consumption patterns and economies of scale.

with  $k$  a leisure preference parameter,  $\gamma$  a risk aversion parameter and with an implicit assumption of no life-span uncertainty and no time-discounting for notational simplicity.<sup>17</sup> The OV is the difference between the function  $V^{single}$  evaluated at the optimal retirement age minus its value upon immediate retirement.

Two major problems arise with this specification of the utility function when considering the case of couples. First, the specification includes a pension terms that could be composed of a single or a household pension – with no explicit or implicit recognition of differing household size. Second, the specification ignores the fact that, particularly for women, the true incentives might actually play not through one’s own pension entitlement but rather through changes in the spousal benefit allocated to the partner.

We thus propose a change in the value function to reflect the household dimension. More specifically, household utility associated with any given retirement date  $h$  for a worker (evaluated at time  $a$ ) corresponds to

$$V^{couple} = \sum_{a=t}^h (wage + q_w^{spouse} wage^{spouse} + (1 - q_w^{spouse})pension^{spouse})^\gamma + \sum_h^T k(pension + q_w^{spouse} wage^{spouse} + (1 - q_w^{spouse})pension^{spouse})^\gamma$$

where  $q_w^{spouse}$  is the probability that the spouse is still working during the period where the worker contemplates retiring. If the spouse is already retired,  $q_w^{spouse} = 0$ , which is, for example, automatically the case as of age 65. As indicated before, we consider a Nash-like approach where the individual takes his partner’s choice as a given, with the household OV indicator corresponding to difference between the function  $V^{couple}$  evaluated at the optimal retirement age of the worker minus its value upon immediate retirement.

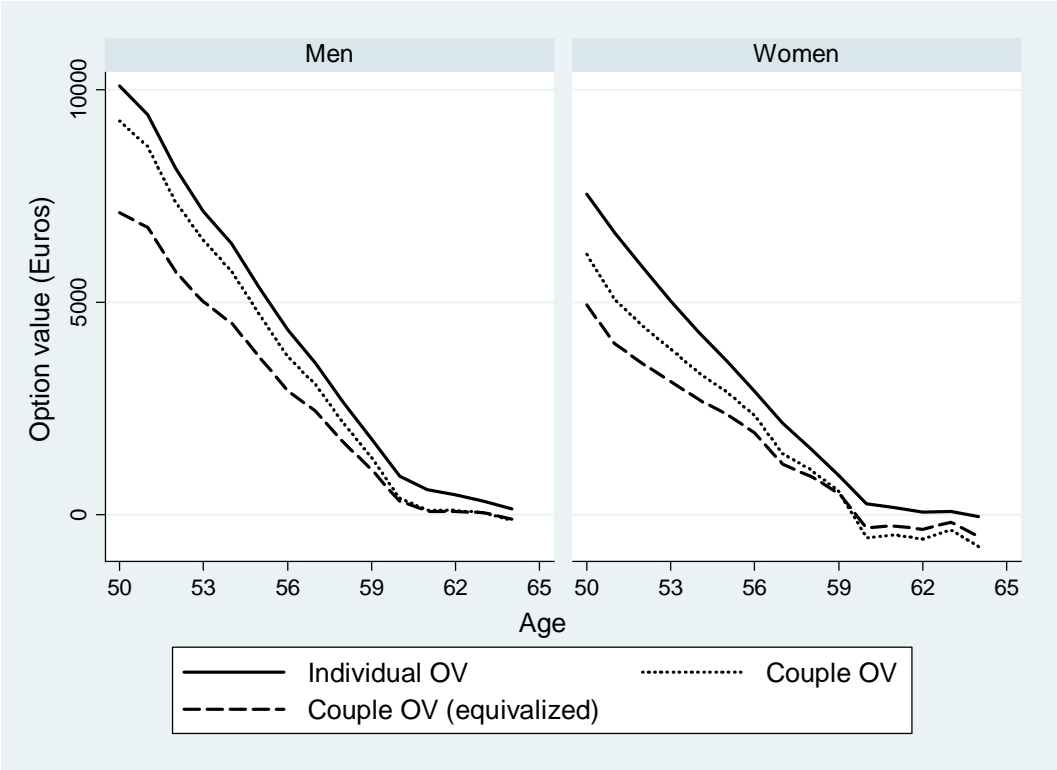
Figure 6 documents the impact of this adaptation for household composition on the notion of OV for the same population of SHARE respondents as in the previous graph. It documents that the use of a couple notion lowers the value of the OV indicator – hence reducing the rewards to optimal retirement timing. This is particularly pronounced for women where the OV values can even turn negative. The negative values for women aged 60+ means that for numerous married female workers immediate retirement is the most rational choice as any individual gains in retirement incomes at the individual level are more than offset by losses on the side of the husband. These findings further reinforce our previous observation of the relevance of integrating and interacting all benefits (including spousal and survivor benefits) for evaluating household resources.

Regarding the decrease in the dynamic incentive to retire, several elements are at play. First, by explicitly recognizing the interaction between spousal benefits, we better align the computed incentives to the true incentives faced by individuals. Second, couple and equalized couple OV indicators better reflect the changing household size across different states of the world, in two conceptually different ways: while the former takes a grossing-up approach to including both partners income streams into the utility function, the second adds a scaling parameter to adjust the

<sup>17</sup> We set  $k$  equal to 1.5 and  $\gamma$  to 0.75 in line with Dellis et al (2004).

income (and hence utility) terms down to reflect the size of the household benefiting from a given income stream. Third, integrating the household dimension provides an implicit insurance to the individual, lowering the risks of suffering from low (or no) income outcomes. This third parameter hints at the influence of choosing specific utility function parameters – with more risk aversion leading to flatter profiles. Figure 7 provides an illustration of the pathways of the utility function underlying the derivation of the OV amounts. It shows the overall flatter profile of couple utility values and the relatively more important reductions in underlying utility functions for ages 60+.

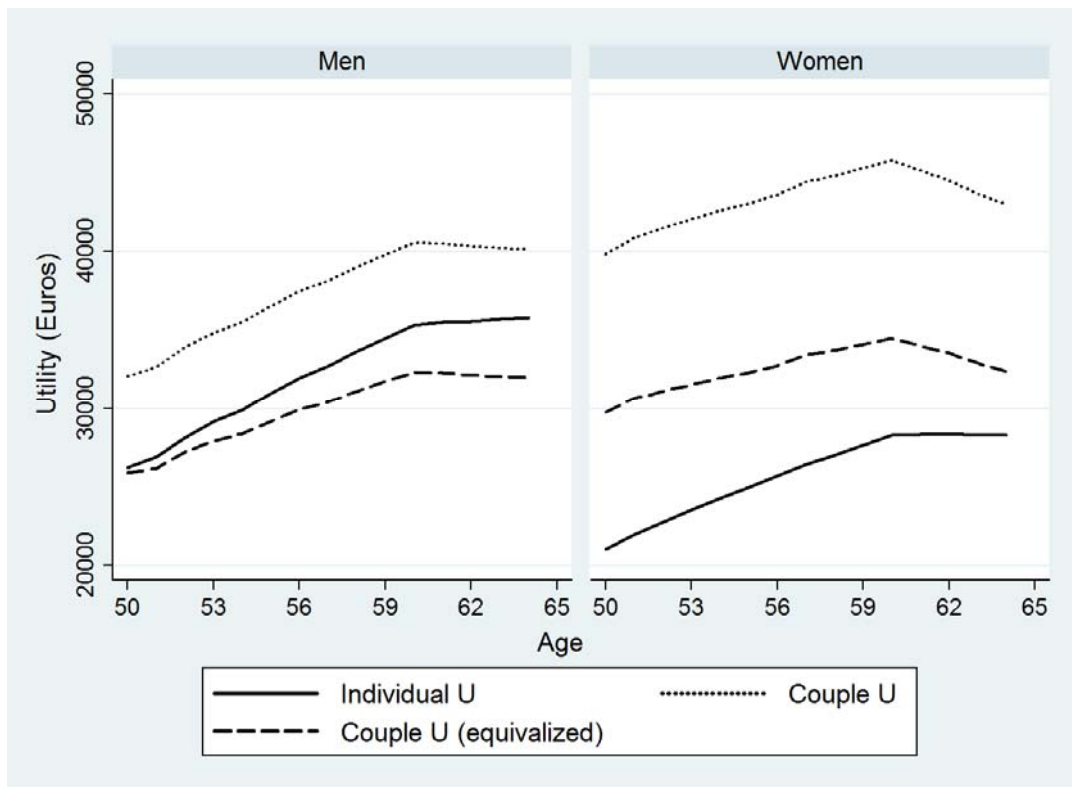
Figure 6: Average individual and couple OV, by age and sex



Note: Prospective calculation for a sample of individuals aged 50 in wave 1  
 Source: Authors' calculations using SHARE



Figure 7: Average individual and couple utility function, by age and sex



Note: Prospective calculation for a sample of individuals aged 50 in wave 1

Source: Authors' calculations using SHARE

#### 4. Estimation results

The results of probit estimations of labor market exits are presented and discussed below. The dependent variable takes the value of 1 if the individual is retiring within the year. We include the incentive variables of Section 3 as explanatory variables we add a series of socio-demographic and economic control variables such as age, family status, education level, health, household wealth and income indicators of the individual/couple. Tables 2 and 3 summarize the results of different model estimates by means of the average marginal effect.

Table 2 presents six specifications for a pooled dataset of men and women: two for individual, couple and equivalized couple indicators each. The first column is a replication of the specifications of Jousten and Lefebvre (2013) and Jousten et al (2016) –the former using a somewhat differently constructed incentive indicator. Our estimates are consistent with these studies, with a negative signed and significant effect of the incentive variable OV in the absence of a SSW indicator, as well as a negative effect of tertiary education and a strong positive effect of net financial wealth. Having an active spouse has a strong negative effect on retirement probabilities, lending support to the joint retirement hypothesis. Regional and health controls, as well as net real assets play no significant role.

The inclusion of a SSW indicator in the second column, in the spirit of Dellis et al (2004) and Gruber and Wise (2004), reveals a strong and positive income effect, contrary to the findings of most contributors to this latter publication. Columns 3 to 6 replicate the same exercise for couples and equivalized couples, with broadly similar results for OV, SSW and other key indicators. SSW seems to

play a significant explanatory role in retirement decisions. Noticeable changes in the couples-specifications include a more powerful role of the “female” dummy, which indicates that male and female incentives are likely different, and also differently affected by the use of broader couple-based incentive indicators. Column 6 further reveals that the equivalized couple specification has the advantage of better identifying the role of per capita household resources for the retirement decision – with the stronger marginal effect largely outweighing the underlying rescaling of income (and hence indirectly of SSW).

Table 2: Option value - Probit – marginal effects

	Individual incentives		Couple incentives		Couple incentives (Equivalized)	
	No SSW	With SSW	No SSW	With SSW	No SSW	With SSW
Option value /1000	-0.0133*** (0.0047)	-0.0112** (0.0045)	-0.0122*** (0.0040)	-0.0109*** (0.0039)	-0.0134*** (0.0045)	-0.0120*** (0.0044)
SSW/10000	-	0.0082*** (0.0032)	-	0.0026* (0.0017)	-	0.0051* (0.0029)
Age	0.0052 (0.0035)	0.0070** (0.0034)	0.0056* (0.0032)	0.0053 (0.0033)	0.0067** (0.0031)	0.0063** (0.0032)
Female	-0.0326* (0.0189)	-0.0275 (0.0191)	-0.0368** (0.0186)	-0.0466** (0.0194)	-0.0356* (0.0188)	-0.0472** (0.0196)
Secondary ed.	-0.0168 (0.0198)	-0.0178 (0.0191)	-0.0143 (0.0195)	-0.0149 (0.0193)	-0.0135 (0.0198)	-0.0142 (0.0194)
Tertiary ed.	-0.0487* (0.0258)	-0.0484* (0.0254)	-0.0459* (0.0254)	-0.0466* (0.0252)	-0.0476* (0.0255)	-0.0481* (0.0251)
Health less than very good	0.0136 (0.0139)	0.0161 (0.0140)	0.0137 (0.0138)	0.0148 (0.0138)	0.0116 (0.0137)	0.0133 (0.0138)
Partner	0.0502 (0.0376)	0.0513 (0.0369)	0.0474 (0.0383)	0.0392 (0.0397)	0.0388 (0.0390)	0.0530 (0.0389)
Married	0.0205 (0.0253)	0.0046 (0.0257)	0.0178 (0.0254)	-0.0084 (0.0306)	0.0110 (0.0265)	-0.0028 (0.0278)
Spouse activity	-0.0566** (0.0273)	-0.0517* (0.0277)	-0.0594** (0.0282)	-0.0488* (0.0269)	-0.0592** (0.0281)	-0.0462* (0.0267)
Spouse health less than very good	-0.0185 (0.0183)	-0.0226 (0.0185)	-0.0157 (0.0181)	-0.0135 (0.0181)	-0.0143 (0.0179)	-0.0125 (0.0180)
Financial assets	0.0009*** (0.0003)	0.0009*** (0.0003)	0.0009*** (0.0003)	0.0009*** (0.0003)	0.0009*** (0.0003)	0.0009*** (0.0003)
Real assets	-0.0002 (0.0002)	-0.0002 (0.0002)	-0.0002 (0.0002)	-0.0003 (0.0002)	-0.0002 (0.0002)	-0.0003 (0.0002)
Flanders	0.0173 (0.0180)	0.0172 (0.0179)	0.0140 (0.0179)	0.0105 (0.0179)	0.0148 (0.0179)	0.0097 (0.0180)
N	1403	1403	1403	1403	1403	1403

Note : coefficients are the average of marginal effects. Standard errors in parentheses. \*  $p < 0.1$ , \*\*  $p < 0.05$ , \*\*\*  $p < 0.01$ . All regressions include control for net wage and lifetime earnings for the individual and for the spouse as well as squared of these variables and the interactions of these.

Financial and real assets are also equivalized in the “equivalized” regressions

In Table 3 we separate the sample by sex and re-estimate the previous models including the SSW by sex. In line with Dellis et al (2004), we find differences between the sexes. Contrary to these authors, we consistently find no significant role of social security incentive variables across all specifications for men- a finding that is very robust even to numerous robustness checks. For women, the OV and SSW indicators continue to play an important role, like in the pooled estimations reported in the

previous table. Expressed differently, it looks like the pooled regressions' findings of OV and SSW effects are mostly driven by women.

**Table 3: Option value - Probit by sex – marginal effects**

	Men			Women		
	Individual (Total)	Couple (Total)	Couple (Equalized)	Individual (Total)	Couple (Total)	Couple (Equalized)
Option value/1000	-0.0016 (0.0061)	-0.0033 (0.0052)	-0.0005 (0.0060)	-0.0242*** (0.0091)	-0.0199*** (0.0068)	-0.0239*** (0.0081)
SSW/10000	0.0038 (0.0048)	0.0023 (0.0028)	0.0049 (0.0049)	0.0093* (0.0049)	0.0041* (0.0022)	0.0080** (0.0037)
Age	0.0166*** (0.0050)	0.0150*** (0.0049)	0.0174*** (0.0047)	-0.0010 (0.0046)	-0.0023 (0.0037)	-0.0020 (0.0036)
Secondary ed.	-0.0188 (0.0295)	-0.0204 (0.0291)	-0.0164 (0.0288)	-0.0459* (0.0248)	-0.0418* (0.0235)	-0.0414* (0.0238)
Tertiary ed.	-0.0775** (0.0370)	-0.0801** (0.0373)	-0.0803** (0.0367)	-0.0227 (0.0323)	-0.0215 (0.0298)	-0.0221 (0.0305)
Health less than very good	0.0089 (0.0206)	0.0103 (0.0206)	0.0097 (0.0204)	0.0343* (0.0199)	0.0396** (0.0194)	0.0430** (0.0197)
Partner	0.0641 (0.0717)	0.0535 (0.0783)	0.0726 (0.0669)	0.0384 (0.0451)	0.0376 (0.0438)	0.0516 (0.0459)
Married	0.0488 (0.0591)	0.0444 (0.0623)	0.0523 (0.0529)	-0.0282 (0.0289)	-0.0830** (0.0395)	-0.0784** (0.0331)
Spouse activity	-0.0301 (0.0328)	-0.0285 (0.0308)	-0.0177 (0.0311)	-0.1072* (0.0613)	-0.1051* (0.0637)	-0.1044* (0.0631)
Spouse health less than very good	-0.0239 (0.0244)	-0.0206 (0.0248)	-0.0183 (0.0243)	-0.0384 (0.0273)	-0.0138 (0.0254)	-0.0067 (0.0258)
Financial assets	0.0016*** (0.0005)	0.0017*** (0.0005)	0.0016*** (0.0005)	0.0001 (0.0006)	-0.0000 (0.0006)	0.0001 (0.0005)
Real assets	-0.0008 (0.0005)	-0.0010* (0.0006)	-0.0010* (0.0005)	0.0006 (0.0004)	0.0005 (0.0004)	0.0006 (0.0003)
Flanders	0.0433 (0.0279)	0.0404 (0.0273)	0.0371 (0.0270)	-0.0153 (0.0218)	-0.0319 (0.0229)	-0.0366 (0.0232)
<i>N</i>	751	751	751	652	652	652

Note : coefficients are the average of marginal effects. Standard errors in parentheses. \*  $p < 0.1$ , \*\*  $p < 0.05$ , \*\*\*  $p < 0.01$ . All regressions include control for net wage and lifetime earnings for the individual and for the spouse as well as squared of these variables and the interactions of these.

Financial and real assets are also equalized in the "equalized" regressions

Men's retirement decisions are mostly a function of age, education and wealth levels, factors that play no or little role for women. Marital status and spousal activity indicators play no significant role for men, while they are strongly (negatively) significant for women. The strong negative effects of marital status is consistent with a view of the women as the secondary earner in the couple, having a much larger degree of freedom to choose the ideal retirement date for the couple. While male decisions seem to be mostly a function of exogenous factors, such as age, likely linked to the work environment in which they operate, their spouses have a much larger ability to fine-tune retirement in line with financial incentives, but also in line with their own perceived health situation and their spouses' retirement decisions. Both types of couple estimations seem to capture these phenomena. In addition, equalized couple indicators still keep their conceptual edge regarding the effect of household resources SSW over the simple couple indicator as for results in Table 2.

## 5. Conclusions

In the present paper, we studied retirement incentives on a sample of Belgian wage earners. We proceeded in three steps. First, we outlined some conceptual weaknesses of classical estimations using Stock and Wise (1990) option value methodology when applied to household types other than singles. We proposed methodological extensions to the baseline modeling of incentive indicators to better reflect the respective incentives faced by singles and couples. For couples, a key and often ignored dimension is the inclusion of the partner's benefits in assessing the level of well-being, as well as the crossed effects of one partner's behavior on the other's entitlements.

We derive two key sets of results. First, the introduction of modified incentive indicators for couples leads to substantial changes not only in terms of indicators of expected future income, but also in terms of dynamic retirement incentives. For numerous women, this broader view on entitlements leads to less work incentives – a contrast to previously estimated positive ones.

Second, we find empirical evidence of strong differences between the sexes. Using Survey of Health, Ageing and retirement in Europe (SHARE) data from Belgium, probit models of retirement consistently reveal social security incentives playing a significant role for women, but not for men. For women – contrary to Gruber and Wise (2004) and others – our estimates further show an intuitively signed income effect of social security wealth that plays particularly strongly when using indicators relying on household equivalence scales.

Our results show that a more comprehensive approach to retirement incentives is warranted, particularly for couples. Our findings are consistent with a view that male labor market activity is largely of the primary-earner type, more strongly driven by exogenous factors with relatively little room for adjustment. Female labor market attachment is shown to be more heavily influenced by endogenous factors such as retirement incentives, self-perceived health and the partner's activity decision.

## Bibliography

1. Aliaj, A., X. Flawinne, A. Jousten, S. Perelman and L. Shi (2016), "Old-Age Employment and Hours of Work Trends: Empirical Analysis for Four European Countries", IZA Discussion Paper 9819.
2. Atalay, K. and G. Barrett (2016), "Pension Incentives and Retirement Decisions of Couples", IZA Discussion Paper 10013.
3. Blau, D. (1998), "Labor force dynamics of older married couples", *Journal of Labor Economics*, 16, 595-629.
4. Blundell, R., P.-A. Chiappori & C. Meghir (2005), "Collective labor supply with children", *Journal of Political Economy*, 113, 1277-1306.
5. Cherchye, L., B. De Rock & F. Vermeulen (2012), « Married with children. A collective labor supply model with detailed time use and intrahousehold expenditure information », *American Economic Review*, 102, 3377-3405.
6. Dellis, A., R. Desmet, A. Jousten, and S. Perelman (2004), "Micro- Modeling of Retirement in Belgium." In *Social Security Programs and Retirement around the World: Micro- Estimation*, edited by J. Gruber and D. Wise, 41–98. Chicago: University of Chicago Press.
7. Fraikin, A.-L., and Alain Jousten (2016), "Work and retirement patterns in Belgium: lessons from a panel dataset", mimeo
8. Gruber, J. and D. Wise (2004), "Introduction and Summary" In *Social Security Programs and Retirement around the World: Micro- Estimation*, edited by J. Gruber and D. Wise, 1–40. Chicago: University of Chicago Press.
9. Gustman, A. & T. Steinmeier (2000), "Retirement in dual-career families: a structural model", *Journal of Labor Economics*, 18, 503-545.
10. Jousten A. and M. Lefebvre (2013), "Retirement Incentives in Belgium: Estimations and Simulations Using SHARE Data", *De Economist*, vol. 161(3), pages 253-276.
11. Jousten, A., M. Lefebvre, and S. Perelman (2012), "Disability in Belgium: There is More Than Meets the Eye." In *Social Security Programs and Retirement around the World: Historical Trends in Mortality and Health, Employment, and Disability Insurance Participation and Reforms*, edited by D. Wise, 251–76. Chicago: University of Chicago Press.
12. Jousten, A., Lefebvre, M. and S. Perelman (2016), "Health status, disability and retirement incentives in Belgium", in "Social Security and Retirement around the World: Disability Insurance Programs and Retirement", edited by D. Wise, 179-209. Chicago: University of Chicago Press.
13. Maestas, N. (2001), "Labor, love and leisure: complementarity and the timing of retirement by working couples", mimeo, UC Berkeley, Department of Economics.
14. Michaud, P.-C. and F. Vermeulen (2011), "A collective labor supply model with complementarities in leisure: identification and estimation by means of panel data", *Labour Economics*, 18, 159-167.
15. Stock, J. and D. Wise (1990), "Pensions, the option value of work, and retirement", *Econometrica*, 58 (5), 1151–80.

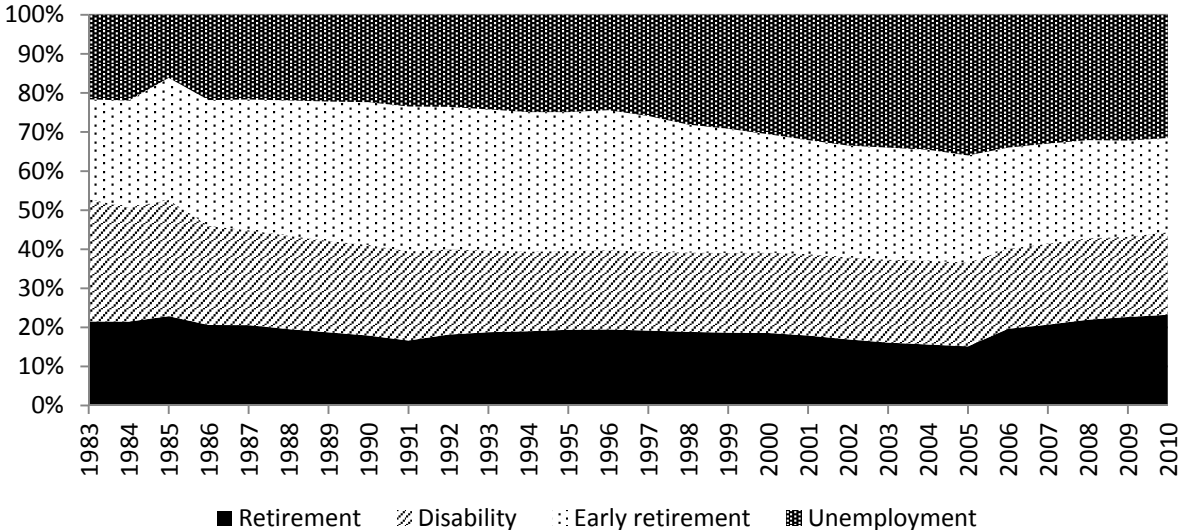
# Appendix 1

Wage earners face three broad pathways to retirement: old-age pensions; unemployment and early retirement; sickness and disability. We cannot observe each individual’s correct eligibility as it is a function of both worker and employer characteristics, such as information on periods of work, sector of work, etc.

As in Jousten et al (2016), we use weights based on observed exit patterns in the wage-earner population as a whole. More specifically, for each year of observation we use the share of the population for the age group 50-64 that is benefiting from unemployment, early retirement, disability benefits. Old age pension takes the residual such that the sum of the weights is equal to one. The choice of the 50-64 retirement-window is motivated by the fact that it corresponds to the main window of opportunity for retirement in Belgium.

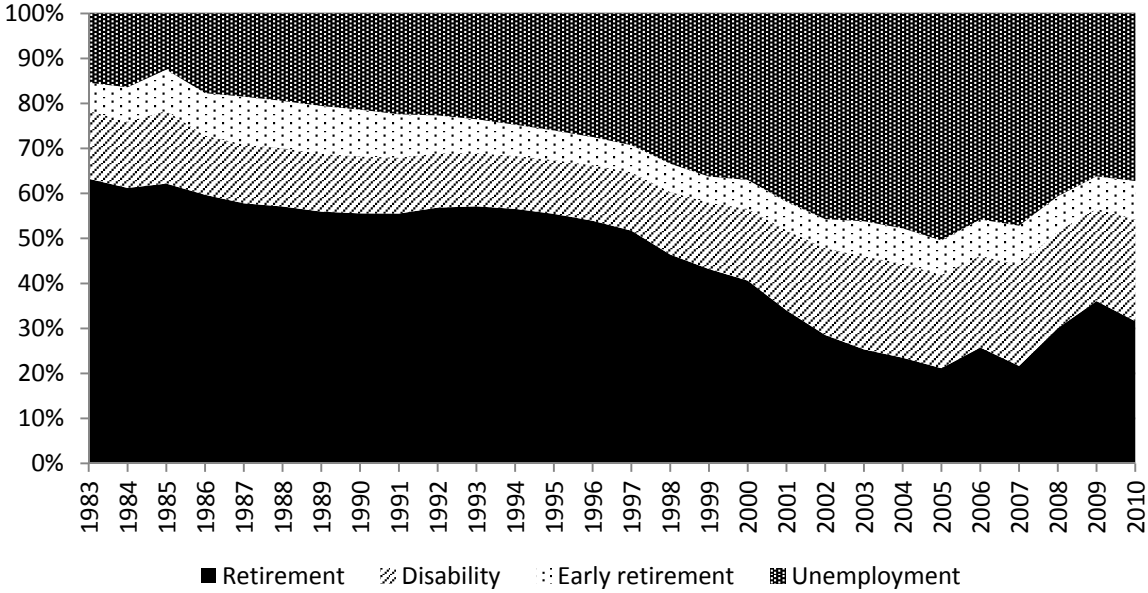
The choice of a stock indicator of inactivity over an entire age range rather than a flow indicator by age is motivated by the fact that observed flows would either grossly over or under-estimate true eligibility for the individual retirement pathways depending on which assumption would be taken regarding those not retiring. An illustrative example might help illustrate the point. Consider the (extreme) example of a monotonous 1 percent of the total population retiring each year through the unemployment channel, and a further 1 percent through the disability channel over the age span 50-64. At age 50, taking our stock indicator, we would weigh retirement pathways as 15 percent on unemployment and disability each, and 70 percent on old-age retirement. Using a flow indicator, the respective weights would be 50/50/0 percent or 1/1/98 percent for unemployment/disability/old-age-pension respectively depending on whether we allocate the remaining 98 percent of non-movers to an early exit pathway or not.

Figure A1: Pathways to retirement – Male wage-earners, age 50-64 (%)



Source: INAMI, ONEM, ONP, Belgostat.  
 Note: The denominator is the number of individuals in the same age group who were covered under the wage-earner regime and are currently inactive. The numerator is the split of these people across the various social security programs in the age group 50-64.

Figure A2: Pathways to retirement – Female wage-earners, age 50-64 (%)



Source: INAMI, ONEM, ONP, Belgostat.  
 Note: The denominator is the number of individuals in the same age group who were covered under the wage-earner regime and are currently inactive. The numerator is the split of these people across the various social security programs in the age group 50-64.