

Cseres-Gergely, Zsombor; Scharle, Ágota; Földessy, Árpád

Working Paper

Evaluating the impact of a well-targeted wage subsidy using administrative data

Budapest Working Papers on the Labour Market, No. BWP - 2015/3

Provided in Cooperation with:

Institute of Economics, Centre for Economic and Regional Studies, Hungarian Academy of Sciences

Suggested Citation: Cseres-Gergely, Zsombor; Scharle, Ágota; Földessy, Árpád (2015) : Evaluating the impact of a well-targeted wage subsidy using administrative data, Budapest Working Papers on the Labour Market, No. BWP - 2015/3, ISBN 978-615-5447-76-1, Hungarian Academy of Sciences, Institute of Economics, Centre for Economic and Regional Studies, Budapest

This Version is available at:

<https://hdl.handle.net/10419/147440>

Standard-Nutzungsbedingungen:

Die Dokumente auf EconStor dürfen zu eigenen wissenschaftlichen Zwecken und zum Privatgebrauch gespeichert und kopiert werden.

Sie dürfen die Dokumente nicht für öffentliche oder kommerzielle Zwecke vervielfältigen, öffentlich ausstellen, öffentlich zugänglich machen, vertreiben oder anderweitig nutzen.

Sofern die Verfasser die Dokumente unter Open-Content-Lizenzen (insbesondere CC-Lizenzen) zur Verfügung gestellt haben sollten, gelten abweichend von diesen Nutzungsbedingungen die in der dort genannten Lizenz gewährten Nutzungsrechte.

Terms of use:

Documents in EconStor may be saved and copied for your personal and scholarly purposes.

You are not to copy documents for public or commercial purposes, to exhibit the documents publicly, to make them publicly available on the internet, or to distribute or otherwise use the documents in public.

If the documents have been made available under an Open Content Licence (especially Creative Commons Licences), you may exercise further usage rights as specified in the indicated licence.



BUDAPEST WORKING PAPERS ON THE LABOUR MARKET
BWP – 2015/3

**Evaluating the impact of a well-targeted wage
subsidy using administrative data**

ZSOMBOR CSERES-GERGELY – ÁGOTA SCHARLE
– ÁRPÁD FÖLDESSY

INSTITUTE OF ECONOMICS, CENTRE FOR ECONOMIC AND REGIONAL STUDIES
HUNGARIAN ACADEMY OF SCIENCES
DEPARTMENT OF HUMAN RESOURCES, CORVINUS UNIVERSITY OF BUDAPEST
BUDAPEST, 2015

Budapest Working Papers on the Labour Market
BWP – 2015/3

Institute of Economics, Centre for Economic and Regional Studies,
Hungarian Academy of Sciences
Department of Human Resources, Corvinus University of Budapest

Evaluating the impact of a well-targeted wage subsidy using administrative data

Authors:

Zsombor Cseres-Gergely
research fellow
Institute of Economics
Centre for Economic and Regional Studies
Hungarian Academy of Sciences
email: cseres-gergely.zsombor@rtk.mta.hu

Ágota Scharle
senior researcher
Budapest Institute
agota.scharle@budapestinstitute.eu

Árpád Földessy
University College London

April 2015

ISBN 978 615 5447 76 1
ISSN 1785 3788

Evaluating the impact of a well-targeted wage subsidy using administrative data

Zsombor Cseres-Gergely - Ágota Scharle - Árpád Földessy

Abstract

The paper measures the impact of a wage subsidy for long term unemployed workers, using a large administrative dataset from Hungary. While such subsidies are often promoted as an efficient way to speed up the recovery of the economy or to increase demand for low skilled workers, existing evidence on their employment effects is somewhat inconclusive, especially in the case of transition economies. We examine employment outcomes in various model specifications. Results show a significant impact for men aged over 50, which is driven by the subgroup of those with lower secondary education. The subsidy for jobseekers with at least secondary education and aged over 50 is cost effective for men. We also present some evidence that this is not merely caused by substitution across various sub-groups of jobseekers.

Keywords: wage-subsidy, evaluation, older workers

JEL classification: J38, J68

Acknowledgements

This research was supported by a grant from the CERGE-EI Foundation under a programme of the Global Development Network. All opinions expressed are those of the author(s) and have not been endorsed by CERGE-EI or the GDN. We gratefully acknowledge the support of the Data Bank of the Institute of Economics, Hungarian Academy of Sciences, which provided the data for our analysis, and thank for the help of Zsuzsanna Sinka-Grósz, who helped us in extracting the data on jobseekers and Anna Orosz for her assistance in doing the cost benefit analysis.

Egy jól célzott bértámogatási program értékelése adminisztratív adatok alapján

Cseres-Gergely Zsombor - Scharle Ágota - Földessy Árpád

Összefoglaló

A tanulmány egy, a tartós munkanélküliek számára nyújtott bértámogatás hatását méri magyarországi adminisztratív adatok segítségével. Noha az ilyen támogatásokat gyakran javasolják a gazdaság élénkítésére, illetve a képzetlen munkaerő iránti kereslet növelésére, az elérhető - és főként a volt szocialista országokra vonatkozó - kutatások nem igazolják egyértelműen a hatékonyságukat. Itt a foglalkoztatásra gyakorolt hatást mérjük különféle modellspecifikációkban. Az eredmények szignifikáns hatást mutatnak az 50 év feletti férfiak esetében, amit főként a szakmunkás végzettségűekre gyakorolt hatás határoz meg. A legalább középiskolai végzettséggel rendelkező munkanélküliek esetében a támogatás költséghatékonynak is bizonyul. Bemutatjuk azt is, hogy mindez valódi hatás, nem csupán a munkanélküliek közötti helyettesítés okozta látszat.

Tárgyszavak: bértámogatás, értékelés, idősebb munkavállalók

JEL kódok: J38, J68

1. Introduction

There is a clear shift in European employment policy towards active labour market programmes (ALMP) as opposed to cash transfers for the unemployed and the recent crisis has further increased the demand for well-designed policies.¹ The meta-analyses of existing empirical evidence on ALMPs have shown that the impact of such policies is determined predominantly by their type, while the business cycle or labour market institutions are much less, or not important at all (Card et al 2010, Kluge 2010).

According to Kluge (2010), wage subsidies and services/sanctions are the most effective in increasing reemployment rates. The effectiveness of wage subsidies however has been questioned on several accounts. First, not all empirical studies found positive and significant effects. In fact, the few existing papers on transition countries have all shown a neutral or negative impact (Kluge 2010, Betcherman et al 2004). Second, wage subsidies are relatively expensive, which implies that the magnitude of their effect is as important as its sign, i.e. only a relatively large impact can make such programmes cost effective. Third, the narrow targeting of subsidies may stigmatise recipients and reduce both take-up and effects (Katz 1996). Fourth, deadweight and substitution costs are likely to be high (Betcherman et al 2004).

The recent global financial crisis has increased the policy relevance of wage subsidies as a means to preventing the rise of long-term unemployment and speeding up recovery. Such subsidies are especially relevant for transition economies struggling to meet EU employment targets. The political and economic transition of 1989 has drastically reduced the employment rate of low-skilled workers in Eastern Europe, and the reduction has proved to be lasting in most countries. This has become one of the main causes behind the rise in long-term unemployment, economic inactivity and persistent poverty.

This paper aims to contribute to resolving three questions concerning the effectiveness of wage subsidies.

As very few studies have been done in transition countries, it is unclear if the disparity of earlier findings is due to the transition environment or poor policy design. We assess a wage subsidy introduced in Hungary in 2007, which is a relatively well-designed scheme. It is very similar to the targeted payroll tax subsidies in Belgium and Finland and a targeted tax credit in the US, which earlier studies have shown to have some positive impact.

¹ For a recent initiative by influential economists supporting wage subsidies as a means of speeding up the economic recovery see: <http://delong.typepad.com/sdj/2010/02/economists-for-wage-subsidies.html>

We use a large administrative dataset, which includes information on employment and wage as opposed to merely recording exit from the unemployment register. This will allow us to compute the costs and benefits of the scheme.

The same dataset allows us to check if there is a substitution effect for close substitutes.

We focus on one element of a wage subsidy scheme introduced in Hungary in 2007 for various subgroups among the long term unemployed. This subsidy offers a temporary reduction on payroll tax (social security contributions) to employers, and the reduction is largest for job seekers aged over 50 and those with only primary education. Eligibility is determined solely by observable characteristics of job seekers.

To identify the effect of the subsidy, we exploit the design of the programme and the availability of administrative data. As outcomes, we consider various measures of re-employment. As the suitable control groups are eligible for a base subsidy, our estimates are interpreted as the *additional* effect of the extra subsidy for multiply disadvantaged groups.

The dataset we use is a 50 % random sample of the total working age population and includes information on registration at the public employment service, receipt of welfare provisions (including retirement), employment and wages, for the period between 2002 and 2008. The size and depth of the dataset allows us to control for a richer set of observable characteristics than most earlier studies.

Results show a significant positive effect on re-employment probabilities in the case of men aged over 50 and this result is robust to model specifications. We find positive but insignificant effects for women. Using the same dataset, we also estimate exit probabilities for close substitutes of the treatment group and find no indication of a substitution effect. Lastly, under conservative assumptions, the subsidy is cost effective for men with at least secondary education aged over 50.

In the rest of this paper, the next section briefly reviews existing relevant research on wage subsidies. Section 3 describes the Hungarian scheme in detail and summarises aggregate data on take-up. Section 4 describes the dataset and presents raw outcome measures. Section 5 outlines the objects of interest and identification strategy. Section 6 presents estimation results and discusses their robustness, while Section 7 presents a cost-benefit analysis.

2. Review of research on similar policy instruments

Similar targeted payroll tax subsidies have been used in Belgium, Finland, Germany, the Netherlands and the US. The ‘Maribel subsidies’ system in Belgium in the late 1990s offered a lump sum reduction in payroll taxes for employing manual workers, so that the relative size of the subsidy was highest for low wage workers. Goos and Konings (2007) use firm-level data to evaluate the effects of changes in this scheme and find significant positive effects on employment. Huttunen et al (2010) estimate the employment effects of a subsidy in Finland, which is targeted at the employers of low-wage older workers using difference-in-difference-in-differences. They find that the subsidy has no effects on the employment rate but it increases the probability of part-time workers obtaining full-time employment (the scheme is only available to full time workers). Katz (1996) reviews evaluations of the Targeted Jobs Tax Credit (TJTC), a similar scheme operating in the US until 1994 and concludes that it was effective in improving the earnings and employment of disadvantaged groups, especially when combined with training elements. However, studies examining changes in the TJTC rules or its performance compared to more sophisticated schemes in experiments have pointed to a potential problem with narrow targeting. When TJTC was used without additional services (training or counselling), take up tended to be low and reemployment effects were small (or even negative in some experiments). These results were attributed to the stigmatisation of recipients. However, some of these concerns were called into question by later analyses showing that non-random selection into the treatment group could explain poor performance. Dubin and Rivers (1993) recalculate the effects of one such experiment in Illinois, where the treatment group were long term unemployed individuals who were offered a voucher, which their new employer could submit and receive a lump sum payment. They find that, once controlling for self-selection, the programme significantly increased the likelihood of re-employment.

Schünemann et al (2011) estimate the effect of a wage subsidy for employers hiring long term unemployed, using information on eligibility rather than take-up, and applying an RDD in differences approach in order to exclude potential bias from unobserved effects. They find no impact on employment outcomes, nor on employment stability.² The authors suggest that this

² This is intriguing given that the size of the subsidy is rather large (60 % of the usual wage in the given occupation for 6 months and 40 % for another 6 months). However, the subsidy is conditional on submitting a claim at the local (or regional) job centre, and is granted at the discretion of the caseworker and provided that there is available funding. Also, it requires one year of continued employment. Lastly, the discontinuity exploited by the paper is that eligibility is conditional on 12 months of prior unemployment, which may lead to an overestimation of programme effects if those with 11 months of unemployment would postpone their job entry in order to become eligible for the subsidy - see Brouillette and Lacroix (2010) on the problem of self-selection.

may be a consequence of using eligibility rather than take-up to identify the treatment effect since the latter combines the effect of the subsidy and finding a job. An alternative explanation is that this estimate applies only to a particular sub-sample of long term job seekers: those who did not participate in any other labour market programme, had worked for at least 6 months during the 12 months preceding (re)entry to the unemployment register, and were eligible for unemployment benefit but not exactly for 12 months.

There are very few empirical studies on Hungarian ALMPs and as far as we know, the reemployment effect of the Hungarian “START” scheme has not yet been evaluated. The two papers that evaluate the impact of traditional wage subsidies have somewhat conflicting results. O’Leary (1998) found negative or zero employment effects and a significant increase in earnings on the first job, except for job seekers aged over 45, where effects on both employment and earnings were positive and significant. Using data for 2010, Csoba et al (2012) estimate a 24-fold increase in log-odds of employment, which is a dubiously large effect, and is robust to controlling for an extensive set of individual characteristics. However, they do not control for the duration of the last unemployment spell.

3. The policy instrument and the context of its introduction

The Hungarian wage subsidy scheme examined in this paper was first introduced in October 2005 for school leavers (START) and was extended to various subgroups among the long term unemployed in July 2007 (START plusz and extra).

It is a quasi-voucher scheme that offers a temporary reduction on payroll tax (social security contributions) to employers hiring the holder of the ‘voucher.’ The amount of the subsidy varies across eligible groups, as summarised in Table 1. All long-term unemployed are eligible for START plus, and START extra doubles the subsidy for a selected subgroup with multiple disadvantages, ie. for jobseekers above 50 and those who completed primary education only. Eligibility for START extra can thus be earned in two ways: by accumulating unemployment spells (for the uneducated) or by reaching 50 years of age (for the educated).

The subsidy is largest for job seekers aged over 50 and those with only primary education: 25% of the total wage cost in the first year and 14 % in the second year, with a cap set at twice the minimum wage. The general subsidy available to all long term unemployed is 14 % in the first year and 7 % in the second year.

Table 1.

Rules of the various START schemes at the time of introduction

| Name | Eligibility | Amount of subsidy (% of total wage cost)* | | Ceiling on subsidy |
|-------------|--|---|----------|---|
| | | 1st year | 2nd year | |
| START | School leavers: below 25 (30 for graduates), no prior paid job | | | 1.5x minimum wage (2x for he. graduates) |
| START Plusz | On parental leave or care allowance, or registered unemployed for 12 months within preceding 16 months, not eligible for old age pension | 14 % | 7% | 2x minimum wage |
| START Extra | Over 50 or primary education only, and registered unemployed for 12 months within preceding 16 months, not eligible for old age pension | 25 % | 14 % | 2x minimum wage |

* In 2007, the employer's contribution was 32% of the gross wage, and this was waived in full during the first year of employing a person with a START extra voucher. The flat rate health contribution was waived in both years in all schemes, which was 1950 HUF a month (about 8 EUR), or around 3% of the minimum wage. The subsidy was further extended in 2009 and replaced by a new scheme in 2012.

The scheme (all three variants) has been administered by the tax authority who issue a plastic card to eligible persons which indicates the type and eligibility period of the subsidy. Cards are issued only if claimed, but the evaluation of claims is automatic, with no discretion or further conditions beyond age, education and long term unemployed status. This implies that there is no selection in the decision of who may receive the subsidy (prior to the hiring decision of the employer) as is often the case with wage subsidy schemes managed by the public employment service. Job centres have been actively encouraging job seekers to claim the card.

The validity of the card and thus the period of eligibility starts on the day of issue. Jobseekers are therefore advised to claim the card immediately before starting in their job, so that their employer may be eligible for the maximum length of the subsidy. The timing of programme-participation is thus as follows: the job seeker 1) registers at the job centre, 2) becomes eligible for a START card, 3) finds a job 4) applies for a START card, 4) enters the job, 5) ends the employment spell within the subsidised period or stays employed. The subsidy lasts for a maximum of two years, so that past programme-participation impacts can only be measured using data for 2009 or later.

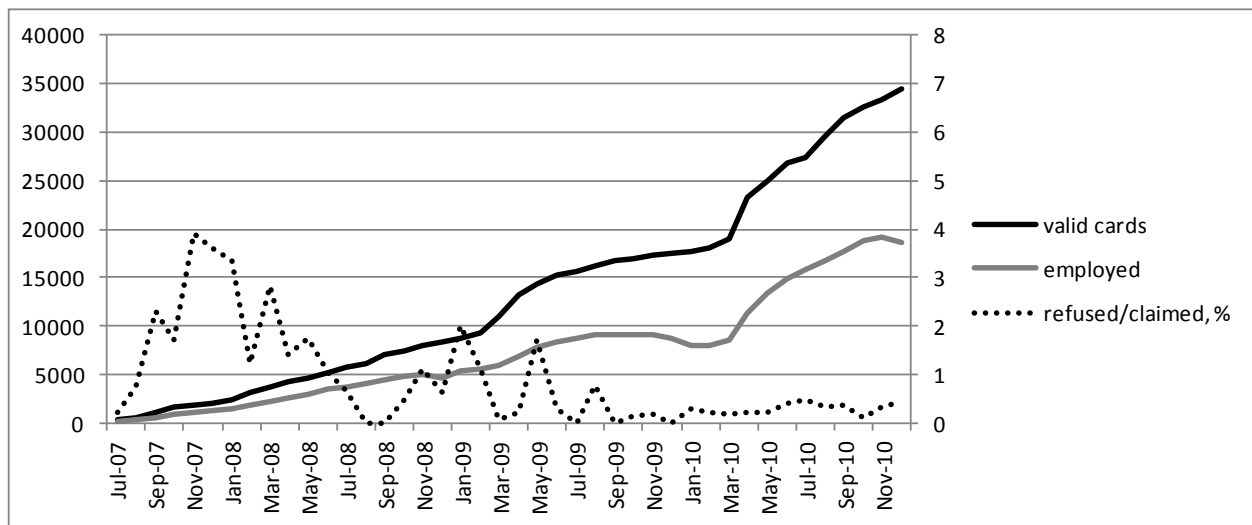
The START schemes are different from traditional wage subsidies in a number of ways, the most important being administration and further obligations. Traditional subsidy schemes require the employers to submit an application at a regional PES office and to guarantee that

they will employ the beneficiary for at least as long as the benefit was provided. Since the Start schemes do not pose such requirements, we expect that their effect will be larger than that of the traditional wage subsidy.

Between July 2007 and December 2008, the START EXTRA card was claimed by 8,859 persons and issued to 8,392 persons. Less than 2 % of the claims were declined by the tax authority, and some 5 % was not issued for other, unknown reasons (e.g. the card holder withdrew the claim). During the same period, the number of persons employed with the subsidy started to grow steadily, peaking at 19,236 in November 2010 (Figure 1). This suggests that most cards have been claimed once the job seekers had a job offer, as recommended by job centres. Data recorded by jobcentres also appears to confirm this: 82 % of card holders were employed within 30 days of requesting a certificate at the job centre and another 7 % were employed within 90 days.³

Figure 1

**Number of valid cards and persons employed with a START extra subsidy
between July 2007 and December 2010**



Source: Aggregate administrative data by the Tax Authority, prepared on request for the Ministry for Labour. The share of refused cards is shown on the right scale (percentages).

³ These data come from the digital data archive of the Public Employment Service, who were responsible for issuing a certificate to confirm that the jobseeker had the necessary unemployment record to qualify for the card. It should be noted however that these archive records cover less than half of all card-claims, as job centres were not motivated to digitalise this information.

In the ensuing analysis we focus on the START EXTRA scheme accessible to long-term jobseekers aged over 50 with at least secondary education. This covers half of the recipients (Table 2).

Table 2.

Persons ever employed with the START extra subsidy until December 2008

| | aged below 50 | aged 50 or over | of which: men |
|---------------------|------------------|-----------------|---------------|
| primary education | 1 298 | 1 690 | 754 |
| secondary or higher | | 3 127 | 1 227 |

Source: Aggregate administrative data by the Tax Authority, prepared on request for the Ministry for Labour.

Between June 2007 and December 2008 there were no other new programmes introduced that would target especially the uneducated or older long-term jobseekers. The only other large programme intended for these groups was public works schemes, which had already been in place since 2001. In 2009, several new programmes were introduced: using EU funding, personalised services (e.g. mentoring) were introduced for hard-to-place groups and funding for the public works scheme run by municipalities was considerably increased, while active job search requirements for jobseekers aged over 55 were considerably relaxed.

The START EXTRA subsidy appears to be well targeted considering that reemployment probabilities are significantly lower for uneducated and older job seekers. Demand for older workers declined significantly in the 1990s, partly due to the sharp drop in their relative productivity and also due to discrimination (see Lovász 2012 for a review of empirical evidence). There is also some evidence that wage subsidies targeted at the long-term unemployed (as in the START EXTRA scheme) rather than at low-ability workers are more effective (Brown et al 2011).

4. Data and stylised facts

We use a dataset drawn from administrative records, constructed for research purposes by the Institute of Economics, Hungarian Academy of Sciences (IE-HAS). It contains the matched records of 50 % of the adult population including data from (1) health and (2) pension insurance, (3) the treasury, and the (4) unemployment register.⁴ The sample was taken from the records of

⁴ For a detailed description of the data collected by the Pension and the Health Insurance Funds and in the Treasury, see Elek et al (2008).

January 2002 of the health insurance fund, which include all people residing in Hungary who ever had been covered by public health insurance. This practically covers the total population.

The resulting dataset is a panel of the employment and job search history of the working age population covering the period between January 2002 and December 2008. There is information on age, sex, dates of entering and exiting employment, earnings (pension insurance records), unemployment history and type and period of receiving various transfers (including disability benefits) and sick leave. The information on employment and transfers is used to reconstruct labour market status in each month during the observed period. The employment-outcome indicator excludes casual jobs as such jobs are not eligible for the START subsidy. There is no data on the actual claiming the START cards (which is recorded by the tax authority), or on the employer.

It must be noted that labour market status in this dataset may not correspond to the actual situation in the economic sense. A person receiving unemployment benefit is coded as unemployed, even if not actively looking for a job, while a person receiving old-age pension is coded as inactive, even if available for work and actively looking for a job.

In the original administrative data, information on employment, unemployment and transfer receipt is in continuous time, recording the type of spell and the dates of starting and ending for each spell. This was converted into a monthly structure.

Although the data are based on administrative records, the nature of the administrative sources itself may generate attrition: we lose information on people who leave the unemployment register and take up undeclared work, or become inactive without obtaining any form of social transfer. However, attrition does not seem particularly large in the age groups we examine and it is not very different between the groups eligible and not eligible for START.⁵

We observe only 18 months following the introduction of the programme, thus we cannot look at post-participation outcomes and we have right-censored spells in the dataset. None of the spells are left-censored and we have a quite long employment history available.

⁵ For jobseekers aged around 50, attrition is 1.04 % for those eligible and 1.28 % for those not eligible for START. For the low educated, attrition in the sample is 0.53% and 1.29 % respectively. Deaths are recorded in the data and spells ending in death are right censored in our estimates. The lack of information on unregistered jobs is not considered a problem as such jobs cannot (by design) benefit from the subsidy.

5. Objects of interest, identification strategy and raw effects

A wage subsidy can increase the demand for the beneficiary thus increasing probability of exit from registered unemployment or even increase wages when employed. Given that employing a programme participant is relatively cheaper, employment spells can last longer, everything being equal. As the time-frame of our data does not extend very much into the programme period, we shall be focussing on the exit from the registered unemployment spell and wages at entry to the subsidised job.

The thought-experiment we carry out is the following. We observe a group of registered unemployed with identical characteristics making them eligible for programme participation at a point in time. The programme is introduced. Some of the unemployed are randomly chosen to receive the benefits provided by the programme, while the others are left out. Neither of these groups takes part in other programmes and nothing happens that would change their chances to exit unemployment. As time passes by, we observe all exits from unemployment in both groups. To evaluate the programme, we examine the characteristics of the exits to employment: their timing, distribution by relevant characteristics. If, for example, exits take a shorter time on average in the participant group than in the nonparticipant group, we conclude that the programme had an overall beneficial effect.

We consider two outcomes: 1) employment after 15 months and 2) exit to a job in calendar time. In outcome 2) we consider exits during the period starting in July 2007, when the subsidy was introduced. This differs from the usual approach of observing exits from the start of the last spell of unemployment, which varies in calendar time across individuals. However, given that that eligibility depends on the number of months spent in unemployment (accumulated in one unbroken spell or several shorter spells), in the usual spell-duration estimates, the treatment dummy is negatively correlated with the spell length. To see why, consider the last spell including the month when the programme was introduced. Those with an unbroken long spell enter into treatment at a later point in their spell, while those who collected the 12 months in several shorter spells will enter into treatment sooner. Now assume that spell-duration is measured using a single continuous variable. Using standard auxiliary-regression arguments, one can show that in the case of a negative correlation between the treatment dummy and the variable measuring the spell length and a negative correlation between re-employment and spell length (time-decreasing hazard), the estimate of the treatment effect is downward-biased.

START EXTRA included two sub-programmes P1) for the long-term unemployed aged over 50 (any education), and P2) for the long-term unemployed with primary education only (any age).

The eligibility rules of the sub-programme for older job-seekers (P1) allows us to exploit a discontinuity in eligibility to identify the programme effect. In this case, the treatment group is formed by those eligible for participation and are slightly above the age 50, while the control group is formed by those who are similar to them in all aspects, but stay slightly below age 50 during the observation period.

The treatment effect is identified as

$$T = E(I|P=1) - E(I|P=0)$$

that is as a simple difference between the outcomes of the treatment and the control group, where I is the outcome indicator and P is the indicator of programme participation. In order to control for the observable differences between the two groups, we can use the conditional version of these statistics to obtain

$$T' = E(I|P=1, X=x1) - E(I|P=0, X=x0)$$

Those with at most primary education are excluded, as they are eligible for the same support through P2. Our estimates will therefore be local to the age around 50 and also to individuals with higher than primary education.

The discontinuity design strategy assumes that heterogeneity in the variable with the discontinuity is irrelevant in determining outcomes. This is not completely so in our case, as age tends to reduce the chance of reemployment, but we can account for this in the estimation strategy.

When defining the groups slightly below and slightly above 50, we are facing a trade-off. Opening up the age-windows and making the groups larger, we obtain more observations and hence more precise estimates. At the same time, groups become more heterogeneous with respect to age and the estimates become more prone to age-related effects that might be correlated with the outcome – a familiar trade-off between consistency and variance.

If the differential effect of extraneous factors on outcomes over time (such as seasonality or the business cycle) is to be taken into account separately from unemployment duration, it has to be controlled for using some statistical method, such as difference in differences strategy, where we look at the difference between the control and the treatment outcomes before and after the programme.

As already noted, we do not directly observe card claims and define treatment as eligibility for the START card. This is not only a pragmatic decision taken for the lack of better data, but can also be justified on the basis of the official information on claims, take-up and subsequent employment presented in section 3 above. As we have seen, the issuing of vouchers is almost automatic and most claims are shortly followed by employment. This suggests that claiming the voucher is a formal exercise, which is in reality most likely to happen after the outcome, that is, after the employer decided to hire the job seeker. ‘True’ take-up is knowledge of the scheme and of the age condition by either the employer or the job seeker. As the scheme was actively advertised in job centres, it does not seem far-fetched to assume take-up to be close to full and to consider all eligible job seekers as treated. The aggregate statistics seem to support this assumption as subsidised job entries are rather close to the number of card holders.⁶

Based on the above considerations the treatment group is defined as those aged between 50 and 52.5 and the control group includes those aged between 45.5 and 48.5 in June 2007. The 18-month gap between them ensures that no member of the control group becomes eligible for participation during the observed period. In other respects the two groups both fulfil the eligibility criteria at the time the scheme was introduced, i.e. they have accumulated 12 months of registered unemployment. As the scheme was not much advertised before its introduction, this is likely to eliminate any bias from waiting effects.

Reemployment effects are estimated in various specifications: probits for the probability of being employed 15 or 18 months after the introduction of the scheme and duration models (a modified Jenkins type probit) for the probability of exit to a job at any time after the introduction of the scheme (Jenkins 1995).

Raw outcomes for job-seekers aged over 50 are presented in Table 3 and Figures 3-4 below. For this sub-programme, the share of those employed in September 2008 is slightly higher in the treatment group and the survival function measured in calendar time also suggests some positive treatment effect for men. There is no visible positive programme-effect when survival is observed during the whole unemployment spell, nor for women. For P2, the share of those employed in September 2008 is significantly lower in the treatment group. This is not unexpected however, given the higher education level of the control group.

⁶ If the assumption does not hold, we can identify what is called in the medical literature the intention to treat effect (ITT). Although one can regard this as a limitation of the analysis, some would argue that it has at least as much policy relevance as the treatment effect itself (Schünemann-Lechner-Wunsch, 2011).

Table 3.

**Raw outcomes for older job-seekers: employed 15 months after
(in September 2008)**

| | Not employed | MEN Employed | Ratio | Not employed | WOMEN Employed | Ratio |
|------------|-----------------|-----------------|-------|-----------------|-------------------|-------|
| Control | 806 | 247 | 23.5% | 613 | 258 | 29.6% |
| Treat | 795 | 264 | 24.9% | 516 | 238 | 31.6% |
| Difference | | | 1.5% | | | 1.9% |

6. Estimation results

Regression results show by and large the same picture as the raw outcomes presented above. Marginal effects estimated in various model specifications (see main results below, full regression output in the Appendix) tend to be small but positive and significant for men, and insignificant for women. Results are robust to the definition of employment and unemployment in the data. Control variables take the expected signs. The preferred specification (presented below) includes controls for age, education, and past work history.

For men, the positive effect is driven by job seekers with lower secondary vocational education, who constitute 74 % of the sample. For the higher educated, there is no significant effect, which may be due to the ceiling on the subsidy (which reduces the value of the subsidy at high wages) or possibly to stigma effects, which may be stronger in white collar occupations.

Table 5.

Employment effects of older job-seekers

| | 15 months after | 18 months after | Calendar time duration | CT duration for lower sec vocational |
|-------|--------------------|--------------------|---------------------------|---|
| Men | 0.1040** | 0.0782 | 0.0144*** | 0.0164** |
| Women | 0.0638 | 0.1040 | 0.0016 | -0.0034 |

*** p<0.01, ** p<0.05, * p<0.1 See full regression results in Tables B1 and B2 in the Appendix.

For women, the subsidy has no significant effect on employment. A possible explanation is that older women are less likely to actively look for a job, which lowers the potential impact of any wage subsidy that is by design dependant on job search. An earlier result by Micklewright and Nagy (2010) points to a similar direction: they found that a mild tightening of job search criteria for unemployment benefit recipients had a significant positive effect on the probability of reemployment only in the case of women aged over 30.

7. Substitution effects

The above results give gross estimates of the programme effect which is valid only if the control group was not affected by the program, for example through a replacement of employees by long-term unemployed similar to them and eligible to the subsidy. As a crude check for displacement effects, we examine the probability of becoming unemployed for the employed population in the period between 2005 and 2008, that is, around the time of introducing the subsidy. We use the same administrative dataset (which covers 50 % of the employed population) and for each educational level estimate a probit regression with dummies for each year, for the age group just below 50 and their interactions as well as controls for prior work history.

The results show a U shape evolution of exit probabilities: exits are somewhat less likely before and after 2007 but this is only significant for educated workers (see Table 6 below). This makes sense in view of general economic growth trends: there was very little growth in Hungary in 2007, compared to before 2007 or the first half of 2008. We find no significant trend in the job loss probabilities of workers aged below 50 with secondary or higher education. Workers with primary education are more likely to exit in 2007 and 2008 compared to 2006. Recalling that the positive effect of START EXTRA presented above applied to men with lower secondary vocational education, these results suggest that substitution is unlikely to have lessened the impact of the programme.

Table 6

**Job exit probabilities for men between 2005 and 2008, by level of education
(probit)**

| VARIABLES | Primary education | Lower secondary | Upper secondary or higher |
|---------------------------|-----------------------|------------------------|---------------------------|
| Year 2005 | -0.0282 (0.00560) | -0.088 (0.00543) | -0.127*** (0.00975) |
| Year 2006 | -0.0381 (0.00515) | -0.0919 (0.00571) | -0.127*** (0.0108) |
| Year 2007 | reference | | |
| Year 2008 | -0.0428 (0.00325) | -0.0779 (0.00486) | -0.110*** (0.00999) |
| Year 2005 * age below 50 | -0.00733 (0.00561) | -0.00152 (0.00730) | 0.0323 (0.0205) |
| Year 2006 * age below 50 | -0.0104* (0.00561) | -0.000477 (0.00739) | 0.00836 (0.0202) |
| Year 2008 * age below 50 | -0.00188 (0.00355) | -0.00469 (0.00412) | -0.00236 (0.00876) |
| Age below 50 | 0.0143*** (0.0035) | 0.0036 (0.0040) | -0.0048 (0.0098) |
| Age (years) | 0.0050*** (0.0006) | 0.0015** (0.0007) | -0.0016 (0.0021) |
| Controls for work history | | | |
| Observations | 108,347 | 97,566 | 23,511 |

Heteroskedasticity robust standard errors in parentheses. *** p<0.01, ** p<0.05, * p<0.1

8. Cost benefit analysis

The total cost of the scheme is relatively modest, compared e.g. to re-training or public works programmes in Hungary. Between July 2007 and December 2008, the START EXTRA scheme cost a total of 1 billion HUF per annum. This amounts to 593 EUR per person (HLM 2011, not controlling for right censoring in employment spells).

Neglecting the costs of administration, which are likely to be very low, we define the cost of the programme to equal the additional subsidy (on top of START PLUSZ available to all long term unemployed). The short term benefits of the programme include savings on social assistance expenditure and employee's social security contributions (17 % of the gross wage).⁷

⁷ We neglect revenues from the personal income tax as this was practically zero at the relevant wage levels.

Long term benefits may include social security contributions after the subsidy expired, longer employment spells in the subsequent work history, postponed retirement and savings on health care costs. For lack of empirical evidence on the magnitude of these long term effects (in Hungary), we concentrate on the short term balance. The average employment spell starting after the subsidy was introduced lasts 5 months, so we can safely ignore the fact that the subsidy is lower in the second year.

Assuming that there is no deadweight loss at all, the additional cost of the programme amounts to 20 thousand HUF per month for each additional worker entering employment and yields 22 thousand HUF of social security contributions and a saving of 26 thousand HUF per month, if the worker had been on social assistance. In this case the benefits clearly exceed the cost. This implies that each worker hired as a result of the subsidy generate a fiscal saving of 28 thousand forints (about 100 EUR) each month as long as they are employed. To estimate deadweight loss we compare the number of subsidised job entries as recorded by the Tax Authority to the number of additional entries attributable to the programme. The Tax Authority recorded that 1227 men and 1895 women were hired with the card during the observed period. For women, we assume that all the spending on their subsidy is deadweight as the programme had no significant effect on their re-employment. For men, we calculate the number of additional workers assuming that the programme effect estimated for men just over 50 (1) applies to all older men (2) declines linearly with age, (3) declines exponentially with age.⁸ In the first two cases the estimated number of additional workers exceeds the observed official figure by 136% and 43% respectively, implying that deadweight loss is zero. In the third case, it is 42% smaller, but total monthly savings will still exceed costs if the average employment spell of “true” additional workers is at least as long as that of deadweight workers (i.e. those who would have been hired without the subsidy). Thus, the programme generates some savings even if it only affects men aged between 50-55. The amount of savings depends on how programme effects decline with age, which we cannot measure. If there is no deadweight loss on male jobseekers, the savings almost compensate for the loss on women, assuming that their average employment spells are the same or shorter.

9. Conclusions

The paper measures the impact of a wage subsidy for long term unemployed workers in Hungary, using administrative data. While such subsidies are often promoted as an efficient

⁸ This implies that programme effects drop significantly over age 52 and are close to zero above age 55.

means to speed up recovery or to increase demand for low skilled workers, existing evidence on their employment effects is somewhat mixed, especially in the case of transition economies.

We examine employment and wage outcomes in various model specifications. Results show a significant impact on the reemployment rate and wages of men aged over 50. The overall positive impact on employment is driven by the largest subgroup of those with lower secondary education. The evolution of job loss probabilities around the introduction of the programme suggests that the positive employment effect of the programme is not merely caused by substitution across various sub-groups of jobseekers.

For women, the subsidy has no significant effect. A possible explanation is that older women are less likely to actively look for a job, which lowers the potential impact of any wage subsidy that is by design dependant on job search.

The subsidy for jobseekers with at least secondary education and aged over 50 is cost effective for men, even if the effect exponentially declines with age and considering short term benefits only. The overall efficiency of the programme could be improved by narrowing the target group to jobseekers with less than upper secondary education and possibly by supplementing it with incentives for job search, especially for women.

REFERENCES

- Betcherman, G., K. Olivas and A. Dar (2004) Impacts of Active Labor Market Programs: New Evidence from Evaluations with Particular Attention to Developing and Transition Countries, World Bank Social Protection Discussion Paper, No. 0402
- Brouillette, D. and Lacroix, G. (2010) Heterogeneous Treatment and Self-Selection in a Wage Subsidy Experiment, *Journal of Public Economics*, 94 (7-8), pp 479-492.
- Brown, Alessio J.G. & Merkl, Christian and Snower, Dennis J. (2011) [Comparing the effectiveness of employment subsidies](#), *Labour Economics*, 18(2), pp 168-179.
- Card, David, Kluve, Jochen and Weber, Andrea (2010) Active Labor Market Policy Evaluations: A Meta-analysis. *The Economic Journal*, 2010, 120, F452-F477
- Csoba, Judit – Nagy, Zita Éva (2012) Evaluation of active labour market programmes with control groups, in: Kézdi (ed) *In focus, The Hungarian labour market: Review and analysis* (forthcoming)
- Elek, P. – Osztotics, A. – Scharle, Á. – Szabó, B. – Szabó, P. A. (2008) Az OEP, az OnyF és a MÁK kezelésében lévő adatbázisok [The administrative data of the Health and Pension insurance funds and the Treasury], MTA-KTI, Institute of Economics <http://adatbank.mtaki.hu/files/dokum/4.pdf>
- Dubin, J.A. and Rivers, D. (1993) Experimental Estimates of the Impact of Wage Subsidies, *Journal of Econometrics* 53, 219-242.
- Goos, Maarten and Konings, Jozef (2007) The Impact of Payroll Tax Reductions on Employment and Wages: A Natural Experiment Using Firm Level Data, LICOS Discussion Papers 17807, Centre for Institutions and Economic Performance, K.U.Leuven.
- Jenkins, S. P. (1995) Easy Estimation Methods for Discrete-Time Duration Models, *Oxford Bulletin of Economics and Statistics* 57(1) 129-38
- Huttunen, Kristiina, Pirttilä, Jukka and Uusitalo, Roope (2010) The Employment Effects of Low-Wage Subsidies, IZA Discussion Paper No. 4931, May 2010
- Katz, Lawrence F. (1996) Wage Subsidies for the Disadvantaged, NBER Working Paper No. W5679, July 1996
- Kluve, J. (2010), “The Effectiveness of European Active Labour Market Policy”, *Labour Economics* 17(6) 904-918
- Lovász, A (2012) Labour market discrimination. In: Fazekas-Scharle (eds): *From pensions to public works. Two decades of employment policy in Hungary, 1990-2010*. Budapest Institute and IE-HAS, forthcoming
- Micklewright, J. and Nagy, Gy. (2010): The effect of monitoring unemployment insurance recipients on unemployment duration: evidence from a field experiment, *Labour Economics*, [Volume 17, Issue 1](#), January 2010, pp 180-187
- O’Leary, Christopher J. (1998) Evaluating the Effectiveness of Active Labor Programs in Hungary, Upjohn Institute Technical Reports http://research.upjohn.org/cgi/viewcontent.cgi?article=1016&context=up_technicalreports
- Schünemann, Benjamin, Michael Lechner and Conny Wunsch (2013) Do long-term unemployed workers benefit from targeted wage subsidies? WWZ Discussion Paper 2013/14
- Sjögren, Anna and Vikström, Johan (2013): How long and how much? Learning about the design of wage subsidies from policy discontinuities, IFAU WP 2013(18) <http://www.ifau.se/Upload/pdf/se/2013/wp2013-18-How-long-and-how-much.pdf>

APPENDIX

Table A1.

Summary statistics for the treatment and control group for June 2007

| Variable | Obs | Treatment | | Control | | |
|------------------------------------|------|-----------|-----------|---------|--------|-----------|
| | | Mean | Std. Dev. | Obs | Mean | Std. Dev. |
| sex | 2043 | 0.592 | 0.49 | 2195 | 0.559 | 0.50 |
| age (years) | 2043 | 50.800 | 0.77 | 2195 | 46.488 | 0.97 |
| lower secondary education | 2043 | 0.617 | 0.49 | 2195 | 0.643 | 0.48 |
| upper secondary education | 2043 | 0.320 | 0.47 | 2195 | 0.304 | 0.46 |
| tertiary education | 2043 | 0.063 | 0.24 | 2195 | 0.052 | 0.22 |
| student (months) July06-June07 | 2043 | 0.012 | 0.38 | 2195 | 0.005 | 0.26 |
| training before July07 (dummy) | 2043 | 0.011 | 0.11 | 2195 | 0.017 | 0.13 |
| over 50% disabled (dummy) | 2043 | 0.037 | 0.79 | 2195 | 0.029 | 0.72 |
| sick leave (ever b July07) | 2043 | 0.0015 | 0.04 | 2195 | 0.0014 | 0.04 |
| <i>labour income and transfers</i> | | | | | | |
| reservation wage (HUF/month) | 981 | 71055 | 22528 | 1171 | 71730 | 23260 |
| current income (HUF/month) | 2043 | 9960 | 27631 | 2195 | 10349 | 27605 |
| smallholder (ever before) | 2043 | 0.020 | 0.14 | 2195 | 0.026 | 0.16 |
| disab benefit months July06-June07 | 2043 | 0.854 | 3.00 | 2195 | 0.697 | 2.77 |
| UB months July06-June07 | 2043 | 1.816 | 3.82 | 2195 | 0.918 | 2.54 |
| UA months July06-June07 | 2043 | 5.718 | 5.55 | 2195 | 6.187 | 5.46 |
| disab benefit months b July06 | 2031 | 1.485 | 6.16 | 2191 | 1.227 | 5.57 |
| UB months b July06 | 2031 | 2.554 | 4.06 | 2191 | 2.534 | 4.02 |
| UA months b July06 | 2031 | 7.160 | 10.82 | 2191 | 7.888 | 11.13 |
| <i>Labour market participation</i> | | | | | | |
| months worked July06-June07 | 2043 | 0.385 | 0.92 | 2195 | 0.434 | 0.97 |
| casual work July06-June07 | 2043 | 0.164 | 0.64 | 2195 | 0.198 | 0.70 |
| months worked b July06 | 2036 | 17.724 | 17.77 | 2191 | 15.095 | 15.87 |
| casual work b July06 | 2036 | 0.159 | 0.83 | 2191 | 0.168 | 0.80 |
| student (months) b July 06 | 2036 | 0.027 | 1.20 | 2191 | 0.000 | 0.00 |

Notes: Retrospective data cover the period starting in January 2002, except for transfers, where we have data from Jan 2004. b=before

Table B1.

Average marginal effects of treatment and age in various model specifications of reemployment probabilities (probit) for men and women

| Specification | 1 | 2 | 3 | 4 | 5 | 6 |
|---------------|-----------------------|-----------------------|-----------------------|-----------------------|------------------------|-----------------------|
| MEN | | | | | | |
| Treat | 0.00161 (0.00185) | 0.0122** (0.00542) | 0.0122** (0.00542) | 0.0137** (0.00551) | 0.0144*** (0.00558) | 0.00275 (0.00188) |
| Age | | - (0.00109) | - (0.00109) | - (0.00109) | - (0.00109) | - (0.00109) |
| Obs No. | 21,202 | 21,202 | 21,202 | 21,182 | 21,142 | 21,142 |
| WOMEN | | | | | | |
| Treat | -0.00156 (0.00228) | 0.00342 (0.00628) | 0.00272 (0.00629) | 0.00124 (0.00630) | 0.00156 (0.00628) | -0.00203 (0.00228) |
| Age | | -0.00115 (0.00132) | -0.00110 (0.00133) | 0.000873 (0.00132) | 0.000834 (0.00132) | |
| Obs No. | 15,889 | 15,889 | 15,889 | 15,887 | 15,840 | 15,840 |

Where the explanatory variables of the different specifications are as follows:

1. Treat
2. Treat, age
3. Treat, age, education
4. Treat, age, education, employment history
5. Treat, age, education, employment history, regional unemployment
6. Treat, education, employment history, regional unemployment

Heteroskedasticity robust standard errors in parentheses. *** p<0.01, ** p<0.05, * p<0.1

Table B2.

Marginal effects for the reemployment probability (probit) for men

| VARIABLES | Men, all levels of education (excluding primary) | Men with lower secondary vocational education |
|---|---|--|
| Treat | 0.0144*** (0.00558) | 0.0164** (0.00684) |
| Age | -0.00262** (0.00109) | -0.00308** (0.00128) |
| Lower secundar vocational | -0.00234 (0.0107) | |
| A -levels | -0.00602 (0.0112) | |
| A –levels with vocational | -0.000701 (0.0110) | |
| Post secondary vocational | -0.00393 (0.0114) | |
| College | -0.0138 (0.0111) | |
| University | 0.00537 (0.0151) | |
| Regional unemployment | 0.0395*** (0.0139) | 0.0469*** (0.0167) |
| training before July07 (dummy) | -7.86e-06 (0.000355) | -3.15e-05 (0.000416) |
| months worked July06-June07 | 0.00687*** (0.00152) | 0.00620*** (0.00172) |
| casual work July06-June07 | 0.00281* (0.00148) | 0.00267 (0.00171) |
| months worked (short) July06-June07 | 0.0172 (0.0258) | |
| months worked b July06 | 0.000261*** (9.76e-05) | 0.000337*** (0.000120) |
| casual work b July06 | -0.000201 (0.00125) | -5.54e-05 (0.00142) |
| months worked (short) b July06 | -0.000281 (0.000421) | 0.000813 (0.000799) |
| disability benefit July06-June07 | -0.000147 (0.000823) | 9.28e-05 (0.00102) |
| UB months July06-June07 | -0.000577 (0.000508) | -0.000919 (0.000614) |
| UA months July06-June07 | -0.000982*** (0.000217) | -0.000753*** (0.000255) |
| disability benefit months July06-June07 | -0.000207 (0.000393) | -0.000326 (0.000492) |
| UB months b July06 | -0.000227 (0.000331) | -0.000256 (0.000415) |
| UA months b July06 | -9.48e-05 (0.000112) | -0.000136 (0.000126) |
| Observations | 21,142 | 15,525 |

Heteroskedasticity robust standard errors in parentheses. *** p<0.01, ** p<0.05, * p<0.1

Table C1

**Job exit probabilities for men between 2005 and 2008, by level of education
(probit)**

| VARIABLES | Primary education | Lower secondary | Upper secondary or higher |
|---------------------------|-----------------------|------------------------|---------------------------|
| Year 2005 | -0.0282 (0.00560) | -0.088 (0.00543) | -0.127*** (0.00975) |
| Year 2006 | -0.0381 (0.00515) | -0.0919 (0.00571) | -0.127*** (0.0108) |
| Year 2007 | reference | | |
| Year 2008 | -0.0428 (0.00325) | -0.0779 (0.00486) | -0.110*** (0.00999) |
| Year 2005 * age below 50 | -0.00733 (0.00561) | -0.00152 (0.00730) | 0.0323 (0.0205) |
| Year 2006 * age below 50 | -0.0104* (0.00561) | -0.000477 (0.00739) | 0.00836 (0.0202) |
| Year 2008 * age below 50 | -0.00188 (0.00355) | -0.00469 (0.00412) | -0.00236 (0.00876) |
| Age below 50 | 0.0143*** (0.0035) | 0.0036 (0.0040) | -0.0048 (0.0098) |
| Age (years) | 0.0050*** (0.0006) | 0.0015** (0.0007) | -0.0016 (0.0021) |
| Controls for work history | | | |
| Observations | 108,347 | 97,566 | 23,511 |

Heteroskedasticity robust standard errors in parentheses. *** p<0.01, ** p<0.05, * p<0.1