

Burda, Michael C.; Severgnini, Battista

Working Paper

TFP convergence in German states since reunification: Evidence and explanations

SFB 649 Discussion Paper, No. 2015-054

Provided in Cooperation with:

Collaborative Research Center 649: Economic Risk, Humboldt University Berlin

Suggested Citation: Burda, Michael C.; Severgnini, Battista (2015) : TFP convergence in German states since reunification: Evidence and explanations, SFB 649 Discussion Paper, No. 2015-054, Humboldt University of Berlin, Collaborative Research Center 649 - Economic Risk, Berlin

This Version is available at:

<https://hdl.handle.net/10419/146169>

Standard-Nutzungsbedingungen:

Die Dokumente auf EconStor dürfen zu eigenen wissenschaftlichen Zwecken und zum Privatgebrauch gespeichert und kopiert werden.

Sie dürfen die Dokumente nicht für öffentliche oder kommerzielle Zwecke vervielfältigen, öffentlich ausstellen, öffentlich zugänglich machen, vertreiben oder anderweitig nutzen.

Sofern die Verfasser die Dokumente unter Open-Content-Lizenzen (insbesondere CC-Lizenzen) zur Verfügung gestellt haben sollten, gelten abweichend von diesen Nutzungsbedingungen die in der dort genannten Lizenz gewährten Nutzungsrechte.

Terms of use:

Documents in EconStor may be saved and copied for your personal and scholarly purposes.

You are not to copy documents for public or commercial purposes, to exhibit the documents publicly, to make them publicly available on the internet, or to distribute or otherwise use the documents in public.

If the documents have been made available under an Open Content Licence (especially Creative Commons Licences), you may exercise further usage rights as specified in the indicated licence.

SFB 649 Discussion Paper 2015-054

TFP Convergence in German States since Reunification: Evidence and Explanations

Michael C. Burda*
Battista Severgnini*²



* Humboldt-Universität zu Berlin, Germany

*² Copenhagen Business School, Denmark

This research was supported by the Deutsche
Forschungsgemeinschaft through the SFB 649 "Economic Risk".

<http://sfb649.wiwi.hu-berlin.de>
ISSN 1860-5664

SFB 649, Humboldt-Universität zu Berlin
Spandauer Straße 1, D-10178 Berlin



SFB 649 ECONOMIC RISK BERLIN

TFP Convergence in German States since Reunification: Evidence and Explanations*

Michael C. Burda

Battista Severgnini

Humboldt University Berlin, CEPR and IZA

Copenhagen Business School

December 26, 2015

Abstract

A quarter-century after reunification, labor productivity in eastern Germany continues to lag systematically behind the West. Denison-Hall-Jones point-in-time estimates point to large gaps in total factor productivity as the proximate cause, and auxiliary measurements which do not rely on capital stock data confirm a slowdown in TFP growth after 2000. Strikingly, capital intensity in eastern Germany, especially in industry, has overshoot values in the West, casting doubt on the embodied technology hypothesis. Indeed, TFP growth is negatively associated with rates of expenditures on both total investment and plant and equipment. The best candidates for explaining the stubborn East-West TFP gap are the low concentration of managers in the East and the insufficient R&D expenditure, rather than the concentration of firm headquarters and R&D personnel.

Key Words: Productivity, regional convergence, German reunification

JEL classification: D24, E01, E22, O33, O47

*We are grateful to Jörg Heining for providing us with access to the IAB-establishment data. This project is part of the InterVal project which is funded by the German Ministry of Education and Research and was also supported by Collaborative Research Center (SFB) 649. Niklas Flamang, Tobias König and Judith Sahling provided excellent research assistance. Address: Michael C. Burda, Humboldt Universität zu Berlin, Institut für Wirtschaftstheorie II, Spandauer Str. 1, 10099 Berlin, Germany. Tel: +49(30)20935650. Fax: +49(30)20935696. Address: Battista Severgnini, Copenhagen Business School. Address: PorcelænsHAVEN 16A. DK - 2000 Frederiksberg, Denmark. Tel: +4538152599. Fax: +4538153499.

1 Introduction

A quarter-century after reunification, living standards in the new German states have largely converged to those of former West Germany, with income disparities across eastern and western households resembling those found within the richer western half of the country.¹ The convergence of average incomes stands in stark contrast to that of labor productivity, which continues to lag behind the West. The market value of output per capita in the East in 2014 was only about 75% of the German average including Berlin, and only 71% when Berlin is excluded. On the basis of productivity per employed person, the latter measure is somewhat higher at 79%; on a per-hour basis, it drops to 76%. After an initial post-unification decade of strong output and productivity growth, the convergence process of the new German states has stalled, leaving Eastern income convergence to be financed by long-term regional transfers.²

The German reunification episode thus continues to pose a challenge to economists. Under ideal conditions for economic integration - free trade, capital and labor mobility, and similar human capital endowments and economic institutions - the productivity of regions should converge, albeit slowly, at a rate determined by the mobility of capital and labor and the savings rate of the regions as well as the productivity of capital.³ In the German case, regional integration took place under ideal conditions in which language, cultural, institutional and legal differences were of second order importance. While per-capita GDP growth in the immediate aftermath of unification was remarkable, it slowed after 2000 below rates of total factor productivity (TFP) growth in leading western states. Why has East-West convergence stalled?

In this paper, we present evidence on the existence and persistence of regional productivity differences across East and West Germany. We document the role of TFP and its evolution over time. In particular, we show evidence of conditional convergence in the East to a lower level of total factor productivity in the second half of the the post unification episode. We address doubts about problems typically associated with TFP growth measurement, especially the quality of productive capital stock data. By using TFP measurements which are free of capital stocks, we are able to deconstruct

¹By 2012, average consumption per capita in Eastern Germany excluding Berlin had reached 87% of the national average, while in Berlin and Saarland it was 88% and 96%, respectively; within Western Germany, residents of Lower Saxony only enjoyed 89% of average per capita consumption in Bavaria.

²Source: *Arbeitsgemeinschaft Volkswirtschaftliche Gesamtrechnung der Länder*, 2014

³On the basis of purely model-theoretic considerations, Barro (1991) and Acemoglu and Zilibotti (2001) show that capital formation alone implies convergence in productivity of 2% per annum.

the stalled convergence episode. We find that, if anything, eastern German regions have seen an overaccumulation of capital relative to output, even if residential and nonresidential structures are excluded. Because it is unlikely that technology or institutions can account for different levels of conditional convergence across the German *Bundesländer*, we focus in our econometric work on agglomeration, exports, the presence of large firms, small firms, and startups as well as human capital endowments, using data extracted from this purpose from a large dataset of establishment-level data (*Querschnittsmodell der LIAB Daten*) as well as publicly available data sources. Our results point to an influence of firm size, but not headquarters, on productivity; we also do not find evidence that agglomeration, urbanization or population density matters. We do find a significant influence of the concentration of managers and technical personnel as well as a negative influence of the investment rate. The latter finding supports the view that investment is a substitute for, rather than a complement, to multifactor productivity, at least in the current context.

The paper is organized as follows. Section 2 frames the scientific relevance of the German unification episode and presents evidence on disparate regional productivity developments between Eastern and Western Germany on the basis of point-in-time TFP level estimates using the Denison-Hall-Jones decomposition (Denison (1962), Hall and Jones (1999)). Section 3 assesses the robustness of our findings using three measures of TFP growth as well as relative TFP levels in the German states. In Section 4, we present an econometric analysis of the level and dynamics of TFP levels. Section 5 concludes with an interpretation of our findings and some tentative policy conclusions.

2 Labor Productivity and Total Factor Productivity after German Unification

2.1 The east-west productivity gap, a quarter century later

As it was virtually unanticipated, German unification presents a unique natural experiment for a number of important economic hypotheses. Early on, it was recognized as an episode of intense regional economic integration (Collier and Siebert (1991) and Burda (1990, 1991) with significant labor productivity differentials between East and West at the outset, when output was measured at market prices (Akerlof et al. (1991)). A capital-poor East integrating with a capital-rich west

initiated a mobility race between the two regions (Burda and Hunt (2001) and Burda (2008)) in which migration was strongly responsive to push and pull factors, yet in a demographically sensitive fashion (Hunt (2006)). A number of factors make the German unification episode an attractive laboratory for economic hypotheses: uniform and standardized data collection methods implemented early on, a common legal institutional framework and underlying economic system and ultimately, highly similar but by no means identical preferences of households (Alesina and Fuchs-Schuendeln (2007)).

Under conditions of economic integration, productivity per unit of labor input should converge faster than rates predicted by the neoclassical growth model (e.g. Barro and Sala-i-Martin (1990)). This is because movements of capital and labor act to equalize factor returns and, in the case of otherwise identical production technologies, capital-labor ratios across regions (Burda (2006)). Figure 1 presents the trajectory of GDP per employee in the new states individually as well as the West German average and shows that, despite an initial surge, labor productivity in the eastern states continues to lag systematically behind that of their western counterparts, even 25 years after unification. The trajectory of the Berlin-Brandenburg as an intermediate outcome is solely due to the presence of West Berlin; Brandenburg taken alone is little different from the other eastern German States.

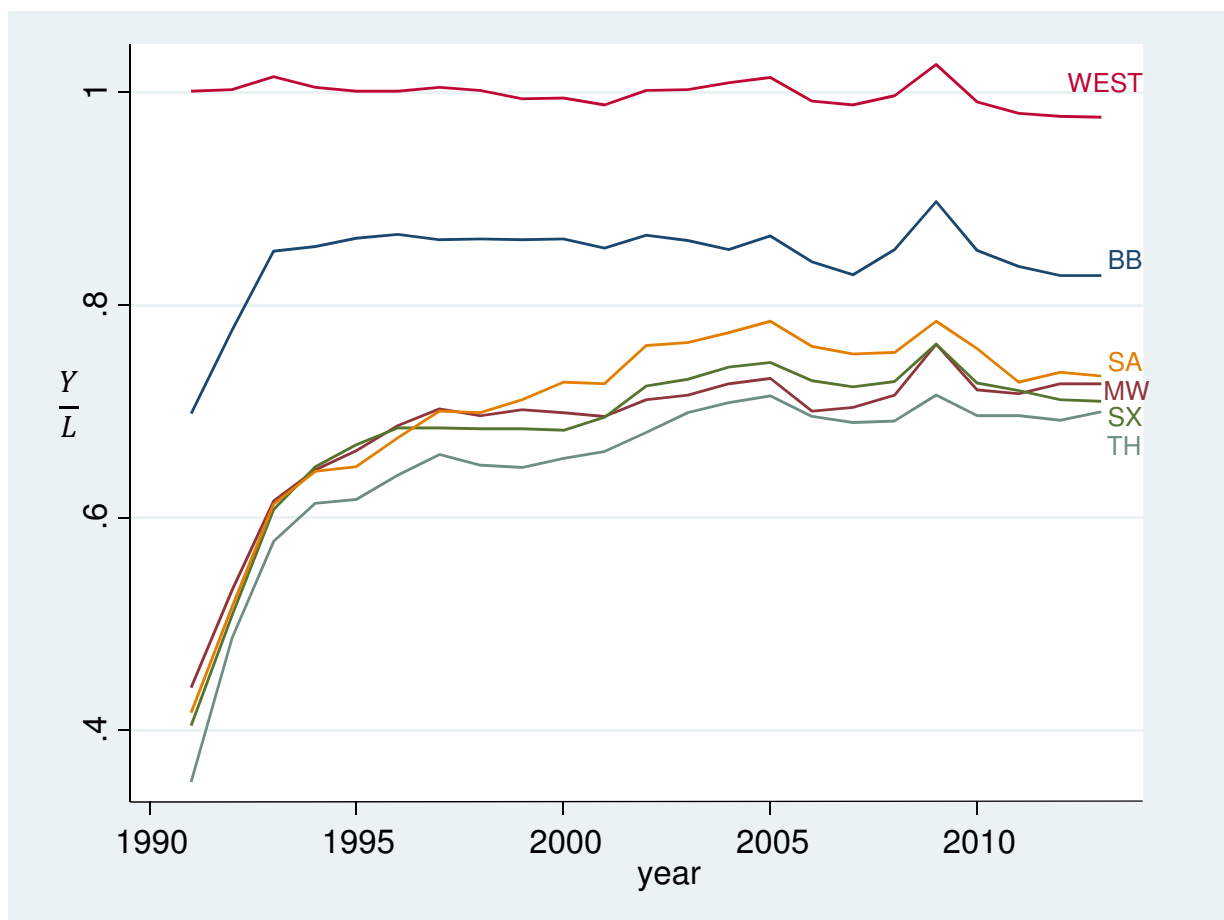
We document the regional labor productivity differences in more detail in Table 1, using a more accurate hourly productivity measure in 13 "region-states", measured as gross domestic product in nominal terms per hour in 2014.⁴ The region-states correspond to the Bundesländer, except that the city-states Berlin, Bremen and Hamburg have been merged with the states which surround them. The total economy exhibits significant differences which are in excess of the usual measures of income per capita and have given rise to controversial discussions about a "*Mezzogiorno syndrome*" in eastern Germany.⁵

[Table 1 about here]

⁴Due to a lack of hours data in the new states from the 1990s, our subsequent econometric work will use employed persons rather than hours. Details on the data used in this research can be found in the Appendix.

⁵While these regional differences are significant and economically interesting, they are by no means unusual. Germany has a surface area comparable to the US region of New England plus the states of New York and New Jersey. Among those states, annual GDP per civilian employed person ranged in 2010 from \$135,000 in Connecticut and New York to \$78,000 and \$82,000 in Vermont and Maine respectively. This is much more dispersed than the extreme values in Germany (71,000 in Hessen versus 49,000 in Mecklenburg-West Pomerania). What makes the German episode so interesting is the apparent history-dependence of these differences, especially considering that parts of Eastern Germany were the most productive regions before the Second World War.

Figure 1: Labor productivity, expressed as a fraction of Baden-Württemberg's, 1993-2013



Source: Authors' calculations based on Statistische Bundesamt, Volkswirtschaftliche Gesamtrechnungen. BB: Berlin / Brandenburg. MW: Mecklenburg-West Pomerania. SX: Saxony. SA: Saxony-Anhalt. TH: Thuringia. WEST: West Germany.

2.2 Proximate causes of East-West productivity differences

What could be the source of persistent regional differences in labor productivity in Germany more than a quarter-century after unification? A natural first reaction to this question is to look for structural reasons, i.e. compositional effects. The last three columns of Table 1 reveal significant and systematic differences in productivity per employed person between eastern and western Germany. While the West continues to dominate the East in manufacturing, construction and other "productive sectors", yet it is less clear for services - in which the public sector plays a large role. It is not true at all, however, in agriculture, forestry and fishing, where an hour worked in (eastern German) Saxony-Anhalt or Mecklenburg-West Pomerania is *twice* as productive as in the rich western states of Bavaria or Hesse. Yet even in these states, only 2% of total GDP derives from agriculture,, forestry and fishing. Much more significant in the East is the low-productivity public sector, which continues to play a much larger role in the East, while the share of high value-added services remains modest.

To see whether heterogeneity and changing sectoral composition can account for some or all of the flagging productivity growth in Eastern Germany, we disaggregated value added per capita into six sectoral activities using definition common to the sample period 1991-2014.⁶ Holding constant the fraction of employment in each of the six sectors at 1991 levels, we find that aggregate labor productivity per person in Eastern German states excluding Berlin would have been consistently *lower* than observed levels, meaning that sectoral change has in fact accelerated convergence. Yet quantitatively the level difference is never more than 6% and has been declining steadily since the early 2000s; this conclusion also holds when employment shares in 2000 are used instead. Furthermore, the distribution of the labor productivity gap is fairly uniform across the important sectors: Structural change - or a lack of it - cannot be the main suspect for flagging Eastern German productivity since 2000.

The neoclassical response to the productivity puzzle lies in the endowment of physical capital. Indeed, most analyses of the unification episode assume that the eastern states had access to the same production function and operate with the same physical, institutional and political infrastructure, human capital endowments, and technical sophistication available in the western states. Put differ-

⁶The categories are agriculture, forestry and fishing; productive industries (manufacturing, mining, quarrying, and energy; construction; trade, hospitality and transport; finance and business services; public services and private household services.

ently, total factor productivity was identical in both halves of Germany from an early date. This assumption was defensible *a priori* on a number of grounds: Human capital endowments of formal education in eastern and western Germany were very similar (Burda and Schmidt (1997)) and migration patterns following the fall of the wall suggest that a large fraction of human capital was transferable (Fuchs-Schündeln and Izem (2012)). Nevertheless, it may be an enormous leap of faith to assume that all determinants of the aggregate production were identical from the outset.⁷ In the sections which follow, we address directly this issue by constructing measures of TFP levels and growth rates from several perspectives to judge whether total factor productivity is consistently lower in Eastern Germany, twenty five years later.

2.3 Assessing TFP levels using the Denison-Hall-Jones decomposition

With a point-in-time decomposition we begin our analysis of regional German labor productivity with an approach described by Hall and Jones (1999), which can be traced back to Christensen, Cummings, and Jorgenson (1981) and ultimately Denison (1962).⁸ Under the assumption of identical constant returns production technology and an appropriate benchmark, improvement in the efficiency in the aggregate use of productive factors can be summarized in a convenient way. Hall and Jones (1999) used this method to point out the limitation of human capital in accounting for differences between developed nations and those of, say, sub-Saharan Africa.

Consider a constant returns production function expressing output in period t (Y_t) as resulting from production factors capital (K_t) and labor (L_t) as well as Harrod-neutral (labor augmenting) technology (A_t):

$$Y_t = K_t^\alpha (A_t L_t)^{1-\alpha} \quad (1)$$

with $0 < \alpha < 1$, Rewrite (1) in intensive form expressing labor productivity as a function of capital intensity (the capital coefficient) as follows:

$$\frac{Y_t}{L_t} = A_t \left(\frac{K_t}{A_t L_t} \right)^\alpha = A_t \left(\frac{K_t}{Y_t} \right)^{\frac{\alpha}{1-\alpha}}$$

⁷Another variant would be to assume an identical production function with more structure, leading to a different interpretation of total factor productivity and implying conditional convergence to different steady states. We discuss this argument in more detail in Section 4.

⁸This technique is also referred to in the literature as development accounting (Caselli (2005) and Hsieh and Klenow (2010)).

Assuming that capital can be measured, output per worker can be accounted for as the product of a term involving the observable capital intensity of production $\left(\frac{K_t}{Y_t}\right)^{\frac{\alpha}{1-\alpha}}$ and unobservable labor augmenting technical progress A_t . Over longer periods the former can be linked in a natural way to the investment rate (the ratio of investment I to Y).⁹ The Denison-Hall-Jones procedure expresses differences in labor productivity in region or economy i to some "frontier" benchmark (superscript F) as

$$\frac{(Y/L)_t^i}{(Y/L)_t^F} = \frac{A_t^i}{A_t^F} \left(\frac{(K/Y)_t^i}{(K/Y)_t^F} \right)^{\frac{\alpha}{1-\alpha}}$$

where the benchmark is normalized to equal 1 in each year.

Table 2 displays the Hall-Jones decomposition the year 2011 for the thirteen region-states, the eastern six and the western seven as aggregates, and Germany as a whole. The decomposition is normalized on the state of Baden-Württemberg, which serves as the benchmark for the analysis. A value of 0.33 is assumed for α . The data used, including the capital stocks, are described in the Appendix.

[Table 2 about here]

The first three columns immediately lead us two preliminary conclusions. First, TFP and labor productivity are highly positively correlated, as is consistent with current theory on the source of productivity differences. Second, TFP levels appear to represent the primary driver of the East-West differences; within East and West variance is dwarfed by the between variance. Figure 2 shows that during the first ten years following unification were characterized by rapid TFP catch-up, followed by a marked stagnation, while further convergence of labor productivity seems to be achieved via capital intensity. The two panels of Figure 2 present the time series of the contribution to labor productivity for TFP levels for each of the individual Eastern states, the West German average for the entire period. The first panel shows that the level TFP measures in East Germany slow down systematically around 1994. In contrast, the capital intensity of Eastern Germany has continued to rise. In fact, capital-output ratios as measured by the statistical agencies appear to have overshoot their West German counterparts.

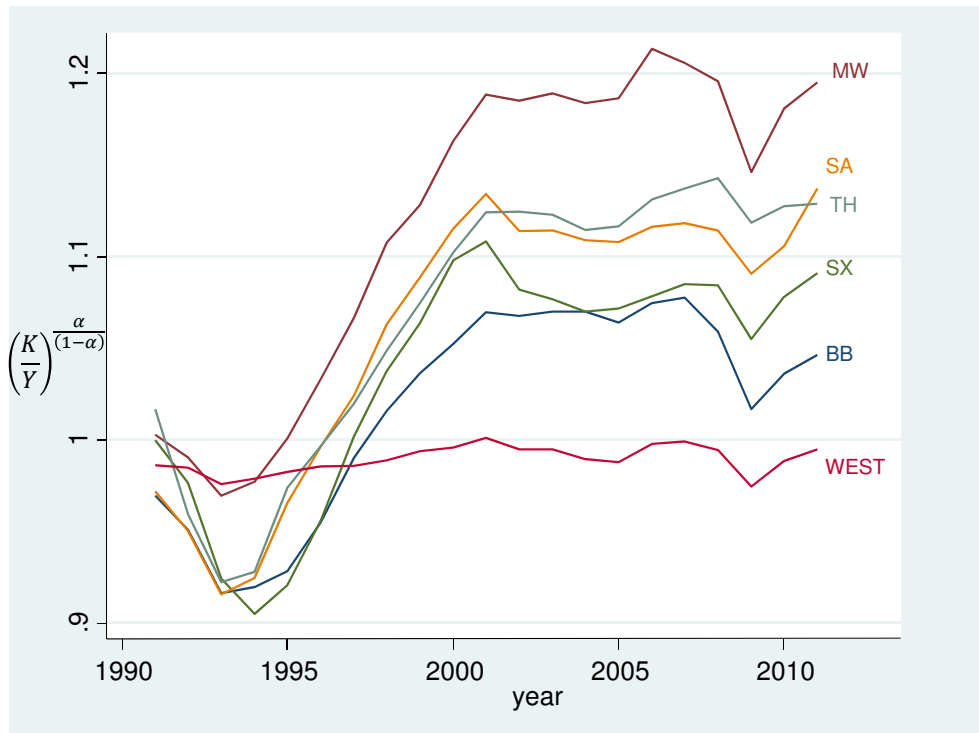
A natural suspicion is that our results may be an artifact of structural differences or structural

⁹In the steady state of a competitive economy, capital and output grow at the same rate, say g . If capital depreciates at rate δ , then the steady state capital-output ratio is $(I/Y)/(g + \delta)$.

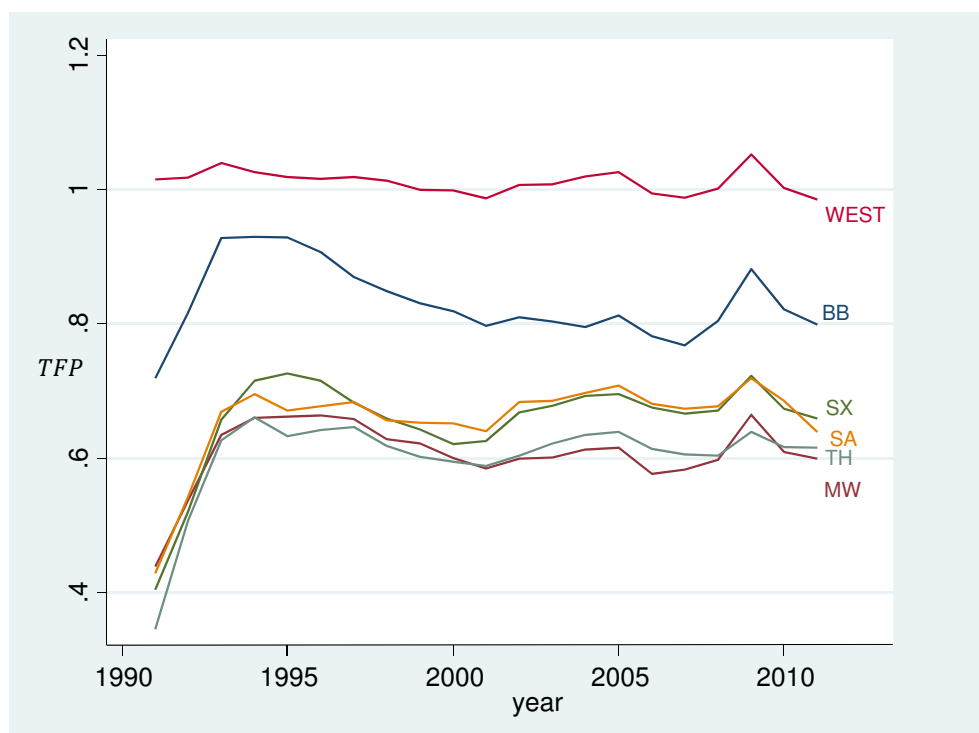
shifts. The former German Democratic Republic was highly industrialized with an underdeveloped service sector (see Collier and Siebert (1991), Burda and Hunt (2001)). In the remaining columns of Table 1, we decompose labor productivity in the three sectors of agriculture (agriculture, forestry, fisheries), industry (manufacturing, mining, energy) and services (business services, personal services, wholesale and retail trade, finance). The production sector dominates the movement in the total economy, with a more murky picture in services; moreover, the tables are turned in favor of the east in agriculture, where by far the most productive workers are located. The temporal behavior of these series (not reported) confirms the pattern in Table 2: TFP growth in the new states has slowed to a trickle, and in particular for industry, the East appears more capital intensive than the West. Figure 3 plots for aggregate of western and eastern Germany, the contribution of capital and TFP according to the Denison-Hall-Jones productivity decomposition. It shows 1) a significantly larger variability of the components over time and 2) that eastern Germany has compensated for flagging TFP in the latter half of the sample with a significant increase in capital intensity (the capital coefficient).

Figure 2: Denison-Hall-Jones Decomposition 1993-2011.

Contribution of capital $(K/Y)^{\alpha/(1-\alpha)}$.

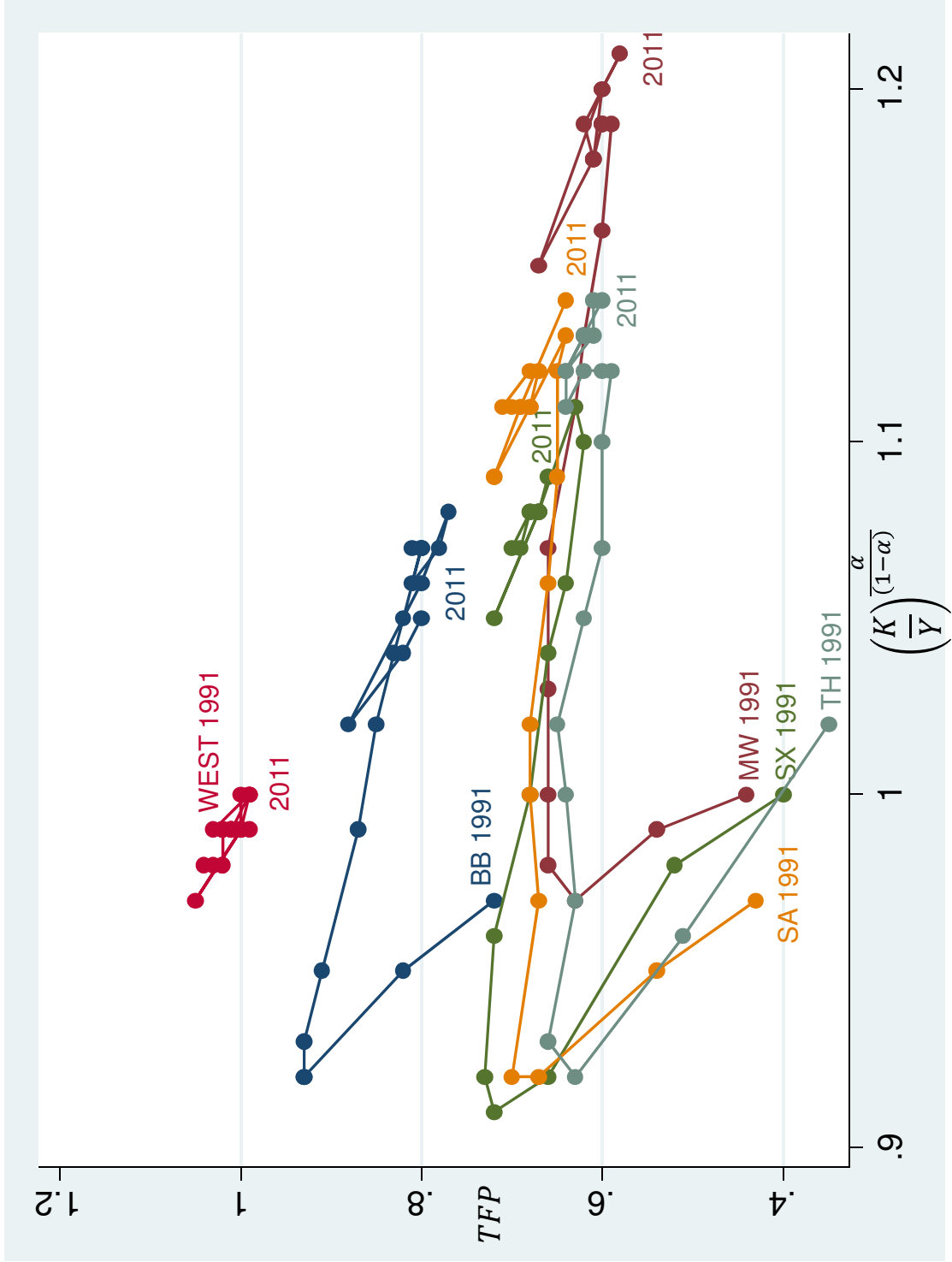


Contribution of total factor productivity (TFP).



Source: Authors' calculations based on Statistische Bundesamt, Volkswirtschaftliche Gesamtrechnungen. BB: Berlin / Brandenburg. MW: Mecklenburg-West Pomerania. SX: Saxony. SA: Saxony-Anhalt. TH: Thuringia. WEST: West Germany.

Figure 3: Contributions of capital and TFP in the East-West. Denison-Hall-Jones Decomposition 1993-2011.



The finding that East Germany’s capital intensity has overshoot and exceeds that of the states of the former West Germany might reflect fundamental mismeasurement currently. The size and value of eastern Germany’s capital stock was largely impossible to assess in the initial part of the sample, and was dominated by new investment for many years. Only over time will the decommissioning and obsolescence of equipment and structures render its capital stock increasingly like comparable to West Germany’s. In order to corroborate the TFP growth slowdown in the East, we will now turn to robust TFP measurements which avoid the use of capital stock data (Burda and Severgnini (2014)).

3 Robust TFP Growth Measurement: Three measurements

3.1 Solow-Törnqvist residuals (ST)

In his seminal paper, Solow (1957) defined TFP growth as the difference between observable growth in output and a weighted average of growth in observable inputs. In his analysis, inputs were capital and labor, and the weights are the output elasticities of capital and labor. Under constant returns in production and competitive factor markets, output elasticities of capital and labor correspond to factor income shares, which may or may not change over time. This "Solow residual" captures growth not attributable to observable factor inputs; it does so solely on the basis of theoretical assumptions (constant returns to scale, perfect competition in factor markets), external information (factor income shares), and without particular statistical assumptions.¹⁰ Because the Solow residual is straightforward and easy to compute, it is a standard measurement in productivity analysis. Over the half-century to follow, Denison, Jorgenson and others extended the TFP measurement paradigm to a larger set of production factors; nevertheless, they continued to find that the residual is the most important factor driving output growth.

Let a_t^{ST} be the rate of TFP growth as captured by the Solow concept. We will use the logarithmic Törnqvist index specification¹¹ for region i in time t :

$$a_{it}^{ST} = \Delta \ln Y_{it} - \bar{\alpha}_{it-1} \Delta \ln K_{it} - (1 - \bar{\alpha}_{it-1}) \Delta \ln L_{it} \quad (2)$$

¹⁰For more microeconomically motivated methods, see e.g. Olley and Pakes (1996).

¹¹This formulation is also attributed to Caves, Christensen, and Diewert (1982a,1982b).

where Y is gross value added as measured "gross domestic product" K is the capital stock at the beginning of the period, L_t is average employment over the period, and $\bar{\alpha}_{t-1} = \frac{\alpha_{t-1} + \alpha_t}{2}$ (see Törnqvist (1936)). Because data on income shares do not exist at the level of the *Bundesländer*, we will use a single common value across time and space to be specified below.

Using synthetic data, Burda and Severgnini (2014) show that the Solow residual is subject to considerable measurement error in short time series when the capital stock is poorly measured. In benchmark scenarios, about 40% of this error in short datasets is due to the estimated initial capital stock, while the rest is due to unobservable depreciation and capacity utilization. Measurement error in K_0 will be significant when 1) the depreciation rate is low and 2) the time series under consideration is short. For conventional rates of depreciation, errors in estimating the initial condition can have long-lasting effects on estimated capital stocks. It is widely recognized that the transformation led to systematic depreciation of physical, human and match capital.¹² In the case of Eastern German states, for which market-based estimates of the capital stock are only available since 1991, the problem of correctly measuring the contribution of that factor are likely to be significant. It is for this reason that we present two alternative measures of TFP growth proposed by Burda and Severgnini (2014).

3.2 Direct Substitution (DS)

In this and the following section, we describe two capital stock-free alternatives to the Solow residual elaborated in detail in Burda and Severgnini (2014). The DS measure relies on direct substitution and alternative assumptions to eliminate capital from the Solow residual calculation. Substitution of the perpetual inventory equation for the capital stock in (2) and rearranging, yields the DS measure,

a_{it}^{DS} :

$$a_{it}^{DS} = \Delta \ln Y_{it} - \kappa_{t-1} \frac{I_{it-1}}{Y_{it-1}} + \alpha_{it-1} \delta_{it-1} - (1 - \alpha_{it-1}) \Delta \ln L_{it}. \quad (3)$$

where κ is the user cost of capital and δ_{it-1} is the depreciation rate applied to the capital stock in *Bundesland* i in period $t - 1$. The DS approach, which eliminates the capital stock from the TFP calculation, will be a better measurement of TFP growth to the extent that 1) the capital stock is unobservable or poorly measured; 2) capital depreciation varies and is better measured from other sources; 3) the most recent increments to the capital stock is more likely to be completely utilized

¹²See Blanchard and Kremer (1997) and Roland and Verdier (1999) for theoretical models on capital depreciation during the transition process.

than older capital. The DS measure can be used to construct a total contribution of capital to growth as $\frac{\Delta Y_t}{Y_{t-1}} - a_t^{DS} - (1 - \alpha_{t-1}) \frac{\Delta L_t}{L_{t-1}}$. While the cost of capital may vary over the sample, credible data at the regional level are unavailable, so we will assume a single value for the purposes of TFP growth estimation. Similarly, we will assume a single rate of depreciation over space and time.

3.3 Generalized Differences (GD)

If an economy, region or sector is close to a known, stable steady state growth path, it may be more appropriate to measure total factor productivity growth as deviations from a long-run deterministic trend path estimated using the entire available data set, e.g. trend regression estimates, moving averages or Hodrick-Prescott filtered series (Hodrick and Prescott (1997)). Suppose that a region has attained, but fluctuates around a steady state path in which all observable variables grow at a common rate g . Denoting the deviation of variable X_t around its steady state value \bar{X}_t by \hat{X}_t , it is possible to write the Solow decomposition as

$$\hat{Y}_t = \hat{A}_t + \alpha \hat{K}_t + (1 - \alpha) \hat{L}_t. \quad (4)$$

and the perpetual inventory equation as

$$\hat{K}_t = \frac{(1 - \delta)}{(1 + g)} \hat{K}_{t-1} + \iota \hat{I}_{t-1}, \quad (5)$$

where $\iota = \frac{\overline{(I/K)}}{(1+g)}$, and the capital elasticity $\alpha \equiv \frac{F_{KK}}{Y_t}$ and depreciation rate δ are constant, and $\overline{(I/K)}$ is constant in the steady state. If L is the lag (backshift) operator, premultiplication of both sides of (4) by $\left(1 - \frac{(1-\delta)}{(1+g)}L\right)$ and substitution of (5) results in

$$\left(1 - \frac{(1-\delta)}{(1+g)}L\right) a_t^{GD} = \left(1 - \frac{(1-\delta)}{(1+g)}L\right) \hat{Y}_t - \iota \alpha \hat{I}_{t-1} - \left(1 - \frac{(1-\delta)}{(1+g)}L\right) (1 - \alpha) \hat{L}_t \quad (6)$$

which as in the DS approach eliminates the capital stock from the measure. Assuming an initial condition, \hat{a}_0^{GD} , the sequence $\{\hat{a}_t^{GD}\}$ is recovered recursively for $t = 1, \dots, T$ using

$$\hat{a}_t^{GD} = \left(\frac{1-\delta}{1+g}\right)^t \hat{a}_0^{GD} + \sum_{i=0}^{t-1} \left(\frac{1-\delta}{1+g}\right)^i \left[\hat{Y}_{t-i} - \alpha \iota \hat{I}_{t-1-i} - (1-\alpha) \hat{L}_{t-i} \right]. \quad (7)$$

From the sequence $\{\widehat{a}_t^{GD}\}_{t=1}^T$ it is straightforward to recover the TFP growth measure $\{a_t^{GD}\}$, given an estimate of the initial condition, \widehat{a}_0^{GD} , and using the approximation $a_t^{GD} \approx \ln(\frac{A_t}{A_{t-1}})$.¹³ Our estimate, based on the Malmquist index, is given by $\widehat{a}_0^{GD} = \ln(A_0/\bar{A}_0)$ and is computed in Burda and Severgnini (2014) as the geometric mean of labor productivity growth and output growth in the first period. The GD measure imputes the contribution of capital as $\frac{\Delta Y_t}{Y_{t-1}} - a_t^{GD} - (1 - \alpha_{t-1}) \frac{\Delta L_t}{L_{t-1}}$. As was the case for the DS measure, we assume a single values of δ, g and ι across geographic units and time.

3.4 Results

We now employ all three measures to study the sources of economic growth in the federal states of Germany (*Länder*) in the period following reunification. We revisit the findings of Keller (2000) and Burda and Hunt (2001), who estimated total factor productivity growth using either the conventional Solow residual measure or econometric techniques. Given the poor quality of capital stock data in the new states, especially for structures, the alternative DS and GD methods offer an additional perspective on TFP growth in a complex and changing environment. Reunification - due to both market competition and the revaluation of the east German mark - rendered about 80% of East German production noncompetitive (Akerlof et al. (1991)), and implied a large capital loss for existing equipment and business structures. At the same time, many buildings measured initially at minimal book value have since been returned to productive use, implying larger capital stock than conventionally measured. Depreciation rates and capacity utilization data do not exist at the state level, further compounding already severe measurement problems.

In Tables 3, and 4, we present Solow-Törnqvist residuals and our stock-free TFP measurements for both new and old German states for the period 1993-2011 and the two sub-periods 1993-2001 and 2002-2011. We also present the same calculations based on macroeconomic aggregates consisting of the Eastern states, the Western states and all of Germany. The Solow residual estimates employ an estimate of capital stocks provided by the German statistical agency (*Statistisches Bundesamt*). A constant capital share (0.33) was assumed for reasons related to data availability. For the DS method, the annual rental price of capital (κ) was set to a constant value over the entire period (0.11). For

¹³To see this note that: $a_t \approx \ln(\frac{A_t}{A_{t-1}}) = \ln(\frac{A_t/\bar{A}_t}{A_{t-1}/\bar{A}_t}) = \ln(\frac{(1+a)A_t/\bar{A}_t}{A_{t-1}/\bar{A}_{t-1}}) \approx \bar{a}_t + \ln(\widehat{A}_t) - \ln(\widehat{A}_{t-1})$, where $\bar{a}_t \equiv \ln(\frac{\bar{A}_t}{\bar{A}_{t-1}})$ is the underlying trend growth rate. If TFP grows at constant rate a , then we have:
 $a_t^{GD} \approx a + \ln(\widehat{A}_t) - \ln(\widehat{A}_{t-1}) = (1 - \alpha)(g - n) + \ln(\widehat{A}_t) - \ln(\widehat{A}_{t-1})$.

the GD approach, the trends were constructed using H-P filter ($\lambda = 100$). For both approaches, a constant rate of capital depreciation δ equal to 5.52% per annum was used. The assumed steady state trend growth rate was average real output growth in each state over the entire period. Capacity utilization and depreciation at the *Bundesland* level is not available. Lacking sufficient data on hours worked, we used total employment as a measure of labor input.

We first turn to TFP growth estimates for the eastern and western states and Germany. The behavior of the DS measure is broadly consistent with that of the Solow residual, which indicate a slowdown of GFP growth after 2001, while the western states appear little changed in either direction. Our results are thus broadly consistent with the findings of Keller (2000), who used both econometric and conventional growth accounting techniques to estimate TFP growth rates in East and West Germany following unification. He finds an acceleration of East German TFP growth in the period 1990-1996. We also find a higher rate of TFP growth in the initial period (1993-2000), but we also find a significant slowdown in the latter period, starting in 1997. This slowdown is consistent with his hypothesis of TFP growth driven by diffusion from West to the East due to adoption patterns of embodied technologies.

The cross-sectional dimension of our TFP growth estimates for individual states can shed light on the appropriateness of the two alternative measures. The prior expectation is that measurement error should be most severe in the new states, given the limited statistical basis for computing capital stocks. Yet given the common institutional background and common access to technology, wide variation across space within the East or West during during these seven-year intervals is likely to be associated with measurement error. For the Eastern states, the unweighted standard deviation of the DS measure is slightly lower than that of the Solow-Törnqvist (ST) residual (0.545 versus 0.551); for the GD measure the standard deviation is much higher (0.970). Given initial conditions at reunification, the GD measure is thus likely to be inappropriate for the eastern German states. In contrast, the GD estimates for the western states are much more tightly distributed (standard deviation of 0.217 for a^{GD} , versus 0.365 and 0.401 for a^{ST} and a^{DS} respectively). A priori, the dispersion of TFP growth in the Western states is likely to be low, so the GD measure appears to provide a more credible estimate of the temporal evolution of TFP in the West, which is presumably close to its steady state growth path, than its Solow-Törnqvist counterpart.

The DS and GD estimates can be used to back out an implied growth contribution of capital, or,

given a capital share, to the growth in the "true" (i.e. utilized) capital stock. These estimates are presented in Tables 5 and 6. They suggest a larger degree of fluctuation than otherwise implied by official capital stock estimates. The GD and DS measures reduce that mismeasurement to the extent that the utilization of more recent capital formation more closely tracks the "true" utilization rate. It is striking that both alternative measurements imply little contribution of growth in capital input to the evolution of East German GDP in the latter period, in contrast to the 1990s.

[Tables 3, 4, 5, 6, and 7 about here]

4 Accounting for differences in East-West TFP growth and levels

The last two sections established that 1) aggregate TFP levels in eastern German states remain persistently lower than in the West, and 2) convergence of TFP ground to a halt in all Eastern states after 2001. We also found that capital intensity has compensated for low total factor productivity, partially offsetting its effects on labor productivity in the eastern states. To learn more about factors behind these convergence dynamics, we present an econometric analysis of the level and the dynamics of TFP in our panel of German regions, using a convenient framework for understanding determinants of productivity growth in OECD countries (Griffith, Redding, and Van Reenen (2003, 2004)). This approach is a natural complement to the Denison-Hall-Jones analysis of TFP differences presented in Section 2, in the sense that it to explain TFP growth dynamics described in Section 3.

4.1 TFP growth regression specification

As a point of departure, we employ the following "convergence to the frontier" empirical framework which has been used by Griffith, Redding, and Van Reenen (2003, 2004) to study the role of R&D on TFP growth. The baseline specification takes the form

$$\begin{aligned}
 a_{it}^{ST} \left(= \ln \frac{A_{it}^{ST}}{A_{it-1}^{ST}} \right) &= \beta_0 + \beta_1 a_{Ft}^{ST} + \beta_2 \ln \frac{A_{Ft-1}^{ST}}{A_{it-1}^{ST}} \\
 &+ \left(\beta_3 + \beta_4 \ln \frac{A_{Ft-1}^{ST}}{A_{it-1}^{ST}} \right) \ln \left(\frac{R\&D_{it-1}}{Y_{it-1}} \right) + \beta_5 Z_{it-1} + u_{it}
 \end{aligned} \tag{8}$$

Equation (8) relates the growth in A_{it}^{ST} , the estimated level of total factor productivity (*DHJ* method) in the i th German region/state at time t , to the growth of the technological frontier (a_{Ft}^{ST}), to the distance to the frontier ($\ln \frac{A_{Ft-1}^{ST}}{A_{it-1}^{ST}}$), to other controls Z_{it} , to the intensity of R&D expenditure $\frac{R\&D_{it-1}}{Y_{it-1}}$, and to an interaction with the distance to the frontier $\ln \left(\frac{A_{Ft-1}^{ST}}{A_{it-1}^{ST}} \right) \ln \left(\frac{R\&D_{it-1}}{Y_{it-1}} \right)$, which affects the speed at which convergence occurs. u_{it} is a standard disturbance term with mean zero and finite variance.

This specification is derived and explained in detail in Griffith, Redding, and Van Reenen (2004) and will not be elaborated here. TFP dynamics of each state is a function of growth in the technological frontier, defined as the *Bundesland* with the highest estimated level, as well as the distance to that frontier, along the lines of the standard growth convergence literature. TFP growth is also affected by determinants contained in Z_{it} , as well as resources dedicated to research and development (R&D spending). Following Griffith et al. (2004) we distinguish between direct innovation effects of R&D spending (β_3) and the creation of "absorptive capacity" for adopting innovations at the frontier (β_4).

4.2 Data and Sources

The TFP series are the same ones described in previous sections. Public and private R&D expenditure data at the *Bundesland* level are from the German Federal Ministry of Education and Research.¹⁴ Elements of Z were obtained from a number of different datasets. The *Establishment History Panel* (BHP), collected by the Research Data Centre (FDZ) of the German Federal Employment Agency (BA) at the Institute for Employment Research (IAB), tracks all German establishments with at least one employee liable for social security contributions (until 1999) and with at least one marginal part-time employee (after 1999).¹⁵ From the BHP we extract for each *Bundesland* the total number of establishments (*establishments*), startups (*startup*), and employees liable for social security contributions (*employees*) in establishments of various sizes. In addition, we consider the number of technical workers (*technicians*), semi-professionals (*semiprofessionals*), professionals (*professionals*), and managers (*managers*).¹⁶ Total and urban population in levels serve as controls for agglomeration

¹⁴The statistics can be found at the following link <http://www.datenportal.bmbf.de/portal/de/Tabelle-1.1.3.html>. Data are available for the years 1995, 1997, and for the period 1999-2013. For the missing years, we estimate the series using the growth rates of investment of private R&D.

¹⁵Additional information on the dataset can be found at the following link <http://fdz.iab.de/en.aspx>

¹⁶The job classification followed by IAB follows the classification introduced by Blossfeld (1985). In particular, professionals are defined as all the positions requiring a university degree (*Freie Berufe und hochqualifizierte Dienstleis-*

effects; total population (*population*) is taken from the *Statistisches Bundesamt*, while urban population (*population100*), defined as population for cities larger than 100,000 inhabitants is taken from several *Bundesland* and regional statistical offices. Descriptive statistics for the variables of interest are provided in the Appendix.

Given these sources, the elements of Z are the following: the ratio of startups to all establishments (*ratiostartup*), the fraction of establishments with less than 50 employees (*fractionest* < 50), the ratio of establishments with more than 250 employees to the total (*fractionest* > 250), population density ($\ln \frac{\text{population}}{\text{km}^2}$), degree of urbanization measured as fraction of total population living in cities with more than 100,000 inhabitants (*fractionurban*), the ratio of managers to total number of employees ($\frac{\text{managers}}{\text{employees}}$), the ratio of semiprofessional workers to the total number of employees ($\frac{\text{semi_professionals}}{\text{employees}}$), the ratio of technicians to the total number of employees ($\frac{\text{technicians}}{\text{employees}}$).

4.3 OLS Results

Table 8 presents the first set of OLS regressions using Solow-Törnqvist residuals as the dependent variable (effectively, first differences of Denison-Hall-Jones estimates described in Section 2). The results are presented with robust standard errors. Relative to the first column, the second includes controls for the composition of employment; the third and fourth columns substitute annual time dummies for the growth of the technological frontier ($a_{Ft}^{ST} = \ln \frac{A_{Ft}^{ST}}{A_{Ft-1}^{ST}}$). Consistent with findings elsewhere in the literature, all four specifications exhibit a positive and significant influence of distance to the frontier. In specifications (1) and (2), growth of the frontier has a similarly strong and statistically significant effect on *Bundesland* TFP growth. In the fifth and sixth columns of Table 8, we include the logarithm of R&D expenditure as well as its interaction with the distance to the frontier. The outcome, which is robust to many changes in specification, is that the direct effect is negative and significant taken in isolation, but as an interaction with the distance to the frontier is positive, implying that the most backward states profit the most from R&D spending. Looking at the indirect effect, at the mean distance in the sample (0.23), a 10% increase in R&D spending can be anticipated to have a 0.37% effect on TFP growth. For states that are closer than 40% to the frontier, the point estimates imply

tungsberufe), semi professionals considers jobs characterized by a specialization degree (*Dienstleistungsberufe, die sich durch eine Verwissenschaftlichung der Berufspositionen auszeichnen*), and managers are defined as employees in charge of either the production or the organizational processes (*Berufe, die die Kontrolle und Entscheidungsgewalt über den Einsatz von Produktionsfaktoren besitzen sowie Funktionäre in Organisationen*).

that additional R&D spending reduces TFP growth. Our findings are thus only partially consistent with Griffith et al. (2004), which is likely due to their aggregated (national) level of analysis.

[Table 8 about here]

Of the controls employed, the prevalence of startups and small establishments appear to have some positive effect, while in the preferred specification the presence of large establishments has a negative influence on TFP growth. Most striking are our findings for personnel structure in the *Bundesland*: while workers with technical training, semiprofessional status and university degrees have little consistent explanatory power, the presence of managers has a powerful and positive influence on TFP growth. In our preferred OLS specification, an increase in the ratio of managers to total employees of 0.1 (10 percentage points), or from the mean *Bundesland* of 2.64% to 2.90% will increase TFP growth by 0.65%.

In all specifications, the lagged investment rate is negatively associated with total factor productivity dynamics. This result is robust with respect to the measurement used.¹⁷

4.4 Robustness checks: Endogeneity concerns, alternative specifications, split samples

One concern, also raised by Griffith et al. (2004), is endogeneity of R&D spending or other variables on the right-hand side of the regression. Spending on research and development might react to variables which determine future TFP growth, but because these are omitted from the equation and possibly unobservable to the econometrician, will lead to endogeneity and biased coefficient estimates. For example, an important discovery today can cause an increase in research activity today and later, as a result of the spending, appear to "cause" an increase in TFP tomorrow.

We deal with endogeneity in two different ways. First, following Griffith, Redding, and Van Reenen (2004) we instrument the R&D spending variable as a potentially endogenous covariate with lagged values, including the interaction with the TFP gap, under the orthogonality assumption that further lags are no longer correlated with spending. The Sargan test provides evidence on the validity of this assumption.

¹⁷Regressions using DS and GD measures are not reported but for DS were broadly similar; the GD measure, which assumes proximity to the steady state, is probably not appropriate for the episode under consideration.

A second perspective on robustness is to assume that the variables of interest are adequately captured by an error correction model (ECM) specification. This would be the case if log TFP at the frontier is integrated of order 1 and that one or more linear combinations of logarithms of *Bundesland* TFP, the frontier level, R&D spending, managerial and other personnel inputs, and other variables are stationary.¹⁸ Exploiting nonstationarity of the relevant variables should deliver consistent estimates of the parameters of interest even if there is simultaneity of the type described above. Let X_{it} denote the deviation of the integrated variables from one particular cointegrating relationship. Following Griffith, Redding, and Van Reenen (2003, 2004), convergence patterns can be studied following error-correction formulation of the model above, somewhat specialized in the following form):

$$a_{it}^{ST} = \alpha_{0i} + \alpha_1 a_{it-1}^{ST} + \alpha_2 (\ln A_{it-1}^j - \beta X_{it-1} - (1 + \gamma_i) \ln A_{Ft-1}) + \alpha_3 \Delta X_{it-1} + u_{it} \quad (9)$$

In this setup, the rate of change of TFP is modeled as an autoregressive process driven by stochastic shocks, changes in X (ΔX), which are represented by the variables Z and $\ln \frac{R\&D}{Y}$, and deviations of $\ln A_{it-1}^{ST}$ from its steady state value, which is given by $\beta X_{it-1} + \gamma_i \ln A_{Ft-1}$. This steady state corresponds to constant and equal growth rates of A_{it-1}^j and A_{Ft-1} , so it thereby expresses the steady state value of the former as a linear combination of common determinants X_{it-1} , including the frontier A_{Ft-1} , plus a state fixed effect captured by γ_i :

$$\ln A_{it-1}^{ST} = \beta X_{it-1} + \gamma_i \ln A_{Ft-1}^{ST} + \epsilon_{it}$$

The results of both the IV estimation and "nonstructural" ECM specifications are presented in Tables 9 and 10.

[Tables 9 and 10 about here]

Finally, the robustness of the results might be challenged if the data generating process for eastern and western German observations is fundamentally different. This is especially important for our findings concerning the effects of the frontier, management personnel, R&D spending and investment on TFP growth. As reported in Table 11, splitting the sample into East and West did affect the

¹⁸The series are too short for a Dickey-Fuller or related tests of integration or cointegration, so these results should be viewed as explorative.

precision of some estimates but the sign and the statistical significance of the OLS and IV estimates survive across most specifications.

[Table 11 about here]

5 Conclusion

In their widely cited study of international cross-country differences in output per worker, Hall and Jones (1999) stressed the role of social infrastructure, referring to institutions which encourage productive activities, i.e. the selling labor services and investing in human and physical capital with the expectation of appropriating gains from those activities. They can link a great deal of the cross-sectional variation in TFP to corruption and confiscatory taxation by governments, impediments to trade, the absence of rule of law, disruptive racial and ethnic diversity, and civil strife. Naturally TFP differences may also be due to other factors such as regional agglomeration, Marshallian externalities, learning by doing, or even climate. In the case of post-unification Germany, however, persistent productivity gaps are unlikely due to regional variation in social infrastructure or human capital endowments or even weather. This makes the post-unification episode of particular scientific interest for uncovering the determinants of total factor productivity, a fundamental source of the wealth of nations.

Using a standard two-factor production function approach, we have shown that persistent East-West labor productivity differentials are due to a significant TFP gap in the East. Most of this gap can be attributed to manufacturing, construction and other production sectors; the difference is less pronounced in services and even reversed in agriculture, where east German labor is significantly more productive. Yet the evolution of TFP convergence cannot be attributed to structural shifts over the period. Strikingly, capital intensity in eastern states has overshoot values in the West. Our findings are confirmed using measures which do not depend on capital stocks, with the slowdown beginning roughly a decade after reunification. It is noteworthy that eastern German capital intensity is higher than in the West, and that level TPF is negatively correlated with capital intensity in both eastern and western German states, albeit with significantly less variability over time and space in the latter.

Econometric analysis of TFP growth using the framework associated with Griffith, Redding, and

Van Reenen (2004), Aghion and Griffith (2005) and Nicoletti and Scarpetta (2003) confirm a significant role for growth at the technological frontier and distance to the frontier, but also show that of the two channels or "faces" of R&D spending, only the absorptive capacity channel is operative in East German context, helping backwards states the most. This finding is true even in "only West" regressions. This is also supported by unreported regressions in which we used US TFP data for the frontier. Consistent with our descriptive evidence, investment rates are robustly associated with lower TFP growth, *ceteris paribus*. In one interpretation, this is a signal of mismeasurement error; in another, physical capital is a substitute for TFP with the latter having a causal role. While we do not find a role for firm headquarters (Ragnitz (1999)), we do find a positive, robust and significant association of TFP growth with the density of managers, consistent with agency theory and new empirical evidence from the US relating productivity to monitoring and selective personnel policies (Kalnins and Lafontaine (2013)). Factors such as agglomeration, small firms, new startups contribute positively, and the prevalence of large firms negatively, to the evolution of TFP.

References

- ACEMOGLU, D., AND F. ZILIBOTTI (2001): “Productivity Differences,” *The Quarterly Journal of Economics*, 116(2), 563–606.
- AGHION, P., AND R. GRIFFITH (2005): *Competition and Growth. Reconciling Theory and Evidence*. MIT Press.
- AKERLOF, G. A., A. K. ROSE, J. L. YELLEN, AND H. HESSENIUS (1991): “East Germany in from the Cold: The Economic Aftermath of Currency Union,” *Brookings Papers on Economic Activity*, 22(1991-1), 1–106.
- ALESINA, A., AND N. FUCHS-SCHUENDELN (2007): “Goodbye Lenin (or Not?): The Effect of Communism on People,” *American Economic Review*, 97(4), 1507–1528.
- BARRO, R. J. (1991): “Eastern Germany’s Long Haul,” *Wall Street Journal*.
- BARRO, R. J., AND X. SALA-I-MARTIN (1990): *Economic Growth*. MIT Press.
- BLANCHARD, O., AND M. KREMER (1997): “Disorganization,” *The Quarterly Journal of Economics*, 112(4), 1091–1126.
- BLOSFELD, H.-P. (1985): *Bildungsexpansion und Berufschancen : empirische Analysen zur Lage der Berufsanfänger in der Bundesrepublik*. Campus Verlag.
- BURDA, M. C. (1990): “Les Consequences de l’Union Economique et Monetaire de l’Allemagne,” in *A l’Est, En Europe*, P. Fitoussi, ed. Fondation Nationale de Science Politique.
- (1991): “Capital Flows and the Reconstruction of Eastern Europe: The Case of the GDR after the Staatsvertrag,” in *Capital Flows in the World Economy*, H. Siebert, ed. J.C.B. Mohr, Tübingen.
- (2006): “Factor Reallocation in Eastern Germany after Reunification,” *American Economic Review*, 96(2), 368–374.
- (2008): “What kind of shock was it? Regional integration and structural change in Germany after unification,” *Journal of Comparative Economics*, 36(4), 557–567.

- BURDA, M. C., AND J. HUNT (2001): “From Reunification to Economic Integration: Productivity and the Labor Market in Eastern Germany,” *Brookings Papers on Economic Activity*, 32(2), 1–92.
- BURDA, M. C., AND C. SCHMIDT (1997): “Getting behind the East-West Wage Differential: Theory and Evidence,” in *Wandeln oder Weichen - Herausforderungen der wirtschaftlichen Integration für Deutschland*, R. Pohl, ed., pp. 13–64. Sonderheft, *Wirtschaft im Wandel*.
- BURDA, M. C., AND B. SEVERGNINI (2014): “Solow residuals without capital stocks,” *Journal of Development Economics*, 109(C), 154–171.
- CASELLI, F. (2005): “Accounting for Cross-Country Income Differences,” in *Handbook of Economic Growth*, ed. by P. Aghion, and S. Durlauf, vol. 1 of *Handbook of Economic Growth*, chap. 9, pp. 679–741. Elsevier.
- CAVES, D. W., L. R. CHRISTENSEN, AND W. E. DIEWERT (1982a): “The Economic Theory of Index Numbers and the Measurement of Input, Output, and Productivity,” *Econometrica*, 50(6), 1393–1414.
- (1982b): “Multilateral Comparisons of Output, Input, and Productivity Using Superlative Index Numbers,” *Economic Journal*, 92(365), 73–86.
- CHRISTENSEN, L. R., D. CUMMINGS, AND D. W. JORGENSON (1981): “Relative productivity levels, 1947-1973 : An international comparison,” *European Economic Review*, 16(1), 61–94.
- COLLIER, IRWIN L, J., AND H. SIEBERT (1991): “The Economic Integration of Post-Wall Germany,” *American Economic Review*, 81(2), 196–201.
- DENISON, E. (1962): “Source of Economic Growth in the United States and the Alternative before Us,” *Committee for Economic Development*.
- FUCHS-SCHÜNDELN, N., AND R. IZEM (2012): “Explaining the low labor productivity in East Germany A spatial analysis,” *Journal of Comparative Economics*, 40(1), 1–21.
- GRIFFITH, R., S. REDDING, AND J. VAN REENEN (2003): “R&D and Absorptive Capacity: Theory and Empirical Evidence,” *Scandinavian Journal of Economics*, 105(1), 99–118.

- (2004): “Mapping the Two Faces of R&D: Productivity Growth in a Panel of OECD Industries,” *The Review of Economics and Statistics*, 86(4), 883–895.
- HALL, R. E., AND C. I. JONES (1999): “Why Do Some Countries Produce So Much More Output Per Worker Than Others?,” *The Quarterly Journal of Economics*, 114(1), 83–116.
- HODRICK, R. J., AND E. C. PRESCOTT (1997): “Postwar U.S. Business Cycles: An Empirical Investigation,” *Journal of Money, Credit and Banking*, 29(1), 1–16.
- HSIEH, C.-T., AND P. J. KLENOW (2010): “Development Accounting,” *American Economic Journal: Macroeconomics*, 2(1), 207–23.
- HUNT, J. (2006): “Staunching Emigration from East Germany: Age and the Determinants of Migration,” *Journal of the European Economic Association*, 4(5), 1014–1037.
- KALNINS, A., AND F. LAFONTAINE (2013): “Too Far Away? The Effect of Distance to Headquarters on Business Establishment Performance,” *American Economic Journal: Microeconomics*, 5(3), 157–79.
- KELLER, W. (2000): “From socialist showcase to Mezzogiorno? Lessons on the role of technical change from East Germany’s post-World War II growth performance,” *Journal of Development Economics*, 63(2), 485–514.
- NICOLETTI, G., AND S. SCARPETTA (2003): “Regulation, productivity and growth: OECD evidence,” *Economic Policy*, 18(36), 9–72.
- OLLEY, G. S., AND A. PAKES (1996): “The Dynamics of Productivity in the Telecommunications Equipment Industry,” *Econometrica*, 64(6), 1263–97.
- RAGNITZ, J. (1999): “Warum ist die Produktivitaet ostdeutscher Unternehmen so gering?,” *Konjunkturpolitik*, (3), 165–187.
- ROLAND, G., AND T. VERDIER (1999): “Transition and the output fall,” *The Economics of Transition*, 7(1), 1–28.
- SOLOW, R. M. (1957): “Technical Change and the Aggregate Production Function,” *The Review of Economics and Statistics*, 39(3), 312–320.

TÖRNQVIST, L. (1936): "The Bank of Finland's Consumption Price Index," *Bank of Finland Monthly Bulletin*, 10, 1-8.

Table 1: Hourly productivity in German regions, 2014 (nominal GDP/hour, in euros)

Region/State	Total Economy	Agriculture	Industry	Services
Baden-Württemberg	53.42	16.43	56.64	44.32
Bavaria	52.93	14.96	54.89	45.69
Berlin / Brandenburg	43.56	21.20	44.55	38.27
Lower Saxony / Bremen	48.31	18.85	53.32	40.92
Hamburg / Schleswig-Holstein	53.27	16.85	54.28	47.23
Hessen	55.19	15.86	52.41	49.27
Mecklenburg-West Pomerania	36.80	28.56	35.53	32.64
North Rhine-Westphalia	51.52	18.96	51.39	44.97
Rheinland-Palatinate	48.35	21.89	50.77	41.25
Saarland	48.42	14.46	50.64	40.70
Saxony	37.52	19.62	36.49	32.90
Saxony-Anhalt	38.38	29.95	39.87	32.47
Thuringia	35.65	21.84	33.10	31.92
Eastern Germany including Berlin	39.56	23.82	38.49	34.91
Western Germany excluding Berlin	52.00	17.27	53.70	44.87
All Germany	49.66	18.49	51.08	42.93

Source: *Statistische Bundesamt, Volkswirtschaftliche Gesamtrechnungen, Reihe 1, Band 1.*

Note: Agriculture refers to farming, forestry and fishing.

Table 2: Denison-Hall-Jones decomposition of labor productivity in German region-states, 2011, relative to Baden-Württemberg

Region/State	Total Economy			Agriculture			Industry			Service		
	$\frac{Y}{L}$	$\left(\frac{K}{Y}\right)^{\frac{\alpha}{1-\alpha}}$	TFP	$\frac{Y}{L}$	$\left(\frac{K}{Y}\right)^{\frac{\alpha}{1-\alpha}}$	TFP	$\frac{Y}{L}$	$\left(\frac{K}{Y}\right)^{\frac{\alpha}{1-\alpha}}$	TFP	$\frac{Y}{L}$	$\left(\frac{K}{Y}\right)^{\frac{\alpha}{1-\alpha}}$	TFP
Baden-Württemberg	1.00	1.00	1.00	1.00	1.00	1.00	1.00	1.00	1.00	1.00	1.00	1.00
Bavaria	1.01	1.05	0.95	0.98	1.12	0.87	1.01	1.02	0.99	1.03	1.03	1.00
Berlin / Brandenburg	0.84	1.05	0.80	0.94	1.03	0.91	0.84	1.29	0.65	0.89	0.94	0.94
Lower Saxony / Bremen	0.91	1.01	0.90	1.36	0.88	1.55	0.96	1.10	0.87	0.93	0.95	0.98
Hamburg / Schleswig-Holstein	1.04	0.99	1.05	0.98	1.01	0.97	0.95	1.13	0.84	1.14	0.87	1.30
Hessen	1.07	0.95	1.13	0.99	1.07	0.93	0.95	1.05	0.91	1.15	0.87	1.33
Mecklenburg-West Pomerania	0.72	1.20	0.60	1.69	0.94	1.79	0.59	1.66	0.36	0.79	1.05	0.76
North Rhine-Westphalia	0.96	0.93	1.03	1.34	0.87	1.53	0.94	1.10	0.85	1.00	0.86	1.16
Rheinland-Palatinate	0.89	1.08	0.82	1.22	0.80	1.52	0.94	1.08	0.87	0.89	1.06	0.84
Saarland	0.89	1.04	0.86	0.86	1.13	0.76	0.91	1.13	0.80	0.90	1.01	0.89
Saxony	0.72	1.09	0.66	1.16	0.91	1.28	0.68	1.52	0.45	0.75	0.99	0.76
Saxony-Anhalt	0.73	1.14	0.64	1.80	0.90	1.99	0.72	1.56	0.46	0.74	1.03	0.72
Thuringia	0.70	1.13	0.62	1.29	0.89	1.44	0.66	1.42	0.46	0.72	1.07	0.68
Eastern Germany including Berlin	0.76	1.09	0.69	1.33	0.93	1.42	0.72	1.45	0.50	0.80	0.99	0.81
Western Germany excluding Berlin	0.98	0.99	0.99	1.13	0.97	1.16	0.97	1.06	0.92	1.02	0.94	1.08
All Germany	0.94	1.01	0.93	1.17	0.96	1.21	0.93	1.12	0.83	0.98	0.95	1.03

Source: Authors' calculations based on *Statistische Bundesamt, Volkswirtschaftliche Gesamtrechnungen*.

Table 3: TFP growth in German federal states: A comparison of three measures. 1993-2011.

	ST	DG	GD
East Germany	0.8	0.7	0.3
Berlin / Brandenburg	0.5	0.4	0.4
Mecklenburg-West Pomerania	1.0	0.3	0.4
Saxony	1.4	1.1	0.4
Saxony-Anhalt	1.2	0.7	0.2
Thuringia	1.3	0.8	0.2
West Germany	0.5	0.5	0.5
Baden-Württemberg	0.6	0.6	0.5
Bavaria	0.9	0.7	0.5
Hesse	0.3	0.6	0.5
Lower Saxony / Bremen	0.3	0.3	0.5
North Rhine-Westphalia	0.4	0.5	0.4
Rheinland-Palatinate	0.2	-0.0	0.5
Saarland	0.5	0.4	0.5
Hamburg / Schleswig-Holstein	0.2	0.4	0.4
Germany	0.5	0.5	0.4

Source: Authors' calculations based on *Statistische Bundesamt, Volkswirtschaftliche Gesamtrechnungen*.

Table 4: TFP growth in German federal states: A comparison of three measures. 1993-2001 and 2002-2011.

	ST		DS		GD	
	1993-2001	2002-2011	1993-2001	2002-2011	1993-2001	2002-2011
East Germany	1.0	0.7	1.1	0.2	0.0	0.6
Berlin / Brandenburg	0.5	0.5	0.6	0.3	0.1	0.6
Mecklenburg-West Pomerania	1.3	0.7	0.7	-0.1	0.1	0.6
Saxony	2.1	0.9	1.9	0.3	0.2	0.6
Saxony-Anhalt	1.9	0.5	1.6	-0.0	-0.1	0.5
Thuringia	1.8	0.8	1.6	0.2	-0.5	0.8
West Germany	0.4	0.5	0.6	0.4	0.4	0.5
Baden-Württemberg	0.7	0.5	0.8	0.5	0.5	0.5
Bavaria	0.9	1.0	0.7	0.7	0.3	0.7
Hesse	0.8	-0.1	1.2	0.0	0.4	0.5
Lower Saxony / Bremen	-0.2	0.8	-0.1	0.6	0.3	0.6
North Rhine-Westphalia	0.2	0.5	0.5	0.6	0.4	0.5
Rheinland-Palatinate	-0.3	0.6	-0.4	0.3	0.2	0.7
Saarland	0.3	0.7	0.2	0.5	0.4	0.6
Hamburg / Schleswig-Holstein	0.8	-0.4	1.2	-0.4	0.6	0.3
All Germany	0.5	0.5	0.7	0.4	0.3	0.6

Source: Authors' calculations based on *Statistische Bundesamt, Volkswirtschaftliche Gesamtrechnungen*.

Table 5: Growth accounting using the three methods. 1993-2011 (% per annum).

	GDP Growth	Solow-Törnqvist			Direct Substitution			Generalized Difference		
		TFP	Labor	Capital	TFP	Labor	Capital*	TFP	Labor	Capital*
East Germany	2.0	0.8	-0.1	1.2	0.7	-0.1	1.3	0.3	-0.1	1.7
Berlin / Brandenburg	1.3	0.5	0.1	0.7	0.4	0.1	0.8	0.4	0.1	0.9
Mecklenburg-West Pomerania	2.2	1.0	-0.1	1.4	0.3	-0.1	2.0	0.4	-0.1	2.0
Saxony	2.7	1.4	-0.0	1.2	1.1	-0.0	1.6	0.4	-0.0	2.3
Saxony-Anhalt	2.1	1.2	-0.4	1.3	0.7	-0.4	1.7	0.2	-0.4	2.3
Thuringia	2.7	1.3	-0.0	1.4	0.8	-0.0	1.9	0.2	-0.0	2.5
West Germany	1.2	0.5	0.3	0.4	0.5	0.3	0.4	0.5	0.3	0.4
Baden-Württemberg	1.3	0.6	0.3	0.4	0.6	0.3	0.4	0.5	0.3	0.5
Bavaria	1.9	0.9	0.4	0.6	0.7	0.4	0.7	0.5	0.4	1.0
Hesse	1.0	0.3	0.2	0.4	0.6	0.2	0.1	0.5	0.2	0.2
Lower Saxony / Bremen	1.1	0.3	0.4	0.4	0.3	0.4	0.4	0.5	0.4	0.2
North Rhine-Westphalia	0.9	0.4	0.3	0.3	0.5	0.3	0.1	0.4	0.3	0.2
Rheinland-Palatinate	1.0	0.2	0.4	0.3	-0.0	0.4	0.5	0.5	0.4	0.1
Saarland	1.0	0.5	0.3	0.2	0.4	0.3	0.4	0.5	0.3	0.2
Hamburg / Schleswig-Holstein	1.1	0.2	0.3	0.6	0.4	0.3	0.4	0.4	0.3	0.3
Germany	1.3	0.5	0.3	0.5	0.5	0.3	0.5	0.4	0.3	0.6

Note: Components may not add exactly due to rounding error.

* Imputed contribution conditional on TFP calculations described in text.

Source: Authors' calculations based on *Statistische Bundesamt, Volkswirtschaftliche Gesamtrechnungen*.

Table 6: Growth accounting using the three methods. 1993-2001 (% per annum).

	GDP Growth	Solow-Törnqvist			Direct Substitution			Generalized Difference		
		TFP	Labor	Capital	TFP	Labor	Capital*	TFP	Labor	Capital*
East Germany	3.0	1.0	-0.2	2.2	1.1	-0.2	2.1	0.0	-0.2	3.2
Berlin / Brandenburg	1.6	0.5	-0.2	1.4	0.6	-0.2	1.2	0.1	-0.2	1.7
Mecklenburg-West Pomerania	3.7	1.3	-0.1	2.5	0.7	-0.1	3.1	0.1	-0.1	3.8
Saxony	4.3	2.1	-0.1	2.3	1.9	-0.1	2.4	0.2	-0.1	4.2
Saxony-Anhalt	3.8	1.9	-0.6	2.5	1.6	-0.6	2.8	-0.1	-0.6	4.5
Thuringia	4.4	1.8	0.0	2.6	1.6	0.0	2.8	-0.5	0.0	4.9
West Germany	1.3	0.4	0.4	0.5	0.6	0.4	0.3	0.4	0.4	0.6
Baden-Württemberg	1.5	0.7	0.4	0.4	0.8	0.4	0.3	0.5	0.4	0.7
Bavaria	1.9	0.9	0.4	0.7	0.7	0.4	0.8	0.3	0.4	1.3
Hesse	1.6	0.8	0.3	0.4	1.2	0.3	0.1	0.4	0.3	0.9
Lower Saxony / Bremen	0.7	-0.2	0.4	0.5	-0.1	0.4	0.4	0.3	0.4	0.0
North Rhine-Westphalia	1.0	0.2	0.4	0.4	0.5	0.4	0.1	0.4	0.4	0.2
Rheinland-Palatinate	0.6	-0.3	0.5	0.5	-0.4	0.5	0.6	0.2	0.5	-0.0
Saarland	1.2	0.3	0.4	0.4	0.2	0.4	0.6	0.4	0.4	0.3
Hamburg / Schleswig-Holstein	1.6	0.8	0.2	0.6	1.2	0.2	0.2	0.6	0.2	0.8
Germany	1.5	0.5	0.2	0.7	0.7	0.2	0.6	0.3	0.2	1.0

Note: Components may not add exactly due to rounding error.

* Imputed contribution conditional on TFP calculations described in text.

Source: Authors' calculations based on *Statistische Bundesamt, Volkswirtschaftliche Gesamtrechnungen*.

Table 7: Growth accounting using the three methods. 2002-2011 (% per annum).

	GDP Growth	Solow-Törnqvist			Direct Substitution			Generalized Difference		
		TFP	Labor	Capital	TFP	Labor	Capital*	TFP	Labor	Capital*
East Germany	1.0	0.7	0.1	0.3	0.2	0.1	0.7	0.6	0.1	0.3
Berlin / Brandenburg	1.0	0.5	0.3	0.2	0.3	0.3	0.4	0.6	0.3	0.2
Mecklenburg-West Pomerania	0.9	0.7	-0.1	0.3	-0.1	-0.1	1.1	0.6	-0.1	0.4
Saxony	1.2	0.9	0.1	0.3	0.3	0.1	0.8	0.6	0.1	0.6
Saxony-Anhalt	0.5	0.5	-0.2	0.2	-0.0	-0.2	0.7	0.5	-0.2	0.2
Thuringia	1.1	0.8	-0.1	0.4	0.2	-0.1	1.0	0.8	-0.1	0.4
West Germany	1.2	0.5	0.3	0.3	0.4	0.3	0.4	0.5	0.3	0.3
Baden-Württemberg	1.2	0.5	0.3	0.4	0.5	0.3	0.4	0.5	0.3	0.4
Bavaria	1.9	1.0	0.4	0.5	0.7	0.4	0.7	0.7	0.4	0.8
Hesse	0.4	-0.1	0.2	0.3	0.0	0.2	0.2	0.5	0.2	-0.3
Lower Saxony / Bremen	1.4	0.8	0.4	0.2	0.6	0.4	0.4	0.6	0.4	0.4
North Rhine-Westphalia	0.9	0.5	0.2	0.2	0.6	0.2	0.1	0.5	0.2	0.2
Rheinland-Palatinate	1.2	0.6	0.4	0.2	0.3	0.4	0.5	0.7	0.4	0.1
Saarland	0.8	0.7	0.1	0.0	0.5	0.1	0.2	0.6	0.1	0.0
Hamburg / Schleswig-Holstein	0.6	-0.4	0.4	0.7	-0.4	0.4	0.6	0.3	0.4	0.0
Germany	1.1	0.5	0.3	0.3	0.4	0.3	0.4	0.6	0.3	0.3

Note: Components may not add exactly due to rounding error.

* Imputed contribution conditional on TFP calculations described in text.

Source: Authors' calculations based on *Statistische Bundesamt, Volkswirtschaftliche Gesamtrechnungen*.

Table 8: Determinants of TFP Growth in German *Bundesländer*, OLS Regressions

Dependent Variable: a_{it}^{ST}						
	(1)	(2)	(3)	(4)	(5)	(6)
$\ln \frac{A_{Ft-1}^{ST}}{A_{it-1}^{ST}}$	0.24*** (0.05)	0.31*** (0.06)	0.24*** (0.05)	0.30*** (0.05)	0.90*** (0.33)	1.01* (0.33)
a_{Ft}^{ST}	1.12*** (0.11)	1.12*** (0.11)				
$\ln \frac{I_{t-1}}{Y_{t-1}}$	-0.28*** (0.06)	-0.30*** (0.06)	-0.26*** (0.05)	-0.20*** (0.06)	-0.24*** (0.06)	-0.17* (0.07)
$ratio_{startup}_{t-1}$	-0.05 (0.03)	-0.03 (0.03)	0.27*** (0.09)	0.25*** (0.09)	0.14 (0.10)	0.16* (0.09)
$fractionest < 50_{t-1}$	-5.11*** (1.29)	-4.68*** (1.52)	-2.89* (1.50)	-1.69 (1.61)	-1.01 (1.76)	-0.31 (1.80)
$fractionest < 250_{t-1}$	-0.06 (0.20)	-0.16 (0.21)	-0.15 (0.18)	-0.21 (0.19)	-0.34* (0.20)	-0.44* (0.23)
$\ln \frac{est_{t-1}}{km^2}$	0.16*** (0.04)	0.13** (0.05)	0.06 (0.06)	0.06 (0.07)	0.05 (0.07)	0.07 (0.08)
$\ln \frac{population_{t-1}}{km^2}$	0.07 (0.09)	-0.15 (0.12)	0.21 (0.13)	-0.21 (0.14)	0.25 (0.16)	-0.20 (0.17)
$\ln fraction_{urban}_{t-1}$	0.21 (0.13)	0.31** (0.12)	0.07 (0.11)	0.16 (0.11)	0.14 (0.10)	0.22* (0.10)
$\frac{managers_{t-1}}{employees_{t-1}}$		4.16** (1.86)		6.47*** (1.61)		6.49* (1.83)
$\frac{professionals_{t-1}}{employees_{t-1}}$		-0.06 (0.68)		-0.60 (0.86)		-0.52 (0.98)
$\frac{semi\ professional_{t-1}}{employees_{t-1}}$		0.06 (0.37)		0.51 (0.38)		1.06* (0.48)
$\frac{technicians_{t-1}}{employees_{t-1}}$		-1.29 (0.87)		0.05 (0.74)		0.58 (0.99)
$\ln \frac{R\&D_{t-1}}{Y_{t-1}}$					-0.06** (0.03)	-0.07* (0.03)
$\ln \frac{R\&D_{t-1}}{Y_{t-1}} * \ln \frac{A_{Ft-1}^{ST}}{A_{it-1}^{ST}}$					0.16* (0.08)	0.16* (0.08)
Constant	4.37*** (1.43)	5.03*** (1.51)	1.67 (1.92)	2.43 (1.85)	-0.50 (2.22)	0.77 (2.06)
R^2	0.61	0.63	0.75	0.77	0.78	0.80
Time dummies	NO	NO	YES	YES	YES	YES
No. of observations	234	234	234	234	208	208

Notes: Regression estimates are weighted by state GDP share in 1993. Bundesland fixed effects included in all regressions. *, **, and *** denote significance at 90%, 95% and 99% confidence levels respectively, on the basis of robust standard errors .

Table 9: Determinants of TFP Growth in German *Bundesländer*, IV Regressions

Dependent Variable: a_{it}^{ST}						
	(1)	(2)	(3)	(4)	(5)	(6)
$\ln \frac{A_{Ft-1}^{ST}}{A_{it-1}^{ST}}$	0.23*** (0.08)	0.35*** (0.09)	0.31*** (0.07)	0.39*** (0.08)	1.40*** (0.50)	1.86*** (0.64)
a_{Ft}^{ST}	1.10*** (0.12)	1.11*** (0.12)				
$\ln \frac{I_{t-1}}{Y_{t-1}}$	-0.24*** (0.07)	-0.26*** (0.08)	-0.28*** (0.06)	-0.21*** (0.07)	-0.28*** (0.07)	-0.17** (0.07)
$ratiostartup_{t-1}$	-0.06** (0.03)	-0.01 (0.02)	0.12 (0.09)	0.13 (0.09)	0.09 (0.09)	0.14 (0.09)
$fractionest < 50_{t-1}$	-1.63 (1.88)	-1.97 (2.41)	-2.07 (1.97)	-1.31 (2.03)	-0.28 (1.87)	0.47 (1.91)
$fractionest < 250_{t-1}$	-0.24 (0.18)	-0.26 (0.19)	-0.23 (0.16)	-0.35* (0.19)	-0.56*** (0.22)	-0.70*** (0.25)
$\ln \frac{est_{t-1}}{km^2}$	0.08 (0.05)	0.11* (0.06)	0.09 (0.07)	0.11 (0.09)	0.02 (0.07)	0.06 (0.08)
$\ln \frac{population_{t-1}}{km^2}$	0.12 (0.10)	-0.13 (0.11)	0.16 (0.14)	-0.31* (0.16)	0.40*** (0.14)	-0.02 (0.18)
$\ln fractionurban_{t-1}$	0.17 (0.11)	0.16* (0.10)	0.15 (0.10)	0.23** (0.10)	0.12 (0.08)	0.22** (0.09)
$\frac{managers_{t-1}}{employees_{t-1}}$		4.62*** (1.59)		6.85*** (1.56)		6.02*** (1.76)
$\frac{professionals_{t-1}}{employees_{t-1}}$		-0.58 (0.59)		-0.21 (0.83)		-0.37 (1.10)
$\frac{semi\ professional_{t-1}}{employees_{t-1}}$		0.55 (0.39)		0.81* (0.46)		1.45** (0.72)
$\frac{technicians_{t-1}}{employees_{t-1}}$		-0.34 (0.90)		0.44 (0.89)		1.26 (0.94)
$\ln \frac{R\&D_{t-1}}{Y_{t-1}}$					-0.10** (0.05)	-0.14** (0.05)
$\ln \frac{R\&D_{t-1}}{Y_{t-1}} * \ln \frac{A_{Ft-1}^{ST}}{A_{it-1}^{ST}}$					0.27** (0.12)	0.36** (0.15)
Constant	0.87 (2.03)	2.31 (2.35)	1.11 (2.30)	2.48 (2.26)	-2.02 (2.13)	-1.12 (2.11)
R^2	0.65	0.68	0.77	0.79	0.79	0.79
Sargan (<i>p value</i>)	0.71	0.51	0.54	0.32	0.02	0.02
No. of observations	208	208	208	208	195	195

Notes: Regression estimates are weighted by state GDP share in 1993. Bundesland fixed effects included in all regressions. *, **, and *** denote significance at 90%, 95% and 99% confidence levels respectively, on the basis of robust standard errors. Instruments: $\ln \frac{A_{Ft-2}^{ST}}{A_{it-2}^{ST}}$ and $\ln \frac{A_{Ft-3}^{ST}}{A_{it-3}^{ST}}$ in all columns, $\ln \frac{R\&D_{t-2}}{Y_{t-2}}$ and $\ln \frac{A_{Ft-2}^{ST}}{A_{it-2}^{ST}} * \ln \frac{R\&D_{t-2}}{Y_{t-2}}$ in columns (5) and (6).

Table 10: Determinants of TFP Growth in German *Bundesländer*, ECM Regressions

Dependent Variable: a_{it}^{ST}								
	(1)	(2)	(3)	(4)	(5)	(6)	(7)	(8)
a_{it-1}^{ST}	0.20** (0.08)	0.19** (0.08)	0.06 (0.10)	0.07 (0.09)	0.10 (0.11)	0.13 (0.10)	-0.01 (0.54)	0.29 (0.53)
$\ln A_{it-1}$			-0.24*** (0.06)	-0.35*** (0.07)			0.00 (.)	0.00 (.)
$\ln A_{Ft-1}$	-0.67*** (0.11)	-0.67*** (0.11)						
a_{Ft-1}^{ST}	0.24** (0.09)	0.32*** (0.10)			0.33*** (0.08)	0.46*** (0.09)	0.86*** (0.29)	1.29*** (0.34)
$\ln \frac{I_{t-1}}{Y_{t-1}}$	-0.15* (0.08)	-0.21** (0.09)	-0.12* (0.07)	-0.11 (0.08)	-0.17** (0.08)	-0.09 (0.08)	-0.16* (0.08)	-0.07 (0.08)
$\Delta \ln \frac{I_{t-1}}{Y_{t-1}}$	0.02 (0.08)	0.07 (0.08)	-0.07 (0.07)	-0.05 (0.07)	-0.04 (0.08)	-0.05 (0.08)	-0.05 (0.07)	-0.05 (0.07)
$\frac{managers_{t-1}}{employees_{t-1}}$		4.10 (2.56)		6.44*** (2.29)		6.82*** (2.35)		7.62*** (2.32)
$\Delta \frac{managers_{t-1}}{employees_{t-1}}$		2.70 (3.43)		-0.45 (2.66)		0.53 (2.71)		-0.71 (2.67)
$\frac{professionals_{t-1}}{employees_{t-1}}$		-0.56 (1.03)		-0.58 (1.12)		-0.52 (1.20)		-0.12 (1.20)
$\Delta \frac{professionals_{t-1}}{employees_{t-1}}$		-0.99 (0.94)		-0.73 (2.15)		0.06 (2.27)		0.26 (2.41)
$\frac{semi\ professional_{t-1}}{employees_{t-1}}$		0.10 (0.45)		0.54 (0.46)		0.80 (0.52)		1.06** (0.52)
$\Delta \frac{semi\ professional_{t-1}}{employees_{t-1}}$		0.98 (0.63)		0.61 (0.54)		0.53 (0.71)		0.50 (0.72)
$\frac{technicians_{t-1}}{employees_{t-1}}$		-2.28* (1.18)		0.36 (1.01)		1.90 (1.22)		2.32* (1.18)
$\Delta \frac{semi\ professional_{t-1}}{employees_{t-1}}$		-1.50 (1.76)		-0.73 (1.32)		-2.86* (1.49)		-2.99** (1.44)
$\ln \frac{R\&D_{t-1}}{Y_{t-1}}$					-0.01 (0.01)	-0.02 (0.01)	-0.06** (0.03)	-0.09*** (0.03)
$\Delta \ln \frac{R\&D_{t-1}}{Y_{t-1}}$					-0.01 (0.02)	0.01 (0.02)	-0.01 (0.04)	0.03 (0.04)
$\Delta \ln \frac{R\&D_{t-1}}{Y_{t-1}}$							0.14* (0.08)	0.21** (0.08)
$\Delta \ln \frac{R\&D_{t-1}}{Y_{t-1}}$							0.02 (0.13)	-0.05 (0.13)
R^2	0.30	0.33	0.68	0.70	0.72	0.74	0.73	0.75
Time dummies	NO	NO	YES	YES	YES	YES	YES	YES
N. of observations	221	221	221	221	195	195	195	195

Notes: Bundesland fixed effects included in all regressions. *, **, and *** denote significance at 90%, 95% and 99% confidence levels respectively, on the basis of robust standard errors .

Table 11: Determinants of TFP Growth in western and eastern *Bundesländer*

Dependent Variable: a_{it}^{ST}						
	OLS		IV		ECM	
	WEST	EAST	WEST	EAST	WEST	EAST
$\ln \frac{A_{Ft}^{ST}}{A_{it-1}^{ST}}$	1.33** (0.51)	1.85** (0.51)	2.50*** (0.51)	3.05*** (0.51)	1.40** (0.51)	1.21** (0.51)
$\ln \frac{R\&D_{t-1}}{Y_{t-1}}$	-0.07** (0.04)	-0.19** (0.05)	-0.16** (0.07)	-0.33 (0.07)	-0.08 (0.52)	-0.29 (0.07)
$\Delta \ln \frac{R\&D_{t-1}}{Y_{t-1}} * \ln \frac{A_{Ft-1}^{ST}}{A_{it-1}^{ST}}$	0.24* (0.13)	0.33*** (0.12)	0.52** (0.22)	0.67** (0.16)	0.20 (0.16)	0.18 (0.15)
$\Delta \ln \frac{I_{t-1}}{Y_{t-1}}$	-0.29** (0.12)	-0.17** (0.07)	-0.33** (0.12)	-0.12 (0.94)	0.06 (0.07)	-0.42*** (0.14)
$\frac{managers_{t-1}}{employees_{t-1}}$	4.54*** (2.25)	3.27 (2.86)	3.71* (2.11)	1.90 (3.24)	3.49 (3.35)	8.72** (4.43)

Notes: Regression estimates are weighted by state GDP share in 1993. Bundesland fixed effects included in all regressions. *, **, and *** denote significance at 90%, 95% and 99% confidence levels respectively, on the basis of robust standard errors .

Appendix

Income and product account data used in this study are available for all 16 *Bundesländer* beginning in 1992: 11 Western Länder (Bavaria, Baden-Württemberg, Bremen, Hamburg, Hesse, Lower Saxony, North Rhine-Westphalia, Rhineland-Palatinate, Saarland, Schleswig-Holstein) and the 6 "new" Eastern states (Berlin, Brandenburg, Mecklenburg-West Pommern, Saxony-Anhalt, Saxony, and Thuringia). Berlin/Brandenburg is the union of East and West Berlin, because the western half of Berlin, while under the protection and economic aegis of Western Germany until 1989, never enjoyed full status as a *Bundesland*. We employ the income and product accounts and capital stock estimates at the level of the federal states published by the Working Group for State Income and Product Accounts (*Arbeitsgemeinschaft Volkswirtschaftliche Gesamtrechnung der Länder*).¹⁹ Table of descriptive statistics here:

¹⁹The data can be downloaded at the website http://www.vgrdl.de/Arbeitskreis_VGR/ergebnisse.asp. Capital stocks for the new states in the period 1991-1993 were computed by backcasting the perpetual inventory method from the 1994 estimates.

Growth accounting variables: Descriptive statistics

	<i>Y</i>	<i>K</i>	<i>I</i>	<i>L</i>
East Germany	328.6	1077.0	82.2	7449.5
	(21.9)	(197.4)	(17.8)	(168.1)
<i>Berlin</i>	87.9	258.8	14.3	1612.4
	(3.8)	(17.9)	(2.231)	(48.8)
<i>Brandenburg</i>	45.4	157.0	133.6	1055.2
	(45.5)	(38.9)	(3.1)	(26.3)
<i>Mecklenburg-Western Pomerania</i>	30.4	115.4	9.2	743.9
	(2.2)	(24.9)	(2.4)	(20.0)
<i>Saxony</i>	80.3	256.7	21.7	1952.8
	(7.2)	(54.3)	(5.0)	(37.2)
<i>Saxony-Anhalt</i>	44.3	150.3	12.144	1050.7
	(3.1)	(31.1)	(3.8)	(52.4)
<i>Thuringia</i>	40.4	138.5	11.6	1034.5
	(3.7)	(31.4)	(2.6)	(22.3)
West Germany	1846.2	5404.9	317.4	31.6
	(147.8)	(390.7)	(35.0)	(1148.4)
<i>Baden-Württemberg</i>	316.0	944.4	54.0	5408.8
	(28.1)	(67.5)	(6.6)	(215.2)
<i>Bavaria</i>	362.0	1227.4	74.1	6345.6
	(42.3)	(119.8)	(9.2)	(250.4)
<i>Bremen</i>	23.9	54.2	3.1	394.0
	(1.5)	(1.8)	(0.4)	(8.9)
<i>Hamburg</i>	82.8	158.8	14.7	1053.8
	(6.6)	(27.5)	(5.6)	(42.1)
<i>Hesse</i>	200.0	508.4	30.3	3043.9
	(13.9)	(32.3)	(4.2)	(80.8)
<i>Lower Saxony</i>	187.5	599.3	34.1	3511.7
	(13.0)	(40.1)	(3.0)	(136.9)
<i>North Rhine-Westphalia</i>	485.9	126.2	72.8	8333.2
	(32.0)	(67.5)	(6.9)	(300.7)
<i>Rhineland-Palatinate</i>	96.2	339.6	18.0	1778.1
	(6.1)	(20.4)	(1.3)	(82.5)
<i>Saarland</i>	26.4	88.8	4.5	494.9
	(2.2)	(3.9)	(0.5)	(16.9)
<i>Schleswig-Holstein</i>	65.7	221.8	12.1	1243.4
	(3.8)	(13.2)	(1.2)	(30.7)
Germany (in milions)	21.7	6.48	39.9	39.1
	(1.68)	(5.80)	(2.4)	(1.08)

Regression covariates: Descriptive statistics

	mean	std. error	min	max	N. of obs.
$\ln \frac{A_i^{ST}}{A_F^{ST}}$	2.80	0.15	2.56	3.06	234
$\frac{I}{\bar{Y}}$	0.21	0.08	0.13	0.51	234
<i>ratio startup</i>	0.07	0.03	0.04	0.18	234
<i>ratio firm 50</i>	0.97	0.01	0.95	0.98	234
<i>ratio firm 250</i>	0.08	0.17	0.00	0.58	234
$\frac{firm}{km^2}$	3.54	1.74	0.87	8.83	234
$\frac{population}{km^2}$	241.03	117.55	70.15	530.04	234
$\frac{population}{100}$	0.27	0.15	0.11	0.62	234
<i>managers</i>	0.03	0.00	0.02	0.04	234
<i>employees</i>	0.02	0.00	0.01	0.03	234
<i>professionals</i>	0.02	0.00	0.01	0.03	234
$\frac{employees}{semi\ professionals}$	0.07	0.01	0.05	0.10	234
<i>technicians</i>	0.04	0.01	0.03	0.06	234
$\frac{R\&D}{Y}$	0.02	0.01	0.01	0.05	208

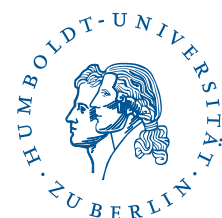
SFB 649 Discussion Paper Series 2015

For a complete list of Discussion Papers published by the SFB 649, please visit <http://sfb649.wiwi.hu-berlin.de>.

- 001 "Pricing Kernel Modeling" by Denis Belomestny, Shujie Ma and Wolfgang Karl Härdle, January 2015.
- 002 "Estimating the Value of Urban Green Space: A hedonic Pricing Analysis of the Housing Market in Cologne, Germany" by Jens Kolbe and Henry Wüstemann, January 2015.
- 003 "Identifying Berlin's land value map using Adaptive Weights Smoothing" by Jens Kolbe, Rainer Schulz, Martin Wersing and Axel Werwatz, January 2015.
- 004 "Efficiency of Wind Power Production and its Determinants" by Simone Pieralli, Matthias Ritter and Martin Odening, January 2015.
- 005 "Distillation of News Flow into Analysis of Stock Reactions" by Junni L. Zhang, Wolfgang K. Härdle, Cathy Y. Chen and Elisabeth Bommers, January 2015.
- 006 "Cognitive Bubbles" by Ciril Bosch-Rosay, Thomas Meissner and Antoni Bosch-Domènech, February 2015.
- 007 "Stochastic Population Analysis: A Functional Data Approach" by Lei Fang and Wolfgang K. Härdle, February 2015.
- 008 "Nonparametric change-point analysis of volatility" by Markus Bibinger, Moritz Jirak and Mathias Vetter, February 2015.
- 009 "From Galloping Inflation to Price Stability in Steps: Israel 1985–2013" by Rafi Melnick and Till Strohsal, February 2015.
- 010 "Estimation of NAIRU with Inflation Expectation Data" by Wei Cui, Wolfgang K. Härdle and Weining Wang, February 2015.
- 011 "Competitors In Merger Control: Shall They Be Merely Heard Or Also Listened To?" by Thomas Giebe and Miyu Lee, February 2015.
- 012 "The Impact of Credit Default Swap Trading on Loan Syndication" by Daniel Streitz, March 2015.
- 013 "Pitfalls and Perils of Financial Innovation: The Use of CDS by Corporate Bond Funds" by Tim Adam and Andre Guettler, March 2015.
- 014 "Generalized Exogenous Processes in DSGE: A Bayesian Approach" by Alexander Meyer-Gohde and Daniel Neuhoff, March 2015.
- 015 "Structural Vector Autoregressions with Heteroskedasticity" by Helmut Lütkepohl and Aleksei Netšunajev, March 2015.
- 016 "Testing Missing at Random using Instrumental Variables" by Christoph Breunig, March 2015.
- 017 "Loss Potential and Disclosures Related to Credit Derivatives – A Cross-Country Comparison of Corporate Bond Funds under U.S. and German Regulation" by Dominika Paula Gałkiewicz, March 2015.
- 018 "Manager Characteristics and Credit Derivative Use by U.S. Corporate Bond Funds" by Dominika Paula Gałkiewicz, March 2015.
- 019 "Measuring Connectedness of Euro Area Sovereign Risk" by Rebekka Gätjen Melanie Schienle, April 2015.
- 020 "Is There an Asymmetric Impact of Housing on Output?" by Tsung-Hsien Michael Lee and Wenjuan Chen, April 2015.
- 021 "Characterizing the Financial Cycle: Evidence from a Frequency Domain Analysis" by Till Strohsal, Christian R. Proaño and Jürgen Wolters, April 2015.

SFB 649, Spandauer Straße 1, D-10178 Berlin
<http://sfb649.wiwi.hu-berlin.de>

This research was supported by the Deutsche
Forschungsgemeinschaft through the SFB 649 "Economic Risk".



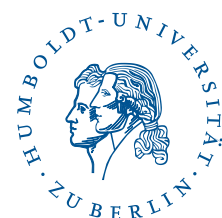
SFB 649 Discussion Paper Series 2015

For a complete list of Discussion Papers published by the SFB 649, please visit <http://sfb649.wiwi.hu-berlin.de>.

- 022 "Risk Related Brain Regions Detected with 3D Image FPCA" by Ying Chen, Wolfgang K. Härdle, He Qiang and Piotr Majer, April 2015.
- 023 "An Adaptive Approach to Forecasting Three Key Macroeconomic Variables for Transitional China" by Linlin Niu, Xiu Xu and Ying Chen, April 2015.
- 024 "How Do Financial Cycles Interact? Evidence from the US and the UK" by Till Strohsal, Christian R. Proaño, Jürgen Wolters, April 2015.
- 025 "Employment Polarization and Immigrant Employment Opportunities" by Hanna Wielandt, April 2015.
- 026 "Forecasting volatility of wind power production" by Zhiwei Shen and Matthias Ritter, May 2015.
- 027 "The Information Content of Monetary Statistics for the Great Recession: Evidence from Germany" by Wenjuan Chen and Dieter Nautz, May 2015.
- 028 "The Time-Varying Degree of Inflation Expectations Anchoring" by Till Strohsal, Rafi Melnick and Dieter Nautz, May 2015.
- 029 "Change point and trend analyses of annual expectile curves of tropical storms" by P.Burdejova, W.K.Härdle, P.Kokoszka and Q.Xiong, May 2015.
- 030 "Testing for Identification in SVAR-GARCH Models" by Helmut Luetkepohl and George Milunovich, June 2015.
- 031 "Simultaneous likelihood-based bootstrap confidence sets for a large number of models" by Mayya Zhilova, June 2015.
- 032 "Government Bond Liquidity and Sovereign-Bank Interlinkages" by Sören Radde, Cristina Checherita-Westphal and Wei Cui, July 2015.
- 033 "Not Working at Work: Loafing, Unemployment and Labor Productivity" by Michael C. Burda, Katie Genadek and Daniel S. Hamermesh, July 2015.
- 034 "Factorisable Sparse Tail Event Curves" by Shih-Kang Chao, Wolfgang K. Härdle and Ming Yuan, July 2015.
- 035 "Price discovery in the markets for credit risk: A Markov switching approach" by Thomas Dimpfl and Franziska J. Peter, July 2015.
- 036 "Crowdfunding, demand uncertainty, and moral hazard - a mechanism design approach" by Roland Strausz, July 2015.
- 037 ""Buy-It-Now" or "Sell-It-Now" auctions : Effects of changing bargaining power in sequential trading mechanism" by Tim Grebe, Radosveta Ivanova-Stenzel and Sabine Kröger, August 2015.
- 038 "Conditional Systemic Risk with Penalized Copula" by Ostap Okhrin, Alexander Ristig, Jeffrey Sheen and Stefan Trück, August 2015.
- 039 "Dynamics of Real Per Capita GDP" by Daniel Neuhoff, August 2015.
- 040 "The Role of Shadow Banking in the Monetary Transmission Mechanism and the Business Cycle" by Falk Mazelis, August 2015.
- 041 "Forecasting the oil price using house prices" by Rainer Schulz and Martin Wersing, August 2015.
- 042 "Copula-Based Factor Model for Credit Risk Analysis" by Meng-Jou Lu, Cathy Yi-Hsuan Chen and Karl Wolfgang Härdle, August 2015.
- 043 "On the Long-run Neutrality of Demand Shocks" by Wenjuan Chen and Aleksei Netsunajev, August 2015.

SFB 649, Spandauer Straße 1, D-10178 Berlin
<http://sfb649.wiwi.hu-berlin.de>

This research was supported by the Deutsche
Forschungsgemeinschaft through the SFB 649 "Economic Risk".



SFB 649 Discussion Paper Series 2015

For a complete list of Discussion Papers published by the SFB 649, please visit <http://sfb649.wiwi.hu-berlin.de>.

- 044 "The (De-)Anchoring of Inflation Expectations: New Evidence from the Euro Area" by Laura Pagenhardt, Dieter Nautz and Till Strohsal, September 2015.
- 045 "Tail Event Driven ASset allocation: evidence from equity and mutual funds' markets" by Wolfgang Karl Härdle, David Lee Kuo Chuen, Sergey Nasekin, Xinwen Ni and Alla Petukhina, September 2015.
- 046 "Site assessment, turbine selection, and local feed-in tariffs through the wind energy index" by Matthias Ritter and Lars Deckert, September 2015.
- 047 "TERES - Tail Event Risk Expectile based Shortfall" by Philipp Gschöpf, Wolfgang Karl Härdle and Andrija Mihoci, September 2015.
- 048 "CRIX or evaluating Blockchain based currencies" by Wolfgang Karl Härdle and Simon Trimborn, October 2015.
- 049 "Inflation Co-movement across Countries in Multi-maturity Term Structure: An Arbitrage-Free Approach" by Shi Chen, Wolfgang Karl Härdle, Weining Wang, November 2015.
- 050 "Nonparametric Estimation in case of Endogenous Selection" by Christoph Breunig, Enno Mammen and Anna Simoni, November 2015.
- 051 "Frictions or deadlocks? Job polarization with search and matching frictions" by Julien Albertini, Jean Olivier Hairault, François Langotz and Thepthida Sopraseuthx, November 2015.
- 052 "ICARE - localizing Conditional AutoRegressive Expectiles" by Xiu Xu, Andrija Mihoci, Wolfgang Karl Härdle, December 2015.
- 053 "Specification Testing in Random Coefficient Models" by Christoph Breunig and Stefan Hoderlein, December 2015.
- 054 "TFP Convergence in German States since Reunification: Evidence and Explanations" by Michael C. Burda and Battista Severgnini, December 2015.

SFB 649, Spandauer Straße 1, D-10178 Berlin
<http://sfb649.wiwi.hu-berlin.de>

This research was supported by the Deutsche
Forschungsgemeinschaft through the SFB 649 "Economic Risk".

