

Dossche, Maarten; Everaert, Gerdie

Working Paper

Measuring inflation persistence: a structural time series approach

NBB Working Paper, No. 70

Provided in Cooperation with:

National Bank of Belgium, Brussels

Suggested Citation: Dossche, Maarten; Everaert, Gerdie (2005) : Measuring inflation persistence: a structural time series approach, NBB Working Paper, No. 70, National Bank of Belgium, Brussels

This Version is available at:

<http://hdl.handle.net/10419/144284>

Standard-Nutzungsbedingungen:

Die Dokumente auf EconStor dürfen zu eigenen wissenschaftlichen Zwecken und zum Privatgebrauch gespeichert und kopiert werden.

Sie dürfen die Dokumente nicht für öffentliche oder kommerzielle Zwecke vervielfältigen, öffentlich ausstellen, öffentlich zugänglich machen, vertreiben oder anderweitig nutzen.

Sofern die Verfasser die Dokumente unter Open-Content-Lizenzen (insbesondere CC-Lizenzen) zur Verfügung gestellt haben sollten, gelten abweichend von diesen Nutzungsbedingungen die in der dort genannten Lizenz gewährten Nutzungsrechte.

Terms of use:

Documents in EconStor may be saved and copied for your personal and scholarly purposes.

You are not to copy documents for public or commercial purposes, to exhibit the documents publicly, to make them publicly available on the internet, or to distribute or otherwise use the documents in public.

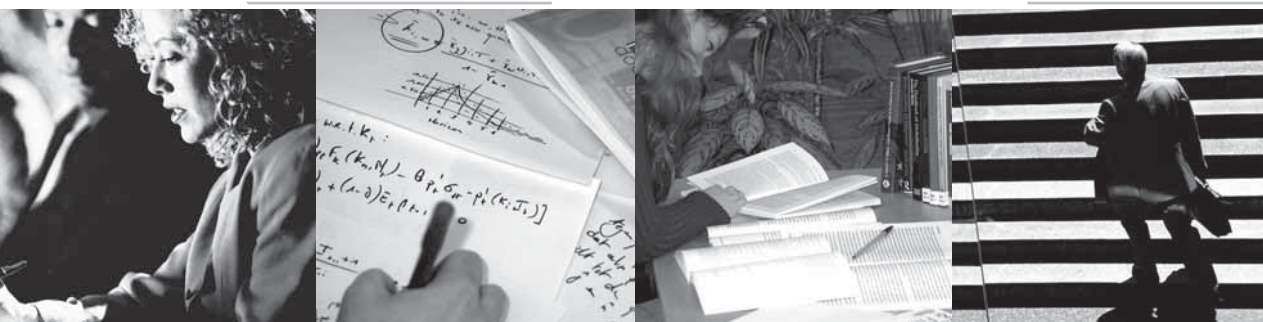
If the documents have been made available under an Open Content Licence (especially Creative Commons Licences), you may exercise further usage rights as specified in the indicated licence.

Working paper research

n° 70 June 2005

Measuring inflation persistence: a structural time series approach

Maarten Dossche Gerdie Everaert



NATIONAL BANK OF BELGIUM

WORKING PAPERS - RESEARCH SERIES

Measuring inflation persistence: a structural time series approach

Maarten Dossche (*)
Gerdie Everaert (**)

This study was developed in the context of the "Eurosystem Inflation Persistence Network". We are grateful for helpful comments of participants of the ECB Conference on "Inflation Persistence in the Euro Area", 10-11 December 2004, Frankfurt and the CFS International Macroeconomics Summer School, 24-30 August 2004, Eltville. We particularly thank Luc Aucremanne, Reinout De Bock, Freddy Heylen, Andrew Levin, Philippe Moës, Benoît Mojon, Gert Peersman, Raf Wouters and an anonymous referee for useful comments and suggestions. The views expressed in this paper are those of the authors and do not necessarily reflect the views of the National Bank of Belgium. We acknowledge support from the Interuniversity Attraction Poles Program - Belgian Science Policy, contract no. P5/21. All remaining errors are the authors'.

(*) NBB, Research Department (e-mail: maarten.dossche@nbb.be) and SHERPPA, Ghent University (www.sherppa.be).

(**) SHERPPA, Ghent University (e-mail: gerdie.everaert@UGent.be) – (www.sherppa.be).

Editorial Director

Jan Smets, Member of the Board of Directors of the National Bank of Belgium

Statement of purpose:

The purpose of these working papers is to promote the circulation of research results (Research Series) and analytical studies (Documents Series) made within the National Bank of Belgium or presented by external economists in seminars, conferences and conventions organised by the Bank. The aim is therefore to provide a platform for discussion. The opinions expressed are strictly those of the authors and do not necessarily reflect the views of the National Bank of Belgium.

The Working Papers are available on the website of the Bank:

<http://www.nbb.be>

Individual copies are also available on request to:

NATIONAL BANK OF BELGIUM
Documentation Service
boulevard de Berlaimont 14
BE - 1000 Brussels

Imprint: Responsibility according to the Belgian law: Jean Hilgers, Member of the Board of Directors, National Bank of Belgium.

Copyright © fotostockdirect - goodshoot
gettyimages - digitalvision
gettyimages - photodisc
National Bank of Belgium

Reproduction for educational and non-commercial purposes is permitted provided that the source is acknowledged.
ISSN: 1375-680X

Abstract

Time series estimates of inflation persistence incur an upward bias if shifts in the inflation target of the central bank remain unaccounted for. Using a structural time series approach we measure different sorts of inflation persistence allowing for an unobserved time-varying inflation target. Unobserved components are identified using Kalman filtering and smoothing techniques. Posterior densities of the model parameters and the unobserved components are obtained in a Bayesian framework based on importance sampling. We find that inflation persistence, expressed by the half-life of a shock, can range from 1 quarter in case of a cost-push shock to several years for a shock to long-run inflation expectations or the output gap.

JEL-code : C11, C13, C22, C32, E31

Keywords: Inflation persistence, inflation target, Kalman filter, Bayesian analysis.



Non technical summary

The Working Paper "Measuring inflation persistence: a structural time series approach", which is also published in the ECB Working Paper Series, has been developed within the scope of the "Eurosysteem Inflation Persistence Network", a research network consisting of the euro area's 12 national central banks, the ECB and the academic world. This network examines the size, causes and consequences of inflation persistence. The paper measures various kinds of inflation persistence.

It is generally accepted that - over the medium to long run - inflation is a monetary phenomenon, i.e. entirely determined by monetary policy. Over shorter horizons, however, various macroeconomic shocks, including variations in economic activity or production costs, will temporarily move inflation away from the central bank's inflation objective. Therefore, a profound understanding of the inflation-generating process, in particular the speed of inflation adjustment in response to such shocks, is of crucial importance for a central bank whose policy is oriented towards price stability. Inflation persistence then refers to the tendency of inflation to converge slowly towards its long-run value in response to these shocks.

When it comes to measuring historical inflation persistence, a common practice in empirical research is to estimate univariate autoregressive (AR) time series models and to measure persistence as the sum of the estimated AR coefficients. In most of these studies, inflation is found to exhibit high to very high persistence over the post-WW II period, i.e. persistence is found to be close to that of a random walk. This suggests that a central bank's task of pursuing price stability might be more complicated than if persistence were low. The main point highlighted in this paper is that unconditional estimates of high post-WW II inflation persistence are hard to interpret. The extent to which the estimates are affected by historical changes in the policy objective blurs the lesson that a stability-oriented central bank can learn from them.

The data-generating process of inflation can be broken down into a number of distinct components, each of them exhibiting its own degree of persistence. First, shifts in the central bank's inflation objective can induce permanent shifts in the mean inflation rate. Second, imperfect or sticky information implies that private agents have to learn about the central bank's true inflation objective. As such, the inflation objective perceived by private agents can persistently differ from the central bank's true inflation objective. Third, persistence in the drivers of inflation also introduces persistence in the observed inflation rate. Finally, there is intrinsic inflation persistence in response to shocks hitting inflation directly. The latter is likely to be related to price- and wage-setting mechanisms, e.g. price and wage indexation.

We measure the persistence in the change of the euro area and United States GDP deflator, using a structural time series model which explicitly models the various components driving inflation. We pursue both a univariate and a multivariate approach. By extracting information from the central bank's key interest rate, we find confirmation that shifts in the central bank's inflation objective induce a non-stationary component in the inflation rate. Moreover, the slow adjustment of inflation expectations in response to changes in the central bank's inflation objective delays the adjustment towards the new inflation objective. Both components explain a large fraction of the high degree of persistence observed in the post-WW II inflation rate. Persistence in the drivers of inflation is also an important factor determining the observed inflation persistence. Taking these components into account, intrinsic inflation persistence in both the euro area and the United States is found to be significantly lower than the persistence of a random walk.

The implications for monetary policy are the following. Our evidence indicates that in a stable inflation regime, where the central bank's inflation objective does not change and where the public perception about this inflation objective is well anchored, inflation persistence is relatively low. The results also imply that in case monetary policy would again give rise to unstable inflation, it would afterwards be very hard to disinflate due to the slow adjustment of inflation expectations in response to changes in the inflation objective.

TABLE OF CONTENTS

1. Introduction	1
2. A structural time series approach	4
2.1. Baseline structural model	4
2.2. Univariate identification	7
2.3. Multivariate identification	7
3. Estimation methodology	11
3.1. State space representation	11
3.2. Kalman filter and smoother	12
3.3. Bayesian analysis	13
4. Estimation results	14
4.1. Prior information	15
4.2. Posterior distribution	16
4.2.1. Posterior distribution of the parameters	17
4.2.2. Posterior distribution of the states	19
4.2.3. Half-life and impulse response analysis	23
5. Conclusions	25
References	27
Appendix 1	31
Appendix 2	34
Appendix 3	35
National Bank of Belgium working paper series	37

1 Introduction

It is generally accepted that over the medium to long run inflation is a monetary phenomenon, i.e. entirely determined by monetary policy. Over shorter horizons, though, various macroeconomic shocks, including variations in economic activity or production costs, will temporarily move inflation away from the central bank's inflation target. Therefore, a profound understanding of the process generating inflation, in particular the speed of inflation adjustment in response to such shocks is of crucial importance for an inflation targeting central bank. Inflation persistence then refers to the tendency of inflation to converge slowly towards the central bank's inflation target in response to these shocks.

With respect to measuring historical inflation persistence, a common practice in empirical research is to estimate univariate autoregressive (AR) time series models and measure persistence as the sum of the estimated AR coefficients (Nelson and Plosser, 1982; Fuhrer and Moore, 1995; Pivetta and Reis, 2004). In most of these studies, inflation is found to exhibit high to very high persistence over the post-WW II period, i.e. persistence is found to be close to that of a random walk. This suggests that, in order to bring inflation back to its target level, a central bank should react more vigorously than if persistence were low.

Important to note, though, is that this estimated high persistence should be interpreted as a measure of unconditional inflation persistence as this literature does not take into account that the data generating process of inflation is composed of a number of distinct components, each of them exhibiting its own level of persistence. As such, there are various factors underlying measured historical inflation persistence. First, over the last four decades large changes in the monetary policy strategy of industrialised economies have occurred. This has led to shifts in the inflation target¹ of central banks, which introduces a non-stationary component in the observed inflation series. Second, due to asymmetric information, sticky information or imperfect credibility, private agents' perceptions about the central bank's inflation target can differ from the true inflation target. The persistence of such deviations can be called expectations-based persistence (see Angeloni et al., 2004). Third, the sluggish response of inflation to various macroeconomic shocks is likely to be related to the wage- and price-setting mechanism. If wages and prices are adjusted infrequently, they will only gradually incorporate the effects of these shocks and therefore deviations of the observed inflation rate from the perceived inflation target will persist during several consecutive periods. This kind of inflation persistence can be called intrinsic inflation persistence (see Angeloni et al., 2004). Also price and wage indexation, which in-

¹Although inflation targeting is a monetary policy strategy that only emerged in the 1990s, we will still use this framework for the 1970s and 1980s. It enables us to identify the implicit inflation target of central banks from their policy choices as well as subsequent economic outcomes.

troduces backward-lookingness into inflation, add to intrinsic inflation persistence. Fourth, inflation persistence is determined by the persistence of the various macroeconomic shocks hitting inflation, e.g. persistent deviations of output from its potential level. This type of inflation persistence can be called extrinsic inflation persistence (see Angeloni et al., 2004).

In order to get a reliable estimate of the various types of inflation persistence, each of the above mentioned components should be taken into account explicitly when constructing the data generating process of inflation. First, permanent shifts in the central bank's inflation target lead to permanent changes in inflation. As standard AR models assume that inflation has a stable mean, these shifts induce an upward bias on measured inflation persistence (Levin and Piger, 2004). In fact, this argument goes back to Perron (1990) who pointed out that the standard Dickey-Fuller unit root test is biased towards non-rejection of the unit root hypothesis if the true data generating process includes breaks in its deterministic components. Taking historical changes in the central bank's inflation target into account might not be straightforward, though. Contrary to the current conduct of monetary policy, most countries typically did not directly communicate their inflation target to the public. Second, if the central bank's inflation target is not known to private agents or if it is not fully credible, the inflation target perceived by economic agents might differ from the central bank's inflation target. In this case intrinsic and extrinsic inflation persistence should be measured as the persistence in the deviations of the actual inflation rate from the perceived inflation target rather than from the central bank's inflation target. Third, in order to disentangle intrinsic and extrinsic persistence, the persistence in macroeconomic shocks hitting inflation should be modelled as well.

In the recent literature, shifts in the central bank's inflation target are accounted for in three different ways. First, O'Reilly and Whelan (2004) and Pivetta and Reis (2004) use rolling regressions to allow for shifts in the mean of inflation over different sub-samples. By lowering the sub-sample size, the number of breaks that can occur is reduced. Still, the authors cannot reject the hypothesis that the sum of the AR coefficients equals 1. Second, Levin and Piger (2004), Gadzinski and Orlandi (2004) and Bilke (2004) estimate an AR process allowing for discrete breaks in the mean of the inflation process. Without accounting for possible shifts, Levin and Piger (2004) report a persistence parameter for the United States GDP deflator of 0.92 over the period 1984Q1-2003Q4. Once a structural break is allowed for, persistence drops to 0.36. Third, Cogley and Sargent (2001, 2003), and Benati (2004) estimate time-varying AR coefficients conditional on a time-varying mean, which is specified as a random walk process. They find evidence that the AR coefficients of inflation have dropped considerably over the last decade.

With respect to these recent contributions to the literature, the following drawbacks

should be stressed. First, rolling regressions do not entirely rule out the possibility that a shift occurred in a specific sub-sample, especially when shifts are frequent. Moreover, this approach has limits in terms of degrees of freedom. Second, capturing shifts in monetary policy by allowing for a time-varying mean inflation rate, either by adding discrete breaks or a random walk process to the AR model, is inappropriate if the perceived inflation target differs from the central bank's inflation target. As this difference is not accounted for in these models, the persistence in the deviation of the perceived inflation target from the central bank's inflation target is implicitly restricted to equal the average of intrinsic and extrinsic inflation persistence.

This paper uses a structural time series approach to model the data generating process of inflation in the euro area² and the United States. Given the various sources of inflation persistence, structural time series models are particularly suited as in these models a time series can be decomposed into a number of distinct components, each of them being modelled explicitly. We pursue both a univariate and a multivariate approach. In both approaches, intrinsic and extrinsic inflation persistence are measured as the persistence of the deviations of inflation from the perceived inflation target. In contrast to the current literature, this allows for expectations-based persistence in response to shocks to the inflation target. Expectations-based persistence is incorporated by modelling the perceived inflation target as an AR process around the central bank's inflation target, the latter being modelled as a random walk. Kozicki and Tinsley (2003) use a similar model to disentangle permanent and transitory monetary policy shifts. Contrary to these authors, in the multivariate model we explicitly decompose output into potential output and a business cycle component. In this way we can consistently disentangle intrinsic and extrinsic inflation persistence in response to shocks to the business cycle.

As the univariate and the multivariate model both include a number of unobserved components, they are cast in a linear Gaussian state space representation. This enables the identification of the unobserved components from the observed data using Kalman filtering and smoothing techniques. The unknown parameters are estimated in a Bayesian framework, exploiting information both from the sample data and from previous studies estimating similar models. Posterior densities of the model parameters and the unobserved components are obtained using importance sampling.

The results indicate that intrinsic inflation persistence is not close to that of a random walk, i.e. the sum of the AR coefficients ranges from 0.45 in the euro area to 0.80 in the United States. Considerable extrinsic persistence explains why inflation deviates from the

²Although the euro area did not exist for the larger part of our data sample (1970Q2-1998Q4), we use synthetic data aggregating the respective national data (Fagan et al, 2005). We thus implicitly assume that the euro area was an economy with a homogeneous monetary policy over the entire sample.

perceived inflation target during several consecutive periods. This source of persistence corresponds to the persistence in the output gap that drives inflation. Expectations-based persistence is estimated to be at least as high as intrinsic persistence, indicating that the dissipation of changes in the policy target is typically slower than in case of temporary shocks. Next to permanent changes in the central bank’s inflation target, this explains the observed high degree of aggregate post war inflation persistence.

The implications for monetary policy are as follows. Our evidence indicates that in a stable inflation regime, where the central bank’s inflation target does not change and where the public perception about this inflation target is well anchored, inflation persistence is relatively lower. The results also imply that in the case monetary policy would again give rise to unstable inflation, it would afterwards be very hard to disinflate due to the slow adjustment of inflation expectations in response to changes in the inflation target. In the case of natural rate misperceptions (Orphanides and Williams, 2004) this might however not be straightforward to avoid.

2 A structural time series approach

In this section, we present a structural time series model for inflation which takes into account (i) possible shifts in the central bank’s inflation target, (ii) expectations-based persistence, (iii) intrinsic persistence and (iv) extrinsic persistence. The model is identified both in a univariate and a multivariate set-up. The univariate approach relies on time series data for inflation only. In the multivariate model, we add information contained in real output and the central bank’s key interest rate. Using a variant of the macroeconomic model of Rudebusch and Svensson (1999), this allows us to impose more economic structure on the identification process. The advantage of the univariate over the multivariate model is that its relative simplicity reduces the risk of specification errors. The state space representation of both models is given in section 3.

2.1 Baseline structural model

The baseline structural model is given by:

$$\pi_{t+1}^T = \pi_t^T + \eta_{1t}, \quad (1)$$

$$\pi_{t+1}^P = E_{t+1}\pi_{t+1}^T, \quad (2)$$

$$\pi_t = (1 - \sum_{i=1}^q \varphi_i)\pi_t^P + \sum_{i=1}^q \varphi_i L^i \pi_t + \beta_1 z_{t-1} + \varepsilon_{1t}, \quad \sum_{i=1}^q \varphi_i < 1, \quad (3)$$

where π_t^T is the central bank’s inflation target, π_t^P is the perceived inflation target, π_t is the observed inflation rate and z_t is the output gap, i.e. the percentage deviation of real output

from potential output. L is the lag operator so that $L^i \pi_t = \pi_{t-i}$. ε_{1t} and η_{1t} are mutually independent zero mean white noise processes.

Equation (1) specifies π_t^T as a random walk process, i.e. shifts in the central bank's inflation target are assumed to be permanent. These shifts can be thought of as representing (i) changes in the central bank's preferences over alternative inflation outcomes (see Andolfatto et al., 2002) or (ii) an implicit change in the inflation target of the central bank created by misperceptions about the natural rate of different real variables (Orphanides and Williams, 2004)

Shifts in π_t^T are unlikely to be passed on to inflation expectations immediately. Castelnovo et al. (2003) present data on long-run inflation expectations. These suggest that in the aftermath of shifts in monetary policy, convergence towards the new equilibrium evolves smoothly over time. In the literature, this is often attributed to asymmetric information and signal extraction, sticky information or imperfect credibility. The source of asymmetric information on behalf of the private agents can be due to a lack of knowledge about the central bank's inflation target (Kozicki and Tinsley, 2003) or uncertainty about the central bank's preferences of inflation over real activity (Cukierman and Meltzer, 1986; Tetlow and von zur Muehlen, 2001). If private agents have to extract information about the central bank's inflation target from a monetary policy rule, the signal-to-noise ratio of this policy rule determines the uncertainty faced by private agents in disentangling transitory and permanent policy shocks and therefore also the speed at which they recognise permanent policy shocks (Erceg and Levin, 2003). Further, even if the central bank clearly announces a new inflation target, it can take quite some time before the new policy target is incorporated into long-run inflation expectations of private agents (for evidence see Castelnovo et al., 2003). This might be due to costs of acquiring information and/or re-optimisation (Mankiw and Reis, 2002). Summing up, private agents must form expectations about the inflation target π_t^T . Therefore, equation (2) introduces the perceived inflation target π_t^P , which captures the private agents' beliefs about the central bank's inflation target π_t^T .

The expectations operator in equation (2) is operationalised by modelling π_{t+1}^P as a weighted average of π_t^P and π_{t+1}^T ,

$$\pi_{t+1}^P = (1 - \delta)\pi_t^P + \delta\pi_{t+1}^T + \eta_{2t}, \quad 0 < \delta \leq 1, \quad (4)$$

where η_{2t} is a zero mean white noise process. The weighting parameter δ can be interpreted as being the information updating parameter λ in a variant of the sticky-information model of Mankiw and Reis (2002) or as being proportional to the Kalman gain parameter k_g in the signal extraction problem of Erceg and Levin (2003) and Andolfatto et al. (2002).³

³See appendix 1 for more details on how equation (4) can be derived from these two models.

Consequently, δ measures the speed at which changes in the central bank's inflation target affect long-run inflation expectations of private agents, i.e. δ measures expectations-based persistence. If δ is one, a shift in the central bank's inflation target is immediately and completely passed on to inflation expectations. This would be the case if the central bank's inflation target is perfectly known to all private agents and immediately credible. The smaller δ , the slower expectations respond to a shift in the central bank's inflation target.⁴ In the sticky-information model of Mankiw and Reis (2002), δ decreases in the cost of acquiring information and/or the cost of re-optimising prices in response to a shift in the central bank's inflation target. In the signal extraction problem of Erceg and Levin (2003) and Andolfatto et al. (2002), δ increases in the signal-to-noise ratio of the monetary policy rule, i.e. the lower the uncertainty about whether monetary policy signals reflect transitory rather than permanent policy changes, the faster private agents will react to these signals by updating their inflation expectations.⁵

Note that shocks to the perceived inflation target, η_2 , only have a short-run impact on π^P . These shocks should be interpreted as misperceptions of private agents about the central bank's inflation target, due to for instance noise in the signal extraction problem of Erceg and Levin (2003) and Andolfatto et al. (2002). Shocks to the central bank's inflation target, η_1 , have a unit long-run impact on π^P , i.e. π^T is the long-run equilibrium inflation rate. This is consistent with the generally accepted feature that long-run inflation is a purely monetary phenomenon.

Equation (3) is a Phillips curve, relating the observed inflation rate π_t to the perceived inflation target π_t^P , q lags of inflation and the lagged output gap z_{t-1} . The perceived inflation target π_t^P is the inflation rate consistent with the private agents' inflation expectations. Therefore, it serves as the medium-run inflation anchor. Both business cycle shocks, reflected in the output gap z_{t-1} , as well as cost-push shocks, measured by ε_{1t} , hitting inflation induce temporary deviations of π_t from π_t^P . The sluggish adjustment of π_t in response to cost-push shocks ε_{1t} is measured by the sum of the AR coefficients, $\sum_{i=1}^q \varphi_i$. This intrinsic inflation persistence is likely to be related to price- and wage-setting mechanisms, e.g. price and wage indexation. The sluggish adjustment of π_t in response to business cycle shocks is determined, besides the intrinsic inflation persistence, by the persistence of the output gap z_t in response to business cycle shocks. The latter source of inflation persistence can be called extrinsic inflation persistence.

Note that equation (3) does not impose that the observed inflation series is additively

⁴We do not allow δ to take a value of 0, as in this case π_t^P does not react to monetary policy shocks, i.e. monetary policy is not credible. Note that this restriction does not imply that all monetary policy actions are fully credible. Rather, only credible shifts in the central bank's inflation target are included in η_{1t} .

⁵Equation (4) does not distinguish between these two theories, neither excludes that δ is a weighted average of k_g and λ , which could be the case if reality is a mixture of both theories.

composed of the perceived inflation target and a temporary component. Rather, shifts in π_t^P are only slowly passed on to observed inflation, with the speed of convergence being determined by the degree of intrinsic inflation persistence. In this way, we assume that in case of a shift in the perceived inflation target the structural determinants for intrinsic persistence, e.g. price and wage indexation, are present in addition to the determinants of expectations-based persistence, e.g. sticky or imperfect information.

2.2 Univariate identification

In a first step, we use time series data on inflation only to estimate the model specified in equations (1)-(4). Given the limited information set, the baseline model is simplified in two respects. First, we set $\beta_1 = 0$ in equation (3). This restriction stems from the fact that we do not include any information about real output and therefore cannot disentangle intrinsic from extrinsic inflation persistence in response to business cycle shocks. Second, we exclude the possibility of shocks to π_t^P , i.e. $\eta_{2t} = 0 \forall t$. This restriction is motivated from the concern to keep, given the limited information set, the identification of π_t^P and π_t^T as simple as possible. Under this restriction, equation (4) can be rewritten, using equation (1), as:

$$\pi_{t+1}^P = (2 - \delta) \pi_t^P + (\delta - 1) \pi_{t-1}^P + \delta \eta_{1t} \quad (5)$$

This way of writing equation (4) shows that the univariate identification scheme boils down to the empirical restriction that (i) shocks to the central bank's inflation target, η_{1t} , have a unit long-run impact on observed inflation, (ii) inflation expectations can deviate from the central bank's inflation target over a long period of time and (iii) observed inflation is a stationary AR process around the perceived inflation target. Note that equation (5) is broadly consistent with the idea advocated by, among others, Young et al. (1991), that in order to introduce enough smoothness in estimates of unobserved trend components, they are best modelled as an integrated random walk process. Although strictly speaking the data generating process for π_t^P is not allowed to be an integrated random walk process, as $\delta > 0$, π_t^P will exhibit a similar smoothness in response to monetary policy shocks provided that δ is sufficiently close to 0. A similar specification of the data generating process of inflation expectations can be found in Doménech and Gomez (2003).

2.3 Multivariate identification

The univariate model exhibits two main drawbacks. First, identification of shocks to the central bank's inflation target stems from the purely statistical restriction that these shocks should have a unit long-run impact on inflation. Second, intrinsic and extrinsic inflation

persistence cannot be disentangled. Therefore, we add data on the central bank's key interest rate and real output. We use a variant of the widely used macroeconomic model of Rudebusch and Svensson (1999) to (i) identify the central bank's inflation target from information contained in the central bank's key interest rate and (ii) to measure extrinsic inflation persistence in response to shocks to the output gap from information contained in real output. Therefore, the baseline specification in equations (1)-(4) is extended with the following equations:

$$i_t = \rho_2 i_{t-1} + (1 - \rho_2)(r_t^* + \pi_t^P) + \rho_1(\pi_{t-1} - \pi_t^T) + \varepsilon_{2t} \quad (6)$$

$$y_t^r = y_t^P + z_t \quad (7)$$

$$z_t = \beta_2 z_{t-1} + \beta_3 z_{t-2} - \beta_4 (i_{t-1} - \pi_{t-1}^P - r_{t-1}^*) + \varepsilon_{3t} \quad (8)$$

$$y_{t+1}^P = \lambda_{t+1} + y_t^P + \eta_{3t} \quad (9)$$

$$\lambda_{t+1} = \lambda_t + \eta_{4t} \quad (10)$$

$$r_{t+1}^* = \gamma \lambda_{t+1} + \tau_{t+1} \quad (11)$$

$$\tau_{t+1} = \theta \tau_t + \eta_{5t} \quad (12)$$

where ε_{2t} , ε_{3t} , η_{3t} , η_{4t} and η_{5t} are mutually independent zero mean white noise processes.

The interest rate rule in equation (6) infers on the stance of monetary policy through comparing the central bank's key nominal interest rate, i_t , with a measure for the neutral stance of monetary policy. Following Laubach and Williams (2003), this measure is assumed to be the natural short-run nominal interest rate ($r_t^* + \pi_t^P$), where r_t^* is the time-varying real short-term interest rate consistent with output equal to potential (cf. below). As the perceived inflation target π_t^P is the medium-run inflation anchor consistent with long-run inflation expectations, $r_t^* + \pi_t^P$ is the medium-run nominal interest rate anchor for monetary policy. The term $(\pi_{t-1} - \pi_t^T)$ captures the reaction of the central bank to deviations of inflation from its target, i.e. monetary authorities will increase the nominal interest rate i_t when observed inflation π_{t-1} lies above the inflation target π_t^T . The lagged interest rate i_{t-1} introduces a degree of nominal interest rate smoothing or policy inertia (Amato and Laubach, 1999; English et al., 2003; Erceg and Levin, 2003). We assume that the policy parameters ρ_1 and ρ_2 are time-invariant. Although Clarida et al. (1998) find that the policy parameters are unstable in a number of countries, this assumption is not in contradiction with their results. They estimate the parameters conditional on a constant inflation target, whereas we estimate the inflation target conditional on constant policy parameters. Both strategies are to a high degree observationally equivalent. The reason why we do so is that we are interested in the time-varying inflation target and less in the policy parameters. For examples of the same approach see e.g. Kozicki and Tinsley (2003) or Smets and Wouters

(2005).

The interest rate rule enables us to extract information on shifts in the monetary policy regime contained in the key nominal interest rate i_t . Figures 1 and 2 present data for key nominal interest rates and inflation in the euro area and the United States since 1970. For a given fully credible central bank inflation target, inflation and the key nominal interest rate i_t should, over an entire business cycle, move around a fixed point on a 45 degree line with an intercept equal to the equilibrium real interest rate. This 45 degree line corresponds to the sum of the natural real interest rate and the perceived inflation target π_t^P , that equals the credible central bank inflation target π_t^T . However, the seven year moving average line of the data, which approximately filters out business cycle fluctuations, shows that from the 1970s until now inflation and interest rates did not move around a fixed point. This suggests that there have been substantial shifts in the central bank's inflation target.

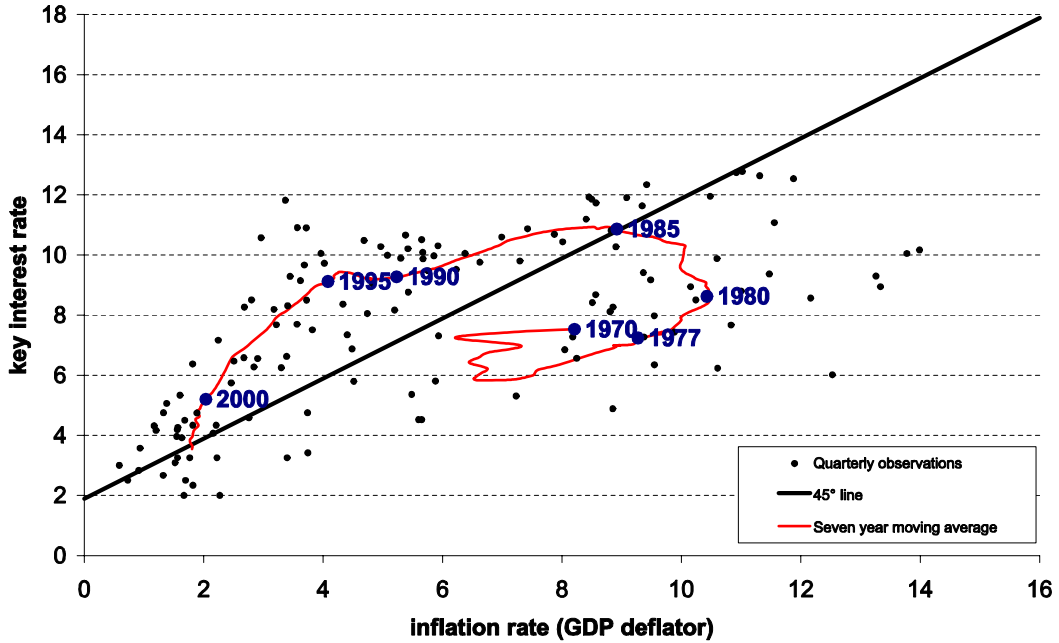


Figure 1: Shifts in the inflation target (euro area). Notes: a) The intercept is the mean of the real interest rate in the sample 1970Q2-2003Q4. b) As the sample begins in 1970Q2, the moving average will only start to contain seven years of data from 1977Q2. Therefore, the average is a slightly more volatile in the beginning of the sample.

The same figures also reveal to what extent the perceived inflation target differed from the central bank's inflation target at a certain point in time. Suppose we start from a point on the 45 degree line, e.g. a high inflation rate and a high key interest rate in the early 1980s. Now consider a central bank that wants to disinflate, i.e. the central bank reduces its target π_t^T . If the shift in π_t^T immediately feeds through into π_t^P , we would observe

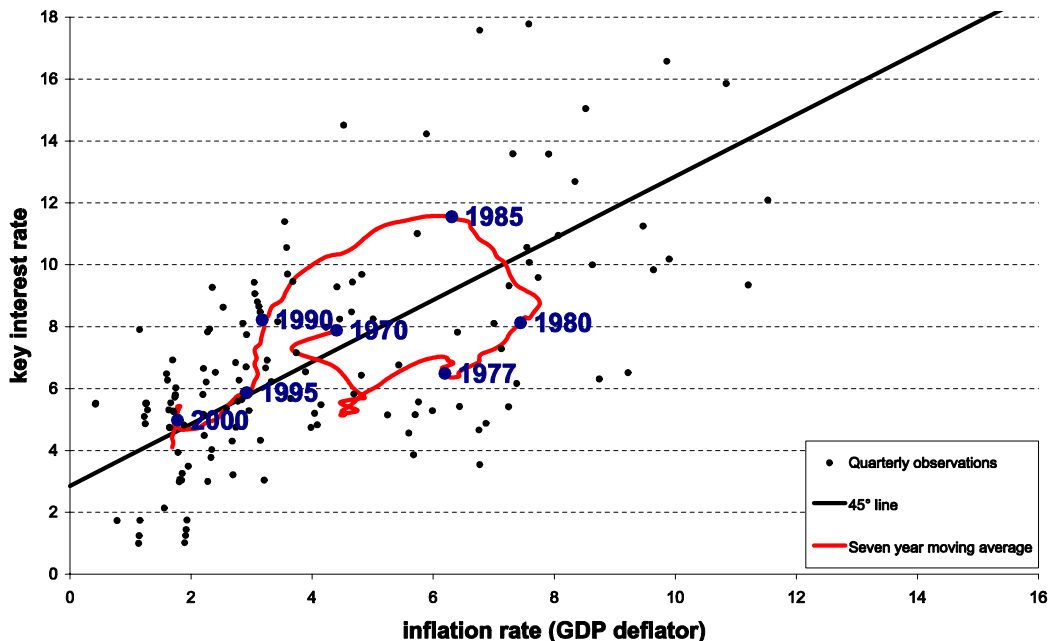


Figure 2: Shifts in the inflation target (United States). Notes: See figure 1.

a contemporaneous decrease in the key interest rate. Graphically, this would correspond to a downward shift *along* the 45 degree line. As this is neither the case for the United States nor for the euro area in most of the sample, this shows that changes in the central bank's inflation target are usually only slowly reflected in the perceived inflation target. The only time this observation seems not to hold is for the period between 1994 and today in the United States. It suggests that during the last decade, the Federal Reserve was able to disinflate in a credible way by about 2 percentage points⁶. Note that, as Laubach and Williams (2003) point out, shifts in the natural real rate of interest could mislead our judgement of the stance of monetary policy if we would assume that the natural rate remains constant. Time variation in the natural rate implies that the intercepts in Figures 1 and 2 are also time-varying. Still it is hard to believe that the natural rate of interest was persistently lower in the seventies than in the eighties and nineties, which lets us conclude that the interest rate rule indeed contains information about the timing and magnitude of shifts in the central bank's inflation target.

Equation (7) decomposes the log of real output y_t^r into potential output y_t^P and the output gap z_t . Equation (8) is an aggregate demand equation, relating the output gap z_t to

⁶This seems to be confirmed by narrative evidence. Goodfriend (2002) writes: "... in February 1994, the Fed started to announce its current intended federal funds rate target immediately after each FOMC meeting. This new practice made Fed policy more visible than ever. Every increase in the federal funds rate since then has attracted considerable attention."

its own lags and a term $(i_{t-1} - \pi_{t-1}^P - r_{t-1}^*)$ which captures monetary policy transmission. Following Harvey (1985), Stock and Watson (1998) and Laubach and Williams (2003), equations (9)-(10) model potential output as a random walk with drift, where the drift term λ_t varies over time according to a random walk process. The time-variation in λ_t allows for the possibility of permanent changes in the trend growth of real output, e.g. the productivity slowdown of the early 1970s.⁷

Laubach and Williams (2003) argue that the natural real rate of interest varies over time due to shifts in the trend growth of output and other factors such as households' rate of time preference. Therefore, equation (11) relates the real short-term interest rate r_t^* to the trend growth in potential output λ_t and a component τ_t that captures other determinants like time preferences. τ_t is assumed to be an AR process that, depending on the value for θ , can be either stationary or non-stationary.

Because we want to measure inflation persistence as the sum of the coefficients on the lagged inflation terms, the non-expectational autoregressive model presented above suits our purpose very well. In the case the economy is characterised by forward looking rational expectations, it can be considered as its reduced form representation. Rudebusch (2005), however, shows that in that case the reduced form representation of a simple forward looking monetary policy model would be subject to the Lucas critique. In this context Lansing and Trehan (2003) analytically show that the reduced form parameters depend on the policy parameters ρ_1 and ρ_2 . This is not relevant for our extension, though, as we model the economy in a reduced form around a time varying steady state inflation rate. The policy parameters ρ_1 and ρ_2 remain constant and therefore the reduced form parameters are not affected by policy changes.

3 Estimation methodology⁸

3.1 State space representation

The structural time series models outlined in section 2 both include a number of unobserved components $(\pi_t^P, \pi_t^T, \dots)$. In order to estimate these models, it is necessary to write them into state space form⁹. In a state space model, the development over time of the system under study is determined by an unobserved series of vectors $\alpha_1, \dots, \alpha_n$, which are associated with

⁷Note that the random walk in equation (10) implies that y_t^P , and therefore also y_t , is an I(2) process. This seems inconsistent with the empirical evidence from Dickey-Fuller (DF) unit root tests that real output is I(1). Stock and Watson (1998) argue, though, that when the variance of η_{4t} is small relative to the variance of η_{3t} , Δy_t^P has a moving average (MA) root close to unity. Schwert (1989) and Pantula (1991) show that the size of the standard DF unit root test is severely upwards biased in the presence of a large MA root. In this case, the standard DF unit root test is inappropriate to pick up a possible I(2) component in real output.

⁸The methodology outlined in this section was implemented using a set of GAUSS procedures. The code of these procedures is available from the authors on request.

⁹See e.g. Durbin and Koopman (2001) for an extensive overview of state space methods.

a series of observed vectors y_1, \dots, y_n . A general linear Gaussian state space model can be written in the following form:

$$y_t = Z\alpha_t + Ax_t + \varepsilon_t, \quad \varepsilon_t \sim N(0, H), \quad (13)$$

$$\alpha_{t+1} = T\alpha_t + R\eta_t, \quad \eta_t \sim N(0, Q), \quad t = 1, \dots, n, \quad (14)$$

where y_t is a $p \times 1$ vector of observed endogenous variables, modelled in the observation equation (13), x_t is a $k \times 1$ vector of observed exogenous variables and α_t is a $m \times 1$ vector of unobserved states, modelled in the state equation (14). The disturbances ε_t and η_t are assumed to be independent sequences of independent normal vectors. The matrices Z, A, T, R, H , and Q are parameter matrices.¹⁰

3.2 Kalman filter and smoother

Assuming that Z, A, T, R, H , and Q are known, the purpose of state space analysis is to infer the relevant properties of the α_t 's from the observations y_1, \dots, y_n and x_1, \dots, x_n . This can be done through the subsequent use of two recursions, i.e. the Kalman filter and the Kalman smoother. The objective of filtering is to obtain the distribution of α_t , for $t = 1, \dots, n$, conditional on Y_t and X_t , where $Y_t = \{y_1, \dots, y_t\}$ and $X_t = \{x_1, \dots, x_t\}$. In a linear Gaussian state space model, the distribution of α_t is entirely determined by the filtered state vector $a_t = E(\alpha_t | Y_t, X_t)$ and the filtered state variance matrix $P_t = Var(\alpha_t | Y_t, X_t)$. The (contemporaneous) Kalman filter algorithm (see e.g. Hamilton, 1994, or Durbin and Koopman, 2001) estimates a_t and P_t by updating, at time t , a_{t-1} and P_{t-1} using the new information contained in y_t and x_t . The Kalman filter recursion can be initialised by the assumption that $\alpha_1 \sim N(a_1, P_1)$. In practice, a_1 and P_1 are generally not known though. Therefore, we assume that the distribution of the initial state vector α_1 is

$$\alpha_1 = V\Gamma + R_0\eta_0, \quad \eta_0 \sim N(0, Q_0), \quad \Gamma \sim N(0, \kappa I_r), \quad (15)$$

where the $m \times r$ matrix V and the $m \times (m - r)$ matrix R_0 are selection matrices composed of columns of the identity matrix I_m . They are defined so that, when taken together, their columns constitute all the columns of I_m and $V'R_0 = 0$. The matrix Q_0 is assumed to be positive definite and known. The $r \times 1$ vector Γ is a vector of unknown random quantities, referred to as the diffuse vector as we let $\kappa \rightarrow \infty$. This leads to

$$\alpha_1 \sim N(0, P_1), \quad P_1 = \kappa P_\infty + P_*, \quad (16)$$

where $P_\infty = VV'$ and $P_* = R_0Q_0R_0'$. The Kalman filter is modified to account for this diffuse initialisation implied by letting $\kappa \rightarrow \infty$ by using the exact initial Kalman filter

¹⁰The exact elements of the vectors y_t, x_t and α_t and the matrices Z, A, T, R, H , and Q for both the univariate and the multivariate model are specified in appendix 2.

introduced by Ansley and Kohn (1985) and further developed by Koopman (1997) and Koopman and Durbin (2003).

Subsequently, the Kalman smoother algorithm is used to estimate the distribution of α_t , for $t = 1, \dots, n$, conditional on Y_n and X_n , where $Y_n = \{y_1, \dots, y_n\}$ and $X_n = \{x_1, \dots, x_n\}$. Thus, the smoothed state vector $\hat{\alpha}_t = E(\alpha_t | Y_n, X_n)$ and the smoothed state variance matrix $\hat{P}_t = Var(\alpha_t | Y_n, X_n)$ are estimated using all the observations for $t = 1, \dots, n$. In order to account for the diffuse initialisation of α_1 , we use the exact initial state smoothing algorithm suggested by Koopman and Durbin (2003).

Given the complexity of the multivariate model, we do not use the entire observational vector y_t in the filtering and smoothing algorithm. Following Koopman and Durbin (2000), the elements of y_t are introduced into the filtering and smoothing algorithms one at a time, i.e. the multivariate analysis is converted into a univariate analysis. As the data can then be analysed in univariate form, this approach offers significant computational gains, particularly for the treatment of initialisation by diffuse priors.

3.3 Bayesian analysis

The filtering and smoothing algorithms both require that Z , A , T , R , H , and Q are known. In practice, these matrices generally depend on elements of an unknown parameter vector ψ . One possible approach is to derive, from the exact Kalman filter, the diffuse loglikelihood function for the model under study (see de Jong, 1991; Koopman and Durbin, 2000; Durbin and Koopman, 2001) and replace the unknown parameter vector ψ by its maximum likelihood estimate. This is not the approach pursued in this paper. First, given the fairly large number of unknown parameters, especially in the multivariate model, the numerical optimisation of the sample loglikelihood function becomes quite cumbersome. Second, most of the unknown parameters in ψ have been estimated in the past for different countries and samples. Therefore, we analyse the state space models from a Bayesian point of view, i.e. we treat ψ as a random parameter vector with a known prior density $p(\psi)$ and estimate the posterior densities $p(\psi | y, x)$ for the parameter vector ψ and $p(\hat{\alpha}_t | y, x)$ for the smoothed state vector $\hat{\alpha}_t$, where y and x denote the stacked vectors $(y'_1, \dots, y'_n)'$ and $(x'_1, \dots, x'_n)'$ respectively, by combining information contained in $p(\psi)$ and the sample data. Essentially, this boils down to calculating the posterior mean \bar{g} :

$$\bar{g} = E[g(\psi) | y, x] = \int g(\psi) p(\psi | y, x) d\psi \quad (17)$$

where g is a function which expresses the moments of the posterior densities $p(\psi | y, x)$ and $p(\hat{\alpha}_t | y, x)$ in terms of the parameter vector ψ .

As $p(\psi | y, x)$ is not a density with known analytical properties, equation (17) is evaluated using importance sampling. The idea behind this simulation approach is to obtain a sequence $\psi^{(1)}, \dots, \psi^{(n)}$ of n random vectors from a density $g(\psi | y, x)$ which is as close to $p(\psi | y, x)$ as possible. Such a density is known as an importance density for $p(\psi | y, x)$. As an importance density $g(\psi | y, x)$, we take a large sample normal approximation to $p(\psi | y, x)$, i.e.

$$g(\psi | y, x) = N(\widehat{\psi}, \widehat{\Omega}) \quad (18)$$

where $\widehat{\psi}$ is the mode of $p(\psi | y, x)$ obtained from maximising

$$\log p(\psi | y, x) = \log p(y | \psi) + \log p(\psi) - \log p(y) \quad (19)$$

with respect to $\widehat{\psi}$ and where $\widehat{\Omega}$ denotes the variance-covariance matrix of $\widehat{\psi}$ and $p(y | \psi)$ is given by the likelihood function derived from the exact Kalman filter. Note that we do not need to calculate $p(y)$ as it does not depend on ψ .

By Bayes' theorem and after some manipulations, equation (17) can be rewritten as

$$\bar{g} = \frac{\int g(\psi) z^g(\psi, y, x) g(\psi | y, x) d\psi}{\int z^g(\psi, y, x) g(\psi | y, x) d\psi} \quad (20)$$

with

$$z^g(\psi, y, x) = \frac{p(\psi) p(y | \psi)}{g(\psi | y, x)} \quad (21)$$

Using a sample of n independent draws of ψ , denoted by $\psi^{(i)}$, from $g(\psi | y, x)$, an estimate \bar{g}_n of \bar{g} can be obtained as

$$\bar{g}_n = \left(\sum_{i=1}^n g(\psi^{(i)}) z^g(\psi^{(i)}, y, x) \right) / \left(\sum_{i=1}^n z^g(\psi^{(i)}, y, x) \right) \quad (22)$$

Geweke (1989) shows that if $g(\psi | y, x)$ is proportional to $p(\psi | y, x)$, and under a number of weak regularity conditions, \bar{g}_n will be a consistent estimate of \bar{g} for $n \rightarrow \infty$. In drawing from $g(\psi | y, x)$, efficiency was improved by the use of antithetic variables, i.e. for each $\psi^{(i)}$ we take another value $\tilde{\psi}^{(i)} = 2\widehat{\psi} - \psi^{(i)}$, which is equiprobable with $\psi^{(i)}$. This results in a simulation sample that is balanced for location (Durbin and Koopman, 2001).

4 Estimation results

We use quarterly data for the euro area and the United States from 1970Q1 to 2003Q4. The inflation series π_t is the annualised first difference of the log of the seasonally adjusted GDP deflator. For the interest rate, i_t , we use the annualised central bank key interest rate. This interest rate should be most appropriate to infer changes in the central bank's behaviour.

Real output, y_t^r , is measured as the log of seasonally adjusted GDP at constant prices. See appendix 3 for a more detailed data description. Given that we work with quarterly data, the number of AR terms in equation (3) is set equal to 4, i.e. $q = 4$.

4.1 Prior information

Prior information about the unknown parameter vector ψ is included in the analysis through the prior density $p(\psi)$. Where possible, prior information is taken from the literature¹¹. If no adequate information is available, we leave considerable uncertainty around the chosen priors. The prior distribution is assumed to be Gaussian for all elements in ψ , except for the variance parameters which are assumed to be gamma distributed.

Univariate model The priors for the AR coefficients φ_i in the univariate model are chosen from studies allowing for a break in the mean of the inflation rate. Levin and Piger (2004) for instance find a value of 0.36 for the sum of the AR coefficients of the United States GDP deflator. Gadzinski and Orlandi (2004) find a somewhat higher figure of 0.6 for the euro area. Finally we choose a prior for the sum of the AR coefficients of 0.4 for both the United States and the euro area. Our prior for δ is 0.15, which is the average of the parameter values determining signal extraction in Erceg and Levin (2003) and Kozicki and Tinsley (2003), or sticky information in Mankiw and Reis (2002). The prior for the variance of the inflation target shocks $\sigma_{\eta_1}^2$ corresponds, on average, to what Kozicki and Tinsley (2003) and Smets and Wouters (2005) find. As at this stage we want to stay quite agnostic about the time series characteristics of inflation, we leave the uncertainty around the priors high and take the same priors for both the euro area and the United States.

Multivariate model The priors for the multivariate model come from previous studies estimating variants of the model of Rudebusch and Svensson (1999) as well as the posterior distribution of the univariate model. As a prior for the AR coefficients we chose the posterior means of the univariate model for the euro area and the United States, allowing for more uncertainty than the univariate posterior distributions suggest. The priors for δ , $\sigma_{\varepsilon_1}^2$ and $\sigma_{\eta_1}^2$ also correspond to the posterior means of the univariate model. For the impact of the lagged output gap on inflation we choose a value of 0.2. The AR coefficients of the output gap equation are chosen in order to generate a hump-shaped response of output in reaction to a shock. This feature is often found in previous empirical studies (Gerlach and Smets, 1999; Rudebusch and Svensson, 1999; Rudebusch, 2005; Laubach and Williams, 2003). The parameter value for ρ_2 assumes considerable interest rate smoothing (Smets and

¹¹References to the source of prior information for the individual elements of ψ can be found in Tables 1-4.

Table 1: Parameter estimates univariate model (euro area; 1971Q2:2003Q4)^a

	Prior reference(s) ^b	Prior distribution ^c			Posterior distribution		
		5 p.c.	Mean	95 p.c.	5 p.c.	Mean	95 p.c.
φ_1	-	0.04	0.20	0.36	0.14	0.25	0.36
φ_2	-	-0.06	0.10	0.26	-0.00	0.11	0.22
φ_3	-	0.01	0.05	0.09	-0.01	0.03	0.07
φ_4	-	0.01	0.05	0.09	0.02	0.06	0.10
$\sum_{i=1}^4 \varphi_i$	[19],[32]	0.16	0.40	0.64	0.29	0.45	0.61
δ	[16],[29],[33]	0.07	0.15	0.23	0.14	0.20	0.26
$\sigma_{\varepsilon_1}^2$	-	0.35	1.30	2.70	1.40	1.72	2.12
$\sigma_{\eta_1}^2$	[29],[43]	0.01	0.12	0.36	0.10	0.20	0.41

Notes: ^a All variances are expressed at annual rates.

^b The numbers refer to the numbers in the list of references.

^c The prior distribution is assumed to be Gaussian for all elements in ψ , except for the variance parameters which are assumed to be gamma distributed.

Wouters, 2005). The parameter values for ρ_1 and ρ_2 are chosen so that the Taylor (1993) principle $\left(1 + \frac{\rho_1}{1-\rho_2} = 1.5 > 1\right)$ holds for deviations of π_t^P from π_t^T . The central bank reacts less vigorously $\left(\frac{\rho_1}{1-\rho_2} = 0.5\right)$ in response to deviations of π_t from π_t^T . This is consistent with the view that an inflation-targeting central bank should only stabilise inflation in the medium run and pay less attention to short-term deviations.

4.2 Posterior distributions

In this section we present estimates of the posterior mean $\bar{\psi} = E[\psi | y, x]$ of the parameter vector ψ and the posterior mean $\bar{\alpha}_t = E[\hat{\alpha}_t | y, x]$ of the smoothed state vector $\hat{\alpha}_t$. An estimate $\tilde{\psi}$ of $\bar{\psi}$ is obtained by setting $g(\psi^{(i)}) = \psi^{(i)}$ in equation (22) and taking $\tilde{\psi} = \bar{g}_n$. An estimate $\tilde{\alpha}_t$ of $\bar{\alpha}_t$ is obtained by setting $g(\psi^{(i)}) = \hat{\alpha}_t^{(i)}$ in equation (22) and taking $\tilde{\alpha}_t = \bar{g}_n$, where $\hat{\alpha}_t^{(i)}$ is the smoothed state vector obtained from the Kalman smoother using the parameter vector $\psi^{(i)}$.

We also present the 5th and 95th percentiles of the posterior densities $p(\psi | y, x)$ and $p(\hat{\alpha}_t | y, x)$. Let $F(\psi_j | y, x) = \Pr(\psi_j^{(i)} \leq \psi_j)$ with ψ_j denoting the j -th element in ψ . An estimate $\tilde{F}(\psi_j | y, x)$ of $F(\psi_j | y, x)$ is obtained by setting $g(\psi^{(i)}) = I_j(\psi_j^{(i)})$ in equation (22) and taking $\tilde{F}(\psi_j | y, x) = \bar{g}_n$, where $I_j(\psi_j^{(i)})$ is an indicator function which equals one if $\psi_j^{(i)} \leq \psi_j$ and zero otherwise. An estimate $\tilde{\psi}_j^{5\%}$ of the 5th percentile of the posterior density $p(\psi | y, x)$ is chosen such that $\tilde{F}(\psi_j^{5\%} | y, x) = 0.05$. An estimate $\tilde{\alpha}_{j,t}^{5\%}$ of the 5th percentile of the j th element of the posterior density $p(\hat{\alpha}_t | y, x)$ is obtained by setting $g(\psi^{(i)}) = \hat{\alpha}_{j,t}^{(i)} - 1.645\sqrt{\hat{P}_{j,t}^{(i)}}$ in equation (22) and taking $\tilde{\alpha}_{j,t}^{5\%} = \bar{g}_n$, where $\hat{\alpha}_{j,t}^{(i)}$ denotes the j -th element in $\hat{\alpha}_t^{(i)}$ and $\hat{P}_{j,t}^{(i)}$ is the (j, j) th element of the smoothed state variance matrix $\hat{P}_t^{(i)}$ obtained using the parameter vector $\psi^{(i)}$. The 95th percentiles are constructed in a similar way.

Table 2: Parameter estimates multivariate model (euro area; 1971Q2:2003Q4)^a

	Prior reference(s) ^b	Prior distribution ^c			Posterior distribution		
		5 p.c.	Mean	95 p.c.	5 p.c.	Mean	95 p.c.
φ_1	univariate euro area	0.09	0.25	0.41	0.17	0.27	0.38
φ_2	univariate euro area	-0.06	0.11	0.27	0.01	0.11	0.21
φ_3	univariate euro area	-0.13	0.03	0.20	-0.17	-0.07	0.03
φ_4	univariate euro area	-0.11	0.06	0.22	0.06	0.16	0.26
$\sum_{i=1}^4 \varphi_i$	univariate euro area	0.12	0.45	0.78	0.28	0.47	0.66
δ	univariate euro area	0.03	0.20	0.36	0.14	0.26	0.38
β_1	[40],[41],[21]	0.18	0.20	0.22	0.18	0.20	0.22
β_2	[40],[41],[21]	1.32	1.35	1.38	1.33	1.36	1.40
β_3	[40],[41],[21]	-0.50	-0.47	-0.44	-0.48	-0.45	-0.42
β_4	[40],[41],[21]	-0.01	0.15	0.31	0.10	0.15	0.21
ρ_1	[45]	0.02	0.05	0.08	0.02	0.04	0.06
ρ_2	[45],[43]	0.87	0.90	0.93	0.87	0.90	0.92
γ	[31]	0.92	1.00	1.08	0.91	0.99	1.07
θ	[31]	0.95	0.97	0.99	0.95	0.97	0.99
$\sigma_{\varepsilon_1}^2$	univariate euro area	0.47	1.72	3.58	1.30	1.59	1.96
$\sigma_{\varepsilon_2}^2$	-	0.21	0.30	0.41	0.25	0.30	0.36
$\sigma_{\varepsilon_3}^2$	[31]	0.11	0.16	0.22	0.08	0.11	0.15
$\sigma_{\eta_1}^2$	univariate euro area	0.05	0.20	0.42	0.07	0.15	0.30
$\sigma_{\eta_2}^2$	-	$3.e-5$	$1.e-4$	$2.e-4$	$1.e-5$	$5.e-5$	$2.e-4$
$\sigma_{\eta_3}^2$	[31]	4.07	5.86	7.88	2.40	3.04	4.16
$\sigma_{\eta_4}^2$	[31]	0.01	0.01	0.01	0.01	0.01	0.01
$\sigma_{\eta_5}^2$	[31]	0.07	0.10	0.14	0.07	0.11	0.14

Notes: see table 1.

4.2.1 Posterior distribution of the parameters

Tables 1-4 present the posterior mean and the 5th and 95th percentile of the posterior distribution of ψ for the euro area and the United States for both the univariate and multivariate model. Two important conclusions stand out. First, in the univariate model the combination¹² of intrinsic and extrinsic inflation persistence, measured as $\sum_{i=1}^q \varphi_i$, amounts to 0.45 for the euro area and 0.67 for the United States. This is considerably lower than estimates from standard AR time series models. The multivariate intrinsic inflation persistence estimates amount to 0.48 and 0.80 for the euro area and the United States, and are in line with the results of the univariate specification. In the case of the United States, intrinsic inflation persistence is somewhat higher than in the euro area. Note that this result is consistent with Galí et al. (2001), who for the United States also find a relatively higher degree of backward-lookingness compared to the euro area. Second, expectations-based persistence, measured by $(1 - \delta)$, is at least as high or higher than intrinsic inflation persistence, i.e. higher than 0.75 for both economies across the different models. The persistence in the

¹²Note that since we can not disentangle intrinsic from extrinsic persistence in the univariate model, the AR coefficients measure a combination of both.

Table 3: Parameter estimates univariate model (United States; 1971Q2:2003Q4)^a

	Prior reference(s) ^b	Prior distribution ^c			Posterior distribution		
		5 p.c.	Mean	95 p.c.	5 p.c.	Mean	95 p.c.
φ_1	-	0.04	0.20	0.36	0.24	0.36	0.50
φ_2	-	-0.06	0.10	0.26	0.07	0.19	0.31
φ_3	-	0.01	0.05	0.09	0.02	0.06	0.10
φ_4	-	0.01	0.05	0.09	0.02	0.06	0.10
$\sum_{i=1}^4 \varphi_i$	[19],[32]	0.16	0.40	0.64	0.47	0.67	0.87
δ	[16],[29],[33]	0.07	0.15	0.23	0.11	0.18	0.26
$\sigma_{\varepsilon_1}^2$	-	0.36	1.30	2.68	1.10	1.36	1.68
$\sigma_{\eta_1}^2$	[29],[43]	0.01	0.12	0.36	0.03	0.13	0.38

Notes: see table 1.

Table 4: Parameter estimates multivariate model (United States; 1971Q2:2003Q4)^a

	Prior reference(s) ^b	Prior distribution ^c			Posterior distribution		
		5 p.c.	Mean	95 p.c.	5 p.c.	Mean	95 p.c.
φ_1	univariate US	0.20	0.36	0.53	0.27	0.36	0.46
φ_2	univariate US	0.02	0.19	0.35	0.08	0.17	0.25
φ_3	univariate US	-0.10	0.06	0.22	0.04	0.13	0.22
φ_4	univariate US	-0.11	0.06	0.22	0.06	0.13	0.21
$\sum_{i=1}^4 \varphi_i$	univariate US	0.34	0.67	1.00	0.68	0.79	0.91
δ	univariate US	0.02	0.18	0.35	0.07	0.21	0.35
β_1	[40],[41],[21]	0.18	0.20	0.22	0.19	0.20	0.22
β_2	[40],[41],[21]	1.32	1.35	1.38	1.33	1.36	1.39
β_3	[40],[41],[21]	-0.50	-0.47	-0.44	-0.48	-0.46	-0.43
β_4	[40],[41],[21]	-0.01	0.15	0.31	0.11	0.15	0.22
ρ_1	[45]	0.02	0.05	0.08	0.03	0.05	0.07
ρ_2	[45], [43]	0.87	0.90	0.93	0.85	0.88	0.91
γ	[31]	0.92	1.00	1.08	0.99	1.00	1.01
θ	[31]	0.95	0.97	0.99	0.95	0.97	0.98
$\sigma_{\varepsilon_1}^2$	univariate US	0.37	1.36	2.83	1.07	1.19	1.35
$\sigma_{\varepsilon_2}^2$	-	0.21	0.30	0.41	0.61	0.69	0.79
$\sigma_{\varepsilon_3}^2$	[31]	0.11	0.16	0.22	0.11	0.14	0.17
$\sigma_{\eta_1}^2$	univariate US	0.03	0.13	0.26	0.07	0.09	0.11
$\sigma_{\eta_2}^2$	-	7.e-5	1.e-4	1.e-4	7.e-5	1.e-4	1.e-4
$\sigma_{\eta_3}^2$	[31]	4.07	5.86	7.88	4.40	5.28	6.39
$\sigma_{\eta_4}^2$	[31]	4.e-3	0.01	0.02	6.e-3	8.e-3	9.e-3
$\sigma_{\eta_5}^2$	[31]	0.01	0.10	0.31	0.29	0.36	0.44

Notes: see table 1.

output gap, measured by the sum of β_2 and β_3 , amounts to at least 0.9. This implies considerable extrinsic inflation persistence.

4.2.2 Posterior distribution of the states

Figures 3, 4, 5 and 6 show the dynamics of the inflation rate together with the central bank's inflation target and the perceived inflation target. These figures reveal considerable variation in the central bank's inflation target in both the euro area and the United States. The dynamics of the perceived inflation target show that inflation expectations adjust smoothly in response to shifts in the central bank's inflation target. The central bank's inflation target and the perceived inflation target identified in the univariate model are very similar to the ones identified in the multivariate model. This confirms that the permanent shifts in the perceived inflation target identified in the univariate model are indeed driven by shifts in the central bank's inflation target.

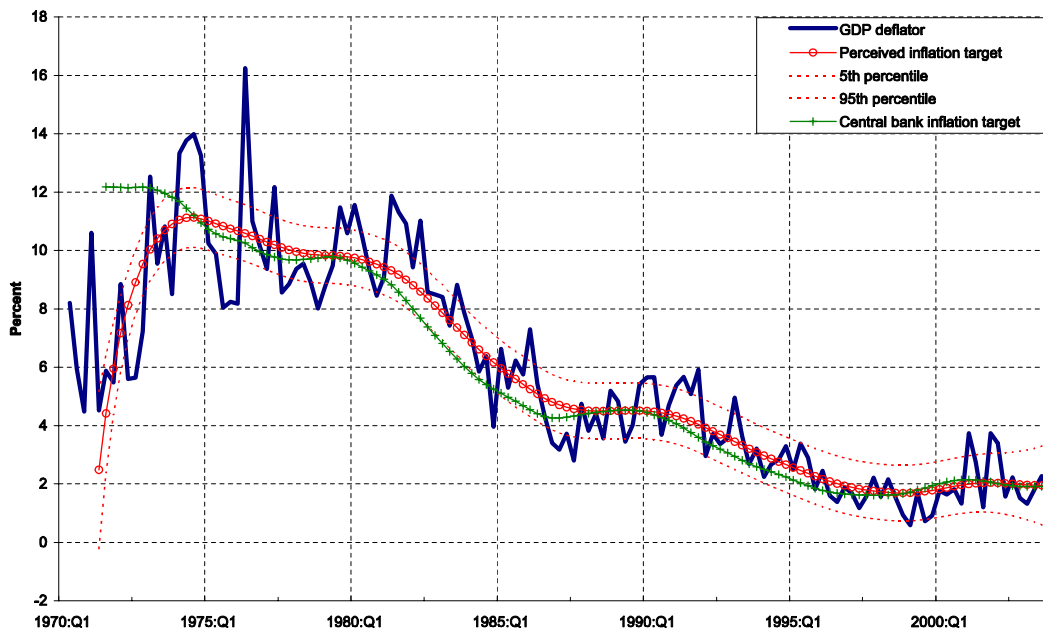


Figure 3: Smoothed univariate states (euro area)

The timing of the shifts in the central bank's inflation target seems to be in line with common knowledge about the historical conduct of monetary policy. A first disinflationary period is present in the early 1980s. In the United States, the univariately estimated inflation target decreased from 7 p.c. in the late 1970s to about 3 p.c. in the mid 1980s. This is matched by the disinflationary policy of Paul Volcker, who was appointed president of the Federal Reserve in 1979. A similar decrease, from about 10 p.c. to about 5 p.c., is

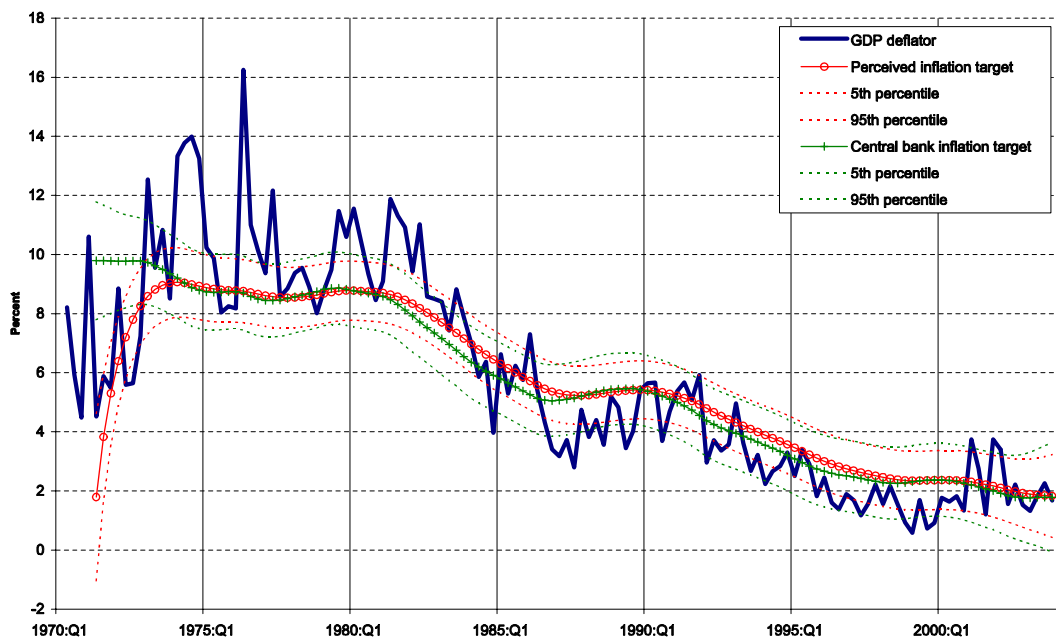


Figure 4: Smoothed multivariate states (euro area)

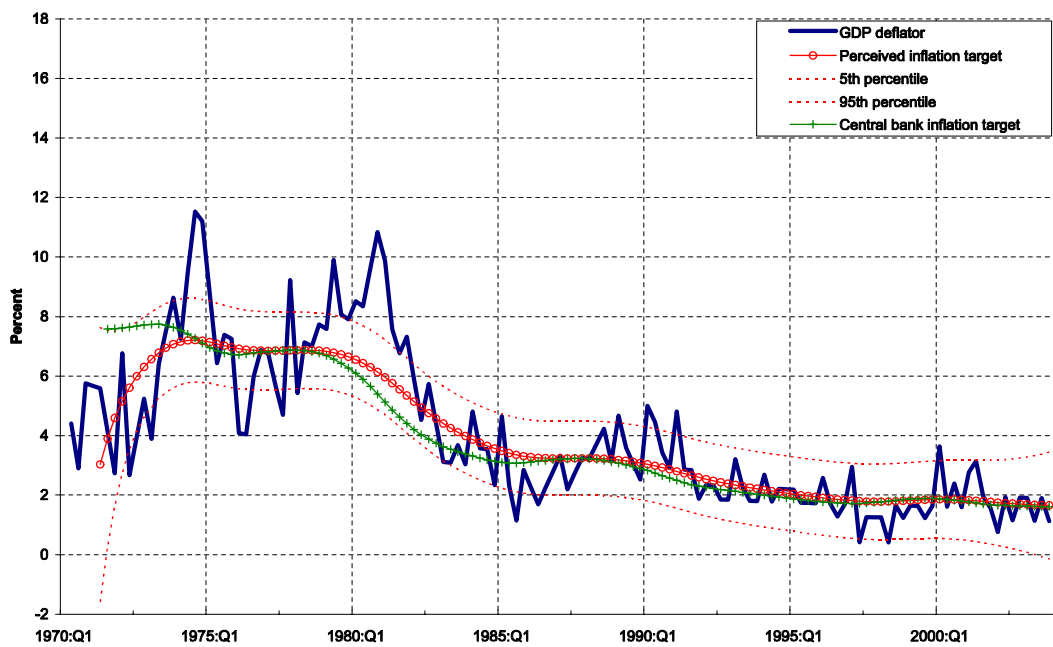


Figure 5: Smoothed univariate states (United States)

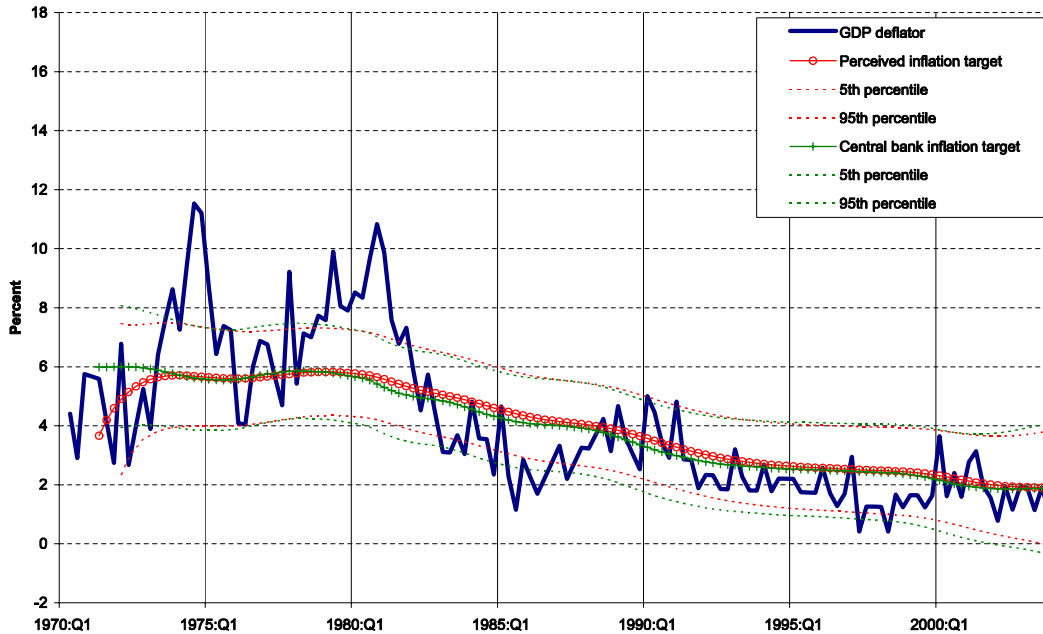


Figure 6: Smoothed multivariate states (United States)

observed for the euro area. This decrease is more difficult to match with narrative evidence, though, as no unified monetary policy existed before 1999. Still, several future euro area member countries (e.g. Austria, Belgium, France, The Netherlands) were disinflating in the beginning of the eighties. For the euro area, a second disinflationary period is also present in the beginning of the nineties. Other future euro area member countries (e.g. Greece, Italy, Portugal, Spain) were then disinflating in order to comply with the Maastricht criteria. In the United States there seems to have been a somewhat less pronounced decrease in the central bank's inflation target over that period.

In an inflation targeting framework, where the short-term interest rate is the primary policy instrument, the natural interest rate provides a metric for the stance of monetary policy. The natural rate of interest varies over time due to shifts in the trend growth of output and other factors such as households' rate of time preference. We took these variations explicitly into account in our model, so that when estimating shifts in the central banks' inflation target the results would not be misleading due the shifts in the benchmark, namely the natural interest rate. From figures 7 and 8 one can see that during the nineties a decrease in the trend growth rate of the euro area has driven the natural real interest rate, whereas this does not seem to be the case for the United States. In addition, especially variations in time preferences have driven the natural real interest rate over the last three decades in both the United States and the euro area.

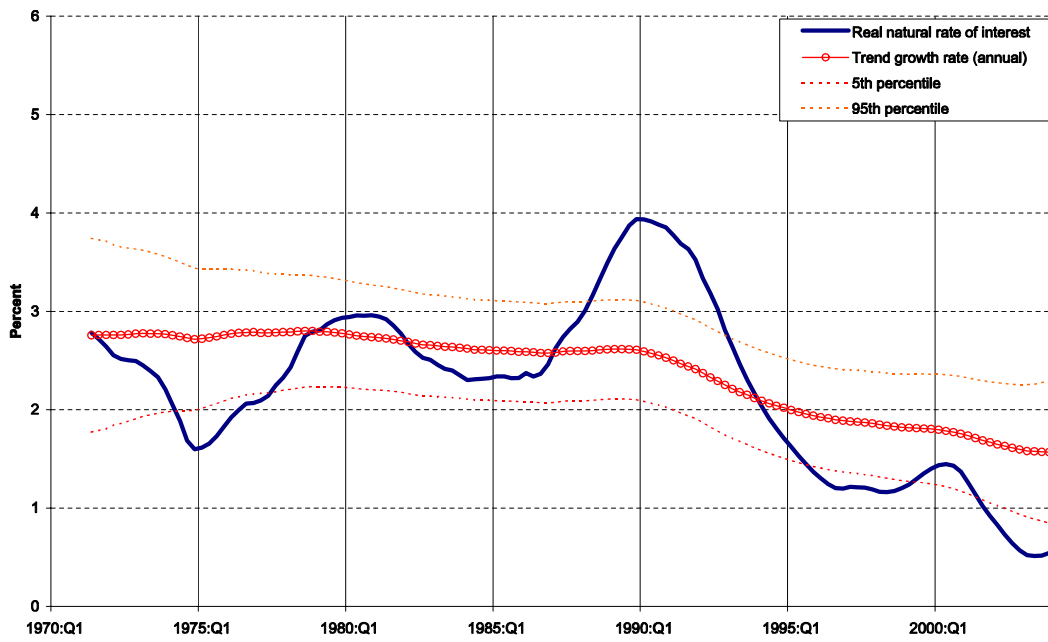


Figure 7: Smoothed multivariate states (euro area)

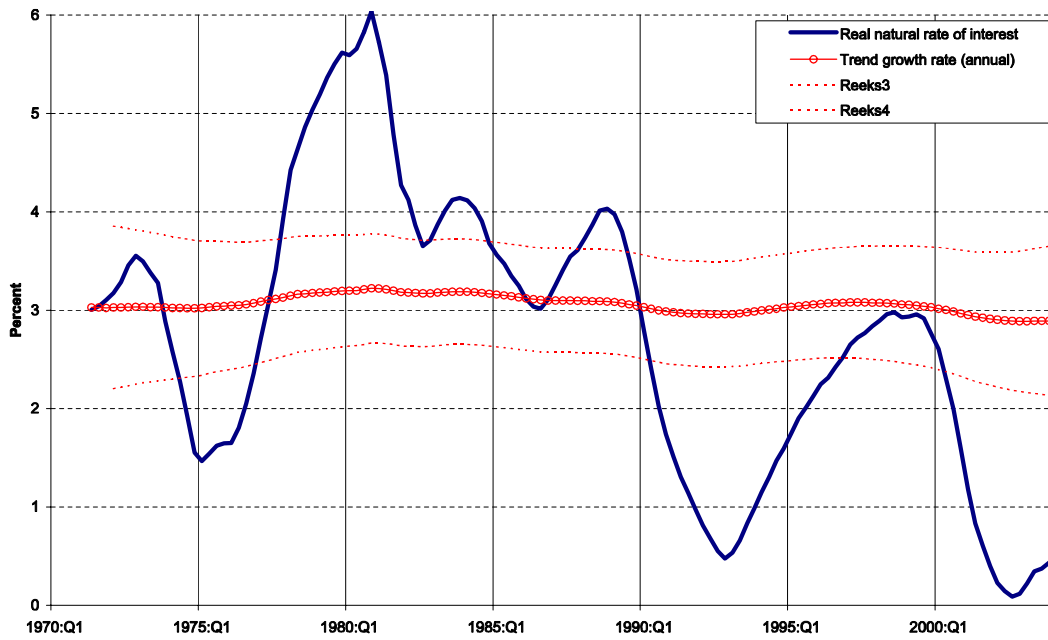


Figure 8: Smoothed multivariate states (United States)

Table 5: Half lives of inflation (quarters)

	Euro area	United States
Temporary inflation shock	1	1
Perceived inflation target shock	8	16
Output gap shock	13	18
Central bank target shock	∞	∞

4.2.3 Half-life and impulse response analysis

An alternative way of analysing inflation persistence in the multivariate model looks at the impulse response functions and the so-called half-life of different shocks to inflation. The latter counts the number of periods for which the effect of a shock to inflation remains above half its initial impact. An important difference with the point estimates of the respective AR coefficients is that with this persistence measure different sources of persistence in response to a shock can reinforce each other. The inflation dynamics in response to a shock will thus not only depend on the persistence in the variable that was shocked, but will also depend on the interaction with other variables. Therefore, also the persistence in the latter will play a role.

Table 5 reports half lives for four shocks to inflation considered in the multivariate model. The half life of a temporary shock (ε_{1t}) is only one quarter. For a shock to the perceived inflation target (η_{2t}), the half life is 8 and 16 quarters in the euro area and the United States respectively. For a shock to the output gap (ε_{3t}), the half life even amounts to 13 quarters in the euro area and to 18 quarters the United States. Finally, a shock to the inflation target (η_{1t}) is permanent and therefore its half life is equal to infinity. The latter result is obtained by construction because we assume a random walk process for the shifts in the central bank's inflation target. Still, it shows that ignoring a component with an infinite half life must create a considerable bias in the estimates of the other kinds of persistence.

A similar lesson can be learnt from the impulse response functions in response to a unit shock in Figures 9-10. Both in the euro area and in the United States a shift in the central bank's inflation target (η_{1t}) has a permanent impact on inflation. Still, it takes various periods before the inflation rate stabilises at the new target. This is to a big extent due to considerable expectations-based persistence that creates persistent deviations of the perceived inflation target from the central bank's inflation target. In case of a shock to the output gap (ε_{3t}) or the perceived inflation target (η_{2t}), the response of inflation seems to be characterised by a similar degree of persistence. In case of a temporary shock to inflation (ε_{1t}), the convergence to the target goes much faster. Intrinsic and expectations-based persistence measured according to the sum of the AR coefficients are not statistically significantly different. Still, due to the persistence in the reaction of the central bank and

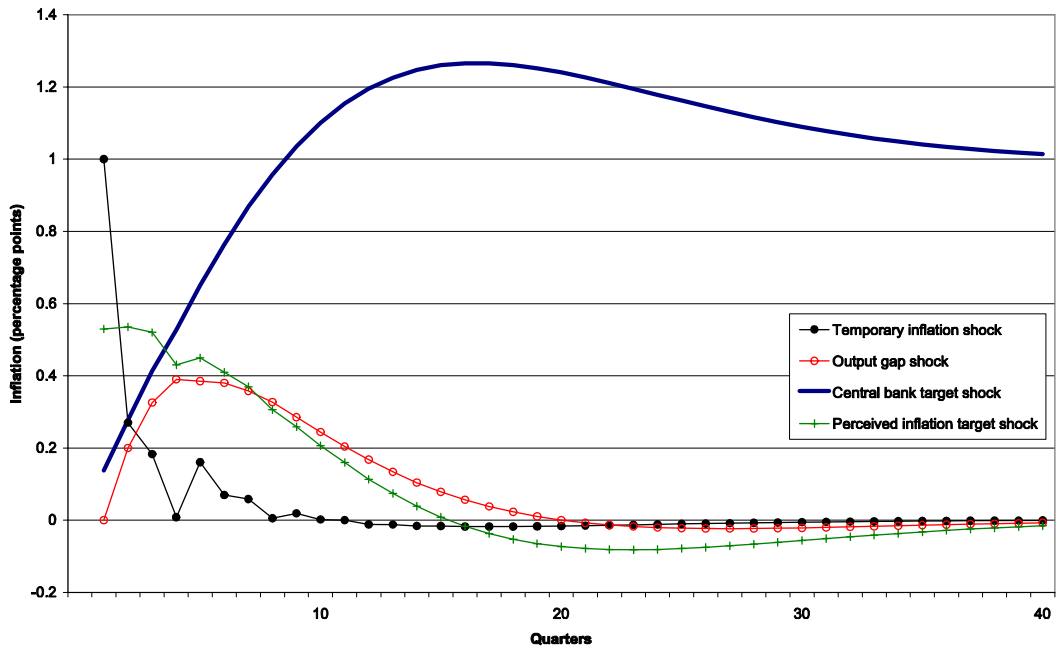


Figure 9: Impulse responses (euro area)

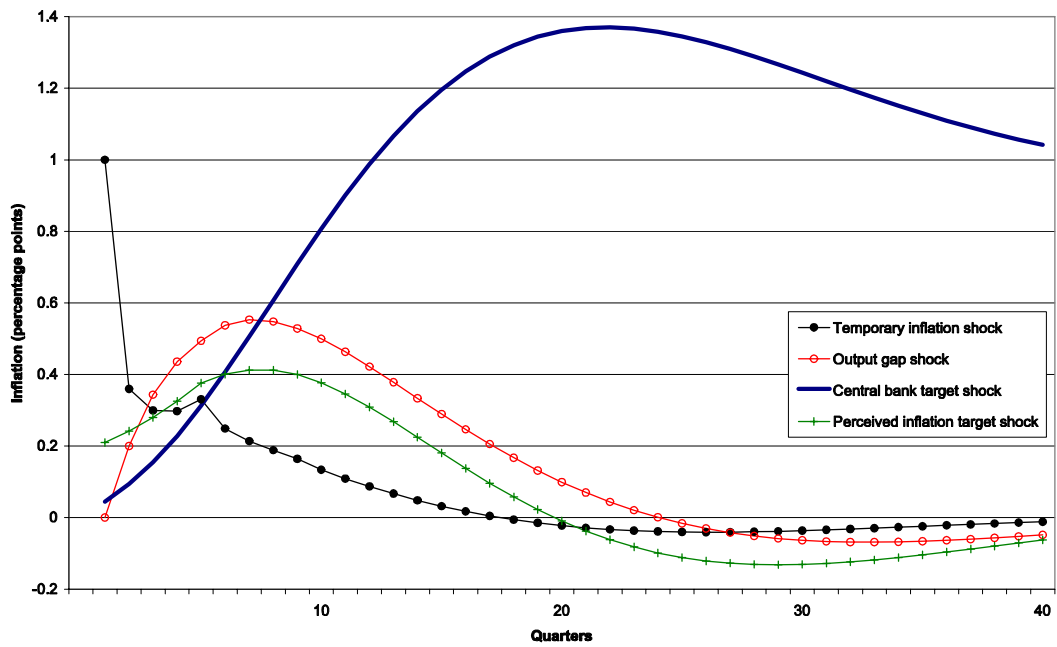


Figure 10: Impulse responses (United States)

the output gap, the number of quarters that inflation is affected by a difference between the perceived and the central bank's inflation target can be considerably higher.

The impulse response functions show that the central bank can play an important role in the adjustment process. The speed and the extent to which the central bank adjusts its policy instrument will determine the speed at which inflation returns to its target level. In case of a difference between the perceived inflation target and the central bank's inflation target we modelled the reaction function of the central bank such that it responds more than in case of deviations from the inflation target caused by other shocks (cf. higher). Still, the interest rate smoothing is the same for all deviations, implying that the speed - and not the extent - at which the central bank adjusts its policy instrument is the same. To accelerate the adjustment to the inflation target a central bank could react more vigorously to a shock to the output gap or the perceived inflation target compared to a temporary shock to inflation.

5 Conclusions

This paper aims at measuring different sorts of inflation persistence, i.e. the sluggish response of inflation in response to different macroeconomic shocks. In the literature post war inflation persistence measures are often found to be close to that of a random walk. The main point stressed in this paper is that these unconditional estimates are hard to interpret as the data generating process of inflation can be decomposed in a number of distinct components, each of them exhibiting its own degree of persistence. First, shifts in the central bank's inflation target can induce permanent shifts in the mean inflation rate. Second, imperfect or sticky information implies that private agents have to learn about the true central bank's inflation target. As such, the inflation target perceived by private agents can persistently differ from the true central bank's inflation target. Third, persistence in the various determinants of inflation also introduces persistence in the observed inflation rate. As the first three sources of persistence typically show relatively high inertia, ignoring one of them might create an upward bias in measured intrinsic inflation persistence.

Therefore, we measure inflation persistence in a structural time series model which explicitly models the various components driving inflation. We pursue both a univariate and a multivariate approach. Extracting information from the central bank's key interest rate we find confirmation that shifts in the central bank's inflation target induce a non-stationary component in the inflation rate. In addition, slow adjustment of inflation expectations in response to changes in the central bank's inflation target and persistence of shocks hitting inflation are important factors determining the observed inflation persistence. These com-

ponents explain a large fraction of the high degree of persistence observed in the post-WW II inflation rate. Taking these components into account, intrinsic inflation persistence is found to be lower than the persistence of a random walk, i.e. the sum of the AR coefficients in the data generating process of inflation is estimated to range from 0.45 in the euro area to 0.8 in the United States.

The implications for monetary policy are as follows. Our evidence indicates that in a stable inflation regime, where the central bank's inflation target does not change and where the public perception about this inflation target is well anchored, inflation persistence is relatively lower. The results also imply that in the case monetary policy would again give rise to unstable inflation, it would afterwards be very hard to disinflate due to the slow adjustment of inflation expectations in response to changes in the inflation target. In the case of natural rate misperceptions (Orphanides and Williams, 2004) this might however not be straightforward to avoid.

References

- [1] Amato, J.D. and T. Laubach, 1999, "The value of interest rate smoothing: how the private sector helps the federal reserve", Federal Reserve Bank of Kansas City Economic Reviews, Third Quarter, 47-64.
- [2] Andolfatto, D., Hendry, S. and K. Moran, 2002, "Inflation Expectations and Learning about Monetary Policy", Bank of Canada Working Paper 2002-30.
- [3] Angeloni, I., Aucremanne, L., Ehrmann, M., Gali, J., Levin, A. and F. Smets, 2004, "Inflation Persistence in the Euro Area: Preliminary Summary of Findings", paper presented at the ECB conference on inflation persistence in the euro area, Frankfurt am Main , 10-11 December 2004.
- [4] Ansley, C. and R. Kohn, 1985, "Estimation, filtering and smoothing in state space models with incompletely specified initial conditions", *Annals of Statistics*, 13, 1286-1316.
- [5] Benati, L., 2004, "International Evidence on the Persistence in Inflation", Bank of England, mimeo.
- [6] Bilke, L., 2004, "Shifts in the Mean and Persistence of Inflation: A Sectoral Analysis on France", ECB Working Paper, forthcoming.
- [7] Castelnuovo E., Nicoletti-Altimari S. and D. Rodriguez-Palenzuela, 2003, "Definition of Price Stability, Range and Point Inflation Targets: The Anchoring of Long-Term Inflation Expectations", in *Background Studies for the ECB's Evaluation of Its Monetary Policy Strategy*, O. Issing ed.
- [8] Clarida R., Galí J. and M. Gertler, 1998, Monetary policy rules in practice. Some international evidence, *European Economic Review*, 42, 1033-1067.
- [9] Cogley, T. and T. Sargent, 2001, "Evolving Post World War II US Inflation Dynamics", NBER Macroeconomics Annual 2001, 331-372.
- [10] Cogley, T. and T. Sargent, 2003, "Drifts and Volatilities: Monetary Policies and Outcomes in the Post World War US", University of California, mimeo.
- [11] Cukierman, A. and A.H. Meltzer, 1986, "A Theory of Ambiguity, Credibility, and Inflation under Discretion and Asymmetric Information", *Econometrica*, 54, 1099-1128.
- [12] de Jong, P., 1991, "The diffuse Kalman filter", *Annals of Statistics*, 19, 1073-1083

- [13] Domenech, R. and V. Gomez, 2003, "Estimating potential output, core inflation and the NAIRU as latent variables", University of Valencia, mimeo.
- [14] Durbin, J. and S. Koopman, 2001, *Time Series Analysis by State Space Methods*, Oxford Statistical Science Series, Oxford University Press, Oxford.
- [15] English, W.B., Nelson, W.R. and B.P. Sack, 2003, "Interpreting the significance of the lagged interest rate in estimated monetary policy rules", *Contributions to Macroeconomics*, 3.
- [16] Erceg, C. and A. Levin, 2003, "Imperfect credibility and inflation persistence", *Journal of Monetary Economics*, 50, 914-944.
- [17] Fagan, G., Henry J. and R. Mestre, 2005, "An area-wide model (AWM) for the euro area", *Economic Modelling*, 22, 39-59.
- [18] Fuhrer, J. and G. Moore, 1995, "Inflation Persistence", *Quarterly Journal of Economics*, 110, 127-159.
- [19] Gadzinski, G. and F. Orlandi, 2004, "Inflation Persistence for the EU Countries, the Euro Area and the US", ECB Working Paper 414.
- [20] Galí J., Gertler M. and D. Lopez-Salido, 2001, European inflation dynamics, *European Economic Review*, 45, 1237-1270.
- [21] Gerlach, S. and F. Smets, 1999, "Output Gaps and Monetary Policy in the Euro Area", *European Economic Review*, 43, 801-812.
- [22] Geweke, J., 1989, "Bayesian inference in econometric models using Monte Carlo integration", *Econometrica*, 57, 1317-1339.
- [23] Goodfriend, M., 2002, "The Phases of US Monetary Policy: 1987 to 2001", Federal Reserve Bank of Richmond *Economic Quarterly*, 88, 1-17.
- [24] Hamilton, J., 1994, *Time Series Analysis*, Princeton University Press, Princeton.
- [25] Harvey, A.C., 1985, "Trends and Cycles in Macroeconomic Time Series", *Journal of Business and Economic Statistics*, 3, 216-227.
- [26] Koopman, S., 1997, "Exact initial Kalman filtering and smoothing for non-stationary time series models", *Journal of the American Statistical Association*, 92, 1630-1638.
- [27] Koopman, S. and J. Durbin, 2000, "Fast Filtering and Smoothing for Multivariate State Space Models", *Journal of Time Series Analysis*, 21, 281-296.

- [28] Koopman, S. and J. Durbin, 2003, "Filtering and Smoothing of State Vector for Diffuse State-Space Models", *Journal of Time Series Analysis*, 24, 85-98.
- [29] Kozicki, S. and P.A. Tinsley, 2003, "Permanent and Transitory Policy Shocks in an Empirical Macro Model with Asymmetric Information", Federal Reserve Bank of Kansas City Working Paper 03-09.
- [30] Lansing, K. and B. Trehan, 2003, "Forward-Looking Behavior and Optimal Discretionary Monetary Policy", *Economics Letters*, 81, 249-256.
- [31] Laubach, T. and J. Williams, 2003, "Measuring the Natural Rate of Interest", *Review of Economics and Statistics*, 85, 1063-1070.
- [32] Levin, A.T. and J.M. Piger, 2004, "Is Inflation Persistence Intrinsic in Industrial Economies?", ECB Working Paper 334.
- [33] Mankiw, N.G. and R. Reis, 2002, "Sticky Information versus Sticky Prices: A Proposal to Replace the New Keynesian Phillips Curve", *Quarterly Journal of Economics*, 117, 1295-1328.
- [34] Nelson, C.R. and C.I. Plosser, 1982, "Trends and Random Walks in Macroeconomic Time Series: Some Evidence and Implications", *Journal of Monetary Economics*, 10, 139-162.
- [35] O'Reilly, G. and K. Whelan, 2004, "Has euro area inflation persistence changed over time?", ECB Working Paper 335.
- [36] Orphanides A. and J. Williams, 2004, The decline of activist stabilisation policy: natural rate misperceptions, learning and expectations, ECB Working Paper 337.
- [37] Pantula, S.G., 1991, "Asymptotic distributions of the unit-root tests when the process is nearly stationary", *Journal of Business and Economic Statistics*, 9, 325-353.
- [38] Perron, P., 1990, "Testing for a unit root in a time series with a changing mean", *Journal of Business and Economic Statistics*, 8, 153-162.
- [39] Pivetta, F. and R. Reis, 2004, "The persistence of inflation in the United States", Harvard University, mimeo.
- [40] Rudebusch, G., 2005, "Assessing the Lucas Critique in Monetary Policy Models", forthcoming in *Journal of Money, Credit and Banking*.
- [41] Rudebusch, G. and L. Svensson, 1999, "Policy Rules for Inflation Targeting", in J. Taylor, ed., *Monetary Policy Rules*, Chicago University Press, Chicago.

- [42] Schwert, G.W., 1989, "Tests for unit roots: a Monte Carlo investigation," *Journal of Business and Economic Statistics*, 7, 147-160.
- [43] Smets, F. and R. Wouters, 2005, "Comparing shocks and frictions in US and euro area business cycles", *Journal of Applied Econometrics*, forthcoming
- [44] Stock, J.H. and M.W. Watson, 1998, "Median Unbiased Estimation of Coefficient Variance in a Time-Varying Parameter Model", *Journal of the American Statistical Association*, 93, 349-358.
- [45] Taylor, J., 1993, "Discretion versus policy rules in practice", *Carnegie-Rochester Conference Series on Public Policy*, 39, 195-214
- [46] Tetlow, R.J. and P. von zur Muehlen, 2001, "Simplicity versus optimality: the choice of monetary policy rules when agents must learn," *Journal of Economic Dynamics and Control*, 25, 245-279.
- [47] Young, P.C., Lane, K., Ng, C.N. and D. Palmer, 1991, "Recursive forecasting, smoothing and seasonal adjustment of nonstationary environmental data", *Journal of Forecasting*, 10, 57-89.

Appendix 1: Deriving an empirical specification for inflation expectations

Equation (4) can be derived using a variant of the sticky information model of Mankiw and Reis (2002) or the signal extraction problem of Erceg and Levin (2003) and Andolfatto et al. (2002). The difference between the two models is the way information about the central bank's inflation target π_t^T arrives to the firms. In the sticky-information model, exact information about π_t^T is available but not all firms update their information about π_t^T every period due to for instance information gathering costs. Therefore, aggregate prices do not respond immediately to changes in π_t^T . In the model of Erceg and Levin (2003) and Andolfatto et al. (2002), exact information about π_t^T is not available. This leads to a signal extraction problem. Aggregate prices will only respond to changes in π_t^T once firms have learned about the new central bank target. If learning is slow, aggregate prices will not respond immediately to changes in π_t^T .

A sticky-information model

As in Mankiw and Reis (2002) we assume that firms reset their prices every period, but infrequently gather information about the central bank inflation target π_t^T , which is readily available in every period. The log of a firm's optimal price p_t^* is given by:

$$p_t^* = p_t + \alpha z_t \tag{A.1}$$

$$p_t^* = p_{t-1}^P + \pi_t^T, \quad z_t = 0 \quad \forall t \tag{A.2}$$

where p_t is the log of the aggregate price level, z_t is the output gap and α is a positive coefficient. This equation says that a firm's desired relative price rises in booms and falls in recessions. If we assume that the output gap is always equal to zero, the firms' optimal price p_t^* will be equal to the aggregate price level p_t or the sum of the aggregate price level p_{t-1}^P in the previous period consistent with the perceived inflation target and the central bank's inflation target π_t^T in the current period.

In this model, only a fraction λ of the firms updates its information about π_t^T to calculate a new optimal price. The probability of updating information is the same for each firm, i.e. independent of the timing of the last update. The other firms continue to set their prices based on old information about π_t^T .

A firm that last updated its beliefs about the inflation target j periods ago sets its price x_t^j :

$$x_t^j = E_{t-j} p_t^* \tag{A.3}$$

$$= p_{t-1-j}^P + (j+1)\pi_{t-j}^T \tag{A.4}$$

The aggregate price level is the average of the prices of all firms, given by:

$$p_t^P = \lambda \sum_{j=0}^{\infty} (1-\lambda)^j x_t^j \quad (\text{A.5})$$

The perceived inflation target can be calculated from (A.5) as:

$$\pi_t^P = p_t^P - p_{t-1}^P \quad (\text{A.6})$$

$$= \lambda \pi_t^T + (\lambda - 1) p_{t-1}^P + \lambda \sum_{j=0}^{\infty} (1-\lambda)^{j+1} (p_{t-2-j}^P + (j+2)\pi_{t-j-1}^T) \quad (\text{A.7})$$

Substituting out p_{t-j}^P using (A.5) and rearranging yields:

$$\pi_t^P = \lambda \sum_{j=0}^{\infty} (1-\lambda)^j \pi_{t-j}^T, \quad (\text{A.8})$$

which is equivalent to:

$$\pi_t^P = (1-\lambda)\pi_{t-1}^P + \lambda\pi_t^T \quad (\text{A.9})$$

A signal extraction problem

Both Erceg and Levin (2003) and Andolfatto et al. (2002) assume that monetary authorities set nominal interest rates in line with their inflation target, π_t^T , using an interest rate rule. Observing the central bank's interest rate, private agents can therefore infer on the central bank's inflation target from their knowledge of the central bank's interest rate rule. An information problem arises from the assumption that the interest rate set by the central bank can shift due to both transitory and permanent monetary policy actions. Transitory policy actions can be interpreted as (i) deviations from the interest rate rule in response to various transitory shocks hitting inflation and/or (ii) imperfect control of monetary authorities over the interest rate. Permanent policy actions are shifts in the central bank's inflation target π_t^T . Consequently, private agents must solve a signal-extraction problem to disentangle transitory and permanent policy actions using shifts in the nominal interest rate. This can be done using the Kalman filter. This optimal filtering solution gives rise to a learning rule that resembles adaptive expectations processes.

In particular, we assume that the central bank's inflation target evolves according to equation (1) while monetary policy is described by the following interest rate rule:

$$i_t = \rho_2 i_{t-1} + (1 - \rho_2) (r_t^* + \pi_{t-1}^P) + \rho_1 (\pi_{t-1} - \pi_t^T) + \varepsilon_{2t} \quad (\text{A.10})$$

More information on this interest rate rule can be found in section 2. Permanent monetary policy actions stem from η_{1t} in equation (1). Transitory policy actions stem from ε_{2t} in equation (6). An optimal estimate $E_t \pi_t^T$ of π_t^T based on the information contained in i_t can be obtained recursively using the Kalman filter as:

$$E_t \pi_t^T = E_{t-1} \pi_{t-1}^T - k_g \nu_t \quad (\text{A.11})$$

where ν_t captures the new information contained in i_t , i.e. $\nu_t = i_t - E_{t-1} i_t = \rho_1 (E_{t-1} \pi_t^T - \pi_t^T) + \varepsilon_{2t}$ where for simplicity r_t^* is assumed to be a constant \bar{r} . k_g the Kalman gain parameter that measures the speed at which private agents update their beliefs about the monetary policy target π_t^T in response to the new information contained in ν_t . It is given by

$$k_g = \frac{1}{2} \frac{\sigma_{\eta_1}^2}{\sigma_{\varepsilon_2}^2} \left(-\rho_1 + \sqrt{\rho_1^2 + 4 \frac{\sigma_{\varepsilon_2}^2}{\sigma_{\eta_1}^2}} \right) \quad (\text{A.12})$$

Equation (A.12) shows that k_g is increasing in the signal-to-noise ratio $\sigma_{\eta_1}^2 / \sigma_{\varepsilon_2}^2$ and decreasing in the reaction ρ_1 of the central bank to deviations of inflation from its target.

As from equation (1) we have that $E_{t-1} \pi_t^T = E_{t-1} \pi_{t-1}^T$ and setting $\pi_t^P = E_t \pi_t^T$ using equation (2), equation (A.11) can be rewritten as:

$$\pi_t^P = (1 - \rho_1 k_g) \pi_{t-1}^P + \rho_1 k_g \pi_t^T - k_g \varepsilon_{2t} \quad (\text{A.13})$$

Appendix 2: State Space representations

Univariate model

$$y_t = [\pi_t]; \alpha_t = [\pi_t^P \quad \pi_{t-1}^P]'; x_t = [\pi_{t-1} \quad \dots \quad \pi_{t-q}]';$$

$$Z = [(1 - \sum_{i=1}^q \varphi_i) \quad 0]; A = [\varphi_1 \quad \dots \quad \varphi_q]; T = \begin{bmatrix} 2 - \delta & \delta - 1 \\ 1 & 0 \end{bmatrix};$$

$$R = [\delta \quad 0]'; \varepsilon_t = [\varepsilon_{1t}]; \eta_t = [\eta_{1t}]; H = [\sigma_{\varepsilon_1}^2]; Q = [\sigma_{\eta_1}^2]$$

Multivariate model

$$y_t = [\pi_t \quad i_t \quad y_t^r]'; x_t = [\pi_{t-1} \quad \pi_{t-2} \quad \dots \quad \pi_{t-q} \quad y_{t-1} \quad y_{t-2} \quad i_{t-1}]';$$

$$\alpha_t = [\pi_t^T \quad \pi_t^P \quad \pi_{t-1}^P \quad y_t^P \quad y_{t-1}^P \quad y_{t-2}^P \quad \lambda_t \quad \lambda_{t-1} \quad \tau_t \quad \tau_{t-1}]';$$

$$A = \begin{bmatrix} \varphi_1 & \varphi_2 & \dots & \varphi_q & \beta_1 & 0 & 0 \\ \rho_1 & 0 & \dots & 0 & 0 & 0 & \rho_2 \\ 0 & 0 & \dots & 0 & \beta_2 & \beta_3 & -\beta_4 \end{bmatrix};$$

$$Z = \begin{bmatrix} 0 & (1 - \sum_{i=1}^q \varphi_i) & 0 & 0 & -\beta_1 & 0 & 0 & 0 & 0 & 0 & 0 \\ -\rho_1 & (1 - \rho_2) & 0 & 0 & 0 & 0 & (1 - \rho_2)\gamma & 0 & (1 - \rho_2) & 0 & 0 \\ 0 & 0 & \beta_4 & 1 & -\beta_2 & -\beta_3 & 0 & \beta_4\gamma & 0 & \beta_4 & 0 \end{bmatrix};$$

$$T = \begin{bmatrix} 1 & 0 & 0 & 0 & 0 & 0 & 0 & 0 & 0 & 0 & 0 \\ \delta & (1 - \delta) & 0 & 0 & 0 & 0 & 0 & 0 & 0 & 0 & 0 \\ 0 & 1 & 0 & 0 & 0 & 0 & 0 & 0 & 0 & 0 & 0 \\ 0 & 0 & 0 & 1 & 0 & 0 & 1 & 0 & 0 & 0 & 0 \\ 0 & 0 & 0 & 1 & 0 & 0 & 0 & 0 & 0 & 0 & 0 \\ 0 & 0 & 0 & 0 & 1 & 0 & 0 & 0 & 0 & 0 & 0 \\ 0 & 0 & 0 & 0 & 0 & 0 & 1 & 0 & 0 & 0 & 0 \\ 0 & 0 & 0 & 0 & 0 & 0 & 0 & 1 & 0 & 0 & 0 \\ 0 & 0 & 0 & 0 & 0 & 0 & 0 & 0 & \theta & 0 & 0 \\ 0 & 0 & 0 & 0 & 0 & 0 & 0 & 0 & 1 & 0 & 0 \end{bmatrix}; R = \begin{bmatrix} 1 & 0 & 0 & 0 & 0 \\ \delta & 1 & 0 & 0 & 0 \\ 0 & 0 & 0 & 0 & 0 \\ 0 & 0 & 1 & 1 & 0 \\ 0 & 0 & 0 & 0 & 0 \\ 0 & 0 & 0 & 0 & 0 \\ 0 & 0 & 0 & 1 & 0 \\ 0 & 0 & 0 & 0 & 0 \\ 0 & 0 & 0 & 0 & 1 \\ 0 & 0 & 0 & 0 & 0 \end{bmatrix}$$

$$\varepsilon_t = [\varepsilon_{1t} \quad \varepsilon_{2t} \quad \varepsilon_{3t}]'; \eta_t = [\eta_{1t} \quad \eta_{2t} \quad \eta_{3t} \quad \eta_{4t} \quad \eta_{5t}]';$$

$$H_t = \begin{bmatrix} \sigma_{\varepsilon_1}^2 & 0 & 0 \\ 0 & \sigma_{\varepsilon_2}^2 & 0 \\ 0 & 0 & \sigma_{\varepsilon_3}^2 \end{bmatrix}; Q_t = \begin{bmatrix} \sigma_{\eta_1}^2 & 0 & 0 & 0 & 0 \\ 0 & \sigma_{\eta_2}^2 & 0 & 0 & 0 \\ 0 & 0 & \sigma_{\eta_3}^2 & 0 & 0 \\ 0 & 0 & 0 & \sigma_{\eta_4}^2 & 0 \\ 0 & 0 & 0 & 0 & \sigma_{\eta_5}^2 \end{bmatrix}$$

Appendix 3: Data

- **Inflation:** quarterly inflation rate, defined as $400(\ln P_t - \ln P_{t-1})$, with P_t the seasonally adjusted quarterly GDP deflator. Sources: AWM (Fagan et al, 2005) and BIS;
- **Real output:** quarterly $\ln(\text{GDP}_t)$, with GDP_t the seasonally adjusted quarterly GDP in constant prices. Sources: AWM (Fagan et al, 2005) and BIS. The estimated output gap is expressed in percent deviation of current output from potential output, namely $100 * (y_t^r - y_t^P)$;
- **Key interest rate:** quarterly central bank key interest rate. Sources: NCB and ECB calculations and BIS.

NATIONAL BANK OF BELGIUM - WORKING PAPERS SERIES

1. "Model-based inflation forecasts and monetary policy rules" by M. Dombrecht and R. Wouters, *Research Series*, February 2000.
2. "The use of robust estimators as measures of core inflation" by L. Aucremanne, *Research Series*, February 2000.
3. "Performances économiques des Etats-Unis dans les années nonante" by A. Nyssens, P. Butzen, P. Bisciari, *Document Series*, March 2000.
4. "A model with explicit expectations for Belgium" by P. Jeanfils, *Research Series*, March 2000.
5. "Growth in an open economy: some recent developments" by S. Turnovsky, *Research Series*, May 2000.
6. "Knowledge, technology and economic growth: an OECD perspective" by I. Visco, A. Bassanini, S. Scarpetta, *Research Series*, May 2000.
7. "Fiscal policy and growth in the context of European integration" by P. Masson, *Research Series*, May 2000.
8. "Economic growth and the labour market: Europe's challenge" by C. Wyplosz, *Research Series*, May 2000.
9. "The role of the exchange rate in economic growth: a euro-zone perspective" by R. MacDonald, *Research Series*, May 2000.
10. "Monetary union and economic growth" by J. Vickers, *Research Series*, May 2000.
11. "Politique monétaire et prix des actifs: le cas des Etats-Unis" by Q. Wibaut, *Document Series*, August 2000.
12. "The Belgian industrial confidence indicator: leading indicator of economic activity in the euro area?" by J.J. Vanhaelen, L. Dresse, J. De Mulder, *Document Series*, November 2000.
13. "Le financement des entreprises par capital-risque" by C. Rigo, *Document Series*, February 2001.
14. "La nouvelle économie" by P. Bisciari, *Document Series*, March 2001.
15. "De kostprijs van bankkredieten" by A. Bruggeman and R. Wouters, *Document Series*, April 2001.
16. "A guided tour of the world of rational expectations models and optimal policies" by Ph. Jeanfils, *Research Series*, May 2001.
17. "Attractive Prices and Euro - Rounding effects on inflation" by L. Aucremanne and D. Cornille, *Documents Series*, November 2001.
18. "The interest rate and credit channels in Belgium: an investigation with micro-level firm data" by P. Butzen, C. Fuss and Ph. Vermeulen, *Research series*, December 2001.
19. "Openness, imperfect exchange rate pass-through and monetary policy" by F. Smets and R. Wouters, *Research series*, March 2002.
20. "Inflation, relative prices and nominal rigidities" by L. Aucremanne, G. Brys, M. Hubert, P. J. Rousseeuw and A. Struyf, *Research series*, April 2002.

21. "Lifting the burden: fundamental tax reform and economic growth" by D. Jorgenson, *Research series*, May 2002.
22. "What do we know about investment under uncertainty?" by L. Trigeorgis, *Research series*, May 2002.
23. "Investment, uncertainty and irreversibility: evidence from Belgian accounting data" by D. Cassimon, P.-J. Engelen, H. Meersman, M. Van Wouwe, *Research series*, May 2002.
24. "The impact of uncertainty on investment plans" by P. Butzen, C. Fuss, Ph. Vermeulen, *Research series*, May 2002.
25. "Investment, protection, ownership, and the cost of capital" by Ch. P. Himmelberg, R. G. Hubbard, I. Love, *Research series*, May 2002.
26. "Finance, uncertainty and investment: assessing the gains and losses of a generalised non-linear structural approach using Belgian panel data", by M. Gérard, F. Verschueren, *Research series*, May 2002.
27. "Capital structure, firm liquidity and growth" by R. Anderson, *Research series*, May 2002.
28. "Structural modelling of investment and financial constraints: where do we stand?" by J.- B. Chatelain, *Research series*, May 2002.
29. "Financing and investment interdependencies in unquoted Belgian companies: the role of venture capital" by S. Manigart, K. Baeyens, I. Verschueren, *Research series*, May 2002.
30. "Development path and capital structure of Belgian biotechnology firms" by V. Bastin, A. Corhay, G. Hübner, P.-A. Michel, *Research series*, May 2002.
31. "Governance as a source of managerial discipline" by J. Franks, *Research series*, May 2002.
32. "Financing constraints, fixed capital and R&D investment decisions of Belgian firms" by M. Cincera, *Research series*, May 2002.
33. "Investment, R&D and liquidity constraints: a corporate governance approach to the Belgian evidence" by P. Van Cayseele, *Research series*, May 2002.
34. "On the Origins of the Franco-German EMU Controversies" by I. Maes, *Research series*, July 2002.
35. "An estimated dynamic stochastic general equilibrium model of the Euro Area", by F. Smets and R. Wouters, *Research series*, October 2002.
36. "The labour market and fiscal impact of labour tax reductions: The case of reduction of employers' social security contributions under a wage norm regime with automatic price indexing of wages", by K. Burggraeve and Ph. Du Caju, *Research series*, March 2003.
37. "Scope of asymmetries in the Euro Area", by S. Ide and Ph. Moës, *Document series*, March 2003.
38. "De autonijverheid in België: Het belang van het toeleveringsnetwerk rond de assemblage van personenauto's", by F. Coppens and G. van Gastel, *Document series*, June 2003.
39. "La consommation privée en Belgique", by B. Eugène, Ph. Jeanfils and B. Robert, *Document series*, June 2003.
40. "The process of European monetary integration: a comparison of the Belgian and Italian approaches", by I. Maes and L. Quaglia, *Research series*, August 2003.

41. "Stock market valuation in the United States", by P. Bisciari, A. Durré and A. Nyssens, *Document series*, November 2003.
42. "Modeling the Term Structure of Interest Rates: Where Do We Stand?", by K. Maes, *Research series*, February 2004.
43. "Interbank Exposures: An Empirical Examination of Systemic Risk in the Belgian Banking System", by H. Degryse and G. Nguyen, *Research series*, March 2004.
44. "How Frequently do Prices change? Evidence Based on the Micro Data Underlying the Belgian CPI", by L. Aucremanne and E. Dhyne, *Research series*, April 2004.
45. "Firm's investment decisions in reponse to demand and price uncertainty", by C. Fuss and Ph. Vermeulen, *Research series*, April 2004.
46. "SMEs and Bank Lending Relationships: the Impact of Mergers", by H. Degryse, N. Masschelein and J. Mitchell, *Research series*, May 2004.
47. "The Determinants of Pass-Through of Market Conditions to Bank Retail Interest Rates in Belgium", by F. De Graeve, O. De Jonghe and R. Vander Vennet, *Research series*, May 2004.
48. "Sectoral vs. country diversification benefits and downside risk", by M. Emiris, *Research series*, May 2004.
49. "How does liquidity react to stress periods in a limit order market?", by H. Beltran, A. Durré and P. Giot, *Research series*, May 2004.
50. "Financial consolidation and liquidity: prudential regulation and/or competition policy?", by P. Van Cayseele, *Research series*, May 2004.
51. "Basel II and Operational Risk: Implications for risk measurement and management in the financial sector", by A. Chapelle, Y. Crama, G. Hübner and J.-P. Peters, *Research series*, May 2004.
52. "The Efficiency and Stability of Banks and Markets", by F. Allen, *Research series*, May 2004.
53. "Does Financial Liberalization Spur Growth?" by G. Bekaert, C.R. Harvey and C. Lundblad, *Research series*, May 2004.
54. "Regulating Financial Conglomerates", by X. Freixas, G. Lóránth, A.D. Morrison and H.S. Shin, *Research series*, May 2004.
55. "Liquidity and Financial Market Stability", by M. O'Hara, *Research series*, May 2004.
56. "Economisch belang van de Vlaamse zeehavens: verslag 2002", by F. Lagneaux, *Document series*, June 2004.
57. "Determinants of Euro Term Structure of Credit Spreads", by A. Van Landschoot, *Research series*, July 2004.
58. "Macroeconomic and Monetary Policy-Making at the European Commission, from the Rome Treaties to the Hague Summit", by I. Maes, *Research series*, July 2004.
59. "Liberalisation of Network Industries: Is Electricity an Exception to the Rule?", by F. Coppens and D. Vivet, *Document series*, September 2004.
60. "Forecasting with a Bayesian DSGE model: an application to the euro area", by F. Smets and R. Wouters, *Research series*, September 2004.

61. "Comparing shocks and frictions in US and Euro Area Business Cycle: a Bayesian DSGE approach", by F. Smets and R. Wouters, *Research series*, October 2004.
62. "Voting on Pensions: A Survey", by G. de Walque, *Research series*, October 2004.
63. "Asymmetric Growth and Inflation Developments in the Acceding Countries: A New Assessment", by S. Ide and P. Moës, *Research series*, October 2004.
64. "Importance économique du Port Autonome de Liège" by F. Lagneaux, *Document series*, November 2004.
65. "Price-setting behaviour in Belgium: what can be learned from an ad hoc survey", by L. Aucremanne and M. Druant, *Research series*, March 2005.
66. "Time-dependent versus State-dependent Pricing: A Panel Data Approach to the Determinants of Belgian Consumer Price Changes", by L. Aucremanne and E. Dhyne, *Research series*, April 2005.
67. "Indirect effects – A formal definition and degrees of dependency as an alternative to technical coefficients", by F. Coppens, *Research series*, May 2005.
68. "Noname – A new quarterly model for Belgium", by Ph. Jeanfils and K. Burggraeve, *Research series*, May 2005.
69. "Economic importance of the Flemish maritime ports: report 2003", F. Lagneaux, *Document series*, May 2005.
70. "Measuring inflation persistence: a structural time series approach", M. Dossche and G. Everaert, *Research series*, June 2005.