

Fihel, Agnieszka; Anacka, Marta; Kaczmarczyk, Paweł; Stefańska, Renata

Working Paper

Recent trends in international migration in Poland: The 2011 SOPEMI report

CMR Working Papers, No. 52/110

Provided in Cooperation with:

Centre of Migration Research (CMR), University of Warsaw

Suggested Citation: Fihel, Agnieszka; Anacka, Marta; Kaczmarczyk, Paweł; Stefańska, Renata (2011) : Recent trends in international migration in Poland: The 2011 SOPEMI report, CMR Working Papers, No. 52/110, University of Warsaw, Centre of Migration Research (CMR), Warsaw

This Version is available at:

<https://hdl.handle.net/10419/140835>

Standard-Nutzungsbedingungen:

Die Dokumente auf EconStor dürfen zu eigenen wissenschaftlichen Zwecken und zum Privatgebrauch gespeichert und kopiert werden.

Sie dürfen die Dokumente nicht für öffentliche oder kommerzielle Zwecke vervielfältigen, öffentlich ausstellen, öffentlich zugänglich machen, vertreiben oder anderweitig nutzen.

Sofern die Verfasser die Dokumente unter Open-Content-Lizenzen (insbesondere CC-Lizenzen) zur Verfügung gestellt haben sollten, gelten abweichend von diesen Nutzungsbedingungen die in der dort genannten Lizenz gewährten Nutzungsrechte.

Terms of use:

Documents in EconStor may be saved and copied for your personal and scholarly purposes.

You are not to copy documents for public or commercial purposes, to exhibit the documents publicly, to make them publicly available on the internet, or to distribute or otherwise use the documents in public.

If the documents have been made available under an Open Content Licence (especially Creative Commons Licences), you may exercise further usage rights as specified in the indicated licence.



CMR Working Papers

52/110

Recent Trends in International Migration in Poland

The 2011 SOPEMI Report

Edited by

AGNIESZKA FIHEL

(corresponding author, a.fihel@uw.edu.pl)

Prepared by:

MARTA ANACKA (Statistical Annex)

AGNIESZKA FIHEL (sections 3 & 5)

PAWEŁ KACZMARCZYK (sections 1, 4 & 6)

RENATA STEFAŃSKA (section 2)

December 2011

Table of contents

Summary	4
1. Contextual issues.....	7
2. Migration and integration policy.....	13
2.1. Migration policy developments	13
2.2. Simplification of employment procedure for foreigners	13
2.3. Simplified employment system for foreign workers from the East	14
2.4. Amnesty for foreigners.....	15
2.5. Local border traffic with Ukraine, Belarus and the Kaliningrad District.....	15
2.6. Relocation and resettlement of refugees to Poland	16
2.7. Policy on admitting Chechen refugees.....	16
2.8. Facilitated access to education for immigrant children	17
2.9. Bill on Polish citizenship	17
2.10. Future developments	18
3. Trans-border mobility.....	19
4. Migration from Poland	22
4.1. Data on migration from Poland.....	22
4.2. Registered flows	23
4.3. Stock of Polish migrants staying temporarily abroad according to the CSO estimate.....	24
4.4. Migration from Poland according to LFS.....	28
5. Immigrants in Poland	31
5.1. Flows of foreigners according to the Central Population Register	31
5.2. Stocks of foreigners and of temporary migrants	31
5.3. Foreign labour	32
5.4. Mixed marriages.....	35
5.5. Naturalization and repatriation.....	36
5.6. Inflow of refugees / asylum seekers.....	37
6. Labour market impacts of post-accession migration	38

6.1. Short-term impacts	39
6.2. Medium-term impacts	42
6.3. Long-term impacts	45
6.4 Concluding remarks.....	48
References.....	50
Statistical Annex	53
List of tables in the Annex	54

Summary

Poland was one of few European countries to avoid the economic downturn registered in recent years: the country experienced a rapid economic growth, the wage gap with regard to other EU member states diminished and the unemployment rate stabilized. High unemployment of young persons, regardless of level of education, remained one of the most important push factor underlying international migrations from Poland.

Polish migration policy has been becoming more open to immigrants in the years 2009-2011, especially immigrants needed by the Polish economy (labour migrants, in particular from the East, foreign students and graduates, highly-skilled migrants). At the same time, according to the new migration strategy, it is going to devote more attention to the issue of immigrants integration (voluntary integration courses for all categories of immigrants, knowledge of the Polish language requirement for settlement and, optionally, for citizenship). One of the most important developments in 2009-2011 was agreement on the strategic document entitled 'The Polish Migration Policy: current state of play and further actions' adopted by the inter-ministerial Committee on Migration, the consultative and advisory body to the Prime Minister. It constitutes the first comprehensive strategic document on migration policy and states that Poland should be more open for immigrants with needed skills and not causing integration problems, and that the state administration should prevent abuse of immigration system. The document is awaiting approval by the Council of Ministers.

In years 2009-2011 several amendments in the law relating to various aspects of migration policy were enacted. One of the most important concerned the employment of foreigners. In 2009 important amendment to the Act on promotion of employment and labour market institutions entered into force, which greatly facilitated foreigners' access to the Polish labour market. The fee for issuing a decision on granting a work permit was substantially reduced, and the obligation to apply for a work permit promise before obtaining a work permit was abolished, which relevantly simplified and shortened the procedure of issuing the work permits. Also, a list of foreigners automatically granted work permits (without labour market test) and foreigners exempted from the obligation to possess a work permit was extended, so that foreign employment responded more efficiently to the Polish labour market needs.

Additional facilities concerning access to the Polish labour market were designed specifically for workers from the East, not only from Belarus, Russia and Ukraine, but also from Moldova and Georgia (since 2009), and concerned all sectors of economy. Residents of the above-listed countries can work in Poland without a work permit up to six months on the basis of a declaration of employer on the intention to employ a foreigner. In order to improve monitoring of simplified employment system for foreign workers from the East and to respond to exploitation of the system for purposes other than legal employment, in 2011 the employers were obliged to provide detailed information on employment of foreign citizens.

In 2011 the Polish Parliament passed the Act on legalization of stay of some foreigners in the territory of Poland, a third regularization action in Poland (after 2003 and 2007). In the first half of

2012 foreigners living in Poland illegally will have an opportunity to legalize their stay and this concerns foreigners whose continuous stay in Poland is illegal at least since end of 2007. The new Act on abolition is very liberal – it does not envisage any economic requirements for amnesty applicants. Under the abolition Act foreigners will be granted a stay permit for a fixed period allowing to work without a work permit on the basis of employment contract valid for two years.

In 2010 new legal provisions designed to facilitate access to education for foreign children and to improve their functioning in Polish schools came into force. Under the amendments to the Act on education system all foreign children (including children staying in Poland illegally) acquired the right to education free of charge at general secondary, technical secondary and basic vocational public schools. Also, foreign pupils who do not know Polish language well were entitled to a year-long help of the teacher's assistant during lessons at school.

As for trends in international migration, in previous years the transborder mobility remained elevated in Poland with 54 million border crossings and, as for foreigners, it involved mostly citizens of neighboring countries. The Polish accession to the Schengen area constituted an important impediment for non-EU citizens to enter Poland. The Agreement on the Local Border Traffic concluded in 2008 with Ukraine aimed at facilitating the mobility of inhabitants of Ukrainian border regions. This solution significantly intensified the transborder mobility, increased the amount of expenses spent by the Ukrainian citizens in Poland and stimulated the formation of new enterprises in the Polish border region.

As for registered flows in Poland, the 2011 was a successive year of negative migration balance: 15.2 thousand persons registered for a permanent stay, whereas 17.4 thousand persons deregistered from their permanent place of residence in Poland. Since 2006 the registered emigration has been decreasing and registered immigration has been increasing, mostly due to return migration of Polish citizens. As in previous years, registered emigration was dominated by young persons and persons moving to other European countries, with Germany, the United Kingdom and the United States as the most important destinations. The LFS data prove that the number of long-term Polish emigrants stabilized, while the number of short-term emigrants declined abruptly, which suggests that Poland is already in a "late" or "mature" phase of post-accession emigration, characterized by stabilization of the outflow of settlement type and intensification of return migration. The estimates made by the Central Statistical Office on the basis of different data sources, including the 2011 National Census, concern 1.990 thousand Polish citizens staying abroad for at least two months as of December 2010, thus more than in 2009 which presumably results from underestimation of stock in previous years. The most important destination country was the United Kingdom, followed by Germany and Ireland.

As for immigration to Poland, the register data gives evidence on the return flow of Polish citizens. Just like in the previous year, the most important source countries were United Kingdom, Germany, the United States and Ireland, which remain the main destinations for Polish emigrants. Persons registering in Poland for a permanent stay are relatively young, with significant shares of persons aged less than 30 and children aged under 4. The stock of foreign citizens aged 15 and over residing in Poland, estimated on the basis of the LFS, was 50 thousand in the 1st quarter of 2010 and 44 thousand one year later. The data on persons who arrived from abroad and registered for a temporary stay of above 3 months in Poland is not available for 2010. The number of work permits granted in Poland has been increasing constantly since 2007 and exceeded 35 thousand in 2010.

Also, the number of work visas issued (mostly to the citizens of Ukraine) on the basis of simplified procedure has increased to 180 thousand in 2010 and 164 thousand in the first half of 2011. The data indicate an increasing tendency of foreign employment in Poland, mostly in agriculture, construction sector, retail and wholesale trade.

1. Contextual issues

Recent economic situation of Poland is still to be presented in the context of the accession into the European Union in May 2004 and developments noted in the post-accession period. As clearly shown below (see Table 1) between 2005 and 2008 Poland experienced rapid economic growth marked by over 5% annual GDP growth rate. This period meant also significant inflow of Foreign Direct Investment (accumulated stock of FDI amounted to over 40% of GDP in 2009), increase in employment rates and decrease in number of unemployed. Along with the growing participation in the common European market (but not the EURO-zone) the wage gap between Poland and the rest of Europe became seriously smaller (GDP per capita measured in PPS amounted to 62% of the EU27 as compared to 48% in early 2000s).

Table 1. Selected macroeconomic indicators, 2001-2011

Measure	2001	2002	2003	2004	2005	2006	2007	2008	2009	2010	2011
Real GDP growth	1.2	1.4	3.9	5.3	3.6	6.2	6.8	5.1	1.6	3.9	4.0*
GDP per capita in Purchasing Power Standards (PPS) (EU-27 = 100)	47.5	48.3	48.9	50.6	51.4	52.3	53.8	57.6	61.0	62.0	.
Public balance in % of GDP	-5.1	-5	-6.3	-5.7	-4.1	-3.6	-1.9	-3.7	-7.3	-7.8	.
General government consolidated gross debt in % of GDP	37.6	42.2	47.1	45.7	47.1	47.7	45	47.1	50.9	54.9	.
FDI - flows as % of GDP	3	2.1	2.2	5.1	3.4	5.7	5.5	2.8	3.2	2.1	.
FDI - stocks as % of GDP	22	21.8	24	31.1	31.4	35.1	38.8	32.2	41.5	.	.
Consumer price index in %	5.5	1.9	0.8	3.5	2.1	1.0	2.6	4.2	3.5	2.6	3.8**
Employment rate (15-64)	53.4	51.5	51.2	51.7	52.8	54.5	57.0	59.2	59.3	59.3	.
Unemployment rate (LFS)	18.5	19.7	19.3	16.2	15.7	11.5	8.0	6.4	8.2	9.1	9.4***

. no data

* forecasted value

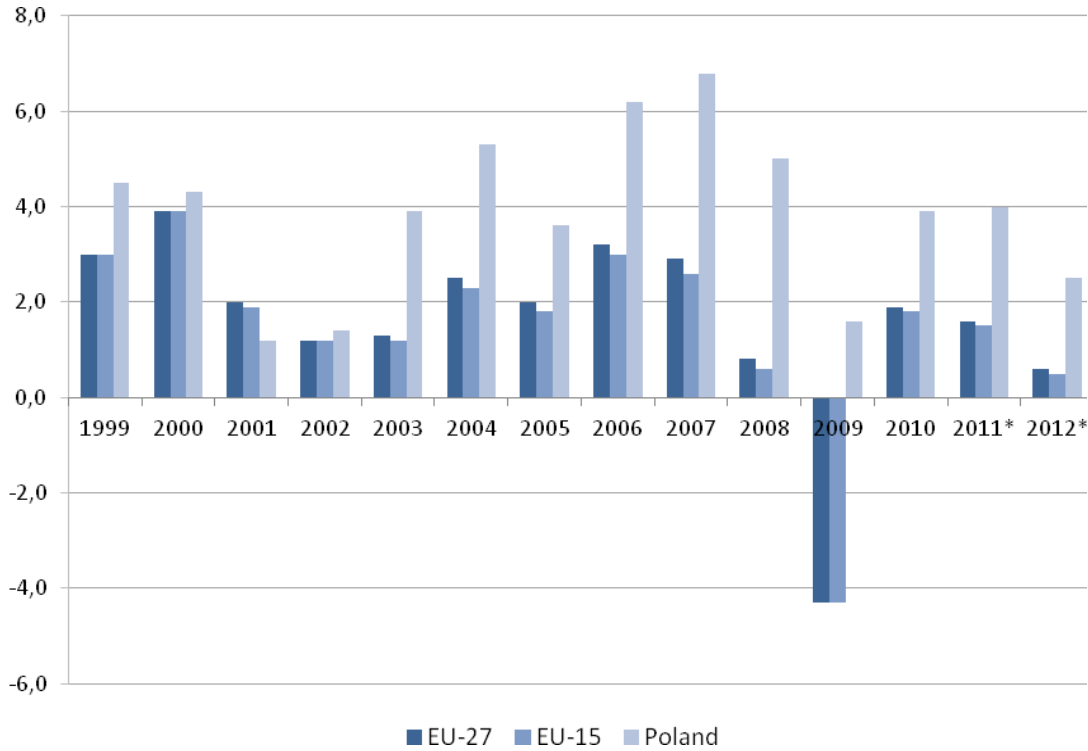
** percentage change m/m-12

*** as for October 2010

Source: Own elaboration based on Eurostat, CSO and National Bank of Poland data

Interestingly, above described development did not change significantly in last 3 years. Since 2008 most EU countries struggle with severe economic downturn (see Figure 1). Economic recession was recorded particularly in the southern European countries (Greece, Portugal, Spain, Italy), in Ireland as well as a few New Member States (particularly Baltic states).

Figure 1. Real GDP growth – Poland, EU15 and EU27, 1999-2012



* forecasted values for 2011 and 2012

Source: Own elaboration based on Eurostat data.

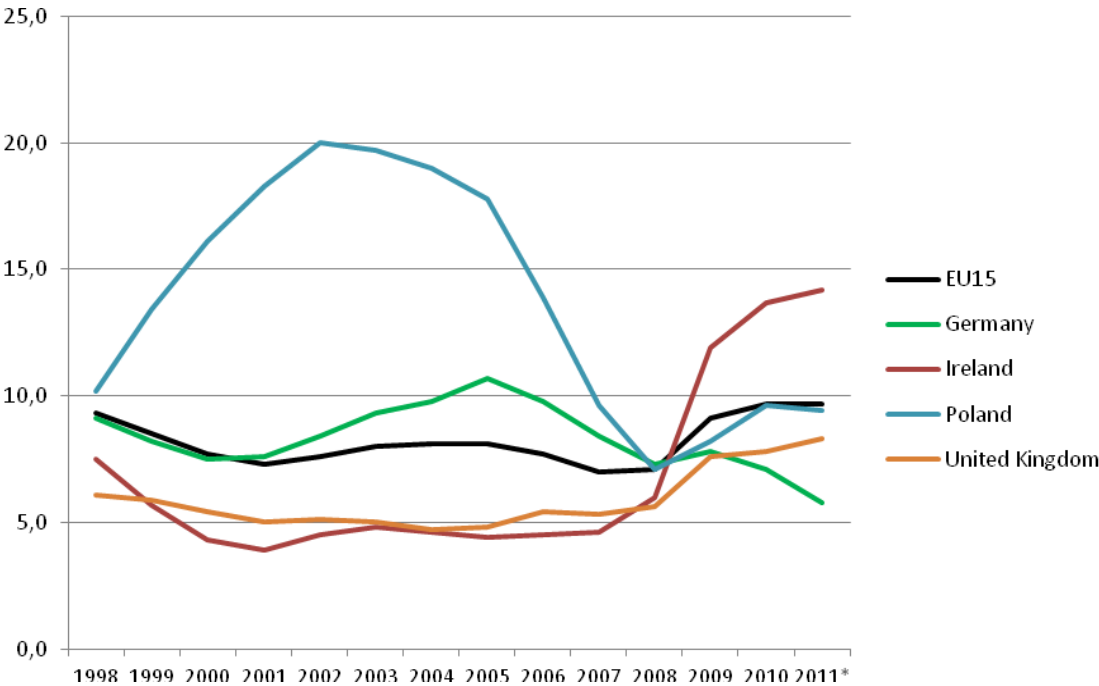
As clearly shown above, Polish situation differs significantly from those observed in most EU economies – contrary to them Poland did not experience radical decline in the economic performance measured by the GDP growth rate. In 2009 Poland was one of a few EU countries with positive GDP growth (1.6%), in 2010 situation improved much better than in the neighboring countries, there are also positive GDP forecasts for 2011 and 2012. These relatively positive developments are to be linked with the inflow of the EU funds but also with performance of Polish entrepreneurs as well as relative strength of domestic demand. Interestingly, end of 2011 saw a continuation of previous government which managed to re-win parliamentary elections for the very first time in Polish history. This seems particularly striking when compared to recent experiences of southern European democracies.

Nevertheless, economic recession remains the main issue in public debate in Poland. Due to relatively low rates of economic growth (i.e. lower than in the early post-accession phase) the country faces a serious crisis regarding public finances. General government consolidated debt (gross) was high already in 2009, in 2010 it amounted to 54.9% of GDP which means that it was only 0.1% below the safety benchmark foreseen in Polish Constitution (55%). Thus – similarly as in previous years – consolidation of public finances, including tax system, pension system and health system becomes a major task for Polish government.

While describing socio-economic context of international migration from and into Poland it is necessary to refer to demographic developments and situation on the labour market. On the one

hand, Polish society belongs (still) to the youngest in the whole EU. This is mostly due to baby boom of 1950s and its echo recorded in 1970s. Notwithstanding, this situation is changing on much faster pace than observed before in the western European countries. Total Fertility Rate decreased from over 2.4 in 1983 to 1.2 in 2003 (similarly to other post-socialist countries) and then rose only moderately (to over 1.4). On the other hand, life expectancy is on constant rise: since 1989 the life expectancy at birth increased by over 5 years for men (to 71.5 years in 2009) and 4.9 years for women (to 80.1 years). This process is to be perceived as one of major achievements of Poland in last 20 years, however, when juxtaposed to dramatically low fertility rates it leads to serious changes in the age structure of the population. Ageing of the Polish population is expected to influence both labour market phenomena as well as the welfare since 2020 onwards. This is the reason why in the Polish public debate international migration and migration policy is more and more commonly linked to demographic developments.

Figure 2. Unemployment rate (according to LFS) in Poland and major destination countries, 1998-2011*



* Data as for October 2011

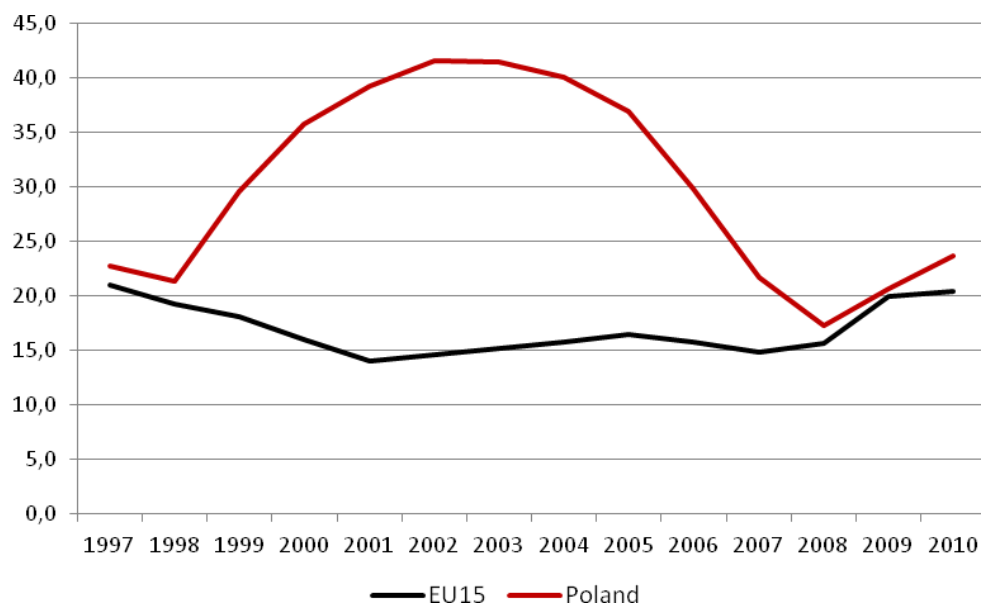
Source: Own elaboration based on Eurostat data

One of the main outcomes of the post-enlargement economic boom was serious improvement of the situation on the labour market. This trend was particularly well visible until 2007 when unemployment rate (according to the LFS) fell below 10%. Figure 2 shows that it meant also an improvement in relation to the most important destination countries. At the same time employment rates started to increase. This is extremely important in case of the Polish labour market suffering low or extremely low (as it was in the early transition phase) employment rates. In 2010 employment rate in Poland was as high as 59.3 – i.e. it was still far below the EU average but definitely higher than

in the pre-accession period. Economic downturn brought an end to the process of mass job creation (responsible for increase in employment rates in the post-enlargement period) and stabilization in employment rates and, at the same time, impacted negatively unemployment rates. As shown above, since 2008 unemployment rate are on the rise again and in the end of 2011 was close to 10% (according to the LFS).

In the context of post-accession migration two labour market phenomena are of crucial importance. Firstly – youth unemployment and, secondly, unemployment of well educated persons (see Figure 3 and 4).

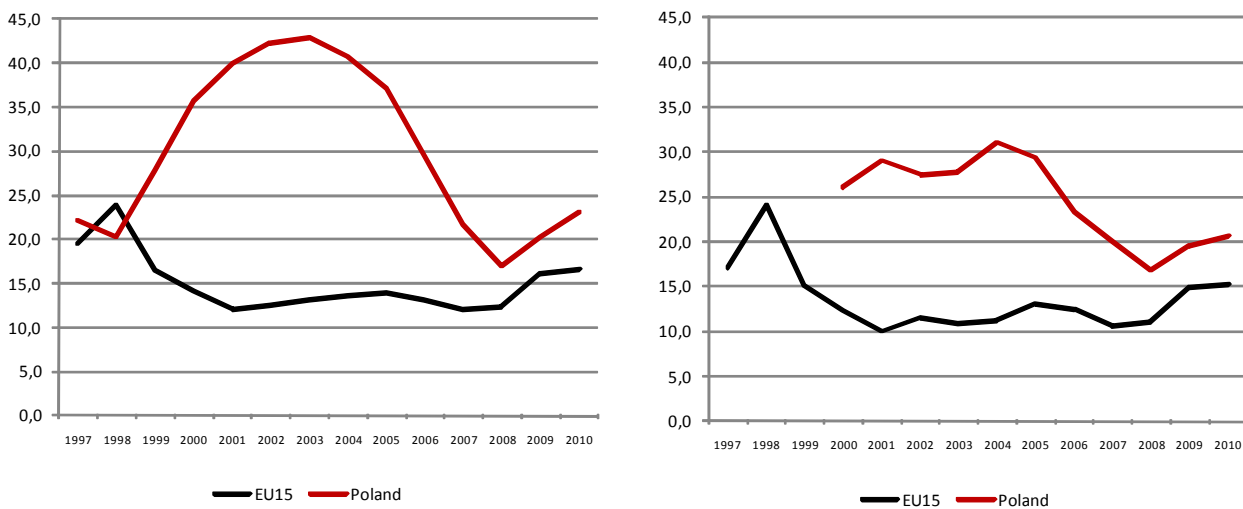
Figure 3. Unemployment rate of persons aged 15-24 (according to LFS) in Poland and EU15, 1998-2010



Source: Own elaboration based on Eurostat data

One of the most important structural features of the Polish labour market in the pre-accession period was very high unemployment rate among persons aged 15-24 (see Figure 3). Situation changed since then but recent data indicate – again – gradual worsening of the situation of younger cohorts on the labour market: in 2010 unemployment rate of persons aged 15-24 was close to 25% (almost 5 p.p. higher than the EU average). The same tendencies refer to well educated persons. Data presented on Figure 4 reveal that unemployment rates of young persons with upper and post-secondary, and tertiary education are in Poland much higher than in the EU countries and this gap is widening further during the period of economic downturn. In 2010 unemployment rate of persons aged 15-24 with completed tertiary education was higher than 20%, situation of persons with secondary and post-secondary education was even worse. This may suggest that – depending on the economic situation in main destination countries and absorptive capacities of western European labour markets – one may expect additional outflows of young and educated migrants from Poland.

Figure 4. Unemployment rate of persons aged 15-24 with upper secondary and post-secondary non-tertiary education (levels 3-4 ISCED 1997) (left panel) and tertiary education (levels 5-6 ISCED 1997) (right panel) in Poland and EU15, 1998-2010



Source: Own elaboration based on Eurostat data

Last but not least, it is necessary to emphasize – as stated clearly in the 2010 SOPEMI report – that transition from state governed towards market economy found its symbolic end with Poland’s accession into the European Union in May 2004. Recent Poland differs significantly from the country which entered the transition path in 1989. In 2009 Poland was ranked – for the very first time – as a country with high level of development according to the UNDP methodology¹. In 2010 the value of HDI increased again – from 0.811 (corrected value) to 0.813 and the position in the ranking improved as well (39 as compared to 41 in previous year) – see Table 2.

Table 2. Human Development Index for Poland – ver. 2010

Year	HDI value	HDI rank	Life expectancy at birth (years)	Mean years of schooling (years)	Expected years of schooling (years)	Gross national income per capita (PPP 2008 US\$)	GNI per capita rank minus HDI rank	Non-income HDI value	Inequality-adjusted HDI	Gender inequality index
2010	0.811	41	76.0	10.0	15.2	17 803	4	0.834	0.709	0.325
2011	0.813	39	76.1	10.0	15.3	17 451	7	0.853	0.734	0.164

Source: UNDP 2011.

Presented data shows a significant improvement as noted in last 20 years – in 1990 HDI was as high as 0.683 (UNDP 2011). Thus, Poland could be easily described in terms of catching-up economy, particularly due to the fact that improvement in the HDI was completed mostly due to GDP growth and educational changes. Notwithstanding, the non-income HDI value as counted for Poland is much higher than ‘ordinary’ HDI (0.853 as compared to 0.834) which clearly suggests that GDP per capita (or GNI per capita in recent version of the index) remains the key weak point of Polish economy. Interesting feature of the recent edition of Human Development Index is the value of Gender

¹ See comments on the HDI methodology in SOPEMI Report 2010.

inequality index (0.164 as compared to 0.325) showing serious improvement in terms of gender relations (Poland was ranked 25).

2. Migration and integration policy

2.1. Migration policy developments

The 2009-2011 period is characterized by relatively many legislative and political initiatives taken in the field of migration. One of the most important events concerning Poland's migration policy was agreement on the strategic document entitled 'The Polish Migration Policy: current state of play and further actions'. The document was adopted – after broad social consultations with, among others, non-governmental organizations dealing with migration issues and immigrant associations – on 20 July 2011 by the inter-ministerial Committee on Migration, the consultative and advisory body to the Prime Minister. It is the first comprehensive strategic document on migration policy in Poland. General message of the document is that Poland should be more open for immigrants with needed skills and not causing integration problems. At the same time Poland should prevent abuse of immigration system. The document highlights the priority of the Polish labour market needs as well as the need to ensure competitiveness of the Polish economy as a keynote as far as shaping migration policy instruments is concerned. Currently, the document is awaiting approval by the Council of Ministers, however, it is difficult to determine, when it will happen. Only after adoption of the migration strategy by the government the executive document – which will set out a concrete plan of implementation of recommendations contained in 'The Polish Migration Policy', sources of financing and institutions responsible – will be developed².

In addition to adoption of the strategic document that will have a crucial impact on the state's migration policy in the future, in years 2009-2011 several amendments in the law relating to various aspects of migration policy were enacted. The most important legal developments concerning migration issues in the reported period are presented below.

2.2. Simplification of employment procedure for foreigners

As a rule, foreigners need work permits in order to be employed in Poland. In February 2009 important amendment to the Act on promotion of employment and labour market institutions entered into force, which greatly facilitated foreigners' access to the Polish labour market. On the basis of the new provisions five types of work permits were introduced: type A – for these foreigners who perform work on the basis of a contract with an employer whose registered office, place of residence, branch, facility or other form of business is located in Poland (this type of a work permit

² It is worth noting that although the document has not been approved by the Council of Ministers yet, it already serves as a reference point when formulating legislation concerning migration, e.g. the new Act on foreigners.

may be issued for the period up to three years), type B – for foreigners performing a function in the management board of a legal person for more than six months during 12 consecutive months (for the period up to five years), type C, D, E – for foreign workers delegated to Poland (for the period of delegation). An important change simplifying and shortening the procedure for issuing work permits was abolition of the obligation to apply for a work permit promise, before obtaining a work permit. Moreover, a fee for issuing a decision on granting a work permit was substantially reduced – to 50 PLN for work permits issued for a period up to three months, to 100 PLN for work permits issued for a period exceeding three months, and to 200 PLN for work permits concerning pursuing export service. Previously, this fee was several times higher and it constituted an equivalent of a minimum wage (at present, 1,386 PLN). On the basis of the amended Act a list of foreigners automatically granted work permits (without labour market test) was extended with, among others, the following categories: foreigners employed in an occupation which is on the list of deficit occupations in a given region (determined each year by the region's governor in consultation with social partners); foreigners who graduated high schools located in Poland or in the other European Economic Area countries or in Switzerland in the period of three years preceding submitting application for a work permit; foreigners legally residing in Poland for three years preceding application for a work permit. The list of foreigners released from the obligation to possess a work permit was also expanded by, among others, students and graduates of Polish full-time higher education studies or full-time doctorate studies in Polish universities.

Besides facilities, the amended Act on promotion of employment and labour market institutions introduced provisions aimed at preventing social dumping by specifying that the employer is obliged to pay a foreigner a salary not lower than received by Polish citizens working on a similar position.

2.3. Simplified employment system for foreign workers from the East

Additional facilities concerning access to the Polish labour market were designed specifically for workers from the East. Poland has a simplified employment system for labour migrants from selected Eastern countries since 2006. Initially, it was addressed only to foreigners from countries bordering Poland and it was limited to agriculture. Currently, simplified procedure relates not only to nationals of Belarus, Russia and Ukraine, but also to nationals of Moldova (since 2 February 2009 based on mobility partnership) and Georgia (since 30 November 2009 based on mobility partnership) and, at present, it embraces all sectors of economy. Residents of these countries can work in Poland without a work permit up to six months during 12 consecutive months (previously, three months during six months) on the basis of a declaration of employer on the intention to employ a foreigner, registered at the local labour office.

On 28 July 2011 entered into force regulations imposing new information obligations for employers recruiting foreign workers from the East under the simplified procedure. Occupation, place of employment, date for start of work and period of work performance, amount of salary proposed, and even the type of contract to be concluded with a foreigner – all this detailed information employer is obliged to provide in a declaration on the intention to employ a foreigner. The employer is also required to confirm that he had acquainted with provisions governing employment of

foreigners and that he/she is aware that all information on the immigrant may be provided to the Border Guard, the National Labour Inspectorate or the Police.

The aim of the amendments is to improve monitoring of simplified employment system for foreign workers from the East and to respond to exploitation of the system for purposes other than legal employment, such as e.g. 'trade' in declarations of Polish employers.

2.4. Amnesty for foreigners

On 28 July 2011 the Polish Parliament passed the Act on legalisation of stay of some foreigners in the territory of Poland. On the basis of the new law from 1 January 2012 to 2 July 2012 foreigners living in Poland illegally will have an opportunity to legalize their stay. Amnesty (so called abolition) will be available to foreigners whose continuous stay in Poland is illegal at least since 20 December 2007, or since 1 January 2010 in the case of foreigners who prior to that date were granted a final decision on refusal to award the refugee status along with the decision on expulsion. Moreover, an opportunity to legalize their stay in Poland will gain foreigners for whom on 1 January 2010 next proceedings for the award of the refugee status were carried out. According to the new act stay is recognized as continuous provided that the documentation does not specify otherwise. Amnesty applications should be submitted to governors of the regions competent for the place of residence of undocumented foreigners. It is worth to stress out that the new Act on abolition is very liberal – it does not envisage any economic requirements for amnesty applicants. Under the abolition Act foreigners will be granted a permit for a fixed period valid for two years. During this period they will be entitled to work in Poland without a work permit, but only on the basis of an employment contract (not civil law agreement such as e.g. commission contract or contract for a specific task), which is not easy to obtain even in the case of Polish nationals.

Amnesty for foreigners of 2012 is a third regularization action in Poland. The first two took place in 2003 and 2007. Requirements for taking advantage of previous abolitions were much more restrictive, therefore only 5,470 foreigners legalized their stay, mainly Vietnamese and Armenians.

2.5. Local border traffic with Ukraine, Belarus and the Kaliningrad District

On 1 July 2009 the Polish-Ukrainian local border traffic (LBT) agreement came into force (signed in 2008). On the basis of this agreement Ukrainian nationals, residing in border zone – area that extends no more than 30 kilometers from the border – do not need visas, but only local border traffic permits in order to enter Poland and to stay in the border area of Poland (Polish nationals are entitled to visa-free travels to Ukraine, so provisions of the LBT agreement are not very important from their point of view). Such a permit entitles to a multiple border crossing under the local border traffic regime. A maximum duration of each uninterrupted stay on the basis of this document may not exceed 60 days. The LBT permit is valid for two years with possibility of extension for the next five years. Persons entitled to obtain the LBT permit must have documented permanent residence

for a period not less than three years in one of 1,545 towns and villages from the Volyn, Lvov (without Lvov) and Zakarpackie oblast (ca. 1.5 million residents) and possess medical insurance policy valid throughout the period of stay. The fee for issuance of the LBT permit amounts 20 euro.

Similar LBT agreement was signed by Poland and Belarus in 2010. So far, however, due to political reasons, the agreement has not been ratified by the Belarusian side. On 14 December 2011, agreement on the local border traffic encompassing the entire Kaliningrad District (in order to prevent an artificial division of the Kaliningrad area) was signed by Polish and Russian authorities. Because of the need for exceptional extension of the border zone it required earlier amendment of the EU regulation on the local border traffic. It is anticipated that the agreement will come into force by mid-2012.

2.6. Relocation and resettlement of refugees to Poland

On 28 July 2011 Polish Parliament adopted amendments to the Act on providing foreigners with protection within the territory of the Republic of Poland, which made possible relocation to Poland refugees from the other European Union member states and resettlement from third countries to Poland foreigners recognized as refugees by the UNHCR. According to the new regulations the Council of Ministers will be entitled to specify by ordinance: number of foreigners that can be relocated or resettled to Poland in a given year; states from which foreigners would come and the amount of funds allocated to cover the costs of relocation or resettlement. Thus, participation of Poland in these solidarity programs with other countries in receiving refugees will not contribute to uncontrolled influx of forced migrants to Poland.

2.7. Policy on admitting Chechen refugees

In 2010, the number of Russian nationals declaring Chechen nationality granted international protection in Poland dropped abruptly, as compared to the previous year. While in 2009 Chechens obtained 101 positive decisions granting refugee status and 2 338 positive decisions granting subsidiary protection, one year later – appropriately – only 43 (more than 2 times less) and 222 (more than 10 times less). Sharp decline started in April 2009. According to the Office for Foreigners large number of refusals to grant Chechens international protection stems from two main reasons: changed profile of asylum seekers (larger proportion of fugitives for economic reasons) and changed situation in the country of origin (safety of civilians in Chechnya – due to, among others, completion of military actions – improved considerably). The Office points out also the fact of completion of anti-terrorist operation in Chechnya. However, according to some NGO activists change of the refugee policy towards Chechens is associated rather with the warming of political relations between Poland and Russia than with considerable improvement of situation in Chechnya.

2.8. Facilitated access to education for immigrant children

On 1 January 2010 new legal provisions designed to facilitate access to education for foreign children and to improve their functioning in Polish schools came into force. Under the amendments to the Act on education system all foreign children (including children staying in Poland illegally) acquired the right to education free of charge at general secondary, technical secondary and basic vocational public schools. Previously, most children who were nationals of non-EU countries could attend schools on the same rules as Polish nationals only at the level of primary and lower secondary schools (gymnasiums). Another important amendment was an introduction of the right for foreign pupils who do not know Polish language well to a year-long help of the teacher's assistant during lessons at school (a person speaking the language of immigrant children). The task of the assistant is to support immigrant children and teachers in the classroom, both in order to improve mutual understanding between immigrant children, their parents and teachers, and the integration of foreign children with Polish pupils.

2.9. Bill on Polish citizenship

On 2 April 2009 the Polish Parliament passed a new Act on Polish citizenship. The Act has not entered into force because the Polish President had referred it to the Constitutional Tribunal with a request for consideration of the constitutionality of a provision extending the possibility of acquiring Polish citizenship under administrative procedure, i.e. by the decision on acknowledgement as a Polish citizen, taken by the governor of the region. The act still awaits consideration.

The new law envisages two main ways of acquiring Polish citizenship available to all foreigners (not only to selected categories of foreigners): applying for granting citizenship by the President and applying for acknowledgement as a Polish citizen by the governor of the region (administrative procedure). The President will have right to grant Polish citizenship to every applicant – any legal requirements will bind him (as until now, 5-year period of residence in Poland on the basis of a permanent residence permit is required). Thus, the conferment procedure will become even more discretionary than it is now. In turn, the acknowledgement procedure, hitherto accessible only to stateless persons and persons with undetermined citizenship, will also be eased. The decision on acknowledgement will be taken by the regional governors almost automatically provided that the applicant will fulfill several conditions: 3-year residence in Poland on the basis of a permanent residence permit (shorter in case of, among others, people of Polish origin and refugees), providing proof of ensured accommodation as well as maintenance means, complying with Polish law and a completely new requirement – possessing knowledge of the Polish language confirmed by a state certificate. Moreover, in the light of the new act possessing dual (or multiple) citizenship will be allowed. Another great novelty in the new citizenship law is introduction of a possibility of restoration of Polish citizenship granted to persons, who lost it on the basis of previous acts on Polish citizenship, e.g. due to political reasons in the period of the Polish People's Republic.

2.10. Future developments

During the reported period several new regulations concerning migration issues were elaborated, among which the most important are: the new Act on foreigners, the Act on sanctions against entities who employ third-country nationals in breach of legal provisions.

On 16 August 2011 – after inter-ministerial consultations – a draft on assumptions for the new Act on foreigners was adopted by the Polish government. The most important amendments set out in the document are: introduction of a single permit covering both residence and work; new regulations regarding the so called Blue Card for highly-skilled foreign workers; extending from two to three years a maximal period for which a permit for a fixed period may be issued; introduction of a temporary residence permits valid one year for foreign graduates of Polish high schools for the purpose of searching job in Poland; imposing a requirement of a basic knowledge of Polish language (A2 level) to be granted permanent residence permit; replacing of two types of decisions – on ordering to leave the territory of the Republic of Poland and on expulsion – by one decision imposing an obligation to return, which will specify the deadline for voluntary return. Currently, the project of the new Act on foreigners is being elaborated by the Government Legislation Centre.

The bill on sanctions against entities that employ third-country nationals in breach of legal provisions implements provisions of the so called Employer Sanction Directive. It envisages very severe penalties for employing foreigners illegally residing in Poland, even penalty of imprisonment. Works on this act are continued in 2011.

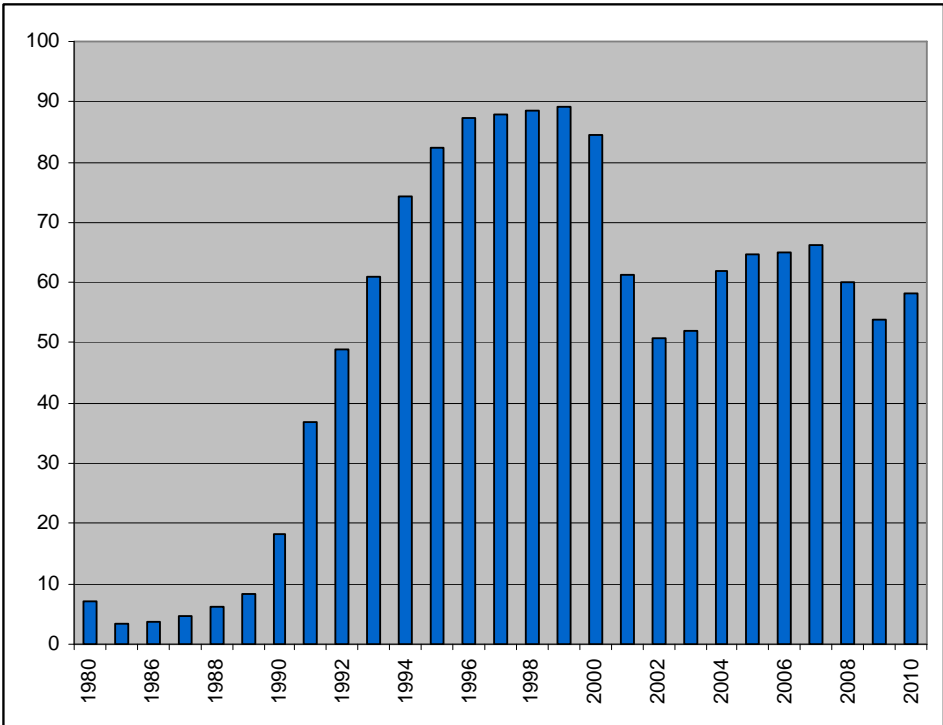
As is clear from the above, the Polish migration policy has been becoming more open to immigrants in recent years, especially immigrants needed by the Polish economy (labour migrants, in particular from the East, foreign students and graduates, highly-skilled migrants). It facilitates the entry and access to the Polish labour market for desired categories of foreigners. At the same time, according to the new migration strategy it is planned to devote more attention to the issue of immigrants integration, what is reflected e.g. in the plans to introduce, on the one hand, voluntary integration courses for all categories of foreigners, and on the other hand, knowledge of Polish language requirement in order to obtain permanent residence permit and Polish citizenship.

3. Trans-border mobility

This section is based on data published by the Border Guard and the Institute for Tourism which estimates and gathers the information on arrivals of foreigners in Poland.

After the communist period Poland experienced an outburst of trans-border mobility reaching its peak in 1995 with almost 90 million of arrivals of foreigners. This number dropped to about 51 million in 1998, mostly due to so-called Russian crisis and accompanying economic downturn in Poland, as well as due to coming into force of the new Act on foreigners, significantly tightening entry conditions and border controls. However, since the Polish accession into the European Union in 2004 the number of arrivals has remained relatively stable at the level of 50-60 million annually (see Table 11-12 in the Annex and Figure 5). In 2009 a small drop was registered, followed by an increase in 2010 (54 and 58 million border crossings, respectively).

Figure 5. Arrival of foreigners to Poland, 1980-2010, in million



Source: The Border Guard and the Institute for Tourism

The arrivals to Poland have been in vast majority undertaken by the European Union citizens. In 2010, the most recent year for which detailed data is available, 81% (47,385) of arrivals constituted those persecuted by the citizens of EU member states: 49% citizens of the ‘old 15’, and 32% of the new member states. It is self-evident that the biggest numbers of arrivals to Poland have been noted in case of citizens of neighboring countries in the Schengen area (88% of total): in 2010 44% of entries referred to German citizens, 16% to Czech Republic citizens, 10% to Slovak citizens, 5% to

Lithuanian citizens. As for the foreigners from outside of the Schengen area, the main groups arriving to Poland were constituted by the citizens of Ukraine (9% of arrivals) and of Belarus (5%).

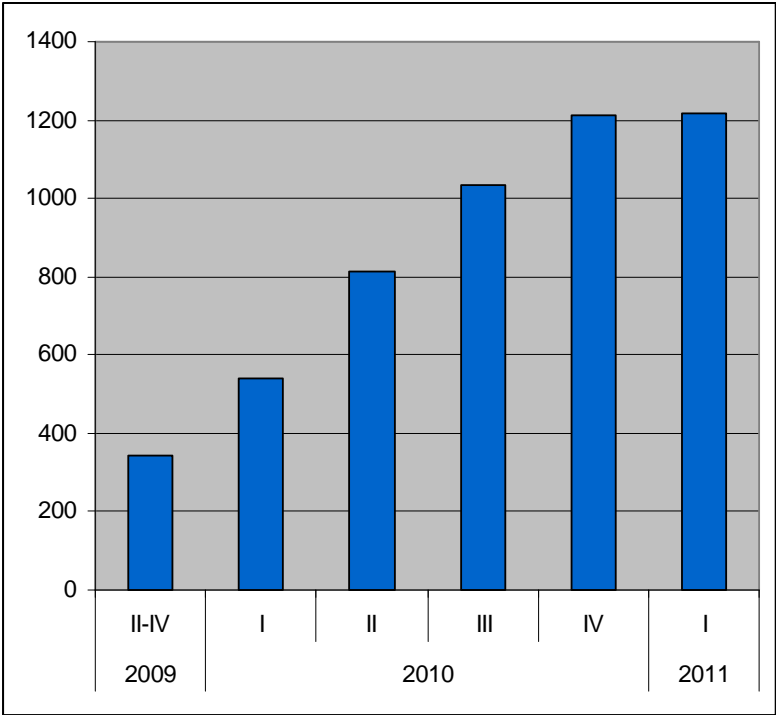
In 2010 the Border Guard refused to let 23,758 foreigners (16,864 in 2008 and 26,941 in 2009), mostly due to lack of valid visa or other proper documents. This concerned mostly the citizens of Ukraine (11,802 persons), followed by citizens of Belarus (4,737), Russia (3,542) and Georgia (2,880).

In 2010 2,349 persons have been apprehended while crossing or attempting to cross the border illegally (in 2009 – 3,581, a decline by 34%). Most of apprehension referred to the non-EU citizens (92%) and a half of apprehensions involved the citizens of Ukraine (1,269 persons, 54%). In the first quarter of 2011 544 persons were apprehended. The apprehensions take place slightly more often at the external EU border (58% in 2010 and 2011), as compared to the internal border. It is worth mention that the number of apprehensions has been constantly diminishing over the last years.

The Polish accession to the Schengen area imposed on non-EU citizens the obligation of having a visa in order to enter Poland. In order to facilitate the trans-border mobility the governments of Poland and Ukraine signed on 28th March, 2008 the Polish-Ukrainian local border traffic (LBT) agreement (see Section 2.5). The Agreement is in force since 1st of July 2009 and concerns the inhabitants of a strip located up to 50 km from the border. It worth mention that the Agreement is of great importance for the Ukrainian citizens, as the Polish citizens are allowed to a non-visa stay in Ukraine lasting up to 90 days. The statistical data on trans-border mobility is available at the website of the Border Guard of Poland, whereas the CSO (2011a) provides additional information on expenses of Ukrainian citizens in Poland. The data is gathered only with regard to the Ukrainian citizens.

According to the Border Guard of Poland, in the period July-December 2009 Ukrainian citizens crossed the border with Poland 345 thousands times (see Figure 6) on the basis of the Agreement on the Local Border Traffic. In 2010 (January-December) this number increased to 3,596 thousand, whereas in the first quarter of 2011 it was already 1,218 thousand (as compared to 539 thousand in the first quarter of 2010). The majority of foreigners crossed the border a few times a week (71%), 10% crossed the border every day. The Agreement significantly intensified the trans-border mobility and, consequently, increased the scale of expenses spent by the Ukrainian citizens (CSO 2011a). Moreover, it influenced the dynamics in number of new enterprises registered in the Polish border region as compared to the regions in Poland close to Russia and Belarus. Therefore, a similar agreement is to be concluded with Belarus: it was signed by the government of Poland on February 12th, 2010 and it has not been be ratified yet by the Belarusian part. In December 2011 similar agreement concerning Kaliningrad District has been adopted and it is expected that it will come into force by mid-2012 (see Section 2.5).

Figure 6. The number of border crossings by the Ukrainian citizens within the local border traffic, 1980-2010, in thousand



Source: The Border Guard

4. Migration from Poland

4.1. Data on migration from Poland

Measurement of migration (regarding both size of flows and stocks of migrants) is commonly acknowledged as one of the most critical areas in migration research. This point is particularly well taken in case of Poland and this is due to two reasons. Firstly, assessment of the scale of migration is complicated in case of those countries where majority of population movements constitute short-term of circular mobility (as it is in case of Central and Eastern European countries). Secondly, since 2004 enlargement and introduction of free migration regime the statistical control over migratory flows is far more complicated than before.

Still, the central population register (so-called PESEL) is considered as the basic and official statistical source used to assess international migration from (and into) Poland. It includes all residents of the country and, consequently, records entries of immigrants and exits of emigrants. However, definitions applied are crucial here. Immigrants are defined as persons who have arrived from abroad and have been registered as permanent residents in any basic administrative unit of Poland. Emigrants are defined as persons who moved with an intention to settle abroad and delisted themselves from their permanent place of residence in Poland (see Tables 1-3 in the Annex). The problem is however that in Poland – similarly as in many other countries – the number of those who complete the act of de-registration even if they do migrate remains relatively low. As a consequence, there is a significant number of persons who are counted as permanent residents of Poland even if have de facto ceased to live in Poland (*de iure* residents and *de facto* migrants). This is the reason why official data on registered migration from Poland are treated as non reliable and this was also the main incentive to make an attempt to provide more reliable data on scale and structure of Polish mobility. The outcome of these efforts is regularly presented (since 2006, on annual basis) estimate of the stock of permanent residents of Poland staying temporarily abroad (i.e. *de facto* migrants) prepared and published by the Central Statistical Office (CSO 2011b – see section 4.3 and Table 10 in the Annex)³. Contrary to the category of “officially registered emigrants” a category of “temporary migrants” is being used which concerns permanent residents who have stayed in a foreign country for longer than three months.

The second unique feature of the Polish statistics on migration is the reference to the Polish Labour Force Survey (LFS) as one of potential sources of information (see Table 9 in the Annex and section 4.4). This data, based on relatively large samples (recently over 50 thousand households), refers to persons aged 15 years and more who are still treated as members of households residing in Poland. This feature is commonly acknowledged as the major weakness of this data because the sample of

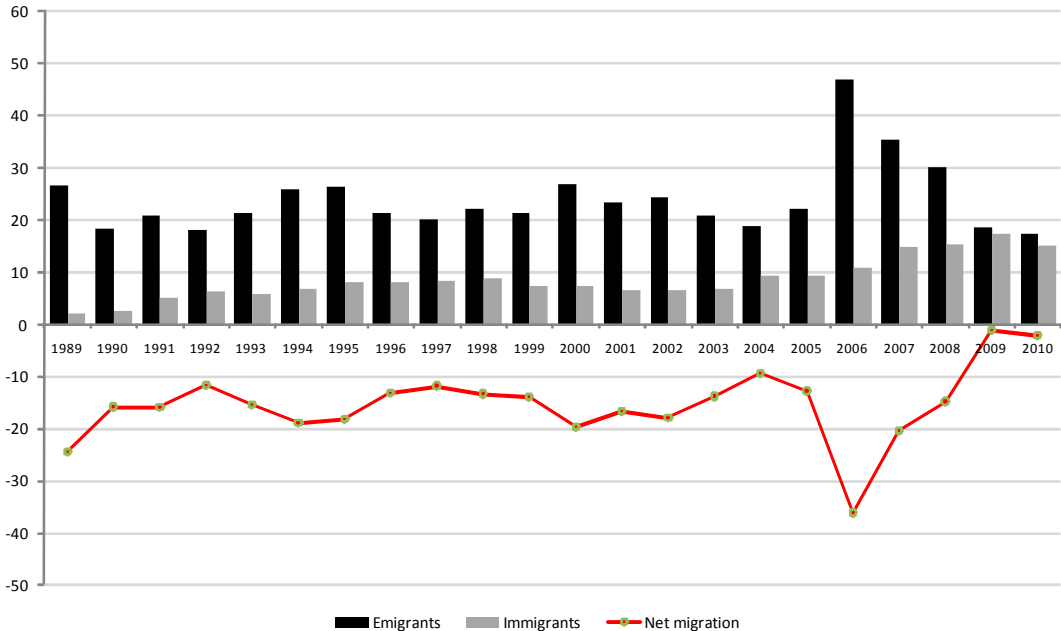
³ The stock of temporary Polish migrants (defined as explained above) is being estimated on the basis of: the 2002 National census data (basis for the estimation), data on officially registered flows (referring to permanent migrants), data of quarterly Labour Force Survey, and statistics on Polish migrants in destination countries, including administrative data on the number of work registrations, insurance registrations, residence permits, work permits as well as LFS data.

migrants does not include migrants who moved abroad accompanied by whole households, neither those staying abroad for shorter than 3 months (till 2007 for shorter than 2 months). Secondly, LFS was created for the purposes of the labour market analysis and the sample design is subordinated to this particular task. Due to above presented reasons the Central Statistical Office holds a position that data on Poles staying temporarily abroad are not representative for the total population and should be analyzed and interpreted with caution. Thus LFS data cannot provide information on real scale of migration, however – as proven by statistical tests completed by the CMR – may serve as a very good data source on migration dynamics and its structural features (see particularly 2009 SOPEMI Report for Poland including extensive part on selectivity of Polish migration based on the LFS data).

4.2. Registered flows

According to the Central Population Register, in 2010 the declining trend in the number of Polish emigrants continued (4th year in a row). As shown on the Figure 7 and Table 2 in the Annex number of emigrants was a high as 17.4 thousand, i.e. 6.5% smaller than in previous year (and almost three times smaller than in the peak 2006 year).

Figure 7. Officially registered international migration from and into Poland, 1989 – 2010 (in thousand)



Source: Table 1 in the Annex.

Number of those persons who immigrate to Poland remains relatively stable over last few years. In 2010 it amounted to 15.2 thousand and it meant almost 13% decrease as compared to 2009, but slightly higher than in 2007 and 2008 (see Table 2 in Annex). As a consequence, in 2010 officially registered net outflow was as high as 2.1 thousand. This is mostly due to decrease in the scale of the

registered outflow which in 2009-2010 reached the level observed in early 1990s, far below averages of the post-accession period. Along with slowly increasing scale of immigration it has led to a serious change in net migration - in 2009 net outflow was 30 times smaller and in 2010 over 17 times higher than in 2006 (peak year of the registered outflow).

Polish registered emigration is feminized. In 2010 the share of women among all emigrants amounted to 54% and the share of men was as high as 46%. Traditionally, young persons are those who dominate among all registered emigrants. In 2010 the share of persons aged 20-39 was as high as 48% in case of males and was pretty close to 50% in case of females. Interestingly, in both cases the share of persons aged 0-14, i.e. accompanying dependents remains relatively high – 14% and 12% respectively.

2010 data points to similar patterns as observed before also in terms of regions of origin and destinations of Polish emigrants. Decline was noted in case of all Polish regions, however, the distribution of sending regions remained largely unchanged: the highest share of migrants originated from Śląskie region (*voivodship*) (22.8% of all permanent migrants), Dolnośląskie region (11.6%) and Opolskie region (10.6%). It is important to note that relative dominance of these three regions clearly shows that data on registered flows refers to particular types of mobility only, traditional migratory flows based mainly on ethnic or kinship linkages with abroad.

In 2010 EU-27 countries dominated among destinations of Polish permanent migrants and their share was as high as 81%. The main destination remains Germany targeted by around 39% of all registered emigrants (12% decrease noted as compared to 2009. The next main destination include: the United Kingdom (20% of all emigrants, <1% decrease noted) and United States (10%, negligible increase noted) and the Netherlands (4%, 2% decrease noted). Decline in number of emigrants was recorded in most destinations. The only exceptions include Belgium, Czech Republic, Iceland, Australia and the United States. In all cases, however, the scale of change was (very) low.

4.3. Stock of Polish migrants staying temporarily abroad according to the CSO estimate

Since 2006 (first estimate presented) the estimates presented by the Central Statistical Office of Poland serves as the most reliable and accurate data on emigrants' stock. Table 3 (as well as Table 10 in the Annex) presents the outcomes of the most recent estimate published in October 2011.

Table 3. Polish citizens staying abroad for longer than two months (three months since 2007) (in thousand) and percentage changes as compared with previous year

Country	2002 (May) – Census	2004*	2005*	2006*	2007*	2008*	2009*	2010*
<i>In thousand</i>								
Total	786	1 000	1 450	1 950	2 270	2 210	1 870	1 990
Including:								
EU27	451	750	1 170	1 550	1 860	1 820	1 570	1 615
Austria	11	15	25	34	39	40	38	32
Belgium	14	13	21	28	31	33	34	45
Denmark	17	19	20	19
France	21	30	30	49	55	56	47	55
Germany	294	385	430	450	490	490	415	455
Ireland	2	15	76	120	200	180	140	125
Italy	39	59	70	85	87	88	85	92
Netherlands	10	23	43	55	98	108	84	108
Norway	36	38	45	46
Spain	14	26	37	44	80	83	84	50
Sweden	6	11	17	25	27	29	31	37
United Kingdom	24	150	340	580	690	650	555	560
<i>Percentage change as compared with previous year**</i>								
Total	.	.	45.0	34.5	16.4	-2.6	-15.4	6.2
EU27	.	.	56.0	32.5	20.0	-2.2	-13.7	2.9
Austria	.	.	66.7	36.0	14.7	2.6	-5.0	-15.8
Belgium	.	.	61.5	33.3	10.7	6.5	3.0	32.4
Denmark	-	-	-	-	-	11.8	5.3	-5.0
France	.	.	0.0	63.3	12.2	1.8	-16.1	17.0
Germany	.	.	11.7	4.7	8.9	0.0	-15.3	9.6
Ireland	.	.	406.7	57.9	66.7	-10.0	-22.2	-10.7
Italy	.	.	18.6	21.4	2.4	1.1	-3.4	8.2
Netherlands	.	.	87.0	27.9	78.2	10.2	-22.2	28.6
Norway	5.6	18.4	2.2
Spain	.	.	42.3	18.9	81.8	3.8	1.2	-40.5
Sweden	.	.	54.5	47.1	8.0	7.4	6.9	19.4
United Kingdom	.	.	126.7	70.6	19.0	-5.8	-14.6	0.9

* as for the end of a given year, ** 2002-2004 changes not reported due to lack of full data comparability

Source: CSO 2011b.

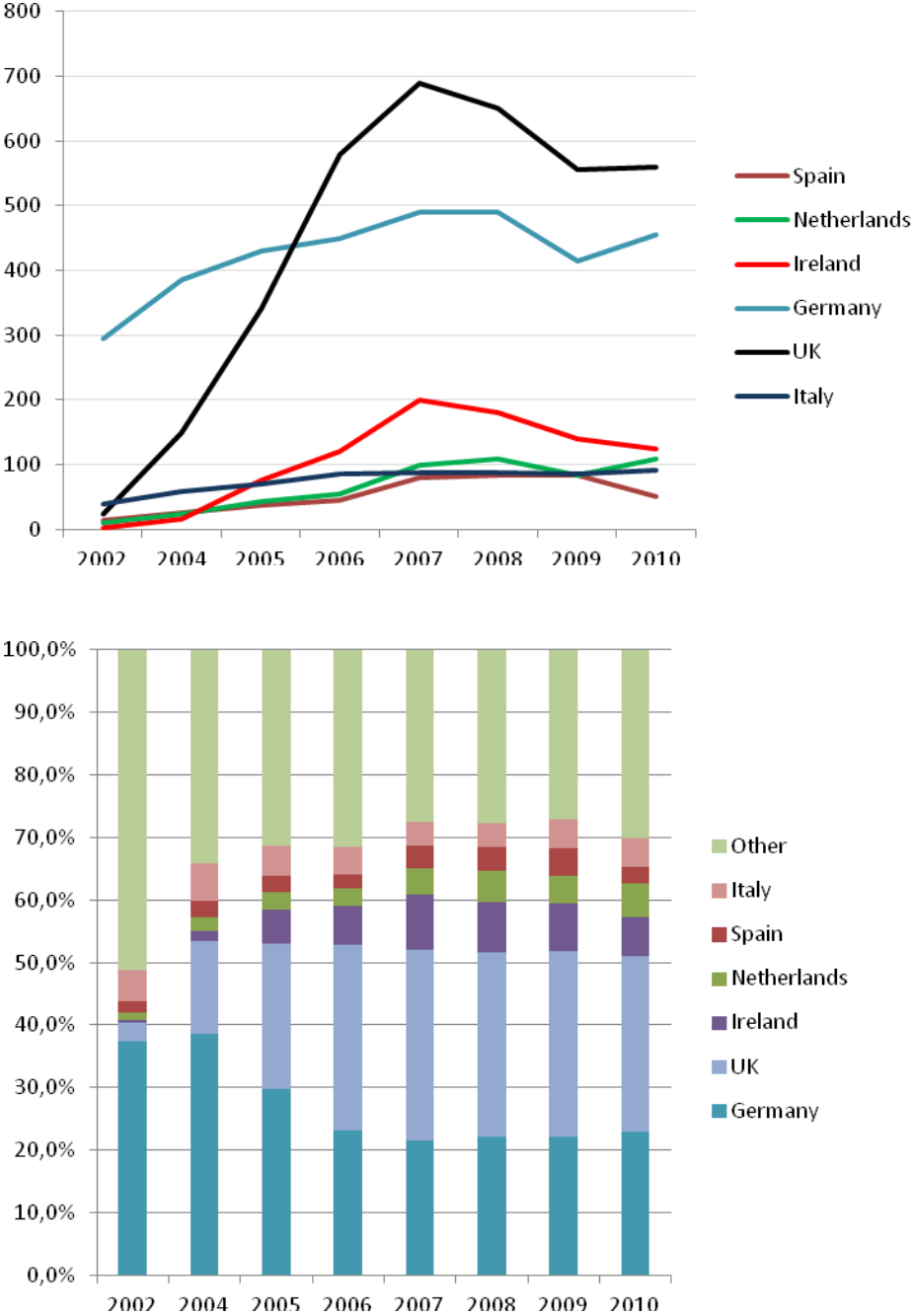
Presented data documents spectacular development of migration process in the early post-accession period: between 2004 and the end of 2007 the number of temporary Polish migrants increased by almost 1.5 million and reached 2.3 million (6.6% of the total population). Since then a gradual decline in number of Poles staying temporarily abroad is noted. However, the estimates for 2008-2010 are to be interpreted with caution. This is mostly due to the fact that the basis for all calculations was the census conducted in 2002. Thus, data for the second half of the period under analysis can be seriously biased. On the other hand, the most recent estimate (accounting for the stock in 2010) was

based already on the first outcomes of 2011 National Census. It makes this particular information relatively more reliable but also questions all kind of trend analyses. According to the presented data since 2008 a gradual decrease in scale of migration was noted, which can be attributed do the economic downturn in majority of migrants' destinations. A slight decline in number of persons staying abroad was observed already in 2008 (2.6%) however in next year it amounted to over 15% and the stock of temporary migrants was estimated at 1.87 million (around 5% of the total population of Poland). The largest scale of decline was noted in case of Ireland, the Netherlands (in 2009) and Spain (in 2010), i.e. particularly in those countries which were most seriously hit by the economic crisis. However, the most recent estimate suggests an increase in scale of migration again (around 120 thousand, i.e. 6.2% increase as compared to previous year, mostly in non-European countries). As stated above, this outcome poses serious methodological challenges. Firstly, the data provided does not include detailed information on non-EU destinations and it remains highly unclear why Polish migrants are supposed to target non-European countries at this particular time. Secondly, neither other Polish data (see Section 4.2), nor data from main destination countries document new wave of migration from Poland. Rather, in a few cases (UK, the Netherlands) stock of Polish migrants remains relatively stable. This may suggest that problem lies in underestimation of previous stocks⁴.

Due to above presented remarks we will refer particularly to the data for 2010 rather than comparing them to previous years. According to the recent estimate presented the number of temporary migrants staying abroad remains relatively high (slightly below 2 million). Most of those persons reside in the EU-27 countries (81%). Notwithstanding recent changes in the stock of persons staying abroad, structure of destination countries in the post-accession period is relatively stable (see Figure 8 and Table 10 in Annex).

⁴ Polish CSO announced a re-estimation of the data for 2007-2009. The outcome should be available in first half of 2012.

Figure 8. Stock of Polish migrants staying temporarily abroad by destination country*, in thousand – upper panel and as % of the total – lower panel



* as for the end of a given year

Source: CSO 2011b.

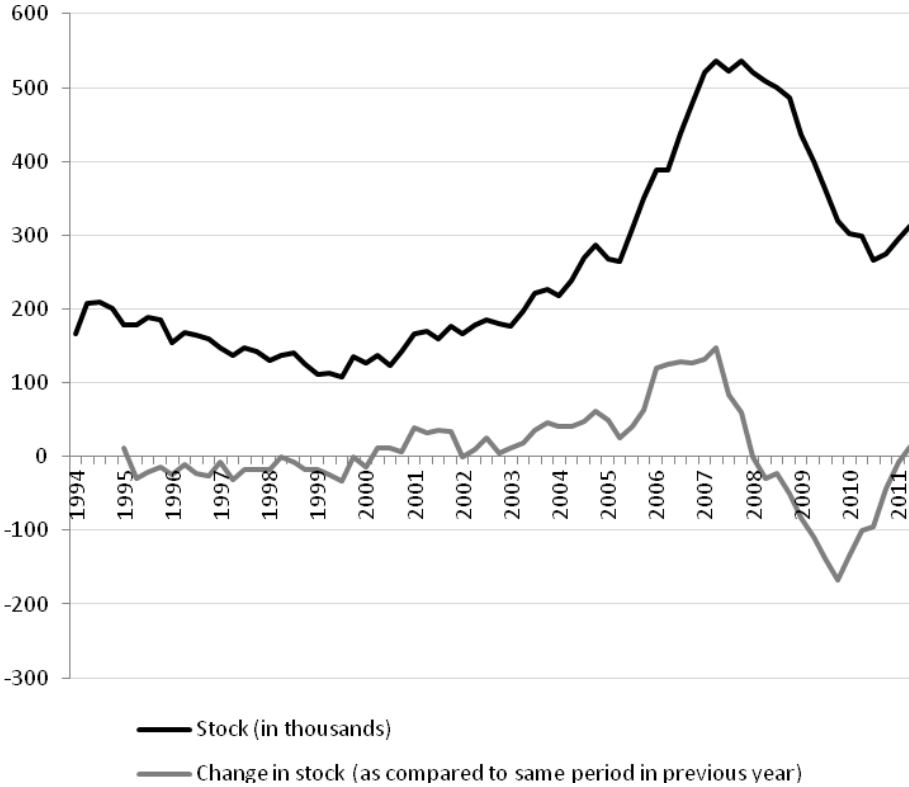
Contrary to the pre-accession period the most important destination country is the United Kingdom hosting over 28% of all temporary migrants. The second most important destination remains Germany (23%). It is important to note that Germany used to be the most important destination for Polish migrants in the pre-2004 period (almost 40% of all migrants in 2004) and its position seriously changed after the EU enlargement. Interestingly, situation did not change significantly even in 2011 when transitory arrangements with respect to German (and Austrian) labour market were abolished:

according to available data the number of Polish migrants staying in Germany increased by roughly 50 thousand. United Kingdom and Germany are followed by Ireland (6.3% of all migrants), the Netherlands (5.5%) and Italy (4.6%). Recent data indicate significant decreases in case of countries suffering severe economic crisis, i.e. Ireland and Spain.

4.4. Migration from Poland according to LFS

As noted already even if the LFS data are not fully representative with regard to the scale of migration it may serve as reliable and useful tool to follow dynamics and structural features of temporary migration from Poland. Figure 9 presents the data on Polish migrants staying temporarily abroad for longer than 3 months (see also Table 9 in Annex).

Figure 9. Stock of Polish migrants staying temporarily abroad according to Labour Force Survey, 1994-2011 (2nd quarter) – absolute numbers (in thousand) and year-to-year change



Source: Own elaboration based on the LFS data

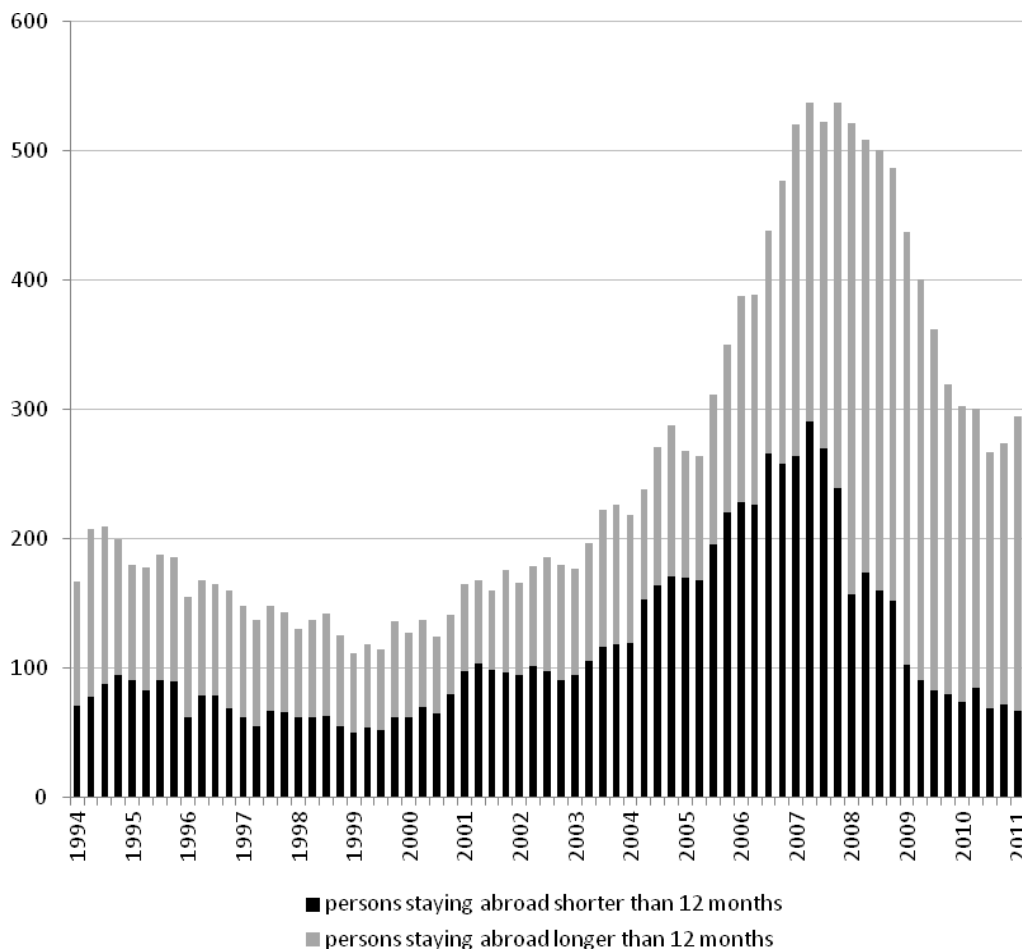
On the basis of the LFS data we can conclude following:

- since 2007 serious decline in number of persons indicated in the LFS as temporary migrants was noted; in fact, in the third quarter of 2010 the number of migrants was about the same as in 2004 (the same quarter) and increased only slightly since then (see Figure 10 and Table 9 in Annex); first two quarters of 2011 witnessed an increase in scale of migration but it is too early to describe it in terms of a new trend in migratory behavior;

- notwithstanding changes in global economic climate most of Polish migrants staying temporarily abroad take up employment at destinations (since 2006 more than 90% of all migrants, around 91% in the most recent quarters) and thus can be described as “typical” labour migrants;

- temporary migrants from Poland are mostly men who constituted around 55% of all migrants in the 1990s and over 60% in last few years – in 2010-2011 the share of male migrants was as high as 62-64%; note that this indicates different pattern of migration than shown by the register data on permanent migration from Poland;

Figure 10. Stock of Polish migrants staying temporarily abroad according to Labour Force Survey, 1994-2011 (2nd quarter)



Source: Own elaboration based on LFS data

- interesting feature of the recent migration from Poland is its temporary character: indeed the spectacular increase in number of migrants noted in the early post-accession phase was mostly due to increase in number of short-term migrants, i.e. migrants staying abroad for longer than 3 but shorter than 12 months – share of those migrants in the total number was as high as 60% between mid-2004 and mid-2006; this structure started to change in 2007 – since then a steady decline in number of short-term migrants is noted which is accompanied by relatively stable number of long-

term migrants: in 2011 (second quarter) the number of persons staying abroad for shorter than 12 months amounted to around 70-80 thousand (22-25% of all migrants) and was much lower than scale of short-term mobility prior to the EU-enlargement while long-term migration figures are still higher than in the pre-2004 period (230 thousand as compared to 100 thousand in late 2003) (Figure 10 and Table 9 in Annex);

- as indicated in the previous report, data for 2009 and 2010 have shown that number of long-term migrants stabilized while sharp decline in number of short-term migrants was noted; this suggested that Poland was already in “late” or “mature” phase of post-accession migration with two important effects related to temporary Polish migrants who started to meet their decisions on return and to the other group which might decide to settle abroad; recent changes however may indicate that due to economic downturn one may expect further changes in migratory behavior of Poles.

5. Immigrants in Poland

5.1. Flows of foreigners according to the Central Population Register

The Central Population Register provides the information on persons (both Polish nationals and foreign nationals) who came from abroad and registered for a permanent stay in Poland. Thus, this data source concerns not only immigrants, but also Polish nationals (see Section 5.1 and 5.5).

In general, in the period 2001-2010 112.8 thousand persons registered in Poland for a permanent stay (Table 1 in the Annex). In 2010 the number of permanent immigrants was 15,246 persons, which was by 12% less than in the previous year (Table 13 in the Annex). The majority arrived from the countries of European Union (11,115 persons, 73%), mostly the 'old-15' member states (10,928 persons, 72%). Just like in the previous year, the most important source countries were United Kingdom (4,409), Germany (2,677), the United States (1,601 persons) and Ireland (1,200). Since these are main destinations for Polish emigrants, this data seem to include information rather about the return migration or migration of persons with Polish descent than inflow of foreigners. Unfortunately, the PESEL register does not distinguish nationals of Poland from foreigners and further conclusion can be only a speculation.

The proportion of women in the inflow remains in the recent years stable; in 2010 it was 41% (Table 13 in the Annex). Persons registering in Poland for a permanent stay are relatively young, with a significant share of persons aged less than 30 years (61%, Table 15 in the Annex). Interestingly, in 2010 there was a large proportion of small children, aged under 4 (29%, in 2009 22%). Again, this indicates rather a return migration of Polish nationals for family reasons. The structure of provinces of destination in Poland remains relatively stable in last few years (Table 14 in the Annex): the most important are Śląskie (14% of immigrants in 2010), Małopolskie (13%), Dolnośląskie (12%), Mazowieckie and Pomorskie (8% each).

5.2. Stocks of foreigners and of temporary migrants

The Central Statistical Office estimates, on the basis of the Labour Force Survey, the stock of foreigners residing in Poland. This data source should be treated with caution as it may underestimate the stock of foreigners for two reasons. First, as already stated in the Section 4.1, the survey was designed for the purposes of the labour market analysis and the sampling method is not adapted to track international migration. Second, as the CSO claims the pollsters are not trained to interview foreigners so the presence of the latter may not be documented in all cases. The number refers to persons aged 15 and over.

The Labour Force Survey reveals a very low scale of immigration to Poland. The number of foreign citizens aged 15 and over oscillated between 50 thousand in the 1st quarter of 2010, 39 thousand in

the 3rd quarter and 42 thousand in the 4th quarter (Table 17 in the Annex). In 2011 this number was estimated at 44 thousand in the 1st and 41 thousand in the 2nd quarter, which is rather a marginal number as for a country inhabited by 38 persons. The reason for which the figure referring to foreign born person is much higher – approximately 270 thousand at the beginning of 2011 – was the relocation of borders of Poland after the World War II. For many citizens of Poland born in the pre-war period the place of birth ceased to be in 1945 within the Polish territory.

The information on stock of temporary migrants was derived from the Central Population Register that concerns persons (both foreigners and Polish nationals) who arrived from abroad and registered for a temporary stay of above 3 months in Poland. Unfortunately, the data for 2010 is not available yet. In 2009 this number was as high as 59 thousand, that is by 3% more as compared to 2008 and by almost 27% more than in 2007 (Table 18 in the Annex). The number of foreign nationals among all temporary immigrants amounted to 53.5 thousand (over 90%). In 2006-2009 Polish nationals constituted approximately 8-10% of all temporary migrants (Table 19 in the Annex). The 2009 increase was both due to change in number of arriving foreigners as well as Polish nationals. The main countries, from which temporary immigrants recruited, was Ukraine (11 thousand in 2007 and 14.2 thousand in 2009), followed by Belarus (3.3 and 4.1 thousand, respectively), Germany (3.3 and 3.2 thousand – a drop as compared to 2008 noted), Russian Federation (1.8 and 2.6 thousand), Vietnam (1.8 and 2.5 thousand – a decline noted) and Armenia (1.4 and 1.5 thousand).

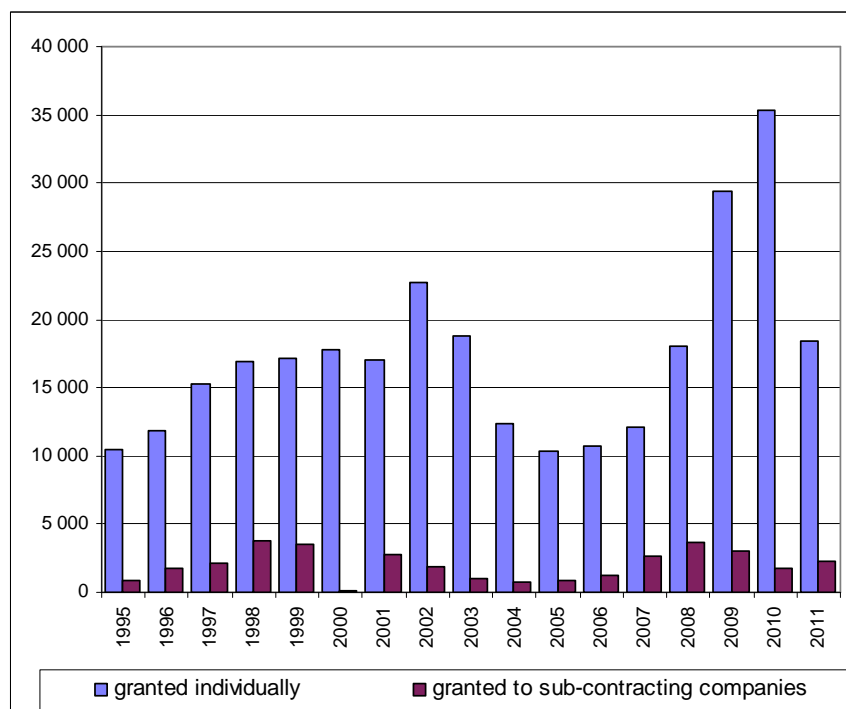
Additionally, it is worth noting that in 2010 43,375 residence permits were issued, which was by 1% more than in the previous year (Table 21 in the Annex). Just like in previous period, they were mostly permits for a fixed period (30,451, 70%) and registrations of stay of EU citizens (6,863, that is 16%). The number of permits to settle was over 3 thousand.

5.3. Foreign labour

The following information on labour performed in Poland by foreigners was provided by the Central Statistical Office and the Ministry of Labour and Social Policy. The data refers to work permits granted individually to foreigners or to sub-contracting foreign companies operating in Poland.

The number of work permits granted in Poland has been increasing constantly since 2007 (Figure 11). As for work permits granted individually, in 2010 35,365 documents were issued, that is by 20% more than in the previous year (Table 22 in the Annex). It is expected that this rising trend will be maintained in 2011, since the number of work permits issued in the first half of 2011 exceeded the respective number for 2010 (18,396 to 15,628). In the first half of 2011 extensions constituted only 19% of all work permits – the rest was constituted by documents issued for the first time. As for work permits granted to foreign sub-contracting companies, in 2010 1,756 documents were issued, which was by 43% less than in the previous year. In the first half of 2011 already 2,230 work permits to foreign sub-contracting companies were granted.

Figure 11. Work permits granted to foreigners by type, 1995-2011¹



¹Data for 2011 from January to June only.

Source: Own elaboration based on the National Labour Office and the Ministry of Labour and Social Policy data

In 2010 the main economic sectors of foreign employment were retail and wholesale trade (5,874, that is 16%), construction sector (5,853, that is 16%), manufacturing (4,154, that is 11%), professional, scientific and technical activities (3,399, that is 9%). As for the country of origin of foreign employees, in 2010 the largest groups were constituted by citizens of Ukraine (13,150, 35%), China (6,317, that is 17%), Vietnam (2,252, that is 6%), Nepal (2,158, that is 6%), Belarus (1,958, that is 5%), Turkey (1,521, that is 4%) and India (1,196, that is 3%). All the above-mentioned groups of foreign employees are dominated by qualified workers and workers performing simple jobs, employed mostly in retail and wholesale trade (the case of citizens of China, Ukraine, Vietnam), manufacturing (the domain of citizens of Ukraine), construction sector (Ukraine and China). An interesting new phenomenon concerns a large number of the citizens of Nepal, mostly employed in professional, scientific and technical activities (1,120 persons). Such an abrupt inflow from this country and the peculiarity of sector of employment indicate that specific migration networks linking Poland and Nepal (and involving recruitment agencies) have been established. Apart from that, distributions of occupations, economic sectors and nationalities remain similar over the last years and the preliminary data for the first half of 2011 do not show any change. Over half of work permits granted individually in 2010 was issued in *Mazowieckie* (19,301, Table 23 in the Annex), other regions attracting foreign workers were *Śląskie*, *Pomorskie*, *Lubuskie*.

In 2009 a simplified procedure of employment gave a way to increased inflow of foreign labour. According to the procedure, the citizens of Belarus, Georgia, Moldova, Ukraine and Russia do not need to receive a work permit in order to work up to 6 months during twelve consecutive months, on the basis of Polish employer's declaration of intent to employ a foreigner. On the basis of such a

declaration Polish consulates issue visas which enable citizens of those countries to enter Poland and undertake employment.

The number of employers' declarations of intent to employ a foreigner on the basis of simplified procedure increased from almost 22 thousand in 2007 to 180 thousand in 2010 (by 4% less than in 2009) and 164 thousand in the first half of 2011 (Table 4, Figure 12). As in the previous years, in 2010 Ukrainians constituted the vast majority of foreigners for whom the declaration was made on the basis of this procedure (169 thousand, that is 94%). Further nationalities were the citizens of Moldova (5.9 thousand), Belarus (3.6 thousand), Russia (0.6 thousand) and Georgia (0.5 thousand). In 2010 and the first half of 2011 the main economic sectors represented by the employers were agriculture and the construction sector (Table 4), which explains seasonality of the demand (Figure 12). Further economic sectors of employment were household services and manufacturing, hotels and restaurants. Agencies of temporary work, for which the economic sector remains unspecified, reported intent to employ for a considerable group of foreigners.

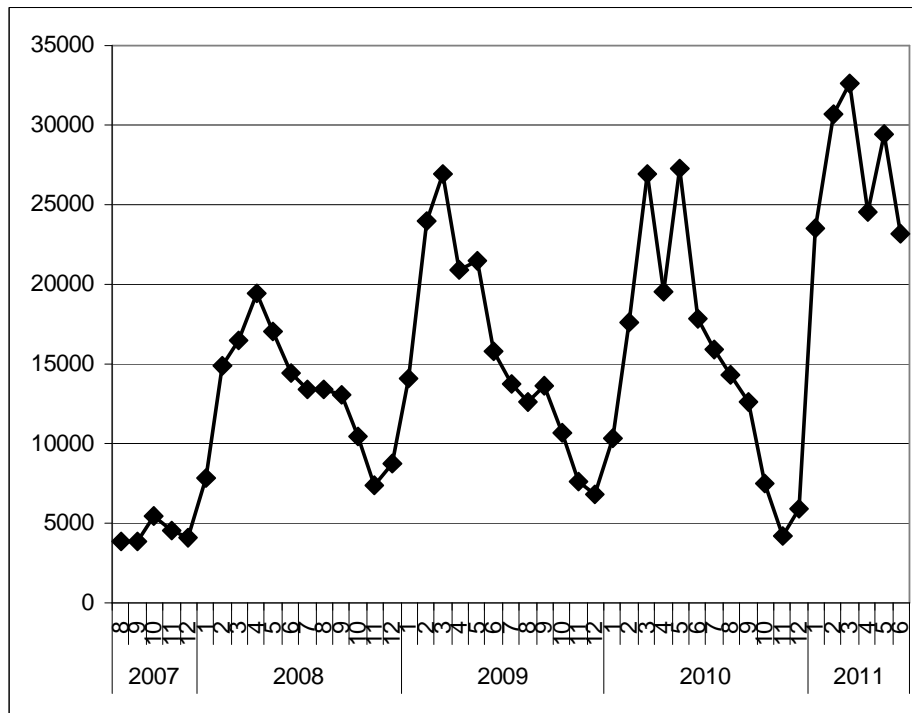
Table 4. Number of employers' declarations of intent to employ a foreigner, by sector of employment, 2007-2011¹

Economic sector	2007	2008	2009	2010	2011¹
Total	21,797	156,713	188,414	180,073	163,984
Agriculture	6,431	77,187	122,352	109,603	97,371
Construction	5,629	23,949	19,095	20,049	28,789
Household services	1,242	8,270	8,791	6,619	5,958
Trade	746	5,031	3,815	2,585	2,494
Manufacturing	2,940	10,071	6,600	6,249	7,542
Transport	754	4,619	3,041	3,661	3,022
Hotels and restaurants	665	3,724	3,474	4,091	2,489
Temporary work agencies	992	10,312	11,341	10,999	-
Other	2,229	13,138	11,385	16,217	16,319

¹Data for 2011 from January to June only.

Source: Own elaboration based on the Ministry of Labour and Social Policy data

Figure 12. Number of employers' declarations of intent to employ a foreigner, August 2007-June 2011



Source: Own elaboration based on the Ministry of Labour and Social Policy data

5.4. Mixed marriages

This section is based on the data derived from the Population Register (provided by the Central Statistical Office) on marriages contracted in Poland between a Polish resident and a person who lived abroad before matrimony. Mixed marriages concern person residing permanently in Poland and residing permanently abroad before marriage (of foreign or of Polish nationality). It is worth mention that the Demographic Yearbooks published online by the Central Statistical Office provide more and more detailed information on marriages between a Polish resident and a 'foreigner'.

In general, the number of mixed marriages registered in Poland has been increasing since 2006, although in 2010 a small drop was registered as compared to the previous year (Table 29 in the Annex). In 2010 there were 86 marriages contracted between both foreign spouses and 3,732 with one foreign spouse. Those numbers constitute, altogether, only 1.7% of all marriages contracted in Poland, which – again – points to still very low level of immigration to the country. Similarly to previous years, mixed marriages in Poland are contracted more often between a husband residing abroad and a wife residing in Poland (75%). As for a husband from abroad, in 2010 the main sending countries were the United Kingdom, Germany, Italy, Ireland and France (Table 30 in the Annex). Interestingly, those countries constitute destinations for Polish emigrants rather than typical origin countries for immigrants trying to settle down in Poland. Therefore, it is highly probable that mixed marriages contracted with a man residing in the United Kingdom, Germany, Italy, Ireland or France concerned mostly Polish emigrants. The opposite situation can be observed in the case of wives from abroad, for whom the main sending countries were Ukraine, Belarus and the Russian Federation (Table 31 in the Annex). Since those are typical origin countries of immigrants, the mixed marriages

contracted with a women residing in Ukraine, Belarus or the Russian Federation concerned mostly immigrants.

5.5. Naturalization and repatriation

The Polish citizenship is based on the *ius sanguinis* rule. Persons who do not have Polish parent(s) dispose of four procedures of acquiring Polish citizenship, open to different categories of foreigners: conferment procedure (with President as a competent authority), acknowledgment procedure (with governor of the region as a competent authority), declaration procedure (with governor of the region as a competent authority) and repatriation procedure. A foreigner willing to obtain the Polish citizenship is obliged to reside incessantly in Poland usually for at least ten years, which is a strict condition and results in a relatively low number of the Polish citizenship acquisitions. After a significant increase in 2005 and a drop in 2006, the number of acquisitions of Polish citizenship was 1,528 in 2007, 1,054 in 2008, 2,503 in 2009 and 2,926 in 2010 (Table 28 in the Annex). The main recipients were citizens of the former USSR: Ukrainians (992 persons in 2010), Belarusians (418), Russians (215), Armenians (101). The Vietnamese and German citizens constituted further major groups (97 and 92, respectively).

The resettlement law constitutes a legislative basis for settling down in Poland and this procedure is open to persons of Polish descent or origin. Officially, there are two possibilities to resettle in Poland: on the basis of the repatriation procedure and on the basis of the Article 52(5) of the Constitution. In practice, there are also numerous cases of persons who have finished studies, begun the economic activity, and use the resettlement procedure to stay in Poland. Just like in the case of naturalization procedure, there are relatively few persons benefitting from the resettlement. The main reason for that are financial constraints related to repatriation to be borne by the Polish local authorities (accommodation and vacant job offers). Thus, after a certain peak in the period 2000-2002, the number of issued repatriation visas dropped to 204 in 2008, 164 in 2009 and 139 in 2010 (Tables 24-25 in the Annex). Simultaneously, applications for repatriation visas decreased to 178, 240 and 125 (in the years 2008, 2009, 2010). In 2010 the largest group of incoming repatriates originated from Kazakhstan (84), Russian Federation (23), and Ukraine (15).

Due to problems with financing of repatriation other procedures are being more and more often used by persons of Polish descent willing to live in Poland. The Polish Charter (according to the Act on Polish Charter passed in September 2007) is a document proving the adherence to the Polish nation and it entitles to coming to Poland. Until the end of 2010 approximately 55 thousand applications were submitted (19,046 in 2010). The vast majority of applications has been approved and approximately 40 thousand Polish Charters were granted (18,333 in 2010). Around 90% applications are submitted in Ukraine (app. 29 thousand) and Belarus (app. 20 thousand), followed by Lithuania (3 thousand) and Russia (1.7 thousand). According to the Polish Ministry of Foreign Affairs, the realization of the Polish law on Polish Charter in Belarus is impeded by the local administration.

5.6. Inflow of refugees / asylum seekers

After a significant increase in 2009, the number of applications for the refugee status dropped one year later from 10,587 to 6,534 (by 38%, Table 32 in the Annex). Also, the number of first applications largely decreased, from 9,651 to 4,330 (by 51%). Similarly to previous year, the Russian Federation constituted the main sending country of asylum seekers (4,795 persons, 73% of all applications). Out of persons with Russian citizenship the largest group constituted persons declaring Chechen nationality and out of persons applying till 2009 most was granted the supplementary protection or tolerated status. In 2010 the number of persons from Russia who were granted the supplementary protection diminished abruptly – from 2,261 in 2009 to 172 in 2010. In 2010 another sending country was Georgia (1,082 persons, 17%), but the number of Georgian applicants was on decrease since 2009 as most of applications were denied as manifestly unfounded.

In 2010 82 persons were granted the refugee status in Poland according to the Geneva Convention, which shows a relevant decrease as compared to the previous years (186 in 2008 and 131 in 2009). There were mostly citizens of Russia (42 persons) and Belarus (19). In the same year only 195 persons got supplementary protection (1,074 in 2008 and 2,316 in 2009), whereas 196 persons were allowed to stay in Poland on the basis of tolerated status (1,507 in 2008 and 65 in 2009). Again, the vast majority of those persons were the citizens of Russia.

6. Labour market impacts of post-accession migration⁵

One of the most commonly issues in the recent debate on migration from and into Poland relates to effects of post-accession migration on the Polish labour market. Main message of this section is that contemporary labour market situation in Poland was only moderately affected by the outflow of Polish citizens. Observed developments suggest rather that labour market performance and its dynamics is determined predominantly by business cycle related factors. Notwithstanding, recent migration of Poles may have serious long-term impacts, particularly if we consider demographic dimension and local / regional distribution of labour (so-called crowding-out effect).

Links between labour market and migration are among the most important issues in the migration and development debate. However, the focus of most of the studies available was on the receiving end of the migration process. Numerous papers discussed such issues as position and performance of immigrants on receiving labour markets and looked at their impacts on the labour importing markets (Borjas, Freeman and Katz 1997, Borjas 2003, Card 1990, Card 2001, Friedberg and Hunt 1995, Kahanec and Zimmermann 2008, Zimmermann 1998). The number of studies assessing impacts of migration on sending countries' labour markets is far more limited, the case of the Central and Eastern European countries is not an exception here. In the following sections an attempt will be made to assess multiple impacts of recent migration on the Polish labour market. In order to complete this task we will follow the approach proposed among others by George Borjas (Borjas 2004, IOM 2005, Kaczmarczyk *et al.* 2009, Janicka and Kowalska 2010) and distinguish three types of effects depending on time frame applied:

- a) In the short term the main effects are related to change in supply of labour and thus refer particularly to change in employment, unemployment and eventually in number of those who are out of the labour force
- b) In the medium term first adjustments towards labour market equilibrium might be visible which may result, among others, in pressure on wages. Additionally structural/qualitative features of the outflow, e.g. so-called brain drain, are of some importance.
- c) In the long term more significant adjustments are expected, including changes in the structure of the economy (capital/labour ratio, demand side modifications), occupational and social mobility of native workers and immigration of foreign labour.

The main methodological problem lies in the separation of impacts as resulting from international mobility of Polish citizens and being consequence of other factors. This point is particularly well taken if we consider economic developments in the post-accession period. In fact, as it follows from the table 1 (Section 1) the post-accession period can be divided into two sub-periods. The first one (2004-2008) was marked by high growth rates, closing the income gap as compared to the rest of the EU and gradual improvement of the labour market situation (with spectacular decline in

⁵ This section includes shortened version of a paper prepared by Paweł Kaczmarczyk and presented during the conference „Growing free labour mobility areas and trends in international migration”, 14-15 November 2011 (organized by OECD and European Commission).

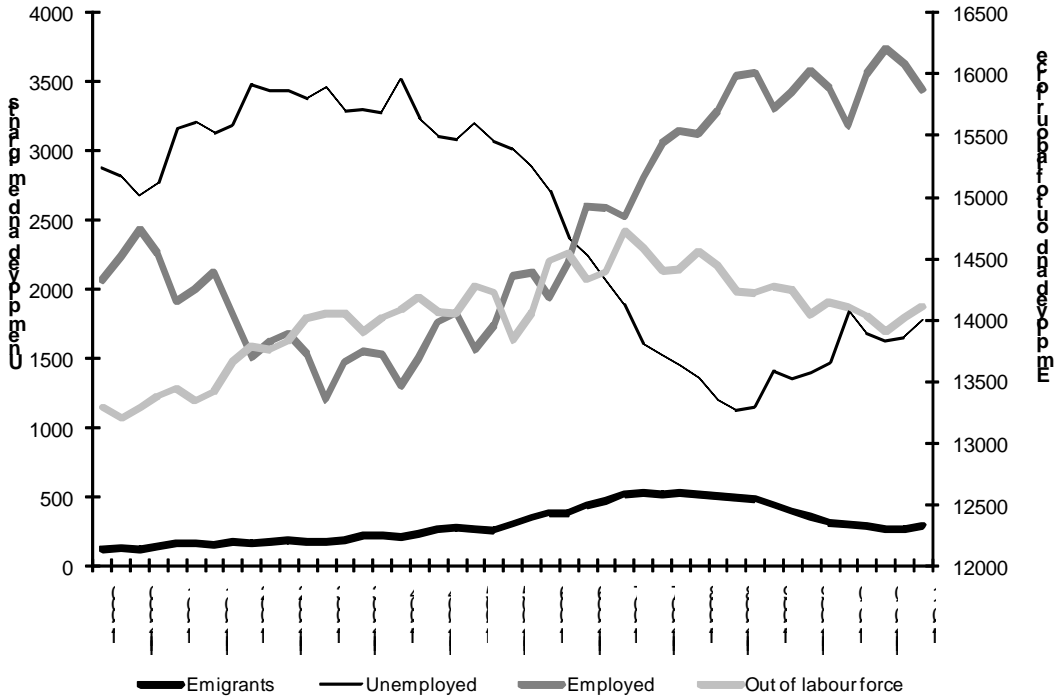
unemployment as major achievement). The second (2009-2011) was already seriously impacted by global economic crisis. Even if Poland managed to survive the first phase of economic crisis in a relatively good 'economic shape' (very high GDP growth rates as compared to most EU member states) the general economic climate obviously impacted the labour market performance (registered unemployment rate increased to over 12%). The main aim of the next sections is to question the role of migration in the labour market developments and to make an attempt to separate the impact of mobility from those resulting from business cycle.

6.1. Short-term impacts

Similarly to other transition economies one of the most important economic issues in Poland was serious oversupply of labour. As a result, during most of the pre-accession period unemployment rate was as very high and prior to the accession – in 2002 – it amounted to over 20%. Additionally, Polish labour market used to be described in terms of low participation and employment rates, structural mismatches and a large share of long-term unemployment (Kaczmarczyk *et al.* 2009).

The situation started to improve already prior to the EU enlargement as the Polish economy grew, which was particularly important directly before the accession (3.9 and 5.3% of GDP growth in 2003 and 2004 respectively). In 2004 the number of unemployed started to gradually decrease: according to LFS data, the number of unemployed decreased from 3.2 million in early 2004 to 1.2 million in the late 2008 (the unemployment rate decreased from 19.1% to 7.1%). As shown on Figure 13 this change was accompanied by significant increase in scale of migration: stock of migrants (according to the LFS data) rose from 218 thousand to around 500 thousand.

Figure 13. Emigration and the labour force in Poland, 2000-2011

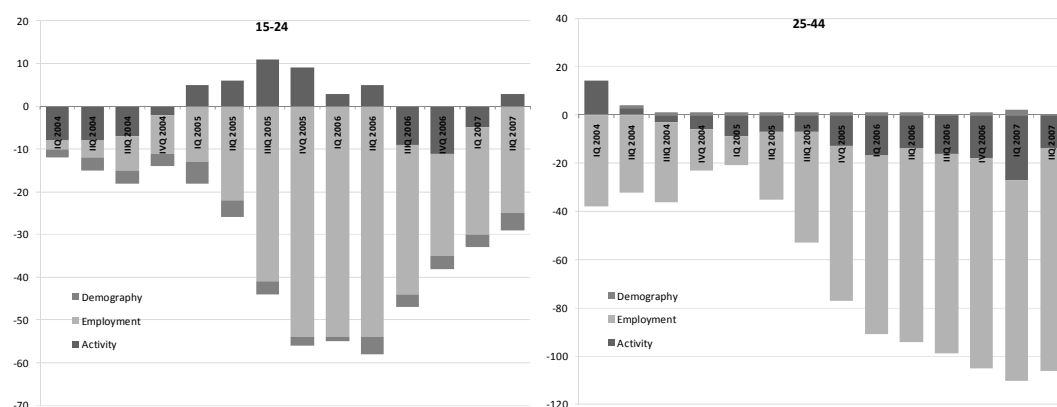


Source: Own calculation based on LFS

A back of the envelope analysis suggests that decline in unemployment might be an outcome of spectacular post-accession migration. In fact, the Pearson correlation coefficient for the period from the second quarter of 2004 to the fourth quarter of 2007 equals -0.82, which indicates an almost perfectly negative linear relationship between the two time series⁶. This observation alone cannot serve as a proof of the causality between migration and unemployment (or an ‘unemployment export’ hypothesis). First of all, the fall of unemployment as observed since 2004 was also strongly correlated with the rise in employment (Pearson correlation coefficient: -0.97): employment rates increased from 44% to 50.1% between the second quarter of 2004 and second quarter of 2008. Secondly, the general trends in the labour market continued even once emigration rates had stabilized, i.e. in 2007 and 2008. This indicates that post-accession emigration could not have been the primary cause of the changes in the labour market, which resulted mainly from structural and business cycle changes in the whole economy. Thirdly, the LFS data shows that the stock of migrants rose by approximately 300,000 whereas unemployment fell by 2 million. It suggests that even if emigration would have a direct impact on the level of unemployment, only a small proportion of changes in the latter variable could be attributed to the first one (see also Kaczmarczyk *et al.* 2009).

The situation on the Polish labour market was subject of analysis presented by Bukowski *et al.* (2008) who investigated the impact of three factors on unemployment: demographic structure, changes in economic activity, and changes in employment. As clearly shown below (Figure 14) the changes in the level of unemployment in case of people in mobile age should be attributed predominantly to a rise (or decline) in the level of employment.

Figure 14. Impact of demographic factors, changes in economic activity and employment on unemployment (2004-2007)*



* The sign is positive for components which increase the level of unemployment and negative otherwise.

Source: Bukowski *et al.* 2008.

⁶ For the whole period under analysis (2000-2011) the correlation between unemployment and migration is strongly negative (-0.77), the same refers to lagged migration time series (-0.71). Interestingly, these relationships became far less stable during the crisis (I quarter 2008 – I quarter 2011): correlation between unemployment and migration remained strongly negative (-0,87), but relation between lagged migration and unemployment became strongly and almost linearly positive (0.98). Additionally, in a last few quarters there was no statistical correlation between unemployment and employment (previously almost linear negative correlation).

In the pre-accession period the increase in unemployment was predominantly a consequence of low number of vacant jobs. Other effects were of moderate importance and acted in opposite direction: the inflow of new cohorts of workers was more or less compensated by decreasing participation rates (particularly in case of older age groups). Figure 14 reveals that in the post-accession period the most important factor influencing the unemployment (in negative way) remained the employment and the process of job creation. Effects of both remaining factors were marginal; however, there was an impact of changes in economic activity which can be attributed to migration. Namely, decrease in participation rates observed in 2005 and 2006 and leading – together with the process of job creation – to significant decline in unemployment shall be attributed, to a degree, to the outflow abroad. A part of migrants, even if still registered as permanent citizens of Poland are not visible in the Polish statistics neither as unemployed nor as economically active and therefore, they affect the value of unemployment rate. This tendency is visible particularly in case of persons in the younger age brackets. Over the years 2003-2006 the number of unemployed persons in the age group 15-24 decreased by over 260 thousand. Out of this number, more than 110 thousand can be attributed to changes in employment, whereas the rest should be attributed mainly to changes in participation patterns. The latter factor is to be linked with two processes: growing tendency to obtain tertiary education and massive post-accession outflow (Kaczmarczyk *et al.* 2009).

Outcomes of Bukowski *et al.* (2008) are supported by the study presented by Lo Turco and Parteka (2008) who analysed the link between labour markets in the New Member States and trade with the EU partners. Their findings show that in case of tradeable sectors the domestic employment was positively affected by employment in trade-partner states. It means that the correlation between the labour emigration and the decline in unemployment in Poland results from the fact that both phenomena are affected by the same factor - the business cycle in the enlarged European Union. When the demand for labour declined in the EU towards the end of 2008 due to cyclical factors and financial crisis, both emigration and employment in Poland were affected.

The impact of migration on the labour market was addressed directly by Budnik (2007). She applied the steady-state solution in order to compare migration scenario versus counterfactual and to evaluate the effect of migration on the Polish labour market. Outcomes of her study – referring to the phase of largest outflow - revealed that even if post-accession migration from Poland had been really massive it would have had only moderate impact on the estimated steady-state shares of people with different labour market statuses. For the period 2004-2005 the bias in unemployment rate due to migration (difference between unemployment rates estimated for migration and non-migration scenarios) was negligible and was estimated at around 0.4 p.p. However, the effects of migration could have been far more severe for particular regional and local labour markets. Additionally, Budnik (2007) analysed gross flows on the Polish labour market (flows between labour market states) in consecutive quarters over the period 2000-2006. The novelty of her approach lied in the introduction of migration as a next labour market state (similarly as employment, unemployment, and non-participation). The study showed that mobility on the Polish labour market is generally very low. In all cases the probability to change the status on the labour market was lower than 5% (in case of employed and non active lower than 3%). Analysis of transition probabilities revealed, however, that transition probabilities were higher in the post-accession period than in the first half of the 2000s. This referred also to migration: transition probability from home to foreign labour market was around 0.1% in the pre-accession period and 0.3% in the post-accession period. At the same time the transition probability from unemployment to migration was equal to 0.5%, as

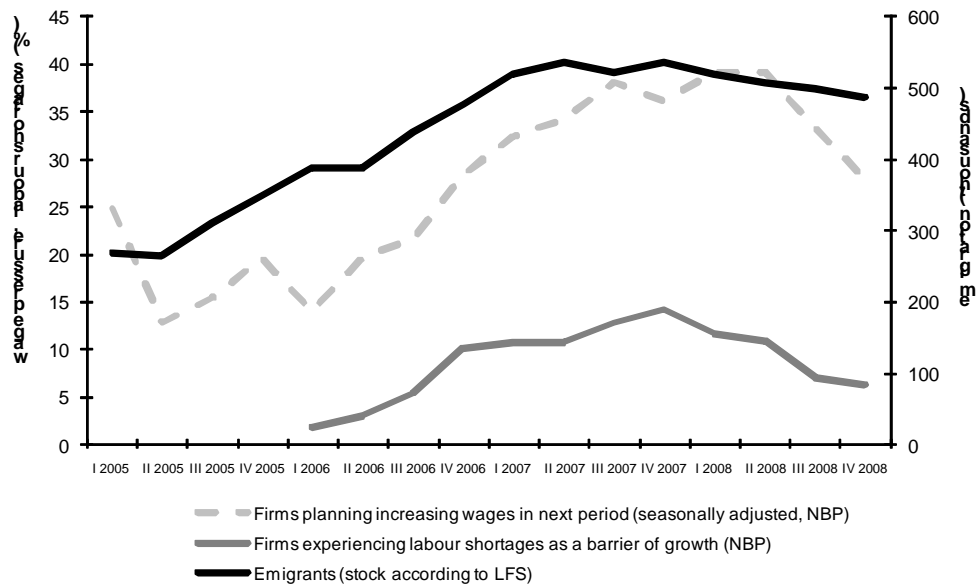
compared to 0.1% in case of transition from employment to migration which may support, at least to some extent, the hypothesis of export of unemployment. In case of returnees (or persons with migration experience) chances on the domestic labour market were higher than in case of non-active persons but lower than of unemployed persons (Budnik 2007; Kaczmarczyk and Okólski 2008).

The last issue, i.e. the question of labour market performance of returnees, is one of the most critical components of the overall assessment of migration impacts. According to the study completed by the National Bank of Poland (Gumuła *et al.* 2011), around 7% of Polish companies did employ persons with migration experience but the total share of returnees among those who newly accessed the labour market was smaller than 2% (1.2% in late 2010). Unfortunately, there is no sound evidence on the transition from migration towards self-employment in Poland. International experiences suggest that this is the main channel enabling the return of migrants on the domestic labour market. This hypothesis is particularly well taken in the Polish case, especially when considering structural characteristics of migrating persons and conditions on local and regional labour markets in Poland. Unfortunately, there is no in-depth analysis on this issue available so far.

6.2. Medium-term impacts

From a theoretical point of view, the wage pressure should be the most important adjustment of the labour market equilibrium to a massive outflow of the labour force and to a decline of the supply of labour force. Most available empirical evidence confirms these predictions (Mishra 2007, Hanson 2005, Aydemir and Borjas 2006). Transition period in Poland saw dramatically difficult situation on the labour market marked by severe unemployment. The vacancy rates were extremely low for the most of that period. In turn, from 2005 until late 2007 the vacancy rate and, particularly, share of firms reporting problems with finding employees increased rapidly. The number of companies experiencing labour shortages as a barrier to growth rose from practically none prior to 2005 to 14.2% in the third quarter of 2007 and then fell again to around 6% in 2008. Most seriously hit sectors included construction (35% firms reporting hiring difficulties) and manufacturing (over 15%).

Figure 15. Labour shortages, wage pressure (seasonally adjusted) and emigration, 2005-2008



Source: Kaczmarczyk et al. 2009.

Importantly, throughout 2007 the labour shortages were declared as the most important barrier of growth (NBP 2008). However, as the business cycle phase changed in 2008, when the Polish economy started slowing down, labour shortages ceased to pose a serious problem for most firms. It suggests, again, that labour shortages as observed in the post-accession phase were primarily an outcome of favorable economic situation and not necessarily outward migration.

Labor shortages are one of the most important factors responsible for wage pressure. This was proven by the National Bank of Poland data (NBP 2008) showing that in the post-accession period the fraction of companies planning to increase wages was higher in case of firms facing labour shortages than in case of those not reporting this problem. These plans, however, did not initially translate into high increases in actual wage levels on the aggregate level in the economy: between 2004 and 2006 the real wages rose at moderate rate (2-4% annually). Additionally, declarations on the impact of outflow on planned changes in wages were very unstable in time. As shown by Gumuła et al. (2011) in the most critical phase of post-accession migration (mid 2007) almost 30% of employed declared international mobility of Poles as an important factor responsible for pressure on wages. Within next years – along with decrease in scale of migration and also clearly visible signs of economic downturn – this share declined to 1% in 2008 and 2009, and to 0 in 2010 (Janicka and Kowalska 2010; Gumuła et al. 2011).

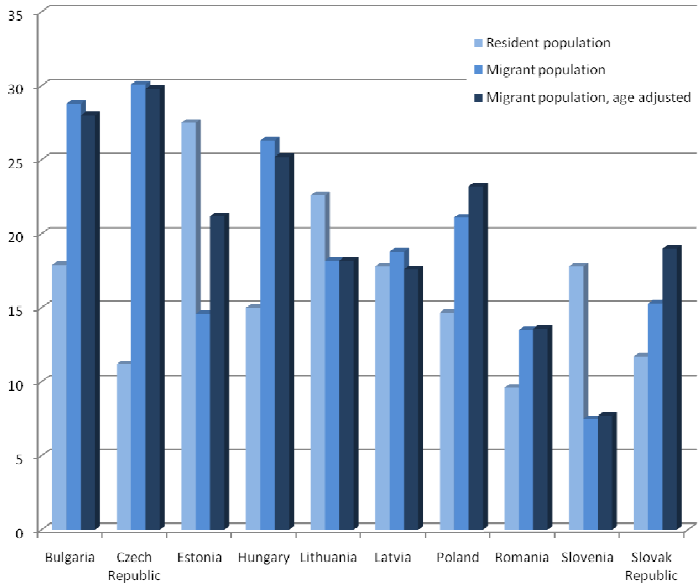
Budnik (2008) attempted to address this issue and to measure directly the impact of migration on wage levels (search and matching model). A comparison of the actual migration scenario and a counter-factual scenario with migration rates fixed at the 2002 level revealed that the steady-state impact on the wage rate of an increase in outflow of workers of around 4.5% (as observed between 2002 and 2006) was moderate and lower than 1% (in 2006). Similar results were provided by Kowalska (2011) who estimated the elasticity of wages in Poland with respect to migration from Poland (based on the LFS data). The aggregate and individual data analysis revealed that 10% labour

supply shock caused between 2 and 4% increase in wages (on average, depending on assumptions). Interestingly, elasticity of wages with respect to international mobility was higher for men than for women and for employees under 30 than older ones. This observation points again to selectivity issues in international migration from Poland.

The impact of large-scale emigration on the supply of labour may be both quantitative and qualitative. Qualitative effects include changes in the composition of the labour force due to the selectivity of migration and this leads to the long lasting debate on mobility of highly skilled persons which has received a considerable amount of attention of discussants arguing for both the negative and positive effects of such form of mobility (Grubel and Scott 1966, Bhagwati and Hamada 1974, Stark *et al.* 1997, Dumont and Lemaître 2005).

Labour market impacts of highly skilled mobility can be both short-term as well as long-term. Following widely acknowledged paper by Beine *et al.* (2001) a distinction can be made between static (or ex post) effects of the outflow which can be termed as drain effect and dynamic (ex ante) brain effects related to possible increase in the investment in education induced by the prospect of migration. Fihel *et al.* (2009) referred to the model proposed by Beine *et al.* (2001) to assess the impacts of post-accession migration from Poland.

Figure 16. Share of persons with tertiary education in case of migrant and resident population in the New Member States



Source: Fihel *et al.* 2009

Figure 16 indicates that in most New Member States an overrepresentation of well educated persons was noted. In case of Poland there was a clear pattern of positive selection of persons who completed tertiary education (see also Sections 4.2-4.3). The term ‘brain drain’ is thus well taken; however, the question of assessment of impacts of this phenomenon remains open. As far as the drain effect is concerned (i.e. short- and medium-term effect of the outflow), it is extremely difficult to assess the impact to post-accession migration on the skill mismatches in specific sectors and regions in Poland. Statistical data available suggests that the labour shortages as observed in the

post-accession period are comprised mainly of qualified workers but not necessarily of those who might be described as highly skilled. In fact, the main sectors suffering from shortage of labour included construction and manufacturing (Kaczmarczyk *et al.* 2009). Thus, it is hardly possible that these posts could be filled by well educated migrants choosing EU labour markets (even if they were ready to take this kind of jobs while staying abroad). Additionally, due to general situation on the Polish labour market (oversupply of labour), post-accession migration is to be assessed rather in terms of 'brain overflow'⁷ than 'brain drain'.

In methodological terms the analysis of the 'brain effect' is even more challenging. The structure of educational attainment of Poland is still changing but empirical evidence available shows this process is caused by set of non-migratory factors (e.g. social change, growing interest in obtaining higher education, structural change within the system and introduction of 3+2 model) and it is impossible to extract any post-accession brain effect. What is of far higher importance is the performance of Polish migrants abroad. One of the key assumptions of the model proposed by Beine *et al.* (2001) is that the rate of return to education should be higher abroad than in country of origin (which is supposed to induce more people to invest in their education in order to engage in gainful international migration). However, recent studies (Drinkwater *et al.* 2008, Fihel *et al.* 2008) suggest that Polish migrants abroad are employed at positions far below their skills (severe over-qualification). Additionally, as shown by Olszewska (2011) the rate of return to education in case of well educated Polish migrants choosing the United Kingdom as their destination was lower abroad than in the domestic labour market. This signifies that the outflow of skilled workers from Poland has the characteristics of a 'brain waste', which undermines the theoretical rationale for increased human capital formation.

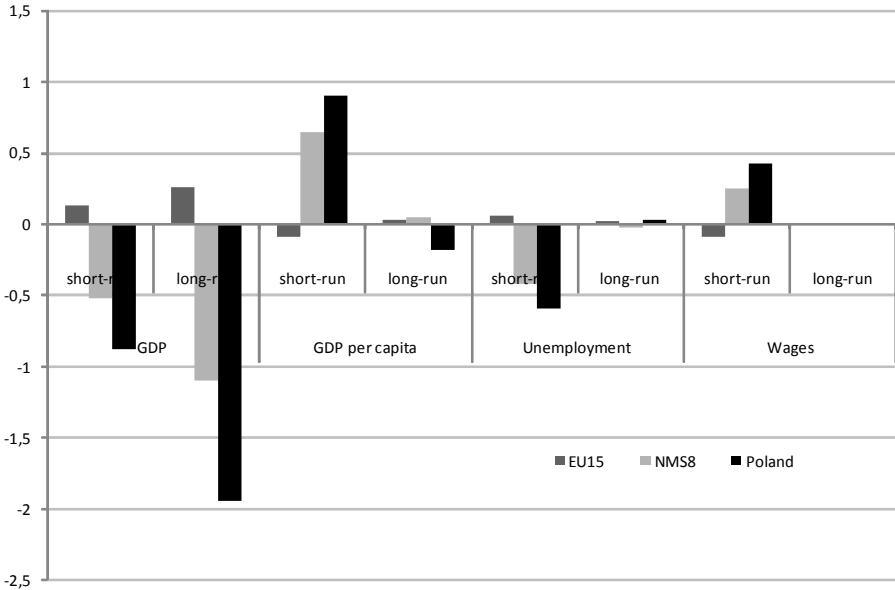
Generally, post-accession migration from Poland is characterized by a selective mobility of the well-educated. Accordingly, it means that in the case of Poland, a brain drain prevails. However, the positive selection of well educated emigrants is mostly due to demographic developments arising from changes in the age structure of the sending population and changes with regard to educational attainment. These issues will be subject of consideration in the next section.

6.3. Long-term impacts

Neoclassical economic theory suggests that in the long run migration is neutral to labour market, i.e. changes in the supply of workers should be internalized by the means of structural changes on the labour market and adjustment in the capital/labour ratio. An exemplification of this thesis is the study presented by Brücker *et al.* (2009) looking at macroeconomic impacts of post-accession migration from the New Member States.

⁷ A brain overflow occurs when there is an (intentional or unintentional) oversupply of educated professionals in the sending country, whose abilities cannot be matched to job offers. In such a case, migration of the highly skilled occurs at low or zero opportunity costs and reduces the labour market supply-demand inequality in the sending country.

Figure 17. Macroeconomic impacts of post-accession migration from NMS – sending and receiving countries (in %, as compared to counterfactual scenario assuming no changes in migration scale/patterns)



Source: Own elaboration based on Brücker et al. 2009.

Brücker et al. (2009) argued that 1) post-accession migration brought serious benefits for the receiving countries (particularly the United Kingdom) and reduced the growth potential in migrant sending areas, 2) impacts on wages and unemployment were moderate and rather positive in short/medium-term, and 3) most of labour market effects were negligible in the long run. Notwithstanding, this kind of approach does not take into account the effects related to demographic aspects of migration and possible structural changes on the domestic labour market. We argue that in case of post-accession migration of Poles these effects may be of biggest importance than short- and medium-term adjustments in wages and employment/unemployment.

If we look at demographic dimension of recent migration from Poland it is necessary to emphasize the relative importance of this phenomenon both in terms of numbers as well as structural features. According to estimates available (Okólski and Mioduszevska 2008; Grabowska-Lusinska and Okólski 2008) the number of migrants staying temporarily abroad increased by over one million between 1st May 2004 and early 2007 (i.e. in the most important phase of post-accession outflow). Considering settlement mobility, the total net loss of population in this period was around 1.1 million (i.e. 2.8% of the total population). In case of working age persons this loss was significantly higher and amounted to 4% of the total population at that age (slightly over 1 million migrants) (Kaczmarczyk and Okólski 2008). This number suggests that we should not expect significant impacts of migration on the country level. However, more in-depth analysis reveals severe challenges with respect to particular groups and, particularly, regional dimension.

Firstly, the demographic loss was more significant in case of males than females (4.4% vs. 2.2%). Secondly, the highest outflow referred to the group of persons aged 25-29 years (9.3%) and 20-24 years (8.8%) as compared to overall 3.3% (in case of the total population). Thirdly, net losses were similar in case of persons with completed tertiary, post-secondary or secondary and vocational

education (in all cases around 4%). Significant differences were noted, however, when analysing jointly education and sex – in case of males the largest losses referred to persons with completed secondary and vocational education (5.8% and 5.4% respectively), in case of females the largest loss was noted among those with tertiary education (3.3 per cent). Fourthly, even if loss of population of urban and urban areas displayed similar pattern, serious differences were noted in case of the most mobile age groups: in case of the age group 25-29, i.e. the age group that was the most strongly affected by the population outflow, the loss in the rural population was as high as 9.5%, it amounted to 10% in case of medium-sized and small towns and to 8.2% in large towns. Last but not least, demographic impacts of migration were significantly different when considering region of origin prior to migration. As for the total population the loss varied from slight 1.8% (Mazowieckie voivodship and particularly Warsaw area) to over 7% (Podkarpackie voivodship marked by the highest propensity to migrate in the post-accession period). These differences were even more striking when we account for type of settlement and age group: in case of younger age brackets and rural areas of Southern Eastern part of Poland losses were commonly close to 25-30%⁸ (Kaczmarczyk and Okólski 2008).

The above presented data is highly relevant if we attempt to understand origins of recent migration of Poles. Available evidence (including correlation between migration rates and such variables as level of economic development, structure of local economy, activity patterns of inhabitants etc.) suggests that migration was more intensive in regions with relatively higher share of population living in rural areas and, additionally, those with younger populations (particularly in the post-accession period). In fact, one of the most important post-accession migrant group was constituted by young and relatively well educated persons departing from relatively backward regions, with undeveloped labour markets and significant share of semi-subsistence economy or remnants of semi-subsistence economy. This kind of people can be termed as economically 'redundant' and their outflow should be described in terms of overflow rather than drainage (Kaczmarczyk and Okólski 2008).

This observation is highly relevant when we look at long term impacts of recent migration. As pointed out by Layard *et al.* (1992), one of the preconditions for development in the post-war Europe was massive outflow of surplus labour. This kind of phenomena happened among others in case of Italy and Spain and created a stimulus for improvement in efficiency of their labour markets. Political conditions, i.e. policies prohibiting massive migration refrained this phenomenon in Poland⁹. As a consequence, during the transition period Polish labour market was characterized by an enormous surplus of labour. Additionally, structural and spatial distribution of the labor force did not match labour market needs: relatively large shares of population were 'trapped' in rural areas in subsistence sectors. Accession into the EU and post-accession mass migration facilitated – for the very first time in contemporary history – the outflow of the 'economically redundant' population originating from economically backward regions. Kaczmarczyk and Okólski (2008) argue that even if

⁸ Due to relatively small samples data are not representative for this level of disaggregation and thus should be interpreted with caution.

⁹ Migration in the communist period was relatively limited in numbers and involved only small portion of the population, i.e. inhabitants of regions with relatively well developed migrant networks or links to particular destination countries (case of so-called ethnic Germans) (Kaczmarczyk 2005).

post-accession flows have only had a moderate impact on sending economies in the short-run (including unemployment, economic activity or wages), this kind of labor market 'pre-emption' or 'crowding out effect' can significantly improve development potential in the long-term. Recent migration can bring about significant changes in the labour market's structure and institutional setup. Predominantly, while affecting the oversupply of labour it makes all reforms of the labour market easier (or even generally feasible). In this context return migration - so welcomed by many policy makers in Poland and other New Member States – may seriously limit this development potential (at least if would happen 'too early', i.e. before completion of labour market reforms).

The economic downturn of the late 2000s created great uncertainty and thus, changed the momentum of new migration from Poland. Analysis of migration data shows that post-accession migration has entered a new, more mature phase. Its most distinct feature is the clearly visible division of migrants' strategies: whereas a relatively large group of post-accession migrants have already returned to their countries of origin, others have taken serious steps to settle abroad. Additionally, post-accession flows have influenced the situation on domestic labour markets and in a few cases seriously strengthened the demand for foreign workers (Kaczmarczyk *et al.* 2009). These process was amplified by demographic changes (extremely low birthrates, clearly recognizable population ageing). As suggested by the economic theory one of the effects of the outflow may be an adjustment in the demand for labour in the longer term in that way that labour supply gaps could be filled with a foreign labour force. This phenomenon was analyzed by Grabowska-Lusińska and Żylicz (2008) who looked at the demand for foreign labour in the context of intensive labour shortages experienced by Polish companies in 2006-2007. Their findings did not support the thesis that Poland has entered already the path towards transforming itself into net immigration country: the share of companies employing foreign workers was marginal (less than 1% of all registered firms), the potential demand (declared willingness to employ foreign workers) was only slightly higher (3.3%). So far, the majority of companies which gained experience in employing foreigners were referring to recruitment abroad in case of specific labour shortages, i.e. the dominating cause was the fact that immigrants hold specific qualifications not available in the Polish labour market (around 40%). However, declarations concerning future plans clearly suggest that Polish employers are aware of potential labour shortages in the future and are ready to engage in active recruitment abroad while foreigners are expected to fill the gaps in the native labour force. Thus, in the long-term one of the effects of post-accession migration and related demographic and labour market changes might be an increase in scale of immigration and rising participation of foreigners in the Polish labour market (Kaczmarczyk *et al.* 2009).

6.4 Concluding remarks

The EU enlargement as completed in May 2004 opened a new chapter in contemporary history of Poland. By all means the same refers to the history of Polish migration. The 'new' migration turned out to be spectacular due to its scale and dynamics (particularly till 2007). Notwithstanding, it was also significantly different from previous waves with regard to structural features of the outflow. Migration from Poland became the domain of young and relatively well educated persons coming mostly from relatively backward regions of the country. A large part of recent mobility from Poland is to be explained in terms of labour market imperfections or mismatches which create serious challenges particularly for those attempting to start their professional careers. Experience of the

post-2004 period revealed that structural composition of migration and selectivity of the outflow to large extent determines the impacts of migration.

The analysis presented above attempted to show that short- and medium-term impacts of migration (i.e. those referring to immediate labour market adjustments with respect to employment/unemployment and the level of wages) were not very pronounced. In fact, the overall effect of the relatively massive supply shock on the macro-scale was moderate, if not negligible. This was among others due to general economic conditions but also structural features of the labour force (including its demographic composition) in Poland. The same refers to the selective outflow of highly skilled Poles which is to be interpreted in terms of brain overflow rather than drainage.

The main aim of the last section was to emphasize the importance of long-term impacts of migration. This seems particularly challenging because the issues under analysis refer to relatively new, dynamic and still ongoing process. Nevertheless, based on preliminary findings and observations it was possible to stress the importance of post-accession migration as potential factor responsible for changing structural and institutional setting of the labour market as well as leading to gradual transformation of Poland into net immigration area.

References

- Anacka M. and M. Okólski (2010). Direct demographic consequences of post-accession migration for Poland. In Black R., Engbersen G., Okolski M and C. Pantiru (eds) *A Continent Moving West? EU enlargement and labour migration within the EU*, Amsterdam: Amsterdam University Press.
- Aydemir A., Borjas G.J. (2006). A Comparative Analysis of the Labor Market Impact of International Migration: Canada, Mexico, and the United States, *NBER Working Paper* No. 12327.
- Beine M., Docquier F., and H. Rapoport (2001). Brain drain and economic growth: theory and evidence, *Journal of Development Economics* Vol. 64, No. 1: 275-89.
- Bhagwati J., Hamada K. (1974). The brain drain, international integration of markets for professionals and unemployment, *Journal of Development Economics*, Vol. 1, No. 1: 19-42.
- Borjas G. (2004). *Labor Economics*, McGraw-Hill.
- Borjas G.J. (2003). The Labor Demand Curve Is Downward Sloping: Reexamining the Impact of Immigration on the Labor Market, *Quarterly Journal of Economics* 118: 1335-1374.
- Borjas G.J., Freeman R.B., and L.F. Katz (1997). How Much Do Immigration and Trade Affect Labor Market Outcomes?, *Brookings Papers on Economic Activity*, 1: 1-67.
- Brücker H. (ed.) (2009). *Labour mobility within the EU in the context of enlargement and the functioning of the transitional arrangements*, Nürnberg: IAB.
- Budnik K.B. (2008). Search Equilibrium with Migration: the Case of Poland, *National Bank of Poland Working Paper* No. 45, Warsaw: NBP.
- Budnik, K.B. (2007). Migration Flows and Labour Market in Poland, *National Bank of Poland Working Paper* No. 44, Warsaw: NBP.
- Bukowski M., Koloch G. and P. Lewandowski (2008). Labour market macrostructure in NMS8 – shocks and institutions. In Bukowski M. (ed.) *Employment in Poland 2007 – Safety on the flexible labour market*, Warsaw: MPiPS.
- Card D. (1990). The Impact of the Mariel Boatlift on the Miami Labor Market, *Industrial and Labor Relations Review* 43: 245-257.
- Card D. (2001). Immigrant Inflows, Native Outflows, and the Local Labor Market Impacts of Higher Immigration, *Journal of Labor Economics* 19: 22-64.
- CSO (2011a). Border traffic and movement of goods and services at the European Union's external border on the territory of Poland in 2010, CSO, Warszawa-Rzeszow.
- CSO (2011b). *Informacja o rozmiarach i kierunkach emigracji z Polski w latach 2004-2010* [Information on the scale and directions of emigration from Poland in 2004-2010], Warsaw: Central Statistical Office.
- Docquier F., Marfouk A. (2004). Measuring the international mobility of skilled workers (1900-2000) - Release 1.0, *Policy Research Working Paper* No. 3381, World Bank.
- Drinkwater, S., Eade, J., and M. Garapich (2006). *Poles apart? EU Enlargement and the Labour Market Outcomes of Immigrants in the UK*, mimeo
- Dumont J.-C., Lemaître G. (2005). Counting immigrants and expatriates in OECD countries: a new perspective, Mimeo: OECD.

- Fihel A., Kaczmarczyk P., N. Wolfeil and A. Żylicz (2009). Brain drain, brain gain and brain waste, in: Brückner H. (ed.). *Labour mobility within the EU in the context of enlargement and the functioning of the transitional arrangements*, Nürnberg: IAB.
- Fihel A., Kaczmarczyk P. (2009). Migration: A Threat or a Chance? Recent Migration of Poles and its Impact on the Polish Labour Market. In Burrell K. (ed.) *Polish Migration to the UK in the 'New' European Union: After 2004*, London: Ashgate .
- Friedberg R.M., Hunt J. (1995). The Impact of Immigration on Host Country Wages, Employment and Growth, *Journal of Economic Perspectives* 9: 23-44.
- Gumuła W., Gucwa A., Opióła Z. and W. Nalepa (2011). Rynek pracy w Polsce. Wynagrodzenia, produktywność pracy i migracje w listopadzie 2010 r. – na tle panelowych badań opinii pracodawców i bezrobotnych w latach 2006–2010 [Salaries, labour productivity and migration in November 2010 – according to employers and unemployed survey 2006-2010], Warsaw: NBP.
- Grabowska-Lusińska I., Żylicz A. (eds) (2008). *Czy Polska gospodarka potrzebuje cudzoziemców?* [Does Polish economy need foreign workers?], Warsaw: OBM UW.
- Grubel H.B., Scott A.D. (1966). The international flow of human capital, *The American Economic Review* Vol. 56, No. 1/2: 268-274.
- Hanson G.H. (2005). Emigration, Labor Supply, and Earnings in Mexico, *NBER Working Paper* No.11412.
- Janicka A. and K. Kowalska (2010). Współczesne migracje zagraniczne Polaków a polski rynek pracy [Recent migration of Poles and the Polish labour market], *Studia Migracyjne – Przegląd Polonijny* 4(2010): 79-106.
- IOM (2005). *Migration and Development*, World Migration Report Series, Geneva: IOM.
- Kaczmarczyk P. (2005). *Migracje zarobkowe Polaków w dobie przemian* [Labour mobility of Poles in the age of transition], Warszawa: WNE UW.
- Kaczmarczyk P., Mioduszewska M. and A. Żylicz (2009). Impact of the Post-Accession Migration on the Polish Labor Market. In: Kahanec M. and K. Zimmermann (eds) *EU Labor Markets After Post-Enlargement Migration*, Bonn: Springer Verlag.
- Kaczmarczyk P. and M. Okólski (2008). Demographic and labour market impacts of migration on Poland, *Oxford Review of Economic Policy*, Vol. 24 No. 3: 600-625.
- Kaczmarczyk P., Anacka M., Fihel A. and R. Stefańska (2010). *Recent Trends in International Migration in Poland The 2009 SOPEMI Report*, unpublished manuscript.
- Kahanec M., Zimmermann K.F. (2008). Migration, the Quality of the Labour Force and Economic Inequality, *IZA Working Paper* No. 3560.
- Kowalska K. (2011). Does the post-enlargement emigration from Poland impact on wages of Poles? Mimeo: University of Warsaw, Faculty of Economics.
- Layard R., Blanchard O.J., Dornbush R. and P. Krugman (1994). *East-West Migration: The Alternatives*, MIT Press.
- Lo Turco, A., Parteka, A. (2008). *EU Enlargement, Economic Interdependence and the Labor Markets in Old and New Member States* (Italian Ministry of Education, University and Research Scientific Research Programs of National Relevance PRIN2007 on "EU policies, economic and trade integration processes and WTO negotiation"); paper presented at the National Bank of Poland's conference "Migration, Labour Market and Economic Growth in Europe after Enlargement"(Warsaw 8-9.12.2008).

Mioduszevska M. (2008). Najnowsze migracje z Polski w świetle danych Badania Aktywności Ekonomicznej Ludności [Recent migration from Poland according to the Polish LFS data], *CMR Working Papers* 36/94.

Mishra P. (2007). Emigration and Wages in Source Countries: Evidence from Mexico, *Journal of Development Economics* Vol. 82, No1: 180-199.

NBP (2008). *Informacja o kondycji sektora przedsiębiorstw ze szczególnym uwzględnieniem stanu koniunktury w IV kw. 2008*, Warszawa: Narodowy Bank Polski. Departament Analiz Makroekonomicznych i Strukturalnych.

Olszewska A. (2011). *Is it rational to migrate to the UK if you are a Pole with a degree?* Mimeo: University of Warsaw, Faculty of Economics.

Stark O., Helmenstein C., and A. Prskawetz (1997). A brain gain with a brain drain, *Economics Letters* Vol. 55, No. 2: 227-34.

UNDP (2011). Human Development Report 2011. Sustainability and Equity: A Better Future for All, UNDP

Zimmermann K.F. (1998). Immigration und Arbeitsmarkt: Eine oekonomische Perspektive, *IZA Working Paper* No. 7.

Statistical Annex

Statistical note

Data from Central Population Register PESEL (Central Statistical Office).

Tables: 1-8, 13-16, 18-20, 29-31.

Data from Labour Force Survey (Central Statistical Office).

Tables: 9, 17.

Data from Office of Foreigners ('Pobyt System')

Tables: 21, 24-28, 32.

Data from Border Guard.

Tables: 11-12.

Data from Ministry of Labour and Social Affairs.

Tables: 22-23.

List of tables in the Annex

- Table 1. International Migration (a). Poland 1952-2000 (in thousand)
- Table 2. International migration (a); year-by-year figures. Poland 1945-2010 (in thousand)
- Table 3. International migration (a) by half-year. Poland 1994-2010 (in thousand)
- Table 4. Population by nationality. Poland 2009 (as of December 31)
- Table 5. Emigrants (a) by major destinations and sex. Poland 2006-2010
- Table 6. Emigrants (a) by provinces of origin. Poland 2006-2010
- Table 7. Emigrants (a) by sex and age. Poland 2006-2010
- Table 8. Emigrants (a) by sex and marital status. Poland 1994-2010
- Table 9. Polish citizens staying abroad for longer than two months (three months since the first quarter of 2007) who at the time of each Labour Force Survey (LFS) were the members of households in Poland by sex, duration of stay abroad and main activity abroad (in thousand; rounded). Poland 1994-2011
- Table 10. Polish citizens staying abroad for longer than two months (three months since 2007; in thousand). Poland 2002-2010 (as of December 31)
- Table 11. Arrivals of foreigners (in thousand). Poland 1980, 1985-2010
- Table 12. Arrivals of foreigners (in thousand); top nationalities; 2004-2010
- Table 13. Polish and foreign nationals who arrived from abroad and who registered for permanent stay, by country of previous residence. Poland 2006-2010.
- Table 14. Polish and foreign nationals who arrived from abroad and who registered for permanent stay, by provinces of destination. Poland 2006-2010.
- Table 15. Polish and foreign nationals who arrived from abroad and who registered for permanent stay, by sex and age. Poland, 2004-2010.
- Table 16. Polish and foreign nationals who arrived from abroad and who registered for permanent stay, by age and marital status. Poland 1994-2010.
- Table 17. Estimates on the number of foreigners based on the Labour Force Survey 2010-2011
- Table 18. Polish and foreign nationals who arrived from abroad and who registered for temporary stay above two months (above three months since 2006). Poland 1997-2009 (as of December 31).
- Table 19. Polish and foreign nationals who arrived from abroad and who registered for temporary stay above three months since 2006 by sex and nationality. Poland 2006-2009 (as of December 31)
- Table 20. Polish and foreign nationals who arrived from abroad and who registered for temporary stay above three months by sex and age. Poland 2007-2009 (as of December 31).
- Table 21. Residence permits by type of a permit and sex. Poland 1998-2010
- Table 22. Work permits granted individually and to sub-contracting foreign companies. Poland 1995-2011
- Table 23. Work permits granted individually by province of destination. Poland 2006-2010
- Table 24. Repatriation to Poland in 1997-2010
- Table 25. Repatriation visas to Poland issued in 1997-2010 by countries of previous residence of repatriates
- Table 26. Repatriation by provinces of settlement. Poland 1998-2010
- Table 27. Persons and families who arrived within repatriation. Poland 2001-2010
- Table 28. Acquisition of Polish nationality by country of former nationality. Poland 2002-2010
- Table 29. Total marriages contracted according to the spouses' country of previous residence. Poland 1990-2010
- Table 30. Mixed marriages; wife living permanently in Poland, husband living permanently abroad – by country of previous residence of husband. Poland 2002-2010.
- Table 31. Mixed marriages; husband living permanently in Poland, wife living permanently abroad – by country of previous residence of wife. Poland 2002-2010.

Table 32. Asylum seekers (first and subsequent applications) by nationality and sex. Poland 2008-2010

Table 1. International Migration (a). Poland 1952-2000 (in thousand).

Year	Emigrants	Immigrants	Net migration
1952-2002	1 359.2	418.9	-940.3
1952-1960	369.6	274.3	-95.3
1961-1970	223.8	24.3	-199.5
1971-1980	225.7	16.2	-209.5
1981-1990	266.7	17.3	-249.4
1991-2000	224.7	72.7	-152.0
2001-2010	258.2	112.8	-145.3

(a) only migrants registering for or deregistering from permanent residence.

Source: Kępińska 2007; own calculations based on Central Population Register PESEL.

Table 2. International migration (a); year-by-year figures. Poland 1945-2010 (in thousand).

Year	Emigrants	Immigrants	Net migration	Year	Emigrants	Immigrants	Net migration
1945	1506.0	2283.0	777.0	1978	29.5	1.5	-28.0
1946	1836.0	1181.0	-655.0	1979	34.2	1.7	-32.5
1947	542.7	228.7	-314.0	1980	22.7	1.5	-21.2
1948	42.7	62.9	20.2	1981	23.8	1.4	-22.4
1949	61.4	19.1	-42.3	1982	32.1	0.9	-31.2
1950	60.9	8.1	-52.8	1983	26.2	1.2	-25.0
1951	7.8	3.4	-4.4	1984	17.4	1.6	-15.8
1952	1.6	3.7	2.1	1985	20.5	1.6	-18.9
1953	2.8	2.0	-0.8	1986	29.0	1.9	-27.1
1954	3.8	2.8	-1.0	1987	36.4	1.8	-34.6
1955	1.9	4.7	2.8	1988	36.3	2.1	-34.2
1956	21.8	27.6	5.8	1989	26.6	2.2	-24.4
1957	133.4	91.8	-41.6	1990	18.4	2.6	-15.8
1958	139.3	92.8	-46.5	1991	21.0	5.0	-16.0
1959	37.0	43.2	6.2	1992	18.1	6.5	-11.6
1960	28.0	5.7	-22.3	1993	21.3	5.9	-15.4
1961	26.5	3.6	-22.9	1994	25.9	6.9	-19.0
1962	20.2	3.3	-16.9	1995	26.3	8.1	-18.2
1963	20.0	2.5	-17.5	1996	21.3	8.2	-13.1
1964	24.2	2.3	-21.9	1997	20.2	8.4	-11.8
1965	28.6	2.2	-26.4	1998	22.2	8.9	-13.3
1966	28.8	2.2	-26.6	1999	21.5	7.5	-14.0
1967	19.9	2.1	-17.8	2000	26.9	7.3	-19.6
1968	19.4	2.2	-17.2	2001	23.3	6.6	-16.7
1969	22.1	2.0	-20.1	2002	24.5	6.6	-17.9
1970	14.1	1.9	-12.2	2003	20.8	7.0	-13.8
1971	30.2	1.7	-28.5	2004	18.9	9.5	-9.4
1972	19.1	1.8	-17.3	2005	22.2	9.4	-12.8
1973	13.0	1.4	-11.6	2006	46.9	10.8	-36.1
1974	11.8	1.4	-10.4	2007	35.5	15.0	-20.5
1975	9.6	1.8	-7.8	2008	30.1	15.3	-14.8
1976	26.7	1.8	-24.9	2009	18.6	17.4	-1.2
1977	28.9	1.6	-27.3	2010	17.4	15.2	-2.1

(a) only migrants registering for or deregistering from permanent residence.

Source: Kępińska 2007, CSO Demographic Yearbook 2009, 2010; 2010 data provided by CSO; based on Central Population Register PESEL.

Table 3. International migration (a) by half-year. Poland 1994-2010 (in thousand).

Period	Number of emigrants	Number of immigrants	Net migration
1994 1st half-year	11.9	3.0	-8.9
1995 1st half-year	13.3	3.4	-9.9
1996 1st half-year	10.6	3.6	-7.0
1997 1st half-year	9.3	3.6	-5.7
1998 1st half-year	10.6	4.1	-6.4
1999 1st half-year	9.5	3.8	-5.7
2000 1st half-year	12.8	3.1	-9.7
2001 1st half-year	11.6	3.3	-8.3
2002 1st half-year	10.6	2.9	-7.7
2003 1st half-year	9.9	3.0	-7.0
2004 1st half-year	8.0	4.2	-3.8
2005 1st half-year	9.6	4.3	-5.3
2006 1st half-year	25.0	4.7	-20.4
2007 1st half-year	16.7	6.2	-10.5
2008 1st half-year	15.5	7.0	-8.5
2009 1st half-year	8.6	8.4	-0.2
2010 1st half-year	8.0	7.1	-0.9

(a) only migrants registering for or deregistering from permanent residence.

Source: Kępińska 2007, Central Statistical Office (Central Population Register – PESEL)

Table 4. Population by nationality. Poland 2009 (as of December 31).

Nationality / country of nationality	Total	Of which: Women	Nationality / country of nationality	Total	Of which: Women
Total	38 167 329	19 738 587	Japan	167	84
Polish	38 117 697	19 713 061	Jordan	150	14
Foreign	49 632	25 526	Kazakhstan	373	209
<i>of which:</i>			Lebanon	131	10
Algeria	241	8	Lithuania	521	367
Armenia	1 393	554	Moldova	191	103
Australia	104	34	Mongolia	249	144
Austria	976	522	Netherlands	480	102
Belarus	3 219	2 161	Norway	102	28
Belgium	201	57	Romania	266	87
Bulgary	1 122	377	Russian Federation	4 191	2 855
Canada	223	77	Serbia and Montenegro	142	23
China	391	158	Slovak Republic	334	191
Croatia	148	27	Spain	169	66
Czech Republic	682	388	Sweden	1 334	696
Czechoslovakia	180	101	Switzerland	107	46
Denmark	269	120	Syria	277	28
Egypt	109	9	Turkey	363	17
France	705	247	Ukraine	10 227	7 071
Georgia	138	55	United Kingdom	764	201
Germany	4 446	1 978	USA	1 052	431
Greece	861	272	USSR	995	681
Hungary	448	222	Vietnam	2 875	1 077
India	288	82	Yugoslavia	296	68
Iraq	241	27	Other (less than 100 citizens)	1 811	469
Italy	672	144	Stateless	209	124
			Unknown	4 168	2 553

Source: Central Population Register (PESEL).

Table 5. Emigrants (a) by major destinations and sex. Poland 2006-2010.

Country of destination	Total					Of which: women				
	2006	2007	2008	2009	2010	2006	2007	2008	2009	2010
Total	46 936	35 480	30 140	18 620	17 360	19 699	14 606	13 978	10 209	9 385
EU-15	40 446	30 229	24 706	15 137	13 997	16 792	12 312	11 417	8 394	7 595
EU-25	40 619	:	24 936	15 248	14 132	16 858	:	11 524	8 443	7 668
EU-27	-	:	24 950	15 256	14 143	-	:	11 531	8 446	7 672
Europe (b)	41 221	31 136	25 710	15 726	14 651	17 099	12 646	11 815	8 676	7 931
Austria	853	785	559	386	338	388	350	303	221	192
Belgium	307	402	325	281	296	137	190	154	157	175
Bulgaria	8	17	13	7	5	4	9	6	3	1
Czech Republic	90	116	123	44	66	34	48	62	17	34
Cyprus	40	39	29	16	18	14	11	10	6	12
Denmark	175	217	208	137	138	83	84	80	71	75
Finland	44	43	42	23	25	16	16	13	13	12
France	579	533	564	388	339	281	240	290	220	183
Germany	14 950	13 771	11 884	7 769	6 818	7 250	6 898	6 440	4 550	3 850
Greece	155	119	174	88	91	72	51	102	55	61
Hungary	12	13	13	19	15	7	10	7	8	7
Iceland	79	140	99	36	43	30	52	25	16	26
Ireland	2 307	2 089	1 422	570	565	637	445	404	271	261
Italy	891	813	922	549	535	524	478	582	389	381
Luxembourg	35	36	31	21	18	17	22	14	11	13
Netherlands	925	1 098	1 004	691	680	396	390	414	357	329
Norway	251	304	418	245	303	87	80	141	101	141
Romania	1	9	2	1	6	0	5	1	0	3
Russian Federation	44	30	23	15	15	11	7	9	6	3
Spain	625	650	514	330	272	234	223	211	166	142
Sweden	595	487	475	398	400	269	202	230	220	220
Switzerland	148	147	166	111	102	75	62	88	77	65
United Kingdom	17 996	9 165	6 565	3 502	3 472	6 482	2 712	2 177	1 691	1 698
Ukraine	28	30	34	25	18	14	9	13	7	7
Other	83	1 039	101	74	73	37	52	39	43	40
Africa	94	41	58	36	32	35	14	26	16	14
South Africa	52	18	27	16	5	29	5	10	8	2
Other	42	23	31	20	27	6	9	16	8	12
America	5 087	3 928	4 033	2 551	2 407	2 325	1 801	1 977	1 346	1 298
Canada	1 097	821	841	571	607	533	410	436	302	324
United States	3 951	3 078	3 158	1 961	1 767	1 773	1 380	1 532	1 035	961
Other	39	29	34	19	33	19	11	9	9	13
Asia	115	76	74	61	94	51	20	23	33	50
Oceania	413	264	261	244	175	186	124	136	137	91
Australia	369	233	239	227	163	170	112	127	130	86
Other	44	31	22	17	12	16	12	9	7	5
Unknown	6	8	4	:	1	3	1	1	:	1

(:) no data available.

(a) refers only to migrants deregistering from permanent residence in Poland with intent of moving abroad.

(b) including Turkey and Cyprus

Source: Kępińska 2007, Demographic Yearbook 2008, 2009; data provided by CSO; based on Central Population Register PESEL (Central Statistical Office).

Table 6. Emigrants (a) by provinces of origin. Poland 2006-2010.

Province of origin	Numbers					Percentage of total				
	2006	2007	2008	2009	2010	2006	2007	2008	2009	2010
Dolnośląskie	5 201	3 702	3 457	2 164	2 007	11.1	10.4	11.5	11.6	11.6
Kujawsko-Pomorskie	2 360	1 560	1 210	745	766	5.0	4.4	4.0	4.0	4.4
Lubelskie	1 703	1 145	839	492	459	3.6	3.2	2.8	2.6	2.6
Lubuskie	1 497	1 226	983	584	557	3.2	3.5	3.3	3.1	3.2
Łódzkie	1 462	984	836	468	556	3.1	2.8	2.8	2.5	3.2
Małopolskie	3 178	2 254	2 314	1 311	1 231	6.8	6.4	7.7	7.0	7.1
Mazowieckie	2 185	1 446	1 068	636	592	4.7	4.1	3.5	3.4	3.4
Opolskie	4 792	4 385	3 785	2 117	1 848	10.2	12.4	12.6	11.4	10.6
Podkarpackie	2 800	1 893	1 801	1 040	863	6.0	5.3	6.0	5.6	5.0
Podlaskie	1 238	761	668	469	421	2.6	2.1	2.2	2.5	2.4
Pomorskie	4 027	2 630	2 115	1 253	1 396	8.6	7.4	7.0	6.7	8.0
Śląskie	9 865	8 358	6 591	4 349	3 958	21.0	23.6	21.9	23.4	22.8
Świętokrzyskie	904	633	652	326	307	1.9	1.8	2.2	1.8	1.8
Warmińsko-Mazurskie	2 350	1 672	1 316	744	740	5.0	4.7	4.4	4.0	4.3
Wielkopolskie	2 292	1 853	1 519	1 183	1 094	4.9	5.2	5.0	6.4	6.3
Zachodniopomorskie	1 082	978	986	739	565	2.3	2.8	3.3	4.0	3.3
<i>Total</i>	46 936	35 480	30 140	18 620	17 360	100	100	100	100	100

(a) refers only to migrants deregistering from permanent residence in Poland with intent of moving abroad.

Source: Central Statistical Office, Regional Data Bank, on-line access; data provided by CSO; based on Central Population Register (PESEL).

Table 7. Emigrants (a) by sex and age. Poland 2006-2010.

Age category	Actual numbers					Percentage of Total				
	2006	2007	2008	2009	2010	2006	2007	2008	2009	2010
Men										
Total	27 237	20 874	16 162	8 411	7 975	100	100	100	100	100
0-14	2 186	1 740	1 742	1 283	1 180	8.0	8.3	10.8	15.3	14.0
15-19	2 767	2 465	1 659	571	667	10.2	11.8	10.3	6.8	7.9
20-24	6 693	5 909	3 504	687	649	24.6	28.3	21.7	8.2	7.7
25-29	5 452	3 181	2 569	1 059	900	20.0	15.2	15.9	12.6	10.7
30-34	2 660	1 579	1 454	1 068	1 035	9.8	7.6	9.0	12.7	12.3
35-39	1 581	1 184	1 116	796	803	5.8	5.7	6.9	9.5	9.5
40-44	1 812	1 321	1 129	760	661	6.7	6.3	7.0	9.0	7.9
45-49	1 550	1 258	1 006	648	631	5.7	6.0	6.2	7.7	7.5
50-54	1 148	936	784	596	535	4.2	4.5	4.9	7.1	6.4
55-59	648	582	544	451	431	2.4	2.8	3.4	5.4	5.1
60-64	322	285	277	218	244	1.2	1.4	1.7	2.6	2.9
65-69	172	192	145	98	92	0.6	0.9	0.9	1.2	1.1
70+	246	242	233	176	147	0.9	1.2	1.4	2.1	1.7
Women										
Total	19 699	14 606	13 978	10 209	9 385	100	100	100	100	100
0-14	2 070	1 647	1 629	1 263	1 123	10.5	11.3	11.7	12.4	12.0
15-19	838	597	542	424	368	4.3	4.1	3.9	4.2	3.9
20-24	3 301	1 706	1 255	824	736	16.8	11.7	9.0	8.1	7.8
25-29	4 209	2 511	2 273	1 646	1 443	21.4	17.2	16.3	16.1	15.4
30-34	2 285	1 891	2 146	1 665	1 502	11.6	12.9	15.4	16.3	16.0
35-39	1 612	1 411	1 557	1 089	1 052	8.2	9.7	11.1	10.7	11.2
40-44	1 549	1 378	1 301	913	839	7.9	9.4	9.3	8.9	8.9
45-49	1 300	1 169	966	700	652	6.6	8.0	6.9	6.9	6.9
50-54	988	879	831	604	544	5.0	6.0	5.9	5.9	5.8
55-59	629	578	541	438	463	3.2	4.0	3.9	4.3	4.9
60-64	302	295	302	208	245	1.5	2.0	2.2	2.0	2.6
65-69	232	176	168	112	118	1.2	1.2	1.2	1.1	1.3
70+	384	368	467	323	300	1.9	2.5	3.3	3.2	3.2

(a) refers only to migrants deregistering from permanent residence in Poland with intent of moving abroad.

Source: Kępińska 2007, Central Statistical Office: Demographic Yearbook 2008, 2009; data provided by CSO; based on Central Population Register (PESEL).

Table 8. Emigrants (a) by sex and marital status. Poland 1994-2010.

Year and age category	Marital status					
	Total	Bachelor or spinster	Married	Widower or widow	Divorced	Unknown (c)
Men						
1986-90 (b)	13 734	7 347	5 988	82	317	-
1991-95 (b)	11 337	6 464	4 609	84	180	-
1996-2000 (b)	11 489	7 016	424	56	177	-
2001-2005 (b)	11 400	7 333	3 763	64	242	-
2006-2010 (b)	15 695	8 036	4 998	55	650	2 393
1994	13 451	7 891	5 306	84	170	-
1995	13 305	8 333	4 707	73	192	-
1996	10 882	6 936	3 744	54	148	-
1997	10 179	6 463	3 504	60	152	-
1998	11 607	7 294	4 094	46	173	-
1999	11 035	6 725	4 054	62	194	-
2000	13 740	7 661	5 802	57	220	-
2001	12 251	7 620	4 338	94	199	-
2002	12 411	8 382	3 761	48	220	-
2003	10 744	7 374	3 151	44	175	-
2004	9 716	6 217	3 207	54	238	-
2005	11 880	7 070	4 356	78	376	-
2006	27 237	13 849	8 126	76	887	4 299
2007	20 874	11 137	5 891	65	673	3 108
2008	13 978	8 117	4 865	59	645	2 476
2009	8 411	3 682	3 143	35	539	1 012
2010						
0-14	1 180	1 029	-	-	-	151
15-19	667	504	-	-	-	163
20-24	649	450	60	-	2	137
25-29	900	487	269	-	22	121
30-34	1 035	372	463	0	66	134
35-39	803	211	414	1	114	63
40-44	661	143	366	1	76	75
45-49	631	95	376	2	81	77
50-54	535	51	362	3	54	65
55-59	431	34	294	8	60	35
60-64	244	10	187	8	19	20
65-69	92	4	72	3	6	7
70+	147	3	102	14	7	21
Total	7 975	3393	2 965	41	507	1 069
Women						
1986-90 (b)	15 631	6 466	8 208	541	416	-
1991-95 (b)	11 206	4 973	5 447	452	334	-
1996-2000 (b)	10 957	4 865	5 376	353	363	-
2001-2005 (b)	10 566	5 283	4 588	314	382	-
2006-2010 (b)	13 575	5 077	5 776	284	752	1 686

1994	12 453	5 318	6 170	562	403	-
1995	13 039	6 167	5 932	489	451	-
1996	10 415	4 955	4 755	345	360	-
1997	10 043	4 739	4 632	327	345	-
1998	10 570	4 667	5 197	356	350	-
1999	10 501	4 578	5 224	349	350	-
2000	13 259	5 388	7 070	390	411	-
2001	11 117	4 850	5 570	302	395	-
2002	12 121	6 756	4 729	295	341	-
2003	10 069	5 616	3 843	268	342	-
2004	9 161	4 644	3 879	299	339	-
2005	10 362	4 548	4 917	406	491	-
2006	19 699	7 933	7 905	306	889	2 666
2007	14 606	5 422	6 469	305	738	1 672
2008	13 978	5 012	5 984	312	866	1 804
2009	10 209	3 716	4 410	262	635	1 186
2010						
0-14	1 123	967	-	-	-	156
15-19	368	276	4	-	-	88
20-24	736	432	161	1	6	136
25-29	1 443	610	577	0	63	193
30-34	1 502	501	739	5	105	152
35-39	1 052	199	628	5	125	95
40-44	839	141	529	9	83	77
45-49	652	60	441	10	74	67
50-54	544	53	366	20	70	35
55-59	463	34	330	20	48	31
60-64	245	14	152	30	27	22
65-69	118	4	70	25	12	7
70+	300	11	113	112	21	43
Total	9 385	3 302	4 110	237	634	1 102

(a) refers only to migrants deregistering from permanent residence in Poland with intent of moving abroad.

(b) annual average.

(c) since 2006 Polish citizens are no longer obliged to report their marital status while leaving Poland.

Source: Kępińska 2007, Demographic Yearbook (2008, 2009, 2010), data provided by CSO; based on Central Population Register – PESEL.

Table 9. Polish citizens staying abroad for longer than two months (three months since the first quarter of 2007) (d) who at the time of each Labour Force Survey (LFS) were the members of households in Poland by sex, duration of stay abroad and main activity abroad (in thousand; rounded). Poland 1994-2011 (a).

Date of LFS	All migrants			Duration of stay abroad		Of which:			
	Total	Men	Women	less than 1 year	1 year and over	migrant workers			Per cent of total
						Total	Men	Women	
1994	(196)	(117)	(79)	(83)	(113)	-	-	-	-
February	167	97	70	71	96	-	-	-	-
May	207	121	86	78	129	144	89	56	69.5
August	209	131	78	88	121	150	100	50	71.7
November	200	119	81	95	105	139	90	49	69.5
1995	(183)	(110)	(73)	(89)	(94)	(133)	(87)	(46)	-
February	179	103	76	91	89	126	82	44	70.3
May	178	104	74	83	95	130	83	46	73.0
August	188	116	72	91	97	139	90	49	73.9
November	186	116	70	90	96	138	92	46	74.1
1996	(162)	(92)	(70)	(72)	(90)	(112)	(70)	(42)	-
February	155	86	69	62	93	109	68	40	70.3
May	168	97	71	79	89	119	75	44	70.8
August	165	94	71	79	86	112	70	42	67.8
November	160	92	68	69	91	108	68	40	67.5
1997	(144)	(83)	(61)	(62)	(82)	(101)	(63)	(38)	-
February	148	85	63	62	86	105	66	38	70.9
May	137	78	59	55	82	94	59	36	68.6
August	148	85	64	67	81	101	63	39	68.2
November	142	82	60	66	77	102	64	37	71.8
1998	(133)	(76)	(57)	(60)	(73)	(98)	(62)	(37)	-
February	130	73	57	62	68	96	60	36	73.8
May	137	76	61	62	75	100	62	38	72.9
August	141	83	58	63	79	104	66	38	73.7
November	125	73	52	55	70	93	59	34	74.4
1999									
February (b)	112	63	49	50	61	89	66	34	79.5
4th quarter	136	80	56	62	74	94	54	35	69.1
2000	(132)	(75)	(57)	(69)	(63)	(101)	(64)	(37)	-
1st quarter	127	75	52	62	65	94	65	29	74.0
2nd quarter	137	78	59	70	67	106	66	40	77.4
3rd quarter	124	65	59	65	59	95	56	39	76.6
4th quarter	142	82	60	80	61	108	70	38	76.0
2001	(168)	(97)	(71)	(99)	(68)	(132)	(83)	(49)	-
1st quarter	166	97	69	98	67	131	82	49	78.9
2nd quarter	169	99	70	104	64	134	85	49	79.3
3rd quarter	160	92	68	99	61	125	78	47	78.1
4th quarter	176	100	76	97	79	138	87	52	78.4
2002	(178)	(102)	(78)	(97)	(81)	(140)	(86)	(54)	-
1st quarter	166	97	69	95	71	134	83	51	80.7
2nd quarter	179	102	77	102	77	142	85	58	79.3
3rd quarter	186	106	80	98	88	148	90	57	79.6
4th quarter	180	104	77	91	89	136	85	51	75.6

	2003	(206)	(112)	(94)	(109)	(97)	(157)	(93)	(64)	-
1st quarter		177	99	78	95	82	129	79	51	72.9
2nd quarter (c)		197	104	94	105	92	149	87	63	75.6
3rd quarter		222	117	104	116	106	175	100	75	78.8
4th quarter		226	126	100	118	108	172	105	68	76.1
	2004	(253)	(143)	(111)	(152)	(107)	(208)	(124)	(84)	-
1st quarter		218	127	91	119	99	165	98	66	75.7
2nd quarter		238	135	104	153	85	193	120	74	81.1
3rd quarter		270	148	122	164	107	224	132	92	83.0
4th quarter		287	161	127	171	117	250	147	103	87.1
	2005	(298)	(181)	(117)	(189)	(110)	(261)	(167)	(94)	-
1st quarter		268	154	114	170	98	232	141	91	86.6
2nd quarter		264	160	103	168	96	225	147	78	85.2
3rd quarter		310	196	114	196	115	271	180	91	87.4
4th quarter		350	212	138	220	130	315	199	116	90.0
	2006	(423)	(271)	(152)	(245)	(179)	(387)	(259)	(127)	-
1st quarter		388	232	156	228	160	347	219	127	89.4
2nd quarter		389	257	133	226	163	353	245	108	90.7
3rd quarter		438	288	150	266	172	403	276	126	92.0
4th quarter		477	306	170	258	219	444	296	148	93.1
	2007	(529)	(342)	(188)	(266)	(263)	(491)	(328)	(162)	-
1st quarter		520	327	193	264	256	477	311	166	91.7
2nd quarter		537	343	193	291	246	492	329	163	91.6
3rd quarter		522	345	178	270	252	490	333	157	93.9
4th quarter		537	351	186	239	298	503	340	163	93.7
	2008 (d)	(502)	(320)	(182)	(160)	(342)	(466)	(308)	(160)	-
1st quarter		520	333	187	157	364	481	319	162	92.5
2nd quarter		508	323	185	174	334	466	310	157	91.7
3rd quarter		500	322	178	160	340	469	312	167	93.8
4th quarter		487	305	182	152	335	453	292	161	93.0
	2009	(380)	(238)	(142)	(89)	(290)	(350)	(227)	(123)	-
1st quarter		437	276	161	103	334	405	264	141	92.7
2nd quarter		400	254	146	91	309	370	243	128	92.5
3rd quarter		362	226	136	83	279	336	216	120	92.8
4th quarter		319	196	124	80	239	290	185	104	90,9
	2010									
1st quarter		303	189	113	74	228	269	177	92	88.8
2nd quarter		299	184	115	85	215	274	175	99	91.6
3rd quarter		267	165	102	69	198	243	156	87	91.0
4th quarter		275	175	100	72	202	249	166	83	90.5
	2011									
1st quarter		296	188	107	67	228	270	177	93	91.2
2nd quarter		313	200	113	81	232	283	188	95	90.4

(a) Numbers in brackets denote annual averages based on four surveys. (b) LFS was temporarily discontinued after February 1999.

(c) Since the second quarter of 2003, data from the LFS were adjusted on the basis of the 2002 population census. Earlier data were adjusted on the basis of the 1988 population census. Consequently, caution needs to be exercised in comparing data across the two periods.

(d) Since 2008 the definition of migrant has been slightly changed. Since then data refer to citizens staying abroad for longer than three months and intending to stay there at least 12 months.

Source: Kępińska 2007, Labour Force Survey (CSO).

Table 10. Polish citizens staying abroad for longer than two months (three months since 2007; in thousand). Poland 2002-2010 (as of December 31).

Destination	Population Census (May 2002)	2004	2005	2006	2007	2008	2009	2010
Total	786	1 000	1 450	1 950	2 270	2 210	1 870	1 990
<i>of which:</i> Europe	461	770	1 200	1 610	1 925	1 887	1 635	1 690
<i>of which:</i> European Union (a)	451	750	1 170	1 550	1 860	1 820	1 570	1 615
<i>of which:</i> Austria	11	15	25	34	39	40	38	32
Belgium	14	13	21	28	31	33	34	45
Cyprus	4	4	3	3
Czech Republic	8	10	9	7
Denmark	17	19	20	19
Finland	0.3	0.4	0.7	3	4	4	3	3
France	21	30	44	49	55	56	47	55
Germany	294	385	430	450	490	490	415	455
Greece	10	13	17	20	20	20	16	16
Ireland	2	15	76	120	200	180	140	125
Italy	39	59	70	85	87	88	85	92
Netherlands	10	23	43	55	98	108	84	108
Portugal	0.3	0.5	0.6	1	1	1	1	1
Spain	14	26	37	44	80	83	84	50
Sweden	6	11	17	25	27	29	31	37
United Kingdom	24	150	340	580	690	650	555	560
Other European Countries	10	20	30	60	65	67	65	75
<i>of which:</i> Norway	36	38	45	46

(a) since 2007 including Bulgaria and Romania.

(.) no data available.

Source: Central Statistical Office estimates.

Table 11. Arrivals of foreigners (in thousand). Poland 1980, 1985-2010.

Year	Arrivals
1980	7 030
1985	3 410
1986	3 843
1987	4 756
1988	6 210
1989	8 233
1990	18 211
1991	36 846
1992	49 015
1993	60 951
1994	74 253
1995	82 244
1996	87 439
1997	87 817
1998	88 592
1999	89 118
2000	84 515
2001	61 431
2002	50 735
2003	52 130
2004	61 918
2005	64 606
2006	65 115
2007	66 208
2008	59 935
2009	53 840
2010	58 340

Source: Border Guard, after Institute of Tourism
(www.intur.com.pl).

Table 12. Arrivals of foreigners (in thousand); top nationalities; 2004-2010.

Nationality	2004	2005	2006	2007	2008	2009	2010		
							Number	Percentage of Total	Of which: Tourists
Total	61 918	64 606	65 115	66 208	59 935	53 840	58 340	100	12 470
Countries bordering Poland	58 258	60 543	60 451	60 982	53 690	49 320	48 770	83.6	7 050
EU-15	35 956	39 503	39 623	40 823	37 205	28 545	28 540	48.9	6 875
EU New Member States (a)	-	13 354	12 872	13 086	14 705	16 800	18 845	32.3	1 625
Austria	288	282	304	318	320	325	345	0.6	310
Belarus	3 523	3 651	3 912	3 861	2 130	2 360	3 090	5.3	970
Czech Republic	9 286	7 855	7 102	7 292	7 820	8 180	9 240	15.8	175
France	195	220	230	258	240	240	260	0.4	225
Germany	34 122	37 436	37 192	38 103	34 630	26 070	25 860	44.3	4 520
Hungary	214	249	268	273	255	225	220	0.4	195
Italy	222	247	276	327	275	255	285	0.5	265
Latvia	392	345	410	485	540	390	350	0.6	270
Lithuania	1 336	1 344	1 459	1 392	1 930	2 640	2 690	4.6	620
Netherlands	263	335	410	363	355	335	370	0.6	335
Norway	79	81	102	142	145	120	.	.	.
Russian Federation	1 420	1 599	1 722	1 626	1 290	1 210	1 530	2.6	400
Slovak Republic	4 048	3 378	3 422	3 210	3 740	5 040	6 010	10.3	95
Switzerland	49	42	47	59	65	60	.	.	.
Sweden	214	214	224	222	210	190	195	0.3	150
Turkey	28	34	39	51	55	55	.	.	.
Ukraine	4 523	5 279	5 642	5 444	3 320	3 820	5 030	8.6	1 350
United Kingdom	247	345	455	548	555	500	540	0.9	485
United States	281	340	354	331	270	230	265	0.5	240

(a) since 2007 including Bulgaria and Romania.

(.) no data available.

Source: Kępińska (2007), Border Guard, after Institute of Tourism (www.intur.com.pl).

Table 13. Polish and foreign nationals who arrived from abroad and who registered for permanent stay, by country of previous residence. Poland 2006-2010.

Country of previous residence	Total					Of which: Women				
	2006	2007	2008	2009	2010	2006	2007	2008	2009	2010
Total	10 802	14 995	15 275	17 424	15 246	4 864	6 492	6 291	6 279	6 235
(EU-15)	6 792	10 463	10 692	12 751	10 928	2 811	4 185	4 049	4 129	:
(EU-25)	6 908	:	10 817	12 918	11 091	2 863	:	4 107	4 221	:
(EU-27)	-	:	10 840	12 934	11 115	-	:	4 122	4 226	:
(former USSR)	1 338	1 382	:	:	1 121	883	917	:	:	:
Europe (b)	8	12 040	12 324	14 369	12 463	3 708	5 163	4 996	5 005	5 016
Austria	224	264	115	300	289	100	116	115	101	122
Belarus	248	230	222	212	173	165	160	144	136	104
Belgium	106	127	151	166	172	57	61	57	48	:
Bulgaria	23	23	15	23	17	12	9	11	10	:
Czech Republic	28	42	48	43	51	9	15	22	17	:
Cyprus	17	15	14	29	13	6	5	5	14	:
Denmark	53	61	102	147	167	22	24	41	50	:
France	356	394	331	326	388	173	173	138	141	150
Germany	3 227	3 913	3 174	3 175	2 677	1 353	1 659	1 324	1 096	1 054
Greece	101	104	108	143	127	46	47	45	56	:
Hungary	14	13	23	36	22	8	10	12	25	:
Iceland	13	25	46	81	82	6	13	11	27	:
Ireland	211	589	917	1458	1 200	55	193	300	440	421
Italy	377	412	428	485	518	184	223	201	214	217
Lithuania	29	20	14	15	27	17	9	6	12	:
Moldova	20	12	10	17	11	11	7	7	11	:
Netherlands	236	285	360	518	393	80	88	112	100	130
Norway	71	89	126	237	205	26	32	38	72	69
Romania	11	9	8	13	7	4	7	4	4	:
Russian Federation	171	158	156	102	128	112	106	84	61	:
Slovak Republic	18	7	14	25	36	7	1	5	14	:
Spain	145	213	273	359	337	66	81	100	131	337
Sweden	146	156	166	224	212	71	71	63	81	90
Switzerland	39	72	62	74	72	22	34	23	26	:
Turkey	47	45	38	38	50	3	10	4	6	:
Ukraine	682	777	776	609	599	471	547	549	414	386
United Kingdom	1 592	3 913	4 365	5 408	4 409	594	1 435	1 542	1 655	1 652
Other	65	72	262	106	81	28	27	33	43	:
Africa	125	121	117	153	187	40	39	31	34	45
America	1 867	2 245	2 287	2 238	2 023	865	1 043	1 021	964	936
Canada	341	493	391	364	354	170	238	178	165	174
United States	1 470	1 737	1 851	1 823	1 601	676	786	823	776	730
Other	56	15	45	51	68	19	19	20	23	32
Asia	388	379	360	485	402	183	161	159	196	161
Armenia	59	68	65	111	90	27	24	26	47	35
China	20	14	11	13	11	10	6	4	7	:
India	28	15	14	19	29	12	3	5	3	:
Israel	24	21	22	17	16	6	4	8	4	:
Kazakhstan	87	90	77	78	56	54	48	45	49	34
Mongolia	13	12	8	7	13	5	7	4	6	:

Syria	6	8	11	13	7	1	2	5	3	:
Uzbekistan	50	10	16	16	8	18	8	11	12	:
Vietnam	16	63	53	117	50	9	21	19	31	22
Other	85	78	83	94	122	41	38	32	34	:
Oceania	149	173	176	176	163	66	84	16	78	73
Australia	138	161	163	168	151	61	79	16	77	69
Other	11	12	13	8	12	5	5	-	1	4
Unknown	3	9	1	3	8	2	2	-	2	:

(:) no data available

Source: Kępińska (2007), Central Statistical Office, Regional Data Bank, on-line access, based on Central Population Register (PESEL).

Table 14. Polish and foreign nationals who arrived from abroad and who registered for permanent stay, by provinces of destination. Poland 2006-2010.

Province of origin	Numbers					Percentage of total				
	2006	2007	2008	2009	2010	2006	2007	2008	2009	2010
Dolnośląskie	1 171	1 785	1 771	1 940	1 813	10.8	11.9	11.6	11.1	11.9
Kujawsko-Pomorskie	396	652	588	663	526	3.7	4.3	3.8	3.8	3.5
Lubelskie	270	537	524	576	421	2.5	3.6	3.4	3.3	2.8
Lubuskie	430	490	520	561	557	4	3.3	3.4	3.2	3.7
Łódzkie	324	509	487	576	533	3	3.4	3.2	3.3	3.5
Małopolskie	1 161	1 646	1 756	2 076	1 966	10.7	11	11.5	11.9	12.9
Mazowieckie	1 362	1 334	1 394	1 453	1 282	12.6	8.9	9.1	8.3	8.4
Opolskie	831	1 068	889	1 010	726	7.7	7.1	5.8	5.8	4.8
Podkarpackie	717	909	1 029	1 151	907	6.6	6.1	6.7	6.6	5.9
Podlaskie	394	415	410	400	521	3.6	2.8	2.7	2.3	3.4
Pomorskie	752	1 287	1 280	1 453	1 296	7	8.6	8.4	8.3	8.5
Śląskie	1 344	2 046	2 351	2 715	2 214	12.4	13.6	15.4	15.6	14.5
Świętokrzyskie	216	346	335	391	329	2	2.3	2.2	2.2	2.2
Warmińsko-Mazurskie	423	621	577	674	755	3.9	4.1	3.8	3.9	5.0
Wielkopolskie	403	599	643	899	661	3.7	4	4.2	5.2	4.3
Zachodniopomorskie	608	751	721	886	739	5.6	5	4.7	5.1	4.8
<i>Total</i>	10 802	14 995	15 275	17 424	15 246	100	100	100	100	100

Source: Central Statistical Office, Regional Data Bank, on-line access, based on Central Population Register (PESEL)

Table 15. Polish and foreign nationals who arrived from abroad and who registered for permanent stay, by sex and age. Poland, 2004-2010.

Age category	Actual numbers							Percentage of total		
	2004	2005	2006	2007	2008	2009	2010	2008	2009	2010
Men										
Total	4800	4873	5938	8 503	8 984	11 145	9 011	100	100	100
0-4	(a)	(a)	(a)	709	(a)	(a)	2 204	(a)	(a)	34.8
5-9	(a)	(a)	(a)	178	(a)	(a)	237	(a)	(a)	3.5
10-14	913	1032	770	128	1 535	2 297	126	17.1	20.6	2.4
15-19	161	176	180	225	252	255	211	2.8	2.3	3.4
20-24	388	430	892	1 449	1 689	2 472	1 003	18.8	22.2	5.1
25-29	545	604	991	1 885	1 858	2 619	1 791	20.7	23.5	10.5
30-34	564	470	626	891	1 014	1 039	992	11.3	9.3	8.8
35-39	385	382	416	519	545	531	546	6.1	4.8	5.2
40-44	369	326	411	434	407	375	361	4.5	3.4	3.9
45-49	423	371	448	552	424	373	365	4.7	3.3	4.0
50-54	331	320	416	549	451	413	352	5.0	3.7	5.4
55-59	232	245	309	403	324	318	306	3.6	2.9	4.8
60-64	178	188	198	260	222	201	242	2.5	1.8	3.6
65-69	165	150	152	207	149	146	148	1.7	1.3	1.8
70+	146	179	129	114	114	106	127	1.3	1.0	2.8
Women										
Total	4 695	4 491	4 491	4 864	6 492	6 291	6 235	100	100	100
0-4	(a)	(a)	(a)	(a)	716	(a)	2 170	(a)	(a)	24.5
5-9	(a)	(a)	(a)	(a)	138	(a)	221	(a)	(a)	2.6
10-14	909	948	948	790	92	1 575	148	25.0	35.8	1.4
15-19	170	183	183	152	169	180	212	2.9	2.7	2.3
20-24	275	314	314	424	681	564	316	9.0	6.1	11.1
25-29	518	520	520	625	1 117	897	654	14.3	12.3	19.9
30-34	515	466	466	486	634	656	549	10.4	9.3	11.0
35-39	398	340	340	350	441	395	323	6.3	5.9	6.1
40-44	386	312	312	333	405	315	246	5.0	4.2	4.0
45-49	411	371	371	433	506	382	252	6.1	5.0	4.1
50-54	364	321	321	435	497	453	335	7.2	5.4	3.9
55-59	248	235	235	370	441	333	301	5.3	5.2	3.4
60-64	162	154	154	171	266	236	222	3.8	3.6	2.7
65-69	117	133	133	129	177	116	110	1.8	1.8	1.6
70+	222	194	194	166	212	189	176	3.0	2.6	1.4

(a) included in 10-14 bracket

Source: Central Statistical Office, Regional Data Bank, on-line access, based on Central Population Register (PESEL)

Table 16. Polish and foreign nationals who arrived from abroad and who registered for permanent stay, by age and marital status. Poland 1994-2010.

Year and age category	Marital status					
	Total	Bachelor or spinster	Married	Widower or widow	Divorced	Unknown (b)
Men						
1991-95 (a)	3 424	1 164	1 968	73	208	-
1996-2000 (a)	4 118	1 758	2 091	76	193	-
2001-2005 (a)	3 416	2 039	1 789	62	193	-
2006-2010 (a)	8 716	4 296	2 700	32	311	1 378
1994	3 569	1 200	2 070	68	231	-
1995	4 321	1 476	2 504	80	261	-
1996	4 165	1 489	2 390	76	210	-
1997	4 279	1 597	2 400	75	207	-
1998	4 400	1 804	2 291	84	221	-
1999	3 853	2 003	1 619	79	152	-
2000	3 893	1 896	1 753	67	177	-
2001	3 505	1 735	1 539	63	168	-
2002	3 529	1 807	1 465	69	188	-
2003	371	1 838	1 642	51	179	-
2004	4 800	2 327	2 215	69	189	-
2005	4 873	2 489	2 084	58	242	-
2006	5 938	2 563	2 199	35	259	882
2007	8 503	3 966	2 981	34	357	1 165
2008	8 984	4 430	2 793	25	324	1 412
2009	11 145	5 998	2 917	31	291	1 908
2010						
0-14	-	-	-	-	-	-
15-19	211	152	-	-	-	59
20-24	1 003	685	119	-	2	197
25-29	1 791	938	528	-	17	308
30-34	992	301	482	-	38	171
35-39	546	129	309	1	51	56
40-44	361	56	215	-	43	47
45-49	365	62	214	1	46	42
50-54	352	48	222	1	33	48
55-59	306	27	189	3	47	40
60-64	242	12	158	10	21	41
65-69	148	5	103	5	12	23
70+	127	8	70	12	12	25
Total	9 011	4 523	2 609	33	322	1 524
Women						
1991-95 (a)	3 077	795	1 809	255	212	-
1996-2000 (a)	3 959	1 307	2 119	313	219	-
2001-2005 (a)	3 740	1 519	1 793	231	198	-
2006-2010 (a)	6 032	2 353	2 472	142	250	815

1994		3 338	824	1 989	312	213	-
1995		3 800	969	2 272	301	258	-
1996		4 021	1 063	2 364	350	244	-
1997		4 147	1 212	2 386	331	218	-
1998		4 516	1 366	2 574	329	247	-
1999		3 672	1 525	1 682	284	181	-
2000		3 438	1 371	1 591	273	203	-
2001		3 120	1 269	1 397	252	202	-
2002		3 058	1 324	1 304	220	210	-
2003		3 338	1 407	1 541	229	161	-
2004		4 695	1 773	2 506	221	195	-
2005		4 491	1 822	2 216	233	220	-
2006		4 864	1 625	2 377	134	219	509
2007		6 492	2 306	3 049	182	275	680
2008		6 291	2 337	2 688	136	275	855
2009		6 279	2 633	2 247	127	255	1 017
	2010						
0-14		-	-	-	-	-	-
15-19		212	130	1	-	-	81
20-24		316	174	69	-	1	72
25-29		654	219	325	1	15	94
30-34		549	138	307	1	35	68
35-39		323	45	210	5	28	35
40-44		246	22	159	2	27	36
45-49		352	21	175	5	23	28
50-54		335	17	251	9	22	36
55-59		301	12	218	10	26	35
60-64		222	7	156	14	29	16
65-69		110	3	62	21	10	14
70+		176	9	65	65	12	25
Total		6 235	2 862	1998	133	228	1014

(a) annual average.

(b) since 2006 it is no longer obligatory to report marital status.

Source: Kępińska 2007, Demographic Yearbook (2008, 2009, 2010), based on Central Population Register – PESEL.

Table 17. Estimates on the number of foreigners based on the Labour Force Survey (a) 2010-2011 (in thousand).

Date of LFS	Non-Polish citizens			Foreign born		
	Total	Men	Women	Total	Men	Women
2010						
1st quarter	50	25	25	298	116	182
2nd quarter	50	27	23	294	109	185
3rd quarter	39	17	22	278	101	177
4th quarter	42	20	21	272	109	162
2011						
1st quarter	44	25	19	273	112	162
2nd quarter	41	22	18	271	104	167

(a) data refers to foreigners living in individual dwellings.

Source: Central Statistical Office, Labour Force Survey.

Table 18. Polish and foreign nationals who arrived from abroad and who registered for temporary stay above two months (above three months since 2006). Poland 1997-2009 (as of December 31).

Year	Total	Men	Women	Urban areas	Rural areas
1997	17 976	:	:	:	:
1998	27 542	:	:	:	:
1999	39 303	:	:	:	:
2000	43 623	:	:	:	:
2001	43 501	:	:	:	:
2002	47 255	24 218	23 037	35 446	11 809
2003	42 356	21 123	21 224	33 307	9 049
2004	44 733	22 776	21 957	34 823	9 910
2005	42 417	21 618	20 799	33 274	9 143
2006	40 695	22 019	18 676	31 934	8 761
2007	46 778	26 521	20 257	37 019	9 759
2008	57 560	33 575	23 985	45 022	12 538
2009	59 233	33 992	25 241	45 953	13 280
<i>Of which:</i>					
Foreign nationals					
2005	39 673	20 223	19 450	31 099	8 574
2006	37 585	20 396	17 189	29 510	8 075
2007	42 824	:	:	:	:
2008	52 804	31 117	21 687	41 576	11 228
2009	53 552	31 012	22 540	41 812	11 740

(:) no data available.

Source: Demographic Yearbook Central Statistical Office (2008, 2009), Kępińska (2007), based on Central Population Register PESEL.

Table 19. Polish and foreign nationals who arrived from abroad and who registered for temporary stay above three months since 2006 by sex and nationality. Poland 2006-2009 (as of December 31).

Continents and countries	2006	2007	2008	2009	<i>of which: Women</i>			
					2006	2007	2008	2009
Total	40 695	46 778	57 560	59 233	18 676	20 257	23 985	25 241
Polish nationals	3 061	3 915	4 721	5 648	1 472	:	2 286	2 693
Foreign nationals	37 585	42 824	52 804	53 552	17 189	:	21 687	22 540
Of which from:								
Europe	26 821	30 128	36 327	36 322	13 291	:	16 071	16 678
Albania	100	:	167	175	28	:	40	37
Austria	317	361	438	427	97	:	155	152
Belarus	3 107	3 306	4 103	4 007	1 829	:	2 055	2 158
Belgium	222	262	323	289	60	:	86	62
Bulgaria	670	846	870	1029	291	:	311	409
Croatia	84	:	71	74	18	:	17	20
Czech Republic	191	:	313	307	88	:	155	148
Denmark	236	299	339	293	81	:	99	81
France	1 142	1 210	1 311	1 174	386	:	385	332
Germany	2 900	3 345	3 483	3 247	633	:	799	746
Greece	75	:	121	130	11	:	19	20
Hungary	94	:	145	142	43	:	63	49
Ireland	66	:	115	138	10	:	21	28
Italy	661	851	1 104	1 202	88	:	110	116
Lithuania	285	344	430	417	190	:	288	277
Latvia	93	:	118	139	70	:	84	107
Moldova	394	748	769	472	177	:	249	206
Netherlands	561	726	942	679	115	:	185	109
Norway	68	:	117	127	6	:	19	26
Portugal	80	:	184	206	16	:	41	38
Romania	198	:	261	386	106	:	120	169
Russian Federation	1 909	1 804	2 342	2 579	1 149	:	1 362	1 519
Serbia and Montenegro	162	:	160	176	42	:	43	50
Slovak Republic	186	261	335	343	105	:	187	14
Spain	200	:	326	319	54	:	104	93
Sweden	327	341	416	380	121	:	147	143
Turkey	765	971	1 439	1 654	146	:	271	350
Ukraine	10 660	11 370	13 885	14 206	7 069	:	8 235	8 702
United Kingdom	785	995	1 193	1 143	192	:	285	234
Other	283	2 088	507	507	70	:	136	283
Africa	1 305	1 553	1 904	2 144	249	:	287	293
Algeria	84	:	122	126	3	:	6	5
Cameroon	73	:	99	117	15	:	24	16
Egypt	154	:	247	316	8	:	10	10
Kenya	71	:	48	48	34	:	21	25
Morocco	70	:	127	152	5	:	9	11
Nigeria	257	385	455	475	34	:	52	49
South Africa	65	:	88	87	31	:	29	26
Tunisia	182	:	275	341	14	:	21	22
Other	349	1 168	443	482	105	:	115	129
America	1 912	1 926	2 001	1 972	739	:	739	670
Brazil	284	158	169	209	151	:	66	72
Canada	180	221	184	176	64	:	74	63

United States	1 109	1 164	1 219	1 079	406	:	452	355
Other	339	383	429	508	118	:	147	180
Asia	7 458	9 112	12 431	12 996	2 882	:	4 547	4 857
Armenia	1 205	1 364	1 650	1 501	564	:	815	772
Azerbaijan	66	:	86	78	33	:	36	35
China	665	953	1 826	2 170	260	:	654	800
Georgia	107	:	214	215	50	:	70	92
India	661	1 066	1 278	1 270	165	:	272	325
Iraq	99	:	122	176	24	:	29	46
Israel	110	:	144	147	28	:	50	50
Japan	485	601	734	697	201	:	295	265
Kazakhstan	331	278	297	303	216	:	204	212
Lebanon	63	:	52	50	7	:	3	4
Mongolia	303	322	392	403	177	:	215	222
Nepal	82	:	271	405	5	:	44	35
Pakistan	100	:	141	134	13	:	11	10
Philippines	72	:	147	239	47	:	88	97
South Korea	548	:	839	860	225	:	347	360
Syria	144	:	156	166	27	:	25	36
Taiwan	91	:	167	202	41	:	61	72
Uzbekistan	96	:	284	224	56	:	62	65
Vietnam	1 645	1 800	2 596	2 523	565	:	982	1001
Other	585	2 728	1 035	1 233	178	:	284	358
Oceania	45	105	141	118	13	:	43	42
Stateless	23	26	26	28	6	:	9	7
Unknown	26	13	9	5	9	:	3	1

(:) no data available.

Source: Kępińska 2007, Demographic Yearbook 2008, Central Statistical Office, based on Central Population Register PESEL

Table 20. Polish and foreign nationals who arrived from abroad and who registered for temporary stay above three months by sex and age. Poland 2007-2009 (as of December 31).

Age group	2007			2008			2009		
	Total	Men	Women	Total	Men	Women	Total	Men	Women
Total	46 778	26 521	20 257	57 560	33 575	23 985	59 233	33 992	25 241
0-4	:	:	:	1 521	790	731	1 855	966	889
5-9	:	:	:	1 601	823	778	1 726	886	840
10-14	614*	315*	299*	1 751	890	861	1 724	867	857
15-19	2522	1182	1340	2 995	1 418	1 577	3 426	1 626	1 800
20-24	5448	2863	2585	6 595	3 540	3 055	6 912	3 703	3 209
25-29	6851	3731	3120	8 643	5 054	3 589	8 812	5 152	3 660
30-34	6257	3581	2676	7 793	4 669	3 124	8 059	4 817	3 242
35-39	5458	3316	2142	6 806	4 231	2 575	6 720	4 045	2 675
40-44	4355	2814	1541	5 431	3 477	1 954	5 308	3 348	1 960
45-49	3665	2201	1464	4 653	2 869	1 784	4 564	2 708	1 856
50-54	2646	1565	1081	3 313	1 983	1 330	3 320	1 908	1 412
55-59	1903	1146	757	2 303	1 352	951	2 335	1 359	976
60-64	1317	834	483	1 602	1 000	602	1 706	1 014	692
65-69	976	583	393	1 148	718	430	1 209	782	427
70-74	1210**	620**	590**	674	404	270	779	427	352
75-79	:	:	:	381	213	168	401	222	179
80+	:	:	:	350	144	206	377	162	215

* in 2007 this category covers only migrants aged 13-14.

** in 2007 this category includes all migrants aged 70 or more.

(:) no data available

Source: Kępińska 2007, Demographic Yearbook (2008), Central Statistical Office, based on Central Population Register (PESEL).

Table 21. Residence permits by type of a permit and sex. Poland 1998-2010.

Positive decisions	Permit for a fixed period	Permit to settle	Long-term resident's EC residence permit	Registrations of stay of EU citizens (a) (b)	EU temporary residence permit for family members (a) (b)	EU residence permit (a) (b)	EU residence permit for family members (a) (b)	Total
1998	4 893	288	-	-	-	-	-	5 181
1999	16 811	512	-	-	-	-	-	17 323
2000	15 039	858	-	-	-	-	-	15 897
2001	20 787	679	-	-	-	-	-	21 466
2002	29 641	602	-	-	-	-	-	30 243
2003	28 590	1 735	-	-	-	-	-	30 325
2004	25 461	4 365	-	1 154	.	5 871	.	36 851
2005	22 626	3 589	37	2 183	.	10 077	.	38 512
2006	22 376	3 255	995	920	.	6 321	.	33 867
2007	23 240	3 124	804	13 139	143	184	3	40 637
2008	28 865	3 625	715	7 237	116	561	4	41 123
2009	30 563	2 936	1 271	6 364	143	1 577	29	42 854
2010	30 451	3 336	775	6 863	128	1 805	17	43 375
<i>of which:</i> Women								
2005	11 909	2 153	14	656	.	2 222	.	16 954
2006	11 337	1 989	436	213	.	1 12	.	15 095
2007	11 460	1 981	368	3 131	103	69	2	17 114
2008	13 648	2 122	323	1 700	.	353	.	.
2009	13 985	1 586	544	1 808	96	425	.	18 444*
2010	13 834	10733	372

(.) Not available.

* the number does not include EU permit for family members due to lack of data.

(a) Since August 26, 2006 the number of EU nationals and their family members who registered their stay in Poland of above three months.

(b) Data in 2007 include the number of registrations for 2007 as a whole and for the period between August 26, 2006 and December 31, 2006. Accordingly, data in 2006 include number of permits issued between January 1, 2006 and August 25, 2006.

Source: Office for Foreigners.

Table 22. Work permits granted individually and to sub-contracting foreign companies. Poland 1995-2011.

Year	Work permits granted individually (b)				Work permits granted to sub-contracting foreign companies (b)	
	Total	Women	of which: Extensions		Total	Up to 3 months
			Total	Women		
1995	10 441	.	.	.	920	.
1996	11 915	.	.	.	1 753	.
1997	15 307	.	.	.	2 191	.
1998	16 928	.	.	.	3 831	.
1999	17 116	.	.	.	3 502	.
2000	17 802	.	.	.	1 86	145
2001	17 038	.	.	.	2 755	411
2002	22 776	8 541	.	.	1 867	1 001
2003	18 841	6 25	10 19	3 607	990	289
2004	12 381	3 559	5 41	1 494	798	43
2005	10 304	1 786	4 399	830	847	29
2006	10 754	2 376	4 125	735	1 309	30
2007	12 153	2 778	4 486	1 02	2 645	168
2008	18 022	4 383	5 632	1 423	3 711	100
2009	29 340	8 850	8 534	2 467	3 070	179
2010	35 365	.	.	.	1 756	25
2002 (a)	10 625	3 705	.	.	995	611
2003 (a)	9 043	2 824	5 144	1 761	460	219
2004 (a)	6 544	1 710	2 934	721	307	43
2005 (a)	5 270	767	2 182	310	419	8
2006 (a)	5 194	1 002	2 082	260	592	23
2007 (a)	5 750	1 270	2 304	447	1 185	18
2008 (a)	8 154	1 908	2 694	620	1 662	37
2009 (a)	14 891	3 981	4 692	1 258	1 817	140
2010 (a)	15 628
2011 (a)	18 396	5 410	3 562	1 160	2 230	32

(a) January – June.

(b) since 2011 'work permits granted individually' refers to work permits of 'A', 'B', 'C' and 'E' type, whereas 'work permits granted to sub-contracting foreign companies' refers to work permits of 'D' type only.

(. .) Not available.

Source: Kępińska 2007, Ministry of Labour and Social Policy.

Table 23. Work permits granted individually (a) by province of destination. Poland 2006-2010.

Province of destination	Total					Of which: Women				
	2006	2007	2008	2009	2010	2006	2007	2008	2009	2010
	<i>All permits</i>									
Total	10 754	12 153	18 022	29 340	35 365	2 376	2 778	4 383	8 523	.
Dolnośląskie	843	851	1 139	1 674	1 695	279	172	179	328	.
Kujawsko-Pomorskie	278	362	367	557	696	97	81	95	145	.
Lubelskie	258	272	381	553	619	96	85	83	99	.
Lubuskie	322	509	1 102	1 528	1 763	112	60	214	511	.
Łódzkie	534	574	846	1 265	972	81	119	192	200	.
Małopolskie	579	672	838	2 000	2 237	174	200	312	669	.
Mazowieckie	4 743	5 372	7 76	13 979	18 498	816	1 362	2 155	4 818	.
Opolskie	439	701	977	677	650	58	85	228	133	.
Podkarpackie	211	235	348	450	389	75	76	100	146	.
Podlaskie	163	209	287	326	350	66	48	57	56	.
Pomorskie	455	613	1 067	2 326	2 272	138	129	165	550	.
Śląskie	777	690	813	1 345	2 161	170	130	151	257	.
Świętokrzyskie	88	72	182	386	453	18	20	69	123	.
Warmińsko-Mazurskie	139	106	195	267	306	44	36	54	92	.
Wielkopolskie	371	500	1 157	1 387	1 724	76	117	238	235	.
Zachodniopomorskie	554	415	563	620	580	76	58	91	161	.
	<i>First work permits</i>									
Total	6 629	7 667	12 390	20 806	.	1 641	1 758	2 960	6 056	.
Dolnośląskie	636	437	769	1 102	.	238	113	115	227	.
Kujawsko-Pomorskie	207	280	249	413	.	77	59	64	108	.
Lubelskie	136	181	246	390	.	28	40	33	77	.
Lubuskie	239	428	913	1 068	.	91	28	168	389	.
Łódzkie	330	363	612	972	.	37	59	130	127	.
Małopolskie	388	462	554	1 524	.	112	147	215	491	.
Mazowieckie	2 494	2 97	4 761	9 485	.	655	920	1 400	3 332	.
Opolskie	364	558	746	367	.	32	60	186	70	.
Podkarpackie	110	151	210	302	.	27	38	53	103	.
Podlaskie	63	111	157	184	.	19	12	27	29	.
Pomorskie	298	457	855	1 871	.	75	75	98	450	.
Śląskie	536	489	602	1 052	.	120	77	107	206	.
Świętokrzyskie	42	31	140	273	.	10	12	61	68	.
Warmińsko-Mazurskie	85	60	140	165	.	13	15	34	59	.
Wielkopolskie	221	322	939	1 203	.	52	62	195	194	.
Zachodniopomorskie	480	367	497	435	.	55	41	74	126	.

(a) since 2011 'work permits granted individually' refers to work permits of 'A', 'B', 'C' and 'E' type, whereas 'work permits granted to sub-contracting foreign companies' refers to work permits of 'D' type only.

Source: Kępińska 2007, Ministry of Labour and Social Policy

Table 24. Repatriation to Poland in 1997-2010.

Category	1997	1998	1999	2000	2001	2002	2003	2004	2005	2006	2007	2008	2009	2010
Applications concerning repatriation	671	898	1,014	1,026	1,083	801	586	171	307	348	239	178	240	125
Applications for a repatriation visa	-	808	937	929	956	717	552	151	276	302	200	139	206	91
Applications of members of families having nationality other than Polish for temporary residence permit (a)	-	90	77	97	127	84	34	20	31	46	39	39	34	34
Repatriation visas issued	316	281	278	662	804	613	301	269	252	239	248	204	164	139
Persons who arrived within repatriation	267	399	362	944	1	832	455	372	335	327	281	260	214	175

(a) Since September 2003 applications for settlement permit.

Source: Office for Foreigners (after CSO)

Table 25. Repatriation visas to Poland issued in 1997-2010 by countries of previous residence of repatriates.

Country of previous residence	1997	1998	1999	2000	2001	2002	2003	2004	2005	2006	2007	2008	2009	2010
Total	316	281	278	662	804	613	301	269	252	239	248	204	164	139
Armenia	-	-	-	-	8	-
Azerbaijan	-	-	-	-	-	-	-	-	-	1	-	-	-	-
Belarus	-	10	15	45	140	127	43	39	30	25	18	13	5	8
Czech Republic	-	-	-	-	2	4	1	1	1	1	-	1	-	-
Georgia	-	-	-	-	-	1	3	-	3	3	3	-	8	4
Germany	-	-	-	-	-	1	-	-	-	1	1	-	-	-
Kazakhstan	316	245	172	361	216	194	156	122	155	125	161	143	90	84
Lithuania	-	-	11	16	20	3	-	1	1	1	-	-	-	-
Latvia	-	1	1	10	-	-	-	-	-	-	-	-	-	-
Moldova	-	1	2	10	9	5	2	-	2	1	-	-	-	-
Russian Federation	-	7	8	10	36	31	11	35	32	40	38	25	32	23
Ukraine	-	15	69	210	381	245	77	56	23	27	16	8	13	15
Uzbekistan	-	2	-	-	-	2	8	15	5	14	11	14	6	5

(.) not available

Source: Office for Foreigners (after CSO)

Table 26. Repatriation by provinces of settlement. Poland 1998-2010.

Province	Families settled 1998-2010	Persons settled									
		1998-2010	2002	2003	2004	2005	2006	2007	2008	2009	2010
Total	2 250	5 956	832	455	372	335	327	281	260	214	175
Dolnośląskie	273	774	68	43	41	34	62	45	24	21	22
Kujawsko-Pomorskie	70	180	31	12	6	19	8	13	5	2	7
Lubelskie	181	328	43	40	23	17	12	15	3	6	4
Lubuskie	73	173	44	10	9	4	4	9	5	10	4
Łódzkie	126	328	33	12	10	21	12	18	16	43	27
Małopolskie	255	550	77	50	53	32	21	23	27	25	15
Mazowieckie	416	988	152	60	45	37	68	49	42	37	38
Opolskie	122	334	29	26	53	22	38	31	29	13	5
Podkarpackie	58	238	36	38	5	13	12	2	-	8	1
Podlaskie	125	339	96	37	28	38	21	20	1	3	7
Pomorskie	101	315	48	33	26	14	6	8	17	10	26
Śląskie	146	497	50	43	29	18	26	18	49	15	14
Świętokrzyskie	24	92	9	5	9	6	5	4	7	2	-
Warmińsko-Mazurskie	54	54	15	6	4	8	3	1	5	1	1
Wielkopolskie	103	103	40	8	11	12	4	6	10	-	-
Zachodniopomorskie	123	123	61	32	20	40	25	19	20	18	4

Source: Office for Foreigners (after CSO), Demographic Yearbook (2010).

Table 27. Persons and families who arrived within repatriation. Poland 2001-2010.

Category	2001-2010	2001	2002	2003	2004	2005	2006	2007	2008	2009	2010
Families	1 678	429	355	175	120	128	135	107	85	72	72
Persons	4 251	1	832	455	372	335	327	281	260	214	175
Repatriates	3 709	904	741	408	329	284	269	243	219	165	147
of which: children below 19	808	182	151	87	72	62	66	50	58	42	38
Members of families having nationality other than Polish	542	96	91	47	43	51	58	38	41	49	28

Source: Office for Foreigners (after CSO), Demographic Yearbook (2010).

Table 28. Acquisition of Polish nationality by country of former nationality. Poland 2002-2010.

Country of former nationality	2002	2003	2004	2005	2006	2007	2008	2009	2010
Total	1 186	1 634	1 937	2 866	989	1 528	1 054	2 503	2 926
(former USSR)	(470)	(801)	(957)	(1 500)	(721)	(988)	.	(1 427)	(1 836)
Algeria	17	6	12	47	4	7	9	30	24
Armenia	13	8	6	18	27	30	16	79	101
Austria	-	3	5	9	2	1	1	-	6
Australia	1	2	5	25	-	1	2	7	10
Belarus	54	108	129	316	101	126	152	357	418
Belgium	2	8	3	5	1	1	1	13	4
Bulgaria	30	41	32	54	8	16	8	21	21
Canada	22	46	36	73	7	17	24	35	40
China	6	6	14	5	7	1	1	10	15
Croatia	2	8	6	11	-	3	2	3	9
Czech Republic	37	20	24	19	-	3	11	9	9
Egypt	5	1	2	18	6	13	-	37	38
France	17	10	5	14	4	9	8	12	14
Georgia	-	-	-	13	5	10	1	14	11
Germany	49	60	62	156	1	39	37	47	92
Greece	3	4	6	4	1	1	2	4	4
Hungary	15	18	12	16	-	1	5	7	8
India	3	7	9	23	11	19	3	35	24
Iraq	2	11	5	7	-	7	6	6	10
Israel	91	101	162	113	2	8	33	10	3
Italy	6	5	8	1	4	8	2	2	9
Jordan	9	4	7	10	5	6	7	10	6
Kazakhstan	53	68	38	62	10	10	18	41	38
Lebanon	5	4	4	17	4	7	5	12	17
Lithuania	93	126	85	36	11	11	9	24	14
Morocco	5	1	1	26	4	7	6	17	19
Moldova	-	-	-	19	8	23	24	20	28
Netherlands	-	1	10	6	-	3	3	3	5
Nigeria	12	8	11	16	7	17	2	35	45
Romania	1	6	3	13	4	7	5	9	8
Russian Federation	22	52	145	257	129	114	64	162	215
Serbia and Montenegro	19	11	12	37	8	14	15	23	17
Slovak Republic	15	12	22	11	2	12	4	8	26
Sweden	30	107	81	90	8	26	48	34	61
Switzerland	10	11	7	13	-	4	-	2	16
Syria	27	9	37	57	5	12	5	22	18
Tunisia	3	-	5	17	4	6	4	19	35
Turkey	1	5	11	19	36	11	1	35	33
Ukraine	214	431	538	759	417	662	369	877	992
United Kingdom	20	14	21	18	1	6	2	6	9
United States	9	32	41	59	8	23	27	47	50
Vietnam	17	11	11	36	29	47	12	64	97
Stateless	162	150	115	150	2	61	14	78	58
All other	84	98	189	191	96	118	86	217	247
<i>Of which:</i>									
by conferment procedure	988	1 471	1 791	2 625	662

(.) no data available

Table 29. Total marriages contracted according to the spouses' country of previous residence. Poland 1990-2010.

Year	Total marriages contracted	Both spouses national (b)	Both spouses foreigners (c)	Mixed marriages		
				Total	Foreign husband (c)	Foreign wife (c)
1990	258 698	(a)	(d)	4 240	3 329	911
1991	236 330	(a)	(d)	3 929	3 124	805
1992	217 240	(a)	(d)	3 364	2 588	776
1993	209 997	(a)	(d)	3 077	2 323	754
1994	210 055	(a)	(d)	3 297	2 366	931
1995	207 114	203 841	(d)	3 240	2 320	920
1996	203 679	203 841	38	3 154	2 177	977
1997	204 887	200 487	37	3 372	2 206	1 166
1998	209 465	201 478	35	3 969	2 428	1 541
1999	219 445	205 461	47	3 639	2 318	1 321
2000	211 189	215 759	39	3 537	2 178	1 359
2001	195 162	207 613	40	3 495	2 115	1 380
2002	191 978	191 627	43	3 552	2 119	1 433
2003	195 495	188 383	49	3 967	2 258	1 709
2004	191 824	187 678	66	4 080	2 402	1 678
2005	206 916	203 375	58	3 483	2 260	1 223
2006	226 257	222 634	76	3 547	2 363	1 184
2007	248 777	244 852	75	3 850	2 658	1 192
2008	257 813	254 063	69	3 957	2 967	990
2009	250 982	247 426	188	4 120	3 076	1 044
2010	228 423	224 605	86	3 732	2 804	928

(a) In 1990-1994 included in 'total marriages contracted'.

(b) Living permanently in Poland before marriage.

(c) Living permanently abroad before marriage.

(d) In 1990-1995 included in 'foreign husband' and 'foreign wife' categories (total number of cases is probably below 40 on annual scale).

Source: Kępińska 2007, Central Statistical Office, Demographic Yearbook (2008, 2009, 2010).

Table 30. Mixed marriages; wife living permanently in Poland, husband living permanently abroad – by country of previous residence of husband. Poland 2002-2010.

Country of previous residence	2002	2003	2004	2005	2006	2007	2008	2009	2010
Total	2 119	2 258	2 402	2 260	2 363	2 658	2 967	3 076	2 804
(EU-15)	(1 195)	(1 176)	(1 129)	(1 130)	(1 262)	(1 427)	(1 642)	(1 667)	(1 799)
(former USSR)	(319)	(428)	(358)	(326)	(282)	(313)	.	(229)	(198)
Albania	-	12	10	17	8	17	23	26	7
Algeria	5	13	14	18	11	20	19	18	14
Armenia	45	57	60	59	45	59	41	25	21
Australia	26	20	28	22	27	29	32	24	31
Austria	19	26	31	22	30	35	30	16	23
Belarus	38	39	40	30	34	28	20	19	24
Belgium	38	39	42	41	48	48	29	40	47
Brazil	(a)	(a)	12	12	33	45	37	25	11
Bulgaria	25	24	33	16	29	9	18	18	11
Canada	69	66	62	51	36	37	31	25	18
Croatia	8	14	10	11	7	17	8	12	9
Czech Republic	10	14	21	27	31	30	37	44	55
Denmark	12	16	15	12	21	26	27	22	30
Egypt	7	12	11	21	14	25	33	50	38
Finland	7	8	8	7	9	7	9	7	6
France	79	64	80	86	83	92	99	99	108
Germany	565	531	466	483	465	395	430	408	403
Greece	15	26	19	11	15	18	20	20	15
Hungary	11	9	10	11	13	13	10	18	25
India	7	9	20	20	22	39	56	63	39
Ireland	23	18	14	23	42	62	99	136	138
Israel	11	13	20	17	13	6	9	3	4
Italy	111	103	128	120	128	162	209	172	196
Lithuania	9	12	6	14	22	13	18	18	22
Mexico	(a)	(a)	9	15	20	12	20	25	22
Moldova	6	6	7	7	2	9	11	13	4
Netherlands	111	131	108	91	97	90	101	106	86
Nigeria	8	14	21	36	35	91	175	109	41
Norway	28	27	25	20	15	17	24	26	18
Pakistan	(a)	(a)	13	12	16	22	17	22	16
Peru	4	8	5	5	5	8	7	5	5
Portugal	11	11	11	16	14	27	27	37	26
Romania	8	14	12	19	26	25	25	26	25
Russian Federation	33	53	37	34	23	33	20	25	19
Serbia and Montenegro	10	8	9	15	11	8	15	11	7
Slovak Republic	10	14	17	21	18	11	25	31	36
Spain	18	21	25	30	47	52	54	68	77
Sweden	27	37	47	24	29	31	25	25	25
Switzerland	9	11	15	17	11	14	13	12	23
Tunisia	(a)	(a)	13	10	36	53	51	40	37
Turkey	22	39	40	26	54	69	65	69	76
Ukraine	175	251	197	168	138	151	94	111	85
United Kingdom	156	144	133	162	231	381	483	506	618

United States	150	123	153	126	108	77	67	72	55
Vietnam	52	73	171	78	41	30	22	13	4
Other	141	128	221	177	200	215	282	416	204

(a) Included in other.

Source: Central Statistical Office

Table 31. Mixed marriages; husband living permanently in Poland, wife living permanently abroad – by country of previous residence of wife. Poland 2002-2010.

Country of previous residence	2002	2003	2004	2005	2006	2007	2008	2009	2010
Total	1 433	1 709	1 678	1 223	1 184	1 192	990	1 044	928
(EU-15)	(125)	(107)	(93)	(72)	(76)	(81)	.	(130)	(134)
(former USSR)	(1 128)	(1 412)	(1 350)	(955)	(923)	(930)	.	(688)	(527)
Armenia	13	26	30	37	41	39	32	17	11
Austria	5	5	2	7	4	4	(a)	7	3
Belarus	196	206	182	165	151	153	119	95	89
Belgium	-	5	6	1	-	2	(a)	-	3
Brazil	(a)	(a)	3	9	17	25	23	9	10
Bulgaria	11	11	12	7	6	6	7	8	3
Canada	16	18	18	12	10	7	(a)	5	4
Czech Republic	6	5	7	13	7	7	(a)	9	11
Estonia	1	5	-	2	1	2	(a)	1	3
France	4	5	4	2	7	3	(a)	6	4
Georgia	-	6	2	-	-	2	7	1	1
Germany	79	62	55	40	39	34	38	42	49
Japan	9	5	11	9	11	7	9	15	12
Kazakhstan	10	8	12	9	10	9	(a)	10	4
Latvia	10	5	2	2	4	7	14	13	6
Lithuania	29	20	19	23	21	27	22	31	18
Moldova	9	12	11	16	9	5	10	6	16
Mongolia	8	9	11	4	10	5	(a)	7	7
Romania	8	7	6	7	14	7	13	11	6
Russian Federation	97	90	95	76	94	92	84	88	83
Slovak Republic	13	12	8	8	1	6	(a)	12	10
Sweden	9	5	5	1	5	6	7	5	3
Ukraine	762	1 031	990	621	578	590	405	413	389
United Kingdom	15	13	5	4	14	13	13	44	39
United States	40	25	24	28	17	15	16	8	13
Vietnam	23	53	87	41	26	14	10	6	6
Other	60	60	71	79	87	105	161	175	125

(a) Included in other.

Source: Central Statistical Office.

Table 32. Asylum seekers (first and subsequent applications) by nationality and sex. Poland 2008-2010.

Nationality	2008	2009	2010	<i>of which:</i>					
				First applications			Women		
				2008	2009	2010	2008	2009	2010
Total	8 517	10 587	6 534	7 199	9 651	4 330	4 068	4 671	3 021
Afghanistan	7	14	25	4	13	23	1	3	6
Algeria	14	11	4	8	7	3	1	1	0
Armenia	50	147	107	33	129	63	13	75	44
Azerbaijan	3	10	10	1	9	3	-	2	3
Bangladesh	18	13	18	4	7	9	-	-	-
Belarus	58	37	46	33	23	34	14	13	15
Cameroon	12	12	11	8	6	5	1	3	2
China	22	16	9	20	14	9	4	4	2
Egypt	7	-	11	6	3	7	-	-	-
Ethiopia	-	1	1	-	-	1	-	1	-
Georgia	71	4 214	1 082	53	4 171	583	20	1 530	410
India	18	16	17	15	7	8	-	1	1
Iran	3	5	7	2	4	6	1	1	1
Iraq	70	21	27	66	19	22	22	9	7
Kazakhstan	17	5	11	17	5	6	9	1	10
Kyrgyzstan	7	13	37	5	10	34	3	5	19
Liberia	3	-	0	2	-	-	-	-	-
Lithuania	-	-	0	-	-	-	-	-	-
Moldova	19	6	5	18	6	1	5	3	3
Mongolia	18	15	19	12	7	5	6	10	12
Nepal	9	14	17	6	14	15	1	4	3
Nigeria	24	23	19	19	22	16	3	3	1
Pakistan	21	19	27	15	9	11	-	-	1
Russian Federation	7 760	5 726	4 795	6 644	4 983	3 314	3 893	2 939	2 414
Serbia & Montenegro	6	-	0	1	-	-	3	-	-
Sierra Leone	4	3	1	1	1	-	-	-	-
Somalia	1	2	5	1	1	3	-	-	2
Sri Lanka	22	11	6	17	8	5	-	1	-
Sudan	11	1	1	2	1	1	5	-	1
Syria	10	7	8	8	4	3	2	-	-
Turkey	18	11	19	17	10	15	1	1	2
Ukraine	40	36	45	25	27	29	15	17	25
Uzbekistan	24	19	14	22	10	11	9	6	7
Vietnam	65	67	47	57	62	39	17	22	15
Stateless	18	19	21	11	8	10	1	2	5
All other	67	73	62	46	51	36	18	14	10

Source: Kępińska 2007, Office for Foreigners.