

Lackó, Mária

Working Paper

Some explanation of disparities of mortality rates of working age population in Eastern, Central and Western Europe

IEHAS Discussion Papers, No. MT-DP - 2015/35

Provided in Cooperation with:

Institute of Economics, Centre for Economic and Regional Studies, Hungarian Academy of Sciences

Suggested Citation: Lackó, Mária (2015) : Some explanation of disparities of mortality rates of working age population in Eastern, Central and Western Europe, IEHAS Discussion Papers, No. MT-DP - 2015/35, ISBN 978-615-5447-98-3, Hungarian Academy of Sciences, Institute of Economics, Budapest

This Version is available at:

<https://hdl.handle.net/10419/129878>

Standard-Nutzungsbedingungen:

Die Dokumente auf EconStor dürfen zu eigenen wissenschaftlichen Zwecken und zum Privatgebrauch gespeichert und kopiert werden.

Sie dürfen die Dokumente nicht für öffentliche oder kommerzielle Zwecke vervielfältigen, öffentlich ausstellen, öffentlich zugänglich machen, vertreiben oder anderweitig nutzen.

Sofern die Verfasser die Dokumente unter Open-Content-Lizenzen (insbesondere CC-Lizenzen) zur Verfügung gestellt haben sollten, gelten abweichend von diesen Nutzungsbedingungen die in der dort genannten Lizenz gewährten Nutzungsrechte.

Terms of use:

Documents in EconStor may be saved and copied for your personal and scholarly purposes.

You are not to copy documents for public or commercial purposes, to exhibit the documents publicly, to make them publicly available on the internet, or to distribute or otherwise use the documents in public.

If the documents have been made available under an Open Content Licence (especially Creative Commons Licences), you may exercise further usage rights as specified in the indicated licence.

MŰHELYTANULMÁNYOK

DISCUSSION PAPERS

MT-DP – 2015/35

**Some Explanation of Disparities of Mortality
Rates of Working Age Population
in Eastern, Central and Western Europe**

MÁRIA LACKÓ

Discussion papers
MT-DP – 2015/35

Institute of Economics, Centre for Economic and Regional Studies,
Hungarian Academy of Sciences

KTI/IE Discussion Papers are circulated to promote discussion and provoke comments.
Any references to discussion papers should clearly state that the paper is preliminary.
Materials published in this series may subject to further publication.

Some Explanation of Disparities of Mortality Rates of Working Age Population
in Eastern, Central and Western Europe

Author:

Mária Lackó
senior research fellow
Institute of Economics - Centre for Economic and Regional Studies
Hungarian Academy of Sciences
e-mail: lacko.maria@krtk.mta.hu

July 2015

ISBN 978-615-5447-98-3
ISSN 1785 377X

Some Explanation of Disparities of Mortality Rates of Working Age Population in Eastern, Central and Western Europe

Mária Lackó

Abstract

There is considerable variation in mortality rates of the working age populations across the “old” and the “new” EU member states, and former Soviet Union countries. The explanation for these differences is investigated by scrutinizing three different groups of factors: 1. Socio-economic factors; 2. Lifestyle factors; 3. Health care resources. The analysis is based on regression analysis of health production functions (HPF) calculated from cross-country estimations for 2011.

The explanatory variables of the health production function can explain 83-93% of the cross-country differences in mortality rates. The most important contribution comes from the past economic and political system represented by the historical structure of production and the present level of development. We confirmed what other authors found that the “example of Europe shows political system can significantly affect health and mortality conditions.”

Economic and lifestyle disadvantages turn out to be more harmful for men than women. The effects of health expenditure, the geographical location of the country and the relative prices of alcohol and tobacco products are similar for the two genders. The consumption of spirits and tobacco, the share of the hidden economy, and the education level are significant explanatory factors for men, but non-significant for women.

Keywords: mortality rate, cross-country comparison, East-, Central and West-Europe

JEL classification: I12

Acknowledgement: This project has received funding from the Hungarian Scientific Research Fund (OTKA, 104400) and European Union’s Seventh Framework Programme (GRINCOH, 290657).

A dolgozó korú népesség halálozási rátáinak különbözősége Kelet-, Közép és Nyugat-Európában – egy kvantitatív elemzés

Lackó Mária

Összefoglaló

Napjainkban az Európai Unió „rég” és „új” tagországaiban, valamint a Szovjetunió utódállamaiban a dolgozó korú népesség halálozási rátái meglehetősen nagy különbségeket mutatnak. E különbségek magyarázatához három tényezőcsoport hatását vizsgáljuk. Ezek 1. a társadalmi-gazdasági tényezők; 2. az életmóddal összefüggő tényezők; és 3. az egészségügy anyagi forrásai. Az elemzés egészségtermelési függvények regressziós módszerét alkalmazza a vizsgált országok halálozási rátáinak keresztmetszeti becslésével a 2011-es évre.

Az eredményül kapott egészségtermelési függvény magyarázó változói 83–93 %-ban képesek az országok között fennálló halálozási különbségeket megmagyarázni. A legfontosabb magyarázó tényezők: a múlt gazdasági és politikai rendszere (szocialista versus kapitalista), amelyet a termelés korabeli struktúrájával jellemzünk, valamint a jelenbeli gazdasági fejlettségi szint. Megerősíthetjük azt a tapasztalatot, amelyet más szerzők is hangsúlyoznak, miszerint „Európa példája mutatja, hogy a politikai rendszer szignifikánsan befolyásolja az egészség és a halálozás feltételeit.”

A gazdasági és politikai rendszer jellegéből és az ezeket jellemző életmódból fakadó hátrányok sokkal veszélyesebbek a dolgozó korú férfiak életére, mint a nőkére. Számításaink szerint az egészségügyi kiadások GDP-hez viszonyított aránya, az országok földrajzi elhelyezkedése és az alkohol- és dohánytermékek relatív árának hatásai hasonlóak a két nemre. Az égetett szesz és a dohány fogyasztása, a rejtett gazdaság kiterjedtsége, valamint a népesség képzettségi szintje szignifikáns magyarázó tényezői a dolgozó korú férfiak halálozási rátája alakulásának, de hatásuk a dolgozó korú nők halálozására nem mutatható ki.

Tárgyszavak: halálozási ráta, keresztmetszeti összehasonlítás, Kelet-, Közép és Nyugat-Európa

JEL kódok: I12

INTRODUCTION¹

The study looks at mortality rates of the working-age populations of various countries in 2011. The mortality rate of working age population is the probability of dying between the ages of 15 and 60 for men and women. The countries included in our international cross-sectional analysis are 46 European states and successor countries of the Soviet Union.² The substantial variation in mortality rates across the countries is well illustrated by the fact that in 2011 the mean mortality rate among working-age men was 158.5 (out of 1000) with the smallest value of 69 (out of 1000) measured in Switzerland and the largest value of 351 (out of 1000) in Russia. The corresponding indicators for women were substantially smaller (mean: 73.5, min: 38, Cyprus, max: 156, Tajikistan.) The 46 countries vary in their geographical location, level of development, and economic system and culture (post-socialist versus long-established market economy) in 2011. The latter dimension gives rise to enormous differences in mortality: the mean mortality rates were 210 for men and 92 for women in the post-socialist countries; while the corresponding figures were 91 and 49 in long-established market economies (see also Figure 1, where the countries are divided into three groups, long-established market economies, Central and East European countries and former Soviet Union countries).

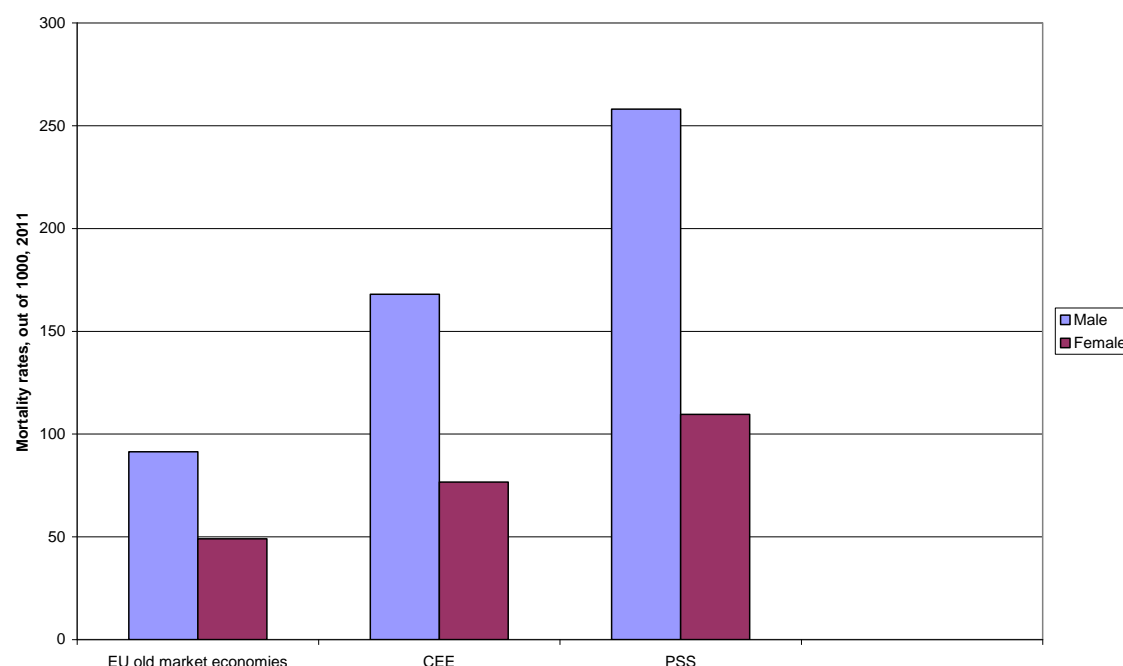
In an overview of adult mortality trends in Europe, Luy, Wegner & Lutz (2011) have shown that current levels and the trends over the past half-century were clustered geographically: “Western Europe with the most favorable health conditions, Eastern Europe with the least favorable, and Central Europe falling in between” (p. 76). The authors also emphasize that “the example of Europe shows political systems can significantly affect health and mortality conditions.”

¹ Definition of all the variables and indicators used in the paper as well as sources of data are listed in the Appendix.

² The countries included are 26 post-socialist countries: Albania, Armenia, Azerbaijan, Belarus, Bosnia and Herzegovina, Bulgaria, Croatia, the Czech Republic, Estonia, Georgia, Hungary, Kazakhstan, Kyrgyzstan, Latvia, Lithuania, Macedonia, Moldova, Montenegro, Poland, Romania, Russia, Serbia, Slovakia, Slovenia, Tajikistan and Ukraine; and 20 Western European economies: Austria, Belgium, Cyprus, Denmark, Finland, France, Germany, Greece, Ireland, Israel, Italy, Malta, the Netherlands, Norway, Portugal, Spain, Sweden, Switzerland, Turkey and Great Britain.

Figure 1

Mortality rates among working-age men and women by country group, 2011



where

EU old market economies: Austria, Belgium, Cyprus, Denmark, Finland, France, Germany, Greece, Ireland, Israel, Italy, Malta, the Netherlands, Norway, Portugal, Spain, Sweden, Switzerland, Turkey and Great Britain;

CEE (Central and East European) countries: Albania, Bosnia and Herzegovina, Bulgaria, Croatia, the Czech Republic, Hungary, Macedonia, Montenegro, Poland, Romania, Serbia, Slovakia, Slovenia;

PSS (Post Soviet Union states): Estonia, Georgia, Kazakhstan, Kyrgyzstan, Latvia, Lithuania, Moldova, Russia, Tajikistan, Ukraine.

Our detailed analysis in this study is based on a regression analysis of Health Production Functions (HPFs) calculated from cross-country estimations for 2011. The explained variable of HPF is the mortality rate of the working age population. The explanation for the differences in mortality rates is investigated by scrutinizing three different groups of factors:

1. Socio-economic factors: geographical position of the country, current level of economic development, the level of education, and the political-ideological system determining the economy in the past.

2. Lifestyle factors: alcohol and tobacco consumption represented by their relative prices, consumption of spirits as a particularly damaging of these consumption products, overwork in the hidden economy in the past and present, all of which are, to some extent, associated with socio-economic factors.

3. Health care resources: health expenditure as a percentage of GDP.

Sections 1 – 3 look at the possible effects of the various factors including theoretical and empirical considerations and analyze pair-wise correlations of the individual factors and mortality rates. Section 4 discusses the results of multivariable regression models incorporating all the factors discussed earlier.

1. THE EFFECTS OF THE LEVEL OF DEVELOPMENT

Based on the sample of 45 countries, Figure 2 displays the negative but, especially for the post-socialist countries, fairly weak correlation between the level of development of the selected economies and the mortality of working-age men in these countries. Some post-socialist countries, mostly those in the south, appear below the regression line, while the other countries are well-above the line.

Figure 3 shows the relationship between the level of development and mortality among working-age women revealing a stronger negative correlation, than that observed for men.

The weak correlations between the level of development and mortality reflected by Figures 2 and 3 as well as the great divide between mortality rates according to different past political systems reflected by Figure 1 suggest that current mortality rates are affected not only by the current state of economic development but also by a combination of various factors accumulated over a long period of time. In the subsequent sections of this study we will show that these factors are: the geographical location of the countries, past economic, social and political environment characterizing these countries and the lifestyle behaviors following from them, and the share of health care expenditures.

**Mortality rate among working-age men and GDP per capita
(natural logarithm)**



Mortality rate of adult females, out of 1000

$y = -30.11x + 370.17$
 $R^2 = 0.6057$

GDP per capita (ln), 2010

Country	GDP per capita (ln), 2010 (approx.)	Mortality rate of adult females, out of 1000 (approx.)
Tajikistan	7.7	155
Kyrgyzstan	7.8	135
Moldova	8.2	110
Ukraine	8.9	120
Kazakhstan	9.5	150
Russia	9.9	130
Belarus	9.7	105
Armenia	8.6	95
Georgia	8.7	90
Albania	9.1	85
Azerbaijan	9.2	85
Serbia	9.3	85
Bulgaria	9.4	85
Latvia	9.8	90
Lithuania	9.9	90
Hungary	10.0	90
Poland	9.9	75
Estonia	10.0	75
Turkey	9.7	70
Croatia	9.9	65
Czech Rep.	10.0	65
Denmark	10.5	65
Belgium	10.5	65
Netherlands	10.6	65
France	10.6	65
Austria	10.7	65
Norway	10.8	65
Sweden	10.9	65
Switzerland	11.0	65
Portugal	10.1	60
Greece	10.2	60
Malta	10.3	60
Spain	10.4	60
Cyprus	10.5	60
Bosnia and Herzegovina	9.1	70
Macedonia	9.2	70
Montenegro	9.3	70
Finland	10.4	55
Ireland	10.5	55
United Kingdom	10.6	55
Germany	10.7	55
France	10.8	55
Italy	10.9	55
Japan	11.0	55
South Korea	11.1	55
China	11.2	55
India	11.3	55
Brazil	11.4	55
USA	11.5	55

2. THE EFFECTS OF GEOGRAPHICAL LOCATION

The literature on European mortality clearly shows that there is a factor characteristic at one end of Mediterranean countries, where heart disease is a rare cause of death and at the other end of the north-eastern regions, where it is a frequent cause of death. Researchers are, however, divided on what mortality causes lie behind the effect of geographical position.

The Mediterranean paradox is investigated by Gjonca & Bobak (1997) through Albania, one of the poorest countries in Europe. The authors find that in Albania the age-standardized heart disease mortality among 0-64 year-old men is half as high as in the United Kingdom, and as high as in Italy. The study concludes that the key to the Albanian paradox are eating habits: low consumption of total energy, meat and dairy products combined with high consumption of fruit, vegetables and carbohydrates. Grimes, Hindle & Dyer (1998) question Gjonca & Bobak's claims arguing that geographical location predicts the frequency of coronary heart disease in itself. The authors explain the effect by the hours of sunshine determined by the Mediterranean latitude, which would have a beneficiary effect on human metabolism and protect the immune system thanks to increased vitamin D production. The real question is whether the effects of latitude are exerted directly by sunlight affecting human metabolism or indirectly through the dominance of agriculture and diet. It is not clear, the authors argue, whether olives (Albania's most important produce) are simply the embodiment of a climate or it is olive consumption per se that has a protective effect against coronary heart disease. Grimes, Hindle & Dyer prefer the former possibility reasoning that the globalization of diet makes it unlikely that olive consumption could be the protector. They also note that although researchers like to explain the development of heart disease citing lifestyle factors and people's health damaging behaviors, there are too many paradoxes by now. Besides the Albanian paradox, other cases featuring in several studies are the French paradox, where the harmful eating habits in the south of the country are coupled with low mortality, and the Italian paradox, where heart disease mortality remains low in spite of a rather high rate of smokers. "It is undoubtedly true that a life in Mediterranean countries is protective against coronary heart disease, but we believe that geographical location is directly responsible rather than lifestyle and behavior. Too many paradoxes means that time is right for a major paradigm shift." (p. 836).

In Figures 1 and 2 we have seen that GDP per capita and geographical locations are rather important factors explaining the differences in mortality rates. We also noticed, however, that the post-socialist countries show some outlier characteristics in terms of these relationships. Below, as a first approach, we summarize and analyze the impact of the mentioned factors in a few regression functions. This exercise is carried out on a sample of 45

countries, working age mortality rate is used as the explained variable, and the level of economic development (GDP per capita), a dummy for the past political and socio/economic system and geographical location (latitude) are the explanatory variables.

Table 1

Functions explaining the variation in working-age mortality in 2011, 45 countries

	[1] lnmortm beta		[2] lnmortf beta		[3] lnmortm beta		[4] lnmortf beta		[5] lnmortm beta		[6] lnmortf beta	
GDP per capita	-0.53**	-0.82	-0.45**	-0.91	-0.22**	-0.34	-0.32**	-0.64	-0.11	-0.17	-0.26**	-0.52
	[-6.92]		[-10.97]		[-2.77]		[-4.93]		[-0.95]		[-4.21]	
Latitude	0.027**	0.40	0.02**	0.38	0.016**	0.24	0.015**	0.29	0.01	0.14	0.011**	0.22
	[4.24]		[4.85]		[3.14]		[3.99]		[1.61]		[4.01]	
Dummy for socialist countries					0.55**	0.59	0.24**	0.33				
					[4.78]		[2.59]					
Dummy for CEE									0.52**	0.51	0.22**	0.28
									[4.50]		[2.71]	
Dummy for PSS									0.88**	0.8	0.41**	0.49
									[5.09]		[3.05]	
Constant	8.91**		7.76**		6.05**		6.52**		5.17**		6.06**	
	[10.9]		[19.26]		[7.66]		[10.54]		[5.00]		[10.29]	
Method	OLS		OLS		OLS		OLS		OLS		OLS	
R2	0.61		0.73		0.75		0.77		0.82		0.8	
RMSE	0.305		0.197		0.2464		0.1826		0.2151		0.172	
Number of obs.	45		45		45		45		45		45	

Table 1 clearly shows that geographical location affects male and female mortality in similar ways. The mortality reducing effect of the level of development is more pronounced for women. The dummy variable representing past political and socio-economic systems (with a value of 1 for post-socialist countries, and 0 otherwise) has a statistically significant detrimental effect on the mortality of both men and women, but this effect is far greater for male than for female mortality. The results of the model suggest that geographical location does not reflect lifestyle differences. If it did, there should be greater gender differences in the regression coefficients of the latitude variable (allegedly containing differences in diet) since women tend to have considerably more health conscious eating habits than men. Importantly, the gender difference in the regression coefficients of the dummy variable of past socialist regime, in contrast, is likely to follow from lifestyle differences: this variable has a far greater effect on men than on women (see Columns 3, 4 and 5, 6). A similar pattern can be observed for the dummy variables of CEE and PSS.

3. ECONOMIC AND SOCIAL STRUCTURE AND WORKING-AGE MORTALITY

3.1. EXPLANATIONS INVOKING THE TRANSFORMATION OF SOCIALIST ECONOMIES

The relationship between the sectoral structure of the economy and working-age mortality was first noted by studies in the 1980s. These studies endeavored to analyze the unusual, rapidly increasing mortality trends observed in the second half of the 20th century in Eastern Europe (Cooper and Sempos, 1984, Giersdorf and Schuler, 1984, Bourgeois-Pichat, 1985, Józán, 1989). Since this phenomenon only appeared in state socialist countries, the authors termed it the State Socialist Mortality Syndrome (Okolski, 1987, Forster and Józán, 1990, Hoehn and Pollard, 1991, Shkolnikov et al. 1998a).

The first attempts to explain State Socialist Mortality Syndrome focused on health care systems, population lifestyle and alcohol and tobacco consumption. Ivanov and Echenique's (2000) study provided evidence that the health care system alone could not be responsible for the development of the syndrome. Lifestyle appeared to be a more plausible explanation (Cockerham, 1997) but this hypothesis was difficult to corroborate; specifically, it was difficult to find out what could have changed people's lifestyle such a way that mortality was increased as a result. Cornia and Paniccia (2000) observed that behaviors increasing the risk of mortality in Eastern European countries were manifestations of social chaos and stress. Cockerham et al. (2002) add that lifestyle and health may be related to passivity and other attitudes arising from socialist ideology.

The micro-analyses in Kopp et al. (2007) and the volume edited by Kopp (2008) reveal that the rapid increase in adult male mortality starting in the early 1970s in Hungary could not be attributed to the factors causing standard cardiovascular diseases (high intake of fats, smoking, excessive alcohol consumption or obesity), nor could it be explained by inadequate access to medical care. Kopp et al. (2007) and Kopp (2008) claim, instead, that the main explanatory factor behind the rapid increase in adult male mortality is an increase in chronic stress and various psychosocial factors. The studies by Maria Kopp and her research group, most of which were made in the period following the political and economic transition, identify low educational attainment, undervalued social status, low personal and family incomes, unavailability of secure jobs, unskilled work, depression, a feeling of lack of purpose in life and a lack of spousal support as the major factors predicting premature death in Hungarian men. These remain statistically significant explanatory factors even if their effects are corrected for the variables representing lifestyle (smoking, alcohol consumption and being overweight). Of the above factors, Kopp (2008) views chronic stress (characterized by the indicator of depression) as some kind of invisible hand having a decisive role in men's premature death. At the same time, Kopp et al. (2006, 2007) also emphasize extensive

engagement in the second economy and voluntary weekend overtime as important explanatory factors in premature cardiovascular disease related deaths.

Józan (2002) also focuses on excessive alcohol consumption in connection with the State Socialist Mortality Syndrome. His touching empirical observations come from Hungary: “Alcoholism has always been a problem in Hungary but the kind of heavy drinking currently haunting the country emerged in the 1950s and 1960s: in part as a Soviet-Russian ‘import’ and in part with the socialist industrialization and as a result of the milieu inherently linked to the nature of the Hungarian version of the Soviet type socialist society. Daily boundless alcohol consumption became the social norm at the great construction works of the 1950s especially among the undereducated unskilled workers recruited from agriculture. Working days were lived through under the influence of alcohol and at the weekends, without their families (when they did not have the Saturday off) or traveling on the shuttling “black trains” playing cards in their vulcanized fiber suitcases, these weary men drank beer and cheap liquor to oblivion. Alcoholism did not jeopardize their jobs as in the aggressively downward trending, performance curbing economy; society had a permissive attitude towards alcohol abuse. This is how the first generation of the Hungarian unskilled working class traveled from the newly erected Leninváros (Lenintown) or Sztálinváros (Stalintown) straight to an alcohol paradise. Down in the depths of society, this is a genesis of that particular drinking habit, which still continues to be a heavy burden on the entire society” (p. 437).

Józan’s (2009) macro-analysis also points to the socio-economic environment and the harmful lifestyle it gives rise to as the main explanation for increased male mortality starting in the mid 1960s in Hungary. “Between the mid 1960s and the early 1990s [...] there emerged a dead-end modernization process and, as a result of the shock of the change of regimes, a chronic epidemiological crisis [...]. An epidemiological crisis is a phenomenon resting on a foundation of an aggressively forced change to a peaceful socio-economic system, the extortion of a non-organic ‘development,’ the stopping of evolution by a revolution turning into anarchy: almost complete nationalization, collectivization, pro-military industrialization without investment capital, and as a consequence of all that, the methodical destruction of the super construction of the existing system and its transformation modeled on the Soviet system. The virtual universality of the typical addiction of a psychosocial crisis – smoking – among the working-age male population, and the unrestrained consumption of alcohol mainly among undereducated manual workers were built on this foundation” (Józan, 2009, p. 1240).

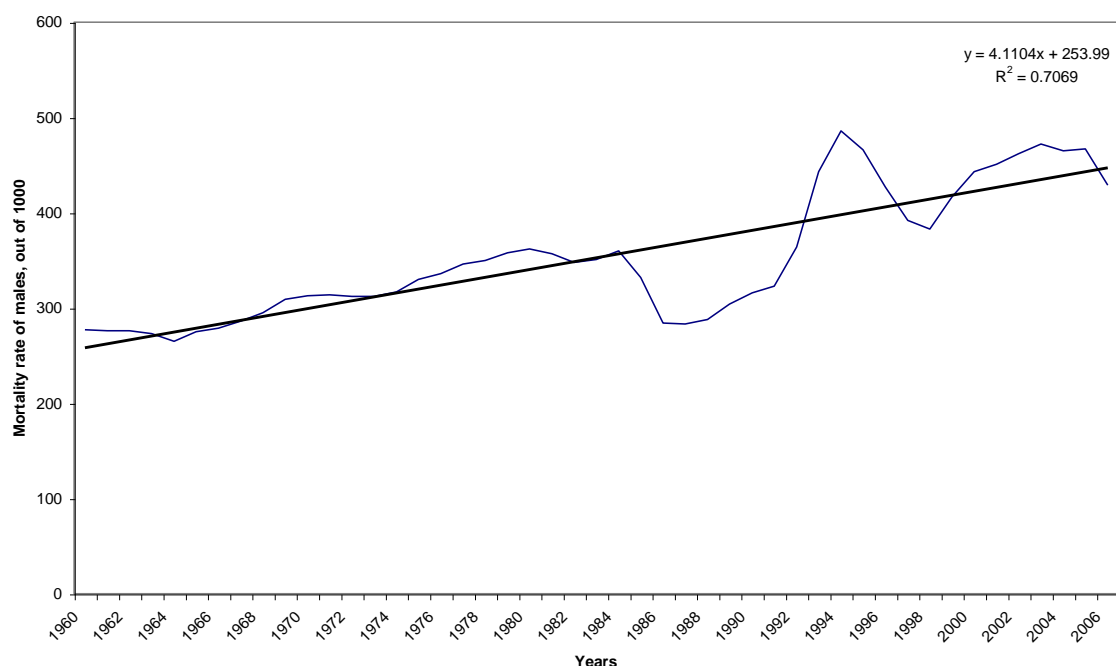
Inequalities in mortality and the higher mortality of lower social classes within a country are not exclusive to Eastern Europe; they are also well-known in Western Europe where inequalities have shown an increasing tendency in the last three decades of the 20th century (Mackenbach, 2006). Mackenbach (2006) identifies three groups of factors as the likely

causes of the phenomenon: property and income related factors, psychosocial factors and health related behavioral factors. In Western Europe, the difference between the mortality rate data of the various social classes manifests itself that the mortality of lower classes decreases more slowly than the mortality of higher social classes. The faster decrease among the upper classes is due to a fall in the incidence of cardiovascular diseases. This is explained in part by more health conscious behaviors (less smoking, more physical exercise and better diet) and in part by the introduction of effective medical interventions (diagnosis and treatment of high blood pressure, surgical interventions, treatment of thrombosis).

A special case of State Socialist Mortality Syndrome is the mortality crisis in Russia. As shown in Figure 4, Russia was characterized by an evenly increasing trend in mortality among working-age men from 1960 to 1985, which was followed by a relatively sharp fall thanks to Gorbachev's anti-alcohol campaign. After the campaign, mortality rates increased very rapidly – this period is termed the Russian mortality crisis in the literature.

Figure 4

Working-age male mortality in Russia, 1960-2006



The search for the causes of the mortality crisis led to a heated debate. Since the sharp rise in mortality coincided in time with the regime change from plan to market, several researchers tried to explain it with reference to the post-socialist transition. The hypotheses related to the post-socialist transition included the following factors as explanations for the Russian mortality crisis:

1. Decline in output and employment (Cornia, Panizza, 2000, Brainard, 2001),
2. Rapid privatization (Stuckler, King, and McKee 2009),
3. Physiological and psychological stress (Shapiro, 1995, Bobak, Marmot, 1996, Kennedy, Kawachi, Brainard, 1998, Gavrilova et al, 2001),
4. Increase in inequalities (Lynch, Smith, Kaplan, House, 2000, Denisova, 2010),
5. Decrease in the relative price of vodka (Treisman, 2010),
6. Decline of the health care system (Ellmann, 1994).

Excessive alcohol consumption as a direct cause appeared in all theories since this was also suggested by the most common direct causes of deaths during the period: alcohol poisoning, violent death, heart failure and stroke.

In contrast with the theories attributing the phenomenon solely to post-socialist factors, Bhattacharya, Gathmann & Miller (2011) show that the termination of the Gorbachev Anti-Alcohol Campaign itself (which happened just before the regime change) created a “period of reconstruction”, which could bear about half of the responsibility for the Russian mortality crisis. The authors emphasize that their analysis indicates that the transition from socialism to capitalism and democracy was not at all as lethal as others had previously suggested.

Laaksonen et al. (2012) state tentatively, that there are “significant East-West differences in health behaviors and psychosocial factors, with Eastern populations generally reporting more unhealthy behaviors and less perception of control over life. The multivariate analysis suggests that a large proportion of the East-West difference in health may be attributed to differences in health behaviors, stress and perceptions of control.” (pp.72)

Kesteloot, Sans and Kromhout (2006) compared cardiovascular disease related deaths and all deaths from 1970 to 2000 in Western and Eastern Europe. These authors also note the vast difference in mortality rates during this period between the two regions of Europe. Their results suggest that one of the most important causes of the high mortality in Eastern Europe was the frequent consumption of foods rich in saturated fats before 1990. Their data reveal that the decrease in cardiovascular deaths observed since 1994 is primarily related to changes in eating habits in these countries.

Carlson and Hoffmann (2010, 2011) and Mihályi (2010) observe a link between the characteristic structure of economic sectors in socialist economic systems and the increase in mortality in Eastern Europe: the forced growth in industry, and heavy industry in particular, and the suppression of the service sector created a norm-defying, anomic environment for men transferred from agriculture to industry, especially to heavy industry. Carlson and Hoffmann compared the employment structures in capitalist countries on the peripheries of

Europe³ to the employment structures in Eastern European countries⁴ in 1930, 1950 and then every five years from 1960 to 2005. While in 1930 and 1950 there was no major difference between European periphery capitalist countries and the socialist countries in the ratio of industry to service sector workers, in socialist countries this ratio gradually increased from 1960 all the way to 1995 when it finally began to fall. Comparing these trends with working-age male mortality, the authors conclude that the increase in mortality rates follows excessive industrialization effected by state socialist policies by a lag of about ten years. The social and behavioral consequences of this development policy had accumulated over a period of time and directly led to the increase in mortality. The authors support their hypothesis by econometric analyses: a fixed effects panel regression model confirms their claims.

Mihályi's (2010) study also blames over-industrialization and employment in the simultaneously emerging informal economy for the self-destructive lifestyle that led to exceptionally high mortality among the working-age population in Hungary. The author shows that a self-destructive life-style is also "encouraged" by the low relative price of alcohol and tobacco products.

For our data, Figures 5 and 6 reveal a strong association between the past production structure of an economy and current working-age mortality. The figures display the relationship between the share of services in GDP in 1990⁵ and working age male and female mortality in 2011. We can see a strong negative correlation: a higher past service sector share in GDP is associated with lower mortality. In this and later models the lag in the effects is explained by the factors determining a mortality rate (population health) measured at a given point in time exerting their effects during the life course of the individuals living or deceased at that time, i.e., in the past and typically over a few decades.

Figures 5 and 6 provide convincing evidence for the relationship between over-industrialization i.e. suppressing services in the past and increased mortality in Eastern Europe in recent decades.

³ Finland, Greece, Ireland, Italy, Norway, Portugal and Spain

⁴ Bulgaria, Czechoslovakia (subsequently Czech Republic and Slovakia), Hungary, Poland, Romania and Yugoslavia (subsequently Serbia, Croatia and Slovenia)

⁵ It would have been better to look at the share of service sector workers but this was not practicable for this broad international comparison because of data availability problems; the share of services in the GDP was the next best indicator.

Figure 5

The share of services in GDP in 1990 and working-age male mortality in 2011 (natural logarithm)

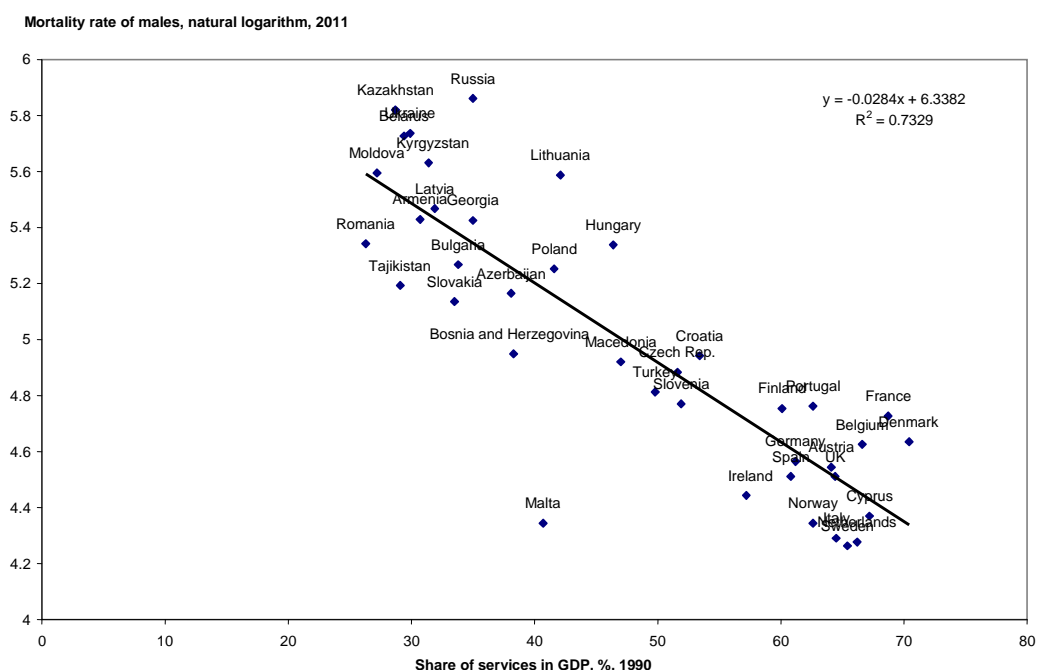
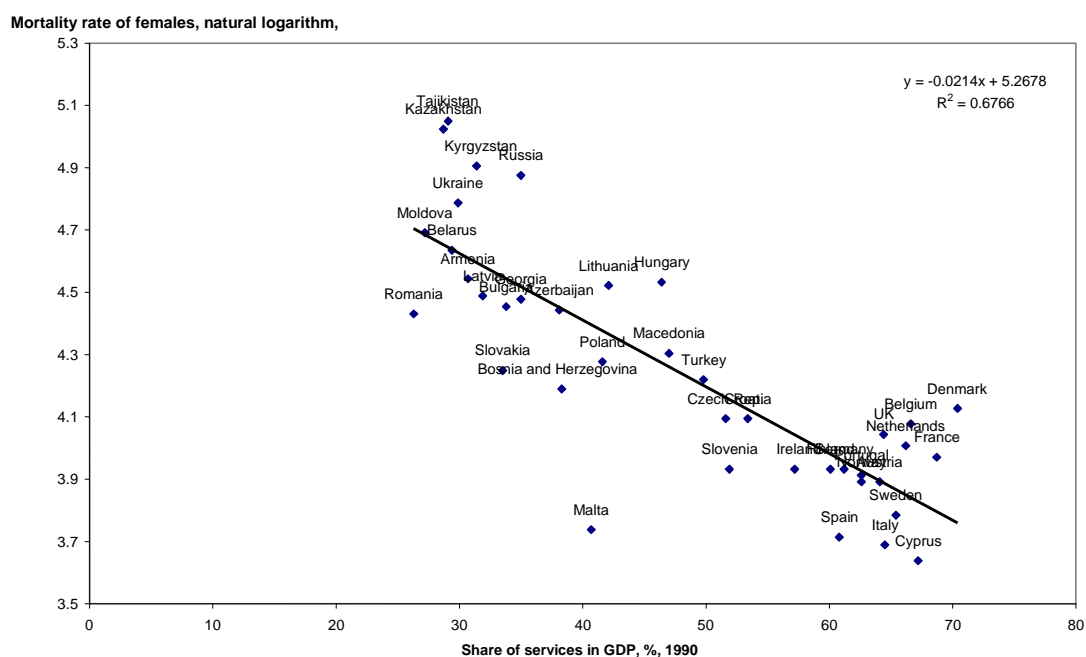


Figure 6

The share of services in GDP in 1990 and working-age female mortality in 2011 (natural logarithm)



3.2. THE RELATIVE SIZE OF THE HIDDEN ECONOMY

Over-industrialization in socialist economies exerts its health damaging effects both directly and indirectly. It does so directly by tipping the balance towards industries detrimental to human health (heavy industry, mining, etc.), and indirectly by giving rise to low-level and poor-quality services in the formal economy and to health damaging behaviors caused by the norm-defying (anomic) social environment. Under socialism and during the transition to market-economies, the low-level and poor-quality services at the same time generated an economy of informal services hidden from the taxation system. This hidden economy may also be detrimental to health both directly and indirectly thus contributing to the high mortality observed in these countries (see Mihályi, 2010). The bad-quality spirits circulating in the black market, for instance, have a direct negative effect on health, while indirect effects include the self-exploitative labor under bad and often dangerous working conditions with no health insurance in the hidden economy.

Hidden economies are not restricted to socialist and post-socialist countries, of course: they are present also in long established capitalist countries, although different reasons and conditions have given rise to them (e.g., high service prices or unemployment), and they are of a much smaller scale, than in the socialist and post-socialist countries. Schneider (2012) estimates the share of the hidden economy in 22 former socialist countries to be on average 37.4% of GDP between 1999 and 2007, while the corresponding figure for 17 long-established capitalist countries is estimated to be 19.8%.

Figures 7 and 8 display these values against the mortality rates for 2011. There is a clear positive correlation for both genders: a prolonged higher share of the hidden economy in the past is associated with higher mortality among the countries in our sample. The figures also reveal that the impact of the share of the hidden economy in the 2000s on mortality appears with less elasticity for women than for men.

Figure 7

The share of the hidden economy (1999-2007) and working-age male mortality in 2011

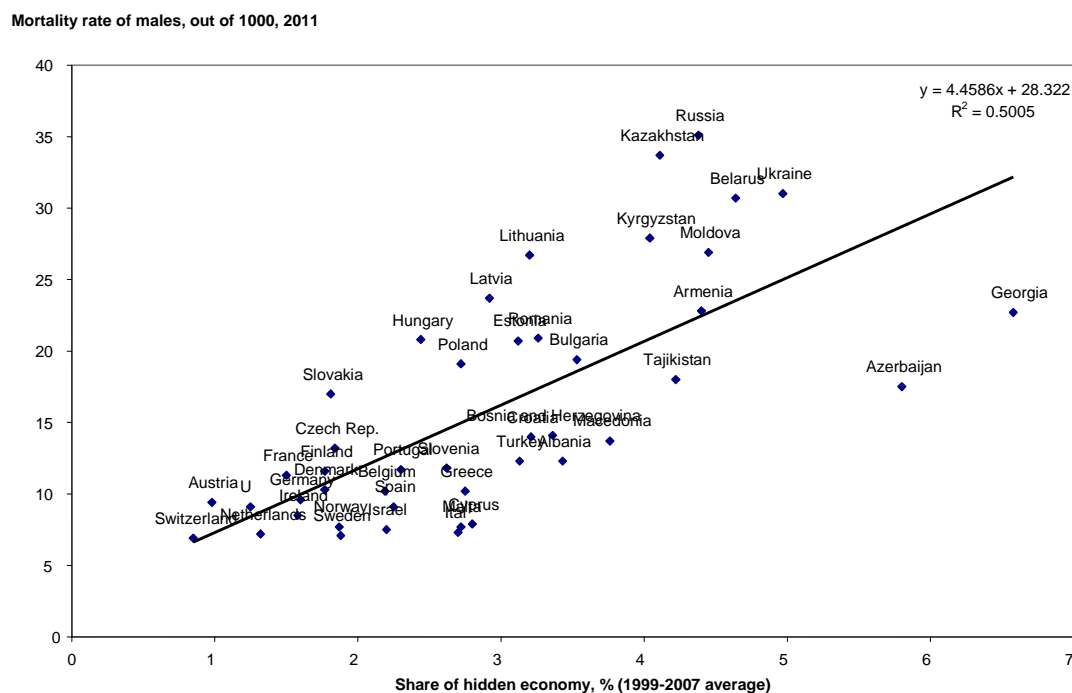
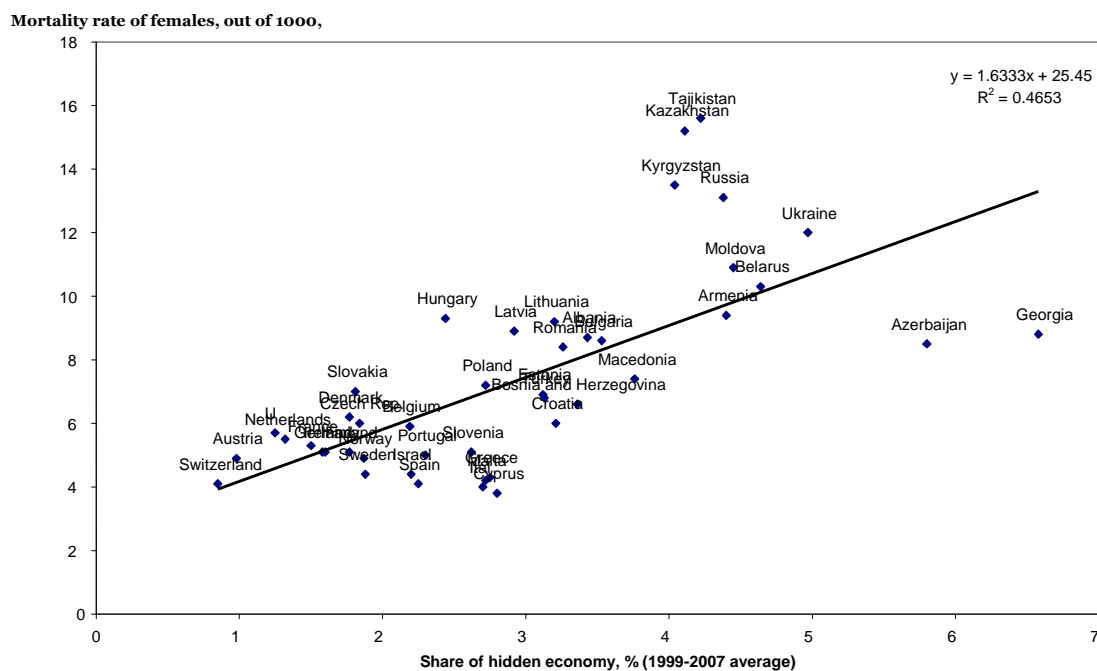


Figure 8

The share of the hidden economy (1999-2007) and working-age female mortality in 2011



3.3. THE PRICE AND CONSUMPTION OF ALCOHOL AND TOBACCO PRODUCTS

An important basic relationship in micro-economics holds both for socialist and capitalist economies: alcohol and tobacco consumption strongly correlate with the prices of consumer goods and within that, with the own prices of these products and the prices of other consumer products. There is mostly consensus in the literature that relatively low prices of harmful consumer goods (alcoholic beverages, tobacco, etc.) lead to extra consumption and thus to a decline in health.

Wagenaar, Salois and Komro (2009) carried out a meta-analysis of studies (1003 publications were included) looking at the relationship between alcohol consumption on the one hand and the price of alcohol and taxes on alcohol on the other. Every study finds a negative correlation between prices and consumption although the strength of the correlation varies by type of alcohol and consumer group.

Treismann (2010) and Mihályi (2009) argue that the relatively low prices of alcoholic beverages and cigarettes make a substantial contribution to poor population health and the consequent increased mortality observed in Eastern European countries through excessive drinking and smoking. Denisova (2009, 2010), however, reaches the opposite conclusion: the author finds a weak positive correlation between the relative price of alcoholic beverages (vodka) and risk of mortality in Russia. The explanation for this pattern is that empirical experience shows that with a rise in the official price of vodka, there is an accompanying increase in the purchase of vodka in the informal market, and this poor quality beverage is harmful to health and leads to increased mortality.

Figure 9

Price level index of alcohol, tobacco products and narcotics (world average=100, 2005) and working-age male mortality, 2011(natural logarithm)

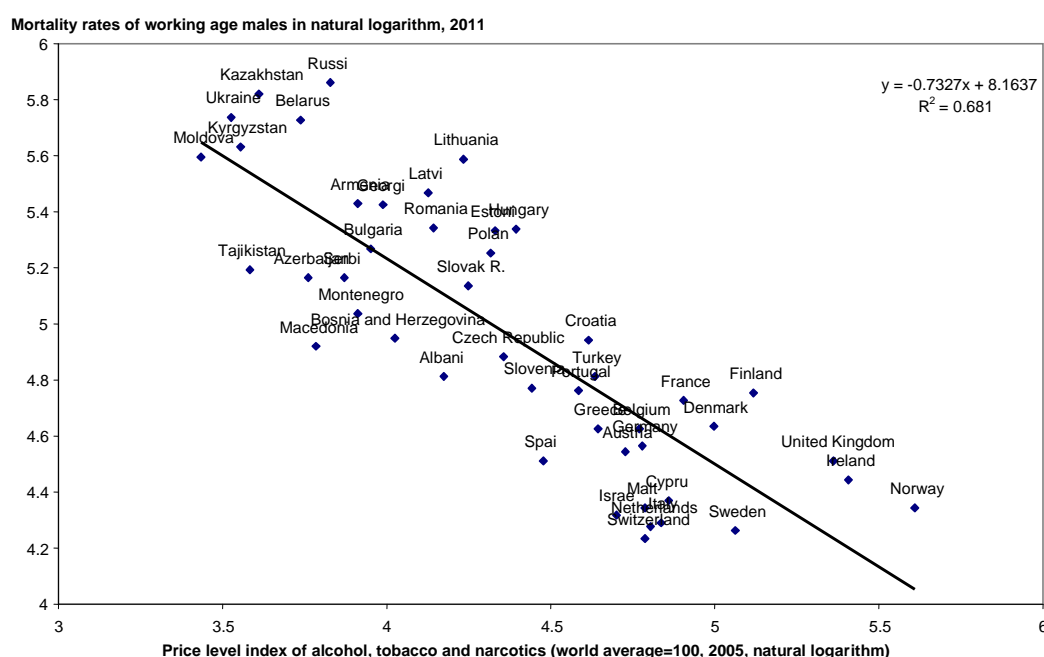
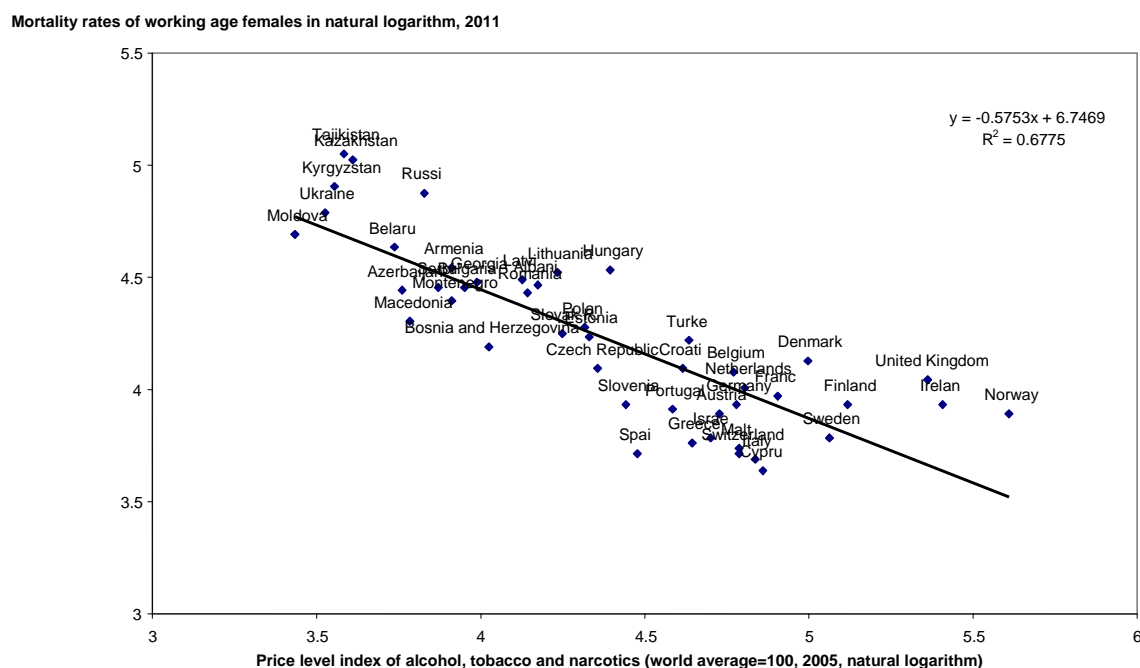


Figure 10

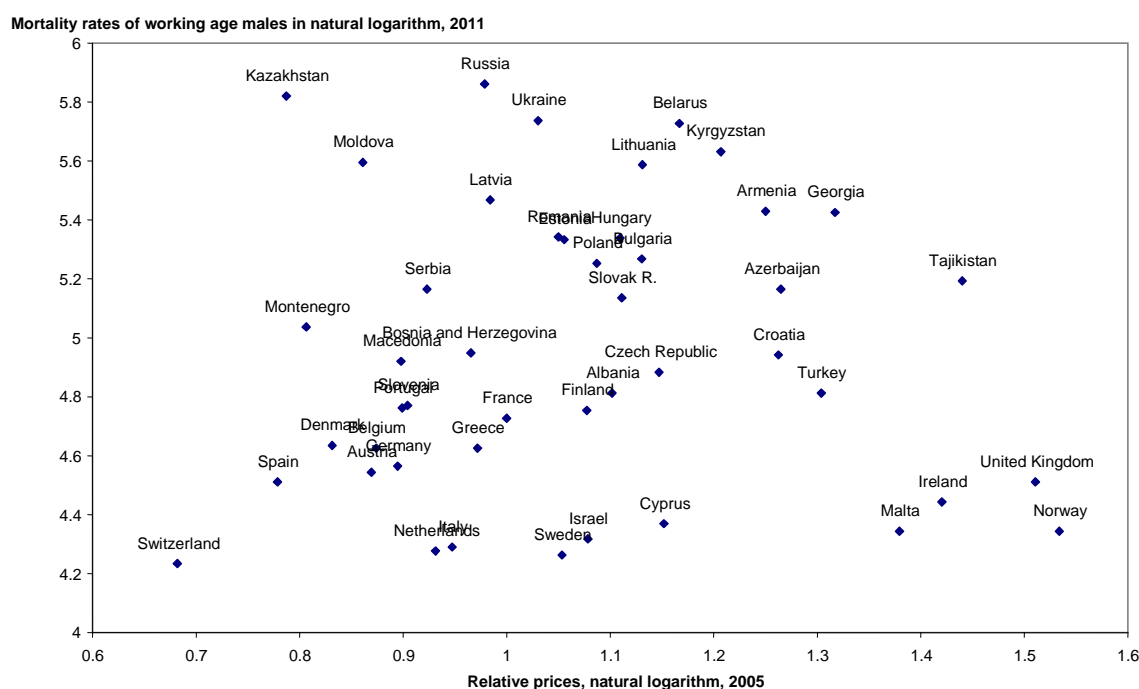
Price level index of alcohol and tobacco products and narcotics (world average=100, 2005) and working-age female mortality, 2011 (natural logarithm)



Figures 9 and 10 uses internationally comparable prices for the product group of alcoholic beverages, tobacco and narcotics (the latter is not being in the focus in our investigation) for the year 2005 and mortality data for our sample of countries in 2011. The scatter points and the adjusted regression clearly show that in line with most studies there is negative correlation between working-age male and female mortality on the one hand and alcohol and tobacco prices on the other: low prices, presumably because of higher consumption, are associated with higher mortality. The figures also reveal that the former socialist countries tend to have substantially lower prices for these health detrimental products than do long-established capitalist countries. The length of the lag between price indices (2005) and mortality data (2011) is accidental; it was dictated by data availability. We assume that the relationship of prices of alcohol and tobacco products across countries have been stable for a long time, and low and high prices had their effect on consumption and on health through many years.

Figure 11

Relative prices of alcohol and tobacco products and male mortality



It should be noted that in our sample there is a strong correlation between the indicator of economic development (GDP per capita) and both the internationally comparable prices of the harmful substances discussed above and the prices of all consumer goods at internationally comparable prices (price level index). To be more realistic, we should conjecture that the consumption of harmful substances is in fact encouraged by their low

relative prices (the prices of harmful substances relative to the prices of all consumer goods) rather than by their prices compared to the world average. The effects of these relative prices of harmful substances on working-age male mortality are shown in Figure 11. The relationship between the two variables is not at all as clear here as it was on Figures 9 and 10 using prices compared to the world level.

Now from prices we turn to direct consumption of alcohol and tobacco products. In their study, Hawkes and Buse (2013) analyzed gender differences in mortality and life expectancy, which have been observed worldwide in the past 40 years. Citing Lim et al.'s (2012) analysis of 67 health-detrimental risk factors, the authors find that the 10 most damaging factors in the ranking of factors harmful to health are considerably more frequent among men than women. Of these ten factors, Hawkes and Buse (2013) focus on alcohol consumption. For the world, alcohol consumption comes third in the above ranking following smoking and high blood pressure, but it is the first factor in Eastern Europe. The authors emphasize that while there are physiological gender differences in the effects of alcohol consumption (because of specific features of alcohol absorption and metabolism in women), a larger part of the difference is rooted in "gender-determined" behaviors: men drink larger quantities of alcohol and more frequently. The authors' view is in agreement with Wilsnack et al.'s (2005) in that alcohol consumption is a culturally determined behavior dictated by gender norms, where it is an expression of the positive side of masculinity. Female heavy drinkers are at the same time despised by society. Men therefore drink a lot more than women throughout the world.

Based on the evidence provided in the literature, our analysis should have a special look at the consumption of spirits, since it has been shown to be the alcohol product most detrimental to health, especially in the former socialist countries. Recently, a number of micro-studies have been carried out endeavoring to show the correlation between the consumption of spirits and mortality, especially in the successor states of the Soviet Union. A recent paper published in *The Lancet* (Zaridze D. et al., 2014) summarized the results of a longitudinal investigation of 151.000 adults with the aim of disclosing the effects of vodka consumption on mortality in Russia. The analysis of factors affecting vodka consumption gave interesting results: vodka consumption to some extent correlates with low educational attainment and manual labor, but shows the strongest correlation with smoking. While this was a very important observation, it presented an obstacle to demonstrating that high vodka consumption increased mortality. Nevertheless, the authors succeeded in providing convincing evidence that vodka consumption increases mortality risk.

Returning to our cross-sectional analysis, we find that the relationship discussed above appears in our sample: Figures 12 and 13 display the effects of spirit consumption on male and female mortality. As has been repeatedly observed in the literature, male mortality shows a substantially stronger correlation with spirit consumption than does female mortality.

Figure 12

Spirit consumption per capita (liters) in 2005 and working-age male mortality per 1000 people in 2011

Mortality rate of males, out of 1000, 2011

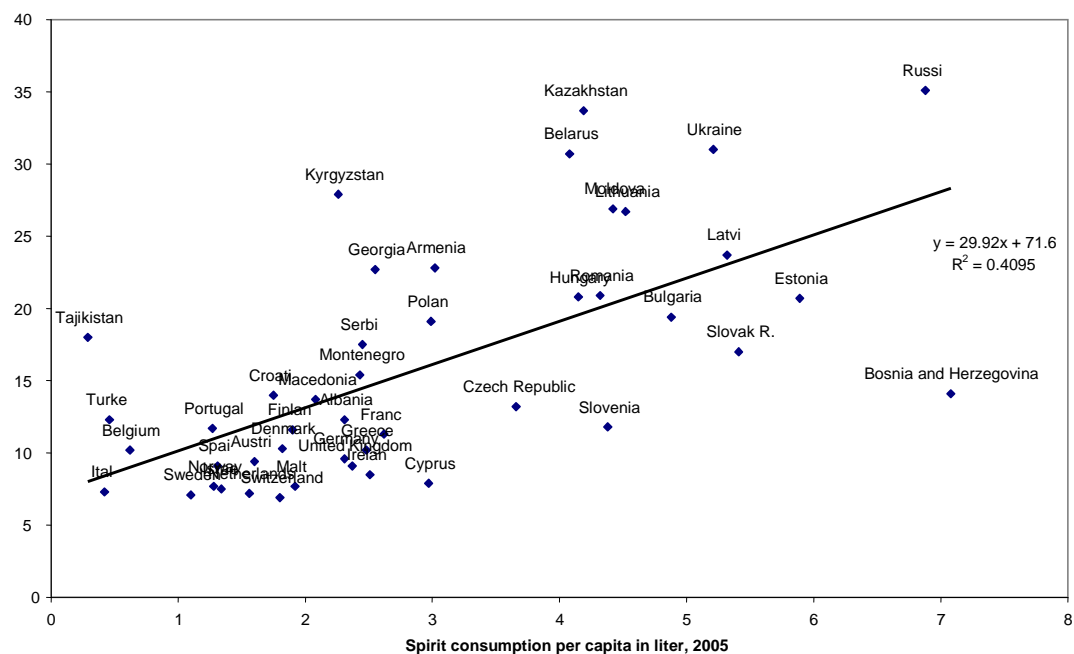
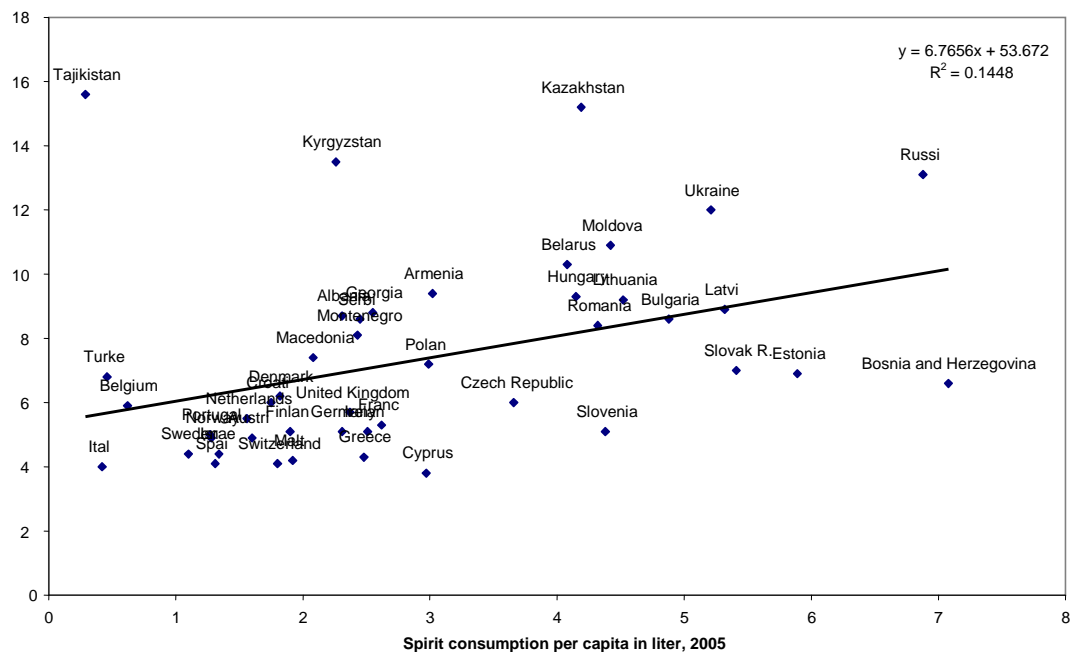


Figure 13

Spirit consumption per capita (liters) in 2005 and working-age female mortality per 1000 people in 2011

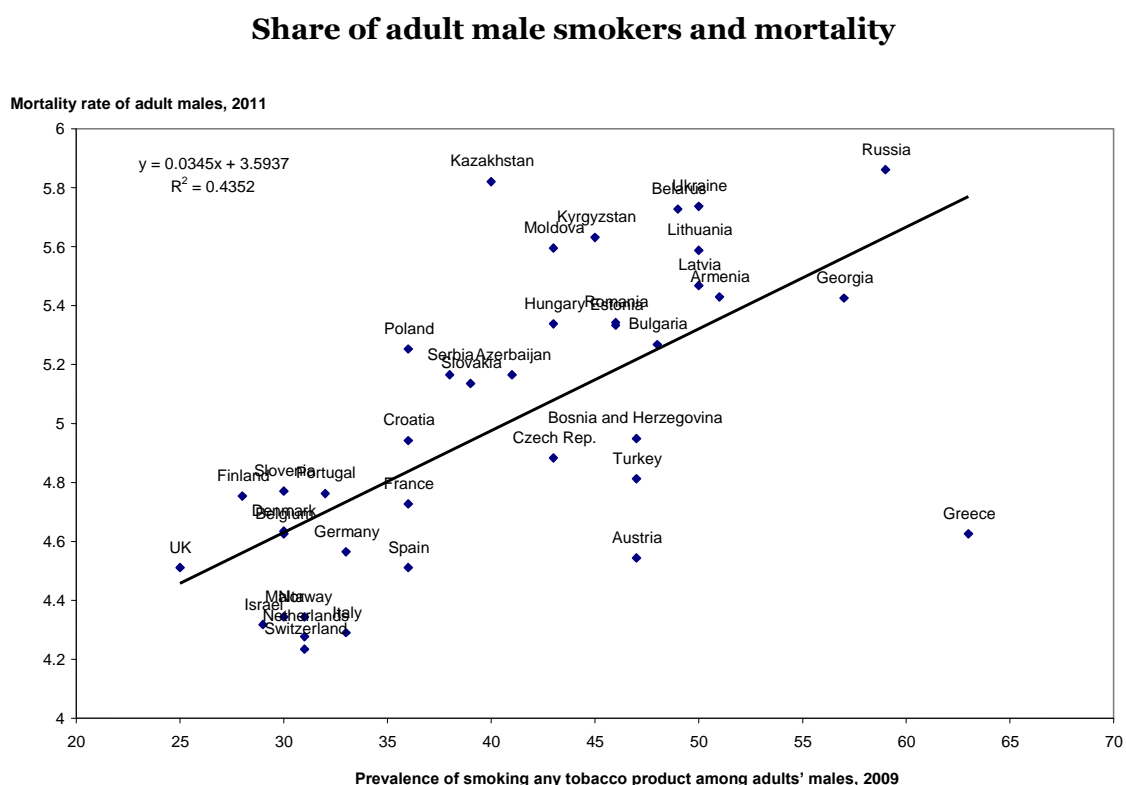
Mortality rate of females, out of 1000, 2011



We also looked at the direct effects of smoking on mortality. The basic indicator in this case is the percentage of smokers in the male and female populations over the age of 15; this kind of data was available for 39 countries in our sample for 2009.⁶

The data reveal that the lowest frequency of smokers was observed in the United Kingdom (25%) and the highest in Greece (63%) and Russia (60%). As shown in Figure 14, male mortality increases with the share of smokers among men. In the diagram of the relationship between smoking and mortality, Greece is a real outlier, which is a typical manifestation of the Mediterranean paradox discussed above: in spite of the fact that over 60% of adult men smoke here, working-age male mortality is about the same as in Germany, which is not only considerably more advanced than Greece but also has half as many male smokers relative to the population than does Greece.

Figure 14



⁶ This indicator is different from the one that we use for spirits for several reasons: it does not indicate the volume of consumption, but offers information about the two genders separately and has the potential of indicating consumption from the black market as well. The indicator for spirit brings information about actual consumption of two genders together, but hides data about utilization of the black market.

Looking at women (data not presented here), there is no direct positive correlation between the percentage of smokers and mortality; in fact, the relationship appears to be negative.

Table 2 lists across the different country groups the average of the percentage of smokers among men and women in the sample countries in 2009. It is clear that for the whole sample, smoking is about twice as common among men than among women. Men are most likely to smoke in the former Soviet Union countries, while the women in this same region have the lowest percentage of smokers. The average prevalence of female smokers in long-established capitalist countries is equal to the frequency of female smokers in the CEE countries, and both are substantially higher than their frequency in former Soviet Union countries (PSS).

Table 2

Prevalence of smoking in adult males and females, %

	Total sample	Old market economies	Post socialist economies	CEE	PSS
Prevalence of smoking adult males, %, 2009	40.5	34.8	44.8	43.1	46.3
number of countries	39	17	22	10	12
Prevalence of smoking adult females, %, 2009	22.3	24.6	20.5	24.8	17.0
number of countries	39	17	22	10	12

3.4. EDUCATION

The relationship between health and mortality on the one hand and education on the other is widely studied in the literature. Every European country has to face the fact that there are great inequalities in health and mortality among their population: those having lower educational attainment, those with lower employment status and those having lower incomes die younger and become ill with higher frequency. Research suggests that premature death in these social strata is caused by a long series of unfavorable financial conditions (lower income, poorer quality housing, lower employment status), psycho-social factors (higher levels of stress, less rest and physical exercise) and risk behaviors (smoking and alcohol consumption) (Mackenbach, 2006). These three groups of factors are not independent of each other: the higher frequency of financial disadvantages among people having lower social status, for instance, partly explains a higher frequency of psycho-social stress or less rest and physical exercise, and higher levels of smoking and alcohol consumption. Mackenbach et al. (2008) analyze the above groups of factors using data from 22 countries. The authors find that mortality inequality is substantially greater in the population of Eastern European and Baltic states than in those of Western European countries. They attribute this pattern mostly

to more smoking and alcohol consumption among people of lower socio-economic status, but also note inequalities in access to good medical services.

In an overview of the literature, Lochner (2011) considers the various channels through which education leads to a healthier lifestyle and lower mortality. Education improves decision-making skills and may thus lead to better decisions on one's own health and more efficient utilization of health inputs (productive efficiency). Educated people also tend to be more efficient in collecting and interpreting information from physicians, others or the Internet (allocative efficiency). Schooling is further associated with better health because it increases earnings, which in turn increases the demand for better health encouraging people to spend more on keeping healthy. (They buy better health insurance and take more valuable treatments.) Education helps to manage and alleviate stress. Educated people choose healthier and safer occupations and healthier lifestyles, they are less likely to smoke or drink alcohol, and they have healthier diets and get more physical exercise. Educated people tend to move to healthier regions with more expensive housing, and maintain close contact with educated friends and colleagues, from whom they may acquire more health related information through regular communication.

In our international comparative analysis we attempt to analyze the direct relationship of education and mortality with the help of two rudimentary indicators of educational attainment. We calculate the coefficients for simple direct correlations between mortality rates on the one hand, and the share of individuals with secondary attainment among the 25+ year-old population in 1990 and 2010, and the average years of total schooling among 15+ year old population in 1990 and 2010, on the other (both indicators come from the Barro Lee database, 2010). These relationships are calculated for a sample of 40 countries.

Table 3 reveals that there is a rather weak direct relationship (with uncertain sign) between the education indicators and mortality rates of working age population on the total sample of countries (See columns 1 and 4 in Table3). It is quite possible that this weaknesses due to the composition of the investigated countries in terms of their economic and political system. In the sample of 40 countries there are 20 developed market economies and 20 post-socialist countries. If we separate the sample by this dimension, we can see that in the old capitalist countries the correlation coefficients have much higher negative sign (i.e. higher education levels are associated with lower mortality rates, than in the post-socialist countries, especially for men (see columns 3 and 6 compared with columns 2 and 4 in Table 3).

Table 3

Correlation coefficients for mortality rates for men and women (mortm, mortf) in 2011, and the share of secondary education attainment among the 25+ year-old population (edu290m, edu290f, edu290mf), in 1990, and the average years of total schooling in 1990 (schooly90m, schooly90f, schooly90mf)

	lnmortm			lnmortf		
	total sample 40 counries [1]	duszoc=1 20 countries [2]	duszoc=0 20 countries [3]	total sample 40 counries [4]	duszoc=1 20 countries [5]	duszoc=0 20 countries [6]
edu290m	0.39	0.15	-0.51	0.43	0.22	-0.27
edu290f	0.32	0.28	-0.71	0.33	0.24	-0.46
edu290mf	0.33	0.17	-0.64	0.37	0.22	-0.35
schooly90m	-0.08	-0.3	-0.71	-0.01	-0.34	-0.021
schooly90f	-0.07	-0.31	-0.71	-0.01	-0.37	-0.22
schooly90mf	-0.09	-0.33	-0.63	-0.006	-0.33	-0.22

3.5. HEALTH EXPENDITURE AS A PERCENTAGE OF GDP

Since 1960, in the developed economies in Europe, the health of the population has continuously improved at the macro-level – measured in mortality or life expectancy. Health expenditure, the total spending on health relative to GDP, has similarly been increasing. The cause and effect relationship between the two processes is, however, complicated since health expenditure is only one of several quantitative and qualitative factors contributing to health outcomes. Similarly to many other studies, this paper considers health expenditure as a percentage of GDP to be exogenous.⁷

A large share of studies analyzing health outcomes in terms of macro-level Health Production Functions mostly use a sample of OECD countries and occasionally developing market economies (see an overview by Nixon and Ulmann, 2006). The general conclusion of these studies (including that of Nixon and Ulmann, 2006) is that health expenditure and its in-kind, indirect indicators (e.g., the density of physicians) are statistically significant explanatory variables, and their expansion, *ceteris paribus*, increase life expectancy. The size of the effect is, however, typically found to be marginal with the exception of infant mortality as an outcome. Our cross-country analysis (see Figures 15 and 16) reveals a clear correlation between health expenditure and mortality: higher health expenditure is accompanied by a lower level of mortality.

⁷ For an analysis of the factors influencing health expenditure and its system-specific characteristics, see Kornai and McHale (2000).

Health expenditure as a percentage of GDP in 2010 and working-age male mortality in 2011



Health expenditure as a percentage of GDP in 2010 and working-age female mortality in 2011



The share of total health expenditure in GDP can only insufficiently mirror the quality of health care in a country. The quality of health care is influenced, among others, by the institutional system, and the competence of the actors (doctors, assistants, patients) as well as the interconnection of the health care system with the research network (see Rechel et al., 2013). These factors not necessarily show up in the quantitative indicator of the share of health expenditure in GDP. This share is, however, closely related to the level of development of a country, as well as to various demographic factors. Kornai and McHale (2000) and others (see a summary of the literature by Gray, 2005), for instance, showed that a higher share of old (65+) population in a country is associated, *ceteris paribus*, with a higher health expenditure per capita. Certainly, these both the level of development and the share of old population should be inserted as instruments into our multivariate mortality function, where we investigate the effect of health expenditure on the mortality of working age population.

4. A CROSS-SECTIONAL ANALYSIS WITH MULTIPLE REGRESSION FUNCTIONS

In this section of the paper the individual factors affecting mortality are combined in a Health Production Function model. The model includes the 39⁸ countries for which data are available for each of the factors discussed in the previous sections.

The explained variable of the function is working-age male and female mortality in 2011 (in natural logarithm).

The following explanatory variables are included:

1. GDP per capita, in US dollars at PPP, (in natural logarithm), 2010
2. Latitude of the countries
3. Share of service sector in GDP, %, 1990
4. Education: a. The share of individuals with secondary attainment, 25+ old people in 1990 and 2010,
b. the average years of total schooling, 25+ old people in 1990 and 2010, (in natural logarithm)
5. Per capita consumption of alcohol and spirits, liter, (in natural logarithm), 2005
6. Share of the hidden economy in GDP, %, 1999-2007 average
7. Relative prices of alcohol and tobacco products and narcotics, 2005, (in natural logarithm)
8. Share of adult male and female smokers, 2010

⁸ The missing countries compared to the sample containing 45 countries are: Israel, Estonia, Greece, Montenegro, Serbia, Switzerland.

9. Health expenditure as a percentage of GDP, %, 2010

10. Share of old (65+) population, %, 2010

Table 4

Regression models of working-age male mortality (lnmortm) and female mortality (lnmortf) in 2011, I

	lnmortm	[1] beta	lnmortf	[2] beta	lnmortm	[3] beta	lnmortf	[4] beta
GDP per capita, 2010 (ln)	-0.22*	-0.36	-0.29**	-0.59	-0.28**	-0.45	-0.26**	-0.28
	[-1.70]		[-4.63]		[-2.74]		[-2.95]	
Share of services in GDP, 1990, (ln)	-0.65*	-0.45	-0.31**	-0.28	-0.24	-0.17	-0.31**	-0.54
	[-1.94]		[-2.06]		[-0.77]		[-2.07]	
Latitude	0.022**	0.32	0.02**	0.35	0.021**	0.3	0.021**	0.37
	[2.54]		[3.70]		[3.48]		[3.83]	
Share of hidden economy in GDP, %, 1991-1999					0.0114**	0.31	0.001	0.04
					[2.80]		[0.36]	
Relative price of alcohol, tobacco and narcotics, 2005					-0.37**	-0.14	-0.34*	-0.17
					[-2.31]		[-1.77]	
Consumption of alcohol, liter per capita, 2005					0.218**	0.33	-0.035	-0.07
					[3.12]		[-0.64]	
Consumption of spirit, liter per capita, 2005								
Share of health expenditure %, 2010	-0.043**	-0.19	-0.038**	-0.21	-0.079**	-0.35	-0.042**	-0.24
	[-2.14]		[-2.42]		[-3.68]		[-2.41]	
Constant	8.92**		7.65**		7.57**		7.43**	
	[12.51]		[21.92]		[7.80]		[9.69]	
R2	0.71		0.8		0.8385		0.823	
RMSE	0.2741		0.1755		0.2139		0.1735	
Number of countries	39		39		39		39	
Method of estimation	OLS		OLS		OLS		OLS	

Before we show our regression functions, we have to refer back to Table 1, in which some initial mortality functions were already defined on the sample of 45 countries. In Table 1 it was shown that mortality rates are strongly affected by the level of development, the latitude and a dummy variable of past political and economic system of the investigated countries. One of the main results emerging from that analysis was that mortality in 2011 is still strongly dependent on the economic and political system existing 20 years before that year. In Table 4 this dummy of the past economic and political system is defined (or in other words, replaced) by a number of other explanatory variables characteristic of the socialist countries compared to developed capitalist countries. Past socialist countries had – beside a much lower level of GDP per capita, and a lower share of health expenditure in GDP – a much lower share of the service sector with a long term impact, a much higher share of the hidden economy, much higher consumption of alcohol and especially spirits, and a higher share of smokers. The values of the indicators of education in the past were more favorable for the socialist countries than for the old market economies, so these variables may have uncertain effect on mortality rates. There we leave these out from the first regression calculations

In the following tables we show the combined effect of the above mentioned factors on mortality rates with the help of cross-sectional regression functions.

When looking at the results of regression calculations in Table 4 there is a striking difference between the mortality models of men and women in the effects of certain lifestyle variables (Columns 3 and 4 in Table 4): in contrast to men's mortality neither alcohol consumption nor the share of the hidden economy has a statistically significant effect on women's mortality. The contributions of the relative prices of health damaging substances approach significance for men with a coefficient with larger t values than for women. (The same pattern is suggested by the beta coefficients, which show the relative sizes of the effects of the variables in the models.) The mortality reducing effect of economic development (GDP per capita) is just as substantial in these models as in Models 3 – 6 in Table 1. As mentioned above in Models 3 and 4 in Table 4, the dummy variable of the socialist regime used in Table 1 is replaced not only by the lifestyle variables that our previous analyses have shown to vary greatly between post-socialist and long-established capitalist countries but also by a variable of the share of services 20 years before as a characteristic system-specific indicator of socialist and developed capitalist economies. The latter variable is, *ceteris paribus*, statistically significant and has a negative effect on female mortality: female mortality is higher in 2011 with a lower share of the service sector in 1990 even if we control for both the level of economic development and the different lifestyle variables.

For men's mortality this variable (the share of services in 1990) is not significant, but the magnitude is similar to the coefficient of women. The reason for the lack of significance is some multicollinearity between this variable and the GDP per capita.

Results in columns 3 and 4 also indicate that after controlling for the level of development, for the direct effects of the lifestyle variables and for the indirect effects of the past share of services, health expenditure as a share of GDP shows a statistically significant effect to decrease mortality for both men and women.

The negative effects of the relative price of alcohol and tobacco products on mortality rates are similar for the two genders. The coefficients of latitude are also very similar for men's and women's mortality rate.

In Table 5 we take the interaction of GDP per capita in 2010 with the share of services in 1990 because of their multicollinearity, and because we have seen that the magnitude of the coefficients are rather similar. Obviously, the models 3 and 4 in Table 4 are very similar to the models 1 and 2 of Table 5. In Table 5 the consumption of the spirit was taken into account, too.

The results in Models 3 and 4 in Table 5 also reflect that a higher health expenditure as a percentage of GDP is associated with a reduction in mortality for both men and women. A 1 percentage point increase in the share of health spending is accompanied by 5-6% decrease in mortality. This means that if in Hungary, for instance, health expenditure as a percentage of GDP were increased to the Austrian level (from 8% to 10%), male mortality would fall by about 13%, from 208 to 181 per 1000 men. This is a really strong effect. But if, alternatively, per capita spirit consumption in Hungary moved to the Austrian level, from 4.15 liters to 1.6 liters, the model indicates a 16% drop in Hungarian men's mortality in 2011, that is, from 208 to 175 per 1000 men $[(\ln(4.15)-\ln(1.6))*0.17=0.16]$. This latter Austria-oriented effect of spirit consumption therefore surpasses even the effect of the hypothetical increase in health expenditure. Similar calculations can be made for the share of the hidden economy: if the long-term average share of the hidden economy in Hungary had been 9.8%, as in Austria, rather than 24.4%, male mortality would have been 11.7% lower in Hungary in 2011, that is, 184 rather than 208 deaths per 1000 men.

Table 5

Regression models of working-age male mortality (lnmortm) and female mortality (lnmortf) in 2011, II

	lnmortm	[1] beta	lnmortf	[2] beta	lnmortm	[3] beta	lnmortf	[4] beta
Interaction GDP,2010 and Service sector, 1990	-0.27** [-4.34]	-0.6	-0.28** [-6.49]	-0.79	-0.19** [-3.38]	-0.43	-0.28** [-5.32]	-0.8
Latitude	0.021** [3.70]	0.3	0.021** [3.97]	0.38	0.02** [3.34]	0.3	0.02** [3.98]	0.36
Share of hidden economy in GDP, %, 1999-2007	0.0115** [2.54]	0.31	0.001 [0.36]	0.04	0.0114** [2.86]	0.31	0.001 [0.37]	0.04
Relative price of alcohol, tobacco and narcotics, 2005	-0.37** [-2.35]	-0.14	-0.34* [1.82]	-0.17	-0.49** [-3.39]	-0.19	-0.30* [-1.69]	-0.14
Consumption of alcohol, liter per capita, 2005	0.213** [3.53]	0.33	-0.031 [-0.60]	-0.06				
Consumption of spirit, liter per capita, 2005					0.176** [3.53]	0.28	0.0005 [0.01]	0.001
Share of health expenditure %, 2010	-0.077** [-4.73]	-0.34	-0.044** [-2.67]	-0.25	-0.058** [-3.60]	-0.25	-0.045** [-2.74]	-0.26
Constant	7.55** [7.06]		7.46** [10.39]		6.69** [6.93]		7.50** [8.97]	
R2	0.8384		0.8228		0.8438		0.8208	
RMSE	0.2106		0.1708		0.207		0.1717	
Number of countires	39		39		39		39	
Method of estimation	OLS		OLS		OLS		OLS	

As for gender differences the models in Table 5 also suggest that while working-age female mortality is not significantly affected by the different lifestyle factors (spirit consumption, share of the hidden economy), the relative prices of the health damaging products have a significant moderate size effect. Once again, the level of development and/or the past share of the service sector make a far greater relative contribution to the mortality of women compared to that of men. The relative contribution of health expenditure is similar in the mortality models for the two genders, while the effect of latitude is once again the same for men and women as it was in the models shown in Tables 1 and 4.

In our last analysis below, the above mortality models are expanded by additional explanatory variables representing education level and tobacco consumption directly. The latter phenomenon is only by a single dimension: the percentage of smokers in the adult population. These expanded functions are shown in Table 6 and Table 7, for only 30-34 countries.

Table 6

Regression models of working-age male mortality (lnmortm) and female mortality (lnmortf) in 2011, III

	[1]		[2]		[3]		[4]	
	lnmortm	beta	lnmortf	beta	lnmortm	beta	lnmortf	beta
Interaction GDP,2010 and Service sector, 1990,ln	-0.19**	-0.41	-0.22**	-0.61	-0.27**	-0.6	-0.30**	-0.85
	[-3.78]		[-2.76]		[-5.23]		[-5.28]	
Latitude	0.018**	0.24	0.02**	0.32	0.02**	0.28	0.02**	0.33
	[2.97]		[2.62]		[3.42]		[3.36]	
Share of hidden economy in GDP, %, 1999-2007	0.007	0.16	0.0046	0.13	0.0056	0.12	0.0001	0.003
	[1.50]		[0.76]		[0.97]		[0.03]	
Relative price of alcohol, tobacco and narcotics, 2005, ln	-0.43**	-0.16	-0.3	-0.15	-0.50**	-0.19	-0.3	-0.14
	[-2.78]		[-1.34]		[-3.79]		[-1.47]	
Consumption of spirit, liter per capita, 2005, ln	0.21**	0.31	0.08	0.16	0.21**	0.32	0.019	0.036
	[3.62]		[1.18]		[4.46]		[0.32]	
Share of health expenditure %, 2010	-0.055**	-0.24	0.041*	-0.24	-0.065**	-0.26	-0.044*	-0.23
	[-3.68]		[-1.70]		[-3.68]		[-1.66]	
Average years of schooling 15+, 1990, male,ln	-0.45*	-0.13			-0.56**	-0.16		
	[-1.72]				[-2.49]			
Average years of schooling 15+, 1990,female,ln			-0.16	-0.08			-0.095	-0.05
			[-0.67]				[-0.56]	
Share of individuals consuming tobacco, male ,2009	0.007**	0.12						
	[2.12]							
Share of individuals consuming tobacco, female , 2009			0.0007	0.01				
			[0.10]					
Constant	7.57**		6.81**		9.19**		7.97**	
	[7.74]		[5.86]		[8.49]		[7.88]	
R2	0.9403		0.8474		0.9196		0.8437	
RMSE	0.1428		0.1722		0.1607		0.18	
Number of countires	30		30		34		34	
Method of estimation	OLS		OLS		OLS		OLS	

The models [1] and [2] of Table 6 contain both new variables. The addition of these variables suppresses the significance of the variable of the share of the hidden economy. The higher level of education (more average years of schooling) directly decreases the mortality rate of men and the higher frequency increases it. If we put these new variables separately into the function, then we realize that the hidden economy-variable loses its significance due to inclusion of the educational level.

In model [7] of Table 7 instead of educational level of men as an explanatory variable we use the educational level of women. In the literature, especially in the micro level analysis, interesting results were shown, namely that the health of men depends much more on the educational level of women in the family than on their own educational level (Kopp, M., et al. (2004)). We experience the same phenomenon at macro level. Comparing [3] of Table 6 with model [7] of Table 7 we see, that the coefficient of the variable education level of females is significantly negative and slightly better fitting in the mortality function of males than the model where the own educational level of males is used as an explanatory variable.

In model [8] of Table 7 where we input the joined education level (males and females together), all parameters turn out significant at least at the level 10 % and have the proper sign.

The new variables, the share of smokers among adult men and the average years of schooling of men (and women) have a significant positive and negative effect, but their relative contributions are not particularly great (see the beta coefficient).

In our last regression calculations we have taken into account fact mentioned in part 3.5 that the share of health expenditure in GDP correlates with the share of old (65+) population as well as with the level of development. In the course of explaining mortality rates by mortality function we choose these two variables as instruments for the share of health expenditure and accordingly the estimation was made by the two stage least squares method.

As we can see in Table 8, the results are quite similar to the previous ones; the only coefficient showing a difference is related to impact of the share of health expenditure on the mortality of women: here the relative weight of this variable are higher than in the calculation without the instrumental variables.

Table 7

Regression models of working-age male (lnmortm) and female mortality (lnmortf) in 2011, IV

	lnmortm	[5] beta	lnmortf	[6] beta	lnmortm	[7] beta	lnmortm	[8] beta
Interaction GDP,2010 and Service sector, 1990, ln	-0.20** [-4.98]	-0.42	-0.21** [-3.18]	-0.61	-0.27** [-5.52]	-0.61	-0.19** [-3.72]	-0.4
Latitude	0.019** [3.44]	0.24	0.019** [3.17]	0.32	0.021** [3.70]	0.29	0.019** [3.03]	0.24
Share of hidden economy in GDP, %, 1999-2007	0.007** [2.51]	0.19	0.003 [1.07]	0.13	0.005 [0.98]	0.11	0.008* [1.70]	0.17
Relative price of alcohol, tobacco and narcotics, 2005, ln	-0.51** [-3.62]	-0.18	-0.35* [-1.82]	-0.17	-0.50** [-3.70]	-0.18	-0.43** [2.69]	-0.16
Consumption of spirit, liter per capita, 2005, ln	0.14** [2.76]	0.21	0.047 [0.82]	0.1	0.22** [4.39]	0.34	0.23** [3.47]	0.34
Share of health expenditure %, 2010	-0.068** [-4.70]	-0.31	-0.05** [-3.13]	-0.3	-0.063** [-3.45]	-0.3	-0.055** [-3.77]	-0.24
Average years of schooling 15+, 1990, male, ln								
Average years of schooling 15+, 1990,female, ln					-0.47** [-2.78]	-0.18		
Average years of schooling 15+, 1990,total, ln							-0.45* [-1.97]	-0.15
Share of individuals consuming tobacco, male ,2009	0.008** [2.28]	0.14					0.006* [1.75]	0.11
Share of individuals consuming tobacco, female , 2009			-0.001 [-0.32]	-0.03				
Constant	6.73** [11.67]		6.56** [7.40]		8.98** [9.74]		7.53** [8.21]	
R2	0.9157		0.8382		0.9249		0.9427	
RMSE	0.159		0.1636		0.1553		0.1398	
Number of countires	34		34		34		30	
Method of estimation	OLS		OLS		OLS		OLS	

Table 8

Regression models of working-age male (lnmortm) and female mortality (lnmortf) in 2011, V

	lnmortm	[1] beta	lnmortf	[2] beta	lnmortm	[3] beta	lnmortf	[4] beta
Interaction GDP,2010 and Service sector, 1990	-0.24** [-7.38]	-0.54	-0.29** [-7.44]	-0.83	-0.27** [-5.15]	-0.6	-0.31** [-5.69]	-0.86
Latitude	0.02** [3.23]	0.27	0.02** [3.77]	0.35	0.02** [3.47]	0.28	0.02** [3.19]	0.35
Share of hidden economy in GDP, %, 1999-2007	0.008** [2.57]	0.2	-0.001 [-0.39]	-0.04	0.006 [0.89]	0.13	-0.004 [-0.63]	-0.1
Relative price of alcohol, tobacco and narcotics, 2005	-0.52** [-3.88]	-0.19	-0.38** [-2.02]	-0.18	-0.49** [-2.83]	-0.18	-0.43* [-1.74]	-0.2
Consumption of spirit, liter per capita, 2005	0.17** [3.72]	0.26	-0.0019 [-0.21]	-0.02	0.21** [4.44]	0.33	0.003 [0.06]	0.007
Share of health expenditure %, 2010	-0.07** [-2.69]	-0.3	-0.074** [-2.77]	-0.4	-0.061* [-1.87]	-0.25	-0.078* [-2.02]	-0.4
Average years of schooling 15+, 1990, male					-0.56** [-2.51]	-0.16		
Average years of schooling 15+, 1990,female							-0.086 [-0.46]	-0.04
Constant	7.60** [15.1]		7.94** [1.12]		9.14** [8.10]		8.49** [8.03]	
R2	0.88		0.8262		0.9195		0.8299	
RMSE	0.1856		0.1754		0.1608		0.188	
Number of countires	39		39		34		34	
Method of estimation	INST		INST		INST		INST	

SUMMARY

There is considerable variation in the mortality rate of the populations across the “old” and the “new” EU member states, and the former Soviet Union countries. The explanation for these differences was investigated by scrutinizing three different groups of factors:

1. Socio-economic factors: the geographical location of the country, current level of economic development and an indicator for the political and ideological system of the economy in the past (the share of service sector in GDP at the moment of the transition).
2. Lifestyle factors: alcohol and tobacco consumption represented by their relative prices as well as by consumption of spirits and tobacco in the past, overwork in the hidden economy in the past and present. These are, in fact, not independent of the socio-economic factors listed above.
3. Health care resources: health expenditure as a percentage of GDP.

The analysis was based on pair-wise relationships of the individual factors and mortality rate also calculated as correlations, as well as on regression analysis of health production functions (HPF) calculated from cross-country estimations for 2011.

For the countries (20 “old” EU countries and 25 post-socialist countries) included in the analysis, the explanatory variables of the health production function could explain 83-93 % of the cross-country differences in mortality rates of the working age population in 2011.

The most important contribution to the differences comes from the past economic and political system represented by the structure of production (the share of the service sector in 1990) and the present level of development (GDP per capita in 2010).

Our results give support to the theory of state socialist mortality syndrome. According to this theory, in the communist countries the forced growth in industry, and heavy industry in particular, and suppression of the service sector had created a norm-defying, anomic environment for working age population transferred from agriculture to industry. The social and behavioral consequences of this development policy accumulated over a period of time and directly led to the increase in mortality. Over-industrialization in socialist economies exerted its health damaging effects both directly and indirectly. It did so directly by tipping the balance towards industries detrimental to human health (heavy industry, mining, etc.), and indirectly by giving rise to low-level and poor-quality services in the formal economy and to health damaging behaviors caused by the norm-defying (anomic) social environment.

Under socialism and during the transition to market-economies, the low-level and poor-quality services at the same time generated an economy of informal services hidden from state control and the taxation system. Our results also reflect that this hidden economy could

be also detrimental to health both directly and indirectly thus contributing to the high mortality observed in these countries. The bad-quality products and services from the black market could have a direct negative effect on health, while indirect effects have included the self-exploitative labor under bad and often dangerous working conditions with no health insurance in the hidden economy.

Economic and lifestyle disadvantages turn out to be more harmful for men than women. The effects of the relative prices of alcohol- and tobacco products, the consumption of spirits and tobacco, the share of the hidden economy and the education level are significant explanatory factors for men, but non-significant for women. The effects of health expenditure and the geographical location of the country are similar for the two genders.

Our assessment of the factors behind disparities in the mortality rate revealed the long lasting impact of economic and social institutions of the past. This suggests that reducing high mortality rates in the post-socialist countries is not an easy, short term task for policy makers. The structure of these economies have already gone through radical changes in the past 25 years; to achieve changes in social behavior, in life-style, and the emergence of new social norms, however, need more time and targeted policies.

A less hectic, more predictable economic and social environment, better pricing policies for health damaging consumer goods, crowding out of the black market, and better education about health – all these may contribute to the reduction in consumption of alcohol and tobacco products as well as cutting back activities in the informal economy. The latter needs further efforts in reforming the regulatory and tax systems. A faster catching up in incomes would mean better working environment for the employees, higher technological level both in manufacturing production and in a wide range of services, including medical services. Increasing the share of expenditures in health services and improving education about healthy lifestyle are further factors that could help the post-socialist countries to catching up with the developed market economies in the health status of their population.

References

- Barro, Robert and Jong-Wha Lee, "A New Data Set of Educational Attainment in the World, 1950-2010." *Journal of Development Economics*, vol 104, pp.184-198.
- Bhattacharya, J., Gathmann, Ch., Miller, G., (2012) The Gorbachev anti-alcohol campaign and Russia's mortality crisis, Discussion Paper Series , IZA DP No. 6783. 2012 August
- Bobak, M., és M. Marmot (1996), East-West Mortality Divide and its Potential Explanations: Proposed Research Agenda, *British Medical Journal*, 312(1996), 421.
- Bourgeois-Pichat J. (1985) Recent changes in mortality in industrialized countries. In: J. Vallin and A. Lopez (eds.) *Health Policy, Social Policy and Mortality Prospects*. Liege: Ordina-IUSSP.
- Brained, E. (2001), Economic Reform and Mortality in the Former Soviet Union: A Study of the Suicide Epidemic in the 1990s, *European Economic Review*, 45(2001), 1007-1019.
- Carlson , E. , Hoffmann, R. (2011) The State Socialist Mortality Syndrome, *Popul Res Policy Rev.* 2011 June; 30(3): 355–379. Published online 2010 October 27. doi: [10.1007/s11113-010-9192-z](https://doi.org/10.1007/s11113-010-9192-z)
- Chenet, L., McKee, M., Leon, D., Shkolnikov, V. and Vassin, S. (1998). 'Alcohol and cardiovascular mortality in Moscow; new evidence of a causal association,' *Journal of Epidemiology and Community Health*, 52, pp. 772-774.
- Cockerham W.C.(1997) The social determinants of the decline of life expectancy in Russia and Eastern Europe: a lifestyle explanation. *Journal of Health and Social Behavior* 38 (2): 117-130.
- Cockerham, W. C., Hinote, B. P., Abott, P. [2006]: Psychological Distress, Gender, and Health Lifestyles in Belarus, Kazakhstan, Russia, and Ukraine. *Social Science and Medicine*, Vol. 63. No. 9. 2381–2394. o.
- Cockerham W. C. , M. C. Snead, D. F. DeWaal (2002) Health lifestyles in Russia and the socialist heritage. *Journal of Health and Social Behavior* 43(1): 42-55.
- Cornia G., Panicia R. (2000) Mortality crisis of the early 1990s: a historical perspective, in: Cornia G., Panicia R. *The Mortality Crisis in Transitional Economies*. Oxford University Press.
- Cornia, G., és R. Panicià (2000), *The Transition Mortality Crisis: Evidence, Interpretation and Policy Responses*, in Cornia and Panicià,(eds). *The Mortality Crisis in Transitional Economies* (Oxford: Oxford University Press, 2000)
- Cooper R., Sempos C.,(1984) Recent mortality patterns associated with economic development in Eastern Europe and the USSR, *Journal of the National Medical Association* 76(2)> 163-6.
- Denisova, I. (2009). 'Mortality in Russia: Microanalysis,' Moscow: CEFIR.
- Denisova, I (2010), "Adult Mortality in Russia: A Microanalysis," *Economics of Transition* , 18(2) (2010), 333-363.
- Ellman, M. (1994), The Increase in Death and Disease under 'Katastroika, *Cambridge Journal of Economics*, 18(4) (1994), 329-355.
- Forster DP. , Józán P. (1990) Helath in Eastern Europe, *The Lancet* 335:458-60.
- Gjonça, A., Bobak, M. (1997) Albanian paradox: another case of the protective effect of Mediterranean lifestyle? *The Lancet*, 350 (9094). 1815-1817. ISSN 0140-6736

- Grimes, DS., Hindle, E., Dyer, T. (1998) Albanian paradox, another example of protective effect of Mediterranean lifestyle? *The Lancet*, [Volume 351, Issue 9105](#), Pages 835 - 836, 14 March 1998
- Giersdorf P., Schuler, H.(1984) Tendenzen der Mortalitaet mannlicher Personen im mittleren Alter, *Zeitschrift für Artzliche Fortbildung* 78 (3): 83-87.
- Gavrilova N.S., Evdokushkina G.N., Semyonova, V.G., és L.A. Gavrilov(2001), *Economic Crises, Stress and Mortality in Russia*. Paper presented at The Population Association of America 2001, Annual Meeting.
- Gray, (2005) *Population Ageing and Health Care Expenditure*, AGEING HORIZONS. Issue No. 2, 15–20., Oxford Institute of Ageing, University of Oxford
- Hawkes, S. and Buse, K. (2013) Gender and global health: evidence, policy, and inconvenient truths, *The Lancet*, [Volume 381, Issue 9879](#), Pages 1783 - 1787, 18 May 2013
- Hoehn C., Pollard J. (1991) Mortality in the two Germanys in 1986 and trends 1976-1986. *European Journal of Population* 7:1-28.
- Ivanov S., Echenique V. (2000) Demographic situation and mortality trends in Russia, pp. 287-304. In: Kucera T. et al (eds.) *New Demographic Faces of Europe*. Berlin: Springer Verlag.
- Józan P.(1989): Some features of mortality in postwar Hungary: the third epidemiological transition. *Cahiers de Sociologie et de Demographie Medicales* 29 (1): 21-42.
- Józan, P. (2002) A halandóság alapirányzata a 20. században és az ezredforduló halálozási viszonyai Magyarországon [The basic trends of mortality in the 20th century and mortality conditions in Hungary at the turn of the millennium]. *Magyar Tudomány*, 4:419–439.
- Józan, P. (2009) Halálozási viszonyok és életkilátások a 21. század kezdetén a világ, Európa és Magyarország népességében [Mortality and life prospects at the beginning of the 21st century in the population of the world, of Europe and of Hungary], *Magyar Tudomány*, 10:1231-1244.
- Kennedy, B., Kawachi, I., E. Brainerd (1998), The Role of Social Capital in the Russian Mortality Crisis, *World Development*, 26(11) (1998), 2029-2043.
- Kesteloot, H., Sans, D., Kromhout, D. (2006) Dynamics of cardiovascular and all-cause mortality in Western and Eastern Europe between 1970 and 2000, *European Heart Journal* 27, 107-113.
- Kopp, M. Skrabski, A., Kawachi, I., N. E. Adler (2005) Low socioeconomic status of the opposite sex is a risk factor for middle aged, *Journal of Epidemiology and Community Health*, 59, 675-678. 2005
- Kopp, M., Skrabski, Á., Székely, A., Stauder, R. W. (2007) Chronic Stress and Social Changes, Socioeconomic Determination of Chronic Stress. Academy of Sciences, New York, http://www.behsci.sote.hu/download/nyas_SBM_07.pdf.
- Kopp, M. (ed.) (2008) *Magyar lelkiállapot [The Hungarian condition]*, 2008. Semmelweis Kiadó, Budapest
- Kornai, J., McHale, J (2000) Is Post-Communist Health Spending Unusual? *Economics of Transition*, [Volume 8, Issue 2](#), pages 369–399, July 2000.
- Lackó. M. (2010) A magyarországi rossz egészségi állapot lehetséges magyarázó tényezői, Összehasonlító makro elemzés magyar és osztrák adatok alapján, 1960–2004 [Explanations for poor population health in Hungary, A comparative macro-analysis of Austrian and Hungarian data1960–2004] *Közgazdasági Szemle* LVII, September 2010:753–778.

- Lackó, M. (2011) The Poor Health Status of the Hungarians; Comparative Macro-Analysis of the Likely Explanatory Factors on Hungarian and Austrian Data, 1960-2004, Danube: Law and Economics Review, 3, 2011, 1-23.
- Laaksonen, M; McAlister, AL; Laatikainen, T; Drygas, W; Morava, E; Nussel, E; Oganov, R; Pardell, H; Uhanov, M; Puska, P (2001) [Do health behaviour and psychosocial risk factors explain the European East-West gap in health status?](#) [EUROPEAN JOURNAL OF PUBLIC HEALTH , 11\(1\), 2001, pp.65-73.](#)
- Lim SS, Vos T, Flaxman A, et al.(2012) A comparative risk assessment of burden of disease and injury attributable to 67 risk factors and risk factor clusters in 21 regions, 1990–2010: a systematic analysis for the Global Burden of Disease study 2010. The Lancet 2012; 380: 2224–60
- Leon, D., V. Shkolnikov (1998), Social Stress and the Russian Mortality Crisis, Journal of the American Medical Association, 279(1998), 790-791
- Lochner, L. (2011) Non-production benefits of education: crime, health, and good citizenship, Working Paper 16722, NBER, January 2011, <http://www.nber.org/papers/w16722>
- Luy, M., Wegner, Ch., W. Lutz (2011) Adult mortality in Europe, in: Rogers, R.G. and Crimmins, E.M. (eds) International Handbook of Adult mortality, pp.49-82, Springer, 2011.
- Lynch, J., Davey Smith, G., Kaplan, G., J. House (2000), Income Inequality and Mortality: Importance to Health of Individual Income, Psychosocial Environment, or Material Conditions, British Medical Journal, 320(7243) (2000), 1200-1204.
- Mackenbach, J. P. (2006) Health Inequalities: Europe in Profile, An independent, expert report commissioned by the UK Presidency of the EU.
- Mihályi, P. (2010) Comparative study into causes of excess premature mortality in Hungary in comparison with selected CEE countries, Budapest, Europe Ltd.
- Mihályi, P. (2009) Árak és volumenek a poszt szocialista egészségügyben [Prices and volumes in post-socialist health care], Közgazdasági Szemle LVI, July-August 2009: 585-608.
- Nixon, J., Ulmann, P. (2006) The relationship between health care expenditure and health outcome. Evidence and caveats for a causal link, European Journal of Health Economics, 7., 7-18.
- Okolski M. (1987) Male mortality trends in eastern and western Europe. Studia Demograficzne 72(2): 3-28.
- Schneider, F. (2012) The Shadow Economy and Work in the Shadow: What Do We (Not) Know?. IZA Discussion Paper No. 6423. Available at SSRN: <http://ssrn.com/abstract=2031951>, <http://ftp.iza.org/dp6423.pdf>
- Shapiro, J. (1995), The Russian Mortality Crisis and Its Causes, in: Russian Economic Reform in Jeopardy? Edited by A. Aslund (London: Pinter Publishers, 1995).
- Shkolnikov V., Cornia G., Leon D., Mesle F.(1998) Causes of the Russian mortality crisis: evidence and interpretations. World Development 26 (11): 1995-2011.
- Stuckler, D., King, L., M. McKee (2009), Mass Privatisation and the Post-Communist Mortality Crisis: A Cross-National Analysis, The Lancet, 373(2009), 399-407.
- Sík, E.(1992) A háztartások gazdasági helyzete és magatartása [The economic position and behaviour of households]. In Andorka Rudolf, Kolosi Tamás and Vukovich György (eds.): Társadalmi riport 1992 [Social Report 1992], Társi, Budapest, 179-200.

- Treisman, D (2010), Death and Prices: The Political Economy of Russia's Alcohol Crisis. *Economics of Transition*, Vol. 18, Issue 2, pp. 281-331, April 2010. Available at SSRN: <http://ssrn.com/abstract=1558041> or <http://dx.doi.org/10.1111/j.1468-0351.2009.00382.x>
- Treisman, D.(2010), Death and Prices: The Political Economy of Russia's Alcohol Crisis, *Economics of Transition*, 18(2) (2010), 281-331.
- Zaridze, D, Lewington, S, Boroda, A., Scelo, G., Karpov, R., Lazarev, A., Konobeevskaya, I., Igitov, V., Terecova, T., Boffetta, P., Sherliker, P., Kong, X., Whitlock, G., Boreham, J., Brennan, P., Peto, R., (2014) Alcohol and mortality in Russia: prospective observational study 151000 adults, *The Lancet*, Early online publication, 31 January 2014,
- Wagenaar, A. C., Salois, M. J. and Komro, K. A. (2008) Effects of Beverage Alcohol Price and Tax Levels on Drinking: A Systematic Review and Meta-analysis of 1003 Estimates from 112 Studies, *Addiction*, 104, 179–190
- Wilsnack RW, Wilsnack SC, Obot IS.(2005) Why study gender, alcohol and culture? In: Obot IS, Room R, eds. *Alcohol, gender and drinking problems: perspectives from low and middle income countries*. Geneva: World Health Organization, 2005: 1–25
- World Bank (2008a) Global Purchasing Power Parities and Real Expenditures – 2005 International Comparison Program, The World Bank, Washington, D.C. <http://siteresources.worldbank.org/ICPINT/Resources/icp-final.pdf>
- World Bank (2008b) Tables of Results. Global Purchasing Power Parities and Real Expenditure. The World Bank, Washington, D.C.
- Health in Europe – Series in *The Lancet*, 2013
1. Johan P Mackenbach, Marina Karanikolos, Martin McKee (2013) The unequal health of Europeans: successes and failures of policies, *The Lancet*, 381. 1125-34.[Full Text](#) | [PDF](#)
 2. Scott L Greer, Tamara K Hervey, Johan P Mackenbach, Martin McKee (2013) Health law and policy in the European Union, *The Lancet* 381. 1135-44.[Full Text](#) | [PDF](#)
 3. Bernd Rechel, Bayard Roberts, Erica Richardson, Sergey Shishkin, Vladimir M Shkolnikov, David A Leon, Martin Bobak, Marina Karanikolos, Martin McKee (2013) Health and health systems in the Commonwealth of Independent States, *The Lancet* 381. 1145-55.[Full Text](#) | [PDF](#)
 4. Ingrid Wolfe, Matthew Thompson, Peter Gill, Giorgio Tamburlini, Mitch Blair, Ann van den Bruel, Jochen Ehrich, Massimo Pettoello-Mantovani, Staffan Janson, Marina Karanikolos, Martin McKee (2013) Health services for children in western Europe, *The Lancet*, 381. 1224-34.[Full Text](#) | [PDF](#)
 5. Bernd Rechel, Philipa Mladovsky, David Ingleby, Johan P Mackenbach, Martin McKee (2013) Migration and health in an increasingly diverse Europe, *The Lancet*, 381. 1235-45.[Full Text](#) | [PDF](#)
 6. Bernd Rechel, Emily Grundy, Jean-Marie Robine, Jonathan Cylus, Johan P Mackenbach, Cecile Knai, Martin McKee (2013) Ageing in the European Union, *The Lancet*, 381. 1312-22.[Full Text](#) | [PDF](#)
 7. Marina Karanikolos, Philipa Mladovsky, Jonathan Cylus, Sarah Thomson, Sanjay Basu, David Stuckler, Johan P Mackenbach, Martin McKee (2013) Financial crisis, austerity, and health in Europe, *The Lancet*, 381. 1323-31.[Full Text](#) | [PDF](#)

Appendix: Definitions, sources and the names of the variables used

Adult male mortality, per 1000 [mortm] [lnmortm=ln(mortm), natural logarithm]

Adult mortality is the probability of dying between the ages of 15 and 60--that is, the probability of a 15-year-old dying before reaching age 60, if subject to current age-specific mortality rates between those ages. World Bank code: SP.DYN.AMRT.MA

Adult female mortality, per 1000 [mortf]] [lnmortf=ln(mortf), natural logarithm]

Adult mortality rate is the probability of dying between the ages of 15 and 60--that is, the probability of a 15-year-old dying before reaching age 60, if subject to current age-specific mortality rates between those ages. World Bank code: SP.DYN.AMRT.FE

GDP per capita, PPP, dollar, [gdpcap]

GDP expressed in purchasing power parity (PPP) is adjusted to the relative domestic purchasing power of the national currency as compared to the US dollar rather than using the official exchange rate. Multipliers (PPPs) are estimated periodically, using the cost of the standard basket of goods. (WHO/EURO uses World Bank World Development indicators, indicator NY.GDP.PCAP.PP.CD as the common source. <http://data.euro.who.int/hfadb/>

Share of services in GDP, %, 1990 [service90], 2010 [service10]

Services correspond to ISIC divisions 50-99 and they include value added in wholesale and retail trade (including hotels and restaurants), transport, and government, financial, professional, and personal services such as education, health care, and real estate services. Also included are imputed bank service charges, import duties, and any statistical discrepancies noted by national compilers as well as discrepancies arising from rescaling. Value added is the net output of a sector after adding up all outputs and subtracting intermediate inputs. It is calculated without making deductions for depreciation of fabricated assets or depletion and degradation of natural resources. The industrial origin of value added is determined by the International Standard Industrial Classification (ISIC), revision 3. World Bank code: NV.SRV.TETC.ZS

Education 1 [edu29om, edu29of, edu29omf], %

Highest level attained secondary school, 25+, % of population aged 25 and over, males

Highest level attained secondary school, 25+, % of population aged 25 and over, females

Highest level attained secondary school, 25+, % of population aged 25 and over, males and females, www.barrolee.com

Education 2, [schooly90m, schooly90f, schooly90mf]

Average years of total schooling, 25+ , males

Average years of total schooling, 25+ , females

Average years of total schooling, 25+ , males and females

www.barrolee.com

Geographical position: latitude [lat]

www.mapsofworld.com/lat_long/europe.html

Alcohol consumption per capita in the population aged 15 years or over, litres, in 2005 [alco5]

Recorded alcohol consumption per capita is defined as the recorded amount of alcohol consumed per adult (15+ years) over a calendar year in a country, in litres of pure alcohol. The indicator only takes into account consumption recorded from production, import, export, and sales data often via taxation. Associated terms Pure alcohol: 100% ethanol, European Health for all database (HFA-DB)

<http://data.euro.who.int/hfadb/tables/tableA.php?w=1024&h=768>

Spirit consumption per capita in the population aged 15 years or over, expressed in pure alcohol, litres, in 2005-ben [spirito5] .

Spirits consumed measured in pure alcohol, litres per capita. European Health for all database (HFA-DB))

http://data.euro.who.int/hfadb/tables/tableA.php?id=tbla_291555001395242145&ind=3051

Health expenditure as a percentage of GDP in 2010 [hegdp10], European Health for all database (HFA-DB)

http://data.euro.who.int/hfadb/tables/tableA.php?id=tbla_291555001395242145&ind=6711

The total collective price level of tobacco, alcohol and narcotics products relative to the price level of all consumption goods, 2005, [relprice], WORLD BANK [2008a]: Global Purchasing Power Parities and Real Expenditures – 2005, International Comparison Program, The World Bank, Washington, D.C., <http://siteresources.worldbank.org/ICPINT/Resources/icp-final.pdf>.

WORLD BANK [2008b]: Tables of Results. Global Purchasing Power Parities and Real Expenditure. The World Bank, Washington, D.C.

Prevalence of smoking any tobacco products among adults aged ≥ 15 years, 2009
[males: tobacm09, females: tobacof09]

Smoking at the time of the survey of any form of tobacco, including cigarettes, cigars, pipes, bides, etc. and excluding smokeless tobacco. These figures represent age-standardized prevalence rates for smoking tobacco and should only be used to draw comparisons of prevalence between countries, and between men and women within a country. World Health Statistics 2013:109-120.

The share of the hidden economy in GDP, 1999-2007 average [hidden], Schneider, F. (2012) pp. 61-64, <http://ftp.iza.org/dp6423.pdf>

The share of old (65+) population in % of total population,(old), World Bank Database.

Descriptive statistics of the variables used in the calculations

Variable	Obs	Mean	Std. Dev.	Min	Max
mortm	46	158.5	78.8	69	351
mortf	46	73.5	30.0	38	156
alcohol05	46	9.0	3.7	0.4	15.4
edu210fbl	40	41.4	16.0	11.3	71.4
edu210mbl	40	47.4	17.1	13.2	75.8
edu210mfbl	40	43.9	16.4	13.0	71.9
edu290fbl	40	25.8	12.2	3.1	56.5
edu290mbl	40	32.8	13.3	6.4	57.0
edu290mfbl	40	28.0	11.7	4.8	56.4
edu310fbl	40	15.1	7.1	1.0	31.4
edu310mbl	40	16.1	7.1	1.0	29.3
edu310mfbl	40	15.6	6.8	1.0	30.3
edu390fbl	40	6.9	3.3	2.4	17.0
edu390mbl	40	10.5	3.9	4.2	20.1
edu390mfbl	40	8.6	3.4	3.4	18.6
gdp10	46	23014.2	13493.5	2147.2	56976.4
hegdp10	46	8.4	2.1	4.3	12.1
hidden	44	29.1	12.8	8.5	65.8
lat	46	46.8	7.1	32.1	60.2
mortf	46	73.5	30.0	38.0	156.0
mortm	46	158.5	78.8	69.0	351.0
relaratn	46	1.1	0.2	0.7	1.5
schoolyf90	40	8.6	1.4	3.9	10.7
schoolym90	40	9.3	1.2	6.1	11.3
schoolymf90	40	8.9	1.3	5.0	10.8
servicegdp90	39	47.8	14.8	26.3	70.4
spirit05	46	2.9	1.7	0.3	7.1
tobacf09	39	22.3	10.1	2.0	45.0
tobacm09	39	40.5	9.4	25.0	63.0
old	46	14.3	4.1	3.0	21.0

OLS: Ordinary least squares method

INST: Two stage least squares method

R2: indicator of fit

RMSE: root mean square error

Robust: Huber-White estimates of standard errors

Ovtest: Ramsey regression specification-error test (RESET) for omitted variables.

Linktest: Specification link test for single-equation models

Beta: Standardized beta coefficients. The beta coefficients are the regression coefficients obtained by first standardizing all variables to have a mean of 0 and a standard deviation of 1.

No.: Number of observations