

Albrecht, James W.; Skogmann Thoursie, Peter; Vroman, Susan B.

Working Paper

Parental leave and the glass ceiling in Sweden

Working Paper, No. 2015:4

Provided in Cooperation with:

IFAU - Institute for Evaluation of Labour Market and Education Policy, Uppsala

Suggested Citation: Albrecht, James W.; Skogmann Thoursie, Peter; Vroman, Susan B. (2015) : Parental leave and the glass ceiling in Sweden, Working Paper, No. 2015:4, Institute for Evaluation of Labour Market and Education Policy (IFAU), Uppsala

This Version is available at:

<https://hdl.handle.net/10419/129394>

Standard-Nutzungsbedingungen:

Die Dokumente auf EconStor dürfen zu eigenen wissenschaftlichen Zwecken und zum Privatgebrauch gespeichert und kopiert werden.

Sie dürfen die Dokumente nicht für öffentliche oder kommerzielle Zwecke vervielfältigen, öffentlich ausstellen, öffentlich zugänglich machen, vertreiben oder anderweitig nutzen.

Sofern die Verfasser die Dokumente unter Open-Content-Lizenzen (insbesondere CC-Lizenzen) zur Verfügung gestellt haben sollten, gelten abweichend von diesen Nutzungsbedingungen die in der dort genannten Lizenz gewährten Nutzungsrechte.

Terms of use:

Documents in EconStor may be saved and copied for your personal and scholarly purposes.

You are not to copy documents for public or commercial purposes, to exhibit the documents publicly, to make them publicly available on the internet, or to distribute or otherwise use the documents in public.

If the documents have been made available under an Open Content Licence (especially Creative Commons Licences), you may exercise further usage rights as specified in the indicated licence.



IFAU

Institute for Evaluation of Labour
Market and Education Policy

Parental leave and the glass ceiling in Sweden

James Albrecht
Peter Skogman Thoursie
Susan Vroman

WORKING PAPER 2015:4

The Institute for Evaluation of Labour Market and Education Policy (IFAU) is a research institute under the Swedish Ministry of Employment, situated in Uppsala. IFAU's objective is to promote, support and carry out scientific evaluations. The assignment includes: the effects of labour market and educational policies, studies of the functioning of the labour market and the labour market effects of social insurance policies. IFAU shall also disseminate its results so that they become accessible to different interested parties in Sweden and abroad.

IFAU also provides funding for research projects within its areas of interest. The deadline for applications is October 1 each year. Since the researchers at IFAU are mainly economists, researchers from other disciplines are encouraged to apply for funding.

IFAU is run by a Director-General. The institute has a scientific council, consisting of a chairman, the Director-General and five other members. Among other things, the scientific council proposes a decision for the allocation of research grants. A reference group including representatives for employer organizations and trade unions, as well as the ministries and authorities concerned is also connected to the institute.

Postal address: P.O. Box 513, 751 20 Uppsala

Visiting address: Kyrkogårdsgatan 6, Uppsala

Phone: +46 18 471 70 70

Fax: +46 18 471 70 71

ifau@ifau.uu.se

www.ifau.se

Papers published in the Working Paper Series should, according to the IFAU policy, have been discussed at seminars held at IFAU and at least one other academic forum, and have been read by one external and one internal referee. They need not, however, have undergone the standard scrutiny for publication in a scientific journal. The purpose of the Working Paper Series is to provide a factual basis for public policy and the public policy discussion.

ISSN 1651-1166

Parental leave and the glass ceiling in Sweden^a

by

James Albrecht^b, Peter Skogman Thoursie^c and Susan Vroman^d

March 4, 2015

Abstract

In this paper, we update and extend “Is There a Glass Ceiling in Sweden?” (Albrecht et al. 2003) by documenting the extent to which the gender log wage gap across the distribution in Sweden has changed over the period 1998-2008. We then examine the Swedish glass ceiling in 2008 in more detail by documenting how it differs for white-collar versus blue-collar workers and for private- versus public-sector workers. We also examine when in the life cycle the glass ceiling effect arises and how this effect develops around the birth of the first child. Finally, we investigate the possible connection between the glass ceiling and the parental leave system in Sweden by linking wage data with data on parental leave from different Swedish registers.

Keywords: Gender gap, parental leave, quantile regression

JEL-codes: J16, J31, J71

^a We thank Erica Lindahl, Erik Grönqvist and seminar participants at the European Society of Population Economics in Braga, Portugal in June 2014 for useful comments. This research was supported by a grant from IFAU, Uppsala.

^b Department of Economics, Georgetown University, albrecht@georgetown.edu

^c Department of Economics, Stockholm University, Peter.thoursie@ne.su.se

^d Department of Economics, Georgetown University, vromans@georgetown.edu

Table of contents

1	Introduction	3
2	Data	7
3	Summary of the Swedish parental leave	8
4	Basic analysis of the gender log wage gap.....	9
4.1	The change in the gender log wage gap: 1998 – 2008	9
4.2	The gender log wage gap: sector and occupation.....	10
5	Parental leave and the gender log wage gap in 2008	16
5.1	The gender gap before and after the first birth.....	16
5.2	The relation between wages and parental leave	18
6	Concluding remarks	22
	References	24
	Appendix	26

1 Introduction

Ten years ago, Albrecht et al., (2003) documented the existence of a substantial glass ceiling in Sweden, i.e., a large difference between the wages earned by men and women at the top of their respective distributions. Using register data from 1998, they found that although the difference between the median log wage for males and the median log wage for females was 0.133 (quite low by international standards), the corresponding gap at the 90th percentile was 0.387 (extremely high by developed country standards). Several later studies, e.g., Arulampalam et al., (2007), examined the gender log wage gap across the distribution in other European countries. With the exception of the other Scandinavian countries, there is less of a glass ceiling elsewhere in Europe; indeed, in some southern European countries, the gender log wage gap declines across the distribution.

Albrecht et al., (2003) hypothesized that the generous parental leave system was a major factor contributing to the glass ceiling in Sweden. Their argument was based on statistical discrimination. Before we discuss that argument, we note that there are, of course, several other potential explanations for the Swedish glass ceiling. One possibility is that career interruptions, e.g., for parental leave, may be associated with lower levels of human capital. See, for example, Mincer and Ofek (1982) and Kim and Polachek (1994). This might occur in two ways. First, human capital may depreciate while one is away from work. We argue, however, that human capital depreciation is unlikely to be the primary explanation for the Swedish glass ceiling. Albrecht et al., (1999) estimated the effects of time out of the workforce on log wages for men and women in Sweden while controlling for individual-specific fixed effects. They found that while women's wages were not affected by "normal" periods of parental leave, men who took parental leave suffered a substantial wage penalty. These findings seem incompatible with a pure human capital depreciation effect – if time out depreciates human capital and if this depreciation leads to wage losses, then the effects should be similar for men as for women.¹ A second reason that parental leave might be associated with lower levels of human capital is that workers who anticipate career interruptions in the future have less incentive to invest in human capital today than do those who expect

¹ This is not to suggest that there is no depreciation of human capital. See Edin and Gustavsson (2008) for some direct evidence based on the International Adult Literacy Survey. They show that survey respondents' ability to read and make use of practical information decreased with time out of work.

to work more or less continuously. However, pre-market levels of human capital investment, in particular, educational attainments, are similar for men and women in Sweden. Indeed, female educational attainment has surpassed that of males in Sweden (Pekkarinen 2012).

A second potential alternative explanation for the glass ceiling in Sweden is gender differences in career orientation; that is, women may self-select into more family-friendly jobs with corresponding flatter wage profiles as a matter of preference. Some papers, e.g., Croson and Gneezy (2009) and Bertrand (2011) argue that women are less competitive, more risk averse, less over-confident and less likely to initiate negotiations. However, this issue is by no means settled; for example, studies of bankers show that women are less risk averse, and other studies suggest that women in competitive settings are at least as aggressive as males. Again, see Croson and Gneezy (2009) and Bertrand (2011). In any event, the question is why the glass ceiling effect is so pronounced in Sweden and the other Scandinavian countries relative to what we see elsewhere. Any argument based on gender differences in career orientation needs to explain why such differences are particularly salient in the Scandinavian countries.

Finally, a third alternative explanation is that there is a limited market for household services in economies such as Sweden that have a compressed wage structure and that women in top jobs may need these services to succeed in the labor market. The argument is that in countries like the U.S., career-oriented women can hire someone to clean the house, pick up the children after school, etc. at a relatively low wage, while in Sweden, such “outsourcing” is much more expensive. This explanation has been advanced by Arulampalam et al., (2007), among others, and, even though public daycare (dagis) is available at a relatively early age in Sweden,² we think it has considerable merit. Interestingly, the market for household services has grown substantially in recent years in Sweden, spurred in part by a relatively generous tax-rebate program known as RUT.³ Some early results on the labor market effects of RUT

² Municipalities have the obligation to provide dagis starting at age one, but in some municipalities there are queues so it sometimes takes somewhat longer to get a place in day care.

³ Since July 1, 2007, a 50 percent deduction can be taken for the cost of outsourced housework such as Rengöring (Cleaning), Underhåll (Maintenance) and Tvätt (Washing). Since July 1, 2009, this deduction has been taken directly; that is, the buyer pays 50 percent of the amount stated on the invoice with the service provider requesting the remainder directly from the Swedish Tax Authority. One motivation for this program was to discourage the black market in household services. In addition to RUT, there is another program known as ROT whereby a 50 percent tax deduction can also be taken for craft services in the home such as Reparation (Repair), Ombyggnad (Refurbishment)

are given in Halldén and Stenberg (2013) who find that 60 percent of married women's freed hours due to RUT are applied to labor market work.

Having sketched these alternatives, our primary hypothesis for the glass ceiling in Sweden remains one of statistical discrimination. The argument is essentially that of Coate and Loury (1993).⁴ Employers understand that the Swedish parental leave system gives women a strong incentive to participate in the labor force but also encourages them to take long periods of parental leave and to be less flexible with respect to hours once they return to work. Extended absence and lack of flexibility are particularly costly for employers when employees hold top jobs.⁵ Employers therefore place relatively few women in fast-track career positions. Women, even those who would otherwise be strongly career-oriented, understand that their promotion possibilities are limited by employer beliefs and respond rationally by opting for more family-friendly career paths and by fully utilizing their parental leave benefits. The equilibrium is thus one of self-confirming beliefs. Women may “choose” family-friendly jobs, but choice reflects both preferences and constraints. Our argument is that what is different about Sweden (and the other Scandinavian countries) is the constraints that women face and that these constraints – in the form of employer expectations – are driven in part by the generosity of the parental leave system.

In this paper, we update and extend Albrecht et al. (2003) by documenting the extent to which the gender log wage gap across the distribution in Sweden has changed over the period 1998-2008. We then examine the Swedish glass ceiling in 2008 in more detail by documenting how it differs for white-collar versus blue-collar workers and for private- versus public-sector workers. We also examine when in the life cycle the glass ceiling effect arises and how this effect develops around the birth of the first child. In particular, we investigate the possible connection between the glass ceiling and the parental leave system in Sweden. To do this, we link wage data with data on parental leave from different Swedish registers. We focus on young men and women who had their first child in the period 1994-98 and then follow the career paths of these individuals. We estimate quantile regressions relating log wages in 2008 to patterns of

and Tillbyggnad (Extension). ROT preceded RUT, albeit at a lower rate of deduction. Currently, the maximum deduction for RUT and ROT together is 50,000 SEK (about \$7600) per person.

⁴ Coate and Loury (1993) develop their model to help explain racial wage differences. See Albanesi and Olivetti (2009) for an application of the Coate and Loury (1993) model to gender wage differences.

⁵ Specifically, using U.S. data, Goldin (2014) argues that absence and lack of commitment are particularly costly in jobs that require long and/or flexible hours.

parental leave utilization. More specifically, we look at how much parental leave the individuals take for their first child and whether the parental leave is concentrated or spread out.

We find that the gender log wage gap toward the top of the distribution decreased from 1998 to 2008 but that there is still a substantial glass ceiling in 2008 and it is still larger than in other developed countries. This reduction in the glass ceiling occurred against a backdrop of increasing overall wage inequality over the 1990's, but during the early 2000's, wage differentials changed little.⁶

When we examine the gender log wage gap by occupation, we find that the glass ceiling is a phenomenon only for the wage distributions of white-collar workers and not for blue-collar workers. Focusing on white-collar workers, we find that the glass ceiling effect is present in both the private and public sectors and is particularly strong in the public sector at the regional government level. The glass ceiling effect increases with age (up to age 45), and over half of the difference in log wages between men and women is present even before the birth of the first child. After the first birth, the gap increases, especially at the very top. Finally, there is a wage gap between mothers who concentrate their parental leave and those who don't, even before the birth of the first child.

We then use quantile regressions to control for education, age, family size, occupation, sector and parental leave utilization. We estimate these quantile regressions separately for women and men whose first child was born in the years 1994–98 and who held a white-collar job in 2008. We use two variables to capture parental leave utilization: the total parental leave taken and the share of parental leave taken in the first half year after the birth. Total parental leave taken has a negative coefficient that is significant throughout the distribution for fathers and is greater in absolute value than the corresponding coefficient estimates for mothers across all quantiles used. For mothers, total parental leave is negative and significant for the median and above. For both fathers and mothers, the coefficient is greater in absolute value for the higher quantiles. The fact that the coefficients are larger in absolute value for the fathers is consistent with the findings of Albrecht et al., (1999), who found that taking parental leave had a negative effect on fathers relative to other men whereas taking parental

⁶ See Bengtsson et al. (2014).

leave had little effect on mothers. For mothers, the share of parental leave taken in the first half year has a consistently positive and increasing coefficient that is significant at the 25th percentile and above. In sum, we find that the negative relationship between taking parental leave and wages is larger in absolute values at the higher end of the wage distribution. The estimates are larger for fathers, but fathers take less parental leave. Mothers who concentrate their leave suffer less wage loss, particularly at the high end of the distribution. The amount of parental leave taken by mothers and fathers and the way in which that leave is taken is closely associated with the glass ceiling.

We start in the next section by describing the data. Then, in Section 3, we briefly describe the Swedish parental leave system. In Section 4, we present a descriptive analysis of how the gender gap across the distribution changed in Sweden between 1998 and 2008. We then focus on the gender log wage gap in 2008 and look at how it differs by occupation, sector, and age. In Section 5, we look at how the gender wage log gap changes around the birth of the first child and with parental leave utilization. Finally, in Section 6, we conclude.

2 Data

We use Swedish population-wide register data for our analysis. Our starting point is the LOUISE database, which is a database compiled by Statistics Sweden for research purposes and contains information on socio-demographic characteristics from different administrative registers held by Statistics Sweden. The database contains information from several registers for the Swedish population, aged 16-75. In particular, data includes annual labor earnings, age, education, country of origin, region of residence, etc. These data are available on an annual basis. We use data over the period 1994-2008.

We link several other registers to the basic LOUISE database. First, information on full-time-equivalent monthly wage earnings (thus comparable to hourly wage rates) is available in the Wage Structure Statistics and is based on: (i) the individual's wage during the survey month (often September) and (ii) his or her contracted hours for that month. These data are available only for individuals who had some working hours during the month of the survey; in particular, workers on leave (e.g., parental leave) for the entire month are not included. Full-time-equivalent wages are available for all public-sector employees with positive hours in the survey month. In the private sector,

these data are available for all workers in firms with at least 500 employees. For firms with fewer than 500 employees, a stratified sample (based on industry and on firm size) is used. As a result, approximately 50 percent of private-sector workers are included in our database. The analysis we present below uses weights to adjust for the fact that full-time-equivalent earnings are not observed for all private-sector workers.

We also link two other registers to LOUISE, the Multiple Generation Register and the Parental Leave Register. The Multiple Generation Register records all births, which makes it possible to keep track of the number and age of children associated with each mother and father. LOUISE includes a family identifier, so that the database can be used to trace spouses, but the Multiple Generation Register gives additional information since a biological mother and father can be divorced. The Parental Leave Register gives start and end dates for periods when benefits have been paid.

3 Summary of the Swedish parental leave

The Swedish parental leave system was introduced in 1974, when maternity leave was replaced by parental leave such that also fathers became eligible for parental leave. Parents were then entitled to six months of paid leave at a compensation rate of 90 percent of labour earnings up to an inflation-adjusted cap. Today, parents are allowed a total of 480 days. Of the 480 days, 390 days are paid at close to 80 percent of the individual's salary up to a cap.⁷ In 2013, the maximum daily allowance was SEK 946 or about \$135. The remaining 90 days are paid at a flat rate. Nonworking parents also can receive a parental allowance at this flat rate. Of the 390 days, 60 days are reserved for each parent. That is, if one parent does not take two months of leave, the other parent cannot take an extra two months, i.e., there are 60 days for each parent and then 270 days that can be allocated in any manner the parents choose. If parents share the 270 days evenly, they get a tax-free bonus of SEK50 per day. Single parents have access to the full 480 days.⁸

The parental leave system provides a great degree of flexibility. During the first 18 months, both parents have the right to be at home full time with job protection. Parental

⁷ Some employers top up the benefit to 90 percent of the wage for a number of months, but we do not have data on this.

⁸ Most of this information can be found on the website sweden.se/society/gender-equality-in-sweden/

benefits may be taken as full, half, quarter or eighth until the child turn eight years old.⁹ In addition, by law, an individual has the right to work at 75 percent of full time until the child turns eight. The Swedish parental leave system is very generous in an international perspective, especially regarding the right to employment protection and unpaid parental leave (see Ray et al., 2009). As illustrated in Figure A 1 in the Appendix, the share of parental leave taken by fathers has increased steadily over time. In the period 1994 to 1998, fathers took about 10 percent of parental leave; currently, they take over 30 percent of parental leave.

4 Basic analysis of the gender log wage gap

4.1 The change in the gender log wage gap: 1998 – 2008

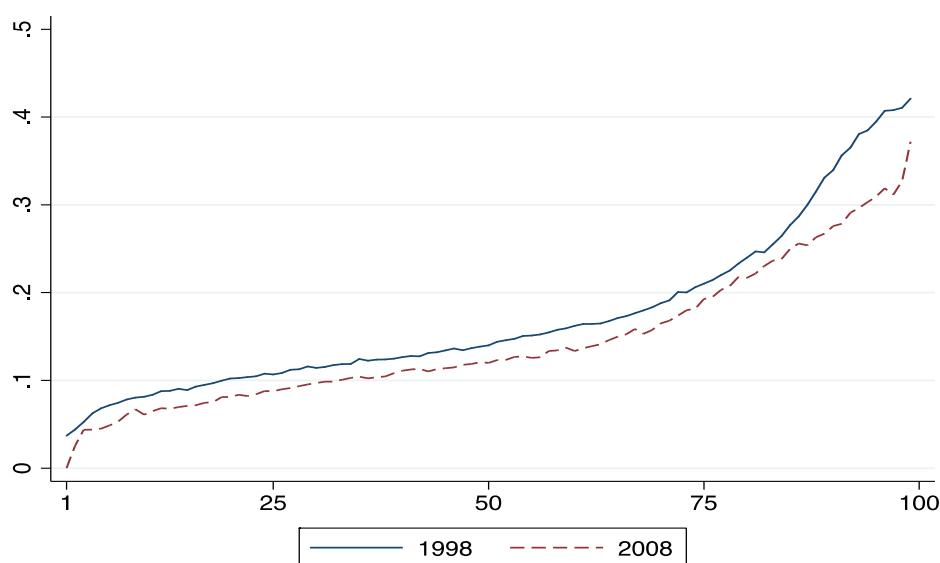
The gender log wage gap at percentile p (GWG_p) is defined as

$$GWG_p = \ln(Wage_p^m) - \ln(Wage_p^f) \quad (1)$$

where $Wage_p^m$ ($Wage_p^f$) is the male (female) wage at percentile p . For example if the gender log wage gap at the median ($p = 50$) is 0.10 it means that the male median wage is approximately 10 percent higher than the female median wage. Figure 1 presents the gender log wage gap across the wage distribution for Sweden in 1998 and 2008. The graph includes data for all men and women aged 25 to 60 for whom we have full-time equivalent wages in September of the survey year. The data are weighted to account for sample stratification by industry affiliation and firm size class. It is apparent that the gender log wage gap is smaller at all percentiles in 2008 than it was in 1998, but the gender log wage gap decreased the most above the 75th percentile of the distributions. That is, there has been a decline in the glass ceiling. Nonetheless, the gender log wage gap above the 75th percentile is still quite substantial in 2008 rising to more than 0.3 log points so that we conclude that there is still a nontrivial glass ceiling in 2008.

⁹ If the child is born January 1, 2014 or later, parental leave can be taken until the child turns 12 years old. But after the child reaches four years, only 96 days are available.

Figure 1. Gender log wage gaps across 1-100 wage percentiles for all workers aged 25-60 observed with monthly earnings in 1998 and 2008



Notes: The gender log wage gaps are based on Equation (1), which means that the y-axis states how much higher male wages are compared to female wages, in percent, at each wage percentile from the male and female wage distributions, respectively.

4.2 The gender log wage gap: sector and occupation

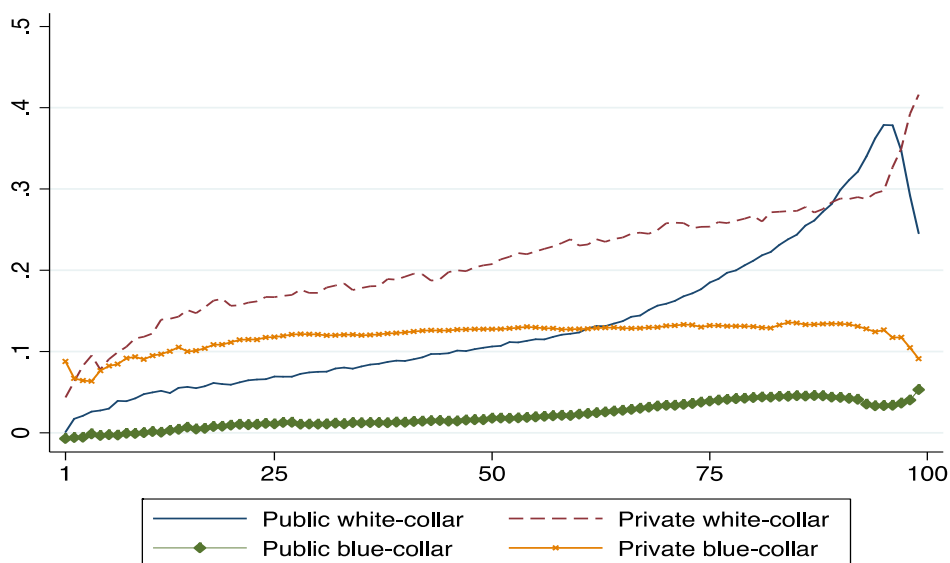
To get a better sense of which women are affected by the glass ceiling in 2008, we look at gender log wage gaps across the distribution by sector and occupation. Again, this is shown for men and women aged 25–60 using weighted data. Overall in 2008, women made up 53.6 percent of white-collar workers and 44.1 percent of blue-collar workers. In the public sector, women were 69.8 percent of white-collar workers, while they were 43.1 percent of white-collar workers in the private sector.¹⁰ Figure 2 shows the gender log wage gaps for public-sector and private-sector white-collar and blue-collar workers. The gender log wage gaps are more or less constant over the wage distribution for blue-collar workers in both sectors. The gender log wage gap for blue-collar workers in the public sector is even close to zero up to the median and a bit higher thereafter but doesn't show the large acceleration seen for the white-collar workers towards the top of the wage distribution. Based on Figure 2, one can see that the glass ceiling (the strong increase in the gender log wage gap across the distribution) is a characteristic of the wage distribution for white-collar workers but not of that for blue-collar workers. That is, the wage differences at the higher quantiles between the overall distributions for men

¹⁰ The gender composition in the public and private sectors and between white collar and blue collar occupations has changed over time. In 2008, women made up a larger share of white-collar workers and a smaller share of blue-collar workers in both the public and private sectors than they had in 1998. See Table A 1 in the Appendix for details.

and women are primarily driven by the difference in the white-collar distributions, and this difference exhibits the glass ceiling pattern. In this sense, the glass ceiling is a white-collar phenomenon. In the rest of this section, we restrict our attention to white-collar workers.

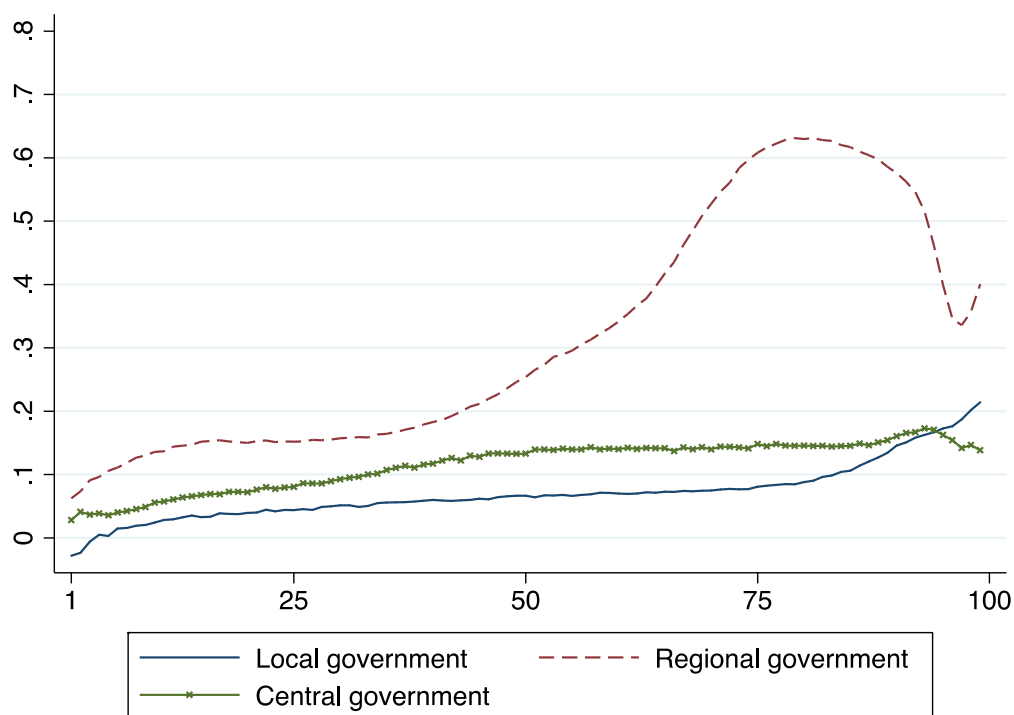
The gender log wage gap for private-sector white-collar workers rises over the wage distribution and grows particularly sharply at the very top of the distribution. For public-sector white-collar workers, the gender log wage gap also rises across the distribution, but the gap falls at the very top of the distribution. This is explained in part by disaggregating the public sector data. Figure 3 plots the gender log wage gap for public-sector white-collar workers by level of government. This shows that the gender log wage gap is highest in the regional government sector (Landsting) and climbs to extremely high levels (between 0.6 and 0.7 log points) around the 75th percentile before falling off. Even after falling off, the gender log wage gap for regional government workers remains above 0.3 log points. The gender log wage gap for white-collar workers in the regional government sector reflects to a large extent occupational segregation in the healthcare sector, which is administered at the regional government level. Of the women in regional government sector whose full-time equivalent monthly earnings were above the 75th percentile in 2008, the most frequent occupations were doctors (30.2 percent), nurses (8.7 percent), and department heads in the healthcare sector (5.7 percent). For men, these were: doctors (87.9 percent), department heads not in the healthcare sector (5.0 percent), and holders of high office making political decisions (1.4 percent).

Figure 2. Gender log wage gaps across 1-100 wage percentiles for all workers aged 25-60 observed with monthly earnings in 2008, by sector and occupation



Notes: The gender log wage gaps are based on Equation (1), which means that the y-axis states how much higher male wages are compared to female wages, in percent, at each wage percentile from the male and female wage distributions, respectively.

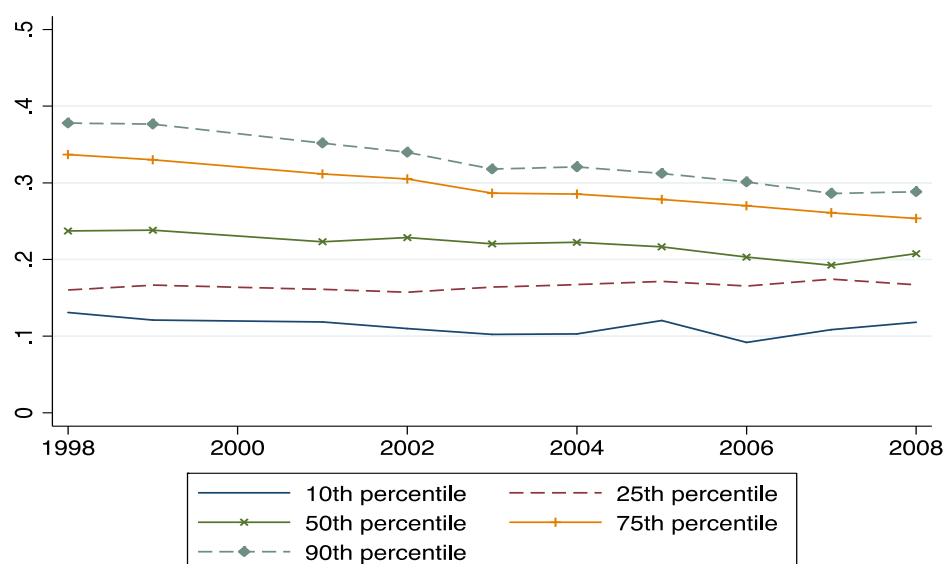
Figure 3. Gender log wage gaps across 1-100 wage percentile for all white-collar public sector workers aged 25-60 in 2008, by level of public sector



Notes: The gender log wage gaps are based on Equation (1), which means that the y-axis states how much higher male wages are compared to female wages, in percent, at each wage percentile from the male and female wage distributions, respectively.

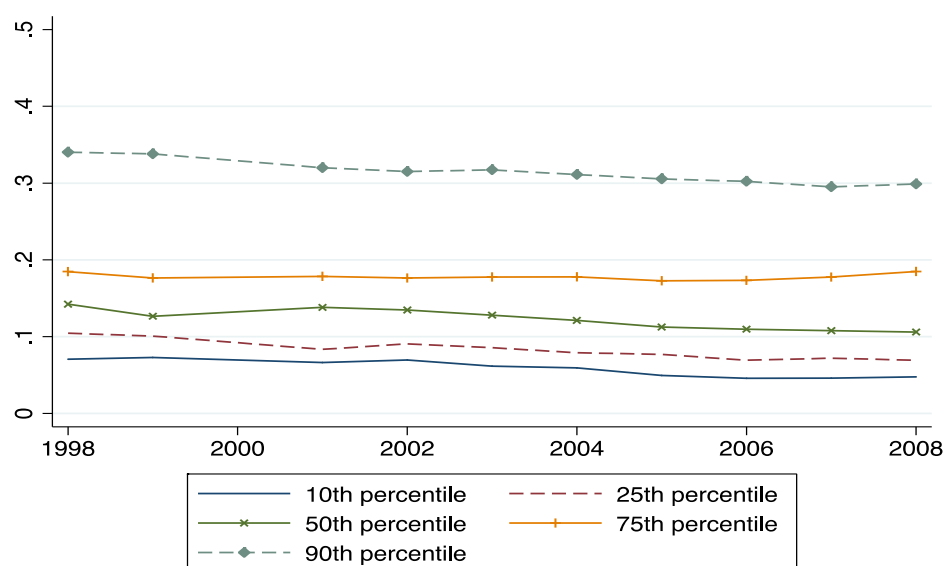
The next two figures illustrate the development of the gender log wage gap for white-collar workers over the period 1998 to 2008. Figure 4 looks at private-sector workers and shows that the gender log wage gaps at the 90th percentile are slightly higher than the wage gaps at the 75th percentile and that the gender wage gaps at both percentiles fell over this period. The gaps at the 10th, 25th, and 50th percentiles were almost constant over this period. Figure 5 shows a quite different picture for the white-collar workers in the public sector. The gender log wage gap at the 90th percentile decreased a bit over the period and remained significantly above the gaps at the lower percentiles, which were essentially constant over the entire period.

Figure 4. Annual development of gender log wage gaps at the 10th, 25th, 50th, 75th and 90th percentiles during 1998-2008. Private white-collar workers



Notes: The gender log wage gaps are based on Equation (1), which means that the y-axis states how much higher male wages are compared to female wages, in percent, at each wage percentile from the male and female wage distributions, respectively.

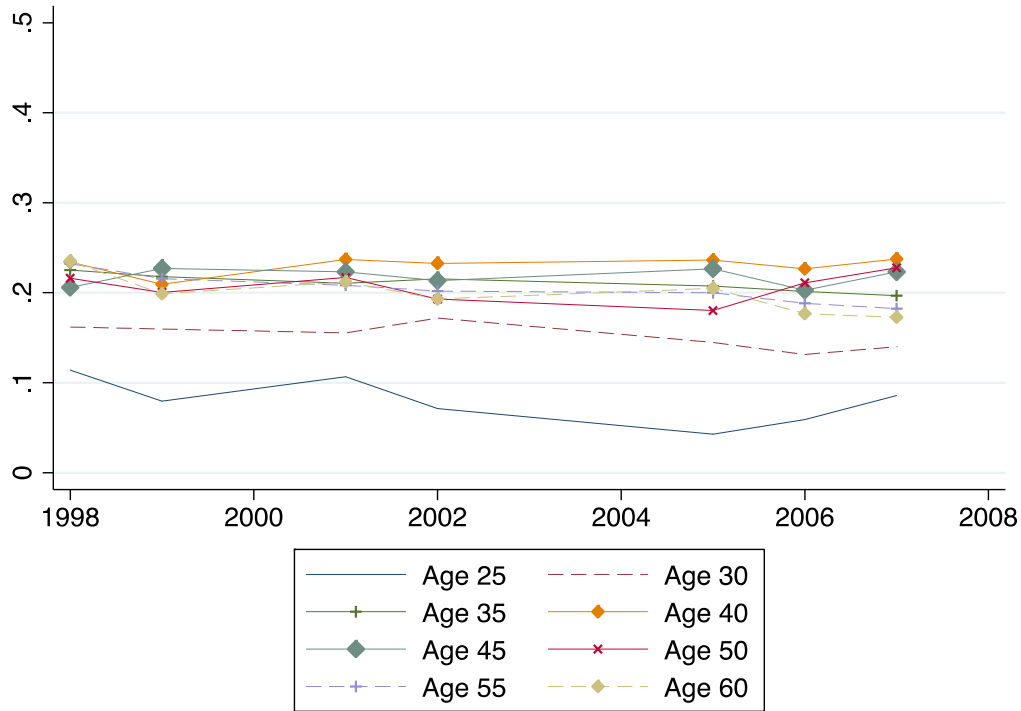
Figure 5. Annual development of gender log wage gaps at the 10th, 25th, 50th, 75th and 90th percentiles during 1998-2008. Public white-collar workers



Notes: The gender log wage gaps are based on Equation (1), which means that the y-axis states how much higher male wages are compared to female wages, in percent, at each wage percentile from the male and female wage distributions, respectively.

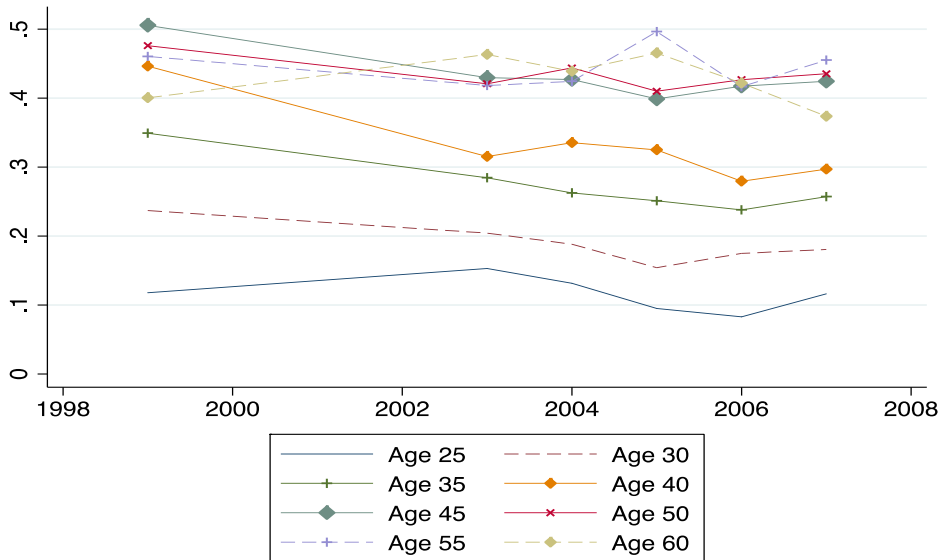
Figure 6 and Figure 7 show the development of the gender log wage gap for white-collar workers at the median and the 90th percentile over 1998-2008 by age groups. In Figure 6, we see that the gender log wage gap at the median increases up to age 35 and remains relatively constant over this time period for each age group. In fact, the biggest increase is between ages 25 and 35 when the gap rises from less than 10 percent to almost 20 percent. This is in line with the results found in Angelov et al. (2013), which shows that the spousal wage and income gaps increase by 10 and 35 percent respectively, fifteen years after the birth of the first child. Figure 7 shows much larger increases in the log wage gap at the 90th percentile. Here we see that the gap continues to rise until age 45 and reaches very high levels – about twice as high as the levels shown for the median in Figure 6.

Figure 6. Annual development of gender wage gaps at the 50th percentile across age groups. White collar workers



Notes: The gender log wage gaps are based on Equation (1), which means that the y-axis states how much higher male wages are compared to female wages, in percent.

Figure 7. Annual development of gender wage gaps at the 90th percentile across age groups. White collar workers



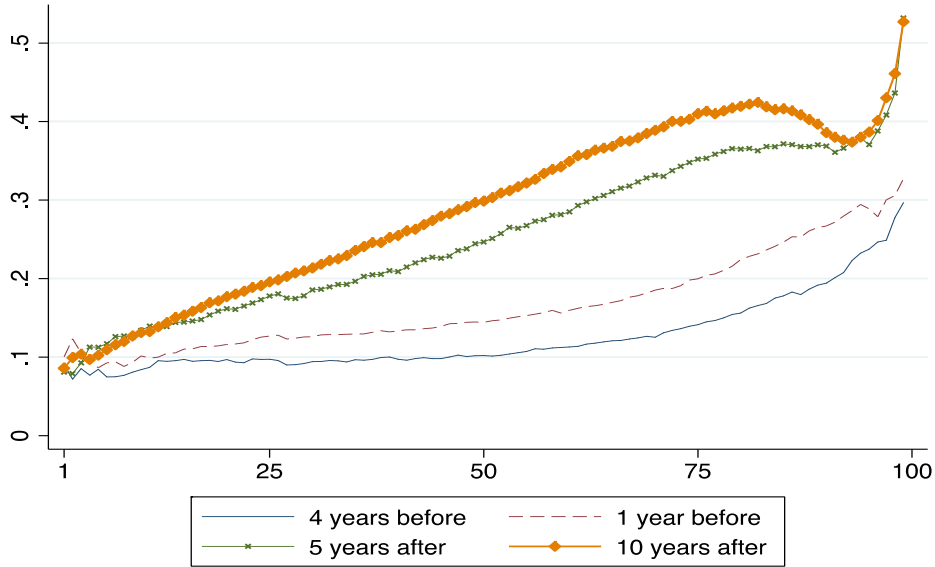
Notes: The gender log wage gaps are based on Equation (1), which means that the y-axis states how much higher male wages are compared to female wages, in percent.

5 Parental leave and the gender log wage gap in 2008

5.1 The gender gap before and after the first birth

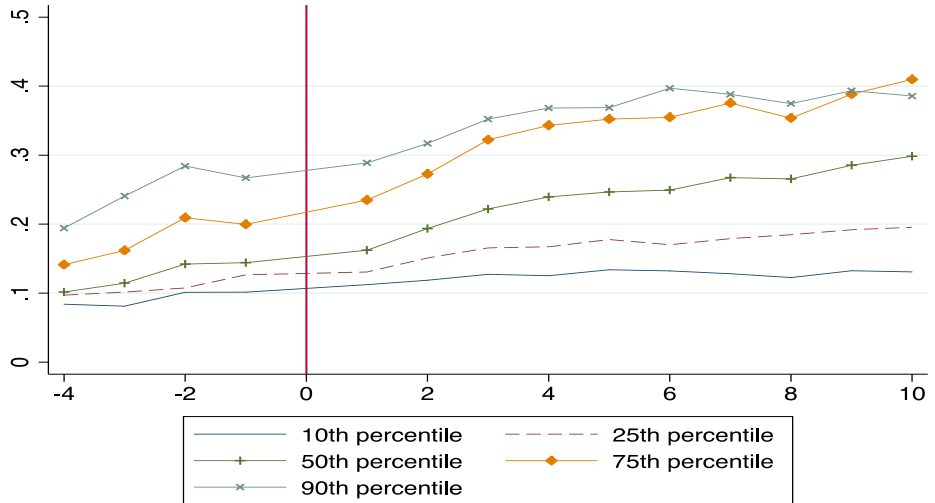
In this section, we focus on men and women whose first child was born during the years 1994 – 98 and who held white-collar jobs in 2008. We look at the gender log wage gap before and after the first birth, and then examine how that gap varies with how much parental leave is taken and whether it is taken in a concentrated or spread-out way. Figure 8 shows the gender log wage gap across the distribution for white-collar workers 4 years before the first birth, 1 year before the birth, 5 years after the first birth and 10 years after the birth. At the 25th percentile, there is roughly a 10 percent log wage gap four years before the first birth. This gap doubles by ten years after the birth. At the median, the log wage gap four years before the first birth triples by ten years after the birth. Finally, at the 75th percentile, the log wage gap ten years after the first birth is about four times the gap that existed four years before the birth. These patterns are consistent with the ones shown in Figure 6 and Figure 7. In the lower half of the wage distribution, most of the gender gap is realized by age 35; in the upper half of the distribution, the spreading out continues through age 45. That is, part of what we see in Figure 8 may be a birth effect and part may be a pure age effect. These patterns are also illustrated in Figure 9, which shows more clearly how the gender log wage gap increases continuously after the first birth for white-collar workers at the median, the 75th percentile and the 90th percentile of the log wage distribution.

Figure 8. Gender wage gaps by percentiles before and after the birth of the first child for those who had their first child between 1994-1998. White collar workers



Notes: The gender log wage gaps are based on Equation (1), which means that the y-axis states how much higher male wages are compared to female wages, in percent, at each wage percentile from the male and female wage distributions, respectively.

Figure 9. Gender wage gaps at before and after the birth of the first child for those who had their first child between 1994-1998, separately for the 10th, 25th, 50th, 75th and 90th. White collar workers



Notes: The gender log wage gaps are based on Equation (1), which means that the y-axis states how much higher male wages are compared to female wages, in percent, at each wage percentile from the male and female wage distributions, respectively.

5.2 The relation between wages and parental leave

To examine how the wages are related to parental leave and how this relationship differ between gender, we estimate a set of quantile regressions for women and men separately so that we can look at the coefficients on parental leave variables while controlling for other factors. We are using 10 percent subsamples of men and women whose first child was born during the years 1994–98 and who hold white-collar jobs in 2008. Specifically, we use a subsample of 7,195 mothers and 4,941 fathers. Summary statistics for this subsample are given in Table A 2 in the Appendix.

We estimate gender quantile regression models, separate for mothers ($g = m$) and fathers ($g = f$). The q th quantile regression model is given by:

$$Q_q(\ln Wage_{ig2008}) = \alpha_q^g + \beta_{1q}^g PL_{ig} + \beta_{2q}^g SHPL_{ig} + \gamma_q' x_i^g \quad (2)$$

where $\ln Wage_{ig2008}$ is the log monthly earning in 2008 for individual i and gender g . PL_{ig} is total parental leave taken (in months) in conjunction with the first birth and $SHPL_{ig}$ is the share of parental leave that the parent took in the first half year after the first birth. The parameters of interest are β_{1q}^g and β_{2q}^g where β_{1q}^g represents how an increase in total parental leave taken affect the wage at q th percentile (in percent) of the wage distribution. The regression coefficient β_{2q}^g represents how an increase in the share parental leave that the parent took in the first half year after the first birth affects the wage (in percent). We do not comment on the coefficients on the share of parental leave taken in the first six months after birth for fathers since a very small fraction of fathers take parental leave in the first half year. The vector x_i^g includes controls such as the family size, age, age squared, a dummy variable indicating whether the individual was employed in the private sector and a set of 2-digit occupational dummies, education dummies, and year dummies. Quantile regressions are performed at the 10th, 25th, 50th, 75th and 90th quantile. We do not control for endogeneity of parental leave take-up, although this is clearly an issue,¹¹ so the quantile regression estimates should be viewed as more of an accounting exercise than an indication of causality. The results are presented in Table A 3 and Table A 4 in the Appendix.

¹¹ The endogeneity issue is as follows. Some individuals may be more career-oriented than others, either inherently or as a result of their work and/or child-rearing experience. To the extent that career orientation is (i) negatively associated with the amount of parental leave taken and (ii) positively associated with subsequent wages, there will be a spurious negative association between parental leave take-up and subsequent wages.

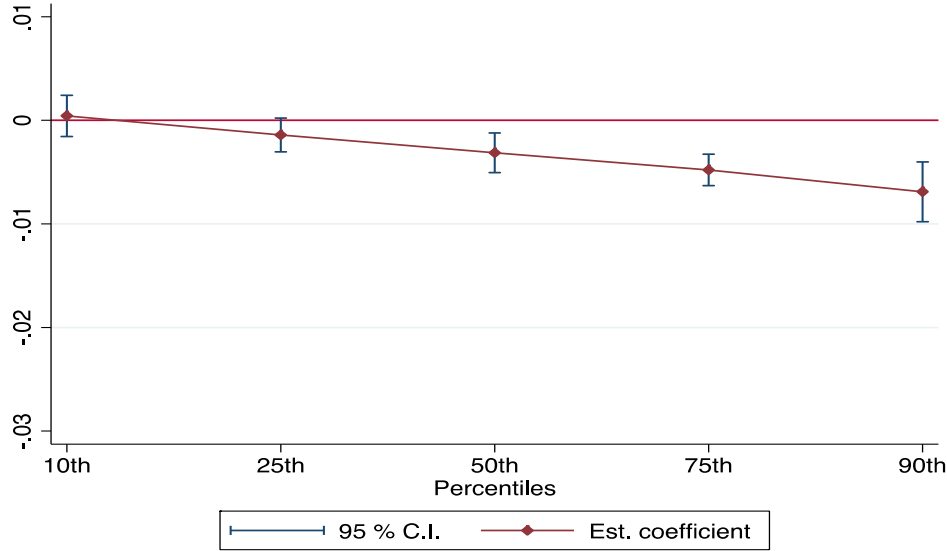
The coefficient on total parental leave taken is negative and significant for mothers at the median and above. For fathers, total parental leave is negative and significant at the 25th percentile and above. The coefficients for both mothers and fathers are larger in absolute value as we move up the distribution. Finally, the coefficients for fathers are larger in absolute value than those for mothers. These results are consistent with the findings in Albrecht et al. (1999), who found that parental leave take-up had a larger correlation with the mean log wage of fathers than on the mean log wage of mothers.

The share of parental leave taken in the first half year is significant for mothers from the 25th percentile up. Its coefficient is positive and increases across the distribution. It is not significant for fathers. Our interpretation of the result for women is that women who concentrate their leave right after the child's birth rather than spreading it out are signaling more career commitment, and this results in higher wages in the upper parts of the wage distribution. Of course, it may be the case that women higher up the wage distribution are encouraged to concentrate their parental leave, i.e., this could be a reflection of the endogeneity of the timing of parental leave.

Age is significantly positive for both women and men, but the coefficients for men are larger at every percentile. Being in the private sector has a positive relation to wages for both women and men, but again the coefficients are larger for men at every percentile. Interestingly, the occupation dummies are mostly significant for men but mostly insignificant for women. Finally, family size is not significant for women, but it is positive and significant for men from the 25th percentile of the distribution.

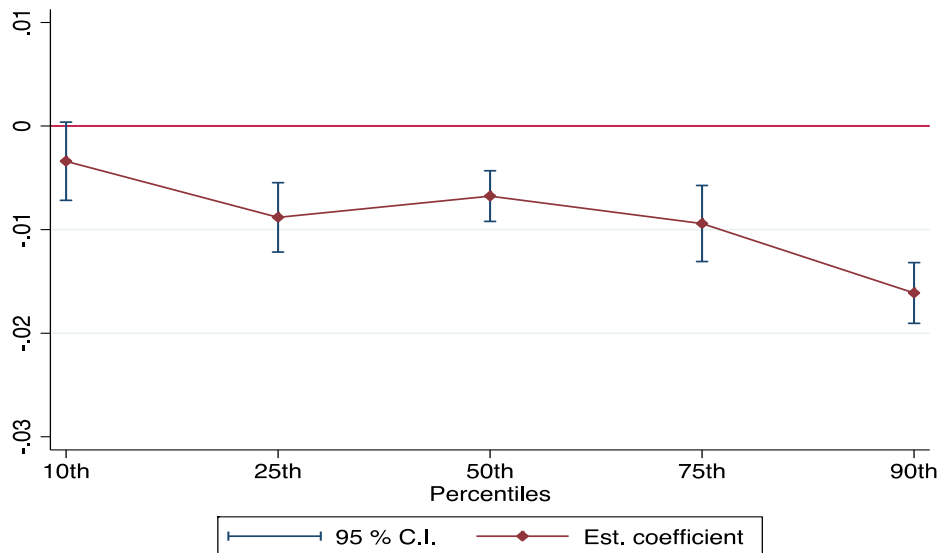
Figure 10 illustrates the coefficients on the first parental leave variable shown in Table A 3, i.e., the total parental leave of mothers who had their first child between 1994 and 1998. It is clear from Figure 10 that, as indicated by the quantile regressions, the coefficient is significant and increasingly negative at the median and above. Figure 11 shows the analogous coefficients on the parental leave variables in the log wage equations for fathers. The coefficients on the total parental leave taken by fathers are negative and become more negative as we move up the wage distribution. Figure 12 illustrates the positive and increasing coefficient associated with concentrating one's parental leave right after having the child.

Figure 10. Estimated quantile regressions coefficients of months of parental leave for the first child with corresponding 95 percent confidence bands. The dependent variable is the log wage in year 2008. Mothers who had their first child in 1994-1998



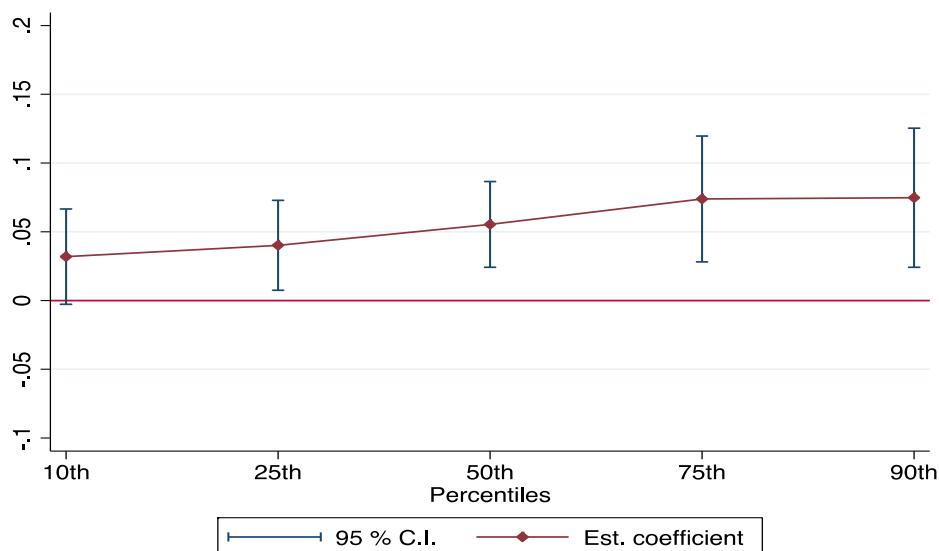
Notes: The quantile regressions coefficients are based on estimations of Equation (2). All estimations include controls for seven education levels (see explanation in Table A 2) and 26 occupation categories based on a two-digit classification. Share 1st Half Year is the share of total parental leave days that are taken during the first half-year since childbirth.

Figure 11. The quantile regressions coefficients of months of parental leave with corresponding 95 percent confidence bands. The dependent variable is the log wage. Fathers who had their first child in 1994-1998



Notes: The quantile regressions coefficients are based on estimations of Equation (2). All estimations include controls for seven education levels (see explanation in Table A 2) and 26 occupation categories based on a two-digit classification. Share 1st Half Year is the share of total parental leave days that are taken during the first half-year since childbirth.

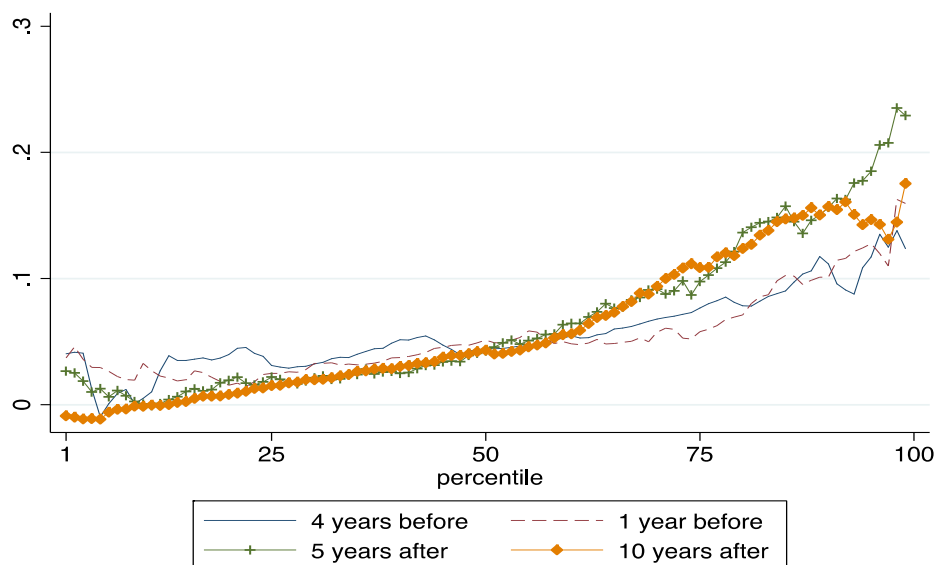
Figure 12. The quantile regressions coefficients on the fraction of leave taken in the first six months after childbirth with corresponding 95 percent confidence bands. The dependent variable is the log wage. Mothers who had their first child in 1994-1998



Notes: The quantile regressions coefficients are based on estimations of Equation (2). All estimations include controls for seven education levels (see explanation in Table A 2) and 26 occupation categories based on a two-digit classification. Share 1st Half Year is the share of total parental leave days that are taken during the first half-year since childbirth.

Finally, in Figure 13, we show the log wage gaps between mothers who concentrate their leave and those who don't. We show the gaps 4 years before the birth, one year before the birth, five years after the birth and 10 years after the birth. There is little gap for women in the bottom half of the wage distribution. Starting at the 75th percentile of the wage distribution, we can see a substantial difference between the women who concentrate their parental leave and those who don't. Those who concentrate their leave earn considerably more and the difference increases over time, i.e., the difference is greater 10 years after the birth than 5 years after the birth.

Figure 13. Gender log wage gaps between mothers who concentrate their parental leave after having the first child and those who don't by percentiles, before and after first birth for those who had their first child between 1994-1998. White collar workers



Notes: The log wage gaps are based on Equation (1) but not we compare the log wage at a certain percentile for mothers who concentrate their parental leave take out with those who don't. This means that the y-axis states how much higher wages of mothers who concentrate their parental leave are compared to mother who don't concentrate their parental leave (in percent).

6 Concluding remarks

We have examined the gender log wage gap in Sweden. Using data from 1998 and 2008, we showed that the glass ceiling, i.e., a large and increasing gender log wage gap at the top of the wage distribution, has persisted over time. We looked at the data for 2008 and found that the glass ceiling is a white-collar phenomenon. There is a glass ceiling for white-collar workers in both the private and the public sectors, although the patterns are different. In the public sector, the gender log wage gap is quite different for different levels of government, being particularly large in the regional government. We also found that the glass ceiling increases with age.

We then looked at how the gender log wage gap develops around the birth of the first child. Over half of the male-female log wage differential is present even before the first child is born. After the first birth, the gender log wage gap increases, especially at the 90th percentile. We then looked at the relationship between parental leave and log wages. We ran quantile regressions for women and men who had their first child between 1994 and 1998 and who were working in white-collar jobs in 2008. We regressed log wages on months of parental leave, the fraction of parental leave taken in

the first six months after the birth and a number of controls. We found that the coefficients on total parental leave were significantly negative for mothers from the median up and that they increased in absolute value as log wages increase. We found significant and increasingly negative coefficients for the fathers that were larger in absolute value than those for the mothers. We found significant positive coefficients for the log wages of mothers who concentrated their leave in the first six months that increased across the wage distribution.

One reason why the log wage gaps between mothers who concentrate their leave and those who don't increase at the upper half of the wage distribution could be differences in career ambitions, skills and preferences for careers and competition. If jobs in the upper part of the wage distribution requires more commitment to the job in terms of being "on call," being around for clients, and attending group meetings, spreading out leave over a long period could imply that a workers miss important skills and knowledge which in turn results n lower wages. However, results are also consistent with a signaling story in which mothers signal their commitment to their careers by concentrating their leave and that such a signal is more important the higher up the wage distribution they are. The larger effect of total parental leave taken for fathers also would support a signaling story in which these fathers signal a commitment to their family by taking more than the normal paternal leave. If the employer expects that all women take out much parental leave, as almost all mothers does, it becomes more difficult for women to signal that you are career oriented. The employers may take women's higher expected absenteeism into account when female wages are set (so-called statistical discrimination). A task for our further research is to analyze explanations behind our results.

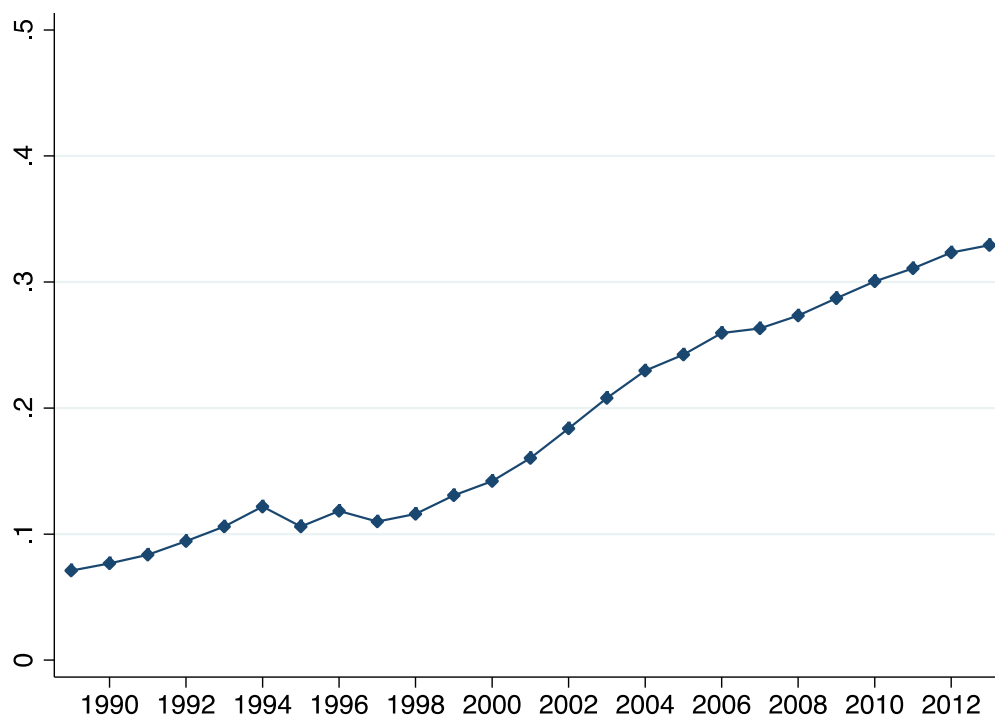
References

- Albanesi, Stephania and Claudia Olivetti (2009), "Home Production, Market Production and the Gender Wage Gap: Incentives and Expectations," *Review of Economic Dynamics*, 12, 80-107.
- Albrecht, James, Björklund, Anders, and Susan Vroman (2003), "Is There a Glass Ceiling In Sweden?" *Journal of Labor Economics*, 21(1), 145-77.
- Albrecht, James, Edin, Per-Anders, Sundström, Marianne, and Susan Vroman (1999), "Career Interruptions and Subsequent Wages: A Reexamination Using Swedish Data," *Journal of Human Resources*, 34(2), 294-311.
- Angelov, Nikolay, Johansson, Per, and Erica Lindahl (2013), "Is the Persistent Gender Gap in Income and Wages Due to Unequal Family Responsibilities?" IFAU Working Paper 2013:3.
- Arulampalam, Wiji, Booth, Alison, and Mark Bryan (2007), "Is There a Glass Ceiling over Europe? Exploring the Gender Pay Gap across the Wage Distribution," *Industrial and Labor Relations Review*, 60(2), 163-86.
- Bengtsson, Niklas, Edin, Per-Anders, and Bertil Holmlund (2014), "Löner, sysselsättning och inkomster – ökar klyftorna i Sverige?" Rapport till Finanspolitiska rådet 2014/1.
- Bertrand, Marianne (2011), "New Perspectives on Gender", *Handbook of Labor Economics*, Volume 4b, Elsevier Ltd., 1545-1592.
- Coate, Stephen and Glenn Loury (1993), "Will Affirmative Action Policies Eliminate Negative Stereotypes?" *American Economic Review*, 83(5), 1220-40.
- Croson, Rachel and Uri Gneezy (2009), "Gender Differences in Preferences," *Journal of Economic Literature*, 47(2), 448-74.
- Edin, Per-Anders and Magnus Gustavsson (2008), "Time Out of Work and Skill Depreciation," *Industrial and Labor Relations Review*, 61(2), 163-80.
- Ekberg, John, Eriksson, Rikard and Guido Friebel (2013), "Parental Leave – A Policy Evaluation of the Swedish 'Daddy-Month' Reform," *Journal of Public Economics*, 97, 131-43.

- Goldin, Claudia (2014), "A Grand Gender Convergence: Its Last Chapter," *American Economic Review*, 104(4), 1091-1119.
- Halldén, Karin and Anders Stenberg (2013), "The Relationship Between Hours of Domestic Services and Female Earnings: Panel Register Data Evidence from a Reform," Working Paper 2013-10-07, Swedish Institute for Social Research (SOFI), Stockholm University.
- Kim, Moon-Kak and Solomon Polachek (1994), "Panel Estimates of Male-Female Earnings Functions," *Journal of Human Resources*, 29(2), 406-428.
- Mincer, Jacob and Haim Ofek (1982), "Interrupted Work Careers: Depreciation and Restoration of Human Capital," *Journal of Human Resources*, 17(1), 3-24.
- Pekkarinen, Toumas (2012), "Gender differences in education," *Nordic Economic Policy Review*, 1, 165-195.
- Ray, R., Gornick, J. and Schmitt, J. (2009), "Parental leave policies in 21 countries -- Assessing Generosity and Gender Equality," Centre for economic and policy research.

Appendix

Figure A 1. The male share of parental leave days used, 1989-2013



Source: National social insurance board.

Table A 1. Share of Workers Aged 25–60 by Sector and Occupation

	Female	Male
1998		
Public White Collar	0.310	0.151
Private White Collar	0.297	0.398
Public Blue Collar	0.228	0.039
Private Blue Collar	0.165	0.411
2008		
Public White Collar	0.300	0.126
Private White Collar	0.333	0.425
Public Blue Collar	0.199	0.039
Private Blue Collar	0.168	0.410

Table A 2. Summary statistics for mothers and fathers whose first child was born in 1994-98. White collar workers in 2008

	Mothers	Fathers
Total PL months	11.89 (2.47)	2.27 (2.06)
Share PL days taken within first half year	0.370 (0.148)	0.086 (0.213)
Age	40.87 (4.52)	42.79 (4.89)
Private sector (0,1)	0.388 (0.487)	0.662 (0.473)
Family size	2.05 (0.68)	2.09 (0.71)
Education level		
Pre secondary school (<9 years)	0.001	0.001
Pre secondary school (9,10 years)	0.014	0.029
Secondary school	0.270	0.327
Post secondary school (<2 years)	0.061	0.147
Post secondary school (≥2 years)	0.635	0.450
Post graduate education	0.018	0.045
Unknown	0.0002	0.0008
Sample Size	72,347	49,012

Table A 3. Results from quantile regressions. dependent variable is log monthly earnings in 2008. Mothers

	10 th Percentile	25 th Percentile	50 th Percentile	75 th Percentile	90 th Percentile	OLS
Total PL of first child in months	0.000 (0.001)	-0.001 (0.001)	-0.003 (0.001)	-0.005 (0.001)	-0.007 (0.001)	-0.005 (0.001)
Share 1 st Half Year	0.032 (0.018)	0.040 (0.017)	0.055 (0.016)	0.074 (0.023)	0.075 (0.026)	0.090 (0.019)
Family Size	0.003 (0.004)	0.001 (0.004)	0.000 (0.004)	0.003 (0.005)	-0.002 (0.007)	0.004 (0.004)
Age	0.040 (0.006)	0.042 (0.005)	0.047 (0.004)	0.050 (0.005)	0.060 (0.004)	0.065 (0.006)
Age ²	-0.000 (0.000)	-0.000 (0.000)	-0.000 (0.000)	-0.000 (0.000)	-0.001 (0.000)	-0.001 (0.000)
Private	0.045 (0.006)	0.069 (0.004)	0.120 (0.005)	0.191 (0.010)	0.256 (0.015)	0.151 (0.006)
Constant	9.416 (0.180)	9.440 (0.127)	9.380 (0.183)	9.346 (0.164)	9.131 (0.227)	8.937 (0.136)
Adjusted R ²						0.5087
Pseudo R ²	0.2446	0.2672	0.3093	0.3794	0.4492	

All estimations include controls for seven education levels (see explanation in Table A 2) and 26 occupation categories based on a two-digit classification. Share 1st Half Year is the share of total parental leave days that are taken during the first half-year since childbirth.

Table A 4. Results from quantile regressions. dependent variable is low monthly earnings in 2008: Fathers

	10 th	25 th	50 th	75 th	90 th	OLS
	Percentile	Percentile	Percentile	Percentile	Percentile	
Total PL of first child in months	-0.003 (0.002)	-0.009 (0.002)	-0.007 (0.001)	-0.009 (0.002)	-0.016 (0.001)	-0.012 (0.002)
Share 1 st Half Year	-0.002 (0.022)	0.029 (0.026)	0.019 (0.020)	-0.011 (0.028)	0.018 (0.064)	0.002 (0.019)
Family Size	0.008 (0.008)	0.017 (0.007)	0.031 (0.007)	0.032 (0.008)	0.034 (0.013)	0.028 (0.006)
Age	0.054 (0.007)	0.060 (0.011)	0.071 (0.012)	0.065 (0.012)	0.098 (0.014)	0.089 (0.010)
Age ²	-0.001 (0.000)	-0.001 (0.000)	-0.001 (0.000)	-0.001 (0.000)	-0.001 (0.000)	-0.001 (0.000)
Private	0.096 (0.013)	0.141 (0.007)	0.214 (0.011)	0.266 (0.014)	0.329 (0.028)	0.234 (0.010)
Constant	8.527 (0.226)	8.230 (0.323)	8.206 (0.346)	8.298 (0.243)	7.661 (0.395)	7.688 (0.243)
Adjusted R ²						0.4268
Pseudo R ²	0.2349	0.2546	0.2916	0.3100	0.3047	

All estimations include controls for seven education levels (see explanation in Table A 2) and 26 occupation categories based on a two-digit classification. Share 1st Half Year is the share of total parental leave days that are taken during the first half-year since childbirth.

Publication series published by IFAU – latest issues

Rapporter/Reports

- 2014:20** Sibbmark Kristina "Arbetsmarknadspolitisk översikt 2013"
- 2014:21** Nordlund Madelene and Mattias Strandh "Selektivitet och jobbchanser bland arbetslösa"
- 2014:22** Angelov Nikolay and Marcus Eliason "Vilka arbetssökande kodas som funktionshindrade av Arbetsförmedlingen?"
- 2014:23** Angelov Nikolay and Marcus Eliason "Friställd och funktionsnedsatt"
- 2014:24** Angelov Nikolay and Marcus Eliason "Lönebidrag och skyddat arbete: en utvärdering av särskilda insatser för sökande med funktionshinder"
- 2014:25** Holmlund Helena, Josefin Häggblom, Erica Lindahl, Sara Martinson, Anna Sjögren, Ulrika Vikman and Björn Öckert "Decentralisering, skolval och friskolor: resultat och likvärdighet i svensk skola"
- 2014:26** Lindgren Karl-Oskar, Sven Oskarsson and Christopher Dawes "Kan politisk ojämlikhet utbildas bort?"
- 2015:1** Albrecht James, Peter Skogman Thoursie and Susan Vroman "Glastaket och föräldraförsäringen i Sverige"

Working papers

- 2014:20** Johansson Per, Lisa Laun and Mårten Palme "Pathways to retirement and the role of financial incentives in Sweden"
- 2014:21** Andersson Elvira, Petter Lundborg and Johan Vikström "Income receipt and mortality – evidence from Swedish public sector employees"
- 2014:22** Felfe Christina and Rafael Lalive "Does early child care help or hurt children's development?"
- 2014:23** Nordlund Madelene and Mattias Strandh "The relation between economic and non-economic incentives to work and employment chances among the unemployed"
- 2014:24** Mellander Erik "Transparency of human resource policy"
- 2014:25** Angelov Nikolay and Marcus Eliason "Factors associated with occupational disability classification"
- 2014:26** Angelov Nikolay and Marcus Eliason "The differential earnings and income effects of involuntary job loss on workers with disabilities"
- 2014:27** Angelov Nikolay and Marcus Eliason "The effects of targeted labour market programs for job seekers with occupational disabilities"
- 2014:28** Carlsson Mikael, Julián Messina and Oskar Nordström Skans "Firm-level shocks and labor adjustments"
- 2014:29** Lindgren Karl-Oskar, Sven Oskarsson and Christopher T. Dawes "Can political inequalities be educated away? Evidence from a Swedish school reform"
- 2015:1** Avdic Daniel "A matter of life and death? Hospital distance and quality of care: evidence from emergency hospital closures and myocardial infarctions"
- 2015:2** Eliason Marcus "Alcohol-related morbidity and mortality following involuntary job loss"
- 2015:3** Pingel Ronnie and Ingeborg Waernbaum "Correlation and efficiency of propensity score-based estimators for average causal effects"
- 2015:4** Albrecht James, Peter Skogman Thoursie and Susan Vroman "Parental leave and the glass ceiling in Sweden"

Dissertation series

- 2014:1** Avdic Daniel "Microeconometric analyses of individual behaviour in public welfare systems"

- 2014:2** Karimi Arizo “Impacts of policies, peers and parenthood on labor market outcomes”
- 2014:3** Eliasson Tove “Empirical essays on wage setting and immigrant labor market opportunities”
- 2014:4** Nilsson Martin “Essays on health shocks and social insurance”
- 2014:5** Pingel Ronnie “Some aspects of propensity score-based estimators for causal inference”
- 2014:6** Karbownik Krzysztof “Essays in education and family economics”