

Anderson, Kathryn; Kroeger, Antje

**Research Report**

## Remittances and children's capabilities: New evidence form Kyrgyzstan, 2005 - 2008

CASE Network Studies & Analyses, No. 430

**Provided in Cooperation with:**

Center for Social and Economic Research (CASE), Warsaw

*Suggested Citation:* Anderson, Kathryn; Kroeger, Antje (2011) : Remittances and children's capabilities: New evidence form Kyrgyzstan, 2005 - 2008, CASE Network Studies & Analyses, No. 430, ISBN 978-83-7178-551-1, Center for Social and Economic Research (CASE), Warsaw

This Version is available at:

<https://hdl.handle.net/10419/128245>

**Standard-Nutzungsbedingungen:**

Die Dokumente auf EconStor dürfen zu eigenen wissenschaftlichen Zwecken und zum Privatgebrauch gespeichert und kopiert werden.

Sie dürfen die Dokumente nicht für öffentliche oder kommerzielle Zwecke vervielfältigen, öffentlich ausstellen, öffentlich zugänglich machen, vertreiben oder anderweitig nutzen.

Sofern die Verfasser die Dokumente unter Open-Content-Lizenzen (insbesondere CC-Lizenzen) zur Verfügung gestellt haben sollten, gelten abweichend von diesen Nutzungsbedingungen die in der dort genannten Lizenz gewährten Nutzungsrechte.

**Terms of use:**

*Documents in EconStor may be saved and copied for your personal and scholarly purposes.*

*You are not to copy documents for public or commercial purposes, to exhibit the documents publicly, to make them publicly available on the internet, or to distribute or otherwise use the documents in public.*

*If the documents have been made available under an Open Content Licence (especially Creative Commons Licences), you may exercise further usage rights as specified in the indicated licence.*

# CASE Network Studies & Analyses

## Remittances and Children's Capabilities: New Evidence from Kyrgyzstan, 2005-2008

Antje Kroeger  
Kathryn Anderson

No. 430/2011

---



Warsaw Bishkek Kyiv Tbilisi Chisinau Minsk

Materials published here have a working paper character. They can be subject to further publication. The views and opinions expressed here reflect the author(s) point of view and not necessarily those of CASE Network.

This paper has been published thanks to the financial support of PEKAO S.A.

Keywords: **Children's education and health, Remittances, Kyrgyzstan, Central Asia**

JEL-classification: **C23, F22, I21, O53, R23**

© CASE – Center for Social and Economic Research, Warsaw, 2011

Graphic Design: Agnieszka Natalia Bury

EAN 9788371785511

Publisher:

CASE-Center for Social and Economic Research on behalf of CASE Network

12 Sienkiewicza, 00-010 Warsaw, Poland

tel.: (48 22) 622 66 27, 828 61 33, fax: (48 22) 828 60 69

e-mail: [case@case-research.eu](mailto:case@case-research.eu)

<http://www.case-research.eu>



## **Contents**

<b>Abstract .....</b>	<b>4</b>
<b>1. Introduction .....</b>	<b>5</b>
<b>2. Migration and Remittances in Kyrgyzstan.....</b>	<b>7</b>
<b>3. Education and health.....</b>	<b>8</b>
<b>4. Hypotheses and Existing Literature .....</b>	<b>10</b>
<b>5. Data and Descriptive Statistics .....</b>	<b>12</b>
<b>5.1 Differences between transfer receiving and non- receiving households and children.....</b>	<b>14</b>
<b>6. Empirical Strategy.....</b>	<b>16</b>
<b>6.1 Panel Data Analysis .....</b>	<b>17</b>
<b>7. Discussion of Results .....</b>	<b>18</b>
<b>7.1 Education Results.....</b>	<b>19</b>
<b>7.2 Health Results .....</b>	<b>20</b>
<b>8. Conclusion.....</b>	<b>22</b>
<b>References .....</b>	<b>24</b>
<b>Appendix .....</b>	<b>31</b>



**Kathryn Anderson** is a Professor of Economics at Vanderbilt University, Nashville, Tennessee, USA and CASE Fellow. She is also a senior research fellow at the University of Central Asia, Bishkek, Kyrgyz Republic and a research fellow at IZA, Bonn, Germany. She received her Ph.D. in economics with a minor in statistics at North Carolina State University and completed a post-doctoral fellowship at Yale University. She was a Fulbright senior research scholar at the University of Central Asia in 2009. Her areas of research include labor, health, and education in the Central Asia Republics and in the United States. Her most recent research has focused on the impact of migration and remittances on development in Central Asia.

**Antje Kroeger** joined the Graduate Center of the German Institute for Economic Research (DIW) in September 2009. She holds advanced degrees from the Eberhard-Karls-University Tuebingen (Diploma in Economics and Bachelor of Arts in Japanese Studies). During her studies she focused on International Economics and Microeconomic Theory. During the Graduate Center program she worked for the German Institute for International and Security Affairs in Berlin and the Research Department of the World Bank in Washington, DC. In May 2010, she joined the Department for Development and Security at DIW, where she is working on the project team "Economic transformation, household behaviour and economic well-being in Kyrgyzstan." Her thesis is entitled "Migration, Poverty and Well-being in Asia."



## Abstract<sup>1</sup>

The Kyrgyz Republic is one of the largest recipients of international remittances in the world; from a Balance of Payments measure of remittances, it ranked tenth in the world in 2008 in the ratio of remittances to GDP, a rapid increase from 30th place in 2004. Remittances can be used to maintain the household’s standard of living by providing income to families with unemployed and underemployed adult members. Remittances can also be used to promote investment not only in businesses and communities but also in people. In this paper, we examine the role that remittances have played in the Kyrgyz Republic in promoting investments in children. Based on the capabilities approach to well-being initiated by Sen (2010), we look at the impact of remittances and domestic transfer payments primarily from internal migration on children’s education and health. Our outcomes include enrollment in school and preschool, expenditures, stunting and wasting of preschool children, and health habits of older children. We use unique panel data from the Kyrgyz Republic for 2005-2008 and thus control for some of the biases inherent in cross-sectional studies of remittances and family outcomes. We find that overall remittances and domestic transfers have not promoted investments in the human capital of children. Specifically, preschool enrollments were higher in the urban north but secondary school enrollments were lower in other regions in remittance receiving households; expenditures were also negatively affected in the south and the mountain areas. These negative enrollment results were larger for girls than for boys. We also found evidence of stunting and wasting among young children and worse health habits among boys in remittance or transfer receiving households. In the long run, Kyrgyzstan needs human capital development for growth; our results suggest that remittances are not providing the boost needed in human capital to promote development in the future.

---

<sup>1</sup> The authors thank the participants of the 3rd Migration Topic Week and the 8th Annual Migration Meeting in Washington, DC, 2011 and Kati Schindler for very helpful comments on an earlier version of this paper. We also thank the National Statistical Committee (Bishkek, Kyrgyzstan) for giving us access to important datasets.

## 1. Introduction

For centuries, Central Asia was a region of significant and frequent household mobility. The Kyrgyz and Kazakh ethnic groups in particular moved voluntarily and with regularity to trade along the Silk Road or to find new and better pasture lands for their livestock. However, during the period of Soviet occupation of the region, voluntary migration was disrupted; ethnic groups were moved involuntarily often with large property incentives, and pastoral mobility was disrupted. Russians, Ukrainians, Koreans, and Volga Germans were settled in the region of the Kyrgyz Republic. Although the titular ethnicity of each new country retained the majority, the policies of the Soviet Union promoted mixing of groups and mobility was allowed with permission of the Central government (Anderson and Mirkasimov 2010)<sup>2</sup>.

Following the dissolution of the Soviet Union and independence for the five republics of Central Asia, migration was no longer controlled by the central government in Moscow. Korobkov (2007) defined five migration periods between 1991 and 2005. During the first period, many non-native ethnic groups moved back to their homelands. Kyrgyzstan, for example, lost almost all of their German and Korean residents and most of their Russian citizens. The percentage of Russians in the country fell from 24 percent in 1993 to 19 percent in 1998 (World Bank, Living Standards Measurement data from 1993-1998). By 2005, the percentage of non-Kyrgyz ethnic groups in the country was so low that the Kyrgyzstan Integrated Household Survey (KIHS) no longer reported ethnicity in their publicly available survey data to avoid confidentiality problems. After 2005, economic performance in the countries of Central Asia, with the exception of oil-rich Kazakhstan, was in decline, and in the labor market wages were relatively low and unemployment was high in comparison to the labor markets in Russia and Kazakhstan (National Statistical Committee of the Kyrgyz Republic 2011). The high demand for resources in these countries encouraged a boom in construction and services that could not be filled only with the labor of native Russian workers. So migration in Central Asia entered a new phase which was almost entirely motivated by economics (Davis, Carletto and Winters 2010). Many households came to depend on remittances from migrants in Russia, Kazakhstan, the Middle East and other countries. The increase in remittance flows motivated studies in 2007, sponsored by the Asian Development Bank, of how remittances were used in Tajikistan and the Kyrgyz Republic (Brown, Olimova and Boboev 2008; Ibragimova et al. 2008).

---

<sup>2</sup> Much of the information on historical mobility was obtained from "The History of Krygzystan" class at the American University of Central Asia, Bishkek, Kyrgyz Republic, in 2009. The instructor of the course was Professor Cholpon Turdalieva, Department of Anthropology.

In both studies, poverty was significantly reduced by international transfers; in Tajikistan there was also evidence of effects on education and capital investment.

Following the global economic downturn in 2008, changes in migration occurred. Many migrants returned to Kyrgyzstan and other Central Asian countries (El Pakir 2009), but beginning in 2008 there is descriptive evidence that emigration increased or stabilized, but the size of international transfers significantly fell (Marat 2009). These changes have affected how households allocate their money towards maintenance of their standard of living, investment, and community support.

In this paper, we use data unique to Central Asia to evaluate how these changes in recent migration have affected human capital investment in children. Education and health of children are two important indicators of future capabilities and are now included regularly in multidimensional poverty measurements (Alkire and Santos 2010). The data were provided by the National Statistical Committee of the Kyrgyz Republic and form a panel survey from 2005-2008. While we are unable to identify migrants from this survey because all data on labor market activities were excluded, we can identify households that report receiving international remittances or domestic transfers largely from internal migration or temporary work in Kyrgyzstan during the last year. In most cases, households receiving these transfers have at least one migrant member. Using panel data analysis, we examine the impact of these international and domestic transfers on the education and health of children at home. Education measures include enrollment in school, preschool, and secondary school and specific expenditures on education. Health measures include height (stunting) and weight (wasting) of young children and health habits of older children. We estimate our models for the nation as a whole and separately for three distinct regions of the country. We also estimate separate models for boys and girls. We include fixed effects for year of the data to measure whether changes in the global economy affected transfers by 2008.

Many different theories suggest that migration, remittances, and transfers can affect investments. In some models (Lu and Treiman 2007), migration and remittances promote human capital development; this occurs largely through an income effect. In other models (Booth and Tamura 2009), migration and remittances can discourage human capital investment. This usually results from the loss of household labor to migration and the need for children to pick up the slack at home and in family businesses and farming. In addition, differences in expectations for girls and boys may encourage remittance and transfer receiving households to focus their attention on one gender over the other. Overall, the predictions from the theoretical models are ambiguous. From our empirical results, we find more negative effects of transfers on human capital investment than positive effects, and girls are more likely to be affected, on average, than boys. Specifically, remittances have a negative effect on enrollment in secondary school, especially among girls. Preschool enrollment is encouraged, however, but only in the wealthier urban northern region. On health outcomes, transfers affect both



height and weight of young children; we find on average that children in transfer-receiving households are smaller and more likely to be thin or severely thin. This is true especially for girls and in the southern and mountain regions. Finally, we find that boys in transfer receiving households smoke more than other children, but these effects are very small.

In the Kyrgyz Republic, remittances and domestic transfers have not been used to promote human capital development while there is some evidence from the same surveys (Ukueva and Becker 2010) that investment in durables is more likely with remittances. While physical capital investment and durable consumption are important to well-being, human capital investment is critical for long run development. Our results suggest that the large outmigration from the Kyrgyz Republic is not promoting this important component of development.

The remainder of this paper is organized as follows. Sections 2 and 3 provide background information on migration and remittances and education and health in Kyrgyzstan. Section 4 summarizes the existing literature on the impact of migration and remittances on children’s capability measures. Section 5 describes the data and section 6 our empirical strategy. In section 7, we discuss the empirical findings and section 8 concludes.

## **2. Migration and Remittances in Kyrgyzstan**

The population in Kyrgyzstan is poor, young, and growing in number; 30 percent of Kyrgyz are 14 years old or younger (CIA 2010), and 60 percent of the population is under age 30 (National Statistical Committee of the Kyrgyz Republic 2009). Officially, the unemployment rate was 8.3 percent in 2006 (World Bank 2007), but experts estimate a much higher rate of unreported unemployment (Open Society Institute (OSI) 2002). The Kyrgyz Republic is one of the poorest Soviet Republics, and during the early 1990s it suffered from a large decline in average income and increasing income inequality. Until recently it was one of the more rapidly reforming former Soviet Republics; it was among the first to issue a national currency in 1993, and in 1998 became the first to join the World Trade Organization (Pomfret 2006). However, political upheaval in 2010 resulted in the overthrow of a very corrupt government, and subsequent ethnic clashes particularly in the southern region of the country have had a significant negative impact on growth and prospects for economic development in the near future (International Crisis Group 2010). The global economic downturn has increased the uncertainty in the Kyrgyz economy.

In the transitional economy of the Kyrgyz Republic, labor migration helps absorb and ease social discontent, especially from the south of the country, from where 80

percent of labor migrants originate. To some extent migration makes up for failed government reforms and provides alternative means for migrant families to achieve economic stability.<sup>3</sup>

The Asian Development Bank supported the collection of survey data in 2007 to assess the impact of migration and remittances on poverty in the Kyrgyz Republic. Their report found that about 70 percent of all migrants are male, and the majority (80 percent) migrates to Russia. The second most common destination is Kazakhstan. Two main sectors of employment for Kyrgyz migrants are construction (45 percent) and trade (30 percent) (Ibragimova et al. 2008). The short term nature of emigration is a distinct feature among post-Soviet sending countries (Ivakhniouk 2004).

The ADB report (Ibragimova et al. 2008) estimated that about 80 percent of Kyrgyz migrants send remittances back to Kyrgyzstan (Ibragimova et al. 2008). According to the World Bank (2011), Kyrgyz migrants remitted nearly US\$ 313 million to Kyrgyzstan in 2005. Two years later the amount of remittances totaled about US\$ 705 million<sup>4</sup>. These numbers indicate that labor migration and remittances are of highest importance for many households in Kyrgyzstan.<sup>5</sup>

### 3. Education and health

The Kyrgyz education system is in a catastrophic situation (Rahmetov, 2009). While education played a very important role in Soviet times, the prestige of education declined during transition and was replaced by an income-generating imperative that attached less value to education in the former planned economies of Central Asia (Mertaugh 2004). Corruption pervades schools and higher education institutions (Heyneman 2007) while the main problems in the Kyrgyz education system are the shortage of qualified teachers and very low teachers' salaries (Anderson, Pomfret and Usseinova 2004; Mertaugh 2004; Rahmetov

---

<sup>3</sup> Accurate aggregate migration statistics are not available from the National Statistical Committee, but their data, reported in the TransMONEE 2011 dataset, do show the recent upward trends in emigration from the Kyrgyz Republic and in emigration to Russia and Kazakhstan (Figure 1).

<sup>4</sup> For data see: <http://data.worldbank.org/indicator/BX.TRF.PWKR.CD>

<sup>5</sup> See Figure 1 for the trend in remittances in Central Asia.

2009)<sup>6</sup> . High inflation and reduced real government expenditure led to increased educational costs to families. Overall, government expenditure on education as a percentage of GDP declined from 7.5 percent in 1990 to 3.9 percent in 2003 and 4.9 percent in 2007 (UNICEF 2011). The consequence of increased schooling costs, the decline in early childhood education, and teacher shortages are lower enrollment rates among school-age children (Anderson, Pomfret and Usseinova 2004). In comparison to other former Soviet Union states, the Central Asian republics have some of the lowest student enrollment rates in secondary school (OSI 2002).

Less is known about health outcomes of children in the Kyrgyz Republic. The World Food Programme (2008) concluded in 2008 that one-fifth of Kyrgyzstan’s households were at high nutritional and health risk due to poor food consumption. UNICEF (2010) reported chronic micro nutrient deficiency in Kyrgyzstan in 2006 when experts found that 13 percent of children under five were growing more slowly than normal. A study by Buckley (2003) showed that 11 percent of children under age three were far below the recommended weight for their age. Further, IRIN (2010) warned that in Kyrgyzstan, malnutrition is easy to overlook since children do not have protruding ribs and distended bellies. However, healthy food does not only mean sufficient food but also the right amount of vitamins and minerals. Overall, government expenditure on health as a percentage of GDP declined from four percent in 1995 to 2.6 percent in 2007 (UNICEF 2011).

---

<sup>6</sup> The 2006 PISA study explicitly mentions the shortage of qualified teachers in Kyrgyzstan and attributes the low test results achieved in science to the lack of qualified science teachers: In Kyrgyzstan, 62 percent of all schools report vacancies in science, and almost all of these schools cope with this shortage by filling their vacancies with teachers from different fields or by assigning unqualified teachers to classes (Steiner-Khami 2009). In the 2006 and 2009 PISA ranking, Kyrgyzstan placed last in all three categories out of 57 participating countries (OECD 2010).

## 4. Hypotheses and Existing Literature

Because of the development potential of financial inflows, a growing literature has examined the impact of remittances on poor countries. Research has focused on the impact of remittances on household consumption, business development and entrepreneurship, and the quality of housing. There is a large literature on the impact of remittances and migration on employment, health, and education in receiving and sending countries. First, we review recent studies that have linked migration and education by estimating the impact of remittances or migration on children's schooling. We then review the studies that link migration or remittances to children's health<sup>7</sup>. We restrict our review of the empirical literature on education to studies on Central Asian countries and evidence from panel data analysis from other countries. To our knowledge, only two studies analyzed the impact of migration and remittances on children's education in Central Asia: Brown, Olimova and Boboev (2008) and Anderson and Mirkasimov (2010), both using data from Tajikistan.

Brown, Olimova and Boboev (2008) evaluated data from the Asian Development Bank's Remittance Survey of 2007 and concluded that most Tajik households did not invest in education if they did not know whether education would yield a positive return to the household. The experience of labor migration from Tajikistan showed that there is little demand for highly skilled migrants in recipient countries. The authors showed that school absenteeism increased when remittances were received.

Anderson and Mirkasimov (2010) evaluated data from the 2007 Tajikistan Living Standards Measurement Survey and compared educational investments of children in migrant and non-migrant households. Their study showed that older children were more likely to complete secondary school and to enroll in higher education if migrants were in the household. However, younger children were less likely to enroll in secondary school and more likely to be absent from school.

To our knowledge, there is only one empirical study on the impact of remittances in Kyrgyzstan. Ukueva and Becker (2010) studied the effect of remittances on the purchase of durable goods using the Kyrgyzstan Integrated Household Survey (KIHS) data. They found a positive impact of remittances on purchases of durable goods.

---

<sup>7</sup> See Edwards and Ureta (2003), Lopez-Cordoba (2005), Yang (2008), Rapoport and Docquier (2006) for surveys of the remittances literature.

Most studies of the impact of remittances in poor countries used cross-sectional data. (See literature reviews referenced in footnote 4.) There are only a few exceptions such as Booth and Tamura (2009), Miranda (2007), Lu and Treiman (2007) and Chen (2006). Booth and Tamura (2009) examined the impact of parents' absenteeism on school attendance using first-differenced regressions with a two-year-panel of Vietnamese households. They found that more boys dropped out of school to contribute to the household's income if one parent was absent for longer than a month. Miranda (2007) found that family and community migration experience influenced the probability of completing high school in Mexico by using a dynamic probit model (1982-2005). His findings indicated that an extra migrant in the family decreased the likelihood of high school graduation significantly. Lu and Treiman (2007) showed for blacks in South Africa that remittances substantially increased the likelihood that children were in school. However, Chen (2008) found that girls were more likely to engage in chores if the father was absent in China.

The literature on the impact of migration and remittances on health outcomes in the CIS region is also thin. The ADB remittance studies in Tajikistan (Brown, Olimova and Boboev 2008) and Kyrgyzstan (Ibragimova et al. 2008) did not link remittances to health status but found important positive effects of remittances on poverty, which can contribute to health outcomes. Walewski et al. (2009) found positive correlations between remittances and expenditures on health in migrant households in Moldova. Mansuri (2006) examined height and weight of children in migrant households in Pakistan and found that both increase for girls relative to non-migrant households. Several studies from Africa and Latin America reach contradictory conclusions. Two studies on Kenya conclude that children are sicker and mortality is higher when parents are absent (Konseiga, 2008; Konseiga, Zulu and Ye, 2006). However, Acosta, Fajnzylber and Lopez (2007) found a positive impact of remittances on weight and vaccinations in Guatemala and Nicaragua and an increase in hospital births. Hildebrandt and McKenzie (2005) also found an increase in hospital births and associated increases in birth weight, survival, and breastfeeding when the Mexican household had at least one migrant residing abroad. In contrast, Kanaiaupuni and Donato (1999) found lower survival with frequent trips abroad from Mexico but higher survival with frequent trips to the United States. Little is known about the impact of migration on health in Central Asia from quantitative analysis.

Overall, the literature on the impact of remittances and migration on children's human capital - education and health - is inconclusive, and there is little information on the relationship between remittances and these important outcomes in Central Asia.

## 5. Data and Descriptive Statistics

In this paper, we use four waves of the Kyrgyz Integrated Household Survey (KIHS) and create a panel dataset of children. This survey covered around 5,000 households each year since its inception in 2003. The survey includes detailed information on demographic characteristics, consumption and income of the households and education and health of individual household members. The KIHS survey data for 2003-2008 were provided to us by the National Statistical Committee (NSC)<sup>8</sup>. Labor force data are excluded from these surveys and placed in separate Labor Force Surveys; the NSC would not release the labor force data to us. Therefore, we have no information on which persons are working abroad or in other areas of the Kyrgyz Republic, and the only way to identify if the household is a migrant household is through remittances' data.<sup>9</sup> Information on the receipt of remittances by the household is only available from 2005-2008. Hence, we focus our analysis on the years 2005 through 2008.<sup>10</sup> After adjusting for missing values, we are left with 4,995 (6,285) households (children aged 6-18) for 2008, 4,803 (6,306) for 2007, 4,863 (6,564) for 2006 and 4,771 (6,449) for 2005. We use all of the household data for each year, and our working data set is an unbalanced panel.

The income section of the KIHS contains information on the remittances received by households. The specific question is: What aid did your family receive from your relatives and/or acquaintances? (The value of in-kind aid is also evaluated and added to money transfers.) For 2005-2008 the survey breaks down transfers into transfers received from outside and inside the territory of Kyrgyzstan. We

---

<sup>8</sup> The KIHS survey was conducted by the National Statistical Committee (NSC) in Bishkek as a rotating panel survey (with about a 20 percent replacement rate each year), but no panel identification code for individuals within each household was created. We merged the children in our working sample based on the following criteria: household code, gender, day, month and year of birth. We were unable to identify which household members (adults and children) were migrants. The sampling procedure for the KIHS is multistage random sampling, and the survey is representative at the national, rural/urban as well as the regional (oblast) levels.

<sup>9</sup> In the household roster, there is a question about whether a household member has been absent permanently or temporarily. However, the percentage of households reporting to have an absent household member is negligible.

<sup>10</sup> We delete those observations for which there is missing information in the household roster. Over all four years, we lose 3,372 individual observations and are left with 86,034 over all four years of observations.

classify these data as international remittances (external) and domestic transfers (internal) and look at their joint and differential impacts on households. We use the term transfers to refer to either remittances or domestic transfers.

Unfortunately, the survey does not provide any other information on the sources or the purposes of the transfers. We do not have information on migrant characteristics in the dataset and can only use the information on whether the household received any remittances and domestic transfers and the amount received for our analysis<sup>11</sup>. However, we assume that the majority of families receives transfers from a household member and not from friends or distant acquaintances. The ADB Remittances Study (Ibragimova et al. 2008) finds that approximately 83 percent of international remittances is received from a migrant family member. A more recent study of return migrants to Kyrgyzstan in 2008 shows that 87 percent of migrants sent remittances back home (El Pakir 2009). The "Life in Kyrgyzstan Survey" 2010<sup>12</sup> shows that almost 90 percent of remittances is received from a migrant family member. Hence, we assume that transfer receiving families have at least one migrant household member abroad or elsewhere in Kyrgyzstan who is sending support back home.

Tables 1-3 define the variables included in our study and report summary statistics on the amount of remittances, domestic transfers over the years 2005- 2008 by region. The total number and share of remittances receiving households increased over time. In 2005 only 2.41 percent of households reported the receipt of remittances, but the share of receiving households increased more than threefold by 2008 to 7.93 percent. The share of households receiving domestic transfers was much higher at approximately 40 percent. While more families received remittances in 2008, the average amount of remittances decreased compared to 2007. This is consistent with the recent literature on remittances and migration in Central Asia (Marat 2009; Ivakhnyuk 2009). Marat (2009) concluded that the primary reason for the increase in migration but the decrease in average remittances in 2008 was the global financial crisis which significantly decreased employment in Central Asia relative to Russia, encouraged emigration, but reduced wages paid and the probability of employment in construction and

---

<sup>11</sup> We know from other surveys as explained in section three that the majority of Kyrgyz migrants is male and goes to Russia in search of better employment.

<sup>12</sup> The German Institute for Economic Research (DIW) is collecting panel data for Kyrgyzstan beginning in 2010 funded by the Volkswagen Foundation.

services abroad<sup>13</sup>. A similar pattern is true for domestic transfers over time.

Household characteristics vary by the region of residence. We create three regional variables: south Kyrgyzstan (Osh, Djalalabad, and Batken oblasts), north Kyrgyzstan (capital Bishkek and Chui oblast) and mountainous regions (Naryn, Talas and Issyk-kul oblasts). The map in Figure 2 illustrates the location of these regions. Most remittance receiving families reside in southern Kyrgyzstan where the unemployment and wage situation is worse than in the north or mountain regions of the country (Figure 3). Higher unemployment and lower wages encourage households in the south to send family members abroad while households in mountainous regions are more likely to send family members to the north of the country for work. From summary statistics for households in Table 4, we find that households in southern and mountainous areas have lower income and housing assets compared to northern families. Further, they have more dependents - children and elderly- residing in the household. In the lower part of Table 4, we show that educational attainment is lower among southern residents; education may play a lesser role in transfer decisions in the south than in the urban north.

Differences across regions are also high among children (Table 5). They are less likely to be enrolled in secondary or preschool when living in the south or the mountainous part of the country. Children also do less exercise and are more likely to be malnourished in these areas.<sup>14</sup> Because of the discernible differences among the three regions in these summary statistics, we estimate our models separately for the regions and for the nation as a whole.

### **5.1 Differences between transfer receiving and non- receiving households and children**

We first describe the differences between transfer receiving households (either international or domestic) and other households. Then, we describe differences

---

<sup>13</sup> We compare remittance and transfer rates in the KIHS to rates reported in household surveys for Kyrgyzstan for 2006, 2007 and 2010. On international remittances, the KIHS remittance rate is low compared to other studies. The reported transfer rate in the KIHS is higher than in the EBRD 2006.

<sup>14</sup> Good Nutrition is a problem in Central Asia. This is not only identified by thinness or lack of food but also by consumption of a high fat /carbohydrate based diet (Zanca, 2002). While we cannot measure individual consumption of nutrients in our data, it is a problem that needs to be examined in the future.



between children in receiving and non-receiving households.

Table 6 shows that households receiving transfers are significantly different from non-receiving households on many socioeconomic characteristics. The share of females in the household is higher in transfer receiving families. Migration is largely male-dominated, and frequently wives or other female relatives of absent male household members live together after migration occurs (Anderson and Mirkasimov 2010). More elderly people also reside in transfer receiving families which can indicate that families combine with older relatives when some household members migrate. Transfers are more likely to flow to vulnerable households with lower assets and household income. These findings are in line with the recent work by Ukueva and Becker (2010) on the Kyrgyz Republic using the KIHS data.

Total educational expenditures (Table 6) are significantly lower in transfer receiving households than in other households. Specifically, transfer receiving families spend more money on other unspecified expenditures and school repairs and renovations and they spend less on tuition fees than other households.

In Table 7, we examine differences in our children's outcome variables. The health outcomes are not significantly different between children in non-receiving and receiving families. For the set of education outcomes, we find that the overall enrollment rate of children aged 6 to 18 is not significantly different in the transfer receiving and not receiving groups. Because basic schooling is compulsory in Kyrgyzstan, it is not surprising that the enrollment rates for all children do not differ between receiving and non-receiving families on average.

After basic school, children and their families decide if it is preferable to continue in school or to focus on market or household work. As our descriptive statistics show, the enrollment rate for secondary school age children is significantly lower in transfer receiving families. Further, preschool enrollment remains a problem; fewer children from transfer receiving families are enrolled in preschool compared to children in other households. Because preschools today are more likely to be found in urban than rural areas, these results are particularly pronounced in cities<sup>15</sup>.

---

<sup>15</sup> Preprimary enrollment fell from 34 percent in 1991 to 17 percent in 2008 (UNESCO 2011). From the 1998 Living Standards Measurement Survey, we find that among all children less than age 18, 77 percent in urban areas and 33 percent in rural areas had access to preschool in their community.

## **6. Empirical Strategy**

Two econometric issues arise when estimating the impact of remittances and domestic transfers on children's educational outcomes. First, receiving and non-receiving households are likely to differ on observable (described above) and unobservable characteristics. The sample of transfer receiving households is not randomly drawn from the population of the Kyrgyz Republic. Second, the explanatory remittance and domestic transfer variables may be correlated with the error term in the schooling and health equations i.e. certain household characteristics (motivation, culture, access) might drive both the receipt of transfers and the schooling and health decisions. Hence we face the twin problems of self-selection into migration and endogeneity of remittances and domestic transfers.

To mitigate these problems we use panel data analysis. In our case, we exploit four waves of the KIHS from 2005 through 2008. With repeated observations for the same individuals over several years, it is possible to control for individual, unobserved fixed-effects that are constant over time and may be correlated with both the receipt of transfers and the human capital outcomes of interest. Panel data analysis reduces omitted variable bias created by time-invariant unobservables. In addition, if selection is at least partially determined by the fixed component of the error term over time, then panel data analysis moderates the influence of sample selection bias on our results.

We include separate measures for remittances and domestic transfers in our models. This dichotomy tests whether households create mental accounts and use transfers from different sources for different purposes. In the mountain region migration to other countries is rare; we expect domestic transfers to exert more influence on behavior in this region. In the north, almost all of the migration is to other countries so we expect remittances to dominate domestic transfers on education and health choices in the north. In the south, there is a mixture of mobility patterns. Often migrants first move to the north of the country then, after saving enough to finance their travel, they move abroad. We expect both remittances and domestic transfers to matter in this region, and the effects of these two forms of transfers may be different.

## 6.1 Panel Data Analysis

We use individual fixed effects estimation to exploit the fact that panel data allow us to control for time-invariant individual heterogeneity which may bias cross sectional results. We run regressions of the form:

$$y_{it} = \beta_0 + X_{it}\beta + \eta_i + u_{it}$$

where  $y_{it}$  is the outcome variable of individual  $i$  at time  $t$ ,  $X_{it}$  is a vector of individual and household characteristics,  $\eta_i$  captures unobserved, time-invariant individual-level heterogeneity and  $u_{it}$  is an idiosyncratic error term. Standard errors are robust to heteroskedasticity (Wooldridge 2002).

We examine several educational and health outcomes of children. The dependent education variables are indicator variables for school enrollment at different levels (overall for ages 6-18, secondary school for ages 14-18 and preschool for ages 3-6), total educational expenditures per child and type of expenditure<sup>16</sup>. The health outcomes differ by age of the child. For children aged 5 and younger, we look at height for age (stunting), weight for age, and indicators that the child is thin or severely thin based on weight for age (wasting). For the older children (ages 7-18), we look at their health habits: whether they exercise or smoke<sup>17</sup>. For each variable, we look at the effect of remittances and domestic transfers on all children, then separately on boys and girls to test for gender preferences in these decisions.

Our three independent remittance variables are dummy variables for receipt of international remittances, domestic transfers, and either or both remittances and domestic transfers<sup>18</sup>. We run two different specifications of our model for each

---

<sup>16</sup> We also estimated models of whether the child is enrolled in school but not in the age-relevant grade, but we found no impact of remittances or transfers on this variable in any of our models so we do not report the regression results in this paper.

<sup>17</sup> We also examined a subjective assessment of their health by their parents (very good, good, average, poor, very poor) and consumption of alcohol and found no effect of any of our remittance and transfer variables on these outcomes so we do not report these results.

<sup>18</sup> We experimented with variables representing the amounts of remittances and domestic transfers received relative to family income but do not report these results. The measurement error is likely to be high in the transfers reported and the level of family income which is why in most evaluations of poverty in Central Asia, expenditures are used in place of income. The preferred transfer measure is the amount of net transfers, but we have information on inflows only, not payments by the household to others. In addition, income is affected by the receipt of internal and external transfers and

outcome of interest; one model includes the dummy variable for any type of transfer, and the other model includes two dummy variables for receipt of remittances and receipt of domestic transfers.

The model specification is consistent with the panel data models of migration estimated by Booth and Tamura (2009), Lu and Treiman (2007) and Chen (2006). We control for time-varying individual and household characteristics including age and age squared of the child, household wealth<sup>19</sup>, the demographic composition of the household (number of children, elderly, and share of females in the household), the age and sex of the household head, and the highest level of completed education among adults in the household. We also include distance to the nearest bus stop to measure the isolation of the household and dummy variables for years. We estimate separate models for each outcome for the nation as a whole and by region: south (Osh oblast and city, Djalalabad and Batken oblasts), north (Chui oblast and Bishkek, the capital city), and mountain (Naryn, Talas, and Issyk-kul in the center of the country).

## 7. Discussion of Results

Our education results are presented in Tables 8-11; Table 8 contains enrollment results for all children, Table 9 for girls and Table 10 for boys. Table 11 contains the household education expenditure results; we cannot differentiate between expenditures on boys and girls because expenditures are only provided at the household level. Our health outcomes results for children aged 0-5 are presented in Tables 12 and 13 for all children and separately for girls. Table 14 contains the results on health habits for older children aged 7-18 .

---

therefore its use introduces another econometric problem into our model. The use of dummy variables is consistent with much of the literature on remittances and migration (Booth and Tamura, 2009).

<sup>19</sup> We create a simple index which is the number of the following wealth conditions present in the household: availability of hot water, availability of heating for at least four months in the winter, condition of the walls and roof of the house, and ownership of the dwelling.



## 7.1 Education Results

First, we describe the effects of receipt of remittances and domestic transfers on education enrollment. For enrollment of children aged 6-18 in any school, we find a small but negative effect of any internal or external transfer on the national level, but the result is primarily from the receipt of domestic transfers and is significant only in the mountain region. Gender matters to these small effects; the enrollment of girls is not affected by either type of transfer in any region or nationally but the enrollment of boys is affected nationally and in the mountain and northern regions. Here an interesting pattern is observed; boys are less likely to be enrolled in school in the mountain region when the household receives domestic transfers, but boys in the north are more likely to enroll in school when they receive international remittances. The north is the wealthiest region of the country; we find that remittances encourage schooling for boys here, and the effect is much larger in absolute value than in the mountain region. The probability that boys enroll in school is .1 higher in remittance receiving households than in other households. In the significantly poorer mountain area where boys are more likely to be used in the production of agricultural goods or livestock products, enrollment falls with domestic transfers, but the probability decline is relatively small at .02.

We examine the impact of remittances and domestic transfers on enrollment at different levels. For basic education which is mandatory in Kyrgyzstan, there is no impact of either form of transfer, and we do not report these results. For older children aged 14-18, transfers do affect enrollment in secondary school but now the impact is only on girls in all regions, and the effect sizes are small except in the north. In the south and mountain regions only internal transfers matter and lower the probability of secondary school enrollment by .05. In the north, domestic transfers do not affect enrollment, but receipt of remittances lowers the probability of enrollment of girls by .2.

Among the youngest children, preschool enrollment is affected by domestic transfers but only in the north when we pool boys and girls; enrollment in preschool increases by about .3 percentage points when the household receives domestic transfers in the north. The separate models for boys and girls are weaker; while preschool effects are positive for boys and girls in the north, the estimates are not precise. In the south, remittances and domestic transfers have large and opposite effects on preschool enrollment of girls, but when added together, these effects cancel each other out. One problem with the preschool model is that many households did not have access to preschool especially outside of the north and the capital Bishkek in particular. Therefore, many

households did not answer the questions related to preschool enrollment.

In Table 11 we look at per child household expenditures on education by category. The results are in soms per school aged child<sup>20</sup>. Our results are consistent with the literature (Anderson and Mirkasimov 2010; Brown, Olimova and Boboev 2008; Walewski et al. 2009). At the national level, total expenditures are 607 soms less per child in remittance receiving households, but there is no discernible difference across regions. Individual expenditures that are affected by remittances or domestic transfers are school fees, transportation costs, library fees, school repairs, tutoring, and unspecified other expenses, but there is considerable variation in the impact on these expenses across regions. In the north, tutoring and transportation costs are increased by domestic transfers; tutoring expenses are 40 soms higher and transport expenditures are 80.6 soms higher in the north in transfer households. In the south, school fees decline by 493 soms on average with either form of transfer, library expenditures fall by a small amount with remittances, school repair expenditures are slightly higher with domestic transfers, and transportation expenditures are 112 soms lower with remittances. Households also spend less on unspecified expenses when they receive remittances in the south. In the mountain region, only domestic transfers matter and seem to lower both tutoring expenses by a small amount and other expenditures by 125 soms on average. Overall, the wealthier north does use transfers to positively impact student knowledge and access to school, but the impact of transfers is more likely to be negative in the other regions.

## 7.2 Health Results

In this section, we describe the effects of remittances and domestic transfers on younger children's physical outcomes such as weight and height and analyze two indicators of malnutrition: being thin and being severely thin<sup>21</sup>. For older children aged 7-18, we examine the impact of transfers on their health habits, i.e. exercise and smoking.

---

<sup>20</sup> The exchange rates with the dollar are 37.32 in 2005, 39.85 in 2006, 34.54 in 2007, and 36.11 in 2008.

<sup>21</sup> Thin is defined as weight for age two or more standard deviations below the British average. Severe thinness is three or more standard deviations below the mean. We used the zanthro.ado program in Stata based on the analysis of wasting and stunting in the UK by Cole, Freeman, and Preece (1998).

Table 12 shows that there is a negative impact of international remittances on height (stunting) and weight (wasting) of younger children in southern areas. Children living in the south and receiving international remittances weigh on average 700 Grams less and are on average 1.85 cm smaller than children in non-remittance receiving households. As with the educational outcomes, the effect is only significant for young girls (Table 13) supporting our hypothesis that girls suffer more from the absence of a household member. We find a positive effect of transfer receipt at the national level on thinness and severe thinness. The result is only significant in the south (severe thinness) and mountainous areas (thinness) and results from the effect of domestic transfers. Gender also matters to these effects; the weight-for-age and height-for-age of girls is affected by remittance receipt for the nation as a whole, but this effect is found only in the south. Transfer receipt increases girls' likelihood to be thin by .05 and their likelihood to be severely thin by .03. However, the weight and height of boys are not affected by any form of transfers in any region. These results suggest that household resources are reallocated from girls to boys when migrants remit, a result consistent with some of the literature on intrahousehold resource allocation (Haddad, Hoddinot, and Alderman 1997).

Table 14 reports the results for health habits such as smoking and exercise for older children. Children in transfer receiving households are more likely to smoke than children in non-receiving families. This is only true for boys. If residing in a receiving household, the probability that a boy smokes is .002 higher than in other households. Interestingly, there are opposite effects of international remittances and domestic transfers on exercise. Domestic transfers have a negative effect but international remittances have a positive effect on exercise in the south. For boys, the overall effect of any transfer receipt is zero in all regions. In general, transfer receipt is associated with worse health habits among older children, but the effects are small.

Finally, we looked at the impact of the financial crisis in 2008 on education and health directly and on the impact of transfers. We were surprised to find no impact of the financial crisis on our outcomes. That could be due to the fact that the data were collected in October 2008, but the financial crisis in Russia began only in the fall of that year. We anticipate that later waves of that survey will show some impact of the downturn of the economy and the subsequent revolution in 2010.



## 8. Conclusion

Do remittances have an impact on children's education and health outcomes in Central Asia? We examine the role of domestic transfers and international remittances on household decisions to invest in children's human capital in one country of Central Asia - the Kyrgyz Republic. This country is one of the poorest former Soviet Republics and currently one of the top remittance receiving countries in the world. Remittances from abroad and at home are widely believed to improve the well-being of recipient households and household members. Using four waves of the KIHS, we estimate the effect of transfers on children's education and health outcomes and practices. To our knowledge, this is the first empirical work examining the impact of remittances on children's human capital outcomes over time in Central Asia. Our analysis shows that remittances receipt does not relieve the liquidity constraint in receiving households with respect to human capital investment in children. Migration disrupts the family structure in such a way that particularly girls suffer on educational and nutritional outcomes. Children living in the south or mountainous region of Kyrgyzstan are more affected than children in the north, partly because schools at all levels and health care are less accessible in these regions. Transfer receipt negatively affects nutritional outcomes of younger girls; they are more likely to be malnourished if they live in a transfer receiving household. Older boys have worse health habits in transfer households.

Our results can be explained by the fact that the absence of a migrant household member especially a parent can exert pressure on remaining household members, mostly children and women, to contribute more of their time to household and market work. Children may also be less supervised when a parent is absent. We cannot test with our data either of these possible explanations. Because migration in Kyrgyzstan is male-dominated, households depend more on girls for household tasks and hence, their human capital investment is often regarded as secondary to investment in sons. In a society, in which the first born son is expected to take care of elderly parents, investment in sons is even more important to families. Our results suggest that some of this investment is in the form of education.

From a policy perspective, our results suggest that children in migrant households may not be better off on average than other children; they also suggest a regional disparity in the impact of transfers. The disparity in favor of the north from





emigration may in the long run exacerbate and not mitigate economic inequality. Policies that support families with migrants can help development, growth and equality. Assistance in schools and health care centers particularly in the poor regions of the country would be appropriate to lessen the longer-term, negative effects of emigration on the education and health of children left behind.



## References

Acosta, Pablo, Pablo Fajnzylber and Humberto Lopez. 2007 "The Impact of Remittances on Poverty and Human Capital: Evidence from Latin American Household Surveys." World Bank Policy Research Working Paper No. 4247. Washington, DC: The World Bank.

Akiner, Shirin. 1997. "Between Tradition and Modernity: The Dilemma Facing Contemporary Central Asian Women." In *Post-Soviet Women: From the Baltic to Central Asia*, ed. Mary Buckley, 261-304. Cambridge, UK: Cambridge University Press.

Amuedo-Dorantes, Catalina, Annie Georges, and Susan Pozo. 2010. "Migration, Remittances, and Children's Schooling in Haiti." In, *The ANNALS of the American Academy of Political and Social Science*, issue Continental Divides: International Migration in the Americas Vol.630(1), ed. Katharine Donato, Jonathan Hiskey, Jorge Durand, and Douglas S. Massey, 224-244.

Ameuedo-Dorantes, Catalina, Annie Georges and Susan Pozo. 2008. *Migration, Remittances, and Children's Schooling in Haiti.* IZA Discussion Paper No.3657. Bonn, Germany: Institute for the Study of Labor.

Anderson, Kathryn H., Richard Pomfret and Natalia Usseinova. 2004. "Education in Central Asia During the Transition to a Market Economy". In *Challenges to Education in Central Asia*, eds. Stephen P. Heyneman and Alan J. DeYoung, 131-152. Greenwich, CT: Information Age Publishing.

Anderson, Kathryn H. and Bakhrom Mirkasimov. 2010. "Migration, Remittances, and the Human Capital of Children: A Case Study of Tajikistan." Paper presented at the Fourth Southeastern International/Development Workshop, December 3. Atlanta, GA: Federal Reserve BankAmerica's Center and Mercer University.

Batista, Cátia, Aitor Lacuesta and Pedro C. Vicente. 2007. "Brain Drain or Brain Gain? Micro Evidence from an African Success Story." IZA Discussion Paper No. 3035. Bonn, Germany: Institute for the study of Labor.

Booth, Alison and Yuji Tamura. 2009. "Impact of Paternal Temporary Absence on Children Left Behind." Australian National University Working Paper

No. 4381. Canberra, Australia: Australian National University.

Brown, Richard, Saodat Olimova, and Muhammadi Boboev. 2008. *A Study on International Migrants' Remittances in Central Asia and South Caucasus – Country Report on Remittances of International Migrants in Tajikistan*. Manila, The Philippines: Asian Development Bank.

Buckley, Cynthia. 2003. "Children at Risk: Infant and Child Health in Central Asia." William Davidson Institute Working Paper No 523. Ann Arbor, Michigan: University of Michigan.

Chen, Joyce J. 2006. "Migration and Imperfect Monitoring: Implications for Intra-household Allocation." *American Economic Review* 96(2): 227-231.

Central Intelligence Agency (CIA). 2010. *World Factbook*. [https://www.cia.gov/library/publications/the-world-factbook/Cole,T. J., J. V. Freeman, and M.A. Preece. 1998. "British 1990 Growth Reference Centiles for Weight, Height, Body Mass Index and Head Circumference."](https://www.cia.gov/library/publications/the-world-factbook/Cole,T.J.,J.V.Freeman,andM.A.Preece.1998. British1990GrowthReferenceCentilesforWeight,Height,BodyMassIndexandHeadCircumference.) *Statistics in Medicine*, 17(4): 407-429.

Davis, Benjamin, Calogero Carletto, and Paul Winters. 2010. "Migration, Transfers and Economic Decision Making Among Agricultural Households: An Introduction." *Journal of Development Studies*, 46(1): 1–13.

DeBrau, Alan and John Giles. 2006. "Migrant Opportunity and the Education of Youth in Rural China." IZA Discussion Paper No. 2326. Bonn, Germany: Institute for the Study of Labor.

Edwards, Alejandra Cox and Manuelita Ureta. 2003. "International Migration, Remittances, and Schooling: Evidence from El Salvador."

Bishkek, Kyrgyzstan: Research Report as part of Eurasia Foundation's. *Improvement of Social and Economic Conditions of the Kyrgyz Labor Migrants Returning to their home land project*. Funding provided by USAID.

El Pakir. 2009. "Assessment of the Social and Economic Situation of Kyrgyz Labor migrants Returning to Their Home Land." *Journal of Development Economics*, 72(2): 429–461.

Falkingham, Jane. 2000. "From Security to Uncertainty: the Impact of Economic

Change on Child Welfare in Central Asia.” Innocenti Working Paper No.76.

Florence, IT: Innocenti Research Centre. A version published in the following: Haddad, Lawrence J., John Hoddinot, and Harold Alderman (eds.). 1997. *Intrahousehold Resource Allocation in Developing Countries: Models, Methods, and Policy*. Baltimore, MD: John Hopkins University Press.

Heyneman, Stephen P. 2007. “Three Universities in Georgia, Kazakhstan, and Kyrgyzstan: the Struggle Against Corruption and for Social Cohesion.” *Prospects*, 35: 305-318.

Hildebrandt, Nicole and David McKenzie. 2005. “The Effects of Migration on Child Health in Mexico.” *World Bank Policy Research Working Paper No.3573*. Washington, DC: The World Bank.

Ibragimova, Shamsia et al. 2008. *Remittances and Poverty in Central Asia and South Caucasus. Country Report on International Migrants' Remittances and Poverty in the Kyrgyz Republic*. Manila, The Philippines: Asian Development Bank (ADB).

International Crisis Group. 2010. “Kyrgyzstan: A Hollow Regime Collapses.” *Policy Briefing: Asia Briefing No. 102*. Bishkek/Brussels.

IRIN Humanitarian News and Analysis. 2010. “Kyrgyzstan: The Hidden Threat of Micronutrient Deficiency.” *Service of the UN Office for the Coordination of Humanitarian Affairs*, November 17.  
<http://www.irinnews.org/Report.aspx?reportid=91119>

Ivakhniouk, Irina. 2004. “Illegal Migration: Russia.” *European Security*, 13(1-2): 35–53.

Kanaiaupuni, Shawn M. and Katharine Donato. 1999. “Migradollars and Mortality: The Effects of Migration on Infant Survival in Mexico.” *Demography* 36(3): 339-353.

Kandel, William. 2003. “The Impact of U.S. Migration on Mexican Children's Educational Attainment.” In *Education, Family and Population Dynamics*, eds. M. Cosio, R. Marcoux, M. Pilon, and A. Quesnel, 305-328. Paris, France: CICRED.

Konseiga, Adama. 2008. "Family Migration: A Vehicle of Child Morbidity in the Informal Settlements of Nairobi City, Kenya." IZA Discussion Paper No. 3567. Bonn, Germany: Institute for the Study of Labor (IZA).

Konseiga, Adama, Eliya M. Zulu, and Yazoumé Yé. 2006. "Assessing the Effect of Mother's Migration on Childhood Mortality in the Informal Settlements of Nairobi." IZA Discussion Paper No. 2295. Bonn, Germany: Institute for the Study of Labor .

Korobkov, Andrei V. 2007. "Migration Trends in Central Eurasia: Politics Versus Economics." *Communist and Post-Communist Studies*, 40(2): 169–189.

López-Cordoba, Ernesto. 2005. "Globalization, Migration, and Development: The Role of Mexican Migrant Remittances." *Economía* 6(1): 217-256.

Lu, Yao and Donald J. Treiman. 2007. "The Effect of Labor Migration and Remittances on Children's Education Among Blacks in South Africa". California Center for Population (CCPR) Research Working Paper 001-07. Los Angeles, CA: UCLA-CCPR.

Mansuri, Ghazala. 2006. "Migration, School Attainment, and Child Labor: Evidence from Rural Pakistan." World Bank Policy Research Working Paper No.3945. Washington, DC: The World Bank.

Marat, Erica. 2009. "Shrinking Remittances Increase Labor Migration from Central Asia." *Central Asia-Caucasus Analyst*, February 11: 7.

Mertaugh, Michael. 2004. "Education in Central Asia, With Particular Reference to the Kyrgyz Republic." In *The Challenge of Education in Central Asia*, eds. Stephen P. Heyneman and Alan J. DeYoung, 153-180. Greenwich, CT: Information Age Publishing.

Miranda, Alfonso. 2007. "Migrant Networks, Migrant Selection, and High School Graduation in Mexico." IZA Discussion Papers 3204. Bonn, Germany: Institute for the Study of Labor (IZA).

Mu, Ren and Dominique van de Walle. forthcoming. "Left Behind to Farm: Women's Labor Reallocation in Rural China." *Labour Economics*. [Also, World Bank Policy Research Working Paper No. 5107, 2009.]

National Statistical Committee of the Kyrgyz Republic. 2009. *Population and*

Housing Census of the Kyrgyz Republic of 2009. Book 1, Main Social and Demographic Characteristics of Population and Number of Housing Units.

[http://unstats.un.org/unsd/demographic/sources/census/2010\\_PHC/Kyrgyzstan/A5-2PopulationAndHousingCensusOfTheKyrgyzRepublicOf2009.pdf](http://unstats.un.org/unsd/demographic/sources/census/2010_PHC/Kyrgyzstan/A5-2PopulationAndHousingCensusOfTheKyrgyzRepublicOf2009.pdf)

Open Society Institute (OSI), Education Support Program. 2002. Education Development in Kyrgyzstan, Tajikistan and Uzbekistan: Challenges and Ways Forward. Budapest, Hungary: OSI.

[http://www.soros.org/initiatives/esp/articles\\_publications/publications/development\\_20020401/education\\_development.pdf](http://www.soros.org/initiatives/esp/articles_publications/publications/development_20020401/education_development.pdf)

Organization for Economic Cooperation and Development (OECD). 2010. PISA 2009 Results: What Students Know and Can Do. Student Performance in Reading, Mathematics and Science, volume

1. <http://dx.doi.org/10.1787/9789264091450-en>.

Pomfret, Richard. 2006. The Central Asian Economies Since Independence. Princeton, NJ: Princeton University Press.

Rahmetov, Anvar. 2009. "Scary Statistics: The State of Schools in Kyrgyzstan." Central Asia-Caucasus Institute Analyst. April 22.

[www.cacianalyst.org/?q=node/5087](http://www.cacianalyst.org/?q=node/5087).

Rapoport, Hillel and Frédéric Docquier. 2006. "The Economics of Migrants' Remittances." In Handbook on the Economics of Giving, Reciprocity and Altruism, Vol. 2, eds. Serge-Christophe Kolm and Jean Mercier Ythier, 1135-1198. Amsterdam, The Netherlands: Elsevier.

Ratha, Dilip and Zhimei Xu. 2008. Migration and Remittances Factbook 2008. Washington, DC: The World Bank.

Schmidt, Matthias and Lira Sagynbekova. 2008. "Migration Past and Present: Changing Patterns in Kyrgyzstan." Central Asian Survey, 27(2):111-127.

Sen, Amartya. 2009. The Idea of Justice. Cambridge, MA: The Belknap Press.

Steiner-Khamsi, Gita, Ainura Moldokmatova, and Gulzhamal Sheripkanova-MacLeod. 2009. Survival strategies of schools in the Kyrgyz Republic: A school level analysis of teacher shortages. New York, NY: UNICEF.  
[http://www.unicef.org/kyrgyzstan/Teacher\\_shortage\\_study.pdf](http://www.unicef.org/kyrgyzstan/Teacher_shortage_study.pdf) .

Thieme, Susan. 2007. Social Networks and Migration: Far West Nepalese Labor Migrants in Delhi. Berlin, Germany: LIT Verlag.

Ukueva, Nurgul. 2010. Migration, Remittances and Growth. Durham, NC: Duke University, Ph.d. Dissertation.

Ukueva, Nurgul and Charles Becker. 2010. "Private Transfers in Kyrgyzstan's Post- Transition Environment: Results from a New Household Panel Dataset." Unpublished. Durham, NC: Duke University.

United Nations Education, Science and Culture Organization (UNESCO). 2011.  
<http://stats.uis.unesco.org/unesco/TableViewer/tableView.aspx>. August 4.

United Nations International Children's Emergency Fund (UNICEF). 2010. Kyrgyzstan: Statistics. March  
2. [http://www.unicef.org/infobycountry/kyrgyzstan\\_statistics.html](http://www.unicef.org/infobycountry/kyrgyzstan_statistics.html).

UNICEF. 2011. TransMONEE Database. Florence, IT: Innocenti Research Centre.

Walewski, Mateusz, et al. 2009. "The Effects of Migration and Remittances in Rural Moldova." CASE Network Studies and Analyses No. 389/2009. Warsaw, Poland: Center for Social and Economic Research (CASE).

Weidman, John C., David W. Chapman, Marc Cohen, and Macrina G. Lelei. 2004. "Access to Education in Five Newly Independent States of Central Asia and Mongolia: A Regional Agenda." In Challenges for Education in Central Asia, eds. Stephen P. Heyneman and Alan J. DeYoung, 181-197. Greenwich, CT: Information Age Publishing.

Wooldridge, Jeffrey. M. 2002. Econometric Analysis of Cross Section and Panel Data. Cambridge, MA: The MIT Press.

The World Bank. 2007. Kyrgyz Republic: Poverty Assessment: Growth, Employment and Poverty; Labor Market Dimensions of Poverty. Report No.40864-KG. Washington, DC: The World Bank, Poverty Reduction and Economic



Management Unit, Europe and Central Asia Region.

<http://web.worldbank.org/WBSITE/EXTERNAL/COUNTRIES/ECAEXT/KYRGYZEXTN/0,,contentMDK:21553694~menuPK:305766~pagePK:2865066~piPK:2865079~theSitePK:305761,00.html>.

World Food Programme. 2008. Kyrgyzstan Winter Emergency Food Aid Response. <http://www.wfp.org/content/emergency-operation-kyrgyz-republic-108040-kyrgyzstan-winter-emergency-food-aid-response>

Yang, Dean. 2006. “Why Do Migrants Return to Poor Countries? Evidence from Philippine Migrants Responses to Exchange Rate Shocks.” *Review of Economics and Statistics* 88(4): 715-735.

Yang, Dean. 2008. “International Migration, Remittances, and Household Investment: Evidence from Philippine Migrants’ Exchange Rate Shocks.” *Economic Journal* 118 (528): 591-630.

Zanca, Russell. 2007. “Fat and All That: Good Eating the Uzbek Way.” In *Everyday Life in Central Asia*, eds. Jeff Sahadeo and Russell Zanca, 178-197. Bloomington, IN: University of Indiana Press.





## Appendix

**Table 1. Definition of Variables**

Name of Variable	
Dependent Variables Enrollment (d) Secondary School Enrollment (d) Preschool Enrollment (d) Educational Expenditures  Weight Height Thin (d)  Severe (d)  Exercise (d) Smoke (d)	enrollment of all school-age children (6-18) enrollment of school-age children (14-18) enrollment at preschool (3-6) total amount of educational expenditures per school-age child weight of children in kg (0-5) height of children in cm (0-5) Thinness of children (0-5) as calculated from z-scores one if thin, zero otherwise Severe thinness of children (0-5) as calculated from z-scores one if severely thin, zero otherwise one if exercise at least once a week (7-18) one if smoking (7-18)
Independent Variables International Remit Domestic Transfers Receiving Transfers	Dummy remittances receipt Dummy transfers receipt Receipt of remittances, regardless of external or internal
age age2 Elderly School children Adults Share females Gender head (d) Highest Educ Asset Index  Next bus (d)	age of the child age squared of the child number of elderly over 65 number of children (6-18) number of adults over 18 share of females in family one if male, zero if female highest education in household count of available assets own house, good roof, good wall, heating in winter, hotwater distance in km to next bus station

**Table 2. Average amount of international remittances received by region**

	South	Mountainous	North	Obs.	% of HH's
2005	5,103	12,749	8,537	114	2.41%
2006	16,513	5,040	5,057	208	4.28%
2007	15,300	21,314	11,956	292	6.08%
2008	8,457	19,391	7,737	396	7.93%
Obs.	679	95	236	1,010	
% of HH's	9.44%	1.41%	4.27%	5.20%	

Note: Calculations by household, in Kyrgyz Som annually.  
Source: KIHS 2005-2008. Authors calculations.

**Table 3. Average amount of domestic transfers received by region**

	South	Mountainous	North	Obs.	% of HH's
2005	4,242	3,530	3,150	2,030	42.5%
2006	2,951	2,271	1,705	2,010	41.3%
2007	7,777	9,478	9,429	1,897	39.5%
2008	4,463	4,411	4,242	1,895	37.9%
Obs.	2,613	3,307	1,912	7,831	
% of HH's	36.3%	49.2%	34.6%	40.3%	

Note: Calculations by household, in Kyrgyz Som annually.  
Source: KIHS 2005-2008. Authors calculations.

**Table 4. Summary Statistics for Households by Region**

	South		Mountain		North	
	Mean	Std. Dev.	Mean	Std. Dev.	Mean	Std. Dev.
<b>Financial Characteristics</b>						
Total Income	54,872	47,167	40,213	38,363	55,055	51,633
Income per capita	14,981	15,348	11,834	13,063	21,143	19,026
International Remittances (d)	.094	.292	.014	.118	.042	.202
Domestic Remittances (d)	.363	.480	.492	.499	.346	.475
<b>General Characteristics</b>						
Dependency Ratio	76.70	76.83	77.23	73.63	66.5	67.20
Household Size	4.30	1.90	4.11	1.72	3.10	1.70
Number of Children	1.90	1.42	1.75	1.37	1.00	1.163
Number of Small Children	.424	.687	.461	.70	.268	.548
Number of School Children	1.47	1.26	1.29	1.17	.735	.964
Number of Elderly	1.60	1.55	1.34	1.427	.967	1.124
Number Adults	3.74	1.94	3.42	1.68	2.69	1.52
Gender of head	.656	.475	.706	.455	.521	.499
Age of head	49.78	13.95	50.86	14.09	52.19	15.59
Share of females	.666	.3648	.642	.352	.668	.355
Married (d)	.363	.265	.392	.276	.321	.337
<b>Dwelling Characteristics</b>						
Heating winter (in months)	4.10	.850	5.07	.821	4.93	.595
Bus station (distance in km)	1.85	.78	1.91	.74	1.66	.63
Good house wall (d)	.382	.486	.318	.466	.645	.478
Hotwater (d)	.030	.171	.015	.123	.426	.494
Ind Heating (d)	.758	.4280	.884	.320	.524	.499
Owner dwelling	.059	.235	.064	.244	.081	.273
Asset Index	2.22	.736	2.35	.60	3.06	.975
<b>Education</b>						
No educ	.090	.143	.082	.137	.053	.129
Illiterate	.022	.080	.020	.070	.013	.067
Higher Educ	.094	.197	.108	.215	.176	.298
Incomplete Secon	.089	.159	.081	.161	.101	.219
Total Educ Exp (per school-age child)	1,363	4,438	1,047	4,339	1,935	5,839

Note: Source: KIHS 2005-2008. Authors calculations.



**Table 5. Summary Statistics for Children by Region**

	South		Mountain		North	
	Mean	Std. Dev.	Mean	Std. Dev.	Mean	Std.
<b>General Characteristics</b>						
Gender	1.49	.500	1.49	.49	1.52	.49
Age	12.35	3.65	12.36	3.65	12.47	3.71
<b>Educational Outcomes</b>						
Overall Enrolment (6-18)	.89	.306	.89	.31	.90	.290
Second Enrolment (14-18)	.90	.287	.915	.278	.956	.203
Preschool Enrolment (3-6)	.57	.495	.59	.493	.71	.453
<b>Health Outcomes</b>						
Weight (0-5)	13.32	6.30	13.27	5.71	12.79	5.14
Height (0-5) Thin	87.17	15.05	87.11	15.43	85.92	14.32
(0-5) Severe (0-5)	.238	.426	.258	.437	.271	.444
Exercise (7-8)	.082	.273	.083	.276	.081	.280
Smoke (7-18)	.665	.472	.714	.451	.787	.408
	.001	.033	.004	.068	.001	.034

Note: Source: KIHS 2005-2008. Authors calculations.



**Table 6. Summary Statistics for Household Variables**

	Non-Receiving	Receiving	diff	diff se
Explanatory Var				
Small child	0.387	0.402	-0.0145	(0.00969)
School child	1.247	1.127	0.120***	(0.0175)
Elderly	1.327	1.336	-0.00854	(0.0208)
Adults	3.456	3.166	0.290***	(0.0263)
Gender Head (d)	0.674	0.579	0.0945***	(0.00702)
Age Head (d)	51.10	50.53	0.568***	(0.213)
Share females	0.633	0.695	-0.0625***	(0.00522)
Highest edu	6.421	6.355	0.0662**	(0.0287)
Asset index	2.528	2.500	0.0275**	(0.0123)
Next busstation (km)	1.818	1.827	-0.00862	(0.0108)
Total Income	59,760.4	42,986.8	16,773.6***	(1157.6)
Expenditures				
Fees	664.7	512.8	151.8***	(41.34)
Textbooks	27.46	28.97	-1.505	(3.516)
Library	3.432	2.808	0.624	(0.496)
Tutoring	9.080	7.733	1.346	(1.821)
Transport	57.59	43.63	13.97***	(4.051)
Repair	35.16	36.11	-0.954	(1.526)
Presents	81.86	80.49	1.370	(5.027)
Others	107.8	92.97	14.87**	(7.295)
Total	2463.9	2154.6	309.3**	(137.9)

\*  $p < 0.10$ , \*\*  $p < 0.05$ , \*\*\*  $p < 0.01$

Tests of difference between receiving and non-receiving households.



**Table 7. Summary Statistics for Children’s Variables**

	Non-receiving	Receiving	diff	diff se
Age	12.46	12.29	0.167***	(0.047)
Age2	168.6	164.7	3.885***	(1.155)
Sex	1.499	1.511	-0.012*	(0.006)
<b>Education</b>				
Enrolment	0.898	0.899	-0.001	(0.004)
Preschool (3-6)	0.635	0.617	0.018*	(0.036)
Secondary (14-18)	0.786	0.769	0.017**	(0.008)
<b>Health</b>				
Weight (0-5)	13.11	13.12	-0.019	(0.144)
Height (0-5)	86.64	86.76	-0.118	(0.370)
Thin (0-5)	0.256	0.253	0.003	(0.010)
Severe (0-5)	0.083	0.084	-0.001	(0.006)
Exercise	0.746	0.747	-0.001	(0.006)
Smoke	0.002	0.002	-0.000	(0.001)

\*  $p < 0.10$ , \*\*  $p < 0.05$ , \*\*\*  $p < 0.01$

Tests of difference between receiving and non-receiving households.

**Table 8. Estimates of the Impact of Remittances and Transfers Receipt on Children’s Education Outcomes**

	Overall (6-18)	Secondary (14-18)	Preschool (3-6)
<b>National</b>			
Model 1			
Receiving Transfers	-.01** (-2.04)	-.0251** (-2.33)	.0698 (1.53)
Model 2			
International Remit	-.000329 (-0.03)	-.00586 (-0.24)	-.0164 (-0.42)
Domestic Transfers	-.00951* (-1.87)	-.0242** (-2.19)	.0712 (1.54)
<b>South</b>			
Model 1			
Receiving Transfers	.0000138 (0.00)	-.0306* (-1.85)	.0556 (0.69)
Model 2			
International Remit	-.00313 (-0.25)	.00174 (0.07)	.0618 (0.77)
Domestic Transfers	.00186 (0.23)	-.0306* (-1.78)	.0862 (1.10)
<b>Mountainous</b>			
Model 1			
Receiving Transfers	.00001 (0.00)	-.0306* (-1.85)	-.0684 (-1.09)
Model 2			
International Remit	.00544 (0.12)	.00174 (0.07)	-
Domestic Transfers	-.0164** (-2.17)	-.0306* (-1.78)	-.0684 (-1.09)
<b>North</b>			
Model 1			
Receiving Transfers	-.00643 (-0.44)	-.0137 (-0.56)	.286** (2.33)
Model 2			
International Remit	.0259 (0.86)	-.0613 (-0.85)	-.0754 (-0.98)
Domestic Transfers	-.00869 (-0.57)	-.00909 (-0.35)	.289** (2.32)

Note: We use individual fixed effects estimation for the dependent variables enrollment for all school-age children aged 6-18, secondary enrollment (14-18) and preschool enrollment (3-6). All control variables are included. t-values are reported in parentheses.

Source: KIHS 2005-2008.

**Table 9. Estimates of the Impact of Remittances and Transfers Receipt on Girls’ Educational Outcomes**

	Overall (6-18)	Secondary (14-18)	Preschool (3-6)
<b>National</b>			
Model 1			
Receiving Transfers	-0.00893 (-1.30)	-.0495*** (-3.15)	.206 (1.43)
Model 2			
International Remit	-.00787 (-0.53)	-.00875 (-0.24)	.151 (1.14)
Domestic Transfers	-.00687 (-0.96)	-.0464*** (-2.87)	.0467 (1.11)
<b>South</b>			
Model 1			
Receiving Transfers	-.000576 (-0.06)	-.052** (-2.17)	.276 (1.22)
Model 2			
International Remit	-.00504 (-0.31)	.0108 (0.30)	-1.47*** (5.59)
Domestic Transfers	.00314 (0.28)	-.0495** (-1.97)	1.19*** (4.55)
<b>Mountainous</b>			
Model 1			
Receiving Transfers	-.0117 (-1.08)	-.0413* (-1.71)	- -
Model 2			
International Remit	.105 (1.23)	-.0853 (-0.56)	- -
Domestic Transfers	-.0133 (-1.25)	-.041* (-1.70)	- -
<b>North</b>			
Model 1			
Receiving Transfers	-.00926 (-0.41)	-.035 (-0.99)	.39** (2.05)
Model 2			
International Remit	-.0586 (-1.26)	-.222* (-1.69)	- -
Domestic Transfers	-.00333 (-0.14)	-.0109 (-0.27)	.39** (2.05)

Note: We use individual fixed effects estimation for the dependent variables enrollment for all school-age children aged 6-18, secondary enrollment (14-18) and preschool enrollment (3-6). All control variables are included. t-values are reported in parentheses.

Source: KIHS 2005-2008.



**Table 10. Estimates of the Impact of Remittances and Transfers Receipt on Boys’ Educational Outcomes**

	Overall (6-18)	Secondary (14-18)	Preschool (3-6)
<b>National</b>			
Model 1			
Receiving Transfers	-.0115* (-1.66)	-.00481 (-0.33)	.0401 (1.04)
Model 2			
International Remit	.00766 (0.50)	.00033 (0.01)	.0105 (0.62)
Domestic Transfers	-.0126* (-1.75)	-.00605 (-0.40)	.0398 (1.04)
<b>South</b>			
Model 1			
Receiving Transfers	.000673 (0.06)	-.0103 (-0.46)	- -
Model 2			
International Remit	.000224 (0.01)	-.0102 (-0.26)	- -
Domestic Transfers	.000455 (0.04)	-.011 (-0.48)	- -
<b>Mountainous</b>			
Model 1			
Receiving Transfers	-.0217** (-2.05)	-.0271 (-1.07)	- -
Model 2			
International Remit	-.0627 (-1.62)	.0677 (0.59)	- -
Domestic Transfers	-.0204* (-1.90)	-.0284 (-1.11)	- -
<b>North</b>			
Model 1			
Receiving Transfers	-.00609 (-0.32)	-.000379 (-0.01)	.194 (0.99)
Model 2			
International Remit	.101*** (2.70)	.0384 (0.53)	.121 (1.03)
Domestic Transfers	-.0134 (-0.68)	-.00237 (-0.07)	.211 (1.02)

Note: We use individual fixed effects estimation for the dependent variables enrollment for all school-age children aged 6-18, secondary enrollment (14-18) and preschool enrollment (3-6). All control variables are included. t-values are reported in parentheses.

Source: KHS 2005-2008.

**Table 11. Household Expenditures on Education**

	Fee	Book	Library	Tutoring	Transport	Repair	Presents	Other	Total
<b>National</b>									
Model 1									
Receiving Remittances	-184 (-0.75)	-2.72 (-0.52)	-2.38 (-1.55)	1.55 (0.42)	15.2 (0.87)	10.2** (1.97)	-22 (-1.19)	27.6 (0.89)	-141 (-0.57)
Model 2									
International Remit	-208 (-0.67)	-8.07 (-0.63)	-8.05 (-1.27)	-1.97 (-0.28)	-69.1* (-1.71)	-19.7** (-2.14)	26.4 (0.65)	-36.7 (-0.73)	-607* (-1.65)
Domestic Transfers	-133 (-0.50)	22.6 (0.81)	-7.03 (-0.48)	1.55 (0.39)	33.3* (1.87)	11.9** (2.25)	-3.37 (-0.16)	47.9 (1.34)	50.7 (0.21)
<b>South</b>									
Model 1									
Receiving Remittances	-493** (-2.15)	61.1 (0.86)	-4.43 (-1.29)	-1.04 (-0.25)	-11.8 (-0.33)	20*** (3.33)	11.8 (0.39)	-4 (-0.09)	-95.7 (-0.33)
Model 2									
International Remit	-329 (-0.94)	-26.4 (-0.92)	-16.2** (-2.28)	-5.04 (-0.66)	-112** (-2.36)	-10.8 (-1.13)	58.1 (1.21)	-96.7* (-1.96)	-539 (-1.40)
Domestic Transfers	-402 (-1.54)	67.2 (0.87)	.3 (0.08)	.0802 (0.02)	20.5 (0.57)	22.2*** (3.42)	1.56 (0.05)	16.7 (0.35)	52.2 (0.16)
<b>Mountainous</b>									
Model 1									
Receiving Remittances	-512 (-0.83)	3.75 (0.25)	.0995 (0.12)	-11.5* (-1.92)	5.04 (0.22)	6.04 (0.44)	12.4 (0.25)	-125** (-2.14)	-378 (-0.61)
Model 2									
International Remit	1518 (0.85)	2.95 (0.05)	11.2 (1.33)	-2.75 (-0.10)	162 (1.56)	7.6 (0.36)	43.5 (0.24)	6.58 (0.07)	614 (0.29)
Domestic Transfers	-550 (-0.88)	3.67 (0.26)	-18 (-0.21)	-11.4* (-1.86)	.986 (0.04)	5.85 (0.42)	11.4 (0.22)	-125** (-2.13)	-343 (-0.54)
<b>North</b>									
Model 1									
Receiving Remittances	1387 (1.11)	-14.1 (-1.03)	4.82 (1.31)	40.3** (2.14)	80.5* (1.81)	-14.9 (-0.87)	7.36 (0.12)	106 (0.66)	1677 (1.44)
Model 2									
International Remit	-871 (-0.77)	-26.4 (-0.93)	27.6 (0.87)	-28 (-0.82)	-12 (-0.11)	-40.3 (-1.12)	-37.9 (-0.47)	12.4 (0.05)	-702 (-0.63)
Domestic Transfers	1476 (1.11)	-11.4 (-0.77)	2.02 (0.69)	43.1** (2.05)	81.8* (1.66)	-10.8 (-0.63)	11.2 (0.17)	104 (0.60)	1753 (1.45)

t statistics in parentheses; \* p &lt; 0.10, \*\* p &lt; 0.05, \*\*\* p &lt; 0.01



**Table 12. Estimates of the Impact of Remittances and Transfers Receipt on Childrens' Health Outcomes**

	<b>Weight</b>	<b>Height</b>	<b>Thin</b>	<b>Severe</b>
<b>National</b>				
Model 1				
Receiving Transfers	.0786 (0.48)	.234 (0.63)	.0333** (2.24)	.0217** (2.05)
Model 2				
International Remit	-1.06*** (-2.37)	-1.97** (-2.46)	.00568 (0.18)	.0369* (1.88)
Domestic Transfers	.228 (1.23)	.525 (1.26)	.0356** (2.29)	.0178 (1.60)
<b>South</b>				
Model 1				
Receiving Transfers	.0207 (0.08)	.14 (0.24)	.0236 (0.99)	.0418** (2.53)
Model 2				
International Remit	-.72* (-1.79)	-1.85** (-2.48)	.0213 (0.58)	.0226 (1.00)
Domestic Transfers	.187 (0.61)	.605 (0.96)	.0244 (0.93)	.0376** (2.08)
<b>Mountainous</b>				
Model 1				
Receiving Transfers	.39 (0.61)	.34 (0.22)	.0139 (.31)	.0274 (0.79)
Model 2				
International Remit	-2.04 (-1.15)	-2.81 (-0.73)	.108 (0.80)	.0891 (1.13)
Domestic Transfers	.0564 (0.20)	.261 (2.21)	.0563** (2.30)	.0143 (0.78)
<b>North</b>				
Model 1				
Receiving Transfers	.396 (0.61)	.343 (0.22)	.014 (0.31)	.0275 (0.79)
Model 2				
International Remit	-2.9 (-1.64)	-4.73 (-1.42)	-.0727 (-1.23)	.0336 (1.08)
Domestic Transfers	.685 (1.07)	.863 (0.55)	.0243 (0.52)	.0247 (0.67)

Note: We use individual fixed effects estimation for the dependent variables weight, height, thin and severe (thin).

All control variables are included. t-values are reported in parentheses.

Source: KIHS 2005-2008.

**Table 13. Estimates of the Impact of Remittances and Transfers Receipt on Girls' Health Outcomes**

	<b>Weight</b>	<b>Height</b>	<b>Thin</b>	<b>Severe</b>
<b>National</b>				
Model 1				
Receiving Transfers	.156 (0.75)	.169 (0.37)	.0509** (2.31)	.027* (1.75)
Model 2				
International Remit	-1.08*** (-2.77)	-2.27*** (-2.58)	.028 (0.56)	.0693** (2.27)
Domestic Transfers	.264 (1.23)	.4 (0.84)	.0521** (2.31)	.021 (1.31)
<b>South</b>				
Model 1				
Receiving Transfers	-.0854 (-0.18)	-.216 (-0.22)	.0581* (1.66)	.0601** (2.55)
Model 2				
International Remit	-1.1* (-1.96)	-2.97** (-2.47)	.0286 (0.48)	.0499 (1.42)
Domestic Transfers	.122 (0.23)	.388 (0.37)	.064* (1.76)	.0535** (2.15)
<b>Mountainous</b>				
Model 1				
Receiving Transfers	.134 (0.68)	-.0738 (-0.14)	.0616* (1.80)	.0141 (0.62)
Model 2				
International Remit	-1 (-1.60)	-.896 (-0.58)	-.0704 (-0.58)	.121 (1.11)
Domestic Transfers	.16 (0.79)	-.0502 (-0.09)	.0633* (1.82)	.0113 (0.49)
<b>North</b>				
Model 1				
Receiving Transfers	.02 (0.07)	-.26 (-0.35)	.024 (0.33)	.0435 (0.76)
Model 2				
International Remit	-.701 (-0.79)	-.583 (-0.26)	-.0761 (-0.80)	-.0181 (-0.31)
Domestic Transfers	.104 (0.32)	-.19 (-0.23)	.0329 (0.41)	.0456 (0.73)

Note: We use individual fixed effects estimation for the dependent variables weight, height, thin and severe (thin).

All control variables are included. t-values are reported in parentheses.

Source: KIHS 2005-2008.

**Table 14. Estimates of the Impact of Remittances and Transfers Receipt on Children’s Health Habit outcomes (7-18)**

	Exer	Smoke	Exer Girl	Smoke Girl	Exer Boy	Smoke Boy
<b>National</b>						
Model 1						
Receiving Transf	-.0117 (-1.52)	.0015* (1.79)	-.00626 (-0.54)	.00095 (0.79)	-.0163 (-1.59)	.00205* (1.72)
Model 2						
Internat Remit	.0293 (1.55)	-.000819 (-1.55)	.00862 (0.32)	-.000317 (-0.41)	.0505* (1.87)	-.00138* (-1.66)
Domestic Transf	-.0191** (-2.39)	.00161* (1.78)	-.0126 (-1.04)	.000991 (0.75)	-.0248** (-2.34)	.00223* (1.74)
<b>South</b>						
Model 1						
Receiving Transf	-.017 (-1.50)	.000764 (1.08)	-.0101 (-0.63)	.00149 (1.00)	-.0224 (-1.41)	.000112 (0.64)
Model 2						
Internat Remit	.068*** (3.02)	-.000239 (-0.50)	.0612** (1.98)	-.000949 (-1.00)	.0751** (2.29)	.000326 (0.44)
Domestic Transf	-.0413*** (-3.41)	.000829 (1.03)	-.0379** (-2.18)	.00175 (1.00)	-.0438*** (-2.62)	.000037 (0.19)
<b>Mountainous</b>						
Model 1						
Receiving Transf	-.00273 (-0.21)	.00122 (0.84)	-.00039 (-0.02)	.000935 (0.37)	-.00517 (-0.29)	.00155 (1.01)
Model 2						
Internat Remit	.00226 (0.04)	.00031 (0.42)	-.0609 (-0.66)	.00126 (0.81)	.064 (1.09)	-.00002 (-0.03)
Domestic Transf	-.00278 (-0.21)	.00121 (0.83)	.000572 (0.03)	.000922 (0.36)	-.00647 (-0.36)	.00155 (1.01)
<b>North</b>						
Model 1						
Receiving Transf	.00587 (0.33)	.00639 (1.58)	.0241 (0.78)	- -	-.0101 (-0.47)	.0111 (1.53)
Model 2						
Internat Remit	-.0304 (-0.63)	-.0046 (-1.51)	-.103 (-1.43)	- -	.0341 (0.52)	-.00395 (-0.80)
Domestic Transf	.00852 (0.46)	.00679 (1.60)	.0346 (1.07)	- -	-.0126 (-0.57)	.0114 (1.54)

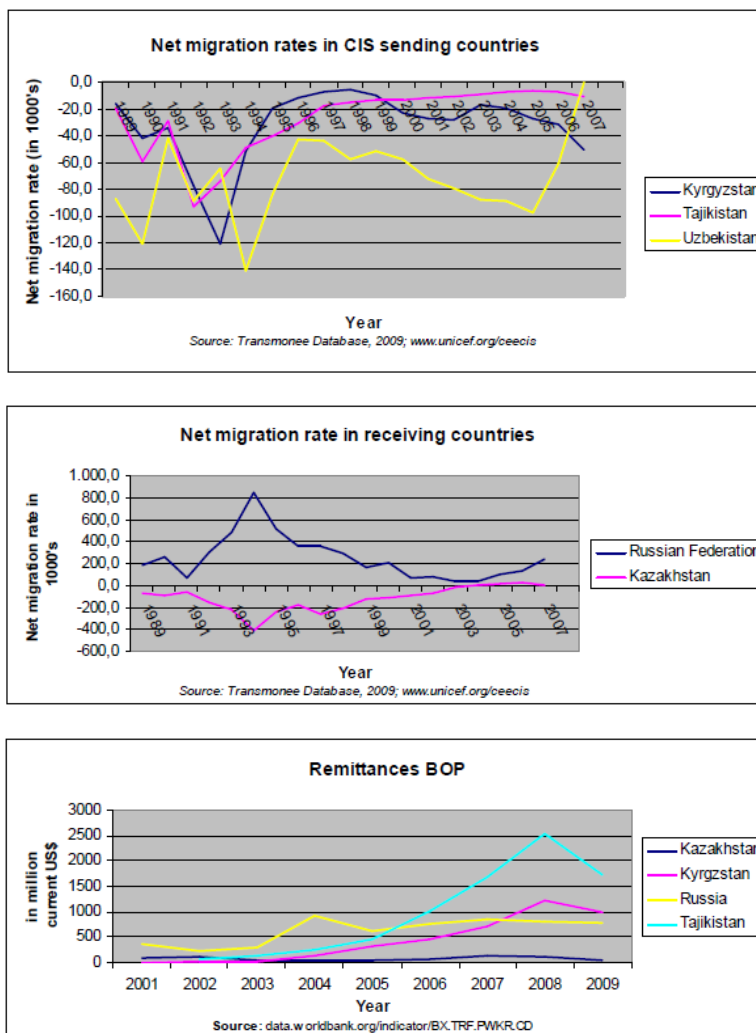
Note: We use individual fixed effects estimation for the dependent variables exercising and smoking.

Questions are only asked for children from age 7.

All control variables are included. t-values are reported in parentheses.

Source: KIHS 2005-2008.

**Figure 1. Macro data on migration and remittances in CIS region**



**Figure 2. Map of Kyrgyzstan**



Source: <http://www.nationsonline.org/oneworld/map/kyrgyzstan-administrative-map.htm>.

**Figure 3. Macro data on economic situation of Kyrgyzstan by region**

