

Grosfeld, Irena; Senik, Claudia

**Research Report**

## The emerging aversion to inequality: Evidence from Poland 1992 - 2005

CASE Network Studies & Analyses, No. 360

**Provided in Cooperation with:**

Center for Social and Economic Research (CASE), Warsaw

*Suggested Citation:* Grosfeld, Irena; Senik, Claudia (2008) : The emerging aversion to inequality: Evidence from Poland 1992 - 2005, CASE Network Studies & Analyses, No. 360, ISBN 978-83-7178-457-6, Center for Social and Economic Research (CASE), Warsaw

This Version is available at:

<https://hdl.handle.net/10419/128162>

**Standard-Nutzungsbedingungen:**

Die Dokumente auf EconStor dürfen zu eigenen wissenschaftlichen Zwecken und zum Privatgebrauch gespeichert und kopiert werden.

Sie dürfen die Dokumente nicht für öffentliche oder kommerzielle Zwecke vervielfältigen, öffentlich ausstellen, öffentlich zugänglich machen, vertreiben oder anderweitig nutzen.

Sofern die Verfasser die Dokumente unter Open-Content-Lizenzen (insbesondere CC-Lizenzen) zur Verfügung gestellt haben sollten, gelten abweichend von diesen Nutzungsbedingungen die in der dort genannten Lizenz gewährten Nutzungsrechte.

**Terms of use:**

*Documents in EconStor may be saved and copied for your personal and scholarly purposes.*

*You are not to copy documents for public or commercial purposes, to exhibit the documents publicly, to make them publicly available on the internet, or to distribute or otherwise use the documents in public.*

*If the documents have been made available under an Open Content Licence (especially Creative Commons Licences), you may exercise further usage rights as specified in the indicated licence.*

CASE Network  
Studies & Analyses

The Emerging Aversion  
to Inequality.  
Evidence from Poland  
1992-2005

**Irena Grosfeld**  
**Claudia Senik**

No. 360/2008

---



Warsaw Bishkek Kyiv Tbilisi Chisinau Minsk

*Irena Grosfeld, Claudia Senik*

Materials published here have a working paper character. They can be subject to further publication. The views and opinions expressed here reflect the author point of view and not necessarily those of CASE Network.

The publication was financed from a institutional grant extended by Rabobank Polska S.A.

We thank Malgorzata Kalbarczyk for outstanding research assistance and Jolanta Sommer for help with the data. We are grateful to Andrew Clark and Marc Gurgand for useful discussions and to participants at the "Economics of Behaviour and Decision Making" seminar (London Business School, London School of Economics, University College London, and Westminster Business School) for comments. We thank CEPREMAP for financial support.

Key words: inequality, subjective well-being, breakpoint, transition.

JEL codes: C25, D31, I30, P20, P26.

© CASE – Center for Social and Economic Research, Warsaw, 2008

Graphic Design: Agnieszka Natalia Bury

EAN 9788371784576

Publisher:

CASE-Center for Social and Economic Research on behalf of CASE Network  
12 Sienkiewicza, 00-010 Warsaw, Poland  
tel.: (48 22) 622 66 27, fax: (48 22) 828 60 69  
e-mail: [case@case-research.eu](mailto:case@case-research.eu)  
<http://www.case-research.eu>

*CASE Network Studies & Analyses No. 360*

This report is part of the CASE Network Studies and Analyses series.

The CASE Network is a group of economic and social research centers in Poland, Kyrgyzstan, Ukraine, Georgia, Moldova, and Belarus. Organizations in the network regularly conduct joint research and advisory projects. The research covers a wide spectrum of economic and social issues, including economic effects of the European integration process, economic relations between the EU and CIS, monetary policy and euro-accession, innovation and competitiveness, and labour markets and social policy. The network aims to increase the range and quality of economic research and information available to policy-makers and civil society, and takes an active role in on-going debates on how to meet the economic challenges facing the EU, post-transition countries and the global economy.

The CASE network consists of:

- CASE – Center for Social and Economic Research, Warsaw, est. 1991, [www.case-research.eu](http://www.case-research.eu)
- CASE – Center for Social and Economic Research – Kyrgyzstan, est. 1998, [www.case.elcat.kg](http://www.case.elcat.kg)
- Center for Social and Economic Research - CASE Ukraine, est. 1999, [www.case-ukraine.kiev.ua](http://www.case-ukraine.kiev.ua)
- CASE –Transcaucasus Center for Social and Economic Research, est. 2000, [www.case-transcaucasus.org.ge](http://www.case-transcaucasus.org.ge)
- Foundation for Social and Economic Research CASE Moldova, est. 2003, [www.case.com.md](http://www.case.com.md)
- CASE Belarus – Center for Social and Economic Research Belarus, est. 2007.

## **Contents**

<b>ABSTRACT .....</b>	<b>5</b>
<b>INTRODUCTION .....</b>	<b>6</b>
<b>1. LITERATURE .....</b>	<b>9</b>
<b>2. THE EVOLUTION OF POLITICAL ATTITUDES IN POLAND .....</b>	<b>10</b>
<b>3. DATA.....</b>	<b>14</b>
<b>4. EMPIRICAL STRATEGY.....</b>	<b>17</b>
<b>5. RESULTS.....</b>	<b>18</b>
<b>6. CONCLUSION.....</b>	<b>28</b>
<b>REFERENCES .....</b>	<b>29</b>
<b>APPENDIX .....</b>	<b>32</b>

**Irena Grosfeld** is Research Director at Paris School of Economics and the National Centre for Scientific Research. She received a Master degree from the University of Warsaw and PhD from Université Paris-I Sorbonne. She is a member of the CASE Advisory Council. Her main field of research is corporate finance and corporate governance, privatization, institutional change and public economics.

e-mail: [grosfeld@pse.ens.fr](mailto:grosfeld@pse.ens.fr)

**Claudia Senik** is Professor of Economics at the Paris School of Economics and the University Paris-Sorbonne. She is also member of the IZA and of the Institut Universitaire de France. Educated at the Ecole Normale Supérieure, she received her PhD from EHESS. Her main research areas include public economics, happiness studies and post-transition economies, with a special interest in the subjective welfare effects of income distribution.

e-mail: [senik@pse.ens.fr](mailto:senik@pse.ens.fr)

## **Abstract**

This paper provides an illustration of the changing tolerance for inequality in a context of radical political and economic transformation and rapid economic growth. We focus on the Polish transition experience, and explore individuals' self-reported attitudes. Using unusually long and frequent (monthly) representative surveys of the population, carried out by the Polish poll institute (CBOS) from 1992 to 2005, we identify a structural break in the relationship between income inequality and subjective well-being. The downturn in the tolerance for inequality (1997) coincides with increasing distrust of political elites.

*“The rulers are not necessarily given any advance notice about (...) the time at which they ought to be on the lookout for a drastically different climate of public and popular opinion; on the contrary, they are lulled into complacency by the easy early stage when everybody seems to be enjoying the very process that will later be vehemently denounced and damned as one consisting essentially in “the rich becoming richer” (Hirschman and Rothschild , 1973, p.552).*

## **Introduction**

Does rising inequality spoil the welfare benefits of growth? And if so, can it reduce popular support for economic reforms? In this paper, we show that during a period of rapid economic growth, accompanied by a substantial rise in income inequality, tolerance for inequality evolved to become a major factor of unhappiness and dissatisfaction. *De facto*, “reform fatigue” and disenchantment (Kornai, 2006; Desai and Olofsgård, 2006) appeared after a number of years of significant achievements in the Central and Eastern European countries, which engaged in a process of profound political and economic transformation at the beginning of the 1990s. Despite notable successes in establishing democratic and market institutions, continuous economic growth and increasing prosperity, and joining NATO and the European Union, the mood of public opinion changed at the end of the last century. Growing tensions between democracy and liberalism and the rise of populist parties were observed in a number of countries in the region (Krastev, 2007). This popular discontent was fueled by increasing public distrust of political elites, who were viewed as corrupt and self-interested.

We focus on the Polish experience, which, after 45 years of Communism, engaged in a process of radical transformation in 1989 (Sachs, 1993). This peaceful and negotiated “refolution”, i.e. a combination of gradual reforms and revolutionary change (Garton Ash, 1989), consisting of the twin transitions towards democracy and a market economy, brought about radical changes in attitudes and expectations. Initially, the process relied on high expectations and massive support from the population. Immense hopes were entrusted in the mere abandon of Socialism. In the middle of the 1990s, however, this consensual period started to come to an end, and initial enthusiasm gave way to disappointment: expectations began to be confronted with experience. Criticism of some of the transition outcomes, including corruption, growing inequality (Brainerd, 1998; Milanovic, 1998, 1999; Kornai,



2006) and the high price paid by the losers, progressively became the dominant theme of public discourse.

In a premonitory paper, Hirschman and Rothschild (1973) suggested that societies experiencing rapid development may initially show tolerance for higher inequality, as this is interpreted in terms of greater opportunities. The increase in others' income is then considered as encouraging information about the individual's own prospects. However, the authors also argued that this tolerance for inequality may wither away over time: if expectations are not met, supporters of the development process may become its enemies. This may also happen when people acquire a more accurate idea of their place and destiny in society. After such a "turning point", the side-effects of development, and in particular the increase in inequality, may swamp the subjective benefits of growth.

Most of the existing literature has documented the relation between income inequality and satisfaction in given environments, sometimes in a comparative static way contrasting Europe and the United-States (Alesina et al., 2004) or Old Europe versus New Europe and the United States (Senik, forthcoming). The experience of eighteen years of transition now makes it possible to investigate how the relation between inequality and satisfaction evolved over time in one country.

Taking advantage of an unusually long Polish dataset with high frequency (bi-monthly), covering the period 1992 - 2005, we here explore the evolution of subjective attitudes of the Polish citizens during the initial and later stages of transition. We hinge on their self-declared satisfaction with the state of the Polish economy (henceforth "country satisfaction"), which is both a satisfaction domain and a political attitude. We also use two other self-declared satisfaction variables: 1) "satisfaction with the living conditions of one's family (henceforth "private satisfaction"); and 2) expectations concerning the living conditions of one's family in the near future ("private expectations").

The main objective of this paper is to test whether the scenario sketched by Hirschman and Rothschild can explain the surprising hump shape of average satisfaction in Poland, in the context of strong and stable national income growth. As shown in Figure 1 (Section 3), individual satisfaction, especially satisfaction with the economic situation of the country, initially followed the rise in GDP, but at a certain point around 1996-1997, became uncoupled

from it and even started to decline.

If this phenomenon can be explained by Hirschman and Rothschild's conjecture, we should be able to identify a structural break in the relationship between satisfaction and inequality over time: in the first period, country satisfaction and private expectations should rise with inequality as the latter is essentially interpreted as an increase in opportunities; however, in a second stage the impact of income inequality should become negative. We test for the existence of such a breakpoint, not by imposing a specific date but by looking over the entire series and using the *sup-Wald* test (Andrews 1993) to identify breakpoint existence and location.

The results show that the breakpoint is situated at the end of 1996. Consequently, we consider the relationship between income inequality and satisfaction before and after this point. Popular satisfaction with the country's economic situation initially rises with income inequality, but falls with inequality in the later period. The relationship between income inequality and individuals' expectations concerning the future situation of their households follows a similar pattern: in the first period, inequality is associated with higher expectations; in the second period, it no longer affects expectations, suggesting that it lost its informational value in the eyes of the population. Finally, income inequality significantly reduces private satisfaction after 1996, whereas it has no significant impact before that date.

Dissatisfaction with the economic situation of the country is also reflected in political attitudes. We find that the percentage of people who position themselves at the extremes of the political spectrum has significantly increased since 1996. More evidence on the evolution of public opinion suggests that the changing tolerance for inequality coincided with the growing perception that high incomes reflect corruption and other unfair phenomena.

The following section reviews the related literature, and Section 2 summarizes the evolution of the political situation in Poland. Section 3 presents the data, Section 4 discusses the empirical strategy, and Section 5 presents the results. Last, Section 6 concludes.

## 1. Literature

This paper is located at the cross-roads of several relevant strands of the literature. It is motivated by work in the political economy of development that focuses on income inequality. A frequent claim is that inequality and the resulting demand for redistribution constitute an obstacle to economic growth (Alesina and Rodrik, 1994; Persson and Tabellini, 1994): income distribution concerns may discourage individuals' adhesion to the deepening of market reforms or development policies, when growth produces income inequality, as suggested by the Kuznets curve. Alesina and Perotti (1993) provide empirical evidence that income inequality fuels social discontent and instability. Acemoglu and Robinson (2000, 2002) argue that much of the historical evolutions of Nineteenth Century Europe, in particular the extension of voting rights that led to unprecedented redistributive programs, can be viewed as a strategy by the elite to avoid political discontent and revolution, which was in turn fed by the rising inequalities from economic development and industrialization.

We address this issue with the tools of the "happiness literature" that analyzes individuals' self-declared satisfaction and attitudes. The paper is first related to a large body of literature on the relationship between income distribution and self-rated happiness. Most work finds that individuals' inequality aversion depends on their perception of income mobility, i.e. on their beliefs regarding the factors of economic success and failure (Alesina et al. 2001; Fong 2001; Alesina and la Ferrara 2005; Alesina and Angeletos 2005). Alesina et al. (2004) show that inequality does not affect the life satisfaction of Americans, while it reduces the self-declared happiness of Europeans; this is because "*... in the U.S., the poor see inequality as a ladder that, although steep, may be climbed, while in Europe the poor see that ladder as more difficult to ascend*". Sanfey and Teksoz (2007) analyze transition countries, also finding that income inequality has a positive effect on life satisfaction, whereas the impact is negative in other countries from the World Values Survey.

One of the key questions in the happiness literature is the subjective welfare impact of income: both own income and the income distribution. The principal motivation here is the so-called Easterlin paradox, i.e. the empirical observation that national average self-declared happiness does not increase with national income (Easterlin 2001). The current paper shares

this type of concern, as its objective is to explain why satisfaction in Poland fell in the late-1990's, even though GDP continued to increase.

Other articles at the intersection of the growing happiness literature and the vast transition literature have analyzed the structure and evolution of satisfaction during transition. These include, inter alia, Easterlin and Zimmermann (2006); Guriev and Zhuravskaya (2007) and Easterlin (2008). One of the principal issues addressed by these papers is the weaker relation, *ceteris paribus*, between GDP and life satisfaction in transition than in non-transition countries. Other papers have used the experience of transition as a sort of giant "natural experiment" in order to consider the welfare effects of more specific changes, such as increased household income (Graham and Pettinato, 2002; Frijters, Haisken-de-New and Shields, 2004), inequality (Ravallion and Lokshin, 2001; Alesina and Fuchs-Schuendeln, 2007) and income comparisons (Ferrer-i-Carbonell 2005; Senik, 2004).

Following the research program initiated by Hirschman and Rothschild (1973), we explore the dynamic aspect of the relation between development, income inequality and subjective welfare over eighteen years of transition in Poland. Our main hypothesis is that the fall in self-declared satisfaction in the late 1990s is due to the rise in inequality and the way in which income inequality was perceived.

## **2. The evolution of political attitudes in Poland**

The evolution of public opinion in Poland is reflected to an extent in the results of parliamentary elections (Table 1). The constant reshuffling of the political supply notwithstanding, one clear trend is the growing influence of Left-wing parties up to 2001 and declining support for liberal pro-reform parties.

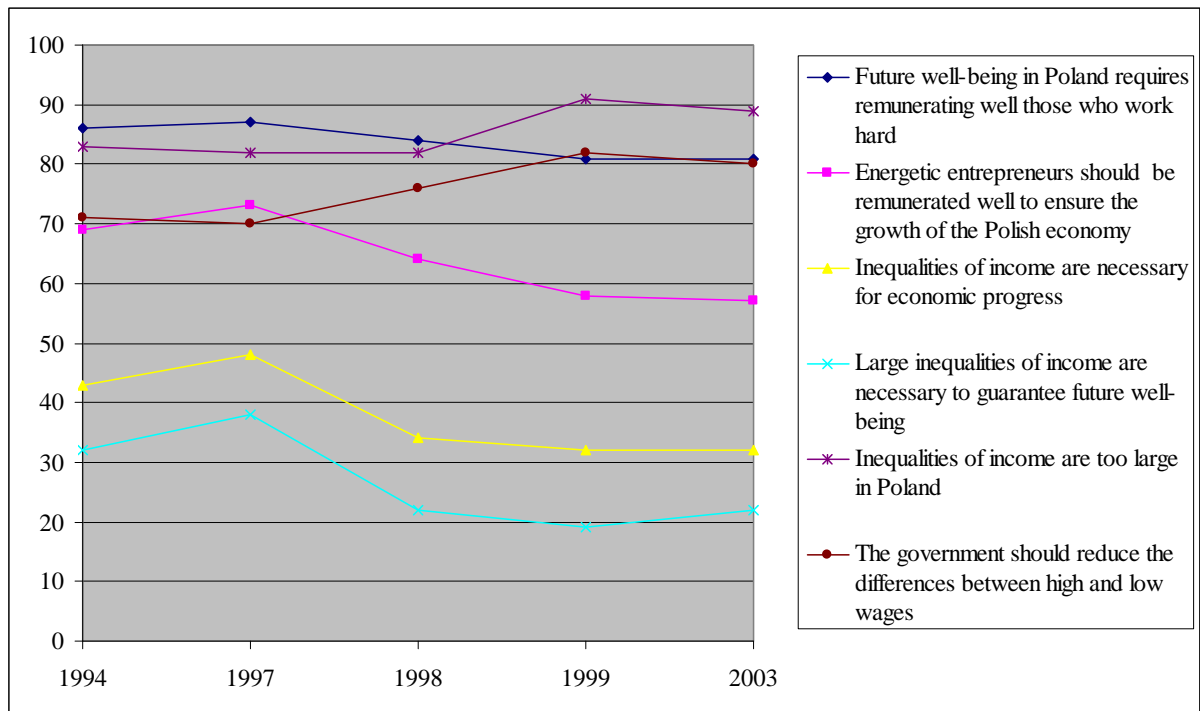
Table 1. Parliamentary election scores of the main Polish political parties. 1991-2005

	1991	1993	1997	2001	2005
Left-wing parties	11.99	27.69	31.87	41.04	15.31
Liberal parties	19.81	14.58	13.37	15.78	26.59
AWS	-	-	33.83	5.60	-
Agrarian parties	14.14	17.77	7.31	8.98	6.96
Samoobrona	-	2.78	0.08	10.20	11.41
PC/PiS	8.71	4.42	-	9.50	26.99
Other right**	21.98	11.18	5.56	7.87	7.97

Source: Our calculations based on data from the State Electoral Commission (<http://www.pkw.gov.pl/>). Left-wing parties include SLD, Unia Pracy and SdPI. Agrarian parties include PSL and PSL-Porozumienie Ludowe. Liberal parties include UD/UW/PD, KLD and PO. AWS was a large coalition of right-wing parties around the Solidarity trade union. Other right includes mostly right-wing Catholic parties, and some radically anti-communist and populist parties. See the description of Polish political parties in the Appendix for more details.

A particular inflexion in voting behavior is visible after 1997. This coincides with the announcement by the newly-appointed Centre-Right government of a wave of second-generation welfare-state reforms (related to health, pensions and education), which was met with some reluctance by the population. The spectacular upsurge in the votes for the Left in the following elections in 2001, and the large rise in the support for an openly populist party, Samoobrona, can both be interpreted as protest votes against the policy of the coalition government of AWS/UW, which was in power between 1997 and 2001. In the 2005 elections, the support for the Left-wing, in power from 2001 to 2005, shrank from 41% to 15%; this defeat was clearly the price paid for the budgetary discipline imposed during the process of accession to the European Union. It was also related to the outbreak of several corruption scandals (Freedom House, 2005). At the same time, two Right-wing parties, the national-conservative *Law and Justice* (PiS) and the liberal-conservative *Civic Platform* (PO), respectively tripled and doubled their scores. Law and Justice won the election with an electoral campaign focused on the losers from transition, and underlining the contrast between the “Poland of Solidarity” and “liberal Poland”. The negative outcomes of reforms, such as corruption and social stratification, were at the center of electoral debates.

Fig. 1. Opinions concerning income inequality: Poland 1994-2003



Percentage of people who agree with the statements indicated in the legend. Source: CBOS (2003).

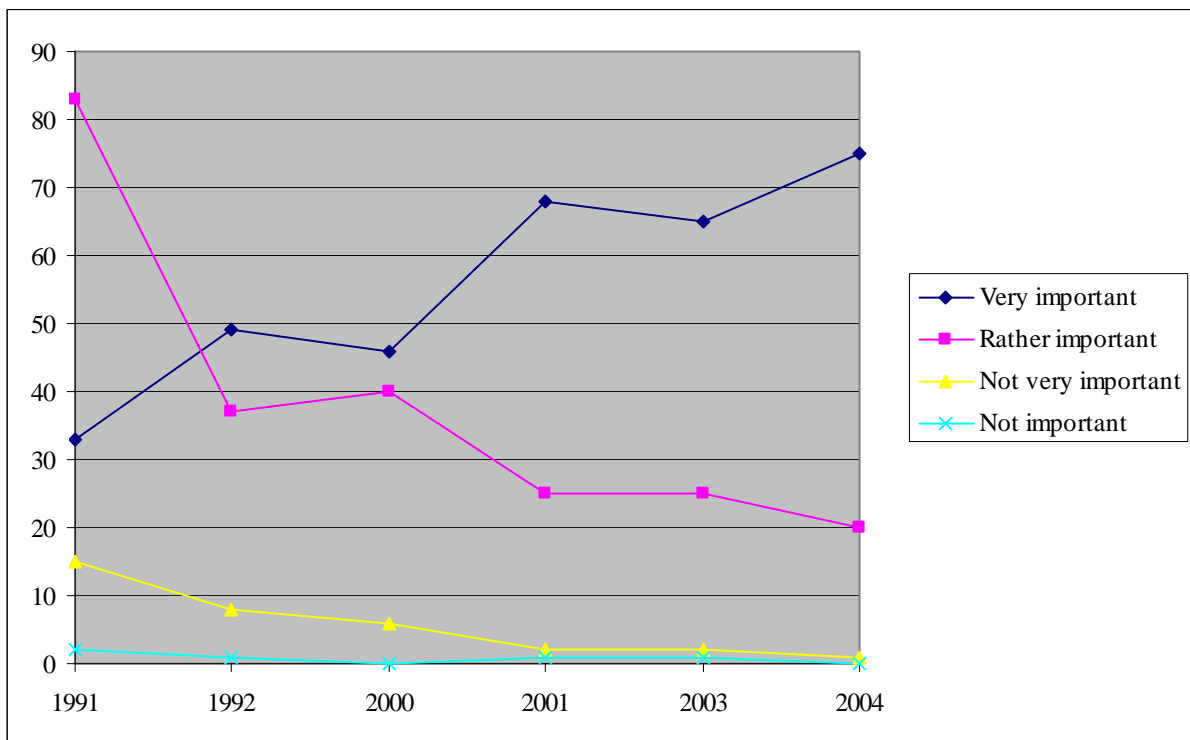
Several public opinion polls reveal the weakening of political support for reform after 1997. Figure 1 draws on a Public Opinion Research Center survey (CBOS, 2003) to show that the tolerance for income inequality, as a counterpart of “future well-being” and “economic progress” increased up to 1997, and then fell. The same pattern is observed for the belief that “energetic entrepreneurs should be remunerated well in order to ensure the growth of the Polish economy”, and to a lesser extent the belief that “future well-being in Poland requires remunerating well those who work hard”. By contrast, the opinion that “the government should reduce differences between high and low wages” gained in popularity after 1997. Finally, the number of citizens who declare that “inequalities of income are too large in Poland” increased after 1998. The same pattern is visible in the data from the New Europe Barometer surveys.<sup>1</sup> These data show that, the proportion of individuals who declare

<sup>1</sup> The questionnaires and descriptive statistics are available at <http://www.abdn.ac.uk/cspp/nebo.shtml>. These surveys were conducted by the Centre for the Study of Public Policy at the University of Aberdeen.

that “incomes should be made equal so that there is no great difference in income” rather than “individual achievement should determine how much people are paid; the more successful should be paid more” rose from 24% in 1992 to 32% in 1998, and 54% in 2004.

Figure 2, using another CBOS survey (CBOS, 2004), displays the proportion of the population considering corruption as an important problem. This sentiment increased sharply, reaching 75 percent in 2004. More generally it seems that the Polish population's perception of the fairness and efficiency of the income-generation process deteriorated during the period under observation, with a visible turning point around 1997.

Fig. 2. Is corruption an important problem? Poland 1991-2004 (%)



The question asked is: ‘In your opinion, how important is the corruption problem in Poland: very important/rather important/not very important/not important’. Source: CBOS (2004).

### **3. Data**

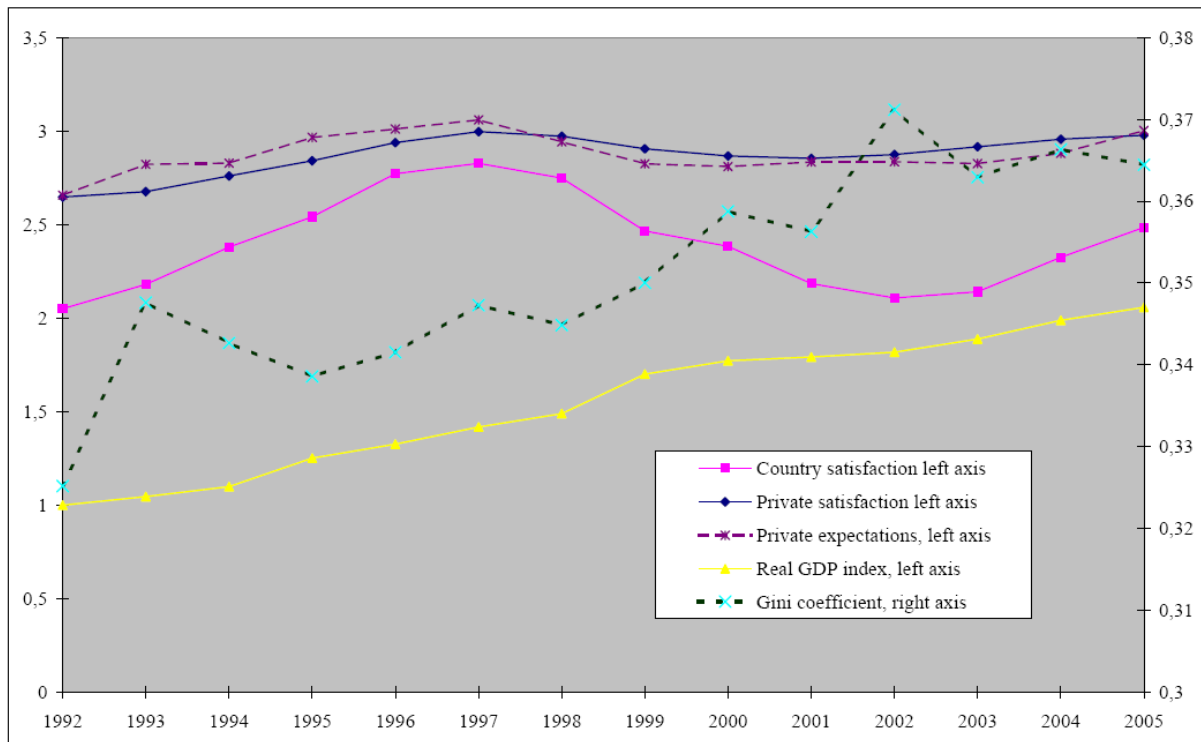
The data is constructed from individual-level surveys carried out by CBOS in Poland.<sup>2</sup> We exploit 84 surveys of randomly-chosen representative samples of the Polish adult population, consisting of approximately 1000-1300 interviews per survey, covering the period 1992-2005 (six surveys per year). Even though some variables are available in earlier years, we choose 1992 as our starting date, the year that GDP growth resumed after two years of significant decline. A standard set of questions appeared systematically: gender, age, education, residential location, labor market status, and socio-professional category. In terms of income, the best documented and most complete measure available is net total monthly household income per capita. This includes all of the revenues from the individual's main job, including bonuses, rewards, various additional remunerations, revenues from other jobs, including sporadic contracts, disability and old-age pensions, and other revenues and transfers. People were asked to indicate their net monthly average income per capita over the last three months. We use this notion of income, deflated using the monthly consumer price index published by the Polish Central Statistical Office (GUS). The evolution of average income per capita is shown in Figure 3.

---

<sup>2</sup> The sample design is explained at [http://www.cbos.pl/EN/About\\_us/design.shtml](http://www.cbos.pl/EN/About_us/design.shtml).



Fig. 3. Satisfaction variables, real GDP and the Gini coefficient, 1992-2005 (yearly averages)



The data also contain specific attitudinal questions. We use three of these (recoded so that higher numbers indicate greater satisfaction):<sup>3</sup>

- Country satisfaction: *How do you evaluate the economic situation in Poland?* Respondents could tick one out of five possible answers: *very good/good/neither good nor bad /bad/ very bad.*
- Private satisfaction: *How are your life and your family's life?* The proposed answers were: *Very good/ good /neither good nor bad/bad /very bad.*

<sup>3</sup> The correlation between the three questions is around 0.3.

- Private expectations: *Do you think that in the coming year, you and your family will live: much better than now/a little bit better/the same as now/a little bit worse/much worse.*

We match the CBOS data to macroeconomic data taken from official sources (GUS): yearly GDP, the yearly GDP deflator, and the monthly unemployment rate.

We compute the Gini coefficient of income inequality using the successive surveys of the dataset. This measure of inequality is of “high quality” as defined by Deininger and Squire (1996): it is calculated on the basis of successive representative samples of the population and takes into account all sources of revenues.<sup>4</sup>

The descriptive statistics for all variables are presented in Tables A1 - A3 in the Appendix. Over the 1992-2005 period, the economy grew at an average rate of 4.4 percent. More precisely, average GDP growth rate reached 5.3 percent between 1992 and 1997, and then fell slightly to 3.7 percent after 1997. In the meantime, there was a rise in unemployment and inequality. Income inequality as measured by the Gini coefficient was 0.32 at the beginning of 1992, but reached 0.38 by the end of 2005 (see Table A1 in the Appendix).

Figure 3 displays yearly averages of the main variables of interest: country satisfaction, private expectations, private satisfaction, real GDP and the Gini coefficient. Although real GDP has been rising continuously since 1992, satisfaction with the country’s economic situation rose only up to 1997, and then declined substantially until 2002, with a slight improvement after this date. The patterns of private satisfaction and expectations exhibit similar movements, but of a smaller amplitude. Private satisfaction and expectations thus seem to adapt to shocks and return to a baseline level of happiness (Clark *et al.*, forthcoming). By contrast, country satisfaction is a more political variable: it expresses people’s judgments about government economic policy. As such, it is more volatile and less subject to adaptation.

---

<sup>4</sup> Our measure of income inequality turns out to be slightly higher than the Gini coefficient for Poland calculated, for instance, by UNICEF (see Table A3 in the appendix): the difference may result from 1) UNICEF providing yearly measures while our data produces monthly estimates of the Gini, and 2) our use of monthly CPI.

## 4. Empirical strategy

We consider the possibility of a structural break in the relationship between individual satisfaction and inequality, without imposing any specific date for the discontinuity. We instead treat the breakpoint as endogenous. As Wald tests constructed with breaks treated as parameters do not possess standard large sample asymptotic distributions, we use the *sup-Wald* test based on the maximum of a sequence of Wald statistics, with critical values from Andrews (1993).<sup>5</sup>

The basic regression we estimate is:

$$S_{it} = a_T \text{Gini}_t + b_1 \mathbf{X}_{it} + b_2 \gamma_T + b_3 \text{trend} + b_4 \mathbf{v}_j + e_{it} \quad (1)$$

where  $S_{it}$  denotes the satisfaction of individual  $i$  at date  $t$  (or alternatively satisfaction with the economic situation of the country, private satisfaction, or private expectations);  $\text{Gini}_t$  is an inequality measure calculated for each representative cross-section;  $\mathbf{X}_{it}$  is a vector of the socio-economic characteristics of individual  $i$  at date  $t$  consisting of age, age-squared, gender, education, occupation, labor market status and other professional categories, household income per capita and residential location;  $\gamma_T$  are year dummies capturing the general macroeconomic and other circumstances that affect all individuals in a given year;  $\mathbf{v}_j$  denotes region dummies; and  $e_{it}$  is the error term. As the satisfaction variables are ordinal, we estimate equation (1) using an ordered logit model. We pool the individual observations from the different surveys, and cluster by cross-section so as to adjust standard errors for intra-survey correlations. Clustering is important to make sure that we do not exaggerate the statistical significance of those RHS variables which are more highly aggregated than the dependent variable.

---

<sup>5</sup> The critical values from Andrews (1993) are widely used in formal tests of parameter stability. See also Bai and Perron (1998).

We test the hypothesis that the parameter on the Gini coefficient ( $a_t$ ) is the same over the entire period. Consequently, we use a partial structural change model, constraining the coefficients of the other explanatory variables to remain the same over all of the periods. In other words, some parameters are taken as constant under  $H_0$  and  $H_1$ . If the null hypothesis is rejected, we want to locate the break point. Specifically,

$H_0: a_T = a^*$  for all  $T$

$H_1: a_T = a_1$  for  $T = 1992, \dots, T^B$

$a_T = a_2$  for  $T = T^B+1, \dots, 2005$

We consider different values of  $T^B$  from 1993 to 2004 trimming the sample at about 15% (i.e. leaving at least 15% of the sample either before or after the break) and compute the Wald statistic for each value of  $T^B$  in order to test whether the regression coefficient on the Gini estimated over the sub-period  $[1992, T^B]$  is equal to that estimated over the sub-period  $[T^B+1, 2005]$ . We calculate the Wald statistic over all possible breakpoints and compare the maximal value with the relevant critical value (taken from Andrews 1993). If the *sup Wald* statistic is smaller than the critical value, the test does not reject the null hypothesis of zero breaks. If the maximal Wald statistic exceeds the critical value, the test rejects the null hypothesis of equal coefficients. We then divide the sample into two parts at the estimated breakpoint and carry out a parameter constancy test for each sub-sample. If the hypothesis of no break in the sub-samples is not rejected, we estimate equation (1) separately for each sub-sample.

## 5. Results

We first check whether the satisfaction regressions yield results consistent with those in the literature with respect to the usual individual level characteristics (see for example Di Tella et al., 2003). As expected (see Table A4 in the Appendix), we find a U shaped relationship between age and satisfaction, and a positive correlation with income, education, and higher occupations. Men are happier than women, a frequent observation in Central and Eastern Europe and in Latin America, as opposed to Western Europe and the United States (Graham and Pettinato, 2002; Guriev and Zhuravskaya, 2007; Easterlin, 2008; Georgellis et al.,

forthcoming). People who live in rural areas are more satisfied and optimistic about their future standard of living than are inhabitants of urban agglomerations, who, in turn, are more satisfied than those who live in large cities. By contrast, individuals who live in the countryside view the situation of the country in a more pessimistic way.

In order to identify a discontinuity in the relation between income inequality and subjective attitudes, we test for the existence of a possible breakpoint, as explained above. For country satisfaction, the highest value of the Wald test is 16.93, corresponding to  $T^B = 1996$  (the critical value is 8.85 at the 5% level). For the relationship between private expectations and inequality, the *sup-Wald* test is 9.86 and also occurs for  $T^B = 1996$ .

With respect to the relation between private satisfaction and inequality, the tests do not allow us to identify a breakpoint.<sup>6</sup> However, if we impose 1996 as a breakpoint, a simple Wald test on the Gini index leads to the rejection of the null hypothesis of parameter equality over the two periods (1992-1996 and 1997-2005). This test, based on an exogenously given date, is less powerful than the previous Wald test. We thus treat the results for private satisfaction with some caution. Finally, we perform a parameter constancy test for each of the subsamples<sup>7</sup> and find no additional breaks.

---

<sup>6</sup> We believe that the relationship between private satisfaction and inequality is different from that between country satisfaction and inequality because private satisfaction mainly depends on personal circumstances and specific dynamics such as adaptation or a homeostatic mechanism of return to a baseline level, which partly isolate it from external circumstances such as the income distribution.

<sup>7</sup> See Bai and Perron (1998).

Table 2. A break in the relation between inequality and satisfaction. Ordered logit estimations.

	Country satisfaction		Private expectations		Private satisfaction	
	1992-1996	1997-2005	1992-1996	1997-2005	1992-1996	1997-2005
	(1)	(2)	(3)	(4)	(5)	(6)
Gini	6.402*** [2.100]	-6.199*** [2.170]	8.981*** [2.156]	0.258 [1.352]	0.627 [0.898]	-2.844** [1.397]
No. of observations	30520	43061	27115	40435	32357	45335
Chi2	3240601	9383	31416	41941	18861	26526
Pseudo R2	0.06	0.06	0.02	0.04	0.10	0.12
Log likelihood	-34891.44	-50214.02	-32677.07	-44364.70	-34828.81	-47973.66

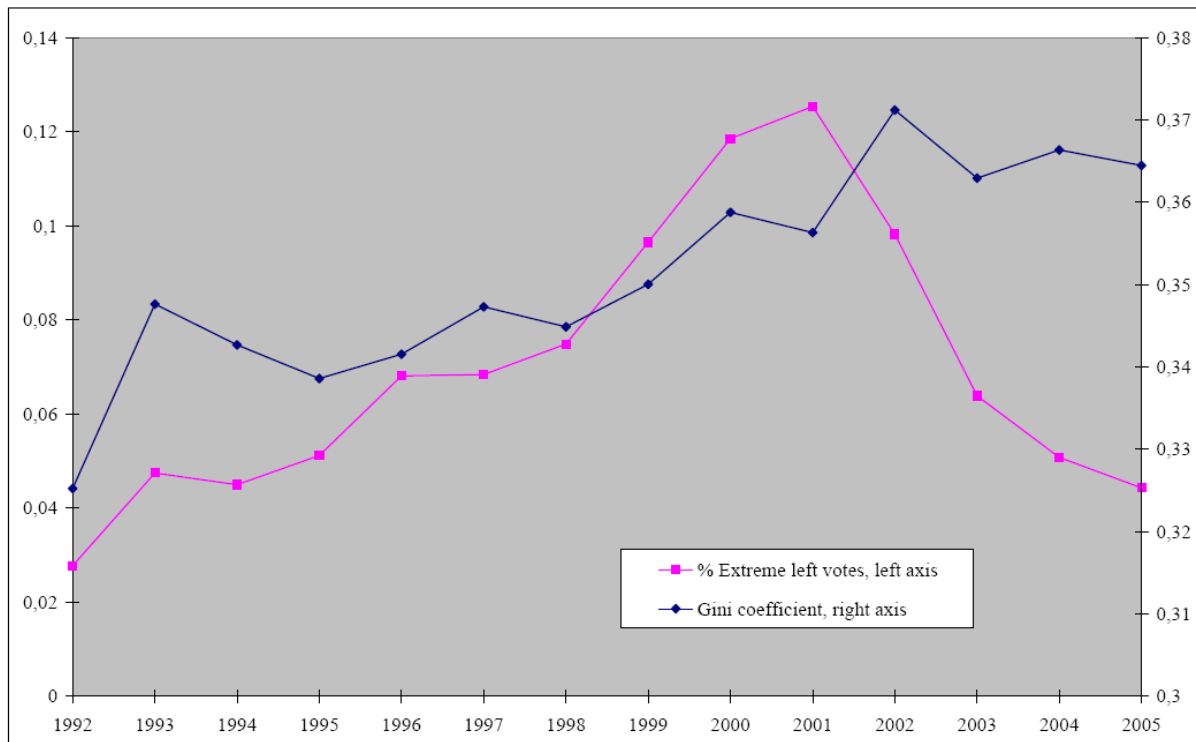
The following questions were asked: How do you assess current economic situation in Poland? Answers from 1 “very bad” to 5 “very good” (Country satisfaction); Do you think that in a year your life and the life of your family will be: Answers from 1 “much worse” to 5 “much better” than now (Private expectations); How do you and your family live? Answers from 1 “very bad” to 5 “very good” (Private satisfaction). Controls include gender, age, age-squared, education, residential location, employment status, occupation, regional dummies, time trend, and year dummies. Gini coefficients are calculated for each successive representative cross-section. All standard errors (in brackets) are clustered by cross-section. \*, \*\* and \*\*\* denote significance at the 10, 5 and 1% levels respectively.

Table 2 shows the estimation results for equation (1) of the three different satisfaction variables over the two sub-periods 1992-1996 and 1997-2005. The impact of the Gini coefficient on the evaluation of the country’s situation is significantly positive before 1997 (column 1) and then significantly negative afterwards (column 2). Columns 3 and 4 show individuals’ expectations regarding their living conditions. Our measure of inequality is significantly positively correlated with expectations up to 1997, but uncorrelated with it thereafter. This suggests that inequality is initially interpreted as an opening of new opportunities, but then loses this signification in the eyes of the population in the later stages of transition. Finally, private satisfaction is initially weakly influenced by inequality. In the second period, however, the coefficient on the Gini becomes significantly negative (columns 5 and 6). Obviously, the interpretation of income inequality has changed over the period under consideration, with a visible turning point in 1997.

As we have already indicated, the subjective assessment of the country’s situation is a political variable as much as a satisfaction variable. A natural question is thus whether the negative impact of the Gini coefficient on the country’s satisfaction is reflected in political attitudes. In Section 2, we presented some evidence about changing attitudes towards the income distribution and the perception of corruption. To go further, we explore another

question included in the CBOS survey: “Can you describe your political opinions? Please, use the scale 1 to 7, 1 meaning left and 7 meaning right”. We assume that the percentage of the respondents who position themselves at the extreme left of the political scale approximately captures the radical rejection of liberal reforms. As illustrated in Figure 4, this percentage follows the rise in the Gini coefficient. It then drops after 2001, when the Right-wing party Law and Justice won the election with a strongly pro-redistributive and anti-corruption program (see Section 3). These results suggest that the weakening tolerance for inequality does affect individuals' political attitudes.

Figure 4. Income inequality and self-indentification at the extreme left



Percentage of respondents identifying themselves as extreme left.

### Robustness checks

In order to make sure that the decline in country satisfaction and other subjective evaluations is actually due to the changing tolerance for inequality, we first assess the influence of other macro-economic variables, such as GDP growth, unemployment and inflation. Table 3

shows that including the annual rate of real GDP growth (panel A), the monthly rate of unemployment (panel B) or the monthly rate of inflation (panel C) does not alter our main result of the changing influence of inequality on subjective attitudes.

Table 3. Satisfaction and inequality, controlling for other macroeconomic variables. Ordered logit estimations.

	Country satisfaction		Private expectations		Private satisfaction	
	1992-1996	1997-2005	1992-1996	1997-2005	1992-1996	1997-2005
<i>Panel A</i>						
Gini	5.398** [2.298]	-9.459*** [2.655]	8.814*** [3.089]	-1.835 [2.489]	1.026 [1.106]	-3.421** [1.346]
GDP growth	-0.009 [0.041]	0.189*** [0.020]	0.035 [0.059]	0.072*** [0.017]	0.046** [0.020]	0.064*** [0.009]
No. of observations	30520	43061	27115	40435	32357	45335
Chi2	8831	2795	4445	3152	9414	21211
Pseudo R2	0.06	0.05	0.02	0.03	0.10	0.12
Log likelihood	-34911	-50670	-32695	-44553	-34846	-48019
<i>Panel B</i>						
Gini	5.914*** [1.872]	-5.709*** [2.202]	8.411*** [2.353]	0.269 [1.326]	0.611 [0.901]	-2.814** [1.391]
Regional unemployment	-0.008*** [0.003]	-0.016*** [0.004]	-0.003 [0.004]	-0.004 [0.003]	0.002 [0.002]	-0.002 [0.003]
No. of observations	30520	43061	27115	40435	32357	45335
Chi2	1972145	9627	9451	4815	22850	28663
Pseudo R2	0.06	0.06	0.02	0.04	0.10	0.12
Log likelihood	-34912	-50204	-32699	-44364	-34829	-47973
<i>Panel C</i>						
Gini	5.809*** [1.777]	-6.648*** [2.248]	8.373*** [2.302]	-0.038 [1.352]	0.638 [0.905]	-2.863** [1.366]
Inflation	0.022 [0.022]	0.079** [0.039]	0.015 [0.043]	0.033* [0.018]	0.011 [0.011]	0.003 [0.030]
No. of observations	30520	43061	27115	40435	32357	45335
Chi2	435180	8314	56413478	5017	11296	26615
Pseudo R2	0.06	0.06	0.02	0.04	0.10	0.12
Log likelihood	-34915	-50207	-32698	-44363	-34828	-47974

The following questions were asked: How do you assess current economic situation in Poland? Answers from 1 "very bad" to 5 "very good" (Country satisfaction); Do you think that in a year your life and the life of your family will be: Answers from 1 "much worse" to 5 "much better" than now (Private expectations); How do you and your family live? Answers from 1 "very bad" to 5 "very good" (Private satisfaction). Controls include gender, age, age-squared, education, residential location, employment status, occupation, regional dummies, and year dummies in the middle and bottom panels. Gini coefficients are calculated for each successive representative cross-section. All standard errors (in brackets) are clustered by cross-section. \*, \*\* and \*\*\* denote significance at the 10, 5 and 1% levels respectively.



Second, as the effect that we are trying to capture is the change in the perception of income inequality over time, we now focus on the time component of satisfaction. In order to isolate the pure time effect of satisfaction, we first regress satisfaction variables on the usual individual controls including date fixed effects. We then use the vector of estimated date fixed effects and regress it over the corresponding Gini coefficients. Intuitively, this is tantamount to asking the following question: what is the impact of income inequality on the bi-monthly variations of average attitudes that are purely due to time. The effect of income inequality remains significantly positive up to 1997 and negative thereafter. Controlling for the monthly rate of unemployment or the monthly rate of inflation does not alter the influence of income inequality (Table 4). Columns (1) and (2) in Table 4 show that the effect of unemployment on country satisfaction is similar to that of income inequality. It is positive in the first period, and negative in the second period. This is not particularly surprising, as unemployment is another facet of inequality. The initial rise in unemployment may have been interpreted as reflecting a necessary process of industrial restructuring required for future growth, whereas the subsequent deepening of layoffs produced a more pessimistic evaluation. The coefficients on the monthly rate of inflation in Table 3 are mostly insignificant.

Table 4. The role of inequality in explaining the wave fixed effects. OLS regressions.

	Country satisfaction				Private expectations				Private satisfaction			
	(1) 1992-1996	(2) 1997-2005	(3) 1992-1996	(4) 1997-2005	(5) 1992-1996	(6) 1997-2005	(7) 1992-1996	(8) 1997-2005	(9) 1992-1996	(10) 1997-2005	(11) 1992-1996	(12) 1997-2005
Gini	4.840** [2.188]	-4.950* [2.552]	5.884** [2.323]	-6.799** [2.550]	7.880* [4.033]	0.545 [1.653]	9.583** [4.234]	0.161 [1.598]	0.719 [1.018]	-2.474* [1.269]	0.676 [0.969]	-2.595** [1.245]
Regional unemployment	0.094** [0.043]	-0.095** [0.045]			0.152* [0.080]	-0.013 [0.028]			-0.003 [0.020]	-0.004 [0.022]		
Monthly inflation rate			0.020 [0.027]	0.083* [0.048]			0.015 [0.049]	0.034 [0.030]			0.012 [0.011]	0.010 [0.024]
No. of observations	29	53	29	53	29	53	29	53	29	53	29	53
R-squared	0.946	0.914	0.936	0.911	0.621	0.779	0.560	0.785	0.925	0.752	0.929	0.753
F-stat	64.72	44.36	54.01	42.76	6.00	14.81	4.66	15.31	45.30	12.76	47.62	12.82

The following questions were asked: How do you assess current economic situation in Poland? Answers from 1 “very bad” to 5 “very good” (Country satisfaction); Do you think that in a year your life and the life of your family will be: Answers from 1 “much worse” to 5 “much better” than now (Private expectations); How do you and your family live? Answers from 1 “very bad” to 5 “very good” (Private satisfaction). Year dummies included. \*, \*\* and \*\*\* denote significance at the 10, 5 and 1% levels respectively. Gini coefficients are calculated for each successive representative cross-section.

We then check for a possible effect of seasonality by including monthly dummies. Their inclusion does not affect the results (Table A5 in the Appendix).

We also ask whether the changing tolerance for inequality is due to the reduced importance of the welfare state. The tolerance for inequality certainly depends on the extent of redistribution and social protection. Keane and Prasad (2002), following Garner and Terrel (1998), argued that at the beginning of transition substantial social transfers compensated for increasing wage inequality. The mechanisms of social transfers were thus critical in ensuring political support for reform. Their period of observation stops in 1997, but official statistics show that the share of social expenditure in GDP has remained stable at around 23% since 1997. Hence, the changing tolerance for inequality does not seem to be associated with the withering away of the welfare state.

Finally, we check whether the results are robust to the use of alternative measures of inequality. It could be argued that people have more local views of the income distribution and that the Gini coefficient calculated at the country level does not measure the level of inequality that is actually perceived. We thus calculate income inequality for different residential locations: large cities (over 100 000 inhabitants), smaller cities and rural areas. As shown in Table 5, the results are unchanged with this new inequality measure: the sign of the Gini coefficient changes after 1996 in the regression of country satisfaction; inequality stops informing expectations starting in 1997, and private satisfaction falls with inequality after 1996.

Table 5. Satisfaction and inequality by residential location. Ordered logit estimations.

	Country satisfaction		Private expectations		Private satisfaction	
	1992-1996	1997-2005	1992-1996	1997-2005	1992-1996	1997-2005
Local Gini	1.914*** [0.736]	-2.396*** [0.892]	3.545*** [1.071]	-0.793 [0.630]	0.288 [0.452]	-1.175** [0.511]
No. of observations	30520	43061	27115	40435	32357	45335
Chi2	8321127	6299	1905	4251	28509	25201
Pseudo R2	0.05	0.06	0.02	0.04	0.1	0.12
Log likelihood	-34916	-50225	-32740	-44363	-34829	-47975

The following questions were asked: How do you assess current economic situation in Poland? Answers from 1 “very bad” to 5 “very good” (Country satisfaction); Do you think that in a year your life and the life of your family will be: Answers from 1 “much worse” to 5 “much better” than now (Private expectations); How do you and your family live? Answers from 1 “very bad” to 5 “very good” (Private satisfaction). Controls include gender, age, age-squared, education, residential location, employment status, occupation, regional dummies, time trend, and year dummies. Local Gini is calculated for each representative cross-section for different residential location: large cities (over 100 000 inhabitants), smaller cities and rural areas. All standard errors (in brackets) are clustered by cross-section. \*, \*\* and \*\*\* denote significance at the 10, 5 and 1% levels respectively.

We have also checked that the same pattern holds when inequality is measured as the standard deviation of log household income for each cross section: in the estimation of country satisfaction, the coefficient on this measure is 0.001\*\*\* before 1997 and -0.001\*\* after 1996; in the estimation of private expectations, the coefficient is 0.002\*\*\* before 1997 and 0.000 thereafter. Finally, in the estimation of private satisfaction, the coefficient is 0.000 before 1997 and -0.001\*\*\* afterwards.

Alternatively, instead of looking at the impact of income inequality in general, as measured by the Gini coefficient, we could use a measure of reference income, constructed as the average income by type of locality for each cross-section (see for example Blanchflower and Oswald, 2004; Clark et al., 2008). This average income can play the role of a comparison benchmark or an expectation (Senik, forthcoming). Including reference income together with own household income per capita in the estimation of equation (1), we check whether the relation of “reference income” to country satisfaction is the same as that for the Gini coefficient.

Table 6 shows the coefficients on reference income and household income per capita. While the coefficient on household income is always positive, that on reference income is significantly negative after 1996 in the country satisfaction regression, but significantly positive in the initial period (columns 1 and 2). Reference income stops informing expectations (columns 3 and 4) and exerts a negative impact on private satisfaction after 1996 (column 6).

Table 6. Satisfaction and reference income. Ordered logit

	Country satisfaction		Private expectations		Private satisfaction	
	1992-1996	1997-2005	1992-1996	1997-2005	1992-1996	1997-2005
	(1)	(2)	(3)	(4)	(5)	(6)
Reference income	1.662*	-1.555**	2.756***	0.409	0.039	-1.053***
	[0.886]	[0.656]	[1.065]	[0.483]	[0.283]	[0.322]
Household income per capita	0.326***	0.336***	0.297***	0.361***	1.274***	1.293***
	[0.025]	[0.022]	[0.034]	[0.021]	[0.034]	[0.019]
No. of observations	30520	43061	27115	40435	32357	45335
Chi2	569147.51	6218.23	100122.39	4112.35	28995.86	30429.20
Pseudo R2	0.06	0.06	0.02	0.04	0.10	0.12
Log likelihood	-34908	-50226	-32694	-44364	-34829	-47972

The following questions were asked: How do you assess current economic situation in Poland? Answers from 1 “very bad” to 5 “very good” (Country satisfaction); Do you think that in a year your life and the life of your family will be: Answers from 1 “much worse” to 5 “much better” than now (Private expectations); How do you and your family live? Answers from 1 “very bad” to 5 “very good” (Private satisfaction). Reference income is calculated by cross-section as the average net income per capita by type of locality (rural, urban or cities with over 100 000 inhabitants). Controls include gender, age, age-squared, education, residential location, employment status, occupation, regional dummies, time trend, and year dummies. All standard errors (in brackets) are clustered by cross-section. \*, \*\* and \*\*\* denote significance at the 10, 5 and 1% levels respectively.

These results confirm that the parallel processes of income growth and inequality were initially well accepted by Poles, who might have seen them as a promise of future shared gains. However, by the late mid-1990s, these high expectations seem to have given way to more negative attitudes fed by the rising intolerance for income inequality. In spite of the continued rise in average income, satisfaction with the economic situation of the country, expectations and private satisfaction all started to decline.

## **6. Conclusion**

This paper provides evidence of the influence of income inequality on individuals' views of the economic situation of the country, which can partly be interpreted as a measure of support for reforms. Income inequality is initially perceived as a positive signal of increased opportunities, but after a couple of years of rapid economic transformation, unfulfilled expectations and diminishing patience brought about a change in attitudes: growing inequality started to undermine satisfaction. Individuals seem to have become disappointed with transformation and skeptical about the legitimacy of the enrichment of reform winners. Various public opinion surveys confirm the changing popular opinions about the degree of corruption in the country and the desirability of high pay-offs in certain professions. Hence, the turning point in the tolerance for income inequality seems to come with the increasingly wide perception that the process that generates income distribution is itself unfair.

The findings of this paper constitute a link between the literature on satisfaction and the political economy literature focusing on inequality and growth. It provides, from the "internal" subjective point of view of citizens, some evidence of the mechanism, hypothesized for instance by Acemoglu and Robinson (2000, 2002) or Alesina and Rodrik (1994), that growth that is accompanied by inequality generates dissatisfaction. Dissatisfaction, in turn, can create political opposition to further reform.

The results obtained in this paper offer a number of lessons for developing and transition countries: if it is important for governments to rapidly exploit the initial "window of opportunity" for reforms, it is also crucial that they adopt redistributive policies early on in the process, in order to ensure durable popular support for reforms. However, the paper's findings also provide lessons for developed countries, by reminding us how important it is to ensure that the functioning of the market and the process of income distribution are perceived as fair and transparent.

## References

- Acemoglu, D. and Robinson, J. A. (2000). 'Why did the West extend the franchise? Democracy, inequality, and growth in historical perspective', *The Quarterly Journal of Economics*, vol.115(4), pp. 1167-119.
- Acemoglu, D. and Robinson, J. A. (2002). 'The political economy of the Kuznets curve', *Review of Development Economics*, vol. 6(2), pp. 183-203.
- Alesina, A. and Fuchs-Schuendeln, N. (2007). 'Good Bye Lenin (or not?) – The effect of communism on people's preferences,' *American Economic Review*, vol. (97), pp. 1507-1528.
- Alesina, A. and Angeletos, G-M. (2005). 'Fairness and redistribution: US versus Europe', *American Economic Review*, vol. 95, pp. 913-35.
- Alesina, A. and la Ferrara, E. (2005). 'Preferences for redistribution in the land of opportunities', *Journal of Public Economics*, vol. 89, pp. 897-931.
- Alesina, A., Glaeser, E. and Sacerdote, B. (2001), 'Why doesn't the US have a European-style welfare system?', *Brookings Papers on Economic Activity*, Fall, pp. 187-278.
- Alesina, A., Di Tella, R. and MacCulloch, R. (2004). 'Inequality and happiness: Are Europeans and Americans different?', *Journal of Public Economics*, vol. 88, pp. 2009–2042.
- Alesina, A. and Perotti, R. (1996). 'Income distribution, political instability, and investment', *European Economic Review*, vol. 40(6), pp. 1203-1228.
- Alesina, A. and Rodrik, D. (1994). 'Distributive politics and economic growth', *The Quarterly Journal of Economics*, vol. 109(2), pp. 465-90.
- Andrews, D.W.K. (1993). 'Test for parameter instability and structural change with unknown change point', *Econometrica*, vol. 61(4), pp. 821-856.
- Bai, J. and Perron, P. (1998). 'Estimating and testing linear models with multiple structural changes', *Econometrica*, vol. 66 (1), pp. 47-78.
- Blanchflower, D. and Oswald, A. (2004) 'Well-Being over time in Britain and the USA', *Journal of Public Economics*, vol. 88, pp. 1359-1386.
- Brainerd, E. (1998). 'Winners and losers in Russia's economic transition', *American Economic Review*, vol. 88, pp. 1094-1116.
- CBOS (2003). 'Attitudes towards income inequality', Warsaw.
- CBOS (2004). 'The perception of corruption in Poland', Warsaw.
- Clark, A., Frijters, E. P. and Shields, M. (2008). 'Relative Income, Happiness and Utility: An Explanation for the Easterlin Paradox and Other Puzzles', *Journal of Economic Literature*, vol. 46, pp. 95-144.

- Clark, A. Ed Diener, E., Georgellis, Y. and Lucas, R. (forthcoming). 'Lags and leads in life satisfaction: A test of the baseline hypothesis', *Economic Journal*.
- Deininger, K. and Squire, L. (1996). 'A new data set measuring income inequality', *World Bank Economic Review*, vol. 10 (3), pp. 565-591.
- Denisova, I., Markus, E. and Zhuravskaya, E. (2008). 'What Russians think about transition: Evidence from RLMS survey', CEFIR and NES working paper n°113.
- Desai, R. M. and Olofsgård, A. (2006). 'Political constraints and public support for market reform'. *IMF Staff Papers*, 53.
- Di Tella, R, MacCulloch, R. and Oswald, A. (2003). 'The macroeconomics of happiness', *Review of Economics and Statistics*, vol. 85(4), pp. 809–827.
- Di Tella, R, MacCulloch, R. and Oswald, A. (2001). 'Preferences over inflation and unemployment: Evidence from surveys of happiness', *American Economic Review*, vol. 91(1).
- Easterlin, R. (2001). 'Income and happiness: a unified theory', *Economic Journal*, vol. 111, pp.1-20.
- Easterlin, R. (2008). 'Lost in transition; Life satisfaction on the road to capitalism', IZA DP 3409.
- Easterlin, R. and Zimmermann, A. (forthcoming). 'Life satisfaction and economic conditions in East and West Germany pre- and post- unification', IZA DP 2494, *Journal of Economic Behavior and Organization*.
- Ferrer-i-Carbonell, A. (2005). 'Income and well-being: An empirical analysis of the comparison income effect', *Journal of Public Economics*, vol. 89, pp. 997-1019.
- Fong, Ch. (2001). 'Social preferences, self-interest, and the demand for redistribution', *Journal of Public Economics*, vol. 82, pp. 225-246.
- Freedom House 'Nations in Transit' (2005), <http://www.freedomhouse.org/>
- Frijters, P., Haisken-de-New, J. and Shields, M. (2004). 'Money does matter! Evidence from increasing real income and life satisfaction in East Germany following reunification', *American Economic Review*, vol. 94(3).
- Garner, T. and Terrell, K. (1998). 'A Gini Decomposition of inequality in the Czech and Slovak Republics during the transition', *Economics of Transition*, 6(1): 23-46.
- Garton Ash, T. (1989). 'Revolution: The springtime of two nations', *The New York Review of Books*, 36 (10).
- Georgellis Y., Tsiitanis, N. and Ping Yin, Y. (forthcoming), 'Personal values as mitigating factors in the link between income and life satisfaction: Evidence from the European Social Survey', Social Indicators Research.



- Graham, C. and Pettinato, S. (2002). 'Frustrated achievers: winners, losers, and subjective well being in new market economies', *Journal of Development Studies* vol. 38, pp. 100–140.
- Guriev, S.M. and Zhuravskaya, E.V. (2008), '(Un)Happiness in Transition'. Available at SSRN: <http://ssrn.com/abstract=1077709>.
- Hirschman, A. and Rothschild, M. (1973). 'The changing tolerance for income inequality in the course of economic development', *Quarterly Journal of Economics*, vol. 87, pp. 544–566.
- Kalbarczyk, M. (2006). 'Income and satisfaction: Panel data analysis for Poland and England', Warsaw University, Faculty of Economic Science.
- Keane, M. and Prasad, E. (2006). 'Inequality, transfers and growth: New evidence from the economic transition in Poland', *Review of Economics and Statistics*, vol. 84(2), pp. 324–341.
- Kornai, J. (2006). 'The great transformation of Central Eastern Europe', *Economics of Transition*, vol. 14(2), pp. 207–244.
- Krastev, I. (2007). 'The strange death of the liberal consensus', *Journal of Democracy*, vol. 18 (4).
- Milanovic, B. (1998). 'Income, inequality, and poverty during the transition from planned to market economy. The first comprehensive review of social effects of transition in 18 countries'. World Bank Regional and Sectoral Studies.
- Milanovic, B. (1999). 'Explaining the increase in inequality during the transition'. *Economics of Transition*, vol. 7(2), pp. 299–341.
- Persson, T. and Tabellini, G. (1994). 'Is inequality harmful for growth?', *American Economic Review* vol. 8, pp. 600–621.
- Ravallion, M. and Lokshin, M. (2000). 'Who wants to redistribute? The tunnel effect in 1990s Russia', *Journal of Public Economics*, vol. 76(1), pp. 81–104.
- Sachs, J. (1993). *Poland's Jump to the Market Economy* (Lionel Robbins Lectures), Boston: The MIT Press .
- Sanfey, P. and Teksoz, U. (2007). 'Does transition make you happy?', *Economics of Transition*, vol. 15(4), pp. 707–731.
- Senik, C. (2004). 'When information dominates comparison. Learning from Russian subjective panel data', *Journal of Public Economics*, vol. 88 (9–10), pp. 2099–2133.
- Senik, C. (forthcoming). 'Ambition and jealousy. Income interactions in the "Old" Europe versus the "New" Europe and the United States', IZA Discussion Paper N° 2083, *Economica*.

## Appendix

### **Brief description of Polish political parties (see Table 1).**

SLD (Sojusz Lewicy Demokratycznej), a social-democratic party which succeeded the pre-1989 communist party PZPR. Initially used anti-capitalist arguments and opposed the privatization program; after 1997 the accent was put on economic reforms, on joining NATO and the UE. In 2001 the results for SLD include Unia Pracy (UP). In 2005 the results for SLD include SdPI (Socjaldemokracja Polska), which obtained 3.89% of the votes.

Samoobrona – a populist agrarian party, proposing a radical program of isolationism, protectionism, and hostility to foreign investors.

UD/UW/PD (Unia Demokratyczna/Unia Wolności/Partia Demokratyczna) – three successive embodiments of a centre party: economically pro-capitalist, culturally and politically liberal

KLD (Kongres Liberalno-Demokratyczny) – a liberal party: it joined UW in 1994, but then left UW in 2001; its leaders helped to found a new more conservative party, Platforma Obywatelska (PO).

PO (Platforma Obywatelska) was created in 2001 – a liberal-conservative party.

AWS/AWS Prawicy (Akcja Wyborcza Solidarność) – large coalition of Right-wing parties around the Solidarity trade union.

PC/PiS – a popular, nationalist, conservative party; since its formation PiS has focused on fighting against the post-Communist left and corruption.

Other right – includes mostly right-wing Catholic parties, and some radically anti-communist and populist parties. These typically reject liberalism, defend the Catholic Church and family values, and want to protect national interests against globalization, foreign capital, and the European Union

Table A1. Descriptive statistics per wave. Subjective variables, household income and the Gini coefficient calculated by cross-section.

Dates (year_month)	Country satisfaction	Private Expectation s	Private satisfaction	Household income	Gini coefficient
1992_01	2.002	2.679	2.753		
1992_05	1.944	2.531	2.613	5.454	0.323
1992_07	2.036	2.849	2.640	5.528	0.331
1992_09	2.060	2.742	2.635	5.569	0.312
1992_10	2.147	2.707	2.652	5.515	0.339
1992_12	2.108	2.453	2.610	5.467	0.320
1993_01	2.124	2.637	2.659	5.516	0.353
1993_03	2.126	2.641	2.677	5.528	0.355
1993_05	2.085	2.741	2.713	5.527	0.324
1993_07	2.124	2.700	2.628	5.490	0.325
1993_09	2.272	3.046	2.663	5.486	0.379
1993_11	2.347	3.169	2.720	5.532	0.347
1994_01	2.343	2.924	2.788	5.488	0.351
1994_03	2.235	2.704	2.703	5.407	0.345
1994_06	2.437	2.886	2.738	5.471	0.357
1994_07	2.462	2.861	2.769	5.514	0.347
1994_09	2.379	2.733	2.818	5.510	0.337
1994_11	2.426	2.859	2.749	5.542	0.323
1995_01	2.521	2.928	2.832	5.546	0.339
1995_03	2.430	2.952	2.809	5.519	0.336
1995_05	2.526	2.904	2.851	5.573	0.306
1995_07	2.599	2.963	2.847	5.569	0.353
1995_09	2.574	2.931	2.841	5.566	0.339
1995_11	2.606	3.117	2.868	5.683	0.358
1996_01	2.943	3.137	2.975	5.650	0.364
1996_03	2.786	3.041	2.911	5.574	0.348
1996_05	2.702	2.988	2.938	5.614	0.329
1996_07	2.699	2.953	2.923	5.668	0.336
1996_09	2.724	2.941	2.959	5.675	0.329
1996_11	2.771	3.006	2.925	5.691	0.342
1997_01	2.745	3.072	2.906	5.726	0.371
1997_03	2.687	3.028	2.987	5.728	0.344
1997_05	2.840	3.048	3.023	5.807	0.332
1997_07	2.895	3.029	3.074	5.749	0.324
1997_09	2.939	3.141	3.005	5.794	0.352
1997_11	2.866	3.052	2.985	5.801	0.328
1998_01	2.771	2.929	3.000	5.720	0.337
1998_03	2.769	2.965	2.942	5.706	0.354
1998_05	2.774	2.988	2.967	5.797	0.337
1998_07	2.721	2.957	2.991	5.822	0.339
1998_09	2.746	2.878	2.943	5.834	0.352
1998_11	2.699	2.923	2.997	5.823	0.353
1999_01	2.706	2.889	2.945	5.805	0.347
1999_03	2.457	2.830	2.879	5.735	0.363
1999_05	2.471	2.828	2.912	5.818	0.342
1999_07	2.396	2.749	2.875	5.823	0.345
1999_09	2.330	2.814	2.882	5.879	0.353
1999_11	2.431	2.840	2.941	5.856	0.350

Table A1. Descriptive statistics per wave. Subjective variables, household income and the Gini coefficient calculated by cross-section (Cont.)

Dates (year_month)	Country satisfaction	Private Expectations	Private satisfaction	Household income	Gini coefficient
2000_01	2.490	2.848	2.874	5.800	0.372
2000_02	2.427	2.781	2.889	5.755	0.365
2000_05	2.320	2.792	2.904	5.827	0.365
2000_07	2.339	2.751	2.826	5.775	0.337
2000_09	2.375	2.854	2.882	5.814	0.359
2000_11	2.348	2.834	2.830	5.779	0.354
2001_01	2.383	2.844	2.896	5.787	0.328
2001_03	2.201	2.770	2.809	5.791	0.368
2001_05	2.198	2.781	2.842	5.783	0.351
2001_07	2.098	2.841	2.864	5.840	0.377
2001_09	2.147	2.879	2.846	5.811	0.340
2001_11	2.077	2.899	2.870	5.811	0.378
2002_01	2.071	2.834	2.881	5.831	0.361
2002_03	2.056	2.791	2.849	5.779	0.375
2002_05	2.071	2.788	2.835	5.824	0.379
2002_07	2.035	2.839	2.864	5.885	0.389
2002_09	2.160	2.876	2.910	5.820	0.366
2002_11	2.247	2.885	2.906	5.852	0.357
2003_01	2.249	2.867	2.914	5.832	0.373
2003_03	2.111	2.836	2.880	5.822	0.355
2003_05	2.060	2.873	2.900	5.864	0.363
2003_07	2.134	2.804	2.882	5.806	0.356
2003_09	2.188	2.887	2.997	5.819	0.360
2003_11	2.120	2.683	2.917	5.778	0.369
2004_01	2.257	2.864	2.920	5.822	0.372
2004_03	2.121	2.772	2.934	5.802	0.381
2004_05	2.370	2.924	2.982	5.882	0.367
2004_07	2.323	2.891	2.942	5.786	0.351
2004_09	2.451	2.939	3.007	5.811	0.369
2004_11	2.445	2.902	2.961	5.773	0.355
2005_01	2.541	2.981	2.980	5.737	0.363
2005_03	2.415	2.966	2.926	5.747	0.351
2005_05	2.525	3.073	2.965	5.809	0.362
2005_07	2.371	2.903	2.989	5.782	0.369
2005_09	2.471	2.974	2.971	5.776	0.365
2005_11	2.588	3.123	3.037	5.778	0.377
2000_11	2.348	2.834	2.830	5.779	0.354
2001_01	2.383	2.844	2.896	5.787	0.328
2001_03	2.201	2.770	2.809	5.791	0.368
2001_05	2.198	2.781	2.842	5.783	0.351

The following questions were asked: How do you assess current economic situation in Poland? Answers from 1 “very bad” to 5 “very good” (Country satisfaction); Do you think that in a year your life and the life of your family will be: Answers from 1 “much worse” to 5 “much better” than now (Private expectations); How do you and your family live? Answers from 1 “very bad” to 5 “very good” (Private satisfaction). Household income is the logarithm of net total monthly household income per capita, deflated by the monthly CPI. Gini coefficients are calculated for each successive representative cross-section.

Table A2. Descriptive statistics. The socio-demographic structure of the sample, yearly averages.

---

Year	Female	Age	Secondary education	Rural areas	Urban areas	Large cities
1992	0.55	46.77	0.34	0.42	0.52	0.28
1993	0.55	47.93	0.35	0.42	0.52	0.28
1994	0.48	47.89	0.37	0.40	0.53	0.28
1995	0.55	48.24	0.37	0.40	0.51	0.29
1996	0.55	47.61	0.39	0.37	0.55	0.28
1997	0.57	47.53	0.41	0.37	0.52	0.31
1998	0.56	47.74	0.41	0.37	0.53	0.30
1999	0.56	48.17	0.43	0.37	0.52	0.30
2000	0.55	48.13	0.45	0.37	0.50	0.32
2001	0.56	47.86	0.44	0.36	0.49	0.32
2002	0.55	48.46	0.46	0.35	0.46	0.35
2003	0.55	47.82	0.46	0.37	0.47	0.33
2004	0.52	46.89	0.46	0.41	0.51	0.29
2005	0.53	46.73	0.44	0.37	0.51	0.30

---

Large cities are defined as having over 100 000 inhabitants.

Table A2. continued.

Year	Unemployed	Pensioners	Farm	Not working	Unqualified workers	Qualified workers	Higher occupations	Self-employed	Employees
1992	0.08	0.34	0.11	0.07	0.06	0.14	0.06	0.03	0.15
1993	0.05	0.44	0.09	0.03	0.04	0.10	0.06	0.04	0.13
1994	0.04	0.45	0.09	0.02	0.04	0.10	0.06	0.04	0.13
1995	0.06	0.43	0.08	0.04	0.04	0.10	0.06	0.04	0.12
1996	0.08	0.37	0.07	0.06	0.04	0.10	0.07	0.04	0.15
1997	0.08	0.35	0.06	0.06	0.04	0.10	0.08	0.04	0.16
1998	0.07	0.37	0.06	0.05	0.04	0.09	0.07	0.04	0.16
1999	0.08	0.37	0.06	0.05	0.04	0.09	0.07	0.04	0.16
2000	0.09	0.37	0.06	0.05	0.03	0.08	0.07	0.04	0.16
2001	0.12	0.37	0.05	0.05	0.03	0.08	0.06	0.04	0.16
2002	0.13	0.37	0.05	0.04	0.03	0.07	0.07	0.04	0.16
2003	0.12	0.35	0.05	0.05	0.03	0.07	0.07	0.04	0.16
2004	0.12	0.34	0.06	0.05	0.03	0.07	0.07	0.04	0.16
2005	0.11	0.33	0.05	0.05	0.04	0.08	0.05	0.03	0.17

Table A3. Descriptive statistics. Macroeconomic variables

Year	Nominal GDP	Real GDP growth	Unemployment rate	Gini coefficient (our data)	Gini coefficient UNICEF data
1992	114243	102.6	13.1	.325	0.274
1993	155780	103.8	14.9	.348	0.317
1994	210377	105.2	16.5	.343	0.323
1995	306318	107.0	15.2	.339	0.321
1996	385448	106.2	14.4	.342	0.328
1997	469372	107.1	11.6	.342	0.334
1998	549467	105.0	10.0	.345	0.326
1999	665688	104.5	11.9	.350	0.334
2000	744378	104.3	13.9	.359	0.345
2001	779564	101.2	16.1	.356	0.341
2002	808578	101.4	17.7	.371	0.353
2003	843156	103.9	18.0	.363	0.356
2004	924538	105.3	19.6	.366	-
2005	982565	103.6	18.2	.325	-

Source: Polish Central Statistical Office (GUS). Gini coefficients calculated using yearly average household income in our data. The estimates of the Gini coefficient from the UNICEF Database (IRC TransMONEE 2005) are based on interpolated distributions from grouped data from household budget surveys reported to the MONEE project.

Table A4. Basic regressions of satisfaction variables. Ordered logit.

	Country satisfaction	Private expectations	Private satisfaction
Gender	-0.061*** [0.021]	-0.119*** [0.017]	-0.097*** [0.014]
Age	-0.031*** [0.003]	-0.076*** [0.005]	-0.090*** [0.005]
Age-squared	0.000*** [0.000]	0.001*** [0.000]	0.001*** [0.000]
Log household income	0.334*** [0.016]	0.336*** [0.019]	1.277*** [0.018]
Education	0.117*** [0.024]	0.051*** [0.019]	0.293*** [0.017]
Rural	-0.152*** [0.022]	0.076*** [0.022]	0.236*** [0.021]
Large city	-0.022 [0.025]	-0.041* [0.025]	-0.196*** [0.022]
Unemployed	-0.032 [0.028]	0.01 [0.037]	-0.537*** [0.042]
Pensioners	-0.110*** [0.023]	-0.222*** [0.031]	-0.611*** [0.030]
Farm	-0.173*** [0.034]	-0.05 [0.041]	-0.05 [0.048]
Unqualified worker	-0.085** [0.034]	-0.150*** [0.043]	-0.319*** [0.040]
Qualified worker	-0.02 [0.031]	-0.058** [0.029]	-0.111*** [0.030]
Not working	0.133*** [0.039]	0.109** [0.046]	-0.160*** [0.039]
Higher professions	0.189*** [0.038]	0.139*** [0.037]	0.309*** [0.035]
Entrepreneur	0.041 [0.047]	0.380*** [0.051]	0.453*** [0.049]
Students	0.211*** [0.041]	-0.164*** [0.054]	0.161*** [0.059]
West	-0.076** [0.031]	0.056* [0.029]	-0.169*** [0.030]
Centre-West	-0.017 [0.030]	-0.096** [0.038]	0.024 [0.026]
Centre	-0.132*** [0.029]	-0.082*** [0.027]	-0.210*** [0.024]
East	-0.204*** [0.039]	-0.136*** [0.038]	0.050* [0.029]
South-east	-0.083*** [0.030]	-0.171*** [0.030]	0.061* [0.032]
South-west	0.149*** [0.031]	-0.023 [0.033]	0.126*** [0.027]
Time trend	0.003 [0.007]	0.009 [0.008]	-0.004 [0,003]



Table A4. Basic regressions of satisfaction variables. Ordered logit (Cont.)

	Country satisfaction	Private expectations	Private satisfaction
cut1:Constant	0,843 [2,914]	0,696 [3,324]	0,507 [1,199]
cut2:Constant	3,314 [2,918]	2,536 [3,319]	2,472** [1,197]
cut3:Constant	5,325* [2,922]	5,121 [3,311]	5,339*** [1,198]
cut4:Constant	9,866*** [2,914]	8,287** [3,311]	9,070*** [1,202]
Observations	73581	67550	77692
chi2	4753	2651	17249
Pseudo R2	0,05	0,03	0,11
log likelihood	-85274	-77445	-83015

The following questions were asked: How do you assess current economic situation in Poland? Answers from 1 “very bad” to 5 “very good” (Country satisfaction); Do you think that in a year your life and the life of your family will be: Answers from 1 “much worse” to 5 “much better” than now (Private expectations); How do you and your family live? Answers from 1 “very bad” to 5 “very good” (Private satisfaction). Yearly dummies included. Omitted variables: men, education less than secondary, medium cities (less than 100 000), employees, and north region.\* significant at 10%, \*\* significant at 5%, \*\*\* significant at 1%. Error terms are clustered for each cross-section. Error terms are clustered for each cross-section.

Table A5. Country satisfaction: controlling for seasonality.

Ordered logit

	Country satisfaction	
	1992-1996	1997-2005
Gini	4,893*** [1,882]	-6,445*** [1,902]
Month_2		0,07 [0,107]
Month_3	-0,230** [0,107]	-0,269*** [0,103]
Month_5	-0,207** [0,104]	-0,185** [0,085]
Month_6	-0,088 [0,105]	
Month_7	-0,177* [0,104]	-0,241*** [0,087]
Month_9	-0,237*** [0,091]	-0,117 [0,109]
Month_10	-0,082 [0,107]	
Month_11	-0,209 [0,130]	-0,095 [0,091]
Month_12	-0,16 [0,099]	
No. of observations	30520	43061
Chi2	7479	8344
Pseudo R2	0,06	0,06
Log likelihood	-34874	-50162

The question asked was: How do you assess current economic situation in Poland? Answers from 1 “very bad” to 5 “very good” (Country satisfaction) .Controls include gender, age, age-squared, education, residential location, employment status, occupation, regional dummies, time trend, and year dummies. Gini coefficients are calculated for each successive representative cross-section. All standard errors are clustered by cross-section. \*, \*\* and \*\*\* denote significance at the 10, 5 and 1% levels respectively. \*, \*\* and \*\*\* denote significance at the 10, 5 and 1% levels respectively..