

Beutler, Toni; Bichsel, Robert; Bruhin, Adrian; Danton, Jayson

**Working Paper**

## The Impact of Interest Rate Risk on Bank Lending

Working Paper, No. 15.05

**Provided in Cooperation with:**

Study Center Gerzensee, Swiss National Bank

*Suggested Citation:* Beutler, Toni; Bichsel, Robert; Bruhin, Adrian; Danton, Jayson (2015) : The Impact of Interest Rate Risk on Bank Lending, Working Paper, No. 15.05, Swiss National Bank, Study Center Gerzensee, Gerzensee

This Version is available at:

<https://hdl.handle.net/10419/128094>

**Standard-Nutzungsbedingungen:**

Die Dokumente auf EconStor dürfen zu eigenen wissenschaftlichen Zwecken und zum Privatgebrauch gespeichert und kopiert werden.

Sie dürfen die Dokumente nicht für öffentliche oder kommerzielle Zwecke vervielfältigen, öffentlich ausstellen, öffentlich zugänglich machen, vertreiben oder anderweitig nutzen.

Sofern die Verfasser die Dokumente unter Open-Content-Lizenzen (insbesondere CC-Lizenzen) zur Verfügung gestellt haben sollten, gelten abweichend von diesen Nutzungsbedingungen die in der dort genannten Lizenz gewährten Nutzungsrechte.

**Terms of use:**

*Documents in EconStor may be saved and copied for your personal and scholarly purposes.*

*You are not to copy documents for public or commercial purposes, to exhibit the documents publicly, to make them publicly available on the internet, or to distribute or otherwise use the documents in public.*

*If the documents have been made available under an Open Content Licence (especially Creative Commons Licences), you may exercise further usage rights as specified in the indicated licence.*



# **The Impact of Interest Rate Risk on Bank Lending**

Toni Beutler, Robert Bichsel, Adrian Bruhin and Jayson Danton

Working Paper 15.05

This discussion paper series represents research work-in-progress and is distributed with the intention to foster discussion. The views herein solely represent those of the authors. No research paper in this series implies agreement by the Study Center Gerzensee and the Swiss National Bank, nor does it imply the policy views, nor potential policy of those institutions.

---

# The Impact of Interest Rate Risk on Bank Lending

---

Toni Beutler<sup>‡</sup>, Robert Bichsel<sup>‡</sup>, Adrian Bruhin<sup>§</sup> and Jayson Danton<sup>§</sup>

November 5, 2015

## Working Paper

---

### Abstract

In this paper, we empirically analyze the transmission of realized interest rate risk – the gain or loss in bank economic capital due to movements in interest rates – to bank lending. We exploit a unique panel data set that contains supervisory information on the repricing maturity profiles of Swiss banks and provides us with an individual measure of interest rate risk exposure net of hedging. Our analysis yields three main results. First, our estimates indicate that a year after a permanent 1 percentage point upward shock in nominal interest rates, the average bank of 2013Q3 would *ceteris paribus* reduce its cumulative loan growth by approximately 170 basis points. An estimated 28% of this reduction would be the result of realized interest rate risk exposure weakening the bank's economic capital. Second, due to the banks' heterogeneity in interest rate risk exposure, the effect of the shock would differ across institutions and could be redistributive across regions. Finally, bank lending seems to be mainly driven by capital rather than liquidity, suggesting that a higher capitalized banking system can better shield its creditors from shocks in interest rates.

---

**Disclaimer:** The views expressed in this paper are those of the author(s) and do not necessarily represent those of the Swiss National Bank. Working papers describe research in progress. Their aim is to elicit comments and to further debate.

**JEL classification:** E44, E51, E52, G21

**Keywords:** Interest Rate Risk; Bank Lending; Monetary Policy Transmission

**Corresponding Author:** Adrian Bruhin, University of Lausanne, Faculty of Business and Economics (HEC Lausanne), 1015 Lausanne, Switzerland; email: [adrian.bruhin@unil.ch](mailto:adrian.bruhin@unil.ch); phone: +41 (0)21 692 34 86

---

<sup>‡</sup>Swiss National Bank, Financial Stability, 3001 Bern, Switzerland

<sup>§</sup>University of Lausanne, Faculty of Business and Economics (HEC Lausanne), 1015 Lausanne, Switzerland

## **Acknowledgements**

We are grateful for insightful comments from Stefanie Behncke, Martin Brown, Bo Honoré, Pius Matter, Cyril Monnet, Bertrand Rime, Mark Watson, and the members of the financial stability unit of the Swiss National Bank. Any errors and/or omissions are solely our own.

# 1 Introduction

Banks are exposed to adverse movements in interest rates as rates on their long, fixed-term assets are on average locked-in for longer than rates on their liabilities. When the general level of interest rates rises, banks typically experience a loss in economic value as the value of assets decreases more than the value of liabilities.

An important question in that context is to what extent realized interest rate risk exposure – the gain or loss in bank economic capital due to movements in interest rates – affects bank lending. This question is particularly relevant in the current environment of prolonged low nominal interest rates in which banks have substantially increased their interest risk exposure (Turner, 2013; SNB, 2014, 2015). For instance, findings by Hanson and Stein (2015) suggest that, as nominal interest rates declined, banks have rebalanced their asset holdings towards longer maturities in order to keep the overall yield of their portfolios from decreasing too much.

The theoretical literature on the transmission of monetary policy postulates that interest rate risk exposure indeed makes bank lending more sensitive to changes in nominal interest rates (Van den Heuvel, 2002, 2007). The postulated mechanism has the following intuition: If nominal interest rates rise, the resulting loss depletes a bank's economic capital and brings it closer to regulatory or market requirements. In such a situation, the bank's ability to restore its required capital level by issuing new equity is limited, because equity issuances are costly due to asymmetric information between existing and potential new shareholders (Myers and Majluf, 1984; Kashyap and Stein, 1995; Myers, 2001). Consequently, the bank reduces its lending in order to still comply with the capital requirements imposed by regulators or market participants.

Empirically testing how realized interest rate risk exposure affects bank lending is difficult for two reasons. First, the necessary information about interest rate sensitive balance sheet positions and the corresponding repricing maturities is often unavailable. Second, detailed information about the positions used for hedging against interest rate risk is typically not publicly available. Hence, constructing a measure for individual interest rate risk exposure net of hedging is often infeasible based on publicly available information.

In this paper, we address these issues by exploiting a quarterly panel data set comprising supervisory information on Swiss banks between 2001Q2 and 2013Q3. The data set provides us with an individual measure of interest rate risk exposure that directly relies on each bank's repricing maturity profile. In a supervisory survey, each bank reports its interest rate sensitive cash flows separated by their repricing maturities, i.e. the remaining time period until the interest rate on the underlying position is reset. The repricing mismatch implied by these cash flows yields the individual measure of interest rate risk exposure. It corresponds to the adjustment in the bank's economic value in response to a permanent 1 percentage point (pp) change in nominal interest rates over all maturities. A major advantage of this measure is that it reflects individual interest rate risk exposure net of hedging, since a bank's reported cash flows

take eventual hedging positions into account.

We apply a dynamic panel data model that relates bank loan growth to interest rate risk exposure and various individual and macroeconomic control variables. The model, inspired by Kashyap and Stein (1995, 2000) and Gambacorta and Mistrulli (2004), enables us to estimate the most important channels through which bank loan growth responds to changes in nominal interest rates. It also allows us to estimate the sensitivity of this response to individual interest rate risk exposure.

The analysis yields three main results. First, realized interest rate risk exposure affects bank lending through its impact on economic capital. The estimated effects of a given shock in interest rates are initially small and statistically insignificant but grow over the next four quarters and eventually become highly significant. For instance, in response to a permanent 1 pp increase in nominal interest rates, the average bank in 2013Q3 would *ceteris paribus* reduce its predicted quarter on quarter loan growth rate by 50 basis points (bp) immediately after the shock and reduce its cumulative loan growth after one year by approximately 170 bp. An estimated 28% of the 170 bp reduction would be due to realized interest rate risk exposure lowering the bank's economic capital. These estimated effects are also economically significant both in light of the recent increase in interest rate risk exposure and in comparison to the average quarter on quarter loan growth rate which was roughly 95 bp over the sample period or the cumulative loan growth after one year of around 380 bp.

Second, as the Swiss banks also have become more heterogeneous in their interest rate risk exposure, the effect of a permanent 1 pp increase in nominal interest rates would differ substantially across individual institutions. For example, if the average bank's interest rate risk exposure *ceteris paribus* corresponded to the 1st (3rd) quartile instead of the average, it would reduce its quarter on quarter loan growth by 45 (60) bp immediately after the shock, and reduce its cumulative loan growth after one year by approximately 140 (200) bp. In historical comparison, levels of interest rate risk exposure in 2003Q1 would have seen the average bank decrease its quarter on quarter loan growth by 45 bp immediately after the shock and reduce its cumulative loan growth after one year by approximately 135 bp.

Third, bank lending seems to be mainly driven by capital rather than liquidity. In contrast to changes in economic capital due to realized interest rate risk exposure, we find no evidence that changes in excess liquidity significantly affects bank lending. This result reflects that liquidity buffers were large and most banks did not experience any strains on liquidity over the sample period.

We also used an augmented specification of the model to test whether realized gains and losses in economic capital have asymmetric effects on bank lending. The point estimates suggest that realized losses may have a larger effect than comparable realized gains, although the difference is not statistically significant. Thus, the above results from our baseline model may be interpreted as a lower bound for the effects of an increase in interest rates on bank lending, given current average interest rate risk exposure.

The results are relevant for policy. They indicate that taking into account the level of the banks' exposure to interest rate risk helps to better understand how changes in interest rates affect bank loan growth. Importantly, our results suggest that individual bank loan growth has become more sensitive to changes in interest rates than it used to be prior to the recent increase in interest rate risk exposure. Although our estimates cannot be directly aggregated as they are based on individual data and do not take eventual general equilibrium effects into account, they suggest that a given upward shock in nominal interest rates would likely have a bigger impact on bank lending than in past periods where the banks' interest rate risk exposure was lower. Moreover, the Swiss banks' heterogeneity in interest rate risk exposure implies that even a relatively small shock could already cause sizable economic losses at the most exposed institutions that might lead them to largely curb their lending. Hence, changes in nominal interest rates could have redistributive effects; especially if the banks' interest rate risk exposure differs across regions. Finally, the finding that capital matters more for bank loan growth than liquidity is consistent with the observations of Kishan and Opiela (2000, 2006), that a higher capitalized banking system can better shield its creditors from shocks in interest rates. The question how these results can be integrated into policy making naturally follows from our analysis but is beyond the scope of this paper.

The paper is primarily related to the existing empirical literature on bank lending. Its empirical strategy is similar to a seminal paper by Kashyap and Stein (2000) which analyzed the different transmission channels of monetary policy via the banking system. Bichsel and Perrez (2005) investigated how monetary policy affected bank lending in Switzerland between 1996 and 2002. However, they did not explicitly take interest rate risk exposure into account as they focused on the relative importance of capital and liquidity for bank lending. Gambacorta and Mistrulli (2004) analyzed the transmission of monetary policy in Italy between 1992 and 2001. In contrast to the former two papers, they included a supervisory measure of interest rate risk exposure. As ours, their measure of interest rate risk exposure is also based on each bank's repricing maturity profile. However, it does not take an economic value point of view, as future cash flows are not discounted to their present value. Even though they applied an estimator that differs from ours, they also found that realized interest rate risk exposure has a strong effect on bank lending.

More recent work that is closely related to ours is by Landier et al. (2013). They estimated the impact of interest rate risk exposure of US bank holding companies on the transmission of monetary policy between 1986 and 2011. Yet, their measure of interest rate risk exposure has a different focus than ours: In contrast to our measure that is based on a supervisory survey and takes each bank's whole maturity profile into account, their measure is based on publicly available data on each bank's income statement and solely considers assets and liabilities that reprice within one year. Their measure is a good proxy for the maturity mismatch only under the assumption that assets and liabilities which reprice after more than a year have on average a similar duration. In contrast to our results, Landier et al. (2013)'s findings imply that banks

would on average benefit from increasing interest rates as their income gaps for maturities up to one year are on average positive.

The remainder of the paper is organized as follows. Section 2 gives an overview of the structure of the Swiss banking system and later describes the sample and variables we use in the econometric analysis. Section 3 outlines the econometric analysis. It provides background information on the main channels through which nominal interest rates can affect bank lending. Subsequently, it explains the empirical model we apply to identify how individual interest rate risk exposure affects bank lending. Lastly, it discusses how we discriminate between immediate and long-run effects, and how we deal with the specific challenges related to dynamic panel methods. Section 4 interprets the results and presents some robustness checks. Finally, section 5 concludes.



## 2 Data and summary statistics

This section first provides some information on the structure of the Swiss banking system. Subsequently, it discusses the sample and the variables we use in the econometric analysis.

### 2.1 Structure of the Swiss banking system

Table 1 summarizes the structure of the Swiss banking system. By the end of 2012, there existed 297 banks in Switzerland with total assets amounting to roughly 3.597 trillion CHF.<sup>1</sup>

**Table 1: Summary Statistics on the Swiss Banking System in 2012Q4**

Category	Number of Banks	Domestic Client Loans	Domestic Mortgage Loans	Total Domestic Loans	Total Assets
Big Banks	2	62'395	252'147	314'542	2'183'512*
Domestically Focused Banks:					
Cantonal Banks	24	47'718	289'823	337'541	482'278
Regional and Savings Banks	40	6'588	81'712	88'300	102'530
Cooperative of Raiffeisen Banks	1	7'605	135'599	143'204	164'670
Other Domestically Focused Banks	2	4'137	41'382	45'519	53'345
Other Banks	228	37'400	33'759	71'159	610'706
Banking System Total	297	165'843	834'422	1'000'265	3'597'041
Share of Big Banks		38%	30%	31%	60%
Share of Domestically Focused Banks		40%	66%	61%	22%

*Notes* : Figures are in millions of Swiss Francs. The category 'total domestic loans' includes all loans made to the real sector. The category 'domestic client loans' represents the difference between 'total domestic loans' and 'domestic mortgage loans' and mostly contains commercial loans. The category 'domestically focused banks' comprises all banks excluding the two big banks that have (i) a share of domestic loans to total assets that is greater than 50% and (ii) a volume of domestic loans of at least 280 million Swiss Francs. The term 'domestic' means that the borrowers of client loans are domiciled in Switzerland, and the real estates serving as collateral for mortgage loans are located in Switzerland.

*Source* : SNB website, annual reports for big bank assets\* and internal data.

The different types of banks fit into three main categories. The first comprises the two big banks, UBS and Credit Suisse. As internationally active universal banks, they offer a broad range of services. The second main category consists of domestically focused banks. This category contains all retail banks providing domestic loans to the real sector that amount to at least 280 million CHF and make up at least half of their total assets. In 2012Q4, there were 24 mostly state-owned cantonal banks, 40 regional and savings banks, the cooperative of Raiffeisen banks, and 2 other domestically focused banks in that category. The last main category, labeled as 'other banks', is made up by a heterogeneous group of mostly small banks specialized in different business models, such as asset management, brokerage, and trade financing.

The Swiss banking system is highly concentrated. The two big banks account for just over half of its total assets. Even though roughly two thirds of their business is abroad and a large

<sup>1</sup> On December 31, 2012 the nominal exchange rate was 0.91 CHF per USD.

proportion of their balance sheet consists of financial assets, the two big banks still reached a combined market share of 31% in the market for domestic loans to the real sector in 2012Q4. However, the domestically focused banks are the most important providers of domestic loans to the real sector with a combined market share of 61% in 2012Q4. The remaining 228 other banks play only a minor role in domestic lending to the real sector and claimed a combined market share of 8% in 2012Q4.

## 2.2 Sample and variables for the empirical analysis

For the empirical analysis, we build a data set that includes quarterly information on bank lending, exposure to interest rate risk, capital, liquidity and balance sheet size collected from the regular surveys conducted by the Swiss National Bank (SNB).<sup>2</sup> Our sample comprises the two big banks and the 67 domestically focused banks and covers the period between 2001Q2 and 2013Q3. We complement the information on bank-level data with macroeconomic variables such as short- and long-term interest rates, inflation and real GDP growth.

### 2.2.1 Exposure to interest rate risk

Interest rate changes affect the underlying economic value of a bank's assets, liabilities and off-balance sheet instruments, due to adjustments in the discount rates used to determine the present value of the respective future cash flows. As a consequence, the bank's economic capital - the difference between the present value of its incoming cash flows and its outgoing cash flows - is affected by nominal interest rate movements.

Our measure of interest rate risk exposure is based on data collected from a comprehensive supervisory survey conducted by the SNB on behalf of Switzerland's microprudential supervisor, the Swiss Financial Markets Supervisory Authority (FINMA). The survey provides detailed information on the repricing maturity profile of each bank  $i$  in every quarter  $t$ . Banks report, on a quarterly frequency, all significant notional and interest rate cash flows arising from interest rate sensitive positions in their banking book, plus the securities and precious metal trading portfolio. Each cash flow is allocated to one of 18 time bands, according to its repricing maturity defined in this context as the remaining time period until the interest rate on a position is reset.<sup>3</sup> Positions are differentiated, into three main categories, according to the nature of their interest rate repricing maturities.<sup>4</sup> The first contains all positions with a defined interest rate repricing maturity, for example, fixed rate mortgages.<sup>5</sup> The second category covers positions

<sup>2</sup> A small number of banks only report certain variables biannually. We linearly interpolate those variables to obtain quarterly observations.

<sup>3</sup> The 18 bands are of different lengths. There are 7 time bands for repricing below 1 year: up to 1 day, 1 day to 1 month, 1 month to 2 months, 2 months to 3 months, 3 months to 6 months, 6 months to 9 months and 9 months to 1 year. There are 9 yearly time bands for maturities between 1 and 10 years. The longest time bands are 10 to 15 years and above 15 years.

<sup>4</sup> A fourth category covers eligible capital, mostly made up of equity. We do not consider the cash flows of these positions as we precisely want to measure the changes in economic capital.

<sup>5</sup> A 10 year fixed-rate mortgage with yearly interest payments (without pre-payment option) issued five years and one day before the current date is reported in the survey as follows: the notional cash flow and the most recent

with undefined interest rate repricing maturities such as sight claims, claims against customers and variable rate mortgage claims, on the assets side and sight liabilities and savings deposits on the liabilities side. The third category regroups remaining position without or with arbitrary interest rate repricing maturities. Cash flows of positions falling in the last two categories are reported according to the banks' internal assumptions on interest rate repricing maturities.

For each of the 18 time bands,  $m$ , the difference between incoming and outgoing cash flows determines the net cash flow,  $CF(m)_{it}$ . Based on these net cash flows, the bank's interest rate risk exposure,  $\rho_{it}$ , is given by:

$$\rho_{it} = \sum_{m=1}^{18} CF(m)_{it} [DF(m)_t^{+1pp} - DF(m)_t] , \quad (1)$$

where  $DF(m)_t$  is the discount factor using the relevant risk-free interest rates for maturity  $m$  at time  $t$ , and  $DF(m)_t^{+1pp}$  is the hypothetical discount factor following a 1 pp increase in interest rates across all maturities.<sup>6</sup> A positive net cash flow in time band  $m$  leads to a reduction in the bank's economic capital when interest rates increase. This is due to the fact that, for a given time band  $m$ , the value of assets decreases more than that of liabilities. Hence, a bank that typically extends loans with a repricing maturity exceeding that of its liabilities will experience a decrease in the value of its equity when interest rates increase. Note that  $\rho_{it}$  reflects the bank's interest rate risk exposure net of hedging, because  $CF(m)_{it}$  comprises all cash flows, including those from linear hedging positions.

The measure of individual interest rate risk exposure,  $\rho_{it}$ , corresponds to the approximate change in bank  $i$ 's economic capital that would be realized per pp the risk-free nominal yield curve shifts upward. Hence, a parallel shift of the yield curve by  $\Delta i_{t+1}$  pp changes bank  $i$ 's economic capital by approximately  $\rho_{it} \times \Delta i_{t+1}$  CHF. To make the realized interest rate risk exposure comparable across banks, we express it as a fraction of eligible capital,

$$\frac{\rho_{it} \times \Delta i_{t+1}}{EligC_{it}} . \quad (2)$$

Figure 1 illustrates how the Swiss banks' interest rate risk exposure evolved between 2001Q2 and 2013Q3. The orange line corresponds to the average realized interest rate risk exposure as a fraction of eligible capital, that would have occurred in response to a 1 pp upward shift in nominal interest rates. The shaded areas represent the various interpercentile ranges, along with median levels (grey line), of interest rate risk exposure.

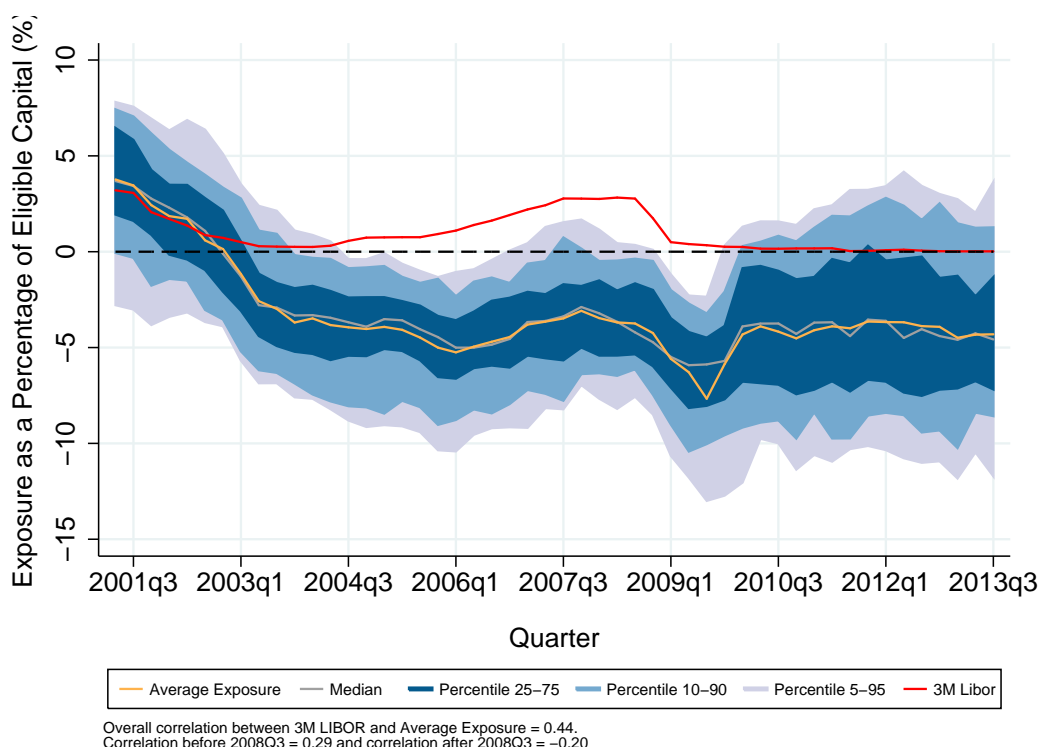
The Swiss banks substantially increased their interest rate risk exposure over the sample period. In 2001Q2, they would on average have experienced an economic gain amounting

---

interest cash flow are reported in a time band corresponding to the residual maturity, ie. 4 to 5 years, and the remaining yearly interest cash flows in four distinct time bands, i.e. 9 months to 1 year, 1 to 2 years, 2 to 3 years and 3 to 4 years.

<sup>6</sup> The measure is analogous for a decrease in nominal interest rates.

**Figure 1: Interest rate risk exposure of Swiss banks**



to 3.75% of eligible capital if nominal interest rates increased by 1 pp, i.e. on average their liabilities had longer maturities than their assets. However, shortly after they started to increase their interest rate risk exposure. By the end of 2008, they would have incurred an average economic loss equivalent to about 4.25% of eligible capital in response to such a 1 pp increase in nominal interest rates. Since then, their interest rate risk exposure has been roughly stable on average but become more heterogeneous.

Nominal interest rates, represented by the 3 months LIBOR in red, also varied substantially between 2001Q2 and 2013Q3. The overall correlation between the 3 months LIBOR and average bank interest rate risk exposure is positive. Note that the correlation before 2008Q3 is positive but negative after 2008Q3. Thus, nominal interest rates and interest rate risk exposure do not comove perfectly which helps us identify the effect of interest rate risk exposure on bank loan growth.

### ***2.2.2 Individual bank characteristics and macroeconomic variables***

Table 2 presents summary statistics of all the variables in the sample. Its upper panel contains individual bank characteristics, while its lower panel exhibits variables that proxy for the macroeconomic environment and are common to all banks.

The most important individual bank characteristic is the realized interest rate risk exposure as a fraction of eligible capital. We calculate it using equation (2) and proxy for the change in nominal interest rates,  $\Delta i_{t+1}$ , by the change in the 3 months LIBOR,  $\Delta i_{t+1}^{3M}$ . We later show that our results remain robust if we use an alternative proxy for the change in nominal interest

**Table 2: Summary Statistics**

Variable	Unit	Obs.	Mean	Std. Dev	Min	Max
<i>Individual Bank Variables:</i>						
Realized Interest Rate Risk Exposure as a fraction of eligible capital	(Fraction)	3317	-0.002	0.016	-0.119	0.146
Domestic Loan Growth Rate	(QoQ %)	3394	0.936	1.047	-3.755	6.028
Excess Capital	(Fraction)	3412	0.525	0.348	-0.872	2.043
Normalized Excess Capital	-	3412	0.000	0.348	-1.396	1.519
Excess Liquidity	(Fraction)	3414	0.849	0.675	-0.425	5.751
Normalized Excess Liquidity	-	3414	0.000	0.675	-1.274	4.902
Log of Total Assets	(Log)	3408	14.97	1.734	12.452	21.19
Normalized Log of Total Assets	-	3408	0.000	1.727	-2.354	6.218
<i>Macroeconomic Variables:</i>						
$\Delta$ Short-term interest rate	(p.p.)	50	-0.068	0.312	-1.245	0.350
$\Delta$ Long-term interest rate	(p.p.)	50	-0.046	0.251	-0.708	0.464
Inflation Rate	(YoY %)	50	0.621	0.876	-1.019	2.975
Real GDP Growth Rate	(YoY %)	50	1.687	1.767	-3.138	4.089

*Notes* : Loan growth is a non-annualised quarter on quarter growth rate. Excess measures are defined as eligible minus required divided by required. Inflation and real GDP both represent annualised year on year quarterly rates, i.e. percentage change with corresponding quarter in the previous year. The sample period spans from 2001Q2 until 2013Q3 at a quarterly frequency. The panel data set is mildly unbalanced.

rates that also takes long term interest rates into account. Over the sample period, the realized change in economic capital due to interest rate risk exposure was close to zero on average but varied substantially over time and across banks.

The other individual bank characteristics are total domestic loans, excess capital, liquidity, and total assets. Total domestic loans are made up of domestic client and mortgage loans. They allow us to calculate the quarter on quarter bank loan growth rate, which amounted to roughly 0.95% on average over the sample period, or 3.80% when annualized. Excess capital and liquidity correspond to the eligible minus the required amounts. To make them comparable across banks, we report them as fractions of the required amounts. On average, capitalization and liquidity exceeded the requirements by 52.5% and 84.9%, respectively. The high level of excess liquidity reflects that most banks did not experience any strains on liquidity during the sample period. We proxy for bank size by the log of total assets, which on average was 14.97.

To make excess capital, excess liquidity, and bank size easier to interpret in the econometric analysis, we apply the following normalizations. We center excess capital and excess liquidity on the entire sample mean, so that interaction terms involving these variables have an interpretation with respect to the average bank in the sample. Similarly, we center bank size on the sample average in each period to deal with its trending nature. We also account for outliers as well as market entries and exits in the sample. For more detailed information on the handling of outliers, the normalizations, and the treatment of market entries and exits, please refer to

appendix A.1.

Finally, to proxy for the macroeconomic environment, we add the 3 month LIBOR on CHF, the 10 year government bond yield, the inflation rate measured by the general consumer price index, and the year on year growth rate of the real GDP to the sample.

## 3 Empirical analysis

This section first reviews the conceptual background that provides the basis for the empirical model. Second, it describes the specification of the empirical model that allows us to identify the effects of interest rate risk exposure on bank lending. Later, it discusses how we differentiate between immediate and long-run effects, and how we deal with the challenges arising in dynamic panel data models.

### 3.1 Conceptual Background

In the empirical analysis we focus on isolating the effects of interest rate risk exposure on bank lending. To do so, we have to partial out the other main channels through which changes in nominal interest rate can affect bank lending.

A growing body of theoretical literature on the effects of monetary policy, originating from Bernanke and Blinder (1988), has analyzed market imperfections that give rise to three main channels through which changes in nominal interest rates can affect bank lending. A change in nominal interest rates can filter through: (i) the Bank Capital Channel (BCC), (ii) the Bank Lending Channel (BLC), and (iii) the Balance Sheet Channel (BSC). Each of these channels relies on distinct market imperfections, that are amplified by individual bank or borrower characteristics.

Our main focus lies on the BCC, which describes how a bank's interest rate risk exposure provides the grounds for interest rate changes to shift its lending. The wider its repricing mismatch, the more exposed the bank is to interest rate risk, which increases the resulting loss in economic capital it experiences when nominal interest rates rise, and eventually reduces its lending. Van den Heuvel (2007) develops a detailed model of a bank's asset and liability management which incorporates capital requirements and an imperfect market assumption for bank capital. In this model, the bank exhibits a maturity mismatch in its balance sheet, i.e. it relies on short-term funding to finance long-term assets, and holds a capital buffer in excess of regulatory or market requirements. If nominal interest rates rise, the bank experiences a loss in economic capital, as the interest rates on its short-term funding adjust faster than on its long-term assets. This economic loss depletes the bank's capital buffer and brings it closer to regulatory or market capital requirements. In this situation, the bank typically does not issue new equity, as equity issuances are costly due to the asymmetric information between the banks existing shareholders and potential future shareholders (see e.g. Myers and Majluf, 1984; Kashyap and Stein, 1995; Myers, 2001). The intuition is that existing shareholders and the bank's management know the economic value of the bank's assets and only agree on issuing new equity if the actual share price is overvalued. However, the potential future shareholders anticipate this reasoning and are only willing to invest in newly issued equity at large discounts. Cornett and Tehranian (1994) show empirically that issuing new equity can in fact be costly. Consequently, instead of issuing new equity, the bank will cut back its loan supply in order

to still comply with the capital requirements imposed by regulators or market participants. Empirical work on Italian banks by Gambacorta and Mistrulli (2004) confirms that a wider maturity mismatch leads to a stronger reaction of bank lending to changes in nominal interest rates.

In contrast, the BLC describes how a bank's liquidity levels determine how its loan schedule will withstand changes to the banking system's available reserves once interest rates change. Bernanke and Blinder (1988) show with a standard IS/LM model, that the Fed's draining of reserves and hence insured deposits, reduces the banking system's loanable funds, ultimately decreasing the supply of bank loans. The BLC relies on the market imperfection that insured deposits carry artificially low interest rates compared to other sources of short-term funding that are not covered by deposit insurance. Thus, if a bank has to replace an outflow of insured deposits by other sources of uninsured short-term funding, its funding costs increase, and so, the bank reduces its loan supply. Kashyap and Stein (1995, 2000) provide empirical evidence for the BLC. In particular, they find that changes in monetary policy matter more for lending by small, less liquid banks.

Finally, the BSC by Bernanke and Gertler (1995) captures how raising nominal interest rates affects bank lending via altered creditworthiness of borrowers. The borrowers' creditworthiness deteriorates due to increased interest payments on outstanding variable rate debt. Similarly, increasing interest rates are usually associated with decreasing asset value, which erodes the borrowers' collateral value. As a consequence, bank lending to these borrowers typically decreases, as agency costs, associated with monitoring or screening rise. Jiménez et al. (2012) exploit an extensive data set on the universe of commercial loans granted by all banks in Spain to study how bank lending to firms is affected by monetary policy. One main result is that firms with weaker balance sheets and shorter creditworthy track records can rely less on external financing.

In sum, both the BCC and BLC depend on individual bank characteristics. In contrast, just like loan demand, the extent of the BSC mainly relies on individual borrower characteristics. Therefore our empirical strategy aims at isolating the BCC – our main focus of interest – along with the BLC. In contrast, it treats the BSC together with loan demand as one of the remaining components of loan growth which we cannot further disentangle explicitly, as we do not observe individual borrower characteristics.

## **3.2 Empirical model**

We apply a dynamic panel data model of bank loan growth, inspired by Kashyap and Stein (1995, 2000) and Gambacorta and Mistrulli (2004). It allows us to estimate how interest rate



changes affect bank loan growth. The model has the following specification:

$$\begin{aligned}
\Delta \ln L_{it} = & \beta_0 + \alpha \Delta \ln L_{it-1} \\
& + \sum_{s=0}^4 \beta_{1,s} \left( \frac{\rho_{it-1} \times \Delta i_t^{3M}}{Elig C_{it-1}} \right)_{it-s} \\
& + \sum_{s=0}^4 \beta_{2,s} B_{it-1} \times \Delta i_{t-s}^{3M} + \sum_{s=0}^4 \beta_{3,s} C_{it-1} \times \Delta i_{t-s}^{3M} \\
& + \sum_{s=0}^4 \beta_{4,s} \Delta i_{t-s}^{3M} + \sum_{s=0}^4 \beta_{5,s} \Delta i_{t-s}^{10Y} \\
& + \beta_6 B_{it-1} + \beta_7 C_{it-1} + \beta_8 S_{it-1} \\
& + \sum_{s=0}^4 \beta_{9,s} C_{it-1} \times y_{t-s} + \sum_{s=0}^4 \beta_{10,s} y_{t-s} + \sum_{s=0}^4 \beta_{11,s} \pi_{t-s} \\
& + \sum_{s=2}^4 \theta_s + \mu_i + \epsilon_{it}, \tag{3}
\end{aligned}$$

with  $i = 1, \dots, N$  banks and  $t = 5, \dots, T$  quarters. The dependent variable,  $\Delta \ln L_{it}$ , is the first difference of bank  $i$ 's log loan volume in quarter  $t$ . Hence it can be interpreted as the quarter on quarter loan growth rate. Individual bank characteristics are all lagged by one quarter to avoid simultaneity problems. Next, we explain the roles of the different regressors.

The model features one lag of the dependent variable among the regressors.<sup>7</sup> This feature has two benefits. First, the lagged dependent variable controls for unobserved characteristics of bank  $i$ 's lending in the previous periods that impact loan growth in the current period. Second, it allows for a dynamic response of the model, enabling us to differentiate between the immediate and long-run effects of an interest rate change on bank loan growth.

The parameters  $\beta_{1,s}$  identify the effect of realized interest rate risk exposure as a fraction of eligible capital. Even though the change in economic capital has no immediate P&L effect on regulatory capital, as it represents a change in the present value of future cash flows, the bank is likely to anticipate the resulting future P&L effects and adjusts its loan supply with the new information. This adjustment is in line with the BCC literature, which postulates that a bank losing part of its capital will curb its lending because its capitalization gets closer to limits imposed by regulators or market participants. Hence, we expect losses in economic capital due to realized interest rate risk exposure to have a negative effect on bank lending. This also implies that loan growth of higher exposed banks should be more sensitive to changes in nominal interest rates.

The interaction terms of normalized excess liquidity,  $B_{it-1} \times \Delta i_{t-s}^{3M}$ , and normalized excess

<sup>7</sup> We also implemented specifications with up to four lags. In each of these specifications, we tested the joint significance of the additional lags. In all cases, the additional lags were never jointly significant. Furthermore, partial autocorrelation analyses suggest that the first lag is the most relevant.

capital,  $C_{it-1} \times \Delta i_{t-s}^{3M}$ , with the three months LIBOR,  $\Delta i_t^{3M}$ , have three interpretations. The first interaction term controls for the notion that the loan supply of banks with larger liquidity buffers should be more robust to a given change in nominal interest rates, as these banks can cope longer with liquidity outflows before they have to tap into more expensive sources of uninsured short-term funding. The interpretation of the second interaction term, however, is two-fold. On the one hand, it captures that the “lemon’s premium”, i.e. the spread between the costs of insured deposits versus other sources of uninsured short-term funding, is lower for higher capitalized banks. On the other hand, an increase in interest rates generally worsens the borrowers’ financial position and may result in higher future defaults, which would need to be absorbed by the bank’s capital. If banks anticipate the higher future default rates, loan supply at higher capitalized banks will react less than at lower capitalized banks since regulatory capital requirements are less binding for higher capitalized banks. The first two interpretations correspond to the BLC, while the third is in line with the BSC. In sum, we expect both of these interaction terms to have a positive effect on bank loan growth.

The specification also includes changes in the 3 months LIBOR,  $\Delta i_t^{3M}$ , which proxies for movements in short-term rates along with changes in the 10 year government bond yield,  $\Delta i_t^{10Y}$ , that proxies for movements in long-term rates. The combined inclusion of these proxies for short- and long-term interest rates movements is useful given that our measure of interest rate risk exposure considers a general change in nominal interest rates over all maturities.

We further include individual bank characteristics that account for bank-specific factors that lead to heterogeneity in loan growth. First, the effect of normalized excess capital,  $C_{it-1}$ , on loan growth is ambiguous. On the one hand, we expect prudent management to be associated with high capital buffers and low loan growth. On the other hand, large capital buffers could help expand loan growth by making uninsured short-term funding cheaper. Second, the effect of normalized excess liquidity,  $B_{it-1}$ , on loan growth is ambiguous too for similar reasons. Large stocks of liquidity may be a result of management moving to buffer up liquidity, which, all else equal, mechanically decreases loan supply. Alternatively, large liquidity buffers may also provide a pool of loan funding. Finally, normalized size,  $S_{it-1}$ , most likely has a negative coefficient, as a given absolute increase in loan volume mechanically has a smaller effect on the loan growth rate of large banks due to the bigger size of the existing loan base.

The specification additionally incorporates regressors that proxy for the economic environment. We expect the interaction between normalized excess capital and the real GDP growth rate,  $C_{it-1} \times y_{t-s}$ , to have a negative effect on loan growth, since more solvent banks are better positioned to withstand economic downturns, resulting in a more stable credit supply. The literature typically explains this by the fact that higher capitalized banks are more risk averse, and lend ex ante to borrowers with lower probabilities of default (see for example Kwan and Eisenbeis (1997)). The real GDP growth rate,  $y_t$ , captures changes in loan demand due to the business cycle, while the CPI inflation rate,  $\pi_t$ , explains the part of loan growth which is simply due to larger nominal loan values.

Finally, we allow for individual bank fixed effects,  $\mu_i$ , which remain invariant over time and are unique to bank  $i$ . These individual bank fixed effects absorb any potential effects of time-invariant individual characteristics of the banks that influence loan growth. In addition, we include quarter dummies,  $\theta_j$ , to capture seasonality in bank loan growth.

### 3.3 Immediate and long-run effects

The dynamics that result from including the lagged dependent variable in equation (3) allow us to distinguish between immediate and long-run effects of the regressors on bank loan growth. The long-run effect of a regressor corresponds to its total cumulative impact over time under the ceteris paribus assumption that no adjustment in other variables, besides bank loan growth, takes place.

The estimate of the immediate effect of the  $j$ -th regressor directly follows from its most contemporaneous coefficient. In contrast, the estimate of its long-run effect is given by

$$\frac{\sum_{s=0}^4 \hat{\beta}_{j,s}}{(1 - \hat{\alpha})}, \quad (4)$$

i.e. by summing up all the coefficients associated with the  $j$ -th regressor and dividing by one minus the coefficient on the lagged dependent variable.<sup>8</sup> Notice that comparing the two estimates sheds light on how much of the effect of a given shock takes place immediately upon impact.

### 3.4 Estimation

The estimation of dynamic panel data models may suffer from endogeneity bias due to the inclusion of lagged dependent variables among the regressors. Consider the following stylized version of our model:

$$y_{it} = \alpha y_{it-1} + \beta x_{it} + (\mu_i + \epsilon_{it}), \quad |\alpha| < 1, \quad (5)$$

for  $i = 1, \dots, N$  and  $t = 2, \dots, T$ .

A pooled Ordinary Least Squares (OLS) estimation of (5) generates an upward biased estimate on the  $\alpha$  coefficient. This upward bias results from the positive correlation between the lagged dependent variable,  $y_{it-1}$ , and the individual fixed effect,  $\mu_i$ , in the composite error term.

Similarly, the within groups fixed effects estimator (WG) mechanically introduces a downward bias on the  $\alpha$  coefficient. This downward bias is a consequence of the negative correlation of order  $1/(T - 1)$  between the transformed lagged dependent variable,  $\tilde{y}_{it-1}$ , and the transformed error term,  $\tilde{\epsilon}_{it}$ . The literature refers to this bias as ‘‘Nickell Bias’’ (Nickell, 1981).

The standard way to deal with this endogeneity problem is by implementing a Generalised

<sup>8</sup> Versions with further lagged dependent variables would take the following form:  $\frac{\sum_{s=0}^4 \hat{\beta}_{j,s}}{(1 - \sum_{s=1}^r \hat{\alpha}_s)}$ , where  $r$  is the number of lags.

Method of Moments (GMM) approach developed by Arellano and Bond (1991), and extended by Arellano and Bover (1995) and Blundell and Bond (1998). Essentially, this GMM approach eliminates the fixed effects using a differenced equation and instruments the resulting equation with internal lagged level versions of the equation’s variables in order to alleviate the endogeneity bias. Ultimately, GMM estimates of  $\alpha$  should fall in between the OLS and WG estimates.

Note, however, that the “Nickell Bias” of the WG estimator becomes negligible when the time dimension of the panel is sufficiently large.<sup>9</sup> The correlation is non-negligible for panels with a small  $T$ , but becomes negligible as  $T$  increases. Excluding the additional explanatory variables, the “Nickell Bias” is given by (Nickell, 1981):

$$\text{plim}_{N \rightarrow \infty}(\hat{\alpha} - \alpha) \simeq -\frac{(1 + \alpha)}{T - 1}. \quad (6)$$

Therefore, a larger time dimension reduces the extent of the bias. A more general result including explanatory variables follows naturally.

Simulation studies reveal that the “Nickell Bias” becomes negligible for  $T > 30$  (Bruno, 2005; Judson and Owen, 1999; Kiviet, 1995). In addition, any bias on the estimates of explanatory variable coefficients depends on the relation of the explanatory variables with the lagged dependent variable but remains slight in comparison.

Given the results of these simulation studies and the large time dimension of our panel, i.e.  $T = 50$ , we can safely rely on the WG estimator as the “Nickell Bias” gets negligible. Using the WG estimator instead of GMM estimator has two advantages. First the WG estimator is generally more efficient in practice (Arellano and Honoré, 2001; Kiviet, 1995; Alvarez and Arellano, 2003). Second, we can avoid making somewhat arbitrary choices about the instrument’s specific structure and the number of lags that would be necessary when implementing the GMM estimator.

Table A2 in the appendix shows the coefficients of our model estimated using OLS, WG, and different versions of GMM. It confirms that the WG and GMM estimators yield similar results, and that the WG estimator tends to be more efficient. Consequently, all results in the following section are based on the WG estimator.

---

<sup>9</sup> Alvarez and Arellano (2003) show that, under certain conditions, the WG estimator has the distribution  $\sqrt{NT} [\hat{\alpha} - (\alpha - \frac{1}{T}(1 + \alpha))] \xrightarrow{d} N(0, 1 - \alpha^2)$ . Large time dimensions reduce the bias  $\frac{1}{T}(1 + \alpha)$ .

## 4 Results

This section first presents evidence on the importance of the different channels through which changes in nominal interest rates affect bank loan growth. Subsequently, it discusses the impact of realized rate risk exposure on bank loan growth. In addition, it explores whether the effects of gains and losses due to realized interest rate risk exposure are different in absolute terms. Finally, it summarizes the results of four robustness checks.

### 4.1 Effect of interest rate changes on bank loan growth

Table 3 exhibits the estimated effects of the different channels through which changes in nominal interest rates may affect bank loan growth. For a given change in nominal interest rates,  $\Delta i$ , the first column shows the immediate effects, while the second column contains the long-run effects under the assumption that no adjustment takes place in other variables apart from bank loan growth. The long-run estimates can be interpreted as approximate cumulative effects over the next year, since the weights of future periods decline at a geometric rate and any period after four quarters in the future has an almost negligible weight.

**Table 3: Immediate vs. Long-run Effects**

Variables	Immediate	Long-Run
Realized Interest Rate Risk Exposure $\left(\frac{\rho_{it-1} \times \Delta i_t^{3M}}{EligC_{it-1}}\right)$ as a fraction of eligible capital	2.02 (2.03)	11.51*** (3.32)
Norm. Excess Liquidity $\times \Delta i^{3M}$	-0.07 (0.11)	-0.08 (0.15)
Norm. Excess Capital $\times \Delta i^{3M}$	-0.08 (0.25)	-0.48 (0.90)
$\Delta$ Short-term interest rate ( $\Delta i^{3M}$ )	-0.38** (0.17)	-1.09** (0.45)
$\Delta$ Long-term interest rate ( $\Delta i^{10Y}$ )	-0.07 (0.08)	-0.23 (0.31)

*Notes* : Dependent variable is the first difference of log quarterly loan volume, i.e. approximately the quarter on quarter loan growth rate. Estimates using the Within Groups transformation in Table A2. All standard errors, in parentheses, are cluster robust at a bank-merger level. Immediate effect standard errors are simply regression estimates. Long-run effect standard errors are calculated using the delta-method. The long-run effects work under the assumption that no adjustment takes place in other variables apart from bank loan growth. In addition, the long-run estimates can be interpreted as approximate cumulative effects over the next year. \*\*\*  $p < 0.01$ , \*\*  $p < 0.05$ , \*  $p < 0.1$

The estimates in the first row indicate that changes in nominal interest rates affect bank loan growth to a large extent through the effect of realized interest rate risk exposure on economic capital. The corresponding long-run effect is statistically highly significant, while the immediate effect is insignificant. This result is consistent with the intuition that anticipated

losses in economic capital alter bank lending in future periods. To get a first interpretation of the magnitude of the effect, consider how a 1 pp upward shift in nominal interest rates affects two hypothetical banks,  $A$  and  $B$ , that only differ in interest rate risk exposure. Bank  $A$  would experience an economic loss equivalent to 5% of its eligible capital if interest rates rise by 1 pp over all maturities, i.e.  $\rho_{At}/EligC_{At-1} = -5\%$ . Bank  $B$ , on the other hand, is relatively more exposed and the economic loss would amount to 6% of its eligible capital, i.e.  $\rho_{Bt}/EligC_{Bt-1} = -6\%$ .<sup>10</sup> The estimated coefficients indicate, that bank  $B$ 's quarter on quarter loan growth would be lower by  $-0.05 - (-0.06) \times 1 \text{ pp} \times 2.02 = 2.02 \text{ bp}$  than  $A$ 's immediately after the shock, and its cumulative loan growth after one year would be approximately  $-0.05 - (-0.06) \times 1 \text{ pp} \times 11.51 = 11.51 \text{ bp}$  lower. Hence, we find evidence for a strong BCC in Switzerland that is driven by realized interest rate risk exposure.

In contrast, changes in nominal interest rates have no significant effect on bank loan growth via the levels of excess liquidity or excess capital. Hence we find neither evidence for a BLC, acting through excess liquidity and the bank's "lemon's premium", nor for a BSC, acting through higher anticipated default rates. An explanation for the absence of a BLC and BSC in our data may be that, over the sample period from 2001Q2 to 2013Q3, the vast majority of Swiss banks did not experience any strains on liquidity and Switzerland's real economy was stable, so that defaults among borrowers were relatively rare. Moreover, many cantonal banks enjoy implicit or explicit state guarantees that may render the "lemon's premium" they have to pay for uninsured short-term funding small and irresponsive to their level of excess capital.

Finally, the direct impact of both the short- and long-term interest rates on bank loan growth capture the remaining supply and demand effects, which we cannot further disentangle. The coefficients on the short-term interest rates are large in absolute value and significant, while those on the long-term interest rates remain smaller in absolute value and statistically insignificant.

## 4.2 Ceteris paribus effect of interest rate risk exposure

We now explore in more detail the extent to which interest rate risk exposure affects the sensitivity of bank loan growth to movements in nominal interest rates. In particular, we analyze the ceteris paribus effect of interest rate risk exposure for a permanent 1 pp increase in nominal interest rates over all maturities on the average bank in the sample.

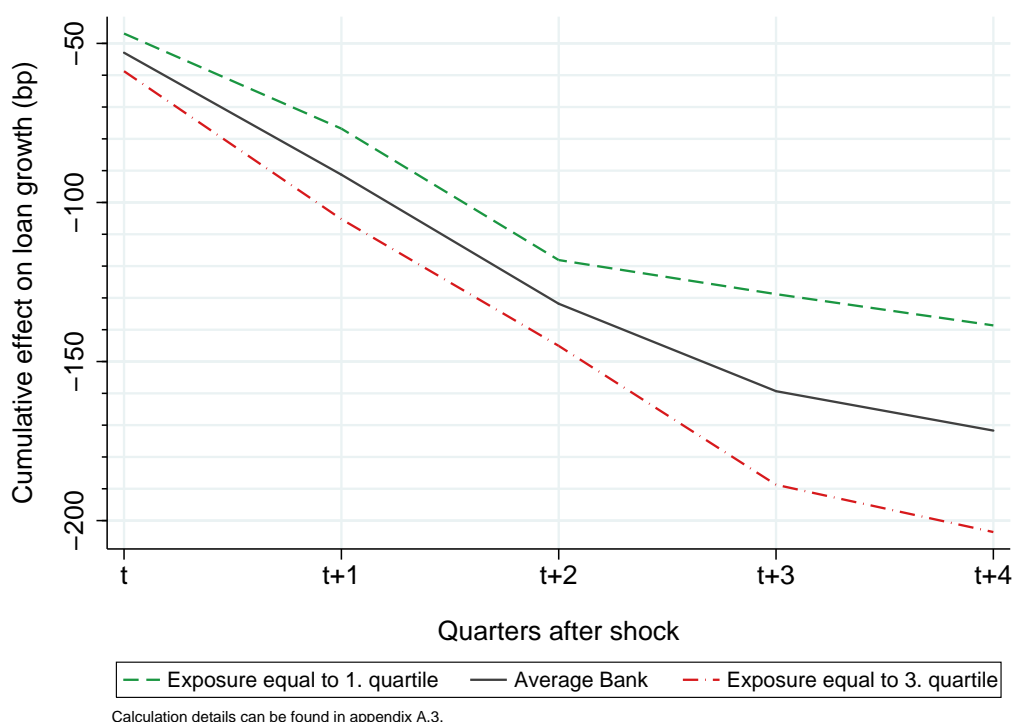
The solid black line in Figure 2 represents the predicted change in the average bank's cumulative loan growth in response to such a permanent 1 pp increase in nominal interest rates happening at time  $t$ .<sup>11</sup> To predict the immediate effect, i.e. in  $t$ , we take the model's most contemporaneous coefficients and evaluate equation (3)'s derivative with respect to  $\Delta i_t = \Delta i_t^{3M} = \Delta i_t^{10Y} = 1 \text{ pp}$  at the average bank's characteristics in time  $t$ .<sup>12</sup> To predict how the effect evolves

<sup>10</sup> Note that the same result could also be obtained by holding interest rate risk exposure constant,  $\rho_{At} = \rho_{Bt}$ , but assuming different levels of eligible capital between  $A$  and  $B$ . However, different levels of eligible capital would also affect other characteristics of the mode in equation (3).

<sup>11</sup> Time  $t$  refers to the last available period in our sample, i.e. 2013Q3.

<sup>12</sup> Calculation details can be found in appendix A.3.

**Figure 2: Cumulative effect of a permanent 1 percentage point upward shock in nominal interest rates on bank loan growth**



over the subsequent quarters, i.e. over  $t + s$ ,  $s = 1 \dots 4$ , we have to take the dynamics of the model into account as described in appendix A.3.

The dashed lines in Figure 2 illustrate the ceteris paribus effect of interest rate risk exposure. They correspond to the predicted response of the average bank’s cumulative loan growth to the permanent 1 pp increase in nominal interest rates, assuming that its interest rate risk exposure equals the 1st and 3rd quartile, respectively, while keeping all other characteristics constant. Consequently, the dashed lines represent the average bank’s predicted reaction to the interest rate increase, if it had an interest rate risk exposure corresponding to 1st and 3rd quartile, respectively.<sup>13</sup>

Comparing the solid and dashed lines in Figure 2 reveals that interest rate risk exposure has a substantial impact on the sensitivity of bank loan growth. Immediately after the 1 pp shock in nominal interest rates, the predicted decline in quarterly loan growth amounts to 50 bp for the average bank in the sample. However, if, ceteris paribus, this bank had an interest rate risk exposure equal to the 1st or 3rd quartile, respectively, the predicted decline would instead amount to 45 bp and 60 bp. In the long-run, the impact of interest rate risk exposure gets even bigger, as the widening spread between the dashed lines illustrates. A year after the shock, i.e. in  $t + 4$ , the cumulative predicted decline in the average bank’s loan growth is 170 bp.<sup>14</sup>

<sup>13</sup> Appendix A.7 contains individual figures including the 95% prediction intervals.

<sup>14</sup> Remember that the total impact over time works under the ceteris paribus assumption that no adjustment in other variables, besides bank loan growth, takes place.

A decomposition of this predicted decline illustrates that roughly 28% of the decline is due to realized interest rate risk. In comparison, for an interest rate risk exposure equal to the 1st or 3rd quartile respectively, the total predicted decline would, ceteris paribus, amount to 140 bp or 200 bp. In these cases, the contribution of interest rate risk exposure to the predicted declines amounts to 11% and 40% respectively.

The substantial impact and vast heterogeneity of interest risk exposure indicate that the decline in loan growth following an interest rate shock would not only be large in magnitude but also vary greatly across banks. In particular, if nominal interest rates were to increase suddenly, we expect the highly exposed banks in the sample to cut back their lending substantially more than the average bank.

### 4.3 Differences in the effects of gains and losses

The results presented in Table 3 rely on the assumption that gains and losses in economic capital due to realized interest rate risk exposure have a symmetric effect on bank loan growth. However, this assumption may not be met in reality, especially since short-term nominal interest rates have approached the zero lower bound, even venturing into negative rates. To test for potential asymmetries in the effects of gains and losses, we estimated an augmented specification of our model. We included a dummy variable that allows the realized interest rate risk exposure as a fraction of eligible capital to have a different effect on bank loan growth depending on whether the exposure lead to a gain or a loss. (See appendix A.4 for further details).

**Table 4: Asymmetry of Interest Rate Exposure**

Variables	Immediate	Long-Run
Realized Interest Rate Risk Exposure $\left(\frac{\rho_{it-1} \times \Delta i_t^{3M}}{EligC_{it-1}}\right)$ : as a fraction of eligible capital		
Gain	0.79 (2.29)	9.57 (5.75)
Loss	4.13 (4.37)	15.60** (6.40)
Two-sided test for equal coefficients (p-value):		
$H_0$ : Gains = Losses	0.50	0.54
$H_a$ : Gains $\neq$ Losses		

*Notes* : Dependent variable is the first difference of log quarterly loan volume, i.e. approximately the quarter on quarter loan growth rate. Estimates using the Within Groups transformation. All standard errors, in parentheses, are cluster robust at a bank-merger level. Immediate effect standard errors are simply regression estimates. Long-run effect standard errors are calculated using the delta-method. The long-run effects work under the assumption that no adjustment takes place in other variables apart from bank loan growth. In addition, the long-run estimates can be interpreted as approximate cumulative effects over the next year. \*\*\*  $p < 0.01$ , \*\*  $p < 0.05$ , \*  $p < 0.1$



Table 4 summarizes the results. The point estimates suggest that realized losses may have a larger impact on bank loan growth than realized gains. In comparison to the coefficients of the baseline model, reported in Table 3, the estimated long-run effect of realized losses is roughly 30% higher. These results suggest that upward shocks in nominal interest rates that typically lead to economic losses given the observed exposures likely have a larger effect on bank lending than comparable downward shocks that typically lead to economic gains. However, since the difference between the estimated effects of realized gains and losses in economic capital are far from being statistically significant, we stick with the baseline model and interpret its estimates as a lower bound for the effects of realized interest rate risk on bank lending.

## 4.4 Robustness Checks

This subsection presents four main robustness checks. First, we use an alternative measure for the change in nominal interest rates to calculate the realized change in economic capital due to interest rate risk exposure. Second, we check whether the results remain robust when we exclude the two big banks from the sample. Third, we assess whether the unbalanced nature of the panel influences the results. Finally, in the fourth robustness check, we exclude the first seven quarters during which the average bank’s interest rate risk exposure was positive.

### 4.4.1 *Alternative proxy for the change in nominal interest rates*

In the baseline specification, we use the change in the 3 months LIBOR to determine the realized change in economic capital due to interest rate risk exposure. Hence, we implicitly assume that changes in short-term rates convey the necessary information for calculating the realized interest rate risk exposure. We now relax this assumption and alternatively proxy for the change in nominal interest rates by the average change between the 3 months LIBOR and 10 year government bond yield,  $\Delta i_t^{avg}$ . To check whether our results remain robust, we reestimate the empirical model using the resulting alternative definition of realized interest rate risk exposure as a fraction of eligible capital,

$$\frac{\rho_{it-1} \times \Delta i_t^{avg}}{EligC_{it-1}}. \quad (7)$$

**Table 5: Robustness – Alternative Interest Rate Measure**

Variables	Immediate	Long-Run
Realized Interest Rate Risk Exposure $\left(\frac{\rho_{it-1} \times \Delta i_t^{avg}}{EligC_{it-1}}\right)$	0.80	14.02***
as a fraction of eligible capital	(2.09)	(4.00)
Norm. Excess Liquidity $\times \Delta i^{3M}$	-0.07	-0.08
	(0.11)	(0.15)
Norm. Excess Capital $\times \Delta i^{3M}$	-0.06	-0.43
	(0.25)	(0.90)
$\Delta$ Short-term interest rate $(\Delta i^{3M})$	-0.39**	-1.05**
	(0.15)	(0.44)
$\Delta$ Long-term interest rate $(\Delta i^{10Y})$	-0.04	-0.02
	(0.09)	(0.32)

*Notes* : Dependent variable is the first difference of log quarterly loan volume, i.e. approximately the quarter on quarter loan growth rate. Estimates using the Within Groups transformation. All standard errors, in parentheses, are cluster robust at a bank-merger level. Immediate effect standard errors are simply regression estimates. Long-run effect standard errors are calculated using the delta-method. The long-run effects work under the assumption that no adjustment takes place in other variables apart from bank loan growth. In addition, the long-run estimates can be interpreted as approximate cumulative effects over the next year. \*\*\*  $p < 0.01$ , \*\*  $p < 0.05$ , \*  $p < 0.1$

Table 5 shows that the results remain robust. Even though the point estimates suggest a slight shift of focus from the immediate effect towards the long-run effect, they are not significantly different from the estimates of the baseline model reported in Table 3.

We repeat the ceteris paribus analysis of the effect of interest rate risk exposure found in section 4.2, but use the estimated coefficients from Table 5. The results indicate that immediately after a 1 pp shock in nominal interest rates, the predicted decline in quarter on quarter loan growth amounts to 46 bp for the average bank in the sample. A year after the shock, i.e. in  $t + 4$ , the cumulative predicted decline in the average bank's loan growth would be 155 bp. In this case, the decomposition of this predicted decline illustrates that roughly 38% of the decline is due to realized interest rate risk.

#### 4.4.2 Excluding the two big banks from the sample

The baseline estimation uses the sample which includes the two big banks along with the domestically focused banks. On the one hand, including the big banks provides a more complete picture of the Swiss banking system. But on the other hand, it is problematic due to the big banks' international business models and specific reporting requirements. In particular, the following two issues compromise the quality of our measure of interest rate risk exposure for the two big banks.

First, about two thirds of the two big bank's business is located abroad. This affects both the numerator and the denominator of the measure of interest rate risk exposure  $\rho_{it}$ . In the numerator, our measure probably overestimates the effect of a change in CHF interest rates on

the big banks' economic capital, as it neglects that most of the big banks' cash flows are in foreign currencies. Similarly, in the denominator, our measure likely overestimates the amount of eligible capital the big banks attribute to domestic lending.

Second, since the measure  $\rho_{it}$  relies on the repricing mismatch between assets and liabilities, it is an adequate measure for interest rate risk arising from the banking book. However, in contrast to the domestically focused banks, the two big banks both have a substantial trading book for which the repricing mismatch is a less adequate measure of interest rate risk.

**Table 6: Robustness – Without Big Banks**

Variables	Immediate	Long-Run
Realized Interest Rate Risk Exposure $\left(\frac{\rho_{it-1} \times \Delta i_t^{3M}}{EligC_{it-1}}\right)$ as a fraction of eligible capital	2.65 (2.00)	11.96*** (3.18)
Norm. Excess Liquidity $\times \Delta i_t^{3M}$	-0.07 (0.11)	-0.07 (0.14)
Norm. Excess Capital $\times \Delta i_t^{3M}$	-0.12 (0.27)	-0.21 (0.92)
$\Delta$ Short-term interest rate ( $\Delta i_t^{3M}$ )	-0.36** (0.16)	-1.34*** (0.45)
$\Delta$ Long-term interest rate ( $\Delta i_t^{10Y}$ )	-0.07 (0.09)	-0.27 (0.31)

*Notes* : Dependent variable is the first difference of log quarterly loan volume, i.e. approximately the quarter on quarter loan growth rate. Estimates using the Within Groups transformation. All standard errors, in parentheses, are cluster robust at a bank-merger level. Immediate effect standard errors are simply regression estimates. Long-run effect standard errors are calculated using the delta-method. The long-run effects work under the assumption that no adjustment takes place in other variables apart from bank loan growth. In addition, the long-run estimates can be interpreted as approximate cumulative effects over the next year. \*\*\*  $p < 0.01$ , \*\*  $p < 0.05$ , \*  $p < 0.1$

In light of these issues, we excluded the big banks from the sample and re-estimated our baseline model. As Table 6 reveals, the estimates we obtain are virtually identical to the ones shown in Table 3. Consequently, the two big banks have only a negligible impact on our results.

#### **4.4.3 Assessing the influence of the unbalanced panel data**

Another concern could be that the unbalanced nature of the panel data set influences the results. Although the sample period from 2001Q2 to 2013Q3 covers  $T = 50$  quarters, we only observe 62 banks over the whole period.<sup>15</sup> Another 8 banks either left – mainly due to mergers and acquisitions – or newly entered the sample between 2001Q2 and 2013Q3. To check whether the unbalanced nature of the panel data set has an influence on the results, we re-estimated our model including only banks which we observe for at least 10, 15, and 20 periods. As shown in

<sup>15</sup> 24 Cantonal, 33 regional and savings banks, Raiffeisen Group banks, Bank Coop, Bank Migros and the two big banks.

Table A5 in the appendix, the results remain robust.

#### ***4.4.4 Excluding quarters with positive interest rate risk exposure***

In the first seven quarters of the sample, i.e. from 2001Q2 to 2002Q4, the banks were on average positively exposed to upward interest rate shocks, meaning that they would have experienced an economic gain if nominal interest rates increased. This period of positive interest rate risk exposure is unusual and may reflect that, due to flat yield curves, typical maturity transformation was no longer as beneficial. As a result, asset duration was reduced culminating in positive exposure to upward interest rate shocks. To check whether our results remain robust, we excluded these seven quarters from the sample and re-estimated our baseline model on the restricted sample period from 2003Q1 to 2013Q3.

We find that the coefficients on the impact of realized interest rate risk exposure on bank lending remain robust, although they are estimated less precisely. The other coefficients are robust too, with the exception that the estimated direct effect of short-term interest rates becomes significantly larger in absolute terms. Consequently, the estimated total effect of a permanent change in nominal interest rates on bank lending is larger in the restricted sample, but the estimated effect of realized interest rate risk exposure remains virtually unchanged. Detailed results can be found in Table A.6 in the appendix.

## 5 Conclusion

Our results are policy relevant in various ways. First of all, they indicate that the level of banks' exposure to interest rate risk needs to be taken into account when trying to understand how changes in interest rates affect bank loan growth. Our results suggest that individual bank loan growth has likely become more sensitive to changes in interest rates than it used to be prior to the recent increase in interest rate risk exposure. Even though our estimates cannot be directly aggregated as they are based on individual data and do not take eventual general equilibrium effects into account, they still indicate that a given upward shock in nominal interest rates would probably have a greater effect on bank lending in Switzerland today than experience prior to the recent increase in interest rate risk exposure suggests. Furthermore, as the Swiss banks have become more heterogeneous in interest rate risk exposure, even a relatively small shock could already cause substantial losses in economic capital at the most exposed institutions, and lead them to significantly cut back their lending. In parallel, if interest rate risk is heterogeneous across regions, an interest rate shock may have redistributive effects. Finally, the finding that bank lending is mainly driven by capital rather than liquidity suggests that larger capital buffers would make bank lending more resilient against shocks in nominal interest rates, while larger liquidity buffers would only have a relatively small or even no effect. Similar conclusions are drawn in recent work published in BIS (2015).

However, a few limitations regarding our measure of interest rate risk are in order here. It is exclusively based on the loss in economic capital due to banks' repricing mismatches. Thus it ignores that, in the current environment of negative short-term interest rates, an upward shock in nominal interest rates would benefit the banks in two ways: They would have to pay less negative interest rates on their sight deposit accounts at the SNB and, at the same time, their liability margin would be restored.<sup>16</sup> These two effects could at least partly offset the economic loss arising from repricing mismatches. On the other hand, our measure may underestimate the banks' true exposure to interest rate risk, as their assumptions regarding positions with undefined repricing maturities may be too optimistic; especially if the shock is substantial, and interest rates on deposits need to be adjusted faster than expected.

Finally, there is scope for future research. An important open question is how changes in the maturity of bank lending affects the transmission of monetary policy. On the one hand, our results suggest that increased interest rate risk exposure renders bank lending to the real sector more sensitive to changes in nominal interest rates. But on the other hand, increased repricing maturity of loans at the origin of increased interest rate risk exposure also temporarily shields existing borrowers from changes in interest rates. Furthermore, as loan-level data

---

<sup>16</sup> The liability margin is the difference between the alternative funding costs for the corresponding maturity on the capital market and the interest paid on the actual liability. It recently became negative for most banks. After the introduction of negative interests on sight deposits at the SNB, some capital and money market interest rates became negative too, while the interest rates on customer sight and savings deposits remained close to zero but positive (SNB, 2015).

becomes more readily available, accounting for borrower characteristics that fall under the balance sheet channel of monetary policy transmission should become possible. In summary, our results should prove helpful for better understanding the transmission of monetary policy via the banking system. As such our results constitute only a first step towards the integration of banking sector characteristics into policy making, an important question that is beyond the scope of this paper.

# References

- Financial Stability Report 2014*. Swiss National Bank, 2014.
- Interest rate risk in the banking book*. Consultative Document. Bank for International Settlements, June 2015.
- Financial Stability Report 2015*. Swiss National Bank, 2015.
- Javier Alvarez and Manuel Arellano. The time series and cross-section asymptotics of dynamic panel data estimators. *Econometrica*, 71(4):1121–1159, 2003.
- Manuel Arellano and Stephen Bond. Some tests of specification for panel data: Monte carlo evidence and an application to employment equations. *The review of economic studies*, 58(2):277–297, 1991.
- Manuel Arellano and Olympia Bover. Another look at the instrumental variable estimation of error-components models. *Journal of econometrics*, 68(1):29–51, 1995.
- Manuel Arellano and Bo Honoré. Panel data models: some recent developments. *Handbook of econometrics*, 5:3229–3296, 2001.
- Ben S Bernanke and Alan S Blinder. Credit, money, and aggregate demand. *The American Economic Review*, pages 435–439, 1988.
- Ben S Bernanke and Mark Gertler. Inside the black box: The credit channel of monetary policy. *The Journal of Economic Perspectives*, 9(4):27–48, 1995.
- Robert Bichsel and Josef Perrez. In quest of the bank lending channel: evidence for switzerland using individual bank data. *Swiss Journal of Economics and Statistics*, 141(2):165–190, 2005.
- Richard Blundell and Stephen Bond. Initial conditions and moment restrictions in dynamic panel data models. *Journal of econometrics*, 87(1):115–143, 1998.
- Stephen R Bond. Dynamic panel data models: a guide to micro data methods and practice. *Portuguese economic journal*, 1(2):141–162, 2002.
- Giovanni SF Bruno. Approximating the bias of the lsdv estimator for dynamic unbalanced panel data models. *Economics Letters*, 87(3):361–366, 2005.
- Marcia Millon Cornett and Hassan Tehranian. An examination of voluntary versus involuntary security issuances by commercial banks: The impact of capital regulations on common stock returns. *Journal of Financial Economics*, 35(1):99–122, 1994.

- Leonardo Gambacorta and Paolo Emilio Mistrulli. Does bank capital affect lending behavior? *Journal of Financial Intermediation*, 13(4):436–457, 2004.
- Samuel G Hanson and Jeremy C Stein. Monetary policy and long-term real rates. *Journal of Financial Economics*, 115(3):429–448, 2015.
- Gabriel Jiménez, Steven Ongena, José-Luis Peydró, and Jesús Saurina. Credit supply and monetary policy: Identifying the bank balance-sheet channel with loan applications. *The American Economic Review*, 102(5):2301–2326, 2012.
- Ruth A Judson and Ann L Owen. Estimating dynamic panel data models: a guide for macroeconomists. *Economics Letters*, 65(1):9–15, 1999.
- Anil K Kashyap and Jeremy C Stein. The impact of monetary policy on bank balance sheets. In *Carnegie-Rochester Conference Series on Public Policy*, volume 42, pages 151–195. Elsevier, 1995.
- Anil K Kashyap and Jeremy C Stein. What do a million observations on banks say about the transmission of monetary policy? *American Economic Review*, pages 407–428, 2000.
- Ruby P Kishan and Timothy P Opiela. Bank size, bank capital, and the bank lending channel. *Journal of Money, Credit and Banking*, pages 121–141, 2000.
- Ruby P Kishan and Timothy P Opiela. Bank capital and loan asymmetry in the transmission of monetary policy. *Journal of Banking & Finance*, 30(1):259–285, 2006.
- Jan F Kiviet. On bias, inconsistency, and efficiency of various estimators in dynamic panel data models. *Journal of Econometrics*, 68(1):53–78, 1995.
- Simon Kwan and Robert A Eisenbeis. Bank risk, capitalization, and operating efficiency. *Journal of Financial Services Research*, 12(2-3):117–131, 1997.
- Augustin Landier, David Sraer, and David Thesmar. Banks’ exposure to interest rate risk and the transmission of monetary policy. Working Paper 18857, National Bureau of Economic Research, February 2013. URL <http://www.nber.org/papers/w18857>.
- Stewart C Myers. Capital structure. *Journal of Economic Perspectives*, pages 81–102, 2001.
- Stewart C Myers and Nicholas S Majluf. Corporate financing and investment decisions when firms have information that investors do not have. *Journal of Financial Economics*, 13(2): 187–221, 1984.
- Stephen Nickell. Biases in dynamic models with fixed effects. *Econometrica: Journal of the Econometric Society*, pages 1417–1426, 1981.



David Roodman. How to do xtabond2: An introduction to difference and system gmm in stata. *Stata Journal*, 9(1):86, 2009.

Philip Turner. Benign neglect of the long-term interest rate. Technical report, Bank for International Settlements, 2013.

Skander Van den Heuvel. The bank capital channel of monetary policy. In *2007 Meeting Papers*, number 512. Society for Economic Dynamics, 2007.

Skander J Van den Heuvel. Does bank capital matter for monetary transmission? *Economic Policy Review*, 8(1):259–265, 2002.

# A Appendices

## A.1 Data preparation

### A.1.1 Outliers

We deal with outliers in the loan growth series using the *hadimvo* STATA program with a threshold at 0.01. Essentially, it removes the observations in the tails of the distribution, dropping 30 observations out of 3444 observations. We keep the remaining outlier-free series of bank loan growth for the analysis.

### A.1.2 Normalizations

The normalizations, on the outlier-free data, to excess capital, liquidity and size work as follows. Formally excess capital and liquidity are given by

$$X_{it} = \frac{E_{it}^X}{R_{it}^X} - \left( \sum_t \frac{\sum_i E_{it}^X / R_{it}^X}{N_t} \right) / T,$$

where  $X$  is either  $C$  for capital or  $B$  for liquidity and  $E^X$  and  $R^X$  are excess and required quantities respectively. Hence, we subtract the sample average from excess capital and liquidity, which yields a variable centered around zero. It should be interpreted as whether the bank had more or less of the corresponding excess quantity in a given quarter than the average over all banks and over the whole sample period.

Size is normalized with respect to the sample average in each period, which removes the trending nature of the size variable. We adopt the following measure:

$$S_{it} = Size_{it} - \left( \frac{\sum_i Size_{it}}{N_t} \right)$$

### A.1.3 Mergers and acquisitions

We need to account for the discrete jumps that are created by 25 mergers and acquisition's in our data set during the sample period. The underlying method works as follows: (i) identify the banks that perform a merger and acquisition as well as the banks that are subject to a merger and acquisition in a given quarter; (ii) under the assumption that the acquired/absorbed banks cease to exist in the quarter of the transaction, we remove all observations of those banks from transaction onwards (and including the quarter of the transaction) but this only happens in one case; and (iii) concerning the acquiring bank, we allocate it a new id from the quarter of the transaction onwards. This procedure accommodates the Gambacorta and Mistrulli (2004) approach, and generates a so-called merger-id which we use to account for bank-level fixed effects in our estimations. Note, we also used original bank id's as fixed effects in a robustness check (note presented here) and the results remained practically unchanged.

In terms of entries and exits of banks during the sample, we start with 77 banks in 2001Q2 and end with 69 banks in 2013Q3. The majority of the fluctuation is due to a consolidation of the banking system via mergers and acquisitions that occurred over the sample period. There is no systematic exit of banks or entry for that matter.

## A.2 Estimator comparisons

Table A2 shows the OLS, WG, and GMM estimates of the model presented in equation (3). Its main objective is to study whether the estimates change across the different estimators as expected given the discussion in section 3.4.

The first two columns depicts the OLS and WG estimates, respectively. The subsequent columns 3 to 6 show the estimates of different implementations of the GMM estimator that are typically found in settings with dynamic panel models. The optimal implementation of the one-step System GMM estimator depends on various criteria, namely: (i) the equation structure, (ii) the choice of instrument structure<sup>17</sup>, (iii) the number of instruments<sup>18</sup>, (iv) the lack of second order autocorrelation in the errors, and (v) over-identification tests. Columns 3 and 4 exploit the GMM-style instruments that creates an instrument matrix, in which one column is generated for each time period and lag available. In contrast, columns 5 and 6 use the so-called “stacked” instruments, which is a reduced column format of the GMM-style instrument structure.

Points (ii) and (iii) are important in determining how the GMM estimator deals with the “Nickell Bias.” More specifically, the GMM-style instrument structure takes on the following form:

$$\begin{pmatrix} 0 & 0 & 0 & 0 & 0 & 0 & \dots \\ y_{i1} & 0 & 0 & 0 & 0 & 0 & \dots \\ 0 & y_{i2} & y_{i1} & 0 & 0 & 0 & \dots \\ 0 & 0 & 0 & y_{i3} & y_{i2} & y_{i1} & \dots \\ \vdots & \vdots & \vdots & \vdots & \vdots & \vdots & \ddots \end{pmatrix}.$$

Each column is generated, for a given row, so that it contains the information of each lag that is available in that period. In contrast, the stacked instrument structure greatly reduces the number of columns that are generated and can be represented as follows:

$$\begin{pmatrix} 0 & 0 & 0 & \dots \\ y_{i1} & 0 & 0 & \dots \\ y_{i2} & y_{i1} & 0 & \dots \\ y_{i3} & y_{i2} & y_{i1} & \dots \\ \vdots & \vdots & \vdots & \ddots \end{pmatrix}.$$

Therefore, choosing between GMM-style and stacked instruments can have a great influence

<sup>17</sup> See Roodman (2009) for a detailed review on the topic.

<sup>18</sup> See Blundell and Bond (1998); Bond (2002) for examples.

on the number of instruments used in the estimation process.

Point (iv) investigates the autocorrelation in the idiosyncratic error term,  $\epsilon_{it}$ . First order correlation would mean that lagged instruments starting at  $t - 2$  would no longer be valid, requiring the instruments to start at lag  $t - 3$ . First order autocorrelation in the differenced errors (AR(1) p-value) is essentially uninformative due to the share of  $\epsilon_{it-1}$  in both  $\Delta\epsilon_{it}$  and  $\Delta\epsilon_{it-1}$ , but should recover the mechanic *negative* correlation due to the differencing of the levels equation in the GMM estimation process. Therefore, no first order autocorrelation in levels is equivalent to no second order autocorrelation in differences, i.e. between  $\epsilon_{it-1}$  in  $\Delta\epsilon_{it}$  and  $\epsilon_{it-2}$  in  $\Delta\epsilon_{it-2}$ . In all of the columns, results suggest that there is no first order correlation (AR(2) p-value) in the level idiosyncratic errors. That said, we still account for the potential heteroscedasticity and autocorrelation in the errors at each bank by clustering the errors at a bank level.

**Table A2: Estimated Coefficients**

Variables	(1)	(2)	(3)	(4)	(5)	(6)
	OLS	WG	GMM SYS t-2: GMM-Style Instruments	GMM SYS t-3: GMM-Style Instruments	GMM SYS t-2: Stacked Instruments	GMM SYS t-3: Stacked Instruments
$\Delta \ln L_{it-1}$	0.466*** (0.042)	0.330*** (0.039)	0.445*** (0.039)	0.506*** (0.039)	0.379*** (0.045)	0.504*** (0.078)
$\left(\frac{\rho_{it-1} \times \Delta i_t}{EligC_{it-1}}\right)_{it}$	1.487 (2.159)	2.020 (2.031)	1.437 (2.172)	2.882 (2.288)	-0.094 (3.517)	5.542 (10.358)
$\left(\frac{\rho_{it-1} \times \Delta i_t}{EligC_{it-1}}\right)_{it-1}$	1.962 (2.841)	2.171 (2.709)	1.910 (2.769)	0.820 (2.999)	3.272 (3.299)	-0.101 (8.086)
$\left(\frac{\rho_{it-1} \times \Delta i_t}{EligC_{it-1}}\right)_{it-2}$	-1.329 (2.080)	-1.189 (1.953)	-1.142 (2.050)	-1.026 (2.095)	0.904 (4.444)	2.868 (5.134)
$\left(\frac{\rho_{it-1} \times \Delta i_t}{EligC_{it-1}}\right)_{it-3}$	6.203*** (1.569)	5.708*** (1.567)	6.245*** (1.547)	5.516*** (1.599)	5.977*** (2.097)	4.171 (2.978)
$\left(\frac{\rho_{it-1} \times \Delta i_t}{EligC_{it-1}}\right)_{it-4}$	-1.332 (1.484)	-0.995 (1.550)	-1.095 (1.529)	-1.495 (1.501)	-0.880 (2.363)	-1.147 (2.565)
$B_{it-1} \cdot \Delta i_t^{3M}$	-0.025 (0.103)	-0.071 (0.106)	-0.035 (0.102)	0.038 (0.117)	-0.250 (0.706)	0.224 (0.736)
$B_{it-1} \cdot \Delta i_{t-1}^{3M}$	0.052 (0.163)	0.075 (0.159)	0.061 (0.162)	0.060 (0.181)	-0.277 (0.714)	-0.632 (0.701)
$B_{it-1} \cdot \Delta i_{t-2}^{3M}$	0.056 (0.181)	0.067 (0.174)	0.057 (0.180)	0.060 (0.210)	-1.420* (0.811)	-0.952 (0.848)
$B_{it-1} \cdot \Delta i_{t-3}^{3M}$	-0.032 (0.130)	-0.024 (0.118)	-0.025 (0.128)	-0.007 (0.160)	0.096 (0.501)	-0.158 (0.491)
$B_{it-1} \cdot \Delta i_{t-4}^{3M}$	-0.109 (0.088)	-0.102 (0.079)	-0.108 (0.086)	-0.163 (0.110)	-0.348 (0.464)	-0.053 (0.483)
$C_{it-1} \cdot \Delta i_t^{3M}$	0.116 (0.242)	-0.079 (0.255)	0.157 (0.237)	0.185 (0.234)	1.278 (1.604)	0.426 (1.653)
$C_{it-1} \cdot \Delta i_{t-1}^{3M}$	0.154 (0.358)	0.112 (0.348)	0.143 (0.356)	0.170 (0.366)	0.911 (1.261)	0.869 (1.591)
$C_{it-1} \cdot \Delta i_{t-2}^{3M}$	0.149 (0.344)	0.072 (0.352)	0.189 (0.328)	0.212 (0.329)	-0.306 (1.588)	-2.227 (1.861)
$C_{it-1} \cdot \Delta i_{t-3}^{3M}$	0.005 (0.214)	0.038 (0.204)	-0.018 (0.217)	0.006 (0.226)	-1.858 (1.171)	-1.144 (1.006)
$C_{it-1} \cdot \Delta i_{t-4}^{3M}$	-0.520* (0.289)	-0.466 (0.285)	-0.505* (0.296)	-0.506* (0.293)	0.805 (1.011)	0.633 (1.170)

*Continued*

Table A2 cont'd: Estimated Coefficients

Variables	(1)	(2)	(3)	(4)	(5)	(6)
	OLS	WG	GMM SYS t-2: GMM-Style Instruments	GMM SYS t-3: GMM-Style Instruments	GMM SYS t-2: Stacked Instruments	GMM SYS t-3: Stacked Instruments
$\Delta i_t^{3M}$	-0.375** (0.182)	-0.377** (0.171)	-0.378** (0.183)	-0.293 (0.186)	-0.935*** (0.332)	-0.642* (0.376)
$\Delta i_{t-1}^{3M}$	-0.106 (0.146)	-0.121 (0.140)	-0.106 (0.145)	-0.114 (0.151)	-0.172 (0.234)	-0.133 (0.334)
$\Delta i_{t-2}^{3M}$	-0.230 (0.148)	-0.293* (0.158)	-0.204 (0.151)	-0.187 (0.150)	0.218 (0.332)	0.468 (0.382)
$\Delta i_{t-3}^{3M}$	0.136 (0.094)	0.081 (0.095)	0.130 (0.093)	0.127 (0.094)	0.249 (0.243)	0.135 (0.194)
$\Delta i_{t-4}^{3M}$	-0.016 (0.126)	-0.022 (0.127)	0.020 (0.126)	0.028 (0.125)	-0.313 (0.203)	-0.300 (0.222)
$\Delta i_t^{10Y}$	-0.052 (0.086)	-0.066 (0.085)	-0.043 (0.087)	-0.049 (0.088)	0.046 (0.113)	-0.022 (0.136)
$\Delta i_{t-1}^{10Y}$	-0.002 (0.095)	0.009 (0.092)	0.007 (0.094)	-0.021 (0.096)	0.075 (0.106)	0.034 (0.115)
$\Delta i_{t-2}^{10Y}$	-0.068 (0.110)	-0.037 (0.104)	-0.069 (0.108)	-0.054 (0.110)	-0.158 (0.130)	-0.152 (0.132)
$\Delta i_{t-3}^{10Y}$	0.023 (0.106)	0.030 (0.100)	0.038 (0.103)	0.023 (0.106)	-0.163 (0.132)	-0.107 (0.139)
$\Delta i_{t-4}^{10Y}$	-0.098 (0.112)	-0.091 (0.110)	-0.090 (0.110)	-0.095 (0.114)	0.004 (0.143)	-0.029 (0.159)
$C_{it-1}$	0.181 (0.183)	0.143 (0.237)	0.303 (0.216)	0.298 (0.196)	-0.068 (0.890)	-1.066 (1.119)
$B_{it-1}$	-0.011 (0.035)	0.014 (0.044)	-0.006 (0.049)	0.035 (0.037)	-0.465*** (0.147)	-0.380* (0.198)
$S_{it-1}$	-0.020 (0.016)	-0.337 (0.251)	-0.036 (0.023)	-0.014 (0.020)	0.176* (0.102)	0.102 (0.076)
$C_{it-1} \cdot y_t$	-0.026 (0.082)	0.004 (0.079)	-0.034 (0.079)	-0.049 (0.076)	-0.081 (0.444)	0.485 (0.551)
$C_{it-1} \cdot y_{t-1}$	-0.086 (0.128)	-0.054 (0.117)	-0.081 (0.126)	-0.072 (0.126)	0.083 (0.577)	-0.396 (0.698)
$C_{it-1} \cdot y_{t-2}$	0.087 (0.162)	0.012 (0.152)	0.087 (0.156)	0.083 (0.161)	-0.948* (0.503)	-0.654 (0.538)
$C_{it-1} \cdot y_{t-3}$	0.079 (0.161)	0.098 (0.151)	0.074 (0.156)	0.065 (0.160)	1.238** (0.622)	1.542** (0.629)
$C_{it-1} \cdot y_{t-4}$	-0.081 (0.083)	-0.054 (0.079)	-0.084 (0.082)	-0.071 (0.082)	-0.482 (0.381)	-0.595 (0.385)

Continued

**Table A2 cont'd: Estimated Coefficients**

Variables	(1)	(2)	(3)	(4)	(5)	(6)
	OLS	WG	GMM SYS t-2: GMM-Style Instruments	GMM SYS t-3: GMM-Style Instruments	GMM SYS t-2: Stacked Instruments	GMM SYS t-3: Stacked Instruments
$y_t$	0.068* (0.038)	0.081** (0.037)	0.060 (0.040)	0.061 (0.040)	0.139*** (0.054)	0.101 (0.065)
$y_{t-1}$	0.033 (0.051)	0.028 (0.048)	0.032 (0.050)	0.022 (0.051)	0.012 (0.069)	0.033 (0.076)
$y_{t-2}$	-0.015 (0.054)	-0.014 (0.052)	-0.014 (0.052)	-0.007 (0.054)	0.016 (0.074)	-0.007 (0.072)
$y_{t-3}$	-0.007 (0.059)	0.011 (0.057)	-0.010 (0.058)	-0.008 (0.060)	-0.057 (0.082)	-0.067 (0.090)
$y_{t-4}$	0.055* (0.033)	0.044 (0.032)	0.053* (0.032)	0.044 (0.032)	0.085* (0.046)	0.066 (0.051)
$\pi_t$	-0.091** (0.045)	-0.100** (0.049)	-0.081* (0.043)	-0.074* (0.043)	-0.202** (0.083)	-0.171** (0.074)
$\pi_{t-1}$	0.034 (0.067)	0.029 (0.063)	0.019 (0.065)	0.021 (0.067)	0.180 (0.113)	0.164 (0.111)
$\pi_{t-2}$	-0.046 (0.063)	-0.059 (0.058)	-0.045 (0.062)	-0.046 (0.064)	-0.024 (0.079)	-0.047 (0.090)
$\pi_{t-3}$	-0.029 (0.064)	-0.020 (0.061)	-0.027 (0.062)	-0.019 (0.064)	-0.089 (0.072)	-0.059 (0.083)
$\pi_{t-4}$	-0.017 (0.037)	-0.037 (0.045)	-0.024 (0.037)	-0.014 (0.038)	-0.071 (0.050)	-0.029 (0.048)
Q2	0.074 (0.068)	0.077 (0.061)	0.074 (0.066)	0.074 (0.069)	0.003 (0.065)	0.011 (0.071)
Q3	-0.083 (0.072)	-0.096 (0.070)	-0.081 (0.071)	-0.085 (0.072)	-0.066 (0.073)	-0.070 (0.085)
Q4	0.162** (0.079)	0.132* (0.075)	0.164** (0.078)	0.161** (0.080)	0.172** (0.084)	0.152 (0.100)
Constant	0.320*** (0.099)	0.440*** (0.093)	0.369*** (0.104)	0.314*** (0.100)	0.303* (0.159)	0.253 (0.188)

Regression Statistics:

Observations	2,898	2,898	2,898	2,898	2,898	2,898
$R^2$	0.287	0.166	-	-	-	-
Number of Groups	-	93	93	93	93	93
AR(1) P-value	-	-	0.00	0.00	0.00	0.00
AR(2) P-value	-	-	0.23	0.15	0.66	0.63
Sargan P-value	-	-	0.00	0.01	0.00	0.03
Hansen P-value	-	-	1.00	1.00	0.96	0.96
Max # of lags	-	-	1-2	2-3	1-16	2-16
# of instruments	-	-	931	943	117	112

Notes : Dependent variable is the first difference of log quarterly loan volume, i.e. approximately the quarter on quarter loan growth rate. Cluster robust standard errors, at bank-merger level, in parentheses. OLS stands for Ordinary Least Squares, WG stands for Within Groups using the deviations from means transformation. GMM stands for Generalised Method of Moments. GMM is implemented using both levels and first differenced equations (System GMM) as well as different instrument structures (GMM-Style or Stacked). Column (3) uses GMM-style instruments and lags from  $t - 2$  to  $t - 3$ . Column (4) uses GMM-style instruments and lags from  $t - 3$  to  $t - 4$ . Column (5) uses stacked instruments and lags from  $t - 2$  up to  $t - 16$  as instruments. Column (6) uses stacked instruments and lags from  $t - 3$  up to  $t - 16$ . All estimations in columns (2)-(6) use fixed effects that are adjusted to account for mergers in our data set. \*\*\*  $p < 0.01$ , \*\*  $p < 0.05$ , \*  $p < 0.1$

### A.3 Immediate vs. long-run effects

To clear up any ambiguity concerning the estimates of the immediate and long-run effects reported in the paper, consider the following simplified version (suppressing fixed effects and the error term) of our model,

$$\Delta \ln L_{it} = \alpha \Delta \ln L_{it-1} + \beta_1 x_{it}, \quad (8)$$

where  $x$  is equivalent to  $\left(\frac{\rho_{it-1} \cdot \Delta i_t}{\text{Elig} C_{it-1}}\right)$  from equation (3). If we forward this model a couple of periods:

$$\begin{aligned} \Delta \ln L_{it} &= \alpha \Delta \ln L_{it-1} + \beta_1 x_{it} \\ \Delta \ln L_{it+1} &= \alpha \Delta \ln L_{it} + \beta_1 x_{it+1} \\ \Delta \ln L_{it+2} &= \alpha \Delta \ln L_{it+1} + \beta_1 x_{it+2} \\ \Delta \ln L_{it+3} &= \alpha \Delta \ln L_{it+2} + \beta_1 x_{it+3} \\ \Delta \ln L_{it+4} &= \alpha \Delta \ln L_{it+3} + \beta_1 x_{it+4} \end{aligned}$$

After some substitution, we get:

$$\begin{aligned} \Delta \ln L_{it} &= \alpha \Delta \ln L_{it-1} + \beta_1 x_{it} \\ \Delta \ln L_{it+1} &= \alpha^2 \Delta \ln L_{it-1} + \beta_1 x_{it+1} + \alpha \beta_1 x_{it} \\ \Delta \ln L_{it+2} &= \alpha^3 \Delta \ln L_{it-1} + \beta_1 x_{it+2} + \alpha \beta_1 x_{it+1} + \alpha^2 \beta_1 x_{it} \\ \Delta \ln L_{it+3} &= \alpha^4 \Delta \ln L_{it-1} + \beta_1 x_{it+3} + \alpha \beta_1 x_{it+2} + \alpha^2 \beta_1 x_{it+1} + \alpha^3 \beta_1 x_{it} \\ \Delta \ln L_{it+4} &= \alpha^5 \Delta \ln L_{it-1} + \beta_1 x_{it+4} + \alpha \beta_1 x_{it+3} + \alpha^2 \beta_1 x_{it+2} + \alpha^3 \beta_1 x_{it+1} + \alpha^4 \beta_1 x_{it} \end{aligned}$$

Notice that  $\Delta i_t$  enters via the  $x_{it}$  terms, which is particularly relevant for the ceteris paribus exercise in section 4.2. Therefore, the immediate effect of  $x_{it}$  on  $\Delta \ln L_{it}$ , is captured by

$$\frac{\partial \Delta \ln L_{it}}{\partial x_{it}} = \beta_1, \quad (9)$$

which is the effect of a contemporaneous change in  $x_{it}$  on this quarter's loan growth rate  $\Delta \ln L_{it}$ . The marginal effect of the change in  $x_{it}$  on  $\Delta \ln L_{it+1}$ , i.e. after one quarter, is

$$\frac{\partial \Delta \ln L_{it}}{\partial x_{it-1}} = \frac{\partial \Delta \ln L_{it+1}}{\partial x_{it}} = \alpha \beta_1.$$

In a similar fashion, the marginal change after  $s$  quarters is equal to

$$\frac{\partial \Delta \ln L_{it}}{\partial x_{it-s}} = \frac{\partial \Delta \ln L_{it+s}}{\partial x_{it}} = \alpha^s \beta_1.$$



Note that  $|\alpha| < 1$ , so as  $s \rightarrow \infty$ ,  $\alpha^s \rightarrow 0$ . The long-run effect we refer to is given by

$$\sum_{s=0}^{\infty} \frac{\partial \Delta \ln L_{it+s}}{\partial x_{it}} = \sum_{s=0}^{\infty} \alpha^s \beta_1 = \frac{\beta_1}{1 - \alpha}. \quad (10)$$

Bear in mind that this is a simplified version of the actual calculation and is used for expositional purposes.

Figure 2 requires a set of calculations and values. The partial derivative of equation (3) with respect to  $\Delta i_t^{3M} = \Delta i_t^{10Y} = \Delta i_t$  yields

$$\frac{\partial \Delta \ln L_{it}}{\partial \Delta i_t} = \beta_{1,0} \left( \frac{\rho}{EligC} \right) + \beta_{2,0} B + \beta_{3,0} C + \beta_{4,0} + \beta_{5,0}, \quad (11)$$

which determines the immediate effect of an interest rate shock  $\Delta i_t = 100$  bp at time  $t$  in Figure 2. The remaining punctual effects can be summarized by the following equations

$$\begin{aligned} \frac{\partial \Delta \ln L_{it+1}}{\partial \Delta i_t} &= (\beta_{1,1} + \alpha \beta_{1,0}) \left( \frac{\rho}{EligC} \right) + (\beta_{2,1} + \alpha \beta_{2,0}) B + (\beta_{3,1} + \alpha \beta_{3,0}) C \\ &+ [(\beta_{4,1} + \beta_{5,1}) + \alpha(\beta_{4,0} + \beta_{5,0})], \end{aligned} \quad (12)$$

$$\begin{aligned} \frac{\partial \Delta \ln L_{it+2}}{\partial \Delta i_t} &= (\beta_{1,2} + \alpha \beta_{1,1} + \alpha^2 \beta_{1,0}) \left( \frac{\rho}{EligC} \right) \\ &+ (\beta_{2,2} + \alpha \beta_{2,1} + \alpha^2 \beta_{2,0}) B \\ &+ (\beta_{3,2} + \alpha \beta_{3,1} + \alpha^2 \beta_{3,0}) C \\ &+ [(\beta_{4,2} + \beta_{5,2}) + \alpha(\beta_{4,1} + \beta_{5,1}) + \alpha^2(\beta_{4,0} + \beta_{5,0})], \end{aligned} \quad (13)$$

$$\begin{aligned} \frac{\partial \Delta \ln L_{it+3}}{\partial \Delta i_t} &= (\beta_{1,3} + \alpha \beta_{1,2} + \alpha^2 \beta_{1,1} + \alpha^3 \beta_{1,0}) \left( \frac{\rho}{EligC} \right) \\ &+ (\beta_{2,3} + \alpha \beta_{2,2} + \alpha^2 \beta_{2,1} + \alpha^3 \beta_{2,0}) B \\ &+ (\beta_{3,3} + \alpha \beta_{3,2} + \alpha^2 \beta_{3,1} + \alpha^3 \beta_{3,0}) C \\ &+ [(\beta_{4,3} + \beta_{5,3}) + \alpha(\beta_{4,2} + \beta_{5,2}) + \alpha^2(\beta_{4,1} + \beta_{5,1}) + \alpha^3(\beta_{4,0} + \beta_{5,0})], \end{aligned} \quad (14)$$

$$\begin{aligned} \frac{\partial \Delta \ln L_{it+4}}{\partial \Delta i_t} &= (\beta_{1,4} + \alpha \beta_{1,3} + \alpha^2 \beta_{1,2} + \alpha^3 \beta_{1,1} + \alpha^4 \beta_{1,0}) \left( \frac{\rho}{EligC} \right) \\ &+ (\beta_{2,4} + \alpha \beta_{2,3} + \alpha^2 \beta_{2,2} + \alpha^3 \beta_{2,1} + \alpha^4 \beta_{2,0}) B \\ &+ (\beta_{3,4} + \alpha \beta_{3,3} + \alpha^2 \beta_{3,2} + \alpha^3 \beta_{3,1} + \alpha^4 \beta_{3,0}) C \\ &+ [(\beta_{4,4} + \beta_{5,4}) + \alpha(\beta_{4,3} + \beta_{5,3}) + \alpha^2(\beta_{4,2} + \beta_{5,2}) + \alpha^3(\beta_{4,1} + \beta_{5,1}) + \alpha^4(\beta_{4,0} + \beta_{5,0})]. \end{aligned} \quad (15)$$

The calculation of the cumulative long-run effect at time  $t + 4$  in Figure 2 is significantly more algebraically involved. It requires the sum of equations (11), (12), (13), (14) and (15). Alternatively, take the long-run coefficients displayed in Table 3, multiply them by their corresponding average values reported in Table 10 and sum up.

Finally, Table 10 summarizes the exact values that are needed for the calculations above that are used in Figure 2. In order to perform the ceteris paribus analysis, we hold all other factors constant and equal to their average value. Our main variable, interest rate risk exposure, takes on three values determined by the distribution of upward interest rate risk in 2013Q3.

**Table 10: Exact Values for Figure 2**

Variable	Exposure equal to 1. quartile	Average Bank	Exposure equal to 3. quartile
Interest Rate Risk Exposure as a fraction of eligible capital $(\rho/EligC) \times 100$	-1.32588	-4.30819	-7.18559
Normalized Excess Capital $(C) \times 100$	-10.34936	-10.34936	-10.34936
Normalized Excess Liquidity $(B) \times 100$	10.791	10.791	10.791
Short-term interest rate $(\Delta i^{3M} = \Delta i = 1) \times 100$	100 bp	100 bp	100 bp
Long-term interest rate $(\Delta i^{10Y} = \Delta i = 1) \times 100$	100 bp	100 bp	100 bp

*Notes* : All values correspond to 2013Q3. We recover the average values of normalized excess capital and liquidity in lines 2 and 3 respectively. Importantly, we recover three values (25<sup>th</sup> percentile, average value, 75<sup>th</sup> percentile) of the upward interest rate risk exposure distribution in 2013Q3 in the first line. The values have already been multiplied by 100, i.e. the 100 basis point increase in interest rates.

## A.4 Asymmetric effects of gains and losses

In order to test the symmetry of the effects realized gains or losses on bank loan growth, we define a binary variable, *Asymmetry*, which takes the value 1 if the effect of any  $\Delta i_t$  is positive and 0 if it is negative. The interaction with realized change in economic value picks up the additional effect of realized gains.

### Definition of the Asymmetry Variable

		Actual Interest Rate Change
		$\Delta i_t \geq 0$ $\Delta i_t < 0$
		Realized Interest Rate Risk Exposure as a fraction of eligible capital
Upward Interest Rate Risk Exposure:		
$\frac{\rho_{it-1}^{up}}{EligC_{it-1}} \geq 0$	Positive effect	
$\frac{\rho_{it-1}^{up}}{EligC_{it-1}} < 0$	Negative effect	
Downward Interest Rate Risk Exposure:		
$\frac{\rho_{it-1}^{down}}{EligC_{it-1}} \geq 0$	Positive effect	
$\frac{\rho_{it-1}^{down}}{EligC_{it-1}} < 0$	Negative effect	

*Notes* : The positive/negative effects describe the ensuing impact of an actual interest rate change on loan growth, via interest rate risk exposure. Note that  $\rho^{up}$  measures the exposure if rates were to increase. Similarly,  $\rho^{down}$  measures the exposure if rates were to decrease.

Using the definition of the binary variable, the specification takes on the following form:

$$\begin{aligned}
\Delta \ln L_{it} = & \beta_0 + \alpha \Delta \ln L_{it-1} \\
& + \sum_{s=0}^4 \kappa_{1,s} \left( \frac{\rho_{it-1} \times \Delta i_t}{EligC_{it-1}} \right)_{it-s} + \sum_{s=0}^4 \kappa_{2,s} \left( \frac{\rho_{it-1} \times \Delta i_t}{EligC_{it-1}} \times Asymmetry_t \right)_{it-s} \\
& + \sum_{s=0}^4 \beta_{2,s} B_{it-1} \times \Delta i_{t-s}^{3M} + \sum_{s=0}^4 \beta_{3,s} C_{it-1} \times \Delta i_{t-s}^{3M} \\
& + \sum_{s=0}^4 \beta_{4,s} \Delta i_{t-s}^{3M} + \sum_{s=0}^4 \beta_{5,s} \Delta i_{t-s}^{10Y} \\
& + \beta_6 B_{it-1} + \beta_7 C_{it-1} + \beta_8 S_{it-1} \\
& + \sum_{s=0}^4 \beta_{9,s} C_{it-1} \times y_{t-s} + \sum_{s=0}^4 \beta_{10,s} y_{t-s} + \sum_{s=0}^4 \beta_{11,s} \pi_{t-s} \\
& + \sum_{s=2}^4 \theta_s + \mu_i + \epsilon_{it}, \tag{16}
\end{aligned}$$

where,  $\kappa^{gain} = \kappa_{1,s} + \kappa_{2,s}$  measures the impact of a realized gain. The impact of a realized loss is measured with  $\kappa^{loss} = \kappa_{1,s}$ . The two-sided test of asymmetry works under the null of  $H_0 : \kappa^{gain} = \kappa^{loss}$  versus the alternative  $H_a : \kappa^{gain} \neq \kappa^{loss}$ . Therefore, rejecting the null would support the thesis of the breakdown in symmetry. We estimate equation (16) and follow the same procedure in calculating immediate and long-run effects, which yields the results found in Table 4.

The null hypothesis of asymmetry of the immediate effects is recovered directly from test

statistic on the estimated coefficient  $\hat{\kappa}_{2,1}$ , while the test statistic in the long-run requires a comparison of the long-run realized gain effect and the long-run realized loss effect, using an adapted version of (4).

## A.5 Panel Bias Robustness

Table A5: Panel Bias Regression Comparisons

Variables	(1)	(2)	(3)	(4)
	$T \geq 10$	$T \geq 15$	$T \geq 20$	All Panels
$\Delta \ln L_{it-1}$	0.331*** (0.040)	0.331*** (0.040)	0.331*** (0.040)	0.330*** (0.039)
$\left(\frac{\rho_{it-1} \times \Delta i_t}{EligC_{it-1}}\right)_{it}$	1.824 (2.035)	1.800 (2.036)	1.937 (2.048)	2.020 (2.031)
$\left(\frac{\rho_{it-1} \times \Delta i_t}{EligC_{it-1}}\right)_{it-1}$	2.424 (2.721)	2.332 (2.727)	2.331 (2.738)	2.171 (2.709)
$\left(\frac{\rho_{it-1} \times \Delta i_t}{EligC_{it-1}}\right)_{it-2}$	-1.645 (1.950)	-1.551 (1.954)	-1.548 (1.964)	-1.189 (1.953)
$\left(\frac{\rho_{it-1} \times \Delta i_t}{EligC_{it-1}}\right)_{it-3}$	6.042*** (1.605)	5.915*** (1.602)	6.115*** (1.604)	5.708*** (1.567)
$\left(\frac{\rho_{it-1} \times \Delta i_t}{EligC_{it-1}}\right)_{it-4}$	-1.071 (1.590)	-1.099 (1.589)	-1.115 (1.607)	-0.995 (1.550)
$B_{it-1} \cdot \Delta i_t^{3M}$	-0.068 (0.106)	-0.069 (0.106)	-0.064 (0.107)	-0.071 (0.106)
$B_{it-1} \cdot \Delta i_{t-1}^{3M}$	0.073 (0.160)	0.073 (0.160)	0.069 (0.161)	0.075 (0.159)
$B_{it-1} \cdot \Delta i_{t-2}^{3M}$	0.067 (0.176)	0.069 (0.177)	0.071 (0.177)	0.067 (0.174)
$B_{it-1} \cdot \Delta i_{t-3}^{3M}$	-0.019 (0.122)	-0.021 (0.122)	-0.020 (0.123)	-0.024 (0.118)
$B_{it-1} \cdot \Delta i_{t-4}^{3M}$	-0.105 (0.083)	-0.104 (0.083)	-0.104 (0.083)	-0.102 (0.079)
$C_{it-1} \cdot \Delta i_t^{3M}$	-0.070 (0.256)	-0.034 (0.258)	-0.036 (0.260)	-0.079 (0.255)
$C_{it-1} \cdot \Delta i_{t-1}^{3M}$	0.115 (0.349)	0.134 (0.353)	0.114 (0.359)	0.112 (0.348)
$C_{it-1} \cdot \Delta i_{t-2}^{3M}$	0.078 (0.352)	0.080 (0.356)	0.076 (0.359)	0.072 (0.352)
$C_{it-1} \cdot \Delta i_{t-3}^{3M}$	0.039 (0.200)	0.049 (0.201)	0.033 (0.203)	0.038 (0.204)
$C_{it-1} \cdot \Delta i_{t-4}^{3M}$	-0.503* (0.293)	-0.502* (0.293)	-0.516* (0.303)	-0.466 (0.285)

*Continued*

**Table A5 cont'd: Panel Bias Regression Comparisons**

<b>Variables</b>	(1) $T \geq 10$	(2) $T \geq 15$	(3) $T \geq 20$	(4) <b>All Panels</b>
$\Delta i_t^{3M}$	-0.393** (0.171)	-0.403** (0.172)	-0.396** (0.173)	-0.377** (0.171)
$\Delta i_{t-1}^{3M}$	-0.097 (0.141)	-0.094 (0.141)	-0.086 (0.142)	-0.121 (0.140)
$\Delta i_{t-2}^{3M}$	-0.315** (0.157)	-0.305* (0.158)	-0.307* (0.160)	-0.293* (0.158)
$\Delta i_{t-3}^{3M}$	0.090 (0.096)	0.087 (0.096)	0.095 (0.097)	0.081 (0.095)
$\Delta i_{t-4}^{3M}$	-0.011 (0.128)	-0.010 (0.129)	-0.012 (0.130)	-0.022 (0.127)
$\Delta i_t^{10Y}$	-0.051 (0.085)	-0.033 (0.085)	-0.033 (0.086)	-0.066 (0.085)
$\Delta i_{t-1}^{10Y}$	-0.004 (0.093)	-0.001 (0.093)	0.006 (0.095)	0.009 (0.092)
$\Delta i_{t-2}^{10Y}$	-0.028 (0.104)	-0.028 (0.106)	-0.026 (0.107)	-0.037 (0.104)
$\Delta i_{t-3}^{10Y}$	0.024 (0.101)	0.027 (0.102)	0.028 (0.104)	0.030 (0.100)
$\Delta i_{t-4}^{10Y}$	-0.085 (0.111)	-0.083 (0.111)	-0.077 (0.113)	-0.091 (0.110)
$C_{it-1}$	0.139 (0.238)	0.179 (0.240)	0.163 (0.243)	0.143 (0.237)
$B_{it-1}$	0.013 (0.044)	0.017 (0.044)	0.016 (0.044)	0.014 (0.044)
$S_{it-1}$	-0.342 (0.252)	-0.335 (0.253)	-0.347 (0.255)	-0.337 (0.251)
$C_{it-1} \cdot y_t$	0.004 (0.079)	-0.008 (0.080)	0.002 (0.081)	0.004 (0.079)
$C_{it-1} \cdot y_{t-1}$	-0.052 (0.117)	-0.058 (0.117)	-0.072 (0.120)	-0.054 (0.117)
$C_{it-1} \cdot y_{t-2}$	0.002 (0.152)	0.025 (0.155)	0.037 (0.158)	0.012 (0.152)
$C_{it-1} \cdot y_{t-3}$	0.120 (0.153)	0.106 (0.157)	0.102 (0.160)	0.098 (0.151)
$C_{it-1} \cdot y_{t-4}$	-0.063 (0.080)	-0.066 (0.082)	-0.064 (0.083)	-0.054 (0.079)
<i>Continued</i>				

**Table A5 cont'd: Panel Bias Regression Comparisons**

Variables	(1)	(2)	(3)	(4)
	$T \geq 10$	$T \geq 15$	$T \geq 20$	All Panels
$y_t$	0.079** (0.037)	0.077** (0.037)	0.077** (0.037)	0.081** (0.037)
$y_{t-1}$	0.029 (0.048)	0.034 (0.047)	0.032 (0.048)	0.028 (0.048)
$y_{t-2}$	-0.015 (0.052)	-0.027 (0.052)	-0.022 (0.053)	-0.014 (0.052)
$y_{t-3}$	0.009 (0.057)	0.018 (0.058)	0.015 (0.059)	0.011 (0.057)
$y_{t-4}$	0.043 (0.032)	0.040 (0.032)	0.040 (0.033)	0.044 (0.032)
$\pi_t$	-0.100** (0.049)	-0.102** (0.049)	-0.104** (0.050)	-0.100** (0.049)
$\pi_{t-1}$	0.029 (0.062)	0.036 (0.063)	0.038 (0.064)	0.029 (0.063)
$\pi_{t-2}$	-0.056 (0.058)	-0.060 (0.059)	-0.061 (0.060)	-0.059 (0.058)
$\pi_{t-3}$	-0.025 (0.061)	-0.028 (0.061)	-0.022 (0.062)	-0.020 (0.061)
$\pi_{t-4}$	-0.032 (0.045)	-0.030 (0.045)	-0.035 (0.046)	-0.037 (0.045)
Q2	0.075 (0.061)	0.079 (0.062)	0.082 (0.063)	0.077 (0.061)
Q3	-0.098 (0.070)	-0.093 (0.071)	-0.090 (0.073)	-0.096 (0.070)
Q4	0.125* (0.075)	0.134* (0.076)	0.138* (0.077)	0.132* (0.075)
Constant	0.446*** (0.093)	0.441*** (0.094)	0.444*** (0.096)	0.440*** (0.093)
Regression Statistics:				
Observations	2,869	2,830	2,785	2,898
$R^2$	0.168	0.169	0.169	0.166
# of Groups	81	75	71	93

*Notes* : Dependent variable is the first difference of log quarterly loan volume, i.e. approximately the quarter on quarter loan growth rate. Estimates using the Within Groups deviations from means transformation. Cluster robust standard errors, at bank-merger level, in parentheses. All estimations use fixed effects that are adjusted to account for mergers in our data set. \*\*\*  $p < 0.01$ , \*\*  $p < 0.05$ , \*  $p < 0.1$

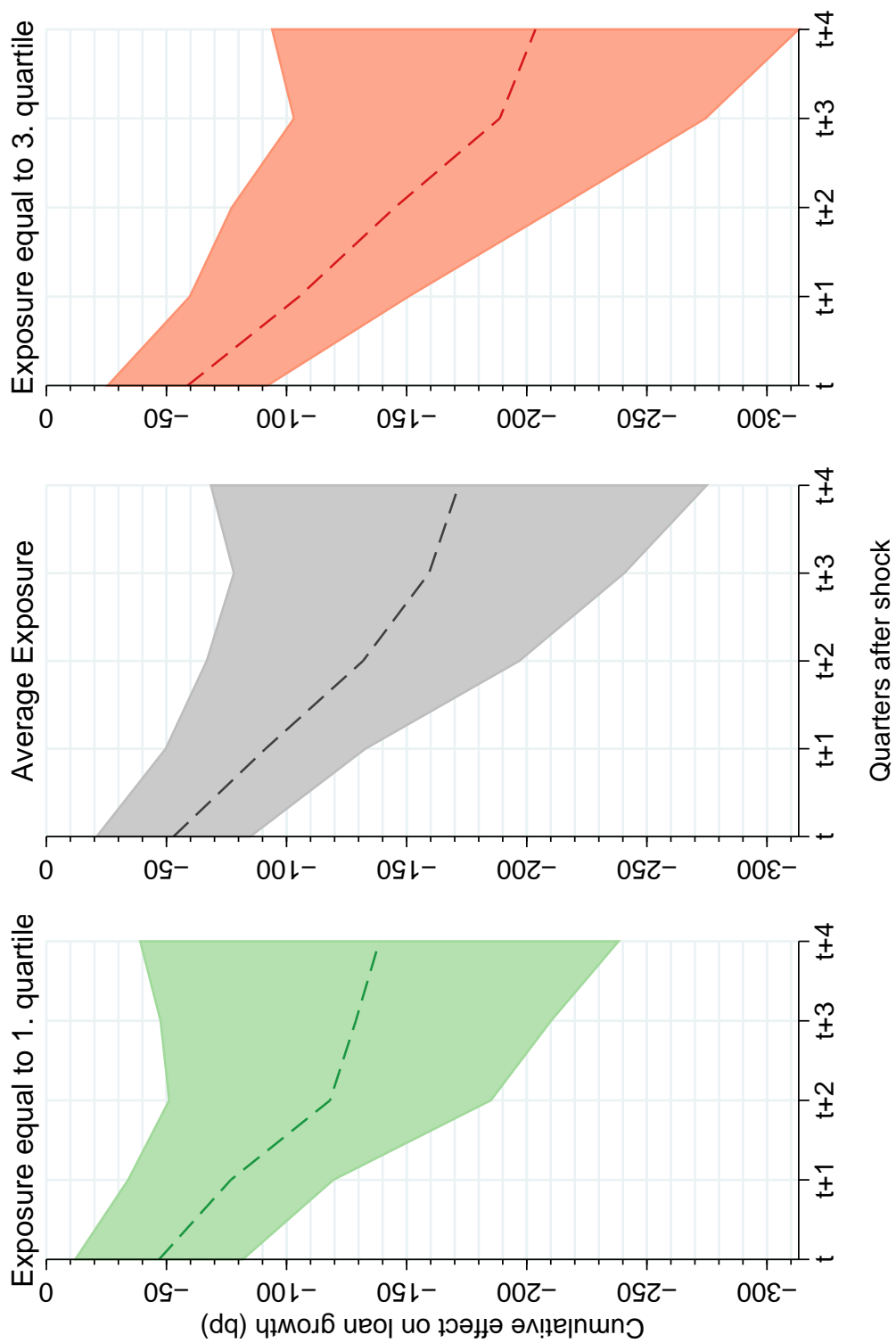
## A.6 Restricted Sample Period

Table A6: Robustness - Restricted Sample Period

Variables	Immediate	Long-Run
Realized Interest Rate Risk Exposure $\left(\frac{\rho_{it-1} \times \Delta i_t^{3M}}{EligC_{it-1}}\right)$ as a fraction of eligible capital	1.17 (2.28)	8.36 (5.26)
Norm. Excess Liquidity $\times \Delta i^{3M}$	-0.09 (0.11)	0.10 (0.17)
Norm. Excess Capital $\times \Delta i^{3M}$	0.04 (0.25)	0.02 (1.08)
$\Delta$ Short-term interest rate ( $\Delta i^{3M}$ )	-0.54** (0.19)	-2.99*** (0.82)
$\Delta$ Long-term interest rate ( $\Delta i^{10Y}$ )	-0.19* (0.11)	-0.59 (0.36)

*Notes* : Dependent variable is the first difference of log quarterly loan volume, i.e. approximately the quarter on quarter loan growth rate. Estimates using the Within Groups transformation. All standard errors, in parentheses, are cluster robust at a bank-merger level. Immediate effect standard errors are simply regression estimates. Long-run effect standard errors are calculated using the delta-method. The long-run effects work under the assumption that no adjustment takes place in other variables apart from bank loan growth. In addition, the long-run estimates can be interpreted as approximate cumulative effects over the next year. \*\*\*  $p < 0.01$ , \*\*  $p < 0.05$ , \*  $p < 0.1$

## A.7 Additional Figures



95% prediction intervals in shaded areas. Calculation details can be found in appendix A.3.

**Figure 3: Cumulative effect of a permanent 1 percentage point upward shock in nominal interest rates on bank loan growth - with prediction intervals**