

Kogelschatz, Hartmut

**Working Paper**

## On the Solution of Stochastic Input Output-Models

Discussion Paper Series, No. 447

**Provided in Cooperation with:**

Alfred Weber Institute, Department of Economics, University of Heidelberg

*Suggested Citation:* Kogelschatz, Hartmut (2007) : On the Solution of Stochastic Input Output-Models, Discussion Paper Series, No. 447, University of Heidelberg, Department of Economics, Heidelberg

This Version is available at:

<https://hdl.handle.net/10419/127266>

**Standard-Nutzungsbedingungen:**

Die Dokumente auf EconStor dürfen zu eigenen wissenschaftlichen Zwecken und zum Privatgebrauch gespeichert und kopiert werden.

Sie dürfen die Dokumente nicht für öffentliche oder kommerzielle Zwecke vervielfältigen, öffentlich ausstellen, öffentlich zugänglich machen, vertreiben oder anderweitig nutzen.

Sofern die Verfasser die Dokumente unter Open-Content-Lizenzen (insbesondere CC-Lizenzen) zur Verfügung gestellt haben sollten, gelten abweichend von diesen Nutzungsbedingungen die in der dort genannten Lizenz gewährten Nutzungsrechte.

**Terms of use:**

*Documents in EconStor may be saved and copied for your personal and scholarly purposes.*

*You are not to copy documents for public or commercial purposes, to exhibit the documents publicly, to make them publicly available on the internet, or to distribute or otherwise use the documents in public.*

*If the documents have been made available under an Open Content Licence (especially Creative Commons Licences), you may exercise further usage rights as specified in the indicated licence.*

University of Heidelberg

Department of Economics



Discussion Paper Series | No. 447

## On the Solution of Stochastic Input Output-Models

Hartmut Kogelschatz

---

June 2007

# On the Solution of Stochastic Input Output-Models

Hartmut Kogelschatz\*  
University of Heidelberg, Germany

October 2006

## Abstract

The static, open input output-model reads  $(I - A)x = d$ , where  $A \geq 0$  is an  $n \times n$  input matrix with  $\sum_i a_{ij} < 1$ ,  $d$  and  $x$  are  $1 \times n$  final demand and output vectors, respectively. In contrast to the familiar model the coefficients of  $A$ ,  $d$  and  $x$  are regarded as random variables in this paper, since there are many influences on production and demand, and hence on the resulting output  $X = (I - \mathbb{A})^{-1}d = \mathbb{L}d$ , where  $\mathbb{L} \geq 0$  denotes the Leontief inverse of  $\mathbb{A}$ . Correlations within  $\mathbb{A}$  or  $d$  can be allowed for, but may often be neglected. However, even for independent coefficients within  $\mathbb{A}$  and  $d$  those within  $\mathbb{L}$  and  $x$  are correlated.

Empirical input matrices are derived from a database from year 0 such that  $(I - A^0)x^0 = d^0$  is fulfilled for this reference system. It is assumed that these values of  $A^0$  and  $d^0$  represent either a) expected values or b) modes of the underlying random variables  $\mathbb{A}$  and  $D$ . If there is no other information, variances are assumed to be derivable by a  $3\sigma$ -rule or in case b) by some additional information on unimodal distributions.

For a random matrix  $\mathbb{A}$  the density of the Leontief inverse is derived. Approximations of  $E(\mathbb{L})$  and  $Cov(\mathbb{L})$ , and  $E(X)$  and  $Cov(X)$  are deduced from the Jacobian of the mapping  $g: \mathbb{A} \mapsto \mathbb{L}$  and the corresponding Hessian. The results simplify considerably

---

\*The author thanks Johannes Becker, Christian Conrad, and Berthold Haag for helpful comments, Asmus Löwenhaupt and Arne Nägel for the simulations.

if correlations within  $\mathbb{A}$  and  $D$  are negligible, which seems realistic.

Crude probability regions for  $\mathbb{L}$  and the solution  $X$  can be given, which may be improved, if knowledge of the distribution types of  $\mathbb{A}$  and  $d$  is available. Assumption of normality may cause difficulty with respect to the requirement that  $(I - \mathbb{A})$  has a non-negative inverse.

In a simulation it is assumed that the column vectors of  $\mathbb{A}$  and normed final demand  $D$  have independent Dirichlet distributions, or its components Beta distributions  $\text{Be}(r, s)$  on  $[0, 1]$ , which seems reasonable for fractions. With these distributions no problem occurs with invertibility, since it can be ensured that the dominant eigenvalue of  $\mathbb{A}$  is less than one. The parameters  $r$  and  $s$  in the simulation, based on German data, are derived from assumed  $E(Y)$  (or  $\text{mode}(Y)$ ) and  $\text{Var}(Y)$ . A simple second approximation of  $\mathbb{L}$  suggests that the coefficients of  $\mathbb{L}$  and  $X$  may have Beta distributions of the second kind. This is confirmed by the simulations. Also, the two types of approximations of  $E(X)$  and  $\text{Var}(X)$  show a good and satisfactory performance, resp. The theoretically expected approximate, relatively narrow,  $2\sigma$ -regions contain 90–95% of the simulation results for most coefficients; the theoretically derived approximate densities mainly accord with the histograms of the simulation.

**Keywords:** random input output-model, distribution of Leontief inverse, solution

**JEL Codes:** C13, C15, C30, R15

# Contents

<b>1</b>	<b>Introduction</b>	<b>1</b>
<b>2</b>	<b>Properties of the Beta Distribution</b>	<b>1</b>
<b>3</b>	<b>First Approximation of the Leontief Inverse and its Moments</b>	<b>5</b>
<b>4</b>	<b>Proxies of Beta Parameters</b>	<b>10</b>
<b>5</b>	<b>Distribution of the Leontief Inverse</b>	<b>13</b>
<b>6</b>	<b>Improved Approximation of Moments of <math>\mathbb{L}</math> and <math>X</math></b>	<b>16</b>
6.1	Taylor expansion . . . . .	16
6.2	Inversion-approximation . . . . .	20
<b>7</b>	<b>Simulation</b>	<b>22</b>
<b>8</b>	<b>Extensions</b>	<b>24</b>
<b>A</b>	<b>Appendix: Diagonal elements of the Leontief-inverse</b>	<b>26</b>
<b>B</b>	<b>Appendix: Off-diagonal elements of the Leontief-inverse</b>	<b>38</b>
<b>C</b>	<b>Appendix: Solution components of the stochastic input output-model</b>	<b>40</b>

# 1 Introduction

Input output-models are usually based on a deterministic input matrix  $A$ . However, the observed values of inputs should be seen as realisations of random variables since inputs are affected by random effects, e.g. data errors, compilation, aggregation, prices, factor substitution, technical progress, product and process mix. In the literature, only a small number of contributions start with a stochastic input matrix and draw some conclusions concerning the stochastic Leontief inverse  $L(A)$  – for instance, on bounds of its expected values based on Jensen’s inequality. However, it is difficult to derive the distributions of the elements of  $L(A)$ , even if the input coefficients are supposed to be normally distributed as is commonly assumed.

In this paper, the input coefficients are mainly assumed to be beta distributed. The standard beta distribution has the domain of the input coefficients, the interval  $[0, 1]$ . It depends on two parameters which allow for a high degree of flexibility. In particular, great skewness is admitted. These properties seem to be adequate for modelling the distribution of the large number of very small input coefficients.  $A$  is assumed to have a dominant eigenvalue less than one, which is equivalent to existence and non-negativity of  $L(A)$ .

The derivation of the distributions of  $L(A)$  seems out of reach. However, for good lower bounds of  $L(A)$  the densities will be given for its diagonal elements, as well as the first two moments for the other elements. The latter result is achieved by applying an approximation of the density of a product of beta random variables proposed by Fan (1991).

A first proxy of the parameters of the beta distributions may even be computed from a single input-output table.

## 2 Properties of the Beta Distribution

Density of the standard beta distribution  $Be(r, s)$ :

$$f_X(x) = \frac{1}{B(r, s)} x^{r-1} (1-x)^{s-1} \mathbb{1}_{[0,1]}(x) \quad \text{for } r, s > 0,$$

where  $B(r, s)$  denotes the beta function ( $B(r, s) = \frac{\Gamma(r)\Gamma(s)}{\Gamma(r+s)}$ ).

$$X \sim Be(r, s) \implies 1 - X \sim Be(s, r)$$

Moments:

$$\begin{aligned} E(X) &= \mu_X = \frac{r}{r+s}, & E(X^2) &= \frac{r(r+1)}{(r+s)(r+s+1)} = \frac{\mu_X}{1+s/(r+1)}, \\ \text{Var}(X) &= \sigma_X^2 = \mu_2 = \frac{rs}{(r+s)^2(r+s+1)} = \frac{\mu_X(1-\mu_X)}{r+s+1}, \\ E((X-\mu)^3) &= \mu_3 = \mu_2 \frac{2(s-r)}{(r+s)(r+s+2)} = \mu_2 \frac{2(1-2\mu)}{r+s+2}, \\ \mu_3 &> 0 &\Leftrightarrow s > r. \end{aligned}$$

If  $r, s > 1$ , which will be an underlying parameter restriction in the paper, then  $\text{Var}(X) < 1/12$  and  $f_X$  is unimodal with mode

$$\begin{aligned} m_X &= \frac{r-1}{r+s-2} < \mu_X, \\ m_X < \mu_X &\Leftrightarrow s > r. \end{aligned}$$

### Distribution of $Y = (1-X)^{-1}$ and moments

The theorem on the density of a function  $g$  of a random variable  $X$  yields

$$f_Y(y) = \frac{1}{B(r,s)} \left(1 - \frac{1}{y}\right)^{r-1} \left(\frac{1}{y}\right)^{s+1} \mathbb{1}_{[1,\infty)}(y),$$

or with  $X = 1 - \frac{1}{Y}$ :

$$f_Y(y) = (1-x)^2 f_X(x) \mathbb{1}_{(0,1)}(x).$$

Thus, the beta density of  $X$  is dampened by the factor  $(1-x)^2$  and transferred to the domain  $[1, \infty)$ . The factor is decreasing with  $x \in [0, 1]$ . The random variable  $Y' := Y - 1 = \frac{X}{1-X}$  has a beta distribution of the second kind ( $Be^*(r, s)$ ) (see Härtter 1987, p.162) with density

$$f_{Y'}(y') = (B(r, s))^{-1} (y')^{r-1} (1+y')^{-(r+s)} \mathbb{1}_{[0,\infty)}(y').$$

It is known that for  $m, n \in \mathbb{N}$

$$X \sim Be^*\left(\frac{m}{2}, \frac{n}{2}\right) \Rightarrow \frac{n}{m} X \sim F(m, n),$$

so that an  $F$ -density results for  $Z := \frac{n}{m} Y' = \frac{n}{m} \frac{X}{1-X}$  with  $E(Z) = \frac{n}{n-2}$ .

Moments are derived as follows

$$\begin{aligned} E(Y) &= \frac{B(r, s-1)}{B(r, s)} = \frac{r+s-1}{s-1} = 1 + \frac{r}{s-1} > \frac{1}{1-\mu_X} = 1 + \frac{r}{s}, \\ E(Y^2) &= \frac{B(r, s-2)}{B(r, s)} = \frac{(r+s-1)(r+s-2)}{(s-1)(s-2)} = \left(1 + \frac{r}{s-1}\right) \left(1 + \frac{r}{s-2}\right), \\ \text{Var}(Y) &= \frac{r(r+s-1)}{(s-1)^2(s-2)} = \mu_Y(\mu_Y - 1) \frac{1}{s-2}, \\ \text{and } E(Y') &= \frac{r}{s-1}, \quad \text{Var}(Y') = \mu_{Y'}(\mu_{Y'} + 1) \frac{1}{s-2}, \end{aligned}$$

provided that  $s > 2$ . In the sequel, this assumption for the beta parameter  $s$  will be made, whenever  $\text{Var}(Y)$  or  $E(Y^2)$  is mentioned. The mode is given with

$$m_Y = \frac{r+s}{s+1} = 1 + \frac{r-1}{s+1} < \frac{1}{1-m_X} = 1 + \frac{r-1}{s-1} < \mu_Y.$$

### Taylor-approximation for moments of $Y = (1-X)^{-1}$

(second order approximation at  $\mu_X$ , cf. Dudewicz, Mishra, (1988, p. 264))

$$\begin{aligned} E(Y) &\approx g(\mu_X) + g''(\mu_X) \frac{\sigma_X^2}{2} \\ &\leq \frac{1}{1-\mu_X} \left(1 + \frac{r}{s(r+s+1)}\right) \leq \frac{1}{1-\mu_X} \left(1 + \frac{\mu_X}{s}\right) \\ \text{Var}(Y) &\approx (g'(\mu_X))^2 \sigma_X^2 = \sigma_X^2 \left(1 + \frac{r}{s}\right)^4 \geq \frac{r}{s^2} (1 + \mu_X), \end{aligned}$$

whereby in the first line, the first inequality holds for  $\mu_3 > 0$ , i.e. for skewness to the right, which is a reasonable assumption for input coefficients. It is equivalent to  $s > r$ .

The figures show two beta densities  $X$  with corresponding transformed distributions of  $Y = 1/(1-X)$  which will be relevant for the densities of the diagonal coefficients of the Leontief inverse. Remarkable is the skewness to the right of  $f_X$ , which seems adequate for the great number of very small input coefficients. A normal density does not seem to fit this situation, even if truncated, because of its symmetry.



Densities of  $X$  and  $Y = 1/(1 - X)$

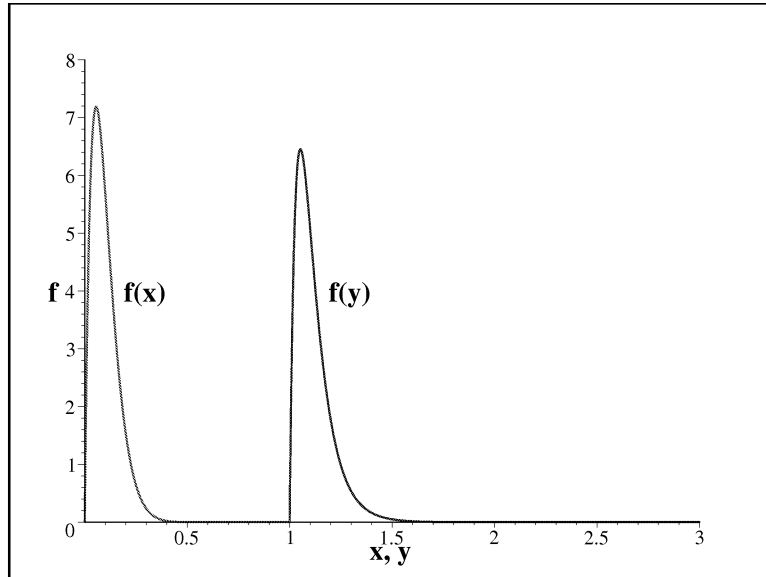


Figure 1:  $r = 2, s = 18 \Rightarrow \mu_X = 0.1$

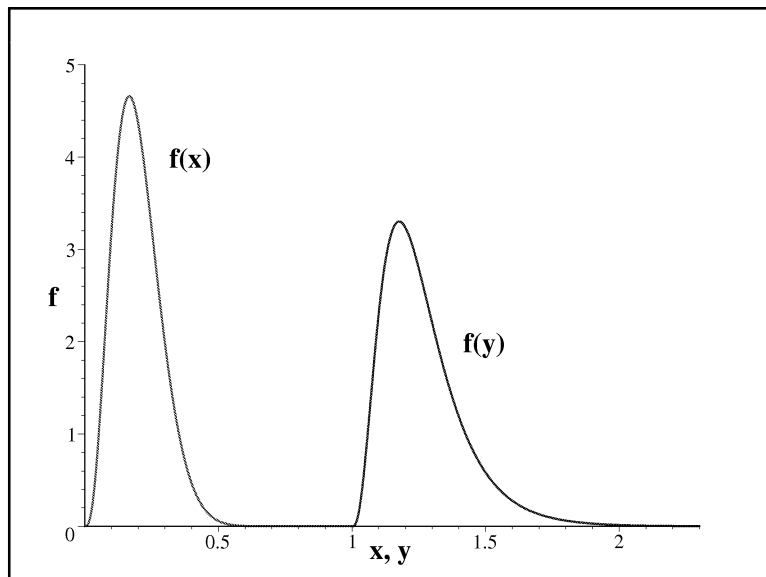


Figure 2:  $r = 4, s = 16 \Rightarrow \mu_X = 0.2$

### 3 First Approximation of the Leontief Inverse and its Moments

If all the elements  $A_{ij}$  of the input matrix  $A$  have certain distributions, it seems impossible to determine the densities of the elements  $L_{ij}$  of the Leontief inverse  $L(A)$ , since they depend on a ratio of two determinants which are sums of products of the  $A_{ij}$ .

Therefore, an approximation of  $L(A)$  for a deterministic matrix  $A$  is regarded which will allow an approximation of the distributions of its diagonal elements and the moments of the other elements after returning to random input coefficients.

The approximation by minors (Kogelschatz, 1978), which gives good lower bounds for  $L$ , reads in its simplest form

$$\tilde{l}_{ii} = \frac{1}{1 - a_{ii}} \quad \forall i \quad \text{and} \quad \tilde{l}_{ij} = \frac{a_{ij}}{(1 - a_{ii})(1 - a_{jj})} \quad \forall i, j \text{ with } j \neq i.$$

For a random matrix  $\mathbb{A} = (A_{ij})$  the associated Leontief inverse  $\mathbb{L} = L(\mathbb{A}) = (L_{ij})$  may in a first step be approximated in this way. If the input coefficients  $A_{ij}$  are assumed to be independent random variables with known moments  $E(A_{ij}) =: \mu_{ij}$  and  $\text{Var}(A_{ij}) =: \sigma_{ij}^2$ , then the Taylor-approximation for moments yields:

$$\begin{aligned} E(\tilde{L}_{ii}) &\approx \frac{1}{1 - \mu_{ii}} \left( 1 + \frac{1}{(1 - \mu_{ii})^2} \sigma_{ii}^2 \right) \\ &= \lambda_{ii} (1 + \lambda_{ii}^2 \sigma_{ii}^2) \quad \text{with } \lambda_{ii} := \frac{1}{1 - \mu_{ii}}, \\ \text{Var}(\tilde{L}_{ii}) &\approx \frac{1}{(1 - \mu_{ii})^4} \sigma_{ii}^2 = \lambda_{ii}^4 \sigma_{ii}^2. \\ E(\tilde{L}_{ij}) &\approx \mu_{ij} E(\tilde{L}_{ii}) E(\tilde{L}_{jj}) \\ &= \mu_{ij} [\lambda_{ii} (1 + \lambda_{ii}^2 \sigma_{ii}^2)] [\lambda_{jj} (1 + \lambda_{jj}^2 \sigma_{jj}^2)]. \end{aligned}$$

The variance of a product of independent random variables (Mood, Graybill, Boes, 1987, p.180)

$$\text{Var}(XY) = \mu_Y^2 \text{Var}(X) + \mu_X^2 \text{Var}(Y) + \text{Var}(X) \text{Var}(Y)$$

is needed in the following:

$$\begin{aligned} \text{Var}(\tilde{L}_{ii} \tilde{L}_{jj}) &= (E(\tilde{L}_{jj}))^2 \text{Var}(\tilde{L}_{ii}) + (E(\tilde{L}_{ii}))^2 \text{Var}(\tilde{L}_{jj}) + \text{Var}(\tilde{L}_{ii}) \text{Var}(\tilde{L}_{jj}) \\ &= \lambda_{jj}^2 (1 + \lambda_{jj}^2 \sigma_{jj}^2)^2 \lambda_{ii}^4 \sigma_{ii}^2 + \lambda_{ii}^4 \lambda_{jj}^4 \sigma_{ii}^2 \sigma_{jj}^2 + \lambda_{ii}^2 (1 + \lambda_{ii}^2 \sigma_{ii}^2)^2 \lambda_{jj}^4 \sigma_{jj}^2 \\ &> \lambda_{ii}^2 \lambda_{jj}^2 (\lambda_{ii}^2 \sigma_{ii}^2 + \lambda_{jj}^2 \sigma_{jj}^2 + \lambda_{ii}^2 \lambda_{jj}^2 \sigma_{ii}^2 \sigma_{jj}^2), \end{aligned}$$

and finally

$$\begin{aligned}\text{Var}(\tilde{L}_{ij}) &= (\text{E}(\tilde{L}_{ij}))^2 \sigma_{ij}^2 + \mu_{ij}^2 \text{Var}(\tilde{L}_{ii} \tilde{L}_{jj}) + \text{Var}(\tilde{L}_{ii} \tilde{L}_{jj}) \sigma_{ij}^2 \\ &= (\text{E}(\tilde{L}_{ij}))^2 \sigma_{ij}^2 + (\mu_{ij}^2 + \sigma_{ij}^2) \text{Var}(\tilde{L}_{ii} \tilde{L}_{jj}),\end{aligned}$$

where  $\mu_{ij}^2 + \sigma_{ij}^2 = \text{E}(A_{ij}^2)$ . Correlations will be addressed later.

In the following, the simplified approximation by minors is studied for random variables  $A_{ij} \sim Be(r_{ij}, s_{ij})$ .

For the diagonal elements of  $\tilde{L}$  the densities are given as for  $Y = 1/(1 - X)$  above:

$$f_{\tilde{L}_{ii}}(\tilde{l}_{ii}) = \frac{1}{\tilde{l}_{ii}^2} \frac{1}{B(r_{ii}, s_{ii})} \left(1 - \frac{1}{\tilde{l}_{ii}}\right)^{r_{ii}-1} \left(\frac{1}{\tilde{l}_{ii}}\right)^{s_{ii}-1} \mathbb{1}_{[1, \infty)}(\tilde{l}_{ii}) \quad \forall i.$$

Furthermore,

$$\text{E}(\tilde{L}_{ii}) = 1 + \frac{r_{ii}}{s_{ii} - 1} > 1 + \frac{r_{ii}}{s_{ii}} = \frac{1}{1 - \text{E}(A_{ii})}$$

and

$$\begin{aligned}\text{Var}(\tilde{L}_{ii}) &= \text{E}(\tilde{L}_{ii}) \frac{\text{E}(\tilde{L}_{ii}) - 1}{s_{ii} - 2} = \left(1 + \frac{r_{ii}}{s_{ii} - 1}\right) \frac{r_{ii}}{(s_{ii} - 1)(s_{ii} - 2)} \\ &\approx \text{Var}(A_{ii}) \left(1 + \frac{r_{ii}}{s_{ii}}\right)^4,\end{aligned}$$

according to the Taylor series approximation in section 2.

For the off-diagonal elements of  $L$  the situation is complicated. The distribution of  $\tilde{L}_{ij}$  depends on a ratio and a product of beta random variables. In the literature, several very complicated formulae can be found, mainly for special cases of products (Johnson, Kotz, Balakrishnan (1995, p. 256f)). A very good approximation of a product of beta random variables, which is usually not beta distributed, was suggested by Fan (1991, p. 4045). By construction, it ensures exact first two moments and, furthermore, performs very well in approximating higher moments as his computations show.

### Fan's approximation theorem

If  $X_i \sim Be(r_i, s_i)$ ,  $X_i$  are independent random variables and  $Z = \prod_{i=1}^k X_i$ , then  $Z$  has an approximate  $Be(R, S)$  distribution with true first two mo-

ments, where

$$R := \frac{U(U-T)}{T-U^2}, \quad S := \frac{(1-U)(U-T)}{T-U^2}$$

and

$$U := \prod_{i=1}^k \frac{r_i}{r_i + s_i}, \quad T := \prod_{i=1}^k \frac{r_i}{r_i + s_i} \cdot \frac{r_i + 1}{r_i + s_i + 1}$$

By the way, in the book by Johnson, Kotz, Balakrishnan (1995, p. 262), where Fan's result is reported, the formula for  $p$  has to be multiplied by  $(S - T)$ , where  $p$  and  $S$  correspond to  $R$  and  $U$  here. The following interpretations result from the independence assumption:

$$U = \prod_{i=1}^k \mathbb{E}(X_i) = \mathbb{E}(Z), \quad T = \prod_{i=1}^k \mathbb{E}(X_i^2) = \mathbb{E}(Z^2),$$

hence  $T - U^2 = \text{Var}(Z)$ .

Obviously,  $T = UV$  where  $V = \prod_{i=1}^k (r_i + 1)/(r_i + s_i + 1)$ .

Fan's method will now be applied to the approximation by minors with random input coefficients  $A_{ij}$  and  $\tilde{L}_{ij}$ , where  $A_{ij} \sim Be(r_{ij}, s_{ij})$  with  $r_{ij}, s_{ij} > 1$ . In order to get some information about the distribution of the off-diagonal elements of  $\tilde{L}_{ij}$ , the denominator  $(1 - A_{ii})(1 - A_{jj}) =: Z_{ij}$  is considered first. It seems realistic to assume the diagonal input coefficients (intrasectoral inputs) to be independent random variables. As  $Z_{ij}$  is a product of  $(1 - A_{ii}) \sim Be(s_{ii}, r_{ii})$  and  $(1 - A_{jj}) \sim Be(s_{jj}, r_{jj})$  it can be approximated by  $\tilde{Z}_{ij} \sim Be(S_{ij}, R_{ij})$  with the same first two moments using the notation from above with additional indices ( $i \neq j$  in the following)

$$S_{ij} = \frac{U_{ij}(U_{ij} - T_{ij})}{T_{ij} - U_{ij}^2}, \quad R_{ij} = \frac{(1 - U_{ij})(U_{ij} - T_{ij})}{T_{ij} - U_{ij}^2}$$

with

$$U_{ij} = \frac{s_{ii}}{r_{ii} + s_{ii}} \cdot \frac{s_{jj}}{r_{jj} + s_{jj}} \quad \text{and} \quad T_{ij} = U_{ij} \frac{s_{ii} + 1}{r_{ii} + s_{ii} + 1} \cdot \frac{s_{jj} + 1}{r_{jj} + s_{jj} + 1}$$

In the next step, the distribution of  $Y_{ij} := 1/\tilde{Z}_{ij} = 1/(1 - \tilde{Z}'_{ij})$ , where  $\tilde{Z}'_{ij} := 1 - \tilde{Z}_{ij}$  with  $\tilde{Z}'_{ij} \sim Be(R_{ij}, S_{ij})$ , is given as that of  $Y := 1/(1 - X)$  above

$$f_{Y_{ij}}(y_{ij}) = \frac{1}{B(R_{ij}, S_{ij})} \left(1 - \frac{1}{y_{ij}}\right)^{R_{ij}-1} \left(\frac{1}{y_{ij}}\right)^{S_{ij}+1} \mathbb{1}_{[1, \infty)}(y_{ij}).$$

The expected value of  $1/\tilde{Z}_{ij}$  is obtained as

$$\mathbb{E}\left(\frac{1}{\tilde{Z}_{ij}}\right) = 1 + \frac{R_{ij}}{S_{ij} - 1} = \dots = \frac{1 + U_{ij} - 2V_{ij}}{2U_{ij} - V_{ij}(1 + U_{ij})} > \frac{1}{\mathbb{E}(Z_{ij})} = 1 + \frac{R_{ij}}{S_{ij}},$$

where  $U_{ij} = \mathbb{E}(Z_{ij})$  and  $V_{ij} \geq U_{ij}$  for  $r_{kk}, s_{kk}$  large. In this case,  $\mathbb{E}(1/\tilde{Z}_{ij}) \geq (1 - U_{ij})/(U_{ij} - U_{ij}^2) = 1/U_{ij} = 1/\mathbb{E}(Z_{ij})$ . Furthermore,

$$\mathbb{E}\left(\frac{1}{\tilde{Z}_{ij}^2}\right) = \left(1 + \frac{R_{ij}}{S_{ij} - 1}\right) \left(1 + \frac{R_{ij}}{S_{ij} - 2}\right).$$

The first two moments of  $1/\tilde{Z}_{ij}$  might deviate slightly from those of  $1/Z_{ij}$ , because the reciprocal is taken of the approximation  $\tilde{Z}_{ij}$  instead of  $Z_{ij}$ . However, since the latter random variables have equal first two moments, this possibly minute error will be neglected.

In the last step, the numerator  $A_{ij}$  of  $\tilde{L}_{ij} = A_{ij}/Z_{ij}$  has to be taken into account. The distribution of  $\tilde{L}_{ij}$  which is a product of a beta and a transformed approximate beta random variable will not be investigated here. Evidently, no beta density can result since the domain of  $\tilde{L}_{ij}$  is  $\mathbb{R}_+$ .

However, the density of  $\tilde{L}_{ij}$ , which is mainly concentrated on  $[0, 1]$ , may also be approximated by a suitable beta distribution (of the second kind) with the same first two moments. For empirical input matrices  $A$  the off-diagonal elements of  $L(A)$  are smaller than 1.

In the sequel, expected value and variance of  $\tilde{L}_{ij}$  will be derived. As before,  $Z_{ij}$  is substituted by  $\tilde{Z}_{ij}$ . Additionally, it is assumed that  $A_{ij}$  and  $A_{ii}, A_{jj}$  are pairwise independent which may be questionable. The intra-sectoral input coefficients  $A_{ii}, A_{jj}$  of different sectors have been supposed to fulfil this requirement;  $A_{ij}$  and  $A_{jj}$  of the same sector (production process) are probably expected to show a slight negative correlation, e. g. for Dirichlet distributions of the column vectors used in the simulation (see section 7). If this is neglected, the expected value of  $\tilde{L}_{ij}$  turns out to be

$$\begin{aligned} \mathbb{E}(\tilde{L}_{ij}) &= \mathbb{E}(A_{ij}) \mathbb{E}\left(\frac{1}{\tilde{Z}_{ij}}\right) = \mathbb{E}(A_{ij}) \left(1 + \frac{R_{ij}}{S_{ij} - 1}\right) \\ &= \mathbb{E}(A_{ij}) \left(1 + \frac{r_{ii}}{s_{ii} - 1}\right) \left(1 + \frac{r_{jj}}{s_{jj} - 1}\right) =: \mathbb{E}(A_{ij}) K_{ij} \\ &> \mathbb{E}(A_{ij}) \frac{1}{\mathbb{E}(Z_{ij})} = \mathbb{E}(A_{ij}) \frac{(r_{ii} + s_{ii})(r_{jj} + s_{jj})}{s_{ii}s_{jj}} \end{aligned}$$

$$= \mathbb{E}(A_{ij}) \left(1 + \frac{r_{ii}}{s_{ii}}\right) \left(1 + \frac{r_{jj}}{s_{jj}}\right) =: \mathbb{E}(A_{ij}) k_{ij}.$$

Obviously,  $\tilde{L}_{ij}$  has not only a greater mean but also greater variance than  $A_{ij}$ . This is shown by the usual computation of a variance

$$\begin{aligned} \text{Var}(\tilde{L}_{ij}) &= \mathbb{E}(\tilde{L}_{ij}^2) - \left(\mathbb{E}(\tilde{L}_{ij})\right)^2. \\ \mathbb{E}(\tilde{L}_{ij}^2) &= \mathbb{E}\left(A_{ij} \cdot \frac{1}{\tilde{Z}_{ij}}\right)^2 = \mathbb{E}(A_{ij}^2) \mathbb{E}\left(\frac{1}{\tilde{Z}_{ij}^2}\right) \\ &= \mathbb{E}(A_{ij}^2) \left(1 + \frac{R_{ij}}{S_{ij} - 1}\right) \left(1 + \frac{R_{ij}}{S_{ij} - 2}\right) \\ &> \mathbb{E}(A_{ij}^2) \left(1 + \frac{R_{ij}}{S_{ij} - 1}\right)^2. \end{aligned}$$

$$\begin{aligned} \text{Var}(\tilde{L}_{ij}) &= \mathbb{E}(A_{ij}^2) \left(1 + \frac{R_{ij}}{S_{ij} - 1}\right) \left(1 + \frac{R_{ij}}{S_{ij} - 2}\right) \\ &\quad - \left(\mathbb{E}(A_{ij})\right)^2 \left(1 + \frac{R_{ij}}{S_{ij} - 1}\right)^2 \end{aligned}$$

Since

$$1 + \frac{R_{ij}}{S_{ij} - 2} < \left(1 + \frac{R_{ij}}{S_{ij} - 1}\right) \cdot \frac{S_{ij} - 1}{S_{ij} - 2} = K_{ij} \frac{S_{ij} - 1}{S_{ij} - 2}$$

$$\text{Var}(A_{ij}) K_{ij}^2 \frac{S_{ij} - 1}{S_{ij} - 2} > \text{Var}(\tilde{L}_{ij})$$

and

$$\begin{aligned} \text{Var}(\tilde{L}_{ij}) &> \text{Var}(A_{ij}) \left(1 + \frac{R_{ij}}{S_{ij} - 1}\right)^2 = \text{Var}(A_{ij}) K_{ij}^2 \\ &> \text{Var}(A_{ij}) \left[\left(1 + \frac{r_{ii}}{s_{ii}}\right) \left(1 + \frac{r_{jj}}{s_{jj}}\right)\right]^2 = \text{Var}(A_{ij}) k_{ij}^2 \end{aligned}$$

which follows from the lower bound of  $\mathbb{E}(\tilde{L}_{ij})$  mentioned above.

Both lower bounds for  $\mathbb{E}(\tilde{L}_{ij})$  and  $\text{Var}(\tilde{L}_{ij})$ , respectively, differ from the corresponding moments of  $A_{ij}$  by augmenting factors which only

depend on the ratio of beta parameters  $r$  and  $s$  of the corresponding diagonal elements. The factor for  $\text{Var}(\tilde{L}_{ij})$  is just obtained by squaring the factor for  $\text{E}(\tilde{L}_{ij})$ . Also the  $3\sigma$ -region will be extended by the latter factor. For the values of the example in Figure 2, where  $\mu = 0.2$  is realistic for average diagonal elements  $A_{ii}$  of input matrices with 10 to 15 sectors, one would obtain  $\text{E}(\tilde{L}_{ij}) > 1.604 \cdot \text{E}(A_{ij})$  and  $\text{Var}(\tilde{L}_{ij}) > 2.574 \cdot \text{Var}(A_{ij})$ .

## 4 Proxies of Beta Parameters

After these theoretical considerations the question arises of how to estimate the parameters  $r$  and  $s$  of the beta distributions within this model for the input coefficients. Estimation from a time series is doubtful since coefficients are changing over time for several reasons. Only input-output tables based on fixed prices should be used. For estimation procedures of the parameters  $r, s$  (see Johnson, Kotz, Balakrishnan (1995, p. 221–238)) and with special focus on skewness Moitra (1990).

Even from a single input matrix a first proxy for  $r, s$  may be given. A practical proposal made by Bamberg (1976, p. 16) for the moments of an apriori distribution in Bayesian estimation can be applied here. He suggests the mode  $m$  as a proxy of  $\mu$  and asks for the greatest relevant deviation  $d$  from  $\mu$ . According to the  $3\sigma$ -rule, which says that 99.7% of the probability of a normal density lies in the  $3\sigma$ -region and 89% according to Chebychev's inequality for the least favorable distribution, he suggests to take  $d/3$  as a proxy of  $\sigma$ . For unimodal beta densities this probability will be close to that of the normal distribution.

For stochastic input coefficients one may modify this proposal as follows. Take the observed value  $a_{ij}$  a) as expected value  $\mu_{ij}$  of the distribution of  $A_{ij}$  and also as deviation  $d$  or b) as mode  $m_{ij}$ . It is assumed that  $a_{ij} \neq 0$  and that the probability that  $A_{ij}$  exceeds  $2\mu_{ij} = \mu_{ij} + 3\sigma_{ij}$  may be neglected.

When  $r$  and  $s$  are integers, this probability (or that of a  $3\sigma$ -region) can be computed by means of the well known relation between the distribution function  $F$  of the  $Be(r, s)$  and that of the binomial distribution

$$F(x) = \sum_{k=r}^n \binom{n}{k} x^k (1-x)^{n-k}, \quad \text{where } n = r + s - 1 \text{ and } x \in [0, 1].$$

For the beta distributions in the figures  $P(X > 2\mu) \leq 1.14\%$ .

The two equations for the moments of  $A_{ij}$  read

$$\begin{aligned}\mu_{ij} &:= \mathbb{E}(A_{ij}) = \frac{r_{ij}}{r_{ij} + s_{ij}} \\ \sigma_{ij}^2 &:= \text{Var}(A_{ij}) = \frac{\mu_{ij}(1 - \mu_{ij})}{r_{ij} + s_{ij} + 1}\end{aligned}$$

which can be solved for  $r_{ij}$  and  $s_{ij}$ :

$$r_{ij} = \left(\frac{\mu_{ij}}{\sigma_{ij}}\right)^2 (1 - \mu_{ij}) - \mu_{ij}, \quad s_{ij} = r_{ij} \left(\frac{1}{\mu_{ij}} - 1\right).$$

Case a): Assume  $a_{ij} = \mu_{ij} = 3\sigma_{ij}$ . Then

$$r_{ij} = 9 - 10a_{ij} \quad \text{and} \quad s_{ij} = r_{ij}(1/a_{ij} - 1),$$

provided  $a_{ij} \neq 0$ , else let  $a_{ij} = 10^{-3}$ , e.g..

With respect to the skewness (to the right) of adequate beta densities it might be preferred to take an assymmetric, larger region, say, up to  $3a_{ij}$  with  $a_{ij} = 2\sigma_{ij}$  in order to capture more of the probability mass. This might fit better for very small  $a_{ij}$  and would yield  $r_{ij} = 4 - 5a_{ij}$  instead.

In case b), which corresponds to the idea of maximum likelihood estimation,  $a_{ij} = m_{ij}$  and again  $\mu_{ij} = 3\sigma_{ij}$  are assumed. Then, according to section 2,

$$\mu'_{ij} = m_{ij} \frac{r_{ij}}{r_{ij} - 1} \frac{r_{ij} + s_{ij} - 2}{r_{ij} + s_{ij}} = m_{ij} \mu_{ij} \left(1 + \frac{s_{ij} - 1}{r_{ij} - 1}\right)$$

and in the equations of a)  $\mu_{ij}$  has to be substituted by  $\mu'_{ij}$ , a third unknown.<sup>1</sup> In order to eliminate  $\mu'_{ij}$  it is proposed to compute  $r_{ij}$  and  $s_{ij}$  according to a) and to insert these values into the last equation. With the resulting  $\mu'_{ij}$  instead of  $\mu_{ij}$  in the equations of a) solve this system again for  $r'_{ij}$  and  $s'_{ij}$ .

Example:

$$\begin{aligned}\text{case a)} \quad a_{ij} = 0.1 &\Rightarrow r_{ij} = 8, s_{ij} = 72 \text{ and} \\ &a_{ij} = 0.2 \Rightarrow r_{ij} = 7, s_{ij} = 28 \\ \text{case b)} \quad a_{ij} = 0.1 &\Rightarrow \mu'_{ij} = 0.11 \Rightarrow r'_{ij} = 7.9, s'_{ij} = 62.9 \\ &a_{ij} = 0.2 \Rightarrow \mu'_{ij} = 0.22 \Rightarrow r'_{ij} = 6.8, s'_{ij} = 27.2.\end{aligned}$$

---

<sup>1</sup>The prime is used here to distinguish case b) from case a) and does not refer to the beta distribution of the second kind as in section 2.



Here,  $a_{ij} = \mu_{ij}$  from a) is increased by about 10% to  $\mu'_{ij}$  in b), which means that  $\mu'_{ij}$  exceeds  $m_{ij} = a_{ij}$  by this percentage. However, for the densities in figure 1 and 2,  $\mu$  exceeds  $m$  by 80% and 20%, respectively.

With the larger region of  $3a_{ij}$  one obtains parameter proxies more similar to those in the figures:

$$\begin{aligned} \text{case a)} \quad & a_{ij} = 0.1 \Rightarrow r_{ij} = 3.5, s_{ij} = 31.5 \text{ and} \\ & a_{ij} = 0.2 \Rightarrow r_{ij} = 3, s_{ij} = 12 \\ \text{case b)} \quad & a_{ij} = 0.1 \Rightarrow \mu'_{ij} = 0.132 \Rightarrow r'_{ij} = 3.34, s'_{ij} = 21.96 \\ & a_{ij} = 0.2 \Rightarrow \mu'_{ij} = 0.26 \Rightarrow r'_{ij} = 2.7, s'_{ij} = 7.68. \end{aligned}$$

Now,  $\mu'_{ij}$  exceeds  $m_{ij}$  by about 30%.

Proxies of the parameters of the density of  $\tilde{L}_{ij}$  (for  $i \neq j$ ), if assumed to be approximated by a beta distribution, are derived from its moments

$$\tilde{\mu}_{ij}^L := E(\tilde{L}_{ij}) = \frac{R_{ij}}{R_{ij} + S_{ij}} = [E(A_{ij})K_{ij} = \mu_{ij}K_{ij}]$$

and

$$(\tilde{\sigma}_{ij}^L)^2 := \text{Var}(\tilde{L}_{ij}) = \frac{\tilde{\mu}_{ij}^L(1 - \tilde{\mu}_{ij}^L)}{R_{ij} + S_{ij} + 1} \gtrsim [\text{Var}(A_{ij})K_{ij}^2 = \sigma_{ij}^2 K_{ij}^2]$$

where, in square brackets, the simple approximations from section 3 are given with

$$K_{ij} = \left(1 + \frac{R_{ij}}{S_{ij} - 1}\right) = \left(1 + \frac{r_{ii}}{s_{ii} - 1}\right) \left(1 + \frac{r_{jj}}{s_{jj} - 1}\right).$$

With the same procedure just applied to  $A$  we obtain for  $L$

$$\begin{aligned} R_{ij} &\approx \left(\frac{\tilde{\mu}_{ij}^L}{\tilde{\sigma}_{ij}^L}\right)^2 (1 - \tilde{\mu}_{ij}^L) - \tilde{\mu}_{ij}^L = \frac{R_{ij}}{S_{ij}} (R_{ij} + S_{ij} + 1)(1 - \tilde{\mu}_{ij}^L) - \tilde{\mu}_{ij}^L \\ S_{ij} &\approx R_{ij} \left(\frac{1}{\tilde{\mu}_{ij}^L} - 1\right). \end{aligned}$$

Example for case a)

Assuming  $a_{ii} = a_{jj} = 0.2$  yields as above  $r_{ii} = r_{jj} = 7$ ,  $s_{ii} = s_{jj} = 28$ ,

hence

$$\begin{aligned}
\text{i)} \quad a_{ij} = \mu_{ij} = 0.1 &\Rightarrow r_{ij} = 8, \quad s_{ij} = 72, \quad \text{Var}(A_{ij}) = 0.00\bar{1} \\
&\Rightarrow \tilde{\mu}_{ij}^L = 0.159, \quad R_{ij} \approx 7.41, \quad S_{ij} \approx 39.33, \quad \text{Var}(\tilde{L}_{ij}) \approx 0.0028. \\
\text{ii)} \quad a_{ij} = \mu_{ij} = 0.2 &\Rightarrow r_{ij} = 7, \quad s_{ij} = 28, \quad \text{Var}(A_{ij}) = 0.00\bar{4} \\
&\Rightarrow \tilde{\mu}_{ij}^L = 0.317, \quad R_{ij} \approx 5.83, \quad S_{ij} \approx 12.55, \quad \text{Var}(\tilde{L}_{ij}) \approx 0.0112.
\end{aligned}$$

When passing from  $A_{ij}$  to  $\tilde{L}_{ij}$ , in the simple approximation the augmenting factors of  $\mu_{ij}$  and  $\sigma_{ij}^2$ , resp., here are  $K_{ij} = 1.586$  and  $K_{ij}^2 = 2.515$ .

Similarly, a beta distribution of the second kind with the same first two moments can be chosen for approximating the density of  $\tilde{L}_{ij}$  with the advantage that both have the same domain. According to section 2 with  $Y' = \tilde{L}_{ij}$  for  $i \neq j$ , for case a) <sup>2</sup>

$$E(\tilde{L}_{ij}) = \frac{R_{ij}}{S_{ij} - 1}$$

and

$$\text{Var}(\tilde{L}_{ij}) = \frac{\tilde{\mu}_{ij}^L(\tilde{\mu}_{ij}^L + 1)}{S_{ij} - 2}$$

then have to be solved for the parameters  $R'_{ij}, S'_{ij}$  of the beta distribution of the second kind which is supposed to yield a better density proxy of  $L_{ij}$ :

$$\begin{aligned}
R'_{ij} &= \tilde{\mu}_{ij}^L(S'_{ij} - 1) \approx \tilde{\mu}_{ij}^L \left( 1 + \frac{\tilde{\mu}_{ij}^L(1 + \tilde{\mu}_{ij}^L)}{(\tilde{\sigma}_{ij}^L)^2} \right) \\
S'_{ij} &\approx 1 + \frac{R'_{ij}}{\tilde{\mu}_{ij}^L} = 2 + \frac{\tilde{\mu}_{ij}^L(1 + \tilde{\mu}_{ij}^L)}{(\tilde{\sigma}_{ij}^L)^2} > 2.
\end{aligned}$$

For the previous example (case a) with  $a_{ii} = a_{jj} = 0.2$

$$\begin{aligned}
a_{ij} = 0.1 &\Rightarrow R'_{ij} \approx 10.57, S'_{ij} \approx 67.63 \\
a_{ij} = 0.2 &\Rightarrow R'_{ij} \approx 12.15, S'_{ij} \approx 39.31.
\end{aligned}$$

## 5 Distribution of the Leontief Inverse

In this section, the distribution of the Leontief inverse of a stochastic input matrix  $\mathbb{A} = (A_{ij})$  will be derived. In order to apply the theorem on

---

<sup>2</sup>Here, the prime again refers to the beta distribution of the second kind.

the density of functions of random variables, an open set of the domain of  $\mathbb{A}$  is needed which will be provided by the requirement  $0 < A_{ij} < 1 \forall i, j$ . The realizations of  $\mathbb{A} = (A_{ij})$  and  $\mathbb{L} = (L_{ij})$  are denoted by  $A = (a_{ij})$  and  $L = (l_{ij})$ , resp. Again, the dominant eigenvalue of any  $A$  has to be assumed to be less than one, which is fulfilled, if all column sums of  $A$  do not exceed one and at least one of them is less than one, since  $\mathbb{A}$  is irreducible. Assuming all of these sums smaller than one gives a suitable open domain.

Thus, transforming  $\mathbb{A}$  into  $\mathbb{L}(\mathbb{A})$  is described by a mapping

$$g : U := \times_{j=1}^n (S_j^n)^\circ \subset \mathbb{R}_{++}^{n^2} \rightarrow V \subset \mathbb{R}_{++}^{n^2},$$

where  $(S_j^n)^\circ$  is the interior of the standard simplex in  $\mathbb{R}^n$  and  $U, V$  are open sets in  $\mathbb{R}^{n^2}$ . Furthermore,  $\tilde{g}(\mathbb{A}) := \mathbb{L}(\mathbb{A}) - I$  has the range  $\mathbb{R}_{++}^{n^2}$  because  $\mathbb{L}(\mathbb{A}) > I$ , where  $I$  denotes the  $n \times n$  identity matrix.  $\mathbb{A} > 0$  implies that  $\mathbb{L}$  and, furthermore,  $L(A)$  is strictly increasing in every coefficient if any element of  $A$  is augmented.

Obviously,  $g$  is a bijection which is continuously differentiable and  $g^{-1}$ , as well. Hence,  $g$  is a diffeomorphism. The differentials are given by

$$\begin{aligned} dg &= d(I - \mathbb{A})^{-1} = d\mathbb{L} = \mathbb{L}(d\mathbb{A})\mathbb{L} \\ dg^{-1} &= d(I - \mathbb{L}^{-1}) = d\mathbb{A} = \mathbb{A}(d\mathbb{L})\mathbb{A}, \end{aligned}$$

both with range  $\mathbb{R}_{++}^{n^2}$ .

Hence, the theorem on the density of functions of random variables can be applied and yields

$$f_{\mathbb{L}}(L) = |\det J(I - L^{-1})|^{-1} f_{\mathbb{A}}(I - L^{-1}) \text{ for } L - I \in \mathbb{R}_{++}^{n^2}$$

and

$$f_{\mathbb{L}}(L) = |\det J(A_L)|^{-1} f_{\mathbb{A}}(A_L), \text{ for } A_L \in U,$$

where  $J$  is the Jacobian matrix of the mapping  $g$  and  $A_L$  denotes the input matrix  $A$  with image  $L(A)$ .

Since  $g$  maps matrix  $A$  onto a matrix  $L$  the functional matrix  $J = \frac{\partial L}{\partial A}$  has to be carefully defined. This is done by rearranging an  $n \times n$  matrix  $A$  into a  $n^2 \times 1$  column vector writing the second column of  $A$  underneath the first and so forth (e.g.,  $a_{n+1} := a_{12}, a_{2n+1} := a_{13}, \dots$ ). In the same way  $L$  is transformed into a column vector  $l$ . The  $n^2 \times n^2$  functional matrix  $J$  consists of  $n^2$  blocks of  $n \times n$  submatrices  $J_{ij}$  given by  $\frac{\partial l^i}{\partial a^j}$

where  $l^i$  and  $a^j$  are the  $i$ -th column of  $L$  and the  $j$ -th column of  $A$ , resp., for  $i, j = 1, \dots, n$ . Thus, the diagonal blocks  $J_{ii} = \frac{\partial l^i}{\partial a^i}$  capture the direct partial effects within sector  $i$ . The coefficients within each block  $J_{ij}$  are  $J_{hk} = \frac{\partial l_h^i}{\partial a_k^j}$ , for  $h, k = 1, \dots, n$ .

The Jacobian matrix ( $n^2 \times n^2$ ) has the following form

$$J(A_L) = \left( \frac{\partial l_{ij}}{\partial a_{hk}} \right) = (l_{ih} l_{kj}) = (l_{ji} L)_{i,j} = L^T \otimes L \geq 0$$

and the non-vanishing determinant

$$|J| = |L^T|^n |L|^n = |L|^{2n} \Rightarrow |J^{-1}| = |I - A_L|^{2n} = |(I - A_L)^T (I - A_L)|^n = |C|^n.$$

Hadamard's inequality for positive definite matrices yields an upper bound for  $|J|$ :

$$|C| \leq \prod_{j=1}^n c_{jj} = \prod_{j=1}^n \|e_j - a^j\|_2^2 = \prod_{j=1}^n (\|\check{a}^j\|_2^2 + (1 - a_{jj})^2) = M'(A_L),$$

where  $M' \approx \prod_{j=1}^n (1 - a_{jj})^2 < 1$ , if  $(I - A_L)$  has a strictly column dominant diagonal, i.e.  $1 - a_{jj} > \sum_{i \neq j} a_{ij}$ , and if furthermore  $2a_{ii} \geq a_{ij} \forall i$ . The symbol  $\check{a}^j$  denotes a vector  $a^j$  without the  $j$ -th component.

The Hadamard-Fischer inequality for (symmetric) positive definite matrices (cf. Horn/Johnson 1985, p. 485) may give an improved bound:

$$|C| \leq c_{nn} \prod_{j=1}^{n-1} \left( c_{jj} - \frac{c_{j,j+1}^2}{c_{j+1,j+1}} \right) = M \leq M'.$$

Hence  $|J^{-1}| \leq M^n$ , which leads to the following representation of the density of the Leontief inverse for any distribution of  $\mathbb{A}$

$$\begin{aligned} f_{\mathbb{L}}(L) &= |L|^{-2n} f_{\mathbb{A}}(I - L^{-1}) = |I - A_L|^{2n} f_{\mathbb{A}}(A_L) \\ &\leq M^n f_{\mathbb{A}}(I - L^{-1}) = M^n f_{\mathbb{A}}(A_L). \end{aligned}$$

## 6 Improved Approximation of Moments of $\mathbb{L}$ and $X$

### 6.1 Taylor expansion

The moments of a function  $g$  of a random variable  $X$  can be approximated by a (second order) Taylor expansion around  $\mu_X$  by (cf. Dudewicz, Mishra (1988, p. 264), see section 2)

$$\begin{aligned} \mathbb{E}(g(X)) &\approx g(\mu_X) + \frac{1}{2}g''(\mu_X)\sigma_X^2, \\ \text{Var}(g(X)) &\approx (g'(\mu_X))^2\sigma_X^2. \end{aligned}$$

These formulae can be generalized to  $n \times n$  random matrices  $\mathbb{A}$  and  $g : \mathbb{R}^n \mapsto \mathbb{R}^n$  as follows

$$\begin{aligned} \mathbb{E}(g_{ij}(\mathbb{A})) &\approx g_{ij}(\mu) + \frac{1}{2} \mathbb{E}[(\text{vec}\Delta\mathbb{A})^T H^{ij}(\mu)\text{vec}\Delta\mathbb{A}] \\ &= g_{ij}(\mu) + \frac{1}{2} \text{tr}(H^{ij}(\mu)\text{cov}(\mathbb{A})), \\ \text{cov}(g(\mathbb{A})) &\approx J(\mu)\text{cov}(\mathbb{A})(J(\mu))^T, \end{aligned}$$

where  $\mu, \Delta\mathbb{A}, J$  and  $H$  denote  $\mathbb{E}(\mathbb{A}), \mathbb{A} - \mathbb{E}(\mathbb{A})$ , the Jacobian and the Hessian of  $g$ , respectively. The formula with the trace follows from a result on the expected value of a quadratic form (cf. Magnus, Neudecker, 1988, p. 247) and from  $\mathbb{E}(\Delta\mathbb{A}) = 0$ .

The Taylor approximations of moments are now applied to the stochastic input output-model with  $g : \mathbb{A} \mapsto \mathbb{L}$  with  $A^\mu := \mathbb{E}(\mathbb{A})$  and  $L^\mu := \mathbb{E}(\mathbb{L})$ . Recalling

$$J = L^T \otimes L \quad \text{or} \quad \frac{\partial l_{ij}}{\partial a_{rs}} \Big|_{\mu} = l_{ir}^\mu l_{sj}^\mu$$

the Hessian  $H(\mu)$  consists of  $n^2$  blocks of symmetric, nonnegative  $n^2 \times n^2$  matrices  $H^{ij}(\mu)$  with elements

$$h_{rs,pq}^{ij}(\mu) = \frac{\partial l_{ij}}{\partial a_{rs} \partial a_{pq}} \Big|_{\mu} = l_{ir}^\mu l_{sp}^\mu l_{qj}^\mu x + l_{ip}^\mu l_{qr}^\mu l_{sj}^\mu.$$

Hence, with  $\text{Cov}(\mathbb{L}) = (L^T \otimes L) \text{cov}(\mathbb{A}) (L \otimes L^T)$ ,  $\sigma_{rs,pq}^2 := \text{cov}(A_{rs}, A_{pq})$ ,

$x^\mu := (I - A^\mu)^{-1} d^\mu$  and  $d^\mu = E(D)$

$$\begin{aligned} \text{cov}(\mathbb{L}_{ij}, \mathbb{L}_{hk}) &\approx \sum_{r,s} l_{ir}^\mu l_{sj}^\mu \sum_{p,q} l_{hp}^\mu l_{qk}^\mu \sigma_{rs,pq}^2, \\ E(\mathbb{L}_{ij}) &\approx l_{ij}^\mu + \frac{1}{2} \sum_{r,s} \sum_{p,q} (l_{ir}^\mu l_{sp}^\mu l_{qj}^\mu + l_{ip}^\mu l_{qr}^\mu l_{sj}^\mu) \sigma_{rs,pq}^2, \\ E(X_i) &\approx x_i^\mu + \frac{1}{2} \sum_{r,s} \sum_{p,q} (l_{ir}^\mu l_{sp}^\mu x_q^\mu + l_{ip}^\mu l_{qr}^\mu x_s^\mu) \sigma_{rs,pq}^2. \end{aligned}$$

Symmetry of  $Cov$  and  $H$  facilitates computation. These 3 approximations often yield lower bounds since all derivatives of the Taylor expansion are nonnegative.

The superscript  $^\mu$  with  $l_{ij}$ ,  $d$  and  $x$  will be suppressed from now on. Assuming  $A$  to be uncorrelated, which is done in the sequel since possible (little negative) correlations within columns seem negligible, e.g. for Dirichlet distributions of the column vectors used in the simulation (see section 7), simplifies the moment proxies as follows

$$\begin{aligned} \text{cov}(\mathbb{L}_{ij}, \mathbb{L}_{hk}) &\approx \sum_{r,s} l_{ir} l_{sj} l_{hr} l_{sk} \sigma_{rs}^2 \geq 0, \\ \text{Var}(\mathbb{L}_{ij}) &\approx \sum_{r,s} (l_{ir} l_{sj})^2 \sigma_{rs}^2, \\ E(\mathbb{L}_{ij}) &\approx l_{ij} + \sum_{r,s} l_{ir} l_{sj} l_{sr} \sigma_{rs}^2. \end{aligned}$$

For these approximations,  $Cov(\mathbb{L}) \geq 0$  and  $Cov(\mathbb{L}) > 0$ , if  $A$  is irreducible.

Furthermore, terms without diagonal elements of  $L$  might be neglected without great loss of precision since  $l_{ii} > l_{ij} \forall i, j$  by a theorem of Metzler given the above assumption that  $A$  has column sums less than one. In addition,  $\sigma_{ii}^2 \geq \sigma_{ij}^2$  seems to be realistic because  $a_{ii} \geq a_{ij}$  is mainly observed in empirical input matrices. Hence, the following reduced smaller sums may be satisfactory proxies:

$$\begin{aligned} \text{cov}(\mathbb{L}_{ij}, \mathbb{L}_{hk}) &\approx l_{ii} l_{jj} l_{hi} l_{jk} \sigma_{ij}^2 + l_{hh} l_{kk} l_{ih} l_{hk} \sigma_{hk}^2 + l_{ii} l_{hi} \sum_s l_{sj} l_{sk} \sigma_{is}^2 \\ &\quad + l_{jj} l_{jk} \sum_r l_{ir} l_{hr} \sigma_{rj}^2, \\ \text{Var}(\mathbb{L}_{ij}) &\approx (l_{ii} l_{jj})^2 \sigma_{ij}^2 + l_{ii}^2 \sum_{s \neq j} l_{sj}^2 \sigma_{is}^2 + l_{jj}^2 \sum_{r \neq i} l_{ir}^2 \sigma_{rj}^2, \\ E(\mathbb{L}_{ij}) &\approx l_{ij} + l_{ii} l_{jj} l_{ji} \sigma_{ij}^2 + l_{ii} \sum_{s \neq j} l_{si} l_{sj} \sigma_{is}^2 + l_{jj} \sum_{r \neq i} l_{ir} l_{jr} \sigma_{rj}^2. \end{aligned}$$

These crude proxies need only two rows and columns of  $L$  and  $\text{Var}(\mathbb{A})$  saving  $n^2 - 4(n - 1)$  terms in the Taylor approximation of each of the  $n^2(n^2 + 1)$  moments of  $\mathbb{L}$ .

These Taylor approximations of  $\text{E}(\mathbb{L})$  and  $\text{cov}(\mathbb{L})$  will now be used to derive proxies for the corresponding moments of the solution  $X$  of the stochastic, static input output-model. Final demand  $D$  is assumed to be uncorrelated with  $\mathbb{A}$  and to be normalized by  $\sum d_i = 1$ , which is no restriction. With  $\text{E}(D) = d$  and  $\text{E}(X) = x$  for the solution based on  $\text{E}(\mathbb{A})$  one obtains

$$\text{E}(X_i) = \sum_{j=1}^n \text{E}(\mathbb{L}_{ij}) \text{E}(D_j) = x_i + \sum_{j=1}^n (\text{E}(\mathbb{L}_{ij}) - l_{ij}) d_j$$

and applying the Taylor proxy of  $\text{E}(\mathbb{L}_{ij})$

$$\text{E}(X_i) \approx x_i + \sum_s x_s \sum_r l_{ir} l_{sr} \sigma_{rs}^2,$$

where  $x_s$  is a  $d$ -weighted mean of row  $s$  in  $L$ , and  $l_{ir} l_{sr} = \frac{\partial l_{ir}}{\partial a_{rs}}$  gives the change of row  $i$  in  $L$  due to changes in  $\mathbb{A}$ .

The double sum provides a proxy for the underestimation (negative bias), if  $\text{E}(X_i)$  is estimated by  $x_i$ , the solution of the system based on  $\text{E}(\mathbb{A})$ . The bias is influenced by all elements of  $\mathbb{L}$  and all variances of  $\mathbb{A}$ , which are weighted by the vector  $x$ . The bias increases with each  $\sigma_{rs}^2$ . Furthermore,

$$\begin{aligned} \text{E}(X_i) &\approx x_i \left(1 + \sum_r l_{ir}^2 \sigma_{ri}^2\right) + \sum_{s \neq i} x_s \sum_r l_{ir} l_{sr} \sigma_{rs}^2 \\ &\geq x_i \left(1 + l_{ii}^2 \sigma_{ii}^2\right) + \sum_{s \neq i} x_s (l_{ii} l_{si} \sigma_{is}^2 + l_{ss} l_{is} \sigma_{ss}^2). \end{aligned}$$

The derivation of a proxy for  $\text{Var}(X_i)$  is more complicated because of the correlation within  $\mathbb{L}$ .

$$\begin{aligned} \text{Var}(X_i) &= \text{Var} \left( \sum_j \mathbb{L}_{ij} D_j \right) = \sum_{j,k} \text{cov}(\mathbb{L}_{ij} D_j, \mathbb{L}_{ik} D_k) \quad \text{with} \\ \text{cov}(\mathbb{L}_{ij} D_j, \mathbb{L}_{ik} D_k) &= \text{cov}(\mathbb{L}_{ij}, \mathbb{L}_{ik}) [\text{cov}(D_j, D_k) + \text{E}(D_j) \text{E}(D_k)] \\ &\quad + \text{E}(\mathbb{L}_{ij}) \text{E}(\mathbb{L}_{ik}) \text{cov}(D_j, D_k). \end{aligned}$$

Assuming  $D$  to be uncorrelated yields a simple Taylor approximation

$$\text{cov}(\mathbb{L}_{ij} D_j, \mathbb{L}_{ik} D_k) \approx \sum_s l_{sj} l_{sk} (d_j d_k + \delta_{jk} \sigma^2(D_j)) \sum_r l_{ir}^2 \sigma_{rs}^2 + \delta_{jk} l_{ij} l_{ik} \sigma^2(D_j),$$

and finally,

$$\begin{aligned}
\text{Var}(X_i) &\approx \sum_s \left( x_s^2 + \sum_j \sigma^2(D_j) l_{sj}^2 \right) \sum_r l_{ir}^2 \sigma_{rs}^2 + \sum_j l_{ij}^2 \sigma^2(D_j) \\
&\gtrsim l_{ii}^2 \left[ \sum_s (x_s^2 + l_{ss}^2 \sigma^2(D_s)) \sigma_{is}^2 + \sigma^2(D_i) \right] \\
&\geq l_{ii}^2 \left[ (x_i^2 + l_{ii}^2 \sigma^2(D_i)) \sigma_{ii}^2 + \sigma^2(D_i) \right].
\end{aligned}$$

The proxy is now regarded for special variances of  $\mathbb{A}$  and  $D$

$$\sigma_{ij}^2 = \left( \frac{a_{ij}}{k} \right)^2 \text{ and } \sigma^2(D_j) = \left( \frac{d_j}{k} \right)^2 \text{ for } k = 2 \text{ or } 3,$$

which are used in the simulation for the case with observations as expected values. Then

$$\begin{aligned}
\text{Var}(\tilde{X}_i) &\approx \sum_s \left( x_s^2 + \sum_j l_{sj}^2 \left( \frac{d_j}{k} \right)^2 \right) \sum_r l_{ir}^2 \left( \frac{a_{rs}}{k} \right)^2 + \sum_j l_{ij}^2 \left( \frac{d_j}{k} \right)^2 \\
\text{Var}(X_i) &\approx \frac{1}{k^2} \left[ \sum_s \left( x_s^2 + \frac{1}{k^2} \sum_j (l_{sj} d_j)^2 \right) \sum_r (l_{ir} a_{rs})^2 + \sum_j (l_{ij} d_j)^2 \right]
\end{aligned}$$

Upper bounds are derived as follows because of  $LA = L - I$  and  $\sum y_i^2 \leq (\sum y_i)^2$

$$\begin{aligned}
\text{Var}(X_i) &\leq \frac{1}{k^2} \left[ \sum_s (l_{is} - \delta_{is})^2 \left( x_s^2 + \frac{1}{k^2} \sum_j (l_{sj} d_j)^2 \right) + \sum_j (l_{ij} d_j)^2 \right] \\
&< \frac{k^2 + 1}{k^4} \left[ x_i^2 + \sum_j (l_{ij} - \delta_{ij})^2 x_j^2 \right] \\
&= \frac{k^2 + 1}{k^4} \left[ \sum_j (l_{ij} x_j)^2 - 2(l_{ii} - 1)x_i^2 \right].
\end{aligned}$$

The upper bounds only depend on row  $i$  of  $\mathbb{L}$ ,  $d$ ,  $x$  and  $k$ , but no longer (directly) on  $\mathbb{A}$ .

A simple but crude lower bound for  $\text{Var}(\tilde{X}_i)$  is given with

$$\text{Var}(\tilde{X}_i) \geq \frac{1}{k^2} \left[ (l_{ii} d_i)^2 + \sum_s (l_{ii} a_{is})^2 \left( x_s^2 + \frac{1}{k^2} (l_{ss} d_s)^2 \right) \right].$$



For the proxy of  $E(X_i)$  an upper bound is found analogously:

$$\begin{aligned}
E(X_i) &\approx x_i + \frac{1}{k^2} \sum_s x_s \sum_r l_{ir} l_{sr} a_{rs}^2 \\
&\leq x_i + \frac{1}{k^2} \sum_s x_s \left( \sum_r l_{ir} a_{rs} \right) \left( \sum_r l_{sr} a_{rs} \right) \\
&= x_i + \frac{1}{k^2} \sum_s x_s (l_{is} - \delta_{is}) (l_{ss} - 1) \\
&= x_i \left[ 1 + \frac{1}{k^2} (l_{ii} - 1)^2 \right] + \frac{1}{k^2} \sum_{s \neq i} x_s (l_{ss} - 1) l_{is}.
\end{aligned}$$

A crude lower bound is given with

$$E(X_i) \geq x_i + \frac{1}{k^2} \left( \sum_r x_r l_{ir} l_{rr} a_{rr}^2 + \sum_s x_s l_{ii} l_{si} a_{is}^2 \right)$$

## 6.2 Inversion-approximation

A further approximation improves the simple approximation by minors, which was introduced in section 3. It starts from the identity  $L(I-A) = I$  which implies

$$l_{ii} = \frac{1}{1 - a_{ii}} \left( 1 + \sum_{k \neq i} l_{ik} a_{ki} \right) \quad \forall i.$$

Substituting  $l_{ik}$  with the minor-proxy yields

$$\tilde{l}_{ii} \approx \frac{1}{1 - a_{ii}} \left( 1 + \frac{1}{(1 - a_{ii})} \sum_{k \neq i} \frac{a_{ik} a_{ki}}{1 - a_{kk}} \right)$$

as a proxy from below. Similarly, it can be seen that

$$l_{ij} = \frac{1}{1 - a_{jj}} \left( l_{ii} a_{ij} + \sum_{h \neq i, j} l_{hh} a_{ih} a_{hj} \right)$$

where proxies for  $l_{ii}$  and  $l_{hh}$  may be inserted to get  $\tilde{l}_{ij}$ . Or, less precise,

$$\tilde{l}_{ij} = \frac{1}{(1 - a_{ii})(1 - a_{jj})} \left( a_{ij} + \sum_{h \neq i, j} \frac{a_{ih} a_{hj}}{1 - a_{hh}} \right).$$

Another good proxy is given with

$$\tilde{l}_{ij} \approx \tilde{l}_{ii}\tilde{l}_{jj}a_{ij}.$$

These approximations based on only one row and column of  $A$  and its diagonal are considerably better than the minor-proxies based on a  $2 \times 2$  submatrix.

If  $\mathbb{A}$  is uncorrelated and  $(\mu_{ij}) := E(\mathbb{A})$ , proxies of the moments are given with

$$\begin{aligned} E\left(\tilde{\mathbb{L}}_{ii}\right) &\approx \lambda_{ii} \left( 1 + \lambda_{ii}(1 + \lambda_{ii}^2\sigma_{ii}^2) \sum_{k \neq i} \lambda_{kk}\mu_{ik}\mu_{ki} \right) \\ E\left(\tilde{\mathbb{L}}_{ij}\right) &\approx \lambda_{jj} \left( E\left(\tilde{\mathbb{L}}_{ii}\right) \mu_{ij} + \sum_{h \neq i,j} E\left(\tilde{\mathbb{L}}_{hh}\right) \mu_{ih}\mu_{hj} \right), \end{aligned}$$

where  $\lambda_{ii} = (1 - \mu_{ii})^{-1}$ . Improvement can be achieved if  $\lambda_{ii}$  is increased by  $(1 - \mu_{ii})^{-3}\sigma_{ii}^2$  due to Taylor.

In contrast to Taylor's method, no knowledge of  $L(E(\mathbb{A}))$  at the expansion point is needed.

Since proxies for the variances of  $\mathbb{L}$  are complicated (see simpler proxies in section 3), in the simulation it is assumed that  $\mathbb{A}_{ij}$  has a Beta distribution  $\mathbb{A}_{ij} \sim Be(r_{ij}, s_{ij})$ . Then, according to section 3, simple approximating Beta distributions of the second kind have the following variances:

$$\text{Var}\left(\tilde{\mathbb{L}}_{ii}\right) = \frac{E\left(\tilde{\mathbb{L}}_{ii}\right) \left(E\left(\tilde{\mathbb{L}}_{ii}\right) - 1\right)}{(s_{ii} - 2)},$$

and

$$\text{Var}\left(\tilde{\mathbb{L}}_{ij}\right) = \frac{E\left(\tilde{\mathbb{L}}_{ij}\right) \left(E\left(\tilde{\mathbb{L}}_{ij}\right) + 1\right)}{(s_{ij} - 2)}.$$

These proxies are used in the simulation with the inversion-approximation (denoted there M2).

Furthermore,  $\lambda_{ii}$  is then replaced by  $E(1/(1 - \mathbb{A}_{ii})) = 1 + r_{ii}/(s_{ii} - 1)$ . The moments of  $X$  then follow in a similar way as described above with

Taylor.

$$\mathbb{E}(\tilde{X}_i) = \sum_j \mathbb{E}(\tilde{\mathbb{L}}_{ij}) d_j,$$

and, if  $D$  is uncorrelated,

$$\text{Var}(\tilde{X}_i) = \sum_{j,k} \text{cov}(\tilde{\mathbb{L}}_{ij}, \tilde{\mathbb{L}}_{ik}) (d_j d_k + \delta_{jk} \sigma^2(D_j)) + \sum_j l_{ij}^2 \sigma^2(D_j),$$

where, since  $l_{ij} \approx l_{ii} l_{jj} a_{ij}$ ,

$$\text{cov}(\tilde{\mathbb{L}}_{ij}, \tilde{\mathbb{L}}_{ik}) \approx \mathbb{E}(\tilde{\mathbb{L}}_{jj}) \mathbb{E}(\tilde{\mathbb{L}}_{kk}) \mu_{ij} \mu_{ik} \text{Var}(\tilde{\mathbb{L}}_{ii}),$$

if positive correlations within  $\text{diag } \mathbb{L}$  as well as between  $\text{diag } \mathbb{L}$  and  $\mathbb{A}$  are neglected, which underestimates  $\text{Var}(\tilde{X})$ .

## 7 Simulation

The simulation is based on German input output-data of the Federal Statistical Office for 1998. Empirical input matrices are derived from a database from year 0 such that  $(I - A^0)x^0 = d^0$  is fulfilled for this reference system. It is assumed that these values of  $A^0$  and  $d^0$  represent either a) expected values or b) modes of the underlying random variables  $\mathbb{A}$  and  $D$  which corresponds to maximum likelihood estimation. If there is no other information, variances are assumed to be derivable by a  $3\sigma$ -rule. The input coefficients  $a_{ij}$  are taken i) as  $3\sigma_{ij}$  or, alternatively, as ii)  $2\sigma_{ij}$ . In both versions it is assumed that an interval of length  $6\sigma_{ij}$  (ending with i)  $2a_{ij}$  or ii)  $3a_{ij}$ ) captures nearly the whole propability mass. Version ii) seems to fit better to the asymmetric beta distributions, skewed to the right, of the bulk of very small input coefficients.

Two types of approximation of  $\mathbb{L}$  are applied:  $\alpha$ ) Taylor series and  $\beta$ ) inversion-approximation of each coefficient of  $L$  by only one corresponding row and column of  $A$ . Approximations of  $\mathbb{E}(\mathbb{L})$  and  $\text{cov}(\mathbb{L})$ , and  $\mathbb{E}(X)$  and  $\text{cov}(X)$  are deduced from the Jacobian and Hessian of the mapping  $g$ . The results simplify considerably if correlations within  $A$  and  $D$  are negligible, which seems realistic.

Crude probability regions for  $\mathbb{L}$  and the solution  $x$  can be given, which may be improved, if knowledge of the distribution types of  $\mathbb{A}$  and  $D$  is

available. Assumption of normality may cause difficulty with respect to the requirement that  $(I - A)$  has a nonnegative inverse.

In a simulation it is assumed that the column vectors of  $A$  and normed final demand  $D$  have independent Dirichlet distributions, or its components Beta distributions  $\text{Be}(r, s)$  on  $[0, 1]$ . It seems reasonable to start with a multivariate standard beta distribution (Dirichlet-distribution (cf. Johnson, Kotz, Balakrishnan, 2000) for each sector  $j$  since the input coefficients and the value added coefficient  $v_j$  add up to one (columnwise). Thus, this restriction may be taken into account. In particular, this would be important for estimation procedures. If all  $v_j$  are positive, then existence and non-negativity of  $L(A)$  are ensured according to Brauer/Solow. This is a realistic assumption for all possible realizations of the random matrix  $A$ .

Then, the marginal distributions of  $Y_i = A_{ij_0}$  are standard beta distributions  $\text{Be}(r_i, s_i = R - r_i)$ , where  $R := \sum_{k=0}^n r_k$  and  $r_0$  is the first beta parameter of  $v_{j_0}$ . Hence,  $\mu$  and  $\sigma^2$  are given as before. Therefore, only

$$\text{cov}(Y_i, Y_j) = -\frac{r_i r_j}{R^2(R+1)} = -\frac{\mu_i \mu_j}{R+1}$$

has to be taken into account. Because of this negative correlation  $E(\tilde{\mathbb{L}}_{ij})$  is smaller than computed above under the assumption of pairwise uncorrelatedness. However,  $\text{cov}(Y_i, Y_j)$  is very small on the average. For  $n$  sectors the average absolute covariance approximately amounts to  $1/n^2(R+1) < 1/n^3$ , which might be neglected in comparison to the average  $E(\tilde{L}_{ij}) \approx 1/n$ . This is done here.

Beta random variables are obtained with the BB-algorithm proposed by Chen (cf. Johnson, Kotz, Balakrishnan, 1995, p. 216, with a misprint ( $\gamma^V$  instead of  $\gamma V$ )). With these distributions no problem occurs with invertibility, since it can be ensured that the dominant eigenvalue of  $A$  is less than one. The density of  $\mathbb{A}$  transformed by  $g$  is theoretically derived for any distribution and, in particular, applied to the beta distribution. The parameters  $r$  and  $s$  in the simulation are computed from German data assumed to be  $E(Y)$  (or  $\text{mode}(Y)$ ), and  $\text{Var}(Y)$  derived by a  $3\sigma$ - (or  $2\sigma$ )-rule. A simple approximation of  $\mathbb{L}$  by minors suggests that the coefficients of  $\mathbb{L}$  may have Beta distributions (of the second kind). Theoretical considerations show that this distribution type then should also be appropriate for the solution  $X$ . This is confirmed by the simulations. Furthermore, the two types of approximations of  $E(X)$  and  $\text{Var}(X)$  show a good performance.

The theoretically expected approximate, relatively narrow,  $2\sigma$ -regions contain 90 – 95 % of the simulation results for most coefficients. For version 2, taking into account the skewness to the right of the distribution of  $A$ , here, it is assumed that the relation of 1 : 2 for left and right parts (with respect to  $E(Y)$ ) of the probability region for  $A$  may be transferred to  $L$  as a proxy because its distributions are also skewed to the right. The theoretically derived approximate densities of  $L$  and  $X$  mainly accord with the histograms of the simulation. As a result, it may be possible to do without simulations within this model framework. Further improvement should be possible by implementing the inversion-approximation from section 6.2.

## 8 Extensions

If final demand is not normed, then Gamma distributions for its components might be assumed. For that case, a recent result on the product of independent Beta and Gamma distributed random variables is expected to be helpful (Nadarajah, Kotz, 2005, p.437).

Most of the methods and results more generally are applicable to stochastic linear systems of equations, if the matrices have a dominant diagonal which is often encountered in economics and (numerical) mathematics.

## References

- [1] Bamberg, G.: Lineare Bayes-Verfahren in der Stichprobentheorie. *Mathematical Systems in Economics*, Vol. 27, Hain, 1976.
- [2] Dudewicz, E. J., Mishra, S. N.: *Modern Mathematical Statistics*. Wiley, New York, 1988.
- [3] Fan, D.-Y.: The Distribution of the Product of independent Beta Variables. *Communications in Statistics – Theory and Methods*, Vol. 20, 1991, p. 4043–4052.
- [4] Greene, W.H.: *Econometric Analysis*. 5th ed., Prentice Hall, New Jersey, 2003.
- [5] Härtter, E.: *Wahrscheinlichkeitsrechnung, Statistik und mathematische Grundlagen*. Vandenhoeck & Ruprecht, Göttingen, 1987.
- [6] Horn, R.A., Johnson, C.A.: *Matrix Analysis*. Cambridge University Press, London, 1985.
- [7] Johnson, N. L., Kotz, S., Balakrishnan, N.: *Continuous Univariate Distributions*, Vol. 2, (2nd edition) Wiley, New York, 1995.
- [8] Kogelschatz, H.: *Aggregation und Prognose in Input-Output-Modellen*. Habilitationsschrift. Karlsruhe, 1978.
- [9] Kotz, S., Balakrishnan, N., Johnson, N. L.: *Continuous Multivariate Distributions*, Vol. 1, Models and Applications. Wiley, New York, 2000.
- [10] Magnus, J.R., Neudecker, H.: *Matrix Differential Calculus with Applications in Statistics and Econometrics*. Wiley, New York, 1988.
- [11] Moitra, S. D.: Skewness and the Beta Distribution. *Journal of the Operational Research Society* 1990, p. 953–961.
- [12] Mood, A., Graybill, F., Boes, D.: *Introduction to the Theory of Statistics*, 3rd edition. McGraw-Hill, London 1987.
- [13] Nadarajah, S., Kotz, S.: On the Product and Ratio of Gamma and Beta Random Variables. *Allgemeines statistisches Archiv* 89, 2005, p. 435–449.

## A Appendix: Diagonal elements of the Leontief-inverse

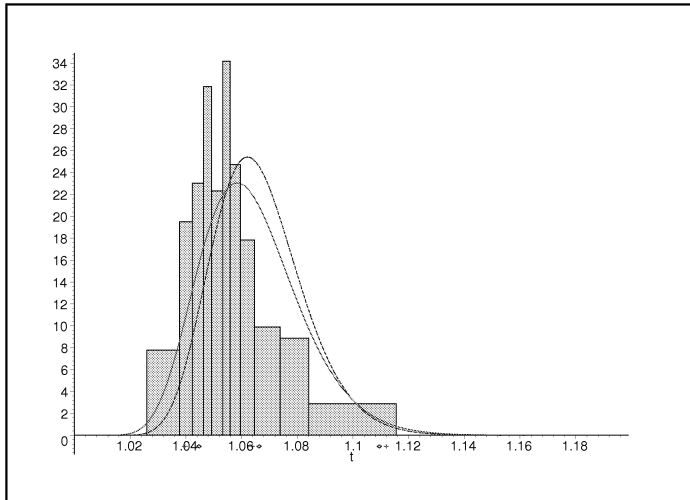


Figure 3:  $(i,i)=(1,1)$ , exact=1.06316697, arithmetic mean=1.05769370,  $S^2_{(n-1)}=.00030499$ . M2 (inversion-approximation, blue line): estimated expected value =1.06629872, estimated variance=.00026219, 75.00% in interval. Taylor (red line): estimated expected value =1.06377250, estimated variance=.00032571, 87.00% in interval. Var.coeff.(simulation)=.016470, Var.coeff.(M2)=.015185, Var.coeff(Taylor)=.016965

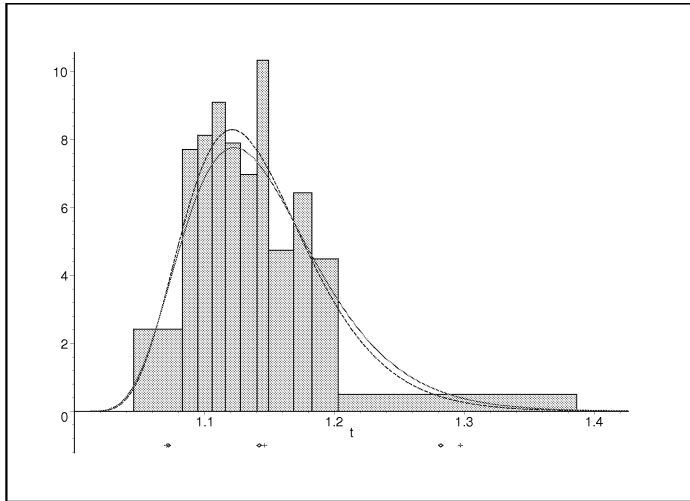


Figure 4:  $(i,i)=(2,2)$ , exact=1.14310441, arithmetic mean=1.13967796,  $S^2_{(n-1)}=.00249099$  M2: estimated expected value =1.14197183, estimated variance=.00274387, 93.00% in interval. Taylor: estimated expected value =1.14616170, estimated variance=.00318553, 94.50% in interval. Var.coeff.(simulation)=.043683, Var.coeff.(M2)=.045870, Var.coeff(Taylor)=.049243



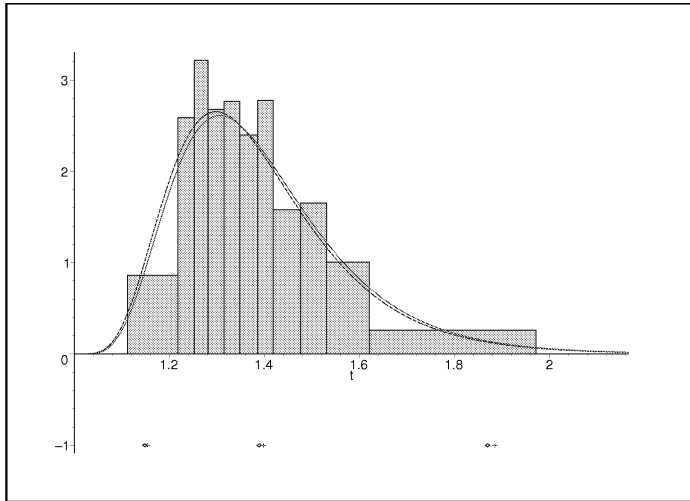


Figure 5:  $(i,i)=(3,3)$ ,  $\text{exact}=1.37450546$ ,  $\text{arithmetic mean}=1.39105082$ ,  $S_{(n-1)}^2=.02403603$ . M2:  $\text{estimated expected value}=1.38874883$ ,  $\text{estimated variance}=.03254323$ , 97.00% in interval. Taylor:  $\text{estimated expected value}=1.39771263$ ,  $\text{estimated variance}=.03347502$ , 97.00% in interval.  $\text{Var.coeff.}(\text{simulation})=.111173$ ,  $\text{Var.coeff.}(\text{M2})=.129899$ ,  $\text{Var.coeff}(\text{Taylor})=.130901$

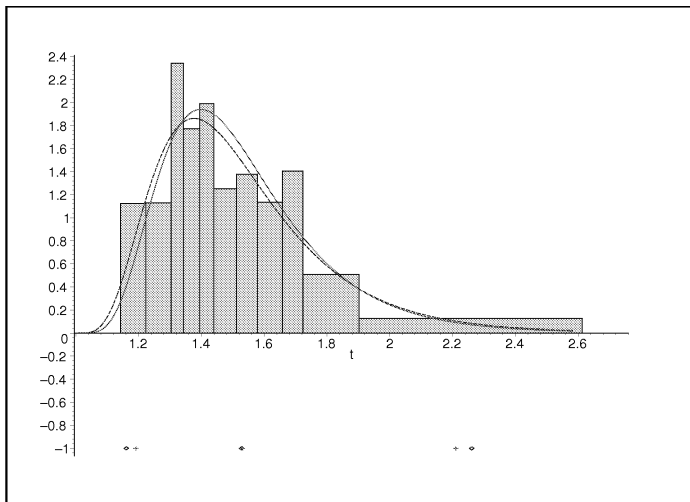


Figure 6:  $(i,i)=(4,4)$ ,  $\text{exact}=1.48791139$ ,  $\text{arithmetic mean}=1.52147896$ ,  $S_{(n-1)}^2=.06236211$ . M2:  $\text{estimated expected value}=1.52729593$ ,  $\text{estimated variance}=.07568236$ , 98.00% in interval. Taylor:  $\text{estimated expected value}=1.53082818$ ,  $\text{estimated variance}=.06501317$ , 95.00% in interval.  $\text{Var.coeff.}(\text{simulation})=.163722$ ,  $\text{Var.coeff.}(M2)=.180125$ ,  $\text{Var.coeff}(\text{Taylor})=.166561$

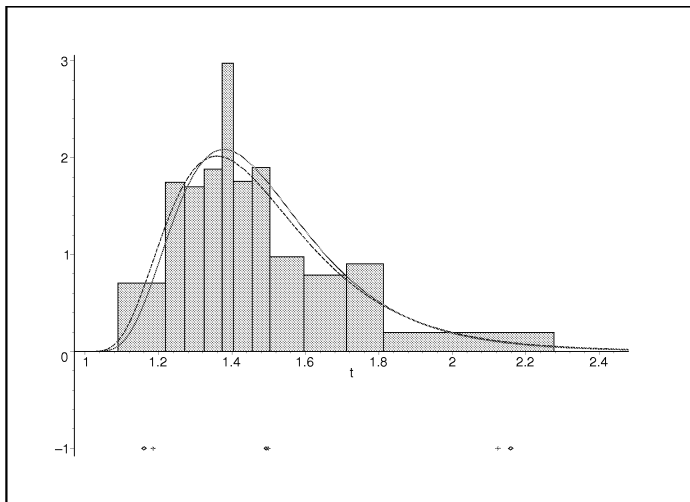


Figure 7:  $(i,i)=(5,5)$ ,  $\text{exact}=1.46092907$ ,  $\text{arithmetic mean}=1.47999187$ ,  $S_{(n-1)}^2=.05527118$ . M2:  $\text{estimated expected value}=1.49312223$ ,  $\text{estimated variance}=.06228505$ , 95.50% in interval. Taylor:  $\text{estimated expected value}=1.49845880$ ,  $\text{estimated variance}=.05504847$ , 93.50% in interval.  $\text{Var.coeff.}(\text{simulation})=.158453$ ,  $\text{Var.coeff.}(\text{M2})=.167146$ ,  $\text{Var.coeff}(\text{Taylor})=.156577$

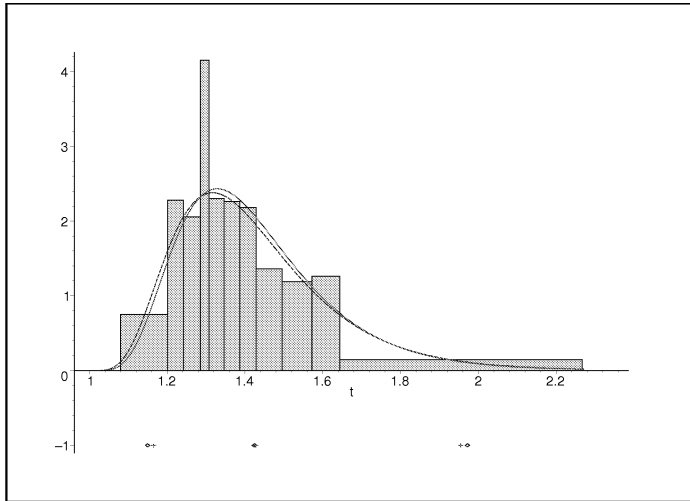


Figure 8:  $(i,i)=(6,6)$ ,  $\text{exact}=1.40000966$ ,  $\text{arithmetic mean}=1.41107149$ ,  $S_{(n-1)}^2=.04302302$ . M2:  $\text{estimated expected value}=1.42364494$ ,  $\text{estimated variance}=.04229164$ , 93.50% in interval. Taylor:  $\text{estimated expected value}=1.42789508$ ,  $\text{estimated variance}=.03902955$ , 91.50% in interval.  $\text{Var.coeff.}(\text{simulation})=.146627$ ,  $\text{Var.coeff.}(M2)=.144453$ ,  $\text{Var.coeff}(\text{Taylor})=.138357$

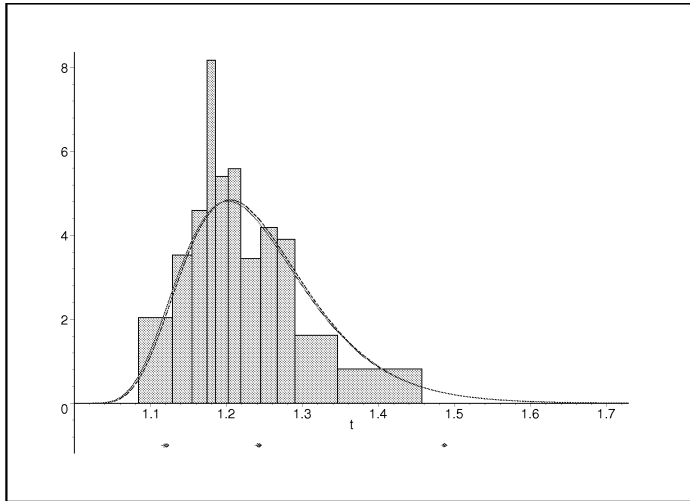


Figure 9:  $(i,i)=(7,7)$ , exact=1.23369370, arithmetic mean=1.22373533,  $S_{(n-1)}^2=.00605759$ . M2: estimated expected value =1.24279952, estimated variance=.00834130, 94.00% in interval. Taylor: estimated expected value =1.24076088, estimated variance=.00850822, 94.50% in interval. Var.coeff.(simulation)=.063442, Var.coeff.(M2)=.073488, Var.coeff(Taylor)=.074341

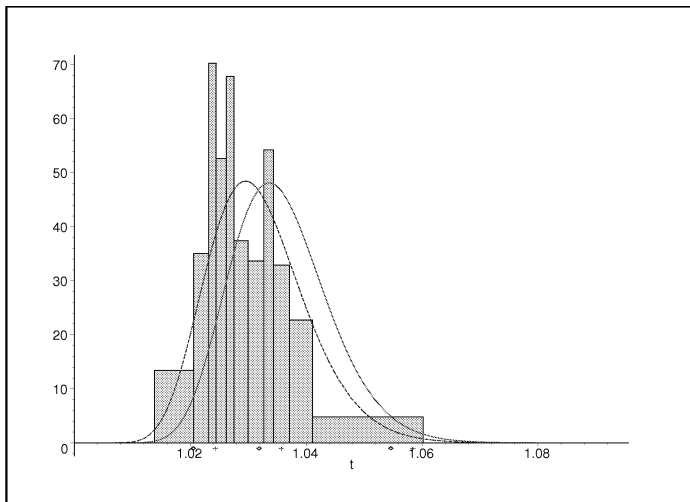


Figure 10:  $(i,i)=(8,8)$ , exact=1.03518597, arithmetic mean=1.03023664,  $S^2_{(n-1)}=.00006946$ . M2: estimated expected value =1.03187433, estimated variance=.00007263, 90.00% in interval. Taylor: estimated expected value =1.03570382, estimated variance=.00007266, 73.50% in interval. Var.coeff.(simulation)=.008069, Var.coeff.(M2)=.008259, Var.coeff(Taylor)=.008230

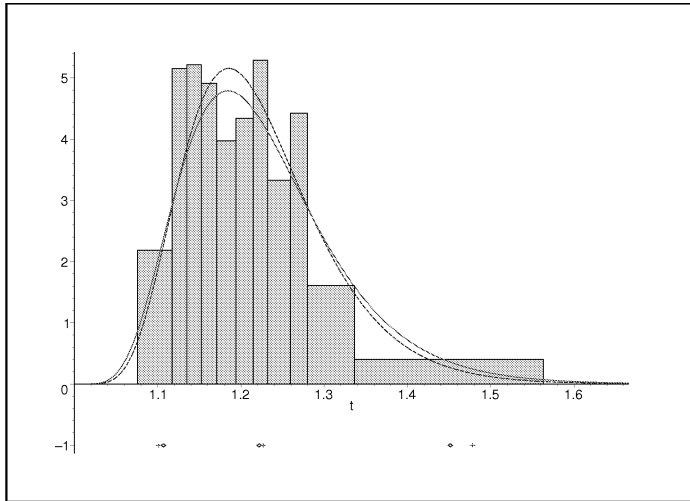


Figure 11:  $(i,i)=(9,9)$ ,  $\text{exact}=1.21973733$ ,  $\text{arithmetic mean}=1.21417974$ ,  $S_{(n-1)}^2=.00769641$ . M2:  $\text{estimated expected value}=1.22179241$ ,  $\text{estimated variance}=.00742207$ , 91.00% in interval. Taylor:  $\text{estimated expected value}=1.22674757$ ,  $\text{estimated variance}=.00889194$ , 92.00% in interval.  $\text{Var.coeff.}(\text{simulation})=.072073$ ,  $\text{Var.coeff.}(M2)=.070512$ ,  $\text{Var.coeff}(\text{Taylor})=.076868$

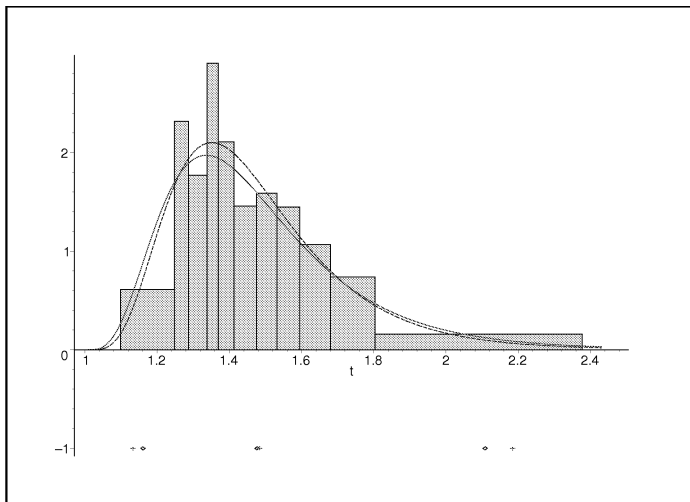


Figure 12:  $(i,i)=(10,10)$ , exact=1.44888249, arithmetic mean=1.48359548,  $S^2_{(n-1)}=.04976908$ . M2: estimated expected value =1.47668964, estimated variance=.05607942, 95.50% in interval. Taylor: estimated expected value =1.48345906, estimated variance=.06911659, 97.00% in interval. Var.coeff.(simulation)=.149995, Var.coeff.(M2)=.160366, Var.coeff(Taylor)=.177221



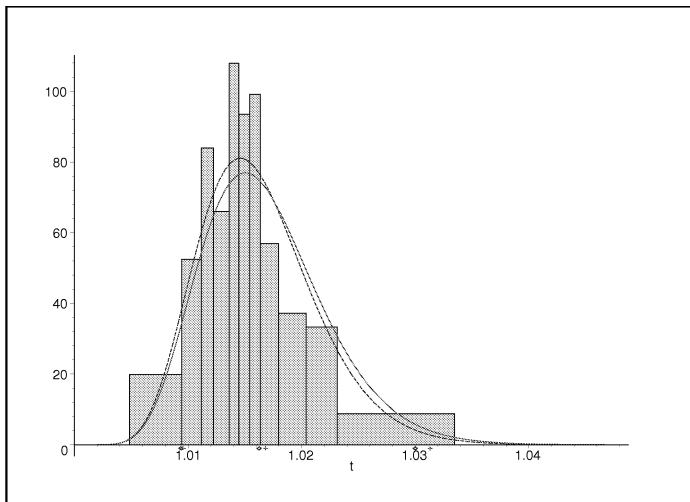


Figure 13:  $(i,i)=(11,11)$ , exact=1.01674161, arithmetic mean=1.01564277,  $S^2_{(n-1)}=.00002589$  . M2: estimated expected value =1.01625626, estimated variance=.00002656, 90.00% in interval. Taylor: estimated expected value =1.01682036, estimated variance=.00002960, 88.50% in interval. Var.coeff.(simulation)=.004997, Var.coeff.(M2)=.005071, Var.coeff(Taylor)=.005351

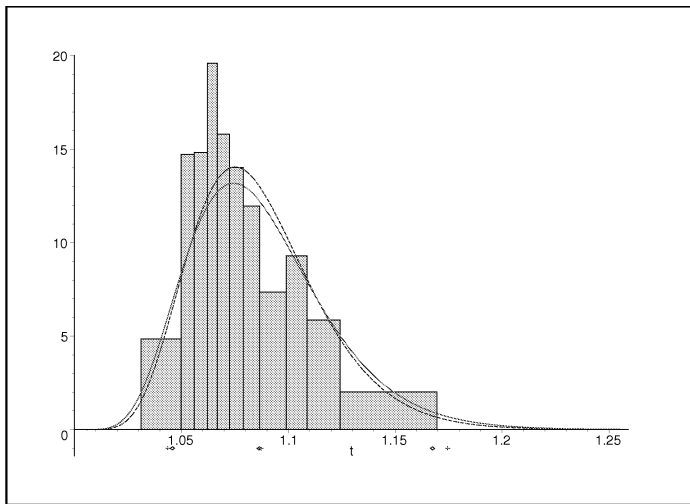


Figure 14:  $(i,i)=(12,12)$ , exact=1.08619042, arithmetic mean=1.08194653,  $S^2_{(n-1)}=.00081617$ . M2: estimated expected value =1.08636468, estimated variance=.00092563, 93.00% in interval. Taylor: estimated expected value =1.08728893, estimated variance=.00107131, 95.00% in interval. Var.coeff.(simulation)=.026339, Var.coeff.(M2)=.028006, Var.coeff(Taylor)=.030103

## B Appendix: Off-diagonal elements of the Leontief-inverse

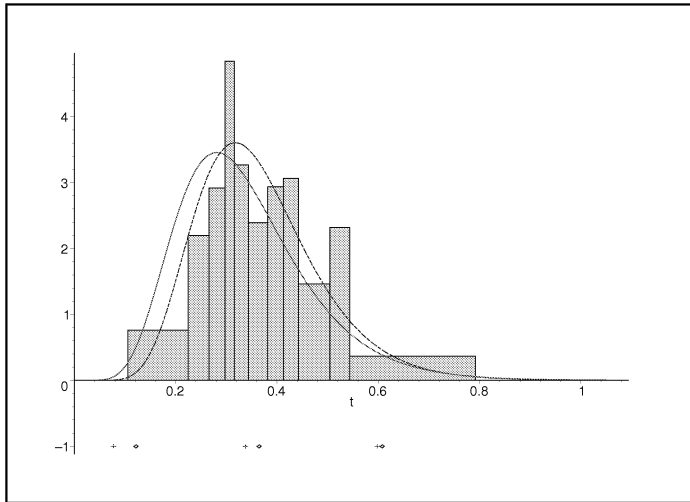


Figure 15:  $(i,j)=(1,7)$ , exact=.33423555, arithmetic mean=.37341845,  $S_{(n-1)}^2=.01541727$ . M2: estimated expected value =.36459644, estimated variance=.01477006, 96.00% in interval. Taylor: estimated expected value =.33750631, estimated variance=.01699031, 95.50% in interval. Var.coeff.(simulation)=.331680, Var.coeff.(M2) =.333333, Var.coeff.(Taylor) =.386206

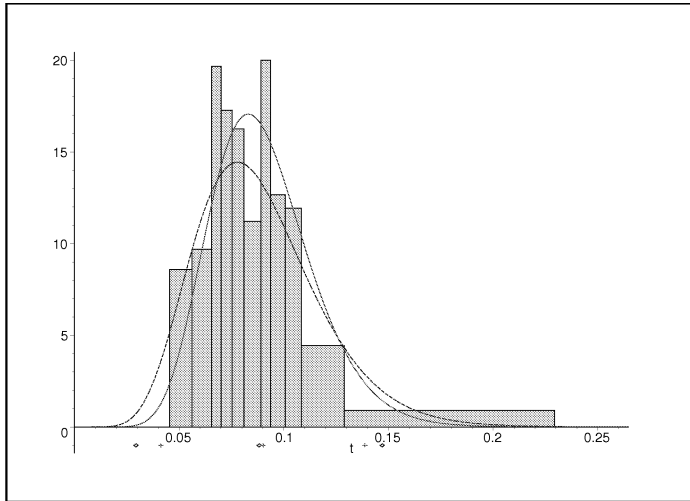


Figure 16:  $(i,j)=(9,2)$ ,  $\text{exact}=.08855437$ ,  $\text{arithmetic mean}=.08874559$ ,  $S_{(n-1)}^2=.00079986$ . M2:  $\text{estimated expected value}=.08820121$ ,  $\text{estimated variance}=.00086438$ , 95.50% in interval. Taylor:  $\text{estimated expected value}=.09004951$ ,  $\text{estimated variance}=.00059328$ , 94.50% in interval.  $\text{Var.coef.}(\text{simulation})=.317886$ ,  $\text{Var.coef.}(\text{M2})=.333333$ ,  $\text{Var.coef.}(\text{Taylor})=.270488$

## C Appendix: Solution components of the stochastic input output-model

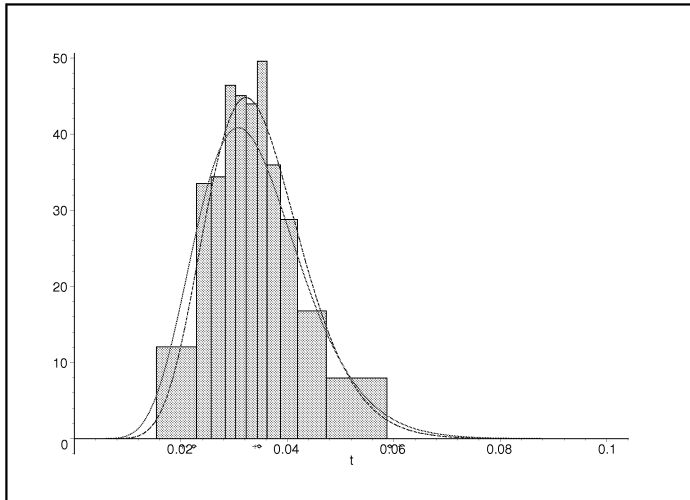


Figure 17:  $i=1$ , exact=.03361670, arithmetic mean=.03404627,  $S^2_{(n-1)}=.00008133$ . M2: estimated expected value =.03469478, estimated variance=.00008486, 91.00% in interval. Taylor: estimated expected value =.03393318, estimated variance=.00010412, 94.50% in interval. Var.coeff.(simulation)=.264215, Var.coeff.(M2) =.265512, Var.coeff.(Taylor) =.300704

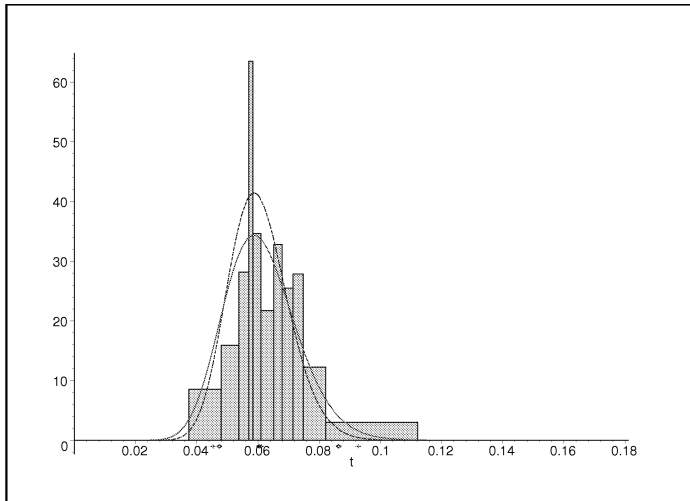


Figure 18:  $i=2$ , exact=.05990588, arithmetic mean=.06464508,  $S^2_{(n-1)}=.00017029$ . M2: estimated expected value =.06036574, estimated variance=.00009513, 87.00% in interval. Taylor: estimated expected value =.06110863, estimated variance=.00014022, 92.00% in interval. Var.coeff.(simulation)=.201359, Var.coeff.(M2) =.161576, Var.coeff.(Taylor) =.193776

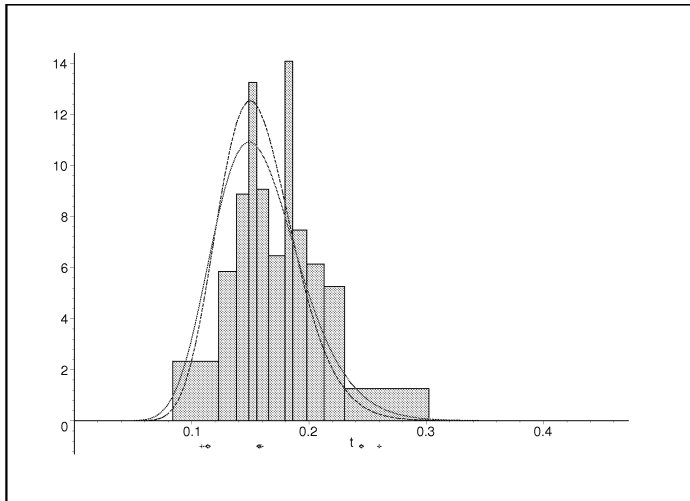


Figure 19:  $i=3$ , exact=.15492811, arithmetic mean=.17557625,  $S^2_{(n-1)}=.00173286$ . M2: estimated expected value =.15747426, estimated variance=.00107107, 89.50% in interval. Taylor: estimated expected value =.15901284, estimated variance=.00143497, 94.50% in interval. Var.coeff.(simulation)=.236498, Var.coeff.(M2) =.207825, Var.coeff.(Taylor) =.238226

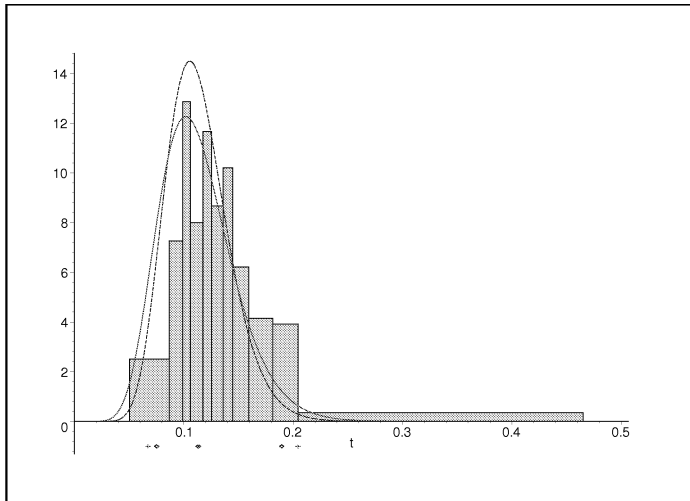


Figure 20:  $i=4$ ,  $\text{exact}=.10824516$ ,  $\text{arithmetic mean}=.14006088$ ,  $S^2_{(n-1)}=.00270309$ . M2:  $\text{estimated expected value}=.11327215$ ,  $\text{estimated variance}=.00081649$ , 82.00% in interval. Taylor:  $\text{estimated expected value}=.11293384$ ,  $\text{estimated variance}=.00117877$ , 89.50% in interval.  $\text{Var.coeff.}(\text{simulation})=.370275$ ,  $\text{Var.coeff.}(\text{M2})=.252263$ ,  $\text{Var.coeff.}(\text{Taylor})=.304012$



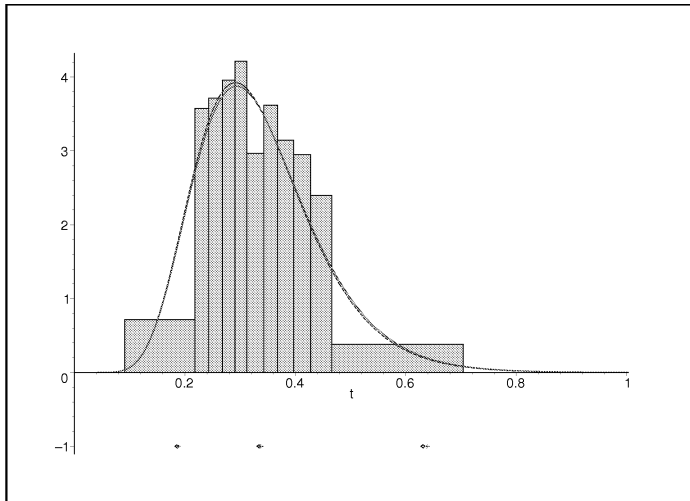


Figure 21:  $i=5$ ,  $\text{exact}=.32824753$ ,  $\text{arithmetic mean}=.33939668$ ,  $S^2_{(n-1)}=.01139405$ . M2:  $\text{estimated expected value}=.33438189$ ,  $\text{estimated variance}=.01239037$ , 94.00% in interval. Taylor:  $\text{estimated expected value}=.33715145$ ,  $\text{estimated variance}=.01273639$ , 94.00% in interval.  $\text{Var.coeff.}(\text{simulation})=.313721$ ,  $\text{Var.coeff.}(\text{M2})=.332889$ ,  $\text{Var.coeff.}(\text{Taylor})=.334733$

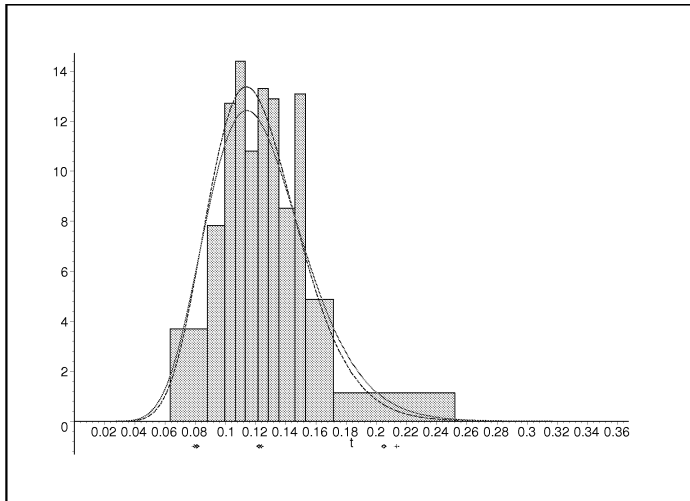


Figure 22:  $i=6$ , exact=.12090179, arithmetic mean=.12779481,  $S^2_{(n-1)}=.00101556$ . M2: estimated expected value =.12234544, estimated variance=.00096047, 93.50% in interval. Taylor: estimated expected value =.12402966, estimated variance=.00112529, 93.50% in interval. Var.coeff.(simulation)=.248743, Var.coeff.(M2) =.253311, Var.coeff.(Taylor) =.270462

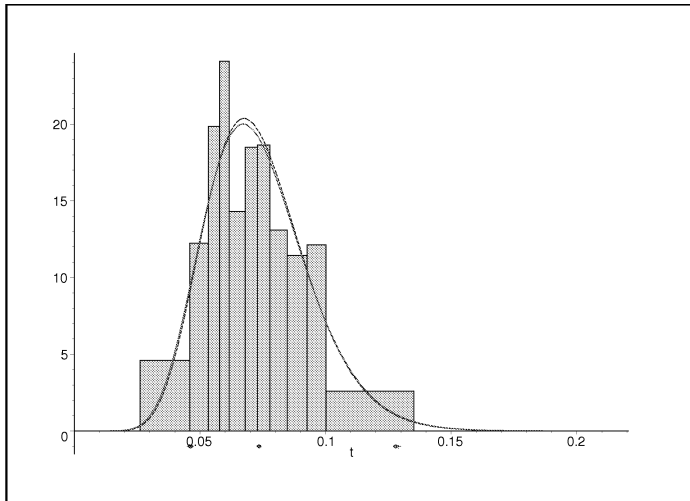


Figure 23:  $i=7$ ,  $\text{exact}=.07283257$ ,  $\text{arithmetic mean}=.07228684$ ,  $S_{(n-1)}^2=.00043234$ . M2:  $\text{estimated expected value}=.07351924$ ,  $\text{estimated variance}=.00041642$ , 90.00% in interval. Taylor:  $\text{estimated expected value}=.07343453$ ,  $\text{estimated variance}=.00043335$ , 90.50% in interval.  $\text{Var.coef.}(\text{simulation})=.286924$ ,  $\text{Var.coef.}(\text{M2})=.277565$ ,  $\text{Var.coef.}(\text{Taylor})=.283478$

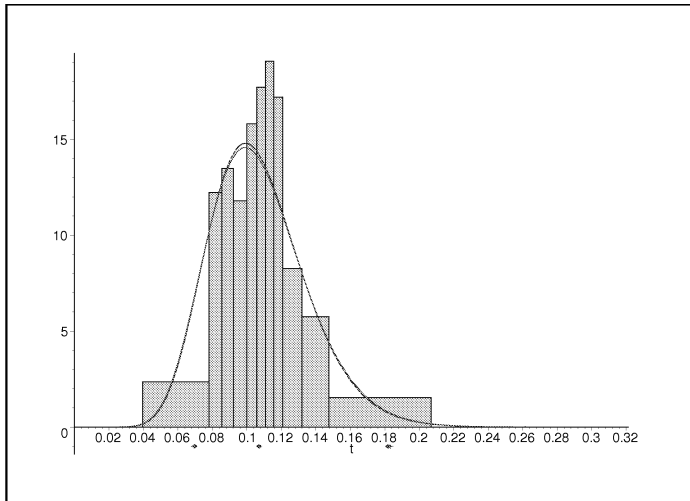


Figure 24:  $i=8$ , exact=.10659005, arithmetic mean=.10979957,  $S_{(n-1)}^2=.00078298$ . M2: estimated expected value =.10709090, estimated variance=.00078737, 93.00% in interval. Taylor: estimated expected value =.10720800, estimated variance=.00081302, 93.00% in interval. Var.coeff.(simulation)=.254206, Var.coeff.(M2) =.262022, Var.coeff.(Taylor) =.265964

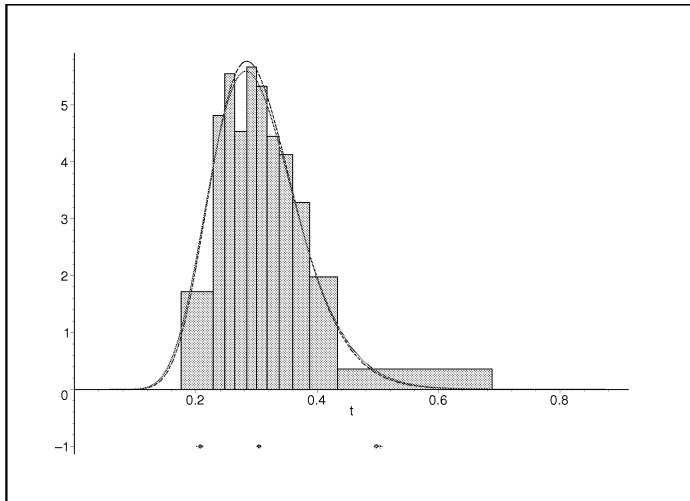


Figure 25:  $i=9$ ,  $\text{exact}=.30055556$ ,  $\text{arithmetic mean}=.31937791$ ,  $S_{(n-1)}^2=.00636517$ . M2:  $\text{estimated expected value}=.30424774$ ,  $\text{estimated variance}=.00523755$ , 93.00% in interval. Taylor:  $\text{estimated expected value}=.30438346$ ,  $\text{estimated variance}=.00560275$ , 94.00% in interval.  $\text{Var.coef.}(\text{simulation})=.249179$ ,  $\text{Var.coef.}(\text{M2})=.237868$ ,  $\text{Var.coef.}(\text{Taylor})=.245912$

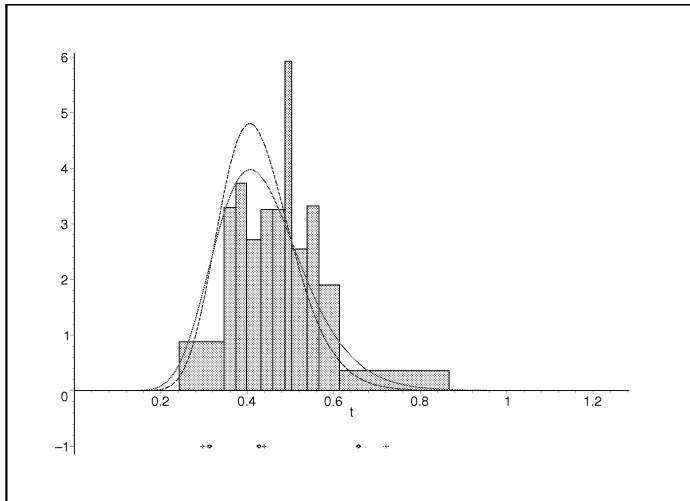


Figure 26:  $i=10$ , exact=.42445949, arithmetic mean=.47700948,  $S^2_{(n-1)}=.01171086$ . M2: estimated expected value =.42719243, estimated variance=.00742581, 90.50% in interval. Taylor: estimated expected value =.43845616, estimated variance=.01119914, 97.00% in interval. Var.coeff.(simulation)=.226297, Var.coeff.(M2) =.201720, Var.coeff.(Taylor) =.241360

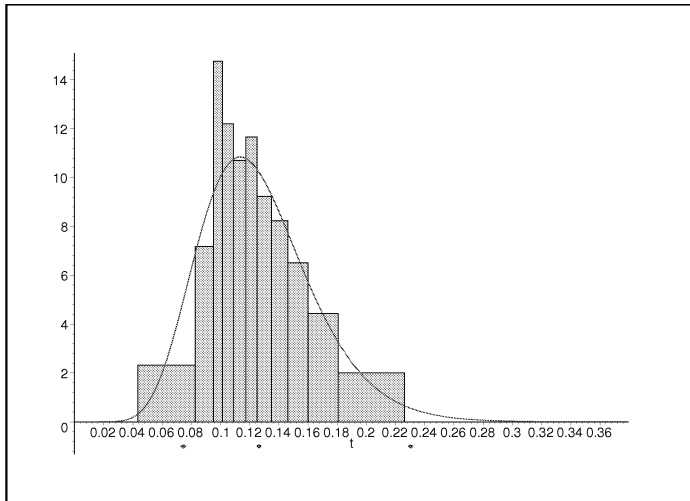


Figure 27:  $i=11$ , exact=.12621878, arithmetic mean=.12635430,  $S^2_{(n-1)}=.00132576$ . M2: estimated expected value =.12648105, estimated variance=.00151695, 93.50% in interval. Taylor: estimated expected value =.12641081, estimated variance=.00151963, 94.50% in interval. Var.coeff.(simulation)=.287444, Var.coeff.(M2) =.307936, Var.coeff.(Taylor) =.308379

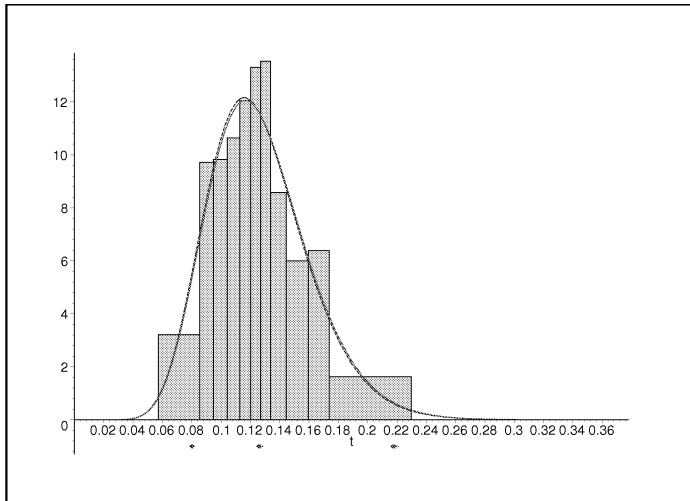


Figure 28:  $i=12$ , exact=.12617985, arithmetic mean=.12710113,  $S^2_{(n-1)}=.00121609$ . M2: estimated expected value =.12593797, estimated variance=.00117813, 92.00% in interval. Taylor: estimated expected value =.12686433, estimated variance=.00119775, 91.50% in interval. Var.coeff.(simulation)=.273681, Var.coeff.(M2) =.272546, Var.coeff.(Taylor) =.272799