

Allen, David E.; McAleer, Michael; Peiris, Shelton; Singh, Abhay K.

**Working Paper**

## Nonlinear Time Series and Neural-Network Models of Exchange Rates between the US Dollar and Major Currencies

Tinbergen Institute Discussion Paper, No. 15-125/III

**Provided in Cooperation with:**

Tinbergen Institute, Amsterdam and Rotterdam

*Suggested Citation:* Allen, David E.; McAleer, Michael; Peiris, Shelton; Singh, Abhay K. (2015) : Nonlinear Time Series and Neural-Network Models of Exchange Rates between the US Dollar and Major Currencies, Tinbergen Institute Discussion Paper, No. 15-125/III, Tinbergen Institute, Amsterdam and Rotterdam

This Version is available at:

<https://hdl.handle.net/10419/125124>

**Standard-Nutzungsbedingungen:**

Die Dokumente auf EconStor dürfen zu eigenen wissenschaftlichen Zwecken und zum Privatgebrauch gespeichert und kopiert werden.

Sie dürfen die Dokumente nicht für öffentliche oder kommerzielle Zwecke vervielfältigen, öffentlich ausstellen, öffentlich zugänglich machen, vertreiben oder anderweitig nutzen.

Sofern die Verfasser die Dokumente unter Open-Content-Lizenzen (insbesondere CC-Lizenzen) zur Verfügung gestellt haben sollten, gelten abweichend von diesen Nutzungsbedingungen die in der dort genannten Lizenz gewährten Nutzungsrechte.

**Terms of use:**

*Documents in EconStor may be saved and copied for your personal and scholarly purposes.*

*You are not to copy documents for public or commercial purposes, to exhibit the documents publicly, to make them publicly available on the internet, or to distribute or otherwise use the documents in public.*

*If the documents have been made available under an Open Content Licence (especially Creative Commons Licences), you may exercise further usage rights as specified in the indicated licence.*

# Nonlinear Time Series and Neural–Network Models of Exchange Rates between the US Dollar and Major Currencies

*David E. Allen*<sup>1</sup>

*Michael McAleer*<sup>2</sup>

*Shelton Peiris*<sup>3</sup>

*Abhay K. Singh*<sup>4</sup>

<sup>1</sup> *The University of Sydney, The University of South Australia, Australia;*

<sup>2</sup> *National Tsing Hua University, Taiwan; Erasmus School of Economics, Erasmus University Rotterdam, Tinbergen Institute, the Netherlands; Complutense University of Madrid, Spain;*

<sup>3</sup> *The University of Sydney, Australia;*

<sup>4</sup> *Edith Cowan University, Australia.*

Tinbergen Institute is the graduate school and research institute in economics of Erasmus University Rotterdam, the University of Amsterdam and VU University Amsterdam.

More TI discussion papers can be downloaded at <http://www.tinbergen.nl>

Tinbergen Institute has two locations:

Tinbergen Institute Amsterdam  
Gustav Mahlerplein 117  
1082 MS Amsterdam  
The Netherlands  
Tel.: +31(0)20 525 1600

Tinbergen Institute Rotterdam  
Burg. Oudlaan 50  
3062 PA Rotterdam  
The Netherlands  
Tel.: +31(0)10 408 8900  
Fax: +31(0)10 408 9031

# Nonlinear time series and neural-network models of exchange rates between the US dollar and major currencies <sup>☆</sup>

David E. Allen<sup>a,\*</sup>, Michael McAleer<sup>b</sup>, Shelton Peiris<sup>c</sup>, and Abhay K. Singh<sup>d</sup>

<sup>a</sup>*School of Mathematics and Statistics, the University of Sydney, and Centre for Applied Financial Studies, School of Business, the University of South Australia.*

<sup>b</sup>*Department of Quantitative Finance, National Tsing Hua University, Taiwan, Econometric Institute, Erasmus School of Economics, Erasmus University Rotterdam, Tinbergen Institute, The Netherlands, Department of Quantitative Economics, Complutense University of Madrid, Spain.*

<sup>c</sup>*School of Mathematics and Statistics, University of Sydney, Australia.*

<sup>d</sup>*School of Accounting, Finance and Economics, Edith Cowan University, Australia.*

---

## Abstract

This paper features an analysis of major currency exchange rate movements in relation to the US dollar, as constituted in US dollar terms. Euro, British pound, Chinese yuan, and Japanese yen are modelled using a variety of nonlinear models, including smooth transition regression models, logistic smooth transition regressions models, threshold autoregressive models, nonlinear autoregressive models, and additive nonlinear autoregressive models, plus Neural Network models. The results suggest that there is no dominating class of time series models, and the different currency pairs relationships with the US dollar are captured best by neural net regression models, over the ten year sample of daily exchange rate returns data, from August 2005 to August 2015.

*Keywords:* Non linear models, time series, non-parametric, smooth-transition regression models, neural networks, GMDH shell.

*JEL:* C45, C53, F3, G15.

---

<sup>☆</sup>The analysis in the paper was undertaken with R and GMDH shell.

\*Corresponding author. **Acknowledgements:** For financial support, the first author acknowledges the Australian Research Council, and the second author is most grateful to the Australian Research Council, National Science Council, Taiwan, and the Japan Society for the Promotion of Science.

*Email address:* profallen2007@gmail.com (David E. Allen)

## 1. Introduction

The Global Financial Crisis (GFC) had a major and sustained impact on the world's financial markets. This paper examines whether the exchange rate behaviour of four major currencies; namely the Euro, British pound, Chinese Yuan, and Japanese yen, in the context of their paired relationships with the US dollar, is better captured using a variety of nonlinear autoregressive models or by a machine learning approach. The models examined include the following nonlinear regression models: smooth transition regression model (STAR), Logistic smooth transition regressions models (LSTAR), self-exciting threshold autoregressive models (SETAR), neural network nonlinear autoregressive model (NNET), and additive nonlinear autoregressive model (AAR), and further models based on the application of various regression specifications of neural network models. Franses and van Dijk (2000) mention that nonlinear time series models have become fashionable tools to describe and forecast economic time series. They have been applied to macro-economic and financial variables such as unemployment, industrial production, and exchange rates.

Exchange rate forecasting remains a troublesome issue. Rogoff (1996) chronicled some of the difficulties, particularly in relation to purchasing power parity (PPP). This embodies the simple empirical proposition that once converted to a single currency; national price levels should be equal. He mentions the paradoxical contrast between the extremely slow rate at which currencies appear to converge to long-run equilibrium, and the enormous volatility of short-run real exchange rate movements.

The general difficulties encountered in exchange rate modelling are discussed in Taylor and Sarno (2003), and more specifically, nonlinear modelling dynamics in Taylor et al. (2001) and Sarno et al. (2004). Baillie and Bollerslev (1989), suggest that foreign currency rates are best characterized as pure unit-root (random walk or martingale) processes, which implies it is impossible to predict exchange rate movements. Engel and Hamilton (1990) applied a Markov switching model for exchange rate changes, while Diebold and Nason (1990) and Meese and Rose (1990) used variants of local regression. Morana and Beltratti (2004) examine long memory and structural breaks in the realized variance process for the DM/US\$ and Yen/US\$ exchange rates.

The use of neural networks to forecast exchange rate movements was initiated by studies such as Kuan and Liu (1995), who used feedforward and recurrent artificial neural networks to produce conditional mean forecasts. In recent years

the argument in favour of the martingale hypothesis has been queried because of the possibility of long memory (fractional) dynamic behaviour in the foreign currency market, an approach which is adopted in this paper.

The paper is divided into four sections; section 2 follows the introduction and introduces the data set and econometric and data mining methods used, section 3 presents the results, followed by a conclusion in section 4.

## 2. Research Methods

### 2.1. Data Set and Econometric Models

#### 2.1.1. Data Sets

The data set includes daily data for each currency, in US dollar terms, of the exchange rates paired with the Euro, British pound, Chinese yuan, and Japanese yen, taken from a ten-year period drawn from 29 August 2005 to 28 August 2015. These daily US dollar-denominated exchange rate series are sourced from the FRED database (Federal Reserve Bank of St. Louis Economic Data). Unit root tests, based on KPSS tests, and fractional integration tests, indicated that the levels series of these exchange rates are non-stationary, as shown in Table 2. Therefore we chose to work with the logarithms of the first difference, that is, log differences, of our base series, for the purposes of the modelling of these exchange rate movements and forecasts, as shown below:

$$y_{it} = \ln(ER_{it}) - \ln(ER_{it-1}), \quad (1)$$

where  $ER_{it}$  indicates the US dollar denominated exchange rate  $i$ , and  $i$  indexes the four series, on day  $t$ . We scaled the returns by 100 to make them easier to manage for the purposes of statistical analysis. Thus, the results are in percentage terms.

The data sets used are shown in Table 1. The tests of stationarity, featuring KPSS tests, with null hypothesis of stationarity, and tests of fractional integration, using a local Whittle approximation, are reported in Table 2. The KPSS tests strongly reject the null hypothesis of stationarity for the levels series of all four exchange rates, and the fractional integration tests all suggest values above 1. Hence, we use the logarithm of first differences of our base series.

A set of graphs of the base series are shown in Figure 1.

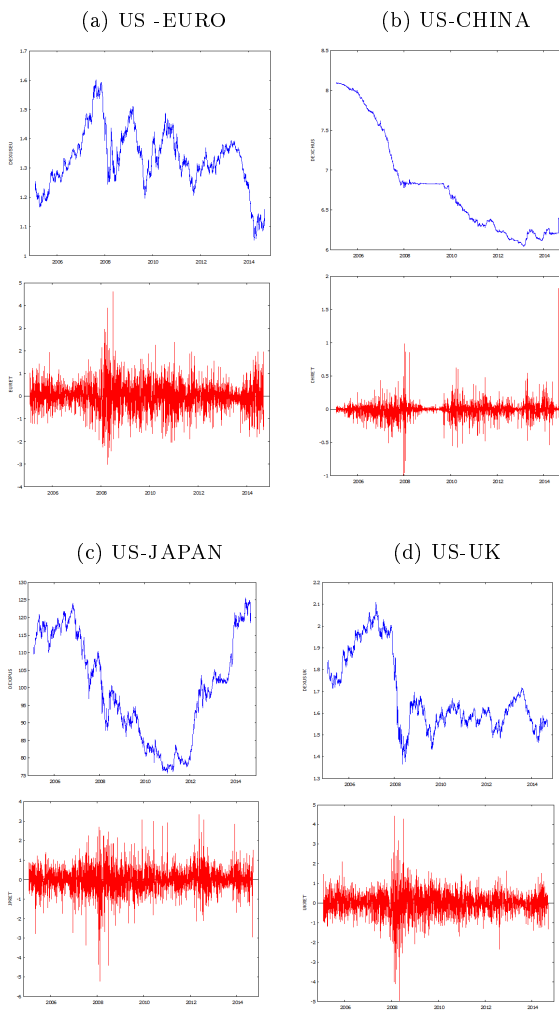
Table 1: List of countries and exchange rates

Country	Symbol	Abbreviations
EURO	EURET	EURO exchange rate return
CHINA	CHRET	CHINESE exchange rate return
JAPAN	JPRET	JAPANESE exchange rate return
UK	UKRET	UK exchange rate return

Table 2: Tests of Stationarity

	KPSS test	Probability	Fractional integration (Whittle estimator)	Z statistic	Probability
EURO - US Dollar exchange rate	4.1066	0.01*	1.01789	21.156	0.0000
CHINESE Yuan - US Dollar exchange rate	25.1896	0.01*	1.101	22.865	0.0000
JAPANESE YEN - US Dollar exchange rate	8.4585	0.01*	1.0163	13.985	0.0000
UK Pound - US Dollar exchange rate	13.8446	0.01*	1.032	21.463	0.0000

Figure 1: Series plots



Statistics	EURET	CHRET	JPRET	UKRET
Mean	-0.0037	-0.0094	0.0037	-0.0063
Median	0.000	-0.0024	0.0084	0.0065
Maximum	4.621	1.816	3.342	4.4348
Minimum	-3.003	-0.998	-5.216	-4.9662
Skewness	0.188	1.637	-0.326	-0.3404
Excess Kurtosis	3.028	33.897	5.159	-0.3404
Standard Deviation	0.638	0.119	0.664	0.6194
Coefficient of Variation	173.97	12.615	178.89	97.827

Table 3: Descriptive statistics

### 2.2. Data Characteristics

The characteristics of the basic index series used in our data set presented in Table 3 suggest substantial departures from normal distributions.

The summary statistics presented in Table 3 show that these exchange rate return series, have means and medians that are close to zero, and they are not particularly skewed. Two series have excess kurtosis, which is evident in the case of China, and to a lesser degree in that of Japan. The UK exchange rate returns have negative excess kurtosis, which suggests that the distribution is flatter than a normal distribution.

The QQ plots, as shown in Figure 2, show that all the exchange rate return series have too many extreme observations in their tails to conform to normal distributions.

### 2.3. Econometric Methods

We use nonlinear autoregressive time series models in the analysis. Consider a discrete time stochastic process  $\{X_t\}_{t \in T}$  that is generated by:

$$X_{t+s} = f(X_t, X_{t-d}, \dots, X_{t-(m-1)d}; \theta) + \epsilon_{t+s}, \quad (2)$$

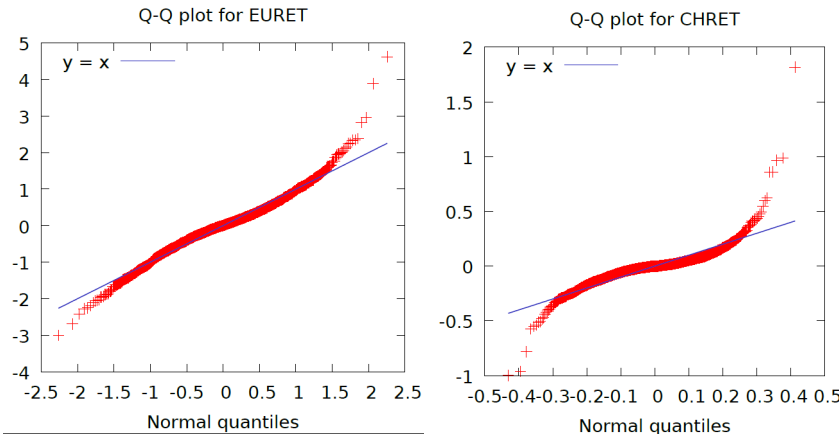
with  $\{\epsilon\}_{t \in T}$  white noise,  $\epsilon_{t+s}$  independent with respect  $X_{t+s}$ , and with  $f$  a generic function from  $R^m$  to  $R$ . This class of models is frequently referred to as being nonlinear autoregressive of order  $m$ .

In equation (2) there is an implicit definition of the embedding dimension  $m$ , the time delay  $d$ , and the forecasting steps  $s$ . The generic vector,  $\theta$ , indicates the vector of parameters determining the shape of  $\theta$ , which will be estimated on the basis of empirical evidence in the form of an observed time series.

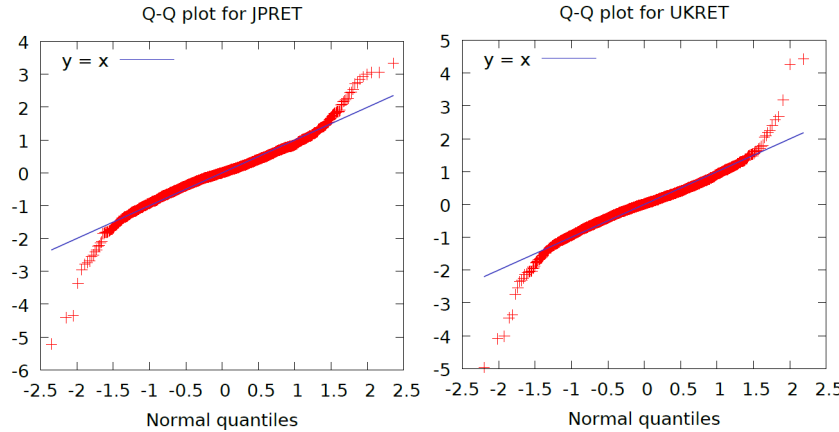


Figure 2: QQ Plots

(a) EEU and China



(b) Japan and UK



A classical  $AR(m)$  model can be written as:

$$X_{t+s} = \phi + \phi_0 X_t + \phi_1 X_{t-d} + \dots + \phi_m X_{t-(m-1)d} + \epsilon_{t+s}. \quad (3)$$

The model in equation (3) can be estimated using conditional least squares.

A Self-Exciting Threshold Autoregressive Model (SETAR) can be written as:

$$X_{t+s} = \begin{cases} \phi_1 + \phi_{10} X_t + \phi_{11} X_{t-d} + \phi_{1L} X_{t-(L-1)d} + \epsilon_{t+s}, & Z_t \leq th \\ \phi_2 + \phi_{20} X_t + \phi_{21} X_{t-d} + \phi_{2L} X_{t-(H-1)d} + \epsilon_{t+s}, & Z_t > th \end{cases} \quad (4)$$

with  $Z_t$  being a threshold variable. This can be variously defined for estimation purposes (see the discussion in the R package `tsDyn` available on Cran, <https://cran.r-project.org/>).

A Logistic Smooth Transition Autoregressive Model (LSTAR) can be viewed as a generalisation of a SETAR model, and can be written as:

$$X\phi_{t+s} = (\phi_1 + \phi_{10} X_t + \phi_{11} X_{t-d} + \phi_{1L} X_{t-(L-1)d}(1 - G(Z_t, \gamma, th)) \\ + (\phi_2 + \phi_{20} X_t + \phi_{21} X_{t-d} + \phi_{2L} X_{t-(H-1)d}(1 - G(Z_t, \gamma, th)) + \epsilon_{t+s} \quad (5)$$

with  $G$  the logistic function, and  $Z_t$  the threshold variable.

A non-parametric generalised additive autoregressive model (GAM) can be written as:

$$x_{t+s} = \mu + \sum_{i=1}^m s_i(x_{t-(i-1)d}), \quad (6)$$

where  $s_i$  are smooth functions represented by penalized cubic regression splines.

In the empirical analysis, we used two approaches to the empirical estimation of neural network models. One was a linear approach, which is available in the R package `TsDyn`. A neural network model with linear input,  $D$  hidden units and activation function  $g$ , can be written as:

$$x_{t+s} = \beta_0 + \sum_{j=1}^D \beta_j g(\gamma_{0j} + \sum_{i=1}^m \gamma_{ij} x_{t-(i-1)d}). \quad (7)$$

We also apply some nonlinear neural net modelling, using the GMDH shell program (<http://www.gmdhshell.com>). This program is built around an approxi-

mation called the ‘‘Group Method of Data Handling’’. This approach is used in such fields as data mining, prediction, complex systems modelling, optimization and pattern recognition. The algorithms feature an inductive procedure that performs a sifting and ordering of gradually complicated polynomial models, and the selection of the best solution by external criterion.

A GMDH model with multiple inputs and one output is a subset of components of the base function:

$$Y(x_1, \dots, x_n) = a_0 + \sum_{i=1}^m a_i f_i, \quad (8)$$

where  $f$  are elementary functions dependent on different inputs,  $a$  are unknown coefficients, and  $m$  is the number of base function components.

In general, the connection between input-output variables can be approximated by Volterra functional series, the discrete analogue of which is the Kolmogorov-Gabor polynomial:

$$y = a_0 + \sum_{i=1}^m a_i x_i + \sum_{i=1}^m \sum_{j=1}^m a_{ij} x_i x_j + \sum_{i=1}^m \sum_{j=1}^m \sum_{k=1}^m a_{ijk} x_i x_j x_k + \dots, \quad (9)$$

where,  $x = (x_1, x_2, \dots, x_m)$ , the input variables vector, and  $A = (a_0, a_1, a_2, \dots, a_m)$  the vector of weights. The Kolmogorov-Gabor polynomial can approximate any stationary random sequence of observations, and can be computed by either adaptive methods or a system of Gaussian normal equations. Ivakhnenko (1968) developed a new algorithm, ‘The Group Method of Data Handling (GMDH)’ by using a heuristic and perceptron type of approach. He demonstrated that a second-order polynomial (Ivakhnenko polynomial:  $y = a_0 + a_1 x_1 + a_2 x_2 + a_3 x_1 x_2 + a_4 x_1^2 + a_5 x_2^2$ ) can reconstruct the entire Kolmogorov-Gabor polynomial using an iterative perceptron-type procedure. This approach is featured in the second stage of the empirical analysis, as given below, which uses the GMDH shell software.

### 3. Empirical Results

#### 3.1. Nonlinear Time Series Analysis

A summary of the results of applying the various nonlinear models to the US dollar to Euro exchange rate returns is shown in Table 4. It can be seen that

Table 4: Non-linear models-Euro

Euro	intercept	F smooth terms V1	F smooth terms V10	AIC	MAPE	R-sq.(adj)
AAR	-0.00394	1.7249	2.4575*	-2244	104.5%	0.00629
SETAR model ( 2 regimes)	Constant L	phiL.1	phiL.2			
Low regime	-0.00972614	0.02389115				
	Constant H	phiH.1	phiH.2			
High regime	0.2307366 **	-0.0153295	-0.2220478**			
Threshold	Value	Propn. in high	Propn. in low			
Z(t) = + (0) X(t)+ (1)X(t-1)	0.5448	15.6%	84.4%	-2258	106.1%	
NNET time series model	2-3-1 network with 13 weights			-2317	102.9%	
LSTAR model	Constant L	phiL.1	phiL.2			
Low regime	-2.39025525	-0.02832705	-0.87307328			
	Constant H	phiH.1	phiH.2			
High regime	4.08892959	0.07937599	0.23125994			
smoothing parameter	gamma = 0.8042					
Threshold	Value					
Z(t) = + (0) X(t) + (1) X(t-1)	-0.4226			-2259	106%	
Random Walk(1)	Constant	slope coefficient				
	-0.00387743	0.0176781			118%	-0.000087
Random Walk (20) lags					108%	

none of the models is particularly effective. The additive autoregressive model for the US dollar Euro exchange rate returns, the results for which are shown in the top row of Table 4, produced an AIC value of -2444, a Mean Average Percentage error (MAPE) of 104.5% and an adjusted R-squared value of less than 1%.

The two-regime SETAR model for the Euro fared slightly better in terms of AIC, with a value of -2258, but had a worse MAPE of 106.1%. Two coefficients in the high regime, which accounted for 15.6% of the total values were significant. The neural net 2-3-1 network with 13 weights fared the best with an AIC of -2317, and the lowest MAPE of 102.9%. The LSTAR model for the Euro also performed relatively poorly, with an AIC of -2259 and a MAPE of 106%.

We also report the results of running the forecast of the exchange rate change as a strict simple random walk with no drift. In this model, the prediction of the next return is the current return, which produces a MAPE for the EURO of 118% when using a one-step ahead forecast. When it was fitted as a simple linear regression,  $y_{it} = a_{it} + by_{it-1} + e_{it}$ , the coefficients are insignificant, and the adjusted R squared is zero. However, the time series models were used to make 20-period forecasts, based on the random walk model, produced a MAPE of 108%, which is worse than for the time series models.

We examined various graphical analyses. Some of the results relating to the SETAR model are shown in Figure 3. In Sub-Figure 3a, we plot the original US\$ Euro exchange rate return series and the residuals from the SETAR analysis, in the top of the panel, and below it in Sub-Figure 3a, we plot the autocorrelation

Table 5: Non-linear models-China

China	intercept	F smooth terms V1.0	F smooth terms V1.1	AIC	MAPE	R-sq.(adj)
AAR	-0.0094677	33.4181***	3.4645***	-10854	122.6%	0.078
SETAR model ( 2 regimes)	Constant L	phiL.1	phiL.2			
Low regime	-0.00972614	0.02389115				
	Constant H	phiH.1	phiH.2			
High regime	0.2307366 **	-0.0153295	-0.2220478**			
Threshold	Value	Propn. in high	Propn. in low			
Z(t) = + (0) X(t)+ (1)X(t-1)	-0.04467	73.3%	26.7%	-10695.75	116.9%	
NNET time series model	2-3-1 network with 13 weights			-10870.93	121.8%	
LSTAR model	Constant L	phiL.1	phiL.2			
Low regime	-0.1336682	-0.2158839	-0.4292838			
	Constant H	phiH.1	phiH.2			
High regime	0.1294817	0.1725717	0.3706611			
smoothing parameter	gamma = 23.85					
Threshold	Value					
:Z(t) = + (0) X(t) + (1) X(t-1)	-0.4226			-10691.80	117.8%	
Random walk (1)	Constant	Slope coefficient				
	-0.0100210***	-0.0301522***			100.2%	0.003095
Random walk (20)					121.38%	

function of the original series and that of the residuals. In Sub-Figure 3b, we plot the mutual information (MI) series and one of the lag relationships (lag -1, 0). In Sub-Figure 3c we plot lag (-1,1) plus a regime switching plot.

The results for the Chinese exchange rate with the US \$ returns are shown in Table 5. The plots of the exchange rate series in Figure 1, Sub-Figure 1b, reveal that the Chinese exchange rate with the US \$ behaves differently, is smoother, and shows evidence of exchange rate management.

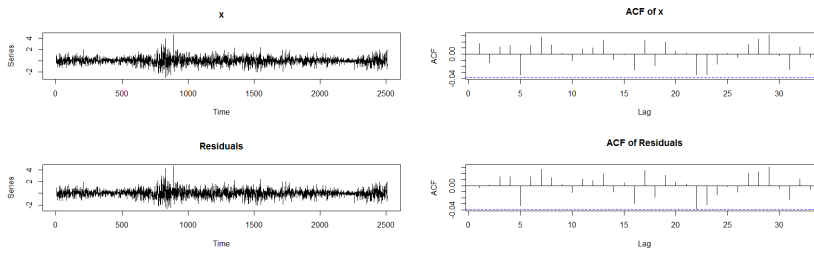
However, this has not translated into a greater ease of forecasting Chinese currency exchange rate return changes. The Mean Average Percentage Errors (MAPE) range from 116% to 122%. The AIC again suggests the NNET approach is preferred, though this approach has a relatively high MAPE of 121.8%. A regression of the current return on the previous return, as discussed above, produces a statistically significant slope coefficient. However, the use of a strict random walk model to forecast the series, in a one-step ahead process, produces the lowest MAPE of 100.2%, but a 20-period forecast has a MAPE of 121.38%, which is worse than some of the time series models for 20-period forecasts.

The results for Japan are quite clear cut. The NNET model has the highest AIC score (in absolute) terms, and the lowest MAPE of the nonlinear methods. The results of the random walk regression are insignificant, but use of the random walk model for forecasting purposes, with one lag, produces the lowest MAPE of 88.92%, but 20 lags produce a MAPE of 104.44%. This is comparable with the time series models.

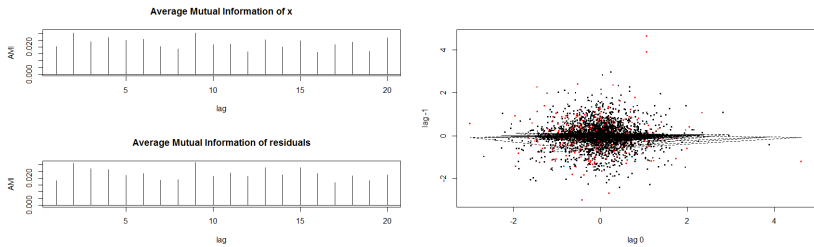
The UK results are similar. The NNET model produces the highest absolute value of AIC, but its MAPE is 106.2%. All the other nonlinear models produce

Figure 3: SETAR analysis of US\$ - Euro returns

(a) Euro SETAR Residuals and ACF



(b) MI Euro and lag -1, 0



(c) lag 1 -1 SETAR Euro and Regime Switching

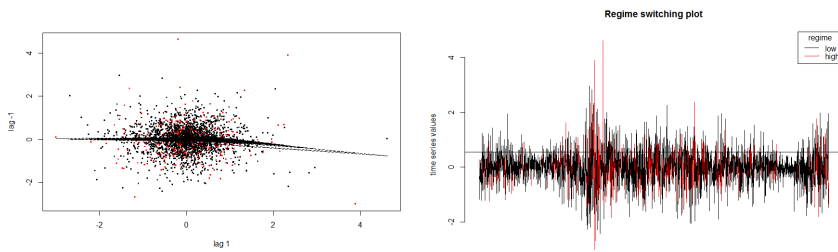


Table 6: Non-linear models-JAPAN

Japan	intercept	F smooth terms V1.0	F smooth terms V1.1	AIC	MAPE	R-sq.(adj)
AAR	0.0038522	5.4933 **	4.0491	-2048	104.5%	0.00859
SETAR model ( 2 regimes)	Constant L	phiL.1	phiL.2			
Low regime	-0.00972614	0.02389115				
	Constant H	phiH.1	phiH.2			
High regime	0.2307366 **	-0.0153295	-0.2220478 **			
	Threshold Value	Propn. in high	Propn. in low			
Z(t) = + (0) X(t)+ (1)X(t-1)	-0.04467	73.3%	26.7%	-10695.75	116.9%	
NNET time series model	2-3-1 network with 13 weights			-2081.341	101.9 %	
LSTAR model	Constant L	phiL.1	phiL.2			
Low regime	-0.1092538	-0.1124170	-0.0582778			
	Constant H	phiH.1	phiH.2			
High regime	0.12426792	0.11504397	0.01657785			
smoothing parameter	gamma = 100					
	Threshold Value					
Z(t) = + (0) X(t) + (1) X(t-1)	-0.7085			-2048	104.9%	
Random walk(1)	Constant	Slope coefficient				
	0.00366027	-0.0170771			88.92%	-0.000108
Random walk (20)					104.44%	

Table 7: Non-linear models-UK

UK	intercept	F smooth terms V1.0	F smooth terms V1.1	AIC	MAPE	R-sq.(adj)
AAR	-0.0069404	3.6884 **	1.0387	-2382	103.6%	0.00687
SETAR model ( 2 regimes)	Constant L	phiL.1	phiL.2			
Low regime	0.14175779 *	-0.04871131	0.14579643*			
	Constant H	phiH.1	phiH.2			
High regime	-0.02411116**	0.02448354	0.04441084			
	Threshold Value	Propn. in high	Propn. in low			
Z(t) = + (0) X(t)+ (1)X(t-1)	-0.3935	78.09%	21.91%	-2406.445	109.06 %	
NNET time series model	2-3-1 network with 13 weights			-2415.012	106.2 %	
LSTAR model	Constant L	phiL.1	phiL.2			
Low regime	0.135255*	-0.048852	0.141031 *			
	Constant H	phiH.1	phiH.2			
High regime	-0.157804 **	0.073844	-0.099545			
smoothing parameter	gamma = 100					
	Threshold Value					
Z(t) = + (0) X(t) + (1) X(t-1)	-0.397965			-2403.007	106.8%	
Random walk(1)	Constant	Slope coefficient				
	-0.00630317	0.00808887			89.29%	-0.000334
Random walk (20)					110.28%	

inferior results. The UK random walk regression is insignificant, with a slope coefficient close to zero, but use of a strict random walk model, or naive no change model, for forecasting purposes, for one lag, yields the lowest MAPE of 89.29%. In order to be strictly comparable with the time series models, which used 20 period forecasts, the MAPE is 110.28%, which is inferior to the time series results.

Given that neural network analysis seemed to perform relatively well in these analyses, it was decided to extend the analysis applying non-linear neural net estimation procedures in a regression context.

### 3.2. Further Analysis Using Neural Nets

Regression analyses using higher order polynomials produced the models shown in Table 8. In all cases where one individual currency exchange rate return was the dependent variable in the regression analysis, only lagged terms of the other exchange rates were used. The neural network analysis produced quite complex models, with higher order terms and new variables that were complex weights of existing variables. For example, in Euro model 2, the new variable N9 is a combination of lagged observations of the Euro exchange rate return, combined with lagged observations of the Chinese exchange rate return. The neural nets were trained on 80% of the available time series observations, and the forecasts were run on the remaining 20% of observations.

Plots of the neural net model forecasts are shown in Figure 4. It is apparent that the neural net based regression models capture only a small proportion of the volatile changes in currency rate of return movements. The results for fluctuations in China appear to be better than for the other three currencies.

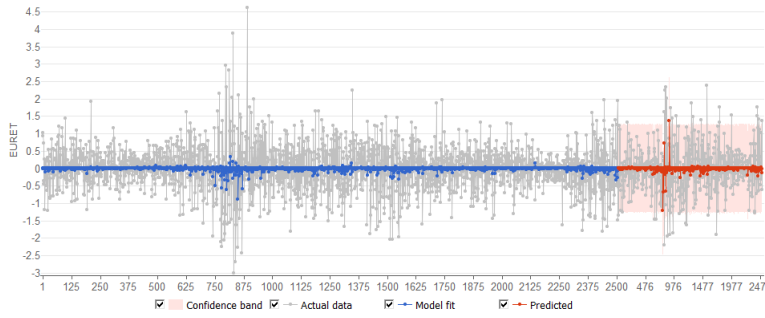
Plots of the residuals are shown in Figure 5. These reveal that the models behave reasonably well, in that the autocorrelation of residuals is of a low order, and the histograms of the residuals are unimodal. There is a clustering of observations in excess of two standard errors from the model fit, in the case of both the training and forecast periods. This is consistent with the existence of volatility clustering, and will be explored further in a subsequent paper.

The error metrics from the neural net regressions are shown in Table 9. The most successful model is for China, which has the lowest mean absolute errors of 0.067 and 0.07 for model fit and predictions, respectively, and similarly root mean square errors of 0.11 and 0.11 for model fit and predictions. The coefficient of determination is 0.10 for model fit and 0.11 for predictions, respectively. The next best model is that for the UK, with a mean absolute error of 0.44, a

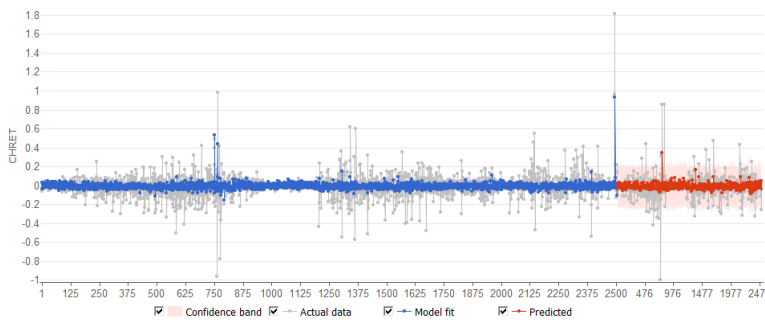


Figure 4: Model forecasts

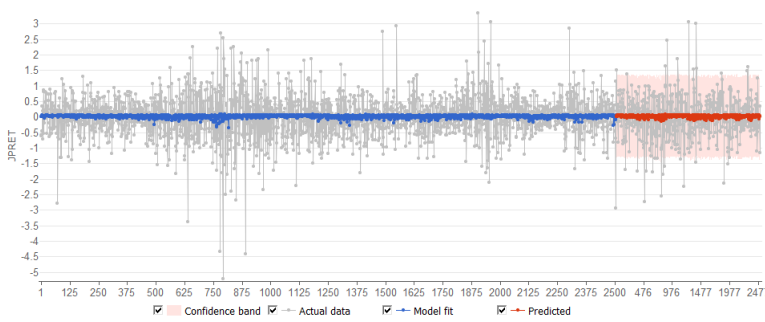
(a) Euro



(b) China



(c) Japan



(d) UK

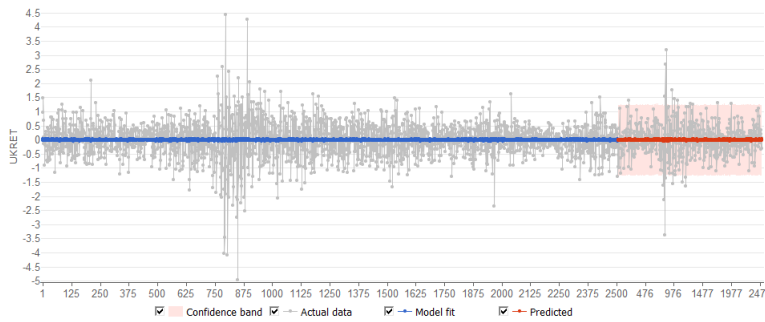


Figure 5: Residual plots

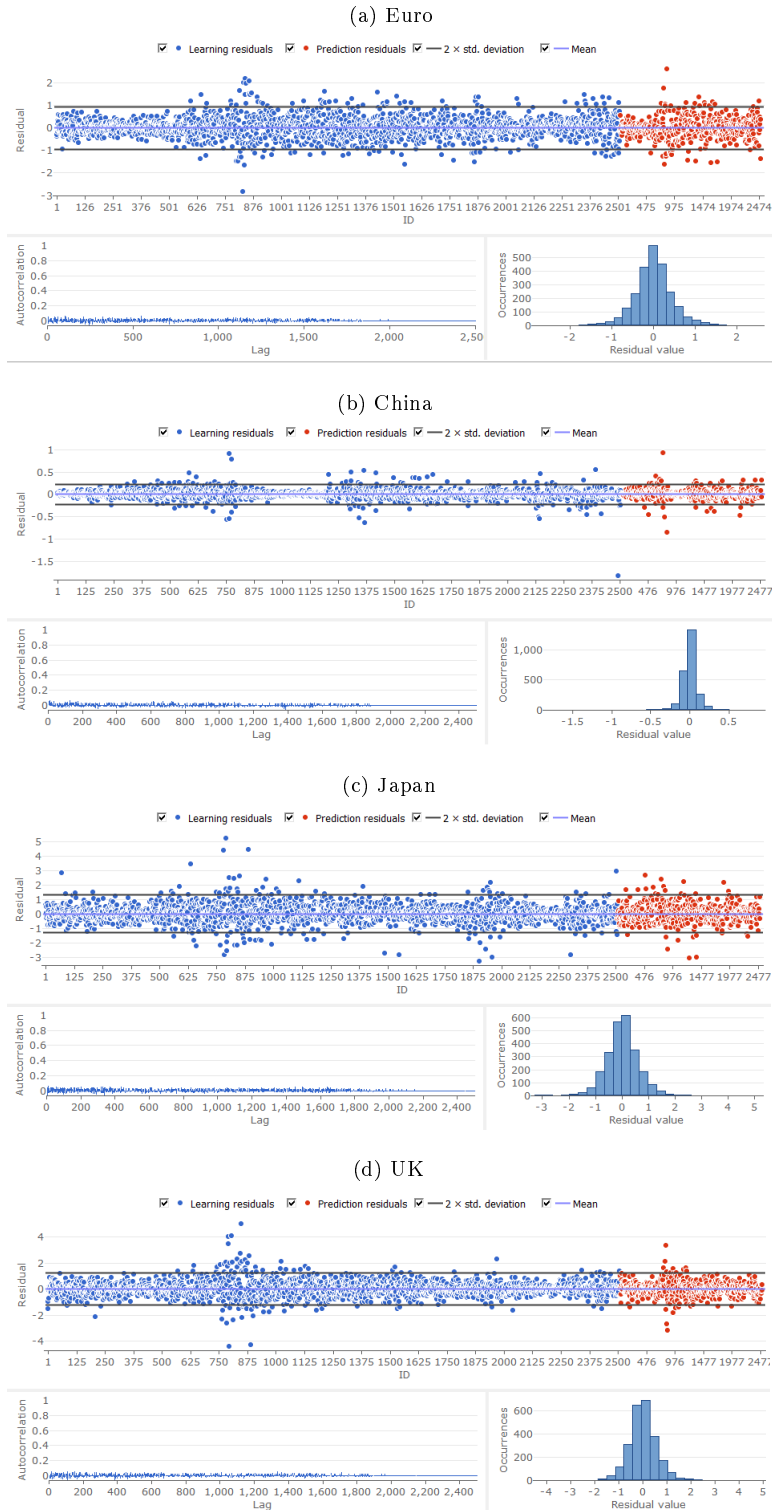


Table 8: Neural Network Regression Analysis

<b>Euro (model 1)</b>
$Y1[t] = 0.0848635 + \text{EURET}[t-2]*\text{EURET}[t-2], \text{cubert}^{*(-0.0136538)} +$ $\text{EURET}[t-2]*\text{EURET}[t-3]*(-0.0357626) + \text{EURET}[t-3]*\text{EURET}[t-6], \text{cubert}^{*0.0464996} +$ $\text{time}*\text{EURET}[t-8], \text{cubert}^{*2.72731e-05} + \text{EURET}[t-4]*\text{EURET}[t-11]*(-0.0678379) +$ $\text{cycle}*0.0028167 + \text{EURET}[t-8], \text{cubert}^{**}\text{EURET}[t-10], \text{cubert}^{*0.0583482}$
<b>Euro (model 2)</b>
$Y1 = 0.000426977 - \text{LUKRET}*N9*0.694354 + N9*1.15686$
$N9 = 0.0127939 - \text{LEURET}*LCHRET*0.237853 - \text{LEURET}^2*0.0444379$
<b>China (model 1)</b>
$\text{China Model 1 } Y1 = 0.00936077 + N76*1.02217 + N118*1.0439N118 = -0.00973411 +$ $\text{LJPRET}*0.0164911 - \text{LJPRET}*\text{LEURET}, \text{cubert}^{*0.00848911} - \text{LEURET}, \text{cubert}^{*0.0206867}$
$N118 = -0.00973411 + \text{LJPRET}*0.0164911 - \text{LJPRET}*\text{LEURET}, \text{cubert}^{*0.00848911} -$ $\text{LEURET}, \text{cubert}^{*0.0206867}$
$N76 = 0.00455715 - \text{LCHRET}*0.202939 + \text{LCHRET}^2*0.446615 + \text{LCHRET},$ $\text{cubert}^{*0.0261334} - \text{LCHRET}, \text{cubert}^2*0.142591$

Table 9: Neural network regression error metrics

	Euro	China	Japan	UK
Model fit	2006 observations	2006 observations	2006 observations	2006 observations
Mean absolute error	0.4578	0.0676	0.4666	0.4465
Root mean square error	0.6319	0.1167	0.6597	0.6245
Coefficient of Determination ( $R^2$ )	0.0068	0.1000	0.0045	0.0011
Predictions	501 observations	501 observations	501 observations	501 observations
Mean absolute error	0.4818	0.0712	0.5036	0.4311
Root mean square error	0.6649	0.1167	0.6751	0.5945
Coefficient of Determination ( $R^2$ )	-0.0383	0.1125	0.0003	0.0039

root mean square error of 0.62, and a coefficient of determination of 0.0011 for model fit. Its errors are lower than those for the Euro, but its coefficient of determination for model fit is lower than for the Euro 0.0068. However, the metrics for the UK predictions are better than those for the Euro. The metrics for Japan for both model fit and for predictions are relatively weak. Clearly, the managed nature of the Chinese currency makes it much easier to forecast than the other three more freely floating currencies. It appears that the neural network regression techniques, particularly in the case of China, work better than the non-linear time series regression models.

#### 4. Conclusion

In this paper we have modelled exchange rate return series for four currencies, namely the Euro, Chinese Yuan, Japanese Yen, and UK pound, when paired with the US dollar, in US dollar terms. We used a variety of non-linear time series models which included the following: smooth transition regression models, logistic smooth transition regressions models, threshold autoregressive models, nonlinear autoregressive models, and additive nonlinear autoregressive models, plus linear and nonlinear Neural Network based regression models. These models were also contrasted with a random walk model with no drift, used for both one and twenty lags, to provide a naive, no-change benchmark model for purposes of comparison.

The neural network based models clearly dominated, and the non-linear regression Neural Network models appeared to be the most effective, in terms of error metrics, for forecasting purposes. The Chinese yuan exchange rate return series appeared to be the most amenable to prediction, but all series produced large errors and low coefficients of determination.

#### References

- [1] Antonio, F.D. Narzo, J.L. Aznarte and M. Stigler (2009), tsDyn: Time series analysis based on dynamical systems theory, url = {<http://stat.ethz.ch/CRAN/web/packages/tsDyn/vignettes/tsDyn.pdf>}.
- [2] Baillie, R.T., and T. Bollerslev (1989), Common stochastic trends in a system of exchange rates, *Journal of Finance*, 44, 167-181.
- [3] Diebold, F. and J. Nason (1990), Nonparametric exchange rate prediction?, *Journal of International Economics*, 28, 315-332.
- [4] Engel, C. and J. D. Hamilton (1990), Long swings in the dollar: Are they in the data and do markets know it?, *American Economic Review*, 80, 689-713.
- [5] Franses, P.H. and D. van Dijk, (2000), *Nonlinear Time Series Models in Empirical Finance*, Cambridge University Press.
- [6] Ivakhnenko, A.G. (1968), The group method of data handling – a rival of the method of stochastic approximation, *Soviet Automatic Control c/c of Avtomatika*, vol.1, no.3, pp.43-55.

- [7] Kuan, C.M. and T. Liu (1995), Forecasting exchange rates using feedforward and recurrent neural networks, *Journal of Applied Econometrics*, 10, 347-364.
- [8] Meese, R. A. and A. K. Rose (1990), Nonlinear, nonparametric, nonessential exchange rate estimation, *American Economic Review Papers and Proceedings*, 80, 192-196.
- [9] Morana, C. and A. Beltratti (2004), Structural change and long range dependence in volatility of exchange rates, either, neither or both?. *Journal of Empirical Finance*, 11, 629-658.
- [10] Rogoff, K. (1996), The purchasing power parity puzzle, *Journal of Economic Literature*, 34, 647-668.
- [11] Sarno, L., M. Taylor, and L. Chowdhury (2004) Nonlinear Dynamics in Deviations from the Law of One Price: A Broad-Based Empirical Study, *Journal of International Money and Finance*, 23, 1-25.
- [12] Taylor, M.P., D.A. Peel, and L. Sarno, (2001), Nonlinear mean-reversion in real exchange rates: towards a solution of the purchasing power parity puzzles, *International Economic Review*, 42, 1015-1042.
- [13] Taylor, M.P., and L. Sarno, (2003), *The Economics of Exchange Rates*, Cambridge University Press, Cambridge, U.K.