

Cobb-Clark, Deborah A.; Moschion, Julie

**Working Paper**

## Gender Gaps in Early Educational Achievement

IZA Discussion Papers, No. 9535

**Provided in Cooperation with:**

IZA – Institute of Labor Economics

*Suggested Citation:* Cobb-Clark, Deborah A.; Moschion, Julie (2015) : Gender Gaps in Early Educational Achievement, IZA Discussion Papers, No. 9535, Institute for the Study of Labor (IZA), Bonn

This Version is available at:

<https://hdl.handle.net/10419/125052>

**Standard-Nutzungsbedingungen:**

Die Dokumente auf EconStor dürfen zu eigenen wissenschaftlichen Zwecken und zum Privatgebrauch gespeichert und kopiert werden.

Sie dürfen die Dokumente nicht für öffentliche oder kommerzielle Zwecke vervielfältigen, öffentlich ausstellen, öffentlich zugänglich machen, vertreiben oder anderweitig nutzen.

Sofern die Verfasser die Dokumente unter Open-Content-Lizenzen (insbesondere CC-Lizenzen) zur Verfügung gestellt haben sollten, gelten abweichend von diesen Nutzungsbedingungen die in der dort genannten Lizenz gewährten Nutzungsrechte.

**Terms of use:**

*Documents in EconStor may be saved and copied for your personal and scholarly purposes.*

*You are not to copy documents for public or commercial purposes, to exhibit the documents publicly, to make them publicly available on the internet, or to distribute or otherwise use the documents in public.*

*If the documents have been made available under an Open Content Licence (especially Creative Commons Licences), you may exercise further usage rights as specified in the indicated licence.*

IZA DP No. 9535

## Gender Gaps in Early Educational Achievement

Deborah A. Cobb-Clark  
Julie Moschion

November 2015

# Gender Gaps in Early Educational Achievement

**Deborah A. Cobb-Clark**

*Melbourne Institute, University of Melbourne,  
IZA and Life Course Centre*

**Julie Moschion**

*Melbourne Institute, University of Melbourne,  
Life Course Centre and EconomiX, University of Nanterre*

Discussion Paper No. 9535  
November 2015

IZA

P.O. Box 7240  
53072 Bonn  
Germany

Phone: +49-228-3894-0  
Fax: +49-228-3894-180  
E-mail: [iza@iza.org](mailto:iza@iza.org)

Any opinions expressed here are those of the author(s) and not those of IZA. Research published in this series may include views on policy, but the institute itself takes no institutional policy positions. The IZA research network is committed to the IZA Guiding Principles of Research Integrity.

The Institute for the Study of Labor (IZA) in Bonn is a local and virtual international research center and a place of communication between science, politics and business. IZA is an independent nonprofit organization supported by Deutsche Post Foundation. The center is associated with the University of Bonn and offers a stimulating research environment through its international network, workshops and conferences, data service, project support, research visits and doctoral program. IZA engages in (i) original and internationally competitive research in all fields of labor economics, (ii) development of policy concepts, and (iii) dissemination of research results and concepts to the interested public.

IZA Discussion Papers often represent preliminary work and are circulated to encourage discussion. Citation of such a paper should account for its provisional character. A revised version may be available directly from the author.

## ABSTRACT

### Gender Gaps in Early Educational Achievement\*

This paper analyzes the source of the gender gap in third grade numeracy and reading. We adopt an Oaxaca-Blinder approach and decompose the gender gap in educational achievement into endowment and response components. Our estimation relies on unusually rich panel data from the Longitudinal Survey of Australian Children in which information on child development reported by parents and teachers is linked to each child's results on a national, standardized achievement test. We find that girls in low- and middle-SES families have an advantage in reading, while boys in high-SES families have an advantage in numeracy. Girls score higher on their third grade reading tests in large part because they were more ready for school at age four and had better teacher-assessed literacy skills in kindergarten. Boys' advantage in numeracy occurs because they achieve higher numeracy test scores than girls with the same education-related characteristics.

JEL Classification: J16, I21, I24

Keywords: gender gaps, educational achievement, education, Australia

Corresponding author:

Julie Moschion  
Melbourne Institute of Applied Economics and Social Research  
University of Melbourne  
161 Barry Street  
Carlton, VIC 3053  
Australia  
E-mail: [moschion@unimelb.edu.au](mailto:moschion@unimelb.edu.au)

---

\* This paper uses unit record data from Growing Up in Australia: the Longitudinal Study of Australian Children, conducted in partnership between the Australian Government Department of Social Services (DSS), the Australian Institute of Family Studies (AIFS) and the Australian Bureau of Statistics (ABS). This research was supported by the Australian Research Council (ARC) Centre of Excellence for Children and Families over the Life Course (project number CE140100027). The Centre is administered by the Institute for Social Science Research at The University of Queensland, with nodes at The University of Western Australia, The University of Melbourne and The University of Sydney. The findings and views reported in this paper are those of the authors and should not be attributed to DSS, AIFS, ABS, or ARC.

## 1. Introduction

Educational achievement is often surprisingly gendered. After all, legislators, policymakers, and educators have worked for more than a generation to encode a principle of equal opportunity in education. Boys and girls generally attend the same schools, sit in classrooms alongside one another, and learn the same lessons. Why then do gender disparities in achievement persist? This question becomes all the more perplexing when one considers that – despite the frequent rhetoric around the issue – it is not a simple matter of one gender having an overall edge in terms of achievement. Girls lag behind when the focus is on achievement in mathematics or science, especially in the upper grades or at the top end of the distribution. Boys underperform relative to girls when the focus is on language skills, particularly reading, classroom behavior, or grades.<sup>1</sup> It is less a matter of the education system failing one gender relative to the other and more a matter of the system failing to produce gender equality in achievement.

This is a concern because any gender disparity in achievement – particularly when it emerges early – is likely to be perpetuated and spill over into other educational outcomes. There are suggestions, for example, that girls' underperformance at the upper extreme of the mathematical achievement distribution is linked to them being less likely to: i) enroll in advanced math and science classes in high school; ii) complete science and technology degrees in university; and iii) subsequently be employed in technology-related occupations such as engineering or computer science (see Penner & Paret 2008; Nollenberger et al. 2014; Lavy & Sand 2015). Boys' weaker literacy skills and poorer classroom behavior (at least as assessed by teachers) have been linked to their higher retention rate (Entwisle et al. 2007), while increased retention, in combination with more disciplinary incidents and lower grades, are thought to explain much of the relative gap in young men's propensity to attend college (Jacob 2002). Finally, there are concerns that teachers' biases in the way they teach, direct

---

<sup>1</sup> See Buchman et al. (2008) for a review.

their attention, or assess performance all have the potential to amplify any gaps in objectively-measured achievement (see DiPrete & Jennings 2012; Cornwell et al. 2013; Lavy & Sand 2015).

The objective of this paper is to contribute to a deeper understanding of gender disparities in achievement by analyzing the gender gap in third grade test scores in numeracy and reading. In particular, our estimation relies on unusually rich panel data from the Longitudinal Study of Australian Children (LSAC) which was specifically designed to provide an in-depth understanding of child development. The LSAC data have the important advantage of being able to be linked to each child's results on the national, standardized achievement tests that all Australian children take biennially. Moreover, information on parents' expectations for and investments in their children as well as each child's school readiness allows us to distinguish between gender gaps that exist before children arrive at school from those that emerge after. Borrowing from the literature on gender wage differentials, we adopt an Oaxaca-Blinder (OB) approach to decomposing the gender gap in standardized numeracy and reading test scores into their various components, paying particular attention to how these factors vary with children's socio-economic status (Blinder 1973; Oaxaca 1973). This approach allows us to shed light on the cumulative importance of the factors underpinning the achievement gap – many of which may be individually insignificant – providing a useful indication of the potential causes and policy responses to be explored in more detail (Fortin et al. 2011).

We make four important contributions to the literature. First, we look at primary-school achievement using an objective, standardized achievement test. Although much of the empirical literature focuses on achievement gaps in secondary or post-secondary outcomes (Cornwell et al. 2013), new evidence is emerging that there are gender gaps in test scores as early as kindergarten (e.g. Penner & Paret 2008; Husain & Millimet 2009; Fryer & Levitt 2009; DiPrete & Jennings 2012; Cornwell et al. 2013). This disparity in early achievement is particularly worrying because the cumulative nature of the learning process has the potential to compound any gaps in achievement over time. Second, it is common for researchers to analyze either those outcomes favoring boys or those

outcomes favoring girls, but not both simultaneously.<sup>2</sup> Considering both in a unified framework, as we do here, has the potential to give rise to a more nuanced understanding of the process through which gender disparity in achievement arises. Third, we utilize a standard OB approach to decomposing the gender gaps in numeracy and reading achievement into two components: one due to endowment effects (i.e. the different characteristics of boys and girls) and one due to differential responses (i.e. the differences in outcomes for boys and girls with the same characteristics).<sup>3</sup> OB decomposition methods have been fundamental to deepening our understanding of gender gaps in labor market outcomes, particularly wages, for more than 40 years, but to date have only rarely been applied to the study of gender gaps in educational achievement.<sup>4</sup> Finally, while some researchers find that gender gaps in test scores are more pronounced among disadvantaged children (e.g. Entwisle et al. 2007), others argue that the gender gap in achievement is more pervasive (e.g. Fryer and Levitt 2009). We add new evidence to this debate – which to date has largely been based on U.S. data – by investigating the link between socio-economic status and gender inequality in achievement in the context of Australia.

We find that girls in low- and middle-SES families have an advantage in reading, while boys in high-SES families have an advantage in numeracy. Girls score higher on their third grade reading tests in large part because they were more ready for school and had better teacher-assessed literacy skills in kindergarten. Boys' advantage in numeracy occurs because they achieve higher numeracy test scores than girls with the same education-related characteristics.

In Section 2, we briefly review the vast literature on gender gaps in early educational achievement paying particular attention to the potential role of socio-economic status. Details of our data, estimation sample, and key measures are presented in Section 3, while the magnitude of the gender gap in reading and numeracy is discussed in Section 4. The results of our decomposition

---

<sup>2</sup> Recent exceptions include Husain and Millimet (2009); DiPrete and Jennins (2012); Cornwell et al. (2013); and Fortin et al. (2013).

<sup>3</sup> In the gender wage gap literature, these are often referred to as the characteristics and returns components respectively.

<sup>4</sup> We are aware of only two exceptions. Jacob (2002) conducts an OB decomposition of the gap in men's and women's university attendance, while Fortin et al. (2013) adopt an extension of the OB method to decompose the gender gap in high academic achievement.

analysis highlighting the source of the gender gap in achievement can be found in Section 5, while our conclusions and suggestions for future research are discussed in Section 6.

## **2. Literature Review**

There is a vast literature demonstrating that children's educational achievement varies with their gender. Gaps in boys' and girls' achievement do not always exist of course, but when they do, they are in one sense remarkably easy to summarize: boys do better in numeracy and girls do better in literacy.<sup>5</sup> In another sense, this characterization is vastly over-simplified. There is a striking lack of uniformity in the achievement gap. The relationship between gender and relative educational achievement varies with the social, cultural, and educational context, for example, (Pope & Sydnor 2010; Nollenberger et al. 2014; Lavy & Sand 2015), opening the possibility that each might play a role in generating the gap. Achievement gaps also vary with students' race and ethnicity (Penner & Paret 2008; Husain & Millimet 2009), with their families' and peers' socio-economic status (Entwisle et al. 2007; Legewie & DiPrete 2012) as well as across the achievement distribution itself (e.g. Penner & Paret 2008).

A number of explanations have been proposed for the disparity in boys' and girls' educational achievement. These include i) biological differences, particularly in spatial versus verbal skills (e.g. Levine et al. 2005); ii) parents' gender-specific expectations for and investments in their children (e.g. Baker & Milligan 2013; Bertrand & Pan 2013); iii) social and cultural influences (e.g. Guiso et al. 2008; Nollenberger et al. 2014); iv) gender differences in the acquisition of social and behavioral skills (e.g. DiPrete & Jennings 2012); and v) gender-specific educational practices, including teacher bias (e.g. Dee 2007; Gibbons & Chevalier 2008; Legewie & DiPrete 2012; Cornwell et al. 2013; Lavy & Sand 2015).

---

<sup>5</sup> See OECD (2015) and Lavy and Sand (2015) for recent and particularly helpful reviews.



Despite the multitude of explanations put forward for the gender gap in educational achievement it is fair to say that the literature has been better at documenting its existence than explaining its source. There is mixed empirical support for many plausible explanations of the gender gap and little to no support for others. Fryer and Levitt (2009), for example, find the mathematics gender gap is largest among children who attend private school, have highly-educated mothers, and have mothers working in math-related occupations – precisely the groups for whom we might expect the gap to be the smallest. Similarly, Dee (2007) and Holmlund and Sund (2008) reach different conclusions about the potential for more male reading teachers along with more female math and science teachers to close gender gaps in these subjects, while Lavy and Sand (2015) and Gibbons and Chevalier (2008) disagree about the importance of teacher bias in gender inequalities in achievement. Parents do appear to make gender-specific investments in their children, yet this seems to contribute to the gender gap in some outcomes (e.g. preschool math and reading scores) (Baker & Milligen 2013), but not others (e.g. disruptive behavior) (Bertrand & Pan 2013).

These mixed messages about the mechanisms underpinning the achievement gap are perhaps not surprising. Generating credible scientific evidence on the issue is difficult because it is often nearly impossible to disentangle particular pathways (e.g. biological from environmental conditions) or to measure concepts like stereotypes and prejudices and test their empirical predictions (Lavy & Sand 2015). A large part of the challenge lies in finding explanations for the gender gap in achievement that are nuanced enough to account for heterogeneity in the relationship between gender and achievement across: i) domains (i.e. numeracy versus literacy); ii) the achievement distribution; or iii) characteristics like age, race, and socio-economic status. Levine et al. (2005), for example, argue that biological explanations of boys' advantage in spatial skills, at least as currently formulated, would not predict the systematic variation across socio-economic status that we observe.

The bottom line is that inconsistency in the pattern of achievement gaps across groups or contexts makes it unlikely that one unified theory will ever provide a compelling explanation for the

overall relationship between gender and educational achievement. At the same time, variation of the sort described above can be exploited to rule some mechanisms into the possibility set and others out. There is little doubt, for example, that educational practices are often gendered, but this is unlikely to provide an explanation for achievement gaps that emerge in preschoolers. Similarly, if biological factors cannot explain racial differences in gender achievement gaps then it seems reasonable to turn to social and cultural explanations (Penner & Paret 2008). In our view, the heterogeneity in achievement gaps across domains and socio-economic status are particularly promising avenues to explore. The mathematics curriculum is highly structured in comparison to other subjects like English (see Riegle-Crumb 2006) and there is evidence that math test scores may be more sensitive to principals' and teachers' actions than are English test scores (see Clark et al. 2009; Rivkin et al. 2005). Given this, it is possible that the relative importance of families and schools in shaping gender achievement gaps may depend on whether our focus is numeracy or literacy. Moreover, the interaction of socio-economic status with educational achievement points to the salience of family background, resource constraints, parental and school investments, and the like in explaining the gender gap in educational achievement.

Our goal is to contribute to a more nuanced understanding of gender inequality in educational achievement by investigating the extent to which these factors can explain the gender gap in students' numeracy and reading test scores.

### **3. Data**

Our data come from the Longitudinal Study of Australian Children (LSAC) which is a national study designed to provide an in-depth understanding of children's development. The study commenced in 2004 with the recruitment of two cohorts: one cohort of 5,107 children aged 0-1 years old (the birth or "B cohort") and another of 4,983 children aged 4-5 years old (the kindergarten or "K cohort") and their

families across all states and territories of Australia. Interviews have subsequently been conducted with families every two years (see Soloff et al. 2005 for details).

### ***3.1 Educational Achievement Measures***

The LSAC data can be linked to standardized test scores from the National Assessment Program - Literacy and Numeracy (NAPLAN) which assesses all Australian students in grades 3, 5, 7 and 9 in reading, writing, language conventions (spelling, grammar and punctuation) and numeracy using a common test administered nation-wide on the same day. NAPLAN has been conducted annually since 2008. The reporting scales range from 0-500 and are constructed so that scores can be compared across school grades and over time. For example, a score of 500 in third grade reading in 2008 means the same as a score of 500 for fifth grade reading in 2009. Each single-year grade progression represents an increase of approximately 40 points on the scale (or 80 points across NAPLAN testing grades).

The availability of school achievement measures based on standardized national test scores is an important advantage of the LSAC data. In comparison, the Early Childhood Longitudinal Study-Kindergarten (ECLS-K) data, on which much of the recent U.S. evidence is based, include only achievement information as measured through a direct assessment of children's cognitive development by the interviewer. Other data sources which do include standardized test scores, e.g. the Programme on International Student Assessment (PISA), have far less detailed information on children's characteristics and do not include any data on children's development, parental expectations, or teachers' assessments for example. The combination of standardized test scores and detailed information about children is central to isolating the source of the gender gap in achievement.

### ***3.2 Socio-economic Status***

To assess the relationship between gender inequality in educational achievement and socio-economic status, we categorize students as having low, medium, or high socio-economic status (SES).

Specifically, the LSAC data include a measure of socio-economic position which is constructed from the standardized scores from three components: i) income (standardized average income of both primary caregivers); ii) educational attainment (standardized years of education for both primary caregivers); and iii) occupational prestige (Jones and McMillan's (2001) standardized status scale for both primary caregivers). These three components are then averaged and normalized to have a mean of 0 and a standard deviation of 1. This combined measure – based upon that designed by Willms and Shields (1996) for the National Longitudinal Survey of Children (NLSC) – provides a robust, parsimonious, and continuous measure of socio-economic position. Children in the bottom third of the distribution are categorized as having low SES, while those in the middle and top thirds are categorized as having medium and high SES respectively.<sup>6</sup>

### ***3.3 Controls***

The LSAC data are extremely detailed, allowing us to account for children's characteristics, behavior, family backgrounds, and home as well as classroom environments. Importantly, unlike the ECLS-K data, LSAC provides information for fathers as well as mothers. Our detailed controls give us the opportunity to simultaneously investigate the contribution of different mechanisms to the gender gap in educational achievement.

We account for measures of school readiness in order to assess whether gender differences in learning exist prior to school entry. Specifically, we control for each child's age four "Who am I?" (WAI) score normalized to have a mean of 0 and a standard deviation of 1. The WAI score provides a direct assessment of school readiness, i.e. the cognitive processes underlying the acquisition of early literacy and numeracy skills such as: pre-writing skills (ability to copy shapes, letters and words), pre-literacy skills (recognition of letters and sounds) and pre-numeracy skills (recognition of numbers and ability to count) (see de Lemos & Doig 1999). It has been previously used by researchers to assess

---

<sup>6</sup> The results, available upon request, are similar if we use an income-based measure of SES.

how school readiness varies with characteristics such as indigenous status (Leigh & Gong 2009) and handedness (Johnston et al. 2009).

We also control for children's reasoning ability using a subtest from the Wechsler Intelligence Scale for Children (WISC), 4th Edition (Wechsler 2003), a standardized, reliable, and widely-used measure of children's intelligence. In particular, our subtest provides a unique assessment of abstract, nonverbal intelligence. Each child is presented with a sequence or group of designs, and then is required to fill in the missing design from a number of choices.

Parental investments may vary with children's gender. Alternatively, the same investment may have a differential effect on boys' and girls' academic achievement. For both reasons, we control for the level of parental investment using a range of measures including: the number of age-appropriate books in the home (Wößmann 2003); the frequency at which the child is being read to by an adult (Leibowitz 1977; Hill & O'Neill 1994); parents' involvement in children's daily activities (sharing meals, brushing teeth) (Amato & Rivera 1999); and parents' help with homework. Gender gaps in early achievement may also originate in deeply-rooted societal or cultural expectations about gender roles. Consequently, we also account for mothers' expectations about their children's educational attainment and mothers' labor force status (Fan et al. 2015).

Previous researchers have argued that gendered educational practices, including teacher bias, can also contribute to the gender gap. Consequently, in addition to the child's school readiness, we also control for indicators of school type as well as for the teacher's absolute and relative assessment of each child's achievement level in reading and math. Our absolute achievement measure is based on teachers' evaluation of how well each child performs with respect to a number of numeracy and literacy skills. This measure has been widely used in the previous literature (Cornwell et al. 2013; Robinson & Lubienski 2011). Teachers also report how well the child is doing in reading and math relative to his peers in the classroom. Relative achievement is often ignored in the literature (Samson & Lesaux 2008), but is likely to be important in light of the emerging evidence that relative ability has important

implications for educational achievement over and above that associated with absolute ability (Elsner & Isphording 2015). These controls allow us to assess how teachers' perceptions of the gender gap in achievement are linked to the actual achievement gap on standardized tests.

Boys' and girls' classroom behavior differs in ways that are related to their academic achievement (Bertrand & Pan 2013). We therefore investigate whether gender differences in a measure of children's antisocial behavior, hyperactivity/inattention, emotional symptoms, peer relationship problems and conduct problems contribute to differences in academic achievement in third grade.<sup>7</sup> Finally, we also control for children's demographic characteristics (e.g. birth weight, age at test, and indigenous status), family background (e.g. household type and parental education), preschool attendance, and whether the teacher has completed the questionnaire. Descriptive statistics for our measure of SES and all control variables are provided in Appendix Table A3.<sup>8</sup>

Decomposition results from our preferred specification, including these controls are discussed in detail in Section 5.2 below. In addition, we conduct a number of robustness checks to determine how sensitive our results are to the inclusion of a range of other measures, e.g. parenting style, approach to learning, parental background, etc., discussed in the literature. These additional results can be found in Section 5.3.

### ***3.4 Estimation Sample***

Given our interest in early achievement gaps, we focus on NAPLAN test scores in third grade when standardized testing begins in Australia. Unfortunately, 23 percent of third grade test scores are missing for the kindergarten cohort (cohort K) because many of these children were enrolled in third grade in 2007 before NAPLAN tests were introduced. As a result, our analysis centers on children from the birth cohort (cohort B).

---

<sup>7</sup> This is based on a version of Goodman's (1997) Strength and Difficulty Questionnaire (SDQ) that has been adapted for toddlers.

<sup>8</sup> To facilitate interpretation, we normalize WAI and WISC scores, parental involvement, teacher-assessed absolute and relative achievement, and the SDQ measure to all have a mean of 0 and a standard deviation of 1.

Because of different school starting ages across states and some parents' decisions to delay their children's school entry, children born in the same year (i.e. in the same LSAC cohort-wave) may be enrolled in one of three different sequential grades and therefore take the third grade NAPLAN test in one of three different calendar years (2010, 2011 or 2012). Moreover, the timing of LSAC interviews (from March to December every two years) differs from that of NAPLAN (in May each year). Both pose challenges in establishing a correspondence between NAPLAN scores and the information collected in LSAC. More specifically, some children will have taken the third grade NAPLAN test before the wave 5 interviews, others after. To avoid explaining the gender gap in test scores with controls measured after the test, we use wave 4 data (when children were 6 – 7 years old), i.e. prior to any child taking the third grade NAPLAN test, when constructing our controls.

We necessarily make a number of sample restrictions. First, we restrict our sample to the 67 percent of cohort B children for whom we have third grade test scores.<sup>9</sup> Second, we drop four percent of the initial sample for whom we do not have the WAI scores at age four or the WISC score at age six (226 observations). Third, we drop 139 children for whom we have missing information on the following variables: socio-economic position (used to define the indicators of SES), birth weight, mother's education, household type, number of books, reading to children, help with homework, mother's involvement, SDQ, school type and teachers' assessments. In the case of all other variables, we retain as much sample as possible by recoding any missing observations to zero and including an indicator variable in the model to control for this recoding.<sup>10</sup> This results in an estimation sample of 3,073 children (i.e. 60 percent of the B cohort at wave 1).

---

<sup>9</sup> Specifically, 17 percent of cohort B children drop out of the survey before wave 4 (prior to third grade); 5 percent did not consent to the data linkage; NAPLAN test scores could not be retrieved for 9 percent of cases; and reading or numeracy test scores are missing for 1 percent of cases.

<sup>10</sup> The recoding indicator takes the value of 1 if information is *missing* in the case of dummy variables and takes the value of 1 if information is *available* in the case of continuous variables.

#### 4. The Magnitude of the Gender Achievement Gap

The boys in our sample score on average 9 points lower in reading and 12 points higher in numeracy on their third grade NAPLAN assessments than do their female classmates (see Table 1). This disparity translates into approximately three months of normal academic progression in reading and numeracy respectively.<sup>11</sup> Importantly, the gender gap in reading is evident only for children in families at the bottom and middle of the socio-economic distribution with low-SES boys, for example, having a reading level in third grade that is five academic months behind that of low-SES girls. At the same time, boys' advantage over girls in numeracy exists only amongst advantaged children. In particular, high-SES boys are nearly six academic months ahead of high-SES girls in numeracy.

#### Table 1 Here

These results are consistent with previous research highlighting the relationship between gender disparities in educational achievement and socio-economic status. Entswisle et al. (2007), for example, find that the reading skills of boys who are receiving meal subsidies are lower than those of girls, while among students who do not receive meal subsidies, gender makes little difference in reading levels. Similarly, Penner and Paret (2008) find that boys' advantage in mathematics is most pronounced among students whose parents have a college or advanced degree, while Levine et al. (2005) demonstrate that boys outperform girls on spatial tasks in middle- and high-income schools, but not in low-income schools.

Gender gaps in mean achievement often obscure a great deal of heterogeneity in the performance of different students and it can often be particularly useful to know whether achievement gaps exist among high achievers, among students who struggle, or across the entire distribution. We investigate this issue by estimating simultaneous conditional quantile regressions of third grade test scores ( $T_i^j$ ) on an indicator of students' gender. Specifically,

$$T_i^j = \alpha_0^{j\tau} + \alpha_1^{j\tau} M_i + \varepsilon_i^{j\tau} \quad (1)$$

---

<sup>11</sup> On average, boys also have lower achievement in writing (24 points); spelling (19 points); and grammar (21 points).



where  $i$  indexes individuals,  $j$  indexes subject areas (i.e. reading and numeracy),  $\tau$  reflects the respective  $\tau$ -percentile of the test score distribution and  $M$  is the indicator variable taking the value 1 for boys and 0 for girls. Equation (1) is estimated simultaneously at every decile of the test-score distribution and the estimated coefficients (along with a 95 percent confidence interval) are presented graphically in Figure 1.<sup>12</sup> As we condition only on students' gender, the estimates obtained from these conditional quantile regressions capture the unconditional (raw) gender gap in educational achievement at different points of the achievement distribution.

The equality of the gender gap in test scores across the entire test-score distribution is strongly rejected.<sup>13</sup> Girls have a relative advantage in reading over much of the distribution (though not among the top third of achievers), while boys' stronger performance in numeracy is most evident in the top half of the achievement distribution (see Figure 1). In contrast, Penner and Paret (2008) find that by third grade boys in the U.S. outperform girls in mathematics throughout nearly the entire distribution.

### **Figure 1 Here**

Finally, estimating quantile regressions separately for children from low-, medium-, and high-socio-economic backgrounds highlights the strong link between the distribution of achievement gaps and socio-economic status.<sup>14</sup> High-SES boys outperform high-SES girls throughout the entire numeracy distribution (Figure 3), while low- and medium-SES girls have an achievement advantage in the bottom half to two-thirds of the reading distribution (Figure 2). In all other cases, there is little evidence of systematic gender gaps in achievement.

### **Figures 2 and 3 Here**

---

<sup>12</sup> Confidence intervals are boot strapped with 100 replications.

<sup>13</sup> Simultaneous estimation across different values of  $\tau$  allows the variance-covariance matrix of the different  $\alpha_1^{j\tau}$  to be obtained and the significance of the gender gap in test scores at points of the achievement distribution to be tested. The equality of  $\hat{\alpha}_1^{j\tau}$  at all values of  $\tau$  was tested and rejected using an F test.

<sup>14</sup> Analyses of grammar, spelling, and writing achievement scores result in conclusions similar to those based on reading. These additional results are available upon request.

## 5. The Source of Gender Achievement Gaps

### 5.1 Decomposition approach

Decomposition analysis has been at the center of efforts to understand the source of the gender gap in labor market outcomes, in particular wages, for nearly half a century. Knowing the relative importance of various factors in contributing to gender disparities in the labor market has been important in highlighting the potential opportunities for policy response. Our objective is to apply this approach to investigate the source of the gap in boys' and girls' test scores. In effect, we will separate the endowment effect (i.e. disparity in boys' and girls' in school readiness, family background, age, non-cognitive skills, etc.) from the response effect (i.e. disparity in the way endowments are translated into boys' versus girls' achievement) which together lead to the overall achievement gap.

Specifically, the gender gap in third grade test scores can be decomposed as follows:

$$\begin{aligned}\bar{T}_M^j - \bar{T}_F^j &= \bar{X}_M^j \hat{\beta}_M^j - \bar{X}_F^j \hat{\beta}_F^j \\ &= [\bar{X}_M^j - \bar{X}_F^j] \hat{\beta}_P^j - [\bar{X}_M^j (\hat{\beta}_M^j - \hat{\beta}_P^j) - \bar{X}_F^j (\hat{\beta}_F^j - \hat{\beta}_P^j)]\end{aligned}\quad (2)$$

where  $\hat{\beta}_M^j, \hat{\beta}_F^j, \hat{\beta}_P^j$  are the estimated coefficients from an OLS regression of test scores on the full set of covariates  $X^j$  using the male, female, and pooled sample respectively (see Neumark 1988; Jann 2008). In effect, equation (2) allows the gender gap in achievement to be written in terms of boys' and girls' average endowments ( $\bar{X}$ ) and the response functions ( $\hat{\beta}$ ) which map those endowments into test scores. Gendered response effects are compared to a gender-neutral benchmark which, following Neumark (1988), is constructed using estimates from the pooled sample.<sup>15</sup> Thus, the first term on the right-hand side of equation (2) captures the endowment effect, i.e. the part of the gender gap in test scores that arises because boys and girls have different endowments of the things (characteristics) that support good educational outcomes. These differences in boys' and girls' average endowments ( $\bar{X}$ ) are evaluated (weighted) using the vector of gender-neutral responses ( $\hat{\beta}_P^j$ ). Thus, this term captures

---

<sup>15</sup> Following Jann (2008), we include a gender indicator variable in the pooled regression.

gender differences in what we will refer to as “educational endowments”. The second right-hand side term captures the response effect, i.e. the part of the gender gap that arises because children’s endowments do not get translated into test scores in a gender-neutral way. The response effect is itself comprised of two components: first, the gap in test scores due to the deviation in boys’ responses from the gender-neutral benchmark  $[\bar{X}_M^j(\hat{\beta}_M^j - \hat{\beta}_P^j)]$ ; and, second, the gap in test scores due to the fact that girls’ response function is also not gender-neutral, i.e.  $[\bar{X}_F^j(\hat{\beta}_F^j - \hat{\beta}_P^j)]$ . The total response effect – which we will refer to as “educational responses” – is equal to the sum of these two components.

In addition to the aggregate decomposition shown above, it is also possible to consider a detailed decomposition in which the contribution of each individual factor to the overall gender gap in achievement is isolated. Previous researchers have noted, however, that in detailed decompositions, the response effects for categorical variables will depend on the choice of the omitted category in the underlying regression model (e.g. Jones 1983; Oaxaca & Ransom 1999; Jann 2008; Fortin et al. 2011). While the literature occasionally refers to this as an identification issue, others argue that it is a conceptual problem in interpretation (see Fortin et al. 2011). Our interest is in investigating the importance of overarching concepts (e.g. parental education or family structure) rather than heterogeneity between specific groups (e.g. high-school dropouts versus college graduates; single-versus couple-headed families, etc.) making these interpretation issues less challenging for us. Thus, we do not adopt an estimation approach that would be invariant to the choice of the base category (Jann 2008), but would also be more difficult to interpret (Fortin et al. 2011). Instead, we allow our detailed response effects to depend on the base category we have chosen and, where relevant, interpret them in this light.<sup>16</sup>

In what follows, we focus on the magnitude of the aggregate educational endowments vs. educational responses components of the gap as well as on the contribution of individual factors (e.g.

---

<sup>16</sup> All models are estimated with STATA 13 using the “Oaxaca” command without the “categorical” option.

school readiness, demographic characteristics, etc.) separately. Both are instrumental in highlighting the source of the gender gap in educational achievement.

## ***5.2 The Achievement Gap in Reading***

The results of our decomposition analysis of reading achievement are presented in Table 2 separately by students' socio-economic status.<sup>17</sup> The top panel shows boys' and girls' average standardized test scores and the magnitude of the gender gap in students' standardized reading scores. The share of the reading gap attributable to differences in boys' and girls' educational endowments is presented in columns 1, 3, and 5 of the bottom panel of Table 2, while columns 2, 4, and 6 of the bottom panel show the educational responses.

There is no gender gap in reading among advantaged children. High-SES boys and girls perform equally well. Girls' in low- and medium-SES families, however, score significantly higher on the NAPLAN reading test than do boys from the same socio-economic background. Differences in boys' and girls' educational endowments accounts for 68.2 percent (0.116 std.) of the 0.170 std. gender gap in disadvantaged children's reading achievement. Similarly, the gap in medium-SES boys' reading achievement (0.159 std.) is more than explained by their relative educational endowments. In effect, boys' underperformance in reading can be directly linked to the fact that, on average, they have less of the things that tend to be associated with reading achievement.

Disparities in two educational endowments appear to be especially important. First, girls' age four "Who am I?" (WAI) scores are higher suggesting that they were more ready for school when they started. Second, girls' literacy skills at age six were rated by their teachers as being higher than those of their male classmates. Together, these two factors account for 0.113 std. of the overall 0.170 std. in the third grade reading deficit among low-SES boys and for 0.144 std. of the overall 0.159 std. gap in

---

<sup>17</sup> The OLS coefficients underpinning the decomposition analysis are presented in Appendix Tables A4 and A5. Analysis of the other domains of literacy including writing, spelling, and grammar resulted in similar conclusions. These results are available upon request.

medium-SES boy's reading test scores. Finally, low-SES parents have much lower expectations for their sons' educational attainment than they do for their daughters, while medium-SES parents report that their sons have significantly more social, emotional, psychological, and behavioral problems. Both contribute to boys' under-performance in reading.

### **Table 2 Here**

Interestingly, a relative lack of school readiness and literacy skills in kindergarten negatively affect high-SES boys' relative reading achievement. Specifically, these two factors result in a 0.120 std. deficit in advantaged boys' reading relative to girls. Unlike their less disadvantaged peers, however, high-SES boys overcome this deficit in educational endowments because their reading scores respond more positively to the endowments they do have. This leaves their overall reading achievement similar to that of high-SES girls.

It is also important to draw attention to several things which do not contribute to the disparity in boys' reading achievement. Specifically, parents are more likely to delay the school start of their sons rather than their daughters (Brent et al. 1996; Buchmann et al. 2008), implying that boys are slightly older than their female classmates when they sit the NAPLAN tests. This age difference improves boys' relative reading performance. That is, if boys on average were the same age as girls when taking the NAPLAN test, our estimates indicate that the gender gap in reading would be approximately 0.020 – 0.030 std. larger than it in fact is.

Moreover, as children's gender is exogenously assigned, there is little difference in the characteristics of the families in which boys and girls grow up. Thus, it is not surprising that there is little role for differences in family structure, parental education, indigenous status, etc. to generate gender differences in educational endowments that would contribute to the gender disparity in achievement. More surprising perhaps is the lack of a role for abstract, nonverbal intelligence in explaining the gender gap in literacy. Specifically, gender differences in reasoning ability (WISC) do

not explain the gender gap in literacy. Similarly, the disparity in boys' and girls' third grade reading achievement is unrelated to teachers' assessments of their math skills at age six.

Although most of the gender gap in reading stems from boys and girls having different endowments of the things associated with good educational outcomes, it is also the case that boys and girls with the same educational endowments (e.g. family structure, school readiness, age, etc.) do not achieve the same reading scores on average. Two results are particularly noteworthy. First, reading achievement is related to disadvantaged children's birth weight in ways that are different for boys and girls (column 2 bottom panel). Specifically, NAPLAN reading scores are positively associated with low-SES boys' birth weight, but negatively associated with low-SES girls' birth weight (see Appendix Table A4). This contributes to reducing the gender gap in reading for children in disadvantaged families. That is, if reading achievement responded to boys' and girls' birth weight in the same way, we estimate that the gender gap in reading amongst low-SES children would be nearly half a standard deviation (0.474 std.) larger. Previous researchers have found that higher birth weight infants achieve higher levels of educational attainment (see Chatterji et al. 2014 for a review).

Second, there are gender differences in the relationship between advantaged children's reading achievement and the type of school they attend. The average reading achievement of high-SES girls attending either Catholic or independent schools is significantly lower (0.177 and 0.161 std. respectively) than that of high-SES girls attending public schools (see Appendix Table A4). In contrast, high-SES boys attending independent schools have higher reading scores (0.161 std.) on average than those high-SES boys attending public schools. Although advantaged boys and girls are equally likely to attend private schools (see Appendix Table A3), these gender differences in the way that reading achievement is related to (responds to) the type of school that a child attends make an important contribution in eliminating the gender gap in reading achievement amongst high-SES children. In effect, the reading achievement of high-SES boys would lag an additional 0.116 std. behind that of

their female classmates if the gendered response of reading achievement to school type were eliminated.

Finally, high-SES girls' reading advantage is reduced by gender differences in the response of reading achievement to general intelligence (i.e. WISC scores) and increased by gender differences in the response of reading achievement to: i) fathers' education; and ii) teacher-assessed six-year old math skills.

### ***5.3 The Achievement Gap in Numeracy***

Decomposition results highlighting the source of the gender gap in numeracy scores are presented in Table 3. As before, the top panel shows the magnitude of the gender gap in students' standardized numeracy scores. The bottom panel presents the share of the numeracy gap attributable to differences in boys' and girls' educational endowments in the odd-numbered columns and educational responses in the even-numbered columns.

#### **Table 3 Here**

In contrast to reading, the gender gap in numeracy achievement favors boys rather than girls and is concentrated at the top of the SES distribution. There is no statistical difference in the numeracy achievement of low- and medium-SES boys and girls. Boys in high-SES families, however, have third-grade numeracy scores that are 0.297 std. higher than high-SES girls. This gap is completely unexplained by differences in boys' and girls' educational endowments. After all, girls are more prepared for school when they start (as reflected in their age four WAI scores) and have better reading skills (as reported by kindergarten teachers). Both contribute to significantly reducing boys' relative numeracy achievement (0.123 std. in total). Boys, on average, are heavier at birth, are slightly older at the test date, and have more numeracy skills at age six (as assessed by teachers), all of which contribute to raising their relative numeracy test scores. On balance, the effect of gendered educational

endowments amongst high-SES children is small (0.051 std.), negative (i.e. favors girls), and statistically insignificant.

The advantage that high-SES boys have in numeracy relative to high-SES girls stems from gendered educational response effects; that is from differences in the numeracy achievement of advantaged boys and girls with the same education-related characteristics. In particular, as with reading achievement, gender differences in the relationship between numeracy and the type of school high-SES children attend partly account for boys' advantage in numeracy. The numeracy scores of advantaged girls attending Catholic schools are significantly lower (0.285 std.) than those of advantaged girls attending public schools (see Appendix Table A5). This results in a statistically significant response effect associated with school type. High-SES boys' numeracy advantage would be 0.095 std. smaller, in the absence of these gender disparities in the relationship between numeracy achievement and school type. In addition, high-SES boys gain much more from attending preschool in terms of numeracy achievement than do high-SES girls (0.436 std.). All other response effects are statistically indistinguishable from zero. The cumulative effect is that high-SES boys have numeracy scores that are 0.348 std. higher than their female peers because they achieve better results than girls do with the same education-related characteristics.

Like their more advantaged counterparts, low- and medium-SES boys also have a substantial numeracy advantage as a result of gendered educational response effects. Specifically, boys in low-SES (medium-SES) families have numeracy scores that are 0.191 std. (0.250 std.) higher than girls with the same socio-economic background. However, this is completely counterbalanced by the relative deficits in their educational endowments – most importantly school readiness, parents' educational expectations, teacher-reported literacy skills and own behavior. The two effects work in opposite directions resulting in an insignificant gender gap in numeracy amongst low- and medium-SES children. In contrast, the relative deficit in endowments experienced by high-SES boys is much smaller, leaving them with an overall numeracy advantage.



#### ***5.4 Summary***

Taken together, these results indicate that girls in low- and medium-SES families have an achievement advantage in reading, while boys in high-SES families have an achievement advantage in numeracy. In all other cases, boys and girls perform equally well on reading and numeracy achievement tests.

Girls' in low- and medium-SES families score significantly higher on the third grade NAPLAN reading test than do boys from the same socio-economic background in large part because they were more ready for school at age four and had higher teacher-assessed literacy skills at age six. In contrast, high-SES boys' advantage in numeracy occurs because they achieve higher numeracy test scores than girls with the same education-related characteristics. Most importantly, high-SES boys benefit more from preschool and do not face an achievement penalty associated with attending Catholic rather than public school.

#### ***5.5 Sensitivity Analysis***

We conduct a number of sensitivity tests in order to shed light on the relative importance of children's school readiness (WAI score) and reasoning ability (WISC score) in understanding observed gender gaps in educational achievement. Moreover, the previous literature suggests that a wide range of factors, e.g. social and behavioral skills, approach to learning, parenting style, etc., may be important in shaping gender differences in test scores. In our preliminary analysis, however, we found that many of these factors were not significantly related to children's achievement over and above the other controls in the model. Hence we exclude them from our preferred specification and test the sensitivity of our conclusions to this choice. The results of all of our sensitivity analyses are summarized in Table 4 and discussed below.

**Table 4 Here**

Panel A of Table 4 reproduces the decomposition results from our preferred specification for comparative purposes. The next three panels of Table 4 present aggregate OB decompositions that drop: i) the WISC score; ii) the WAI score; and iii) both the WISC and WAI scores from the model. Interestingly, failing to account for children's reasoning ability (Panel B) has virtually no effect on the decomposition of reading and numeracy score for high-SES children and only a modest effect on the decomposition of reading scores for low- and medium children. In these cases, our substantive conclusions would be the same irrespective of whether or not we took children's reasoning ability into account. At the same time, reasoning ability is somewhat more important in understanding the gender gap in low- and medium-SES children's numeracy achievement. Specifically, failing to take reasoning ability into account exacerbates the estimated negative educational endowment and positive educational response effects that boys experience. In contrast, accounting for children's school readiness through their WAI score (Panel C) is fundamental to understanding gender gaps in third grade reading and numeracy achievement across the SES spectrum. The advantage that girls have in terms of educational endowments is substantially understated if we ignore the effects of school readiness, leaving the response effects overstated as a result. This problem is compounded if we account for neither school readiness nor reasoning ability (see Panel D).

We also consider whether or not the insignificant effect of parental investments, parental education, and family structure in generating gender differences in educational achievement stems from the inclusion of controls for children's school readiness, reasoning ability, and teacher-assessed skill levels. These capabilities may themselves be driven by the preschool investments that parents make in their children and including them in our model may imply that we are in a sense overcontrolling. We investigate this issue by conducting the decomposition analysis for a model in which the WISC score, WAI score, and all teacher assessments are excluded. The results are presented in Panel E. We find that medium-SES girls continue to have a reading advantage in third grade because they have better educational endowments even when these important endowments are excluded from

the model. In all other cases, however, the gendered educational responses are more than sufficient to explain the entire gender gap in achievement levels ruling out an important role for gendered parental investments in generating the achievement gaps we observe.

Finally, the LSAC data provide information about a range of other factors which have been suggested as contributing to the gender gap in achievement. We investigate the importance of these factors by estimating a “kitchen-sink” model that adds to our preferred specification: i) children’s acquisition of social and behavioral skills (i.e. teacher-assessed Approach to Learning as in Bertrand and Pan, 2013); ii) children’s preference for math or reading; iii) parental background (i.e. whether or not parents were raised in a family in which the only breadwinner was the father); iv) parents’ parenting style (i.e. disengaged, permissive, authoritarian, authoritative) (see Wake et al. 2007)<sup>18</sup>; v) income; and vi) a vector of other contextual variables (e.g. parents’ relationship quality; a cluttered house; etc.). Results are reported in Panel F of Table 4. We find no evidence that the inclusion of this broader set of characteristics adds substantively to our understanding of the relative importance of either endowment or response effects in shaping the disparity in boys’ and girls’ achievement in reading and numeracy.

## **6. Conclusions**

Achieving gender equality in education is a key social objective. Differences in boys’ and girls’ educational achievement are particularly concerning because they are likely to be perpetuated; spilling over into other educational outcomes and undermining efforts to achieve gender equality more generally. After reviewing the evidence, the OECD (2015) recently concluded that gender disparities in educational achievement at age 15 are not the result of differences in aptitude. Rather “given equal

---

<sup>18</sup> LSAC allows us to control for parenting style using the consistent and warmth parenting scales. In contrast, the ECLS-K does not include the scale for consistent parenting. See the Appendix for the details of these additional variables.

opportunities, boys and girls, men and women have equal chances of achieving at the highest levels” (p. 13). If true, this implies that policy effort should be directed towards equalizing opportunities.

This paper makes an important contribution to this debate by investigating the source of gender disparities in early educational achievement. Specifically, we decompose the gender gap in third grade standardized test scores in reading and numeracy into two components. One component is due to differences in boys’ and girls’ endowments of education-related characteristics, while the second is due to gender differences in the way that test scores respond to those endowments. This approach has a long tradition in analyzes of gendered labor market outcomes, but to our knowledge has not been applied to the study of early academic achievement. It has the advantage of allowing us to use a unified framework to consider the collective importance of a vast range of education-related characteristics, many of which may be individually insignificant.

Our results lead us to three important conclusions. First, like others in the literature we find that gaps in educational achievement are linked to children’s socio-economic status. The relative advantage that girls have in reading exists only among children in low- and middle-SES families, while boys’ relative advantage in numeracy only occurs in high-SES families. There is no innate skill advantage for either one gender or the other that manifests itself in all contexts. Rather, the gendered nature of educational achievement differs across domains (e.g. reading versus numeracy) and ends of the socio-economic spectrum.

Second, it is clear that the source of the gender gap in achievement differs across domains. Girls score higher on their third grade reading tests because they have better endowments of the things associated with higher educational achievement. Specifically, they were more ready for school and had better teacher-assessed literacy skills in kindergarten. This results in low- and medium-SES girls having significantly higher reading test scores than boys. High-SES girls also have an advantage in educational endowments, but lag behind high-SES boys in the way these endowments are translated

into reading achievement. These two effects work in opposite directions leaving high-SES girls and boys with virtually identical reading achievement.

In contrast, boys' numeracy advantage stems not from better educational endowments, but from an advantage in the way their test scores respond to (are associated with) these characteristics. That is, boys achieve higher numeracy test scores than do girls with the same education-related characteristics. In the case of low- and medium-SES boys, this advantage in response effects is large enough to compensate for their lower educational endowments leaving them with the same numeracy achievement as their female classmates. High-SES boys, however, have an advantage in numeracy because the positive response effects are larger than the negative endowment effects. In particular, high-SES boys' numeracy advantage would be substantially smaller if the relationship between numeracy achievement on the one hand, and preschool and school type on the other were gender neutral.

Third, while we cannot definitely rule out gendered educational practices as a source of the gender gap in children's standardized test scores, this seems unlikely to be the full story, particularly in the case of reading achievement. Importantly, our results add to the small body of evidence showing that achievement gaps exist in early primary school, before children have been exposed to long periods of gender-biased schooling. Moreover, girls score higher on their third grade, standardized tests, largely because of the skills they already posed before entering school and in kindergarten. It is this skill advantage which produces a reading advantage – and eliminates a numeracy disadvantage – for girls in the bottom two-thirds of the SES distribution. None of this suggests that the school environment itself is the main source of the gender gap in achievement. At the same time, high-SES boys have higher numeracy achievement than high-SES girls in third grade in large part because they gain much more from attending preschool and lose less from attending Catholic (as opposed to public) schools raising the possibility that gendered educational practices in these settings favor boys' numeracy achievement.

Despite these conclusions, there remains a great deal that we do not yet fully understand. Variation in the magnitude and direction of the gender achievement gap across domains and socio-economic status has led some researchers to speculate about the nature of the interactions that might produce this complex pattern of results. Levine et al. (2005) postulate, for example, that in high-SES families, boys engage in relatively more spatially relevant activities than do girls which would potentially explain boys' numeracy advantage. Similarly, Penner and Paret (2008) argue that variation in gender differences in math scores may be due to variation in gender stereotypes or the transmission of cultural resources within groups. Research testing these hypotheses would be particularly valuable in identifying sensible policy responses.

There is also surprisingly little evidence that the gendered nature of investments in children varies by socio-economic status, let alone that this is the source of the gender gaps in achievement we observe. Baker and Milligan (2013), for example, provide cross-national evidence that from an early age parents spent more time with girls reading, telling stories, and teaching words and letters. This could certainly explain girls' advantage in literacy. The gender gap in parental investments in literacy, however, is largest among less-educated mothers in the U.K and among highly-educated mothers in the U.S. and Canada, leaving relative reading achievement by SES difficult to explain. It would be useful to know more about the pathways through which children's SES produces gender inequality in educational achievement.

It is clear that the pattern of achievement gaps across domains and family circumstances is complex, making it unlikely that a single overarching process drives the relationship between gender and educational achievement. We need to do more to identify which mechanisms are relatively more important and in which circumstances.

## References:

- Amato, P. R., & Rivera, F. (1999). Paternal Involvement and Children's Behavior Problems. *Journal of Marriage and the Family*, 61(2), 375-384.
- Baker, M., & Milligan, K. (2013). Boy-Girl Differences in Parental Investments: Evidence from Three Countries. *NBER Working Paper*, no. 18893, March.
- Bertrand, M., & Pan, J. (2013). The Trouble with Boys: Social Influences and the Gender Gap in Disruptive Behavior. *American Economic Journal: Applied Economics*, 5(1), 32-64.
- Blinder, A. (1973). Wage Discrimination: Reduced Form and Structural Estimates. *Journal of Human Resources*, 8(4), 436-455.
- Brent, D., May, D. C., & Kundert, D. K. (1996). The Incidence of Delayed School Entry: A Twelve-Year Review. *Early Education and Development*, 7(2), 121-135.
- Buchman, C., DiPrete, T. A., & McDanile, A. (2008). Gender Inequalities in Education. *American Review of Sociology*, 34, 319-337.
- Chatterji, P., Kim, D., & Lahiri, K. (2014). Birth Weight and Academic Achievement in Childhood. *Health economics*, 23(9), 1013-1035.
- Clark, D., Martorell, P., & Rockoff, J. (2009). School Principals and School Performance. *Working Paper 38*. National Center for Analysis of longitudinal data in Education research.
- Cornwell, C., Mustard, D. B., & van Parys, J. (2013). Noncognitive Skills and the Gender Disparities in Test Scores and Teacher Assessments: Evidence from Primary School. *Journal of Human Resources*, 48(1), 236-264.
- Dee, T. S. (2007). Teachers and the Gender Gaps in Student Achievement. *Journal of Human Resources*, 17(3), 528-554.
- DiPrete, T. A., & Jennings, J. L. (2012). Social and Behavioral Skills and the Gender Gap in Early Educational Achievement. *Social Science Research*, 41(1), 1-15.
- Elsner, B., & Isphording, I. E. (2015). A Big Fish in a Small Pond: Ability Rank and Human Capital Investment. *IZA Discussion Papers*, no. 9121.
- Entwisle, D. R., Alexander, K. L., & Olson, L. S. (2007). Early Schooling: The Handicap of Being Poor and Male. *Sociology of Education*, 80(2), 114-138.
- Fan, X., Fang, H., & Markussen, S. (2015). Mothers' Employment and Children's Educational Gender Gap. *National Bureau of Economic Research WP*, no. 21183.
- Fortin, N., Lemieux, T., & Firpo, S. (2011). Decomposition Methods in Economics, in O. Ashenfelter & D. Card (Eds.) *Handbooks in Economics: Labor Economics, Vol. 4A* (pp. 1-102). Elsevier: Amsterdam.

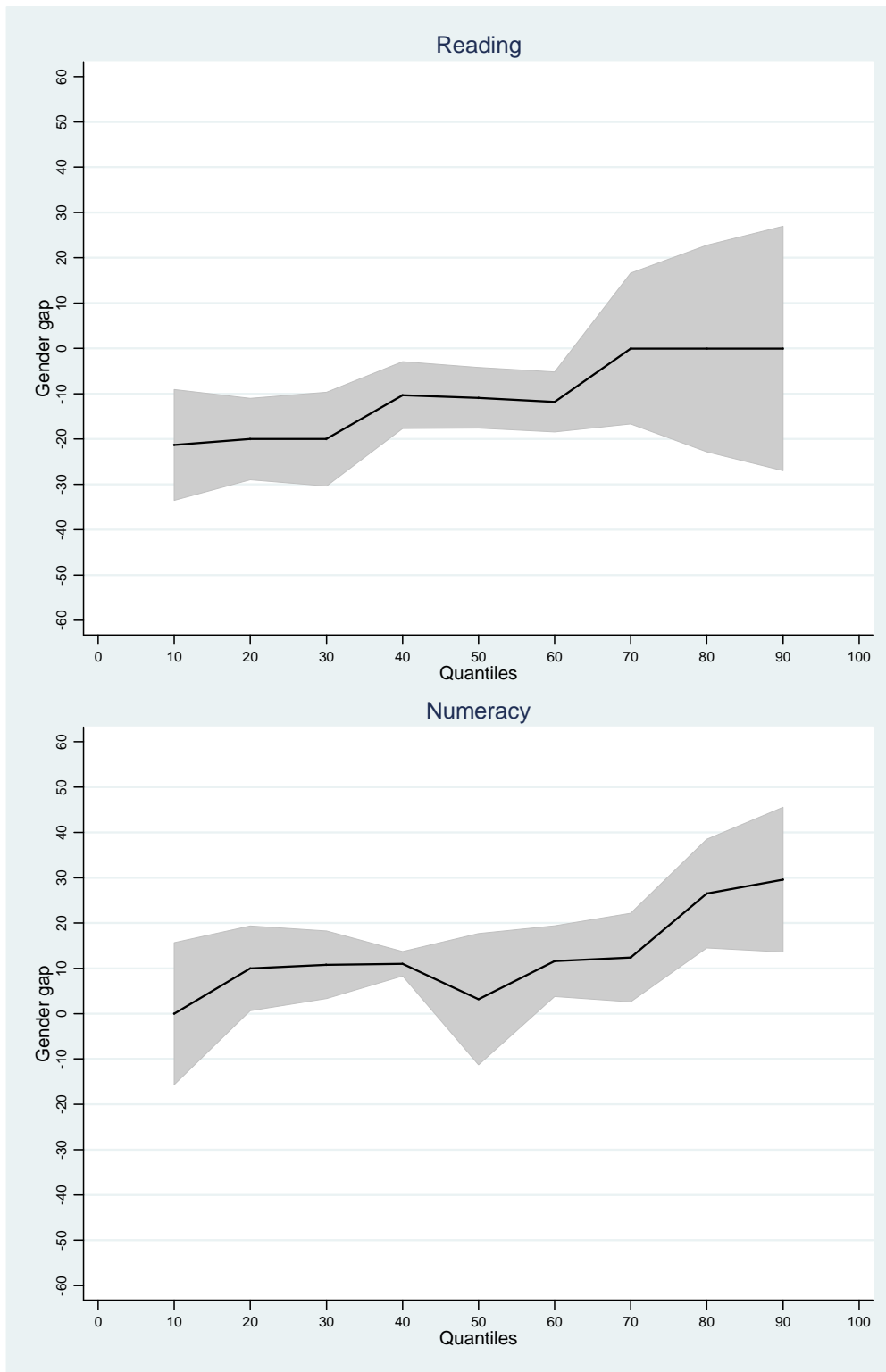
- Fortin, N. M., Oreopoulos, P., & Phipps, S. (2013). Leaving Boys Behind: Gender Disparities in High Academic Achievement. *NBER Working Papers*, no. w19331.
- Fryer Jr, R. G., & Levitt, S. D. (2009). An Empirical Analysis of the Gender Gap in Mathematics *NBER Working Papers*, no. w15430.
- Gibbons, S., & Chevalier, A. (2008). Assessment and Age 16+ Education Participation. *Research Papers in Education*, 23(2), 113-123.
- Goodman, R. (1997). The Strengths and Difficulties Questionnaire: A Research Note. *Journal of Child Psychology and Psychiatry*, 38(5), 581-586.
- Guison, L., Monte, F., Sapienza, P., & Zinaales, L. (2008). Culture, Gender, and Math. *Science*, 320(30), 1164-1165.
- Hill, M. A., & O'Neill, J. (1994). Family Endowments and the Achievement of Young Children with Special Reference to the Underclass. *Journal of Human Resources*, 29(4), 1064-1100.
- Holmlund, H., & Sund, K. (2008). Is the Gender Gap in School Performance Affected by the Sex of the Teacher? *Labour Economics*, 15(1), 37-53.
- Husain, M., & Millimet, D. L. (2009). The Mythical 'Boy Crisis'? *Economics of Education Review*, 28(1), 38-48.
- Jacob, B. A. (2002). Where the Boys Aren't: Non-Cognitive Skills, Returns to School, and the Gender Gap in Higher Education. *Economics of Education Review*, 21(6), 589-598.
- Jann, B. (2008). The Blinder-Oaxaca Decomposition for Linear Regression Models. *The Stata Journal*, 8(4), 453-479.
- Johnston, D. W., Nicholls, M. E., Shah, M., & Shields, M. A. (2009). Nature's Experiment? Handedness and Early Childhood Development. *Demography*, 46(2), 281-301.
- Jones, F. L. (1983). On Decomposing the Wage Gap: A Critical Comment on Blinder's Method. *Journal of Human Resources*, 18(1), 126-130.
- Jones, F. L., & McMillan, J. (2001). Scoring Occupational Categories for Social Research: A Review of Current Practice, with Australian Examples. *Work, Employment & Society*, 15(3), 539-563.
- Lavy, V., & Sand, E. (2015). On the Origins of Gender Human Capital Gaps: Short and Long Term Consequences of Teachers Stereotypical Biases. *NBER Working Paper*, no. 20909, January.
- Legewie, J., & DiPrete, T. A. (2012). School Context and the Gender Gap in Educational Achievement. *American Sociological Review*, 77(3), 463-485.
- Leibowitz, A. (1977). Parental Inputs and Children's Achievement. *Journal of Human Resources*, 12(2), 242-251.



- Leigh, A., & Gong, X. (2009). Estimating Cognitive Gaps Between Indigenous and Non-Indigenous Australians. *Education Economics*, 17(2), 239-261.
- de Lemos, M. M., & Doig, B. (1999). *Who Am I?: Developmental Assessment*. Australian Council for Educational Research.
- Levine, S. C., Vasilyeva, M., Lourenco, S. F., Newcombe, N. S., & Huttenlocher, J. (2005). Socio-economic Status Modifies the Sex Difference in Spatial Skill. *Psychological Science*, 16(11), 841-845.
- Neumark, D. (1988). Employers' Discriminatory Behavior and the Estimation of Wage Discrimination. *Journal of Human Resources*, 23(3), 279-295.
- Nollenberger, N., Rodríguez-Planas, N., & Sevilla, A. (2014). The Math Gender Gap: The Role of Culture. *IZA Discussion Paper*, no. 8379, August.
- Oaxaca, R. (1973). Male-female Wage Differentials in Urban Labor Markets. *International Economic Review*, 14(3), 693-709.
- Oaxaca, R. L. & Ransom, M. R. (1999). Identification in Detailed Wage Decompositions. *Review of Economics and Statistics*, 81(1), 154-157.
- OECD. (2015). *The ABC of Gender Equality in Education: Aptitude, Behaviour, Confidence*, PISA, OECD Publishing. Available at: <http://dx.doi.org/10.1787/9789264229945-en>
- Penner, A. M. & Paret, M. (2008). Gender Differences in Mathematics Achievement: Exploring the Early Grades and the Extremes. *Social Science Research*, 37(1), 239-253.
- Pope, D. G., & Sydnor, J. R. (2010). Geographic Variation in the Gender Differences in Test Scores. *Journal of Economic Perspectives*, 24(2), 95-108.
- Riegle-Crumb, C. (2006). The Path through Math: Course Sequences and Academic Performance at the Intersection of Race-Ethnicity and Gender. *American Journal of Education*, 113(1), 101-122.
- Rivkin, S. E., Hanushek, E., & Kain, J. (2005). Teachers, Schools, and Academic Achievement. *Econometrica*, 73(2), 417-458.
- Robinson, J. P., & Lubienski, S. T. (2011). The Development of Gender Achievement Gaps in Mathematics and Reading During Elementary and Middle School Examining Direct Cognitive Assessments and Teacher Ratings. *American Educational Research Journal*, 48(2), 268-302.
- Samson, J. F., & Lesaux, N. K. (2008). Language-minority Learners in Special Education: Rates and Predictors of Identification for Services. *Journal of Learning Disabilities*, 42(2), 148-162.
- Soloff, C., Lawrence, D., & Johnstone, R. (2005). Sample Design. *LSAC Technical Paper 1*, Australian Institute of Family Studies.

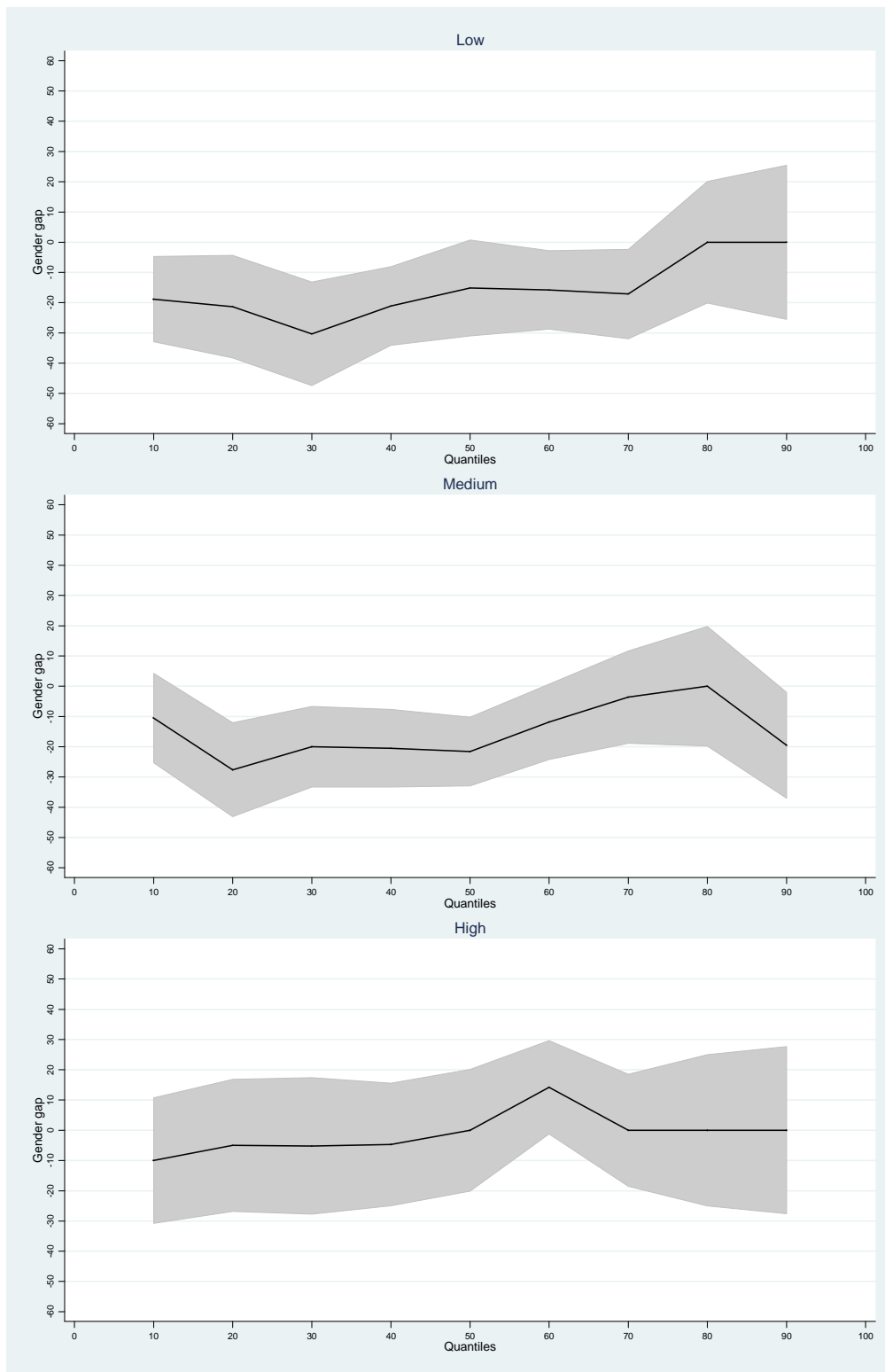
- Wake, M., Nicholson, J. M., Hardy, P., & Smith, K. (2007). Preschooler Obesity and Parenting Styles of Mothers and Fathers: Australian National Population Study. *Paediatrics*, *120*(6), 1520-1527.
- Wechsler, D. (2003). *Wechsler Intelligence Scale for Children— Fourth Edition*. San Antonio, TX: Psychological Corp.
- Willms, J. D., & Shields, M. (1996). *A Measure of Socioeconomic Status for the National Longitudinal Study of Children*. Report prepared for Statistics Canada.
- Wößmann, L. (2003). Schooling Resources, Educational Institutions and Student Performance: The International Evidence. *Oxford Bulletin of Economics and Statistics*, *65*(2), 117-170.

**Figure 1: The Overall Gender Gap Across the Test Score Distribution**



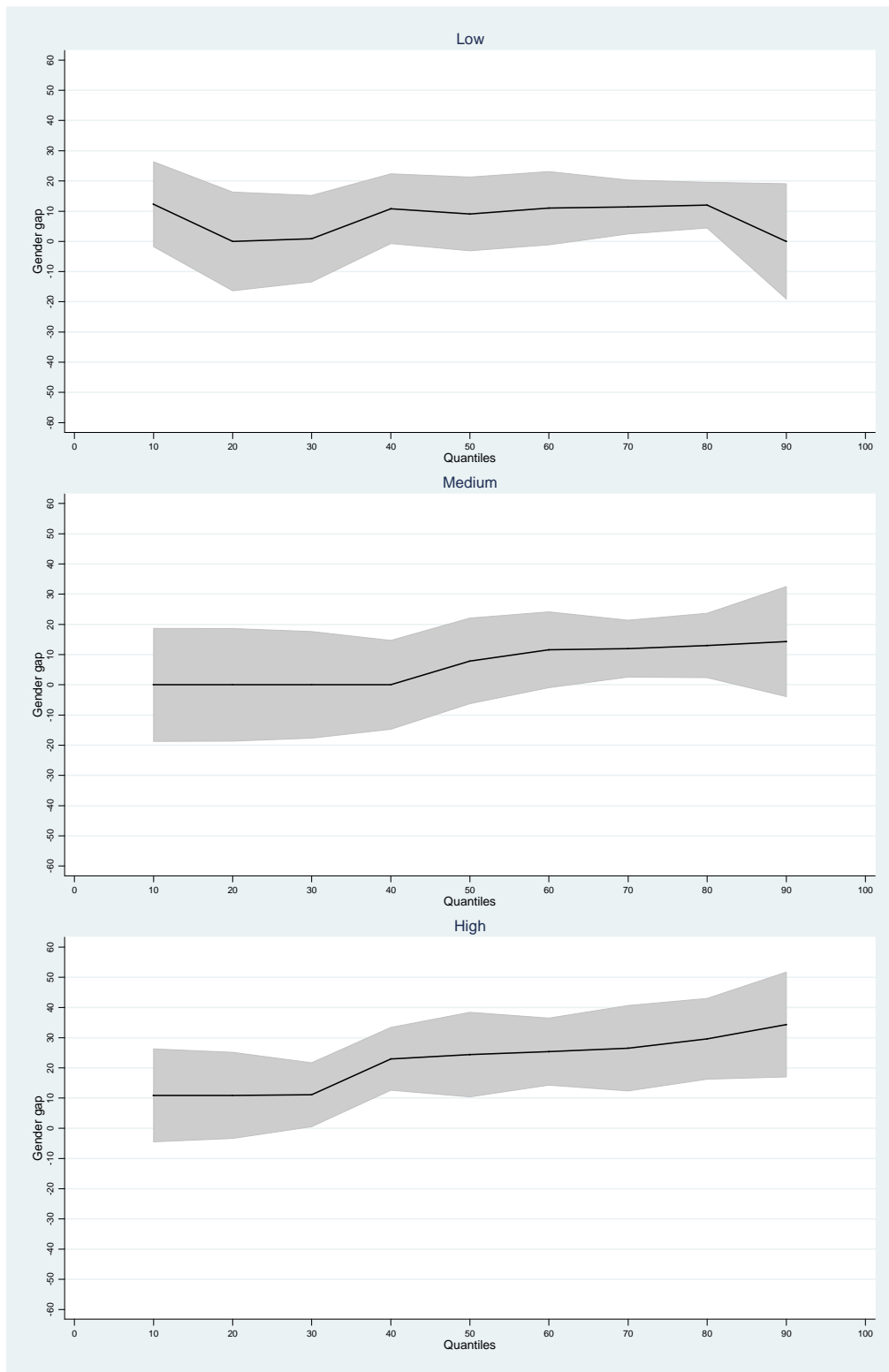
Notes: The black line represents the estimated coefficients from conditional quantile regressions which are estimated simultaneously at every decile of the test-score distribution. The grey area represents the 95 percent confidence interval on these estimates.

**Figure 2: The Gender Gap in Reading by SES Across the Test Score Distribution**



Notes: The black line represents the estimated coefficients from conditional quantile regressions which are estimated simultaneously at every decile of the test-score distribution. The grey area represents the 95 percent confidence interval on these estimates.

**Figure 3: The Gender Gap in Numeracy by SES Across the Test Score Distribution**



Notes: The black line represents the estimated coefficients from conditional quantile regressions which are estimated simultaneously at every decile of the test-score distribution. The grey area represents the 95 percent confidence interval on these estimates.

**Table 1: Mean NAPLAN Reading and Numeracy Test Scores by Gender and SES**

	<i>Reading</i>			<i>Numeracy</i>			<i>N</i>
	<i>Boys</i>	<i>Girls</i>	<i>T-test</i>	<i>Boys</i>	<i>Girls</i>	<i>T-test</i>	
<b><i>SES:</i></b>							
Low	391.56	407.10	2.77***	384.96	378.22	-1.52	984
Medium	428.03	442.58	2.76***	409.54	403.52	-1.41	1032
High	473.44	473.81	0.07	452.22	429.98	-5.13***	1057
All	432.44	441.59	2.80***	416.76	404.23	-4.71***	3073

Notes: \*\*\*, \*\*, \* indicate statistical significance at the 1%, 5% and 10% levels, respectively.

**Table 2: Oaxaca Decomposition Results for NAPLAN Reading Test Scores by SES**

	<i>Low SES</i>		<i>Medium SES</i>		<i>High SES</i>	
<b>Gender Difference</b>	-0.170***		-0.159***		-0.004	
	(0.061)		(0.058)		(0.056)	
Boys' average	-0.462***		-0.063		0.433***	
	(0.045)		(0.042)		(0.041)	
Girls' average	-0.292***		0.096**		0.437***	
	(0.042)		(0.039)		(0.038)	
<b>Characteristics:</b>	<b><i>Endowm.</i></b>	<b><i>Response</i></b>	<b><i>Endowm.</i></b>	<b><i>Response</i></b>	<b><i>Endowm.</i></b>	<b><i>Response</i></b>
WAI score	-0.047***	0.012	-0.030*	-0.008	-0.070***	-0.005
	(0.014)	(0.009)	(0.018)	(0.006)	(0.019)	(0.018)
WISC score	-0.007	-0.014	-0.011	0.000	-0.001	0.025*
	(0.012)	(0.01)	(0.009)	(0.003)	(0.007)	(0.014)
Birth weight (kgs)	0.009	0.474*	0.000	-0.249	0.004	-0.516
	(0.007)	(0.275)	(0.005)	(0.278)	(0.007)	(0.324)
Attended preschool	-0.003	-0.257	0.002	0.239	-0.001	0.173
	(0.003)	(0.391)	(0.002)	(0.359)	(0.002)	(0.222)
Age at test	0.032***	1.472	0.021**	1.352	0.030**	1.821
	(0.012)	(0.96)	(0.009)	(1.1)	(0.013)	(1.123)
Household type	0.005	0.055	0.000	0.025	0.003	-0.009
	(0.005)	(0.04)	(0.002)	(0.02)	(0.003)	(0.015)
Mother's education	-0.001	0.056	0.000	0.031	0.001	-0.006
	(0.002)	(0.043)	(0.003)	(0.078)	(0.002)	(0.213)
Father's education	0.004	-0.058	-0.004	-0.023	-0.001	-0.302*
	(0.004)	(0.071)	(0.006)	(0.088)	(0.005)	(0.163)
Parental investments	0.001	-0.536	0.000	0.277	0.001	0.662
	(0.009)	(0.473)	(0.009)	(0.879)	(0.006)	(0.651)
Education expectations (P1)	-0.039***	0.015	-0.011	0.146	-0.017**	0.061
	(0.014)	(0.078)	(0.011)	(0.098)	(0.008)	(0.187)
School type	-0.003	-0.020	-0.001	-0.014	0.002	0.116***
	(0.004)	(0.028)	(0.003)	(0.036)	(0.003)	(0.041)
Teacher's assessment: Numeracy	0.010	0.006	0.007	0.000	0.011	-0.054*
	(0.008)	(0.013)	(0.006)	(0.005)	(0.008)	(0.03)
Teacher's assessment: Literacy	-0.066***	0.005	-0.114***	0.002	-0.050***	0.012
	(0.021)	(0.012)	(0.026)	(0.007)	(0.017)	(0.033)
SDQ (mother)	-0.005	0.000	-0.033**	-0.012	-0.001	-0.007
	(0.013)	(0.008)	(0.016)	(0.01)	(0.014)	(0.021)
Other	-0.007	0.006	0.001	0.037	0.005	-0.029
	(0.005)	(0.12)	(0.003)	(0.135)	(0.005)	(0.157)
Constant		-1.269		-1.787		-1.863
		(1.205)		(1.468)		(1.39)
<b>Total</b>	-0.116**	-0.054	-0.175***	0.016	-0.084**	0.079
	(0.047)	(0.052)	(0.045)	(0.054)	(0.041)	(0.055)
<b>N</b>	984		1,032		1,057	

Notes: Coefficients estimated by pooled Oaxaca decomposition (including a gender dummy). All regressions control for: teacher survey completion status, indigenous status, preschool attendance, mother's employment status, in the "Other" category. P1 is the primary adult respondent, generally the mother. Robust standard errors reported in parenthesis. \*\*\*, \*\*, \* indicate statistical significance at the 1%, 5% and 10% levels, respectively.

**Table 3: Oaxaca Decomposition Results for NAPLAN Numeracy Test Scores by SES**

	<i>Low SES</i>		<i>Medium SES</i>		<i>High SES</i>	
<b>Gender Difference</b>	0.090		0.081		0.297***	
	(0.059)		(0.057)		(0.058)	
Boys' average	-0.305***		0.024		0.595***	
	(0.043)		(0.043)		(0.044)	
Girls' average	-0.395***		-0.056		0.297***	
	(0.041)		(0.037)		(0.038)	
<i>Characteristics</i>	<i>Endowm.</i>	<i>Response</i>	<i>Endowm.</i>	<i>Response</i>	<i>Endowm.</i>	<i>Response</i>
WAI score	-0.050***	0.004	-0.096***	-0.009	-0.103***	0.017
	(0.014)	(0.009)	(0.019)	(0.006)	(0.02)	(0.019)
WISC score	-0.009	-0.012	-0.018	0.001	-0.001	0.016
	(0.016)	(0.01)	(0.015)	(0.003)	(0.012)	(0.015)
Birth weight (kgs)	0.000	0.501*	0.005	-0.038	0.012*	-0.052
	(0.007)	(0.267)	(0.005)	(0.29)	(0.007)	(0.306)
Attended preschool	-0.003	-0.484	0.003	0.096	0.003	0.436**
	(0.003)	(0.405)	(0.003)	(0.263)	(0.003)	(0.215)
Age at test	0.026***	-0.691	0.021**	0.552	0.023**	-1.615
	(0.01)	(0.913)	(0.009)	(1.086)	(0.01)	(1.122)
Household type	0.003	0.052	-0.001	0.019	0.002	0.008
	(0.003)	(0.039)	(0.002)	(0.017)	(0.002)	(0.014)
Mother's education	0.000	0.034	0.002	-0.015	0.000	0.033
	(0.002)	(0.04)	(0.003)	(0.081)	(0.003)	(0.21)
Father's education	0.002	-0.104	-0.005	0.069	0.001	-0.007
	(0.004)	(0.069)	(0.005)	(0.094)	(0.003)	(0.157)
Parental investments	0.002	-0.378	-0.009	0.228	0.000	-0.431
	(0.008)	(0.463)	(0.008)	(0.807)	(0.006)	(0.576)
Education expectations (P1)	-0.040***	0.158**	-0.018*	0.043	-0.013*	0.242
	(0.013)	(0.073)	(0.011)	(0.098)	(0.007)	(0.17)
School type	0.004	-0.026	0.001	0.042	0.006	0.095**
	(0.005)	(0.025)	(0.003)	(0.036)	(0.005)	(0.04)
Teacher's assessment: Numeracy	0.017	-0.013	0.007	0.001	0.042***	0.006
	(0.016)	(0.011)	(0.01)	(0.005)	(0.016)	(0.032)
Teacher's assessment: Literacy	-0.023**	0.014	-0.055***	0.008	-0.020**	-0.001
	(0.011)	(0.012)	(0.017)	(0.008)	(0.01)	(0.034)
SDQ (mother)	-0.024*	0.016**	-0.005	-0.007	-0.006	-0.005
	(0.013)	(0.008)	(0.016)	(0.01)	(0.013)	(0.017)
Other	-0.007	0.182	0.000	-0.011	0.003	-0.154
	(0.005)	(0.116)	(0.003)	(0.14)	(0.006)	(0.146)
Constant		0.938		-0.730		1.760
		(1.126)		(1.381)		(1.367)
<b>Total</b>	-0.100**	0.191***	-0.169***	0.250***	-0.051	0.348***
	(0.046)	(0.05)	(0.044)	(0.052)	(0.044)	(0.053)
<b>N</b>	984		1,032		1,057	

Notes: Coefficients estimated by pooled Oaxaca decomposition (including a gender dummy). All regressions control for: teacher survey completion status, indigenous status, preschool attendance, mother's employment status, in the "Other" category. P1 is the primary adult respondent, generally the mother. Robust standard errors reported in parenthesis. \*\*\*, \*\*, \* indicate statistical significance at the 1%, 5% and 10% levels, respectively.



**Table 4: Robustness Results: Oaxaca Decompositions of Reading and Numeracy Achievement Using Alternative Models**

<i>SES</i>	<i>Reading</i>			<i>Numeracy</i>		
	<i>Low</i>	<i>Medium</i>	<i>High</i>	<i>Low</i>	<i>Medium</i>	<i>High</i>
Gender Difference	-0.170*** (0.063)	-0.159*** (0.059)	-0.004 (0.057)	0.090 (0.061)	0.081 (0.058)	0.297*** (0.059)
N	984	1,032	1,057	984	1,032	1,057
<i>A. Preferred specification</i>						
Total endowment effects	-0.116** (0.047)	-0.175*** (0.045)	-0.084** (0.041)	-0.100** (0.046)	-0.169*** (0.044)	-0.051 (0.044)
Total response effects	-0.054 (0.052)	0.016 (0.054)	0.079 (0.055)	0.191*** (0.05)	0.250*** (0.052)	0.348*** (0.053)
<i>B. Without the WISC score</i>						
Total endowment effects	-0.134*** (0.046)	-0.183*** (0.044)	-0.084** (0.04)	-0.124*** (0.044)	-0.182*** (0.043)	-0.051 (0.043)
Total response effects	-0.036 (0.053)	0.023 (0.055)	0.080 (0.055)	0.214*** (0.051)	0.263*** (0.055)	0.349*** (0.055)
<i>C. Without the WAI score</i>						
Total endowment effects	-0.079* (0.045)	-0.152*** (0.042)	-0.023 (0.038)	-0.061 (0.045)	-0.097** (0.042)	0.038 (0.041)
Total response effects	-0.091* (0.052)	-0.007 (0.051)	0.019 (0.053)	0.152*** (0.049)	0.178*** (0.051)	0.260*** (0.051)
<i>D. Without the WISC &amp; WAI score</i>						
Total endowment effects	-0.087** (0.044)	-0.152*** (0.042)	-0.015 (0.037)	-0.072* (0.043)	-0.097** (0.04)	0.051 (0.039)
Total response effects	-0.083 (0.054)	-0.007 (0.052)	0.011 (0.053)	0.162*** (0.051)	0.178*** (0.054)	0.247*** (0.052)
<i>E. Without the WAI &amp; Matreas scores, expectations and teachers' assessments</i>						
Total endowment effects	0.010 (0.031)	-0.062** (0.03)	0.027 (0.028)	-0.022 (0.03)	-0.035 (0.029)	0.035 (0.029)
Total response effects	-0.180*** (0.058)	-0.097* (0.058)	-0.031 (0.056)	0.113** (0.057)	0.115* (0.059)	0.263*** (0.056)
<i>F. With ALL variables</i>						
Total endowment effects	-0.121** (0.049)	-0.197*** (0.048)	-0.097** (0.044)	-0.108** (0.048)	-0.188*** (0.047)	-0.057 (0.047)
Total response effects	-0.048 (0.053)	0.038 (0.055)	0.093* (0.056)	0.199*** (0.051)	0.268*** (0.052)	0.354*** (0.054)

Notes: Coefficients estimated using different versions of the Oaxaca decomposition. All regressions include the same controls as in Tables 2 and 3 (except for specified differences). Specification F includes all additional variables as described in the data appendix. Robust standard errors reported in parenthesis. \*\*\*, \*\*, \* indicate statistical significance at the 1%, 5% and 10% levels, respectively.

## APPENDIX

Table A1 provides descriptions of the variables included in the Oaxaca decomposition. The variables in bold are shown individually in the results, while the rest are grouped in the “Other” category. Table A2 describes the variables that are included in robustness checks but not in the main model. All variables are measured at 6 years old unless specified otherwise.

**Table A1: Variables included in the Oaxaca decomposition.**

<i>Variable</i>	<i>Definition</i>
<i>School readiness of the child</i>	
<b>WAI score</b>	WAI score at 4 years old: normalized to a mean of 0 and a standard deviation of 1 (children missing the WAI score are dropped from the sample).
<b>WISC score</b>	The Matreas score at 6 years old: normalized to a mean of 0 and a standard deviation of 1 (children missing the WAI score are dropped from the sample).
<i>Family characteristics</i>	
<b>Birth weight</b>	Study child’s birth weight in kilograms (children missing the birth weight are dropped from the sample).
<b>Age at test</b>	Study child’s age at Third grade Naplan Test, recorded in months (no children missing this variable).
<b>Household type</b>	Indicators of household type: Two biological parents: Equals 1 if study child lives with both biological parents, 0 otherwise (reference). Single parent household: Equals 1 if study child lives with one parent only, 0 otherwise. Blended household: Equals 1 if study child lives with two parents with at least one non-biological parent, 0 otherwise.
<b>Parental education</b>	Indicators of study child’s parental highest education attainment, separately by mother and father: High school graduate: Equals 1 if (mother’s/father’s) highest education attainment is Year 12 completion, 0 otherwise (reference). Certificate/advanced diploma: Equals 1 if (mother’s/father’s) highest education attainment is a certificate or advanced diploma, 0 otherwise. University degree: Equals 1 if (mother’s/father’s) highest education attainment is a university degree, 0 otherwise. Father's education attainment missing: Equals 1 if information about the father’s education is missing, 0 otherwise.
<b>Indigenous</b>	Equals 1 if study child is indigenous, 0 otherwise.
<b>Attended preschool</b>	Equals 1 if study child attended preschool, 0 otherwise.
<i>Parental investments</i>	
<b>Number of books</b>	Refers to the number of books in the study child’s home currently.
<b>Reading to child every day</b>	Equals 1 if study child is read to everyday, 0 otherwise.
<b>Homework help</b>	Indicators of parental help with homework: P1's help with homework every day: Equals 1 if P1 helps study child with homework every day, 0 otherwise. P2's help with homework every day: Equals 1 if P2 helps study child with homework every day, 0 otherwise. P2's help with homework missing: Equals 1 if P2’s information about homework help is missing, 0 otherwise.

<i>Variable</i>	<i>Definition</i>
<b>Parental involvement</b>	<p>Mother's involvement: A measure of mother's involvement with the study child in everyday life, normalized to a mean of 0 and standard deviation of 1, with higher scores indicating more involvement.</p> <p>Father's involvement: A measure of father's involvement with the study child in everyday life, normalized to a mean of 0 and standard deviation of 1, with higher scores indicating more involvement.</p> <p>Father's involvement available: Equals 1 if father's information about involvement is available, 0 otherwise.</p>
<i>Culture / attitudes</i>	
<b>Education expectations</b>	<p>Indicators of mother's expectations about the child's education attainment.</p> <p>High sch. grad. (max): Equals 1 if mother expects child's highest education attainment to be high school graduate, 0 otherwise (reference).</p> <p>Vocat. degree: Equals 1 if mother expects child's highest education attainment to be a trade or vocational training course, 0 otherwise.</p> <p>Uni. degree: Equals 1 if mother expects child's highest education attainment to be a university degree, 0 otherwise.</p> <p>Missing: Equals 1 if mother's expectation of study child's education is missing, 0 otherwise.</p>
Mother's labor force status	<p>Indicators of mother's current labor force status.</p> <p>Maternity leave/unemployed/NILF/missing: Equals 1 if mother is on maternity leave, unemployed, not in the labor force or LFS is missing, 0 otherwise (reference).</p> <p>Mother works full-time: Equals 1 if mother works full-time, 0 otherwise.</p> <p>Mother works part-time: Equals 1 if mother works part-time, 0 otherwise.</p>
<i>Teacher's and school's characteristics</i>	
<b>School type</b>	<p>Indicators of the school type the study child attends.</p> <p>Government: Equals 1 if child attends a government school, 0 otherwise (reference).</p> <p>Catholic: Equals 1 if child attends Catholic school, 0 otherwise.</p> <p>Independent: Equals 1 if child attends an Independent school, 0 otherwise.</p>
Teachers' info available	Equals 1 if the study child's teacher has completed the survey, 0 otherwise.
<i>Teacher assessments</i>	
<b>Teachers' assessment (absolute)</b>	<p>Teachers' assessments of study child's ability in numeracy and literacy, using the "Academic Rating Scales."</p> <p>Teachers' literacy assessment (absolute): Standardized measure of the teacher's assessment of the study child's literacy ability, higher scores indicating better ability. The measure is normalized to a mean of 0 and standard deviation of 1.</p> <p>Teachers' numeracy assessment (absolute): Standardized measure of the teacher's assessment of the study child's mathematical ability, higher scores indicating better ability. The measure is normalized to a mean of 0 and standard deviation of 1.</p>
<b>Teachers' assessment (relative)</b>	<p>Teachers' assessments of study child's ability in numeracy and literacy relative to other students at the same grade level.</p> <p>Teachers' literacy assessment (relative): Standardized measure of the teacher's assessment of the study child's language and literacy ability, higher scores indicating better ability. The measure is normalized to a mean of 0 and standard deviation of 1.</p> <p>Teachers' numeracy assessment (relative): Standardized measure of the teacher's assessment of the study child's mathematical ability, higher scores indicating better ability. The measure is normalized to a mean of 0 and standard deviation of 1.</p>

---

<i>Variable</i>	<i>Definition</i>
<i>Child's behavior</i>	
<b>Strengths &amp; Difficulties Questionnaire</b>	<p>SDQ: Evaluation by mother, which allows for the identification of the following subscales, normalized to a mean of 0 and standard deviation of 1, where a higher score in each subscale indicates a higher degree of problem behavior in the relevant domain:</p> <p>Antisocial behavior: Study child is not considerate; does not share readily; is not helpful if someone is hurt; is not kind to younger children; does not volunteers to help.</p> <p>Hyperactivity/inattention: Study child is restless, overactive, cannot stay still for long; constantly fidgeting or squirming; easily distracted, concentration wanders, does not think before acting; poor attention span and does not see tasks through to the end.</p> <p>Peer relationship problems: Study child is solitary and plays alone; does not have at least one good friend; not generally liked by other children; picked on or bullied by other children; gets on better with adults than other children.</p> <p>Conduct problems: Study child has temper tantrums; not generally obedient; often fights/bullies other children; often lies and cheats; steals from home, school or elsewhere.</p> <p>Emotional symptoms: Study child often complains of headaches, stomach aches or sickness; worries a lot; often unhappy; nervous or clingy in new situations and loses confidence easily; many fears.</p>

---

**Table A2: Variables included in the robustness checks.**

<i>Variable</i>	<i>Definition</i>
Weekly income	Mother's and father's weekly income, separately.
Cluttered house	Equals 1 if the house is cluttered, 0 otherwise.
Cluttered house missing	Equals 1 if information about a cluttered house is missing, 0 otherwise.
Parenting style	Indicators of the fathers' and mothers' parenting style separately: Disengaged: Equals 1 if (mother/father) is disengaged, 0 otherwise (reference). Permissive: Equals 1 if (mother/father) is permissive, 0 otherwise. Authoritarian: Equals 1 if (mother/father) is authoritarian, 0 otherwise. Authoritative: Equals 1 if (mother/father) is authoritative, 0 otherwise.
Angry parenting	(Mother's/Father's) angry parenting scale: Normalized to a mean of 0 and standard deviation of 1, with higher scores indicating parents use aversive or harsh discipline.
Self-efficacy scale	(Mother's/father's) self-efficacy scale: Normalized to a mean of 0 and a standard deviation of 1, with higher scores indicating better ability to handle the study child.
Unkempt child	Equals 1 if study child was unkempt during the interview, 0 otherwise.
Parent's relationship quality	Measure of parents' evaluation of the quality of their relationship with each other, normalized to a mean of 0 and standard deviation of 1, higher scores indicating better quality.
Traditional family model	Equals 1 if (mother/father) raised in a traditional family model (father-only breadwinner), 0 otherwise.
Not employed for family reasons	Equals 1 if mother is not working for family reasons, 0 otherwise.
Supportive partner	Equals 1 if the mother thinks her partner is not supportive, 0 otherwise.
Work and family conflicts	Measure of whether the mother experiences conflicts between work and family, with scores ranging from 1 to 5, with higher scores indicating less work/family conflicts.
Work and family conflicts available	Equals 1 if information about work and family conflicts is available, 0 otherwise.
Teacher/child ratio	Measure of the ratio of teachers to children in the study child's classroom.
Number of parent-teacher interviews	Number of parent/teacher meetings organized by the teacher.
Number of parent-teacher interviews available	Equals 1 if number of parent-teacher interview measure is available, 0 otherwise.
Teaching style: emphasis reading	Measure of teaching style, normalized to a mean of 0 and standard deviation of 1, with lower scores indicating emphasis on reading and comprehending whole texts and higher scores indicating emphasis on phonetics and decoding skills.
Teaching style: emphasis math	Measure of teaching style, normalized to a mean of 0 and standard deviation of 1, with lower scores indicating emphasis on talking about and solving mathematical problems and higher scores indicating emphasis on learning rules, facts and procedures.
Teacher's communication	Scale of the degree to which teachers communicate with parents, normalized to a mean of 0 and standard deviation of 1, with higher scores indicating poorer communication.
Approach to Learning	Approach to Learning Scale, normalized to a mean of 0 and standard deviation of 1, with higher scores indicating the child has better approaches to learning.
Child likes math	Equals 1 if study child likes math and number work, 0 otherwise.
Child likes reading	Equals 1 if study child likes reading, 0 otherwise.

**Table A3: Summary Statistics for Control Variables**

	<i>Low SES</i>			<i>Medium SES</i>			<i>High SES</i>		
	<i>Boys</i>	<i>Girls</i>	<i>T-test</i>	<i>Boys</i>	<i>Girls</i>	<i>T-test</i>	<i>Boys</i>	<i>Girls</i>	<i>T-test</i>
WAI score	-0.38	0.05	7.62***	-0.24	0.33	9.97***	-0.02	0.60	11.18***
WISC score	-0.20	-0.16	0.56	0.02	0.10	1.27	0.28	0.28	0.08
Birth weight (in kgs)	3.48	3.32	-4.56***	3.50	3.39	-3.32***	3.53	3.40	-4.23***
Attended preschool	0.97	0.99	1.58	0.99	0.97	-1.53	0.98	0.96	-1.42
Age at test (in months)	102.14	101.23	-2.85***	102.33	101.60	-2.61***	102.59	101.96	-2.42**
Two biological parents	0.69	0.73	1.08	0.91	0.92	0.71	0.94	0.92	-0.83
Single parent household	0.27	0.23	-1.25	0.07	0.06	-0.78	0.05	0.06	0.34
Blended household	0.04	0.04	0.28	0.02	0.02	-0.02	0.01	0.02	1.17
Mother: high school graduate (max)	0.54	0.57	0.74	0.23	0.27	1.30	0.05	0.06	0.47
Mother: certificate / advanced diploma	0.43	0.41	-0.54	0.49	0.47	-0.37	0.17	0.17	-0.04
Mother: university degree	0.03	0.02	-0.65	0.28	0.26	-0.85	0.78	0.78	-0.22
Father: high school graduate (max)	0.33	0.33	0.09	0.22	0.19	-1.30	0.08	0.06	-1.09
Father: certificate / advanced diploma	0.45	0.45	0.02	0.57	0.62	1.50	0.25	0.27	0.78
Father: university degree	0.05	0.03	-1.46	0.15	0.15	0.38	0.65	0.65	0.03
Father's education attainment missing	0.16	0.18	0.64	0.06	0.04	-1.64	0.02	0.02	-0.58
Number of books	3.60	3.66	1.02	3.78	3.83	1.59	3.88	3.88	-0.01
Reading to child every day	0.43	0.39	-1.12	0.48	0.47	-0.24	0.57	0.55	-0.73
P1's help with homework every day	0.64	0.66	0.59	0.68	0.65	-1.04	0.66	0.63	-1.19
P2's help with homework every day	0.07	0.08	0.54	0.13	0.09	-1.63	0.12	0.12	-0.26
P2's help with homework missing	0.54	0.53	-0.27	0.29	0.29	-0.22	0.17	0.19	0.71
Mother's involvement	-0.00	0.22	3.33***	-0.07	0.05	2.03**	-0.08	-0.05	0.55
Father's involvement	0.12	0.11	-0.20	-0.07	0.13	4.08***	-0.11	-0.17	-1.13
Father's involvement available	0.45	0.47	0.53	0.69	0.71	0.69	0.82	0.81	-0.40
Education expectation: high sch. grad. (max)	0.28	0.28	-0.23	0.16	0.20	1.56	0.05	0.06	0.74
Education expectation: vocat. degree	0.26	0.10	-6.90***	0.22	0.08	-6.42***	0.08	0.03	-3.50***
Education expectation: uni. degree	0.38	0.58	6.32***	0.56	0.69	4.38***	0.83	0.89	2.89***
Education expectation: missing	0.07	0.05	-1.66*	0.06	0.03	-2.27**	0.04	0.02	-2.31**

Government school	0.77	0.74	-1.12	0.60	0.65	1.90*	0.59	0.54	-1.60
Catholic school	0.15	0.20	1.98**	0.28	0.22	-2.16**	0.25	0.29	1.27
Independent school	0.07	0.06	-1.10	0.12	0.13	0.05	0.16	0.17	0.62
Teachers' numeracy assessment (absolute)	-0.11	-0.07	0.80	0.01	0.08	1.32	0.32	0.28	-0.75
Teachers' numeracy assessment (relative)	-0.07	-0.18	-1.90*	0.05	0.01	-0.77	0.36	0.19	-3.26***
Teachers' literacy assessment (absolute)	-0.21	-0.02	3.44***	-0.07	0.17	4.39***	0.24	0.38	2.96***
Teachers' literacy assessment (relative)	-0.22	-0.04	3.38***	-0.12	0.16	5.54***	0.21	0.38	3.21***
Antisocial behaviour	0.15	-0.21	-5.87***	0.10	-0.26	-6.26***	0.13	-0.24	-6.55***
Hyperactivity/inattention	0.24	-0.11	-5.95***	0.15	-0.25	-6.68***	-0.08	-0.37	-5.06***
Peer relationship problems	0.16	0.01	-2.36**	-0.14	-0.13	0.12	-0.20	-0.20	-0.02
Conduct problems	0.20	-0.03	-3.50***	0.05	-0.09	-2.36**	-0.18	-0.27	-1.53
Emotional symptoms	0.01	0.08	0.97	-0.15	0.08	3.86***	-0.20	-0.04	2.81***
Teachers' info available	0.78	0.83	1.81*	0.85	0.85	0.14	0.86	0.85	-0.51
Indigenous	0.06	0.05	-0.34	0.03	0.03	0.17	0.00	0.01	0.51
Mother works full-time	0.19	0.21	1.07	0.24	0.25	0.43	0.30	0.32	0.89
Mother works part-time	0.40	0.39	-0.34	0.49	0.47	-0.62	0.46	0.49	0.91
N	488	496		514	518		542	515	

Notes: P1 is the primary adult respondent, generally the mother, while P2 refers to the secondary respondent. \*\*\*, \*\*, \* indicate statistical significance at the 1%, 5% and 10% levels, respectively.

**Table A4: OLS Coefficients for Reading Test Scores by SES**

	<i>Low SES</i>		<i>Medium SES</i>		<i>High SES</i>	
	<i>Boys</i>	<i>Girls</i>	<i>Boys</i>	<i>Girls</i>	<i>Boys</i>	<i>Girls</i>
WAI score	0.073* (0.042)	0.148*** (0.038)	0.038 (0.047)	0.087** (0.039)	0.089* (0.046)	0.123*** (0.037)
WISC score	0.240*** (0.043)	0.162*** (0.036)	0.127*** (0.037)	0.140*** (0.038)	0.148*** (0.036)	0.060 (0.038)
Birth weight (in kgs)	0.099 (0.064)	-0.042 (0.055)	-0.034 (0.056)	0.038 (0.063)	-0.034 (0.07)	0.115* (0.068)
Attended preschool	0.156 (0.245)	0.417 (0.335)	0.327 (0.343)	0.084 (0.163)	0.028 (0.202)	-0.149 (0.125)
Age at test (in months)	0.040*** (0.007)	0.026*** (0.007)	0.033*** (0.007)	0.020** (0.008)	0.057*** (0.008)	0.039*** (0.008)
Single parent household	0.253** (0.112)	0.013 (0.105)	0.159 (0.209)	-0.189 (0.174)	-0.066 (0.219)	0.122 (0.164)
Blended household	-0.267 (0.197)	-0.133 (0.195)	0.236 (0.229)	0.175 (0.328)	-0.476*** (0.181)	-0.527** (0.217)
Mother: certificate / advanced diploma	0.051 (0.08)	-0.071 (0.065)	-0.026 (0.087)	-0.055 (0.077)	0.177 (0.209)	0.123 (0.16)
Mother: university degree	0.083 (0.205)	-0.078 (0.25)	0.071 (0.098)	0.007 (0.089)	0.151 (0.185)	0.170 (0.144)
Father: certificate / advanced diploma	-0.002 (0.089)	0.088 (0.074)	0.104 (0.087)	0.101 (0.08)	-0.160 (0.16)	0.124 (0.121)
Father: university degree	-0.050 (0.168)	0.636*** (0.245)	0.242** (0.122)	0.340*** (0.118)	-0.097 (0.143)	0.225* (0.117)
Father's education attainment missing	0.053 (0.126)	-0.014 (0.098)	-0.038 (0.208)	0.137 (0.237)	-0.840*** (0.294)	0.135 (0.324)
Number of books	0.073 (0.045)	0.093** (0.045)	0.129** (0.051)	0.064 (0.056)	0.150* (0.089)	-0.116 (0.085)
Reading to child every day	-0.074 (0.08)	0.096 (0.068)	0.049 (0.074)	-0.016 (0.066)	0.004 (0.075)	0.193*** (0.069)
P1's help with homework every day	0.030 (0.082)	-0.076 (0.074)	-0.068 (0.08)	0.091 (0.07)	-0.032 (0.079)	0.020 (0.071)
P2's help with homework every day	-0.192 (0.148)	0.042 (0.117)	-0.142 (0.109)	-0.136 (0.122)	-0.057 (0.129)	-0.151 (0.118)
P2's help with homework missing	-0.215 (0.232)	0.339 (0.36)	-0.449 (0.312)	-0.416 (0.798)	-0.153 (0.448)	0.123 (0.2)
Mother's involvement	-0.053 (0.037)	0.006 (0.03)	-0.048 (0.036)	0.031 (0.036)	0.007 (0.036)	0.010 (0.035)
Father's involvement	0.108* (0.06)	-0.064 (0.048)	0.047 (0.042)	-0.069* (0.041)	0.034 (0.043)	-0.025 (0.039)
Father's involvement available	0.043 (0.251)	0.393 (0.366)	-0.328 (0.317)	-0.484 (0.801)	-0.013 (0.462)	0.217 (0.213)
Education expectation: vocat. Degree	0.015 (0.108)	-0.061 (0.118)	0.183* (0.108)	-0.069 (0.121)	-0.426** (0.185)	0.190 (0.226)
Education expectation: uni. Degree	0.188* (0.098)	0.189** (0.078)	0.276*** (0.095)	0.139 (0.089)	0.046 (0.145)	-0.038 (0.147)
	0.075	0.025	0.408**	-0.187	0.045	-0.594



Education expectation:						
missing	(0.139)	(0.149)	(0.16)	(0.255)	(0.231)	(0.415)
Catholic school	-0.032	0.046	-0.072	0.082	0.055	-0.177**
	(0.108)	(0.082)	(0.081)	(0.082)	(0.089)	(0.075)
Independent school	-0.121	-0.007	0.110	-0.074	0.161*	-0.161*
	(0.154)	(0.136)	(0.107)	(0.099)	(0.091)	(0.092)
Teachers' numeracy	-0.042	0.061	-0.095	-0.015	-0.045	0.143*
assessment (absolute)	(0.08)	(0.073)	(0.071)	(0.071)	(0.082)	(0.073)
Teachers' numeracy	0.106*	0.083	0.132**	0.069	0.072	0.071
assessment (relative)	(0.063)	(0.063)	(0.058)	(0.063)	(0.064)	(0.064)
Teachers' literacy	0.272**	0.169**	0.349***	0.244***	0.212**	0.159*
assessment (absolute)	(0.107)	(0.081)	(0.084)	(0.091)	(0.091)	(0.09)
Teachers' literacy	0.068	0.207***	0.123	0.206***	0.129*	0.146**
assessment (relative)	(0.091)	(0.073)	(0.075)	(0.077)	(0.069)	(0.065)
Antisocial behaviour	0.045	0.015	0.028	-0.056	-0.028	0.044
	(0.042)	(0.036)	(0.038)	(0.043)	(0.04)	(0.039)
Hyperactivity/inattention	0.003	0.084**	-0.115***	-0.043	-0.040	0.020
	(0.05)	(0.041)	(0.044)	(0.042)	(0.046)	(0.043)
Peer relationship problems	-0.012	-0.012	0.038	-0.014	0.051	0.013
	(0.044)	(0.036)	(0.035)	(0.043)	(0.045)	(0.05)
Conduct problems	-0.117***	-0.067*	-0.005	-0.007	-0.019	-0.088**
	(0.044)	(0.039)	(0.041)	(0.042)	(0.049)	(0.042)
Emotional symptoms	0.035	-0.025	-0.032	0.026	-0.025	-0.060*
	(0.042)	(0.039)	(0.038)	(0.036)	(0.045)	(0.036)
Teachers' info available	0.099	0.007	0.024	-0.014	-0.006	-0.142
	(0.099)	(0.093)	(0.104)	(0.097)	(0.112)	(0.105)
Indigenous	-0.182	-0.074	-0.331*	-0.066	-0.162	-0.270
	(0.134)	(0.142)	(0.184)	(0.216)	(0.298)	(0.312)
Mother works full-time	0.012	0.122	-0.088	-0.135	-0.158	0.070
	(0.11)	(0.086)	(0.101)	(0.088)	(0.107)	(0.096)
Mother works part-time	-0.117	-0.012	-0.036	-0.036	-0.192**	-0.035
	(0.087)	(0.074)	(0.09)	(0.081)	(0.091)	(0.091)
Constant	-5.211***	-3.942***	-4.002***	-2.215*	-5.866***	-4.003***
	(0.769)	(0.992)	(0.906)	(1.228)	(1.054)	(0.986)
N	488	496	514	518	542	515

Notes: P1 is the primary adult respondent, generally the mother, while P2 refers to the secondary respondent. Robust standard errors in parenthesis. \*\*\*, \*\*, \* indicate statistical significance at the 1%, 5% and 10% levels, respectively.

**Table A5: OLS Coefficients for Numeracy Test Scores by SES**

	<i>Low SES</i>		<i>Medium SES</i>		<i>High SES</i>	
	<i>Boys</i>	<i>Girls</i>	<i>Boys</i>	<i>Girls</i>	<i>Boys</i>	<i>Girls</i>
WAI score	0.101** (0.043)	0.147*** (0.038)	0.129*** (0.047)	0.223*** (0.037)	0.177*** (0.045)	0.139*** (0.04)
WISC score	0.300*** (0.044)	0.235*** (0.039)	0.233*** (0.038)	0.230*** (0.035)	0.214*** (0.038)	0.157*** (0.039)
Birth weight (in kgs)	0.061 (0.061)	-0.087 (0.055)	0.043 (0.064)	0.054 (0.06)	0.070 (0.065)	0.085 (0.065)
Attended preschool	0.031 (0.206)	0.524 (0.377)	0.320 (0.218)	0.223 (0.173)	0.441** (0.176)	-0.008 (0.148)
Age at test (in months)	0.024*** (0.006)	0.031*** (0.007)	0.031*** (0.008)	0.026*** (0.008)	0.029*** (0.008)	0.045*** (0.008)
Single parent household	0.190* (0.104)	-0.039 (0.105)	0.030 (0.191)	-0.222 (0.141)	0.030 (0.203)	-0.180 (0.135)
Blended household	-0.135 (0.231)	0.009 (0.171)	0.215 (0.258)	0.093 (0.197)	-0.448 (0.291)	-0.128 (0.176)
Mother: certificate / advanced diploma	0.038 (0.073)	-0.038 (0.061)	-0.035 (0.094)	0.002 (0.074)	-0.092 (0.204)	-0.026 (0.163)
Mother: university degree	0.111 (0.234)	0.037 (0.362)	0.063 (0.105)	0.052 (0.082)	0.109 (0.188)	0.053 (0.134)
Father: certificate / advanced diploma	0.092 (0.085)	0.196*** (0.076)	0.111 (0.096)	-0.002 (0.084)	-0.067 (0.141)	-0.092 (0.13)
Father: university degree	-0.031 (0.152)	0.541*** (0.208)	0.197 (0.123)	0.144 (0.109)	0.045 (0.127)	0.042 (0.127)
Father's education attainment missing	0.027 (0.121)	0.218** (0.099)	-0.170 (0.183)	-0.073 (0.177)	-0.416 (0.262)	0.480* (0.253)
Number of books	0.046 (0.042)	0.095** (0.041)	0.139*** (0.046)	-0.019 (0.053)	0.048 (0.095)	0.020 (0.069)
Reading to child every day	-0.032 (0.073)	0.022 (0.065)	-0.041 (0.076)	-0.066 (0.06)	0.038 (0.071)	0.009 (0.069)
P1's help with homework every day	0.071 (0.079)	0.017 (0.069)	0.020 (0.08)	-0.024 (0.068)	-0.098 (0.076)	-0.004 (0.071)
P2's help with homework every day	-0.193 (0.145)	0.120 (0.112)	-0.077 (0.105)	-0.044 (0.106)	-0.108 (0.125)	-0.075 (0.112)
P2's help with homework missing	-0.131 (0.181)	0.140 (0.377)	-0.282 (0.415)	0.168 (0.677)	-0.188 (0.336)	0.391** (0.169)
Mother's involvement	-0.040 (0.034)	-0.010 (0.03)	-0.052 (0.037)	0.051 (0.033)	-0.017 (0.037)	0.022 (0.034)
Father's involvement	0.048 (0.051)	0.003 (0.045)	0.072 (0.046)	-0.020 (0.037)	0.051 (0.042)	-0.056 (0.039)
Father's involvement available	0.041 (0.205)	0.144 (0.379)	-0.226 (0.421)	0.178 (0.681)	0.061 (0.352)	0.520*** (0.187)
Education expectation: vocat. Degree	0.054 (0.096)	-0.093 (0.102)	0.027 (0.108)	-0.081 (0.136)	-0.170 (0.193)	0.302 (0.229)
Education expectation: uni. Degree	0.332*** (0.088)	0.077 (0.078)	0.159 (0.097)	0.134 (0.087)	0.222 (0.146)	-0.065 (0.12)
	0.177	0.018	0.263	-0.017	0.055	-0.385

Education expectation:						
missing	(0.146)	(0.116)	(0.162)	(0.213)	(0.21)	(0.243)
Catholic school	-0.186*	-0.123	0.053	-0.006	-0.071	-0.285***
	(0.099)	(0.076)	(0.085)	(0.087)	(0.077)	(0.074)
Independent school	-0.231*	0.026	0.075	-0.141	0.123	-0.102
	(0.138)	(0.111)	(0.101)	(0.088)	(0.101)	(0.094)
Teachers' numeracy assessment (absolute)	0.117	0.081	-0.068	0.046	-0.022	0.133*
	(0.075)	(0.063)	(0.072)	(0.068)	(0.078)	(0.072)
Teachers' numeracy assessment (relative)	0.211***	0.151***	0.267***	0.100*	0.331***	0.142**
	(0.062)	(0.058)	(0.062)	(0.055)	(0.065)	(0.067)
Teachers' literacy assessment (absolute)	0.083	0.117*	0.266***	0.084	0.065	0.092
	(0.093)	(0.069)	(0.082)	(0.079)	(0.086)	(0.089)
Teachers' literacy assessment (relative)	-0.013	0.092	-0.020	0.110*	0.048	0.030
	(0.08)	(0.068)	(0.076)	(0.063)	(0.063)	(0.06)
Antisocial behaviour	0.029	0.061	0.056	-0.017	0.045	0.028
	(0.036)	(0.039)	(0.04)	(0.041)	(0.041)	(0.042)
Hyperactivity/inattention	-0.027	-0.058	-0.098**	-0.023	-0.061	-0.038
	(0.047)	(0.037)	(0.045)	(0.044)	(0.039)	(0.043)
Peer relationship problems	0.017	-0.061*	-0.029	-0.023	0.038	-0.021
	(0.039)	(0.035)	(0.04)	(0.041)	(0.041)	(0.05)
Conduct problems	-0.089**	-0.020	0.022	-0.022	-0.036	-0.040
	(0.044)	(0.037)	(0.043)	(0.041)	(0.044)	(0.043)
Emotional symptoms	0.051	-0.039	-0.043	-0.014	-0.001	0.012
	(0.041)	(0.038)	(0.04)	(0.034)	(0.041)	(0.039)
Teachers' info available	0.221**	-0.064	-0.115	-0.066	-0.258***	-0.150
	(0.094)	(0.093)	(0.105)	(0.096)	(0.098)	(0.1)
Indigenous	-0.304**	0.029	-0.344	0.094	-0.020	0.277
	(0.135)	(0.137)	(0.222)	(0.201)	(0.26)	(0.352)
Mother works full-time	-0.008	0.085	0.010	-0.076	-0.078	-0.015
	(0.099)	(0.089)	(0.111)	(0.09)	(0.104)	(0.094)
Mother works part-time	-0.051	-0.022	-0.031	-0.072	-0.179**	-0.095
	(0.083)	(0.066)	(0.088)	(0.077)	(0.091)	(0.09)
Constant	-3.381***	-4.319***	-3.970***	-3.240***	-3.324***	-5.085***
	(0.675)	(0.96)	(0.948)	(1.078)	(1.025)	(0.982)
N	488	496	514	518	542	515

Notes: P1 is the primary adult respondent, generally the mother, while P2 refers to the secondary respondent. Robust standard errors in parenthesis. \*\*\*, \*\*, \* indicate statistical significance at the 1%, 5% and 10% levels, respectively.