

Geiger, Martin; Luhan, Wolfgang; Scharler, Johann

Working Paper

When do fiscal consolidations lead to consumption booms? Lessons from a laboratory experiment

Working Papers in Economics and Statistics, No. 2015-06

Provided in Cooperation with:

Institute of Public Finance, University of Innsbruck

Suggested Citation: Geiger, Martin; Luhan, Wolfgang; Scharler, Johann (2015) : When do fiscal consolidations lead to consumption booms? Lessons from a laboratory experiment, Working Papers in Economics and Statistics, No. 2015-06, University of Innsbruck, Research Platform Empirical and Experimental Economics (eeecon), Innsbruck

This Version is available at:

<https://hdl.handle.net/10419/122221>

Standard-Nutzungsbedingungen:

Die Dokumente auf EconStor dürfen zu eigenen wissenschaftlichen Zwecken und zum Privatgebrauch gespeichert und kopiert werden.

Sie dürfen die Dokumente nicht für öffentliche oder kommerzielle Zwecke vervielfältigen, öffentlich ausstellen, öffentlich zugänglich machen, vertreiben oder anderweitig nutzen.

Sofern die Verfasser die Dokumente unter Open-Content-Lizenzen (insbesondere CC-Lizenzen) zur Verfügung gestellt haben sollten, gelten abweichend von diesen Nutzungsbedingungen die in der dort genannten Lizenz gewährten Nutzungsrechte.

Terms of use:

Documents in EconStor may be saved and copied for your personal and scholarly purposes.

You are not to copy documents for public or commercial purposes, to exhibit the documents publicly, to make them publicly available on the internet, or to distribute or otherwise use the documents in public.

If the documents have been made available under an Open Content Licence (especially Creative Commons Licences), you may exercise further usage rights as specified in the indicated licence.



When do Fiscal Consolidations Lead to Consumption Booms? Lessons from a Laboratory Experiment

Martin Geiger, Wolfgang Luhan, Johann Scharler

Working Papers in Economics and Statistics

2015-06

University of Innsbruck
Working Papers in Economics and Statistics

The series is jointly edited and published by

- Department of Banking and Finance
- Department of Economics
- Department of Public Finance
- Department of Statistics

Contact address of the editor:
Research platform "Empirical and Experimental Economics"
University of Innsbruck
Universitaetsstrasse 15
A-6020 Innsbruck
Austria
Tel: + 43 512 507 7171
Fax: + 43 512 507 2970
E-mail: eeecon@uibk.ac.at

The most recent version of all working papers can be downloaded at
<http://eeecon.uibk.ac.at/wopec/>

For a list of recent papers see the backpages of this paper.

When do Fiscal Consolidations Lead to Consumption Booms?

Lessons from a Laboratory Experiment*

Martin Geiger[†]

Wolfgang Luhan[‡]

Johann Scharler[§]

April 16, 2015

Abstract

According to the expectations channel, a fiscal consolidation may give rise to less contractionary, or even expansionary effects on consumption, despite a decline in current disposable income. Intuitively, people may accumulate a stock of savings in anticipation of the consolidation and may start to reduce their savings to support consumption once it occurs. We design a laboratory experiment to study the conditions under which the expectations channel operates. Our results indicate that fiscal consolidations that occur in an unsustainable fiscal environment exert less contractionary effects on consumption, which supports the expectations channel. We also find that the expectations channel is more pronounced if the fiscal authority can convincingly commit to abstain from tax increases in the future, whereas increasing subjects' level of awareness by running a transparent policy has only little influence on the outcomes.

Keywords: Expansionary Fiscal Consolidation, Expectations, Intertemporal Choice, Experimental Macroeconomics

JEL codes: C91, E21, E62

*We would like to thank Luba Petersen and Michael Roos for helpful comments.

[†]Department of Economics, University of Innsbruck, Universitätsstrasse 15, A-6020 Innsbruck, Austria, Phone: +43 (0)512 507 7378, Fax: +43 (0)512 507 2980, E-Mail: Martin.Geiger@uibk.ac.at

[‡]Department of Economics, Ruhr-University of Bochum, Universitätsstrasse 150, D-44801 Bochum, Germany, Phone +49 (0)234 32 25329, Fax: +49 (0)234 32 05329, E-Mail: Wolfgang.Luhan@gmail.com

[§]Department of Economics, University of Innsbruck, Universitätsstrasse 15, A-6020 Innsbruck, Austria, Phone: +43 (0)512 507 7357, Fax: +43 (0)512 507 2980, E-Mail: Johann.Scharler@uibk.ac.at

1 Introduction

Throughout the industrialized world, debt-to-GDP ratios have increased strongly in the aftermath of the global financial crisis, resulting in frequent calls for fiscal austerity measures. An important issue in this context are the macroeconomic consequences associated with fiscal consolidations. While standard Keynesian arguments suggest that fiscal consolidations should be associated with declines in overall economic activity, Giavazzi and Pagano (1990) were among the first to point out that consolidations may give rise to expansionary effects even in the short run.¹

Nevertheless, the idea that fiscal consolidations can exert expansionary effects, remains controversial for at least two reasons: First, empirical evidence is inconclusive. While several authors report instances of fiscal consolidations that were accompanied by higher GDP growth (see e.g. Perotti, 1999; van Aarle and Garretsen, 2003; Alesina and Ardagna, 2010, 2013), a number of studies reaches opposite conclusions (see e.g. Jordà and Taylor, 2013; Guajardo et al., 2014). Also, from a broader perspective, the literature on fiscal multipliers is similarly ambiguous and reports a wide range of estimated multipliers (Cogan et al., 2010; Ramey, 2011). Second, the channels and mechanisms through which a fiscal contraction may generate expansionary effects are not fully understood. Alesina and Perotti (1996) and Alesina et al. (2015) stress that fiscal contractions can give rise to expansionary supply side effects. The argument is that adjustments that involve cuts in the government wage bill lead to wage moderation in the private sector, which in turn stimulates employment and, ultimately, growth. In addition, cutting back on public debt can reduce sovereign default risk and interest rates, which may then boost investment and consumption (McDermott and Wescott, 1996).

Another channel through which a fiscal consolidation may exert expansionary effects is the so-called expectations channel (Blanchard, 1990; Bertola and Drazen, 1993; Sutherland, 1997; Ardagna, 2004). The intuition goes as follows: If the fiscal position is initially perceived to be unsustainable, then consumers expect a consolidation to occur in the future and build up a stock of savings that can be used to compensate the expected decline in disposable income associated with the consolidation. When the consolidation finally occurs, households respond with an increase in consumption, resulting in higher aggregate demand. If this channel is active, then any contractionary effects induced by the consolidation are counteracted and, if the channel is strong enough, the increase in aggregate demand may translate into expansionary effects at the

¹They analyzed the effects of fiscal consolidations in Ireland and Denmark where fiscal reforms coincided with consumption booms during the 1980s.

macroeconomic level.

For the expectations channel, forward-looking decision making and the perception of fiscal policy play a crucial role. The purpose of this paper is to study these aspects in a laboratory experiment. Specifically, we explore under which circumstances, subjects' behavior gives rise to an active expectations channel. Since it is rather challenging to identify the effects of forward-looking behavior in macroeconomic data, a laboratory setting is a promising environment. In addition, the experimental method allows us to isolate the expectation channel and abstract from other factors that may determine the macroeconomic effects of fiscal policy.²

In our experimental design, subjects make repeated consumption and savings decisions taking into account current and future fiscal policy. Since the fiscal position before and after a consolidation plays a crucial role for the expectations channel, we vary the extent to which the fiscal stance prevailing at the start of the experiment is sustainable across treatments. We also vary the type as well as the amount of information available to the subjects across treatments, to study how subjects process information about fiscal positions.

We find that initial fiscal conditions do matter in the sense that consumption declines less in response to a consolidation if the initial position is unsustainable. In other words, fiscal consolidations that occur in an unsustainable fiscal environment exert less contractionary effects on consumption, which is in line with the expectations channel. Nevertheless, we also find that subjects exhibit strong tendencies to maintain a stock of savings after the consolidation. We obtain this result despite the fact that the consolidation is credible in the sense that further tax increases are not necessary. We conclude that although precautionary behavior is required to build up a sufficiently large saving stock before the consolidation, by the same virtue, subjects refrain from consumption after the contraction, even if the consolidation leads to a sustainable fiscal position. We obtain stronger effects if the fiscal authority can convincingly commit to abstain from tax increases in the future. Thus, while the existing literature emphasizes that consolidations have to be credible in the sense of leading to a sustainable fiscal position (e.g. Giavazzi and Pagano, 1996; Bergman and Hutchison, 2010), our findings show that this may not be sufficient for a quantitatively more pronounced expectations channel. We also find that increasing subjects' level of awareness of the sustainable nature of the fiscal position by running a transparent policy has only little influence on the outcomes.

The paper is related to several strands of the experimental literature. The bulk of the

²E.g. the level of economic development, the exchange rate regime, openness (see e.g. Ilzetzi et al., 2013), monetary policy (see e.g. Bi et al., 2013), credit market conditions (see e.g. Auerbach et al., 2010), or the level of public debt (see e.g. Ilzetzi et al., 2013; Bi et al., 2013).

experimental literature on fiscal policy in a macroeconomic context evaluates the Ricardian equivalence proposition (Cadsby and Frank, 1991; Slate et al., 1995; Ricciuti and Di Laurea, 2003; Adji et al., 2009; Meissner and Afschar, 2014, among others).³ While Ricardian equivalence is also based on the assumption that agents take future fiscal policy into account when making consumption decisions, our paper differs from these contributions in terms of our focus on fiscal contractions and in terms of the experimental design.⁴ A large strand of the experimental literature explores the formation of expectations (see e.g. Hommes, 2011) and Bernasconi et al. (2009) study expectation formation in the context of fiscal policy. They show that subjects have only a limited ability to forecast and interpret real world fiscal data, but do not analyze potential implications for consumption behavior, which is the focus of our analysis. Although our analysis is about fiscal policy, the paper is also related to Kryvtsov and Petersen (2013), who investigate expectation effects in the context of monetary policy.⁵ In terms of the experimental design, our setting shares some similarities with experimental work on dynamic consumption and saving behavior (see, for instance Hey and Dardanoni, 1988; Noussair and Matheny, 2000; Lei and Noussair, 2002; Ballinger et al., 2003; Carbone and Hey, 2004; Brown et al., 2009). Nevertheless, in our experimental design, we abstract from a number of complications, which typically arise in intertemporal choice experiments, to focus on the crucial elements of the expectations channel.

The remainder of the paper is structured as follows: In Section 2, we formulate our research questions and Section 3 introduces the experimental design and our hypotheses. In Section 4 we discuss the implemented treatments and Section 5 provides information about procedure. In Section 6, we present our results and Section 7 concludes the paper.

2 Research Questions

The expectations channel holds that unsustainable fiscal positions prior to a consolidation play a crucial role. This point is emphasized by Blanchard (1990), Bertola and Drazen (1993), and Sutherland (1997) among others. Thus, we formulate our first research question as: *Are fiscal contractions less contractionary (or more expansionary) if initial fiscal positions are unsustainable?*

³See Duffy (2012) for surveys of the experimental macroeconomics in general.

⁴In fact, as we will discuss below, Ricardian equivalence does not hold in our setting.

⁵A large empirical literature studies the effects of central bank communication and forward guidance and expected policy in the context of monetary policy (see e.g. Neuenkirch, 2012; Campbell et al., 2012). See Leeper (2009) for a discussion of the similarities between fiscal and monetary policy with respect to transparency and anchoring of expectations.

The expectations channel also holds that a fiscal consolidation should be less contractionary if it eliminates the expectation of future, perhaps more disruptive, adjustments (see McDermott and Wescott, 1996; Giavazzi and Pagano, 1996; Alesina and Perotti, 1996; Bergman and Hutchison, 2010), which leads us to our second research question: *Are fiscal contractions less contractionary if subjects can be certain that there will not be additional tax hikes?*

And finally, we study the role of awareness about fiscal policy more generally. We formulate our third research question as: *Are fiscal contractions less contractionary if subjects are more aware of the unsustainable (sustainable) nature of fiscal policy before (after) a fiscal consolidation?*

3 Experimental Design

Rather than implementing a specific theoretical model, our design is geared towards studying the conditions under which the expectation channel is active in a simple and easy to explain set-up. We use a between subject, individual choice design without any interactions between subjects.

Each treatment comprises of $t = 1, \dots, 12$ periods. In each period, subjects receive an income, y_t , of 18 consumption goods. A tax, tax_t , is subtracted from y_t , and the net income $y_t - tax_t$ can either be consumed or saved, where savings can be used for consumption in future periods. Thus, subjects face the following constraint in each period:

$$c_{it} + s_{it} = y_t - tax_t + s_{it-1},$$

where $c_{it} \geq 0$ is consumption in period t and $s_{it} \geq 0$ denotes the stock of saving in period t . Note that subjects do not earn interest on savings and are not able to borrow. Introducing interest income and the opportunity to borrow against future income might interfere with the decision making process while being not directly related to the expectations channel. Also note that since subjects essentially face a credit constraint, Ricardian equivalence does not hold in this setting.

In all treatments subjects are instructed that an exogenously imposed solvency requirement for the government has to be met: total tax revenues collected from each subject over the course

of the experiment amount to 72 units:

$$\sum_{t=1}^{12} tax_t = 72.$$

Subjects are also explicitly instructed in all treatments that an average tax of 6 units per period is necessary to satisfy the government's solvency condition and that deviations from a tax of 6 units in any period have to be compensated over the course of the treatment.

Consumption in period t yields a period payoff according to

$$Payoff_{it} = \begin{cases} 0 & \text{if } c_{it} < 9 \\ c_{it} & \text{if } c_{it} \geq 9. \end{cases}$$

The task of subject i is to choose consumption such that the total payoff

$$Payoff_i = \sum_{t=1}^{12} \beta_t Payoff_{it}$$

is maximized, where $\beta_{1,\dots,12} = 1.00, 0.98, 0.96, \dots, 0.78$ are the period-specific discount factors. At the end of the experiment, we deduct 10 percent of a subjects' total payoff for each period where consumption was below the threshold of 9 units, in addition to a period payoff of 0 in these periods. We impose the threshold level in the payoff function and this penalty to provide incentives to accumulate savings in a way which is easy to explain in the instructions. This formulation of the task allows us to study intertemporal decision making in a simple environment that avoids complications associated with intertemporal optimization which arise in more general settings. Yet, we are able to study the crucial elements of the expectations channel. Subjects face a tradeoff between early consumption, incentivized via discounting, and saving to avoid falling below the threshold in case of high values of tax_t in future periods. Note that without discounting, subjects would have a clear incentive to postpone consumption above the threshold until the last period, essentially eliminating the possibility to observe a consumption boom in early periods.

4 Treatments and Hypotheses

We implement four treatments varying either the initial tax level, to evaluate the role of initial conditions, or the information available to the subjects. In all treatments, subjects are instructed

on their constant gross income, the total amount of tax payments, and the corresponding average per period tax. In each treatment, a tax increase of 6 units of the consumption good occurs in period $t = 5$.

Treatment UNSUST In this treatment, $tax_t = 2$ in periods $t = 1, \dots, 4$. Thus, fiscal conditions are initially inconsistent with the constraint that total revenues have to amount to 72 units, and therefore unsustainable. A one-time, permanent tax increase to $tax_t = 8$ in period $t = 5$ eliminates the unsustainability. The tax path is illustrated in Panel (a) of Figure 1.

Treatment SUST This treatment replicates Treatment UNSUST, but with a tax path that is already sustainable from the beginning. The tax path is shown in Panel (b) of Figure 1. Although it is not necessary in terms of sustainability, the tax increases in period $t = 5$ and, to ensure that total tax revenues sum to 72 tokens, the tax increase is followed by a permanent tax reduction in period $t = 7$.

Treatment COMMIT In this treatment we use the tax path from Treatment UNSUST, but at the time of the consolidation in period $t = 5$, the entire future tax path (for periods $t = 5, \dots, 12$) is announced and therefore any uncertainty about future fiscal policy is eliminated.

Treatment TRANSP Here, the tax follows again the path from Treatment UNSUST and subjects have essentially the same information as in Treatment UNSUST, but we provide additional interpretations in the form of statements that are displayed on the screen stating explicitly that the current tax level is either not sufficient (in periods $t = 1, \dots, 4$) or that the tax is sufficient (in periods $t = 5, \dots, 12$). The statements which are intended to raise awareness are shown in Table 1.⁶

A less contractionary effect should be the result of a combination of high savings, before the consolidation and a reduction in savings during or shortly after the consolidation. Since unsustainable fiscal positions should provide a stronger incentive to build up a stock of savings, we expect less contractionary effects of the adjustment on consumption in UNSUST compared to SUST: $SUST < UNSUST$.

In Treatment COMMIT, we eliminate any uncertainty about the future tax path at the time of the consolidation, and therefore subjects have essentially no reason to maintain a stock of

⁶The statements are neutrally phrased interpretations of the current fiscal situation. We vary the formulation of the sentences slightly to make it more likely that subjects pay attention to the messages.

savings after the adjustment sets in. In fact, due to discounting they have a strong incentive to immediately consume their accumulated savings. Thus, we expect the following ordering of the consolidation response of consumption: UNSUST < COMMIT.

While the additional statements introduced in Treatment TRANSP do not provide new information, they may influence the perception of fiscal sustainability before and after the consolidation and therefore, influence behavior. Thus, we expect higher savings prior to the consolidation and a stronger reduction of the savings stock after the contraction compared to the Treatment UNSUST, giving rise to a less contractionary consolidation response of consumption: UNSUST < TRANSP.⁷

5 Procedure

The experiments were conducted computerized, using z-Tree (Fischbacher, 2007), at the University of Innsbruck. We had 40 participants in each treatment. Participants were mostly undergraduate students from various faculties. No subject participated more than once. Upon arrival participants were randomly assigned to workstations that were separated by blinds. Instructions were distributed and read aloud, and participants were given a few more minutes to go through the instructions and to ask questions.⁸

Prior to the actual start of the experiment, subjects went through two practice rounds to acquaint themselves with the operation of the program. Subjects were told that they have 30 seconds time for their decision in each period. We implemented a soft close in the sense that the experiment proceeds to the next period only after all subjects have entered and confirmed their consumption choice. Any remaining wealth was automatically saved for future periods. We displayed the relevant information for the task on the decision screen: endowment, the current tax, the resulting net income, the stock of savings, and the wealth.

Since, the expectations channel relies on the perception of future fiscal policy, we elicited beliefs on future net income in all treatments with the exception of COMMIT. In COMMIT we refrained from elicitation, since we worried about confusing subjects by asking them to state beliefs in an environment without any uncertainty. We elicited beliefs in the following way: at the end of each period, subjects were asked whether they expected their net-income, in

⁷We do not have an unambiguous hypothesis concerning the relative effects in TRANSP and COMMIT. While the absence of uncertainty after the consolidation should reduce savings in the aftermath of the consolidation, and hence give rise to larger effect on consumption, in COMMIT, subjects may build up a larger stock of savings in TRANSP giving rise to a larger effect in TRANSP.

⁸The instructions are provided in Appendix A.

subsequent rounds on average to be higher, approximately the same (+/− one unit), or lower compared to the current period. To incentivize the elicitation, subjects received one additional payoff point on top of their total payoff for each correct forecast.

The duration of the experiments varied from 35 to 50 minutes – depending on the treatment. Total payoffs were converted to euros using a rate of 1.00 euro per 15 payoff points. The determinants of the reimbursement were common knowledge. On average subjects earned EUR 13.44 euros including a 4 euro show-up fee (min: 5.70 euros, max: 15.10 euros).

6 Results

6.1 Measuring the Consumption Response

Figure 2 shows consumption, averaged across subjects, for each treatment, together with net income represented by the light-gray lines. Although the tax increases by the same amount in all treatments in period $t = 5$, the average response of consumption differs markedly across treatments. In Treatments SUST, UNSUST, and TRANSP, consumption declines, with less pronounced reactions in Treatments UNSUST and TRANS. In Treatment COMMIT, average consumption increases. Also note that the decline in consumption is rather temporary in Treatment SUST, which is consistent with the subsequent tax reduction that occurs only in this treatment in period $t = 7$, whereas consumption recovers rather slowly in Treatments UNSUST and TRANS.

To study the consumption responses in greater detail, Table 2 shows the average consumption response to the consolidation, calculated as the change in consumption from period $t = 4$ to period $t = 5$, $c_{i5} - c_{i4}$, averaged across subjects in each treatment.⁹ We see that average consumption declines significantly by 8.43 units in Treatment SUST. In Treatments UNSUST and TRANSP, the average declines in consumption of 3.36 units and 3.17 units, respectively, are substantially less pronounced, albeit still significant. In Treatment COMMIT, consumption significantly increases by 5.49 units on average.

Table 2 also reports pairwise Mann Wittney rank sum tests in the lower panel, which indicate that consumption declines significantly more in Treatment SUST than in Treatment UNSUST. This ordering of the effects is as expected and with respect to our first research question, we conclude that consolidations occurring under an unsustainable initial fiscal position exert

⁹Note that considering only the immediate consumption response in the period, in which the consolidation occurs, does not appear to be restrictive, since Figure 2 shows that the responses generally occur rapidly. Hence, we are not excluding any potentially delayed effects in the analysis.

significantly less contractionary effects on consumption.

To address our second research question concerning the role of commitment, we compare outcomes in Treatments UNSUST and COMMIT. Both treatments share an initially unsustainable tax level, but differ with respect to the provided information. According to Table 2, the null hypothesis of equal consumption responses in Treatments UNSUST and COMMIT can be rejected at the one percent level. Hence, we conclude that commitment renders the consolidation effect on consumption significantly less contractionary, as expected.

Turning to our third research question, we compare outcomes in Treatments UNSUST and TRANSP. Do we need a fully credible commitment to obtain a less contractionary outcome, or does an increased level of awareness about the overall fiscal position suffice? Although the consumption response in Treatment TRANSP is slightly less pronounced than in Treatment UNSUST, as expected, the difference is not statistically significant. Thus, a more transparent policy is not sufficient to significantly alter the effect of a fiscal consolidation in an unsustainable environment.

In short, we conclude that the effect of a fiscal consolidation on consumption depends crucially on the initial conditions and on the ability of the fiscal authority to credibly commit to a tax path after the consolidation. While the existing literature emphasizes that a contraction has to be credible in the sense that it leads a sustainable fiscal position, our results suggest that this may not be enough to stimulate consumption sufficiently after a consolidation. At least for strongly less contractionary outcomes, or even an expansionary effect on consumption, a credible commitment is required.

Having characterized the average consolidation effect across subjects, Figure 3 summarizes the distribution of consumption responses to provide a more detailed description of individual consumption choices. In Treatment SUST, all subjects reduce consumption in the period of the tax increase. While the distribution shifts somewhat to the right in Treatments UNSUST and TRANSP, roughly 80 percent of the subjects still reduce consumption in response to the consolidation in these two treatments. In Treatment COMMIT, in contrast, only around 20 percent of the subjects reduce consumption. Using pairwise Kolmogorov-Smirnov tests, we can reject the null hypothesis that consumption responses are drawn from the same distribution at the one percent level for all cases except for the comparison of outcomes in Treatments UNSUST and TRANSP (p-value: 0.91). Thus, this analysis at the level of individual subjects confirms our previously reported results.

6.2 Savings Behavior

For the expectations channel to be active, subjects need to accumulate savings before the consolidation and have to reduce their savings once the consolidation sets in. Therefore, to shed more light on the source of the observed variation in the consumption response across treatments, we study savings behavior before and after the consolidation.

Table 3 shows average savings rates before and after the consolidation for each treatment. We calculate the savings rate for each subject as $s_{it}/(y_t - tax_t)$ and average over the subjects participating in a treatment. To characterize savings behavior before and after the consolidation, we average over either 4 periods before the consolidation, or 4 periods following the consolidation, including the consolidation period itself. We limit the analysis of savings rates in the aftermath of the consolidation to four periods following the consolidation to make sure that we do not pick up end-of-experiment effects. In Treatment SUST, the consolidation is followed by a tax reduction, which complicates a comparison of outcomes in the post-consolidation sample. Therefore we do not calculate the average savings rate for Treatment SUST after the consolidation.

We see that subjects save on average 5 percent of their net income before the consolidation in Treatment SUST. In treatments with unsustainable tax paths, we observe savings rates of 16 percent (Treatment TRANSP) and 18 percent (Treatments UNSUST and COMMIT). Pairwise Mann-Whitney rank sum tests indicate that the savings rate in Treatment SUST is significantly lower than in any of the other treatments. Hence, in an environment with sustainable initial conditions, subjects accumulate a significantly smaller stock of savings, which limits their ability to sustain consumption when the tax is increased. This finding supports the expectations channel and is consistent with the significantly more contractionary effect of the consolidation on consumption in Treatment SUST.

However, above we also find that consumption responses differ significantly across Treatments with initially unsustainable tax paths (Treatments UNSUST, TRANSP, and COMMIT), while Table 3 shows that savings rates prior to the consolidation, do not differ significantly across these treatments. Thus, differences in savings rates before the consolidation only explain the variation in the consolidation effect between treatments with sustainable and unsustainable tax paths, but do not tell us why the consolidation effect also differs strongly within the treatments with unsustainable tax paths.

Turning to savings behavior in the post-consolidation periods, we observe negative savings

rates in Treatments UNSUST, TRANSP, and COMMIT. Thus, subjects use accumulated savings to sustain consumption after the fiscal consolidation to some extent. However, savings rates are only slightly, and in fact insignificantly, negative in Treatments UNSUST and TRANSP, indicating that subjects essentially rely on their current net incomes to support consumption and reduce their accumulated stock of savings only gradually in these treatments. In Treatment COMMIT the post-consolidation savings rate is strongly and significantly negative. Thus, in Treatment COMMIT, subjects strongly consume out of their accumulated savings once the tax is increased. In addition, pairwise Mann-Whitney tests indicate that although post-consolidation savings rates in Treatment COMMIT differ significantly from the savings rates in Treatments UNSUST and TRANSP, the null hypothesis that savings rates are equal in Treatments UNSUST and TRANSP is not rejected.

In short, differences in savings behavior before, as well as after the consolidation, contribute to the variation in the consolidation effect discussed above. If initial conditions are unsustainable, subjects generally realize that taxes have to increase in the future and build up a stock of savings, which makes the tax increase less contractionary. However, even if the tax increase renders the fiscal position sustainable, subjects are still reluctant to consume their accumulated savings stock, as long as additional tax increases in the future are not explicitly ruled out.

To illustrate the dynamics of savings in more detail, Figure 4 shows the evolution of average savings rates in Treatments UNSUST, TRANSP, and COMMIT over time. In Treatment SUST, the average savings rate quickly falls during the initial periods, whereas it remains fairly constant in the treatments with an initially unsustainable tax path. In $t = 4$, the last period before the contraction, the average savings rate is even slightly negative in Treatment SUST. After the contraction, the savings rate increases briefly in Treatment SUST, which mirrors the strong decline in consumption in this treatment.¹⁰ In Treatments UNSUST and TRANSP average savings rates start to decline after the contraction, but only slowly. In Treatment COMMIT, the average savings rate declines quickly and strongly when the consolidation occurs.

6.3 Elicited Beliefs

According to the expectations channel, variation in consumption responses and savings rates across treatments should be ultimately due to differences in subjects' elicited beliefs. In this section, we explore whether this is the case.

¹⁰Since net income drops below the minimum consumption level, subjects have a strong incentive to cut back on consumption.

As a first step of the analysis, we check whether the elicitation of beliefs influences outcomes. Possibly, the elicitation procedure alters the subject's awareness for the nature of the fiscal path which in turn might affect consumption decisions. To do so, we repeated Treatment UNSUST without elicitation with the same number of subjects and compare the distribution of average consumption for each period across treatments. According to a Kolmogorov-Smirnov test we cannot reject the null hypothesis that average consumption levels in the two treatments are drawn from the same distribution (p-value: 0.99). Thus, we conclude the elicitation of beliefs itself does not influence subjects' behavior.

Figures 5, 6, and 7 show the distributions of elicited beliefs for each period and for Treatments SUST, UNSUST, and TRANSP, respectively. In each figure, starting from the left, the dark-grey bars show the fraction of subjects who believe that net income will decrease. The adjacent light-grey bars show the fraction of subjects who believe that net income remains roughly constant. And finally, the medium-grey bar on the right gives the fraction of subjects who believe that net income will increase.

We see from Figure 5 that the majority of subjects initially expect a roughly constant level of net income in Treatment SUST, which is consistent with the sustainable tax path. In period $t = 5$, when the tax increase occurs, subjects start to correctly expect a tax decrease and on average a higher net income for the remainder of the treatment.

For Treatments UNSUST and TRANSP with initially unsustainable tax paths, Figures 6 and Figure 7 show that the majority of subjects correctly expect that taxes will be raised in the future, resulting in a lower expected net income. Interestingly, however, we also see that this fraction starts to decline somewhat from period $t = 2$ onwards in Treatment UNSUST, whereas it remains relatively stable in Treatment TRANSP, which indicates that the additional messages provided in Treatment TRANSP help subjects to correctly interpret the environment. Similarly, after the tax increase, subjects adjust their beliefs substantially faster in Treatment TRANSP as the share of subject who expect net income to remain constant drops immediately from 60 percent in period $t = 4$ to below 20 percent in period $t = 5$. In Treatment, UNSUST, this share also drops by roughly the same magnitude, but the adjustment of beliefs is substantially more gradual and lasts until period $t = 8$. Which illustrates again, that the displayed messages in the TRANSP Treatment play some role for the formation of beliefs.

To see how the variation in beliefs corresponds to the treatment variation of the consumption response, we focus on the fraction of subjects indicating that net income will decrease on average over the course of the experiment in the remainder of the analysis. We concentrate on this

fraction since it should be primarily the subjects expecting a tax increase who build up a savings stock prior to the consolidation. And, a credible consolidation should convince subjects that taxes will not increase again.

To compare beliefs before and after the consolidation, we average these fractions over four periods before the consolidation and over four periods after the consolidation for Treatments SUST, UNSUST, and TRANSP. Recall that we do not elicit beliefs in Treatment COMMIT. Also, we refrain from interpreting beliefs in Treatment SUST in the aftermath of the consolidation, due to the limited comparability as a result of different paths for net income.

Table 4 shows that 14 percent of the subjects participating in Treatment SUST expect lower future net income before the consolidation. In Treatments UNSUST and TRANSP, this fraction is substantially, and also significantly, higher at 68 percent. Thus, if tax path is sustainable, subjects worry less about future tax hikes, which is consistent with the significantly lower average savings rate prior to the consolidation in Treatment SUST, and ultimately, a strong decline in consumption once the tax is increased. For Treatments UNSUST and TRANSP, the null hypothesis of equal fractions of subjects expecting a tax increase cannot be rejected, which is in line with the fairly similar savings rates observed prior to the consolidation in these treatments.

After the consolidation, the fraction of subjects with the belief that net income will decline further, falls to 28 percent in Treatments UNSUST and to 14 percent in Treatment TRANSP. While the decline is highly significant in both treatments, the magnitude is larger in Treatment TRANSP.¹¹ In addition, Table 4 shows that the null hypothesis of equal fractions in Treatment UNSUST and TRANSP after the consolidation can be rejected at the 5 percent level. Although the stronger effect of the consolidation on subjects' beliefs in Treatment TRANSP is in line with our expectation, savings rates, as discussed above, do not differ significantly across Treatments UNSUST and TRANSP. Hence, although the additional announcements provided in Treatment TRANSP appear to convince subjects that additional tax increases will not occur, they are insufficient to induce subjects to adjust their consumption choices accordingly. This outcome underlines again the crucial role of commitment.

¹¹Based on Mann-Whitney ranksum-tests, the null hypothesis of equal fractions before and after the consolidation within treatments can be rejected at the one percent level for both treatments.

7 Concluding Remarks

According to the expectations channel, fiscal consolidations may give rise to expansionary effects on consumption at the macroeconomic level if people build up a sufficient stock of savings, before the consolidation, since they realize that a fiscal consolidation has to occur. When the consolidation finally occurs, and eliminates the need for further savings, a consumption boom should follow.

While our results provide support for the expectations channel in the sense that consolidations occurring in an unsustainable fiscal environment are less contractionary, we also find that the remaining uncertainty in the aftermath of a consolidation plays a crucial role. In our experimental setting, subjects are generally reluctant to reduce savings sufficiently after the consolidation occurs, even if the fiscal situation becomes sustainable. We obtain substantially stronger effects in line with the expectations channel if the fiscal authority can credibly commit to refrain from additional tax hikes in the future, thereby eliminating any uncertainty in the aftermath of a consolidation.

While we do not want to overextend the external validity of our results, given the stylized nature of laboratory experiments, the analysis shows a rather cautious picture of the circumstances under which fiscal consolidations may turn out to have expansionary macroeconomic effects through the expectations channel. To obtain a quantitatively strong expectations channel effect, the fiscal authority may have to overcome severe communication and commitment issues.

References

- Adji, A., Alm, J., and Ferraro, P. J. (2009). Experimental tests of Ricardian equivalence with distortionary versus nondistortionary taxes. *Economics Bulletin*, 29(4):2556–2572.
- Alesina, A. and Ardagna, S. (2010). Large changes in fiscal policy: Taxes versus spending. In Brown, J. R., editor, *Tax Policy and the Economy, Volume 24*, pages 35–68. University of Chicago Press.
- Alesina, A. and Ardagna, S. (2013). The design of fiscal adjustments. In Brown, J. R., editor, *Tax Policy and the Economy, Volume 27*, pages 19–67. University of Chicago Press.
- Alesina, A., Favero, C., and Giavazzi, F. (2015). The output effect of fiscal consolidation plans. *Journal of International Economics*, (forthcoming).
- Alesina, A. and Perotti, R. (1996). Fiscal adjustments in OECD countries: Composition and macroeconomic effects. NBER Working Papers 5730, National Bureau of Economic Research, Inc.
- Ardagna, S. (2004). Fiscal stabilizations: When do they work and why. *European Economic Review*, 48(5):1047–1074.
- Auerbach, A. J., Gale, W. G., and Harris, B. H. (2010). Activist fiscal policy. *Journal of Economic Perspectives*, 24(4):141–164.
- Ballinger, T. P., Palumbo, M. G., and Wilcox, N. T. (2003). Precautionary saving and social learning across generations: an experiment. *Economic Journal*, 113(490):920–947.
- Bergman, U. M. and Hutchison, M. M. (2010). Expansionary fiscal contractions: Re-evaluating the danish case. *International Economic Journal*, 24(1):71–93.
- Bernasconi, M., Kirchkamp, O., and Paruolo, P. (2009). Do fiscal variables affect fiscal expectations? Experiments with real world and lab data. *Journal of Economic Behavior & Organization*, 70(1-2):253–265.
- Bertola, G. and Drazen, A. (1993). Trigger points and budget cuts: Explaining the effects of fiscal austerity. *American Economic Review*, 83(1):11–26.
- Bi, H., Leeper, E. M., and Leith, C. (2013). Uncertain fiscal consolidations. *Economic Journal*, 123(566):31–63.

- Blanchard, O. (1990). Comment. In Blanchard, O. and Fischer, S., editors, *NBER macroeconomics annual 1990*, pages 111–116. MIT Press, Cambridge and Mass. and London.
- Brown, A. L., Chua, Z. E., and Camerer, C. F. (2009). Learning and visceral temptation in dynamic saving experiments. *Quarterly Journal of Economics*, 124(1):197–231.
- Cadsby, C. B. and Frank, M. (1991). Experimental tests of Ricardian equivalence. *Economic Inquiry*, 29(4):645–664.
- Campbell, J. R., Evans, C. L., Fisher, J. D. M., and Justiniano, A. (2012). Macroeconomic effects of Federal Reserve Forward Guidance. *Brookings Papers on Economic Activity: Spring 2012*, pages 1–80.
- Carbone, E. and Hey, J. D. (2004). The effect of unemployment on consumption: An experimental analysis. *Economic Journal*, 114(497):660–683.
- Cogan, J. F., Cwik, T., Taylor, J. B., and Wieland, V. (2010). New Keynesian versus old Keynesian government spending multipliers. *Journal of Economic Dynamics and Control*, 34(3):281–295.
- Duffy, J. (2012). Macroeconomics: A survey of laboratory research. *Handbook of Experimental Economics*, 2.
- Fischbacher, U. (2007). z-tree: Zurich toolbox for ready-made economic experiments. *Experimental Economics*, 10(2):171–178.
- Giavazzi, F. and Pagano, M. (1990). Can severe fiscal contractions be expansionary? Tales of two small european countries. In Blanchard, O. and Fischer, S., editors, *NBER macroeconomics annual 1990*, pages 75–111. MIT Press, Cambridge and Mass. and London.
- Giavazzi, F. and Pagano, M. (1996). Non-Keynesian effects of fiscal policy changes: International evidence and the Swedish experience. *Swedish Economic Policy Review*, 1996(3):67–103.
- Guajardo, J., Leigh, D., and Pescatori, A. (2014). Expansionary austerity? International evidence. *Journal of the European Economic Association*, 12(4):949–968.
- Hey, J. D. and Dardanoni, V. (1988). Optimal consumption under uncertainty - an experimental investigation. *Economic Journal*, 98(390):105–116.

- Hommes, C. (2011). The heterogeneous expectations hypothesis: Some evidence from the lab. *Journal of Economic Dynamics and Control*, 35(1):1–24.
- Ilzetzki, E., Mendoza, E. G., and Végh, C. A. (2013). How big (small?) are fiscal multipliers? *Journal of Monetary Economics*, 60(2):239–254.
- Jordà, Ò. and Taylor, A. M. (2013). The time for austerity: Estimating the average treatment effect of fiscal policy. NBER Working Papers 19414, National Bureau of Economic Research, Inc.
- Kryvtsov, O. and Petersen, L. (2013). Expectations and Monetary Policy: Experimental Evidence. Discussion Papers dp13-09, Department of Economics, Simon Fraser University.
- Leeper, E. M. (2009). Anchoring Fiscal Expectations. NBER Working Papers 15269, National Bureau of Economic Research, Inc.
- Lei, V. and Noussair, C. N. (2002). An experimental test of an optimal growth model. *The American Economic Review*, 92(3):549–570.
- McDermott, C. J. and Wescott, R. F. (1996). An empirical analysis of fiscal adjustments. *Staff Papers - International Monetary Fund*, 43(4):725–753.
- Meissner, T. and Afschar, D. R. (2014). Do tax cuts increase consumption? An experimental test of Ricardian equivalence. *Discussion paper series Free University of Berlin*.
- Neuenkirch, M. (2012). Managing financial market expectations: The role of central bank transparency and central bank communication. *European Journal of Political Economy*, 28(1):1–13.
- Noussair, C. and Matheny, K. (2000). An experimental study of decisions in dynamic optimization problems. *Economic Theory*, 15(2):389–419.
- Perotti, R. (1999). Fiscal policy in good times and bad. *Quarterly Journal of Economics*, 114(4):1399–1436.
- Ramey, V. A. (2011). Can government purchases stimulate the economy? *Journal of Economic Literature*, 49(3):673–685.
- Ricciuti, R. and Di Laurea, D. (2003). An experimental analysis of two departures from Ricardian equivalence. *Economics Bulletin*, 8(11):1–11.

Slate, S., McKee, M., Beck, W., and Alm, J. (1995). Testing Ricardian equivalence under uncertainty. *Public Choice*, 85(1/2):11–29.

Sutherland, A. (1997). Fiscal crises and aggregate demand: Can high public debt reverse the effects of fiscal policy? *Journal of Public Economics*, 65(2):147–162.

van Aarle, B. and Garretsen, H. (2003). Keynesian, non-Keynesian or no effects of fiscal policy changes? The EMU case. *Journal of Macroeconomics*, 25(2):213–240.

A Instructions for Treatments SUST, UNSUST, and COMMIT¹²

Welcome to the experiment. Please do not speak to other participants and use only applications on the computer that are required for the experiment. Please remove all personal items from your desk and switch off your mobile phone and similar electronic devices. Please note that activities which are not related to the experiment such as playing computer games, surfing on the internet or reading non-experiment related material leads to an expulsion from the experiment. In this case you do not receive a payout. Thank you for your understanding.

The goal of this experiment is to study decision-making behavior. You can earn real money. Your payout depends only on your decisions according to the rules of the experiment explained in the instructions at hand. Data from the experiment is anonymized and cannot be traced back to participants. Neither the other participants nor the experimenters know which decisions you have taken and how much you have earned.

Overview

This experiment is about fictitious consumption and savings decisions. Specifically, you decide on how much of your (fictitious) income after taxes you want to spend on current consumption and how much you want to save. Savings may be used in succeeding periods.

Income

Each period you receive a **gross income of 18 tokens**. From this gross income each period a **tax** is subtracted.

Your **net income**, in this case 18 tokens less taxes, can be either used for consumption purposes or saved and spent in later periods.

Please note that taxes, and hence, net income, may vary from period to period.

The maximum amount of tokens you can spend on consumption goods equals the sum of your net income plus **total savings** from previous periods. The amount which is not spend on consumption will automatically be saved and can be consumed in later periods.

Please note that you do **not earn interest** on savings. Hence, if you save e.g. 2 tokens in period 4, then you may use exactly these 2 tokens for consumption purposes in later periods.

¹²Instructions are translated from German. The instructions are almost identical for Treatment TRANSP. We just additionally mention that there are messages on the current tax.

The experiment lasts for 12 periods. **Savings which are leftover after period 12 are FORFEITED and do not contribute to your payout!**

Consumption and Payout

Your payout in euros at the end of the experiment depends on how much you spend on consumption in total – hence, in all periods.

However, only those consumption expenses increase your payout, which are higher than 9 tokens!

Consumption expenses, which are below 9 tokens, affect your payout negatively in two ways:

1. Consumption expenses below 9 tokens are **NOT** considered. If you spend, say 5 tokens, in any period, then your wealth decreases by 5 tokens, but your payout does not increase.
2. Your **total payout at the end of the experiment** in tokens **will be reduced by 10%** for each period in which consumption is below 9 tokens.

Consumption expenses of at least 9 tokens enter your payout positively although with different weights, where the weight depends on the period in which you consume. A weight is a factor with which consumption in a given period is multiplied. Weights of later periods are smaller and hence, consumption in later periods contributes less to your payout.

Period	Weight
1	1.00
2	0.98
3	0.96
4	0.94
5	0.92
6	0.90
7	0.88
8	0.86
9	0.84
10	0.82
11	0.80
12	0.78

As you can see from the table, consumption in the first period enters your payout with a weight of 1 – hence, in full. Expenses which are made in e.g. period 6 receive a lower weight of 0.90.

Example: Given your consumption expenses in period 3 amount to 11.5 tokens, then these expenses increase your payout by $11.5 \times 0.96 = 11.04$ tokens.

To calculate your payout at the end of the experiment, consumption expenses of any period – if they are at least 9 tokens – are multiplied by the weight and summed up:

Total Payout (in tokens) = consumption in period 1 \times 1.00 + consumption in period 2 \times 0.98 + ... + consumption in period 12 \times 0.78.

From this amount 10% are subtracted for each period you spend less than 9 tokens on consumption. The resulting amount in tokens is converted in euros with the following exchange rate:

15 tokens = 1 Euro

Additionally, you receive 4 Euro for your participation regardless of your consumption choices.

Summary “Consumption and Payout” On the one hand high consumption in early periods is contributing relatively more to your payout.

On the other hand, with lower consumption and the accumulation of savings you are able to make sufficiently high consumption expenses in case of low net income.

Taxes and Total Tax Burden

In every period a certain amount is subtracted as tax from your gross income. This amount may vary from period to period. The current tax level for the respective period is displayed on your screen.

The total tax burden over the 12 periods **have to sum up to 72 tokens**.

Hence, the **average tax per period** is given by **6 tokens**. If the tax is below or above 6 tokens in any period, then the deviation has to be compensated over the remaining periods.

Example: Suppose you have already paid a 60 tokens as taxes over the first 10 periods, then 12 tokens have to be paid in the course of the remaining 2 periods of the experiment.

Forecasts

At the end of each period you have to provide an estimate concerning your net income **for the remaining** periods. Specifically, you have to state whether **net income will on average** increase, remain constant, or decrease.

For each correct forecast you will receive an additional token on top of your total payout.

Operation

To make consumption expenses, please write the amount of tokens you want to spend in the respective field and click on the “Continue” button. You have 30 seconds time for this task.

You can use (maximally) the first decimal place for your entry. Please note that the comma “,” has to entered as dot “.”.

You carry out your consumption decision on the Decision Screen. On this screen you also see a button which symbolizes a calculator. Clicking on the button opens a calculator, which you are welcome to use.

The decision screen is followed by an overview screen which provides an overview over the previous periods.

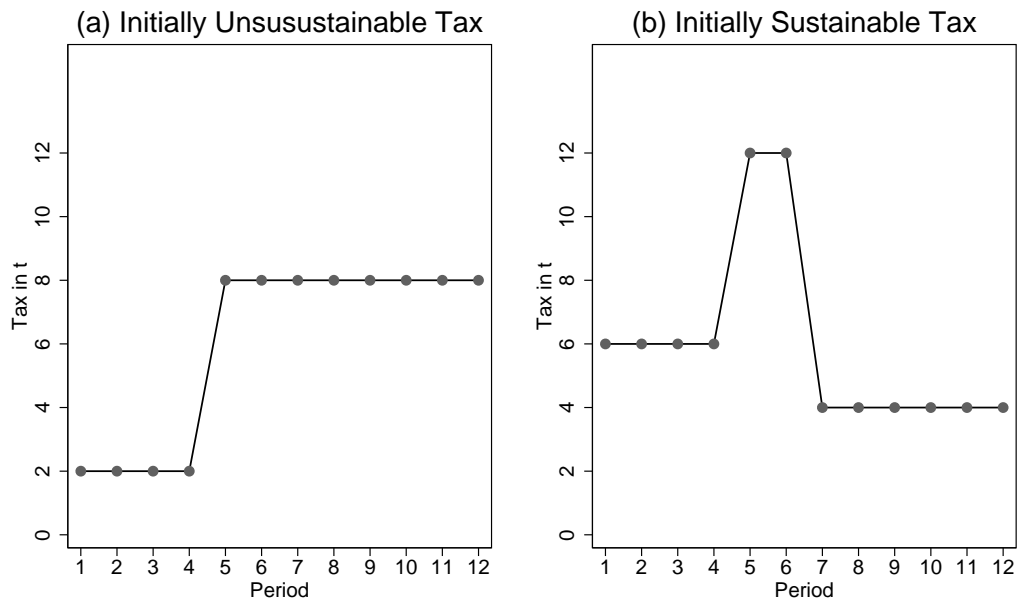
End of the Experiment

After having completed a short questionnaire, participants will be reimbursed individually. Please bring the receipt and the card indicating your workstation number with you. The payout will be in private.

Questions of Understanding to Revise the Contents

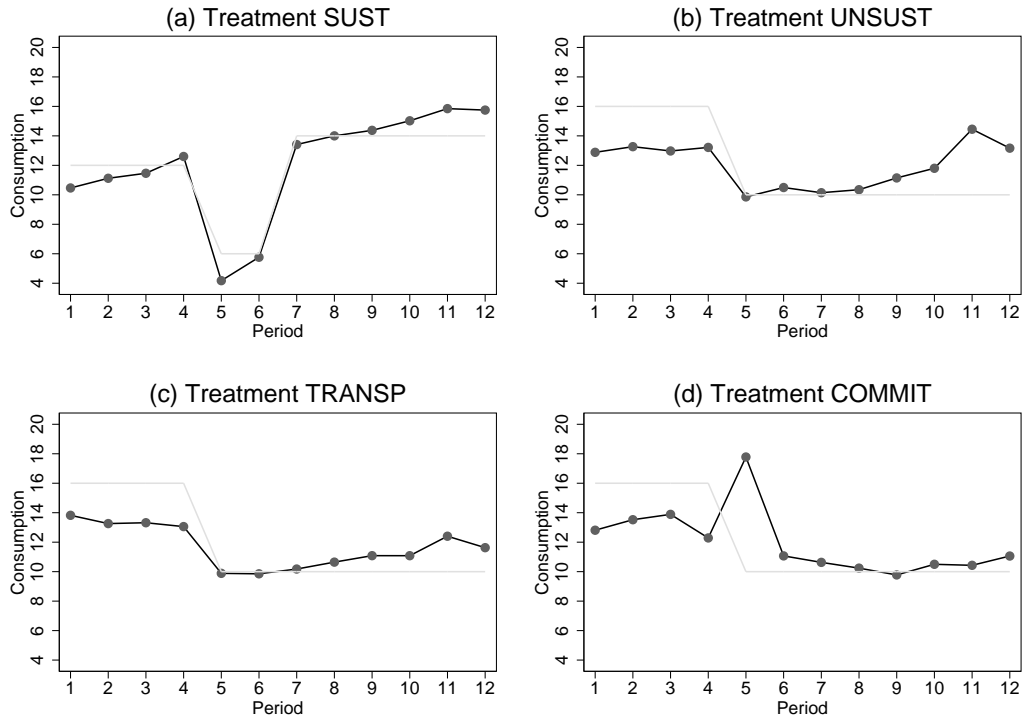
- What happens concerning your payout if you have made consumption expenses in one period that amount to 4 tokens?
- How much is the total tax burden that you have to pay over the 12 periods?
- Say consumption in period 6 amounts to x token, with which weight does the amount x enter your payout?
- Say you still have savings after period 12, do these savings contribute to your payout?

Figure 1: Tax Paths



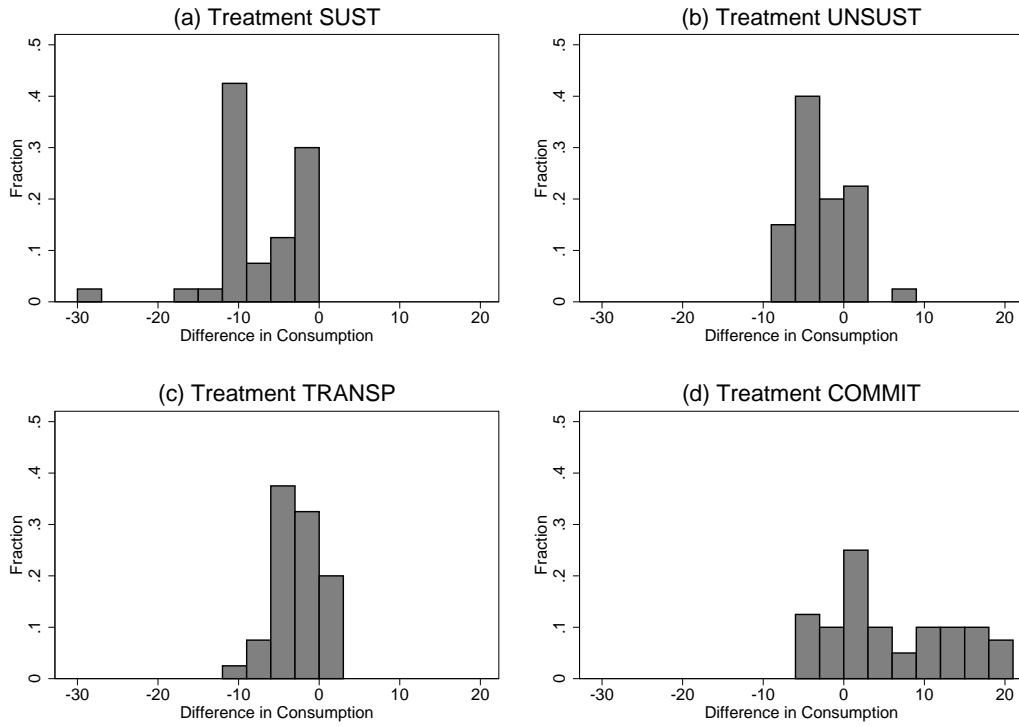
Notes: The figure shows the prevailing tax in each period for the two different tax regimes we use in the experiment. In both treatments, total tax revenues sum to 72 units over the course of the treatment.

Figure 2: Consumption Levels over Time



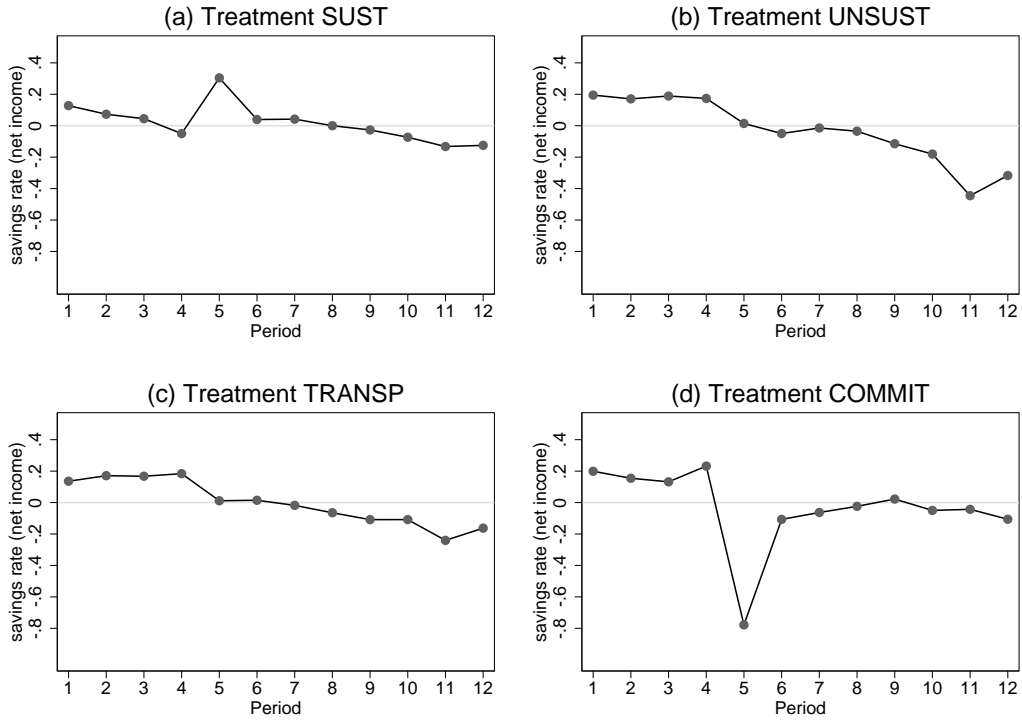
Notes: The figure shows consumption averaged across subjects for each period of the experiment. The consolidation occurs in all treatments in period $t = 5$. The light-grey line corresponds to net income.

Figure 3: Distribution of Consumption Responses to the Consolidation



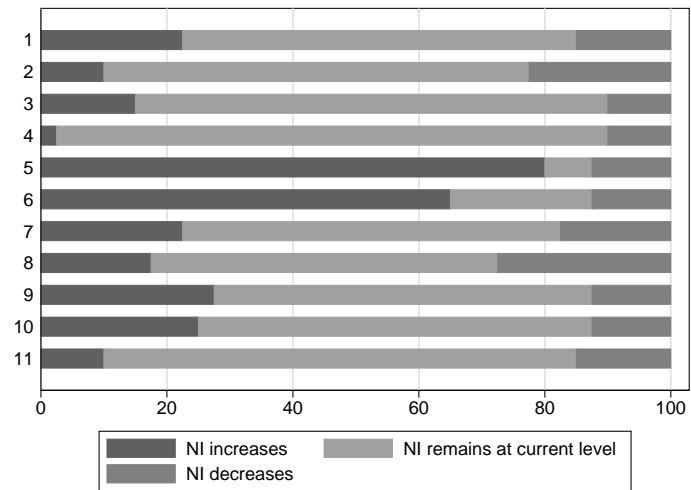
Notes: The figure shows relative frequencies of the change in consumption from period $t = 4$ to $t = 5$ ($c_{i5} - c_{i4}$) for Treatments SUST, UNSUST, TRANSP, and COMMIT.

Figure 4: Savings Rates



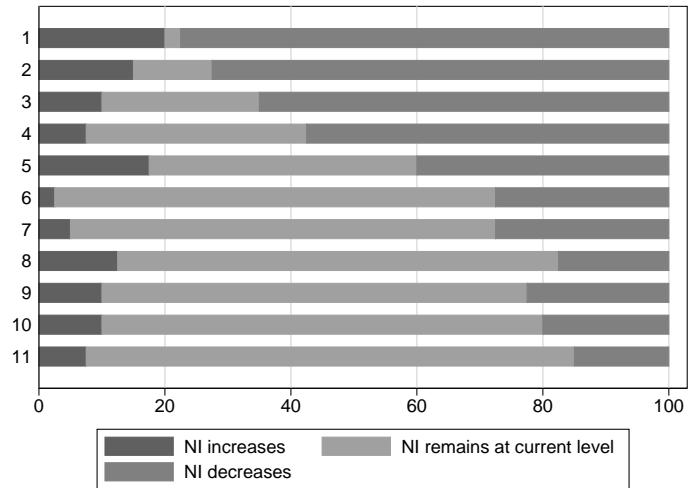
Notes: The figure shows savings rates averaged across subjects for each period of the experiment. The consolidation occurs in all treatments in period $t = 5$.

Figure 5: Distribution of Beliefs across Periods in SUST



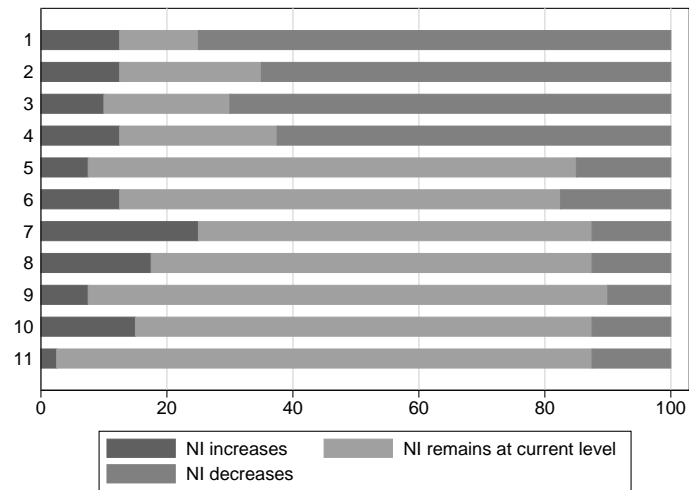
Notes: The Figure shows the fractions (in percent) of subjects that believe that net income (NI) will increase, remain at the current level, or decrease on average compared to the respective period. The consolidation occurs in period $t = 5$.

Figure 6: Distribution of Beliefs across Periods in UNSUST



Notes: The Figure shows the fractions (in percent) of subjects that believe that net income (NI) will increase, remain at the current level, or decrease on average compared to the respective period. The consolidation occurs in period $t = 5$.

Figure 7: Distribution of Beliefs across Periods in TRANSP



Notes: The Figure shows the fractions (in percent) of subjects that believe that net income (NI) will increase, remain at the current level, or decrease on average compared to the respective period. The consolidation occurs in period $t = 5$.

Table 1: Displayed Interpretations of the current fiscal stance

Period	Messages (translated from German)
1	Taxes are going to rise during the experiment.
2	This tax-level cannot be sustained until the end of the experiment.
3	With respect to the total amount of tax due, current tax is below average tax.
4	This tax-level would not be sufficient to pay the amount of taxes due.
5	In the course of the experiment taxes might rise, but they do not have to rise.
6	This tax-level would be sufficient to pay the amount of taxes due, if it will be retained.
7	There is no necessity to increase taxes.
8	The current tax level can be sustained.
9	Tax increases are still not necessary.
10	This tax-level would be sufficient to pay the amount of taxes due.
11	The tax level can be sustained.
12	The total amount of tax due is paid off with this last tax payment.

Notes: The messages are only shown in Treatments TRANSP and are identical for each subject.

Table 2: Changes in Consumption due to the Consolidation

	SUST	UNSUST	COMMIT	TRANSP
Average Change: $c_5 - c_4$	-8.43	-3.36	5.49	-3.17
p-values ($H_0 : c_5 - c_4 = 0$)	0.00	0.00	0.00	0.00
p-values: pairwise comparisons				
vs UNSUST	0.00			
vs COMMIT	0.00	0.00		
vs TRANSP	0.00	0.56	0.00	

Notes: To test whether the consumption response to the contraction is different from 0, we employ a one-sample t-test. The p-values reported in the last three rows for the pairwise comparisons refer to Mann-Whitney rank-sum tests. The corresponding null hypothesis is that the consumption responses due to the contraction are equal among Treatments SUST, UNSUST, TRANSP, and COMMIT.

Table 3: Pre- and Post-Consolidation Saving

	SUST	UNSUST	COMMIT	TRANSP
Savings rate averaged over period 1-4	0.05	0.18	0.18	0.16
p-values: $H_0 = 0$	0.00	0.00	0.00	0.00
Savings rate averaged over period 5-8		-0.02	-0.24	-0.01
p-values: $H_0 = 0$		0.17	0.00	0.61
p-values: pairwise comparisons			Period 1-4	
vs UNSUST	0.00			
vs COMMIT	0.00	0.87		
vs TRANSP	0.00	0.27	0.21	
p-values: pairwise comparisons			Period 5-8	
vs COMMIT		0.00		
vs TRANSP		0.52	0.00	

Notes: The savings rate is $s_{it}/(y_t - tax_t)$. To test whether the savings rates averaged across the respective periods are different from 0, we employ a one-sample t-test. The p-values for the pairwise comparisons refer to Mann-Whitney rank-sum tests. The corresponding null hypothesis is that the savings rates averaged across the respective periods are equal among Treatments SUST, UNSUST, TRANSP, and COMMIT.

Table 4: Fraction of Belief “Net Income will Decrease”

	SUST	UNSUST	TRANSP
Fraction averaged over period 1-4	0.14	0.68	0.68
Fraction averaged over period 5-8		0.28	0.14
p-values: pairwise comparisons		Period 1-4	
vs UNSUST	0.00		
vs TRANSP	0.00	0.97	
p-values: pairwise comparisons		Period 5-8	
vs TRANSP		0.03	

Notes: The p-values refer to Mann-Whitney rank-sum tests. The corresponding null hypothesis is that the fraction of the beliefs “net income will decrease” averaged across the respective periods are equal among Treatments SUST, UNSUST, and TRANSP.

University of Innsbruck - Working Papers in Economics and Statistics
Recent Papers can be accessed on the following webpage:

<http://eeecon.uibk.ac.at/wopec/>

- 2015-06 **Martin Geiger, Wolfgang Luhan, Johann Scharler:** When do Fiscal Consolidations Lead to Consumption Booms? Lessons from a Laboratory Experiment
- 2015-05 **Alice Sanwald, Engelbert Theurl:** Out-of-pocket payments in the Austrian healthcare system - a distributional analysis
- 2015-04 **Rudolf Kerschbamer, Matthias Sutter, Uwe Dulleck:** How social preferences shape incentives in (experimental) markets for credence goods *forthcoming in Economic Journal*
- 2015-03 **Kenneth Harttgen, Stefan Lang, Judith Santer:** Multilevel modelling of child mortality in Africa
- 2015-02 **Helene Roth, Stefan Lang, Helga Wagner:** Random intercept selection in structured additive regression models
- 2015-01 **Alice Sanwald, Engelbert Theurl:** Out-of-pocket expenditures for pharmaceuticals: Lessons from the Austrian household budget survey
- 2014-32 **Esther Blanco, Tobias Haller, James M. Walker:** Externalities in appropriation: Responses to probabilistic losses
- 2014-31 **Michael Kirchler, Stefan Palan:** Friendliness pays off! Monetary and immaterial gifts in consumer-salesperson interactions
- 2014-30 **Alice Sanwald, Engelbert Theurl:** Out-of-pocket expenditures of private households for dental services - Empirical evidence from Austria
- 2014-29 **Stefan Borsky, Esther Blanco:** Setting one voluntary standard in a heterogeneous Europe - EMAS, corruption and stringency of environmental regulations
- 2014-28 **Eberhard Feess, Christian Grund, Markus Walzl, Ansgar Wohlschlegel:** Competing trade mechanisms and monotone mechanism choice
- 2014-27 **Esther Blanco, E. Glenn Dutcher, Tobias Haller:** To mitigate or to adapt? Collective action under asymmetries in vulnerability to losses
- 2014-26 **Alice Sanwald, Thomas Schober:** Follow your heart: Survival chances and costs after heart attacks - An instrumental variable approach

- 2014-25 **Eric Mayer, Sebastian R uth, Johann Scharler:** Total factor productivity and the propagation of shocks; Empirical evidence and implications for the business cycle
- 2014-24 **Susanne Berger, Herbert Stocker, Achim Zeileis:** Innovation and institutional ownership revisited: An empirical investigation with count data models
- 2014-23 **James C. Cox, Rudolf Kerschbamer, Daniel Neururer:** What is trustworthiness and what drives it?
- 2014-22 **Michael Kirchler, Caroline Bonn, J rgen Huber, Michael Razen:** The “Inflow-Effect” - Trader inflow and bubble formation in asset markets *forthcoming in European Economic Review*
- 2014-21 **Silvia Angerer, Daniela Gl tzle-R tzler, Philipp Lergetporer, Matthias Sutter:** Donations, risk attitudes and time preferences: A study on altruism in primary school children *forthcoming in Journal of Economic Behavior and Organization*
- 2014-20 **Christian Kleiber, Achim Zeileis:** Visualizing count data regressions using rootograms
- 2014-19 **Matthias Siller, Christoph Hauser, Janette Walde, Gottfried Tappeiner:** The multiple facets of regional innovation
- 2014-18 **Carmen Arguedas, Esther Blanco:** On fraud and certification of corporate social responsibility
- 2014-17 **Achim Zeileis, Christoph Leitner, Kurt Hornik:** Home victory for Brazil in the 2014 FIFA World Cup
- 2014-16 **Andreas Exenberger, Andreas Pondorfer, Maik H. Wolters:** Estimating the impact of climate change on agricultural production: accounting for technology heterogeneity across countries
- 2014-15 **Alice Sanwald, Engelbert Theurl:** Atypical employment and health: A meta-analysis
- 2014-14 **Gary Charness, Francesco Feri, Miguel A. Mel ndez-Jim nez, Matthias Sutter:** Experimental games on networks: Underpinnings of behavior and equilibrium selection *slightly revised version forthcoming in Econometrica*
- 2014-13 **Uwe Dulleck, Rudolf Kerschbamer, Alexander Konovalov:** Too much or too little? Price-discrimination in a market for credence goods

- 2014-12 **Alexander Razen, Wolfgang Brunauer, Nadja Klein, Thomas Kneib, Stefan Lang, Nikolaus Umlauf:** Statistical risk analysis for real estate collateral valuation using Bayesian distributional and quantile regression
- 2014-11 **Dennis Dlugosch, Kristian Horn, Mei Wang:** Behavioral determinants of home bias - theory and experiment
- 2014-10 **Torsten Hothorn, Achim Zeileis:** partykit: A modular toolkit for recursive partytioning in R
- 2014-09 **Rudi Stracke, Wolfgang Höchtel, Rudolf Kerschbamer, Uwe Sunde:** Incentives and selection in promotion contests: Is it possible to kill two birds with one stone? *forthcoming in Managerial and Decision Economics*
- 2014-08 **Rudi Stracke, Wolfgang Höchtel, Rudolf Kerschbamer, Uwe Sunde:** Optimal prizes in dynamic elimination contests: Theory and experimental evidence *forthcoming in Journal of Economic Behavior and Organization*
- 2014-07 **Nikolaos Antonakakis, Max Breitenlechner, Johann Scharler:** How strongly are business cycles and financial cycles linked in the G7 countries?
- 2014-06 **Burkhard Raunig, Johann Scharler, Friedrich Sindermann:** Do banks lend less in uncertain times?
- 2014-05 **Julia Auckenthaler, Alexander Kupfer, Rupert Sendlhofer:** The impact of liquidity on inflation-linked bonds: A hypothetical indexed bonds approach *published in North American Journal of Economics and Finance*
- 2014-04 **Alice Sanwald, Engelbert Theurl:** What drives out-of pocket health expenditures of private households? - Empirical evidence from the Austrian household budget survey
- 2014-03 **Tanja Hörtnagl, Rudolf Kerschbamer:** How the value of information shapes the value of commitment or: Why the value of commitment does not vanish
- 2014-02 **Adrian Beck, Rudolf Kerschbamer, Jianying Qiu, Matthias Sutter:** Car mechanics in the lab - Investigating the behavior of real experts on experimental markets for credence goods *forthcoming in Journal of Economic Behavior and Organization*
- 2014-01 **Loukas Balafoutas, Adrian Beck, Rudolf Kerschbamer, Matthias Sutter:** The hidden costs of tax evasion - Collaborative tax evasion in markets for expert services

University of Innsbruck

Working Papers in Economics and Statistics

2015-06

Martin Geiger, Wolfgang Luhan, Johann Scharler

When do Fiscal Consolidations Lead to Consumption Booms? Lessons from a Laboratory Experiment

Abstract

According to the expectations channel, a fiscal consolidation may give rise to less contractionary, or even expansionary effects on consumption, despite a decline in current disposable income. Intuitively, people may accumulate a stock of savings in anticipation of the consolidation and may start to reduce their savings to support consumption once it occurs. We design a laboratory experiment to study the conditions under which the expectations channel operates. Our results indicate that fiscal consolidations that occur in an unsustainable fiscal environment exert less contractionary effects on consumption, which supports the expectations channel. We also find that the expectations channel is more pronounced if the fiscal authority can convincingly commit to abstain from tax increases in the future, whereas increasing subjects' level of awareness by running a transparent policy has only little influence on the outcomes.

ISSN 1993-4378 (Print)

ISSN 1993-6885 (Online)