

Mazelisy, Falk

Working Paper

The role of shadow banking in the monetary transmission mechanism and the business cycle

SFB 649 Discussion Paper, No. 2015-040

Provided in Cooperation with:

Collaborative Research Center 649: Economic Risk, Humboldt University Berlin

Suggested Citation: Mazelisy, Falk (2015) : The role of shadow banking in the monetary transmission mechanism and the business cycle, SFB 649 Discussion Paper, No. 2015-040, Humboldt University of Berlin, Collaborative Research Center 649 - Economic Risk, Berlin

This Version is available at:

<https://hdl.handle.net/10419/122010>

Standard-Nutzungsbedingungen:

Die Dokumente auf EconStor dürfen zu eigenen wissenschaftlichen Zwecken und zum Privatgebrauch gespeichert und kopiert werden.

Sie dürfen die Dokumente nicht für öffentliche oder kommerzielle Zwecke vervielfältigen, öffentlich ausstellen, öffentlich zugänglich machen, vertreiben oder anderweitig nutzen.

Sofern die Verfasser die Dokumente unter Open-Content-Lizenzen (insbesondere CC-Lizenzen) zur Verfügung gestellt haben sollten, gelten abweichend von diesen Nutzungsbedingungen die in der dort genannten Lizenz gewährten Nutzungsrechte.

Terms of use:

Documents in EconStor may be saved and copied for your personal and scholarly purposes.

You are not to copy documents for public or commercial purposes, to exhibit the documents publicly, to make them publicly available on the internet, or to distribute or otherwise use the documents in public.

If the documents have been made available under an Open Content Licence (especially Creative Commons Licences), you may exercise further usage rights as specified in the indicated licence.

SFB 649 Discussion Paper 2015-040

The Role of Shadow Banking in the Monetary Transmission Mechanism and the Business Cycle

Falk Mazelis*



* Humboldt University Berlin, Germany

This research was supported by the Deutsche
Forschungsgemeinschaft through the SFB 649 "Economic Risk".

<http://sfb649.wiwi.hu-berlin.de>
ISSN 1860-5664

SFB 649, Humboldt-Universität zu Berlin
Spandauer Straße 1, D-10178 Berlin



SFB 649 ECONOMIC RISK BERLIN

The Role of Shadow Banking in the Monetary Transmission Mechanism and the Business Cycle*

Falk Mazelis[†]

July 2015

Abstract

This paper investigates the heterogeneous impact of monetary policy shocks on financial intermediaries. I distinguish between banks and shadow banks based on their funding constraints. Because credit creation by banks responds to economy-wide productivity endogenously, bank reaction to shocks corresponds to the balance sheet channel. Shadow banks are constrained by their available funding and their behavior is better explained by the lending channel. In line with empirical observations, shadow bank lending moves in the opposite direction to bank lending following monetary policy shocks, which mitigates aggregate credit responses. The propagation of real and financial shocks is likewise altered when shadow banks are identified as a distinct sector among financial intermediaries. Following estimation of the model using Bayesian methods, a historical shock decomposition highlights the roles of banks and shadow banks in the run-up to the 2007 - 08 financial crisis.

Keywords: Shadow Banking, Monetary Policy Transmission, Credit Channel, Bayesian Methods, Search Frictions

JEL Classification: E32, E44, E51, G20

*I am indebted to many colleagues and participants at the Computation in Economics and Finance Annual Conference 2015, the Search and Matching Annual Conference 2015, an ECB research seminar, and the CRC 649 "Economic Risk" Conference 2015. In particular I would like to thank Julien Albertini, Michael Burda, Frank Heinemann, Ivan Jaccard, Peter Karadi, Hong Lan, Perry Mehrling, Zoltan Pozsar, Felix Strobel, Simon Voigts, Lutz Weinke and Jelena Zivanovic. This research was supported by the Deutsche Forschungsgemeinschaft through the CRC 649 "Economic Risk" as well as the RTG 1659 "Interdependencies in the Regulation of Markets".

[†]Institute for Economic Theory II, Humboldt University Berlin and Collaborative Research Center 649: Economic Risk and Research Training Group "Interdependencies in the Regulation of Markets", Email: mazelisf@hu-berlin.de

1 Introduction

Loan issuance is traditionally understood as one of the core functions of the banking sector. However, the data show that the volume of financial intermediation via non-bank financial institutions (NBFI), i.e. the market based or shadow banking sector, has been rising in the last decades, even overtaking the traditional banking sector in several countries, see FSB (2014) [9]. Reacting to this development, Woodford (2010) [29] calls for "a framework for macroeconomic analysis in which intermediation plays a crucial role and [...] which also takes account of the fact that the U.S. financial sector is now largely market-based." Although the financial sector has been incorporated in recent models, it is still largely treated as a relatively homogeneous entity. However, empirical studies indicate that banks and shadow banks react to shocks in different ways.¹ Consider monetary policy: While banks reduce the amount of loans on their balance sheets following monetary policy tightening, shadow banks increase lending (Figure 1). This suggests that the share of credit intermediation via the shadow banking sector is an important determinant of the effectiveness of monetary policy on aggregate lending and the economy.

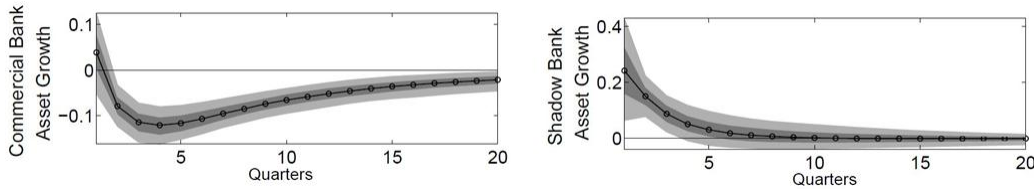


Figure 1: Impact of a 100bp increase in the monetary policy rate on bank and shadow bank lending (Source: Nelson, Pinter, Theodoridis, 2015)

In this paper I will answer the following questions: How does the monetary transmission channel via shadow banks work and how can it be modeled? How does the resulting credit intermediation of shadow banks affect the reaction of *aggregate* loan supply to monetary policy? In addition, if the inclusion of shadow banks changes the propagation of shocks, what has been its contribution to macroeconomic fluctuations in recent years?

To answer these questions I develop a structural model that distinguishes between banks and shadow banks based on their ability to create credit. I use the monetary DSGE model with financial intermediaries by Gertler and Karadi (2011) [10] (GK11 from here on) to describe bank behavior and credit creation, and I extend it with a shadow banking sector. In this model, banks create credit endogeneously in the sense of "inside money" as in Kiyotaki and Moore (2004) [18]. Shadow banks need to raise funds from households to satisfy firm loan demand. I model fund raising by shadow banks as a search in the funding market for previously created deposits, which are held by the household sector. Following Wasmer and Weil (2004) [28], I model funding market frictions analogously to those on the labor market because of their comparable characteristics of "moral hazard, heterogeneity and specificity". After establishing a funding match, shadow banks have the ability to issue short-term debt (Sunderam, *forthcoming* [25]; OFR, 2013 [22]), i.e. repurchase agreements (repo).

In GK11, an increase in the monetary policy rate leads to an increase in the external finance

¹See Altunbas, Gambacorta and Marques-Ibanez (2009) [1]; Den Haan and Sterk (2010) [13]; Igan et al. (2013) [15]; Nelson, Pinter and Theodoridis (2015) [21].

premium for borrowers, prompting a decrease in the value of their collateral, thereby decreasing the willingness of banks to lend. The resulting deleveraging results in a credit squeeze for the real sector, disinvestment and a fall in output. Simultaneously, increased deposit rates discourage households from current consumption and instead encourage savings. In this paper, savings in the form of deposit holdings constitute available funds for the shadow banking sector. After an increase in the monetary policy rate, this increase in available funds for shadow banks results in a higher share of savings flowing into the shadow banking sector. Shadow banks lend out these additional funds and thereby alleviate the credit squeeze, mitigating the fall in investments and any consequent recession.

Shadow bank credit is constrained by the supply of available funding and their reaction is accurately explained by the lending channel (Bernanke and Gertler, 1995 [4]). Banks are less constrained by the supply of loanable funds than shadow banks since they can create credit endogenously. Their reaction to monetary policy therefore corresponds more closely to the balance sheet channel (Disyatat (2011) [8]). By incorporating the quantitatively important shadow banking sector I am able to assess the effects of the lending channel for shadow banks compared to the balance sheet channel for banks. Since the non-bank financial sectors have a different size in different jurisdictions, this model extension can help to better assess the impact of monetary policy shocks on aggregate lending and the economy, depending on the share of shadow banks in aggregate lending. In addition, the present paper lays out a simple way to extend financial models by adding a shadow banking sector, or alternatively, the recognition of a lending channel.

Existing macroeconomic models of shadow banking include Meeks, Nelson and Alessandri (2014) [20]; Verona, Martins and Drumont (2013) [27]; and Goodhart et al. (2012) [12]. The first is mainly concerned with financial stability and considers shadow banks as off balance sheet vehicles of commercial banks to unload risky loans. Verona et al. study adverse effects of excessively easy monetary policy and understand shadow banks as financial intermediaries specializing in less risky loans akin to bond issuance by investment banks. Goodhart et al. study different regulatory regimes to stop fire sales by shadow banks and take the opposite view to Verona et al., considering shadow banks to be less risk averse, but still funded by the regular banking sector, comparable to off balance sheet vehicles as in Meeks et al.

Search and matching in credit markets has been studied since Dell'Arricia and Garibaldi (1998) [6]. Den Haan, Ramey and Watson (2003) [7] analyze the business cycle effects of long-term lending relationships with frictions. Wasmer and Weil (2004) [28] study the effects of credit market frictions on labor market dynamics. What these models have in common is that the total amount of credit to be allocated is either fixed exogenously or is influenced endogenously but without any relation to credit creation by banks. This paper explicitly focuses on this interaction.

In the next section, I will describe the basic model with a simple shadow bank extension and further consider how endogenous credit (repo) creation by shadow banks can be incorporated into the analysis. Section 3 contains the model analysis, including Bayesian estimation of newly introduced structural parameters and all shock parameters, impulse response functions to monetary policy shocks and a historical shock decomposition. Section 4 concludes.

2 The Model

This section lays out the basic model. It is the monetary DSGE model with financial intermediaries by GK11. I add a second financial intermediation sector, called the non-bank financial or shadow banking sector, that issues loans to firms. Shadow banks first need to raise funds from households

in the form of deposits to engage in firm lending. Irrespective of whether shadow banks lend to the real sector directly, or whether they buy securitized credit claims of previously originated loans, shadow banks become the effective intermediary, and banks' balance sheets are freed up.

In this model the economy is populated by six types of agents: households, banks, shadow banks, non-financial goods producers that demand loans, capital producers, and monopolistically competitive retailers. A central bank conducting monetary policy is the source of monetary disturbances and completes the model. The setup is equivalent to GK11 with the addition of shadow banks and an additional household savings technology.

2.1 Households

A continuum of households of measure one exists with each household constituting a family separated into a share $1 - f$ of "workers" and a share f of "bankers". Bankers manage the financial intermediaries called banks, accumulate profits over several periods, and eventually redistribute them back to the households. Workers consume, save and supply labor. They maximize discounted lifetime utility²

$$\max_{C_t, B_{t+1}, L_t} E_t \sum_{i=0}^{\infty} \beta^i [\ln(C_{t+i} - hC_{t+i-1}) - \frac{\chi^{HH}}{1+\varphi} L_{t+i}^{1+\varphi}]$$

subject to the sequence of period budget constraints

$$C_t + B_{t+1} + T_t = W_t L_t + \Pi_t + R_t^w B_t.$$

Each unit of labor L_t earns the real wage W_t . B_t are savings in the form of government bonds, deposits held at banks, or fund shares with shadow banks. Government bonds and deposits are both riskless and are treated as substitutes. Savings pay the weighted interest rate R_t^w based on the allocation of deposits in banks and fund shares in shadow banks. Π_t are profits from ownership of capital producers, retailers and financial intermediaries, both banks and shadow banks. β is the discount factor, h is the habit parameter, χ^{HH} is the relative utility weight of labor and φ is the inverse Frisch elasticity of labor supply.

With ϱ_t denoting marginal utility of consumption, the first order conditions for consumption and labor are given by, respectively,

$$\varrho_t = (C_t - hC_{t-1})^{-1} - \beta h E_t (C_{t+1} - hC_t)^{-1} \quad (1)$$

$$\varrho_t W_t = \chi^{HH} L_t^\varphi \quad (2)$$

with the Euler condition and marginal rate of substitution between consumption today and tomorrow given by, respectively,

$$E_t \beta \Lambda_{t,t+1} R_{t+1}^w = 1 \quad (3)$$

$$\Lambda_{t,t+1} = \frac{\varrho_{t+1}}{\varrho_t}. \quad (4)$$

²For simplicity, I will abstract from equations of the individual agents and instead show their aggregate form directly, distinguishing between individual and aggregate forms as necessary. For more detail, GK11 show individual agents' equations.

2.2 Banks

Banks' balance sheets are given by

$$Q_t S_t = D_{t+1} + N_t. \quad (5)$$

Banks fund their loan portfolio S_t priced at Q_t through their net worth N_t and deposits obtained from households D_{t+1} other than their family members. Because they pay interest on deposits of R_{t+1} and earn a return R_{kt+1} on their loans, an individual bank's net worth evolves according to

$$\begin{aligned} N_{t+1} &= R_{kt+1} Q_t S_t - R_{t+1} D_{t+1} \\ &= (R_{kt+1} - R_{t+1}) Q_t S_t + R_{t+1} N_t. \end{aligned}$$

Banks want to maximize their expected terminal net wealth before they exit the industry with a probability θ per period and pay out all the accumulated profits to their respective households. Expected terminal net wealth is given by

$$\begin{aligned} V_t &= E_t \sum_{i=0}^{\infty} (1-\theta)^i \beta^{i+1} \Lambda_{t,t+1+i} N_{t+1+i} \\ &= \nu_t Q_t S_t + \eta_t N_t \end{aligned}$$

where the second line is the equivalent recursive formulation. The marginal expected discounted value of net worth is η_t and ν_t is the marginal expected discounted value of expanding assets

$$\nu_t = E_t [(1-\theta)\beta\Lambda_{t,t+1}(R_{kt+1} - R_{t+1}) + \beta\Lambda_{t,t+1}\theta x_{t,t+1}\nu_{t+1}] \quad (6)$$

$$\eta_t = E_t [(1-\theta) + \beta\Lambda_{t,t+1}z_{t,t+1}\theta\eta_{t+1}] \quad (7)$$

and the growth rate in net worth $z_{t,t+1}$ and the growth rate in assets is $x_{t,t+1}$ defined below.

It is profitable to increase the loan portfolio as long as the interest rate differential is positive. To motivate an endogenous constraint on banks' ability to obtain funds, an agency problem as in GK11 and Gertler and Kiyotaki (2010) [11] is introduced: every period a banker can divert a fraction of the loan portfolio λ_t that the depositors at the bank are not able to recover. As a consequence, the bank goes bankrupt. Therefore, households will keep their deposits at individual banks only as long as the franchise value of the bank, V_t , is higher than or equal to the divertible amount, which guarantees the banker's interest in not stealing from the bank:

$$V_t \geq \lambda_t Q_t S_t.$$

The divertible fraction λ_t is a time dependent AR(1) process with persistence ρ_λ , which is included to analyze the role of trust in banks and a corresponding ability to lever up. I will assume that the constraint always binds, and after substituting and rearranging, the size of a banker's loan portfolio then depends on the size of their net wealth according to

$$Q_t S_t = \frac{\eta_t}{\lambda_t - \nu_t} N_t \quad (8)$$

and the leverage ratio can be defined as

$$\phi_t \equiv \frac{\eta_t}{\lambda_t - \nu_t}. \quad (9)$$

The growth rate in net worth $z_{t,t+1}$ and the growth rate in assets $x_{t,t+1}$ are defined as

$$\begin{aligned} z_{t,t+1} &= \frac{N_{t+1}}{N_t} \\ &= \frac{(R_{kt+1} - R_{t+1})Q_t S_t + R_{t+1}N_t}{N_t} \\ &= (R_{kt+1} - R_{t+1})\phi_t + R_{t+1} \end{aligned} \tag{10}$$

$$\begin{aligned} x_{t,t+1} &= \frac{Q_{t+1}S_{t+1}}{Q_t S_t} \\ &= \frac{\phi_{t+1}N_{t+1}}{\phi_t N_t} \\ &= \frac{\phi_{t+1}}{\phi_t} z_{t,t+1}. \end{aligned} \tag{11}$$

Since a constant share $1 - \theta$ of bankers dies every period and distributes its retained earnings to their households, $f(1 - \theta)$ workers become new bankers. They receive the same start-up net worth N_{nt} as in GK11. Net worth of existing banks N_{et} and new banks N_{nt} make up aggregate net worth N_t according to

$$N_t = N_{et} + N_{nt} \tag{12}$$

$$N_{et} = \theta[(R_{kt} - R_t)\phi_{t-1} + R_t]N_{t-1} \tag{13}$$

$$N_{nt} = \omega Q_t S_{t-1}. \tag{14}$$

Note that existing net worth is predetermined. The only way banks can react to changing loan demand within the period is via the adjustment of the leverage ratio, as well as via the change of capital prices Q_t in the start-up net worth N_{nt} . The leverage ratio reacts to a change in economy-wide productivity endogenously, as can be seen by its dependence on the borrowing rate and monetary policy rate in equation 6.

2.3 Shadow Banks

Shadow banks cannot create credit, but instead sell fund shares, FS_t , to households³. The amount of loans S_t^{SB} that shadow banks can issue to the goods producers is therefore given by their balance sheet constraint:

$$Q_t S_t^{SB} = FS_t. \tag{15}$$

The shadow bank is a simple intermediary with no liquidity transformation on its balance sheet in line with the loanable funds model. To raise funds from households, shadow banks spend v_t in advertisements for their fund shares FS_t , which have a probability q_t of being successfully matched with a deposit. The idea behind this is to model investor-fund heterogeneity implicitly as in Wasmer and Weil (2004) [28]. Shadow banks need to advertise their operations, which is costly. However, not every advertisement speaks to every household. Households may disagree with investment conditions, the targeted borrower base or the fund manager. Therefore every advertisement only has a certain probability of being matched with a given deposit by a household and stays unmatched otherwise.

³I will introduce deposit-like credit claims of shadow banks in Section 2.8.

Accordingly, shadow banks maximize their discounted future profits by choosing fund advertisements and loan issuance S_t^{SB} :

$$\max_{v_t, S_t^{SB}} E_t \sum_{i=0}^{\infty} \beta^i \Lambda_{t,t+i} \Pi_{t+i}^{SB}$$

with shadow bank profits

$$\Pi_t^{SB} = (R_{kt} - R_t^{SB}) Q_{t-1} S_{t-1}^{SB} - v_t.$$

Shadow bank profits are made up of the interest rate differential times the volume of funds they intermediate net of advertising expenses. The interest rates they pay on fund shares, R_t^{SB} , is negotiated further below.

Once a shadow bank has exchanged fund shares for deposits with households, the match will stay put until the household withdraws the initial bank deposit. As is common with separation of firm-worker matches in the search and matching literature, I do not model fund redemption explicitly, but instead assume a constant probability of separation χ^{SB} , which results in a law of motion for fund shares: Shadow banks' period t sources of funding consist of the fund shares that have not been redeemed plus the new matches from fund advertisement given by

$$FS_t = (1 - \chi^{SB}) FS_{t-1} + q_t v_t. \quad (16)$$

The first order conditions for posting fund unit advertisements and loan issuance are, respectively,

$$\begin{aligned} \tilde{q}_t &= \frac{1}{q_t}, \\ \tilde{q}_t Q_t &= \beta \Lambda_{t,t+1} \{ (R_{kt+1} - R_{t+1}^{SB}) Q_t + \tilde{q}_{t+1} (1 - \chi^{SB}) Q_t \} \end{aligned}$$

with \tilde{q}_t the Lagrangian multiplier on the constraint (16). Combining these equations results in the Euler condition for fund advertisements:

$$\frac{1}{q_t} = E_t \beta \Lambda_{t,t+1} \left\{ (R_{kt+1} - R_{t+1}^{SB}) + (1 - \chi^{SB}) \frac{1}{q_{t+1}} \right\}. \quad (17)$$

New advertisements will be posted until the marginal cost of matching an additional fund unit equals the marginal benefit of having matched an additional fund unit, which is the combination of the interest rate differential and avoided future search costs by having established a match in the previous period.

2.3.1 Matching

Individual savers and individual shadow banks searching for funds randomly meet and evaluate the potential for a match in isolation. In the aggregate, this behavior is approximated via a matching technology. To compute the probability of matching a shadow bank looking for funds with a household I assume a funding market matching function $m(v_t, D_{t+1} - FS_t)$ that is increasing in its arguments, the number of fund unit advertisements v_t and the number of 'unemployed' funds $D_{t+1} - FS_t$. If a unit of deposits has been exchanged for a fund share, it is not available for the remaining searching shadow banks any longer and hence 'employed'. I define unemployed funds as

$$D_{t+1}^u \equiv D_{t+1} - FS_t. \quad (18)$$

Assuming a constant returns to scale matching function, the probability that a shadow bank will find suitable funding is then

$$q(\theta_t) = m(1, \theta_t^{-1}) = \frac{m(v_t, D_{t+1}^u)}{v_t} = s\theta_t^{-\xi} \quad (19)$$

with matching elasticity ξ , matching efficiency s , and funding market tightness θ_t given by

$$\theta_t \equiv \frac{v_t}{D_{t+1}^u}. \quad (20)$$

2.3.2 Interest Rate Bargaining

Because of the existence of search frictions, shadow banks enjoy a rent on established matches. I assume that the interest rates shadow banks pay on funds raised is determined via Nash bargaining over these surpluses. ω^{HH} signifies the relative bargaining power of households. Interest rates R_{t+1}^{SB} are negotiated that maximize a convex combination of the surpluses,

$$R_{t+1}^{SB} = \operatorname{argmax} \quad \omega^{HH} \ln V_t^{HH} + (1 - \omega^{HH}) \ln V_t^{SB}.$$

The resulting interest rate that shadow banks pay for funds raised is (see Appendix A.1 for details)

$$R_{t+1}^{SB} = (1 - \omega^{HH})R_{t+1} + \omega^{HH} \{R_{kt+1} + \theta_{t+1}\}. \quad (21)$$

If household bargaining power is low, shadow banks can get away with paying only the interest rate R_{t+1} that banks pay on their deposits. With increasing bargaining power, shadow banks need to share expected profits with investing households.

The interest rate that households receive on their savings is the weighted average of interests payments from holdings of deposits and holdings of fund shares

$$R_t^w = R_t \frac{D_t}{B_t} + R_t^{SB} \frac{FS_{t-1}}{B_t}. \quad (22)$$

2.4 Goods Producers

Perfectly competitive goods producers manufacture intermediate goods and sell them to the retailer at the relative intermediate output price P_{mt} . Goods producers need to finance their capital expenditures via loans from intermediaries, which they may borrow without frictions, i.e. intermediaries can enforce all of their claims. However, since banks are constrained in the amount of deposits they can issue and shadow banks are constrained in the amount of funds they can raise, lending by intermediaries is capital constrained, which affects the supply of funds to firms and therefore the required interest rate for borrowing, R_{kt+1} . Except for the addition of another source of funding, capital producers are identical to those in GK11.

The firm maximizes its profits by choosing capital K_{t+1} and labor L_t optimally each period.

$$\max_{K_{t+1}, L_t} E_t \sum_{i=0}^{\infty} \beta^i \Lambda_{t,t+1} [P_{mt} Y_t + (Q_t - \delta) \xi_t K_t - W_t L_t - R_{kt} K_t Q_{t-1}]$$

with production output given by

$$Y_t = A_t(\xi_t K_t)^\alpha L_t^{1-\alpha} \quad (23)$$

where α is the capital share, Q_t is the real price of capital, δ is the depreciation rate and W_t are wages.

The first-order conditions are

$$R_{kt+1}Q_t = P_{mt+1}\alpha\frac{Y_{t+1}}{K_{t+1}} + (Q_{t+1} - \delta) \quad (24)$$

$$P_{mt}(1 - \alpha)\frac{Y_t}{L_t} = W_t. \quad (25)$$

Firms do not earn any profits and pay out ex post returns to capital as interest payments, resulting in no profits state by state. They pay out all their profits to their creditors, who are a combination of banks and shadow banks according to

$$K_{t+1} = S_t + S_t^{SB}. \quad (26)$$

2.5 Capital Producers

Following GK11, capital producers buy leftover capital from goods producers which they refurbish, for which the price is unity. Units of new capital are made using input of final output and are then sold to goods producers at Q_t , which capital producers set by solving

$$\max_{I_{nt}} E_t \sum_{\tau=t}^{\infty} \beta^{\tau-t} \Lambda_{t,\tau} \left\{ (Q_\tau - 1)I_{n\tau} - f\left(\frac{I_{n\tau} + I_{SS}}{I_{n\tau-1} + I_{SS}}\right) (I_{n\tau} + I_{SS}) \right\}$$

with

$$I_{nt} \equiv I_t \mu_t - \delta \xi_t K_t.$$

Following the literature on the importance of marginal efficiency of investment (Justiniano, Primiceri, Tambalotti, 2010) [17], investment specific shocks μ_t affect the transformation of gross investment into net investment. The functional form of $f(\cdot)$ obeys $f(1) = f'(1) = 0$ and $f''(1) > 0$. $f(\cdot)$ determines capital adjustment costs with the steady state value for investments given by I_{SS} . The capital producer thus creates profits outside of the steady state. Households receive profits from sales of new capital at price Q_t , which is given by the first-order condition

$$Q_t = 1 + f(\cdot) + \frac{I_{nt} + I_{SS}}{I_{nt-1} + I_{SS}} f'(\cdot) - E_t \beta \Lambda_{t,t+1} \left(\frac{I_{nt+1} + I_{SS}}{I_{nt} + I_{SS}} \right)^2 f'(\cdot). \quad (27)$$

2.6 Retailers

Retailers buy intermediate goods from goods producers at the relative intermediate output price P_{mt} . Final output is the CES composite of a continuum of output by each retailer f with the elasticity of substitution ϵ , given by

$$Y_t = \left[\int_0^1 Y_{ft}^{\frac{\epsilon-1}{\epsilon}} df \right]^{\frac{\epsilon}{\epsilon-1}}.$$

Because users of final output minimize costs, we get

$$Y_{ft} = \left(\frac{P_{jt}}{P_t} \right)^{-\epsilon} Y_t$$

$$P_t = \left[\int_0^1 P_{ft}^{1-\epsilon} df \right]^{\frac{1}{1-\epsilon}}.$$

Each retailer can reset prices with probability $1 - \gamma$ each period. Retailers will otherwise index their prices to lagged inflation. The retailers then choose their reset price P_t^* optimally to solve

$$\max_{P_t^*} E_t \sum_{i=0}^{\infty} \gamma^i \beta^i \Lambda_{t,t+1} \left[\frac{P_t^*}{P_{t+i}} \prod_{k=1}^i (1 + \pi_{t+k-1})^{\gamma p} - P_{mt+i} \right] Y_{ft+i}.$$

The first-order condition is given by

$$E_t \sum_{i=0}^{\infty} \gamma^i \beta^i \Lambda_{t,t+1} \left[\frac{P_t^*}{P_{t+i}} \prod_{k=1}^i (1 + \pi_{t+k-1})^{\gamma p} - \frac{\epsilon}{\epsilon - 1} P_{mt+i} \right] Y_{ft+i} = 0.$$

The evolution of the price level is given by

$$P_t = [(1 - \gamma)(P_t^*)^{1-\epsilon} + \gamma(\prod_{k=1}^{\gamma p} P_{t-1})^{1-\epsilon}]^{1/(1-\epsilon)}. \quad (28)$$

2.7 Resources and Policy

The aggregate resource constraint is given by

$$Y_t = C_t + v_t + I_t + f \left(\frac{I_{nt} + I_{SS}}{I_{nt-1} + I_{SS}} \right) (I_{nt} + I_{SS}) + G_t, \quad (29)$$

capital evolves according to

$$K_{t+1} = \xi_t K_t + I_{nt} \quad (30)$$

and stochastic government expenditures are financed via lump sum taxes

$$G_t = T_t. \quad (31)$$

Monetary policy is characterized by a Taylor rule. The nominal interest rate is given by i_t , with a steady state interest rate of i_{SS} , the natural rate of output given by Y_t^* , an interest rate smoothing parameter ρ , the inflation coefficient κ_π and the output gap coefficient κ_y :

$$i_t = (1 - \rho) [i_{SS} + \kappa_\pi \pi_t + \kappa_y (\log Y_t - \log Y_t^*)] + \rho i_{t-1} + \epsilon_t. \quad (32)$$

The exogenous shock to monetary policy enters the nominal interest rate as ϵ_t . The nominal interest rate has an effect on the economy through the Fisher relation

$$1 + i_t = R_{t+1} E_t (1 + \pi_{t+1}). \quad (33)$$

2.8 Extension: Repo creation by Shadow Banks

Some shadow banks can issue repo, B_{t+1}^{SB} , just like banks issue deposits. Not every agent in the economy accepts these credit claims as payment. Only deposits are accepted by everyone⁴. Therefore, shadow banks have to always have deposits available, which they raise on the funding markets from households. Their credit claim issuance depends on the amount of funds raised. Shadow banks' balance sheets are now given by

$$Q_t S_t^{SB} = B_{t+1}^{SB} + FS_t. \quad (34)$$

Shadow banks can now fund their loan portfolio S_t^{SB} priced at Q_t through raising funds FS_t and through issuing credit claims B_{t+1}^{SB} . Shadow banks have a fiduciary duty with respect to the fund shares that they manage. They will therefore maximize their net wealth. Since the interest rate on credit claims is determined in the period in which they are issued, it is not risky and equal to the interest rate paid on deposits, R_{t+1} . Shadow banks' net worth then evolves according to

$$\begin{aligned} FS_{t+1} &= R_{kt+1} Q_t S_t^{SB} - R_{t+1} B_{t+1}^{SB} \\ &= (R_{kt+1} - R_{t+1}) Q_t S_t^{SB} + R_{t+1} FS_t. \end{aligned}$$

The net wealth of a shadow bank evolves until its fund shares are redeemed for deposits as

$$\begin{aligned} V_t^{SB} &= E_t \sum_{i=0}^{\infty} \chi^{SB} (1 - \chi^{SB})^i \beta^{i+1} \Lambda_{t,t+1+i} FS_{t+1+i} \\ &= \nu_t^{SB} Q_t S_t^{SB} + \eta_t^{SB} FS_t \end{aligned}$$

with η_t^{SB} being the marginal expected discounted value of fund shares and ν_t^{SB} being the marginal expected discounted value of expanding assets

$$\nu_t^{SB} = E_t [\chi^{SB} \beta \Lambda_{t,t+1} (R_{kt+1} - R_{t+1}) + \beta \Lambda_{t,t+1} (1 - \chi^{SB}) x_{t,t+1}^{SB} \nu_{t+1}^{SB}] \quad (35)$$

$$\eta_t^{SB} = E_t [\chi^{SB} + \beta \Lambda_{t,t+1} z_{t,t+1}^{SB} (1 - \chi^{SB}) \eta_{t+1}^{SB}] \quad (36)$$

and the growth rate in shadow bank assets $z_{t,t+1}^{SB}$ and the growth rate in shadow bank net worth

⁴See Hicks' (1989 [14]) explanation of different acceptabilities of money in the context of the market for bills of exchange (Chapter 6), and Pozsar (2014) [24] who writes that "banks and demand deposits are special [...] because of their unique role in forming the backbone of the payments system and facilitating the payments of all entities lower in the system-hierarchy."

$x_{t,t+1}^{SB}$, respectively,

$$\begin{aligned} z_{t,t+1}^{SB} &= \frac{FS_{t+1}}{FS_t} \\ &= \frac{(R_{kt+1} - R_{t+1})Q_t S_t^{SB} + R_{t+1}FS_t}{FS_t} \\ &= (R_{kt+1} - R_{t+1})\phi_t^{SB} + R_{t+1} \end{aligned} \quad (37)$$

$$\begin{aligned} x_{t,t+1}^{SB} &= \frac{Q_{t+1}S_{t+1}^{SB}}{Q_t S_t^{SB}} \\ &= \frac{\phi_{t+1}^{SB}FS_{t+1}}{\phi_t^{SB}FS_t} \\ &= \frac{\phi_{t+1}^{SB}}{\phi_t^{SB}} z_{t,t+1}^{SB}. \end{aligned} \quad (38)$$

I now introduce the same incentive constraint for shadow banks as GK11 and Gertler and Kiyotaki (2010) assume for banks: every period a shadow banker can divert a fraction of the loan portfolio λ_t^{SB} that the holders of credit claims on the shadow bank would not be able to recover. As a consequence, the shadow bank would go bankrupt. As is the case for banks, the divertible share is a stochastic process to shed light on the role of trust in shadow banks, and the resulting ability to leverage. Households will hold credit claims on shadow banks only as long as the franchise value of the shadow bank is higher than or equal to the divertible amount,

$$V_t^{SB} \geq \lambda_t^{SB} Q_t S_t^{SB}.$$

When the incentive constraint binds, the size of a shadow banker's loan portfolio depends on the size of their net wealth according to

$$Q_t S_t^{SB} = \frac{\eta_t^{SB}}{\lambda_t^{SB} - \nu_t^{SB}} FS_t^{SB} \quad (39)$$

and the leverage ratio can be defined as

$$\phi_t^{SB} = \frac{\eta_t^{SB}}{\lambda_t^{SB} - \nu_t^{SB}}. \quad (40)$$

Since one additional unit of fund shares now leads to more than one additional unit of loans to the real economy, equation (15) is modified to equation (39). The Euler condition for fund advertisements changes accordingly:

$$\frac{1}{q_t} = E_t \beta \Lambda_{t,t+1} \left\{ R_{kt+1} \phi_t^{SB} - R_{t+1}^{SB} - (\phi_t^{SB} - 1)R_{t+1} + \frac{1 - \chi^{SB}}{q_{t+1}} \right\}. \quad (41)$$

The increased profit opportunity through credit claim issuance is also reflected in the bargained interest rate:

$$R_{t+1}^{SB} = R_{t+1} + \omega^{HH} [\phi_t^{SB}(R_{kt+1} - R_{t+1}) + \theta_{t+1}]. \quad (42)$$

Households' savings now consist of deposits held at banks, fund shares at shadow banks, and credit claims of shadow banks. The resulting weighted interest rate they earn is

$$R_t^w = R_t \frac{B_t}{B_t + FS_t + B_t^{SB}} + R_t^{SB} \frac{FS_t}{B_t + FS_t + B_t^{SB}} + R_t \frac{B_t^{SB}}{B_t + FS_t + B_t^{SB}}. \quad (43)$$

3 Model Analysis

In this section, I will first pin down the model parameterization using calibration and Bayesian estimation. Next, I analyze how monetary policy shocks propagate through the economy, both with and without shadow banks⁵. I then conduct a historical shock decomposition. The differing reactions of both channels are explained and their practical relevance is examined thereafter. The model is solved via first order perturbation around the deterministic steady state.

3.1 Parameterization

Most of the structural parameters are fixed and taken from GK11. The new parameters that follow the introduction of the shadow banking sector in Section 2.3 are the separation rate χ^{SB} , household bargaining power ω^{HH} , matching efficiency s and matching elasticity ξ . A new parameter from the shadow banks' ability to create repo in Section 2.8 is the mean value of λ_t^{SB} , the fraction of its loan portfolio a shadow banker may divert each period. Table 1 shows the fixed structural parameter values and their source.

All parameters describing the shock processes and structural parameters describing shadow banks are estimated using Bayesian methods. Banks are defined as US-chartered depository institutions and credit unions. Shadow banks combine Finance Companies, Funding Corporations, Asset-backed Security Issuers and Money Market Mutual Funds. The macroeconomic time series underlying the data for observables are real GDP, real investment, real government expenditures and the GDP price deflator (all from the Bureau of Economic Analysis). Data on banks and shadow banks are taken from the Flows of Funds. For both sectors, we include time series on financial assets as well as the amount of fixed income liabilities. Since the model is expressed in log-deviations from steady state for estimation purposes, I take the log difference from the HP filtered trend (smoothing parameter is set to 1600). The data have a quarterly frequency and range from 1985:Q1 to 2008:Q4. Although earlier data are available, the shadow banking sector was a much smaller component of aggregate credit before 1985. I drop data after 2008 because the financial crisis and its aftermath had significant effects on the regulation and perception of the shadow banking sector. This is likely to have caused structural breaks and would change the parameters underlying the financial sector.

Although variable and increasing, shadow banks' balance sheets averaged about 50% of bank balance sheets from 1990 to 2007 (Flows of Funds). The prior for the matching efficiency is chosen such that the steady state credit intermediation by shadow banks is about 50%, see Table 2. For the separation rate, I choose a value of 5% to correspond with the quarterly redemption rates of mutual funds in the US (Investment Company Institute, 2014 [16]). The priors for household bargaining power ω^{HH} and matching elasticity ξ are relatively uninformative Beta distributions centered around 0.5 and allowing for values in the open interval between 0 and 1. I choose a prior mean for λ_t^{SB} , the fraction of assets a shadow banker may divert, equal to the corresponding

⁵I will consider the case with repo creation by shadow banks. For an analysis without repo creation, see a previous version of this paper at <https://ideas.repec.org/p/hum/wpaper/sfb649dp2014-056.html>

Symbol	Value	Description	Source
Households			
β	0.99	Discount rate	GK (2011)
h	0 / 0.815	Habit	GK (2011)
χ^{HH}	3.409	Relative utility weight of labor	GK (2011)
φ	0.276	Inverse Frisch elasticity of labor supply	GK (2011)
Banks			
λ	0.381	Fraction of bank assets that can be diverted	GK (2011)
ω	0.002	Proportional transfer to the incoming banks	GK (2011)
θ	0.972	Survival rate of a banker	GK (2011)
Goods Producers			
α	0.33	Effective capital share	GK (2011)
δ	0.025	Depreciation rate	GK (2011)
Retail Firms			
ϵ	4.167	Elasticity of substitution	GK (2011)
γ	0.779	Probability of keeping prices fixed	GK (2011)
γ_p	0.241	Price indexation	GK (2011)
Government			
G/Y	0.2	Steady state proportion of government expenditures	GK (2011)
κ_π	1.5	Inflation coefficient of Taylor rule	GK (2011)
κ_y	0.125	Output gap coefficient of Taylor rule	GK (2011)
ρ_i	0.8	Smoothing parameter of the Taylor rule	GK (2011)
Shocks			
ρ_a	0.95	Autocorrelation of technology shock	GK (2011)
σ_a	0.01	Standard deviation of technology shock	GK (2011)
σ_i	0.005	Standard deviation of interest rate shock	GK (2011)

Table 1: Calibrated parameter Values

parameter for banks from GK11. The priors for all persistence parameters are Beta distributions with a mean of 0.5 and a standard deviation of 0.2. The priors for the white noise processes on the innovations are Inverse Gamma distributions with means taken from GK11 and standard deviations of 0.05. The shock processes are a priori independent. I run 10 Monte Carlo Markov Chains with 100.000 draws each over the full sample period. Convergence is reached after about 50.000 draws (see Figure 9 in Appendix A.2) and I therefore drop the first 50% of estimated values.

The posteriors of the shock processes are informative (see Appendix A.2). Persistence is relatively high for all shock processes with the exception of capital quality and bank net wealth shocks. The posterior mode for λ^{SB} is much higher than the prior mean and corresponding parameter for banks. This means *ceteris paribus* that shadow banks are less able to leverage since they can divert more funds than banks⁶. Matching elasticity ξ is relatively high, implying that 'unemployed' deposits are relatively abundant. This is mirrored in the household bargaining power ω^{HH} , which has a relatively low posterior mode at 0.02.

3.2 Response to a monetary policy shock

Figure 2 shows impulse response functions for key variables after unexpected monetary policy tightening for the case with only banks and the case with shadow banks present (as well as the 90% highest posterior density intervals based on the Bayesian estimation).

⁶In steady state, shadow banks may still have higher leverage than banks because the marginal expected discounted values of assets and net wealth will be higher than the corresponding values for banks.

Symbol	Name	Type	Prior		Posterior	
			Mean	Std. Dev.	Mode	Std. Dev.
Structural						
s	Matching efficiency	Beta	3	1	4.6	0.06
ξ	Matching elasticity	Beta	0.5	0.2	0.87	0.08
ω^{HH}	Shadow Bank divertibility	Beta	0.5	0.2	0.02	0.01
χ^{SB}	Separation rate	Beta	0.05	0.02	0.10	0.02
λ^{SB}	Shadow Bank divertibility mean	Beta	0.381	0.1	0.73	0.03
Persistences						
ρ_A	TFP	Beta	0.5	0.2	0.78	0.05
ρ_ξ	Capital Quality	Beta	0.5	0.2	0.04	0.03
ρ_g	Government Spending	Beta	0.5	0.2	0.75	0.06
ρ_i	Monetary Policy	Beta	0.5	0.2	0.7	0.06
ρ_{Ne}	Bank Net Wealth	Beta	0.5	0.2	0.16	0.03
ρ_{FS}	Fund Share Redemption	Beta	0.5	0.2	0.76	0.05
$\rho_{\lambda^{Ne}}$	Bank divertible share	Beta	0.5	0.2	0.61	0.28
$\rho_{\lambda^{FS}}$	Shadow Bank divertible share	Beta	0.5	0.2	0.76	0.06
ρ_{IE}	Investment Efficiency	Beta	0.5	0.2	0.63	0.08
Std dev.						
e_A	TFP	Inverse Gamma	0.010	0.05	0.009	0.001
e_ξ	Capital Quality	Inverse Gamma	0.010	0.05	0.010	0.001
e_g	Government Spending	Inverse Gamma	0.010	0.05	0.008	0.001
e_i	Monetary Policy	Inverse Gamma	0.010	0.05	0.003	0.001
e_{Ne}	Bank Net Wealth	Inverse Gamma	0.010	0.05	0.047	0.003
e_{FS}	Fund Share Redemption	Inverse Gamma	0.010	0.05	0.076	0.012
$e_{\lambda^{Ne}}$	Bank divertible share	Inverse Gamma	0.010	0.05	0.004	0.001
$e_{\lambda^{FS}}$	Shadow Bank divertible share	Inverse Gamma	0.010	0.05	0.163	0.002
e_{IE}	Investment Efficiency	Inverse Gamma	0.010	0.05	0.009	0.001

Table 2: Priors and Posteriors of Estimated Parameters

First, consider the case with no shadow banks present in the economy (red, dashed line). After an unexpected monetary tightening of about 33 basis points, interest rates on government bonds increase. To encourage depositors to keep their savings with banks instead of shifting them into government bonds, banks need to raise interest on deposits. At the same time, an increase in interest rates reduces the net present value of future operations and therefore net worth of firms. This also reduces the value of collateral necessary to finance capital acquisitions. Unable to post collateral, the least productive firms leave the market, which decreases capital demand, reduces investment and also the price of capital. This drop in the price for capital further decreases firms' net worth, pushing up the external finance premium and decreasing capital demand even more. In addition, higher deposit interest rates increase savings and reduce consumption. The drop in demand reduces prices and makes goods production even less profitable, putting further downward pressure on capital demand for production. A negative financial accelerator results, as in Bernanke, Gertler and Gilchrist (1996) [3].

With shadow banks present (blue, solid line) the initial reaction is the same. Deposit rates rise and, to keep profit margins up, banks raise the borrowing rate. However, now the rise in interest rates on government bonds, bank deposits and bank loans has another effect. Shadow banks negotiate the fund rate over their expected profits and households' alternative savings. Both the borrowing rate and deposit rates rise, which increases the fund rate. Since the borrowing rate increases more than the funds rate, the interest rate differential that shadow banks earn increases and makes intermediation more profitable, raising fund advertisement expenditures. This increases new fund share sales and allows the shadow banks to offer more credit. Since many previously creditworthy borrowers were pushed out of the market, shadow bank loans now replace some of the lost credit. This has a dampening effect on the fall in investment, which strongly reduces capital

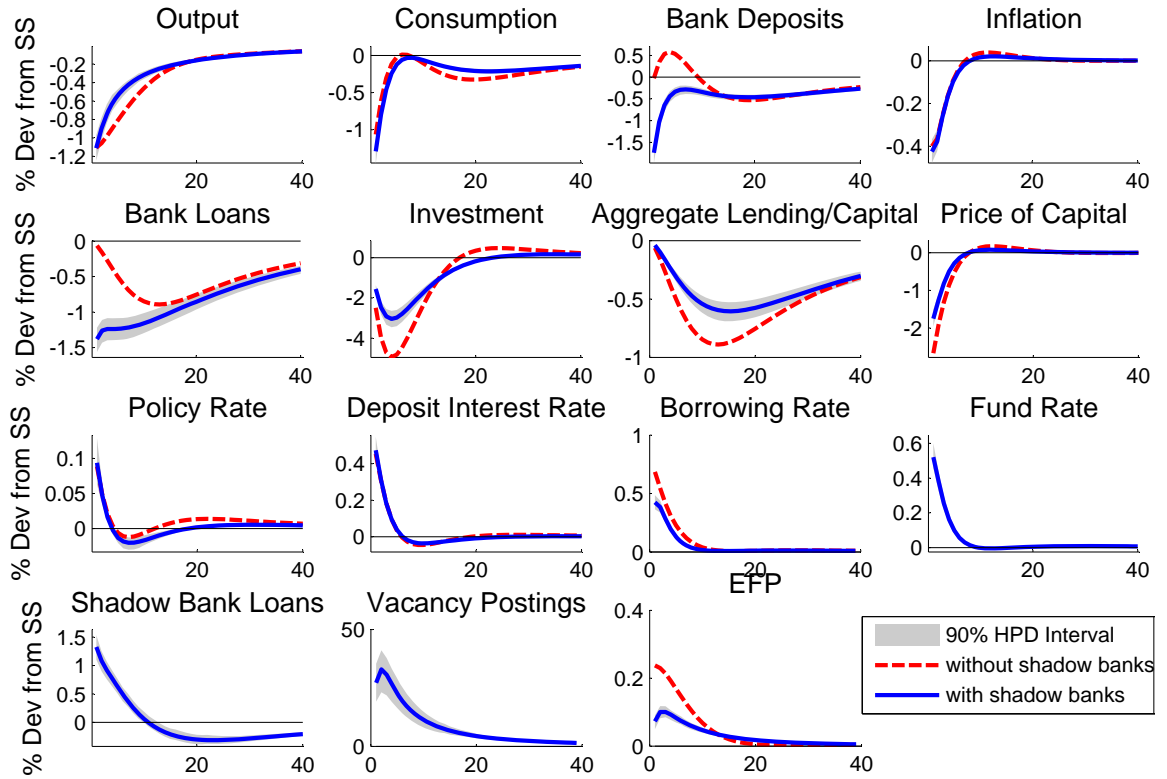


Figure 2: Impulse Responses to Monetary Policy Tightening

decumulation to about half the case without shadow banks present.

The behavior of shadow bank lending following a monetary policy tightening is consistent with empirical studies of the shadow banking system (see Figure 1 and Altunbas, Gambacrotta and Marques-Ibanez (2009) [1]; Den Haan and Sterk (2010) [13]; Igan et al. (2013) [15]). Igan et al show that some shadow banks increase lending after monetary policy tightening, while banks reduce lending. Den Haan and Sterk show that both mortgages and consumption credit increase following an increase in the monetary policy rate. Finally, Altunbas et al show that European banks with more securitization activities reduce their lending by less than non-securitizing banks after monetary tightening. Given the European characteristic of universal banks that house both banking and shadow banking activities within the same group structure, this finding is in line with understanding securitizing banks to be less affected by monetary shocks because they house a larger shadow banking entity within their group structure, which insulates group lending behavior by increasing lending following monetary policy tightening.

3.3 Shadow Bank Contributions to the Business Cycle

Shadow banks change the way shocks propagate through the economy. Comparing variance decompositions of the GK11 economy with and without shadow banks shows that certain shocks are amplified while others are reduced, see Table 3. The contribution of technology shocks, both neutral and investment-specific, increases because shadow banks behave comparably to banks when real sector variables are affected. Shocks emanating from the banking sector are less pronounced, because the shadow banking sector offsets those developments. Contribution of shadow bank redemption rate shocks increases because the shadow banking sector has a bigger share of aggregate credit. Monetary policy shocks are an in-between case: their contribution to real variable variance decreases, while it increases for financial variables.

Series \ shock	TFP	Mon Pol	Govt	Inv	Cap Quality	Bank NW	SB NW	Bank leverage	SB leverage
Output	17% / 21%	8% / 5%	0% / 0%	11% / 28%	16% / 14%	46% / 28%	2% / 3%	0% / 0%	0% / 0%
Hours	6% / 7%	5% / 5%	0% / 0%	3% / 7%	47% / 51%	38% / 31%	1% / 0%	0% / 0%	0% / 0%
Investment	15% / 23%	9% / 4%	1% / 1%	20% / 41%	5% / 10%	47% / 14%	2% / 7%	0% / 0%	0% / 0%
Consumption	12% / 15%	9% / 7%	0% / 0%	12% / 32%	6% / 3%	58% / 41%	3% / 2%	0% / 0%	0% / 0%
Borrowing rate	11% / 12%	5% / 4%	0% / 0%	3% / 5%	46% / 49%	34% / 28%	1% / 1%	0% / 0%	0% / 0%
Deposit rate	15% / 19%	16% / 15%	0% / 0%	28% / 46%	3% / 0%	36% / 14%	1% / 6%	1% / 1%	0% / 0%
Bank Leverage	17% / 20%	7% / 8%	0% / 0%	4% / 7%	41% / 44%	31% / 20%	1% / 1%	0% / 0%	0% / 0%
Inflation	13% / 13%	26% / 28%	0% / 0%	8% / 11%	31% / 34%	20% / 7%	0% / 6%	2% / 1%	0% / 0%
Bank Loans	11% / 14%	60% / 64%	0% / 0%	8% / 11%	1% / 1%	18% / 9%	1% / 1%	0% / 0%	0% / 0%

Table 3: Variance decomposition of key variables without / with shadow banking

Given the changed nature of shock propagation, it follows that macroeconomic fluctuations may be attributed to different developments. To shed light on past business cycles, I perform a historical shock decomposition of the dynamics of key variables. Parameters are fixed at the posterior mode and the Kalman smoother is used to identify shock timelines that best explain the data. Figure 3 shows the HP-trend deviation of GDP, bank loans and shadow bank loans from Q1 1990 to Q4 2008.

Focusing on the lead up to the financial crisis, the model interprets GDP growth from 2004 to 2007 as having been caused by a mix of positive shocks to bank and shadow bank net wealth and neutral technology shocks as well as unexpected contractionary monetary policy and investment specific shocks. In contrast to some voices (e.g. Taylor 2007 [26]), the model does not interpret monetary policy to have been artificially low and thereby contributing to the housing boom. The positive financial shocks can be interpreted as the loosening of credit standards that lead to the housing boom, as is evident from the decompositions of loans by banks and shadow banks. Policy makers started to change gear in late 2007 when they started easing, which supported GDP but was not sufficient to avert a crisis. Negative financial shocks in the form of equity withdrawals and discontinuation of repo agreements led to a reduction of lending and the downturn.

In general, the insulation of the balance sheet channel from the lending channel can be seen in the influence of monetary policy on bank and shadow bank lending: most of the time, monetary policy affects the variables broadly in opposite directions. Focusing on only bank lending and the balance sheet channel may therefore result in the appearance of large policy mistakes. However, the effects of monetary policy decisions on shadow banks and the lending channel are likely to change this assessment. Since the Federal Open Market Committee considers a number of developments in real and financial sectors, the inclusion of the shadow banking sector is a convenient extension that allows a more comprehensible assessment of policy makers' decisions.

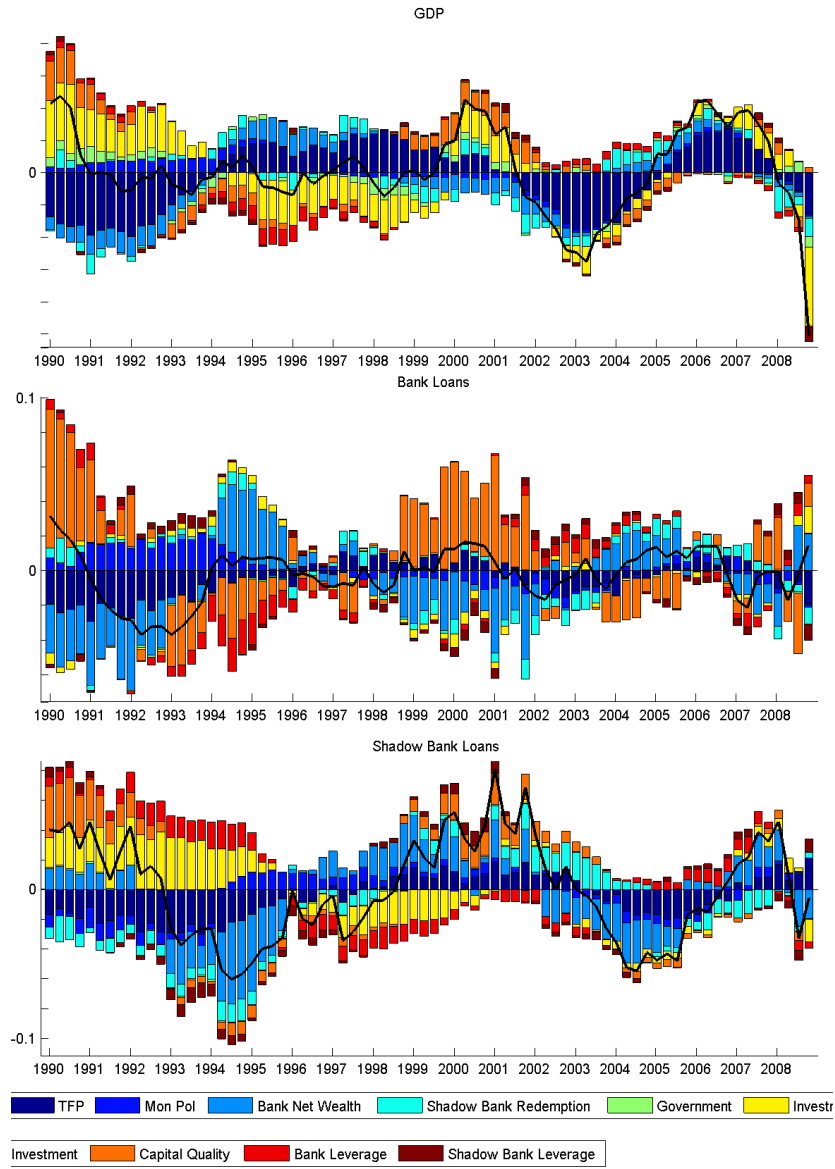


Figure 3: Historical Shock Decomposition of Key Variables, 1990:Q1 - 2008:Q4

3.4 Differentiating the Balance Sheet Channel from the Lending Channel

Monetary policy affects bank and shadow bank lending differently. The reason for this is that different constraints bind their behavior. Banks concentrate on the spread that they can earn on

lending. As long as a borrower is likely to be able to pay a high enough interest rate at a given risk, a bank will be willing to extend credit. Banks can afford this focus on the interest rate spread because they are not necessarily bound by available funds (Bennett, 2002, [2]). In the model, this is reflected in the effective balance sheet composition of the bank, as in equation (8). The amount of lending depends on the leverage variable and the net worth of the bank. The latter two adjust endogenously to the productivity in the economy, which is captured by the firms' ability to borrow. This credit mechanism therefore corresponds to the balance sheet channel of monetary policy transmission.

On the other hand, shadow banks are constrained in their lending by the amount of deposits they are able to acquire. Because the deposit interest rate increases the outside option for households in interest rate bargaining with shadow banks, households increase their allocation of savings in fund shares, which increases shadow bank funding. Although this increases shadow banking costs, their revenue in the form of the borrowing rate is also increasing. Reinforcing this effect, the last term in equation (17) shows that the value of every established match increases in the arrival rate of fund matches. Because a separation rate $\chi^{SB} < 1$ implies that a shadow bank stands to gain from already established funding matched today, front-loading on advertisement will result in the amount of fund shares overshooting their equilibrium value (Pissarides, 2000 [23]). Since shadow bank lending is dependent on funding, this mechanism should be more closely identified with the lending channel.

In practice, the differentiation between the two channels based on entities is not so clear cut. Many shadow banks are subsidiaries of banks and are sponsored or funded by the corporate parent. If the shadow bank receives funding before being able to sell shares to savers, credit creation is taking place on the balance sheets of the bank and shadow bank in step. Only after the sale of fund shares and repayment of the parent by the subsidiary will the credit be solely attributable to the shadow banking sector.

Some of the financial products banks offer to their customers are comparable to a lending channel mechanism. Consider long-term savings deposits or any other product that is not immediately withdrawable by the saver and does not constitute a means of payment in the economy. In this case, credit creation by the bank backed by savings deposits can only take place after successfully matching a savings account with a lender. In this case, bank credit creation may be more comparable to the lending channel and should be modeled with the proposed mechanism.

Similarly, some authors argue that endogeneous credit creation is taking place inside the shadow banking system as well (Pozsar, 2014 [24]). This activity is identified as repo creation and the mechanism is modeled in Section 2.8, which is representative of the balance sheet mechanism explained above. The difference between repo creation by shadow banks and credit creation by banks is that although repo creation endogeneously varies with the productivity in the economy, it is bound by the fund shares it has exchanged for deposits since "demand deposits are special [...] because of their unique role in forming the backbone of the payments system and facilitating the payments of all entities lower in the system-hierarchy" (Pozsar, 2014 [24]). Repo creation therefore still depends on the amount of shadow bank funding matched.

An unambiguous identification of the two mechanisms with respect to individual entities or sectors is difficult to attain. A better classification of institutions and activities with regards to their function should be possible in more detailed studies.

4 Conclusions

In this paper I have introduced non-bank financial intermediaries into a monetary financial DSGE model via the relatively parsimonious search and matching framework. Since banks create credit endogenously, funding supply is not a constraint on bank lending. Instead, their choice of lending depends on the productivity in the economy. Banks' response to shocks therefore more readily resembles the balance sheet channel of monetary policy transmission. Shadow banks have to raise funds in the form of deposits first to act as intermediaries. Their behavior is therefore dependent on the supply of funding and corresponds more accurately to the lending channel.

Differentiating banks and shadow banks according to their lending and funding constraints respectively results in impulse response functions suggested by empirical studies of the sector. Following monetary policy tightening, banks will decrease the amount of loans, while shadow banks will increase loans (Figure 1). As a consequence, shadow banks can significantly reduce the real effects of monetary policy shocks. At the same time, they amplify the reaction of key variables to real shocks.

A historical shock decomposition shows that easing of credit standards for banks and shadow banks were important contributors to the run up to the financial crisis. Expansionary monetary policy does not seem to have played a major role, mainly because credit developments by banks and shadow banks are affected in different ways. Redemption of fund shares in shadow banks was a key contributor to the sharp drop in GDP in 2008.

The modification of impulse response functions in the face of different financial intermediaries suggests an impact on the welfare effects of business cycles in the tradition of Lucas (2003) [19]. The recognition of additional effects shadow banks introduce may impact results on both the optimal size of the financial sector as a whole, and the relative shares of its components.

Another important question is whether central bank policy reacts optimally to real and nominal shocks if it does not take the presence of shadow banks into account. Monetary policy as modeled by a Taylor rule may not anticipate dampened responses following the presence of shadow banks, and may therefore not react optimally. The recognition of shadow bank lending or a modified Taylor rule that includes data on money and credit as in Christiano, Motto and Rostagno (2007) [5] may generate further insights in another exploration.

In the model, shadow banks fund themselves through fund shares that are sold to households only. In reality, shadow banks are often debtors to banks. Additionally, before the crisis mostly US shadow banks contributed to the funding of mostly EU banks. These situations could be explored in both a national and international setting to understand the funding shocks more thoroughly. These analyses will also allow us to experiment with the re-regulation of the shadow banking sector.

In addition, household savings allocations are passively modeled in this version. The explicit microfoundation of savings decisions, together with the introduction of uncertain returns from the intermediary sector, will allow further realism and additional policy experiments.

A Appendix

A.1 Interest Rate Bargaining

The marginal surplus shadow banks stand to gain from making an additional loan is the difference between the value of an employed share $V^{SB,e}$ versus an unemployed share $V^{SB,u}$, with

$$\begin{aligned} V_t^{SB,e} &= (R_{kt} - R_t^{SB}) + \beta\Lambda_{t,t+1}[(1 - \chi)V_{t+1}^{SB,e} + \chi V_{t+1}^{SB,u}] \\ V_t^{SB,u} &= -1 + \beta\Lambda_{t,t+1}[q_t V_{t+1}^{SB,e} + (1 - q_t)V_{t+1}^{SB,u}]. \end{aligned}$$

If shadow banks find a fund share buyer, they earn the difference on the interest rates and will keep this surplus if the match is not separated. If they do not find a match, they have to advertise, incurring advertisement costs, which has a probability q_t of finding a match next period. In accordance with the free entry condition in the labor search literature, I assume that shadow banks advertise until the value of an unemployed share is zero, $V^{SB,u} = 0$. I can then express $\beta\Lambda_{t,t+1}V_{t+1}^{SB,e} = 1/q_t$. Inserting this above, the value of an employed share under free entry is then

$$V_t^{SB} = (R_{kt} - R_t^{SB}) + (1 - \chi)\frac{1}{q_t}.$$

For a household the value of savings at shadow banks $V^{HH,e}$ versus savings at banks $V^{HH,u}$ is

$$\begin{aligned} V_t^{HH,e} &= R_t^{SB} + \beta\Lambda_{t,t+1}[(1 - \chi)V_{t+1}^{HH,e} + \chi V_{t+1}^{HH,u}] \\ V_t^{HH,u} &= R_t + \beta\Lambda_{t,t+1}[f_t V_{t+1}^{HH,e} + (1 - f_t)V_{t+1}^{HH,u}], \end{aligned}$$

where $f_t \equiv m(v_t, B_{t+1}^u)/B_{t+1}^u$ is the probability of an unemployed deposit being intermediated through a shadow bank. The surplus from lending to a shadow bank is the difference they receive in interest rates together with the value they have from keeping that savings relationship,

$$V_t^{HH} = R_t^{SB} - R_t + \beta\Lambda_{t,t+1}(1 - \chi - f_t)V_{t+1}^{HH}.$$

From the first-order condition for interest rate bargaining I know that

$$\frac{\omega^{HH}}{V_t^{HH}} = \frac{(1 - \omega^{HH})}{V_t^{SB}}.$$

Solving this forward one period and inserting above, as well as inserting V_{t+1}^{SB} , I get for the households surplus

$$\begin{aligned} V_t^{HH} &= R_t^{SB} - R_t + (1 - \chi - f_t)\beta\Lambda_{t,t+1}V_{t+1}^{SB}\frac{\omega^{HH}}{1 - \omega^{HH}} \\ &= R_t^{SB} - R_t + (1 - \chi - f_t)\frac{1}{q_{t+1}}\frac{\omega^{HH}}{(1 - \omega^{HH})}. \end{aligned}$$

Inserting the surpluses for shadow banks and households into the first-order condition and solving forward one period results in

$$\frac{\omega^{HH}}{\left\{ (R_{t+1}^{SB} - R_{t+1}) + (1 - \chi - f_{t+1}) \frac{1}{q_{t+1}} \frac{\omega^{HH}}{1 - \omega^{HH}} \right\}} = \frac{(1 - \omega^{HH})}{\left\{ (R_{kt+1} - R_{t+1}^{SB}) + \frac{(1 - \chi)}{q_{t+1}} \right\}},$$

which can be solved for the interest rate shadow banks have to pay on their fund shares

$$R_{t+1}^{SB} = (1 - \omega^{HH})R_{t+1} + \omega^{HH} \{R_{kt+1} + \theta_{t+1}\}.$$

A.2 Bayesian Estimation

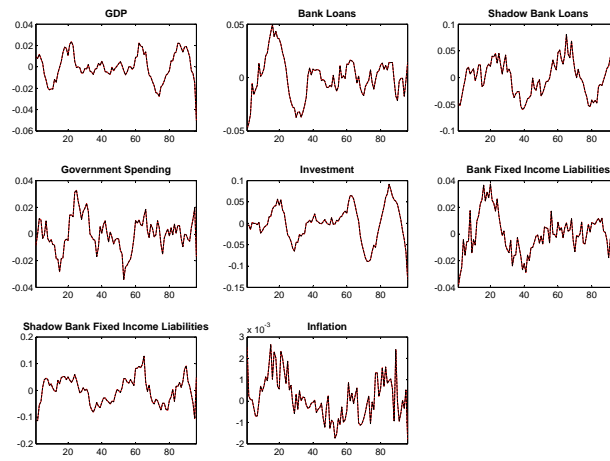


Figure 4: Data Series

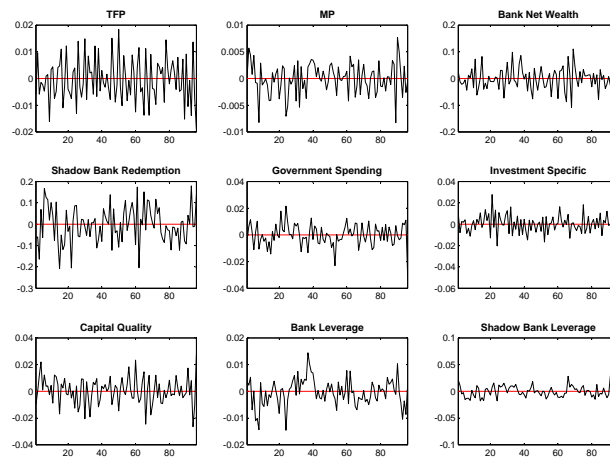


Figure 5: Shock Series

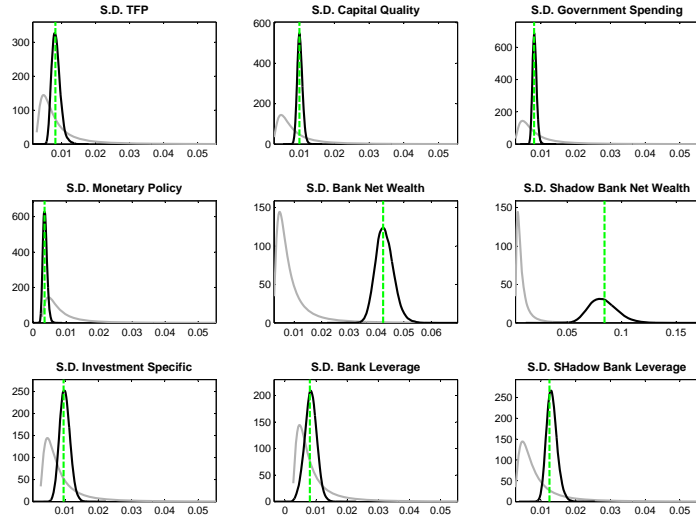


Figure 6: Priors and Posteriors 1/3

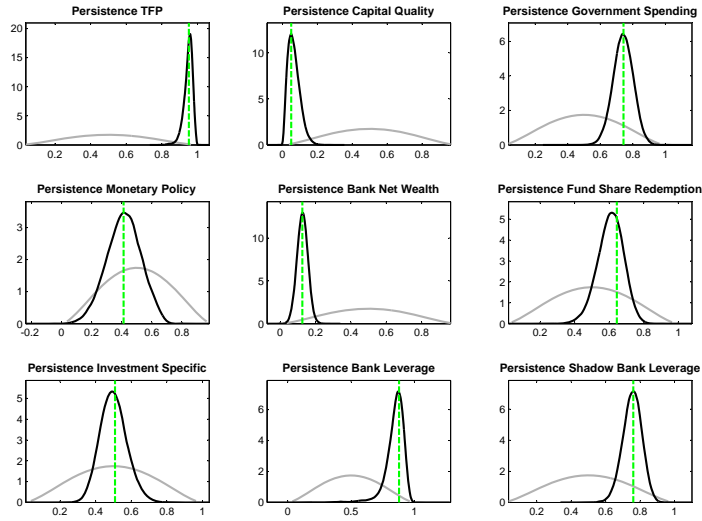


Figure 7: Priors and Posteriors 2/3

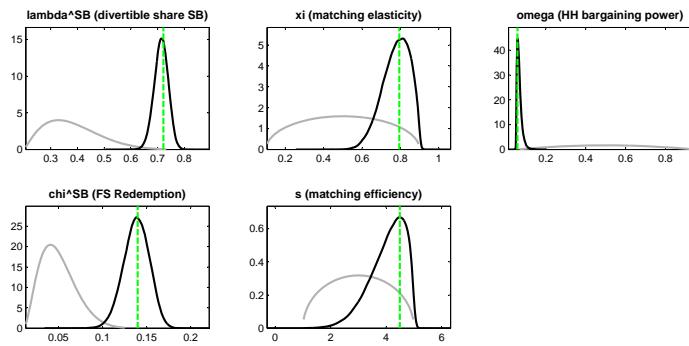


Figure 8: Priors and Posteriors 3/3

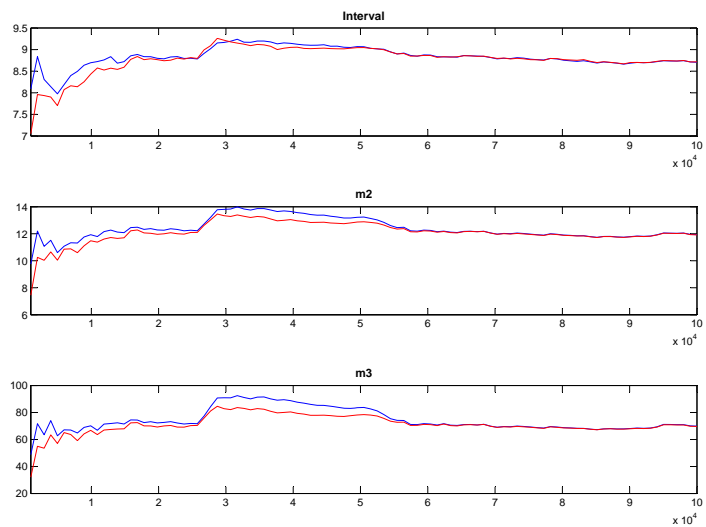


Figure 9: Multivariate Diagnostics

References

- [1] Y. Altunbas, L. Gambacorta, and D. Marques-Ibanez. Securitisation and the bank lending channel. *European Economic Review*, 53(8):996–1009, November 2009.
- [2] P. Bennett, S. Peristiani, et al. Are u.s. reserve requirements still binding. *Federal Reserve Bank of New York Economic Policy Review*, 8(1):53–68, 2002.
- [3] B. Bernanke, M. Gertler, and S. Gilchrist. The Financial Accelerator and the Flight to Quality. *The Review of Economics and Statistics*, 78(1):1–15, February 1996.
- [4] B. S. Bernanke and M. Gertler. Inside the Black Box: The Credit Channel of Monetary Policy Transmission. *Journal of Economic Perspectives*, 9(4):27–48, Fall 1995.
- [5] L. Christiano, R. Motto, and M. Rostagno. Two Reasons Why Money and Credit May be Useful in Monetary Policy. NBER Working Papers 13502, National Bureau of Economic Research, Inc, Oct. 2007.
- [6] G. Dell’Ariccia and P. Garibaldi. Bank Lending and Interest Rate Changes in a Dynamic Matching Model. IMF Working Papers 98/93, International Monetary Fund, June 1998.
- [7] W. J. den Haan, G. Ramey, and J. Watson. Liquidity flows and fragility of business enterprises. *Journal of Monetary Economics*, 50(6):1215–1241, September 2003.
- [8] P. Disyatat. The Bank Lending Channel Revisited. *Journal of Money, Credit and Banking*, 43(4):711–734, 06 2011.
- [9] Financial Stability Board. Global shadow banking monitoring report 2014. Technical report, Financial Stability Board, 2014.
- [10] M. Gertler and P. Karadi. A model of unconventional monetary policy. *Journal of Monetary Economics*, 58(1):17–34, January 2011.
- [11] M. Gertler and N. Kiyotaki. Financial Intermediation and Credit Policy in Business Cycle Analysis. In B. M. Friedman and M. Woodford, editors, *Handbook of Monetary Economics*, volume 3 of *Handbook of Monetary Economics*, chapter 11, pages 547–599. Elsevier, January 2010.
- [12] C. A. Goodhart, A. K. Kashyap, D. P. Tsomocos, and A. P. Vardoulakis. Financial regulation in general equilibrium. Working Paper 17909, National Bureau of Economic Research, March 2012.
- [13] W. J. D. Haan and V. Sterk. The Myth of Financial Innovation and the Great Moderation. *Economic Journal*, 121(553):707–739, 06 2011.
- [14] J. Hicks. *A Market Theory of Money*. Oxford University Press, October 1989.
- [15] D. Igan, A. N. Kabundi, F. N.-D. Simone, and N. T. Tamirisa. Monetary Policy and Balance Sheets. IMF Working Papers 13/158, International Monetary Fund, July 2013.

- [16] Investment Company Institute. Fact book. Technical report, , 2014.
- [17] A. Justiniano, G. E. Primiceri, and A. Tambalotti. Investment shocks and business cycles. *Journal of Monetary Economics*, 57(2):132–145, March 2010.
- [18] N. Kiyotaki and J. Moore. Evil is the root of all money. *American Economic Review*, 92(2):62–66, 2002.
- [19] J. Lucas, Robert E. Macroeconomic priorities. *American Economic Review*, 93(1):1–14, 2003.
- [20] R. Meeks, B. Nelson, and P. Alessandri. Shadow banks and macroeconomic instability. Bank of England working papers 487, Bank of England, Mar. 2014.
- [21] B. Nelson, G. Pinter, and K. Theodoridis. Do contractionary monetary policy shocks expand shadow banking? Bank of England working papers 521, Bank of England, Jan. 2015.
- [22] Office of Financial Research. Asset management and financial stability. Technical report, Office of Financial Research, 2013.
- [23] C. A. Pissarides. Equilibrium unemployment theory. *MIT Press Books*, 1, 2000.
- [24] Z. Pozsar. Shadow banking: The money view. Ofr working paper, Office of Financial Research, 2014.
- [25] A. Sunderam. Money creation and the shadow banking system. *Review of Financial Studies*, forthcoming.
- [26] J. Taylor. Housing and Monetary Policy. Discussion Papers 07-003, Stanford Institute for Economic Policy Research, Sept. 2007.
- [27] F. Verona, M. M. F. Martins, and I. Drumond. (Un)anticipated Monetary Policy in a DSGE Model with a Shadow Banking System. *International Journal of Central Banking*, 9(3):78–124, September 2013.
- [28] E. Wasmer and P. Weil. The Macroeconomics of Labor and Credit Market Imperfections. *American Economic Review*, 94(4):944–963, September 2004.
- [29] M. Woodford. Financial Intermediation and Macroeconomic Analysis. *Journal of Economic Perspectives*, 24(4):21–44, Fall 2010.

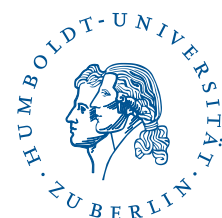
SFB 649 Discussion Paper Series 2015

For a complete list of Discussion Papers published by the SFB 649, please visit <http://sfb649.wiwi.hu-berlin.de>.

- 001 "Pricing Kernel Modeling" by Denis Belomestny, Shujie Ma and Wolfgang Karl Härdle, January 2015.
- 002 "Estimating the Value of Urban Green Space: A hedonic Pricing Analysis of the Housing Market in Cologne, Germany" by Jens Kolbe and Henry Wüstemann, January 2015.
- 003 "Identifying Berlin's land value map using Adaptive Weights Smoothing" by Jens Kolbe, Rainer Schulz, Martin Wersing and Axel Werwatz, January 2015.
- 004 "Efficiency of Wind Power Production and its Determinants" by Simone Pieralli, Matthias Ritter and Martin Odening, January 2015.
- 005 "Distillation of News Flow into Analysis of Stock Reactions" by Junni L. Zhang, Wolfgang K. Härdle, Cathy Y. Chen and Elisabeth Bommers, January 2015.
- 006 "Cognitive Bubbles" by Ciril Bosch-Rosay, Thomas Meissnerz and Antoni Bosch-Domènech, February 2015.
- 007 "Stochastic Population Analysis: A Functional Data Approach" by Lei Fang and Wolfgang K. Härdle, February 2015.
- 008 "Nonparametric change-point analysis of volatility" by Markus Bibinger, Moritz Jirak and Mathias Vetter, February 2015.
- 009 "From Galloping Inflation to Price Stability in Steps: Israel 1985–2013" by Rafi Melnick and till Strohsal, February 2015.
- 010 "Estimation of NAIRU with Inflation Expectation Data" by Wei Cui, Wolfgang K. Härdle and Weining Wang, February 2015.
- 011 "Competitors In Merger Control: Shall They Be Merely Heard Or Also Listened To?" by Thomas Giebe and Miyu Lee, February 2015.
- 012 "The Impact of Credit Default Swap Trading on Loan Syndication" by Daniel Streitz, March 2015.
- 013 "Pitfalls and Perils of Financial Innovation: The Use of CDS by Corporate Bond Funds" by Tim Adam and Andre Guettler, March 2015.
- 014 "Generalized Exogenous Processes in DSGE: A Bayesian Approach" by Alexander Meyer-Gohde and Daniel Neuhoff, March 2015.
- 015 "Structural Vector Autoregressions with Heteroskedasticity" by Helmut Lütkepohl and Aleksei Netšunajev, March 2015.
- 016 "Testing Missing at Random using Instrumental Variables" by Christoph Breunig, March 2015.
- 017 "Loss Potential and Disclosures Related to Credit Derivatives – A Cross-Country Comparison of Corporate Bond Funds under U.S. and German Regulation" by Dominika Paula Gałkiewicz, March 2015.
- 018 "Manager Characteristics and Credit Derivative Use by U.S. Corporate Bond Funds" by Dominika Paula Gałkiewicz, March 2015.
- 019 "Measuring Connectedness of Euro Area Sovereign Risk" by Rebekka Gätjen Melanie Schienle, April 2015.
- 020 "Is There an Asymmetric Impact of Housing on Output?" by Tsung-Hsien Michael Lee and Wenjuan Chen, April 2015.
- 021 "Characterizing the Financial Cycle: Evidence from a Frequency Domain Analysis" by Till Strohsal, Christian R. Proaño and Jürgen Wolters, April 2015.

SFB 649, Spandauer Straße 1, D-10178 Berlin
<http://sfb649.wiwi.hu-berlin.de>

This research was supported by the Deutsche
Forschungsgemeinschaft through the SFB 649 "Economic Risk".



SFB 649 Discussion Paper Series 2015

For a complete list of Discussion Papers published by the SFB 649, please visit <http://sfb649.wiwi.hu-berlin.de>.

- 022 "Risk Related Brain Regions Detected with 3D Image FPCA" by Ying Chen, Wolfgang K. Härdle, He Qiang and Piotr Majer, April 2015.
- 023 "An Adaptive Approach to Forecasting Three Key Macroeconomic Variables for Transitional China" by Linlin Niu, Xiu Xu and Ying Chen, April 2015.
- 024 "How Do Financial Cycles Interact? Evidence from the US and the UK" by Till Strohsal, Christian R. Proaño, Jürgen Wolters, April 2015.
- 025 "Employment Polarization and Immigrant Employment Opportunities" by Hanna Wielandt, April 2015.
- 026 "Forecasting volatility of wind power production" by Zhiwei Shen and Matthias Ritter, May 2015.
- 027 "The Information Content of Monetary Statistics for the Great Recession: Evidence from Germany" by Wenjuan Chen and Dieter Nautz, May 2015.
- 028 "The Time-Varying Degree of Inflation Expectations Anchoring" by Till Strohsal, Rafi Melnick and Dieter Nautz, May 2015.
- 029 "Change point and trend analyses of annual expectile curves of tropical storms" by P.Burdejova, W.K.Härdle, P.Kokoszka and Q.Xiong, May 2015.
- 030 "Testing for Identification in SVAR-GARCH Models" by Helmut Luetkepohl and George Milunovich, June 2015.
- 031 "Simultaneous likelihood-based bootstrap confidence sets for a large number of models" by Mayya Zhilova, June 2015.
- 032 "Government Bond Liquidity and Sovereign-Bank Interlinkages" by Sören Radde, Cristina Checherita-Westphal and Wei Cui, July 2015.
- 033 "Not Working at Work: Loafing, Unemployment and Labor Productivity" by Michael C. Burda, Katie Genadek and Daniel S. Hamermesh, July 2015.
- 034 "Factorisable Sparse Tail Event Curves" by Shih-Kang Chao, Wolfgang K. Härdle and Ming Yuan, July 2015.
- 035 "Price discovery in the markets for credit risk: A Markov switching approach" by Thomas Dimpfl and Franziska J. Peter, July 2015.
- 036 "Crowdfunding, demand uncertainty, and moral hazard - a mechanism design approach" by Roland Strausz, July 2015.
- 037 ""Buy-It-Now" or "Sell-It-Now" auctions : Effects of changing bargaining power in sequential trading mechanism" by Tim Grebe, Radosveta Ivanova-Stenzel and Sabine Kröger, August 2015.
- 038 "Conditional Systemic Risk with Penalized Copula" by Ostap Okhrin, Alexander Ristig, Jeffrey Sheen and Stefan Trück, August 2015.
- 039 "Dynamics of Real Per Capita GDP" by Daniel Neuhoff, August 2015.
- 040 "The Role of Shadow Banking in the Monetary Transmission Mechanism and the Business Cycle" by Falk Mazelis, August 2015.

SFB 649, Spandauer Straße 1, D-10178 Berlin
<http://sfb649.wiwi.hu-berlin.de>

This research was supported by the Deutsche
Forschungsgemeinschaft through the SFB 649 "Economic Risk".

