

Grossmann, Volker; Osikominu, Aderonke; Osterfeld, Marius

Working Paper

Are sociocultural factors important for studying a science university major?

Hohenheim Discussion Papers in Business, Economics and Social Sciences, No. 12-2015

Provided in Cooperation with:

Faculty of Business, Economics and Social Sciences, University of Hohenheim

Suggested Citation: Grossmann, Volker; Osikominu, Aderonke; Osterfeld, Marius (2015) : Are sociocultural factors important for studying a science university major?, Hohenheim Discussion Papers in Business, Economics and Social Sciences, No. 12-2015, Universität Hohenheim, Fakultät Wirtschafts- und Sozialwissenschaften, Stuttgart, <https://nbn-resolving.de/urn:nbn:de:bsz:100-opus-11554>

This Version is available at:

<https://hdl.handle.net/10419/121858>

Standard-Nutzungsbedingungen:

Die Dokumente auf EconStor dürfen zu eigenen wissenschaftlichen Zwecken und zum Privatgebrauch gespeichert und kopiert werden.

Sie dürfen die Dokumente nicht für öffentliche oder kommerzielle Zwecke vervielfältigen, öffentlich ausstellen, öffentlich zugänglich machen, vertreiben oder anderweitig nutzen.

Sofern die Verfasser die Dokumente unter Open-Content-Lizenzen (insbesondere CC-Lizenzen) zur Verfügung gestellt haben sollten, gelten abweichend von diesen Nutzungsbedingungen die in der dort genannten Lizenz gewährten Nutzungsrechte.

Terms of use:

Documents in EconStor may be saved and copied for your personal and scholarly purposes.

You are not to copy documents for public or commercial purposes, to exhibit the documents publicly, to make them publicly available on the internet, or to distribute or otherwise use the documents in public.

If the documents have been made available under an Open Content Licence (especially Creative Commons Licences), you may exercise further usage rights as specified in the indicated licence.

UNIVERSITY OF HOHENHEIM

FACULTY OF BUSINESS, ECONOMICS AND SOCIAL SCIENCES



HOHENHEIM DISCUSSION PAPERS
IN BUSINESS, ECONOMICS AND SOCIAL SCIENCES

Institute of Economics

DISCUSSION PAPER 12-2015

ARE SOCIOCULTURAL FACTORS IMPORTANT
FOR STUDYING A SCIENCE
UNIVERSITY MAJOR?

Volker Grossmann,
University of Fribourg, Switzerland

Aderonke Osikominu,
University of Hohenheim

Marius Osterfeld,
University of Fribourg,
Switzerland



www.wiso.uni-hohenheim.de

Discussion Paper 12-2015

**Are Sociocultural Factors Important for Studying a
Science University Major?**

Volker Grossmann
Aderonke Osikominu
Marius Osterfeld

Download this Discussion Paper from our homepage:

<https://wiso.uni-hohenheim.de/papers>

ISSN 2364-2076 (Printausgabe)
ISSN 2364-2084 (Internetausgabe)

Die Hohenheim Discussion Papers in Business, Economics and Social Sciences dienen der schnellen Verbreitung von Forschungsarbeiten der Fakultät Wirtschafts- und Sozialwissenschaften. Die Beiträge liegen in alleiniger Verantwortung der Autoren und stellen nicht notwendigerweise die Meinung der Fakultät Wirtschafts- und Sozialwissenschaften dar.

Hohenheim Discussion Papers in Business, Economics and Social Sciences are intended to make results of the Faculty of Business, Economics and Social Sciences research available to the public in order to encourage scientific discussion and suggestions for revisions. The authors are solely responsible for the contents which do not necessarily represent the opinion of the Faculty of Business, Economics and Social Sciences.

Are Sociocultural Factors Important for Studying a Science University Major?*

Volker Grossmann,[†] Aderonke Osikominu,[‡] and Marius Osterfeld[§]

October 13, 2015

Abstract

This paper examines the role of the sociocultural background of students for choosing STEM fields in university. We combine rich survey data on university graduates in Switzerland with municipality level information from the census as well as nationwide elections and referenda to characterize a student's home environment with respect to religious and political attitudes towards gender equality and science-related issues. Our empirical estimates are based on a structural Roy model which accounts for differences in costs (relative distance to the next technical university) and earnings across majors as well as for selection bias. Our findings suggest that male students from conservative municipalities are more likely to study a STEM field, whereas the sociocultural background plays little role for the major choice of females.

Key words: Choice of field of study; Gender differences; Selection bias; Sociocultural environment; STEM fields.

JEL classification: I20, C81.

**Acknowledgments:* We are grateful to seminar participants at the University of Fribourg, the University of St. Gallen, the Annual Congress of the International Institute of Public Finance (IIPF) 2014 in Lugano, the European Economic Association (EEA) 2014 in Toulouse, the German Economic Association (Verein für Socialpolitik) 2014 in Hamburg, the CESifo Area Conference in Economics of Education 2014 in Munich, and the 4th SOLE/EALE World Conference 2015 in Montreal for valuable comments and suggestions.

[†]University of Fribourg, Switzerland; CESifo, Munich; Centre for Research and Analysis of Migration (CReAM), London; Institute for the Study of Labor (IZA), Bonn. Postal address: University of Fribourg, Department of Economics, Bd. de Pérolles 90, CH-1700 Fribourg. E-mail: volker.grossmann@unifr.ch.

[‡]Corresponding author. University of Hohenheim, Germany; Institute for Employment Research (IAB), Nuremberg; Centre for Economic Policy Research (CEPR), London; CESifo, Munich; Institute for the Study of Labor (IZA), Bonn. Postal address: University of Hohenheim, Department of Economics (520B), D-70593 Stuttgart. E-mail: a.osikominu@uni-hohenheim.de.

[§]University of Fribourg, Switzerland; swissstaffing. Postal address: swissstaffing, Stettbachstrasse 10, CH-8600 Dübendorf. E-mail: marius.osterfeld@swissstaffing.ch.

1 Introduction

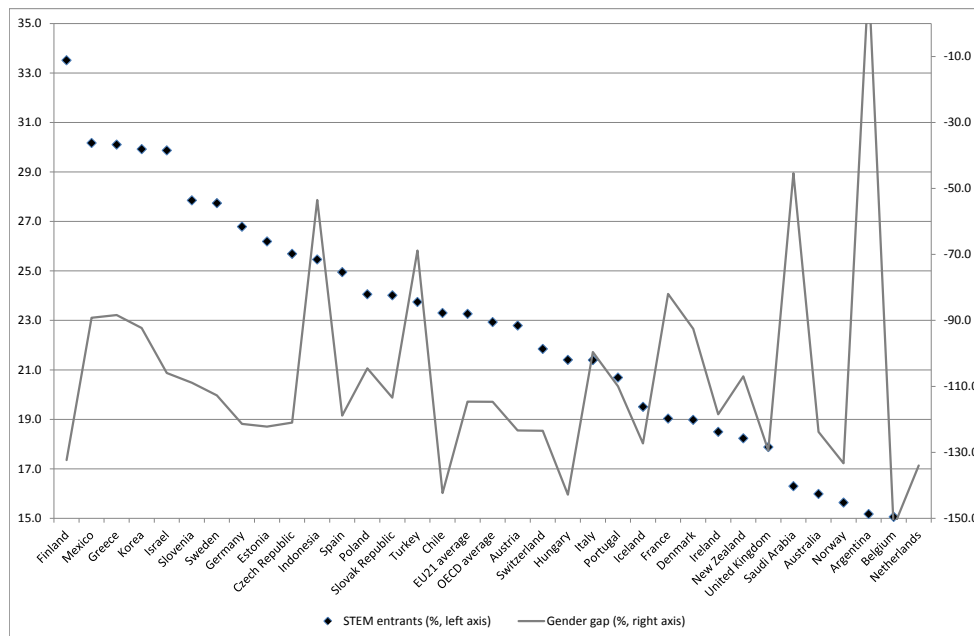
Modern growth theory suggests that economic growth is ultimately driven by technological progress. Cross-country evidence strongly supports the hypothesis that differences in per capita income primarily reflect differences in total factor productivity (e.g., Jones and Romer, 2010). Technological progress, in turn, relies on innovations that are created by scientists and engineers. There is consequently a widespread consensus that the so-called *STEM* (science, technology, engineering, and mathematics) skills are of major importance to sustain innovation and growth.¹ Yet, as Figure 1 illustrates, the share of young people studying a STEM field is rather low in many advanced countries. The average share of new entrants into STEM fields in OECD countries in the year 2011 was only about 25 percent. Moreover, there is a striking gender difference, even in countries with on average high enrolment rates. In the OECD countries, 39 percent of male students choose on average a STEM field, whereas only 14 percent of female students do so (Figure 1 and OECD, 2013, Tab. C3.3b). These figures cause concern to policymakers and employers who perceive a lack of qualified candidates for jobs requiring STEM skills.

Akerlof and Kranton (2000, 2002) point out that the social setting may be an important driver of educational choices. They propose a human capital model that incorporates social incentives in addition to the usual economic returns and constraints. Such a model may explain why observed educational choices are at odds with economic incentives. A recent macroeconomic literature highlights the role of cultural factors for economic growth (e.g., Guiso, Sapienza, and Zingales, 2006; Tabellini, 2008). However, the relevance of the sociocultural setting for microeconomic outcomes has proven difficult to establish empirically.

This paper sets out to explore to which extent the decision to study a STEM field is influenced by the sociocultural background of a student at the micro level. We investigate to which degree gender- and science-related progressive versus conservative religious and political attitudes in the environment of a high school graduate affect the

¹Recent evidence also suggests that college graduates in STEM fields exert much larger human capital externalities to local labor markets than other college graduates (Winters, 2013).

Figure 1: Share of New Entrants in STEM Fields and Gender Gap in Advanced Countries, 2011



Source: OECD (2013) and accompanying material on the web, Tables C3.3a and C3.3b. Notes: The reference year for Argentina is 2010. The gender gap in new STEM entrants is calculated as the difference between the female and the male share relative to the overall share.

decision to study a STEM major. At first glance, one may think that a progressive environment contributes to developing a taste for science. Alternatively, however, STEM fields may be preferred in conservative environments vis-à-vis, for instance, social sciences which may be viewed as being oriented to left-wing political attitudes. One may also hypothesize that conservatism is related to a low fraction of females choosing a STEM field by creating an environment in which certain fields and occupations are perceived as being better suited for either males or females.

We propose a structural framework in order to account for differences in both pecuniary and sociocultural benefits and costs of studying STEM fields rather than other university majors. The main innovation of our study is to capture the sociocultural background of a student within a structural Roy (1951) model. The theoretical model motivates our econometric specification that we apply to rich data on graduates from

Swiss universities who finished their studies in the early 2000s. Switzerland is an ideal country to investigate university major choice, since at the time of our study all Swiss inhabitants graduating from upper secondary education (*Matura*) could freely choose which field and at which Swiss university to study. Study fees are very moderate in international comparison. They are similar across universities and the same for all majors within a university.

According to our theoretical model, individuals value material consumption, related to earnings over the life cycle, and directly derive utility from their field of study. Tastes for study majors depend on the sociocultural environment and the geographic proximity of a student's home municipality to the next technical university, given the distance to the next university. The relative geographic proximity of a technical university determines the pecuniary and nonpecuniary costs of studying a STEM major relative to other fields. The relative geographic proximity of a technical university is unrelated to the returns to different university majors (i.e. earnings), being salient for econometric identification.

The main pecuniary motivation for university major choice are earnings. Thus, we need to account for earnings differences across majors. However, we observe earnings of a university graduate only for the field he or she self-selected into. To address the potentially important selection bias, we construct the expected earnings difference across fields by alluding to the notion that rational individuals choose their major according to comparative advantage (Roy, 1951). We borrow from the literature on the choice of college participation, which deals with a similar selection issue.²

We have access to a unique micro data set that contains rich information on Swiss university graduates five years after graduation. The variables include earnings, parental education, age, gender, and the home municipality in which the respondent lived at the end of high school. Switzerland exhibits a high degree of cultural diversity across regions. Even at a low jurisdictional level such as the municipality, of which there are about 2,600, one can expect important differences in social and cultural norms and

²Seminal papers include Heckman (1976) and Willis and Rosen (1979). See Heckman, Lochner, and Todd (2006) for a survey.

attitudes.³

We further exploit the unique opportunity of the direct democratic system in Switzerland to characterize a respondent's environment with respect to conservative or progressive attitudes on gender equality and science-related issues. We use results from nationwide referenda to construct objective measures of the sociocultural environment at the municipality level that are not contaminated by social desirability considerations. We select the following referenda in order to model the sociocultural environment of a student: on introducing equal rights of men and women in the constitution (referendum held in 1981), on providing addicts with medical prescriptions of heroin (1999), on the regulation of stem cell research (2004), and on the civil union of homosexual couples (2005), providing similar rights than to married couples (except for the right to adopt children and access to in vitro fertilization). We consider the latter referendum to be science-related because a large body of research has severely questioned the argument typically put forward by the religiously conservative that homosexuality is "unnatural". Scientific research, that contradicts the religiously conservative view, has largely affected the public discussion about equal rights for homosexual partnerships. Also the referendum on novel ways to cope with criminal activity of heroin addicts is an example of science-based changes in political attitudes. In addition to referenda results, we measure the impact on major choice of the fraction of votes that accrued to left-wing parties at the national parliamentary elections in 1995. Moreover, we examine the role of the distribution of religious denomination for major choice. A principal component analysis suggests that the outcomes of the four referenda, the vote share of left-wing parties, and religious denomination primarily load on a single principal component, which we therefore interpret as a measure of "progressivism".

Our main results are as follows. First, male students from municipalities with a high fraction of voters in favor of gender equality, the science-related issues and left-wing parties are significantly less likely to enter a STEM field in university, whereas in municipalities with a high share of Catholics, students are more likely to enter a

³Eugster, Lalive, and Zweimüller (2012) and Steinhauer (2013) also make use of the cultural diversity in Switzerland to study how culture affects unemployment and labor force participation of mothers, respectively.

STEM field. Thus, somewhat surprisingly, our results suggest that the probability of male students in tertiary education to choose a STEM field is higher when a student is socialized in a less progressive background.⁴ However, in none of our specifications we find that women in a conservative or Catholic environment are more likely to study a STEM major than women in a progressive environment. In fact, sociocultural factors apparently have negligible effects for female students. Insofar as they matter for the major choice of men to a non-negligible extent, those factors contribute to understanding gender differences in the decision to study a STEM field. Finally, consistent with previous research, our results also suggest that female students are less motivated than men by earnings differences between STEM fields and other majors.

The paper is organized as follows. Section 2 discusses related literature. In Section 3, we present the theoretical background which motivates the structural econometric model. The econometric model and the identification strategy are discussed in Section 4. Section 5 describes the data and empirical specification. Section 6 shows the results. The last section concludes.

2 Related Literature

Our paper contributes to the literature on college major choice by employing a unique data set that allows us to examine the role of objective measures for the sociocultural environment based on a structural model. The main determinants of college major choice suggested by the previous literature were quantitative abilities (e.g., Arcidiacono, 2004; Wang, 2013), parental background (e.g., Boudarbat and Montmarquette, 2009; Sonnert, 2009), expectations on future labor force participation (e.g., Polachek, 1978; Blakemore and Low, 1984), and lifetime earnings (e.g., Berger, 1988; Eidea and Waehrer, 1998). Arcidiacono, Hotz, and Kang (2012) use surveys to elicit earnings expectations in different fields. They argue that, by accounting for students' expecta-

⁴In Switzerland, Catholics were typically associated with more conservative religious values compared to Protestants, which has been attributed to the Reformation process in Switzerland itself (e.g., Gordon, 2002). Altermatt (1979) argues that the relation between conservatism and Catholicism is less pronounced in modern times, however.

tions, ability and expected earnings are important determinants of college major choice. Boudarbat (2008) argues that lifetime earnings are more important if students have gained work experience before attending college. Moreover, Boudarbat and Montmarquette (2009) find that lifetime earnings seem to play a smaller role for the college major choice if the parent of the same gender as the student enjoyed university education. Humlum, Kleinjans, and Nielsen (2012) investigate the role of social identity for educational plans of young people. They rely on self-rated career and social orientations that enter as explanatory variables in reduced form choice models. They find economically important effects of identity on planned field of study and also point to some gender differences.

Recent studies elicit beliefs of students to understand how learning about one's abilities and the returns to different majors affect students' major choices over time. Using data on students at Berea college in the US, Stinebrickner and Stinebrickner (2014) find that students are overoptimistic with respect to their ability to perform well in science fields. They find that an extraordinarily high fraction of students in science fields change their major towards a non-science field once they acquire information about their true ability. Wiswall and Zafar (2015) devise an information experiment at New York University updating students' expectations about the earnings associated with different careers. Students respond rather inelastically to information about the true earnings distribution conditional on major choice, suggesting that rational expectations (as we do in our paper) is an acceptable assumption. Their evidence also suggests that unobserved tastes play an important role for major choice. Unlike these two studies, we want to shed light on the question to what extent the sociocultural environment in which young people grow up shapes their tastes for science fields. We set up a model for college major choice that is motivated by the fact that, in Switzerland, learning about one's abilities seems to be less important empirically. In fact, STEM field students are not more likely to drop out than non-STEM students (Wolter, Diem, and Messer, 2013).

With respect to gender differences in college major choice, Zafar (2013) finds that the gender gap can partly be attributed to a higher emphasis of men on pecuniary

outcomes (see also Montmarquette, Cannings, and Mahseredjian, 2002) and higher emphasis of women on enjoying coursework and employment in potential jobs, and gaining the approval of parents. Our results are consistent with the hypothesis that earnings are less important for men than for women. Carell, Page, and West (2010) find that the gender of the professor plays a role for both females' performance in basic math and science classes and the choice of women with high quantitative skills to graduate from a STEM field. Their results suggest that role models are important for females to study STEM fields, but not for males. Kane and Mertz (2011) show that gender equality as measured by gender gaps in income and political participation is positively correlated with math performance of both male and female high-school students. However, gender inequality cannot explain the gender gap in math performance. None of these studies examine the question whether gender differences in major choice can be attributed to differential effects of sociocultural factors across genders.

3 Theoretical Considerations

We first develop a simple theoretical model of individual university major choice in order to motivate our structural estimation approach. We focus on the binary decision to study a STEM field (alternative A) or a non-STEM field (alternative B). This allows us to employ an identification strategy which is inspired by the literature on the (binary) college participation decision.

3.1 Set Up

Consider an infinitely-living individual i who chooses university major $j \in \{A, B\}$ in period 0 and earns wage income Y_{ijt} in period $t = 1, 2, 3, \dots$ thereafter.

For simplicity and following standard arguments, suppose individuals cannot borrow against future income while attending university in period 0. We assume that, in period 0, individual i possesses and uses resources y_i^0 for consumption.⁵ Moreover, suppose

⁵Sources of income in period 0 could be income from a sideline job during study, scholarships, transfers by parents or prior savings. Individuals may save in period 0 but provided that future

the growth rate of wage income in period $t \geq 1$ is time-invariant and independent of the university major (otherwise income differences across majors would diverge infinitely), but possibly is individual-specific. Let g_i denote the wage growth rate for individual i .⁶ Moreover, let us denote the earnings of individual i in period 1, obtained initially after finishing university studies in field $j \in \{A, B\}$, by y_{ij} . Thus, earnings in period $t \geq 1$ read

$$Y_{ijt} = y_{ij}(1 + g_i)^{t-1}. \quad (1)$$

Initial earnings y_{ij} are given by some major-specific function f_j , which depends on a vector of observable characteristics of individual i , \mathbf{x}_i , and an individual- and major-specific ability component, ξ_{ij} , that is unobservable for an econometrician. We specify

$$y_{ij} = f_j(\mathbf{x}_i, \xi_{ij}) = \xi_{ij} \exp(\mathbf{x}_i' \boldsymbol{\beta}_j + \kappa_j), \quad (2)$$

where $\boldsymbol{\beta}_j$ is a parameter vector and κ_j is a major-specific shift parameter. Defining $u_{ij} \equiv \ln \xi_{ij} + \kappa_j$, we can write

$$\ln y_{ij} = \mathbf{x}_i' \boldsymbol{\beta}_j + u_{ij}, \quad j \in \{A, B\}. \quad (3)$$

(3) gives us a familiar linear form for log earnings of an individual, which in our context captures that earnings may depend on the university major chosen, possibly in interaction with individual ability.

In periods $t \geq 1$, individuals can freely borrow and lend at the time-invariant (world market) interest rate r . For technical reasons, suppose that r exceeds the growth rate of earnings g_i for all i . Individuals draw utility from their consumption stream. Importantly, each individual i also draws utility h_{ij} from studying (or graduating from)

income is sufficiently higher than available resources in period 0, which we implicitly assume, they optimally choose zero savings.

⁶We observe individual earnings one year and five years after graduation from university. As some graduates acquired post-graduate education in-between, we shall not attempt to compute the growth rate of earnings over the life-cycle of a worker based on these observations. Fortunately, as will become apparent, g_i will not affect the university major choice as long as we assume that earnings growth does not depend on field j .

major j . Total intertemporal utility of individual i when choosing field j is given by

$$U_{ij} = \sum_{t=0}^{\infty} \rho^t \ln c_{ijt} + h_{ij}, \quad (4)$$

where $\rho \in (0, 1)$ is the discount rate and c_{ijt} denotes the level of material consumption in t of an individual i which has chosen major j . We assume that h_{ij} depends on observable characteristics, \mathbf{z}_i of individual i and on an unobservable individual and major specific taste component, τ_{ij} . We specify the linear form

$$h_{ij} = \mathbf{z}_i' \boldsymbol{\theta}_j + \tau_{ij}, \quad (5)$$

where $\boldsymbol{\theta}_j$ is a parameter vector.

Our empirical identification strategy, explained in section 4, requires that \mathbf{z}_i contains variables that are not included in \mathbf{x}_i . Taste characteristics in \mathbf{z}_i which determine utility from studying a certain major but do not shape earnings differentials across majors may be thought of (i) the distance of the home municipality to the next technical university, given the distance to the next university, which is related to the costs of studying a STEM field, and (ii) the sociocultural environment in the home municipality at the time the major is chosen.

3.2 Consumption Profile

After choosing a major j , individual i solves the following maximization problem that smooths consumption over time:

$$\max_{\{c_{ijt}\}_{t=1}^{\infty}} \sum_{t=1}^{\infty} \rho^t \ln c_{ijt} \text{ s.t. } \sum_{t=1}^{\infty} \frac{c_{ijt}}{(1+r)^t} = \sum_{t=1}^{\infty} \frac{Y_{ijt}}{(1+r)^t}. \quad (6)$$

This leads to the well-known Euler equation

$$c_{ijt+1} = (1+r)\rho c_{ijt}, \quad (7)$$

$t \geq 1$. Using (7) in (4) and observing that $c_{ij0} = y_i^0$, intertemporal utility of individual i conditional on major choice j reads as⁷

$$U_{ij} = \frac{\rho}{1-\rho} \ln c_{ij1} + \ln y_i^0 + \frac{\rho^2(2-\rho)}{(1-\rho)^2} \ln[(1+r)\rho] + h_{ij}. \quad (8)$$

Combining (7) with the intertemporal budget constraint in (6) and using expression (1) for earnings Y_{ijt} we obtain the (optimal) level of consumption of individual i under college major choice j in the first working period ($t = 1$). Observing that $r > g_i$ by assumption, it is given by

$$c_{ij1} = \frac{(1-\rho)(1+r)}{r-g_i} y_{ij}. \quad (9)$$

3.3 Major Choice

Substituting both (5) and (9) for $j \in \{A, B\}$ into (8), we find that the difference in utility between studying a STEM major (alternative A) and a non-STEM field (alternative B) is given by

$$\Delta U_i = \alpha_1 [\ln y_{iA} - \ln y_{iB}] + \mathbf{z}'_i \boldsymbol{\alpha}_z + \nu_i, \quad (10)$$

where $\alpha_1 \equiv \frac{\rho}{1-\rho}$, $\boldsymbol{\alpha}_z \equiv \boldsymbol{\theta}_A - \boldsymbol{\theta}_B$ and $\nu_i \equiv \tau_{iA} - \tau_{iB}$.⁸ As an implication of the logarithmic form of instantaneous utility from material consumption,⁹ the expression for utility difference ΔU_i does neither depend on the growth rate of earnings, g_i , nor on the interest rate, r . Moreover, because income (and consumption) while attending university, y_i^0 , is independent of the major choice, it cancels out.

Substituting the expression for $\ln y_{ij}$ in (3) for $j \in \{A, B\}$ into (10), we can thus write

$$\Delta U_i = \mathbf{w}'_i \boldsymbol{\pi} - \varepsilon_i, \quad (11)$$

⁷Use $\sum_{t=1}^{\infty} \rho^t = \rho(1-\rho)^{-1}$ and $\sum_{t=2}^{\infty} t\rho^t = \rho^2(2-\rho)(1-\rho)^{-2}$.

⁸Assuming a finite time horizon T rather than an infinite one is inconsequential for (10) except that α_1 becomes $\alpha_1 = \frac{\rho(1-\rho^T)}{1-\rho}$.

⁹The assumption means that the coefficient of relative risk aversion is unity, consistent with empirical evidence (e.g., Chetty, 2006).

where $\mathbf{w}'_i \equiv (\mathbf{x}'_i, \mathbf{z}'_i)$, $\boldsymbol{\pi}' \equiv (\alpha_1(\boldsymbol{\beta}_A - \boldsymbol{\beta}_B)', \boldsymbol{\alpha}'_z)$ and $-\varepsilon_i \equiv \alpha_1(u_{iA} - u_{iB}) + \nu_i$. Clearly, individual i prefers alternative A (STEM major) to B if $\Delta U_i > 0$, i.e., if $\mathbf{w}'_i \boldsymbol{\pi} > \varepsilon_i$.

Willis and Rosen (1979) derived expressions for ΔU_i which are formally equivalent to (10) and (11), albeit in a rather different set up. Whereas they analyzed the choice of college participation, our framework captures the choice of the university major given that an individual goes to university. Willis and Rosen (1979) did not consider consumption smoothing and utility from attending university. In their theoretical model, family background enters by affecting the individual discount rate. The (log) linear forms in their model analogous to (10) and (11) are implied by a first-order Taylor-approximation.

4 Econometric Model

4.1 Selection Bias and Estimation

Ideally, we would like to estimate the probability that a STEM field is chosen, $\Pr\{\Delta U_i > 0 \mid \ln y_{iA} - \ln y_{iB}, \mathbf{z}_i\}$, on basis of (10); that is,

$$\Pr\{\Delta U_i > 0 \mid \ln y_{iA} - \ln y_{iB}, \mathbf{z}_i\} = \Pr\{\alpha_1[\ln y_{iA} - \ln y_{iB}] + \mathbf{z}'_i \boldsymbol{\alpha}_z + \nu_i > 0 \mid \ln y_{iA} - \ln y_{iB}, \mathbf{z}_i\}. \quad (12)$$

However, we observe wages of an individual only for the major which has actually been chosen. Thus, we have to estimate wage equations (3) by correcting for selection bias and then plug the estimates for $\ln y_{iA}$ and $\ln y_{iB}$ into (12). We estimate the model in three stages.

4.1.1 Stage 1

We assume that the error term ε_i in expression (11) is normally distributed with variance σ_ε^2 , i.e. $\varepsilon_i \mid \mathbf{w}_i \sim \mathcal{N}(0, \sigma_\varepsilon^2)$. Further, express the relationship between the error

terms u_{ij} , $j \in \{A, B\}$, in wage equation (3) and ε_i as:

$$u_{ij} = \gamma_j \varepsilon_i + \zeta_{ij}, \quad (13)$$

with $E(u_{ij} | \mathbf{w}_i, \varepsilon_i) = \gamma_j \varepsilon_i$, which implies that $E(\zeta_{ij} | \mathbf{w}_i, \varepsilon_i) = 0$. Thus, the parameter γ_j corresponds to $\text{Cov}(u_{ij}, \varepsilon_i) / \sigma_\varepsilon^2$, where $\text{Cov}(\cdot)$ denotes the covariance.

In a first step, we estimate the reduced form choice equation based on (11). We suppose that

$$\Pr\{\Delta U_i > 0 | \mathbf{w}_i\} = \Pr\{\mathbf{w}'_i \boldsymbol{\pi} > \varepsilon_i | \mathbf{w}_i\} = \Phi\left(\frac{\mathbf{w}'_i \boldsymbol{\pi}}{\sigma_\varepsilon}\right), \quad (14)$$

where Φ denotes the standard normal c.d.f.; its p.d.f. is denoted by φ .

4.1.2 Stage 2

From (3), (11) and (13), we find the expected log wage income of an individual resulting from alternative A (STEM field) conditional on self-selecting to that field:

$$\begin{aligned} E(\ln y_{iA} | \mathbf{w}_i, \Delta U_i > 0) &= E[E(\ln y_{iA} | \mathbf{w}_i, \varepsilon_i) | \mathbf{w}_i, \Delta U_i > 0] \\ &= \mathbf{x}'_i \boldsymbol{\beta}_A + E(\gamma_A \varepsilon_i | \mathbf{w}_i, \Delta U_i > 0) \\ &= \mathbf{x}'_i \boldsymbol{\beta}_A + \gamma_A E(\varepsilon_i | \mathbf{w}_i, \mathbf{w}'_i \boldsymbol{\pi} > \varepsilon_i) \\ &= \mathbf{x}'_i \boldsymbol{\beta}_A + \delta_A \lambda_{iA}, \end{aligned} \quad (15)$$

where $\delta_A \equiv -\gamma_A \sigma_\varepsilon$ and λ_{iA} denotes the inverse Mills ratio that is defined as

$$\lambda_{iA} \equiv \frac{\varphi(\mathbf{w}'_i \boldsymbol{\pi} / \sigma_\varepsilon)}{\Phi(\mathbf{w}'_i \boldsymbol{\pi} / \sigma_\varepsilon)}. \quad (16)$$

Analogously, we have

$$E(\ln y_{iB} | \mathbf{w}_i, \Delta U_i < 0) = \mathbf{x}'_i \boldsymbol{\beta}_B + \delta_B \lambda_{iB}, \quad (17)$$

where $\delta_B \equiv \gamma_B \sigma_\varepsilon$ and

$$\lambda_{iB} \equiv \frac{\varphi(\mathbf{w}'_i \boldsymbol{\pi} / \sigma_\varepsilon)}{1 - \Phi(\mathbf{w}'_i \boldsymbol{\pi} / \sigma_\varepsilon)}. \quad (18)$$

Equations (15) and (17) suggest that, at stage 2, we could estimate wage equations

$$\ln y_{iA} = \mathbf{x}'_i \boldsymbol{\beta}_A + \delta_A \lambda_{iA} + \eta_{iA}, \quad (19)$$

$$\ln y_{iB} = \mathbf{x}'_i \boldsymbol{\beta}_B + \delta_B \lambda_{iB} + \eta_{iB}, \quad (20)$$

with error term $\eta_{ij} \equiv \gamma_j(\varepsilon_i - \sigma_\varepsilon \lambda_{ij}) + \zeta_{ij}$, $j \in \{A, B\}$, in the subsamples for which wages associated with alternatives A and B, respectively, are observed. Recalling $-\gamma_A = \text{Cov}(u_{iA}, -\varepsilon_i) / \sigma_\varepsilon^2$, we have $\delta_A = \text{Cov}(u_{iA}, -\varepsilon_i) / \sigma_\varepsilon$. If the estimate of δ_A is positive (and significant), we can conclude that the unobservable u_{iA} , which affects earnings of individual i when graduating from major A, is positively related to the unobservable $-\varepsilon_i = \alpha_1(u_{iA} - u_{iB}) + \tau_{iA} - \tau_{iB}$ which represents unobserved differences in ability and tastes of i between major A and the alternative major B. A positive estimate for δ_B has the analogous interpretation of a positive relation between u_{iB} and ε_i . In these cases, there is selection bias in the sense that individuals choose their major according to their comparative advantage.

In practice, λ_{iA} and λ_{iB} are unknown. We obtain estimates $\hat{\lambda}_{iA}$ and $\hat{\lambda}_{iB}$ by evaluating the right-hand sides of (16) and (18) using the estimated ratio $\hat{\boldsymbol{\pi}} / \hat{\sigma}_\varepsilon$ from the first stage probit regression (14). As shown by Heckman (1976, 1979), the two-step estimation procedure yields consistent estimates $\hat{\boldsymbol{\beta}}_A$ and $\hat{\boldsymbol{\beta}}_B$ for coefficient vectors $\boldsymbol{\beta}_A$ and $\boldsymbol{\beta}_B$. The conventional OLS standard errors for the estimated coefficients in (19) and (20) are incorrect, however, when $\gamma_j \neq 0$, $j \in \{A, B\}$, because the conditional variances of the error terms, $\text{Var}(\eta_{iA} | \mathbf{w}_i, \Delta U_i > 0)$, $\text{Var}(\eta_{iB} | \mathbf{w}_i, \Delta U_i \leq 0)$, are nonconstant and $\hat{\lambda}_{iA}$, $\hat{\lambda}_{iB}$ are generated regressors. Therefore, we bootstrap the full three-step estimation procedure using 499 bootstrap replications. Specifically, we apply the weighted bootstrap suggested by Barbe and Bertail (1995). For each person in our data set we generate 499 weights based on random draws from a gamma distribution with shape and scale parameters equal to one. Thus, the bootstrap weights are non-integer and

the probability that a weight exactly equals zero is zero. With a binary dependent variable and a number of discrete regressors, this bootstrap procedure has the advantage that we avoid having to repeat the sampling if, in a given resample, the maximum likelihood estimation fails to converge or certain covariate settings perfectly predict the dependent variable (see also Fitzenberger and Muehler, 2015, for a similar argument).

4.1.3 Stage 3

In the final stage 3 (major choice), we estimate the structural probit equation (12) by replacing $\ln y_{iA} - \ln y_{iB}$ by

$$\ln \hat{y}_{iA} - \ln \hat{y}_{iB} = \mathbf{x}'_i(\hat{\boldsymbol{\beta}}_A - \hat{\boldsymbol{\beta}}_B). \quad (21)$$

Again, we rely on the bootstrap procedure described above to obtain standard errors that are valid when the generated wage difference is included as regressor.

4.2 Identification

Our estimating equations (12), (19) and (20) contain two sets of individual characteristics \mathbf{x}_i and \mathbf{z}_i . While \mathbf{x}_i captures regressors that reflect abilities affecting earnings capability, \mathbf{z}_i subsumes regressors that measure socialcultural and economic factors affecting major choice. The vector \mathbf{x}_i and the inverse Mills ratio that is a function of $\mathbf{w}'_i = (\mathbf{x}'_i, \mathbf{z}'_i)$ enter in the second stage equations (19) and (20). The third stage equation contains \mathbf{z}_i and the wage difference that is a function of \mathbf{x}_i as regressors. To avoid multicollinearity issues in the second and third stage estimations it is important to have distinct variables in \mathbf{x}_i and \mathbf{z}_i . In Section 5 we provide further details on the specific variables used.

5 Background and Data

5.1 Institutional Background

Attending a Swiss university requires an upper secondary degree from a general high school (*Gymnasiale Matura*). The share of young people holding an upper secondary degree that entitles them to attend university is rather low in Switzerland in international comparison. In 1999, around the time of our survey data, 18 percent of a cohort held a *Gymnasiale Matura* degree (Bundesamt für Statistik, 2015).¹⁰

At the time of our study, individuals with a Swiss general high school degree could choose freely among the available tertiary education programs and institutions in Switzerland, i.e. for those students there were no university entrance exams, restrictions in terms of minimum high school grade point average, or other selection procedures.¹¹ In Switzerland, there are two types of academic tertiary education institutions: universities and so-called universities of applied sciences (*Fachhochschulen*). The latter offer programs that are more practically oriented and occupation-specific compared with those at standard universities. Most of them were founded in the mid-1990s, whereas the universities are typically much older. In the 1990s and early 2000s, around 75 percent of the young people with a Swiss general high school degree enroll at a (standard) university within a year after high school graduation (Bundesamt für Statistik, 2013). There was no distinction between undergraduate and graduate university degrees. Graduating from university meant completing a curriculum comparable to a Master’s degree in Switzerland and other countries nowadays, whereas graduating from a university of applied sciences meant completing a shorter curriculum comparable to a Bachelor’s degree nowadays.

In the period under study, there were eleven universities in Switzerland. The two technical universities, called *Eidgenössische Technische Hochschulen* (ETH), are the

¹⁰In addition, in 1999, seven percent of a cohort obtained an upper secondary degree from a vocational high school (*Berufsmatura*). This degree only provides access to a particular field of study at a university of applied sciences.

¹¹Only medical schools began, in the year 1998, to select students according to their grade point average at high school and in an entrance exam. These restrictions are not relevant for the cohorts in our data set.

only federal universities in Switzerland. They are located in the cities of Lausanne and Zurich. All other universities are governed at the cantonal (i.e., state) level. The nine cantonal universities are located in the cities of Basel, Berne, Fribourg, Geneva, Lausanne, Lugano, Neuchâtel, St. Gallen, and Zurich. The cantonal universities offer degree programs of comparable quality in non-STEM fields. For STEM fields, however, the technical universities are better endowed, have much bigger departments and offer a wider variety of programs and specializations than the cantonal universities. Thus, a STEM degree from a technical university is considered as more prestigious than one from a cantonal university.¹² In our data set, 62.8 percent of STEM university graduates attended one of the two technical universities.

Drop-out rates are similar across STEM and non-STEM programs and relatively low in international comparison. Of those university students enrolled in a particular program in the year 2001, for instance, 28.7 percent did not graduate from that program after 10 years and the vast majority of them has definitely dropped out of that program (Wolter, Diem, and Messer, 2013). This is very different to the pattern of drop-out rates found by Arcidiacono (2004) and Stinebrickner and Stinebrickner (2014) for the US. Their evidence suggests that an extraordinarily high fraction of students, who intend to or actually start a science major, graduate in another major or drop out from university. A possible explanation for the uniformly low drop-out rates in Switzerland could be the rather low enrolment rates in university education in Switzerland, possibly leading to a more talented and/or better informed selection of university students on average.

Tuition fees in Swiss universities are moderate in international comparison, both in absolute terms and relative to housing costs. They are similar across universities and the same for all majors within a university. With nine university locations in a small country like Switzerland, but only two technical universities located in the high-cost areas Zurich and Lausanne, we hypothesize that the distance from the home municipality to the next technical university, relative to the distance to the next (other) university,

¹²For instance, Nobel Prize winner Albert Einstein studied between 1896 and 1900 at the ETH Zurich where he later also served as a professor. Until today, 21 Nobel prize winners have studied or worked at the ETH Zurich.

is a major determinant of the economic cost to study a STEM major. For instance, high school graduates living at their parents' home in the canton of Ticino or St. Gallen face the trade-off between studying a STEM field at one of the prestigious technical universities in Zurich and Lausanne or studying, say, economics at the University of Lugano or the University of St. Gallen – involving substantially lower living expenses.

5.2 Graduate Survey

Our main data source is the ‘Swiss Graduate Survey’ of the Federal Statistical Office (*Bundesamt für Statistik*), a unique survey of the population of graduates from tertiary academic education in Switzerland (Bundesamt für Statistik, 2008, 2009, 2012). We consider all respondents who graduated in 2000 and 2002 from one of the nine cantonal or the two federal universities.¹³ All graduates of these two cohorts received a questionnaire one year and five years after graduation. Participation in the survey was voluntary. All respondents in the first wave received a follow-up questionnaire five years after graduation. The response rate was about 60 percent in the first wave and 65 percent in the second. We use the probability weights provided by the Federal Statistical Office to account for potentially selective nonresponse.

The survey contains a large array of individual characteristics including earnings, hours worked, major at university, gender, the level of education of mother and father, as well as the home municipality before entering university. To construct our main dependent variable, we categorize graduates into two groups according to their field of study. STEM majors include physical sciences, biology, mathematics, computing, and engineering. The remaining majors are classified as non-STEM or humanities.

Since our theoretical model implies that expected earnings differences between fields of study may have an important impact on study major choice, the availability of individual earnings several years after graduation is crucial for our estimation strategy. As a consequence, we restrict the analysis sample to those who participate also in the

¹³For homogeneity reasons, we do not consider graduates from other higher education institutions, i.e. universities of applied sciences. The graduates from the cantonal and federal universities represent 70 percent of the total number of graduates in the survey.

second wave because it includes information on earnings five years after graduation. To construct our earnings variable, we consider earnings in the main job including also overtime compensation and bonus payments. We divide total earnings by total hours worked (contractual hours plus overtime) to obtain the hourly wage rate we use in the estimations.

We further focus on Swiss persons working at least 20 percent of the fulltime amount. In order to mitigate potential measurement error, we exclude individuals who report extreme earnings values (445 observations). In order to focus on typical careers, we leave out graduates who took less than eight or more than 18 semesters to complete their degree, and we exclude respondents older than 37 years of age (599 observations). Our final sample includes 4,767 individuals.

5.3 Geographical and Sociocultural Data

For our analysis, an important piece of information in the ‘Swiss Graduate Survey’ is the home municipality of each graduate at the end of high school. We draw on this variable to characterize a student’s sociocultural background at the time of major choice. There are about 2,600 municipalities in Switzerland, which allows us to reconstruct the sociocultural environment at a very detailed regional level.¹⁴

First, we characterize the majority language and the religious environment (share of Catholics) of a graduate in the home municipality using information from the ‘Federal Population Census’ in 1990 (Bundesamt für Statistik, 1990). The census is a mandatory survey of the entire resident population that takes place every 10 years. Every household in Switzerland receives a household specific questionnaire and individual specific questionnaires for each person living in the household (Bundesamt für Statistik, 1996). The census collects information on the demographic, economic, social and cultural structure of Switzerland and its development over time. Second, we construct the distances from the center of the home municipality to the next technical university (ETH) and the distance to the next cantonal university with the help of Google

¹⁴A complete listing of the data sources used is provided in Appendix A.

Maps. Third, we calculate the total vote share which accrued to left-wing parties in the Swiss national election in 1995 based on municipality level election data (Bundesamt für Statistik, 1995). Fourth, we use the results from four nationwide referenda to capture how progressive views were on gender equality and science-related issues. The municipality level data on referenda results are provided by *Année Politique Suisse* (2013). Some details of these referenda are outlined next.

The referendum on gender equality in 1981 intended to give equal rights to women with respect to professional life, family life, and education. A particular focus of the initiative was to ensure by law equal pay for equal work. Opponents feared that the proposal would interfere in wage negotiations and endanger private autonomy of families. The referendum passed in 17 of the 26 cantons. The overall support for the proposal was 60.3 percent. A nationwide representative poll revealed that opponents of the initiative, in general, disapproved equal rights for men and women.¹⁵

After the isolation of embryonic stem cells in 1998, advances in stem cell engineering prompted the debate on how to deal with the use of embryonic stem cells legally and ethically. The Swiss government proposed a law allowing scientists to take stem cells only from embryos left over from in vitro fertilization procedures. In 2004, the electorate accepted the law with a majority of 66.4 percent. All cantons voted in favor of the proposal. Polls showed that 40 percent of the opponents said that ethical concerns were the principal reason for voting against the proposal. About 50 percent of adversaries expressed that doubts about the merits of scientific research in general and fears of unwelcome consequences were decisive factors to oppose the law.

In a scientific pilot project set up by the Swiss Government in 1994, drug addicts were entitled to receive heroin from a physician for free. Evaluation of this program suggested positive effects on both the health and the social situation of drug addicts. Subsequently, the Swiss government was seeking to enlarge the set of therapies by a state-controlled distribution of heroin all over Switzerland. Adversaries argued, in particular, that the state would financially and morally support drug addicts by this

¹⁵For such background information and further discussion of the referenda used in our study, see Linder, Bolliger and Rielle (2010).

law. In 1999, the people approved the proposal by a majority of 54.4 percent. Ten cantons refused the law.

Finally, in 2005, a referendum was held on the introduction of equal rights for homosexual couples in civil law. Registered homosexual partnerships were supposed to get the same rights as married couples except for the right to adopt children and access to in vitro fertilization. 58 percent of voters approved the law. In seven of the 26 cantons the majority refused it. A nationwide poll found that voters based their decision on their fundamental conviction whether homosexual partnerships should be legally and socially recognized.¹⁶

5.4 Variables Affecting Earnings Capability

According to equation (2) in the theoretical framework, variables in \mathbf{x}_i are those which affect the earnings capability of an individual i early in the professional career (time $t = 1$) given the major choice. They enter the estimated equations (19) and (20) at the second stage. (As usual, we also include a constant term.) We employ a dummy variable which indicates gender (equal to 1 if i is female) to capture potential discrimination of women in the labor market (variable ‘female’). Moreover, we control for the age (in logs) of an individual at the time of the survey (five years after graduating from university) to capture work experience (variable ‘log age’). Some older graduates may have gained work experience prior or during attending university, the latter possibly prolonging their study duration to the benefit of higher earnings early in the career (as captured by $y_{ij} = f_j(\mathbf{x}_i, \xi_{ij})$ for major j in our model). We also account for the fact whether an individual has participated in a post-graduate education program for a period of at least six months (variable ‘postgraduate education’). We expect individuals who have participated in such a program to earn significantly less early in the career than those who have not because, for a given age, they tend to have shorter work experience at

¹⁶In the period 1980-2005, there were additional referenda on similar topics than the ones included. In 1985 and in 2000 there were two further referenda on gender equality. In the late 1990s, there were four additional referenda on topics related to science issues (genetic engineering, transplantation medicine) and drug policy. Statistically, these additional referenda capture similar variation than the ones we have retained. The included referenda were particularly salient in the public debate at the time.

the time of observation. For instance, the work experience five years after receiving a master degree of an individual which participated in a doctoral program is relatively low (often literally zero). Even if the growth rate of income, g_i , of such an individual i could be higher on average than for individuals without a doctorate but five years of work experience,¹⁷ income y_{ij} for any major j is typically lower. Failing to account for this fact could confound our second-stage estimates (earnings regressions), from which we construct the (log) earnings differences (21). These are denoted by ‘log earnings differential’ and enter at the third stage of the estimation procedure (structural major choice). Finally, we also include dummy variables indicating whether at least one parent attended tertiary academic education, tertiary vocational education, or no vocational education.¹⁸ In this way we account for a possible intergenerational transmission of cognitive ability.¹⁹ Note, however, that the education of parents may be less important for success in the labor market within the group of university graduates as compared to the whole population.

5.5 Variables Affecting Major Choice

Identification requires that we find convincing exclusion restrictions. That is, we need variables that reflect tastes and economic constraints affecting major choice \mathbf{z}_i but are (partly) distinct from characteristics in \mathbf{x}_i affecting earnings capability of a student i . Moreover, our structural estimation approach dictates that only those variables enter \mathbf{z}_i which are known to an individual i at the time of major choice. We thus employ the female dummy and a cohort dummy (taking the value one if an individual is observed in the second survey of the year 2003 rather than 2001) as the only variables that enter

¹⁷Recall that g_i does not enter the estimated equations according to our structural model such that we do not have to observe it.

¹⁸We apply the International Standard Classification of Education (ISCED) by UNESCO which distinguishes tertiary education of type 5A (academic) and type 5B (vocational). Switzerland is, like Germany, well-known for its dual apprenticeship system, associated with lower enrolment rates in tertiary academic education than is typically observed in other advanced countries. We experimented with also including a dummy variable indicating whether at least one parent has secondary vocational education. The variable turned out to be unimportant for any of the results.

¹⁹As robustness checks, we included the education of the mother and father separately and constructed various indicators of their level of education. We found no important differences in the estimation results compared to the parental education measure we use to reach the reported results.

both stage 2 and stage 3 estimations.

Sociocultural Characteristics and Gender Differences Our first identifying assumption is that variables which capture the sociocultural background of students affect the decision whether to study a STEM field but do not affect the differences of (log) earnings across majors after graduating from university. We include in \mathbf{z}_i the shares of yes-votes in the following nationwide referenda in the home municipality of a college graduate before going to university: on introducing equal rights of men and women in the constitution held in 1981 (variable ‘gender equality’), on providing drug addicts with medical prescriptions of heroin to addicts held in 1999 (variable ‘heroin program’), on regulating stem cell research held in 2004 (variable ‘stem cells’), and on a civil union of homosexual couples held in 2005 (variable ‘gay marriage’). As a different kind of political indicator, we employ the support for left wing parties in the election for the National Parliament of 1995 (variable ‘left-wing’). We also aim to capture the cultural background by the share of Catholics in a graduate’s home municipality (variable ‘Catholics’). Although Catholicism and political attitudes may have been related to cognitive skills in the 19th century (e.g. Becker and Woessmann, 2009; Boppert et al., 2013, 2014), both kinds of variables are unlikely to affect the contemporaneous individual earnings potential for a given study field.

A principal component analysis with these variables suggests that they load particularly high on a single principal component, denoted by ‘principal factor’ (see Tab. 7 in Appendix B). It is therefore reasonable to interpret the sociocultural variables as indicators of progressive attitudes on gender equality and science-related issues. We use the sociocultural characteristics and the summary indicator ‘principal factor’ separately in our first and third stage estimations. The share of Catholics is supposed to be a measure of “anti-progressive” attitudes (entering with the opposite sign than the others).

In order to examine whether the sociocultural characteristics contribute to explaining gender differences with respect to choosing a STEM field in university, in an extension of our basic major choice probit estimations, we also include interaction effects

between sociocultural characteristics and gender. Moreover, we use this specification to check the well-known hypothesis that female students are less motivated by earnings than males. We therefore include an interaction effect at stage 3 between the (constructed) earnings differential across fields as given by (21) and gender.

Geographical Characteristics Our second identifying assumption is that the distances of the home municipality to the next technical and the next other university, respectively, do not affect earnings capability for a given major choice but determine the relative cost to study a STEM field. We take logs to capture that the marginal impact of an additional kilometer on major choice is decreasing with distance. Suppose, for instance, the next technical university (ETH) is 75 km away from the parents' home and the next other university is 25 km away. Then a student may be inclined to choose the university in the region (and not study a STEM field) to save living expenses. However, if the next ETH is 150 km away and the next university is 100 km away, the geographical distances shall not matter much for the major choice. It is the combination of the free choice of those holding an upper secondary education degree which field and where to study and the geographical distribution of technical universities and other universities in Switzerland that provide a unique identification opportunity for the determinants of university major choice.

Majority Language Moreover, in Switzerland, the motivation to study a STEM field may depend on the majority language (German, French, Italian) of an individual's home environment. For instance, the two technical universities in Switzerland offer programs in German, French, and English but not in Italian. Further, regional differences in institutions and industry structure may be affected by trade relations of Swiss regions and neighboring countries with a common language. Of course, language may also be perceived as a cultural characteristic. We include dummy variables for French and Italian as majority language, i.e., German as majority language is the left-out category.²⁰

²⁰We subsume the very few observations from Rhaeto-Romansh speaking municipalities to the category Italian speaking. Inhabitants of these municipalities speak Italian at least as their second

5.6 Economic Environment

One may hypothesize that the economic environment may shape taste or capability differences of an individual across study fields. We thus perform a sensitivity analysis, where we include the employment rate of the home municipality, the industry structure (employment shares in agriculture, manufacturing, construction, and business services), and the municipality size as control variables at the first stage. We document in Appendix B that these factors are insignificant and therefore we focus in the main text on the estimation results without those controls.

5.7 Summary Statistics

Tab. 1 provides summary statistics of the variables used in the empirical analysis. Five years after graduation, the average age of the respondents is 31 years. Gross hourly wages in the main job are CHF 34.52 for STEM graduates and CHF 36.66 for non-STEM graduates, with men on average earning almost eleven percent more than women. 28 percent of the graduates studied a STEM field, with 38 percent among men and 15.1 percent among women. Both of these figures are very close the OECD average (see Fig. 1). About 53 percent of the respondents participated in post-graduate education and about two-fifths of the graduates report having at least one parent with tertiary academic education. The average distance to the next university is about 28 km, whereas the average distance to the next technical university (ETH) is 71 km.

The summary statistics of the variables capturing the economic environment employed in the sensitivity analysis are relegated to Appendix B (Tab. 8).

6 Estimation Results

We present two sets of results. First, we show the results of estimations without any interaction effects between gender and sociocultural characteristics as well as earnings differences across majors. Second, we include these interaction effects to learn about language, typically being bilingual.

Table 1: Descriptive Statistics of Core Variables

	Total (1)	Men (2)	Women (3)
Individual level variables			
STEM major (1=yes, 0=no)	0.280 (0.449)	0.380 (0.485)	0.151 (0.358)
Female (1=yes, 0=no)	0.438 (0.496)	0.000 (0.000)	1.000 (0.000)
Second cohort (1=yes, 0=no)	0.438 (0.496)	0.437 (0.496)	0.439 (0.496)
Age	31.05 (1.86)	31.15 (1.78)	30.92 (1.95)
Parent has tertiary academic education (1=yes, 0=no)	0.382 (0.486)	0.368 (0.482)	0.402 (0.490)
Parent has tertiary vocational education (1=yes, 0=no)	0.381 (0.486)	0.388 (0.487)	0.373 (0.484)
Parent has no vocational education (1=yes, 0=no)	0.265 (0.441)	0.268 (0.443)	0.260 (0.439)
Postgraduate education (1=yes, 0=no)	0.534 (0.499)	0.539 (0.499)	0.528 (0.499)
Gross hourly wage with STEM major	34.52 (14.82)	35.34 (13.96)	31.86 (17.05)
Gross hourly wage with non-STEM major	36.66 (13.35)	38.62 (15.31)	34.84 (10.90)
Municipality level variables			
Distance to next university (km)	27.85 (30.39)	28.68 (30.55)	26.79 (30.15)
Distance to next ETH (km)	70.55 (49.60)	70.70 (48.92)	70.35 (50.47)
Share in favor of gender equality	0.635 (0.129)	0.629 (0.130)	0.642 (0.127)
Share in favor of heroin program	0.545 (0.103)	0.547 (0.102)	0.544 (0.104)
Share in favor of stem cell engineering	0.695 (0.102)	0.689 (0.100)	0.703 (0.103)
Share in favor of gay marriage	0.595 (0.085)	0.594 (0.086)	0.596 (0.085)
Share of left-wing parties	0.327 (0.131)	0.322 (0.131)	0.334 (0.132)
Share of Catholics	0.426 (0.291)	0.430 (0.291)	0.420 (0.291)
Majority French (1=yes, 0=no)	0.341 (0.474)	0.312 (0.463)	0.378 (0.485)
Majority Italian (1=yes, 0=no)	0.058 (0.233)	0.053 (0.224)	0.064 (0.245)
Observations	4,767	2,572	2,195

Source: Federal Statistical Office of Switzerland, Année Politique Suisse, own calculations. Notes: The table shows the means and standard deviations (in parentheses) of the variables.

gender differences.

6.1 Results from Pooled Estimations

6.1.1 First Stage: Reduced Form Major Choice

We start with the results on the reduced form Probit estimations (14) of stage 1, presented in Tab. 2. Columns (1)-(7) of Tab. 2 refer to the different “progressivism” indicators included.

As expected from the summary statistics, women are significantly less likely to study a STEM field. Moreover, the larger the (log) distance to the next technical university (ETH), the higher the probability to study a STEM field; coefficients are significantly different from zero at least at the five percent level. The (log) distance to the next university enters positively and often significantly, suggesting that the proximity to the next ETH *relative* to the proximity to the next university positively affects the likelihood to choose a STEM major.²¹ As such geographic characteristics should not matter for earnings *per se* and hence can be left out at stage 2 estimations, these results well support our identification strategy.

Columns (1)-(7) of Tab. 2 differ in the “progressivism” indicator we control for. Its effects are shown in the first row. Not all of the coefficients are significantly different from zero, but overall they provide a consistent picture. Individuals from more conservative environments are more likely to choose a STEM field. For instance, the higher the vote share for left-wing parties (column (5)) in a municipality and for supporting the referenda on extending gender equality (column (1)) as well as allowing stem cell research (column (3)), the lower the probability that a student chooses a STEM major (with significance at the one percent level). The point estimates of the other coefficients point to the same conclusion, i.e., a negative sign for supporting heroin prescriptions to addicts (column (2)) and marriage of homosexuals (column (5)). The share of Catholics enters with a positive sign (column (6)). Instead of using these

²¹This is confirmed when we include the log of the ratio of the two distance measures rather than including the measures separately (not reported). We chose to stick to the latter specification to allow for differential effects.

Table 2: First Stage Probit Estimates for Probability of Graduating in a STEM Major

	Gender equality (1)	Heroin program (2)	Stem cells (3)	Gay mar- riage (4)	Left- wing (5)	Catholics (6)	Principal factor (7)
Coefficients and standard errors							
Progressivism	-0.733 (0.212)***	-0.346 (0.278)	-0.922 (0.288)***	-0.460 (0.320)	-0.540 (0.197)***	0.201 (0.105)*	-0.056 (0.017)***
Female	-0.735 (0.043)***	-0.734 (0.043)***	-0.733 (0.043)***	-0.733 (0.043)***	-0.731 (0.043)***	-0.733 (0.043)***	-0.732 (0.043)***
Cohort two	0.051 (0.039)	0.048 (0.038)	0.050 (0.038)	0.048 (0.038)	0.048 (0.038)	0.048 (0.038)	0.050 (0.038)
Majority	-0.324 (0.054)***	-0.437 (0.065)***	-0.280 (0.061)***	-0.414 (0.054)***	-0.367 (0.052)***	-0.418 (0.053)***	-0.394 (0.051)***
French	-0.050 (0.098)	-0.119 (0.102)	-0.039 (0.099)	-0.150 (0.109)	-0.153 (0.100)	-0.176 (0.110)	-0.168 (0.102)*
Majority	0.029 (0.020)	0.049 (0.019)**	0.044 (0.018)**	0.048 (0.019)**	0.038 (0.019)**	0.040 (0.021)*	0.022 (0.021)
Log distance to next univ.	-0.043 (0.019)**	-0.046 (0.019)**	-0.057 (0.019)***	-0.051 (0.019)***	-0.046 (0.019)**	-0.052 (0.019)***	-0.051 (0.019)***
Parent tert. acad. educ.	-0.089 (0.043)**	-0.097 (0.043)**	-0.093 (0.043)**	-0.096 (0.044)**	-0.099 (0.043)**	-0.098 (0.043)**	-0.089 (0.043)**
Parent tert. voc. educ.	0.056 (0.045)	0.061 (0.045)	0.065 (0.045)	0.062 (0.045)	0.062 (0.045)	0.063 (0.045)	0.061 (0.045)
Parent no voc. educ.	-0.119 (0.051)**	-0.114 (0.050)**	-0.122 (0.051)**	-0.118 (0.051)**	-0.119 (0.051)**	-0.121 (0.051)**	-0.122 (0.051)**
Log age	-3.119 (0.405)***	-3.110 (0.405)***	-3.132 (0.405)***	-3.113 (0.404)***	-3.147 (0.404)***	-3.128 (0.405)***	-3.132 (0.404)***
Postgraduate education	-0.193 (0.040)***	-0.192 (0.040)***	-0.192 (0.040)***	-0.191 (0.040)***	-0.192 (0.040)***	-0.190 (0.040)***	-0.192 (0.040)***
Constant	11.180 (1.401)***	10.877 (1.402)***	11.400 (1.423)***	10.987 (1.431)***	10.997 (1.410)***	10.704 (1.406)***	10.907 (1.404)***
Model statistics							
Observations	4,767	4,767	4,767	4,767	4,767	4,767	4,767
Pseudo R^2	0.09	0.09	0.09	0.09	0.09	0.09	0.09

Source: Swiss Federal Statistical Office, Année Politique Suisse, own calculations. Notes: The dependent variable is a dummy for graduation in a STEM field. Progressivism refers to the different indicators of progressivism indicated by the column headers. Bootstrapped standard errors of the coefficients are shown in parentheses. *, ** and *** denote significance at the 10%-, 5%- and 1%-level, respectively.

six sociocultural indicators separately, column (7) uses the first principal component extracted from a principal component analysis on these indicators. As argued above, it may well be interpreted as measure of “progressivism” of the students’ sociocultural home environment. Consistent with the results from columns (1)-(6), column (7) shows that a higher degree of progressivism reduces the probability to study a STEM field. The coefficient is significantly different from zero at the one percent level.

We also estimated a richer first stage model that includes additional variables capturing the economic environment at the time of major choice (see Tab. 9 in Appendix B). We then conducted joint significance tests on the different sets of regressors: cost determinants, earnings determinants, socio-cultural background, and economic environment. The results shown in Tab. 10 suggest that the variables capturing the economic environment are not statistically significant while all the others are. We therefore report results from estimations that exclude the variables measuring the economic environment as our preferred specification.

6.1.2 Second Stage: Earnings

Results of the earnings regressions at stage 2 are given in Tab. 3 and Tab. 4. Tab. 3 relates to STEM fields and Tab. 4 to Humanities. The columns correspond to those of the first stage, differing in the progressivism indicator used. This is why the estimates for the correction terms $\hat{\lambda}_{iA}$ and $\hat{\lambda}_{iB}$ (constructed from stage 1 estimates to account for selection bias; see (19) and (20)) are different across the columns within Tab. 3 and Tab. 4, respectively. In the tables, correction terms are denoted by λ_A and λ_B for STEM fields and Humanities respectively. We find that their coefficients are always positive and significant at the one percent level. As expected from the proposed Roy (1951) model, they suggest that individuals self-select according to their comparative advantage. If anything, females have slightly higher hourly wages than males when graduating from a STEM field (Tab. 3). However, the coefficient on the female dummy in Tab. 4 is insignificant. By contrast, *inter alia* correcting for self-selection, females have 8-10 percent higher hourly wages than among non-STEM university graduates.

As expected, older and more experienced graduates earn more. The coefficient

Table 3: Second Stage Estimates of the Earnings Equation for STEM Graduates Corrected for Self-Selection

	Gender equality (1)	Heroin program (2)	Stem cells (3)	Gay mar- riage (4)	Left- wing (5)	Catholics (6)	Principal factor (7)
Coefficients and standard errors							
Female	0.041 (0.056)	0.032 (0.059)	0.030 (0.056)	0.037 (0.060)	0.014 (0.058)	0.018 (0.056)	0.031 (0.057)
Cohort two	-0.024 (0.022)	-0.024 (0.023)	-0.023 (0.022)	-0.024 (0.023)	-0.023 (0.022)	-0.023 (0.022)	-0.024 (0.022)
Parent tert. acad. educ.	-0.031 (0.024)	-0.033 (0.024)	-0.034 (0.024)	-0.032 (0.025)	-0.036 (0.024)	-0.035 (0.024)	-0.033 (0.024)
Parent tert. voc. educ.	-0.002 (0.024)	-0.001 (0.024)	-0.001 (0.024)	-0.002 (0.024)	0.001 (0.024)	0.000 (0.024)	-0.001 (0.024)
Parent no voc. educ.	0.029 (0.029)	0.028 (0.029)	0.027 (0.029)	0.029 (0.029)	0.025 (0.029)	0.026 (0.029)	0.027 (0.029)
Log age	0.561 (0.274)**	0.534 (0.271)**	0.539 (0.269)**	0.549 (0.274)**	0.493 (0.269)*	0.501 (0.265)*	0.537 (0.269)**
Postgraduate education	-0.195 (0.027)***	-0.198 (0.027)***	-0.198 (0.027)***	-0.197 (0.028)***	-0.202 (0.027)***	-0.202 (0.027)***	-0.198 (0.027)***
λ_A	0.279 (0.083)***	0.263 (0.090)***	0.258 (0.082)***	0.272 (0.091)***	0.230 (0.087)***	0.238 (0.086)***	0.261 (0.084)***
Constant	1.943 (0.915)**	2.024 (0.903)**	1.998 (0.900)**	1.978 (0.913)**	2.133 (0.896)**	2.113 (0.885)**	2.009 (0.901)**
Model statistics							
Observations	1,438	1,438	1,438	1,438	1,438	1,438	1,438
R^2	0.12	0.11	0.12	0.12	0.12	0.11	0.11

Source: Swiss Federal Statistical Office, Année Politique Suisse, own calculations. Notes: The dependent variable is the log of monthly full-time equivalent earnings. The different specifications differ in the progressivism indicator included at the first stage. Bootstrapped standard errors of the coefficients are shown in parentheses. *, ** and *** denote significance at the 10%-, 5%- and 1%-level, respectively.

Table 4: Second Stage Estimates of the Earnings Equation for Non-STEM Graduates Corrected for Self-Selection

	Gender equality (1)	Heroin program (2)	Stem cells (3)	Gay mar- riage (4)	Left- wing (5)	Catholics (6)	Principal factor (7)
Coefficients and standard errors							
Female	0.084 (0.034)**	0.104 (0.036)***	0.078 (0.035)**	0.101 (0.036)***	0.089 (0.034)***	0.097 (0.035)***	0.080 (0.034)**
Cohort two	0.009 (0.015)	0.008 (0.016)	0.010 (0.015)	0.008 (0.016)	0.009 (0.015)	0.009 (0.016)	0.010 (0.015)
Parent tert. acad. educ.	-0.005 (0.017)	-0.002 (0.018)	-0.006 (0.017)	-0.002 (0.018)	-0.004 (0.017)	-0.003 (0.017)	-0.006 (0.017)
Parent tert. voc. educ.	-0.006 (0.017)	-0.008 (0.018)	-0.005 (0.017)	-0.008 (0.018)	-0.007 (0.017)	-0.008 (0.018)	-0.005 (0.017)
Parent no voc. educ.	0.025 (0.020)	0.028 (0.021)	0.024 (0.020)	0.028 (0.020)	0.026 (0.020)	0.027 (0.020)	0.024 (0.019)
Log age	0.816 (0.141)***	0.869 (0.149)***	0.800 (0.141)***	0.861 (0.146)***	0.832 (0.141)***	0.851 (0.144)***	0.808 (0.140)***
Postgraduate education	-0.039 (0.016)**	-0.034 (0.017)**	-0.041 (0.016)**	-0.035 (0.016)**	-0.037 (0.016)**	-0.036 (0.016)**	-0.040 (0.016)**
λ_B	0.516 (0.089)***	0.573 (0.096)***	0.498 (0.092)***	0.566 (0.096)***	0.531 (0.092)***	0.551 (0.091)***	0.505 (0.089)***
Constant	0.492 (0.518)	0.271 (0.549)	0.561 (0.520)	0.306 (0.539)	0.427 (0.519)	0.351 (0.529)	0.528 (0.515)
Model statistics							
Observations	3,329	3,329	3,329	3,329	3,329	3,329	3,329
R^2	0.06	0.06	0.06	0.06	0.06	0.06	0.06

Source: Swiss Federal Statistical Office, Année Politique Suisse, own calculations. Notes: The dependent variable is the log of monthly full-time equivalent earnings. The different specifications differ in the progressivism indicator included at the first stage. Bootstrapped standard errors of the coefficients are shown in parentheses. *, ** and *** denote significance at the 10%-, 5%- and 1%-level, respectively.

on log age is somewhat higher for non-STEM graduates and highly significant for non-STEM graduates. Also as expected, individuals with post-graduate education earn significantly less five years after graduation. For people who have obtained post-graduate education, earnings are about 20 percent lower for STEM field graduates and four percent lower for non-STEM field graduates. Interestingly, earnings do not seem to be affected much by the education level of parents. This is not implausible. The education of parents would certainly matter for earnings in a sample with both graduates and non-graduates but there is not much reason for such an effect when restricting focus on those who attended university.

6.1.3 Third Stage: Structural Major Choice

Results for stage 3, presented in Tab. 5, basically confirm those of stage 1. The only difference to Tab. 2 is that at stage 3 we employ our measure of constructed differences in (log) earnings across fields (21) rather than controlling for those variables which affect earnings at stage 2. The estimated coefficients are significantly different from zero at the five percent level and suggest that an increase in the log earnings differential positively affects the probability to choose a STEM field. Moreover, as expected, the coefficient on the female dummy is negative and highly significant. The distance measures and sociocultural variables basically keep their significance levels from the stage 1 results and also the sizes of the coefficients are similar in magnitude to Tab. 2.

Table 5: Third Stage Probit Estimates for Probability of Graduating in a STEM Major

	Gender equality (1)	Heroin program (2)	Stem cells (3)	Gay mar- riage (4)	Left- wing (5)	Catholics (6)	Principal factor (7)
Coefficients and standard errors							
Progressivism	-0.785 (0.219)***	-0.436 (0.294)	-0.902 (0.292)***	-0.493 (0.332)	-0.533 (0.213)**	0.195 (0.110)*	-0.057 (0.017)***
Female	-0.693 (0.054)***	-0.691 (0.053)***	-0.692 (0.053)***	-0.691 (0.053)***	-0.690 (0.053)***	-0.690 (0.053)***	-0.690 (0.054)***

<continued on next page>

Table 5: Third Stage Probit Estimates <continued>

	Gender equality (1)	Heroin program (2)	Stem cells (3)	Gay mar- riage (4)	Left- wing (5)	Catholics (6)	Principal factor (7)
Cohort two	0.089 (0.052)*	0.084 (0.052)	0.087 (0.052)*	0.083 (0.052)	0.084 (0.052)	0.083 (0.052)	0.089 (0.052)*
Majority French	-0.215 (0.057)***	-0.359 (0.071)***	-0.179 (0.064)***	-0.321 (0.059)***	-0.276 (0.058)***	-0.328 (0.059)***	-0.293 (0.056)***
Majority Italian	0.040 (0.102)	-0.038 (0.111)	0.050 (0.103)	-0.065 (0.116)	-0.062 (0.109)	-0.084 (0.118)	-0.082 (0.107)
Log distance to next univ.	0.034 (0.020)*	0.057 (0.020)***	0.054 (0.018)***	0.057 (0.020)***	0.049 (0.019)**	0.052 (0.021)**	0.030 (0.021)
Log distance to ETH	-0.043 (0.019)**	-0.049 (0.020)**	-0.059 (0.019)***	-0.054 (0.020)***	-0.049 (0.020)**	-0.055 (0.020)***	-0.053 (0.019)***
Log earnings difference	1.074 (0.492)**	1.032 (0.492)**	1.039 (0.499)**	1.021 (0.494)**	1.015 (0.503)**	1.012 (0.497)**	1.066 (0.500)**
Constant	0.429 (0.181)**	0.182 (0.221)	0.550 (0.247)**	0.243 (0.268)	0.107 (0.144)	-0.116 (0.104)	0.081 (0.119)
Average partial effects and standard errors							
Progressivism	-0.038 (0.011)***	-0.017 (0.011)	-0.037 (0.012)***	-0.017 (0.011)	-0.028 (0.011)**	0.029 (0.016)*	-0.041 (0.012)***
Female	-0.215 (0.016)***	-0.215 (0.016)***	-0.215 (0.016)***	-0.215 (0.016)***	-0.214 (0.016)***	-0.214 (0.016)***	-0.214 (0.016)***
Cohort two	0.028 (0.016)*	0.026 (0.016)	0.027 (0.016)*	0.026 (0.016)	0.026 (0.016)	0.026 (0.016)	0.028 (0.016)*
Majority French	-0.066 (0.017)***	-0.108 (0.020)***	-0.055 (0.019)***	-0.097 (0.017)***	-0.084 (0.017)***	-0.099 (0.017)***	-0.089 (0.016)***
Majority Italian	0.013 (0.032)	-0.012 (0.034)	0.016 (0.033)	-0.020 (0.035)	-0.019 (0.033)	-0.026 (0.035)	-0.025 (0.032)
Log distance to next univ.	0.022 (0.013)*	0.036 (0.013)***	0.034 (0.011)***	0.036 (0.013)***	0.031 (0.012)**	0.033 (0.013)**	0.019 (0.013)
Log distance to ETH	-0.015 (0.007)**	-0.017 (0.007)**	-0.021 (0.007)***	-0.019 (0.007)***	-0.017 (0.007)**	-0.019 (0.007)***	-0.019 (0.007)***
Log earnings difference	0.050 (0.023)**	0.048 (0.023)**	0.048 (0.023)**	0.047 (0.023)**	0.048 (0.024)**	0.048 (0.023)**	0.050 (0.023)**
Model statistics							
Observations	4,767	4,767	4,767	4,767	4,767	4,767	4,767
Pseudo R^2	0.07	0.07	0.07	0.07	0.07	0.07	0.07

Source: Federal Statistical Office of Switzerland, Année Politique Suisse, own calculations. Notes: The dependent variable is a dummy for graduation in a STEM field. Progressivism refers to the different indicators of progressivism indicated by the column headers. The panel labeled “Average partial effects” shows the average partial effect of the corresponding regressor on the response probability. For continuous regressors, the regressor change is from the 25th to the 75th percentile. For dummy regressors, it is from zero to one. Bootstrapped standard errors are shown in parentheses. *, ** and *** denote significance at the 10%-, 5%- and 1%-level, respectively.

We are interested in the quantitative impact of the factors which affect major choice. For this, we first calculate for each individual the effect of a change in a variable on the probability of studying a STEM field by using the point estimates at stage 3; secondly, we average the effects over all individuals.

We find that women are expected to have a 21-22 percentage points lower fraction of STEM field graduates than men. This reflects the widely-discussed substantial gender differences in university major choice we see in most OECD countries, including Switzerland, as also reflected in Tab. 1. (We further explore the gender effect in the next subsection.) Moreover, students with a Francophone background are significantly less likely to choose a STEM field than students with a home municipality where German or Italian is the majority language. The effect on the fraction of STEM field graduates varies from six to ten percentage points, depending on the specification. A change in the log earnings differential from the 25th to the 75th percentile increases the fraction of STEM major graduates by five percentage points. An 25th to 75th percentile increase in the log distance to the next technical university (ETH), which is equal to an increase from 30.5 km to 98.3 km, reduces the probability of choosing a STEM major by about two percentage points. The (positive) impact of a larger distance to the next university, for a given distance to the next ETH, is typically somewhat higher in magnitude.

The impact of the sociocultural background of a student as measured by referenda results on gender equality and science-related issues (conservatism versus progressivism) is typically non-negligible. If the support for liberalizing stem cell research rises from 63.4 percent (25th percentile) to 76 percent (75th percentile), then the fraction of STEM field graduates falls by almost four percentage points (column (3)). Compared to the mean fraction of STEM field graduates of 28 percent, this is a sizable effect. A similar, negative quantitative effect arises if the vote share at the municipality level in favor of gender equality rises from 56 to 71.6 percent (column (1)). An increase from the 25th to 75th percentile in vote share for left-wing parties reduces the percentage of those choosing a STEM field by 2.9 points (column (5)). Somewhat smaller but still negative effects come from similar increases of the vote share in support for heroin distribution to addicts (column (2)) and gay marriage (column (4)). According to the insignificant point estimates, the reduction in the expected fraction of those choosing a STEM major is 1.7 percentage points in both cases. Raising the share of Catholics in a municipality from 29.9 to 65.1 percent raises the fraction on STEM graduates on average by 2.9 percentage points (column (6)). Finally, the impact of the summary indicator of progressivism (column (7)) is 4.1 percentage points and highly significant.

6.2 Results with Interactions Across Gender

The results presented in Tab. 2-5 do not allow for differential effects of sociocultural characteristics and pecuniary incentives for study major choice between men and women. In this subsection, we include interaction effects with gender. For the sake of brevity we only discuss the results in the structural choice equation, further estimation results can be found in Appendix B.

According to Tab. 6, the quantitative effects of distance variables and majority language are similar to those presented in Tab. 5 for both men and women. More interestingly, Tab. 6 provides a consistent picture how sociocultural variables determine the major choice conditional on gender. While the vote shares for left-wing parties and in support of progressive views on gender equality and science-related issues affect the probability to study a STEM major significantly negatively among men, they have no significant effects on the major choice of women. Thus, the results suggest that the sociocultural background matters considerably for males but not for females. This is confirmed by column (7). The effect of first principal component (our measure of progressive values on gender equality and science-related issues) again suggests a negative effect on the probability to study a STEM field for men but not for women. The coefficient on the first principal component is negative and significantly different from zero at the one percent level for men whereas it is close to zero and insignificant for women (bottom panel of column (7)).

Table 6: Third Stage Probit Estimates for Probability of Graduating in a STEM Major with Gender Interactions

	Gender equality (1)	Heroin program (2)	Stem cells (3)	Gay mar- riage (4)	Left- wing (5)	Catholics (6)	Principal factor (7)
Average partial effects for men							
Progressivism	-0.060 (0.019)***	-0.027 (0.020)	-0.072 (0.021)***	-0.035 (0.020)*	-0.053 (0.020)***	0.036 (0.027)	-0.068 (0.022)***
Majority French	-0.067 (0.032)**	-0.141 (0.038)***	-0.036 (0.034)	-0.122 (0.033)***	-0.095 (0.032)***	-0.122 (0.034)***	-0.101 (0.031)***
Majority Italian	0.004 (0.057)	-0.040 (0.061)	0.011 (0.057)	-0.059 (0.061)	-0.054 (0.058)	-0.053 (0.063)	-0.057 (0.055)
Log distance to next univ.	0.041 (0.022)*	0.066 (0.024)***	0.054 (0.019)***	0.059 (0.023)**	0.051 (0.022)**	0.065 (0.024)***	0.032 (0.023)

<continued on next page>

Table 6: Third Stage Probit Estimates <continued>

	Gender equality (1)	Heroin program (2)	Stem cells (3)	Gay mar- riage (4)	Left- wing (5)	Catholics (6)	Principal factor (7)
Log distance to ETH	-0.015 (0.012)	-0.018 (0.013)	-0.024 (0.012)**	-0.021 (0.012)*	-0.018 (0.012)	-0.021 (0.013)*	-0.020 (0.012)*
Log earnings difference	0.102 (0.042)**	0.105 (0.043)**	0.101 (0.043)**	0.104 (0.043)**	0.103 (0.043)**	0.103 (0.043)**	0.103 (0.042)**
Average partial effects for women							
Progressivism	-0.018 (0.012)	-0.008 (0.013)	-0.005 (0.014)	0.003 (0.013)	-0.005 (0.012)	0.022 (0.018)	-0.012 (0.014)
Majority French	-0.067 (0.017)***	-0.085 (0.021)***	-0.073 (0.021)***	-0.076 (0.017)***	-0.076 (0.017)***	-0.084 (0.017)***	-0.077 (0.016)***
Majority Italian	0.010 (0.034)	0 (0.036)	0.008 (0.034)	0.010 (0.041)	0.003 (0.035)	-0.015 (0.037)	-0.003 (0.035)
Log distance to next univ.	0.003 (0.013)	0.010 (0.014)	0.013 (0.013)	0.015 (0.014)	0.012 (0.014)	0.004 (0.015)	0.006 (0.015)
Log distance to ETH	-0.015 (0.007)**	-0.015 (0.007)**	-0.016 (0.007)**	-0.015 (0.007)**	-0.016 (0.007)**	-0.017 (0.007)**	-0.016 (0.007)**
Log earnings difference	0.015 (0.017)	0.014 (0.017)	0.014 (0.017)	0.014 (0.018)	0.014 (0.018)	0.014 (0.018)	0.015 (0.017)
Model statistics							
Observations	4,767	4,767	4,767	4,767	4,767	4,767	4,767
Pseudo R^2	0.08	0.08	0.08	0.08	0.08	0.08	0.08

Source: Federal Statistical Office of Switzerland, *Année Politique Suisse*, own calculations. Notes: The dependent variable is a dummy for graduation in a STEM field. Progressivism refers to the different indicators of progressivism indicated by the column headers. The table shows the average partial effect of the corresponding regressor on the response probability. For continuous regressors, the regressor change is from the 25th to the 75th percentile. For dummy regressors, it is from zero to one. Bootstrapped standard errors of the average partial effects are shown in parentheses. *, ** and *** denote significance at the 10%-, 5%- and 1%-level, respectively.

Quantitatively, for men, the impact of a 25th to 75th percentile increase in the vote share in favor of progressive changes in context-specific political attitudes reduces the fraction of STEM field graduates significantly by 2.7-7.2 percentage points, depending on the referendum. A similar increase in the fraction of Catholics increases this fraction by 3.6 percentage points, albeit in contrast to Tab. 5 the point estimate is not significantly different from zero. The corresponding impact of an increase in the vote share accruing to left-wing parties is 5.3 percentage points and highly significant. By contrast, these variables typically have negligible and insignificant effects for women.

The effect of pecuniary incentives to study a STEM field is different for men and women, too. For men, the average increase in the fraction of STEM major graduates from an increase in the log earnings differential from the 25th to the 75th percentile is a sizeable and highly significant 10 percentage points. However, the average partial effect of the earnings differential (STEM versus non-STEM) for women is 1.4-1.5 percentage points. This effect is not even significantly different from zero. It is thus safe to conclude that pecuniary returns to graduating in a STEM field matter considerably less for women than for men. This is consistent with stage 2 results in Tab. 3 and Tab. 4 suggesting that females earn more than males once we correct for self-selection. However, men earn more than women according to the summary statistics in Tab. 1. That is, men also self-select themselves according to their comparative advantage to earn income, whereas women do not. The estimated values of terms λ_A and λ_B correcting for self-selection are negatively correlated with the female dummy (not reported).

For men, the effect of the change in the log earnings differential is larger than the corresponding change in the principal factor measuring progressivism. The latter reduces the fraction of STEM field graduates by 6.8 percentage points. Thus, we may conclude that for men the effect of the sociocultural background is about two-thirds of the effect of (log) earnings differences for university major choice.

7 Conclusion

We have examined the role of the sociocultural background of students as measured by religious and political attitudes at the municipality level towards gender equality and science-related issues for choosing a STEM field in university. The motivation to focus on the formation of STEM skills was rooted in their salient role for the process of long run economic growth. We exploited regional variation within Switzerland at the municipal level. The unique opportunity for our research mainly comes from two institutional features in Switzerland, (i) the frequently held national referenda in the Swiss direct democratic system and (ii) the fact that at the time of our study all inhabitants with a upper secondary education degree were free which field and at which university to study at very moderate tuition fees. We based the empirical identification on a structural Roy (1951) model which accounts for differences in costs (distance to the next technical university) and earnings across majors as well as for selection bias.

Our findings suggest that male students from more conservative municipalities are more likely to study a STEM field, whereas the sociocultural background plays little role for the major choice of females. Insofar as the sociological background matters

in a quite sizable way for men but not for women the evidence can contribute to understand the widely discussed gender gap in STEM major choice. Consistent with previous studies, we also find that female students are considerably less motivated by earnings than men. Overall, for men the effect of the sociocultural background is about two-thirds the effect of (log) earnings differences associated with different fields of study.

Why men from more conservative environments seem to be more motivated to study STEM fields than men from progressive environments certainly deserves further research. One possibility could be that social sciences are generally considered to be oriented to left-wing political attitudes. Differentiating among the non-STEM fields seems welcome to dig deeper in this phenomenon. As this would probably require modelling of major choice among more than two alternatives, identification will be an important challenge which is beyond the scope of the current paper. The differential impact of the sociocultural environment on males and females certainly deserves further attention in future research as well.

References

- [1] Akerlof, George A., and Rachel E. Kranton (2000). Economics and Identity, *Quarterly Journal of Economics* 115, 715-753.
- [2] Akerlof, George A., and Rachel E. Kranton (2002). Identity and Schooling: Some Lessons for the Economics of Education, *Journal of Economic Literature* 40, 1167-1201.
- [3] Altermatt, Urs (1979). Conservatism in Switzerland: A Study in Antimodernism, *Journal of Contemporary History* 14, 581-610.
- [4] Année Politique Suisse (2013). Datensatz der eidgenössischen Volksabstimmungen ab 1848. Bern: Institut für Politikwissenschaft, Url: <http://www.swissvotes.ch>
- [5] Arcidiacono, Peter (2004). Ability Sorting and Returns to College Major, *Journal of Econometrics* 121, 343-375.
- [6] Arcidiacono, Peter, V., Joseph Hotz and Songman Kang (2012). Modeling College Major Choices Using Elicited Measures of Expectations and Counterfactuals, *Journal of Econometrics* 166, 3-16.

- [7] Barbe, Philippe and Patrice Bertail (1995). *The Weighted Bootstrap*, Springer, New York.
- [8] Becker, Sascha O. and Ludger Woessmann (2009). Was Weber Wrong? A Human Capital Theory of Protestant Economic History, *Quarterly Journal of Economics* 124, 531-596.
- [9] Berger, M.C. (1988). Predicted Future Earnings and Choice of College Major, *Industrial and Labour Relations Review* 41, 418-29.
- [10] Blakemore, A.E. and S.A. Low (1984). Sex Differences in Occupational Selection: The Case of College Majors, *Review of Economics and Statistics* 66, 157-63.
- [11] Boppart, Timo, Josef Falkinger, Volker Grossmann, Ulrich Woitek and Gabriela Wüthrich (2013). Under Which Conditions Does Religion Affect Educational Outcomes?, *Explorations in Economic History* 50, 242-266.
- [12] Boppart, Timo, Josef Falkinger and Volker Grossmann (2014). Protestantism and Education: Reading (the Bible) and Other Skills, *Economic Inquiry* 52, 874-895.
- [13] Boudarbat, Brahim (2008). Field of Study Choice by Community College Students in Canada, *Economics of Education Review* 27, 79-93.
- [14] Boudarbat, Brahim and Claude Montmarquette (2009). Choice of Fields of Study of University Canadian Graduates: The Role of Gender and their Parents' Education, *Education Economics* 17, 185-213.
- [15] Bundesamt für Statistik (1990). Eidgenössische Volkszählung 1990, Ergebnisse nach Gemeindeebene, Neuchâtel.
- [16] Bundesamt für Statistik (1995). Statistik der Nationalratswahlen, Ergebnisse nach Gemeinden, Neuchâtel.
- [17] Bundesamt für Statistik (1996). Evaluation der Volkszählung 1990: Erhebungsmethoden und Alternativen, Neuchâtel.
- [18] Bundesamt für Statistik (2008). Schlüsselkompetenzen der Schweizer Hochschulabsolvent/innen: Thematischer Sammelband mit empirischen Ergebnissen der Absolventenstudie, Neuchâtel.
- [19] Bundesamt für Statistik (2009). Von der Hochschule ins Berufsleben: Erste Ergebnisse der Absolventenbefragung 2007, Neuchâtel.

- [20] Bundesamt für Statistik (2010). Die Raumgliederungen der Schweiz 2010, Neuchâtel.
- [21] Bundesamt für Statistik (2011). Die Raumgliederungen der Schweiz 2011, Neuchâtel.
- [22] Bundesamt für Statistik (2012). Erhebungen, Quellen – Absolventenstudien Hochschulen: Steckbrief, Neuchâtel.
- [23] Bundesamt für Statistik (2013). Bildungssystem Schweiz – Indikatoren: Abschlüsse und Kompetenzen – Übertrittsquote Maturität-HS
- [24] Bundesamt für Statistik (2014). Historisiertes Gemeindeverzeichnis der Schweiz, Stand: 01. May 2014, Neuchâtel.
- [25] Bundesamt für Statistik (2015). Bildungssystem Schweiz – Indikatoren: Abschlüsse und Kompetenzen – Maturitätsquote, Neuchâtel.
- [26] Carrell, Scott E., Marianne Page and James E. West (2010). Sex and Science: How Professor Gender Perpetuates the Gender Gap, *Quarterly Journal of Economics* 125, 1101-1144.
- [27] Chetty, Raj (2006). A New Method of Estimating Risk Aversion, *American Economic Review* 96, 1821-1834.
- [28] Eidea, Eric and Geetha Waehrer (1998). The Role of the Option Value of College Attendance in College Major Choice, *Economics of Education Review* 17, 73-82.
- [29] Eugster, Beatrix, Rafael Lalive, and Josef Zweimüller (2012). Does Culture Matter for Unemployment? Evidence from the Roesti Border, Discussion Paper, University of Lausanne.
- [30] Fitzenberger, Bernd and Grit Muehler (2015). Dips and Floors in Workplace Training: Using Personnel Records to Estimate Gender Differences, *Scottish Journal of Political Economy* 62, 400-429.
- [31] Gordon, Bruce (2002). The Swiss Reformation, Manchester University Press, Manchester, New York.
- [32] Guiso, Luigi, Paola Sapienza and Luigi Zingales (2006). Does Culture Affect Economic Outcomes, *Journal of Economic Perspectives* 20, 23-48.

- [33] Heckman, James J. (1976). The Common Structure of Statistical Models of Truncation, Sample Selection and Limited Dependent Variables and a Simple Estimator for Such Models, *Annals of Economic and Social Measurement* 5, 475-492.
- [34] Heckman, James J. (1979). Sample Selection Bias as a Specification Error, *Econometrica* 47, 153-161.
- [35] Heckman, James J., Lance J. Lochner, Petra E. Todd (2006). *Earnings Functions, Rates of Return and Treatment Effects: The Mincer Equation and Beyond*, in: Hanushek, E. and F. Welch (eds.), *Handbook of the Economics of Education*, Vol. 1, ch. 7, Elsevier.
- [36] Humlum, Maria K., Kristin J. Kleinjans, and Helena S. Nielsen (2012). An Economic Analysis of Identity and Career Choice, *Economic Inquiry* 50, 39-61.
- [37] Jones, Charles I. and Paul M. Romer (2010). The New Kaldor Facts: Ideas, Institutions, Population, and Human Capital, *American Economic Journal: Macroeconomics* 2, 224-245.
- [38] Kane, Jonathan M. and Janet E. Mertz (2011). Debunking Myths about Gender and Mathematics Performance, *Notices of the American Mathematical Society* 59, 10-21.
- [39] Linder, Wolf, Christian Bolliger and Yvan Rielle (2010). *Handbuch der eidgenössischen Volksabstimmungen 1848-2007*, Haupt Verlag.
- [40] Montmarquette, Claude, K. Cannings, and S. Mahseredjian (2002). How Do Young People Choose College Majors?, *Economics of Education Review* 21, 543-556.
- [41] OECD (2013). *Education at a Glance*, Paris.
- [42] Polachek, Solomon W. (1978). Sex Differences in College Major, *Industrial and Labor Relations Review* 31, 498-508.
- [43] Roy, Andrew D. (1951). Some Thoughts on the Distribution of Earnings, *Oxford Economic Papers* 3, 135-146.
- [44] Sonnert, Gerhard (2009). Parents Who Influence Their Children to Become Scientists: Effects of Gender and Parental Education, *Social Studies of Science* 39, 927-941.

- [45] Steinhauer, Andreas (2013). Identity, Working Moms, and Childlessness: Evidence from Switzerland, Discussion Paper, University of Zurich.
- [46] Stinebrickner, Ralph and Todd R. Stinebrickner (2014). A Major in Science? Initial Beliefs and Final Outcomes for College Major and Dropout, *Review of Economic Studies* 81, 426-472.
- [47] Tabellini, Guido (2008). Institutions and Culture, *Journal of the European Economic Association* 6, 255-294.
- [48] Wang, Xueli (2013). Why Students Choose STEM Majors: Motivation, High School Learning, and Postsecondary Context of Support, *American Educational Research Journal* 50, 1081-1121.
- [49] Willis, Robert J. and Sherwin Rosen (1979). Education and Self-Selection, *Journal of Political Economy* 87, S7-S36.
- [50] Winters, John V. (2013). STEM Graduates, Human Capital Externalities, and Wages in the U.S., IZA Discussion Paper No. 7830.
- [51] Wiswall, Matthew and Basit Zafar (2015). Determinants of College Major Choice: Identification Using an Information Experiment, *Review of Economic Studies*, forthcoming.
- [52] Wolter, Stefan C., Andrea Diem und Dolores Messer (2013). Studienabbrüche an Schweizer Universitäten, Schweizer Koordinationsstelle für Bildungsforschung (SKBF) Staff Paper No. 11.
- [53] Zafar, Basit (2013). College Major Choice and the Gender Gap, *Journal of Human Resources* 48, 545-595.

Appendix

A List of Data Sources

- The ‘Swiss Graduate Survey’ (*Absolventenstudie*) of the Swiss Federal Statistical Office (*Bundesamt für Statistik*) is a biennial survey of the population of students who graduate from tertiary academic education in Switzerland (Bundesamt für Statistik, 2008, 2009, 2012). We use data on the cohorts who graduated in 2000 and 2002 and completed the questionnaires one year and five years after graduation.
- The ‘Swiss Historical Municipality Register’ (*Historisiertes Gemeindeverzeichnis der Schweiz*) records all municipality changes since 1960 (Bundesamt für Statistik, 2014). We use it to harmonize the municipality codes across data sources to the classification valid on December 31, 2010. We obtain additional information on geographical classifications and region types from Bundesamt für Statistik (2010, 2011).
- The ‘Federal Population Census’ (*Eidgenössische Volkszählung*) of the year 1990 provides population counts at the municipality level on several aspects of economic and social life (Bundesamt für Statistik, 1990, 1996). We use the census to construct the share of Catholics, indicators for the majority language, the employment rate, and industry shares of a municipality.
- We use municipality level information on the results of the ‘Federal Elections’ (*Nationalratswahlen*) of the year 1995 (Bundesamt für Statistik, 1995) to calculate the share of left-wing parties in each municipality. We classify the following parties as left wing: SP, PdA, Sol., FGA, and GPS.
- The municipality level data on the results of the nationwide referenda is provided by Année Politique Suisse (2013). We use it to compute the share of yes-votes in four referenda on gender equality and science-related issues.
- With the help of Google Maps, we compiled a data base recording the distances between the municipalities that existed in 2010 and the nine locations of the cantonal and federal universities.

B Additional Empirical Results

Table 7: Principal Component Analysis of the Six Variables for the Sociocultural Environment

Component	Eigenvalue	Difference	Proportion	Cumulative
1	2.598	1.573	0.433	0.433
2	1.025	0.017	0.171	0.604
3	1.008	0.373	0.168	0.772
4	0.635	0.154	0.106	0.878
5	0.480	0.226	0.080	0.958
6	0.254		0.042	1.000

Source: Federal Statistical Office of Switzerland, Année Politique Suisse, own calculations. Notes: The six variables are the share of yes votes in four national referenda on gender equality and science related issues, the share of left-wing parties in the federal elections, the share of Catholics. The number of observations is 2,573 municipalities.

Table 8: Descriptive Statistics of Economic Environment

	Total (1)	Men (2)	Women (3)
Employment rate	0.624 (0.045)	0.625 (0.045)	0.622 (0.046)
Share of agriculture	0.017 (0.025)	0.017 (0.024)	0.017 (0.026)
Share of manufacturing	0.100 (0.046)	0.103 (0.046)	0.097 (0.044)
Share of construction	0.044 (0.014)	0.044 (0.014)	0.044 (0.015)
Share of business services	0.078 (0.029)	0.077 (0.028)	0.079 (0.028)
100,000 and more inhabitants	0.142 (0.349)	0.135 (0.342)	0.151 (0.358)
Between 50,000 and 99,999	0.038 (0.190)	0.039 (0.194)	0.036 (0.185)
Between 20,000 and 49,999	0.096 (0.295)	0.094 (0.292)	0.099 (0.298)
Between 10,000 and 19,999	0.179 (0.383)	0.182 (0.386)	0.176 (0.381)
Between 5,000 and 9,999	0.175 (0.380)	0.180 (0.384)	0.168 (0.374)
Between 2,000 and 4,999	0.214 (0.410)	0.219 (0.414)	0.208 (0.406)
Between 1,000 and 1,999	0.085 (0.280)	0.085 (0.279)	0.085 (0.280)
Less than 1,000 inhabitants	0.071 (0.256)	0.066 (0.248)	0.077 (0.266)
Observations	4,767	2,572	2,195

Source: Federal Statistical Office of Switzerland, own calculations. Notes: The table shows the means and standard deviations (in parentheses) of the variables.

Table 9: First Stage Probit Estimates for Probability of Graduating in a STEM Major including Economic Environment Controls

	Gender equality (1)	Heroin program (2)	Stem cells (3)	Gay mar- riage (4)	Left- wing (5)	Catholics (6)	Principal factor (7)
Coefficients and standard errors							
Progressivism	-0.721 (0.254) ^{***}	0.202 (0.377)	-0.956 (0.349) ^{***}	-0.074 (0.399)	-0.571 (0.234) ^{**}	0.230 (0.114) ^{**}	-0.053 (0.021) ^{**}
Female	-0.733 (0.043) ^{***}	-0.732 (0.043) ^{***}	-0.731 (0.043) ^{***}	-0.732 (0.043) ^{***}	-0.728 (0.044) ^{***}	-0.730 (0.044) ^{***}	-0.729 (0.043) ^{***}
Cohort two	0.052 (0.039)	0.049 (0.038)	0.052 (0.038)	0.049 (0.038)	0.052 (0.038)	0.051 (0.038)	0.052 (0.038)
Employment rate	0.430 (0.664)	0.118 (0.665)	0.362 (0.668)	0.159 (0.672)	0.367 (0.675)	0.215 (0.667)	0.428 (0.671)
Share agri- culture	-1.151 (1.226)	-0.211 (1.171)	-0.645 (1.172)	-0.384 (1.232)	-1.120 (1.232)	-0.471 (1.165)	-1.154 (1.247)
Share manu- facturing	-0.356 (0.676)	-0.275 (0.674)	-0.303 (0.676)	-0.312 (0.678)	-0.224 (0.676)	-0.399 (0.684)	-0.375 (0.678)
Share con- struction	-2.258 (1.754)	-0.325 (1.736)	-1.722 (1.738)	-0.671 (1.750)	-1.266 (1.709)	-1.511 (1.731)	-2.081 (1.797)
Share busi- ness services	-2.583 (1.365) [*]	-3.460 (1.470) ^{**}	-2.176 (1.395)	-3.143 (1.373) ^{**}	-3.325 (1.359) ^{**}	-3.376 (1.370) ^{**}	-2.572 (1.369) [*]
50,000 to 99,999	0.136 (0.137)	0.204 (0.138)	0.186 (0.136)	0.190 (0.136)	0.122 (0.136)	0.171 (0.136)	0.141 (0.136)
20,000 to 49,999	0.102 (0.119)	0.117 (0.121)	0.127 (0.119)	0.108 (0.119)	0.053 (0.119)	0.040 (0.123)	0.070 (0.120)
10,000 to 19,999	0.137 (0.114)	0.160 (0.116)	0.193 (0.114) [*]	0.149 (0.113)	0.077 (0.115)	0.086 (0.115)	0.108 (0.114)
5,000 to 9,999	0.133 (0.117)	0.172 (0.119)	0.201 (0.117) [*]	0.159 (0.116)	0.062 (0.121)	0.090 (0.119)	0.102 (0.118)
2,000 to 4,999	0.052 (0.120)	0.107 (0.122)	0.139 (0.120)	0.091 (0.118)	-0.014 (0.123)	0.035 (0.120)	0.029 (0.121)
1,000 to 1,999	0.257 (0.133) [*]	0.303 (0.134) ^{**}	0.343 (0.134) ^{**}	0.290 (0.132) ^{**}	0.189 (0.136)	0.232 (0.135) [*]	0.235 (0.134) [*]
Less than 1,000 inhab.	0.132 (0.143)	0.143 (0.144)	0.213 (0.145)	0.134 (0.143)	0.051 (0.144)	0.103 (0.143)	0.110 (0.143)
Majority French	-0.337 (0.062) ^{***}	-0.380 (0.076) ^{***}	-0.295 (0.071) ^{***}	-0.412 (0.061) ^{***}	-0.372 (0.058) ^{***}	-0.439 (0.059) ^{***}	-0.403 (0.057) ^{***}
Majority Italian	0.007 (0.117)	-0.013 (0.123)	-0.005 (0.118)	-0.048 (0.131)	-0.073 (0.116)	-0.131 (0.127)	-0.110 (0.120)

<continued on next page>

Table 9: First Stage Probit Estimates including Economic Environment Controls <continued>

	Gender equality (1)	Heroin program (2)	Stem cells (3)	Gay mar- riage (4)	Left- wing (5)	Catholics (6)	Principal factor (7)
Log distance to next uni.	0.009 (0.025)	0.026 (0.024)	0.009 (0.025)	0.023 (0.025)	0.019 (0.024)	0.013 (0.026)	0.009 (0.025)
Log distance to ETH	-0.070 (0.024)***	-0.086 (0.024)***	-0.084 (0.023)***	-0.083 (0.023)***	-0.078 (0.023)***	-0.087 (0.023)***	-0.077 (0.023)***
Parent tert. acad. educ.	-0.087 (0.043)**	-0.093 (0.043)**	-0.089 (0.043)**	-0.092 (0.044)**	-0.090 (0.043)**	-0.088 (0.043)**	-0.087 (0.043)**
Parent tert. voc. educ.	0.058 (0.045)	0.063 (0.045)	0.065 (0.045)	0.062 (0.045)	0.064 (0.045)	0.064 (0.045)	0.062 (0.045)
Parent no voc. educ.	-0.119 (0.051)**	-0.117 (0.051)**	-0.122 (0.051)**	-0.117 (0.051)**	-0.122 (0.051)**	-0.124 (0.051)**	-0.123 (0.051)**
Log age	-3.133 (0.404)***	-3.125 (0.403)***	-3.132 (0.404)***	-3.122 (0.404)***	-3.169 (0.405)***	-3.139 (0.404)***	-3.143 (0.404)***
Postgraduate education	-0.193 (0.040)***	-0.192 (0.040)***	-0.193 (0.040)***	-0.192 (0.040)***	-0.193 (0.040)***	-0.191 (0.040)***	-0.193 (0.040)***
Constant	11.352 (1.432)***	10.912 (1.432)***	11.510 (1.451)***	11.049 (1.467)***	11.320 (1.439)***	11.099 (1.431)***	11.068 (1.429)***
Model statistics							
Observations	4,767	4,767	4,767	4,767	4,767	4,767	4,767
Pseudo R^2	0.09	0.09	0.09	0.09	0.09	0.09	0.09

Source: Swiss Federal Statistical Office, Année Politique Suisse, own calculations. Notes: The dependent variable is a dummy for graduation in a STEM field. Progressivism refers to the different indicators of progressivism indicated by the column headers. Bootstrapped standard errors of the coefficients are shown in parentheses. *, ** and *** denote significance at the 10%-, 5%- and 1%-level, respectively.

Table 10: Wald Tests of Joint Significance (First Stage Probit Estimation including Economic Environment Controls)

	Gender equality (1)	Heroin program (2)	Stem cells (3)	Gay marriage (4)	Left- wing (5)	Catholics (6)	Principal factor (7)
Cost determinants							
χ^2 -statistic	8.877	13.815	13.438	13.857	11.967	14.609	11.195
df	2	2	2	2	2	2	2
p -value	0.012	0.001	0.001	0.001	0.003	0.001	0.004
Earnings determinants							
χ^2 -statistic	87.613	87.839	88.157	87.603	89.280	88.569	88.532
df	5	5	5	5	5	5	5
p -value	0.000	0.000	0.000	0.000	0.000	0.000	0.000
Sociocultural background							
χ^2 -statistic	60.578	53.457	61.664	53.203	58.012	56.368	58.865
df	3	3	3	3	3	3	3
p -value	0.000	0.000	0.000	0.000	0.000	0.000	0.000
Economic environment							
χ^2 -statistic	12.071	15.236	13.015	14.758	15.299	17.088	11.629
df	12	12	12	12	12	12	12
p -value	0.440	0.229	0.368	0.255	0.225	0.146	0.476
Remaining variables							
χ^2 -statistic	287.695	285.143	284.743	285.467	281.466	282.867	283.772
df	2	2	2	2	2	2	2
p -value	0.000	0.000	0.000	0.000	0.000	0.000	0.000

Source: Swiss Federal Statistical Office, Année Politique Suisse, own calculations. Notes: The panel labeled ‘Cost determinants’ refers to a joint test of the log distances to the next university and the next technical university (ETH). The panel ‘Earnings determinants’ includes the variables log age, dummies for parental education, and postgraduate training. The panel ‘Sociocultural background’ includes dummies for the majority language and the progressivism variable. The panel ‘Economic environment’ includes the variables shown in Tab. 8. The remaining variables in the last panel are a female dummy and a dummy for the second cohort.

Table 11: First Stage Probit Estimates for Probability of Graduating in a STEM Major with Gender Interactions

	Gender equality (1)	Heroin program (2)	Stem cells (3)	Gay mar- riage (4)	Left- wing (5)	Catholics (6)	Principal factor (7)
Coefficients and standard errors							
Progressivism	-0.835 (0.274) ^{***}	-0.411 (0.354)	-1.315 (0.365) ^{***}	-0.729 (0.416) [*]	-0.712 (0.255) ^{***}	0.186 (0.127)	-0.071 (0.022) ^{***}
Female	0.050 (0.039)	0.047 (0.039)	0.049 (0.039)	0.046 (0.039)	0.048 (0.039)	0.047 (0.038)	0.049 (0.038)
Cohort two	-6.448 (2.788) ^{**}	-6.399 (2.791) ^{**}	-7.209 (2.845) ^{**}	-6.968 (2.843) ^{**}	-6.619 (2.815) ^{**}	-6.272 (2.789) ^{**}	-6.450 (2.793) ^{**}
Majority French	-0.260 (0.069) ^{***}	-0.393 (0.083) ^{***}	-0.182 (0.078) ^{**}	-0.376 (0.069) ^{***}	-0.308 (0.065) ^{***}	-0.362 (0.067) ^{***}	-0.341 (0.064) ^{***}
Majority Ital- ian	-0.069 (0.131)	-0.155 (0.135)	-0.051 (0.131)	-0.213 (0.145)	-0.201 (0.134)	-0.200 (0.144)	-0.213 (0.136)
Log distance to next univ.	0.041 (0.025)	0.063 (0.025) ^{**}	0.053 (0.023) ^{**}	0.056 (0.025) ^{**}	0.046 (0.025) [*]	0.058 (0.026) ^{**}	0.028 (0.027)
Log distance to ETH	-0.032 (0.026)	-0.036 (0.025)	-0.052 (0.026) ^{**}	-0.044 (0.026) [*]	-0.035 (0.026)	-0.041 (0.025)	-0.042 (0.025) [*]
Parent tert. acad. educ.	-0.106 (0.056) [*]	-0.116 (0.056) ^{**}	-0.109 (0.055) ^{**}	-0.111 (0.056) ^{**}	-0.115 (0.056) ^{**}	-0.117 (0.055) ^{**}	-0.105 (0.056) [*]
Parent tert. voc. educ.	0.109 (0.057) [*]	0.113 (0.057) ^{**}	0.118 (0.057) ^{**}	0.115 (0.057) ^{**}	0.114 (0.057) ^{**}	0.114 (0.057) ^{**}	0.113 (0.057) ^{**}
Parent no voc. educ.	-0.156 (0.062) ^{**}	-0.150 (0.063) ^{**}	-0.165 (0.062) ^{***}	-0.156 (0.063) ^{**}	-0.156 (0.063) ^{**}	-0.157 (0.063) ^{**}	-0.163 (0.062) ^{***}
Log age	-3.700 (0.531) ^{***}	-3.696 (0.531) ^{***}	-3.717 (0.531) ^{***}	-3.703 (0.530) ^{***}	-3.742 (0.529) ^{***}	-3.717 (0.530) ^{***}	-3.715 (0.530) ^{***}
Postgrad. edu- cation	-0.260 (0.054) ^{***}	-0.261 (0.054) ^{***}	-0.260 (0.054) ^{***}	-0.259 (0.054) ^{***}	-0.259 (0.054) ^{***}	-0.258 (0.054) ^{***}	-0.258 (0.054) ^{***}
Female × pro- gressivism	0.296 (0.429)	0.177 (0.590)	1.165 (0.618) [*]	0.886 (0.712)	0.539 (0.420)	0.027 (0.206)	0.046 (0.037)
Female × ma- jority French	-0.156 (0.108)	-0.101 (0.137)	-0.260 (0.128) ^{**}	-0.074 (0.114)	-0.146 (0.105)	-0.132 (0.109)	-0.123 (0.105)
Female × ma- jority Italian	0.032 (0.197)	0.076 (0.208)	0.004 (0.199)	0.182 (0.229)	0.122 (0.204)	0.047 (0.222)	0.117 (0.208)
Female × log distance to next univ.	-0.035 (0.039)	-0.042 (0.041)	-0.025 (0.037)	-0.022 (0.041)	-0.024 (0.040)	-0.050 (0.043)	-0.015 (0.045)

<continued on next page>

Table 11: Third Stage Probit Estimates with Gender Interactions <continued>

	Gender equality (1)	Heroin program (2)	Stem cells (3)	Gay marriage (4)	Left-wing (5)	Catholics (6)	Principal factor (7)
Female × log distance to ETH	-0.026 (0.040)	-0.025 (0.040)	-0.011 (0.040)	-0.016 (0.040)	-0.026 (0.040)	-0.026 (0.039)	-0.021 (0.039)
Female × parent ter. acad. educ.	0.042 (0.090)	0.046 (0.091)	0.037 (0.090)	0.035 (0.090)	0.041 (0.090)	0.048 (0.090)	0.037 (0.090)
Female × parent tert. voc. educ.	-0.144 (0.091)	-0.142 (0.091)	-0.145 (0.091)	-0.142 (0.091)	-0.142 (0.091)	-0.138 (0.091)	-0.142 (0.091)
Female × parent no voc. educ.	0.105 (0.108)	0.101 (0.109)	0.114 (0.108)	0.105 (0.108)	0.105 (0.108)	0.103 (0.108)	0.112 (0.108)
Female × log age	1.655 (0.805)**	1.665 (0.806)**	1.684 (0.807)**	1.677 (0.808)**	1.698 (0.808)**	1.663 (0.805)**	1.669 (0.805)**
Female × postgrad. education	0.192 (0.087)**	0.195 (0.087)**	0.194 (0.086)**	0.195 (0.087)**	0.192 (0.087)**	0.192 (0.087)**	0.190 (0.087)**
Constant	13.177 (1.846)***	12.869 (1.846)***	13.636 (1.864)***	13.147 (1.878)***	13.046 (1.849)***	12.662 (1.845)***	12.895 (1.843)***
Model statistics							
Observations	4,767	4,767	4,767	4,767	4,767	4,767	4,767
Pseudo R^2	0.09	0.09	0.09	0.09	0.09	0.09	0.09

Source: Federal Statistical Office of Switzerland, Année Politique Suisse, own calculations. Notes: The dependent variable is a dummy for graduation in a STEM field. Progressivism refers to the different indicators of progressivism indicated by the column headers. Bootstrapped standard errors of the coefficients are shown in parentheses. *, ** and *** denote significance at the 10%-, 5%- and 1%-level, respectively.

Table 12: Third Stage Probit Estimates for Probability of Graduating in a STEM Major with Gender Interactions

	Gender equality (1)	Heroin program (2)	Stem cells (3)	Gay marriage (4)	Left-wing (5)	Catholics (6)	Principal factor (7)
Coefficients and standard errors							
Progressivism	-1.032 (0.325) ^{***}	-0.577 (0.430)	-1.464 (0.431) ^{***}	-0.832 (0.488) [*]	-0.833 (0.316) ^{***}	0.203 (0.155)	-0.079 (0.025) ^{***}
Female	0.100 (0.056) [*]	0.097 (0.057) [*]	0.097 (0.055) [*]	0.096 (0.056) [*]	0.096 (0.055) [*]	0.095 (0.055) [*]	0.099 (0.055) [*]
Cohort two	-0.979 (0.387) ^{**}	-0.832 (0.466) [*]	-1.585 (0.533) ^{***}	-1.299 (0.582) ^{**}	-0.912 (0.286) ^{***}	-0.610 (0.207) ^{***}	-0.808 (0.244) ^{***}
Majority French	-0.182 (0.088) ^{**}	-0.387 (0.111) ^{***}	-0.098 (0.094)	-0.335 (0.093) ^{***}	-0.259 (0.090) ^{***}	-0.334 (0.096) ^{***}	-0.277 (0.086) ^{***}
Majority Italian	0.010 (0.155)	-0.110 (0.172)	0.028 (0.153)	-0.163 (0.174)	-0.150 (0.166)	-0.147 (0.180)	-0.158 (0.158)
Log distance to next univ.	0.054 (0.029) [*]	0.087 (0.031) ^{***}	0.071 (0.026) ^{***}	0.078 (0.031) ^{**}	0.067 (0.029) ^{**}	0.086 (0.031) ^{***}	0.042 (0.031)
Log distance to ETH	-0.036 (0.029)	-0.044 (0.030)	-0.058 (0.029) ^{**}	-0.051 (0.029) [*]	-0.042 (0.030)	-0.050 (0.030) [*]	-0.047 (0.028) [*]
Log earnings difference	1.816 (0.764) ^{**}	1.819 (0.761) ^{**}	1.774 (0.766) ^{**}	1.802 (0.767) ^{**}	1.787 (0.760) ^{**}	1.777 (0.758) ^{**}	1.826 (0.765) ^{**}
Female × progressivism	0.526 (0.458)	0.315 (0.625)	1.314 (0.642) ^{**}	0.930 (0.749)	0.707 (0.460)	0 (0.225)	0.056 (0.039)
Female × majority French	-0.120 (0.117)	0 (0.153)	-0.232 (0.138) [*]	-0.010 (0.127)	-0.087 (0.119)	-0.052 (0.128)	-0.074 (0.117)
Female × majority Italian	0.034 (0.212)	0.111 (0.231)	0.007 (0.212)	0.206 (0.246)	0.161 (0.226)	0.082 (0.247)	0.147 (0.222)
Female × log distance to next univ.	-0.048 (0.040)	-0.066 (0.044)	-0.044 (0.038)	-0.045 (0.044)	-0.042 (0.042)	-0.076 (0.046) [*]	-0.028 (0.047)
Female × log distance to ETH	-0.021 (0.042)	-0.016 (0.043)	-0.004 (0.041)	-0.009 (0.042)	-0.019 (0.043)	-0.017 (0.043)	-0.015 (0.041)
Female × log earn. difference	-1.386 (0.849)	-1.422 (0.844) [*]	-1.373 (0.851)	-1.422 (0.850) [*]	-1.399 (0.847) [*]	-1.397 (0.843) [*]	-1.413 (0.849) [*]

<continued on next page>

Table 12: Third Stage Probit Estimates with Gender Interactions <continued>

	Gender equality (1)	Heroin program (2)	Stem cells (3)	Gay mar- riage (4)	Left- wing (5)	Catholics (6)	Principal factor (7)
Constant	0.584 (0.274)**	0.266 (0.323)	0.949 (0.370)**	0.480 (0.389)	0.220 (0.206)	-0.131 (0.157)	0.144 (0.174)
Model statistics							
Observations	4,767	4,767	4,767	4,767	4,767	4,767	4,767
Pseudo R^2	0.08	0.07	0.08	0.07	0.08	0.07	0.08

Source: Federal Statistical Office of Switzerland, Année Politique Suisse, own calculations. Notes: The dependent variable is a dummy for graduation in a STEM field. Progressivism refers to the different indicators of progressivism indicated by the column headers. Bootstrapped standard errors of the coefficients are shown in parentheses. *, ** and *** denote significance at the 10%-, 5%- and 1%-level, respectively.

Hohenheim Discussion Papers in Business, Economics and Social Sciences

The Faculty of Business, Economics and Social Sciences continues since 2015 the established "FZID Discussion Paper Series" of the "Centre for Research on Innovation and Services (FZID)" under the name "Hohenheim Discussion Papers in Business, Economics and Social Sciences".

Institutes

- 510 Institute of Financial Management
- 520 Institute of Economics
- 530 Institute of Health Care & Public Management
- 540 Institute of Communication Science
- 550 Institute of Law and Social Sciences
- 560 Institute of Economic and Business Education
- 570 Institute of Marketing & Management
- 580 Institute of Interorganisational Management & Performance

Download Hohenheim Discussion Papers in Business, Economics and Social Sciences from our homepage: <https://wiso.uni-hohenheim.de/papers>

Nr.	Autor	Titel	Inst.
01-2015	Thomas Beissinger, Philipp Baudy	THE IMPACT OF TEMPORARY AGENCY WORK ON TRADE UNION WAGE SETTING: A Theoretical Analysis	520
02-2015	Fabian Wahl	PARTICIPATIVE POLITICAL INSTITUTIONS AND CITY DEVELOPMENT 800-1800	520
03-2015	Tommaso Proietti, Martyna Marczak, Gianluigi Mazzi	EUROMIND-D: A DENSITY ESTIMATE OF MONTHLY GROSS DOMESTIC PRODUCT FOR THE EURO AREA	520
04-2015	Thomas Beissinger, Nathalie Chusseau, Joël Hellier	OFFSHORING AND LABOUR MARKET REFORMS: MODELLING THE GERMAN EXPERIENCE	520
05-2015	Matthias Mueller, Kristina Bogner, Tobias Buchmann, Muhamed Kudic	SIMULATING KNOWLEDGE DIFFUSION IN FOUR STRUCTURALLY DISTINCT NETWORKS – AN AGENT-BASED SIMULATION MODEL	520
06-2015	Martyna Marczak, Thomas Beissinger	BIDIRECTIONAL RELATIONSHIP BETWEEN INVESTOR SENTIMENT AND EXCESS RETURNS: NEW EVIDENCE FROM THE WAVELET PERSPECTIVE	520
07-2015	Peng Nie, Galit Nimrod, Alfonso Sousa-Poza	INTERNET USE AND SUBJECTIVE WELL-BEING IN CHINA	530
08-2015	Fabian Wahl	THE LONG SHADOW OF HISTORY ROMAN LEGACY AND ECONOMIC DEVELOPMENT – EVIDENCE FROM THE GERMAN LIMES	520
09-2015	Peng Nie, Alfonso Sousa-Poza	COMMUTE TIME AND SUBJECTIVE WELL-BEING IN URBAN CHINA	530

Nr.	Autor	Titel	Inst.
10-2015	Kristina Bogner	THE EFFECT OF PROJECT FUNDING ON INNOVATIVE PERFORMANCE AN AGENT-BASED SIMULATION MODEL	520
11-2015	Bogang Jun, Tai-Yoo Kim	A NEO-SCHUMPETERIAN PERSPECTIVE ON THE ANALYTICAL MACROECONOMIC FRAMEWORK: THE EXPANDED REPRODUCTION SYSTEM	520
12-2015	Volker Grossmann Aderonke Osikominu Marius Osterfeld	ARE SOCIOCULTURAL FACTORS IMPORTANT FOR STUDYING A SCIENCE UNIVERSITY MAJOR?	520

FZID Discussion Papers

(published 2009-2014)

Competence Centers

IK	Innovation and Knowledge
ICT	Information Systems and Communication Systems
CRFM	Corporate Finance and Risk Management
HCM	Health Care Management
CM	Communication Management
MM	Marketing Management
ECO	Economics

Download FZID Discussion Papers from our homepage: https://wiso.uni-hohenheim.de/archiv_fzid_papers

Nr.	Autor	Titel	CC
01-2009	Julian P. Christ	NEW ECONOMIC GEOGRAPHY RELOADED: Localized Knowledge Spillovers and the Geography of Innovation	IK
02-2009	André P. Slowak	MARKET FIELD STRUCTURE & DYNAMICS IN INDUSTRIAL AUTOMATION	IK
03-2009	Pier Paolo Saviotti, Andreas Pyka	GENERALIZED BARRIERS TO ENTRY AND ECONOMIC DEVELOPMENT	IK
04-2009	Uwe Focht, Andreas Richter and Jörg Schiller	INTERMEDIATION AND MATCHING IN INSURANCE MARKETS	HCM
05-2009	Julian P. Christ, André P. Slowak	WHY BLU-RAY VS. HD-DVD IS NOT VHS VS. BETAMAX: THE CO-EVOLUTION OF STANDARD-SETTING CONSORTIA	IK
06-2009	Gabriel Felbermayr, Mario Larch and Wolfgang Lechthaler	UNEMPLOYMENT IN AN INTERDEPENDENT WORLD	ECO
07-2009	Steffen Otterbach	MISMATCHES BETWEEN ACTUAL AND PREFERRED WORK TIME: Empirical Evidence of Hours Constraints in 21 Countries	HCM
08-2009	Sven Wydra	PRODUCTION AND EMPLOYMENT IMPACTS OF NEW TECHNOLOGIES – ANALYSIS FOR BIOTECHNOLOGY	IK
09-2009	Ralf Richter, Jochen Streb	CATCHING-UP AND FALLING BEHIND KNOWLEDGE SPILLOVER FROM AMERICAN TO GERMAN MACHINE TOOL MAKERS	IK

Nr.	Autor	Titel	CC
10-2010	Rahel Aichele, Gabriel Felbermayr	KYOTO AND THE CARBON CONTENT OF TRADE	ECO
11-2010	David E. Bloom, Alfonso Sousa-Poza	ECONOMIC CONSEQUENCES OF LOW FERTILITY IN EUROPE	HCM
12-2010	Michael Ahlheim, Oliver Frör	DRINKING AND PROTECTING – A MARKET APPROACH TO THE PRESERVATION OF CORK OAK LANDSCAPES	ECO
13-2010	Michael Ahlheim, Oliver Frör, Antonia Heinke, Nguyen Minh Duc, and Pham Van Dinh	LABOUR AS A UTILITY MEASURE IN CONTINGENT VALUATION STUDIES – HOW GOOD IS IT REALLY?	ECO
14-2010	Julian P. Christ	THE GEOGRAPHY AND CO-LOCATION OF EUROPEAN TECHNOLOGY-SPECIFIC CO-INVENTORSHIP NETWORKS	IK
15-2010	Harald Degner	WINDOWS OF TECHNOLOGICAL OPPORTUNITY DO TECHNOLOGICAL BOOMS INFLUENCE THE RELATIONSHIP BETWEEN FIRM SIZE AND INNOVATIVENESS?	IK
16-2010	Tobias A. Jopp	THE WELFARE STATE EVOLVES: GERMAN KNAPPSCHAFTEN, 1854-1923	HCM
17-2010	Stefan Kirn (Ed.)	PROCESS OF CHANGE IN ORGANISATIONS THROUGH eHEALTH	ICT
18-2010	Jörg Schiller	ÖKONOMISCHE ASPEKTE DER ENTLOHNUNG UND REGULIERUNG UNABHÄNGIGER VERSICHERUNGSVERMITTLER	HCM
19-2010	Frauke Lammers, Jörg Schiller	CONTRACT DESIGN AND INSURANCE FRAUD: AN EXPERIMENTAL INVESTIGATION	HCM
20-2010	Martyna Marczak, Thomas Beissinger	REAL WAGES AND THE BUSINESS CYCLE IN GERMANY	ECO
21-2010	Harald Degner, Jochen Streb	FOREIGN PATENTING IN GERMANY, 1877-1932	IK
22-2010	Heiko Stüber, Thomas Beissinger	DOES DOWNWARD NOMINAL WAGE RIGIDITY DAMPEN WAGE INCREASES?	ECO
23-2010	Mark Spoerer, Jochen Streb	GUNS AND BUTTER – BUT NO MARGARINE: THE IMPACT OF NAZI ECONOMIC POLICIES ON GERMAN FOOD CONSUMPTION, 1933-38	ECO

Nr.	Autor	Titel	CC
24-2011	Dhammika Dharmapala, Nadine Riedel	EARNINGS SHOCKS AND TAX-MOTIVATED INCOME-SHIFTING: EVIDENCE FROM EUROPEAN MULTINATIONALS	ECO
25-2011	Michael Schuele, Stefan Kirn	QUALITATIVES, RÄUMLICHES SCHLIEßEN ZUR KOLLISIONSERKENNUNG UND KOLLISIONSVERMEIDUNG AUTONOMER BDI-AGENTEN	ICT
26-2011	Marcus Müller, Guillaume Stern, Ansgar Jacob and Stefan Kirn	VERHALTENSMODELLE FÜR SOFTWAREAGENTEN IM PUBLIC GOODS GAME	ICT
27-2011	Monnet Benoit, Patrick Gbakoua and Alfonso Sousa-Poza	ENGEL CURVES, SPATIAL VARIATION IN PRICES AND DEMAND FOR COMMODITIES IN CÔTE D'IVOIRE	ECO
28-2011	Nadine Riedel, Hannah Schildberg- Hörisch	ASYMMETRIC OBLIGATIONS	ECO
29-2011	Nicole Waidlein	CAUSES OF PERSISTENT PRODUCTIVITY DIFFERENCES IN THE WEST GERMAN STATES IN THE PERIOD FROM 1950 TO 1990	IK
30-2011	Dominik Hartmann, Atilio Arata	MEASURING SOCIAL CAPITAL AND INNOVATION IN POOR AGRICULTURAL COMMUNITIES. THE CASE OF CHÁPARRA - PERU	IK
31-2011	Peter Spahn	DIE WÄHRUNGSKRISEUNION DIE EURO-VERSCHULDUNG DER NATIONALSTAATEN ALS SCHWACHSTELLE DER EWU	ECO
32-2011	Fabian Wahl	DIE ENTWICKLUNG DES LEBENSSTANDARDS IM DRITTEN REICH – EINE GLÜCKSÖKONOMISCHE PERSPEKTIVE	ECO
33-2011	Giorgio Triulzi, Ramon Scholz and Andreas Pyka	R&D AND KNOWLEDGE DYNAMICS IN UNIVERSITY-INDUSTRY RELATIONSHIPS IN BIOTECH AND PHARMACEUTICALS: AN AGENT-BASED MODEL	IK
34-2011	Claus D. Müller- Hengstenberg, Stefan Kirn	ANWENDUNG DES ÖFFENTLICHEN VERGABERECHTS AUF MODERNE IT SOFTWAREENTWICKLUNGSVERFAHREN	ICT
35-2011	Andreas Pyka	AVOIDING EVOLUTIONARY INEFFICIENCIES IN INNOVATION NETWORKS	IK
36-2011	David Bell, Steffen Otterbach and Alfonso Sousa-Poza	WORK HOURS CONSTRAINTS AND HEALTH	HCM
37-2011	Lukas Scheffknecht, Felix Geiger	A BEHAVIORAL MACROECONOMIC MODEL WITH ENDOGENOUS BOOM-BUST CYCLES AND LEVERAGE DYNAMICS	ECO
38-2011	Yin Krogmann, Ulrich Schwalbe	INTER-FIRM R&D NETWORKS IN THE GLOBAL PHARMACEUTICAL BIOTECHNOLOGY INDUSTRY DURING 1985–1998: A CONCEPTUAL AND EMPIRICAL ANALYSIS	IK

Nr.	Autor	Titel	CC
39-2011	Michael Ahlheim, Tobias Börger and Oliver Frör	RESPONDENT INCENTIVES IN CONTINGENT VALUATION: THE ROLE OF RECIPROCITY	ECO
40-2011	Tobias Börger	A DIRECT TEST OF SOCIALLY DESIRABLE RESPONDING IN CONTINGENT VALUATION INTERVIEWS	ECO
41-2011	Ralf Rukwid, Julian P. Christ	QUANTITATIVE CLUSTERIDENTIFIKATION AUF EBENE DER DEUTSCHEN STADT- UND LANDKREISE (1999-2008)	IK

Nr.	Autor	Titel	CC
42-2012	Benjamin Schön, Andreas Pyka	A TAXONOMY OF INNOVATION NETWORKS	IK
43-2012	Dirk Foremny, Nadine Riedel	BUSINESS TAXES AND THE ELECTORAL CYCLE	ECO
44-2012	Gisela Di Meglio, Andreas Pyka and Luis Rubalcaba	VARIETIES OF SERVICE ECONOMIES IN EUROPE	IK
45-2012	Ralf Rukwid, Julian P. Christ	INNOVATIONSPOTENTIALE IN BADEN-WÜRTTEMBERG: PRODUKTIONSCLUSTER IM BEREICH „METALL, ELEKTRO, IKT“ UND REGIONALE VERFÜGBARKEIT AKADEMISCHER FACHKRÄFTE IN DEN MINT-FÄCHERN	IK
46-2012	Julian P. Christ, Ralf Rukwid	INNOVATIONSPOTENTIALE IN BADEN-WÜRTTEMBERG: BRANCHENSPEZIFISCHE FORSCHUNGS- UND ENTWICKLUNGSAKTIVITÄT, REGIONALES PATENTAUFKOMMEN UND BESCHÄFTIGUNGSSTRUKTUR	IK
47-2012	Oliver Sauter	ASSESSING UNCERTAINTY IN EUROPE AND THE US - IS THERE A COMMON FACTOR?	ECO
48-2012	Dominik Hartmann	SEN MEETS SCHUMPETER. INTRODUCING STRUCTURAL AND DYNAMIC ELEMENTS INTO THE HUMAN CAPABILITY APPROACH	IK
49-2012	Harold Paredes- Frigolett, Andreas Pyka	DISTAL EMBEDDING AS A TECHNOLOGY INNOVATION NETWORK FORMATION STRATEGY	IK
50-2012	Martyna Marczyk, Víctor Gómez	CYCLICALITY OF REAL WAGES IN THE USA AND GERMANY: NEW INSIGHTS FROM WAVELET ANALYSIS	ECO
51-2012	André P. Slowak	DIE DURCHSETZUNG VON SCHNITTSTELLEN IN DER STANDARDSETZUNG: FALLBEISPIEL LADESYSYSTEM ELEKTROMOBILITÄT	IK
52-2012	Fabian Wahl	WHY IT MATTERS WHAT PEOPLE THINK - BELIEFS, LEGAL ORIGINS AND THE DEEP ROOTS OF TRUST	ECO
53-2012	Dominik Hartmann, Micha Kaiser	STATISTISCHER ÜBERBLICK DER TÜRKISCHEN MIGRATION IN BADEN-WÜRTTEMBERG UND DEUTSCHLAND	IK
54-2012	Dominik Hartmann, Andreas Pyka, Seda Aydin, Lena Klauß, Fabian Stahl, Ali Santircioglu, Silvia Oberegelsbacher, Sheida Rashidi, Gaye Onan and Suna Erginkoç	IDENTIFIZIERUNG UND ANALYSE DEUTSCH-TÜRKISCHER INNOVATIONSNETZWERKE. ERSTE ERGEBNISSE DES TGIN- PROJEKTES	IK
55-2012	Michael Ahlheim, Tobias Börger and Oliver Frör	THE ECOLOGICAL PRICE OF GETTING RICH IN A GREEN DESERT: A CONTINGENT VALUATION STUDY IN RURAL SOUTHWEST CHINA	ECO

Nr.	Autor	Titel	CC
56-2012	Matthias Strifler Thomas Beissinger	FAIRNESS CONSIDERATIONS IN LABOR UNION WAGE SETTING – A THEORETICAL ANALYSIS	ECO
57-2012	Peter Spahn	INTEGRATION DURCH WÄHRUNGSUNION? DER FALL DER EURO-ZONE	ECO
58-2012	Sibylle H. Lehmann	TAKING FIRMS TO THE STOCK MARKET: IPOS AND THE IMPORTANCE OF LARGE BANKS IN IMPERIAL GERMANY 1896-1913	ECO
59-2012	Sibylle H. Lehmann, Philipp Hauber and Alexander Opitz	POLITICAL RIGHTS, TAXATION, AND FIRM VALUATION – EVIDENCE FROM SAXONY AROUND 1900	ECO
60-2012	Martyna Marczak, Víctor Gómez	SPECTRAN, A SET OF MATLAB PROGRAMS FOR SPECTRAL ANALYSIS	ECO
61-2012	Theresa Lohse, Nadine Riedel	THE IMPACT OF TRANSFER PRICING REGULATIONS ON PROFIT SHIFTING WITHIN EUROPEAN MULTINATIONALS	ECO

Nr.	Autor	Titel	CC
62-2013	Heiko Stüber	REAL WAGE CYCLICALITY OF NEWLY HIRED WORKERS	ECO
63-2013	David E. Bloom, Alfonso Sousa-Poza	AGEING AND PRODUCTIVITY	HCM
64-2013	Martyna Marczak, V́ctor G3mez	MONTHLY US BUSINESS CYCLE INDICATORS: A NEW MULTIVARIATE APPROACH BASED ON A BAND-PASS FILTER	ECO
65-2013	Dominik Hartmann, Andreas Pyka	INNOVATION, ECONOMIC DIVERSIFICATION AND HUMAN DEVELOPMENT	IK
66-2013	Christof Ernst, Katharina Richter and Nadine Riedel	CORPORATE TAXATION AND THE QUALITY OF RESEARCH AND DEVELOPMENT	ECO
67-2013	Michael Ahlheim, Oliver Fr3r, Jiang Tong, Luo Jing and Sonna Pelz	NONUSE VALUES OF CLIMATE POLICY - AN EMPIRICAL STUDY IN XINJIANG AND BEIJING	ECO
68-2013	Michael Ahlheim, Friedrich Schneider	CONSIDERING HOUSEHOLD SIZE IN CONTINGENT VALUATION STUDIES	ECO
69-2013	Fabio Bertoni, Tereza Tykvov3	WHICH FORM OF VENTURE CAPITAL IS MOST SUPPORTIVE OF INNOVATION? EVIDENCE FROM EUROPEAN BIOTECHNOLOGY COMPANIES	CFRM
70-2013	Tobias Buchmann, Andreas Pyka	THE EVOLUTION OF INNOVATION NETWORKS: THE CASE OF A GERMAN AUTOMOTIVE NETWORK	IK
71-2013	B. Vermeulen, A. Pyka, J. A. La Poutr3 and A. G. de Kok	CAPABILITY-BASED GOVERNANCE PATTERNS OVER THE PRODUCT LIFE-CYCLE	IK
72-2013	Beatriz Fabiola L3pez Ulloa, Valerie M3ller and Alfonso Sousa- Poza	HOW DOES SUBJECTIVE WELL-BEING EVOLVE WITH AGE? A LITERATURE REVIEW	HCM
73-2013	Wencke Gwozdz, Alfonso Sousa-Poza, Lucia A. Reisch, Wolfgang Ahrens, Stefaan De Henauw, Gabriele Eiben, Juan M. Fern3ndez-Alvira, Charalampos Hadjigeorgiou, Eva Kov3cs, Fabio Lauria, Toomas Veidebaum, Garrath Williams, Karin Bammann	MATERNAL EMPLOYMENT AND CHILDHOOD OBESITY – A EUROPEAN PERSPECTIVE	HCM

Nr.	Autor	Titel	CC
74-2013	Andreas Haas, Annette Hofmann	RISIKEN AUS CLOUD-COMPUTING-SERVICES: FRAGEN DES RISIKOMANAGEMENTS UND ASPEKTE DER VERSICHERBARKEIT	HCM
75-2013	Yin Krogmann, Nadine Riedel and Ulrich Schwalbe	INTER-FIRM R&D NETWORKS IN PHARMACEUTICAL BIOTECHNOLOGY: WHAT DETERMINES FIRM'S CENTRALITY-BASED PARTNERING CAPABILITY?	ECO, IK
76-2013	Peter Spahn	MACROECONOMIC STABILISATION AND BANK LENDING: A SIMPLE WORKHORSE MODEL	ECO
77-2013	Sheida Rashidi, Andreas Pyka	MIGRATION AND INNOVATION – A SURVEY	IK
78-2013	Benjamin Schön, Andreas Pyka	THE SUCCESS FACTORS OF TECHNOLOGY-SOURCING THROUGH MERGERS & ACQUISITIONS – AN INTUITIVE META- ANALYSIS	IK
79-2013	Irene Prostopolupow, Andreas Pyka and Barbara Heller-Schuh	TURKISH-GERMAN INNOVATION NETWORKS IN THE EUROPEAN RESEARCH LANDSCAPE	IK
80-2013	Eva Schlenker, Kai D. Schmid	CAPITAL INCOME SHARES AND INCOME INEQUALITY IN THE EUROPEAN UNION	ECO
81-2013	Michael Ahlheim, Tobias Börger and Oliver Frör	THE INFLUENCE OF ETHNICITY AND CULTURE ON THE VALUATION OF ENVIRONMENTAL IMPROVEMENTS – RESULTS FROM A CVM STUDY IN SOUTHWEST CHINA –	ECO
82-2013	Fabian Wahl	DOES MEDIEVAL TRADE STILL MATTER? HISTORICAL TRADE CENTERS, AGGLOMERATION AND CONTEMPORARY ECONOMIC DEVELOPMENT	ECO
83-2013	Peter Spahn	SUBPRIME AND EURO CRISIS: SHOULD WE BLAME THE ECONOMISTS?	ECO
84-2013	Daniel Guffarth, Michael J. Barber	THE EUROPEAN AEROSPACE R&D COLLABORATION NETWORK	IK
85-2013	Athanasios Saitis	KARTELLBEKÄMPFUNG UND INTERNE KARTELLSTRUKTUREN: EIN NETZWERKTHEORETISCHER ANSATZ	IK

Nr.	Autor	Titel	CC
86-2014	Stefan Kirn, Claus D. Müller-Hengstenberg	INTELLIGENTE (SOFTWARE-)AGENTEN: EINE NEUE HERAUSFORDERUNG FÜR DIE GESELLSCHAFT UND UNSER RECHTSSYSTEM?	ICT
87-2014	Peng Nie, Alfonso Sousa-Poza	MATERNAL EMPLOYMENT AND CHILDHOOD OBESITY IN CHINA: EVIDENCE FROM THE CHINA HEALTH AND NUTRITION SURVEY	HCM
88-2014	Steffen Otterbach, Alfonso Sousa-Poza	JOB INSECURITY, EMPLOYABILITY, AND HEALTH: AN ANALYSIS FOR GERMANY ACROSS GENERATIONS	HCM
89-2014	Carsten Burhop, Sibylle H. Lehmann-Hasemeyer	THE GEOGRAPHY OF STOCK EXCHANGES IN IMPERIAL GERMANY	ECO
90-2014	Martyna Marczak, Tommaso Proietti	OUTLIER DETECTION IN STRUCTURAL TIME SERIES MODELS: THE INDICATOR SATURATION APPROACH	ECO
91-2014	Sophie Urmetzer, Andreas Pyka	VARIETIES OF KNOWLEDGE-BASED BIOECONOMIES	IK
92-2014	Bogang Jun, Joongho Lee	THE TRADEOFF BETWEEN FERTILITY AND EDUCATION: EVIDENCE FROM THE KOREAN DEVELOPMENT PATH	IK
93-2014	Bogang Jun, Tai-Yoo Kim	NON-FINANCIAL HURDLES FOR HUMAN CAPITAL ACCUMULATION: LANDOWNERSHIP IN KOREA UNDER JAPANESE RULE	IK
94-2014	Michael Ahlheim, Oliver Frör, Gerhard Langenberger and Sonna Pelz	CHINESE URBANITES AND THE PRESERVATION OF RARE SPECIES IN REMOTE PARTS OF THE COUNTRY – THE EXAMPLE OF EAGLEWOOD	ECO
95-2014	Harold Paredes-Frigolett, Andreas Pyka, Javier Pereira and Luiz Flávio Autran Monteiro Gomes	RANKING THE PERFORMANCE OF NATIONAL INNOVATION SYSTEMS IN THE IBERIAN PENINSULA AND LATIN AMERICA FROM A NEO-SCHUMPETERIAN ECONOMICS PERSPECTIVE	IK
96-2014	Daniel Guffarth, Michael J. Barber	NETWORK EVOLUTION, SUCCESS, AND REGIONAL DEVELOPMENT IN THE EUROPEAN AEROSPACE INDUSTRY	IK

IMPRINT

University of Hohenheim

Dean's Office of the Faculty of Business, Economics and Social Sciences

Speisemeistereiflügel – 120

70593 Stuttgart | Germany

Fon +49 (0)711 459 22488

Fax +49 (0)711 459 22785

E-mail wiso@uni-hohenheim.de

Web www.wiso.uni-hohenheim.de