

Cerqua, Augusto; Di Pietro, Giorgio

**Working Paper**

## Natural Disasters and University Enrolment: Evidence from L'Aquila Earthquake

IZA Discussion Papers, No. 9332

**Provided in Cooperation with:**

IZA – Institute of Labor Economics

*Suggested Citation:* Cerqua, Augusto; Di Pietro, Giorgio (2015) : Natural Disasters and University Enrolment: Evidence from L'Aquila Earthquake, IZA Discussion Papers, No. 9332, Institute for the Study of Labor (IZA), Bonn

This Version is available at:

<https://hdl.handle.net/10419/120988>

**Standard-Nutzungsbedingungen:**

Die Dokumente auf EconStor dürfen zu eigenen wissenschaftlichen Zwecken und zum Privatgebrauch gespeichert und kopiert werden.

Sie dürfen die Dokumente nicht für öffentliche oder kommerzielle Zwecke vervielfältigen, öffentlich ausstellen, öffentlich zugänglich machen, vertreiben oder anderweitig nutzen.

Sofern die Verfasser die Dokumente unter Open-Content-Lizenzen (insbesondere CC-Lizenzen) zur Verfügung gestellt haben sollten, gelten abweichend von diesen Nutzungsbedingungen die in der dort genannten Lizenz gewährten Nutzungsrechte.

**Terms of use:**

*Documents in EconStor may be saved and copied for your personal and scholarly purposes.*

*You are not to copy documents for public or commercial purposes, to exhibit the documents publicly, to make them publicly available on the internet, or to distribute or otherwise use the documents in public.*

*If the documents have been made available under an Open Content Licence (especially Creative Commons Licences), you may exercise further usage rights as specified in the indicated licence.*

IZA DP No. 9332

## Natural Disasters and University Enrolment: Evidence from L'Aquila Earthquake

Augusto Cerqua  
Giorgio Di Pietro

September 2015

# Natural Disasters and University Enrolment: Evidence from L'Aquila Earthquake

**Augusto Cerqua**

*Westminster Business School*

**Giorgio Di Pietro**

*Westminster Business School  
and IZA*

Discussion Paper No. 9332  
September 2015

IZA

P.O. Box 7240  
53072 Bonn  
Germany

Phone: +49-228-3894-0  
Fax: +49-228-3894-180  
E-mail: [iza@iza.org](mailto:iza@iza.org)

Any opinions expressed here are those of the author(s) and not those of IZA. Research published in this series may include views on policy, but the institute itself takes no institutional policy positions. The IZA research network is committed to the IZA Guiding Principles of Research Integrity.

The Institute for the Study of Labor (IZA) in Bonn is a local and virtual international research center and a place of communication between science, politics and business. IZA is an independent nonprofit organization supported by Deutsche Post Foundation. The center is associated with the University of Bonn and offers a stimulating research environment through its international network, workshops and conferences, data service, project support, research visits and doctoral program. IZA engages in (i) original and internationally competitive research in all fields of labor economics, (ii) development of policy concepts, and (iii) dissemination of research results and concepts to the interested public.

IZA Discussion Papers often represent preliminary work and are circulated to encourage discussion. Citation of such a paper should account for its provisional character. A revised version may be available directly from the author.

## **ABSTRACT**

### **Natural Disasters and University Enrolment: Evidence from L'Aquila Earthquake**

This paper uses the synthetic control method to look at how the L'Aquila earthquake affected subsequent enrolment at the local university. Such an issue is closely related to the economic consequences caused by this event given the large contribution made by the university to the local economy before the earthquake. The empirical results indicate that the earthquake had no statistically significant effect on first-year enrolment at the University of L'Aquila in the three academic years after the disaster. This natural disaster, however, caused a compositional change in the first-year student population, with a substantial increase in the number of students aged 21 or above. This is likely to have been driven by post-disaster measures adopted in an attempt to mitigate the expected negative effects on enrolment triggered by the earthquake. Finally, the results show also that the effect of the earthquake on enrolment varied by Faculty.

JEL Classification: A20, H84, C23

Keywords: university enrolment, natural disaster, synthetic control method

Corresponding author:

Giorgio Di Pietro  
University of Westminster  
Westminster Business School  
Department of Economics and Quantitative Methods  
35 Marylebone Road  
NW1 5LS London  
United Kingdom  
E-mail: [G.D.I.Pietro@westminster.ac.uk](mailto:G.D.I.Pietro@westminster.ac.uk)

## 1. Introduction

A relatively large number of studies examine the economic impact of natural disasters. Despite the destructive nature of these events, it is often suggested that they have no permanent detrimental economic effects as their negative consequences are often mitigated by measures adopted in the post-disaster period (e.g. public transfers). Several factors may trigger these negative consequences. First, the destruction of physical and human capital stock may have a detrimental effect on economic growth. Second, firms and individuals may not be willing to invest in the affected area as they may perceive that this may be hit again by a similar environmental shock. Third, natural disasters may determine a significant exodus of people from the affected area with negative consequences on the local economy.

In this paper, we look at another channel through which natural disasters may negatively impact the local economy. This happens when these events damage the local university that is a primary contributor of the affected area's economy. The potential future decline in enrolment may cause a significant adverse effect as less spending would be injected into the local economy by the student population (in terms, for instance, of tuition fees and subsistence expenditure). Additional economic losses may occur in the long-term as declining enrolment could mean that fewer students would remain to work in the local area after graduation.

We focus our attention on the L'Aquila earthquake, and we attempt to identify the impact that this event had on subsequent first-year enrolment at the local university<sup>1</sup>. This issue has considerable policy implications given that before the earthquake university students were making an important contribution to the economy of the city of L'Aquila. The number of university students increased by 60% between 2000 and 2008 and they accounted for a

---

<sup>1</sup> The L'Aquila earthquake was a sudden unexpected shock. L'Aquila is not an area particularly prone to earthquakes. Prior to 2009, the last year L'Aquila was struck by an earthquake was in 1958.

significant part of the L'Aquila population<sup>2</sup>. These students provided jobs, rental income and demand for local goods and services (OECD, 2009). It has been estimated that just before the earthquake the total expenditure generated by them, including lodging and transportation, was 220 million euro per year, which accounted for about 16% of the valued added of the city of L'Aquila (<http://www.oecd.org/regional/regional-policy/43226147.pdf>).

To evaluate the effect of the earthquake on first-year enrolment at the University of L'Aquila one needs to estimate how first-year enrolment at this institution would have evolved in the absence of this natural disaster. Following the approach of Abadie et al. (2010), in order to construct this counterfactual, we create a synthetic control using a weighted combination of Italian universities of similar size and structure that were unaffected by the earthquake. These institutions are selected on the basis of their similarity to the University of L'Aquila in the pre-earthquake period, both with respect to relevant covariates and past realizations of the outcome.

While the synthetic control approach has been already employed to assess the effects of natural disasters, previous studies have looked at the impact that these events had on economic growth (Cavallo et al., 2013; Barone and Mocetti, 2014). This paper extends the use of this methodology within the natural disasters literature to examine the effect caused by these events on first-year university enrolment.

The remainder of the paper is as follows. Section 2 provides information about the L'Aquila earthquake and its effects on the local university. Additionally, it discusses how, following this disaster, enrolment at the University of L'Aquila might have changed also in light of the measures taken to mitigate the negative effects of the earthquake. Section 3 outlines the

---

<sup>2</sup> In the pre-earthquake period approximately 8,000-10,000 university students were residing in the city of L'Aquila out of a population of about 70,000-80,000 inhabitants (OECD, 2013).

methodology and describes the data. Section 4 presents and discusses the empirical results. Section 5 concludes.

## **2. Background information and related literature**

On 6 April 2009 a severe earthquake of magnitude 6.3 shook the city of L'Aquila, which is situated about 70 miles northeast of Rome. This event killed 309 people<sup>3</sup>, injured more than 1,500 individuals, and caused widespread damage and destruction. Approximately 90% of the residents of L'Aquila were displaced from their homes following this natural disaster and much of the city historical centre was declared unsafe. The local university was no exception to this devastation, in terms of infrastructural damage and disruptions to students' daily life. About 70% of the infrastructure of the University of L'Aquila (including university buildings, libraries and student canteens) was seriously damaged and had to be closed for repair<sup>4</sup>. Lectures and exams were moved to temporary venues often located miles away from L'Aquila. This caused a significant burden on students who, not only were forced to find a new place to live<sup>5</sup>, but also faced transportation problems as they had to travel to university temporary locations.

Despite the efforts to return to the pre-earthquake situation, the pattern of disruption at the university continued for several years after the natural disaster (for instance, students of the Faculty of Engineering returned to the original university site only in October 2013).

However, the supply of courses offered by the University of L'Aquila remained practically unchanged after the earthquake. The university, indeed, continued to have nine Faculties:

---

<sup>3</sup> This makes the L'Aquila earthquake the deadliest earthquake to hit Italy since the 1980 Irpinia earthquake.

<sup>4</sup> Aprile 2009 - Aprile 2010: l'Università dell'Aquila un anno dopo il terremoto, 28/03/2010, available at: <http://www.studenti.it/universita/inchieste/universita-aquila-un-anno-dopo-il-terremoto.php>, accessed 2/2/2015

<sup>5</sup> The historical centre of city of L'Aquila hosted almost one-third of the students of the University of L'Aquila before the earthquake (OECD, 2009).

Biotechnology, Economics, Engineering, Arts and Philosophy, Medicine and Surgery, Psychology, Education, Sport Sciences and Mathematical, Physical and Natural Sciences.

Several measures were taken shortly after the L'Aquila earthquake. They were designed both to mitigate the detrimental effects that this event exerted on current students and to make the university more attractive to prospective students. A tuition fee exemption for the next three academic years was given to existing students and was also offered to future students. All students were also entitled to receive discount on study-related materials (e.g. textbooks, computers). Furthermore, to assist students with transportation due to relocation issues, they benefited from free public transport. At the same time, the University of L'Aquila, in order to help students to study anywhere at any time, developed an effective virtual learning environment (VLE). This allowed students to have online access to learning resources and to easily interact with their tutors as well as with their fellow students.

This paper is related to the literature investigating the factors that influence university student's decision where to study. With this literature in mind, it is difficult to determine a priori the direction and the degree of the effect that the earthquake had on enrolment at the University of L'Aquila. Measures adopted following this natural disaster could have offset the expected negative effect on enrolment caused by the earthquake.

On the one hand, significant disruptions in the learning environment and the fear that the earthquake could strike again in the near future could have discouraged a lot of potential students from enrolling at the University of L'Aquila. Several US reports (see for instance, Noel-Levitz Inc., 2012) show that campus appearance is among the most important factors affecting higher education student choice. Other papers (see, for instance, Absher and Crawford, 1996; Dubey, 2013) report that infrastructures and educational facilities play an important role in influencing students' enrolment choices. In Italy, the results of a survey of



1,500 upper secondary school students are in line with the above findings. Organizational aspects of an institution and the general atmosphere in the area where this institution is located are ranked as the fourth most important factor that respondents will consider when deciding about which university to attend<sup>6</sup>.

On the other hand, the tuition fee exemption policy adopted by the University of L'Aquila in the aftermath of the natural disaster could have enhanced the attractiveness of this institution. There are a lot of studies, mainly from the US (see, for instance, Heller, 1997; Helmet and Marcotte, 2008) and the UK (see, for instance, Dearden et al., 2011), that highlight the negative effect of tuition fees on university enrolment. Though in Italy tuition fees are rather modest in comparison with those in the US and in the UK, Staffolani and Pignini (2012) show that also in Italy they have a considerable bearing on higher education choices.

There is an additional channel through which the L'Aquila earthquake could have impacted university enrolment. Following this natural disaster the local unemployment rate has increased and lower employment opportunities could have induced many high school leavers from L'Aquila to study at the local university. The earthquake has significantly reduced their opportunity cost of university education. Several studies (see, for instance, Di Pietro, 2004) show that in Italy declining local labour market conditions (proxied by regional unemployment rate) lead to an increase in the probability that a high school graduate enrolls at university.

---

<sup>6</sup> Uno studente su due è influenzato dai genitori nella scelta dell'università, La Stampa, 16/7/2013, available at: <http://www.lastampa.it/2013/07/16/cultura/scuola/uno-studente-su-due-influenzato-dai-genitori-nella-scelta-delluniversit-cH3fCGfS6gVYGLRYpGi8bO/pagina.html>, accessed 2/2/2015

### 3. Empirical strategy and data

#### 3.1 Empirical strategy

We employ the synthetic control method to construct a counterfactual post-earthquake first-year enrolment path for the University of L'Aquila. This method has three main advantages. First, the counterfactual is a weighted average of Italian universities, whose size and structure are similar to those of the University of L'Aquila, that have not been exposed to the earthquake. This is important as neither the set of all Italian universities nor a single Italian university is likely to approximate the most relevant characteristics of the University of L'Aquila. Additionally, this data-driven procedure reduces the discretion in the decision about what to include in the control/comparison group. Second, as the choice of the synthetic control does not require access to post-earthquake data, this selection is made without knowing its impact on enrolment. Third, unlike several other techniques<sup>7</sup>, the synthetic control method allows the effects of unobservable confounders to vary with time.

Specifically, let the index  $j = (0, 1, \dots, J)$  denotes Italian universities. While  $j = 0$  indicates the University of L'Aquila,  $j = (1, \dots, J)$  refer to each of the other  $J$  universities that can be potentially included in the control group. Define  $X_0$  as a  $(k \times 1)$  vector with elements equal to the first-year enrolment at the University of L'Aquila in each academic year during the pre-earthquake period plus additional covariates predictive of enrolment. Similarly, define  $X_1$  as the  $(k \times J)$  vector containing the same variables for each of the  $J$  universities in the control group<sup>8</sup>.

---

<sup>7</sup> For instance, the fixed effect estimation strategy enables us to account for just time-invariant confounding factors, while the differences-in-difference approach permits these factors only to share a common trend (Billmeier and Nannicini, 2013).

<sup>8</sup> See Section 3.2 for the list of variables included in  $X_0$  and  $X_1$ .

The synthetic control approach identifies a convex combination of the  $J$  universities in the control group that best approximates the pre-earthquake data vector for the University of L'Aquila. Define the  $(J \times 1)$  weight vector  $W = (w_1, w_2, \dots, w_J)$  such that all weights are non-negative and sum to one; that is  $w_j \geq 0$  for  $j = (1, \dots, J)$  and  $\sum_{j=1}^J w_j = 1$ . The product  $X_1 W$  then gives us a weighted average of the pre-earthquake vectors for all universities omitting the University of L'Aquila, with the difference between the University of L'Aquila and this average given by  $(X_0 - X_1 W)$ . The synthetic control method chooses a value for  $W$  such that

$$W^* = \arg \min_W (X_0 - X_1 W)' V (X_0 - X_1 W) \quad (1)$$

where  $V$  is a  $(k \times k)$  diagonal positive-definitive vector with diagonal elements providing the relative weights for the contribution of the square of the elements in the vector  $(X_0 - X_1 W)$  to the objective function being minimised.

Once  $W^*$  is selected, it is possible to tabulate both the pre-earthquake path and the post-earthquake values for first-year enrolment in the synthetic control unit by calculating the corresponding weighted average for each academic year using the universities with positive weights. Therefore, one can assess the earthquake's impact by simply comparing this counterfactual to the actual path observed.

### 3.2 Data

Our outcome variable is university-level undergraduate first-year enrolment between the academic years 2000/01 and 2011/12<sup>9</sup>. Given that the earthquake took place in April 2009, while the pre-disaster period comprises 9 academic years, 3 academic years make up the post-disaster period. Enrolment data are from the Italian Ministry of Education, Universities and Research (MIUR).

In addition to past realizations of the outcome, several variables are employed as predictors of university first-year enrolment in order to construct the synthetic control. First, we use youth unemployment rate (between the ages of 15-29) in the province where the university is located in an attempt to measure the opportunity cost of university education. Data are from the Italian National Statistical Institute (ISTAT) and the period covered goes from 2004 to 2008<sup>10</sup>. The rationale for this variable is that, as discussed in Section 2, poor local employment opportunities may induce high school leavers to enrol at university. We also include GDP per capita in the province where the university is located. Again, data are from ISTAT and cover the period 2004 to 2008<sup>11</sup>. This is a proxy for local income levels that could reflect the ability to pay for university education. On the other hand, average tuition fees paid by undergraduate students are employed as a measure for the cost of university education. These figures, which are available for 4 academic years prior to the earthquake, come from the MIUR and are broken down by university.

Furthermore, in an attempt to capture additional factors affecting the attractiveness of a university, we use several variables aimed at measuring the quality of higher education

---

<sup>9</sup> Unfortunately data on earlier and later academic years are not comparable with those included in the analysis given a change in the methodology used to compute university first-year enrolment.

<sup>10</sup> Data for earlier years are unavailable because of a change in the methodology used to compute unemployment rate.

<sup>11</sup> Data for earlier years are unavailable because of a change in the methodology used to compute GDP.

institutions. They are available for all Italian universities and are broken down by faculty. The first measure comes from a research evaluation survey carried out in 2006 by the Supervising Committees for Research Evaluation (CIVR) jointly with MIUR. This indicator reflects the average score received by a faculty across a range of learning and research-related areas<sup>12</sup>. Our second quality measure is from performance-based league tables of Italian universities published in 2009<sup>13</sup> by *La Repubblica* newspaper and it is based on the analysis carried out by the Centre for Social Studies (CENSIS). This measure represents the average score obtained by a faculty in the following four areas: 1) teaching, 2) research outcomes, 3) student progression and achievement, and 4) internationalization<sup>14</sup>.

Finally, we also use two variables related to the composition of the first-year student population: proportion of males and proportion of first-year students aged 20 or below.

In selecting a synthetic control that includes Italian higher education institutions “comparable” to the University of L’Aquila, the original donor pool is reduced according to the following criteria. First, since the University of L’Aquila is a medium-sized university we eliminate large and small-sized universities (i.e. with more than 5,150 or less than 900 first-year students in the academic year during which the earthquake occurred). Second, we also remove universities founded after 2001 and those offering only virtual education programs. Third, we exclude from our analysis the Faculties of Biotechnology, Psychology and Sport Sciences. While the first two are omitted because they were established at the University of L’Aquila in 2005, the third one is eliminated given that the number of universities with this Faculty and the corresponding number of enrolled students are both very small. Fourth, we include in the donor pool only institutions that have at least 3 of the remaining 6 Faculties of the University of L’Aquila (i.e.

---

<sup>12</sup> A score between 0 and 1 is awarded.

<sup>13</sup> These measures refer to the academic year 2007/08.

<sup>14</sup> In each of these areas a score between 0 and 110 is awarded.

Economics<sup>15</sup>, Engineering, Arts and Philosophy, Medicine and Surgery, Education<sup>16</sup>, and Mathematical, Physical and Natural Sciences). Our final donor pool comprises 25 universities.

Table 1 reports the summary statistics for all the variables used in the analysis.

*Insert Table 1 about here*

#### 4. Results

The synthetic control method<sup>17</sup> delivers positive weights for University of Sannio (0.107), University of Parma (0.159), University of Basilicata (0.436) and Ca' Foscari University of Venice (0.298)<sup>18</sup> (see Figure 1 for the geographical localization of these institutions).

*Insert Figure 1 about here*

Table 2 reports the characteristics of the University of L'Aquila (Column 1), its synthetic control (Column 2) and all the universities in the final donor set (Column 3) during the pre-earthquake period. The synthetic control resembles the University of L'Aquila more closely than the entire donor pool in all the variables considered apart from the CIVR score.

---

<sup>15</sup> However, within the Faculty of Economics first-year enrolment in the degree program for “legal-economic analysis” has been adjusted to control for the huge unusual growth experienced by this degree program in the academic year 2010/11. An agreement between the University of L'Aquila and the Italian Finance Police (“Guardia di Finanza”) has driven this enrolment growth. A simple linear extrapolation was used to predict the first-year enrolment that this degree program would have experienced in the academic year 2010/11 had the above agreement not been in effect.

<sup>16</sup> However, within the Faculty of Education first-year students enrolled in the “investigation sciences” degree program are excluded from our analysis. Not only did this degree program end in 2011, but for some years the University of L'Aquila has been the only Italian higher education institution offering it.

<sup>17</sup> In the estimation, we employ the *synth, nested* command, which has been developed by Abadie, Diamond and Hainmueller.

<sup>18</sup> One may note that none of the universities included in the synthetic control is geographically close to L'Aquila (the closest institution is the University of Sannio, which is located 147 mile away from L'Aquila). This consideration is important as students who would have attended the University of L'Aquila had the earthquake not occurred could have enrolled at institutions located in an area near L'Aquila (in Italy many university students continue to live at home with their parents). Therefore, our estimates are unlikely to be biased as a result of this spillover effect.

*Insert Table 2 about here*

Not only, as indicated in Table 2, is average first-year enrolment at the University of L'Aquila close to that of the synthetic control before the earthquake, but also, as depicted in Figure 2, during the pre-earthquake period both the treated and synthetic units show a similar first-year enrolment trend. Two exceptions occur in the academic years 2003/04 and 2008/09, where first-year enrolment at the University of L'Aquila exceeds that of the synthetic unit by 10.1 and 6.6 percentage points, respectively. However, these outliers are an artefact of the data and are not driven by underlying policy changes implemented by the University of L'Aquila that would affect first-year enrolment. The average pre-disaster first-year enrolment difference between the University of L'Aquila and the synthetic control is very small (i.e., -3.79 first-year students), with a root mean square prediction error of 153.032.

Figure 2 shows that the earthquake has an immediate negative effect on first-year enrolment, as there is a sharp drop in first-year enrolment at the University of L'Aquila relative to the synthetic control in the academic year 2009/10. But interestingly, such a negative impact is very short-lived as it is followed by a recovery that in the academic year 2011/12 even surpasses the counterfactual estimate. More precisely, our analysis indicates that while in the academic year 2009/10 first-year enrolment at the University of L'Aquila was 15.8% lower than in the synthetic unit, this gap was completely reduced in the next academic year. Then, in the academic year 2011/12 first-year enrolment at the University of L'Aquila was 10.3% higher than in the counterfactual scenario in which the earthquake did not occur.

*Insert Figure 2 about here*

In order to test the significance of the observed relative change in first-year enrolment experienced by the University of L'Aquila following the earthquake, we perform the placebo test as suggested by Abadie et al. (2010). This approach consists of applying the synthetic

control method to every higher education institution included in the final donor pool. It is artificially assumed that each control unit had experienced the earthquake at the same time as the University of L'Aquila. Placebo effects are computed as the difference between the actual path of first-year enrolment for the control unit and the path of first-year enrolment for its synthetic control. The distribution of these placebo effects would give us an idea about whether the relative change in first-year enrolment experienced by the University of L'Aquila after the disaster is different relative to those experienced by other higher education institutions.

Figure 3 depicts the result of the placebo test. The placebo effects for each of the donor higher education institutions are displayed with thin grey lines, while the corresponding effect for the University of L'Aquila is displayed with the thick black line. This Figure shows that during the post-disaster period the first-year enrolment gap associated with the University of L'Aquila lies within the distribution of the placebo effects, suggesting that University of L'Aquila does not stand out as an outlier during this period. Even in the academic year just after the earthquake the negative gap in the number of first-year students for the University of L'Aquila is larger than most, but not all, the placebo gaps<sup>19</sup>. Following the approach of Ando (2015), we conduct two extensions of the placebo test. Appendix A describes them and reports the results. The latter confirm the robustness of the findings shown in Figure 3.

*Insert Figure 3 about here*

Figure 4 shows the impact of the earthquake on first-year enrolment separately for each of the 6 Faculties of the University of L'Aquila. In line with Figure 2, Figure 4 depicts the fit in the

---

<sup>19</sup> As a robustness test we use a difference-in-differences estimation strategy to estimate the impact of the earthquake on first-year enrolment at University of L'Aquila in the academic year immediately after the earthquake. We regress the difference in the number of first-year students at the University of L'Aquila and its counterfactual in that academic year against the same covariates used in the synthetic control method and a treatment dummy. Although the coefficient on the treatment dummy has a negative sign as expected, its corresponding p-value is slightly above the 10% level of statistical significance.



pre-earthquake period and a comparison post-earthquake of the actual values and the synthetic control. Figure 4 reveals that the effect of the L'Aquila earthquake on first-year enrolment varied significantly across Faculties. While in the post-earthquake period first-year enrolment at the Faculties of Economics and Arts and Philosophy diverges upward from its synthetic counterpart, the opposite holds for first-year enrolment at the Faculties of Engineering and Medicine and Surgery. This gap appears to be especially wide for the Faculties of Economics and Engineering. Although the L'Aquila earthquake had short-term negative consequences on first-year enrolment at the Faculties of Education and Mathematical, Physical and Natural Sciences, in both cases this was followed by a rebound increase.

*Insert Figure 4 about here*

In Figure 5 the results of the placebo tests are shown. They confirm that a negative effect on first-year enrolment caused by the earthquake appears to be particularly plausible for the Faculty of Engineering as the gap in the number of first-year students becomes clearly larger than all the placebo gaps in the post-disaster period. The validity of the estimated negative effect on first-year enrolment at the Faculty of Medicine and Surgery is weaker as the treatment effect is larger than most (but not all) placebo effects. A similar consideration can be made by looking at the result of the placebo test about the increase in first-year enrolment at the Faculty of Economics following the earthquake. Figure 5 shows that there are few placebo effects that are larger than the treatment effect.

*Insert Figure 5 about here*

Next, we look at whether the effect of the earthquake on first-year enrolment at the University of L'Aquila varies across gender and age groups.

The top panels of Figure 6 suggest that the effect of the earthquake on first-year enrolment differs by gender, with women being more negatively affected than men. However, placebo testing results, which are depicted in the bottom panels of Figure 6, indicate that the earthquake caused a statistically relevant reduction in first-year female enrolment only in the academic year immediately after the disaster. Between the academic years 2010/11 and 2011/12, though first-year female enrolment at the University of L'Aquila is lower than the estimated counterfactual, the placebo test for this variable is not particularly robust. As regards first-year male enrolment, during the whole post-earthquake period the University of L'Aquila data points clearly lie within the distribution of placebo estimates, indicating that University of L'Aquila is not an outlier in this period.

*Insert Figure 6 about here*

One reason why the earthquake has diverted female students from enrolling at the University of L'Aquila may lie in gender differences in the perception of risk of earthquakes. Kung and Chen (2012), using data from Taiwan on both earthquake survivors and individuals in the general population who have not been exposed to earthquakes, find that women are significantly more likely to worry about the reoccurrence of an earthquake relative to men. Given that L'Aquila was not hit again by an earthquake after 2009, it is possible that the magnitude of this effect has lessened over time and this could have contributed to drive the rebound in first-year female enrolment observed since the academic year 2010/11.

Synthetic control results for first-year enrolment among students aged 20 or below and those aged 21 or above are shown in Figure 7. The top right panel of this Figure clearly indicates that after the earthquake there has been a substantial increase in the number of first-year students aged 21 or over. The placebo test reported in the bottom right panel of Figure 7 confirms the robustness of this effect. When it comes to first-year enrolment among students aged 20 or

under, our findings indicate a statistically relevant reduction only during the academic year 2009/10.

*Insert Figure 7 about here*

Finally, Figure 8 shows the synthetic control results by age and gender. They indicate that the post-earthquake period has been characterised by a surge in the enrolment of older first-year students across both males and females. This increase played a crucial role especially in the academic year just after the earthquake. It prevented an ever greater decline in overall first-year enrolment which was caused by a significant reduction in the number of first-year students aged 20 or below. In the two successive academic years both the rebound in first-year enrolment of younger students and the high first-year enrolment level of older students contributed to the upward trend shown in Figure 2.

*Insert Figure 8 about here*

The increase in first-year enrolment of older male and female students following the L'Aquila earthquake may underscore the importance of the post-disaster measures discussed in Section 2. These measures, which were designed to make the university more attractive to prospective students despite the damages caused by the earthquake, could have been especially appealing to people aged 21 or above. The tuition fees exemption could have encouraged particularly the enrolment of those older people who, before the earthquake, were unable to afford the cost of university education in light of their economic and family commitments. It might have also increased participation in higher education of those older individuals with no particularly strong financial constraints but facing a high marginal cost of enrolment (e.g. working individuals with lifelong ambitions linked to a specific degree program). Similarly, an effective VLE, adopted by the University of L'Aquila following the earthquake, could have favoured the enrolment of a lot of older students. A VLE may help them to fit their university studies

around their busy work and family life. They can study at their own pace and have access to teaching resources they need in the format that suits them best (Newson et al., 2011). Finally, it is worth to mention that in Italy most public sector working people without a university degree have great incentives to get one as this may significantly increase their chances of being promoted. This consideration is relevant in this context as the number of public sector employees in L'Aquila is very large given that, as the capital of Abruzzo region, this city hosts regional governments' offices in addition to provincial and municipal ones<sup>20</sup>.

## **5. Conclusions**

This paper adds to the growing literature on the socio-economic effects of natural disasters by investigating how an earthquake may affect future university enrolment. Not only is this a relevant educational issue, but it may have wider implications if before the earthquake the university was a major contributor of the local economy. The potential decline in the university enrolment following the disaster could have considerable detrimental economic effects given the important role of students in providing jobs, rental income and demand for local goods and services.

With the above in mind, we have examined the impact of the L'Aquila earthquake on first-year university enrolment at the local university. Using a synthetic control method, we have found that this event has had no statistically significant effect on the number of students enrolled at the University of L'Aquila in the three academic years after the earthquake. However, this natural disaster caused a compositional change in the first-year student population. While following the earthquake there has been an increase in the number of first-year students aged

---

<sup>20</sup> As stated in a report carried out by the Ministry for Territorial Cohesion (2012), public sector is by far the most important source of employment for the city of L'Aquila.

21 or above, a decline in the enrolment of first-year students aged 20 or below has been observed in the same period.

What has driven the surge in the enrolment of older first-year students after the earthquake? We interpret this result as evidence of the effectiveness of the post-disaster measures adopted in an attempt to counter the negative effects on enrolment triggered by the earthquake. Measures such as the tuition fee exemption and the creation of a VLE are likely to have favoured the enrolment of a lot of mature students. These provisions have eliminated the financial constraints often faced by older students and have provided them with an online learning support platform that is an essential tool for those who wish to study in flexible ways. The increase in the number of students aged 21 or above played a crucial role as it offset the decline in the enrolment of younger students.

Our empirical results indicate also that the effect of the L'Aquila earthquake on first-year enrolment differs by Faculty. In particular, this event has led to a statistically significant decline in first-year enrolment at the Faculty of Engineering. Although the reasons for this result are not determined in this work, it is possible that an important cause lies in the particularly severe and prolonged disruption experienced by the students of this Faculty following the disaster. The buildings of the Faculty of Engineering were especially hit hard by the earthquake and, despite the fact that temporary arrangements were made to help students continue studying, the quality of student life inevitably worsened as a result of this. This could have made studying Engineering at the University of L'Aquila less attractive for prospective students. Therefore a lesson that could be learnt from the L'Aquila earthquake is that university enrolment enhancing measures may be less effective in cases where a natural disaster brought about a particularly unfavourable situation for the students.

## References

- Ando, M. (2015). "Dreams of urbanization: Quantitative case studies on the local impacts of nuclear power facilities using the synthetic control method", *Journal of Urban Economics*, 85, 68-85
- Abadie, A., Diamond, A. and Hainmueller, J. (2010). "Synthetic control methods for comparative case studies: Estimating the effects of California's tobacco control programs", *Journal of American Statistical Association*, 105(490), 493-505.
- Absher, K. and Crawford, G. (1996). "Marketing the community college starts with understanding students' perspectives", *Community College Review*, 23(4), 59-67.
- Barone, G. and Mocetti, S. (2014). "Natural disasters, growth and institutions: A tale of two earthquakes", *Journal of Urban Economics*, 84, 52-66.
- Billmeier, A. and Nannicini, T. (2013). "Assessing economic liberalization episodes: a synthetic control approach", *Review of Economics and Statistics*, 95(3), 983-1001.
- Cavallo, E., Galiani, S., Noy, I. and Pantano, J. (2013). "Catastrophic natural disasters and economic growth", *Review of Economics and Statistics*, 95(5), 1549-1561.
- Kung, Y.W. and Chen, S.H. (2012). "Perception of earthquake risk in Taiwan: effects of gender and past earthquake experience", *Risk Analysis*, 32(9), 1535-1546.
- Dearden, L., Fitzsimons, E. and Wyness, G. (2011). "*The impact of tuition fees and support on university participation in the UK*", IFS working Paper, W11/17.
- Di Pietro, G. (2004). "The determinants of university drop-out in Italy: a bivariate probability model with sample selection", *Applied Economics Letter*, 11(3), 187-191.

Dubey, P. (2013). “Factors affecting choice of engineering colleges in Odisha, India”, *Research Journal of Management Science*, 2(4), 14-20.

Heller, D.E. (1997). “Student price response in higher education; an update to Leslie and Brinkman”, *Journal of Higher Education*, 68(6), 624-659.

Helmet, S. and Marcotte, D. (2008). “*Rising tuition and enrolment in public higher education*”, IZA Discussion Paper No. 3827.

Ministry for Territorial Cohesion (2012). *L’Aquila 2030 una strategia di sviluppo economico*, Rome, available at [http://www.antoniocalafati.it/t\\_pdf/Aquila\\_27\\_09\\_2012\\_Z.pdf](http://www.antoniocalafati.it/t_pdf/Aquila_27_09_2012_Z.pdf) , accessed 2/2015.

Newson, C., McDowall, A. and Saunders, M.N.K. (2011). “*Understanding the support needs of mature students*”, University of Surrey report, available at [http://www.surrey.ac.uk/psychology/files/Mature\\_student\\_report\\_2011.pdf](http://www.surrey.ac.uk/psychology/files/Mature_student_report_2011.pdf), accessed 2/2015.

Noel- Levitz Inc. (2012). “*National Research report 2012: Why did they enrol? The factors influencing college choice*”, available at: [https://www.noellevitz.com/documents/shared/Papers\\_and\\_Research/2012/2012\\_Factors\\_to\\_Enroll.pdf](https://www.noellevitz.com/documents/shared/Papers_and_Research/2012/2012_Factors_to_Enroll.pdf), accessed 2/2015.

OECD (2013). “*Policy Making after Disasters. Helping Regions Become Resilient – The Case of Post-Earthquake Abruzzo*”, DOI:[10.1787/9789264189577-en](https://doi.org/10.1787/9789264189577-en)

OECD (2009). “*Policy options for re-launching the economy of L’Aquila region the earthquake*”, OECD workshop, Co-organised by the OECD and the Ministry of Economy and Finance, Italy, 3 July 2009, available at: <http://www.oecd.org/gov/regional-policy/43195264.pdf> , accessed 6/2015

Staffolani, S. and Pigni, C. (2012). “*Enrolment decision and university choice of Italian secondary school graduates*”, Working Paper No. 380, Dipartimento di Scienze Economiche e Sociali, Università Politecnica delle Marche.



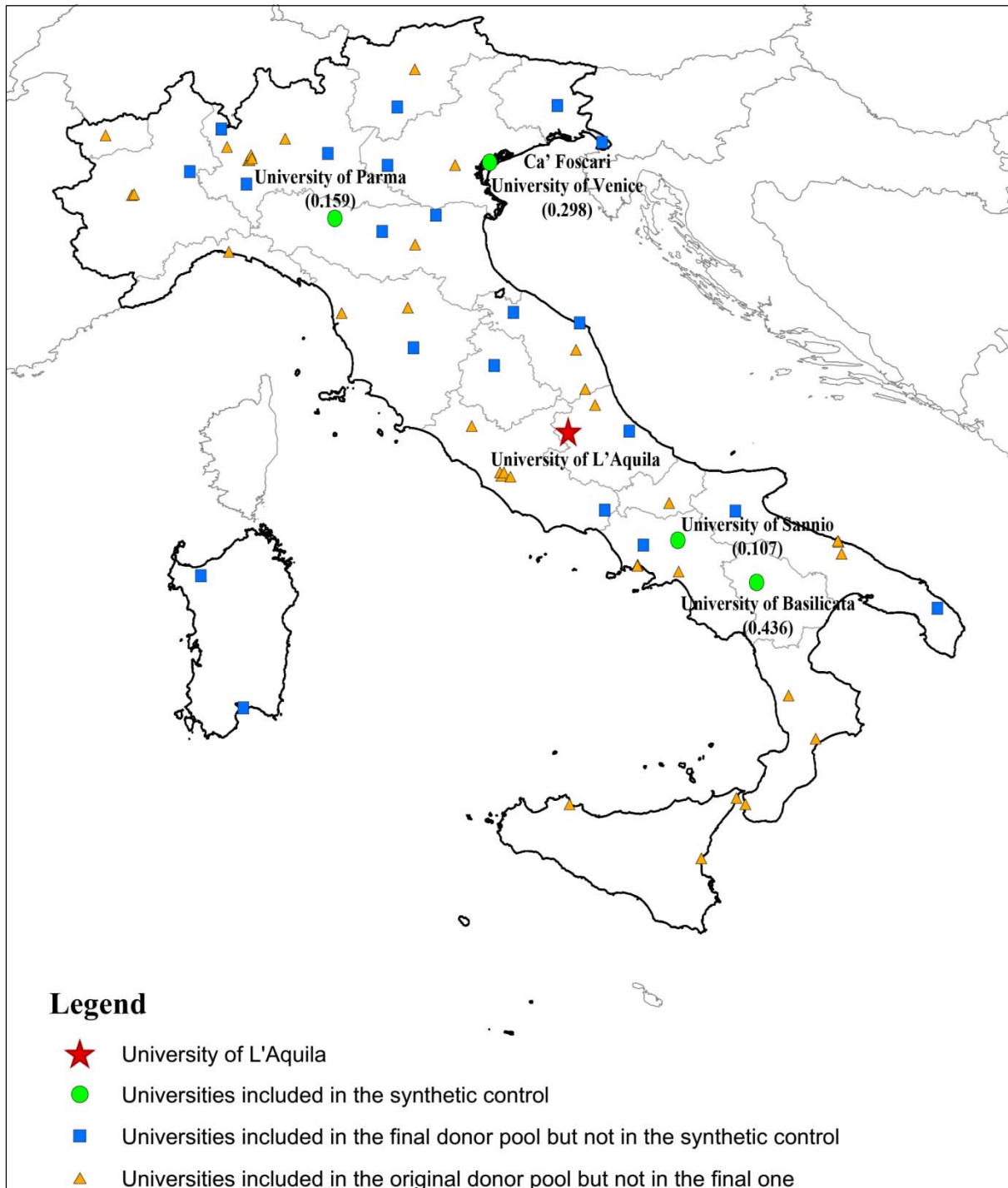
**Table 1: Descriptive statistics**

	Period of reference	All donors		The University of L'Aquila	
		Mean	s.d.	Mean	s.d.
Number of first-year students	Between academic years 2000/01 and 2008/09	3335.62	1457.20	2418.89	267.40
Proportion of first-year students aged 20 or below	Between academic years 2000/01 and 2008/09	0.757	0.086	0.821	0.026
Proportion of male first-year students	Between academic years 2000/01 and 2008/09	0.443	0.059	0.461	0.017
Unemployment rate in the province where the university is located	Between 2004 and 2008	15.11	9.33	19.77	2.46
GDP per capita (current prices in euro) in the province where the university is located	Between 2004 and 2008	24105.60	5502.38	19120.00	1603.75
Average tuition fees (current prices in euro)	Between academic years 2005/06 and 2008/09	790.82	299.71	668.95	102.81
Average CIVR score	In 2006	0.787	0.068	0.805	N/A
Average CENSIS score	In the academic year 2007/08	87.79	5.11	79.92	N/A

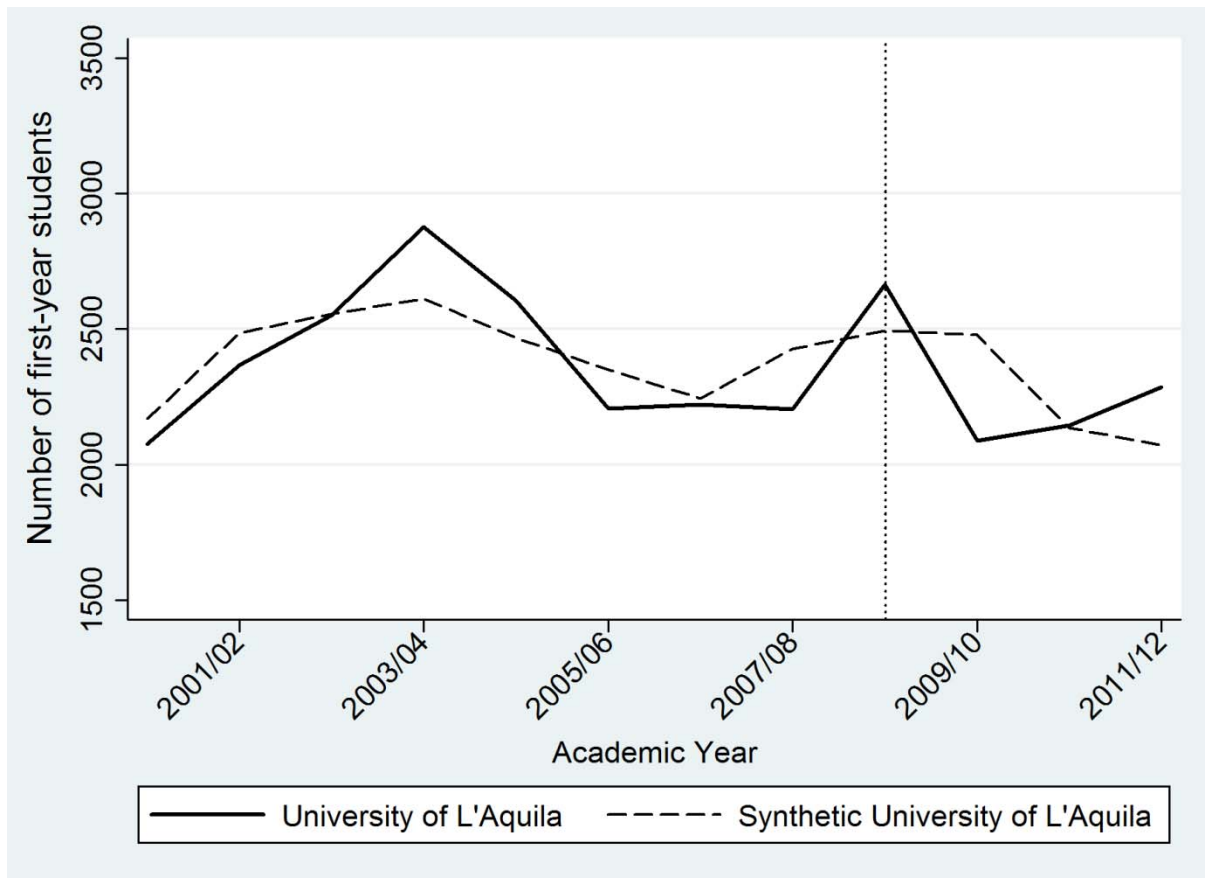
**Table 2: Balancing properties**

	Period of reference	The University of L'Aquila (1)	Synthetic control (2)	All donors (3)
Number of first-year students	Between academic years 2000/01 and 2004/05	2494.80	2457.79	3408.49
Number of first-year students	Between academic years 2005/06 and 2007/08	2211.00	2340.32	3260.76
Number of first-year students	In the academic year 2008/09	2663.00	2494.22	3048.08
Proportion of first-year students aged 20 or below	Between academic years 2000/01 and 2008/09	0.82	0.78	0.76
Proportion of male first-year students	Between academic years 2000/01 and 2008/09	0.46	0.46	0.44
Unemployment rate in the province where the university is located	Between 2004 and 2008	19.77	18.60	15.11
GDP per capita (current prices in euro) in the province where the university is located	Between 2004 and 2008	19120.00	22458.36	24105.60
Average tuition fees (current prices in euro)	Between academic years 2005/06 and 2008/09	668.95	669.22	790.82
Average CIVR score	In 2006	0.81	0.85	0.79
Average CENSIS score	In the academic year 2007/08	79.92	85.28	87.79

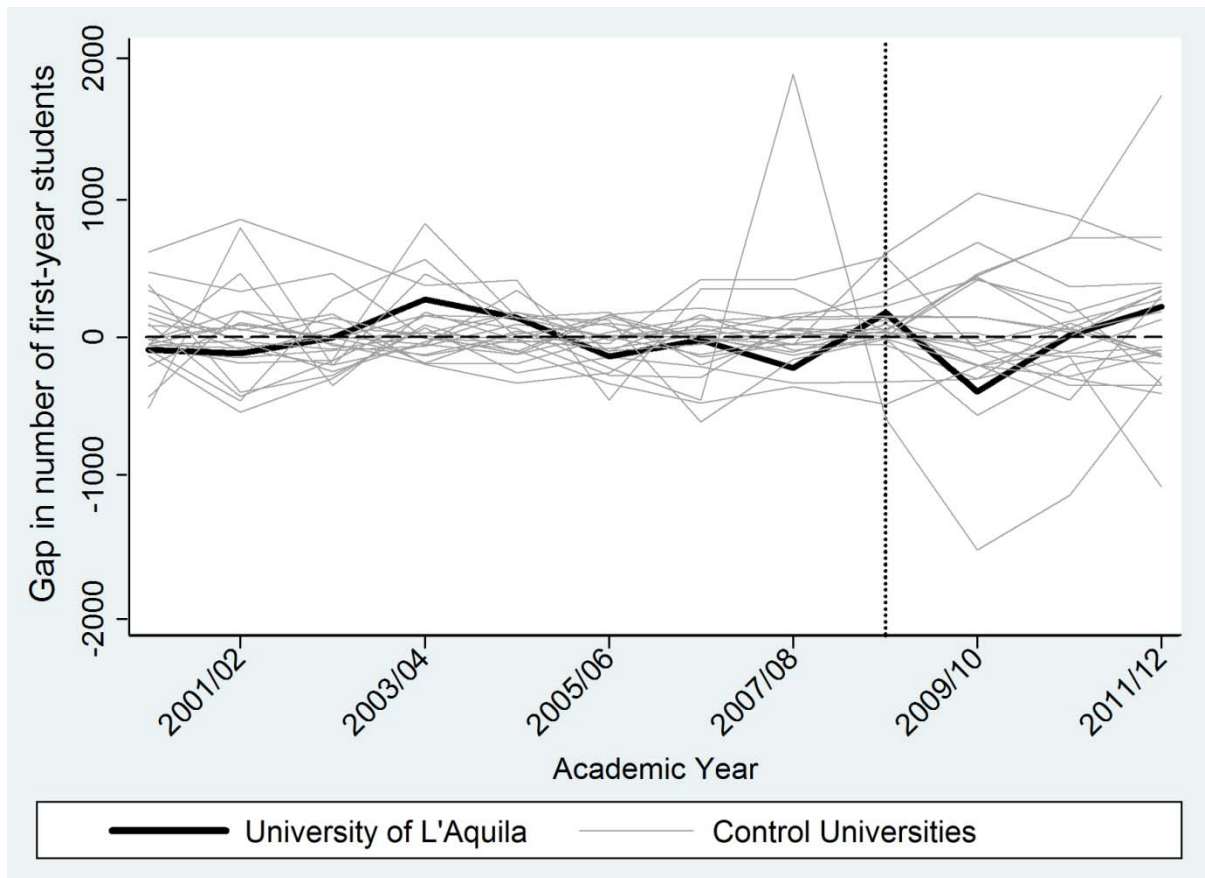
**Figure 1. Geographical localization of the University of L'Aquila and the other Italian universities**



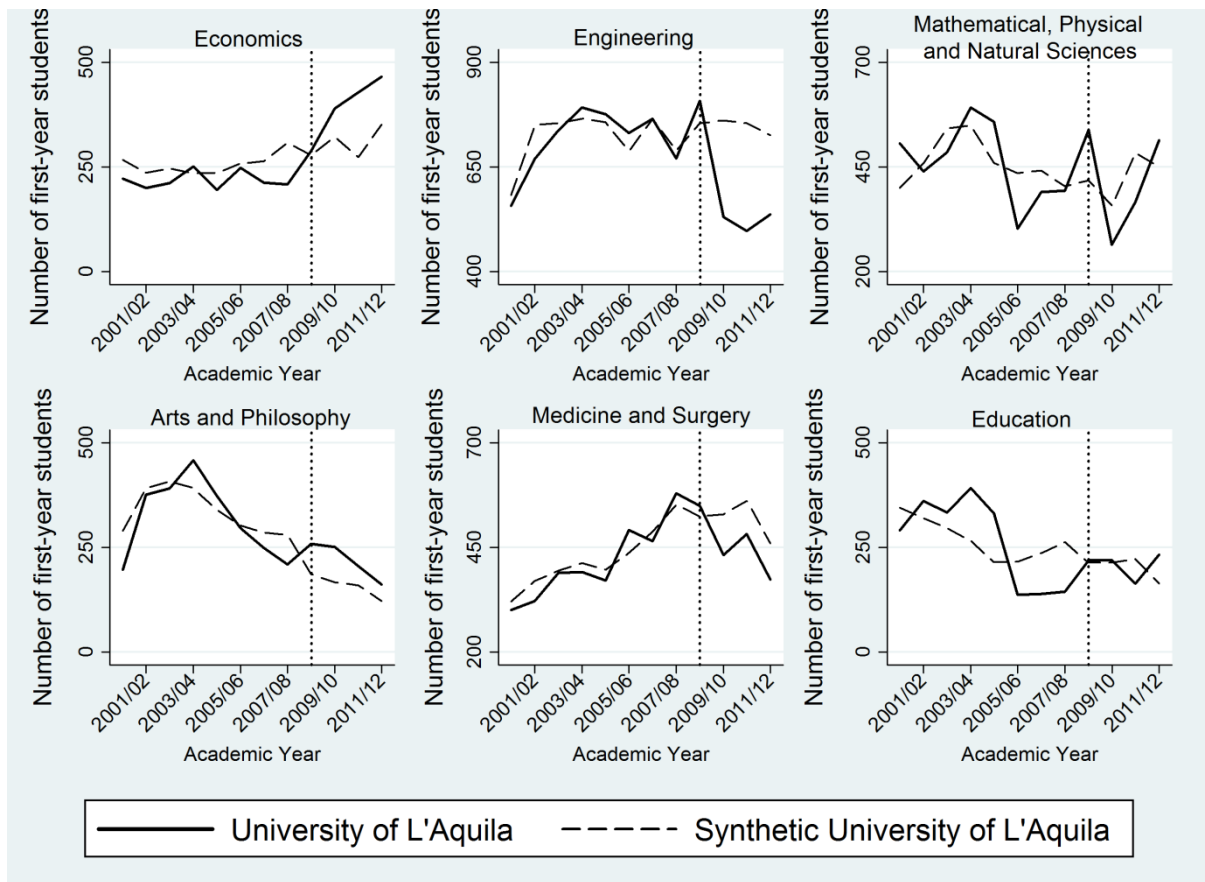
**Figure 2. Number of first-year students at the University of L'Aquila and at the synthetic comparison group, academic years 2000/01-2011/12**



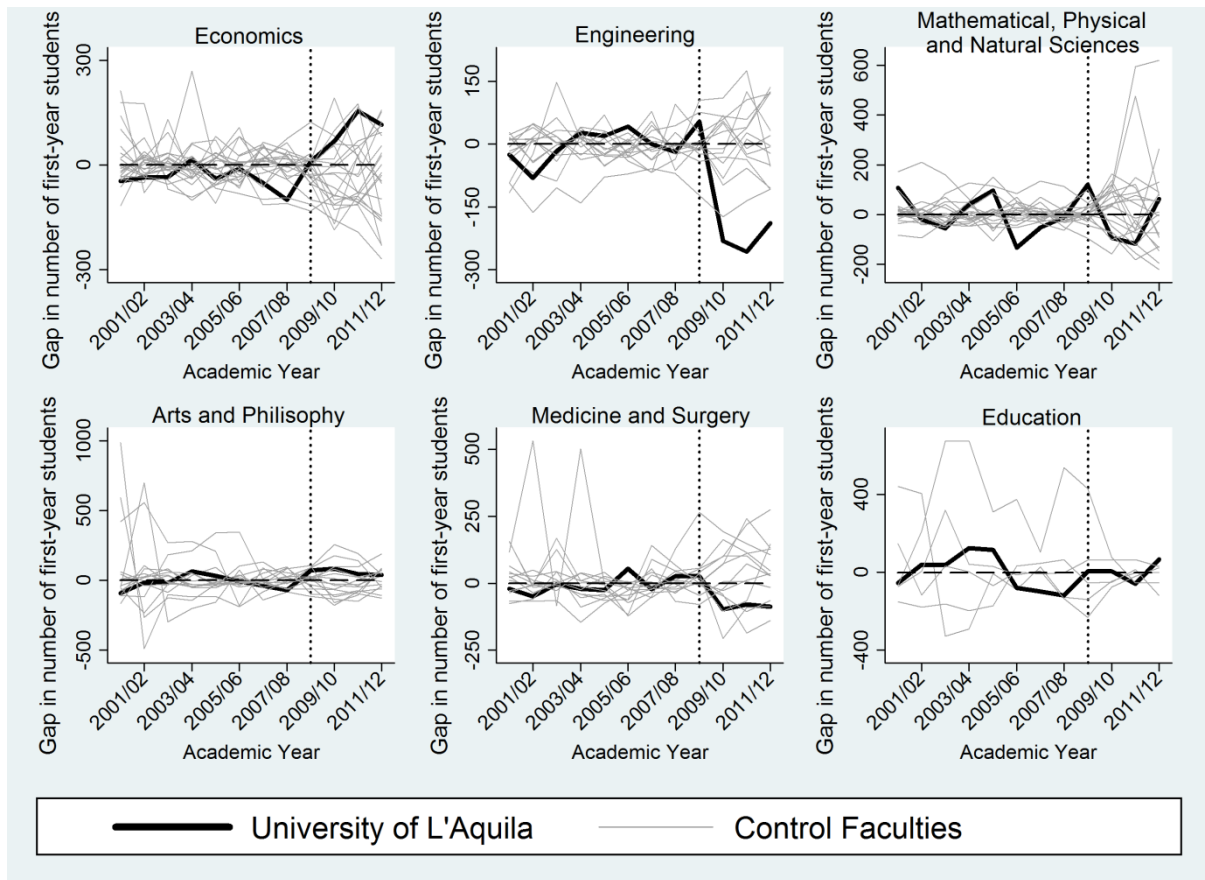
**Figure 3. Number of first-year students' gap at University of L'Aquila and placebo gaps at control universities, academic years 2000/01-2011/12**



**Figure 4. Number of first-year students by Faculty at the University of L'Aquila and at the synthetic comparison group, academic years 2000/01-2011/12**

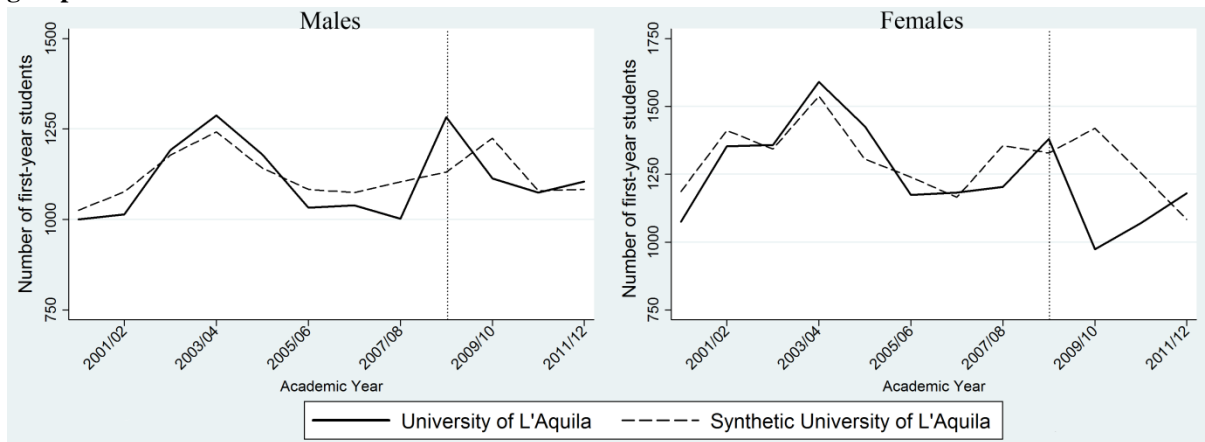


**Figure 5. Number of first-year students' gap by Faculty at University of L'Aquila and placebo gaps by Faculty at control universities, academic years 2000/01-2011/12**

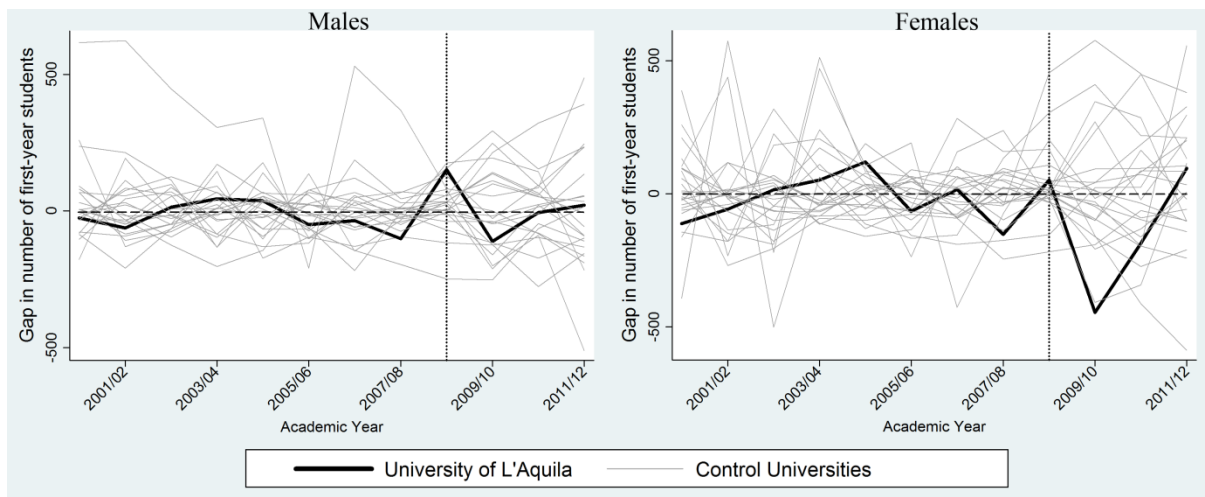


**Figure 6. Synthetic control results by gender, academic years 2000/01-2011/12**

**Number of first-year students by gender at the University of L'Aquila and at the synthetic comparison group**



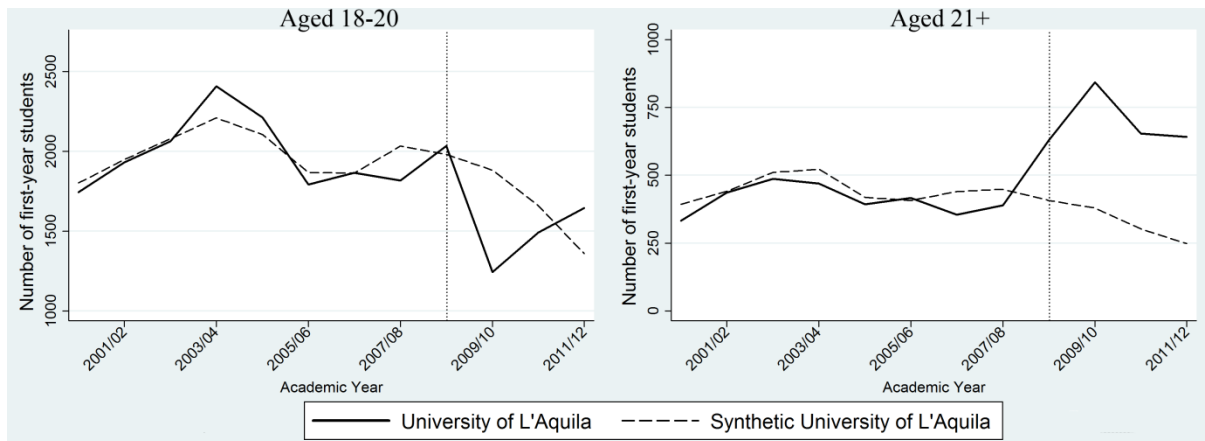
**Number of first-year students' gap by gender at University of L'Aquila and placebo gaps by gender at control universities**



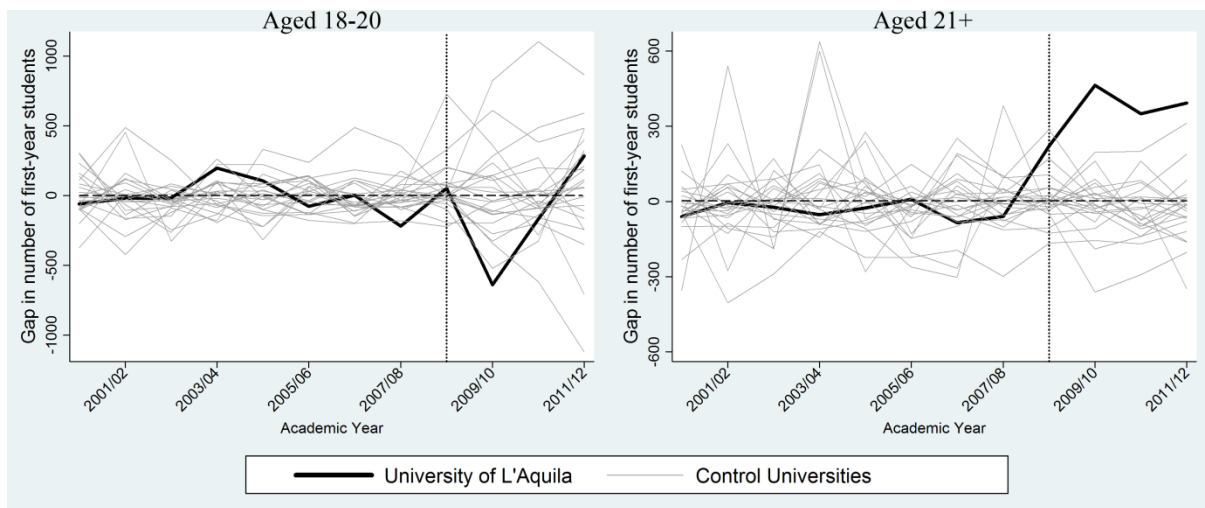


**Figure 7. Synthetic control results by age, academic years 2000/01-2011/12**

Number of first-year students by age at the University of L'Aquila and at the synthetic comparison group

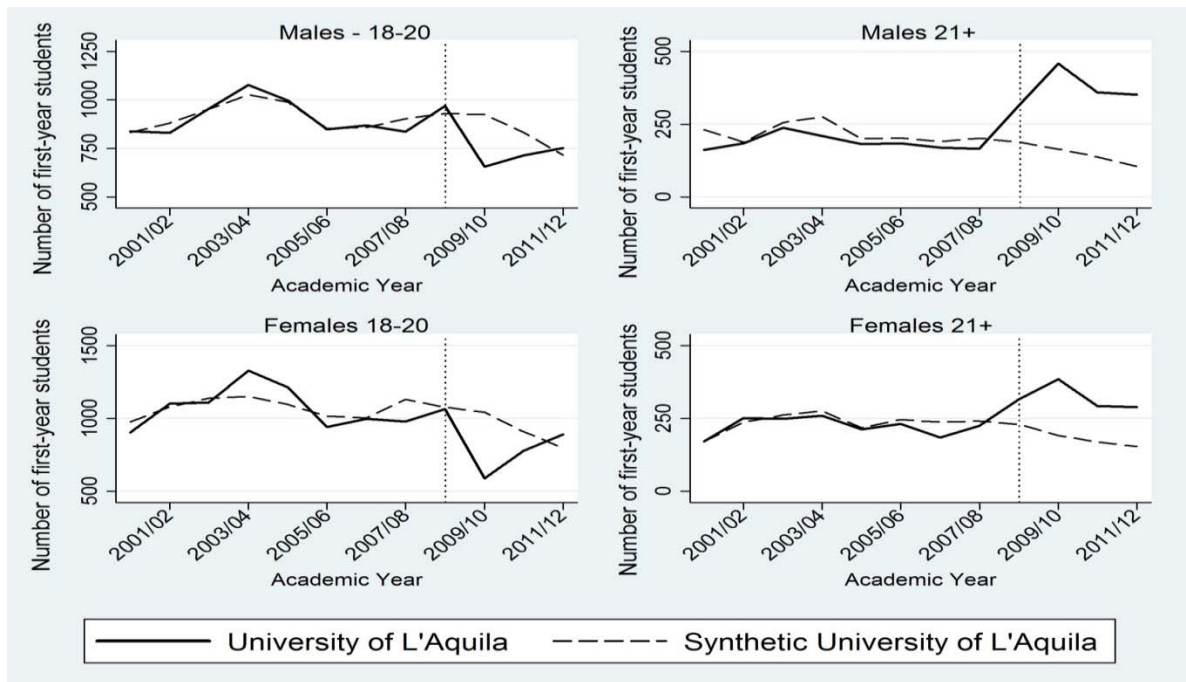


Number of first-year students' gap by age at University of L'Aquila and placebo gaps by age at control universities

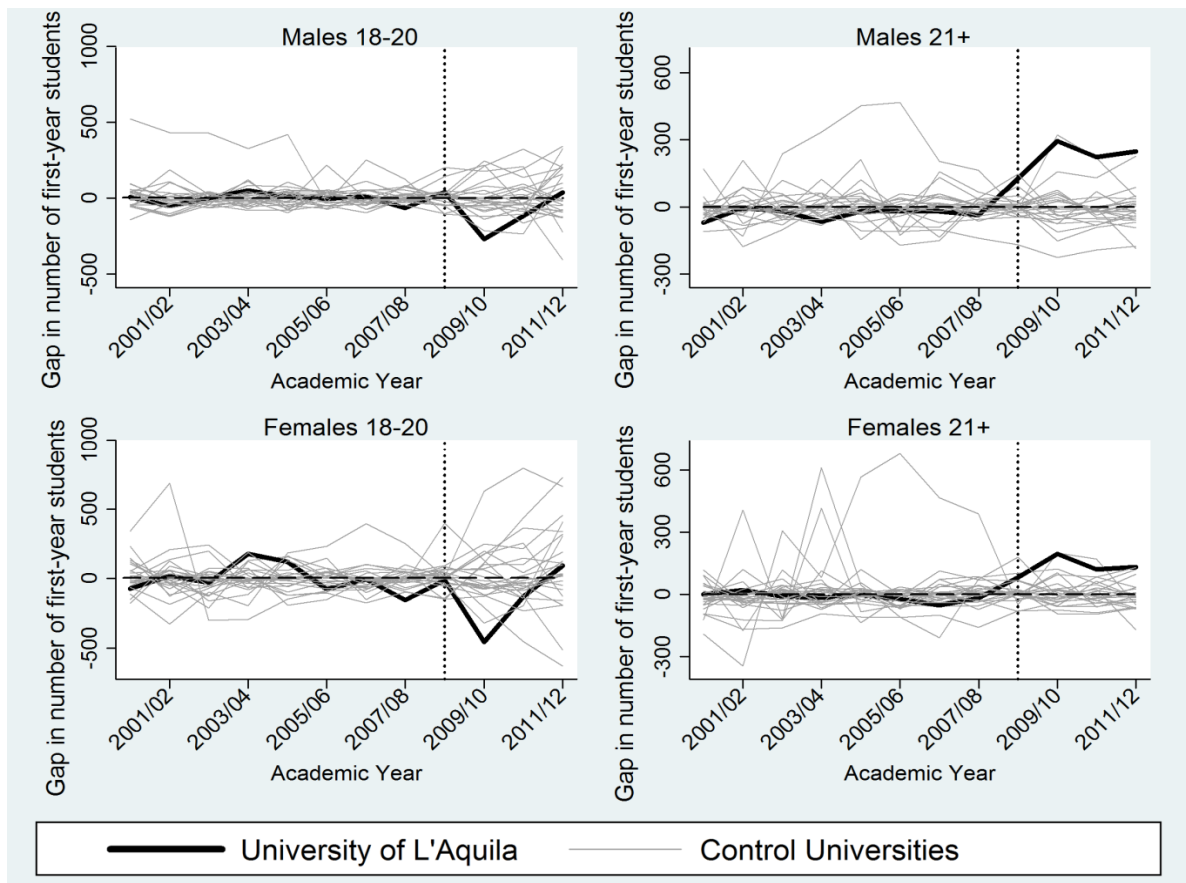


**Figure 8. Synthetic control results by gender and age, academic years 2000/01-2011/12**

Number of first-year students by gender and age at the University of L'Aquila and at the synthetic comparison group



Number of first-year students' gap by gender and age at University of L'Aquila and placebo gaps by gender and age at control universities

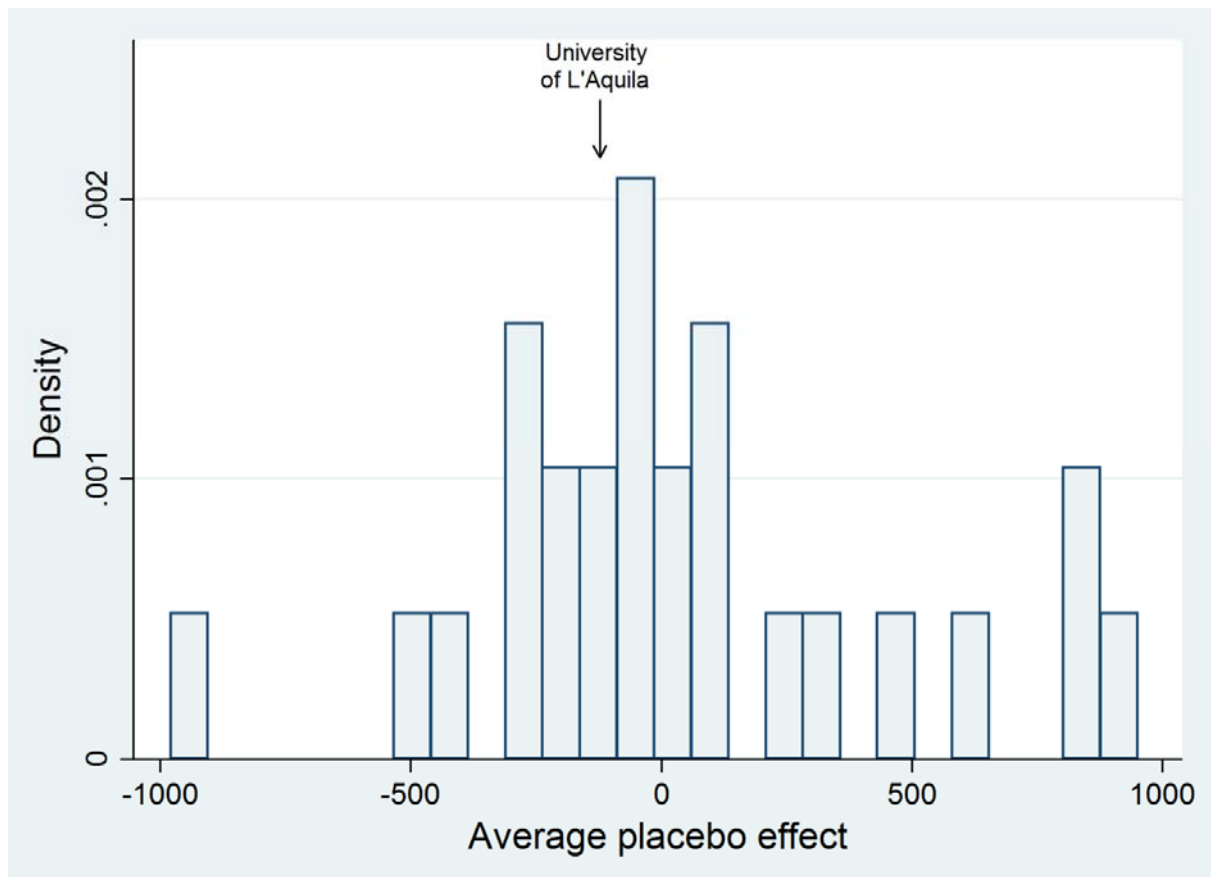


## **Appendix A – Additional placebo tests**

Following Ando (2015), we carry out a second placebo test in which we compute the average estimated effect of the earthquake on first-year enrolment at the University of L’Aquila and at the control universities across the three post-disaster academic years. Then the size of the average number of first-year students at the University of L’Aquila is tested by the distribution of average placebo effects for all the control universities. Figure A1 shows that the average estimated post-earthquake effect at University of L’Aquila lies within the distribution of the placebo effects and there is no evidence of a statistically significant effect.

Finally, we also compare the gap in the number of first-year students at the University of L’Aquila relative to the similar gaps at control universities, which were obtained from the first placebo exercise (see Figure 3), by looking at the distribution of the ratios of post/pre-earthquake mean square prediction error (MSPE). Figure A2 displays the distribution of the post/pre-earthquake ratios of the MSPE for the University of L’Aquila and all 25 control universities. The post-earthquake MSPE for the University of L’Aquila University is about 3 times the MSPE in the pre-earthquake period. As several control universities have larger ratios, this test confirms that the treatment effect for the University of L’Aquila is not statistically significant.

**Figure A1. Histogram of average placebo effects**



**Figure A2. Histogram of ratios between post-earthquake MSPE and pre-earthquake MSPE**

