

Kristoufek, Ladislav; Lunackova, Petra

Working Paper

Rockets and feathers meet Joseph: Reinvestigating the oil-gasoline asymmetry on the international markets

IES Working Paper, No. 2/2015

Provided in Cooperation with:

Charles University, Institute of Economic Studies (IES)

Suggested Citation: Kristoufek, Ladislav; Lunackova, Petra (2015) : Rockets and feathers meet Joseph: Reinvestigating the oil-gasoline asymmetry on the international markets, IES Working Paper, No. 2/2015, Charles University in Prague, Institute of Economic Studies (IES), Prague

This Version is available at:

<https://hdl.handle.net/10419/120442>

Standard-Nutzungsbedingungen:

Die Dokumente auf EconStor dürfen zu eigenen wissenschaftlichen Zwecken und zum Privatgebrauch gespeichert und kopiert werden.

Sie dürfen die Dokumente nicht für öffentliche oder kommerzielle Zwecke vervielfältigen, öffentlich ausstellen, öffentlich zugänglich machen, vertreiben oder anderweitig nutzen.

Sofern die Verfasser die Dokumente unter Open-Content-Lizenzen (insbesondere CC-Lizenzen) zur Verfügung gestellt haben sollten, gelten abweichend von diesen Nutzungsbedingungen die in der dort genannten Lizenz gewährten Nutzungsrechte.

Terms of use:

Documents in EconStor may be saved and copied for your personal and scholarly purposes.

You are not to copy documents for public or commercial purposes, to exhibit the documents publicly, to make them publicly available on the internet, or to distribute or otherwise use the documents in public.

If the documents have been made available under an Open Content Licence (especially Creative Commons Licences), you may exercise further usage rights as specified in the indicated licence.

Institute of Economic Studies, Faculty of Social Sciences
Charles University in Prague

Rockets and Feathers Meet Joseph: Reinvestigating the Oil-gasoline Asymmetry on the International Markets

Ladislav Kristoufek
Petra Lunackova

IES Working Paper: 2/2015



Institute of Economic Studies,
Faculty of Social Sciences,
Charles University in Prague

[UK FSV – IES]

Opletalova 26
CZ-110 00, Prague
E-mail : ies@fsv.cuni.cz
<http://ies.fsv.cuni.cz>

Institut ekonomických studií
Fakulta sociálních věd
Univerzita Karlova v Praze

Opletalova 26
110 00 Praha 1

E-mail : ies@fsv.cuni.cz
<http://ies.fsv.cuni.cz>

Disclaimer: The IES Working Papers is an online paper series for works by the faculty and students of the Institute of Economic Studies, Faculty of Social Sciences, Charles University in Prague, Czech Republic. The papers are peer reviewed, but they are *not* edited or formatted by the editors. The views expressed in documents served by this site do not reflect the views of the IES or any other Charles University Department. They are the sole property of the respective authors. Additional info at: [ies@fsv.cuni.cz](http://ies.fsv.cuni.cz)

Copyright Notice: Although all documents published by the IES are provided without charge, they are licensed for personal, academic or educational use. All rights are reserved by the authors.

Citations: All references to documents served by this site must be appropriately cited.

Bibliographic information:

Kristoufek L., Lumackova P. (2015). "Rockets and Feathers Meet Joseph : Reinvestigating the Oil-gasoline Asymmetry on the International Markets" IES Working Paper 2/2015. IES FSV. Charles University.

This paper can be downloaded at: <http://ies.fsv.cuni.cz>

Rockets and Feathers Meet Joseph: Reinvestigating the Oil-gasoline Asymmetry on the International Markets

Ladislav Kristoufek^{a,b}

Petra Lunackova^a

^aInstitute of Economic Studies, Faculty of Social Sciences, Charles University in Prague, Smetanovo nábřeží 6, 111 01 Prague 1, Czech Republic

^bInstitute of Information Theory and Automation, Academy of Sciences of the Czech Republic, Pod Vodárenskou Věží 4, 182 02, Prague, Czech Republic
E-mail: kristouf@utia.cas.cz

January 2015

Abstract:

We reinvestigate the "rockets and feathers" effect between retail gasoline and crude oil prices in a new framework of fractional integration, long-term memory and borderline (non)stationarity. The most frequently used error-correction model is examined in detail and we find that the prices return to their equilibrium value much more slowly than would be typical for the error-correction model. Such dynamics is usually referred to as "the Joseph effect". The standard procedure is shown to be troublesome and we introduce two new tests to investigate possible asymmetry in the price adjustment to equilibrium under these complicated time series characteristics. On the dataset of seven national gasoline prices, we find no statistically significant asymmetry. The proposed methodology is not limited to the gasoline and crude oil case but it can be utilized for any asymmetric adjustment analysis.

Keywords: rockets and feathers, asymmetry, gasoline, crude oil, cointegration
JEL: Q40, Q43, Q48

1. Introduction

Gasoline prices shoot up like rockets and fall down slowly like feathers – such is a popular belief and a feeling of retail customers at gasoline stations. Increasing gasoline prices in the last decade have made such notion even more relevant to general public as well as to policy makers. The study of Bacon (1991) has coined the term “rockets and feathers” into the literature and since then, the topic has attracted much attention. The price of gasoline, after controlling for taxes, is primarily driven by the crude oil prices, even though such effect is indirect as there are usually several steps from the oil rigs and wells to the retail customers. Although the passthrough of the oil price to the retail gasoline prices might take relatively a long time, due to economic reasons such as transportation, menu costs, storage and others, the price adjustment should be symmetric whether the oil prices are going up or down. Mandelbrot and Wallis (1968) refer to such long-term dynamics as the Joseph effect inspired by the biblical story of Joseph (son of Jacob) who interpreted a dream of the Egyptian pharaoh about upcoming seven years of plenty followed by seven years of famine (Chapter 41 of the Book of Genesis). The dream-telling had been rewarded and Joseph served as the pharaoh’s vizier. The years of plenty and the years of famine represent long periods when time series are above or below their long-term mean. From an econometric standpoint, this is represented by a slow decay of autocorrelation function of the long-term correlated¹ (long-range correlated, or persistent) series (Beran, 1994; Samorodnitsky, 2006).

Even though the parallel between price adjustment and the Joseph effect might be vivid and straightforward, it does not reflect the approach taken in majority of the empirical literature investigating the “rockets and feathers” effect in the gasoline market. In Section 2, we present a comprehensive literature review of the asymmetric price adjustment between gasoline and crude oil and we show that the studies usually begin with the assumption of the long-term equilibrium relationship between retail gasoline (or diesel in some cases) and crude oil. Specifically, the cointegration relationship is being built upon. This is well grounded both theoretically and empirically. However, the next step usually stems in estimating some form of an error-correction model. The deviation from equilibrium, represented by the error-correction term in the cointegration equation, is thus assumed to return to zero, i.e. the equilibrium state, rather quickly. We describe the cointegration and error-correction models methodology in Section 3. There, we also introduce the analyzed dataset, which comprises of the gasoline markets of Belgium, France, Germany, Italy, the Netherlands, the UK and the USA, and we focus on the basic dynamic properties of the series as well. We show that the gasoline markets are indeed cointegrated with crude oil.

¹Specifically, the autocorrelation function $\rho(k)$ (with lag k) of long-term correlated series decays as $\rho(k) \propto k^{2H-2}$ for $k \rightarrow +\infty$. Hurst exponent H represents a strength of the long-term correlations. A time series is standardly labelled as long-term correlated for $H > 0.5$. Such process follows long-lived deviations from its mean, yet still reverts back to it for $H < 1.5$ (a random walk process has $H = 1.5$). This type of a process has been historically labeled as “the Joseph effect” (Mandelbrot and Wallis, 1968) due to its long-term behavior, similar to the biblical reference.

However, we also show that gasoline prices return to their long-run equilibrium very slowly. Specifically, we show that such dynamics can be attributed to long-term correlations and hence the Joseph effect rather than to the rapidly adjusting error-correction model. We argue that such a strong memory makes the standard error-correction models and their variants infeasible. As a solution, we propose two new tests for examining asymmetry in the cointegration framework. In Section 4, we present results of the asymmetry testing on the international gasoline markets and we show that there is no statistical evidence of the “rockets and feathers” dynamics towards equilibrium, and we also outline possible directions of future research in this area. Section 5 concludes.

2. Literature review

The term “rockets and feathers” has been connected with crude oil and retail gasoline since 1991 when Robert Bacon published his famous article (Bacon, 1991). Since then, vast research focusing on the (a)symmetric behavior of prices “at the pump” has been performed. Its motivation is to explain this phenomenon and understand whether any policy would improve the current market situation. As the literature on the topic is quite broad, we summarize the reviewed articles in Tab. 1 while focusing mainly on the analyzed time period, location and possible asymmetry.

The most common econometric approach investigating the asymmetry is the error-correction model (ECM). We focus on this dominant branch of the literature. All the ECMs are based on the two step Engle and Granger (1987) procedure that exploits the long-run equilibrium relationship between, in our case mostly, crude oil and retail gasoline. Various ECM specifications could be put into three groups – asymmetric ECM (used by most studies), threshold autoregressive ECM (Godby et al., 2000; Al-Gudhea et al., 2007) and ECM with threshold cointegration (Chen et al., 2005). For more detailed analysis, see the work of Grasso and Manera (2007) who study the sensitivity of various ECM models in order to understand how the choice of a particular model influences the results.

Existing literature differs by a country, a sample period and a data frequency, an econometric model and a research question. Paper of Borenstein et al. (1997) has influenced all subsequent papers and it serves as the reference point until now. The study is focused on the US market in 1986-1992 and its findings are based on ECM. The authors provide evidence for a common belief that after a crude oil price changes, gasoline prices rise faster than they fall. They try to identify the stage where the asymmetry occurs but it seems to be spread over all stages. The paper also offers an explanation for the asymmetric retail price adjustment (sticky prices, production lags, and inventories).

Balke et al. (1998) extend the previous study using several different model specifications and they confirm the asymmetry and conclude that the findings are sensitive to model specifications but not to the sample period. Bachmeier and Griffin (2003) use daily (spot) prices from the US market and find no evidence of asymmetry in wholesale gasoline prices. Analysis of Borenstein et al. (1997) is performed on weekly and biweekly data and that is how Bachmeier and Griffin (2003) explain different results – broader interval can result in a significant bias.

The literature on the “rockets and feathers” phenomenon can be viewed and compared from many different angles. Firstly, the studies can be divided according to a country of interest. Most of the studies focus on the US market, some on Canada and the UK, few on Western European countries, other countries like Chile (Balmaceda and Soruco, 2008) or New Zealand (Liu et al., 2010) are studied only rarely. According to Duffy-Deno (1996), the asymmetric effect depends also on the market size, and conclusions made based on local markets’ data cannot be generalized and applied to national markets. Deltas (2008) also relates the asymmetry to the local market conditions. Secondly, according to the objective, the articles’ aim is to (dis)prove the asymmetry or to analyze the asymmetry itself. Thirdly, a sample period and a data frequency matter, and mainly the latter one that varies from daily to monthly, and various specifications (simple price averages or prices collected on a specific day of the week) are utilized. For example, Bettendorf et al. (2003) estimate the ECM for five datasets, one for each working day, to find out whether the choice of a weekday matters. Fourthly, according to the results, asymmetry prevails but it is not unanimous. Godby et al. (2000) work on Canadian data and, together with Bachmeier and Griffin (2003) and Karrenbrock (1991), they are among few authors who cannot reject symmetry. The three mentioned studies that report no asymmetry all worked with different data frequency which suggests that frequency may not be the crucial factor. Some findings are also neutral as in Bettendorf et al. (2003) or Oladunjoye (2008). From a different angle, Douglas (2010) claims that the uncovered asymmetry is caused by outliers in the analyzed dataset. The asymmetry disappears when the outliers are excluded.

Last but not least, we can split the articles according to the approach that explains the asymmetry as all papers discuss the causes of the asymmetry as well. There are three major explanations. The first one focuses on market power and connects the phenomenon to the oligopolistic theory. Market power is the most widespread explanation. Price of retail gasoline is easily available and of interest to all drivers, which is a large group of consumers that frequently suspect some form of a collusion, even though there is little evidence of the market power abuse (Brown and Yücel, 2000). Moreover, even if there was a player with a significant market power, Peltzman (2000) does not find any link between market power and asymmetric pricing. On the contrary, Radchenko (2005) attributes asymmetry to the oligopolistic theory and finds negative relation between oil price volatility and asymmetric response of gasoline prices – a degree of asymmetry declines with an increase in oil price volatility.

The second explanation analyzes the demand side of the market and claims that consumers cause part of the asymmetry, a theory known as the consumer search theory. Consumers search less intensively for a better deal when prices are falling. Imagine a driver passing by a gas station who spots gasoline rack prices and now gasoline costs less than he expected. If our hypothetical driver is in a need of gasoline, he will stop at that station (and observe others’ prices as he goes his way). In his theoretical paper, Tappata (2009) suggests that the asymmetric response emerges naturally, based on consumer search. Lewis (2011) also says that consumers search less when prices are falling, the reduced search causes a slower price response. Johnson (2002) gives the following implication – if search costs are such an important factor that determines the lag length, then there should be a shorter

adjustment lag in the case of diesel than in the case of gasoline, as diesel is typically bought in larger quantities and more frequently so that the customers have a greater incentive to search.

Other (minor) explanations form the third group. Decreasing inventories are the reason to either produce less (resulting in a price increase) or buy more inputs (resulting in a price increase as well). Unfortunately, the opposite does not have to hold for an increasing amount of inventories which adjust more slowly. The intention is to avoid abrupt price changes and not to increase an already high price volatility. The FIFO (first in first out) accounting principle built in the pricing process does not smooth the price/costs changes and refinery adjustment costs either, it follows the behavior of inventories. Gasoline prices respond to cost shocks with a lag in order to spread the adjustment costs (Borenstein and Shepard, 2002).

Panagiotidis and Rutledge (2007) test the assumption that liberalization should cause decoupling of gas and oil prices on the British data. Their results do not support the expectations, which on the contrary support the cointegration relation of crude oil and retail gasoline. Galeotti et al. (2003) revisit the phenomenon analyzing an international data set (joint data for France, Spain, Italy, Germany and the United Kingdom) and break up the process into two stages – refinery and distribution. In both cases, asymmetry is found. Verlinda (2008) then focuses on a local market, believing in its greater information value. Employing a detailed weekly data at a station level and local market characteristics, the author concludes that the degree of asymmetry is influenced by a brand identity, a proximity to rivals, local market features and demographics.

Reilly and Witt (1998) focus on the work of Bacon (1991) and their findings do not support those of Bacon who claims the upward price process to be slightly faster and the period of adjustment more concentrated than in the case of downward price movement. According to Reilly and Witt (1998), both price changes are fully passed through in the long-run. Eckert (2002) studies the Canadian data (Windsor, Ontario) and rejects a tacit collusion as the explanation of asymmetry, and instead points out that retail price series show an asymmetric cycle, which is not present in the wholesale prices series. And finally, Kaufmann and Laskowski (2005) argue that asymmetry is implied by the efficient gasoline markets so that there is little justification for policy interventions.

3. Data and preliminary analysis

We analyze weekly gasoline prices for Belgium, France, Germany, Italy, the Netherlands, the UK and the USA and their possible asymmetric transmission referred to as the “rockets and feathers” effect in the literature. For the European markets, we utilize the Brent crude oil as an exogenous production variable, and for the US market, we use the WTI crude oil. The oil prices are the average weekly spot prices and the gasoline prices are the average retail prices for the given country. The whole dataset was obtained from www.eia.gov. The analyzed period starts on 08.01.1996 and goes up to 19.5.2014, which gives us 959 weekly prices for each variable.

Evolution of all the analyzed prices is illustrated in Fig. 1. The gasoline prices are reported without taxes and in the US dollars per gallon for a better comparison. Crude oil prices are reported in the US dollars per barrel. We observe that the gasoline prices for all countries practically overlap for the whole analyzed period. The same thing can be said about the Brent and WTI crude oils until 2011. However, from 2011 onwards, the WTI price remains below the Brent price due to changes in the US oil policies. Even though the initial divergence of the series is rather sharp, the prices have been converging during the last months.

Traditional “rockets and feathers” literature builds on the assumption that gasoline and crude oil prices are cointegrated, i.e. they tend to a long-run equilibrium, in economic terms. As crude oil prices can be taken as an exogenous variable and all prices are reported in the US dollars, we can write the long-run equilibrium relationship as

$$\log(G_{i,t}) = \beta_0 + \beta_1 \log(CO_{i,t}) + \varepsilon_{i,t} \quad (1)$$

where $G_{i,t}$ is the gasoline price of country i at time t , $CO_{i,t}$ is the crude oil price respective to country i at time t . Due to the logarithmic specification of Eq. 1, parameter β_1 can be interpreted as a long-term elasticity or a long-term passthrough. Error-correction term $\varepsilon_{i,t}$ is a deviation from the long-term equilibrium. If the prices return to their long-term equilibrium more slowly from above than from below, the situation is labelled as the “rockets and feathers” effect. Therefore, the analysis of behavior of the error-correction term separately above and below the equilibrium value becomes crucial.

As we have demonstrated in the preceding sections, the typical way how to approach such problem is to treat Eq. 1 as the cointegration relationship. If such relationship is found, the authors usually tackle the series using the (vector) error-correction model. Such procedure assumes that the original series G and CO are unit roots, i.e. integrated of order one, $I(1)$, and the error-correction term is stationary and weakly dependent, i.e. integrated of order zero, $I(0)$ ². As the cointegration relationship is usually built simply on the prices of gasoline and crude oil, the Engle-Granger two-step cointegration testing procedure is applied (Engle and Granger, 1987). The procedure stems in two steps. Firstly, the original series of Eq. 1 are tested for unit root using the Augmented Dickey-Fuller (ADF) test (Dickey and Fuller, 1979). And secondly, if both the original series are found to contain unit root, the cointegration relationship in Eq. 1 is estimated using OLS and the residuals are tested for the unit root presence as well. If the unit root is rejected for the residuals, i.e. the estimated error-correction term, we say that series G and CO are cointegrated.

²A level of integration reflects a number of times the series needs to be difference to become a weakly dependent stationary process, i.e. integrated of order $I(0)$. This number is standardly labelled as d . The parameter d does not necessarily need to be a finite number. For such case, we speak about fractionally integrated processes as these need to be fractionally differenced to attain $d = 0$. The parameter is important for describing dynamic properties of the series. For $d = 0$, we have a weakly dependent stationary process, as already noted. For $d > 0$, we have a long-range dependent process. Processes with $d < 0.5$ are stationary and mean-reverting, the ones with $0.5 \leq d < 1$ are non-stationary but still mean-reverting, and the ones with $d \geq 1$ are non-stationary and not mean-reverting, i.e. explosive. The fractional differencing parameter d is tightly connected to Hurst exponent H from the definition of long-term memory as $d = H - 0.5$.

For our dataset, we find straightforward results for the original series, which are summarized in Tab. 2 – all the analyzed series contain unit root. In Tab. 2, we also apply the KPSS test (Kwiatkowski et al., 1992), which has a null hypothesis of $I(0)$, i.e. weakly dependent stationarity. The latter test supports the finding of unit roots in all gasoline and crude oil prices. The series are thus eligible for possible cointegration relationships. Estimated long-run elasticities (also standardly referred to as a long-term passthrough or a long-term transmission), together with heteroskedasticity and autocorrelation consistent (HAC) standard errors, are summarized in Tab. 3. The long-term transmissions vary between 0.6 and 0.8 and we thus do not observe a complete passthrough of the crude oil price and its changes into gasoline prices for any of the analyzed markets. However, the more important findings are reported in the right part of the table.

There, we report the ADF and KPSS tests for the error-correction terms from all the cointegration relationships, which are illustrated in Fig. 2. The results are again quite straightforward – the error-correction terms are not unit root series but are also not stationary (or they are borderline stationary³). This is further supported by the estimated d parameters using the local Whittle⁴ (Robinson, 1995) and the GPH⁵ (Geweke and Porter-Hudak, 1983) estimators. The estimates and standard errors suggest that most of the error-terms are borderline (non-)stationary with $0.5 \lesssim d < 1$. We can thus safely say that all of the analyzed pairs are cointegrated. However, we can also safely state that the error-correction terms are not $I(0)$. Even though this does not play any significant part for the cointegration itself, it plays a crucial role in the appropriateness of the error-correction models. Using the notation of Eq. 1, we can write the error-correction model (ECM) as

$$\Delta \log(G_{i,t}) = \gamma_0 + \sum_{j=1}^p \gamma_j \Delta \log(G_{i,t-j}) + \sum_{j=1}^p \delta_j \Delta \log(CO_{i,t-j}) + \eta \hat{\varepsilon}_{i,t-1} + u_{i,t}. \quad (2)$$

The regression is estimated using the ordinary least squares and parameter η is negative for the cointegration relationship, i.e. the error-correction term reverts back to the mean values and the cointegrated pair does not diverge⁶. The logarithmic differences of the gasoline and crude oil prices are $I(0)$ automatically, i.e. from the fact that the prices are

³Processes with the fractional integration parameter $d \approx 0.5$ are usually referred to as borderline stationary.

⁴The local Whittle estimator is a semi-parametric maximum likelihood estimator utilizing the likelihood function of Künsch (1987) and using a part of spectrum near the origin. Spectrum $f(\lambda)$ is estimated using periodogram $I(\lambda)$. For the time series of length T , and setting $m \leq T/2$ and $\lambda_j = 2\pi j/T$, the Hurst exponent is estimated as $\hat{H} = \arg \min R(H)$ where $R(H) = \log \left(\frac{1}{m} \sum_{j=1}^m \lambda_j^{2H-1} I(\lambda_j) \right) - \frac{2H-1}{m} \sum_{j=1}^m \log \lambda_j$. The estimator is consistent and asymptotically normal.

⁵The GPH estimator is based on a full functional specification of the underlying process as the fractional Gaussian noise which yields a specific spectral density which is in turn used in the regression estimation of $\log I(\lambda_j) \propto -(H - 0.5) \log[4 \sin^2(\lambda_j/2)]$ using the periodogram in the same way as the previously defined local Whittle estimator.

⁶The error-correction specification allows for distinguishing between a short-run passthrough represented by δ_j parameters and a long-run passthrough represented by the parameter η . As we argue here, the ECM specification is infeasible in the crude oil and gasoline market so that the separation between

I(1). However, for a feasible estimation procedure, we also need a stationary and weakly dependent error-correction term $\hat{\varepsilon}_t$. This is usually assumed from rejection of the null hypothesis of the ADF test, i.e. from the rejection of unit root. However, a rejection of I(1) does not automatically imply either of I(0), stationarity or weak dependence. Figures shown in Tab. 3 clearly show that the error-correction term does not meet the necessary criteria for ECM to be correctly estimated. There are various reasons why the estimation procedure in Eq. 2 does not work when the error-correction term is not I(0). We now shortly focus on the most obvious one.

Assume that Eq. 2 holds and also assume that the error-correction term $\hat{\varepsilon}_{i,t-1}$ is integrated of order higher than zero, i.e. it is a long-term memory process as reported for our dataset. From the definition of the standard cointegration relationship, we know that both $\log(G_{i,t})$ and $\log(CO_{i,t})$ are integrated of order one, i.e. I(1). Their first differences are thus automatically I(0). Turning now back to Eq. 2, we have an I(0) process (left hand side of the equation) being a sum of three I(0) processes (gasoline, crude oil and an error term $u_{i,t}$) and one process integrated of order higher than zero. This is a contradiction as the sum of integrated processes is asymptotically integrated of the same order as the highest order among the separate processes (Engle and Granger, 1987; Samorodnitsky, 2006; Kristoufek, 2013). The estimation is thus inconsistent.

Even though we do not replicate the time series analyzed in other studies using ECM and asymmetric ECM, we can quite confidently speculate that the statistical and dynamic properties of the gasoline and crude oil series do not differ much from the ones we report and it is very likely that the same problem exists even for other studies. Application of ECM (or the asymmetric ECM which is popular in the “rockets and feathers” literature) thus yields unreliable results. Any study dealing with the asymmetric passthrough from crude oil to gasoline prices using the cointegration framework should take this issue into consideration. In the next section, we introduce two tests which build on the cointegration methodology and possible asymmetry of the error-correction term. The tests are constructed using the characteristics of the mean-reverting time series and they do not need the analyzed series to be either I(0) or stationary or weakly dependent.

4. Methodology

The cointegration framework is a natural environment for analyzing the price transmission from crude oil to retail gasoline. The “rockets and feathers” dynamics of the relationship can be simply understood as the fact that it takes prices a longer time before they converge back to their equilibrium level if gasoline is overpriced (with respect to the cointegration long-term equilibrium) than if it is underpriced. In the previous section, we have shown that the error-correction term, which represents such deviation from the equilibrium state, is fractionally integrated of order less than one which implies that the term is mean-reverting and the gasoline price thus returns to its equilibrium level. We can use

these two effects loses its meaning. We thus strictly focus on the long-run passthrough implied from the original cointegration relationship given by β_1 in Eq. 1.

the mean reversion approach in the “rockets and feathers” framework by saying that if the effect is existent on the specific market, then the positive part of the error-correction term will revert to its mean more slowly than the negative part. In this section, we introduce two new tests based on this idea.

4.1. Wave test

Mean-reverting persistent time series are characteristic by wandering quite far away from the mean value and for long time periods. Labeling values above the mean as + and values below the mean as -, we can obtain a series such as + + + - - - - + + - which consists of four runs - two positive ones with lengths of three and two, and two negative ones with lengths of four and one. Let’s say that we have a set of positive runs with given lengths W^+ and a set of negative runs with given lengths W^- . In the example, we have $W^+ \in \{3, 2\}$ and $W^- \in \{4, 1\}$.

Let’s return to the case of error-correction term and its possible asymmetry around the mean value. In the case of symmetry, series both above and below the mean have the same mean-reversion rate so that the length of runs should be on average the same. In the case of the “rockets and feathers” dynamics, the error-correction term should stay longer above its mean value before it returns to its equilibrium level than if it’s below its mean value. Utilizing this characteristic, we propose a new test based on a difference between the average length of runs above and below the mean value. As the wandering away from the mean value is rather persistent for this specific case, we rather refer to these persistent runs as waves. This way, we also distinguish between standard runs tests, which are used to test no serial correlation of the series whereas the waves test examines potential asymmetry in the dynamics around the mean value.

The wave testing statistic W is defined as

$$W = \overline{W^+} - \overline{W^-} \tag{3}$$

where $\overline{W^+}$ is an average length of the positive runs in the error-correction term $\hat{\varepsilon}_t$ and $\overline{W^-}$ is an average length of the negative runs. For the symmetric error-correction term, the expected value of the W statistic is zero whereas for the prevailing positive runs, i.e. the slower mean-reversion of the values above the equilibrium state which corresponds to the “rockets and feathers” effect, the statistic is positive. Therefore, the null hypothesis is stated as $H_0 : W = 0$ against the alternative of $H_1 : W > 0$.

4.2. Rescaled range ratio test

In the previous section, we show that the error-correction terms for all analyzed series are non-stationary or borderline stationary. Specifically, the fractional differencing parameter d is very far from $d = 0$ assumed for standard error-correction models. Even if $d \gtrsim 0.5$ for all series, which disqualifies the use of standard error-correction models, the notion of fractional integration and long-term memory still provides ways to test for asymmetry in the error-correction term dynamics around its mean. The higher the d parameter is, the more persistent the underlying series is and thus the more it wanders away from its long-term mean value. Therefore, we assume that the level of persistence is the same for both

parts (positive and negative) of the symmetric error-correction term. And for the “rockets and feathers” asymmetry, we would observe that the positive part of the error-correction term is more persistent than the negative part.

However, it turns out that testing for difference in the fractional integration parameters d of part of one series is much more troublesome than testing the difference between two series. This is mainly due to the nature of the error-correction term $\hat{\varepsilon}_t$ separation into two series – the positive and the negative ones. The positive part takes the same values of the original series if these are positive and zero otherwise, and symmetrically for the negative part. Each of these series thus has long periods when being equal to zero. This levies a strong autocorrelation structure into the series so that we cannot simply estimate the d parameters of the separate series and compare these. We cannot even use the two-sample test of Lavancier et al. (2010) which is specifically constructed for testing equal d for two series. To overcome these issues, we introduce a new test.

Motivated by the test of Lavancier et al. (2010) which is based on the univariate rescaled variance test of Giraitis et al. (2003), we propose a parallel test based on the rescaled range test originally utilized by Hurst (1951) and later studied and popularized by Benoît Mandelbrot (Mandelbrot and Wallis, 1968; Mandelbrot, 1971, 1972). Similarly to the original method, we construct a range of the series’ profile, i.e. a difference between maximum and minimum of the cumulative deviations from the mean. However, our series have specific properties and the aim of the test is different so that we need to alter the original methodology.

We construct ranges for each part of the error-correction term $\hat{\varepsilon}_t$ and we label them as R^+ and R^- for the positive part and the negative part, respectively. Formally, this is expressed as

$$R^+ = \max \left(\sum_{t=1}^T \hat{\varepsilon}_t \mathbb{I}_{\hat{\varepsilon}_t \geq 0} \right) - \min \left(\sum_{t=1}^T \hat{\varepsilon}_t \mathbb{I}_{\hat{\varepsilon}_t \geq 0} \right) = \sum_{t=1}^T \hat{\varepsilon}_t \mathbb{I}_{\hat{\varepsilon}_t \geq 0} \quad (4)$$

$$R^- = \max \left(\sum_{t=1}^T \hat{\varepsilon}_t \mathbb{I}_{\hat{\varepsilon}_t < 0} \right) - \min \left(\sum_{t=1}^T \hat{\varepsilon}_t \mathbb{I}_{\hat{\varepsilon}_t < 0} \right) = - \sum_{t=1}^T \hat{\varepsilon}_t \mathbb{I}_{\hat{\varepsilon}_t < 0} \quad (5)$$

where \mathbb{I}_{\bullet} is an indicator function equal to 1 if the condition in \bullet is met and 0 otherwise. To take into consideration the fact that the scale of each part differs, we rescale each range using its variance. However, as the series are constructed as the negative and the positive part of the error-correction term, standard variance would introduce bias through its estimated mean value. To control for this specific, we utilize semi-variances of the series rather than variances. If the error-correction term varies symmetrically around its mean value, the rescaled ranges of each part should be the same (asymptotically). In the case of the “rockets and feathers” asymmetry, the rescaled range of the positive part should dominate the other one. This leads us to a construction of the testing statistic, which we label as the rescaled range ratio (RRR) statistic, as

$$RRR = \frac{R^+}{R^-} \times \frac{\sum_{t \in \{t: \hat{\varepsilon}_t < 0\}} \hat{\varepsilon}_t^2}{\sum_{t \in \{t: \hat{\varepsilon}_t \geq 0\}} \hat{\varepsilon}_t^2}. \quad (6)$$

As the rescaled ranges serve as a measure of mean-reversion speed, these should be equal for the symmetric case. Therefore, the null hypothesis is stated as $H_0 : RRR = 1$ against the alternative of $H_1 : RRR > 1$ as a higher rescaled range signifies a stronger persistence.

4.3. Statistical testing procedure

Both introduced tests follow a complex behavior under the null hypothesis dependent on a level of long-range dependence as well as distributional properties of the underlying process. Moreover, the tests are applied on a rather short finite sample time series (in our specific case with approximately 1000 observations). Distribution of the testing statistics under the null hypothesis thus needs to be carefully controlled for in the testing procedure.

We follow Hall and Wilson (1991) who introduce a bootstrapping procedure which ensures a high power of a test, i.e. a high chance of rejection the null hypothesis when in fact the alternative hypothesis is correct, as well as a low error in the significance of the test, i.e. a low probability of rejecting the null hypothesis when it is true.

Let us work with a parameter of interest θ and its estimate $\hat{\theta}$ with variance $\hat{\sigma}_\theta^2$. Let us further have a bootstrapped estimate of θ under the null hypothesis $\hat{\theta}^*$ with variance $\hat{\sigma}_{\theta^*}^2$. For a selected significance level $1 - \alpha$, we find a critical value \hat{t}_α for which

$$P^* \left(\frac{|\hat{\theta}^* - \hat{\theta}|}{\hat{\sigma}_{\theta^*}} > \hat{t}_\alpha \right) = \frac{\alpha}{2} \quad (7)$$

where P^* stands for probability measure under the bootstrap distribution. The null hypothesis $H_0 : \theta = \theta_0$ is rejected in favor of the alternative $H_1 : \theta > \theta_0$ if

$$\frac{\hat{\theta} - \theta_0}{\hat{\sigma}_\theta} > \hat{t}_\alpha. \quad (8)$$

As we work with time series rather than randomly sampled cross-sectional data, the bootstrapping procedure gets slightly more complicated (Efron, 1987; Kunsch, 1989). We cannot simply resample from the original series as this would destroy its correlation structure. We need to simulate a series which has very close dynamic and statistical properties as the original one but in addition, the null hypothesis holds. To do so, we utilize the Theiler's Amplitude Adjusted Fourier Transform (TAAF) (Theiler et al., 1992) which ensures that the series has the same correlation structure as the original series as well as distributional properties. Crucially, the method keeps the correlations symmetric as it is based on the Fourier transform. This way, the simulated series has symmetric correlations, which are needed under the null hypothesis, and the same distribution which avoids possible inefficiency of the testing statistics. We simulate 10,000 series using the TAAF

procedure for each analyzed series to obtain $\hat{\theta}^*$ and $\hat{\sigma}_{\theta^*}$. Null hypothesis θ_0 is given for both tests we utilize. We thus still need $\hat{\theta}$ and mainly $\hat{\sigma}_{\theta}$.

Estimated parameters are obtained using the moving-block jackknife method (Efron and Stein, 1981; Kunsch, 1989). In the procedure, one fixes the estimating period to J (in our case we set this period to $J = 500$). A parameter of interest is then estimated on observations $1, \dots, J = 500$, then on $2, \dots, J + 1$, and so forth. Eventually, we obtain $T - J + 1$ estimates, where T is the original time series length. Based on these, we get $\hat{\theta}$ as an average of the jackknifed estimates and $\hat{\sigma}_{\theta}$ as their standard deviation. This gives us all necessary variables for Eqs. 7 and 8 and the testing procedure is thus complete. Note again that the described procedure ensures very good statistical properties, specifically the high test power and low significance error as reported by Hall and Wilson (1991).

5. Application and discussion

In the Data and preliminary analysis section, we have shown that for all the studied gasoline markets (Belgium, France, Germany, Italy, the Netherlands, the UK, and the US), the relationship with the given crude oil (either Brent or WTI) is identified as a cointegration one, i.e. the gasoline and crude oil prices tend to an equilibrium value. The price transmission from crude oil to gasoline varies approximately between 0.6 and 0.8 so that it is quite strong yet still imperfect. Deviations from the long-term equilibrium gasoline prices, which are represented by the error-correction term, have been shown to deviate strongly from an $I(0)$ process. Such dynamics can be also observed by a naked eye in Fig. 2. The term is thus not weakly dependent and mostly on the verge of (non-)stationarity. Furthermore, we have shown that such error-correction term makes standard ECM models invalid. To be able to use the cointegration framework for distinguishing between symmetric and asymmetric dynamics of the error-correction term, we have introduced two new tests in the previous sections. Results of the tests now follow.

Tab. 4 summarizes all the results and it includes the testing statistics and p -values for the null hypothesis of symmetric adjustment of the error-correction term coming from Eq. 1 against the one-sided alternative hypothesis of the “rockets and feathers” asymmetry, i.e. the case when the error-correction term reverts to the equilibrium more slowly when its above equilibrium compared to the situation when it is below the equilibrium value. The p -values are based on the bootstrapping procedure described in detail in the previous section.

The results are very straightforward – we find no “rockets and feathers” dynamics in the analyzed series. Therefore, the long-run passthrough from crude oil to retail gasoline prices shows no signs of asymmetry for our dataset. To show how these results differ from the standardly used ECM framework, we also present the testing statistics for asymmetry based on (Galeotti et al., 2003)⁷. In the right part of Tab. 4, we present the testing statistics and

⁷Galeotti et al. (2003) constructs an asymmetric ECM model as $\Delta \log(G_{i,t}) = \alpha + \beta^+ ECM_{t-1}^+ + \beta^- ECM_{t-1}^- + \gamma^+ \Delta \log(CO_{i,t}^+) + \gamma^- \Delta \log(CO_{i,t}^-) + u_{i,t}$ where the superscripts + and – signify whether

p -values for the null hypothesis of symmetry against the “rockets and feathers” alternative. The latter is identified for two markets – Belgium and Germany. For others, the null hypothesis cannot be rejected. Such result supports our claim that the ECM framework should be used carefully as the ECM coefficient might be estimated incorrectly, leading to spuriously rejected symmetry. Nevertheless, the research on the topic is of course not complete.

Firstly, we have found no asymmetry at national level. However, more localized study could report qualitatively different results. Secondly, the pair of tests we have newly introduced in this article does not cover all possibilities. There are some other approaches that could be added such as fractionally integrated ECM or fractional cointegration framework in general. And thirdly, we do not investigate various stages of the price transmission. The article thus primarily serves as a starting point for treating the asymmetric equilibrium adjustment of the error-correction term in a different, statistically and econometrically convenient, way. Finally, it has to be noted that the developed tests are not restricted to the relationship between retail gasoline, crude oil and related variables but they can serve to test the asymmetry in any economic and financial application which considers asymmetry in the cointegration framework.

6. Conclusion

We have analyzed the possible “rockets and feathers” dynamics between the retail gasoline and crude oil prices. Focusing on the national prices of selected countries, we provide a step-by-step treatment in the cointegration framework. The standardly applied error-correction model methodology is discussed in detail. We show that it is not convenient for analysis of the price transmission asymmetry in the given system due to long-term memory aspects of the equilibrium adjustments, which are represented by the error-correction term. We show that the gasoline prices return to their equilibrium levels much more slowly than assumed by the ECM approach which makes the estimation inconsistent, and the results are thus unreliable. To deal with such issue, and to still remain in the cointegration environment, we introduce two new tests for asymmetry in the error-correction term – wave test and rescaled range ratio test.

On the dataset of seven national gasoline price series, we find no statistically significant signs of the “rockets and feathers” effect. However, this does not necessarily discard the previous results showing asymmetry as we limit ourselves to the national data only. The results might indeed differ for more local price series.

Importantly, the proposed framework is not limited only to the gasoline-oil relationship but it can be utilized for any economic and financial series which are considered in the equilibrium cointegrated relationship and the adjustment rate might be asymmetric. The article can thus serve as a reference for future research in this area.

the series is above or below zero. The testing procedure for the long-term asymmetry is based on the null hypothesis $H_0 : \beta^+ = \beta^-$ against the alternative $H_1 : \beta^+ > \beta^-$ for the “rockets and feathers” effect.

Acknowledgements

Support from the Czech Science Foundation under projects No. P402/11/0948 and No. 14-11402P is gratefully acknowledged.

References

- Al-Gudhea, S., T. Kenc, and S. Dibooglu (2007). Do retail gasoline prices rise more readily than they fall? a threshold cointegration approach. *Journal of Economics and Business* 59(6), 560–574.
- Bachmeier, L. J. and J. M. Griffin (2003). New evidence on asymmetric gasoline price responses. *Review of Economics and Statistics* 85(3), 772–776.
- Bacon, R. W. (1991). Rockets and feathers: The asymmetric speed of adjustment of UK retail gasoline prices to cost changes. *Energy Economics* 13(3), 211–218.
- Balke, N. S., S. P. Brown, and M. Yücel (1998). Crude oil and gasoline prices: An asymmetric relationship? *Economic and Financial Policy Review* 1, 2–11.
- Balmaceda, F. and P. Soruco (2008). Asymmetric dynamic pricing in a local gasoline retail market. *The Journal of Industrial Economics* 56(3), 629–653.
- Beran, J. (1994). *Statistics for Long-Memory Processes*, Volume 61 of *Monographs on Statistics and Applied Probability*. New York: Chapman and Hall.
- Bettendorf, L., S. A. Van der Geest, and M. Varkevisser (2003). Price asymmetry in the dutch retail gasoline market. *Energy Economics* 25(6), 669–689.
- Borenstein, S., A. C. Cameron, and R. Gilbert (1997). Do gasoline prices respond asymmetrically to crude oil price changes? *The Quarterly Journal of Economics* 112(1), 305–339.
- Borenstein, S. and A. Shepard (2002). Sticky prices, inventories, and market power in wholesale gasoline markets. *RAND Journal of Economics* 33, 116–139.
- Brown, S. P. and M. K. Yücel (2000). Gasoline and crude oil prices: why the asymmetry? *Economic and Financial Policy Review* 3(Q3), 23–29.
- Chen, L.-H., M. Finney, and K. S. Lai (2005). A threshold cointegration analysis of asymmetric price transmission from crude oil to gasoline prices. *Economics Letters* 89(2), 233–239.
- Deltas, G. (2008). Retail gasoline price dynamics and local market power. *The Journal of Industrial Economics* 56(3), 613–628.
- Dickey, D. and W. Fuller (1979). Distribution of the estimators for autoregressive time series with a unit root. *Journal of the American Statistical Association* 74, 427–431.

- Douglas, C. C. (2010). Do gasoline prices exhibit asymmetry? Not usually! *Energy Economics* 32(4), 918–925.
- Duffy-Deno, K. T. (1996). Retail price asymmetries in local gasoline markets. *Energy Economics* 18(1), 81–92.
- Eckert, A. (2002). Retail price cycles and response asymmetry. *Canadian Journal of Economics/Revue canadienne d'économique* 35(1), 52–77.
- Efron, B. (1987). Better bootstrap confidence intervals. *Journal of the American Statistical Association* 82, 171–185.
- Efron, B. and C. Stein (1981). The jackknife estimate of variance. *The Annals of Statistics* 9, 586–596.
- Engle, R. and C. Granger (1987). Co-integration and error correction: Representation, estimation and testing. *Econometrica* 55, E251–276.
- Galeotti, M., A. Lanza, and M. Manera (2003). Rockets and feathers revisited: an international comparison on European gasoline markets. *Energy Economics* 25, 175–190.
- Geweke, J. and S. Porter-Hudak (1983). The estimation and application of long memory time series models. *Journal of Time Series Analysis* 4(4), 221–238.
- Giraitis, L., P. Kokoszka, R. Leipus, and G. Teyssiere (2003). Rescaled variance and related tests for long memory in volatility and levels. *Journal of Econometrics* 112, 265–294.
- Godby, R., A. M. Lintner, T. Stengos, and B. Wandschneider (2000). Testing for asymmetric pricing in the Canadian retail gasoline markets. *Energy Economics* 22(3), 349–368.
- Grasso, M. and M. Manera (2007). Asymmetric error correction models for the oil-gasoline price relationship. *Energy Policy* 35(1), 156–177.
- Hall, P. and S. Wilson (1991). Two guidelines for bootstrap hypothesis testing. *Biometrics* 47, 757–762.
- Honarvar, A. (2009). Asymmetry in retail gasoline and crude oil price movements in the United States: An application of hidden cointegration techniques. *Energy Economics* 31(3), 395–402.
- Hurst, H. (1951). Long term storage capacity of reservoirs. *Transactions of the American Society of Engineers* 116, 770–799.
- Johnson, R. N. (2002). Search costs, lags and prices at the pump. *Review of Industrial Organization* 20(1), 33–50.
- Karrenbrock, J. D. (1991). The behavior of retail gasoline prices: symmetric or not? *Federal Reserve Bank of St. Louis Review* 73(July/August 1991), 19–29.

- Kaufmann, R. K. and C. Laskowski (2005). Causes for an asymmetric relation between the price of crude oil and refined petroleum products. *Energy Policy* 33(12), 1587–1596.
- Kristoufek, L. (2013). Mixed-correlated arfima processes for power-law cross-correlations. *Physica A* 392, 6484–6493.
- Künsch, H. (1987). Statistical aspects of self-similar processes. *Proceedings of the First World Congress of the Bernoulli Society* 1, 67–74.
- Kunsch, H. (1989). The jackknife and the bootstrap for general stationary observations. *The Annals of Statistics* 17, 1217–1241.
- Kwiatkowski, D., P. Phillips, P. Schmidt, and Y. Shin (1992). Testing the null of stationarity against alternative of a unit root: How sure are we that the economic time series have a unit root? *Journal of Econometrics* 54, 159–178.
- Lavancier, F., A. Philippe, and D. Surgailis (2010). A two-sample test for comparison of long memory parameters. *Journal of Multivariate Analysis* 101, 2118–2136.
- Lewis, M. S. (2011). Asymmetric price adjustment and consumer search: An examination of the retail gasoline market. *Journal of Economics & Management Strategy* 20(2), 409–449.
- Liu, M.-H., D. Margaritis, and A. Tourani-Rad (2010). Is there an asymmetry in the response of diesel and petrol prices to crude oil price changes? evidence from new zealand. *Energy Economics* 32(4), 926–932.
- Mandelbrot, B. (1971). Analysis of long-run dependence in economics: The R/S techniques. *Econometrica* 39, 68–69.
- Mandelbrot, B. (1972). Statistical methodology for non-periodic cycles: from covariance to R/S analysis. *Annals of Economic and Social Measurement* 1(3), 259–290.
- Mandelbrot, B. and J. Wallis (1968). Noah, Joseph and Operational Hydrology. *Water Resources Research* 4(5), 909–918.
- Nagy Eltony, M. (1998). The asymmetry of gasoline prices: fresh evidence from an error correction model for uk and usa. *International journal of energy research* 22(3), 271–276.
- Oladunjoye, O. (2008). Market structure and price adjustment in the us wholesale gasoline markets. *Energy Economics* 30(3), 937–961.
- Panagiotidis, T. and E. Rutledge (2007). Oil and gas markets in the uk: Evidence from a cointegrating approach. *Energy economics* 29(2), 329–347.
- Peltzman, S. (2000). Prices rise faster than they fall. *Journal of Political Economy* 108(3), 466–502.

- Radchenko, S. (2005). Oil price volatility and the asymmetric response of gasoline prices to oil price increases and decreases. *Energy economics* 27(5), 708–730.
- Reilly, B. and R. Witt (1998). Petrol price asymmetries revisited. *Energy Economics* 20(3), 297–308.
- Robinson, P. (1995). Gaussian semiparametric estimation of long range dependence. *The Annals of Statistics* 23(5), 1630–1661.
- Samorodnitsky, G. (2006). Long range dependence. *Foundation and Trends[®] in Stochastic Systems* 1(3), 163–257.
- Tappata, M. (2009). Rockets and feathers: Understanding asymmetric pricing. *The RAND Journal of Economics* 40(4), 673–687.
- Theiler, J., S. Eubank, A. Longtin, B. Galdrikian, and J. Farmer (1992). Testing for nonlinearity in time series: the method of surrogate data. *Physica D: Nonlinear Phenomena* 58, 77–94.
- Verlinda, J. A. (2008). Do rockets rise faster and feathers fall slower in an atmosphere of local market power? evidence from the retail gasoline market. *The Journal of Industrial Economics* 56(3), 581–612.

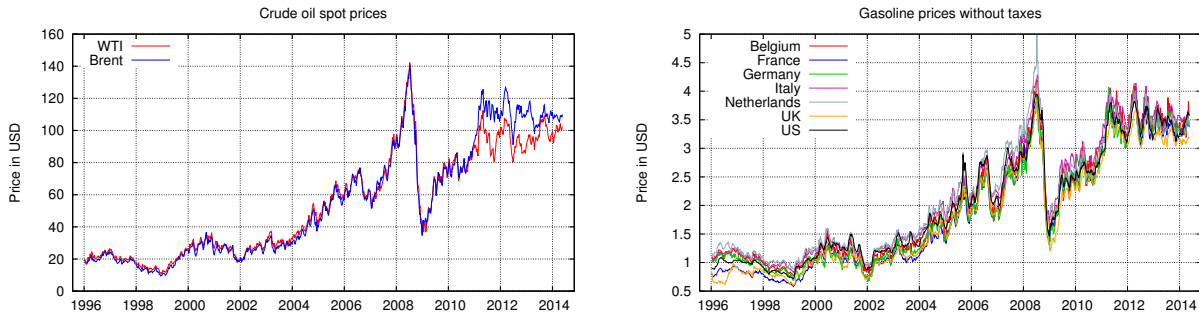


Figure 1: **Crude oil and gasoline prices.** Crude oil prices (left panel) for Brent and WTI are reported in the US dollars per barrel. Retail gasoline prices (right panel) corrected for taxes are reported in the US dollars per gallon. All series have been obtained from www.eia.gov.

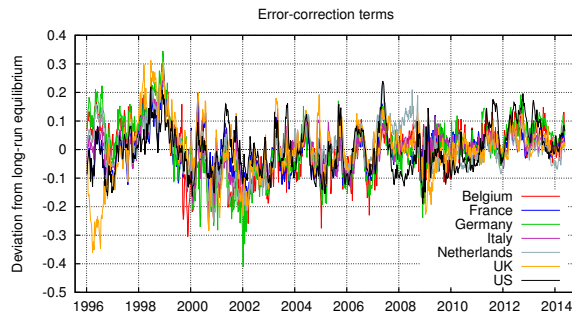


Figure 2: **Error-correction terms.** Error-correction terms are obtained from the cointegration relationship between respective retail gasoline price and crude oil. Logarithmic relationship between the series is estimated based on Eq. 1.

Table 1: Summary of the “rockets and feathers” literature

Reference	Period	Country	Model/method	Results
Al-Gudhea et al. (2007)	1998–2004	USA	TAR, M-TAR, VECM	Asymmetry
Bachmeier and Griffin (2003)	1985–1998	USA	ECM (asymmetric)	Symmetry
Bacon (1991)	1982–1989	UK	Quadratic quantity adjustment function	Asymmetry
Balke et al. (1998)	1987–1996	USA	ECM (asymmetric)	Asymmetry
Balmaceda and Soruco (2008)	2001–2004	Santiago, Chile	ECM	Neutral
Bettendorf et al. (2003)	1996–2001	Netherlands	ECM (asymmetric)	Asymmetry
Borenstein and Shepard (2002)	1985–1995	USA	LAM, PAM and VAR	Asymmetry
Borenstein et al. (1997)	1986–1992	USA	ECM	Asymmetry
Chen et al. (2005)	1991–2003	USA	ECM (threshold)	Asymmetry
Deltas (2008)	1988–2002	USA (separate states)	ECM (various)	Asymmetry
Douglas (2010)	1990–2008	USA	ECM	Depends on outliers
Duffy-Deno (1996)	1989–1993	Salt Lake City, USA	Markup model with first differences	Asymmetry
Eckert (2002)	1989–1994	Windsor, Ontario, Canada	ECM (reduced)	Asymmetry
Galeotti et al. (2003)	1985–2000	International (DE, ES, FR, IT, UK)	ECM (dynamic)	Asymmetry
Godby et al. (2000)	1990–1996	Canada (13 cities)	TAR within EC framework	Symmetry
Grasso and Manera (2007)	1985–2003	International (DE, ES, FR, IT, UK)	ECM (asymmetric, threshold)	Asymmetry
Honarvar (2009)	1981–2007	USA	ECM (crouching)	Asymmetry
Johnson (2002)	1996–1998	USA (15 cities)	ECM	Asymmetry
Karrenbrock (1991)	1983–1990	USA	Markup model with first differences	Symmetry
Kaufmann and Laskowski (2005)	1986–2002	USA	ECM (restricted and unrestricted)	Asymmetry
Lewis (2011)	2000–2001	San Diego, CA, USA	Consumer search model (with EC term)	Asymmetry
Liu et al. (2010)	2004–2009	New Zealand	ECM (asymmetric)	Asymmetry
Nagy Eltony (1998)	1980–1996	UK and USA	ECM (dynamic)	Asymmetry
Oladunjoye (2008)	1987–2004	USA	ECM (asymmetric)	Symmetry
Panagiotidis and Rutledge (2007)	1996–2003	UK	VECM	Symmetry
Radchenko (2005)	1993–2003	USA	ECM, VAR and PAM	Asymmetry
Reilly and Witt (1998)	1982–1995	UK	ECM (unrestricted dynamic)	Asymmetry
Tappata (2009)	Theoretical	General	Consumer search model	Asymmetry
Verhinda (2008)	2002–2003	USA	ECM	Asymmetry

Abbreviations: ECM (error-correction model), M-TAR (momentum threshold autoregressive model), PAM (partial adjustment model), LAM (lagged adjustment model), TAR (threshold autoregressive model), VAR (vector autoregression), VECM (vector error-correction model)

Table 2: Unit-root and stationarity testing

Country	ADF	p -value	KPSS	p -value
Belgium	-1.1166	> 0.1	10.9231	< 0.01
France	-1.1415	> 0.1	11.1559	< 0.01
Germany	-1.1823	> 0.1	10.8568	< 0.01
Italy	-0.9969	> 0.1	11.1836	< 0.01
Netherlands	-1.2177	> 0.1	10.6809	< 0.01
UK	-1.6644	> 0.1	10.9663	< 0.01
US	-0.8690	> 0.1	11.0235	< 0.01
Brent	-0.9535	> 0.1	11.0037	< 0.01
WTI	-1.1199	> 0.1	10.8473	< 0.01

Table 3: Cointegration & error-correction term testing

Country	Transmission	SE	ADF	p -value	KPSS	p -value	LWE	GPH
Belgium	0.6804	0.0123	-3.2763	0.0160	1.2094	< 0.01	0.6574 [0.0645]	0.6857 [0.0924]
France	0.7842	0.0096	-5.1817	< 0.01	0.7797	< 0.01	0.5201 [0.0645]	0.6012 [0.0982]
Germany	0.7005	0.0146	-3.7932	< 0.01	1.2647	< 0.01	0.7139 [0.0645]	0.8044 [0.1117]
Italy	0.6690	0.0104	-2.8726	0.0486	0.8037	< 0.01	0.6138 [0.0645]	0.6709 [0.1102]
Netherlands	0.6329	0.0114	-3.9637	< 0.01	0.5147	0.0420	0.7105 [0.0645]	0.7000 [0.1024]
UK	0.7478	0.0146	-4.0413	< 0.01	0.3121	> 0.1	0.6036 [0.0645]	0.5217 [0.0936]
US	0.7560	0.0106	-4.4462	< 0.01	0.6123	0.0290	0.4630 [0.0645]	0.4995 [0.1275]

Table 4: Asymmetry in error-correction term testing

Country	Wave test	p -value	RRR test	p -value	ECM test	p -value
Belgium	-2.5303	> 0.1	1.4876	> 0.1	2.0320	0.0211
France	-2.6220	> 0.1	1.0547	> 0.1	-0.1000	> 0.1
Germany	-4.4207	> 0.1	1.2883	> 0.1	2.0205	0.0217
Italy	-1.2520	> 0.1	1.2358	> 0.1	0.7598	> 0.1
Netherlands	-1.9005	> 0.1	0.9062	> 0.1	0.1585	> 0.1
UK	-0.8635	> 0.1	1.0037	> 0.1	-0.2975	> 0.1
US	-4.0140	> 0.1	0.7796	> 0.1	-1.5456	> 0.1

IES Working Paper Series

2015

1. Petr Macek, Petr Teplý: *Credit Valuation Adjustment Modelling During a Global Low Interest Rate Environment*
2. Ladislav Kristoufek, Petra Lunackova: *Rockets and Feathers Meet Joseph: Reinvestigating the Oil-gasoline Asymmetry on the International Markets*

All papers can be downloaded at: <http://ies.fsv.cuni.cz>



Univerzita Karlova v Praze, Fakulta sociálních věd
Institut ekonomických studií [UK FSV – IES] Praha 1, Opletalova 26

E-mail : ies@fsv.cuni.cz

<http://ies.fsv.cuni.cz>