

Ariga, Kenn; Brunello, Giorgio

**Working Paper**

## Are the more educated receiving more training? Evidence from Thailand

Nota di Lavoro, No. 97.2002

**Provided in Cooperation with:**

Fondazione Eni Enrico Mattei (FEEM)

Suggested Citation: Ariga, Kenn; Brunello, Giorgio (2002) : Are the more educated receiving more training? Evidence from Thailand, Nota di Lavoro, No. 97.2002, Fondazione Eni Enrico Mattei (FEEM), Milano

This Version is available at:

<http://hdl.handle.net/10419/119705>

**Standard-Nutzungsbedingungen:**

Die Dokumente auf EconStor dürfen zu eigenen wissenschaftlichen Zwecken und zum Privatgebrauch gespeichert und kopiert werden.

Sie dürfen die Dokumente nicht für öffentliche oder kommerzielle Zwecke vervielfältigen, öffentlich ausstellen, öffentlich zugänglich machen, vertreiben oder anderweitig nutzen.

Sofern die Verfasser die Dokumente unter Open-Content-Lizenzen (insbesondere CC-Lizenzen) zur Verfügung gestellt haben sollten, gelten abweichend von diesen Nutzungsbedingungen die in der dort genannten Lizenz gewährten Nutzungsrechte.

**Terms of use:**

*Documents in EconStor may be saved and copied for your personal and scholarly purposes.*

*You are not to copy documents for public or commercial purposes, to exhibit the documents publicly, to make them publicly available on the internet, or to distribute or otherwise use the documents in public.*

*If the documents have been made available under an Open Content Licence (especially Creative Commons Licences), you may exercise further usage rights as specified in the indicated licence.*

Fondazione Eni Enrico Mattei

**Are the More Educated  
Receiving More Training?  
Evidence from Thailand**

Kenn Ariga and Giorgio Brunello

NOTA DI LAVORO 97.2002

**NOVEMBER 2002**

KNOW – Knowledge, Technology, Human Capital

Kenn Ariga, *Kyoto University*  
Giorgio Brunello, *Padova University, Cesifo and IZA*

This paper can be downloaded without charge at:

The Fondazione Eni Enrico Mattei Note di Lavoro Series Index:  
[http://www.feem.it/web/activ/\\_wp.html](http://www.feem.it/web/activ/_wp.html)

Social Science Research Network Electronic Paper Collection:  
[http://papers.ssrn.com/abstract\\_id=XXXXXX](http://papers.ssrn.com/abstract_id=XXXXXX)

The opinions expressed in this paper do not necessarily reflect the position of  
Fondazione Eni Enrico Mattei

# **Are the More Educated Receiving More Training? Evidence from Thailand**

## **Summary**

This paper investigates the relationship between education and training provided by the firm, both on the job and off the job, using a unique dataset based on a survey of Thai employees conducted in the summer of 2001. We find a significant and negative relationship between educational attainment and on the job training and no significant relationship between education and off the job training. We also find that education and training are technical complements, especially in the case of off the job training. These findings are consistent with more educated individuals having higher marginal costs of training than less educated workers, especially where on the job training is concerned. Either the better educated have lower learning skills in jobs requiring on the job training or they have higher opportunity costs of training, or both.

**Keywords:** Training, education, wages

**JEL:** J24, J31

*The current paper is part of a larger research project on “Training and Education in Southeast Asia”, funded by the Asian Development Bank Research Institute. The authors are grateful to the project members, to Futoshi Yamauchi and to the audience in Osaka (KISER), Kyoto and Tokyo (ADB) for comments and suggestions. This paper was written while the second author was visiting Kyoto University. The usual disclaimer applies.*

*Address for correspondence:*

Giorgio Brunello  
Department of Economics  
University of Padova  
via del Santo 33  
35100 Padova  
Italy  
E-mail: [brunello@decon.unipd.it](mailto:brunello@decon.unipd.it)

## 1. Introduction

The economic literature emphasizes strongly the importance of schooling in increasing productivity, improving health and nutrition and reducing fertility (see Behrman [1987]). Schooling can affect productivity both directly, by improving basic skills, and indirectly, by affecting training. Do the better educated receive by firms more or less training? A positive association between education and training has two implications. If the more educated also receive more training, both on the job and off the job, an increase in the average level of educational attainment leads to even higher human capital and productivity. On the other hand, initial individual differences in the level of human capital are bound to widen in the labor market.

The economic literature does not provide a clear-cut answer to the question above. A strand of literature going back to the mid 1970s argues in a rather informal way that more education leads to more training. According to Thurow [1975] and Rosen [1976], education improves learning skills, thereby reducing (marginal) training costs. Since optimal investment in training obtains when marginal costs are equal to marginal benefits, a reduction in marginal costs given marginal benefits increases investment. A more recent strand does not fully support this view. According to Sicherman [1990] and Hersch [1991], over - educated individuals receive less on the job training than individuals with less education. This happens because the over - educated are less willing, or less able, to learn, which increases (marginal) costs of training, thereby leading to lower training incidence.

Clearly, education does not affect only the marginal costs of training. If education and training are technical complements in the production of human capital, an increase in attained education increases the productivity of training and positively affects marginal benefits. Given marginal costs, higher education leads to higher training incidence.

The purpose of this paper is to investigate in an empirical way the relationship between education and training provided by the firm, both on the job and off the job, using a unique dataset based on a survey of Thai employees conducted by a team led by one of the authors during the summer of 2001. The survey covers 1737 employees belonging to 20 large firms operating in four selected industries in the Bangkok area. These employees filled a questionnaire especially designed to elicit information on earnings, education, training and family background. The availability of information on the last three variables is an important feature of these data. Failure to control for family connections and ability could lead to spurious associations between schooling, training and earnings.

We distinguish between two types of training, on the job and off the job, and show that only the former type is significantly related to educational attainment. In particular, we find that individuals with more education are less likely to receive on the job training. Therefore, our data provide little support to the view that more education leads to more training. If anything, we find support for the contrary. We also find some evidence that education and training are technical complements, especially in the case of off the job training. In order to explain our empirical results, we need to assume that more educated individuals have higher, not lower, marginal costs of training, especially when on the job training is concerned. Either the better educated have lower learning skills in jobs requiring on the job training or they have higher opportunity costs of training, or both.

The paper is organized as follows. Section 2 introduces two economic models in which to highlight the relationship between education and training. Section 3 presents the data and Section 4 discusses the econometric specification. Empirical results are shown in Section 5 and discussed in Section 6, which also concludes.

## 2. Theory

The purpose of this section is to introduce the concept of technical complementarity between education and training and to investigate how it relates to the co-movement, across individuals and over time, of these two variables. We use two simple models, Model A and Model B. While the first model is static, the second model is dynamic.

### *Model A*

Consider the following production function

$$Y = LH \quad [1]$$

where  $Y$  is output and  $H$  is the stock of human capital accumulated by each (identical) employee, and let this stock be an increasing function of both education  $E$  and training  $T$

$$H = \phi(E, T) \quad [2]$$

Technical complementarity between education and training is defined by the additional condition

$$\phi_{TE} > 0 \quad [3]$$

which says that an increase in education raises the marginal productivity of training. With no depreciation, the stock of training  $T$  in each period of time is simply

$$T = t + T_{-1} \quad [4]$$

where  $t$  is training during the period and  $T_{-1}$  is the stock at the beginning of each period.

Training is costly both to the employer and to the employee. We ignore the interesting issues associated to the allocation of these costs to the parties and define net output per head as

$$NY = \phi(E, T) - \sigma(E, T) \quad [5]$$

where  $\sigma(E, T)$  is the cost of training per head, that we assume to vary both with the stock of training  $T$  and with the level of education  $E$ . One possible reason why training costs vary with education is that the better educated have higher learning skills, which reduces the cost of training them compared with the less educated.

Conditional on previous training  $T_{-1}$ , the optimal level of investment is obtained by maximizing net output. The solution is the same if the program [5] is replaced by an enforceable efficient contract between a firm and a worker, designed to maximize profits subject to a participation constraint. The first order condition associated to this problem is simply

$$\phi_T(E, T) - \sigma_T(E, T) = 0 \quad [6]$$

where the subscript indicates the partial derivative with respect to training. Using a double subscript for the second partial derivatives, total differentiation of the first order condition yields

$$\frac{\partial T}{\partial E} = \frac{\sigma_{TE} - \phi_{TE}}{\phi_{TT} - \sigma_{TT}} \quad [7]$$

This condition clarifies that technical complementarity does not necessarily imply that better educated individuals receive more training. To see why, notice first that the denominator in [7] is negative to fulfil the second order conditions. An increase in education leads to more training only if  $\sigma_{TE} - \phi_{TE} < 0$ . If the marginal cost of training increases with education faster than the marginal product of training, better educated individuals end up with less training even in the presence of technical complementarity<sup>1</sup>.

### *Model B*

One problem with model A is that the relationship between training costs and education is not well specified. One could argue, as we have done above, that more education reduces (marginal) training costs. While this argument has some natural appeal, one could also argue that too much education reduces the willingness to undertake training, especially in jobs that are not well suited to the education attained.

An alternative way of thinking about how education affects marginal costs is to emphasize the opportunity costs of training. By undertaking training, an individual is giving up current production to increase future production. In equilibrium, the optimal training policy must balance the marginal costs and the marginal benefits of the additional investment. Consider a single (representative) employee and assume a working life lasting  $H$  periods. In each period, the employer and the employee efficiently choose how much time to devote to additional training  $t$ , that we normalize to lie in the  $(0,1)$  range. Current production depends on education and previously accumulated human capital via training, and future production depends on the current training investment.

Define the present discounted value of total net output as

$$V = \sum_{h=1}^H \beta^{h-1} (1-t_h) \phi_h \quad [8]$$

where  $h$  is time,  $\beta$  the discount factor,

$$\phi_h = \phi(E, T_{h-1}) \quad [9]$$

---

<sup>1</sup> The model can be easily extended to include two types of training.

is real output per head and

$$T_h = \rho T_{h-1} + I_h \quad [10]$$

is accumulated training, with  $\rho$  as the depreciation rate of human capital.

Clearly, training investment in the final period ( $h=H$ ) is zero, as the cost cannot be recouped. In the previous to the last period, however, optimal investment is obtained by maximizing

$$(1-t_{H-1})\phi(E, T_{H-2}) + \beta\phi(E, \rho T_{H-2} + t_{H-1}) \quad [11]$$

with respect to  $t_{H-1}$ . In this case, the first order condition is

$$\phi(E, T_{H-2}) = \beta\eta(E, \rho T_{H-2} + t_{H-1}) \quad [12]$$

where

$$\eta(E, \rho T_{H-2} + t_{H-1}) = \frac{\partial\phi(E, \rho T_{H-2} + t_{H-1})}{\partial t_{H-1}} \quad [13]$$

Similarly, the first order condition for  $h=H-2$  is

$$\phi(E, T_{H-3}) = \beta[(1-t_{H-1})\eta(E, \rho T_{H-3} + t_{H-2}) + \beta\rho\eta(E, \rho T_{H-2} + t_{H-1})] \quad [14]$$

Making use of repeated substitutions in the first order conditions, it can be checked that [14] applies to all earlier periods as well.

Assuming that the real wage  $W$  is proportional to output per head<sup>2</sup>, we can re-write the above condition as

$$W_h = \beta[(1-t_{h+1})\frac{\partial W_{h+1}}{\partial t_h} + \beta\rho W_{h+1}] \quad [15]$$

The left - hand side represents the marginal cost and the right – hand side is the marginal benefit of training. An increase in education can affect both marginal costs and marginal benefits. First, there is abundant empirical evidence that more education leads to higher wages (see Card [1999]), implying that



it is more costly to train an educated worker. Second, higher education increase future marginal benefits if education and training are technical complements, that is, if

$$\frac{\partial W_{h+1}}{\partial t_h \partial E} = \frac{\partial \phi(E, T_{h-1})}{\partial t_h \partial E} > 0 \quad [16]$$

To further illustrate, consider a two – period version of the above model. Because of the second order conditions for a maximum, the marginal benefits schedule must be downward sloping with respect to training  $T$ . Since the current wage depends on previous training, the marginal cost schedule is flat. Equilibrium investment is shown in Figure 1 below.

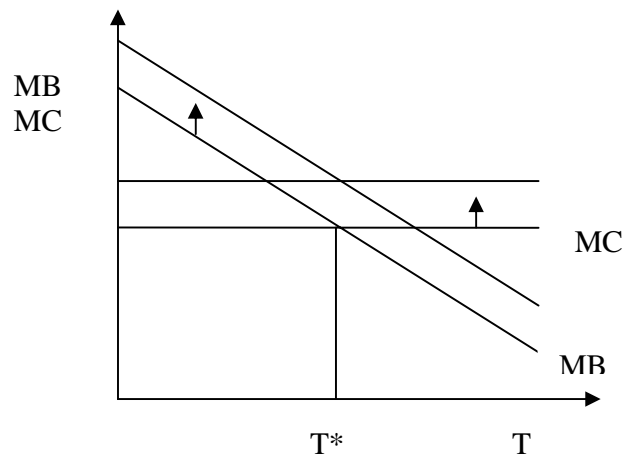


Figure 1

In the presence of technical complementarity, higher education shifts both the marginal costs and the marginal benefits schedule upwards, with a positive effect on wages but uncertain effects on training investment and training incidence. A key insight provided by the models in this section is that technical complementarity is not sufficient to guarantee a positive relationship between education and training.

---

<sup>2</sup> This assumption holds in a Nash bargaining setup where training costs are proportional to output per head.

### 3. The Data

The employee survey on which our data are based covers firms belonging to four industries: food processing, auto parts, hard disk drive makers and computer components (mainly IC). The latter two industries are high tech and dominated by foreign subsidiaries. Thailand is one of the largest production locations for hard disk drives and related components, and this industry is one of the country's major exporters (see Doner and Brimble [1998]). The former two industries use more labor intensive production technologies and include a substantial share of domestic firms.

Despite being hi-tech, HDD and IC/PC firms are also fairly labor intensive, as production gets outsourced in Thailand from abroad to take advantage of the favorable price of labor. In the HDD industry, production involves mainly head stack and head gimbals assembly, which are very labor intensive. Final HDD assembly is usually done in China.

The selection of these industries provides a reasonable coverage of Thai industry without pretending to produce a statistically representative sample. Due to financial constraints, we have restricted our attention to firms with plants located in the Greater Bangkok area. Firms in the four industries were approached and asked to cooperate to the survey. Overall, 20 firms agreed to cooperate, 5 in food processing, 5 in auto parts, 6 in personal computers and 4 in the HDD industry. The firms in the sample have more than 100 employees (more than 1000 in the HDD industry). After restricting our sample to production workers, technicians and engineers, we stratified employment in each firm by age and education and randomly sampled employees within each cell, using larger weights for smaller firms.

Each selected employee was interviewed by trained personnel hired by the Thailand Development Research Institute (*TDRRI*), which cooperated to the project. Since the questionnaire is rather lengthy (121 questions), individual interviews lasted on average 40 minutes. The questionnaire asks detailed information about family background, education, previous job experience, job allocation, training and monthly labor income net of bonuses but gross of overtime. Some of these questions are asked not only for the reference period of the survey (year 2001) but also for the years 1998 to 2000. The timing of some of the retrospective questions is framed to generate predetermined variables. To illustrate, monthly wages were asked with reference to January of each year, and the questions on the occurrence of training referred to the full year. Therefore, training in 1999 could be considered as predetermined with respect to wages in 2000, which were measured in January 2000.

While we acknowledge that recall data are affected by different types of measurement error (see Beckett et al [2001]), we stress that many of these questions are qualitative (requiring only a yes or no

answer). We also stress that the relative short span of recall is likely to reduce the relative importance of these errors. Overall, our sample provides a snapshot of events for an important group of Thai employees. It is not, however, a statistically representative sample, both because of the selection of industries and because of the endogenous selection associated with the participation of firms to the project. These limits, induced mainly by financial constraints, need to be weighted against the advantages, which include the collection of detailed current and retrospective information on family background, education and different types of training. This information is not readily available from nationally representative labor surveys.

Compared to the entire Thai labor force, our sample is substantially more educated. Table 1 shows the distribution of employment by education and industry in the sample (columns 1 to 4) and in the total labor force. The share of employees with primary education in our sample is close to zero in three industries out of four and significantly different from zero only in the food processing industry. In Thailand as a whole, this share is as high as 75 percent<sup>3</sup>. On the other hand, college graduates are 44 percent of all employees in the personal computers industry and only 9 percent in the national average.

**Table 1. Distribution of employees by education. By industry and overall.**

	(1)	(2)	(3)	(4)	(5)
primary	0.36	0.00	0.03	0.03	0.75
second.	0.41	0.55	0.62	0.62	0.16
tertiary	0.22	0.44	0.34	0.35	0.09

Notes: second: lower and upper secondary education. (1): foodstuffs; (2): Electronics; (3): auto components; (4): HDD components; (5) national average (OECD).

These drastic differences are accounted by the fact that we are selecting industries with more than 100 employees, where the average age of employees is close to 28 years. Moreover, the national average includes agricultural employment, where average educational attainment is very low.

Table 2 presents the summary statistics of the main variables in the survey for the year 2001, separately for males and females. Average age of sampled employees is about 28 years, and average tenure in 1998 (*ten98*), the start of the reference period, is about 2 and a half years for males and slightly

over 3 years for females. On the other hand, previous labor market experience recorded at the start of the period (*exp98*) is close to 2 years for both males and females.

The survey asks individuals about their highest attained degree. We convert the answers in years of education by applying to each degree the required number of years of schooling<sup>4</sup>. Average years of attained education is close to 13 years for males and to 11 years for females. Therefore, females in the sample have less education but longer tenure. On the other hand, males have changed more jobs (*njobs*) during their previous labor market experience (1.11 versus 0.92 jobs).

We collect information both about on the job (*OJT*) and off the job (*OFFJT*) training provided by the firm. The former includes both formal and informal training carried out on the job, and focuses mainly on the performance of daily tasks. The latter is formal training carried out off the job and organized by the firm either in or outside the premises, and either during or after standard working hours. While OJT is provided mainly by senior workers in the same unit, team leaders and foremen (72% of the total), OFFJT is supplied mainly by instructors from professional training centres and from outside the company (86% of the total) and concerns both daily tasks, quality standards and safety regulations.

For each type of training, the survey whether the employee has had any training during the reference period (the year), a simple (0,1) dummy, and about training frequency. The latter question is framed differently depending on whether we consider OJT or OFFJT. In the former case we ask the number of training events per year. In the second case we ask the employee to rank the frequency of events in different categories (daily, once a week...). In the final coding we measure OJT frequency as a discrete variable taking the values 0 to 3, with zero for no training and three for the highest frequency. The difference in the question about frequency can be explained with the fact that OJT includes both formal and informal events, and is therefore more difficult to grasp with precision than OFFJT, which takes place outside the work premises.

Starting with training incidence in 2001 (*ojt* for on the job and *off* for off the job), we find that 55% of the males in the sample have undertaken some OJT in 2001, compared to 67% of the females. Interestingly, the opposite holds for OFFJT, with 67 % of the males and 58% of the females receiving it. When we cumulate training events over the entire period (1998-2001) by summing up the dummies for each year<sup>5</sup>, however, we find that off the job training incidence over the four years (*soff*) is about the

---

<sup>3</sup>Clearly such a high percentage discounts the important role played by agriculture.

<sup>4</sup>We set 0 years for no education, 6 years for primary, 9 years for lower secondary, 12 years for upper secondary and lower vocational, 14 years for upper vocational and 16 years for college or more.

<sup>5</sup>We compute *sojt* as the sum of *ojt*, a (0,1) dummy, over the relevant sample period. For instance, *sojt* in 1999 is the sum of *ojt* in 1998 and 1999, and is equal to 2 if training occurred in both years, to 1 if training occurred in only one year and to zero if training never occurred.

same for males and females. The difference still remains, however, when we consider cumulated on the job training (*sojt*).

**Table 2. Means and standard deviations of the main variables by gender. 2001**

# obs :	690		1047	
	males		females	
wage	14386	(8237)	9347	(5260)
ten98	2.59	(3.54)	3.29	(3.60)
exp98	2.17	(3.44)	2.27	(3.72)
ojt	0.55	(0.49)	0.67	(0.46)
off	0.67	(0.46)	0.58	(0.48)
froj	1.00	(1.14)	1.18	(1.11)
froff	2.03	(2.91)	1.55	(2.41)
promo	0.13	(0.34)	0.09	(0.29)
sojt	1.89	(1.69)	2.41	(1.63)
soff	2.30	(1.47)	2.33	(1.47)
sfroj	3.37	(3.86)	4.23	(3.92)
sfroff	7.92	(10.68)	6.69	(9.53)
spromo	0.47	(0.77)	0.31	(0.64)
edyear	12.90	(2.59)	10.67	(3.05)
age	28.26	(5.34)	28.09	(6.31)
njobs	1.11	(1.38)	0.92	(1.09)
feduc	0.26	(0.43)	0.18	(0.38)
meduc	0.15	(0.36)	0.09	(0.28)
seduc	0.72	(0.44)	0.59	(0.49)
sibli	3.12	(2.18)	3.36	(2.23)

Notes: wage: nominal monthly wage in baths; ten98 = tenure in 1998; exp98 = previous labor market experience in 1998; ojt = dummy equal to 1 if any OJT training occurred in year h; off= dummy equal to 1 if any OFFJT training occurred in year h; froj = frequency of OJT in year h; froff = frequency of OFFJT in year h; promo= dummy equal to 1 if promoted in year h; sojt = sum of ojt from 1998 to year h; soff = sum of off from 1998 to year h; sfroj = sum of froj from 1998 to year h; sfroff = sum of froff from 1998 to year h; spromo = sum of promo from 1998 to year h; edyear = years of education; njobs= number of jobs held before current job; feduc= education of the father (1: higher than primary; 0: primary or less); meduc = education of the mother (1: higher than primary; 0: primary or less); seduc = education of the oldest sibling (from 0 to 3); sibli = number of siblings.

Turning to frequencies, we find similar differences by gender and type of training. Males experience more frequently off the job training (*froff*) and less frequently on the job training (*froj*). A similar ranking holds for cumulated frequencies (*sfroff* and *sfroj* respectively). The evidence based on simple averages suggests the presence both of a negative correlation between educational attainment and OJT and of a positive correlation between education and OFFJT.

With reference to family background, we have information on the father's (*feduc*) and mother's education (*meduc*), on the education of the oldest sibling (*seduc*) (next to oldest if the employee is the oldest) and on the number of siblings (*sibli*). The information on parental background is recoded to

generate two (0,1) dummies, with 0 referring to primary education or less and 1 referring to higher education. It turns out that male employees, who have higher educational attainment, have also a “better” family background, since both parents and the oldest sibling have higher education and the number of siblings is smaller.

Finally, we notice that males have on average substantially higher wages and a higher incidence of promotion, both in the final year of the sample (*promo*) and in the entire reference period (*spromo*). Table 3 shows the means of the same variables separately for production workers, team leaders and foremen, and for technicians and engineers. As expected, the latter group is better educated than the former and receives on average less OJT and more OFFJT. Given the type of job they are likely to be in, engineers are bound to receive more formal OFFJT than shop floor employees.

**Table 3. Means and standard deviations of the main variables, by job. 2001.**

# obs :	1465		272	
	production		tech+eng	
wage	10157	(5945)	17755	(8851)
ten98	3.20	(3.86)	2.01	(2.73)
exp98	2.35	(3.74)	1.58	(2.76)
ojt	0.64	(0.48)	0.54	(0.49)
offjt	0.61	(0.48)	0.68	(0.46)
frojft	1.13	(1.27)	0.96	(1.12)
froff	1.71	(2.63)	1.93	(1.67)
promo	0.11	(0.31)	0.11	(0.32)
sojt	2.26	(1.66)	1.91	(2.65)
soff	2.31	(1.48)	2.40	(1.39)
sfrojft	4.00	(3.94)	3.30	(3.75)
sfroff	7.09	(10.22)	7.66	(9.06)
spromo	0.34	(0.66)	0.55	(0.84)
edyear	11.02	(3.00)	14.44	(1.50)
age	28.22	(6.22)	27.85	(4.06)
njobs	0.99	(1.22)	1.02	(1.23)
feduc	0.19	(0.39)	0.33	(0.47)
meduc	0.09	(0.29)	0.21	(0.40)
seduc	0.59	(0.49)	0.82	(0.38)
sibli	3.36	(2.23)	2.93	(2.06)

Notes: see Table 2.

#### 4. The Econometric Specification

The simple models presented in Section 2 of the paper show the relationship between optimal investment in training and technical complementarity between education and training. While training in these models is a continuous flow variable, our data include both qualitative information on whether training has taken place in a given interval of time and measures of training frequency. We treat the former as an indicator of training incidence. Since the information on whether there has been any training during the reference period (a year) is organized as a (0,1) dummy variable, we use the Probit specification. On the other hand, we consider frequency information as count data, because of the large number of zeros and small values (see Greene [1993]), and use a Poisson specification.

We pool the available data over the period 1999-2001 and estimate the following empirical training models

$$ojt = \Phi(edyear, X, Y, Z, FD, YD, JD, ID * YD) \quad [17]$$

$$off = \Phi(edyear, X, Y, Z, FD, YD, JD, ID * YD) \quad [18]$$

$$frojt = P(edyear, X, Y, Z, FD, YD, JD, ID * YD) \quad [19]$$

$$froff = P(edyear, X, Y, Z, FD, YD, JD, ID * YD) \quad [20]$$

where  $\Phi$  is for the standard Normal and P for the Poisson distribution,  $X$  is a vector of individual variables, which includes tenure and experience in 1998, gender (*sex*), marital status (*marry*), household size (*hsize*), the number of previous jobs held, whether the first job was in production (*fjprod*), and whether the first job was quitted because of the prospect of better wages (*fjquiw*),  $Z$  is a vector including lagged training of either type and lagged promotion, and  $FD$ ,  $YD$ ,  $JD$  and  $ID*YD$  are vectors of firm, year, job and industry by year dummies. For each specification, we experiment with and without the lagged variables in vector  $Z$ .

Since training incidence and frequency depend on individual ability, which is usually not observed by the econometrician, we try to capture differences in ability with family background variables. The underlying idea is that unobserved ability can be considered “..as the consequence of the genetic and environmental contribution of the family...” (Willis [1986], p.584). Vector  $Y$  therefore includes the father’s, the mother’s and the oldest sibling education, the number of siblings, whether the employee is the oldest son or daughter and three dummies for the macro-region of birth. These dummies

are expected to capture differences in school quality, which also influences the development of individual ability, in the three areas outside Greater Bangkok (the omitted area).

Training incidence equations tell us whether variations across individuals in educational attainment affect the probability of training. Whether this probability increases or decreases depends, in equilibrium, on the relative shifts of the marginal benefits and marginal costs schedules. As shown in Figure 1, the marginal benefits schedule shifts upwards if there is technical complementarity between education and training. Technical complementarity is a propriety of the production function and cannot be directly tested unless we observe individual productivity. Since this information is not available, we make the standard assumption of proportionality between productivity and wages and estimate the following Mincerian equation

$$\begin{aligned} \ln W = & \alpha + \beta edyear + \gamma sojt_{-1} + \delta soff_{-1} + \mu(edyear * sojt_{-1}) + \lambda(edyear * soff_{-1}) \\ & + \theta(sojt_{-1} * soff_{-1}) + \rho(sojt_{-1} * promo_{-1}) + \sigma(soff_{-1} * promo_{-1}) + \zeta(edyear * ten98) \\ & + \omega(edyear * exp98) + \psi X + \zeta Y + (FD, YD, JD, ID * YD) + \varepsilon \quad [21] \end{aligned}$$

where we ignore the time subscript and *sojt* and *soff* are the cumulated training events from the start of the reference period (1998) to the selected year<sup>6</sup>. Following the indications of our simple models, we use cumulated events rather than current events (*ojt* and *off*) because wages are affected by the stock of human capital accumulated by training, not just by the most recent flow. Cumulated events can proxy accumulated human capital during the window covered by the questionnaire, but do not capture the initial stock of human capital before the start of the observation period. We capture this stock with tenure and labor market experience at the start of the sample, in 1998. While (21) is specified as a function of cumulated training events, we also experiment with cumulated training frequencies (*sfrojt* and *sfoff*).

We use lagged rather than current cumulated training to exploit the natural sequence of events in the data: wages in January 2000 are affected by training during 1998 and 1999, not by training in later years. We also add a full set of interactions, between different types of training and education, between education, tenure and experience, between training and lagged cumulated promotion and finally between on the job and off the job training. As in the training incidence equation, we pool the available information (from 1999 to 2001 because of the presence of lags) and use the full set of firm, year, job and

---

<sup>6</sup> For instance, we consider training in 1998 and 1999 for the wage in January 2000 and training in 1998 for the wage in January 1999.



industry by year dummies. Beside the individual controls in  $X$ , we also include family background variables ( $Y$ ), again with the purpose of capturing cross section differences in individual unobserved ability.

Assuming that wages are proportional to output per head, technical complementarity requires that

$$\frac{1}{W} \frac{\partial^2 W}{\partial T \partial E} = \frac{\partial \ln W}{\partial T \partial E} + \frac{\partial \ln W}{\partial T} \frac{\partial \ln W}{\partial E} \quad [22]$$

where the second term on the right hand side reflects the fact that the Mincerian equation is nonlinear in education and training. If human capital increases productivity and wages, and training and education contribute positively to the accumulation of human capital, both elements in the second term are positive. It follows that a sufficient (but not necessary) condition for technical complementarity is that  $\frac{\partial \ln W}{\partial T \partial E} = \mu + \zeta + \omega > 0$  in the case of OJT and  $\frac{\partial \ln W}{\partial T \partial E} = \lambda + \zeta + \omega > 0$  in the case of OFFJT.

## 5. The Results

### *a) Training Incidence*

We start the presentation of our results from training incidence. For each training type (on the job or off the job) we estimate a Probit model when the dependent variable is the event of training in each year and a Poisson model when the dependent variable is the frequency of training in each year. For each model, we estimate two specifications, one with and one without family background variables.

Consider first OJT (Tables 4 and 5 for training incidence and frequency respectively). We find that individuals with higher education have significantly lower training incidence. This finding remains even when we include lagged training and promotion among the explanatory variables. There is also evidence that individuals with higher previous labor market experience and tenure in the firm have significantly lower training incidence. If we interpret these variables as accumulated training before 1998, this suggests that individuals with a higher initial stock of human capital accumulated in the labor market need less OJT. Lagged OJT influences strongly current OJT, which points to persistence. On the other hand, having received OFFJT in the previous period reduces the likelihood of currently receiving OJT. Finally, we find that the inclusion of family background variables affect only marginally the coefficient associated to years of education.

**Table 4. OJT Training Incidence. All Workers. Dependent variable: ojt**  
 (standard errors in parentheses with p<0.05 = ~, p<0.01 = \*)

# obs :	5202	4899	5202	4899
Depvar:	ojt	ojt	ojt	ojt
ten98	-0.0088* (0.0063)	-0.0117* (0.0066)	-0.0327* (0.0078)	-0.0325* (0.0083)
exp98	-0.0155~ (0.0066)	-0.0156~ (0.0068)	-0.0195~ (0.0079)	-0.0195~ (0.0081)
marry	0.0048* (0.0204)	0.0143* (0.0211)	-0.0411 (0.0249)	-0.0367 (0.0258)
sex	-0.2344* (0.0515)	-0.2486* (0.0539)	-0.1690* (0.0611)	-0.1862* (0.0636)
hsize	-0.0414* (0.0090)	-0.0454* (0.0096)	-0.0130~ (0.0116)	-0.0145~ (0.0124)
edyear	-0.0578* (0.0089)	-0.0572* (0.0095)	-0.0278* (0.0104)	-0.0284~ (0.0112)
fjprod	0.0295 (0.0458)	0.0224 (0.0470)	0.0248 (0.0546)	0.0235 (0.0561)
njobs	-0.0082~ (0.0197)	-0.0093 (0.0206)	0.0097 (0.0225)	0.0058 (0.0231)
fjquiw	0.130* (0.0487)	0.1412* (0.0506)	0.0542~ (0.0581)	0.0567 (0.0602)
feduc		-0.1366~ (0.0542)		-0.1203 (0.0682)
meduc		-0.0823 (0.0696)		0.0092 (0.0856)
seduc		0.0752~ (0.0333)		0.0604 (0.0407)
oldest		-0.0349 (0.0460)		-0.0548~ (0.0567)
sibli		0.0003 (0.0103)		-0.0007 (0.0130)
ojt(-1)			2.1689* (0.0522)	2.1927* (0.0548)
promo(-1)			-0.1138 (0.0841)	-0.1368 (0.0852)
off(-1)			-0.2216* (0.0562)	-0.2540* (0.0589)
Reg	Yes	Yes	Yes	Yes
Firm	Yes	Yes	Yes	Yes
Job	Yes	Yes	Yes	Yes
Year	Yes	Yes	Yes	Yes
YI	Yes	Yes	Yes	Yes

Notes: see Table 2. Oldest: whether the employee is the oldest son or daughter; fjprod: whether first job was in production; fjquiw: whether first job was quitted because of better wage prospects; reg = region of birth dummies; firm: firm dummies; Job: job dummies; Year: year dummies; YI: year by industry dummies; sex: gender dummy (1:male); marry: marital status dummy; hsize: household size; ten98: tenure in 1998; exp98: labor market experience in 1998.

Conditional on education and experience, training is less frequent among female employees and among individuals who belong to larger households. Since household size is larger on average among female workers with poorer family background, this variable could be capturing the joint negative effect of gender and family background on training incidence. A possible interpretation of this result is that employers statistically discriminate against female employees.

**Table 5. OJT Training Incidence. All Workers. Dependent variable: frojt**

(standard errors in parentheses with p<0.05 = ~, p<0.01 = \*)

# obs :	5202	4899	5177	4879
Depvar:	froj	froj	froj	froj
ten98	-0.0062 (0.0051)	-0.0104 (0.0054)	-0.0148* (0.0034)	-0.0151* (0.0035)
exp98	-0.0133~ (0.0059)	-0.0140~ (0.0060)	-0.0113~ (0.0050)	-0.0115~ (0.0052)
marry	0.0230 (0.0162)	0.0275 (0.0166)	-0.0191 (0.0102)	-0.0152 (0.0104)
sex	-0.1480* (0.0442)	-0.1743* (0.0456)	-0.0424 (0.0295)	-0.0431 (0.0301)
hsize	-0.0590* (0.0082)	-0.0628* (0.0085)	-0.0058 (0.0052)	-0.0073 (0.0055)
edyear	-0.0543* (0.0067)	-0.0529* (0.0070)	-0.0154* (0.0048)	-0.0163* (0.0050)
fjprod	0.030 (0.0370)	0.0302 (0.0371)	0.0294 (0.0273)	0.0284 (0.0275)
njobs	-0.0411~ (0.0169)	-0.0430~ (0.0172)	-0.0060 (0.0126)	-0.0058 (0.0128)
fjquiw	0.0765~ (0.0388)	0.0722 (0.0395)	0.0365 (0.0266)	0.0403 (0.0269)
feduc		-0.0617 (0.0446)		-0.0328 (0.0306)
meduc		-0.0572 (0.0610)		-0.0278 (0.0423)
seduc		0.0842* (0.0255)		0.0250 (0.0170)
oldest		-0.0811~ (0.0366)		-0.0082 (0.0245)
sibli		0.0154 (0.0084)		-0.0006 (0.0053)
froj(-1)			0.6180* (0.0110)	0.6165* (0.0113)
promo(-1)			-0.0136 (0.0362)	-0.0172 (0.0355)
froff(-1)			-0.0008 (0.0029)	-0.0033 (0.0031)
Reg	Yes	Yes	Yes	Yes
Firm	Yes	Yes	Yes	Yes
Job	Yes	Yes	Yes	Yes
Year	Yes	Yes	Yes	Yes
YI	Yes	Yes	Yes	Yes

Note: see Table 4.

The uncovered negative relation between educational attainment and OJT could simply be driven by the fact that we are including different jobs in the same regression. If engineers have higher education and lower OJT than production workers, this between – jobs variation could explain our results. To check this, we run the same regressions by retaining only production workers. Results in Table 6 below<sup>7</sup> show that the relation between education and OJT remains negative and significant.

**Table 6. OJT Training Incidence. Production workers only. Dependent variable: ojt**  
(standard errors in parentheses with p<0.05 = ~, p<0.01 = \*)

# obs :	3420	3228	3420	3228
Depvar:	ojt	ojt	ojt	ojt
ten98	-0.0097 (0.0081)	-0.0165 (0.0085)	-0.0415* (0.0098)	-0.0448* (0.0103)
exp98	-0.0128 (0.0082)	-0.0123 (0.0084)	-0.0205~ (0.0095)	-0.0197~ (0.0097)
marry	0.0271 (0.0250)	0.0503 (0.0259)	-0.0324 (0.0296)	-0.0231 (0.0307)
sex	-0.1723~ (0.0674)	-0.1880* (0.0713)	-0.1568~ (0.0772)	-0.1811~ (0.0818)
hsize	-0.0477* (0.0111)	-0.0559* (0.0119)	-0.0117 (0.0138)	-0.0165 (0.0149)
edyear	-0.0675* (0.0108)	-0.0711* (0.0115)	-0.0333* (0.0123)	-0.0359* (0.0133)
fjprod	0.0718 (0.0550)	0.0424 (0.0563)	0.0584 (0.0651)	0.0470 (0.0670)
njobs	-0.0168 (0.0254)	-0.0289 (0.0261)	-0.0019 (0.0290)	-0.0141 (0.0298)
fjquiw	0.0495 (0.0593)	0.0699 (0.0614)	0.0428 (0.0688)	0.0570 (0.0708)
feduc		-0.1776* (0.0681)		-0.1517 (0.0856)
meduc		-0.0171 (0.0932)		0.1034 (0.1110)
seduc		0.0911~ (0.0427)		0.0801 (0.0511)
oldest		0.0095 (0.0571)		-0.0068 (0.0688)
sibli		0.0102 (0.0129)		0.0081 (0.0158)
ojt(-1)			2.1009* (0.0649)	2.1170* (0.0680)
promo(-1)			-0.1685 (0.1228)	-0.1863 (0.1244)
off(-1)			-0.2421* (0.0664)	-0.2779* (0.0695)
Reg	Yes	Yes	Yes	Yes
Firm	Yes	Yes	Yes	Yes
Job	Yes	Yes	Yes	Yes
Year	Yes	Yes	Yes	Yes
YI	Yes	Yes	Yes	Yes

Note: see Table 4.

<sup>7</sup> Results (available upon request) do not change when we use training frequency.

Turning to OFFJT (Tables 7 and 8 for training incidence and frequency respectively), we find that the relationship between education and training incidence is positive but not significantly different from zero. In contrast to the results for OJT, there is evidence that the incidence of OFFJT increases with tenure at the start of the sample period.

**Table 7. OJT Training Incidence. All Workers. Dependent variable: offjt**  
(standard errors in parentheses with  $p < 0.05 = \sim$ ,  $p < 0.01 = *$ )

# obs :	5202	4899	5202	4899
Depvar:	off	off	off	off
ten98	0.0444*	0.0407*	0.0132	0.0126
	(0.0072)	(0.0075)	(0.0075)	(0.0079)
exp98	0.0128	0.0127	0.0065	0.0066
	(0.0071)	(0.0073)	(0.0077)	(0.0079)
marry	0.0033	0.0010	-0.0354	-0.0417
	(0.0209)	(0.0216)	(0.0228)	(0.0236)
sex	-0.0647	-0.0786	-0.0158	-0.0222
	(0.0536)	(0.0559)	(0.0573)	(0.060)
hsize	0.0021	0.0045	0.0097	0.0120
	(0.0091)	(0.0097)	(0.010)	(0.0106)
edyear	0.0051	0.0046	0.0110	0.0134
	(0.0091)	(0.0097)	(0.0097)	(0.0104)
fjprod	0.0215	0.0075	-0.0026	-0.0033
	(0.0470)	(0.0481)	(0.0506)	(0.0518)
njobs	-0.0195	-0.0186	-0.0134	-0.0136
	(0.0199)	(0.0205)	(0.0217)	(0.0222)
fjquiw	0.1693*	0.1644*	0.0997	0.0901
	(0.0495)	(0.0510)	(0.0530)	(0.0546)
feduc		-0.0891		-0.0170
		(0.0558)		(0.0591)
meduc		0.1419		0.1035
		(0.0750)		(0.0792)
seduc		-0.0282		-0.0430
		(0.0342)		(0.0366)
oldest		-0.1151~		-0.0812
		(0.0468)		(0.0504)
sibli		0.0020		-0.0006
		(0.0107)		(0.0115)
ojt(-1)			0.2394*	0.2363*
			(0.0449)	(0.0467)
promo(-1)			-0.0786	-0.0789
			(0.0742)	(0.0766)
off(-1)			1.2375*	1.2347*
			(0.0458)	(0.0473)
Reg	Yes	Yes	Yes	Yes
Firm	Yes	Yes	Yes	Yes
Job	Yes	Yes	Yes	Yes
Year	Yes	Yes	Yes	Yes
YI	Yes	Yes	Yes	Yes

Notes: see Table 4.

While we find that having had OJT in the previous period improves OFFJT incidence in the current period, there is no significant evidence that female employees receive less OFFJT than their male colleagues.

**Table 8. OJT Training Incidence. All Workers. Dependent variable: froff**

(standard errors in parentheses with  $p < 0.05 = \sim$ ,  $p < 0.01 = *$ )

# obs :	5190	4889	5175	4877
Depvar:	froff	froff	froff	froff
ten98	0.0224* (0.0061)	0.0220* (0.0062)	0.0176* (0.0048)	0.0169* (0.0050)
exp98	-0.0004 (0.0079)	0.0028 (0.0080)	-0.0067 (0.0061)	-0.0042 (0.0063)
marry	0.0439 (0.0230)	0.0389 (0.0234)	-0.0293 (0.0186)	-0.0350 (0.0180)
sex	0.0589 (0.0463)	0.0265 (0.0477)	-0.0021 (0.0411)	-0.0118 (0.0431)
hsize	-0.0024 (0.0109)	-0.0009 (0.0112)	0.0141 (0.0078)	0.0127 (0.0080)
edyear	0.0329* (0.0109)	0.0177 (0.0104)	0.0089 (0.0096)	0.0007 (0.0090)
fjprod	0.1656* (0.0451)	0.1349* (0.0451)	0.1098* (0.0395)	0.1034* (0.0386)
njobs	-0.0210 (0.0282)	-0.0180 (0.0284)	0.0018 (0.0192)	0.0027 (0.0197)
fjquiw	0.0343 (0.0497)	0.0665 (0.0515)	0.1076* (0.0387)	0.1131* (0.0393)
feduc		-0.0097 (0.0535)		0.0622 (0.0441)
meduc		0.0274 (0.0692)		0.0741 (0.0620)
seduc		0.0642 (0.0351)		-0.0394 (0.0298)
oldest		-0.0050 (0.0507)		0.0461 (0.0398)
sibli		0.0172 (0.0102)		0.0010 (0.0076)
froj(-1)			0.0754* (0.0155)	0.0714* (0.0149)
promo(-1)			0.0318 (0.0530)	0.0270 (0.0525)
foff(-1)			0.0992* (0.0120)	0.1002* (0.0120)
Reg	Yes	Yes	Yes	Yes
Firm	Yes	Yes	Yes	Yes
Job	Yes	Yes	Yes	Yes
Year	Yes	Yes	Yes	Yes
YI	Yes	Yes	Yes	Yes

Notes: see Table 4.

The finding that the incidence and frequency of training depends both on education and on previous training (of either type) implies that, in the long run, higher education affects each type of training both directly and indirectly, by influencing the other type as well. We have checked in our data whether the overall direction of the relationship between education and training changes in the long run compared to the short run, when previous training is given, but found no instance of such an occurrence.

*b) Mincerian wage regressions.*

Since the standard Mincerian earnings function does not include training and occupational dummies, we start by estimating a simplified version of [21], which excludes cumulated training, interaction terms and job dummies. In line with the traditional specification, we retain tenure and experience net of tenure and investigate whether the estimated returns to education vary significantly with the inclusion of family background controls. Table 9 presents our findings for the full sample and two sub-samples, one for production workers (inclusive of team leaders and supervisors) and one for technicians and engineers.

It turns out that the inclusion of family background variables reduces the estimated returns to education by close to 9% in the full sample and in the sub – sample of production workers and by close to 5% in the sub – sample of technicians and engineers. Since the estimated returns to tenure and previous labor market experience also fall, the returns to human capital are significantly affected in the expected direction by the addition of information on parental education and region of birth. We find that the marginal returns to education in the full sample are equal to 5.3% per year, much less than 10.4%, the value reported for Thailand by Psacharopoulos [1994]. Only technicians and engineers in our sample get close to this number, with a marginal return equal to 15%.

Next, we estimate equation [21] by adding training variables, job dummies and the relevant interactions. Table 10 shows the results of four regressions. While in the former two columns we measure training as cumulated events over the relevant interval, in the latter two columns we measure it as cumulated frequencies. For each measure of training, we estimate a wage regression with and without interactions between training, education and promotion. Each specification includes both individual characteristics and family background variables.

We find that monthly earnings are higher for married males with higher tenure and previous experience who have quit their first job because of better wage prospects and who have been promoted in the interval period. Focusing on columns (1) and (3) of the table, our evidence also shows that,

conditional on education, monthly earnings are positively affected by training. These effects are bigger for OFFJT when we measure it as the sum of events in the sample period and bigger for OJT when we measure it as the frequency of training events.

**Table 9. Mincerian Wage Regressions without Training and Occupational Dummies.**

(standard errors in parentheses with p<0.05 = ~, p<0.01 = \*)

# obs :	4671	4419	3953	3747	718	672
Depvar:	wage	wage	wage	wage	wage	wage
ten98	0.0418* (0.0018)	0.0385* (0.0019)	0.0402* (0.0019)	0.0372* (0.0019)	0.0731* (0.0059)	0.0692* (0.0058)
exp98	0.0151* (0.0025)	0.0134* (0.0025)	0.0141* (0.0025)	0.0130* (0.0025)	0.0449* (0.0067)	0.040* (0.0073)
fjprod	-0.0219 (0.0146)	-0.0159 (0.0146)	-0.0210 (0.0154)	-0.0144 (0.0152)	0.0194 (0.0307)	0.0386 (0.0317)
njobs	-0.0069 (0.0066)	-0.0090 (0.0066)	-0.0122 (0.0069)	-0.0137~ (0.0069)	0.0111 (0.0117)	0.0121 (0.0118)
fjquiw	0.0313~ (0.0153)	0.0421* (0.0154)	0.0515* (0.0166)	0.0547* (0.0166)	-0.0875* (0.0322)	-0.0786~ (0.0329)
marry	0.0225* (0.0063)	0.0249* (0.0064)	0.0231* (0.0067)	0.0224* (0.0068)	0.0026 (0.0139)	0.0123 (0.0144)
sex	0.2466* (0.0152)	0.2243* (0.0152)	0.1951* (0.0181)	0.1756* (0.0180)	-0.0102 (0.070)	-0.0360 (0.0776)
hsize	-0.0040 (0.0028)	-0.0079* (0.0029)	0.0010 (0.0029)	-0.0027 (0.0030)	-0.0162~ (0.0076)	-0.0194~ (0.0082)
edyear	0.0589* (0.0028)	0.0533* (0.0030)	0.0477* (0.0029)	0.0434* (0.0030)	0.1643* (0.0122)	0.1552* (0.0129)
rel		-0.0644* (0.0167)		-0.060* (0.0180)		0.0000 (0.0379)
re2		-0.0345 (0.0196)		-0.0346 (0.0210)		-0.0684 (0.0413)
re4		-0.0459~ (0.0189)		-0.0672* (0.0207)		0.0059 (0.0372)
feduc		-0.0045 (0.0183)		-0.0093 (0.0198)		-0.0722 (0.0422)
meduc		0.1233* (0.0238)		0.1166* (0.0267)		0.0606 (0.0494)
seduc		0.0226~ (0.0099)		0.0199 (0.0108)		0.0084 (0.0214)
oldest		0.0034 (0.0143)		-0.0006 (0.0151)		0.0151 (0.0340)
sibli		0.0140* (0.0031)		0.0134* (0.0034)		0.0078 (0.0077)
Firm	Yes	Yes	Yes	Yes	Yes	Yes
Year	Yes	Yes	Yes	Yes	Yes	Yes
YI	Yes	Yes	Yes	Yes	Yes	Yes
R-sq	0.443	0.449	0.388	0.398	0.584	0.588

Note: see Table 4



When we consider the interaction terms between training and education, we find that the coefficients associated to the interaction between education and training, tenure and labor market experience are positive, albeit not always significantly different from zero. We have also checked whether log wages are increasing in training and education by evaluating the partial derivatives at the sample means of the relevant variables and found that in all circumstances this regularity condition was met. Therefore, both the sufficient conditions and the overall conditions for technical complementarity hold in our data.

**Table 10. Mincerian Wage Regressions with Training and Occupational Dummies.**

(standard errors in parentheses with  $p < 0.05 = \sim$ ,  $p < 0.01 = *$ )

# obs :	4419	4419	4419	4419
Depvar:	wage	wage	wage	wage
ten98	0.0296* (0.0019)	0.0198* (0.0064)	0.0303* (0.0019)	0.0198* (0.0064)
exp98	0.0118* (0.0024)	0.0089 (0.0053)	0.0121* (0.0024)	0.0089 (0.0053)
fjprod	-0.0104 (0.0135)	-0.0097 (0.0134)	-0.0109 (0.0135)	-0.0099 (0.0134)
njobs	-0.0102 (0.0057)	-0.0109 (0.0060)	-0.0101 (0.0057)	-0.0105 (0.0059)
fjquiw	0.0483* (0.0145)	0.0461* (0.0146)	0.0508* (0.0146)	0.0486* (0.0146)
marry	0.0205* (0.0060)	0.0183* (0.0061)	0.0206* (0.0060)	0.0176* (0.0061)
sex	0.1292* (0.0158)	0.1260* (0.0159)	0.1278* (0.0159)	0.1231* (0.0158)
hsize	-0.0058~ (0.0028)	-0.0056~ (0.0028)	-0.0056~ (0.0028)	-0.0050 (0.0028)
edyear	0.0336* (0.0030)	0.0219* (0.0045)	0.0336* (0.0030)	0.0232* (0.0042)
spromo(-1)	0.0523* (0.0108)	0.0624* (0.0223)	0.0546* (0.0109)	0.0789* (0.0180)
sojt(-1)	0.0094 (0.0057)	-0.0044 (0.0225)		
soff(-1)	0.0230* (0.0062)	-0.0217 (0.0243)		
sfrojt(-1)			0.0046~ (0.0023)	-0.0061 (0.0086)
sfroff(-1)			0.0023~ (0.0010)	-0.0088~ (0.0044)
esojt(-1)		0.0021 (0.0019)		
esoff(-1)		0.0046~ (0.0020)		
edten98		0.0009 (0.0006)		0.0010 (0.0006)
edexp98		0.0003 (0.0005)		0.0003 (0.0005)
trint		-0.0059 (0.0042)		

ojtpro		-0.0035		
		(0.0084)		
offpro		-0.0059		
		(0.0094)		
esfrojt				0.0012
				(0.0007)
esfroff				0.0011*
				(0.0003)
trintf				-0.0002
				(0.0002)
frojtp				-0.0022
				(0.0027)
froffpr				-0.0028~
				(0.0012)
re1	-0.0487*	-0.0506*	-0.0499*	-0.0538*
	(0.0156)	(0.0157)	(0.0156)	(0.0156)
re2	-0.0254	-0.0271	-0.0261	-0.0282
	(0.0183)	(0.0183)	(0.0183)	(0.0183)
re4	-0.0662*	-0.0656*	-0.0665*	-0.0664*
	(0.0173)	(0.0173)	(0.0173)	(0.0173)
feduc	-0.0108	-0.0105	-0.0126	-0.0126
	(0.0173)	(0.0172)	(0.0174)	(0.0173)
meduc	0.0772*	0.0799*	0.0790*	0.0805*
	(0.0220)	(0.0218)	(0.0221)	(0.0218)
seduc	0.0114	0.0136	0.0103	0.0112
	(0.0094)	(0.0094)	(0.0094)	(0.0094)
oldest	0.0098	0.0102	0.0085	0.0104
	(0.0134)	(0.0134)	(0.0134)	(0.0134)
sibli	0.0096*	0.0094*	0.0093*	0.0095*
	(0.0030)	(0.0030)	(0.0030)	(0.0030)
Firm	Yes	Yes	Yes	Yes
Job	Yes	Yes	Yes	Yes
Year	Yes	Yes	Yes	Yes
YI	Yes	Yes	Yes	Yes

-----

R-sq                    0.514                    0.516                    0.513                    0.516

=====

Note: esojt=edyear\*sojt; esoff=edyear\*soff; edten98=edyear\*ten98; edexp=edyear\*exp98; trint=soff\*sojt; ojtpro=sojt\*promo; offpro=soff\*promo; esfrojt=edyear\*sfojt; esfroff= edyear\*sfroff; trintf=sfrojt\*soff; frojtp=frojtp\*promo; froffpr=froff\*promo. See Table 4.

*c) Summary of the evidence*

The evidence from incidence regressions points to a negative correlation between educational attainment and OJT and to the absence of a significant correlation between attainment and OFFJT. On the other hand, the evidence from wage regressions suggests the presence of technical complementarity between education and both types of training. This evidence is somewhat stronger for OFFJT than for OJT.

## 6. Discussion and Conclusions

In the second section of the paper, we have presented two simple economic models, both predicting that optimal training investment is obtained when the marginal costs and the marginal benefits of training are equal. Changes in educational attainment could affect optimal investment by affecting either marginal costs or marginal benefits or both. Model B in particular suggests that the marginal cost of training is proportional to the wage. Since individuals with more education have a higher opportunity value of time, they have also higher marginal training costs. Therefore, their marginal costs schedule lies to the left of the schedule associated to individuals with less education.

A shift from lower to higher education also affects marginal benefits, because of the complementarity between education and training. This complementarity is empirically stronger for OFFJT than for OJT. It follows that individuals with higher education have a marginal benefits schedule which lies to the right of the schedule accruing to less educated individuals. Moreover, the outward shift is quantitatively larger for OFFJT.

The overall effect of these shifts on training incidence is illustrated in Figures 2 and 3 below. In the case of OJT, the shift in the marginal costs schedule is relatively larger than the shift in the marginal benefits schedule and training incidence falls for the better educated. In the case of OFFJT, however, the relative shift of the marginal benefits schedule is bigger, so that on balance training incidence does not change in a significant way.

We can strengthen this interpretation by relying on additional factors affecting training costs. For instance, we could argue that the more educated have higher learning skills in more general and formalized OFFJT than in specific and often narrow OJT, because general education is more akin to formal off the job training. If this is the case, the outward shift in the training costs schedule for the more educated is smaller in the case of OFFJT than in the case of OJT. The important fact is that, in either cases, the marginal costs of training must be higher for the more educated. This is clearly in contrast with the literature reviewed in the introduction, which relies on the untested assumption that more education reduces marginal training costs. If anything, our data require the opposite to occur.

Our findings from wage regressions also suggest that training events increase future wages. Since average wages are related to labor productivity, we conclude that an increase in human capital, both via education and via training, positively affects labor productivity. Training affects future wages both directly and indirectly. The indirect effect occurs via promotion. We have shown that promotion records affect current wages. Not reported in the paper, a probit estimate of the probability of promotion shows

that this probability is significantly and positively affected by both off the job and on the job training events. Therefore, training events can affect wages and productivity by influencing the probability of promotion.

The impact of educational attainment on wage and labor productivity is also both direct and indirect. To the direct and familiar effect one should add the indirect effect via training incidence: by affecting the investment in training, education influences the additional accumulation of human capital and future wages and productivity. An important result of this paper is that the direction of the indirect effect is likely to be negative, as OJT falls for the better educated and OFFJT remains more or less unchanged.

Our results have also implications for the specific case of Thailand. First, we have found that the direct returns to education are much smaller than previously found in the literature. This of course could depend on the fact that we are using a relatively small sample of large firms in four selected industries. In this sample, the returns to one year of additional education is close to 5 percent, close to the average return found in OECD developed countries<sup>8</sup>.

The negative relationship between educational attainment and OJT suggests that the firms in the sample have compensated the relative scarcity of human capital represented by low education with higher investment in on the job training. This compensation might have been necessary, given the rapid growth of manufacturing in Thailand during the past twenty years, which has by far outpaced the growth of educational attainment. In a way, such a policy may have helped reducing the initial differences in accumulated human capital, which are significantly related to differences in family background.

One fourth of the companies in our sample are Japanese subsidiaries. We conclude this paper by asking whether these firms provide significantly more training than domestic and other foreign subsidiaries. We investigate empirically this issue by retrieving the estimated coefficients associated to the firm dummies and by regressing these coefficients on a *Japan* dummy taking the value of one if the firm is a Japanese subsidiary and of zero otherwise. We use weighted least squares, with each weight defined as the inverse of the variance of the estimated coefficient. It turns out that Japan dummy is positive and significantly different from zero only in the case of OFFJT. This result runs counter the standard intuition that Japanese firms provide more intense on the job training (see Koike [1988]).

---

<sup>8</sup> According to Psacharopoulos [1994], the average rate of return to one year of education in the OECD is 6.8 percent. More recent research shows that the average rate of return in Europe is close to 5 percent (see Harmon, Nielsen and Walker [2000]).

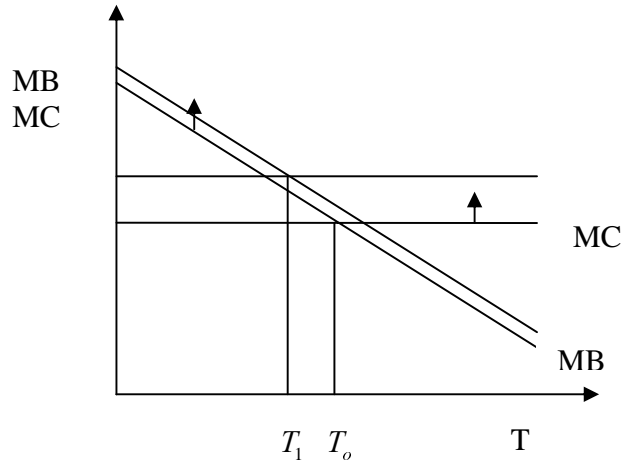


Figure 2. OJT

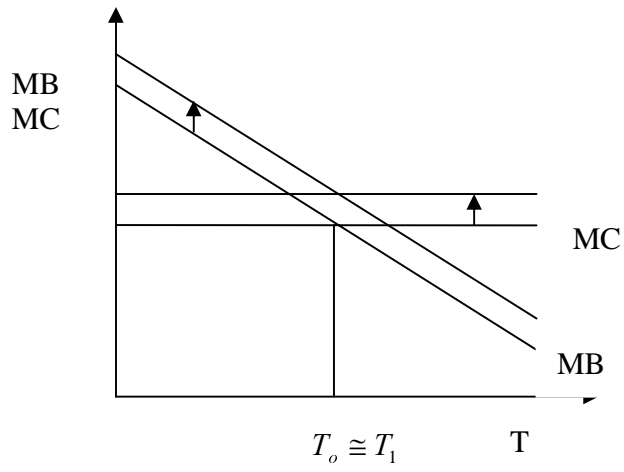


Figure 3. OFFJT

## References

- Beckett, M. et al [2001], Measurement Errors in Recall Data, Journal of Human Resources, 3, 36, 593-624.
- Berhman, J. [1987], Schooling in Developing Countries: Which Countries are the Over and Underachievers and What is the Schooling Impact?, Economics of Education Review, 2, 6, 111-127.
- Card, D., [1999], The Economic Returns to Education, in Ashenfelter, O. and Card, D., [1999], Handbook of Labor Economics, Volume 3, North Holland, Amsterdam.
- Doner, R. and Brimble, P., [1998], Thailand's Hard Disk Drive Industry, Report 98-02, University of California at San Diego.
- Greene, W., [1993], Econometric Analysis, McGraw Hill, New York.
- Harmon, C., Nielsen, N. and Walker, I., [2000], The Returns to Education in Europe, Edward Elgar.
- Hersch, R. [1991], Education Match and Job Match, The Review of Economics and Statistics, 73, 1, 140-44,
- Koike, K. [1988], Understanding Industrial Relations in Japan, MacMillan, London.
- Psacharopoulos, G., [1994], Returns to Investment in Education: A Global Update, World Development, 22. 9, 1325-1343
- Rosen, S. [1976], A Theory of Lifetime Earnings, Journal of Political Economy.
- Sicherman, N., [1990], "Overeducation" in the Labor Market, Journal of Labor Economics, 9, 2, 101-122
- Thurow, L [1975], Generating Inequality, New York, Basic Books
- Willis, R. [1986], Wage Determinants, in Ashenfelter, O. and Layard, R., Handbook of Labor Economics, North Holland, Amsterdam



## NOTE DI LAVORO DELLA FONDAZIONE ENI ENRICO MATTEI

### Fondazione Eni Enrico Mattei Working Papers Series

Our working papers are available on the Internet at the following addresses:

*Server WWW: WWW.FEEM.IT*

*Anonymous FTP: FTP.FEEM.IT*

[http://papers.ssrn.com/abstract\\_id=XXXXXX](http://papers.ssrn.com/abstract_id=XXXXXX)

SUST	1.2001	<i>Inge MAYERES and Stef PROOST: <u>Should Diesel Cars in Europe be Discouraged?</u></i>
SUST	2.2001	<i>Paola DORIA and Davide PETTENELLA: <u>The Decision Making Process in Defining and Protecting Critical Natural Capital</u></i>
CLIM	3.2001	<i>Alberto PENCH: <u>Green Tax Reforms in a Computable General Equilibrium Model for Italy</u></i>
CLIM	4.2001	<i>Maurizio BUSSOLO and Dino PINELLI: <u>Green Taxes: Environment, Employment and Growth</u></i>
CLIM	5.2001	<i>Marco STAMPINI: <u>Tax Reforms and Environmental Policies for Italy</u></i>
ETA	6.2001	<i>Walid OUESLATI: <u>Environmental Fiscal Policy in an Endogenous Growth Model with Human Capital</u></i>
CLIM	7.2001	<i>Umberto CIORBA, Alessandro LANZA and Francesco PAULI: <u>Kyoto Commitment and Emission Trading: a European Union Perspective</u></i>
MGMT	8.2001	<i>Brian SLACK (xlv): <u>Globalisation in Maritime Transportation: Competition, uncertainty and implications for port development strategy</u></i>
VOL	9.2001	<i>Giulia PESARO: <u>Environmental Voluntary Agreements: A New Model of Co-operation Between Public and Economic Actors</u></i>
VOL	10.2001	<i>Cathrine HAGEM: <u>Climate Policy, Asymmetric Information and Firm Survival</u></i>
ETA	11.2001	<i>Sergio CURRARINI and Marco MARINI: <u>A Sequential Approach to the Characteristic Function and the Core in Games with Externalities</u></i>
ETA	12.2001	<i>Gaetano BLOISE, Sergio CURRARINI and Nicholas KIKIDIS: <u>Inflation and Welfare in an OLG Economy with a Privately Provided Public Good</u></i>
KNOW	13.2001	<i>Paolo SURICO: <u>Globalisation and Trade: A “New Economic Geography” Perspective</u></i>
ETA	14.2001	<i>Valentina BOSETTI and Vincenzina MESSINA: <u>Quasi Option Value and Irreversible Choices</u></i>
CLIM	15.2001	<i>Guy ENGELEN (xlii): <u>Desertification and Land Degradation in Mediterranean Areas: from Science to Integrated Policy Making</u></i>
SUST	16.2001	<i>Julie Catherine SORS: <u>Measuring Progress Towards Sustainable Development in Venice: A Comparative Assessment of Methods and Approaches</u></i>
SUST	17.2001	<i>Julie Catherine SORS: <u>Public Participation in Local Agenda 21: A Review of Traditional and Innovative Tools</u></i>
CLIM	18.2001	<i>Johan ALBRECHT and Niko GOBBIN: <u>Schumpeter and the Rise of Modern Environmentalism</u></i>
VOL	19.2001	<i>Rinaldo BRAU, Carlo CARRARO and Giulio GOLFETTO (xliii): <u>Participation Incentives and the Design of Voluntary Agreements</u></i>
ETA	20.2001	<i>Paola ROTA: <u>Dynamic Labour Demand with Lumpy and Kinked Adjustment Costs</u></i>
ETA	21.2001	<i>Paola ROTA: <u>Empirical Representation of Firms’ Employment Decisions by an (S,s) Rule</u></i>
ETA	22.2001	<i>Paola ROTA: <u>What Do We Gain by Being Discrete? An Introduction to the Econometrics of Discrete Decision Processes</u></i>
PRIV	23.2001	<i>Stefano BOSI, Guillaume GIRMANS and Michel GUILLARD: <u>Optimal Privatisation Design and Financial Markets</u></i>
KNOW	24.2001	<i>Giorgio BRUNELLO, Claudio LUPI, Patrizia ORDINE, and Maria Luisa PARISI: <u>Beyond National Institutions: Labour Taxes and Regional Unemployment in Italy</u></i>
ETA	25.2001	<i>Klaus CONRAD: <u>Locational Competition under Environmental Regulation when Input Prices and Productivity Differ</u></i>
PRIV	26.2001	<i>Bernardo BORTOLOTTI, Juliet D’SOUZA, Marcella FANTINI and William L. MEGGINSON: <u>Sources of Performance Improvement in Privatised Firms: A Clinical Study of the Global Telecommunications Industry</u></i>
CLIM	27.2001	<i>Frédéric BROCHIER and Emiliano RAMIERI: <u>Climate Change Impacts on the Mediterranean Coastal Zones</u></i>
ETA	28.2001	<i>Nunzio CAPPUCCIO and Michele MORETTO: <u>Comments on the Investment-Uncertainty Relationship in a Real Option Model</u></i>
KNOW	29.2001	<i>Giorgio BRUNELLO: <u>Absolute Risk Aversion and the Returns to Education</u></i>
CLIM	30.2001	<i>ZhongXiang ZHANG: <u>Meeting the Kyoto Targets: The Importance of Developing Country Participation</u></i>
ETA	31.2001	<i>Jonathan D. KAPLAN, Richard E. HOWITT and Y. Hossein FARZIN: <u>An Information-Theoretical Analysis of Budget-Constrained Nonpoint Source Pollution Control</u></i>
MGMT Coalition	32.2001	<i>Roberta SALOMONE and Giulia GALLUCCIO: <u>Environmental Issues and Financial Reporting Trends</u></i>
Theory Network	33.2001	<i>Shlomo WEBER and Hans WIESMETH: <u>From Autarky to Free Trade: The Impact on Environment</u></i>
ETA	34.2001	<i>Margarita GENIUS and Elisabetta STRAZZERA: <u>Model Selection and Tests for Non Nested Contingent Valuation Models: An Assessment of Methods</u></i>



NRM	35.2001	<i>Carlo GIUPPONI</i> : <u>The Substitution of Hazardous Molecules in Production Processes: The Atrazine Case Study in Italian Agriculture</u>
KNOW	36.2001	<i>Raffaele PACI and Francesco PIGLIARU</i> : <u>Technological Diffusion, Spatial Spillovers and Regional Convergence in Europe</u>
PRIV	37.2001	<i>Bernardo BORTOLOTTI</i> : <u>Privatisation, Large Shareholders, and Sequential Auctions of Shares</u>
CLIM	38.2001	<i>Barbara BUCHNER</i> : <u>What Really Happened in The Hague? Report on the COP6, Part I, 13-25 November 2000, The Hague, The Netherlands</u>
PRIV	39.2001	<i>Giacomo CALZOLARI and Carlo SCARPA</i> : <u>Regulation at Home, Competition Abroad: A Theoretical Framework</u>
KNOW	40.2001	<i>Giorgio BRUNELLO</i> : <u>On the Complementarity between Education and Training in Europe</u>
Coalition Theory Network	41.2001	<i>Alain DESDOIGTS and Fabien MOIZEAU</i> (xlvi): <u>Multiple Politico-Economic Regimes, Inequality and Growth</u>
Coalition Theory Network	42.2001	<i>Parkash CHANDER and Henry TULKENS</i> (xlvi): <u>Limits to Climate Change</u>
Coalition Theory Network	43.2001	<i>Michael FINUS and Bianca RUNDSHAGEN</i> (xlvi): <u>Endogenous Coalition Formation in Global Pollution Control</u>
Coalition Theory Network	44.2001	<i>Wietze LISE, Richard S.J. TOL and Bob van der ZWAAN</i> (xlvi): <u>Negotiating Climate Change as a Social Situation</u>
NRM	45.2001	<i>Mohamad R. KHAWLIE</i> (xlvi): <u>The Impacts of Climate Change on Water Resources of Lebanon- Eastern Mediterranean</u>
NRM	46.2001	<i>Mutasem EL-FADEL and E. BOU-ZEID</i> (xlvi): <u>Climate Change and Water Resources in the Middle East: Vulnerability, Socio-Economic Impacts and Adaptation</u>
NRM	47.2001	<i>Eva IGLESIAS, Alberto GARRIDO and Almudena GOMEZ</i> (xlvi): <u>An Economic Drought Management Index to Evaluate Water Institutions' Performance Under Uncertainty and Climate Change</u>
CLIM	48.2001	<i>Wietze LISE and Richard S.J. TOL</i> (xlvi): <u>Impact of Climate on Tourist Demand</u>
CLIM	49.2001	<i>Francesco BOSELLO, Barbara BUCHNER, Carlo CARRARO and Davide RAGGI</i> : <u>Can Equity Enhance Efficiency? Lessons from the Kyoto Protocol</u>
SUST	50.2001	<i>Roberto ROSON</i> (xlvi): <u>Carbon Leakage in a Small Open Economy with Capital Mobility</u>
SUST	51.2001	<i>Edwin WOERDMAN</i> (xlvi): <u>Developing a European Carbon Trading Market: Will Permit Allocation Distort Competition and Lead to State Aid?</u>
SUST	52.2001	<i>Richard N. COOPER</i> (xlvi): <u>The Kyoto Protocol: A Flawed Concept</u>
SUST	53.2001	<i>Kari KANGAS</i> (xlvi): <u>Trade Liberalisation, Changing Forest Management and Roundwood Trade in Europe</u>
SUST	54.2001	<i>Xueqin ZHU and Ekko VAN IERLAND</i> (xlvi): <u>Effects of the Enlargement of EU on Trade and the Environment</u>
SUST	55.2001	<i>M. Ozgur KAYALICA and Sajal LAHIRI</i> (xlvi): <u>Strategic Environmental Policies in the Presence of Foreign Direct Investment</u>
SUST	56.2001	<i>Savas ALPAY</i> (xlvi): <u>Can Environmental Regulations be Compatible with Higher International Competitiveness? Some New Theoretical Insights</u>
SUST	57.2001	<i>Roldan MURADIAN, Martin O'CONNOR, Joan MARTINEZ-ALER</i> (xlvi): <u>Embodied Pollution in Trade: Estimating the "Environmental Load Displacement" of Industrialised Countries</u>
SUST	58.2001	<i>Matthew R. AUER and Rafael REUVENY</i> (xlvi): <u>Foreign Aid and Direct Investment: Key Players in the Environmental Restoration of Central and Eastern Europe</u>
SUST	59.2001	<i>Onno J. KUIK and Frans H. OOSTERHUIS</i> (xlvi): <u>Lessons from the Southern Enlargement of the EU for the Environmental Dimensions of Eastern Enlargement, in particular for Poland</u>
ETA	60.2001	<i>Carlo CARRARO, Alessandra POME and Domenico SINISCALCO</i> (xlix): <u>Science vs. Profit in Research: Lessons from the Human Genome Project</u>
CLIM	61.2001	<i>Efrem CASTELNUOVO, Michele MORETTO and Sergio VERGALLI</i> : <u>Global Warming, Uncertainty and Endogenous Technical Change: Implications for Kyoto</u>
PRIV	62.2001	<i>Gian Luigi ALBANO, Fabrizio GERMANO and Stefano LOVO</i> : <u>On Some Collusive and Signaling Equilibria in Ascending Auctions for Multiple Objects</u>
CLIM	63.2001	<i>Elbert DIJKGRAAF and Herman R.J. VOLLEBERGH</i> : <u>A Note on Testing for Environmental Kuznets Curves with Panel Data</u>
CLIM	64.2001	<i>Paolo BUONANNO, Carlo CARRARO and Marzio GALEOTTI</i> : <u>Endogenous Induced Technical Change and the Costs of Kyoto</u>
CLIM	65.2001	<i>Guido CAZZAVILLAN and Ignazio MUSU</i> (l): <u>Transitional Dynamics and Uniqueness of the Balanced-Growth Path in a Simple Model of Endogenous Growth with an Environmental Asset</u>
CLIM	66.2001	<i>Giovanni BAIOCCHI and Salvatore DI FALCO</i> (l): <u>Investigating the Shape of the EKC: A Nonparametric Approach</u>
CLIM	67.2001	<i>Marzio GALEOTTI, Alessandro LANZA and Francesco PAULI</i> (l): <u>Desperately Seeking (Environmental) Kuznets: A New Look at the Evidence</u>
CLIM	68.2001	<i>Alexey VIKHLYAEV</i> (xlvi): <u>The Use of Trade Measures for Environmental Purposes – Globally and in the EU Context</u>
NRM	69.2001	<i>Gary D. LIBECAP and Zeynep K. HANSEN</i> (li): <u>U.S. Land Policy, Property Rights, and the Dust Bowl of the 1930s</u>

NRM	70.2001	<i>Lee J. ALSTON, Gary D. LIBECAP and Bernardo MUELLER</i> (li): <u>Land Reform Policies. The Sources of Violent Conflict and Implications for Deforestation in the Brazilian Amazon</u>
CLIM	71.2001	<i>Claudia KEMFERT</i> : <u>Economy-Energy-Climate Interaction – The Model WIAGEM -</u>
SUST	72.2001	<i>Paulo A.L.D. NUNES and Yohanes E. RIYANTO</i> : <u>Policy Instruments for Creating Markets for Biodiversity: Certification and Ecolabeling</u>
SUST	73.2001	<i>Paulo A.L.D. NUNES and Erik SCHOKKAERT</i> (lii): <u>Warm Glow and Embedding in Contingent Valuation</u>
SUST	74.2001	<i>Paulo A.L.D. NUNES, Jeroen C.J.M. van den BERGH and Peter NIJKAMP</i> (lii): <u>Ecological-Economic Analysis and Valuation of Biodiversity</u>
VOL	75.2001	<i>Johan EYCKMANS and Henry TULKENS</i> (li): <u>Simulating Coalitionally Stable Burden Sharing Agreements for the Climate Change Problem</u>
PRIV	76.2001	<i>Axel GAUTIER and Florian HEIDER</i> : <u>What Do Internal Capital Markets Do? Redistribution vs. Incentives</u>
PRIV	77.2001	<i>Bernardo BORTOLOTTI, Marcella FANTINI and Domenico SINISCALCO</i> : <u>Privatisation around the World: New Evidence from Panel Data</u>
ETA	78.2001	<i>Toke S. AIDT and Jayasri DUTTA</i> (li): <u>Transitional Politics. Emerging Incentive-based Instruments in Environmental Regulation</u>
ETA	79.2001	<i>Alberto PETRUCCI</i> : <u>Consumption Taxation and Endogenous Growth in a Model with New Generations</u>
ETA	80.2001	<i>Pierre LASSERRE and Antoine SOUBEYRAN</i> (li): <u>A Ricardian Model of the Tragedy of the Commons</u>
ETA	81.2001	<i>Pierre COURTOIS, Jean Christophe PÉREAU and Tarik TAZDAÏT</i> : <u>An Evolutionary Approach to the Climate Change Negotiation Game</u>
NRM	82.2001	<i>Christophe BONTEMPS, Stéphane COUTURE and Pascal FAVARD</i> : <u>Is the Irrigation Water Demand Really Convex?</u>
NRM	83.2001	<i>Unai PASCUAL and Edward BARBIER</i> : <u>A Model of Optimal Labour and Soil Use with Shifting Cultivation</u>
CLIM	84.2001	<i>Jesper JENSEN and Martin Hvidt THELLE</i> : <u>What are the Gains from a Multi-Gas Strategy?</u>
CLIM	85.2001	<i>Maurizio MICHELINI</i> (liii): IPCC “Summary for Policymakers” in TAR. <u>Do its results give a scientific support always adequate to the urgencies of Kyoto negotiations?</u>
CLIM	86.2001	<i>Claudia KEMFERT</i> (liii): <u>Economic Impact Assessment of Alternative Climate Policy Strategies</u>
CLIM	87.2001	<i>Cesare DOSI and Michele MORETTO</i> : <u>Global Warming and Financial Umbrellas</u>
ETA	88.2001	<i>Elena BONTEMPI, Alessandra DEL BOCA, Alessandra FRANZOSI, Marzio GALEOTTI and Paola ROTA</i> : <u>Capital Heterogeneity: Does it Matter? Fundamental Q and Investment on a Panel of Italian Firms</u>
ETA	89.2001	<i>Efrem CASTELNUOVO and Paolo SURICO</i> : <u>Model Uncertainty, Optimal Monetary Policy and the Preferences of the Fed</u>
CLIM	90.2001	<i>Umberto CIORBA, Alessandro LANZA and Francesco PAULI</i> : <u>Kyoto Protocol and Emission Trading: Does the US Make a Difference?</u>
CLIM	91.2001	<i>ZhongXiang ZHANG and Lucas ASSUNCAO</i> : <u>Domestic Climate Policies and the WTO</u>
SUST	92.2001	<i>Anna ALBERINI, Alan KRUPNICK, Maureen CROPPER, Nathalie SIMON and Joseph COOK</i> (lii): <u>The Willingness to Pay for Mortality Risk Reductions: A Comparison of the United States and Canada</u>
SUST	93.2001	<i>Riccardo SCARPA, Guy D. GARROD and Kenneth G. WILLIS</i> (lii): <u>Valuing Local Public Goods with Advanced Stated Preference Models: Traffic Calming Schemes in Northern England</u>
CLIM	94.2001	<i>Ming CHEN and Larry KARP</i> : <u>Environmental Indices for the Chinese Grain Sector</u>
CLIM	95.2001	<i>Larry KARP and Jiangfeng ZHANG</i> : <u>Controlling a Stock Pollutant with Endogenous Investment and Asymmetric Information</u>
ETA	96.2001	<i>Michele MORETTO and Gianpaolo ROSSINI</i> : <u>On the Opportunity Cost of Nontradable Stock Options</u>
SUST	97.2001	<i>Elisabetta STRAZZERA, Margarita GENIUS, Riccardo SCARPA and George HUTCHINSON</i> : <u>The Effect of Protest Votes on the Estimates of Willingness to Pay for Use Values of Recreational Sites</u>
NRM	98.2001	<i>Frédéric BROCHIER, Carlo GIUPPONI and Alberto LONGO</i> : <u>Integrated Coastal Zone Management in the Venice Area – Perspectives of Development for the Rural Island of Sant’Erasmus</u>
NRM	99.2001	<i>Frédéric BROCHIER, Carlo GIUPPONI and Julie SORS</i> : <u>Integrated Coastal Management in the Venice Area – Potentials of the Integrated Participatory Management Approach</u>
NRM	100.2001	<i>Frédéric BROCHIER and Carlo GIUPPONI</i> : <u>Integrated Coastal Zone Management in the Venice Area – A Methodological Framework</u>
PRIV	101.2001	<i>Enrico C. PEROTTI and Luc LAEVEN</i> : <u>Confidence Building in Emerging Stock Markets</u>
CLIM	102.2001	<i>Barbara BUCHNER, Carlo CARRARO and Igor CERSOSIMO</i> : <u>On the Consequences of the U.S. Withdrawal from the Kyoto/Bonn Protocol</u>
SUST	103.2001	<i>Riccardo SCARPA, Adam DRUCKER, Simon ANDERSON, Nancy FERRAES-EHUAN, Veronica GOMEZ, Carlos R. RISOPATRON and Olga RUBIO-LEONEL</i> : <u>Valuing Animal Genetic Resources in Peasant Economies: The Case of the Box Keken Creole Pig in Yucatan</u>
SUST	104.2001	<i>R. SCARPA, P. KRISTJANSON, A. DRUCKER, M. RADENY, E.S.K. RUTO, and J.E.O. REGE</i> : <u>Valuing Indigenous Cattle Breeds in Kenya: An Empirical Comparison of Stated and Revealed Preference Value Estimates</u>
SUST	105.2001	<i>Clemens B.A. WOLLNY</i> : <u>The Need to Conserve Farm Animal Genetic Resources Through Community-Based Management in Africa: Should Policy Makers be Concerned?</u>
SUST	106.2001	<i>J.T. KARUGIA, O.A. MWAI, R. KAITHO, Adam G. DRUCKER, C.B.A. WOLLNY and J.E.O. REGE</i> : <u>Economic Analysis of Crossbreeding Programmes in Sub-Saharan Africa: A Conceptual Framework and Kenyan Case Study</u>
SUST	107.2001	<i>W. AYALEW, J.M. KING, E. BRUNS and B. RISCHKOWSKY</i> : <u>Economic Evaluation of Smallholder Subsistence Livestock Production: Lessons from an Ethiopian Goat Development Program</u>

SUST	108.2001	<i>Gianni CICIA, Elisabetta D'ERCOLE and Davide MARINO: <u>Valuing Farm Animal Genetic Resources by Means of Contingent Valuation and a Bio-Economic Model: The Case of the Pentro Horse</u></i>
SUST	109.2001	<i>Clem TISDELL: <u>Socioeconomic Causes of Loss of Animal Genetic Diversity: Analysis and Assessment</u></i>
SUST	110.2001	<i>M.A. JABBAR and M.L. DIEDHOU: <u>Does Breed Matter to Cattle Farmers and Buyers? Evidence from West Africa</u></i>
SUST	1.2002	<i>K. TANO, M.D. FAMINOW, M. KAMUANGA and B. SWALLOW: <u>Using Conjoint Analysis to Estimate Farmers' Preferences for Cattle Traits in West Africa</u></i>
ETA	2.2002	<i>Efrem CASTELNUOVO and Paolo SURICO: <u>What Does Monetary Policy Reveal about Central Bank's Preferences?</u></i>
WAT	3.2002	<i>Duncan KNOWLER and Edward BARBIER: <u>The Economics of a "Mixed Blessing" Effect: A Case Study of the Black Sea</u></i>
CLIM	4.2002	<i>Andreas LÖSCHEL: <u>Technological Change in Economic Models of Environmental Policy: A Survey</u></i>
VOL	5.2002	<i>Carlo CARRARO and Carmen MARCHIORI: <u>Stable Coalitions</u></i>
CLIM	6.2002	<i>Marzio GALEOTTI, Alessandro LANZA and Matteo MANERA: <u>Rockets and Feathers Revisited: An International Comparison on European Gasoline Markets</u></i>
ETA	7.2002	<i>Effrosyni DIAMANTOUDI and Eftichios S. SARTZETAKIS: <u>Stable International Environmental Agreements: An Analytical Approach</u></i>
KNOW	8.2002	<i>Alain DESDOIGTS: <u>Neoclassical Convergence Versus Technological Catch-up: A Contribution for Reaching a Consensus</u></i>
NRM	9.2002	<i>Giuseppe DI VITA: <u>Renewable Resources and Waste Recycling</u></i>
KNOW	10.2002	<i>Giorgio BRUNELLO: <u>Is Training More Frequent when Wage Compression is Higher? Evidence from 11 European Countries</u></i>
ETA	11.2002	<i>Mordecai KURZ, Hehui JIN and Maurizio MOTOLESE: <u>Endogenous Fluctuations and the Role of Monetary Policy</u></i>
KNOW	12.2002	<i>Reyer GERLAGH and Marjan W. HOFKES: <u>Escaping Lock-in: The Scope for a Transition towards Sustainable Growth?</u></i>
NRM	13.2002	<i>Michele MORETTO and Paolo ROSATO: <u>The Use of Common Property Resources: A Dynamic Model</u></i>
CLIM	14.2002	<i>Philippe QUIRION: <u>Macroeconomic Effects of an Energy Saving Policy in the Public Sector</u></i>
CLIM	15.2002	<i>Roberto ROSON: <u>Dynamic and Distributional Effects of Environmental Revenue Recycling Schemes: Simulations with a General Equilibrium Model of the Italian Economy</u></i>
CLIM	16.2002	<i>Francesco RICCI (I): <u>Environmental Policy Growth when Inputs are Differentiated in Pollution Intensity</u></i>
ETA	17.2002	<i>Alberto PETRUCCI: <u>Devaluation (Levels versus Rates) and Balance of Payments in a Cash-in-Advance Economy</u></i>
Coalition Theory Network	18.2002	<i>László Á. KÓCZY (liv): <u>The Core in the Presence of Externalities</u></i>
Coalition Theory Network	19.2002	<i>Steven J. BRAMS, Michael A. JONES and D. Marc KILGOUR (liv): <u>Single-Peakedness and Disconnected Coalitions</u></i>
Coalition Theory Network	20.2002	<i>Guillaume HAERINGER (liv): <u>On the Stability of Cooperation Structures</u></i>
NRM	21.2002	<i>Fausto CAVALLARO and Luigi CIRAULO: <u>Economic and Environmental Sustainability: A Dynamic Approach in Insular Systems</u></i>
CLIM	22.2002	<i>Barbara BUCHNER, Carlo CARRARO, Igor CERSOSIMO and Carmen MARCHIORI: <u>Back to Kyoto? US Participation and the Linkage between R&amp;D and Climate Cooperation</u></i>
CLIM	23.2002	<i>Andreas LÖSCHEL and ZhongXIANG ZHANG: <u>The Economic and Environmental Implications of the US Repudiation of the Kyoto Protocol and the Subsequent Deals in Bonn and Marrakech</u></i>
ETA	24.2002	<i>Marzio GALEOTTI, Louis J. MACCINI and Fabio SCHIANTARELLI: <u>Inventories, Employment and Hours</u></i>
CLIM	25.2002	<i>Hannes EGLI: <u>Are Cross-Country Studies of the Environmental Kuznets Curve Misleading? New Evidence from Time Series Data for Germany</u></i>
ETA	26.2002	<i>Adam B. JAFFE, Richard G. NEWELL and Robert N. STAVINS: <u>Environmental Policy and Technological Change</u></i>
SUST	27.2002	<i>Joseph C. COOPER and Giovanni SIGNORELLO: <u>Farmer Premiums for the Voluntary Adoption of Conservation Plans</u></i>
SUST	28.2002	<i><u>The ANSEA Network: Towards An Analytical Strategic Environmental Assessment</u></i>
KNOW	29.2002	<i>Paolo SURICO: <u>Geographic Concentration and Increasing Returns: a Survey of Evidence</u></i>
ETA	30.2002	<i>Robert N. STAVINS: <u>Lessons from the American Experiment with Market-Based Environmental Policies</u></i>
NRM	31.2002	<i>Carlo GIUPPONI and Paolo ROSATO: <u>Multi-Criteria Analysis and Decision-Support for Water Management at the Catchment Scale: An Application to Diffuse Pollution Control in the Venice Lagoon</u></i>
NRM	32.2002	<i>Robert N. STAVINS: <u>National Environmental Policy During the Clinton Years</u></i>
KNOW	33.2002	<i>A. SOUBEYRAN and H. STAHN : <u>Do Investments in Specialized Knowledge Lead to Composite Good Industries?</u></i>
KNOW	34.2002	<i>G. BRUNELLO, M.L. PARISI and Daniela SONEDDA: <u>Labor Taxes, Wage Setting and the Relative Wage Effect</u></i>
CLIM	35.2002	<i>C. BOEMARE and P. QUIRION (lv): <u>Implementing Greenhouse Gas Trading in Europe: Lessons from Economic Theory and International Experiences</u></i>

CLIM	36.2002	<i>T. TIETENBERG</i> (lv): <u>The Tradable Permits Approach to Protecting the Commons: What Have We Learned?</u>
CLIM	37.2002	<i>K. REHDANZ and R.J.S. TOL</i> (lv): <u>On National and International Trade in Greenhouse Gas Emission Permits</u>
CLIM	38.2002	<i>C. FISCHER</i> (lv): <u>Multinational Taxation and International Emissions Trading</u>
SUST	39.2002	<i>G. SIGNORELLO and G. PAPPALARDO</i> : <u>Farm Animal Biodiversity Conservation Activities in Europe under the Framework of Agenda 2000</u>
NRM	40.2002	<i>S.M. CAVANAGH, W. M. HANEMANN and R. N. STAVINS</i> : <u>Muffled Price Signals: Household Water Demand under Increasing-Block Prices</u>
NRM	41.2002	<i>A. J. PLANTINGA, R. N. LUBOWSKI and R. N. STAVINS</i> : <u>The Effects of Potential Land Development on Agricultural Land Prices</u>
CLIM	42.2002	<i>C. OHL</i> (lvi): <u>Inducing Environmental Co-operation by the Design of Emission Permits</u>
CLIM	43.2002	<i>J. EYCKMANS, D. VAN REGEMORTER and V. VAN STEENBERGHE</i> (lvi): <u>Is Kyoto Fatally Flawed? An Analysis with MacGEM</u>
CLIM	44.2002	<i>A. ANTOCI and S. BORGHESI</i> (lvi): <u>Working Too Much in a Polluted World: A North-South Evolutionary Model</u>
ETA	45.2002	<i>P. G. FREDRIKSSON, Johan A. LIST and Daniel MILLIMET</i> (lvi): <u>Chasing the Smokestack: Strategic Policymaking with Multiple Instruments</u>
ETA	46.2002	<i>Z. YU</i> (lvi): <u>A Theory of Strategic Vertical DFI and the Missing Pollution-Haven Effect</u>
SUST	47.2002	<i>Y. H. FARZIN</i> : <u>Can an Exhaustible Resource Economy Be Sustainable?</u>
SUST	48.2002	<i>Y. H. FARZIN</i> : <u>Sustainability and Hamiltonian Value</u>
KNOW	49.2002	<i>C. PIGA and M. VIVARELLI</i> : <u>Cooperation in R&amp;D and Sample Selection</u>
Coalition Theory Network Coalition Theory Network	50.2002	<i>M. SERTEL and A. SLINKO</i> (liv): <u>Ranking Committees, Words or Multisets</u>
ETA	51.2002	<i>Sergio CURRARINI</i> (liv): <u>Stable Organizations with Externalities</u>
ETA	52.2002	<i>Robert N. STAVINS</i> : <u>Experience with Market-Based Policy Instruments</u>
ETA	53.2002	<i>C.C. JAEGER, M. LEIMBACH, C. CARRARO, K. HASSELMANN, J.C. HOURCADE, A. KEELER and R. KLEIN</i> (liii): <u>Integrated Assessment Modeling: Modules for Cooperation</u>
CLIM	54.2002	<i>Scott BARRETT</i> (liii): <u>Towards a Better Climate Treaty</u>
ETA	55.2002	<i>Richard G. NEWELL and Robert N. STAVINS</i> : <u>Cost Heterogeneity and the Potential Savings from Market-Based Policies</u>
SUST	56.2002	<i>Paolo ROSATO and Edi DEFRANCESCO</i> : <u>Individual Travel Cost Method and Flow Fixed Costs</u>
SUST	57.2002	<i>Vladimir KOTOV and Elena NIKITINA</i> (lvii): <u>Reorganisation of Environmental Policy in Russia: The Decade of Success and Failures in Implementation of Perspective Quests</u>
SUST	58.2002	<i>Vladimir KOTOV</i> (lvii): <u>Policy in Transition: New Framework for Russia's Climate Policy</u>
SUST	59.2002	<i>Fanny MISSFELDT and Arturo VILLAVICENCO</i> (lvii): <u>How Can Economies in Transition Pursue Emissions Trading or Joint Implementation?</u>
VOL	60.2002	<i>Giovanni DI BARTOLOMEO, Jacob ENGWERDA, Joseph PLASMANS and Bas VAN AARLE</i> : <u>Staying Together or Breaking Apart: Policy-Makers' Endogenous Coalitions Formation in the European Economic and Monetary Union</u>
ETA	61.2002	<i>Robert N. STAVINS, Alexander F. WAGNER and Gernot WAGNER</i> : <u>Interpreting Sustainability in Economic Terms: Dynamic Efficiency Plus Intergenerational Equity</u>
PRIV	62.2002	<i>Carlo CAPUANO</i> : <u>Demand Growth, Entry and Collusion Sustainability</u>
PRIV	63.2002	<i>Federico MUNARI and Raffaele ORIANI</i> : <u>Privatization and R&amp;D Performance: An Empirical Analysis Based on Tobin's Q</u>
PRIV	64.2002	<i>Federico MUNARI and Maurizio SOBRERO</i> : <u>The Effects of Privatization on R&amp;D Investments and Patent Productivity</u>
SUST	65.2002	<i>Orley ASHENFELTER and Michael GREENSTONE</i> : <u>Using Mandated Speed Limits to Measure the Value of a Statistical Life</u>
ETA	66.2002	<i>Paolo SURICO</i> : <u>US Monetary Policy Rules: the Case for Asymmetric Preferences</u>
PRIV	67.2002	<i>Rinaldo BRAU and Massimo FLORIO</i> : <u>Privatisations as Price Reforms: Evaluating Consumers' Welfare Changes in the U.K.</u>
CLIM	68.2002	<i>Barbara K. BUCHNER and Roberto ROSON</i> : <u>Conflicting Perspectives in Trade and Environmental Negotiations</u>
CLIM	69.2002	<i>Philippe QUIRION</i> : <u>Complying with the Kyoto Protocol under Uncertainty: Taxes or Tradable Permits?</u>
SUST	70.2002	<i>Anna ALBERINI, Patrizia RIGANTI and Alberto LONGO</i> : <u>Can People Value the Aesthetic and Use Services of Urban Sites? Evidence from a Survey of Belfast Residents</u>
SUST	71.2002	<i>Marco PERCOCO</i> : <u>Discounting Environmental Effects in Project Appraisal</u>
NRM	72.2002	<i>Philippe BONTEMS and Pascal FAVARD</i> : <u>Input Use and Capacity Constraint under Uncertainty: The Case of Irrigation</u>
PRIV	73.2002	<i>Mohammed OMRAN</i> : <u>The Performance of State-Owned Enterprises and Newly Privatized Firms: Empirical Evidence from Egypt</u>
PRIV	74.2002	<i>Mike BURKART, Fausto PANUNZI and Andrei SHLEIFER</i> : <u>Family Firms</u>
PRIV	75.2002	<i>Emmanuelle AURIOL, Pierre M. PICARD</i> : <u>Privatizations in Developing Countries and the Government Budget Constraint</u>
PRIV	76.2002	<i>Nichole M. CASTATER</i> : <u>Privatization as a Means to Societal Transformation: An Empirical Study of Privatization in Central and Eastern Europe and the Former Soviet Union</u>

PRIV	77.2002	<i>Christoph LÜLSFESMANN</i> : <u>Benevolent Government, Managerial Incentives, and the Virtues of Privatization</u>
PRIV	78.2002	<i>Kate BISHOP, Igor FILATOTCHEV and Tomasz MICKIEWICZ</i> : <u>Endogenous Ownership Structure: Factors Affecting the Post-Privatisation Equity in Largest Hungarian Firms</u>
PRIV	79.2002	<i>Theodora WELCH and Rick MOLZ</i> : <u>How Does Trade Sale Privatization Work? Evidence from the Fixed-Line Telecommunications Sector in Developing Economies</u>
PRIV	80.2002	<i>Alberto R. PETRUCCI</i> : <u>Government Debt, Agent Heterogeneity and Wealth Displacement in a Small Open Economy</u>
CLIM	81.2002	<i>Timothy SWANSON and Robin MASON (Ivi)</i> : <u>The Impact of International Environmental Agreements: The Case of the Montreal Protocol</u>
PRIV	82.2002	<i>George R.G. CLARKE and Lixin Colin XU</i> : <u>Privatization, Competition and Corruption: How Characteristics of Bribe Takers and Payers Affect Bribe Payments to Utilities</u>
PRIV	83.2002	<i>Massimo FLORIO and Katuscia MANZONI</i> : <u>The Abnormal Returns of UK Privatisations: From Underpricing to Outperformance</u>
NRM	84.2002	<i>Nelson LOURENÇO, Carlos RUSSO MACHADO, Maria do ROSÁRIO JORGE and Luís RODRIGUES</i> : <u>An Integrated Approach to Understand Territory Dynamics. The Coastal Alentejo (Portugal)</u>
CLIM	85.2002	<i>Peter ZAPFEL and Matti VAINIO (Iv)</i> : <u>Pathways to European Greenhouse Gas Emissions Trading History and Misconceptions</u>
CLIM	86.2002	<i>Pierre COURTOIS</i> : <u>Influence Processes in Climate Change Negotiations: Modelling the Rounds</u>
ETA	87.2002	<i>Vito FRAGNELLI and Maria Erminia MARINA (Iviii)</i> : <u>Environmental Pollution Risk and Insurance</u>
ETA	88.2002	<i>Laurent FRANCKX (Iviii)</i> : <u>Environmental Enforcement with Endogenous Ambient Monitoring</u>
ETA	89.2002	<i>Timo GOESCHL and Timothy M. SWANSON (Iviii)</i> : <u>Lost Horizons. The noncooperative management of an evolutionary biological system.</u>
ETA	90.2002	<i>Hans KEIDING (Iviii)</i> : <u>Environmental Effects of Consumption: An Approach Using DEA and Cost Sharing</u>
ETA	91.2002	<i>Wietze LISE (Iviii)</i> : <u>A Game Model of People's Participation in Forest Management in Northern India</u>
CLIM	92.2002	<i>Jens HORBACH</i> : <u>Structural Change and Environmental Kuznets Curves</u>
ETA	93.2002	<i>Martin P. GROSSKOPF</i> : <u>Towards a More Appropriate Method for Determining the Optimal Scale of Production Units</u>
VOL	94.2002	<i>Scott BARRETT and Robert STAVINS</i> : <u>Increasing Participation and Compliance in International Climate Change Agreements</u>
CLIM	95.2002	<i>Banu BAYRAMOGLU LISE and Wietze LISE</i> : <u>Climate Change, Environmental NGOs and Public Awareness in the Netherlands: Perceptions and Reality</u>
CLIM	96.2002	<i>Matthieu GLACHANT</i> : <u>The Political Economy of Emission Tax Design in Environmental Policy</u>
KNOW	97.2002	<i>Kenn ARIGA and Giorgio BRUNELLO</i> : <u>Are the More Educated Receiving More Training? Evidence from Thailand</u>

(xlii) This paper was presented at the International Workshop on "Climate Change and Mediterranean Coastal Systems: Regional Scenarios and Vulnerability Assessment" organised by the Fondazione Eni Enrico Mattei in co-operation with the Istituto Veneto di Scienze, Lettere ed Arti, Venice, December 9-10, 1999.

(xliii) This paper was presented at the International Workshop on "Voluntary Approaches, Competition and Competitiveness" organised by the Fondazione Eni Enrico Mattei within the research activities of the CAVA Network, Milan, May 25-26, 2000.

(xliv) This paper was presented at the International Workshop on "Green National Accounting in Europe: Comparison of Methods and Experiences" organised by the Fondazione Eni Enrico Mattei within the Concerted Action of Environmental Valuation in Europe (EVE), Milan, March 4-7, 2000

(xlv) This paper was presented at the International Workshop on "New Ports and Urban and Regional Development. The Dynamics of Sustainability" organised by the Fondazione Eni Enrico Mattei, Venice, May 5-6, 2000.

(xlvi) This paper was presented at the Sixth Meeting of the Coalition Theory Network organised by the Fondazione Eni Enrico Mattei and the CORE, Université Catholique de Louvain, Louvain-la-Neuve, Belgium, January 26-27, 2001

(xlvii) This paper was presented at the RICAMARE Workshop "Socioeconomic Assessments of Climate Change in the Mediterranean: Impact, Adaptation and Mitigation Co-benefits", organised by the Fondazione Eni Enrico Mattei, Milan, February 9-10, 2001

(xlviii) This paper was presented at the International Workshop "Trade and the Environment in the Perspective of the EU Enlargement", organised by the Fondazione Eni Enrico Mattei, Milan, May 17-18, 2001

(xlix) This paper was presented at the International Conference "Knowledge as an Economic Good", organised by Fondazione Eni Enrico Mattei and The Beijer International Institute of Environmental Economics, Palermo, April 20-21, 2001

(l) This paper was presented at the Workshop "Growth, Environmental Policies and Sustainability" organised by the Fondazione Eni Enrico Mattei, Venice, June 1, 2001

- (li) This paper was presented at the Fourth Toulouse Conference on Environment and Resource Economics on “Property Rights, Institutions and Management of Environmental and Natural Resources”, organised by Fondazione Eni Enrico Mattei, IDEI and INRA and sponsored by MATE, Toulouse, May 3-4, 2001
- (lii) This paper was presented at the International Conference on “Economic Valuation of Environmental Goods”, organised by Fondazione Eni Enrico Mattei in cooperation with CORILA, Venice, May 11, 2001
- (liii) This paper was circulated at the International Conference on “Climate Policy – Do We Need a New Approach?”, jointly organised by Fondazione Eni Enrico Mattei, Stanford University and Venice International University, Isola di San Servolo, Venice, September 6-8, 2001
- (liv) This paper was presented at the Seventh Meeting of the Coalition Theory Network organised by the Fondazione Eni Enrico Mattei and the CORE, Université Catholique de Louvain, Venice, Italy, January 11-12, 2002
- (lv) This paper was presented at the First Workshop of the Concerted Action on Tradable Emission Permits (CATEP) organised by the Fondazione Eni Enrico Mattei, Venice, Italy, December 3-4, 2001
- (lvi) This paper was presented at the ESF EURESCO Conference on Environmental Policy in a Global Economy “The International Dimension of Environmental Policy”, organised with the collaboration of the Fondazione Eni Enrico Mattei, Acquafredda di Maratea, October 6-11, 2001
- (lvii) This paper was presented at the First Workshop of “CFEWE – Carbon Flows between Eastern and Western Europe”, organised by the Fondazione Eni Enrico Mattei and Zentrum für Europäische Integrationsforschung (ZEI), Milan, July 5-6, 2001
- (lviii) This paper was presented at the Workshop on “Game Practice and the Environment”, jointly organised by Università del Piemonte Orientale and Fondazione Eni Enrico Mattei, Alessandria, April 12-13, 2002

## 2002 SERIES

<b>CLIM</b>	<i>Climate Change Modelling and Policy</i> (Editor: Marzio Galeotti)
<b>VOL</b>	<i>Voluntary and International Agreements</i> (Editor: Carlo Carraro)
<b>SUST</b>	<i>Sustainability Indicators and Environmental Evaluation</i> (Editor: Carlo Carraro)
<b>NRM</b>	<i>Natural Resources Management</i> (Editor: Carlo Giupponi)
<b>KNOW</b>	<i>Knowledge, Technology, Human Capital</i> (Editor: Dino Pinelli)
<b>MGMT</b>	<i>Corporate Sustainable Management</i> (Editor: Andrea Marsanich)
<b>PRIV</b>	<i>Privatisation, Regulation, Antitrust</i> (Editor: Bernardo Bortolotti)
<b>ETA</b>	<i>Economic Theory and Applications</i> (Editor: Carlo Carraro)