

Brunello, Giorgio; Parisi, Maria Luisa; Sonedda, Daniela

**Working Paper**

## Labor taxes, wage setting and the relative wage effect

Nota di Lavoro, No. 34.2002

**Provided in Cooperation with:**

Fondazione Eni Enrico Mattei (FEEM)

*Suggested Citation:* Brunello, Giorgio; Parisi, Maria Luisa; Sonedda, Daniela (2002) : Labor taxes, wage setting and the relative wage effect, Nota di Lavoro, No. 34.2002, Fondazione Eni Enrico Mattei (FEEM), Milano

This Version is available at:

<https://hdl.handle.net/10419/119642>

**Standard-Nutzungsbedingungen:**

Die Dokumente auf EconStor dürfen zu eigenen wissenschaftlichen Zwecken und zum Privatgebrauch gespeichert und kopiert werden.

Sie dürfen die Dokumente nicht für öffentliche oder kommerzielle Zwecke vervielfältigen, öffentlich ausstellen, öffentlich zugänglich machen, vertreiben oder anderweitig nutzen.

Sofern die Verfasser die Dokumente unter Open-Content-Lizenzen (insbesondere CC-Lizenzen) zur Verfügung gestellt haben sollten, gelten abweichend von diesen Nutzungsbedingungen die in der dort genannten Lizenz gewährten Nutzungsrechte.

**Terms of use:**

*Documents in EconStor may be saved and copied for your personal and scholarly purposes.*

*You are not to copy documents for public or commercial purposes, to exhibit the documents publicly, to make them publicly available on the internet, or to distribute or otherwise use the documents in public.*

*If the documents have been made available under an Open Content Licence (especially Creative Commons Licences), you may exercise further usage rights as specified in the indicated licence.*



Fondazione Eni Enrico Mattei

## **Labor Taxes, Wage Setting and the Relative Wage Effect**

Giorgio Brunello, Maria Luisa Parisi and  
Daniela Sonedda

NOTA DI LAVORO 34.2002

**JUNE 2002**

KNOW- Knowledge, Technology, Human Capital
--

Giorgio Brunello, *University of Padova, CESifo and IZA*  
Maria Luisa Parisi, *University of Padova*  
Daniela Sonedda, *University College London and University of Novara*

This paper can be downloaded without charge at:

The Fondazione Eni Enrico Mattei Note di Lavoro Series Index:  
[http://www.feem.it/web/attiv/\\_attiv.html](http://www.feem.it/web/attiv/_attiv.html)

Social Science Research Network Electronic Paper Collection:  
<http://papers.ssrn.com/abstract=XXXXXX>

The opinions expressed in this paper do not necessarily reflect the position of  
Fondazione Eni Enrico Mattei

# Labor Taxes, Wage Setting and the Relative Wage Effect

## Summary

Public finance solutions to high unemployment in Europe have often been advocated during the past years. With unemployment concentrated among the young and unskilled, it has been suggested that the reduction of social security contributions for low wage earnings, financed by a carbon tax, could yield a double dividend, the reduction of unemployment and the abatement of pollution. A decline in average labor taxes reduces unemployment if it generates lower pretax wages. Pretax wages fall if real after tax income from unemployment and leisure is not affected or only partially affected by the change in average taxes. When unemployment benefits are not taxed in a unionized economy, lower average labor taxes reduce the replacement ratio, and unions are willing to accept lower pretax wages because the net income loss from employment increases. Changes in labor taxation do not necessarily require that average labor taxes vary. In principle, a switch from payroll to income taxes, given average rates, could affect wage pressure and unemployment. The empirical evidence to date, however, does not support this possibility. When labor taxation is nonlinear, another opportunity is to vary the degree of labor tax progressivity. Economic theory suggests that higher progressivity could reduce unemployment. Suppose that wages are bargained over by unions. When a union contemplates the possibility of a wage hike, it has to consider that say for a 1% increase in the after tax wage the pretax wage increases by  $1/v$ , where  $v$  denotes the coefficient of residual income progression. This implies that the expected employment loss associated to the higher after tax wage is  $\epsilon/v$ , where  $\epsilon$  is the elasticity of labor demand. Since  $v < 1$  with progressive taxation, this loss is higher with progressive than with proportional taxation. It follows that, when labor markets are not perfectly competitive, a certain degree of tax progressivity can be desirable because it makes wage increases less attractive to unions, with positive consequences on the unemployment rate.

This empirical paper adds to the existing literature additional evidence based on Italian data. We use both panel and grouped data to study the effects of average and marginal (payroll and income) tax rates on wage pressure, and investigate whether these effects vary by skill, age group and region of residence.

Our empirical findings are summarized as follows:

- a) changes in average payroll taxes are not fully absorbed by offsetting changes in the after tax wage and affect both pretax wages and employment;
- b) the estimated effects of changes in average income taxes on pretax wages are mixed but on balance the evidence suggests that after tax wages do not fully offset these changes;
- c) higher tax progressivity *increases* pretax wages;
- d) there are significant differences in the relationship between labor taxes and pretax wages by age group but not by region of residence or skill.

We also find that the estimated elasticity of pretax wages to changes in marginal tax rates, given average rates, is large and ranges between 0.919 and 1.131, depending on the specification being used. It is difficult to explain this large positive elasticity exclusively with the argument that the labor supply effect prevails over the wage moderation effect. Therefore, we add an additional mechanism, the relative wage effect, and describe how it can contribute to producing the above results. Briefly put, when individuals and unions care about relative wages and an increase in tax progressivity

reduces the own wage via the wage moderation effect, this reduction translates into lower relative wages, which can only be avoided by increasing wage pressure.

**Keywords:** Progressive taxation, wage determination, Italy

**JEL:** H24

*Address for correspondence:*

Giorgio Brunello  
Department of Economics  
University of Padova  
via del Santo 33  
35100 Padova  
Phone: +390498274223  
E-mail: [brunello@decon.unipd.it](mailto:brunello@decon.unipd.it)

*A preliminary version of this paper was presented at the CESifo/ISPE conference “Labor Market Institutions and Public Regulation”, Munich 26/27 October 2001. We are grateful to Jonas Agell, Michael Keen, Alfons Weichenrieder and Ulrich Woiteck for comments and to Daniele Checchi and Tommaso di Fonzo for help with the data. Financial support by the University of Padova is gratefully acknowledged. The usual disclaimer applies.*

## 1 Introduction

Public finance solutions to high unemployment have often been advocated in the past years. With unemployment concentrated among the young and unskilled, a fairly popular suggestion has been that a reduction of the social security contributions borne by low wage earnings, financed by a carbon tax, could yield a double dividend, the reduction of unemployment and the abatement of pollution (see Sørensen [1997]).

The literature in this area has clearly pointed out that a decline in average labor taxes reduces unemployment if it generates lower pre-tax wages. Pre-tax wages fall if real after tax income from unemployment and leisure is not affected or only partially affected by the change in average taxes. When unemployment benefits are not taxed, for instance, lower average labor taxes reduce the replacement ratio, and unions are willing to accept lower pre-tax wages because the net income loss from employment increases (see Pissarides [1998], Lockwood and Manning [1993], Daveri and Tabellini [2000] and Sonedda [2001]).

Another result in this literature is that changes in tax progressivity, holding average labor taxes constant, can affect wage pressure. Lockwood and Manning [1993] find that an increase of tax progressivity reduces wage pressure in the UK. In empirical studies of Italy and Sweden, Malcomson and Sartor [1984] and Holmlund and Kolm [1995] also find evidence of a negative relationship between tax progressivity and wage pressure. Somewhat different results are obtained by Lockwood et al. [2000], who study the Danish case and show that the relationship between tax progressivity and pre-tax wages is negative for low levels of income (and skill) and positive for high levels of income (and skill)<sup>2</sup>.

These authors consider unionized labor markets and decompose the impact of tax progressivity on pre-tax wages into a *wage moderation effect* and a *labor supply effect*. The wage moderation effect occurs because, when the marginal tax rate increases, the price in terms of foregone employment of a higher take-home pay goes up. This allows the union to buy more employment through wage moderation, because

---

<sup>2</sup>See also Hansen et al [1999].

a given fall in the pre-tax wage leads to a smaller change in the after tax wage (see Sørensen [1997], p.228). The labor supply effect can generate higher wage pressure when an increase in tax progressivity reduces the supply of working hours, because the income effect is dominated by the substitution effect. If the wage moderation effect prevails over the labor supply effect, higher labor tax progressivity reduces pre-tax wages and increases employment. This could be the case of unskilled workers if they are heavily unionized and if their hours supply function is flatter than that of skilled workers.

Sonedda [2001] develops an overlapping generations model of a unionized economy where hours of work are allowed to vary endogenously. The model is calibrated for Italy, a country where unskilled workers are highly unionized and can use overtime to vary their supply of hours. Her quantitative results show that an increase in income tax progressivity raises union wages, and that the labor supply effect prevails over the wage moderation substitution effect.

In this paper, we add to the wage moderation and labor supply effects another mechanism, *the relative wage effect*, and show how it influences the relationship between tax progressivity and pre-tax wage in unionized labor markets. Briefly put, when individuals and unions care about relative wages and an increase in tax progressivity reduces the own wage via the wage moderation effect, this reduction translates into lower relative wages, which can only be avoided by increasing wage pressure. The idea that unions are concerned not only with the absolute wage of union members but also with its relative purchasing power goes back at least to Keynes (see Gylfason and Lindbeck [1984]). A relative wage concern can also be justified either by "fairness" (Fehr and Schmidt [1999], Agell and Lundborg [1995], Akerlof and Yellen [1990] and Oswald [1980]) or by "envy" considerations (Clark and Oswald [1996]).

We model a two sector economy with unionized labor markets and competitive product markets, where workers and unions care about their relative wages, and show that the presence of a relative wage concern reinforces the labor supply effect and could help in generating a positive relationship between tax progressivity and wage pressure. We also

conduct an empirical analysis of the relationship between labor taxation and pre-tax wages in Italy and study whether such relationship varies significantly by skill and age group. To preview our results, we find that higher tax progressivity increases pre-tax wages, which suggests that the combination of the labor supply and the relative wage effect dominates the wage moderation effect in this specific context. There is also evidence that changes in payroll taxes are not fully absorbed by offsetting changes in the pre-tax wage and affect labor costs and employment. The evidence on the effect of the average income tax rate on pre-tax wages is more mixed, but it also points to the presence of some degree of real wage resistance. Finally, we find significant differences in the relationship between labor taxes and pre-tax wages by age group but not by skill.

The paper is organized as follows. Section 1 presents the model and its implications. Section 2 introduces the empirical analysis and Section 3 presents the data. The empirical results are discussed in Section 4. Conclusions follow.

## 2 The Model

Consider a closed economy characterized by two sectors and composed of three economic agents: households, unions and firms. Skilled workers are employed in one sector (“the skilled workers’ sector”) and unskilled workers work in the other sector (“the unskilled workers’ sector”). Each sector is fully unionized and for simplicity we assume that both unions have monopoly power over wage setting<sup>3</sup>. The labor force is constant and individuals earn only wage income.

This economy is populated by a fixed number of identical competitive firms, indexed by  $j$ . Their technology is described by the following production function:

---

<sup>3</sup>The assumption of a monopoly union is made for the sake of simplicity. If we rule out the possibility that wages may be strategic substitutes à la Padilla et al [1996] (this should be sensible given that in our case the product market is competitive), the signs of the comparative statics of interest in the monopoly union framework correspond to those of the right to manage model of wage bargaining.

$$Y_{ji} = \alpha_i L_{ji}^{\sigma_i} \quad (1)$$

where  $i = u, s$  stands for “unskilled” and “skilled” respectively and  $\alpha_i$  is a productivity parameter. By assumption  $\alpha_u < \alpha_s$  and both  $\sigma_u$  and  $\sigma_s$  are lower than 1.

In both sectors the labor input  $L_{ji}$  is homogeneous and hours of work are fixed and normalized to 1. Therefore, provided that the goods market is competitive, labor demand can be obtained by inverting the first order condition of the profit function:

$$L_{ji} = N_{ji}(w_{ji}) = \left[ \frac{w_{ji}}{\alpha_i \sigma_i} \right]^{\frac{1}{\sigma_i - 1}} \quad (2)$$

Risk neutral skilled and unskilled individuals care about their consumption and their relative position in the distribution of income. They have homothetic preferences described by a utility function, separable over consumption and the wage differential between their own wage and the wage of the other group.

The utility function is linear in both arguments and takes the following form<sup>4</sup>:

$$U^{i,m} = c_i + a_i [w_i (1 - t_i) - w_k (w_i) (1 - t_k)] \quad (3)$$

where  $k \neq i = u, s$ ;  $m = e$  (*employed*),  $un$  (*unemployed*);  $c_i$  denotes consumption, the term  $[w_i(1 - t_i) - w_k(w_i)(1 - t_k)]$  is the wage differential and  $t_i = t_u, t_s$  denotes the average personal income tax rate of unskilled and skilled workers respectively. Finally  $a_i$  is a parameter that measures the marginal utility of the wage differential<sup>5</sup>. Since each agent internalizes the effect of changes in the own wage on the other wage, the term  $w_k(w_i)$  in the utility function captures the conjecture on how

---

<sup>4</sup>Our results hold also when we use the relative wage in place of the wage differential in the utility function. The proof is available from the authors upon request.

<sup>5</sup>It is clear that when  $a = 0$  there is no relative wage concern. We believe that the introduction of the wage differential in the utility function cannot be considered as arbitrary since fairness or envy motives truly affect behaviour. See Fehr and Schimdt [1999], who refer to a more general context than the labor market.



the other wage is expected to respond. We assume that the conjectural variation  $\frac{dw_k}{dw_i}$  is equal to a positive constant  $\varphi_i > 0$ .

There is no saving and households face the following budget constraint:

$$\omega_i^m = c_i^m \quad (4)$$

where

$$\omega^m = \begin{cases} w_i - T(w_i, z) & \text{if } \textit{employed} \\ b_i & \text{if } \textit{unemployed} \end{cases}$$

with  $w_i - T(w_i, z)$  as the income net of taxes and  $b_i$  as unemployment benefits, which are determined by some political-economy mechanism outside the model and are not taxable by assumption<sup>6</sup>. As in Lockwood and Manning (1993),  $T(w_i, z)$  is for personal labor income taxes and  $z$  is a vector of parameters (marginal tax rates, tax brackets...) which takes into account any non-linearities in the tax system.

Each sector is characterized by the presence of a monopolistic union which sets the sector wage by taking into account the effects of its own decision on the other sector wage. Following Dowrick [1989], we interpret the parameter  $0 < \varphi_i < 1$  as a measure of the degree of centralization in the wage setting process. When  $\varphi = 0$  ( $\varphi = 1$ ) wage determination is fully decentralized (fully centralized). Since the output price index is normalized to unity, setting nominal (pre-tax) wages is equivalent to setting real wages. Unions are unable to affect fiscal policy decisions and their aim is to maximize the expected utility of members subject to (2). Notice that an interior solution to the maximization problem is guaranteed by the presence of unemployed union members. The union optimization problem is:

$$\max_{w_i} N_i(w_i) [U_i^e - U_i^{un}] \quad (5)$$

Following Lockwood and Manning (1993), we express (5) in logs and define the first order condition  $\psi$  as:

---

<sup>6</sup>If unemployment benefits are taxable, changes in the parameter  $z$  of the taxation system would affect net benefits. Then, when evaluating the effect of changes in taxation on wages one should also consider this effect. However, since benefits are conceived as unemployment benefits only and since individuals can only earn labor income, it is quite likely that unemployment benefits would be below the minimum threshold and therefore remain untaxed.

$$\psi_i = 0 = \frac{\frac{\partial N_i(w_i)}{\partial w_i}}{N_i(w_i)} + \frac{\frac{\partial [U_i^e - U_i^{un}]}{\partial w_i}}{[U_i^e - U_i^{un}]} \quad (6)$$

where  $\frac{\partial [U_i^e - U_i^{un}]}{\partial w_i} = \frac{\partial [U_i^e - U_i^{un}]}{\partial w_i} + \frac{\partial [U_i^e - U_i^{un}]}{\partial w_j} \frac{\partial w_j}{\partial w_i}$ . We can use (3) and rewrite (6) as

$$\psi_i = \begin{cases} w_u - \frac{b_u}{1-t_u} M_u = 0 & \text{if } i=u \\ w_s - \frac{b_s}{1-t_s} M_s = 0 & \text{if } i=s \end{cases} \quad (7)$$

with  $M_i$  as the union markup in sector  $i$ , defined as

$$M_i = \begin{cases} \left[ (1+a_u)(\nu_u(\sigma_u-1)+1) - \frac{(1-t_s)}{(1-t_u)}(\sigma_u-1)a_u\nu_s\varphi_s - \frac{a_u}{RW} \right]^{-1} & \text{if } i=u \\ \left[ (1+a_s)(\nu_s(\sigma_s-1)+1) - \frac{(1-t_u)}{(1-t_s)}(\sigma_s-1)a_s\nu_u\varphi_u - a_sRW \right]^{-1} & \text{if } i=s \end{cases}$$

In the above expression  $\nu$  is the coefficient of residual income progression ( $\nu_i = \frac{1-\tau_i}{1-t_i}$ ); the marginal tax rate  $\tau_i$  is equal to  $\frac{\partial T(w_i)}{\partial w_i}$  and  $RW$  is the relative post tax wage  $\frac{w_u(1-t_u)}{w_s(1-t_s)}$ .

Sectorial wages in the two reaction functions defined by (7) are increasing functions of unemployment benefits and of the union markup<sup>7</sup>. We can decompose this markup into three components. The first term,  $((1+a_i)(\nu_i(\sigma_i-1)+1))$ , is the well know wage moderation effect; the second term,  $\left( \frac{(1-t_k)}{(1-t_i)}(\sigma_i-1)a_i\nu_k\varphi_k \right)$ , is generated by the presence of conjectural variations, and we define the last term as the relative wage concern. The markup is increasing in the first term, decreasing in the second term and either decreasing ( $M_u$ ) or increasing ( $M_s$ ) in the relative wage. An equilibrium of this game requires that each union achieve positive utility. This condition is guaranteed if each sectorial wage is higher than unemployment benefits. The second order conditions of the optimization problem (5) are met if  $(1+a_i)(1-\tau_i) > a_k(1-\tau_k)\varphi_k$ , which surely holds when  $a$  and  $\tau$  are not too different.

## 2.1 Qualitative Analysis

In this section we study how changes in the labor tax parameters affect equilibrium skilled and unskilled pre-tax wages. In order to do so, it is convenient to re-write (7) in implicit form as follows

$$\psi_u = \psi_u(w_u, w_s(w_u), \nu_u, \nu_s, X_u) = 0 \quad (8)$$

---

<sup>7</sup>As expected, reaction functions are upward sloping.

$$\psi_s = \psi_s(w_u(w_s), w_s, \nu_s, \nu_u, X_s) = 0 \quad (9)$$

where  $X_i \in (a_i, \sigma_i, b_i, t_i)$ . Total differentiation of (8) and (9) and the application of Cramer's rule allows us to establish the following

**Proposition 1** *Given the average tax rate and with fixed hours, an increase in tax progressivity  $\nu_u$  has both a wage moderation effect and a relative wage effect, with an ambiguous overall effect on the unskilled wage  $w_u$ .*

**Proof.**

$$\frac{dw_u}{d\nu_u} = - \frac{\left[ \frac{\partial \psi_u}{\partial \nu_u} \frac{\partial \psi_s}{\partial w_s} + \frac{\partial \psi_u}{\partial \nu_u} \frac{\partial \psi_s}{\partial w_u} \frac{\partial w_u}{\partial w_s} \right] - \left[ \frac{\partial \psi_s}{\partial \nu_u} \frac{\partial \psi_u}{\partial w_s} + \frac{\partial \psi_s}{\partial \nu_u} \frac{\partial \psi_u}{\partial w_u} \frac{\partial w_u}{\partial w_s} \right]}{|J|} \gtrless 0 \quad (10)$$

where  $\frac{\partial \psi_s}{\partial w_s} < 0$ ;  $\frac{\partial \psi_u}{\partial \nu_u} > 0$ ;  $\frac{\partial \psi_u}{\partial w_u} < 0$ ;  $\frac{\partial w_s}{\partial w_u} > 0$ ;  $\frac{\partial \psi_s}{\partial w_u} > 0$ ;  $\frac{\partial \psi_s}{\partial \nu_u} > 0$ ;  $\frac{\partial w_s}{\partial \nu_u} < 0$ ;  $\frac{\partial \psi_u}{\partial w_s} < 0$ ;  $\frac{\partial w_u}{\partial \nu_u} > 0$  ■

As usual, the sign of (10) depends on the numerator since the sign of the denominator corresponds to the sign of the determinant of the Jacobian matrix  $J$ , which must be positive to guarantee the stability of the system. Following Padilla, Bentolila and Dolado [1996], we distinguish between a direct effect (shift of the reaction curve), captured by the terms in the former bracket in the numerator, and a strategic effect (movement along the reaction curve), represented by the terms in the latter bracket.

The relative wage effect on the reaction curve associated to unskilled workers is captured by the second term in the first bracket in the numerator. In the absence of this effect and of the strategic effect, given by the first term in the second bracket, the sign of the derivative is positive, which suggests that an increase in tax progressivity should reduce the unskilled pre-tax wage. This is the well known wage moderation effect discussed in the Introduction. The presence of a relative wage concern combined with a certain degree of centralization in the wage determination process adds to this the relative wage effect. On the one hand, the union in the unskilled sector, aware of the fact that a decline in the unskilled wage induced by higher tax progressivity in the unskilled

sector will reduce its relative wage, reacts by increasing its wage pressure. On the other hand, the union in the skilled sector realizes that the other union could avoid the (expected) reduction in its relative wage by bargaining for a higher wage (or by going for lower wage moderation). In order to prevent the deterioration of its own relative wage, the union in the skilled sector will also react by increasing its own wage pressure. These effects are amplified by the strategic complementarity between the two wages and generate an increase in wage pressure. Therefore, the wage moderation and the relative wage effect have opposite influences on the unskilled wage. The overall effect is ambiguous and depends on the parameters of the model.

Notice that this result is robust to different model specifications. If we rule out conjectural variations and consider instead a framework where the employers' association determines the employment level in either sector and the two unions are completely collusive, an increase in tax progressivity raises (reduces) the unskilled wage  $w_u$  if and only if  $a_u > 1 + a_s$  ( $a_u < 1 + a_s$ ). The main difference with the model presented above relies on the asymmetric effects on the two sectorial wages. That is,  $a_u > 1 + a_s$  ( $a_u < 1 + a_s$ ) implies  $a_s < 1 + a_u$  ( $a_s > 1 + a_u$ ) and therefore an increase in tax progressivity in the skilled sector would lead to lower (higher) skilled wage pressure. It is worth noting that empirical results for Denmark presented by Lockwood et al [2000] could be interpreted in terms of this framework even though working hours are fixed. Furthermore, the ambiguous effect on wage determination could also be obtained in a simple Bertrand-Nash game under the assumption that skilled and unskilled wages bear equal marginal and average tax rates (e.g when tax brackets are quite large).

**Proposition 2** *Given the average tax rate and with fixed hours, the effect of an increase in tax progressivity  $\nu_s$  on the unskilled wage is ambiguous.*

**Proof.**

$$\frac{dw_u}{d\nu_s} = - \frac{\left[ \frac{\partial \psi_u}{\partial \nu_s} \frac{\partial \psi_s}{\partial w_s} + \frac{\partial \psi_u}{\partial \nu_s} \frac{\partial \psi_s}{\partial w_u} \frac{\partial w_u}{\partial w_s} \right] - \left[ \frac{\partial \psi_s}{\partial \nu_s} \frac{\partial \psi_u}{\partial w_s} + \frac{\partial \psi_s}{\partial w_u} \frac{\partial \psi_u}{\partial w_u} \frac{\partial w_u}{\partial w_s} \right]}{|J|} \begin{matrix} \geq \\ \leq \end{matrix} 0 \quad (11)$$

where  $\frac{\partial \psi_s}{\partial w_s} < 0; \frac{\partial \psi_u}{\partial \nu_u} > 0; \frac{\partial \psi_u}{\partial w_u} < 0; \frac{\partial w_s}{\partial w_u} > 0; \frac{\partial \psi_u}{\partial w_s} > 0; \frac{\partial \psi_s}{\partial w_u} > 0; \frac{\partial w_s}{\partial \nu_u} < 0; \frac{\partial \psi_s}{\partial \nu_u} < 0; \frac{\partial w_u}{\partial \nu_u} > 0$ . ■

In the absence of a relative wage concern, an increase in tax progressivity in the skilled sector  $\nu_s$  has no impact on the unskilled wage. When wages are strategic complements and conjectural variations are introduced, the presence of a relative wage effect implies that the wage moderation effect on the skilled wage spills over to the unskilled wage, with uncertain overall effects.

The effect of changes in tax progressivity on the skilled wage are symmetric:

**Proposition 3** *Given the average tax rate and with fixed hours, an increase in tax progressivity  $\nu_s$  has both a wage moderation effect and a relative wage effect, with an ambiguous overall effect on the skilled wage  $w_s$ .*

**Proof.**

$$\frac{dw_s}{d\nu_s} = - \frac{\left[ \frac{\partial \psi_s}{\partial \nu_s} \frac{\partial \psi_u}{\partial w_u} + \frac{\partial \psi_s}{\partial \nu_s} \frac{\partial \psi_u}{\partial w_s} \frac{\partial w_s}{\partial w_u} \right] - \left[ \frac{\partial \psi_u}{\partial \nu_s} \frac{\partial \psi_s}{\partial w_u} + \frac{\partial \psi_u}{\partial w_s} \frac{\partial \psi_s}{\partial w_s} \frac{\partial w_s}{\partial w_u} \right]}{|J|} \gtrless 0 \quad (12)$$

where  $\frac{\partial \psi_s}{\partial w_s} < 0; \frac{\partial \psi_u}{\partial \nu_u} > 0; \frac{\partial \psi_u}{\partial w_u} < 0; \frac{\partial w_s}{\partial w_u} > 0; \frac{\partial \psi_u}{\partial w_s} > 0; \frac{\partial \psi_s}{\partial w_u} > 0; \frac{\partial w_s}{\partial \nu_u} < 0; \frac{\partial \psi_s}{\partial \nu_u} < 0; \frac{\partial w_u}{\partial \nu_u} > 0$ . ■

**Proposition 4** *Given the average tax rate and with fixed hours, the effect of an increase in tax progressivity  $\nu_u$  on the skilled wage is ambiguous.*

**Proof.**

$$\frac{dw_s}{d\nu_u} = - \frac{\left[ \frac{\partial \psi_s}{\partial \nu_u} \frac{\partial \psi_u}{\partial w_u} + \frac{\partial \psi_s}{\partial \nu_u} \frac{\partial \psi_u}{\partial w_s} \frac{\partial w_s}{\partial w_u} \right] - \left[ \frac{\partial \psi_u}{\partial \nu_u} \frac{\partial \psi_s}{\partial w_u} + \frac{\partial \psi_u}{\partial w_s} \frac{\partial \psi_s}{\partial w_s} \frac{\partial w_s}{\partial w_u} \right]}{|J|} \gtrless 0 \quad (13)$$

where  $\frac{\partial \psi_s}{\partial w_s} < 0; \frac{\partial \psi_u}{\partial \nu_u} > 0; \frac{\partial \psi_u}{\partial w_u} < 0; \frac{\partial w_s}{\partial w_u} > 0; \frac{\partial \psi_u}{\partial w_s} > 0; \frac{\partial \psi_s}{\partial w_u} > 0; \frac{\partial w_s}{\partial \nu_u} < 0; \frac{\partial \psi_s}{\partial \nu_u} < 0; \frac{\partial w_u}{\partial \nu_u} > 0$ . ■

To summarize, our simple model suggests that, in unionized labor markets where unions care about the wage differential and make conjectures about the effects of changes in their own wages on the other wages, changes in tax progressivity have ambiguous effects on wage pressure. There are two important mechanisms at work: a) a union wage moderation effect; b) a relative wage effect. To these we should also add the hours supply effect, that was not included in the model for the sake of simplicity. While the former effect reduces wage pressure in the presence of an increase in tax progressivity, the other two effects increase it. The overall effect cannot be signed using the restrictions imposed by economic theory and can only be determined in the empirical analysis, to which we now turn.

### 3 The Empirical Specification

The first order conditions (8) and (9) can be solved to yield equilibrium wages

$$w_u^* = w_u(\nu_u, \nu_s, X_u, X_s) \quad (14)$$

$$w_s^* = w_s(\nu_u, \nu_s, X_u, X_s) \quad (15)$$

Notice that each equilibrium wage depend on the entire tax structure, described by the tax parameters  $t_s$ ,  $t_u$ ,  $\nu_s$  and  $\nu_u$ . In the empirical specification we impose the restriction that the cross effects of changes in the parameters and variables associated to one wage on the other wage are small and can be disregarded as a first approximation. To add realism, we also assume that wage settlements are determined by bilateral bargaining between unions and employers rather than by a monopolistic union. It is also reasonable to expect that the relative bargaining power of unions vary with changes in labor market conditions, captured by the unemployment rate.

With these additional assumptions, a log-linear approximation of (14) and (15) yield the following empirical model

$$\ln w_i - \ln q_i = f_i + \alpha_1 \ln(1 + t_e) + \alpha_2 \ln(1 - t) + \alpha_3 \ln v + \alpha_4 \ln u + \epsilon_i \quad (16)$$

where  $u$  is unemployment,  $q$  is the output price,  $t_e$  is the payroll tax

wedge, defined as the ratio of payroll taxes to pre-tax wages,  $(1 - t)$  is the average income tax retention rate and  $\nu$  is the measure of tax progressivity,  $i$  is for the individual,  $f_i$  is an individual fixed effect and  $\epsilon_i$  is the random error term. This specification has the advantage of having been used in previous empirical work, most notably by Holmlund and Kolm [1995] and by Lockwood et al. [2000]. This facilitates the comparison of our results with theirs.

In the current setup,  $w_i$  is the pre-tax wage net of payroll taxes. This wage is related to the total labor cost  $c_i$  by the following identity:  $\ln c_i = \ln w_i + \ln(1 + t_e)$ . Changes in labor taxes, both average and marginal, do not affect per capita labor costs and employment when the following restrictions hold:

$$\alpha_1 = -\frac{t_e}{1 + t_e}; \quad \alpha_2 - \alpha_3 = 0; \quad \alpha_3 = 0 \quad (17)$$

When the former two restrictions hold, we say that there is no real wage resistance to change in labor taxes.

## 4 The Data

We investigate the relationship between labor taxes and pre-tax wages using two data sets: a panel drawn from the 1993 and 1995 waves of the survey on the income and wealth of Italian households, carried out by the Bank of Italy (*SHIW*), and grouped data covering a longer period, from 1979 to 1995, obtained by collapsing data from *SHIW* and by merging the results with other sources of information. Genuine longitudinal information is available from *SHIW* only from 1989, and we choose the 1993 - 1995 window to minimize attrition in the data. The main advantage of the grouped data from 1979 to 1995 is that they allow us to use the time variation in average and marginal tax rates to study how these variables affect the pre-tax wage.

The *SHIW* survey covers most years from 1979 to 1989 and the years 1991, 1993, 1995 and 1998. Individual earnings in this data-set are net of taxes and social security contributions. For each year and for each individual in the sample, we compute pre-tax wages by using the information on income tax rates, tax brackets and tax allowances

from the relevant tax legislation and information on the composition of the household (whether the individual has a dependent spouse and / or children, whether he is employed or self - employed) from *SHIW*. Given pre-tax and net wages, we compute for each individual the relevant average and marginal tax rate. These rates are based on labor income only, and do not take into account additional income from capital and self - employment. Since there is no individual information on social security contributions paid by the employer and by the employee, we use regional data from the Regional Accounts, that cover the period 1979-1995.

Grouped data are obtained by combining information from different sources: gross wages and income tax rates from *SHIW*, unemployment rates from the Labor Force Survey and payroll taxes from the Regional Accounts. Each cell in the data contains the average value of these variables by gender, educational attainment, age group, macro area of residence and year. We classify educational attainment into two categories, at least upper secondary education (the skilled) and less than upper secondary education (the unskilled). We also group individuals into two age groups, the young (20-29) and the adults (30-59) and in three macro areas of residence (North, Center and South).

While information on unemployment rates and payroll taxes is available for the entire period 1979 - 1995, gross wages and tax rates are missing in the years when the *SHIW* was not carried out. We take care of these missing values in two ways: first, average and marginal tax rates are linearly interpolated using the available data points; second, gross wages in the missing years are estimated by using the rate of growth of regional gross wages, which are available for the full period. The Appendix at the end of the paper provides additional technical details.

Figure 1 provides a summary description of the data. The first panel of the figure shows that the unemployment rate has increased during the sample period, especially among the unskilled. As a consequence, the relative unskilled unemployment rate has risen from less than 0.5 in 1979 to about 1 in 1995. Nominal gross wages by skill have also increased (see panel 2), and the absolute gap between skilled and unskilled wages is



higher in 1995 than it was in 1979. Panel 3 shows that average income taxes have increased sharply in the early eighties and only mildly thereafter. Clearly, the skilled have higher average tax rates, and the absolute gap with the unskilled has slightly increased in the 1990s. Finally, the evolution of tax progressivity is illustrated in the last panel of the figure. Progressivity increased sharply up to 1982, partially bounced back in the mid 1980 only to increase again in the rest of the period, with the exception of the last two years in the sample, when it decreased mildly.

Income tax rates in Italy were almost proportional before the sweeping fiscal reform of 1974, which introduced steeply rising marginal tax rates. This reform was followed by a significant cut in the payroll tax wedge, that declined by close to 10 percentage points in the second part of the seventies<sup>8</sup>. In the early 1980s, two-digits inflation increased significantly the average tax rate and tax progressivity. As remarked by Giavazzi and Spaventa [1988]

”..the inflation induced increase in the average tax rate was such that the wedge between the cost of labor for enterprises and take-home pay actually increased in the period, in spite of the substantial cut in contributions....”  
(p.147)

Since fiscal drag was responsible of a sharp increase in the tax burden of employees, unions started to negotiate with the government both the restitution of the drag and measures that could reduce the progressivity of income taxation. These measures were eventually implemented in the early 1980s. Tax progressivity was loosened again during the last part of the 1980s, only to be increased in the early 1990s.

Figure 2 presents similar evidence by age group. We notice that youth unemployment is much higher than adult unemployment over the entire sample period. A high gap in the unemployment rate has been accompanied by an increasing gap in the wage differential between the adults and the young. While income tax progressivity does not vary significantly across the two groups, average income taxes paid by the young have declined since the late 1980s and their gap with the tax

---

<sup>8</sup>See Brunello et al [2001] for a detailed discussion.

rates paid by the adults have increased. Finally, Figure 3 shows the evolution of the average payroll tax wedge. With the exclusion of the few years at the start of the sample, the wedge has increased by close to 10 points from about 0.45 to about 0.55.

## 5 Results

We start our empirical analysis by estimating (16) on the longitudinal data for the years 1993 and 1995. First, we eliminate the individual fixed effect  $f_i$  by taking first differences; second, we add to the explanatory variables additional controls, including gender, marital status, age, education. We also include occupation, sector of activity, firm size and region of residence in 1993. The inclusion of sector, occupation, firm size and regional dummies captures all the variation in local labor market conditions, including changes in the unemployment rate. Since payroll taxes in these data are only available at the regional level, their effects on individual wages cannot be identified and are captured by regional dummies.

The dependent variable is the change in the (log) hourly wage  $w_h$ , obtained by dividing the annual wage by total hours worked (weekly hours by number of weeks by number of months of employment). By construction, shocks to individual pre-tax hourly wages affect both tax progressivity and the average income tax retention rate  $(1 - t)$ . The endogeneity of the current changes in tax progressivity and in the retention rate requires that we use instrumental variables. Our selected instruments include the 1991 to 1993 changes in both variables, computed from grouped data. We also add the changes in the presence of a dependent spouse in the household, the changes in a dummy indicating whether the household has purchased a life insurance, a private health insurance or a private pension scheme, and a dummy indicating whether the individual has had medical or college expenses in 1993. These variables are selected because they affect tax deductions and the tax rates without any obvious effect on the hourly wage.

Instrument validity is tested with the Sargan Criterion, a misspecification test of whether additional instruments can be omitted from the

vector of explanatory variables. The quality of instruments is tested with the Bound test, an F test of the additional instruments in the regression of each endogenous variable on the full list of instruments.

Our main results are reported in Table 1, which shows both the estimated coefficients and the implied elasticities associated to the tax variables<sup>9</sup>. The Sargan criterion clearly rejects the hypothesis of misspecification. Not reported in the table, the Bound tests suggest that the selected instruments are significantly correlated with each endogenous variable.

We find that higher marginal taxes, given the retention rate, significantly *increase* the pre-tax wage. A similar result holds also for average taxes, given tax progressivity. The estimated coefficients associated to the average tax retention rate and to tax progressivity are not significantly different from zero (P-value of the test: 0.68). Therefore, and conditional on marginal taxes, changes in average labor tax rates do not significantly affect pre-tax hourly wages. On the other hand, changes in the marginal tax rate, given average taxes, have a large and significant positive effect on hourly wages (the elasticity is equal to 1.131).

The evidence in Table 1 is based on the cross - sectional variation of changes in taxation and changes in hourly wages. These changes cover a short period of time (two years) characterized by relatively small changes in the tax rates. The longitudinal data-set could be extended backward to 1989 and forward to 1998 at the price of significant attrition<sup>10</sup>. A more appealing alternative is to use grouped annual data from 1979 to 1995. We have information on real gross and net annual wages<sup>11</sup>, the unemployment rate, the average and the marginal personal income tax rate, and each cell contains average values of data classified by year, gender, age group, macro area of residence and educational attainment.

We estimate a version of (16) where the subscript  $i$  is now for the cell rather than for the individual. Rather than taking first differences, we capture the cell specific fixed effect with gender, education, age and

---

<sup>9</sup>These elasticities are computed using the sample averages of  $\tau$  and  $t$  in 1995.

<sup>10</sup>The inclusion of 1991 would reduce the sample size from 2233 to 1650 individuals.

<sup>11</sup>Since hours of work are not available in the first part of the sample, we prefer to use annual wages.

Table 1: IV estimates of (16) based on panel data (1993-95). Dependent variable: two - year change in log hourly gross wage  $\Delta \ln w_h$

	Coefficient
$\Delta \ln(1 - T_a)$	-2.693 (.818)
$\Delta \ln V$	-2.612 (.877)
$\eta_1$	.017
$\eta_2$	1.131
$Nobs$	2233
$R^2$	.285
$SC$	.336

Note: Each regression includes a constant, individual age and marital status, plus gender, part time, education, region, occupation, firm size, sector dummies. Additional instruments are the changes in the average retention rate between 1991 and 1993, in tax progressivity between 1991 and 1993 and between 1989 and 1991, computed from grouped data, the changes in the number of dependent children, in a dummy indicating whether the spouse is dependent, in dummies indicating whether the household has purchased a life insurance, a private health insurance or a private pension scheme, and in a dummy showing medical and college expenses in 1993. Robust standard errors within parentheses.  $\eta_1$  : average income tax elasticity of the gross wage;  $\eta_2$  : marginal income tax elasticity of the gross wage.  $SC$  : P- value of the Sargan test for the validity of instruments.

area dummies and estimate two alternative empirical specifications. In the former specification we regress cell - specific annual wages on cell - specific retention rates, tax progressivity and unemployment rates and model aggregate, region, age and skill specific effects with time dummies and interactions of these dummies with region of residence, educational attainment and age. Since payroll taxes are available only at the regional level, these dummies capture also the impact of payroll taxes on pre-tax wages.

In the latter specification, we add lagged payroll tax rates<sup>12</sup> to the list of regressors and model the remaining aggregate, region, age and skill specific effects with a linear and a quadratic trend and with the interactions of these trends with region, educational and age dummies. The second specification allows us to identify the effect of payroll taxes at the price of imposing restrictions on the shape of aggregate, region, age and skill specific effects.

By construction, income tax rates and cell - specific unemployment rates  $u$  are endogenous. A disadvantage of the longer span of time is that most of the variables used as instruments in Table 1 are not available. An advantage is that we have a richer lag structure. We exploit this advantage by selecting as additional instruments the first and second lags of the average income tax retention rate, the first lag of log tax progressivity and the first and second lag of log regional unemployment.

Table 2 shows our estimates for the full sample, with the former specification in the first column and the latter specification in the second column. Since the payroll tax is defined at a higher level of aggregation than the annual wage, Column (2) reports IV estimates with standard errors corrected for the lack of independence of errors within regions of residence. The Sargan criterion always rejects the hypothesis of misspecification. Both columns show that a higher average income tax retention rate and a lower rate of tax progressivity significantly reduce pre-tax wages. These findings broadly confirm the results in Table 1. Compared to that table and conditional on marginal tax rates, we find that changes in average income taxes have a positive and significant

---

<sup>12</sup>We use lagged rather than current values to avoid endogeneity issues.

effect on the pre-tax wage, thereby suggesting the presence of real wage resistance. We also find that the impact of marginal taxes on wage pressure, given average taxes, is positive and quantitatively similar to that found in Table 1.

Moreover, a one percentage point increase in payroll taxation is estimated to increase labor costs per head by 0.427<sup>13</sup>. Overall, this evidence suggests that increases in average income and payroll taxes are only partially absorbed by reductions in take home pay and affect pre-tax wages, labor costs per head and (un)employment.

Next we ask whether the impact of marginal and average taxes on pre-tax wages vary by skill and age, where skill is measured by educational attainment. This is done by selecting the empirical specification in the second column of Table 2 and by interacting the main regressors either with the dummy *UNSK*, equal to one for cells of individuals with less than upper secondary education and to zero otherwise, or with the dummy *YOUNG*, equal to 1 if the cell consists of individuals younger than 30 and to zero otherwise. Table 3 illustrates the results. The Wald test in the table shows that only the interactions with *YOUNG* are (jointly) significantly different from zero. Therefore, and in contrast with the findings by Lockwood and at [2000], there is evidence in our data that the relationship between taxation and pre-tax wages varies significantly by age group but not by skill.

We find that the elasticity of the pre-tax wage to changes in tax progressivity is significantly lower in the younger (0.377) than in the older age group (0.747). On the other hand, the elasticity of the pre-tax wage to changes in the income tax retention rate and in the payroll tax is higher among the young (0.741 and 0.406 respectively) than among the adults (0.569 and 0.123 respectively). Only for payroll taxes, however, the observed difference in the elasticities is significantly different from zero. The higher real wage resistance to changes in payroll taxes among

---

<sup>13</sup>This elasticity is computed as follows

$$\frac{\partial \ln c}{\partial \ln t_e} = \left(1 + \frac{\partial \ln w}{\partial \ln t_e}\right) \frac{t_e}{1 + t_e}$$

Table 2: IV estimates of (16) based on grouped data. Dependent variable: log annual gross wage  $\ln W$

	(1)	(2)
$\ln(1 - T_a)$	-4.656 (.431)	-5.895 (.411)
$\ln V$	-2.857 (.495)	-2.735 (.493)
$u$	-.060 (.011)	-.029 (.009)
$\ln(1 + T_e)_{-1}$	-	1.002 (.194)
$\eta_1$	.298 <sup>°</sup>	.524 <sup>°</sup>
$\eta_2$	.960	.919
$\eta_3$	-	.324 <sup>†</sup>
$\eta_4$	-	.427
$Nobs$	408	408
$R^2$	.986	.965
$SC$	.315	.374
<i>Regressors</i>	time dummies	trends

Note: Additional instruments include first and second lags of the average retention rate, first lag of log tax progressivity, first and second lag of log regional unemployment. Robust standard errors in Column (1) and cluster adjusted robust standard errors in Column (2) within parentheses.  $\eta_1$  : average income tax elasticity of the gross wage;  $\eta_2$  : marginal income tax elasticity of the gross wage;  $\eta_3$ : payroll tax elasticity of the gross wage;  $\eta_4$ : payroll tax elasticity of the labor cost;  $SC$  : P- value of the Sargan test for the validity of instruments. <sup>°</sup> and <sup>†</sup> if the estimated elasticity is significantly different from zero and one respectively at the 10 percent level of confidence.

Table 3. IV estimates of (16) based on grouped data. Dependent variable: log annual gross wage  $\ln w$ . With age and skill interactions.

	(1)	(2)
$\ln(1 - T_a)$	-5.708 (.770)	-5.655 (.426)
$\ln V$	-1.988 (.515)	-2.222 (.541)
$u$	-.035 (.010)	-.047 (.011)
$\ln(1 + T_e)_{-1}$	1.020 (.169)	.381 (.375)
$UNSK * \ln(1 - T_a)$	-.361 (.409)	—
$UNSK * \ln V$	-.736 (.371)	—
$UNSK * u$	.006 (.002)	—
$UNSK * \ln(1 + T_e)_{-1}$	-.129 (.059)	—
$YOUNG * \ln(1 - T_a)$	—	.067 (.366)
$YOUNG * \ln V$	—	1.099 (.424)
$YOUNG * u$	—	.064 (.008)
$YOUNG * \ln(1 + T_e)_{-1}$	—	.876 (.348)
<i>Nobs</i>	408	408
<i>Wald Test</i> — <i>Skill</i>	.176	-
<i>Wald Test</i> — <i>Age</i>	-	.025
<i>SC</i>	.321	.564
<i>R</i> <sup>2</sup>	.968	.975
<i>Regressors</i>	trends	trends

Note: Additional instruments include first and second lags of the average retention rate, first lag of log tax progressivity, first and second lag of log regional unemployment plus all interactions with the dummies *UNSK* and *YOUNG*. Cluster adjusted robust standard errors within parentheses.  $\eta_1$  : average income tax elasticity of the gross wage;  $\eta_2$  : marginal income tax elasticity of the gross wage;  $\eta_3$  : payroll tax elasticity of the gross wage. *SC* : P- value of the Sargan test for the validity of instruments.



the young could be explained with the fact that the wages of this group have been relatively close to sectorial wage floors set by collective bargaining in an economic environment characterized by increasing payroll taxes. As a consequence, the take home pay of this group could not adjust downward as much as in the case of adult workers to compensate for the higher payroll taxes. An alternative explanation is that unionized young workers have had a higher emphasis than unionized adults on wage gains relative to employment gains.

We can further illustrate our results in this section by considering the following policy experiment. Marginal income taxes in our sample have increased from 1979 to 1995 by close to 39%, and the relative employment of the young has fallen during the same period by close to 25%. Suppose that the government decides to reduce the marginal income tax rate borne by the young by 10% and to increase it by the same amount for the adults. Given that the young earn on average lower annual wages, this can be accomplished by reducing progressivity for the low wage income group and by increasing it for the high wage income group. According to our estimates in the second column of Table 3, and assuming that the estimated wage pressure equation is invariant to this policy experiment, the relative pre-tax wage of the young would fall as a consequence by 11.2%, a substantial reduction. Following Katz and Autor [1999], we have estimated that the long run elasticity of relative employment to relative labor costs is 0.903. Using these estimates, this policy experiment would increase the relative employment of the young by 10.11%, from 0.279 to 0.307, close to the value taken in 1992 but still far from 0.372, the 1979 value.

## 6 Conclusions

We have found that higher tax progressivity increases pre-tax wages. There is also evidence that changes in payroll taxes are not fully absorbed by offsetting changes in the pre-tax wage and affect labor costs and employment. The evidence on the effect of the average income tax rate on pre-tax wages is more mixed and varies with the data set being used, but on balance it also points to the presence of some degree of real

wage resistance. Finally, we have found significant differences in the relationship between labor taxes and pre-tax wages by age group but not by skill.

The finding that there is some degree of real wage resistance in the relationship between labor taxes and pre-tax wages is not surprising in the Italian institutional environment. Income from unemployment in this country includes both ordinary unemployment benefits and more generous unemployment subsidies paid to dismissed employees from large firms. Provided that income is above a given threshold, both are subject to income taxes, but the latter are exempt from taxation after the first year of unemployment<sup>14</sup>. Neither is subject to payroll taxes, that constitute the largest share of the overall tax wedge. When income from unemployment is only partially taxed, changes in average taxes (both payroll and income) affect wage pressure by influencing the reservation wage.

This result is also consistent with previous research. Daveri and Tabellini [2000] find that taxes affect unemployment relatively more in countries like Italy with an intermediate degree of centralization of the wage bargain. Brunello et al. [2001] show that the long term relationship between the average labor tax wedge and regional unemployment is significant and large.

The positive and relatively large effect of higher marginal income tax rates, given average rates, on the pre-tax wage is not in line with the previous empirical literature, which typically finds a negative effect. We interpret it as evidence that both the labor supply *and* the relative wage effects have dominated the wage moderation effect in the specific institutional context and time period. As illustrated at the end of the previous section, a switch of tax progressivity from the young to the adults could help reduce the relative unemployment of the young. A message of this paper is not only that this tax instrument can be effective, but also that it should be used in the same direction as the other tax

---

<sup>14</sup>Dismissed workers from large firms are enrolled in "mobility lists" and can draw subsidies for longer than one year if they live in the South or are older than 40. See Brunello and Miniaci [1997] for details.

instruments (average income and payroll taxes).

## 7 Appendix

The Bank of Italy [2000] supplies information on net income for each individual in the interviewed household. Income can be from employment, self - employment and welfare (pensions and other benefits). For each household, there is also information both on the number of individuals earning income and on the number of dependents (spouse or children). This information is available by gender, educational attainment, occupation, sector of activity, region of residence and age. The survey covers the years from 1977 to 1989 (with the exclusion of 1985), 1991, 1993, 1995 and 1998. In the longitudinal panel, we use the 1993 and the 1995 wave. In the grouped data, we focus on the period 1979-1995.

For each year, gross wages  $w$  are calculated from the available information on net wages  $nw$  and tax legislation as follows

$$w = \frac{(nw - basdet)}{(1 - T_{mi})} + \frac{[max_1 * (T_{m1} - T_{m2}) + \dots + max_{i-1} * (T_{mi-1} - T_{mi})]}{(1 - T_{mi})} \quad (A1)$$

where  $w$  is the gross wage,  $nw$  the net wage,  $basdet$  are tax deductions, which vary with the type and level of income, with the number of dependent children and with whether the individual is single or have a dependent spouse, and  $max_i$  is the upper bound of each income bracket relevant to each individual. In (A1)  $T_{mi}$  is the marginal tax rate and  $T_{mk}$ ,  $k = 1..i$  are the marginal tax rates associated to each tax bracket. Finally, individual tax rates are defined as  $T_a = \frac{(w-nw)}{w}$ .

Grouped data for the period 1979-95 are obtained by collapsing individual data by gender, age group, area of residence and educational attainment. Since a few years are missing, we linearly interpolate marginal and average tax rates and gross wages. Missing gross wages are computed by applying to the available data the rate of change of regional gross wages in the missing years<sup>15</sup>.

Data on employment, unemployment and active population by age group, gender, region of residence and educational attainment are

---

<sup>15</sup>Holmlund and Kolm [1995] use a similar method.

Table A1. Summary statistics.

	Mean	St.D.
Annual wage	31764.48	17588.2
Hourly wage	18.86	10.4
Payroll tax rate	0.48	0.07
Average tax retention rate	0.83	0.06
Tax progressivity	0.85	0.04
Gender	0.38	0.48
Age	40.62	9.52
Part time	0.04	0.20
Marital status	0.73	0.44
Educational attainment	0.56	0.49
Unemployment rate	0.15	0.14

from the Labor Force Survey (Istat [2000]). This survey underwent a number of minor changes over the sample period and a major change in 1992. Starting from October 1992, the Statistical Office uses new weights to expand the sample data to the universe and implements a restricted definition of unemployment. In order to reduce the risk of structural jumps in the data, we restrict our attention to two age categories (20-29 = young and 30-59 = adult), two educational levels (elementary plus middle school = unskilled, and high school plus university degree = skilled), three macro areas (north, centre and south). For each group, we work with the pre-1992 definition of unemployment and extend it forward to 1995, using the data provided on line by Fondazione Brodolini<sup>16</sup>.

Finally, grouped data from *SHIW* and the Labor Force Survey are merged with regional account data, that include information on the payroll tax rate. Table A1 presents the summary statistics for 1995 of the main variables used in the paper.

## References

- [1] Agell, J. and Lundborg, P., [1995], Fair Wages in an Open Economy, *Economica*, 335-351

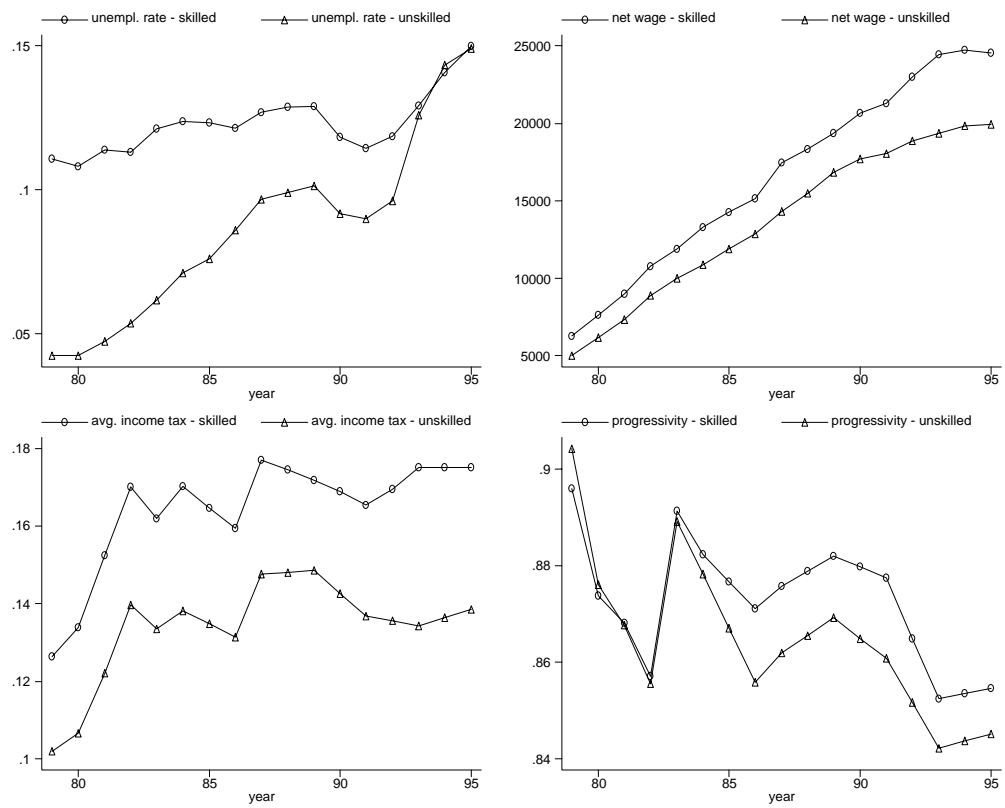
---

<sup>16</sup>These data are available in the following electronic address: [www.aiel.it](http://www.aiel.it).

- [2] Akerlof, G. and Yellen, J. [1990], The fair wage effort hypothesis and unemployment, *The Quarterly Journal of Economics*, 543-69.
- [3] Bank of Italy (2000): "Survey of Household Income and Wealth (SHIW), 1977-98," Version 1.0, May, cd-rom
- [4] Brunello, G., Lupi, C., Ordine, P. and Parisi, M.L., [2001] Beyond national institutions: labor taxes and regional unemployment in Italy, *CESifo Working Paper* # 414
- [5] Brunello, G. and Miniaci, R., [1997], Benefit Transfers in Italy: An Empirical Study of Mobility Lists in the Milan Area, in *Oxford Bulletin of Economics and Statistics*, 1997
- [6] Clark, A. and Oswald, A., (1996), "Satisfaction and Comparison Income", in *Journal of Public Economics*, 359-381.
- [7] Daveri and G. Tabellini (2000): "Unemployment, Growth and Taxation in Industrial Countries," *Economic Policy*, 47-88.
- [8] Dowrick, S., (1989), Union-Oligopoly Bargaining, in *Economic Journal*, 1123-1142.
- [9] Fehr, E. and Schmidt, (1999), A Theory of Fairness, Competition and Cooperation, in *Quarterly Journal of Economics*, 817-868.
- [10] Giavazzi, F. and Spaventa, L., [1988], Italy: the real effects of inflation and disinflation, *Economic Policy*, 135-171.
- [11] Gylfason, T. and Lindbeck, A., Competing wage claims and cost inflation, *The European Economic Review*, 1-21.
- [12] Hansen, C., Pedersen, L. and Slok, T., [1999] Progressive Taxation, Wage and Activity in a Small Open Economy, EPRU Working Paper, University of Copenhagen.
- [13] Holmlund B. and A.S. Kolm (1995): "Progressive Taxation, Wage Setting and Unemployment - Theory and Swedish Evidence," National Institute of Economic Research, *Tax Reform Evaluation Report*, n.15, August
- [14] ISTAT (2000): "Caratteristiche dell'occupazione e della disoccupazione negli anni 90," *Gli annuari delle Forze di Lavoro 1993-1999*, n.21, cd-rom
- [15] Katz L. and D. Autor (1999): "Changes in the Wage Structure and Earnings Inequality," *Handbook of Labor Economics*, 3a, pp.

1463-1555

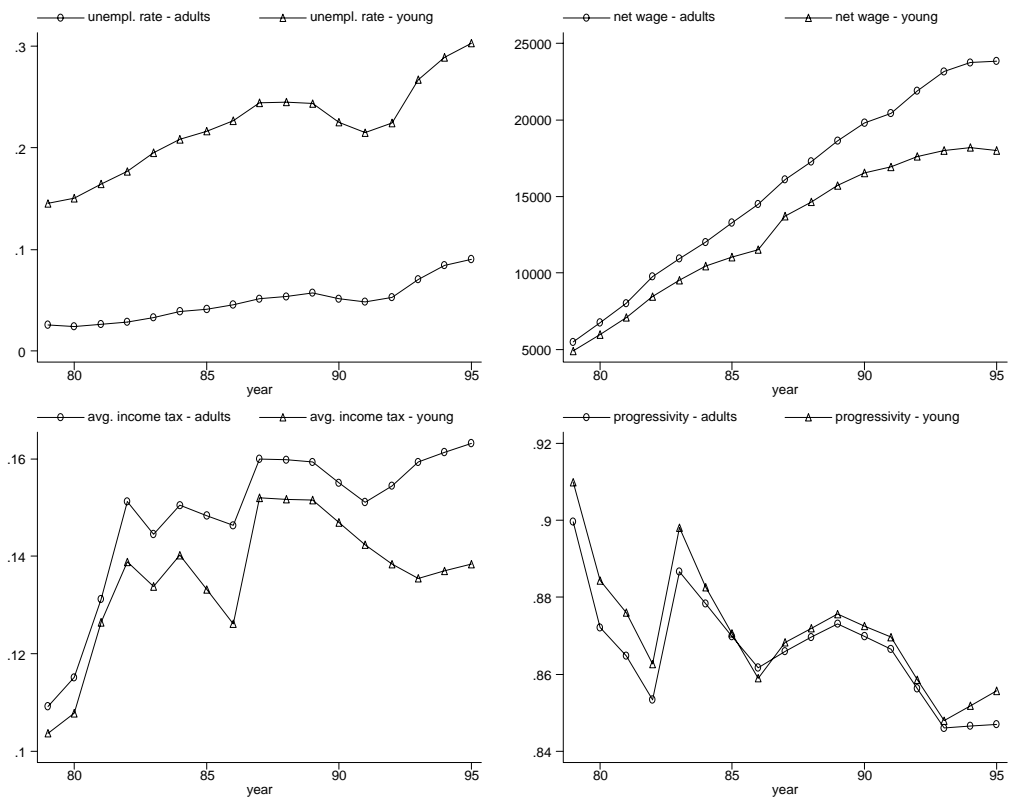
- [16] Lockwood B. and A. Manning (1993): “Wage Setting and the Tax System. Theory and Evidence for the United Kingdom,” *J. of Public Economics*, 52, pp. 1-29
- [17] Lockwood B., Sløk T., and T. Tranaes (2000): “Progressive Taxation and Wage Setting: Some Evidence for Denmark,” *Scand. J. of Economics*, 102, n.4, pp. 707-723
- [18] Malcomson J. and N. Sartor (1987): “Tax Push Inflation in a Unionized Labour Market,” *European Economic Review*, 31, n.8, December, pp. 1581-96
- [19] Oswald, A., [1980], Threat and morale effects in the theory of wages, *The European Economic Review*, 269-83.
- [20] Padilla J., Bentolila S., and J. Dolado (1996): Wage Bargaining in Industries with Market Power, *Journal of Economics & Management Strategy*, 5, n.4, pp. 535-564.
- [21] Pissarides C. (1998): “The Impact of Employment Tax Cuts on Unemployment and Wages; the Role of Unemployment Benefits and Tax Structure,” *European Economic Review*, 42, n.1, January, pp.155-183
- [22] Sonedda D. (2001): “Employment Effects of Progressive Taxation in a Unionised Economy,” University College London, w.p. 6
- [23] Sørensen, 1999, Optimal Tax Progressivity in Imperfect Labour Markets, *Labour Economics*, Vol 6, pp 435-452.
- [24] Sørensen P. (1997): “Public Finance Solutions to the European Unemployment Problem?” *Economic Policy*, October, pp. 223-264



all workers, by skill

Figure 1: By skill





all workers, by age group

Figure 2: By age

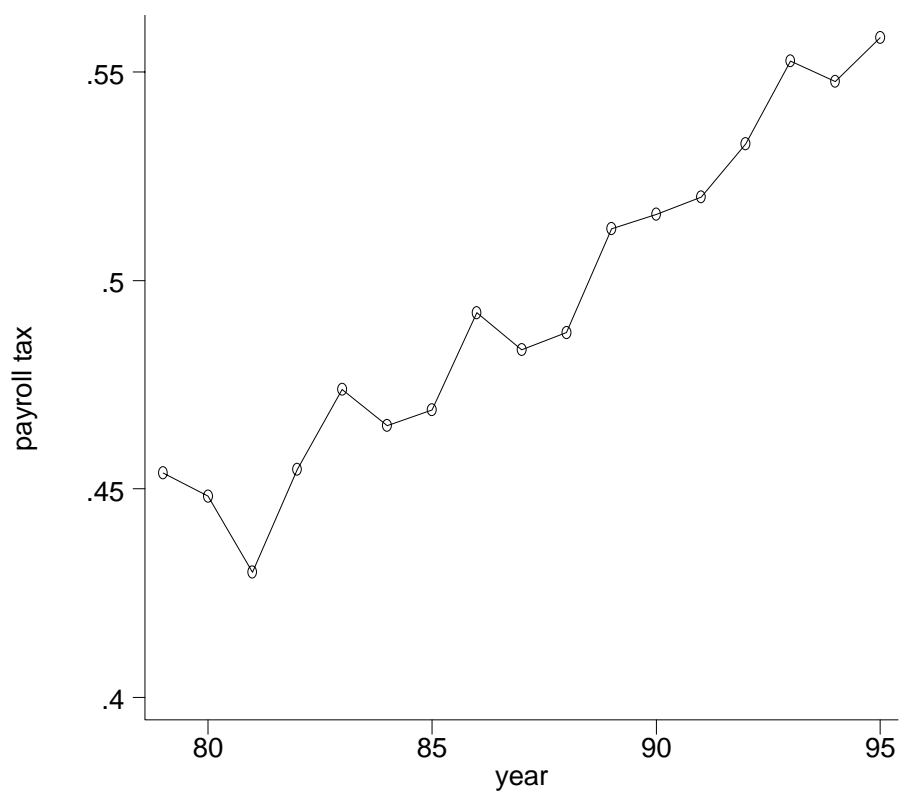


Figure 3: The average payroll tax rate

# NOTE DI LAVORO DELLA FONDAZIONE ENI ENRICO MATTEI

## Fondazione Eni Enrico Mattei Working Papers Series

Our working papers are available on the Internet at the following addresses:

**Server WWW:** [WWW.FEEM.IT](http://WWW.FEEM.IT)

**Anonymous FTP:** [FTP.FEEM.IT](http://FTP.FEEM.IT)

[http://papers.ssrn.com/abstract\\_id=XXXXXX](http://papers.ssrn.com/abstract_id=XXXXXX)

SUST	1.2001	<i>Inge MAYERES and Stef PROOST:</i> <u>Should Diesel Cars in Europe be Discouraged?</u>
SUST	2.2001	<i>Paola DORIA and Davide PETTENELLA:</i> <u>The Decision Making Process in Defining and Protecting Critical Natural Capital</u>
CLIM	3.2001	<i>Alberto PENCH:</i> <u>Green Tax Reforms in a Computable General Equilibrium Model for Italy</u>
CLIM	4.2001	<i>Maurizio BUSSOLO and Dino PINELLI:</i> <u>Green Taxes: Environment, Employment and Growth</u>
CLIM	5.2001	<i>Marco STAMPINI:</i> <u>Tax Reforms and Environmental Policies for Italy</u>
ETA	6.2001	<i>Walid OUESLATI:</i> <u>Environmental Fiscal Policy in an Endogenous Growth Model with Human Capital</u>
CLIM	7.2001	<i>Umberto CIORBA, Alessandro LANZA and Francesco PAULI:</i> <u>Kyoto Commitment and Emission Trading: a European Union Perspective</u>
MGMT	8.2001	<i>Brian SLACK (xlv):</i> <u>Globalisation in Maritime Transportation: Competition, uncertainty and implications for port development strategy</u>
VOL	9.2001	<i>Giulia PESARO:</i> <u>Environmental Voluntary Agreements: A New Model of Co-operation Between Public and Economic Actors</u>
VOL	10.2001	<i>Cathrine HAGEM:</i> <u>Climate Policy, Asymmetric Information and Firm Survival</u>
ETA	11.2001	<i>Sergio CURRARINI and Marco MARINI:</i> <u>A Sequential Approach to the Characteristic Function and the Core in Games with Externalities</u>
ETA	12.2001	<i>Gaetano BLOISE, Sergio CURRARINI and Nicholas KIKIDIS:</i> <u>Inflation and Welfare in an OLG Economy with a Privately Provided Public Good</u>
KNOW	13.2001	<i>Paolo SURICO:</i> <u>Globalisation and Trade: A "New Economic Geography" Perspective</u>
ETA	14.2001	<i>Valentina BOSETTI and Vincenzina MESSINA:</i> <u>Quasi Option Value and Irreversible Choices</u>
CLIM	15.2001	<i>Guy ENGELEN (xlii):</i> <u>Desertification and Land Degradation in Mediterranean Areas: from Science to Integrated Policy Making</u>
SUST	16.2001	<i>Julie Catherine SORS:</i> <u>Measuring Progress Towards Sustainable Development in Venice: A Comparative Assessment of Methods and Approaches</u>
SUST	17.2001	<i>Julie Catherine SORS:</i> <u>Public Participation in Local Agenda 21: A Review of Traditional and Innovative Tools</u>
CLIM	18.2001	<i>Johan ALBRECHT and Niko GOBBIN:</i> <u>Schumpeter and the Rise of Modern Environmentalism</u>
VOL	19.2001	<i>Rinaldo BRAU, Carlo CARRARO and Giulio GOLFETTO (xliii):</i> <u>Participation Incentives and the Design of Voluntary Agreements</u>
ETA	20.2001	<i>Paola ROTA:</i> <u>Dynamic Labour Demand with Lumpy and Kinked Adjustment Costs</u>
ETA	21.2001	<i>Paola ROTA:</i> <u>Empirical Representation of Firms' Employment Decisions by an (S,s) Rule</u>
ETA	22.2001	<i>Paola ROTA:</i> <u>What Do We Gain by Being Discrete? An Introduction to the Econometrics of Discrete Decision Processes</u>
PRIV	23.2001	<i>Stefano BOSI, Guillaume GIRMANS and Michel GUILLARD:</i> <u>Optimal Privatisation Design and Financial Markets</u>
KNOW	24.2001	<i>Giorgio BRUNELLO, Claudio LUPI, Patrizia ORDINE, and Maria Luisa PARISI:</i> <u>Beyond National Institutions: Labour Taxes and Regional Unemployment in Italy</u>
ETA	25.2001	<i>Klaus CONRAD:</i> <u>Locational Competition under Environmental Regulation when Input Prices and Productivity Differ</u>
PRIV	26.2001	<i>Bernardo BORTOLOTTI, Juliet D'SOUZA, Marcella FANTINI and William L. MEGGINSON:</i> <u>Sources of Performance Improvement in Privatised Firms: A Clinical Study of the Global Telecommunications Industry</u>
CLIM	27.2001	<i>Frédéric BROCHIER and Emiliano RAMIERI:</i> <u>Climate Change Impacts on the Mediterranean Coastal Zones</u>
ETA	28.2001	<i>Nunzio CAPPUCCIO and Michele MORETTO:</i> <u>Comments on the Investment-Uncertainty Relationship in a Real Option Model</u>
KNOW	29.2001	<i>Giorgio BRUNELLO:</i> <u>Absolute Risk Aversion and the Returns to Education</u>
CLIM	30.2001	<i>ZhongXiang ZHANG:</i> <u>Meeting the Kyoto Targets: The Importance of Developing Country Participation</u>
ETA	31.2001	<i>Jonathan D. KAPLAN, Richard E. HOWITT and Y. Hossein FARZIN:</i> <u>An Information-Theoretical Analysis of Budget-Constrained Nonpoint Source Pollution Control</u>
MGMT Coalition Theory Network	32.2001	<i>Roberta SALOMONE and Giulia GALLUCCIO:</i> <u>Environmental Issues and Financial Reporting Trends</u>
ETA	33.2001	<i>Shlomo WEBER and Hans WIESMETH:</i> <u>From Autarky to Free Trade: The Impact on Environment</u>
ETA	34.2001	<i>Margarita GENIUS and Elisabetta STRAZZERA:</i> <u>Model Selection and Tests for Non Nested Contingent Valuation Models: An Assessment of Methods</u>

NRM	35.2001	<i>Carlo GIUPPONI</i> : <u>The Substitution of Hazardous Molecules in Production Processes: The Atrazine Case Study in Italian Agriculture</u>
KNOW	36.2001	<i>Raffaele PACI and Francesco PIGLIARU</i> : <u>Technological Diffusion, Spatial Spillovers and Regional Convergence in Europe</u>
PRIV	37.2001	<i>Bernardo BORTOLOTTI</i> : <u>Privatisation, Large Shareholders, and Sequential Auctions of Shares</u>
CLIM	38.2001	<i>Barbara BUCHNER</i> : <u>What Really Happened in The Hague? Report on the COP6, Part I, 13-25 November 2000, The Hague, The Netherlands</u>
PRIV	39.2001	<i>Giacomo CALZOLARI and Carlo SCARPA</i> : <u>Regulation at Home, Competition Abroad: A Theoretical Framework</u>
KNOW	40.2001	<i>Giorgio BRUNELLO</i> : <u>On the Complementarity between Education and Training in Europe</u>
Coalition	41.2001	<i>Alain DESDOIGTS and Fabien MOIZEAU</i> (xlv): <u>Multiple Politico-Economic Regimes, Inequality and Growth</u>
Theory		
Network		
Coalition	42.2001	<i>Parkash CHANDER and Henry TULKENS</i> (xlv): <u>Limits to Climate Change</u>
Theory		
Network		
Coalition	43.2001	<i>Michael FINUS and Bianca RUNDSHAGEN</i> (xlv): <u>Endogenous Coalition Formation in Global Pollution Control</u>
Theory		
Network		
Coalition	44.2001	<i>Wietze LISE, Richard S.J. TOL and Bob van der ZWAAN</i> (xlv): <u>Negotiating Climate Change as a Social Situation</u>
Theory		
Network		
NRM	45.2001	<i>Mohamad R. KHAWLIE</i> (xlvii): <u>The Impacts of Climate Change on Water Resources of Lebanon- Eastern Mediterranean</u>
NRM	46.2001	<i>Mutaseem EL-FADEL and E. BOU-ZEID</i> (xlvii): <u>Climate Change and Water Resources in the Middle East: Vulnerability, Socio-Economic Impacts and Adaptation</u>
NRM	47.2001	<i>Eva IGLESIAS, Alberto GARRIDO and Almudena GOMEZ</i> (xlvii): <u>An Economic Drought Management Index to Evaluate Water Institutions' Performance Under Uncertainty and Climate Change</u>
CLIM	48.2001	<i>Wietze LISE and Richard S.J. TOL</i> (xlvii): <u>Impact of Climate on Tourist Demand</u>
CLIM	49.2001	<i>Francesco BOSELLO, Barbara BUCHNER, Carlo CARRARO and Davide RAGGI</i> : <u>Can Equity Enhance Efficiency? Lessons from the Kyoto Protocol</u>
SUST	50.2001	<i>Roberto ROSON</i> (xlviii): <u>Carbon Leakage in a Small Open Economy with Capital Mobility</u>
SUST	51.2001	<i>Edwin WOERDMAN</i> (xlviii): <u>Developing a European Carbon Trading Market: Will Permit Allocation Distort Competition and Lead to State Aid?</u>
SUST	52.2001	<i>Richard N. COOPER</i> (xlviii): <u>The Kyoto Protocol: A Flawed Concept</u>
SUST	53.2001	<i>Kari KANGAS</i> (xlviii): <u>Trade Liberalisation, Changing Forest Management and Roundwood Trade in Europe</u>
SUST	54.2001	<i>Xueqin ZHU and Ekko VAN IERLAND</i> (xlviii): <u>Effects of the Enlargement of EU on Trade and the Environment</u>
SUST	55.2001	<i>M. Ozgur KAYALICA and Sajal LAHIRI</i> (xlviii): <u>Strategic Environmental Policies in the Presence of Foreign Direct Investment</u>
SUST	56.2001	<i>Savas ALPAY</i> (xlviii): <u>Can Environmental Regulations be Compatible with Higher International Competitiveness? Some New Theoretical Insights</u>
SUST	57.2001	<i>Roldan MURADIAN, Martin O'CONNOR, Joan MARTINEZ-ALER</i> (xlviii): <u>Embodied Pollution in Trade: Estimating the "Environmental Load Displacement" of Industrialised Countries</u>
SUST	58.2001	<i>Matthew R. AUER and Rafael REUVENY</i> (xlviii): <u>Foreign Aid and Direct Investment: Key Players in the Environmental Restoration of Central and Eastern Europe</u>
SUST	59.2001	<i>Onno J. KUIK and Frans H. OOSTERHUIS</i> (xlviii): <u>Lessons from the Southern Enlargement of the EU for the Environmental Dimensions of Eastern Enlargement, in particular for Poland</u>
ETA	60.2001	<i>Carlo CARRARO, Alessandra POME and Domenico SINISCALCO</i> (xlix): <u>Science vs. Profit in Research: Lessons from the Human Genome Project</u>
CLIM	61.2001	<i>Efrem CASTELNUOVO, Michele MORETTO and Sergio VERGALLI</i> : <u>Global Warming, Uncertainty and Endogenous Technical Change: Implications for Kyoto</u>
PRIV	62.2001	<i>Gian Luigi ALBANO, Fabrizio GERMANO and Stefano LOVO</i> : <u>On Some Collusive and Signaling Equilibria in Ascending Auctions for Multiple Objects</u>
CLIM	63.2001	<i>Elbert DIJKGRAAF and Herman R.J. VOLLEBERGH</i> : <u>A Note on Testing for Environmental Kuznets Curves with Panel Data</u>
CLIM	64.2001	<i>Paolo BUONANNO, Carlo CARRARO and Marzio GALEOTTI</i> : <u>Endogenous Induced Technical Change and the Costs of Kyoto</u>
CLIM	65.2001	<i>Guido CAZZAVILLAN and Ignazio MUSU</i> (l): <u>Transitional Dynamics and Uniqueness of the Balanced-Growth Path in a Simple Model of Endogenous Growth with an Environmental Asset</u>
CLIM	66.2001	<i>Giovanni BAIOCCHI and Salvatore DI FALCO</i> (l): <u>Investigating the Shape of the EKC: A Nonparametric Approach</u>
CLIM	67.2001	<i>Marzio GALEOTTI, Alessandro LANZA and Francesco PAULI</i> (l): <u>Desperately Seeking (Environmental) Kuznets: A New Look at the Evidence</u>
CLIM	68.2001	<i>Alexey VIKHLYAEV</i> (xlviii): <u>The Use of Trade Measures for Environmental Purposes – Globally and in the EU Context</u>
NRM	69.2001	<i>Gary D. LIBECAP and Zeynep K. HANSEN</i> (li): <u>U.S. Land Policy, Property Rights, and the Dust Bowl of the 1930s</u>

NRM	70.2001	<i>Lee J. ALSTON, Gary D. LIBECAP and Bernardo MUELLER</i> (li): <u>Land Reform Policies, The Sources of Violent Conflict and Implications for Deforestation in the Brazilian Amazon</u>
CLIM	71.2001	<i>Claudia KEMFERT</i> : <u>Economy-Energy-Climate Interaction – The Model WIAGEM -</u>
SUST	72.2001	<i>Paulo A.L.D. NUNES and Yohanes E. RIYANTO</i> : <u>Policy Instruments for Creating Markets for Biodiversity: Certification and Ecolabeling</u>
SUST	73.2001	<i>Paulo A.L.D. NUNES and Erik SCHOKKAERT</i> (lii): <u>Warm Glow and Embedding in Contingent Valuation</u>
SUST	74.2001	<i>Paulo A.L.D. NUNES, Jeroen C.J.M. van den BERGH and Peter NIJKAMP</i> (lii): <u>Ecological-Economic Analysis and Valuation of Biodiversity</u>
VOL	75.2001	<i>Johan EYCKMANS and Henry TULKENS</i> (li): <u>Simulating Coalitionally Stable Burden Sharing Agreements for the Climate Change Problem</u>
PRIV	76.2001	<i>Axel GAUTIER and Florian HEIDER</i> : <u>What Do Internal Capital Markets Do? Redistribution vs. Incentives</u>
PRIV	77.2001	<i>Bernardo BORTOLOTTI, Marcella FANTINI and Domenico SINISCALCO</i> : <u>Privatisation around the World: New Evidence from Panel Data</u>
ETA	78.2001	<i>Toke S. AIDT and Jayasri DUTTA</i> (li): <u>Transitional Politics. Emerging Incentive-based Instruments in Environmental Regulation</u>
ETA	79.2001	<i>Alberto PETRUCCI</i> : <u>Consumption Taxation and Endogenous Growth in a Model with New Generations</u>
ETA	80.2001	<i>Pierre LASSERRE and Antoine SOUBEYRAN</i> (li): <u>A Ricardian Model of the Tragedy of the Commons</u>
ETA	81.2001	<i>Pierre COURTOIS, Jean Christophe PÉREAU and Tarik TAZDAÏT</i> : <u>An Evolutionary Approach to the Climate Change Negotiation Game</u>
NRM	82.2001	<i>Christophe BONTEMPS, Stéphane COUTURE and Pascal FAVARD</i> : <u>Is the Irrigation Water Demand Really Convex?</u>
NRM	83.2001	<i>Unai PASCUAL and Edward BARBIER</i> : <u>A Model of Optimal Labour and Soil Use with Shifting Cultivation</u>
CLIM	84.2001	<i>Jesper JENSEN and Martin Hvidt THELLE</i> : <u>What are the Gains from a Multi-Gas Strategy?</u>
CLIM	85.2001	<i>Maurizio MICHELINI</i> (liii): IPCC “Summary for Policymakers” in TAR. Do its results give a scientific support always adequate to the urgencies of Kyoto negotiations?
CLIM	86.2001	<i>Claudia KEMFERT</i> (liii): <u>Economic Impact Assessment of Alternative Climate Policy Strategies</u>
CLIM	87.2001	<i>Cesare DOSI and Michele MORETTO</i> : <u>Global Warming and Financial Umbrellas</u>
ETA	88.2001	<i>Elena BONTEMPI, Alessandra DEL BOCA, Alessandra FRANZOSI, Marzio GALEOTTI and Paola ROTA</i> : <u>Capital Heterogeneity: Does it Matter? Fundamental Q and Investment on a Panel of Italian Firms</u>
ETA	89.2001	<i>Efrem CASTELNUOVO and Paolo SURICO</i> : <u>Model Uncertainty, Optimal Monetary Policy and the Preferences of the Fed</u>
CLIM	90.2001	<i>Umberto CIORBA, Alessandro LANZA and Francesco PAULI</i> : <u>Kyoto Protocol and Emission Trading: Does the US Make a Difference?</u>
CLIM	91.2001	<i>ZhongXiang ZHANG and Lucas ASSUNCAO</i> : <u>Domestic Climate Policies and the WTO</u>
SUST	92.2001	<i>Anna ALBERINI, Alan KRUPNICK, Maureen CROPPER, Nathalie SIMON and Joseph COOK</i> (lii): <u>The Willingness to Pay for Mortality Risk Reductions: A Comparison of the United States and Canada</u>
SUST	93.2001	<i>Riccardo SCARPA, Guy D. GARROD and Kenneth G. WILLIS</i> (lii): <u>Valuing Local Public Goods with Advanced Stated Preference Models: Traffic Calming Schemes in Northern England</u>
CLIM	94.2001	<i>Ming CHEN and Larry KARP</i> : <u>Environmental Indices for the Chinese Grain Sector</u>
CLIM	95.2001	<i>Larry KARP and Jiangfeng ZHANG</i> : <u>Controlling a Stock Pollutant with Endogenous Investment and Asymmetric Information</u>
ETA	96.2001	<i>Michele MORETTO and Gianpaolo ROSSINI</i> : <u>On the Opportunity Cost of Nontradable Stock Options</u>
SUST	97.2001	<i>Elisabetta STRAZZERA, Margarita GENIUS, Riccardo SCARPA and George HUTCHINSON</i> : <u>The Effect of Protest Votes on the Estimates of Willingness to Pay for Use Values of Recreational Sites</u>
NRM	98.2001	<i>Frédéric BROCHIER, Carlo GIUPPONI and Alberto LONGO</i> : <u>Integrated Coastal Zone Management in the Venice Area – Perspectives of Development for the Rural Island of Sant’Erasmus</u>
NRM	99.2001	<i>Frédéric BROCHIER, Carlo GIUPPONI and Julie SORS</i> : <u>Integrated Coastal Management in the Venice Area – Potentials of the Integrated Participatory Management Approach</u>
NRM	100.2001	<i>Frédéric BROCHIER and Carlo GIUPPONI</i> : <u>Integrated Coastal Zone Management in the Venice Area – A Methodological Framework</u>
PRIV	101.2001	<i>Enrico C. PEROTTI and Luc LAEVEN</i> : <u>Confidence Building in Emerging Stock Markets</u>
CLIM	102.2001	<i>Barbara BUCHNER, Carlo CARRARO and Igor CERSOSIMO</i> : <u>On the Consequences of the U.S. Withdrawal from the Kyoto/Bonn Protocol</u>
SUST	103.2001	<i>Riccardo SCARPA, Adam DRUCKER, Simon ANDERSON, Nancy FERRAES-EHUAN, Veronica GOMEZ, Carlos R. RISOPATRON and Olga RUBIO-LEONEL</i> : <u>Valuing Animal Genetic Resources in Peasant Economies: The Case of the Box Keken Creole Pig in Yucatan</u>
SUST	104.2001	<i>R. SCARPA, P. KRISTJANSON, A. DRUCKER, M. RADENY, E.S.K. RUTO, and J.E.O. REGE</i> : <u>Valuing Indigenous Cattle Breeds in Kenya: An Empirical Comparison of Stated and Revealed Preference Value Estimates</u>
SUST	105.2001	<i>Clemens B.A. WOLLNY</i> : <u>The Need to Conserve Farm Animal Genetic Resources Through Community-Based Management in Africa: Should Policy Makers be Concerned?</u>
SUST	106.2001	<i>J.T. KARUGIA, O.A. MWAI, R. KAITHO, Adam G. DRUCKER, C.B.A. WOLLNY and J.E.O. REGE</i> : <u>Economic Analysis of Crossbreeding Programmes in Sub-Saharan Africa: A Conceptual Framework and Kenyan Case Study</u>
SUST	107.2001	<i>W. AYALEW, J.M. KING, E. BRUNS and B. RISCHKOWSKY</i> : <u>Economic Evaluation of Smallholder Subsistence Livestock Production: Lessons from an Ethiopian Goat Development Program</u>

SUST	108.2001	<i>Gianni CICA, Elisabetta D'ERCOLE and Davide MARINO: <u>Valuing Farm Animal Genetic Resources by Means of Contingent Valuation and a Bio-Economic Model: The Case of the Pentro Horse</u></i>
SUST	109.2001	<i>Clem TISDELL: <u>Socioeconomic Causes of Loss of Animal Genetic Diversity: Analysis and Assessment</u></i>
SUST	110.2001	<i>M.A. JABBAR and M.L. DIEDHOU: <u>Does Breed Matter to Cattle Farmers and Buyers? Evidence from West Africa</u></i>
SUST	1.2002	<i>K. TANO, M.D. FAMINOW, M. KAMUANGA and B. SWALLOW: <u>Using Conjoint Analysis to Estimate Farmers' Preferences for Cattle Traits in West Africa</u></i>
ETA	2.2002	<i>Efrem CASTELNUOVO and Paolo SURICO: <u>What Does Monetary Policy Reveal about Central Bank's Preferences?</u></i>
WAT	3.2002	<i>Duncan KNOWLER and Edward BARBIER: <u>The Economics of a "Mixed Blessing" Effect: A Case Study of the Black Sea</u></i>
CLIM	4.2002	<i>Andreas LÖSCHEL: <u>Technological Change in Economic Models of Environmental Policy: A Survey</u></i>
VOL	5.2002	<i>Carlo CARRARO and Carmen MARCHIORI: <u>Stable Coalitions</u></i>
CLIM	6.2002	<i>Marzio GALEOTTI, Alessandro LANZA and Matteo MANERA: <u>Rockets and Feathers Revisited: An International Comparison on European Gasoline Markets</u></i>
ETA	7.2002	<i>Effrosyni DIAMANTOUDI and Eftichios S. SARTZETAKIS: <u>Stable International Environmental Agreements: An Analytical Approach</u></i>
KNOW	8.2002	<i>Alain DESDOIGTS: <u>Neoclassical Convergence Versus Technological Catch-up: A Contribution for Reaching a Consensus</u></i>
NRM	9.2002	<i>Giuseppe DI VITA: <u>Renewable Resources and Waste Recycling</u></i>
KNOW	10.2002	<i>Giorgio BRUNELLO: <u>Is Training More Frequent when Wage Compression is Higher? Evidence from 11 European Countries</u></i>
ETA	11.2002	<i>Mordecai KURZ, Hehui JIN and Maurizio MOTOLESE: <u>Endogenous Fluctuations and the Role of Monetary Policy</u></i>
KNOW	12.2002	<i>Reyer GERLAGH and Marjan W. HOFKES: <u>Escaping Lock-in: The Scope for a Transition towards Sustainable Growth?</u></i>
NRM	13.2002	<i>Michele MORETTO and Paolo ROSATO: <u>The Use of Common Property Resources: A Dynamic Model</u></i>
CLIM	14.2002	<i>Philippe QUIRION: <u>Macroeconomic Effects of an Energy Saving Policy in the Public Sector</u></i>
CLIM	15.2002	<i>Roberto ROSON: <u>Dynamic and Distributional Effects of Environmental Revenue Recycling Schemes: Simulations with a General Equilibrium Model of the Italian Economy</u></i>
CLIM	16.2002	<i>Francesco RICCI (I): <u>Environmental Policy Growth when Inputs are Differentiated in Pollution Intensity</u></i>
ETA	17.2002	<i>Alberto PETRUCCI: <u>Devaluation (Levels versus Rates) and Balance of Payments in a Cash-in-Advance Economy</u></i>
Coalition Theory Network	18.2002	<i>László Á. KÓCZY (liv): <u>The Core in the Presence of Externalities</u></i>
Coalition Theory Network	19.2002	<i>Steven J. BRAMS, Michael A. JONES and D. Marc KILGOUR (liv): <u>Single-Peakedness and Disconnected Coalitions</u></i>
Coalition Theory Network	20.2002	<i>Guillaume HAERINGER (liv): <u>On the Stability of Cooperation Structures</u></i>
NRM	21.2002	<i>Fausto CAVALLARO and Luigi CIRAOLO: <u>Economic and Environmental Sustainability: A Dynamic Approach in Insular Systems</u></i>
CLIM	22.2002	<i>Barbara BUCHNER, Carlo CARRARO, Igor CERSOSIMO and Carmen MARCHIORI: <u>Back to Kyoto? US Participation and the Linkage between R&amp;D and Climate Cooperation</u></i>
CLIM	23.2002	<i>Andreas LÖSCHEL and ZhongXIANG ZHANG: <u>The Economic and Environmental Implications of the US Repudiation of the Kyoto Protocol and the Subsequent Deals in Bonn and Marrakech</u></i>
ETA	24.2002	<i>Marzio GALEOTTI, Louis J. MACCINI and Fabio SCHIANTARELLI: <u>Inventories, Employment and Hours</u></i>
CLIM	25.2002	<i>Hannes EGLI: <u>Are Cross-Country Studies of the Environmental Kuznets Curve Misleading? New Evidence from Time Series Data for Germany</u></i>
ETA	26.2002	<i>Adam B. JAFFE, Richard G. NEWELL and Robert N. STAVINS: <u>Environmental Policy and Technological Change</u></i>
SUST	27.2002	<i>Joseph C. COOPER and Giovanni SIGNORELLO: <u>Farmer Premiums for the Voluntary Adoption of Conservation Plans</u></i>
SUST	28.2002	<i>The ANSEA Network: <u>Towards An Analytical Strategic Environmental Assessment</u></i>
KNOW	29.2002	<i>Paolo SURICO: <u>Geographic Concentration and Increasing Returns: a Survey of Evidence</u></i>
ETA	30.2002	<i>Robert N. STAVINS: <u>Lessons from the American Experiment with Market-Based Environmental Policies</u></i>
NRM	31.2002	<i>Carlo GIUPPONI and Paolo ROSATO: <u>Multi-Criteria Analysis and Decision-Support for Water Management at the Catchment Scale: An Application to Diffuse Pollution Control in the Venice Lagoon</u></i>
NRM	32.2002	<i>Robert N. STAVINS: <u>National Environmental Policy During the Clinton Years</u></i>
KNOW	33.2002	<i>A. SOUBEYRAN and H. STAHN : <u>Do Investments in Specialized Knowledge Lead to Composite Good Industries?</u></i>
KNOW	34.2002	<i>G. BRUNELLO, M.L. PARISI and Daniela SONEDDA: <u>Labor Taxes, Wage Setting and the Relative Wage Effect</u></i>

- (xlii) This paper was presented at the International Workshop on "Climate Change and Mediterranean Coastal Systems: Regional Scenarios and Vulnerability Assessment" organised by the Fondazione Eni Enrico Mattei in co-operation with the Istituto Veneto di Scienze, Lettere ed Arti, Venice, December 9-10, 1999.
- (xliii) This paper was presented at the International Workshop on "Voluntary Approaches, Competition and Competitiveness" organised by the Fondazione Eni Enrico Mattei within the research activities of the CAVA Network, Milan, May 25-26, 2000.
- (xliv) This paper was presented at the International Workshop on "Green National Accounting in Europe: Comparison of Methods and Experiences" organised by the Fondazione Eni Enrico Mattei within the Concerted Action of Environmental Valuation in Europe (EVE), Milan, March 4-7, 2000
- (xlv) This paper was presented at the International Workshop on "New Ports and Urban and Regional Development. The Dynamics of Sustainability" organised by the Fondazione Eni Enrico Mattei, Venice, May 5-6, 2000.
- (xlvi) This paper was presented at the Sixth Meeting of the Coalition Theory Network organised by the Fondazione Eni Enrico Mattei and the CORE, Université Catholique de Louvain, Louvain-la-Neuve, Belgium, January 26-27, 2001
- (xlvii) This paper was presented at the RICAMARE Workshop "Socioeconomic Assessments of Climate Change in the Mediterranean: Impact, Adaptation and Mitigation Co-benefits", organised by the Fondazione Eni Enrico Mattei, Milan, February 9-10, 2001
- (xlviii) This paper was presented at the International Workshop "Trade and the Environment in the Perspective of the EU Enlargement", organised by the Fondazione Eni Enrico Mattei, Milan, May 17-18, 2001
- (xlix) This paper was presented at the International Conference "Knowledge as an Economic Good", organised by Fondazione Eni Enrico Mattei and The Beijer International Institute of Environmental Economics, Palermo, April 20-21, 2001
- (l) This paper was presented at the Workshop "Growth, Environmental Policies and Sustainability" organised by the Fondazione Eni Enrico Mattei, Venice, June 1, 2001
- (li) This paper was presented at the Fourth Toulouse Conference on Environment and Resource Economics on "Property Rights, Institutions and Management of Environmental and Natural Resources", organised by Fondazione Eni Enrico Mattei, IDEI and INRA and sponsored by MATE, Toulouse, May 3-4, 2001
- (lii) This paper was presented at the International Conference on "Economic Valuation of Environmental Goods", organised by Fondazione Eni Enrico Mattei in cooperation with CORILA, Venice, May 11, 2001
- (liii) This paper was circulated at the International Conference on "Climate Policy – Do We Need a New Approach?", jointly organised by Fondazione Eni Enrico Mattei, Stanford University and Venice International University, Isola di San Servolo, Venice, September 6-8, 2001
- (liv) This paper was presented at the Seventh Meeting of the Coalition Theory Network organised by the Fondazione Eni Enrico Mattei and the CORE, Université Catholique de Louvain, Venice, Italy, January 11-12, 2002

## **2002 SERIES**

<b>CLIM</b>	<i>Climate Change Modelling and Policy</i> (Editor: Marzio Galeotti )
<b>VOL</b>	<i>Voluntary and International Agreements</i> (Editor: Carlo Carraro)
<b>SUST</b>	<i>Sustainability Indicators and Environmental Evaluation</i> (Editor: Carlo Carraro)
<b>NRM</b>	<i>Natural Resources Management</i> (Editor: Carlo Giupponi)
<b>KNOW</b>	<i>Knowledge, Technology, Human Capital</i> (Editor: Dino Pinelli)
<b>MGMT</b>	<i>Corporate Sustainable Management</i> (Editor: Andrea Marsanich)
<b>PRIV</b>	<i>Privatisation, Antitrust, Regulation</i> (Editor: Bernardo Bortolotti)