

Anundsen, Andre K.; Nymore, Ragnar

Working Paper

Did US consumers 'save for a rainy day' before the Great Recession?

Memorandum, No. 11/2015

Provided in Cooperation with:

Department of Economics, University of Oslo

Suggested Citation: Anundsen, Andre K.; Nymore, Ragnar (2015) : Did US consumers 'save for a rainy day' before the Great Recession?, Memorandum, No. 11/2015, University of Oslo, Department of Economics, Oslo

This Version is available at:

<https://hdl.handle.net/10419/119544>

Standard-Nutzungsbedingungen:

Die Dokumente auf EconStor dürfen zu eigenen wissenschaftlichen Zwecken und zum Privatgebrauch gespeichert und kopiert werden.

Sie dürfen die Dokumente nicht für öffentliche oder kommerzielle Zwecke vervielfältigen, öffentlich ausstellen, öffentlich zugänglich machen, vertreiben oder anderweitig nutzen.

Sofern die Verfasser die Dokumente unter Open-Content-Lizenzen (insbesondere CC-Lizenzen) zur Verfügung gestellt haben sollten, gelten abweichend von diesen Nutzungsbedingungen die in der dort genannten Lizenz gewährten Nutzungsrechte.

Terms of use:

Documents in EconStor may be saved and copied for your personal and scholarly purposes.

You are not to copy documents for public or commercial purposes, to exhibit the documents publicly, to make them publicly available on the internet, or to distribute or otherwise use the documents in public.

If the documents have been made available under an Open Content Licence (especially Creative Commons Licences), you may exercise further usage rights as specified in the indicated licence.

MEMORANDUM

No 11/2015

Did US Consumers ‘Save for a Rainy Day’ before the Great Recession?

The seal of the University of Oslo is a circular emblem. It features a central figure of a woman in classical attire, holding a lyre. The text "UNIVERSITAS OSLOENSIS" is inscribed around the top inner edge of the circle, and "MDCCCXXXII" is at the bottom. The seal is rendered in a light gray tone.

André K. Anundsen and Ragnar Nymoen

ISSN: 0809-8786

Department of Economics
University of Oslo

This series is published by the
University of Oslo
Department of Economics

P. O.Box 1095 Blindern
N-0317 OSLO Norway
Telephone: + 47 22855127
Fax: + 47 22855035
Internet: <http://www.sv.uio.no/econ>
e-mail: econdep@econ.uio.no

In co-operation with
**The Frisch Centre for Economic
Research**

Gaustadalleén 21
N-0371 OSLO Norway
Telephone: +47 22 95 88 20
Fax: +47 22 95 88 25
Internet: <http://www.frisch.uio.no>
e-mail: frisch@frisch.uio.no

Last 10 Memoranda

No 10/15	Finn Førsun <i>Economic Perspectives on DEA</i>
No 09/15	Andreas Kotsadam, Eivind Hammersmark Olsen, Carl Henrik Knutsen and Tore Wig <i>Mining and Local Corruption in Africa</i>
No 08/15	Eric Nævdal <i>Catastrophes and Expected Marginal Utility – How the Value of The Last Fish in a Lak is Infinity and Why We Shouldn't Care (Much)</i>
No 07/15	Niklas Jakobsson and Andreas Kotsadam <i>The Economics of Trafficking for Sexual Exploitation</i>
No 06/15	Geir B. Asheim and Stéphane Zuber <i>Evaluating Intergenerational Risks: Probability Adjusted Rank-Discounted Utilitarianism</i>
No 05/15	Fridrik Mar Baldursson and Nils-Henrik von der Fehr <i>Natural Resources and Sovereign Expropriation</i>
No 04/15	Erik Biørn and Xuehui Han <i>Persistence, Signal-Noise Pattern and Heterogeneity in Panel Data: With an Application to the Impact of Foreign Direct Investment in GDP</i>
No 03/15	Alice Ciccone <i>Environmental Effects of a Vehicle Tax Reform: Empirical Evidence from Norway</i>
No 02/15	Katinka Holtsmark and Kristoffer Midttømme <i>The Dynamics of Linking Permit Markets</i>
No 01/15	Francesco Lania and Alessia Russo <i>Public Education and Pensions in Democracy: A Political Economy Theory</i>

Previous issues of the memo-series are available in a PDF® format at:
<http://www.sv.uio.no/econ/english/research/unpublished-works/working-papers/>

Did US consumers ‘save for a rainy day’ before the Great Recession?*

André K. Anundsen

Norges Bank

Ragnar Nymoen

Economic Analysis Norway - Center for Wage formation and University of Oslo

Memo 11/2015-v1

This version May 8, 2015

Abstract

The ‘saving for a rainy day’ hypothesis implies that households’ saving decisions reflect that they can (rationally) predict future income declines. The empirical relevance of this hypothesis plays a key role in discussions of fiscal policy multipliers and it holds under the null that the permanent income hypothesis is true. We find mixed support for this hypothesis using time series data for the 100 largest US Metropolitan Statistical Areas, as well as aggregate macro time series, for the period 1980q1–2011q4. That is, income is more often found to predict consumption and saving than the converse. Our modus operandi is to investigate the ‘saving for a rainy day’ hypothesis by testing (weak) exogeneity of income and consumption and by exploring the direction of Granger causality between the two series. We also give evidence that house price changes played a role in the US income and consumption dynamics, before, during and after the Great Recession.

Keywords: *Cointegration; Consumption; Granger causality; Permanent income hypothesis; Household saving*

JEL classification: *C22; C32; C51; C52; E21; E62*

*This Working Paper should not be reported as representing the views of Norges Bank. The views expressed are those of the authors and do not necessarily reflect those of Norges Bank. The paper was presented at the conference “Econometric Modelling in a Rapidly Changing World” in Oxford, September 2014, at the 2014 European Winter Meeting of the Econometric Society in Madrid, December 2014, at the 37th Annual Meeting of the Norwegian Economic Association in Bergen, January 2015, at the 23rd Symposium of the Society for Nonlinear Dynamics and Econometrics in Oslo, March 2015, and at seminars and workshops in the Central Bank of Hungary, Norges Bank [Central Bank of Norway] and Statistics Norway. We are grateful to the participants at these events for their comments. We would also like to thank Farooq Akram, Bruce Hansen, Veronica Harrington, Tord Krogh and Asbjørn Rødseth for comments and discussions. All results may be reproduced using an Ox-code that will be made available on the authors’ websites. Contact details: *André Kallåk Anundsen*: Norges Bank Research, Norges Bank, Bankplassen 2, P.O. Box 1179 Sentrum, NO-0107 Oslo, Norway. Email: andre-kallak.anundsen@norges-bank.no. *Ragnar Nymoen*: Department of Economics, University of Oslo, PO Box 1095 Blindern, N-0317 Oslo. Email: ragnar.nymoen@econ.uio.no.n

1 Introduction

Consumer expenditure is by far the largest component of spending in the US economy, and in most other countries as well. Not surprisingly, the study of saving and consumption dynamics is therefore of great importance both for economic policy analysis and economic forecasting. It is well known that the rational expectations permanent income hypothesis (PIH hereafter) due to Hall (1978) is consistent with non-stationarity of income and stationarity of saving, see e.g. Muellbauer and Lattimore (1995, Ch.3.2). When combined with the famous theoretical result of Hall (1978), stating that consumption follows a first order Markov process, we obtain the implication that causation runs from lagged saving to current income and not from saving to consumption. In this paper, we test the direction of causation between consumption and income using quarterly time series data for the 100 largest US Metropolitan Statistical Areas (MSAs), as well as aggregate macro data, over the period 1980q1–2011q4.

A common ground is represented by the idea that the savings rate may be a stationary variable, even though there are stochastic trends in the time series of both income and consumption. This common ground allows the analysis to be held within a vector autoregressive (VAR) framework. To account for the stochastic trends in income and consumption, we apply econometric methods that are robust to the non-stationarity of the two series, i.e. the cointegrated VAR model of Johansen (1988, 1995). Under the null that the statistical relationship between consumption and income describes the PIH, a fall in saving anticipates a future increase in income and a rise in saving anticipates future income declines, Campbell (1987).¹ This also explains why the result has been dubbed the ‘saving for a rainy day’ hypothesis, cf. Attanasio (1999).

In his seminal paper, Campbell (1987) referred to (Granger) causation running from the savings rate to income growth – and not the other (Keynesian) way around – as the weak implication of the permanent income hypothesis. Empirically, using aggregate US

¹Campbell showed this for an infinitely lived consumer with quadratic utility function, equal and constant subjective discount rates and no credit constraints.

data for the period 1953–1984, Campbell found that the implication of the PIH for the direction of Granger causality preserved even if other implications of the PIH fared less well empirically.² The conclusion that the PIH is only partly correct, and that it needs to be supplemented by several factors to account for the many features of consumption dynamics that we are trying to understand, is consistent with the consensus view in modern macroeconomics, see e.g. Romer (2006), Carroll (2009), Jappelli and Pistaferri (2010) and Attanasio and Weber (2010).

Although one-way Granger causality from (the log of) the average propensity to consume to income growth can be regarded a weak implication of the PIH, it has strong implications for the analysis of the income and job recession that followed in the wake of the global financial crisis. For example, the increase in the savings rate preceding the drop in income growth in 2008 and 2009 seems to corroborate the PIH Granger-causality predictions, meaning that consumers had started to adapt to a period with low income growth that they were able to rationally foresee. However, several months earlier real house prices had peaked and started to fall, meaning that the increase in saving that went before the fall in income may have signaled the start of a period of financial consolidation in the US household sector. In that interpretation, the increase in saving may have added to the income recession by depressing aggregate demand.

Using time series data spanning the period 1980q1–2011q4, both for the 100 largest US MSAs and for the aggregate US economy, our modus operandi is to test the implied VAR parameter restrictions of the PIH, as outlined in Campbell (1987). Thus, in addition to replicating the aggregate analysis in Campbell (1987) on a sample covering both the Great Moderation and the Great Recession, we consider disaggregate data for 100 regional US markets. Further, our analysis allow us to shed light on the role of house prices for consumption dynamics before, during and after the Great Recession. More precisely, we estimate separate cointegrated VAR models in consumption, income, house prices and the real interest rate for all 100 MSAs. Thus, we allow for complete heterogeneity in lag

²Campbell (1987, p.1267).

length and both short and long-run parameters. Tests for the VAR restrictions implied by the PIH are then conducted for each of the 100 MSAs.

The conclusions from the MSA level and the aggregate analyses are similar, and results from the 1980q1–2007q4 Great Moderation sub-sample strongly suggest that income is causing consumption, while there is mixed support for causation running in the other direction. Including the financial crisis period in our sample strengthens these result, and overall our findings lead us to reject the ‘saving for a rainy day’ hypothesis. Interestingly, our results suggest a strengthened effect of house prices on consumption dynamics after the financial crisis. This suggests that US consumers who saw their retirement funds saved up in the housing market completely wiped out during the housing bust increased their saving to compensate for this loss.

Our findings that the importance of house prices for consumption dynamics has increased in the aftermath of the subprime crisis suggests that the spike in the savings rate following the recent financial crisis may – at least partly – be attributed to a financial consolidation effect. This finding adds insight to the already large literature attempting to explain the puzzle that household saving declined during the Great Moderation. A branch of this literature suggests the easing of credit conditions as an explanation, see e.g. Parker (2000) and Aron et al. (2012). Further, Guerrieri and Lorenzoni (2011), Eggertsson and Krugman (2012) and Hall (2011) find that the tightening of credit standards in the period succeeding the Great Recession can explain the sharp increase in the savings rate. An alternative explanation was highlighted in an earlier contribution by Carroll (1992), who suggested precautionary saving as a an explanation for why savings rates tend to increase in recession periods. A more recent study by Alan et al. (2012) reaches a similar conclusion. A final explanation is that the evolution of the savings rate is driven by changes in households’ net worth. Consistent with this view, Mian et al. (2013) estimate a sizeable marginal propensity to consume out of housing net worth using US zip code level data for the 2006–2009 period. In a recent paper, Carrol et al. (2012) investigate the relative importance of credit conditions, precautionary saving and

the wealth channel in explaining US savings rate dynamics. While their results suggest that all three channels are important, they find that the largest contributor to the recent increase in the savings rate is the drop in household wealth. Our findings are consistent with the view in Carrol et al. (2012) and Mian et al. (2013).

There is a possibility that households living through a financial crisis adjust their savings rate upwards relative to what they would have done otherwise. This would be consistent with history dependent dynamics, e.g., in the form of the cumulative prospect theory of Tversky and Kahneman (1992), stating that extreme events change the weights that agents put on the probabilities of future economic fortunes and misfortunes. In the case of this type of behavioral change, financial consolidation may mark the start of a secular rise in saving, since the behavior of the cohorts that become exposed to a crisis will continue to influence the aggregate for many years to come. However, as documented empirically by Aizenman and Noy (2013), the consequences of economic disasters on household saving probably depends on the degree of perceived political risk as well, which can of course work both ways.

The findings in this paper also relates to the discussion about the role of expansionary fiscal policy during the jobs and incomes crisis that followed the financial crisis, cf. DeLong and Summers (2012), Eberly (2014) and Stiglitz (2014). The size of the fiscal multiplier depends on several premises, i.e. “idle resources”, the degree of import leakage and the marginal propensity to consume. With large numbers of unemployed, but employable, workers and a large domestic economy (small import leakage), the first two factors indicate that there has been a sizeable fiscal multiplier in the US over the last five to six years. However, if increased income ends up as private saving because the marginal propensity to consume is close to zero, the fiscal policy multiplier may nevertheless be very small.

The paper proceeds as follows. In the next section, we outline the implied (and testable) VAR parameter restrictions of the PIH, and we discuss how we will proceed to explore the empirical relevance of these theoretical conjectures. In Section 3, we present

the data sets that are used in the econometric analyses. Results from the MSA specific analyses over the Great Moderation are discussed in Section 4. In the same section, we explore how our main conclusions are affected by extending the data set to include the financial crisis period. In Section 5, we analyze whether the evidence at the aggregate level is congruent with the MSA evidence. The analysis in that section comes in the form of a small identified structural econometric model of the income-consumption VAR. The final section concludes the paper.

2 The ‘saving for a rainy day’ hypothesis

As shown by Campbell (1987), for an infinitely lived consumer and no credit constraints, saving is given by the discounted sum of anticipated declines in income:

$$S_t = - \sum_{i=1}^{\infty} \left(\frac{1}{1+r} \right)^i E_t \Delta Y_{t+i} \quad (1)$$

where S_t denotes saving in period t , r is the subjective discount rate, and $E_t Y_{t+i}$ is the conditional expectation of period $t+i$ income, given information available in period t .³ The interpretation is that consumers wish to avoid the utility loss of reductions in consumption, so they smooth consumption intertemporally, they ‘save for a rainy day’.

Define $\Delta Y_{t+i} = E_t \Delta Y_{t+i} + v_{t+i}$, ($i > 1$) where the forecast errors, v_{t+i} , have zero means and constant variances. Substitution in (1) gives:

$$S_t = - \sum_{i=1}^{\infty} \left(\frac{1}{1+r} \right)^i \Delta Y_{t+i} + \sum_{i=1}^{\infty} \left(\frac{1}{1+r} \right)^i v_{t+i} \quad (2)$$

showing that S_t is the sum of a linear filter of leads in stationary income changes, and another linear filter of forecast errors, which are $I(0)$ by assumption. Thus, it follows logically that S_t is stationary, $I(0)$. As noted by Muellbauer and Lattimore (1995), stationarity of S_t does not require that income follows a pure random-walk – it holds also

³In addition to the mentioned assumptions, Campbell’s derivation assumed quadratic utility function and rational expectations about future income.

in the case where income follows an ARIMA process.

Campbell further noted the implication that, under the null of the PIH, saving should encapsulate the superior information of the agent to the econometrician, meaning that lagged saving should Granger-cause income in the bivariate VAR. This is also logical, since Hall’s Euler-equation implies that consumption follows a first order Markov process. Hence, consumption should not be Granger-caused by lagged income, or lagged saving, in the VAR.

2.1 An econometric framework for testing the ‘saving for a rainy day’ hypothesis

In the following, we measure consumption and income in natural logarithms, where c_t denotes consumption in period t and y_t is income in period t . We assume that both consumption and income are integrated of order one, $I(1)$. Due to the non-stationarity of the two series, cointegration represents a common ground between the consumption function approach, which assumes a causal link from income to consumption (see e.g. Davidson et al. (1978)), and the permanent-income/life-cycle theories, which imply the consumption Euler equation – a cornerstone in conventional macroeconomic models, cf. Ljungqvist and Sargent (2004).⁴

Although our econometric analysis makes use of models with longer lags and possible structural breaks, the main hypotheses about saving behavior can be formulated with reference to a first order bivariate VAR with constant parameters:

$$c_t = \kappa + \phi_{cc}c_{t-1} + \phi_{cy}y_{t-1} + \varepsilon_{c,t} \quad (3)$$

$$y_t = \varphi + \phi_{yc}c_{t-1} + \phi_{yy}y_{t-1} + \varepsilon_{y,t} \quad (4)$$

where the disturbances, $\varepsilon_{c,t}$, and $\varepsilon_{y,t}$ have a joint normal distribution. Their variances

⁴“All of macroeconomics too seems to have descended from a common source, Irvin Fisher’s and Milton Friedman’s consumption Euler equation, the cornerstone of the permanent income theory of consumption”, Ljungqvist and Sargent (2004, p.3).

are σ_c^2 and σ_y^2 , respectively, and the correlation coefficient is denoted $\rho_{c,y}$.

Cointegration implies that the matrix of autoregressive coefficients $\Phi = \begin{pmatrix} \phi_{cc} & \phi_{cy} \\ \phi_{yc} & \phi_{yy} \end{pmatrix}$ has one unit root, and one stable root. The equilibrium correction (EqCM) representation of (3) and (4) is therefore:

$$\Delta c_t = \kappa + \alpha_c [c_{t-1} - \beta_y y_{t-1}] + \varepsilon_{c,t} \quad 0 \leq -\alpha_c < 1, \quad (5)$$

$$\Delta y_t = \varphi + \alpha_y [c_{t-1} - \beta_y y_{t-1}] + \varepsilon_{y,t} \quad 0 \leq \alpha_y < 1, \quad (6)$$

where β_y is the cointegration coefficient, while α_c and α_y are the adjustment coefficients, where we have normalized on consumption in the long-run cointegrating relationship, $(c_{t-1} - \beta_y y_{t-1})$.

It is useful to reparameterize the system with mean-zero equilibrium correction terms. To achieve that, define $\eta_c = \mathbf{E}[\Delta c_t]$, $\eta_y = \mathbf{E}[\Delta y_t]$ and $\mu = \mathbf{E}[c_t - \beta_y y_t]$. Thus, the constant terms in (5) and (6) can be expressed as $\kappa = \eta_c + \alpha_c \mu$ and $\varphi = \eta_y - \alpha_y \mu$, respectively. We then have:

$$\Delta c_t = \eta_c + \alpha_c [c_{t-1} - \beta_y y_{t-1} - \mu] + \varepsilon_{c,t} \quad 0 \leq -\alpha_c < 1, \quad (7)$$

$$\Delta y_t = \eta_y + \alpha_y [c_{t-1} - \beta_y y_{t-1} - \mu] + \varepsilon_{y,t} \quad 0 \leq \alpha_y < 1. \quad (8)$$

In the case of $\beta_y = 1$, the savings rate, $(y - c)$, is $I(0)$ and μ is its long-run mean.

2.2 Consumption function model of the VAR

Underlying the consumption function approach is the idea that consumption is equilibrium correcting, i.e., $0 < -\alpha_c < 1$. Given that this requirement is fulfilled, there are two possibilities for the coefficient α_y : (i) $0 < \alpha_y < 1$ or (ii) $\alpha_y = 0$. The first case is

consistent with hours worked etc. being *demand determined* and that y_t adjusts to past disequilibria. In econometric terms, there is mutual (Granger) causation between income and consumption, see Engle et al. (1983). The second possibility implies that income is *supply determined*. In the context of the VAR, the restriction that $\alpha_y = 0$ implies that income is weakly exogenous with respect to the long-run income elasticity, β_y , see e.g. Johansen (1992). Moreover, with the dynamics restricted to the first order case, there is one-way Granger causation from income to consumption, so income is also strongly exogenous.

Interpretation is aided by writing the system (7)-(8) in model form:

$$\Delta c_t = \eta_c + \gamma_c + \pi_c \Delta y_t + \alpha'_c [c_{t-1} - \beta_y y_{t-1} - \mu] + \varepsilon'_{c,t} \quad (9)$$

$$\Delta y_t = \eta_y + \alpha_y [c_{t-1} - \beta_y y_{t-1} - \mu] + \varepsilon_{y,t} \quad (10)$$

where (9) is a conditional consumption function, while (10) is a marginal income equation. From the properties of the bivariate normal distribution, we have:

$$\begin{aligned} \alpha'_c &= \alpha_c - \pi_c \alpha_y \\ \pi_c &= \rho_{c,y} \frac{\sigma_c}{\sigma_y} \\ \gamma_c &= -\eta_y \pi_c, \\ \varepsilon'_{c,t} &= \varepsilon_{c,t} - \pi_c \varepsilon_{y,t}. \end{aligned} \quad (11)$$

Note that along a growth path characterized by $E[c_{t-1} - \beta_y y_{t-1} - \mu] = 0$, the growth rates of c_t and y_t are proportional:

$$\eta_c = \beta_y \eta_y \quad (12)$$

As noted, the system represented by (9)-(10) is merely a reparameterization of the VAR by means of “conditional plus marginal” model equations. When the (testable) restriction that $\alpha_y = 0$ holds, (9)-(10) may be expressed as:

$$\Delta c_t = \eta_c + \gamma_c + \pi_c \Delta y_t + \alpha_c [c_{t-1} - \beta_y y_{t-1} - \mu] + \varepsilon'_{c,t} \quad (13)$$

$$\Delta y_t = \eta_y + \varepsilon_{y,t}, \quad (14)$$

with $\eta_y = \varphi$, since there is no equilibrium correction in income.

Equations (9) and (13) are conditional equilibrium correction equations for c_t , see e.g., Hendry (1995, Chapter 7), Davidson et al. (1978) and Hendry and von Ungern-Sternberg (1981). However, (9) is more general, since (13) rests on the assumption that causation runs from income to consumption, and not the other way around.

2.3 Euler equation model of the VAR

According to the permanent income/life cycle hypothesis, the evolution of consumption is shaped by tastes and life cycle needs. The stochastic permanent income/life cycle hypothesis holds that consumption growth, Δc_t , is not Granger-caused by the lagged income level, hence $\alpha_c = 0$ in (7). Thus, it is assumed that consumption growth is orthogonal to $(c_{t-1} - \beta_y y_{t-1} - \mu)$, the linear and stationary combination of consumption and income, i.e. the cointegrating relationship.

As in the former case, we may rewrite the system (7)-(8) in model form (conditional on $\alpha_c = 0$):

$$\Delta c_t = \eta_c + \varepsilon_{c,t} \quad (15)$$

$$\Delta y_t = \eta_y + \gamma_y + \pi_y \Delta c_t + \alpha_y [c_{t-1} - \beta_y y_{t-1} - \mu] + \varepsilon'_{y,t} \quad (16)$$

where (15) is a marginal model for consumption, while (16) is a conditional model for

income. Again, from the properties of the bivariate normal distribution, we have:

$$\begin{aligned}\pi_y &= \rho_{c,y} \frac{\sigma_y}{\sigma_c} \\ \gamma_y &= -\eta_y \pi_y \\ \varepsilon'_{y,t} &= \varepsilon_{y,t} - \pi_y \varepsilon_{c,t}\end{aligned}\tag{17}$$

Given $\alpha_c = 0$, cointegration implies that $0 < \alpha_y < 1$, since – as we know from the Engle-Granger representation theorem (Engle and Granger, 1987) – cointegration implies equilibrium correction, and *vice versa*. The interpretation for the case of $\beta_y = 1$, due to Campbell (1987), is that growth in disposable income is negatively related to the lagged savings rate because consumers have superior information about their income prospects. If saving increases “today”, this is because consumers expect income to decline in the future. Hence, after first observing a rise in the savings rate, we will observe a fall in income in subsequent periods, since households are ‘saving for a rainy day’.

Furthermore, although income is not Granger-causing consumption in (15), this does not preclude contemporaneous correlation, since we can have $\pi_y \neq 0$ without violating the Euler-equation restriction (i.e., $\alpha_c = 0$ and $\Delta c_t \perp (c_{t-1} - \beta_y y_{t-1} - \mu)$).

The theoretical prediction that income is equilibrium correcting carries over to less stylized situations: first, if a proportion of the consumers are subject to liquidity or borrowing constraints, we may find that aggregate income is Granger-causing aggregate consumption, as in Campbell and Mankiw (1989). Still, as long as the remaining proportion of consumers adjust their consumption to expected permanent income, observed aggregate disposable income is negatively related to the aggregate savings rate, so we would still find $\alpha_y > 0$. Second, the orthogonality condition may not hold if the measure of consumption expenditure includes purchases of durables, see e.g. Deaton (1992, p.99–103), but the implication that $\alpha_y > 0$ still holds. Finally, the basic implication of $\alpha_y > 0$ is unaffected by modifications of the basic Euler equation, e.g., non-constant expected future interest rates (Haug, 1996) and inclusion of demographic variables.

2.4 Generalizations to higher order VARs and allowing for regional heterogeneity

To test for the absence of cointegration between consumption and income, and to explore the direction of equilibrium correction and Granger causality, we develop both MSA-specific econometric models and a model on aggregate data.

Our main reference is a VAR(p_j) model of the following form:

$$\mathbf{y}_{j,t} = \sum_{s=1}^{p_j} \mathbf{A}_{j,s} \mathbf{y}_{j,t-s} + \mathbf{\Phi}_j \mathbf{D}_{j,t} + \boldsymbol{\varepsilon}_{j,t} \quad (18)$$

where the index j represents MSA unit. The vector $\mathbf{y}_{j,t}$ comprises real consumption and real disposable income. Deterministic terms (linear trend and a constant) are collected in the vector $\mathbf{D}_{j,t}$. House price changes and the real interest rate are also collected in $\mathbf{D}_{j,t}$. The disturbances are assumed to follow a multivariate normal distribution, with expectation $\mathbf{0}_{2 \times 1}$ and covariance matrix $\boldsymbol{\Sigma}_j$, i.e. $\boldsymbol{\varepsilon}_{j,t} \sim MVN(\mathbf{0}_{2 \times 1}, \boldsymbol{\Sigma}_j)$.

A model using aggregate data is a special case of the above model, since by imposing $\mathbf{A}_{j,s} = \mathbf{A}_s$, $\mathbf{\Phi}_j = \mathbf{\Phi} \forall j, s$, while also taking sums over all $j \in M \supset N$, where M covers all MSAs in the US, we have a standard VAR for aggregate data. Since the aggregate model is a restricted version of the MSA-specific models, we shall concentrate our explanation of the econometric approach we pursue on the MSA-specific models.

For all areas, we start with a lag length of 5, i.e. $p_j = 5$. Then, we select the lag length (between 1 and 5) that minimizes the Akaike Information Criterion (AIC). Conditional on the optimal lag truncation, p_j^* , we consider (18) on vector equilibrium correction (VECM) form. We follow the recommendation of Harbo et al. (1998) for partial systems and restrict a deterministic trend to enter the cointegration space. Letting $\tilde{\mathbf{y}}_{j,t} = (\mathbf{y}'_{j,t}, trend_j)'$, the VECM representation of the VAR model takes the following

form:⁵

$$\Delta \mathbf{y}_{j,t} = \mathbf{\Pi}_j \tilde{\mathbf{y}}_{j,t-1} + \sum_{s=1}^{p_j^*-1} \mathbf{\Gamma}_{j,s} \Delta \mathbf{y}_{j,t-s} + \tilde{\mathbf{\Phi}}_j \tilde{\mathbf{D}}_{j,t} + \boldsymbol{\varepsilon}_{j,t} \quad (19)$$

where $\tilde{\mathbf{D}}_{j,t}$ contains the constant term, the real interest rate and house price changes. All coefficient matrices are redefined conformably.

To determine the rank of the matrix $\mathbf{\Pi}_j$, we use the trace test of Johansen (1988). The rank of $\mathbf{\Pi}_j$ corresponds to the number of independent linear combinations between the variables in $\tilde{\mathbf{y}}_{j,t}$ that are stationary, i.e. the number of cointegrating relationships. When $\mathbf{\Pi}_j$ has reduced rank, we can write $\mathbf{\Pi}_j = \boldsymbol{\alpha}_j \boldsymbol{\beta}'_j$, where $\boldsymbol{\beta}_j$ is a $(l_j + 1) \times r_j$ matrix and $\boldsymbol{\alpha}_j$ is a $l_j \times r_j$ matrix corresponding to the long-run coefficients and loading factors (adjustment coefficients), respectively. The rank of $\mathbf{\Pi}_j$ is denoted by r_j , while $l_j + 1$ refers to the number of endogenous variables (plus the deterministic trend, which is restricted to lie in the space spanned by $\boldsymbol{\alpha}_j$). In all areas, l_j is equal to 2 (real consumption and real disposable income).

Conditional on a non-zero rank, we can estimate the parameters in the cointegration space. In particular, our approach allows us to explore heterogeneities in both long-run income elasticities and the speed of adjustment parameters. Moreover, cointegration implies that there is Granger causality in at least one direction (Granger, 1986). To formally explore the direction of causality, in the Granger sense, consider the reduced rank representation of the VECM in (19):

$$\begin{aligned} \begin{pmatrix} \Delta c_{j,t} \\ \Delta y_{j,t} \end{pmatrix} &= \begin{pmatrix} \alpha_{c_j} \\ \alpha_{y_j} \end{pmatrix} (c_{j,t-1} - \beta_{y,j} y_{j,t-1} - \beta_{trend,j} trend_{t-1}) \\ &+ \sum_{s=1}^{p_j^*-1} \begin{pmatrix} \Gamma_{11,j,s} & \Gamma_{12,j,s} \\ \Gamma_{21,j,s} & \Gamma_{22,j,s} \end{pmatrix} \begin{pmatrix} \Delta c_{j,t-s} \\ \Delta y_{j,t-s} \end{pmatrix} + \tilde{\mathbf{\Phi}}_j \tilde{\mathbf{D}}_{j,t} + \boldsymbol{\varepsilon}_{j,t} \end{aligned} \quad (20)$$

⁵Johansen (1994, 1995) and Harbo et al. (1998).

where we have normalized the first coefficient in the cointegration space with respect to consumption. A test for GNC from income to consumption in area j amounts to testing the joint hypothesis that $\alpha_{c_j} = \Gamma_{12,j,s} = 0 \forall s$, while a test for GNC from consumption to income in area j is a test of the joint hypothesis that $\alpha_{y_j} = \Gamma_{21,j,s} = 0 \forall s$. In our empirical analysis, we shall consider these tests for each of the 100 MSAs covered by our sample.

2.5 Allowing for MSA-specific structural breaks

When building the MSA-specific econometric models, we make use of the *impulse indicator saturation* (IIS) algorithm, which is an integrated part of the *Autometrics* algorithm implemented within OxMetrics (see Doornik (2009) and Hendry and Doornik (2009)) to allow for MSA-specific structural breaks.

The IIS algorithm includes an impulse dummy for each observation in the information set. More precisely, this implies that the baseline VAR in (18) can be modified to:

$$\mathbf{y}_{j,t} = \sum_{s=1}^{p_j} \mathbf{A}_{j,s} \mathbf{y}_{j,t-s} + \mathbf{\Phi}_j \mathbf{D}_{j,t} + \mathbf{\Psi}_j \mathbf{I}_t + \boldsymbol{\varepsilon}_{j,t} \quad t = t_j, \dots, T \quad (21)$$

where \mathbf{I}_t is a $(T + 1 - t_j) \times (T + 1 - t_j)$ matrix of impulse dummies. Since this entails that there are more variables than observations, the model is estimated in blocks to determine which indicators are significant (see Hendry et al. (2008) and Johansen and Nielsen (2009)). If we let the retained indicators for area j be collected in the $(T + 1 - t_j) \times Q_j$ matrix $\tilde{\mathbf{I}}_{j,t}$, with $Q_j < (T + 1 - t_j)$, the IIS robust reparameterization of the VAR takes the following form:

$$\Delta \mathbf{y}_{j,t} = \Pi_j \tilde{\mathbf{y}}_{j,t-1} + \sum_{s=1}^{p_j^*-1} \Gamma_{j,s} \Delta \mathbf{y}_{j,t-s} + \tilde{\mathbf{\Phi}}_j \tilde{\mathbf{D}}_{j,t} + \tilde{\mathbf{\Psi}}_j \tilde{\mathbf{I}}_{j,t} + \boldsymbol{\varepsilon}_{j,t} \quad (22)$$

After having estimated (21) employing Autometrics, we follow the same steps as those described in the previous section, i.e. we test down the lag length using the AIC, determine the rank of the matrix $\mathbf{\Pi}_j$, and conduct tests for both weak exogeneity and Granger non-causality. Thus, the estimates and tests obtained in this case can be seen as being robustified to MSA-specific structural breaks (Johansen and Nielsen, 2009).

Applying the IIS algorithm, an average of $\alpha^{IIS} \times (T + 1 - t_j)$ indicators will be retained by chance, where α^{IIS} denotes a pre-specified significance level used for the selection of indicators. This is indeed a low cost to pay for robustifying a model to intermittent structural breaks and past data contamination that can cause an otherwise sensible econometric model to break down. Castle et al. (2012) show that the IIS algorithm is successful in detecting multiple breaks in the data.

When applying the IIS algorithm to the VAR model of area j , the significance level, α^{IIS} , is set to 0.1%. With this significance level, the chance of retaining irrelevant indicator variables is relatively low, and as the MSA results below demonstrate, very few indicators are picked up on average. The same is true for the macro time series analysis.

3 Data

We have collected quarterly time series data at both the national level and for the 100 largest MSAs in the US. For most of the areas, the data set spans the period 1980q1–2011q4 ($T = 124$).

The MSAs included in our MSA data set cover all but four of the 50 US states and are spread out in different geographical regions. To ease the exposition, we shall follow the Census Bureau and divide the US into four major regions (West, Midwest, South and East) when discussing some of our results.⁶ The geographical divide of the four regions is presented in Figure 1.

With reference to Figure 1, 25 of the MSAs included in our sample belong to the

⁶The estimation and testing are, however, carried out for each MSA.

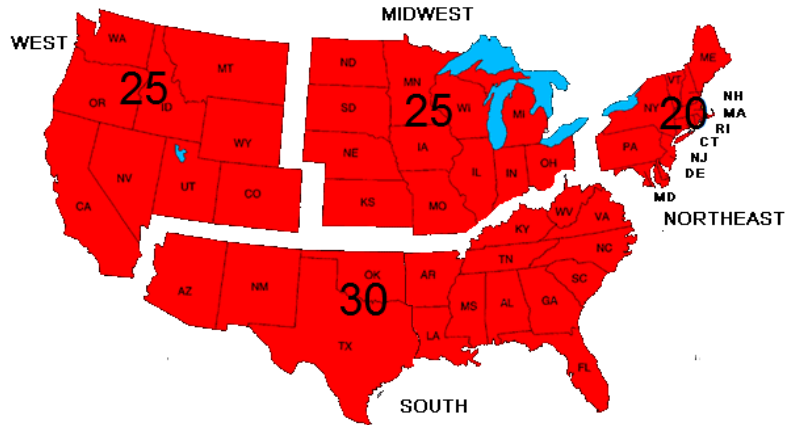


Figure 1: Main geographical regions in the US

West, 20 to the East, 30 to the South and 25 to the Midwest.

The income data, $y_{j,t}$, measure personal disposable income in billions of USD. Unfortunately, disaggregate consumption data are not available at the MSA level (in fact it is not even available at the state level). For that reason, we use data on retail sales in billions of USD as a proxy for consumption, $c_{j,t}$, which is a drawback of our analysis. That said, as pointed out by Sorensen and Luengo-Prado (2008), the correlation between aggregate US retail sales and non-durable consumption is very high. Thus, in the absence of data on MSA level consumption, we take this to be a relatively good proxy. Similar data have been used in e.g. Case et al. (2012), Sorensen and Luengo-Prado (2008) and Dejuan et al. (2004), who all consider state level consumption in the US. We follow Case et al. (2012) and use the retail sales data supplied by Moody's (formerly supplied by Regional Financial Associates). House price data are collected from the FHFA, and all series are deflated by the corresponding MSA level CPI measure, which has also been collected from Moody's. Finally, MSA-specific real interest rates are constructed by subtracting the MSA level CPI inflation from the nominal 3-month T-bill. In the empirical analysis, all variables, except the real interest rate, are included in log form.

All data series used for the aggregate macro time series are taken from the FRED data base of the St. Louis Fed. The income data measure private disposable income, while the consumption data are personal consumption expenditures. House prices are measured

by the FHFA house price index. All variables are considered in real terms, and the nominal-to-real transformations are achieved by deflating by the CPI. The real interest rate is the nominal 3-month T-bill less CPI inflation. We have also collected aggregate retail sales data (similar to those used for the MSA level analysis) to explore how this alternative operationalization affects the aggregate results. While a similar robustness cannot be done with respect to the MSA analysis due to data availability, we take it as reassuring that the qualitative results from the aggregate analysis are relatively invariant to the operationalization of the consumption variable.

The discussion in Section 2 is based on the premise that the time series for income and consumption contain unit roots. To investigate the empirical relevance of this assumption, we have tested the order of integration of the data series using standard ADF tests (Dickey and Fuller, 1979) for each of the areas. In particular, we started with a lag length of 5, including a deterministic trend in the ADF regressions. Then, the optimal lag truncation was chosen by a sequence of t-tests. The average order of integration is close to one for both series.⁷ Based on these results, we feel confident in continuing our analysis under the modeling assumption that both series are integrated of order one.

4 MSA-based evidence about rainy day behavior

4.1 Cointegration results for the MSA data set

In this section, we present the results from the MSA-specific econometric analysis using data for the Great Moderation (1980q1–2007q4). In the first step of our estimation approach, the IIS algorithm picks up a little less than 1 dummy on average (confer the last row in the first column of Table 1). Based on AIC, we find the average optimal lag truncation to be just below 4, and the hypothesis of co-trending is supported for a majority of the areas (72%) when we use a 1% significance level. While detailed results for the individual MSAs are presented in Table A.1–A.4 in Appendix A, Table 1 reports

⁷Detailed results from the unit root tests at the MSA level are available upon request.

Table 1: Averages and percentages of some key model features for Great Moderation sample (1980q1–2007q4), ordered by census region

Region	Dummies (avg.)	p^* (avg.)	Rank($\mathbf{\Pi}$) (avg.)	Auto. (%)	Norm. (%)	Hetero. (%)	$\beta_{trend} = 0$ (%)
West	1.20	3.48	0.60	92.00	96.00	92.00	84.00
East	0.95	3.85	1.20	95.00	95.00	95.00	85.00
South	0.44	3.92	0.96	100.00	96.00	100.00	44.00
Midwest	1.13	4.20	0.90	90.00	100.00	90.00	76.67
All	0.94	3.88	0.90	94.00	97.00	94.00	72.00

Notes: Columns 2-4 report the average number of dummies, Dummies (avg.), included in the econometric models within each of the four major regions, as well as the average optimal lag truncation, p^* (avg.) and average number of cointegrating relationships, Rank($\mathbf{\Pi}$). Columns 5-7 report the percentage number of times where we cannot reject absence of autocorrelation, non-normality and heteroskedasticity. The final column displays the percentage number of areas where we find support for co-trending, i.e. $\beta_{trend} = 0$. The final row in each column reports the same figures for all the MSAs covered by the sample (all areas). Detailed results for the individual MSAs are reported in Table A.1–A.4 in Appendix A.

a summary of the average results across each of the four census regions illustrated in Figure 1.

As is evident from Table 1, we find overwhelming evidence in a majority of the areas that the residuals are well behaved, i.e. there are no signs of autocorrelation, heteroskedasticity nor departures from normality. It is also evident that the average rank is just around one, which is also what we will impose for the rest of the analysis. Imposing the reduced rank restriction and normalizing the cointegrating vector with respect to consumption ($\beta_{c,j} = 1 \forall j$), we obtain estimates of the long-run income elasticity. While detailed results for the individual MSAs are reported in Table A.5–A.8, Figure 2 plots the point estimates for the long-run income elasticity for all of the areas included in our sample – in descending order.

For all except five areas,⁸ the estimated long-run income elasticity is positive, as would be expected. The average long-run income elasticity across all areas is found to be 0.86, and the standard error of this mean group estimate is 0.03, see the second and fourth column in Table 2.⁹

To have a first look at the empirical relevance of the weak implication of the PIH (implying that $\alpha_{c,j} = 0$ and $\alpha_{y,j} > 0$), Figure 3 plots the distribution of the two adjustment parameters across the 100 MSAs.¹⁰

⁸These areas are Miami-Miami Beach-Kendall (FL), Lansing-East Lansing (MI), Detroit-Livonia-Dearborn (MI), Sioux Falls (SD) and Ann Arbor (MI).

⁹In calculating the mean group estimates, we have excluded the five areas where estimated income elasticity was negative.

¹⁰Again, detailed results for each MSA can be found in Table A.5–A.8 in Appendix A.

It is clear that in a majority of the areas, we find that $\alpha_{c,j} < 0$, which is consistent with a consumption function approach. The average estimated speed of adjustment in the consumption equation is found to be -0.12, see Column 5 in Table 2. Looking at the adjustment coefficient associated with the income equation, there are several cases where it is found to be negative, while in a majority of the cases it is found to be positive. The average estimate, around 0.03, is substantially lower (in absolute value) than the adjustment parameter in the consumption equation. Hence, results thus far suggest mixed support for the ‘saving for a rainy day’ hypothesis as an empirically relevant description of US consumption behavior. In the next section, we shall explore the direction of causality in more detail by conducting formal tests for both weak exogeneity and Granger non-causality for each of the MSAs in the sample.

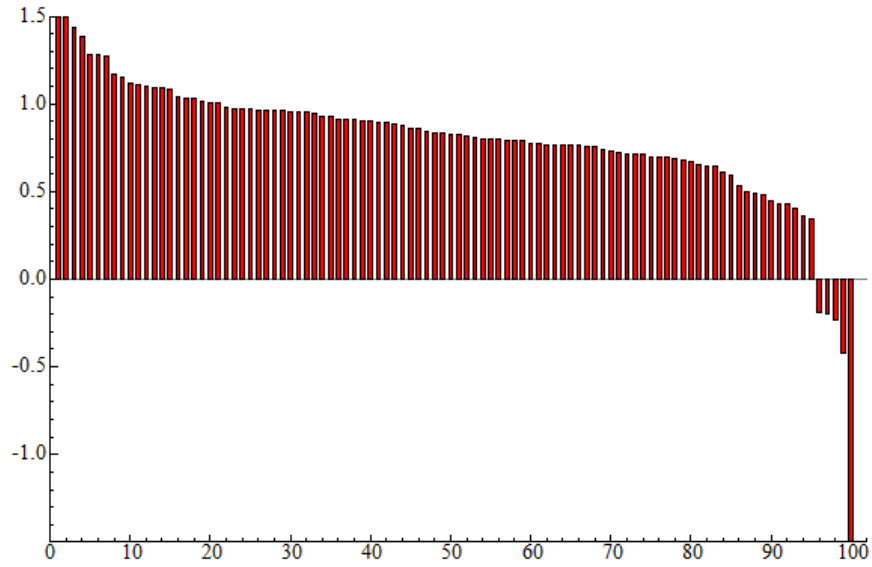


Figure 2: Estimated long-run income elasticities ($\beta_{y,j}$) for all MSAs for Great Moderation sample (1980q1–2007q4), in descending order

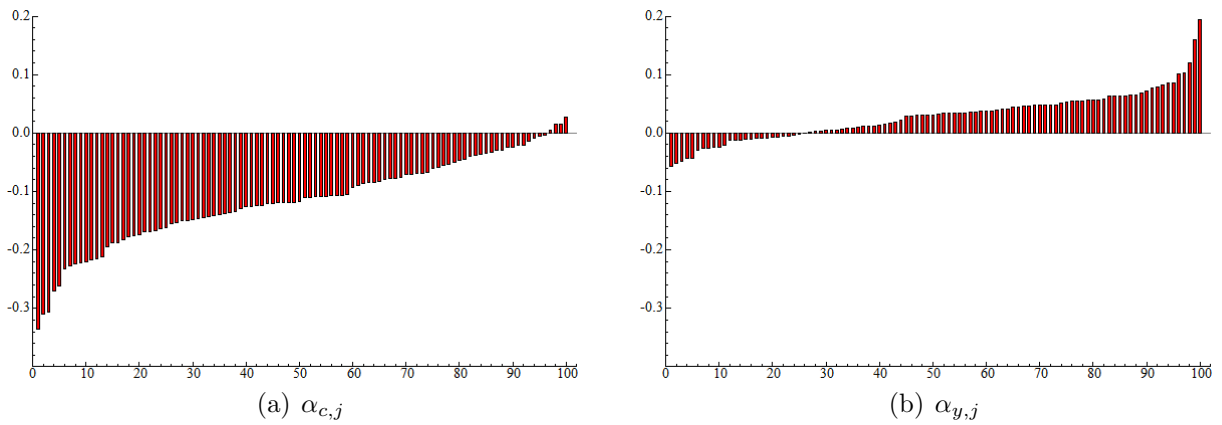


Figure 3: Adjustment parameter in consumption equation ($\alpha_{c,j}$) and in income equation ($\alpha_{y,j}$) for Great Moderation sample (1980q1–2007q4), in descending order

Table 2: Summary of cointegration results for Great Moderation sample (1980q1–2007q4)

Region	$\hat{\beta}_y^{IIS}$			$\hat{\alpha}_c^{IIS}$			$\hat{\alpha}_y^{IIS}$		
	Mean	Median	Standard error	Mean	Median	Standard error	Mean	Median	Standard error
West	0.8374	0.8133	0.0325	-0.1271	-0.1179	0.0152	0.0250	0.0308	0.0074
East	0.7936	0.7686	0.0628	-0.1273	-0.1228	0.0107	0.0339	0.0353	0.0122
South	0.8618	0.8976	0.1543	-0.1158	-0.1084	0.0197	0.0354	0.0371	0.0102
Midwest	0.9341	0.8846	0.0559	-0.1135	-0.1285	0.0143	0.0301	0.0341	0.0064
All	0.8631	0.8380	0.0317	-0.1205	-0.1187	0.0076	0.0307	0.0340	0.0043

Notes: The table reports the average long-run income elasticities of consumption ($\hat{\beta}_y^{IIS}$), the adjustment parameter in the consumption equation ($\hat{\alpha}_c^{IIS}$) and the adjustment parameter in the income equation ($\hat{\alpha}_y^{IIS}$), grouped by census region. The table also reports the median and the standard error for each of these coefficients. The final row in each column reports the same figures for all the MSAs covered by the sample (all areas). Detailed results for the individual MSAs can be found in Table A.5–A.8 in Appendix A.

4.2 Weak exogeneity and Granger non-causality

Using the optimal lag truncations of the VAR models, as found in the previous section, together with the estimated cointegrating vectors, we derive the vector equilibrium correction representation of the CVAR models (confer (20)). The VECM for each area is estimated by FIML, and Table 3 summarizes the main results regarding tests for both weak exogeneity and Granger non-causality.¹¹

As is evident by inspecting the second and third column, weak exogeneity of consumption with respect to the cointegrating vector is rejected in a majority of the cases (87%), while weak exogeneity of income is rejected only for 38% of the MSAs. This is at odds with the weak implication of the PIH, and further support for this claim is provided by the results in Column 4 and Column 5, where we report the percentage number of times where we find evidence that income is Granger-causing consumption (84%) and the percentage number of times where we find evidence that consumption is Granger-causing income (69%). It is also interesting to look at the Granger causality tests for house prices. In about 55% of the areas, we find that house prices Granger-cause consumption, suggesting that house prices may be important for consumption dynamics in some MSAs. The same figure for income is around 32%.

4.3 Including the financial crisis period

We have seen that the ‘saving for a rainy day’ hypothesis receives mixed support over the Great Moderation period. The empirical evidence is clearly supportive to the interpretation that consumption represents the main equilibrium correction mechanism.

In this section, we briefly check if the assessment changes when we extend the sample to include the financial crisis period and the ensuing income and job crisis, i.e. the sample now covers the period from 1980q1 to 2011q4. The distribution of long-run

¹¹Note that the reported results are based on the MSAs where the estimated long-run income elasticity was “meaningful”– defined as $0 < \hat{\beta}_{y_j} < 2$. The only cases where this restriction is violated is for the five areas where a negative long-run income elasticity was found. Thus, the tests for weak exogeneity and GNC are conducted for the remaining 95 MSAs.

Table 3: Tests for weak exogeneity and Granger non-causality for Great Moderation sample (1980q1–2007q4)

Region	$\alpha_c \neq 0$	$\alpha_y \neq 0$	$y \xrightarrow{GC} c$	$c \xrightarrow{GC} y$	$ph \xrightarrow{GC} c$	$ph \xrightarrow{GC} y$
West	92.00	28.00	88.00	80.00	36.00	28.00
East	100.00	45.00	90.00	60.00	70.00	20.00
South	90.48	33.33	76.19	47.62	52.38	33.33
Midwest	72.41	44.83	82.76	82.76	62.07	41.38
All	87.37	37.89	84.21	69.47	54.74	31.58

Notes: Column 2–4 report the percentage number of times where weak exogeneity of consumption is rejected ($\alpha_c \neq 0$) and the percentage number of times where weak exogeneity of income ($\alpha_y \neq 0$) is rejected, as well as the percentage number of times where we find that income Granger-causes consumption ($y \xrightarrow{GC} c$) and vice versa ($c \xrightarrow{GC} y$). The final two columns report the percentage number of times where we find that house prices Granger-cause consumption ($ph \xrightarrow{GC} c$) and income ($ph \xrightarrow{GC} y$).

income elasticities is plotted in Figure 4. It is clear that the result of a positive income elasticity in a majority of the areas is retained. In fact, estimated income elasticity now turns negative only for two areas.¹²

In Figure 5, we plot the estimated long-run elasticities from the Great Moderation sample against the estimated long-run elasticities obtained on the full sample. It is clear that the coefficients are very stable, which is a reassuring finding.

The estimated adjustment parameters in the consumption and income equation from the full sample analysis are illustrated in Figure 6. It is evident that the adjustment parameter in the consumption function is negative in most areas and, if anything, a bit more negative than in the Great Moderation sample. The distribution of the adjustment parameter in the income equation is also similar to the Great Moderation sample.

Based on the above results, it is clear that the inclusion of the financial crisis period in the estimation sample does not alter our main conclusions. If anything, our results are strengthened when the sample is extended. This is also seen from the mean and median estimates for long-run income elasticity and the adjustment parameters, which are summarized in Table 4.¹³ Comparing these results to the results obtained on the

¹²These areas are Detroit-Livonia-Dearborn (MI) and Lansing-East Lansing (MI), where negative income elasticities were also found on the Great Moderation sample.

¹³Detailed results for the individual MSAs from the full sample analysis are available upon request.

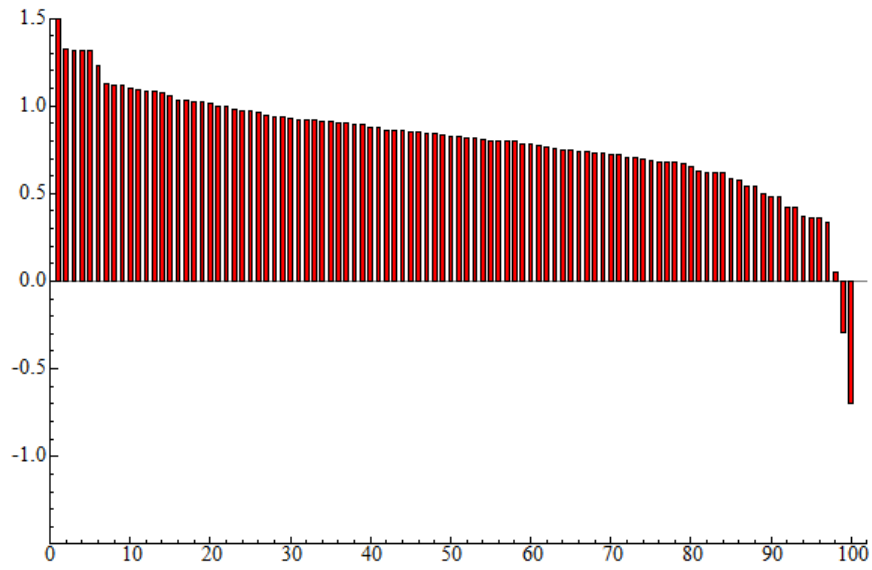


Figure 4: Estimated long-run income elasticities ($\beta_{y,j}$) for all MSAs for full sample (1980q1–2011q4), in descending order

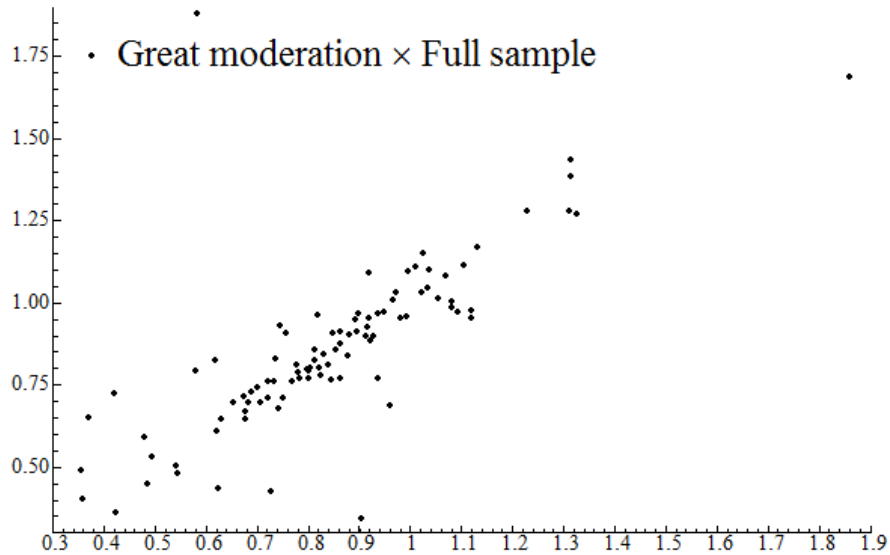


Figure 5: Estimated long-run income elasticities ($\beta_{y,j}$) from Great moderation sample (1980q1–2007q4) versus full sample (1980q1–2011q4)

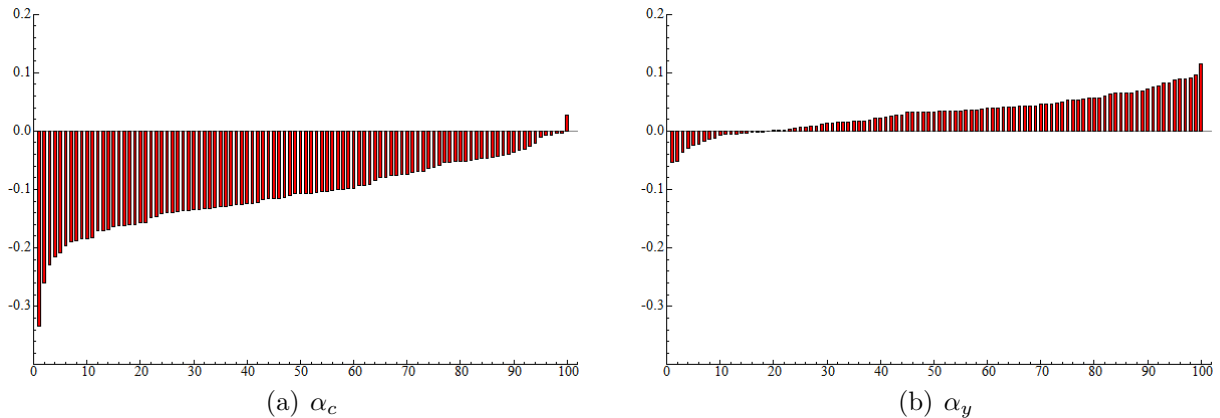


Figure 6: Adjustment parameter in consumption equation (α_c) and in income equation (α_y) for full sample (1980q1–2011q4), in descending order

Great Moderation sample, we see that there are no significant changes in results.

To formally explore how the inclusion of the financial crisis period affects the tests for weak exogeneity and Granger non-causality, Table 5 reports average results across the four major census regions.¹⁴

There are several interesting observations in Table 5. First, the average number of dummies retained by the IIS algorithm (confer the final column) increases slightly compared to the Great Moderation sample. Second, the main results regarding weak exogeneity and Granger causality are retained – in fact the result is further strengthened when the financial crisis period is included, i.e. the rejection of the weak implication of the PIH is stronger when we include the financial crisis period. Finally, the evidence that house prices Granger-cause consumption is stronger than what we documented for the Great Moderation sample. This is consistent with the view that the fall in house prices during the subprime crisis led to increased saving by US consumers to counteract the negative impact on their accumulated wealth of the housing crash, i.e. that there are sizeable housing wealth effects on consumption, see also Carrol et al. (2012) and Mian et al. (2013).

¹⁴Again, detailed results for the individual MSAs are available upon request.

Table 4: Summary of cointegration results from full sample analysis (1980q1–2011q4)

Region	$\hat{\beta}_y^{IIS}$			$\hat{\alpha}_c^{IIS}$			$\hat{\alpha}_y^{IIS}$		
	Mean	Median	Standard error	Mean	Median	Standard error	Mean	Median	Standard error
West	0.7958	0.7841	0.0423	-0.1064	-0.1028	0.0112	0.0257	0.0392	0.0074
East	0.8071	0.7977	0.0549	-0.1254	-0.1288	0.0106	0.0325	0.0399	0.0070
South	0.7868	0.8224	0.0637	-0.1080	-0.1013	0.0141	0.0270	0.0167	0.0067
Midwest	0.9104	0.8788	0.0464	-0.0997	-0.1102	0.0119	0.0391	0.0335	0.0055
All	0.8311	0.8275	0.0256	-0.1086	-0.1076	0.0061	0.0315	0.0339	0.0033

Notes: The table reports average long-run income elasticity ($\hat{\beta}_y^{IIS}$), the adjustment parameter of the consumption equation ($\hat{\alpha}_c^{IIS}$) and the adjustment parameter of the income equation ($\hat{\alpha}_y^{IIS}$), grouped by census region. The table also reports the median and the standard error for each of these coefficients. The final row in each column reports the same figures for all the MSAs covered by the sample (all areas).

Table 5: Tests for weak exogeneity and Granger non-causality for full sample (1980q1–2011q4)

Region	$\alpha_c \neq 0$	$\alpha_y \neq 0$	$y \xrightarrow{GC} c$	$c \xrightarrow{GC} y$	$ph \xrightarrow{GC} c$	$ph \xrightarrow{GC} y$	Dummies
West	88.00	56.00	96.00	80.00	72.00	52.00	2.16
East	100.00	50.00	100.00	50.00	90.00	15.00	0.85
South	95.65	30.43	91.30	43.48	86.96	39.13	1.28
Midwest	83.33	53.33	93.33	80.00	76.67	46.67	2.00
All	90.82	47.96	94.90	65.31	80.61	39.80	1.63

Notes: Columns 2-4 report the percentage number of times where weak exogeneity of consumption ($\alpha_c \neq 0$) is rejected and the percentage number of times where weak exogeneity of income ($\alpha_y \neq 0$) is rejected, as well as the percentage number of times where we find that income Granger-causes consumption ($y \xrightarrow{GC} c$) and vice versa ($c \xrightarrow{GC} y$). Columns 5-6 report the percentage number of times where we find that house prices Granger-cause consumption ($ph \xrightarrow{GC} c$) and income ($ph \xrightarrow{GC} y$). The final column reports the average number of dummies that were retained by the IIS algorithm. The final row in each column reports the same figures for all the MSAs covered by the sample (all areas).

5 Macro evidence and a structural model of the VAR

Macro time series of private income and consumption have features similar to the typical MSA series in that there are clear signs of both unit-root non-stationarity and intermittent structural breaks. In this section we present evidence of cointegration and causality which is congruent with the picture that emerged from the analysis of the MSA-data.

5.1 Cointegration and exogeneity using aggregate US data

Table 6 shows cointegration tests for the case where the VAR in c_t and y_t is of order 4, with an unrestricted constant (allowing the necessary trends in the two variables), and a restricted deterministic trend that represents the drift in the μ parameter. This gives the same representation of deterministic trends in the VAR as in the MSA cointegration analysis. We report cointegration test results for two versions of the trace statistic: the first is for the VAR without any interventions, while the second, denoted $\text{Trace}^{\text{IIS}}$, is for a VAR where intervention dummies have been selected by the IIS algorithm.

IIS finds only two dummies; 1980q2 and 1981q4.¹⁵ The diagnostic tests show that the inclusion of the dummies improves the residual properties of the VAR models, so that the

¹⁵To remain consistent with the MSA analysis, a significance of 0.1 % was used.

Table 6: Cointegration tests from aggregate macro analysis for Great Moderation sample (1980q1–2007q4)

$H_0 : Rank(\mathbf{\Pi}) \leq$	Trace	Trace ^{IIS}
0	45.7*	51.5*
1	16.0	22.0*
VAR diagnostics	p-values:	
AR^v	0.02	0.91
Het^v	0.001	0.72
$Norm^v$	0.001	0.53

Notes: The table reports the results from cointegration tests on the aggregate macro data. Trace is the trace statistic for a fourth order VAR, with an unrestricted constant and a restricted trend. Trace^{IIS} is for the same fourth order VAR, but including dummies selected by the IIS algorithm.

assumption of Gaussian disturbances that underlies the inference theory is more tenable in these models than in the VAR without interventions.¹⁶

Consistent with the average MSA results, Table 6 supports cointegration in all cases. Thus, it seems to be safe to continue under the assumption of one cointegration vector. Table 7 shows the estimated cointegration parameters and the corresponding equilibrium correction coefficients from the IIS estimations. The zero restriction on the trend coefficient in the cointegration relationship is not rejected. We found the same (non-rejection) result from the analysis of the MSA data, where the co-trending restriction was accepted in about 70% of the MSAs.

The results for the equilibrium-correction parameters show that the estimate of $\hat{\alpha}_c^{IIS}$ is significantly different from zero at conventional levels of significance. The same is true for $\hat{\alpha}_y^{IIS}$. We also tested the robustness of our results by replacing the consumption data with total retail sales (at fixed prices), i.e., the same operational definition that data availability forced on us at the MSA level. In general, this leads to the same qualitative

¹⁶ AR^v , Het^v , $Norm^v$ are vector versions of tests for autocorrelation (Godfrey (1978)), heteroskedasticity (White (1980)), and normality (Doornik and Hansen (1994)), see e.g. Doornik and Hendry (2013, Ch. 11.9) for details.

Table 7: Estimated cointegration parameters and equilibrium correction coefficients based on IIS results in Table 6

$\hat{\beta}_y^{IIS}$	$\hat{\beta}_{trend}^{IIS}$	$\hat{\alpha}_c^{IIS}$	$\hat{\alpha}_y^{IIS}$	$H_0: \beta_{trend} = 0$
0.91 (0.11)	0.001 (0.001)	-0.22 (0.06)	0.17 (0.08)	0.79[0.37]
1.08 (0.01)	—	-0.18 (0.06)	0.27 (0.09)	imposed

Notes: This table reports the long-run income elasticity and adjustment parameters, with standard errors in round brackets below the estimates, from a fourth order VAR in consumption and income. The VAR also contain three lags of the first difference of the log of the real house price index, and one lag of the real interest rate.

conclusions.¹⁷

As a summary, the evidence in Table 6 and Table 7 confirms that a long-run relationship between private income and consumption can be established. The estimation results for the α_c and α_y show that saving behavior is not well described by the saving for a rainy day hypothesis. Instead, the results strongly indicate that equilibrium correction is just as significant in consumption as it is in income. The macro results are robust to using total retail sales instead of personal consumption expenditure. Since we used retail sales in the MSA data set, this suggests that the results from that analysis may well have been strengthened if consumption data had been available for the MSA analysis.

Although the exclusion restriction on the linear trend in the cointegration relationship is statistically acceptable in Table 7, it is of interest to test the robustness of the estimation result for α_c and α_y (our main parameters of interest) to a specification that allows for a break in the unconditional mean of the savings rate. Both the time graph of the savings rate, and estimation of a regime-switching model for $c_t - y_t$ suggests a possible change in the mean of the savings rate around 1993q1. To take account of a shift, we specified a

¹⁷In particular, the Trace^{IIS} test for no cointegration becomes 29.5 with a p-value of 1.5 when retail sales data are used. When indicators are re-selected, Autometrics keeps only the 1980q2 dummy, the results for the same long-run model as in the last row in Table 7 gives an income elasticity of 0.89, against 1.08 when aggregate consumption data are used. The estimate using retail sales is however close to the mean MSA level estimate of 0.86 that we reported in Table 2. The same is the case for the estimated loadings, which become -0.10 for α_c and 0.05 for α_y . In Table 2, the corresponding point estimates are -0.12 and 0.03. Detailed results for the macro analysis using retail sales data are available upon request.

Table 8: Estimated adjustment parameters in a model with a structural break in the savings rate in 1993q1

	Δc_t	Δy_t
$c_{t-1} - y_{t-1} - \mu_{T_1 T_2}$	-0.1945* (0.039)	0.0650 (0.0649)
VAR diagnostics		
<i>AR</i>	0.98	0.09
<i>Het</i>	0.55	0.16
<i>Norm</i>	0.95	0.100
$\hat{\sigma}_c$	0.41	
$\hat{\sigma}_y$		0.0070
$\hat{\rho}_{cy}$	0.28	
Maximized <i>log - likelihood</i> : 869.61		
Sample 1980q1–2007q4. $T = 112$. # of parameters: 30		

Notes: The table shows estimated reduced form equilibrium correction parameters (α_c and α_y) in a cointegrated VAR model of Δc_t and Δy_t . Additional regressors: Three lags in Δc_t , Δy_t and in real house price growth, the lagged real interest rate, impulse dummies for 1980q2 and 1981q4, as well as a differenced step dummy and a constant term.

step-function that reduces the unconditional expectation of the savings rate permanently by 3 percentage points, beginning in 1993q1.¹⁸

Table 8 shows the two estimated (reduced form) parameters α_c and α_y in a cointegrated VAR model that allows for the hypothesized change in the mean of the savings rate (hence $\beta_y = 1$ is imposed in this model). We observe that the estimated α_c is similar to the estimates in Table 7, but that α_y is smaller and insignificantly different from zero.

As can be expected from Table 6, the VAR diagnostics do not give any proof of misspecification (in Table 8, we give the equation-specific diagnostics, but the vector versions of the tests give the same conclusion). Formally, we can therefore reject weak exogeneity of consumption with respect to the savings rate, but weak exogeneity of income cannot be rejected on the basis of this model.

Table 8 also shows that the VAR disturbances are positively correlated, with a correlation coefficient of 0.28. Although the correlation is not very high, it suggests that impulse multipliers are poorly identified and that it is of interest to develop a structural

¹⁸Specifically, we subtract $\mu_{[T_1 T_2]}$ from $c_t - y_t$. $\mu_{[T_1 T_2]}$ takes one value when $t < T_1$ and $t > T_2$ and another when $(T_1, T_2) = (1_{T_1, t} + 1_{T_1+1, t} \dots + 1_{T_2, t})$, where $1_{T_1+j, t}$ is an indicator equal to unity only when $t = T_1 + j$. T_1 is 1993q1 and T_2 is the end period of the sample.

model of the VAR – a point we shall return to in the next section.

5.2 An identified macro model

In this section, we will consider alternative models of the VAR to explore how the savings rate responds to an increase in house prices. Since the aggregate results and the MSA level results lead to similar conclusions, we restrict the current analysis to the aggregate data.

Taking the reduced form VECM as a starting point, we formulate a classical simultaneous equations model for Δc_t and Δy_t . As identifying assumptions, we assume that Δy_t is independent of Δc_{t-3} , since it is plausible that an aggregate demand shock affects consumption relatively fast. Second, for consumption, we reasoned that if consumption growth depends on real house price growth, that effect is unlikely to have a very long lag, and therefore we identify the consumption growth equation by omitting the third lag of real house price growth from the Δc_t equation.

Based on the exactly identified model, it is easy to base further modeling on the results of Full Information Maximum Likelihood (FIML) estimation. Table 9 shows the results for the structural equilibrium correction parameters α'_c and α'_y , with model diagnostics and the LR test for overidentifying restrictions, which is very far from rejecting the validity of the 14 restrictions (p-value= 0.92).

Note that the FIML-estimated structural parameter α'_y in Table 9 is higher than the OLS-estimated reduced form parameter α_y above. It is also significantly different from zero, with a t-value of -2.11 . The FIML-estimated α'_c is highly significant, with a t-value of -7.38 . These results can also be seen in Table 10, which shows the details of the two estimated structural equations. The model has a recursive structure, since Δc_t is a variable in the identified equation for Δy_t , while there is no corresponding contemporaneous effect of Δy in the consumption growth equation. The two residuals of FIML estimation are almost perfectly uncorrelated (cf. Table 9). Hence we have a recursive interpretation of the structural model, where income changes are strongly influenced by contempora-

Table 9: Estimated equilibrium correction parameters α_c and α_y in an identified structural model of Δc_t and Δy_t for Great Moderation sample (1980q1–2007q4)

	Δc_t	Δy_t
$c_{t-1} - y_{t-1} - \mu_{T_1 T_2}$	-0.1961** (0.0267)	0.1331 (0.0631)
Structural model diagnostics		
AR^v		0.46
Het^v		0.08
$Norm^v$		0.60
$\hat{\sigma}_c$	0.004	
$\hat{\sigma}_y$		0.007
$\hat{\rho}_{cy}$		-0.015
Log-likelihood: 865.96		
Test of Overidentifying restrictions: $\chi_{id}^2(14) = 7.30[0.92]$		
Sample 1980(1)-2007(4). $T = 112$. No of parameters: 16		

Notes: The table reports the estimated equilibrium correction parameters α'_c and α'_y in an identified structural model of Δc_t and Δy_t . The test for overidentifying restrictions is due to Anderson and Rubin (1949,1950).

neous changes in the largest component of aggregate demand, which in turn depends on lags of income growth and on permanent income via the equilibrium correction term.

The identifying assumptions have not involved the real interest rate, and it is included, as R_{t-1} , in both equations in Table 10.¹⁹ The estimated coefficients are negative in the Δc_t equation, and positive in the Δy_t equation. However, neither of the estimates are significantly different from zero. The discussion in Romer (2006) shows that small (numerical) and statistically insignificant effects of the real interest rate on US consumption is a common finding. Since we use private disposable income, where non-labor income may capture the income effect of the interest rate, the negatively signed coefficient of the real interest rate is consistent with a substitution effect.

Since the residuals of the two FIML-estimated equations are almost uncorrelated, the impulse responses to consumption and income shocks appear to be better identified empirically than in the reduced form VAR. Specifically, since house price changes (i.e., Δph_{t-1}) are estimated to affect consumption growth more strongly than income growth in Table 10, a negative shock to house prices is predicted to increase the private savings rate in the short run.

¹⁹The coefficients of R_{t-1} , which is measured in percent, have been multiplied by 100 for readability.

Table 10: Identified structural model for Great Moderation sample (1980q1–2007q4)

Variable	Δc_t		Δy_t	
	Coefficient	Standard error	Coefficient	Standard error
Δc_t	-	-	0.47	0.17
Δc_{t-1}	-	-	0.26	0.12
Δc_{t-3}	0.32	0.07	-	-
Δy_{t-1}	0.13	0.06	-0.16	0.10
Δy_{t-3}	-0.10	0.06	-	-
Δph_{t-1}	0.17	0.05	0.08	0.10
Δph_{t-2}	-	-	-0.15	0.09
R_{t-1}	-0.03	0.03	-0.05	0.04
$I_{1980q2,t}$	-0.03	0.004	-	-
$I_{1981q4,t}$	-0.02	0.004	-	-
$c_{t-1} - y_{t-1} - \mu_{[T_1 T_2]}$	-0.20	0.03	0.13	0.06

Notes: The table reports FIML estimates the equations of the identified structural model. Absolute standard errors are reported. $c_{t-1} - y_{t-1} - \mu_{[T_1 T_2]}$ is the savings rate, where we allow for a shift in the equilibrium savings rate.

Figure 7 shows impulse responses to a 10 per cent negative shock to real house prices. In this simulation, in order to get a clear picture, we use a model where we have imposed the restriction that changes in the real house prices do not affect income directly, and that income does not equilibrium correct. As the estimation results in Table 10 indicate, the three restrictions are statistically acceptable. A likelihood ration test of the joint hypothesis returns a p-value of 0.06. The responses show that both consumption and income growth falls as house price growth drops. However, consumption is more negatively affected than income. The statistical significance of the first four dynamic consumption multipliers is evident, while the income responses are smaller in absolute values. Consequently, as shown in panel c) of Figure 7, the savings rate is significantly increased by the negative house price shock.

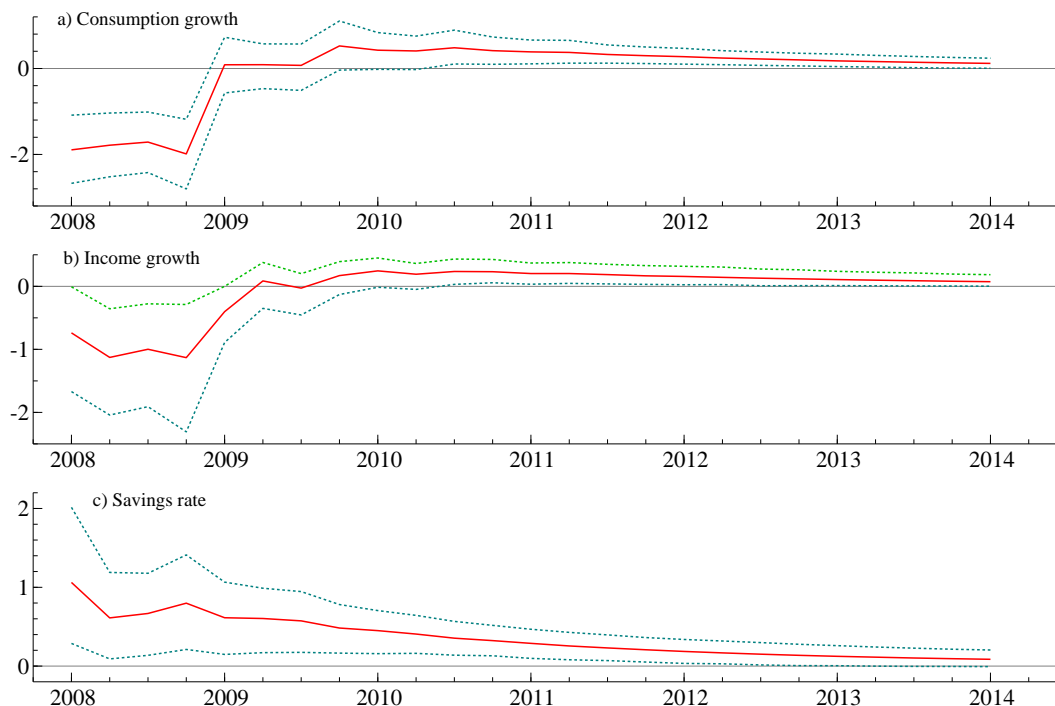


Figure 7: Impulse responses with respect to a 10 % reduction in house prices, 2008q1–2014q1. Effects on the four quarter growth rates for consumption (panel a)) and income (panel b)), and the savings rate (panel c)), with 90% confidence intervals.

5.3 The macro model and the Great Recession

The VAR in Table 8 appears to be relatively stable when the sample is extended to include 2014q1.²⁰ We make use of the identified structural model that we used for the dynamic multipliers in Figure 7 to construct conditional forecasts for the period 2008q1–2014q1. The forecasts are reported with 95% prediction intervals. Over this 25-quarter forecast horizon, there are very few forecast failures, defined as outcomes that are not covered by the prediction intervals that reflect the forecast uncertainty “to be expected” from the estimation of the model. In fact, the only evident failures are for income growth, in

²⁰The two estimated standard errors are practically unchanged, and the same is the case for the correlation coefficient (ρ_{cy}). The mis-specification tests are insignificant, with the exception of the heteroscedasticity test, which has a p-value of 0.0043 in the Δy_t equation. The estimated $\hat{\alpha}_c^{IIS}$ changes very little: from -0.1945 to -0.2093 , with a t-value of -5.83 . For income growth, $\hat{\alpha}_y^{IIS}$ is estimated at 0.0929, which is a little higher than in Table 8, but it is insignificantly different from zero also on the longest sample, with a t-value of 1.48.

2008q3 and 2013q1.²¹

The forecasts for the savings rate predict the increase that happened in 2008. Later in the forecast period, the model underpredicts consumption relative to income, but the prediction intervals contain the actuals for the length of the 25-quarter forecast period. Given that the Great Recession dominates the forecast period, it is reassuring that there are no forecast failures for 2008-2010. Based on the model in Table 10, the interpretation of the forecast performance is that there are no “new” breaks in the cointegration mean, $\mu_{T_1T_2}$, over the 2008q1-2014q1 period, and also that the estimated parameters of the model are relatively stable over the extended sample period.

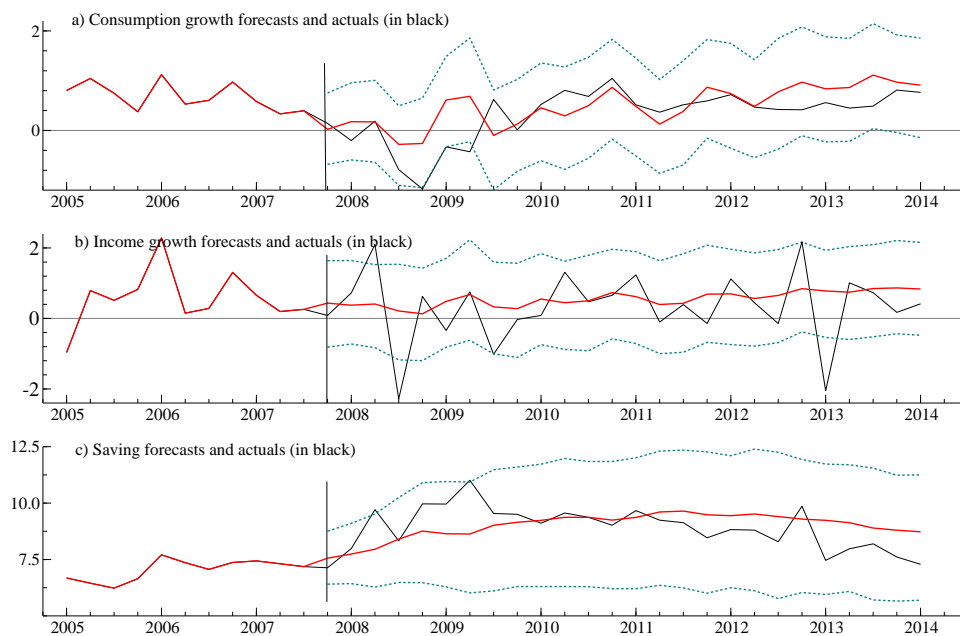


Figure 8: Dynamic forecasts based on the same model specification as in Figure 7, 2008q1–2014q1. The forecasts are conditional on actual real house price changes. Bounds for 95 percent prediction intervals are drawn together with the forecasts and the actuals

²¹In Eitrheim et al. (2002), the impact of the banking crisis in Norway in 1990 on the possibility of distinguishing empirically between the Euler-equation and the consumption function versions of the system was investigated. The results showed that it was the data from the crisis and post crisis years that made it possible to separate the two hypotheses empirically

6 Conclusion

We started this paper by asking whether US consumers saved for a rainy day during the Great Moderation period. To test this hypothesis, we have concentrated on the so-called weak implication of the permanent income hypothesis, which entails that consumption growth does not respond to deviations from a long-run relationship between income and consumption. The statistical implication of this is that consumption is weakly exogenous with respect to any long-run cointegrating relationship that exists between income and consumption. Our econometric analysis on the Great Moderation sample (1980q1–2007q4) give mixed support for this hypothesis, and indicate that consumption responds to deviations from the long-run cointegrating relationship between income and consumption in a majority of the areas. Including the financial crisis period in the estimation sample, this result is strengthened, and the same is true for the results from the aggregate time series.

The VAR models that we use for testing include lagged growth rates in real house prices. In the MSA models we find significant effects of these conditioning variables, first on the 1980q1–2007q4 sample and even stronger effects when the financial crisis and Great Recession is included. On both samples, the overall direction of the effect is that lagged house price changes are positively related to consumption growth. The macro model corroborated the existence of such a relationship. Our finding therefore suggests that the large declines in housing equity in the aftermath of the subprime crash have strongly dampened consumer spending in the US. A similar conclusion is reached by Aron et al. (2012), Carrol et al. (2012) and Mian et al. (2013).

Our main research question has been joint modeling of income and consumption, which is also central in the discussion of the effectiveness of fiscal stimulus. Although there is nothing in our empirical analysis that calls into question the importance of sustainable fiscal policies, the direction of causality has relevance for the argument often raised against fiscal stimulus: the intended effects of a stimulus are largely offset by

Ricardian equivalence effects, crowding out private consumption. This, together with the central bank response, lead to low-valued fiscal multipliers.

Our econometric results have most direct bearing on the Ricardian equivalence premise. We give proof that US private consumption growth was positively related to lagged income before the crisis, and that the relationship may even be stronger on the sample that includes the Great recession. Crowding out is mainly a concern when there is little spare capacity (and then discretionary fiscal policy should not be used). With interest rates at or near the zero lower bound, fiscal stimulus will not be met by interest rate increases (if we keep deflation out of the picture).

Another relevant question concerns the effects of de-leveraging (private financial consolidation). As documented by Jordà et al. (2013) financial recessions with high debt-to-income ratios are deeper and slower in recovery than “normal” recessions. That does not imply that fiscal multipliers are low in these recessions, and the analysis of DeLong and Summers (2012) points in the opposite direction, that the fiscal multiplier is likely to be high in the situation that the US has been in during the Great Recession. The point is that de-leveraging and financial consolidation represent so much “negative stimulus” that they for a long time dominated the effects of expansionary fiscal policy.²² Although we have not addressed these important issues directly (the parameters in the models we have estimated are neither regime-dependent nor state-contingent), the results that we obtain on the full sample analysis suggest that the responsiveness of consumption to income has increased, rather than decreased, during the Great Recession.

²²As was also seen in Norway in the recession that followed the banking crisis of 1989, cf. Eika and Nymo (1992).

References

- Aizenman, J. and I. Noy (2013). Macroeconomic Adjustments and the History of Crises in Open Economies. *Journal of International Money and Finance*, 38(C), 41–58.
- Alan, S., T. Crossley and H. Low (2012). Saving on a rainy day, borrowing for a rainy day. IFS Working Papers 11.
- Aron, J., J. V. Duca, J. Muellbauer, K. Murata and A. Murphy (2012). Credit, Housing Collateral and Consumption: Evidence from the UK, Japan and the US. *Review of Income and Wealth*, 58(3), 397–423.
- Attanasio, O. (1999). Consumption. In Taylor, J. and M. Woodford (eds.), *Handbook in Macroeconomics*, vol. Volume 1B, chap. 11, 741–812. Elsevier.
- Attanasio, O. P. and G. Weber (2010). Consumption and Saving: Models of Intertemporal Allocation and Their Implications for Public Policy. *Journal of Economic Literature*, 48(3), pp. 693–751.
- Campbell, J. Y. (1987). Does Saving Anticipate Declining Labor Income? An Alternative Test of the Permanent Income Hypothesis. *Econometrica*, 55, 1249–73.
- Campbell, J. Y. and N. G. Mankiw (1989). Consumption, Income and Interest Rates: Reinterpreting the Time Series Evidence. In Blanchard, O. J. and S. Fisher (eds.), *NBER Macroeconomics Annual 1989*, 185–216. MIT Press, Cambridge, Mass.
- Carrol, C., J. Slacalek and M. Sommer (2012). Dissecting saving dynamics: measuring credit, wealth and precautionary effects. Mimeo, John Hopkins University.
- Carroll, C. (1992). The Buffer-Stock Theory of Saving: Some Macroeconomic Evidence. *Brookings Papers on Economic Activity*, 23(2), 61–156.
- Carroll, C. (2009). Precautionary Saving and the Marginal Propensity to Consume Out of Permanent Income. *Journal of Monetary Economics*, 56(6), 780–790.

- Case, K. E., J. M. Quigley and R. J. Shiller (2012). Wealth Effects Revisited 1975-2012. *Critical Finance Review*, 2, 101–128.
- Castle, J. L., J. A. Doornik and D. F. Hendry (2012). Model Selection when there are Multiple Breaks. *Journal of Econometrics*, 169(2), 239–246.
- Davidson, J. E. H., D. F. Hendry, F. Srba and S. Yeo (1978). Econometric Modelling of the Aggregate Time-Series Relationship between Consumers' Expenditure and Income in the United Kingdom. *Economic Journal*, 88, 661–692.
- Deaton, A. (1992). *Understanding Consumption*. Clarendon Press, Oxford.
- DeJuan, J. P., J. J. Seater and T. S. Wirjanto (2004). A Direct Test of the Permanent Income Hypothesis with an Application to the U.S. States. *Journal of Money, Credit and Banking*, 36(6), 1091–1103.
- DeLong, J. and L. Summers (2012). Fiscal Policy in a Depressed Economy. *Brookings Papers on Economic Activity*, 2012, 233–274.
- Dickey, D. A. and W. A. Fuller (1979). Distribution of the Estimators for Autoregressive Time Series With a Unit Root. *Journal of the American Statistical Association*, 74(366), 427–431.
- Doornik, J. (2009). Autometrics. In Castle, J. L. and N. Shephard (eds.), *The Methodology and Practice of Econometrics*, 88–121. Oxford University Press.
- Doornik, J. A. and H. Hansen (1994). A Practical Test of Multivariate Normality. Unpublished paper, Nuffield College.
- Doornik, J. A. and D. F. Hendry (2013). *Modelling Dynamic Systems PcGive 14. Volume 2*. Timberlake Consultants, London.
- Eberly, J. (2014). Defining the Reemerging Role of Fiscal Policy. In Akerlof, G., O. Blanchard, D. Roemer and J. Stiglitz (eds.), *What Have We Learned? Macroeconomic Policy after the Crisis.*, chap. 14. MIT Press.

- Eggertsson, G. B. and P. Krugman (2012). Debt, Deleveraging, and the Liquidity Trap: A Fisher-Minsky-Koo Approach. *The Quarterly Journal of Economics*, 127(3), 1469–1513.
- Eika, K. H. and R. Nymoén (1992). Finansiell konsolidering som en konjunkturfaktor [Financial Consolidation as a Business Cycle Factor]. *Penger og Kreditt*, 21(1), 29–38.
- Eitrheim, Ø., E. S. Jansen and R. Nymoén (2002). Progress from Forecast Failure: The Norwegian Consumption Function. *Econometrics Journal*, 5. Forthcoming.
- Engle, R. F. and C. W. J. Granger (1987). Co-Integration and Error Correction: Representation, Estimation and Testing. *Econometrica*, 55(2), 251–276.
- Engle, R. F., D. F. Hendry and J.-F. Richard (1983). Exogeneity. *Econometrica*, 51, 277–304.
- Godfrey, L. G. (1978). Testing for Higher Order Serial Correlation When the Regressors Include Lagged Dependent Variables. *Econometrica*, 46, 1303–1313.
- Granger, C. W. J. (1986). Developments in the study of cointegrated economic variables. *Oxford Bulletin of Economics and Statistics*, 48(3), 213–228.
- Guerrieri, V. and G. Lorenzoni (2011). Credit Crises, Precautionary Savings, and the Liquidity Trap. NBER Working Papers 17583, NBER.
- Hall, R. E. (1978). Stochastic implications of the life cycle permanent income hypothesis. *Journal of Political Economy*, 86, 971–987.
- Hall, R. E. (2011). The long slump. *American Economic Review*, 101(2), 461–469.
- Harbo, I., S. Johansen, B. Nielsen and A. Rahbek (1998). Asymptotic Inference on Cointegrating Rank in Partial Systems. *Journal of Business and Economic Statistics*, 16, 388 – 399.

- Haug, A. (1996). Blanchard's Model of Consumption: An Empirical Study. *Journal of Business and Economic Statistics*, 14, 169–177.
- Hendry, D. F. (1995). *Dynamic Econometrics*. Oxford University Press, Oxford.
- Hendry, D. F. and J. Doornik (2009). *Empirical Econometric Modelling using PcGive: Volume I*. Timberlake Consultant Press, London.
- Hendry, D. F., S. Johansen and C. Santos (2008). Automatic selection of indicators in a fully saturated regression. *Computational Statistics*, 33, 317–335.
- Hendry, D. F. and T. von Ungern-Sternberg (1981). Liquidity and Inflation Effects on Consumer Expenditure. In Deaton, A. (ed.), *Essays in the Theory and Measurement of Consumers' Behaviour*. Cambridge University Press, Cambridge.
- Jappelli, T. and L. Pistaferri (2010). The Consumption Response to Income Changes. *Annual Review of Economics*, 2, 479–506.
- Johansen, S. (1988). Statistical analysis of cointegration vectors. *Journal of Economic Dynamics and Control*, 12, 231–254.
- Johansen, S. (1992). Cointegration in Partial Systems and the Efficiency of Single-Equation Analysis. *Journal of Econometrics*, 52, 389–402.
- Johansen, S. (1994). Testing Weak Exogeneity and the Order of Cointegration in U.K. Money Demand Data. In Ericsson, N. R. and J. S. Irons (eds.), *Testing Exogeneity*, chap. 5, 121–143. Oxford University Press.
- Johansen, S. (1995). *Likelihood-Based Inference in Cointegrated Vector Autoregressive Models*. Oxford University Press.
- Johansen, S. and B. Nielsen (2009). An analysis of the indicator saturation estimator as a robust regression estimator. In Castle, J. L. and N. Shepard (eds.), *The Methodology and Practice of Econometrics*, 1–36. Oxford University Press.

- Jordà, O., M. Schularick and A. Taylor (2013). When Credit Bites Back. *Journal of Money Credit and Banking*, 45(s2), 3–28.
- Ljungqvist, L. and T. Sargent (2004). *Recursive Macroeconomic Theory*. MIT Press, 2nd edn.
- Mian, A., K. Rao and A. Sufi (2013). Household Balance Sheets, Consumption, and the Economic Slump. *The Quarterly Journal of Economics*, 128(4), 1687–1726.
- Muellbauer, J. and R. Lattimore (1995). The Consumption Function: A Theoretical and Empirical Overview. In M.H., P. and M. Wickens (eds.), *Handbook of Applied Econometrics*, vol. 1: Macroeconomics, chap. 5, 221–311. Blackwell.
- Parker, J. A. (2000). Spendthrift in America? On two decades of decline in the U.S. saving rate. In Bernanke, B. S. and J. J. Rotemberg (eds.), *NBER Macroeconomics Annual 1999*, chap. vol. 14, 317–387. NBER.
- Romer, D. (2006). *Advanced Macroeconomics*. McGraw-Hill, New York, 3rd edn.
- Sorensen, B. E. and M. J. Luengo-Prado (2008). What can explain excess smoothness and sensitivity of state-level consumption? *Review of Economics and Statistics*, 90(1), 65–88.
- Stiglitz, J. E. (2014). The Lessons from the North Atlantic Crisis for Economic Theory and Policy. In Akerlof, G., O. Blanchard, D. Roemer and J. Stiglitz (eds.), *What Have We Learned? Macroeconomic Policy after the Crisis.*, chap. 29. MIT Press.
- Tversky, A. and D. Kahneman (1992). Advances in Prospect Theory: Cumulative Representation of Uncertainty. *Journal of Risk and Uncertainty*, 5(4), 297–323.
- White, J. (1980). A Heteroskedasticity-Consistent Covariance Matrix Estimator and a Direct Test of Heteroskedasticity. *Econometrica*, 48, 817–838.

Appendix A: Detailed econometric results by MSA

Table A.1: Specification results for West region for Great Moderation sample (1980q1–2007q4)

MSA and state	Dum.	p^*	$Rank(\mathbf{\Pi}_i)$	$Auto.$	$Norm.$	$Hetero.$	p(co-trend)	$p\left(y \xrightarrow{GC} c\right)$	$p\left(c \xrightarrow{GC} y\right)$	p(c is WE)	p(c is WE)
ALBUQUERQUE NM	2	4	1	0	0.0103	0.0109	0.0115	0.0014	0.0306	0.0002	0.1989
BOISE CITY ID	0	3	0	0	0.8509	0.4119	0.0003	0.0000	0.3359	0.0679	0.3718
BOULDER CO	1	2	0	0	0.3398	0.0001	0.0309	0.0672	0.0007	0.0668	0.3512
COLORADO SPRINGS CO	0	4	0	0	0.4796	0.0514	0.1020	0.1292	0.0562	0.0320	0.1642
DENVER CO	3	4	1	0	0.3605	0.0191	0.0149	0.3252	0.0002	0.0378	0.0029
EUGENE OR	0	2	0	0	0.8916	0.0217	0.6806	0.0004	0.0106	0.0059	0.6275
HONOLULU HI	3	5	0	0	0.2232	0.6954	0.7968	0.0018	0.2537	0.0016	0.0613
LAS VEGAS NV	1	2	0	0	0.3395	0.0853	0.9441	0.0000	0.0018	0.0000	0.5725
LOS ANGELES CA	0	2	0	0	0.0179	0.4055	0.2302	0.0002	0.0306	0.0035	0.1340
OAKLAND CA	0	4	0	0	0.0291	0.8735	0.9961	0.0002	0.1637	0.0001	0.5081
OXNARD CA	1	4	2	0	0.0260	0.9213	0.0516	0.0065	0.0241	0.0484	0.0150
PHOENIX AR	3	5	1	1	0.0926	0.3568	0.0103	0.0005	0.0001	0.0002	0.4662
PORTLAND WA OR	3	5	0	0	0.8188	0.1349	0.3975	0.0065	0.0001	0.0015	0.0610
PROVO UT	1	3	1	0	0.7068	0.1967	0.3203	0.0000	0.6577	0.0000	0.3591
RIVERSIDE CA	0	4	1	0	0.0048	0.1145	0.0013	0.0040	0.0066	0.2653	0.0042
SACRAMENTO CA	0	4	0	0	0.0117	0.0272	0.2635	0.0012	0.0258	0.0747	0.1743
SALT LAKE CITY UT	0	4	1	0	0.3075	0.0211	0.1709	0.2847	0.0020	0.1471	0.0009
SAN DIEGO CA	4	5	1	0	0.0305	0.7672	0.0386	0.0006	0.0049	0.0001	0.1203
SAN FRANCISCO CA	1	3	2	0	0.3442	0.1475	0.5919	0.0000	0.2099	0.0000	0.3462
SAN JOSE CA	0	2	1	0	0.1294	0.0066	0.4972	0.0000	0.0092	0.0004	0.0179
SANTA ANA CA	0	2	0	0	0.1221	0.5841	0.7936	0.0002	0.0140	0.0074	0.7711
SEATTLE WA	2	4	1	0	0.1915	0.0708	0.0874	0.0000	0.0185	0.0000	0.4810
SPOKANE WA	2	4	1	1	0.4852	0.5537	0.0000	0.0021	0.0507	0.0001	0.5549
TACOMA WA	2	4	1	0	0.5206	0.2186	0.0000	0.0006	0.0164	0.0000	0.2915
TUCSON AZ	1	2	0	0	0.5584	0.0299	0.1001	0.0000	0.0000	0.0015	0.8566

Notes: This table reports supplementary results for the MSAs in our sample that are situated in the West region of the US. The first three columns report the number of dummies picked up by the IIS algorithm, Dum., the selected lag length (based on AIC), p_i^* , and the cointegration rank, $Rank(\mathbf{\Pi})$. The next three columns report the p-value from tests for no autocorrelation (Auto.), normality (Norm.) and homoskedasticity (Hetero.). The next column reports the p-value for the test of whether the trend can be excluded from the cointegration space, p(co-trend). The final four columns report p-values from tests for GC from income to consumption ($p\left(y \xrightarrow{GC} c\right)$), GC from consumption to income ($p\left(c \xrightarrow{GC} y\right)$), as well as tests for weak exogeneity of consumption, p(c is WE), and income, p(y is WE).

Table A.2: Specification results for East region for Great Moderation sample (1980q1–2007q4)

MSA and state	Dum.	p^*	$Rank(\mathbf{\Pi}_i)$	$Auto.$	$Norm.$	$Hetero.$	p(co-trend)	$p\left(y \xrightarrow{GC} c\right)$	$p\left(c \xrightarrow{GC} y\right)$	p(c is WE)	p(c is WE)
ALBANY NY	4	4	2	0	0.1599	0.0274	0.0320	0.0001	0.0553	0.0000	0.7277
BOSTON MA	1	4	2	0	0.7274	0.0920	0.0177	0.0000	0.4283	0.0000	0.0865
BRIDGEPORT CT	0	4	2	1	0.3164	0.1297	0.7031	0.0014	0.2182	0.0000	0.1386
BUFFALO NY	3	4	2	0	0.0341	0.2864	0.0658	0.0002	0.5491	0.0000	0.1367
CAMDEN NJ	0	3	1	0	0.0419	0.2339	0.0862	0.1451	0.0215	0.0214	0.0223
EDISON NJ	0	2	0	0	0.0922	0.6880	0.8140	0.0014	0.1297	0.0003	0.3463
HARRISBURG PA	1	4	0	0	0.2906	0.5605	0.6022	0.0594	0.1687	0.0440	0.0155
HARTFORD CT	0	2	1	0	0.1504	0.5168	0.2191	0.0000	0.0575	0.0000	0.5067
MANCHESTER NH	1	4	2	0	0.4988	0.7038	0.0020	0.0121	0.0864	0.0011	0.2890
NASSAU NY	0	4	1	0	0.1288	0.0300	0.6200	0.0003	0.0667	0.0000	0.1326
NEWARK PA NJ	2	4	1	0	0.0794	0.0015	0.0061	0.0220	0.0162	0.0008	0.0228
NEW HAVEN CT	0	2	2	0	0.0766	0.0296	0.0001	0.0463	0.0009	0.0231	0.0650
NEW YORK NY NY	1	4	1	0	0.0100	0.0508	0.1114	0.0124	0.0364	0.0005	0.0560
OCEAN CITY NJ	0	5	0	0	0.1530	0.3429	0.5828	0.0121	0.0213	0.0003	0.0395
PHILADELPHIA PA	0	4	1	0	0.1743	0.0350	0.6466	0.0002	0.3670	0.0000	0.1142
PITTSBURG PA	0	4	2	1	0.0657	0.7750	0.1373	0.0009	0.0119	0.0023	0.0037
PORTLAND ME	2	4	0	1	0.0076	0.2179	0.2902	0.0001	0.0000	0.0002	0.2555
PROVIDENCE MA RI	1	5	2	0	0.0840	0.5420	0.5470	0.0000	0.2023	0.0000	0.9938
SYRACUSE NY	2	5	2	0	0.5756	0.5734	0.0678	0.3602	0.0018	0.0428	0.0006
TRENTON NJ	1	5	0	0	0.0277	0.0217	0.2903	0.0062	0.6963	0.0001	0.8868

Notes: This table reports supplementary results for the MSAs in our sample that are situated in the East region of the US. The first three columns report the number of dummies picked up by the IIS algorithm, Dum., the selected lag length (based on AIC), p_i^* , and the cointegration rank, $Rank(\mathbf{\Pi})$. The next three columns report the p-value from tests for no autocorrelation (Auto.), normality (Norm.) and homoskedasticity (Hetero.). The next column reports the p-value for the test of whether the trend can be excluded from the cointegration space, p(co-trend). The final four columns report p-values from tests for GC from income to consumption ($p\left(y \xrightarrow{GC} c\right)$), GC from consumption to income ($p\left(c \xrightarrow{GC} y\right)$), as well as tests for weak exogeneity of consumption, p(c is WE), and income, p(y is WE).

Table A.3: Specification results for South region for Great Moderation sample (1980q1–2007q4)

MSA and state	Dum.	p^*	$Rank(\mathbf{\Pi}_i)$	Auto.	Norm.	Hetero.	p(co-trend)	$p\left(y \xrightarrow{GC} c\right)$	$p\left(c \xrightarrow{GC} y\right)$	p(c is WE)	p(y is WE)
ATLANTA GA	0	5	1	1	0.3973	0.0206	0.8540	0.0000	0.0039	0.0000	0.3548
AUSTIN TX	0	4	1	0	0.1777	0.6882	0.2591	0.3773	0.0067	0.5415	0.0012
BALTIMORE MD	1	4	1	0	0.8937	0.0304	0.9189	0.0004	0.0210	0.0004	0.0173
BIRMINGHAM AL	2	4	1	0	0.5956	0.8325	0.0024	0.0013	0.0755	0.0000	0.0855
CHARLOTTE SC NC	0	5	0	0	0.5774	0.0105	0.0389	0.0031	0.0059	0.0004	0.6380
CINCINNATI IN KY OH	1	5	1	0	0.6294	0.3343	0.0000	0.0019	0.0351	0.0001	0.4045
COLUMBUS OH	1	4	0	0	0.1028	0.8631	0.1255	0.4981	0.0030	0.4700	0.0025
DALLAS TX	1	5	0	0	0.7501	0.1229	0.8377	0.0237	0.0027	0.0054	0.2543
FORT LAUDERDALE FL	1	4	0	0	0.2260	0.0879	0.0838	0.0421	0.0000	0.1983	0.1645
FORT WORTH TX	2	5	0	0	0.8956	0.1123	0.0001	0.4677	0.0156	0.7868	0.1840
GREENSBORO NC	1	4	2	0	0.2081	0.0110	0.3452	0.0000	0.0323	0.0002	0.3887
GREENVILLE SC	0	5	0	0	0.6273	0.6890	0.5203	0.2149	0.0000	0.3552	0.0117
HOUSTON TX	1	4	1	0	0.2910	0.0067	0.2975	0.0014	0.3384	0.0000	0.2514
JACKSONVILLE FL	1	4	1	0	0.1296	0.0859	0.9530	0.0048	0.0004	0.0020	0.0632
LITTLE ROCK AR	1	2	1	0	0.3998	0.3866	0.0001	0.0074	0.0599	0.0290	0.1738
LOUISVILLE IN KY	2	4	1	1	0.9315	0.0217	0.0298	0.0011	0.2200	0.0000	0.7647
MEMPHIS AR MS TN	0	4	2	0	0.8767	0.0012	0.5189	0.0000	0.0351	0.0000	0.8950
MIAMI FL	1	2	0	0	0.6370	0.0845	0.0119	0.0106	0.0767	0.1217	0.1615
NASHVILLE TN	3	4	1	1	0.1253	0.2128	0.0074	0.0000	0.0278	0.0000	0.9145
NEW ORLEANS LA	4	5	1	0	0.9932	0.0196	0.0001	0.0000	0.0000	0.0000	0.0596
OKLAHOMA CITY OK	0	4	0	1	0.0292	0.7237	0.4756	0.0672	0.0064	0.1961	0.0030
ORLANDO FL	1	4	0	0	0.6321	0.2338	0.9553	0.0033	0.0004	0.0014	0.9000
RALEIGH NC	1	4	1	0	0.7733	0.0037	0.2577	0.0020	0.0019	0.0003	0.0616
RICHMOND VA	2	4	2	1	0.7581	0.1660	0.0124	0.1376	0.0000	0.1919	0.0000
SAN ANTONIO TX	1	5	1	0	0.0285	0.4152	0.7532	0.0591	0.0008	0.2144	0.0008
TAMPA FL	1	5	2	1	0.8343	0.6185	0.0029	0.0201	0.0001	0.0051	0.0024
VIRGINIA BEACH NC VA	2	4	2	1	0.2372	0.1002	0.4099	0.0000	0.2025	0.0000	0.6672
WASHINGTON WV MD VA	2	5	2	0	0.2187	0.0267	0.0617	0.0000	0.2336	0.0000	0.7320
WEST PALM BEACH FL	1	4	1	0	0.2073	0.0864	0.1882	0.0068	0.0004	0.0002	0.1026
WILMINGTON NJ MD DE	0	4	1	0	0.3825	0.6878	0.4495	0.0000	0.2027	0.0000	0.0874

Notes: This table reports supplementary results for the MSAs in our sample that are situated in the South region of the US. The first three columns report the number of dummies picked up by the IIS algorithm, Dum., the selected lag length (based on AIC), p_i^* , and the cointegration rank, $Rank(\mathbf{\Pi}_i)$. The next three columns report the p-value from tests for no autocorrelation (Auto.), normality (Norm.) and homoskedasticity (Hetero.). The next column reports the p-value for the test of whether the trend can be excluded from the cointegration space, p(co-trend). The final four columns report p-values from tests for GC from income to consumption ($p\left(y \xrightarrow{GC} c\right)$), GC from consumption to income ($p\left(c \xrightarrow{GC} y\right)$), as well as tests for weak exogeneity of consumption, p(c is WE), and income, p(y is WE).

Table A.4: Specification results for Midwest region for Great Moderation sample (1980q1–2007q4)

MSA and state	Dum.	p^*	$Rank(\mathbf{\Pi}_i)$	Auto.	Norm.	Hetero.	p(co-trend)	$p\left(y \xrightarrow{GC} c\right)$	$p\left(c \xrightarrow{GC} y\right)$	p(c is WE)	p(y is WE)
AKRON OH	0	3	1	0	0.1377	0.8139	0.0002	0.1684	0.0254	0.0653	0.1242
ANN ARBOR MI	0	5	0	1	0.3419	0.8928	0.1570	0.0110	0.1256	0.0021	0.1114
CHICAGO WI IN IL	0	4	2	0	0.1082	0.1311	0.5330	0.0000	0.8818	0.0000	0.7957
CLEVELAND OH	0	4	2	0	0.4411	0.5168	0.1051	0.0177	0.0025	0.0300	0.0111
DAYTON OH	1	4	0	0	0.0226	0.6577	0.0149	0.0345	0.2404	0.0079	0.5621
DES MOINES IA	1	5	1	0	0.1595	0.2998	0.0038	0.0003	0.0162	0.0000	0.8724
DETROIT MI	0	4	0	0	0.3540	0.9846	0.0017	0.2744	0.0046	0.1555	0.0154
FARGO MN ND	1	5	1	0	0.9356	0.0382	0.0009	0.7809	0.0657	0.4941	0.0020
FORT WAYNE IN	1	4	0	1	0.1173	0.5895	0.6086	0.0007	0.8672	0.0003	0.4342
GARY IN	0	4	2	0	0.2714	0.0794	0.0789	0.0000	0.1886	0.0000	0.3028
GRAND RAPIDS MI	0	3	0	1	0.7150	0.3338	0.0028	0.2058	0.0018	0.8566	0.0174
INDIANAPOLIS IN	0	5	1	0	0.9862	0.1262	0.0001	0.0110	0.0671	0.0010	0.9538
KANSAS CITY KS MO	0	4	1	0	0.4910	0.9028	0.0095	0.0027	0.0919	0.0002	0.9667
LANSING MI	1	2	0	0	0.5511	0.3432	0.0842	0.0202	0.0061	0.0234	0.2777
MADISON WI	0	2	1	0	0.2247	0.7131	0.0063	0.0000	0.2793	0.0000	0.6037
MILWAUKEE WI	0	4	1	0	0.8736	0.0210	0.0389	0.0016	0.0658	0.0001	0.1584
MINNEAPOLIS WI MN	3	4	2	0	0.0075	0.1720	0.0075	0.0000	0.4557	0.0000	0.7257
OMAHA IA NE	0	4	0	0	0.2370	0.7400	0.1922	0.0359	0.1608	0.0068	0.0843
PEORIA IL	0	5	1	1	0.4766	0.1134	0.0000	0.0148	0.4096	0.0010	0.0842
ROCHESTER NY	0	4	0	0	0.1926	0.2856	0.0741	0.1273	0.1892	0.0367	0.0432
ST LOUIS IL MO	1	4	2	0	0.0104	0.4043	0.0032	0.0001	0.3360	0.0000	0.4472
SIOUX FALLS SD	0	3	1	0	0.8063	0.0633	0.0003	0.0013	0.6812	0.0007	0.6976
SPRINGFIELD MA	1	4	1	1	0.0663	0.6324	0.2196	0.1084	0.0108	0.0232	0.0204
TOLEDO OH	0	4	2	0	0.1602	0.7262	0.0023	0.0051	0.0575	0.0010	0.1282
WICHITA KS	1	4	2	0	0.2715	0.7638	0.0026	0.0010	0.7871	0.0001	0.7380

Notes: This table reports supplementary results for the MSAs in our sample that are situated in the Midwest region of the US. The first three columns report the number of dummies picked up by the IIS algorithm, Dum., the selected lag length (based on AIC), p_i^* , and the cointegration rank, $Rank(\mathbf{\Pi})$. The next three columns report the p-value from tests for no autocorrelation (Auto.), normality (Norm.) and homoskedasticity (Hetero.). The next column reports the p-value for the test of whether the trend can be excluded from the cointegration space, p(co-trend). The final four columns report p-values from tests for GC from income to consumption ($p\left(y \xrightarrow{GC} c\right)$), GC from consumption to income ($p\left(c \xrightarrow{GC} y\right)$), as well as tests for weak exogeneity of consumption, p(c is WE), and income, p(y is WE).

Table A.5: Cointegration results for West region for Great Moderation sample (1980q1–2007q4)

MSA and state	$\hat{\beta}_y^{IIS}$	$se\left(\hat{\beta}_y^{IIS}\right)$	$\hat{\alpha}_c^{IIS}$	$se\left(\hat{\alpha}_c^{IIS}\right)$	$\hat{\alpha}_y^{IIS}$	$se\left(\hat{\alpha}_y^{IIS}\right)$	Likelihood
ALBUQUERQUE NM	0.9834	0.0311	-0.1482	0.0414	0.0398	0.0331	684.5480
BOISE CITY ID	0.8978	0.0571	-0.0774	0.0440	0.0311	0.0363	605.7252
BOULDER CO	0.6074	0.0514	-0.0684	0.0383	0.0307	0.0340	631.4747
COLORADO SPRINGS CO	0.8030	0.0695	-0.0508	0.0249	0.0308	0.0234	663.0202
DENVER CO	0.7619	0.0282	-0.0846	0.0435	0.1037	0.0367	705.2742
EUGENE OR	0.6863	0.1310	-0.0543	0.0199	0.0070	0.0149	646.6909
HONOLULU HI	0.7219	0.0918	-0.1242	0.0422	-0.0521	0.0303	685.0864
LAS VEGAS NV	1.0076	0.0278	-0.1200	0.0277	-0.0126	0.0231	649.4193
LOS ANGELES CA	1.0929	0.1234	-0.0802	0.0277	0.0340	0.0232	673.1400
OAKLAND CA	0.5911	0.0471	-0.2173	0.0579	0.0294	0.0472	677.7233
OXNARD CA	0.9251	0.0664	-0.0702	0.0376	0.0639	0.0276	664.1026
PHOENIX AR	0.9544	0.0245	-0.2199	0.0631	-0.0261	0.0392	689.4353
PORTLAND WA OR	0.7904	0.0494	-0.1096	0.0369	0.0383	0.0222	719.6856
PROVO UT	1.0822	0.0228	-0.1781	0.0403	0.0287	0.0330	604.4709
RIVERSIDE CA	1.1702	0.0857	-0.0242	0.0230	0.0472	0.0172	666.2857
SACRAMENTO CA	0.8133	0.0689	-0.0601	0.0355	0.0349	0.0271	676.3557
SALT LAKE CITY UT	0.9708	0.0675	-0.0293	0.0213	0.0547	0.0171	670.7926
SAN DIEGO CA	0.8308	0.0284	-0.1824	0.0478	0.0542	0.0383	712.8950
SAN FRANCISCO CA	0.5336	0.0286	-0.2625	0.0516	-0.0428	0.0476	667.6387
SAN JOSE CA	0.6526	0.0563	-0.1179	0.0336	0.0857	0.0368	640.7102
SANTA ANA CA	0.9094	0.0866	-0.1075	0.0406	0.0089	0.0313	666.7492
SEATTLE WA	0.7700	0.0218	-0.3364	0.0670	0.0406	0.0617	660.6230
SPOKANE WA	0.8239	0.0505	-0.1738	0.0459	0.0194	0.0353	648.0029
TACOMA WA	0.7604	0.0469	-0.1624	0.0391	-0.0300	0.0304	655.0036
TUCSON AZ	0.7947	0.0524	-0.1184	0.0377	0.0051	0.0292	671.6345

Notes: This table reports the cointegration results for the MSAs in our sample that are situated in the West region of the US. The first column lists the name of the MSA, as well as the state it belongs to. The next six columns show the estimated long-run income elasticity and the speed of adjustment parameters, along with the estimated standard errors. The final column shows the likelihood.

Table A.6: Cointegration results for East region for Great Moderation sample (1980q1–2007q4)

MSA and state	$\hat{\beta}_y^{IIS}$	$se(\hat{\beta}_y^{IIS})$	$\hat{\alpha}_c^{IIS}$	$se(\hat{\alpha}_c^{IIS})$	$\hat{\alpha}_y^{IIS}$	$se(\hat{\alpha}_y^{IIS})$	Likelihood
ALBANY NY	0.7682	0.0661	-0.1194	0.0269	0.0116	0.0364	622.4952
BOSTON MA	0.5016	0.0504	-0.1695	0.0344	-0.0482	0.0298	665.0053
BRIDGEPORT CT	0.6968	0.0394	-0.1692	0.0415	0.0542	0.0386	640.7754
BUFFALO NY	1.2799	0.0502	-0.2150	0.0478	0.0720	0.0519	662.5939
CAMBDEN NJ	1.0428	0.0689	-0.0835	0.0374	0.0646	0.0292	643.4380
EDISON NJ	0.6962	0.0504	-0.1352	0.0372	0.0304	0.0331	646.6993
HARRISBURG PA	1.1160	0.1153	-0.0404	0.0212	0.0349	0.0152	691.4009
HARTFORD CT	0.3637	0.0958	-0.1387	0.0296	0.0156	0.0242	618.4045
MANCHESTER NH	0.9299	0.0738	-0.1086	0.0347	0.0357	0.0361	590.0464
NASSAU NY	0.8774	0.0621	-0.1885	0.0434	0.0763	0.0535	647.3947
NEWARK PA NJ	0.4340	0.1005	-0.1060	0.0332	-0.0563	0.0262	670.3950
NEW HAVEN CT	0.7130	0.1290	-0.0772	0.0346	0.0469	0.0260	601.2536
NEW YORK NJ NY	0.7690	0.0858	-0.0762	0.0226	0.0508	0.0281	670.7662
OCEAN CITY NJ	0.4277	0.1539	-0.0925	0.0272	-0.0431	0.0228	514.6580
PHILADELPHIA PA	0.9665	0.0354	-0.2224	0.0540	0.0694	0.0464	687.2860
PITTSBURG PA	0.9072	0.0630	-0.1415	0.0482	0.1203	0.0432	703.7600
PORTLAND ME	0.4909	0.0877	-0.1062	0.0301	-0.0215	0.0204	599.2765
PROVIDENCE MA RI	0.8592	0.0683	-0.1432	0.0306	-0.0002	0.0243	689.7847
SYRACUSE NY	1.3850	0.0693	-0.0870	0.0467	0.1595	0.0499	601.0707
TRENTON NJ	0.6473	0.0789	-0.1261	0.0345	0.0043	0.0331	604.9171

Notes: This table reports the cointegration results for the MSAs in our sample that are situated in the East region of the US. The first column lists the name of the MSA, as well as the state it belongs to. The next six columns show the estimated long-run income elasticity and the speed of adjustment parameters, along with the estimated standard errors. The final column shows the likelihood.

Table A.7: Cointegration results for South region for Great Moderation sample (1980q1–2007q4)

MSA and state	$\hat{\beta}_y^{IIS}$	$se(\hat{\beta}_y^{IIS})$	$\hat{\alpha}_c^{IIS}$	$se(\hat{\alpha}_c^{IIS})$	$\hat{\alpha}_y^{IIS}$	$se(\hat{\alpha}_y^{IIS})$	Likelihood
ATLANTA GA	0.7776	0.0216	-0.2238	0.0417	-0.0246	0.0287	679.2625
AUSTIN TX	1.2799	0.0891	-0.0088	0.0153	0.0341	0.0109	647.7250
BALTIMORE MD	0.8584	0.0466	-0.1629	0.0476	0.0831	0.0368	684.4944
BIRMINGHAM AL	0.8846	0.0507	-0.1197	0.0304	0.0339	0.0210	707.6373
CHARLOTTE SC NC	0.8380	0.0332	-0.1393	0.0409	0.0129	0.0296	682.6482
CINCINNATI IN KY OH	0.7969	0.0516	-0.1494	0.0408	-0.0243	0.0316	701.4162
COLUMBUS OH	1.2701	0.1483	0.0146	0.0219	0.0402	0.0141	550.5971
DALLAS TX	0.6693	0.0242	-0.1459	0.0558	0.0465	0.0441	696.8004
FORT LAUDERDALE FL	1.1021	0.1009	-0.0456	0.0377	0.0357	0.0273	694.3737
FORT WORTH TX	1.6874	0.3959	-0.0043	0.0172	0.0169	0.0138	665.2070
GREENSBORO NC	0.9670	0.0458	-0.1250	0.0353	0.0228	0.0281	678.1753
GREENVILLE SC	0.9753	0.0667	-0.0361	0.0421	0.0559	0.0236	674.9334
HOUSTON TX	0.6479	0.0222	-0.1881	0.0472	0.0473	0.0438	684.7603
JACKSONVILLE FL	0.9050	0.0322	-0.1285	0.0435	0.0630	0.0358	684.3778
LITTLE ROCK AR	1.8795	0.3536	0.0156	0.0073	-0.0072	0.0054	673.6373
LOUISVILLE IN KY	0.8410	0.0462	-0.1536	0.0385	0.0087	0.0312	691.7986
MEMPHIS AR MS TN	0.7607	0.0247	-0.2275	0.0533	-0.0053	0.0425	683.7340
MIAMI FL	-0.2010	0.5579	-0.0139	0.0092	-0.0095	0.0070	669.4106
NASHVILLE TN	0.9105	0.0249	-0.1939	0.0403	0.0037	0.0366	702.8282
NEW ORLEANS LA	0.8231	0.0968	-0.1674	0.0411	0.0567	0.0329	676.1593
OKLAHOMA CITY OK	0.7124	0.0992	-0.0352	0.0288	0.0628	0.0220	670.2655
ORLANDO FL	0.9540	0.0491	-0.1077	0.0352	-0.0034	0.0293	677.6995
RALEIGH NC	1.0119	0.0212	-0.1449	0.0419	0.0524	0.0297	682.7069
RICHMOND VA	1.0030	0.0515	-0.0383	0.0314	0.1021	0.0219	691.3986
SAN ANTONIO TX	0.9480	0.0472	-0.0336	0.0293	0.0788	0.0249	697.3470
TAMPA FL	0.3437	0.1802	-0.0288	0.0110	-0.0257	0.0090	683.5009
VIRGINIA BEACH NC VA	0.7649	0.0561	-0.1494	0.0317	0.0119	0.0300	648.5413
WASHINGTON WV MD VA	0.7120	0.0256	-0.2317	0.0449	-0.0113	0.0361	701.1287
WEST PALM BEACH FL	0.7911	0.0308	-0.1210	0.0337	0.0479	0.0311	679.3454
WILMINGTON NJ MD DE	0.9728	0.0343	-0.2119	0.0439	0.0589	0.0363	669.8835

Notes: This table reports the cointegration results for the MSAs in our sample that are situated in the South region of the US. The first column lists the name of the MSA, as well as the state it belongs to. The next six columns show the estimated long-run income elasticity and the speed of adjustment parameters, along with the estimated standard errors. The final column shows the likelihood.

Table A.8: Cointegration results for Midwest region for Great Moderation sample (1980q1–2007q4)

MSA and state	$\hat{\beta}_y^{IIS}$	$se(\hat{\beta}_y^{IIS})$	$\hat{\alpha}_c^{IIS}$	$se(\hat{\alpha}_c^{IIS})$	$\hat{\alpha}_y^{IIS}$	$se(\hat{\alpha}_y^{IIS})$	Likelihood
AKRON OH	1.0321	0.0777	-0.0849	0.0477	0.0479	0.0324	675.4228
ANN ARBOR MI	-0.1927	0.2789	-0.0251	0.0086	-0.0127	0.0086	593.2709
CHICAGO WI IN IL	0.7273	0.0268	-0.3097	0.0574	-0.0129	0.0527	683.4733
CLEVELAND OH	1.4354	0.1274	-0.0592	0.0287	0.0563	0.0232	687.4960
DAYTON OH	1.0957	0.1640	-0.0696	0.0275	0.0097	0.0178	683.2149
DES MOINES IA	0.6966	0.0451	-0.1363	0.0329	0.0050	0.0334	670.7293
DETROIT MI	-11.8396	4.7449	-0.0049	0.0037	-0.0077	0.0033	647.8484
FARGO MN ND	0.9646	0.0641	0.0276	0.0451	0.1933	0.0678	481.7431
FORT WAYNE IN	0.4036	0.0867	-0.0667	0.0193	-0.0113	0.0154	675.1286
GARY IN	1.0307	0.0296	-0.3057	0.0531	0.0452	0.0464	666.5616
GRAND RAPIDS MI	1.1502	0.0930	0.0057	0.0330	0.0645	0.0280	645.6913
INDIANAPOLIS IN	0.8024	0.0507	-0.1090	0.0348	-0.0016	0.0298	676.8026
KANSAS CITY KS MO	0.7418	0.0686	-0.1187	0.0322	0.0009	0.0224	702.5573
LANSING MI	-0.2340	0.4613	-0.0206	0.0093	-0.0087	0.0093	640.4061
MADISON WI	0.4818	0.1096	-0.0555	0.0119	-0.0047	0.0093	638.5430
MILWAUKEE WI	0.4492	0.0737	-0.1098	0.0278	0.0319	0.0239	688.6969
MINNEAPOLIS WI MN	0.6770	0.0563	-0.1084	0.0255	-0.0084	0.0259	672.9606
OMAHA IA NE	0.8976	0.0549	-0.0893	0.0345	0.0485	0.0296	668.0966
PEORIA IL	0.7689	0.0644	-0.1544	0.0494	0.0635	0.0394	663.1911
ROCHESTER NY	0.9590	0.1295	-0.0701	0.0356	0.0866	0.0454	553.3168
ST LOUIS IL MO	0.9108	0.0311	-0.2708	0.0625	0.0371	0.0521	703.3568
SIOUX FALLS SD	-0.4197	0.3355	-0.0205	0.0062	0.0028	0.0076	483.9687
SPRINGFIELD MA	0.9553	0.2310	-0.0467	0.0219	0.0372	0.0171	565.0260
TOLEDO OH	1.1075	0.0816	-0.1247	0.0392	0.0447	0.0311	679.7043
WICHITA KS	0.8099	0.0555	-0.1756	0.0466	0.0111	0.0352	667.3760

Notes: This table reports the cointegration results for the MSAs in our sample that are situated in the Midwest region of the US. The first column lists the name of the MSA, as well as the state it belongs to. The next six columns show the estimated long-run income elasticity and the speed of adjustment parameters, along with the estimated standard errors. The final column shows the likelihood.