

Santos, Gervasio; Haddad, Eduardo; Hewings, Geoffrey

Conference Paper

Energy Policy and Regional Inequalities in the Brazilian Economy

50th Congress of the European Regional Science Association: "Sustainable Regional Growth and Development in the Creative Knowledge Economy", 19-23 August 2010, Jönköping, Sweden

Provided in Cooperation with:

European Regional Science Association (ERSA)

Suggested Citation: Santos, Gervasio; Haddad, Eduardo; Hewings, Geoffrey (2010) : Energy Policy and Regional Inequalities in the Brazilian Economy, 50th Congress of the European Regional Science Association: "Sustainable Regional Growth and Development in the Creative Knowledge Economy", 19-23 August 2010, Jönköping, Sweden, European Regional Science Association (ERSA), Louvain-la-Neuve

This Version is available at:

<http://hdl.handle.net/10419/118829>

Standard-Nutzungsbedingungen:

Die Dokumente auf EconStor dürfen zu eigenen wissenschaftlichen Zwecken und zum Privatgebrauch gespeichert und kopiert werden.

Sie dürfen die Dokumente nicht für öffentliche oder kommerzielle Zwecke vervielfältigen, öffentlich ausstellen, öffentlich zugänglich machen, vertreiben oder anderweitig nutzen.

Sofern die Verfasser die Dokumente unter Open-Content-Lizenzen (insbesondere CC-Lizenzen) zur Verfügung gestellt haben sollten, gelten abweichend von diesen Nutzungsbedingungen die in der dort genannten Lizenz gewährten Nutzungsrechte.

Terms of use:

Documents in EconStor may be saved and copied for your personal and scholarly purposes.

You are not to copy documents for public or commercial purposes, to exhibit the documents publicly, to make them publicly available on the internet, or to distribute or otherwise use the documents in public.

If the documents have been made available under an Open Content Licence (especially Creative Commons Licences), you may exercise further usage rights as specified in the indicated licence.

Energy Policy and Regional Inequalities in the Brazilian Economy

(EXTENDED VERSION)

Gervásio F. Santos

FCE, Federal University of Bahia, BA Brasil

Eduardo A. Haddad

FEA, University of São Paulo, SP Brasil and Regional Economics Applications Laboratory, University of Illinois, Urbana, USA

Geoffrey J. D. Hewings

Regional Economics Applications Laboratory, University of Illinois, Urbana, USA

ABSTRACT

The objective of this paper is to evaluate the long-run regional impacts of tariff policy of the Brazilian electric power sector. This sector has undergone a reform process started in the 1990's. Since the beginning of the reform, two different distribution spatial trends of electric power tariffs have emerged among the Brazilian states, one of convergence and another of spatial divergence. These trends have been guided by the new electric power tariff policy and by the spatial features of the Brazilian economy, which is marked by high degree of spatial concentration and hierarchical distribution of large markets. In addition, electric power distribution is a capital-intensive activity marked by the presence of strong economies of scale. For this reason, the recent electric power prices differentials might be caused by differentials of market size, which provide better conditions for the achievement of economies of scale for electric power utility companies located in large markets. Based on the fact that electric power is an important intermediate input to the production process, and the economic sectors have input-output linkages among them, an Energy Interregional Computable General Equilibrium model was used to simulate the long-run regional impacts of electric power tariff policy in Brazil. The simulations showed that, the heterogeneity of energy-intensity and the differentials of energy substitution drive the spatial impacts of electric power prices changing. On the other hand, the recent trend of spatial dispersion of electric power prices might contribute to decrease the long-run economic growth and to increase the regional inequalities Brazil.

Key words: energy policy, regulation, spatial concentration, CGE modeling.

JEL: P25, P28, C68, R13

1. Introduction

Since the 1990s, the energy sectors have been the subject to a variety of reform initiatives in Brazil that are changing the market structure and the energy price levels. These reforms were triggered with the implementation of *Plano Real* and new liberal policies in the Brazilian economy. In this context, energy policy has stimulated energy diversification to increase the inter-fuel substitution. This policy might have changed the sectoral and regional consumption pattern of energy in the country towards sectors and regions that are more or less energy-intensive. In the electric power sector, these reforms led to a new industrial organization and a new tariff policy implemented through the price-cap regime by Brazilian Electric Power Regulatory Agency (*ANEEL*). During the implementation of the reforms and the tariff policy the spatial evolution of tariffs presented a trend of spatial convergence. But after the consolidation of the tariff policy, the spatial evolution of tariffs has showed that the richest regions are presenting

lower tariffs than the poorest regions. This element has raised some issues about the regional inequalities caused by tariff policy.

The Brazilian economy is considerably heterogeneous and marked by a high degree of heterogeneity and spatial concentration (Azzoni, 2001 and Haddad, 1999). After several decades of government policies designed to decrease this concentration, the effectiveness of these policies has been modest. Table 01 show that in 2004¹ the Southeast region, the richest, concentrated 55.4% of the Brazilian GDP, while the North, the poorest, only 5.0%. On the other hand, the poorest regions presented the highest electric-power-intensity. The analysis of the impacts of changes in the electric power prices faced by differentials of demand, income level and energy substitution might bring important elements to evaluate the energy policy results in Brazil.

Table 01 – Economic concentration and electric-power-intensity in Brazil, 2004

Regions	GDP	Electric power consumption	Electric-power-intensity*
North	5.0%	6.6%	0.168
Northeast	12.9%	16.9%	0.165
Center-West	9.1%	5.4%	0.075
South-East	55.4%	53.5%	0.111
South	17.6%	17.6%	0.127
Brazil	100.0%	100.0%	0.126

Source: Brazilian Institute of Geography and Statistics and Brazilian Electric Power Agency.

* (GWh/10⁶ GDP in R\$ of 2004).²

According to the literature, energy-intensive sectors are the main channel through which energy price shocks affect the economy. These sectors and energy sectors were in the core of the development policies of the country in the 1970s. As a consequence, the growth of these sectors strengthened the sectoral and spatial links in the Brazilian economy. Besides that, the spatial concentration of energy-intensive sectors followed the same pattern of the spatial concentration of the whole economy. In 2004, 82.6% of the value-added of the energy-intensive sectors was concentrated in the Center-South region of Brazil. However, electric power consumption of these sectors amounted 70.6% in the same region. This 10% difference can be attributed to a set of regional factors such as energy diversification, product differentiation that increases value-added, economies of scale and more efficient energy uses. As result, there is a considerable spatial heterogeneity of the electric-power-intensity in the energy-intensive sectors and in the economy as a whole (Santos, *et al*, 2009). For this reason, energy price changes may result in different regional impacts.

The spatial concentration in Brazil is characterized towards large interrelated (hierarchical) markets in the Center-South region (South-East and South) of Brazil, which form larger agglomeration economies in this region. Considering that energy supply is a capital intensive activity marked by the presence of strong economies of scale, electric power utility companies located in markets with higher demand density may increase these economies of

¹ The year of the interregional input-output table developed to calibrate the CGE model used in the simulations.

² GWh is abbreviation of Gigawatts/hour

scale. Studies about the evolution of productivity and scale effects in Brazilian electric power sector have proven this hypothesis. As a consequence, the price-cap regime, which enforces the transference of productivity gains from electric power utility companies to final consumers, is leading to electric power prices to be lower in the Brazilian richest regions.

The energy policy in Brazil strongly stimulates the diversification of energy sources. Into this policy, the share of natural gas in the energy supply has increased in the last years. Further the increasing in the national production, in 1999 the Brazil started to import natural gas from Bolivia. The location of the pipelines covers a strategic portion of the national territory. The pipelines cross the states of Mato Grosso do Sul, São Paulo, Paraná, Santa Catarina and Rio Grande do Sul. Furthermore, they allow the integration of the states of Rio de Janeiro and Minas Gerais to the national natural gas supply. The region formed by all these states is responsible for 76.0% of the national industrial GDP and 71.8% of the national GDP. As a result, after 1999 the natural gas consumption increased considerably in Brazil and in 2007 represented 9.0% of the energy consumption of industrial sectors.

Considering the sectoral and spatial input-output linkages and factor mobility, the main question of this paper is: what are the regional impacts of the tariff policy of electric power sector on the Brazilian economy? To answer these questions three important elements must be considered. First, electric power price differentials in Brazil might be emerging from the relative differences among market sizes. Second, the regional impacts of price differentials might have been strengthened by economies of scale in the large markets. And third, the heterogeneity of energy supply in Brazil might determine an unequal pattern of energy substitution among regions. To incorporate all these elements in the analysis, an Inter-regional Computable General Equilibrium Model (ICGE) named by ENERGY-BR will be calibrated and used to simulate the regional impacts.

Further this introduction, the paper has seven other sections. Section Two presents the tariff policy and the spatial distribution pattern of electric power tariffs in Brazil. Section Three describes the main findings of past studies about energy in the Regional Science field and some New Economic Geography elements (NEG) which combines vertical linkages and capital mobility to explain the agglomeration economies. In the Section Four presents the structure of the ICGE model which will be used to simulate the results. The Section Five reports the data set and key parameters used to calibrate the ENERGY-BR model. Section Six accounts for the simulation strategy and basic experiments. Results are presented in the Section Seven. Finally, the Section Eight is designed to final remarks.

2. Spatial distribution of electric power tariffs in Brazil

Brazilian electric power system is a large scale hydrothermal system, which the high voltage networks interconnect transmission systems and generation plants to form the National Interconnected System (NIS). The NIS is a national grid composed by four interconnected subsystems. It optimizes the operation of public and private generation and transmission companies in the whole country and is responsible for 96.6% of the electric power supplied in Brazil (Figure 01). The 4.0% remaining is supplied through the small isolated systems located in the Amazonian region.

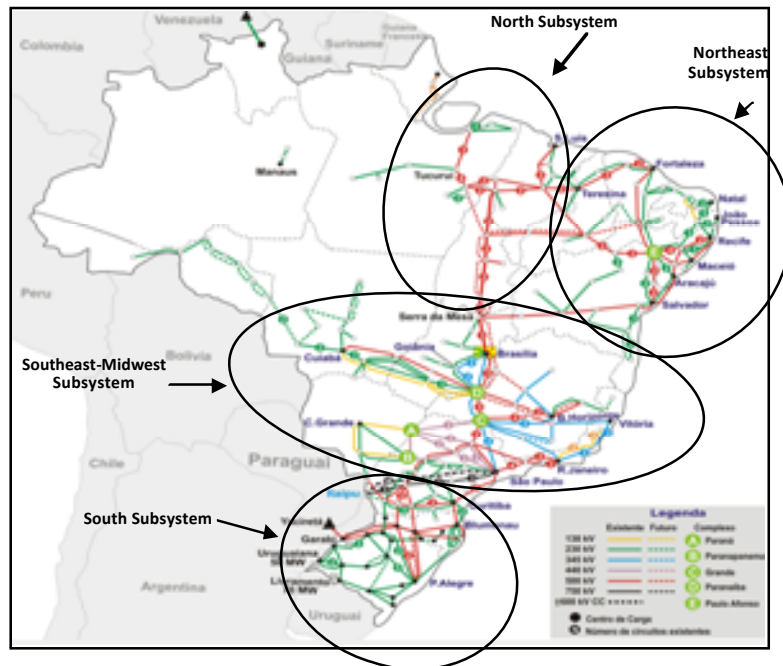


Figure 1 – National Interconnected System
Source: National Electric Grid Operator

Table 02 shows the structure of the Brazilian electric power supply. In 2007 it was produced 444.5 TWh³ of electric power. The hydroelectric with 84.1% and the gas-fired thermoelectric generation with 3.5% were the two main electric power sources in Brazil. From this amount, 89.4% were produced by public services electric power companies and 10.6 by independent and self-producers. The distribution to final consumers is performed by 64 private electric power utilities companies operating under public services concession regime and 34 rural electrification companies.

Table 02 – Electric Power Supply in Brazil, 2007

Source	GWh	Share %
Hydroelectric	374.015.1	84.1
Natural Gas	15.496.6	3.5
Coal	5.937.8	1.3
Wood	803.4	0.2
Sugar cane biomass	11.094,8	2.5
Light oil	6.268.7	1.4
Fuel oil	5.672.8	1.3
Nuclear	12.349.8	2.8
Other Sources	12.943.9	2.9
Total	444,582.8	100.0

Source: National Energetic Balance, 2008

The Brazilian electric power sector is still adjusting to a set of reforms started in the 1993. These reforms were introduced to stimulate the private investments after a long period of finance

³ Tigawatts/hour.

imbalances in the sector. As a first step, in the 1993 was defined the rules for the private agents to supply public services, through the well know Concession Law⁴. After that, in the 1995 it was started the privatization of the state owned electric power utility companies. After the beginning the privatization process, it was created the *ANEEL* in the 1996, which is an independent regulatory agency responsible for enforcement rules, tariff policy and consumers rights regarding the electric power sector. The same law which created the *ANEEL* also created a new industrial organization for the sector through the segmentation of the vertically integrated public monopolies to distinct generation, transmission, distribution and trader companies (Landi, 2006).

Into the old structure of the vertically integrated electric power sector, before 1993, the tariffs were indexed to production costs and geographically equalized for the whole Brazilian territory. After 1993, it was introduced the tariff regime of “price service” and “economic and financial balance”. In this new tariff policy, electric power tariffs were settled in concession or permission contracts from public bidding in the privatization process. The rules to revise these tariffs start to consider economic and financial balance of the companies, stimulus to increase the competition and investment achievements (Lorenzo, 2002; ANEEL, 2005 and Rego 2007). For this reason, in order to warrant the economic balance of the companies and modicum tariffs to final consumers, the ANEEL introduced the incentive regulation through the price-cap⁵ regime.

The price-cap regime simulates elements of a competitive market. An upper bound tariff to be charged by distribution companies is settled in the privatization contracts, based on initial finance balance of the companies. This tariff is supposed to be yearly adjusted using a national price index minus a productivity index (*X-Factor*). In addition, a tariff review process is accomplished each four years to redefine the productivity index in a way to transfer productivity gains from distribution companies to final consumers. As higher is the productivity, higher is the *X-Factor* and lower is the yearly tariff adjustment. In the period before and after the tariff review process, electric power utility companies have incentives to become more productive, because they might internalize the productivity gains and increase the returns.

In addition to the new tariff policy, the ANEEL also started to eliminate two of the main two main price distortions in the electric power sector, the cross-subsidies and special contracts of electric power supply signed in the 1980's to warrant low cost electricity to large consumers. These two distortions were responsible for a considerable tariff gap among consumption segments (residential, industrial, commercial, rural and public) and regions in Brazil. To eliminate these distortions, ANEEL implemented the “tariff realignment”, determining that all consumers should pay the value for electric power supplied, added by commensurable transmission, distribution and sectoral costs. The only allowed subsidies were those institutionally determined for lower income consumers.

⁴ Law n.º 8.987/1995

⁵ See Littelchild (1983).

The main element of new tariff policy is the redefinition of *X-Factor* by the regulatory agency during the tariff review process. The *ANEEL* carried two review process; the first in the 2003/2004 and the second in the 2007/2008 biennium. Before 2003, the *X-Factor* was set to zero. To revise the *X-Factor*, usually the regulator grounds this variable in the studies about Total Productivity Factor (TPF) and efficiency of electric power companies. In a recent econometric study, Ramos-Real *et al.* (2009) showed that only after 2004 electric power distributors started to present satisfactory productivity indexes and positive rates of return. The same study also shows that companies with smaller rate of electric power supply by kilometer (KWh/Km) of distribution networks tend to present weak performance compared those with a larger rate. In addition, Tovar, *et al.* (2009) also showed that the size of the companies is an important element to determine the evolution of productivity. In summary, there might be evidence that the market and company sizes determine the tariff gap among the Brazilian regions triggered by the transference of productivity gains to final consumers.

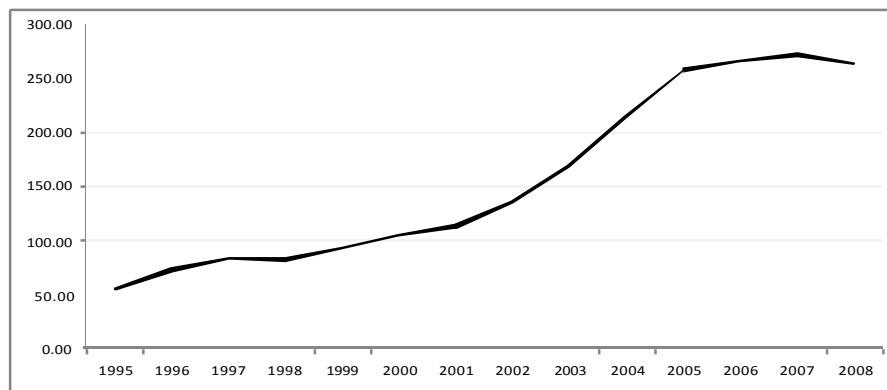


Figure 02 – Evolution of electric power real average tariff (R\$/KWh) in Brazil, 1995-2008
Source: National Agency of Electric Power, 2009.

The Figure 02 shows evolution of electric power real average tariff in Brazil. From 1995 to 2008, the tariff increased 360.6%. It was at R\$ 57.12 in the 1995 and increased to R\$ 263.22 by KWh in the 2008. In the same period, the inflation rate increased 184.6%. The tariff increases above the inflation rate reverberates the rate of return policy recovering of the electric power sector in order to stimulate the new private investments in the sector. However, after 2004 the tariff increases slowed and in the 2008 stated a mild decrease. This final trend might be reflecting the finance recovery of the sector. The spatial aspects underlying the tariff gap among the Brazilian states in this period may bring important issues for the analysis.

Figure 03 shows the spatial distribution of electric power average tariff among the Brazilian states for the selected years of 1995, 2004 and 2008. As can be seen, in the 1995, in the beginning of the electric power reforms and privatization process, the North and Northeast states - less developed regions in Brazil - presented the highest average tariffs. But in the 2004, after the first tariff review process, there was no defined pattern. In this year, some states from Southeast region, further the states of Rondônia and Acre in the North region presented the highest tariffs. However, in the 2008, after the beginning of the second tariff review process,

except from the state of Mato Grosso do Sul, the states in the North and Northeast regions presented the highest tariffs again. This evidence suggests the evolution of a spatial pattern towards higher tariffs in the less developed regions, after the tariff review process.

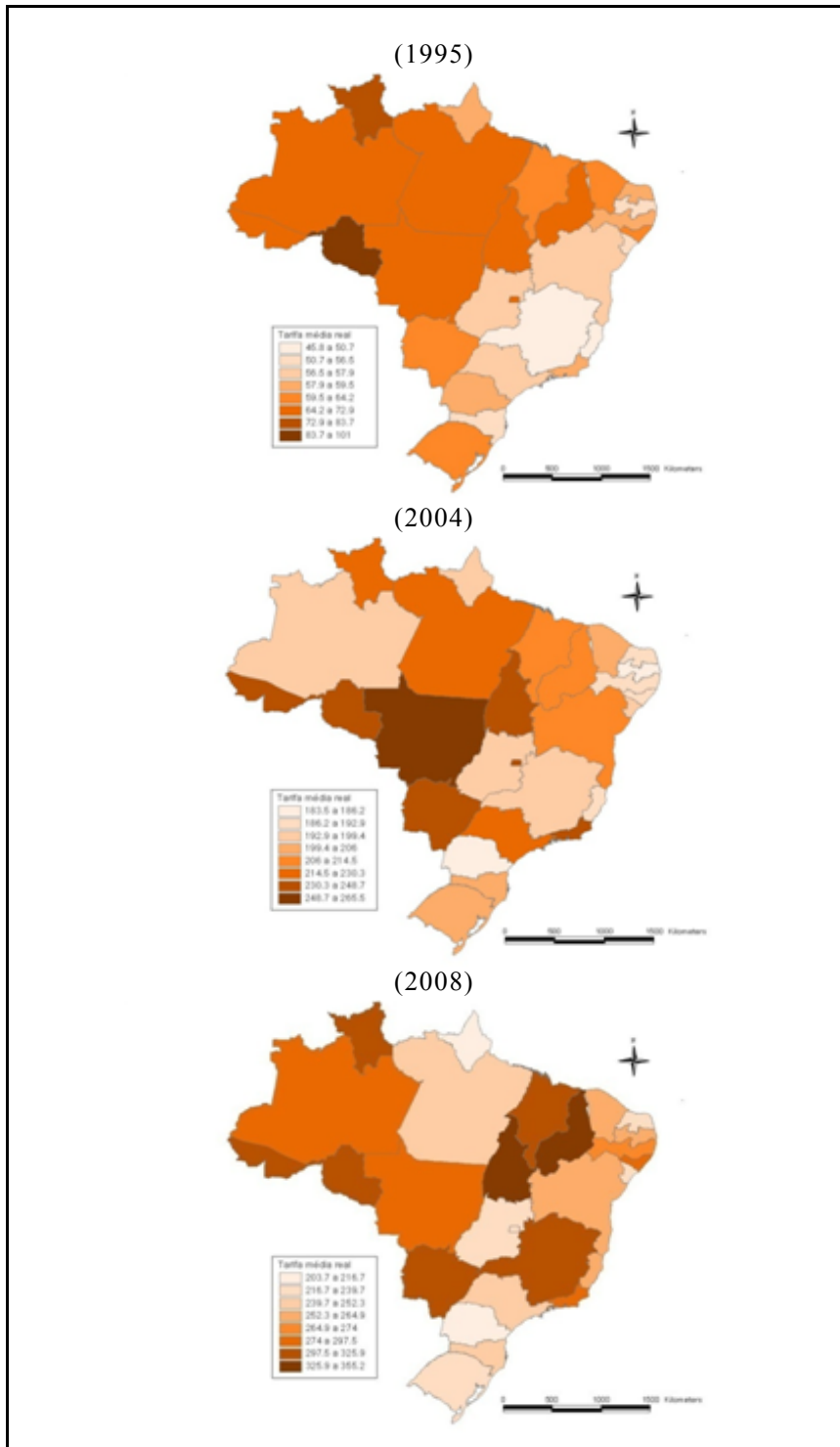


Figura 2 - Tarifa média por Unidade da Federação no Brasil, 1995, 2004 e 2008
 FONTE: ANEEL, 2009.

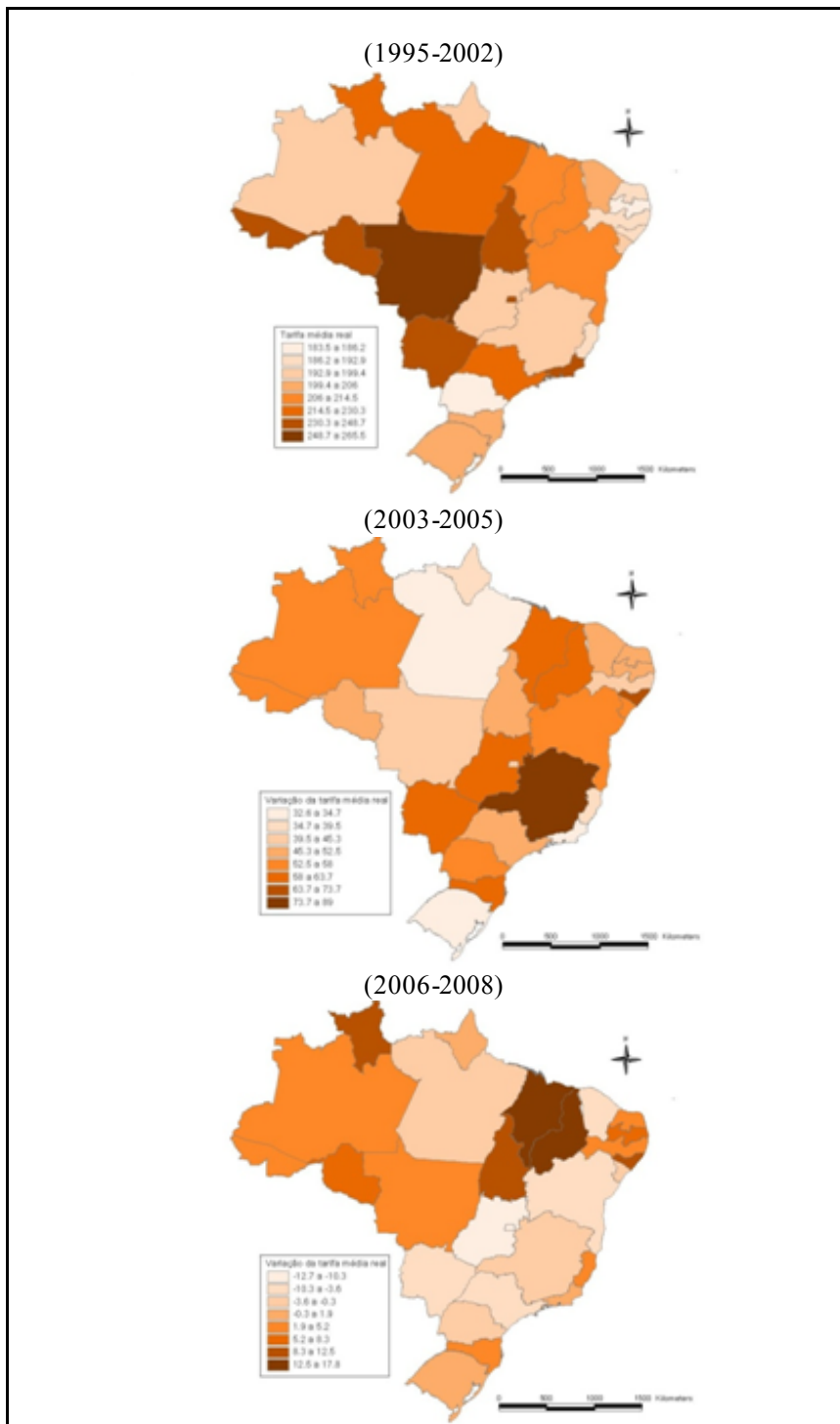


Figura 3 - Aumento, em %, da tarifa média por Unidade da Federação no Brasil, 1995-2008
 FONTE: ANEEL, 2009.

In addition, Figure 4 presents the percentage variation of electric power average tariff by states for three selected periods. In the period 1995-2002, previous to the first tariff review process, the highest percentage increases were verified in the Southeast and Center-west states. These two regions and the South region presented the lowest tariffs in the 1995. Regarding the period 2003-2005, after the beginning and the end of the first tariff review process, though the highest increases were verified in the states of Mato Grosso do Sul and Minas Gerais belonging to the Center-west and Southeast region respectively, the spatial pattern of the highest increases were slightly towards the Northeast region. Finally, in the period 2006-2008, after the beginning of the second tariff review process, except from the state of Mato Grosso do Sul, the highest increases were verified in the North and Northeast states. In several more developed states of the South, Southeast and Center-west regions the tariff were decreased in this last period.

From 1995 to 2004, the electric power tariffs evolution underwent the enforcement of the regulatory rules regarding tariff realignment, the end of special contracts of electric power supply and the price-cap regime. The year of 2004 might be characterized by the consolidation of regulatory rules, the beginning of positive rates of return and favorable productivity gains for the electric power utility companies. On the other hand, this period also was characterized by the end of a tariff convergence among Brazilian states.

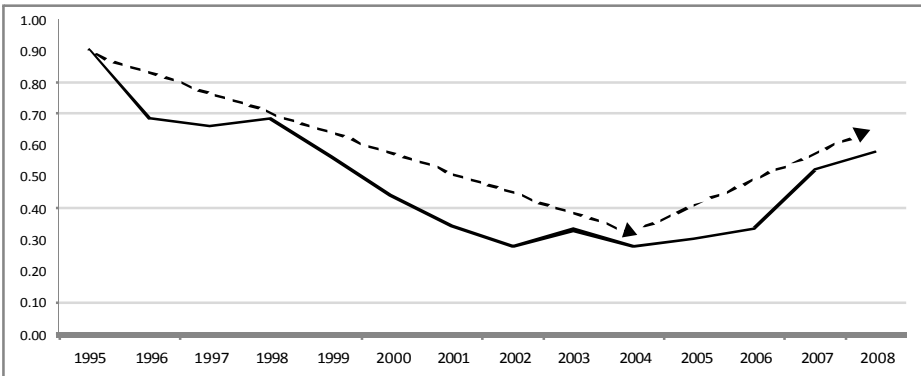


Figure 5 – Evolution of square deviation from the relation between average tariff by state and the national tariff in Brazil, 1995-2008

Source: National Agency of Electric Power, 2009

Figure 05 shows the evolution of the square deviation of the relation between the tariffs by state and the national average tariff. As can be seen, the deviation declined from 1995 to 2004 and after 2004 started to increase again. For this reason, it might to conclude that the period 2003-2004 marks a period with the smaller tariff gap among the Brazilian states. After this period, the tariff review process determined a new trend of spatial distribution of these tariffs.

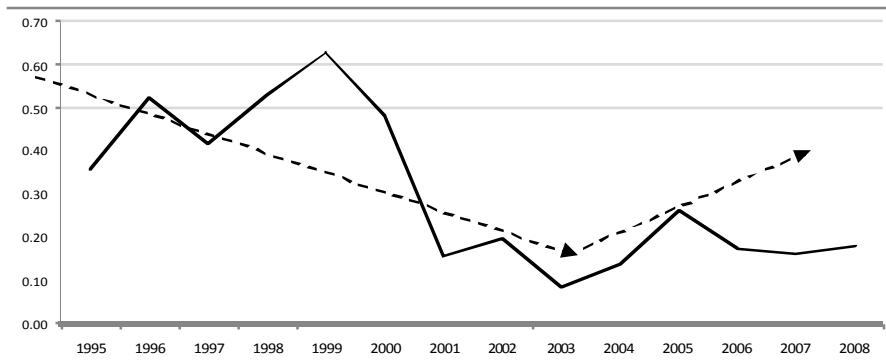


Figure 6 – Spatial autocorrelation among average tariffs by state in Brazil, 1995-2008

Source: National Agency of Electric Power, 2009

In order to detect some spatial pattern in the tariff distribution, it was calculated the spatial autocorrelation coefficient through the Moran Index⁶. The evolution of this coefficient, in the Figure 06, showed that from 1995-2008 there were a spatial pattern of tariff distribution, where states with highest tariffs were close to other states also presenting highest tariffs. On the other hand, states with lowest also were close to other states with lowest tariffs. However, this pattern declined from 1995 to 2003, when started to slightly increase again. In summary, the data point out to a spatial pattern of tariff distribution, before and after the beginning of the tariff review processes. This pattern is characterized by lowest tariffs towards the South and Southeast regions in the end of the period.

The increasing of spatial dispersion of electric power tariffs in Brazil might be happening due to methodology applied by ANEEL in the tariff review processes. In the first tariff review process, the *X-Factor* was replaced in a way that the distribution companies located in less developed regions and with smaller demand density had higher tariff increases. On the other hand, in the second tariff review process, the tariffs of the companies located in the more developed regions were reduced through the transference of productivity gains to final consumers (Sales, 2009). This fact contributes to enlarge the spatial heterogeneity of tariffs after 2004.

Although this analysis considers the market for captive consumers, and the possibility of convergence and spatial dispersion of tariff might differ across consumers segments, it is possible to conclude that there is strong relation between the spatial distribution of tariffs and the spatial concentration of economic activity in Brazil. In the large markets, electric power tariffs are becoming considerable lower than those in the small markets. Although it must be considered that Brazilian poorer regions had received more investments to extend electric power services to low income and rural household, which contribute to increase electric power tariffs in these regions. However, in the long-run the trend of lower tariffs in the more developed regions might contribute for the displacements of economic activity, enlarging regional inequalities in Brazil.

⁶ Anselin, (1988).

3. Energy and Regional Science

The relation between energy policy and regional issues is relatively well-known in the Regional Science field. There is a considerable literature providing a range of issues concerning the scope of energy policy in the context of spatial economy (see Lakshmanan 1981; Lakshmanan and Bolton 1986; Nijkamp 1980, 1983, and 1988). These studies were primarily focused on the relation between energy supply and demand and spatial distribution of activities. The main results were that spatial distribution of households, firms and infrastructure systems has strong implications for energy systems, particularly for the size of energy plants. Furthermore, the heterogeneous distribution of energy resources may affect land uses, transport systems, and environmental policies.

Regarding the link between energy and location and the performance of economic activities, Miernyk (1976, 1977) and Nijkamp (1988) focused on these relationships with a concentration on energy-intensive sectors. Although the results were not so clear, the high energy dependence makes these sectors the main channel through which disturbances such as prices, taxes, subsidies, environment regulations in energy markets affect the equilibrium among regions. Although these studies have improved our understanding of the relation between energy and space, the connection between technical and economic aspects of energy sectors and many theoretical issues in modeling the spatial economy still remain open. A better knowledge of the links between economic activity and energy sectors would enhance the understanding of the spatial impacts of energy policy (Santos *et al.*, 2008).

In the search for theoretical elements to support energy studies in the Regional Science field, the relation between energy and location of economic activity must be highlighted. Regarding this relation, it must be considered that the Regional Science has renewed its perspective of analysis from recent theoretical advances in the NEG, which allows introducing spatial elements in the center of economic theory. Based on the trade models (see, Krugman, 1980), the NEG formalizes the agglomeration devices derived from the endogenous market size. The main assumption is that sectors characterized by increasing returns, imperfect competition and transport costs tend to locate in the regions which provide good conditions of market access. The base of the NEG is the Core Periphery (CP) model presented by Krugman (1991), which presents the foundations of the agglomeration economies. These economies are defined as the trend of the spatial concentration creates the own economic conditions which strength the concentration (Krugman, 1991; Fujita, *et al.* 1999; Baldwin, *et al.* 2003).

The NEG also considers the input-output structures as important determinants of industrial agglomerations. The input-output linkages, with positive transport costs, make that as larger is the quantity of the own inputs an industry uses as intermediate input, larger will be absolute concentration necessary to reduce these costs. Although the closeness might accelerate the competitiveness, working as dispersion force, the NEG considers that imperfect competition and increasing returns might modify or reverse the location effects, strengthening the agglomeration in the presence of competition. Based on these principles, and in the CP model, the *vertical linkages* models were developed (Baldwin e Venables, 1995; Krugman e Venables, 1996; Venables (1996).

The results of the basic *vertical linkages* model are guided by two important results of the CP model, the ‘market-access effect’ and the cost-of-living effect. The former is regarding to the trend of monopolistic firms to concentrate the production close to large markets and export to small markets, and the later to the impact of the location of the firms on production costs. Each industrial firm uses intermediate inputs each other and produces a differentiated variety. Because of transport costs a variety is cheaper in one region than another. Consumers located in the region with the largest agglomeration engage in fewer imports and avoid transport cost. Finally, price indexes relatively lower in the regions with large market and intersectoral labor mobility activates the cumulative causality device (Baldwin, *et al.*, 2003).

An important *vertical linkages* model was introduced by Robert-Nicoud (2004). The model combines capital mobility and input-output linkages to shape agglomeration economies. In the long-run equilibrium, capital shifts to regions with higher returns. The first agglomeration force is the *backward linkages*, which transport costs influence the decision firms to increase the expenditure with intermediate products in the local market. As a consequence, large quantity of capital is allocated in this region and the production increases, resulting in expenditure shifts and profit increases. The second force is the *forward linkages*. The greater the number of varieties of industrial products, lower is the consumer price index in the domestic region and greater is the production costs in the further regions. This initiates the circular causality process. Besides the proximity of the empirical studies, the advantage of this kind of *vertical linkages* model is that the spatial distribution of expenditure and the income of mobile factor explain the formation of agglomeration economies (Robert-Nicoud, 2004; Ottaviano and Robert-Nicoud, 2006).

Although the NGE models are still difficult for empirical tractability, they have launched a new challenge to Regional Science. Moreover, the models still only highlight the role of industrial and tradable sectors in the formation of agglomeration economies. In this regard, Baldwin (2003) highlights the model Faine (1984) as an important model for the determination of industrial location. It is based on *vertical links* inside a growth and capital accumulation model. In this model, the production of a final good uses capital, labor and intermediate non-tradable inputs.

Based on urban economy literature, Faine (1984) modeled the importance of non-tradable sectors and their interrelationships for the decisions of location and for agglomeration economies. From empirical studies that shown that capital-intensive service sectors readily available for production, such as transport, electric power and others, tend to have increasing returns to scale. The basic hypothesis from the literature of urban economics is that economic performance of a region is affected by the cost or availability of producer services, which is one of the foundations of the economies of agglomeration. In the Faine’s model, the existence of increasing returns in the capital-intensive producer services activates a process of cumulative causation, where some regions specialize in vertically integrated industries and relatively more intensive in these non-tradable services.

Despite the difficulty in modeling the above elements in a general equilibrium framework, they can help to understand both the problem and the results of the present study. The gap in electric power tariffs might be caused by differentials of agglomeration economies. Richest and most industrialized regions provide the biggest gains for consumers and producers. In electric power distribution, the productivity gains are due to greater economies of scale in areas with higher

demand density. The tariff policy enforces that these gains are transmitted to final consumers through price decreasing. Thus, it makes sense to analyze the impact of the electric power price differentials, in the presence of region economies of scale and the theoretical elements of the NEG.

4. Energy Inter-regional Computable General Equilibrium model

To evaluate the long-run effects price increases of electric power in Brazil, Interregional Computable General Equilibrium Model (ICGE) model named by ENERGY-BR was developed and implemented. The structure of this model represents the further development of the 27 regions Brazilian Multi-sectoral and Regional/Interregional Model (B-MARIA-27), a widely used and well documented ICGE model for the Brazilian economy (Haddad, 2004, Haddad and Hewings, 2005). Moreover, the ENERGY-BR model incorporates energy substitution modeling from the MMRF-Green model (Adams, *et al.*, 2003). The sectoral disaggregation recognizes the energy and the energy-intensive sectors of the Brazilian Energetic Balance. Table 03 shows the ENERGY-BR model sectors.

Table 3: Sectors of ENERGY-BR model

Order	Sectors
1	Agriculture and Livestock
2	Mining (Oil and Gas)
3	Mining (Ore, Coal and Other Minerals)
4	Food and Beverage
5	Textile
6	Paper and Pulp
7	Oil Refining
8	Ethanol
9	Chemical, Rubber and Plastic
10	Cement
11	Ceramic and Glass
12	Metallurgy of Steel and Iron
13	Metallurgy of Aluminum and Cooper
14	Metal Products
15	Other Industries
16	Electric Power – Hydro
17	Electric Power - Thermo Fuel Oil
18	Electric Power - Thermo Coal
19	Electric Power - Thermo Diesel
20	Electric Power - Thermo - Natural Gas
21	Electric Power - Thermo - Sugar Cane Biomass
22	Electric Power - Thermo Other Sources
23	Utility – Electric Power Distribution
24	Utility - Gas Distribution
25	Utility -Water Distribution and Sanitation
26	Construction
27	Domestic Trade
28	Transport Services
29	Services
30	Public

The agent's behavior of ENERGY-BR model is modeled at the regional level to accommodate variations in the structure of the regional economies. Results are based on bottom-up approach, which national results are obtained from the aggregation of regional results of 27 Brazilian states. In each state the model identifies 30 sectors producing 30 commodities, 30 investors which organize the capital creation, one representative household, one regional and one federal government, and a single consumer who trades internationally with each state. The model also recognizes three primary factors in each state: capital, labor and land.

The core of the model is shaped by supply, demand and market clearing equations. These equations determine the regional supply and demand based on assumptions of optimizing behavior of agents in competitive markets at the microeconomic level. The national labor supply is determined by demographic factors, while supply of capital responds to a rate of return. Capital and labor are mobile among regions. For this reason, regional factor endowments reflect the regional opportunities for jobs and relative rates of return. Considering zero profit, the producer price is equal de marginal cost in each sector of the regional competitive markets. Except from the labor market, where demand excess might be specified, the demand is equal supply in every market. The intervention on the market might be carried by the government through taxes and subsidies, for instance, in a way to set up price differentials between the purchasing and selling price. Two commodities are specified as margins: transport and domestic trade.

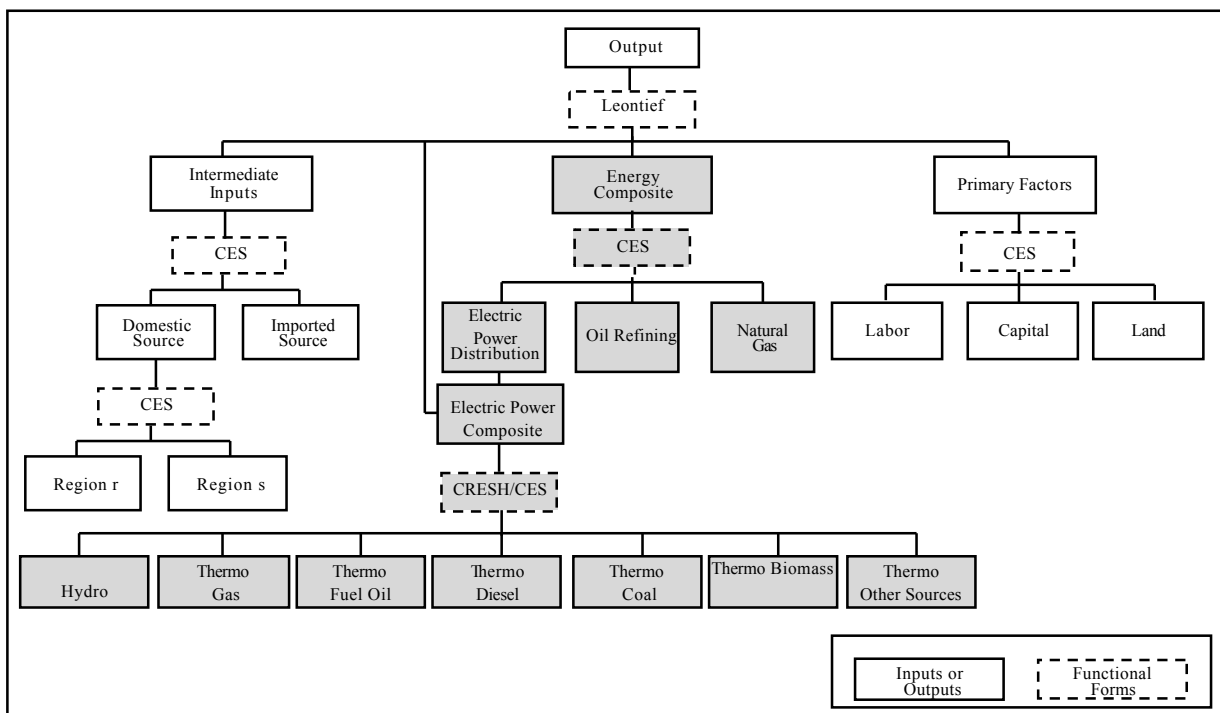


Figure 7 – Regional Nested Production Technology

The structure of the model is represented by five blocks of integrated system of equations: CGE core; capital accumulation and investment; public finance, foreign debt accumulation; and labor market and regional migration. The energy substitution processes takes place into the CGE core

which assembly the production process (demand by inputs), household demand, investment (capital creation), government demand and foreign demand. In this paper, only the production structure will be described. Full details of the model may be found in Santos (2010). The regional nested production technology of the ENERGY-BR model is presented in the Figure 7. Aside from primary factors, the model recognizes two classes of intermediate inputs: non-energy inputs and energy inputs. Each individual firm chooses an input mix which minimizes the production costs for a given production level. Two energy substitution processes take place into the production structure, one among energy inputs and another among electric power sources.

As can be seen in the Figure 7, in the first level, intermediate inputs, energy inputs and primary factors are demanded in fixed proportions by unit of output through a Leontief production technology. In the second level, for non-energy inputs, vectors of aggregate inputs are framed through a CES⁷ technology, which allows the substitution between domestic and imported inputs using the Armington assumption of imperfect substitution among inputs. In the third level, also for non-energy inputs, vectors of domestic inputs are formed through CES, which combines inputs from different domestic regions, also using the Armington assumption. The CES technology also is used to combine labor, capital and land to frame an aggregated primary factors vector.

For the energy inputs, in the first level each firm demands an energy composite and an electric power composite (direct from generation plants), in fixed proportions by output unit through the Leontief production technology. The energy composite refers to a combination of oil refining products, natural gas and electric power (sectors 7, 23 and 24 in the Table 3). Regarding the electric power, the substitution among the seven generation sources in the Table 3 is allowed through a CES or CRESH technology⁸ (Hanoch, 1971; Dixon *at al*, 1982 and 1992; Hinchy and Hanslow, 1996). The resulting electric power composite might be demanded by electric power utility distribution sector or directly by the other sectors⁹.

The interregional modeling is considerably important for the spatial results. Haddad and Hewings (2005) concluded in the previous analysis using the B-MARIA model, (see Haddad (1999), that interregional substitution is the key mechanism that drives de the model's spatial results. Moreover, the interregional linkages play an important role in the functioning of ICGE models. These linkages are driven by trade relations (commodity flow), and factor mobility (capital and labor migration). In this regard, the estimation of interregional input-output databases is an important step to calibrate the model, and regional trade elasticities play a crucial role in the adjustment process.

The model is calibrated for the base year of 2004. This was the year of the last complete interregional input-output table for Brazil (Guilhoto, 2008). Like the most CGE models, the

⁷ Constant Elasticity Substitution.

⁸ Constant Ratio Elasticity Substitution Homothetic.

⁹ The electric power substitution modeling through the CRESH technology considers the *technological bundle* approach of Hinchy and Hanslow (1996), which electric power supply is a combination of weighted average of different generation technologies.

number of unknowns of ENERGY-BR exceeded the number of equations. The model contains 7,397,126 equations and 7,466,034 variables, which involves determining 68,908 exogenous variables. However, the implementation of the model through the software GEMPACK allowed condensing it to obtain a reduced version of the model with 63,229 equations and 92,492 variables, resulting in the determination of “only” 29,263 exogenous variables. The choice of this exogenous variable allows determining macroeconomic environment to run the political simulations¹⁰.

The same short-run and long-run closures of B-MARIA-27 were adopted in ENERGY-BR. In the short-run closure, it was assumed intersectoral and interregional immobility of capital, fixed population and labor supply, fixed regional wage differentials, and fixed national real wages. Regional employment is driven by the assumptions on wage rates, which indirectly determine regional unemployment rate. On demand side, investment expenditures are fixed exogenously, *ie*, firms cannot reevaluate their investment decisions in the short-run. Household consumption follows the household disposable income. Government consumption, at both regional and federal level is fixed (government deficit may be specified exogenously). Furthermore, technology variables and exchange rate are exogenous. The short-run closure was used to accomplish initial tests in the model, while the long-run closure to carry the simulations of the present study.

On the hand, the long-run closure represents the steady-state equilibrium with intersectoral and interregional mobility of capital and labor. In the labor market, aggregated employment is determined by the growth population, labor supply and unemployment shares. Besides that, labor supply is spatially and sectorally endogenously distributed in way that labor is attracted to the more competitive sectors in the more developed regions. Regarding the capital stock, it shifts to more competitive sectors and regions to maintain the rates of return in its initial levels. The exchange rate is endogenous.

5. Data set and key parameters

An interregional input-output table, representing the interindustry and interregional trade flows of 30 sectors (producing 30 commodities) and 27 Brazilian states was the main set of data used to calibrate the ENERGY-BR model. Before the construction of this set of data, it was necessary to handle the information about energy sectors enclosed in the aggregate sector “Industry Services of Public Utility” of the *Brazilian National Accounts System*. This aggregate sector was disaggregated to form the subsectors of electric power generation, electric power utility transmission and distribution, natural gas utility distribution and water and sanitation utility. The information used to carry this process was provided by the *Brazilian Institute of Geography and Statistics*. In addition, the electric power generation was disaggregated to form seven sources of generation (see Table 3) using information from the *Brazilian Energy Balance* and from the *Brazilian Ministry of Mining and Energy*.

The flows regarding the electric power produced by the self-producers also was separated from that produced by the public service generation. In 2004, the electric power produced in Brazil

¹⁰ (Dixon and Rimmer, 2002).

amounted 387.4 GWh. From this amount, the self-producers were responsible for 9.8%. For this reason, it was allowed that all electric power from self-producers was sent directly to economic sectors in the input-output table and the 90.2% remaining was sent to transmission and distribution sector. This strategy minimized further problems that could be caused by the possibility of larger consumers to buy electric power direct from the generation plants or from self-producers in Brazil and that represented 5,0% of the market in 2004. At last, the transmission and distribution sectors were held aggregated in one sector due to the lack of information to disaggregate them. Transmission costs represented only 8.0% of electric power costs to final consumers in the 2004 and were shared almost proportionally to the electric power quantity distributed to final consumers. Therefore, we guess this will not entail further problems in the implementation of the shocks in the CGE model.

All the above information were firstly used to generate an interregional input-output matrix recognizing 132 sectors of 27 Brazilian states for the year of 2004, based on the industry-by-industry technology (Guilhoto, 2008). After that, this matrix was aggregated to obtain the interregional matrix recognizing 30 sectors and 27 Brazilian states used to calibrate the model.

Beyond the structural parameters from input-output matrix, some sets of behavior parameters also were used to calibrate the model. The Armington elasticities regarding regional substitution of inputs form one of these sets. These elasticities were obtained from the estimated elasticities to calibrate do B-MARIA-27-COM (Haddad *et al*, 2008) and weighted by the 30 sectors aggregation of the ENERGY-BR model using the production matrix. Table 4 presents these parameters, which also were used to represent the Armington elasticities regarding the substitution between domestic and imported inputs.

Table 4 – Armington elasticities used to calibrate the ENERGY-BR model

Order	Sectors	Parameters
1	Agriculture and Livestock	2.403
2	Mining (Oil and Gas)	2.925
3	Mining (Ore, Coal and Other Minerals)	1.796
4	Food and Beverage	2.464
5	Textile	3.561
6	Paper and Pulp	2.052
7	Oil Refining	1.163
8	Ethanol	3.530
9	Chemical, Rubber and Plastic	2.802
10	Cement	3.171
11	Ceramic and Glass	3.099
12	Metallurgy of Steel and Iron	2.907
13	Metallurgy of Aluminum and Cooper	2.900
14	Metal Products	2.183
15	Other Industries	2.321
16	Electric Power – Hydro	0.010
17	Electric Power - Thermo Fuel Oil	0.010
18	Electric Power - Thermo Coal	0.010
19	Electric Power - Thermo Diesel	0.010
20	Electric Power - Thermo - Natural Gas	0.010

21	Electric Power - Thermo - Sugar Cane Biomass	0.010
22	Electric Power - Thermo Other Sources	0.010
23	Utility – Electric Power Distribution	0.010
24	Utility - Gas Distribution	0.010
25	Utility -Water Distribution and Sanitation	0.001
26	Construction	0.002
27	Domestic Trade	0.690
28	Transport Services	1.400
29	Services	0.150
30	Public	0.070

FONTE: Prepared based on econometric estimations of the B-MARIA-27-C OM

Aside from the tradition difficulty to acquire estimation of parameters to calibrate ICGE models, in the ENERGY-BR model three addition difficulties emerged. First, because of the inexistence of elasticities regarding the interregional substitution of electric power because of inexistence of ICGE models designed to energy policy in Brazil. However, it must be pointed out that the electric power utility companies have few possibilities to displace its interregional demands of electric power. These companies send to the ANEEL their demands equivalent to four year of future consumption. Afterwards, the ANEEL coordinates an auction in which energy blocks are supplied in locations that do not hold correspondence with the location of demand, mainly because of optimization of the supply accomplished through the NIS. In face of this, Armington elasticities for electric power generation sectors were set in 0.01.

The second difficulty was regarding the parameters of substitution among the energy sources (electric power, natural gas and oil refining products). There are no parameters for Brazil in the literature. Although there are estimations in the international literature we decided to choose conservative values because of the specific features of the Brazilian economy. On the other hand, considering that one of the main elements in this substitution process is the natural gas supply and that this supply still is heterogeneous in the national territory, it was created a differential regarding this feature of the energy supply in Brasil. For the seven states (Mato Grosso do Sul, São Paulo, Paraná, Santa Catarina, Rio Grande do Sul, Rio de Janeiro and Minas Gerais) which are integrated to natural gas supply through the pipeline Bolivia-Brazil it was set the conservative value of 0.20 for energy substitution for all economic the economic sectors. For the further states was set the value of 0.10. These values were conditioned to the completion of systematic sensitivity analysis of the results from the simulations.

The third difficulty was regarding the inexistence of substitution parameters among the electric power sources. Aside from econometric estimation, these parameters could be derived with the use of *bottom-up* energy models. Econometric estimation for Brazil could make use of electric power prices from energy action of ANEEL. However, these actions are organized according to the energy availability in a way that they do not depend on the generation source. For this reason, besides using the CES technology which requires less parameters than the CRESH technology, for the energy-intensive sectors and for the transmission and distribution was set the value of 0,15 for substitution parameter and 0,1 for the further sector. The values also were conditioned to the completion of systematic sensitivity analysis of the results.

The model was implemented using the software Gempack (Harrison and Pearson, 1996).

6. Basic experiments, causalities and simulation strategy

In this section will be discussed the elements concerning the implementation of the simulations, the causal relations and the simulation strategy in the ENERGY-BR model.

6.1 Implementation of the basic experiments

The experiments evolve exogenous shocks in basic prices of electric power supplied from distribution companies to captive final consumers to evaluate long-run regional impacts of the tariff policy on the Brazilian electric power sector. Prices of electric power directly purchased from generation sector or self-production will be adjusted endogenously according to market equilibrium. Basic prices are uniform among all the consumers and producers for both domestic and imported goods. Equation (1) presents the simplified basic prices system of the ENERGY-BR model.

$$P_{jr}^0 = \gamma_{jr} + IC_j \quad (1)$$

In the CGE modeling, commodity basic prices (P^0) usually are equal to a unit cost index (IC), (intermediate and factor costs). Thus, it was introduced an exogenous term (γ_{jr}) in the equation and the shocks were implemented in the sector $j=23$ in all regions, $r=1, \dots, 27$. The shocks will affect all the consumption segments which buy electric power from the electric power utility sector. As a consequence, the electric power acquired from generation sectors by the large electric power consumers will not be directly affected by the exogenous shock, but it will be affected indirectly due to general equilibrium adjustments.

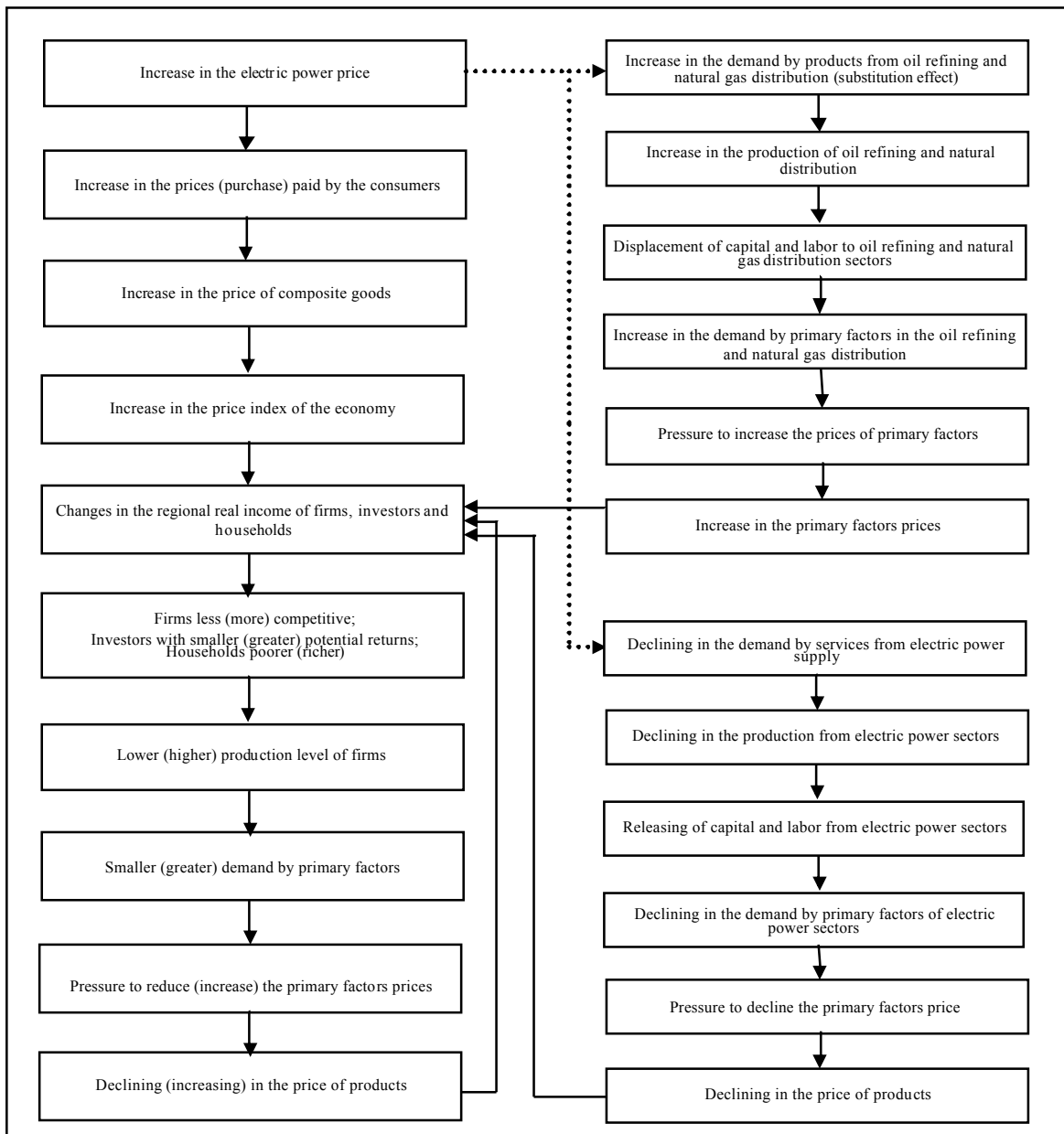
6.2 Causal relations

The Figure 8 shows the causal relations underlining to system of equations of ENERGY-BR model. On demand side, the equation blocks make that the shocks in the electric power basic prices (an increase for example) are directly transmitted to purchase prices paid by agents in the economy, which will increase the price of composite goods. As a result, price indexes of the economy will increase and the regional real income of firms, investors and families will decrease. The firms become less competitive, the investors obtain lower potential returns and families will become "poorer". The internal demand decreases leading to an increase in the exports. The production level of the economy will decrease, leading to a declining of primary factor demand. This result pressures the prices of primary factors to decrease, which also lead to the decrease in the price of goods.

On the supply side, an increase in the electric power price will press the declining in the requirements of electric power services, and consequently, the production of these sectors. Capital and labor of these sectors will be released, causing a surplus of primary factors supply that pressures the prices of these factors to decline, and resulting in a declining in the price of goods. On the other hand, because of the energy substitution, the opposite effect will hold for the sectors that compete with electric power in the model. For this reason, the demand for oil

refining and natural gas products might increase, resulting in an increase in the price of products, as describe in the Figure 8.

The net effect will depend on the relative intensity of the increases and decreases in prices. The simulation considers the long-run closure, which capital and labor are mobile. For this reason, aside from the regional trade elasticities, the spatial results will depend on the relative adjustments in the rate of return among the states.



One of the main advantages of the ICGE applications is the possibility to capture differentiated spatial effects. In the long-run, the relevant mechanism of adjustment is the “relocation” effect

(Haddad, 2004). In the closure of the model it is considered that capital and labor are mobile among regions. As a consequence, new investment decisions might define the marginal relocation of economic activities, through a new spatial distribution of capital stock and population dynamics. The main element responsible for these effects is the variation in the regional rate of return, given the fixed national rate of return. Therefore, considering the equations of the model, the increase in the investment price index will lead to a respective increase in the basic price for capital creation and a relative declining the interregional rate of return. In the long-run, there might be interindustrial and interregional migration of factors. One hypothesis underlining the present study is that capital could migrate to sectors and regions with lower electric-power-intensity.

6.3 Simulation strategy

In the present study, three simulations will be accomplished. The objective of the simulations is extract the regional impacts of the electric power tariff considering the differentiated dynamics of the spatial evolution of tariffs among the Brazilian states in the period from 1995 to 2008. The Figure 9 shows schematic representation of simulations, considering the spatial evolution of standard deviation of electric power tariffs among the Brazilian states. As can be seen, hree different environments of tariff deviations are considered in the simulations. As a consequence, each simulation incorporates the patters of tariff deviation that emerged in different periods among the states.

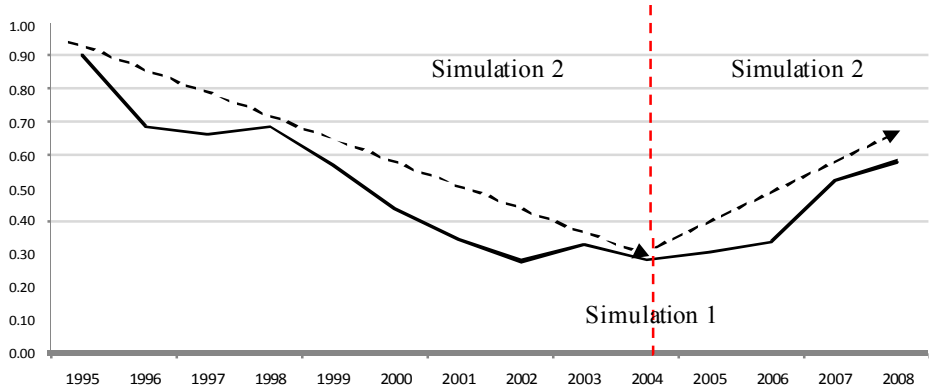


Figure 9– Schematic representation of simulations, considering the spatial evolution of standard deviation of electric power tariffs among the Brazilian states, 1995-2008

Table 5 presents the design of the simulations that will be introduced in the model. In the Simulations 2 and 3, the first column presents the real percentage variations in the electric power tariffs, while the second presents the normalization of this variation regarding the national average tariff. This normalized index will be introduced as shock in the ICGE model, since the main objective is to capture the relative effects among regions.

In the Simulation 1, will be introduced a uniform shock of 1.0% in the electric power prices in all the 27 Brazilian states. The objective of this simulation is to evaluate the dissipation of exogenous shocks in the electric power prices on the Brazilian economic space in 2004. This year, also marks the spatial convergence of electric power tariffs among the Brazilian states. Simulation 2 considers exogenous “reverse” shocks in electric power state prices. The objective

is to evaluate the regional impacts of relative tariffs increases by states in the period 1995-2004. In this period, the tariff policy resulted in the tariff convergence, as described in the Section Two (Figure 5). Regarding simulation 03, exogenous shocks also will be introduced in the electric power prices to evaluate regional impacts of the relative tariffs increases among Brazilian states in the period 2004-2008. In this period, the tariff policy resulted in higher transference of productivity gains for final consumers in the regions characterized by existence of large economic concentration in Brazil, as also described in the Section Two.

Table 5 – Description of shocks in the electric power price

State	Simulation 1	Simulation 2		Simulation 3	
	% Shock	Price change (1995-2004)	% Shock	Price change (2004-2008)	% Shocks
Acre	1.00	229.3	0.84	27.0	1.16
Amapá	1.00	234.1	0.85	2.50	0.11
Amazonas	1.00	186.6	0.68	49.0	2.11
Pará	1.00	229.3	0.84	9.60	0.41
Rondônia	1.00	139.9	0.51	30.9	1.33
Roraima	1.00	162.6	0.59	39.8	1.72
Tocantins	1.00	233.1	0.85	50.3	2.17
Alagoas	1.00	208.6	0.76	53.9	2.32
Bahia	1.00	263.5	0.96	23.1	1.00
Ceará	1.00	232.9	0.85	25.6	1.11
Maranhão	1.00	245.1	0.89	46.0	1.99
Paraíba	1.00	233.0	0.85	39.0	1.68
Pernambuco	1.00	219.7	0.80	44.3	1.91
Piauí	1.00	218.5	0.80	59.3	2.56
Sergipe	1.00	253.0	0.92	20.2	0.87
Rio Grande do Norte	1.00	222.5	0.81	22.8	0.98
Distrito Federal	1.00	252.0	0.92	-2.70	-0.12
Goiás	1.00	244.1	0.89	14.4	0.62
Mato Grosso	1.00	297.9	1.09	11.2	0.48
Mato Grosso do Sul	1.00	287.0	1.05	31.1	1.34
Espírito Santo	1.00	280.9	1.03	37.3	1.61
Minas Gerais	1.00	330.1	1.21	55.4	2.39
Rio de Janeiro	1.00	302.4	1.10	25.4	1.10
São Paulo	1.00	285.0	1.04	12.5	0.54
Paraná	1.00	209.7	0.77	18.1	0.78
Santa Catarina	1.00	270.4	0.99	24.0	1.03
Rio Grande do Sul	1.00	225.6	0.82	15.6	0.67
Brazil	1.00	273.9	1.00	23.2	1.00

7. Results

In this section the macro, sectoral and regional results from the three simulations are presented and discussed.

7.1 Macro results

Table 5 presents the macro results from three simulations. Considering the causal relations from Figure 8, the uniform shock of 1.0% in the electric power prices caused an increase in all price indexes of macroeconomic variables. As a consequence, the real income and the expectation of

returns decreased, leading to a declining in the economic activity. The primary factor income also decreased because of the declining in the demand for these factors. Even considering the declining in the national demand, the shock reduced the competitiveness of the exports. On the other hand, different from the other primary factor the factor land (which is immobile) had an increase in its payment. This was a consequence of displacement of economic activity to the Agriculture and Livestock sector which presented an increase in the rate of return because of the lower electric-power-intensity. The general macro result of the Simulation 1 was the declining of -0.0140% in the real GDP and a negative equivalent variation of R\$ -494.41 million (of 2004).

Table 6 – Long-run macro results (% change)

Variables	Simulation 1 (1,0% Uniform)	Simulation 2 (1995-2004)	Simulation 3 (2004-2008)
<i>Prices</i>			
Investment price index	0.0014	-0.0068	-0.0153
Consumer price index	0.0318	0.0255	0.0124
Regional government demand price index	0.0392	0.0352	0.0836
Federal government price index	0.0089	0.0018	0.0178
Exports price index	0.0087	0.0026	-0.0165
Imports price index	0.0018	-0.0010	-0.0328
GDP price index	0.0272	0.0195	0.0201
<i>Primary factors</i>			
Aggregate payments to capital	-0.0265	-0.0277	-0.0509
Aggregate payments to labor	-0.0287	-0.0286	-0.0379
Aggregate payments to land	0.0448	0.0168	0.0338
Aggregate capital stock	-0.0280	-0.0196	-0.0395
<i>Aggregate demand</i>			
Real household consumption	-0.0089	-0.0018	-0.0178
Aggregate real investment expenditure	-0.0265	-0.0186	-0.0350
Aggregate real regional government demand	-0.0392	-0.0352	-0.0835
Aggregate real federal government demand	-0.0089	-0.0018	-0.0178
Export volume	-0.0016	0.0035	-0.0046
<i>Aggregate indicators</i>			
Real GDP	-0.0140	-0.0066	-0.0257
Equivalent variation –total change in (US\$ million)	-494.41	-230.94	-801.60

In the Simulation 2, electric power tariffs increases in the Center-West and Center-South regions were higher than the national average. The results showed that except from the investment and imports price indexes, the impacts were positive on the other price indexes. The exports were the only final demand segment that presented positive result. The negative result in the other segments pushed the declining of economic activity and, as a consequence, the declining in the factor income (except for the factor land). The final result of this simulation was the declining of -0.0066% in the real GDP and a negative equivalent variation R\$ -230.94. Comparing the results, the long-run negative impacts of the Simulation 2 were considerably smaller than those from the Simulation 1. The higher electric power prices increases in the regions with lower electric power intensity and better possibilities of energy substitution might explain the better performance in this simulation.

The Simulation 3 is designed to evaluate the impacts of the relative electric power prices increases from 2004 to 2008, when the North and Northeast regions presented price increases higher than the national average. As can be seen in the Table 6, the investment, export and imports price indexes presented negative variation. However, the magnitudes of this negative variation were considerably smaller than the positive variation the other indexes. As a result, the GDP price index increased and the declining in the aggregate demand and in the primary factors payments to labor and capital were stronger than those in the Simulations 1 and 2. The final macro result was a declining of real GDP of -0.0257% and a negative equivalent variation of R\$ -801.60. This simulation showed that even considering the transference of productivity gains, from electric power utility companies to final consumers, the tariff policy may not be resulting in positive impacts on the real income and welfare level. The higher electric power price increases in the regions with higher electric power intensity and weak possibilities of energy substitution might be the main inducement of this result.

7.2 Sectoral results

The results from the three simulations concerning the sectoral activity level are presented in the Table 7 and Figure 10. As can be seen in the Figure 10, the impacts of the electric power price changes followed a general pattern where the electric power sectors (S16-S23) were the most negatively affected in the simulations because of the declining the electric power demand. The Agriculture and Livestock sector (S1) presented an increasing in the activity level in the three simulations. The smaller share of electric power in the production costs led to a relative increasing of the rate of return of this sector. This result might have indirectly influenced the performance of the Food and Beverage sector (S4).

Considering the assumptions of energy substitution implemented through the equations of the ENERGY-BR model, the electric power price changes resulted in an increasing of the Natural Gas Utility Distribution (S24). Although the Oil Refining sector (S7) is an energy-intensive sector and could present performance strongly negative, it must be pointed out that it competes with electric power. For this reason, this sector presented a result close to zero in the Simulation 1, positive in the Simulation 2 and only slightly negative in the Simulation 3 when the electric power price increase was higher in the regions with weak possibilities of energy substitution. Regarding the other energy-intensive sectors, the three simulations produced the expected results. The Cement sector (S10) presented one the largest declining in the sectoral activity in the simulations, followed the Ceramic and Glass (S11) and Metallurgy of Steel and Iron (S12). The sector of Metallurgy of Aluminum and Cooper (S13) which is one of the most energy-intensive, did not presented strong declining in the activity level compared to the other sectors. As a matter of the fact, around 50.0% of the electric power used by this sector in the 2004 was direct supplied by generation plants or from self-production.

Table 7 – Long-run sectoral results of electric power price changes, Activity Level (% change)

Order	Sectors	Simulation I		
		(1,0% Uniform)	Simulation 2 (1995-2004)	Simulation 3 (2004-2008)
S1	Agriculture and Livestock	0,0282	0,0207	0,0833
S2	Mining (Oil and Gas)	-0,0286	-0,0310	-0,0698
S3	Mining (Ore, Coal and Other Minerals)	-0,0050	-0,0120	-0,0067
S4	Food and Beverage	0,0005	0,0035	-0,0007
S5	Textile	-0,0253	-0,0160	-0,0161
S6	Paper and Pulp	-0,0088	0,0028	-0,0210
S7	Oil Refining	-0,0002	0,0060	-0,0233
S8	Ethanol	-0,0070	0,0038	-0,0120
S9	Chemical, Rubber and Plastic	-0,0208	-0,0077	-0,0309
S10	Cement	-0,0293	-0,0239	-0,0422
S11	Ceramic and Glass	-0,0273	-0,0161	-0,0335
S12	Metallurgy of Steel and Iron	-0,0260	-0,0168	-0,0225
S13	Metallurgy of Aluminum and Cooper	-0,0145	-0,0097	-0,0534
S14	Metal Products	-0,0212	-0,0046	-0,0438
S15	Other Industries	-0,0119	0,0017	-0,0441
S16	Electric Power – Hydro	-0,1151	-0,1102	-0,1164
S17	Electric Power - Thermo Fuel Oil	-0,0947	-0,0862	-0,1095
S18	Electric Power - Thermo Coal	-0,1680	-0,1581	-0,1832
S19	Electric Power - Thermo Diesel	-0,1479	-0,1438	-0,1771
S20	Electric Power - Thermo - Natural Gas	-0,1198	-0,1142	-0,1329
S21	Electric Power - Thermo - Sugar Cane Biomass	-0,0887	-0,0802	-0,0840
S22	Electric Power - Thermo Other Sources	-0,0713	-0,0689	-0,0734
S23	Utility – Electric Power Distribution	-0,1356	-0,1291	-0,1390
S24	Utility - Gas Distribution	0,0173	0,0259	0,0137
S25	Utility -Water Distribution and Sanitation	-0,0112	-0,0032	-0,0174
S26	Construction	-0,0221	-0,0137	-0,0322
S27	Domestic Trade	-0,0066	-0,0035	-0,0208
S28	Transport Services	-0,0091	-0,0007	-0,0326
S29	Services	-0,0102	-0,0004	-0,0266
S30	Public	-0,0174	-0,0113	-0,0366
	Brazil	-0,0132	0,0062	-0,0243

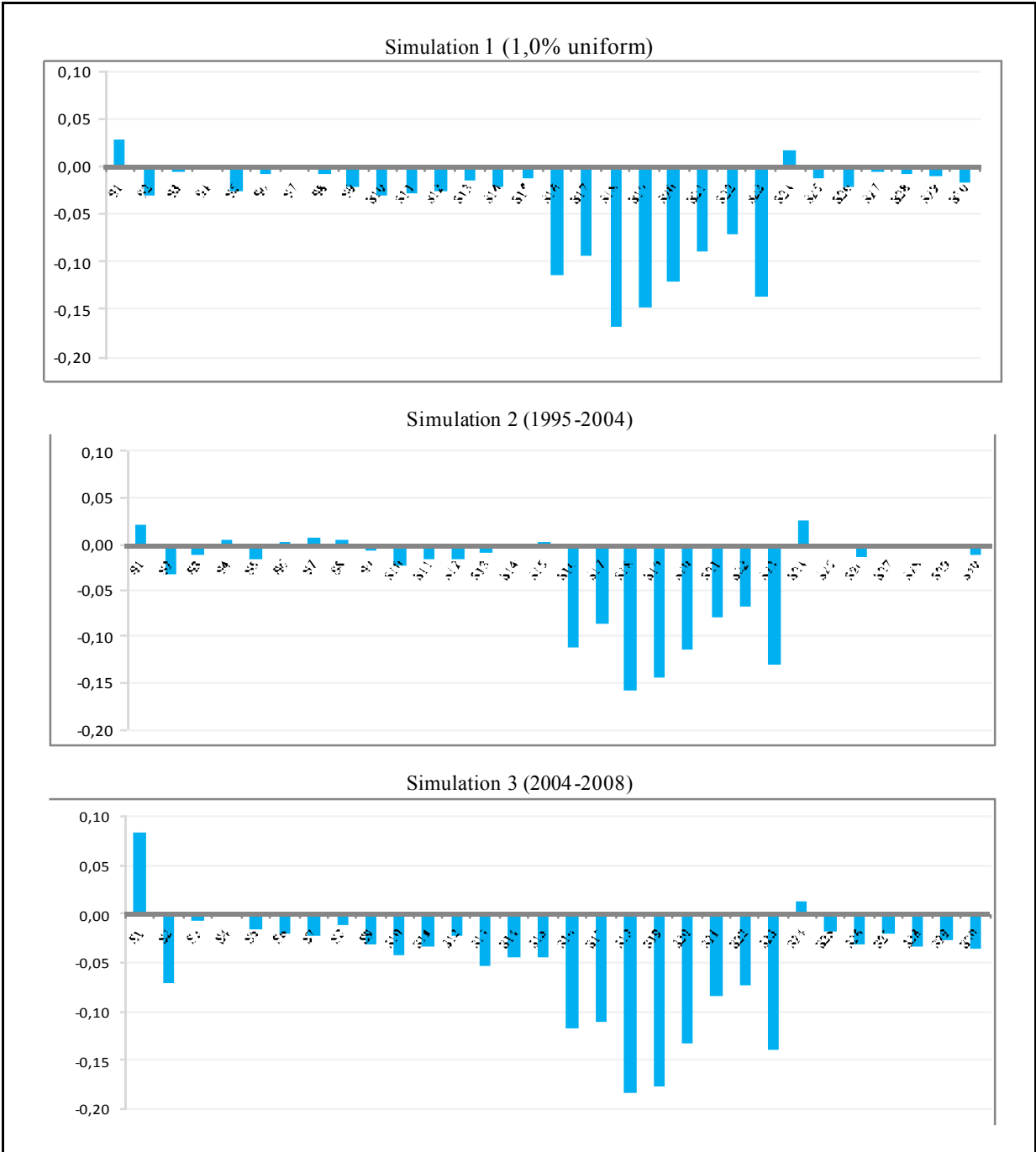


Figure 1 – Long-run sectoral results of electric power price changes, Activity Level (% change)

Comparing the sectoral results from the three simulations, it can be verified that in the Simulation 2 the relatively higher increases in the electric power prices in the regions with better conditions of energy substitution led to positive results for the Natural Gas Utility Distribution and Oil Refining. In the same way, non energy-intensive sectors such as Agriculture and Livestock and Food and Beverage also presented good performance in the simulations.

7.3 Regional results

The regional results are presented in the Table 8 and in the Figure 11 where the light colors represent the negative impacts on the real GDP of the Brazilian states.

Table 8 – Long-run regional impacts of electric power price changes, real GDP (% change)

Order	State	Simulation 1 (1,0% Uniform)	Simulation 2 (1995-2004)	Simulation 3 (2004-2008)
1	Acre	0,0431	0,0645	0,0719
2	Amapá	-0,0108	0,0009	0,0511
3	Amazonas	0,0885	0,3191	-0,8484
4	Pará	0,0943	0,0175	-0,0922
5	Rondônia	0,0168	-0,2101	0,1770
6	Roraima	0,0151	0,0961	-0,0600
7	Tocantins	0,0833	-0,0300	0,7467
8	Alagoas	-0,0241	-0,0330	0,0454
9	Bahia	-0,0211	-0,0247	0,0073
10	Ceará	-0,0494	-0,0488	-0,0661
11	Maranhão	-0,0540	-0,0495	-0,0298
12	Paraíba	-0,0421	-0,0376	-0,0460
13	Pernambuco	-0,0312	-0,0366	0,0132
14	Piauí	-0,0295	-0,0250	-0,0173
15	Sergipe	0,0062	-0,0193	-0,1826
16	Rio Grande do Norte	-0,0669	-0,0672	-0,0970
17	Distrito Federal	-0,1132	-0,0959	-0,2077
18	Goiás	0,0057	0,0014	-0,0212
19	Mato Grosso	0,0182	0,0281	0,0041
20	Mato Grosso do Sul	-0,0092	0,0000	-0,0055
21	Espírito Santo	-0,0077	0,0011	0,0566
22	Minas Gerais	0,0008	0,0174	0,1283
23	Rio de Janeiro	-0,0329	-0,0515	-0,0730
24	São Paulo	-0,0187	0,0100	-0,0379
25	Paraná	0,0191	-0,0114	0,0325
26	Santa Catarina	-0,0011	0,0102	0,0042
27	Rio Grande do Sul	-0,0167	-0,0165	-0,0263
1	North	0,0724	0,0721	-0,1978
2	Northeast	-0,0333	-0,0360	-0,0228
3	Center-west	-0,0377	-0,0290	-0,0880
4	Southeast	-0,0170	-0,0014	-0,0108
5	South	0,0011	-0,0082	0,0034
	Brazil	-0,0140	-0,0066	-0,0257

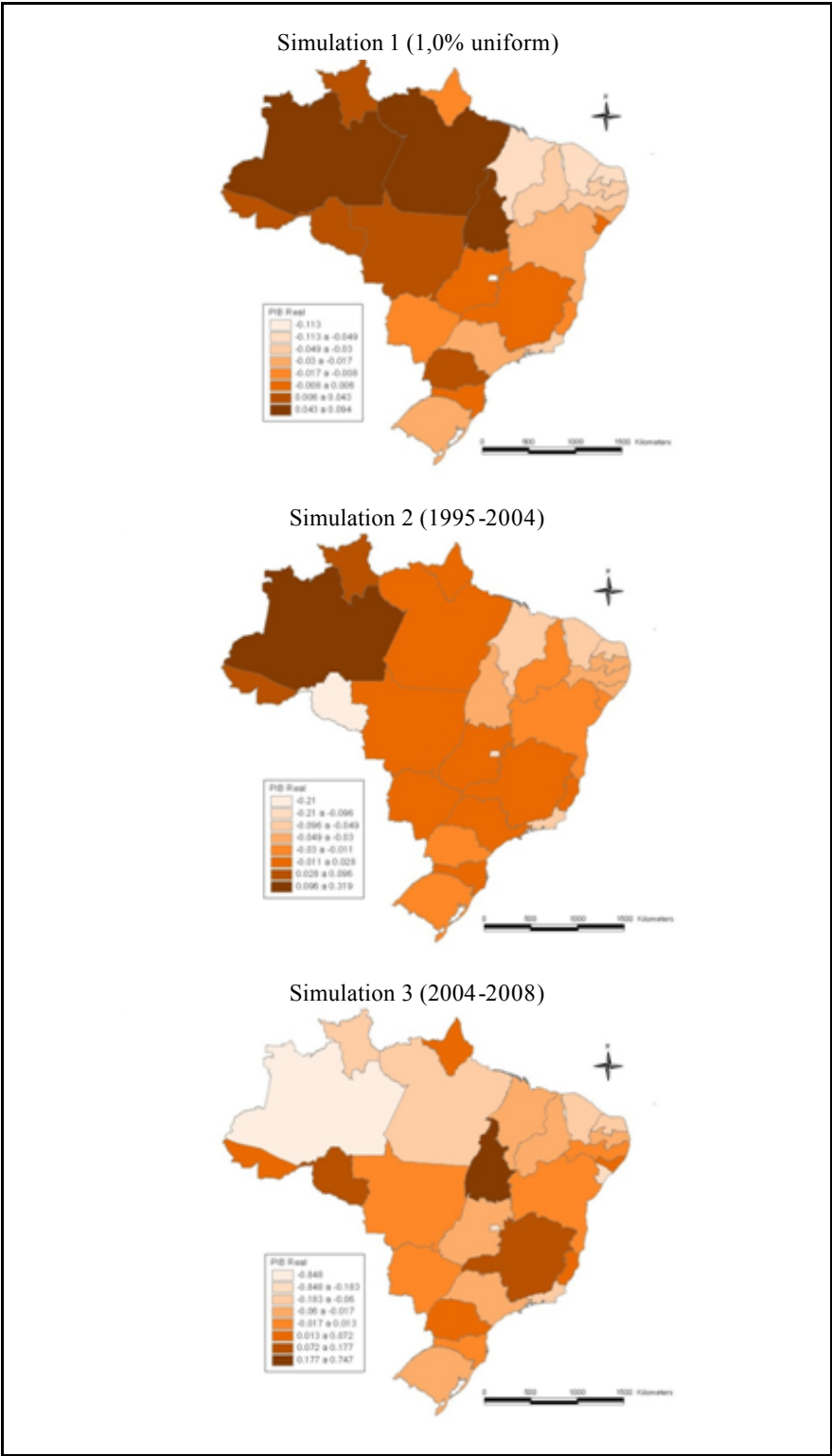


Figure 11 - Long-run regional impacts of electric power price changes, real GDP (% change)

As can be seen in the Table 8, in the Simulation 1 the Northeast and Center-west regions were the most affected by the electric power price increases. However, the negative result of the Center-West region was strongly affected by the Distrito Federal, while in the Northeast region only the state of Sergipe did not present negative variation in the real GDP. On the other hand, the North and South regions presented positive variation on the real GDP. Although the South and Southeast regions (Center-South) concentrate a large share of the energy-intensive activities, these regions presented good performance in the simulations. Similarly, the states with strong share of Agriculture and Livestock activity in the regional GDP (such as Tocantins, Paraná and Mato Grosso) also presented good performance.

In the Simulation 2, although the electric power price increase was higher in the Center-West and Center-South, the Northeast region presented the largest declining in the real GDP. The higher electric power-intensity in this region and the better possibilities of energy substitution in the Center-West and Center-South regions might be the main inducement of this result. In the North region, the considerable positive variation the real GDP of the state of Amazonas was due to this state had one of the lowest electric power prices increases in the period, as presented in the Table 5.

Regarding the Simulation 3, the negative impacts were distributed among several states of the all regions. The magnitude of these negative impacts was larger than those in the Simulation 1 and 2. This might be a consequence of the higher price increasing in the regions with higher electric power-intensity and weak possibilities of energy substitution. The South region was the unique that presented positive variation in the real GDP. Furthermore, the magnitude of the negative impacts in the several states had strong negative impacts on the state of São Paulo.

7.4 Systematic sensitivity analysis

In the calibration and in the simulation process with the ENERGY-BR model at least three sets of key parameters were used: regional and international Armington trade elasticities; energy sources substitution elasticities; and electric power sources substitution elasticities. In order to increase to reliability of the results, systematic sensitivity analyses were carried to evaluate the robustness of these results concerning each one of these set of key parameters. In this analysis, it was set a 20% interval for variation in the parameters, with triangular distribution in the three levels of substitution. The confidence intervals of 90% to be reported were obtained from the results of median and standard deviation generated in the systematic sensitivity analysis, using the Chebychev inequality (limits of 3.16 standard deviation from the mean). Based on these intervals, it was possible to evaluate the sensitivity of the selected results to the parameters used.

7.4.1 Regional and international trade elasticities

The regional and interregional Armington trade elasticities were implemented for three groups of agents (producers, investors and households) in the model among 27 domestic regions. Table 9-14 present the results of the systematic sensitivity analysis for these parameters.

Table 09 – Simulation 1: sensitivity analysis concerning the regional and international elasticities of substitution, activity level (% change)

Order	Sectors	Lower Limit	Upper Limit
1	Agriculture and Livestock	0.0256	0.0344
2	Mining (Oil and Gas)	-0.0508	-0.0448
3	Mining (Ore, Coal and Other Minerals)	-0.0208	0.0141
4	Food and Beverage	-0.0002	0.0034
5	Textile	-0.0299	-0.0180
6	Paper and Pulp	-0.0132	-0.0015
7	Oil Refining	-0.0233	-0.0148
8	Ethanol	-0.0167	-0.0013
9	Chemical, Rubber and Plastic	-0.0292	-0.0123
10	Cement	-0.0309	-0.0283
11	Ceramic and Glass	-0.0321	-0.0210
12	Metallurgy of Steel and Iron	-0.0308	-0.0236
13	Metallurgy of Aluminum and Cooper	-0.0239	-0.0066
14	Metal Products	-0.0310	-0.0127
15	Other Industries	-0.0172	-0.0043
16	Electric Power – Hydro	-0.0902	-0.0860
17	Electric Power - Thermo Fuel Oil	-0.0607	-0.0544
18	Electric Power - Thermo Coal	-0.1029	-0.0953
19	Electric Power - Thermo Diesel	-0.0865	-0.0802
20	Electric Power - Thermo - Natural Gas	-0.0781	-0.0693
21	Electric Power - Thermo - Sugar Cane Biomass	-0.0611	-0.0498
22	Electric Power - Thermo Other Sources	-0.0503	-0.0460
23	Utility – Electric Power Distribution	-0.1062	-0.0974
24	Utility - Gas Distribution	-0.0194	-0.0121
25	Utility -Water distribution and Sanitation	-0.0165	-0.0061
26	Construction	-0.0261	-0.0171
27	Domestic Trade	-0.0103	-0.0050
28	Transport Services	-0.0144	-0.0056
29	Services	-0.0150	-0.0037
30	Public	-0.0210	-0.0131
	Brazil	-0.0178	-0.0081

Table 2 – Simulation 2: sensitivity analysis concerning the regional and international elasticities of substitution, activity level (% change)

Order	Sectors	Lower Limit	Upper Limit
1	Agriculture and Livestock	0.0199	0.0222
2	Mining (Oil and Gas)	-0.0432	-0.0315
3	Mining (Ore, Coal and Other Minerals)	-0.0158	-0.0086
4	Food and Beverage	0.0029	0.0051
5	Textile	-0.0159	-0.0145
6	Paper and Pulp	0.0012	0.0064
7	Oil Refining	-0.0048	0.0028
8	Ethanol	0.0014	0.0057
9	Chemical, Rubber and Plastic	-0.0105	-0.0037
10	Cement	-0.0264	-0.0214
11	Ceramic and Glass	-0.0181	-0.0126
12	Metallurgy of Steel and Iron	-0.0200	-0.0142
13	Metallurgy of Aluminum and Cooper	-0.0114	-0.0094
14	Metal Products	-0.0088	0.0003
15	Other Industries	-0.0012	0.0066
16	Electric Power – Hydro	-0.1000	-0.0966
17	Electric Power - Thermo Fuel Oil	-0.0824	-0.0754
18	Electric Power - Thermo Coal	-0.1462	-0.1385
19	Electric Power - Thermo Diesel	-0.1374	-0.1263
20	Electric Power - Thermo - Natural Gas	-0.1073	-0.1010
21	Electric Power - Thermo - Sugar Cane Biomass	-0.0725	-0.0693
22	Electric Power - Thermo Other Sources	-0.0649	-0.0611
23	Utility – Electric Power Distribution	-0.1170	-0.1127
24	Utility - Gas Distribution	0.0168	0.0202
25	Utility -Water distribution and Sanitation	-0.0045	-0.0013
26	Construction	-0.0163	-0.0101
27	Domestic Trade	-0.0060	-0.0020
28	Transport Services	-0.0040	0.0026
29	Services	-0.0020	0.0024
30	Public	-0.0128	-0.0091
	Brazil	-0.0077	-0.0034

Table 11 – Simulation 3: sensitivity analysis concerning the regional and international elasticities of substitution, activity level (% change)

Order	Sectors	Lower Limit	Upper Limit
1	Agriculture and Livestock	0.0805	0.0884
2	Mining (Oil and Gas)	-0.0855	-0.0632
3	Mining (Ore, Coal and Other Minerals)	-0.0121	-0.0017
4	Food and Beverage	-0.0016	0.0013
5	Textile	-0.0176	-0.0133
6	Paper and Pulp	-0.0236	-0.0167
7	Oil Refining	-0.0364	-0.0228
8	Ethanol	-0.0149	-0.0098
9	Chemical, Rubber and Plastic	-0.0348	-0.0263
10	Cement	-0.0466	-0.0377
11	Ceramic and Glass	-0.0367	-0.0288
12	Metallurgy of Steel and Iron	-0.0277	-0.0174
13	Metallurgy of Aluminum and Cooper	-0.0573	-0.0512
14	Metal Products	-0.0500	-0.0366
15	Other Industries	-0.0490	-0.0371
16	Electric Power – Hydro	-0.1087	-0.1031
17	Electric Power - Thermo Fuel Oil	-0.1095	-0.0974
18	Electric Power - Thermo Coal	-0.1769	-0.1634
19	Electric Power - Thermo Diesel	-0.1777	-0.1584
20	Electric Power - Thermo - Natural Gas	-0.1292	-0.1184
21	Electric Power - Thermo - Sugar Cane Biomass	-0.0775	-0.0749
22	Electric Power - Thermo Other Sources	-0.0716	-0.0649
23	Utility – Electric Power Distribution	-0.1303	-0.1240
24	Utility - Gas Distribution	0.0054	0.0102
25	Utility -Water distribution and Sanitation	-0.0195	-0.0152
26	Construction	-0.0367	-0.0265
27	Domestic Trade	-0.0243	-0.0185
28	Transport Services	-0.0384	-0.0268
29	Services	-0.0293	-0.0232
30	Public	-0.0397	-0.0339
	Brazil	-0.0271	-0.0205

Table 12 - Simulation 1: sensitivity analysis concerning the regional and international elasticities of substitution, real GDP (% change)

Order	States	Lower Limit	Upper Limit
1	Acre	0.0280	0.0539
2	Amapá	-0.0124	-0.0071
3	Amazonas	0.0110	0.0944
4	Pará	0.0589	0.1434
5	Rondônia	0.0034	0.0520
6	Roraima	0.0003	0.0164
7	Tocantins	-0.0159	0.2454
8	Alagoas	-0.0284	-0.0215
9	Bahia	-0.0225	-0.0189
10	Ceará	-0.0585	-0.0450
11	Maranhão	-0.0588	-0.0465
12	Paraíba	-0.0477	-0.0352
13	Pernambuco	-0.0342	-0.0277
14	Piauí	-0.0312	-0.0265
15	Sergipe	-0.0057	0.0172
16	Rio Grande do Norte	-0.0817	-0.0591
17	Distrito Federal	-0.1180	-0.1045
18	Goiás	0.0043	0.0071
19	Mato Grosso	0.0212	0.0221
20	Mato Grosso do Sul	-0.0070	-0.0040
21	Espírito Santo	-0.0036	0.0002
22	Minas Gerais	0.0020	0.0033
23	Rio de Janeiro	-0.0504	-0.0430
24	São Paulo	-0.0197	-0.0066
25	Paraná	0.0199	0.0235
26	Santa Catarina	0.0033	0.0068
27	Rio Grande do Sul	-0.0150	-0.0117
	Brazil	-0.0189	-0.0087

Table 13 - Simulation 02: sensitivity analysis concerning the regional and international elasticities of substitution, real GDP (% change)

Order	States	Lower Limit	Upper Limit
1	Acre	0.0336	0.0903
2	Amapá	-0.0058	0.0089
3	Amazonas	0.2148	0.4173
4	Pará	-0.0095	0.0436
5	Rondônia	-0.2641	-0.1616
6	Roraima	0.0567	0.1262
7	Tocantins	-0.0561	0.0009
8	Alagoas	-0.0349	-0.0303
9	Bahia	-0.0271	-0.0230
10	Ceará	-0.0496	-0.0471
11	Maranhão	-0.0503	-0.0473
12	Paraíba	-0.0403	-0.0331
13	Pernambuco	-0.0376	-0.0349
14	Piauí	-0.0247	-0.0241
15	Sergipe	-0.0418	-0.0011
16	Rio Grande do Norte	-0.0704	-0.0640
17	Distrito Federal	-0.0987	-0.0902
18	Goiás	0.0005	0.0031
19	Mato Grosso	0.0294	0.0298
20	Mato Grosso do Sul	0.0000	0.0040
21	Espírito Santo	0.0023	0.0048
22	Minas Gerais	0.0164	0.0195
23	Rio de Janeiro	-0.0649	-0.0504
24	São Paulo	0.0101	0.0162
25	Paraná	-0.0129	-0.0086
26	Santa Catarina	0.0101	0.0147
27	Rio Grande do Sul	-0.0173	-0.0135
	Brazil	-0.0083	-0.0038

Table 14 - Simulation 03: sensitivity analysis concerning the regional and international elasticities of substitution, real GDP (% change)

Order	States	Lower Limit	Upper Limit
1	Acre	0.0439	0.0937
2	Amapá	0.0416	0.0637
3	Amazonas	-1.0394	-0.6363
4	Pará	-0.1432	-0.0469
5	Rondônia	0.1219	0.2377
6	Roraima	-0.1082	-0.0255
7	Tocantins	0.5827	0.9294
8	Alagoas	0.0427	0.0499
9	Bahia	0.0049	0.0107
10	Ceará	-0.0699	-0.0590
11	Maranhão	-0.0331	-0.0236
12	Paraíba	-0.0523	-0.0356
13	Pernambuco	0.0117	0.0165
14	Piauí	-0.0168	-0.0157
15	Sergipe	-0.2726	-0.1293
16	Rio Grande do Norte	-0.1059	-0.0839
17	Distrito Federal	-0.2222	-0.2046
18	Goiás	-0.0232	-0.0184
19	Mato Grosso	0.0041	0.0068
20	Mato Grosso do Sul	-0.0069	0.0006
21	Espírito Santo	0.0579	0.0625
22	Minas Gerais	0.1273	0.1334
23	Rio de Janeiro	-0.0949	-0.0633
24	São Paulo	-0.0384	-0.0329
25	Paraná	0.0281	0.0400
26	Santa Catarina	0.0020	0.0115
27	Rio Grande do Sul	-0.0282	-0.0223
	Brazil	-0.0288	-0.0217

The sectoral results of the systematic sensitivity analysis are presented in the Table 9, 10 and 11. As can be seen, these results were relatively robust regarding the parameters used. In the Simulation 1, the reversion in the sign of the % change of the Activity Level occurred only in the Mining and Food and Beverage sectors. In the Simulation 2, the reversion occurred in the Oil Refining, Metal Products, Other Industries, Transport and Services sectors. In the Simulation 3, the reversion occurred again in the Food and Beverage sector.

The Table 12, 13 and 14 presents the regional results of the systematic sensitivity analysis. As can be seen, these results were considerably robust. In the Simulation 1, the reversion in the sign occurred only in the real GDP of the states of Tocantins and Espírito Santo. In the Simulation 2, in the states of Amapá and Pará and in the Simulation 3 in the state of Mato Grosso do Sul.

7.42 Energy sources substitution elasticities

The structure of energy substitution might change among the states and sectors. Table 15-20 presents the sectoral and regional results of the systematic sensitivity analysis regarding the energy sources substitution elasticities.

Table 15 – Simulation 1: sensitivity analysis concerning the energy composite elasticity of substitution, activity level (% change)

Order	Sectors	Lower Limit	Upper Limit
1	Agriculture and Livestock	0.0277	0.0286
2	Mining (Oil and Gas)	-0.0314	-0.0264
3	Mining (Ore, Coal and Other Minerals)	-0.0057	-0.0047
4	Food and Beverage	0.0001	0.0009
5	Textile	-0.0263	-0.0249
6	Paper and Pulp	-0.0099	-0.0084
7	Oil Refining	-0.0025	0.0016
8	Ethanol	-0.0079	-0.0066
9	Chemical, Rubber and Plastic	-0.0220	-0.0205
10	Cement	-0.0300	-0.0295
11	Ceramic and Glass	-0.0281	-0.0271
12	Metallurgy of Steel and Iron	-0.0268	-0.0261
13	Metallurgy of Aluminum and Cooper	-0.0158	-0.0147
14	Metal Products	-0.0221	-0.0206
15	Other Industries	-0.0129	-0.0115
16	Electric Power – Hydro	-0.1184	-0.1121
17	Electric Power - Thermo Fuel Oil	-0.0970	-0.0928
18	Electric Power - Thermo Coal	-0.1724	-0.1641
19	Electric Power - Thermo Diesel	-0.1519	-0.1444
20	Electric Power - Thermo - Natural Gas	-0.1227	-0.1172
21	Electric Power - Thermo - Sugar Cane Biomass	-0.0917	-0.0857
22	Electric Power - Thermo Other Sources	-0.0732	-0.0699
23	Utility – Electric Power Distribution	-0.1397	-0.1317
24	Utility - Gas Distribution	0.0137	0.0205
25	Utility -Water distribution and Sanitation	-0.0116	-0.0110
26	Construction	-0.0224	-0.0217
27	Domestic Trade	-0.0068	-0.0064
28	Transport Services	-0.0096	-0.0090
29	Services	-0.0106	-0.0098
30	Public	-0.0177	-0.0173
	Brazil	-0.0093	-0.0170

Table 16 – Simulation 2: sensitivity analysis concerning the energy composite elasticity of substitution, activity level (% change)

Order	Sectors	Lower Limit	Upper Limit
1	Agriculture and Livestock	0.0211	0.0211
2	Mining (Oil and Gas)	-0.0383	-0.0380
3	Mining (Ore, Coal and Other Minerals)	-0.0124	-0.0124
4	Food and Beverage	0.0041	0.0041
5	Textile	-0.0148	-0.0148
6	Paper and Pulp	0.0039	0.0040
7	Oil Refining	-0.0014	-0.0011
8	Ethanol	0.0038	0.0038
9	Chemical, Rubber and Plastic	-0.0070	-0.0070
10	Cement	-0.0242	-0.0242
11	Ceramic and Glass	-0.0154	-0.0154
12	Metallurgy of Steel and Iron	-0.0172	-0.0172
13	Metallurgy of Aluminum and Cooper	-0.0105	-0.0105
14	Metal Products	-0.0042	-0.0042
15	Other Industries	0.0027	0.0027
16	Electric Power – Hydro	-0.0992	-0.0988
17	Electric Power - Thermo Fuel Oil	-0.0797	-0.0794
18	Electric Power - Thermo Coal	-0.1435	-0.1429
19	Electric Power - Thermo Diesel	-0.1331	-0.1327
20	Electric Power - Thermo - Natural Gas	-0.1051	-0.1047
21	Electric Power - Thermo - Sugar Cane Biomass	-0.0713	-0.0709
22	Electric Power - Thermo Other Sources	-0.0636	-0.0633
23	Utility – Electric Power Distribution	-0.1162	-0.1156
24	Utility - Gas Distribution	0.0183	0.0189
25	Utility -Water distribution and Sanitation	-0.0028	-0.0028
26	Construction	-0.0133	-0.0133
27	Domestic Trade	-0.0040	-0.0040
28	Transport Services	-0.0008	-0.0008
29	Services	0.0003	0.0003
30	Public	-0.0109	-0.0109
	Brazil	-0.0056	-0.0055

Table 17 – Simulation 3: sensitivity analysis concerning the energy composite elasticity of substitution, activity level (% change)

Order	Sectors	Lower Limit	Upper Limit
1	Agriculture and Livestock	0.0842	0.0844
2	Mining (Oil and Gas)	-0.0751	-0.0737
3	Mining (Ore, Coal and Other Minerals)	-0.0071	-0.0069
4	Food and Beverage	-0.0002	0.0000
5	Textile	-0.0157	-0.0153
6	Paper and Pulp	-0.0203	-0.0200
7	Oil Refining	-0.0301	-0.0290
8	Ethanol	-0.0125	-0.0122
9	Chemical, Rubber and Plastic	-0.0307	-0.0304
10	Cement	-0.0422	-0.0420
11	Ceramic and Glass	-0.0329	-0.0326
12	Metallurgy of Steel and Iron	-0.0226	-0.0224
13	Metallurgy of Aluminum and Cooper	-0.0543	-0.0541
14	Metal Products	-0.0434	-0.0431
15	Other Industries	-0.0432	-0.0429
16	Electric Power – Hydro	-0.1069	-0.1049
17	Electric Power - Thermo Fuel Oil	-0.1040	-0.1029
18	Electric Power - Thermo Coal	-0.1713	-0.1690
19	Electric Power - Thermo Diesel	-0.1687	-0.1673
20	Electric Power - Thermo - Natural Gas	-0.1247	-0.1229
21	Electric Power - Thermo - Sugar Cane Biomass	-0.0769	-0.0754
22	Electric Power - Thermo Other Sources	-0.0688	-0.0677
23	Utility – Electric Power Distribution	-0.1283	-0.1260
24	Utility - Gas Distribution	0.0063	0.0093
25	Utility -Water distribution and Sanitation	-0.0174	-0.0173
26	Construction	-0.0317	-0.0315
27	Domestic Trade	-0.0214	-0.0214
28	Transport Services	-0.0326	-0.0326
29	Services	-0.0264	-0.0262
30	Public	-0.0369	-0.0368
	Brazil	-0.0246	-0.0230

Table 18 – Simulation 1: sensitivity analysis concerning the energy composite elasticity of substitution, real GDP (% change)

Order	States	Lower Limit	Upper Limit
1	Acre	0.0394	0.0447
2	Amapá	-0.0124	-0.0106
3	Amazonas	0.0799	0.0970
4	Pará	0.0919	0.0977
5	Rondônia	0.0154	0.0232
6	Roraima	0.0099	0.0166
7	Tocantins	0.0785	0.0847
8	Alagoas	-0.0242	-0.0235
9	Bahia	-0.0217	-0.0207
10	Ceará	-0.0500	-0.0484
11	Maranhão	-0.0545	-0.0536
12	Paraíba	-0.0426	-0.0410
13	Pernambuco	-0.0314	-0.0307
14	Piauí	-0.0299	-0.0293
15	Sergipe	0.0043	0.0109
16	Rio Grande do Norte	-0.0684	-0.0652
17	Distrito Federal	-0.1133	-0.1115
18	Goiás	0.0053	0.0059
19	Mato Grosso	0.0170	0.0184
20	Mato Grosso do Sul	-0.0103	-0.0087
21	Espírito Santo	-0.0089	-0.0072
22	Minas Gerais	-0.0001	0.0012
23	Rio de Janeiro	-0.0369	-0.0302
24	São Paulo	-0.0207	-0.0164
25	Paraná	0.0163	0.0197
26	Santa Catarina	-0.0028	-0.0001
27	Rio Grande do Sul	-0.0178	-0.0160
	Brazil	-0.0099	-0.0181

Table 19 – sensitivity analysis concerning the energy composite elasticity of substitution, real GDP (% change)

Order	States	Lower Limit	Upper Limit
1	Acre	0.0612	0.0612
2	Amapá	0.0015	0.0015
3	Amazonas	0.3065	0.3072
4	Pará	0.0166	0.0167
5	Rondônia	-0.2085	-0.2084
6	Roraima	0.0905	0.0906
7	Tocantins	-0.0289	-0.0289
8	Alagoas	-0.0327	-0.0327
9	Bahia	-0.0252	-0.0252
10	Ceará	-0.0478	-0.0478
11	Maranhão	-0.0489	-0.0489
12	Paraíba	-0.0364	-0.0364
13	Pernambuco	-0.0364	-0.0364
14	Piauí	-0.0245	-0.0245
15	Sergipe	-0.0228	-0.0228
16	Rio Grande do Norte	-0.0651	-0.0650
17	Distrito Federal	-0.0929	-0.0929
18	Goiás	0.0017	0.0017
19	Mato Grosso	0.0296	0.0297
20	Mato Grosso do Sul	0.0019	0.0020
21	Espírito Santo	0.0034	0.0035
22	Minas Gerais	0.0179	0.0180
23	Rio de Janeiro	-0.0592	-0.0588
24	São Paulo	0.0139	0.0140
25	Paraná	-0.0113	-0.0113
26	Santa Catarina	0.0123	0.0124
27	Rio Grande do Sul	-0.0155	-0.0155
	Brazil	-0.0060	-0.0060

Table 20 – sensitivity analysis concerning the energy composite elasticity of substitution, real GDP (% change)

Order	States	Lower Limit	Upper Limit
1	Acre	0.0681	0.0699
2	Amapá	0.0525	0.0529
3	Amazonas	-0.8388	-0.8372
4	Pará	-0.0963	-0.0953
5	Rondônia	0.1758	0.1771
6	Roraima	-0.0669	-0.0660
7	Tocantins	0.7519	0.7523
8	Alagoas	0.0461	0.0462
9	Bahia	0.0076	0.0077
10	Ceará	-0.0647	-0.0646
11	Maranhão	-0.0286	-0.0285
12	Paraíba	-0.0443	-0.0441
13	Pernambuco	0.0139	0.0140
14	Piauí	-0.0163	-0.0162
15	Sergipe	-0.2018	-0.2002
16	Rio Grande do Norte	-0.0954	-0.0950
17	Distrito Federal	-0.2139	-0.2135
18	Goiás	-0.0209	-0.0208
19	Mato Grosso	0.0053	0.0055
20	Mato Grosso do Sul	-0.0034	-0.0029
21	Espírito Santo	0.0599	0.0603
22	Minas Gerais	0.1298	0.1306
23	Rio de Janeiro	-0.0799	-0.0782
24	São Paulo	-0.0362	-0.0351
25	Paraná	0.0335	0.0343
26	Santa Catarina	0.0063	0.0071
27	Rio Grande do Sul	-0.0255	-0.0251
	Brazil	-0.0260	-0.0244

The sectoral results presented in the Tables 15, 16 and 17 were robust. The reversion in the sign occurred only in the Oil Refining sector in the Simulation 1 and Food and Beverage in the Simulation 3. The Oil Refining sector composes the energy composite in the energy substitution structure. Its sensitivity to the value of the parameter used in the simulation suggests two recommendations: the value of the parameters might not be appropriated, and the inclusion of this sector in the substitution structure must be revised. Regarding the Food and Beverage sector, which is little concentrated in the national territory, the result suggest the other energy sources used to fire activities such as wood or biomass, for example, need to be considered in the future researches with the model.

The regional results are presented in the Tables 18, 19 and 20 and also showed to be robust. Only in the state of Minas Gerais, in the Simulation 1, occurred the reversion in the sigh of the %

change in the real GDP. This state has large participation in the national production of energy-intensive products. The result reinforces the indication to review the inclusion of the Oil Refining sector in the energy substitution structure.

7.43 Electric power sources substitution elasticities

Tables 21-26 present the results of systematic sensitivity analysis for this set of parameters.

Table 21 – Simulation 1: sensitivity analysis concerning electric power sources elasticity of substitution, activity level (% change)

Order	Sectors	Lower Limit	Upper Limit
1	Agriculture and Livestock	0.0281	0.0282
2	Mining (Oil and Gas)	-0.0296	-0.0282
3	Mining (Ore, Coal and Other Minerals)	-0.0055	-0.0048
4	Food and Beverage	0.0004	0.0006
5	Textile	-0.0260	-0.0253
6	Paper and Pulp	-0.0094	-0.0088
7	Oil Refining	-0.0005	-0.0004
8	Ethanol	-0.0076	-0.0069
9	Chemical, Rubber and Plastic	-0.0216	-0.0209
10	Cement	-0.0298	-0.0296
11	Ceramic and Glass	-0.0278	-0.0274
12	Metallurgy of Steel and Iron	-0.0265	-0.0264
13	Metallurgy of Aluminum and Cooper	-0.0153	-0.0152
14	Metal Products	-0.0217	-0.0211
15	Other Industries	-0.0124	-0.0119
16	Electric Power – Hydro	-0.1159	-0.1146
17	Electric Power - Thermo Fuel Oil	-0.0990	-0.0909
18	Electric Power - Thermo Coal	-0.1761	-0.1603
19	Electric Power - Thermo Diesel	-0.1584	-0.1379
20	Electric Power - Thermo - Natural Gas	-0.1255	-0.1144
21	Electric Power - Thermo - Sugar Cane Biomass	-0.0915	-0.0859
22	Electric Power - Thermo Other Sources	-0.0737	-0.0694
23	Utility – Electric Power Distribution	-0.1358	-0.1356
24	Utility - Gas Distribution	0.0169	0.0173
25	Utility -Water distribution and Sanitation	-0.0115	-0.0112
26	Construction	-0.0221	-0.0220
27	Domestic Trade	-0.0067	-0.0066
28	Transport Services	-0.0093	-0.0093
29	Services	-0.0103	-0.0101
30	Public	-0.0176	-0.0175
	Brazil	-0.0141	-0.0122

Table 22– Table 21 – Simulation 1: sensitivity analysis concerning electric power sources elasticity of substitution, activity level (% change)

Order	Sectors	Lower Limit	Upper Limit
1	Agriculture and Livestock	0.0211	0.0211
2	Mining (Oil and Gas)	-0.0385	-0.0378
3	Mining (Ore, Coal and Other Minerals)	-0.0126	-0.0122
4	Food and Beverage	0.0040	0.0042
5	Textile	-0.0150	-0.0146
6	Paper and Pulp	0.0037	0.0042
7	Oil Refining	-0.0013	-0.0012
8	Ethanol	0.0035	0.0040
9	Chemical, Rubber and Plastic	-0.0072	-0.0068
10	Cement	-0.0242	-0.0242
11	Ceramic and Glass	-0.0155	-0.0152
12	Metallurgy of Steel and Iron	-0.0172	-0.0171
13	Metallurgy of Aluminum and Cooper	-0.0105	-0.0105
14	Metal Products	-0.0044	-0.0039
15	Other Industries	0.0025	0.0029
16	Electric Power – Hydro	-0.0994	-0.0986
17	Electric Power - Thermo Fuel Oil	-0.0818	-0.0772
18	Electric Power - Thermo Coal	-0.1463	-0.1400
19	Electric Power - Thermo Diesel	-0.1376	-0.1282
20	Electric Power - Thermo - Natural Gas	-0.1076	-0.1021
21	Electric Power - Thermo - Sugar Cane Biomass	-0.0723	-0.0699
22	Electric Power - Thermo Other Sources	-0.0647	-0.0622
23	Utility – Electric Power Distribution	-0.1159	-0.1159
24	Utility - Gas Distribution	0.0185	0.0187
25	Utility -Water distribution and Sanitation	-0.0029	-0.0027
26	Construction	-0.0134	-0.0132
27	Domestic Trade	-0.0041	-0.0040
28	Transport Services	-0.0009	-0.0008
29	Services	0.0002	0.0004
30	Public	-0.0109	-0.0108
	Brazil	-0.0063	-0.0061

Table 3 – Simulation 3: sensitivity analysis concerning electric power sources elasticity of substitution, activity level (% change)

Order	Sectors	Lower Limit	Upper Limit
1	Agriculture and Livestock	-0.0157	-0.0153
2	Mining (Oil and Gas)	-0.0202	-0.0201
3	Mining (Ore, Coal and Other Minerals)	-0.0299	-0.0292
4	Food and Beverage	-0.0124	-0.0123
5	Textile	-0.0305	-0.0305
6	Paper and Pulp	-0.0423	-0.0419
7	Oil Refining	-0.0328	-0.0327
8	Ethanol	-0.0227	-0.0223
9	Chemical, Rubber and Plastic	-0.0542	-0.0541
10	Cement	-0.0434	-0.0432
11	Ceramic and Glass	-0.0431	-0.0429
12	Metallurgy of Steel and Iron	-0.1062	-0.1056
13	Metallurgy of Aluminum and Cooper	-0.1064	-0.1005
14	Metal Products	-0.1750	-0.1653
15	Other Industries	-0.1754	-0.1606
16	Electric Power – Hydro	-0.1276	-0.1199
17	Electric Power - Thermo Fuel Oil	-0.0774	-0.0749
18	Electric Power - Thermo Coal	-0.0696	-0.0669
19	Electric Power - Thermo Diesel	-0.1273	-0.1270
20	Electric Power - Thermo - Natural Gas	0.0078	0.0078
21	Electric Power - Thermo - Sugar Cane Biomass	-0.0174	-0.0173
22	Electric Power - Thermo Other Sources	-0.0317	-0.0315
23	Utility – Electric Power Distribution	-0.0215	-0.0213
24	Utility - Gas Distribution	-0.0328	-0.0324
25	Utility -Water distribution and Sanitation	-0.0263	-0.0262
26	Construction	-0.0369	-0.0367
27	Domestic Trade	-0.0157	-0.0153
28	Transport Services	-0.0202	-0.0201
29	Services	-0.0299	-0.0292
30	Public	-0.0124	-0.0123
	Brazil	-0.0239	-0.0237

Table 4 – Simulation 1: sensitivity analysis concerning electric power sources elasticity of substitution, real GDP (% change)

Order	States	Lower Limit	Upper Limit
1	Acre	0.0417	0.0423
2	Amapá	-0.0119	-0.0112
3	Amazonas	0.0874	0.0895
4	Pará	0.0934	0.0963
5	Rondônia	0.0182	0.0205
6	Roraima	0.0127	0.0138
7	Tocantins	0.0796	0.0837
8	Alagoas	-0.0239	-0.0238
9	Bahia	-0.0213	-0.0210
10	Ceará	-0.0502	-0.0482
11	Maranhão	-0.0543	-0.0539
12	Paraíba	-0.0422	-0.0415
13	Pernambuco	-0.0311	-0.0309
14	Piauí	-0.0296	-0.0296
15	Sergipe	0.0056	0.0096
16	Rio Grande do Norte	-0.0689	-0.0647
17	Distrito Federal	-0.1127	-0.1122
18	Goiás	0.0055	0.0056
19	Mato Grosso	0.0176	0.0178
20	Mato Grosso do Sul	-0.0096	-0.0094
21	Espírito Santo	-0.0081	-0.0079
22	Minas Gerais	0.0004	0.0007
23	Rio de Janeiro	-0.0350	-0.0321
24	São Paulo	-0.0195	-0.0176
25	Paraná	0.0179	0.0181
26	Santa Catarina	-0.0015	-0.0013
27	Rio Grande do Sul	-0.0170	-0.0168
	Brazil	-0.0149	-0.0131

Table 5 – Simulation 2: sensitivity analysis concerning electric power sources elasticity of substitution, real GDP (% change)

Order	States	Lower Limit	Upper Limit
1	Acre	0.0607	0.0618
2	Amapá	0.0012	0.0018
3	Amazonas	0.3055	0.3082
4	Pará	0.0157	0.0177
5	Rondônia	-0.2095	-0.2075
6	Roraima	0.0895	0.0916
7	Tocantins	-0.0292	-0.0287
8	Alagoas	-0.0328	-0.0327
9	Bahia	-0.0253	-0.0251
10	Ceará	-0.0481	-0.0475
11	Maranhão	-0.0490	-0.0488
12	Paraíba	-0.0364	-0.0364
13	Pernambuco	-0.0365	-0.0364
14	Piauí	-0.0245	-0.0245
15	Sergipe	-0.0242	-0.0214
16	Rio Grande do Norte	-0.0657	-0.0644
17	Distrito Federal	-0.0929	-0.0929
18	Goiás	0.0017	0.0017
19	Mato Grosso	0.0296	0.0298
20	Mato Grosso do Sul	0.0018	0.0020
21	Espírito Santo	0.0034	0.0035
22	Minas Gerais	0.0179	0.0180
23	Rio de Janeiro	-0.0597	-0.0583
24	São Paulo	0.0133	0.0146
25	Paraná	-0.0113	-0.0113
26	Santa Catarina	0.0122	0.0125
27	Rio Grande do Sul	-0.0156	-0.0154
	Brazil	-0.0067	-0.0065

Table 6 – Simulation 3: sensitivity analysis concerning electric power sources elasticity of substitution, real GDP (% change)

Order	States	Lower Limit	Upper Limit
1	Acre	0.0682	0.0700
2	Amapá	0.0525	0.0529
3	Amazonas	-0.8451	-0.8309
4	Pará	-0.0965	-0.0951
5	Rondônia	0.1752	0.1777
6	Roraima	-0.0691	-0.0638
7	Tocantins	0.7494	0.7548
8	Alagoas	0.0460	0.0462
9	Bahia	0.0076	0.0076
10	Ceará	-0.0653	-0.0639
11	Maranhão	-0.0285	-0.0285
12	Paraíba	-0.0447	-0.0436
13	Pernambuco	0.0140	0.0140
14	Piauí	-0.0163	-0.0163
15	Sergipe	-0.2013	-0.2007
16	Rio Grande do Norte	-0.0967	-0.0937
17	Distrito Federal	-0.2140	-0.2134
18	Goiás	-0.0209	-0.0208
19	Mato Grosso	0.0054	0.0054
20	Mato Grosso do Sul	-0.0032	-0.0031
21	Espírito Santo	0.0600	0.0602
22	Minas Gerais	0.1302	0.1303
23	Rio de Janeiro	-0.0805	-0.0777
24	São Paulo	-0.0361	-0.0351
25	Paraná	0.0337	0.0342
26	Santa Catarina	0.0066	0.0068
27	Rio Grande do Sul	-0.0254	-0.0252
		-0.0252	-0.0250

Similarly to the energy sources substitution, the elasticities of substitution among electric power sources might vary among sectors and regions. As can be seen, the sectoral and regional results were robust. The inversion in the sign of activity level and real GDP occurred in none of the simulations.

At the end of the systematic sensitivity analysis, it might be concluded that the results of the model are relatively robust. However it must be remarked that the Armington elasticities need to be reviewed. In addition, the conservative values for the parameter of energy and electric power sources substitution used in the simulations could have influenced the results. This suggests the necessity of future studies about energy substitution in Brazil. On the other hand, the sensitivity analysis also showed that the results of the models were more sensitive to international and

regional trade elasticities than to energy substitution parameters. This finding could justify the importance of the use of ICGE for energy policy analysis in Brazil.

8. Final Remarks

The objective of this paper was to evaluate the long-run regional impacts of tariff policy of Brazilian electric power sector. From 1995 to 2008, there were two different trends of spatial distribution of electric power tariff among the Brazilian states, one of convergence and another of spatial divergence. The former were guided by the elimination of tariff distortions, and the latter by the electric power tariff policy based on the price-cap method. In the search for theoretical elements to support energy studies in the Regional Science field, the relation between energy and location of economic activity was considered. The recent theoretical advances in the NEG, which allows considering the vertical linkages and the factor mobility to explain agglomeration economies, seems to fit to the empirical problem presented. Furthermore, an ICGE model was designed and calibrated to evaluate energy policy issues in the Brazilian economy. Three simulations were carried using this model.

The results of the Simulation 1 showed that the model provides good numerical representations of the theoretical causalities expressed in the system of equations. The macroeconomic results revealed that in the long-run a uniform increase of 1.0% in the electric power prices in Brazil had negative impacts on income and welfare in the long-run. At the sectoral level, energy and energy-intensive sectors were the most affected. The Natural Gas and Oil Refining sectors, which compete with electric power, presented good performance in the simulations. On the other hand, the low electric-power-intensity and the capital mobility determine the shift of production to agriculture and food sectors. The regional results showed that the most affected regions were the poorest, with the highest electric-power-intensity and weak possibilities of energy substitution. Despite the high concentration of energy intensive sectors in the Center-South, the low electric-power-intensity and better possibilities of energy substitution in this region resulted in positive relative returns that attracted capital and improved the real GDP in same states. The contrary effects occurred in the Northeast region.

The Simulation 2 showed that the patterns of spatial evolution of tariff increasing from 1995 to 2004 resulted in negative macroeconomic impacts less intensives on the economy than those from Simulation 1. Although the Center-west and Center-South regions had higher electric power tariff increases during the process of the tariff convergence, the most negative results were not concentrated in these regions. In some states of these regions the results were positive. Low electric-power-intensity and better conditions of energy substitution might explain this result. At the sectoral level, the higher activity level in the Oil Refining and Natural Gas Utility Distribution reinforce the importance of energy substitution process for the results. On the other hand, the Northeast regions continued to present negative effects.

Finally, the Simulation 3 showed that the pattern of spatial evolution of tariff increasing from 2004 to 2008 resulted in the strongest negative macroeconomic impacts on the Brazilian economy. The tariff policy which distributes productivity gains to final consumers still is not resulting positive results for the economy as a whole. The highest tariffs increasing in the North

and Northeast regions in the period determined that these two regions were the most affected. The higher electric-power-intensity and minor possibilities of energy substitution in these regions make that negative impacts had been transmitted to other regions through trade flows. In addition, the strongest declining in the real GDP of the state of São Paulo must be highlighted. The dependence of the Brazilian regions regarding this state, and *vice versa*, seems to be an important determinant of the regional impacts. For this reason, the qualitative and quantitative analysis is strongly sensitive to regional trade elasticities.

The final result of the research was that higher electric power tariffs increasing in the regions with higher electric-power-intensity and minor possibilities of energy substitution generate the most negative impacts on the economy. The negative impacts might overcome the positive impacts of the transference of productivity gains to final consumer in the most developed regions. For this reason, the recent trend of spatial evolution of electric power tariffs might bring strong negative impacts on the economy and contributes to increase the regional inequalities. Regarding the results of the sensitivity analysis, besides the revision of Armington elasticities, the introduction of the Oil Refining sector in the energy substitution structure needs to be reevaluated. On the other hand, the results of the model were more sensitive to Armington elasticities than to energy substitution elasticities. This finding justifies the importance of the ICGE models to incorporate spatial elements for the energy policy analysis in Brazil.

Future extensions of this research can be focused on the structure of energy substitution in Brazil and estimation of the respective key parameters of energy substitution. In addition, concerning the electric power tariffs differentials among the Brazilian regions, the evaluation of the impacts of the taxes differentials among the states could be evaluated. This subject has been discussed in Brazil because of the state policy of taxes increasing on goods with inelastic demand, such electric power.

References

ADAMS, Philip *et al.* **MMRF-GREEN: a dynamic multi-regional applied general equilibrium model of the Australian economy, based on the MMR and Monash models. Working Paper.** Centre of Policy Studies/IMPACT Centre: Monash University, n. g-140, 2003. Disponível em:< www.monash.edu.au/policy>.

AGÊNCIA NACIONAL DE ENERGIA ELÉTRICA – ANEEL. **Consumo setorial de energia elétrica.** Brasília, 2009.

AZZONI, Carlos Roberto. *Economic growth and regional income inequality in Brazil.* **The Annals of Regional Science.** German, v. 35, n. 1, p. 133-152, 2001.

BALDWIN, Richard *et al.* ***Economic geography and public policy***. USA: Princeton University Press, 2003.

BALDWIN, Richard; Venables, Anthony. *Regional economic integration*. In: GROSSMANN, Gene; ROGOFF, Kenneth (Org). ***Handbook of international economics - v. 3***. Amsterdam : Elsevier, 1995.

DIXON, Peter *et al.* ***Notes and problem in applied general equilibrium economics***. North-Holland: Amsterdam, 1992.

DIXON, Peter *et al.* ***ORANI, a multi-sectoral model of the australian economy***. North-Holland: Amsterdam, 1982.

DIXON, Peter; RIMMER, Maureen. ***Dynamic general equilibrium modeling for forecasting and policy: a practical guide and documentation of MONASH***. North-Holland: Amsterdam, 2002.

FAINI, Riccardo. *Increasing returns, non-traded inputs and regional development*. ***Economic Journal***. v. 94, n. 374, p. 308–323, 1984.

FUJITA Masahisa *et al.* ***The spatial economy: cities, regions, and international trade***. USA: MIT Press, 1999.

GUILHOTO, Joaquim José Martins. ***Matriz interestadual de insumo-produto 2004***. São Paulo, Universidade de São Paulo, Instituto de Pesquisas Econômicas.

HADDAD, Eduardo Amaral *et al.* *Avaliação dos impactos econômicos das políticas de infraestrutura de transportes no Brasil: uma aplicação a duas rodovias federais em Minas Gerais*. ***Cadernos BDMG***. n. 16, 2008.

HADDAD, Eduardo Amaral. ***Regional inequality and structural changes: lessons from the Brazilian Economy***. Ashgate: Aldershot, 1999.

HADDAD, Eduardo Amaral. ***Retornos crescentes, custos de transporte e crescimento regional***. São Paulo, 2004. Tese (Livre Docência), Faculdade de Economia Administração e Contabilidade da Universidade de São Paulo.

HANOCH, Giora. *CRESH production functions*. ***Econometrica***. USA, v. 39, n. 5, p. 695–712, 1971.

HARRISON, Jill; PEARSON, Ken. *An introduction to GEMPACK*. ***GEMPACK user documentation GPD-1***. Australia: IMPACT Project and KPSOFT Monash University, 1996.

HINCHY, Michael; HANSLOW, Kevin. *The MEGABARE model: interim documentation*. Australian Bureau of Agricultural and Resource Economics, 1996. Disponível em: <<http://www.abareconomics.com>>.

INSTITUTO BRASILEIRO DE GEOGRAFIA E ESTATÍSTICA – IBGE. **Sistemas de Contas Nacionais: Brasil, 2004**. Rio de Janeiro, 2008.

KRUGMAM, Paul. *Increasing returns and economic geography*. **Journal of Political Economy**. v. 99, n. 3, p. 483-99, 1991

KRUGMAM, Paul. *Scale economies, product differentiation, and the pattern of trade*. **American Economic Review** v. 70, n. 5, p. 950-59, 1980.

KRUGMAM, Paul. VENABLES, Anthony. *Integration, specialization, and adjustment*. **European economic review**. v. 40, n. 3-5, p. 959-968, 1996.

LAKSHMANAN, Tiruvarur. *Regional growth and energy determinants: implications for the future*. **Energy Journal**. v. 2, n. 2, p. 1-24, 1981.

LAKSHMANAN, Tiruvarur; BOLTON, Roger. *Regional energy and environmental analysis*. In: NIJKAMP, Peter (Org). **Handbook of Regional and Urban Economics – v. 1**. North Holland, p. 581-628, 1986.

MIERNYK, William. *Rising energy prices and regional economic development*. **Growth and Change**. v. 8, n. 3, p. 2-7, 1977.

MIERNYK, William. *Some regional impacts of the rising costs of energy*. **Papers in Regional Science Association**. v. 37, n. 1, p. 213-227, 1976.

NIJKAMP, Peter. *Energy problems and regional development: editorial note*. **Regional Science and Urban Economics**. v. 10, n. 3, 299-301, 1980.

NIJKAMP, Peter. *Regional dimensions of energy scarcity*. **Environment and Planning C: Government and Policy**. v. 1, n. 2, p. 179 – 192, 1983.

NIJKAMP, Peter; PARRELS, Adriaan. *Impacts of electricity rates on industrial location*, **Energy Economics**. v. 10, n. 2, p. 107-116, 1988.

OPERADOR NACIONAL DO SISTEMA - ONS. Rio de Janeiro, 2009. Disponível em: <<http://www.ons.org.br>>. Acesso em: 20/03/2009.

OTTAVIANO, Gianmarco; ROBERT-NICOUD, Frédéric. *The 'genome' of NEG models with vertical linkages: a positive and normative synthesis*. **Journal of Economic Geography**. Oxford University Press, v. 6, n. 2, p.113-139, 2005.

RAMOS-REAL, Francisco Javier *et al.* *The evolution and main determinants of productivity in Brazilian electricity distribution 1998-2005: an empirical analysis*. **Energy Economics**. v. 31, n. 2, p. 298-305, 2009.

ROBERT-NICOUD, Frédéric. *The structure of simple 'New Economic Geography' models (Or, on identical twins)*. **Journal of Economic Geography**. v. 5, n. 2, p. 201-234, 2004.

SALES, Julio César Ferreira. **Avaliação do processo de revisão tarifária periódica das concessionárias de distribuição de energia elétrica no Brasil**. Campinas, 2009. Dissertação (Mestrado). Programa de Pós-Graduação da Faculdade de Engenharia Mecânica, Planejamento de Sistemas Energéticos, Universidade de Campinas.

SANTOS, Gervásio Ferreira *et al.* 2009. Spatial interactions between energy and energy-intensive sectors in the Brazilian economy: a field of influence approach. **17ª Conferência Internacional Input-Output**, University of São Paulo, Brasil.

SANTOS, Gervásio Ferreira. **Política energética e desigualdades regionais na economia brasileira. São Paulo, 2010**. Tese (Doutorado em Economia) – Programa de Pós-Graduação em Economia, Faculdade de Economia Administração e Contabilidade da Universidade de São Paulo.

SANTOS, Gervásio Ferreira. Energy Policy and Spatial Economy: do energy transport costs matter? 56th Annual North American Meetings of the Regional Science Association International, New York, 2008.

TOVAR, Beatriz. *et al.* **Productivity evolution and scale effects in Brazilian electricity distribution industry: evidence from 1998-2005 period**. Fundación de Estudios de Economía Aplicada, 2009. Disponível em: <<http://www.fedea.es>>.

VENABLES, Anthony J (1996). Equilibrium locations of vertically linked industries. **International Economic Review**, 37(2), 341-360.