

Photis, Yorgos; Tsobanoglou, Stelios

Conference Paper

Residential Concentration Pattern Analysis and of Urban Cluster Dynamics Assessment.

46th Congress of the European Regional Science Association: "Enlargement, Southern Europe and the Mediterranean", August 30th - September 3rd, 2006, Volos, Greece

Provided in Cooperation with:

European Regional Science Association (ERSA)

Suggested Citation: Photis, Yorgos; Tsobanoglou, Stelios (2006) : Residential Concentration Pattern Analysis and of Urban Cluster Dynamics Assessment., 46th Congress of the European Regional Science Association: "Enlargement, Southern Europe and the Mediterranean", August 30th - September 3rd, 2006, Volos, Greece, European Regional Science Association (ERSA), Louvain-la-Neuve

This Version is available at:

<https://hdl.handle.net/10419/118571>

Standard-Nutzungsbedingungen:

Die Dokumente auf EconStor dürfen zu eigenen wissenschaftlichen Zwecken und zum Privatgebrauch gespeichert und kopiert werden.

Sie dürfen die Dokumente nicht für öffentliche oder kommerzielle Zwecke vervielfältigen, öffentlich ausstellen, öffentlich zugänglich machen, vertreiben oder anderweitig nutzen.

Sofern die Verfasser die Dokumente unter Open-Content-Lizenzen (insbesondere CC-Lizenzen) zur Verfügung gestellt haben sollten, gelten abweichend von diesen Nutzungsbedingungen die in der dort genannten Lizenz gewährten Nutzungsrechte.

Terms of use:

Documents in EconStor may be saved and copied for your personal and scholarly purposes.

You are not to copy documents for public or commercial purposes, to exhibit the documents publicly, to make them publicly available on the internet, or to distribute or otherwise use the documents in public.

If the documents have been made available under an Open Content Licence (especially Creative Commons Licences), you may exercise further usage rights as specified in the indicated licence.

Residential concentration pattern analysis of Urban cluster dynamics assessment

Stelios Tsobanoglou¹, Yorgos N. Photis²

¹PhD Candidate, Department of Urban Planning and Regional Development, Laboratory for Spatial Analysis, GIS and Thematic Planning, University of Thessaly, Pedion Areos, Volos, Greece, tel: +302421074426, fax: +302421074382

² Assistant Professor, Department of Urban Planning and Regional Development, Laboratory for Spatial Analysis, GIS and Thematic Planning, University of Thessaly, Pedion Areos, Volos, Greece, tel: +302421074418, fax: +302421074382

ABSTRACT

The main aim of this paper is the definition of a methodological framework for the determination, analysis and cross-evaluation of urban clusters which are formulated within wider study areas, such as administrative regions. To this end, different methods and techniques are utilised, that stem from the fields of Statistics and Quantitative Spatial Analysis and which during the last years are all the more commonly applied to the different stages of Geographical Analysis. The definition of urban clusters is mainly based on different types of variables such as the demographic characteristics of the cities, the number of public facilities located in them, as well as the total length of the different types of road network in the study area. Furthermore a comparative indicator of spatial concentration is formulated that reflects the role and the relative weight of every urban area in the study region as well as its spatial influence. Such a metric, improves the definition and analysis of urban clusters and in the same time, constitutes an alternative assessment of their overall locational perspective. Both the proposed methodological framework and the formulated indicator are applied and in the region of Thessaly, Greece.

INTRODUCTION

During the last years the role of urban centres in their regions varies, depending mainly on their location and the relations with surrounding cities and settlements since through their service levels they affect the dependence of settlements in a specific distance from them and thus their further development and the region's sustainability. Such varying levels of influence and service have led during the last years to the appearance of regional inequalities and many researchers tried to interpret them through different scientific approaches. In most cases, they focused on the application of methods and techniques as well as in the formulation of models while seeking a theoretical framework. First, it was Plato's ideas (4th century BC) concerning the role of urban centres, who stated that the ideal size of cities can be calculated with mathematic models (Pangle, 1979). In the mid '60s Doxiadis (1964), defined "*cities-states*" according to distances travelled from centre to borders between sunshine and sundown, on foot. From approaches that focused on economic and social criteria Christaller (1966) formulated his Central Place Theory which was

based on supply and demand of goods and services. In a more recent work, Portnov and Erell (2001) used a location clustering indicator as a measure of relations between cities and with respect to applied regional policies.

The main aim of this paper is the definition of a methodological framework for the study of relations that are developed between settlements, the degree of influence and their interdependence, and finally for the localisation or determination of urban clusters. Since this framework is mainly based on methods and techniques of spatial analysis can constitute an important tool in the interpretation of urban totals and settlements concentrations In this objective contributes selected use of existing,.

1. THEORETIC AND EMPIRICAL APPROACHES

Operations and activities that are developed in the interior of settlements and at extension of cities, play an important role in the development of urban environment. At the same time they influence the relations of people and create various problems, while they offer important possibilities, strengthening the cities growth level. The monitoring of urban changes constitutes an important subject of research for a lot of scientific sectors aiming at the interpretation of developments that becomes in the cities.

Sustainable urban growth as *'the potential of urban areas to attract new residents while maintaining the existing'* is undoubtedly a complex phenomenon. However, this statement if followed by a set of analyses with regard to the indicators and the criteria, which place the bases for the interpretation of relation between the sustainable population growth of cities and the attributes of their locality (Portnov and Erell, 2001). Furthermore, indicators that promote growth in urban and regional planning must follow three rules: (Wong, 1995)

- 1.) Quantification of needs and opportunities that offers each geographic region or locality, for the distribution of resources.
- 2.) Placement of that terms with which can exist improvement of an area with public political intervention.
- 3.) Recognition of the most important opportunities and problems for each area as base for the determination of political objectives.

Accordingly, there are three basic categories of criteria that affect the sustainable growth of urban areas. Namely, the environment, the population and the economy which constitute the bases for sustainability control. Last years sustainability is related to a term which is used in many

academic sectors, as the astronomy, the sociology, the economy, the statistics and the geography and the regional planning and is called cluster. However the interpretations of causes and consequences of cluster in these sectors differ enough with result the existence of various types of clusters, as,

- *clustering of galaxies*, Newton (1962)
- *clustering of data*
- *clustering in social groups* (Moreno, 1953)
- *clustering of opportunities* (Fotheringham, 1991)
- *clustering of industries* (Weber, 1929)

In all these sectors the term *cluster* describes mainly the same phenomenon: ‘*a set of neighbouring objects or entities which are connected with some concrete bond, either functional or attractive*’. (Portnov and Erell, 2001). In the field of geography and regional planning the structure of clusters is reported and reflects in *urban clusters*. The effort for the interpretation of the above phenomenon began at 4 century b.C. when Platon tried to determine the ideal city-state, considering that this should be constituted from 5.040 landowners and be checked from 37 law ephors and a council of 360 (Pangle, 1979).

Later, in contradistinction to the above opinion Doxiadis (1964) concluded that sizes of cities depend on movements realised between sunshine and sundown. Thus for the median city the distance from the borders should not exceed a 4-hour walking, for a small city 1-hour and 7-hour for major cities. Three more definitions of the size of ideal city came from Richardson (1977) and Clark (1982), Howard (1985) and Haughton and Hunter (1994). Clark and Richardson correlated the ideal size with minimal cost. According to Howard, the ideal size of cities are 32.000 residents in an area of 3.000 m². Finally, according to Haughton and Hunter the ideal size of city is 100.000-250.000 residents which implies a significant economic growth. (see Table 1)

Table 1: *Empiric approaches for the determination of ideal city size*

Writer	Year	Characteristics of ideal city
Platon	4 century b.C.	5040 landowners and a council of 360
Doxiadis	1964	Three kinds of cities– states, depending on the distance that can be covered between sunshine and sundown.
Richardson, Clark	1977, 1982	The size depends on minimal cost
Howard	1985	Ideal size of 32.000 residents and 3.000 m ²
Haughton - Hunter	1994	Ideal size of 100.000-250.000 residents

However, while initially the only criteria for the determination and categorisation of urban clusters were population, area and distances travelled within their limits later on economic, social, policies even psychological characteristics were also considered.

1.1 THEORIES AND METHODS

The first consideration of the above parameters came with the introduction of central place theory by Christaller. According to this cities attract a set of facilities from which their functions and activities stem and are distinguished in the following types:

- General. Executed by the city, in order to serve the neighbouring countryside.
- Transport. Usually executed in the nodes of transport networks.
- Special. Carried out in smaller or bigger areas. To them belong mining and industrial activities.

Although these categories can be considered as important factors of urbanisation, the main role of the city is to serve its hinterland. Consequently, they are two additional criteria for the definition of central place: *critical size*, which means the minimum population that is required in order to support an urban operation and *scope*, which means the furthest distance to offer its goods or services. (Argyris, 1997)

As stated by Golany (1982) the role of urban clusters becomes important by contributing to the reduction of spatial isolation of barren regions. In this respect, clusters of cities that are scattered in barren areas can have economic profits by decreasing infrastructure and transport costs.

Another interesting formulation came from Krakover (1987) who analyzed the advantages and disadvantages of urban clusters by using statistical data for Northern Carolina and the Piedmont, Philadelphia in U.S.A. He managed to define two distinct stages of growth for the cities which constitute urban clusters:

- At the first stage, the cities are relatively small and the existing economic, technological and spatial conditions coincide with existing accumulated economies.
- In the second stage when the cities exceed a certain population limit then a lot of businesses are moved in the suburbs. In the opposite case such an economic diffusion is less possible to appear in a cluster of smaller cities.

An important contribution in the definition of urban clusters in the interior of regions was given by Portnov and Erell (2001) who formed an indicator which shows if clusters exist in a greater region and how these can be described based on their distance from the central city (Equation 1):

$$IC = \frac{IS}{IR} \quad (1)$$

Where:

IC = the index of clustering,

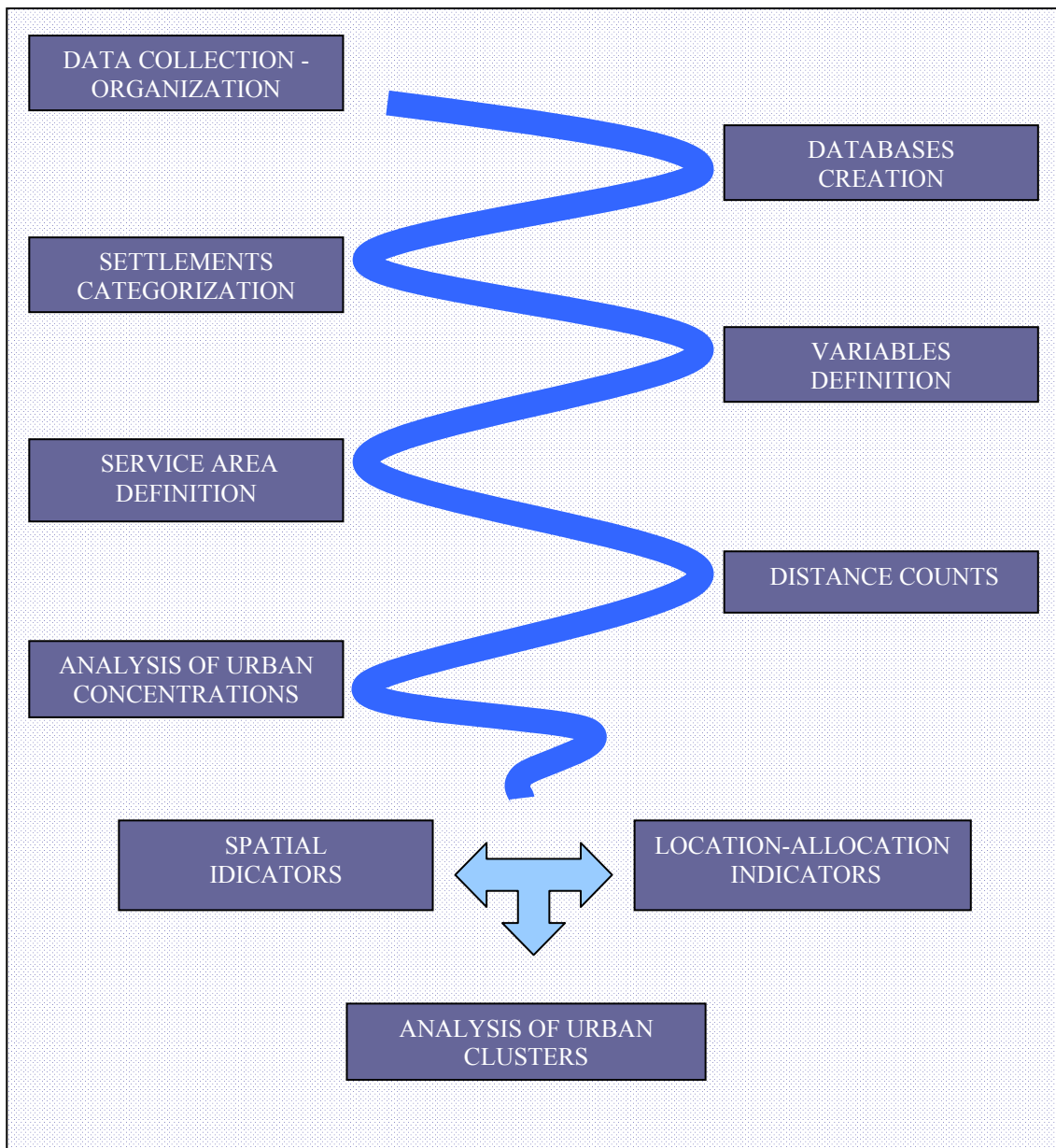
IR = the distance from the central city and

IS = the isolation.

2. METHODOLOGY

According to the proposed approach, a thorough study and evaluation of the spatial relationships between settlements and central cities can be achieved with the application of the following methodological framework (Figure1). Since urban concentration assessment is critical for the interpretation of phenomena at both the urban and the rural level, methods and techniques from the quantitative spatial analysis toolbox are needed.

Figure 1: Diagram of Methodological Framework



The first step of the approach is the data collection and organization, which eventually leads to spatial database formulation and management. Since both are essential for the urban clusters definition, they must be corrected and updated in order to ensure the validity of the final results.

The next step is the categorization of settlements aimed to define groups in the study area. A typical way to deal with this issue is based on the population that each settlement has and the degree to which corresponds to the term urban. In this respect, the critical problem variables which will be analysed in the framework of this study are defined. They refer to the strength of the area's urban centres in a demand, supply, and service concept. They will also contain data reflecting the number of public facilities and private sector enterprises, along with measures which are reflecting overall accessibility of surrounding areas, utilising descriptive data of the existing road and railway network and the public transport system. In this stage, specific Geostatistical methods and techniques of spatial data analysis along with the technology of Geographic Information Systems (GIS) are adopted, in order to obtain a multivariate combinative exploitation of information.

The service areas calculation which follows is based on the each settlement's network accessibility cost (time or distance) and they can be defined by locating each settlement to the nearest urban centre using the network distance or through the formulation a locational indicator. In the GIS environment and with respect to road network arcs, data should be available about their length and the category they belong by means of average speed. Following the determination of service areas, spatial analysis methods and techniques are applied in order to define the urban formations and patterns that exist in the study area. To this end, point and services concentrations are assessed and thus, urban clusters evaluated.

The definition of urban concentrations is realised with the application of the *distance counts* method (Unwin, 1978), according to which the settlements density around each city is calculated, attributing at the same time the characteristics of urban clusters in the study region. The analysis of the resulting urban clusters is realised via *cluster analysis*. The application of the particular method seeks urban clusters with similar characteristics, while simultaneously evaluating each cluster's importance taking into consideration every variable in the database.

Finally, a numerical indicator is formulated which reflects the clustering dynamics around each settlement in the study area. The variables utilised refer to critical infrastructural and developmental characteristics of each settlement–centre reflecting in this manner, its importance in the study area.

The validity of the methods and the effectiveness of the proposed methodological framework are evaluated through their application for the definition of urban clusters in the region of Thesaly, Greece. The specific region due to its morphology, inadequate and old road network as well as its sometimes extreme climate and weather conditions constitutes an intriguing case study.

3. ANALYTICAL METHODS AND TECHNIQUES

Each settlement, depending on its demographic size assembles in his interior operations and services which respectively attract smaller populations from neighbouring settlements. In this respect, around each big and small urban centre its service area is defined at a specific network radius. This task is performed in a GIS environment by the use of specific functions and routines.

The distance counts method is the set of settlements (points) that belong to each centre's service area attributing at the same time an altitude value for each centre. Consequently, its three-dimensional study and representation is feasible in a GIS environment, by graphically sketching out the study area and getting a different perspective which can then utilised at the analysis and interpretation stages of the approach. (Photis, 2002)

Furthermore, cluster analysis refers to an extensive set of algorithms with which are grouped the lines (cases) or the columns (variables) of a data table. It is divided into two main methods. Hierarchical, which they begin from groups equal in number and progressively merge similar groups until a team which includes the total number of cases is formulated and bisectonal, which begin from a set that contains the total of cases and progressively remove the most remote cases, creating a new set and redistributing every other case, until a predetermined number of groups is formulated optimally. (Maloutas, 1994)

4. APPLICATION: SPATIAL ANALYSIS OF URBAN CONCENTRATIONS IN THE REGION OF THESSALY

According to the proposed methodological framework settlements of Thessaly were categorised to the following groups, which at the larger part coincide with the groups that the National Statistical Service of Greece adopts:

- Settlements with population less than 2.000 residents (922).
- Settlements with population more than 2.000 and less than 10.000 residents (28).
- Settlements with population more than 10.000 residents (4).

According to the approach the settlements with 2.000 to 10.000 residents and settlements with more than 10.000 residents will be examined. For the calculation of service areas in the GIS environment two digital coverages will be needed. A point coverage, with additional information about each settlement's population and altitude (2001 census data) and a line coverage of the road

network, with length, maximum speed data. The three types of roads that were adopted are based on the international categorisations (Gutierrez and Urbano, 2002):

- 1st category, in which the E-75 highway belongs with average speed 120 Km/h
- 2nd category, in which the E-90 motorway belongs with average speed 100 Km/h
- 3rd category, in which the rest national road network belongs with average speed 70 Km/h

4.1 SERVICE AREA DEFINITION

Using the accessibility of each settlement in the nearest mean urban centre, were calculated the service areas of each urban centre with population bigger than 10.000 residents and those with population 2.000-10.000 residents. In the determination of service areas was used the following indicator of interaction

$$L_i = \frac{W_j}{d_{ij}^2} \quad (2)$$

Where:

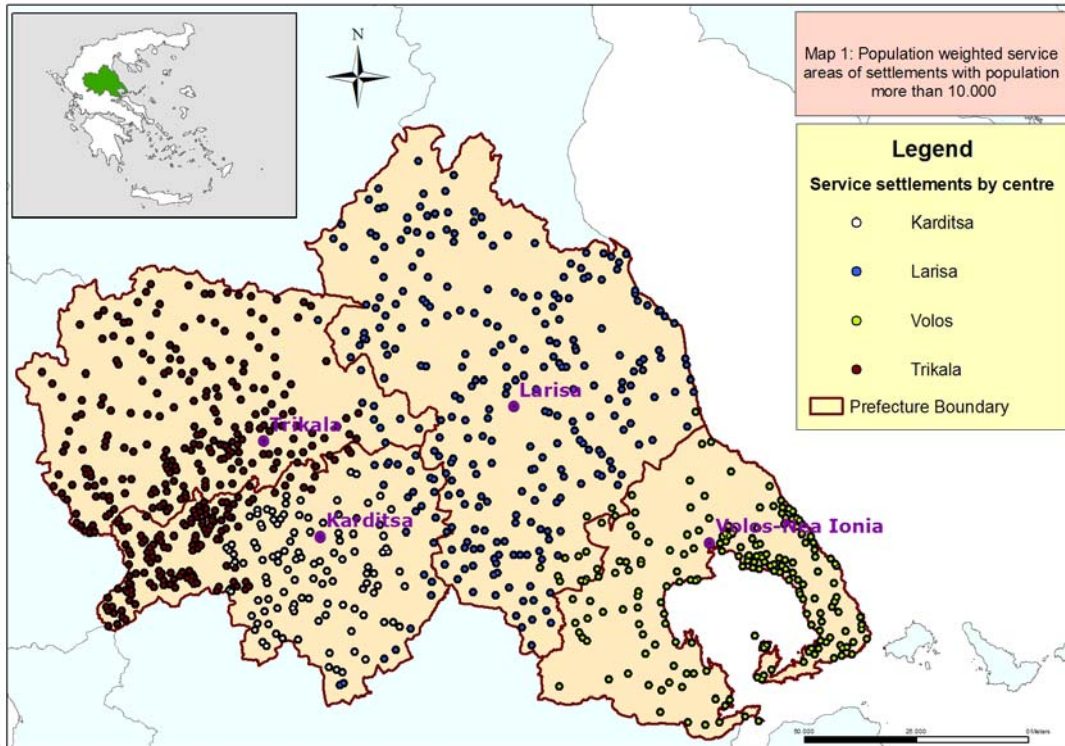
L_i , is the strength with which the settlement i is influenced by each urban centre j

W_j , is the weight of each urban centre j and

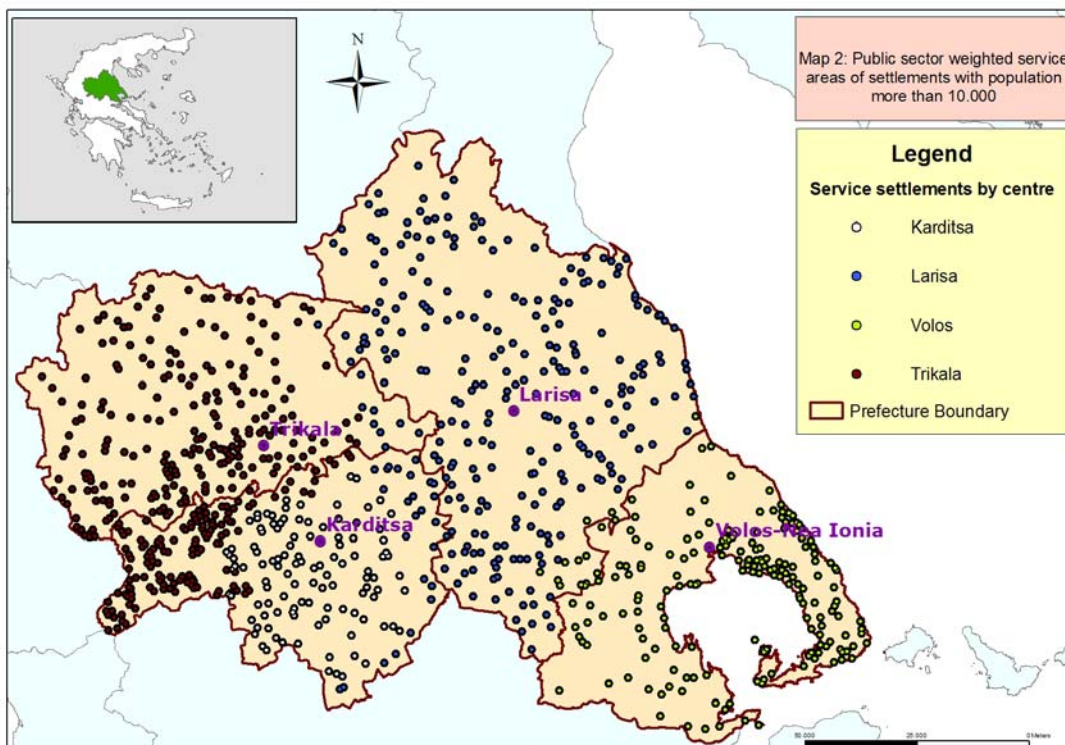
d_{ij} , is the distance between the settlement i and the urban centre j .

Maps 1, 2 and 3, which follow, contain service areas with respect to serviced settlements for each urban centre of with more than 10.000 population (primary), with the indicator's weight formulated through the number of the public facilities or the number of the private enterprises, for each urban centre. Respectively, maps 4, 5 and 6 exhibit the resulting spatial assignments for the urban centres with population sizes between 2.000-10.000 residents (secondary).

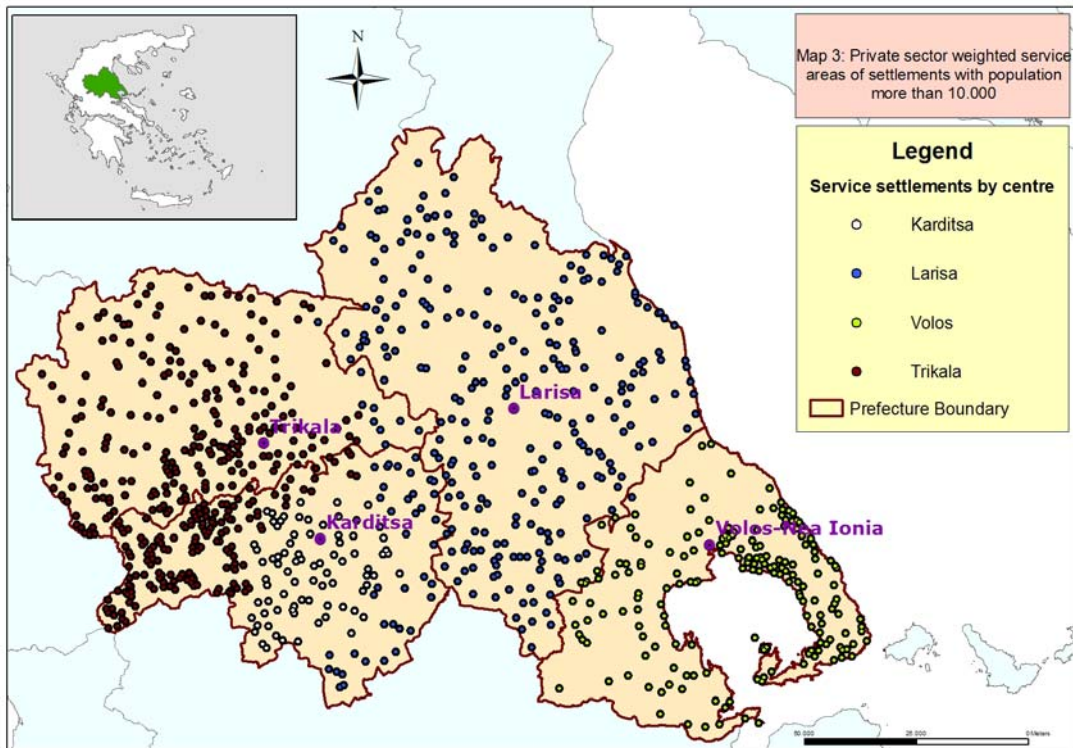
Map 1: Population weighted service areas of settlements with population more than 10.000.



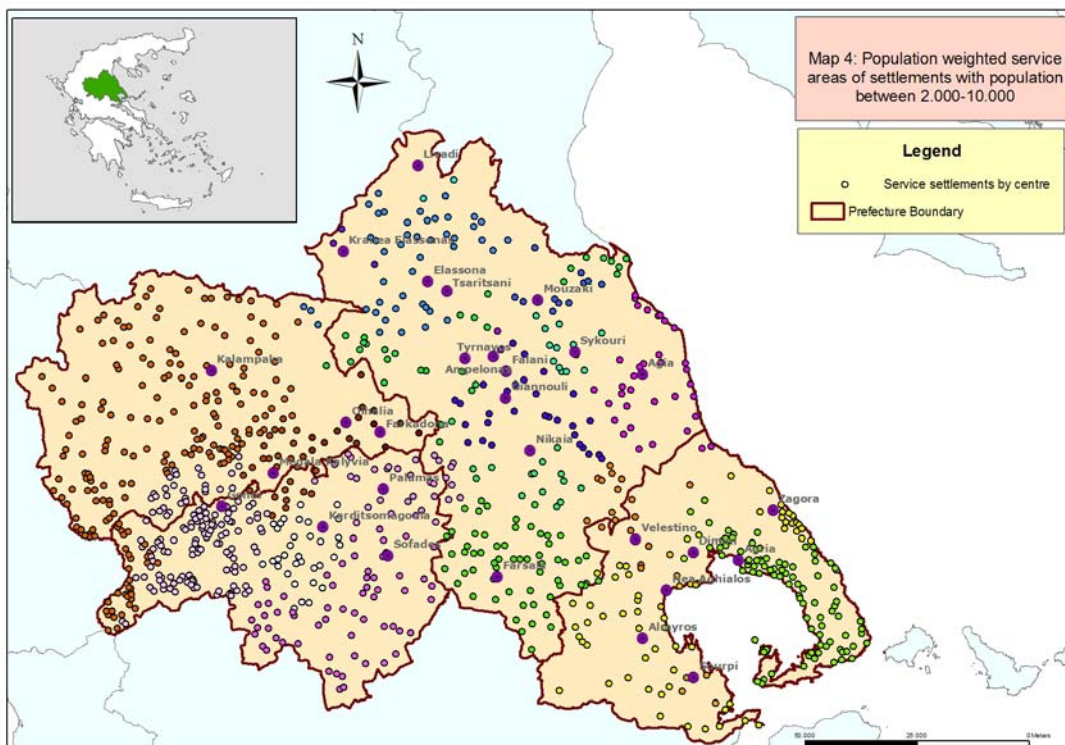
Map 2: Public sector weighted service areas of settlements with population more than 10.000.



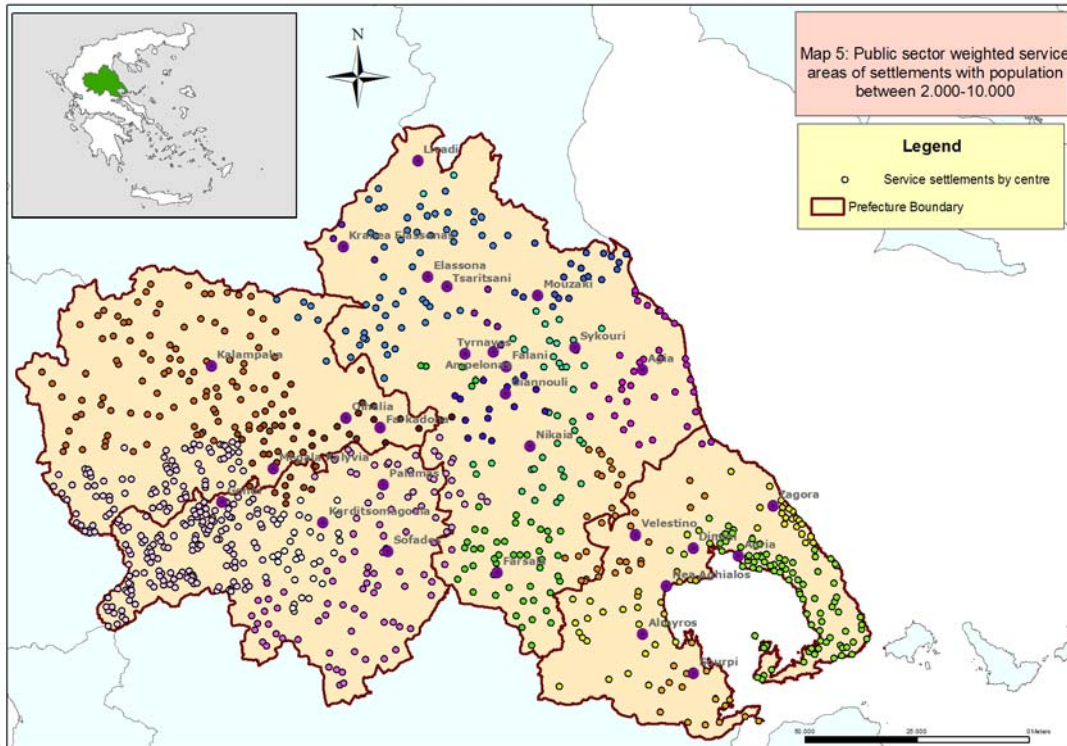
Map 3: Private sector weighted service areas of settlements with population more than 10.000.



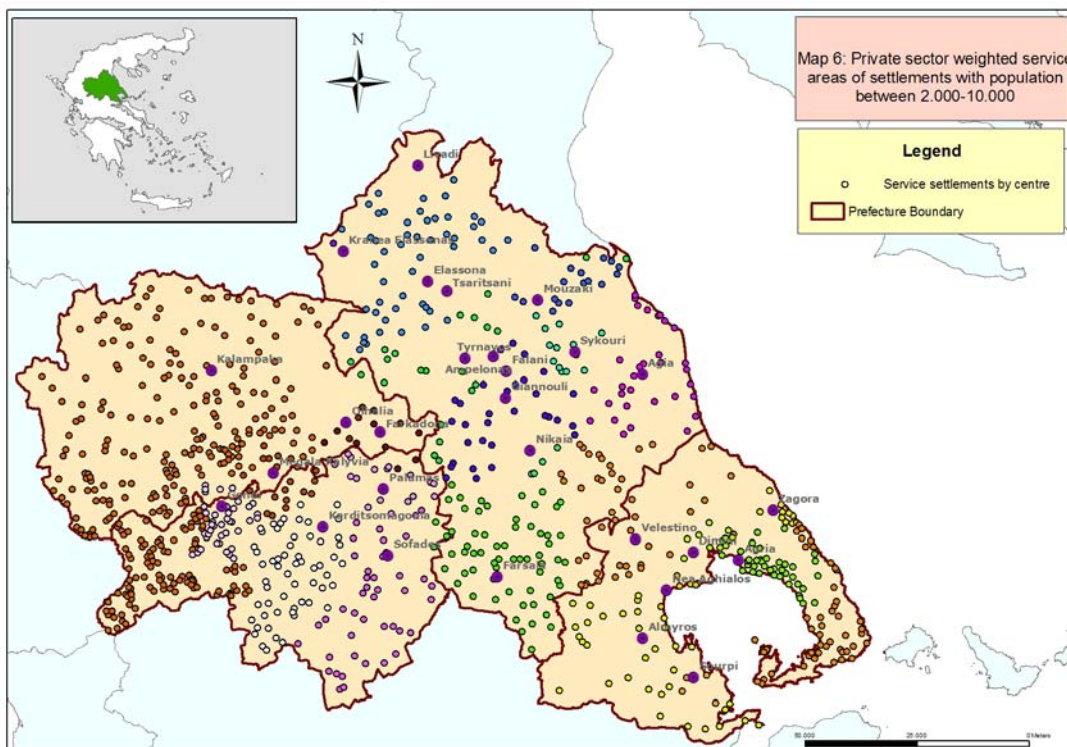
Map 4: Population weighted service areas of settlements with population between 2.000 - 10.000.



Map 5: Public sector weighted service areas of settlements with population between 2.000 -10.000.



Map 6 Private sector weighted service areas of settlements with population between 2.000- 10.000.

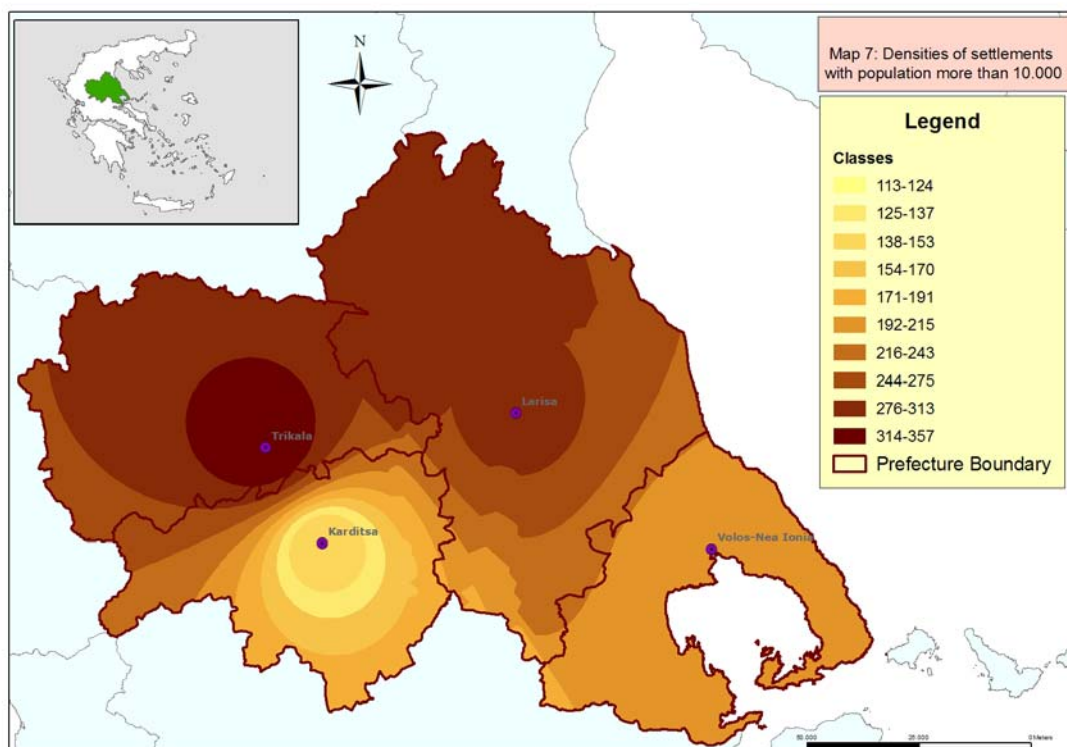


4. 2 SPATIAL ANALYSIS OF SETTLEMENTS CONCENTRATIONS

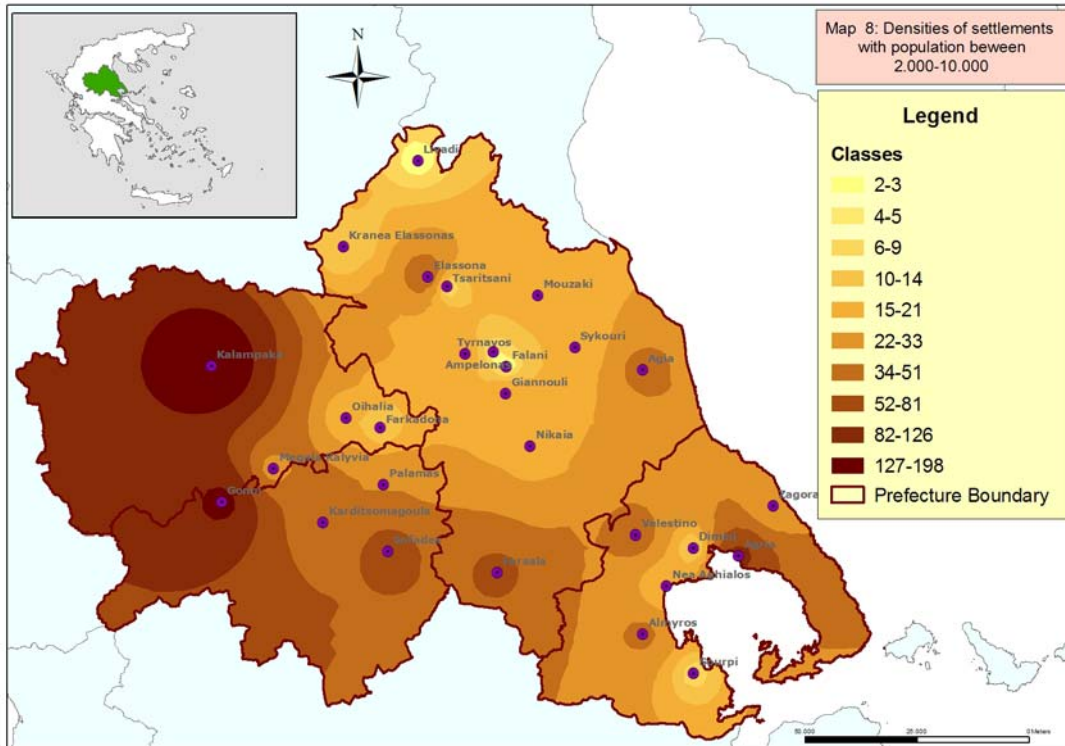
With the determination of service areas for each settlement–centre additional data are created and added to the database about the number of settlements covered, the total population served, the percentages of road network per category and the size of the coverage area. After the application of the distance-counts method with the use of the ArcGis Geostatistical Analyst, maps 7 and 8 were created which showing the density of settlements differentiations in the region.

More specifically, in map 7 it is realised that for the settlements with population more than 10.000 residents, in the prefectures of Trikala and Larisa the number of served settlements is more than 200, while in the counties of Karditsa and Magnisia this number is smaller and reaches up to the 100 settlements. In map 8 the picture largely changes for centres with population 2.000-10.000 residents. Higher concentrations, exceeding 30 served settlements on average, are observed in the western parts of Karditsa and Trikala prefectures, as well as in the southern part of the prefecture of Larissa, while in the prefecture of Magnesia the higher concentration is observed in its centre. On the other side lower concentrations, with less than 20 served settlements, are observed in the northern part of the prefecture of Larissa.

Map 7: Densities of settlements with population more then 10.000.



Map 8: Densities of settlements with population between 2.000-10.000.



4.3 ANALYSIS OF SETTLEMENTS CONCENTRATIONS

In our case, of increased interest are urban centres of 2.000-10.000 residents since in most instances represent and define both the spatial distribution and concentrations of settlements inside the study region's boundaries. According to the proposed methodological framework and in order to assign settlements to this category of centres, K-means analysis was adopted. The method of K-means cluster analysis was applied through the utilisation of SPSS 13.0. Settlements were grouped into three categories with respect to a set of variables. Tables 2 and 3, show the groups which were formulated when the variables referring to the number of public services were processed. Respectively, Tables 4 and 5, show the groups which were formulated when the variables reflecting the number of private enterprises were processed.

Table 2: K-means public sector clusters of settlements with 2.000-10.000 residents

Group 1	Group2		Group 3
Ampelonas	Agia	Megala Kalyvia	Almyros
Elassona	Agria	Mouzaki	Kalampaka
Palamas	Velestino	Nea Aghialos	Sofades
	Giannouli	Nikaia	Tyrnavos
	Gonoi	Oihalia	Farsala
	Dimini	Sourpi	
	Zagora	Sykouri	
	Karditsomagoula	Tsaritsani	
	Kraneia Elassonas	Falani	
	Livadi	Farkadona	

Table 3: Public sector cluster characteristics for settlements with 2.000-10.000 residents

	1	2	3
% of Population	0,0799	0,0384	0,106
% of Education	0,049155	0,024424	0,072811
% of Emergency	0,037736	0,033019	0,045283
% of Culture	0,04386	0,032237	0,044737
% of Sports	0,090909	0,026515	0,039394

Examining the above two tables it is apparent that Groups 1 and 3 contain settlements that constitute the Major Service centres of Thessaly. Respectively, they share common characteristics, while Group 2 exhibits different and in most cases lower service levels. In this respect the resulting settlement-centre hierarchy is Group 3 – Group 1 – Group 2.

Table 4: K-means private sector clusters of settlements with 2.000-10.000 residents

Group 1	Group2		Group 3
Kalampaka	Agia	Megala Kalyvia	Almyros
	Agria	Mouzaki	Velestino
	Ampelonas	Nea Aghialos	Elassona
	Sofades	Nikaia	Tyrnavos
	Gonoi	Oihalia	Farsala
	Dimini	Sourpi	Giannouli
	Zagora	Sykouri	
	Karditsomagoula	Tsaritsani	
	Kraneia Elassonas	Falani	
	Farkadona	Palamas	
	Livadi		

Table 5: Private sector cluster characteristics for settlements with 2.000-10.000 residents

	1	2	3
% of Population	0,0935	0,0417	0,0947
% of Industry businesses	0,1984	0,0299	0,1733
% of Commercial businesses	0,1684	0,0356	0,1456
% of Private Services businesses	0,4043	0,0324	0,0532

In the same manner, if we examine the above two tables it appears that Groups 1 and 3 also contain settlements that constitute the Major Service centres of Thessaly. Respectively, they share common characteristics, while Group 2 exhibits different and in most cases lower service levels. Only this time, the resulting settlement-centre hierarchy is Group 1 – Group 3 – Group 2.

A first conclusion derived from the application of K-means analysis is that the resulting groups successfully reflect the notion of urban clusters, in terms of their centre's degree of diachronic development.

4.3 URBAN CONCENTRATION INDICATOR (UCI)

The applied methodological approach can form the base for the creation of an indicator which will compare settlements in terms of clustering status and potential, taking into consideration their critical service characteristics determining at the same time their dominance and importance in the region. The mathematical formulation of the Urban Concentration Indicator (UCI) is:

$$D_j = \frac{\left(\frac{\sum_{i=1}^N a_{ji} + 1}{N + 1} \right) * \left(\frac{P_j + \sum_{i=1}^N P_i a_{ji}}{P_j + \sum_{i=1}^N P_i} \right)}{\left(\frac{m'_j * m_j}{m'_j} \right)} * \left(\frac{S_j}{\sum_{j=1}^M (S_j)} \right) * 1000 \quad (3)$$

where

$j = 1, \dots, M$ service centres

$i = 1, \dots, N$ settlements served (inside region I)

P = population of each settlement or centre of service

S = number of services

m_j = average distance travelled, $m_j = \frac{\sum d_{ij}}{N}$ where d_{ij} the distance between i and j

$$\text{and } a_{ij} = \begin{cases} 1 & \text{if } d_{ij} < m_i \\ 0 & \text{if } d_{ij} > m_i \end{cases}$$

m_i is the medium distance of settlements with $d_{ij} > m$

The indicator that is presented above constitutes a combination of variables and it aims to analyse and evaluate the dynamics of settlements-centres and the urban concentrations around them based on two main parameters, the cluster of serviced settlements and the settlement-centre. Consequently the general form of the above indicator is the following:

$$\mathbf{D} = \text{CLUSTER} * \text{SERVICE CENTRE} * 1000$$

The first term of the equation examines the serviced settlements cluster based on the number of settlements, the population served and their average distance and reflects its clustering status and perspective. The second term examines the capacity of the settlement-centre in association with the number of public services, as cultural, educational and emergency, or the private businesses services as industry, commercial and private services, that it offers. Based on the UCI the settlements with population 2.000 -10.000 residents were ranked and the results appear in Tables 6 and 7.

Table 6: Public sector Urban Concentration Indicator for settlements with population 2.000-10.000

	Settlement - centre of service	Indicator of urban concentration		Settlement - centre of service	Indicator of urban concentration
1	Tyrnavos	369,7837	14	Agria	159,1259
2	Farsala	366,2827	15	Agia	156,2878
3	Almyros	311,0211	16	Moyzaki	153,4448
4	Nea Aghialos	301,2717	17	Farkadona	141,2366
5	Elassona	295,2091	18	Sykourio	132,565
6	Kalampaka	253,3141	19	Nikaia	128,6869
7	Palamas	251,3871	20	Oihalia	128,3622
8	Sofades	226,9316	21	Sourpi	114,9073
9	Giannouli	184,1596	22	Livadi	110,3783
10	Ampelonas	168,7334	23	Megala Kalyvia	97,91365
11	Kraneia Elassonas	164,1392	24	Karditsomagoula	96,80786
12	Zagora	163,0302	25	Gonoi	92,21739
13	Velestino	159,1302	26	Dimini	88,56842

Table 7: Private sector Urban Concentration Indicator for settlements with population 2.000-10.000

	Settlement - centre of service	Indicator of urban concentration		Settlement - centre of service	Indicator of urban concentration
1	Farsala	512,3282	14	Megala Kalyvia	96,10815
2	Kalampaka	508,5882	15	Ampelonas	95,55118
3	Tyrnavos	479,1138	16	Farkadona	95,30963
4	Elassona	458,7954	17	Moyzaki	94,13456
5	Almyros	447,0259	18	Agria	92,04151
6	Velestino	419,7764	19	Sykourio	88,71854
7	Giannouli	338,9321	20	Nikaia	59,20964
8	Nea Aghialos	221,7873	21	Oihalia	47,24823
9	Agia	201,3452	22	Sourpi	42,29568
10	Karditsomagoula	166,2898	23	Gonoi	33,94385
11	Sofades	158,2677	24	Zagora	32,73217
12	Dimini	130,4029	25	Kranea Elassonas	24,16688
13	Palamas	115,6648	26	Livadi	18,05716

In order to compare the resulting ordering for both the public and private sector indicators, Table 8 was formulated, which presents the fluctuation of each settlement-centre of service positioning, for the value public and private sector indicator respectively. According to it, the first seven cities (green cells) are centres that achieved higher values for private than the public sector indicator, while the reverse holds for the last six cities (yellow cells) which obtained higher values for public sector indicator. The rest settlements constitute the group with similar levels of development in terms of both indicators.

Table 8: Hierarchy placement comparison

Settlement - centre of service	Difference in hierarchy public vs private	Settlement - centre of service	Difference in hierarchy public vs private
Kranea Elassonas	-14	Oihalia	-1
Zagora	-12	Sourpi	-1
Palamas	-6	Farsala	1
Ampelonas	-5	Elassona	1
Nea Aghialos	-4	Farkadona	1
Agria	-4	Giannouli	2
Livadi	-4	Gonoi	2
Sofades	-3	Kalampaka	4
Tyrnavos	-2	Agia	6
Almyros	-2	Velestino	7
Moyzaki	-1	Megala Kalyvia	9
Sykourio	-1	Karditsomagoula	14
Nikaia	-1	Dimini	14

Comparing the results of the two approaches and with regard to settlements ranking and grouping a more detailed conclusion is that Almyros, Kalampaka, Tyrnavos and Farsala constitute the four major service centres of the area with Velestino. Sofades and Ellassona steadily defining the second-best group.

5. CONCLUSIONS

The role of urban centres is crucial in the configuration of any urban system so as in the case of Greece. This comes as result of relations created between centres, cities and neighbouring settlements that they serve, formulating urban clusters, strengthen the overall developmental process. In order to better define and manage urban concentrations new methods, techniques, models and indicators of spatial analysis are needed in a robust decision support methodological framework, which could be applied to different scales of urban and regional planning.

Furthermore, there is no doubt that the geographical location of urban centres and their relations with neighbouring settlements constitute two of the most important parameters influencing their diachronic development. Such direct or indirect relations acquire greater importance with respect to the size of both the urban centre and the neighbouring settlements which they serve. In this paper, a methodological framework for the analysis and comparative evaluation of service areas of urban centres was determined, mainly based on their topological and institutional characteristics and applied to the region of Thessaly, Greece. Moreover, the proposed methodological approach is strengthened by the formation of a comparative indicator of urban concentration (UCI) which while assisting the analysis of urban clusters, constitutes an alternative estimator of their role.

The overall effectiveness of the approach is dependent to the type and the volume of initial information and the quality of variables taken into consideration. Furthermore, by examining the phenomenon of urban clusters, it can be stated that their diachronic development and degree of growth are influenced and in most cases are determined by the number of facilities and services located in any settlement. In this manner, a major city with significant population size, number of services and efficient road network attracts settlements in critical distance while in the opposite case isolation can be observed. The resolution of such problems although not in the objectives of this study, can stem from the reformation of performed regional policies and the redefinition of various political and developmental objectives from the corresponding agencies and institutions.

6. BIBLIOGRAPHY

- Argyris C. (1997), 'Economy of Space: Volume II, Urban Economy', Editorial House of Brothers Sunday HM, Thessaloniki. (in greek)
- Christaller W. (1966), 'Central places in Southern Germany, Translate from W. Christaller (1933), 'Die zentralen Orte in Suddeutschland. Eine okonomisch-geographische Untersuchung uber die Gesetzmassigkeit der Verteilung und Entwicklung der Siedlungen mit stadtischer Funktionen'.
- Clark C. (1982), 'Regional and Urban Location', St. Martin's, New York
- Doxiadis, C.A. (1964), 'The Ancient Greek City and the City of the Present', Doxiadis-Associates-Consultants, Athens.
- Dueker K. and Jampoler S. (2002), 'Global Urban Quality: An Analysis of Urban Indicators Using Geographic Information Science', University Consortium for Geographic Information Science.
- Fotheringham S. (1991), 'Migration and Spatial Structure: The Development of ths Competing Destinations Model', in J. Stillwell and P. Congdon (eds), Migration Models: Mcro and Micro Approaches, Belhaven Press, London and New York, pp. 57-72.
- Golany G. (1982), 'Selecting Cities for New Settlements in Arid Lands: Negev Case Study' in Energy and Building, vol. 4, pp. 23-41.
- Gutierrez J nad Urbano P. (2002), 'Accessibility in the European Union: the Impact of the Trans – European Road Network' in Journal of Transport Geography, Vol.4 pp.15-25.
- Haughton G. και Hunter C. (1994), 'Sustainable Cities', Jessica Kingsley Publishers, London.
- Howard E. (1985), 'Garden Cities of Tomorrow', Attic Books, London.
- Krakover S. (1987), 'Clusters of Cities versus City Region in Regional Planning' in Environment and Planning A, vol. 19, pp. 1375-86.
- Maloutas C. (1994), 'Quantitative methods of geographic analysis: Notes. University of Thessaly. Department Urban Planning and Regional Development. Volos. (in greek)
- Moreno J.L (1953; 1978 reprint), 'Who Shall Survive? Foundations of Sociometry, Group Psychotherapy and Sociodrama'. Beacon House Inc., Beacon.
- Page M., Parisel C., Pumain D. and Sanders I., 2000. "Knowlwdge-based simulation of settlement systems". Computers, environment and urban systems 25, 167-193.
- Pangle (1979 English Translation by T.L. Pangle), 'The laws of Plato', Basics Books Inc., N.Y..
- Photis Y. N. (2002), 'Spatial Analysis Methods and Techniques'. Department of Planning and Regional Development. University of Thessaly. Volos. (in greek)
- Portnov B.A. and Erell E., 2001. 'Urban Clustering: The benefits and the drawbacks of location', Ashgate Publishing Company, England.

- Portnov B, Erell E., Bivand R and Nilsen A. 2000. 'Investigating the Effect of Clustering of the Urban Field on Sustainable Population Growth of centrally Located and Peripheral Towns' International Journal of Population Geography, Vol 6, pp. 133-154.
- Portnov B and Etzion Y. 2000. 'Investigating the effects of public policy on the interregional patterns of population growth: the case of Israel', Elsevier Science, Vol.34, pp. 239-269.
- Pred, A., 1977. City Systems in Advanced Economies . London: Hutchinson.
- Pumain D., 1982. La dynamique des villes, Paris, Editions Economica.
- Pumain, D. and Robic, M.C., 1996. Théoriser la ville, in DERYCKE, P.H., HURIOT, J.M. and PUMAIN, D. (eds): Penser la ville, Paris: Anthropos.
- Pumain D. 2000. Settlement systems in the evolution. Geografiska Annaler, 82B, 2, 73-87.
- Pumain D. and Gaudin J., 2002. "Systems of cities and government: An analysis by Giovanni Botero at the time of the Renaissance". Cybergeo: European journal of geography, No.227.
- Reilly W.J., 1929. "Methods for the study of retail relationships. University of Texas, Bulletin, 2944.
- Richardson H.W. (1977), 'Regional Growth Theory', Macmillan, London.
- Weber A. (1909;1929 reprint), 'Theory of the Location of Industries', The University of Chicago Press, Chicago and London.
- Wong C. (1995), 'Developing Quantitative Indicators for Urban and Regional Policy Analysis', in R. Hambleton and T. Huw, Urban Policy Evaluation: Challenge and Change, Paul Chapman Publishing Ltd., Cardiff, pp. 111-22.

Internet sources

1. <http://www.fisc-racing.com/misc/speed.html>
2. http://www.motorhoming.com/need_august_2003.htm
3. <http://www.statistics.gr/>