

Haddad, Eduardo; Porsse, Alexandre A.; Ribeiro, Eduardo P.

Conference Paper

Modeling Interjurisdictional Tax Competition in a Federal System

46th Congress of the European Regional Science Association: "Enlargement, Southern Europe and the Mediterranean", August 30th - September 3rd, 2006, Volos, Greece

Provided in Cooperation with:

European Regional Science Association (ERSA)

Suggested Citation: Haddad, Eduardo; Porsse, Alexandre A.; Ribeiro, Eduardo P. (2006) : Modeling Interjurisdictional Tax Competition in a Federal System, 46th Congress of the European Regional Science Association: "Enlargement, Southern Europe and the Mediterranean", August 30th - September 3rd, 2006, Volos, Greece, European Regional Science Association (ERSA), Louvain-la-Neuve

This Version is available at:

<https://hdl.handle.net/10419/118312>

Standard-Nutzungsbedingungen:

Die Dokumente auf EconStor dürfen zu eigenen wissenschaftlichen Zwecken und zum Privatgebrauch gespeichert und kopiert werden.

Sie dürfen die Dokumente nicht für öffentliche oder kommerzielle Zwecke vervielfältigen, öffentlich ausstellen, öffentlich zugänglich machen, vertreiben oder anderweitig nutzen.

Sofern die Verfasser die Dokumente unter Open-Content-Lizenzen (insbesondere CC-Lizenzen) zur Verfügung gestellt haben sollten, gelten abweichend von diesen Nutzungsbedingungen die in der dort genannten Lizenz gewährten Nutzungsrechte.

Terms of use:

Documents in EconStor may be saved and copied for your personal and scholarly purposes.

You are not to copy documents for public or commercial purposes, to exhibit the documents publicly, to make them publicly available on the internet, or to distribute or otherwise use the documents in public.

If the documents have been made available under an Open Content Licence (especially Creative Commons Licences), you may exercise further usage rights as specified in the indicated licence.

Modeling interjurisdictional tax competition in a federal system

Alexandre A. Porsse^a, Eduardo A. Haddad^b and Eduardo P. Ribeiro^c

Abstract

Interjurisdictional tax competition is a controversial theme with little empirical studies in spite of the great advance in the theoretical debate at last decades. In order to link the theoretical issues and the empirical tools, this paper uses an interregional general equilibrium model to evaluate the welfare effects of an experimental game of tax competition between two regional governments of the Brazilian economy. The model recognizes the horizontal and vertical fiscal linkages underlying Brazilian federalism. The results suggest that interjurisdictional tax competition is race-to-the-bottom but this outcome is welfare-improving at the Nash equilibrium. Two fiscal externalities matters for such outcome. First, the lower indirect tax rate in both regions implies positive gains of private consumption due to reduction in the basic prices of the regional goods. Second, the interjurisdictional tax competition raises the central government's tax base and its transfers to the regional governments since the Brazilian constitutional rules impose hard vertical linkages. This fiscal externality alleviates the reduction pressures on the provision of regional public goods. Then, when regional governments engage in tax competition strategies into the Brazilian federal system, the regional private consumption benefits are bigger than the regional public good losses, reinforcing the welfare-improving equilibrium.

Key-words: tax competition, federal system and interregional CGE model.

JEL: H39, H73, R13.

1. Introduction

The theoretical issues on the effects of interjurisdictional tax competition have grown-up since the seminal work of Tiebout (1956). On the one hand, tax competition is usually inefficient and produces a suboptimal Nash equilibrium when the governments' function is only benevolent (Mintz and Tulkens, 1986; Zodrow and Mieszkowski, 1986; Wildasin, 1988; Burbdige and Myers, 1994; Cadarelli, Taugourdeau and Vidal, 2002). On the other hand, tax competition can produce an efficient equilibrium and it is an effective mechanism to refrain the governments' predatory action if they have a Leviathan behavior (Rauscher, 1998; Cassette, Jayet and Paty, 2005).

^a *Foundation of Economics and Statistics of Rio Grande do Sul; St. Duque de Caxias, 1691, 90010-283, Porto Alegre, Brazil; porsse@fee.tche.br.*

^b *Department of Economics, University of Sao Paulo; Av. Prof. Luciano Gualberto, 908, Butantã, 05508-900, Sao Paulo, Brazil; ehaddad@usp.br.*

^c *Department of Economics, Federal University of Rio Grande do Sul; Av. João Pessoa, 52, 90040-000, Porto Alegre, Brazil; eribeiro@ufrgs.br.*

In spite of the great advance in the theoretical studies, little empirical analyses were developed in order to evaluate the welfare effects of interjurisdictional tax competition. An exception is the work of Mendoza and Tesar (2003), where the welfare effects of capital tax competition are analyzed through a two-country dynamic general equilibrium model building based on the neoclassical-growth model. The simulation results conducted by the authors showed that capital tax competition is race-to-the-bottom when consumption tax rates are adjusted to guarantee budget balance but, conversely the theoretical issues, this outcome is welfare improving.

In fact, the effects of the interjurisdictional tax competition in the real world depend of empirical characteristics of the economic system in focus such as the level of regional interdependence between the economies given by the commercial flows of goods and the fiscal linkages between different levels of governments if the competition game occurs into a federal system. This paper proposes to evaluate the effects of the interjurisdictional tax competition using a CGE model, but for an economic system where the jurisdictions that have competition strategies are the regional governments and the federal (central) government doesn't play the game but it has some role since there are hard vertical linkages imposed by constitutional rules. Such fiscal structure is particularly important for the Brazilian federal system because the constitutional rules accorded in 1998 raised the vertical linkage between the governments, that is, the federal transfers to the regions raised of 10% to 21.5% of the income tax revenue collected by the federal government. Then, the paper builds on the B-MARIA-RS, an interregional CGE model calibrated for two regions of the Brazilian economy, Rio Grande do Sul and Rest of Brazil. The simulation is implemented assuming the regional governments engage in a non cooperative game where the indirect tax rate on manufacturing goods are strategies used to influence allocations of the productive factors (capital and labor). The vertical linkages of the Brazilian federal system are fully modeled in the B-MARIA-RS model.

The remainder of the paper is organized in four sections. First, after this introduction, the B-MARIA-RS model is presented focusing on its theoretical economic structure and describing the organization of the public finance account by government level and its linkages. In the section three, the modeling strategy adopted to implement the simulation

of non cooperative game between the regional governments is presented. After that, the main results are discussed in the following section. The final remarks follow in the last section in an attempt to evaluate our findings and put them in perspective, considering their extension and limitations.

2. The B-MARIA-RS model

B-MARIA-RS (*Brazilian Multisectoral and Regional/Interregional Analysis – Rio Grande do Sul*) is an interregional computable general equilibrium model developed for the analysis of the economy of Rio Grande do Sul and of Brazil. Its theoretical framework is similar to the B-MARIA model (Haddad, 1999) and follows the Australian tradition of general equilibrium models.¹

The B-MARIA-RS model divides the Brazilian economy into two regions, Rio Grande do Sul and Rest of Brazil, and identifies a single foreign market (Rest of the World). The calibration data are those for 1998, and 25 productive sectors and investment goods are specified for each region. The productive sectors use two local primary factors (capital and labor). The final demand consists of household consumption, investment, exports, and regional and federal government consumption. The regional governments are sources of exclusively local demands and expenditure, comprising the state and municipal levels of public administration in each region. The whole model contains 60,323 equations and 1,475 exogenous variables.²

The main innovation in the B-MARIA-RS model is the detailed treatment of public finances that recognizes the horizontal and vertical linkages between the Brazilian governments. As will be described below, this modification allows introducing alternative closures for the governments regarding public finance policies. The core module of the

¹ Following this tradition, the models use the Johansen approach, where the mathematical framework is represented by a set of linearized equations and the solutions are obtained as growth rates. In the Brazilian economy, the PAPA (Guilhoto, 1995), EFES (Haddad e Domingues, 2001) and EFES-IT (Haddad *et al.*, 2001; 2002) models, among others, use this approach.

² The full description of the model is available in Porsse (2005). A miniature version for tests and evaluation is available from the authors upon request. This miniature model can be implemented in the demo version of the GEMPACK program (www.monash.edu.au/policy/gpdemo.htm).

model comprises blocks of equations that determine the relationship between supply and demand, derived from optimization theories, and market equilibrium conditions. The indirect taxes at the core of the model are decomposed in order to separate the state indirect tax from the other federal and municipal indirect taxes. In addition, several regional and national aggregates are defined, such as level of aggregate employment, balance of trade and price indices. Next, we present the main theoretical aspects of the model. Other definitions in the model include tax rates, basic prices, and purchase prices of commodities, tax revenues, margins, components of the gross domestic product (GDP) and gross regional product (GRP), regional and national price indices, factor prices, aggregate employment and money wage settings.

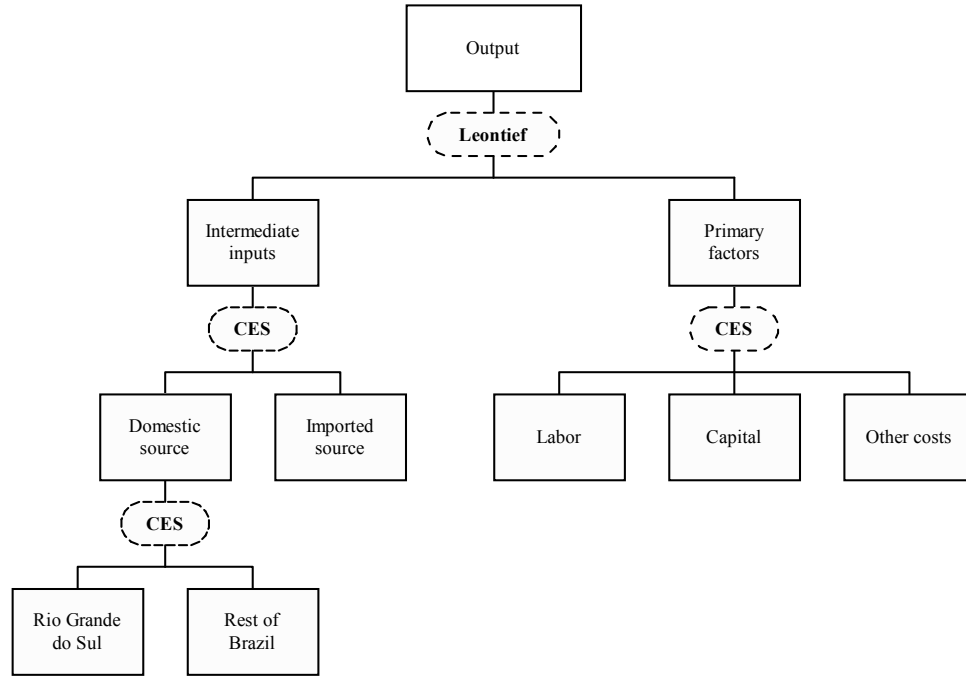
Production technology

Figure 1 illustrates the production technology encountered in the B-MARIA-RS model, a usual specification in regional models. This specification defines three levels of optimization for the productive process of firms. The dashed lines indicate the functional forms specified in each stage. Fixed proportion combinations of intermediate inputs and primary factors are assumed at the first level, through the Leontief specification. The second level involves substitution between domestically produced and imported inputs on one side, and substitution between capital and labor on the other side. A constant elasticity substitution (CES) function is used for the combination of inputs and primary factors. At the third level, bundles of domestically produced and imported intermediate inputs are formed as combinations of inputs from different sources. Again, a CES function is used to combine goods from different sources.

The use of CES functions in the production technology implies the adoption of the so-called Armington assumption (Armington, 1969) for product differentiation. This hypothesis regards goods from different sources as imperfect substitutes. For instance, agricultural and livestock products from Rio Grande do Sul are different from the agricultural and livestock products from the Rest of Brazil with regard to their use in the productive process (third level in Figure 1). This treatment permits the model to exhibit

non-specialized intrasectoral market patterns, an important empirical regularity described in the literature.³

Figure 1. Nested Structure of Regional Production Technology



Household demand

Each region has a group of representative households, which buy domestic goods (either locally produced or from other regions) and imported goods. The specification of household demand, in each region, is based on a CES/linear expenditure system (LES) preference function. The demand equations are derived from a utility maximization problem, whose solution follows hierarchical steps, similar to the ones shown in Figure 1. At the bottom level, substitution occurs across different domestic and imported sources of supply. At the subsequent upper level, substitution occurs between domestic composite and imported goods. The utility derived from the consumption of domestic and imported composite goods is maximized according to a Stone-Geary utility function. This specification gives rise to the linear expenditure system (LES), in which the expenditure

³ For product differentiation in the world market and CGE models, see De Melo and Robinson (1989). The behavior of several classes of CES functions is analyzed in Perroni and Rutherford (1995).

share above the subsistence level for each good represents a constant proportion of the total subsistence expenditure of each regional household.⁴

Demand for Investment Goods

Investors are a category of use of final demand, and are held responsible for capital formation in each regional sector. They choose the inputs used in the capital formation process through cost minimization using a hierarchically structured technology. This technology is similar to the production technology, with some adaptations. As occurs with the production technology, the capital good is produced by domestic and imported inputs. At the third level, an aggregate bundle of intermediate goods (domestic and imported) is formed as the combination of inputs from different sources. A CES function is used in the combination of goods from different sources. Differently from the production technology, primary factors are not used directly as input for capital formation, but used indirectly through inputs in sectoral production, especially in the civil construction sector. The level of regional investment in capital goods per sector is determined by the capital accumulation block.

Export and Government Demand

All export goods have downward sloping demand curves for their own prices in the world market. A vector of elasticity defines the response of foreign demand to changes in the FOB price of regional exports.

The government demand for public goods is based on the isolation of the consumption of public goods by the regional and federal governments, obtained from the input-output matrix. However, productive activities carried out by the public sector cannot be dissociated from those performed by the private sector. Thus, the government's entrepreneurial behavior is dictated by the same cost minimization assumptions adopted by the private sector. This hypothesis may be considered more appropriate, at first, for the

⁴ For the parameters necessary for the calibration of this specification, see Dixon *et al.* (1982). The LES specification is non-homothetic, such that the increase in the household expenditure (income) causes changes in the share of goods in overall expenditure, *ceteris paribus*.

Brazilian economy, since the privatization process implemented in the 1990s substantially reduced the participation of the government in the productive sector (Haddad, 1999). Public goods consumption is set to maintain a constant proportion with 1) regional private consumption, in the case of regional governments, and 2) with national private consumption, in the case of the federal government.

Capital Accumulation and Investment

Capital stock and investment relationships are defined in this module. There are two comparative static versions for the model that allow its use in short-run and long-run simulations. The use of the comparative statics model implies no fixed relationship between capital and investment; this relationship is selected on the basis of the requirements of the specific simulation. For example, in typical long-run comparative static simulations, growth of investment and capital is assumed to be identical (see Peter *et al.*, 1996). Some qualifications are necessary for the specification of capital formation and investment in the model. As discussed in Dixon *et al.* (1982), the modeling of these components is basically concerned with how investment expenditures are allocated both per sector and per region, and not with the aggregate private investment in construction, machinery and equipment. On top of that, the temporal conception of investment used is not endowed with a correlation with a precise timetable; this would be a necessary characteristic if the model had the aim to explain the investment expansion path over time. Therefore, the main concern regarding the investment modeling is to capture the effects of the shocks on the allocation of current investment expenditure across sectors and regions.

Labor Market and Regional Migration

In this module, the population in each region is defined exogenously through the interaction of demographic and interregional migration variables, and there is also a connection between regional population and labor supply. Given the specification of the labor market functioning, labor supply can be determined by interregional wage differentials or by regional unemployment rates, along with demographic variables, often defined exogenously. In sum, both labor supply and wage differentials may determine

unemployment rates or, alternatively, labor supply and unemployment rates will determine wage differentials.

Public finance module

The public finance module incorporates equations determining the gross regional product for each region, through the decomposition and modeling of its components, on both the expenditure and income sides. The budget constraints of the regional and federal governments also are defined, as well as the aggregate household consumption functions in each region (disaggregated into the main sources of income and in the respective tax duties).

Figure 2 describes the main characteristics of the government's budget and the fiscal linkages between the central and regional governments modeled in the B-MARIA-RS model in accordance with the Brazilian federalism. The income taxes and the contributions (other indirect taxes) are the most important source of revenue for the central government of Brazil while the indirect commodity tax (an excise tax collected on goods and services transactions by the origin principle) is the main source of revenue for the regional governments. The Brazilian constitutional rules imposes a hard vertical linkage between governments since 21.5% of the income and commodity taxes collected by the central government should be transferred to the regional governments.

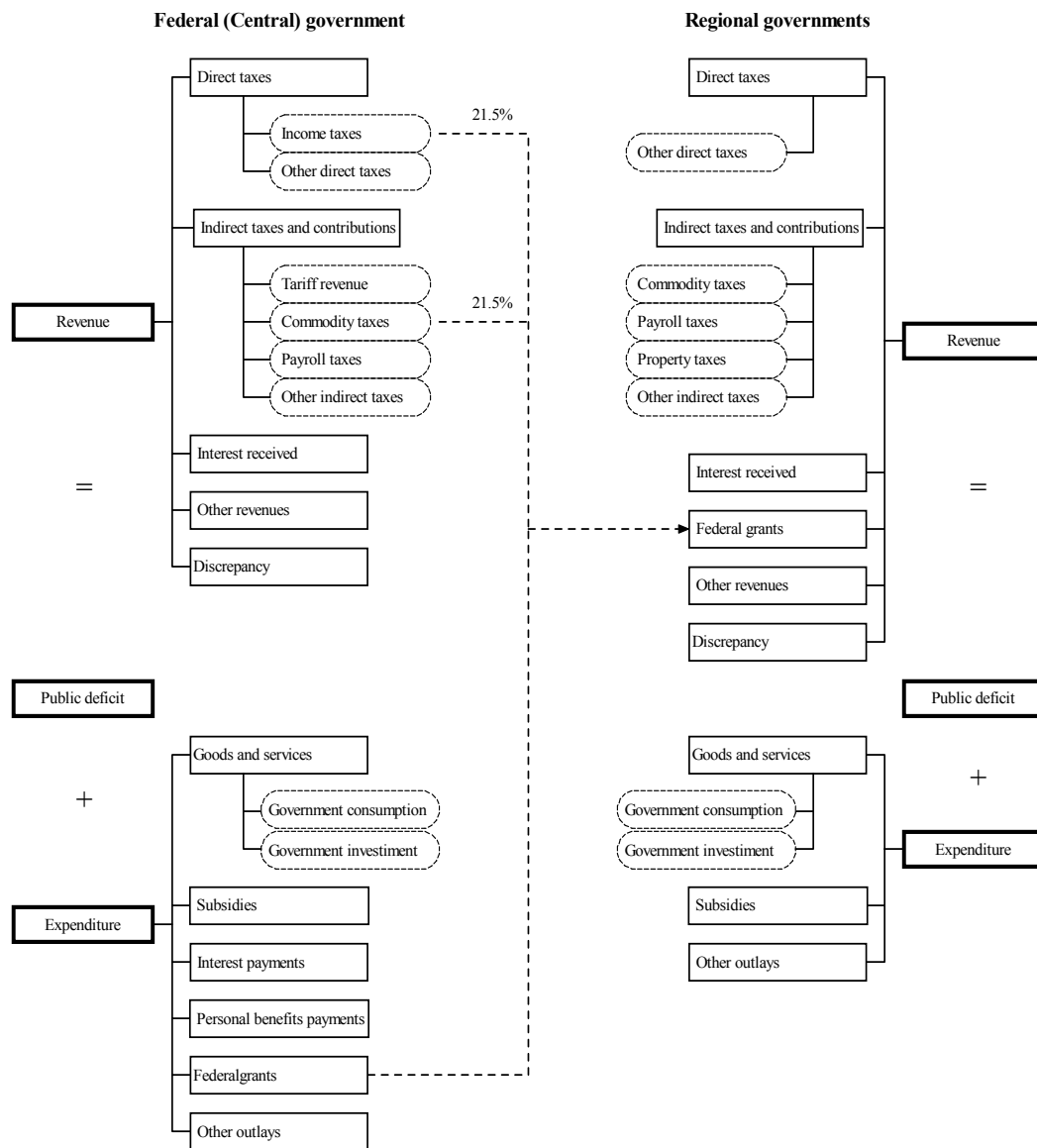
Closures

The B-MARIA-RS model can be used for short-run and long-run comparative static simulations. The basic distinction between these two types of closure lies in the treatment given to the microeconomic approach to capital stock adjustment. Capital stocks are held fixed in the short run, whereas in the long run, policy changes may affect capital stocks in each region.⁵ In the short-run closure, besides the hypothesis of interindustry and interregional immobility of capital, the regional population and labor supply are fixed, the regional wage differentials are constant and the national real wage is fixed. Regional

⁵ For closures in CGE models, see Dixon and Parmenter (1996) e Dixon *et al.* (1982).

employment is driven by the assumptions on wage rates, which indirectly determine regional unemployment rates. On the demand side, investment expenditures are exogenous – firms cannot reassess investment decisions in the short run. Household consumption follows household disposable income, and government consumption, at both regional and federal levels, is fixed (alternatively, government deficit can be set exogenously, allowing government expenditures to change). Finally, the technology variables are exogenous, given that the model does not present any endogenous growth theory.

Figure 2. Government's budget and fiscal linkages between Brazilian governments



In the long-run closure, capital and labor are mobile across sectors and regions. The major differences from the short-run closure lie in the configuration of the labor market and capital accumulation. In the former case, aggregate employment is determined by population growth, labor force participation rates, and the natural rate of unemployment. The distribution of labor force across regions and sectors is totally determined endogenously. Labor is attracted to more competitive sectors in more favored geographical areas. Likewise, capital is directed towards more attractive sectors. This movement keeps the rates of return at their initial levels.

3. Modeling strategy

The simulation is implemented assuming the regional governments play one-shot non cooperative game where percentage changes in indirect tax rates on manufacturing goods are used as strategies to influence allocations of the productive factors (long run closure), capital and labor, in order to increase the welfare of each regional representative household. However, we assume there is a “threshold variance” that limits the space to promote percentage changes in indirect tax rates due to the electoral implications in the political cycle. On the one hand, if the tax rate falls under this threshold the welfare losses caused by reductions in public good provisions can damage the self interest of the government’s authorities since the median voter can remove them in the next election. On the other hand, this also can occurs if the tax rate increase above this threshold since the representative household welfare will be worse off due to the increases in the goods prices. Then, we define *ad hoc* that the threshold variance is 10%, that is, the strategies set of the regional governments is composed by percentage changes in the indirect tax rates limited to the space $[-0.10, +0.10]$ ⁶.

Into the percentage changes’ space, the regional governments engage in a non cooperative game concerned to the welfare of the regional representative household. But we assume the regional public goods provision (regional government consumption) is adjusted to maintain the fiscal solvency and this requires building a welfare measure able to account for the

⁶ Its worth to note that the coefficient of variation of the effective indirect tax rates collected by the regional governments in Brazil between 1988 and 2004 it was 11.2%.

changes in the private and public good consumption generated by the tax competition policies. To achieve this outcome, the game's payoffs will be evaluated by a welfare measure that combines additively the Hicksian measure of *relative* equivalent variation with the percentage changes in the provision of regional public goods post-simulation the tax competition policy. The first one is defined as the *percentage change* of the benchmark income the representative household would need in order to get a post-simulation utility under benchmark prices (Bröcker, 1998). Formally, for linear utility functions, the welfare measure used to compute the payoffs of the tax competition game it can be written as⁷:

$$W^r = \theta_U \frac{U^r(1) - U^r(0)}{U^r(0)} + \theta_G \frac{G^r(1) - G^r(0)}{G^r(0)}, \quad \theta_U + \theta_G = 1 \quad (1)$$

where $U^r(1)$ is the post-shock private consumption utility, $U^r(0)$ is the benchmark private consumption utility, $G^r(1)$ is the post-shock public good consumption, $G^r(0)$ is the benchmark public good consumption and θ_U and θ_G are the private and public goods shares of the representative household consumption. Note that, when the tax competition policy implies reductions in indirect tax rates, the benefits associated with the reduction in basic prices is balanced by the cost of public good provision associated with the reduction in government revenue and then $W^r > 0$ if the gains of private good consumption overcome the losses of public good consumption.

Now, following Mendoza and Tesar (2003), we can define that the Nash equilibrium of the regional tax competition game is computed as a pair of percentage changes in indirect tax rates (τ^{RS}, τ^{RB}) and the associated payoffs $U(\tau^{RS} | \tau^{RB})$ and $U(\tau^{RB} | \tau^{RS})$ where:

- i) τ^{RS} maximizes $U(\tau^{RS} | \tau^{RB})$ given τ^{RB} ;
- ii) τ^{RB} maximizes $U(\tau^{RB} | \tau^{RS})$ given τ^{RS} ;
- iii) the payoffs are supported by the prices and allocations corresponding the competitive equilibrium for (τ^{RS}, τ^{RB}) and τ^r ($r = RS, RB$) $\in [-0.10, +0.10]$;
- iv) the fiscal solvency rules of both regions and of the federal government are satisfied.

⁷ See Layard and Walters (1978) for details on the equivalent variation concept and Almeida (2003) for derivations of the relative equivalent variation when handling linear utility functions.

Finally, the simulation also is carried on the hypothesis of exogenous fiscal policy by the federal government. That is, the federal government doesn't have a reaction function in the context of the regional tax competition game, but the vertical linkages still remain because of the constitutional rules. This is an important issue in the Brazilian federalism and alternative closures for the fiscal policy of the federal government can be explored in the future research.

4. Results

A four-step Euler procedure is adopted in the solution the model and the results are reported as percentage changes from the benchmark database. Table 1 presents the payoffs matrix for the regional tax competition game simulated with the B-MARIA-RS model. The results are presented by each 2% changes in the strategies set to obtain an illustration about the non linearity of the payoffs and about the slope of the reaction function. The welfare measure shows that the regional representative households are better off when both governments play reductions in the tax rate of the manufacturing goods and are worse off otherwise. Then, the optimal strategies are on the left-right diagonal of the payoffs matrix and the reaction function has a positive slope, that is, the regional governments tend to adopt the same policy choice in such tax competition game. Therefore, the Nash equilibrium is on the left-left corner of the payoffs matrix and corresponds to the usual race-to-the-bottom outcome as advocated by the benevolent-type theories. But, conversely these theories, the Nash equilibrium is welfare-improving like the findings of Mendoza e Tesar (2003). But as we will see forward, the welfare gains probably are augmented by the vertical fiscal linkages because the regional tax competition raises the national tax base and, therefore, the federal transfers to the regional governments.

Table 1. Payoffs matrix of the interjurisdictional tax competition game

Strategies		Rest of Brasil																					
		-0.10		-0.08		-0.06		-0.04		-0.02		0.00		0.02		0.04		0.06		0.08		0.10	
Rio Grande do Sul	-0.10	3.769	3.856	3.168	3.118	2.571	2.388	1.979	1.664	1.391	0.948	0.807	0.239	0.228	-0.464	-0.348	-1.159	-0.919	-1.848	-1.487	-2.531	-2.050	-3.208
	-0.08	3.600	3.806	3.000	3.068	2.405	2.338	1.814	1.616	1.227	0.900	0.644	0.191	0.066	-0.511	-0.508	-1.207	-1.079	-1.895	-1.645	-2.578	-2.207	-3.254
	-0.06	3.432	3.756	2.834	3.019	2.239	2.289	1.649	1.567	1.064	0.851	0.482	0.143	-0.095	-0.559	-0.668	-1.254	-1.238	-1.942	-1.803	-2.624	-2.364	-3.300
	-0.04	3.265	3.706	2.667	2.970	2.074	2.240	1.486	1.518	0.901	0.803	0.321	0.095	-0.255	-0.606	-0.828	-1.301	-1.396	-1.989	-1.960	-2.670	-2.520	-3.346
	-0.02	3.098	3.656	2.502	2.920	1.910	2.191	1.323	1.470	0.739	0.755	0.160	0.047	-0.415	-0.653	-0.986	-1.348	-1.553	-2.035	-2.116	-2.717	-2.675	-3.392
	0.00	2.933	3.607	2.338	2.871	1.747	2.143	1.160	1.422	0.578	0.707	0.000	0.000	-0.574	-0.701	-1.144	-1.394	-1.710	-2.082	-2.272	-2.763	-2.830	-3.437
	0.02	2.767	3.558	2.174	2.822	1.584	2.094	0.999	1.373	0.418	0.660	-0.159	-0.047	-0.732	-0.748	-1.301	-1.441	-1.866	-2.128	-2.427	-2.809	-2.984	-3.483
	0.04	2.603	3.508	2.010	2.774	1.422	2.046	0.838	1.325	0.258	0.612	-0.318	-0.095	-0.890	-0.794	-1.457	-1.488	-2.021	-2.174	-2.581	-2.855	-3.137	-3.528
	0.06	2.439	3.459	1.848	2.725	1.261	1.998	0.678	1.278	0.099	0.564	-0.476	-0.142	-1.047	-0.841	-1.613	-1.534	-2.176	-2.220	-2.735	-2.900	-3.290	-3.574
	0.08	2.276	3.410	1.686	2.676	1.100	1.949	0.518	1.230	-0.060	0.517	-0.633	-0.189	-1.203	-0.888	-1.768	-1.580	-2.330	-2.266	-2.888	-2.946	-3.442	-3.619
0.10	2.114	3.362	1.525	2.628	0.940	1.901	0.359	1.182	-0.217	0.470	-0.790	-0.236	-1.358	-0.934	-1.923	-1.627	-2.483	-2.312	-3.040	-2.991	-3.593	-3.664	

Source: Calculated by the authors.

Notes: The strategies are percentage changes in indirect tax rate of manufacturing goods adopted by the regional governments. The payoffs by the welfare measure defined in equation (1) and the Nash equilibrium is identified by gray cells.

It is worth to note a curious result in the payoffs matrix, that is, the majority of the payoffs are positives when the Rio Grande do Sul's government increase the indirect tax rate and the Rest of Brazil's reduce it. The interregional feedback effects and the size asymmetries between the regional economies explain a lot of such outcome. The final result of the substitution effects associated with the relative prices changes is a composite price of the private goods lower than the benchmark composite prices for both regions. For the Rio Grande do Sul's representative household, the gains of private consumption due to the interregional substitution effect overcome the losses due the increase in the local basic prices. This occurs because there is a high integration between these economies. For the Rest of Brazil, the composite price of the goods is lower than the benchmark due to reduction in local prices and the primary factor income rises because the productive relocation effects caused by the mobility of the factors. Also, the Rest of Brazil economy is benefited by the international substitution effects and, since it represents about 92% of the Brazilian economy, its growth has a significant spillover effect on the Rio Grande do Sul. That is, the Rio Grande do Sul's interregional trade balance is positive and the population migration for the Rest of Brazil is big enough to the per capita household expenditure be now relatively bigger than the benchmark level.

Table 2 presents the main macroeconomic effects at the Nash equilibrium. The regional tax competition produces a general reduction in the price indexes and the majority of the aggregated demand components have a real positive variation. Both regional economies become more efficient and the expansion in the product requires a bigger demand of primary factors (capital and labor), implying increases of their earnings. The level of integration between the regional economies raises and also there is a positive effect on the international trade balance because of the substitution effect acting on the import goods. All the feedback effects of regional tax competition cause an expansion in output and employment for the regions and the whole country. The negative effect in the Rest of Brazil's employment just reveals an adjustment in the regional labor market due to the migration effects.

Table 2. Macro-regional effects at the Nash equilibrium (%)

Variables	Rio Grande do Sul	Rest of Brazil	Brazil
<u>GDP components</u>			
Real household consumption	1.405	1.071	1.094
Real aggregate investment	1.720	1.325	1.350
Real aggregate regional government demand	-2.390	-2.712	-2.206
Real aggregate federal government demand	-	-	-
Interregional export volume	1.273	1.567	-
International export volume	2.063	1.691	1.727
Interregional import volume	1.567	1.273	-
International import volume	0.865	0.611	0.625
<u>Prices</u>			
Consumer price index	-0.516	-0.390	-0.399
Investment price index	-0.502	-0.366	-0.375
Regional government price index	0.578	0.492	0.497
Federal government price index	0.578	0.492	0.496
Interregional export price index	-0.282	-0.171	-
International export price index	-1.198	-0.957	-0.980
Interregional import price index	-0.171	-0.282	-
International import price index	-	-	-
GDP deflator (expenditure side)	-0.505	-0.321	-0.335
<u>Primary factors</u>			
Aggregate payments to capital	1.131	0.929	0.944
Aggregate payments to labor	1.008	0.773	0.791
Aggregate capital stock	1.642	1.305	1.329
<u>Welfare indicators</u>			
REV	4.446	4.744	4.720
Real GDP	0.998	0.731	0.751
Employment	0.218	-0.015	0.002

Source: calculated by the authors.

Only the regional government consumption presents a real reduction because of the fiscal solvency rule. As showed in Table 3, the race-to-the-bottom equilibrium implies a big negative variation in indirect commodity tax collection of the regional governments and this is the main explanation for the reduction in the regional government's revenue. Then, the budget balance is achieved by reductions in regional public good provisions (regional government consumption). But, since the national tax base rises due to the positive feedback effects of regional tax competition, there is a positive effect on the indirect commodity taxes and the income tax collected by the federal government. This effect benefits the regional government budgets through the vertical linkages associated with the constitutional rules and helps to alleviate the reduction pressures on regional government's revenue and the regional public goods provision. Otherwise, there would be needful a

bigger effort on the expenditure side to achieve the regional fiscal solvency. Therefore, the hard vertical linkages contributes to alleviate the adjustment pressures on the regional public goods provision when regional tax competition is active and such specificity of the Brazilian federalism reinforces the welfare improving Nash equilibrium.

Table 3. Public finances effects at the Nash equilibrium by level of government (%)

Variables	Governments		
	Rio Grande do Sul	Rest of Brazil	Federal
<u>Government's revenue</u>	-2.010	-2.239	-0.129
Tax revenue	-2.442	-2.390	0.299
Direct taxes	-0.090	-0.084	0.237
Income taxes	-	-	0.352
Other direct taxes	-0.090	-0.084	-0.083
Indirect taxes	-7.882	-5.975	0.752
Tariff revenue	-	-	0.084
Commodity taxes	-9.653	-7.091	4.102
Payroll taxes	0.702	0.555	-0.083
Property taxes	-0.090	-0.084	-
Land taxes	-	-	-
Other indirect taxes	-0.090	-0.084	-0.083
Interests received	-0.090	-0.084	-0.083
Federal transfers	22.101	11.130	-
Other revenues	-0.090	-0.084	-0.083
Discrepancy	-2.404	-2.726	-
Public deficit	-	-	-
<u>Government's expenditure</u>	-2.010	-2.239	-0.129
Expenditures with goods and services	-2.051	-2.322	0.041
Government consumption	-2.404	-2.726	-
Government investment	0.632	0.462	0.545
Personal benefit payments	-0.759	-0.905	-0.887
Subsidies	-7.087	-4.835	-5.020
Interest payments	-0.090	-0.084	-0.083
Federal transfers to regions	-	-	11.903
Other outlays	-2.010	-2.239	-0.129

Source: calculated by the authors.

6. Final remarks

The previous analysis provides important insights into the debate on interjurisdictional tax competition in an empirical perspective. In accordance with Mendoza and Tesar (2003), the experimental exercise implemented through the B-MARIA-RS model showed the one-shot tax competition game between regional governments can imply a race-to-the-

bottom Nash equilibrium, but welfare improving. However, while the regional governments perceive an expressive fall in the indirect tax revenue due to the reduction in tax rate at the Nash equilibrium, the federal government revenue is benefited by the growth in national tax base of the direct and indirect taxes. In special case of the Brazilian federalism, the welfare gains of the regional tax competition can be very high since the hard vertical linkages imposed by the constitutional rules allow alleviating the reduction pressures on the regional provision of public goods.

These findings suggest that the effective effects of the interjurisdictional tax competition depend on the empirical structure of the economic system in analysis, such as the complementary or competitive relationships between the regional economies and the fiscal environment. The welfare improving outcome founded in this paper probably is associated with the methodological solution employed here, that is, the CGE modeling. Differently of the partial analysis used in many theoretical issues on tax competition, the CGE approach allows to overcome the hypothesis that the governments don't evaluate the fiscal externalities into the payoff function. Such hypothesis is very appropriated in a partial context but not in a general equilibrium analysis because all feedback effects are computed in the equilibrium solution. In other words, the payoffs calculated by the CGE model take into account the bi-directional impact of the tax policy changes executed by each regional government. More precisely, the Nash equilibrium is an allocation Pareto optimum.

Finally, the analysis of the interjurisdictional tax competition in the context of the Brazilian federal system showed that the fiscal rules matter for the outcome. Was observed that the presence of hard vertical linkages between the governments consist in an important aspect of the welfare improving equilibrium, but this is specific to the Brazilian federalism and can't be effective for other federal regimes. In addition, the simulation was implemented on the hypothesis that fiscal policy of the federal government is exogenous, implying the federal government isn't an active player in the tax competition game. Indeed, this hypothesis could be relaxed since the Brazilian federal government has been making several changes in its tax policy in order to raise the role in the economy after the new constitutional rules promulgated in 1988 promoted a decentralization process. The sensitivity analysis of interjurisdictional tax competition in the Brazilian federal system to different fiscal closures seems a prominent issue to be explored in the future research.

7. References

- Armington, P. S. (1969) A theory of demand for products distinguished by place of production. *International Monetary Fund Staff Papers*, 16, pp. 159-178.
- Burbidge, J. B. and Myers, G. M. (1994) Population mobility and capital tax competition. *Regional Science and Urban Economics*, Boston, v. 24, n. 4, p. 441-459.
- Cardarelli, R., Taugourdeau, E. and Vidal, JP (2002) A repeated interactions model of tax competition. *Journal of Public Economic Theory*, Champaign, v. 4, n.1, p. 19-38.
- Cassette, A., Jayet, H., Paty, S. (2005) Tax Competition and *Leviathan*-type politicians. *Public Economic Theory 2005 Meeting*. Available in: <http://139.124.177.94/pet/viewpaper.php?id=198>.
- De Melo, J. and Robinson, S. (1989) Product differentiation and foreign trade in CGE models of small economies. Washington DC, World Bank, *Policy, Planning and Research Working Papers*, WPS 144.
- Dixon, P. D. and Parmenter, B. R. (1996) *Computable general equilibrium modeling for policy analysis and forecasting*, In: H. M. Amman, D. A. Kendrick and J. Rust (Eds.) *Handbook of Computational Economics*, 1: 3-85, Amsterdam, Elsevier.
- Dixon, P. D., Parmenter, B. R., Sutton, J. and Vincent, D. P. (1982) *ORANI: A multisectoral model of the Australian economy*, Amsterdam, North-Holland.
- Domingues, E. P., Leon, F. L. L. and Haddad, E. A. (2001) Impactos das exportações sobre a estrutura setorial e de qualificação do emprego no Brasil. *Economia*, v.2, n. 1.
- Guilhoto, J. J. M. (1995) *Um modelo computável de equilíbrio geral para planejamento e análise de políticas públicas (PAPA) na economia brasileira*. ESALQ, Piracicaba, Tese de Livre Docência, June.
- Haddad, E. A. (1999) *Regional inequality and structural changes: lessons from the Brazilian experience*. Aldershot: Ashgate.
- Haddad, E. A. and Domingues, E. P. (2001) EFES – Um modelo de aplicado de equilíbrio geral para a economia brasileira: projeções setoriais para 1999-2004. *Estudos Econômicos*, v. 31, n. 1.
- Haddad, E. A., Domingues, E. P. and Perobelli, F. S. (2002) Regional effects of economic integration: the case of Brazil. *Journal of Policy Modeling*, v. 24, n.5, pp. 453-482.
- Haddad, E. A. and Hewings, G. J. D. (1999) The short-run regional effects of new investments and technological upgrade in the Brazilian automobile industry: an interregional computable general equilibrium analysis. *Oxford Development Studies*, v. 27, n. 3, 25 p.

Mendoza, E. G. and Tesar, L. L. (2003) A quantitative analysis of tax competition v. tax coordination under perfect capital mobility. NBER Working Paper, W9746. Available in: [http:// papers.nber.org/ papers/w9746.pdf](http://papers.nber.org/papers/w9746.pdf).

Mintz, J. and Tulkens, H. (1986) Commodity tax competition between member states of a federation: equilibrium and efficiency. *Journal of Public Economics*, Chicago, v. 29, n. 2, p. 133-172.

Perroni, C. and Rutherford, T. F. (1995) Regular flexibility of nested CES functions. *European Economic Review*, v. 39, n.2, p. 335-343.

Peter, M. W., Horridge, M., Meagher, G. A., Naqvi, F. and Parmenter, B. R. (1996) The theoretical structure of MONASH-MRF. *Preliminary Working Paper no. OP-85*, IMPACT Project, Monash University, Clayton, April.

Porsse, A. A. (2005) *Competição tributária regional, externalidades fiscais e federalismo no Brasil: uma abordagem de equilíbrio geral computável*. UFRGS, Porto Alegre, Tese de Doutorado, Dec.

Rauscher, M. (1998) *Leviathan* and competition among jurisdictions: the case of benefit taxation. *Journal of Urban Economics*, Irvine, v. 44, n. 1, p. 59-67.

Tiebout, C. M. (1956) A pure theory of local expenditures. *Journal of Political Economy*, Chicago, 64, p. 416-424.

Wildasin, D. E. (1988) Nash equilibrium in models of fiscal competition. *Journal of Public Economics*, Chicago, v. 35, n. 2, p. 229-240.

Zodrow, G. R.; Mieszkowski, P. (1986) Pigou, Tiebout, property taxation, and underprovision of local public goods. *Journal of Urban Economics*, Irvine, v. 19, n. 3, p. 356-370.