

Xepapadeas, Anastasios; Roseta-Palma, Catarina

Working Paper

Instabilities and Robust Control in Fisheries

Nota di Lavoro, No. 110.2003

Provided in Cooperation with:

Fondazione Eni Enrico Mattei (FEEM)

Suggested Citation: Xepapadeas, Anastasios; Roseta-Palma, Catarina (2003) : Instabilities and Robust Control in Fisheries, Nota di Lavoro, No. 110.2003, Fondazione Eni Enrico Mattei (FEEM), Milano

This Version is available at:

<http://hdl.handle.net/10419/118138>

Standard-Nutzungsbedingungen:

Die Dokumente auf EconStor dürfen zu eigenen wissenschaftlichen Zwecken und zum Privatgebrauch gespeichert und kopiert werden.

Sie dürfen die Dokumente nicht für öffentliche oder kommerzielle Zwecke vervielfältigen, öffentlich ausstellen, öffentlich zugänglich machen, vertreiben oder anderweitig nutzen.

Sofern die Verfasser die Dokumente unter Open-Content-Lizenzen (insbesondere CC-Lizenzen) zur Verfügung gestellt haben sollten, gelten abweichend von diesen Nutzungsbedingungen die in der dort genannten Lizenz gewährten Nutzungsrechte.

Terms of use:

Documents in EconStor may be saved and copied for your personal and scholarly purposes.

You are not to copy documents for public or commercial purposes, to exhibit the documents publicly, to make them publicly available on the internet, or to distribute or otherwise use the documents in public.

If the documents have been made available under an Open Content Licence (especially Creative Commons Licences), you may exercise further usage rights as specified in the indicated licence.

Instabilities and Robust Control in Fisheries

Anastasios Xepapadeas and
Catarina Roseta-Palma

NOTA DI LAVORO 110.2003

DECEMBER 2003

NRM – Natural Resources Management

Anastasios Xepapadeas, *University of Crete, Department of Economics*
Catarina Roseta-Palma, *Dep. Economia and Dinâmica - ISCTE, Lisboa*

This paper can be downloaded without charge at:

The Fondazione Eni Enrico Mattei Note di Lavoro Series Index:
http://www.feem.it/web/attiv/_wp.html

Social Science Research Network Electronic Paper Collection:
http://papers.ssrn.com/abstract_id=XXXXXX

The opinions expressed in this paper do not necessarily reflect the position of
Fondazione Eni Enrico Mattei

Instabilities and Robust Control in Fisheries

Summary

Demand and supply analysis in fisheries often indicates the presence of instabilities and multiple equilibria, both in open access conditions and in the socially optimal solution. The associated management problems are further intensified by uncertainty on the evolution of the resource stock or on demand conditions. In this paper the fishery management problem is handled using robust optimal control, where the objective is to choose a harvesting rule that will work, in the sense of preventing instabilities and overfishing, under a range of admissible specifications for the stock recruitment equation. The paper derives robust harvesting rules, leading to a unique equilibrium, which could be used to design policy instruments such as robust quota systems.

Keywords: Fishery Management, Multiple Equilibria, Instabilities, Robust Control, Robust Harvesting Rules

JEL: Q22, D81

This paper has been presented at the "International Conference on Theoretical Topics in Ecological Economics", Trieste, Italy, February 10-12, 2003, a joint initiative of the Abdus Salam International Centre for Theoretical Physics - ICTP, the Beijer International Institute of Ecological Economics, and Fondazione Eni Enrico Mattei – FEEM.

Address for correspondence:

Anastasios Xepapadeas
University of Crete, Department of Economics
University Campus
74 100 Rethymno
Crete
Greece
Tel: +30 2831 0 77419
Fax: +30 2831 0 77406
E-mail: xepapad@econ.soc.uoc.gr

1 Introduction

Demand and supply analysis in fisheries has been associated with instabilities and multiple equilibria, both in the context of an open access fishery and a socially optimal fishery.¹ The source of instability is the emergence of a backward bending supply curve which is the consequence of biological overfishing that occurs when effort expands beyond the level corresponding to the maximum sustainable yield. The combination of a standard downward sloping demand curve with the backward bending supply curve can produce an odd number of interchanging locally stable and locally unstable market equilibria in open access fisheries. There exist locally stable equilibria corresponding to high price and low harvesting, which can be seen as an indication of overfishing. It is interesting to note that a similar picture can emerge even in fishery that is managed in a socially optimal way. The discounted supply curve is also backward bending for positive discount rates. As a result, there are demand conditions under which multiple equilibria and instabilities are present even in optimally controlled fisheries.

The problems caused by the emergence of instabilities and overfishing in fisheries are further intensified by uncertainty, which is an important aspect of resource economics. Uncertainty in this context can be associated with the evolution of the resource stock² or with demand conditions. Thus both supply and demand shocks could disturb a locally stable fishery and lead to instabilities and overfishing. As Clark (1990) points out, many stock-recruitment relationships are poorly understood and difficult to estimate given the exist-

¹See for example Clark (1990).

²See for example Conrad and Clark (1988, Ch. 5), McDonald and Hanf (1992), Clark (1990, Ch. 11), Danielson (2002), Tu and Wilman (1992), Conrad (2000, Ch. 7), Weitzman (2002), Androkovich and K.R.Stollery (1989).

ing data, which in most cases is of low quality. As a result regulation based on misspecified biological dynamics might be ineffective in achieving the desired targets. This brings into the picture the issue of scientific uncertainty and its effects on fishery management.

Our use of the term uncertainty refers to cases where the possible outcomes are known but the decision maker is unable to assign unique probabilities. The possibility of multiple prior distributions has largely been absent from recent economic literature, although it is often a more appropriate setting (see Woodward and Bishop (1997)). Introducing an axiom of uncertainty aversion, as in Gilboa and Schmeidler (1989), a maximin model is obtained where the optimal choice maximizes utility for the worst probability distribution in a given set.³ In our analysis of fisheries, scientific uncertainty relates to the stock-recruitment equation. It reflects the possibility that although the estimated model, often referred to as the approximating or benchmark model, is consistent with the data, there is a set of alternative models describing the evolution of the resource stock which are also consistent with the data, and thus could be regarded as possibly true. It is important to stress that if the benchmark model is misspecified, and resource stock evolution corresponds to a worse than expected scenario, then the optimal control solution for the benchmark model could result in a fishery with instabilities and overfishing. This observation provides support for adopting a “precautionary principle” in fishery management when there is scientific uncertainty. When the extensive collapse of fisheries over the last century is considered, precaution in designing management rules for regulating fisheries seems to

³See also Roseta-Palma and Xepapadeas (forthcoming) for an application of robust control to water management, and Chevé and Congar (2000), Chevé and Congar (forthcoming) for alternative set definitions.

be desirable.

Managing a fishery in this context suggests formulating the management problem as a *robust control* problem along the lines developed in Hansen and Sargent (2001*a*), Hansen and Sargent (2003). The objective is to choose a harvesting rule that will work, in the sense of preventing instabilities and overfishing, under a range of different model specifications of the stock-recruitment equation. Robust control can be directly related to uncertainty aversion and precaution, and as Hansen and Sargent (2001*b*) explicitly state “a preference for robustness induces context-specific precaution”.

The purpose of this paper is to address the issue of scientific uncertainty and the potentially induced instabilities and overexploitation in fisheries by introducing robust control methodologies in fishery management. Our main finding is that by an appropriate choice of the robustness parameter, which is a parameter indicating preference for robustness, a regulator that manages a fishery for the social optimum could eliminate multiple equilibria instabilities and potential overfishing. The robust harvesting rules that lead to a unique equilibrium can be used to design decentralized regulation with policy instruments such as transferable quota or landing fees.

2 Bionomic Instabilities in Fishery Management⁴

We begin by considering a standard fishery model where biomass evolves deterministically according to

$$\dot{x}(t) = F(x(t)) - h(t) \tag{1}$$

⁴This section follows Clark (1990, section 5.2), and will serve as background for the development of robust control methodology in the following section.

where $x(t)$ is fish biomass, $h(t)$ denotes the harvest rate and $F(x(t))$ is the growth function for stock-recruitment. One common example is the logistic growth function, where $F(x) = rx(1 - x/k)$. Biomass stock for the maximum sustainable yield is defined as $x_{msy} = \arg \max_x F(x)$, while $x_k : F(x_k) = 0, x_k > 0$ denotes the carrying capacity biomass. Let unit harvest cost, $c(x(t))$ be a nonincreasing function of the fish stock x . Then for any price p , the profit flow is determined as⁵

$$\pi = (p - c(x)) h \quad (2)$$

The open access supply in equilibrium is determined by the conditions

$$h = F(x) \quad (3)$$

$$p = c(x) \quad (4)$$

Solving (4) for x and substituting into (3) we obtain equilibrium supply as $h = F(x(p))$. If demand is given by $h = D(p)$, market equilibrium under open access is determined as:

$$(p^0, h^0) : D(p^0) = F(x(p^0)) \text{ , } p^0 = P(h^0)$$

where $p = P(h)$ is the inverse demand curve. Typical bell-shaped growth functions together with stock effects on harvest cost and a positive discount rate may give rise to a backward bending supply curve. Combined with a downward sloping demand curve, this could induce multiple equilibria. With three equilibria, the middle one indicates bionomic instability while one of the locally stable equilibria indicates overfishing with low equilibrium harvesting at a relatively high price.⁶ Multiple equilibria could be the result of prevailing demand conditions, or could arise from demand shocks.

⁵ t is dropped to simplify notation.

⁶See for example figure 5.11 in Clark (1990), for logistic growth and unit cost equal to $\frac{c}{x}$.

To analyze socially optimal fishery management we introduce a social planner or a regulator maximizing net surplus defined as $U(h) - c(x)h$, where $U(h) = \int_0^h P(u) du$ so that $U'(h) = P(h)$. The welfare maximization problem is defined as:

$$\max_{\{h(t)\}} \int_0^\infty e^{-\rho t} [U(h(t)) - c(x(t))h(t)] dt \quad (5)$$

$$\text{s.t. } \dot{x}(t) = F(x(t)) - h(t), x(0) = x_0 > 0 \quad (6)$$

The current value Hamiltonian for the problem is:

$$H = U(h) - c(x)h + \lambda [F(x) - h] \quad (7)$$

with optimality conditions

$$U'(h) = \lambda + c(x), U'(h) = P(h) \quad (8)$$

$$\dot{\lambda} = [\rho - F'(x)]\lambda + c'(x)h \quad (9)$$

along with biomass evolution (6) and the transversality condition at infinity. Differentiating (8) with respect to time and substituting into (9) we obtain the dynamic system that characterizes the optimal paths of harvest and fish stock. The behavior of harvest is given by

$$\dot{h} = \frac{1}{U''(h)} [(\rho - F'(x))(U'(h) - c(x)) + c'(x)F(x), U'(h) = P(h)] \quad (10)$$

whereas stock behaves according to (6). The deterministic steady state equilibrium is defined as $\dot{h} = \dot{x} = 0$. At the steady state, market equilibrium is characterized by

$$P(h) = p, \quad p = c(x) - \frac{c'(x)F(x)}{\rho - F'(x)} = S_\rho(x), \quad h = F(x) \quad (11)$$

which describe demand, supply, and biological equilibrium respectively. Solving the stock equilibrium equation of (11), market equilibrium when the fishery is optimally managed is defined as

$$(p^*, h^*) : P(h^*) = S_\rho(x(h^*)) , p^* = P(h^*) \quad (12)$$

The discounted supply curve determined by (11) is backward bending as in the case of open access fishery and could induce multiple equilibria, as presented in the phase diagram of figure 1.⁷

[Figure 1]

For the $\dot{h}_1 = 0$ isocline there is a unique steady state which is saddle point stable at M . However, a demand shock could shift this isocline to $\dot{h}_s = 0$ and induce multiple equilibria, at M_1 , M_2 , and M_3 , with the middle one being unstable and M_3 indicating overfishing. Furthermore, if the benchmark model for stock evolution is misspecified, it is possible for a worse than estimated model for the stock-recruitment relationship $F(x)$ to be realized. Under demand shocks and misspecification of the stock-recruitment relationship both the $\dot{x} = 0$ isocline and the $\dot{h} = 0$ isocline shift and multiple equilibria could also be induced. If these shifts yield a system such as $\dot{x}_2 = 0$, $\dot{h}_2 = 0$ then multiple equilibria emerge at E_1^D, E_2^D, E_3^D . It is also possible for the true model to correspond to an $\dot{x} = 0$ isocline even further below $\dot{x}_2 = 0$, so that an equilibrium with harvesting rule $\dot{h}_2 = 0$ does not exist. This harvesting rule would lead to resource collapse under such circumstances.

The possibility of multiple equilibria at the social optimum presents problems for regulation. For example, the regulatory instruments could have been

⁷See also Clark (1990) figures 5.17 and 6.12.

designed to steer the system towards M_1 but due to demand shocks and/or misspecification, as described above, the systems could converge, for appropriate initial conditions, to a state like E_3^D which is an overfishing steady state. To prevent regulatory complications arising from such cases a different type of regulation is required. The idea behind the robust control methodology, as applied in this paper to fishery management, is to help design rules which under the worst possible scenario for the stock-recruitment relationship will prevent instabilities, steady state multiple equilibria and biological overfishing.

3 Robust Control and Fishery Management

To develop the robust control methodology we introduce uncertainty in the stock-recruitment equation. Let $(\Omega, \mathcal{F}, \mathcal{G})$ be a complete probability space, and let $x_t = x(\omega, t)$, $h_t = h(\omega, t)$ be the stochastic processes for the fish biomass and harvesting, respectively. Moreover, let $B_t = B(\omega, t)$ be a Wiener process, $\mathcal{E}(dB_t) = 0$, $var(dB_t) = dt$.

The stochastic social optimization problem for the fishery can be defined as the choice of a nonanticipating harvesting process $h(\omega, t)$ that maximizes the expected value of net surplus, subject to the constraints imposed by

species growth rate:⁸

$$\max_{\{h(t)\}} \mathcal{E}_0 \int_0^\infty e^{-\rho t} [U(h_t) - c(x_t) h_t] dt \quad (13)$$

$$\text{s.t. } dx(t) = [F(x_t) - h_t] dt + \sigma dB_t \quad (14)$$

$$\sigma > 0, \quad x(0) = x_0 > 0 \text{ nonrandom} \quad (15)$$

$$x_t \geq 0, h_t \geq 0 \quad (16)$$

where x_t is the state variable and h_t is the control variable of the stochastic control problem.

In equation (14) the term $F(x_t) - h_t$ represents the expected change in the fish biomass at any given point in time, while the term σdB_t is the random amount of biomass change, with zero mean and variance σ^2 . In this setup, which is a typical stochastic control problem, the manager is assumed to know the behavior of stochastic shocks well enough to fully trust the characterization of the probability distribution implied by (14). This basic assumption leads to a decision on optimal harvest paths. However, it is quite possible (indeed likely, given natural system characteristics and information gaps) that the distribution is only an estimate, so that there is a degree of uncertainty attached not just to the specific realization of the random shock but also to the distribution itself. In other words, the planner might want to consider his own doubts about the model he is using to represent randomness.⁹

Following Hansen et al. (2002), we regard (14) as a benchmark model. If we assume that the social planner knows the benchmark model then there

⁸The basic assumption is that species biomass fluctuates continuously and that these stochastic influences are adequately represented by Wiener processes.

⁹There are two essentially different types of uncertainty involved. Chev e and Congar (2000) refer to these as risk (not knowing the precise value the shock will take) and imprecision (not being sure of the model).

are no concerns about robustness to model misspecification. Otherwise, these concerns for robustness to model misspecification are reflected by a family of stochastic perturbations to the Brownian motion $\{B_t : t \geq 0\}$. The perturbation distorts the probabilities \mathcal{G} implied by (14) and replaces \mathcal{G} by another probability measure \mathcal{Q} . The main idea is that stochastic processes under \mathcal{Q} will be difficult to distinguish from \mathcal{G} using a finite amount of data. The perturbed model is constructed by replacing B_t in (14) with

$$B_t = z_t + \int_0^t R_s ds, \text{ or } dB_t = dz_t + R_t dt \quad (17)$$

where $\{z_t : t \geq 0\}$ is a Brownian motion and $\{R_t : t \geq 0\}$ is a measurable drift distortion. Changes in the distribution of B_t will be parametrized as drift distortions to a fixed Brownian motion $\{z_t : t \geq 0\}$. The distortions will be zero under the measure \mathcal{G} , in which case B_t and z_t coincide.

Now the social planner's concerns about misspecification of the model describing the evolution of fish biomass can be expressed using (17) to write the distorted model

$$dx_t = [F(x_t) - h_t + \sigma R_t]dt + \sigma dz_t \quad (18)$$

Thus, in the fishery management problem under model misspecification, equation (14) is replaced by (18). Now, following Hansen et al. (2002), the corresponding multiplier robust control model for the fishery can be written as:

$$\begin{aligned} \max_{h_t} \min_{R_t} \mathcal{E} \int_0^\infty e^{-\rho t} \left[U(h_t) - c(x_t) h_t + \theta \frac{R_t^2}{2} \right] dt \\ \text{s.t. (18), (15) and (16)} \end{aligned} \quad (19)$$

In problem (19) the social planner is the maximizing agent that chooses harvesting h_t to maximize surplus, while "Nature" is the minimizing agent

that chooses the “worst case distortion” to the stock-recruitment relationship. The robustness parameter θ can be interpreted as the Lagrangian multiplier associated with an entropy constraint, which defines the maximum specification error in the stock-recruitment relationship that the social planner is willing to accept.¹⁰ A value $\theta = +\infty$ signifies no preference for robustness in the sense that the decision-maker has no doubts on the model, while lower values for θ indicate such a preference and such doubts.

Note that a specific choice of a maximum specification error that the regulator is willing to consider implies a specific choice of θ . Conversely, a specific choice of the robustness parameter θ implies a specific maximum specification error. Thus a desire to be robust, as reflected in θ , can be translated to a maximum acceptable specification error and vice-versa. Infinite θ implies that the regulator is not willing to consider any specification error and regards the benchmark model as a good model, or rather, as *the* model.

Using the Fleming and Souganidis (1989) result on the existence of a recursive solution to the multiplier problem, Hansen et al. (2002) show that problem (19) can be transformed into a stochastic infinite horizon two-player game where the Bellman-Isaacs conditions imply that the value function

¹⁰Relative entropy is a measure of the distance between the distributions \mathcal{G} and \mathcal{Q} . It must be limited, otherwise they would be distinguishable. More rigorously, the entropy constraint is $\int_0^\infty e^{-\delta u} \mathcal{E}_{\mathcal{Q}} \left(\frac{|R_u|^2}{2} \right) du \leq \eta$ (see Hansen et al. (2002)). Then θ can be interpreted as the Lagrangian multiplier associated with the constraint robust problem $\max_{h_t} \min_{R_t} \mathcal{E} \int_0^\infty e^{-\rho t} [U(h_t) - c(x_t) h_t] dt$, subject to (18), (15), (16) and the above entropy constraint, with η being the maximum specification error that the regulator is willing to consider. As Hansen et al. (2002) show, the constraint problem and the multiplier problem are equivalent.

$J(x_t, \theta)$ satisfies¹¹

$$\begin{aligned} \rho J(x, \theta) &= \max_h \min_R \left\{ \begin{array}{l} \left[U(h) - c(x)h + \theta \frac{R^2}{2} \right] + \\ J_x [F(x) - h + \sigma R] + \frac{1}{2} \sigma^2 J_{xx} \end{array} \right\} \\ &= \min_R \max_h \left\{ \begin{array}{l} \left[U(h) - c(x)h + \theta \frac{R^2}{2} \right] + \\ J_x [F(x) - h + \sigma R] + \frac{1}{2} \sigma^2 J_{xx} \end{array} \right\} \end{aligned} \quad (20)$$

A solution for game (20) for any given value of the robustness parameter θ will determine the socially optimal robust harvesting policy.

3.1 Robust harvesting rules

The optimality conditions associated with the optimization in the right hand side of (20) imply

$$U'(h) - c(x) = J_x \quad (21)$$

$$R = -\frac{\sigma}{\theta} J_x \quad (22)$$

Equation (21) is the usual result that at the optimal harvest the net marginal benefit of an additional unit of catch must be equal to the resource cost, whereas equation (22) is the worst possible distortion that is admissible, which is negative as expected and depends on θ . When θ is large, R is small and the benchmark model is a good approximation. More specifically, when $\theta \rightarrow \infty$ there is no distortion at all and the model yields the same solution as the typical optimal stochastic control model.

Going through the required derivations (see Appendix A), we obtain the solution for the evolution of harvesting (in expected terms), which depends on the distortion R :

$$(1/dt) \mathcal{E}dh = \frac{1}{U''(h)} \left\{ \begin{array}{l} [\rho - F'(x)] (U'(h) - c(x)) + c'(x) [F(x) + \sigma R] \\ + \frac{1}{2} \sigma^2 c''(x) - \frac{1}{2} U'''(h) \sigma^2 h_x^2 \end{array} \right\} \quad (23)$$

¹¹ t is dropped again to simplify notation.

substituting the worst case distortion R from first order condition (22), we have the differential equation governing the change of the expected value of robust harvesting along the optimal path.

$$(1/dt) \mathcal{E}dh = \frac{1}{U''(h)} \left[\begin{aligned} & \left[\rho - F'(x) - \frac{\sigma^2}{\theta} c'(x) \right] (U'(h) - c(x)) + c'(x) F(x) \\ & + \frac{1}{2} \sigma^2 (c''(x) - U'''(h) h_x^2) \end{aligned} \right] \quad (24)$$

Likewise, the evolution of the expected value of biomass, after substituting R from equation (22) into equation (18) and taking expected values, becomes

$$(1/dt) \mathcal{E}dx = F(x) - h - \frac{\sigma^2}{\theta} (U'(h) - c(x)) \quad (25)$$

Equations (24) and (25) summarize the evolution of the expected values of harvesting and biomass under socially optimal management with robust control.

4 Robust Equilibrium: Uniqueness and Regulation

In equilibrium $(1/dt) \mathcal{E}dh = (1/dt) \mathcal{E}dx = 0$. Using (24) and recalling that $U'(h) = P(h)$, the socially optimal expected steady state harvest under robust control will be determined by:

$$\rho = F'(x) + \frac{\sigma^2}{\theta} c'(x) - \frac{c'(x) F(x) + \frac{1}{2} \sigma^2 (c''(x) - U'''(h) h_x^2)}{P(h) - c(x)} \quad (26)$$

Under certainty $\sigma = 0$, in which case (26) is reduced to the well known rule for optimal fishery management, equation (11). Similarly, the management rule under “typical”, risk-type uncertainty in stock-recruitment, without a preference for robustness, is obtained by setting $\sigma \neq 0$ and $\theta \rightarrow \infty$.

Solving (26) for $P(h)$ the robust equilibrium market clearing conditions

become:

$$p = P(h) = c(x) - \left[\frac{c'(x) F(x) + \frac{1}{2} \sigma^2 (c''(x) - U'''(h) h_x^2)}{\rho - F'(x) - \frac{\sigma^2}{\theta} c'(x)} \right] \quad (27)$$

$$h + \frac{\sigma^2}{\theta} U'(h) = F(x) + \frac{\sigma^2}{\theta} c(x) \quad (28)$$

where condition (28) indicates stationary biomass, $x_\theta(h, \theta)$. Substituting into (27) we obtain the robust supply curve $p = S_\theta(h, \theta)$. Then market equilibrium is obtained as:

$$(p_\theta^*, h_\theta^*) : P(h_\theta^*) = S_\theta(h_\theta^*, \theta) \text{ and } p_\theta^* = P(h_\theta^*) \quad (29)$$

Setting $\theta \rightarrow \infty$ we obtain the corresponding equilibrium condition under risk. It is interesting to note that the simpler type of randomness (assuming a known distribution) affects only the supply curve (27), but not the stock equilibrium condition (28). However, once we allow for model uncertainty the stock equilibrium condition is also affected by the robustness parameter, so that both harvest and stock expected paths are modified. The chosen equilibrium will depend on σ (which is assumed to be exogenous) as well as θ . Now the interesting question is how to choose an appropriate value for this parameter. One possibility is to use the detection error probabilities associated with a given sample of observations for biomass evolution, calculating likelihood ratios between different worst case distributions and the benchmark (see Hansen and Sargent (2003)).

Alternatively, the discussion in section 2 suggests that the dynamic fishery model could be associated with problems of multiple equilibria and bionomic instabilities, which suggests that θ could also be used to eliminate such problems. To make the point clear, assume that the fishery is controlled using

only the benchmark model (14), which implies that $\theta \rightarrow \infty$. The dynamic system for expected harvesting and biomass is defined, using (23) and (25) for $\theta \rightarrow \infty$, by:

$$(1/dt) \mathcal{E}dh = \frac{1}{U''(h)} \left\{ \begin{array}{l} [\rho - F'(x)] (U'(h) - c(x)) + c'(x) F(x) \\ + \frac{1}{2} \sigma^2 c''(x) - \frac{1}{2} U'''(h) \sigma^2 h_x^2 \end{array} \right\} \quad (30)$$

$$(1/dt) \mathcal{E}dx = F(x) - h \quad (31)$$

Suppose that this system has a unique equilibrium with the usual saddle point property, shown, in Figure 1, as the intersection of $\dot{x}_1 = 0$ and $\dot{h}_2 = 0$ at point E . Assume now that the benchmark model is not the true one, but that the true one is a distorted model for some $R^D < 0$. Since there are no robust control considerations by the manager, the corresponding dynamic system in expected values is given by (30) and

$$(1/dt) \mathcal{E}dx = F(x) - h + R^D$$

In this case while the $(1/dt) \mathcal{E}dh = 0$ isocline remains the same, the $(1/dt) \mathcal{E}dx = 0$ isocline shrinks inward, possibly as far as the $\dot{x}_2 = 0$ isocline in Figure 1, inducing multiple equilibria at E_1^D , E_2^D , and E_3^D . If R^D is sufficiently large in absolute value, then there could be no steady state equilibrium at all and the resource might collapse. Thus controlling with the benchmark model when the distorted model is true could lead to instabilities or even resource collapse.¹²

The idea behind stabilization through robust control is to choose a harvesting rule such that the system has a unique equilibrium not only for the benchmark model but for the worst possible distortion R that Nature could choose. If a unique equilibrium exists under the worst possible distortion,

¹²These effects will be more profound and detrimental the faster the biomass and harvest dynamics.

we want to show that uniqueness will also hold for milder distortions of the benchmark model.

Under robust control the equilibrium harvesting and biomass are determined by (24), (25). In this system θ can be used as a free parameter. Therefore, it could be chosen in principle so that the system has a unique equilibrium. This idea can be explained with the help of Figure 2, which depicts again the three equilibria that emerge from the distorted model without robust control, E_1^D , E_2^D , and E_3^D of Figure 1. Choosing a specific θ implies that the $(1/dt) Edh = 0$ and the $(1/dt) Edx = 0$ isoclines of the system (24), (25) will shift. The idea is to choose θ so that the isoclines shift to positions such as $H_R H_R$ and Ax_k^R , intersecting only once at point E^R .

[Figure 2]

Choosing θ this way implies that the preference for robustness is combined with a preference for uniqueness. A specific value of θ that guarantees a unique, stable equilibrium can be translated to a maximum specification error that the manager or regulator is willing to accept, by recalling θ 's role as multiplier of the entropy constraint in the constraint problem formulation.¹³ Provided that uniqueness is preserved under milder distortions, the use of robust control ensures that a unique equilibrium exists for all distortions from the benchmark case to the worst one. Thus, if a milder distortion shifts the $(1/dt) Edx = 0$ isocline to Bx_k^M in Figure 2, since the robust control solution fixes the $(1/dt) Edh = 0$ isocline at $H_R H_R$, uniqueness is preserved at E^M .

¹³The uniqueness - stabilization argument used in this paper can be complementary to the detection error probability approach. For instance, it is possible that more than one value of θ achieve uniqueness, in which case detection error probabilities can provide additional input into the final choice.

An approach for choosing such a θ can be described as follows. Let $(x, h) \in \mathcal{A} \subset \mathcal{R}_+^2$, where $\mathcal{A} = (0, h^{\max}) \times (0, x^{\max})$, $x^{\max} > x_k$. and h^{\max} sufficiently large but without violating any technical constraints. Let $\theta \in \Theta = (\underline{\theta}, \infty)$, where $\underline{\theta}$ defines the lower bound of admissible values of θ , ie. the nonnegative values of θ for which the objective function can be larger than $-\infty$. The $(1/dt) \mathcal{E}dx = 0$ isocline defines, using (25), the curve $G(x, h; \theta) = 0$, while the $(1/dt) \mathcal{E}dh = 0$ isocline defines, using (24), the curve $K(x, h; \theta) = 0$. If a θ^* exists such that $G(x, h; \theta^*) = 0$ and $K(x, h; \theta^*) = 0$ have a unique solution (x^*, h^*) , then robust control leads to a unique equilibrium. Sufficient conditions for the existence of such a θ can be derived.

Consider the Jacobian determinant of the system (24), (25):

$$D(x, h; \theta) = \begin{vmatrix} G_x(x, h; \theta) & G_h(x, h; \theta) \\ K_x(x, h; \theta) & K_h(x, h; \theta) \end{vmatrix} \text{ for } (x, h) \in \mathcal{A}, \theta \in \tilde{\Theta} \subseteq \Theta \quad (32)$$

where $\tilde{\Theta}$ is the subset of values of θ for which the a solution for the system exists.

Proposition 1 *If $D(x, h; \theta)$ does not change sign in $\mathcal{A} \times \tilde{\Theta} \subseteq \Theta$ then a unique robust equilibrium exists for the expected values of harvest and biomass.*

For proof see Appendix B.

A possible illustration of this result can be presented with reference to Figure 2. The uniqueness condition means that a θ^* is selected such that the $H_R H_R$ curve cuts the horizontal axis between A and x_k^R , that it is monotonic increasing at least up to x_k^R , and that the intersection takes place at the non increasing part of the Ax_k^R curve.¹⁴ At the equilibrium point the slope

¹⁴An intersection could take place at the increasing part of the Ax_k^R curve, but additional conditions would be required to ensure uniqueness in that case.

condition for the $H_R H_R$ and Ax_k^R curves implies, using (32), that

$$-\frac{K_x(x, h; \theta^*)}{K_h(x, h; \theta^*)} > -\frac{G_x(x, h; \theta^*)}{G_h(x, h; \theta^*)} \text{ or } \left. \frac{dh(\theta^*)}{dx} \right|_{(1/dt)\mathcal{E}dh=0} > \left. \frac{dh(\theta^*)}{dx} \right|_{(1/dt)\mathcal{E}dx=0}$$

For $D(x, h; \theta^*) = G_x K_h - K_x G_h < 0$ the robust equilibrium has the saddle point property.

To locate sufficient conditions for uniqueness to be preserved under milder distortions, consider a θ^* that provides a unique equilibrium satisfying Proposition 1. For this value of θ the triplet (x^*, h^*, θ^*) will determine a corresponding R^* which is the worse possible distortion. Consider now arbitrary distortions $\tilde{R} \in [R^*, 0]$, with $\tilde{R} = 0$ corresponding to the benchmark model and $\tilde{R} = R^*$ corresponding to the robust model. Thus as R increases toward zero we have milder distortions and the $(1/dt)\mathcal{E}dx = 0$ isocline shifts. In terms of Figure 2 this means that the Ax_k^R curve shifts outwards uniformly. Keep the $H_R H_R$ to the robust equilibrium position determined by the triplet (x^*, h^*, θ^*) , and consider the sequence of determinants:

$$\tilde{D}(x, h; \tilde{R}) = \begin{vmatrix} G_x(x, h; \tilde{R}) & G_h(x, h; \tilde{R}) \\ K_x(x^*, h^*; R^*) & K_h(x^*, h^*; R^*) \end{vmatrix} \quad (33)$$

It is clear that $\tilde{D}(x, h; R^*) = D(x, h; \theta^*)$.

Proposition 2 *If $\tilde{D}(x, h; \tilde{R} = 0)$ has the same sign as $D(x, h; \theta^*)$ and it is monotonic in \tilde{R} then the uniqueness of the robust equilibrium is preserved under milder distortions in $(R^*, 0]$*

For proof see Appendix ??.

In terms of Figure 2, uniqueness is obtained if the $(1/dt)\mathcal{E}dh = 0$ isocline is increasing at least up to the carrying capacity of the benchmark model. Furthermore, since Ax_k^R shifts uniformly outwards, say to Bx_k^m in figure 2,

while $H_R H_R$ remains fixed, uniqueness with the saddle point property is preserved up to the benchmark model.¹⁵

Of course it is possible that several θ satisfy the sufficient conditions described above. In such a case, the value for θ can be chosen to ensure the highest expected value for the robust control problem.¹⁶ More formally, among the set of θ that satisfy conditions for uniqueness and preservation of uniqueness under milder distortions, a θ^{**} is chosen such that:

$$\theta^{**} = \arg \max_{\theta} \mathcal{E} \int_0^{\infty} e^{-\rho t} \left[U(h_t^*(\theta)) - c(x_t^*(\theta)) h_t^*(\theta) + \theta \frac{R^*(\theta)^2}{2} \right] dt$$

where $h_t^*(\theta)$, $x_t^*(\theta)$, $R^*(\theta)$ are solutions of the robust control problem evaluated at each θ .

If a unique robust equilibrium is defined, the value obtained for harvesting in these conditions can be used as a robust quantity limit for designing tradable quota systems. In this case a robust quota is determined by a policy function $h_t^R = \phi(x_t)$ which is the function characterizing an approach path to the unique robust equilibrium. This is the path RR corresponding to the one dimensional stable manifold of the saddle point robust equilibrium, converging to E^R in Figure 2.¹⁷ This result can be related to the safe quota concept discussed in Homans and E.Wilen (1997). They assume a quota that

¹⁵If milder distortions are realized, updates of the policy might be possible. The analysis of the updating process for a robust rule is left for future research.

¹⁶Given empirical data, the set of allowable θ can be narrowed down to those that generate reasonable detection error probabilities. See footnote 13.

¹⁷The stable manifold or equivalently the policy function $h_t^R = \phi(x_t)$ can be recovered by numerical methods. Using the time elimination method, the stable manifold is determined by the solution of the differential equation

$$\frac{dh}{dx} = \frac{(1/dt)\mathcal{E}dh}{(1/dt)\mathcal{E}dx}$$

with initial conditions (x^*, h^*) , which is the robust steady state corresponding to E^R in Figure 2.

is a linear function of the biomass, so that the safe quota is determined as $h^S = \max\{0, c + dx\}$, with $c < 0$, $d > 0$. Thus if the stock is below some minimum value then $h^S = 0$ (as negative harvesting is obviously ruled out), while the quota is below, equal or above biological growth if $x \begin{smallmatrix} \geq \\ \leq \end{smallmatrix} x_{safe}$, respectively. In our case for each stock level the quota is "safe" in the sense that it ensures that the robust equilibrium biomass is attained in the long run even under the worst possible scenario for stock-recruitment.

It should be noted that the robust quota rule which attains a steady state biomass equilibrium for the worst possible case of the stock-recruitment equation implies smaller harvesting relative to the benchmark model. If the benchmark model was actually the true model, then with initial condition x_0^R in Figure 2, the benchmark quota would be determined by the stable manifold NN converging to E_1^D , which defines the policy function $h_t^N = \psi(x_t)$. The difference $h_t^N - h_t^R$ can be interpreted as the reduction in harvesting induced by the decision to follow robust rules. Moreover, the difference

$$\frac{1}{\rho} \mathcal{E} \{ [U(h^*) - c(h^*, x^*)] - [U(h^+) - c(h^+, x^+)] \}$$

will indicate the change in expected steady state welfare between robust and benchmark rules. Since this difference is negative, it can be interpreted as the steady state cost of wanting to be robust, or to put it in a different way, as the cost of precaution.

5 Concluding Remarks

Bionomic instability is an inherent characteristic of fishery models induced by a backward bending supply curve. This instability emerges both in open access and in optimally controlled fisheries. Given the uncertainties associ-

ated with fisheries, these instabilities could be intensified by demand shocks or uncertainties associated with the stock-recruitment relationship.

In the present paper we consider the case of scientific uncertainty in the stock-recruitment relationship and we introduce robust control methods in fishery management. We show that robust control could act as a tool to prevent instabilities, by an appropriate choice of the robustness parameter. This is obtained by designing a rule so that the optimally managed fishery is stable under a worst possible scenario for the stock-recruitment relationship. The robust management rule can be used to design a robust quota rule that work better than typical prescriptions under uncertainty, both in the sense of maintaining stable harvests and in avoiding biomass collapse. This management rule will, however, have a cost in terms of foregone expected harvesting benefits.

The robust harvesting solution can be used as a basis for setting "safe" quotas to be applied in a fishery. The question of whether and when it makes sense to update the robustness parameter as more information becomes available on stock-recruitment, and thus to update the harvesting rule accordingly, is one potentially important question which should be addressed in future research.

Finally, the basic model developed here can also be extended along different lines, such as depensation or non-linear cost effects, or by considering the fishery as a dynamic game between the planner/regulator and the fishermen, and seeking robust solutions with possible heterogenous preferences for robustness.

A Derivation of optimal solution

This appendix shows how to derive equation (23).

Differentiating the value function with respect to x and using (21) and (22) we obtain ¹⁸

$$\rho J_x = [F(x) - h + \sigma R] J_{xx} - c'(x) h + F'(x) J_x + \frac{1}{2} \sigma^2 J_{xxx} \quad (34)$$

since $J(x)$ is a function of the stochastic variable x we have by Ito's lemma for $J_x(x)$

$$dJ_x(x) = J_{xx} dx + \frac{1}{2} J_{xxx} (dx)^2 \quad (35)$$

Using equation (18), taking expected values, and dividing by dt we obtain

$$(1/dt) \mathcal{E} dJ_x(x) = J_{xx} [F(x) - h + \sigma R] + \frac{1}{2} \sigma^2 J_{xxx} \quad (36)$$

Substituting in (34) and rearranging with (21), the expected evolution of the resource cost is

$$(1/dt) \mathcal{E} dJ_x = [\rho - F'(x)] (U'(h) - c(x)) + c'(x) h \quad (37)$$

To express the solution in terms of the expected evolution of harvesting, apply the differential operator $(1/dt) \mathcal{E} d(\cdot)$ to (21)

$$(1/dt) \mathcal{E} d(U'(h) - c(x)) = (1/dt) \mathcal{E} dJ_x \quad (38)$$

We need to expand the left hand side of (38), by applying Ito's lemma to $c(x)$ and $U'(h)$, which yields the following second order expansions:

$$\mathcal{E} dc(x) = \left[c'(x) [F(x) - h + \sigma R] + \frac{1}{2} \sigma^2 c''(x) \right] dt \quad (39)$$

$$dU'(h) = U''(h) dh + \frac{1}{2} U'''(h) (dh)^2 \quad (40)$$

¹⁸For a basic explanation of the methods used in this section see for example Dixit and Pindyck (1994, Ch.4).

Since along the optimal path $h = h(x)$, where x is a stochastic variable, using Ito's lemma once again yields

$$dh = \left[h_x [F(x) - h + \sigma R] + \frac{1}{2} \sigma^2 h_{xx} \right] dt + \sigma h_x dz \quad (41)$$

When taking the expected value, terms of order higher than t go to zero, so that $\mathcal{E}(dh)^2 = \sigma^2 h_x^2 dt$, and (40) becomes

$$\mathcal{E}dU'(h) = U''(h) \mathcal{E}dh + \frac{1}{2} U'''(h) \sigma^2 h_x^2 dt \quad (42)$$

Using equations (39) and (42) to plug into (38), and recalling (37) we finally obtain

$$(1/dt) \mathcal{E}dh = \frac{1}{U''(h)} \left\{ \begin{array}{l} [\rho - F'(x)] (U'(h) - c(x)) + c'(x) [F(x) + \sigma R] \\ + \frac{1}{2} \sigma^2 c''(x) - \frac{1}{2} U'''(h) \sigma^2 h_x^2 \end{array} \right\}. \quad (43)$$

B Proof of Proposition 1

We locate sufficient conditions for the existence of a

The proof follows from the proof of proposition 1. All the $\tilde{D}(x, h; \tilde{R})$ determinants are different than zero and do not change sign. Then the implicit value theorem and the index theorem provide existence and uniqueness under milder distortions. ■

References

- Androkovich, R. A. and K.R.Stollery (1989), ‘Regulation of stochastic fisheries: A comparison of alternative methods in the pacific halibut fishery’, *Marine Resource Economics* **6**, 109–122.
- Chevé, M. and Congar, R. (2000), ‘Optimal pollution control under imprecise environmental risk and irreversibility’, *Risk Decision and Policy* **5**, 151–164.
- Chevé, M. and Congar, R. (forthcoming), ‘La gestion des risques environnementaux en présence d’incertitudes et de controverses scientifiques: Une interprétation du principe de précaution’, *Revue Économique* .
- Clark, C. W. (1990), *Mathematical Bioeconomics: The Optimal Management of Renewable Resources*, John Wiley Sons Inc.
- Conrad, J. M. (2000), *Resource Economics*, Cambridge University Press.
- Conrad, J. M. and Clark, C. W. (1988), *Natural Resource Economics: Notes and Problems*, Cambridge University Press.
- Danielson, A. (2002), ‘Efficiency of catch and effort quotas in the presence of risk’, *Journal of Environmental Economics and Management* **43**, 20–33.
- Dixit, A. K. and Pindyck, R. S. (1994), *Investment under Uncertainty*, Princeton University Press, Princeton, New Jersey.
- Fleming, W. H. and Souganidis, P. E. (1989), ‘On the existence of value functions of two-player, zero sum stochastic differential games’, *Indiana University Mathematics Journal* pp. 293–314.

- Gilboa, I. and Schmeidler, D. (1989), ‘Maximin expected utility with non-unique prior’, *Journal of Mathematical Economics* **18**, 141–153.
- Hansen, L. P. and Sargent, T. J. (2001a), ‘Robust control and model uncertainty’, *American Economic Review* **91**, 60–66.
- Hansen, L. and Sargent, T. (2001b), ‘Acknowledging misspecification in macroeconomic theory’, on the Web.
URL: <ftp://zia.stanford.edu/pub/sargent/webdocs/research/costa6.pdf>
- Hansen, L. and Sargent, T. (2003), ‘Robust control and model uncertainty in macroeconomics’, on the Web.
URL: <ftp://zia.stanford.edu/pub/sargent/webdocs/research/rgamesb.pdf>
- Hansen, L. et al. (2002), ‘Robustness and uncertainty aversion’, on the Web.
URL: <http://home.uchicago.edu/lhansen/uncert12.pdf>
- Homans, F. R. and E.Wilen, J. (1997), ‘A model of regulated open access resource use’, *Journal of Environmental Economics and Management* **32**, 1–21.
- Mas-Colell, A., Whinston, M. D. and Green, J. R. (1995), *Microeconomic Theory*, Oxford University Press.
- McDonald, A. and Hanf, G.-H. (1992), ‘Bio-economic stability of the north sea shrimp stock with endogenous fishing effort’, *Journal of Environmental Economics and Management* **22**, 38–56.
- Milnor, J. (1965), *Topology from the Differentiable Viewpoint*, The University Press of Virginia.

- Roseta-Palma, C. and Xepapadeas, A. (forthcoming), ‘Robust control in water management’, *Journal of Risk and Uncertainty* .
- Tu, P. and Wilman, E. (1992), ‘A generalized predator-prey model: Uncertainty and management’, *Journal of Environmental Economics and Management* **23**, 123–138.
- Weitzman, M. (2002), ‘Landing fees vs harvest quotas with uncertain fish stock’, *Journal of Environmental Economics and Management* **43**, 325–338.
- Woodward, R. and Bishop, R. (1997), ‘How to decide when experts disagree: Uncertainty-based choice rules in environmental policy’, *Land Economics* **73**, 492–507.

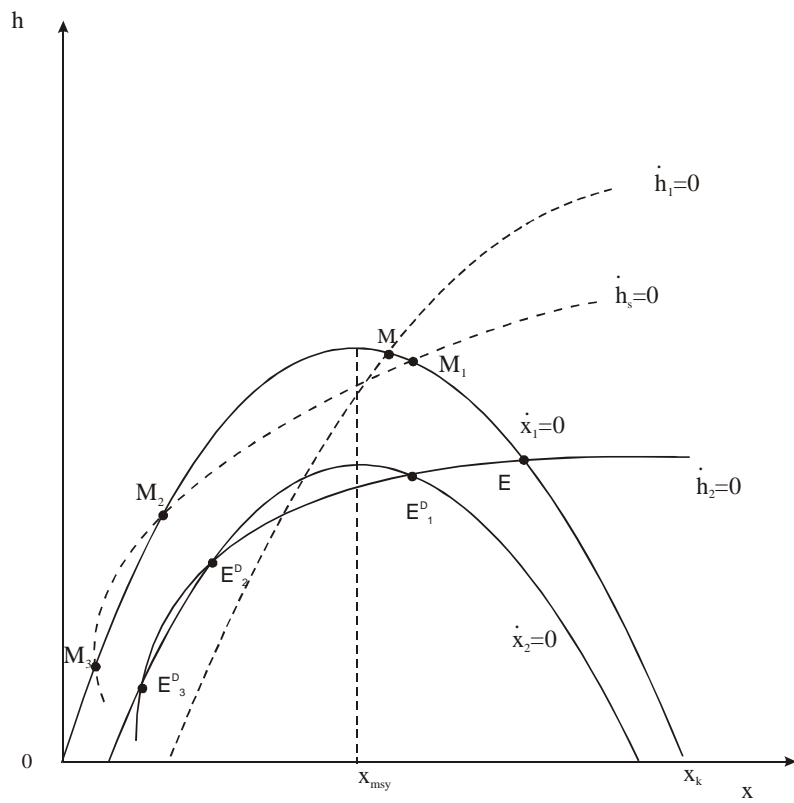


Figure 1:

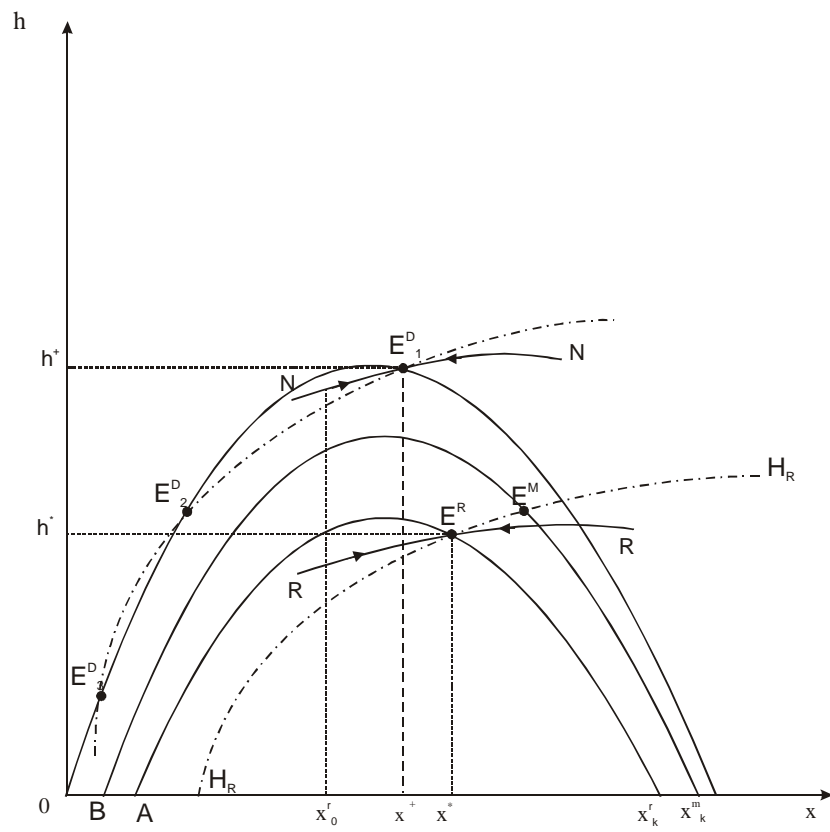


Figure 2:

NOTE DI LAVORO DELLA FONDAZIONE ENI ENRICO MATTEI

Fondazione Eni Enrico Mattei Working Paper Series

Our working papers are available on the Internet at the following addresses:

<http://www.feem.it/Feem/Pub/Publications/WPapers/default.html>

<http://papers.ssrn.com>

SUST	1.2002	<i>K. TANO, M.D. FAMINOW, M. KAMUANGA and B. SWALLOW:</i> <u>Using Conjoint Analysis to Estimate Farmers' Preferences for Cattle Traits in West Africa</u>
ETA	2.2002	<i>Efrem CASTELNUOVO and Paolo SURICO:</i> <u>What Does Monetary Policy Reveal about Central Bank's Preferences?</u>
WAT	3.2002	<i>Duncan KNOWLER and Edward BARBIER:</i> <u>The Economics of a "Mixed Blessing" Effect: A Case Study of the Black Sea</u>
CLIM	4.2002	<i>Andreas LÖSCHEL:</i> <u>Technological Change in Economic Models of Environmental Policy: A Survey</u>
VOL	5.2002	<i>Carlo CARRARO and Carmen MARCHIORI:</i> <u>Stable Coalitions</u>
CLIM	6.2002	<i>Marzio GALEOTTI, Alessandro LANZA and Matteo MANERA:</i> <u>Rockets and Feathers Revisited: An International Comparison on European Gasoline Markets</u>
ETA	7.2002	<i>Effrosyni DIAMANTOUDI and Efthios S. SARTZETAKIS:</i> <u>Stable International Environmental Agreements: An Analytical Approach</u>
KNOW	8.2002	<i>Alain DESDOIGTS:</i> <u>Neoclassical Convergence Versus Technological Catch-up: A Contribution for Reaching a Consensus</u>
NRM	9.2002	<i>Giuseppe DI VITA:</i> <u>Renewable Resources and Waste Recycling</u>
KNOW	10.2002	<i>Giorgio BRUNELLO:</i> <u>Is Training More Frequent when Wage Compression is Higher? Evidence from 11 European Countries</u>
ETA	11.2002	<i>Mordecai KURZ, Hehui JIN and Maurizio MOTOLESE:</i> <u>Endogenous Fluctuations and the Role of Monetary Policy</u>
KNOW	12.2002	<i>Reyer GERLAGH and Marjan W. HOFKES:</i> <u>Escaping Lock-in: The Scope for a Transition towards Sustainable Growth?</u>
NRM	13.2002	<i>Michele MORETTO and Paolo ROSATO:</i> <u>The Use of Common Property Resources: A Dynamic Model</u>
CLIM	14.2002	<i>Philippe QUIRION:</i> <u>Macroeconomic Effects of an Energy Saving Policy in the Public Sector</u>
CLIM	15.2002	<i>Roberto ROSON:</i> <u>Dynamic and Distributional Effects of Environmental Revenue Recycling Schemes: Simulations with a General Equilibrium Model of the Italian Economy</u>
CLIM	16.2002	<i>Francesco RICCI (I):</i> <u>Environmental Policy Growth when Inputs are Differentiated in Pollution Intensity</u>
ETA	17.2002	<i>Alberto PETRUCCI:</i> <u>Devaluation (Levels versus Rates) and Balance of Payments in a Cash-in-Advance Economy</u>
Coalition Theory Network	18.2002	<i>László Á. KÓCZY (liv):</i> <u>The Core in the Presence of Externalities</u>
Coalition Theory Network	19.2002	<i>Steven J. BRAMS, Michael A. JONES and D. Marc KILGOUR (liv):</i> <u>Single-Peakedness and Disconnected Coalitions</u>
Coalition Theory Network	20.2002	<i>Guillaume HAERINGER (liv):</i> <u>On the Stability of Cooperation Structures</u>
NRM	21.2002	<i>Fausto CAVALLARO and Luigi CIRAOLO:</i> <u>Economic and Environmental Sustainability: A Dynamic Approach in Insular Systems</u>
CLIM	22.2002	<i>Barbara BUCHNER, Carlo CARRARO, Igor CERSOSIMO and Carmen MARCHIORI:</i> <u>Back to Kyoto? US Participation and the Linkage between R&D and Climate Cooperation</u>
CLIM	23.2002	<i>Andreas LÖSCHEL and ZhongXIANG ZHANG:</i> <u>The Economic and Environmental Implications of the US Repudiation of the Kyoto Protocol and the Subsequent Deals in Bonn and Marrakech</u>
ETA	24.2002	<i>Marzio GALEOTTI, Louis J. MACCINI and Fabio SCHIANTARELLI:</i> <u>Inventories, Employment and Hours</u>
CLIM	25.2002	<i>Hannes EGLI:</i> <u>Are Cross-Country Studies of the Environmental Kuznets Curve Misleading? New Evidence from Time Series Data for Germany</u>
ETA	26.2002	<i>Adam B. JAFFE, Richard G. NEWELL and Robert N. STAVINS:</i> <u>Environmental Policy and Technological Change</u>
SUST	27.2002	<i>Joseph C. COOPER and Giovanni SIGNORELLO:</i> <u>Farmer Premiums for the Voluntary Adoption of Conservation Plans</u>
SUST	28.2002	<i>The ANSEA Network:</i> <u>Towards An Analytical Strategic Environmental Assessment</u>
KNOW	29.2002	<i>Paolo SURICO:</i> <u>Geographic Concentration and Increasing Returns: a Survey of Evidence</u>
ETA	30.2002	<i>Robert N. STAVINS:</i> <u>Lessons from the American Experiment with Market-Based Environmental Policies</u>

NRM	31.2002	<i>Carlo GIUPPONI and Paolo ROSATO: <u>Multi-Criteria Analysis and Decision-Support for Water Management at the Catchment Scale: An Application to Diffuse Pollution Control in the Venice Lagoon</u></i>
NRM	32.2002	<i>Robert N. STAVINS: <u>National Environmental Policy During the Clinton Years</u></i>
KNOW	33.2002	<i>A. SOUBEYRAN and H. STAHN : <u>Do Investments in Specialized Knowledge Lead to Composite Good Industries?</u></i>
KNOW	34.2002	<i>G. BRUNELLO, M.L. PARISI and Daniela SONEDDA: <u>Labor Taxes, Wage Setting and the Relative Wage Effect</u></i>
CLIM	35.2002	<i>C. BOEMARE and P. QUIRION (lv): <u>Implementing Greenhouse Gas Trading in Europe: Lessons from Economic Theory and International Experiences</u></i>
CLIM	36.2002	<i>T. TIETENBERG (lv): <u>The Tradable Permits Approach to Protecting the Commons: What Have We Learned?</u></i>
CLIM	37.2002	<i>K. REHDANZ and R.J.S. TOL (lv): <u>On National and International Trade in Greenhouse Gas Emission Permits</u></i>
CLIM	38.2002	<i>C. FISCHER (lv): <u>Multinational Taxation and International Emissions Trading</u></i>
SUST	39.2002	<i>G. SIGNORELLO and G. PAPPALARDO: <u>Farm Animal Biodiversity Conservation Activities in Europe under the Framework of Agenda 2000</u></i>
NRM	40.2002	<i>S.M. CAVANAGH, W. M. HANEMANN and R. N. STAVINS: <u>Muffled Price Signals: Household Water Demand under Increasing-Block Prices</u></i>
NRM	41.2002	<i>A. J. PLANTINGA, R. N. LUBOWSKI and R. N. STAVINS: <u>The Effects of Potential Land Development on Agricultural Land Prices</u></i>
CLIM	42.2002	<i>C. OHL (lvi): <u>Inducing Environmental Co-operation by the Design of Emission Permits</u></i>
CLIM	43.2002	<i>J. EYCKMANS, D. VAN REGEMORTER and V. VAN STEENBERGHE (lvi): <u>Is Kyoto Fatally Flawed? An Analysis with MacGEM</u></i>
CLIM	44.2002	<i>A. ANTOCI and S. BORGHESI (lvi): <u>Working Too Much in a Polluted World: A North-South Evolutionary Model</u></i>
ETA	45.2002	<i>P. G. FREDRIKSSON, Johan A. LIST and Daniel MILLIMET (lvi): <u>Chasing the Smokestack: Strategic Policymaking with Multiple Instruments</u></i>
ETA	46.2002	<i>Z. YU (lvi): <u>A Theory of Strategic Vertical DFI and the Missing Pollution-Haven Effect</u></i>
SUST	47.2002	<i>Y. H. FARZIN: <u>Can an Exhaustible Resource Economy Be Sustainable?</u></i>
SUST	48.2002	<i>Y. H. FARZIN: <u>Sustainability and Hamiltonian Value</u></i>
KNOW	49.2002	<i>C. PIGA and M. VIVARELLI: <u>Cooperation in R&D and Sample Selection</u></i>
Coalition Theory Network Coalition Theory Network	50.2002	<i>M. SERTEL and A. SLINKO (liv): <u>Ranking Committees, Words or Multisets</u></i>
ETA	51.2002	<i>Sergio CURRARINI (liv): <u>Stable Organizations with Externalities</u></i>
ETA	52.2002	<i>Robert N. STAVINS: <u>Experience with Market-Based Policy Instruments</u></i>
ETA	53.2002	<i>C.C. JAEGER, M. LEIMBACH, C. CARRARO, K. HASSELMANN, J.C. HOURCADE, A. KEELER and R. KLEIN (liii): <u>Integrated Assessment Modeling: Modules for Cooperation</u></i>
CLIM	54.2002	<i>Scott BARRETT (liii): <u>Towards a Better Climate Treaty</u></i>
ETA	55.2002	<i>Richard G. NEWELL and Robert N. STAVINS: <u>Cost Heterogeneity and the Potential Savings from Market-Based Policies</u></i>
SUST	56.2002	<i>Paolo ROSATO and Edi DEFRANCESCO: <u>Individual Travel Cost Method and Flow Fixed Costs</u></i>
SUST	57.2002	<i>Vladimir KOTOV and Elena NIKITINA (lvii): <u>Reorganisation of Environmental Policy in Russia: The Decade of Success and Failures in Implementation of Perspective Quests</u></i>
SUST	58.2002	<i>Vladimir KOTOV (lvii): <u>Policy in Transition: New Framework for Russia's Climate Policy</u></i>
SUST	59.2002	<i>Fanny MISSFELDT and Arturo VILLAVICENCO (lvii): <u>How Can Economies in Transition Pursue Emissions Trading or Joint Implementation?</u></i>
VOL	60.2002	<i>Giovanni DI BARTOLOMEO, Jacob ENGWERDA, Joseph PLASMANS and Bas VAN AARLE: <u>Staying Together or Breaking Apart: Policy-Makers' Endogenous Coalitions Formation in the European Economic and Monetary Union</u></i>
ETA	61.2002	<i>Robert N. STAVINS, Alexander F. WAGNER and Gernot WAGNER: <u>Interpreting Sustainability in Economic Terms: Dynamic Efficiency Plus Intergenerational Equity</u></i>
PRIV	62.2002	<i>Carlo CAPUANO: <u>Demand Growth, Entry and Collusion Sustainability</u></i>
PRIV	63.2002	<i>Federico MUNARI and Raffaele ORIANI: <u>Privatization and R&D Performance: An Empirical Analysis Based on Tobin's Q</u></i>
PRIV	64.2002	<i>Federico MUNARI and Maurizio SOBRERO: <u>The Effects of Privatization on R&D Investments and Patent Productivity</u></i>
SUST	65.2002	<i>Orley ASHENFELTER and Michael GREENSTONE: <u>Using Mandated Speed Limits to Measure the Value of a Statistical Life</u></i>
ETA	66.2002	<i>Paolo SURICO: <u>US Monetary Policy Rules: the Case for Asymmetric Preferences</u></i>
PRIV	67.2002	<i>Rinaldo BRAU and Massimo FLORIO: <u>Privatisations as Price Reforms: Evaluating Consumers' Welfare Changes in the U.K.</u></i>
CLIM	68.2002	<i>Barbara K. BUCHNER and Roberto ROSON: <u>Conflicting Perspectives in Trade and Environmental Negotiations</u></i>
CLIM	69.2002	<i>Philippe QUIRION: <u>Complying with the Kyoto Protocol under Uncertainty: Taxes or Tradable Permits?</u></i>
SUST	70.2002	<i>Anna ALBERINI, Patrizia RIGANTI and Alberto LONGO: <u>Can People Value the Aesthetic and Use Services of Urban Sites? Evidence from a Survey of Belfast Residents</u></i>
SUST	71.2002	<i>Marco PERCOCO: <u>Discounting Environmental Effects in Project Appraisal</u></i>

NRM	72.2002	<i>Philippe BONTEMS and Pascal FAVARD: <u>Input Use and Capacity Constraint under Uncertainty: The Case of Irrigation</u></i>
PRIV	73.2002	<i>Mohammed OMRAN: <u>The Performance of State-Owned Enterprises and Newly Privatized Firms: Empirical Evidence from Egypt</u></i>
PRIV	74.2002	<i>Mike BURKART, Fausto PANUNZI and Andrei SHLEIFER: <u>Family Firms</u></i>
PRIV	75.2002	<i>Emmanuelle AURIOL, Pierre M. PICARD: <u>Privatizations in Developing Countries and the Government Budget Constraint</u></i>
PRIV	76.2002	<i>Nichole M. CASTATER: <u>Privatization as a Means to Societal Transformation: An Empirical Study of Privatization in Central and Eastern Europe and the Former Soviet Union</u></i>
PRIV	77.2002	<i>Christoph LÜLSFESMANN: <u>Benevolent Government, Managerial Incentives, and the Virtues of Privatization</u></i>
PRIV	78.2002	<i>Kate BISHOP, Igor FILATOTCHEV and Tomasz MICKIEWICZ: <u>Endogenous Ownership Structure: Factors Affecting the Post-Privatisation Equity in Largest Hungarian Firms</u></i>
PRIV	79.2002	<i>Theodora WELCH and Rick MOLZ: <u>How Does Trade Sale Privatization Work? Evidence from the Fixed-Line Telecommunications Sector in Developing Economies</u></i>
PRIV	80.2002	<i>Alberto R. PETRUCCI: <u>Government Debt, Agent Heterogeneity and Wealth Displacement in a Small Open Economy</u></i>
CLIM	81.2002	<i>Timothy SWANSON and Robin MASON (Ivi): <u>The Impact of International Environmental Agreements: The Case of the Montreal Protocol</u></i>
PRIV	82.2002	<i>George R.G. CLARKE and Lixin Colin XU: <u>Privatization, Competition and Corruption: How Characteristics of Bribe Takers and Payers Affect Bribe Payments to Utilities</u></i>
PRIV	83.2002	<i>Massimo FLORIO and Katuscia MANZONI: <u>The Abnormal Returns of UK Privatisations: From Underpricing to Outperformance</u></i>
NRM	84.2002	<i>Nelson LOURENÇO, Carlos RUSSO MACHADO, Maria do ROSÁRIO JORGE and Luis RODRIGUES: <u>An Integrated Approach to Understand Territory Dynamics. The Coastal Alentejo (Portugal)</u></i>
CLIM	85.2002	<i>Peter ZAPFEL and Matti VAINIO (Iv): <u>Pathways to European Greenhouse Gas Emissions Trading History and Misconceptions</u></i>
CLIM	86.2002	<i>Pierre COURTOIS: <u>Influence Processes in Climate Change Negotiations: Modelling the Rounds</u></i>
ETA	87.2002	<i>Vito FRAGNELLI and Maria Erminia MARINA (Iviii): <u>Environmental Pollution Risk and Insurance</u></i>
ETA	88.2002	<i>Laurent FRANCKX (Iviii): <u>Environmental Enforcement with Endogenous Ambient Monitoring</u></i>
ETA	89.2002	<i>Timo GOESCHL and Timothy M. SWANSON (Iviii): <u>Lost Horizons. The noncooperative management of an evolutionary biological system.</u></i>
ETA	90.2002	<i>Hans KEIDING (Iviii): <u>Environmental Effects of Consumption: An Approach Using DEA and Cost Sharing</u></i>
ETA	91.2002	<i>Wietze LISE (Iviii): <u>A Game Model of People's Participation in Forest Management in Northern India</u></i>
CLIM	92.2002	<i>Jens HORBACH: <u>Structural Change and Environmental Kuznets Curves</u></i>
ETA	93.2002	<i>Martin P. GROSSKOPF: <u>Towards a More Appropriate Method for Determining the Optimal Scale of Production Units</u></i>
VOL	94.2002	<i>Scott BARRETT and Robert STAVINS: <u>Increasing Participation and Compliance in International Climate Change Agreements</u></i>
CLIM	95.2002	<i>Banu BAYRAMOGLU LISE and Wietze LISE: <u>Climate Change, Environmental NGOs and Public Awareness in the Netherlands: Perceptions and Reality</u></i>
CLIM	96.2002	<i>Matthieu GLACHANT: <u>The Political Economy of Emission Tax Design in Environmental Policy</u></i>
KNOW	97.2002	<i>Kenn ARIGA and Giorgio BRUNELLO: <u>Are the More Educated Receiving More Training? Evidence from Thailand</u></i>
ETA	98.2002	<i>Gianfranco FORTE and Matteo MANERA: <u>Forecasting Volatility in European Stock Markets with Non-linear GARCH Models</u></i>
ETA	99.2002	<i>Geoffrey HEAL: <u>Bundling Biodiversity</u></i>
ETA	100.2002	<i>Geoffrey HEAL, Brian WALKER, Simon LEVIN, Kenneth ARROW, Partha DASGUPTA, Gretchen DAILY, Paul EHRlich, Karl-Goran MALER, Nils KAUTSKY, Jane LUBCHENCO, Steve SCHNEIDER and David STARRETT: <u>Genetic Diversity and Interdependent Crop Choices in Agriculture</u></i>
ETA	101.2002	<i>Geoffrey HEAL: <u>Biodiversity and Globalization</u></i>
VOL	102.2002	<i>Andreas LANGE: <u>Heterogeneous International Agreements – If per capita emission levels matter</u></i>
ETA	103.2002	<i>Pierre-André JOUVET and Walid OUESLATI: <u>Tax Reform and Public Spending Trade-offs in an Endogenous Growth Model with Environmental Externality</u></i>
ETA	104.2002	<i>Anna BOTTASSO and Alessandro SEMBENELLI: <u>Does Ownership Affect Firms' Efficiency? Panel Data Evidence on Italy</u></i>
PRIV	105.2002	<i>Bernardo BORTOLOTTI, Frank DE JONG, Giovanna NICODANO and Ibolya SCHINDELE: <u>Privatization and Stock Market Liquidity</u></i>
ETA	106.2002	<i>Haruo IMAI and Mayumi HORIE (Iviii): <u>Pre-Negotiation for an International Emission Reduction Game</u></i>
PRIV	107.2002	<i>Sudeshna GHOSH BANERJEE and Michael C. MUNGER: <u>Move to Markets? An Empirical Analysis of Privatisation in Developing Countries</u></i>
PRIV	108.2002	<i>Guillaume GIRMENS and Michel GUILLARD: <u>Privatization and Investment: Crowding-Out Effect vs Financial Diversification</u></i>
PRIV	109.2002	<i>Alberto CHONG and Florencio LÓPEZ-DE-SILANES: <u>Privatization and Labor Force Restructuring Around the World</u></i>
PRIV	110.2002	<i>Nandini GUPTA: <u>Partial Privatization and Firm Performance</u></i>
PRIV	111.2002	<i>François DEGEORGE, Dirk JENTER, Alberto MOEL and Peter TUFANO: <u>Selling Company Shares to Reluctant Employees: France Telecom's Experience</u></i>

PRIV	112.2002	<i>Isaac OTCHERE</i> : <u>Intra-Industry Effects of Privatization Announcements: Evidence from Developed and Developing Countries</u>
PRIV	113.2002	<i>Yannis KATSOULAKOS and Elissavet LIKOYANNI</i> : <u>Fiscal and Other Macroeconomic Effects of Privatization</u>
PRIV	114.2002	<i>Guillaume GIRMENS</i> : <u>Privatization, International Asset Trade and Financial Markets</u>
PRIV	115.2002	<i>D. Teja FLOTHO</i> : <u>A Note on Consumption Correlations and European Financial Integration</u>
PRIV	116.2002	<i>Ibolya SCHINDELE and Enrico C. PEROTTI</i> : <u>Pricing Initial Public Offerings in Premature Capital Markets: The Case of Hungary</u>
PRIV	1.2003	<i>Gabriella CHIESA and Giovanna NICODANO</i> : <u>Privatization and Financial Market Development: Theoretical Issues</u>
PRIV	2.2003	<i>Ibolya SCHINDELE</i> : <u>Theory of Privatization in Eastern Europe: Literature Review</u>
PRIV	3.2003	<i>Wietze LISE, Claudia KEMFERT and Richard S.J. TOL</i> : <u>Strategic Action in the Liberalised German Electricity Market</u>
CLIM	4.2003	<i>Laura MARSILIANI and Thomas I. RENSTRÖM</i> : <u>Environmental Policy and Capital Movements: The Role of Government Commitment</u>
KNOW	5.2003	<i>Reyer GERLAGH</i> : <u>Induced Technological Change under Technological Competition</u>
ETA	6.2003	<i>Efrem CASTELNUOVO</i> : <u>Squeezing the Interest Rate Smoothing Weight with a Hybrid Expectations Model</u>
SIEV	7.2003	<i>Anna ALBERINI, Alberto LONGO, Stefania TONIN, Francesco TROMBETTA and Margherita TURVANI</i> : <u>The Role of Liability, Regulation and Economic Incentives in Brownfield Remediation and Redevelopment: Evidence from Surveys of Developers</u>
NRM	8.2003	<i>Elissaios POPYRAKIS and Reyer GERLAGH</i> : <u>Natural Resources: A Blessing or a Curse?</u>
CLIM	9.2003	<i>A. CAPARRÓS, J.-C. PEREAU and T. TAZDAÏT</i> : <u>North-South Climate Change Negotiations: a Sequential Game with Asymmetric Information</u>
KNOW	10.2003	<i>Giorgio BRUNELLO and Daniele CHECCHI</i> : <u>School Quality and Family Background in Italy</u>
CLIM	11.2003	<i>Efrem CASTELNUOVO and Marzio GALEOTTI</i> : <u>Learning By Doing vs Learning By Researching in a Model of Climate Change Policy Analysis</u>
KNOW	12.2003	<i>Carole MAIGNAN, Gianmarco OTTAVIANO and Dino PINELLI (eds.)</i> : <u>Economic Growth, Innovation, Cultural Diversity: What are we all talking about? A critical survey of the state-of-the-art</u>
KNOW	13.2003	<i>Carole MAIGNAN, Gianmarco OTTAVIANO, Dino PINELLI and Francesco RULLANI (lix)</i> : <u>Bio-Ecological Diversity vs. Socio-Economic Diversity. A Comparison of Existing Measures</u>
KNOW	14.2003	<i>Maddy JANSENS and Chris STEYAERT (lix)</i> : <u>Theories of Diversity within Organisation Studies: Debates and Future Trajectories</u>
KNOW	15.2003	<i>Tuzin BAYCAN LEVENT, Enno MASUREL and Peter NIJKAMP (lix)</i> : <u>Diversity in Entrepreneurship: Ethnic and Female Roles in Urban Economic Life</u>
KNOW	16.2003	<i>Alexandra BITUSIKOVA (lix)</i> : <u>Post-Communist City on its Way from Grey to Colourful: The Case Study from Slovakia</u>
KNOW	17.2003	<i>Billy E. VAUGHN and Katarina MLEKOV (lix)</i> : <u>A Stage Model of Developing an Inclusive Community</u>
KNOW	18.2003	<i>Selma van LONDEN and Arie de RUIJTER (lix)</i> : <u>Managing Diversity in a Globalizing World</u>
Coalition Theory Network	19.2003	<i>Sergio CURRARINI</i> : <u>On the Stability of Hierarchies in Games with Externalities</u>
PRIV	20.2003	<i>Giacomo CALZOLARI and Alessandro PAVAN (lx)</i> : <u>Monopoly with Resale</u>
PRIV	21.2003	<i>Claudio MEZZETTI (lx)</i> : <u>Auction Design with Interdependent Valuations: The Generalized Revelation Principle, Efficiency, Full Surplus Extraction and Information Acquisition</u>
PRIV	22.2003	<i>Marco LiCalzi and Alessandro PAVAN (lx)</i> : <u>Tilting the Supply Schedule to Enhance Competition in Uniform-Price Auctions</u>
PRIV	23.2003	<i>David ETTINGER (lx)</i> : <u>Bidding among Friends and Enemies</u>
PRIV	24.2003	<i>Hannu VARTAINEN (lx)</i> : <u>Auction Design without Commitment</u>
PRIV	25.2003	<i>Matti KELOHARJU, Kjell G. NYBORG and Kristian RYDQVIST (lx)</i> : <u>Strategic Behavior and Underpricing in Uniform Price Auctions: Evidence from Finnish Treasury Auctions</u>
PRIV	26.2003	<i>Christine A. PARLOUR and Uday RAJAN (lx)</i> : <u>Rationing in IPOs</u>
PRIV	27.2003	<i>Kjell G. NYBORG and Ilya A. STREBULAEV (lx)</i> : <u>Multiple Unit Auctions and Short Squeezes</u>
PRIV	28.2003	<i>Anders LUNANDER and Jan-Eric NILSSON (lx)</i> : <u>Taking the Lab to the Field: Experimental Tests of Alternative Mechanisms to Procure Multiple Contracts</u>
PRIV	29.2003	<i>TangaMcDANIEL and Karsten NEUHOFF (lx)</i> : <u>Use of Long-term Auctions for Network Investment</u>
PRIV	30.2003	<i>Emiel MAASLAND and Sander ONDERSTAL (lx)</i> : <u>Auctions with Financial Externalities</u>
ETA	31.2003	<i>Michael FINUS and Bianca RUNDSHAGEN</i> : <u>A Non-cooperative Foundation of Core-Stability in Positive Externality NTU-Coalition Games</u>
KNOW	32.2003	<i>Michele MORETTO</i> : <u>Competition and Irreversible Investments under Uncertainty</u>
PRIV	33.2003	<i>Philippe QUIRION</i> : <u>Relative Quotas: Correct Answer to Uncertainty or Case of Regulatory Capture?</u>
KNOW	34.2003	<i>Giuseppe MEDA, Claudio PIGA and Donald SIEGEL</i> : <u>On the Relationship between R&D and Productivity: A Treatment Effect Analysis</u>
ETA	35.2003	<i>Alessandra DEL BOCA, Marzio GALEOTTI and Paola ROTA</i> : <u>Non-convexities in the Adjustment of Different Capital Inputs: A Firm-level Investigation</u>
GG	36.2003	<i>Mathieu GLACHANT</i> : <u>Voluntary Agreements under Endogenous Legislative Threats</u>
PRIV	37.2003	<i>Narjess BOUBAKRI, Jean-Claude COSSET and Omrane GUEDHAMI</i> : <u>Postprivatization Corporate Governance: the Role of Ownership Structure and Investor Protection</u>
CLIM	38.2003	<i>Rolf GOLOMBEK and Michael HOEL</i> : <u>Climate Policy under Technology Spillovers</u>

KNOW	39.2003	<i>Slim BEN YOUSSEF</i> : <u>Transboundary Pollution, R&D Spillovers and International Trade</u>
CTN	40.2003	<i>Carlo CARRARO and Carmen MARCHIORI</i> : <u>Endogenous Strategic Issue Linkage in International Negotiations</u>
KNOW	41.2003	<i>Sonia OREFFICE</i> : <u>Abortion and Female Power in the Household: Evidence from Labor Supply</u>
KNOW	42.2003	<i>Timo GOESCHL and Timothy SWANSON</i> : <u>On Biology and Technology: The Economics of Managing Biotechnologies</u>
ETA	43.2003	<i>Giorgio BUSETTI and Matteo MANERA</i> : <u>STAR-GARCH Models for Stock Market Interactions in the Pacific Basin Region, Japan and US</u>
CLIM	44.2003	<i>Katrin MILLOCK and Céline NAUGES</i> : <u>The French Tax on Air Pollution: Some Preliminary Results on its Effectiveness</u>
PRIV	45.2003	<i>Bernardo BORTOLOTTI and Paolo PINOTTI</i> : <u>The Political Economy of Privatization</u>
SIEV	46.2003	<i>Elbert DIJKGRAAF and Herman R.J. VOLLEBERGH</i> : <u>Burn or Bury? A Social Cost Comparison of Final Waste Disposal Methods</u>
ETA	47.2003	<i>Jens HORBACH</i> : <u>Employment and Innovations in the Environmental Sector: Determinants and Econometrical Results for Germany</u>
CLIM	48.2003	<i>Lori SNYDER, Nolan MILLER and Robert STAVINS</i> : <u>The Effects of Environmental Regulation on Technology Diffusion: The Case of Chlorine Manufacturing</u>
CLIM	49.2003	<i>Lori SNYDER, Robert STAVINS and Alexander F. WAGNER</i> : <u>Private Options to Use Public Goods. Exploiting Revealed Preferences to Estimate Environmental Benefits</u>
CTN	50.2003	<i>László Á. KÓCZY and Luc LAUWERS (Ixi)</i> : <u>The Minimal Dominant Set is a Non-Empty Core-Extension</u>
CTN	51.2003	<i>Matthew O. JACKSON (Ixi)</i> : <u>Allocation Rules for Network Games</u>
CTN	52.2003	<i>Ana MAULEON and Vincent VANNETELBOSCH (Ixi)</i> : <u>Farsightedness and Cautiousness in Coalition Formation</u>
CTN	53.2003	<i>Fernando VEGA-REDONDO (Ixi)</i> : <u>Building Up Social Capital in a Changing World: a network approach</u>
CTN	54.2003	<i>Matthew HAAG and Roger LAGUNOFF (Ixi)</i> : <u>On the Size and Structure of Group Cooperation</u>
CTN	55.2003	<i>Taiji FURUSAWA and Hideo KONISHI (Ixi)</i> : <u>Free Trade Networks</u>
CTN	56.2003	<i>Halis Murat YILDIZ (Ixi)</i> : <u>National Versus International Mergers and Trade Liberalization</u>
CTN	57.2003	<i>Santiago RUBIO and Alistair ULPH (Ixi)</i> : <u>An Infinite-Horizon Model of Dynamic Membership of International Environmental Agreements</u>
KNOW	58.2003	<i>Carole MAIGNAN, Dino PINELLI and Gianmarco I.P. OTTAVIANO</i> : <u>ICT, Clusters and Regional Cohesion: A Summary of Theoretical and Empirical Research</u>
KNOW	59.2003	<i>Giorgio BELLETTINI and Gianmarco I.P. OTTAVIANO</i> : <u>Special Interests and Technological Change</u>
ETA	60.2003	<i>Ronnie SCHÖB</i> : <u>The Double Dividend Hypothesis of Environmental Taxes: A Survey</u>
CLIM	61.2003	<i>Michael FINUS, Ekko van IERLAND and Robert DELLINK</i> : <u>Stability of Climate Coalitions in a Cartel Formation Game</u>
GG	62.2003	<i>Michael FINUS and Bianca RUNDSHAGEN</i> : <u>How the Rules of Coalition Formation Affect Stability of International Environmental Agreements</u>
SIEV	63.2003	<i>Alberto PETRUCCI</i> : <u>Taxing Land Rent in an Open Economy</u>
CLIM	64.2003	<i>Joseph E. ALDY, Scott BARRETT and Robert N. STAVINS</i> : <u>Thirteen Plus One: A Comparison of Global Climate Policy Architectures</u>
SIEV	65.2003	<i>Edi DEFRANCESCO</i> : <u>The Beginning of Organic Fish Farming in Italy</u>
SIEV	66.2003	<i>Klaus CONRAD</i> : <u>Price Competition and Product Differentiation when Consumers Care for the Environment</u>
SIEV	67.2003	<i>Paulo A.L.D. NUNES, Luca ROSSETTO, Arianne DE BLAEIJ</i> : <u>Monetary Value Assessment of Clam Fishing Management Practices in the Venice Lagoon: Results from a Stated Choice Exercise</u>
CLIM	68.2003	<i>ZhongXiang ZHANG</i> : <u>Open Trade with the U.S. Without Compromising Canada's Ability to Comply with its Kyoto Target</u>
KNOW	69.2003	<i>David FRANTZ (Iix)</i> : <u>Lorenzo Market between Diversity and Mutation</u>
KNOW	70.2003	<i>Ercole SORI (Iix)</i> : <u>Mapping Diversity in Social History</u>
KNOW	71.2003	<i>Ljiljana DERU SIMIC (Ixii)</i> : <u>What is Specific about Art/Cultural Projects?</u>
KNOW	72.2003	<i>Natalya V. TARANOVA (Ixii)</i> : <u>The Role of the City in Fostering Intergroup Communication in a Multicultural Environment: Saint-Petersburg's Case</u>
KNOW	73.2003	<i>Kristine CRANE (Ixii)</i> : <u>The City as an Arena for the Expression of Multiple Identities in the Age of Globalisation and Migration</u>
KNOW	74.2003	<i>Kazuma MATOBA (Ixii)</i> : <u>Glocal Dialogue- Transformation through Transcultural Communication</u>
KNOW	75.2003	<i>Catarina REIS OLIVEIRA (Ixii)</i> : <u>Immigrants' Entrepreneurial Opportunities: The Case of the Chinese in Portugal</u>
KNOW	76.2003	<i>Sandra WALLMAN (Ixii)</i> : <u>The Diversity of Diversity - towards a typology of urban systems</u>
KNOW	77.2003	<i>Richard PEARCE (Ixii)</i> : <u>A Biologist's View of Individual Cultural Identity for the Study of Cities</u>
KNOW	78.2003	<i>Vincent MERK (Ixii)</i> : <u>Communication Across Cultures: from Cultural Awareness to Reconciliation of the Dilemmas</u>
KNOW	79.2003	<i>Giorgio BELLETTINI, Carlotta BERTI CERONI and Gianmarco I.P. OTTAVIANO</i> : <u>Child Labor and Resistance to Change</u>
ETA	80.2003	<i>Michele MORETTO, Paolo M. PANTEGHINI and Carlo SCARPA</i> : <u>Investment Size and Firm's Value under Profit Sharing Regulation</u>

- IEM 81.2003 *Alessandro LANZA, Matteo MANERA and Massimo GIOVANNINI: Oil and Product Dynamics in International Petroleum Markets*
- CLIM 82.2003 *Y. Hossein FARZIN and Jinhua ZHAO: Pollution Abatement Investment When Firms Lobby Against Environmental Regulation*
- CLIM 83.2003 *Giuseppe DI VITA: Is the Discount Rate Relevant in Explaining the Environmental Kuznets Curve?*
- CLIM 84.2003 *Reyer GERLAGH and Wietze LISE: Induced Technological Change Under Carbon Taxes*
- NRM 85.2003 *Rinaldo BRAU, Alessandro LANZA and Francesco PIGLIARU: How Fast are the Tourism Countries Growing? The cross-country evidence*
- KNOW 86.2003 *Elena BELLINI, Gianmarco I.P. OTTAVIANO and Dino PINELLI: The ICT Revolution: opportunities and risks for the Mezzogiorno*
- SIEV 87.2003 *Lucas BRETSCGHER and Sjak SMULDERS: Sustainability and Substitution of Exhaustible Natural Resources. How resource prices affect long-term R&D investments*
- CLIM 88.2003 *Johan EYCKMANS and Michael FINUS: New Roads to International Environmental Agreements: The Case of Global Warming*
- CLIM 89.2003 *Marzio GALEOTTI: Economic Development and Environmental Protection*
- CLIM 90.2003 *Marzio GALEOTTI: Environment and Economic Growth: Is Technical Change the Key to Decoupling?*
- CLIM 91.2003 *Marzio GALEOTTI and Barbara BUCHNER: Climate Policy and Economic Growth in Developing Countries*
- IEM 92.2003 *A. MARKANDYA, A. GOLUB and E. STRUKOVA: The Influence of Climate Change Considerations on Energy Policy: The Case of Russia*
- ETA 93.2003 *Andrea BELTRATTI: Socially Responsible Investment in General Equilibrium*
- CTN 94.2003 *Parkash CHANDER: The γ -Core and Coalition Formation*
- IEM 95.2003 *Matteo MANERA and Angelo MARZULLO: Modelling the Load Curve of Aggregate Electricity Consumption Using Principal Components*
- IEM 96.2003 *Alessandro LANZA, Matteo MANERA, Margherita GRASSO and Massimo GIOVANNINI: Long-run Models of Oil Stock Prices*
- CTN 97.2003 *Steven J. BRAMS, Michael A. JONES, and D. Marc KILGOUR: Forming Stable Coalitions: The Process Matters*
- KNOW 98.2003 *John CROWLEY, Marie-Cecile NAVES (Ixxiii): Anti-Racist Policies in France. From Ideological and Historical Schemes to Socio-Political Realities*
- KNOW 99.2003 *Richard THOMPSON FORD (Ixxiii): Cultural Rights and Civic Virtue*
- KNOW 100.2003 *Alaknanda PATEL (Ixxiii): Cultural Diversity and Conflict in Multicultural Cities*
- KNOW 101.2003 *David MAY (Ixxiii): The Struggle of Becoming Established in a Deprived Inner-City Neighbourhood*
- KNOW 102.2003 *Sébastien ARCAND, Danielle JUTEAU, Sirma BILGE, and Francine LEMIRE (Ixxiii) : Municipal Reform on the Island of Montreal: Tensions Between Two Majority Groups in a Multicultural City*
- CLIM 103.2003 *Barbara BUCHNER and Carlo CARRARO: China and the Evolution of the Present Climate Regime*
- CLIM 104.2003 *Barbara BUCHNER and Carlo CARRARO: Emissions Trading Regimes and Incentives to Participate in International Climate Agreements*
- CLIM 105.2003 *Anil MARKANDYA and Dirk T.G. RÜBBELKE: Ancillary Benefits of Climate Policy*
- NRM 106.2003 *Anne Sophie CRÉPIN(Ixiv): Management Challenges for Multiple-Species Boreal Forests*
- NRM 107.2003 *Anne Sophie CRÉPIN (Ixiv): Threshold Effects in Coral Reef Fisheries*
- SIEV 108.2003 *Sara ANIYAR (Ixiv): Estimating the Value of Oil Capital in a Small Open Economy: The Venezuela's Example*
- SIEV 109.2003 *Kenneth ARROW, Partha DASGUPTA and Karl-Göran MÄLER(Ixiv): Evaluating Projects and Assessing Sustainable Development in Imperfect Economies*
- NRM 110.2003 *Anastasios XEPAPADEAS and Catarina ROSETA-PALMA(Ixiv): Instabilities and Robust Control in Fisheries*
- 1000** **Carlo CARRARO, Alessandro LANZA and Valeria PAPPONETTI: One Thousand Working Papers**

- (l) This paper was presented at the Workshop “Growth, Environmental Policies and Sustainability” organised by the Fondazione Eni Enrico Mattei, Venice, June 1, 2001
- (li) This paper was presented at the Fourth Toulouse Conference on Environment and Resource Economics on “Property Rights, Institutions and Management of Environmental and Natural Resources”, organised by Fondazione Eni Enrico Mattei, IDEI and INRA and sponsored by MATE, Toulouse, May 3-4, 2001
- (lii) This paper was presented at the International Conference on “Economic Valuation of Environmental Goods”, organised by Fondazione Eni Enrico Mattei in cooperation with CORILA, Venice, May 11, 2001
- (liii) This paper was circulated at the International Conference on “Climate Policy – Do We Need a New Approach?”, jointly organised by Fondazione Eni Enrico Mattei, Stanford University and Venice International University, Isola di San Servolo, Venice, September 6-8, 2001
- (liv) This paper was presented at the Seventh Meeting of the Coalition Theory Network organised by the Fondazione Eni Enrico Mattei and the CORE, Université Catholique de Louvain, Venice, Italy, January 11-12, 2002
- (lv) This paper was presented at the First Workshop of the Concerted Action on Tradable Emission Permits (CATEP) organised by the Fondazione Eni Enrico Mattei, Venice, Italy, December 3-4, 2001
- (lvi) This paper was presented at the ESF EURESCO Conference on Environmental Policy in a Global Economy “The International Dimension of Environmental Policy”, organised with the collaboration of the Fondazione Eni Enrico Mattei, Acquafredda di Maratea, October 6-11, 2001
- (lvii) This paper was presented at the First Workshop of “CFEWE – Carbon Flows between Eastern and Western Europe”, organised by the Fondazione Eni Enrico Mattei and Zentrum für Europäische Integrationsforschung (ZEI), Milan, July 5-6, 2001
- (lviii) This paper was presented at the Workshop on “Game Practice and the Environment”, jointly organised by Università del Piemonte Orientale and Fondazione Eni Enrico Mattei, Alessandria, April 12-13, 2002
- (lix) This paper was presented at the ENGIME Workshop on “Mapping Diversity”, Leuven, May 16-17, 2002
- (lx) This paper was presented at the EuroConference on “Auctions and Market Design: Theory, Evidence and Applications”, organised by the Fondazione Eni Enrico Mattei, Milan, September 26-28, 2002
- (lxi) This paper was presented at the Eighth Meeting of the Coalition Theory Network organised by the GREQAM, Aix-en-Provence, France, January 24-25, 2003
- (lxii) This paper was presented at the ENGIME Workshop on “Communication across Cultures in Multicultural Cities”, The Hague, November 7-8, 2002
- (lxiii) This paper was presented at the ENGIME Workshop on “Social dynamics and conflicts in multicultural cities”, Milan, March 20-21, 2003
- (lxiv) This paper was presented at the International Conference on "Theoretical Topics in Ecological Economics", organised by the Abdus Salam International Centre for Theoretical Physics - ICTP, the Beijer International Institute of Ecological Economics, and Fondazione Eni Enrico Mattei – FEEM Trieste, February 10-21, 2003

2002 SERIES

CLIM	<i>Climate Change Modelling and Policy</i> (Editor: Marzio Galeotti)
VOL	<i>Voluntary and International Agreements</i> (Editor: Carlo Carraro)
SUST	<i>Sustainability Indicators and Environmental Valuation</i> (Editor: Carlo Carraro)
NRM	<i>Natural Resources Management</i> (Editor: Carlo Giupponi)
KNOW	<i>Knowledge, Technology, Human Capital</i> (Editor: Dino Pinelli)
MGMT	<i>Corporate Sustainable Management</i> (Editor: Andrea Marsanich)
PRIV	<i>Privatisation, Regulation, Antitrust</i> (Editor: Bernardo Bortolotti)
ETA	<i>Economic Theory and Applications</i> (Editor: Carlo Carraro)

2003 SERIES

CLIM	<i>Climate Change Modelling and Policy</i> (Editor: Marzio Galeotti)
GG	<i>Global Governance</i> (Editor: Carlo Carraro)
SIEV	<i>Sustainability Indicators and Environmental Valuation</i> (Editor: Anna Alberini)
NRM	<i>Natural Resources Management</i> (Editor: Carlo Giupponi)
KNOW	<i>Knowledge, Technology, Human Capital</i> (Editor: Gianmarco Ottaviano)
IEM	<i>International Energy Markets</i> (Editor: Anil Markandya)
CSRM	<i>Corporate Social Responsibility and Management</i> (Editor: Sabina Ratti)
PRIV	<i>Privatisation, Regulation, Antitrust</i> (Editor: Bernardo Bortolotti)
ETA	<i>Economic Theory and Applications</i> (Editor: Carlo Carraro)
CTN	<i>Coalition Theory Network</i>