

Gerlagh, Reyer

**Working Paper**

## Induced Technological Change under Technology Competition

Nota di Lavoro, No. 5.2003

**Provided in Cooperation with:**

Fondazione Eni Enrico Mattei (FEEM)

*Suggested Citation:* Gerlagh, Reyer (2003) : Induced Technological Change under Technology Competition, Nota di Lavoro, No. 5.2003, Fondazione Eni Enrico Mattei (FEEM), Milano

This Version is available at:

<https://hdl.handle.net/10419/118032>

**Standard-Nutzungsbedingungen:**

Die Dokumente auf EconStor dürfen zu eigenen wissenschaftlichen Zwecken und zum Privatgebrauch gespeichert und kopiert werden.

Sie dürfen die Dokumente nicht für öffentliche oder kommerzielle Zwecke vervielfältigen, öffentlich ausstellen, öffentlich zugänglich machen, vertreiben oder anderweitig nutzen.

Sofern die Verfasser die Dokumente unter Open-Content-Lizenzen (insbesondere CC-Lizenzen) zur Verfügung gestellt haben sollten, gelten abweichend von diesen Nutzungsbedingungen die in der dort genannten Lizenz gewährten Nutzungsrechte.

**Terms of use:**

*Documents in EconStor may be saved and copied for your personal and scholarly purposes.*

*You are not to copy documents for public or commercial purposes, to exhibit the documents publicly, to make them publicly available on the internet, or to distribute or otherwise use the documents in public.*

*If the documents have been made available under an Open Content Licence (especially Creative Commons Licences), you may exercise further usage rights as specified in the indicated licence.*

## **Induced Technological Change under Technology Competition**

Reyer Gerlagh

NOTA DI LAVORO 5.2003

**JANUARY 2003**

KNOW – Knowledge, Technology, Human Capital

Reyer Gerlagh, *IVM, Institute for Environmental Studies, Vrije Universiteit,  
Amsterdam, The Netherlands*

This paper can be downloaded without charge at:

The Fondazione Eni Enrico Mattei Note di Lavoro Series Index:  
[http://www.feem.it/web/activ/\\_wp.html](http://www.feem.it/web/activ/_wp.html)

Social Science Research Network Electronic Paper Collection:  
[http://papers.ssrn.com/abstract\\_id=XXXXXX](http://papers.ssrn.com/abstract_id=XXXXXX)

The opinions expressed in this paper do not necessarily reflect the position of  
Fondazione Eni Enrico Mattei

# Induced Technological Change under Technology Competition

## Summary

We develop a partial one-sector model with capital, natural resources, and labor as production factors, and endogenous technological change through research. Production exhibits increasing returns to scale. We compare the response of output and resource use to a change in resource prices with and without induced technological change (ITC). It is shown that induced technological change is insignificant in reducing resource use when there is one representative technology and output demand is inelastic to prices. In contrast, substantial gains from ITC appear when we allow for two competing technologies that can be employed for production, while these technologies are good substitutes. Also, in case of two technologies, conditions are specified under which multiple balanced growth paths exist, and it is shown that because of ITC, a temporary resource tax can lock out the economy from a resource intensive path and lock in to a resource extensive path.

**Keywords:** Induced technological change, environmental taxes, partial equilibrium

**JEL:** H23, O31, O41, Q42, Q43

*The author is grateful to David Popp, Chris Green, and Sjak Smulders for their suggestions and comments on an earlier draft. The usual disclaimer applies. The research has been funded by the Dutch National Science Foundation (NWO) under contract nr. 016.005.040.*

*Address for correspondence:*

Reyer Gerlagh  
IVM/VU  
De Boelelaan 1087  
1081 HV Amsterdam, the Netherlands  
Phone: +31 - 20 - 44 49502  
Fax: +31 - 20 - 44 49553  
E-mail: reyer.gerlagh@ivm.vu.nl



# Induced technological change under technology competition<sup>1</sup>

## 1. Introduction

It has become increasingly clear that environmental taxes and regulation not only reduce pollution by shifting behavior away from polluting activities, but also encourage the development of new technologies that make pollution control less costly in the long run (Popp 2002). Understanding the response of technology to economic incentives – dubbed induced innovation or induced technological change (ITC) – will prove crucial for designing appropriate environmental policies.<sup>2</sup> This paper studies the contribution of ITC to pollution reduction and it specifically addresses the issue in the context of multiple competing technologies that are good substitutes for producing the same good. The analysis extends the literature that has mainly studied ITC in the context of one representative aggregate technology.

Since Grossman and Krueger (1993), the effect of environmental taxes and regulation on pollution is commonly decomposed in a scale effect, a composition effect, and a factor substitution effect, where the latter effect is often referred to as the technology effect.<sup>3</sup> The scale effect signifies the increase or decrease in aggregate output and pollution, all other things equal. The composition effect records the shift away from polluting activities. The factor substitution effect measures the implication on pollution of the substitution of less polluting production factors for more polluting production factors. A similar breakdown into a composition and factor substitution effect can be made for ITC. First, when multiple technologies are available that can be employed for the production of a good, each technology with a different resource use and pollution profile, then environmental taxes will induce a change in technological composition, that is a shift towards technologies that are less polluting. Second, treating technology as a production factor, ITC stands for a substitution of technology for other production factors. Most of the

---

<sup>1</sup> The author acknowledges financial support by the Netherlands Organisation for Scientific Research (NWO) under contract number 016.005.040.

<sup>2</sup> For an extensive literature overview of policy instruments in relation to ITC, see Jaffe *et al.* (2002).

<sup>3</sup> The reason for our change in labeling is that, in this paper, we want to separate factor substitution from a technology effect.

## ITC UNDER TECHNOLOGY COMPETITION

literature on ITC is based on the concept of a representative technology and focuses on ITC as enhanced factor substitution (e.g. Newell, Jaffe and Stavins 1999, Goulder and Matthai 2000).

ITC is receiving much attention, for example in the climate change related literature where its potential contribution to policies aiming at greenhouse gas emission reductions is subject of a yet undecided debate. A few studies try to estimate empirically the impact of enhanced factor substitution through ITC relative to the direct factor substitution effects (Goulder and Schneider 1999, Nordhaus 2002). They conclude that, though ITC is not negligible, its contribution to emission abatement is small when compared to the contribution of direct factor substitution. Nordhaus' (2002) conclusion is, however, based on an assumed representative technology, and it neglects induced changes in the technological composition as a channel through which ITC operates. The reduction of resource use will not only require the substitution of knowledge for a resource, it will also require the substitution of 'clean' technologies for 'dirty' technologies. Goulder and Schneider model two energy sources but treat these as complements (elasticity of substitution below unity), so that substitution and competition between energy sources is limited. Technology competition is of specific interest for climate change in relation to energy use and supply. In the long term, energy savings will be insufficient for substantial abatement levels of carbon dioxide emissions, since energy is an essential production factor. Instead, if a substantial emission abatement strategy is aimed for, a shift away from fossil-fuel based energy sources towards carbon-free energy sources will have to carry such a strategy (Chakravorty *et al.* 1997). For this reason, we have to take into account the effect of ITC on the relative contribution of various technologies used for production (Weyant and Olavson 1999).

The effect of ITC on the technological composition has fundamentally different features when compared to the enhanced factor substitution effect of ITC. Even though ITC amplifies factor substitution, factor substitution remains a continuous process. For multiple technologies, we can expect discontinuous responses to environmental taxes, since under endogenous innovation, production exhibits increasing returns to scale, and profit maximization or cost minimization implies a non-continuous adjustment of production to price changes. Specifically, in this paper, we make a case for the existence of so-called bifurcation equilibria. An environmental tax can, when it passes a certain threshold, cause a trade in places between a currently dominant

and polluting technology, and a currently minor but non-polluting technology. An analysis based on a representative technology cannot represent this behavior.<sup>4</sup>

In this paper, we develop a one-sector two-technology model with endogenous R&D in the tradition of the endogenous growth models with natural resources that have been specified to study growth and sustainability (Gradus and Smulders 1993; Bovenberg and Smulders 1995; den Butter and Hofkes 1995; Bovenberg and Smulders 1996; Smulders 1999). Section 2 describes the basic features of the model for one sector and one technology. Section 3 studies the dynamic paths and steady states, and it examines the returns to scale. An important finding of this section is that returns to scale increase when output levels increase. A matured technology has higher increasing returns vis-à-vis an infant technology. ITC enters the analysis in Section 4, where the model is used to examine the effect of ITC on the elasticity of output and resource use, with respect to resource prices. Section 5 extends the model to take account of two competing technologies. That is, two different technologies are considered that can be used to produce goods that are good substitutes. In this setting, increasing returns to scale typically produce a one-takes-all allocation, that is a corner solution where one technology dominates and the other technology disappears. In contrast, the increasingness of returns we have found in Section 4 permits the existence of multiple interior solutions. We specify explicit conditions for existence of stable and unstable equilibria. Section 6 examines the effect of ITC on the elasticity of output and resource use, with respect to resource prices, in the two-technology model. ITC is shown to act as a strong multiplier for the elasticities. This section also shows that a resource tax can, through ITC, lock out production from a locally stable steady state in which a resource intensive technology dominates, to an alternative stable steady state in which a resource extensive technology dominates. Finally, Section 7 discusses the implications of our analysis for climate change policies.

## 2. Model set up for one technology

This section presents the basic elements of our model for production and innovation, describing one sector and one technology. We distinguish between ‘research firms’ that produce innovations and producers of the final sector good. Technology is described as an expanding library of ideas that can be used in the production process. Innovation is a cumulative process; each innovation

---

<sup>4</sup> More in general, a representative aggregate technology does not perform well when there are increasing returns to scale at the disaggregate level (Basu and Fernald 1997).

builds on the stock of existing knowledge. Producers of the final good can make use of all past and present innovations, that is the total stock of knowledge, and pay a license fee to all research firms that have developed the innovations that are currently in use. In turn, the researchers receive the license fees from all present and future final goods producers that use their innovations. Both researchers and producers of final goods take prices as given. We do not consider product variety and price setting under monopolistic competition as in many other endogenous growth models (see Barro and Sala-i-Martin 1995 for an overview).

Demand for the sector good is assumed to show constant elasticity of substitution  $\sigma$ ,

$$y_t = \hat{y}_t p_t^{-\sigma}, \quad (1)$$

for some exogenous demand variable  $\hat{y}_t$ , where  $p_t$  is the price of the sectoral final good. The final good is produced by firms, indexed  $j$ , according to

$$y_{j,t} = (a_{j,t})^\eta (k_{j,t})^\alpha (e_{j,t})^\beta (l_{j,t})^{1-\alpha-\beta}, \quad (2)$$

where  $k_{j,t}$ , is the capital stock,  $e_{j,t}$  is resource use, and  $l_{j,t}$ , is labor use in efficient labor units. Human capital increasing labor productivity is not specified explicitly, as it is considered embodied in the labor good, exogenous to the individual firm. The technology variable  $a_{j,t}$  denotes the number of innovations that are employed by the  $j$ -th firm, at date  $t$ .

Capital depreciates over time at rate  $\delta$ , and is accumulated through investments  $i_t$ ,

$$\dot{k}_{j,t} = i_{j,t} - \delta k_{j,t}. \quad (3)$$

In addition to the investment expenditures,  $i_{j,t}$ , resource rents  $q_t e_t$ , and wages,  $w_t l_{j,t}$ , firms have to pay a license fee for the innovations employed, denoted by  $\theta_t$ , for every unit of innovation  $a_{j,t}$ , and for every unit of output  $y_{j,t}$ . At time  $t$ , total expenditures thus amount to  $i_{j,t} + q_t e_{j,t} + w_t l_{j,t} + \theta_t a_{j,t} y_{j,t}$ , while revenues amount to  $p_t y_{j,t}$ . The firms maximize the net present value of their cash flows:

$$\max \int_0^{\infty} e^{-\rho t} ((p_{j,t} - \theta_t a_{j,t}) y_{j,t} - q_t e_{j,t} - w_t l_{j,t} - i_{j,t}) dt, \quad (4)$$

subject to (2) and (3), where  $\rho$  is the interest rate. Since expenditures on licenses are proportional to output, production has constant returns to scale, and the firms can operate in a competitive market with marginal pricing. We thus omit firms' subscripts  $j$ . The Hamiltonian for profit maximization reads:



$$\mathbf{H} = py - \theta ay - qe - wl - i + \lambda(a^\eta k^\alpha e^\beta l^{1-\alpha-\beta} - y) + \psi(i - \delta k). \quad (5)$$

For convenience, we omitted time subscripts. The first order conditions for  $y$ ,  $a$ ,  $l$ ,  $e$ ,  $i$ , and  $k$  are, respectively,

$$p = \theta a + \lambda, \quad (6)$$

$$\theta y = \eta \lambda y / a, \quad (7)$$

$$w = (1 - \alpha - \beta) \lambda y / l, \quad (8)$$

$$q = \beta \lambda y / e, \quad (9)$$

$$1 = \psi, \quad (10)$$

$$\dot{\psi} = \rho \psi - \mathbf{H}_k = (\rho + \delta_k) \psi - \alpha \lambda y / k, \quad (11)$$

We can substitute equations (10) in (11) to derive a capital cost equation that shows capital costs to consist of interest and depreciation:

$$\rho + \delta_k = \alpha \lambda y / k. \quad (12)$$

The price of the output good,  $p$ , consists of two parts (6), the license fee  $\theta a$  and the immediate production costs  $\lambda$ . From (6) and (7), we see that innovation costs make a constant mark up  $\eta$  on top of the immediate production costs net of the license fee,  $\lambda$ ,

$$p = (1 + \eta) \lambda. \quad (13)$$

Furthermore, because of linear homogeneity of production  $y$  in  $(k, e, l)$ , we can calculate  $\lambda$ , as dependent on capital costs,  $\rho + \delta_k$ , the resource price  $q$ , and wages,  $w$ ,

$$\lambda = \min \{ (\rho + \delta_k) k + qe + wl \mid 1 \leq a^\eta k^\alpha e^\beta l^{1-\alpha-\beta} \} = \xi a^{-\eta}, \quad (14)$$

where  $\xi$ , the production costs net of technology,

$$\xi = \alpha^{-\alpha} \beta^{-\beta} (1 - \alpha - \beta)^{-(1-\alpha-\beta)} (\rho + \delta)^{\alpha} q^{\beta} w^{1-\alpha-\beta}, \quad (15)$$

is exogenous to the sector. The license fee  $\theta$  is now calculated as

$$\theta = \eta \xi a^{-1-\eta}, \quad (16)$$

and output prices are given by

$$p = (1 + \eta) \xi a^{-\eta}. \quad (17)$$

Next we turn to the supply of innovations. There are two externalities working in opposite direction. As a positive externality, knowledge about past innovations is public, that is, technology is non-rival when it is used to produce new technology. As a negative externality, research efforts  $r$  by one firm negatively affect the finding of new innovations by other firms, because of fishing out of new innovations that are attainable from the current state of technology. Research firms use the ‘library’ of past inventions to produce new innovations. We distinguish between the overall (non sector-specific) state of technology, denoted by upper-case  $A$ , and the sector specific technological state of the art, denoted by lower-case  $a$ . The distinction is a way of representing the finding by Jaffe (1986) that spill-over effects between ‘technological neighbors’ exceed spill-over effects between distant technologies. In our model, technological innovation within the sector spills over through  $a$ , whereas we abstract from spillovers between sectors. The next section studies the implications of this distinction for the returns to scale.

A research firm  $j$  can produce a number of new innovations  $da_j$  according to

$$da_j = \zeta r^{\pi-1} (a+A)^{1-\pi} dr_j. \quad (18)$$

where  $\zeta$  is a scaling constant,  $dr_j$  denotes the research expenditures by firm  $i$  ( $dr_j=r_j dt$ , research expenditures are equal to the research flow  $r_j$  times the time interval  $dt$ ), and  $r$  denotes the overall expenditures on research by all (other) research firms. Aggregation of innovations (18) over the research firms gives

$$\dot{a} = \zeta r^\pi (a+A)^{1-\pi}. \quad (19)$$

Equilibrium on the market for innovations requires that the costs of developing a new technology, that is, the costs of an increase  $da_i$ , equals the revenues the research firm can obtain by selling the license fees. Costs per unit of innovation are given by (18),

$$dr_j/da_j = \zeta^{-1} r^{1-\pi} (a+A)^{\pi-1}. \quad (20)$$

The revenues from an innovation are equal to the net present value of future license fees:

$$\varphi_t = \int_t^\infty \theta_\tau y_\tau e^{-\rho(\tau-t)} d\tau, \quad (21)$$

where  $\varphi_t$  denotes the asset price of an innovation. In terms of a differential equation, we write

$$\dot{\varphi} = \rho\varphi - \theta y = \rho\varphi - \eta \xi y a^{-1-\eta}. \quad (22)$$

Substitution of the demand function (1) and the price-technology relation (17) gives

$$\dot{\phi} = \rho\phi - \eta (1+\eta)^{-\sigma} \xi^{1-\sigma} \hat{y} a^{-1-\eta+\sigma\eta}. \quad (23)$$

Setting costs (20) and revenues (21) equal, we obtain the overall research effort  $r$ ,

$$r = (\zeta\phi)^{1/(1-\pi)} (a+A), \quad (24)$$

and (19) becomes

$$\dot{a} = \zeta^{1/(1-\pi)} \phi^{\pi/(1-\pi)} (a+A). \quad (25)$$

The two equations (23) and (25) fully describe the dynamics for technology  $a$  and its price  $\phi$ . We use these in the next section to study existence, stability, and returns-to-scale properties of the steady state.

### 3. Steady state and returns to scale

In this section, we establish conditions for a stable balanced growth, also labeled a steady state solution, for the dynamic equations (23) and (25), and we analyze the returns to scale, that is, the decrease in production costs that occurs when the output level,  $y$ , increases. Along the balanced growth path, the rate of increase for the general purpose technology  $A$  is a constant  $g_A$ , wages increase at constant rate  $g_w$ , resource prices increase at constant rate  $g_q$ , and the exogenous demand  $\hat{y}$  increases at constant rate  $g_y$ . Furthermore, we characterize the balanced growth path by a constant ratio between the sector specific technology and the general purpose technology,  $a/A$  and denote the growth rate of both technology variables by the constant  $\gamma = g_a = g_A$ . It follows from the innovation dynamics (19) that research expenditures grow at the same rate,  $g_r = \gamma$ , and from (24) that the technology price  $\phi$  is constant,  $g_\phi = 0$ . In turn, the price dynamics equation (23) makes clear that the growth rates for wages, resource prices and demand  $\hat{y}$  are linked such that the exogenous variable

$$\chi = \eta (1+\eta)^{-\sigma} \xi^{1-\sigma} \hat{y} A^{-1-\eta+\sigma\eta} \quad (26)$$

is a constant. We can thus express the growth rates of  $\xi$ ,  $p$ , and  $y$  in terms of  $\gamma$  and  $g_y$ :  $g_\xi = ((1+\eta-\sigma\eta)\gamma - g_y)/(1-\sigma)$ ,  $g_p = (\gamma - g_y)/(1-\sigma)$ ,  $g_y = (g_y - \sigma\gamma)/(1-\sigma)$ . These growth rates are used in Figure 2 to normalize over time the axes. We notice that, if demand growth in proportion to

technology,  $g_y = \gamma$ , and factor costs increase by  $g_\xi = \eta\gamma$ , then prices remain constant,  $g_p = 0$ , and output grows at the same rate as demand,  $g_y = \gamma$ .

First, we study the existence of a steady state and its stability through the phase diagrams for  $(a, \phi)$ , as in Figure 1a, b, and c. The two loci with  $\dot{\phi} = 0$  and  $\dot{a} = \gamma a$ , are given by (23) and (25), that become in steady state:

$$\phi = \rho^{-1} \chi (a/A)^{-1-\eta+\eta\sigma}, \text{ and} \tag{27}$$

$$a/A = \zeta^{1/(1-\pi)} \phi^{\pi/(1-\pi)} / (\gamma - \zeta^{1/(1-\pi)} \phi^{\pi/(1-\pi)}), \tag{28}$$

respectively. We show three figures. For  $\sigma < 1 + 1/\eta$ , the  $\dot{\phi} = 0$  locus is downwards sloping whereas the  $\dot{a} = \gamma a$  locus is upwards sloping, as in Figure 1a. There is a unique stable steady state. For larger values of the elasticity of demand,  $\sigma > 1 + 1/\eta$ , existence and stability of the steady state depends on the value of the constant  $\chi$ , and for given resource price and wages this means that existence and stability depend on the market size  $\hat{y}$ . For  $1 + 1/\eta < \sigma < 1 + 1/\eta + (1-\pi)/\pi\eta$ , and small  $\hat{y}$ , a stable steady state exists as in Figure 1b. But if the size of the market increases, the  $\dot{\phi} = 0$  locus shifts upwards and the steady state vanishes, as in Figure 1c. We can extend the list of figures for higher values of  $\sigma$ , but we constrain ourselves to this set of figures since these will turn out to be of most interest for our further analysis. It is remarkable that an increase of  $\hat{y}$  transforms Figure 1b with stable steady state into Figure 1c that has no steady state. An analysis of the returns to scale in steady state will reveal the mechanism at play, and will prove useful for the two-technology economy studied in the Section 5.

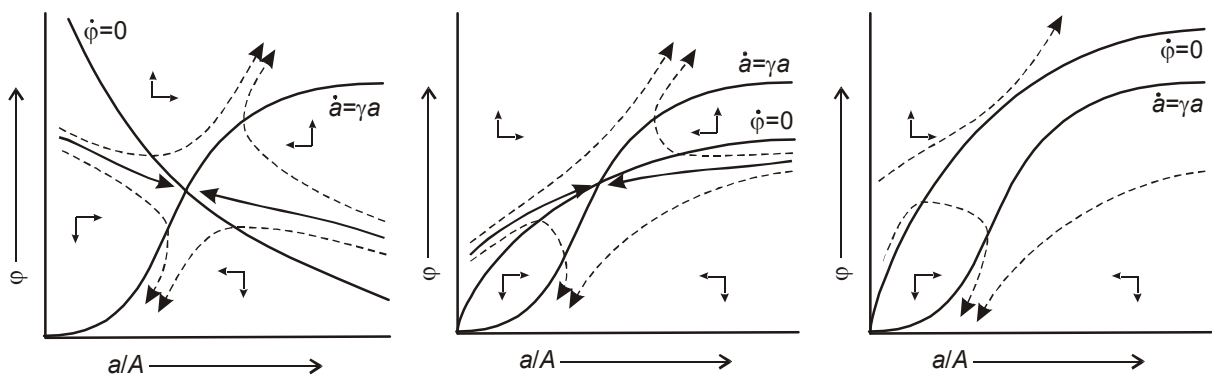


FIGURE 1a. Phase diagram for  $(a, \phi)$ ; saddle-point stability for  $0 \leq \sigma < 1 + 1/\eta$

FIGURE 1b. Phase diagram for  $(a, \phi)$ ; saddle-point stability for  $1 + 1/\eta < \sigma < 1 + 1/\eta + (1-\pi)/\pi\eta$ ,

FIGURE 1c. Phase diagram for  $(a, \phi)$ ; unstable for  $1 + 1/\eta < \sigma < 1 + 1/\eta + (1-\pi)/\pi\eta$ ,

small  $\hat{y}$ large  $\hat{y}$ 

We will measure the rate of return through the decrease in prices as a function of the output level,  $\omega(y) = -(dp/dy)/(y/p)$ .<sup>5</sup> For convenience, we use the symbol  $\varepsilon$  to denote relative growth rates,  $\varepsilon_p = dp/p$ ,  $\varepsilon_y = dy/y$ , and we use double subscripts to denote elasticities,  $\varepsilon_{py} = \varepsilon_p/\varepsilon_y = -\omega(y)$ . Notice that we measure the scale effect with respect to actual output  $y$ ; we study returns to scale in supply and abstract from the demand equation (1), and from the variable  $\hat{y}$ . To sketch the significance of returns to scale in production for the existence and stability of a steady state, first consider a simple economy of constant returns to scale,  $\omega(y) \equiv 0$ . Production prices are independent of the output level and a stable steady state exists where supply meets demand. In an economy with increasing returns to scale, i.e.  $\omega > 0$  and constant, a stable steady state exists as long as demand is inelastic or increasing returns are not too large,  $\sigma\omega < 1$ . On the other hand, if demand is highly elastic, or if increasing returns to scale are sufficiently large, that is if  $\sigma\omega > 1$ , an unstable steady state arises. As we will show, in our economy, the returns to scale vary with the output level; the condition for a stable steady state  $\sigma\omega(y) < 1$  can thus hold for small output levels  $y$ , while it does not hold for large output levels  $y$ .

Recall from (17) that prices  $p$  are proportional to  $a^{-\eta}$ , and thus

$$\omega(y) = -\varepsilon_{py} = \eta \varepsilon_{ay}. \quad (29)$$

Substitution of (22) with  $\dot{\phi} = 0$  in (28) provides the relation between  $y$  and  $a$ :

$$a^{1+\eta+(1-\pi)/\pi} (a+A)^{-(1-\pi)/\pi} = \rho^{-1} \gamma^{-(1-\pi)/\pi} \zeta^{1/\pi} \xi y. \quad (30)$$

On the balanced growth path and for a given point in time, we may consider  $A$  and  $\xi$  fixed so that we can study the relation between  $y$  and  $a$ . Both sides of the equation are monotonically increasing in  $a$  and  $y$ , respectively, and if  $y \rightarrow 0$ , then  $a \rightarrow 0$ , and if  $y \rightarrow \infty$ , then  $a \rightarrow \infty$ . Thus,  $\varepsilon_{ay} > 0$ , and production has increasing returns to scale. For low values of demand  $y$ , the sector specific technology is substantially below the general purpose technology spillover,  $a \ll A$ , and we have that

---

<sup>5</sup> The value of  $1+\omega(y)$  is often labeled the scale factor. The value of  $\omega(y)$  is also known as Verdoorn's coefficient (cf. Jefferson 1988, Harris and Lau 1998).

$$\varepsilon_{ay} = 1/(1+\eta+(1-\pi)/\pi) , \quad (31)$$

so that (for  $y$  small),

$$\lim_{y \rightarrow 0} \omega(y) = -\varepsilon_{py} = \eta/(1+\eta+(1-\pi)/\pi) . \quad (32)$$

For large values of demand and sector specific technology,  $a \gg A$ , we have from (30) that

$$\varepsilon_{ay} = 1/(1+\eta) , \quad (33)$$

so that,

$$\lim_{y \rightarrow \infty} \omega(y) = -\varepsilon_{py} = \eta/(1+\eta) . \quad (34)$$

The economy does not only exhibit increasing returns to scale,  $\omega(y) > 0$ , but remarkably, the returns to scale accelerate when output levels increase,  $\omega'(y) > 0$ . This finding is consistent with the empirical literature (Caballero and Lyons 1992; Basu and Fernald 1997).<sup>6</sup>

The feature of  $\omega(y)$  enables us to appreciate the phase diagrams of Figure 1. First, let us consider the case in which demand is relatively inelastic,  $\sigma < 1 + 1/\eta$ . For all output levels,  $\sigma\omega(y) < 1$ , and though the supply curve is downward sloping because of increasing returns to scale, still, the demand curve crosses the supply curve from above and there exists a stable steady state, as in Figure 2a. For  $\sigma > 1 + 1/\eta + (1-\pi)/\pi\eta$ , not represented in Figure 1 and Figure 2, we have that  $\sigma\omega(y) > 1$  for all  $y$ , and supply will cross demand from above, signifying an unstable steady state. For  $1 + 1/\eta < \sigma < 1 + 1/\eta + (1-\pi)/\pi\eta$ , we have that  $\sigma\omega(0) < 1 < \sigma\omega(\infty)$ . For low values of the size of the market,  $\hat{y}$ , demand crosses supply two times, and a stable and unstable steady state exists (Figure 2b). For  $\hat{y}$  large, the demand curve shifts to the right and no steady state exists (Figure 2c).

---

<sup>6</sup> Basu and Fernald (1997) find a substantial gap between the estimated rate of return on the disaggregate level and the aggregate level of production. They also show that the gap decreases if they correct their estimates for factor reallocation between sectors. From this, they conclude that the returns on aggregate level are insufficient to warrant the use of analytical models that require substantial increasing returns for providing specific results. We stress that the results of our analysis do not require substantial increasing returns. A small gap between returns to scale for low and high output levels suffices.

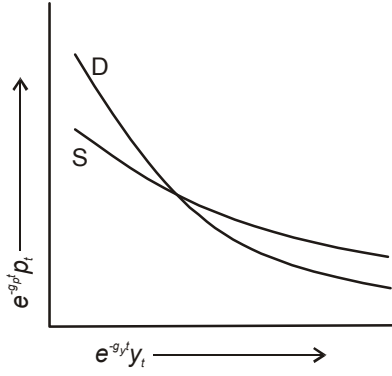


FIGURE 2a. Demand (D) and Supply (S);  $0 \leq \sigma < 1 + 1/\eta$

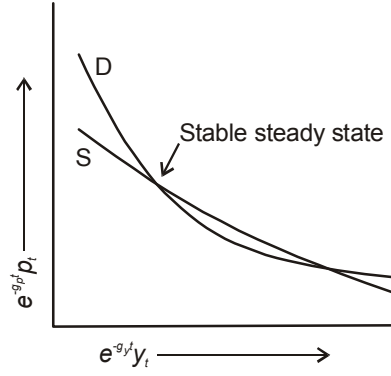


FIGURE 2b. Demand (D) and Supply (S);  $1 + 1/\eta < \sigma < 1 + 1/\eta + (1 - \pi)/\pi\eta$ , small  $\hat{y}$

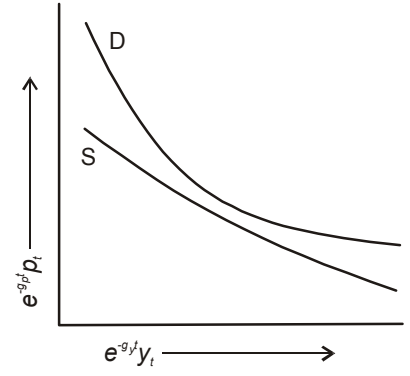


FIGURE 2c. Demand (D) and Supply (S);  $1 + 1/\eta < \sigma < 1 + 1/\eta + (1 - \pi)/\pi\eta$ , large  $\hat{y}$

#### 4. Resource price elasticities

In this section, we study the response of output, technology, and resource use on a permanent shock in the resource price. The production factors will substitute, and technology will adapt to the change in factor prices. We can think of a resource tax that increases the resource price, and this section deals with the implications of ITC for the effectiveness of such a tax. In precise terms, we calculate the resource price elasticities for output, technology and resource use, distinguishing the direct factor substitution effect from ITC effects. More or less, in the short term, technology does not adjust and direct factor substitution is most important. In the long term, induced technological change will play a role.

An increase in the resource price  $q$  implies an increase in the unit production cost for the capital-labor-resource composite  $\xi$  by (15):

$$\varepsilon_{\xi q} = \beta. \quad (35)$$

In the short term, technology does not adjust,  $\varepsilon_a = 0$ , and output prices go up by the same rate as the composite input (17):

$$\varepsilon_{pq} = \varepsilon_{\xi q} = \beta. \quad (36)$$

Consequently, output falls (1),

$$\varepsilon_{yq} = -\sigma \varepsilon_{pq} = -\beta \sigma, \quad (37)$$

and since resource expenditures have a fixed share in output value,  $\beta/(1+\eta)$ , resource use adjusts according to

$$\varepsilon_{eq} = \varepsilon_{yq} + \varepsilon_{pq} - 1 = -\beta\sigma - (1-\beta), \quad (38)$$

where the first part,  $\varepsilon_{yq} = -\beta\sigma$ , accounts for the decrease in output demand; this signifies the composition effect when seen from the overall macro-economic perspective. The second part,  $\varepsilon_{pq} - 1 = \beta - 1$ , accounts for factor substitution.

In the long term, technology adjusts and changes in output prices  $p$  consist of one part reflecting the immediate production costs increase and another part reflecting the change in technology (17). Equation (36) becomes:

$$\varepsilon_{pq} = \varepsilon_{\xi q} - \eta \varepsilon_{aq}. \quad (39)$$

Technology adjusts because of two opposite forces (30). An increase in production costs  $\xi$  makes innovations more profitable, and thus, innovations increase, partly offsetting the resource tax. At the same time, a decrease in output level  $y$  decreases the value of innovations, and thus, decreases the innovation level. We have<sup>7</sup>

$$\varepsilon_{aq} = (\omega(y)/\eta)(\varepsilon_{yq} + \varepsilon_{\xi q}). \quad (40)$$

Substitution of (39) and (40) in (37) gives:

$$\varepsilon_{y\xi} = -\sigma(1-\omega(y))/(1-\sigma\omega(y)), \quad (41)$$

and in turn,

$$\varepsilon_{yq} = \varepsilon_{y\xi} \varepsilon_{\xi q} = -\beta\sigma(1-\omega(y))/(1-\sigma\omega(y)). \quad (42)$$

The short-term elasticity of output with respect to resource prices,  $\varepsilon_{yq} = -\beta\sigma$  (37), is multiplied by the factor  $(1-\omega(y))/(1-\sigma\omega(y))$  to reach the long-term elasticity. For inelastic demand,  $\sigma < 1$ , an increase in innovations partly compensates for the increase in production costs  $\xi$ ,  $\varepsilon_{aq} > 0$ . After an initial fall in output, following a price increase for the resource, due to ITC in the long term,

---

<sup>7</sup> Notice that the elasticity of the left-hand-side of equation (30) with respect to  $a$  is  $\omega(y)/\eta$ ; see also the derivation of  $\omega(y)$  in (32) and (34).



production levels partly recover. For elastic demand,  $\sigma > 1$ , the decrease in output reduces the value of innovations so much that research activities decrease,  $\varepsilon_{aq} < 0$ , and due to ITC in the long term, production levels continue to fall. In the intermediate case,  $\sigma = 1$ , the two forces of (40) balance and technology is unaffected by resource prices,  $\varepsilon_{aq} = 0$ .

Under ITC, resource use adjusts according to (38), (41), and  $\varepsilon_{pq} = -(1/\sigma)\varepsilon_{yq}$ :

$$\varepsilon_{eq} = \varepsilon_{yq} + \varepsilon_{pq} - 1 = (1-\sigma)\beta(1-\omega(y))/(1-\sigma\omega(y)) - 1. \quad (43)$$

The short-term (38) and long-term (43) elasticity of resource use coincide for  $\sigma = 1$ , since then, the level of technology is unaffected by resource prices. For inelastic demand,  $\sigma < 1$ , ITC enables a recovering output level in the long term, while further reducing resource use, that is innovation is an effective substitute for the resource. For elastic demand,  $\sigma > 1$ , ITC increases the resource intensity of production and it reduces resource use mainly through an enhanced decrease in output levels.

To assess the significance of ITC relative to factor substitution without ITC, we compare the elasticities of output and resource use with and without ITC, using some basic numbers that give an impression of climate change policy analyses insofar considering energy savings. We treat primary energy, such as oil, as the resource  $e$ , available at the cost of 2.5 \$/GJ (IEA/OECD, 1999, p.41), and with an average carbon content of about 0.025 gC/kJ. A carbon tax of 25 \$/tC will increase primary energy prices by 25%. Primary energy is used to produce end-use energy (e.g. heating), where primary energy sources have a cost share of say 50 per cent,  $\beta = 0.5$ . We notice that the value of  $\beta$  has no bearing on the relative effect of ITC. Furthermore, we assume that energy is essential for production, and demand has a low elasticity of 0.4 (Manne *et al.* 1995). Finally, we assume moderate increasing returns for the energy sector of 20 per cent,  $\omega = 0.2$ .<sup>8</sup> The calculated elasticities are reported in Table 1. The elasticity of end-use energy without ITC amounts to  $-0.20$ . The elasticity of primary energy use without ITC is  $-0.70$ . The elasticity of end-use energy with ITC is  $-0.17$ . The elasticity of primary energy use with ITC is  $-0.74$ . A carbon tax of 25 \$/tC decreases primary energy use by 16.1 %, without ITC, and by 16.9 %, with

---

<sup>8</sup> For the illustrative calculations, increasingness of  $\omega(y)$  is inconsequential.

## ITC UNDER TECHNOLOGY COMPETITION

ITC.<sup>9</sup> In this example, the effect of ITC on primary energy use is insignificant. This confirms the result by Nordhaus (2002) who also found ITC to be less effective than direct factor substitution.

Table 1. *Calculated elasticities with respect to the resource price\**

	One technology		Two technologies	
	Without ITC	With ITC	Without ITC	With ITC
Output	-0.20	-0.17	-0.28	-0.70
Resource use	-0.70	-0.74	-0.78	-1.50

\* Calculations based on:  $\beta=0.5$ ,  $\omega=0.2$ ,  $\sigma=0.4$  (one technology, using equations (37), (38), (42), and (43)),  $\sigma=3$ ,  $y_1/y_2=9$  (two technologies, using equations (56), (57), (59), and (60))

Yet, if we assume that carbon-rich energy sources compete with carbon-poor or carbon-free energy sources, a different context arises, and as we will show analytically in Section 6, and as presented numerically in Table 1, the contribution of ITC increases considerably. In the context of competing technologies, demand for output produced with a specific technology is not determined by demand elasticities for total output, e.g. by energy requirements for production. Instead, demand is determined by competition between goods produced with different technologies, and we expect a higher elasticity of demand for technology specific output. Moreover, in the energy context, the competing carbon-poor or carbon-free energy sources will also benefit from increasing returns to scale through ITC when they gain market share. This brings us to the next section, where we study the joint innovation efforts for competing technologies.

### 5. Competing technologies

So far we did not explicitly consider competition between technologies. In this section, we extend the one-technology model assuming two competing technologies that can be used for production. Goods produced by both technologies have their own characteristics but are substitutes; we use the same elasticity of substitution  $\sigma$  as above, now to denote the constant elasticity of substitution between technologies. For convenience, we assume inelastic demand on the aggregate level,  $\bar{y}_t$ ,

<sup>9</sup> Notice that we take the exponential function of the elasticity multiplied by the relative price increase of 25%:  $-0.161=1-\exp(-0.7 \times 0.25)$ , and  $-0.169=1-\exp(-0.74 \times 0.25)$ .

that grows at a constant rate  $\gamma$ , so that we can focus on the substitution effects between the two technologies. The technologies are denoted by  $g=1,2$ . Output aggregation satisfies

$$(y_{1,t}^{(\sigma-1)/\sigma} + y_{2,t}^{(\sigma-1)/\sigma})^{\sigma/(\sigma-1)} = \bar{y}_t. \quad (44)$$

We can think of various energy sources, such as oil, gas, and renewable energy systems, operating on the energy market. In a classic economy of constant returns to scale, each technology has a ‘natural’ share of the market, inversely proportional to the production costs associated with that technology. In an economy with increasing returns to scale, but with a constant scale factor,  $1+\omega$ , both technologies would share the market if both technologies are poor substitutes, or if the scale factor is not too large,  $\sigma\omega < 1$ . On the other hand, if both technologies are good substitutes, or if there are substantial increasing returns to scale,  $\sigma\omega > 1$ , full specialization would occur. In our economy, the returns to scale increase with the output level, and thus, it may be that  $\sigma\omega(0) < 1$ , while  $\sigma\omega(y) > 1$  for larger values of output  $y$ . The increasingness of  $\omega(y)$  can produce a partial pattern of specialization.

In this section, we will assume that both technologies have the same production costs net of technology,  $\xi_1 = \xi_2$ . The states of technology  $a_g$  determine the prices  $p_g$  (17), which determine the output levels  $y_g$  (45), which drive the price dynamics for technology,  $\phi$  (22). Simultaneously, innovation prices drive the technology dynamics (25), and this defines a four-dimensional dynamic system for  $(a_1, a_2, \phi_1, \phi_2)$ . The direct analysis thereof is beyond our capabilities. Instead, we consider steady states and we study an auxiliary mapping  $\Lambda: [0,1] \rightarrow [0,1]$  that measures the feed back of output levels on demand. To specify the mapping  $\Lambda(\cdot)$ , we use the variable  $x_g$  for demand, and  $y_g$  for output levels. The economy is in equilibrium if  $x_g = y_g$ . For  $x_g$  and  $y_g$ , the same aggregation equation (44) applies. Furthermore, let the variable  $s_y$  be the share of technology 1 in total output,  $s_y = y_1/(y_1 + y_2)$ ,  $0 \leq s_y \leq 1$ , and similarly,  $s_x$  is the share of technology 1 in total demand,  $s_x = x_1/(x_1 + x_2)$ ,  $0 \leq s_x \leq 1$ . From  $s_y$ , we can derive the output levels  $(y_1, y_2)$ , based on (44), and in turn the steady state technology levels  $(a_1, a_2)$  and prices  $(p_1, p_2)$ , based on (30) and (17), respectively. Now, prices determine the share of the first sector in total demand,  $s_x$ , through

$$x_1/x_2 = (p_1/p_2)^{-\sigma}, \quad (45)$$

jointly with (44). The chain  $s_y \rightarrow (y_1, y_2) \rightarrow (a_1, a_2) \rightarrow (p_1, p_2) \rightarrow s_x$  defines the mapping  $\Lambda: s_y \rightarrow s_x$ .

A fixed point  $s_x = s_y = s^*$ ;  $\Lambda(s^*) = s^*$  indicates a steady state solution. There are three obvious fixed points.  $\Lambda(0) = 0$ , since for  $s_y = 0$ , we have  $y_1 = 0$  so that  $a_1 = 0$ ,  $p_1 = \infty$ , and in turn  $x_1 = 0$ . Similarly,  $\Lambda(1) = 1$ . For  $s_y = 1/2$ , we have  $y_1 = y_2$  so that  $a_1 = a_2$ ,  $p_1 = p_2$ , and in turn  $x_1 = x_2$ . Thus,

$\Lambda(1/2)=1/2$ , as well. The slope of  $\Lambda(\cdot)$  around a fixed point tells us whether the steady state is stable, or unstable. If  $\Lambda'(s^*)>1$ , as in point  $C$  in Figure 3b and Figure 3c, then the balanced growth path  $C$  is unstable. An increase in the production share for technology 1, relative to the balanced growth path, will decrease production costs by so much that the increase in demand for goods produced with technology 1 exceeds the increase in production. The increase in demand further stimulates decreasing production costs, and production will converge to the stable balanced growth path  $D$  or  $E$ , for Figure 3b and Figure 3c, respectively. If  $\Lambda'(s^*)<1$ , as in point  $C$  in Figure 3a, then the balanced growth path  $C$  is stable. In this section, we show that Figure 3a, Figure 3b, and Figure 3c cover all possible configurations, dependent on the value of  $\sigma$  *vis-à-vis* the elasticity of productivity  $\omega(0)$  and  $\omega(1/2 \bar{y})$ .

On a fixed point of  $\Lambda(\cdot)$ , we have  $x_1=y_1$ , and  $x_2=y_2$ , and  $\Lambda'(\cdot)>1$  is equivalent with  $dx_1/dy_1>1$ , or  $\varepsilon_{x_1 y_1}>1$ . The elasticity of  $x_1$  relative to  $y_1$  we study here. From the CES aggregation (44) we have

$$\varepsilon_{y_1} = -(y_2/y_1)^{(\sigma-1)/\sigma} \varepsilon_{y_2} . \quad (46)$$

We first study the value of  $\varepsilon_{x_1 y_1}$  around  $s_y=0$ , that is for small values of  $s_y$ , so that  $y_1 \ll y_2$ . We can take  $\varepsilon_{y_2}=0$  (46), and focus on output and demand changes for the first technology,  $\varepsilon_{y_1}$  and  $\varepsilon_{x_1}$ . By definition of  $\omega(\cdot)$ , prices satisfy

$$\varepsilon_{p_1 y_1} = -\omega(0) \quad (47)$$

whereas  $\varepsilon_{p_2}=0$ . At the same time, demand satisfies

$$\varepsilon_{x_1 p_1} = -\sigma \quad (48)$$

so that

$$\varepsilon_{x_1 y_1} = \varepsilon_{x_1 p_1} \varepsilon_{p_1 y_1} = \sigma \omega(0) \quad (49)$$

The slope of  $\Lambda(\cdot)$  satisfies  $\Lambda'(0)>1$  if  $\sigma \omega(0)>1$ , as in Figure 3a and Figure 3b. In contrast, if  $\sigma \omega(0)<1$ ,  $\Lambda'(0)<1$  and demand will fall short of supply for low levels of  $y_1$ , as in Figure 3c.

Now consider the steady state with  $y=y_1=y_2=(1/2)^{\sigma/(\sigma-1)} \bar{y}$ , and  $s_y=s_x=1/2$ . Then, from (46), we have that  $\varepsilon_{y_1 y_2}=-1$ , and  $\varepsilon_{x_1 x_2}=-1$ . Analogous to the analysis for  $s_y \rightarrow 0$ , above, we deduct

$$\varepsilon_{p_1 y_1} = -\omega(y) ; \varepsilon_{p_2 y_2} = \omega(y). \quad (50)$$

At the same time, demand satisfies

$$\varepsilon_{x_1 p_1} = -1/2\sigma ; \varepsilon_{x_1 p_2} = 1/2\sigma , \quad (51)$$

so that

$$\varepsilon_{x_1 y_1} = \varepsilon_{x_1 p_1} \varepsilon_{p_1 y_1} + \varepsilon_{x_1 p_2} \varepsilon_{p_2 y_1} = \sigma \omega(y) . \quad (52)$$

The slope of  $\Lambda(\cdot)$  satisfies  $\Lambda'(1/2) > 1$  if  $\sigma \omega((1/2)^{\sigma/(\sigma-1)} \bar{y}) > 1$ , as in Figure 3b and Figure 3c. In contrast, if  $\sigma \omega((1/2)^{\sigma/(\sigma-1)} \bar{y}) < 1$ ,  $\Lambda'(1/2) < 1$  and demand will fall short of supply for decreasing levels of  $y_1$ , as in Figure 3a.

We can now distinguish three cases. First, if  $\sigma \omega((1/2)^{\sigma/(\sigma-1)} \bar{y}) < 1$ , then also  $\sigma \omega(0) < 1$  and the graph of  $\Lambda(\cdot)$  will look as in Figure 3a. The goods are too poor substitutes, or even complements if  $\sigma < 1$ , and no specialization will take place. There is one stable balanced growth path in which both technologies produce half of total output,  $C$ , and there are two unstable extreme balanced growth paths  $A$  and  $E$ . If  $\sigma \omega(0) < 1 < \sigma \omega((1/2)^{\sigma/(\sigma-1)} \bar{y})$ , Figure 3b applies. The increasing returns to scale in production, jointly with the good substitutability between the two technologies, make an equal partition of production over both sectors  $C$  unstable. However, returns to scale are also insufficient to warrant an extreme specialization;  $A$  and  $E$  are unstable as well. There must be two symmetric stable balanced growth paths of partial specialization,  $B$  and  $D$ . If  $1 < \sigma \rho(0) < \sigma \rho((1/2)^{\sigma/(\sigma-1)} \bar{y})$ , then Figure 3c applies. Both goods are good substitutes and it is optimal to fully specialize using one technology only;  $A$  and  $E$  are stable,  $C$  is unstable.

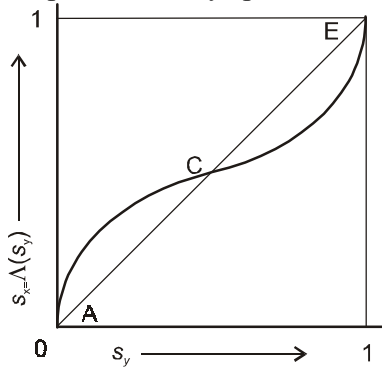


FIGURE 3a. Mapping  $\Lambda(\cdot)$  for  $\sigma \omega(0) < \sigma \omega((1/2)^{\sigma/(\sigma-1)} \bar{y}) < 1$

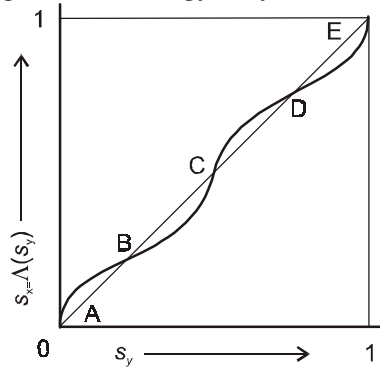


FIGURE 3b. Mapping  $\Lambda(\cdot)$  for  $\sigma \omega(0) < 1 < \sigma \omega((1/2)^{\sigma/(\sigma-1)} \bar{y})$

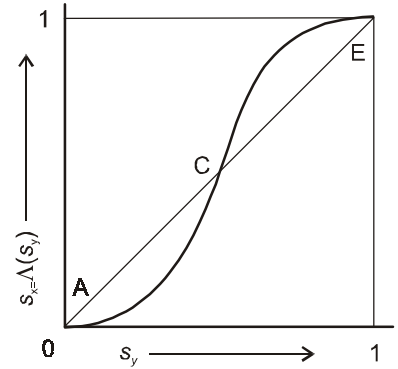


FIGURE 3c. Mapping  $\Lambda(\cdot)$  for  $1 < \sigma \omega(0) < \sigma \omega((1/2)^{\sigma/(\sigma-1)} \bar{y})$

## 6. Resource price elasticities

In this section, we extend the analysis of Section 4, investigating the response of output, technology, and resource use on changes in the resource price for the economy with two competing technologies. We copy the structure of Section 4, comparing the response without ITC with the response with ITC. Assume that the two technologies use different resources, or use the same resource but with different share parameters  $\beta_g$ . An increase in the resource price will affect both technologies differently. For convenience, we assume that both technologies use different resources, and we study an increase in the resource price used by the first technology.

Without technological change, prices adjust only for goods produced with the first technology

$$\varepsilon_{p_1 q_1} = \beta \ ; \ \varepsilon_{p_2 q_1} = 0. \quad (53)$$

From the demand equation (45), where we use the equilibrium assumption of  $x_g = y_g$ , we deduce

$$(\varepsilon_{y_1} - \varepsilon_{y_2}) = -\sigma(\varepsilon_{p_1} - \varepsilon_{p_2}). \quad (54)$$

Substitution of (46) yields:

$$\varepsilon_{y_1} (1 + (y_1/y_2)^{(\sigma-1)/\sigma}) = -\sigma\beta\varepsilon_{q_1}. \quad (55)$$

Rearranging terms gives for the elasticity of output:

$$\varepsilon_{y_1 q_1} = -\sigma\beta / (1 + (y_1/y_2)^{(\sigma-1)/\sigma}), \quad (56)$$

and (38) results in the elasticity of resource use:

$$\varepsilon_{e_1 q_1} = \varepsilon_{y_1 q_1} + \varepsilon_{p_1 q_1} - 1 = -\sigma\beta / (1 + (y_1/y_2)^{(\sigma-1)/\sigma}) - (1 - \beta). \quad (57)$$

The elasticities calculated in (56) and (57) resemble the one-technology values calculated in (37) and (38), except for the correction of the fact that, when the first technology has gained a substantial share, the elasticity of demand decreases.

With ITC, technology  $a_g$  adjusts, and (53) becomes:

$$\varepsilon_{p_1 q_1} = \beta - \omega(y_1)\varepsilon_{y_1 q_1} \ ; \ \varepsilon_{p_2 q_1} = -\omega(y_2)\varepsilon_{y_2 q_1}. \quad (58)$$

After adjusting (55) and rearranging, the elasticity of output, (56) is calculated as:

$$\varepsilon_{y_1 q_1} = -\sigma\beta / (1 + (y_1/y_2)^{(\sigma-1)/\sigma} - \sigma\omega(y_1) - (y_1/y_2)^{(\sigma-1)/\sigma} \sigma\omega(y_2)). \quad (59)$$

The long-term resource elasticity is now calculated as:

$$\varepsilon_{e_1, q_1} = (-\sigma\beta / (1 + (y_1/y_2)^{(\sigma-1)/\sigma} - \sigma\omega(y_1) - (y_1/y_2)^{(\sigma-1)/\sigma} \sigma\omega(y_2)) - (1-\beta)) / (1 - \omega(y_1)). \quad (60)$$

Comparing (57) with (59), we see that ITC increases the elasticity of output with respect to resource prices. Yet, similar to the case for the one-technology model, if both technologies are poor substitutes, or if both technologies have almost constant returns to scale, i.e.  $\sigma\omega(y) \ll 1$  for all  $y$ , then the additional effect of ITC on resource reduction is limited. On the other hand, when both technologies are moderate substitutes or have sufficient increasing returns to scale, say  $1/2 < \sigma\omega(y) < 1$ , for  $y = ((1/2)^{\sigma/(\sigma-1)} \bar{y})$ , then the denominator in (59) is halved because of ITC. The additional effect of ITC on output levels exceeds the primary effect of factor and technology substitution.

Figure 4a portrays the shift in the mapping  $\Lambda(\cdot)$ , taking account of endogenous technology levels, caused by a change in production costs  $\xi_1$ . The dashed line represents the mapping for  $\xi_1 = \xi_2$ . When the production costs of the first technology increase,  $d(\xi_1/\xi_2) > 0$ , output prices for the first technology increase, given output shares as determined by  $s_y$ , and demand for the output good produced by the first technology decreases. The mapping  $\Lambda(\cdot)$  adjusts downwards. The stable steady state  $C$  shifts to  $C'$  where the first technology has a lower share.

ITC has more drastic impact when substitutability and returns to scale produce one dominant and one minor technology, as presented in Figure 3b, when two stable steady states exist, one in which the first technology is dominant ( $D$ ), the other in which the second technology is dominant ( $B$ ). In principle, it is possible that the denominator of the right-hand-side of equation (59) becomes zero, since  $\sigma\omega(y_1) > 1$ . That is, the price elasticity of resource use with ITC may become infinite. Figure 4b portrays the shift in the mapping  $\Lambda(\cdot)$  when production costs  $\xi_1$  increase for the first technology. The mapping  $\Lambda(\cdot)$  shifts to the right, the stable steady state  $D$  shifts downwards, and the unstable steady state  $C$  shifts upwards. (Indeed, the denominator of the right-hand-side of equation (59) is negative, since for  $C$ ,  $\sigma\omega(y) > 1$ ,  $y = y_1 = y_2$ .) When the resource price continues to increase, at a certain moment, the steady states  $C$  and  $D$  coincide, making a bifurcation equilibrium  $G$ . A further increase of the tax will set the curve  $\Lambda(\cdot)$  loose of the diagonal, and the steady states  $C$  and  $D$  vanish.

We picture the so-called equilibrium surface in Figure 4c (cf. Magill 1977, Fig. 2b). The line  $FDGCHBI$  presents the set of steady states (shares for first sector on y-axis) as a function of the

ITC UNDER TECHNOLOGY COMPETITION

relative production costs for the two technologies,  $\xi_1/\xi_2$ .<sup>10</sup> The segments *FDG* and *HBI* represent stable steady states, these segments are called the stable sub-manifolds. The segment *GCH* represents the unstable steady states, called the unstable sub-manifold. The points *G* and *H* represent so-called bifurcation equilibria. The situation with equal production costs is depicted by the vertical line with  $\xi_1=\xi_2$ . *D* and *B* denote the stable steady states, with dominance of the first and second technology, respectively, *C* is the unstable steady state in which both technologies have equal shares. A tax on a resource that is intensively used in the first technology (in the figure, that is a shift to the right) will shift both stable steady states *B* and *D* downwards, towards a more favorable share for the second technology; the curves *BI* and *DG* are downwards sloping. When, initially, the economy is in equilibrium in *D*, a continued increase of the tax will lead to a continuous fall in the share of the first technology until, at point *G*, the system jumps to the next stable sub-manifold at point *I*. At this point *G*, a small increase in the resource tax induces technological change that leads to a major change in long-run dynamic behavior. After a jump, the economy has locked in another stable sub-manifold in which the second technology becomes dominant. The first technology will not regain its dominant position, even after complete lifting of the tax. The economy will then converge to *B*.

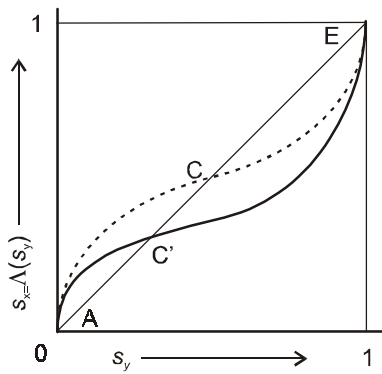


FIGURE 4a. Shift  $d(\xi_1/\xi_2) > 0$  in Mapping  $\Lambda(\cdot)$  for  $\sigma\omega(0) < \sigma\omega((\frac{1}{2})^{\sigma/(\sigma-1)} \bar{y}) < 1$

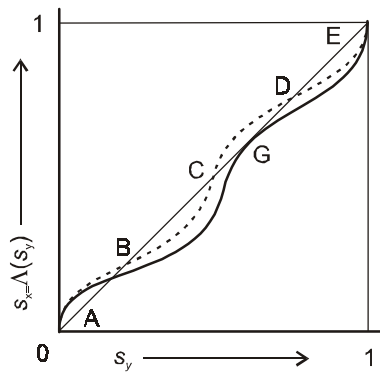


FIGURE 4b. Shift  $d(\xi_1/\xi_2) > 0$  in Mapping  $\Lambda(\cdot)$  for  $\sigma\omega(0) < 1 < \sigma\omega((\frac{1}{2})^{\sigma/(\sigma-1)} \bar{y})$

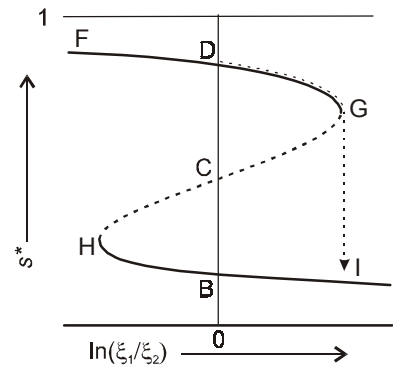


FIGURE 4c. Equilibrium surface for  $\sigma\omega(0) < 1 < \sigma\omega((\frac{1}{2})^{\sigma/(\sigma-1)} \bar{y})$

To conclude this section, we continue the numerical assessment of ITC as presented at the end of Section 4. We follow the suggestion by Weyant and Olavson (1999) and consider a

<sup>10</sup> In the figure, we use  $\ln(\xi_1/\xi_2)$  on the horizontal axis to have symmetry over the axis with  $\xi_1=\xi_2$ .



carbon-rich energy technology in competition with a carbon-free energy technology; the elasticity of substitution between both technologies is assumed  $\sigma=3$ .<sup>11</sup> We abstract from changes in the overall energy demand, and focus on the substitution between the energy sources. Let us consider a future period, say 2025, in which carbon-rich energy sources capture a stable market share of 90%, whereas the carbon-free energy sources produce the remaining 10%. We maintain the basic numbers from Section 4. A carbon tax of 25 \$/tC increases fossil fuel prices by 25%. Primary energy sources have a cost share of 50 per cent,  $\beta=0.5$ . We furthermore assume increasing returns for both energy technologies of 20 per cent,  $\omega=0.2$ . Results are presented in Table 1. The elasticity of end-use carbon-rich energy without ITC amounts to  $-0.28$ . The elasticity of primary carbon-rich energy use without ITC is  $-0.78$ . These values are comparable with the values for the one-technology model, see Table 1. The elasticity of end-use energy with ITC is  $-0.70$ . The elasticity of primary energy use with ITC is  $-1.50$ . A carbon tax of 25 \$/tC decreases fossil fuel primary energy use by 17.7 %, without ITC, and by 31.4 %, with ITC. In contrast with the one-technology model, the effect of ITC is rather substantial in the two-technology model.

## 7. ITC and climate change

Induced technological change makes pollution control less costly in the long run. In this paper, we have studied the response of output and resource use to changes in factor costs as caused by e.g. environmental taxes. We studied two models with endogenous R&D expenditures. In the first model, there is one technology available for production of a certain good. In the second model, two technologies compete, that is, two technologies can be used to produce goods that are good substitutes. For both models, we calculated explicit expressions for the elasticity of output and resource use, with and without ITC. Based on sensible parameter values, we found that ITC will not prove a substantial contribution to resource reduction when there is one technology and demand is inelastic. This configuration applies to the energy savings debate. Our analysis suggests that ITC has not much potential to improve on the direct factor substitution of capital, labor and other production factors for energy, for given technology. In this context, our analysis sketches a pessimistic perspective, suggesting that there are limits to improvements in energy efficiency. These limits to substitution, away from energy in favor of other factors, can also be understood

---

<sup>11</sup> In many applied models, various energy sources are assumed perfect substitutes,  $\sigma=\infty$ . We choose a less extreme value for  $\sigma$  to account for some complementarity between energy sources.

from a physical perspective. They arise because various basic activities (e.g. heating, cooling, transportation) require a minimum amount of energy, given by the thermodynamic laws of physics. Also, while there is scope for sectoral shifts from highly energy intensive activities to energy extensive activities, ultimately sectoral shifts are limited too.

Yet, our analysis proves more optimistic when there are competing resources, e.g. when we aim at carbon dioxide emission reductions through a substitution away from carbon-rich energy sources toward carbon-poor or carbon-free energy sources. In this setting, ITC acts as a powerful multiplier for the price elasticity of resource use. Moreover, it is possible that multiple balanced growth paths exist, each with another dominant energy technology. Indeed, if the current energy system is biased towards fossil-fuel based energy sources, because of spill-over effects, an alternative (imaginary) energy system in which the carbon-free energy sources have traded in place with fossil-fuel energy sources can exist. Then, the configuration of multiple steady states applies to the current energy system and the economy exhibits path dependency. A pessimistic feature of this configuration is that the current economy is locked-in in fossil-fuel technologies. Carbon-free technologies will not gain a substantial market share under their own steam. The optimistic feature is that, nonetheless, a carbon tax may render the current fossil-fuel dominance of the energy system unstable, setting in motion a major transition.

Having said so, it will be a challenge to develop renewable energy sources that are truly good substitutes for fossil-fuels. Solar, wind and new biomass seem too land intensive to displace fossil fuels at large scale. Moreover, solar and wind are intermittent, greatly limiting the amount that can be used to directly produce electricity, while storage of solar and wind energy (e.g. as hydrogen) remains a very expensive option. There is a need to search for new concentrated sources of energy, such as nuclear fusion, or geothermal sources from below the earth's mantle, capable of eventually displacing fossil fuels. The development of these sources naturally is a very long-term enterprise, and the commencement of such development requires more than a modest increase in fossil-fuels prices.

### **Acknowledgments**

The author is grateful to David Popp, Chris Green, and Sjak Smulders for their suggestions and comments on an earlier draft. The usual disclaimer applies. The research has been funded by the Dutch National Science Foundation (NWO) under contract nr. 016.005.040.

## References

- Barro R.J. and X.X.Sala-i-Martin (1995) *Economic growth*. McGraw-Hill, Inc., New York.
- Basu S, Fernald JG (1997), Returns to scale in US production: Estimates and implications, *Journal Of Political Economy* 105 (2): 249-283.
- Bovenberg A.L. and S.A. Smulders (1995) "Environmental quality and pollution-augmenting technological change in a two-sector endogenous growth model", *Journal of Public Economics* 57: 369-391.
- Bovenberg, A.L., and S.A. Smulders (1996) "Transitional Impacts of Environmental Policy in an Endogenous Growth Model", *International Economic Review* 37: 861-893.
- Caballero, RJ, and RK Lyons (1992), "External effects in US procyclical productivity", in *Journal of Monetary Economics* 29: 209-225.
- Chakravorty U., J.Roumasset, and K.Tse (1997) "Endogenous substitution among energy resources and global warming" in *Journal of Political Economy* **105**: 1201-1234.
- Butter F.A.G.d. and M.W.Hofkes (1995) "Sustainable development with extractive and non-extractive use of the environment in production" in *Environmental and Resource Economics* 6: 341-358.
- Goulder L.H. and K.Mathai (2000) "Optimal CO2 abatement in the presence of induced technological change" in *Journal of Environmental Economics and Management* **39**: 1-38.
- Goulder L.H. and S.H.Schneider (1999) "Induced technological change and the attractiveness of CO2 abatement policies" in *Resource and Energy Economics* **21**: 211-253.
- Gradus R.H.J.M. and S.A.Smulders (1993) "The trade-off between environmental care and long-term growth; pollution in three prototype growth models" in *Journal of Economics* 58: 25-51.
- Grossman, G. M. and A.B. Krueger (1993). Environmental Impacts of a North American Free Trade Agreement, in P. Garber, ed., *The U.S.-Mexico Free Trade Agreement*, p13-56, MIT Press, Cambridge, MA.
- Harris R.I.D, and E. Lau (1998), "Verdoorn's law and increasing returns to scale in the UK regions, 1968-91: some new estimates based on the cointegration approach", *Oxford Economic Papers-New Series* 50: 201-219.
- Jaffe, A.B. (1986), "Technological opportunity and spillovers of R&D: evidence from firms' patents, profits and market value", *American Economic Review* 76:984-1001
- Jaffe A.B., R.G. Newell, and R.N. Stavins (2002), "Environmental Policy and Technological Change", in *Environmental and Resource Economics* 22:41-70.

## ITC UNDER TECHNOLOGY COMPETITION

- Jefferson G.H. (1988), "The Aggregate Production Function And Productivity Growth - Verdoorns Law Revisited", *Oxford Economic Papers-New Series* 40 (4): 671-691.
- Magill M.J.P. (1977) "Some new results on the local stability of the process of capital accumulation" in *Journal of Economic Theory* **15**: 174-210.
- Manne A.S., R.Mendelsohn, and R.Richels (1995) "MERGE, A model for evaluating regional and global effects of GHG reduction policies" in *Energy Policy* **23**: 17-34.
- Newell R.G., A.B. Jaffe and R.N. Stavins (1999), "The induced innovation hypothesis and energy-saving technological change", *Quarterly Journal of Economics* 114: 941-975.
- Nordhaus W.D. (2002), "Modeling induced innovation in climate change policy", Ch 9 in *Modeling induced innovation in climate change policy*, A. Grubler, N. Nakićenović, and W.D. Nordhaus (eds), Resources for the Future Press.
- Popp, D. (2000), "Induced innovation and energy prices", *American Economic Review* 92: 160-180.
- Smulders S.A. (1999) "Endogenous growth theory and the environment" in *Handbook of environmental and resource economics*, Ch. 42, edited by J.C.J.M.v.d.Bergh. Edward Elgar,
- Weyant, J.P. and T. Olavson (1999), "Issues in modeling induced technological change in energy, environment, and climate policy", in *Environmental Modeling and Assessment* 4: 67-85.

## NOTE DI LAVORO DELLA FONDAZIONE ENI ENRICO MATTEI

### Fondazione Eni Enrico Mattei Working Paper Series

Our working papers are available on the Internet at the following addresses:

[http://www.feem.it/web/attiv/\\_wp.html](http://www.feem.it/web/attiv/_wp.html)

<http://papers.ssrn.com>

SUST	1.2002	<i>K. TANO, M.D. FAMINOW, M. KAMUANGA and B. SWALLOW: <u>Using Conjoint Analysis to Estimate Farmers' Preferences for Cattle Traits in West Africa</u></i>
ETA	2.2002	<i>Efrem CASTELNUOVO and Paolo SURICO: <u>What Does Monetary Policy Reveal about Central Bank's Preferences?</u></i>
WAT	3.2002	<i>Duncan KNOWLER and Edward BARBIER: <u>The Economics of a "Mixed Blessing" Effect: A Case Study of the Black Sea</u></i>
CLIM	4.2002	<i>Andreas LÖSCHEL: <u>Technological Change in Economic Models of Environmental Policy: A Survey</u></i>
VOL	5.2002	<i>Carlo CARRARO and Carmen MARCHIORI: <u>Stable Coalitions</u></i>
CLIM	6.2002	<i>Marzio GALEOTTI, Alessandro LANZA and Matteo MANERA: <u>Rockets and Feathers Revisited: An International Comparison on European Gasoline Markets</u></i>
ETA	7.2002	<i>Effrosyni DIAMANTOUDI and Eftichios S. SARTZETAKIS: <u>Stable International Environmental Agreements: An Analytical Approach</u></i>
KNOW	8.2002	<i>Alain DESDOIGTS: <u>Neoclassical Convergence Versus Technological Catch-up: A Contribution for Reaching a Consensus</u></i>
NRM	9.2002	<i>Giuseppe DI VITA: <u>Renewable Resources and Waste Recycling</u></i>
KNOW	10.2002	<i>Giorgio BRUNELLO: <u>Is Training More Frequent when Wage Compression is Higher? Evidence from 11 European Countries</u></i>
ETA	11.2002	<i>Mordecai KURZ, Hehui JIN and Maurizio MOTOLESE: <u>Endogenous Fluctuations and the Role of Monetary Policy</u></i>
KNOW	12.2002	<i>Reyer GERLAGH and Marjan W. HOFKES: <u>Escaping Lock-in: The Scope for a Transition towards Sustainable Growth?</u></i>
NRM	13.2002	<i>Michele MORETTO and Paolo ROSATO: <u>The Use of Common Property Resources: A Dynamic Model</u></i>
CLIM	14.2002	<i>Philippe QUIRION: <u>Macroeconomic Effects of an Energy Saving Policy in the Public Sector</u></i>
CLIM	15.2002	<i>Roberto ROSON: <u>Dynamic and Distributional Effects of Environmental Revenue Recycling Schemes: Simulations with a General Equilibrium Model of the Italian Economy</u></i>
CLIM	16.2002	<i>Francesco RICCI (I): <u>Environmental Policy Growth when Inputs are Differentiated in Pollution Intensity</u></i>
ETA	17.2002	<i>Alberto PETRUCCI: <u>Devaluation (Levels versus Rates) and Balance of Payments in a Cash-in-Advance Economy</u></i>
Coalition Theory Network	18.2002	<i>László Á. KÓCZY (IIV): <u>The Core in the Presence of Externalities</u></i>
Coalition Theory Network	19.2002	<i>Steven J. BRAMS, Michael A. JONES and D. Marc KILGOUR (IIV): <u>Single-Peakedness and Disconnected Coalitions</u></i>
Coalition Theory Network	20.2002	<i>Guillaume HAERINGER (IIV): <u>On the Stability of Cooperation Structures</u></i>
NRM	21.2002	<i>Fausto CAVALLARO and Luigi CIRAOLO: <u>Economic and Environmental Sustainability: A Dynamic Approach in Insular Systems</u></i>
CLIM	22.2002	<i>Barbara BUCHNER, Carlo CARRARO, Igor CERSOSIMO and Carmen MARCHIORI: <u>Back to Kyoto? US Participation and the Linkage between R&amp;D and Climate Cooperation</u></i>
CLIM	23.2002	<i>Andreas LÖSCHEL and ZhongXIANG ZHANG: <u>The Economic and Environmental Implications of the US Repudiation of the Kyoto Protocol and the Subsequent Deals in Bonn and Marrakech</u></i>
ETA	24.2002	<i>Marzio GALEOTTI, Louis J. MACCINI and Fabio SCHIANTARELLI: <u>Inventories, Employment and Hours</u></i>
CLIM	25.2002	<i>Hannes EGLI: <u>Are Cross-Country Studies of the Environmental Kuznets Curve Misleading? New Evidence from Time Series Data for Germany</u></i>
ETA	26.2002	<i>Adam B. JAFFE, Richard G. NEWELL and Robert N. STAVINS: <u>Environmental Policy and Technological Change</u></i>
SUST	27.2002	<i>Joseph C. COOPER and Giovanni SIGNORELLO: <u>Farmer Premiums for the Voluntary Adoption of Conservation Plans</u></i>
SUST	28.2002	<i><u>The ANSEA Network: Towards An Analytical Strategic Environmental Assessment</u></i>
KNOW	29.2002	<i>Paolo SURICO: <u>Geographic Concentration and Increasing Returns: a Survey of Evidence</u></i>
ETA	30.2002	<i>Robert N. STAVINS: <u>Lessons from the American Experiment with Market-Based Environmental Policies</u></i>

NRM	31.2002	<i>Carlo GIUPPONI and Paolo ROSATO: <u>Multi-Criteria Analysis and Decision-Support for Water Management at the Catchment Scale: An Application to Diffuse Pollution Control in the Venice Lagoon</u></i>
NRM	32.2002	<i>Robert N. STAVINS: <u>National Environmental Policy During the Clinton Years</u></i>
KNOW	33.2002	<i>A. SOUBEYRAN and H. STAHN: <u>Do Investments in Specialized Knowledge Lead to Composite Good Industries?</u></i>
KNOW	34.2002	<i>G. BRUNELLO, M.L. PARISI and Daniela SONEDDA: <u>Labor Taxes, Wage Setting and the Relative Wage Effect</u></i>
CLIM	35.2002	<i>C. BOEMARE and P. QUIRION (lv): <u>Implementing Greenhouse Gas Trading in Europe: Lessons from Economic Theory and International Experiences</u></i>
CLIM	36.2002	<i>T. TIETENBERG (lv): <u>The Tradable Permits Approach to Protecting the Commons: What Have We Learned?</u></i>
CLIM	37.2002	<i>K. REHDANZ and R.J.S. TOL (lv): <u>On National and International Trade in Greenhouse Gas Emission Permits</u></i>
CLIM	38.2002	<i>C. FISCHER (lv): <u>Multinational Taxation and International Emissions Trading</u></i>
SUST	39.2002	<i>G. SIGNORELLO and G. PAPPALARDO: <u>Farm Animal Biodiversity Conservation Activities in Europe under the Framework of Agenda 2000</u></i>
NRM	40.2002	<i>S.M. CAVANAGH, W. M. HANEMANN and R. N. STAVINS: <u>Muffled Price Signals: Household Water Demand under Increasing-Block Prices</u></i>
NRM	41.2002	<i>A. J. PLANTINGA, R. N. LUBOWSKI and R. N. STAVINS: <u>The Effects of Potential Land Development on Agricultural Land Prices</u></i>
CLIM	42.2002	<i>C. OHL (lvi): <u>Inducing Environmental Co-operation by the Design of Emission Permits</u></i>
CLIM	43.2002	<i>J. EYCKMANS, D. VAN REGEMORTER and V. VAN STEENBERGHE (lvi): <u>Is Kyoto Fatally Flawed? An Analysis with MacGEM</u></i>
CLIM	44.2002	<i>A. ANTOCI and S. BORGHESI (lvi): <u>Working Too Much in a Polluted World: A North-South Evolutionary Model</u></i>
ETA	45.2002	<i>P. G. FREDRIKSSON, Johan A. LIST and Daniel MILLIMET (lvi): <u>Chasing the Smokestack: Strategic Policymaking with Multiple Instruments</u></i>
ETA	46.2002	<i>Z. YU (lvi): <u>A Theory of Strategic Vertical DFI and the Missing Pollution-Haven Effect</u></i>
SUST	47.2002	<i>Y. H. FARZIN: <u>Can an Exhaustible Resource Economy Be Sustainable?</u></i>
SUST	48.2002	<i>Y. H. FARZIN: <u>Sustainability and Hamiltonian Value</u></i>
KNOW	49.2002	<i>C. PIGA and M. VIVARELLI: <u>Cooperation in R&amp;D and Sample Selection</u></i>
Coalition Theory Network Coalition Theory Network	50.2002	<i>M. SERTEL and A. SLINKO (liv): <u>Ranking Committees, Words or Multisets</u></i>
ETA	51.2002	<i>Sergio CURRARINI (liv): <u>Stable Organizations with Externalities</u></i>
ETA	52.2002	<i>Robert N. STAVINS: <u>Experience with Market-Based Policy Instruments</u></i>
ETA	53.2002	<i>C.C. JAEGER, M. LEIMBACH, C. CARRARO, K. HASSELMANN, J.C. HOURCADE, A. KEELER and R. KLEIN (liii): <u>Integrated Assessment Modeling: Modules for Cooperation</u></i>
CLIM	54.2002	<i>Scott BARRETT (liii): <u>Towards a Better Climate Treaty</u></i>
ETA	55.2002	<i>Richard G. NEWELL and Robert N. STAVINS: <u>Cost Heterogeneity and the Potential Savings from Market-Based Policies</u></i>
SUST	56.2002	<i>Paolo ROSATO and Edi DEFRANCESCO: <u>Individual Travel Cost Method and Flow Fixed Costs</u></i>
SUST	57.2002	<i>Vladimir KOTOV and Elena NIKITINA (lvii): <u>Reorganisation of Environmental Policy in Russia: The Decade of Success and Failures in Implementation of Perspective Quests</u></i>
SUST	58.2002	<i>Vladimir KOTOV (lvii): <u>Policy in Transition: New Framework for Russia's Climate Policy</u></i>
SUST	59.2002	<i>Fanny MISSFELDT and Arturo VILLAVICENCO (lvii): <u>How Can Economies in Transition Pursue Emissions Trading or Joint Implementation?</u></i>
VOL	60.2002	<i>Giovanni DI BARTOLOMEO, Jacob ENGWERDA, Joseph PLASMANS and Bas VAN AARLE: <u>Staying Together or Breaking Apart: Policy-Makers' Endogenous Coalitions Formation in the European Economic and Monetary Union</u></i>
ETA	61.2002	<i>Robert N. STAVINS, Alexander F. WAGNER and Gernot WAGNER: <u>Interpreting Sustainability in Economic Terms: Dynamic Efficiency Plus Intergenerational Equity</u></i>
PRIV	62.2002	<i>Carlo CAPUANO: <u>Demand Growth, Entry and Collusion Sustainability</u></i>
PRIV	63.2002	<i>Federico MUNARI and Raffaele ORIANI: <u>Privatization and R&amp;D Performance: An Empirical Analysis Based on Tobin's Q</u></i>
PRIV	64.2002	<i>Federico MUNARI and Maurizio SOBRERO: <u>The Effects of Privatization on R&amp;D Investments and Patent Productivity</u></i>
SUST	65.2002	<i>Orley ASHENFELTER and Michael GREENSTONE: <u>Using Mandated Speed Limits to Measure the Value of a Statistical Life</u></i>
ETA	66.2002	<i>Paolo SURICO: <u>US Monetary Policy Rules: the Case for Asymmetric Preferences</u></i>
PRIV	67.2002	<i>Rinaldo BRAU and Massimo FLORIO: <u>Privatisations as Price Reforms: Evaluating Consumers' Welfare Changes in the U.K.</u></i>
CLIM	68.2002	<i>Barbara K. BUCHNER and Roberto ROSON: <u>Conflicting Perspectives in Trade and Environmental Negotiations</u></i>
CLIM	69.2002	<i>Philippe QUIRION: <u>Complying with the Kyoto Protocol under Uncertainty: Taxes or Tradable Permits?</u></i>
SUST	70.2002	<i>Anna ALBERINI, Patrizia RIGANTI and Alberto LONGO: <u>Can People Value the Aesthetic and Use Services of Urban Sites? Evidence from a Survey of Belfast Residents</u></i>
SUST	71.2002	<i>Marco PERCOCO: <u>Discounting Environmental Effects in Project Appraisal</u></i>

NRM	72.2002	<i>Philippe BONTEMS and Pascal FAVARD: <u>Input Use and Capacity Constraint under Uncertainty: The Case of Irrigation</u></i>
PRIV	73.2002	<i>Mohammed OMRAN: <u>The Performance of State-Owned Enterprises and Newly Privatized Firms: Empirical Evidence from Egypt</u></i>
PRIV	74.2002	<i>Mike BURKART, Fausto PANUNZI and Andrei SHLEIFER: <u>Family Firms</u></i>
PRIV	75.2002	<i>Emmanuelle AURIOL, Pierre M. PICARD: <u>Privatizations in Developing Countries and the Government Budget Constraint</u></i>
PRIV	76.2002	<i>Nichole M. CASTATER: <u>Privatization as a Means to Societal Transformation: An Empirical Study of Privatization in Central and Eastern Europe and the Former Soviet Union</u></i>
PRIV	77.2002	<i>Christoph LÜLSFESMANN: <u>Benevolent Government, Managerial Incentives, and the Virtues of Privatization</u></i>
PRIV	78.2002	<i>Kate BISHOP, Igor FILATOTCHEV and Tomasz MICKIEWICZ: <u>Endogenous Ownership Structure: Factors Affecting the Post-Privatisation Equity in Largest Hungarian Firms</u></i>
PRIV	79.2002	<i>Theodora WELCH and Rick MOLZ: <u>How Does Trade Sale Privatization Work? Evidence from the Fixed-Line Telecommunications Sector in Developing Economies</u></i>
PRIV	80.2002	<i>Alberto R. PETRUCCI: <u>Government Debt, Agent Heterogeneity and Wealth Displacement in a Small Open Economy</u></i>
CLIM	81.2002	<i>Timothy SWANSON and Robin MASON (Ivi): <u>The Impact of International Environmental Agreements: The Case of the Montreal Protocol</u></i>
PRIV	82.2002	<i>George R.G. CLARKE and Lixin Colin XU: <u>Privatization, Competition and Corruption: How Characteristics of Bribe Takers and Payers Affect Bribe Payments to Utilities</u></i>
PRIV	83.2002	<i>Massimo FLORIO and Katuscia MANZONI: <u>The Abnormal Returns of UK Privatisations: From Underpricing to Outperformance</u></i>
NRM	84.2002	<i>Nelson LOURENÇO, Carlos RUSSO MACHADO, Maria do ROSÁRIO JORGE and Luis RODRIGUES: <u>An Integrated Approach to Understand Territory Dynamics. The Coastal Alentejo (Portugal)</u></i>
CLIM	85.2002	<i>Peter ZAPFEL and Matti VAINIO (Iv): <u>Pathways to European Greenhouse Gas Emissions Trading History and Misconceptions</u></i>
CLIM	86.2002	<i>Pierre COURTOIS: <u>Influence Processes in Climate Change Negotiations: Modelling the Rounds</u></i>
ETA	87.2002	<i>Vito FRAGNELLI and Maria Erminia MARINA (Iviii): <u>Environmental Pollution Risk and Insurance</u></i>
ETA	88.2002	<i>Laurent FRANCKX (Iviii): <u>Environmental Enforcement with Endogenous Ambient Monitoring</u></i>
ETA	89.2002	<i>Tim GOESCHL and Timothy M. SWANSON (Iviii): <u>Lost Horizons. The noncooperative management of an evolutionary biological system.</u></i>
ETA	90.2002	<i>Hans KEIDING (Iviii): <u>Environmental Effects of Consumption: An Approach Using DEA and Cost Sharing</u></i>
ETA	91.2002	<i>Wietze LISE (Iviii): <u>A Game Model of People's Participation in Forest Management in Northern India</u></i>
CLIM	92.2002	<i>Jens HORBACH: <u>Structural Change and Environmental Kuznets Curves</u></i>
ETA	93.2002	<i>Martin P. GROSSKOPF: <u>Towards a More Appropriate Method for Determining the Optimal Scale of Production Units</u></i>
VOL	94.2002	<i>Scott BARRETT and Robert STAVINS: <u>Increasing Participation and Compliance in International Climate Change Agreements</u></i>
CLIM	95.2002	<i>Banu BAYRAMOGLU LISE and Wietze LISE: <u>Climate Change, Environmental NGOs and Public Awareness in the Netherlands: Perceptions and Reality</u></i>
CLIM	96.2002	<i>Matthieu GLACHANT: <u>The Political Economy of Emission Tax Design in Environmental Policy</u></i>
KNOW	97.2002	<i>Kenn ARIGA and Giorgio BRUNELLO: <u>Are the More Educated Receiving More Training? Evidence from Thailand</u></i>
ETA	98.2002	<i>Gianfranco FORTE and Matteo MANERA: <u>Forecasting Volatility in European Stock Markets with Non-linear GARCH Models</u></i>
ETA	99.2002	<i>Geoffrey HEAL: <u>Bundling Biodiversity</u></i>
ETA	100.2002	<i>Geoffrey HEAL, Brian WALKER, Simon LEVIN, Kenneth ARROW, Partha DASGUPTA, Gretchen DAILY, Paul EHRlich, Karl-Goran MALER, Nils KAUTSKY, Jane LUBCHENCO, Steve SCHNEIDER and David STARRETT: <u>Genetic Diversity and Interdependent Crop Choices in Agriculture</u></i>
ETA	101.2002	<i>Geoffrey HEAL: <u>Biodiversity and Globalization</u></i>
VOL	102.2002	<i>Andreas LANGE: <u>Heterogeneous International Agreements – If per capita emission levels matter</u></i>
ETA	103.2002	<i>Pierre-André JOUVET and Walid OUESLATI: <u>Tax Reform and Public Spending Trade-offs in an Endogenous Growth Model with Environmental Externality</u></i>
ETA	104.2002	<i>Anna BOTTASSO and Alessandro SEMBENELLI: <u>Does Ownership Affect Firms' Efficiency? Panel Data Evidence on Italy</u></i>
PRIV	105.2002	<i>Bernardo BORTOLOTTI, Frank DE JONG, Giovanna NICODANO and Ibolya SCHINDELE: <u>Privatization and Stock Market Liquidity</u></i>
ETA	106.2002	<i>Haruo IMAI and Mayumi HORIE (Iviii): <u>Pre-Negotiation for an International Emission Reduction Game</u></i>
PRIV	107.2002	<i>Sudeshna GHOSH BANERJEE and Michael C. MUNGER: <u>Move to Markets? An Empirical Analysis of Privatisation in Developing Countries</u></i>
PRIV	108.2002	<i>Guillaume GIRMENS and Michel GUILLARD: <u>Privatization and Investment: Crowding-Out Effect vs Financial Diversification</u></i>
PRIV	109.2002	<i>Alberto CHONG and Florencio LÓPEZ-DE-SILANES: <u>Privatization and Labor Force Restructuring Around the World</u></i>
PRIV	110.2002	<i>Nandini GUPTA: <u>Partial Privatization and Firm Performance</u></i>
PRIV	111.2002	<i>François DEGEORGE, Dirk JENTER, Alberto MOEL and Peter TUFANO: <u>Selling Company Shares to Reluctant Employees: France Telecom's Experience</u></i>

PRIV	112.2002	<i>Isaac OTCHERE</i> : <u>Intra-Industry Effects of Privatization Announcements: Evidence from Developed and Developing Countries</u>
PRIV	113.2002	<i>Yannis KATSOULAKOS and Elissavet LIKOYANNI</i> : <u>Fiscal and Other Macroeconomic Effects of Privatization</u>
PRIV	114.2002	<i>Guillaume GIRMENS</i> : <u>Privatization, International Asset Trade and Financial Markets</u>
PRIV	115.2002	<i>D. Teja FLOTHO</i> : <u>A Note on Consumption Correlations and European Financial Integration</u>
PRIV	116.2002	<i>Ibolya SCHINDELE and Enrico C. PEROTTI</i> : <u>Pricing Initial Public Offerings in Premature Capital Markets: The Case of Hungary</u>
PRIV	1.2003	<i>Gabriella CHIESA and Giovanna NICODANO</i> : <u>Privatization and Financial Market Development: Theoretical Issues</u>
PRIV	2.2003	<i>Ibolya SCHINDELE</i> : <u>Theory of Privatization in Eastern Europe: Literature Review</u>
PRIV	3.2003	<i>Wietze LISE, Claudia KEMFERT and Richard S.J. TOL</i> : <u>Strategic Action in the Liberalised German Electricity Market</u>
CLIM	4.2003	<i>Laura MARSILLANI and Thomas I. RENSTRÖM</i> : <u>Environmental Policy and Capital Movements: The Role of Government Commitment</u>
KNOW	5.2003	<i>Reyer GERLAGH</i> : <u>Induced Technological Change under Technological Competition</u>

- (i) This paper was presented at the Workshop “Growth, Environmental Policies and Sustainability” organised by the Fondazione Eni Enrico Mattei, Venice, June 1, 2001
- (ii) This paper was presented at the Fourth Toulouse Conference on Environment and Resource Economics on “Property Rights, Institutions and Management of Environmental and Natural Resources”, organised by Fondazione Eni Enrico Mattei, IDEI and INRA and sponsored by MATE, Toulouse, May 3-4, 2001
- (iii) This paper was presented at the International Conference on “Economic Valuation of Environmental Goods”, organised by Fondazione Eni Enrico Mattei in cooperation with CORILA, Venice, May 11, 2001
- (liii) This paper was circulated at the International Conference on “Climate Policy – Do We Need a New Approach?”, jointly organised by Fondazione Eni Enrico Mattei, Stanford University and Venice International University, Isola di San Servolo, Venice, September 6-8, 2001
- (liv) This paper was presented at the Seventh Meeting of the Coalition Theory Network organised by the Fondazione Eni Enrico Mattei and the CORE, Université Catholique de Louvain, Venice, Italy, January 11-12, 2002
- (lv) This paper was presented at the First Workshop of the Concerted Action on Tradable Emission Permits (CATEP) organised by the Fondazione Eni Enrico Mattei, Venice, Italy, December 3-4, 2001
- (lvi) This paper was presented at the ESF EURESCO Conference on Environmental Policy in a Global Economy “The International Dimension of Environmental Policy”, organised with the collaboration of the Fondazione Eni Enrico Mattei, Acquafredda di Maratea, October 6-11, 2001
- (lvii) This paper was presented at the First Workshop of “CFEWE – Carbon Flows between Eastern and Western Europe”, organised by the Fondazione Eni Enrico Mattei and Zentrum für Europäische Integrationsforschung (ZEI), Milan, July 5-6, 2001
- (lviii) This paper was presented at the Workshop on “Game Practice and the Environment”, jointly organised by Università del Piemonte Orientale and Fondazione Eni Enrico Mattei, Alessandria, April 12-13, 2002



## 2002 SERIES

<b>CLIM</b>	<i>Climate Change Modelling and Policy</i> (Editor: Marzio Galeotti )
<b>VOL</b>	<i>Voluntary and International Agreements</i> (Editor: Carlo Carraro)
<b>SUST</b>	<i>Sustainability Indicators and Environmental Valuation</i> (Editor: Carlo Carraro)
<b>NRM</b>	<i>Natural Resources Management</i> (Editor: Carlo Giupponi)
<b>KNOW</b>	<i>Knowledge, Technology, Human Capital</i> (Editor: Dino Pinelli)
<b>MGMT</b>	<i>Corporate Sustainable Management</i> (Editor: Andrea Marsanich)
<b>PRIV</b>	<i>Privatisation, Regulation, Antitrust</i> (Editor: Bernardo Bortolotti)
<b>ETA</b>	<i>Economic Theory and Applications</i> (Editor: Carlo Carraro)

## 2003 SERIES

<b>CLIM</b>	<i>Climate Change Modelling and Policy</i> (Editor: Marzio Galeotti )
<b>GG</b>	<i>Global Governance</i> (Editor: Carlo Carraro)
<b>SIEV</b>	<i>Sustainability Indicators and Environmental Valuation</i> (Editor: Anna Alberini)
<b>NRM</b>	<i>Natural Resources Management</i> (Editor: Carlo Giupponi)
<b>KNOW</b>	<i>Knowledge, Technology, Human Capital</i> (Editor: Gianmarco Ottaviano)
<b>IEM</b>	<i>International Energy Markets</i> (Editor: Anil Markandya)
<b>CSR</b>	<i>Corporate Social Responsibility and Management</i> (Editor: Sabina Ratti)
<b>PRIV</b>	<i>Privatisation, Regulation, Antitrust</i> (Editor: Bernardo Bortolotti)
<b>ETA</b>	<i>Economic Theory and Applications</i> (Editor: Carlo Carraro)