

Çiftçi, Çiğdem

**Conference Paper**

## Research Aimed At Explaining The Relationship Between Urban Planning And Social Facilities Of Some Major Cities In Turkey

40th Congress of the European Regional Science Association: "European Monetary Union and Regional Policy", August 29 - September 1, 2000, Barcelona, Spain

**Provided in Cooperation with:**

European Regional Science Association (ERSA)

*Suggested Citation:* Çiftçi, Çiğdem (2000) : Research Aimed At Explaining The Relationship Between Urban Planning And Social Facilities Of Some Major Cities In Turkey, 40th Congress of the European Regional Science Association: "European Monetary Union and Regional Policy", August 29 - September 1, 2000, Barcelona, Spain, European Regional Science Association (ERSA), Louvain-la-Neuve

This Version is available at:

<https://hdl.handle.net/10419/114957>

**Standard-Nutzungsbedingungen:**

Die Dokumente auf EconStor dürfen zu eigenen wissenschaftlichen Zwecken und zum Privatgebrauch gespeichert und kopiert werden.

Sie dürfen die Dokumente nicht für öffentliche oder kommerzielle Zwecke vervielfältigen, öffentlich ausstellen, öffentlich zugänglich machen, vertreiben oder anderweitig nutzen.

Sofern die Verfasser die Dokumente unter Open-Content-Lizenzen (insbesondere CC-Lizenzen) zur Verfügung gestellt haben sollten, gelten abweichend von diesen Nutzungsbedingungen die in der dort genannten Lizenz gewährten Nutzungsrechte.

**Terms of use:**

*Documents in EconStor may be saved and copied for your personal and scholarly purposes.*

*You are not to copy documents for public or commercial purposes, to exhibit the documents publicly, to make them publicly available on the internet, or to distribute or otherwise use the documents in public.*

*If the documents have been made available under an Open Content Licence (especially Creative Commons Licences), you may exercise further usage rights as specified in the indicated licence.*

# RESEARCH AIMED AT EXPLAINING THE RELATIONSHIP BETWEEN URBAN PLANNING AND SOCIAL FACILITIES OF SOME MAJOR CITIES IN TURKEY

**Çiftçi, Çiğdem \***

Department of city and regional planning, University of Selçuk, Faculty of engineering and architect, 42031 - campus / Konya / Turkey (e-mail :cigdemci@superonline.com) Fax: (+90)-332-241-0635, (+90)-332-241-0106

**Abstract.** The subject of this research is relations between urban planning and social equipments of major cities at where Diyarbakır, Erzurum, Gaziantep, Kayseri and Konya. Urbanization, industrialization and related events in contemporary societies affect badly upon physical development of urban settlements. In fact, it is necessary to observe systematically all the events related to the spatial growth, to get data based upon field studies and to fix urban strategy through central and local programmes of implementation, in order to prepare development plans for urban settlements. All of these factors concerning of urban planning are checked by social equipments. This point of view is fundamental for each sectoral growth and zoning. It covers those areas including commercial, social, industrial, cultural, health, education and recreational activities. But this case include it serving by the state. So this study is defined a case of Turkey as a developing country. Planning problems concerning social equipments will be classified and to search thoroughly.

## 1. Introduction

The subject of this research is the relationship between urban planning and social facilities of some major cities in Turkey such as Diyarbakır, Erzurum, Gaziantep, Kayseri and Konya. Tecnicques of observation and inquiry in the sampling areas were the methods used in this resarch. According to the last census the number of major cities in Turkey is 15 [Table1 ].

**Table 1.**The information of population concerning major cities in Turkey [Die, 1996].

Number of the group	Population (000)	Population frequency	The equivalent of groups in names	Population of chosen sample city-in turn (1990)
1	500 - 1000	3	<u>Erzurum</u> , <u>Eskişehir</u> , <u>Kayseri</u>	848 201, 943 484
2	1000 - 1500	6	<u>Antalya</u> , <u>Diğerbaktır</u> , <u>Gaziantep</u> , <u>İçel</u> , <u>İzmit</u> , <u>Samsun</u>	1 094 996 , 1 140 594
3	1500 - 2000	2	<u>Bursa</u> , <u>Konya</u>	1 750 303
4	2000 - 2500	—	—	—
5	2500 - 3000	2	İzmir, Adana	—
6	3000 - 3500	1	Ankara	—
7	3500 >	1	İstanbul	—

\* The major cities which is underlined its named are chosen as sampling areas.

\* I Would like to thank my supervisor of PH degree thesis Prof. Dr. Ayten ÇETİNER.

The table 1 is shown that seven population groups. 5-6 and 7. groups of them are metropolises. The rest of groups are major cities. It has been selected at least two major cities from each group except for the group of the metropolises as sample areas.

## **2. Urban Planning and Social Facilities in Turkey**

In accordance with Construction Law in our country, the urban planning system can be divided into two categories [Figure 1]. One of them is the upper scaled planning which consists of national development plans and regional plans. Today although national development plans have been made in every five years, regional plans have not been made yet. While this deficiency is the cause of the irrational use of national resources in the development process, it is also the reason for the lack of success in site organization. Other category in the planning system is lower scaled planning which comprises of different scaled physical plans. These plans provide regular distributed social facilities and were hierarchy of urban settlements. The conditions of facilities can be considered as one of the main tenets in urban planning studies. This point of view is fundamental to growth and development in every sector and zoning plan. Social facilities cover those areas including educational, administrative, social, public health, cultural and recreational activities, which serve residential areas.

Social equipment facilities should be adjusted in accordance with the population growth in respect of economic and social growth and social welfare. The successful use of these facilities depend on healthy city planning . Today there are many problems in health city planning. These problems can be classified as follows:

1. Problems at the preparatory stage of construction plans,
2. Problems at the approval stage of construction plans,
3. Problems at the application stage of construction plans.

These problems of development plans affect the distribution of social facilities. These affects have been examined in Diyarbakır, Erzurum, Gaziantep, Kayseri and **Konya municipalities. One of the problems that stage of preparing development plan should have done social and economic analysis in each settlements. The other problem is connected with location of facilities.** Generally they located private property instead of public property. It is needed nationalized process. This way is the most expensive to build social facilities. If amount of social facilities in each sample cities has been compared with the optimal size as to the Construction Law 3194, educational, public health, social, cultural and

recreational places is not sufficient for their needs except for administrative place. As sample cities are central of under zone in Turkey, they have got upper administrative facility [ **t test for paired samples is done between amount of existing facilities and amount of optimal facilities as to 3194** ], [Çiftçi, 1999].

This social facilities data has been compared with the optimal sizes as to the Construction Law 3194. In the second stage, the degree of equipment facilities, according to projected population in the last plan, have been given. This data has been compared with the degree of equipment facilities calculated according to projection population. As a conclusion of this test, this process run normally[Çiftçi, 1999] .

Stages of approving and application of the development plan are examined at the third stage in the sample cities. It is shown that municipalities had done a lot of changes in plans. This changing of plans has badly effected the social facilities as the changes are generally done with recreational, educational, administrative, social, cultural and public health facilities. In accordance with these changing conditions, the social facilities in the plans should have been increased in line with the growing population [Table 2].

### **3. Conclusions and suggestions**

Consequently social equipment planning has a lot of problems. These problems could be classified as follows:

#### **Problems at the preparatory stage of construction plans;**

- In making every new plan, the former plan decisions are not taken into account,
- Construction Law 3194 does not take into consideration standards of social facilities in urban planning according to local characteristics of each settlement; social, economic, cultural etc.
- None of the major cities that were sampled, come up to ideal facilities standard

#### **Problems at the approval stage of construction plans**

- There is a chaos in the authorities during the approval of changing plans between the mayor and municipal councils.
- Municipal councils approving plans are not experienced and are ill informed in this field.
- Municipal councils are manipulated by political pressures.

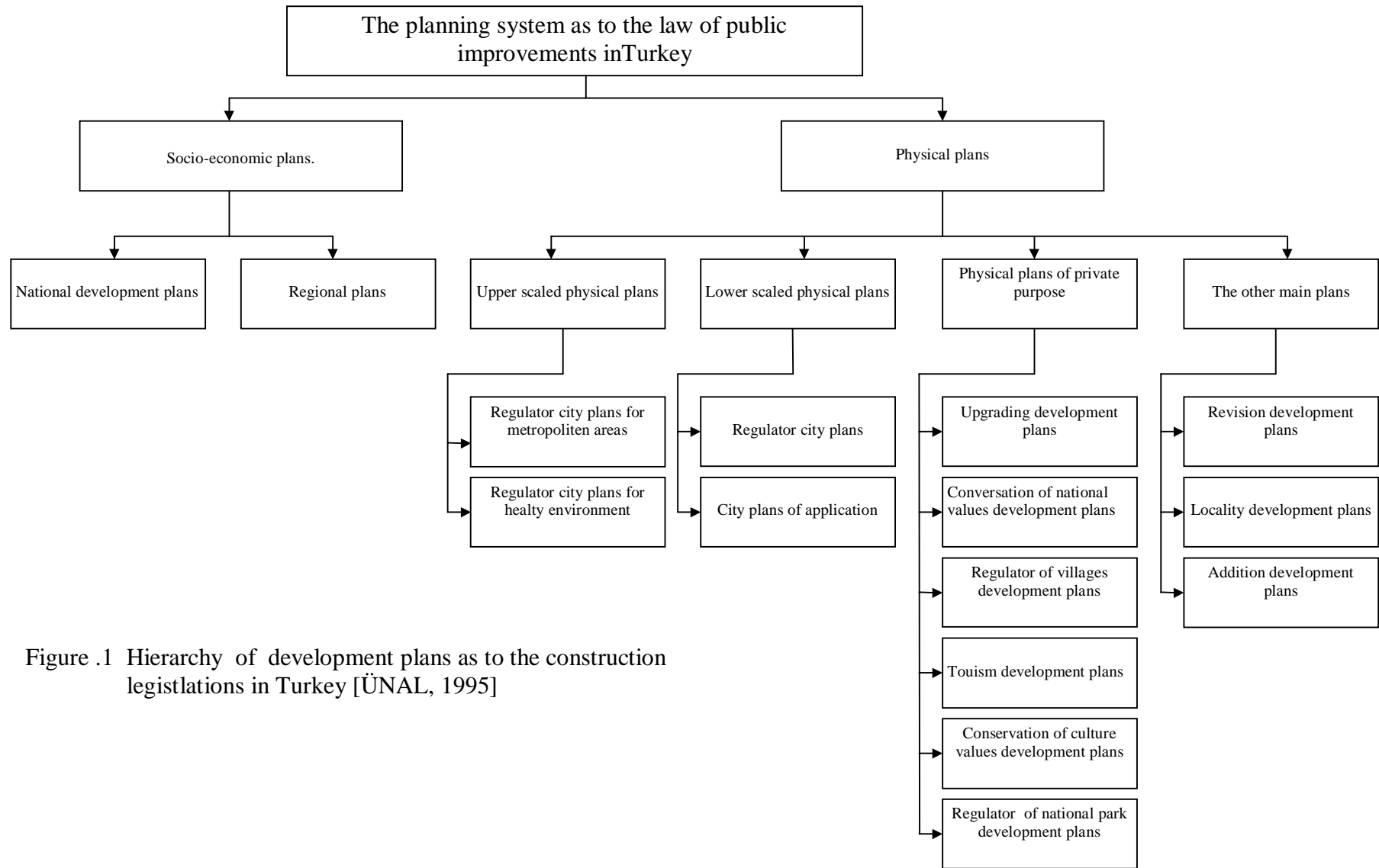


Figure .1 Hierarchy of development plans as to the construction legislations in Turkey [ÜNAL, 1995]

### Problems at the application stage of construction plans

- There are a lot of plan changes which effect optimum social facilities in a negative way,
- Plan changes are made in the favour of individuals,
- Decisions made in urban planning have resulted in an increase in mosques, commercial and residential areas to reduce the most important other social facilities, although these were adequate

**Table 2.** The amount of changed plans was connected with social facilities ( a period of 1994-1997 ), [Diyarbakır-Erzurum-Gaziantep-Kayseri-Konya, 1998]

		The last function									
		EDUCATION	ADMINISTRATION	SOCIO-CULTURAL		HEALTH	REKREASYON		HOUSE + COMMERCIAL-INDUSTRY.	THE OTHER	TOTAL
				SOCIO-CULTURAL	RELIGIOUS		GREEN SPACE	SPORT			
THE FUNCTIONS OF BEFORE THE CHANGED PLAN	EDUCATION	1	-	-	2	-	-	-	4	-	6
	ADMINISTRATION	1	2	-	1	1	1	-	7	1	12
	SOCIO-CULTURAL	-	-	-	-	-	1	-	1	-	2
	RELIGIOUS	-	-	-	-	-	-	-	1	7	1
	HEALTH	-	-	-	-	-	1	-	1	-	2
	GREEN PLACE	2	3	1	7	1	1	1	13	19	47
	SPORT	-	-	-	1	-	-	-	-	-	1
	HOUSE+COMMERCIAL-INDUSTRY	6	4	1	7	3	5	-	140	-	26
	THE OTHER	-	1	-	2	-	-	-	-	1	3
	TOTAL	9	8	2	20	5	8	1	27	20	100

The numbers of the pointed diagonal are added total worth (105+140+158=403 total worth of the changed plans. 105 of these changing are directly connected with social facilities, the rest of them are also indirectly connected with them)

- During the application of construction, construction programs are not used by municipalities. This leads to the facilities distribution contrary to the plans,
- It is preferred to locate social facilities in places where individuals benefit from the public.

### **Suggestions**

As a conclusion of this research, to regulate optimum social equipment and to be successful in planning studies in major municipalities the following is necessary:

- ❖ Newly standardized social equipment must be developed according to the local social-economic, geographic and cultural features.
- ❖ Plan reports must include an explanation of data of the number and area of social equipment in order to control plans quickly.
- ❖ The construction councilors must be elected from among the permanent personnel of major municipalities,
- ❖ Municipalities must regulate the planning system as to the Law of Public Regulation in Turkey.
- ❖ Social equipment facilities must be located according to the construction plans in application.
- ❖ Public participation must be provided at the preparation, approving and application stage of plan.

### **Reference**

1. ÇİFTÇİ, Çiğdem, research aimed at explaining the relationship between urban planning and social facilities of some major cities in Turkey , PH DEGREE THESIS, İstanbul Technical University, City and Regional Planning Department , İstanbul/Turkey,1999.
2. DİE,Türkiye Nüfusu1923-1995 Demografik yapısı ve gelişimi, yayın no:1839, Ankara, 1996.
3. Diyarbakır Büyükşehir Belediyesi Yazı İşleri ve Kararlar Dairesi Başkanlığı Doküman Taramaları,Diyarbakır/Turkey,1998.
4. Erzurum Büyükşehir Belediyesi Yazı İşleri ve Kararlar Dairesi Başkanlığı Doküman Taramaları, Erzurum /Turkey,1998.
5. Gaziantep Büyükşehir Belediyesi Yazı İşleri ve Kararlar Dairesi Başkanlığı Doküman Taramaları, Gaziantep/ Turkey,1998.
6. Kayseri Büyükşehir Belediyesi Yazı İşleri ve Kararlar Dairesi Başkanlığı Doküman Taramaları, Kayseri/Turkey,1998.
7. Konya Büyükşehir Belediyesi Yazı İşleri ve Kararlar Dairesi Başkanlığı Doküman Taramaları, Konya /Turkey,1998.
8. ÜNAL, Yücel, “Kentleşme ve Kentleşme Politikaları”, TÜSES, Türkiye Sosyal Ekonomik Araştırma Vakfı, İstanbul, 1995.