

Jousten, Alain; Lefèbvre, Mathieu

Working Paper

Work Capacity and Longer Working Lives in Belgium

IZA Discussion Papers, No. 9032

Provided in Cooperation with:

IZA – Institute of Labor Economics

Suggested Citation: Jousten, Alain; Lefèbvre, Mathieu (2015) : Work Capacity and Longer Working Lives in Belgium, IZA Discussion Papers, No. 9032, Institute for the Study of Labor (IZA), Bonn

This Version is available at:

<https://hdl.handle.net/10419/110761>

Standard-Nutzungsbedingungen:

Die Dokumente auf EconStor dürfen zu eigenen wissenschaftlichen Zwecken und zum Privatgebrauch gespeichert und kopiert werden.

Sie dürfen die Dokumente nicht für öffentliche oder kommerzielle Zwecke vervielfältigen, öffentlich ausstellen, öffentlich zugänglich machen, vertreiben oder anderweitig nutzen.

Sofern die Verfasser die Dokumente unter Open-Content-Lizenzen (insbesondere CC-Lizenzen) zur Verfügung gestellt haben sollten, gelten abweichend von diesen Nutzungsbedingungen die in der dort genannten Lizenz gewährten Nutzungsrechte.

Terms of use:

Documents in EconStor may be saved and copied for your personal and scholarly purposes.

You are not to copy documents for public or commercial purposes, to exhibit the documents publicly, to make them publicly available on the internet, or to distribute or otherwise use the documents in public.

If the documents have been made available under an Open Content Licence (especially Creative Commons Licences), you may exercise further usage rights as specified in the indicated licence.

IZA DP No. 9032

Work Capacity and Longer Working Lives in Belgium

Alain Jousten
Mathieu Lefebvre

April 2015

Work Capacity and Longer Working Lives in Belgium

Alain Jousten

*University of Liege,
IZA and NETSPAR*

Mathieu Lefebvre

University of Strasbourg

Discussion Paper No. 9032
April 2015

IZA

P.O. Box 7240
53072 Bonn
Germany

Phone: +49-228-3894-0
Fax: +49-228-3894-180
E-mail: iza@iza.org

Any opinions expressed here are those of the author(s) and not those of IZA. Research published in this series may include views on policy, but the institute itself takes no institutional policy positions. The IZA research network is committed to the IZA Guiding Principles of Research Integrity.

The Institute for the Study of Labor (IZA) in Bonn is a local and virtual international research center and a place of communication between science, politics and business. IZA is an independent nonprofit organization supported by Deutsche Post Foundation. The center is associated with the University of Bonn and offers a stimulating research environment through its international network, workshops and conferences, data service, project support, research visits and doctoral program. IZA engages in (i) original and internationally competitive research in all fields of labor economics, (ii) development of policy concepts, and (iii) dissemination of research results and concepts to the interested public.

IZA Discussion Papers often represent preliminary work and are circulated to encourage discussion. Citation of such a paper should account for its provisional character. A revised version may be available directly from the author.

ABSTRACT

Work Capacity and Longer Working Lives in Belgium¹

We explore the link between health indicators and employment rates of the population aged 55 or more. Our focus lies on work capacity as a key determinant of employment. Using cohort mortality information as a proxy for overall health outcomes, we establish a substantial untapped work capacity in the population 55+. Similar results are obtained when relying on individual-level objective and subjective health and socioeconomic parameters as predictors.

JEL Classification: J14, J21, J26

Keywords: employment, retirement, work capacity

Corresponding author:

Alain Jousten
Université de Liège
HEC Ecole de Gestion
Boulevard du Rectorat 7, Bât. B31
4000 Liege
Belgium
E-mail: ajousten@ulg.ac.be

¹ The authors acknowledge financial support from the Belspo project EMPOV (TA/00/45). This paper uses data from the European Union Labour Force Survey (Eurostat, European Union). Eurostat has no responsibility for the results and conclusions which are the authors' only. It also uses data from SHARE wave 4 release 1.1.1, as of March 28th 2013 or SHARE wave 1 and 2 release 2.5.0, as of May 24th 2011 or SHARELIFE release 1, as of November 24th 2010. The SHARE data collection has been primarily funded by the European Commission through the 5th Framework Programme (project QLK6-CT-2001-00360 in the thematic programme Quality of Life), through the 6th Framework Programme (projects SHARE-I3, RII-CT-2006-062193, COMPARE, CIT5-CT-2005-028857, and SHARELIFE, CIT4-CT-2006-028812) and through the 7th Framework Programme (SHARE-PREP, N° 211909, SHARE-LEAP, N° 227822 and SHARE M4, N° 261982). Additional funding from the U.S. National Institute on Aging (U01 AG09740-13S2, P01 AG005842, P01 AG08291, P30 AG12815, R21 AG025169, Y1-AG-4553-01, IAG BSR06-11 and OGHA 04-064) and the German Ministry of Education and Research as well as from various national sources is gratefully acknowledged (see www.share-project.org for a full list of funding institutions).

1. Introduction

Previous waves of this project studied the effect of financial incentives created by formal and de facto (early) retirement programs on an individual's decision to retire, the fiscal impact of such behavior and reforms' impact thereon. Furthermore, the impact of (early) exits on youth employment and the respective roles of health and program rules as determinants of disability program enrolment have been studied. (Dellis et al, 2004; Desmet et al 2007, Jousten et al 2010, 2012, 2014)

One aspect that most of these papers have essentially bypassed are work-capacity issues. This neglect is all the more striking in a country like Belgium where the public-sphere pension reform debate is to a large degree dominated by such aspects. For example, one often voiced concern in the debate on prolonging working life of Belgian workers is that numerous workers don't have the capacity to work longer (even if they wanted or were pushed to) because of physical or mental health and exhaustion problems, or because psychological or material limitations render continued work impossible.

The most extreme incarnation of this concern is the so-called « arduous jobs » discussion that has been raging with particular emphasis since the current coalition government – in power since the middle of 2014 – has embarked on a broader pension reform project targeting longer effective working lives. This is achieved by closing or delaying early retirement options, and working towards a convergence between the various public pension schemes for wage-earners, civil servants and self-employed. While the government strategy's main thrust mirrors recommendations of a report published by an Expert Committee on Pension Reform 2020-2040 (Expert Committee, 2014), individual policy measures show differences between the expert committee and the government proposals.

The broader literature provides some evidence on the link between health and work capacity.² For example, relying on indicators of self-assessed health, Van Looy et al (2014) note that subjective health levels are not any different between those who reduced their working time and those who did not. In contrast, Desmette and Vendramin (2014) find that “positive evaluations on ‘general health’, ‘physical health’ (backache, muscular pain in the upper body, muscular pain in the lower body) and ‘psychological health’ (depression or anxiety, fatigue and insomnia) are at the highest levels for those who think their current job is sustainable.” Similarly, Jousten and Lefebvre (2013) estimate a retirement model for Belgium including health as an explanatory variable and find that it plays a statistically significant role in the individual retirement decision.

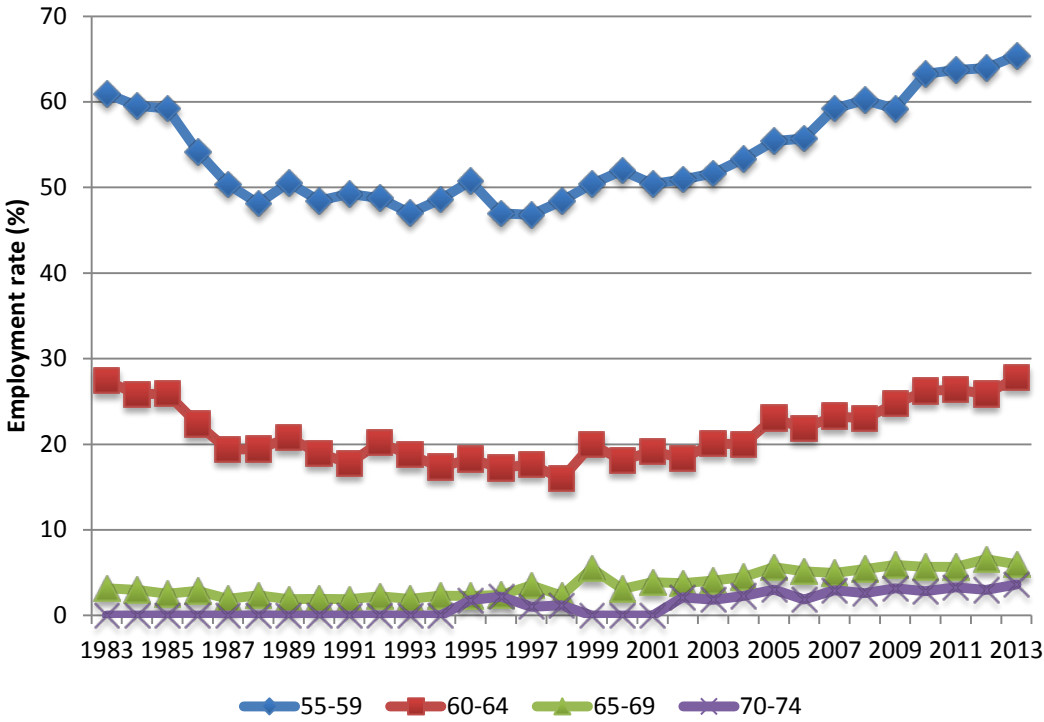
The literature however also cautions that work ability is only one – though very important – step in the process of keeping individuals at work. Schreurs et al. (2011) argues that “good health may be a necessary but not sufficient condition for retaining older workers”, and

² See Jousten and Salanauskaitė (2015) for a survey of work determinants including motivation, finances, and legislation, as well as domestic, workplace and work ability factors.

hence “creating and sustaining a healthy workforce by no means guarantees that older employees will continue working until their official retirement age” as workplace, domestic or other factors may also influence individual’s effective labor market attachment.

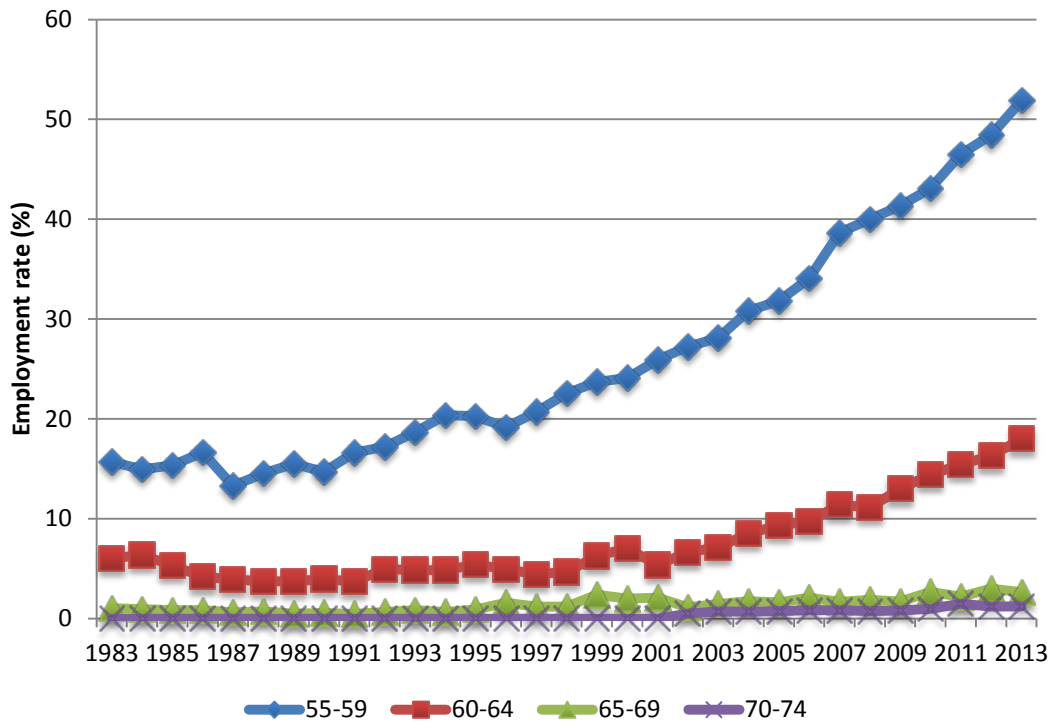
The present chapter focuses on the “necessary condition”: good work ability as a precondition for higher employment. In our approach, we focus on the outcome indicator “employment rate” (see Figures 1 and 2) and link it to general indicators of the healthiness of the older population as measured by mortality and self-assessed health (SAH) of Figure 3. These Figures demonstrate that as we move up across age cohorts at any given point in time, employment rates fall substantially for both sexes - and this despite a generalized upward trend since the mid-1990’s. While this decline is part age, part cohort effect, the question remains as to what the impact of health on these trends is.

Figure 1: Men’s employment rate, ages 55-59 to 70-74



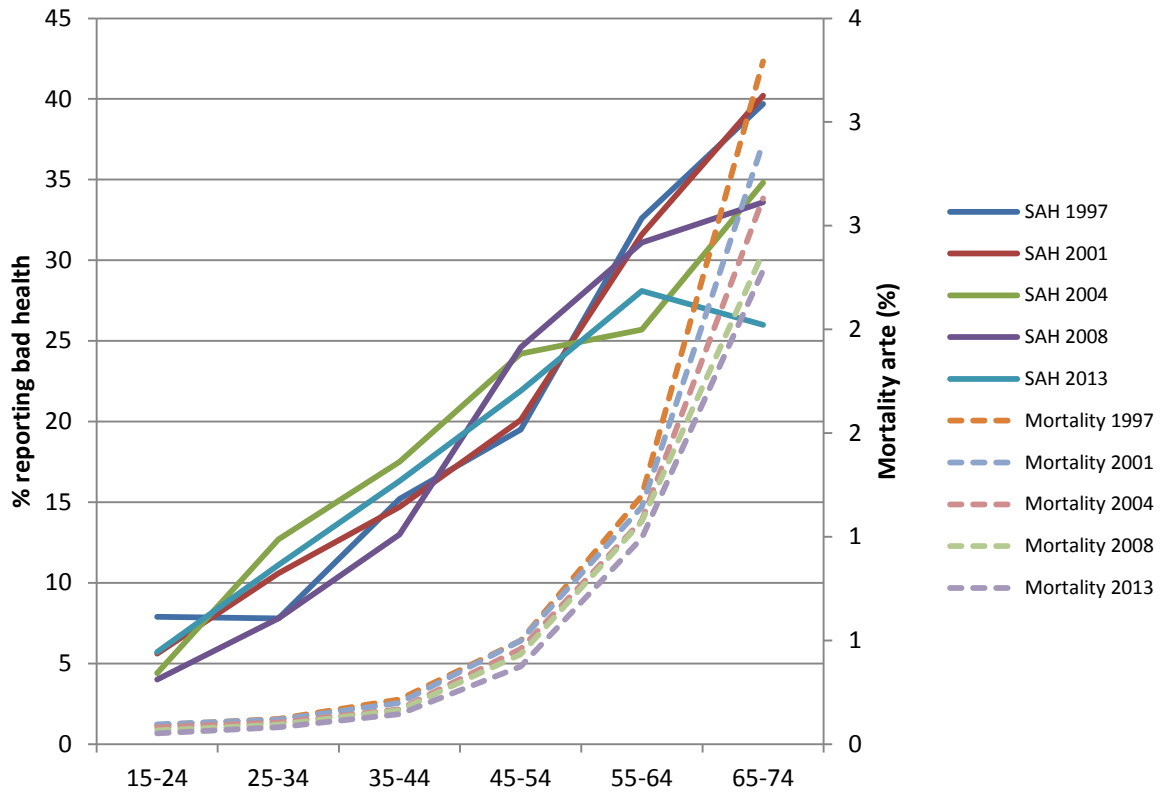
Source: EU-LFS

Figure 2: Women's employment rate, ages 55-59 to 70-74



Source: EU-LFS

Figure 3: SAH and mortality for men by age group, 1997 to 2013



Source: Human Mortality Database and Belgian Health Survey

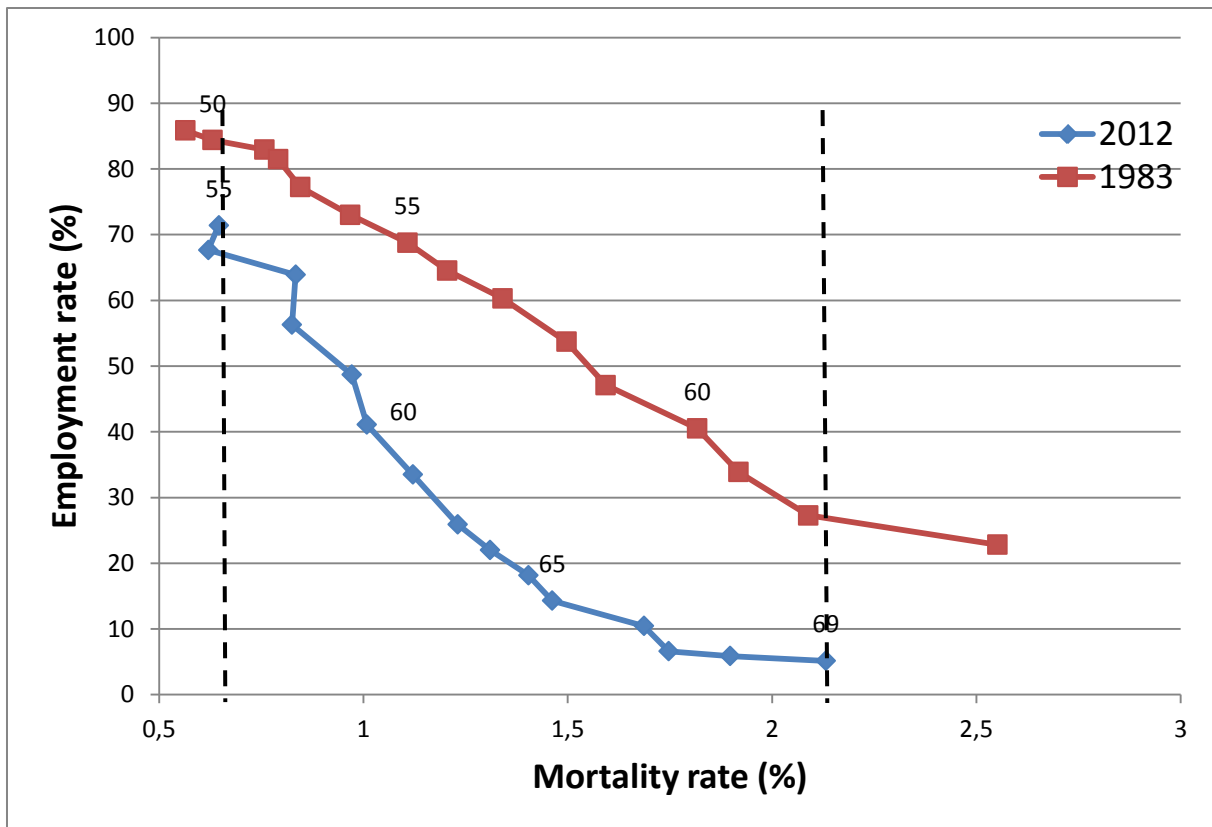
Section 2 proposes an analysis using the Milligan and Wise (2015) methodology, essentially linking mortality and employment across time for those aged 55+. Section 3 replaces mortality by a series of health conditions and explores the link between these factors and employment rate at younger ages (50-54) in a first step. In a second step, it proposes a simulation of employment potential at higher ages based on these first-step parameters. Section 4 concludes.

2. Milligan-Wise method

Figure 4 is a good starting point both for exploring the facts about mortality across time in Belgium, as well as the methodology of Milligan and Wise (2015). The figure plots the instantaneous mortality rate of the Belgian male population as extracted from the Human Mortality Database against the male employment rate in the country as extracted from the EU Labour Force Survey (EU-LFS). We focus on the male population, as Belgian females have experienced a seminal trend towards higher levels of employment and labor force participation over the last decades, hence rendering an isolation of the health from the structural effects hard to implement. The plot of Figure 4 is done for two years: the recent year 2012 and a latest possible reference year in the past 1983.³ The two outstanding – though unsurprising – facts are: (i) a strong negative relation between mortality and employment rate as age increases, and (ii) a seminal trend in mortality rates at equal ages as represented by a leftward shift of the curve across time.

³ No LFS data available before that date.

Figure 4: Employment versus mortality rates men, 2012 versus 1983



Note: Mortality rates from Human Mortality Database; employment rate from EU-LFS. Employment rates correspond to linear interpolation as data are only available for 5-year age groups.

For the purpose of the present section, the focus lies on exploring work capacity for the older population aged 55-69, i.e., those that are either below the normal retirement age just a few years above. Leaving from the plot of Figure 4 corresponding to the year 2012, we draw two vertical dotted lines at two bounds of the age interval of interest: one corresponds to the mortality rate observed at age 55 in the year 2012 of approx. 0.6%; the other one to the mortality rate of 2.1% at age 69 in 2012.

Milligan and Wise (2015) approach is then to explore employment rates at equal mortality rates across time, rather than at equal ages. For example, the mortality rate of 0.6% as observed for 55 year-old in 2012 corresponds to an employment level of 71%, while in 1983 the same mortality rate was observed for 50 year-old with a corresponding employment rate of 89%. Thus if men had the same employment rate as their equal-mortality peers in 1983, this would lead to an 18 percentage points larger employment rate in 2012. Expressed differently, 18 percent of men aged 55 could have worked one more year, corresponding to an average gap of 0.18 years of work for that specific age group.⁴

⁴ Notice that results would be substantially different when merely comparing employment rates for the same age group across time but ignoring mortality improvements: for 55 year-olds, the employment rate actually increased from 1983 to 2012 from 69% to 71%, with mortality however strongly decreasing from 1.1% to 0.6%.

Similar calculations were done for all ages in the relevant range 55-69 in 2012 and results are reported in Table 1. They indicate that if employment rates at equal mortality would have stayed constant, then the sum of the age-specific average gains of working years would add up to an additional employment capacity for the male population under study of 4.3 “years of work”. This number is derived as the simple arithmetic sum of average year-of-work gains for each age cohort.

Table 1: Additional Employment Capacity in 2012 using the 1983 employment-mortality relationship

Age	Mortality rate in 2012	Employment rate in 2012	Employment rate in 1983 at same death rate	Additional Employment Capacity
55	0.65%	71.4%	84.2%	12.8%
56	0.62%	67.7%	84.6%	17.0%
57	0.83%	63.9%	78.2%	14.3%
58	0.82%	56.3%	78.9%	22.6%
59	0.97%	48.7%	72.9%	24.2%
60	1.01%	41.1%	71.8%	30.7%
61	1.12%	33.5%	68.2%	34.7%
62	1.23%	25.9%	63.7%	37.8%
63	1.31%	22.0%	61.3%	39.2%
64	1.40%	18.2%	57.6%	39.5%
65	1.46%	14.3%	55.2%	40.9%
66	1.69%	10.5%	44.4%	33.9%
67	1.75%	6.6%	42.6%	36.0%
68	1.90%	5.9%	35.3%	29.4%
69	2.13%	5.2%	26.9%	21.7%
Total years		4.9		4.3

Note: Authors’ calculations using Human Mortality Database and EU-LFS

To understand the meaning and significance of this result of an extra 4.3 potential “years of work”, three important elements need to be considered. First of all, the equivalence between extra employment potential (e.g. the 18 percentage points for 55 year-old in 2012) and “years of work” implicitly assumes that these extra workers would work the same hours/days/months than those that actually work. If this were to be different – either because those that currently work or those that could join work significantly less or more than the others – the equivalence would no longer hold.

Second, the total gain in “years of work” is a theoretical construct and has to be understood as such. For example, as the above number of 4.3 is the simple sum of potential “year of work” gains by age in the relevant range from 55 to 69 – it ignores any size differences between the various age cohorts. Also, and more substantially, the number is hard to interpret in a meaningful way unless one compares it to the theoretical maximum and/or currently observed “years of work”. As the maximum work potential by age is 100 percent

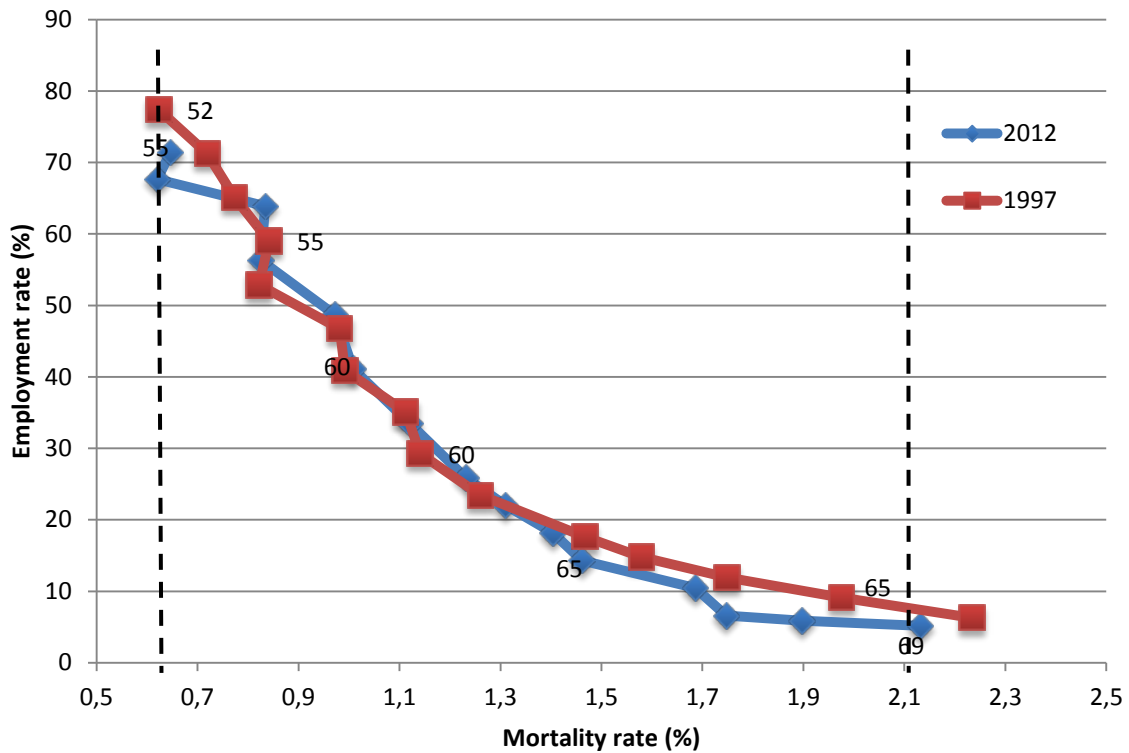
(corresponding to an average year of work for that age group of 1) – the total maximum “years of work” for the entire 55-69 cohort is 15 years. Expressed differently, the extra potential work capacity represents approximately 30 percent of total employment capacity, and is slightly less than the currently observed “years of work” of 4.9 that one can derive from the age-specific employment rates using the same methodology. In sum, or results controlling for mortality improvements indicate that there is unused work capacity that could be activated to achieve almost a doubling of current levels of employment.

Third, the structure of employment and mortality rates the chosen reference year has a strong impact on the outcome of the simulation. For example, no fundamental mechanism ensures a systematic leftward shift of the employment-mortality relation when moving across time. Furthermore, even a lack of a visible leftward shift does not mean that there was no change... In fact, situations may arise where negative extra employment capacity is derived, i.e. where workers work more in 2012 than in the reference year considered be it for a specific age or for the whole 55-69 cohort.

Figure 5 illustrates this point. It provides the same information as Figure 4, but this time for the different baseline year 1997 – chosen because it corresponds to the year where the employment rate for the age cohort considered was historically at a low point before increasing again since then. Even though the curve barely moved in the employment-mortality rate space, there is a shift of the corresponding points for any given age up “along the curve” towards the north-west. Expressed differently, at any given age the mortality rate in 2012 is lower than in 1997, and the corresponding employment rate higher.

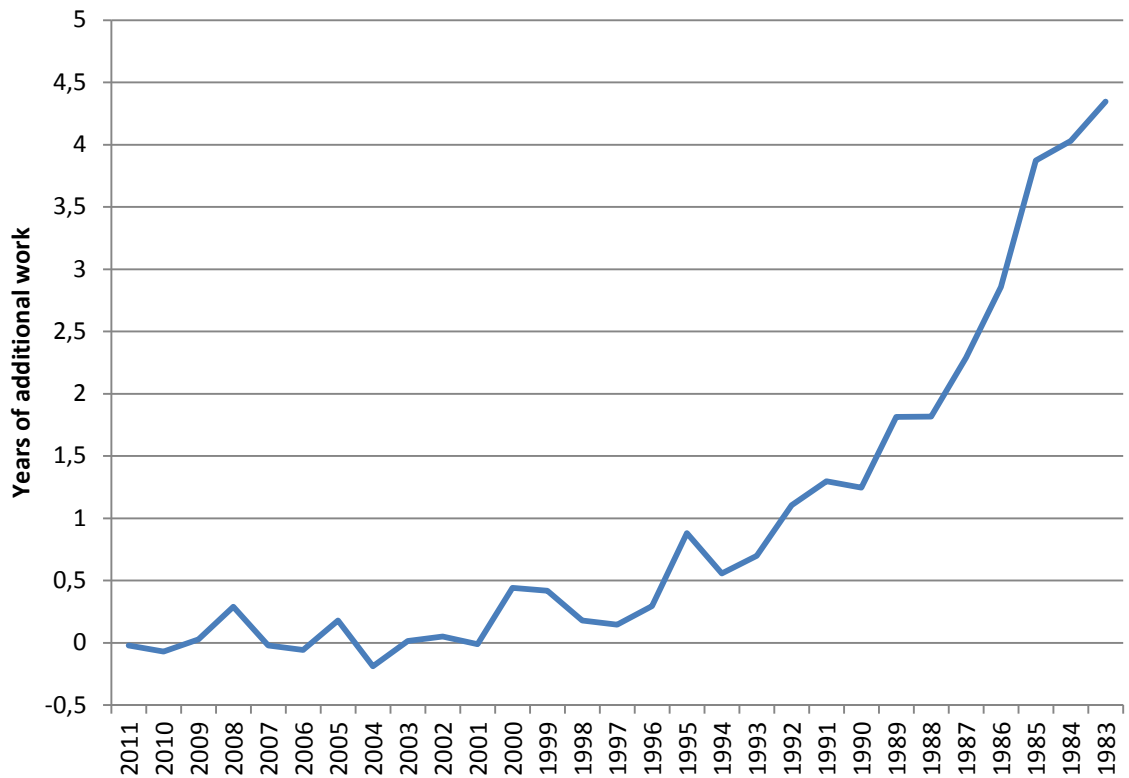
Figure 6 summarizes the findings in terms of extra years of work for the entire 55-69 age cohort for all possible reference years from 1983 to 2011. The graph shows that the additional employment capacity is close to 0 when referencing across the last 10 years, given increases in employment and decreases in mortality essentially cancelling each other out. The sharpest changes could be derived if we take as reference the years furthest in the past, where both factors compound.

Figure 5: Employment versus mortality rates, 2012 versus 1997



Note: Mortality rates from Human Mortality Database; employment rate from EU-LFS. Employment rates correspond to linear interpolation as data are only available for 5-year age groups.

Figure 6: Estimated additional employment capacity in 2012 by reference year



Note: Authors' calculations using Human Mortality Database and EU-LFS

3. Cutler, Meara and Richards-Shubik method

The second method we employ for exploring the potential for additional employment of the older population 55-69 is the method pioneered by Cutler et al (2012). The basic idea of this approach is to estimate a labor force participation model at a lower age (e.g., those aged 50-54) that includes demographic, health and other socio-economic variables as explanatory variables. The coefficients thus obtained are then applied to the realizations of these very same variables for the older cohort 55-69 to “predict” their labor force participation, this way controlling for the effect of health or other controlled-for differences between older and younger cohorts.

Our technical approach slightly deviates from Cutler et al (2012) in that we focus on employment as the key dependent variable instead of labor force participation. The slightly different angle can be rationalized by the fact that in countries like Belgium, where early retirement by means of unemployment benefits is prevalent (be it technically as an early retiree or an unemployed) employment likely is the better outcome indicator.

We use (and pool) data from the Survey on Health, Ageing and Retirement in Europe (SHARE), waves 1, 2 and 4 collected between 2004 and 2011. The survey is a cross-national panel database of micro data on health, socio-economic status and social and family networks of European individuals aged 50 and over conducted since 2004-05. It covers a broad range of variables of special interest for this study such as objective information of health, self-assessed health and occupational status.

Our empirical approach is to estimate (OLS regression) the employment model for the “young” age group 50-54 of men and women separately, and then apply its predictions to the older cohorts 55-69. We have a sample of 916 male and 1152 female observations aged between 50-54 that we rely upon for the regressions, and apply the simulations to almost 7000 observations at older ages. Summary statistics of the survey population are provided in Tables 2 and 3 for the various 5-year age cohorts and by sex.

In the regressions reported in Table 4, we use a single health measure: the PVW health index, as introduced and defined in Poterba et al (2013). The idea behind the PVW is simple: apply the principal components technique to the 24 objective and subjective health measures reported in Tables 2 and 3. These include self-assessed health, various health conditions, as well as the prevalence of physical limitations, etc. In a second step, use the first principal component to predict a health score of the individual. Finally, the individual’s score is positioned in a given percentile of the overall population used in the estimation. The score of an individual thus generally varies for across survey waves because the health outcomes and perceptions likely vary across time. Poterba et al (2013) show that the indicator traces mortality trends at the individual level rather well.

Table 2: Summary Statistics SHARE Waves 1, 2 and 4, Men

	Age Group				
	50-54	55-59	60-64	65-69	70-74
Retired	0.153	0.211	0.386	0.602	0.729
In labor force	0.864	0.643	0.256	0.031	0.005
<i>Subjective health</i>					
Excellent	0.118	0.112	0.118	0.088	0.084
Very good	0.303	0.238	0.228	0.210	0.195
Good	0.399	0.413	0.418	0.460	0.432
Fair	0.149	0.184	0.194	0.185	0.220
Poor	0.031	0.053	0.042	0.057	0.070
<i>Objective health</i>					
ADL any	0.056	0.089	0.083	0.124	0.111
IADL any	0.066	0.095	0.091	0.108	0.149
One physical limit	0.133	0.158	0.183	0.186	0.185
More than one physical limit	0.147	0.199	0.201	0.235	0.277
Heart disease	0.064	0.086	0.095	0.178	0.210
Lung disease	0.037	0.047	0.053	0.085	0.098
Stroke	0.016	0.024	0.034	0.036	0.035
Cancer	0.023	0.040	0.049	0.060	0.074
Hypertension	0.242	0.275	0.329	0.320	0.358
Arthritis	0.111	0.157	0.177	0.214	0.212
Diabetes	0.068	0.062	0.106	0.099	0.114
Back problems	0.518	0.542	0.536	0.481	0.453
Depression	2.025	1.953	1.832	1.868	1.922
Psychological disorder	0.049	0.054	0.066	0.045	0.040
Smoking currently	0.609	0.809	0.836	0.810	0.894
Smoking formerly	0.312	0.255	0.162	0.145	0.123
Underweight	0.006	0.003	0.002	0.001	0.008
Overweight	0.376	0.257	0.225	0.273	0.261
Obese	0.164	0.133	0.107	0.120	0.090
<i>Education</i>					
Primary education	0.092	0.132	0.130	0.193	0.226
Secondary education	0.559	0.438	0.363	0.339	0.362
Tertiary education	0.349	0.431	0.507	0.467	0.411
<i>Marital status</i>					
Married	0.712	0.777	0.758	0.783	0.790
<i>Scheme</i>					
Wage earners	0.781	0.762	0.771	0.777	0.782
Self-employed	0.087	0.090	0.092	0.110	0.114
Civil servant	0.132	0.149	0.137	0.117	0.104
<i>Skill</i>					
Low skill	0.070	0.039	0.035	0.042	0.022
Medium skill	0.236	0.151	0.128	0.107	0.076
High skill	0.138	0.080	0.079	0.067	0.065
<i># Obs</i>	<i>916</i>	<i>1 096</i>	<i>907</i>	<i>713</i>	<i>628</i>

Note: Authors' calculations using SHARE data

Table 3: Summary Statistics SHARE Waves 1, 2 and 4, Women

	Age Group				
	51-54	55-59	60-64	65-69	70-74
Retired	0.269	0.350	0.527	0.720	0.834
In labor force	0.734	0.519	0.204	0.018	0.006
<i>Subjective health</i>					
Excellent	0.132	0.089	0.081	0.054	0.043
Very good	0.245	0.259	0.227	0.186	0.159
Good	0.404	0.432	0.417	0.472	0.438
Fair	0.162	0.170	0.218	0.238	0.283
Poor	0.057	0.051	0.057	0.050	0.078
<i>Objective health</i>					
ADL any	0.067	0.076	0.104	0.117	0.189
IADL any	0.127	0.137	0.171	0.169	0.245
One physical limit	0.166	0.175	0.191	0.177	0.170
More than one physical limit	0.241	0.298	0.341	0.417	0.483
Heart disease	0.036	0.058	0.076	0.088	0.128
Lung disease	0.040	0.032	0.059	0.062	0.043
Stroke	0.019	0.023	0.021	0.026	0.043
Cancer	0.046	0.054	0.054	0.080	0.065
Hypertension	0.233	0.274	0.345	0.402	0.437
Arthritis	0.221	0.226	0.304	0.329	0.389
Diabetes	0.046	0.070	0.095	0.106	0.136
Back problems	0.569	0.578	0.603	0.605	0.644
Depression	2.942	2.755	2.639	2.737	2.811
Psychological disorder	0.125	0.113	0.111	0.091	0.086
Smoking currently	0.529	0.745	0.744	0.728	0.725
Smoking formerly	0.528	0.743	0.744	0.727	0.725
Underweight	0.020	0.014	0.007	0.008	0.011
Overweight	0.240	0.193	0.170	0.217	0.203
Obese	0.124	0.099	0.113	0.098	0.111
<i>Education</i>					
Primary education	0.096	0.113	0.165	0.217	0.241
Secondary education	0.548	0.470	0.372	0.359	0.395
Tertiary education	0.355	0.416	0.463	0.424	0.364
<i>Marital status</i>					
Married	0.703	0.725	0.651	0.632	0.598
<i>Scheme</i>					
Wage earners	0.802	0.828	0.829	0.838	0.873
Self-employed	0.067	0.056	0.063	0.073	0.071
Civil servant	0.131	0.117	0.108	0.090	0.057
<i>Skill</i>					
Low skill	0.063	0.045	0.038	0.024	0.036
Medium skill	0.292	0.171	0.119	0.115	0.093
High skill	0.105	0.049	0.053	0.029	0.025
<i># Obs</i>	<i>1 152</i>	<i>1 144</i>	<i>937</i>	<i>819</i>	<i>718</i>

Note: Authors' calculations using SHARE data

Results of Table 4 suggest that the PVW index plays a substantial and positive role, i.e. a better health score leads to more employment. Marital status plays substantially for men and women, though in opposite direction – likely the result of the primary versus secondary earner status. Higher educated, as well as civil servants are more likely to be employed for both sexes, while the required skill level for a job only seems to play significantly differently for men in low and high qualifying jobs.⁵

Table 4: Employment Regressions, PVW Health Index (age group 50-54)

Variable	Men		Women	
	Coefficient	Std Error	Coefficient	Std Error
PVW Index	0.084 ^{***}	0.009	0.078 ^{***}	0.008
<i>Education</i>				
Primary	Ref.	Ref.	Ref.	Ref.
Secondary	0.069	0.044	0.078 [*]	0.046
Tertiary	0.125 ^{***}	0.048	0.179 ^{***}	0.050
<i>Marital status</i>				
Married	0.099 ^{***}	0.027	-0.092 ^{***}	0.029
<i>Scheme</i>				
Salaried	Ref.	Ref.	Ref.	Ref.
Self employed	0.026	0.044	0.091 [*]	0.053
Civil servant	0.091 ^{**}	0.037	0.176 ^{***}	0.040
<i>Skill</i>				
Medium skill	Ref.	Ref.	Ref.	Ref.
Low skill	-0.171 ^{***}	0.049	0.003	0.055
High skill	0.085 ^{**}	0.038	0.074	0.046
Constant	0.571 ^{***}	0.045	0.550 ^{***}	0.048
# Obs	916		1 152	

Note: OLS regression based on SHARE data waves 1, 2 and 4.

Table 5 uses the estimates of Table 4 and applies them to the older cohorts to predict work capacity based on the exogenous variables of the regressions. The table indicates that when controlling for health, work capacity clearly decreases with age, but in a rather unspectacular manner. Predicted work capacity at age 70-74 is simulated to be around 75 percent for men and 56 percent for women. These numbers are orders of magnitude larger than the ones corresponding to the actual observed employment rate in the country. Figures 7a and 7b

⁵ The appendix Table A.1 provides the regression results where we replace the synthetic PVW index by the explicit battery of subjective and objective health (and physical limitation) indicators. The results are overall broadly similar, though individual parameter estimates for some of the health conditions may be influenced by underlying issues of co-variation.

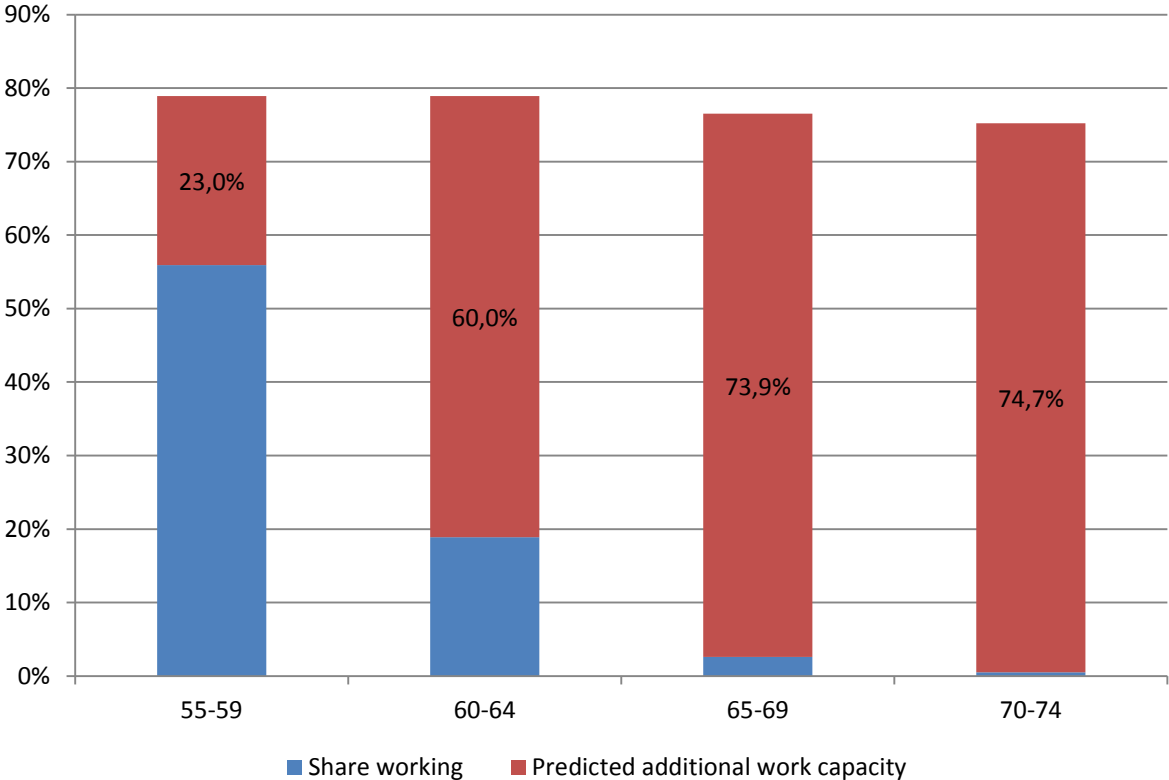
display the same information in a more visual manner, essentially showing the large potential for extra employment that one would predict using this method.⁶

Table 5: Simulations of Work Capacity, PVW health index

Age Group	# Obs	Actual % Working	Predicted % Working	Additional Work Capacity
Men				
55-59	1 096	55.9%	78.9%	23.0%
60-64	907	18.9%	78.9%	60.0%
65-69	713	2.6%	76.5%	73.9%
70-74	628	0.5%	75.2%	74.7%
Women				
55-59	1 144	40.5%	64.1%	23.6%
60-64	937	13.0%	62.8%	49.8%
65-69	819	1.5%	60.5%	59.0%
70-74	718	0.6%	56.3%	55.7%

Note: Simulations based on estimates of Table 4.

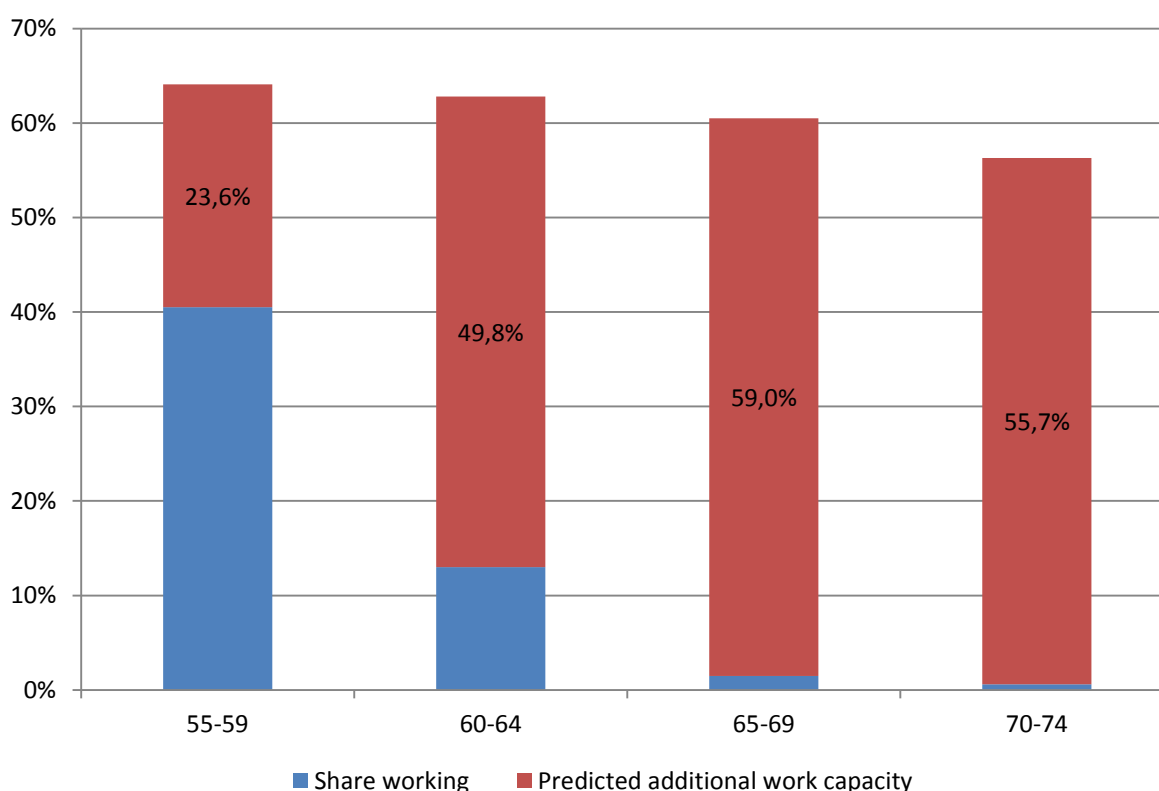
Figure 7a: Share of SHARE Men Working and Additional Work Capacity, By Age (PVW health index)



Note: Simulations based on estimates of Table 4.

⁶ Appendix Table A.2 provides simulation results when the initial estimation is obtained for the full set of health and limitation variables. The results are similar.

Figure 7b: Share of SHARE Women Working and Additional Work Capacity, By Age (PVW health index)



Note: Simulations based on estimates of Table 4.

Given the generally large differences in employment outcomes observed in Belgium, we also applied the same approach by splitting the population along the education dimension.⁷ Results of the regressions are reported in Table 6. They reveal some interesting differences, with those presented in Table 5. First, the positive and significant (surprising) coefficient for male civil servants disappears. While Table 5 might have been interpreted that civil servants behavior actually differs, be it because of the completely different social protection environment than their salaried counterparts or for some other reason, the Table 6 indicates that this specific finding was more likely the result of interactions between the different explanatory variables education, scheme and skill.⁸

Health, by means of the PVW index, has no significant effect for low educated people, a distinguishing feature as compared to their better educated counterparts. Different interpretations are again possible, two of which are the following: (i) low educated might have less flexibility in determining their retirement from the labor force, (ii) the health indicators contained in the PVW index (or the full set of health indicators of Appendix Tables

⁷ Similar splits could be performed by scheme or skill level.

⁸ The similarly surprising lack of a distinctly positive effect of self-employment subsists when running regressions by education. Given that self-employed are excluded from many early exit routes and given that they have a substantially higher effective retirement age, one would expect the contrary. However, one has to keep in mind that the regression is done on a relatively young cohort aged 50-54 and that it is well before the main early retirement options of wage-earners open up during the survey period.

A.1 and A2) do not necessarily contain employment-determining conditions, particularly for workers with lower education who are already less likely to work to start with.

Table 6: Employment Regressions, by education - PVW Health Index (age group 50-54)

Variable	Men						Women					
	Primary		Secondary		Tertiary		Primary		Secondary		Tertiary	
	Coefficient	Std Error	Coefficient	Std Error	Coefficient	Std Error	Coefficient	Std Error	Coefficient	Std Error	Coefficient	Std Error
PVW Index	0.043	0.028	0.099***	0.012	0.066***	0.015	0.035	0.024	0.089***	0.010	0.070***	0.013
<i>Marital status</i>												
Married	0.191	0.120	0.116***	0.038	0.068*	0.036	0.179*	0.105	-0.148***	0.041	-0.074*	0.042
<i>Scheme</i>												
Salaried	Ref.	Ref.	Ref.	Ref.	Ref.	Ref.	Ref.	Ref.	Ref.	Ref.	Ref.	Ref.
Self-employed	0.481	0.381	0.092	0.067	-0.053	0.051	-0.070	0.355	0.120	0.083	0.065	0.067
Civil-servant	0.268	0.480	0.079	0.053	0.087*	0.044	0.653**	0.300	0.256***	0.061	0.099*	0.052
<i>Skill</i>												
Medium skill	Ref.	Ref.	Ref.	Ref.	Ref.	Ref.	Ref.	Ref.	Ref.	Ref.	Ref.	Ref.
Low skill	-0.166	0.126	-0.197***	0.064	0.105	0.132	0.114	0.129	-0.022	0.067	-0.122	0.233
High skill	-0.076	0.305	0.182**	0.081	0.076**	0.037	-0.013	0.261	0.294***	0.106	0.036	0.049
Constant	0.500***	0.104	0.611***	0.034	0.745***	0.035	0.309***	0.094	0.653***	0.037	0.751***	0.040
# Obs	83		513		320		112		630		410	

Note: OLS regression based on SHARE data waves 1, 2 and 4.

Table 7 as well as the accompanying Figures 8a and 8b show the results of simulations based on the OLS coefficients by education of Table 6. It reveals a picture broadly consistent with the pooled simulation results of Table 5 – namely one of substantial additional work capacity in the population. It however also allows extra insights beyond the pooled approach. First, it shows that the share of the population currently working at the age of 55-59 has a strong education gradient – with an employment rate close to 80 percent higher for men with tertiary education than those with primary education, and a whopping 200 percent higher for women of the same age group. These findings are in line with those of Aliaj et al (2015) who show that it is less-educated Belgian females that stand out as having an unusually low employment rate both when comparing within the country and with the neighboring countries of France, Germany and the Netherlands. Second, as of age 60-64 these employment rates drop dramatically for all education groups for both sexes. Almost insignificant levels are attained as of age 65, where employment is more anecdotal than

systematic – if only because of the strong focus of numerous social protection programs on 65 as a pivotal age.⁹

Though the results indicate that predicted work capacity is substantially lower for those with primary education only at all ages considered, their additional work capacity is actually the highest of all education levels at age 55-59, indicating large employment potential when considering the health, education, scheme and skill characteristics as in our analysis.

Table 7: Simulations of Work Capacity, by education group and sex - PVW health index

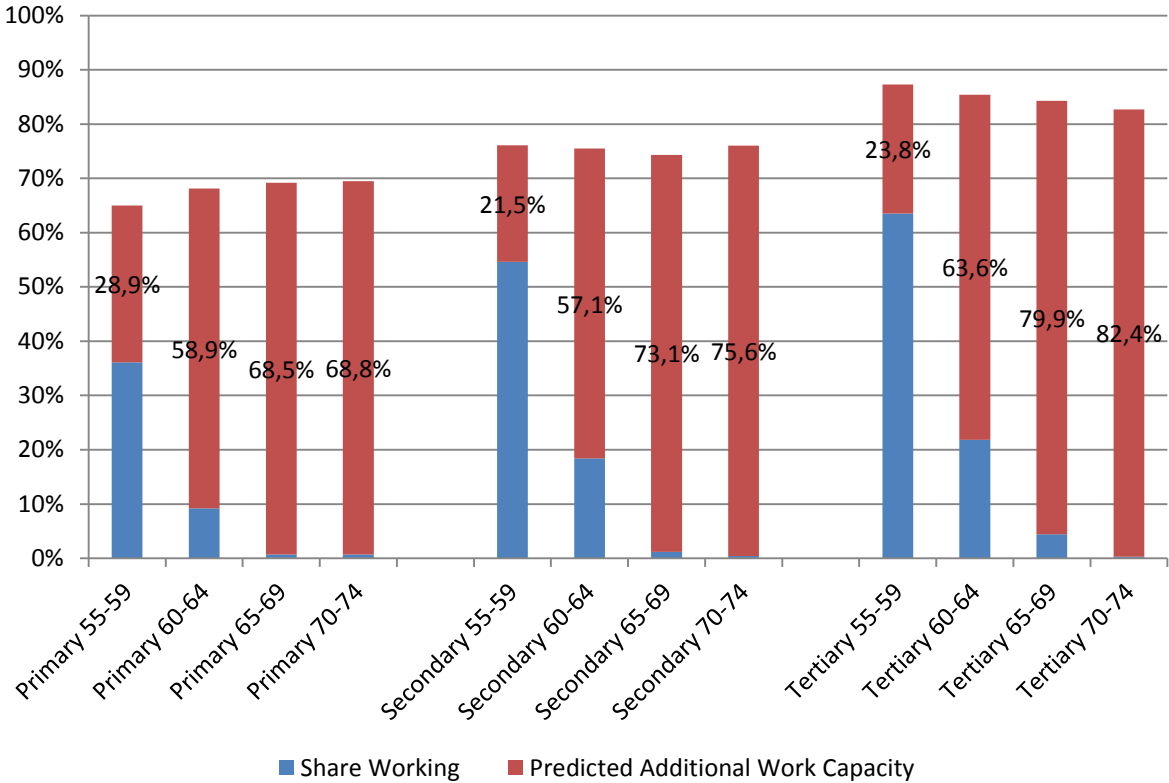
Education	Men. PVW Model			Women. PVW Model		
	Actual % Working	Predicted % Working	Additional Work Capacity	Actual % Working	Predicted % Working	Additional Work Capacity
Age 55-59						
Primary	36.1%	65.0%	28.9%	16.9%	44.7%	27.8%
Secondary	54.6%	76.1%	21.5%	35.9%	59.2%	23.3%
Tertiary	63.5%	87.3%	23.8%	51.9%	74.6%	22.7%
Age 60-64						
Primary	9.2%	68.1%	58.9%	8.4%	42.7%	34.3%
Secondary	18.4%	75.5%	57.1%	10.3%	59.3%	49.0%
Tertiary	21.8%	85.4%	63.6%	16.9%	73.4%	56.5%
Age 65-69						
Primary	0.7%	69.2%	68.5%	0.0%	42.8%	42.8%
Secondary	1.2%	74.3%	73.1%	2.0%	57.7%	55.7%
Tertiary	4.4%	84.3%	79.9%	1.7%	71.8%	70.1%
Age 70-74						
Primary	0.7%	69.5%	68.8%	0.0%	39.1%	39.1%
Secondary	0.4%	76.0%	75.6%	0.0%	55.4%	55.4%
Tertiary	0.3%	82.7%	82.4%	1.5%	68.2%	66.7%

Note: Simulations based on estimates of Table 6.

Similar exercises can be performed by splitting the population along the “scheme” dimension, rather than education. Tables 8 and 9 summarize the results of these regressions, as well as the corresponding simulated effects. They show substantial differences between the 3 main schemes. Table 9 indicates that self-employed have a much higher actual employment level than both wage-earners and civil servants, for women and men alike. Also, the simulations reveal that the age gradient of extra employment capacity is steepest for self-employed women and men. In terms of the prediction of people working, civil servants stand out as the most able to work when controlling for the health and socio-demographic variables of Table 8. Expressed differently, while their level of actual employment is the lowest of all three schemes, their additional employment potential is by far the largest, and this for all but one of the age-sex groups considered.

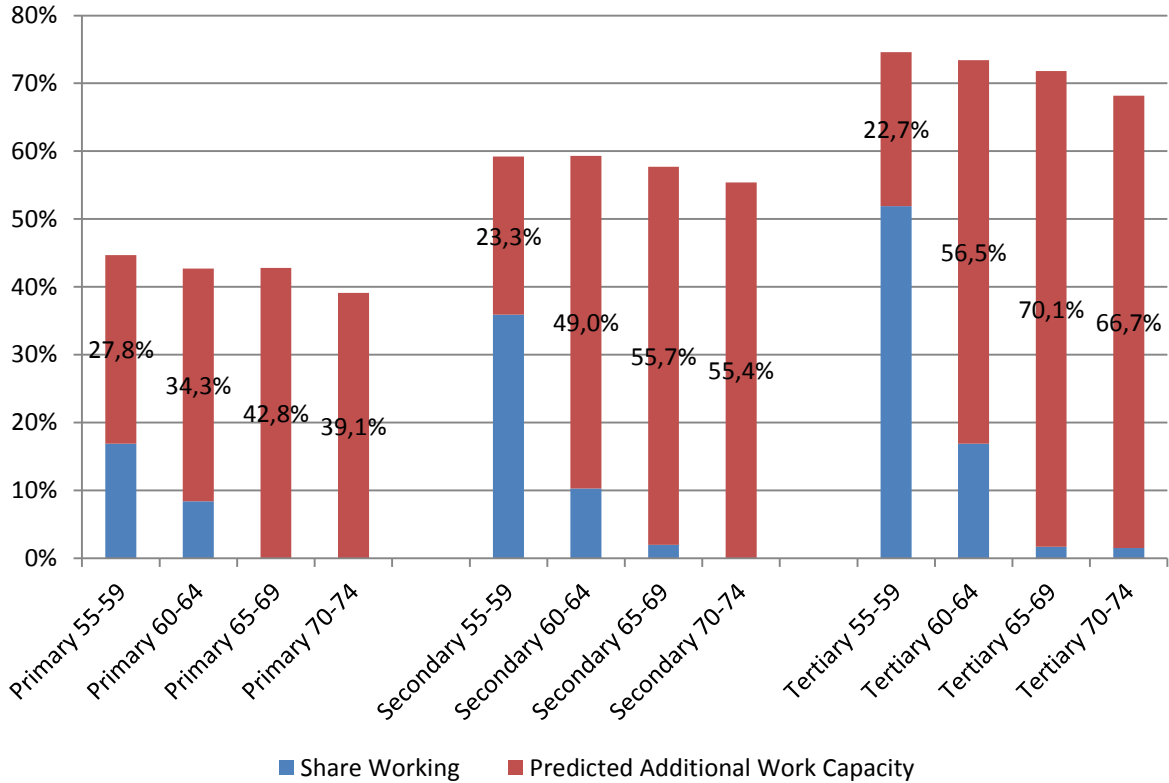
⁹ While retirement at a maximum age 65 is by and large history, workers continue to face discontinuities at 65. For example, they lose their layoff protection and also continue to be rolled over from other social protection programs into the pension system at this very age.

Figure 8a: Share of SHARE Men Working and Additional Work Capacity, by Age and Education (PVW health index)



Note: Simulations based on estimates of Table 6.

Figure 8b: Share of SHARE Women Working and Additional Work Capacity, by Age and Education (PVW health index)



Note: Simulations based on estimates of Table 6.

Table 8: Employment Regressions, by scheme - PVW Health Index (age group 50-54)

Variable	Men						Women					
	Wage earners		Civil servant		Self-employed		Wage earners		Civil servant		Self-employed	
	Coefficient	Std Error	Coefficient	Std Error	Coefficient	Std Error	Coefficient	Std Error	Coefficient	Std Error	Coefficient	Std Error
PVW Index	0.092 ^{***}	0.010	0.018	0.020	0.150 ^{***}	0.032	0.088 ^{***}	0.009	0.071 ^{***}	0.016	0.060 ^{**}	0.029
<i>Marital status</i>												
Married	0.091 ^{***}	0.032	0.094 [*]	0.053	0.148 ^{**}	0.066	-0.114 ^{***}	0.034	-0.038	0.058	-0.095	0.111
<i>Skill</i>												
Medium skill	Ref.	Ref.	Ref.	Ref.	Ref.	Ref.	Ref.	Ref.	Ref.	Ref.	Ref.	Ref.
Low skill	-0.182 ^{***}	0.052	-0.916 ^{***}	0.252	-0.078	0.081	-0.015	0.058	-0.091	0.255	-0.760 [*]	0.426
High skill	0.140 ^{***}	0.052	0.057	0.049	0.159 ^{**}	0.079	0.190 ^{***}	0.062	0.084	0.062	-0.104	0.119
Constant	0.645 ^{***}	0.028	0.829 ^{***}	0.051	0.539 ^{***}	0.082	0.656 ^{***}	0.029	0.826 ^{***}	0.049	0.832 ^{***}	0.103
# Obs	716		120		80		922		153		77	

Note: OLS regression based on SHARE data waves 1, 2 and 4.

All these results have to be read with a sufficient caution, keeping in mind the fact that this is only a partial analysis of health and socioeconomic determinants on an individual's ability to work. Clearly, it would be highly premature to claim that such higher employment ability should immediately lead to more employment as a policy strategy. As already indicated in the introduction, this analysis ignores many factors: household characteristics beyond marital status; workplace or system characteristics beyond the simple dummies for scheme and skill.

In sum, the analysis should be seen as a first step into the direction of a better understanding of what employment potential there is, in light of an ever-increasing need for financial resources to sustain our pension systems, and social protection more generally.

Table 9: Simulations of Work Capacity, by scheme and sex - PVW health index

Education	Men. PVW Model			Women. PVW Model		
	Actual	Predicted	Additional	Actual	Predicted	Additional
	% Working	% Working	Work Capacity	% Working	% Working	Work Capacity
Age 55-59						
Wage earners	50.8%	75.9%	25.1%	35.8%	59.4%	23.6%
Civil servant	66.1%	90.6%	24.5%	63.3%	85.6%	22.3%
Self employed	82.0%	78.3%	13.7%	64.1%	77.2%	13.1%
Age 60-64						
Wage earners	13.0%	75.2%	62.2%	10.6%	57.6%	47.0%
Civil servant	28.8%	89.9%	61.1%	17.6%	85.2%	67.6%
Self employed	53.6%	79.1%	25.5%	37.3%	74.0%	36.7%
Age 65-69						
Wage earners	1.1%	73.2%	72.1%	0.7%	56.4%	55.7%
Civil servant	2.3%	92.6%	90.3%	2.0%	81.7%	79.7%
Self employed	13.9%	76.5%	62.6%	11.7%	76.6%	64.9%
Age 70-74						
Wage earners	0.2%	72.6%	72.4%	0.0%	53.3%	53.3%
Civil servant	0.0%	89.4%	89.4%	0.0%	77.9%	77.9%
Self employed	2.8%	79.2%	76.4%	7.8%	73.9%	66.1%

Note: Simulations based on estimates of Table 8.

4. Conclusion

The paper explores a dimension that has often been bypassed in the Belgian retirement literature, namely the one of an individuals' work ability. Work ability is however increasingly recognized as a key determinant of retirement, as discussed in Jousten and Salanauskaite (2015). We employ two methodologies to explore the link between changes in the health characteristics of the population and their work ability. To be more specific, the paper uses employment as a proxy for work ability, hence focusing exclusively on the extensive margin of the link between improved health and work capacity.

Using the Milligan and Wise methodology (2015) linking mortality improvements to employment, we establish a significant employment potential in the Belgian population – corresponding to potential doubling of employment rates. Similarly, using a richer set of health indicators instead of mortality, the Cutler et al (2012) methodology identifies even more substantial employment potential. When separating the analysis by education level and employment scheme, we derive substantial

differences in the population, highlighting the importance of institutional and workplace characteristics.

Clearly, both results should be seen as indicative rather than conclusive, in the sense that they show that improvements in health across time have left the country with a healthier population, hence harboring some degree of unused employment potential. We expressly warrant against a shortcut-logic which would claim that the results are evidence of a need of massive activation. Our reading is more prudent: while substantial employment potential seems to exist, other factors such as system, workplace and household factors are equally important determinants of the ultimate desirability of increased employment. Furthermore, our study of employment as a proxy for work ability can only be seen as a useful first step into a richer investigation of the topic – including the intensive margin of the impact on hours of work – leading us to conclude in the need for further scientific investigation of the subject.

Bibliography

1. Aliaj, A., X. Flawinne, A. Jousten, S. Perelman and L. Shi (2015), "The EU OMC recommendations and the evolution of older workers' employment in Belgium and neighbouring countries after 2001", mimeo.
2. Cutler, D., E. Meara, and S. Richards-Shubik (2012). "Health and Work Capacity of Older Adults: Estimates and Implications for Social Security Policy," mimeo.
3. Dellis, A., Desmet, R., Jousten, A., and Perelman, S. (2004) "Micro-Modeling of Retirement in Belgium", in *Social Security Programs and Retirement Around the World: Micro-Estimation*, ed., by J. Gruber and D. Wise (Chicago: University Chicago Press).
4. Desmet, R., Jousten, A. , Perelman S. and Pestieau, P. (2007) "Micro-Simulation of Social Security in Belgium," in *Social Security Programs and Retirement Around the World: Fiscal Implications of Reform*, ed., by J. Gruber and D. Wise (Chicago: University Chicago Press).
5. Desmette, D. and Vendramin, P. (2014). "Chapter 4: Bridge Employment in Belgium: Between an Early Retirement Culture and a Concern for Work Sustainability", in *Bridge Employment: A Research Handbook*, ed. by Alcover, C., Topa, G., Parry, E., Fraccaroli, F., and Depolo, M. Routledge.
6. Jousten, A., and Lefebvre, M. (2013). Retirement Incentives in Belgium: Estimations and Simulations Using SHARE Data. *De Economist*: No. 161, p. 253-276.
7. Jousten, A., Lefebvre, M., and Perelman, S., (2012). "Disability in Belgium: There Is More Than Meets the Eye" in *Social Security Programs and Retirement Around the World: Historical Trends in Mortality and Health, Employment, and Disability Insurance Participation and Reforms*, ed. by D. Wise (Chicago: University Chicago Press).
8. Jousten, A., Lefebvre, M., and Perelman, S. (2014). Health Status, Disability and Retirement Incentives in Belgium. NBER Working Paper No. 20035, available online at <http://www.nber.org/papers/w20035>.
9. Jousten, A., Lefebvre, M., Perelman, S. and Pestieau, P., (2010), "The effect of Early Retirement on Youth Unemployment. The Case of Belgium" in *Social Security Programs and Retirement Around the World: The Relationship to Youth Employment*, ed. by J. Gruber and D. Wise (Chicago: University Chicago Press).
10. Jousten A. and L. Salanauskaite, (2015), "Understanding Employment Participation of Older Workers - National report: Belgium" in *Understanding employment participation of older workers: Creating a knowledge base for future labour market challenges*, ed. By H.-M. Hasselhorn and W. Abt, Berlin: (Federal Ministry of Labour and Social Affairs).
11. Milligan, K. and D. Wise (2015). "Health and Work at Older Ages: Using Mortality to Assess the Capacity to Work Across Countries," *Journal of Population Aging*, March 2015, Volume 8, Issue 1-2, pp 27-50.
12. Poterba, James, Steven Venti, and David A. Wise (2013), "Health, Education, and the Postretirement Evolution of Household Assets," *Journal of Human Capital*, Vol. 7, No. 4, pp. 297-339. NIHMSID #506623
13. Schreurs, B., Van Emmerik, H., De Cuyper, N., Notelaers, G. and De Witte, H. (2011). Job Demands-resources and Early Retirement Intention: Differences Between Blue-and White-collar Workers. *Economic and Industrial Democracy*, Vol. 32(1), pp. 47-68.
14. Van Looy, D., Kovalenko, M., Mortelmans, D., and De Preter, H. (2014). *Working hour-reduction in the move to full retirement: How does this affect retirement preferences of 50+ individuals in*

Flanders? Leuven: Steunpunt Werk en Sociale Economie / Antwerpen: CELLO, Universiteit Antwerpen, 2014, 48 p.

Appendix

Table A.1: Employment Regressions, All Health Variables

Variable	Men		Women	
	Coefficient	Std Error	Coefficient	Std Error
<i>Subjective health</i>				
Excellent	Ref.	Ref.	Ref.	Ref.
Very good	0.077 [*]	0.040	0.006	0.045
Good	0.062	0.040	-0.004	0.043
Fair	-0.114 ^{**}	0.053	-0.098 [*]	0.057
Poor	-0.305 ^{***}	0.092	-0.248 ^{***}	0.082
<i>Objective health</i>				
ADL any	0.117 ^{**}	0.059	-0.094	0.061
IADL any	-0.116 ^{**}	0.053	-0.098 ^{**}	0.047
One physical limit	-0.017	0.037	0.029	0.038
More than one physical limit	-0.105 ^{**}	0.044	-0.103 ^{**}	0.043
Heart disease	-0.006	0.050	-0.058	0.075
Lung disease	-0.086	0.066	-0.174 ^{**}	0.070
Stroke	-0.138	0.095	-0.198 ^{**}	0.100
Cancer	-0.122	0.087	-0.065	0.064
Hyper tension	0.019	0.029	0.050	0.033
Arthritis	-0.036	0.041	0.021	0.036
Diabetes	0.058	0.049	-0.094	0.065
Back problems	-0.009	0.026	-0.027	0.030
Depression	-0.012 [*]	0.007	0.002	0.006
Psychological disorder	-0.094	0.057	-0.037	0.043
Smoking currently	-0.044	0.027	0.044	0.033
Smoking formerly	0.044	0.030	0.026	0.033
Underweight	-0.281 [*]	0.147	0.109	0.099
Overweight	-0.013	0.026	-0.005	0.032
Obese	0.018	0.036	0.022	0.044
<i>Education</i>				
Primary	Ref.	Ref.	Ref.	Ref.
Secondary	0.062	0.044	0.065	0.047
Tertiary	0.109 ^{**}	0.048	0.173 ^{***}	0.051
<i>Marital status</i>				
Married	0.097 ^{***}	0.027	-0.085 ^{***}	0.030
<i>Scheme</i>				
Wage earners	Ref.	Ref.	Ref.	Ref.
Self-employed	0.023	0.044	0.090 [*]	0.054
Civil servant	0.068 [*]	0.037	0.162 ^{***}	0.041
<i>Skill</i>				
Low	Ref.	Ref.	Ref.	Ref.
Medium	-0.170 ^{***}	0.050	-0.001	0.056
High	0.062	0.039	0.083 [*]	0.046
Constant	0.692 ^{***}	0.062	0.644 ^{***}	0.063
# Obs	916		1 152	

Note: OLS regression based on SHARE data waves 1, 2 and 4.

Table A.2: Simulations of Work Capacity, All health variables

Age Group	# Obs	Actual % Working	Predicted % Working	Additional Work Capacity
Men				
55-59	1 096	55,9%	79,4%	23,5%
60-64	907	18,9%	80,3%	61,4%
65-69	713	2,6%	78,7%	76,1%
70-74	628	0,5%	76,3%	75,8%
Women				
55-59	1 144	40,5%	63,6%	23,1%
60-64	937	13,0%	62,2%	49,2%
65-69	819	1,5%	59,8%	58,3%
70-74	718	0,6%	55,3%	54,7%

Note: Simulations based on estimates of Table A.1.