

Tansel, Aysit; Ozdemir, Zeynel Abidin; Aksoy, Emre

Working Paper

Unemployment and Labor Force Participation in Turkey

IZA Discussion Papers, No. 8834

Provided in Cooperation with:

IZA – Institute of Labor Economics

Suggested Citation: Tansel, Aysit; Ozdemir, Zeynel Abidin; Aksoy, Emre (2015) : Unemployment and Labor Force Participation in Turkey, IZA Discussion Papers, No. 8834, Institute for the Study of Labor (IZA), Bonn

This Version is available at:

<https://hdl.handle.net/10419/108714>

Standard-Nutzungsbedingungen:

Die Dokumente auf EconStor dürfen zu eigenen wissenschaftlichen Zwecken und zum Privatgebrauch gespeichert und kopiert werden.

Sie dürfen die Dokumente nicht für öffentliche oder kommerzielle Zwecke vervielfältigen, öffentlich ausstellen, öffentlich zugänglich machen, vertreiben oder anderweitig nutzen.

Sofern die Verfasser die Dokumente unter Open-Content-Lizenzen (insbesondere CC-Lizenzen) zur Verfügung gestellt haben sollten, gelten abweichend von diesen Nutzungsbedingungen die in der dort genannten Lizenz gewährten Nutzungsrechte.

Terms of use:

Documents in EconStor may be saved and copied for your personal and scholarly purposes.

You are not to copy documents for public or commercial purposes, to exhibit the documents publicly, to make them publicly available on the internet, or to distribute or otherwise use the documents in public.

If the documents have been made available under an Open Content Licence (especially Creative Commons Licences), you may exercise further usage rights as specified in the indicated licence.

IZA DP No. 8834

Unemployment and Labor Force Participation in Turkey

Aysit Tansel
Zeynel Abidin Ozdemir
Emre Aksoy

February 2015

Unemployment and Labor Force Participation in Turkey

Aysit Tansel

*Middle East Technical University,
IZA and ERF*

Zeynel Abidin Ozdemir

*Gazi University
and ERF*

Emre Aksoy

Kirikkale University

Discussion Paper No. 8834
February 2015

IZA

P.O. Box 7240
53072 Bonn
Germany

Phone: +49-228-3894-0
Fax: +49-228-3894-180
E-mail: iza@iza.org

Any opinions expressed here are those of the author(s) and not those of IZA. Research published in this series may include views on policy, but the institute itself takes no institutional policy positions. The IZA research network is committed to the IZA Guiding Principles of Research Integrity.

The Institute for the Study of Labor (IZA) in Bonn is a local and virtual international research center and a place of communication between science, politics and business. IZA is an independent nonprofit organization supported by Deutsche Post Foundation. The center is associated with the University of Bonn and offers a stimulating research environment through its international network, workshops and conferences, data service, project support, research visits and doctoral program. IZA engages in (i) original and internationally competitive research in all fields of labor economics, (ii) development of policy concepts, and (iii) dissemination of research results and concepts to the interested public.

IZA Discussion Papers often represent preliminary work and are circulated to encourage discussion. Citation of such a paper should account for its provisional character. A revised version may be available directly from the author.

ABSTRACT

Unemployment and Labor Force Participation in Turkey

This paper investigates the relationship between labor force participation rate and unemployment rate in Turkey a developing country. Cointegration analysis is carried out for the aggregate and gender and age specific series. The findings indicate that there is no long-run relationship between labor force participation and unemployment rates in Turkey. Thus, unlike in the case of the developed countries the unemployment invariance hypothesis is supported in Turkey.

JEL Classification: E24

Keywords: unemployment invariance hypothesis, cointegration, Turkey

Corresponding author:

Aysit Tansel
Department of Economics
Middle East Technical University
06531 Ankara
Turkey
E-mail: atansel@metu.edu.tr

I. Introduction

This paper investigates the long-run relationship between unemployment and labor force participation in Turkey which is a developing country. The nature of the relationship between unemployment and labor force participation is an important issue. It has wide implications for macroeconomic theory, modelling in applications and labor market policy. There are several examples on the importance of this association. For instance, labor force participation may change over time over the business cycle due to discouraged worker effect. As a result the informational value of the unemployment rate as an indicator of labor market conditions may not be reliable. Several authors refer to this example such as Murphy and Topel (1997), Gustavsson and Österholm (2006) and Ozdemir et al. (2013). A second example often cited is unemployment invariance hypothesis. The unemployment invariance hypothesis suggests that the long-run unemployment rate is independent of the labor force, capital stock and total factor productivity. This hypothesis is supported in the works of authors such as Layard et al. (1991) and Kögel (2005) while Karanassou and Snower (2004) criticized this hypothesis. Therefore it is also important from this point of view to provide evidence on whether or not there is a long-run relationship between unemployment and labor force participation rates.

Recently, Österholm (2010) in Sweden and Emerson (2011) in United States investigate whether or not there is a long-run relationship between participation and unemployment rates. They both find a robust long-run relationship between them. These results do not support the unemployment invariance hypothesis in Sweden and in the United States. Further their results imply discouraged worker effects in Sweden and only for the male sample in the United States. Our findings show that there is no long-run relationship between labor force participation and unemployment rates in Turkey. Thus, unlike in the case of Sweden and the United States the unemployment invariance hypothesis is supported in Turkey. This result may be due to differences in the labor market institutions in these countries.

The rest of the paper is organized as follows. The next section describes data used. The third section presents the empirical results. The final section concludes.

2. Data

We use quarterly data on labor force participation rates and unemployment rates for Turkey by gender and for two age groups: 15 and over and 15-24. The data are taken from State Institute of Statistics for the period before 2005 and from TURKSTAT sources for the period 2005 and after. These data are based on the Household Labor Force Survey results. These surveys are conducted once in 1988, semiannually during 1989-1999 (April and October), quarterly during 2000-2004 and monthly since 2005. We first convert the semi-annual data of the 1988-1999 period into quarterly data using an interpolation method. It is called Chow-Lin technique based on the GDP series. The GDP series use the production of the national income accounting interpolation. We next check for seasonality and perform seasonal adjustment of the labor force participation rates and unemployment series using the TRAMO/SEATS procedure (Gomez and Maravall 1996). Thus, our analysis is based on quarterly data for the period from 1988:Q3 to 2013:Q4 including over 100 observations. The data are shown in Figure 1 and 2 for the age 15+ and 15-24 groups respectively.

≠ **Figure 1 insert here** ≠

≠ **Figure 2 insert here** ≠

Turkish labor market is characterized by low and declining labor force participation rates and high unemployment rates. Labor force participation rate of women is in particular low by international standards. In Figure 1 for the 15+ age group we note the downward trend in the aggregate, female and male labor force participation rates with a recent increasing trend in the aggregate and the female series and a stagnation in the male series. The aggregate, female and male unemployment series reach a higher plateau after the 2001 crisis and exhibits a peak in 2009 during the global crisis. In Figure 2 for the 15-24 age group the trends in the labor force participation rate and the unemployment rate are all similar to those for the 15+ age group in Figure 1. Comparing the two figures we note that the labor force participation is higher for the 15+ age group than for the 15-24 age group due to the school participation of the latter group. In contrast the unemployment rate for the young (15-24 age group) is much higher than for the 15+ age group as it is the case in many countries.

3. Empirical Analysis

We first examine the time series properties of the labor force participation rates and unemployment rates using Augmented Dickey-Fuller (ADF) unit root test of Dickey and Fuller (1979) and Said and Dickey (1984) as well as the KPSS test of Kwiatkowski, Phillips, Schmidt and Shin (1992). The ADF test has nonstationarity under the null hypothesis whereas KPSS test assumes stationarity under the null hypothesis. The test results are reported in Table 1 for both the levels and the first differences of the series. ADF tests indicate that the null hypothesis of nonstationarity cannot be rejected for all of the series but rejected for all of the series in first differences at 5 % level of significance or better. KPSS tests indicate that the null hypothesis of stationarity is rejected for all of the series in levels but not rejected for all of the series in first differences at 5% level of significance or better.

≠ Table 1 insert here ≠

After establishing that all of the series considered are unit root processes and integrated of order one, we can now test if there is a long run relationship between labor force participation and unemployment rates in a cointegration framework. The finding of cointegration between labor force participation and unemployment rates implies that there is a long run relationship between them. We begin by considering a Vector Error Correction (VEC) model of the participation rates and unemployment rates. We emphasize that a VEC model is cointegrated VAR model that has the cointegrating relationship(s) specified in the model. This specification allows the endogenous variables to converge to the long-run equilibrium as well as considering short-run adjustment dynamics to be included in the analysis. We avoid presenting a cointegrated VAR model equation since there is a standard representation the literature (see for example Österholm, 2010). In the standard notation α represents the adjustment parameters in the VEC model and β is the cointegrating vector. Cointegration is tested by employing Johansen's methodology (1988, 1991) which includes two complementary tests: the trace and maximum eigenvalue tests. These test results are reported in Table 2.

≠ Table 2 insert here ≠

The trace test results indicate that the null hypothesis of no cointegration is rejected and there is one and only one cointegrated vector in all the cases considered. However, the maximum

eigen value test results indicate cointegration only in the aggregate series for age 15+ and in the aggregate and male series for age 15-24. A recent study by Hjalmarsson and Österholm (2010) suggest that the two cointegration tests must be in agreement for a robust conclusion on cointegration. Therefore, we can conclude that there is cointegration for the aggregate series in the age 15+ sample and for both the aggregate and the male series in the age 15-24 sample. These results indicate that there is a long-run relationship between aggregate labor force participation and unemployment rates in the age 15+ sample and in the age 15-24 sample as well as in the male, age 15-24 sample.

Hjalmarsson and Österholm (2010) further caution that Johansen's trace and maximum eigen value tests have size distortions in the cases where the series have near unit roots. Thus they suggest further testing of the two restrictions on the cointegrating vector β such that $\beta = (1 \ 0)'$ and $\beta = (0 \ 1)'$. If these restrictions are rejected then cointegration is supported. If both of them or either of them cannot be rejected then cointegration is not supported and it may be due to a single stationary variable. In our case, it is possible that the labor force participation and unemployment rates series may not have exact unit roots and the results of trace and maximum eigen values tests may be misleading. In order to allow for this possibility we further test for the above restrictions. The results are reported in Table 3.

≠ Table 3 insert here ≠

In this table we review only the three cases where we found cointegration both by the trace and maximum eigen value tests above. Considering the aggregate series in the age 15+ sample we observe that the former restriction is rejected while the latter is not. This indicates that there is no cointegration between aggregate labor force participation and unemployment rates in the age 15+ sample but it is due to a single stationary variable that is the labor force participation rate in this case. Similar results are obtained in the case of the aggregate series in the age 15-24 sample. Therefore, there is no cointegration between aggregate labor force participation and unemployment rates in the age 15-24 sample also. Finally in the case of the male series in the age 15-24 sample the results indicate that the former restriction is rejected while the latter is not. These imply that there is no cointegration between male labor force participation and unemployment rates in the age 15-24 sample but it is due to a single stationary variable that is the unemployment rate in this case.

4. Conclusions

This paper provides evidence that there is no long-run equilibrium relationship between labor force participation and unemployment rates in Turkey which is a developing country. These results are robust and continue to hold when using gender specific data and data for two age groups. This result is in contrast to the findings of Österholm (2010) for Sweden and the findings of Emerson (2011) for the United States both of which are developed countries. Thus while the evidence does not support the unemployment invariance hypothesis in both Sweden and the United States our findings support the unemployment invariance hypothesis in Turkey. This may be due to differences in the labor market institutions in these countries. More clearly, the long-run unemployment rate is independent of the labor force in Turkey. One of the implications of this result is that policies that increase the labor force participation such as recent social security tax reductions and active labor market policies (which are put into effect in particular to increase the labor force participation and employment of women and the young men in Turkey) will have negligible influence on unemployment rates. Turkey also introduced a number of institutional changes that affected the labor force participation rates during the period under study such as introduction of the early retirement scheme in the early 1990s and its abolition in the first half of 2000 which may not have influenced the unemployment rates. These findings should be useful to applied researchers and policy makers. They contribute to our understanding of the how labor market functions in Turkey and the long-run potentials of labor market policy in Turkey.

References

- Dickey, D.A. and Fuller, W.A. (1979) Distribution of the estimators for autoregressive time series with a unit root, *Journal of the American Statistical Association*, 74, 427–431.
- Emerson, J. (2011) Unemployment and labor force participation in the United States, *Economics Letters*, 111, 203–206.
- Gustavsson, M. and Österholm, P. (2006) The informational value of unemployment statistics: a note on the time series properties of participation rates. *Economics Letters* 92, 428–433.
- Gomez, Z., and Maravall, A. (1996) Program tramo and seats: instructions for the users. Working Paper 9628, Bank of Spain.
- Hjalmarsson, E. and Österholm, P. (2010), “Testing for cointegration using the Johansen methodology when variables are near-integrated: Size distortions and partial remedies”, *Empirical Economics*, 39, 51–76.
- Johansen, S. (1988) Statistical analysis of cointegration vectors, *Journal of Economic Dynamics and Control*, 12, 231–254.
- Johansen, S. (1991) Estimation and hypothesis testing of cointegration vectors in Gaussian vector autoregression models, *Econometrica*, 59, 1551–1580.
- Karanassou, M. and Snower, D. J. (2004) Unemployment invariance, *German Economic Review*, 5, 297–317.

- Kögel, T. (2005) Trendless unemployment in a model with endogenous technical progress, Economic Research Paper, no.05-05, Loughborough University, Leicestershire, UK.
- Kwiatkowski, D., Phillips, P. C. B, Schmidt, P. and Shin, Y. (1992) Testing the null hypothesis of stationarity against the alternative of a unit root, *Journal of Econometrics*, 54, 159–178.
- Layard, R., Nickell, S. J. and Jackman, R. (1991) *Unemployment: Macroeconomic Performance and the Labour Market*, Oxford University Press, Oxford.
- Murphy, K.M., and Topel, R., (1997) Unemployment and nonemployment. *The American Economic Review* 87, 295–300.
- Osterwald-Lenum, M. (1992) Practioners corner a note with quartiles of the asymptotic distribution of the maximum likelihood cointegration rank test statistics, *Oxford Bulletin of Economics and Statistics*, 54, 461–472.
- Österholm, P. (2010) Unemployment and labour-force participation in Sweden. *Economics Letters*, 106, 205–208.
- Ozdemir, Z. A., Balcilar, M. and Tansel, A. (2013) International labor force participation rates by gender: Unit roots or structural breaks? *Bulletin of Economic Research*, 65(S1): s142-s164.
- Said, S. and Dickey, D.A. (1984) Testing for unit roots in autoregressive-moving average models of unknown order, *Biometrika*, 71 599–607.

Figure 1. Labor-Force Participation Rates (LFPR) and Unemployment (UN) Rates, Age 15+, Turkey, 1988:Q3-2013:Q4

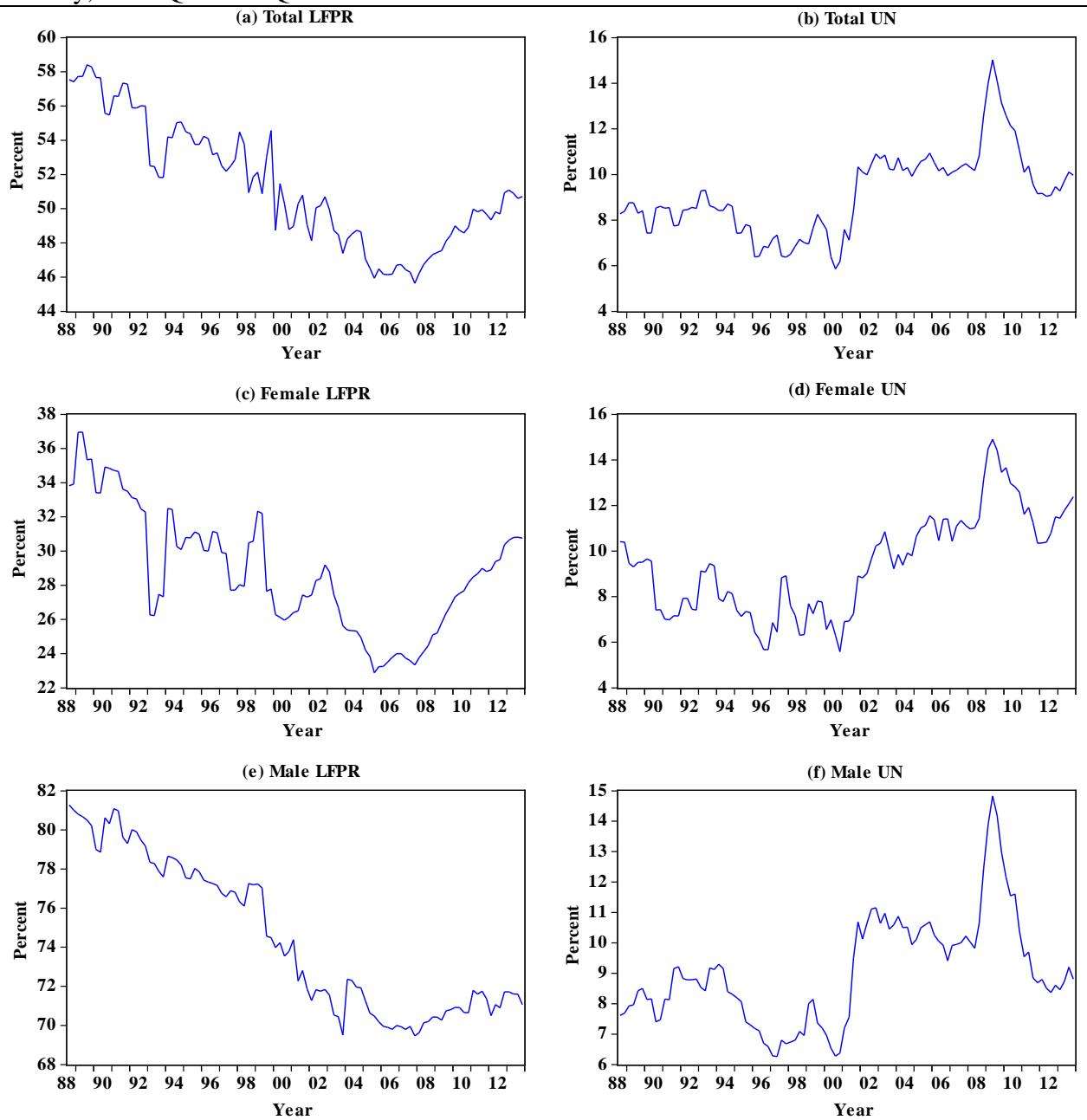


Figure 2. Labor-Force Participation Rates (LFPR) and Unemployment (UN) Rates, Age 15-24, Turkey, 1988:Q3-2013:Q4

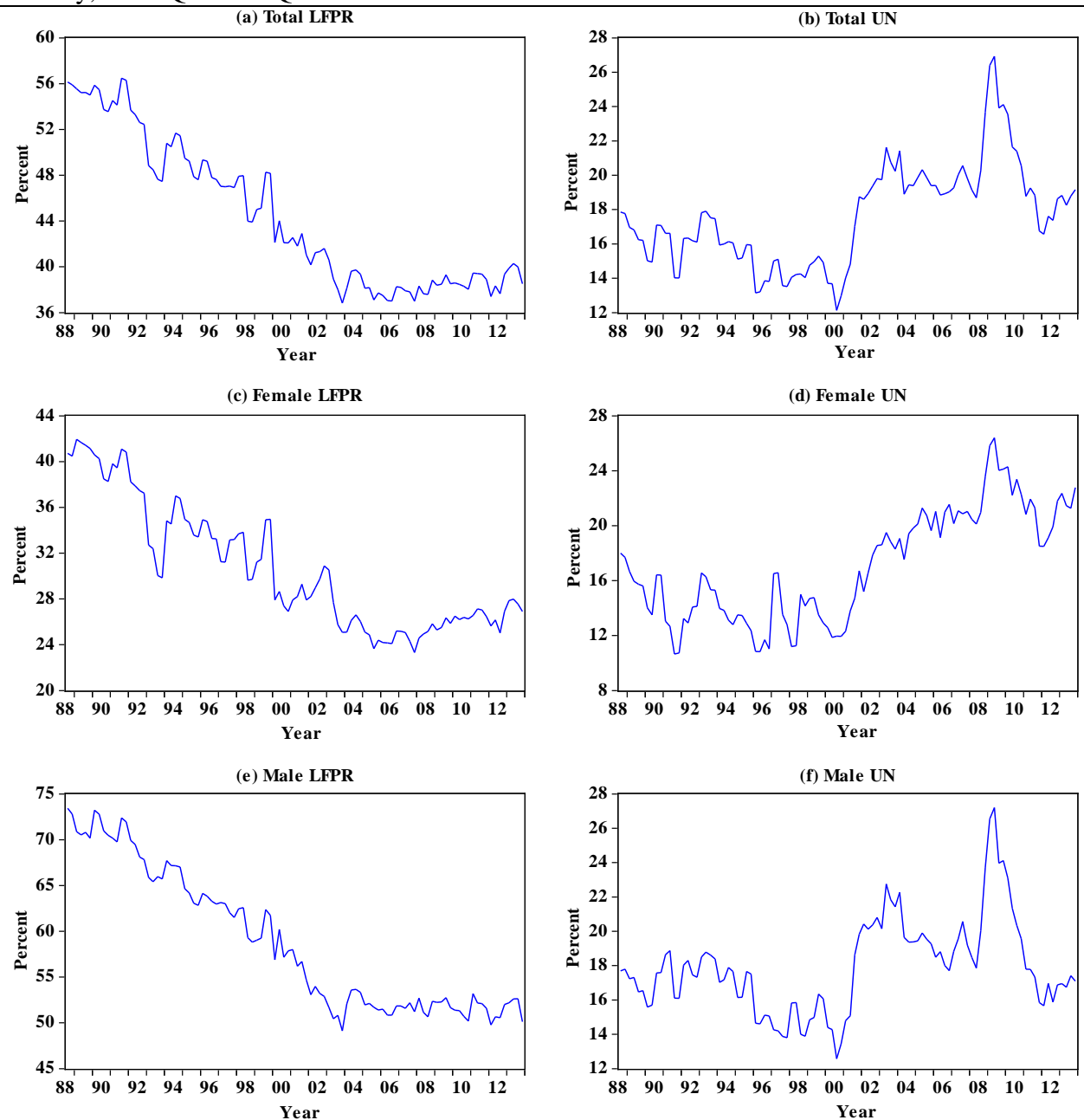


Table 1. Univariate Unit Root Tests, Turkey, 1988:Q3-2013:Q4

| | Level | | First Difference | |
|---------------------------------------|------------------|-------------------|------------------|-------|
| | ADF ^a | KPSS ^b | ADF | KPSS |
| Age: 15+ | | | | |
| Labor force participation rate | | | | |
| Total | -2.07 (4) | 0.994* | -6.61* (3) | 0.283 |
| Female | -2.02 (8) | 0.728* | -4.48* (4) | 0.279 |
| Male | -1.68 (4) | 1.133* | -7.37* (3) | 0.224 |
| Unemployment rate | | | | |
| Total | -2.11 (1) | 0.673* | -7.68* (0) | 0.055 |
| Female | -0.17 (12) | 0.806* | -4.94* (11) | 0.199 |
| Male | -1.81 (8) | 0.543* | -4.28* (7) | 0.083 |
| Age: 15-24 | | | | |
| Labor force participation rate | | | | |
| Total | -1.93 (4) | 1.137* | -8.64* (3) | 0.288 |
| Female | -2.01 (8) | 1.091* | -4.65* (7) | 0.315 |
| Male | -1.67 (4) | 1.153* | -8.11* (3) | 0.268 |
| Unemployment rate | | | | |
| Total | -1.15 (12) | 0.653* | -4.29* (11) | 0.076 |
| Female | -0.30 (12) | 0.924* | -4.54* (11) | 0.249 |
| Male | -2.66 (1) | 0.547* | -5.91* (3) | 0.060 |

Notes: †, *, ** indicate significance at the 10, 5, and 1 percent levels, respectively. The numbers in parentheses indicate the lag lengths which are established using the Akaike's Information Criteria.

^aTest allows for a constant; one-sided test of the null hypothesis that the variable has a unit root; 10, 5, 1 percent significance critical values equal -2.59, -2.87, and -3.44, respectively.

^bTest allows for a constant; one-sided test of the null hypothesis that the variable is stationary; 10, 5, 1 percent significance critical values equal 0.347, 0.463, and 0.739, respectively.

Table 2. Multivariate Cointegration Tests between Labor Force Participation and Unemployment Rates, Turkey, 1988:Q3-2013:Q4

| | Null Hypothesis | TraceTest ^a | Maximum Eigen Value Test ^b |
|-------------------|-----------------|------------------------|---------------------------------------|
| Age: 15+ | | | |
| Total (6) | $r = 0$ | 18.51** | 12.11* |
| | $r \leq 1$ | 7.15 | 7.62 |
| Female (5) | $r = 0$ | 14.42* | 9.51 |
| | $r \leq 1$ | 6.75 | 6.31 |
| Male (2) | $r = 0$ | 13.65* | 8.72 |
| | $r \leq 1$ | 5.09 | 5.23 |
| Age: 15-24 | | | |
| Total (5) | $r = 0$ | 18.37** | 12.81* |
| | $r \leq 1$ | 6.14 | 6.41 |
| Female (5) | $r = 0$ | 17.72** | 10.86 |
| | $r \leq 1$ | 7.44 | 7.84 |
| Male (5) | $r = 0$ | 19.65** | 15.26** |
| | $r \leq 1$ | 5.17 | 5.44 |

* Notes: Lag lengths (shown in parenthesis) in the VAR (in levels) are selected using the Akaike's Information Criterion. Statistically significant at the 10% level. *, ** and *** indicate significance at 10, 5 and 1 percent levels.

^a One-sided test of the null hypothesis that the variables are not cointegrated; 10, 5 and 1 percent Osterwald-Lenum (1992) critical values for $r = 0$ are 13.33, 15.41 and 20.04, respectively.

^b One-sided test of the null hypothesis that the variables are not cointegrated; 10, 5 and 1 percent Osterwald-Lenum (1992) critical values for $r = 0$ are 12.07, 14.07 and 18.63 for, respectively.

Table 3. Tests of Restrictions in Cointegrated VAR, Turkey, 1988:Q3-2013Q4

| Restriction | Total | Female | Male |
|----------------------------|----------------|------------------|----------------|
| Age: 15+ | | | |
| $\beta = (1 \ 0)'$ | 5.02 (0.02) | 0.49 (0.47) | 5.99 (0.01) |
| $\beta = (0 \ 1)'$ | 1.91 (0.16) | 0.74 (0.38) | 1.76 (0.18) |
| $\alpha = (\alpha_1 \ 0)'$ | 4.85 (0.02) | (0.78) (0.37) | 5.88 (0.01) |
| $\alpha = (0 \ \alpha_2)'$ | 0.80 (0.37) | 0.003 (0.95) | 0.12 (0.73) |
| Age: 15-24 | | | |
| $\beta = (1 \ 0)'$ | 2.80 (0.09) | 2.72 (0.09) | 4.34 (0.03) |
| $\beta = (0 \ 1)'$ | 0.62 (0.43) | (6.03) (0.01) | 0.04 (0.84) |
| $\alpha = (\alpha_1 \ 0)'$ | 2.48 (0.11) | 3.74 (0.05) | 3.13 (0.07) |
| $\alpha = (0 \ \alpha_2)'$ | 0.87 (0.35) | 0.59 (0.44) | 2.28 (0.13) |

Notes: The numbers in the table are results of likelihood ratio tests for the restrictions. The p -values of the likelihood ratio tests are reported in the parenthesis.