

Grimm, Michael; Munyehirwe, Anicet; Peters, Jörg; Sievert, Maximiliane

Working Paper

A First Step up the Energy Ladder? Low Cost Solar Kits and Household's Welfare in Rural Rwanda

IZA Discussion Papers, No. 8594

Provided in Cooperation with:

IZA – Institute of Labor Economics

Suggested Citation: Grimm, Michael; Munyehirwe, Anicet; Peters, Jörg; Sievert, Maximiliane (2014) : A First Step up the Energy Ladder? Low Cost Solar Kits and Household's Welfare in Rural Rwanda, IZA Discussion Papers, No. 8594, Institute for the Study of Labor (IZA), Bonn

This Version is available at:

<https://hdl.handle.net/10419/106532>

Standard-Nutzungsbedingungen:

Die Dokumente auf EconStor dürfen zu eigenen wissenschaftlichen Zwecken und zum Privatgebrauch gespeichert und kopiert werden.

Sie dürfen die Dokumente nicht für öffentliche oder kommerzielle Zwecke vervielfältigen, öffentlich ausstellen, öffentlich zugänglich machen, vertreiben oder anderweitig nutzen.

Sofern die Verfasser die Dokumente unter Open-Content-Lizenzen (insbesondere CC-Lizenzen) zur Verfügung gestellt haben sollten, gelten abweichend von diesen Nutzungsbedingungen die in der dort genannten Lizenz gewährten Nutzungsrechte.

Terms of use:

Documents in EconStor may be saved and copied for your personal and scholarly purposes.

You are not to copy documents for public or commercial purposes, to exhibit the documents publicly, to make them publicly available on the internet, or to distribute or otherwise use the documents in public.

If the documents have been made available under an Open Content Licence (especially Creative Commons Licences), you may exercise further usage rights as specified in the indicated licence.

IZA DP No. 8594

**A First Step up the Energy Ladder? Low Cost Solar Kits
and Household's Welfare in Rural Rwanda**

Michael Grimm
Anicet Munyehirwe
Jörg Peters
Maximiliane Sievert

October 2014

A First Step up the Energy Ladder? Low Cost Solar Kits and Household's Welfare in Rural Rwanda

Michael Grimm

University of Passau, Erasmus University of Rotterdam and IZA

Anicet Munyehirwe

IB&C Rwanda

Jörg Peters

RWI and AMERU, University of the Witwatersrand

Maximiliane Sievert

RWI

Discussion Paper No. 8594

October 2014

IZA

P.O. Box 7240

53072 Bonn

Germany

Phone: +49-228-3894-0

Fax: +49-228-3894-180

E-mail: iza@iza.org

Any opinions expressed here are those of the author(s) and not those of IZA. Research published in this series may include views on policy, but the institute itself takes no institutional policy positions. The IZA research network is committed to the IZA Guiding Principles of Research Integrity.

The Institute for the Study of Labor (IZA) in Bonn is a local and virtual international research center and a place of communication between science, politics and business. IZA is an independent nonprofit organization supported by Deutsche Post Foundation. The center is associated with the University of Bonn and offers a stimulating research environment through its international network, workshops and conferences, data service, project support, research visits and doctoral program. IZA engages in (i) original and internationally competitive research in all fields of labor economics, (ii) development of policy concepts, and (iii) dissemination of research results and concepts to the interested public.

IZA Discussion Papers often represent preliminary work and are circulated to encourage discussion. Citation of such a paper should account for its provisional character. A revised version may be available directly from the author.

ABSTRACT

A First Step up the Energy Ladder? Low Cost Solar Kits and Household's Welfare in Rural Rwanda¹

More than 1.3 billion people lack access to electricity. The UN have proclaimed the goal of providing electricity to all by 2030. In recent years, Pico-Photovoltaic kits have become a lower cost alternative to investment intensive grid electrification. Using a randomized controlled trial we examine uptake and impacts of a simple Pico-Photovoltaic kit that barely exceeds the benchmark of what the UN considers as modern energy. We find significant effects on households' budget, productivity and convenience. Despite these effects, the data shows that adoption will be impeded by affordability, suggesting that policy has to consider subsidized dissemination strategies.

JEL Classification: O13, O18, Q41

Keywords: energy access, household technology adoption, Sub-Saharan Africa, randomized controlled trial

Corresponding author:

Maximiliane Sievert
RWI
Hohenzollernstraße 1-3
45128 Essen
Germany
E-mail: sievert@rwi-essen.de

¹ The data underlying this research was collected for an impact evaluation commissioned by the Policy and Evaluation Department of the Ministry of Foreign Affairs of the Netherlands (IOB).

1. Introduction

More than 1.3 billion people in developing countries lack access to electricity. Some 590 million of them live in Africa (IEA 2012), where the rural electrification rate is only 14 percent (SE4All 2013). It is often hypothesized that lacking access to electricity hampers enterprise development and the provision of public services like health care and schooling. The absence of modern lighting in households not only limits their possibilities to pursue productive activities after nightfall, but also educational and recreational activities. In addition, traditionally used kerosene lamps emit a range of health-damaging pollutants. Providing access to electricity is frequently considered a precondition for sustainable development and the achievement of the Millennium Development Goals (MDGs, UN 2005). Based on such assumptions, the United Nations aims for universal access to electricity by 2030 via their initiative Sustainable Energy for All (SE4All, see also UN 2010). The investment requirements of achieving this target are enormous, estimated by the IEA (2011) to be about 640 billion US Dollars.

In recent years, so-called Pico-Photovoltaic (Pico-PV) kits have become an affordable bridging technology due to a substantial cost decrease for photovoltaic and battery systems as well as energy saving LED-lamps. Different Pico-PV kits exist that provide basic energy services like lighting, mobile phone charging and radio usage. The SE4All initiative considers the technology as a “transitional alternative to grid-based electricity” and as a potential “long-term solution” in remote areas (SE4All 2013: 79). In fact, within the SE4All multi-tier system of modern energy access, the Pico-PV technology constitutes the Tier 1 and thus the first step on the metaphoric energy ladder. Investment costs for Pico-PV kits are far lower than for the provision of on grid electricity or higher tier PV systems.

This paper investigates take-up behaviour and the changes in people’s living conditions after this first step towards modern energy by means of a Randomized Controlled Trial (RCT) in rural Rwanda. The kit, which we randomly assigned free of charge to 150 out of 300 households in 15 remote villages, consists of a 1 Watt solar

panel, a 40 lumen lamp, a telephone charger, and a radio – and thereby just barely reaches the benchmark of what qualifies as modern energy access in the SE4All framework. The market price of the full Pico-PV kit is at 29.50 USD. As such, this is the first study to examine whether the Pico-PV kits meet the energy demands of the main target group of Pico-PV technology, i.e. people living in a country's periphery that will not be reached by the electricity grid in the years to come. Our theoretical framework follows the household production model of BECKER (1965), further developed to the case of electrification in VAN DE WALLE ET AL. (2013). We concentrate on productivity effects on domestic production and budget effects through the reduction of energy expenditures. In addition, we look at convenience effects that are induced through higher quality and improved accessibility of simple energy services. The role of the international community in the promotion of Pico-PV technology is not defined so far. The most prominent program in the sector is World Bank's *Lighting Africa*, which tries to build up transparent markets for Pico-PV kits in Sub-Saharan Africa by providing technical assistance to governments and by introducing a quality certificate. The expectation is that Pico-PV kits can in principle make inroads to African households via commercial markets and without public subsidies. The only role of governments in this endeavour is to avoid a market-for-lemons effect that might arise from high variability in the quality of kits and information asymmetries that disadvantage consumers. Without an intervention, high quality products might be competed out by low quality solar or battery driven kits, which in turn do not fulfil the expectations of users and lead to a breakdown of the infant market. The quality certificate issued by Lighting Africa intends to create transparency in terms of quality and inform consumers' choices. The Pico-PV kit used for this RCT is certificated by Lighting Africa.

Apart from information asymmetries, the market for Pico-PV kits might suffer from further market imperfections that could justify the intervention of the international community. Most notably, the major target group of Pico-PV kits are located in very remote areas. These households, which are short on cash and access to credit, might

have more essential priorities to spend their money on. If these groups in the periphery of the developing world shall be reached by the SE4All initiative, direct subsidies or even a free distribution might be required. This is in fact the policy intervention we mimic in our study. From a welfare economics point of view this would be justified if the usage of Pico-PV kits generates private and social returns that outweigh the investment cost. It is the purpose of our paper to provide evidence on this debate.

The remainder of the paper is organized as follows: Section 2 provides the background by reviewing the relevant literature on energy access and by presenting the international movement to provide electricity to non-connected households. Section 3 describes the underlying theoretical model. Section 4 introduces the research approach and its implementation. Section 5 presents the results, and Section 6 concludes.

2. Background

2.1 Policy Background

In the absence of electricity people in rural Sub-Saharan Africa light their homes using traditional lighting sources – candles or kerosene driven wick lamps and hurricane lamps. In recent years, dry-cell battery driven LED-lamps have become available in almost every rural shop and are increasingly used. The most common ones are small LED-torches and mobile LED-lamps that exist in various shaping, for example a battery driven hurricane lamp (see Figure 2). In addition, many rural households use hand-crafted LED lamps, i.e. LED-lamps that are removed from torches and installed somewhere in the house or on a stick that can be carried around. Yet, both traditional lighting sources and dry-cell batteries are expensive and the costs per lumen hour are much higher than for grid or solar fed lighting sources (if investment costs are not included). For rural households in Africa, lighting expenditures constitute a considerable part of their total expenditures. In very remote

and poor areas, people who are cash constrained generally use very little artificial lighting and sometimes even only resort to the lighting that the cooking fire emits. For this stratum, the day inevitably ends after sunset.

Obviously, this lighting constraint restricts people in many regards. Activities after nightfall are literally expensive, but also difficult and tiring because of the low quality of the lighting. It is against this background that the United Nations have launched the Sustainable Energy for All initiative (SE4All) to provide modern energy to everybody by 2030 (see UN 2010, SE4All 2013). At the same time it becomes evident that modern energy is not a binary situation. Rather, there are several steps between a candle and an incandescent light bulb or even a situation in which lighting can hardly be considered a scarce good (like in industrialized countries). A regular connection to the national electricity grid is of course much more powerful and hence allows for usage of more appliances than a connection to a mini-grid or an individual solar home system.

This continuum has sometimes been referred to as the *energy ladder*. In fact, SE4All has now defined different tiers of modern energy access within its Global Tracking Framework (SE4All 2013) according to the electricity supply that is made available. A regular connection to the national grid allowing for using general lighting, a television, and a fan the whole day would thereby qualify, for example, for Tier 3 or more. A solar home system would qualify for Tier 1 or 2 (depending on its size). Tier 1 requires having access to a peak capacity of at least 1 Watt and basic energy services comprising a task light and a radio or a phone charger for four hours per day.² The spread between the service qualities of the different tiers is also reflected in the required investment costs: the retail price of the Pico-PV kit used in this study is at around 29.50 USD, WORLD BANK (2009) estimates a cost range for on-grid electrification in rural areas of 730 to 1450 USD per connection.

The promotion of Pico-PV kits is most prominently pursued by the World Bank

² The investment requirements calculated by IEA (2011) of additional 640 billion US Dollars to achieve universal access to electricity are based on electricity connections that provide a minimum level of electricity of 250 kWh per year. This roughly corresponds to a Tier 2 electricity source.

program *Lighting Africa*. Based on the assumption that the market for Pico-PV systems is threatened by a lack of information and information asymmetries, it provides technical assistance to governments, provides market research and facilitates access to finance to market players, and has introduced a quality certificate. The objective of Lighting Africa is to provide access to certificated Pico-PV kits to 250 million people by 2030. The Pico-PV kit used for the present study is certified by Lighting Africa.

2.2 Country Background

Rwanda's energy sector is undergoing an extensive transition with access to electricity playing a dominating role. While the focus is clearly on the huge Electricity Access Roll-Out Program (EARP) and no particular government interventions so far are targeting off-grid and solar solutions, the Government of Rwanda explicitly welcomes activities that intent to improve the access to solar energy in rural areas. Also for Pico-PV, no particular promotion scheme is in place, but the Government cooperates with Lighting Africa and in general is very favourable towards private sector players. The few existing firms that sell Lighting Africa certificated Pico-PV kits operate mostly in the Rwandan capital, Kigali, and other cities. While in rural areas, Pico-PV kits are sometimes available, but their retail price is much higher compared to lower quality dry-cell battery driven LED-lamps that can be bought in rural shops all over the country. These devices are not quality assured, but cost only between 500 FRW (0.82 USD) for hand-crafted LED lamps and 3000 FRW (4.95 USD) for an LED hurricane lamp. The battery costs to run an LED hurricane lamp for one hour are at around 0.01 USD. This is cheaper than running a kerosene driven wick lamp (around 0.03 USD per hour) and the lighting quality is slightly better, which is why many households are now using such ready-made or hand-crafted LED-lamps. Compared to both battery driven LED lamps and kerosene lamps, Pico-PV kits provide higher quality lighting (depending on the number of LED diodes) at zero operation costs. The investment into the Pico-PV lamp used for

this study of 16.50 USD amortizes after 1200 lighting hours if it replaces an LED hurricane lamp and after less than 600 lighting hours if it replaces a kerosene driven lamp. Assuming that a household uses the lamp for four hours per day, the Pico-PV lamp pays off after 10 month if the LED hurricane lamp is replaced and after less than 5 months if it replaces a kerosene driven lamp.

2.3 Literature

The effects of electrification have been increasingly studied in recent years. The results are mixed for effects on productivity, firm performance, and employment with some very positive evidence from India, Nicaragua, and South Africa (RUD 2012; GROGAN AND SADANAND 2012; DINKELMAN 2011) and rather sobering findings from remoter areas in Africa (BERNARD 2010; PETERS, VANCE AND HARSDORFF 2011; NEELSEN AND PETERS 2011).

For household level indicators and household behaviour, most studies find positive effects of grid electrification. KHANDKER, BARNES, AND SAMAD (2012) observe a substantial increase in household income and completing schooling years in Bangladesh. In addition, the study time for children increases. These benefits, though, are unevenly distributed across households with richer households benefiting more from electricity than poorer ones. KHANDKER, BARNES, AND SAMAD (2013) confirm these findings for Vietnam. VAN DE WALLE ET AL. (2013) examine the long-term effects of rural electrification in India and find evidence for an increase in consumption and a shift in labour supply from casual work to formal work. Also, schooling outcomes measured by enrolment rates and years of schooling improve. The only study that examines broader household indicators in Africa is BENSCH, KLUVE, AND PETERS (2011). Using data from Rwanda they find that people use electricity mostly for lighting and hardly for other appliances. The effect on lighting consumption is considerable both in terms of quality and quantity. Further changes in household behaviour cannot be observed with insignificant effects on kids' home study hours and income. Without looking on broader socio-economic dimensions, LA

FERRARA, CHONG, AND DURYEY (2008), PETERS AND VANCE (2011) and GRIMM, SPARROW, and TASCIOTTI (2014) observe a declining fertility rate in newly connected areas in Brazil, Côte d'Ivoire and Indonesia, respectively.

The common feature of all these studies is the technology they look at: access to grid electricity. Only very few rigorous studies exist that investigate the effects of solar based electrification. SAMAD ET AL. (2013) examine Solar Home System usage in Bangladesh. They find positive effects on evening studying hours of school kids, an increase in TV usage followed by an increase in decision-making power, a decrease in respiratory disease symptoms induced by kerosene usage as well as an increase in expenditures. The solar panels in their sample are between 10 and 130 Watt with 50 Watt being the most common panel size. Like grid electricity, such solar home systems easily qualify for energy access in Tier 2 or higher in the SE4All Global Tracking Framework. The only study that examines low-cost solar panels that fall into Tier 1 is FURUKAWA (2012). In a randomized controlled trial in Uganda the paper concentrates on educational outcomes and obtains puzzling results. While study hours clearly increase among solar lantern owners, this does not translate into better test results. On the contrary, solar lantern owners show weaker test results than non-owners.

Overall, it can be stated that little evidence exists on rural electrification in Africa and on off-grid technologies. In particular, the present paper therefore is the first to study the effects of a low-cost Pico-PV kit that would fit into the first tier of the SE4All tracking framework on household behaviour, budget, and convenience.

3. The Theoretical Model

In what follows we present a theoretical framework that will guide our empirical analysis. We rely on a model that VAN DE WALLE ET AL. (2013) developed for the evaluation of electrification effects and adapt it to the particularities of providing access to Pico-PV kits. We assume that the Pico-PV treatment affects three dimensions of living conditions: First, the *productivity* of domestic production, i.e.

production not intended to be traded on competitive markets. The reason for only focussing on domestic production is that the Pico-PV kit will not affect agricultural production, which in turn is virtually the only source of tradable goods produced in these remote areas with only very limited access to markets. Second, the *budget effect* which arises because households with access to a Pico-PV kit experience a change in the price of energy, while no (substantial) investment costs occur as long as we assume that the Pico-PV treatment is subsidized or distributed for free. Third, the *convenience effect* which refers to the direct effect that the Pico-PV kit has on people's well-being, as it improves the quality and quantity of light at home relative to traditional lighting sources such as kerosene and candles or hand-crafted LED-torches.

As in VAN DE WALLE ET AL. (2013), we assume that households derive utility from goods, Z , and recreation or leisure time, R . Hence, the utility function is defined as strictly increasing and quasi-concave and has the following form:

$$U = U(Z, R_L, R_D). \quad (1)$$

Leisure can be spent under light, R_L , or in darkness, R_D (here and in what follows light includes non-electric sources of light). We further assume that the marginal utility of recreation in light R_L is higher than the recreation in darkness R_D , because recreation under light allows for a wider set of potential activities than darkness. These activities may include reading or socializing. Moreover, in the given context it is plausible to assume that the household is light constrained, i.e. $U'_{R_L} > U'_{R_D}$. We abstract, as do VAN DE WALLE ET AL. (2013), from preference shifts induced by electric lighting. While such shifts are imaginable in the case of full electricity access because of, for example, the increased usage of information technologies related to electricity access or the psychological effects of improved lighting, in the present case of a Pico-PV treatment it is less likely to be relevant.

The good Z is domestically produced according to the following production function:

$$Z = Z(D(E), C_e, C_o), \quad (2)$$

where D denotes domestic labour and C_e denotes consumption of energy in any form, such as firewood, kerosene, dry-cell batteries, candles and also electricity as generated by a Pico-PV kit. The productive activities may for instance include cooking, studying or charging a cell phone. C_o stands for the quantity of other goods consumed. E refers to access to electricity and increases the labour productivity in household production. In this model, E is treated as a continuous variable which reflects the non-binary character of electricity access ranging from Pico-PV kit to a high quality grid connection. In the empirical analysis, though, we will take it as a binary variable, since no other competing electricity source is available in the region.

As for recreation, for labour we also distinguish labour under electric light, D_L , and labour in darkness, D_D . Since E shifts the production function, we assume that labour under electric light is more productive than labour in darkness, hence $Z'_E > 0$ and $Z'_{D_L} > Z'_{D_D}$.

We can now write the time constraint of the household as follows:

$$T = D + R = D_L(E) + D_D + R_L(E) + R_D, \quad (3)$$

where each time use is positive: $D_L(E) \geq 0$, $D_D \geq 0$, $R_L(E) \geq 0$ and $R_D \geq 0$. We normalize the time endowment to one so that the allocation of time is characterized through fractions of the total endowment T . The time endowment T does not include an incompressible time window people need to spend sleeping (typically in darkness) and the time they spend in a labour market activity, typically on their own farm or in paid employment. These two time uses are exogenously fixed and are not significantly affected by the availability of a Pico-PV kit. Hence, farm or market income, Y , is also exogenous.

Hence, the budget constraint can be written as follows:

$$p_e(E)C_e + C_o = Y. \quad (4)$$

The price of C_o is set equal to one, it is hence the *numéraire* in our model. An increase of E is assumed to reduce the price of energy, i.e. $p'_{eE} < 0$.

The Lagrangian associated with the constrained maximisation problem can be written as follows:

$$L = U(\mathbf{Z}, \mathbf{R}_L, \mathbf{R}_D) - \gamma(p_e(\mathbf{E})\mathbf{C}_e + \mathbf{C}_0 - Y) - \mu(\mathbf{D}_L(\mathbf{E}) + \mathbf{D}_D + \mathbf{R}_L(\mathbf{E}) + \mathbf{R}_D - \mathbf{1}). \quad (5)$$

Assuming \mathbf{E} as exogenously determined, the first order conditions are:

$$\partial L / \partial \mathbf{Z} = \mathbf{U}'_Z - \gamma(p_e(\mathbf{E})\mathbf{C}'_{eZ} + \mathbf{C}'_{0Z}) - \mu(\mathbf{D}'_{LZ} + \mathbf{D}'_{DZ} + \mathbf{R}'_{LZ} + \mathbf{R}'_{DZ}) = \mathbf{0} \quad (6)$$

where $\mathbf{U}'_Z = U(\mathbf{Z}'_{D_L(\mathbf{E})} + \mathbf{Z}'_{C_e} + \mathbf{Z}'_{C_0})$.

$$\partial L / \partial \mathbf{R}_L = \mathbf{U}'_{R_L} - \mu = \mathbf{0}. \quad (7)$$

$$\partial L / \partial \mathbf{R}_D = \mathbf{U}'_{R_D} - \mu = \mathbf{0}. \quad (8)$$

Hence, the household chooses simultaneously the optimal amounts of \mathbf{Z} , \mathbf{R}_L and \mathbf{R}_D given the exogenous available level of lighting as well as the budget and time constraints. The choice of \mathbf{Z} in turn requires to choose \mathbf{D}_L , \mathbf{C}_e and \mathbf{C}_0 . Labour, energy and market goods are used in order to equate the marginal rates of transformation with the shadow price of labour, the price of energy and the price of market goods. The marginal rates of substitution between consumption of the domestically produced good and recreation under light and in darkness are equated to the price ratios between the shadow price of the domestically produced good as well as the shadow prices of recreation under light and in darkness. The marginal utility of recreation under light is equated to the marginal utility in darkness.

If in the optimum access to electricity \mathbf{E} changes exogenously the optimization problem above implies that the price of energy is reduced, electric light is available (for free) and domestic labour is more productive. The increase in the productivity of labour leads to an increase in the output of household production. This is the *productivity effect*. The lower price of energy will increase energy consumption and recreation given the income effect and depending on the rate of substitution between the domestically produced good and leisure lead to an increase or decrease of

consumption of the domestically produced good. This is the *budget effect*. The increased availability of electric light (for free) leads to a substitution between recreation in the darkness by recreation under light. This is the *convenience effect*. Hence, the model implies that $dU/dE > 0$, since

$$\frac{\partial Z}{\partial D_L} \frac{dD_L}{dE} > 0, \quad \frac{\partial Z}{\partial C_e} \frac{dC_e}{dE} > 0 \quad \text{and} \quad \frac{\partial U}{\partial R_L} \left(-\frac{dR_D}{dE} \right) > 0,$$

where the first term refers to the *productivity effect*, the second to the *budget effect* and the third to the *convenience effect*.

In our empirical analysis we seek to identify causal evidence in support of these three effects.

4. Research Approach and Data

4.1 Treatment and Identification Strategy

The randomized kits include a 1 Watt panel, a rechargeable 4-LED-diodes lamp (40 lumen maximum) including an installed battery, a mobile phone charger, a radio including a charger, and a back-up battery package. There are different options to use the panel. First, it can be used to directly charge the lamp's battery. After one day of solar charging it is fully charged. The lamp can be used in three dimming levels and – fully charged – provides lighting for between 6 and 30 hours depending on the chosen intensity level. Second, the kit can be connected directly to the mobile phone connector plug and the radio connector to charge mobile phones or the radio. Third, the kit can be used to charge the back-up battery package that can then be used to charge the other devices without sunlight (i.e. inside or after nightfall). The complete kit costs around 29.50 USD, the smallest version with only the solar panel and an LED lamp costs around 16.50 USD.

Figure 1: The Pico-PV kit



Source: Own illustration

The identification strategy relies on the randomized assignment of the Pico-PV kits at the time of the baseline survey. Households do not select themselves into the treatment and thereby the confusion of impacts of the program with other factors that are correlated with the outcomes of interest and selection into the treatment group is avoided. As a consequence, unobserved characteristics cannot distort the impact assessment afterwards. All differences in follow-up outcomes can be attributed to the treatment.

Two principal approaches exist to estimate the impact of ICS usage in this experimental setup. The intention-to-treat effect (ITT) is obtained by simply comparing mean values of impact indicators for the treatment and control group, without accounting for non-compliance from households that were assigned to the treatment group, but for some reason do not use the Pico-PV kit. The average treatment effect on the treated (ATT), by contrast, accounts for non-usage in the treatment group and potential take-up in the control group and thereby serves to estimate the effect of effective Pico-PV usage. For this purpose, instrumental variable (IV) estimations could be applied with the random assignment into the treatment group as an instrument for the effective usage of the Pico-PV kit. This would yield a local average treatment effect (LATE). In our case, ITT and ATT are very similar given the high compliance rate in the treatment group and no selection into treatment in the control group. Since all results are robust with regard to both ways

of estimating impacts, we generally display in the following only the more conservative ITT results.







4.2. Impact Indicators

As a pre-condition for the three effects on budget, productivity and convenience, which we identified in the theoretical model, the households' take-up behaviour is our first matter of interest. We look at usage and charging patterns of the Pico-PV kit and analyse which of the different energy services – lighting, radio operation, and mobile phone charging – households use most. Since the kit is used for lighting mainly (see Section 5.2.1), we focus most of the more detailed analyses on lighting usage and identify the main users of the solar lamp.

For budget effects, we first look at changes in the price of the energy service. For this purpose, we calculate the *price per lighting hour* and *price per lumen hour* the households effectively pay. Second, we analyse whether price effects translate into a change in lighting consumption as suggested by the model. Here, we look at the average amount of *lighting hours consumed per day* and *lumen hours consumed per day*. Lighting hours are calculated as the sum of usage time of all lamps used during a typical day (including candles and ready-made torches). The price per lighting hour is calculated by dividing expenditures on lighting fuels (kerosene, batteries, candles) by the number of lighting hours consumed. For calculating lumen hours we multiply the lamp specific lighting hours with the amount of lumen (lm) emitted per lamp. The different lighting sources used by the households emit very different amounts of lumen. The Pico-PV lamp emits 40 lm, while a candle only emits around 12 lm, a hurricane lamp used at full capacity around 32 lm and a mobile LED lamp reaches levels around 100 lm (O'Sullivan and Barnes 2006). Lumen levels emitted by hand-crafted LED lamps vary substantially depending on the number and quality of diodes and batteries used. Since lumen numbers for these hand-crafted lamps do not exist, we tested the two most widely used structures (a two diode-lamp and a three diode-lamp structure connected to a battery package of three very low batteries and

three slightly fuller batteries, respectively) in a laboratory using standard lumen emission test procedures. Based on these tests we estimate an average level of 10 lm emitted by hand-crafted LED lamps.

Figure 2: Traditional lighting devices

hurricane lamp	traditional tin lamp	ready-made torch	hand-crafted LED lamp	mobile LED lamp
				 

Source: Own illustration

Finally, we look at changes in *total energy expenditures* and in the expenditures for the different energy sources kerosene, batteries, candles, and charcoal (for ironing only). We also examine to what extent the reduced usage of kerosene leads to a perceived improvement of *air quality* and, potentially, into a decrease in *respiratory disease symptoms* and *eye problems*.

For productivity effects we look at the main users' domestic labour activities exercised when using the Pico-PV lamp. The main domestic labour activity for adults is housework while children use the lamp mainly for studying. We assess the gain in household productivity by analysing the *lighting source used* for these respective activities. Following the theoretical model, households become more productive when they switch from a lower quality lighting source to the Pico-PV lamp. A switch from no artificial lighting to the Pico-PV lamp is also considered a productivity gain. To this end, we enumerated all lamps in each household interview and asked respondents to name all users for each lamp and the respective purpose of using it. The information on time spent on different activities was elicited in the interviews through an activity profile for each household member. For the head of household

and the spouse, interviewees specified the time these persons get up, the exact periods in the course of the day when they exercise income generating activities (including subsistence farming) and do housework, and when they go to bed. For children we furthermore elicited from which time to which time children study at home and outside their home (at a neighbour's house etc.) after school. Since we know the exact time of each activity for every household member, we are able to distinguish between activities that are pursued before and those that are pursued after nightfall. If a certain activity pursued by the household is not associated to one of the employed lamps, we assume that no specific lighting device is used for this activity and it is either exercised using daylight, or using indirect lighting from the fireplace or lamps used by other household members.

In order to analyse whether the higher productivity also leads to an increase in total domestic labour input, we analyse the total amount of *time dedicated to domestic labour per day*. More specifically, we analyse the time the head of household and the spouse spend per day on housework and the time children study at home per day.

For convenience effects, we assess how household members distribute their time given the increased availability and higher quality of lighting. For this purpose, we look at the *time dedicated to recreation*. We calculate the recreation time by subtracting the time household members spend on income generation activities and time dedicated to domestic labour from the total time household members are awake. For children at school age we subtract 4 hours and 8 hours for primary and secondary school time, respectively, which corresponds to the time children normally spend each day at school in Rwanda. The theoretical model assumes that time spent on income generation activities and the total time household members are awake are not affected by the treatment; this assumption can also be corroborated in our sample.

In order to assess changes in the time household members spend on *recreation under light*, we examine whether for a certain recreational activity a lighting source was used.

4.3 RCT Implementation

The RCT for this study was conducted between November 2011 and July 2012 in close cooperation with the Rwandan survey company IB&C and the Rwandan Energy Water and Sanitation Authority (EWSA). IB&C team members and EWSA staff were included at all stages of the planning and implementation process. In November 2011, we did a preparation mission to select the regions in which the RCT should be implemented. In order to mimic the effects Pico-PV kits would have on their ultimate target population – households beyond the reach of the electricity grid and its extensions – we selected 15 remote communities in the periphery of the country. According to Rwandan solar experts, these regions show a medium solar radiation level with a yearly average of 5.5 hours of sunlight per day. Also in the (cloudier) rainy season the radiation level should be enough for the Pico-PV kit to produce sufficient electricity. In order to avoid treatment contamination, none of the few regions were selected in which Pico-PV kits were already available.

Together with IB&C we conducted a baseline survey among 300 randomly sampled households in December 2011. The baseline data was used to build strata of comparable households with regards to the consumed lighting hours per day, usage of mobile phones (binary), radio usage (binary), and district. We then randomized the treatment within the 48 strata resulting from this stratification, which ensures that the resulting treatment and control groups are balanced with regards to the stratification criteria (see BRUHN AND MCKENZIE 2009). We applied additionally a minmax t -stat method in order to assure balance for further important baseline criteria that could not be accounted for in the stratification because of dimensionality reasons.³ Examples for such “secondary” balancing criteria are usage of dry-cell battery driven LED-lamps and wealth indicators such as housing conditions or the educational level of the head of the household. For the impact analysis, we include stratum dummies according to our stratification process and control for all

³ See ASHRAF ET AL. (2010) for an application of this combined stratified re-randomization approach.

household characteristics used for re-randomization.

A few days after the baseline survey, the Pico-PV lamps were delivered to the randomly selected households. Those households assigned to the control group received a compensation (one bottle of palm oil and a 5kg sack of rice) in order to avoid resentment among the villagers. The Pico-PV “winners” furthermore were instructed on how to use the kit. This instruction was conducted by staff members of the organisation that marketed the Pico-PV kit in other regions and who are hence also responsible for instructing real customers that buy a kit at a regular sales man. Also, the content of the instruction was congruent with the ordinary instruction a real-world customer receives. Members of IB&C participated in this instruction.

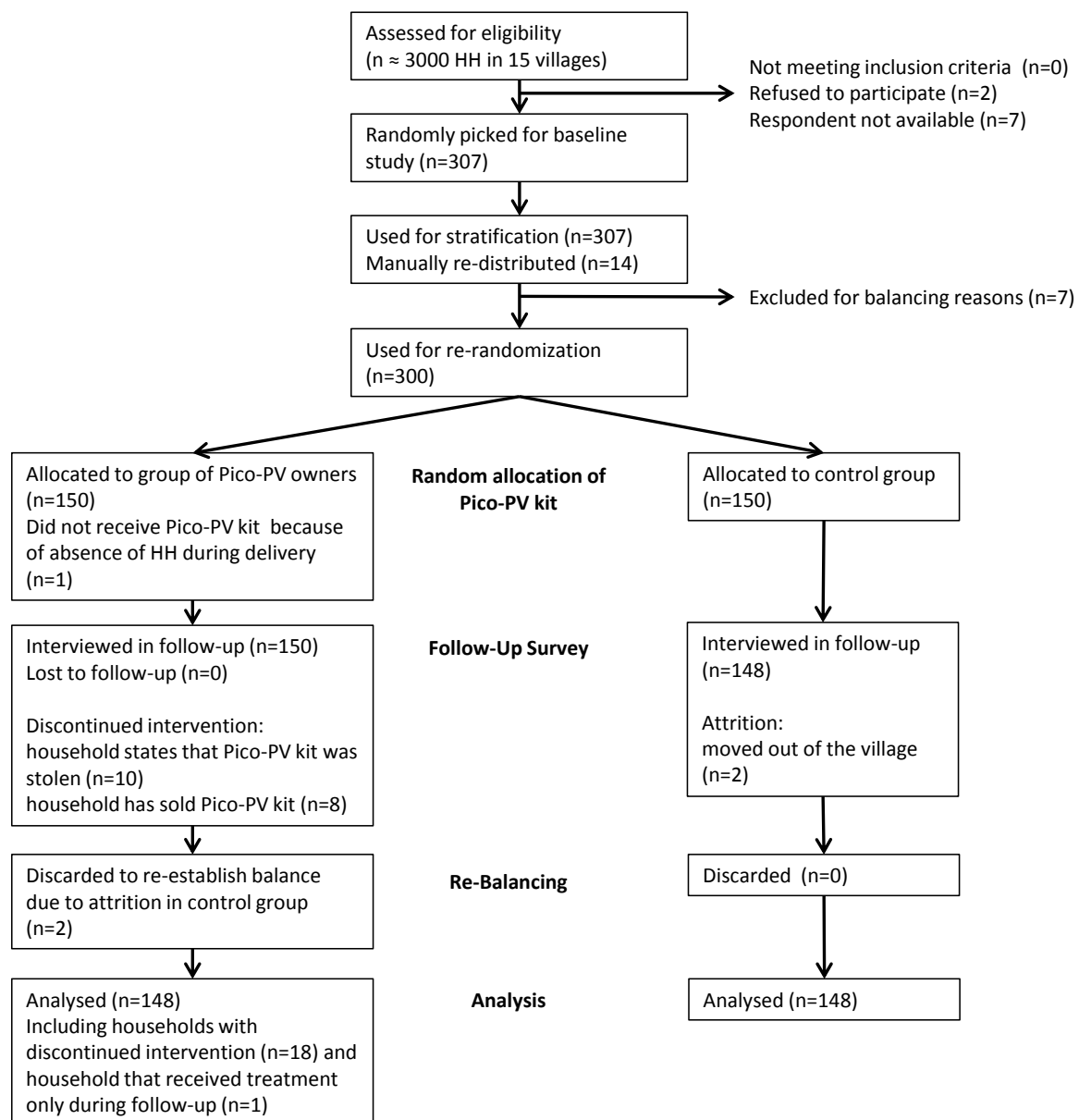
Since the survey was embedded into a broader set of evaluation studies in the Rwandan energy sector on other ongoing interventions in different areas of the country, it was presented as a general survey on energy usage and not as a study on Pico-PV or lighting usage. Neither treatment nor control group members were informed about the experiment. An official survey permission issued by the Rwandan energy authority was shown to both local authorities and the interviewed households. Both the Pico-PV kit and the control group compensation was presented to participants not as a gift, but as a reward for participation in the survey.⁴ We conducted the randomization in our office using the digitalized baseline data. Local authorities as well as the field staff of IB&C were only informed on the final randomization results.

Given the high poverty rates in the region, our local partners assessed the risk of households selling the Pico-PV kit to be fairly high. Since it was our ambition to mimic a policy intervention in which basic energy services are provided for free to all households (and thus trading the kits would not be an issue) we tried to avoid this. Our local research partners addressed this risk by preparing a short contract to be

⁴ A similar procedure as applied by DE MEL, MCKENZIE AND WOODRUFF (2008) in an RCT on business grants among micro-enterprises in Sri Lanka

signed by the district mayors and the winners that obliged the winners not to sell the Pico-PV system (see Annex). The governmental authority is well respected also in remote areas of the country and Rwandans generally tend to comply with formal agreements. At the same time we were assured that such a procedure would not induce irritations or other issues in the villages. A monitoring visit among all winners each two months was conducted to ensure the proper functioning of the Pico-PV systems and may remind the winners of their commitment not to sell the systems.

Figure 3: Participants flow



Source: own illustration in accordance with guidelines provided in Bose (2010)

Six months after the randomization we revisited the 300 households for the follow-up survey. Except for two, all households interviewed during the baseline could be retrieved giving us a fairly low attrition rate of only 1 percent. Also compliance turned out to be high with only 18 households that declared their Pico-PV kit to be sold, lost or stolen (it can be suspected that also the lost and stolen ones were sold in fact). One household got the kit only during the follow-up, since the household had been absent during multiple delivery attempts after baseline. In order to rebalance the two groups after attrition we discarded two households from the treatment group sample by randomly dropping one observation each from the same two strata that lost the two households from the control group. The participant flow is visualized in Figure 2.

5. Results

5.1 Balance of socio-economic characteristics of participating households

This section examines the balancing between treatment and control group and at the same time portrays the socio-economic conditions in the study areas. Baseline values of the households' socio-economic characteristics show that the randomization process was successful in producing two perfectly balanced groups (see Table 1). We do not find any significant difference between the treatment and the control group, neither for the characteristics used for stratification and re-randomization nor for further household characteristics.

The surveyed households are mainly subsistence farmers that live in very modest conditions. Housing conditions are very simple even for Rwandan standards. The educational level of the head of household is low and households have very few small assets only. The households in our sample have cash expenditures of on average 1.07 USD a day per person with the lower 25%-stratum having 0.18 USD

only. Even the upper quantile has cash expenditures of 2.86 USD only.⁵ By all definitions, the households qualify as extremely poor.

Table 1: Balance of socioeconomic characteristics between treatment and control group (baseline values)

	Treatment		Control	<i>t</i> -test/chi-2-test (total treated vs. control <i>p</i> -values)
	total (sd)	non-compliant (sd)	total (sd)	
N	129	19	148	
Household size *	4.85 (2.0)	5.5 (1.5)	5.0 (2.0)	0.491
Hh's composition (in percent)				
Share children 0-15 years	39 (24)	51 (16)	38 (23)	0.680
Share elderly 65+	7 (20)	2 (6)	5 (16)	0.389
Hh's head male (in percent)	76	84	76	0.892
Age of the HH's head	47 (15)	45 (17)	48 (15)	0.795
Education of hh head (in percent) *				
None	35	53	34	0.855
Primary education	61	42	60	
Secondary education and more	4	5	5	
Cultivation of arable land (in percent) *	98	100	99	0.314
Ownership of arable land (in percent) *	95	90	95	0.791
Ownership of cows (in percent) *				
No cow	63	84	69	0.542
One cow	22	11	19	
More than one cow	15	5	12	
Ownership of goats (in percent) *				
No goat	68	79	74	0.476
One goat	16	5	14	
More than one goat	16	16	11	
Material of the walls (in percent) *				
Higher value than wood, mud, or clay	14	11	14	1.000
Material of the floor (in percent) *				
Higher value than earth or dung	11	5	11	0.854
District (in percent) ⁵				
Gicumbi	19	16	20	0.997
Gisagara	26	32	27	
Huye	27	26	27	
Rusizi	27	26	27	
Number of observations	148	19	148	

Note: * used for re-randomization: ⁵ used for stratification

⁵ All expenditure values adjusted for purchasing power parity (PPP).

Also energy consumption patterns illustrate the precarious situation of most households (see Table 2): They consume on average only around 3 hours of lighting per day which is mainly provided through kerosene-driven wick lamps or small hand-crafted LED lamps. Around 11 percent of households even do not use any artificial lighting devices and rely only on lighting from the fireplace after nightfall. For the baseline values, we calculate lighting hours as the sum of lighting usage per day across all used lamps, excluding candles and torches because we did not elicit usage hours for candles and torches at the baseline stage. Almost 65 percent of the household own a radio, around 40 percent have mobile phones.

Table 2: Balance of outcome related characteristic between treatment and control group (baseline values)

	Treatment		Control	<i>t</i> -test/chi-2-test (total treated vs. control <i>p</i> -values)
	total (sd)	non-compliant (sd)	total (sd)	
N	129	19	148	
Lighting hours, categorized ^S				
No lamps or candles	19	26	19	
Less or equal 3h/day	51	42	51	
More than 3h/day	30	32	30	1.000
Lighting hours per day, continuous*	3.1	2.7	3.2	0.910
Usage of hand-crafted LED* (in %)	37	26	34	0.629
Usage of mobile LED* (in %)	3	5	4	0.520
Consumption of candles* (pieces per month)	1.34	2.32	1.76	0.445
Usage of wick lamps (in %)	49	47	47	0.727
Usage of no artificial lighting (in %)	12	11	16	0.715
Consumption of kerosene for lighting * (in litre per month)	0.46	0.35	0.54	0.373
Radio ownership ^S (in %)	64	32	64	1.000
Mobile phone ownership ^S (in %)	36	32	36	1.000
Number of mobile phones *	0.49	0.21	0.47	0.815

Note: * used for re-randomization: S used for stratification

If we look at the group of non-compliers, we see that they differ substantially along several wealth indicating characteristics. This suggests that non-compliers are generally poorer than complying households: They have more children, own less land, have less cows and goats, and have less radios and mobile phones.

5.2 Impact assessment

5.2.1 Take-Up and Lighting Usage

Out of the 149 Pico-PV sets we originally randomized, 18 households do no longer possess the kit at the follow-up stage because they sold it (8 households) or it got stolen (10 households). Among the remaining 131 households that still have a Pico-PV kit, usage rates are very high (see Table 3). 86 percent use the kit at least once per day, primarily for lighting. Radio and especially mobile phone charging usage rates are rather low. Most households report that both the radio and the mobile phone were very difficult to use with the kit, which was confirmed by technical inspectors involved in testing the kit for Lighting Africa. The major reason for this seems to be the borderline capacity of the panel, which only allows for charging all devices completely within one day if conditions are almost perfect and sunlight is exploited at a maximum. Given the households preference for lighting, too little capacity is left for the other two services. For mobile phone charging, non-compatibility of the solar charger with most widely used mobile phones in rural Rwanda posed additional problems.

In line with these technical deficiencies and the households' expressed priorities for lighting, charging patterns are dominated by the lamp: Most of the time, the kit is used to charge the lamp (26 hours per week), followed by operating the radio (20 hours). It is hardly used to charge a mobile phone (only 2 hours⁶). Households less frequently charge the battery pack that can be used to run one of the three appliances.

Due to the technical drawbacks of the Pico-PV kit, we will concentrate in the following on effects related to the usage of improved lighting service. Virtually all kit owning households use it for lighting.⁷ The Pico-PV lamps are mainly used by female adults, followed by male adults (see Table 3). Children use the lamp less frequently.

⁶ The share of households using the kit for mobile phone charging is very low at less than ten percent. Those households that charge their phone with the kit charge it 19 hours per week.

⁷ The only exceptions are four households that reported to have technical problems with the lamp and cannot use it for this reason.

Table 3: Usage of Pico-PV kits (share of treatment households in percent)

Share of treatment households... (in parentheses: only compliant households)	%	Pico-PV lamp is mainly used by...	%
using the kit at least once a day	86 (95)	Female adult >17 years old	49
...using the kit for lighting	85 (97)	Male adult >17 years old	23
...using the kit for listening to the radio	68 (79)	Female between 12 and 17 years old	10
...using the kit for charging mobile phones	10 (11)	Male between 12 and 17 years old	7
...use the battery pack	65 (71)	Collectively used by whole family	6
		Children between 6 and 11 years old	5

Traditional lamp usage goes down substantially, with 47 percent of the treatment group using exclusively the Pico-PV lamp for lighting purposes⁸. While treatment group households use on average 0.8 traditional lamps (any type, including candles), control group households use 1.43 traditional lamps implying that the Pico-PV lamps have replaced half of the traditional lighting sources. Treatment households use above all significantly less wick lamps and hand-crafted LED lamps, but also less ready-made torches, hurricane lamps, and mobile LED lamps. The share of households that do not use any artificial lighting source, amounting to nine percent in the control group, still reaches five percent among treatment households. They either belong to the group of no-compliers or to the households with technical problems with the Pico-PV lamp.

Overall, we find that the Pico-PV lamp was extensively used by the vast majority of households while the usage of traditional lamps is significantly reduced. Moreover, households seem to have a clear preference for the lighting device over the other two services the Pico-PV kit allows for. This revealed preference, though, has to be interpreted with some care, since technically the lamp was the easiest to use.

⁸ Table A1 in the Electronic Appendix shows a comprehensive presentation of lamp usage in the treatment and the control group.

5.2.2 Budget Effects and Kerosene Consumption

The major transmission channel for most impacts of the Pico-PV lamp is the price of energy and – given the primary usage of the lamp for lighting – the *price per consumed lighting hour* and the *price per consumed lumen hour* in particular. This price is decisive for the household's choice on the optimal level of lighting it consumes, both as input in the household production function as well as for spending recreation time under light.

As can be seen in Table 4, a control household pays approximately five times as much per lighting hour as a treatment household (950 FRW vs. 180 FRW; 1.56 USD vs. 0.30 USD) with this difference being obviously more pronounced for the price per lumen hour: A control household pays seven times more per lumen hour than a treatment household (70 FRW vs. 9 FRW; 0.12 USD vs. 0.02 USD)

Table 4: Price and consumption of lighting energy

	Treatment	Control	ITT	p-value
Cost per lighting hour (in FRW per 100 hours)	176	950	-702	0.000
Cost per lumen hour (in FRW per 100 hours)	9	70	-57	0.000
Lighting hours consumed per day	4.43	3.85	0.59	0.074
Lumen hours consumed per day	142	61	78	0.000

Note: The ITT depicts the difference in means at the follow-up stage between the whole treatment and control group, including also non-complying households. We control for all stratification and re-randomization characteristics. Detailed estimation results can be found in the Electronic Appendix. Exchange rate as of November 2011: 1 USD = 607 FRW.

This reduction in lighting costs effectively translates into a massive increase in the amount of *lumen hours consumed per day* in treatment households, which is more than two times as high as in control households (see Table 4) – reflecting the very poor lighting quality of traditional lighting sources. But also without accounting for the improved quality of lighting, the Pico-PV kit leads to an increase in lighting consumption. While baseline levels for *lighting hours consumed per day* are almost perfectly balanced between the treatment and control group, the treatment group consumes significantly more lighting hours after having received the Pico-PV lamp (15 percent more).

Looking at *total energy expenditure*, we observe that households spend around 5 percent of their overall expenditures on kerosene, candles, and dry-cell batteries, the lighting fuels typically used in non-electrified areas. In treatment households, the Pico-PV lamp has mainly replaced wick lamps, but also LED-lamps that run on dry-cell batteries (see Section 5.1) and, as a consequence, we expect a decrease of the respective expenditures. In fact, we observe a significant and considerable reduction of kerosene expenditures of almost 70 percent.

Two types of dry-cell batteries are used in the households, big (Type D) and small (Type AA) batteries. While more than 90 percent of small batteries are used for lighting, more than three fourth of big batteries are used for radios. As a consequence, for small batteries, we observe a significant reduction, whereas the consumption of big batteries is not affected. Also the consumption of candles is reduced significantly. For expenditures on mobile phone charging, we find a considerable reduction. The difference is not significant, though, which might be due to the small number of households that use the kit for phone charging.⁹

Table 5: Expenditures per month per category (in FRW)

	Treatment	Control	ITT	p-value
Candles	42	109	-20	0.339
Kerosene for lighting	155	609	-418	0.000
Charcoal	2	0	2	0.447
Big batteries	358	352	-9	0.750
Small batteries	30	72	-43	0.003
Mobile phone charging	407	520	-68	0.407
Total traditional energy sources (without cooking energy)	993	1662	-557	0.000
Total expenditures	37,971	31,334	7,249	0.276
Share of energy expenditure on total expenditures	0.04	0.07	-0.03	0.001

Note: The ITT depicts the difference in means at the follow-up stage between the whole treatment and control group, including also non-complying households. We control for all stratification and re-randomization characteristics. Detailed estimation results can be found in the Electronic Appendix. Exchange rate as of November 2011: 1 USD = 607 FRW)

⁹ Estimating an ATT only among mobile phone users by instrumenting the effective usage of the solar mobile phone charger with the random allocation of the Pico-PV kit shows a statistically significant reduction of costs for phone charging of 1662 FRW (2.74 USD). The average households that pays for charging the mobile phone pays 1400 FRW per month (2.31 USD).

In total, energy expenditures without cooking energy are 557 FRW (0.92 USD) lower in the treatment group with this difference being highly statistically significant. If we compare this to the total household expenditures it shows the importance of energy expenditures for the household budget: The share of energy expenditures without cooking decreases by 3 percentage points from 7 percent to 4 percent.

Next to the immediate effects on the households' expenditures, the reduction of kerosene consumption might have beneficial effects on people's health. The combustion of kerosene is associated with quite harmful emissions that can lead to respiratory diseases. Although the relative contribution of kerosene lamps to household air pollution is rather low compared to firewood and charcoal usage for cooking purposes, it is the immediate exposure of people sitting next to a wick lamp for a specific task (e.g. studying), that makes kerosene a substantial health threat (LAM ET AL. 2012). Indeed, in our sample kerosene lamps are above all used by children for studying and by women for cooking, and during open qualitative baseline interviews many households complained about sooty kerosene lamps leading to recurring eye problems and kids having black nasal mucus. We therefore examine the extent to which the decrease in kerosene lamp usage translates into a perceived improvement of *perceived air quality* and, potentially, into a decrease in *respiratory disease symptoms* and *eye problems*. While at the baseline stage the judgement of most households was that air quality in their houses was good (among both groups around 67 percent of the households rated the indoor air quality as good, the rest rating it as bad), in the follow-up survey 45 percent of treated households say that the air quality in their houses has improved in comparison to the baseline period, while hardly anybody in the control group makes this statement (3 percent). In an open question, virtually all treated households ascribe this improvement to the Pico-PV lamp. However, looking at reported health indicators we cannot confirm that this improved air quality leads to a better health status of the household members, which is no surprise given the rather subtle effect size over a six months period and the sample size at hand.

5.2.3 Productivity Effects

Building on the substantial usage of the Pico-PV lamp we examine the extent to which this induces a gain in household productivity. For this purpose, we look at the main users' domestic labour activities exercised when using the Pico-PV lamp and – in order to assess the extent of the quality improvement – which *lighting sources are used* among control households for the respective activity.

Table 6: Activity using Pico-PV lamp per household member (in percent)

		First Activity		Second Activity		Third Activity	
Female adult >17 years old	N=149	housework	87	Study	5	Eat	4
Male adult >17 years old	N=60	housework	71	Recreation	10	Study	10
Children between 6 and 17 years old	N=56	Study	75	Housework	16	Recreation	4

Note: Information on activities stem from an open question, asking what are the main activities the different lamp users are exercising while using the lamp.

The most frequent users of the Pico-PV lamp are female adults, of whom 87 percent use the lamp for housework. Housework done by women refers above all to cooking, but also to child caring, preparing the beds before going to sleep, and other smaller housework activities (see Table 6). By looking at lamps used for housework among control households, we see that the Pico-PV lamp replaces lower quality lighting sources (see Table 7): The lamp is used by women who formerly had not been using any lighting device for housework and replaces wick lamps. While 42 percent of the households in the control group do not use any lighting device for housework, only 15 percent in the treatment group do. Usage of wick lamps for housework is reduced from 32 percent to seven percent.

Male adults also use the lamp mostly for housework, which are mainly general activities in their case, i.e. time that is not used for one particular task but for various housework activities that are difficult to specify for the respondent (but excluding recreational activities). If we compare again the lamps used by control households for these activities, we see similar patterns as for women. The Pico-PV lamp replaces wick lamps (9 percent vs. 3 percent) and is used by males who formerly had not been

using any lamp for these activities (78 percent vs. 68 percent). Furthermore, the usage of ready-made torches (7 percent vs. 3 percent) and hand-crafted LEDs is reduced (5 percent vs. 1 percent). Accordingly, also male adults experience a gain in productivity for doing housework.

Table 7: Most frequently used lamps for housework by male and female adult (percent of all households)

Lamp	Female adults				Male adults			
	Treat.	Ctrl.	ITT	p-value	Treat.	Ctrl.	ITT	p-value
Wick lamp	7	32	-23	0.000	3	9	-7	0.001
Ready-made torch	8	12	-7	0.056	3	7	-8	0.000
Hand-crafted LED	7	9	-3	0.182	1	5	-6**	0.003
Pico-PV lamp	72	0	72*	0.000	26	0	26*	0.000
None	15	42	-25	0.000	68	78	-9	0.006

Note: The ITT depicts the difference in means at the follow-up stage between the whole treatment and control group, including also non-complying households. We control for all stratification and re-randomization characteristics. Detailed estimation results can be found in the Electronic Appendix.

*Probit estimation is not applicable, since control group households do not use the lamp leading to convergence problems; we display simple differences in means instead. **Controlling for randomization stratum dummies leads to convergence problems. We include the stratification criteria instead.

While each hour that adults spend on domestic production can now be used more productively thanks to the better lighting quality, the total time dedicated to domestic labour per day does not change significantly (see Table 8). While for head of households the difference between treatment and control household is negligible and statistically not significant, spouses in treatment households work more than in control households. The difference is statistically not significant, though. Of course, if such effect can be confirmed, the implications for women's welfare are unclear, as the increased workload might be the result of women's low decision power. The third most important user groups are children between 6 and 17 years. They use the Pico-PV lamp mainly for studying (see Table 6).

In order to understand changes in the productivity of studying at home, we first of all have to analyse children's study patterns and how they divide study time

between daylight time and evening. We present first the time dedicated to studying per day and afterwards examine the lighting source that is used when children study after nightfall. The theoretical assumption suggested by our model is that if an improved lighting source is used this induces a gain in productivity.

Table 8: Daily time spent on domestic labour

	Treatment	Control	ITT	p-value
Head of household, total	2h08	2h10	-0h01	0.950
Head of household, after nightfall	0h16	0h12	0h04	0.542
Spouse, total	2h48	2h30	0h16	0.333
Spouse, after nightfall	0h32	0h31	0h02	0.779

Note: The ITT depicts the difference in means at the follow-up stage between the whole treatment and control group, including also non-complying households. We control for stratum dummies and re-randomization characteristics. Detailed estimation results can be found in the Electronic Appendix.

As can be seen in Table 9, in around one third of the households with children at school age, children do not study after school with no significant differences between control and treatment households. The share of children studying after nightfall, though, is significantly higher in the treatment group. The *time dedicated to studying per day* shows a comparable pattern. The total study time, i.e. after nightfall and during daytime, does not increase. We do observe, though, that children shift their study time from afternoon hours to the evening leading to an increase in study time after nightfall.

Table 9: Study pattern (only HH with children at school age; 6-17 years)

	N	Treatment	Control	ITT	p-value
Share of HH with children studying after school	208	67	61	6	0.368
Share of HH with children studying after nightfall	208	58	38	27	0.000
Time children study after school, total (in minutes)	208	0h54	0h50	0h01	0.932
Time children study after nightfall (in minutes)	208	0h41	0h25	0h19	0.002

Note: The ITT depicts the difference in means at the follow-up stage between the whole treatment and control group, including also non-complying households. We control for all stratification and re-randomization characteristics. Detailed estimation results can be found in the Electronic Appendix.

Two further important changes can be observed when looking at the *lighting devices used for studying* (see Table 10): First, the share of children that use wick lamps for studying is significantly reduced. Wick lamps are the most common lighting source for studying among control households. Second, the share of children studying without any lighting device is significantly reduced from 41 percent in the control group to 32 percent among treatment households. This effect is driven by children who study during daytime, what is in line with what we saw above: Because of the Pico-PV lamp, children switch from studying at daytime to studying at night time. When studying at daytime, children normally do not use artificial lighting. Still, more than 20 percent of children both in the treatment and the control group do not use any lighting device for studying at all. These children use indirect lighting from lamps that are used by other household members for other activities. Here, no significant difference between the two groups can be seen.

Table 10: Most frequently used lamps for studying by children (percent of HH with children at school age; N=208)

Lamp	Children (6-17 years)			
	Treat.	Ctrl.	ITT	p-value
Wick lamp	2	12	-12*	0.000
Pico-PV lamp	30	0	30**	0.000
No lamp	32	41	-19	0.000
None and studying at day time only	9	18	-19	0.000
None and studying after nightfall	23	22	-2	0.633

Note: The ITT depicts the difference in means at the follow-up stage between the whole treatment and control group, including also non-complying households. We control for all stratification and re-randomization characteristics. Detailed estimation results can be found in the Electronic Appendix.

*Controlling for baseline kerosene consumption (continuous) causes convergence problems. We include a dummy indicating baseline kerosene consumption yes/no instead. ** Probit estimation is not applicable, since control group households do not use the lamp leading to convergence problems; we display simple differences in means instead.

Altogether, we do not observe an effect of Pico-PV kit ownership on the quantity of time children dedicate to studying. We do, however, find clear evidence for an improved quality of learning time and also for more flexibility of children to learn as

indicated by the shift towards learning during evening hours. Both can be plausibly expected to increase the effectiveness of learning. Measuring this effectiveness is obviously beyond the scope of our study.

5.2.4 Convenience effects

Given the substantial productivity effects on domestic labour activities and the price reduction for electric lighting, we analyse how household members distribute their time between household production and recreation and assess the *time dedicated to recreation*.

Table 11: Daily time spent on recreation

	Treatment	Control	ITT	p-value
Head of household	6h49	6h48	-0h09	0.693
Spouse	6h10	6h35	-0h42	0.008
Male children 12-17	5h51	5h44	-0h18	0.389
Female children 12-17	5h48	5h38	0h01	0.966
Male children 6-11	9h20	9h23	-0h16	0.105
Female children 6-11	9h20	9h23	0h06	0.841

Note: The ITT depicts the difference in means at the follow-up stage between the whole treatment and control group, including also non-complying households. We control for all stratum dummies and re-randomization characteristics. Detailed estimation results can be found in the Electronic Appendix.

It turns out that recreation time of most household members is not affected. Only for spouses we observe a significant difference. Spouses in treatment households enjoy significantly less recreation than control household. This is in line with the observation that treatment spouses do more housework (see Section 5.2.3). Recreation time for male children between 6 and 11 is also substantially lower among treatment households with the differences being close to statistical significance.

In order to assess changes in the time household members spend on *recreation under light*, we compare lighting sources used for recreational activities. Here, we observe that treatment households do not spend more recreation under light compared to control households. The share of households that do not use any lamp for

recreational activities is similar among both groups (around 86 percent) and no substantial changes can be observed for other lighting devices.

Table 12: Most frequently used lamps for recreation (percent of all HH)

Lamp	all household members			
	Treat.	Ctrl.	ITT	p-value
Wick lamp	0	2	-2*	0.083
Ready-made torch	4	5	-2	0.262
Hand-crafted LED	3	5	-3	0.133
Candle	2	1	2**	0.014
Pico-PV lamp	8	0	8*	0.001
No lamp	85	87	-2	0.633

Note: The ITT depicts the difference in means at the follow-up stage between the whole treatment and control group, including also non-complying households. We control for all stratum dummies and re-randomization characteristics. Detailed estimation results can be found in the Electronic Appendix.

*Probit estimation not applicable, since nobody uses lamp in control group leading to convergence problems; we display simple differences in means instead. ** Inclusion of randomization stratum dummies leads to convergence problems. We include the stratification criteria instead.

Altogether, we observe that the Pico-PV lamp is hardly used for recreational activities and convenience measured through our two indicators presented above does not increase. By contrast, the higher flexibility in when to pursue domestic production activities mentioned in Section 5.2.3, shows that the Pico-PV lamp nevertheless simplifies the organization of the daily routine.

6. Conclusion

This paper has analyzed the usage and benefits of very simple but quality certified small solar systems that were freely distributed among households in a randomized controlled trial. The 1 Watt panel and the basic energy services the Pico-PV kit provides just barely exceed the benchmark of what the United Nations Sustainable Energy for All (SE4All) initiative considers as access to modern energy (so-called Tier 1 energy access). With a retail price of around 29.50 USD these Pico-PV kits are at the very bottom of the cost range for different electrification options. It can be used for a four diodes lamp and to charge mobile phones and radios.

Guided by a theoretical household utility framework we have examined the extent to which the kit increases household's welfare through lower energy expenditures per lumen (the 'budget effect'), a higher productivity in housework (the 'productivity effect'), and a higher convenience during recreation (the 'convenience effect'). Our results show that Pico-PV kits in fact constitute an improvement compared to the baseline energy sources, mostly dry-cell batteries and kerosene. Given the small size of the panel, the charging capacity is obviously not abundantly available and many households did not manage to use the panel for charging the radio and mobile phones; lighting turned out to be the mostly used service. The lantern was indeed intensively used by virtually all treatment group households. In these remote and poor areas, lighting is a scarce good and the availability of the lantern has increased both the quality and the quantity of lighting usage. We find clear indication for a facilitation of various domestic work processes like cooking or studying. It enables households to allocate their time more freely and shift activities towards the evening hours. Not least, expenditures for dry-cell batteries and kerosene go down considerably. Beyond the mere effect this perceivably has on household welfare, it can be expected to yield major advantages for either people's health (because kerosene usage is associated with harmful smoke emissions) or the environment (because dry-cell batteries are usually disposed in unprotected latrines or in the landscape). Since households in rural Sub-Saharan Africa are rapidly switching from kerosene or candles to LED-lamps that run on dry-cell batteries this finding deserves particular attention.

Our results hence underpin the Tier-1-threshold of modern energy access in the SE4All Global Tracking Framework. The Pico-PV kits can in fact meet the need for basic energy services, at least in such poor areas with very low energy consumption levels. If our findings are compared to other data sets from less remote areas, for example a comparable study that has recently been conducted on the Rwandan grid extension program (PETERS ET AL. 2014), it also becomes evident, though, that Pico PV kits cannot satisfy the whole portfolio of energy demand due to their capacity

restrictions. Accordingly, in many not so remote areas Pico-PV kits can be considered as either a complement to a grid connection for backup purposes or as a bridging technology towards a grid connection at a later point in time. For very poor areas in the periphery of a country (as studied in this paper), in contrast, Pico-PV is in many cases the only option to obtain modern energy because, first, these regions are beyond the reach of the electricity grid for decades and, second, other off-grid solutions such as larger solar home systems are too expensive. We therefore argue that households in such remote areas are the major target group of Tier 1 energy systems within the SE4All initiative.

What is crucial for the acceptance of this new technology is the proper functioning and ease in usage of the kit – in particular if a market establishment policy is pursued as programs like Lighting Africa do. It has turned out that a relatively mature product such as the Pico-PV kit used in this study, which had been tested and certified by Lighting Africa as well as massively sold in other countries, might still exhibit technical problems under real usage conditions. Testing and certification procedures should therefore encompass a strong component of field tests and not only laboratory examinations. This is particularly important in the light of the rapid penetration of rural Africa with low-quality LED lamps that has occurred in recent years without any governmental involvement. In terms of lighting quality, these dry-cell battery run lamps are on a par with Pico-PV kits.

Nonetheless, Pico-PV kits that meet quality standards in terms of usability and life-time are a worthwhile investment. If kerosene or dry-cell batteries are replaced, households with consumption patterns as observed in our research economize on average 0.95 USD per month, which is around two percent of monthly household expenditures. The investment into the Pico-PV kit then pays off after 18 months, which is less than its life-span of 2-3 years. However, it is easy to imagine that the interplay of cash and credit constraints of the target population, the lack of information, and high preferences for today's consumption will make most households forego this investment. This claim points at a dilemma of Lighting Africa

and other donor and governmental interventions, which intend to disseminate Pico-PV kits via sustainable markets as a contribution to SE4All: The major target population will hardly be able to bring up the required investment. At the same time, it is clearly the political will both in national governments and among the international community to provide energy access also to the very poor – not least because of the clear social benefits related to the reduction in the consumption of kerosene and dry-cell batteries. These positive external effects of Pico-PV usage would suggest that more direct promotion options should be considered. Subsidized or even free distribution of kits might be an alternative to reach the poorest of the poor. While many development practitioners are opposed to a free distribution policy and it would be in stark contrast to the strategies pursued by ongoing dissemination programmes, the empirical literature provides evidence from other field experiments that supports the idea (COHEN AND DUPAS 2010; KREMER AND MIGUEL 2007; TAROZZI ET AL. 2012). As a matter of course, a subsidized distribution policy would require establishing institutions that the subsidy scheme in order to avoid a flash-in-the-pan effect.

Since these recommendations can only be an interim conclusion, further research on the take-up behaviour and on the impacts of Pico-PV usage has to follow. Further experimental studies should examine the mechanisms behind take-up behaviour, such as the households' willingness-to-pay for electric energy, the role of credit constraints, and information. Such research efforts will help to design appropriate strategies to achieve the modern energy for all goals of the international community.

References

- Ashraf, Nava, James Berry, and Jesse M. Shapiro. 2010. "Can Higher Prices Stimulate Product Use? Evidence from a Field Experiment in Zambia." *American Economic Review*, 100(5): 2383–413.
<http://search.ebscohost.com/login.aspx?direct=true&db=ecn&AN=1134737&site=ehost-live>.
- Becker, Gary S. 1965. "A Theory of the Allocation of Time." *Economic Journal*: 493–517.
- Bensch, Gunther, Jochen Kluve, and Jörg Peters. 2011. "Impacts of rural electrification in Rwanda." *Journal of Development Effectiveness*, 3(4): 567–88. <http://ideas.repec.org/a/taf/jdevef/v3y2011i4p567-588.html>.
- Bernard, Tanguy. 2012. "Impact Analysis of Rural Electrification Projects in Sub-Saharan Africa." *World Bank Research Observer*, 27(1): 33–51.
<http://search.ebscohost.com/login.aspx?direct=true&db=ecn&AN=1298965&site=ehost-live>.
- Bose, Ron. 2010. "A Checklist for the Reporting of Randomized Control Trials of Social and Economic Policy Interventions in Developing countries: CEDE Version 1.0." *Working Paper No. 6. New Delhi: International Initiative for Impact Evaluation*.
- Bruhn, Miriam and David McKenzie. 2009. "In Pursuit of Balance: Randomization in Practice in Development Field Experiments." *American Economic Journal: Applied Economics*, 1(4): 200–32.
<http://search.ebscohost.com/login.aspx?direct=true&db=ecn&AN=1062490&site=ehost-live>.
- Cohen, Jessica and Pascaline Dupas. 2010. "Free Distribution or Cost-Sharing? Evidence from a Randomized Malaria Prevention Experiment." *Quarterly Journal of Economics*, 125(1): 1–45.
<http://search.ebscohost.com/login.aspx?direct=true&db=ecn&AN=1092908&site=ehost-live>.
- Dinkelman, Taryn. 2011. "The Effects of Rural Electrification on Employment: New Evidence from South Africa." *American Economic Review*, 101(7): 3078–108. <http://www.aeaweb.org/articles.php?doi=10.1257/aer.101.7.3078>.
- Furukawa, Chishio. 2013. "Do Solar Lamps Help Children Study? Contrary Evidence from a Pilot Study in Uganda." *The Journal of Development Studies*, 50(2): 319–41. <http://dx.doi.org/10.1080/00220388.2013.833320>.
- Grimm, Michael, Robert Sparrow, and Luca Tasciotti. 2014. "Does electricity spur the fertility transition? Evidence from Indonesia." *IZA Discussion Paper*. 2014.
- Grogan, Louise and Asha Sadanand. 2013. "Rural Electrification and Employment in Poor Countries: Evidence from Nicaragua." *World Development*, 43(0): 252–65.
<http://www.sciencedirect.com/science/article/pii/S0305750X1200215X>.
- IEA. 2011. *World Energy Outlook 2011*. Paris.
- IEA. 2012. *World Energy Outlook 2012*. Paris.
- Khandker, Shahidur R., Douglas F. Barnes, and Hussain A. Samad. 2012. "The Welfare Impacts of Rural Electrification in Bangladesh." *The Energy Journal*, 33(1). <http://ideas.repec.org/a/aen/journal/33-1-a07.html>.
- Khandker, Shahidur R., Douglas F. Barnes, and Hussain A. Samad. 2013. "Welfare Impacts of Rural Electrification: A Panel Data Analysis from Vietnam." *Economic Development and Cultural Change*, 61(3): 659–92. <http://www.jstor.org/stable/10.1086/669262>.
- Kremer, Michael and Edward Miguel. 2007. "The Illusion of Sustainability." *The Quarterly Journal of Economics*, 122(3): 1007–65.
- La Ferrara, Eliana, Alberto Chong, and Suzanne Duryea. 2012. "Soap Operas and Fertility: Evidence from Brazil." *American Economic Journal: Applied Economics*, 4(4): 1–31.
<http://ideas.repec.org/a/aea/aejapp/v4y2012i4p1-31.html>.

- Lam, Nicholas L., Smith, Kirk R., Alison Gauthier, and Bates, Michael N.** 2012. "Kerosene: A Review of Household Uses and their Hazards in Low- and Middle-Income Countries." *Journal of Toxicology and Environmental Health, Part B*, 15(6): 396–432. <http://dx.doi.org/10.1080/10937404.2012.710134>.
- Mel, Suresh de, David McKenzie, and Christopher Woodruff.** 2008. "Returns to Capital in Microenterprises: Evidence from a Field Experiment." *Quarterly Journal of Economics*, 123(4): 1329–72. <http://search.ebscohost.com/login.aspx?direct=true&db=ecn&AN=1009462&site=ehost-live>.
- Neelsen, Sven and Jörg Peters.** 2011. "Electricity usage in micro-enterprises — Evidence from Lake Victoria, Uganda." *Energy for Sustainable Development*, 15(1): 21–31. <http://www.sciencedirect.com/science/article/pii/S0973082610000712>.
- O'Sullivan, Kyran and Douglas F. Barnes.** 2006. "Energy Policies and Multitopic Household Surveys. Guidelines for Questionnaire Design in Living Standards Measurement Studies." *ENERGY AND MINING SECTOR BOARD DISCUSSION PAPER*(17).
- Peters, Jörg, Maximiliane Sievert, Anicet Munyehirwe, and Luciane Lenz.** 2014. The provision of grid electricity to households through the Electricity Access Roll-out Programme. Final Report on behalf of the Policy and Operations Evaluation Department (IOB) of the Netherlands Ministry of Foreign Affairs. http://www.iob-evaluatie.nl/sites/iob-evaluatie.nl/files/20140611-RWI_EARP_Rwanda_final.pdf.
- Peters, Jörg and Colin Vance.** 2011. "Rural Electrification and Fertility – Evidence from Côte d'Ivoire." *The Journal of Development Studies*, 47(5): 753–66. <http://dx.doi.org/10.1080/00220388.2010.527954>.
- Peters, Jörg, Colin Vance, and Marek Harsdorff.** 2011. "Grid Extension in Rural Benin: Micro-Manufacturers and the Electrification Trap." *World Development*, 39(5): 773–83. <http://www.sciencedirect.com/science/article/pii/S0305750X10002299>.
- Rud, Juan P.** 2012. "Electricity provision and industrial development: Evidence from India." *Journal of Development Economics*, 97(2): 352–67. <http://www.sciencedirect.com/science/article/pii/S0304387811000678>.
- Samad, Hussain A., Shahidur R. Khandker, M. Asaduzzaman, and Mohammad Yunusd.** 2013. "The Benefits of Solar Home Systems: An Analysis from Bangladesh." *World Bank Policy Research Working Paper*(6724). Available at SSRN: <http://ssrn.com/abstract=2367084>.
- Sustainable Energy for All (SE4All).** 2013. Sustainable Energy for All Global Tracking Framework Consultation Document. <http://www.se4all.org/tracking-progress/> (accessed September 10, 2014).
- Tarozzi, Alessandro, Aprajit Mahajan, Brian Blackburn, Dan Kopf, Lakshmi Krishnan, and Joanne Yoong.** 2014. "Micro-loans, Insecticide-Treated Bednets, and Malaria: Evidence from a Randomized Controlled Trial in Orissa, India." *American Economic Review*, 104(7): 1909–41. <http://search.ebscohost.com/login.aspx?direct=true&db=ecn&AN=1441085&site=ehost-live>.
- United Nations.** 2005. *The Energy Challenge for Achieving the Millenium Development Goals*. New York.
- United Nations.** 2010. *Energy for a Sustainable Future. Report and Recommendations*. New York.
- van de Walle, Dominique, Martin Ravallion, Vibhuti Mendiratta, and Gayatri Koolwal.** 2013. "Long-term impacts of household electrification in rural India." *World Bank Policy Research Working Paper*(6527). <http://ideas.repec.org/p/wbk/wbrwps/6527.html>.
- World Bank.** 2009. "Unit Costs of Infrastructure Projects in Sub-Saharan Africa." *Africa Infrastructure Country Diagnostic, Background Paper*(11).

Annex: Contract for lottery winners

AGREEMENT OF COOPERATION (translated from Kinyarwanda)

Between.....Representative of RWI/ISS

And the beneficiary of solar kits:

-Name:
-Phone number:
-Code of household:
-Village
-Cell:
-Sector:
-District:
-Province:

Article 1: This agreement concerns the cooperation between RWI/ISS and beneficiaries of solar kits during research on impact of electricity on living conditions of beneficiaries.

Article 2: The Agreement is valid for one year from the date of signature.

Article 3: RWI/ISS's responsibilities:

- To offer beneficiaries solar kits freely (solar kits consist of 1. solar panel, 2. lamp, 3. battery power pack, 4. active and passive radio connectors, 5. radio, and 6. phone connector)
- To conduct survey on impact of electricity on living conditions of beneficiaries
- Assist beneficiaries in collaboration with Though Stuff in any case of technical problems of solar kits

Article 4: Responsibilities of beneficiaries of solar kits:

- To follow rules given by Though Stuff about how to keep well solar kits
- To give all required information on the impact of electrification on the living conditions
- To communicate Though Stuff on the encountered problems about the use of solar kits
- Don't sell or give freely solar kits to someone else
- Turn back to RWI/ISS solar kits when beneficiaries are not able to keep them

Done at, the....December 2011

Signature

Beneficiary's name:.....

Signature

Name.....

Local Authorities representative.....

Signature

Name.....

Representative of RWI-ISS

A First Step up the Energy Ladder? Low Cost Solar Kits and Household's Welfare in Rural Rwanda

Michael Grimm, Anicet Munyehirwe, Jörg Peters, and Maximiliane Sievert

Electronic Appendix

Table A1: Number of lighting devices and consumption

	Share of households using [lamp]				Operation hours per day and lamp	
	Treatment	Control	ITT	p-value	Treatment	Control
Pico-PV lamp	0.86	0.00	0.86*	0.00	2.89	-
Hand-crafted LED lamps	0.28	0.45	-0.18	0	3.45	3.40
Ready-made torch	0.14	0.22	-0.10	0.01	2.23	2.12
Wick lamp	0.12	0.43	-0.22	0	2.47	2.98
Candles	0.07	0.15	0.04	0.935	2.05	1.58
Hurricane lamp	0.04	0.10	-0.07	0.002	3.2	2.43
Mobile LED lamp	0.03	0.05	-0.03**	0.014	2	2.57
No lamp	0.05	0.09	0.03	0.16	-	-
SUM	1.62	1.43	0.16	0.004	4.3	3.8

Note: The *ITT* depicts the difference in means at the follow-up stage between the whole treatment and control group, also including non-complying households. We control for all stratification and re-randomization characteristics. Rechargeable lamps and gas lamps are not included in the table, since only one control household uses a rechargeable lamp and only one treatment household use a gas lamp.

*Probit estimation is not applicable, since control group households do not use the lamp leading to convergence problems; we display simple differences in means instead. **Controlling for randomization stratum dummies leads to convergence problems. We include the stratification criteria instead.

Table 4: Price and consumption of lighting energy

VARIABLES	cost per lighting hour	cost per lumen hour	lighting hours consumed per day	lumen hours consumed per day
treat	-7.022 (0.000)***	-0.566 (0.000)***	0.585 (0.074)*	77.736 (0.000)***
BAS_consmpt_candle	0.182 (0.013)**	0.012 (0.009)***	0.021 (0.267)	0.026 (0.983)
BAS_consmpt_kerosene	1.260 (0.001)***	0.109 (0.000)***	0.054 (0.718)	-3.696 (0.163)
BAS_num_HHmemb	-0.017 (0.911)	0.001 (0.950)	0.013 (0.851)	-4.296 (0.374)
BAS_num_mobilephone	-0.392 (0.528)	-0.034 (0.355)	1.296 (0.007)***	21.644 (0.019)**
BAS_dwellingplastered	-2.112 (0.120)	-0.208 (0.012)**	0.709 (0.372)	-14.458 (0.607)
BAS_modernwall	1.529 (0.310)	0.147 (0.141)	-1.249 (0.039)**	-27.763 (0.077)*
BAS_modernfloor	3.310 (0.064)*	0.132 (0.120)	0.461 (0.549)	-40.420 (0.243)
BAS_handcraftedLED	-1.494 (0.136)	-0.059 (0.414)	0.592 (0.295)	-10.708 (0.452)
BAS_mobileLED	-1.607 (0.300)	-0.167 (0.108)	0.873 (0.405)	47.231 (0.199)
BAS_owns_land	-1.447 (0.139)	-0.085 (0.285)	-0.181 (0.868)	19.863 (0.430)
BAS_onegoat	-2.448 (0.119)	-0.154 (0.090)*	-0.296 (0.563)	-38.858 (0.307)
BAS_severalgoats	0.757 (0.591)	0.024 (0.789)	0.021 (0.967)	-16.033 (0.608)
BAS_onecow	-0.004 (0.998)	-0.063 (0.409)	0.879 (0.078)*	19.648 (0.225)
BAS_severalcows	1.784 (0.090)*	0.213 (0.044)**	0.205 (0.670)	75.429 (0.239)
BAS_hohedu_prim	0.919 (0.165)	0.049 (0.466)	0.492 (0.311)	13.202 (0.305)
BAS_hohedu_sec	3.560 (0.085)*	0.276 (0.076)*	-0.980 (0.543)	-33.814 (0.348)
hdum_red	-0.018 (0.990)	0.006 (0.967)	1.319 (0.202)	20.259 (0.530)
Constant	9.486 (0.012)**	0.661 (0.023)**	2.138 (0.329)	-17.590 (0.603)
Observations	265	265	288	288
Adjusted R-squared	0.397	0.404	0.121	0.165

Note: Robust pval in parentheses; *** p<0.01, ** p<0.05, * p<0.1;

Randomization strata dummies are included in all estimations. Standard errors are clustered at the village level.

Table 5a: Expenditures per month per category (in FRW)

VARIABLES	candles	kerosene	charcoal	big batteries	small batteries	mobile phone charging
treat	-19.927 (0.339)	-418.007 (0.000)***	1.917 (0.447)	-9.344 (0.750)	-43.352 (0.003)***	-67.916 (0.407)
BAS_consmpt_candle	29.621 (0.000)***	8.273 (0.165)	-0.019 (0.780)	0.405 (0.911)	-1.165 (0.537)	19.456 (0.039)**
BAS_consmpt_kerosene	1.833 (0.753)	169.929 (0.007)***	-0.096 (0.594)	9.460 (0.133)	-0.074 (0.978)	7.410 (0.686)
BAS_num_HHmemb	8.228 (0.267)	8.295 (0.567)	-0.934 (0.382)	-2.416 (0.829)	1.281 (0.678)	29.491 (0.383)
BAS_num_mobilephone	-9.833 (0.631)	195.483 (0.067)*	7.513 (0.367)	60.265 (0.149)	17.418 (0.232)	1,100.513 (0.009)***
BAS_dwellingplastered	16.502 (0.581)	-63.128 (0.576)	-0.548 (0.726)	-70.298 (0.330)	-12.142 (0.686)	205.632 (0.198)
BAS_modernwall	-44.866 (0.322)	-120.093 (0.267)	-0.820 (0.617)	64.199 (0.504)	-58.167 (0.058)*	63.933 (0.686)
BAS_modernfloor	56.056 (0.246)	281.553 (0.050)*	-2.738 (0.360)	-65.299 (0.282)	22.367 (0.599)	-434.782 (0.060)*
BAS_handcraftedLED	18.316 (0.392)	9.387 (0.925)	-4.571 (0.334)	20.710 (0.686)	-15.293 (0.440)	86.275 (0.552)
BAS_mobileLED	-2.633 (0.965)	255.134 (0.234)	-3.422 (0.403)	139.388 (0.361)	21.636 (0.735)	-84.409 (0.867)
BAS_owns_land	-0.584 (0.986)	-117.541 (0.287)	5.549 (0.185)	179.692 (0.036)**	-19.392 (0.544)	-14.158 (0.942)
BAS_onegoat	73.643 (0.000)***	-134.849 (0.225)	-1.542 (0.500)	26.665 (0.621)	-16.252 (0.202)	-11.673 (0.912)
BAS_severalgoats	10.973 (0.609)	-111.840 (0.363)	-1.314 (0.510)	164.868 (0.042)**	33.091 (0.219)	287.823 (0.036)**
BAS_onecow	-11.154 (0.533)	-151.915 (0.076)*	5.046 (0.290)	134.052 (0.019)**	14.472 (0.707)	74.082 (0.600)
BAS_severalcows	93.441 (0.027)**	91.004 (0.486)	-1.129 (0.673)	68.589 (0.315)	-19.832 (0.233)	-136.453 (0.568)
BAS_hohedu_prim	-27.737 (0.095)*	89.954 (0.332)	1.490 (0.353)	115.139 (0.004)***	-2.168 (0.885)	26.694 (0.799)
BAS_hohedu_sec	83.751 (0.277)	26.200 (0.880)	-0.821 (0.717)	326.077 (0.047)**	110.878 (0.408)	-523.982 (0.153)
hdum_red	44.463 (0.488)	56.283 (0.769)	1.826 (0.426)	126.782 (0.403)	-80.459 (0.231)	185.076 (0.292)
Constant	-227.965 (0.049)**	-283.081 (0.463)	-18.863 (0.259)	-419.144 (0.173)	261.650 (0.130)	-320.098 (0.723)
Observations	296	296	295	296	296	296
Adjusted R-squared	0.622	0.356	-0.019	0.275	0.046	0.480

Note: Robust pval in parentheses; *** p<0.01, ** p<0.05, * p<0.1;

Randomization strata dummies are included in all estimations. Standard errors are clustered at the village level.

Table 5b: Expenditures per month per category (in FRW)

VARIABLES	Total traditional energy expenditures (without cooking)	Total expenditures	Share of energy expenditure on total expenditures
treat	-556.653 (0.000)***	7,249.033 (0.276)	-0.030 (0.001)***
BAS_consmpt_candle	56.573 (0.002)***	-603.375 (0.074)*	0.001 (0.017)**
BAS_consmpt_kerosene	188.463 (0.010)**	2,594.154 (0.002)***	0.003 (0.144)
BAS_num_HHmemb	43.955 (0.315)	3,700.456 (0.135)	0.000 (0.922)
BAS_num_mobilephone	1,371.322 (0.004)***	22,314.462 (0.051)*	0.013 (0.164)
BAS_dwellingplastered	75.918 (0.724)	21,254.017 (0.165)	-0.023 (0.066)*
BAS_modernwall	-95.781 (0.672)	23,581.834 (0.137)	-0.002 (0.893)
BAS_modernfloor	-142.721 (0.550)	-7,699.614 (0.719)	0.016 (0.143)
BAS_handcraftedLED	114.774 (0.525)	1,974.949 (0.762)	-0.004 (0.724)
BAS_mobileLED	325.633 (0.561)	-1,101.144 (0.930)	-0.003 (0.854)
BAS_owns_land	33.578 (0.881)	2,184.018 (0.485)	0.010 (0.364)
BAS_onegoat	-64.025 (0.721)	-7,456.327 (0.112)	0.006 (0.610)
BAS_severalgoats	383.684 (0.082)*	8,874.944 (0.524)	-0.005 (0.643)
BAS_onecow	64.631 (0.693)	-4,661.881 (0.381)	0.001 (0.924)
BAS_severalcows	95.617 (0.777)	14,374.902 (0.171)	-0.015 (0.302)
BAS_hohedu_prim	203.383 (0.217)	5,767.114 (0.329)	-0.003 (0.791)
BAS_hohedu_sec	22.096 (0.965)	-8,550.415 (0.701)	-0.004 (0.836)
hdum_red	333.947 (0.137)	-9,091.174 (0.214)	0.013 (0.729)
Constant	-1,007.517 (0.342)	-45,103.310 (0.298)	0.071 (0.150)
Observations	296	296	295
Adjusted R-squared	0.582	0.250	0.136

Note: Robust pval in parentheses; *** p<0.01, ** p<0.05, * p<0.1;

Randomization strata dummies are included in all estimations. Standard errors are clustered at the village level.

Table 7a: Most frequently used lamps for housework by female adult (% of all households)

	Wick lamp	Ready-made torch	Hand-crafted LED	None
treat	-0.228 (0.000)***	-0.069 (0.056)*	-0.034 (0.182)	-0.249 (0.000)***
BAS_consmpt_candle	-0.001 (0.612)	-0.016 (0.001)***	0.000 (0.829)	-0.001 (0.854)
BAS_consmpt_kerosene	0.013 (0.229)	-0.022 (0.427)	-0.017 (0.652)	0.017 (0.151)
BAS_num_HHmemb	-0.005 (0.676)	0.011 (0.106)	-0.006 (0.347)	0.017 (0.091)
BAS_num_mobilephone	0.047 (0.270)	0.005 (0.836)	0.013 (0.484)	-0.025 (0.734)
BAS_dwellingplastered	-0.056 (0.481)	0.071 (0.024)**	-0.000 (0.994)	0.147 (0.200)
BAS_modernwall	-0.073 (0.217)	-0.106 (0.119)	0.042 (0.390)	0.075 (0.468)
BAS_modernfloor	0.078 (0.094)*	0.090 (0.076)*	-0.058 (0.246)	-0.136 (0.161)
BAS_handcraftedLED	-0.082 (0.134)	-0.095 (0.022)**	0.071 (0.012)**	0.042 (0.507)
BAS_mobileLED	-0.040 (0.763)	0.058 (0.379)	-0.008 (0.916)	0.007 (0.962)
BAS_owns_land	-0.238 (0.003)***	0.104 (0.434)	-0.060 (0.176)	0.147 (0.218)
BAS_onegoat	-0.064 (0.126)	0.072 (0.109)	-0.005 (0.915)	-0.019 (0.808)
BAS_severalgoats	-0.005 (0.897)	0.034 (0.430)	0.060 (0.148)	-0.005 (0.932)
BAS_onecow	-0.033 (0.543)	0.001 (0.978)	0.025 (0.521)	-0.065 (0.321)
BAS_severalcows	0.026 (0.657)	-0.056 (0.287)	-0.086 (0.055)*	0.036 (0.722)
BAS_hohedu_prim	0.046 (0.385)	0.085 (0.045)**	-0.002 (0.937)	-0.095 (0.083)
BAS_hohedu_sec	-0.100 (0.136)	0.185 (0.021)**	n.i.	-0.038 (0.816)
hdum_red	-0.029 (0.853)	0.078 (0.314)	n.i.	0.112 (0.409)
Pseudo R-Squared	0.36	0.32	0.29	0.20
Number of Observations	294	294	294	294

Note: Robust pval in parentheses; *** p<0.01, ** p<0.05, * p<0.1;

Randomization strata dummies are included in all estimations. Standard errors are clustered at the village level.

n.i.: not included since variable predicts success or failure perfectly.

Table 7b: Most frequently used lamps for housework by male adult (% of all households)

	Wick lamp	Ready-made torch	Hand-crafted LED	None
treat	-0.070 (0.001)***	-0.078 (0.000)***	-0.055 (0.003)***	-0.085 (0.006)***
BAS_consmpt_candle	0.004 (0.062)*	-0.007 (0.006)***	-0.013 (0.113)	0.002 (0.728)
BAS_consmpt_kerosene	0.011 (0.006)***	-0.043 (0.046)**	-0.057 (0.000)***	0.007 (0.545)
BAS_num_HHmemb	0.007 (0.195)	0.009 (0.025)**	0.002 (0.427)	0.003 (0.856)
BAS_num_mobilephone	0.006 (0.794)	-0.005 (0.587)	0.000 (0.979)	-0.048 (0.391)
BAS_modernfloor	-0.010 (0.874)	0.050 (0.056)*	n.i.	-0.031 (0.781)
BAS_handcraftedLED	-0.003 (0.900)	-0.053 (0.047)**	0.037 (0.140)	-0.090 (0.089)*
BAS_owns_land	-0.029 (0.581)	n.i.	-0.022 (0.447)	0.009 (0.942)
BAS_onegoat	0.039 (0.168)	-0.051 (0.216)	n.i.	-0.023 (0.723)
BAS_severalgoats	0.077 (0.004)***	0.082 (0.000)***	-0.044 (0.036)**	-0.107 (0.038)**
BAS_onecow	-0.007 (0.866)	-0.003 (0.896)	n.i.	0.030 (0.614)
BAS_severalcows	-0.016 (0.656)	-0.045 (0.244)	0.013 (0.470)	0.130 (0.134)
BAS_hohedu_prim	0.036 (0.073)*	0.048 (0.138)	-0.025 (0.040)**	-0.036 (0.485)
hdum_red	0.137 (0.039)**	n.i.	n.i.	0.109 (0.646)
BAS_dwellingplastered	n.i.	0.009 (0.526)	n.i.	0.191 (0.079)*
BAS_modernwall	n.i.	-0.059 (0.073)*	-0.047 (0.049)**	0.072 (0.488)
BAS_mobileLED	n.i.	-0.050 (0.317)	0.121 (0.000)***	-0.110 (0.359)
BAS_hohedu_sec	n.i.	0.075 (0.147)	0.020 (0.568)	-0.065 (0.528)
BAS_hdum_radio	n.i.	n.i.	-0.004 (0.811)	n.i.
BAS_hdum_mobile	n.i.	n.i.	0.038 (0.000)***	n.i.
BAS_lightingh_cat2	n.i.	n.i.	-0.001 (0.883)	n.i.
Pseudo R-Squared	0.36	0.51	0.51	0.17
Number of Observations	294	294	295	294

Note: Robust pval in parentheses; *** p<0.01, ** p<0.05, * p<0.1;

Randomization strata dummies are included in all estimations. Standard errors are clustered at the village level.

n.i.: not included since variable predicts success or failure perfectly.

Table 8: Daily time spent on domestic labour

VARIABLES	total_hoh	night_hoh	total_sp	night_sp
Treat	-1.674 (0.950)	6.150 (0.542)	26.953 (0.333)	2.752 (0.779)
BAS_consmpt_candle	-0.431 (0.871)	-0.858 (0.099)*	3.755 (0.182)	0.320 (0.705)
BAS_consmpt_kerosene	-6.370 (0.274)	-1.981 (0.129)	-4.528 (0.339)	0.123 (0.954)
BAS_num_HHmemb	-3.233 (0.660)	-0.591 (0.793)	3.293 (0.735)	5.514 (0.248)
BAS_num_mobilephone	39.520 (0.103)	7.932 (0.367)	32.397 (0.306)	28.709 (0.029)**
BAS_dwellingplastered	-2.937 (0.952)	8.097 (0.556)	-15.112 (0.764)	2.584 (0.890)
BAS_modernwall	-42.319 (0.353)	-10.732 (0.389)	29.055 (0.627)	6.767 (0.768)
BAS_modernfloor	-0.894 (0.986)	15.761 (0.211)	-50.724 (0.184)	-20.211 (0.430)
BAS_handcraftedLED	-9.829 (0.726)	0.960 (0.904)	-64.496 (0.108)	-19.938 (0.354)
BAS_mobileLED	-104.698 (0.061)*	-13.120 (0.552)	72.072 (0.331)	99.724 (0.008)***
BAS_owns_land	-57.488 (0.314)	-18.418 (0.378)	-180.938 (0.135)	-67.553 (0.113)
BAS_onegoat	44.618 (0.359)	11.146 (0.438)	-60.298 (0.186)	-0.667 (0.965)
BAS_severalgoats	-10.393 (0.820)	-0.429 (0.967)	-42.010 (0.478)	-28.114 (0.170)
BAS_onecow	-14.606 (0.748)	-13.052 (0.290)	36.974 (0.281)	8.110 (0.565)
BAS_severalcows	-0.574 (0.989)	-18.584 (0.065)*	-38.480 (0.509)	2.483 (0.897)
BAS_hohedu_prim	-10.490 (0.755)	-6.117 (0.488)	-25.867 (0.427)	2.283 (0.793)
BAS_hohedu_sec	-22.247 (0.748)	-20.982 (0.459)	12.455 (0.902)	23.273 (0.601)
hdum_red	99.878 (0.347)	-28.758 (0.139)	0.900 (0.991)	55.525 (0.187)
Constant	463.535 (0.054)*	86.662 (0.060)*	80.674 (0.603)	-55.506 (0.313)
Observations	287	287	257	257
Adjusted R-squared	0.000	-0.042	-0.006	0.092

Note: Robust pval in parentheses; *** p<0.01, ** p<0.05, * p<0.1;

Randomization strata dummies are included in all estimations. Standard errors are clustered at the village level.

Outcome variables have been transformed to a decimal system. For retransformation multiply with 0.6.

Table 9a: Study pattern (only HH with children at school age; 6-17 years)

	Share of HH with children studying after school	Share of HH with children studying at home after nightfall
treat	0.055 (0.368)	0.269 (0.000)***
BAS_consmpt_candle	-0.008 (0.187)	-0.012 (0.043)**
BAS_consmpt_kerosene	0.196 (0.005)***	0.221 (0.001)***
BAS_num_HHmemb	0.015 (0.452)	0.010 (0.652)
BAS_num_mobilephone	0.151 (0.078)*	0.034 (0.542)
BAS_dwellingplastered	-0.091 (0.419)	-0.036 (0.718)
BAS_modernwall	0.072 (0.337)	0.052 (0.561)
BAS_modernfloor	-0.102 (0.425)	-0.135 (0.144)
BAS_handcraftedLED	0.177 (0.086)*	0.160 (0.045)**
BAS_owns_land	0.083 (0.383)	0.066 (0.634)
BAS_onegoat	0.160 (0.161)	0.099 (0.382)
BAS_severalgoats	0.158 (0.090)*	0.100 (0.160)
BAS_onecow	0.179 (0.097)*	0.026 (0.792)
BAS_severalcows	0.141 (0.205)	0.209 (0.109)
BAS_hohedu_prim	-0.049 (0.484)	-0.129 (0.064)*
BAS_hohedu_sec	0.173 (0.351)	0.056 (0.775)
hdum_red	1.402 (0.000)***	0.147 (0.392)
Pseudo R-Squared	0.21	0.30
Number of Observations	208	208

Note: Robust pval in parentheses; *** p<0.01, ** p<0.05, * p<0.1;

Randomization strata dummies are included in all estimations. Standard errors are clustered at the village level.

Table 9b: Study pattern (only HH with children at school age; 6-17 years)

VARIABLES	Time children study total	Time children study at home after nightfall
Treat	-1.844 (0.932)	31.652 (0.002)***
BAS_consmpt_candle	-1.416 (0.303)	-1.426 (0.139)
BAS_consmpt_kerosene	16.386 (0.152)	25.023 (0.046)**
BAS_num_HHmemb	2.597 (0.640)	-1.927 (0.643)
BAS_num_mobilephone	21.852 (0.353)	8.399 (0.295)
BAS_dwellingplastered	-21.226 (0.285)	-10.985 (0.423)
BAS_modernwall	2.358 (0.924)	5.692 (0.646)
BAS_modernfloor	-21.553 (0.501)	-19.897 (0.334)
BAS_handcraftedLED	4.006 (0.830)	15.317 (0.360)
BAS_mobileLED	6.383 (0.778)	36.922 (0.114)
BAS_owns_land	6.300 (0.855)	-4.260 (0.897)
BAS_onegoat	16.266 (0.655)	23.046 (0.313)
BAS_severalgoats	-8.373 (0.657)	3.984 (0.781)
BAS_onecow	52.327 (0.220)	-6.745 (0.721)
BAS_severalcows	44.584 (0.123)	11.598 (0.629)
BAS_hohedu_prim	-32.940 (0.125)	-14.190 (0.143)
BAS_hohedu_sec	-19.544 (0.629)	1.023 (0.978)
hdum_red	-24.560 (0.646)	26.586 (0.574)
Constant	-67.996 (0.339)	-44.621 (0.428)
Observations	208	208
Adjusted R-squared	-0.021	0.107

Note: Robust pval in parentheses; *** p<0.01, ** p<0.05, * p<0.1;

Randomization strata dummies are included in all estimations. Standard errors are clustered at the village level.

Outcome variables have been transformed to a decimal system. For retransformation multiply with 0.6.

Table 10: Most frequently used lamps for studying by children (% of HH with children at school age; N=208)

	wick lamp	No lamp	None and studying at daytime only	None and studying after nightfall
treat	-0.118 (0.000)***	-0.194 (0.000)***	-0.185 (0.000)***	-0.020 (0.633)
BAS_consmpt_candle	0.002 (0.327)	-0.004 (0.235)	-0.009 (0.116)	-0.001 (0.780)
BAS_num_HHmemb	0.021 (0.049)**	0.009 (0.623)	0.003 (0.748)	0.006 (0.669)
BAS_num_mobilephone	-0.027 (0.211)	0.089 (0.319)	0.059 (0.272)	0.015 (0.827)
BAS_dwellingplastered	-0.031 (0.526)	-0.053 (0.616)	-0.061 (0.540)	-0.083 (0.284)
BAS_modernwall	-0.137 (0.008)***	-0.069 (0.378)	-0.041 (0.530)	-0.082 (0.232)
BAS_modernfloor	0.025 (0.692)	-0.088 (0.525)	n.i.	0.049 (0.453)
BAS_handcraftedLED	-0.049 (0.312)	-0.092 (0.360)	-0.065 (0.005)***	-0.020 (0.773)
BAS_onegoat	-0.041 (0.415)	0.109 (0.257)	0.083 (0.005)***	0.054 (0.628)
BAS_severalgoats	-0.138 (0.014)**	0.178 (0.012)**	0.027 (0.644)	0.137 (0.015)**
BAS_onecow	-0.022 (0.652)	0.100 (0.292)	0.125 (0.040)**	-0.039 (0.621)
BAS_severalcows	0.118 (0.021)**	0.217 (0.033)**	-0.051 (0.674)	0.142 (0.086)*
BAS_hohedu_prim	-0.013 (0.797)	-0.058 (0.543)	0.056 (0.269)	-0.106 (0.179)
BAS_hohedu_sec	0.033 (0.574)	-0.123 (0.543)	-0.027 (0.842)	-0.229 (0.216)
BAS_consmpt_kerosene	n.i.	-0.144 (0.015)**	-0.111 (0.005)***	-0.060 (0.110)
BAS_owns_land	n.i.	0.055 (0.751)	0.014 (0.891)	0.064 (0.663)
hdum_red	n.i.	0.177 (0.379)	-0.655 (0.000)***	0.204 (0.216)
BAS_mobileLED	n.i.	0.116 (0.558)	n.i.	0.186 (0.147)
Pseudo R-Squared	0.50	0.27	0.40	0.33
Number of Observations	207	207	207	207

Note: Robust pval in parentheses; *** p<0.01, ** p<0.05, * p<0.1;

Randomization strata dummies are included in all estimations. Standard errors are clustered at the village level.

n.i.: not included since variable predicts success or failure perfectly.

Table11: Daily time spent on recreation

VARIABLES	hoh	sp	m1217	f1217	m611	f611
treat	-14.776 (0.693)	-69.143 (0.008)***	-30.536 (0.389)	1.138 (0.966)	-26.885 (0.105)	9.419 (0.841)
BAS_consmpt_candle	-0.053 (0.988)	-4.686 (0.249)	1.716 (0.376)	-1.131 (0.599)	1.704 (0.378)	3.653 (0.348)
BAS_consmpt_kerosene	-12.422 (0.068)*	-6.893 (0.357)	-29.121 (0.416)	-6.480 (0.801)	-27.496 (0.336)	-28.275 (0.481)
BAS_num_HHmemb	-1.134 (0.887)	-12.407 (0.452)	-4.594 (0.680)	11.008 (0.104)	9.428 (0.058)*	6.690 (0.640)
BAS_num_mobilephone	-56.813 (0.145)	10.188 (0.750)	-21.946 (0.514)	-60.443 (0.013)**	-25.309 (0.359)	54.593 (0.063)*
BAS_dwellingplastered	55.501 (0.492)	164.222 (0.016)**	7.050 (0.917)	94.857 (0.064)*	11.804 (0.812)	48.157 (0.453)
BAS_modernwall	-2.725 (0.969)	-37.105 (0.555)	-48.632 (0.504)	39.395 (0.365)	7.090 (0.789)	-53.854 (0.300)
BAS_modernfloor	-46.432 (0.411)	-26.839 (0.731)	146.448 (0.043)**	-25.350 (0.651)	14.001 (0.824)	-98.762 (0.154)
BAS_handcraftedLED	36.509 (0.405)	99.163 (0.020)**	31.070 (0.154)	-23.933 (0.524)	-87.354 (0.020)**	-82.876 (0.159)
BAS_mobileLED	60.428 (0.691)	-170.587 (0.169)	230.620 (0.000)***	16.371 (0.833)	24.959 (0.560)	21.797 (0.833)
BAS_owns_land	176.016 (0.077)*	295.541 (0.024)**	-48.661 (0.437)	-29.006 (0.719)	-49.719 (0.386)	-114.783 (0.260)
BAS_onegoat	5.909 (0.895)	51.810 (0.128)	-76.626 (0.202)	-3.022 (0.918)	-64.828 (0.172)	35.721 (0.706)
BAS_severalgoats	98.095 (0.133)	42.876 (0.652)	12.419 (0.788)	-2.927 (0.869)	31.880 (0.315)	67.989 (0.386)
BAS_onecow	46.606 (0.516)	-15.361 (0.789)	-80.844 (0.068)*	-11.518 (0.738)	-58.023 (0.210)	-71.088 (0.372)
BAS_severalcows	70.840 (0.213)	109.230 (0.132)	-50.951 (0.338)	44.904 (0.422)	60.513 (0.097)*	-75.206 (0.493)
BAS_hohedu_prim	17.682 (0.682)	2.309 (0.942)	-16.913 (0.715)	19.380 (0.594)	-0.552 (0.987)	-0.631 (0.985)
BAS_hohedu_sec	12.461 (0.917)	-32.801 (0.747)	26.787 (0.756)	59.208 (0.275)	-22.495 (0.754)	109.658 (0.501)
hdum_red	-35.641 (0.859)	-48.079 (0.720)	-175.192 (0.115)	-44.225 (0.275)	69.174 (0.603)	-204.741 (0.200)
Constant	284.376 (0.225)	93.416 (0.672)	524.919 (0.000)***	649.792 (0.000)***	928.962 (0.000)***	1,196.210 (0.001)***
Observations	280	255	88	93	100	90
Adjusted R-squared	-0.029	0.054	0.200	0.180	0.169	-0.039

Note: Robust pval in parentheses; *** p<0.01, ** p<0.05, * p<0.1;

Randomization strata dummies are included in all estimations. Standard errors are clustered at the village level.

Outcome variables have been transformed to a decimal system. For retransformation multiply with 0.6.

Table 12: Most frequently used lamps for recreation (% of all HH)

	Ready-made torch	Hand-crafted LED	Candle	No lamp
Treat	-0.024 (0.262)	-0.033 (0.133)	0.019 (0.014)**	-0.014 (0.633)
BAS_consmpt_candle	-0.001 (0.477)	-0.001 (0.721)	0.002 (0.013)**	-0.001 (0.818)
BAS_consmpt_kerosene	0.001 (0.830)	0.001 (0.619)	-0.019 (0.025)**	0.003 (0.612)
BAS_num_HHmemb	-0.007 (0.246)	0.002 (0.720)	-0.001 (0.630)	-0.005 (0.557)
BAS_num_mobilephone	0.009 (0.387)	0.059 (0.002)***	-0.013 (0.454)	-0.066 (0.031)**
BAS_dwellingplastered	0.027 (0.354)	0.076 (0.020)**	-0.017 (0.019)**	-0.124 (0.039)**
BAS_modernwall	-0.000 (0.983)	-0.009 (0.784)	n.i.	0.026 (0.664)
BAS_modernfloor	0.038 (0.189)	-0.114 (0.014)**	n.i.	0.030 (0.668)
BAS_handcraftedLED	0.020 (0.243)	-0.015 (0.406)	0.014 (0.095)*	0.063 (0.061)*
BAS_mobileLED	0.039 (0.464)	0.050 (0.272)	n.i.	-0.086 (0.442)
BAS_owns_land	-0.042 (0.179)	n.i.	n.i.	-0.104 (0.112)
BAS_onegoat	0.015 (0.617)	n.i.	0.005 (0.586)	0.000 (1.000)
BAS_severalgoats	-0.002 (0.944)	-0.015 (0.596)	0.010 (0.234)	0.006 (0.921)
BAS_onecow	0.067 (0.025)**	0.004 (0.838)	0.012 (0.069)*	-0.052 (0.245)
BAS_severalcows	0.004 (0.864)	-0.040 (0.271)	0.025 (0.023)**	0.056 (0.375)
BAS_hohedu_prim	-0.009 (0.549)	-0.010 (0.645)	n.i.	0.031 (0.480)
BAS_hohedu_sec	0.015 (0.766)	0.042 (0.198)	n.i.	0.009 (0.940)
hdum_red	-0.011 (0.847)	n.i.	n.i.	0.068 (0.623)
BAS_hdum_radio	n.i.	n.i.	0.000 (0.996)	n.i.
BAS_hdum_mobile	n.i.	n.i.	0.004 (0.842)	n.i.
BAS_lightingh_cat2	n.i.	n.i.	-0.003 (0.562)	n.i.
Pseudo R-Squared	0.31	0.51	0.41	0.30
Number of observations	294	294	295	294

Note: Robust pval in parentheses; *** p<0.01, ** p<0.05, * p<0.1;

Randomization strata dummies are included in all estimations. Standard errors are clustered at the village level.

n.i.: not included since variable predicts success or failure perfectly.