

van den Berg, Gerard J.; Kjærsgaard, Lene; Rosholm, Michael

Working Paper

To meet or not to meet, that is the question: Short-run effects of high-frequency meetings with case workers

Working Paper, No. 2014:6

Provided in Cooperation with:

IFAU - Institute for Evaluation of Labour Market and Education Policy, Uppsala

Suggested Citation: van den Berg, Gerard J.; Kjærsgaard, Lene; Rosholm, Michael (2014) : To meet or not to meet, that is the question: Short-run effects of high-frequency meetings with case workers, Working Paper, No. 2014:6, Institute for Evaluation of Labour Market and Education Policy (IFAU), Uppsala

This Version is available at:

<https://hdl.handle.net/10419/106296>

Standard-Nutzungsbedingungen:

Die Dokumente auf EconStor dürfen zu eigenen wissenschaftlichen Zwecken und zum Privatgebrauch gespeichert und kopiert werden.

Sie dürfen die Dokumente nicht für öffentliche oder kommerzielle Zwecke vervielfältigen, öffentlich ausstellen, öffentlich zugänglich machen, vertreiben oder anderweitig nutzen.

Sofern die Verfasser die Dokumente unter Open-Content-Lizenzen (insbesondere CC-Lizenzen) zur Verfügung gestellt haben sollten, gelten abweichend von diesen Nutzungsbedingungen die in der dort genannten Lizenz gewährten Nutzungsrechte.

Terms of use:

Documents in EconStor may be saved and copied for your personal and scholarly purposes.

You are not to copy documents for public or commercial purposes, to exhibit the documents publicly, to make them publicly available on the internet, or to distribute or otherwise use the documents in public.

If the documents have been made available under an Open Content Licence (especially Creative Commons Licences), you may exercise further usage rights as specified in the indicated licence.

**To meet or not to meet, that is
the question
– short-run effects of high-frequency
meetings with case workers**

Gerard J. van den Berg
Lene Kjærsgaard
Michael Rosholm

The Institute for Evaluation of Labour Market and Education Policy (IFAU) is a research institute under the Swedish Ministry of Employment, situated in Uppsala. IFAU's objective is to promote, support and carry out scientific evaluations. The assignment includes: the effects of labour market and educational policies, studies of the functioning of the labour market and the labour market effects of social insurance policies. IFAU shall also disseminate its results so that they become accessible to different interested parties in Sweden and abroad.

IFAU also provides funding for research projects within its areas of interest. The deadline for applications is October 1 each year. Since the researchers at IFAU are mainly economists, researchers from other disciplines are encouraged to apply for funding.

IFAU is run by a Director-General. The institute has a scientific council, consisting of a chairman, the Director-General and five other members. Among other things, the scientific council proposes a decision for the allocation of research grants. A reference group including representatives for employer organizations and trade unions, as well as the ministries and authorities concerned is also connected to the institute.

Postal address: P.O. Box 513, 751 20 Uppsala

Visiting address: Kyrkogårdsgatan 6, Uppsala

Phone: +46 18 471 70 70

Fax: +46 18 471 70 71

ifau@ifau.uu.se

www.ifau.se

Papers published in the Working Paper Series should, according to the IFAU policy, have been discussed at seminars held at IFAU and at least one other academic forum, and have been read by one external and one internal referee. They need not, however, have undergone the standard scrutiny for publication in a scientific journal. The purpose of the Working Paper Series is to provide a factual basis for public policy and the public policy discussion.

ISSN 1651-1166

**To meet or not to meet,
that is the question –
short-run effects of high-frequency meetings
with case workers***

Gerard J. van den Berg [†]

Lene Kjærsgaard [‡]

Michael Rosholm [§]

March 10, 2014

Abstract

We investigate the effects of meetings between the unemployed and their case workers on the transition rate from unemployment to employment using detailed Danish event history data obtained from administrative registers. We find large positive effects of meetings. The transition rate strongly increases in the week the meeting is held, and this effect persists for some weeks after the meeting. The effect size tends to increase with the number of meetings. The effect of the first meeting on the transition rate to work does not depend on the timing of the meeting.

Keywords: Unemployment, active labor market policy, unemployment duration, treatment effects, meetings, job search assistance, employment agency.

JEL Classification: C31, J64.

*Acknowledgement: We are grateful for comments from Johan Vikström, Michael Svarer, and participants at seminars at Aarhus University, the Danish Institute of Governmental Research, and Workshops in Bornholm and Ebeltoft. Kjærsgaard and Rosholm acknowledge financial support from the Danish Social Science Research Council, grant no. 275-05-0273 and the Danish Agency for Science, Technology and Innovation.

[†]Alexander von Humboldt Professor of Econometrics and Empirical Economics, University of Mannheim; IFAU Uppsala; VU University Amsterdam; IZA.

[‡]Aarhus University and AKF, Danish Institute of Governmental Research

[§]Aarhus University; IZA.

1 Introduction

Active labor market policies (ALMPs) for unemployed individuals serve at least three aims. First, they must provide skills for redundant unemployed workers. Second, the labor market authorities must assist the unemployed workers in finding employment as swiftly as possible. Third, they must provide sufficient incentives to search actively in order to avoid the incentive problems generated by generous unemployment benefits transfers.

ALMPs are implemented by case workers through meetings with the unemployed workers. By implication, meetings have several functions. They may serve to identify human capital deficiencies of unemployed workers and may thus be helpful in providing effective activation programs via a targeting schedule. They may also provide job search assistance to unemployed workers who are inexperienced in searching for employment. Meetings also serve as a channel for job search, in the sense that case workers receive information on vacancies via access to the vacancies database of the public employment service. Finally, the meetings provide an opportunity for the case worker to test the availability and search efforts of the unemployed workers, for example, by asking/requiring the unemployed worker to document search activities (and by requiring the unemployed worker to attend the meeting). If search efforts are deemed insufficient or the individual does not attend the meeting, the case worker can implement sanctions. For all these reasons, one might expect changes in the transition rates from unemployment to employment around the time of the meetings.

In this paper we analyze how the meetings between unemployed workers and their case workers affect the transition rate to work among unemployed workers in Denmark. We use unique Danish data derived from the administrative registers of the public employment services from the period January 2001 to September 2005. In particular, these data contain precise dates for all meetings between case workers and clients as well as for the unemployment entry and exit dates. To evaluate the effects of meetings, selection on unobservables is an issue of concern. Instrumental variables are not available. Notice that the study of effects of meetings necessarily focuses on the hazard rate of the unemployment duration distribution as the outcome of interest, since the meetings occur at random times and their effects potentially depend on the moment of the meeting and the elapsed time since the latest meeting. To proceed, we exploit random variation in the timing of meetings, by applying the Timing-of-Events approach (Abbring and van den Berg (2003)) to estimate the causal treatment effects of a meeting or a sequence of meetings on the transition rate from unemployment to employment.

We focus in particular on how the transition rate to work depends on the time since the most recent meeting. Somewhat informally, one could argue that we take a microscopic view of the effects in the days and weeks after a meeting, and the extent to which such effect persist until the next meeting. This is informative from a policy point of view, and it sheds some light on the issue which aspects of the meetings have the largest impact. For example, monitoring effects can be expected to be more persistent than effects of specific job vacancy referrals during a meeting. Using an extension of the model, we analyze the effects of sequences of meetings, and we discuss whether the timing of the meetings can be improved.

We find that meetings have large positive effects on the transition rate to work (or “job finding rate”). The job finding rate increases during the week the meeting takes place, and then the effect tends to die out over time. When a second meeting is held, the job finding rate peaks at a higher level, and then the effect declines but does not disappear entirely, and for the third meeting we find even larger effects and so on. We find that the effect is of roughly the same size irrespective of the timing of the first meeting.

There have been numerous studies on the effects of various training activation programs, both in Europe and in the U.S. (see e.g. surveys by Heckman et al. (1999); Martin and Grubb (2001); Card et al. (2010), and Kluve (2010)). Recently, however, especially the European literature has started focusing on other aspects of active policies such as monitoring and sanctions, counseling and job search assistance, and the so-called threat effects (see e.g. Kluve (2010)). Our paper thus contributes to this new branch of literature, which investigates the effects of “institutional” or “administrative” labor market policies rather than traditional activation programs.

Pedersen et al. (2012) summarize the evidence from 37 studies that have analyzed the impact of meetings or aspects of meetings on various employment-related outcomes. 30 of these find significant positive effects, 7 find no significant effects, and none find negative effects of meetings. Hence, the empirical evidence on the positive effects of meetings is overwhelmingly positive, and, we would surmise, somewhat overlooked. What is absent from these studies, however, is a detailed analysis of the dynamics of the exit rates around the time of the meetings. The latter is of course the topic of the present study.

The study that is arguably most relevant and complementary to ours is Pedersen et al. (2012). They use data from a social experiment conducted in Denmark on a sample from the inflow into unemployment insurance. The treatment is the exposure to very frequent meetings with case workers. The study evaluates this regime to the standard regime, with the employment status and unemployment duration being the primary outcome

measures. The meetings for the treated were so frequent that they inhibit an analysis of short-run effects in between meetings. Notice also that the evaluation of effects on hazard rates is hampered by dynamic selection even with randomization of the inflow (Abbring and van den Berg (2005)). Pedersen et al. (2012) find very large effects of fortnightly meetings during the first three months of unemployment. In the current paper we address whether meetings give rise to a higher over-all level of the hazard rate or to a pattern of spikes shortly after the meetings. The result of Pedersen et al. (2012) can be explained in either case.

The paper is organized as follows. In Section 2, we discuss the most relevant features, rules and regulations regarding the Danish labor market. Section 3 contains a theoretical discussion in order to frame the empirical analysis, Section 4 presents the data used in the analysis, and in Section 5, we present the econometric model used. The main results are shown in Section 6. Section 7 provides a summary and policy discussion.

2 The Danish labor market, labor market policy, and meetings with case workers

The Danish labor market features low costs of labor turnover and generous income transfers to compensate workers for income losses during periods without work. High labor turnover is a natural consequence of a system with low cost of hiring and firing, and, indeed, nearly one quarter of the labor force switch jobs (with a new employer) during a year, see Frederiksen and Westergaard-Nielsen (2007). In such a flexible labor market, it is important to have a labor market policy that supports the ability of workers to make smooth transitions between jobs. Therefore, the skill enhancing and job search assistance components of labor market policies are important. The generous income transfers necessitate a labor market policy that provides the unemployed worker with sufficient incentives to search. This emphasizes the importance of frequent monitoring of job search activities, sanction policies, and certain workfare arrangements to reduce the amount of “cheap leisure” otherwise available to the unemployed workers.

Meetings between case workers and their clients - the unemployed workers - play a crucial role in ensuring that all the functions of active labor market policy measures are served. It is at the meetings that participation in activation programs are decided, job search is monitored, sanctions are imposed, job search assistance is provided, and sometimes specific job assignments are carried out.

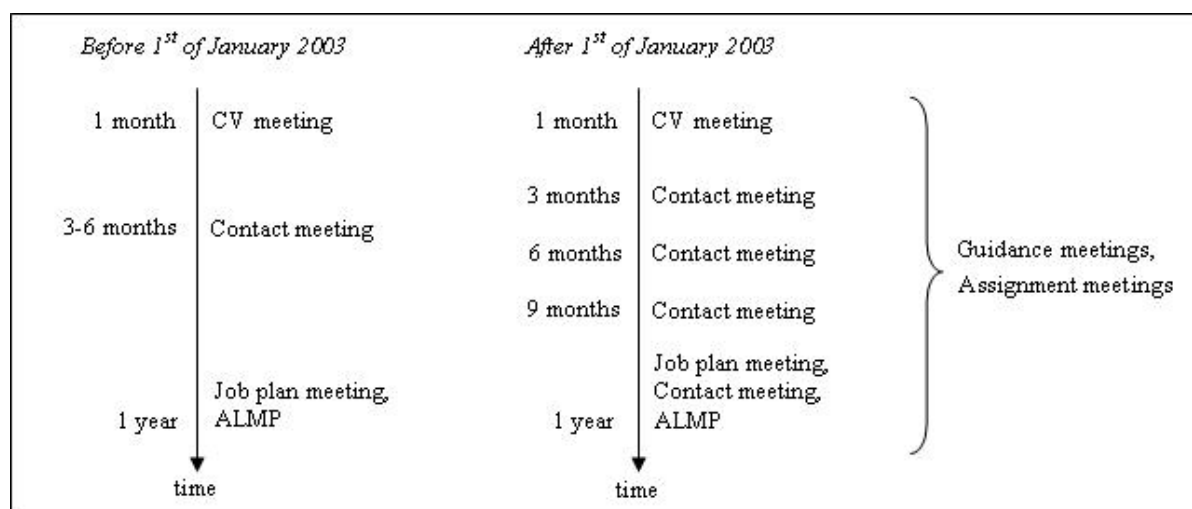
There are five types of meetings between the unemployed workers and the case workers:

CV meetings, contact meetings, job plan meetings, guidance meetings and job assignment meetings. At the CV meetings, the unemployed worker informs the case worker about previous employment, education and qualifications in general. The case worker assists the unemployed worker in producing a CV and registering various types of information. At contact meetings, the topic is job search; the possibilities and strategies of the unemployed worker to find a job immediately. Monitoring of job search, job search assistance and counseling regarding the formulation of applications may also be part of these meetings. At the job plan meetings, the unemployed worker and the case worker together produce a plan for improving the possibilities of the unemployed worker to return to employment. The job plan includes planning and scheduling of activation programs. The guidance meetings include counseling about the unemployed workers education and employment possibilities. At the job assignment meetings, the case worker assigns the unemployed worker to a regular job interview.

The rules of the meetings are illustrated in Figure 1. In the period 2001-2005, the unemployed worker had to attend a CV meeting during the first month of unemployment. Assignment meetings could take place at any time during the unemployment period, but would often occur in connection with other meetings. The same was the case with the guidance meetings. The unemployed worker should also participate in a job plan meeting before the assignment into an activation program. The rules of the contact meetings changed in 2003. Before 2003, the unemployed worker had to attend a contact meeting after three months but before six months of unemployment. After 2003, the unemployed worker had to participate in a least one contact meeting in the first three months of unemployment, and subsequent contact meetings were required to take place no later than three months after the last one.

The change in the rules led to increasing meeting activities; see Table 1. In the inflow to unemployment during 2000-2001, 42 percent of the unemployed had at least one meeting with their case worker during the unemployment spell while this was 74 percent for those becoming unemployed during 2003-2004. Similarly, the fraction attending multiple consecutive meetings rose from the first to the second period. For the empirical analysis it is important to make the following two remarks. First, the implementation of the change in the rules was gradual. For example, individuals in ongoing unemployment spells in January 2003 faced a slow increase in the meeting frequency for a period of at least half a year. Secondly, the period 2003-2004 faced a deterioration of labor market conditions due to a mild cyclical setback. The latter explains part of the increase in meetings, since

Figure 1: The rules governing meetings between unemployed workers and case workers



Note: The meetings should take place before the specified time, except for the contact meeting before 2003. This meeting should take place between the specified months.

longer unemployment durations mechanically lead to more meetings.¹

Table 1: The distribution of the number of meetings for unemployed workers who became unemployed during 2000-1 and 2003-4, in per cent

Number of meetings	At least 1	At least 2	At least 3	At least 4	At least 5	At least 6
2000 and 2001	42	25	15	9	6	4
2003 and 2004 ^a	74	49	31	21	15	11

a) The period is July 1, 2003 to June 30, 2004.

Note: The numbers are for unemployed worker aged 25-50 and contain only meetings held in the first 1 1/2 year of the unemployment spell.

Source: The Danish Economic Council (2007).

In 2007, the rules governing the meetings changed again. In the new regime, there are only two types of meetings: CV meetings and contact meetings. The CV meeting is unchanged. At the contact meetings the focus is on job search, monitoring, and activation planning. That is, the contact meeting has all the purposes of the previous meeting types. What drove this change in rules was that it was realized that the distinction between types of meetings was rather artificial and often determined *ex post* when the case worker had to record the type of meeting and the recorded type was chosen on the base of the dominant discussion topic in the meeting. For these reasons we do not distinguish between types of meetings in the remainder of the paper.

In addition, we disregard CV meetings. They are held by almost all unemployed

¹Incidentally, these two facts imply that we cannot use the data to evaluate the change in rules.

workers right at the start of the unemployment spell. Notice that this implies that the number of meetings is considerably smaller than the numbers reported in Table 1 (see Section 4).

3 Theoretical considerations

In this section we discuss the effects of meetings from a theoretical point of view, using a job search model of unemployed individuals. The model helps to understand the effects of a regime with meetings on individual behavior. It also provides insights into effects on the rates at which jobs are found.

First, consider an unemployed individual who searches sequentially for a job. Job offers arrive according to the rate λ . Offers are random drawings from a wage offer distribution $F(w)$. Every time an offer arrives the decision has to be made whether to accept it or to reject it and search further. During unemployment, a flow of benefits b is received, possibly including a non-pecuniary utility of being unemployed. The individual aims at maximization of the expected lifetime utility over an infinite horizon. For expositional convenience, we take the wage as the only possible job characteristic and we assume that once a job is accepted it will be held forever at the same wage.

It is well known that under some regularity conditions, the optimal strategy of unemployed individuals can be characterized by a reservation wage ϕ giving the minimal acceptable wage offer. The transition rate to work θ then equals $\lambda(1 - F(\phi))$.

This model can be straightforwardly extended by allowing for search effort to be a choice variable as well. In that case, if s is the chosen amount of search effort per time unit, λs is the job offer arrival rate, $c(s)$ is the search cost flow, and the optimal strategy consists of a pair (ϕ, s) .

As described above, the meetings between the unemployed individual and the case worker involve a combination of a few active labor market policies. For all means and purposes, these are all targeted at increasing the rate at which job offers arrive. Improving job search techniques primarily involves increasing λ , monitoring involves increasing s , and job vacancy referrals are supposed to involve the direct creation of an offer. Policies aimed at increasing the frequency of job offers lead to a counterreaction of the unemployed individual, since the increase in opportunities creates an incentive to be more selective vis-à-vis the quality of the offers. For example, an increase in λ leads to an increase of the reservation wage ϕ . Typically, the direct effect dominates the indirect effect, in the exit rate to work θ (van den Berg (1994)).

Notice that some of these policies are not restricted to the meetings alone. At the one extreme, exposure to monitoring is supposed to occur throughout the spell of unemployment and does not necessarily require personal meetings. Job search assistance is supposed to exert its positive effects throughout unemployment as well. However, job vacancy referrals are only relevant in the weeks directly after the meeting. Also, job search assistance aimed at exploiting temporary shocks in the labor market (e.g. advice on how to apply for seasonal work during the harvest season) only has a temporary effect.

Typically, data from a time interval with a more or less stable policy regime cannot be used to detect effects of non-stop exposure. In our case, for example, the monitoring regime did not change markedly during our observation interval, and monitoring occurs throughout the spell of unemployment for each individual, so that it is hard to evaluate the effect of monitoring. At the other extreme, the temporary effects of job vacancy referrals (or of meetings in general) can be studied with data on the moments of the meetings and the moment of exit out of unemployment. A job vacancy referral leads to a spike in θ in the weeks after the meeting. If the meeting actually involves a concrete job offer then, in a discrete time setting, the probability of leaving unemployment at that moment is equal to $1 - F(\phi)$, whereas in the absence of the meeting it would equal $\lambda(1 - F(\phi))$, where λ is the probability of receiving an offer in a discrete-time moment. The ratio of the two equals $1/\lambda$, which strictly exceeds 1 and which can be arbitrarily large. Institutional features may influence how long such a spike occurs. If jobs can only start at the first day of a month then the observed spike may be spread out over an interval of a few weeks beyond the moment of the meeting. If a meeting does not lead to a concrete job offer but involves job search assistance that is only relevant for a short while then again one may expect to see an elevated level of θ in the weeks following the meeting. The shorter the period in which the job search assistance is relevant, the less the individual will counteract it by being more selective. A formal analysis can be carried out with a non-stationary job search model (van den Berg (1990)), but it seems to be difficult to derive results on the shape of the spike in θ (e.g. whether it is symmetric) without making functional form assumptions on the wage offer distribution F .

Of course, meetings may give rise to interaction and accumulation effects as well. The temporary effect of a job vacancy referral may increase with successive meetings, e.g. because the case worker becomes more skilled at picking the most promising vacancies.

4 Data

We use a register-based 10 percent random sample of the Danish population aged 18 or more. For each individual we can construct an event history; each week, the event history indicates whether a worker is employed, unemployed, in an activation program or outside the labor force. The event history is based on information from four different registers: the Central Register of Labor Market Statistics (CRAM), the Register for Labor Market Policy Measures (AMFORA), the Coherent Social Statistics (SHS) and the Central Register of Information (CON). The data set in this study covers the period January 1, 2001 to September 30, 2005. We also have information on different socioeconomic characteristics such as age, gender, education, etc. from the Integrated Database for Labor Market Research (IDA). Finally, we have information about participation in meetings with a case worker from a database (AMANDA) used for administrative purposes by the case workers and the National Labor Market Authority. All data sets used are located (and hence, the analyses carried out) on Statistics Denmark's secured servers for researchers.

The sample is limited to unemployed workers who are eligible for UI benefits (approximately 80 percent of the labor force in Denmark is a member of a UI fund and thus eligible), and who become unemployed and have the maximum (four years) of benefit eligibility. This implies that the analysis only contains people who have worked at least 52 weeks in the last three years before the current unemployment spell. In the main analysis, we focus on four groups, men and women between 30 and 50, and men and women below 30. The age cutoff is motivated by the fact that ALMP entitlement rules are applied differently to unemployed workers aged below 30 than to those aged above 30. Workers above 50 are removed from the sample to avoid behavioral effects of (early) retirement considerations.

For each individual we define an unemployment spell as a period where the person receives UI benefits, that is, she/he is openly unemployed or participates in an activation program. The unemployment spell stops when an individual has been out of unemployment for more than four weeks. If the unemployment spell is interrupted by an employment spell shorter than four weeks, then that employment spell is treated as part of the unemployment spell (such interruptions are very often holiday payments from a previous employer). After the unemployment spell ends the individuals can either be employed or leave the labor force.

Descriptive statistics regarding sample sizes, unemployment spells, and meetings are shown in Table 2, and descriptive statistics for all other included explanatory variables are provided in Table A1 in the Appendix. There are 9,000-13,000 persons in each of

the four samples used, and they have slightly more than one unemployment spell each, due to the strict sampling criterion discussed above (they must have at least 52 weeks of employment before becoming unemployed). An unemployment spell contains around 0.9 meetings on average for workers aged below 30 and 1.1-1.3 meetings for workers aged above 30. This closely follows the corresponding difference in the average unemployment duration. The weekly meetings intensity in all four samples is around 0.04. The large number of unemployment spells with several meetings justifies the analysis of the impacts of sequences of meetings.

Table 2: Descriptive statistics

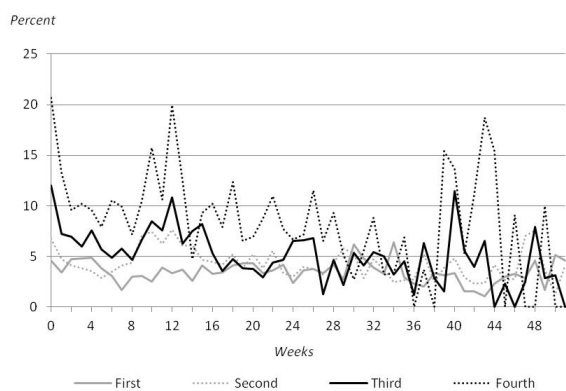
	Women aged 18-29	Men aged 18-29	Women aged 30-49	Men aged 30-49
Number of persons	9,044	9,049	12,617	11,795
Number of unemployment spells	9,836	10,202	13,695	13,225
Average spell duration in weeks	20	20	28	25
Number of observed weeks with ≥ 1 meeting	9,136	9,142	18,080	14,520
Avg. number of weeks with ≥ 1 meeting, per spell	0.93	0.90	1.32	1.10
Average number of meetings per week	0.04	0.04	0.04	0.04
Spells with 0 meetings	5,991	6,408	7,023	7,453
Spells with 1 meeting	1,887	1,892	2,947	2,712
Spells with 2 meetings	800	741	1,371	1,247
Spells with 3 meetings	438	399	792	614
Spells with 4 meetings or more	720	762	1,562	1,199

Figure 2 shows the estimated discrete-time Kaplan-Meier hazard probabilities for the first meeting in the unemployment spell, the time between the first and the second meeting, between the second and third, and third and fourth meetings. The probability of participating in the first meeting is around three percent during the first year of unemployment except around the 13th week and around one year of unemployment, where the probability of participating in a meeting is 5 percent per week. The second, third and fourth meeting are most likely to be held during the first couple of weeks after the previous meeting, and there is also a peak around 13 weeks after the previous meeting.

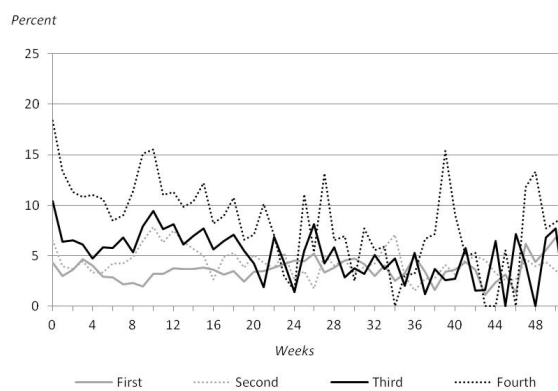
In Figure 3, we plot the estimated discrete-time Kaplan-Meier hazard probabilities for the transition from unemployment into employment. Not surprisingly, the job finding rate is highest in the beginning of an unemployment spell and it continues to fall during the first year of unemployment.

Figure 2: Kaplan-Meier hazard probabilities for transition into the 1st, 2nd, 3rd and 4th meeting (excl. CV meetings) as a function of the time since the previous meeting

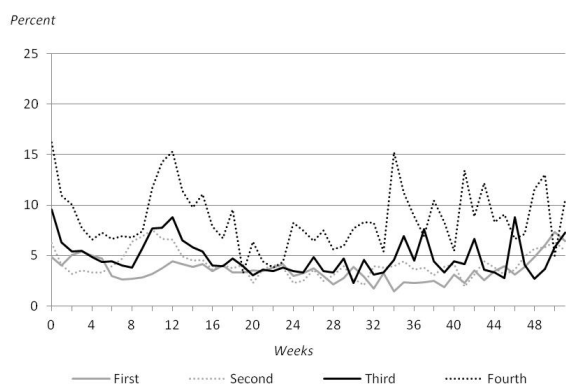
(a) Women aged 18-29



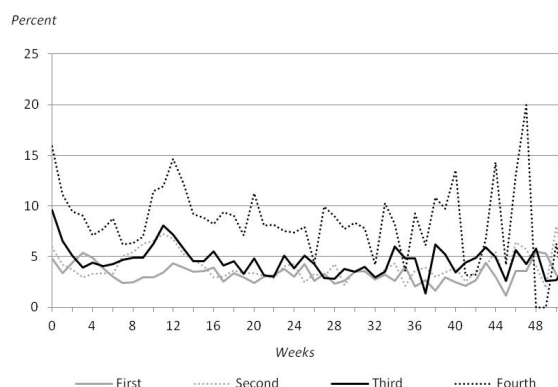
(b) Men aged 18-29



(c) Women aged 30-49



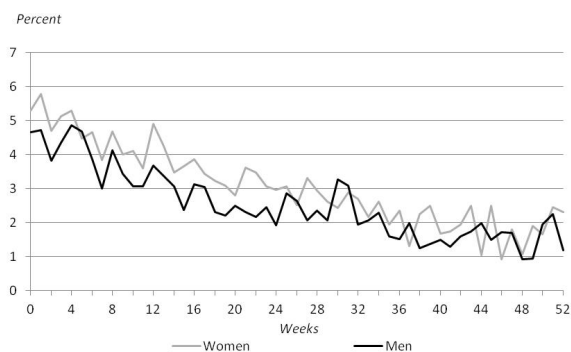
(d) Men aged 30-49



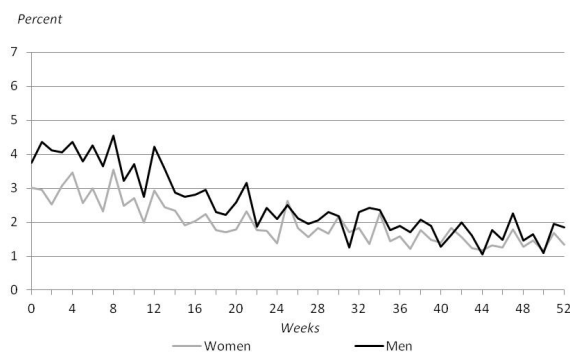
Note: The duration for the second, third and fourth meeting is measured in weeks after the last meeting.

Figure 3: Kaplan-Meier hazard probabilities for transition into employment from unemployment

(a) Aged 18-29



(b) Aged 30-49



5 Econometric model

5.1 Basic model specification

The econometric analysis is based on the Timing-of-Events approach by Abbring and van den Berg (2003). Our aim is to estimate the treatment effect of meetings attended by the unemployed workers. The model is extended by allowing for sequences of meetings. In addition, we will allow for the effects of meetings to depend on their timing in the unemployment spell.

The Timing-of-Events method specifies a joint model for the transition out of unemployment and the participation rate in meetings. The time-varying treatment effect of participation in meetings is non-parametrically identified. There is no need for an exclusion restriction, since the identification result relies on random variation in the timing of the treatment, in this case in the timing of the meetings. As was shown in Figure 2, there is plenty of variation in the timing of meetings, and naturally, some of this must be random from the point of view of the individual.

Unemployed workers leave unemployment after a certain period of time. Some of them participate in a meeting at some time during the unemployment spell. The duration until the end of unemployment and until the first meeting is measured by T_u and T_m , respectively. T_u and T_m are continuous non-negative random variables. The individual differences in the joint distribution of T_u or T_m can be characterized by the explanatory variables X and V_u, V_m where X is observed and V_u, V_m are unobserved by the econometrician. T_u and T_m are allowed to correlate through the observed variables, X , through the correlation of the unobserved variables, V_u and V_m , and through a possible treatment effect of participating in a meeting on the exit rate from unemployment.

The exit rate from unemployment to employment is specified as:

$$\theta_u(t|x(t), d(t), e(t), v_u) = \lambda_u(t) \cdot \varphi_u(x(t), d(t), e(t), v_u) \quad (1)$$

$\lambda_u(t)$ is the baseline hazard, and $\varphi_u(x(t), d(t), e(t), v_u)$ is a scaling function specified as $\exp(x(t)\beta_u + d(t)\gamma_1 + e(t)\gamma_{2,t-t_m} + v_u)$. Here, we consider only the first meeting held during the unemployment spell. Extensions follow below. The variables $d(t)$ and $e(t)$ are indicators for attending a meeting in week t , and for having attended a meeting before week t , respectively. The time-index on the coefficient of $e(t)$ allows the effect of the meeting to vary with time since the last meeting.

To identify the treatment effect in the Timing-of-Events approach, some assumptions

are necessary. The first assumption is non-anticipation of the exact meeting date. This implies that the realization of T_m affects the shape of the hazard of T_u only from T_m and onwards. The assumption rules out that private knowledge of the meeting time affects $\theta_u(t|x(t), d(t), e(t), v_u)$ before T_m . Hence, the individuals are allowed to know the distribution of time until a meeting but not the exact date of the meeting. This assumption is likely to be fulfilled (or at least not seriously violated) in the current analysis, because meeting dates are typically announced only one week in advance. The fact that the next meeting is more likely to occur at 13 weeks than at 12 weeks since the previous meeting is easily accommodated into the model specification and hence is estimated along with the other parameters. A second crucial assumption is that the hazard rates are specified as mixed proportional hazards.

The first assumption also implies that there should be some random variation in the timing of the meetings. It is highly likely to be the case, since not all meetings take place with exactly 13 weeks between them as specified by the rules. Reasons for such variations could be quits, sickness absence, holidays, and training courses for the case workers, the workload of case workers might suddenly change due to large (or small) inflows of workers to unemployment (which could be caused by cyclical, seasonal, and monthly patterns - e.g. unemployment spells are more likely to begin at the start of a month than during the month). In short, there are several reasons for why the exact timing of a meeting may vary due to causes that are exogenous to the unemployed worker.

As noted in Section 2, the change in the rules of meetings intensity introduced in 2003 was gradual and coincided with a deterioration of cyclical conditions. We control for all this by including time-varying calendar-time indicators. The exogenous change in the rules, occurring at random unemployment durations for spells ongoing at the time of the policy change, adds further random variation to the timing of meetings (in a sensitivity analysis, we estimate models allowing the causal effect of meetings to depend on whether the meetings regime was the pre-2003 regime or the more recent regime).

In order to model the potential endogeneity of meetings, we must also specify a selection equation, measuring the time until the first meeting, to be estimated simultaneously with the model for exit from unemployment to employment.

$$\theta_m(t|x(t), v_m) = \lambda_m(t) \cdot \varphi_m(x(t), v_m). \quad (2)$$

The results from the estimation of this model will be our basic specification. The baseline hazard, $\lambda(t)$, is flexibly specified as a piecewise-constant hazard, where we divide the time line into a number of intervals. For both hazards, the time line is divided into

16 intervals measured in weeks (0-1, 1-2, 2-4, 4-6, 6-8, 8-12, 12-16, 16-22, 22-28, 28-38, 38-46, 46-52, 52-60, 60-96, 96-104, 104-).

The unobserved variables, V_u and V_m , are assumed to follow a discrete distribution with an unknown number of mass points. This allows for unrestricted correlation between V_u and V_m , which is important because this is essentially the channels through which the model allows for selection on unobservables.

We define C_u to be a non-censoring indicator variable, that takes the value 1 when an unemployment spell is followed by employment and 0 otherwise. The contribution to the likelihood function of one individual with J unemployment spells, given observed and unobserved characteristics, is the following likelihood function:

$$L(v_u, v_m) = \prod_{j=1}^J \left(\begin{array}{l} \theta_m(t_{mj}|x_j(t_{mj}), v_m)^{1[t_{mj} < t_{uj}]} \cdot \exp[-\Theta_m(t_{mj}|x_j(t_{mj}), v_m)] \cdot \\ \theta_u(t_{uj}|x_j(t_{uj}), d(t), e(t), v_u)^{c_{uj}} \cdot \exp[-\Theta_u(t_{uj}|x_j(t_{uj}), d(t), e(t), v_u)] \end{array} \right).$$

where $\Theta(\cdot)$ denotes the integrated hazard. The model is estimated using maximum likelihood, where the individual likelihood contributions are:

$$L = \int \int L(v_u, v_m) dG(v_u, v_m)$$

and where G is the joint distribution function of the unobserved variables. If the individual experiences multiple unemployment spells in the observation window, we exploit this by assuming that the unobserved heterogeneity terms are identical across spells. This, as well as the use of time-varying explanatory variables, reduces the sensitivity of the estimates to functional form assumptions and to the mixed proportional hazards assumption (van den Berg (2001)).

5.2 Extensions

We now consider a couple of extensions. First, it is trivial to allow the treatment effect to vary with unemployment duration at the time of the meeting and with calendar time indicators.

Second, we wish to investigate the effects of sequences meetings. This can be done by measuring the time from becoming unemployed and until the 1st meeting, from the 1st to the 2nd meeting, from the 2nd to the 3rd meeting, etc., and modelling selection equations for the time between meetings simultaneously with the main equation, and at the same time including extra indicators for subsequent meetings in the exit rate from

unemployment to employment. This model is based on

$$\begin{aligned}\theta_u(t|x(t), d_1(t), e_1(t), \dots, d_K(t), e_K(t), v_u) &= \lambda_u(t) \cdot \varphi_u(x(t), d_1(t), e_1(t), \dots, d_K(t), e_K(t), v_u), \\ \theta_{mi}(t|x(t), v_{mi}) &= \lambda_{mi}(t) \cdot \varphi_{mi}(x(t), v_{mi}), \quad i = 1, 2, \dots, K\end{aligned}\quad (3)$$

where K is the number of meetings. We restrict the model by allowing the K different selection equations to differ only via a set of indicators for the order of the meeting. The baseline hazards and the systematic unobserved determinants v are taken to be the same. Without these restrictions, the estimation becomes computationally cumbersome. The dimensionality of the unobserved heterogeneity effects increases in the number of selection equations, and the number of parameters capturing covariate effects would become unmanageably large.

6 Results

Table 3 shows the results obtained from estimating the Timing-of-Events model with unobserved heterogeneity with seven mass points based on the hazard specifications (1) and (2) above. This model estimates the effect of the first meeting, ignoring any subsequent meetings taking place. These might then, to some extent, be captured by the effect of the first meeting. Only the effects of the meetings between the unemployed and their case worker will be discussed and are shown in the table. The effects of other explanatory variables, such as socioeconomic and demographic characteristics, participation in activation programs, calendar time dummies, etc., for both the hazard rates into meetings and employment from this estimation are shown in the Table A2 in the Appendix.

The model was initially estimated with a large number of parameters capturing effects by post-treatment time interval for a large number of possible intervals. Subsequently, we tested the number of parameters down using LR-tests, in order to obtain parsimonious specifications and tractable results. Although point estimates do not vary dramatically across specifications, we should point out that this procedure involves a certain amount of data mining. In effect, the estimated standard errors for the parameter estimates in Table 3 may under-estimate the true uncertainty in the parameter estimates. In particular, reported significance at levels between 5% and 10% may be regarded as insufficient to reject the null hypothesis of no effect. This should be kept in mind in the discussion below.

In the week where the meeting is held, there is in three out of the four samples

Table 3: The effects of the first meetings between the caseworker and unemployed worker on the exit rate to employment

	Women aged 18-29	Men aged 18-29	Women aged 30-49	Men aged 30-49
Week of meeting [δ_1]	0.226** (0.090)	0.227*** (0.083)	0.108 (0.083)	0.256*** (0.071)
1-2 weeks after meeting [δ_2]		0.200*** (0.064)		
1-8 weeks after meeting [δ_2]	0.217*** (0.045)		0.080** (0.040)	
1+ weeks after meeting [δ_2]				0.070** (0.032)
3+ weeks after meeting [δ_2]		0.069* (0.039)		
9+ weeks after meeting [δ_2]	0.043 (0.055)		0.153*** (0.042)	

Notes: Standard errors in parentheses; ***, ** and * indicate significance at the 1%, 5% and 10% level, respectively.

around 25 percent increase in the exit rate to employment.² For women above 30, the increase is only 11 percent, and it is not statistically significant. Subsequently, the effect tends to decline but in most cases it remains statistically significant for at least some weeks after the meeting. For women above 30, the effect becomes significantly positive, and for men above 30 the effect remains significantly positive in all subsequent weeks. On average, there are thus quite large effects of the first meetings with a case worker. At least, these effects are larger than the average treatment effects derived from many activation programs that last for weeks or months. In comparison, a meeting typically lasts 30 minutes. Hence, here is a first indication that meetings are a potent instrument in the toolbox of labor market policy makers.

We then proceed to estimating a model similar to the one above, where meeting effects would vary with the timing of the meeting. However, we did not find any significant variations in the effect of the first meeting, whether it was held in the first, second, third, or a later month of unemployment. These results are therefore not reported but are available on request.

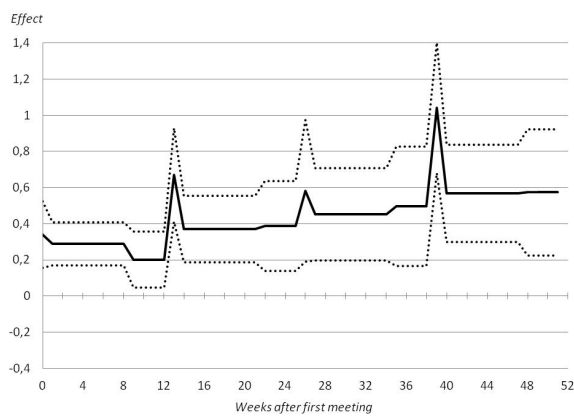
Next, we estimate the effects of sequences of meetings based on the hazard specification (3) above. In order to restrict the number of parameters, all effects are estimated with time-varying indicators for the week of the meeting, for 1-8 weeks after the meeting, and for 9+ weeks after the meeting. When a new meeting is held, all indicators of previous meetings are set to zero. The results and the 95%-confidence intervals of this model

²The change is calculated by taking the exponential function of the parameter estimates and subtracting 1.

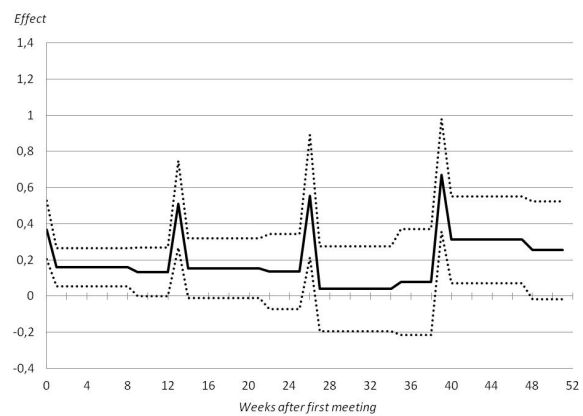
are shown in Figure 4, where it is assumed that meetings are held every 13 weeks. The results are, if anything, even more compelling than those for the first meeting. The peak in the exit rate at the time of the meeting continues to grow relative to the baseline, and *ex post* meeting effects are also increasing with the total number of meetings held in the unemployment spell (except for men below 30). This suggests that it is not only the first meeting that matters but that subsequent meetings have additional positive effects. The previous result regarding the insignificance of the timing of the meeting suggests that a further intensification of meetings would lead to higher job finding rates. This hypothesis is also supported by the empirical evidence in Pedersen et al. (2012) obtained from a social experiment.

Figure 4: The effects of sequences of the meetings between the caseworker and unemployed worker on the exit rate to employment

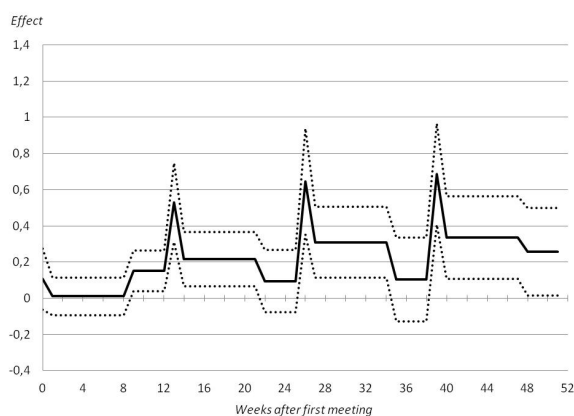
(a) Women aged 18-29



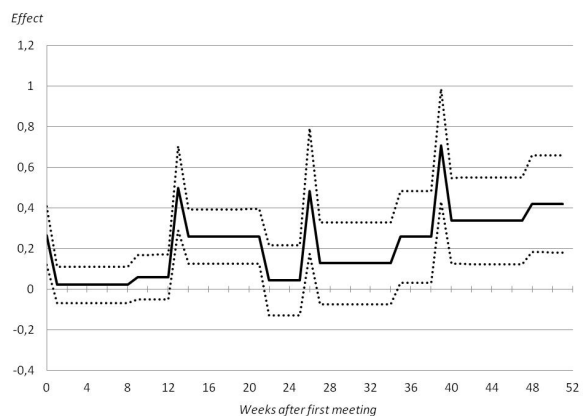
(b) Men aged 18-29



(c) Women aged 30-49



(d) Men aged 30-49



Note: The dotted lines are the 95%-confidence intervals. The relative effects on the exit rates can be obtained by taking the exponential function and subtracting 1.

The average effect over these 52 weeks after the first meeting range from around 55

percent for the young women to approximately 25 percent for the three other samples (these numbers are found by taking the exponential function of the coefficients reported in the figure, subtracting 1, and calculating the average value over the 52 weeks). This suggests that the intensified use of meetings has caused a significant decline in average unemployment duration as well as a twist towards less negative duration dependence (since there are more meetings at higher durations after the 2003 reform). However, the largest potential gains would be to move the first meeting so that it takes place earlier in the unemployment spell, since that will affect most unemployed workers at a time where the absolute effect will be largest (since the exit rate is higher at shorter durations and we found no time-variation in the relative effect with respect to the timing of the first meeting).

We also estimated a model with separate effects for the pre- and post-2003 reform periods (results available upon request) and we conclude that the main results are largely unaffected. The effects of meetings after January 2003 seem to be somewhat smaller. This may be because of the business cycle being somewhat more adverse, or it may be due to declining marginal returns caused by the increased use of the instrument. A higher frequency of meetings may involve some crowding out. At the extreme, if the meetings would be held daily, the separate effect of a single meeting will tend to zero.

We may relate the empirical findings of this section to the theoretical discussion of the impacts of meetings. The peaks in the exit rates to employment around the time of meetings point to the presence of significant effects of vacancy referrals and other immediate job search assistance. In addition, the more permanent increase in job finding rates after each meeting suggest longer-run benefits of job search assistance (although here the significance is not unambiguous across groups and across time).³ Presumably, longer-run effects concern the implementation of more effective job search strategies. Perhaps monitoring is intensified after meetings as well.

7 Conclusion

We have investigated the effects of meetings between the unemployed and their case workers on the transition rate from unemployment to employment using detailed Danish event history data obtained from administrative registers. We find large positive effects

³Notice that our analysis allows for the identification of longer-run effects by comparing the transition rate some time after meeting number i but before meeting $i + 1$ to the transition rate at the same elapsed unemployment duration among those who have not had meeting i yet, correcting for selectivity along the Timing-of-Events approach.

of meetings, and moreover, we find that the effect tends to build up as more meetings are held. We find that the effect of the first meeting on the hazard rate does not depend on the timing of the meeting. The job finding rate increases during the week the meeting is held, and it remains positive for some weeks after the meeting. The impact of meetings tends to increase with the number of meetings held. On the whole, we find slightly larger meetings effects for women than for men.

Our results point at the importance of actual meetings between case workers and unemployed individuals, as a tool to reduce unemployment durations. Meetings effects appear to be driven by highly significant direct vacancy referral effects. In addition, we find some evidence for longer-run job search assistance (and perhaps monitoring) effects leading to more effective job search throughout the unemployment spell. The point estimates can be used to quantify the relative sizes of short-run and longer-run effects. In more elaborate models one may allow for accumulation effects of various aspects of the individual meetings history, but this would warrant larger samples than we have at our disposal. The results suggest that moving the first meeting in unemployment closer towards the moment of entry into unemployment would lead to a further reduction in unemployment duration, and that a shortening of the time intervals in between meetings might do the same. It remains an open question to what extent the meetings can be replaced by contacts through mail or over the internet without losing some of the quality of the information transfer. At the very least, showing up at meetings involves an element of monitoring that would be hard to emulate electronically.

In this paper we have not studied wage effects of meetings. This, as well as the impact of meetings on vacancy creation and on the overall functioning of the labor market could be fruitful avenues for future research. Another topic for future research might be to consider autoregressive conditional duration models (Engle and Russell (1998)). These models are used to study high-frequency financial transactions where the durations between transactions are irregular and autocorrelated. With an increasing frequency of meetings between an unemployed worker and the case worker, these models may provide a useful tool to examine interrelations between the effects of consecutive meetings.

References

- Abbring, J. H. and G. J. van den Berg (2003). The non-parametric identification of treatment effects in duration models. *Econometrica* 71(5), 1491–1517.
- Abbring, J. H. and G. J. van den Berg (2005). Social experiments and instrumental variables with duration outcomes. Working Paper Series 2005:11, IFAU - Institute for Labour Market Policy Evaluation.
- Card, D., J. Kluve, and A. Weber (2010). Active labour market policy evaluations: A meta-analysis. *Economic Journal* 120(548), 452–477.
- Engle, R. F. and J. R. Russell (1998). Autoregressive conditional duration: A new model for irregularly spaced transaction data. *Econometrica* 66(5), 1127–1162.
- Frederiksen, A. and N. Westergaard-Nielsen (2007). Where did they go? Modelling transitions out of jobs. *Labour Economics* 14(5), 811–828.
- Heckman, J. J., R. J. Lalonde, and J. A. Smith (1999). The economics and econometrics of active labor market programs. In O. Ashenfelter and D. Card (Eds.), *Handbook of Labor Economics*, Volume 3 of *Handbook of Labor Economics*, Chapter 31, pp. 1865–2097. Elsevier.
- Kluve, J. (2010). The effectiveness of european active labor market programs. *Labour Economics* 17(6), 904–918.
- Martin, J. P. and D. Grubb (2001). What works and for whom: A review of OECD countries' experiences with active labour market policies. *Swedish Economic Policy Review* 8(2), 9–56.
- Pedersen, J. M., M. Rosholm, and M. Svarer (2012). Experimental evidence on the effects of early meetings and activation. Manuscript in production.
- The Danish Economic Council (2007). *The Danish Economy, Spring 2007 (in Danish)*. The Danish Economic Council. Secretariat of the Danish Economic Council.
- van den Berg, G. J. (1990). Nonstationarity in job search theory. *Review of Economic Studies* 57(2), 255–77.
- van den Berg, G. J. (1994). The effects of changes of the job offer arrival rate on the duration of unemployment. *Journal of Labor Economics* 12(3), 478–98.

van den Berg, G. J. (2001). Duration models: specification, identification and multiple durations. In J. Heckman and E. Leamer (Eds.), *Handbook of Econometrics*, Volume 5 of *Handbook of Econometrics*, Chapter 55, pp. 3381–3460. Elsevier.

A Appendix

Table A.1: Sample means

	Women aged 18-29	Men aged 18-29	Women aged 30-49	Men aged 30-49
Children age 0-2	0.23	0.10	0.18	0.14
Children age 3-6	0.15	0.04	0.27	0.17
Children age 7-17	0.04	0.01	0.48	0.27
Children age 0-2	0.23	0.10	0.18	0.14
Children age 3-6	0.15	0.04	0.27	0.17
Children age 7-17	0.04	0.01	0.48	0.27
Age 18-24	0.64	0.57		
Age 25-29 (reference category)	0.36	0.43		
Age 30-34 (reference category)			0.31	0.28
Age 35-39			0.28	0.28
Age 40-44			0.22	0.22
Age 45-49			0.19	0.22
Married	0.21	0.11	0.57	0.44
Single (reference category)	0.79	0.89	0.43	0.56
Primary school	0.29	0.37	0.30	0.31
High school	0.23	0.17	0.07	0.07
Vocational education (reference category)	0.03	0.03	0.06	0.40
Short-term tertiary education (1-2 years)	0.03	0.06	0.06	0.06
Long- term tertiary education (3-6 years)	0.14	0.08	0.18	0.15
Immigrant from OECD countries	0.03	0.04	0.03	0.05
Immigrant from non-OECD countries	0.03	0.04	0.03	0.05
Danes (reference category)	0.93	0.92	0.94	0.90
Living in a bigger city	0.22	0.25	0.15	0.19
Living at the country	0.61	0.59	0.73	0.66
Living in Copenhagen (reference category)	0.18	0.16	0.12	0.15
Years of work experiences	3.47	4.00	11.70	13.15
Weeks of sickness benefit last year	1.89	1.52	3.80	3.11
Weeks of sickness benefit two years ago	0.68	0.80	1.39	1.26
Weeks of public income transfers last year	9.00	3.46	10.05	5.75
Weeks of public income transfers 2 years ago	7.91	5.31	10.37	7.31
Weeks of public income transfers 3 and 4 years ago	15.84	11.98	27.42	19.32
UI fund construction	0.02	0.10	0.02	0.07
UI fund metal	0.00	0.12	0.00	0.08
UI fund manufacturing, restaurant (reference category)	0.15	0.26	0.19	0.28
UI fund production	0.02	0.03	0.02	0.02
UI fund technicians	0.03	0.06	0.05	0.08
UI fund trade	0.29	0.13	0.22	0.07

Continued on next page

Table A.1 – *Continued from previous page*

	Women aged 18-29	Men aged 18-29	Women aged 30-49	Men aged 30-49
UI fund services	0.24	0.08	0.28	0.12
UI fund academics	0.15	0.13	0.09	0.11
UI fund self-employed	0.01	0.02	0.04	0.06
Other UI fund	0.09	0.07	0.10	0.09
Union member	0.72	0.72	0.80	0.79
Non-union member (reference category)	0.28	0.28	0.20	0.21
Unemployment rate for UI fund	6.26	6.75	6.31	6.76
First quarter (reference category)	0.28	0.29	0.29	0.30
Second quarter	0.20	0.19	0.23	0.22
Third quarter	0.31	0.27	0.27	0.23
Fourth quarter	0.21	0.24	0.21	0.25
Year 2001	0.20	0.21	0.21	0.21
Year 2002	0.19	0.20	0.21	0.22
Year 2003	0.27	0.22	0.23	0.27
Year 2004	0.24	0.26	0.26	0.21
Year 2005 (reference category)	0.10	0.10	0.09	0.08

Table A.2: Full estimation results

	Women aged 18-29	Men aged 18-29	Women aged 30-49	Men aged 30-49
Hazard rate into employment				
<i>Baseline in weeks</i>				
0-1	-3.649 (6.687)	-3.748 (356.2)	-3.846 (6.773)	-3.276 (22.85)
1-2	-3.621 (6.690)	-3.650 (356.2)	-3.861 (6.770)	-3.118 (22.86)
2-4	-3.748 (6.689)	-3.804 (356.2)	-3.913 (6.772)	-3.163 (22.85)
4-5	-3.578 (6.688)	-3.785 (356.2)	-3.832 (6.772)	-3.143 (22.86)
6-8	-3.885 (6.687)	-3.899 (356.2)	-3.954 (6.770)	-3.149 (22.86)
8-12	-3.851 (6.685)	-3.904 (356.2)	-3.929 (6.770)	-3.216 (22.85)
12-16	-3.911 (6.689)	-3.890 (356.2)	-4.048 (6.769)	-3.251 (22.85)
16-22	-4.075 (6.688)	-4.040 (356.2)	-4.249 (6.769)	-3.453 (22.86)
22-28	-4.125 (6.687)	-4.071 (356.2)	-4.337 (6.774)	-3.634 (22.86)
28-38	-4.064 (6.686)	-4.222 (356.2)	-4.391 (6.770)	-3.671 (22.86)
38-46	-4.367 (6.688)	-4.343 (356.2)	-4.521 (6.767)	-3.835 (22.86)
46-52	-4.275 (6.686)	-4.548 (356.2)	-4.527 (6.772)	-3.837 (22.86)
52-60	-4.444 (6.684)	-4.35 (356.2)	-4.684 (6.772)	-3.988 (22.85)
60-96	-4.387 (6.687)	-4.316 (356.2)	-4.790 (6.772)	-3.981 (22.86)
96-104	-4.478 (6.687)	-4.884 (356.2)	-4.974 (6.761)	-4.208 (22.86)
104-	-4.536 (6.691)	-4.675 (356.2)	-4.879 (6.774)	-4.447 (22.86)
<i>Variables</i>				
Children age 0-2	-0.022 (0.050)	0.092* (0.048)	-0.026 (0.040)	0.054* (0.032)
Children age 3-6	-0.113* (0.058)	-0.005 (0.071)	0.016 (0.030)	0.099*** (0.030)
Children age 7-17	-0.223** (0.101)	-0.019 (0.109)	0.007 (0.026)	0.167*** (0.027)
Age 18-24	0.179*** (0.037)	0.273*** (0.035)		
Age 35-39			-0.100*** (0.034)	-0.194*** (0.031)
Age 40-44			-0.134*** (0.040)	-0.296*** (0.035)
Age 45-49			-0.264*** (0.045)	-0.470*** (0.039)
Married	-0.116*** (0.044)	-0.083 (0.051)	0.090*** (0.026)	0.125*** (0.026)

Continued on next page

Table A.2 – *Continued from previous page*

	Women aged 18-29	Men aged 18-29	Women aged 30-49	Men aged 30-49
Primary school	−0.313*** (0.043)	−0.253*** (0.034)	−0.129*** (0.032)	−0.182*** (0.029)
High school	0.153*** (0.043)	−0.033 (0.050)	−0.015 (0.049)	−0.228*** (0.055)
Short-term tertiary education (1-2 years)	−0.013 (0.093)	0.059 (0.081)	−0.053 (0.055)	−0.052 (0.050)
Long- term tertiary education (3-6 years)	0.186*** (0.057)	−0.024 (0.070)	0.167*** (0.038)	−0.019 (0.046)
Immigrant from OECD countries	−0.079 (0.094)	−0.187** (0.089)	−0.129* (0.076)	−0.193*** (0.062)
Immigrant from non-OECD countries	−0.498*** (0.128)	−0.606*** (0.102)	−0.264*** (0.088)	−0.438*** (0.079)
Living in a bigger city	0.023 (0.044)	0.091** (0.043)	−0.013 (0.048)	0.017 (0.042)
Living at the country	−0.022 (0.040)	0.198*** (0.040)	0.091** (0.040)	0.185*** (0.035)
Years of work experiences	0.687*** (0.145)	1.059*** (0.127)	0.236*** (0.067)	0.246*** (0.061)
Years of work experiences ²	−4.180*** (1.156)	−4.665*** (0.857)	−0.518** (0.219)	−0.301 (0.185)
Weeks of sickness benefit last year	−1.043*** (0.181)	−0.523*** (0.189)	−0.676*** (0.095)	−0.993*** (0.119)
Weeks of sickness benefit two years ago	−0.730** (0.337)	−0.356 (0.237)	−0.272* (0.152)	−0.147 (0.171)
Weeks of public inc. transfers last year	−0.231*** (0.066)	−0.218* (0.117)	−0.142*** (0.053)	−0.014 (0.079)
Weeks of public inc. transf. 2 years ago	−0.327*** (0.075)	−0.203** (0.086)	−0.140*** (0.052)	−0.102 (0.064)
Weeks of pub. inc. transf. 3 & 4 years ago	−0.462*** (0.083)	−0.828*** (0.086)	−0.328*** (0.046)	−0.685*** (0.059)
UI fund construction	0.204*** (0.035)	0.095*** (0.035)	0.081** (0.033)	0.027 (0.034)
UI fund metal	0.177 (0.154)	0.391*** (0.079)	0.222* (0.119)	0.277*** (0.072)
UI fund production	−0.169 (0.286)	0.064 (0.086)	0.059 (0.183)	−0.120 (0.077)
UI fund technicians	0.041 (0.131)	−0.098 (0.099)	0.137 (0.108)	−0.185** (0.092)
UI fund trade	−0.153 (0.152)	−0.210* (0.118)	0.019 (0.118)	−0.221** (0.088)
UI fund services	−0.059 (0.085)	−0.223*** (0.072)	−0.027 (0.071)	−0.501*** (0.071)
UI fund academics	0.417*** (0.138)	0.220** (0.112)	0.253** (0.111)	−0.197** (0.092)
UI fund self-employed	−0.173 (0.114)	0.059 (0.095)	−0.052 (0.094)	−0.359*** (0.082)
Other UI fund	0.072 (0.155)	0.155 (0.122)	0.203 (0.124)	−0.221** (0.102)
Union member	0.019 (0.154)	−0.151 (0.112)	0.009 (0.086)	−0.394*** (0.067)
Unemployment rate for UI fund	−0.072 (0.047)	−0.059 (0.050)	−0.078** (0.039)	−0.120*** (0.041)

Continued on next page

Table A.2 – Continued from previous page

	Women aged 18-29	Men aged 18-29	Women aged 30-49	Men aged 30-49
Second quarter	0.048 (0.037)	-0.098*** (0.037)	-0.130*** (0.033)	-0.179*** (0.032)
Third quarter	-0.075* (0.042)	-0.061* (0.035)	-0.059* (0.035)	-0.151*** (0.030)
Fourth quarter	0.592 (2.235)	2.351 (1.749)	0.004 (0.018)	-0.296 (1.456)
Year 2001	0.342*** (0.062)	0.260*** (0.059)	0.348*** (0.054)	0.188*** (0.050)
Year 2002	0.260*** (0.063)	0.112* (0.060)	0.200*** (0.056)	0.067 (0.050)
Year 2003	0.203*** (0.058)	0.133** (0.056)	0.239*** (0.053)	0.018 (0.048)
Year 2004	0.191*** (0.059)	0.135** (0.057)	0.265*** (0.052)	0.084* (0.049)
<i>Locking-in effect for ALMP variables</i>				
Private sector employment subsidy	2.315*** (0.279)	3.626 (3.754)	2.384*** (0.287)	2.385*** (0.184)
Public sector employment subsidy	-0.582*** (0.150)	-0.396** (0.154)	-0.469*** (0.127)	-0.392** (0.158)
Education/training	-1.157*** (0.130)	-0.896*** (0.101)	-1.018*** (0.089)	-0.651*** (0.097)
Guidance programmes	-0.060 (0.109)	-0.040 (0.111)	0.214** (0.107)	0.140 (0.093)
Other programmes	-0.674** (0.306)	-0.804** (0.313)	-0.784 (0.750)	-1.116** (0.552)
<i>Post effect for ALMP variables</i>				
Private sector employment subsidy	2.730*** (0.447)	3.915 (3.762)	2.642*** (0.404)	2.874*** (0.286)
Public sector employment subsidy	-2.660*** (0.314)	-3.954 (3.742)	-2.391*** (0.307)	-2.598*** (0.209)
Education/training	-0.404*** (0.092)	-0.262*** (0.078)	-0.095 (0.062)	-0.066 (0.062)
Guidance programmes	-0.279*** (0.088)	-0.195** (0.088)	-0.126* (0.073)	-0.225*** (0.075)
Other programmes	-0.479 (0.403)	-0.573 (0.410)	-2.282 (10.01)	-0.435 (0.422)
<i>Meetings variables</i>				
week 0	0.226** (0.090)	0.227*** (0.083)	0.108 (0.083)	0.256*** (0.071)
week 1-2		0.200*** (0.064)		
week 1-8	0.217*** (0.045)		0.080** (0.040)	
week 1+				0.070** (0.032)
week 3+		0.069* (0.039)		
week 9+	0.043 (0.055)		0.153*** (0.042)	
Hazard rate into meetings				
<i>Baseline in weeks</i>				
0-1	-3.489**	-3.517	-3.194	-3.329

Continued on next page

Table A.2 – Continued from previous page

	Women aged 18-29	Men aged 18-29	Women aged 30-49	Men aged 30-49
	(1.688)	(312.2)	(25.51)	(40.83)
1-2	-3.201*	-3.402	-2.996	-3.126
	(1.689)	(312.2)	(25.51)	(40.84)
2-4	-3.166*	-3.151	-2.942	-2.955
	(1.687)	(312.2)	(25.51)	(40.84)
4-6	-3.383**	-3.387	-3.091	-3.148
	(1.688)	(312.2)	(25.51)	(40.84)
6-8	-3.627**	-3.525	-3.428	-3.383
	(1.686)	(312.2)	(25.51)	(40.84)
8-12	-3.152*	-2.977	-2.716	-2.840
	(1.684)	(312.2)	(25.51)	(40.84)
12-16	-2.726	-2.749	-2.481	-2.539
	(1.686)	(312.2)	(25.51)	(40.84)
16-22	-2.855*	-2.858	-2.722	-2.929
	(1.684)	(312.2)	(25.51)	(40.84)
22-28	-2.916*	-2.737	-2.893	-2.848
	(1.685)	(312.2)	(25.51)	(40.83)
28-38	-2.868*	-2.787	-3.097	-3.006
	(1.684)	(312.2)	(25.51)	(40.84)
38-46	-3.142*	-2.917	-3.090	-3.044
	(1.693)	(312.2)	(25.51)	(40.84)
46-52	-2.802	-2.570	-2.476	-2.447
	(1.705)	(312.2)	(25.51)	(40.84)
52-60	-3.099*	-2.846	-2.309	-2.608
	(1.682)	(312.2)	(25.51)	(40.84)
60-96	-3.39**	-3.325	-3.076	-3.306
	(1.699)	(312.2)	(25.50)	(40.83)
96-104	-2.877	-5.332	-3.517	-4.005
	(1.807)	(312.8)	(25.50)	(40.85)
104-	-5.145	-3.927	-3.950	-4.11
	(5.868)	(312.1)	(25.55)	(40.84)
<i>Variables</i>				
Children age 0-2	0.061	-0.036	0.097**	0.006
	(0.058)	(0.065)	(0.043)	(0.044)
Children age 3-6	-0.047	-0.019	0.000	-0.005
	(0.062)	(0.094)	(0.032)	(0.040)
Children age 7-17	0.040	0.060	-0.040	-0.002
	(0.099)	(0.138)	(0.029)	(0.035)
Age 18-24	0.031	-0.009		
	(0.045)	(0.047)		
Age 35-39			-0.031	-0.082**
			(0.037)	(0.038)
Age 40-44			-0.052	-0.092**
			(0.043)	(0.045)
Age 45-49			-0.126***	-0.058
			(0.049)	(0.048)
Married	0.045	0.062	0.017	0.047
	(0.052)	(0.064)	(0.029)	(0.034)
Primary school	-0.105**	-0.032	-0.027	-0.089**
	(0.051)	(0.047)	(0.035)	(0.037)
High school	-0.085	0.008	-0.054	0.022
	(0.057)	(0.066)	(0.051)	(0.062)

Continued on next page

Table A.2 – *Continued from previous page*

	Women aged 18-29	Men aged 18-29	Women aged 30-49	Men aged 30-49
Short-term tertiary education (1-2 years)	-0.070 (0.105)	-0.123 (0.123)	-0.002 (0.062)	0.030 (0.064)
Long- term tertiary education (3-6 years)	0.017 (0.078)	-0.108 (0.093)	-0.007 (0.043)	0.007 (0.057)
Immigrant from OECD countries	0.144 (0.094)	0.181* (0.096)	0.014 (0.074)	0.097 (0.064)
Immigrant from non-OECD countries	0.156 (0.100)	0.144 (0.102)	0.100 (0.076)	0.095 (0.073)
Living in a bigger city	0.081 (0.056)	0.068 (0.058)	0.053 (0.050)	0.093* (0.050)
Living at the country	0.072 (0.049)	0.108** (0.053)	-0.013 (0.041)	0.073* (0.040)
Years of work experiences	0.333* (0.191)	0.021 (0.175)	0.033 (0.074)	-0.090 (0.076)
Years of work experiences ²	-1.482 (1.586)	-0.390 (1.333)	-0.014 (0.249)	0.222 (0.244)
Weeks of sickness benefit last year	0.204 (0.156)	0.063 (0.219)	0.092 (0.087)	0.264** (0.124)
Weeks of sickness benefit two years ago	-0.132 (0.305)	0.814*** (0.277)	0.039 (0.142)	0.306* (0.165)
Weeks of public inc. transfers last year	-0.156** (0.073)	-0.049 (0.139)	-0.080 (0.055)	-0.121 (0.095)
Weeks of public inc. transf. 2 years ago	-0.132* (0.079)	-0.384*** (0.103)	-0.184*** (0.054)	-0.223*** (0.070)
Weeks of pub. inc. transf. 3 & 4 years ago	-0.005 (0.085)	0.044 (0.097)	-0.022 (0.046)	-0.144** (0.061)
UI fund construction	0.109** (0.043)	0.122*** (0.046)	0.093** (0.036)	0.068* (0.040)
UI fund metal	-0.247 (0.190)	0.154 (0.118)	-0.180 (0.137)	0.111 (0.096)
UI fund production	-0.138 (0.443)	0.131 (0.121)	-0.036 (0.211)	0.018 (0.100)
UI fund technicians	-0.310** (0.155)	-0.046 (0.131)	0.050 (0.124)	-0.065 (0.110)
UI fund trade	-0.137 (0.184)	0.093 (0.159)	-0.166 (0.128)	-0.170 (0.112)
UI fund services	0.024 (0.100)	0.076 (0.098)	-0.078 (0.075)	-0.099 (0.087)
UI fund academics	0.077 (0.167)	0.012 (0.157)	-0.043 (0.120)	-0.099 (0.119)
UI fund self-employed	-0.222 (0.135)	-0.138 (0.131)	-0.498*** (0.102)	-0.430*** (0.102)
Other UI fund	-0.075 (0.185)	0.165 (0.168)	-0.099 (0.134)	-0.060 (0.131)
Union member	-0.394** (0.156)	-0.010 (0.134)	-0.041 (0.083)	-0.188** (0.074)
Unemployment rate for UI fund	-0.004 (0.059)	0.051 (0.067)	0.000 (0.043)	0.098* (0.051)
Second quarter	0.084* (0.045)	0.048 (0.050)	-0.013 (0.036)	0.062 (0.040)
Third quarter	0.086 (0.053)	0.073 (0.050)	0.015 (0.039)	0.013 (0.039)

Continued on next page

Table A.2 – Continued from previous page

	Women aged 18-29	Men aged 18-29	Women aged 30-49	Men aged 30-49
Fourth quarter	0.164 (2.729)	0.381 (2.396)	-0.008 (0.019)	-0.035 (1.805)
Year 2001	-0.638*** (0.068)	-0.760*** (0.073)	-0.501*** (0.053)	-0.501*** (0.059)
Year 2002	-0.882*** (0.071)	-1.020*** (0.073)	-0.659*** (0.055)	-0.752*** (0.060)
Year 2003	-0.542*** (0.062)	-0.639*** (0.066)	-0.353*** (0.049)	-0.441*** (0.054)
Year 2004	-0.218*** (0.061)	-0.286*** (0.067)	-0.219*** (0.047)	-0.182*** (0.053)
<i>Unobserved heterogeneity</i>				
Employment 2	-4.033 (30.76)	0.014 (2,034)	-1.794 (536.2)	-0.187 (567.7)
Meeting 2	-0.466 (2.374)	-0.012 (1,656)	0.528 (150.1)	-0.627 (1,499)
Masspoint 2	5.484 (1,526)	4.731 (47,309)	3.802 (9,972)	4.188 (1,725)
Employment 3	-0.434 (1,344)	-5.019 (355.8)	-0.382 (141.9)	-0.123 (2,519)
Meeting 3	0.448 (3,538)	1.653 (312.1)	0.296 (58.46)	-0.498 (3,815)
Masspoint 3	0.128 (1,564)	2.659 (376,220)	0.274 (17,840)	-0.938 (25,998)
Employment 4	0.380 (7.752)	-0.101 (361.1)	-0.029 (208.5)	0.083 (1,456)
Meeting 4	-0.816 (7.162)	-0.512 (341.3)	0.081 (436.2)	0.125 (1,809)
Masspoint 4	-0.527 (12,237)	0.040 (3.090)	-0.547 (10,246)	-1.481 (36,375)
Employment 5	-0.233 (1,672)	-0.133 (284.6)	-0.202 (10.67)	-1.558 (22.78)
Meeting 5	0.135 (1,646)	0.161 (197.4)	-0.707 (22.76)	0.836 (40.88)
Masspoint 5	0.929 (1,567)	-0.688 (327.7)	0.983 (16,574)	0.171 (29,185)
Employment 6	-0.490 (145.9)	-0.127 (356.1)	-0.649 (38.27)	0.293 (198.2)
Meeting 6	0.783 (1,067)	-2.430 (312.8)	-0.388 (60.61)	0.308 (106.9)
Masspoint 6	0.498 (4,260)	1.172 (3,253)	0.689 (10,126)	0.391 (1,978)
Employment 7	0.295 (126.1)	-1.388 (356.1)	-1.933 (712.2)	-0.019 (89.29)
Meeting 7	0.092 (95.74)	-1.264 (312.2)	0.488 (195.5)	-0.626 (127.6)
Masspoint 7	-1.205 (11,139)	0.638 (4,859)	-1.294 (10,173)	-0.896 (4,817)

Notes: Standard errors in parentheses; ***, ** and * indicate significance at the 1%, 5% and 10% level, respectively.

Publication series published by IFAU – latest issues

Rapporter/Reports

- 2013:19** Golsteyn Bart H.H., Hans Grönqvist and Lena Lindahl "Tidspreferenser och långsiktiga utfall"
- 2013:20** Hensvik Lena and Oskar Nordström Skans "Kontakter och ungdomars arbetsmarknadsinträde"
- 2013:21** Dahlberg Matz, Eva Mörk and Katarina Thorén "Jobbtorg Stockholm – resultat från en enkätundersökning"
- 2013:22** Sibbmark Kristina "Arbetsmarknadspolitisk översikt 2012"
- 2013:23** Hedlin Maria and Magnus Åberg "Vara med i gänget?" – Yrkesocialisation och genus i två gymnasieprogram"
- 2013:24** Alam Moudud, Kenneth Carling and Ola Nääs "Har kommunala sommarjobb under gymnasieåren en positiv effekt på arbetskarriären senare i livet?"
- 2013:25** Lundin Andreas and Tomas Hemmingsson "Prediktorer för arbetslöshet och förtidspension"
- 2013:26** Egebark Johan and Niklas Kaunitz "Sänkta arbetsgivaravgifter för unga"
- 2014:1** Assadi Anahita "En profilfråga: Hur använder arbetsförmedlare bedömningsstödet?"
- 2014:2** Eliason Marcus "Uppsägningar och alkoholrelaterad sjuklighet och dödlighet"
- 2014:3** Adman Per "Försummas gymnasieskolans demokratiuppdrag? En kvalitativ textanalys av 2009 års svenska gymnasiereform"
- 2014:4** Stenberg Anders and Olle Westerlund "Utbildning vid arbetslöshet: en jämförande studie av yrkesinriktad och teoretisk utbildning på lång sikt"
- 2014:5** van den Berg Gerard J., Lene Back Kjærsgaard and Michael Rosholm "Betydelsen av möten mellan arbetslösa och förmedlare"

Working papers

- 2013:19** Josephson Malin, Nina Karnehed, Erica Lindahl and Helena Persson "Intergenerational transmission of long-term sick leave"
- 2013:20** Wondratschek Verena, Karin Edmark and Markus Frölich "The short- and long-term effects of school choice on student outcomes – evidence from a school choice reform in Sweden"
- 2013:21** Edmark Karin and Roger Gordon "Taxes and the choice of organizational form by entrepreneurs in Sweden"
- 2013:22** Golsteyn Bart H.H., Hans Grönqvist and Lena Lindahl "Time preferences and lifetime outcomes"
- 2013:23** Hensvik Lena and Oskar Nordström Skans "Networks and youth labor market entry"
- 2013:24** Alam Moudud, Kenneth Carling and Ola Nääs "The effect of summer jobs on post-schooling incomes"
- 2013:25** Lundin Andreas and Tomas Hemmingsson "Adolescent predictors of unemployment and disability pension across the life course – a longitudinal study of selection in 49 321 Swedish men"
- 2013:26** van den Berg Gerard J., Arne Uhlendorff and Joachim Wolff "Sanctions for young welfare recipients"
- 2013:27** Egebark Johan and Niklas Kaunitz "Do payroll tax cuts raise youth employment?"
- 2014:1** Vikström Johan "IPW estimation and related estimators for evaluation of active labor market policies in a dynamic setting"
- 2014:2** Adman Per "Who cares about the democratic mandate of education? A text analysis of the Swedish secondary education reform of 2009"
- 2014:3** Stenberg Anders and Olle Westerlund "The long-term earnings consequences of general vs. specific training of the unemployed"

- 2014:4** Boye Katarina “Can you stay at home today? The relationship between economic dependence, parents’ occupation and care leave for sick children”
- 2014:5** Bergemann Annette and Gerard J. van den Berg “From giving birth to paid labor: the effects of adult education for prime-aged mothers”
- 2014:6** van den Berg Gerard J., Lene Kjærsgaard and Michael Rosholm “To meet or not to meet, that is the question – short-run effects of high-frequency meetings with case workers”

Dissertation series

- 2013:1** Vikman Ulrika “Benefits or work? Social programs and labor supply”
- 2013:2** Hanspers Kajsa “Essays on welfare dependency and the privatization of welfare services”
- 2013:3** Persson Anna “Activation programs, benefit take-up, and labor market attachment”
- 2013:4** Engdahl Mattias “International mobility and the labor market”