

Chao, Shih-kang; Härdle, Wolfgang Karl; Hien, Pham-thu

**Working Paper**

## Credit risk calibration based on CDS spreads

SFB 649 Discussion Paper, No. 2014-026

**Provided in Cooperation with:**

Collaborative Research Center 649: Economic Risk, Humboldt University Berlin

*Suggested Citation:* Chao, Shih-kang; Härdle, Wolfgang Karl; Hien, Pham-thu (2014) : Credit risk calibration based on CDS spreads, SFB 649 Discussion Paper, No. 2014-026, Humboldt University of Berlin, Collaborative Research Center 649 - Economic Risk, Berlin

This Version is available at:

<https://hdl.handle.net/10419/103813>

**Standard-Nutzungsbedingungen:**

Die Dokumente auf EconStor dürfen zu eigenen wissenschaftlichen Zwecken und zum Privatgebrauch gespeichert und kopiert werden.

Sie dürfen die Dokumente nicht für öffentliche oder kommerzielle Zwecke vervielfältigen, öffentlich ausstellen, öffentlich zugänglich machen, vertreiben oder anderweitig nutzen.

Sofern die Verfasser die Dokumente unter Open-Content-Lizenzen (insbesondere CC-Lizenzen) zur Verfügung gestellt haben sollten, gelten abweichend von diesen Nutzungsbedingungen die in der dort genannten Lizenz gewährten Nutzungsrechte.

**Terms of use:**

*Documents in EconStor may be saved and copied for your personal and scholarly purposes.*

*You are not to copy documents for public or commercial purposes, to exhibit the documents publicly, to make them publicly available on the internet, or to distribute or otherwise use the documents in public.*

*If the documents have been made available under an Open Content Licence (especially Creative Commons Licences), you may exercise further usage rights as specified in the indicated licence.*

SFB 649 Discussion Paper 2014-026

# Credit Risk Calibration based on CDS Spreads

Shih-Kang Chao\*  
Wolfgang Karl Härdle\*  
Hien Pham-Thu\*



\* Humboldt-Universität zu Berlin, Germany

This research was supported by the Deutsche  
Forschungsgemeinschaft through the SFB 649 "Economic Risk".

<http://sfb649.wiwi.hu-berlin.de>  
ISSN 1860-5664

SFB 649, Humboldt-Universität zu Berlin  
Spandauer Straße 1, D-10178 Berlin



SFB 649 ECONOMIC RISK BERLIN

# Credit Risk Calibration based on CDS Spreads\*

Shih-Kang Chao<sup>†</sup>, Wolfgang Karl Härdle<sup>‡§</sup>, Hien Pham-Thu,<sup>¶</sup>

May 9, 2014

## Abstract

As observed in the financial crisis, CDS spreads tend to increase simultaneously as a reaction to common shocks. Focusing on the spillover effects triggered by extreme events, we propose a credit risk analysis tool by applying credit default swap spread returns to the concept of  $\Delta$ CoVaR suggested by Adrian and Brunnermeier (2011). The interconnection and mutual impact on credit spreads are investigated based on CDS spreads of the biggest derivative dealers in the market. By including factors identified as determinants of CDS spreads to the set of explanatory variables such as equity return and equity volatility and implementing the variable selection technique least absolute shrinkage and selection operator (LASSO), the results demonstrate an improved performance in CDS spread VaR calculation. The enhancement is more significant in pre-crisis period but both methodologies tend to overestimate risk in turbulent period. Further, non-linear effects between CDS spreads in extreme events are captured by the introduction of a partial linear model in the CoVaR calculation.

*JEL:* G12, G13, G23

*Keywords:* CDS, VaR, CoVaR, stressed VaR, Central Counterparty, Quantile Regression

---

\*Financial support from the Deutsche Forschungsgemeinschaft (DFG) via SFB 649 "Economic Risk" and International Research Training Group (IRTG) 1792 are gratefully acknowledged.

<sup>†</sup>Ladislaus von Bortkiewicz Chair of Statistics, C.A.S.E. - Center for applied Statistics and Economics, Humboldt-Universität zu Berlin, Unter den Linden 6, 10099 Berlin, Germany. Email: shih-kang.chao@cms.hu-berlin.de

<sup>‡</sup>Ladislaus von Bortkiewicz Chair of Statistics, C.A.S.E. - Center for applied Statistics and Economics, Humboldt-Universität zu Berlin, Unter den Linden 6, 10099 Berlin, Germany. Email: haerdle@wiwi.hu-berlin.de

<sup>§</sup>School of Business, Singapore Management University, 50 Stamford Road, Singapore 178899, Singapore.

<sup>¶</sup>Ladislaus von Bortkiewicz Chair of Statistics, C.A.S.E. - Center for applied Statistics and Economics, Humboldt-Universität zu Berlin, Unter den Linden 6, 10099 Berlin, Germany. Email: hien.pham-thu@cms.hu-berlin.de

## 1. Introduction

Nowaday derivatives are standard elements of the financial market and cover a wide variety of products. There are listed derivatives such as exchange traded futures and options but also over-the-counter (OTC) products such as forwards or swaps traded bilaterally by financial institutions, fund managers, and corporate treasurers. The flexibility of OTC derivatives in the area of hedging and risk management, price discovery and enhancement of liquidity is one of the reasons for the fast growth of these products in the market (Acharya et al. (2009)). Since the financial crisis unfolded several vulnerabilities in OTC trading (lack of transparency, interconnectedness and change in counterparty credit risk) regulators advocate for the clearing of OTC derivative transactions through central counterparties. This has been legally established in the Dodd-Frank Wall Street Reform and Consumer Protection Act of 2010 for the United States of America (SEC (2010)) and regulatory adopted by the European Parliament and The Council (ESMA (2013)). The Basel Committee supports this attempt by offering incentives for centrally cleared OTC derivative transactions through counterparty credit risk reforms under Basel III framework (BIS (2011)). The main objective of these acts are to centrally control the counterparty credit risk of those trades and to anticipate systemic risk mitigation. This regulation is facing two main challenges. One is the implementation of standardized contractual terms and operational processes. A legal standardisation is important for netting and effective risk management whereas operational standardisation of trade terms is vital for setting initial and variation margins. The second challenge is an appropriate counterparty credit risk allocation for an adequate risk controlling. A mapping of risk contribution to individual counterparties has two main enhancements. Firstly, it provides further information how the default or distress of one bank impacts the system. Secondly, it reduces the incentive for risk-seeking behavior and fosters effective risk monitoring.

The recent financial crisis and its aftermath disclose the boost in interconnectedness within financial market participants. High correlation among financial firms can usually be explained by simultaneous response to common risk factors. Moreover, in stressed period market participants are engaged progressively in "flight to quality" when market participants are forced to reduce risk and invest in securities with good credit ratings. Further, the increased trading of derivatives contributes to the high sensitivity to counterparty credit risk in the financial industry. Thus, mutual impacts play an important role within the system. As a consequence, monitoring of individual risk is not sufficient and systemic risk contribution needs to be considered. The interconnection and

externality effects of financial institutions have already been examined by Acharya et al. (2010), Adrian and Brunnermeier (2011), Hautsch et al. (2013), Brownlees and Engle (2010) or Düllmann and Sosinska (2007), Upper and Worm (2004) with focus on the German banking sector. Further, the Basel Committee on Banking Supervision included supplementary methodology in December 2011 to identify systemically important banks (Global Systemically Important Banks (G-SIBs)). The assessment methodology is based on five categories: size, interconnectedness, substitutability, cross-border activity, and complexity of the bank.

In this paper we propose a macro-prudential view from a central counterparty's perspective. This research is focused on the measurement of spillover effects of credit risk by using credit default swaps spreads as a proxy for credit risk. The scope of our work is the analysis of counterparty credit risk effects of a distressed counterparty on other market members. This requires the study of 'tail events' given that one of the market participants is in stress. Quantitatively speaking this falls into the category of VaR (value at risk) and more precisely conditional value at risk. Therefore, we employ CoVaR of Adrian and Brunnermeier (2011). It denotes the maximum loss in time  $t + d$  which will only be exceeded under a confidence level of  $\tau$ , where  $0 < \tau < 1$ . This measure is expressed statistically by the  $\tau$ -quantile of the conditional distribution of returns

$$\text{VaR}_{t+d}^{\tau} = \inf \{x \in \mathbb{R} : \text{P}(X_{t+d} \leq x \mid \mathcal{F}_t) \geq \tau\}, \quad (1)$$

where  $\mathcal{F}_t$  is the information set up to time  $t$ .

The CoVaR is defined as the VaR of an institution  $j$  conditional on an event of institution  $i$  denoted by  $\mathbb{C}(X^i)$ .

$$\text{Pr} \left\{ X^j \leq \text{CoVaR}_{\tau}^{j|\mathbb{C}(X^i)} \mid \mathbb{C}(X^i) \right\} = \tau. \quad (2)$$

Subsequently, the systemic contribution of each institution is determined by the delta CoVaR ( $\Delta\text{CoVaR}$ ) level conditional on the median state of the institution and the status where the institution is under distress

$$\Delta \text{CoVaR}_{\tau}^{j|i} = \text{CoVaR}_{\tau}^{j|X_i=\text{VaR}_{\tau}^i} - \text{CoVaR}_{\tau}^{j|X_i=\text{Median}} \quad (3)$$

This quantity exhibits the marginal contribution of individual financial institutions to the remainder within the system. The benefit in applying  $\Delta\text{CoVaR}$  measure is versatile. The main advantage lies in its ability to reflect the effect of the distress of one individual

institution on another firm based on the stand-alone risk level. In addition,  $\Delta\text{CoVaR}$  is effective for the identification of systemically relevant counterparties. This measure reflects the concept of the "stressed VaR" proposed by Basel Committee to supplement the VaR framework - a risk measure of stand-alone risk under extreme and volatile market conditions.

In order to capture credit risk properly we add further variables which are identified to have major impact on CDS spreads including variables at firm level. Since this inclusion greatly inflates the number of variables, multicollinearity or strong correlation between covariates might cause inadequate error in the estimation results of the regression. Therefore, we apply least absolute shrinkage and selection operator (LASSO) as a simple variable selection technique to overcome this problem. As the proposed method generates less exceedance in backtesting our method improves the performance in the VaR prediction in comparison to the earlier methodology.

Corresponding to Espinosa et al. (2013) we discover that the most relevant coefficients for CDS spreads VaR are the VIX and the liquidity spread. The LASSO technique reveals that CDS spread returns can be mostly solely described by the covariate VIX. This could result from the fact that market volatility have a high impact on the remaining variables as the CDS spread returns are described by more coefficients when VIX is excluded from the set of explanatory variables. In contrast to Breitenfellner and Wagner (2012) we find a predominant negative influence of stock market volatility on spread changes relative to stock market return. The influence increases during the crisis. This result goes along with the findings from Alexander and Kaeck (2008) for crisis period. The  $\Delta\text{CoVaR}$  from our research reveals that the effect of distress varies between banks and there are institutions which have a higher effects on their counterparties and therefore can be considered as more systemic relevant than others.

The remainder of the paper is organised as follows. The next section introduces the structure and risk management of a central counterparty. Section 2 provides a short discussion about the application of CDS spreads in credit risk predictions. Thereafter, the methodology is introduced and data are described. An empirical analysis is given in section 5. Section 6 concludes and presents further remarks.

## 2. Concept of Central Counterparty

The OTC derivatives market is facing many changes. One of these major changes is the mandatory clearing of standardized OTC derivatives via central clearing counterparty (CCP). Standardized OTC derivatives offer pre-determined terms in legal and operational specifications which are provided by the ISDA master agreement ISDA (2013). A CCP can be seen as a counterparty which interposes itself between the initial counterparties of the derivative contract and takes the position as a seller to the original buyer and the position of a buyer to the original seller. The original bilateral relationship between the counterparties is then withdrawn. The main benefit of this new structure lies in the reduction of the total exposure. In the example shown in figure 1, the total exposure amounts to 760 without netting. The total exposure is reduced from 760 to 420 in case netting effects are taken into account. Herein, the long and short position between two counterparties are offset. Multilateral netting further reduces the total exposure of the trades from 420 to 180. It is important to note that the exposure reduces or increases when there are more than one CCPs which clear different classes of OTC derivatives (Duffie et al. (2010), Duffie and Zhu (2011), Cont and Kokholm (2013)).

Due to the replacement of the original contract by two new contracts, the positions with opposite direction are automatically offset and CCP barely faces less market risk. However, the CCP internalizes counterparty credit risk from its clearing members. When a counterparty defaults, the CCP has to unwind the defaulted position. In case replacement costs exceed the deposit collateral the remaining losses are then mutualized to their clearing members.

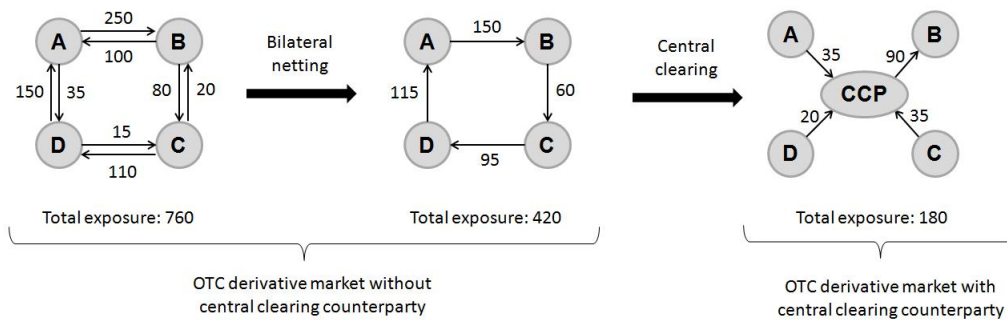


Figure 1: Market structure of OTC derivatives market with and without central clearing counterparty

Currently, CCPs rely on different risk management mechanism such as stringent membership access, initial margin, variation margin and default fund contribution. Ini-

tial margins are deposits required by opening new position and cover the extreme changes of potential future exposures whereas variation margin is needed to cover daily changes in mark-to-market value. Default fund contribution is an additional deposit where each clearing member has to contribute. It represents further buffer in case the occurred losses exceed the variation and initial margins. However, there still exists a lack of standard in the risk management mechanism of a CCP (Duffie et al. (2010)). There is a necessity in a distinct credit risk mapping in the calculation of the default fund contribution based on the severeness of the spillover effects. As the default fund covers the loss from extreme events, there is a need to find a stressed risk measure reflecting severe changes in the credit spreads. Default funds' relevant losses occur when a counterparty defaults and losses are not fully covered by deposit collateral. Further, a CCP needs to consider the mark-to-market changes of derivative trades initiated by distressed derivative dealers. An application of our work is the identification of credit risk contribution of individual clearing members to the central clearing counterparty (CCP).

To understand the challenges a CCP faces in the real world, we refer to the insurance corporation American International Group (AIG) as an example. This monoline was struggling from significant losses in securities lending businesses, mark-to-market losses on CDS and associated margin calls as a consequence of excessive CDS selling. Due to lack in liquidity and downgrade by the major rating agencies, AIG could not fulfill all collateral requirements. In order to avoid spill-over effects caused by AIG's bankruptcy, the company was bailed out by the US government. AIG is an example worth mentioning because it could not fulfill the collateral requirements resulting from mark-to-market changes in derivatives among other circumstances. As a consequence, the question arises whether a central counterparty can prevent financial market participants from such excessive CDS selling and manage the risks implied by distressed market environment? By offering clearing and settlement procedures, the CCP would be highly sensitive to counterparty credit risk due to changes in market value and therefore depends on accurate future exposure simulation methods. Therefore, the central clearing counterparty should put emphasis on the identification of risks triggered by default of a clearing member and take precautionary measures.

Further discussion of the structure and the risk of central counterparty is to be found in Pirrong (2011). Economical analysis on the reduction of counterparty credit risk by introducing a unique CCP is given in Duffie and Zhu (2011). Duffie and Zhu show that counterparty credit risk can diminish in case there is an unique existing CCP but also



point out that multiple CCP might decrease netting opportunities and increase risk. Arora et al. (2012) support and complement the results provided by Duffie and Zhu (2011).

### **3. Data**

#### **3.1. Credit Default Swaps Spread and its determinants**

Until recently, many papers have been published referring to the evaluation of counterparty risk by using CDS spreads as a proxy for credit risk. A credit default swap (CDS) is an insurance contract on debt of a reference entity. The buyer of the CDS receives a payment in case the reference entity defaults and makes a fixed payment (usually quarterly) to the CDS seller as long as default has not been occurred. The spread on the reference entity is expressed as a fair premium based on the expected loss given default and the probability default.

Towards credit risk assessment by rating, CDS spreads are more beneficial as they are traded market indicators for credit risk and react quickly to market events. Further, they directly reflect the market's perception of credit risk (Longstaff et al. (2007)) and express the implied price of risk on the reference entity to a certain extent. This is illustrated by the soaring CDS spread of AIG during the financial crisis in 2008. Another example is Bear Stearns which was in financial distress from mid February until mid March in 2008. In mid February, the spread of a CDS on Bear Stearns' senior unsecured debt with 5 year maturity was located at 100 basis points. In mid March, it rose to almost 250 basis points. When the crisis by Bear Stearns was solved through its sale to JP Morgan Chase arranged by the Fed, the spreads reverted within a month to its mid-February levels. This example taken from Acharya and Subrahmanyam (2008) shows the impacts of distress and new information on CDS spreads movements. In addition, it also reveals the relevant impact of liquidity risk. The scarcity of CDS seller could also lead to high CDS spreads which automatically increases the concentration on the market. CDS spreads not only reflect the credit risk of the underlying entity, but also include the credit risk of the counterparty providing the protection.

Our research raises the question how to forecast CDS spreads and how to quantify the effect of correlation within a portfolio of CDS. By using the macro variables observed in the market, we are able to analyse the effect of market development on the change of CDS spreads for individual counterparty. It is obvious that counterparties which

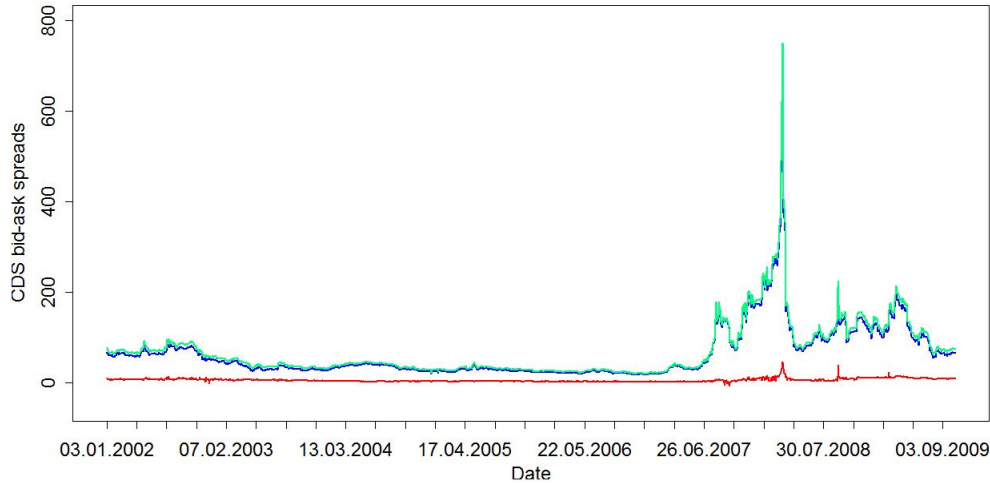


Figure 2: AIG bid-ask level

show high systemic importance and high dependence to market movements in its CDS spread should meet higher capital requirements than others, which is also applied by the standard regulatory tools such as supervision and risk-based capital requirements in Duffie (2010). Since the group of derivative dealers and especially CDS dealers is small, it increases the interconnectedness on the dealer market and could lead to a rise in replacement costs in case a dealer defaults and other market participants have to amend the derivative trade. Therefore, CoVaR would not only give an credit risk overview of one counterparties to the remaining counterparty of the portfolio. Furthermore, it also provides the basis for the overall credit risk effect on replacement cost of a derivative contract. This effect is illustrated in the high bid-ask spreads of CDS derivatives and IRS during and after the financial crisis of the distressed firm. The credit risk from financial institutions are not only determined by their fundametalns but also affected by spillover effects created by the condition of the macroeconomics and conditions of other system relevant financial institutions on the market.

### 3.2. Data selection

The CDS data are obtained from Bloomberg and cover the period from September 12, 2002 to December 31, 2011. The data set is divided into two periods which are considered as pre-crisis and crisis. The shock event is marked by the default of Lehman on September 16, 2008. CDS spreads of fourteen biggest derivative dealers in the market are included, which contain Bank of America (BoA), Barclays (BARC), BNP Paribas

(BNP), Citigroup (Citi), Credit Suisse (CS), Deutsche Bank (DB), Goldman Sachs (GS), HSBC (HSBC), J.P. Morgan (JPM), Morgan Stanley (MS), Royal Bank of Schottland (RBS), Société Générale (SG), UBS, and Lehman Brothers. In addition, we add the monoline AIG to the variable set to capture extreme high spread development. Until the shock event in 2008, the majority of the financial institutions receive an AA rating from Standard and Poor's (S&P). However, the CDS spreads show significant movement after Lehman's default in September 2008. At the end of 2008 and the beginning of 2009, AA-rated banks were downgraded to A level except for Barclays, BNP and HSBC. In the late post shock period, all financial institutions are rated on an A level by S&P. The overall sample contains 2208 observations for all institutions except for Lehman and a descriptive statistic overview of CDS spread level and CDS spread log returns is given in table 1 and 2. The spread curves of selected representative institutions are shown in Figure 3.

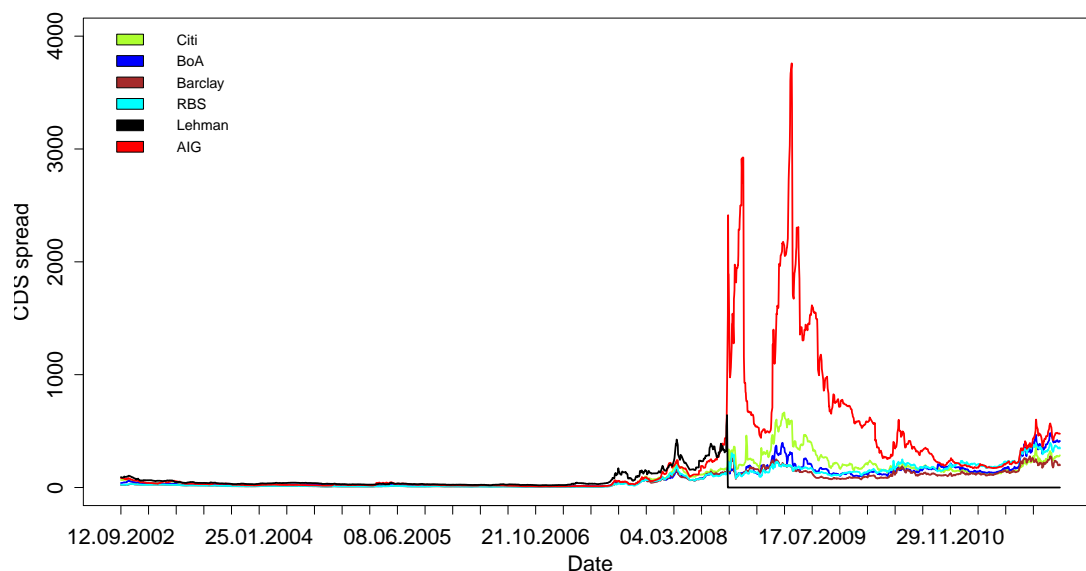


Figure 3: CDS spreads of the representative 5 global financial institutions and one global insurance company

As CDS spread determinants we considered in total 37 independent variables. The panel data covers 7 state variables suggested by Adrian and Brunnermeier (2011). It includes the VIX for implied volatility of the stock market reported by Chicago Board Options Exchange. The short term liquidity spread which is measured by the difference between the three-month repo rate and three-month bill rate. The change in the three-month Treasury bill rate from the Federal Reserve Board is also included as its

Table 1: Descriptive statistics of CDS spreads in basis point

	Mean	Std. Dev	Skewness	Kurtosis	Min	Median	Max	Autocorr
CITI	104,795	121,726	1,748	3,498	7,438	34,709	665,532	0,996
BOA	87,620	95,516	1,586	2,397	8,003	32,167	483,064	0,997
BARCLAYS	65,094	68,200	0,991	-0,066	5,594	23,209	278,637	0,997
BNP	50,618	59,424	2,168	5,560	5,375	23,268	359,586	0,997
CS	62,647	52,799	0,978	0,215	8,397	45,509	263,295	0,996
DB	59,720	53,089	1,087	0,762	9,550	38,035	311,601	0,996
GS	95,775	89,719	1,561	2,116	18,750	53,750	545,143	0,993
HSBC	45,008	41,161	0,996	0,114	4,937	25,000	183,530	0,997
JPM	61,303	43,124	0,979	0,291	11,450	46,492	232,301	0,995
MS	123,375	138,067	2,521	10,767	17,833	55,488	1239,997	0,984
RBS	83,709	94,375	1,124	0,474	3,964	23,750	395,937	0,998
SG	64,678	78,502	2,124	5,274	5,964	24,317	440,265	0,997
UBS	63,464	70,687	1,316	1,337	4,500	21,125	361,675	0,997
LEHMAN	59,429	71,726	3,411	13,356	18,821	34,402	641,911	0,991
AIG	279,207	500,674	3,096	11,119	8,156	42,667	3758,987	0,992

Table 2: Descriptive statistics of CDS spread log returns. Mean and median of CDS spread returns of all financial institution are almost at zero and therefore are not shown in the table.

	Std. Dev	Skewness	Kurtosis	Min	Max	Autocorr.
CITI	0.023	0.871	27.203	-0.174	0.286	0.032
BOA	0.023	0.579	14.454	-0.182	0.247	0.008
BARCLAYS	0.021	1.045	24.028	-0.155	0.270	0.115
BNP	0.021	0.160	17.017	-0.192	0.214	0.117
CS	0.019	0.172	17.983	-0.168	0.182	0.065
DB	0.020	0.682	22.554	-0.156	0.252	0.143
GS	0.020	-0.040	28.865	-0.248	0.219	0.222
HSBC	0.019	-0.294	13.582	-0.147	0.151	0.067
JPM	0.019	0.453	15.169	-0.138	0.213	0.117
MS	0.023	4.678	118.434	-0.255	0.475	-0.006
RBS	0.024	1.884	87.755	-0.368	0.376	-0.072
SG	0.020	-0.209	21.404	-0.223	0.187	0.129
UBS	0.020	0.439	20.372	-0.153	0.218	0.090
LEHMAN	0.019	-2.040	30.336	-0.226	0.148	0.138
AIG	0.024	1.106	61.673	-0.253	0.402	0.237

rate is significant in explaining the tails of financial sector market-valued asset returns. The risk-free interest rate is also a component of the structural model (Merton (1974)) which decreases the likelihood of default as it gets higher. We assume that interest rate and credit spread reveal a negative relationship, since in a macroeconomic context, a high level of interest rate is usually found in an economy with high growth where default rarely occurs. In our research, we consider the three month treasury bill as the risk free interest rate referring to Adrian and Brunnermeier (2011). Several fixed-income factors that capture the time variation in tails of asset returns are further included such as change in slope of the yield curve, where an increase in the slope of the yield curve indicates an improvement in economic growth. Another factor is the change in credit spreads between BAA-rated bonds and treasury rate (both instruments with maturity of 10 years), which reflects default premium based on market risk. A rise suggests a high default premium and therefore implies an increase in market risk. In accordance with Galil et al. (2013) daily equity market returns (CRSP) as determinant of CDS spreads is also included in addition to daily real estate sector excess return over the market return.

Following the structure model rationale stock returns and stock volatility returns are components in the spread calculation. Variables such as asset growth, asset volatility and leverage have a direct impact on credit spreads as the model assumes that they are the key driving factors for bankruptcy. As a consequence, we include financial institution's individual equity return as a proxy for the change in firm value. A high equity return increases firm value which leads to reduction in the spread level of the financial institution. It is also obvious to assume that stock return and credit spread expose a negative relationship. Refer to Galil et al. (2013) change in leverage is not statistically significant as a determinant for CDS spread and is therefore excluded from the set of explanatory variables. However, as change in leverage is highly correlated with stock return this factor is considered through equity return to a certain extent.

## 4. Methodology

### 4.1. Quantile regression

For the calculation of value at risk (VaR), we apply the quantile regression proposed by Koenker and Bassett (1978), which reveals the relationship between the predictive variables and a specific quantile of the response variables. By considering the CDS spreads movements in quantile, we capture the risk and variability of the credit spreads of the constituents under extreme scenario. Denote  $X_i$  as the CDS spread return of

institution  $i$  with  $i = 1, \dots, N$ , where  $N$  is the number of financial institutions (FIs) considered in our sample. Referring to Adrian and Brunnermeier (2011), the predicted quantiles of the CDS spread return is modeled through a linear equation as the following:

$$X_{i,t} = \alpha_i + \gamma_i^\top M_{t-1} + \varepsilon_{i,t}, \quad (4)$$

where the vector  $M_t$  represents state variables,  $\alpha_i$  describes the intercept and transposed vector  $\gamma_i^\top$  outlines the parameters respective to  $M_t$ .  $\varepsilon_{i,t}$  is independent in  $i$  and  $t$  with  $\tau$  quantile equal to 0. Again with linear modeling paradigm as equation (4), if we are interested in the CDS spread returns of  $X_j$ , we can form a linear function of state variables  $M_t$  and another CDS spread returns  $X_i$  ( $j \neq i$ ) so that

$$X_{j,t} = \alpha_{j|i} + \beta_{j|i} X_{i,t} + \gamma_{j|i}^\top M_{t-1} + \varepsilon_{j,t}. \quad (5)$$

Recent findings have questioned the linear relationship between returns of financial institutions (Chao et al. (2014)). Since the linearity relation between institutions' CDS spread returns is not evident nor justified by any economic theory, a partial linear model has been chosen to model the relationship between the input and output variables. Figure 4 demonstrates the non-linearity between the CDS spreads returns especially in extreme events from different institutions as the linear function is not lying within the confidence bands of the nonparametric curve, which is constructed in Song et al. (2012). PLM approach has the virtue of allowing more flexibility in the model while avoiding the curse of dimensionality. Given scalar response variable  $X_{j,t}$  and explanatory scalar variable  $X_{i,t}$  and state variables vector  $M_t$ , the PLM is defined as

$$X_{j,t} = f(X_{i,t}) + \beta^\top M_t + \varepsilon_{j,t} \quad (6)$$

where  $f$  is an unknown nonparametric function to be estimated, and  $\beta^\top$  is a transposed coefficient vector. A detailed explanation about the estimation procedure can be found in Song et al. (2012). The idea behind the fitting procedure is first finding a reasonable estimate of  $\hat{\beta}$  for  $\beta$ , and then regressing the residual  $X_{j,t} - \beta^\top M_t$  on  $X_{i,t}$  via local linear quantile smoothing (Detailed algorithm description is explained in the PLM appendix).

Following by the parameter estimation, the VaR of institution  $i$  and the CoVaR of  $j$  conditional on the VaR event of institution  $i$  are given by

$$\widehat{VaR}_{i,t} = \hat{\alpha}_i + \hat{\gamma}_i^\top M_{t-1}, \quad (7)$$

$$\widehat{CoVaR}_{j|i,t} = \hat{\alpha}_{j|i} + \hat{f}_{j|i}(\widehat{VaR}_{i,t}) + \hat{\gamma}_{j|i}^\top M_{t-1}. \quad (8)$$

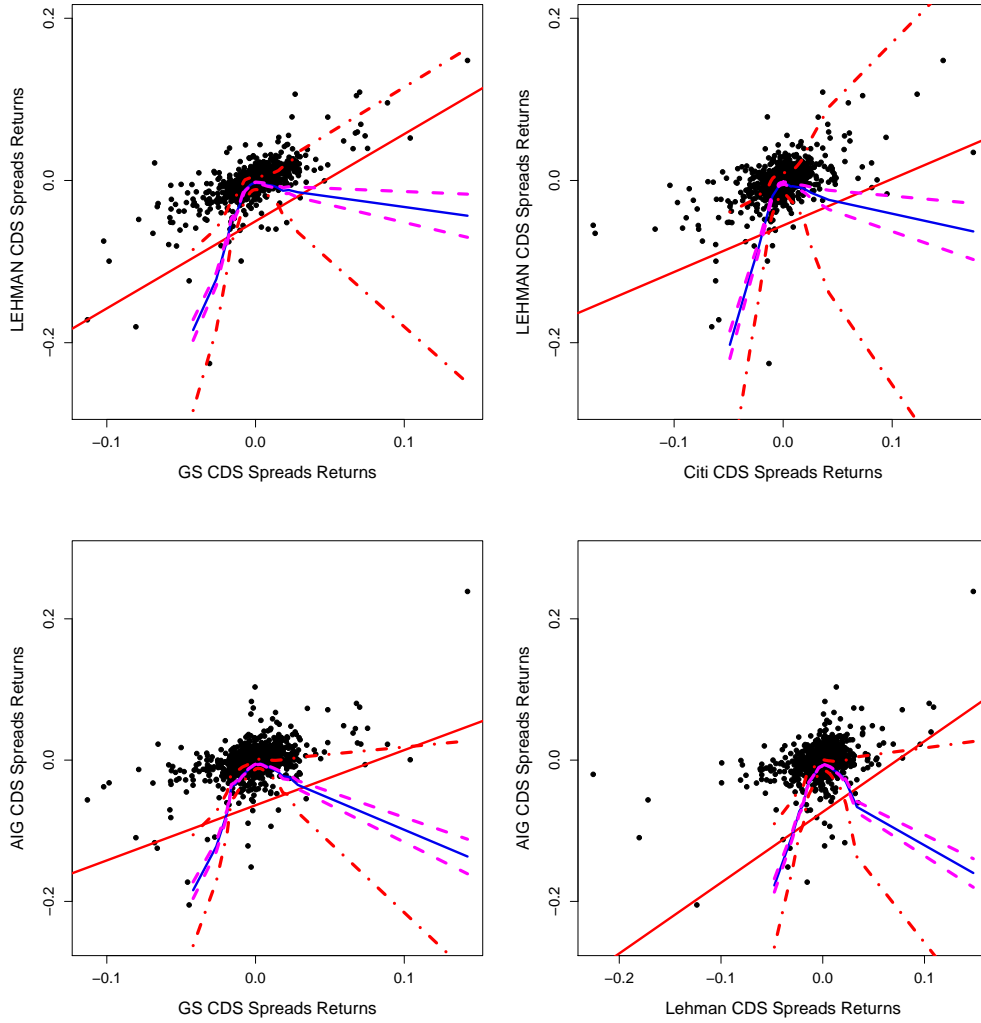


Figure 4: Quantile regression at 0.01 level on CDS spread return. The blue line shows the partial linear quantile regression function. The four dashed lines express the asymptotic (magenta) and bootstrap (red) confidence bands at 95% confidence level.

This construction follows from Adrian and Brunnermeier (2011). The algorithm to estimate  $\hat{f}_{j|i}(\cdot)$  is proposed by Song et al. (2012), and is described in detail in the appendix.

## 4.2. Least Absolute Shrinkage and Selection Operator for Quantile Regression

Since Chao et al. (2014) show unsatisfactory backtesting results regarding VaR values, we apply a different way to compute the individual VaR in our paper. First, we apply the linear Least Absolute Shrinkage and Selection Operator (LASSO) technique in order to find variables with significant effect on CDS spread returns. The LASSO variable selection method has been introduced by Tibshirani (1996). It is widely known that LASSO outperforms ridge regression in terms of shrinkage effect. For the typical case described by Tibshirani (1996), the loss function for LASSO can be viewed as constrained versions of the ordinary least squares (OLS) regression loss function, which can also be presented in the Lagrange form as

$$L^{lasso}(\beta_1, \dots, \beta_p) = \|Y - X\beta\|_2^2, \quad s.t. \|\beta\|_{\ell_1} \leq t_1,$$

where  $Y \in \mathbb{R}^n$  the dependent variable,  $X \in \mathbb{R}^{n \times p}$  the independent variable and  $\beta \in \mathbb{R}^p$  denotes the coefficients. The LASSO penalty can also be applied to quantile regression analysis. One is referred to Koenker (2005) for more details. The loss function reads:

$$L^{lasso}(\beta) = \sum_{i=1}^n \rho_{\tau}(Y_i - X_i^{\top} \beta) + \lambda_n \sum_{j=1}^p |\beta_j|, \quad (9)$$

where  $\rho_{\tau}(u) = \{\tau - \mathbf{1}(u \leq 0)\}u$  and  $0 \leq \tau \leq 1$  is a given constant.

In our empirical analysis, we use 37 variables for  $X_i$ , as mentioned in Section 3.2. In the section of empirical findings, we will see that the coefficients associated to many of the independent variable are shrunk to zero as the result of LASSO. To choose the penalty parameter  $\lambda_n$ , we apply the generalized approximate cross-validation (GACV) of Yuan (2006) and Li et al. (2007).

## 4.3. Backtesting

For check of accuracy of the out-of-sample VaR estimation we compare the actual CDS spread returns to the calculated VaR (model VaR). Following Christoffersen (1998),



the hit sequence is defined as

$$I_t(\tau) = \begin{cases} 1, & \text{if } X_t < \widehat{\text{VaR}}_t^T \\ 0, & \text{otherwise.} \end{cases}$$

The probability of getting  $x$  exceedance from  $T$  observations is therefore

$$f(x | T, \pi) = \binom{T}{x} \pi^x (1 - \pi)^{T-x}$$

where  $\pi$  is the probability of an exceedance for a given confidence level. As the VaR is calculated under a 1%-quantile, this leads to an expectation of one exceedance every 100 days. The unconditional coverage test introduced by Kupiec (Kupiec (1995)) explores the frequency of the violations over specific time interval (proportion of failure (POF)). The null hypothesis for the Kupiec test is represented by

$$H_0 : \pi = \pi_0 = \frac{x}{T}.$$

The test statistic is calculated as

$$\begin{aligned} LR_{POF} &= 2 \log \left[ \left( \frac{1 - \hat{\pi}}{1 - \pi} \right)^{T - I(\pi)} \left( \frac{\hat{\pi}}{\pi} \right)^{I(\pi)} \right] \\ \hat{\pi} &= \frac{1}{T} I(\tau) \\ I(\tau) &= \sum_{t=1}^T I_t(\tau) \end{aligned}$$

In case the value of the test statistic  $LR_{POF}$  exceeds the critical value of the  $\chi^2$  distribution with one degree of freedom, the null hypothesis is to be rejected and the model is considered as inaccurate. We expect the VaR to be in line with the confidence level. A failure of the unconditional coverage leads to the conclusion that the VaR does not measure the risk accurately.

However, it is not only important to test the sequence of exceedance but also look at the clustering of violations. The conditional coverage test suggested by Christoffersen (Christoffersen (1998)) includes a separate statistic for the detection of exceedance's independence. We assume that the calculated value accurately reflects the change in market condition when the exceedance is independent from the previous state. This means no effect on current exceedance whether there was a violation the day before,

$I_{t-1} = 1$ , or no violation has occurred,  $I_{t-1} = 0$ . Let  $T_{ij}$  be the total number of event  $(I_{t-1}, I_t) = (j, i)$  in the data for  $i, j \in \{0, 1\}$ . Denote the probability of observing a violation condition on the state  $i \in \{0, 1\}$  by

$$\pi_i = \frac{T_{i1}}{T_{i0} + T_{i1}}.$$

The unconditional probability for violation is

$$\pi = \frac{T_{01} + T_{11}}{T_{00} + T_{01} + T_{10} + T_{11}}.$$

The test statistic of independence is denoted by

$$LR_{ind} = 2 \log \left( \frac{(1 - \pi)^{(T_{00} + T_{10})} \pi^{(T_{01} + T_{11})}}{(1 - \pi_0)^{T_{00}} \pi_0^{T_{10}} (1 - \pi_1)^{T_{10}} \pi_1^{T_{11}}} \right).$$

Under the hypothesis that the method for VaR estimation is accurate, the sequence of violations should satisfy the unconditional coverage property as well as the independence property. Therefore, as suggested in Christoffersen (1998), we consider the "conditional coverage" test statistic:

$$LR_{CC} = LR_{POF} + LR_{ind}$$

exceeds the critical value given by  $\chi^2$  distribution with two degrees of freedom. The rejection of the test indicates an inaccurate coverage, clustered violations or both.

## 5. Empirical results

### 5.1. Variables that drive the tails

Our regression analysis confirms the relationship between the tail of CDS spread return and the market volatility, approximated by VIX returns. Interestingly, the effect of firm specific volatility is not as strong as volatility of the market indicated by the VIX index. By LASSO, we observe from Tables 10 and 11 that the CDS spread return is almost described by the VIX log-returns, S&P500 log-returns and the change in daily real estate sector return in excess to the market return, in which VIX plays the dominant role.

It is surprising to see that the firm specific variables are so underselected. For some CDS spreads, such as Citi in pre-crisis period, and CITI, DB, GS, JPM, MS and UBS in crisis period, firm specific variables are not selected at all. To check for the important role

that VIX return plays in modeling the tail of CDS spread returns, we redo the LASSO without VIX log-return. we find that it is impossible to arrive with a parsimonious model, because all variables are selected with nonzero frequency for both pre- and crisis periods in Table 12 and 13. In both tables, V2 which describes the short term liquidity spread becomes the most popular choice. In particular, firm specific variables are selected more often than in crisis period than in pre-crisis period.

The time series of VaR computed from LASSO 37-factor model and AB 7-factor model show different behavior, as can be seen in Figures 5 and 6. We only present the pre-crisis time series plots because we want to visualize which model performs better in capturing the upcoming shock induced by the default of Lehman Brothers in the September of 2008. The VaR time series plots for the period after the default of Lehman Brothers behave similar to white noise and do not demonstrate much structure. It is generally observed that the trajectory of LASSO VaR varies less violently than its counterpart using 7-factor model, while it still accurately captures the risk as the violations are rather few. It is considered as a benefit because this suggests that with our VaR model, the financial practitioners do not have to adjust their capitals frequently, and therefore the transaction cost and be reduced.

Table 3 and 4 show the  $p$ -values using the conditional coverage test, which allows a joint test of unconditional coverage rate and independence. Table 3 shows the pre-crisis backtesting results. Both AB 7 factor model and our LASSO QR model generate independent hit sequence, as the independence test statistics are 0 for our data set. However, we found that the AB 7 factor model performs significantly worse than LASSO QR model in terms of unconditional coverage. AB's model leads to too many downside exceedances and therefore does not yield a good risk measure. Same phenomenon can be observed for crisis period data as shown in Table 4.

## 5.2. Network of Risk

As almost all the LASSO VaRs pass the backtesting test, we proceed to use the VaR prediction to compute CoVaR by the construction in the equation (8).

CoVaR demonstrate different dynamics than VaR. Table 6 and 7 present the exceedances for two periods: 2005-2007 and 2009-2011. In 2008-2009 periods there are no CoVaR exceedances, because all financial firms in the sample have large VaR and the CoVaR computed based on the VaR is also very large. This suggests that CoVaR dynamics heavily depends on the company conditioned on. Tabel 6 shows that CoVaR value conditioning on different firms differ trmendously. From the aspect of the sum of total exceedance, conditioning on firms such as BOA and MS leads to few exceedances,

while conditioning on firms such as SG, UBS, CS, AIG leads to many exceedances.

The exceedance time series of CoVaR shown in Figure 7 demonstrate strong clustering phenomenon. In the pairs of AIG on JPM, AIG on MS and Citi on BOA, the exceedances accumulate in certain periods. In the crisis period, few exceedances are observed, but the CoVaR seems to over-estimate the risk in the sense that the estimated CoVaRs are far below the realizations of returns.

The idea of  $\Delta$ CoVaR calibration on credit risk and intergration of state variables as well as firm-specific variables have been applied on the model suggested by Adrian and Brunnermeier (2011). Our results show that the  $\Delta$  CoVaR results from the period until Lehman's default reveals different effects on financial institutions from different regions. As shown in Table 9, for the US financial institutions, the  $\Delta$  CoVaR effect is high when the distressed counterparty is a US financial institution. The same can be observed for European based financial institutions. This shows that the  $\Delta$  CoVaR captures the spillover effect owing to the geological closeness, as we would expect.

Given the VaR obtained from the last section based on 37 variables for pre-crisis period and crisis period, we are able to compute the *CoVaR* with (8) using partial linear model at levels  $\tau = 1\%$  and  $50\%$ . The  $\Delta$ *CoVaR* can therefore be obtained by the difference of the two CoVaRs.

The mean and the maximum of the estimated  $\Delta$ *CoVaRs* are summarized in Table 8 for pre-crisis period and Table 9. Comparing the two tables, the CoVaRs of crisis period are in general greater than that of the pre-crisis period in terms of absolute value. In pre-crisis period, among the 15 financial institutions, BoA, Barc, RBS and JPM are the ones which introduce the most risk to the market, while AIG and HSBC contribute the fewest. RBS's high risk contribution reflects its risk seeking business model before the crisis. AIG's low risk contribution may be due to its nature as an insurance company, but  $\Delta$ CoVaR seems to underestimate AIG's potential impact to the market due to its gigantic CDS position before the crisis. However, it is interesting to note that after LEH defaults, SG, DB and GS become largest risk contributors, while AIG, Citi, Barc and MS contribute the fewest. Among the smallest risk contributors in the crisis period, the first ones are the ones which suffer the greatest hit of the crisis, while MS shifted its business orientation to a more conservative ground after the crisis.

In order to visualize the risk contribution defined by  $\Delta$ CoVaR, we make the network plots. We focus on the data in 3 periods: 2005-2007 (first pre-crisis period), 2007-2008 (eve of crisis) and 2008-2011 (crisis), as shown in Figures 8, 9 and 10. In these figures, the nodes represent the financial institutions, the edges represent the amount of risk contribution and the arrows show the direction of risk contribution. The thicker

the edge, the larger the  $\Delta\text{CoVaR}$  in absolute value and therefore the larger the risk contribution.

It can be seen in Figure 8 for the period 2005-2007 that several financial institutions are connected through risk contribution. RBS contributes much risk to BARC, which could be due to their geographic closeness; moreover it is obvious that RBS also contribute risk to HSBC, SG and CS. JPM and LEH contribute much risk to AIG, while AIG seemingly conveys not too much risk to the others, except BOA. BOA transmits much risk to CITI and GS.

For the period 2007-2008, the relationship between these firms varies. The risk contribution to AIG becomes prominent. RBS still contribute risk to BARC and SG, but the contribution to HSBC becomes less obvious. BOA still conveys much risk to CITI. At this moment, although the international financial market looks interconnected, but regional effect actually plays a big role.

We then proceed to the last network figure for crisis period depicted in Figure 10. The boundaries of region crash and firms from different regions can contribute significant risk to each other, while the firms in the same region remain very much connected. SG contribute much risk to JPM, BOA and GS. It is also interesting to note that the direction of risk contribution can also change. BOA contributes risk to CITI in pre-crisis period, but in crisis it is the other way around. SG is mainly a risk receiver before the crisis, but it changes its role to a risk contributor for this period. This could result from European debt crisis in 2011, during which the fear of bankruptcy for SG drives its CDS spread higher and thus introduce huge amount of uncertainty into the global financial market.

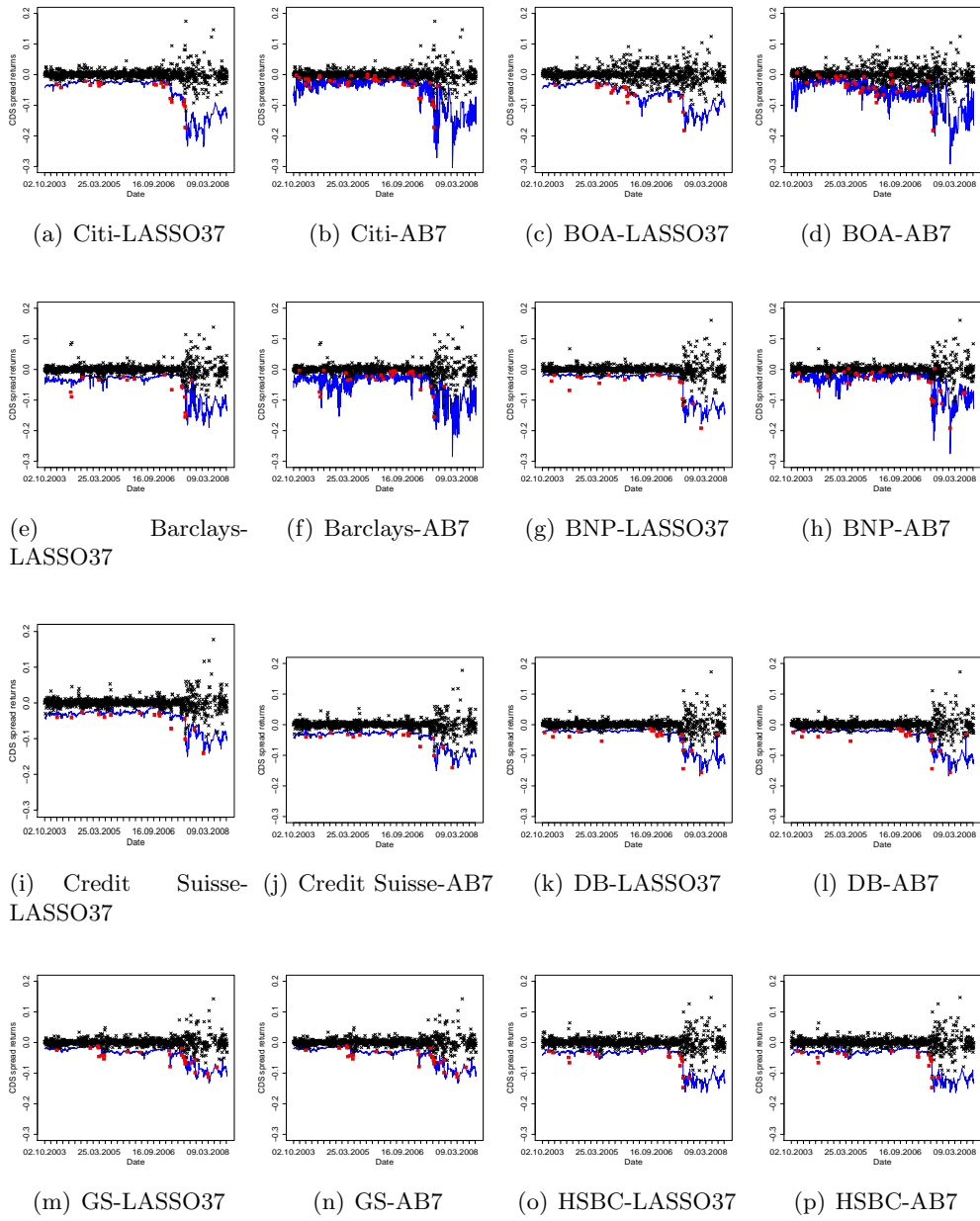


Figure 5: First part: The plots VaR from LASSO 37 factors model and AB 7 factor model in pre-crisis period Sep. 2002-Sep. 2008.

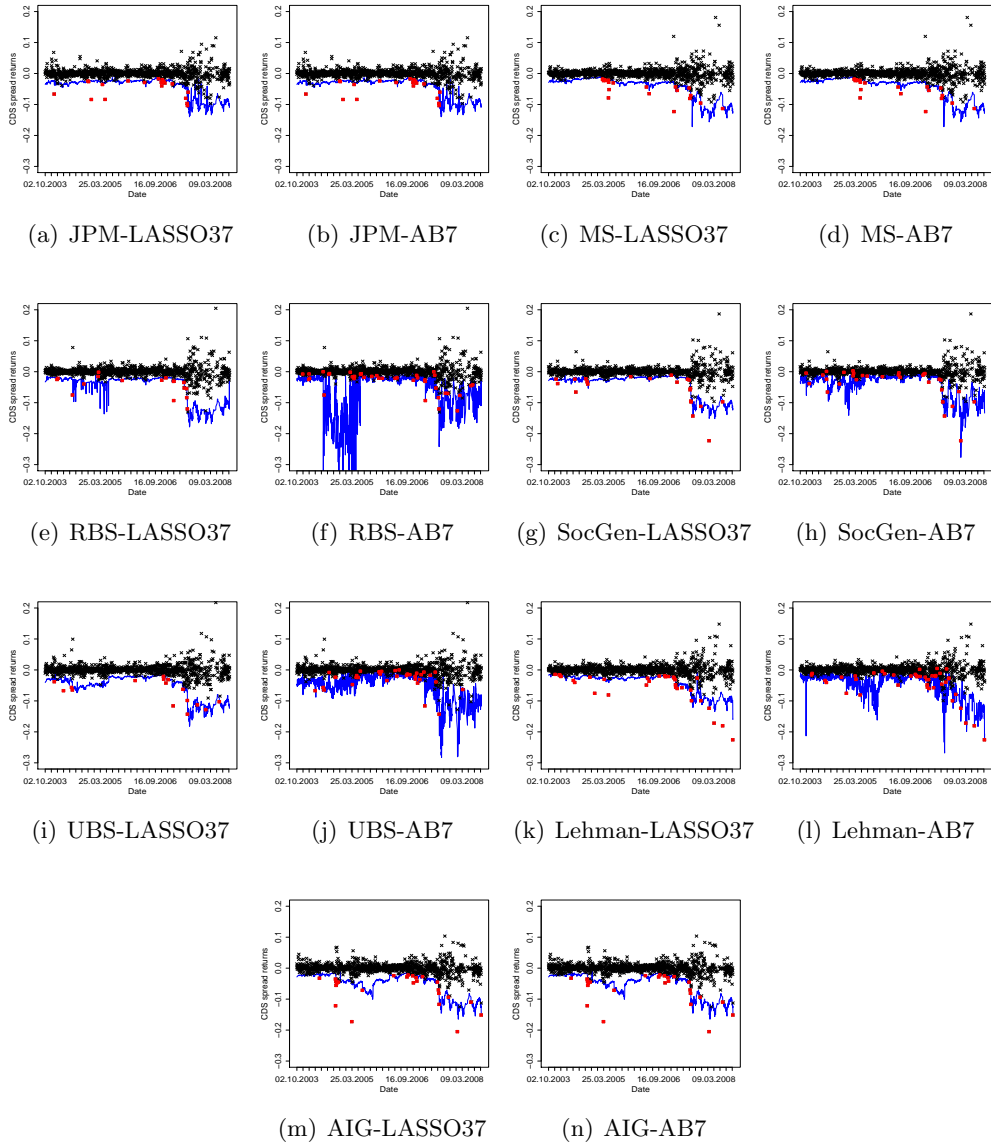


Figure 6: Second part: The plots VaR from LASSO 37 factors model and AB 7 factor model in pre-crisis period Sep. 2002-Sep. 2008.

## 6. Conclusion

Best overall performance for VaR estimation is achieved via LASSO quantile regression while considering 37 independent variables and under the variable selection method LASSO (following notified as LASSO-37-VaR) which is confirmed by backtesting re-

sults. The calculated VaR also shows a good performance during the crisis period and is able cover certain extreme CDS spreads drops. However, these VaR overestimate the risk during the crisis period whereas VaR simulated via standard quantile regression by using 7 state variables suggested by (Adrian and Brunnermeier, 2011) shows a lower VaR level. On the other hand, LASSO-37-VaR show a more accurate and stable VaR estimation during the pre-crisis and crisis period. VaR simulated under the assumption of Adrian and Brunnermeier tends to over-estimate CDS spread returns in calm period.

Based on our findings, the calculated  $\Delta$  CoVaR can be used as a basis for risk weights which described the change between normal circumstances and a stressed VaR. As a consequence, risk contribution can be charged based on idiosyncratic risk and further on the spillover effects given by the risk weight. A valuable question of how counterparty credit risk affects the pricing of CDS contracts could also be investigated based on the overall effects of one distressed institution on CDS spreads of other market players. In addition, this approach provides the possibility to measure spread widening effect from derivative dealer on spread level from reference entities. Effect of extreme CDS spreads of bid dealers on spread level of reference entity when it comes to CDS spread central clearing.



## 7. Appendix

### PLM Fitting

For the PLM estimation, we adopt the algorithm described in Song et al. (2012). Given data  $\{(X_t, Y_t)\}_{t=1}^T$  bivariate and  $\{M_t\}_{t=1}^T$  multivariate random variables. The PLM is:

$$Y_t = f(X_t) + \beta^\top M_t + \varepsilon_t.$$

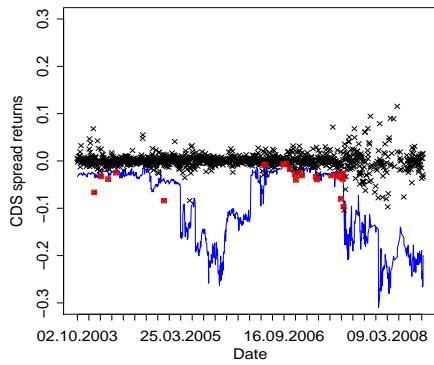
Suppose the support of  $X_t$  is bounded in  $[0, 1]$  for simplicity. Let  $a_n$  denote an increasing sequence of positive integers and set  $b_n = a_n^{-1}$ . For each  $n = 1, 2, \dots$ , dividing the interval  $[0, 1]$  into  $a_n$  subintervals  $I_i$ ,  $i = 1, \dots, a_n$  with equal length  $b_n$ . On each  $I_i$ ,  $f(\cdot)$  can approximately be taken as a constant.

The PLM estimation procedure is:

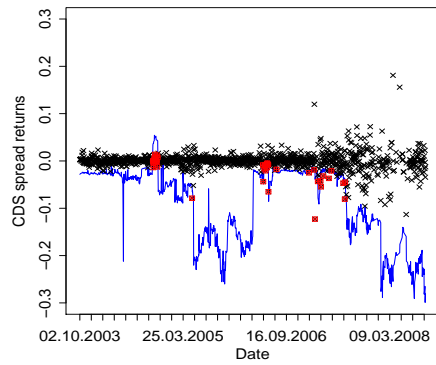
1. Inside each partition  $I_i$ , a linear quantile regression is performed to get  $\hat{\beta}_i$ , then their weighted mean gives  $\hat{\beta}$ . Formally, let  $\rho_\tau(\cdot)$  be the check function.  $f_1, \dots, f_{a_n}$  are constants, then

$$\hat{\beta} = \underset{\beta}{\operatorname{argmin}} \min_{f_1, \dots, f_{a_n}} \sum_{t=1}^T \rho_\tau \left\{ Y_t - \beta^\top M_t - \sum_{i=1}^{a_n} f_i \mathbf{1}(X_t \in I_i) \right\}$$

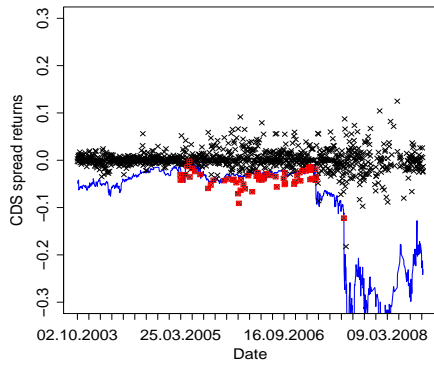
2. Perform the local linear quantile estimates of  $f(\cdot)$  from  $\{(X_t, Y_t - \hat{\beta}^\top M_t)\}_{t=1}^T$ .



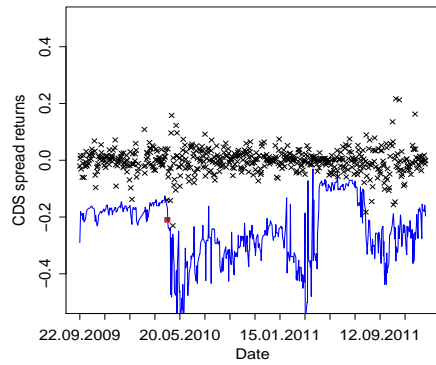
(a) Pre-crisis: AIG on JPM



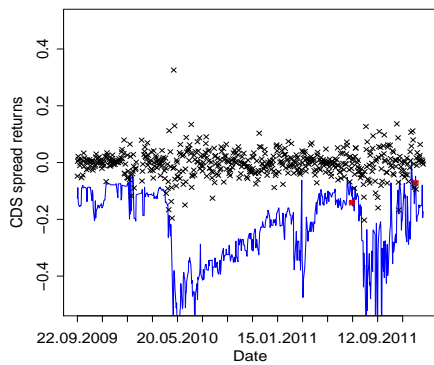
(b) Pre-crisis: AIG on MS



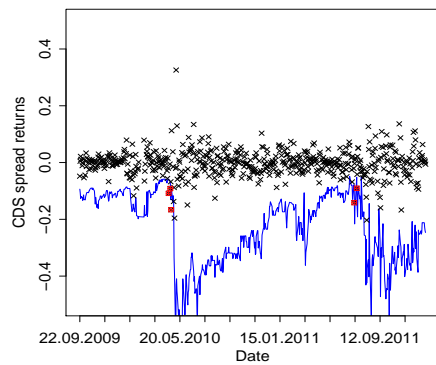
(c) Pre-crisis: Citi on BOA



(d) Crisis: BOA on GS



(e) Crisis: BOA on SG



(f) Crisis: BNP on SG

Figure 7: The plots for the time series of CoVaR.

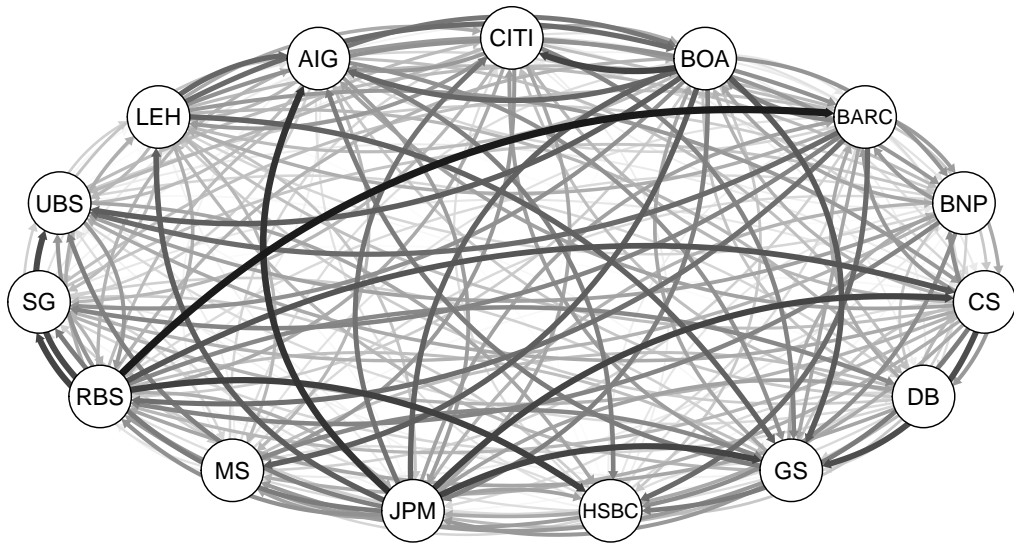


Figure 8:  $\Delta$  CoVaR network: average  $\Delta$  CoVaR between FIs from 2005 to 2007.

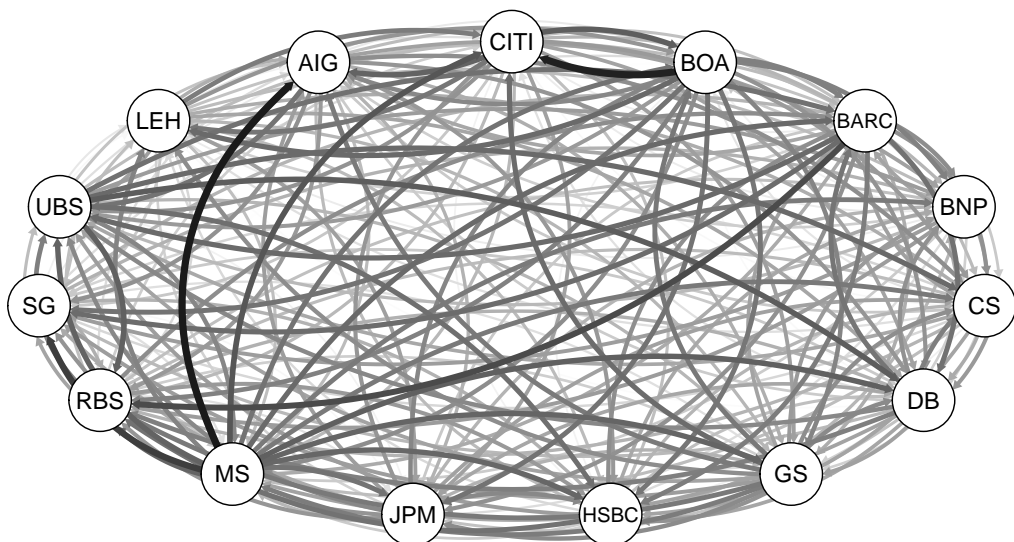


Figure 9:  $\Delta$  CoVaR network: average  $\Delta$  CoVaR between FIs from 2007 to 2008.

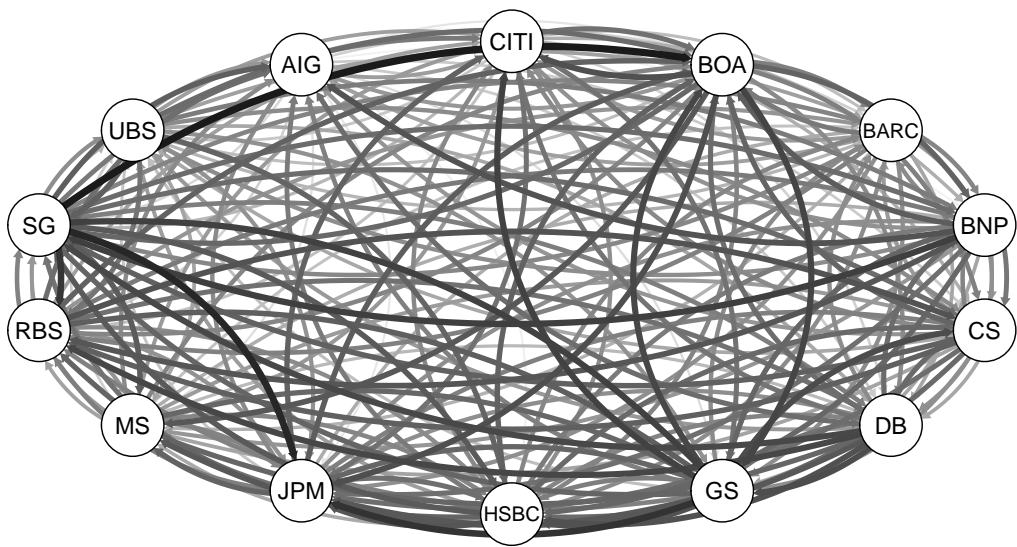


Figure 10:  $\Delta$  CoVaR network: average  $\Delta$  CoVaR between FIs within the crisis period.

Table 3: Backtesting results for LASSO-QR VaR and AB's 7 factor model for data in pre-crisis periods.

Fin. Firms	LASSO-QR VaR			AB 7 Factor		
	$LR_{POF}$	$LR_{cond}$	$p$ -value	$LR_{POF}$	$LR_{cond}$	$p$ -value
CITI	3.22	0	0.20	38.69	0	< 0.001***
BOA	5.27	0	0.07	41.17	0	< 0.001***
BARC	1.01	0	0.60	17.22	0	< 0.001***
BNP	4.19	0	0.12	27.17	0	< 0.001***
CS	1.01	0	0.60	59.9	0	< 0.001***
DB	7.73	0	0.02*	62.76	0	< 0.001***
GS	13.73	0	0.001**	57.08	0	< 0.001***
HSBC	3.22	0	0.20	46.27	0	< 0.001***
JPM	4.19	0	0.12	93.73	0	< 0.001***
MS	5.27	0	0.07	103.77	0	< 0.001***
RBS	3.22	0	0.20	43.7	0	< 0.001***
SG	6.45	0	0.04*	22.99	0	< 0.001***
UBS	1.62	0	0.44	33.91	0	< 0.001***
LEH	27.17	0	< 0.001***	51.58	0	< 0.001***
AIG	12.11	0	0.002**	93.73	0	< 0.001***

Table 4: Backtesting results for LASSO-QR VaR and AB's 7 factor model for data in crisis periods.

Fin. Firms	LASSO-QR VaR			AB 7 Factor		
	$LR_{POF}$	$LR$	$p$ -value	$LR_{POF}$	$LR_{cond}$	$p$ -value
CITI	1.75	0	0.42	30.67	0	< 0.001***
BOA	0.07	0	0.97	10.88	0	< 0.001***
BARC	8.95	0	0.01*	33.6	0	< 0.001***
BNP	10.88	0	0.004**	39.72	0	< 0.001***
CS	1.75	0	0.42	25.09	0	< 0.001***
DB	0.91	0	0.63	42.9	0	< 0.001***
GS	5.54	0	0.06	17.47	0	< 0.001***
HSBC	2.81	0	0.24	19.9	0	< 0.001***
JPM	0.27	0	0.97	8.95	0	< 0.001***
MS	8.95	0	0.01*	25.09	0	< 0.001***
RBS	0.32	0	0.85	17.47	0	< 0.001***
SG	4.09	0	0.13	63.54	0	< 0.001***
UBS	17.47	0	< 0.001***	17.47	0	< 0.001***
AIG	0.07	0	0.97	36.62	0	< 0.001***

Table 5: The variables used for predicting VaR

Index	Variable
V1	VIX
V2	Short term liquidity spread
V3	3 months Treasury Bill rate
V4	Slope of the yield curve
V5	Credit spread between 10 years BAA-rated bonds and Treasury Bond rate
V6	S&P500 index log-return
V7	Dow Jones US Real Estate Index
V8	CITIGROUP equity
V9	BANK of AMERICA equity
V10	BARCLAYS equity
V11	BNP PARIBAS equity
V12	CREDIT SUISSE equity
V13	DEUTSCHE BANK
V14	GOLDMAN SACHS
V15	HSBC
V16	JP MORGAN equity
V17	MORGAN STANLEY equity
V18	ROYAL BANK of SCOTLAND equity
V19	SOCIETE GENERALE equity
V20	UBS equity
V21	LEHMAN BROTHERS equity
V22	AIG equity
V23	CITIGROUP equity volatility
V24	BANK of AMERICA equity volatility
V25	BARCLAYS equity volatility
V26	BNP PARIBAS equity volatility
V27	CREDIT SUISSE equity volatility
V28	DEUTSCHE BANK
V29	GOLDMAN SACHS
V30	HSBC
V31	JP MORGAN equity volatility
V32	MORGAN STANLEY equity volatility
V33	ROYAL BANK of SCOTLAND equity volatility
V34	SOCIETE GENERALE equity volatility
V35	UBS equity volatility
V36	LEHMAN BROTHERS equity volatility
V37	AIG equity volatility

Table 6: The exceedances of CoVaR in pre-crisis period.

VaR Input	Citi	BoA	BARC	BNP	CS	DB	GS	HSBC	JPM	MS	RBS	SG	UBS	LEH	AIG	sum
Citi	-	60	68	53	67	142	35	120	24	36	37	104	93	64	84	987
BoA	7	-	17	29	12	65	86	42	19	15	25	23	14	30	26	403
BARC	186	54	-	27	21	147	190	33	27	150	32	14	28	114	163	1000
BNP	188	86	20	-	21	180	209	32	44	159	29	21	34	137	153	1125
CS	119	83	83	52	-	73	116	111	31	17	69	71	91	159	115	1071
DB	79	116	29	39	16	-	99	56	44	57	33	42	61	59	146	797
GS	20	82	53	23	57	77	-	76	13	22	61	149	55	42	74	784
HSBC	109	91	9	18	11	114	90	-	23	66	14	5	20	41	120	622
JPM	21	61	17	50	11	69	55	37	-	44	111	24	123	50	85	737
MS	20	51	79	29	34	41	31	40	18	-	41	36	65	19	61	545
RBS	173	160	12	139	21	29	213	10	19	173	-	5	26	148	122	1077
SG	171	117	27	28	33	188	193	49	45	157	59	-	66	155	149	1266
UBS	245	120	9	52	30	147	157	45	34	64	47	144	-	172	249	1270
LEH	43	37	26	72	47	92	124	48	12	107	69	13	40	-	60	747
AIG	82	54	108	53	77	116	62	94	26	46	92	98	139	100	-	1065

Table 7: The exceedances of CoVaR in crisis period.

VaR Input	Citi	BoA	BARC	BNP	CS	DB	GS	HSBC	JPM	MS	RBS	SG	UBS	AIG	sum
Citi	-	2	4	15	4	9	6	3	0	5	5	12	6	1	72
BoA	1	-	5	0	0	3	1	4	0	3	1	2	17	1	37
BARC	4	2	-	8	2	4	10	3	2	6	1	6	6	1	51
BNP	4	2	4	-	3	4	12	4	3	6	0	5	3	2	48
CS	3	6	3	8	-	5	16	3	12	5	0	5	5	1	69
DB	7	4	4	9	2	-	8	4	3	6	2	3	4	1	50
GS	3	1	10	8	4	3	-	6	0	3	3	5	13	2	58
HSBC	10	5	1	8	2	2	10	-	0	6	2	5	4	0	45
JPM	1	0	0	2	0	1	2	2	-	2	0	2	9	1	21
MS	6	3	19	24	14	13	11	9	5	-	4	19	13	2	136
RBS	34	0	2	12	1	3	10	4	5	9	-	7	3	29	85
SG	1	1	1	5	2	2	9	1	0	5	0	-	3	0	29
UBS	9	9	15	13	7	12	24	6	31	11	3	12	-	1	144
AIG	24	35	11	20	12	7	11	54	73	13	44	19	9	-	308

Table 8:  $\Delta$  CoVaR estimated in the pre-crisis period. The upper table indicates an overview of average  $\Delta$  CoVaR, whereas the lower table shows the maximum negative effects on  $\Delta$  CoVaR.

	Citi	BoA	BARC	BNP	CS	DB	GS	HSBC	JPM	MS	RBS	SG	UBS	LEH	AIG	sum
Citi	-	-0.04	-0.03	-0.02	-0.03	-0.02	-0.03	-0.01	-0.03	-0.03	-0.03	-0.02	-0.03	-0.04	-0.04	-0.41
BoA	-0.07	-	-0.04	-0.04	-0.02	-0.03	-0.05	-0.04	-0.05	-0.04	-0.04	-0.05	-0.04	-0.04	-0.04	-0.58
BARC	-0.01	-0.04	-	-0.05	-0.05	-0.05	-0.03	-0.06	-0.04	-0.03	-0.07	-0.06	-0.07	-0.03	-0.03	-0.61
BNP	0.00	-0.01	-0.05	-	-0.03	-0.03	-0.02	-0.04	-0.02	-0.02	-0.05	-0.04	-0.05	-0.02	-0.01	-0.38
CS	-0.01	-0.02	-0.04	-0.03	-	-0.04	-0.03	-0.03	-0.04	-0.02	-0.03	-0.02	-0.04	-0.02	-0.02	-0.38
DB	0.00	-0.01	-0.05	-0.03	-0.04	-	-0.03	-0.03	-0.03	-0.03	-0.04	-0.02	-0.04	-0.01	-0.02	-0.37
GS	-0.05	-0.04	-0.02	-0.03	-0.03	-0.02	-	-0.03	-0.04	-0.04	-0.03	-0.03	-0.02	-0.03	-0.04	-0.46
HSBC	0.00	-0.01	-0.04	-0.03	-0.03	-0.02	-0.01	-	-0.02	-0.01	-0.05	-0.03	-0.04	-0.02	-0.02	-0.32
JPM	-0.05	-0.05	-0.03	-0.03	-0.05	-0.03	-0.04	-0.04	-	-0.03	-0.03	-0.04	-0.03	-0.03	-0.04	-0.52
MS	-0.04	-0.03	-0.03	-0.02	-0.03	-0.03	-0.05	-0.03	-0.03	-	-0.03	-0.04	-0.02	-0.03	-0.05	-0.43
RBS	-0.03	-0.02	-0.12	-0.04	-0.05	-0.07	-0.02	-0.09	-0.04	-0.02	-	-0.09	-0.15	-0.03	-0.02	-0.78
SG	0.00	-0.01	-0.04	-0.03	-0.02	-0.02	-0.01	-0.03	-0.01	-0.01	-0.04	-	-0.04	-0.01	-0.01	-0.28
UBS	0.00	-0.02	-0.05	-0.04	-0.05	-0.03	-0.02	-0.05	-0.02	-0.03	-0.06	-0.03	-	-0.01	-0.01	-0.43
LEH	-0.04	-0.04	-0.03	-0.03	-0.03	-0.03	-0.04	-0.02	-0.04	-0.03	-0.03	-0.03	-0.04	-	-0.04	-0.46
AIG	-0.02	-0.02	-0.01	-0.03	-0.02	-0.02	-0.03	-0.01	-0.03	-0.02	-0.02	-0.02	-0.03	-0.02	-	-0.28

	Citi	BoA	BARC	BNP	CS	DB	GS	HSBC	JPM	MS	RBS	SG	UBS	LEH	AIG
Citi	0.00	-0.37	-0.23	-0.25	-0.28	-0.27	-0.35	-0.20	-0.32	-0.27	-0.34	-0.32	-0.49	-0.42	-0.45
BoA	-0.52	-	-0.33	-0.32	-0.20	-0.26	-0.29	-0.35	-0.27	-0.21	-0.50	-0.39	-0.37	-0.33	-0.43
BARC	-0.42	-0.29	-	-0.48	-0.51	-0.35	-0.42	-0.33	-0.35	-0.30	-0.46	-0.38	-0.55	-0.38	-0.52
BNP	-0.33	-0.15	-0.31	-	-0.24	-0.21	-0.30	-0.24	-0.17	-0.18	-0.41	-0.22	-0.27	-0.38	-0.29
CS	-0.29	-0.13	-0.28	-0.29	-	-0.23	-0.20	-0.24	-0.15	-0.15	-0.18	-0.21	-0.19	-0.30	-0.29
DB	-0.23	-0.22	-0.52	-0.26	-0.34	0.00	-0.16	-0.50	-0.21	-0.24	-0.52	-0.28	-0.37	-0.29	-0.50
GS	-0.27	-0.28	-0.29	-0.27	-0.36	-0.22	0.00	-0.26	-0.22	-0.20	-0.61	-0.29	-0.27	-0.34	-0.28
HSBC	-0.33	-0.19	-0.31	-0.44	-0.31	-0.26	-0.32	0.00	-0.22	-0.20	-0.35	-0.25	-0.42	-0.41	-0.35
JPM	-0.29	-0.25	-0.20	-0.31	-0.31	-0.23	-0.24	-0.27	0.00	-0.46	-0.50	-0.32	-0.31	-0.45	-0.26
MS	-0.27	-0.25	-0.50	-0.37	-0.31	-0.36	-0.37	-0.33	-0.23	0.00	-0.56	-0.56	-0.32	-0.27	-0.47
RBS	-0.32	-0.35	-1.67	-0.39	-0.60	-0.80	-0.16	-0.71	-0.55	-0.22	0.00	-0.93	-1.11	-0.46	-0.46
SG	-0.19	-0.10	-0.23	-0.25	-0.20	-0.16	-0.18	-0.21	-0.14	-0.33	-0.32	0.00	-0.24	-0.25	-0.22
UBS	-0.41	-0.25	-0.31	-0.48	-0.51	-0.28	-0.24	-0.27	-0.22	-0.22	-0.39	-0.40	0.00	-0.52	-0.37
LEH	-0.35	-0.29	-0.26	-0.21	-0.24	-0.32	-0.30	-0.36	-0.25	-0.29	-0.27	-0.21	-0.28	0.00	-0.32
AIG	-0.34	-0.32	-0.36	-0.25	-0.26	-0.21	-0.28	-0.27	-0.21	-0.27	-0.52	-0.25	-0.36	-0.36	0.00



Table 9:  $\Delta$  CoVaR estimated in the crisis period. The upper table indicates an overview of average  $\Delta$  CoVaR, whereas the lower table shows the maximum negative effects on  $\Delta$  CoVaR.

	Citi	BoA	BARC	BNP	CS	DB	GS	HSBC	JPM	MS	RBS	SG	UBS	AIG	sum
Citi	-	-0.16	-0.07	-0.09	-0.09	-0.05	-0.15	-0.12	-0.15	-0.11	-0.07	-0.08	-0.06	-0.11	-1.32
BoA	-0.19	-	-0.14	-0.17	-0.14	-0.13	-0.20	-0.13	-0.19	-0.18	-0.13	-0.16	-0.07	-0.11	-1.96
BARC	-0.11	-0.15	-	-0.13	-0.12	-0.10	-0.12	-0.13	-0.12	-0.08	-0.14	-0.13	-0.08	-0.10	-1.51
BNP	-0.12	-0.18	-0.13	-	-0.15	-0.12	-0.10	-0.17	-0.16	-0.11	-0.18	-0.17	-0.12	-0.19	-1.94
CS	-0.13	-0.17	-0.11	-0.13	-	-0.10	-0.12	-0.16	-0.16	-0.10	-0.17	-0.17	-0.10	-0.12	-1.74
DB	-0.15	-0.16	-0.13	-0.16	-0.16	-	-0.19	-0.19	-0.18	-0.17	-0.20	-0.20	-0.11	-0.16	-2.16
GS	-0.21	-0.20	-0.13	-0.17	-0.20	-0.15	-	-0.19	-0.22	-0.18	-0.14	-0.17	-0.07	-0.14	-2.16
HSBC	-0.13	-0.17	-0.13	-0.14	-0.16	-0.13	-0.14	-	-0.19	-0.09	-0.17	-0.18	-0.11	-0.15	-1.89
JPM	-0.17	-0.18	-0.09	-0.12	-0.14	-0.12	-0.17	-0.16	-	-0.17	-0.14	-0.15	-0.06	-0.13	-1.80
MS	-0.11	-0.13	-0.07	-0.09	-0.11	-0.08	-0.17	-0.13	-0.14	-	-0.10	-0.11	-0.06	-0.13	-1.42
RBS	-0.10	-0.17	-0.12	-0.15	-0.19	-0.16	-0.17	-0.13	-0.12	-0.12	-	-0.14	-0.09	-0.16	-1.80
SG	-0.15	-0.25	-0.13	-0.16	-0.16	-0.14	-0.21	-0.18	-0.24	-0.18	0.22	-	-0.12	-0.17	-2.31
UBS	-0.10	-0.16	-0.10	-0.14	-0.13	-0.10	-0.12	-0.17	-0.12	-0.10	-0.15	-0.17	-	-0.11	-1.68
AIG	-0.01	-0.03	-0.05	-0.02	-0.06	-0.06	-0.04	-0.02	-0.03	-0.04	-0.05	-0.04	-0.05	-	-0.49

	Citi	BoA	BARC	BNP	CS	DB	GS	HSBC	JPM	MS	RBS	SG	UBS	AIG
Citi	-	-0.79	-0.97	-0.38	-0.60	-0.79	-1.03	-0.58	-1.55	-1.36	-1.06	-0.51	-0.48	-1.24
BoA	-0.84	-	-0.55	-0.54	-0.42	-0.58	-0.83	-0.57	-0.58	-1.19	-0.45	-0.65	-0.34	-0.56
BARC	-1.72	-0.78	-	-0.44	-1.07	-0.58	-0.90	-0.48	-0.46	-0.42	-0.95	-0.47	-0.42	-0.74
BNP	-0.63	-0.88	-0.48	-	-0.50	-0.45	-0.48	-0.49	-0.73	-0.76	-0.64	-0.81	-0.72	-0.78
CS	-1.19	-1.09	-0.47	-1.13	-	-0.39	-1.31	-0.58	-1.18	-0.61	-0.75	-0.67	-0.35	-0.90
DB	-1.41	-0.82	-0.97	-1.63	-0.58	-	-1.60	-1.57	-1.52	-1.32	-0.74	-2.19	-1.94	-1.35
GS	-0.90	-1.18	-0.63	-0.63	-1.25	-1.09	-	-1.22	-0.73	-1.99	-1.51	-0.94	-0.76	-1.66
HSBC	-0.73	-0.83	-0.60	-0.34	-0.62	-0.65	-0.75	-	-0.65	-0.38	-0.62	-0.76	-0.44	-0.75
JPM	-0.58	-0.54	-0.34	-0.45	-0.44	-0.42	-0.55	-0.72	-	-1.07	-0.44	-0.61	-0.34	-0.77
MS	-1.26	-0.94	-0.83	-0.45	-1.16	-1.05	-0.95	-0.68	-0.89	-	-1.40	-1.14	-0.74	-2.31
RBS	-0.69	-0.67	-0.39	-0.40	-0.50	-0.52	-0.81	-0.53	-0.55	-0.47	-	-0.61	-0.40	-0.64
SG	-0.89	-1.02	-0.38	-0.54	-0.75	-0.44	-0.90	-0.49	-0.79	-0.71	-0.63	-	-0.46	-0.54
UBS	-0.51	-1.00	-0.39	-0.40	-0.61	-0.51	-0.57	-0.62	-0.47	-0.81	-0.56	-0.75	-	-1.30
AIG	-0.61	-0.41	-0.65	-0.27	-1.15	-0.71	-0.37	-0.39	-0.49	-0.58	-0.78	-0.31	-0.72	-

Table 10: The frequency of variable selection in pre-crisis period. The total number of the procedure of data selection performed is 1145.

	Citi	BoA	BARC	BNP	CS	DB	GS	HSBC	JPM	MS	RBS	SG	UBS	AIG
V1	1145	1145	1145	1145	1145	1145	1145	1145	1145	1145	1145	1145	1145	1145
V2	8	1	15	6	10	10	7	6	2	4	4	10	2	8
V3	6	1	11	2	2	3	3	3	1	1	2	5	1	8
V4	4	1	10	4	4	7	7	4	1	2	5	7	2	6
V5	0	1	10	3	1	3	3	4	1	2	3	6	1	4
V6	14	11	65	23	46	29	70	19	48	29	42	32	25	21
V7	16	15	68	37	36	79	33	36	65	17	63	57	14	49
Market variables														
V8	0	1	0	0	0	2	1	1	0	1	0	0	0	0
V9	0	1	0	1	0	1	3	2	0	1	1	2	1	3
V10	1	0	1	2	1	3	0	2	0	1	2	3	1	3
V11	1	0	1	1	0	1	0	2	1	1	2	2	0	2
V12	1	1	6	0	0	1	0	1	0	1	0	4	1	2
V13	1	0	1	1	0	0	4	2	1	1	0	1	1	3
V14	0	0	1	2	1	1	1	1	0	1	0	4	0	2
V15	0	0	5	2	0	1	1	0	0	0	2	2	0	1
V16	6	1	1	2	1	2	1	2	1	1	2	1	0	3
V17	1	0	1	1	0	1	3	2	0	1	1	3	1	3
V18	1	0	8	2	0	1	3	0	0	0	2	3	1	3
V19	1	1	5	3	0	3	2	1	1	1	3	2	0	2
V20	1	0	7	2	1	2	4	2	1	1	2	0	0	2
V21	0	1	7	3	0	2	5	2	0	0	2	4	1	1
V22	1	1	8	2	0	1	0	2	1	1	2	4	1	3
Institution-wise equity returns														
V23	0	1	2	1	0	0	1	0	1	1	2	0	0	0
V24	0	0	0	0	0	0	1	1	0	1	1	0	0	0
V25	0	0	1	2	0	1	0	1	0	0	0	1	0	3
V26	0	1	1	0	0	0	0	1	0	1	1	2	0	1
V27	0	1	1	0	0	0	0	0	0	0	1	1	1	0
V28	0	0	0	0	0	0	0	0	1	0	0	0	0	0
V29	0	0	1	0	0	0	0	0	0	0	1	0	0	0
V30	0	1	0	1	0	1	2	0	0	0	0	0	0	1
V31	0	0	0	0	0	0	4	0	0	0	0	2	0	1
V32	0	0	0	0	0	0	2	1	1	0	0	2	0	0
V33	0	0	1	1	1	0	0	1	0	0	3	2	0	2
V34	0	0	1	1	0	2	0	0	0	0	2	0	0	2
V35	0	1	2	0	0	1	0	0	0	0	0	1	0	2
V36	0	0	0	1	0	0	0	0	0	0	1	0	0	0
V37	0	1	5	0	0	1	0	0	0	0	1	1	0	1
Institution-wise volatility														
V23	0	1	2	1	0	0	1	0	1	1	2	0	0	0
V24	0	0	0	0	0	0	1	1	0	1	1	0	0	0
V25	0	0	1	2	0	1	0	1	0	0	0	1	0	3
V26	0	1	1	0	0	0	0	1	0	1	1	2	0	1
V27	0	1	1	0	0	0	0	0	0	0	1	1	1	0
V28	0	0	0	0	0	0	0	0	1	0	0	0	0	0
V29	0	0	1	0	0	0	0	0	0	0	1	0	0	0
V30	0	1	0	1	0	1	2	0	0	0	0	0	0	1
V31	0	0	0	0	0	0	4	0	0	0	0	2	0	1
V32	0	0	0	0	0	0	2	1	1	0	0	2	0	0
V33	0	0	1	1	1	0	0	1	0	0	3	2	0	2
V34	0	0	1	1	0	2	0	0	0	0	2	0	0	2
V35	0	1	2	0	0	1	0	0	0	0	0	1	0	2
V36	0	0	0	1	0	0	0	0	0	0	1	0	0	0
V37	0	1	5	0	0	1	0	0	0	0	1	1	0	1

Table 11: The frequency of variable selection in crisis period. The total number of the procedure of data selection performed is 561.

	Citi	BoA	BARC	BNP	CS	DB	GS	HSBC	JPM	MS	RBS	SG	UBS	AIG
Market variables														
V1	561	561	561	561	561	561	561	561	561	561	561	561	561	561
V2	2	3	5	1	1	1	1	3	1	1	2	2	2	1
V3	0	1	4	1	0	0	0	3	1	0	2	2	0	1
V4	3	1	11	1	0	0	0	3	1	1	3	2	1	2
V5	2	2	4	1	0	0	0	3	1	1	2	2	1	1
V6	87	30	25	49	16	140	52	23	65	51	51	18	74	74
V7	77	24	42	26	19	117	28	89	144	34	61	9	61	61
Institution-wise equity returns														
V8	1	1	3	1	0	0	1	0	1	1	2	1	0	1
V9	0	1	1	1	0	0	0	3	1	1	1	1	0	1
V10	1	0	1	3	1	0	0	3	0	1	2	2	0	0
V11	1	1	2	1	0	0	0	2	0	0	2	2	0	0
V12	0	1	0	2	1	0	0	1	0	1	2	1	0	1
V13	0	0	1	2	1	0	0	0	0	1	0	2	0	1
V14	0	1	0	1	1	0	0	2	0	0	0	1	0	1
V15	0	1	0	4	1	0	0	2	0	1	0	1	0	1
V16	0	1	0	1	1	0	0	0	0	0	1	2	0	0
V17	0	1	1	2	0	0	0	1	0	1	2	1	0	0
V18	1	0	0	4	1	0	0	3	0	1	0	2	0	1
V19	1	0	1	2	1	0	0	2	0	1	2	1	0	0
V20	2	0	0	0	0	0	0	1	0	1	2	2	0	0
V22	1	1	1	3	0	0	0	2	0	1	2	1	0	1
Institution-wise volatility														
V23	0	1	0	0	1	0	0	1	0	0	0	0	0	0
V24	0	0	0	0	1	0	0	0	0	0	0	1	0	0
V25	0	0	0	0	0	0	0	1	0	0	0	0	0	1
V26	0	0	0	0	0	0	0	1	0	0	1	0	0	1
V27	0	1	0	2	0	0	0	1	0	0	0	0	0	0
V28	0	0	0	1	0	0	0	1	0	0	0	1	0	1
V29	0	0	0	0	0	0	0	1	0	0	1	1	0	0
V30	0	0	0	0	0	0	0	2	0	0	0	1	0	0
V31	0	0	0	0	0	0	0	0	0	0	0	0	0	0
V32	0	0	0	0	0	0	0	0	0	0	0	0	0	0
V33	0	0	0	0	1	0	0	1	0	0	0	0	0	0
V34	0	0	0	0	1	0	0	1	0	0	0	0	0	1
V35	0	0	0	0	0	0	0	1	0	0	0	1	0	0
V37	0	0	0	0	0	0	0	0	0	0	0	1	0	0

Table 12: The frequency of variable selection in pre-crisis period excluding VIX. The total number of the procedure of data selection performed is 1145.

	Citi	BoA	BARC	BNP	CS	DB	GS	HSBC	JPM	MS	RBS	SG	UBS	AIG
Market variables														
V2	1145	1145	1145	1145	1145	1145	1145	1145	1145	1145	1145	1145	1145	1145
V3	148	120	92	173	123	164	159	128	190	258	61	128	204	124
V4	132	113	95	164	122	141	181	121	168	187	55	135	179	114
V5	105	101	65	141	94	119	142	98	150	158	51	109	160	102
V6	287	272	300	355	271	323	439	273	443	507	276	265	472	262
V7	302	415	236	379	322	282	481	281	472	612	272	266	480	303
Institution-wise equity returns														
V8	60	65	45	88	70	96	72	95	97	104	15	60	106	87
V9	61	87	54	123	64	107	85	85	111	118	39	94	128	86
V10	64	79	60	89	75	96	86	75	117	109	30	102	121	89
V11	77	71	46	104	79	69	85	66	93	115	33	96	119	84
V12	101	90	60	113	81	96	86	76	100	126	35	106	132	70
V13	96	90	50	98	70	98	89	77	109	125	28	108	115	98
V14	86	68	47	112	70	97	66	85	119	115	32	100	104	86
V15	94	71	46	126	83	88	92	89	111	128	28	97	130	104
V16	100	84	65	114	75	93	98	74	113	115	36	86	97	98
V17	93	71	48	128	74	107	93	77	120	129	34	100	133	91
V18	74	66	55	125	72	101	81	74	121	118	38	104	110	73
V19	88	77	56	87	57	88	88	82	84	105	35	99	116	74
V20	90	97	55	119	82	78	96	86	128	121	33	92	124	69
V21	87	86	44	117	56	97	96	65	115	146	35	73	128	92
V22	79	85	56	115	79	118	99	90	126	141	29	94	120	94
Institution-wise volatility														
V23	72	63	40	67	77	85	81	71	82	133	24	51	93	87
V24	59	76	34	99	64	97	91	52	100	112	24	63	80	94
V25	66	76	29	91	68	83	89	35	100	135	28	93	103	87
V26	64	71	36	122	68	65	75	55	64	119	27	100	95	78
V27	86	85	54	83	73	100	65	61	96	94	34	26	115	87
V28	91	75	36	90	60	102	78	46	113	128	19	90	91	84
V29	87	64	29	52	49	54	48	27	88	84	23	82	30	31
V30	81	55	58	130	75	102	86	88	112	114	27	85	117	95
V31	21	34	15	97	63	45	48	44	88	96	10	78	99	95
V32	65	52	19	63	34	50	50	42	52	70	17	88	58	43
V33	61	36	38	53	56	56	63	40	78	71	21	77	48	69
V34	62	68	51	84	42	82	66	51	91	124	34	89	104	61
V35	65	58	40	63	62	86	85	68	120	141	31	52	129	65
V36	48	67	31	53	60	61	70	45	94	78	14	22	103	63
V37	67	76	41	102	74	99	67	85	58	95	19	29	86	57

Table 13: The frequency of variable selection in crisis period excluding VIX. The total number of the procedure of data selection performed is 561.

	Citi	BoA	BARC	BNP	CS	DB	GS	HSBC	JPM	MS	RBS	SG	UBS	AIG
V2	561	561	561	561	561	561	561	561	561	560	561	561	561	561
V3	201	186	194	172	192	170	245	173	161	213	212	184	195	189
V4	203	193	200	174	194	174	250	173	164	211	222	192	196	192
V5	205	200	204	189	200	180	250	183	162	226	221	207	202	194
V6	427	353	418	352	421	388	507	406	375	507	520	401	418	439
V7	403	422	462	439	470	443	435	431	344	485	503	439	476	430
Institution-wise equity returns														
V8	198	180	197	164	187	168	241	172	161	206	214	178	192	184
V9	200	183	195	171	187	165	245	173	159	210	213	182	186	189
V10	197	182	193	170	186	168	241	168	153	208	214	184	189	189
V11	191	168	197	168	182	162	232	164	154	194	212	181	188	182
V12	190	178	192	162	186	153	229	163	153	205	203	175	181	187
V13	197	182	190	165	186	164	242	168	156	211	201	173	189	176
V14	189	179	180	158	175	161	234	166	149	195	195	170	177	179
V15	196	178	167	163	184	162	227	167	152	205	208	180	184	178
V16	181	177	189	162	181	163	235	165	148	190	196	175	180	174
V17	194	177	190	170	187	165	235	172	155	206	207	179	195	185
V18	196	179	195	170	187	171	247	174	159	210	212	180	187	177
V19	198	176	192	172	191	168	240	165	155	207	213	181	194	187
V20	195	177	193	169	180	168	235	171	158	212	208	174	187	181
V22	201	186	196	173	190	165	241	172	158	211	210	184	194	187
Institution-wise volatility														
V23	183	167	174	162	181	149	228	159	155	173	200	168	190	170
V24	170	171	160	159	171	146	214	146	125	151	168	163	159	184
V25	168	171	141	118	165	142	219	136	142	189	184	150	144	137
V26	174	165	140	154	157	131	188	146	111	186	183	151	168	176
V27	183	159	183	153	178	158	207	161	152	206	171	169	181	168
V28	191	183	189	158	185	161	228	174	145	195	214	163	184	187
V29	183	168	162	137	171	149	217	157	140	177	181	160	172	181
V30	186	172	173	167	187	149	211	158	149	198	208	166	170	179
V31	180	172	177	155	166	131	187	130	138	187	182	164	141	168
V32	170	186	185	163	163	137	225	149	141	206	199	164	186	166
V33	195	149	182	148	181	159	216	144	141	201	201	155	168	175
V34	182	172	186	156	189	154	230	164	154	208	191	165	190	178
V35	197	181	192	164	190	157	228	166	152	202	208	166	193	188
V37	200	180	195	170	183	166	244	172	160	213	202	180	194	182

## References

- Acharya, V., Engle, R., Figlewski, S., Lynch, A. and Subrahmanyam, M. (2009). *Centralized Clearing for Credit Derivatives*, Wiley, chapter 11, pp. 251–268.
- Acharya, V. V., Pedersen, L. H., Philippon, T. and Richardson, M. (2010). Measuring systemic risk, *Working Paper 10-02*, Federal Reserve Bank of Cleveland.
- Acharya, V. V. and Subrahmanyam, M. G. (2008). Time to lift the veil.
- Adrian, T. and Brunnermeier, M. K. (2011). CoVaR, *Staff Reports 348*, Federal Reserve Bank of New York.
- Alexander, C. and Kaeck, A. (2008). Regime dependent determinants of credit default swap spreads, *Journal of Banking and Finance* **32**: 1008–1021.
- Arora, N., Gandhi, P. and Longstaff, F. A. (2012). Counterparty credit risk and the credit default swap market, *Journal of Financial Economics* **103**: 280–293.
- BIS (2011). Basel iii: A global regulatory framework for more resilient banks and banking systems, *Basel Committee on Banking Supervision* .
- Breitenfellner, B. and Wagner, N. (2012). Explaining aggregate credit default swap spreads, *International Review of Financial Analysis* **22**: 18–29.
- Brownlees, C. T. and Engle, R. (2010). Volatility, correlation and tails for systemic risk measurement, *Working paper*, NYU Stern School of Business.
- Chao, S.-K., Härdle, W. and Wang, W. (2014). Quantile regression in risk calibration, in C.-F. Lee (ed.), *Handbook of Financial Econometric and Statistics*, Springer-Verlag, chapter 54.
- Christoffersen, P. F. (1998). Evaluating interval forecasts, *International Economic Review* **39**(4): 841–862.
- Cont, R. and Kokholm, T. (2013). Central clearing of otc derivatives: bilateral vs multilateral netting.  
**URL:** *arXiv:1304.5065*

- Duffie, D. (2010). *How Big Banks Fail And What to do About It* Darrell Duffie, Princeton University Press.
- Duffie, D., Li, A. and Lubke, T. (2010). Policy perspectives on OTC derivatives market infrastructure, *Staff Reports 424*, Federal Reserve Bank of New York.
- Duffie, D. and Zhu, H. (2011). Does a central clearing counterparty reduce counterparty risk?, *Review of Asset Pricing Studies* **1**(1): 74–95.
- Düllmann and Sosinska (2007). Credit default swap prices as risk indicators of listed german banks, *Financial Markets and Portfolio Management* **21**(3): 269–292.
- ESMA (2013). The clearing obligation under emir, *Discussion Paper* .
- Espinosa, G., Rubia, A., Valderrama, L. and Anton, M. (2013). Good for one, bad for all: Determinants of individual versus systemic risk, *Journal of Financial Stability* **9**: 287–299.
- Galil, K., Shapir, O. M., Amiran, D. and Ben-Zion, U. (2013). The determinants of cds spreads, *Journal of Banking & Finance* <http://dx.doi.org/10.1016/j.jbankfin.2013.12.005>.
- Hautsch, N., Schaumburg, J. and Schienle, M. (2013). Financial network systemic risk contributions, *Submitted to the Review of Finance* (2011-072).
- ISDA (2013). Non-cleared otc derivatives: Their importance to the global economy, *The International Swaps and Derivatives Association, Inc.* .
- Koenker, R. (2005). *Quantile Regression*, Cambridge University Press.
- Koenker, R. and Bassett, G. S. (1978). Regression quantiles, *Econometrica* **46**: 33–50.
- Kupiec, P. (1995). Techniques for verifying the accuracy of risk management models, *Journal of Derivatives* **3**: 73–84.
- Li, Y., Lui, Y. and Zhu, J. (2007). Quantile regression in reproducing kernel hilbert spaces, *J. Am. Stat. Assoc.* **102**(477): 255–268.  
**URL:** <http://dx.doi.org/10.1198/016214506000000979>
- Longstaff, F. A., Pan, J., Pedersen, L. and Singleton, K. (2007). How sovereign is

- sovereign credit risk?, *NBER Working Paper* **13658**.
- Merton, R. C. (1974). The pricing of corporate debt: The risk structure of interest rates, *Journal of Finance* **29** (2): 449–470.
- Pirrong, C. (2011). The economics of central clearing: Theory and practice, *Discussion Paper 1*, International Swaps and Derivatives Association.
- SEC (2010). Dodd-frank wall street reform and consumer protection act, *United States Securities and Exchange Commission (SEC)* .
- Song, S., Härdle, W. and Ritov, Y. (2012). Partial linear quantile regression and bootstrap confidence bands, *Journal of Multivariate Analysis* **107**: 244–262.
- Tibshirani, R. (1996). Regression shrinkage and selection via the Lasso, *Journal of the Royal Statistical Society, Series B* **58**: 267–288.
- Upper, C. and Worm, A. (2004). Estimating bilateral exposures in the german interbank market: Is there a danger of contagion?, *European Economic Review* **48**: 827–849.
- Yuan, M. (2006). GACV for quantile smoothing splines, *Computational Statistics & Data Analysis* **50**: 813–829.



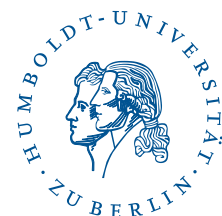
# SFB 649 Discussion Paper Series 2014

For a complete list of Discussion Papers published by the SFB 649, please visit <http://sfb649.wiwi.hu-berlin.de>.

- 001 "Principal Component Analysis in an Asymmetric Norm" by Ngoc Mai Tran, Maria Osipenko and Wolfgang Karl Härdle, January 2014.
- 002 "A Simultaneous Confidence Corridor for Varying Coefficient Regression with Sparse Functional Data" by Lijie Gu, Li Wang, Wolfgang Karl Härdle and Lijian Yang, January 2014.
- 003 "An Extended Single Index Model with Missing Response at Random" by Qihua Wang, Tao Zhang, Wolfgang Karl Härdle, January 2014.
- 004 "Structural Vector Autoregressive Analysis in a Data Rich Environment: A Survey" by Helmut Lütkepohl, January 2014.
- 005 "Functional stable limit theorems for efficient spectral covolatility estimators" by Randolf Altmeyer and Markus Bibinger, January 2014.
- 006 "A consistent two-factor model for pricing temperature derivatives" by Andreas Groll, Brenda López-Cabrera and Thilo Meyer-Brandis, January 2014.
- 007 "Confidence Bands for Impulse Responses: Bonferroni versus Wald" by Helmut Lütkepohl, Anna Staszewska-Bystrova and Peter Winker, January 2014.
- 008 "Simultaneous Confidence Corridors and Variable Selection for Generalized Additive Models" by Shuzhuan Zheng, Rong Liu, Lijian Yang and Wolfgang Karl Härdle, January 2014.
- 009 "Structural Vector Autoregressions: Checking Identifying Long-run Restrictions via Heteroskedasticity" by Helmut Lütkepohl and Anton Velinov, January 2014.
- 010 "Efficient Iterative Maximum Likelihood Estimation of High-Parameterized Time Series Models" by Nikolaus Hautsch, Ostap Okhrin and Alexander Ristig, January 2014.
- 011 "Fiscal Devaluation in a Monetary Union" by Philipp Engler, Giovanni Ganelli, Juha Tervala and Simon Voigts, January 2014.
- 012 "Nonparametric Estimates for Conditional Quantiles of Time Series" by Jürgen Franke, Peter Mwita and Weining Wang, January 2014.
- 013 "Product Market Deregulation and Employment Outcomes: Evidence from the German Retail Sector" by Charlotte Senftleben-König, January 2014.
- 014 "Estimation procedures for exchangeable Marshall copulas with hydrological application" by Fabrizio Durante and Ostap Okhrin, January 2014.
- 015 "Ladislaus von Bortkiewicz - statistician, economist, and a European intellectual" by Wolfgang Karl Härdle and Annette B. Vogt, February 2014.
- 016 "An Application of Principal Component Analysis on Multivariate Time-Stationary Spatio-Temporal Data" by Stephan Stahlschmidt, Wolfgang Karl Härdle and Helmut Thome, February 2014.
- 017 "The composition of government spending and the multiplier at the Zero Lower Bound" by Julien Albertini, Arthur Poirier and Jordan Roulleau-Pasdeloup, February 2014.
- 018 "Interacting Product and Labor Market Regulation and the Impact of Immigration on Native Wages" by Susanne Prantl and Alexandra Spitz-Oener, February 2014.

**SFB 649, Spandauer Straße 1, D-10178 Berlin**  
**<http://sfb649.wiwi.hu-berlin.de>**

This research was supported by the Deutsche  
Forschungsgemeinschaft through the SFB 649 "Economic Risk".



## SFB 649 Discussion Paper Series 2014

For a complete list of Discussion Papers published by the SFB 649, please visit <http://sfb649.wiwi.hu-berlin.de>.

- 019 "Unemployment benefits extensions at the zero lower bound on nominal interest rate" by Julien Albertini and Arthur Poirier, February 2014.
- 020 "Modelling spatio-temporal variability of temperature" by Xiaofeng Cao, Ostap Okhrin, Martin Odening and Matthias Ritter, February 2014.
- 021 "Do Maternal Health Problems Influence Child's Worrying Status? Evidence from British Cohort Study" by Xianhua Dai, Wolfgang Karl Härdle and Keming Yu, February 2014.
- 022 "Nonparametric Test for a Constant Beta over a Fixed Time Interval" by Markus Reiß, Viktor Todorov and George Tauchen, February 2014.
- 023 "Inflation Expectations Spillovers between the United States and Euro Area" by Aleksei Netšunajev and Lars Winkelmann, March 2014.
- 024 "Peer Effects and Students' Self-Control" by Berno Buechel, Lydia Mechtenberg and Julia Petersen, April 2014.
- 025 "Is there a demand for multi-year crop insurance?" by Maria Osipenko, Zhiwei Shen and Martin Odening, April 2014.
- 026 "Credit Risk Calibration based on CDS Spreads" by Shih-Kang Chao, Wolfgang Karl Härdle and Hien Pham-Thu, May 2014.

**SFB 649, Spandauer Straße 1, D-10178 Berlin**  
**<http://sfb649.wiwi.hu-berlin.de>**

This research was supported by the Deutsche  
Forschungsgemeinschaft through the SFB 649 "Economic Risk".

