

Lindhe, Tobias; Södersten, Jan

Working Paper

Dividend Taxation and the Cost of New Share Issues

CESifo Working Paper, No. 5001

Provided in Cooperation with:

Ifo Institute – Leibniz Institute for Economic Research at the University of Munich

Suggested Citation: Lindhe, Tobias; Södersten, Jan (2014) : Dividend Taxation and the Cost of New Share Issues, CESifo Working Paper, No. 5001, Center for Economic Studies and ifo Institute (CESifo), Munich

This Version is available at:

<https://hdl.handle.net/10419/103087>

Standard-Nutzungsbedingungen:

Die Dokumente auf EconStor dürfen zu eigenen wissenschaftlichen Zwecken und zum Privatgebrauch gespeichert und kopiert werden.

Sie dürfen die Dokumente nicht für öffentliche oder kommerzielle Zwecke vervielfältigen, öffentlich ausstellen, öffentlich zugänglich machen, vertreiben oder anderweitig nutzen.

Sofern die Verfasser die Dokumente unter Open-Content-Lizenzen (insbesondere CC-Lizenzen) zur Verfügung gestellt haben sollten, gelten abweichend von diesen Nutzungsbedingungen die in der dort genannten Lizenz gewährten Nutzungsrechte.

Terms of use:

Documents in EconStor may be saved and copied for your personal and scholarly purposes.

You are not to copy documents for public or commercial purposes, to exhibit the documents publicly, to make them publicly available on the internet, or to distribute or otherwise use the documents in public.

If the documents have been made available under an Open Content Licence (especially Creative Commons Licences), you may exercise further usage rights as specified in the indicated licence.



Working Papers

www.cesifo.org/wp

Dividend Taxation and the Cost of New Share Issues

Tobias Lindhe
Jan Södersten

CESIFO WORKING PAPER NO. 5001

CATEGORY 1: PUBLIC FINANCE

OCTOBER 2014

An electronic version of the paper may be downloaded

- *from the SSRN website:* www.SSRN.com
- *from the RePEc website:* www.RePEc.org
- *from the CESifo website:* www.CESifo-group.org/wp

CESifo

Center for Economic Studies & Ifo Institute

Dividend Taxation and the Cost of New Share Issues

Abstract

This paper examines how the effects of dividend taxation on the cost of new equity funds depend on whether or not shareholders can recover their original equity injections without being subject to the dividend tax. We point out the alternative assumptions in the literature on this, and we compare two different tax regimes, one where it is impossible for the firm to pay cash to its shareholders that is not taxed as dividends, the other where the shareholders are allowed a tax-free return of the original capital contributed through new issues. We conclude that any model, which explicitly or implicitly assumes that the shareholders cannot recover their original equity injections without being subject to the dividend tax, exaggerates the distortive effects of the tax.

JEL-Code: H240, H250, H320.

Keywords: dividend taxation, return of capital, share repurchases, equity trap, cost of capital, nucleus theory, growth path.

Tobias Lindhe
Uppsala Center for Fiscal Studies
(UCFS) / Uppsala University
Uppsala / Sweden
Tobias.Lindhe@telia.com

*Jan Södersten**
Uppsala Center for Fiscal Studies (UCFS)
Department of Economics
Uppsala University
Uppsala / Sweden
Jan.Sodersten@nek.uu.se

*corresponding author

September 2014

We are grateful to Martin Jacob, Michael Riis Jacobsen , Guttorm Schjelderup, Vesa Kanninen and Chuan-Zhong Li for helpful suggestions.

1. Introduction

This paper reconsiders the impact of dividend taxation on the cost of capital when the firm is using new share issues as the marginal source of funds. That the dividend tax reduces the rate of return to investments financed by new issues of equity, and hence raises the cost of capital, has generally been accepted in earlier research.¹ However, the exact impact of the dividend tax is often left unclear as in many cases no parametric expressions for the cost of new equity are obtained from the analysis. What is problematic, and as apparent from a closer inspection of the literature, is that two different approaches to the theoretical modeling have been used, which differ substantially in the resulting impact of tax on the cost of capital. The aim of the paper is to point out the underlying assumptions causing this difference, and to demonstrate their effect on the cost of new equity. The key issue here, which has rarely been explicitly discussed in the literature, is whether shareholders can recover their original equity injections without being subject to the dividend tax.

The first of these two approaches typically constrains new issues to be non-negative. Though this modelling requirement serves the purpose of preventing the firm from circumventing dividend taxation, the absence of any provision for a tax-free recovery of original equity in the model effectively turns the dividend tax into a combination of a tax on (distributed) profits and a capital levy on issues of new equity. Examples of this approach include well-known contributions by Auerbach (1983) and Sinn (1991), but also more recent papers by Brys and Bovenberg (2006), Chetty and Saez (2007) and Korinek and Stiglitz (2009).

In the second modeling approach, the shareholders – implicitly, as in models in the King and Fullerton (1984) tradition², or explicitly, as in Devereux and Griffith (1998) and Chetty and Saez (2010)³ – are allowed a tax-free recovery of their initial equity. Devereux and Griffith state that most tax systems treat a repurchase of equity at its original price to be a repayment

¹ See for example Auerbach (2002).

² King and Fullerton's (1984) formulae for the cost of capital have been put to a widespread use in international comparisons and for policy oriented research, see for example OECD (1991), Jorgenson and Landau (1993) and EU (2001).

³ Note that Chetty and Saez (2010) is the revised and published version of Chetty and Saez (2007). The authors changed their assumption on the tax treatment of return of original equity for the published version.

of capital which is not taxed, and Chetty and Saez briefly use similar formulations. Hence, the dividend tax is confined to be a tax on (distributed) profits.

This paper demonstrates and compares the impact of dividend taxation on the cost of new share issues under the two approaches. We draw on Sinn (1991) and set up a simple dynamic model of an all-equity firm, with a personal tax on dividends as the only tax parameter. The outcome of this model is a “nucleus” theory of the corporation. A firm faced by an initial shortage of retainable profits following a disturbance to the marginal productivity of capital, will let the shareholders inject less than the total amount of funds needed to reach a new long-run equilibrium. The adjustments following the initial distortion take place gradually with no dividends being paid until the firm is in a new long-run equilibrium.⁴

Our model includes two varieties. The first of these is the same as examined by eg. Sinn (1991) and Korinek and Stiglitz (2009), namely where it is impossible for the firm to pay cash to its shareholders that is not taxed as dividends. We will denote this variety of the model the *full equity trap-case*, or *F-case*, for short. Following the initial new share issue, the *F-case* firm embarks upon a growth path using less expensive retained earnings and continues to grow by internal funds, issuing no more shares, and paying no dividends until the marginal productivity of capital is equated to the rate of interest.

The second variety of the model allows the shareholders a tax-free return of the original capital contributed through the new issues. This means that negative new share issues (such as share redemptions or share repurchases or other forms of tax-free cash distributions) are allowed, but only to the extent of the amount contributed by the shareholders. This is the *partial equity trap-case*, or *P-case* – reflecting the implicit or explicit assumptions by King-Fullerton (1984), Devereux and Griffith (1998) and others. With a partial equity trap (*P-case*), there is likewise an internally funded growth path, but this growth path is preceded by a phase where the original capital injected into the firm is repaid to the shareholders.

⁴ The discussion in the economics literature on the effects of dividend taxation has recently been revitalized, for example by including elements from the corporate finance tradition (eg. Chetty and Saez (2010)). We do not contribute to this important development, as the basic model of corporate taxation is sufficient for our purpose to point out the alternative assumptions in the literature regarding the taxation of the return of original equity. The insights we offer make it clear that the tax incentives must be correctly understood and explicitly accounted for, irrespective of modelling strategy.

Our analysis shows that the choice between the *F*- and *P*-cases makes a substantial difference to our perceptions of the distortive effects of dividend taxation. Though no parametric expressions for the cost of new equity are obtained from the analysis, the marginal productivity of capital subsequent to the issue of new equity is considerably higher in the *F*-case and the initial equity injection is smaller. The gradual adjustment towards the long-run equilibrium obviously causes a loss in output, compared to a hypothetical case where the firms could immediately reach their new long-run capital stocks and output levels. This output loss is clearly much higher in the *F*-case, that is, when there are no provisions for a tax-free return of original equity.

The remainder of this paper is organized as follows. Section 2 presents the theoretical model of an all equity firm, and derives general expressions for the cost of capital for two versions of the model, with and without a provision for a tax-free return of original equity. Optimal behavior following a new issue of equity is determined in section 3, which also includes numerical simulations to compare the firm's optimal behavior under the two cases. Section 4 summarizes our findings. We point out that even though tax rules differ, most countries allow for a tax-exempt return of original capital. The *F*-case assumptions – turning the dividend tax into a combination of a tax on distributed profits and a capital levy – therefore clearly exaggerates the distortive effects of dividend taxation.

2. The model

We derive the firm's cost of capital by setting up a dynamic model in discrete time with a personal tax on dividends τ as the only tax parameter. The owner is assumed to maximize the after-tax dividend stream given by

$$\sum_{s=t}^{\infty} \frac{(1-\tau)D_s - N_s}{(1+r)^{s-t}}, \quad (1)$$

where D denotes dividends as defined in the firm's accounts, N is the amount of new share issues and r is the discount rate. The firm's budget constraint in period s is a cash flow identity, where capital inflow equals capital outflow.

$$F(K_{s-1}) + N_s = D_s + I_s . \quad (2)$$

The production function $F(K)$ depends only on the stock of capital, where the stock in period $s-1$ becomes fully efficient in production in period s . To keep the model simple, capital depreciation is ignored, which implies that the stock of capital evolves over time as

$$K_{s-1} + I_s = K_s . \quad (3)$$

As usual, dividends must be non-negative

$$D_s \geq 0 . \quad (4)$$

In the following, we distinguish between two varieties of the model. In the first of these we require issues of new equity to be non-negative

$$N_s \geq 0 . \quad (5)$$

Though this constraint is standard in tax models of the firm, its full implication is seldom made clear. With (5), there is no way for the shareholders to withdraw cash from the firm except as dividends. The effect of this is that not only current and past profits (as emphasized by the new view), but also the new issues of equity injected into the firm are trapped by the dividend tax. Put differently, constraint (5) models the dividend tax as a combination of a tax on (distributed) profits and a capital levy on issues of new equity. We will denote this variety of the model the *full equity trap-case*, or *F-case*, for short.

The second variety of the model – the *partial equity trap-case*, or *P-case* – assumes instead that shareholders are allowed a tax-exempt return of funds injected into the firm by issues of new equity. We model this assumption by letting A be the remaining stock of past (positive or negative) equity injections, and requiring that

$$A_s \geq 0, \quad (6)$$

where the stock A evolves as

$$A_{s-1} + N_s = A_s. \quad (7)$$

Constraint (6) implies that negative issues of equity are allowed ($N < 0$), but only within the limit set by the requirement that the sum total of past equity injections (positive or negative) be non-negative. Replacing constraint (5) by constraint (6) and the motion (7) therefore confines the dividend tax to be a tax on distributed profits, leaving any withdrawals of funds to the extent of the original investment of the shareholders free of tax.

The model (for both varieties of the equity trap) defines a discrete-time control problem with control variables N , D and I , and state variables K and A . By imposing shadow values for the constraints and motions – μ^D for (2), μ^K for (3), λ^D for (4), λ^N for (5), λ^A for (6), μ^A for (7) – and maximizing the owners' after-tax dividend stream the optimization problem takes

the form $\max \sum_{s=t}^{\infty} \frac{\Lambda(\cdot)}{(1+r)^{s-t}}$. The Λ -function reads as

$$\begin{aligned} \Lambda = & (1-\tau)D_s - N_s + \mu_s^D (F(K_s) + N_s - I_s - D_s) + \mu_s^K (K_{s-1} + I_s - K_s) + \lambda_s^D D_s \\ & + \lambda_s^N N_s \end{aligned}$$

for the *F-case*, and as

$$\Lambda = (1 - \tau)D_s - N_s + \mu_s^D (F(K_s) + N_s - I_s - D_s) + \mu_s^K (K_{s-1} + I_s - K_s) + \lambda_s^D D_s + \lambda_s^A A_s + \mu_s^A (A_{s-1} + N_s - A_s).$$

for the *P-case*.

The first order conditions for D , I and K are the same for both varieties of the model

$$D_s \quad 1 - \tau - \mu_s^D + \lambda_s^D = 0, \quad (8)$$

$$I_s \quad -\mu_s^D + \mu_s^K = 0, \quad (9)$$

$$K_s \quad -\mu_s^K + \frac{\mu_{s+1}^K}{1+r} + \frac{\mu_{s+1}^D}{1+r} F_{K_s} = 0. \quad (10)$$

Equations (9) and (10) yield the general expression for the cost of capital

$$F_{K_s} = \frac{\mu_s^K (1+r) - \mu_{s+1}^K}{\mu_{s+1}^K}, \quad (11)$$

that is, the cost of capital is determined by the rate of interest and the marginal valuation of capital, μ^K , for two consecutive periods.

The long-run cost of capital with retained earnings as the marginal source of finance

For a firm that relies on retained earnings as the marginal source of finance and also pays dividends, the shadow value of the dividend constraint appearing in (8) is zero, $\lambda^D = 0$. Since $\mu^K = \mu^D$ (eq. 9) the first order condition for D (eq. (8)) then implies that in long-run

equilibrium $\mu_s^K = \mu_{s+1}^K = 1 - \tau$. The general expression for the cost of capital in (11) is therefore

$$F_K = r. \quad (12)$$

With $\mu^K = 1 - \tau$, the owner is indifferent between retaining earnings and receiving dividends, and as a result of this, the dividend tax does not distort the steady state value of the firm's capital stock. This is of course the well-known result from the *New View* of equity.⁵

New equity as the marginal source of finance

The first order condition specific to the *F-case* is

$$N_s \quad -1 + \mu_s^D + \lambda_s^N = 0, \quad (13)$$

while those specific to the *P-case* are

$$N_s \quad -1 + \mu_s^D + \mu_s^A = 0, \quad (14)$$

$$A_s \quad -\mu_s^A + \frac{\mu_{s+1}^A}{1+r} + \lambda_s^A = 0. \quad (15)$$

New shares are issued by the firm only occasionally as a response to exogenous disturbances to the productivity of capital when retained earnings are insufficient to finance the required addition to the capital stock. A *F-case* firm hit by a productivity shock in period t will issue new equity sufficient to depress the marginal value of capital to unity, $\mu_t^K = 1$ ⁶. The cost of capital associated with the new issue of equity is then obtained from the general expression in (11) as

⁵ The new view of equity was developed by Auerbach (1979), Bradford (1981) and King (1977). For a survey of the debate, see Auerbach (2002) and Auerbach and Hassett (2002, 2005).

⁶ See equations (9) and (13).

$$F_{K_t} = \frac{(1+r) - \mu_{t+1}^K}{\mu_{t+1}^K}. \quad (16)$$

Since the marginal value of capital in the period subsequent to the new issue, μ_{t+1}^K , cannot be determined without further assumptions, equation (16) means that no parametric expression for the cost of capital is available for the *F-case* firm.⁷ However, in the special case where the firm pays dividends immediately following the new issue, $\mu_{t+1}^K = 1 - \tau$, and (16) simplifies to

$$F_{K_t} = \frac{r + \tau}{1 - \tau}, \quad (17)$$

which corresponds to a result derived by Auerbach (1983, p. 925) and Korinek and Stiglitz (2009, p.143).

When the *P-case* firm issues new shares in period t , we assume that $A_t > 0$. This means that the shadow value $\lambda_t^A = 0$, and by equation (9) and the first order conditions for N and A (eqs. (14) and (15)) we derive $\mu_{t+1}^K = \mu_t^K (1 + r) - r$. Using the general expression for the cost of capital (eq. (11)) we therefore derive the *P-case* firm's cost of capital following the new equity issue as

$$F_{K_t} = \frac{r}{\mu_{t+1}^K}. \quad (18)$$

Again, no parametric expression is available.⁸ In case the firm pays dividends following the new issue, $\mu_{t+1}^K = 1 - \tau$, and we get

⁷ Equations (1)-(5) above, which explicitly require new issues of equity to be non-negative, give a discrete-time variant of Sinn's (1991) continuous-time model, and the resulting equation (16) for the *F-case*, corresponds to Sinn's expression for the cost of new equity.

⁸ A simple and interesting alternative to (7) would be to let the (net) stock of remaining equity injections, A , be augmented annually by stockholders' rate of return requirement, that is $A_{s-1} (1 + r) + N_s = A_s$. Replacing (7) by this motion yields $F_{K_t} = r$, that is independent of tax. Such a modified scheme is basically similar to both the

$$F_{K_t} = \frac{r}{1-\tau}, \quad (19)$$

as the expression for the cost of capital for a *P-case* firm. This is King and Fullerton's (1984) well-known expression for the cost of new equity.

For ease of comparison, the expressions for the costs of capital derived above are summarized in Table 1. The character of the equity trap clearly has important implications for the cost of new issues of equity. When the marginal value of capital in the period subsequent to the new issue, μ_{t+1}^K , is the same in the two cases, the *F-case* firm has a higher cost of capital. The intuition for this result is particularly clear when the firm pays dividends, see equations (17) and (19). The pre-tax marginal rate of return of the *F-case* firm must then be sufficiently high to compensate not only for the tax on the income from the marginal investment but also for the tax upon the return of the original capital, i.e. the tax code turns the dividend tax into a combination of a tax on (distributed) profits and a capital levy.

Table 1. Cost of new share issues for the full and partial equity trap

	Full Equity Trap (<i>F-case</i>)	Partial Equity Trap (<i>P-case</i>)
Tax code	All cash paid to shareholders is taxed as dividends	Shareholders are allowed a tax-free return of the original capital
General:	$F_{K_t} = \frac{(1+r) - \mu_{t+1}^K}{\mu_{t+1}^K} \quad (16)$	$F_{K_t} = \frac{r}{\mu_{t+1}^K} \quad (18)$
Special case: dividend paying firm following a new share issue	$F_{K_t} = \frac{r+\tau}{1-\tau} \quad (17)$	$F_{K_t} = \frac{r}{1-\tau} \quad (19)$

Note also that the assumption that dividends are paid subsequent to a new issue (as in King and Fullerton (ibid.) for the *P-case* and in Auerbach (1983) p.925 and Korinek and Stiglitz (2009), p. 143 for the *F-case*) causes an upward bias in estimating the cost of capital: With

Swedish Annull-deduction (a tax benefit based on new issues), see Auerbach (2002), p. 15, and the new Norwegian Shareholder Income Tax, see Sørensen (2005) and Lindhe and Södersten (2012).

no dividends being paid in the year following the new issue, the shadow value equals $\mu_{t+1}^K > 1 - \tau$. A simple comparison between (16) and (17) or between (18) and (19) makes it clear that the cost of capital then is lower than would be the case when the firm pays dividends, that is $F_{K_t} = \frac{(1+r) - \mu_{t+1}^K}{\mu_{t+1}^K} < \frac{r + \tau}{1 - \tau}$ for the *F-case* firm and $F_{K_t} = \frac{r}{\mu_{t+1}^K} < \frac{r}{1 - \tau}$ for the *P-case* firm.⁹

3. Optimal behavior and simulation of the growth path

With a full equity trap, the firm's optimal behavior following a new issue of equity was briefly described in section 1 above, and readers looking for a formal and detailed treatment are referred to Sinn (1991)¹⁰. This section first explains the incentives faced by the *P-case* firm, and then proceeds to illustrate and compare the optimal behavior of the two types of firms making use of a few numerical simulations.

There are three alternative routes for the *P-case* firm to follow subsequent to a new share issue in period t , see the Chart 1 below. We refer to Appendix A for the technical details. We rule out two of these alternatives, which both imply that the firm would maintain a constant and positive stock of new equity ($A > 0$), and use its profits either for paying dividends or for additional investment. Behaving optimally, the *P-case* firm will first use current profits and some disinvestment to undertake a gradual repayment of the original issue of equity. Once the new issue has been repaid ($A = 0$), the firm will retain profits earned in subsequent periods and add to its capital stock. This second phase corresponds to the growth path analyzed by Sinn, where the firm continues to grow by internal funds, paying no dividends until the new long-run equilibrium is reached.

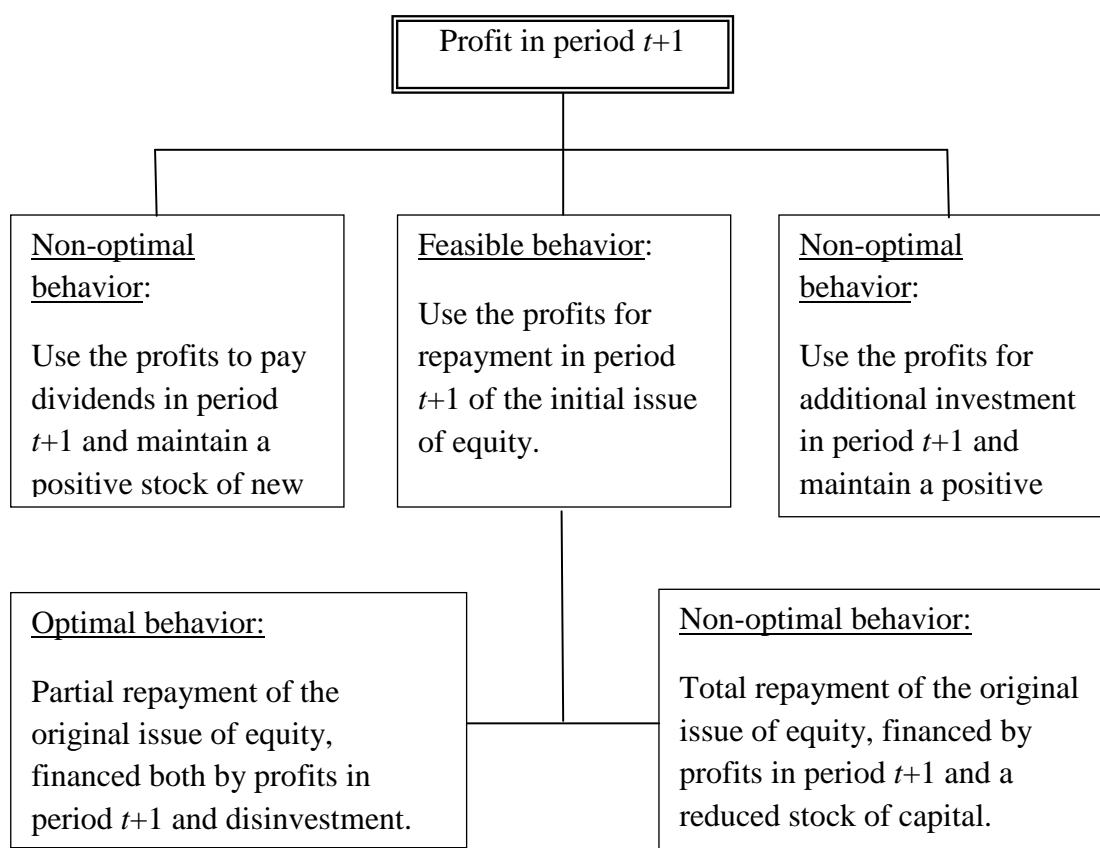
⁹ Sinn (1991) claims on the contrary that earlier research (for example King and Fullerton (1984)) *underestimated* the true cost of equity because it invariably assumed that profits from marginal investment

projects were distributed as dividends. Specifically, he finds that $F_{K_t} = \frac{(1+r) - \mu_{t+1}^K}{\mu_{t+1}^K} > \frac{r}{1 - \tau}$, where the LHS is

Sinn's expression for the cost of new equity (see eq. (16) above). However, as is apparent from Table 1, Sinn's criticism simply amounts to an implicit comparison across two *different* tax regimes – the *F-case* (eq. 16) and *P-case* (eq. 19) – with different implications for the equity trap and for the cost of capital.

¹⁰ A *F-case* growth-path is derived also in Korinek and Stiglitz (2009), though in terms of money-capital rather than real capital.

Chart 1. Alternative routes for a *P-case* firm following a new share issue.



As explained above, our model cannot be used to derive parametric expressions for the short run costs of capital. We are still able to make considerable progress in illustrating and comparing the behavior of the two types of firms by resorting to numerical simulations. We will assume that there occurs an exogenous disturbance to the firms that raises the marginal productivity of capital, and that the resulting investment needs cannot be financed from retained earnings.

The *F-case* firm will then issue new equity sufficient to depress μ^K to unity. A growth path financed by retained earnings follows, and continues until the marginal valuation of capital has fallen to unity minus the dividend tax rate. For the *P-case* firm the starting condition is, likewise, that the marginal valuation of the injection of new equity equals unity, but this comes from two conceptually different sources: The first is the direct increase in the productive capacity of the firm, which is valued at the shadow price of capital, μ^K . The

second derives from the fact that the new equity enables the owner a tax-free return of capital, valued at the shadow price μ^A . The condition $\mu^K + \mu^A = 1$ then holds all along the firm's optimal path, with μ^K falling from its initial value in period t in the range $1 - \tau < \mu_t^K < 1$, to its long-run value of unity minus the dividend tax rate.

We refer to Appendix B for a step-by-step account of the simulations. In general terms, we make use of the first order conditions to determine the development over time of the marginal valuation of capital, μ^K , the pre-tax marginal rate of return, F_K , the capital stock, K , and – in the *P-case* – the stock of new equity, A . We specify the firm's production function in the Appendix and we assume that the market rate of interest is 5 per cent.

The results of the simulations are illustrated in *Figures 1-2* for a dividend tax rate of 30 percent ($\tau = 0.3$). The cost of capital is initially 6.22 percent for the *P-case* firm, or 1.24 times the long-run cost of capital (of 5 percent), compared to 12.73 percent for the *F-case* firm, or 2.55 times the long-run cost of capital. As a result of these differences, there is a striking difference between the firms in the amount of new equity injected by the shareholders: The *P-case* firm starts its adjustment path with a capital stock which is more than four times as large as that of the *F-case* firm. Following the new issue, the *F-case* firm uses all profits for internal investment, and completes its growth path in 13 years. The adjustment phase of the *P-case* firm is of approximately the same length, but during the first half of this phase, the firm uses both current profits and disinvestment to repay the original new equity to the shareholders.

The gradual adjustment towards the long-run equilibrium obviously causes a loss in output, compared to a hypothetical case where the firms could immediately reach their new long-run capital stocks and output levels. The annual output losses, accumulated over the adjustment period, add up to 32 percent (of the hypothetical no-tax output level) for the *F-case* firm, and to 18.9 percent for the *P-case* firm, when the dividend tax rate is 30 percent¹¹.

¹¹ The numbers ignore the effect of discounting. The simulations depend on the parameters, and in particular on the tax rate. With a reduction in the dividend tax from 30 to 15 percent, for instance, the adjustment periods of both firms are shortened, but the effect is stronger for the *F-case* firm than for the *P-case* firm. The tax cut also reduces the cost of new equity and increases the size of the initial equity injection, for both firms. The distorting effects of dividend taxation remain considerably larger for the *F-case* firm than for the *P-case* firm. With a 15 percent tax on dividends, the output losses are 19.3 and 10.5 percent, respectively.

Figure 1: The cost of capital following a new equity issue.

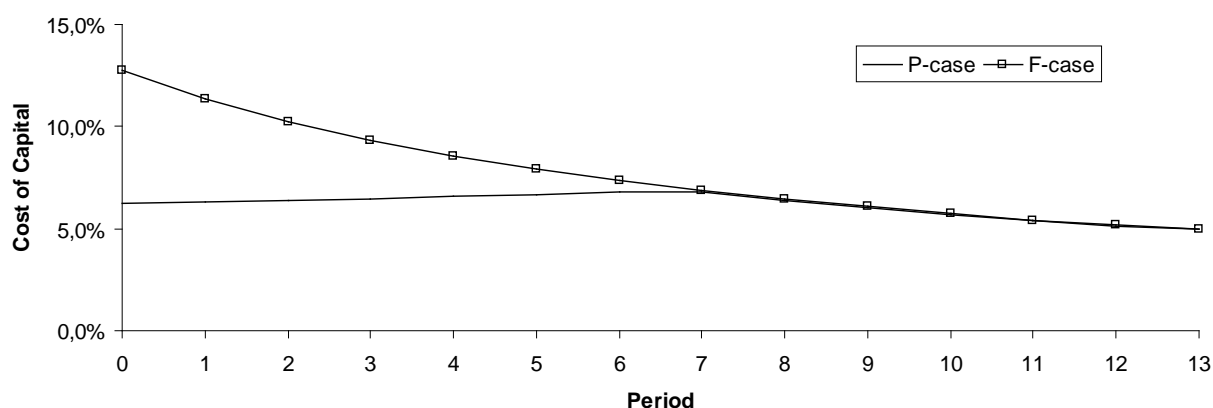
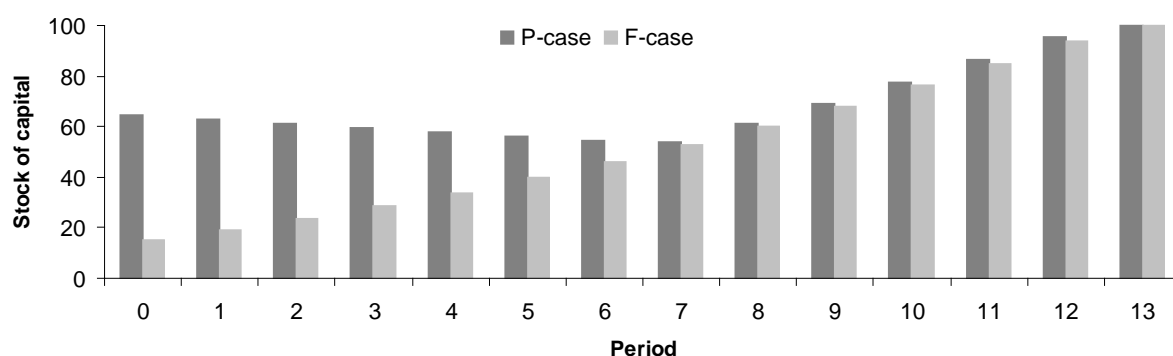


Figure 2: The development of the capital stock following a new equity issue.



4. Concluding comments

This paper has examined a question rarely discussed in the literature, namely how the distortions caused by dividend taxation depend on whether or not shareholders can recover their original equity injections without being subject to the dividend tax. We point out the alternative assumptions in the literature on this, and we compare two different tax regimes, one where it is impossible for the firm to pay cash to its shareholders that is not taxed as dividends (the full equity trap, or *F-case*), the other where the shareholders are allowed a tax-free return of the original capital contributed through new issues (the partial equity trap, or *P-case*). We set up a dynamic model of the firm where adjustments following an initial new share issue take place gradually with no dividends being paid until the firm is in a new long-run equilibrium. With a full equity trap, the firm embarks upon a growth path, using retained earnings as the source of funds, whereas with a partial equity trap, the growth path is preceded by a phase where the original capital injected into the firm is repaid to the shareholders. Our numerical simulations indicate a substantial difference between the two cases in the size of

the initial equity injections, and a resulting difference in the output losses over the adjustment periods.

The choice between the *F*- and *P*-case assumptions about the equity trap, as well as between possible intermediate cases, is in principle an empirical question, depending on country specific tax codes. We emphasize, however, that all countries allow shareholders a tax-free recovery of their initial equity following a winding-up decision, but also that there are several other old and new channels for a tax-free return of equity. Techniques such as share repurchases and combinations of splits and share redemptions, have gained in importance in most countries over the past decades.¹² These procedures may trigger capital gains taxation, but the deductibility of the acquisition costs of shares repurchased or redeemed ensures that the original contributions of equity capital do escape the equity trap. In the US, share repurchases appear to be especially important, even surpassing the value of dividends for certain years. Across Europe, the pattern has historically been different, and in several cases share repurchases long remained illegal. A European Union Council Directive first adopted in 1976, and later amended in November 1992, now regulates the use of share repurchases¹³. Present rules state that own shares acquired by a company may not exceed 10 percent of the subscribed capital. However, and importantly, the scope for share redemptions appears to be substantially less circumscribed, and subject only to the limitations set by the existence of a legally required minimum of share capital.

On the basis of these observations, we conclude that allowing for a tax-free return of original equity, as in the *P*-case, offers a more appropriate description of the real world than does the full equity trap assumption of the *F*-case. Clearly, the provisions for a tax-exempt return of original equity are varied and may differ between countries. While these variations may be captured through modifications of our stylized model¹⁴, the simple and clear message is that any model, which explicitly or implicitly assumes that the shareholders cannot recover their

¹² See for example van Eije and Megginson (2008) and Skinner. (2008).

¹³ The Second Council Directive on Company Law, Directive 77/91/EEC on the formation of public limited-liability companies and the maintenance and alteration of their capital (13.12.1976). Amendments: Directive 92/101/EEC (23.11.1992).

¹⁴ Elsewhere (Lindhe and Södersten (2009)), we have, for example, modelled the current EU rules regulating the use of share repurchases. When the tax code allows only some tax-free return of equity, our analysis indicates that the firm instead may embark upon an investment path, following the injection of capital. This initial growth phase is then followed by a phase of share repurchases, succeeded in turn by a second phase of investment on the firm's way towards long-run equilibrium. We find moreover that the less generous the scope for share repurchases, the longer is the first investment phase and the shorter is the phase of share repurchases.

original equity injections without being subject to tax, exaggerates the distortive effects of dividend taxation.

References

Auerbach, Alan J., 1979, Wealth Maximization and the Cost of Capital, *Quarterly Journal of Economics*, Vol.93(3), pp. 433-446.

Auerbach, Alan J., 1983, Taxation, Corporate Financial Policy and the Cost of Capital, *Journal of Economic Literature*, Vol. 21, No. 3. (Sep., 1983), pp. 905-940.

Auerbach, Alan J., 2002, Taxation and Corporate Financial Policy, in *Handbook of Public Economics*, Vol. 3, Ch. 19, pp 1251-1292.

Auerbach, Alan J. and Kevin Hassett, 2002, On the marginal source of investment funds, *Journal of Public Economics*, Vol. 89, pp. 205-232.

Auerbach, Alan J. and Kevin Hassett, 2005, The 2003 dividend tax cuts and the value of the firm: An event study, *NBER WP 11449*.

Bradford, David F., 1981, The Incidence and Allocation Effects of a Tax on Corporate Distributions, *Journal of Public Economics*, Vol. 15, pp. 1-22.

Brys, B. and Bovenberg, A.L., 2006, *The Life Cycle of the Firm with Debt and Capital Income Taxes*. (CentER Discussion Paper, 2006-91) pp. 1-29.

Chetty, Raj and Emmanuel Saez, 2007, *An Agency Theory of Dividend Taxation*, NBER Working Paper 13538.

Chetty, Raj and Emmanuel Saez, 2010, Dividend and Corporate Taxation in an Agency Model of the Firm, *American Economic Journal: Economic Policy* (August 2010): 1–31

Directive 77/91/EEC (The Council of the European Communities).

Directive 92/101/EEC (The Council of the European Communities).

Devereux, M. P. and R. Griffith (1998), *The Taxation of Discrete Investment Choices*, The Institute for Fiscal Studies, Working Paper Series No. W98/16.

EU (2001), Company taxation in the internal market, *Commission staff working paper*, COM(2001) 582 final.

van Eije, Henk and William L. Megginson, 2008, Dividends and Share Repurchases in the European Union. *Journal of Financial Economics*, 87, 347-374.

Jorgenson, Dale and Ralph Landau (eds.), 1993, *Tax Reform and the Cost of Capital. An International Comparison*, (The Brookings Institution, Washington, D.C.).

King, M. A., 1977, *Public Policy and the Corporation* (Chapman and Hall, London).

King, M. A. and D. Fullerton, 1984, *The Taxation of Income from Capital. A Comparative Study of the United States, the United Kingdom, Sweden and West-Germany* (University of Chicago Press, Chicago).

Korinek, Anton and Stiglitz, Joseph E., 2009. Dividend Taxation and Intertemporal Tax Arbitrage, *Journal of Public Economics*, vol. 93(1-2), pp. 142-159.

Lindhe, Tobias and Södersten, Jan, 2009, *Dividend Taxation, Share Repurchases and the Equity Trap*, CESifo Working Paper no. 2652.

Lindhe, Tobias and Södersten, Jan, 2012, The Norwegian Shareholder Tax Reconsidered, *International Tax and Public Finance*, vol.19 (3), pp.424-441.

OECD (1991), *Taxing Profits in a Global Economy: Domestic and International Issues* (OECD Publications, Paris).

Sinn, Hans-Werner, 1991, The vanishing Harberger triangle, *Journal of Public Economics*, Vol. 45, pp. 271-299.

Sørensen, Peter Birch (ed.), 2004, Measuring the Tax Burden on Capital and Labor, *CESifo Seminar Series*, (MIT Press, Cambridge. Massachusetts, London).

Sørensen, P. B., 2005, Neutral Taxation of Shareholder Income, *International Tax and Public Finance* 12(6), pp. 777-801.

Skinner, Douglas J., 2008, The Evolving Relation between Earnings, Dividends, and Stock Repurchases. *Journal of Financial Economics*, 87, 582-609.

Appendix A: Technical details on optimal behavior

This appendix explores the behavior of the *P-case* firm subsequent to a new share issue. A new share issue at time t implies a positive stock of new equity, i.e. $A_t > 0$, and, because of this, $\lambda_t^A = 0$. Since $\mu^K = \mu^D$ (eq. 9) and by the first order conditions for N and A (eqs. (14) and (15)) we derive

$$\mu_{t+1}^K = \mu_t^K (1+r) - r = \mu_t^K - r(1 - \mu_t^K) < \mu_t^K, \quad (20)$$

which may be interpreted to mean that whenever the stock of new equity is positive, the marginal valuation of capital will decrease from the current period to the next. Two alternative routes for the firm to follow subsequent to the new issue of equity at time t may now be ruled out.

The first is where the firm would use the profits earned in period $t+1$ to pay dividends and maintain a positive stock of new equity, $A_{t+1} > 0$. With $\lambda_{t+1}^A = 0$, this would mean a continued reduction in the marginal value of capital, $\mu_{t+2}^K < \mu_{t+1}^K$. However, since payment of dividends requires that the marginal valuation of capital take its minimum value $\mu_{t+1}^K = 1 - \tau$, such a further reduction for time $t+2$ is impossible. We conclude therefore that the firm will not simultaneously pay dividends and keep a positive stock of new equity.

A second route, following the initial equity injection, would be to use current profits in period $t+1$ for additional investment, which would mean $K_{t+1} > K_t$. However, with $A_{t+1} > 0$ and $\lambda_{t+1}^A = 0$ as before, we derive

$$F_{K_{t+1}} = \frac{r}{\mu_{t+2}^K} \quad (21)$$

and since $\mu_{t+2}^K < \mu_{t+1}^K$ when $\lambda_{t+1}^A = 0$, the cost-of-capital expression $F_{K_t} = r / \mu_{t+1}^K$ (eq. (18)) and equation (21) give that $K_{t+1} < K_t$. Hence, the firm's first order conditions imply a *decrease* in the capital stock. Also the second route, where the firm would use current profits to add to its capital stock must be ruled out.

The only feasible use of profits for period $t+1$ is therefore for repayment of the initial issue of equity. Assuming first that repayment takes place gradually, that is with $A_{t+1} > 0$ and $\lambda_{t+1}^A = 0$, we may use equations (20) and (21), to solve for the firm's capital stock, K_{t+1} and, by using the budget constraint, also for the remaining stock of new equity, A_{t+1} . Since $\lambda_{t+1}^A = 0$ implies that $K_{t+1} < K_t$, this partial repayment of the original issue of equity is financed both by current profits and disinvestment. Alternatively, the firm may choose to repay the entire issue of new equity at time $t+1$, by a further reduction in the stock of capital. However, such a reduction is not compatible with the first order conditions, since $\lambda_{t+1}^A > 0$ when $A_{t+1} = 0$, yields a *lower* cost of capital, implying a *larger* capital stock. Repaying the entire issue of equity at time $t+1$ is therefore ruled out.

We conclude that following an issue of new equity, the firm will use its profits neither to pay dividends, nor to add to its capital stock, but to repay the new equity. Repayment takes place gradually, and if profits in, say, time period $s-1$, is insufficient to return the remaining stock of new equity, that is $F(K_{s-1}) < A_{s-1}$, a positive stock will be kept for the following period, $A_s > 0$. If, on the other hand, $F(K_{s-1}) \geq A_{s-1}$, the return of the initial equity issue will be completed in period s , possibly in conjunction with an addition to the capital stock (if $F(K_{s-1}) > A_{s-1}$).

Appendix B: Technical details on the simulations

For the *P-case* firm, we begin by choosing, tentatively, a starting value for μ_t^K in the feasible interval $1 - \tau < \mu_t^K < 1$. With $\lambda_t^A = 0$, because of the new issue, we then determine μ_{t+1}^K from equation (20) in Appendix A and solve for the initial stock of capital from the cost-of-capital expression $F_{K_t} = r / \mu_{t+1}^K$ (eq. (18)). Since $\lambda_{t+1}^A = 0$ when $A_t > F(K_t)$ (by the argument presented above), we use an updated version of equation (20) to compute μ_{t+2}^K , and solve for

the firm's capital stock, K_{t+1} , implicitly given by equation (21) in Appendix A. From the firm's budget constraint we also determine the remaining stock of new equity, A_{t+1} . This procedure is repeated until $F(K_{s-1}) \geq A_{s-1}$. The repayment of the initial equity issue is then completed in period s , possibly in conjunction with an addition to the capital stock (if $F(K_{s-1}) > A_{s-1}$). Having repaid the new equity, the firm will then use all of the profits earned in subsequent periods for investment, which means that we add $I_v = F(K_{v-1})$, $v = s+1, s+2, \dots$ to the capital stock of the previous year, K_{v-1} . This "growth process" is continued until the marginal productivity of capital is equated to the rate of interest. If the marginal valuation of capital in the first round of simulations then happens to exceed (fall below) $1-\tau$, the whole procedure is repeated, using a lower (higher) starting value for μ_t^K .

We compute the behavior of the *F-case* firm in a similar way. Since the firm's starting condition for period t is that the marginal valuation of capital equals unity, we choose, tentatively, a value for the marginal valuation of capital in the next period, $\mu_{t+1}^K < 1$. From (16), we then compute the initial capital stock, K_t , and by adding investment equal to $F(K_t)$, we obtain the capital stock and the marginal productivity of capital for the following year, $t+1$. This step-wise procedure is continued until the marginal productivity of capital equals the rate of interest. If then, as described above, the marginal valuation of capital happens to exceed (fall below) $1-\tau$, the whole simulation procedure is repeated, picking a lower (higher) starting value for μ_{t+1}^K .

The simulations require a specification of the firm's production function. We let

$$F(K) = CK^\alpha \quad (22)$$

represent the firm's output, where C determines the level of technology, and α is capital's share of output. With $\alpha = 0.5$, $C = 1$ and the market interest rate $r = 0.05$, the long-run capital stock, as determined by $F_K = r$ (eq. (12)), is $K=100$.