

# NOTA DI LAVORO

15.2014

---

## Beyond 2020 – Strategies and Costs for Transforming the European Energy System

---

By **Brigitte Knopf**, Potsdam Institute for Climate  
Impact Research (PIK)

**Yen-Heng Henry Chen**, Massachusetts Institute of  
Technology (MIT), Joint Program on the Science and  
Policy of Global Change

**Enrica De Cian**, Fondazione Eni Enrico Mattei and  
Euro-Mediterranean Center on Climate Change

**Hannah Förster**, Öko-Institut

**Amit Kanudia**, KanORS-EMR

**Ioanna Karkatsouli**, Massachusetts Institute of  
Technology (MIT), Joint Program on the Science and  
Policy of Global Change

**Ilkka Keppo**, University College London

**Tiina Koljonen**, VTT Technical Research Centre of  
Finland

**Katja Schumacher**, Öko-Institut

**Detlef van Vuuren**, PBL Netherlands Environmental  
Assessment Agency and Utrecht University,  
Department of Geosciences

# Climate Change and Sustainable Development

Series Editor: Carlo Carraro

## Beyond 2020 - Strategies and Costs for Transforming the European Energy System

By Brigitte Knopf, Potsdam Institute for Climate Impact Research (PIK)  
Yen-Heng Henry Chen, Massachusetts Institute of Technology (MIT),  
Joint Program on the Science and Policy of Global Change

Enrica De Cian, Fondazione Eni Enrico Mattei and Euro-Mediterranean  
Center on Climate Change

Hannah Förster, Öko-Institut

Amit Kanudia, KanORS-EMR

Ioanna Karkatsouli, Massachusetts Institute of Technology (MIT), Joint  
Program on the Science and Policy of Global Change

Ilkka Keppo, University College London

Tiina Koljonen, VTT Technical Research Centre of Finland

Katja Schumacher, Öko-Institut

Detlef van Vuuren, PBL Netherlands Environmental Assessment Agency  
and Utrecht University, Department of Geosciences

### Summary

The Energy Modeling Forum 28 (EMF28) study systematically explores the energy system transition required to meet the European goal of reducing greenhouse gas (GHG) emissions by 80% by 2050. The 80% scenario is compared to a reference case that aims to achieve a 40% GHG reduction target. The paper investigates mitigation strategies beyond 2020 and the interplay between different decarbonization options. The models present different technology pathways for the decarbonization of Europe, but a common finding across the scenarios and models is the prominent role of energy efficiency and renewable energy sources. In particular, wind power and bioenergy increase considerably beyond current deployment levels. Up to 2030, the transformation strategies are similar across all models and for both levels of emission reduction. However, mitigation becomes more challenging after 2040. With some exceptions, our analysis agrees with the main findings of the “Energy Roadmap 2050” presented by the European Commission.

**Keywords:** European decarbonisation, Mitigation scenarios, Model comparison, Climate change, EU Energy Roadmap 2050

**JEL Classification:** Q2, Q4

*This is a pre-print version of the article by Brigitte Knopf et al, Clim. Change Econ. 04, 1340001 (2013), <http://www.worldscientific.com/doi/abs/10.1142/S2010007813400010>.*

*Address for correspondence:*

Brigitte Knopf  
Potsdam Institute for Climate Impact Research (PIK)  
P.O. Box 60 12 03  
14412 Potsdam  
Germany  
E-mail: [knopf@pik-potsdam.de](mailto:knopf@pik-potsdam.de)

# Beyond 2020 - Strategies and costs for transforming the European energy system

---

Brigitte Knopf<sup>a1</sup>, Yen-Heng Henry Chen<sup>b</sup>, Enrica De Cian<sup>c</sup>, Hannah Förster<sup>d</sup>, Amit Kanudia<sup>e</sup>, Ioanna Karkatsouli<sup>b</sup>, Ilkka Keppo<sup>f</sup>, Tiina Koljonen<sup>g</sup>, Katja Schumacher<sup>d</sup>, Detlef P. van Vuuren<sup>h,i</sup>

<sup>a</sup> Potsdam Institute for Climate Impact Research (PIK), Research Domain III: Sustainable Solutions, P.O. Box 60 12 03, 14412 Potsdam, Germany

<sup>b</sup> Massachusetts Institute of Technology (MIT), Joint Program on the Science and Policy of Global Change, US

<sup>c</sup> Fondazione Eni Enrico Mattei (FEEM), Italy and Centro Mediterraneo per i Cambiamenti Climatici (CMCC), Italy

<sup>d</sup> Öko-Institut, Germany

<sup>e</sup> KanORS-EMR, New Delhi, India

<sup>f</sup> University College London, UCL Energy Institute, UK

<sup>g</sup> VTT Technical Research Centre of Finland, Finland

<sup>h</sup> PBL Netherlands Environmental Assessment Agency, Netherlands

<sup>i</sup> Utrecht University, Department of Geosciences, Netherlands

## Abstract

*The Energy Modeling Forum 28 (EMF28) study systematically explores the energy system transition required to meet the European goal of reducing greenhouse gas (GHG) emissions by 80% by 2050. The 80% scenario is compared to a reference case that aims to achieve a 40% GHG reduction target. The paper investigates mitigation strategies beyond 2020 and the interplay between different decarbonization options. The models present different technology pathways for the decarbonization of Europe, but a common finding across the scenarios and models is the prominent role of energy efficiency and renewable energy sources. In particular, wind power and bioenergy increase considerably beyond current deployment levels. Up to 2030, the transformation strategies are similar across all models and for both levels of emission reduction. However, mitigation becomes more challenging after 2040. With some exceptions, our analysis agrees with the main findings of the “Energy Roadmap 2050” presented by the European Commission.*

---

<sup>1</sup> Corresponding author: Brigitte Knopf, [knopf@pik-potsdam.de](mailto:knopf@pik-potsdam.de)

# 1. Introduction

## 1.1. Setting the scene: the European Union's low-carbon strategy

In 2009, the European Union (EU) set an aspirational target of reducing greenhouse gas (GHG) emissions by 80–95% below 1990 levels by 2050 (European Council, 2009; confirmed in European Council, 2011). This objective reflects the EU's unilateral commitment to keeping increases in the global average temperature below 2°C. The EU's long-term goal is grounded in a 2020 mid-term strategy described in the "EU climate and energy package" that aims to achieve: i) a 20% reduction in EU GHG emissions from 1990 levels, ii) raising the share of renewables in the EU's final energy consumption to 20% (including a 10% renewable share in the transport sector), and iii) a 20% improvement in the EU's energy efficiency. Taken together, these goals constitute the 20-20-20 targets<sup>2</sup>. While the first two targets are binding, the last one is only indicative. Furthermore, it remains unclear whether and how these targets will be maintained after 2020. An initial idea for a post 2020 framework was circulated in March 2013 with the EU green paper "A 2030 framework for climate and energy policies" (European Commission (2013a)) designed to launch a public consultation.

In 2011, the European Commission began a discussion about the long-term framework of climate and energy policies in Europe, including a strategy leading up to 2050. As a result, three roadmaps have been launched: the "Roadmap for Moving to a Competitive Low Carbon Economy in 2050" (European Commission, 2011d), the "Roadmap to a Single European Transport Area - Towards a Competitive and Resource Efficient Transport System" (European Commission, 2011f) and the "Energy Roadmap 2050" (European Commission, 2011e). Extensive modeling work has supported the three roadmaps, e.g. the impact assessment on the Energy Roadmap (European Commission, 2011c). The analyses of the energy system were mainly based on one model, i.e. PRIMES (E3Mlab, 2010). However, the single-model approach leaves several unanswered questions, particularly in terms of the modeling methodology, uncertainties related to input assumptions, and lack of transparency (see the critique by the Advisory Group on the Energy Roadmap (European Commission, 2011b). Other single-model analyses of long-term EU climate and energy policies include Hübler and Löschel's (2013) analysis of the Energy Roadmap with a detailed sectoral analysis. The study "Power Choices" focuses solely on the power sector using PRIMES (Eurelectric, 2009) and the "Roadmap 2050" by the European Climate Foundation (2011), is another example which investigates a number of pathways with different shares of renewables. However, earlier model comparison projects have taught us that mitigation strategies vary significantly across models (Weyant, 2004; Clarke et al., 2009; Edenhofer et al., 2010; Calvin et al., 2012; Luderer et al., 2012). In light of this, it seems that a multi-model perspective is valuable for formulating robust and effective energy and climate policies.

---

<sup>2</sup> For more information consult [http://ec.europa.eu/clima/policies/package/index\\_en.htm](http://ec.europa.eu/clima/policies/package/index_en.htm)

This paper contributes to the energy and climate debate by presenting the results of the Energy Modeling Forum 28 (EMF28). The project considers how to decarbonize the European energy system and asks whether the technology strategies drawn from the Energy Roadmap are robust when comparing them with the results of several models run by a number of organizations. More specifically, the research questions are:

- Technologies and sectors: Which are the most important technologies enabling the GHG reduction target to be met across the EU in a cost-effective manner? Are some technologies irrelevant or ambiguous? What is the most cost-effective allocation of emission reductions across sectors?
- Targets and timing: What are the implications of different long-term targets for shorter-term actions in terms of the timing of mitigation and for specifying targets? Are the EU 2020 targets sufficient to meet the long-term target of reducing GHG emissions by 80% by 2050? What does this imply for determining appropriate targets in 2030 and 2040? How do the costs of the transformation develop over time?

A total of 13 European modeling teams—including the PRIMES team—are involved in the model comparison under the roof of the Stanford Energy Modeling Forum (EMF) which is documented as the EMF28 study<sup>3</sup>. The model typology ranges from global integrated assessment models, where Europe is modeled as one region, to European energy system models, which feature a greater level of spatial detail and an explicit representation of individual Member States. The EMF28 analysis builds upon the scenarios defined in the European Commission’s Energy Roadmap. One set of scenarios considers the continuation of current policies, leading to a 40% reduction of GHG emissions by 2050 compared to 1990. The decarbonization scenarios aim to reduce GHG emissions by 80% by the same date. This exercise has two goals. The first is to identify common technological requirements and technology portfolios by analyzing the various low carbon pathways produced by the models. The second is to understand the extent to which variations in results are due to assumptions inherent in the input data, and the extent to which they are explained by methodological differences. The underlying research question is whether different types of models tell different stories about Europe’s decarbonization pathway, or whether there is a shared view on cost-effective strategies. The use of a large number of models provides a wider characterization of plausible pathways, thus making it possible to attempt to identify robust strategies (Lempert, 2002).

This paper is organized as follows: The remainder of Section 1 introduces the scenarios and the participating models. Section 2 focuses on technology options and sectoral decarbonization strategies. Section 3 discusses the feasibility and costs of decarbonization. Potential EU targets for the period beyond 2020 are analyzed in Section 4. Section 5 presents the conclusions of this study and compares them to those of the Energy Roadmap.

---

<sup>3</sup> EMF has considerable experience in leading model comparison studies. Moreover, this EMF28 study, which focuses on the EU, was linked to similar studies at the global (EMF27) and USA scale (EMF24).

## 1.2. Scenario setup

The EMF28 exercise incorporates two dimensions of analysis: i) the availability of different technologies and ii) the presence of different climate policy regimes outside Europe. Table 1 summarizes the main characteristics of the EMF28 scenarios. This paper specifically concentrates on the technology dimension of different European strategies, while De Cian et al. (this issue) focus on the impacts of different global climate policy regimes for Europe.

The no-policy baseline scenario<sup>4</sup> (BASE) describes a counter-factual baseline that does not include any target for 2020 or 2050. The purpose of this scenario is to determine how the models would behave without any constraint. The Reference scenarios achieve a 40% reduction of GHG emissions by 2050. These scenarios can be interpreted as a continuation of current policies (European Commission, 2011e, p. 2). The Mitigation 1 scenarios assume that the EU takes leadership of the global climate policy regime by committing unilaterally to an emissions reduction target of 80%, while the rest of the world continues with moderate targets (Luderer et al., submitted)<sup>5</sup>. Furthermore, in these scenarios, only Europe has an established carbon market where carbon offsets can be exchanged. Mitigation 2 and 3 explore the role of international trade in carbon offset, see De Cian et al. (this issue).

The Reference scenarios and the Mitigation 1, 2, and 3 scenarios consider technology variations in five main technology storylines. In the default cases (40%DEF/80%DEF), the technology assumptions reflect the default view and structure of each model.<sup>6</sup> The other scenarios consider a “what-if” perspective and analyze what happens if a certain technology is not available or if some technological development is more successful than expected in the default case. In the 40%noCCS / 80%noCCS scenarios, carbon capture and storage (CCS) is excluded<sup>7</sup> and in the pessimistic scenarios 40%PESS / 80%PESS both CCS and nuclear fission are excluded. CCS and nuclear fission could both be key elements of a mitigation strategy but are also controversial. An optimistic case considers expectations about greater efficiency improvements (40%EFF / 80%EFF), compared to the default assumptions. Green scenarios consider a situation without CCS and with low nuclear deployment, but with high-energy efficiency and a more rapid technology development for renewable energy

---

<sup>4</sup> This scenario should not be confused with the “business-as-usual” scenario of the Energy Roadmap. In the EMF28 baseline scenario, no policies are assumed, while in the “business-as-usual” scenario of the Energy Roadmap, the 20-20-20 targets will be achieved and the annual reduction of the cap in the ETS directive is in place. The EMF28 baseline scenario has no corresponding scenario in the Energy Roadmap.

<sup>5</sup> The moderate policy scenarios for the rest of the world are taken from the WeakPol scenario in the RoSE project<sup>5</sup> (Luderer et al., submitted). It reflects existing climate policies, a weak interpretation of the 2020 Copenhagen Pledges, and an extrapolation of these targets beyond 2020 based on the intensity of emissions (GHG emissions per unit of GDP). There is no international cooperation and international carbon trading is excluded.

<sup>6</sup> Default technology assumptions represent model-specific, evolutionary improvements in technology, while optimistic technology assumptions represent plausible, optimistic improvements. Pessimistic cases assume either the failure of a technology or public opposition.

<sup>7</sup> CCS is excluded for any option that might be combined with this technology, coal, oil, gas, and bioenergy. Note that PRIMES provides the results of the “delayed CCS” scenario of the EU Energy Roadmap with limited CCS (instead of no CCS).

(40%GREEN / 80%GREEN). The technology scenarios should be understood as reflecting “what-if” assumptions about technological development. To different degrees, the scenarios reflect public choice, technology failure, or success or failure of government policies. Within this set, the 40%DEF and the 80%DEF scenarios form the *default reference* and *default mitigation* scenario, respectively; 40%DEF corresponds to the “Reference” scenario within the Energy Roadmap and 80%DEF represents the “diversified supply technologies” scenario.

At the EU level, all scenarios except the baseline scenario take into account the 2020 target for GHG reduction. This target is considered a minimum, i.e. a GHG reduction of at least 20% has to be achieved by 2020. Models may however choose to implement a reduction rate based on the cost-efficiencies of reaching the long-term target. The EU target regarding share of renewables is only considered by two thirds of the models, and again, where implemented this target is regarded as a minimum. The energy efficiency target is not incorporated in the models, as it is only indicative rather than binding. The analysis focusses on two different periods: the short-term action from 2010-2030 and the long-term requirements between 2030 and 2050.

Only a limited import of biofuels is allowed into the EU region by the scenarios. Although the Energy Roadmap acknowledges the importance of bioenergy as a mitigation option, land-based bioenergy options must be compatible with other biodiversity objectives as well as with the sustainability of agriculture and food security (European Parliament and the European Council 2009, Art. 17; European Commission 2011a, p.106). Europe interacts with the rest of the world through international trade, energy markets, and technology spillovers in all of the scenarios. However, the extent of these interactions is model-specific.

This paper identifies robust model results for the transformation of the European energy system (EU27) by focusing on the differences between the core scenarios (40%DEF and 80%DEF) while taking into account different technological developments. De Cian et al. (this issue) explore the implications of different global climate policy regimes by looking at the policy dimensions described in Table 1 and by focusing on the mitigation 2 (80%FRAG /80% FRAG\_EFF) and Mitigation 3 (80%GLOB /80%GLOB\_EFF) scenarios. Other papers in this issue provide a structural analysis of the different decarbonization strategies (Förster et al., this issue) and compare alternative mitigation cost metrics (Paltsev and Capros, this issue). Knopf et al. (this issue) explore the interplay between the transformation of the energy system at the European level and at the level of EU Member States. Von Hirschhausen and Holz (this issue) describe the infrastructure requirements for the EMF28 scenarios. Section 4 briefly summarizes the conclusions from these papers.

Table 1. Definitions of scenarios in the EM28 modeling comparison exercise.

Technology dimension						
		Default w CCS	Default w/o CCS	Pessimistic	Efficiency	Green
CCS		on	off	off	on	off
Nuclear energy		ref	ref	low	ref	low
Energy efficiency		ref	ref	ref	high	high
Renewable energies		ref	ref	ref	ref	opt
Policy dimension						
Europe	Rest of the World					
<b>Baseline: no policy</b>	No policy	BASE				
<b>Reference:</b> 40% GHG reduction by 2050	WeakPol (Luderer et al., submitted)	40%DEF	40%noCCS	40%PESS	40%EFF	40%GREEN
<b>Mitigation1:</b> 80% GHG reduction by 2050 (with cap and trade within the EU only, 1 carbon market in the EU)	WeakPol (Luderer et al., submitted)	80%DEF	80%noCCS	80%PESS	80%EFF	80%GREEN
<b>Mitigation2:</b> 80% GHG reduction by 2050 (with cap and trade within the rest of the world and the EU, 2 separate carbon markets)	IMAGE2.9 scenario (van Vuuren et al., 2007)	80%FRAG			80%FRAG_EFF	
<b>Mitigation3:</b> global 480 ppme target with full cap and trade, 1 global carbon market	IMAGE2.9 scenario (van Vuuren et al., 2007)	80%GLOB			80%GLOB_EFF	

**Notes:** “Low” nuclear is defined as no construction of new nuclear power plants beyond those already under construction ([www.world-nuclear.org/info/reactors.html](http://www.world-nuclear.org/info/reactors.html)). The “optimistic” energy efficiency setting assumes easier access to energy efficiency technology or an increase in energy productivity. In the “green” scenario, renewables are applied differently in each model, e.g., higher learning rates, higher rates of technical change, lower capital costs, or setting a specific target for renewables.

### 1.3. Participating models

The models included in this exercise differ in many respects. The main difference concerns the methodological characteristics of the models (i.e., energy system models and full equilibrium macro-economic models). Other differences include the geographical resolution (coverage and geographical explicitness), temporal resolution (model time horizon and time-step length), and sectoral coverage (focusing on the energy sector or coupling with other issues such as land-use).



Table 2. Models of the EMF28 comparison exercise.

	<b>Economic coverage</b>	<b>Geographic coverage (number of EU regions)</b>	<b>Inter-temporal methodology</b>	<b>General solution methodology</b>	<b>International trade</b>
<b>EPPA [A]</b>	Full economic coverage in CGE	Global (1)	Recursive dynamic	Market equilibrium	All commodities
<b>FARM EU [B]</b>	Full economic coverage in CGE	Global (5)	Recursive dynamic	Market equilibrium	All commodities
<b>GEM-E3 [C]</b>	Full economic coverage in CGE	Global (25)	Recursive dynamic model with static expectations	Market equilibrium	All commodities
<b>PACE [D]</b>	Full economic coverage in CGE	Global (1)	Recursive dynamic	Market equilibrium	All commodities
<b>MERGE-CPB [E]</b>	Full economic coverage in optimal growth model	Global (1)	Inter-temporal optimization	Optimization	Fossil fuels
<b>WITCH [F]</b>	Full economic coverage in optimal growth model	Global (2)	Inter-temporal optimization	Optimization	Oil
<b>POLES [G]</b>	Partial equilibrium model of the energy sector	Global (27)	Recursive dynamic	Market equilibrium	Fossil fuels
<b>TIAM-UCL [H]</b>	Partial equilibrium model of the energy sector	Global (3)	Inter-temporal optimization	Optimization	Fossil fuels, uranium
<b>TIMES-VTT [I]</b>	Partial equilibrium model of the energy sector	Global (4)	Inter-temporal optimization	Optimization	Fossil fuels, electricity, biofuels, CO <sub>2</sub> storage services
<b>PRIMES [J]</b>	Partial equilibrium model of the energy sector	EU (25)	Perfect foresight in power sector, 10-year foresight in demand sectors	Market equilibrium	Electricity and gas in Europe
<b>TIMES Pan EU [K]</b>	Partial equilibrium model of the energy sector	EU (23)	Inter-temporal optimization	Optimization	Electricity, biomass, biofuels
<b>PET [L]</b>	Partial equilibrium model of the energy sector	EU (25)	Inter-temporal optimization	Optimization	Electricity, biomass, biofuels
<b>EMELIE-ESY [M]</b>	Partial equilibrium model of the electricity sector	EU (27+2)	Inter-temporal optimization	Market equilibrium	Electricity

**Notes:** [A] Paltsev et al. (2005; 2011); [B] Sands et al. (submitted); [C] Capros et al. (2010; in press); [D] Böhringer and Lange (2003), Böhringer et al. (2009), Böhringer and Löschel (2006); For this version of PACE<sup>8</sup> calibrated to EU data up to 2050 Hübler and Löschel (2013); [E] Blanford et al. (2009), Aalbers and Bollen (this issue); [F] Bosetti et al. (2006), De Cian et al. (2012); [G] Criqui and Mima (2012); [H] Anandarajah et al. (2011); [I] Koljonen and Lehtilä (2012); [J] Capros et al. (2012); [K] Blesl et al. (2012); [L] Kanudia and Gargiulo (2009); [M] Traber and Kemfert (2012), Schroeder (2012).

Table 2 lists the models participating in the EMF28 exercise. There are two major classes of models: i) macroeconomic models that describe the nexus between the economy and the energy system and ii) partial equilibrium models of the energy system. The macroeconomic models include computable

<sup>8</sup> Note that this specific version of PACE that was used for the EMF28 scenarios assumes high energy improvement.

general equilibrium (CGE) models, which are solved recursively using market equilibrium conditions, and growth models, which are solved in a forward-looking manner using optimization algorithms. CGE and optimization models provide full economic coverage with the former representing all sectors of the economy in greater detail than the latter. The energy system models include a partial equilibrium representation of the full energy system. An additional model that covers the electricity sector in detail is also included. The majority of the models have a global scope and include trade in fossil fuels. Some models also include trade in biofuels, electricity, and captured CO<sub>2</sub>. Trade in other commodities is modeled in the CGE models. Finally, trade in emissions permits is dependent on the scenario definition and is not allowed in the reference or Mitigation 1 scenarios, except within the EU region.

## **2. EU decarbonization strategies – technology options**

### **2.1. Decarbonization challenges and strategies**

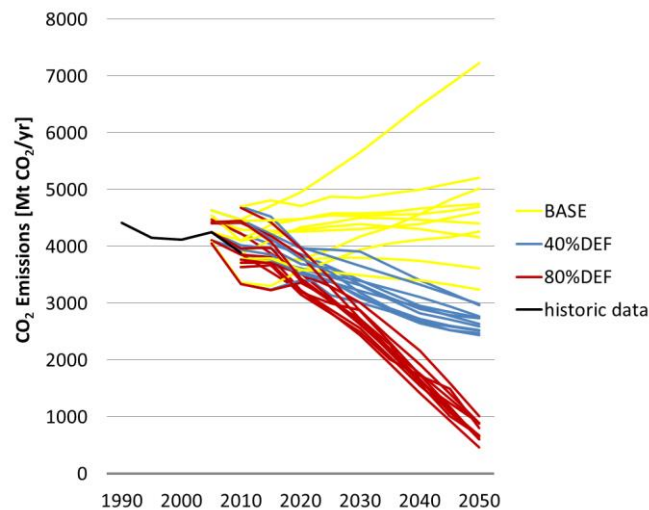
Figure 1 shows the CO<sub>2</sub> emissions for the baseline (BASE), the default reference case (40%DEF), and the default mitigation case (80%DEF). One model is not able to reach the 80% reduction target (see section 3.1). Discrepancies in the base year occur because of slightly different geographical definitions for the EU27 (in some models, EU27 includes countries that are not EU Member States, such as Switzerland and Norway), and because the project does not attempt to harmonize the model data for historical years. The models can, therefore, have different calibrated base years (2005 and 2010 being the most common) and use different variables.

Model-specific no-policy baseline scenarios (BASE) show a high degree of variation in terms of CO<sub>2</sub> emissions. Historically, there has been a decrease in emissions since 1990 (EEA, 2012), but only TIMES-PanEU shows a continuation of this decrease in the baseline, leading to a greater than 10% CO<sub>2</sub> reduction by 2050, relative to 2010. In contrast, two models—EPPA and TIAM-UCL—project a drastic increase in emissions (between 40% and 60%, respectively) between 2010–2050. All the other models suggest a more modest increase of less than 15%.

In the other two scenarios, the historical trend of decreasing CO<sub>2</sub> emissions continues in the EU, leading to at least a 20% reduction in 2020, relative to 1990. The differences between the default reference and the default mitigation case stand out clearly from 2025 onwards. In several models, the default mitigation scenario (80%DEF) leads to far more substantial reductions in 2020 than that achieved in the default reference scenario (40%DEF) (Section 4). The fact that some models go below the cap by 2020 suggests that the cost of the rapid reductions needed to achieve the 2050 target are exceedingly high and, therefore, mitigation begins earlier.

The mean annual CO<sub>2</sub> reduction rates for the default reference case are approximately 1% per year for 2010–2030 and 2030–2050. In the default mitigation scenario, the emission reduction rates increase to 2.2% and 6.1% for the first and second period, respectively. This indicates a higher mitigation effort not only in the long-term, but also in the mid-term up to 2030 (Section 4). The wide

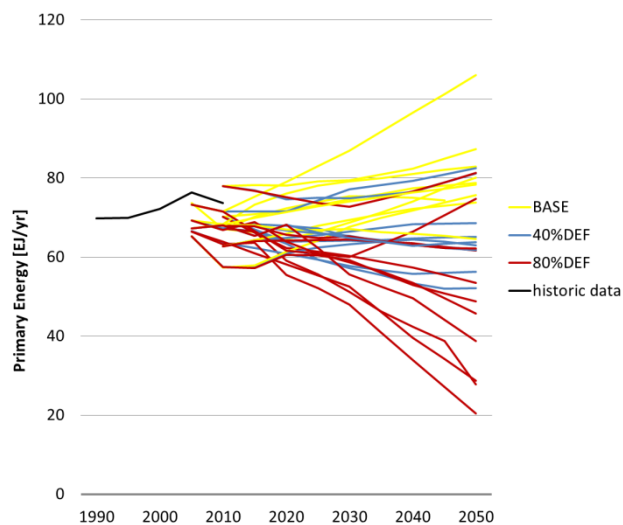
range observed for emission reduction rates reflects the diversity in BASE scenario emissions, which will have implications also in terms of policy costs. By contrast, emissions for the 40%DEF and 80%DEF scenarios converge by definition, as 40% resp. 80% GHG reduction is required by 2050. Reaching a given emission reduction target from a higher BASE trajectory is certainly more challenging than reaching it from a trajectory that is only little above the 40% reduction line.



**Figure 1. CO<sub>2</sub> emissions (excluding land-use) for all models for the baseline BASE, default reference scenario (40%DEF), and default mitigation scenario (80%DEF). Historical emissions based on EEA (2012).**

The trends in primary energy vary considerably across the models including the 40%DEF and 80%DEF scenarios (Figure 2), indicating that similar emission pathways can be achieved through alternative energy transitions. A first robust tendency observed across the models is the decline in primary energy use in the reference scenario (compared to the baseline) and in the mitigation scenario (compared to the reference case).<sup>9</sup> The trend in time is more variable. Except for TIMES-PanEU, all the models show either constant or increasing primary energy use in the baseline (BASE). In the default reference case (40%DEF), nearly half of the models show a moderate increase while the other half show a moderate decrease (with a maximum increase of 15% for PET and TIAM-UCL, and a maximum decrease of 26% for EPPA). In the default mitigation case (80%DEF), one model (TIMES-VTT) suggests an increase in primary energy use, while the others remain more or less at the 2010 level or demonstrate a decrease in their primary energy use (up to 55% in EPPA, FARM-EU and in this version of PACE).

<sup>9</sup> It should be noted that this finding is also affected by the primary energy accounting method: many carbon free options (i.e., nuclear, non-biomass, and renewables) lead to a lower primary energy use, while their share increases with mitigation. The same conclusion can be drawn for final energy as the above finding for primary energy use is supported.



**Figure 2. Primary energy use for all models for the baseline scenario BASE, the default reference scenario 40%DEF, and the default reference scenario 80%DEF. Historical data based on Eurostat (2012b)**

A second robust finding across the models is that reduction of energy intensity plays an important role in decreasing emissions. Figure 3 plots changes in energy intensity (EI, defined as primary energy over GDP) against changes in carbon intensity (CI, defined as CO<sub>2</sub> emissions over primary energy) between 2010 and 2050 for the baseline, the default reference, and the default mitigation scenario (representing the three markers on each line). The first markers on the left reflect the baseline and indicate that improvements in energy efficiency occur without climate policies. Results are more mixed regarding carbon intensity and in the baseline scenario models, CI is either increased or slightly decreased. The diagonal line represents the situation in which the reduction rates of energy intensity and carbon intensity are equal. For the BASE scenarios, it can be seen that the reduction of EI has by far the larger impact on emissions (the reduction of CI only plays a limited role). Reduction of CI, however, becomes more important in the 40%DEF scenario, but all data points remain on the left half of the 45-degree line, implying that reduction of EI is the main option.

This changes in the 80%DEF scenario. In this scenario, there are two main response strategies across the models. One group of models always chooses EI as the main option, regardless of the stringency of the policy. This cluster of models remain above the 45-degree line and primarily includes CGE models (PACE, FARM-EU, and EPPA), which generally have lower potential for substitution across technologies than energy system models. The second group includes models that rely on energy intensity reductions when the emissions target is moderate, but switch to decarbonization as the main strategy given the 80% emissions reduction target. In this cluster, we find models with a wider portfolio of explicitly carbon-free technologies (e.g. energy system models) or models that endogenously respond to the carbon price signal with induced innovation (WITCH) and technological change driven by learning-by-doing (e.g., WITCH and MERGE-CPB). A similar clustering of models also emerges when comparing short- and long-term strategies in the mitigation scenario. CGE models tend to rely on EI in the short- and long-term, whereas the other models switch from EI to

decarbonization after 2030 (Förster et al., this issue). For a comprehensive overview of the importance of technological change induced by climate policy and how it is represented in different types of models see Edenhofer et al. (2006).

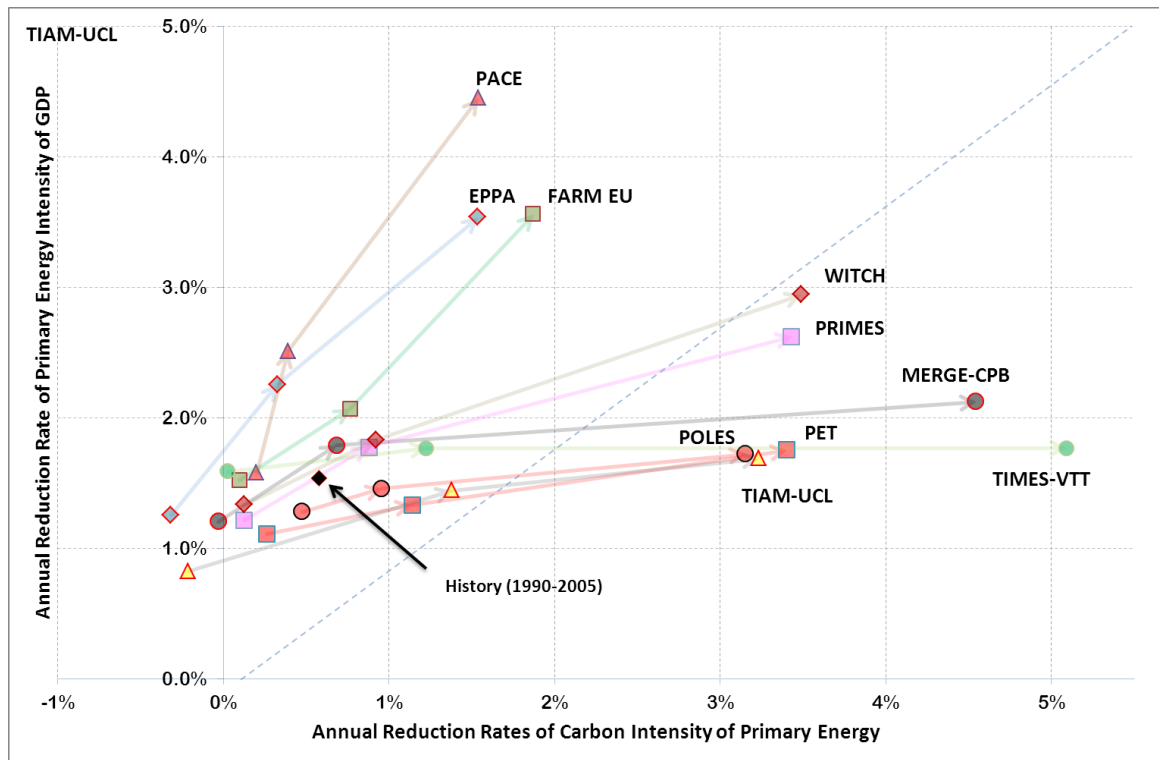


Figure 3. Annual reduction rates of CI and EI between 2010–2050 for the baseline (BASE), the default reference (40%DEF), and the default mitigation (80%DEF) scenarios, represented by the three markers on each line, in the direction of the arrows (from left to right). Historical data are given for annual reduction rates between 1990–2005.

All baseline scenarios show a slower improvement of CI than the historical rates of 0.57% per year from 1990–2005. However, it should be noted that most historic improvements originate from the modernization and restructuring of the Eastern European economies and that more recently, the reduction in CI has not been noteworthy (only 0.19% p.a. from 2000–2005). In fact, some models show a future increase in CI (TIAM-UCL, PACE, EPPA) in the no-policy baseline. The historical trend of 1.5% for EI reduction from 1990–2005 is projected to continue in the baseline scenarios of most models. Some models show much higher values in the baseline than was observed in the past (e.g., TIMES-VTT, this version of PACE) while others continue the trend (FARM-EU, POLES, PRIMES, WITCH) or show a reduction (TIAM-UCL). In the default reference and mitigation scenarios, and in contrast to the baseline scenario, energy efficiency improvement and reduction of CI are as high as historical values. In the default mitigation scenario, these rates are pushed to 3–4% for EI in the CGE models (EPPA, FARM-EU, and this version PACE) and for CI in the other models (MERGE-CPB, PET, POLES, PRIMES, TIMES-VTT, and WITCH).

## 2.2. Identifying technological options for decarbonizing the energy system

The previous section emphasizes the important role CI reduction plays in most models in the mitigation scenario, as opposed to the reference scenario. In this section, we give a detailed analysis of the decarbonization. First we concentrate on the scenarios BASE, 40%DEF and 80%DEF. In Section 2.3, we analyze the influence of the different technology variations. Currently, primary energy mix in the EU is dominated by the fossil fuels oil, gas and coal, providing 35%, 25% and 16% respectively in 2010, totaling 76%. Nuclear contributes 14%, while bioenergy and non-biomass-renewables account for 7% and 3%, respectively (Eurostat, 2012c).

While there is significant variety across the different models and mitigation scenarios, some robust conclusions about the importance of certain technologies can be identified. In the first period up to 2030, oil and gas remain relatively stable and are similar in all three scenarios. Coal use, in contrast, is reduced considerably by 2030 in 40%DEF and 80%DEF compared to the BASE scenario (Figure 4), while fossil-CCS only has a limited contribution up to 2030. In the second period up to 2050, a greater reduction is observed for oil and gas in 80%DEF but not 40%DEF. In the 80%DEF scenario, coal without CCS is almost completely phased out by 2050, while fossil fuels with CCS (mainly coal and partly gas) contribute substantially to long-term mitigation. By 2050, in a few of the models, fossil-CCS is being used in the default reference scenario (40%DEF).

Most models follow a similar decarbonization strategy up to 2030 which reflects the robustness of the model results. Divergences become prominent after 2030, particularly concerning the use of bioenergy outside the electricity sector (Section 2.4). Furthermore, the differences between the 80%DEF and 40%DEF scenarios in 2050 confirm the finding of Figure 3; while for 40%DEF a mixture of energy efficiency and reduction of carbon intensity is sufficient, a substantial additional effort in reducing carbon intensity by phasing out fossil fuels is required in most of the models to achieve the mitigation target of 80%DEF.

As the use of fossil fuels decreases, a simultaneous transformation towards low-carbon technologies is observed. This is particularly true for bioenergy (with and without CCS), fossil fuels with CCS, non-biomass-renewables (NBR), and nuclear for primary energy (Figure 4). Taken together, renewables (including bioenergy and NBR) make up 38% [36%-45%] (model median and 25-75% quartiles)<sup>10</sup> of primary energy use by 2050 for 80%DEF. They make up 24% [21%-26%] and 12% [7%–19%] in the 40% and the baseline case, respectively.

In 2010, the share of nuclear energy in primary energy was roughly 5%. In the 40%DEF scenario, the models are heterogeneous in terms of the deployment of nuclear energy over time, with some models showing an increase and others a decrease. However, in the 80%DEF scenario, the deployment level of nuclear energy is constant over time or increases slightly. The use of nuclear

---

<sup>10</sup> In the following, the first number always accounts for the model median and the numbers in brackets account for the 25-75% quartiles.

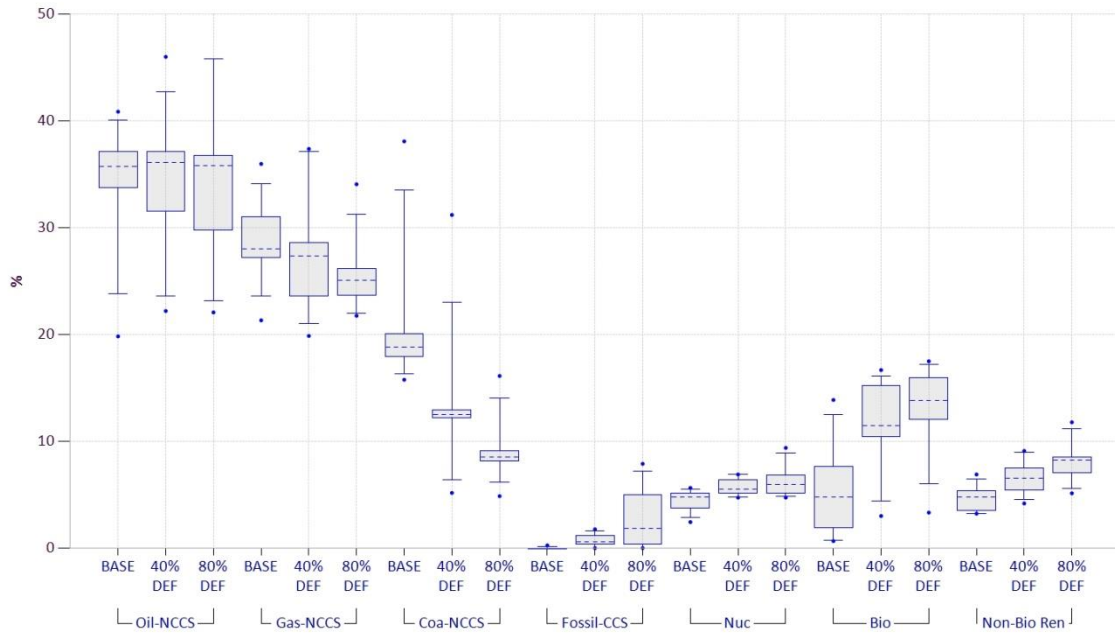
increases only moderately with the stringency of the mitigation target (except for PRIMES, where the opposite is the case) and the share is similar to that of NBR. It is important to note that some models have implemented constraints on the use of nuclear.<sup>11</sup> Due to these constraints, little can be said about the long-term relevance of nuclear energy in Europe.

While global modeling studies often suggest that the combination of bioenergy and CCS (BECCS) is important to ensure the 2 °C target is achieved (Azar et al., 2006; van Vuuren et al., 2007; Edenhofer et al., 2010), this option is of minor importance in the results of the EU models. BECCS is only used in three of the models (POLES, TIMES-VTT, and WITCH) in the mitigation scenario where it provides a 9–11% share by 2050. The contrast with global studies is likely due to the shorter time horizon of EMF28 and to the low bioenergy potential in Europe, given that bioenergy trade with the rest of the world is constrained by the scenario definition. In fact, in the global and century-long studies BECCS is primarily deployed after 2050 (Klein et al., submitted).

---

<sup>11</sup> Constraints on nuclear energy are modeled differently. Some models have no constraints (the majority), some restrict nuclear to baseline levels (MERGE-CPB), some only implement reactors that are under construction (e.g., EMILIE), and some set a (time-dependent) constraint on the share of nuclear (e.g., PACE, TIAM-UCL).

2030



2050

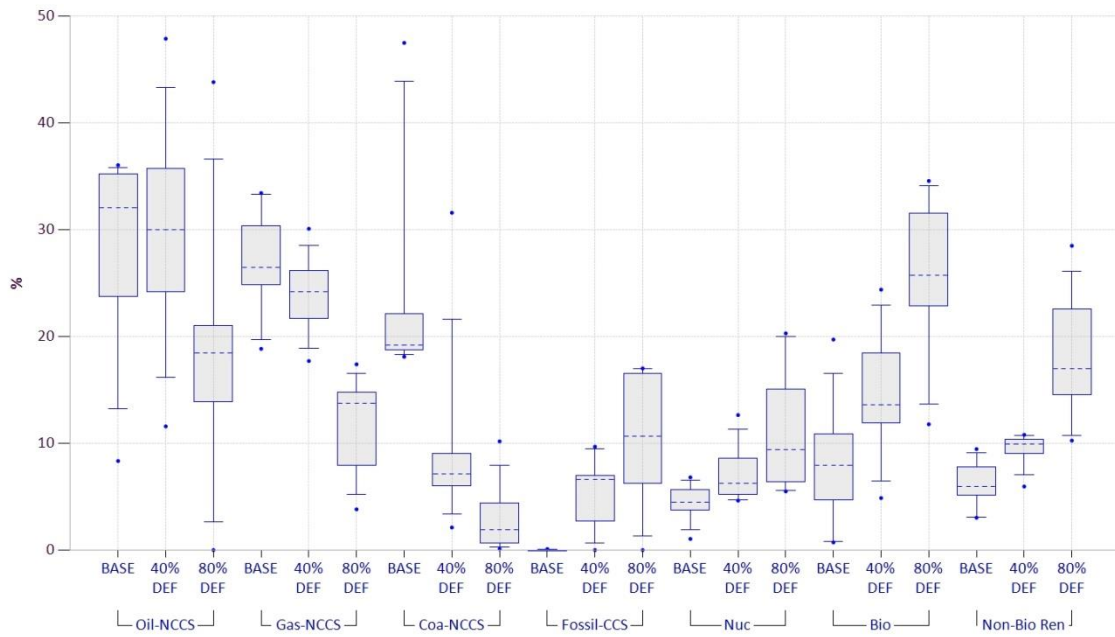
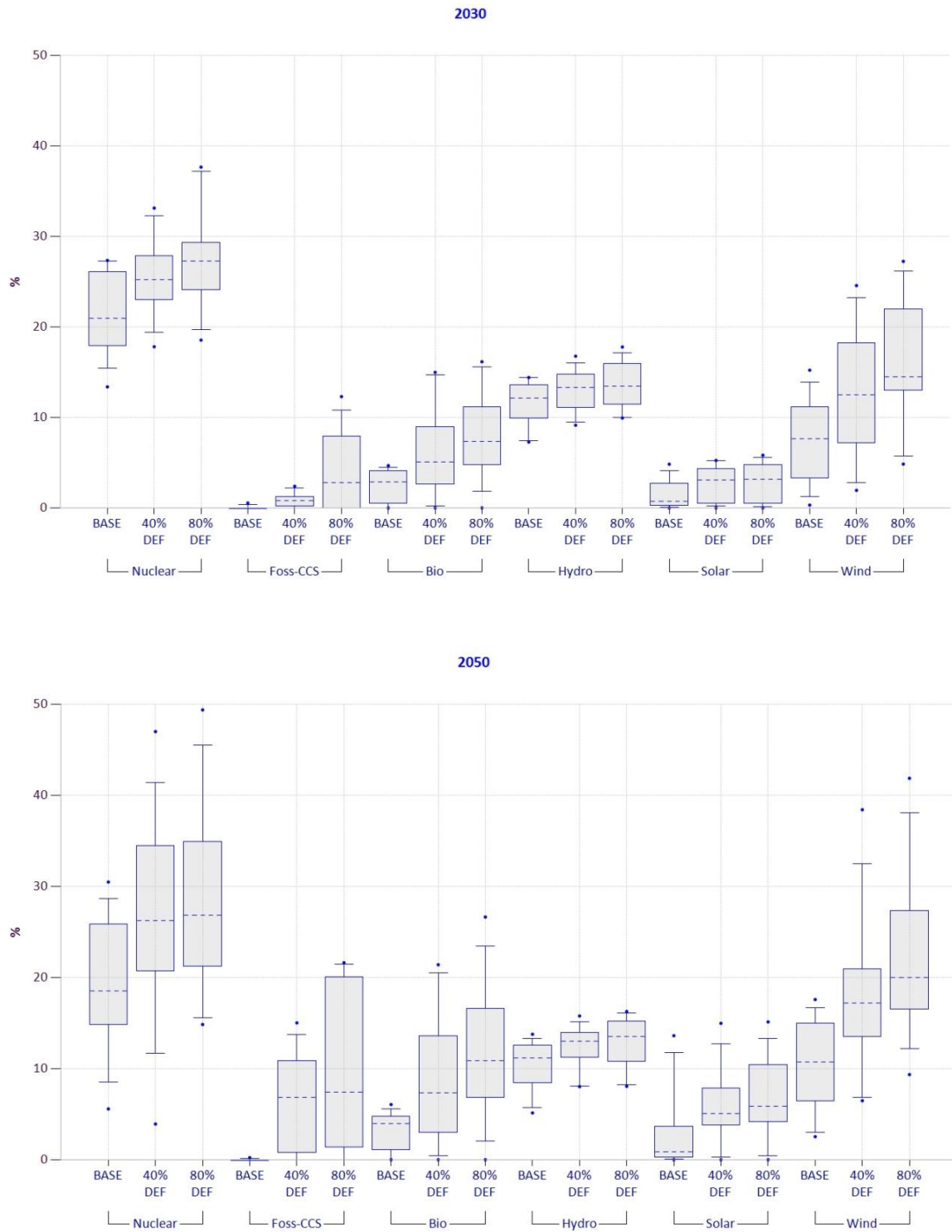


Figure 4. Percentage share of different technologies in primary energy for 2030 (upper panel) and 2050 (lower panel). The dotted line is the median, the box contains the 50% interval, the whiskers mark the 90% interval, and the dots mark the extreme values. NCCS: without CCS. For renewable energies and nuclear energy the direct equivalent method is used.





**Figure 5. Percentage share of low carbon technologies in electricity mix for 2030 (upper panel) and 2050 (lower panel). The dotted line is the median, the box contains the 50% interval, the whiskers mark the 90% interval, and the dots mark the extreme values.**

A closer look into individual NBR technologies (hydro, wind, and solar PV) suggests that wind energy will become the most important renewable technology (Figure 5). The median use of solar PV in the default mitigation scenario is lower than that of wind deployment in the baseline scenario. Although solar PV plays a minor role in the electricity mix for 80%DEF, it should be noted that other solar thermal technologies contribute significantly to sectors other than electricity in some of the models. Hydro is constant over time because no model assumes new significant capacities. Wind increases considerably over time, with a seven-fold increase at absolute levels (model median) from 2010–2050, with PRIMES showing the greatest deployment. Wind power actually reaches a similar deployment level as nuclear energy, with nuclear remaining more or less stable over time (see earlier) and therefore likely to play a similar role by 2050 as nuclear energy does today. Solar PV and wind power collectively account for 27% [16%–38%] of the 80%DEF scenario by 2050, compared to approximately 5% by 2010 (with solar contributing less than 1% according to Eurostat (2012a)). Due to the variability of these two technologies, a considerable expansion of the European grid and/or electricity storage options will be required in order to balance the various renewable sources (see von Hirschhausen and Holz (this issue)). Most of the models do not consider this factor. In the 40%DEF scenario the figures for solar PV and wind power are similarly high with a median of 21% [12%–28%].

The share of bioenergy in the electricity mix is much lower than in the primary energy mix. Although this is partly due to the primary energy accounting method, it also results from the fact that most of the models use bioenergy in the heating and transport sectors (section 2.4).

### **2.3. Influence of technology choices and technology development**

This section analyzes how technology availability and development could influence the EU climate policy (see Section 1.2). We focus on those low-carbon technologies that are not constrained by the scenario definition, namely bioenergy, wind and solar (hydro stays more or less constant, see Figure 5). Figure 6 and Figure 7 give the shares in primary energy for these technologies. As an indicator we use the spread of the model median values between the different technology scenarios. A large spread between different scenarios indicates a high sensitivity to scenario assumptions, rendering policy-making on (renewable) energy policy more difficult. For the effect on the costs see Section 3.2.

The first important finding is that emission reduction targets are feasible for all models that provide these scenarios even when constraining CCS availability or nuclear deployment<sup>12</sup>. The scenarios that exclude CCS show that CCS availability is not pivotal in reaching the mitigation target, provided other options can be substituted. In fact, when CCS is constrained, deployment of nuclear is increased. Moreover, higher energy efficiency improvement rates are achieved in these scenarios and primary energy use in absolute terms will be further reduced.

---

<sup>12</sup> Note that not all models provide all scenarios.

With the exception of the high efficiency scenarios (40%EFF and 80%EFF), the default scenarios provide the lowest median deployment rates (for bioenergy, solar and wind). The highest rates are observed in the PESS and the GREEN scenarios because in these cases CCS is not available and nuclear is phased-out, so renewables are the only low-carbon technology option that is left. In the GREEN scenario, this is compensated for by the fact that renewables are either less costly or have a more rapid diffusion compared to the default case, and higher energy efficiency is assumed. But the GREEN and PESS scenarios remain very similar indicating that simultaneously foregoing both CCS and nuclear might be more important for the development of renewables than any assumptions regarding renewable technology characteristics or energy efficiency. By contrast, the noCCS scenario, where only CCS is constrained, has a smaller influence on the deployment of wind and solar, but a larger influence on nuclear deployment (not shown here).

With high energy efficiency improvements (EFF) the need for deployment of bioenergy, wind and solar slightly decreases, so a lower median value compared to the default scenarios DEF is observed. For both the 40% and 80% reduction scenarios, the differences between the model medians for the technologies for primary energy production, between the scenarios in 2030, are small at less than three percentage points. The spread does not increase with the stringency of the target: model spread for the 40% and 80% scenarios are of similar order of magnitude. For 2050, however, the spread increases considerably up to eight (six) percentage points for the 40% (80%) scenarios. Although the spread is quite small for primary energy, the effect is much larger in the power sector, where the spread for wind is about 9 (6) percentage points by 2030 and as large as 22 (17) percentage points by 2050 (about 11 (10) percentage points for PV) for the 40% (80%) scenarios.

The policy implication that can be drawn from the technological sensitivity analysis is twofold. First, until 2030 the spread in results induced by different technology assumptions is small but increases by 2050. Second, both the scenarios that constrain CCS at the same time as nuclear deployment (GREEN and PESS) tend to influence the distribution of model results towards greater deployment of wind and solar PV. This results in considerable uncertainty for the deployment of fluctuating renewables in the power sector and, with it, for electricity grid planning. The development of storage options and better demand-side measures might therefore be important to reduce this uncertainty.

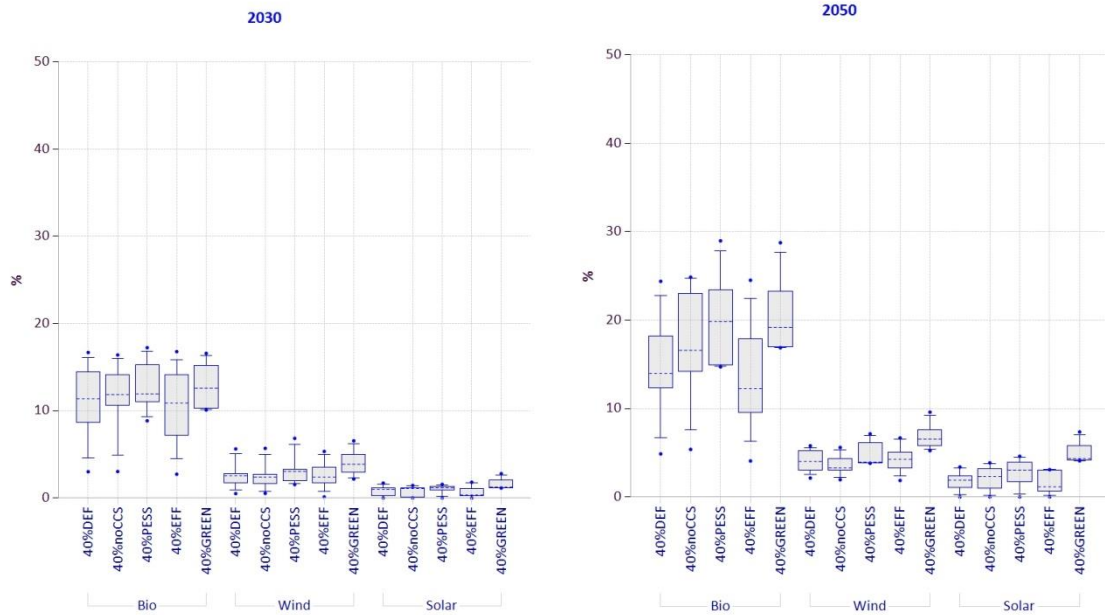


Figure 6. Percentage share of Bioenergy, Solar and Wind in primary energy for 2030 (left) and 2050 (right) for the 40% GHG reduction scenarios. The dotted line is the median, the box contains the 50% interval, the whiskers mark the 90% interval, and the dots mark the extreme values. Note that only six of the models provide the full set of technology scenarios. Definitions of the technology scenarios are given in Table 1.

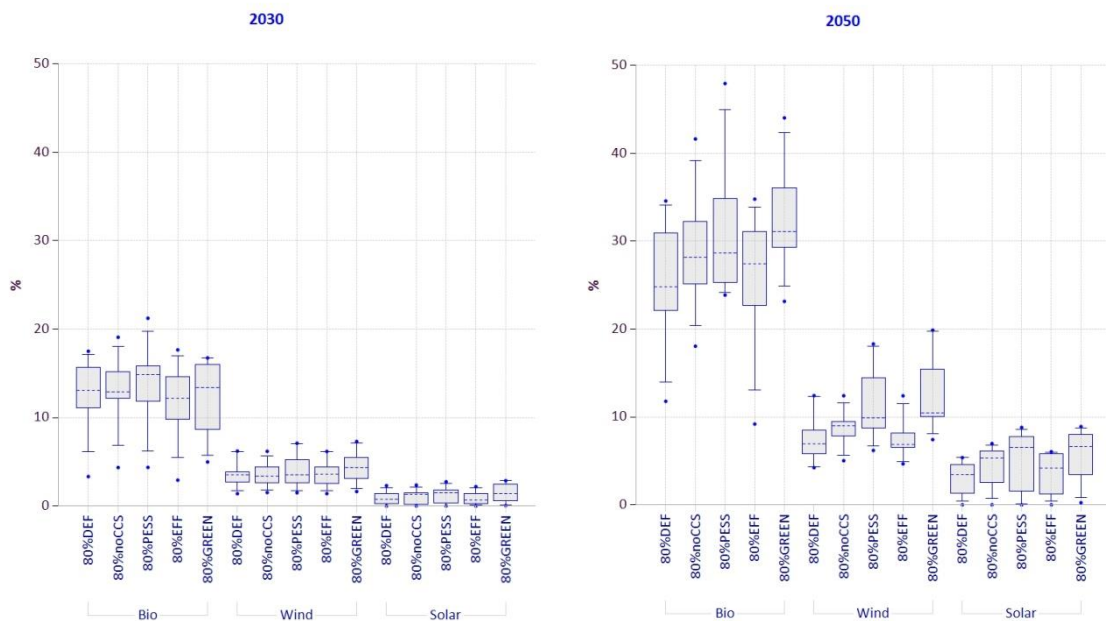
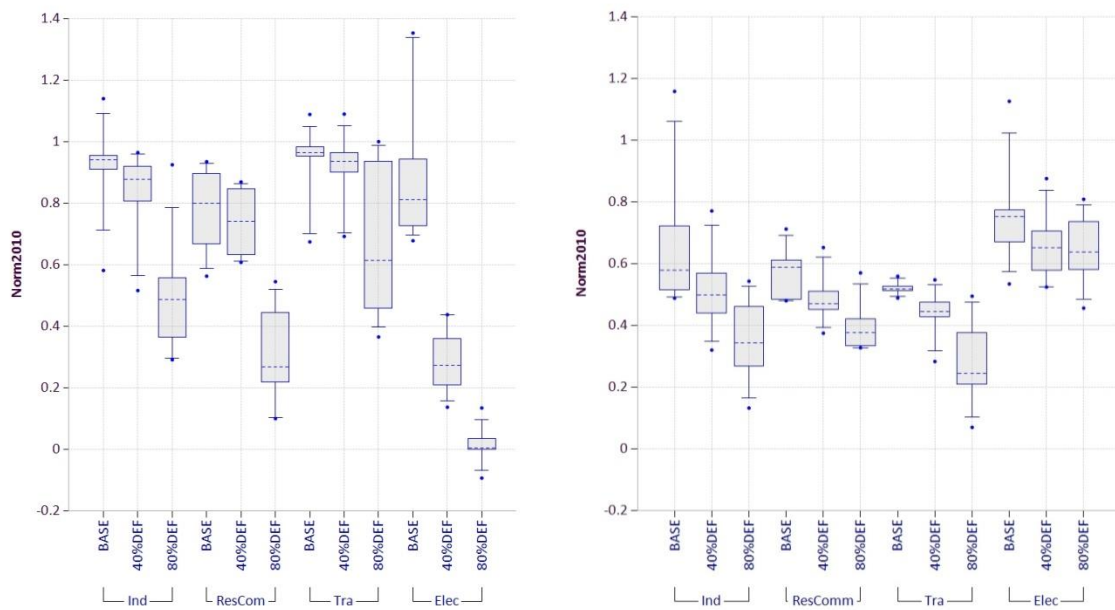


Figure 7. Percentage share of Bioenergy, Solar and Wind in primary energy for 2030 (left panel) and 2050 (right panel) for the 80% GHG reduction scenarios. The dotted line is the median, the box contains the 50% interval, the whiskers mark the 90% interval, and the dots mark the extreme values. Note that only six of the models provide the full set of technology scenarios. Definitions of the technology scenarios are given in Table 1.

## 2.4. Sectoral analysis

This section examines the details of three end-use sectors and compares their contribution to the mitigation of the electricity sector. As shown in Figure 8, the electricity sector accounts for more abatement than any other sector (industry, transport, residential and commercial) and is fully decarbonized by 2050 in the default mitigation scenario (80%DEF) in all the models. Although the other sectors also contribute to the mitigation effort to achieve the 80% GHG emissions reduction target, the electricity sector is by far the most important. The results suggest that the mitigation options in the power sector appear rather “early on the marginal abatement cost curve.” Emission reductions in the electricity sector are achieved through CI reduction rather than through EI improvements. Absolute electricity consumption remains more or less constant throughout the period, even decreasing in the 80%DEF in 2050. However, between 2010 and 2050, the share of electricity in final energy consumption increases considerably, by 15% (BASE), 30% (40%DEF) and 80% (80%DEF), pointing to the importance of electrification in the future energy system.

In contrast to the electricity sector, EI reduction is the dominant result of carbon mitigation policies for the other sectors (industrial, residential and commercial, and transport). Figure 8 shows that CI will only marginally improve in the 40%DEF scenario showing a greater improvement in the 80%DEF scenario. It seems that the transport sector is the most costly to decarbonize, as reductions in CI can only be achieved with the high CO<sub>2</sub> prices found in the 80%DEF scenario. This may lead to the conclusion that this sector is indeed the most difficult to decarbonize, especially given the recent rapid increase in transport emissions. The results from PRIMES are an exception in this area, cutting a higher level of emissions than the other models. There seems to be some potential for CO<sub>2</sub> reduction in the residential and commercial sectors, but realizing this potential requires high CO<sub>2</sub> prices. All the models use less coal and more electricity in industrial sectors with carbon mitigation. Similarly the use of gas reduces in the residential and commercial sectors, especially under more stringent mitigation targets. Interestingly, for the transportation sector, which has a CO<sub>2</sub> mitigation target, not all the models require a decrease in the use of liquid fuels, especially under a less stringent CO<sub>2</sub> mitigation target. The electrification of the transport sector only becomes significant under more stringent mitigation targets.



**Figure 8. Sectoral analysis of reduction in CI (left) and final EI (right) indexed to one in 2010 for the different sectors (industrial, residential and commercial, transport, and electricity). The carbon intensity of each sector is shown in the left chart and the sector energy intensity in terms of GDP in the right chart. The 2010–2050 growth rates normalized to 1 in 2010 are shown for the baseline (BASE), the default reference (40%DEF), and the default mitigation scenario (80%DEF).**

To summarize, the analysis of sector-specific strategies shows that the electricity sector achieves greater emissions reductions than any other sector and will, at the same time, increase in importance through the electrification of other sectors. Therefore, as mitigation targets become more stringent, cutting emissions of the non-electricity sectors becomes particularly important. Emission reductions in the industrial, residential, and commercial sectors are equivalent; however, the models suggest that the transportation sector is the most costly to decarbonize.

### 3. EU decarbonization strategies – feasibility and costs

In this section, we explore the feasibility of the EU’s decarbonization strategies by investigating the emission prices and economic costs measured in terms of reduction of GDP or consumption. Emission prices are indicators of the relative scarcity of emission allowances and therefore of the stringency of the mitigation challenge. GDP and consumption losses are indicators of economic costs (see Paltsev and Capros (this issue) for a discussion on costs concepts and metrics).

#### 3.1. The level of ambition

Although all the models—with the exception of TIAM-UCL—find a feasible solution for the ambitious default mitigation scenario (80%DEF), this does not necessarily mean that this level of ambition is “feasible” in reality. In mathematical terms “model infeasibility” means that under the given assumptions, the model finds it difficult to fulfill all the constraints it faces simultaneously (e.g., energy demands, environmental targets, resource potentials, maximum speed of technology

diffusion, etc.). If any result can be retrieved at all, this is often reflected by a high price for emission certificates and energy. Furthermore, implementing stringent emissions reduction targets requires several additional processes that are not explicitly captured by the simplified tools used in this study, such as successfully completing complex political processes and overcoming the inertia of social and behavioral change (Knopf et al., 2010). At the same time, the models implement a specific set of technologies that can alter feasibility conclusions. For example, the 80%DEF scenario is infeasible for TIAM-UCL, but when the scenario is rerun with the possibility of biofuel trade, it is not only feasible, but resulting emissions prices remain well below the median prices of the other models. Furthermore, changes in the feasibility domain can be achieved by altering the binding constraints that prevent the model from reaching lower targets. Therefore, "model (in)feasibility" is a function of a set of reasonable, but limited and highly uncertain model assumptions. This indicates that models may, at best, provide information about the feasibility of the mechanisms that the model is able to capture (i.e., the technical and economic dimensions of feasibility). Real world interpretation of the results should always be very cautious as conclusions regarding feasibility are not easily transferable to the real world.

Marginal abatement costs or carbon prices (such as for emissions certificates) in stringent mitigation scenarios may be used as an indicator of the level of constraint under which the models operate (Figure 9). In the default reference case (40%DEF), carbon prices increase over time to a median value of 64 €/tCO<sub>2</sub> [48 €/tCO<sub>2</sub> - 83 €/tCO<sub>2</sub>] in 2050. This increase is rather linear. It is also completely different from the default mitigation scenario (80%DEF) where carbon prices are not only much higher, but also show a sudden increase after 2040 in some of the models. This leads to a median value of 521 €/tCO<sub>2</sub> [240 €/tCO<sub>2</sub> - 1127 €/tCO<sub>2</sub>] by 2050 (compared with 76 €/tCO<sub>2</sub> [61€/tCO<sub>2</sub> - 169€/tCO<sub>2</sub>] in 2030), at which point the models have already utilized most of their (cheaper) mitigation possibilities under the given constraints.

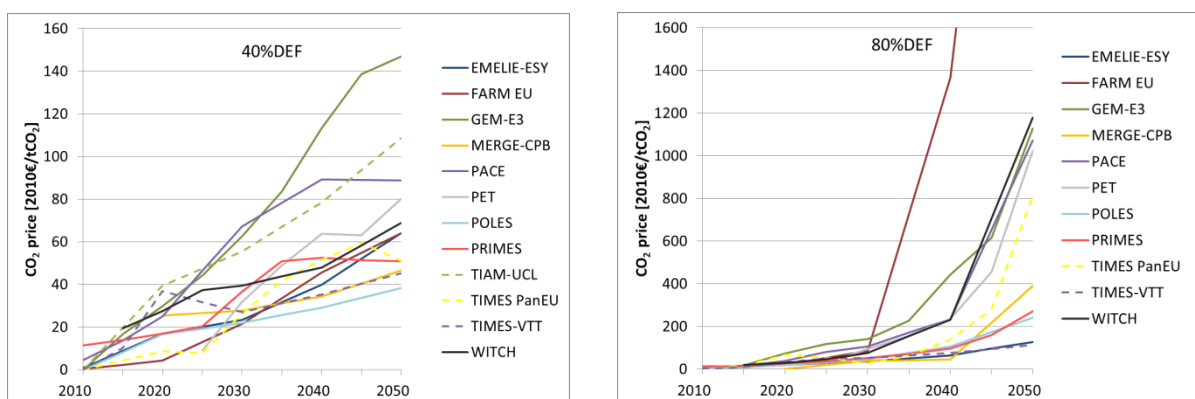


Figure 9. CO<sub>2</sub> prices for the default reference scenario 40%DEF (left) and the default mitigation scenario 80%DEF (right). Note the different scales (factor of 10 between 40%DEF and 80%DEF).

Specifically, CGE models (FARM-EU,<sup>13</sup> GEM-E3,<sup>14</sup> and PACE) show the highest CO<sub>2</sub> prices in 2050, mainly due to the way technological mitigation possibilities enter these models. It is likely that structural breaks will be necessary for stringent mitigation scenarios to become feasible, i.e., new technologies will enter markets that have different input structures than the technologies available today. CGE models are calibrated against baseline data from a single point in time (in which only a limited set of technologies is available) and mostly model anomalies from this point onwards. The use of constant elasticity of substitution (CES) production functions to describe substitution possibilities between sectors, production inputs and technologies, and the use of supply elasticities of technologies for electricity generation, particularly limits the degree of flexibility. This flexibility is lower than that of energy system models with greater substitution possibilities. The WITCH model, which also characterizes production and substitution via CES functions, shows a relatively high CO<sub>2</sub> price, closer to that of CGE models. In contrast, some models (TIMES-VTT, PRIMES, EMILIE, and POLES) show a smoother increase of CO<sub>2</sub> prices in 80%DEF. These models include a wider range of technological options for the energy sector as well as the mitigation of all GHG gases in energy production and end-use sectors, and/or cross-border commodity trading, which increases flexibility. In the following, we will discuss the costs of the EU’s decarbonization policies.

### 3.2. Costs of EU decarbonization

There are different approaches for calculating mitigation costs. Paltsev and Capros (this issue) consider the cost concepts used to assess carbon policies in different types of models including changes in GDP, changes in consumption, changes in welfare, energy system costs, and the area under the marginal abatement cost (MAC) curve. This section concentrates on the reduction of GDP in the mitigation scenarios and only briefly mentions other cost measures. The exercise therefore only considers the subset of models for which GDP is an endogenous variable.

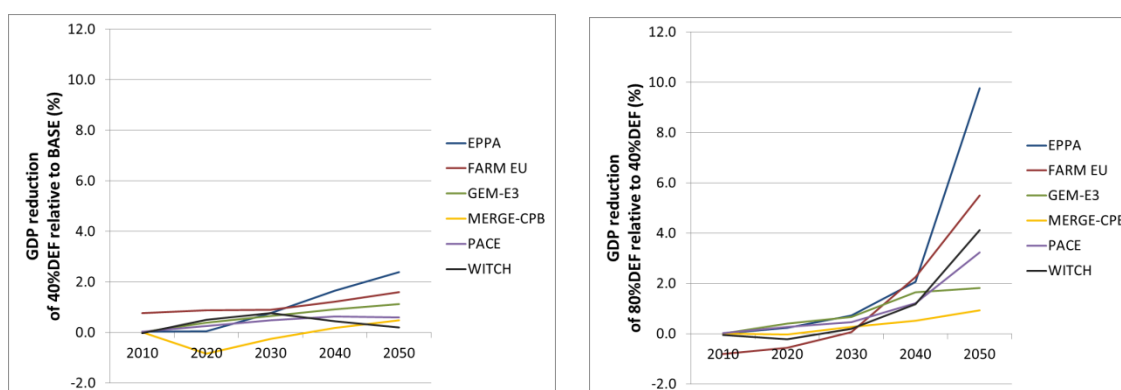


Figure 10. GDP reduction as a percentage of the reference scenario (40%DEF) relative to the no-policy baseline (BASE; left) and of the default mitigation scenario (80%DEF) relative to the default reference scenario (40%DEF; right).

<sup>13</sup> FARM EU currently exhibits high emissions certificate prices in stringent mitigation scenarios due to ongoing development targeted at innovative technologies, such as electricity generation from biomass with CCS and e-mobility, as well as improving the nesting structure of the electricity sector.

<sup>14</sup> In GEM-E3 the result is driven by the endogenous labor-leisure choice. Increasing prices lead to higher costs of the consumption bundle. Households finance this extra cost by increasing labor and decreasing leisure. This means that consumption value is increasing rather than consumption volume.



Figure 10 presents the GDP reduction in the reference scenario (40%DEF) compared to the no-policy baseline (BASE) and of the mitigation scenario (80%DEF) compared to the reference scenario (40%DEF). In the reference scenario, GDP reductions are 0.9% [0.4%–1.8%] by 2050, and the picture resembles the carbon prices discussed in Section 2.4: GDP reductions are moderate and below 0.7% until 2030 and below 2.3% for 2040. However, after 2040, several models show steep, non-linear increases in costs up to 10% (model median 3.7%). It is important to note that 80%DEF is the scenario that is most restricted in terms of global participation and costs can be decreased considerably if global climate action and international emission trading is assumed (see below). In general, the strong increase in costs for the period 2040-2050 is an indication that the models might miss innovation possibilities in the energy sector, especially in the demand side, that could occur with high energy prices.

In the CGE models (EPPA and FARM-EU), the costs are particularly high in 2050, reflecting fewer abatement options compared to those in the optimization models (e.g., MERGE-CPB). The higher costs in the CGE models could also be due to their recursive mode and the assumption that future policy changes cannot be perfectly anticipated as in the optimization models. Therefore, the models greatly diverge on the costs of the “last mile”; some models suggest that abating the last ton of CO<sub>2</sub> could become very costly. The higher costs in EPPA can be explained by i) the assumption of higher costs of renewables, ii) the costs for balancing intermittency, and iii) the built-in model constraints in the penetration of technologies in future periods. FARM-EU shows small GDP gains up to 2030 in the 80%DEF scenario compared to 40%DEF. This is because slightly higher targets in 80%DEF in early years induce structural effects which cause a shift away from energy-intensive production to higher value added non-energy intensive production. In addition, exports are higher in earlier years. Over time, however, GDP decreases when targets become more restrictive. MERGE-CPB also shows some GDP gains for the 40%DEF scenario. In this case, the worldwide moderate climate policy in the 40%DEF scenario gives rise to lower international energy supply prices. In regions such as Europe with considerable taxes on fossil fuels the decline in supply prices of fossil energy lowers the expenses on fossil energy, and thus has a positive impact on GDP.

This exercise assumes that the 80% GHG reduction target will be delivered domestically; therefore, no emissions trading with other world regions is considered. De Cian et al. (this issue) analyze the effects of international emissions trading, as described in 80%GLOB scenario, demonstrating that costs can be reduced significantly when international mitigation potentials are taken into account. If global participation and global emission trading is assumed, CO<sub>2</sub> prices decrease considerably and reduce for example by 90% for FARM-EU to 400 €/tCO<sub>2</sub>, and by 80% to 233 €/tCO<sub>2</sub> for WITCH in 2050 for the scenario 80%GLOB (c.f. Figure 9). GDP reduction also decreases, for example for EPPA, from 10% for 80%DEF (see Figure 10) to 5% for 80%FRAG with comparable mitigation efforts in other countries, to only 2.8% under a fully global carbon market in the 80%GLOB scenario<sup>15</sup> (always

---

<sup>15</sup> In the scenario 80%GLOB, however, the EU generally achieves emission reduction lower than 80% by 2050 and will become a net buyer of emission certificates.

compared to 40%DEF). For further details, for example on the influence of global climate policy regime on trade patterns, technology and innovation, see De Cian et al. (this issue).

Figure 11 presents the impacts of technology assumptions on mitigation costs. The GDP reduction for 80%DEF is compared to the costs of the different technology scenarios (Table 1 and section 2.3). For each scenario, the GDP reduction is compared to its associated reference scenario (e.g., 80%EFF relative to 40%EFF; 80%PESS relative to 40%PESS, etc). Technology variation influences mitigation costs, but the overall effect is not very large. Costs tend to increase without CCS availability (80%noCCS), particularly in the most pessimistic scenario where nuclear is also phased out (80%PESS)<sup>16</sup>. Optimistic assumptions on energy efficiency (80%EFF) cause costs to decrease as high energy efficiency is not available in the default scenario (DEF), and therefore reduces costs. This effect is also important in the green scenario (80%GREEN), where the cost increase due to pessimistic assumptions about CCS and nuclear availability can be partly counterbalanced by more optimistic assumptions about higher energy efficiency and a more rapid technology development for renewable energy. In general, the differences across the models tend to be larger than the influence of different technological variations on the costs.

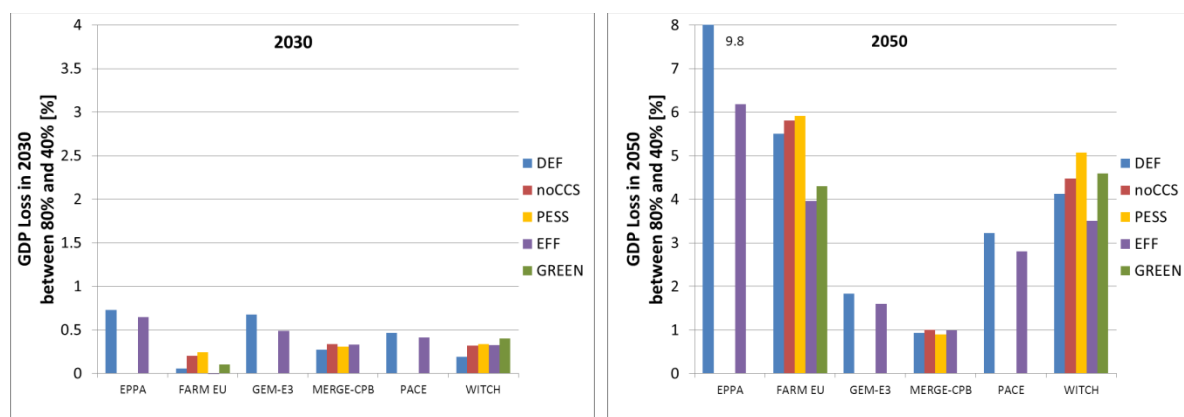


Figure 11. GDP losses for the 80%DEF scenario and 80% technology scenarios (relative to their respective reference cases) in 2030 (left) and 2050 (right). Losses are given in that specific year, not aggregated over time. Note the different scales.

GDP loss is only one measure of costs, but these conclusions also hold for the analysis of consumption loss and additional total energy system costs. The same set of models that provide GDP also provide consumption as an endogenous variable. Reduction of consumption for 80%DEF, when compared to 40%DEF, follows a very similar pattern as the GDP reduction in Figure 10, and has a similar order of magnitude (values for 2050 range from -2% to 9.5% reduction). One notable exception is GEM-E3 showing consumption gains over the whole time horizon. In TIMES-PanEU additional total energy system costs increase from €4 bn in 2020 and €17 bn in 2030 to €110 bn in 2050, again showing a nonlinear increase beyond 2030. Only POLES, providing abatement costs (area under the MAC curve), shows a more linear increase. Other types of costs, for example costs from an

<sup>16</sup> Note that in MERGE-CPB, consumption (and not GDP) is optimized. This explains the effect that GDP reduction is slightly lower for the PESS scenario compared to DEF in 2050 as more investments are stimulated in the former scenario. Consumption losses for PESS are clearly higher when compared to DEF.

end-user perspective, are not considered in this exercise. Paltsev and Capros (this issue) provide a more detailed analysis of the costs of European mitigation. However, it is necessary to note that although we analyzed the technology cases with constrained availability of technology, the costs do not fully consider real world constraints such as lack of public acceptance for CCS, integration costs for intermittent renewable energy, logistical and infrastructure bottlenecks, sustainability of bioenergy, and insurance costs for nuclear.

#### **4. Targets and timing – 2020 and beyond**

The EU has currently fixed targets until 2020 laid out in its 20-20-20 strategy (see Section 1.1). Moreover, in 2013 the EU Commission started the discussion about policy targets for 2030. The green paper “A 2030 framework for climate and energy policies” (European Commission, 2013a), assesses the 20-20-20 targets and presents potential architectures for a post-2020 framework. The document states that there is “broad consensus [...] for interim targets for GHG emissions reductions [...] to reach the aspiration of an 80-95% reduction by 2050”. At the same time, it states, “a 2030 target for renewables would have to be carefully considered”. Therefore, it is not clear whether the trilogy of GHG reduction, renewable target, and energy efficiency will continue. The document mentions some indicative numbers for potential targets that refer to the EU Energy Roadmap. First that “by 2030 GHG emissions would need to be reduced by 40% in the EU to be on track to reach a GHG reduction of between 80-95% by 2050” and second that “for renewables, the policy scenarios in the Energy Roadmap 2050 indicate a share of around 30% in 2030” (European Commission, 2013a).

Our model analysis can contribute to this debate by analyzing the two key questions in that debate: i) how do the 2020 targets and long-term goal of 80% GHG reduction by 2050 relate to each other, and ii) whether specific conclusions for the pathways and timing of action for 2030 can be surmised from our analysis. To answer these questions, we begin by looking at the EU 20-20-20 targets for emission reductions, renewable deployment, and the indicative target for energy efficiency. We also give indications for potential targets for 2030 for emission reductions and renewable deployment. It should be noted that in our exercise we only consider the climate externality. We include no other public policy objectives, such as employment effects or energy import independence, that might be important in the context of renewable energy deployment (see e.g. Edenhofer et al. (in revision)). Moreover, in some cases, the model results cannot be directly compared with these specific targets, either due to limitations in the details of the model’s output or different regional aggregation.

##### **4.1. GHG reduction**

The analysis compares the current 2020 policies to a pathway that aims to reduce GHG emissions by 80% by 2050 and determines the level of emission reduction required for 2030. The GHG emission reduction targets for 2020 are given as a minimum constraint in all the models (see section 1.2). Since GHG emissions are not reported in all the models, we focus here on CO<sub>2</sub> emissions.

Figure 12 shows that in 2020, there is a considerable difference in CO<sub>2</sub> emission reduction between the default reference scenario (40%DEF) and the “optimal model responses” in the default mitigation scenario (80%DEF). This is already the case from 2015 and even more evident from 2020 onwards. The 80%DEF scenarios requires 28% [26% - 30%] CO<sub>2</sub> reduction by 2020<sup>17</sup>; this is a difference of about 7 percentage points in 2020 compared to the 40%DEF scenario with 21% [19%-25%]. In other words, the level of effort of 20% GHG reduction that is included in the default reference scenario (40%DEF) up to 2020 is not consistent with the least-cost pathways towards the 80% reduction target in 2050. This supports the finding of the “Low Carbon Economy Roadmap” (European Commission, 2011d) which points out that a reduction of 25% by 2020 would be more in line with ambitious long-term targets.

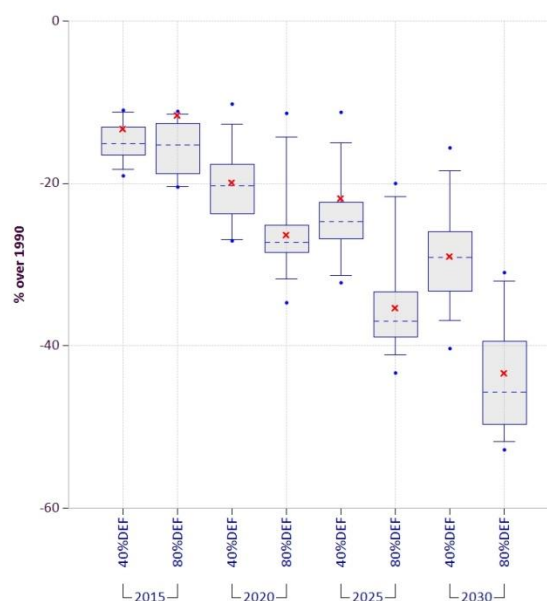


Figure 12. CO<sub>2</sub> emissions reductions for different years for 80%DEF and 40%DEF. Historic decreases in CO<sub>2</sub> emissions of 13% between 1990–2010 (EEA, 2012), are combined with model-based results after 2010. The crosses mark the values for PRIMES.

For 2030, the results of this study can be directly compared to the results of the Energy Roadmap. The Energy Roadmap indicates that “in 2030, energy-related CO<sub>2</sub> emissions are between 38–41% lower (compared to 1990), and total GHG emissions reductions are lower by 40–42%.” The results from our exercise suggest a CO<sub>2</sub> reduction of 47% [40% - 51%] for the default mitigation scenario (80%DEF), compared to 1990, i.e. a much stronger CO<sub>2</sub> reduction than in the Energy Roadmap. This indicates that a reduction of GHG emissions of 40% by 2030 – as mentioned in the EU green paper (European Commission, 2013a) - could in principle be in line with the long-term effort to reduce emissions by 80%. The model median, however, would suggest setting a more ambitious target.

<sup>17</sup> We take into account 13% CO<sub>2</sub> reduction between 1990–2010.

The annual CO<sub>2</sub> reduction rates for 80%DEF are 2.2% [1.7% - 2.4%] between 2010 and 2030 and 4% [3.5% - 4.7%] between 2010 and 2050 and for the ETS sector the CO<sub>2</sub> reduction factor is 5.4% [4.4% - 5.9%] between 2020 and 2050. These rates are clearly above the linear annual reduction factor of 1.74% that is currently set for the 3<sup>rd</sup> phase of the EU emissions trading scheme (2013-2020) and beyond 2020. There may be many reasons why short-term constraints make it impossible to follow the pathways of the cost-optimal 80%DEF scenarios for 2020 or 2030 — but it should be noted that any short-term delays must be compensated for in the long-term. In the extension of the 2020 target, the policies in the default reference scenario lead to a 40% GHG reduction by 2050. Global studies (e.g. Luderer et al., submitted) have shown that similar worldwide policies of only moderate mitigation could lead to a global “muddling through” scenario, with a global average temperature increase of approximately 3–4 °C in 2100, which is considerably higher than the targeted increase of a 2°C maximum.

## 4.2. Renewable energy

In terms of the second component of the EU 20-20-20 policy—renewable deployment—the target has been formulated in such a complex way that it is difficult to track based on the variables and accounting, e.g. of bioenergy, reported by the models. One commonly used proxy for renewable deployment is the share of renewable energy in the electricity mix and primary energy (Figure 13 and Figure 14). Interestingly, the difference in renewable deployment in the electricity sector between 40%DEF and 80%DEF is not significant based on the models’ means, although the spread within the 80%DEF scenario extends somewhat higher (Figure 13; Section 2.4), especially towards 2050. On average, the deployment of RES shows a steady increase up to 2050. However, saturation can be noted in some models after 2030 as it becomes more important to utilize bioenergy to decarbonize sectors other than electricity. To obtain an indicative number of the share of renewables in the electricity sector that would be consistent with the overall renewable target, the document “Renewable Energy: Progressing towards the 2020 target” (European Commission, 2012) states that renewable energy should constitute 37% of Europe's electricity mix by 2020. Clearly, a 37% share is at the upper limit of what the models report for 2020. One reason might be, as stated above, that there are reasons other than GHG reduction for the deployment of renewables, and that these are not being captured by the models. In this respect, it is also important to note that the recent “renewable energy progress report” (European Commission, 2013b) states that the 2020 renewable target might not be met and that more effort is needed to reach it, implying that the 20% renewables target might indeed be very ambitious.

Figure 14 presents the share of renewables in total primary energy. This graph shows a considerable increase in the share of renewables over the entire 2010–2050 period. Furthermore, a clear increase between the default reference (40%DEF) and the default mitigation scenario (80%DEF) can be noted for 2050. This increase is mainly due to the increase in bioenergy after 2030.

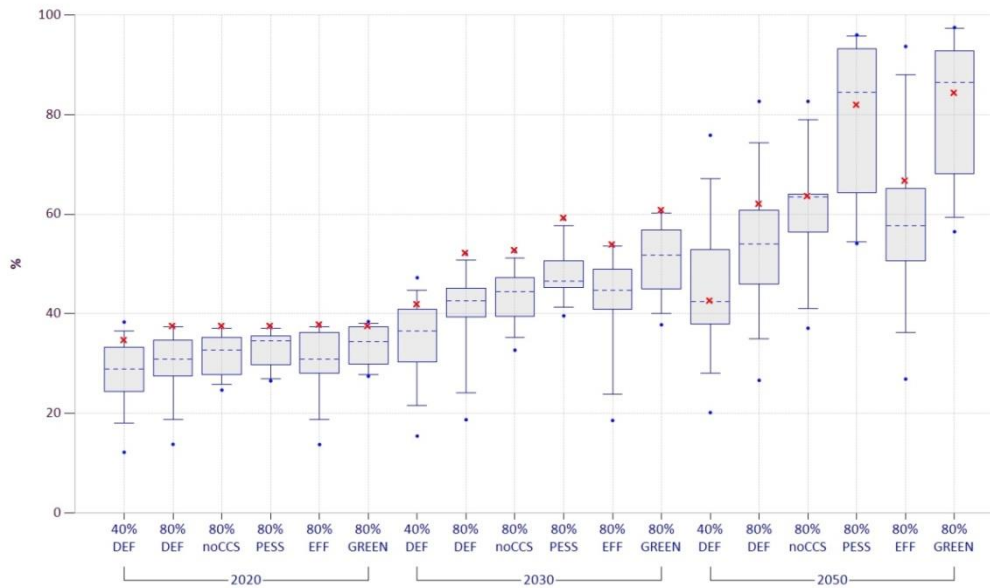


Figure 13. Share of renewable energy sources in total electricity generation for different years. The dotted line is the median, the box contains the 50% interval, the whiskers mark the 90% interval, and the dots mark the extreme values. Note that not all the models provide all technology scenarios; therefore, in these scenarios the set of models is smaller than for 40%DEF and 80%DEF. The crosses mark the values for the PRIMES model.

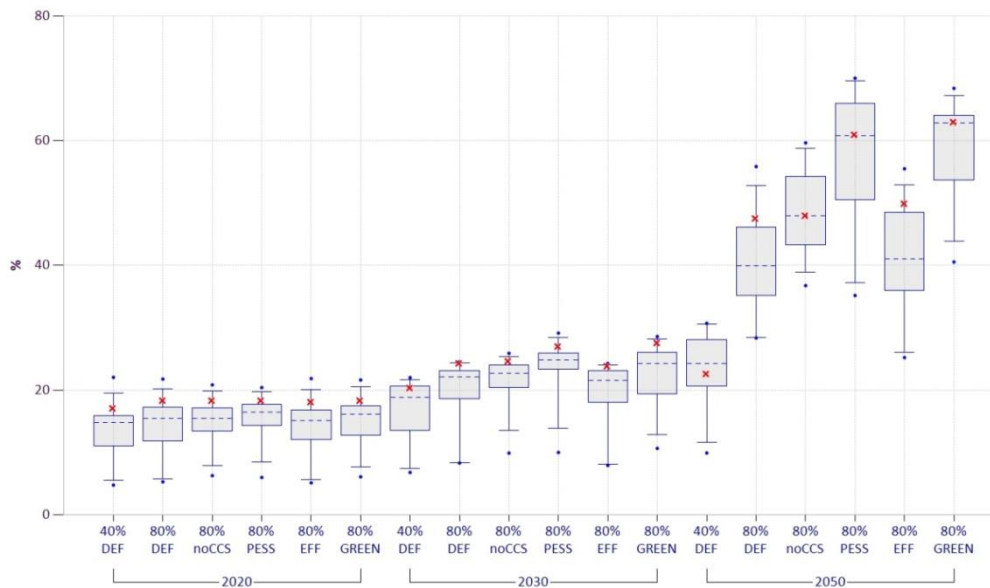


Figure 14. Share of Renewables (NBR+Bio) in total primary energy. The dotted line is the median, the box contains the 50% interval, the whiskers mark the 90% interval, and the dots mark the extreme values. Note that not all the models provide all technology scenarios; therefore, in these scenarios the set of models is smaller than for 40%DEF and 80%DEF. The crosses mark the values for the PRIMES model.

Interestingly, the models reveal a significant change in the pattern and extent of the share of renewable energy sources (RES) in relation to electricity generation and primary energy from 2020–2030 and further to 2050. Although the shares of RES are rather homogenous across models and

technology scenarios in 2020, the picture changes in 2030, which demonstrates the increasing importance of RES and more divergent patterns across technology scenarios. By 2030, the share of RES is much higher in the mitigation cases where CCS is not allowed (80%noCCS and 80%GREEN) and nuclear deployment is low (80%PESS and 80%GREEN) and where additionally the assumptions on energy efficiency and renewable deployment are optimistic (80%GREEN). The share of RES in electricity generation reaches 47% (for 80%PESS) and 55% (for 80%GREEN), compared to 41% for 80%DEF. This effect is even stronger by 2050, as the share of RES reaches a median value of approximately 85% for 80%PESS and 80%GREEN, compared to 48% in the default mitigation scenario, 80%DEF.

Concerning the implication for a potential renewable target for 2030, it is important to note that over time the share of renewables continues to increase in all models demonstrating the importance of renewables (mainly bioenergy) for long-term energy transformation. In addition, based on the analysis in sections 2.1 and 2.2, the model results suggest that wind could become of considerable importance and be promoted based on its expected long-term potential.

### 4.3. Energy efficiency

The third important point of the 20-20-20 targets relates to energy efficiency. The Directive 2012/27/EU on energy efficiency<sup>18</sup>, adopted in October 2012, states that a cumulative end-use energy savings target must be achieved by 2020: “That target shall be at least equivalent to achieving new savings each year from 1 January 2014 to 31 December 2020 of 1.5 % of the annual energy sales to final customers of all energy distributors” (European Parliament and the European Council, 2012, Art.7). Because of several amendments and exceptions, this target cannot be directly compared to the model results, but at least it is clear that an absolute reduction in final energy use is intended.

All the models reveal a considerable reduction of EI with a model median of 1.8% [1.5%– 2.1%] p.a. in the default reference scenario (40%DEF) and 2.1% [1.7%–3.5%] p.a. in the default mitigation scenario (80%DEF; Figure 3) between 2010 and 2050. For the 80%DEF scenario, even a reduction in absolute final energy use becomes important, as all models show a decrease in final energy use by 2050 compared to 2010. Despite the significantly increased GDP by 2050 (75%–110% increase from 2010), final energy use reduces by 15 EJ in 80%DEF (roughly 30% of today’s final energy use), whereas it stays constant in 40%DEF. This implies that energy efficiency improvements must be initiated early in order to achieve final energy savings of sufficient scale to meet the 80% reduction target. Some policies related to energy efficiency have already been initiated, such as energy labeling, the Ecodesign Directive, and the implementation of smart metering. However, currently, no EU-wide policy instruments of substantial scale—compared, for example, to the EU emissions

---

<sup>18</sup> [http://ec.europa.eu/energy/efficiency/eed/eed\\_en.htm](http://ec.europa.eu/energy/efficiency/eed/eed_en.htm)

trading scheme for CO<sub>2</sub>—have been implemented to trigger energy savings or energy efficiency. This is key for achieving the mitigation targets.

The models clearly reveal that in order to reach 80% emission reduction in the long-term, fundamental changes for decarbonizing the energy system are needed. Although the largest effort must occur after 2030, the foundations need to be laid out beforehand and considerable effort is required to facilitate such substantial changes. Sufficiently ambitious milestones for CO<sub>2</sub> emissions, renewable deployment, and energy efficiency are needed in order to create a foundation for achieving the long-term target by 2050. The discussion surrounding a potential 2030 framework (European Commission, 2013a) is in this respect only a first, but very timely and important step.

## 5. Conclusion

This paper describes the EMF28 multi-model assessment of the long- and medium-term transformation of the European energy system. Thirteen models have been run using the same set of mitigation and reference scenarios under comparable technology assumptions. This model comparison is the first to relate its results to those of the Energy Roadmap presented by the European Commission in 2011. The EMF28 model comparison is used as a tool to determine what the EU energy system transition should look like in order to meet the EU's emission reduction goals and to be consistent with the international goal of staying below a 2°C rise in global average temperature. In this context, the analysis compares a reference scenario where the EU achieves 40% GHG reduction by 2050 with a mitigation scenario in which GHG emissions are reduced by 80%. The scenarios build upon the cases that support the Energy Roadmap. In other words, the results of this exercise assess the robustness of the Energy Roadmap.

First, this study shows that, despite the models' differences, there are several pathways for achieving ambitious climate change mitigation in Europe. Nearly all the models can achieve the long-term target of reducing GHG emissions by 80%,<sup>19</sup> with only a moderate reduction in GDP (less than 0.7% by 2030 and below 2.3% by 2040). However, in some models, costs increase considerably after 2040, while others show costs increasing in a linear manner. This allows us to conclude that the 80% GHG reduction target is indeed challenging, especially after 2040 when a substantial amount of effort is required. It is important to mention that these results are derived from models that do not consider technical and political obstacles that could hinder the technological developments prescribed by our results.

This study also shows that it is critical to start a structural transformation of the fossil-fuel based energy system prior to 2030. It is necessary to set the right price signals in order to prevent the energy system from being locked into long-lasting investments in carbon technologies, such as coal-

---

<sup>19</sup> The reported infeasibility in TIAM-UCL could be overcome if the restriction on the ability to import bioenergy into the EU was relaxed.



fired power plants. In general, policies should be designed to facilitate this transition through infrastructure development and behavioral and societal transformation.

Our findings show that the short-term target of a 20% GHG reduction by 2020 is not consistent with the cost-minimizing pathways for the long-term target of reducing GHG emissions by 80% in 2050. Therefore, to facilitate the long-term transformation, a clear indication of binding targets for the period beyond 2020 would help investors to take the right strategic decisions. In addition, by setting targets for 2030, the EU would signal their willingness to contribute to the global climate mitigation effort. Concerning potential targets for 2030, a 40% reduction of GHG emissions – as indicated in the EU green paper (European Commission, 2013a) - could be in line with the long-term effort to reduce emissions by 80% in 2050, but the model median would suggest setting an even more ambitious target.

The power sector is crucial for decarbonization, already shown by the reference scenario, as it has the ability to reduce emissions more than any other sector. However, as the mitigation target becomes more stringent, cutting emissions through the non-electricity sectors becomes increasingly important. The transportation sector is the most costly sector to decarbonize, especially without significant biofuel imports to the EU. Allowing larger biofuel imports is likely to decrease the costs of mitigation. Energy efficiency is key for transformation across all the models, in all the scenarios, and for all levels of ambition. Achievement of energy efficiency, however, requires very strong policy instruments.

Despite the differences across the models, common features concerning the relevance of certain mitigation options leading to the achievement of the 80% GHG reduction target exist:

- Reduction of energy intensity plays a key role in the mitigation strategies;
- Biomass use shows a greater than three-fold increase from 2010–2050; non-biomass-renewables also increase considerably; all renewable energies together make up nearly 50% of electricity generation (model mean); among non-biomass-renewables, wind is the most important with a seven-fold increase by 2050, ultimately reaching a similar deployment level as nuclear, while solar PV represents a limited share;
- Nuclear is constant or moderately increases over time, but continues to make an important contribution in the electricity sector;
- While CCS plays also an important role in the default EMF28 scenarios, the alternative technology scenarios show that CCS is not necessarily required to meet the mitigation target;
- Intermittent renewables such as wind and solar PV contribute 27% of the future electricity mix by 2050 (model median). Therefore, new balancing power options are required, like the development of long-term and medium-term energy storage options and/or the expansion of the European electricity grid and the increase of interconnectors between Member States and demand-side measures.

**Table 3. Comparison of findings from the Energy Roadmap 2050 (European Commission, 2011e) with findings from this study.**

Energy Roadmap 2050	EMF28
Decarbonization is possible and can be less costly than current policies in the long-term.	The models suggest that reaching the ambitious 80% GHG reduction target by 2050 is possible, as all the models except one found a solution. The abatement costs indicate that costs will increase with the level of ambition; however, the benefits of mitigation are not evaluated here. Some models suggest a strong increase in costs beyond 2040 (indicating the importance of technology development).
Higher capital expenditure and lower fuel costs.	A transition towards capital-intensive low carbon technologies (nuclear, wind, solar) is observed in the models.
Electricity plays an increasing role.	Electricity plays a greater role over time and becomes even more important for stringent policy scenarios; moreover, a nearly complete decarbonization of the electricity sector is mandatory for the achievement of the 80% reduction target.
Electricity prices rise until 2030 and then decline.	This is not analyzed in detail. Electricity prices, as reported by the models, are mostly marginal prices (and not household prices). Marginal prices in the models stay stable or show a slight increase over time.
Household expenditures will increase.	Not analyzed.
Energy savings throughout the system are crucial.	The conclusion from the model comparison is that: i) absolute energy savings become more important as the stringency of the target rises, especially for sectors other than power generation, ii) energy efficiency is crucial in all the models, especially in the short-term, and iii) energy savings become even more important in the presence of technology constraints, for example, if CCS and/or nuclear power are not available.
Renewables rise substantially.	Bioenergy and wind are of major importance in a low-carbon energy system. In the scenarios, solar PV plays only a minor role.
CCS has to play a pivotal role in system transformation.	CCS is used when it is available in the models, but decarbonization is also possible without CCS. Nevertheless, CCS is an important option at the global level; therefore, the development of CCS technology is important for climate change mitigation.
Nuclear energy provides an	The use of nuclear is more or less independent from the

important contribution.	emissions reduction target because many models assume that the potential for nuclear expansion is limited. If CCS is not available, nuclear becomes more important.
Decentralization and centralized systems increasingly interact.	This is not analyzed, but it is probably true as decentralized technologies such as solar PV and on-shore wind are entering the system while centralized technologies, such as nuclear, are still important for electricity generation.

We have compared the EMF28 conclusions to those of the Energy Roadmap. The advantage of the EMF28 study compared to the Energy Roadmap is that it provides a comparative assessment based on a larger number and greater variety of models run by several organizations. We relate our findings to those provided in the communication document of the European Commission, which describes “ten structural changes for energy system transformation” (European Commission, 2011e), see Table 3.

This comparison shows that EMF28 results can support the general conclusions of the Energy Roadmap. One noticeable difference is the importance of CCS: While CCS plays an important role in the Energy Roadmap, especially as includes no scenario completely without CCS, in the EMF28, CCS only plays a role in scenarios where CCS is available, and the alternative technology scenarios show that CCS is not required to meet the mitigation target.

Future areas of research identified in this study include: i) analysis of technology options in final consumption, including structural change; ii) a more detailed analysis of all sectors, especially the transport sector; and iii) an analysis of the implications and requirements of including a high share of intermittent renewables in the system in a technical and economic sense. These three streams of research could support the transformation that the European energy system must undergo in order to mitigate climate change.

## References

- Aalbers, R. and J. Bollen (this issue). "EU Energy Roadmap: Learning and Intermittency." *Climate Change Economics*.
- Anandarajah, G., S. Pye, F. Kesicki, W. Usher and C. McGlade (2011). "TIAM-UCL Global Model."
- Azar, C., K. Lindgren, E. Larson and K. Möllersten (2006). "Carbon capture and storage from fossil fuels and biomass - Costs and potential role in stabilizing the atmosphere." *Climatic Change* **74**(1-3): 47-79.
- Blanford, G. J., R. G. Richels and T. F. Rutherford (2009). "Feasible climate targets: The roles of economic growth, coalition development and expectations." *Energy Economics* **31**(Supplement 2): S82-S93.
- Blesl, M., T. Kober, R. Kuder and D. Bruchof (2012). "Implications of different climate policy protection regimes for the EU-27 and its Member States through 2050." *Climate Policy* **12**(3): 301-319.
- Böhringer, C. and A. Lange (2003). Efficiency, Compensation, and Discrimination: What is at Stake When Implementing the EU Emissions Trading Scheme? ZEW Discussion Paper No. 03-73, Mannheim, Germany.
- Böhringer, C. and A. Löschel (2006). "Promoting Renewable Energy in Europe: A Hybrid Computable General Equilibrium Approach. ." *The Energy Journal*(Special Issue: Hybrid Modelling: New Answers to Old Challenges): 123-138.
- Böhringer, C., A. Löschel, U. Moslener and T. F. Rutherford (2009). "EU climate policy up to 2020: An economic impact assessment." *Energy Economics* **31**(2): 295-305.
- Bosetti, V., C. Carraro, M. Galeotti, E. Massetti and M. Tavoni (2006). "WITCH: a world induced technical change hybrid model." *Energy Journal* **27**(Special Issue 2): 13–38.
- Calvin, K., L. Clarke, V. Krey, G. Blanford, K. Jiang, M. Kainuma, E. Kriegler, G. Luderer and P. R. Shukla (2012). "The role of Asia in mitigating climate change: Results from the Asia modeling exercise." *Energy Economics* **34**(Supplement 3): S251-S260.
- Capros, P., N. Kouvaritakis, L. Paroussos, P. Karkatsoulis, K. Fragkiadakis, D. Van Regemorter, V. Zaporozhets, Q. Gharbi, P. Le Mouel and K. Delkis (2010). Description of GEM-E3 model improvements. [www.gem-e3.net](http://www.gem-e3.net)
- Capros, P., N. Tasios, A. De Vita, L. Mantzos and L. Paroussos (2012). "Transformations of the energy system in the context of the decarbonisation of the EU economy in the time horizon to 2050." *Energy Strategy Reviews* **1**: 85-96.
- Capros, P., D. Van Regemorter, L. Paroussos and P. Karkatsoulis (in press). The GEM-E3 model. IPTS' Scientific and Technical report. [www.gem-e3.net](http://www.gem-e3.net).
- Clarke, L., C. Böhringer and T. F. Rutherford, Eds. (2009). International, U.S. and E.U. Climate Change Control Scenarios: Results from EMF 22 [Special Issue]. *Energy Economics* **31** (Supplement 2):S63-S306.
- Criqui, P. and S. Mima (2012). "European Climate - Energy Security Nexus: a model based scenario analysis." *Energy Policy* **41**: 827–842.
- De Cian E, V. Bosetti and M. Tavoni (2012). "Technology innovation and diffusion in 'less than ideal' climate policies: an assessment with the WITCH model." *Climatic Change* **114**(1): 121-143.
- De Cian, E., I. Keppo, S. Carrara, K. Schumacher, H. Förster, J. Abrell, M. Hübler, J. Bollen and S. Paltsev (this issue). "European implications of the Global mitigation strategy." *Climate Change Economics*.
- E3Mlab (2010). PRIMES Model Version used for the 2010 Scenarios for the European Commission including new Sub-Models [http://www.e3mlab.ntua.gr/e3mlab/PRIMES%20Manual/The\\_PRIMES\\_MODEL\\_2010.pdf](http://www.e3mlab.ntua.gr/e3mlab/PRIMES%20Manual/The_PRIMES_MODEL_2010.pdf).
- Edenhofer, O., L. Hirth, B. Knopf, M. Pahle, S. Schloemer, E. Schmid and F. Ueckerdt (in revision). "On the Economics of Renewables." *Energy Economics*.
- Edenhofer, O., B. Knopf, T. Barker, L. Baumstark, E. Bellevrat, B. Chateau, P. Criqui, M. Isaac, A. Kitous, S. Kypreos, M. Leimbach, K. Lessmann, B. Magné, S. Scricciu, H. Turton and D. P. van

- Vuuren (2010). "The economics of low stabilization: model comparison of mitigation strategies and costs." *The Energy Journal* **31**(Special Issue 1).
- Edenhofer, O., K. Lessmann, C. Kemfert, Grubb M and K. J (2006). "Technological Change: Exploring its Implications for the Economics of Atmospheric Stabilization." *The Energy Journal* **93**.
- EEA (2012). Annual European Union greenhouse gas inventory 1990–2010 and inventory report 2012. <http://www.eea.europa.eu/publications/european-union-greenhouse-gas-inventory-2012>.
- Eurelectric (2009). Power Choices - Pathways to Carbon-Neutral Electricity in Europe by 2050. [www.eurelectric.org/powerchoices2050](http://www.eurelectric.org/powerchoices2050).
- European Climate Foundation (2011). Roadmap 2050. <http://www.roadmap2050.eu/downloads>.
- European Commission (2011a). COMMISSION STAFF WORKING DOCUMENT: Impact Assessment. Accompanying the Communication: "A Roadmap for moving to a competitive low carbon economy in 2050". <http://eur-lex.europa.eu/LexUriServ/LexUriServ.do?uri=SEC:2011:0288:FIN:EN:PDF>.
- European Commission (2011b). COMMISSION STAFF WORKING PAPER: Final report of the Advisory Group on the Energy Roadmap 2050, Summary record of the PRIMES Peer review Meeting, Results of the public consultation on the Energy Roadmap 2050. [http://ec.europa.eu/energy/energy2020/roadmap/doc/sec\\_2011\\_1569\\_1.pdf](http://ec.europa.eu/energy/energy2020/roadmap/doc/sec_2011_1569_1.pdf).
- European Commission (2011c). COMMISSION STAFF WORKING PAPER: Impact Assessment. Accompanying the document Energy Roadmap 2050
- European Commission (2011d). COMMUNICATION: A Roadmap for moving towards a competitive low carbon economy in 2050. <http://eur-lex.europa.eu/LexUriServ/LexUriServ.do?uri=COM:2011:0112:FIN:EN:PDF>.
- European Commission (2011e). COMMUNICATION: Energy Roadmap 2050. <http://eur-lex.europa.eu/LexUriServ/LexUriServ.do?uri=COM:2011:0885:FIN:EN:PDF>.
- European Commission (2011f). WHITE PAPER: Roadmap to a Single European Transport Area – Towards a competitive and resource efficient transport system. <http://eur-lex.europa.eu/LexUriServ/LexUriServ.do?uri=COM:2011:0144:FIN:EN:PDF>.
- European Commission (2012). COMMUNICATION: Renewable Energy: Progressing towards the 2020 target. <http://eur-lex.europa.eu/LexUriServ/LexUriServ.do?uri=COM:2011:0031:FIN:EN:PDF>.
- European Commission (2013a). A 2030 framework for climate and energy policies. <http://eur-lex.europa.eu/LexUriServ/LexUriServ.do?uri=COM:2013:0169:FIN:EN:PDF>.
- European Commission (2013b). Renewable energy progress report. <http://eur-lex.europa.eu/LexUriServ/LexUriServ.do?uri=COM:2013:0175:FIN:EN:PDF>.
- European Council (2009). PRESIDENCY CONCLUSIONS of the Brussels European Council (29/30 October 2009). <http://register.consilium.europa.eu/pdf/en/09/st15/st15265.en09.pdf>.
- European Council (2011). Conclusions of 4 February 2011. [http://www.consilium.europa.eu/uedocs/cms\\_data/docs/pressdata/en/ec/119175.pdf](http://www.consilium.europa.eu/uedocs/cms_data/docs/pressdata/en/ec/119175.pdf).
- European Parliament and the European Council (2009). Directive 2009/28/EC of the European Parliament and of the Council on the promotion of the use of energy from renewable sources and amending and subsequently repealing Directives 2001/77/EC and 2003/30/EC, Official Journal of the European Union. **L 140/16**.
- European Parliament and the European Council (2012). DIRECTIVE 2012/27/EU, Official Journal of the European Union. **L 315/1**.
- Eurostat. (2012a). "Electricity production and supply statistics." Retrieved 31/01, 2013, from [http://epp.eurostat.ec.europa.eu/statistics\\_explained/index.php/Electricity\\_production\\_and\\_supply\\_statistics](http://epp.eurostat.ec.europa.eu/statistics_explained/index.php/Electricity_production_and_supply_statistics).
- Eurostat (2012b). Energy production and imports. [http://epp.eurostat.ec.europa.eu/statistics\\_explained/index.php/Energy\\_production\\_and\\_imports](http://epp.eurostat.ec.europa.eu/statistics_explained/index.php/Energy_production_and_imports).

- Eurostat (2012c). Gross inland energy consumption by fuel. <http://epp.eurostat.ec.europa.eu/tgm/table.do?tab=table&init=1&language=en&pcode=tsd cc320&plugin=1>.
- Förster, H., K. Schumacher, E. De Cian, M. Hübler, I. Keppo, S. Mima and R. D. Sands (this issue). "A multi-model decomposition analysis for Europe: Energy efficiency and decarbonisation strategies beyond 2030." *Climate Change Economics*.
- Hübler, M. and A. Löschel (2013). "The EU Decarbonisation Roadmap 2050 - What way to walk?" *Energy Policy*.
- Kanudia, A. and M. Gargiulo (2009). "The Pan European TIMES model."
- Klein, D., G. Luderer, E. Kriegler, J. Strefler, N. Bauer, M. Leimbach, A. Popp, J.-P. Dietrich, F. Humpenöder, H. Lotze-Campen and O. Edenhofer (submitted). "The value of bioenergy in low stabilization scenarios: an assessment using ReMIND-MAgPIE." *Climatic Change*.
- Knopf, B., B. Bakken, S. Carrara, A. Kanudia, I. Keppo, T. Koljonen, S. Mima, E. Schmid and D. van Vuuren (this issue). "National mitigation scenarios in the perspective of the European energy transformation." *Climate Change Economics*.
- Knopf, B., O. Edenhofer, C. Flachsland, M. T. J. Kok, H. Lotze-Campen, G. Luderer, A. Popp and D. P. van Vuuren (2010). "Managing the low-carbon transition – from model results to policies." *The Energy Journal* **31**(Special Issue 1 on The Economics of Low Stabilization).
- Koljonen, T. and A. Lehtilä (2012). "The impact of residential, commercial, and transport energy demand uncertainties in Asia on climate change mitigation." *Energy Economics* **34**(Supplement 3): S410 - S420.
- Lempert, R. (2002). "Confronting Surprise." *Social Science Computer Review* **20** (4): 420-440.
- Luderer, G., C. Bertram, K. Calvin, E. De Cian and E. Kriegler (submitted). "Implications of weak near-term climate policies on long-term climate mitigation pathways." *Climatic Change*.
- Luderer, G., V. Bosetti, M. Jakob, M. Leimbach, J. C. Steckel, H. Waisman and O. Edenhofer (2012). "The economics of decarbonizing the energy system - results and insights from the RECIPE model intercomparison." *Climatic Change* **114**(1): 9-37.
- Paltsev, S. and P. Capros (this issue). "Estimation of Climate Change Mitigation Costs." *Climate Change Economics*.
- Paltsev, S., H. Jacoby, J. Reilly, Q. Ejaz, F. O'Sullivan, J. Morris, S. Rausch, N. Winchester and O. Kragha (2011). "The Future of U.S. Natural Gas Production, Use, and Trade." *Energy Policy* **39**(9): 5309-5321.
- Paltsev, S., J. Reilly, H. Jacoby, R. Eckaus, J. McFarland, M. Sarofim, M. Asadoorian and M. Babiker (2005). The MIT Emissions Prediction and Policy Analysis (EPPA) Model: Version 4. MIT Joint Program Report 125 [http://globalchange.mit.edu/files/document/MITJPSPGC\\_Rpt125.pdf](http://globalchange.mit.edu/files/document/MITJPSPGC_Rpt125.pdf).
- Sands, R. D., H. Förster, K. Schumacher and C. A. Jones (submitted). "Bio-electricity and Land Use in the Future Agricultural Resources Model (FARM)." *Climatic Change*(EMF27 Special Issue).
- Schroeder, A. (2012). An Electricity Market Model with Generation Capacity Expansion under Uncertainty, International Workshop. Stochastic Programming for Implementation and Advanced Applications July 3–6, 2012, Neringa, Lithuania.
- Traber, T. and C. Kemfert (2012). "German Nuclear Phase-out Policy Effects on European Electricity Wholesale Prices, Emission Prices, Conventional Power Plant Investments and Electricity Trade." *DIW Discussion papers* **1219**.
- van Vuuren, D. P., M. G. J. den Elzen, P. L. Lucas, B. Eickhout, B. Strengers, B. van Ruijven, S. Wonink and R. van Houdt (2007). "Stabilizing greenhouse gas concentrations at low levels: an assessment of reduction strategies and costs." *Climatic Change* **81**(2): 119-159.
- von Hirschhausen, C. and F. Holz (this issue). "No Decarbonization without Infrastructure –The Infrastructure Implications of the Energy Transformation in Europe until 2030/2050." *Climate Change Economics*.
- Weyant, J., Ed. (2004). EMF 19 Alternative technology strategies for climate change policy [Special Issue]. *Energy Economics* **26**(6):501-756.



## NOTE DI LAVORO DELLA FONDAZIONE ENI ENRICO MATTEI

### Fondazione Eni Enrico Mattei Working Paper Series

Our Note di Lavoro are available on the Internet at the following addresses:

<http://www.feem.it/getpage.aspx?id=73&sez=Publications&padre=20&tab=1>  
[http://papers.ssrn.com/sol3/JELJOUR\\_Results.cfm?form\\_name=journalbrowse&journal\\_id=266659](http://papers.ssrn.com/sol3/JELJOUR_Results.cfm?form_name=journalbrowse&journal_id=266659)  
<http://ideas.repec.org/s/fem/femwpa.html>  
<http://www.econis.eu/LNG=EN/FAM?PPN=505954494>  
<http://ageconsearch.umn.edu/handle/35978>  
<http://www.bepress.com/feem/>

### NOTE DI LAVORO PUBLISHED IN 2014

CCSD	1.2014	Erin Baker, Valentina Bosetti, Karen E. Jenni and Elena Claire Ricci: <a href="#">Facing the Experts: Survey Mode and Expert Elicitation</a>
ERM	2.2014	Simone Tagliapietra: <a href="#">Turkey as a Regional Natural Gas Hub: Myth or Reality? An Analysis of the Regional Gas Market Outlook, beyond the Mainstream Rhetoric</a>
ERM	3.2014	Eva Schmid and Brigitte Knopf: <a href="#">Quantifying the Long-Term Economic Benefits of European Electricity System Integration</a>
CCSD	4.2014	Gabriele Standardi, Francesco Bosello and Fabio Eboli: <a href="#">A Sub-national CGE Model for Italy</a>
CCSD	5.2014	Kai Lessmann, Ulrike Kornek, Valentina Bosetti, Rob Dellink, Johannes Emmerling, Johan Eyckmans, Miyuki Nagashima, Hans-Peter Weikard and Zili Yang: <a href="#">The Stability and Effectiveness of Climate Coalitions: A Comparative Analysis of Multiple Integrated Assessment Models</a>
CCSD	6.2014	Sergio Currarini, Carmen Marchiori and Alessandro Tavoni: <a href="#">Network Economics and the Environment: Insights and Perspectives</a>
CCSD	7.2014	Matthew Ranson and Robert N. Stavins: <a href="#">Linkage of Greenhouse Gas Emissions Trading Systems: Learning from Experience</a>
CCSD	8.2013	Efthymia Kyriakopoulou and Anastasios Xepapadeas: <a href="#">Spatial Policies and Land Use Patterns: Optimal and Market Allocations</a>
CCSD	9.2013	Can Wang, Jie Lin, Wenjia Cab and ZhongXiang Zhang: <a href="#">Policies and Practices of Low Carbon City Development in China</a>
ES	10.2014	Nicola Genovese and Maria Grazia La Spada: <a href="#">Trust as a Key Variable of Sustainable Development and Public Happiness: A Historical and Theoretical Example Regarding the Creation of Money</a>
ERM	11.2014	Ujjayant Chakravorty, Martino Pelli and Beyza Ural Marchand: <a href="#">Does the Quality of Electricity Matter? Evidence from Rural India</a>
ES	12.2014	Roberto Antonietti: <a href="#">From Outsourcing to Productivity, Passing Through Training: Microeconomic Evidence from Italy</a>
CCSD	13.2014	Jussi Lintunen and Jussi Uusivuori: <a href="#">On The Economics of Forest Carbon: Renewable and Carbon Neutral But Not Emission Free</a>
CCSD	14.2014	Brigitte Knopf, Bjørn Bakken, Samuel Carrara, Amit Kanudia, Ilkka Keppo, Tiina Koljonen, Silvana Mima, Eva Schmid and Detlef van Vuuren: <a href="#">Transforming the European Energy System: Member States' Prospects Within the EU Framework</a>
CCSD	15.2014	Brigitte Knopf, Yen-Heng Henry Chen, Enrica De Cian, Hannah Förster, Amit Kanudia, Ioanna Karkatsouli, Ilkka Keppo, Tiina Koljonen, Katja Schumacher and Detlef van Vuuren: <a href="#">Beyond 2020 - Strategies and Costs for Transforming the European Energy System</a>