

# NOTA DI LAVORO

29.2014

---

**Global Energy Security under  
Different Climate Policies,  
GDP Growth Rates and  
Fossil Resource Availabilities**

---

By **Aleh Cherp**, Central European  
University and Lund University

**Jessica Jewell**, International Institute  
for Applied Systems Analysis and  
Central European University

**Vadim Vinichenko**, Central European  
University

**Nico Bauer**, Potsdam Institute for  
Climate Impact Research (PIK)

**Enrica De Cian**, Fondazione Eni Enrico  
Mattei and Euro-Mediterranean Center  
on Climate Change (CMCC)

# Climate Change and Sustainable Development

Series Editor: Carlo Carraro

## Global Energy Security under Different Climate Policies, GDP Growth Rates and Fossil Resource Availabilities

By Aleh Cherp, Central European University and Lund University  
Jessica Jewell, International Institute for Applied Systems Analysis and  
Central European University

Vadim Vinichenko, Central European University

Nico Bauer, Potsdam Institute for Climate Impact Research (PIK)

Enrica De Cian, Fondazione Eni Enrico Mattei and Euro-Mediterranean  
Center on Climate Change (CMCC)

### Summary

Energy security is one of the main drivers of energy policies. Understanding energy security implications of long-term scenarios is crucial for informed policy making, especially with respect to transformations of energy systems required to stabilize climate change. This paper evaluates the global energy security under several global energy scenarios, modeled in the REMIND and WITCH integrated assessment models. The paper examines the effects of long-term climate policies on energy security under different assumptions about GDP growth and fossil fuel availability. It uses a systematic energy security assessment framework and a set of global and regional indicators for risks associated with energy trade and resilience associated with diversity of energy options. The analysis shows that climate policies significantly reduce the risks and increase the resilience of energy systems in the first half of the century. Climate policies also make energy supply, energy mix, and energy trade less dependent upon assumptions of fossil resource availability and GDP growth, and thus more predictable than in the baseline scenarios.

**Keywords:** Energy Security, Energy Scenarios, Long-Term Climate Policies, Fossil Resources Assumptions

**JEL Classification:** Q4, Q5, Q51

*This is a pre-print version of the paper “Global Energy Security under Different Climate Policies, GDP Growth Rates and Fossil Resource Availabilities” published in the Journal of Climatic Change, <http://dx.doi.org/10.1007/s10584-013-0950-x>.*

*Address for correspondence:*

Enrica De Cian  
Fondazione Eni Enrico Mattei  
Isola di San Giorgio Maggiore  
30124 Venice  
Italy  
E-mail: [enrica.decian@feem.it](mailto:enrica.decian@feem.it)

# Global energy security under different climate policies, GDP growth rates and fossil resource availabilities<sup>1</sup>

Aleh Cherp

*Central European University and Lund University*

Jessica Jewell

*International Institute for Applied Systems Analysis and Central European University*

Vadim Vinichenko

*Central European University*

Nico Bauer

*Potsdam Institute for Climate Impact Research (PIK)*

Enrica De Cian

*Fondazione Eni Enrico Mattei and Euro-Mediterranean Center on Climate Change (CMCC)*

## Abstract

Energy security is one of the main drivers of energy policies. Understanding energy security implications of long-term scenarios is crucial for informed policy making, especially with respect to transformations of energy systems required to stabilize climate change. This paper evaluates the global energy security under several global energy scenarios, modeled in the REMIND and WITCH integrated assessment models. The paper examines the effects of long-term climate policies on energy security under different assumptions about GDP growth and fossil fuel availability. It uses a systematic energy security assessment framework and a set of global and regional indicators for risks associated with energy trade and resilience associated with diversity of energy options. The analysis shows that climate policies significantly reduce the risks and increase the resilience of energy systems in the first half of the century. Climate policies also make energy supply, energy mix, and energy trade less dependent upon assumptions of fossil resource availability and GDP growth, and thus more predictable than in the baseline scenarios.

*Energy security, energy scenarios, long-term climate policies, fossil resources assumptions*

---

<sup>1</sup> This work was funded by Stiftung Mercator ([www.stiftung-mercator.de](http://www.stiftung-mercator.de)).

## 1. Introduction

Understanding energy security implications of long-term climate stabilization scenarios is crucial for informed policy making. A few systematic studies in this area analyze oil and gas trade and availability (Turton and Barretto 2006; Rozenberg et al. 2010; McCollum et al. 2011), energy import dependency (McCollum et al. 2011; Bollen et al. 2010), or focus on a specific region (Costantini et al. 2007; Grubb et al. 2006). Riahi et al. (2012) explore the trade dynamics for different fuels and diversity of energy supply in energy end-use sectors. None of the published studies assessed long-term global energy security with respect to all energy sectors and under different assumptions of economic growth and fossil fuel availability.

This article examines the implications of long-term climate policies (CPs) for energy security under different assumptions about GDP growth and fossil fuel availability. It uses the conceptualization of energy security developed in the Global Energy Assessment (GEA) (Cherp et al. 2012 and Riahi et al. 2012) as summarized by Cherp and Jewell (2013). This conceptualization is sufficiently specific to be meaningful in today's policy context and yet sufficiently generic to be applicable to energy systems which may be radically different from those at present. We apply indicators based on this framework to a set of global energy scenarios developed within two integrated assessment models (IAMs) - REMIND and WITCH - as part of RoSE multi-model ensemble comparison exercise (Kriegler et al. this issue).

## 2. Framework and indicators

### 2.1 The concept of energy security

Following the GEA (Cherp et al. 2012) and other mainstream definitions (see a summary in Winzer (2012)), we define energy security as "*low vulnerability of vital energy systems*". Vital energy systems can be delineated sectorally and/or geographically. In terms of energy sectors, these can be the total primary energy supply (PES), individual fuels, energy carriers, or end-uses. In terms of geographic boundaries, vital energy systems can be those of individual nations, regions, or the global system as a whole. Although the present-day energy security concerns are primarily articulated at the national level, most of the IAMs do not have the granularity necessary for assessment of national energy systems, except for very large economies. Therefore, in this assessment we address energy security of *global* and *regional* energy systems, focusing on the TPES, major fuels, carriers and end-uses as shown in Table 1. Due to space limitations, this analysis is primarily focused on global-level results.

Vulnerabilities of vital energy systems can be categorized in terms of the three perspectives on energy security (Cherp and Jewell 2011). The '**sovereignty**' perspective, with its roots in geopolitics, focuses on risks associated with foreign

control over energy resources such as threats of trade embargoes or price manipulations. The ‘**robustness**’ perspective, with its roots in natural science and engineering, focuses on technical and natural risks to energy systems such as aging of infrastructure and resource scarcity. The ability of energy systems to respond to diverse risks (including those that are less predictable and controllable such as political instability, terrorism and price volatility) is in the focus of the third ‘**resilience**’ perspective on energy security with its roots in economics and complex systems science.

Our definition of energy security deals with both physical and economic vulnerabilities. With respect to the latter, energy security is concerned with competitive and stable rather than *low* prices (Cherp and Jewell 2013). However, competitiveness is a feature of institutional (market) arrangements and price stability is a short-term phenomenon and thus neither can be directly represented in IAMs. Therefore we analyze long-term economic aspects of energy security through such proxies as import dependence and diversity of energy options. This analysis is limited because it does not cover the robustness perspective of energy security. Some aspects of robustness (e.g. topography of energy infrastructure, the volumes of strategic stocks or redundant capacities) are difficult to represent in IAMs, whereas some other (e.g. the scarcity of resources) are in principle possible to analyze, but are not included in the current paper due to space limitations (for such expanded analysis see Jewell et al. (in press)).

## 2.2 Indicators

Table 1 lists the indicators used in this article representing vital energy systems (in columns) and perspectives on energy security (in rows). These indicators for evaluating energy security in IAMs (based on Jewell et al. 2012) are further explained in the Supplementary Material (SM). The sovereignty risks are reflected in trade-related indicators echoing the current energy security concerns associated with import dependence and geographically concentrated production of oil and gas (Cherp et al. 2012). Resilience of energy systems is represented by the diversity<sup>2</sup> of energy sources in the global or regional primary energy supply (PES) mix or used for the production of liquid fuels or electricity.

**Table 1. Energy security indicators used in this study**

Energy systems	TPES	Primary fuels: oil, coal**, gas**	Carriers: Liquids and electricity***
<b>Global</b>			
<i>Sovereignty</i>	Global* energy trade: absolute; Global* energy trade: share of PES (intensity)	Global* trade in fuel: absolute; Geographic diversity of the production of traded fuels	

<sup>2</sup> Calculated by the Shannon-Wiener diversity index as proposed by (Stirling 1994) and subsequently used by O’Leary et al. (2007), Gupta (2008), Jansen and Seebregts (2009) and many other studies.

<b>Energy systems</b>	<b>TPES</b>	<b>Primary fuels: oil, coal**, gas**</b>	<b>Carriers: Liquids and electricity***</b>
<i>Resilience</i>	Diversity of energy sources in PES		Diversity of primary energy sources in carrier production
<b>Regional</b>			
<i>Sovereignty</i>	Net import dependency	Import dependency on a particular fuel	
<i>Resilience</i>	Diversity of energy sources in PES of the region		Diversity of fuels in carrier production

*Notes:* Extended definitions and formulas for all indicators are available online in Jewell et al. (2012) and in the SM.

\* Global trade is defined as trade between the model regions;

\*\* REMIND only;

\*\*\* The diversity of electricity production is calculated based on the PES mix used for electricity generation; the diversity of liquids is calculated based on the type of liquid fuels: oil, synthetic fuels and biofuels in the overall liquid fuel mix.

The selection of indicators was influenced by availability of data. We could not use indicators involving values which are either not reported or not represented in models such as trade in secondary energy (hydrogen and electricity), diversity of carriers in end-use sectors. For WITCH, only oil trade was analyzed because this model did not report trade in other fuels.

## 2.3 Scenarios

Table 2 lists and illustrates the differences between 21 scenarios analyzed in this paper. The first difference is with respect to the presence and stringency of climate policies. Six Baseline scenarios do not contain any climate policy measures. Three WEAK-POL scenarios project the currently existing climate mitigation commitments (Luderer et al. this issue). The 450 and 550 scenarios model climate policies compatible with constraining the GHG concentrations in the atmosphere at 450 ppm CO<sub>2</sub>eq and 550 ppm CO<sub>2</sub>eq respectively. The second difference is in their assumptions concerning GDP growth and fossil fuel availability. The four DEF scenarios represent medium assumptions about both factors. The 4 FS Gr and 4 SL Gr scenarios represent fast GDP growth and slow GDP growth assumptions respectively (with medium fossil fuel availability). The 3 HI Fos and 3 LO Fos scenarios represent high and low fossil fuel availability (with medium GDP growth). Finally, the 3 LO Oil scenarios represent medium assumptions on gas and coal availability and GDP growth and low assumptions on oil availability. A detailed description of the scenarios and their assumptions is provided by Kriegler et al. (this issue).

**Table 2. Scenarios used for the analysis of energy security**

<b>Climate policies</b>	<b>Default (medium GDP and fossil resources)</b>	<b>GDP growth (medium fossil fuel availability)</b>		<b>Fossil resources availability (medium GDP growth)</b>		
		Fast	Slow	High	Low	Low oil
<hr/>						

Baseline	BAU DEF	BAU FS Gr	BAU SL Gr	BAU HI Fos	BAU LO Fos	BAU LO Oil
WEAK-POL (projection of existing commitments)	WEAK-POL DEF	WEAK- POL FS Gr	WEAK- POL SL Gr			
450 ppme stabilization	450 DEF	450 FS Gr	450 SL Gr	450 HI Fos	450 LO Fos	450 LO Oil
550 ppme stabilization	550 DEF	550 FS Gr	550 SL Gr	550 HI Fos	550 LO Fos	550 LO Oil

*Note:* Detailed assumptions for different scenarios are provided in Kriegler et al. (this issue) and Luderer et al. (this issue).

### 3. Results

#### 3.1 Effects of climate policies on energy security

##### 3.1.1 Sovereignty risks (trade)

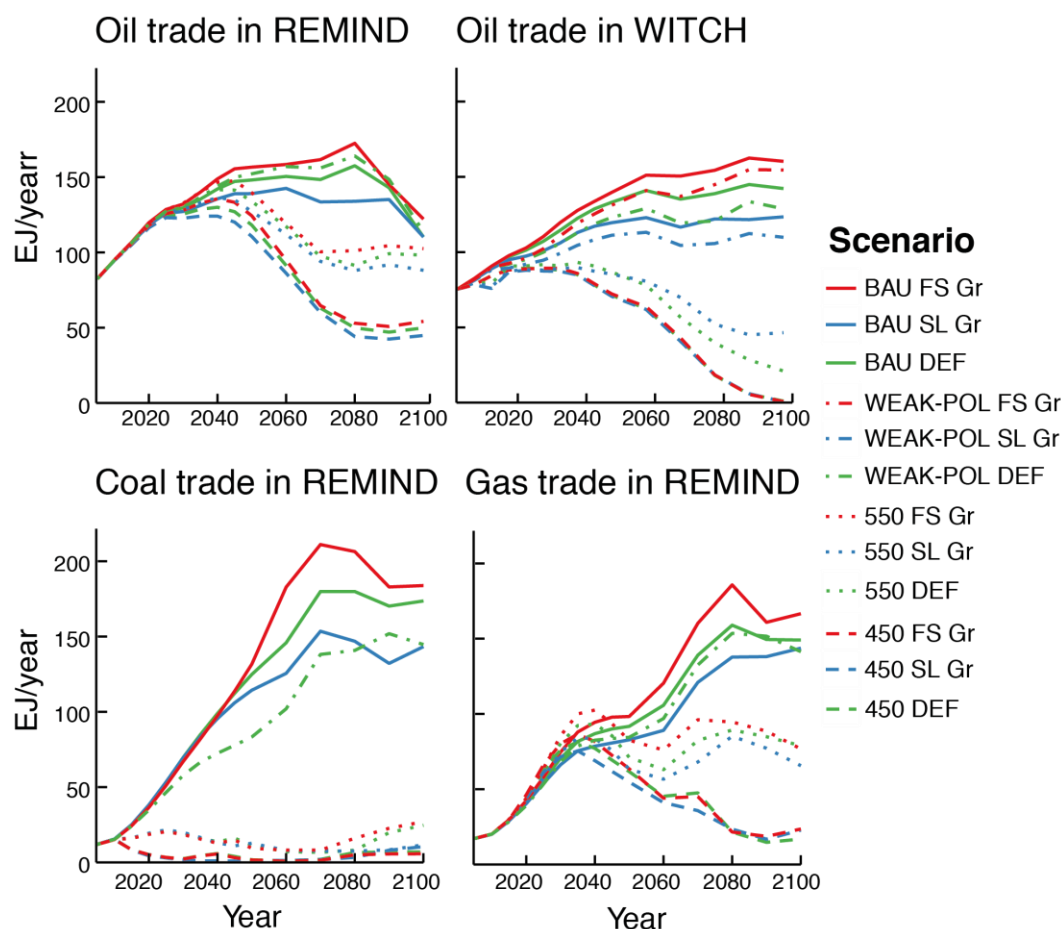
In the baseline scenario BAU DEF, REMIND models a rapidly rising gas and coal trade due to rising demand in developing economies (Figure 1) and, as a result an up to 5-fold increase in the global energy trade by the end of the century (Figure S-1 in SM). Oil trade increases by 50% in the BAU DEF scenario in both REMIND and WITCH<sup>3</sup> (Figure 1).

Both models show radically lower energy trade under the 450 scenarios: in REMIND it is almost 4.5 times less compared to BAU DEF, and in WITCH it declines almost to zero. The drop in energy trade in REMIND is due to a decrease of coal trade over the short-term and all fossil fuels over the long-term, whereas in WITCH it is entirely explained by the phase-out of oil. The 550 scenarios also result in reduction of trade, although to a lesser extent than the 450 scenarios. The WEAK-POL scenarios do not lead to notable differences in global energy trade.

---

<sup>3</sup> Since WITCH only reported oil trade, the total PES trade equals oil trade in WITCH.

**Figure 1. Global energy trade in Baseline and CP scenarios under different economic growth assumptions.**



*Note:* For definition of scenarios see Table 1. Only oil trade is modeled in WITCH. REMIND only models medium GDP growth assumptions for the WEAK-POL policy scenario.

The share of tradable energy in TPES ('trade intensity', Figure S-2 in the SM) declines to much lower levels in CPs than in Baseline scenarios in both models. In REMIND, the present trade intensity of some 25% increases to 40% in the Baseline, but drops to some 10-15% in the 450 DEF scenario or stays at approximately the same level of 25% in the 550 DEF scenario. In WITCH, where only oil is traded, the present global trade intensity of some 20% remains virtually unchanged in the Baseline scenario and drops to zero under the CP scenarios. The decline in trade intensity occurs due to declining shares of tradable fuels (oil, coal and gas) in the energy mix under CPs.

CPs reduce oil imports of most regions. At the same time, CPs constraint the use of unconventional oil resources and coal- and gas-to-liquid technologies. This may on the one hand, increase the share of imported oil in some regions and some periods of time and on the other hand somewhat sustain oil export revenues of traditional exporters of conventional oil such as the Middle East. Of course, all these developments would occur against the background of declining importance of oil in the energy system (Figure S-3 in the SM).



### 3.1.2 Resilience (diversity)

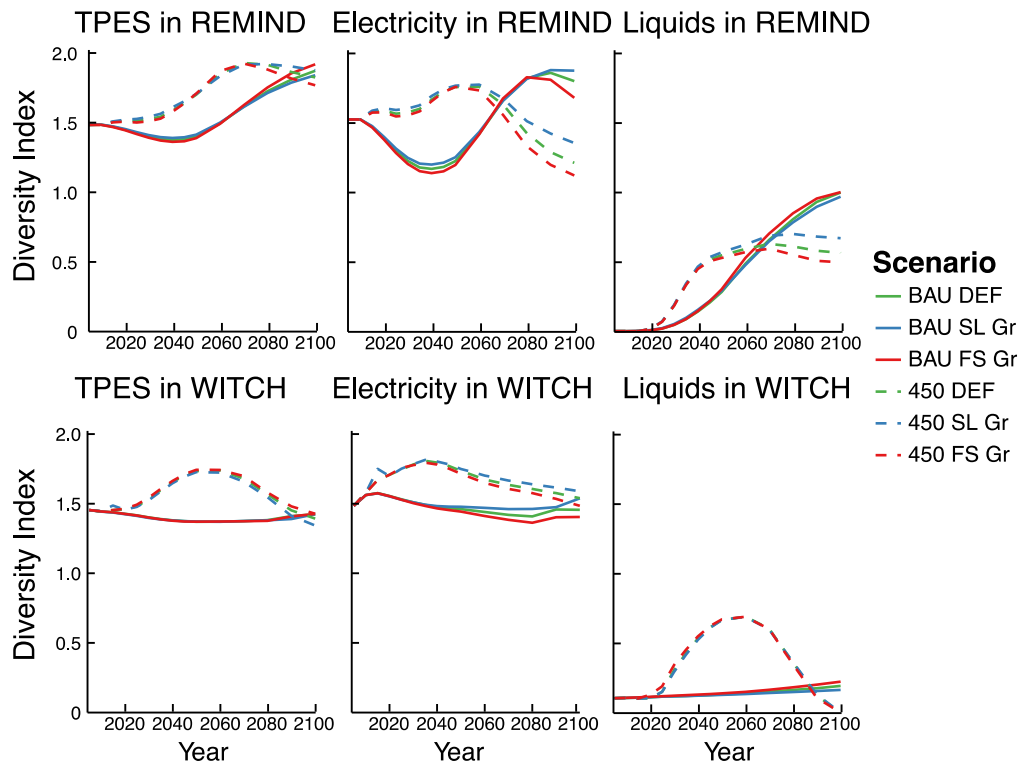
The overall diversity of TPES follows a distinctly different pattern in CPs and the Baseline scenarios (Figure 2 and Figure S-4 in the SM). Under the 450 DEF scenario, TPES diversity rises at a higher rate than in the Baseline at the beginning of the century when low-carbon and traditional technologies co-exist. At the end of the century, however, low-carbon technologies domination either slows or reverses this trend so that the CP and Baseline scenarios converge (in REMIND this is also due to the eventual rise in diversity under the Baseline).

The diversity of electricity production also behaves differently under CPs and in the Baseline (Figure 2 and Figure S-4 in the SM). In the Baseline scenarios, it stays virtually unchanged in WITCH while in REMIND it initially declines and then rises. In both models the diversity of electricity production in the CP scenarios rises (the faster the stricter are CPs) in the first half of the century, exceeding that of the Baseline. In REMIND this rise is followed by a rapid decline below the Baseline, as renewable energies, particularly solar, start to dominate electricity production. In WITCH there is no comparable decline in diversity of electricity production because the penetration of renewable energies is constrained by an economic penalty, which is exponentially increasing with the increasing share of renewables in the electricity mix based on Hoogwijk et al. (2007) (Figure S-5 in the SM).

In case of liquids (Figure 2 and Figures S-4 and S-6 in the SM), in REMIND, the diversity of the liquid production mix - which includes biofuels, coal-derived synfuels and oil products - steadily increases from the initially very low level throughout the century in all scenarios. Until the middle of the century this increase is faster in the 450 scenarios, but in the last third of the century it slows down or even slightly reverses eventually becoming lower than in the Baseline due to lower share of synfuels and increasing domination of biofuels.

In WITCH, the diversity of liquid fuels in the Baseline scenarios does not change much staying at very low levels throughout the century because these remain based on oil products (gas-to-liquids and coal-to-liquids technologies are not available in WITCH). In the stricter CP scenarios, the diversity of liquids rapidly rises in the first part of the century when biofuels are introduced and then equally rapidly declines below the Baseline and even below the present already low levels in the 450 DEF scenario. In the 550 DEF scenario (see Figure S-4 in the SM), this decline occurs later and is not as pronounced. The rise and decline in diversity of fuels in WITCH is due to the rapid introduction of biofuels, which initially balance and then substitute oil in liquid fuels.

**Figure 2. Diversity of TPES, electricity and liquids in the Baseline and the 450 scenarios under different GDP growth assumptions**



In both models there are regional differences in the diversity of energy systems. In general, the energy mix in different regions diverges more under CPs than under the Baseline (illustrated for WITCH by Figure S-7 in the SM). This is because in the Baseline scenario the energy mix is dominated by tradable fossil fuels and thus tends to be similar across different regions which are all part of the global energy market. Under CPs, fossil fuels are phased out, there is less global energy trade and each region seems to gravitate to its own unique energy mix based on its resource endowments and demand dynamics.

### 3.2 Effects of GDP growth assumptions on energy security under different climate policies

Higher GDP growth assumptions result in higher global energy trade in the Baseline, but barely affect the trade under CP scenarios (Figure 1). This is because (a) the total energy consumption is less affected by GDP growth in CP scenarios due to the lower energy intensity (especially in WITCH) and (b) because the economic growth under CPs is primarily fueled by non-tradable renewable energy sources.

The diversity of energy options is not significantly affected by GDP growth assumptions in any of the scenarios (Figure 2). An exception is diversity of electricity and liquids under strict CPs in REMIND in the 2<sup>nd</sup> half of the century, when faster economic growth leads to more notable decline of diversity. This occurs because faster growth is supported by solar energy and biofuels which

more rapidly penetrate electricity and liquids fuels, further accelerating the pattern already induced by climate policies as described in the previous section.

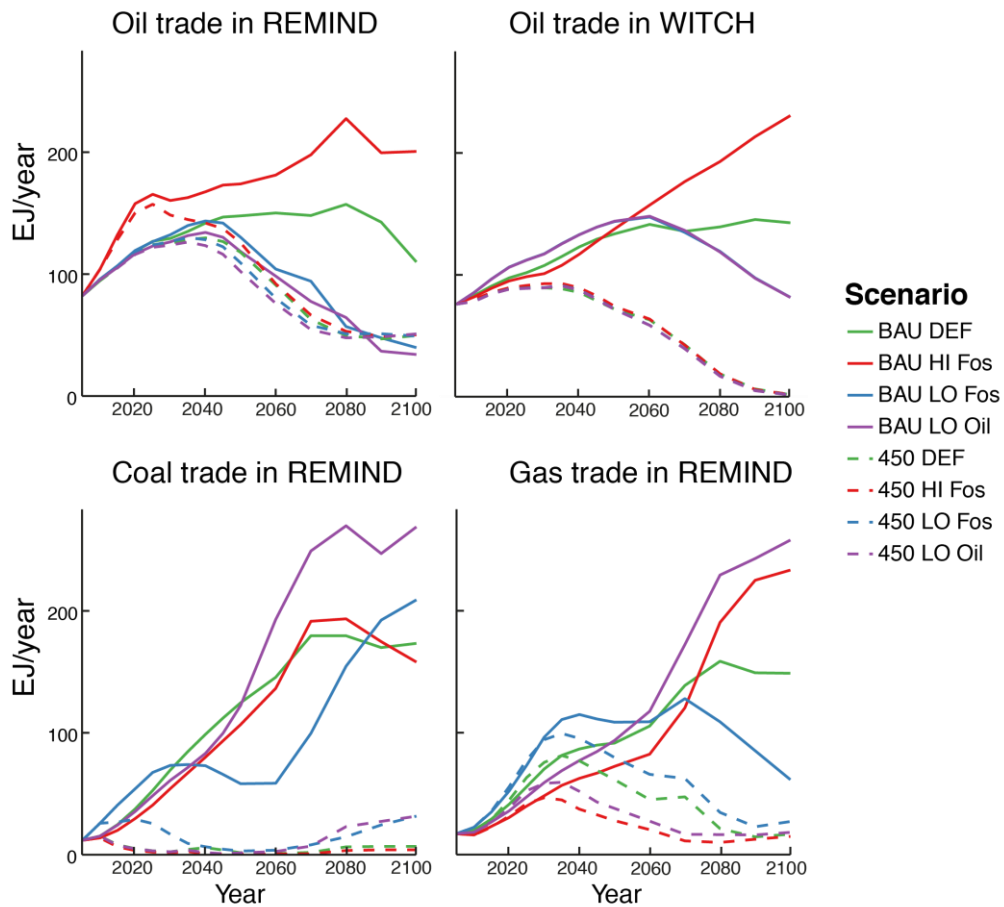
### **3.3 Effect of fossil fuels availability assumptions on energy security under different climate policies**

In both models, the Baseline scenarios are dominated by fossil fuels. However, lower fossil fuel availability results in a higher share of bioenergy in WITCH (up to 25-27% in BAU LO Fos as compared to negligible amounts under BAU HI Fos in 2100) and a higher share of renewable energies in REMIND (up to 40% under BAU LO Fos as compared to some 16% in 2100 under BAU HI Fos). Under CPs, the total energy supply and the energy mix are much less significantly affected by fossil fuel availability assumptions.

In the Baseline scenarios, higher availability of fossil fuels generally results in higher volumes of trade in these fuels, especially in the longer term. Lower availability of oil also results in higher trade in coal and gas, which substitute for oil in REMIND (Figure 3). Thus, the overall global energy trade in the Baseline remains high even under low oil availability assumptions.

In the strict CP scenarios, the availability of fossil fuels does not affect the global oil or coal trade. However, low fossil fuel availability results in higher gas trade under CPs, especially earlier in the century. This occurs because the endowments of import regions are lowered disproportionately to those of export regions. At the same time, even under the lowest resource assumption, the trade in any fuel in the Baseline scenario is higher, than the trade under any of the CP scenarios.

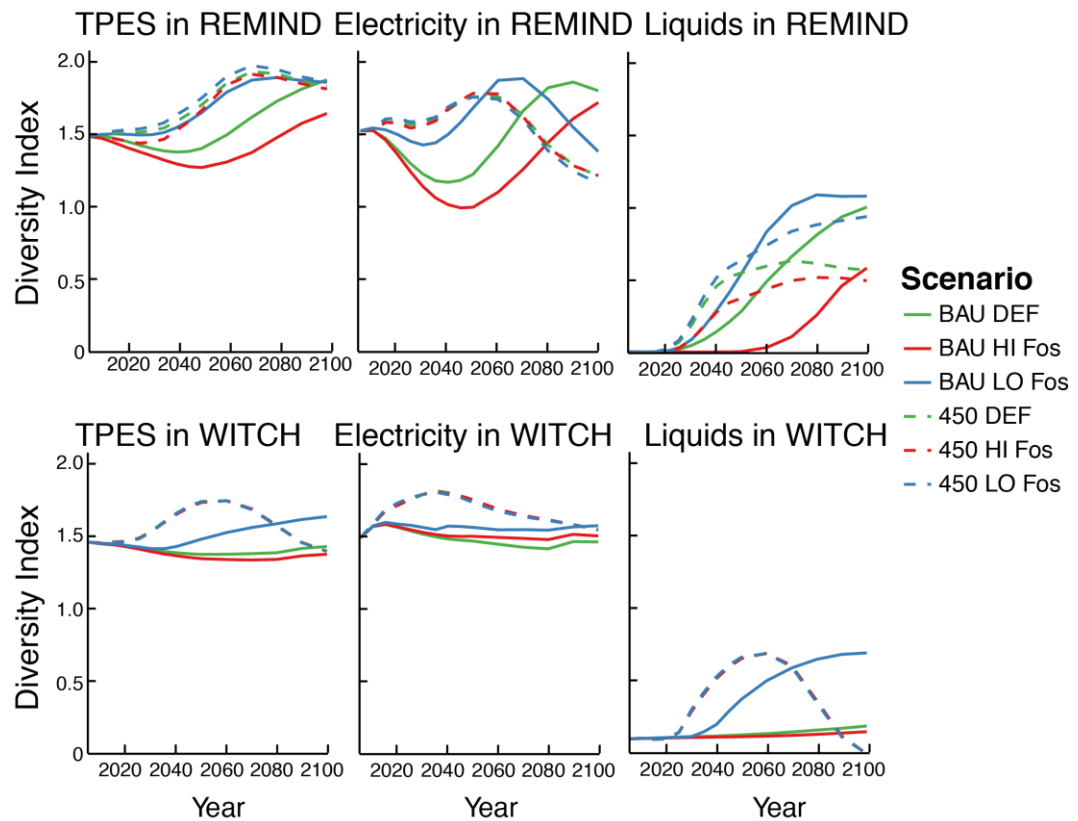
**Figure 3. Global energy trade in individual fuels depending on fossil fuel availability in REMIND and WITCH**



In the Baseline scenarios in REMIND, lower resource availability generally results in higher diversity of energy options (Figure 4). This occurs because alternative energy options are introduced to replace scarce fossil fuels. The only diversity of electricity at the end of the century, which is lower in the BAU LO Fos scenario because solar energy starts dominating electricity generation much like in the CP scenarios. In WITCH, low fossil fuel availability increases the diversity of liquids in Baseline scenarios due to substitution of oil products by biofuels, but otherwise resource availability has no distinct effect on diversity.

In CP scenarios, alternative fuels are introduced due to low-carbon constraints rather than resource scarcity and thus fossil fuel availability does not generally affect diversity. An exception is liquid fuels in REMIND which become more diverse under low fossil availability, because scarcity of oil results in substitution of this dominating fuel by biofuels (Figure S-6 in SM).

**Figure 4. Diversity of TPES, electricity and liquids in the Baseline and the 450 scenarios under different assumptions about fossil fuel availability**



#### 4. Discussion

Our analysis shows that in the Baseline scenarios the global trade in fossil fuels would rapidly rise. At the same time, alternatives to oil in the transport sector are introduced slowly, which means that disruptions of the global oil trade (including price fluctuations) would seriously affect this vital system essential for all modern societies.

Climate mitigation policies would radically lower the trade in fossil fuels as compared to the Baseline because of the lower energy demand and because the energy mix would be dominated by non-tradable renewable energy. The resilience of energy systems as reflected in their diversity would also be higher around the middle of the century when low-carbon and fossil energy sources coexist (Figure 5, the top two graphs).

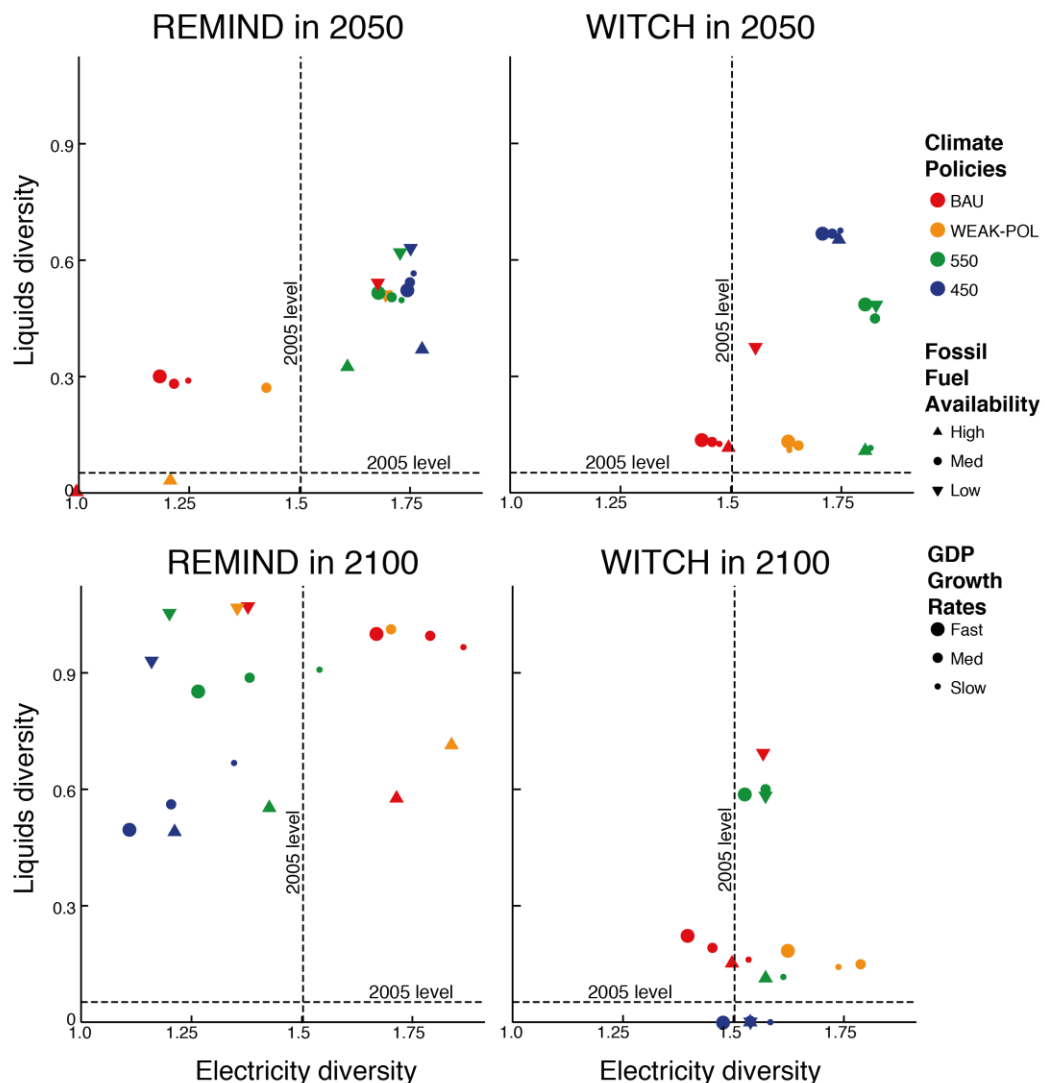
The overall energy trade in the 450 scenarios does not significantly depend on the GDP growth or fossil resources availability assumptions. In contrast, in the Baseline scenarios the trade in fossil fuels is highly sensitive to their availability (varying by as much as two times) and to economic growth assumptions (varying by as much as some 40%). The diversity of energy systems under CPs is also not strongly affected by any of these assumptions. Thus, in CP scenarios, the vulnerability of energy systems is not only lower but also less uncertain than in the Baseline.

At the same time, climate policies may entail certain risks for energy security. For example, if unconventional oil resources are not exploited more regions would

need to import oil. However, this would occur against the background of decreasing importance of oil and thus constitute a progressively declining risk. Climate policies may also result in dropping energy export revenues although these risks may be not so profound for conventional oil exporters (due to limitations on unconventional fossils and on coal- and gas-to-oil substitutes). The effect of climate policies on oil exports is described by Bauer et al. in this special issue and (see also results for other these and other models in Jewell (2013, 131-141)).

With respect to diversity, climate policies may result in deep penetration of solar energy in the electricity sector and biofuels in the liquid fuels sector, particularly under high economic growth and low fossil fuel resource assumptions. This may reduce the diversity of these vital energy systems by the end of the century as shown in Figure 5 (the bottom two graphs). By 2100, the diversity of electricity and liquids under CPs in REMIND may become lower than in the Baseline and, in the case of electricity, lower than at present. Such decrease in diversity may be especially pronounced in certain regions which will be using their domestic resources rather than relying on the global mix of tradable fuels as at present.

**Figure 5. Diversity of energy sources used in electricity and liquid fuels in 2050 and 2100 under different scenarios**



The data points indicate the diversity of primary energy sources used for electricity generation and production of liquid fuels in 2050 (the top two graphs) and in 2100 (the bottom two graphs). The colors of the data points correspond to the strength of the climate policy, the shapes – to fossil fuel availability, and the sizes – to GDP growth assumptions. The dotted lines show the 2005 levels of diversity of liquid fuels and electricity. Any data point to the left of the vertical line or to the bottom of the horizontal line reflects potential insecurity.

Although the two models present generally similar trends, there are certain differences between WITCH and REMIND as far as energy security is concerned. WITCH portrays a world where only oil is globally traded and thus exposure to trade risks is lower (especially under climate policies where oil is phased out) than in REMIND which is based on free and flexible trade assumptions and where gas and coal trade may exceed the present oil trade. On the other hand, WITCH does not allow a rapid increase of solar energy in electricity production or using synthetic fuels in liquids due to its more severe constraints on penetration of energy technologies. This makes the diversity of the electricity sector under strict CPs higher in WITCH and the diversity of liquids higher in REMIND<sup>4</sup>.

## 5. Conclusions

This article aimed to evaluate energy security in long-term scenarios with different stringency of climate policies and different assumptions about fossil resources availability and GDP growth. Our results show that climate policies would generally enhance energy security through reducing energy trade and increasing the diversity of energy options. At the same time, the exclusion of non-conventional fossil fuels as well as the potential domination of the electricity sector by solar energy and of liquid fuels by bioenergy may somewhat increase vulnerabilities of energy systems.

The limitation of this conclusion is that we analyse only trade in fossil fuels, whereas it is entirely plausible that bioenergy, synthetic fuels, hydrogen and even electricity may become globally traded on a large scale in the future. Nevertheless, analysis by Jewell (2013) indicates that this trade in 'new' fuels is unlikely to exceed the current levels of oil trade.

Another limitation is that this analysis is primarily focused on the global level, whereas many of the current energy security concerns are most apparent at the *national* level. Though IAMs do not typically have the national-level granularity, future research should explore the applicability of these results to national energy security concerns starting with major economies.

The two models, REMIND and WITCH, considered in this analysis portray two different worlds of the future: one with higher global energy interdependence and high penetration of solar energy and one with high regional specialization, a more diverse electricity sector and dominance of bioenergy in liquid fuels. As emphasized in other studies (Jewell 2013, 165-166) these differences in long-term energy security profiles may reflect not only different modeling approaches, but may actually signal the real trade-offs between energy trade and diversity as shaped by different technology choices. There are many pathways to low-carbon

---

<sup>4</sup> Kriegler et al. (this issue) provide a detailed explanation of the technological capabilities of the two models.

future and energy security may be a consideration in choosing which of these paths are more feasible and desirable.

## 6. References

- Bauer N., Mouratiadou, I., Baumstark, L., Brecha, R., Luderer, G., Kriegler, E., Edenhofer, O. this issue. Global fossil energy markets and climate change mitigation: An analysis with REMIND. *Climatic change (this issue)*
- Bollen, J., Hers, S., & van der Zwaan, B. (2010). An integrated assessment of climate change, air pollution, and energy security policy. *Energy Policy*, 38(8), 4021–4030. doi:10.1016/j.enpol.2010.03.026
- Cherp, A., & Jewell, J. (2011). The three perspectives on energy security: intellectual history, disciplinary roots and the potential for integration. *Current Opinion in Environmental Sustainability*, 3(4), 202–212. doi:10.1016/j.cosust.2011.07.001
- Cherp, A., & Jewell, J. (2013). Energy security assessment framework and three case-studies. In H. C. Dyer & M. Trombetta (Eds.), *International Handbook of Energy Security* (pp. 231-277). Edward Elgar Publishing.
- Cherp, A., Adenikinju, A., Goldthau, A., Hernandez, F., Hughes, L., Jansen, J. C., Jewell, J., et al. (2012). Energy and security. In T. B. Johansson, N. Nakicenovic, A. Patwardan, & L. Gomez-Echeverri (Eds.), *Global Energy Assessment: Toward a Sustainable Future* (pp. 325–383). Cambridge, UK; and New York, USA: Cambridge University Press.
- Costantini, V., Gracceva, F., Markandya, A., & Vicini, G. (2007). Security of energy supply: Comparing scenarios from a European perspective. *Energy Policy*, 35(1), 210–226. doi:10.1016/j.enpol.2005.11.002
- Gupta, E. (2008). Oil vulnerability index of oil-importing countries. *Energy Policy*, 36(3), 1195–1211. doi:10.1016/j.enpol.2007.11.011
- Grubb, M., Butler, L., & Twomey, P. (2006). Diversity and security in UK electricity generation: The influence of low-carbon objectives. *Energy Policy*, 34(18), 4050–4062. doi:10.1016/j.enpol.2005.09.004
- Hoogwijk, M., van Vuuren, D., de Vries, B., Turkenburg, W., 2007. Exploring the impact on cost and electricity production of high penetration levels of intermittent electricity in OECD Europe and the USA, results for wind energy. *Energy* 32 (2007) 1381-1402
- Jansen, J. C., & Seebregts, A. J. (2009). Long-term energy services security: What is it and how can it be measured and valued? *Energy Policy*, 38(4), 1654–1664. doi:10.1016/j.enpol.2009.02.047
- Jewell, J. (2013). *Energy security and climate change mitigation: interaction in long-term global scenarios*. PhD thesis. Central European University, Budapest.
- Jewell, J., Cherp, A., & Riahi, K. (2012). *Energy security indicators for use in Integrated Assessment Models*. Deliverable No 4.1. LIMITS Project (FP7 Project No 282846). Available at: [http://www.feem-project.net/limits/docs/limits\\_d4-1\\_iiasa.pdf](http://www.feem-project.net/limits/docs/limits_d4-1_iiasa.pdf).
- Jewell, J., Cherp, A., Vinichenko, V., Bauer, N., Kober, T., McCollum, D. L., et al. (in press). Energy security of China, India, the EU and the US under long-term scenarios: Results from six IAMs. *Climate Change Economics*
- Kriegler E., Mouratiadou I., Brecha R., Calvin K., DeCian E., Edmonds J., Kejun J., Luderer G., Tavoni M., Edenhofer O. this issue. Will economic growth and fossil fuel scarcity help or hinder climate stabilization? Overview of the RoSE multi-model study. *Climatic change (this issue)*



Luderer G, Bertram C, Calvin K, De Cian E and Kriegler E. this issue. 'Implications of weak near-term climate policies on long-term climate mitigation pathways' and the author list includes. *Climatic change (this issue)*

McCollum, D. L., Krey, V., & Riahi, K. (2011). An integrated approach to energy sustainability. *Nature Climate Change*, 1(9), 428–429. doi:10.1038/nclimate1297

McCollum, D. L., Krey, V., Riahi, K., Kolp, P., Grubler, A., & Makowski, M. (In Press). Climate policies can help resolve energy security and air pollution challenges. *Climatic Change*.

O'Leary, F., Bazilian, M., Howley, M., & O Gallachoir, B. (2007). *Security of Supply in Ireland* (pp. 1–76)

Riahi, K., Dentener, F., Gielen, D., Grubler, A., Jewell, J., Klimont, Z., et al. (2012). Energy pathways for sustainable development. In T. B. Johansson, N. Nakicenovic, A. Patwardan, & L. Gomez-Echeverri (Eds.), *Global Energy Assessment: Toward a Sustainable Future* (pp. 1203–1306). Cambridge, UK; and New York, USA: Cambridge University Press.

Rozenberg, J., Hallegatte, S., Vogt-Schilb, A., Sassi, O., Guivarch, C., Waisman, H., & Hourcade, J.-C. (2010). Climate policies as a hedge against the uncertainty on future oil supply. *Climatic Change*, 101(3-4), 663–668. doi:10.1007/s10584-010-9868-8

Stirling, A. (1994). Diversity and ignorance in electricity supply investment: Addressing the solution rather than the problem. *Energy Policy*, 22(3), 195–216. doi:10.1016/0301-4215(94)90159-7

Turton, H., & Barreto, L. (2006). Long-term security of energy supply and climate change. *Energy Policy*, 34(15), 2232–2250.

Winzer, C. (2012). Conceptualizing energy security. *Energy Policy*, 46(C), 36–48. doi:10.1016/j.enpol.2012.02.067

# Supplementary material

## 7. Indicators of Energy Security used in this study

The indicators used in the paper are listed in Table S-3 and are based on Jewell et al. (2012).

**Table S-3 Indicators of energy security in long-term energy transformation scenarios**

Indicator	Energy security Concern(s)	Unit	Definition (formula)	Applies to	
				Sector	Geography
<b>Risk (trade) indicators</b>					
<b>Global energy trade (absolute)</b>	Disruption of trade flows by various factors	Ej/year	Total flows of trade between regions in a given year	PES, oil, gas, coal, hydrogen, biomass, synfuels, electricity (used in this paper), trade in uranium, oil products, other fuels and carriers can also be used	Global
<b>Global energy trade (intensity)</b>	same as above	share (0-1)	Global energy trade divided by global energy supply	PES (trade intensity in other fuels and carriers can also be used)	Global
<b>Geographic diversity of production</b>	same as above	non-dimensional	SWDI or HHI	Oil, gas, coal (this indicator can also be used for other fuels and carriers)	Global
<b>Net import dependency</b>	Regional vulnerability to trade disruptions by various factors	share (0-1)	net energy imports divided by total PES or total primary energy of a given source	PES (can also be used for individual fuels and carriers)	Regional
<b>Resilience (diversity) indicators</b>					
<b>Diversity of energy</b>	Overall vulnerability to	non-	SWDI or HHI	PES	Global or

Indicator	Energy security Concern(s)	Unit	Definition (formula)	Applies to	
				Sector	Geography
<b>sources in PES</b>	various PES disruptions	dimensional			Regional
<b>Diversity of PES used in carrier production</b>	Carrier vulnerability to various PES disruptions	non-dimensional	SWDI or HHI	electricity , liquid fuels	Global or Regional

### *Energy trade*

**Global fuel trade** is the sum of all net exports for each globally-traded fuels or carriers. This paper analyses trade in oil, gas, and coal. Global energy trade is the sum of each of these global fuel trade sums. This value only accounts for interregional trade which is likely to be a large part of country-to-country trade.

**Trade intensity** is calculated by dividing the total volume of energy trade (or the volume of trade for a fuel) by the total primary energy supply (or the total supply for a fuel). In this study, we use the substitution equivalent but it could be done using another primary energy accounting method as well. It is important to use the same primary energy accounting method to compare different scenarios.

On the regional level, **net-import dependence** is the difference between exports and imports divided by the regional TPES. Similarly, fuel import dependency or carrier import dependency is the net- imports divided by the primary energy supply of that source. A symmetrical indicator can be calculated for energy exports.

The last energy trade indicator is the **geographic diversity of production** for each globally-traded fuel or carrier. The regional proportion for each globally-traded fuel or carrier is calculated by dividing a region's net-exports for a fuel or carrier by the total volume of trade for the respective fuel or carrier. Then the SWDI index (see below) is calculated for the distribution between regions for energy exporters.

### *Diversity*

For diversity, we use the Shannon-Weiner diversity index (SWDI) which is calculated as  $SWDI = \sum_i p_i \ln(p_i)$  where  $p_i$  is the share of the primary energy source  $i$  in the TPES. The Herfindahl-Hirschmann index<sup>5</sup> (HHI) has also been used in the literature as a measure of diversity (Grubb, Butler, and Twomey 2006; Jansen and Seebregts 2009; Jewell 2011; Neff 2010). Stirling argues that the SWDI is better than the HHI because the ordering of results are not influenced by the base of the logarithm which is used (Stirling 1998).

---

<sup>5</sup> Herfindahl Hirschmann index =  $\sum_i p_i$

Much more important than the question of *which* diversity index is the issue of the diversity of *what*. The most useful analysis of diversity is one that measures the diversity of energy options within a vital energy system. The term “system” means that it consists of resources, materials, infrastructure, technologies, markets and other elements connected to each other stronger than they are connected to the outside world. From the energy security angle, the meaning of such connections is that in case disruption the elements within a system can replace each other, but the elements from outside the system - can't. Indeed diversity indices were first proposed to measure the diversity of sources in an electricity system (Stirling 1994). Electricity systems are both vital to modern economies and the various sources of electricity production are substitutable.

In the paper, we present the diversity of PES as well as the diversity of energy sources used for electricity generation and for liquid fuels. The PES diversity was calculated based on the proportion each primary energy source contributed to the TPES (using the substitution equivalent PES accounting method). The SWDI for electricity and liquids reflects the diversity of fuel sources used for electricity generation and production of liquid fuels.

## 8. Regional definitions

REMIND and WITCH use the definition of regions shown in Map 1.

**Map 1. Definition of regions in REMIND (left) and WITCH (right)**

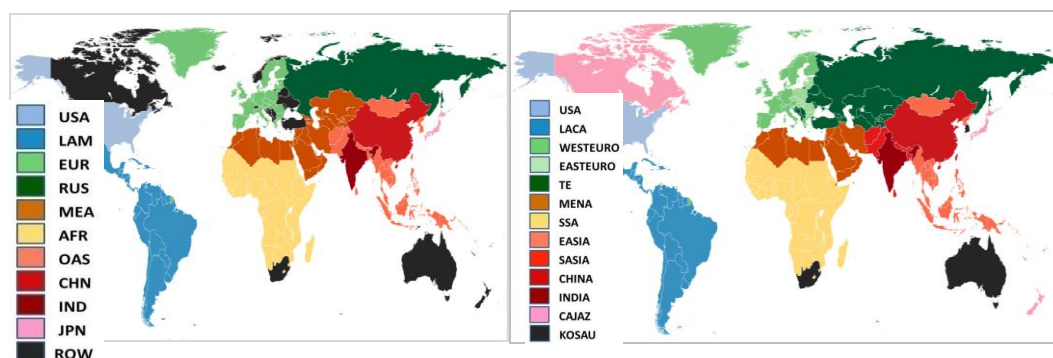


Table S-2 shows mapping of native REMIND and WITCH model regions to RoSE regions (see Kriegler et al. (this issue) for detail) which are used in Figures S-3 and S-7.

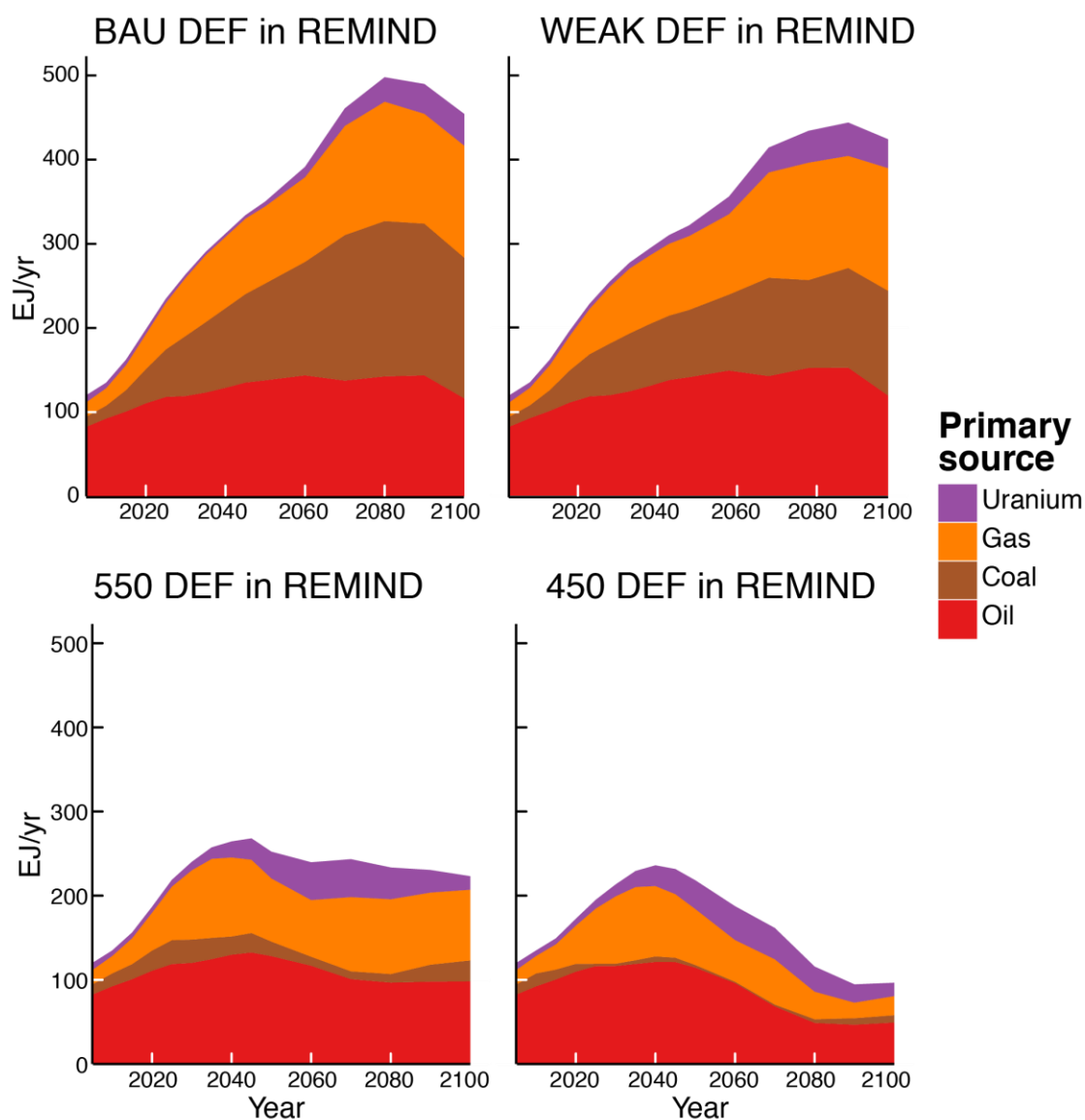
**Table S-4 Mapping of native REMIND and WITCH model regions to RoSE regions**

	REMIND	WITCH
Africa (AFR)	AFR	SSA
China (CHN)	CHN	CHINA
Europe (EUR)	EUR	NEWEURO, OLDEURO
Former Soviet Union (FSU)	RUS	TE
India (IND)	IND	INDIA

	REMIND	WITCH
Japan (JPN)	JPN	CAJAZ
Latin America (LAM)	LAM	LACA
Middle East (MEA)	MEA	MENA
Other Asia (OAS)	OAS	EASIA, SASIA
Rest of the World (ROW)	ROW	KOSAU
Unites States (USA)	USA	USA

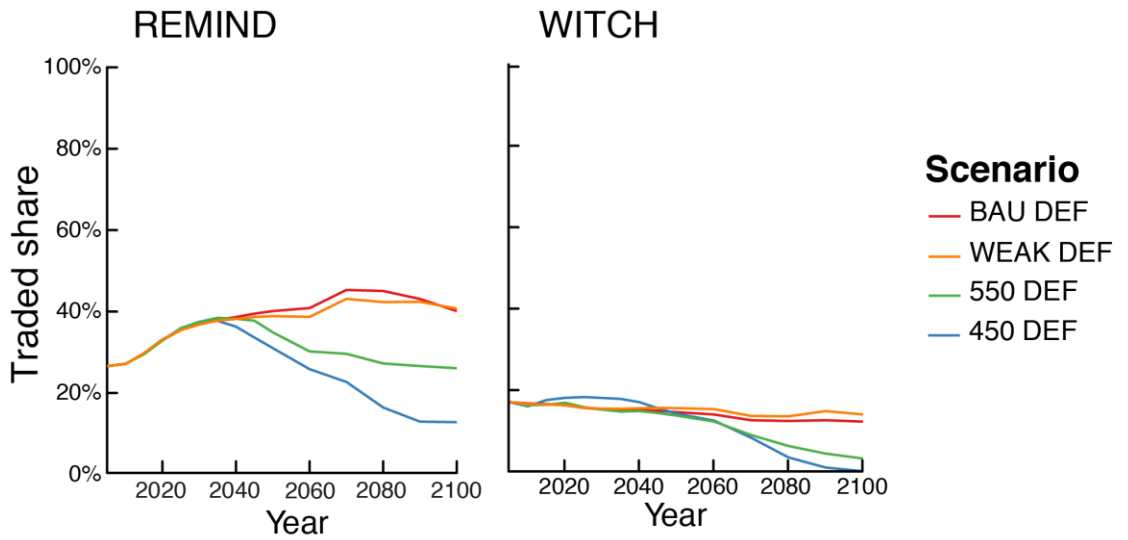
## 9. Supplementary figures and analysis

Figure S-6. Global energy trade in REMIND



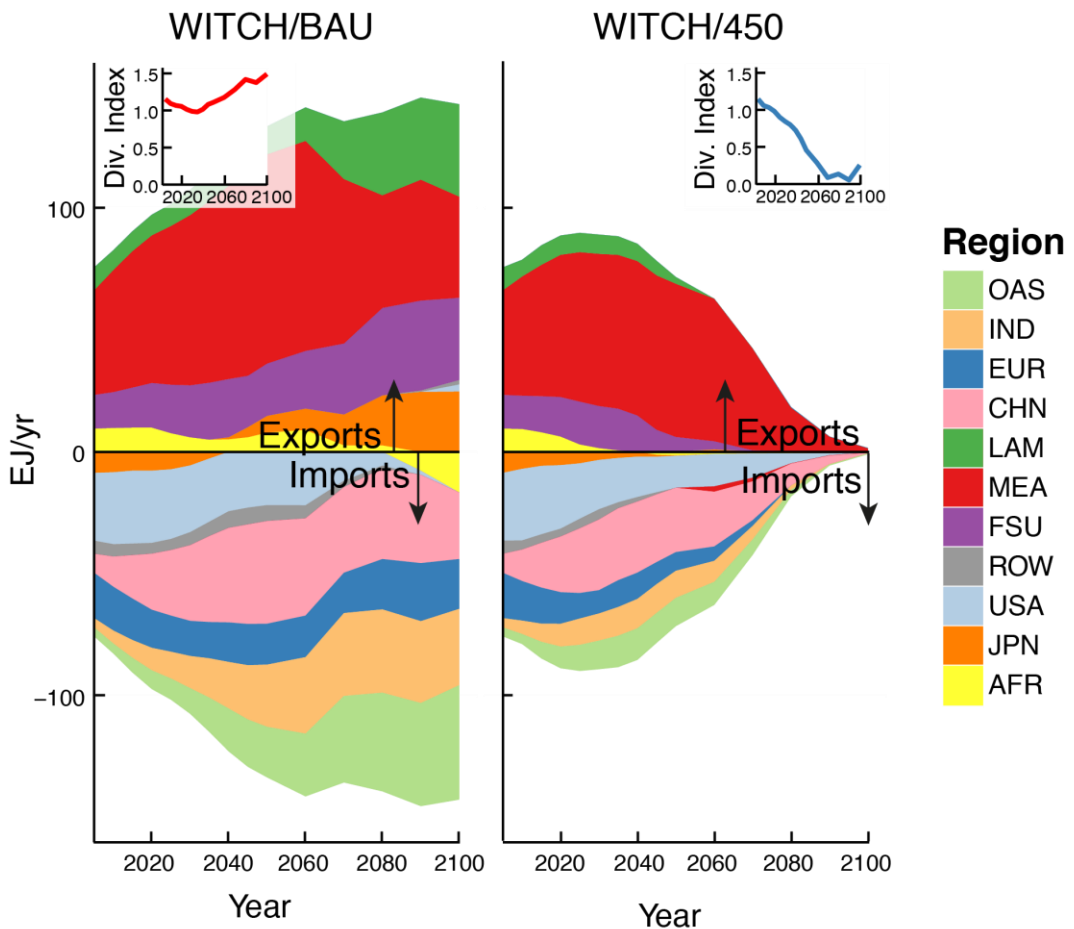
The total global energy trade in REMIND is significantly lower under stringent climate policies due to lower trade in coal and natural gas as compared to the Baseline and WEAK policy scenarios.

**Figure S-7. Trade intensity of TPES in REMIND and WITCH**



Trade intensity (a share of globally traded energy in the total energy use) increases (in REMIND) or stays the same (in WITCH) under the Baseline or WEAK scenarios and declines significantly under stringent climate policies.

**Figure S-8. Regional patterns of oil exports and imports in WITCH under the Baseline and the 450 DEF scenario and the geographic concentration of exports (inset).**



The figure shows volumes of oil exports from/imports to all world regions in the 21st century as modeled in WITCH. The Baseline scenario is on the left and the 450 DEF scenario on the right. Positive values (above the zero axis) indicate exports and negative values – imports. The insets show the geographic diversity of exporting regions for the respective scenarios. The definition of the standard ROSE regions is provided in section 2 above.

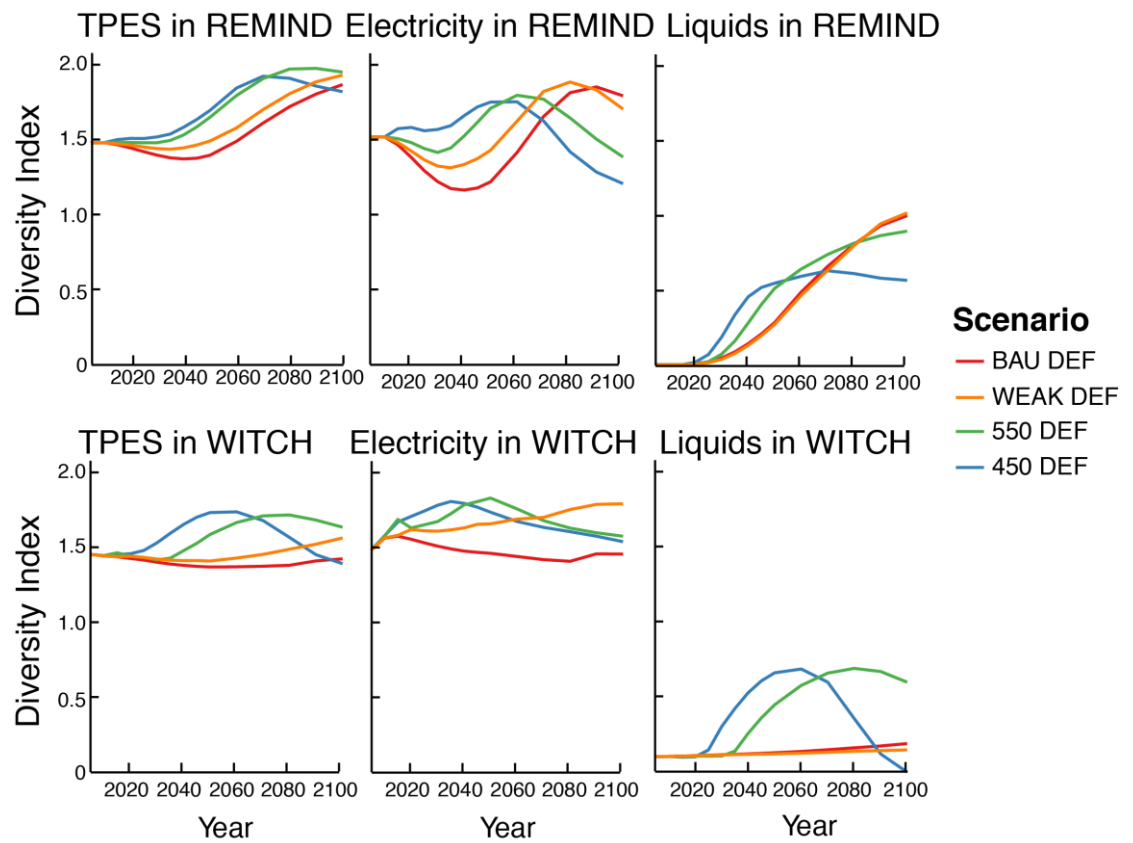
In WITCH, CPs constraint exploitation of non-conventional oil, which results in oil being produced in a smaller number of regions with conventional oil resources such as Middle East (MEA) and the former Soviet Union (FSU). In contrast, in the Baseline, Latin America (LAM), ROW (which includes Australia) and increasingly Canada and New Zealand (part of JPN) also become significant exporters. At the same time, the overall importance of oil in the energy systems declines so these developments become progressively less important for energy security.

Our analysis indicates that in the short-term perspective (up till 2030), the impact of climate policies on oil export revenues of existing exporters is not significant as the demand for conventional oil is not elastic in this period. In the longer term, the number of oil exporting regions is lower under CPs because some regions do not get to export their unconventional oil. It is interesting that stricter climate policies mean relatively larger oil exports in both mainstream exporting regions (FSU and MEA) in the first half of the century for the 450 scenario and for most of the century under the 550 scenario. This is because in the Baseline scenario energy exports from these regions face strong competition from unconventional fossil fuels and coal- or gas-to-liquids technologies. The strictest climate policy would lead to smaller exports in the last third of the century, but the relative importance of energy exports for the economy may have already declined by this time even in the Baseline.

Likewise, in REMIND climate policies lead to a smaller number of regions producing coal which means that more regions have to import it (see Bauer et al. (this issue) for detail).

The figure also shows how in the Baseline scenario India, China, and other Asia replace Europe and USA as the main importers of oil. Lower global energy trade under CPs generally means lower overall energy import dependency of most regions. However, some regions, may import higher proportion of their oil under climate policies especially early in the century because their unconventional oil reserves are less intensely used.

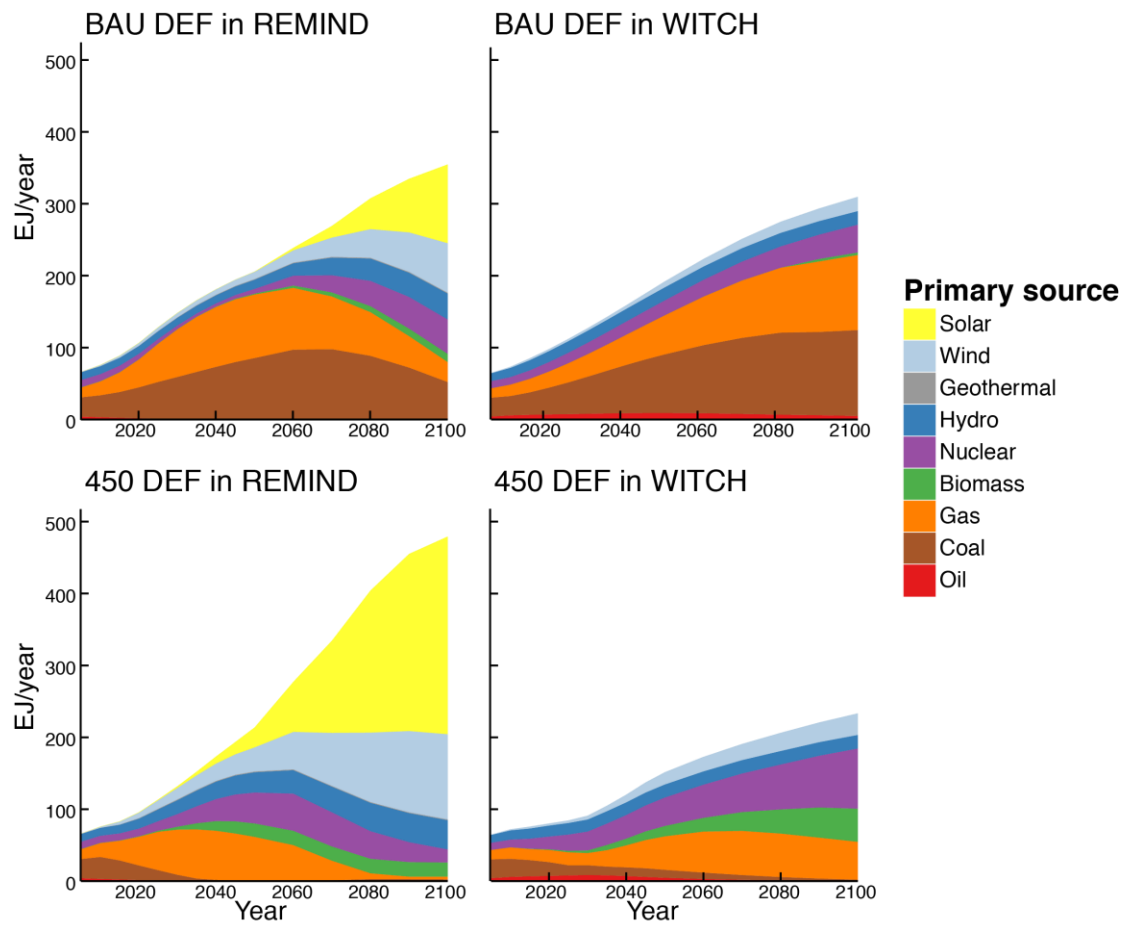
**Figure S-9. Diversity of energy options under different climate policies**



Diversity of energy options rises faster under more stringent climate policies which force faster penetration of new energy technologies, but may decline or plateau by the end of the century when low-carbon technologies start dominating energy systems.

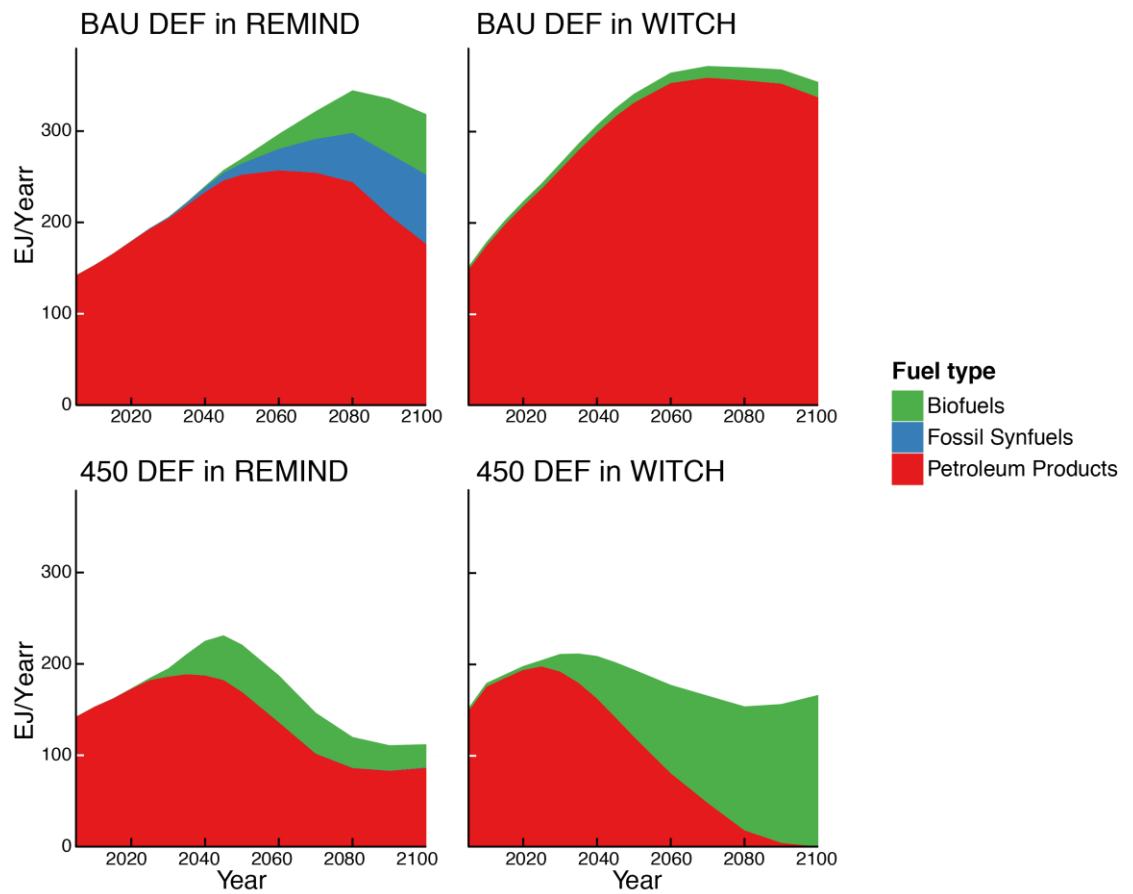


**Figure S-10. Mix of primary energy sources in electricity production**



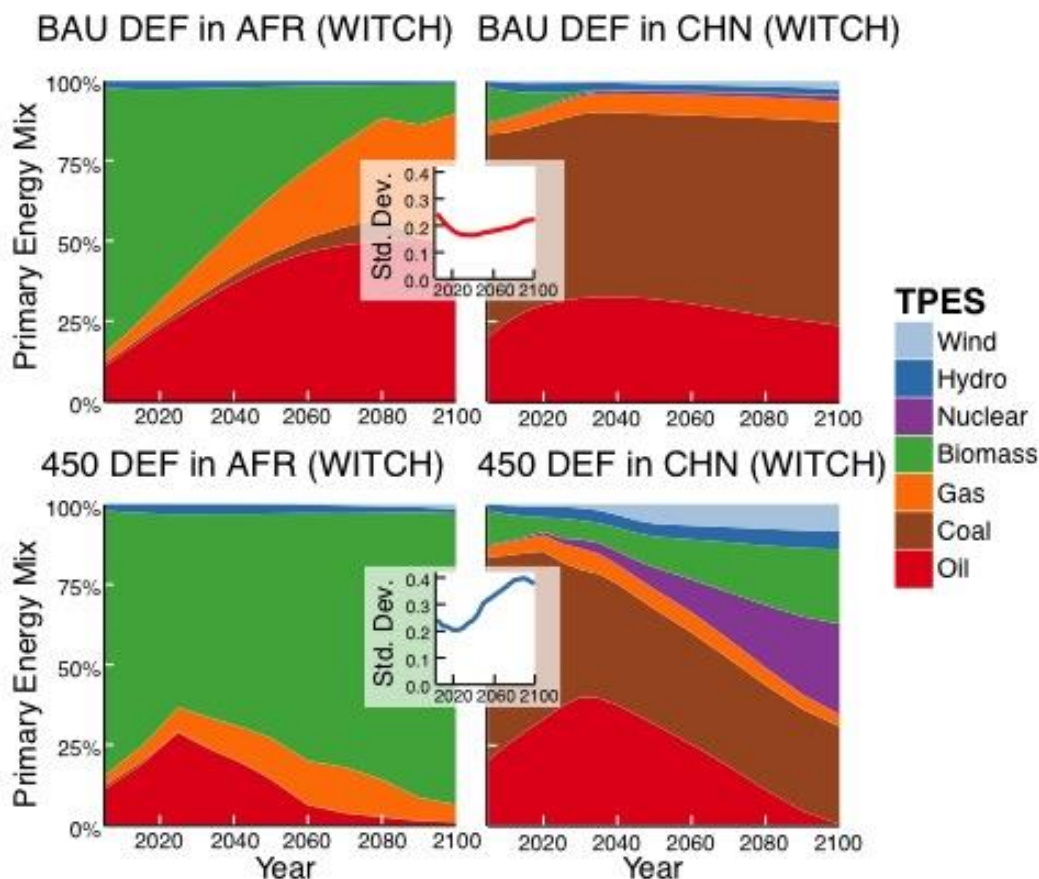
In REMIND, solar energy is increasingly used for electricity production in both the Baseline and the 450 scenario (where it dominates all other energy sources). In both REMIND and WITCH call and gas are practically phased out from electricity production. More nuclear energy is used in WITCH as compared to REMIND.

**Figure S-11. Mix of energy careers in liquid fuels**



Under the Baseline, liquid fuels are dominated by oil in both models. Oil is partially (in REMIND) or fully (in WITCH) replaced by bioenergy under climate policies.

**Figure S-12. Energy mix in Africa (AFR) and China (CHN) and the standard deviation of energy diversity in all the world regions under the Baseline and a 450 scenario in WITCH**



The graphs show the share of different sources in energy supply in China and Africa modeled in WITCH under CPs (the lower chart) and the Baseline (the upper chart) scenarios. The diversity of TPES in China significantly increases under CPs, because in the Baseline it is largely dominated by coal. The diversity of TPES in Africa decreases under the CPs as the energy system is increasingly dominated by biomass. The insets show the standard deviation of regional energy diversity for all world regions. This deviation increases under CPs indicating that the difference between regional energy systems increases under climate policies. This result may be partially caused by the lack of trade in bioenergy in WITCH, but similar results were observed in models which allowed bioenergy trade.

## References

- Grubb, M., Butler, L., & Twomey, P. (2006). Diversity and security in UK electricity generation: The influence of low-carbon objectives. *Energy Policy*, 34(18), 4050–4062. doi:10.1016/j.enpol.2005.09.004
- Jansen, J. C., & Seebregts, A. J. (2009). Long-term energy services security: What is it and how can it be measured and valued? *Energy Policy*, 38(4), 1654–1664. doi:10.1016/j.enpol.2009.02.047
- Jewell, J. (2011). *The IEA Model of Short-term Energy Security (MOSES)*. Paris: OECD/IEA.

Jewell, J., Cherp, A., & Riahi, K. (2012). *Energy security indicators for use in Integrated Assessment Models*. Deliverable No 4.1. LIMITS Project (FP7 Project No 282846). Available at: [http://www.feem-project.net/limits/docs/limits\\_d4-1\\_iiasa.pdf](http://www.feem-project.net/limits/docs/limits_d4-1_iiasa.pdf).

Kriegler E., Mouratiadou I., Brecha R., Calvin K., DeCian E., Edmonds J, Kejun J., Luderer G., Tavoni M., Edenhofer O. Will economic growth and fossil fuel scarcity help or hinder climate stabilization? Overview of the RoSE multi-model study. *Climatic change (this issue)*

Neff, T. (2010). Improving Energy Security in Pacific Asia: Diversification and Risk Reduction for Fossil and Nuclear Fuels. *Project Commissioned by the Pacific Asia Regional Energy Security (PARES) Massachusetts Institute of Technology, Center for International Studies*, 1–22.

Stirling, A. (1994). Diversity and ignorance in electricity supply investment: Addressing the solution rather than the problem. *Energy Policy*, 22(3), 195–216. doi:10.1016/0301-4215(94)90159-7

Stirling, A. (1998). On the economics and analysis of diversity. *Science Policy Research Unit (SPRU), Electronic Working Papers Series, Paper, 28*, 1–156.

## NOTE DI LAVORO DELLA FONDAZIONE ENI ENRICO MATTEI

### Fondazione Eni Enrico Mattei Working Paper Series

Our Note di Lavoro are available on the Internet at the following addresses:

<http://www.feem.it/getpage.aspx?id=73&sez=Publications&padre=20&tab=1>  
[http://papers.ssrn.com/sol3/JELJOUR\\_Results.cfm?form\\_name=journalbrowse&journal\\_id=266659](http://papers.ssrn.com/sol3/JELJOUR_Results.cfm?form_name=journalbrowse&journal_id=266659)  
<http://ideas.repec.org/s/fem/femwpa.html>  
<http://www.econis.eu/LNG=EN/FAM?PPN=505954494>  
<http://ageconsearch.umn.edu/handle/35978>  
<http://www.bepress.com/feem/>

### NOTE DI LAVORO PUBLISHED IN 2014

CCSD	1.2014	Erin Baker, Valentina Bosetti, Karen E. Jenni and Elena Claire Ricci: <a href="#">Facing the Experts: Survey Mode and Expert Elicitation</a>
ERM	2.2014	Simone Tagliapietra: <a href="#">Turkey as a Regional Natural Gas Hub: Myth or Reality? An Analysis of the Regional Gas Market Outlook, beyond the Mainstream Rhetoric</a>
ERM	3.2014	Eva Schmid and Brigitte Knopf: <a href="#">Quantifying the Long-Term Economic Benefits of European Electricity System Integration</a>
CCSD	4.2014	Gabriele Standardi, Francesco Bosello and Fabio Eboli: <a href="#">A Sub-national CGE Model for Italy</a>
CCSD	5.2014	Kai Lessmann, Ulrike Kornek, Valentina Bosetti, Rob Dellink, Johannes Emmerling, Johan Eyckmans, Miyuki Nagashima, Hans-Peter Weikard and Zili Yang: <a href="#">The Stability and Effectiveness of Climate Coalitions: A Comparative Analysis of Multiple Integrated Assessment Models</a>
CCSD	6.2014	Sergio Currarini, Carmen Marchiori and Alessandro Tavoni: <a href="#">Network Economics and the Environment: Insights and Perspectives</a>
CCSD	7.2014	Matthew Ranson and Robert N. Stavins: <a href="#">Linkage of Greenhouse Gas Emissions Trading Systems: Learning from Experience</a>
CCSD	8.2013	Efthymia Kyriakopoulou and Anastasios Xepapadeas: <a href="#">Spatial Policies and Land Use Patterns: Optimal and Market Allocations</a>
CCSD	9.2013	Can Wang, Jie Lin, Wenjia Cai and ZhongXiang Zhang: <a href="#">Policies and Practices of Low Carbon City Development in China</a>
ES	10.2014	Nicola Genovese and Maria Grazia La Spada: <a href="#">Trust as a Key Variable of Sustainable Development and Public Happiness: A Historical and Theoretical Example Regarding the Creation of Money</a>
ERM	11.2014	Ujjayant Chakravorty, Martino Pelli and Beyza Ural Marchand: <a href="#">Does the Quality of Electricity Matter? Evidence from Rural India</a>
ES	12.2014	Roberto Antonietti: <a href="#">From Outsourcing to Productivity, Passing Through Training: Microeconomic Evidence from Italy</a>
CCSD	13.2014	Jussi Lintunen and Jussi Uusivuori: <a href="#">On The Economics of Forest Carbon: Renewable and Carbon Neutral But Not Emission Free</a>
CCSD	14.2014	Brigitte Knopf, Bjørn Bakken, Samuel Carrara, Amit Kanudia, Ilkka Keppo, Tiina Koljonen, Silvana Mima, Eva Schmid and Detlef van Vuuren: <a href="#">Transforming the European Energy System: Member States' Prospects Within the EU Framework</a>
CCSD	15.2014	Brigitte Knopf, Yen-Heng Henry Chen, Enrica De Cian, Hannah Förster, Amit Kanudia, Ioanna Karkatsouli, Ilkka Keppo, Tiina Koljonen, Katja Schumacher and Detlef van Vuuren: <a href="#">Beyond 2020 - Strategies and Costs for Transforming the European Energy System</a>
CCSD	16.2014	Anna Alberini, Markus Bareit and Massimo Filippini: <a href="#">Does the Swiss Car Market Reward Fuel Efficient Cars? Evidence from Hedonic Pricing Regressions, a Regression Discontinuity Design, and Matching</a>
ES	17.2014	Cristina Bernini and Maria Francesca Cracolici: <a href="#">Is Participation in Tourism Market an Opportunity for Everyone? Some Evidence from Italy</a>
ERM	18.2014	Wei Jin and ZhongXiang Zhang: <a href="#">Explaining the Slow Pace of Energy Technological Innovation: Why Market Conditions Matter?</a>
CCSD	19.2014	Salvador Barrios and J. Nicolás Ibañez: <a href="#">Time is of the Essence: Adaptation of Tourism Demand to Climate Change in Europe</a>
CCSD	20.2014	Salvador Barrios and J. Nicolás Ibañez Rivas: <a href="#">Climate Amenities and Adaptation to Climate Change: A Hedonic-Travel Cost Approach for Europe</a>
ERM	21.2014	Andrea Bastianin, Marzio Galeotti and Matteo Manera: <a href="#">Forecasting the Oil-gasoline Price Relationship: Should We Care about the Rockets and the Feathers?</a>
ES	22.2014	Marco Di Cintio and Emanuele Grassi: <a href="#">Wage Incentive Profiles in Dual Labor Markets</a>
CCSD	23.2014	Luca Di Corato and Sebastian Hess: <a href="#">Farmland Investments in Africa: What's the Deal?</a>
CCSD	24.2014	Olivier Beaumais, Anne Briand, Katrin Millock and Céline Nauges: <a href="#">What are Households Willing to Pay for Better Tap Water Quality? A Cross-Country Valuation Study</a>
CCSD	25.2014	Gabriele Standardi, Federico Perali and Luca Pieroni: <a href="#">World Tariff Liberalization in Agriculture: An Assessment Following a Global CGE Trade Model for EU15 Regions</a>
ERM	26.2014	Marie-Laure Nauleau: <a href="#">Free-Riding in Tax Credits For Home Insulation in France: An Econometric Assessment Using Panel Data</a>

- CCSD 27.2014 Hannah Förster, Katja Schumacher, Enrica De Cian, Michael Hübler, Ilkka Keppo, Silvana Mima and Ronald D. Sands: [European Energy Efficiency and Decarbonization Strategies Beyond 2030 – A Sectoral Multi-model Decomposition](#)
- CCSD 28.2014 Katherine Calvin, Shonali Pachauri, Enrica De Cian and Ioanna Mouratiadou: [The Effect of African Growth on Future Global Energy, Emissions, and Regional Development](#)
- CCSD 29.2014 Aleh Cherp, Jessica Jewell, Vadim Vinichenko, Nico Bauer and Enrica De Cian: [Global Energy Security under Different Climate Policies, GDP Growth Rates and Fossil Resource Availabilities](#)