

NOTA DI LAVORO

38.2014

Energy from Waste: Generation Potential and Mitigation Opportunity

By **Francesco Bosello**, Fondazione Eni Enrico Mattei, Euro-Mediterranean Center on Climate Change and University of Milan

Lorenza Campagnolo, Fondazione Eni Enrico Mattei and University of Venice Ca' Foscari

Fabio Eboli, Fondazione Eni Enrico Mattei, Euro-Mediterranean Center on Climate Change and University of Venice Ca' Foscari

Ramiro Parrado, Fondazione Eni Enrico Mattei, Euro-Mediterranean Center on Climate Change and University of Venice Ca' Foscari

Climate Change and Sustainable Development

Series Editor: Carlo Carraro

Energy from Waste:

Generation Potential and Mitigation Opportunity

By Francesco Bosello, Fondazione Eni Enrico Mattei, Euro-Mediterranean Center on Climate Change and University of Milan

Lorenza Campagnolo, Fondazione Eni Enrico Mattei and University of Venice Ca' Foscari

Fabio Eboli, Fondazione Eni Enrico Mattei, Euro-Mediterranean Center on Climate Change and University of Venice Ca' Foscari

Ramiro Parrado, Fondazione Eni Enrico Mattei, Euro-Mediterranean Center on Climate Change and University of Venice Ca' Foscari

Summary

The present research proposes a macroeconomic assessment of the role of waste incineration with energy recovery (WtE) and controlled landfill biogas to electricity generation and their potential contribution to a CO₂ emission reduction policy, within a recursive-dynamic computable general equilibrium model. From the modelling viewpoint, introducing these energy sectors in such a framework required both the extension of the GTAP7 database and the improvement of the ICES production nested function. We focus our analysis on Italy as a signatory of the GHG reduction commitment of 20% by 2020 wrt 1990 levels proposed by the European Community; the rest of the world is represented by 21 geo-political countries/regions. It is shown that albeit in the near future WtE and landfill biogas will continue to represent a limited share of energy inputs in electricity sector (in Italy, around 2% for WtE and 0.6% for biogas in 2020) they could play a role in a mitigation policy context. The GDP cost of the EU emission reduction target for the Italian economy can indeed be reduced by 1% when the two energy generating options are available. In absolute terms, this translates into an annuitized value of 87-122 million €.

Keywords: Climate Change, Mitigation, Energy From Waste

JEL Classification: C68, E27, Q42, Q43, Q54

Authors gratefully acknowledge Ecocerved and Unioncamere for the financial support of the present research, developed within the "E=mc² - Energy from waste: an assessment of the contribution to climate change mitigation policies in Italy" project (http://www.cmcc.it/research/research-projects/concluded-projects/e-mc2?set_language=en). Authors assume full responsibility for all errors and omissions contained in the paper.

This is a pre-print version of the article "Energy from waste: generation potential and mitigation opportunity" published in Environmental Economics and Policy Studies, October 2012, Volume 14, Issue 4, pp 403-420, DOI 10.1007/s10018-012-0043-5.

Address for correspondence:

Francesco Bosello

San Giorgio Maggiore Island 8

30124 Venice

Italy

Phone: 0412700449

Fax: 0412700413

E-mail: francesco.bosello@feem.it

The opinions expressed in this paper do not necessarily reflect the position of
Fondazione Eni Enrico Mattei

Corso Magenta, 63, 20123 Milano (I), web site: www.feem.it, e-mail: working.papers@feem.it

Energy from Waste: Generation Potential and Mitigation Opportunity

F. BOSELLO*^{§,°}, L. CAMPAGNOLO*[#], F. EBOLI*^{§,#}, R. PARRADO*^{§,#}

* FEEM (Fondazione Eni Enrico Mattei), San Giorgio Maggiore Island 8 - 30124 Venice, ITALY, www.feem.it

§ CMCC (Euro-Mediterranean Center on Climate Change), Via Augusto Imperatore 16 - 73100 Lecce, ITALY, www.cmcc.it

° University of Milan, Via Conservatorio, 7 – 20122 Milan, ITALY, www.unimi.it

University of Venice Ca' Foscari, Dorsoduro 3246 – 30123, Venice, ITALY, www.unive.it

Corresponding author:

Francesco Bosello
San Giorgio Maggiore Island, 8
30124 Venice, Italy
E-mail: francesco.bosello@feem.it
Tel: 041-2700449
Fax 041-2700413

Acknowledgements

Authors gratefully acknowledge Ecocerved and Unioncamere for the financial support of the present research, developed within the "E=mc² - Energy from waste: an assessment of the contribution to climate change mitigation policies in Italy" project (http://www.cmcc.it/research/research-projects/concluded-projects/e-mc2?set_language=en).

Authors assume full responsibility for all errors and omissions contained in the paper.

Energy from Waste: Generation Potential and Mitigation Opportunity

Abstract

The present research proposes a macroeconomic assessment of the role of waste incineration with energy recovery (WtE) and controlled landfill biogas to electricity generation and their potential contribution to a CO₂ emission reduction policy, within a recursive-dynamic computable general equilibrium model. From the modelling viewpoint, introducing these energy sectors in such a framework required both the extension of the GTAP7 database and the improvement of the ICES production nested function.

We focus our analysis on Italy as a signatory of the GHG reduction commitment of 20% by 2020 wrt 1990 levels proposed by the European Community; the rest of the world is represented by 21 geo-political countries/regions. It is shown that albeit in the near future WtE and landfill biogas will continue to represent a limited share of energy inputs in electricity sector (in Italy, around 2% for WtE and 0.6% for biogas in 2020) they could play a role in a mitigation policy context. The GDP cost of the EU emission reduction target for the Italian economy can indeed be reduced by the 1% when the two energy generating options are available. In absolute terms, this translates into an annuitized value of 87-122 million €.

Key-words: *climate change, mitigation, energy from waste.*

JEL codes: C68, E27, Q42, Q43, Q54

1. Introduction and background

Sustainable waste management is an issue of increasing importance worldwide. It is widely recognized that the reduction in waste generation both in the production and the final consumption phases and integrated waste management, aimed to a gradual decrease in landfill disposal in favor of materials and energy recovery, can create benefits from social, economic and environmental viewpoints.

Against this background the EU waste strategy (EP, 2008 – art. 4 “Waste hierarchy”) establishes the priorities in waste management. First, waste production should be reduced as much as possible through prevention. Then, post-consumption waste generation should be followed by preparation for re-use or recycling. When it is neither possible to prevent waste generation nor recovering material, the preferred option is energy recovery. Only the residual part of waste can be landfilled. Even in this case, landfills must be endowed with biogas collection plants, in order to recover energy and reduce the methane emitted in atmosphere.

Energy from waste can play a role also within a climate change mitigation strategy. Waste is indeed one of the sector present in the Annex A of Kyoto Protocol (UNFCCC, 2007). Albeit its contribution to global greenhouse gas emissions is less than 5% (around 1300 MtCO₂eq in 2005) (IPCC, 2007), moving from uncontrolled landfill to biogas production or energy recovery can decrease emissions and offsets the use of more polluting fossil fuels.

This research assesses the contribution to power generation and CO₂ emission reduction policies provided, in Italy, by energy recovery from waste incineration¹ and biogas production. These are analyzed within the framework of the 20% emission reduction policy compared to 1990 level by 2020 proposed by the European Union (EC, 2007) and lately confirmed during the 2009 Copenhagen summit. Analyzing this issue in the Italian context is particularly interesting for at least two reasons: its low share of recycling compared to the EU15 average and the still high share of

¹ In this report, we consider only waste incineration with energy recovery, that indeed represents almost the total of the waste incineration (both with and without energy recovery).

(unmanaged) landfilled waste may associate high efficiency gains to energy from waste generation. In addition, Italy is amongst the EU countries with the highest dependence on imported energy, and highest abatement costs. It is therefore important to verify the effective role that an apparently abundant alternative energy source could play. The study benefited from the detailed and updated ECOCERVED country database on waste production and management reported by product typology and related shares of disposal/recycling/incineration, for each of the 110 Italian administrative units (province).

The investigation tool chosen for the analysis is a top-down, recursive-dynamic computable general equilibrium (CGE) model for the world economy: ICES (Eboli *et al.*, 2010), enriched to include waste to energy and biogas production from landfill among the available inputs to the energy sector. Since the beginning of the Nineties, CGE models have been increasingly used for the economic assessment of climate change mitigation policies (see e.g. Burniaux *et al.*, (1992), Waisman (1995), Gottinger, (1998). For an updated review on EU climate policy, Bohringer *et al.* (2009)). Peculiar to this approach is the explicit modelling of international and domestic demand and supply flows linking different industries, and households in the economy. Perfectly flexible prices and rational agents guarantee market clearing and the optimal use of resources. More interestingly, price changes, induced by say a taxation policy, determine an overall reallocation of demand and supply all over the system which triggers and is influenced by macroeconomic feedbacks. In the context of the present research it is particularly important to link energy demand and supply pattern to the economic cycle, to sectoral dynamics originating flows of supply and demand to and from the energy sectors, to fluctuations in fossil fuel prices. To correctly estimate cost and effectiveness of a given mitigation policy and the role of energy generation from waste it is also fundamental to consider the degree of international coordination, the number and characteristics of the countries involved. All these aspects are taken into account by the present study. And, indeed, albeit the focus of the investigation is Italy, results are presented also for the EU27 and the “rest of the world”.

To the best of our knowledge, no similar study has been conducted before especially for Italy. Available assessments in this field are performed mainly in a partial-equilibrium framework confined to the waste sector and without direct reference to the effects on the costs of mitigation policies. In this vein for instance Monni *et al.* (2006) and Delhotal *et al.* (2006) evaluate the costs at the world scale connected to the reduction of CH₄ emissions from waste disposal through a gradual switching from unmanaged landfilling to different waste management options. They conclude that the potential greenhouse gases emissions reduction from waste can be the 80% if landfilling were substituted by biogas recovery and thermal processes for waste-to-energy. Monni *et al.* (2006) show also that worldwide a 70% emission reduction from the waste sector could be fostered by a carbon tax of 100 US\$/tCO₂ eq., but that, interestingly, half of this could be accomplished at negative costs. However, their approach only considers mitigation options within the waste sector, neglecting both a more complex mitigation strategy covering the overall spectrum of energy-intensive sectors and the interaction with the rest of the economic system involving adjustments in economic agents' choices.

Developing a partial equilibrium study for Italy, Bianchi (2008) estimates that an increase of recycling of 15% by 2020 with respect to current level can entail energy savings of 32% and a CO₂ emissions reduction of 17 million tons. This study also quantifies in 3,5 million tons the reduction of CO₂ if energy from waste would replace coal-based power. However, Bianchi (2008) does not analyse the impact on the overall energy sector, nor quantifies the potential contribution of the waste sector to mitigation policy costs.

In what follows, section 2 presents the data used and provides a picture of waste to energy and biogas recovery from landfill in Italy; section 3 briefly describes the ICES model and its improvement; section 4 introduces major findings. Finally section 5 concludes.²

² See Bosello *et al.* (2010) for the extended version of the research.

2. The Italian waste management sector: data and historical overview

Data concerning volumes, technical potentials, emissions from waste incineration, and biogas production in Italy have been collected and elaborated by ECOCERVED³. The database produced is the most complete and up-to-date data set available for Italy, gathering the information that selected private and public operators in the industrial sector should release in compliance with the Italian regulation (D.Lgs. 152/2006). It covers almost 80% of urban wastes and between the 10% and 50% (depending on the sector) of industrial waste.

In recent years (2002-2006), the volume of wastes used for energy recovery (so-called “R1” category, hereafter WtE) grew in Italy by 27% with a slight slowdown in the last two years. Biogas recovered from landfills increased more considerably (330%); however, that trend was not only due to the diffusion of biogas collection, but also to an increase in the number of firms asked to report their own biogas production through the MUD (“Modello Unico di Dichiarazione Ambientale”).

Insert table 1 here

Insert table 2 here

In 2006, WtE and landfill biogas plants provided respectively 1.02 and 0.31 million tons of oil equivalent (Mtoe) to the Italian power generation sector, contributing a small share of total energy supply (0.7% and 0.2%, respectively). This quota increases if we refer only to the electricity sector: the two sources met respectively 1.9% and 0.6% of energy demand, playing anyway a marginal role compared to traditional fossil fuels.

Therefore, the respective contribution of WtE to total carbon dioxide emissions is also limited: 2.8 million tons of CO₂ (0.58% of the Italian total energy generation or 1.88% of the total electricity

³ This is an Italian institute devoted to the collection of environmental data on behalf of the main industrial and commerce Italian associations. Since 1996, the ECOCERVED database collects data about waste categories defined in EWC (European Waste Catalogue), keeping also track of waste management options.

generation (ISPRA, 2009)).⁴ As emerges crossing IEA (2009a) data on energy volume with ISPRA (2009) data on carbon dioxide emissions, emission intensity of waste incineration is slightly higher than that of natural gas, but lower than that of oil. Biogas is considered a clean energy source since CO₂ emissions resulting from electricity generation are commonly treated as natural organic compounds (like other kind of biomass) and therefore not included in emissions statistics (IPCC, 2007).⁵

3. Introducing waste to energy and landfill biogas in the ICES CGE model

This research uses a recursive-dynamic economic general equilibrium model, developed by the Fondazione Eni Enrico Mattei: ICES (Intertemporal Computable Equilibrium System) (Eboli *et al.*, 2010).⁶

It relies upon the GTAP7 database (Narayanan and Walmsley, 2008) reporting all the economic flows and market exchanges among productive sectors and economic agents within all economic systems in a specific year. Those data are organised in the form of input output tables derived from countries' social accounting matrices in 2004 for 113 countries/regions and 57 productive sectors, plus households and government.

Dynamics in the model are originated by an endogenous investment process, based on the equalization of expected rate of return to capital, linking inter-temporally capital stocks in different periods.

As standard in CGE model, in ICES each sector interacts with the others as any change in relative prices, induced by technology or policy shocks reallocates production factors, intermediate inputs and goods across markets in order to maximize producer and consumer revenues.

⁴ GHG emissions imputable to the overall waste management are much higher: in 2006, they amounted to 18.7 million tons of CO₂ equivalent.

⁵ It is important to notice that biogas collection and the resulting use in power generation can greatly contribute to climate change mitigation, reducing the methane (CH₄) emissions in atmosphere from uncontrolled landfills; as known, methane has a much higher global warming potential than CO₂ and represents the most serious environmental concern in waste management.

⁶ Detailed information on the model can also be found at the ICES web site: <http://www.feem-web.it/ices>.

For this study, ICES details the world into 22 geo-political countries/regions, among which Italy, linked by international trade flows of capital, goods and services (table 3, left-side). For expositional convenience, and according to the purpose of this work, the results will be shown only for Italy, the EU 27 and a “Non-EU” rest of the world aggregate.

The sectoral detail (table 3, right-side) represents, in addition to the electricity sector, energy and carbon intensive industries, since they are directly affected by the development of WtE and biogas production and by mitigation policies; the sector “Oth_ind” is a bundle of non-energy intensive productive sectors.

Insert table 3 here

In this formulation, ICES introduces WtE and biogas among those sectors providing inputs to electricity generation. This involved an extension of the database and a change in the model specification with reference to the production function of electricity.

Figures 1a and 1b compare the old and the new ICES production trees respectively. The energy composite is now enriched by two additional non electric input: waste to energy and landfill biogas which are also two new economic sectors selling their output to the electricity sector.⁷ Waste to energy appears in the first non electric top nest, landfill biogas in the bottom “non coal” nest. The assumption is that landfill biogas is closer to natural gas and thus a closer substitute for the (non-coal) fossil fuel bundle. Waste to energy is on the contrary an easier substitute for the fossil fuel basket as a whole and a more difficult one with single non-coal fossil fuels. The quite low value of the substitution elasticity set in both nests (0.05 and 0.125 for biogas and WtE, respectively) is based on qualified judgments from Italian experts and verified that it was also consistent with the development of both energy generation processes expected in the baseline.⁸

⁷ The electricity sector in GTAP7 also includes heat and heat/electricity cogeneration.

⁸ A sensitivity analysis has been performed increasing by up to 5 times the substitution elasticities of both WtE and landfill biogas with other energy generation technologies in the ICES production nest. On the one hand, these are the

Insert Figure 1 here

In the GTAP 7 database, the value of input demanded by the electricity sector does include purchases of WtE and landfill biogas; however, these are not disentangled.

The first step is thus to single them out. In the case of Italy, demanded Mtoe of WtE derive from ECOCERVED and the average cost of waste treatment for incineration from Consonni *et al.* (2005). Values for other countries/regions have been estimated using IEA (2009a, b) and Consonni *et al.* (2005). For landfill biogas, unit costs have been estimated according to the outcomes of the CASES project, while quantity demanded according to Euroobserver (2009) for EU countries and IEA (2009a, b) for non-EU countries.

A similar procedure has been used to allocate input demand by the two new sectors. That of WtE has been disentangled from the input demand of the electricity sector; that of landfill biogas from the input demand of the gas distribution sector replicating in demand shares those of sectoral production. For both WtE and landfill biogas input demand is mainly made of capital and labour (Consonni *et al.*, 2005, Sue Wing, 2008), with a minor contribution of public services, transport, electricity used to produce WtE before the combustion process and a small residual of intermediates from “other industries” (UN, 2002; European IPPC Bureau, 2006b, Enea, 2006).

4. Results

key parameters driving the development of the two sources in the baseline and in the policy case; on the other hand, it is highly uncertain, basically lacking of estimates used as reference in the top-down literature.

As long as the elasticities are doubled or tripled no detectable changes are shown. For higher values, some changes are indeed experienced, not in the baseline trends of the two energy generation technologies, but on their potential to reduce policy costs. In general higher substitution elasticity is associated to a reduced cost saving opportunity provided by the technology. This may appear counter intuitive, but is in fact perfectly understandable considering that the mitigation policy reduces energy use, including that of WtE and landfill biogas. The higher the elasticity, the less the use of WtE and landfill biogas decreases in the policy case and the closer it is to the baseline case. Therefore, the benefits offered by the two policies also decrease as we compute them contrasting policy costs when their use is free against policy cost when their use is fixed at the baseline levels (see section 4).

The period chosen for the investigation is 2007-2020.⁹ In this time-frame the technological assumptions embodied in the model remain sufficiently stable. More importantly, the final year represents a significant corner stone for the EU mitigation strategies. As a matter of fact, in 2020 the third trading period of European *Emission Trading System (EU-ETS)* will come to an end and also 2020 is the deadline to meet the target for the 20% reduction of GHG emissions with respect to the level of 1990 (European Commission, 2007).

In order to consider the uncertainty in future economic dynamics, two reference scenarios are proposed: one “optimistic” and the other “prudential”.

In each scenario, the effects of the 20% EU mitigation policy are assessed. It is assumed that the policy is implemented cost-efficiently (that is at minimum cost), using an EU emission allowances trading system which grants the best allocation of abatement effort across countries and sectors. Coherently with the EU regulation, this exercise assumes that WtE and biogas production do not participate directly to the emission trading scheme. Nevertheless, they are indirectly involved in the mitigation policy as part of the productive mix and as possible substitutes of other energy sources.

4.1 The reference scenarios

In the optimistic scenario, Italian and EU economies grow the 2.8% and 2.5% per year, respectively (Figure 2). In Italy, carbon dioxide emissions increase yearly the 0.5% (Figure 3). Energy production from waste incineration and biogas increases at a rate of 1.27% and 0.75%, respectively (Figures 4 and 5). This increase is consistent with the trend in national energy demand (+0.64% per year) and with the long-run pattern of fossil fuel prices, which increase the competitiveness of alternative sources.

In the prudential scenario, the annual GDP growth is around 1.4% and 1.2% in Italy and EU, respectively (Figure 2). Emissions in Italy grow annually of 0.3% (Figure 3). WtE production

⁹ Note that the model simulates the period 2004-2020. Nevertheless, we worked to replicate the historical trend (GDP, emission, fossil fuels' prices and so on) for the period 2004-2007.

increases annually at a rate of 0.88%, whereas biogas decreases slightly of 0.2% per year (Figures 4 and 5), assuming a gradual reduction of waste destined to landfill. In both scenarios we assumed that oil prices double in the reference period (in prudential scenario, the increase is slightly lower).

Insert figure 2 here

Insert figure 3 here

Insert figure 4 here

Insert figure 5 here

The energy input mix of the electricity sector changes marginally in both scenarios (Figure 6): WtE slightly increases its share from 1.9% in 2007 to 2.1% in 2020 in the optimistic scenario and to 2.0% in the prudential scenario; biogas share remains roughly constant to 0.6% in both scenarios. This pattern is similar to the European trend (Figure 7) that is characterized by a more intensive use of coal (mainly in East-European countries and Germany) and a lower use of natural gas.

Insert figure 6 here

Insert figure 7 here

4.2. Waste to energy and landfill biogas in a mitigation policy context: implications for energy production

The EU mitigation commitment implies a reduction of CO₂ emissions amounting to -20% with respect to 1990 by 2020. In the cost-efficient setting this imposes Italy, an emission reduction of the -18.9% and -16.1% compared to business-as-usual (-5.6% and -5.1% with respect to 1990) in the optimistic and prudential scenarios, respectively (Figure 8). In 2020, the price of carbon allowances

in the EU settles at around 47 and 39 €. Implementation costs in Italy range between the 1.1% and 0.9% of GDP (Figure 9), slightly below the European average.

Insert figure 8 here

Insert figure 9 here

The Non-EU block, which includes all the countries not taking part to the emission reduction effort, experiences a moderate GDP increase (0.2% and 0.1%). This is the well known *leakage effect*: goods produced where environmental regulation is softer are less costly and consequently more competitive in international market. It generates an increased demand and a resulting benefit for more polluting exporting countries.

This partially neutralizes the effectiveness of the European mitigation policy (Figure 8): in 2020, in front of a EU reduction of 1,319 and 1,096 million tons of CO₂, the rest of the world increases its emissions by 579 and 436 million tons of CO₂, with a leakage effect of about 40%. It is important to highlight that such a high leakage comes from the pessimistic hypothesis of not even small emission reduction commitment in Non-EU countries.

Consequent to the mitigation policy, total energy demand in Italy shrinks (-16.1% and -13.7% respectively in the optimistic and prudential scenarios); the reduction in electricity demand (-26.1% and -22.7%) is even stronger like that of energy sources required for domestic power production (Figure 10). The demand reduction affects more severely carbon intensive inputs: coal (-48.1% and -43.8%), oil (-20% and -17.4%), natural gas (-26.8% and -22.4%).

Insert figure 10 here

Against this background, even if WtE and landfill biogas are not directly involved in mitigation efforts and biogas is commonly considered a clean productive factor, demand of both decreases (-

17.7% and -14.8% in the first scenario and -15.8% and -13% in the second one). Indeed, the aggregate effect of overall demand contraction is dominant on substitution effect among energy inputs.

The energy mix in electricity sector shows an increase in WtE and biogas shares (however, in absolute values the percentage change is lower), a substantial constant contribution of natural gas and a clear substitution effect between coal and oil (Figure 11).

Insert figure 11 here

4.3. Waste to energy and biogas in mitigation policy context: implications for the policy implementation costs

Which could be the impact of energy production from waste and biogas on the costs of the mitigation policy? In other words, by how much the presence of these two technological options for power generation can facilitate the achievement of the mitigation targets? This can be assessed by comparing the overall costs of the mitigation policy when countries are and are not free to adjust the use of the two technologies in response to the policy. Operationally, the latter case translates in constraining countries subjected to the policy to use WtE and biogas at their baseline levels. The difference between policy costs with free or “frozen” WtE and biogas defines the value of the additional flexibility provided by the two options.¹⁰

Table 4 shows that the flexibility associated to WtE in Italy is not negligible: 122 and 87 million euro yearly in the optimistic and prudential scenarios, respectively. This means that the possibility to include WtE in the technological portfolio could save the 1% of the total policy cost. In absolute terms, as a comparison, the value of neglecting the contribution of WtE is much lower than that of natural gas. But this is not surprising: we can expect that the more relevant an energy source and the

¹⁰ A similar concept is that of “option value” applied by Leimback *et al.* (2010) which relates to the introduction of specific technologies in the energy mix. It is defined explicitly as the contribution provided by a non-traditional energy source to cost reduction in achieving a policy target. In our case however the situation is rather peculiar as total electricity use, and accordingly also that of energy from waste is reduced by the policy.

corresponding technology in power generation are, the more important are their role in the mitigation policy and therefore their flexibility value. Natural gas has indeed a paramount role as primary energy source and in electricity generation. It can be however more interesting to compare the two generation technologies at “equivalent energy contribution” – in the specific freezing natural gas utilization for the same amount of energy generated by WtE -. In this case, the latter in fact shows a higher flexibility value.

Finally, policy cost saving associated to biogas is extremely small (0.3 and 0.1 million euro every year), which is due to its marginal role in power generation.

Table 5 and 6 allow some comparison with and within the EU. In Italy, the value to give up to WtE and biogas is higher than the EU-27 average which is influenced by the New Member Countries performance where the role of the two inputs is lower. The Italian data is instead lower than, but comparable with, the average value of France, Germany, Spain and UK, chosen for their similar economic system.

Insert table 4 here

Insert table 5 here

Insert table 6 here

5. Conclusions

This research assessed the possible development of Waste to Energy (waste incineration with energy recovery) and landfill biogas used for electricity generation and their potential cost-saving contribution to a CO₂ emission reduction policy in Italy.

From the energy generation point of view, in the medium term WtE and landfill biogas will remain a minor share of energy inputs for the electricity sector (around 2% for waste incineration and 0.6%). While waste incineration could nonetheless show interesting growth rates (18% - 12% in the

period 2007-2020), biogas collection could gradually diminish in a scenario with slow growth rate and decreasing use of waste landfilling (-3.2% in period 2007-2020).

Even though considering the marginality of these two sectors, WtE could play a role in a mitigation policy context. The policy costs that could be saved because of the flexibility provided by the possibility to produce electricity also from wastes, corresponds to 1% of the total policy costs or to 87-122 million € each year in absolute terms.

It is worth to point out that, even if WtE and biogas are not directly involved in mitigation efforts and biogas is commonly considered a clean productive factor, the demand of both decreases (-17.7% and -14.8% in the first scenario and -15.8% and -13% in the second one). In this case the aggregate effect of overall demand reduction is dominant on substitution effect among energy inputs.

References

- Bianchi D., (2008), *Il Riciclo Ecoefficiente – Performance e Scenari Economici, Ambientali ed Energetici*, Edizioni Ambiente, Milano.
- Bigano A., Bosello F., Roson R. and Tol, R.S.J. (2006), “Economy-Wide Estimates of the Implications of Climate Change: a Joint Analysis for Sea Level Rise and Tourism”, *FEEM Working Paper N.135.2006*.
- Bohringer C., Rutherford T. and Tol R., (2009), “The EU 20/20/20 targets: an Overview of the EMF22 Assessment”, *Energy Economics*, 31: 268-273.
- Bosello F., Botteri M., Campagnolo L., Carraro C., Eboli F., Medoro M. and Parrado R., (2010), *Energia da Rifiuti in Italia: Potenzialità di Generazione e Contributo alle Politiche di Mitigazione dei Cambiamenti Climatici*, available on line at: http://www.ecocerved.it/Download/2010-E=mc2_Relazione.pdf
- Burniaux J.M., Nicoletti G. and Oliveira-Martins J., (1992), “GREEN: a Global Model for Quantifying the Costs of Policies to Curb CO₂ Emissions”, *OECD Economic Studies* n. 19.
- Burniaux J.-M. and Truong T.P. (2002), “GTAP-E: An energy environmental version of the GTAP model”, *GTAP Technical Paper n.16*.
- Consonni S., Giugliano M. and Grosso M., (2005), “Alternative strategies for energy recovery from municipal solid waste. Part B: emission and cost estimates”, *Waste Management*, 25, pp. 137-148.
- Delhotal, C., de la Chesnaye F., Gardiner A., Bates J., and Sankovski A., (2006), “Estimating potential reductions of methane and nitrous oxide emissions from waste, energy and industry.” *The Energy Journal*, Special Issue: Multi-Greenhouse Gas Mitigation and Climate Policy, F.C. de la Chesnaye and J. Weyant (eds).
- Eboli F., Parrado R. and Roson R. (2010), "Climate Change Feedback on Economic Growth: Explorations with a Dynamic General Equilibrium Model", *Environment and Development Economics*, 15 (5): 515-533.

EC - European Commission (2007), *Limiting Global Climate Change to 2 degrees Celsius. The way ahead for 2020 and beyond*, COM/2007/2.

ENEA, (2006), *Rapporto sul Recupero Energetico da Rifiuti Urbani in Italia*, Roma.

EP - European Parliament (2008), *Directive 2008/98/EC*.

EUROSERVER (2009), *Interactive EUROSERVER Database*, (<http://www.euroserver.org/>).

European IPPC Bureau (2006b), *Waste Incineration*, Best Available Techniques Reference Documents.

European IPPC Bureau (2006a), *Waste Management*, Best Available Techniques Reference Documents.

Gottinger H.W., (1998), "Greenhouse Gas Economics and Computable General Equilibrium", *Journal of Policy Modeling*, 20(5): 537-580.

Hertel, T.W. (1997), *Global Trade Analysis: Modeling and applications*, Cambridge University Press, Cambridge.

Hertel, T.W., Tsigas, M. and Narayanan B.G. (2008), "Primary Factor Shares", on Dimaranan, B.V. (2006), *the GTAP 7 Data Base*, cap. 12.A, Center for Global Trade Analysis, Department of Agricultural Economics, Purdue University.

IEA – International Energy Agency (2009a), *Energy Balances of OECD countries – Extended Balances*.

IEA – International Energy Agency (2009b), *Energy Balances of Non-OECD countries – Extended Balances*.

IMAGE (2001), IMAGE (2001), *The IMAGE 2.2 Implementation of the SRES Scenarios*, RIVM CD-ROM Publication 481508018, Bilthoven, The Netherlands.

IPCC (2007), *Waste Management*, chapter 10 of Contribution of Working Group III to the *Fourth Assessment Report of the Intergovernmental Panel on Climate Change* (www.ipcc.ch).

- ISPRA (2009), *Italian Greenhouse Gas Inventory 1990-2007 – National Inventory Report 2009*, (http://unfccc.int/national_reports/annex_i_ghg_inventories/national_inventories_submissions/items/4771.php).
- Leimback M., Bauer N., Baumstark L., Lüken M. and Edenhofer O., (2010), “Technological Change and international Trade – Insights from REMIND-R”, *The Energy Journal*, 31(2): 109-136.
- McKibbin, W.J, Wilcoxon, P.J., (1998), “The Theoretical and Empirical Structure of the G-Cubed Model”, *Economic Modelling* 16(1), 123–148.
- Monni, S., Pipatti R., Lehtilä A., Savolainen I. and Syri S., (2006), “Global climate change mitigation scenarios for solid waste management”, Espoo, *Technical Research Centre of Finland. VTT Publications, No. 603*, pp 51.
- Narayanan B.G. and Walmsley T.L., (2008). *Global Trade, Assistance, and Production: The GTAP 7 Data Base*, Center for Global Trade Analysis, Purdue University.
- Roson, R., (2003), *Modelling the Economic Impact of Climate Change*, *EEE Programme Working Papers Series*, International Centre for Theoretical Physics “Abdus Salam”, Trieste, Italy.
- UN, (2002), *International Standard Industrial Classification of All Economic Activities - ISIC Rev. 3.1*, (<http://unstats.un.org/unsd/statcom/doc02/isic.pdf>)
- UNFCCC, (1997), *Kyoto Protocol to the United Nations Framework Convention on Climate Change*, (<http://unfccc.int/resource/docs/convkp/kpeng.pdf>).
- U.S. Energy Information Administration, (2007), *Annual Energy Outlook 2007 - With Projections to 2030*, Office of Integrated Analysis and Forecasting, U.S. Department of Energy, Washington.
- Wajzman N., (1995), “The Use of Computable General Equilibrium Models in Evaluating Environmental Policy”, *Journal of Environmental Management*, 44: 127-143.

Appendix. The ICES model

As in all CGE models, ICES makes use of the Walrasian perfect competition paradigm to simulate market adjustment processes, although the inclusion of some elements of imperfect competition is also possible. Industries are modeled through a representative firm, minimizing costs while taking prices as given. In turn, output prices are given by average production costs. The production functions are specified via a series of nested CES functions. Domestic and foreign inputs are not perfect substitutes, according to the so-called “Armington” assumption (Figure A1).

A representative consumer in each region receives income, defined as the service value of national primary factors (natural resources, land, labor, capital). Capital and labor are perfectly mobile domestically, but immobile internationally. Land and natural resources, on the other hand, are industry-specific. This income is used to finance three classes of expenditure: aggregate household consumption, public consumption, and savings. The expenditure shares are generally fixed, which amounts to saying that the top-level utility function has a Cobb-Douglas specification.

Public consumption is split in a series of alternative consumption items, again according to a Cobb-Douglas specification. However, almost all expenditure is actually concentrated in one specific industry: non-market services.

Private consumption is analogously split in a series of alternative composite Armington aggregates. However, the functional specification used at this level is the Constant Difference in Elasticities form: a non-homothetic function, which is used to account for possible differences in income elasticities for the various consumption goods (Figure A2).

Investment is internationally mobile: savings from all regions are pooled and then investment is allocated to achieve equality of expected rates of return to capital. In this way, savings and investments are equalized at the world, but not at the regional level. Because of accounting identities, any financial imbalance mirrors a trade deficit or surplus in each region.

The recursive-dynamic engine for the model can replicate dynamic economic growths based on endogenous investment decisions. As standard in the CGE literature the dynamic is recursive. It consists of a sequence of static equilibria (one for each simulation period which in the present exercise is the year) linked by the process of capital accumulation. As investment decisions, which build regional capital stocks are taken one year to the other, i.e. not taking into account the whole simulation period, the planning procedure is “myopic”. Two factors endogenously drive investment and its international allocation: the equalization of the expected rate of return to capital and the international GDP differentials. In other words, a country can attract more investment and increase the rate of growth of its capital stock when its GDP and its rate of return to capital are relatively higher than those of its competitors.

Table 1 - Waste used for incineration with energy recovery (2002-2006)

Year	Tons
2002	3,096,965
2003	3,599,050
2004	4,134,659
2005	4,027,931
2006	3,921,904

Fonte: Ecocerved (MUD 2003-2007)

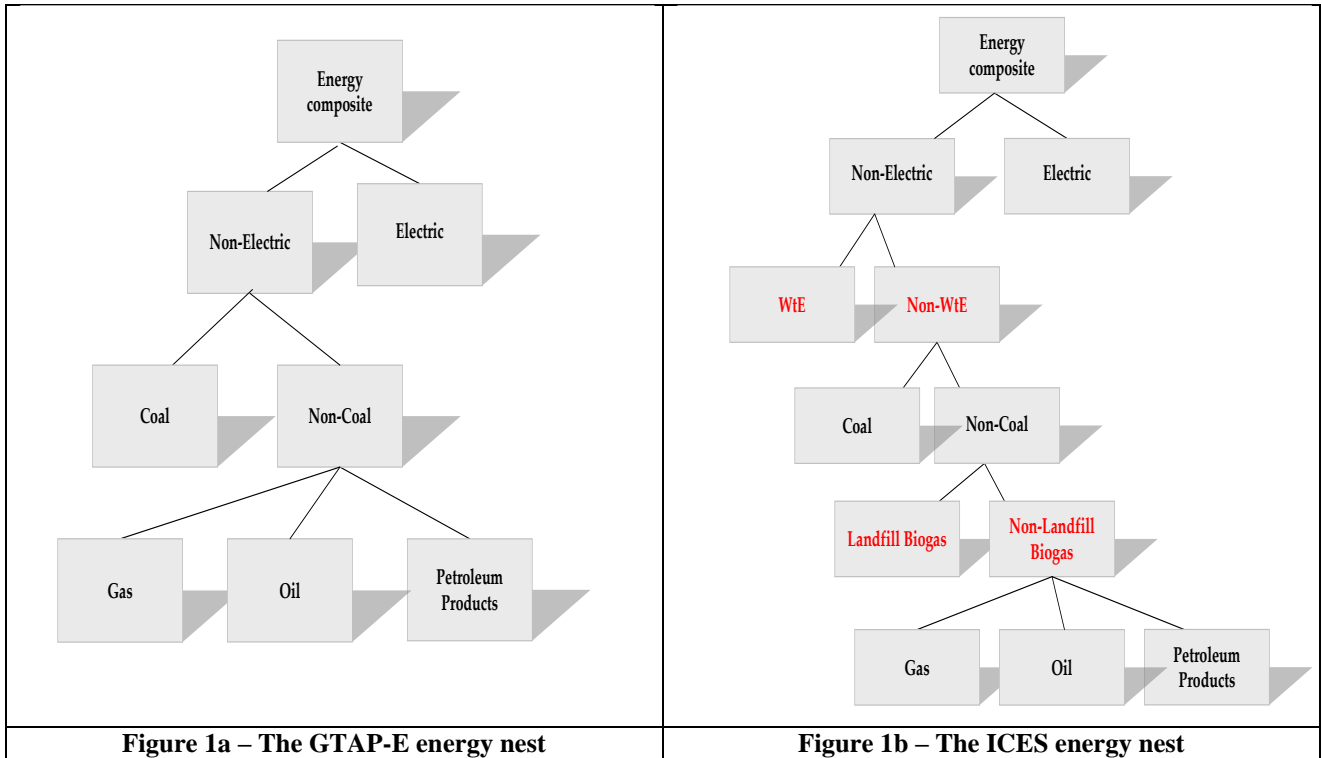
Table 2 - Landfill biogas used for energy recovery (2002-2006)

Year	Tons
2002	119,883
2003	167,841
2004	307,902
2005	411,934
2006	515,966

Fonte: Ecocerved (MUD 2003-2007)

Table 3 - Regional and sector details in the ICES model

Countries/Regions	Productive Sectors
<i>Austria</i>	<i>Agriculture</i>
<i>Belgium</i>	<i>Coal</i>
<i>CzechRep</i>	<i>Oil</i>
<i>Denmark</i>	<i>Natural Gas</i>
<i>Finland</i>	<i>Oil_Pcts</i>
<i>France</i>	<i>WtE</i>
<i>Germany</i>	<i>Landfill Biogas</i>
<i>Greece</i>	<i>Electricity</i>
<i>Hungary</i>	<i>Paper</i>
<i>Ireland</i>	<i>Minerals</i>
<i>Italy</i>	<i>Chemicals</i>
<i>Netherlands</i>	<i>Iron_Steel</i>
<i>Poland</i>	<i>Transport</i>
<i>Portugal</i>	<i>Oth_ind</i>
<i>Spain</i>	<i>Market Services</i>
<i>Sweden</i>	<i>Public services</i>
<i>UnitKingdom</i>	
<i>RoEU</i>	
<i>USA</i>	
<i>EEFSU</i>	
<i>RoA1</i>	
<i>RoW</i>	



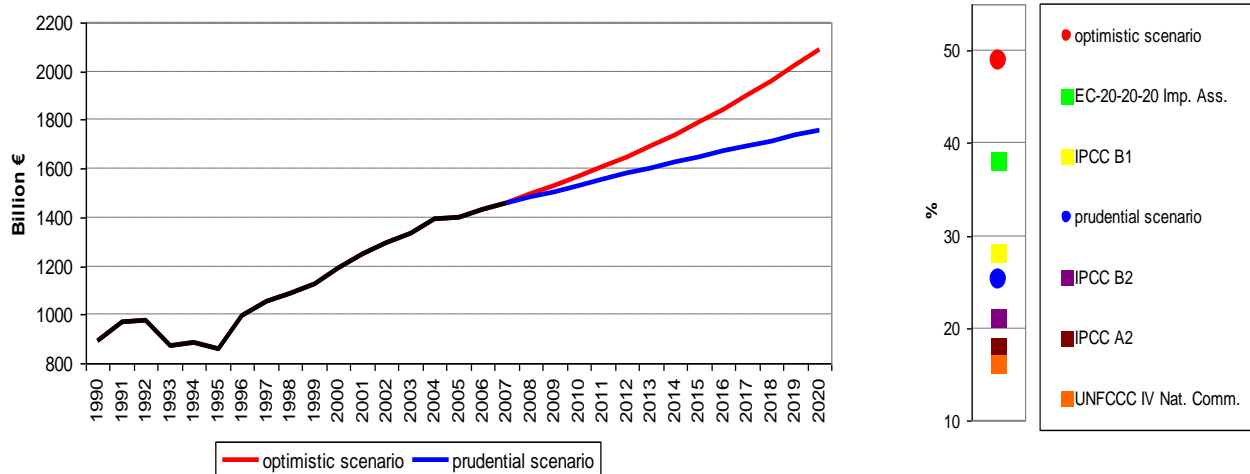


Figure 2 - GDP Italy: historical and projected trends in the optimistic and prudential scenarios (left) and comparison with other sources (2005-2020 growth rates) (right)

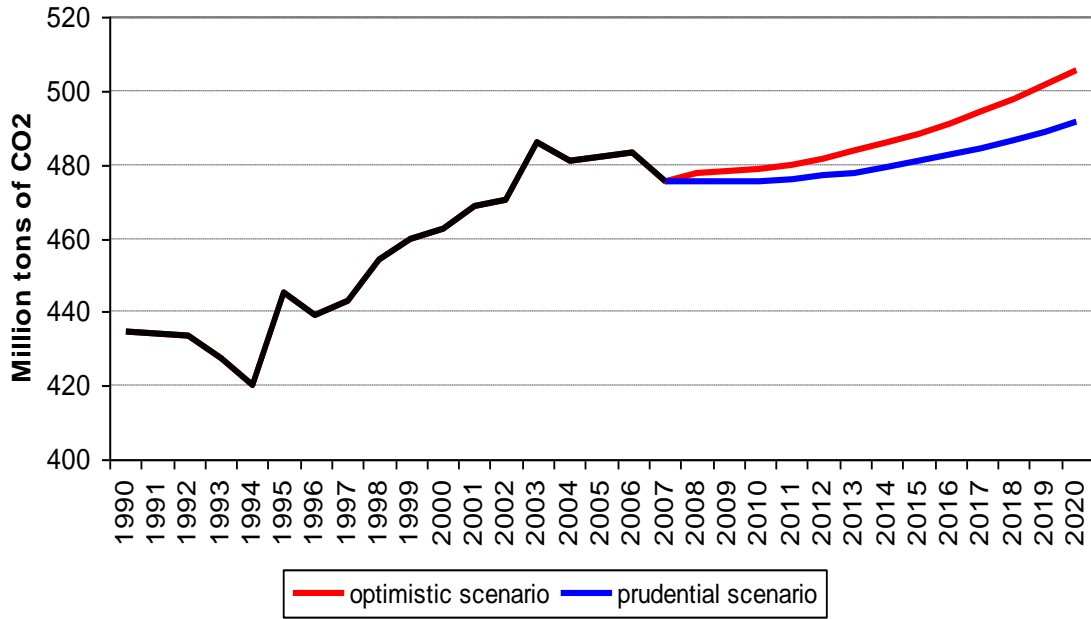


Figure 3 – CO₂ emissions Italy: historical and projected trend in the optimistic and prudential scenarios

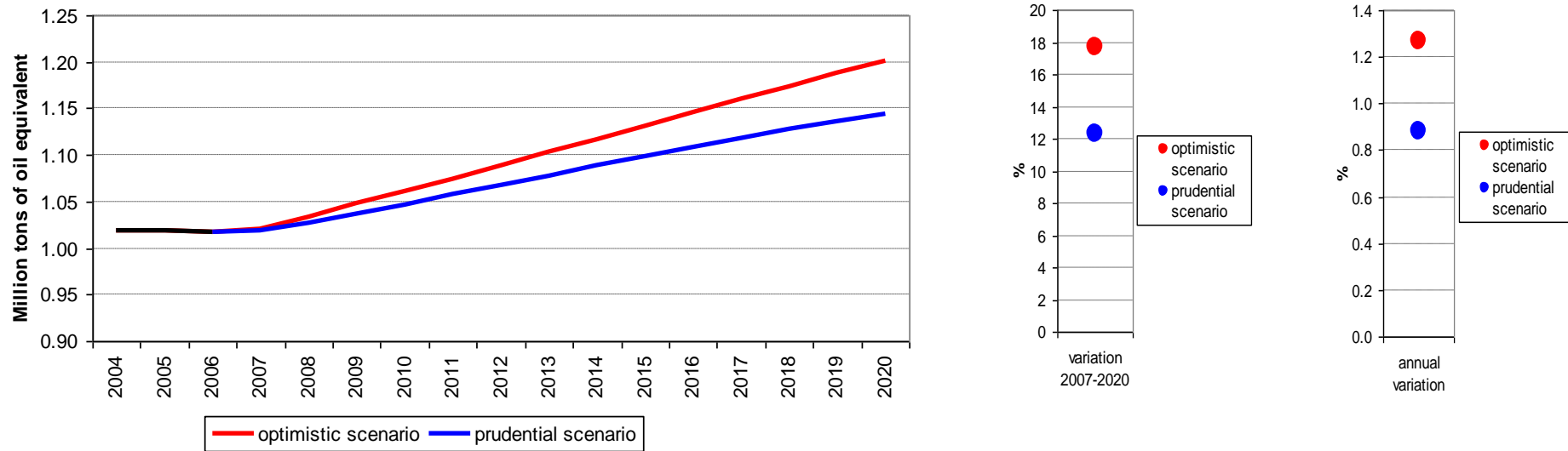


Figure 4 - WtE Italy: historical and projected trend in the optimistic and prudential scenarios. Absolute value (left), % variation 2007-2020 (center) and % annual variation (right)

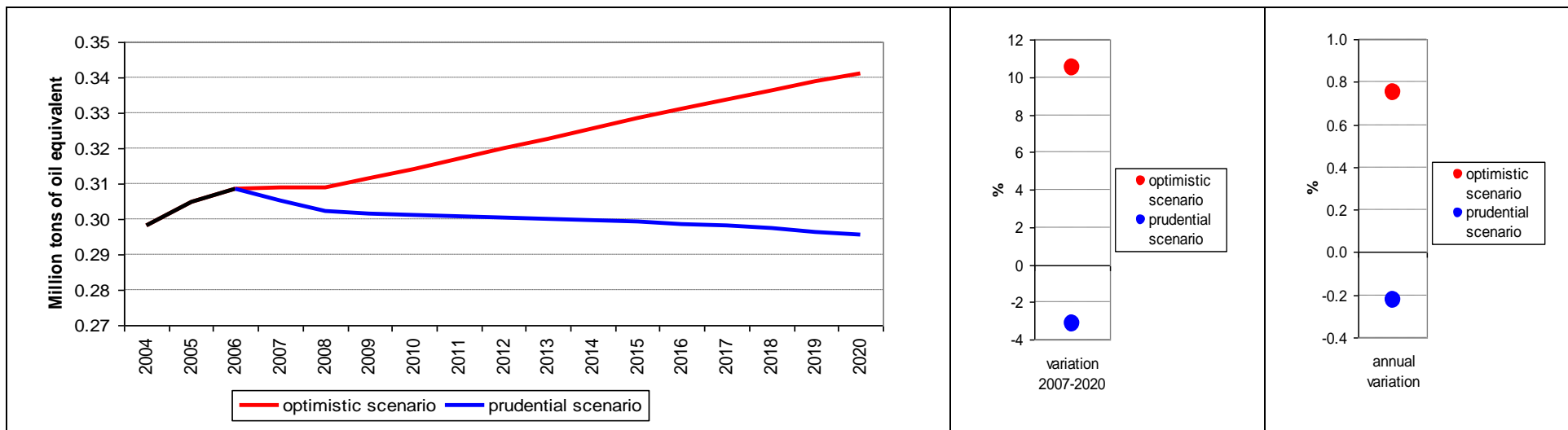


Figure 5 - Biogas Italy: historical and projected trend in the optimistic and prudential scenarios. Absolute value (left), % variation 2007-2020 (center) and % annual variation (right)

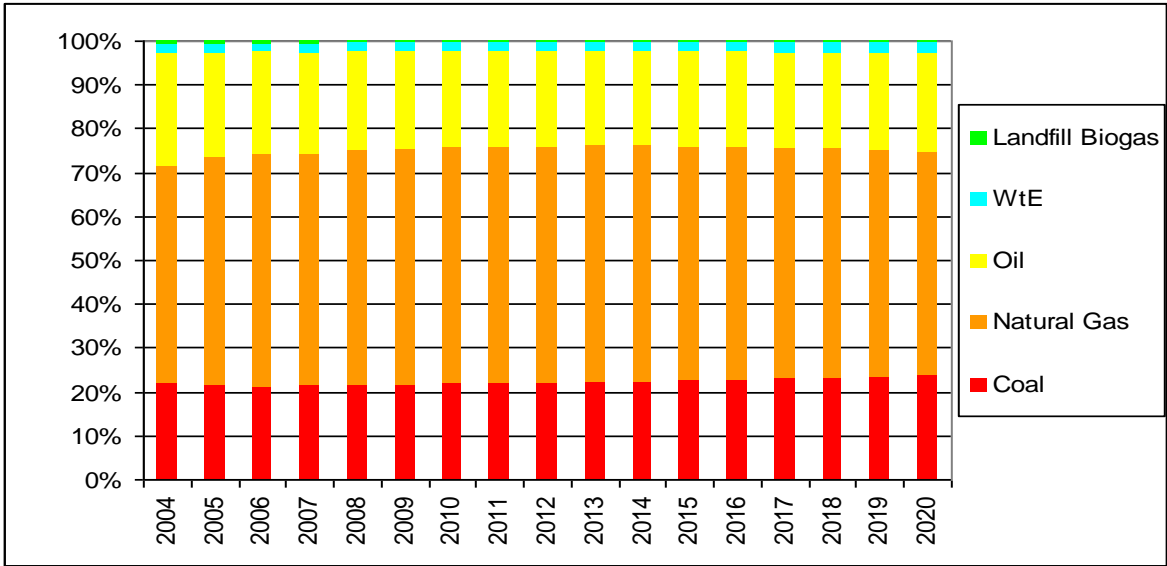


Figure 6 – Energy mix of power sector demand in Italy – Prudential scenario

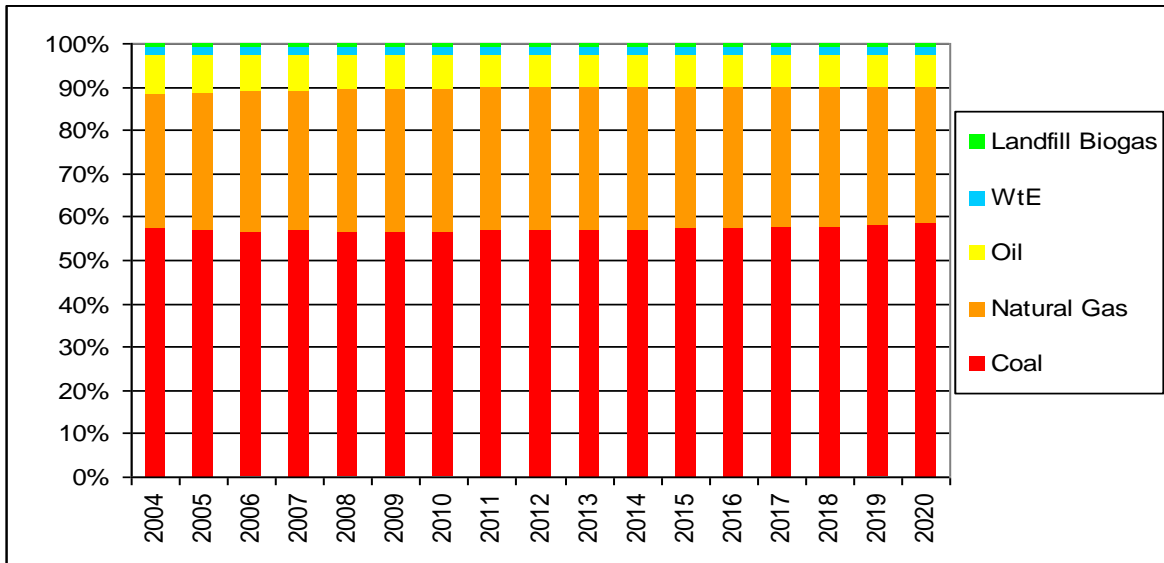


Figure 7 - Energy mix of power sector demand in EU27 – Prudential scenario

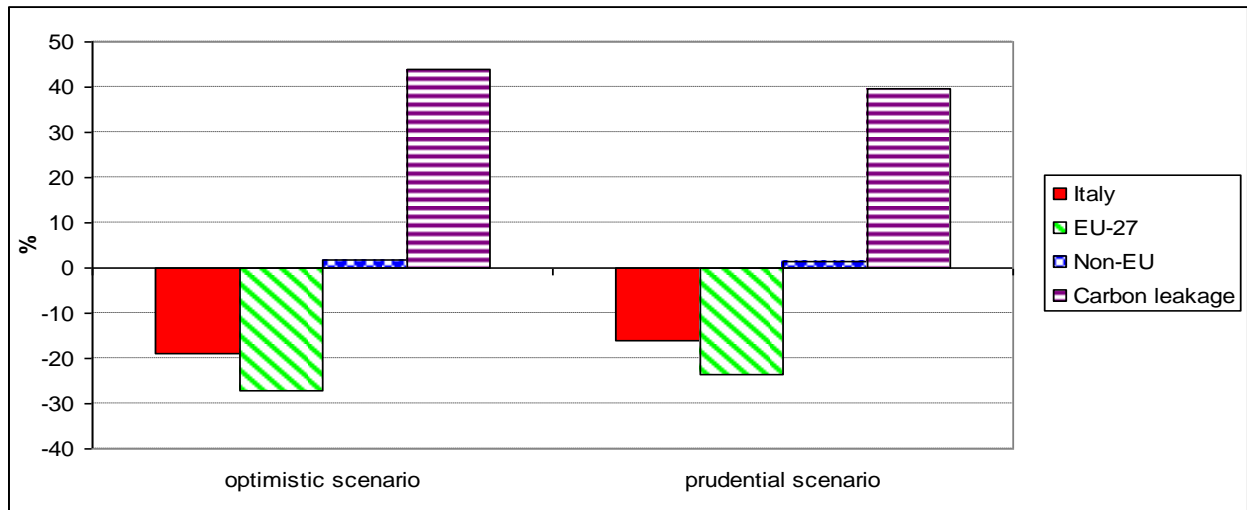


Figure 8 – Impact of mitigation policy on CO₂ emissions in 2020 (% change wrt reference scenarios)

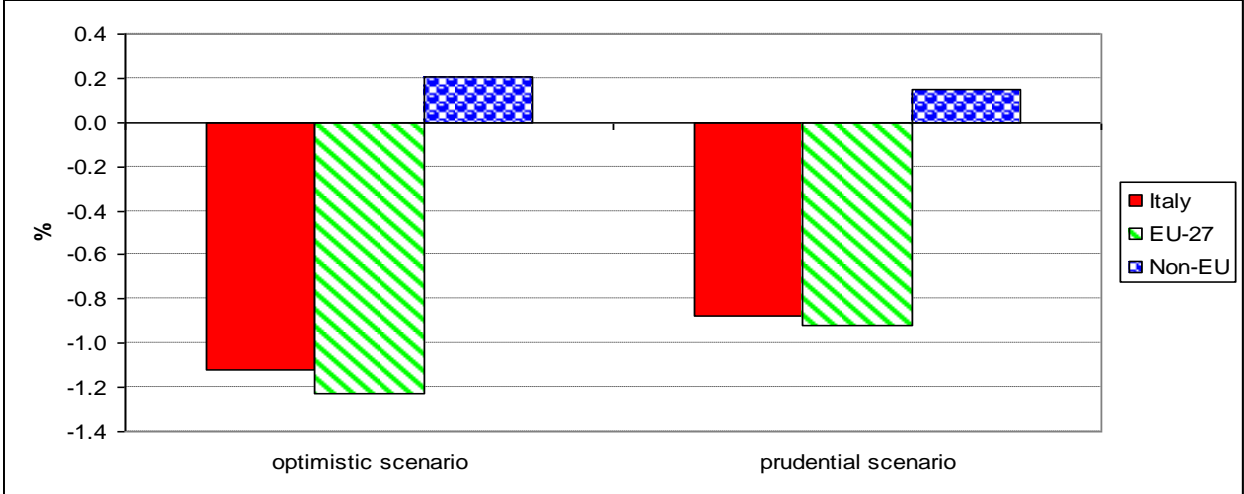


Figure 9 - Impact of mitigation policy on GDP in 2020 (% change wrt reference scenarios)

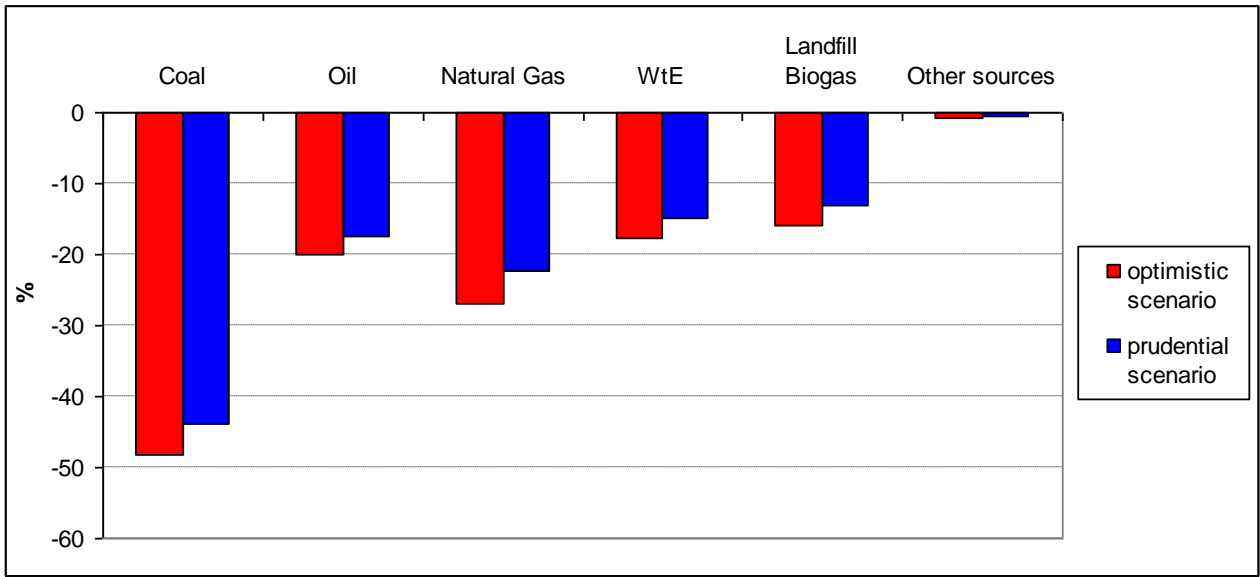


Figure 10 - Impact of mitigation policy on energy mix for power purpose in 2020 (% change wrt reference scenarios)

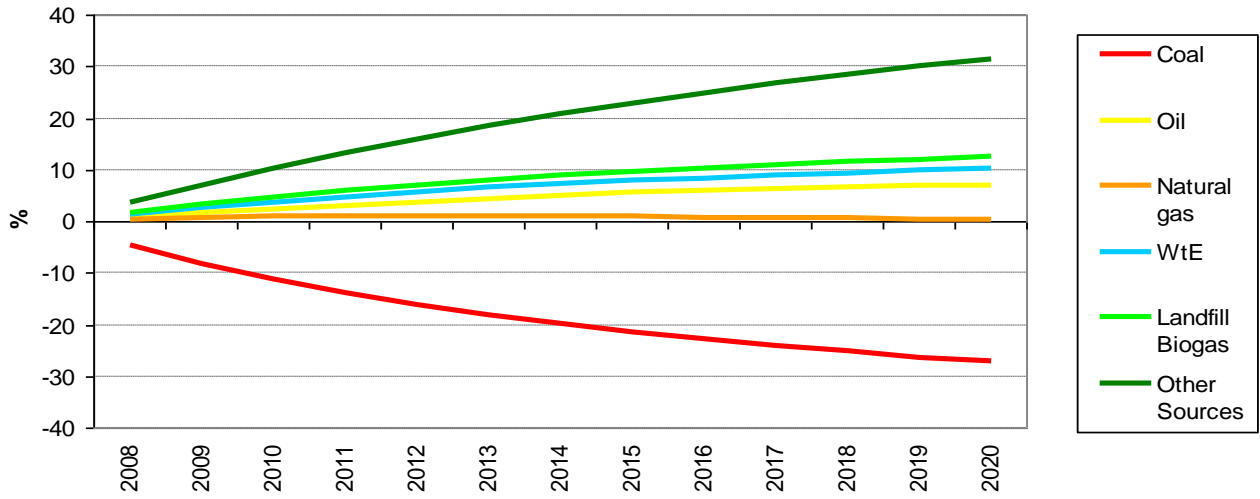


Figura 11 - Impact of mitigation policy on energy mix for power purpose (% change of shares)

Table 4: Flexibility values (2009 Mln €) for different technologies given a reduction in CO₂ emissions by 20% in 2020 compared to 1990 levels: Italy

	2007-2020 (discount rate 3%)		Annuitized	
	Optimistic scenario	Prudential scenario	Optimistic scenario	Prudential scenario
WtE	1269	907	122	87
Landfill Biogas	3	1	0.3	0.1
Natural gas ("energy equivalent" to Waste to Energy)	905	440	90	45
Natural gas*	29962	20702	2889	1984

* Only for electricity sector

Table 5: Flexibility values (2009 Mln €) for different technologies given a reduction in CO₂ emissions by 20% in 2020 compared to 1990 levels: EU 27 aggregate

	2007-2020 (discount rate 3%)		Annuitized	
	Optimistic scenario	Prudential scenario	Optimistic scenario	Prudential scenario
Waste to Energy	513	364	49	35
Biogas from landfill	1.5	1.2	0.15	0.12
Natural gas ("energy equivalent" to Waste to Energy)	368	228	36	23
Natural gas*	8427	5778	811	553

* Only for electricity sector

Table 6: Flexibility values (2009 Mln €) for different technologies given a reduction in CO₂ emissions by 20% in 2020 compared to 1990 levels: France, Germany, Spain and UK aggregate

	2007-2020 (discount rate 3%)		Annuitized	
	Optimistic scenario	Prudential scenario	Optimistic scenario	Prudential scenario
Waste to Energy	1933	1410	184	134
Biogas from landfill	8	6	0.8	0.6
Natural gas ("energy equivalent" to Waste to Energy)	1366	895	134	88
Natural gas*	27030	18983	2598	1815

* Only for electricity sector

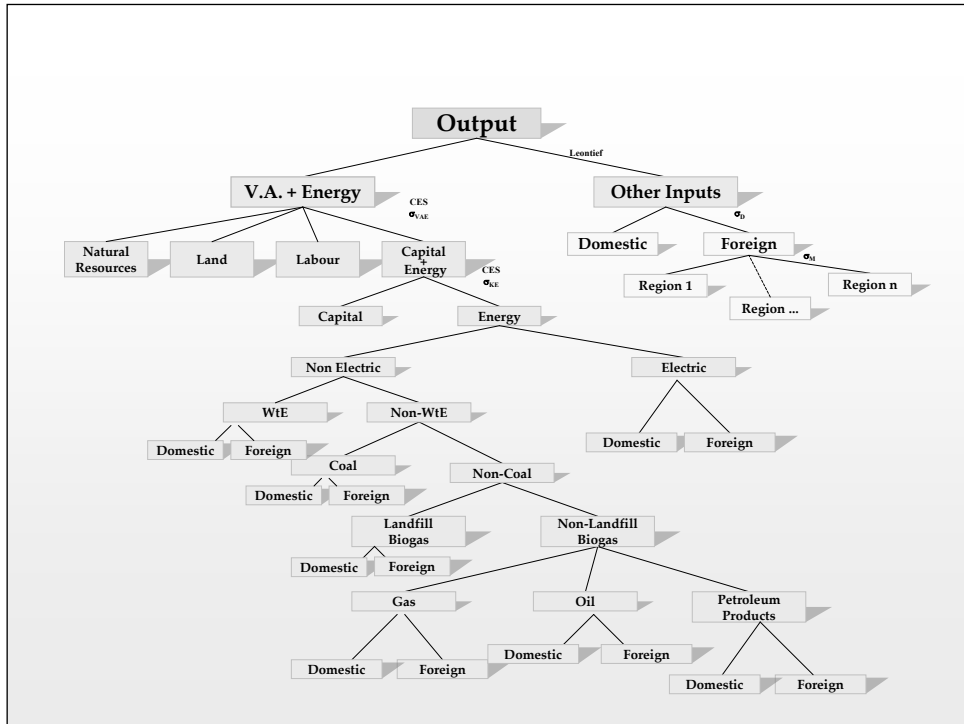


Figure A1. Nested tree structure for industrial production processes of the ICES model

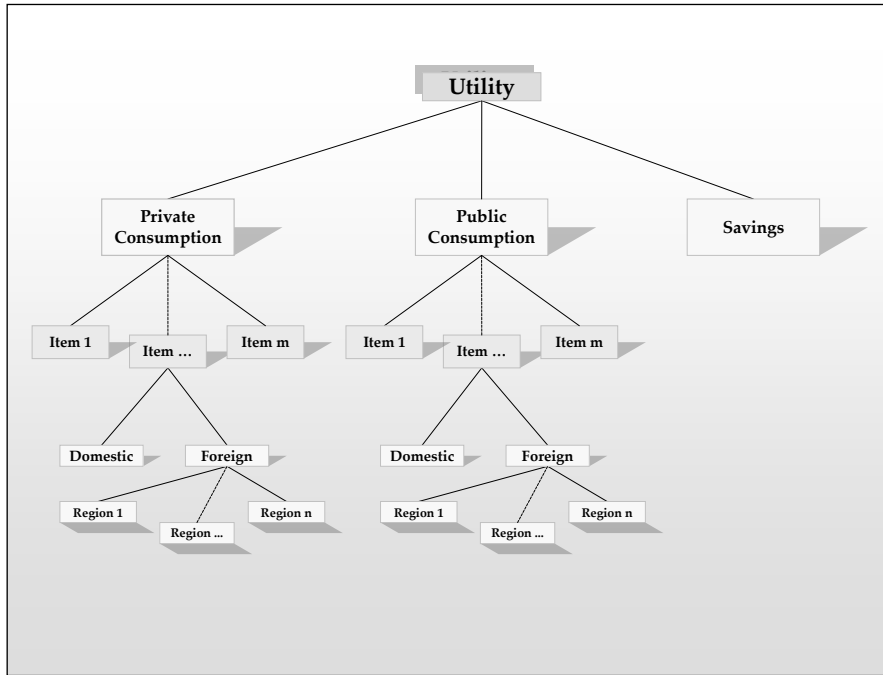


Figure A2. Nested tree structure for final demand of the ICES model

NOTE DI LAVORO DELLA FONDAZIONE ENI ENRICO MATTEI

Fondazione Eni Enrico Mattei Working Paper Series

Our Note di Lavoro are available on the Internet at the following addresses:

<http://www.feem.it/getpage.aspx?id=73&sez=Publications&padre=20&tab=1>
http://papers.ssrn.com/sol3/JELJOUR_Results.cfm?form_name=journalbrowse&journal_id=266659
<http://ideas.repec.org/s/fem/femwpa.html>
<http://www.econis.eu/LNG=EN/FAM?PPN=505954494>
<http://ageconsearch.umn.edu/handle/35978>
<http://www.bepress.com/feem/>

NOTE DI LAVORO PUBLISHED IN 2014

CCSD	1.2014	Erin Baker, Valentina Bosetti, Karen E. Jenni and Elena Claire Ricci: Facing the Experts: Survey Mode and Expert Elicitation
ERM	2.2014	Simone Tagliapietra: Turkey as a Regional Natural Gas Hub: Myth or Reality? An Analysis of the Regional Gas Market Outlook, beyond the Mainstream Rhetoric
ERM	3.2014	Eva Schmid and Brigitte Knopf: Quantifying the Long-Term Economic Benefits of European Electricity System Integration
CCSD	4.2014	Gabriele Standardi, Francesco Bosello and Fabio Eboli: A Sub-national CGE Model for Italy
CCSD	5.2014	Kai Lessmann, Ulrike Kornek, Valentina Bosetti, Rob Dellink, Johannes Emmerling, Johan Eyckmans, Miyuki Nagashima, Hans-Peter Weikard and Zili Yang: The Stability and Effectiveness of Climate Coalitions: A Comparative Analysis of Multiple Integrated Assessment Models
CCSD	6.2014	Sergio Currarini, Carmen Marchiori and Alessandro Tavoni: Network Economics and the Environment: Insights and Perspectives
CCSD	7.2014	Matthew Ranson and Robert N. Stavins: Linkage of Greenhouse Gas Emissions Trading Systems: Learning from Experience
CCSD	8.2013	Efthymia Kyriakopoulou and Anastasios Xepapadeas: Spatial Policies and Land Use Patterns: Optimal and Market Allocations
CCSD	9.2013	Can Wang, Jie Lin, Wenjia Cai and ZhongXiang Zhang: Policies and Practices of Low Carbon City Development in China
ES	10.2014	Nicola Genovese and Maria Grazia La Spada: Trust as a Key Variable of Sustainable Development and Public Happiness: A Historical and Theoretical Example Regarding the Creation of Money
ERM	11.2014	Ujjayant Chakravorty, Martino Pelli and Beyza Ural Marchand: Does the Quality of Electricity Matter? Evidence from Rural India
ES	12.2014	Roberto Antonietti: From Outsourcing to Productivity, Passing Through Training: Microeconomic Evidence from Italy
CCSD	13.2014	Jussi Lintunen and Jussi Uusivuori: On The Economics of Forest Carbon: Renewable and Carbon Neutral But Not Emission Free
CCSD	14.2014	Brigitte Knopf, Bjørn Bakken, Samuel Carrara, Amit Kanudia, Ilkka Keppo, Tiina Koljonen, Silvana Mima, Eva Schmid and Detlef van Vuuren: Transforming the European Energy System: Member States' Prospects Within the EU Framework
CCSD	15.2014	Brigitte Knopf, Yen-Heng Henry Chen, Enrica De Cian, Hannah Förster, Amit Kanudia, Ioanna Karkatsouli, Ilkka Keppo, Tiina Koljonen, Katja Schumacher and Detlef van Vuuren: Beyond 2020 - Strategies and Costs for Transforming the European Energy System
CCSD	16.2014	Anna Alberini, Markus Bareit and Massimo Filippini: Does the Swiss Car Market Reward Fuel Efficient Cars? Evidence from Hedonic Pricing Regressions, a Regression Discontinuity Design, and Matching
ES	17.2014	Cristina Bernini and Maria Francesca Cracolici: Is Participation in Tourism Market an Opportunity for Everyone? Some Evidence from Italy
ERM	18.2014	Wei Jin and ZhongXiang Zhang: Explaining the Slow Pace of Energy Technological Innovation: Why Market Conditions Matter?
CCSD	19.2014	Salvador Barrios and J. Nicolás Ibañez: Time is of the Essence: Adaptation of Tourism Demand to Climate Change in Europe
CCSD	20.2014	Salvador Barrios and J. Nicolás Ibañez Rivas: Climate Amenities and Adaptation to Climate Change: A Hedonic-Travel Cost Approach for Europe
ERM	21.2014	Andrea Bastianin, Marzio Galeotti and Matteo Manera: Forecasting the Oil-gasoline Price Relationship: Should We Care about the Rockets and the Feathers?
ES	22.2014	Marco Di Cintio and Emanuele Grassi: Wage Incentive Profiles in Dual Labor Markets
CCSD	23.2014	Luca Di Corato and Sebastian Hess: Farmland Investments in Africa: What's the Deal?
CCSD	24.2014	Olivier Beaumais, Anne Briand, Katrin Millock and Céline Nauges: What are Households Willing to Pay for Better Tap Water Quality? A Cross-Country Valuation Study
CCSD	25.2014	Gabriele Standardi, Federico Perali and Luca Pieroni: World Tariff Liberalization in Agriculture: An Assessment Following a Global CGE Trade Model for EU15 Regions
ERM	26.2014	Marie-Laure Nauleau: Free-Riding in Tax Credits For Home Insulation in France: An Econometric Assessment Using Panel Data

CCSD	27.2014	Hannah Förster, Katja Schumacher, Enrica De Cian, Michael Hübler, Ilkka Keppo, Silvana Mima and Ronald D. Sands: European Energy Efficiency and Decarbonization Strategies Beyond 2030 – A Sectoral Multi-model Decomposition
CCSD	28.2014	Katherine Calvin, Shonali Pachauri, Enrica De Cian and Ioanna Mouratiadou: The Effect of African Growth on Future Global Energy, Emissions, and Regional Development
CCSD	29.2014	Aleh Cherp, Jessica Jewell, Vadim Vinichenko, Nico Bauer and Enrica De Cian: Global Energy Security under Different Climate Policies, GDP Growth Rates and Fossil Resource Availabilities
CCSD	30.2014	Enrica De Cian, Ilkka Keppo, Johannes Bollen, Samuel Carrara, Hannah Förster, Michael Hübler, Amit Kanudia, Sergey Paltsev, Ronald Sands and Katja Schumacher: European-Led Climate Policy Versus Global Mitigation Action. Implications on Trade, Technology, and Energy
ERM	31.2014	Simone Tagliapietra: Iran after the (Potential) Nuclear Deal: What's Next for the Country's Natural Gas Market?
CCSD	32.2014	Mads Greker, Michael Hoel and Knut Einar Rosendahl: Does a Renewable Fuel Standard for Biofuels Reduce Climate Costs?
CCSD	33.2014	Edilio Valentini and Paolo Vitale: Optimal Climate Policy for a Pessimistic Social Planner
ES	34.2014	Cristina Cattaneo: Which Factors Explain the Rising Ethnic Heterogeneity in Italy? An Empirical Analysis at Province Level
CCSD	35.2014	Yasunori Ouchida and Daisaku Goto: Environmental Research Joint Ventures and Time-Consistent Emission Tax
CCSD	36.2014	Jaime de Melo and Mariana Vijil: Barriers to Trade in Environmental Goods and Environmental Services: How Important Are They? How Much Progress at Reducing Them?
CCSD	37.2014	Ryo Horii and Masako Ikefuji: Environment and Growth
CCSD	38.2014	Francesco Bosello, Lorenza Campagnolo, Fabio Eboli and Ramiro Parrado: Energy from Waste: Generation Potential and Mitigation Opportunity