

Huber, Martin; Lechner, Michael; Wunsch, Conny

Working Paper

Workplace Health Promotion and Labour Market Performance of Employees

IZA Discussion Papers, No. 8297

Provided in Cooperation with:

IZA – Institute of Labor Economics

Suggested Citation: Huber, Martin; Lechner, Michael; Wunsch, Conny (2014) : Workplace Health Promotion and Labour Market Performance of Employees, IZA Discussion Papers, No. 8297, Institute for the Study of Labor (IZA), Bonn

This Version is available at:

<https://hdl.handle.net/10419/101908>

Standard-Nutzungsbedingungen:

Die Dokumente auf EconStor dürfen zu eigenen wissenschaftlichen Zwecken und zum Privatgebrauch gespeichert und kopiert werden.

Sie dürfen die Dokumente nicht für öffentliche oder kommerzielle Zwecke vervielfältigen, öffentlich ausstellen, öffentlich zugänglich machen, vertreiben oder anderweitig nutzen.

Sofern die Verfasser die Dokumente unter Open-Content-Lizenzen (insbesondere CC-Lizenzen) zur Verfügung gestellt haben sollten, gelten abweichend von diesen Nutzungsbedingungen die in der dort genannten Lizenz gewährten Nutzungsrechte.

Terms of use:

Documents in EconStor may be saved and copied for your personal and scholarly purposes.

You are not to copy documents for public or commercial purposes, to exhibit the documents publicly, to make them publicly available on the internet, or to distribute or otherwise use the documents in public.

If the documents have been made available under an Open Content Licence (especially Creative Commons Licences), you may exercise further usage rights as specified in the indicated licence.

IZA DP No. 8297

Workplace Health Promotion and Labour Market Performance of Employees

Martin Huber
Michael Lechner
Conny Wunsch

June 2014

Workplace Health Promotion and Labour Market Performance of Employees

Martin Huber

University of St. Gallen, SEW

Michael Lechner

*University of St. Gallen, SEW,
CESifo, IZA, CEPR, PSI and IAB*

Conny Wunsch

*University of Basel,
CESifo and IZA*

Discussion Paper No. 8297

June 2014

IZA

P.O. Box 7240
53072 Bonn
Germany

Phone: +49-228-3894-0

Fax: +49-228-3894-180

E-mail: iza@iza.org

Any opinions expressed here are those of the author(s) and not those of IZA. Research published in this series may include views on policy, but the institute itself takes no institutional policy positions. The IZA research network is committed to the IZA Guiding Principles of Research Integrity.

The Institute for the Study of Labor (IZA) in Bonn is a local and virtual international research center and a place of communication between science, politics and business. IZA is an independent nonprofit organization supported by Deutsche Post Foundation. The center is associated with the University of Bonn and offers a stimulating research environment through its international network, workshops and conferences, data service, project support, research visits and doctoral program. IZA engages in (i) original and internationally competitive research in all fields of labor economics, (ii) development of policy concepts, and (iii) dissemination of research results and concepts to the interested public.

IZA Discussion Papers often represent preliminary work and are circulated to encourage discussion. Citation of such a paper should account for its provisional character. A revised version may be available directly from the author.

ABSTRACT

Workplace Health Promotion and Labour Market Performance of Employees^{*}

This paper investigates the average effects of (firm-provided) workplace health promotion measures in form of the analysis of sickness absenteeism and health circles/courses on labour market out-comes of the firms' employees. Exploiting linked employer-employee panel data that consist of rich survey-based and administrative information on firms, workers and regions, we apply a flexible propensity score matching approach that controls for selection on observables as well as on time-constant unobserved factors. While the effects of analysing sickness absenteeism appear to be rather limited, our results suggest that health circles/courses increase tenure and decrease the number of job changes across various age groups. A key finding is that health circles/courses strengthen the labour force attachment of elderly employees (51-60), implying potential cost savings for public transfer schemes such as unemployment or early retirement benefits.

JEL Classification: I10, I19, J32

Keywords: firm health policies, health circles, health courses,
analysis of sickness absenteeism, matching

Corresponding author:

Michael Lechner
University of St. Gallen
Swiss Institute for Empirical Economic Research (SEW)
Varnbuelstrasse 14
CH-9000 St. Gallen
Switzerland
E-mail: michael.lechner@unisg.ch

^{*} This project received financial support from the Institut für Arbeitsmarkt und Berufsforschung, IAB, Nuremberg (contract 8104), and from the St. Gallen Research Center for Aging, Welfare, and Labor Market Analysis (SCALA). We are grateful to the staff of the Forschungsdatenzentrum (FDZ) of the Federal Employment Office (BA) in Nuremberg, where the estimations were conducted, who provided kind and skillful assistance.

1 Introduction

The health of employees is an important cost factor for firms and a key determinant of the productivity of an economy. Although, due to the complexity of the issue, it is difficult to obtain precise and undisputable numbers of direct costs and productivity losses, rough estimates suggest, for example, that the bad quality of the air in US firms alone lead to annual costs of about 250 bn. USD due to additional medical expenses and lost productivity.¹ For Germany, the country we study in this paper, BMAS (2014) estimates that in 2012, with on average 14 work days lost per worker, production losses due to illness amounted to 53 bn. EUR (corresponding to 92 bn. EUR in terms of value added). Although such numbers must be interpreted with care, they show the large potential gains that could be realised by improving employees' health. Thus, it is not surprising that health issues receive considerable attention from national governments, as well as from supranational and international agencies.²

Employers are of course also interested in the good health of their workforce. They can influence the health of their employees in two different ways: First, they can provide a workplace that fosters, or is at least not detrimental to, health. Second, they may encourage their employees to pursue a healthier life style in general by providing information, incentives, and opportunities (e.g. courses about healthy eating or subsidies for a fitness centre). Many larger firms follow such strategies and the economic benefits for employers and the positive health effects for employees have been documented extensively in the public health literature.³ However, to the best of our knowledge the literature still lacks a thorough investigation of the effects of such measures on future labour market outcomes of employees.

¹ See New York Times (2013).

² An example for the latter at the European level is the *European Agency for Safety and Health at Work* (OSHA, <https://osha.europa.eu/en>). At the international level, safety at work is an important topic for the International Labour Organization (ILO, <http://www.ilo.org/global/topics/safety-and-health-at-work>), for example.

³ For an excellent review of the literature see Kreis and Bödeker (2004), which covers 25 high-quality review articles that summarize more than 400 studies, as well as Sockoll, Kramer and Bödeker (2009), which is an update of the earlier survey and covers 40 review articles that summarize more than 1000 studies.

There are several reasons why this appears important. Firstly, workers with health problems have a higher probability of receiving payments from public transfer systems such as unemployment insurance, welfare schemes or disability insurance because they face a higher risk of becoming (and staying) unemployed as well as of leaving the labour market early (e.g. Böckerman and Ilmakunnas 2009). Therefore, it is of interest for policy makers whether such employer policies reduce dependency rates and if so, whether the effects are sufficiently large to justify their active promotion using public funding. Secondly, reduced turnover due to improved worker-firm matches not only reduces turnover costs for firms, but may also stabilise workers' careers, which has positive effects on lifetime wealth (especially pension wealth) and on contributions to the social insurance system. Finally, health-improving measures adopted by firms may increase the labour market attachment of elderly workers, thus alleviating the negative effects of the demographic change in terms of both shortage of skilled workers and financial strains on the pension system.

It is the objective of this paper to fill this gap. We analyse the impact of selected health promotion measures provided by firms on medium-term labour market outcomes of employees in Germany. Our study is based on unique linked employer-employee data combining administrative records of individual labour market histories with a panel survey of firm establishments and regional statistics. Among many other characteristics, the panel survey contains information about the establishments' provision of specific health promotion activities. Based on this information, we separately investigate the effects of two classes of measures which have been introduced in firms between 2002 and 2004: (i) systematic analysis of sickness absenteeism in the firm, (ii) courses to improve the health knowledge and health-seeking behaviour of the firms' employees, as well as (iii) so-called health circles where health problems are discussed in groups with the aim of finding ways to alleviate or overcome these problems. The administrative records allow us to assess individual labour market outcomes in terms of employment, unemployment, firm-provided early retirement, inactivity, and turnover from

mid-2004 to the end of 2008. Furthermore, they also provide individual worker characteristics as well as information about the composition of the establishments' work forces prior to any health promotion, which (in addition to the firm characteristics from the survey and the regional information) can be used to control for selection into these measures.

As with any such study, it is most interesting to estimate the effects of the health interventions on labour market outcomes rather than merely uncovering statistical associations between interventions and outcomes. In the absence of experimental evidence (which is apparently more difficult and expensive to obtain because labour market outcomes take longer to materialize than many health outcomes) or any other exogenous outside variation influencing the establishments' implementation of health promotion measures, our identification strategy has to rely on a different approach. Firstly, we eliminate the potential problem that workers may select themselves into establishments offering health services: On the one hand, we focus on establishments that had no such offerings by mid-2002, thus equalising firms in that respect. On the other hand, we only consider workers who entered the respective establishments at least two years prior to mid-2002. Secondly, by conditioning on a rich set of firm, worker, and regional characteristics coming from the various data sources, we account for the selective introduction of such measures in some firms between 2002 and 2004. Thirdly, since we are interested in individual labour market outcomes of employees, we use the panel structure of the data and take-out unobserved factors and differential trends that determine labour market performance by conditioning on long-run pre-implementation labour market outcomes. Some placebo-like tests implicit in our results support our strategy.

Our results suggest that the investigated health promotion activities have mixed effects on employees' labour market outcomes. Analysing sickness absenteeism, an intervention that only passively involves the employees, is found to have a rather limited impact. This measure is merely found to somewhat reduce the number of employer changes of younger and mid-

aged workers after 3-4 years. In contrast, health courses and health circles, which activate employees directly, increase tenure in the studied firm and reduce overall turnover among all age groups. Moreover, for older workers, who are most likely to suffer from health problems and are thus of particular interest, the measures strengthen labour market attachment. They significantly increase employment by reducing unemployment and thereby dependence on unemployment insurance payments, as well as by reducing exits from the labour market via a specific type of firm-provided early retirement scheme. Thus, besides the beneficial effects on firms and employees' health documented in the previous literature, there also seem to be additional benefits in the longer run for both employees and social insurance systems.

The paper proceeds as follows: In the next section, we briefly describe several aspects of the health policies of German firms. Section 3 is devoted to data and measurement issues and provides selected descriptive statistics. Section 4 contains the discussion of the identification strategy and presents the estimator used. Section 5 empirically characterises the establishments implementing the different measures and presents the estimated effects for the health promotion activities considered in this paper. Section 6 concludes. Appendix A contains extensive descriptive statistics, while Appendix B contains additional results omitted from the main body of the paper.

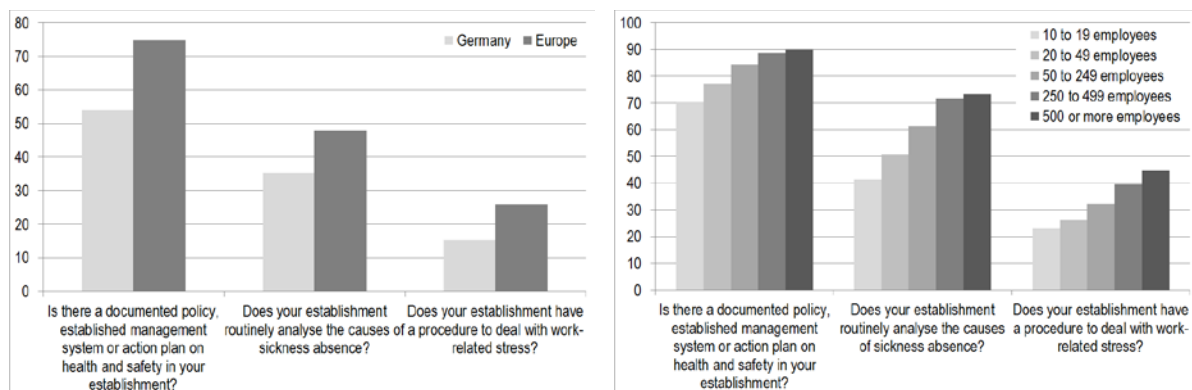
2 Firms' health policies in Germany

The Initiative for Health and Work (Initiative für Gesundheit und Arbeit, IGA) provides a summary of legally required and voluntarily provided measures of German firms to ensure and improve the safety and health of employees at their workplace (IGA, 2009). Our study focuses on voluntary measures that we will describe in more detail in the following. With one exception, the German measures are largely comparable to those of other countries.⁴ Com-

⁴ See the compilation of measures on <http://www.enwhp.org/european-toolbox.html>.

prehensive and internationally comparable data on the use of health promotion measures at the work place is, unfortunately, rare. One of the few data sources that provide at least some information is the European Survey of Enterprises on New and Emerging Risks, which has been conducted by the European Agency for Safety and Health at Work in 2009.

Figure 2.1: Share of establishments answering ‘yes’ to various questions about workplace health promotion in 2009 by country and establishment size



Source: Own graph based on data from the European Survey of Enterprises on New and Emerging Risks (ESENER) 2009. Data was retrieved from <https://osha.europa.eu/sub/esener/en/front-page> on June 12, 2014. The right panel uses the data from all 31 European countries included in the survey.

The left panel of Figure 2.1 shows the share of establishments that implemented different health and safety procedures in Germany and Europe. 54% of German and 75% of European establishments have at least some formalized health and safety procedure, 35% of German, and 50% of European establishments routinely analyse sickness absenteeism and, respectively, 15% and 26% have some procedure to deal with work-related stress. Moreover, the right panel of Figure 2.1 shows that the prevalence of the measures quite strongly increases with establishment size with differences of 20-30 percentage points between the smallest and the largest firms.

The measures most frequently adopted by German firms coincide with the ones surveyed in the IAB Establishment Panel, which is a representative survey of establishments⁵ in

⁵ An establishment is either a single firm, or comprises all branches of a larger firm within the same relatively narrowly defined region and industry. In the following, we will use the terms establishment and firm interchangeably.

Germany and also part of the data we use. Questions about health promoting activities of firms were included in the 2002 and 2004 questionnaires. The shares of establishments that offer a respective health measure are displayed in Table 2.1 for both years.

Table 2.1: Share of establishments offering different health policies implemented by firms in the IAB Establishment Panel 2002 and 2004

Health measure	2002	2004
Analysis of sickness absenteeism	30%	29%
Surveys of employees about health risks at the workplace	19%	18%
Discussion groups about health problems in the workplace (health circles)	10%	9%
Courses about healthy behaviour	14%	15%
Other than the above mentioned	12%	10%
None of the above	54%	56%
Missing information	0.5%	0.4%
Total number of observations	15682	16063

Note: Multiple answers are possible. See Appendix C for the question underlying this table.

With about 30% of establishments using it, the most popular measure is a systematic analysis of sickness absenteeism in the firm. Because of reporting requirements, most firms have some records on sickness absenteeism and a significant share of them uses these data to gain knowledge about potential problems and possible solutions. To do so, firms analyse the incidence of absenteeism, average duration, causes, systematic patterns, and the characteristics of the absentees and often compare their numbers to other businesses in the same industry (IGA, 2009). Secondly, to collect information on health risks and mental or physical pressures experienced or perceived by employees as well as potential complaints almost 20% of firms conduct anonymous employee surveys (IGA, 2009). About 15% of firms offer health courses that comprise talks and lectures to advise workers on health issues such as a healthy working position, healthy eating or drug use, learning exercises to improve, for example, back muscles. Furthermore, there are relaxation courses, courses for people who want to give up smoking, and so on (IGA, 2009). About 10% of establishment make use of so-called health circles, which are a particularity of the German system. These are discussion groups where employees and sometimes supervisors collect information about work-related health prob-

lems, stress or psychological pressures, and their causes and discuss possible solutions. Usually, a health circle is set up for a limited period (6-10 meetings) and followed by the creation of a within-firm working group of employees, which seeks to implement improvements (IGA, 2009). 10-12% of firms also use a variety of other measures such as free access to or subsidies for fitness clubs, health days, and sports events. Finally, about 55% of establishments do not offer any health promotion measures.

3 Data and definition of the sample

3.1 Data

Our empirical analysis relies on unique linked employer-employee data that combine different administrative and survey data sets from the Federal Employment Agency's Institute of Employment Research (IAB). The data is based on the IAB Establishment Panel, which is a representative survey of German establishments. It covers a broad spectrum of firm level information including firm size, industry, legal form, biographical data, structure of the work force (e.g. education, occupation, share of males/females), employee turnover, vacancies and labour demand, working hours, and human resource policies (e.g. flexible work time, inclination to recruit older workers). Furthermore, there is information on training activities, financial revenues and profits, investment activities, usage rate, technological and organizational factors, and use of financial support or subsidies, among many others. The survey was first conducted in 1993 and is annually repeated. It is an unbalanced panel due to attrition and the inclusion of new companies over time.

The information from the IAB Establishment Panel has been merged with the so-called IAB Establishment History Panel that includes a rich set of aggregate information on the firm's employees. The variables describe the composition of a firm's work force, for example in terms of age, education, tenure, and earnings. They are based on the employees' social in-

insurance records and are constructed, for each year, from the cross section of all workers employed in the firm on June 30.

For the firms in our sample, described in more detail below, the social insurance records of their employees for the years 1990-2008 were merged to the firm data. They comprise employment, unemployment and earnings histories, as well as a rich set of personal characteristics for all workers employed by the firms in our data on June 30, 2002. The social insurance records have also been used, for example, by Wunsch and Lechner (2008), Biewen et al. (2013), Wunsch (2013), and Lechner and Wunsch (2013), with a different sampling design, though. Finally, the data also contain a rich set of regional characteristics, merged via county identifiers from regional statistics, such as the federal state, urbanization, and local labour market conditions.

3.2 Selection of the sample and definition of treatments

Our empirical analysis is based on a subsample of the establishments included in the IAB Establishment Panel (IAB-EP) in 2002. For this project, we had access to a linked employer-employee dataset that covers 2,819 of the 15,682 establishments in the 2002 wave of the IAB-EP. Excluded are establishments with less than 100 employees (about 75% of all 2002 firms), the 25 largest firms, and firms in the sectors agriculture, forestry, mining, energy, transportation, messaging, education and social insurance (about 20% of all 2002 firms).⁶ For design purposes, we focus on estimating the effects of the *introduction* of workplace health promotion measures between mid-2002 and mid-2004. This requires, firstly, that we are able to measure the use of these measures both in 2002 and in 2004. Due to relatively high attrition rates in the IAB-EP and a small amount of item non-response, this reduces the original sample by 30%. Secondly, firms that already offered health promotion measures in

⁶ This paper is part of a larger cooperation project with the IAB, which focused on intra-firm comparisons of workers in the primary and tertiary private sector. The former required a sufficiently large numbers of employees per firms. For the latter, sectors with large public shares in the past were excluded as well.

mid-2002 are also excluded. This affects a relatively large number of firms, but is essential for identification as we discuss in detail below.⁷ To avoid common support problems, we also exclude firms in East Germany and Berlin (14%), as well as establishments with more than 800 employees (32%), with more than 10% of temporary workers (0.8%), or firms indicating ‘problems because their work force is too old’ (3%), as these characteristics almost perfectly predict whether firms offer health promotion measures in 2004. Hence, firms with and without such measures cannot be ‘made comparable’ with respect to these characteristics.

Our analysis is concerned with the individual-level outcomes of the employees of the firms in our sample. We only consider workers of age 31 to 60 years (in June 2002). This condition ensures that workers are sufficiently distant to educational choices and statutory retirement age (65). As one may suspect that health promotion activities have different effects on younger and older workers (because the former are in general less subject to health problems), we conduct the empirical analysis within three age-specific strata (31-40, 41-50, 51-60). For design purposes, explained below, we also exclude workers with less than 2 years of tenure with their employer.

As already mentioned in Section 2, the information about the different health promotion activities comes from the 2002 and 2004 waves of the IAB-EP. Establishments were asked to state which type of health promotion they implemented or supported, or whether they did not implement or support any such measure (see Appendix C for the exact survey question). For reasons of sample size and homogeneity, we group establishments into three so-called ‘treatments’ based on this information. The first group of establishments indicated to analyse sickness-related absenteeism. We use the short-cut *SickAna* for this intervention. The second

⁷ Table A.1 in Appendix A contains cross tabulations of the answers to the questions about the use of health promotion measures in 2002 and 2004 for all establishments that participated in the 2002 and in the 2004 waves of the IAB Establishment Panel, have non-missing entries for the respective question, and are part of the linked-employer-employee data used in this project. It shows the numbers of establishments that are relevant for the empirical analysis before removing firms with at least one measure in 2002 and before applying further restrictions to ensure common support.

group consists of establishments that introduced health circles and/or health courses (*Courses*) for their employees. In this group, 23% of establishments offered health circles, 91% health courses, and 14% implemented both measures. It should be noted that, unfortunately, it is unknown whether individual workers actually participate in *Courses*. It appears reasonable to assume that *participation* in *Courses* has an effect at least as large as the mere offer of such an opportunity (which may or may not be taken up). Hence, the estimated effect of the offer represents a lower bound on the effect of actual participation of workers. Note that the first and second groups may overlap to some extent: 35% of the establishments offering *Course* also used *SickAna*. Of those implementing *SickAna*, 9% offered health circles and 23% health courses. Unfortunately, sample size considerations prevent us from analysing the other options mentioned in the survey (see Table 2.1),⁸ or from analysing courses and health circles separately. Finally, the third group (the control group or so-called ‘non-treated’) consists of establishments that did neither implement nor support any health measure and does therefore not overlap with *SickAna* or *Course*. The resulting sample sizes of firms and workers for each stratum and treatment are displayed in Table 3.1.

Table 3.1: Number of firms and individuals per stratum

Health measure Age	Analysis of sickness absenteeism			Health circles/courses		
	31-40	41-50	51-60	31-40	41-50	51-60
Number of firms	163	162	163	197	196	197
Number of workers	11227	11323	7670	9693	10124	6732

3.3 Descriptive statistics

Table 3.2 contains a first description of the data in terms of the means of selected variables by age stratum and treatment status.⁹ The four upper panels describe the underlying

⁸ The alternative of grouping them together with either *SickAna* or *Course* would lead to a very heterogeneous group of measures. The estimated effects for such a group would be very difficult to interpret.

⁹ A more extensive set of descriptive statistics can be found in Tables A.2 and A.3 in Appendix A. Due to the very large number of variables in the data (several hundred) we abstain from presenting statistics on all variables. They are available on request. The information available in the administrative data is well documented in Wunsch and Lechner (2008) and

population of workers and establishments prior to treatment in June 2002. The lower panel contains outcome variables measured from July 2004 to December 2008.

Establishments that offer health courses and/or health circles are quite distinct from the other establishments. On average, they are larger and employ more women. This coincides with higher shares of part-time employment and lower shares of firms active in manufacturing. They also operate under more difficult economic circumstances, with lower regional GDP growth rates, fewer jobs per inhabitant, and lower investments per employee. In contrast, firms that analyse sickness absenteeism are quite similar to firms that do not offer any health promotion measures. Somewhat larger differences only occur with respect to the share of establishments in the manufacturing sector, which is lower for the latter firms, and investments per employee, which is are higher.

Concerning potential reasons for introducing health promotion measures, it is interesting to see that fewer firms who state to have problems with high absenteeism introduce health promotion measures. Instead, there is a positive correlation between the introduction of such measures and having a work council, i.e. a formal representation of employees in the firm, as well as having difficulties to hire skilled workers. The latter seems to suggest that health promotion measures may have been introduced by firms to be more attractive for skilled workers. Also interesting from the point of potential selection problems is the observation that the labour market performance of a firm's employees prior to treatment is very similar for all treatment groups and hence, seems to be unrelated to whether or not firms introduce health promotion measures at the work place. This suggests that by limiting our sample to workers with at least 2 years of tenure in the studied firms before potential treatment we largely succeeded in eliminating bias due to self-selection of workers into firms.

Lechner and Wunsch (2013). For a detailed documentation of the variables available in the IAB Establishment Panel, see http://fdz.iab.de/de/FDZ_Establishment_Data/IAB_Establishment_Panel/IAB_Establishment_Panel_Working_Tools.aspx and for those in the IAB Establishment History Panel see http://fdz.iab.de/de/FDZ_Establishment_Data/Establishment_History_Panel/Establishment_History_Panel_Working_Tools.aspx.

Table 3.2: Selected descriptive statistics by stratum and treatment status

Age in 2002 (stratum)	31 to 40			41 to 50			51 to 60			
Health measure (treatment)	None	Sick- Ana	Cour- se	None	Sick- Ana	Cour- se	None	Sick- Ana	Cour- se	
Establishment characteristics										
Manufacturing sector	0.46	0.62	0.29	0.47	0.58	0.25	0.43	0.58	0.27	
Number of employees	301	304	361	304	301	372	298	310	364	
Problems with high absenteeism	0.13	0.09	0.10	0.13	0.11	0.10	0.11	0.10	0.09	
Difficulties hiring skilled employees	0.35	0.39	0.44	0.33	0.38	0.46	0.33	0.38	0.51	
Firm has a works council	0.80	0.86	0.89	0.84	0.87	0.91	0.86	0.89	0.90	
Investment per employee /10000	0.75	0.68	0.35	0.77	0.72	0.33	0.74	0.65	0.30	
Individual characteristics of employees (shares)										
Women	0.39	0.37	0.49	0.42	0.44	0.55	0.44	0.43	0.52	
Part-time employed	0.17	0.15	0.24	0.19	0.18	0.28	0.25	0.22	0.30	
No vocational degree	0.16	0.17	0.09	0.22	0.18	0.12	0.22	0.18	0.15	
Regional characteristics										
Jobs per inhabitant aged 15-64	1.2	1.0	0.8	1.1	1.2	0.7	1.4	1.2	0.7	
GDP growth 1994 to 2002 in %	23	22	19	24	22	19	23	22	19	
Pre-treatment outcomes (individual level)										
Share employed in past 10 years	0.87	0.85	0.85	0.92	0.92	0.90	0.94	0.95	0.94	
Share unemployed in past 10 years	0.02	0.02	0.03	0.02	0.02	0.02	0.01	0.01	0.01	
Share inactive in past 10 years	0.02	0.02	0.02	0.01	0.01	0.01	0.01	0.01	0.01	
Outcome variables (individual level)										
Cumulated months employed until end of	2/2004	5.5	5.6	5.7	5.6	5.6	5.7	5.0	5.0	5.1
	2/2008	48.7	49.3	49.5	48.6	49.1	49.9	36.4	37.1	38.3
Cum. months in early ret. scheme ¹⁰ until end of	2/2004	0.0	0.0	0.0	0.0	0.0	0.0	0.7	0.7	0.6
	2/2008	0.0	0.0	0.0	0.1	0.1	0.1	6.3	5.5	7.1
Cum. months unemployed until end of	2/2004	0.2	0.2	0.1	0.3	0.2	0.1	0.4	0.4	0.2
	2/2008	1.8	1.8	1.2	2.3	2.0	1.5	4.2	3.7	2.4
Number of employer changes until end of	2/2004	0.0	0.0	0.0	0.0	0.0	0.0	0.0	0.0	0.0
	2/2008	0.2	0.2	0.1	0.2	0.1	0.1	0.1	0.1	0.1
Tenure after June 30, 2004 in years		4.9	5.2	5.2	5.1	5.4	5.5	4.2	4.5	4.6
# of employees (observations)		6247	4858	3312	6613	4622	3420	4366	3073	2135

Note: Statistics are based on the samples used for estimation. If not explicitly mentioned otherwise, variables are measured in 2002. 1/200x denotes the first half of the 200x, while 2/200x denotes the second half of this year. For all cumulated measures, accumulation begins in 2/2004.

In terms of outcome variables, the differences between the three groups of firms are mostly small. Somewhat larger differences are mainly visible for the elderly who exhibit more time in employment and less time in unemployment if employed in firms that offer health courses and/or circles rather than in firms that do not offer any health promotion measures.

¹⁰ The administrative records allow measuring one specific type of firm-provided early retirement scheme, which is called "Altersteilzeit" in German. Workers who want to retire early sign a 6-year contract with the firm. They either work full-time at a reduced wage for 3 years and then stop working but continue to receive the same wage for 3 more years (so-called block model, which is by far the most common case), or they work part-time at a reduced wage for the full 6-year period. In both cases, workers are recorded in the data for the full 6-year period. Eligibility starts at age 55.

This might be suggestive of a positive effect of these measures in this age group. In the econometric analysis below, we will assess whether this is indeed the case.

4 Empirical strategy

4.1 Identification

We are interested in the effects of a firm offering a certain type of workplace health promotion measure compared to not offering any such measure on the labour outcomes of the firm's employees. To disentangle these effects from other determinants of the worker's labour market outcomes, two selection problems need to be solved. Firstly, workers may self-select into firms that offer certain health promotion measures. We approach this problem by focusing on firms that did not offer any such measure by mid-2002 and by only considering workers who have been with the firm for at least 2 years by mid-2002. Hence, all workers we include in the analysis joined the firms at a point in time when they did not offer, and it was not foreseeable that they will offer, any health promotion measure.

The second selection problem arises because firms selectively rather than randomly introduced health promotion measures between mid-2002 and mid-2004. This also became visible when comparing the characteristics of the firms across treatment states in Section 3.3. To solve a large part of this problem, we exploit that the data are very informative and allow us to capture most of the potential drivers of the decision to introduce health measures and of workers' labour market outcomes (so-called 'confounders').

From a theoretical perspective, taking the view of a profit maximising enterprise, health promotion measures should be introduced if they are cost-effective. Firm performance, which also depends on the economic situation in the region and industry, is one of the most obvious factors because it affects the financial means available for costly health promotion. Firm size appears to be an important determinant of health promotion costs *per employee*, given that

introductory fixed costs, e.g. for building up the infrastructure, are non-negligible. The potential returns from these measures depend on health risks that differ a lot by industry and occupation but also by individual characteristics, such as education and age, because of different health knowledge and health investments. They also depend on health problems evident in the firm such as high absenteeism and high accident rates. Finally, the bargaining power of employees may play an important role in introducing health promotion measures. A strong representation of workers' interest, e.g. via a works council in the firm or strong unionization, is more likely to enforce better working conditions. All of these factors (that determine the firms' decision to engage in health promotion activities) are likely to affect individual workers' labour market outcomes as well. Thus, they need to be controlled for.

The importance of these factors is also confirmed by several empirical studies, mostly in the public health literature, which have investigated the relationship between firm characteristics and health promotion. Kenkel and Supina (1992) analyse data from the US National Survey of Worksite Health Promotion Programs and find that firm size, the share of females, and corporate health insurance plans are positively correlated with health promotion, while employee turnover is negatively associated with the latter. Based on the same data, Fielding and Piserchia (1989) conclude that health promotion activities also vary with industry and region. Due to different institutional settings with respect to health policies in the US and Germany, the results of studies using German data appear particularly relevant in our context. Ulmer and Gröben (2005) use a survey of firms in the German states of Hesse and Thuringia and find that firm size, the number of work accidents, and profit expectations are significantly associated with health promoting activities. Hollederer (2007) uses the unrestricted version of the IAB Establishment Panel and concludes that health promotion varies considerably with federal states, industry, firm size, and the presence or absence of a works council. Based on a phone survey among German insurance companies, Köhler et al. (2009) argue that firm size and particular firm policies, such as human resources and organizational development

policies, are related to health promotion. Finally, Jung et al. (2012) investigate the relationship between firm characteristics and the attitude towards health promotion in a survey among German information and communication technology companies. They find a firm's market position and the percentage of employees with an academic education to be associated with a positive attitude towards health promotion among small companies.

Table 4.1 summarizes the factors identified above from the theoretical considerations and the empirical literature and indicates how we can capture them with our data. However, two factors we cannot capture: The first one is the availability of health insurance plans. However, this is not relevant in the German context because health insurance is compulsory for everyone. The second missing factor is related to accidents at work. This is only captured indirectly by controlling for industry, occupation, and the share of employment contracts in the last 10 years that ended due to prolonged illness of more than 6 weeks. These factors are very likely to be strongly correlated with the rate of accidents. They represent potentially important confounders per se.

To address the issue of any potentially remaining unobserved factors and differential trends that drive workers' labour market outcomes, either via their current or past employers or other individual factors, we additionally exploit the panel structure of the data which allows us to observe at least 10 years of detailed pre-treatment labour market outcomes for all workers in our sample. By conditioning on a variety of summary measures of the workers' labour market performance over the 10 years prior to mid-2002, we not only take out any time-constant unobserved factors (fixed effects) that drive labour market outcomes, but also any differential long-term trends. The latter is so because we essentially 'equalize' workers in terms of all kinds of dimensions of labour market performance over the 10 years prior to mid-2002.

The exact specification we use for selection correction is described in the next section and summarized in the last column of Table 4.1.

Table 4.1 Summary of potential confounders and control variables available in the data

Potential confounders	Variables available in the data	Variables included in the estimation
Firm performance	Total revenues, evaluation of the business situation, investments per employee, age of firm, use of government subsidies, establishment is single firm	Investments per employee, age of firm, indicator for no use of government subsidies, establishment is single firm
Firm size	Firm size	Firm size
Industry of the firm	Industry of the firm	Industry of the firm
Occupation of the employees	Occupation of the employees	Occupation of the employees
Turnover	Distribution of tenure in firm, number of entries and exits over last year, tenure of individual employees	Tenure of individual employees
Strong worker representation	Indicators for whether firm has works council, is subject to sectorial or firm-specific wage contract, follows sectorial wage contract or is not subject to a wage contract	Indicators for whether firm has works council or is subject to sectorial wage contract
Region and its economic situation	Region dummies, unemployment rate, migration, commuting, dummies for urban and rural areas, population density, GDP growth, jobs per inhabitant aged 15-64, earnings per capita	Region dummies, GDP growth, jobs per inhabitant aged 15-64
Composition of the firm's workforce/ individual characteristics of employees	Gender, age, education, nationality, part-time/full-time, earnings distribution, occupations, blue-collar/white-collar job	Gender, age, education, foreigner status, part-time/full-time, earnings, occupation
Firm policies	Dozens of variables measuring various human resource policies, restructuring activities, organizational factors	Firm has difficulties hiring skilled employees, firm uses working time accounts
Absenteeism	Firm states to have problems with high absenteeism	Firm states to have problems with high absenteeism
Number of work accidents	-	Industry of the firm, occupation of the employees, share of employment contracts in the last 10 years that ended due to prolonged illness of more than 6 weeks
Corporate health insurance plans	-	Not relevant in the German context because of compulsory health insurance for everyone
Other factors and differential trends	More than 200 variables with half-yearly measurements of different types of employment, unemployment, receipt of unemployment insurance, wage earnings, program participation and inactivity; average duration and number of spells of employment/unemployment/program participation/inactivity, over the last 10 years	Fraction of time employed/unemployed/inactive in past 10 years

Note: All variables that are available in the data but are not used in the estimation have been tested in omitted variable tests. They are highly correlated with the included variables and therefore do not add much explanatory power.

4.2 Estimation

Any estimator which eliminates selection based on observed factors is built on the idea of comparing outcomes across units with and without treatment that are similar with respect to observed confounders in order to pin down the causal effect of the treatment. Instead of

using parametric OLS, we apply a propensity-score-matching estimator that defines similarity in terms of a function of the probability to be treated conditional on the confounders. In the program evaluation literature, this conditional probability is referred to as propensity score (see Rosenbaum and Rubin, 1983). An advantage of these estimators is that they are semi-parametric and therefore more robust than parametric methods like OLS, and that they allow for flexible effect heterogeneity (see Huber, Lechner and Wunsch, 2011, for an application in health economics).

We use radius matching on the propensity score with regression adjustment as suggested in Lechner, Miquel, and Wunsch (2011) to estimate the average effects of the two measures relative to ‘no such measure’. This estimator is more precise than nearest neighbour matching (e.g. Dehejia and Wahba, 2002), remains consistent if either the matching step is based on a correctly specified propensity score model, or the regression model is correctly specified (so-called double robustness property, see e.g. Rubin, 1979, Joffe et al., 2004), reduces small sample as well as asymptotic biases of matching (Abadie and Imbens, 2006), and appears to perform well in finite samples, also compared to OLS (Huber, Lechner, and Wunsch, 2013), but without having to rely on functional form assumptions.

To obtain the propensity scores required for selection correction, we estimate 6 separate probit models, one for each measure considered, *SickAna* and *Course*, and each of the 3 age strata. The dependent variable in any subsample is zero for workers in firms without any health measure and one otherwise (if the respective health measure is provided). All probit models and their results are presented in Appendix B.1. The specifications result from the identification issues discussed above as well as extensive specification tests for normality, heteroscedasticity and in particular omitted variables. The data contain hundreds of variables, a lot of them being highly correlated. We started with a parsimonious specification that included the most important potential confounders according to the empirical literature and the-

oretical considerations summarized in Table 4.1. Based on omitted variables tests for all variables in the data, we sequentially added additional variables if suggested by the test statistics.

The final specifications include gender, age, foreigner status, wages, tenure in June 2002, and indicators for part-time work, education, and occupation to capture the main determinants of workers' labour market performance as well as occupational health risks. Additionally, we include three summary measures of labour market performance in the past 10 years as pre-treatment outcomes to take out any other time constant unobserved factors that affect workers' labour market performance. We also include regional indicators and two variables capturing regions' economic performance as additional determinants of both individual labour market performance and firm performance where the latter may affect the financial means available to introduce health promotion measures. This is also true for firms' age, size and investments per employee as well as an indicator for establishments that do not use any government subsidies or represent a single firm. To capture health risks and other incentives to introduce health promotion measures, we finally include indicators for the industry, for firms stating to have problems with high absenteeism or difficulties hiring skilled workers, for having a works council or being subject to a sectorial wage contract, and the share of employment contracts in the past 10 years that ended due to prolonged illness of the employee.

Based on the estimated propensity scores, we ensure overlap of the distributions of the covariates in the treated and nontreated samples by excluding treated individuals with scores higher than the maximum among the nontreated and, similarly, nontreated individuals with scores lower than the minimum among the treated. Applying the matching technique outlined above on the common support results in very satisfactory balancing of the covariate distributions across treated and untreated establishments. This holds not only for the variables entering the respective propensity score specifications, but also for variables not explicitly

included, in particular the large number of workers' pre-treatment labour market outcomes and firm characteristics.¹¹

4.3 Inference

P-values to test whether the estimated effects are different from zero are obtained from a block bootstrap that resamples establishments (rather than individuals) along with all their employees to account for clustering at the establishment level.¹² We use 499 bootstrap replications and compute the bootstrap t-statistics of the respective average effects in each of the samples (recentered by the estimated effect in the original sample). We then estimate the p-value as the share of absolute bootstrap t-statistics that are larger than the absolute t-statistic in the original sample.¹³

5 Results

The individual administrative records allow computing a large number of outcome variables, which measure different dimensions of employees' labour market performance from July 2004 to December 2008 (see Table A.2 in Appendix A for a comprehensive list of all variables). With one exception, they are measured in the second half of June or December of a given year, either as binary labour market status indicators or income measures for that particular period, or as half-months in a given labour market status or income from a given

¹¹ Due to the very large number of tested variables, we abstain from presenting the results of the balancing tests. They are available on request.

¹² Abadie and Imbens (2008) show that for standard matching (based on a fixed number of comparison observations) bootstrap-based inference may be invalid. However, our matching algorithm is smoother than the one studied by Abadie and Imbens (2008) because it uses a variable number of (distance-weighted) comparisons and a regression adjustment. For this reason, the bootstrap is most likely a valid inference procedure in our context.

¹³ See for instance MacKinnon (2006) for a discussion on bootstrapping symmetric statistics. Since the theoretical results by Abadie and Imbens (2006) and the simulation based results in Huber, Lechner, and Wunsch (2013) suggest that the estimator is asymptotically normally distributed, bootstrapping the potentially pivotal t-statistic (computed under the assumption that the weights obtained to compute the control group are non-stochastic; see Lechner, 2002) has the advantage of potentially providing so-called asymptotic refinements and thus improving inference. In addition we also checked the bootstrap distribution of the estimated effects, rather than the t-statistics. The results are similar (available on request).

source accumulated since July 2004.¹⁴ In the following, we present the results for selected outcomes, which we consider the most interesting. They include two measures of turnover, namely tenure in the studied firm and the number of individual employer changes, as well as the cumulated number of months in employment, unemployment, or in the firm-provided early retirement scheme (described in footnote 10 above).

Below we report the so-called average treatment effect (ATE) of introducing *SickAna* or *Courses* compared to not introducing any measure. This corresponds to the effect for an employee randomly drawn from our estimation sample. Our empirical strategy also allows estimating effects for different groups of employees. The average effect on the non-treated (ATENT) is the effect for an employee randomly drawn from the subsample of firms, which did not introduce any health measure. Since firms adopting health measures and their employees differ from those that do not, comparing ATE and ATENT is informative about potential effect heterogeneity. In Appendix B.2, we therefore additionally report the results for the ATENT. They are very similar suggesting that effect heterogeneity is limited.¹⁵

Table 5.1: Average effects on tenure in the original establishment in days

Health promotion measure	Age	Effect	P-value in %
Analysis of sickness absenteeism	31-40	83	16
	41-50	48	36
	51-60	54	28
Health circles/courses	31-40	187**	3
	41-50	108*	10
	51-60	147***	1

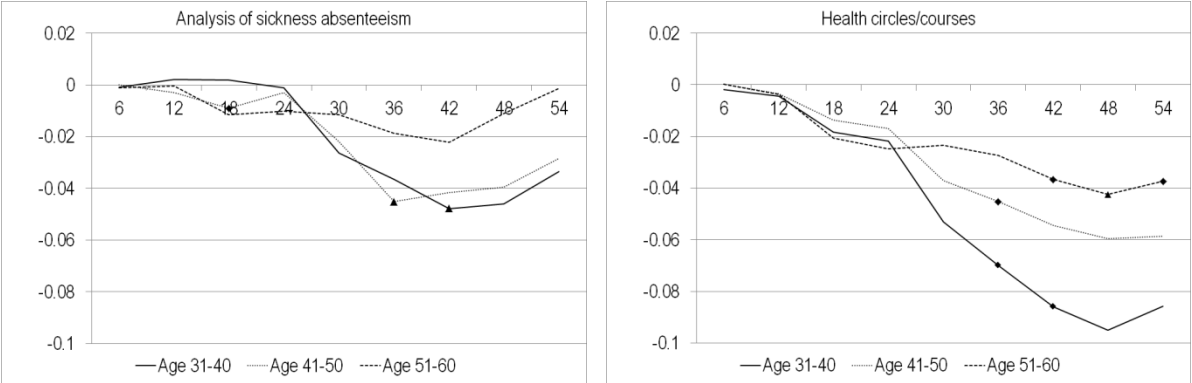
Note: */**/** indicates significance on the 10/5/1% level. Inference is based on block bootstrapping p-values (clustered at the establishment level, 499 replications). Tenure refers to the time with the establishment after treatment from July 2004 onwards. Tenure before that is a control variable.

¹⁴ To determine a unique labour market status for each period, the administrative records have been arranged as a panel data set with one observation for each half of a month in the period 1990-2008.

¹⁵ The results for the average treatment on the treated (ATET), which is the effect for an employee randomly drawn from the subsample of firms which adopted a specific health measure, are also similar, but less precisely estimated. Detailed results are available on request.

Table 5.1 reports the ATEs on tenure in the firm (from July 2004 onwards) for each of the three age strata. In any of the latter, there are no significant effects of analysing sickness absenteeism, but large positive and statistically significant effects of health circles/courses. After firms introduced these measures, employees stayed with the firm for 4-6 more months longer than if the firm had not introduced these measures. Hence, establishments offering these measures seem to be employers that are more attractive. Moreover, this suggests that firms can save turnover costs by introducing such measures.

Figure 5.1: Average effects on the number of employer changes



Note: Lines denote average treatment effects on the for respective age stratum. The symbol '▲' denotes significance at the 5% level, while '◆' denotes significance at the 10% level. The horizontal axis measures the number of months since June 2004 (half-yearly measurements in June and December of each year). Inference is based on block bootstrapping p-values (clustered at the establishment level, 499 replications).

There is also evidence, though somewhat weaker, that health circles/courses stabilise workers' careers more generally by reducing the number of employer changes. Figure 5.1 plots half-yearly measurements of the ATEs of introducing the respective health promotion measure compared to not introducing any measure from December 2004 to December 2008. Triangles appear if the effects are significant on the 5% level and diamond symbols when they are significant on the 10% level. About 3 years after introduction of the measures we find significant reductions in the number of employer changes of about 4 percentage points for workers aged 51-60, of 5-6 percentage point for 41-50-year olds, and of roughly 8 percentage points for workers aged 31-40. We also estimate drops in the number of employer changes of

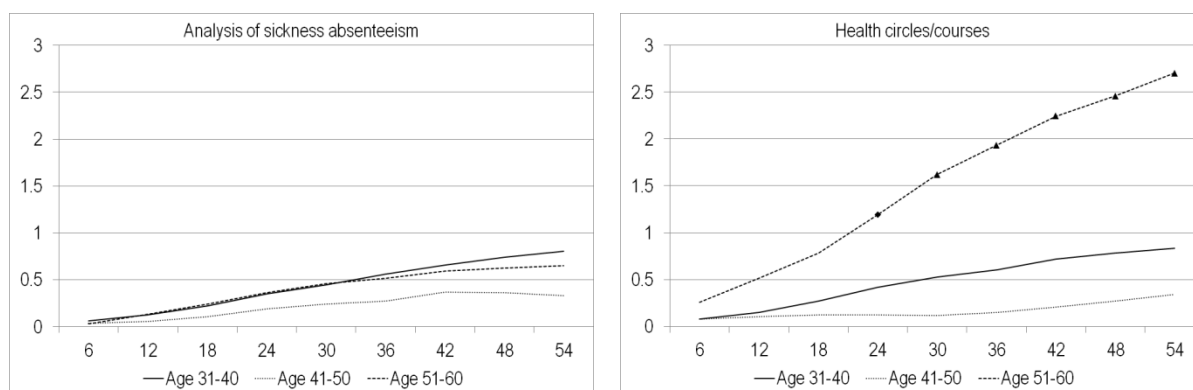
roughly 4-5 percentage points for workers aged 50 or younger about 3 years after first analysing sickness absenteeism. However, few point estimates are significant.

Figures 5.2 to 5.4 plot the ATEs on the cumulated number of months in unsubsidised employment, unemployment or the firm-provided early retirement scheme in a similar fashion as Figure 5.1. Tables B.3 and B.4 in Appendix B.3 report the results for the binary labour market status indicators measured in the second half of June or December of a given year (so-called point-in-time estimates). There are no significant effects of introducing the analysis of sickness absenteeism on any outcome or age group. The only quantitatively larger effects appear for older workers in terms of participation in the firm-provided early retirement scheme, which is reduced by more than one month. The cumulated effects are never significant, while some of the longer run point-in-time estimates are marginally significant (see Table B.3). We do not find any significant or quantitatively noteworthy effects of introducing health circles/courses for workers aged 50 or younger either.

However, there are interesting effects for older workers. After the introduction of health circles/courses, workers aged 51-60 are 4-7 percentage points more likely to be employed than without the introduction of the measures and in total, they spend about 3 months more in unsubsidised employment over the 4.5-year period following June 2004. Moreover, during the first 2 years, the elderly are 3-4 percentage points less likely to be unemployed and receive unemployment insurance payments, and in total they spend about 1.5 months less in unemployment. During the first 1.5 years, they are also roughly 3-4 percentage points less likely to participate in the firm-provided early retirement scheme, which accumulates to being almost one month less in this scheme.¹⁶ Consequently, tax revenues and social insurance contributions increase while expenditures on unemployment and pension insurance fall.

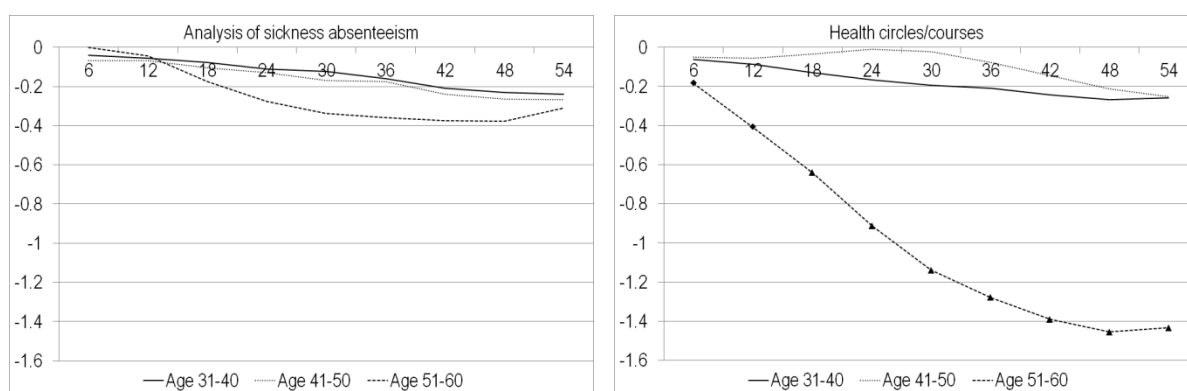
¹⁶ The effects on earnings (coded as zero if not employed) show a similar pattern as the effects on employment but are never significant and thus omitted. The results for the other outcomes listed in Table A.1 also support the main conclusions, but lack precision in many cases which is why they are not reported either.

Figure 5.2: Average effects on cumulated unsubsidised employment in months



Note: Lines denote average treatment effects on the for respective age stratum. The symbol '▲' denotes significance at the 5% level, while '◆' denotes significance at the 10% level. The horizontal axis measures the number of months since June 2004 (half-yearly measurements in June and December of each year). Inference is based on block bootstrapping p-values (clustered at the establishment level, 499 replications).

Figure 5.3: Average effects on cumulated unemployment in months

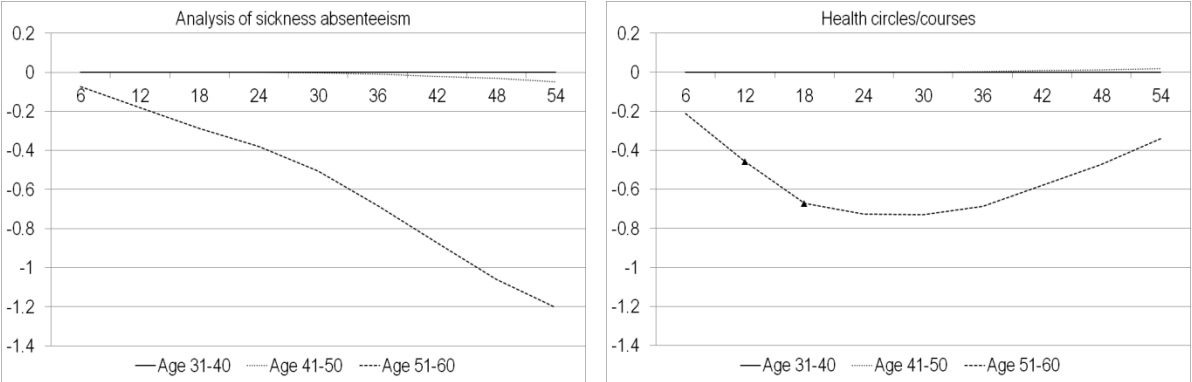


Note: Lines denote average treatment effects on the for respective age stratum. The symbol '▲' denotes significance at the 5% level, while '◆' denotes significance at the 10% level. The horizontal axis measures the number of months since June 2004 (half-yearly measurements in June and December of each year). Inference is based on block bootstrapping p-values (clustered at the establishment level, 499 replications).

The cumulated effects may seem small at first sight. However, because of the tenure requirement we impose for identification purposes, the workers in our sample have a quite strong labour market attachment (they were employed for 85-95% of the 10 years before July 2002, see Table 3.2). Hence, unemployment risk and incentives to retire early should be comparatively low, which implies that the effects on (the relatively few) workers who would become unemployed or decide to retire early in the absence of the health measures must be quite large. This is confirmed by the relatively large point-in-time effects. It follows that the average effects for older workers with weaker labour market attachment might be even larger.

However, for the sake of minimising self-selection into firms, we here focus on a more narrowly defined population of workers.

Figure 5.4: Average effects on months in firm-provided early retirement schemes



Note: Lines denote average treatment effects on the for respective age stratum. The symbol '▲' denotes significance at the 5% level, while '◆' denotes significance at the 10% level. The horizontal axis measures the number of months since June 2004 (half-yearly measurements in June and December of each year). Inference is based on block bootstrapping p-values (clustered at the establishment level, 499 replications).

The results also provide some insights on the credibility of our identification strategy. Firstly, if controlling for the variables available in the data was not sufficient for removing selection bias, one might see immediate 'effects' in the figures presented above, as there is no obvious reason why selection effects would need time to materialize - as opposed to true effects. However, effects immediately after introducing the health measures are largely absent and never significant, thus providing no evidence against the validity of our selection-on-observables strategy. Secondly, the fact that we mainly find effects for older workers, who are most likely to suffer from health problems, but not for younger workers in the same firms also speaks against selection effects, which should be similar for all employees of a firm. Finally, the firms which introduced health circles/courses are operating in less favourable labour markets than those which do not (see Table 3.2), suggesting that selection effects should lead to worse labour market outcomes of their employees. The fact that we find opposite effects supports our identification strategy.

6 Conclusions

In this paper, we complement the literature on the effects of firm-provided workplace health promotion measures on workers' health and firms' economic situation by studying the effects on future labour market outcomes of the firms' employees. Identification exploits rich survey and administrative data and is based on a combination of a selection-on-observables assumption and a particular usage of the panel structure of the data that allows controlling for time-constant unobserved factors and differential time trends. For estimation, we apply semi-parametric radius matching on the propensity score with regression adjustment, which is flexible in terms of functional form assumptions and permits arbitrary effect heterogeneity with respect to observables.

Our results suggest that analyses of sickness absenteeism, which involve employees only passively, have a rather limited impact on individual labour market outcomes by slightly reducing the number of job changes for younger workers. In contrast, health circles and health courses, which require an active engagement of the employees, appear to have a more profound impact. They decrease the number of job changes in general (and more profoundly than the analyses of sickness absenteeism) leading to more stable work careers. Moreover, they increase tenure with the studied firm by 4-6 months for all age groups, which implies savings for firms in terms of turnover costs that come in addition to health-related cost savings documented in the existing literature. Finally and maybe most important from a policy perspective, health circles and health courses also increase the labour market attachment of older workers. They increase employment and reduce unemployment of these workers. They also reduce participation in special firm-provided early retirement schemes. Therefore, tax revenues and social insurance contributions increase while expenditures on unemployment and pension insurance fall. Again, this comes on top of the positive effects on workers' health and the corresponding health-related cost savings documented in the earlier literature. Thus, it

might be advisable for policy makers to encourage firms to introduce health circles or health courses, especially given the demographic development in many countries.

Further research should be devoted to a more thorough investigation of heterogeneity patterns to permit a more precise targeting of health promotion activities to groups that benefit most. Possible dimensions of interest are specific industries and occupations as well as particular types of employees with specific health risks, none of which could be investigated in this study due to sample size issues.

Literature

- Abadie, A., and G. W. Imbens (2006): "Large Sample Properties of Matching Estimators for Average Treatment Effects", *Econometrica*, 74, 235-267.
- Abadie, A., and G. W. Imbens (2008): "On the Failure of the Bootstrap for Matching Estimators", *Econometrica*, 76, 1537-1557.
- Biewen, M., B. Fitzenberger, R. Osikominu, and M. Paul (2013): "The Effectiveness of Public Sponsored Training Revisited: The Importance of Data and Methodological Choices", forthcoming in *Journal of Labor Economics*.
- BMAS (2014): "Sicherheit und Gesundheit bei der Arbeit 2012 - Unfallverhütungsbericht Arbeit", Bundesministerium für Arbeit und Soziales (BMAS).
- Böckerman P., and P. Ilmakunnas (2009): "Unemployment And Self-Assessed Health: Evidence From Panel Data", *Health Economics*, 18, 161-179.
- Dehejia, R. H., and S. Wahba (2002): "Propensity-Score-Matching Methods for Nonexperimental Causal Studies", *Review of Economics and Statistics*, 84, 151-161.
- Fielding, J. E., and P. V. Piserchia (1989): "Frequency of worksite health promotion activities", *American Journal of Public Health*, 79, 16-20.
- Hollederer, A. (2007): "Betriebliche Gesundheitsförderung in Deutschland—Ergebnisse des IAB-Betriebspanels 2002 und 2004", *Gesundheitswesen*, 69, 63-76.
- Huber, M., M. Lechner, and C. Wunsch (2011): "Does Leaving Welfare Improve Health? Evidence for Germany", *Health Economics*, 20, 484-504.
- Huber, M., M. Lechner, and C. Wunsch (2013): "The Performance of Estimators Based on the Propensity Score", *Journal of Econometrics*, 175, 1-21.
- IGA (2009): "Health in the workplace – A guide to health at work", published by Initiative Gesundheit und Arbeit (IGA), BKK Bundesverband, Deutsche Gesetzliche Unfallversicherung, BGAG – Institut Arbeit und Gesundheit der DGUV, AOK-Bundesverband, Verband der Ersatzkassen e.V..

- Joffe, M. M., T. R. Have, H. I. Feldman, and S. Kimmel (2004): "Model Selection, Confounder Control, and Marginal Structural Models", *The American Statistician*, 58-4, 272-279.
- Jung, J., A. Nitzsche, L. Ansmann, N. Ernstmann, O. Ommen, B. Stieler-Lorenz, J. Wasem, and H. Pfaff (2012): "Organizational factors and the attitude toward health promotion in German ICT-companies", *Health Promotion International*, 27, 382-393.
- Kenkel, D., and D. Supina (1992): The determinants of worksite health promotion, *Economics Letters*, 40, 345-351.
- Kreis, J. and W. Bödeker (2004): "Health-related and economic benefits of workplace health promotion and prevention - Summary of the scientific evidence", IGA Report 3e, published by the BKK Federation and the Federation of Institutions for Statutory Accident Insurance and Prevention.
- Lechner, M. (2002): Some practical issues in the evaluation of heterogeneous labour market programmes by matching methods, *Journal of the Royal Statistical Society, Series A, Statistics in Society*, 165, 59-82.
- Lechner, M. and C. Wunsch (2013): "Sensitivity of Matching-Based Program Evaluations to the Availability of Control Variables", *Labour Economics*, 21, 111-121.
- Lechner, M., R. Miquel, and C. Wunsch (2011): "Long-Run Effects of Public Sector Sponsored Training in West Germany", *Journal of the European Economic Association*, 9, 742-784.
- MacKinnon, J. G. (2006). "Bootstrap Methods in Econometrics", *The Economic Record*, 82, 2-18.
- New York Times (2013): "As OSHA Emphasizes Safety, Long-Term Health Risks Fester", online edition, <http://www.nytimes.com/2013/03/31/us/osha-emphasizes-safety-health-risks-fester.html> (accessed August, 26, 2013).
- Köhler, T., C. Janssen, C. S. Plath, S. Steinhausen, and H. Pfaff (2009): "Determinanten der betrieblichen Gesundheitsförderung in der Versicherungsbranche: Ergebnisse einer Vollerhebung bei deutschen Versicherungen im Jahr 2006", *Gesundheitswesen*, 71, 722-731.
- Rosenbaum, P. R., and D. B. Rubin (1983): "The central role of the propensity score in observational studies for causal effects", *Biometrika*, 70, 41-50.
- Rubin, D. B. (1979): "Using Multivariate Matched Sampling and Regression Adjustment to Control Bias in Observational Studies", *Journal of the American Statistical Association*, 74, 318-328.
- Sockoll, I., I. Kramer, and W. Bödeker (2009): "Effectiveness and economic benefits of workplace health promotion and prevention - Summary of the scientific evidence 2000 to 2006", IGA Report 13e, published by the Federal Association of Company Health Insurance Funds.
- Ulmer, J. and F. Gröben (2005): "Work place health promotion. A longitudinal study in companies placed in Hessen and Thuringen", *Journal of Public Health*, 13, 144-152.
- Wunsch, C. (2013): "Optimal Use of Labor Market Policies: The Role of Job Search Assistance", *Review of Economics and Statistics*, 95, 1030-1045.
- Wunsch, C., and M. Lechner (2008): "What Did All the Money Do? On the General Ineffectiveness of Recent West German Labour Market Programmes", *Kyklos*, 61, 134-174.

Appendix A: Further descriptive statistics

Table A.1: Transition matrix for the use of different health measures

(a) Analysis of sickness absenteeism				
2002	2004		Total	
	No	Yes		
No	460	308	768	
Yes	340	1,123	1,463	
Total	800	1,431	2,231	

(b) Surveys of employees about health risks at the workplace				
2002	2004		Total	
	No	Yes		
No	1,102	344	1,446	
Yes	354	431	785	
Total	1,456	775	2,231	

(c) Discussion groups about health problems in the workplace (health circles)				
2002	2004		Total	
	No	Yes		
No	1,456	218	1,674	
Yes	276	281	557	
Total	1,732	499	2,231	

(d) Courses with information about healthy behaviour				
2002	2004		Total	
	No	Yes		
No	1,230	322	1,552	
Yes	253	426	679	
Total	1,483	748	2,231	

Note: The numbers refer to all establishments, which participated in the 2002 and in the 2004 waves of the IAB Establishment Panel, have non-missing entries for the respective question and are part of the linked-employer-employee data used in this project. The shaded cells indicate the firms that are relevant for the empirical analysis before removing firms with at least one measure in 2002 and before applying further restrictions to ensure common support.

Table A.2: Outcome variables

Age of worker in 2004		31 to 40			41 to 50			51 to 60		
Establishment health policy (treatment)		None	SickA	Cour	None	SickA	Cour	None	SickA	Cour
Employed end of	2/2004	0.92	0.93	0.94	0.92	0.93	0.95	0.81	0.82	0.84
	1/2005	0.91	0.92	0.92	0.91	0.93	0.93	0.76	0.78	0.79
	2/2005	0.90	0.91	0.92	0.90	0.92	0.93	0.72	0.74	0.76
	1/2006	0.90	0.92	0.92	0.90	0.91	0.92	0.69	0.70	0.73
	2/2006	0.90	0.92	0.92	0.90	0.91	0.92	0.66	0.67	0.70
	1/2007	0.90	0.92	0.91	0.89	0.90	0.91	0.62	0.64	0.66
	2/2007	0.90	0.90	0.91	0.88	0.89	0.91	0.60	0.60	0.63
	1/2008	0.89	0.90	0.90	0.88	0.88	0.91	0.56	0.57	0.59
	2/2008	0.89	0.90	0.90	0.87	0.87	0.90	0.54	0.54	0.57
Minor employment end of	2/2004	0.04	0.04	0.04	0.03	0.04	0.03	0.04	0.04	0.05
	1/2005	0.04	0.05	0.05	0.04	0.04	0.03	0.05	0.04	0.04
	2/2005	0.04	0.05	0.04	0.04	0.04	0.03	0.05	0.04	0.04
	1/2006	0.05	0.05	0.05	0.04	0.04	0.04	0.05	0.05	0.05
	2/2006	0.05	0.05	0.05	0.04	0.04	0.04	0.05	0.05	0.05
	1/2007	0.05	0.05	0.05	0.04	0.04	0.03	0.06	0.05	0.06
	2/2007	0.04	0.05	0.05	0.04	0.04	0.03	0.06	0.06	0.06
	1/2008	0.05	0.05	0.05	0.04	0.04	0.04	0.06	0.07	0.05
	2/2008	0.05	0.05	0.05	0.04	0.04	0.04	0.07	0.07	0.06
In early retirement scheme end of	2/2004	0.00	0.00	0.00	0.00	0.00	0.00	0.12	0.11	0.10
	1/2005	0.00	0.00	0.00	0.00	0.00	0.00	0.12	0.11	0.11
	2/2005	0.00	0.00	0.00	0.00	0.00	0.00	0.12	0.11	0.11
	1/2006	0.00	0.00	0.00	0.00	0.00	0.00	0.12	0.11	0.13
	2/2006	0.00	0.00	0.00	0.00	0.00	0.00	0.12	0.10	0.14
	1/2007	0.00	0.00	0.00	0.00	0.00	0.00	0.12	0.10	0.15
	2/2007	0.00	0.00	0.00	0.00	0.00	0.01	0.11	0.09	0.15
	1/2008	0.00	0.00	0.00	0.00	0.00	0.01	0.11	0.09	0.15
	2/2008	0.00	0.00	0.00	0.01	0.00	0.01	0.11	0.09	0.15
Unemployed end of	2/2004	0.04	0.03	0.02	0.04	0.03	0.02	0.07	0.07	0.04
	1/2005	0.04	0.04	0.03	0.04	0.04	0.03	0.08	0.07	0.05
	2/2005	0.04	0.04	0.03	0.05	0.04	0.03	0.10	0.07	0.05
	1/2006	0.04	0.04	0.03	0.05	0.04	0.03	0.10	0.09	0.05
	2/2006	0.03	0.03	0.02	0.04	0.04	0.03	0.09	0.08	0.05
	1/2007	0.03	0.03	0.02	0.04	0.04	0.03	0.08	0.07	0.05
	2/2007	0.03	0.03	0.02	0.04	0.03	0.02	0.07	0.06	0.04
	1/2008	0.03	0.03	0.02	0.04	0.03	0.02	0.06	0.05	0.04
	2/2008	0.03	0.03	0.02	0.04	0.04	0.02	0.04	0.04	0.03
Received unemployment benefits end of	2/2004	0.02	0.02	0.01	0.03	0.02	0.02	0.07	0.06	0.04
	1/2005	0.02	0.02	0.01	0.03	0.02	0.03	0.07	0.06	0.04
	2/2005	0.02	0.02	0.01	0.03	0.02	0.02	0.09	0.06	0.04
	1/2006	0.02	0.01	0.01	0.03	0.02	0.02	0.08	0.08	0.04
	2/2006	0.01	0.01	0.01	0.02	0.02	0.02	0.07	0.07	0.04
	1/2007	0.01	0.01	0.01	0.03	0.02	0.01	0.07	0.06	0.04
	2/2007	0.02	0.01	0.01	0.02	0.01	0.01	0.06	0.05	0.03
	1/2008	0.02	0.01	0.01	0.02	0.01	0.01	0.04	0.04	0.03
	2/2008	0.01	0.02	0.01	0.02	0.02	0.01	0.03	0.03	0.02
Out-of-labour-force end of	2/2004	0.04	0.03	0.04	0.03	0.03	0.03	0.12	0.11	0.12
	1/2005	0.05	0.04	0.05	0.04	0.03	0.03	0.16	0.14	0.15
	2/2005	0.05	0.05	0.06	0.04	0.04	0.03	0.18	0.18	0.19
	1/2006	0.06	0.04	0.06	0.05	0.04	0.04	0.21	0.21	0.21
	2/2006	0.06	0.05	0.06	0.05	0.05	0.04	0.24	0.24	0.24
	1/2007	0.06	0.05	0.07	0.06	0.05	0.06	0.29	0.28	0.29
	2/2007	0.07	0.06	0.07	0.07	0.07	0.06	0.32	0.32	0.32
	1/2008	0.07	0.06	0.07	0.07	0.08	0.07	0.37	0.37	0.36
	2/2008	0.08	0.07	0.07	0.08	0.09	0.07	0.41	0.40	0.39

Note: Table A.2 to be continued.

Table A.2 continued

Age of worker in 2004		31 to 40			41 to 50			51 to 60		
Establishment health policy (treatment)		None	SickA	Cour	None	SickA	Cour	None	SickA	Cour
Cumulated half months of employment until end of	2/2004	11.07	11.17	11.30	11.16	11.28	11.48	9.89	9.97	10.22
	1/2005	21.97	22.16	22.34	22.16	22.42	22.70	19.21	19.48	19.84
	2/2005	32.78	33.13	33.38	33.06	33.49	33.90	28.07	28.57	29.12
	1/2006	43.53	44.09	44.40	43.85	44.48	45.01	36.39	37.11	38.05
	2/2006	54.36	55.09	55.39	54.68	55.41	56.08	44.43	45.32	46.66
	1/2007	65.16	66.07	66.33	65.44	66.25	67.06	52.08	53.14	54.74
	2/2007	75.94	76.99	77.24	76.09	77.05	78.03	59.35	60.55	62.46
	1/2008	86.65	87.82	88.11	86.69	87.67	88.94	66.22	67.50	69.64
	2/2008	97.36	98.64	98.99	97.25	98.17	99.78	72.79	74.15	76.55
Cumulated half-months in minor employment until end of	2/2004	0.45	0.50	0.47	0.39	0.46	0.37	0.48	0.47	0.55
	1/2005	0.98	1.12	1.03	0.84	0.95	0.76	1.02	0.95	1.05
	2/2005	1.50	1.72	1.57	1.28	1.40	1.15	1.57	1.43	1.56
	1/2006	2.06	2.32	2.13	1.76	1.95	1.62	2.14	1.97	2.14
	2/2006	2.62	2.93	2.70	2.24	2.45	2.10	2.78	2.55	2.78
	1/2007	3.21	3.61	3.35	2.74	2.98	2.52	3.42	3.17	3.43
	2/2007	3.75	4.21	3.94	3.23	3.50	2.93	4.12	3.87	4.10
	1/2008	4.32	4.80	4.51	3.74	4.04	3.44	4.85	4.62	4.76
	2/2008	4.87	5.41	5.08	4.25	4.55	3.92	5.66	5.43	5.45
Cumulated half-months in early retirement scheme until end of	2/2004	0.00	0.00	0.00	0.00	0.00	0.00	1.41	1.31	1.28
	1/2005	0.00	0.00	0.00	0.00	0.00	0.00	2.80	2.58	2.51
	2/2005	0.00	0.00	0.00	0.00	0.00	0.00	4.21	3.86	3.82
	1/2006	0.00	0.00	0.00	0.00	0.00	0.00	5.63	5.16	5.33
	2/2006	0.00	0.00	0.00	0.01	0.00	0.01	7.07	6.45	7.01
	1/2007	0.00	0.00	0.00	0.03	0.01	0.04	8.52	7.65	8.76
	2/2007	0.00	0.00	0.00	0.07	0.03	0.10	9.93	8.81	10.59
	1/2008	0.00	0.00	0.00	0.13	0.06	0.17	11.29	9.92	12.37
	2/2008	0.00	0.00	0.00	0.21	0.10	0.28	12.61	11.03	14.14
Cumulated half months in unemployment until end of	2/2004	0.43	0.41	0.26	0.49	0.38	0.27	0.79	0.75	0.43
	1/2005	0.87	0.89	0.57	0.99	0.85	0.64	1.70	1.59	0.99
	2/2005	1.36	1.36	0.88	1.56	1.33	1.03	2.76	2.42	1.57
	1/2006	1.84	1.82	1.19	2.15	1.81	1.42	4	3.43	2.20
	2/2006	2.25	2.21	1.47	2.69	2.27	1.77	5.09	4.41	2.76
	1/2007	2.63	2.57	1.73	3.18	2.73	2.08	6.10	5.27	3.35
	2/2007	3.00	2.91	1.94	3.69	3.15	2.36	7.02	6.07	3.88
	1/2008	3.36	3.30	2.17	4.16	3.55	2.65	7.84	6.75	4.41
	2/2008	3.68	3.66	2.39	4.60	3.95	2.93	8.37	7.31	4.84
Cumulated half months in income support ('Hartz IV') end middle of	2/2004	0.00	0.00	0.00	0.00	0.00	0.00	0.00	0.00	0.00
	1/2005	0.15	0.20	0.12	0.10	0.13	0.09	0.06	0.09	0.08
	2/2005	0.30	0.40	0.22	0.19	0.26	0.20	0.13	0.17	0.14
	1/2006	0.46	0.61	0.33	0.30	0.41	0.31	0.22	0.25	0.20
	2/2006	0.62	0.83	0.45	0.41	0.56	0.43	0.32	0.35	0.28
	1/2007	0.77	1.04	0.58	0.52	0.73	0.57	0.44	0.46	0.37
	2/2007	0.93	1.24	0.70	0.62	0.89	0.71	0.55	0.59	0.47
	1/2008	1.08	1.45	0.81	0.72	1.07	0.85	0.68	0.74	0.58
	2/2008	1.22	1.65	0.93	0.83	1.24	0.96	0.80	0.87	0.69
Part-time employed end of	2/2004	0.17	0.16	0.25	0.19	0.19	0.28	0.25	0.21	0.29
	1/2005	0.18	0.16	0.25	0.19	0.19	0.29	0.24	0.22	0.28
	2/2005	0.18	0.16	0.25	0.19	0.19	0.29	0.24	0.21	0.28
	1/2006	0.19	0.17	0.25	0.20	0.20	0.29	0.24	0.21	0.28
	2/2006	0.19	0.17	0.26	0.20	0.19	0.29	0.23	0.21	0.28
	1/2007	0.19	0.17	0.26	0.20	0.20	0.29	0.22	0.20	0.28
	2/2007	0.19	0.17	0.26	0.20	0.19	0.29	0.22	0.19	0.27
	1/2008	0.19	0.17	0.26	0.20	0.19	0.29	0.21	0.19	0.25
	2/2008	0.19	0.17	0.26	0.20	0.19	0.29	0.21	0.19	0.25
Tenure after June 30, 2004 in days		1777	1897	1899	1872	1973	2001	1540	1630	1667

Note: Table A.2 to be continued.

Table A.2 continued

Age of worker in 2004		31 to 40			41 to 50			51 to 60		
Establishment health policy (treatment)		None	SickA	Cour	None	SickA	Cour	None	SickA	Cour
Half monthly earnings end of	2/2004	1184	1196	1179	1226	1232	1234	1062	1098	1039
	1/2005	1157	1175	1164	1197	1208	1194	982	1031	969
	2/2005	1152	1173	1164	1188	1205	1193	932	990	939
	1/2006	1150	1175	1152	1173	1188	1159	870	920	873
	2/2006	1144	1179	1153	1169	1183	1157	834	888	839
	1/2007	1139	1172	1129	1143	1167	1130	769	822	766
	2/2007	1138	1167	1133	1142	1159	1137	734	773	732
	1/2008	1127	1148	1131	1124	1115	1113	671	709	671
	2/2008	1128	1151	1132	1116	1114	1107	642	671	648
Cumulated half-months in Part-time employment until end of	2/2004	2.09	1.88	2.96	2.30	2.25	3.42	3.05	2.61	3.60
	1/2005	4.22	3.84	6	4.64	4.56	6.92	6.01	5.25	7.01
	2/2005	6.35	5.78	9.03	6.96	6.84	10.40	8.88	7.79	10.39
	1/2006	8.56	7.79	12.05	9.32	9.24	13.95	11.71	10.33	13.76
	2/2006	10.82	9.82	15.12	11.68	11.59	17.48	14.52	12.85	17.15
	1/2007	13.06	11.92	18.25	14.05	13.96	21	17.26	15.31	20.53
	2/2007	15.34	13.96	21.38	16.48	16.32	24.49	19.92	17.68	23.84
	1/2008	17.65	15.98	24.46	18.90	18.66	28.04	22.48	19.99	26.96
	2/2008	19.97	18.02	27.55	21.35	20.99	31.54	25.01	22.26	29.97
Cumulated earnings /100 until end of	2/2004	142	144	141	147	148	148	129	133	126
	1/2005	281	285	280	291	293	291	249	259	243
	2/2005	420	426	420	434	438	434	363	380	358
	1/2006	557	567	558	575	580	573	469	493	464
	2/2006	695	708	696	715	723	712	571	602	566
	1/2007	831	848	832	852	863	848	665	702	660
	2/2007	968	989	968	989	1003	984	755	798	749
	1/2008	1100	1126	1103	1120	1137	1118	837	885	831
	2/2008	1230	1265	1239	1250	1271	1251	916	967	910
Cumulated half-months in out-of-labour-force until end of	2/2004	0.48	0.39	0.44	0.33	0.31	0.23	1.29	1.25	1.32
	1/2005	1.09	0.90	1.05	0.76	0.65	0.59	3	2.84	3.08
	2/2005	1.73	1.40	1.68	1.24	1.05	0.96	4.98	4.80	5.12
	1/2006	2.41	1.93	2.31	1.74	1.48	1.38	7.27	7.09	7.47
	2/2006	3.12	2.50	3.01	2.31	2.01	1.89	10.01	9.78	10.19
	1/2007	3.88	3.11	3.79	2.99	2.65	2.55	13.23	12.98	13.44
	2/2007	4.69	3.79	4.63	3.77	3.37	3.23	16.90	16.63	17.10
	1/2008	5.56	4.53	5.50	4.64	4.26	3.99	21.07	20.84	21.30
	2/2008	6.47	5.29	6.38	5.57	5.29	4.83	25.80	25.47	25.85
Number of employer changes until end of	2/2004	0.00	0.00	0.00	0.00	0.00	0.00	0.00	0.00	0.00
	1/2005	0.01	0.01	0.01	0.01	0.00	0.00	0.00	0.00	0.00
	2/2005	0.03	0.03	0.01	0.02	0.01	0.01	0.02	0.01	0.01
	1/2006	0.05	0.04	0.03	0.03	0.03	0.02	0.03	0.02	0.01
	2/2006	0.09	0.06	0.04	0.08	0.04	0.03	0.05	0.03	0.03
	1/2007	0.12	0.08	0.05	0.10	0.06	0.04	0.06	0.03	0.03
	2/2007	0.16	0.11	0.07	0.13	0.08	0.06	0.08	0.04	0.04
	1/2008	0.19	0.14	0.08	0.15	0.11	0.07	0.09	0.06	0.05
	2/2008	0.22	0.19	0.10	0.17	0.14	0.08	0.11	0.08	0.07
Number of terminations of employment due to longer illness until end of	2/2004	0.01	0.01	0.01	0.01	0.01	0.01	0.02	0.02	0.02
	1/2005	0.02	0.02	0.02	0.02	0.02	0.02	0.03	0.03	0.03
	2/2005	0.03	0.04	0.03	0.03	0.03	0.03	0.05	0.06	0.05
	1/2006	0.04	0.05	0.05	0.05	0.05	0.05	0.07	0.07	0.07
	2/2006	0.05	0.06	0.06	0.06	0.06	0.06	0.08	0.09	0.09
	1/2007	0.07	0.07	0.07	0.08	0.07	0.08	0.09	0.11	0.10
	2/2007	0.08	0.08	0.08	0.09	0.09	0.09	0.11	0.13	0.12
	1/2008	0.09	0.09	0.09	0.11	0.11	0.11	0.12	0.14	0.13
	2/2008	0.10	0.10	0.11	0.12	0.12	0.13	0.14	0.15	0.14
# of employees (observations)		6247	4858	3312	6613	4622	3420	4366	3073	2135

Note: 1/200x denotes the first half of the 200x, while 2/200x denotes the second half of this year.

Table A.3: Selection of variables determined prior to treatment

Age in 2002	31 to 40			41 to 50			51 to 60		
	None	SickA	Cour	None	SickA	Cour	None	SickA	Cour
Establishment health policy (treatment)									
Women (share)	0.39	0.37	0.49	0.42	0.44	0.55	0.44	0.43	0.52
Age (in years)	35.9	35.8	35.9	45.3	45.3	45.2	54.9	54.8	54.8
Foreigner (share)	0.06	0.09	0.05	0.05	0.06	0.05	0.07	0.07	0.05
Half-monthly earnings in June 2002/1000	1.26	1.27	1.26	1.30	1.30	1.28	1.29	1.33	1.24
Tenure in June 2002 in years	2.56	2.51	2.62	2.90	2.83	3.05	3.07	3.09	3.27
Part-time employed (share)	0.17	0.15	0.24	0.19	0.18	0.28	0.25	0.22	0.30
No vocational degree (share)	0.16	0.17	0.09	0.22	0.18	0.12	0.22	0.18	0.15
University or polytechnical degree (share)	0.08	0.08	0.09	0.08	0.07	0.08	0.06	0.07	0.05
Vocational degree missing (share)	0.04	0.08	0.05	0.04	0.09	0.06	0.04	0.09	0.07
Occupation in manufacturing (share)	0.10	0.22	0.10	0.11	0.20	0.09	0.09	0.17	0.07
Low skilled occupation (share)	0.13	0.09	0.10	0.14	0.12	0.15	0.14	0.14	0.19
Occupation in construction (share)	0.13	0.11	0.08	0.13	0.11	0.07	0.13	0.10	0.08
Technical occupation (share)	0.19	0.23	0.11	0.18	0.22	0.08	0.18	0.22	0.10
Manufacturing (sector) (share)	0.46	0.62	0.29	0.47	0.58	0.25	0.43	0.58	0.27
Construction, trade (sector) (share)	0.20	0.14	0.13	0.18	0.14	0.13	0.23	0.14	0.17
Share employed in past 10 years	0.87	0.85	0.85	0.92	0.92	0.90	0.94	0.95	0.94
Share unemployed in past 10 years	0.02	0.02	0.03	0.02	0.02	0.02	0.01	0.01	0.01
Share inactive in past 10 years	0.02	0.02	0.02	0.01	0.01	0.01	0.01	0.01	0.01
Central German states (share)	0.34	0.31	0.41	0.35	0.31	0.44	0.38	0.32	0.42
Jobs per inhabitant aged 15-64	1.18	1.00	0.84	1.13	1.20	0.69	1.36	1.24	0.74
Growth of regional GDP 1994 to 2002 in %	0.23	0.22	0.19	0.24	0.22	0.19	0.23	0.22	0.19
Number of employees in establishment	301	304	361	304	301	372	298	310	364
Problems with high absenteeism	0.13	0.09	0.10	0.13	0.11	0.10	0.11	0.10	0.09
Difficulties hiring skilled employees (share)	0.35	0.39	0.44	0.33	0.38	0.46	0.33	0.38	0.51
Investment per employee / 10000	0.75	0.68	0.35	0.77	0.72	0.33	0.74	0.65	0.30
No use of government subsidies	0.52	0.52	0.40	0.51	0.52	0.39	0.48	0.54	0.37
Subject to sectoral wage contract (share)	0.80	0.79	0.71	0.81	0.79	0.71	0.84	0.81	0.74
Firm-specific wage contract (share)	0.11	0.08	0.09	0.11	0.09	0.12	0.10	0.09	0.11
Firm follows sectoral wage contract (share)	0.07	0.15	0.11	0.06	0.13	0.08	0.05	0.12	0.07
Not subject to general wage contract (share)	0.02	0.07	0.01	0.02	0.07	0.01	0.02	0.05	0.01
Firm has a work council (share)	0.80	0.86	0.89	0.84	0.87	0.91	0.86	0.89	0.90
Firm with single establishm. (share)	0.43	0.48	0.51	0.44	0.51	0.52	0.42	0.46	0.49
Establishment is headquarter (share)	0.28	0.25	0.15	0.24	0.23	0.11	0.27	0.28	0.13
Establishment is regional unit (share)	0.22	0.24	0.31	0.24	0.23	0.34	0.24	0.24	0.34
Share of determinations of employment contracts due to longer illness in past 10 y.	0.17	0.17	0.18	0.17	0.17	0.19	0.17	0.17	0.18

Note: Based on the samples used for estimation. If not explicitly mentioned otherwise, variables are measured in 2002.

Appendix B: Additional results

B.1 Propensity scores

In this section, we show the detailed specification and estimation results for the propensity scores used in the estimation.

Table B.1: Probit estimation results for the probability to be treated

Treatment	Analysis of sickness absenteeism						Health circles/courses					
	31-40		41-50		51-60		31-40		41-50		51-60	
Startum	Coeff.	p-val.	Coeff.	p-val.	Coeff.	p-val.	Coeff.	p-val.	Coeff.	p-val.	Coeff.	p-val.
Women	0.15	0.0	0.22	0.0	0.22	0.0	0.08	3.0	0.13	0.0	0.05	28.3
Age	-0.01	25.8	0.01	62.4	0.01	78.5	-0.01	17.1	-0.02	0.1	0.01	50.5
Foreigner	0.17	0.1	0.03	57.9	-0.08	18.9	0.02	80.9	--		-0.15	4.6
Earnings	0.18	0.0	0.16	0.0	0.13	0.3	0.21	0.0	0.18	0.0	-0.05	35.3
Tenure in months	-0.02	18.3	-0.03	1.8	-0.03	21.4	0.03	16.0	0.05	0.1	0.12	0.0
Part time employ.	0.05	28.8	0.05	16.5	0.02	60.5	0.04	30.3	0.12	0.5	-0.07	15.3
No vocat. degree	-0.08	5.9	-0.22	0.0	-0.22	0.0	-0.28	0.0	-0.28	0.0	-0.27	0.0
University/polytech.	-0.08	14.1	-0.09	5.7	0.08	18.7	0.04	45.9	0.01	84.7	-0.04	65.2
Voc. degree missing	0.70	0.0	0.70	0.0	0.69	0.0	0.17	2.4	0.16	1.4	0.30	0.0
Occ. in manufact.	0.41	0.0	0.44	0.0	0.41	0.0	0.22	0.1	0.19	0.2	0.13	10.3
Low skilled service occupation	-0.15	0.2	0.06	18.6	0.12	3.2	-0.13	1.0	0.03	50.5	0.17	0.5
Occ. in construction	-0.11	1.7	0.05	28.7	-0.01	81.1	-0.26	0.0	-0.15	0.7	-0.23	0.1
Technical occupat.	0.21	0.0	0.33	0.0	0.17	0.0	-0.16	0.2	-0.15	0.3	-0.19	0.2
Share UE last 10 y.	0.51	0.8	0.86	0.0	0.42	23.2	--		--		--	
Share inactive ...	0.57	25.6	0.27	65.6	0.69	43.9	--		--		--	
Share employed...	-0.36	0.0	-0.16	12.6	0.03	84.0	-0.48	0.0	--		-0.07	67.6
Northern states	-0.21	0.0	-0.34	0.0	-0.30	0.0	--		--		--	
Central states	-0.29	0.0	-0.37	0.0	-0.40	0.0	-0.20	0.0	-0.12	0.0	-0.21	0.0
Jobs per inhabitant	0.0	0.0	0.0	0.4	0.0	0.0	0.0	0.0	0.0	0.0	0.0	0.0
Reg. GDP growth	-2.01	0.0	-1.61	0.0	-2.06	0.0	-2.36	0.0	-2.41	0.0	-3.08	0.0
Manufact. (sector)	0.33	0.0	0.34	0.0	0.43	0.0	-0.46	0.0	-0.43	0.0	-0.22	0.0
Construction, trade	0.15	0.0	0.13	0.1	0.01	86.7	-0.32	1.8	-0.36	0.0	-0.21	0.0
Age of establish.	0.01	0.0	0.02	0.0	0.02	0.0	0.01	0.0	--	0.0	0.01	0.3
# of employees (ln)	0.04	12.4	0.05	3.7	0.12	0.1	0.29	0.0	0.43	0.0	0.39	0.0
Hiring difficulties	0.19	0.0	0.17	0.0	0.22	0.0	0.50	0.0	0.59	0.0	0.77	0.0
Sect. wage contract & many absences	-0.45	0.0	-0.50	0.0	-0.57	0.0	-0.37	0.0	-0.26	0.0	-0.34	0.0
Work council	0.44	0.0	0.42	0.0	0.53	0.0	0.28	0.0	--	1.8	0.45	0.0
Firm with single establishment	0.12	0.0	0.24	0.0	0.13	0.0	0.32	0.0	0.34	0.0	0.39	0.0
Investment per employee / 10000	-0.02	5.6	0.01	75.7	-0.02	20.8	-0.42	46.9	-0.21	0.0	-0.29	0.0
No use of subsidies	0.14	0.0	0.07	0.9	0.27	0.0	-0.02	0.0	-0.07		0.04	28.2
Work. time accounts	0.40	0.0	--		--		0.70	0.0	--		--	
Share of terminations of employment contracts due to longer illness past 10 y.	0.89	0.2	1.07	0.0	0.95	1.1	0.75	2.0	--		1.19	0.2
< 0.15	--		--		--		--		-0.45	0.0	--	
> 0.2	--		--		--		--		-0.19	0.0	--	
Pseudo-R ² in %		14.1		11.5		13.7		23.8		22.2		24.1
# of unique establishments		197		196		197		163		162		163

Note: --: Variable omitted from particular specification. All specifications include a constant term. Coefficient estimates obtained by maximum likelihood. P-values are based on asymptotic distribution not accounting for clustering and given in %. The dependent variable equals 1 if observation is treated.

B.2 Average treatment effects for the non-treated

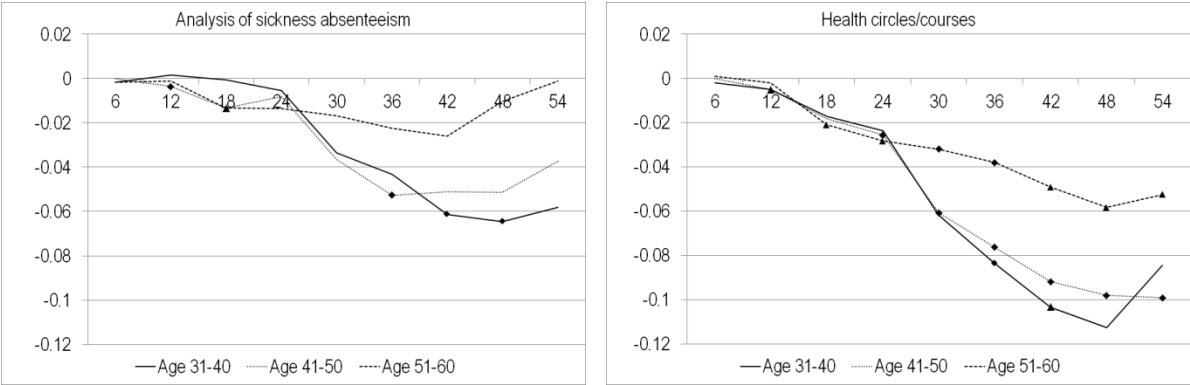
As already mentioned in the main text (see Section 5.2), one way to assess potential effect heterogeneity is to compare the average effects for workers in establishments without any health promotion measure to the average effects for all workers. The reason is that non-treated firms and their employees differ systematically from the average firm and its employees. Here we present the results for workers in non-treated firms (which are very similar to the average effects).

Table B.2: Average effects on tenure in the original establishment in days

Health promotion measure	Age	Effect	P-value in %
Analysis of sickness absenteeism	31-40	85	26
	41-50	40	55
	51-60	87	25
Health circles/courses	31-40	200***	1
	41-50	157**	4
	51-60	185***	0

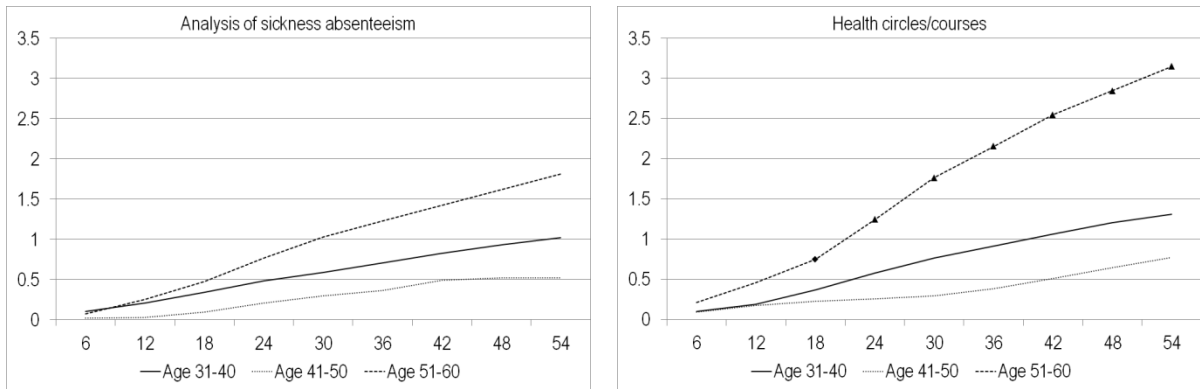
Note: */**/** indicates significance on the 10/5/1% level. Inference is based on block bootstrapping p-values (clustered at the establishment level, 499 replications). Tenure refers to the time with the establishment after treatment measured from July 2004. Tenure before that is a control variable.

Figure B.1: Average effects on the number of employer changes



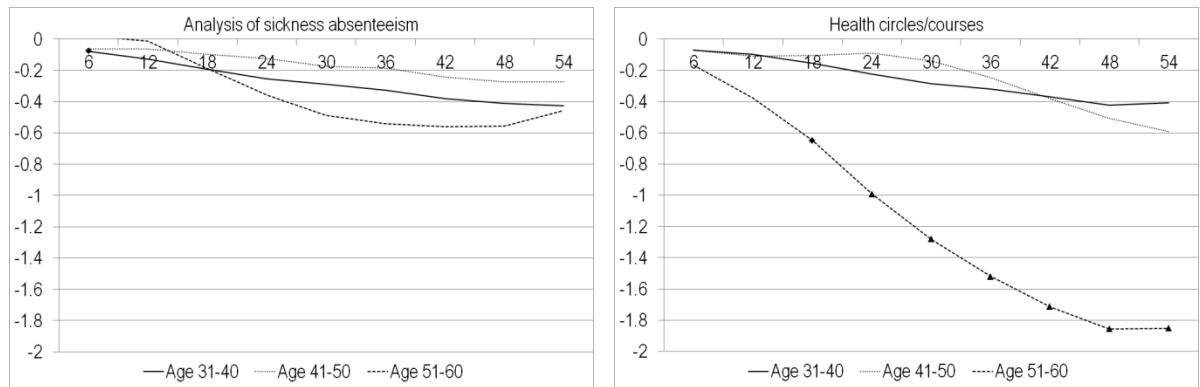
Note: Lines denote average treatment effects on the for respective age stratum. The symbol '▲' denotes significance at the 5% level, while '◆' denotes significance at the 10% level. The horizontal axis measures the number of months since June 2004 (half-yearly measurements in June and December of each year). Inference is based on block bootstrapping p-values (clustered at the establishment level, 499 replications).

Figure B.2: Average effects on cumulated unsubsidised employment in months



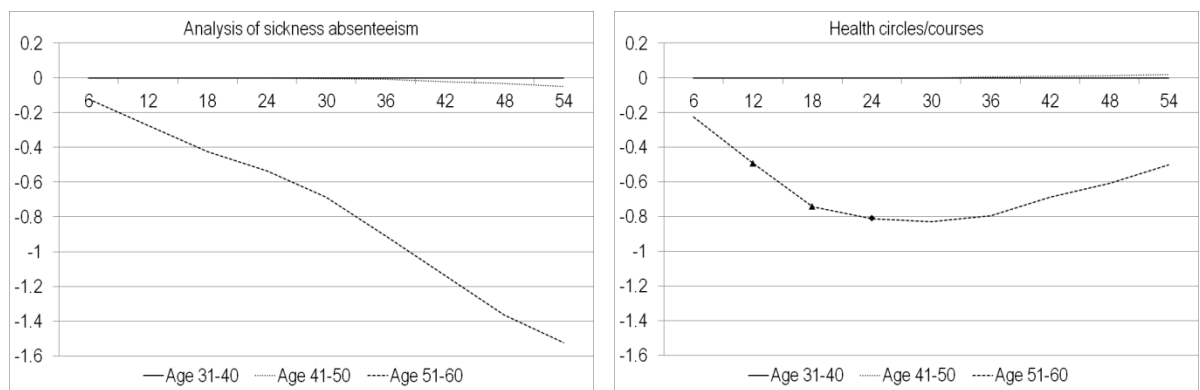
Note: See note to Figure B.1.

Figure B.3: Average effects on cumulated unemployment in months



Note: See note to Figure B.1.

Figure B.4: Average effects on months in firm-provided early retirement scheme



Note: See note to Figure B.1.

B.3 Point-in-time estimates

Table B.3: Effects of analysing sickness absenteeism on the probability to be in a certain labour market state in percentage points

		Age 31-40		Age 41-50		Age 51-60	
		ATENT	ATE	ATENT	ATE	ATENT	ATE
Employed end of	2/2004	0.016	0.011	-0.010	-0.003	0.019	0.009
	1/2005	0.020	0.013	0.013	0.011	0.031	0.020
	2/2005	0.021	0.015	0.017	0.011	0.039	0.018
	1/2006	0.021	0.018	0.022	0.013	0.033	0.009
	2/2006	0.019	0.018	0.004	0.001	0.043	0.015
	1/2007	0.018	0.016	0.018	0.012	0.035	0.013
	2/2007	0.017	0.011	0.016	0.011	0.030	0.008
	1/2008	0.015	0.013	0.000	-0.005	0.035	0.006
	2/2008	0.012	0.006	0.000	-0.005	0.031	0.006
In early retirement scheme end of	2/2004	0.000	0.000	0.000	0.000	-0.023	-0.016
	1/2005	0.000	0.000	0.000	0.000	-0.026	-0.018
	2/2005	0.000	0.000	0.000	0.000	-0.025	-0.018
	1/2006	0.000	0.000	0.000	0.000	-0.021	-0.017
	2/2006	0.000	0.000	0.002	0.001	-0.028	-0.022
	1/2007	0.000	0.000	-0.001	-0.001	-0.041	-0.033 *
	2/2007	0.000	0.000	-0.002	-0.002	-0.036	-0.029
	1/2008	0.000	0.000	-0.002	-0.002	-0.039	-0.031 *
	2/2008	0.000	0.000	-0.005	-0.004 *	-0.027	-0.025
Unemployed end of	2/2004	-0.010	-0.006	-0.001	-0.004	0.002	-0.001
	1/2005	-0.008	-0.001	-0.003	-0.004	-0.017	-0.016
	2/2005	-0.013	-0.006	-0.011	-0.008	-0.035 *	-0.026 *
	1/2006	-0.006	-0.002	-0.012	-0.007	-0.018	-0.007
	2/2006	-0.005	-0.004	0.003	0.001	-0.023	-0.011
	1/2007	-0.011 *	-0.009	-0.007	-0.004	-0.006	-0.003
	2/2007	-0.003	-0.003	-0.003	-0.007	0.001	0.000
	1/2008	-0.004	-0.004	-0.004	-0.004	0.010	0.004
	2/2008	-0.002	-0.001	0.012	0.007	0.001	0.002
On unemployment insurance end of	2/2004	-0.007	-0.004	0.004	0.000	0.004	0.000
	1/2005	-0.008 **	-0.004	-0.004	-0.006	-0.013	-0.013
	2/2005	-0.004	-0.002	-0.011	-0.008	-0.027	-0.021
	1/2006	-0.005	-0.003	-0.008	-0.004	-0.015	-0.005
	2/2006	-0.001	0.002	0.008	0.004	-0.016	-0.006
	1/2007	-0.008 ***	-0.007 **	-0.005	-0.002	-0.001	0.002
	2/2007	-0.003	-0.005	-0.002	-0.009	0.005	0.002
	1/2008	-0.004	-0.005	-0.006	-0.007	-0.006	-0.004
	2/2008	0.000	0.001	0.010	0.006	0.002	0.001

Note: */**/** indicates significance on the 10/5/1% level. Inference is based on block bootstrapping p-values (clustered at the establishment level, 499 replications).

Table B.4: Effects of health circles/courses on the probability to be in a certain labour market state in percentage points

		Age 31-40		Age 41-50		Age 51-60		
		ATENT	ATE	ATENT	ATE	ATENT	ATE	
Employed end of	2/2004	0.019	0.015	0.011	0.009	0.037	0.044	*
	1/2005	0.019	0.015	0.005	-0.001	0.037	0.039	*
	2/2005	0.029	0.021	0.002	0.001	0.058	* 0.051	**
	1/2006	0.027	0.018	-0.003	-0.008	0.084	*** 0.071	**
	2/2006	0.034	* 0.023	0.013	0.005	0.079	** 0.064	*
	1/2007	0.014	0.004	0.013	0.004	0.069	** 0.055	*
	2/2007	0.024	0.019	0.019	0.009	0.064	** 0.048	*
	1/2008	0.014	0.006	0.019	0.010	0.049	* 0.037	
	2/2008	0.014	0.006	0.023	0.014	0.055	* 0.046	
In early retirement scheme end of	2/2004	0.000	0.000	0.000	0.000	-0.035	-0.034	
	1/2005	0.000	0.000	0.000	0.000	-0.044	* -0.037	*
	2/2005	0.000	0.000	0.000	0.000	-0.036	-0.030	
	1/2006	0.000	0.000	0.000	0.000	-0.005	0.000	
	2/2006	0.000	0.000	0.007	0.005	0.006	0.007	
	1/2007	0.000	0.000	0.005	0.003	0.015	0.013	
	2/2007	0.000	0.000	0.003	0.002	0.026	0.025	
	1/2008	0.000	0.000	0.002	0.001	0.019	0.022	
2/2008	0.000	0.000	0.004	0.003	0.021	0.024		
Unemployed end of	2/2004	-0.011	-0.010	-0.015	-0.010	-0.024	-0.026	
	1/2005	-0.003	-0.003	0.007	0.009	-0.036	* -0.033	*
	2/2005	-0.014	-0.011	0.001	0.003	-0.058	** -0.047	***
	1/2006	-0.005	-0.002	0.003	0.005	-0.052	** -0.039	**
	2/2006	-0.013	-0.008	-0.005	0.000	-0.040	* -0.024	
	1/2007	-0.002	0.000	-0.015	* -0.007	-0.038	* -0.022	
	2/2007	-0.007	-0.013	-0.015	* -0.007	-0.013	-0.006	
	1/2008	0.005	0.003	-0.011	-0.005	-0.008	-0.001	
	2/2008	0.007	0.004	-0.009	-0.004	0.019	0.015	
On unemployment insurance end of	2/2004	-0.005	-0.005	-0.008	-0.005	-0.031	* -0.030	*
	1/2005	0.003	0.002	0.011	0.012	-0.029	-0.026	
	2/2005	-0.003	-0.003	0.001	0.003	-0.048	** -0.039	**
	1/2006	-0.006	-0.004	0.007	0.006	-0.047	** -0.036	**
	2/2006	-0.007	* -0.004	-0.005	-0.002	-0.037	** -0.022	
	1/2007	-0.001	-0.001	-0.013	** -0.008	* -0.037	** -0.023	
	2/2007	-0.009	-0.024	-0.017	** -0.010	** -0.019	-0.010	
	1/2008	0.002	0.001	-0.012	* -0.008	* -0.018	-0.008	
	2/2008	0.007	0.003	-0.005	-0.003	0.005	0.004	

Note: */**/** indicates significance on the 10/5/1% level. Inference is based on block bootstrapping p-values (clustered at the establishment level, 499 replications).

Appendix C: More details on the definition of the treatment

Figure C. 1: Cut-and-paste from the original questionnaire

87. Welche Maßnahmen zum Schutz oder zur Förderung der Gesundheit der Beschäftigten, die über die gesetzlichen Regelungen hinausgehen, werden in Ihrem Betrieb/Ihrer Dienststelle durchgeführt oder finanziell unterstützt? Sagen Sie mir bitte, was von dieser Liste zutrifft.

Interv.: Liste 17 vorlegen und alles Zutreffende ankreuzen!

A Krankenstandsanalysen

B Mitarbeiterbefragungen zum Gesundheitsschutz am Arbeitsplatz

C Gesprächskreise zu gesundheitlichen Problemen im Betrieb („Gesundheitszirkel“)

D Kurse zum gesundheitsgerechten Verhalten

E Sonstiges, und zwar:

F Nichts davon

Translation: “Beyond what is required by law, which measures to protect and improve the health of your employees are you implementing or supporting financially? Please indicate in the following list which items are true for your establishment.

- A. Analysis of sick leave
- B. Surveys of employees about health risks at the workplace
- C. Discussion groups about health problems in the establishment (health circles)
- D. Courses with information about healthy behaviour
- E. Other, in particular: < fill in >
- F. None of the above”

Note that indicating multiple measures is possible. The first treatment (*SickAna*) used in the main body of the paper consists of workers in those establishments indicating ‘A’, the second one consists of workers in establishments indicating ‘C’ and/or ‘D’ (*Course*). In either case, the control group consists of those establishments indicating option ‘F’ (only).