

Tavoni, Massimo; Tol, Richard S.J.

**Working Paper**

## Counting only the hits? The risk of underestimating the costs of stringent climate policy

ESRI Working Paper, No. 324

**Provided in Cooperation with:**

The Economic and Social Research Institute (ESRI), Dublin

*Suggested Citation:* Tavoni, Massimo; Tol, Richard S.J. (2009) : Counting only the hits? The risk of underestimating the costs of stringent climate policy, ESRI Working Paper, No. 324, The Economic and Social Research Institute (ESRI), Dublin

This Version is available at:

<https://hdl.handle.net/10419/50088>

**Standard-Nutzungsbedingungen:**

Die Dokumente auf EconStor dürfen zu eigenen wissenschaftlichen Zwecken und zum Privatgebrauch gespeichert und kopiert werden.

Sie dürfen die Dokumente nicht für öffentliche oder kommerzielle Zwecke vervielfältigen, öffentlich ausstellen, öffentlich zugänglich machen, vertreiben oder anderweitig nutzen.

Sofern die Verfasser die Dokumente unter Open-Content-Lizenzen (insbesondere CC-Lizenzen) zur Verfügung gestellt haben sollten, gelten abweichend von diesen Nutzungsbedingungen die in der dort genannten Lizenz gewährten Nutzungsrechte.

**Terms of use:**

*Documents in EconStor may be saved and copied for your personal and scholarly purposes.*

*You are not to copy documents for public or commercial purposes, to exhibit the documents publicly, to make them publicly available on the internet, or to distribute or otherwise use the documents in public.*

*If the documents have been made available under an Open Content Licence (especially Creative Commons Licences), you may exercise further usage rights as specified in the indicated licence.*



Working Paper No. 324

October 2009

## Counting Only the Hits? The Risk of Underestimating the Costs of Stringent Climate Policy

Massimo Tavoni\*, Richard S.J. Tol\*\*

*Abstract.* This paper warns against the risk of underestimating the costs -and the uncertainty about the costs- of achieving stringent stabilization targets. We argue that a straightforward review of integrated assessment models results produces biased estimates for the more ambitious climate objectives such as those compatible with the 2°C of the European Union and the G8. The magnitude and range of estimates are significantly reduced because only the most optimistic results are reported for such targets. We suggest a procedure that addresses this partiality. The results show highly variable costs for the most difficult scenarios.

*Corresponding Author:* Richard.Tol@esri.ie

---

\* Princeton Environmental Institute, Princeton University, USA. Fondazione Eni Enrico Mattei (FEEM), Milan, Italy.

\*\* Economic and Social Research Institute, Dublin, Ireland. Institute for Environmental Studies, Vrije Universiteit, Amsterdam, The Netherlands. Department of Spatial Economics, Vrije Universiteit, Amsterdam, The Netherlands.

ESRI working papers represent un-refereed work-in-progress by members who are solely responsible for the content and any views expressed therein. Any comments on these papers will be welcome and should be sent to the author(s) by email. Papers may be downloaded for personal use only.

# Counting Only the Hits? The Risk of Underestimating the Costs of Stringent Climate Policy

## Introduction

As the predictions about climate change are becoming direr and support for climate policy is growing across the political spectrum, the long-term goals for greenhouse gas emission reduction are getting more ambitious. The targets that are now on the political agenda were deemed unlikely only five years ago. As a result, there is only a thin body of literature on the costs of meeting these aspirations. This has led to an inadvertent bias in policy advice: the most policy-relevant part of the literature is dominated by a few studies only. This note estimates the size of this bias.

The bias in policy advice comes about as follows. Analysts run their model using a central scenario that is considered to be most relevant to policy. Sensitivity analyses are done with more stringent and more lenient targets, but results are reported in less detail. A conscientious modeler would realize that more stringent targets would take the model further away from its domain of calibration and validation, and would hesitate to publish such results so as to maintain academic credibility. In addition, without modifying the underlying model structure, stringent scenarios are often not attainable or infeasible, and simply do not appear in the literature. Until recently, the standard choice for a central scenario aimed at stabilizing atmospheric carbon dioxide at a concentration of 550 ppm (Weyant et al. 1999;Weyant 2004;Weyant et al. 2006). The policy debate has now moved to a stabilization of greenhouse gas concentrations at 450 ppm CO<sub>2</sub> equivalent as a central case (MEF 2009;CEC 2005). In order to be able to satisfy this new policy demand, models have been pushed towards implementing more optimistic assumptions about the range and availability of their mitigation portfolio, which has the effect of lowering the costs of climate policies. In summary, published results for stringent emission targets are fewer and tend to be disproportionately based on cheap models and low baseline scenarios.

This is best illustrated with the Summary for Policy Makers of the Fourth Assessment Report of the Intergovernmental Panel on Climate Change (Barker et al. 2007;IPCC 2007). Emission reduction costs are reported for three alternative targets. While 118 results were available for targets in the range of 3.2 to 4.0°C warming, there were only 6 estimates of the costs of keeping

warming in the range of 2.0 to 2.4°C. According to the reported results, moving from a 3.6°C to a 3.0°C target would double the abatement costs. Moving from a 3.0°C to a 2.2°C target would increase costs by 37.5% only. As the underlying models are correctly specified – that is, more stringent targets mean higher and accelerating costs – the IPCC results can only be explained by selection bias: only models with low emission reduction costs reported results for the most stringent targets. Such selection bias is potentially misleading for policy makers (Tol 2007).

This paper proceeds as follows. We first discuss the data used in this paper, and then present a method to correct for selection bias. We apply this method and analyze the results before drawing conclusions.

### **Data and selection bias**

We avail of a recent data set of model results. The data result from the 22<sup>nd</sup> round of model comparison led by the Energy Modeling Forum (EMF22). We focus on the international scenarios as this is the richest set of data<sup>1</sup>. Details of the scenarios and of the main implications can be found in (Clarke et al. 2010). Ten models<sup>2</sup> from across the rich world ran ten scenarios (some models reporting more than one version). The scenarios had three alternative levels of atmospheric stabilization in 2100 (2.6 Wm<sup>-2</sup>, 3.7 Wm<sup>-2</sup>, 4.5 Wm<sup>-2</sup>, corresponding to 450, 550 and 650 CO<sub>2</sub>-eq ppm), allowed or disallowed overshooting the target in the intermediate run, and had two alternative specifications of international participation (global emission reduction from 2012 onwards versus delayed participation by developing countries). The modelers were explicitly asked to run all scenarios, including the more stringent ones; although they did not report results in case of infeasibility or unrealistically high initial carbon price (above 1000\$/tCO<sub>2</sub> in 2012), they did report the fact that the target was “infeasible” according to their model.

---

<sup>1</sup> Data is publicly available at the following website  
[http://emf.stanford.edu/events/emfbriefing\\_on\\_climate\\_policy\\_scenarios\\_us\\_domestic\\_and\\_international\\_policy\\_architectures/](http://emf.stanford.edu/events/emfbriefing_on_climate_policy_scenarios_us_domestic_and_international_policy_architectures/)

<sup>2</sup> ETSAP-TIAM, FUND, GTEM, IMAGE, MERGE, MESSAGE, MINICAM, POLES, SGM and WITCH.

We focus our attention on the economic implications of climate stabilization scenarios, as this is one of the most relevant information summarizing the requirements needed to comply with the climate policy. Nine out of ten<sup>3</sup> models reported economic output expressed either -or both- as GDP and abatement costs, two common metrics for macro-economic and energy system models respectively. To maximize consistency in the use of the cost metrics, we have used change in GDP for all the (seven) models that reported it and total abatement cost in the remaining (two) cases. Policy costs have been calculated relative to the baseline, actualized in net present values using a 5% discount rate.

Since some models reported more than one case for each scenario, we have 11 runs for each of the 10 scenarios, for a total of 110 potential observations. However, only 68 are observed in reality, since some scenarios could not be run by some models. Table 1 shows the distribution of model runs that were completed, by scenario; it indicates that the more ambitious the scenario, the fewer the observations. The density of observations is particularly low for the 2.6 Wm<sup>-2</sup> scenarios, which is troubling because these are the only ones consistent with the 2°C objective that has been adopted by the European Union and most recently by the G8. Surely, policy driven research in the near future will try to remedy this imbalance and arguably more effort will be (and is already being) diverted to the analysis of more stringent scenarios. As of now, though, an account of the risks of relying on such sparse data has not been thoroughly carried out.

The important feature to notice in Table 1 is that since stringent scenarios can be simulated only by the models that are more optimistic (in terms of technology substitutability, mitigation portfolio, baseline etc.), a meta-analysis of model results would inevitably be plagued by selection bias. This could lead to a distortion in the statistical analysis, with important repercussions for policy advice.

### **Accounting for the bias**

Correcting for the bias is not straightforward since replacement methods such as imputation cannot be used precisely because there is a systematic relation between the causes of data being missing and the missing data, that is the values are not missing at random. In such cases, a model for filling in the missing observations needs to be devised. Essentially, we conduct a meta-

---

<sup>3</sup> With the exception of POLES

analysis (Barker et al. 2002;Fischer et al. 2006;Kuik et al. 2009;Repetto et al. 1997) and use the estimated model to impute the missing observations. We propose a simple OLS regression<sup>4</sup> between the (log) of the policy costs and a series of independent variables that include the stringency of the climate target in radiative forcing, model dummies, a delayed participation dummy, and an overshoot dummy. The results shown in Table 2 confirm the intuition that the climate objective, the possibility to temporarily overshoot the target, and the rate of participation of developing countries are main driving forces of policy costs.

This simple estimation allows us to predict policy costs for those models that were unable to run the more stringent scenarios, thus addressing the selection bias issue. Figure 1 compares the original dataset with the one augmented with predictions. It shows that correcting for selection bias leads to a significant upward revision of the estimates of macro-economic implications of stringent climate policies. Policy costs for the  $2.6 \text{ Wm}^{-2}$  (450 CO<sub>2</sub>-e) cases rise several fold, especially for the two more ambitious scenarios, that were originally dealt with by only two models.

---

<sup>4</sup> We also experimented with the Heckman sample selection technique, a model for heteroskedasticity, and kernel density estimators but did not find significant results. There are too few data given the number of model/scenario combinations, so that we can only estimate a basic model.

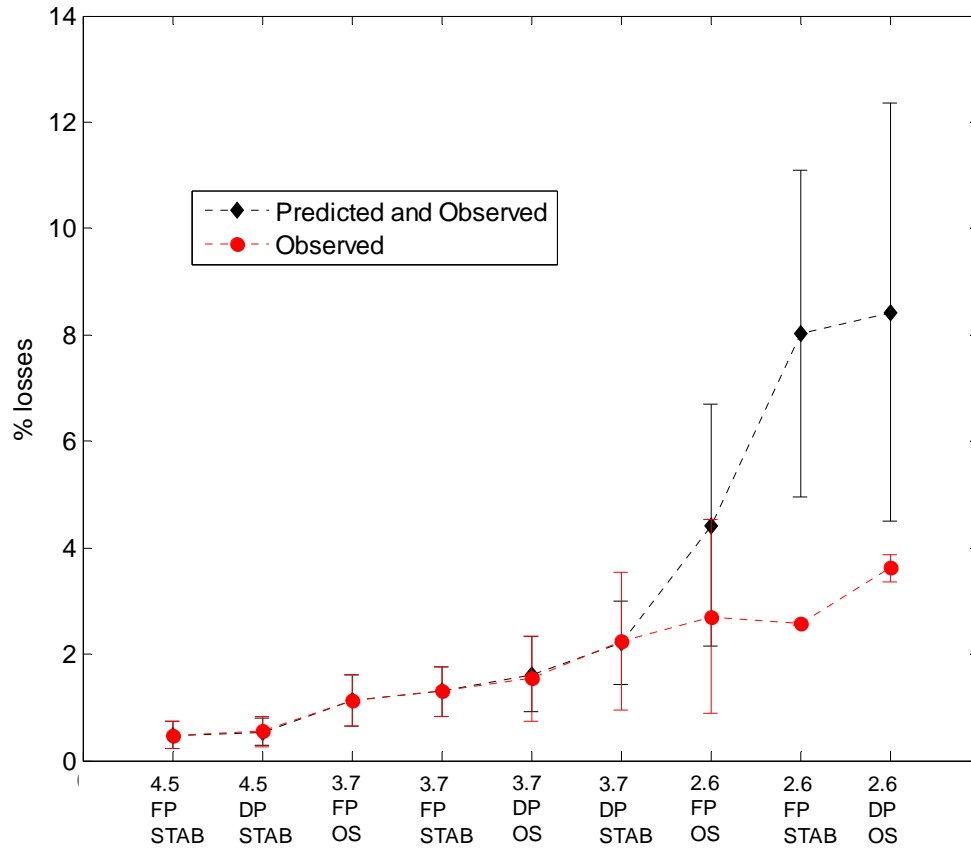


Figure 1. Mean policy costs for the original EMF22 data set ('observed') and the one where missing values have been predicted ('predicted and observed'). Bars show 95% percentiles. Scenario legend as in Table 1.

Most importantly, accounting for the bias greatly increases the uncertainty around the costs. Relying on a subset of models is dangerous in that it can reduce the range of cost estimates, especially if the models share similar assumptions, which we have shown to be true for this experiment. Supplementing the data with our predicted values generates a much wider range of estimates. Table 1 reports standard errors and the coefficient of variation of results across models for the various scenarios. It shows that the variability across models tends to diminish in the observed datasets for the most ambitious scenarios, given that the low number of models that are able to solve them reported similar values. This feature is corrected when we predict the behavior of the more conservative models into the more ambitious schemes.

### **What drives the costs difference?**

Since we have shown that different subsets of models generate significantly different answers regarding the economic impact of climate policies, it is interesting to understand whether there is a main underlying force that drives the discrepancy. The distinction between bottom-up and top-down models has been emphasized in previous model comparisons such as the IPCC Fourth Assessment Report, since it is known that the former feature lower costs. The presence of no-carbon backstop technology has also been known to be a key driver of results (Repetto and Austin 1997). More recently, models have been including negative emissions technologies such as Biomass Energy with Carbon Storage (BECS) (Rhodes et al. 2005), which are particularly attractive when carbon is highly priced.

Figure 2 plots the average observed costs separating models into those that feature or do not feature BECS. Incidentally, in this dataset, this distinction coincides with the one of bottom-up versus top down. The two lines show that top-down/no-BECS models report significantly higher costs estimates and somewhat larger uncertainty around them. Since BECS is a necessary (albeit not sufficient) condition for running the most stringent scenarios, then it is possible that the cost range will get smaller as more and more models will implement it in order to run stringent scenarios.



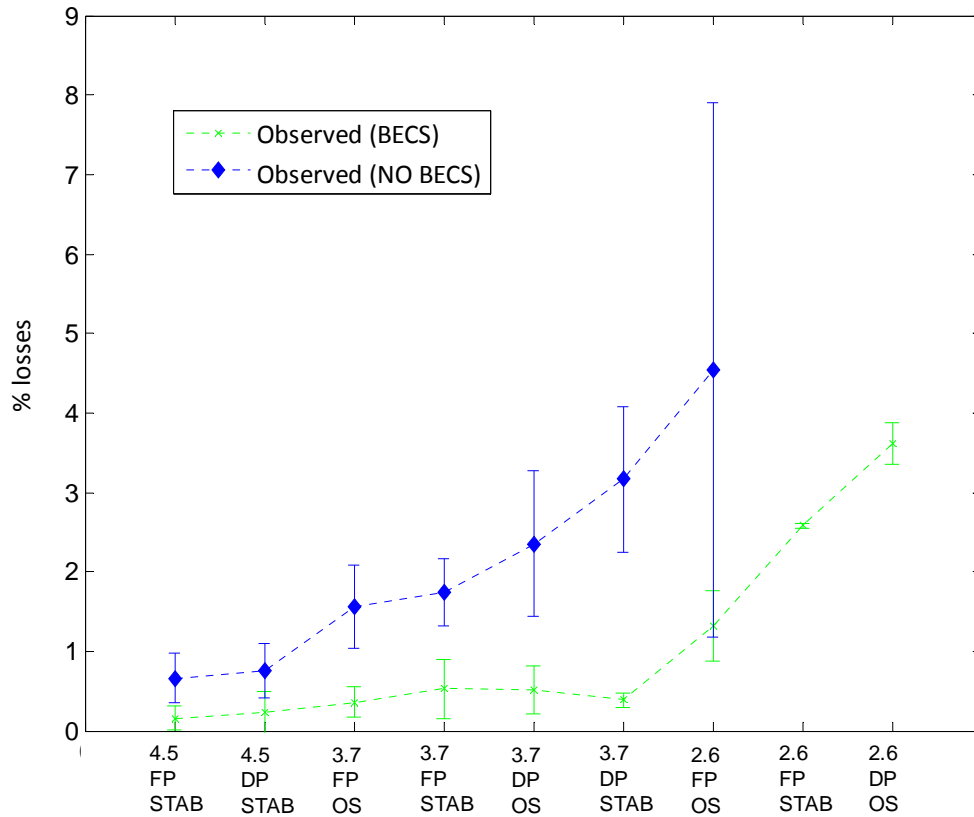


Figure 2. Mean observed policy costs for models with and without BECS. Models that feature BECS are ETSAP-TIAM, IMAGE, MESSAGE, MINICAM. Bars show 95% percentiles. Scenario legend as in Table 1.

### Summary and recommendations

In this article, we have argued against the risks of selection bias when comparing integrated assessment modeling results. Using a recent comparison exercise, we have shown that correcting the bias would lead to decisively higher estimates for the costs and the range of costs of meeting stringent stabilization scenarios in line with the objectives set forward by the European Union and the G8.

This article is meant to provide recommendations for the future analysis of integrated assessment models. We have shown that different representation of the economic activity and of decarbonization technologies have an important bearing on the costs of climate policies. Given

the various ways models can differ from one another, comparison exercises are particularly important to identify robust findings across model specification, and are indeed at the heart of the reviewing work of the IPCC. The AR4 suggested that caution was needed when interpreting the results of the more stringent climate policies, as a slim number of studies had been carried out at the time. However, approaches more formal than general warnings are needed when dealing with policy relevant issues such as the costs of climate protection. This is especially important when communicating uncertainties, which are easily lost in the executive summaries. This note has provided a first attempt to resolve the issue of selection bias in meta-analysis of integrated assessment estimates of climate mitigation costs.

		<b>4.5 FP STAB</b>	<b>4.5 DP STAB</b>	<b>3.7 FP OS</b>	<b>3.7 FP STA B</b>	<b>3.7 DP OS</b>	<b>3.7 DP STA B</b>	<b>2.6 FP OS</b>	<b>2.6 FP STAB</b>	<b>2.6 DP OS</b>
<b>Number of scenarios</b>		11	10	11	11	9	6	7	2	2
<b>Mean of policy costs</b>	Observed	0.48	0.55	1.12	1.30	1.54	2.24	2.70	2.58	3.62
	Predicted and Observed	0.48	0.54	1.12	1.30	1.62	2.21	4.42	8.03	8.43
<b>Standard Error of policy costs</b>	Observed	0.13	0.14	0.24	0.23	0.40	0.65	0.91	0.01	0.13
	Predicted and Observed	0.13	0.13	0.24	0.23	0.36	0.39	1.14	1.54	1.98
<b>Coefficient of Variation of policy costs</b>	Observed	0.27	0.25	0.21	0.18	0.26	0.29	0.34	0	0.04
	Predicted and Observed	0.26	0.23	0.22	0.18	0.22	0.18	0.26	0.19	0.24
<b>Mean of policy costs</b>	Observed (BECS)	0.15	0.22	0.36	0.53	0.52	0.39	1.31	2.58	3.62
	Observed (NO BECS)	0.66	0.76	1.56	1.74	2.35	3.16	4.54	-	-
<b>Standard Error of policy costs</b>	Observed (BECS)	0.08	0.13	0.10	0.19	0.15	0.05	0.22	0.02	0.13
	Observed (NO BECS)	0.16	0.17	0.26	0.21	0.46	0.46	1.70	-	-

Table 1. Main statistics. Legend: 4.5, 3.7 and 2.6 are the radiative forcing targets in 2100. FP=full, immediate participation of DCs, DP=delayed participation of DCs. STAB.=target not to exceed, OS=target can be overshoot.

<b>Variable</b>	<b>Coefficient</b>	<b>Standard error</b>	<b>t-statistic</b>
Radiative forcing	-1.65	0.127	-13.0
Delayed participation	0.423	0.124	3.41
Overshoot	-0.910	0.270	-3.37
ETSAP	-1.37	0.299	-4.58
FUND	0.721	0.305	2.36
GTEM	0.606	0.301	2.02
IMAGE	-1.66	0.297	-5.59
MERGE (opt)	0.676	0.334	2.03
MERGE (pess)	0.138	0.312	0.44
MESSAGE	-0.0791	0.302	-0.26
MESSAGE (NoBS)	(dropped)		
MiniCAM	-0.456	0.286	-1.60
SGM	0.792	0.315	2.52
WITCH	-0.363	0.313	-1.16
Adj. R <sup>2</sup>	0.842	Root MSE	0.459

Table 2. Regression results for the natural logarithm of the net present value of abatement costs as a percentage of the net present value of the Gross Domestic Product in the no-policy scenario.

## References

- Barker, T., I.Bashmakov, A.Alharthi, M.Amann, L.Cifuentes, J.Drexhage, M.Duan, O.Edenhofer, B.P.Flannery, M.J.Grubb, M.Hoogwijk, F.I.Ibitoye, C.J.Jepma, W.A.Pizer, and K.Yamaji (2007), 'Mitigation from a Cross-Sectoral Perspective', in *Climate Change 2007: Mitigation -- Contribution of Working Group III to the Fourth Assessment Report of the Intergovernmental Panel on Climate Change*, B. Metz et al. (eds.), Cambridge University Press, Cambridge, pp. 619-690.
- Barker, T., J.Koehler, and M.Villena (2002), 'The Costs of Greenhouse Gas Abatement: A Meta-Analysis of Post-SRES Mitigation Scenarios', *Environmental Economics and Policy Studies*, 5, 135-166.
- MEF (2009), Declaration of the major economies forum on energy and climate, Major Economies Forum, L'Aquila.
- CEC (2005), *Winning the Battle Against Global Climate Change*, Communication from the Commission to the Council, the European Parliament, the European Economic and Social Committee and the Committee of the Regions COM(2005) 35 final, Commission of the European Communities, Brussels.
- Clarke, L.E., J.A.Edmonds, V.Krey, R.G.Richels, S.Rose, and M.Tavoni (2010), 'International Climate Policy Architectures: Overview of the EMF22 International Scenarios', *Energy Economics*.
- Fischer, C. and R.D.Morgenstern (2006), 'Carbon Abatement Costs: Why the Wide Range of Estimates?', *Energy Journal*, 27, 73-86.
- IPCC (2007), 'Summary for Policymakers', in *Climate Change 2007: Mitigation -- Contribution of Working Group III to the Fourth Assessment Report of the Intergovernmental Panel on Climate Change*, B. Metz et al. (eds.), Cambridge University Press, Cambridge.
- Kuik, O., L.Brandner, and R.S.J.Tol (2009), 'Marginal abatement costs of greenhouse gas emissions: A meta-analysis', *Energy Policy*, 37, (4), pp. 1395-1403.
- Repetto, R. and D.Austin (1997), *The Costs of Climate Protection: A Guide for the Perplexed*, World Resources Institute, Washington, D.C.
- Rhodes, J.S. and D.W.Keith (2005), 'Engineering economic analysis of biomass IGCC with carbon capture and storage', *Biomass and Bioenergy*, 29, (6), pp. 440-450.
- Tol, R.S.J. (2007), 'Biased Policy Advice from the Intergovernmental Panel on Climate Change', *Energy & Environment*, 18, (7+8), 929-936.
- Weyant, J.P. (2004), 'Introduction and overview', *Energy Economics*, 26, 501-515.
- Weyant, J.P., F.C.de la Chesnaye, and G.J.Blanford (2006), 'Overview of EMF-21: Multigas Mitigation and Climate Policy', *Energy Journal* (Multi-Greenhouse Gas Mitigation and Climate Policy Special Issue), 1-32.
- Weyant, J.P. and J.N.Hill (1999), 'Introduction and Overview of the Special Issue', *Energy Journal Special Issue on the Costs of the Kyoto Protocol: A Multi-Model Evaluation*, vii-xliv.

Year	Number	Title/Author(s) ESRI Authors/Co-authors <i>Italicised</i>
<b>2009</b>		
	323	International Cooperation on Climate Change Adaptation from an Economic Perspective Kelly C. de Bruin, Rob B. Dellink and <i>Richard S.J. Tol</i>
	322	What Role for Property Taxes in Ireland? <i>T. Callan, C. Keane and J.R. Walsh</i>
	321	The Public-Private Sector Pay Gap in Ireland: What Lies Beneath? <i>Elish Kelly, Seamus McGuinness, Philip O'Connell</i>
	320	A Code of Practice for Grocery Goods Undertakings and An Ombudsman: How to Do a Lot of Harm by Trying to Do a Little Good <i>Paul K Gorecki</i>
	319	Negative Equity in the Irish Housing Market <i>David Duffy</i>
	318	Estimating the Impact of Immigration on Wages in Ireland <i>Alan Barrett, Adele Bergin and Elish Kelly</i>
	317	Assessing the Impact of Wage Bargaining and Worker Preferences on the Gender Pay Gap in Ireland Using the National Employment Survey 2003 <i>Seamus McGuinness, Elish Kelly, Philip O'Connell, Tim Callan</i>
	316	Mismatch in the Graduate Labour Market Among Immigrants and Second-Generation Ethnic Minority Groups <i>Delma Byrne and Seamus McGuinness</i>
	315	Managing Housing Bubbles in Regional Economies under EMU: Ireland and Spain <i>Thomas Conefrey and John Fitz Gerald</i>
	314	Job Mismatches and Labour Market Outcomes Kostas Mavromaras, <i>Seamus McGuinness</i> , Nigel O'Leary, Peter Sloane and Yin King Fok
	313	Immigrants and Employer-provided Training <i>Alan Barrett, Séamus McGuinness</i> , Martin O'Brien and <i>Philip O'Connell</i>
	312	Did the Celtic Tiger Decrease Socio-Economic Differentials in

- Perinatal Mortality in Ireland?  
*Richard Layte and Barbara Clyne*
- 311 Exploring International Differences in Rates of Return to Education: Evidence from EU SILC  
*Maria A. Davia, Seamus McGuinness and Philip, J. O'Connell*
- 310 Car Ownership and Mode of Transport to Work in Ireland  
*Nicola Commins and Anne Nolan*
- 309 Recent Trends in the Caesarean Section Rate in Ireland 1999-2006  
*Aoife Brick and Richard Layte*
- 308 Price Inflation and Income Distribution  
*Anne Jennings, Seán Lyons and Richard S.J. Tol*
- 307 Overskilling Dynamics and Education Pathways  
*Kostas Mavromaras, Seamus McGuinness, Yin King Fok*
- 306 What Determines the Attractiveness of the European Union to the Location of R&D Multinational Firms?  
*Iulia Siedschlag, Donal Smith, Camelia Turcu, Xiaoheng Zhang*
- 305 Do Foreign Mergers and Acquisitions Boost Firm Productivity?  
*Marc Schiffbauer, Iulia Siedschlag, Frances Ruane*
- 304 Inclusion or Diversion in Higher Education in the Republic of Ireland?  
*Delma Byrne*
- 303 Welfare Regime and Social Class Variation in Poverty and Economic Vulnerability in Europe: An Analysis of EU-SILC  
*Christopher T. Whelan and Bertrand Maitre*
- 302 Understanding the Socio-Economic Distribution and Consequences of Patterns of Multiple Deprivation: An Application of Self-Organising Maps  
*Christopher T. Whelan, Mario Lucchini, Maurizio Pisati and Bertrand Maitre*
- 301 Estimating the Impact of Metro North  
*Edgar Morgenroth*
- 300 Explaining Structural Change in Cardiovascular Mortality in Ireland 1995-2005: A Time Series Analysis  
*Richard Layte, Sinead O'Hara and Kathleen Bennett*

- 299 EU Climate Change Policy 2013-2020: Using the Clean Development Mechanism More Effectively  
*Paul K Gorecki, Seán Lyons and Richard S.J. Tol*
- 298 Irish Public Capital Spending in a Recession  
*Edgar Morgenroth*
- 297 Exporting and Ownership Contributions to Irish Manufacturing Productivity Growth  
*Anne Marie Gleeson, Frances Ruane*
- 296 Eligibility for Free Primary Care and Avoidable Hospitalisations in Ireland  
*Anne Nolan*
- 295 Managing Household Waste in Ireland: Behavioural Parameters and Policy Options  
*John Curtis, Seán Lyons and Abigail O'Callaghan-Platt*
- 294 Labour Market Mismatch Among UK Graduates; An Analysis Using REFLEX Data  
*Seamus McGuinness and Peter J. Sloane*
- 293 Towards Regional Environmental Accounts for Ireland  
*Richard S.J. Tol, Nicola Commins, Niamh Crilly, Sean Lyons and Edgar Morgenroth*
- 292 EU Climate Change Policy 2013-2020: Thoughts on Property Rights and Market Choices  
*Paul K. Gorecki, Sean Lyons and Richard S.J. Tol*
- 291 Measuring House Price Change  
*David Duffy*
- 290 Intra-and Extra-Union Flexibility in Meeting the European Union's Emission Reduction Targets  
*Richard S.J. Tol*
- 289 The Determinants and Effects of Training at Work: Bringing the Workplace Back In  
*Philip J. O'Connell and Delma Byrne*
- 288 Climate Feedbacks on the Terrestrial Biosphere and the Economics of Climate Policy: An Application of *FUND*  
*Richard S.J. Tol*
- 287 The Behaviour of the Irish Economy: Insights from the HERMES macro-economic model



*Adele Bergin, Thomas Conefrey, John FitzGerald and  
Ide Kearney*

- 286 Mapping Patterns of Multiple Deprivation Using  
Self-Organising Maps: An Application to EU-SILC Data for  
Ireland  
*Maurizio Pisati, Christopher T. Whelan, Mario Lucchini and  
Bertrand Maitre*
- 285 The Feasibility of Low Concentration Targets:  
An Application of FUND  
*Richard S.J. Tol*
- 284 Policy Options to Reduce Ireland's GHG Emissions  
  
Instrument choice: the pros and cons of alternative policy  
instruments  
*Thomas Legge and Sue Scott*
- 283 Accounting for Taste: An Examination of Socioeconomic  
Gradients in Attendance at Arts Events  
*Pete Lunn and Elish Kelly*
- 282 The Economic Impact of Ocean Acidification on Coral Reefs  
*Luke M. Brander, Katrin Rehdanz, Richard S.J. Tol, and Pieter  
J.H. van Beukering*
- 281 Assessing the impact of biodiversity on tourism flows:  
A model for tourist behaviour and its policy implications  
*Giulia Macagno, Maria Loureiro, Paulo A.L.D. Nunes and Richard  
S.J. Tol*
- 280 Advertising to boost energy efficiency: the Power of One  
campaign and natural gas consumption  
*Seán Diffney, Seán Lyons and Laura Malaguzzi Valeri*
- 279 International Transmission of Business Cycles Between Ireland  
and its Trading Partners  
*Jean Goggin and Iulia Siedschlag*
- 278 Optimal Global Dynamic Carbon Taxation  
*David Anthoff*
- 277 Energy Use and Appliance Ownership in Ireland  
*Eimear Leahy and Seán Lyons*
- 276 Discounting for Climate Change  
*David Anthoff, Richard S.J. Tol and Gary W. Yohe*

- 275 Projecting the Future Numbers of Migrant Workers in the Health and Social Care Sectors in Ireland  
*Alan Barrett and Anna Rust*
- 274 Economic Costs of Extratropical Storms under Climate Change: An application of FUND  
*Daiju Narita, Richard S.J. Tol, David Anthoff*
- 273 The Macro-Economic Impact of Changing the Rate of Corporation Tax  
*Thomas Conefrey and John D. Fitz Gerald*
- 272 The Games We Used to Play  
An Application of Survival Analysis to the Sporting Life-course  
*Pete Lunn*
- 2008**
- 271 Exploring the Economic Geography of Ireland  
*Edgar Morgenroth*
- 270 Benchmarking, Social Partnership and Higher Remuneration: Wage Settling Institutions and the Public-Private Sector Wage Gap in Ireland  
*Elish Kelly, Seamus McGuinness, Philip O'Connell*
- 269 A Dynamic Analysis of Household Car Ownership in Ireland  
*Anne Nolan*
- 268 The Determinants of Mode of Transport to Work in the Greater Dublin Area  
*Nicola Commins and Anne Nolan*
- 267 Resonances from *Economic Development* for Current Economic Policymaking  
*Frances Ruane*
- 266 The Impact of Wage Bargaining Regime on Firm-Level Competitiveness and Wage Inequality: The Case of Ireland  
*Seamus McGuinness, Elish Kelly and Philip O'Connell*
- 265 Poverty in Ireland in Comparative European Perspective  
*Christopher T. Whelan and Bertrand Maitre*
- 264 A Hedonic Analysis of the Value of Rail Transport in the Greater Dublin Area  
*Karen Mayor, Seán Lyons, David Duffy and Richard S.J. Tol*

- 263 Comparing Poverty Indicators in an Enlarged EU  
*Christopher T. Whelan and Bertrand Maitre*
- 262 Fuel Poverty in Ireland: Extent,  
Affected Groups and Policy Issues  
*Sue Scott, Seán Lyons, Claire Keane, Donal McCarthy and  
Richard S.J. Tol*
- 261 The Misperception of Inflation by Irish Consumers  
*David Duffy and Pete Lunn*
- 260 The Direct Impact of Climate Change on Regional Labour  
Productivity  
Tord Kjellstrom, R Sari Kovats, Simon J. Lloyd, Tom Holt,  
*Richard S.J. Tol*
- 259 Damage Costs of Climate Change through Intensification of  
Tropical Cyclone Activities:  
An Application of FUND  
Daiju Narita, *Richard S. J. Tol* and *David Anthoff*
- 258 Are Over-educated People Insiders or Outsiders?  
A Case of Job Search Methods and Over-education in UK  
Aleksander Kucel, *Delma Byrne*
- 257 Metrics for Aggregating the Climate Effect of Different  
Emissions: A Unifying Framework  
*Richard S.J. Tol*, Terje K. Berntsen, Brian C. O'Neill, Jan S.  
Fuglestvedt, Keith P. Shine, Yves Balkanski and Laszlo Makra
- 256 Intra-Union Flexibility of Non-ETS Emission Reduction  
Obligations in the European Union  
*Richard S.J. Tol*
- 255 The Economic Impact of Climate Change  
*Richard S.J. Tol*
- 254 Measuring International Inequity Aversion  
*Richard S.J. Tol*
- 253 Using a Census to Assess the Reliability of a National Household  
Survey for Migration Research: The Case of Ireland  
*Alan Barrett and Elish Kelly*
- 252 Risk Aversion, Time Preference, and the Social Cost of Carbon  
*David Anthoff, Richard S.J. Tol* and Gary W. Yohe
- 251 The Impact of a Carbon Tax on Economic Growth and Carbon

- Dioxide Emissions in Ireland  
*Thomas Conefrey, John D. Fitz Gerald, Laura Malaguzzi Valeri and Richard S.J. Tol*
- 250 The Distributional Implications of a Carbon Tax in Ireland  
*Tim Callan, Sean Lyons, Susan Scott, Richard S.J. Tol and Stefano Verde*
- 249 Measuring Material Deprivation in the Enlarged EU  
*Christopher T. Whelan, Brian Nolan and Bertrand Maître*
- 248 Marginal Abatement Costs on Carbon-Dioxide Emissions: A Meta-Analysis  
Onno Kuik, Luke Brander and *Richard S.J. Tol*
- 247 Incorporating GHG Emission Costs in the Economic Appraisal of Projects Supported by State Development Agencies  
*Richard S.J. Tol and Seán Lyons*
- 246 A Carbon Tax for Ireland  
*Richard S.J. Tol, Tim Callan, Thomas Conefrey, John D. Fitz Gerald, Seán Lyons, Laura Malaguzzi Valeri and Susan Scott*
- 245 Non-cash Benefits and the Distribution of Economic Welfare  
*Tim Callan and Claire Keane*
- 244 Scenarios of Carbon Dioxide Emissions from Aviation  
*Karen Mayor and Richard S.J. Tol*
- 243 The Effect of the Euro on Export Patterns: Empirical Evidence from Industry Data  
*Gavin Murphy and Iulia Siedschlag*
- 242 The Economic Returns to Field of Study and Competencies Among Higher Education Graduates in Ireland  
*Elish Kelly, Philip O'Connell and Emer Smyth*
- 241 European Climate Policy and Aviation Emissions  
*Karen Mayor and Richard S.J. Tol*
- 240 Aviation and the Environment in the Context of the EU-US Open Skies Agreement  
*Karen Mayor and Richard S.J. Tol*
- 239 Yuppie Kvetch? Work-life Conflict and Social Class in Western Europe  
*Frances McGinnity and Emma Calvert*
- 238 Immigrants and Welfare Programmes: Exploring the

- Interactions between Immigrant Characteristics, Immigrant Welfare Dependence and Welfare Policy  
*Alan Barrett and Yvonne McCarthy*
- 237 How Local is Hospital Treatment? An Exploratory Analysis of Public/Private Variation in Location of Treatment in Irish Acute Public Hospitals  
*Jacqueline O'Reilly and Miriam M. Wiley*
- 236 The Immigrant Earnings Disadvantage Across the Earnings and Skills Distributions: The Case of Immigrants from the EU's New Member States in Ireland  
*Alan Barrett, Seamus McGuinness and Martin O'Brien*
- 235 Europeanisation of Inequality and European Reference Groups  
*Christopher T. Whelan and Bertrand Maitre*
- 234 Managing Capital Flows: Experiences from Central and Eastern Europe  
*Jürgen von Hagen and Iulia Siedschlag*
- 233 ICT Diffusion, Innovation Systems, Globalisation and Regional Economic Dynamics: Theory and Empirical Evidence  
*Charlie Karlsson, Gunther Maier, Michaela Trippel, Iulia Siedschlag, Robert Owen and Gavin Murphy*
- 232 Welfare and Competition Effects of Electricity Interconnection between Great Britain and Ireland  
*Laura Malaguzzi Valeri*
- 231 Is FDI into China Crowding Out the FDI into the European Union?  
*Laura Resmini and Iulia Siedschlag*
- 230 Estimating the Economic Cost of Disability in Ireland  
*John Cullinan, Brenda Gannon and Seán Lyons*
- 229 Controlling the Cost of Controlling the Climate: The Irish Government's Climate Change Strategy  
*Colm McCarthy, Sue Scott*
- 228 The Impact of Climate Change on the Balanced-Growth-Equivalent: An Application of *FUND*  
*David Anthoff, Richard S.J. Tol*
- 227 Changing Returns to Education During a Boom? The Case of Ireland  
*Seamus McGuinness, Frances McGinnity, Philip O'Connell*

- 226 'New' and 'Old' Social Risks: Life Cycle and Social Class Perspectives on Social Exclusion in Ireland  
*Christopher T. Whelan and Bertrand Maitre*
- 225 The Climate Preferences of Irish Tourists by Purpose of Travel  
*Seán Lyons, Karen Mayor and Richard S.J. Tol*
- 224 A Hirsch Measure for the Quality of Research Supervision, and an Illustration with Trade Economists  
*Frances P. Ruane and Richard S.J. Tol*
- 223 Environmental Accounts for the Republic of Ireland: 1990-2005  
*Seán Lyons, Karen Mayor and Richard S.J. Tol*
- 2007** 222 Assessing Vulnerability of Selected Sectors under Environmental Tax Reform: The issue of pricing power  
*J. Fitz Gerald, M. Keeney and S. Scott*
- 221 Climate Policy Versus Development Aid  
*Richard S.J. Tol*
- 220 Exports and Productivity – Comparable Evidence for 14 Countries  
*The International Study Group on Exports and Productivity*
- 219 Energy-Using Appliances and Energy-Saving Features: Determinants of Ownership in Ireland  
*Joe O'Doherty, Seán Lyons and Richard S.J. Tol*
- 218 The Public/Private Mix in Irish Acute Public Hospitals: Trends and Implications  
*Jacqueline O'Reilly and Miriam M. Wiley*
- 217 Regret About the Timing of First Sexual Intercourse: The Role of Age and Context  
*Richard Layte, Hannah McGee*
- 216 Determinants of Water Connection Type and Ownership of Water-Using Appliances in Ireland  
*Joe O'Doherty, Seán Lyons and Richard S.J. Tol*
- 215 Unemployment – Stage or Stigma?  
Being Unemployed During an Economic Boom  
*Emer Smyth*
- 214 The Value of Lost Load  
*Richard S.J. Tol*

- 213 Adolescents' Educational Attainment and School Experiences in Contemporary Ireland  
*Merike Darmody, Selina McCoy, Emer Smyth*
- 212 Acting Up or Opting Out? Truancy in Irish Secondary Schools  
*Merike Darmody, Emer Smyth and Selina McCoy*
- 211 Where do MNEs Expand Production: Location Choices of the Pharmaceutical Industry in Europe after 1992  
*Frances P. Ruane, Xiaoheng Zhang*
- 210 Holiday Destinations: Understanding the Travel Choices of Irish Tourists  
*Seán Lyons, Karen Mayor and Richard S.J. Tol*
- 209 The Effectiveness of Competition Policy and the Price-Cost Margin: Evidence from Panel Data  
Patrick McCloughan, *Seán Lyons* and William Batt
- 208 Tax Structure and Female Labour Market Participation: Evidence from Ireland  
*Tim Callan, A. Van Soest, J.R. Walsh*
- 207 Distributional Effects of Public Education Transfers in Seven European Countries  
*Tim Callan, Tim Smeeding and Panos Tsakloglou*