

Lemos, Sara; Portes, Jonathan

Working Paper

New labour? The impact of migration from Central and Eastern European countries on the UK labour market

IZA Discussion Papers, No. 3756

Provided in Cooperation with:

IZA – Institute of Labor Economics

Suggested Citation: Lemos, Sara; Portes, Jonathan (2008) : New labour? The impact of migration from Central and Eastern European countries on the UK labour market, IZA Discussion Papers, No. 3756, Institute for the Study of Labor (IZA), Bonn, <https://nbn-resolving.de/urn:nbn:de:101:1-2008112660>

This Version is available at:

<https://hdl.handle.net/10419/35467>

Standard-Nutzungsbedingungen:

Die Dokumente auf EconStor dürfen zu eigenen wissenschaftlichen Zwecken und zum Privatgebrauch gespeichert und kopiert werden.

Sie dürfen die Dokumente nicht für öffentliche oder kommerzielle Zwecke vervielfältigen, öffentlich ausstellen, öffentlich zugänglich machen, vertreiben oder anderweitig nutzen.

Sofern die Verfasser die Dokumente unter Open-Content-Lizenzen (insbesondere CC-Lizenzen) zur Verfügung gestellt haben sollten, gelten abweichend von diesen Nutzungsbedingungen die in der dort genannten Lizenz gewährten Nutzungsrechte.

Terms of use:

Documents in EconStor may be saved and copied for your personal and scholarly purposes.

You are not to copy documents for public or commercial purposes, to exhibit the documents publicly, to make them publicly available on the internet, or to distribute or otherwise use the documents in public.

If the documents have been made available under an Open Content Licence (especially Creative Commons Licences), you may exercise further usage rights as specified in the indicated licence.

IZA DP No. 3756

**New Labour?
The Impact of Migration from Central and Eastern
European Countries on the UK Labour Market**

Sara Lemos
Jonathan Portes

October 2008

New Labour? The Impact of Migration from Central and Eastern European Countries on the UK Labour Market

Sara Lemos

*University of Leicester
and IZA*

Jonathan Portes

Department for Work and Pensions

Discussion Paper No. 3756

October 2008

IZA

P.O. Box 7240
53072 Bonn
Germany

Phone: +49-228-3894-0

Fax: +49-228-3894-180

E-mail: iza@iza.org

Any opinions expressed here are those of the author(s) and not those of IZA. Research published in this series may include views on policy, but the institute itself takes no institutional policy positions.

The Institute for the Study of Labor (IZA) in Bonn is a local and virtual international research center and a place of communication between science, politics and business. IZA is an independent nonprofit organization supported by Deutsche Post World Net. The center is associated with the University of Bonn and offers a stimulating research environment through its international network, workshops and conferences, data service, project support, research visits and doctoral program. IZA engages in (i) original and internationally competitive research in all fields of labor economics, (ii) development of policy concepts, and (iii) dissemination of research results and concepts to the interested public.

IZA Discussion Papers often represent preliminary work and are circulated to encourage discussion. Citation of such a paper should account for its provisional character. A revised version may be available directly from the author.

ABSTRACT

New Labour? The Impact of Migration from Central and Eastern European Countries on the UK Labour Market^{*}

The UK was one of only three countries that granted free movement of workers to accession nationals following the enlargement of the European Union in May 2004. The resulting large, rapid and concentrated migration inflow can be seen as a natural experiment that arguably corresponds closely to an exogenous supply shock. We evaluate the impact of this migration inflow – one of the largest in British history – on the UK labour market. We use new monthly micro level data and an empirical approach that ascertains which particular labour markets in the UK – with varying degrees of natives' mobility and migrants' self-selection – may have been affected. Our results suggest modest effects throughout the labour market. Despite anecdotal evidence, we found little hard evidence that the inflow of accession migrants contributed to a fall in wages or a rise in claimant unemployment in the UK between 2004 and 2006.

JEL Classification: J22

Keywords: migration, employment, wages, Central and Eastern Europe, UK

Corresponding author:

Sara Lemos
University of Leicester
Economics Department
University Road
Leicester LE1 7RH
England
E-mail: sl129@leicester.ac.uk

^{*} Special thanks to Alan Manning, Barry Chiswick, Carlos Carrillo-Tudela, Gianni De Fraja, Ian Preston, Jennifer Hunt, Juan Jimeno, Kevin Lee, Martin Hoskins, Steve Hall and Tim Hatton. Mathew Hentley, David Finchley, and Jag Athwal provided invaluable research assistance. Also, thanks to comments from various discussants and participants in the following conferences and seminars: IZA-MEM, IZA-AM², CReAM, CEPR-ELMR, UoL and DWP. We acknowledge and thank the financial support of the Department for Work and Pensions. We are also grateful for the data provided. Views expressed in this paper are not necessarily those of the Department for Work and Pensions or any other Government Department.

1 Introduction

On May 2004, ten Central and Eastern European countries joined the European Union (EU). The UK, along with Ireland and Sweden, were the only EU countries to initially grant full free movement of workers to accession nationals (Sriskandarajah 2004; Doyle et al. 2006). Around 560,000 accession migrants joined the UK labour market between May 2004 and May 2006, according to the Worker Registration Scheme (WRS). This migration inflow is roughly equivalent to 2% of total employment and is therefore sufficiently large – one of the largest in British history (Salt and Miller 2006) – and rapid to have an impact on the labour market. It has been suggested, for example, that this inflow is part of the explanation for the 96,000 rise in the Jobseeker’s Allowance (JSA) claimant unemployment during the same period (The Telegraph 2006; CIPD 2005). It has also been suggested that this inflow depressed wages (Blanchflower et al. 2007; The Economist 2006a).

Indeed, the impact of such a large and rapid migration shock on wages and unemployment is a crucial labour market issue. This is specially so given the heated public debate on migration – and in particular on migration from current and future accession countries. Yet, there is currently very limited evidence on migration effects on the UK – and even less so on the effects of the recent EU enlargement (Dustmann et al. 2005 and 2007; Drinkwater et al. 2006; Manacorda et al. 2006; Home Office 2007).

The main contribution of this paper is to help to fill this gap in the literature and to inform policy-making on the face of further EU enlargement. We estimate the effect of the accession migration inflow on the distribution of wages and on claimant unemployment using micro level monthly WRS and JSA data, as well as data from the Annual Survey on Hours and Earnings (ASHE). By exploiting this new and large source of data on migration (WRS), and combining it with claimant unemployment data (JSA), we obtain invaluable insights into the UK labour market at fine disaggregation (district and month) levels. Given that paucity of suitable data is one of the main reasons for scarce evidence for the UK, this paper is a timely contribution.

By exploiting this new data we are also able to circumvent identification issues arising from natives’ mobility and migrants’ self-selection, which usually pose difficulties in the literature (Chiswick 1991; Borjas 1999; Card 2001). That is because the large, rapid and concentrated inflow of accession migrants can be seen as a natural experiment that arguably corresponds more closely to an exogenous supply shock

than most migration shocks studied in the literature (Card 2007; Dustman and Glitz 2005). Similar in nature to the 1990's inflow of Cubans to Miami and Russians to Israel (Card 1990; Hunt 1992; Carrington and Lima 1996; Friedberg 2001), accession nationals chose to migrate because of conditions in their home countries. The timing of the inflow did not depend on economic conditions in the UK. Also, many chose the UK because other countries imposed restrictions and because of factors such as language and existing clusters (Bartel and Koch 1991; Pollard et al. 2008). Within the UK, their initial location and occupational choice was primarily driven by such clusters and by other labour market barriers (LaLonde and Topel 1991; Card and DiNardo 2000), and not by particularly favourable local labour market conditions. We exploit these location and occupation choices, in turn, to ensure identification in our empirical model.

More specifically, we use an empirical approach whereby we ascertain which particular labour markets in the UK may have been affected. Establishing which natives compete with migrants is central to identifying the effect of migration on wages and employment (Borjas 1999; Card 2001). This is because the extent to which any such effects can be identified depends on how mobile natives are across areas, sectors, occupations, etc., in response to migration inflows. If natives avoid competing with migrants by moving away – i.e. if they skip the treatment – potential adverse effects in a particular labour market may be offset. We argue that our treatment groups were fully treated because they received high proportions of migrants and are arguably relatively closed markets, where natives' mobility is limited. We also argue that our control groups were relatively uncontaminated because they received low proportions of migrants and arguably constitute a clear counterfactual. Furthermore, as the accession migration inflow was larger and faster than expected (Dustmann et al. 2003a), any natives' mobility response is probably sufficiently lagged to allow identification of more adverse effects (Friedberg and Hunt 1995; Card 2001; Hatton and Tani 2005; Borjas 2006).

We found little evidence that the inflow of accession migrants contributed to a fall in wages or a rise in claimant unemployment in the UK between 2004 and 2006. While our results are robust to a number of specification checks and are in line with other results in the literature,¹ they are not in line with

¹Our results are in line with evidence in the international (mainly US) literature of little or no effect on employment and wages (Chiswick 1978; Grossman 1982; Card 1990, 2001, 2005 and 2007; LaLonde and Topel 1991; Altonji and Card 1991; Pischke and Velling 1997; Friedberg 2001; Dustmann et al. 2005 and 2007; Manacorda et al. 2006; Carrasco et al. 2008), though in contrast with other evidence of more adverse effects (Borjas 1999, 2003 and 2006; Angrist and Kugler 2003;

standard theory predictions that migration inflows exert downwards pressure on wages and employment. One explanation here is that as accession migrants overwhelmingly compete with low paid workers, and as these workers were protected by a concurrently increasing minimum wage, more adverse wage effects may have been mitigated or offset.

We thoroughly discuss the above issues in the remainder of this paper. In Section 2 we depict our data. In Section 3 we describe our empirical approach and carefully discuss several identification issues. In Section 4 we specify our empirical model and in Section 5 we examine the results and perform a number of robustness checks. In Section 6 we summarize and discuss the results in light of the existing literature before we conclude in Section 7.

2 Data

2.1 Sources

The migration data we use is from the Home Office administered Worker Registration Scheme (WRS). Registration, in addition to being a legal requirement, offers incentives such as certain social security benefits (Home Office 2004; Doyle et al. 2006). As a result, compliance is high, with 560,000 registrations between May 2004 and May 2006 (Browley 2005; Blanchflower et al. 2007).² The vast majority of these workers arrived post-accession, though those already in the country could formalise their status (Gilpin et al. 2006). The left panel of Figure 1 shows the monthly WRS inflow between May 2004 and May 2006. The trend is downwards in 2004, dipping in December (7,950), and upwards in 2005, peaking in November (33,784). Numbers fell in the first half of 2006 (to around 23,000).

The WRS is rich, large, frequent and timely. It records nationality, address, age, gender, number of dependents, application date, entry date, start of work date, hourly wage rate, hours worked, sector, occupation and industry. Table 1 shows that many WRS migrants are young, male, Polish, childless, in London, working full time in elementary and machine operative occupations low pay jobs in manufacturing

Orrenius and Zavodny 2007). As we discuss below, the disagreement in the literature is underlined by an ongoing debate on identification issues arising from natives' mobility and migrants' self-selection (see Sections 3 and 4).

²The typical migrant enters the country-regionplaceUK, finds a job, and then applies to the WRS. We use "start of work date" to best capture labour market effects, whereas Gilpin et al. (2006) use "entry date" and the Home Office (2006) uses "application date", which explains different figures across studies.

and catering (also see Home Office 2006; Blanchflower et al. 2007; Pollard et al. 2008). We restrict our sample to eight accession countries (A8), namely: Czech Republic, Estonia, Hungary, Latvia, Lithuania, Poland, Slovenia and Slovakia, as Malta and Cyprus already had relative access to the EU labour market. A caveat with the WRS is that it measures inflows only, as migrants are not required to de-register when leaving the UK, and thus the associated netflow and stock cannot be calculated.³

The unemployment data we use is from the Department for Work and Pensions administered Job-seeker's Allowance (JSA). Registration is a legal requirement to qualify for the benefit, and therefore compliance is full. Between May 2004 and May 2006 JSA claimant unemployment rose by roughly 96,000. The left panel of Figure 1 shows the monthly JSA stock during this period. Casual observation suggests perhaps a negative association between the JSA stock and the WRS inflow in 2006 but not before. Claimant unemployment decreased during 2003-2004, dipping in December (803,029), and remained stable during 2005, despite a continuous and growing inflow of migrants. In the first half of 2006 it increased, peaking in March (989,136), while migration decreased.

The JSA is large, frequent and timely, and like the WRS, permits disaggregation at fine (district and month) levels.⁴ This is in contrast with the more widely used Labour Force Survey (LFS), where migration analysis below the region and quarter level is not feasible due to sample size limitations. Furthermore, the JSA measures claimant unemployment, which is directly relevant for policymaking. The JSA records address, gender, age, usual and sought occupations, claim start and end dates. Table 1 shows that many JSA unemployed are over 35 years old, female, in London and work in elementary occupation low pay jobs (also see Layard et al. 1991; Machin and Manning 1999).

The wage data we use is from the Annual Survey of Hours and Earnings (ASHE) collected by the Office for National Statistics (ONS). The ASHE is derived from employers' data and represents 1% of

³The WRS records jobs, not people; migrants leaving are not counted whereas migrants re-entering the country-regionplaceUK are double counted (Coats 2008; Pollard et al. 2008). Blanchflower et al. (2007) analyze A8 migration figures across several data sources and conclude that a stock of 500,000 migrants by late 2006 is likely to be an upper bound. Browley (2005), Pollard et al. (2008) and Coats (2008) provide similar analysis and conclude that outflow is not zero, in line with evidence on return migration (Chiswick and Hattton 2003; Dustmann 2003; LaLonde and Topel 1997).

If outflow is not random, β^n in Equation 1 could be biased (see Sections 3.2, 4 and 5.4). Gilpin et al. (2006) provide a detailed discussion on measurement error in the WRS and conclude that any associated bias is not too severe. Another caveat with the WRS is that registration is not a requirement for the self-employed (who are a minority that already had relative access to the EU labour market), which explains the larger number of Polish plumbers in anecdotal evidence (The Economist 2006b; Home Office 2007).

⁴The ONS-defined geographical areas we use are: 409 Local Authority Districts, 49 counties and 12 Government Regions (ONS 2003) (see Table 1).

all employees, containing around 160,000 responses per year. It collects, among other variables, address, gender, age, hourly pay, hours worked, occupation and industry. Table 1 shows various percentiles and the average of the ASHE and WRS hourly wage distributions, whereas Figure 2 plots both distributions for those earning £7 or below. The WRS distribution 50th percentile is roughly lined up with the ASHE distribution 5th percentile (see Table 1). This indicates that the typical WRS migrant earns around the minimum wage, which is also the wage for the lowest paid UK workers. The left panel of Figure 2 shows a sizeable spike at the minimum wage in the WRS distribution, which dwarfs the spike in the ASHE distribution. It also shows how remarkably compressed the WRS distribution is: over 90% (75%) of migrants earn between £2.00 (£4.00) and £7.00 an hour. While the average wage is £5.56 for a WRS migrant, it is £12.57 for a UK worker, though caution should be taken here, as ASHE includes WRS migrants after 2004.

Finally, we use data from the LFS to define control variables that describe the natives' population. ("Natives" here and throughout the paper include UK born and overseas born nationals who are UK residents.) The LFS is a rotating panel survey that interviews around 60,000 households with about 140,000 respondents every quarter and represents 0.5% of the population. It collects information on personal characteristics and labour market variables. Table 1 summarizes some variables from the LFS between April 2004 and June 2006.

2.2 Descriptive Analysis

In early 2004 the UK labour market was performing well historically and internationally (Coats 2008). The right panel of Figure 1 shows the trend for quarter rolling average employment rates between April 2001 and April 2006. The overall employment rate in May 2004 was 74.7%, one of the highest on record, while claimant unemployment was 2.7% (or 858,100), one of the lowest since 1975 (Lemos and Portes 2008). However, in late 2005 the labour market weakened. Although employment continued to grow, with low redundancy and high vacancy levels (Home Office 2007), claimant (ILO) unemployment increased by roughly 96,000 (250,000) between May 2004 and May 2006. As this rise coincided with substantial A8 migration, some suggested an association between the two phenomena (The Telegraph 2006; CIPD 2005). Nonetheless, despite the continuing migration inflow, the labour market began to recover in late 2006,

with both ILO and claimant unemployment falling (Lemos and Portes 2008; The Economist 2007). This is in line with our analysis in Section 2.1, which offers little evidence of a negative association between claimant unemployment and WRS migration.

Likewise, Figure 1 shows that the substantial rise in the employment rate of A8 migrants since 2004 does not appear to be associated with a fall in the employment rates of UK born or non-UK born. The dip in the A8 employment rate in 2003 suggests that migrants deferred their decisions to join the UK labour market to take advantage of the new accession status, which was announced in December 2002 (Doyle et al. 2006). The employment rate is highest for A8 migrants, perhaps because of their younger age, although some argue that this is because of their skills, higher productivity and better work ethic (more reliability, less sick leave, longer working hours, etc.) (see Table 1), while a few argue that this is because of their lower wage costs (House of Lords 2008; Dustmann et al. 2003b).

Figure 3 also offers little evidence of a negative association between WRS migration and monthly average wage growth nationally or for manufacturing and services. Moreover, Figure 3 suggests little evidence of depressed wages at other points of the wage distribution. It instead shows wage growth throughout, relatively more generous at the very bottom of the distribution in 2005 – where it is probably driven by minimum wage increases. This is also illustrated in the right panel of Figure 2, which shows the wage distribution change for those earning below £7.

In mid 2003 there were around 110,000 A8 nationals in the UK, of which 60,000 were Polish. Poland is the largest A8 country and has one of the weakest labour markets (Dustmann et al. 2003a). It is therefore perhaps not surprising that the Polish comprise 61% of the WRS migrants, followed by the Lithuanians (12%). Prior to accession, over 75% of working age A8 nationals lived in London and the South East. Perhaps as a result of such clusters, these regions received the largest WRS inflows (respectively 17% and 14%) (see Table 1 and Figure 4). Given the disproportionate numbers of WRS migrants and claimants in London, it is likely that both groups compete for the same jobs and three obvious questions arise.

The first question is whether migrants pushed natives out of (or prevented natives to move into) London. Figure 5 shows that natives' netflow between May 2004 and May 2006 is negative in London and positive elsewhere, though this is a long term trend that precedes accession (Hatton and Tani 2005; Lemos and Portes 2008). Figure 5 also shows that natives' netflow in London was less negative after May

2004 than before. This suggests that, if anything, less natives (not more) were pushed out of London after accession (see Sections 3.2 and 5.3), though caution should be taken here due to limitations with the internal migration indicators data (Lemos and Portes 2008). The second question is whether migrants pushed natives out of their jobs or made it harder for them to go back into jobs in London. Figure 1 shows a continuing inflow of migrants but a relatively stable number of claimants in London (see Sections 3.2 and 5.1). The third question is whether migrants depressed wages (Blanchflower et al. 2007). Wages grew slower in London between 2005 and 2006 (2.7%) than in the rest of the country (4.4%), which may suggest a negative association between wage growth and WRS migration (see Sections 3.2 and 5.6).

WRS migrants concentrate predominantly in low-skilled jobs, in contrast with earlier more skilled migrants (Dustmann et al. 2005). The most popular sectors are manufacturing (31%) and distribution hotels and restaurants (27%), where WRS migrants represent less than 2% of total employment (Gilpin et al. 2006). The most popular occupations are elementary (46%) and machine operatives (32%) (see Table 1).⁵ The obvious question is again whether migrants pushed natives out of, or made it harder for them to go back into these occupations. Figure 6 shows that despite the continuing inflow of migrants into machine operatives, more claimants switched to this from other (usual) occupations.⁶ Also, wages grew faster in machine operatives between 2005 and 2006 (3.8%) than in elementary (2.7%) or other occupations (3.5%). This suggests that demand side factors may have driven both migrants and claimants into machine operative jobs.

Although there is no indication of demand side factors attracting migrants into elementary occupations, this is probably where they were most able to find jobs because of language or other labour market barriers (Card and DiNardo 2000; Friedberg 2001; Drinkwater et al. 2006). This is also the usual occupation for most claimants (35%) and Figure 6 shows that some of them switched from looking for jobs in (usual) elementary to other (sought) occupations. The switch could either be because natives were pushed out or because of other factors, including occupational progression, sectoral or occupational shocks, macro shocks, etc., which we account for in our empirical model in Section 4. An example of such

⁵We use the nine Standard Occupation Codes: 1 Managerial and senior officials, 2 Professional, 3 Associate professional and technical, 4 Administrative and secretarial, 5 Skilled trades, 6 Personal service, 7 Sales and customer service, 8 Process plant and machine operatives and 9 Elementary.

⁶We observe both usual and sought occupation for the claimant unemployed, thus overcoming a common difficulty in the literature, where occupation is often not observed (Card 2001).

shocks, as discussed above, is the claimant unemployment increase across all occupations in early 2006, which hints at macro effects in addition to any WRS migration effects.

In sum, the inflow of WRS migrants in London and in elementary occupations represents a large, concentrated and rapid enough shock to have an impact on unemployment and wages. We exploit these location and occupation choices to ensure identification in our empirical model, as we discuss in Sections 3 and 4.

3 Empirical Approach

3.1 Experiment Design

The large, rapid and concentrated inflow of WRS migrants documented in Section 2 can be seen as a natural experiment that arguably corresponds more closely to an exogenous supply shock than most migration shocks studied in the literature (Card 1990 and 2007; Altonji and Card 1991; LaLonde and Topel 1991; Friedberg 2001). This helps to circumvent identification issues arising from migrants' self-selection to labour markets experiencing more favourable conditions (Card 1990 and 2005; Borjas 2003). Similar in nature to the 1990's inflow of Cubans to Miami and Russians to Israel (Card 1990; Hunt 1992; Carrington and Lima 1996; Friedberg 2001), accession nationals chose to migrate because of conditions in their home countries. As discussed in Section 2.2, the timing of the inflow did not depend on economic conditions in the UK (see Figure 1). Also, many chose the UK because other countries imposed restrictions and because of factors such as language, culture, existing clusters, etc. (Bartel and Koch 1991; Dustmann et al. 2003a; Pollard et al. 2008).

Within the UK, WRS migrants' initial location and occupational choice in London and elementary occupations was primarily driven by existing clusters and by language or other labour market barriers (LaLonde and Topel 1991; Card and DiNardo 2000; Friedberg 2001; Drinkwater et al. 2006) and not by particularly favourable conditions in these labour markets (see Section 2.2). This is in contrast with migrants' self-selection into machine operatives, which may have been demand driven, as discussed in Section 2.2. Because machine operatives may have been hit simultaneously by demand (e.g. booming construction industry) and supply shocks (e.g. WRS migration inflow), we perform robustness checks

excluding it from our regression models in Section 5.5. We also perform robustness checks using alternative models and techniques to account for potentially remaining self-selection bias in Sections 4 and 5.⁷

In addition to corresponding to a relatively exogenous supply shock, the WRS inflow was large, rapid and concentrated into relatively closed markets; it therefore arguably warrants clearly defined treatment and control groups. This helps to circumvent identification issues arising from natives' mobility in response to the inflow (Chiswick 1991; Altonji and Card 1991; LaLonde and Topel 1991; Borjas 1999; Card 2001). We now carefully argue that the treatment groups (in turn, elementary occupations and London) were fully exposed to the treatment, and that the associated control groups (other occupations and regions) were uncontaminated by the treatment (migrants). That is, natives in the treatment group did compete with migrants, and natives in the control group skipped the treatment and did not compete with migrants.

Clearly ascertaining which natives belong in each group is key to our identification strategy. As Card (2001) notes, establishing "who competes with whom" is central to identifying the effect of migration on wages and employment. This is because the extent to which such effects can be identified depends on how mobile natives are across areas, sectors, occupations, etc., in response to migration inflows – or the extent to which the treatment group skips treatment. If natives respond to the inflow through increased mobility, potential adverse effects in a particular labour market may be offset. This undermines identification because we do not observe what would have been the wages and employment level had natives not fled (i.e. a fully treated treatment group). Furthermore, we do not normally observe what would have been the wages and employment level had migrants not flooded in (i.e. the counterfactual or a credible control group).

In our data we observe migrant inflows of different intensities into relatively closed labour markets and this arguably provides suitable treatment and control groups. One example is that elementary occupations received substantially more migrants (46%) than other occupations (1% to 6% excluding machine operatives). In addition, most competing low-skilled natives may not have immediate access to jobs in other occupations, as this often requires retraining (Friedberg 2001; Borjas 2003) (some limited mobility here derives from occupational progression, which we control for in our regression models, as

⁷For example, although early cohorts' location choices were primarily driven by existing clusters, subsequent cohorts may have self-selected into areas experiencing more favourable conditions (Bartel and Koch 1991; Zavodny 1999; Gilpin et al. 2006).

discussed in Sections 2.2 and 4). Consequently, the treatment group was fully treated because elementary occupations received relatively high proportions of migrants and are arguably relatively closed markets, where natives' mobility is limited. And the control group was fairly uncontaminated because other occupations received relatively low proportions of migrants and therefore arguably constitute a clear counterfactual.

Another example is that while London received relatively high proportions of migrants, other areas received varying degrees of the treatment. One interpretation here is to treat all areas as treatment groups, exploiting the variation in the proportion of migrants across areas and time. Table 1 and Figure 4 show a great deal of variation both across regions (1% to 17%) and across time. One concern here, as in much of the literature, is that London may not have received a full course of the treatment – i.e. that some natives moved out of London and skipped the treatment. As discussed in Section 2.2, we found little evidence that natives responded to the migration inflow by moving out of (or refraining to move into) London (see Figure 5 and Section 5.3). Furthermore, as the migration inflow was larger and faster than expected (Dustmann et al. 2003a), any natives' mobility response is probably sufficiently lagged to allow identification of more adverse effects (Friedberg and Hunt 1995; Card 2001; Borjas 2006).

Finally, WRS migrants concentrate in low paid jobs (see Table 1) and thus compete with low-skilled natives, who are more area-bound because the cost-benefit of cross-regional mobility is often prohibitive (Borjas 1999; McCormick 1997). This effectively means that they compete in a relatively more closed market. As the boundaries of the actual radius of job search for low-skilled natives is an empirical matter, we experiment with several levels of aggregation – i.e. several degrees of natives' mobility – allowing the search to take place on ever wider labour markets (Borjas 2006) (see Section 3.2). We also provide a number of robustness checks using alternative models and techniques to account for potentially remaining natives' mobility bias in Sections 4 and 5.

3.2 Aggregation Level

Ideally, the level of data aggregation should conform to the actual radius of job search for natives competing with migrants. However, most studies for the UK use data from the LFS, where migration analysis below the region and quarter level is not feasible due to sample size limitations (see Section 2.1). The

implicit assumption in these studies is that there are 12 regional closed labour markets in the UK, where the whole of London is treated as one data point (see Table 1) – even though London has 33 districts, where 41% (17%) of all (WRS) migrants are unevenly distributed.

We overcome this weakness in the literature by exploiting large datasets that permit disaggregation at finer levels. We begin by assuming that there are 409 closed labour market districts in the UK. While districts are unlikely to exactly coincide with local labour markets, they may represent a more realistic practical radius of job search than regions for most low-skilled natives competing with WRS migrants (see Section 3.1). We use work address for WRS migrants and ASHE workers – to eliminate concerns that they may live in one district and work in another – and home address for JSA claimants, who we assume, search for jobs primarily in their neighbourhood. Nonetheless, it is possible that claimants live in one district and search for jobs in another, as districts are close and commuting costs are relatively low in big cities.

Thus, we next relax the assumption that districts are independent and closed labour markets by aggregating the data across 49 counties. While counties are unlikely to coincide with local labour markets throughout the country, they may represent a realistic practical radius of job search to relatively area-bound low-skilled natives in big cities who are likely to choose districts near by (within the same county) to commute or move to. Thus counties can be regarded as more closed labour markets than districts (Borjas 2006). Likewise, regions can be regarded as more closed labour markets than counties. Therefore, we end by aggregating the data across regions to check the robustness of our results and for comparability with the literature.

In sum, we use three levels of aggregation, in turn: districts, counties and regions. By changing the level of aggregation, we are changing the boundaries of the radius of job search – i.e. the degree of natives' mobility – and allowing the search to take place on ever wider labour markets (Borjas 2006). Our final level of aggregation is the national level, as we discuss below, which scrapes all boundaries – allowing natives full mobility within the country – and is therefore more robust to natives' mobility bias (Friedberg and Hunt 1995; Dustmann and Glitz 2005).

The idea is that the greater the degree of natives' mobility, the larger the associated estimate bias across different aggregation levels (Borjas 2006). If natives are district-bound then estimates at the

district, county or region level should not differ much. If however natives are mobile across districts, but not across counties, potentially adverse effects are offset at the district level but uncovered at the county level. Similarly, effects offset at the county (region) level might be uncovered at the region (nation) level. In addition to accessing the extent of natives' mobility bias by aggregating the data at different levels, we also perform robustness checks using alternative models (e.g. explicitly controlling for natives' mobility) and techniques (e.g. instrumental variables) in Sections 4 and 5.

The implicit assumption so far is that all WRS migrants compete with all natives in each area (district, county and region), which may not be realistic. This is because the vast majority of WRS migrants do not compete with highly skilled natives. We relax this assumption by assuming that WRS migrants are only substitutes for low-skilled natives within each area. We also experiment with other vulnerable groups, such as female and young natives. Here, the assumption is that WRS migrants are only substitutes for female (young) natives within each area.

We also relax the assumption that all WRS migrants compete with all natives by assuming that low-skilled (high-skilled) WRS migrants compete with low-skilled (high-skilled) natives in a national market. That is, we aggregate the data across occupations and assume that migrants and natives are only substitutes within occupations (Card 2001; Friedberg 2001). Furthermore, given that the majority of WRS migrants concentrate in elementary occupations, and given that low-skilled natives are relatively region-bound, our final assumption is that migrants and natives are only substitutes within occupations within regions. The main difference is that at the national-occupation level, migrant and native cleaners, say, compete across the country; whereas at the regional-occupation level, migrant and native cleaners compete in London only, for example. Given that crossing the country for a cleaning job may not be financially viable for a native, it may be more realistic to stratify the labour market at the regional-occupation level than at the national-occupation level for the particular phenomenon we study here (see Section 3.1). As before, if low-skilled natives are relatively region-bound, then estimates at both levels should not differ much.

Stratification across occupations is particularly fruitful because migrants and natives compete more directly across occupations than across areas (Card 2001). In addition, natives' mobility bias and migrants' self-selection bias are less of a concern across occupations. Firstly, occupations are more closed

labour markets than areas because occupation mobility often requires retraining (Friedberg 2001; Borjas 2003; Orrenius and Zavodny 2007). Secondly, migrants' initial occupational choice is often driven by language or other labour market barriers (Friedberg 2001; Dustmann and Glitz 2005). Both factors are particularly relevant in our data, as we discussed in Section 3.1, because the treatment is concentrated in low-skilled elementary occupations.⁸

In sum, we exploit a number of ways of stratifying local labour markets. We experiment not only with various levels of aggregation (district, county, region, nation-occupation and region-occupation) but also with alternative demographic groups (low-skilled, young and female). By altering our assumptions on substitutability between migrants and natives, we consider a number of local labour markets where migrants may be affecting natives. As in much of the literature, we relate migrant densities to natives' wages and claimant unemployment across these labour markets to establish whether those that received relatively more migrants experienced more adverse effects. The magnitude of any such adverse effects depends on the degree of substitutability between migrants and natives.

Figure 7 plots our claimant unemployment (netflow) rate variable ΔN_{it} against our migration (inflow) rate variable ΔM_{it} across t months (between May 2004 and April 2006) and i districts (i is, in turn, districts, counties, regions and occupations). In line with our analysis at the national level in Section 2, this suggests little evidence of a negative association between the two variables at the district, county, region or nation-occupation level. The raw data suggests that claimant unemployment did not grow faster in areas and occupations that received relatively more migrants. Figure 7 also plots the average (and 10th percentile) of the distribution of log hourly pay W_{iy} in first-difference across y years (2004 to 2006) and i districts against the yearly migration rate ΔM_{iy} . Again, in line with our analysis at the national level in Section 2, this suggests little evidence of a negative association between the two variables at the district level. The raw data suggests that wages did not grow slower in districts that received relatively more migrants. Finally, Figure 7 plots the native (netflow) rate ΔN_{it} against ΔM_{it} and suggests that

⁸Several skill definitions have been used in the literature, e.g. occupation, education, education-experience, etc. (Card 2001; Borjas 2003; Dustmann and Glitz 2005). Occupation is measured more accurately than education and experience. Firstly, the extent and quality of education varies across countries. Therefore, migrants and natives in the same 20 years education cell may have different skills and compete for different jobs. Secondly, occupation measures the effective reward that migrants obtain, after usual skill downgrading due to language or other labour market barriers (see Section 3.1). For example, a migrant journalist may initially work as a cleaner, and thus is not competing with native journalists. Thirdly, there is evidence that natives and migrants are imperfect substitutes within education groups in the country-regionplaceUK (Manacorda et al. 2006; Ottaviano and Peri 2006). As discussed in Section 3.1, identifying accurately who competes with whom is crucial, as poor skill group allocation results in poor identification.

natives are not district-bound but are county and region-bound (see Section 3.2).⁹

The above correlations offer little support to standard theory predictions that migration inflows exert downwards pressure on wages and employment. However, such raw correlations need to be proved robust when the effect of other variables (demand and supply shocks, area and occupation specific shocks, etc.) on wages and claimant unemployment is accounted for. We control for such variables in our regression models in Sections 4 and 5, where we further discuss associated identification issues and robustness checks.

4 Model Specification

We estimate the effect of the WRS migration inflow on the UK claimant unemployment netflow using a reduced form equation grounded on standard theory (Borjas 1999; Card 2001; Dustmann et al. 2005):

$$\Delta N_{it} = \beta^n \Delta M_{it} + \lambda^n \Delta X_{it} + f_t^n + \Delta \varepsilon_{it}^n \quad (1)$$

where ΔN_{it} and ΔM_{it} are our unemployment and migration variables, defined in Section 3.2, X_{it} are labour demand and supply shifters, f_t^n is time fixed effects, and ε_{it}^n is the error term in district $i = 1, \dots, 409$ and month-year $t = 1, \dots, 24$. The interpretation of our coefficient of interest is that a one percentage point increase in the migration rate changes the claimant unemployment rate by β^n percentage points.

As we estimate Equation 1 in first-difference, area fixed effects were differenced out. This way we remove any permanent differences across districts and make them equally attractive. In other words, we control for specific factors in a district (such as more schools, more housing, higher wages, etc.) that

⁹We define $\Delta N_{it} = \frac{\Delta N_{it}^*}{P_{it}}$ and $\Delta M_{it} = \frac{\Delta M_{it}^*}{P_{it}}$, where N_{it}^* is the number (stock) of JSA claimants, M_{it}^* is the number (stock) of WRS migrants, and P_{it} is working age population. As discussed in Section 2.1, whereas we observe the stock of claimants and can calculate the netflow of claimants as $\Delta N_{it}^* = N_{it}^* - N_{it-1}^*$; we do not observe the stock of migrants. We therefore re-define the netflow of migrants as $\Delta M_{it}^* = I_{it} - O_{it}$, where I_{it} is inflow and O_{it} is outflow of migrants. As we do not observe outflow, we again re-define $\Delta M_{it}^* = I_{it}$, as it is common in the literature (Card 2001; Dustmann and Glitz 2005). Similarly, we define $\Delta A_{it} = \frac{\Delta A_{it}^*}{P_{it}}$ and $\Delta A_{it}^* = I_{it}^A - O_{it}^A$, where I_{it}^A is inflow and O_{it}^A is outflow of natives. We also run robustness checks where our migration and unemployment variables in Equation 1 were not standardized (i.e. re-defining $\Delta N_{it} = \Delta N_{it}^*$ and $\Delta M_{it} = \Delta M_{it}^*$) and found qualitatively similar results (Peri and Sparber 2008).

may make it more attractive to migrants or natives or both. This enables us to separate the effect of district specific factors from the effect of the WRS shock on claimant unemployment. We model time fixed effects using 24 month-year dummies. This enables us to separate the effect of other macro shocks (such as seasonal shocks, national and international shocks, etc.) from the effect of the WRS shock on claimant unemployment. Incidentally, controlling for both area and time fixed effects helps to correct for migrants' self-selection (omitted variable) bias and natives' mobility (omitted variable) bias (see Section 5.2).

We also control for demand and supply shifters. This enables us to separate the effect of demand and supply shocks from the effect of the WRS shock on claimant unemployment. Incidentally this helps to control for factors that may motivate income-maximizing natives to move to other districts and thus helps to correct for natives' mobility (omitted variable) bias (Borjas 2006). Controls in X_{it} include the proportion of the total population who are women, young (those between 18 and 24 years of age), ethnic minorities and migrants from outside the A8 countries. This enables us to control for higher unemployment in a particular district due to the presence of relatively more women, young, minorities or other migrants – which are groups who often experience high unemployment (see Section 2). Further controls include the lagged proportion of WRS migrants who are women, young and parents (along with average number of children). We also control for the lagged average hours worked by WRS migrants to account for potentially higher claimant unemployment in districts where migrants work longer hours (which may increase substitutability). We also include the lagged proportion of WRS migrants in elementary and machine operative occupations to control for occupation-district specific shocks affecting claimant unemployment. Finally, we include the lagged proportion of unemployed who are women and young, and lagged average claim duration. Lagged claim duration accounts for higher unemployment in districts with historically long spells of unemployment; it also alleviates problems arising from serial correlation in the residuals and it can be interpreted as a measure of labour demand.¹⁰

Next, we control for natives' mobility. This allows us to separate the effect of the WRS shock on claimant unemployment from the effect of natives moving away from (or refraining to move into) a

¹⁰As in Gilpin et al. (2006), we experimented with two types of dynamics (lagged migration rate and lagged claimant unemployment rate), which, however, did not alter our main result. Although dynamics allow for lagged adjustments due to slow responses in employment, migration effects are generally expected to be lower in the longer than in the shorter run (Altonji and Card 1991; Dustmann et al. 2005).

district. Put differently, this allows us to some extent to build a counterfactual of how mobile natives would have been in the absence of the migration inflow. Therefore, it helps to correct for both natives' mobility (omitted variable) bias and migrants' self selection (omitted variable) bias (see Sections 3 and 5.2). The severity of any such omitted variable bias depends on the extent of the correlation between the migrant inflow and natives' netflow (see Section 5.3). Therefore, this is ultimately an empirical matter and will vary according to the particular phenomenon studied (Card and DiNardo 2000; Card 2001; Borjas 2003 and 2006; Dustmann and Glitz 2005).

It follows that, ideally, we want to use a variable that measures what would have been the observed natives' net migration had migrants not arrived – which would also introduce the initial labour market pre-accession conditions into the regression analysis (Borjas 1999 and 2006). As such a counterfactual is not observable, we add two observable proxies to ΔX_{it} , in turn. The first proxy we use is lagged working age population growth (Borjas et al. 1997; Borjas 2006) – which incidentally ensures that the variation in ΔM_{it} that identifies β^n comes from the numerator (migration inflow) and not from the denominator (working age population) (Borjas 2003). To avoid repeating the dependent variable as a regressor, we use lagged working age population growth by education group (Dustmann et al. 2005; Borjas 2006; Peri and Sparber 2008).¹¹ The second proxy we use is the native netflow rate ΔA_{it} , defined in Section 3.2 (Borjas 1999).

We perform a Generalized Least Square (GLS) correction to account for the relative importance of each district, for heteroskedasticity arising from aggregation, and for serial correlation across and within districts.¹² Given such stringent specifications, and given the careful consideration of our treatment and control groups (see Section 3), we argue that the remaining variation in the claimant unemployment rate is likely due to changes in the WRS migration inflow – and this ensures the identification of β^n .

¹¹We use a group comprising those with a degree or equivalent and above, a group comprising those with GCSE or equivalent and below, and a group comprising those in between; the last was omitted in alternative robustness checks, which did not qualitatively alter the main results.

¹²The appropriate weight here is the sample size used to calculate the dependent variable (working age population), but our estimates were robust to using total population as weight instead – which reduces concerns of a potential correlation between the weight and the dependent variable affecting the results. (Also, as discussed in Section 3.2, we run robustness checks where our unemployment and migration variables were not standardized and found qualitatively similar results.) Our estimates were also robust to using, in turn, April 2004 working age population and April 2004 total population as time-invariant weight (Card 2001 and 2005; Borjas 2006).

5 Results

5.1 Unemployment Effects

Row 1 of Panel A of Table 2 shows an insignificant -0.015 (unweighted OLS) β^n estimate, which corresponds to the raw data in Figure 7. The insignificant -0.044 estimate in row 2 is our baseline (GLS) estimate. It accounts for district specific time invariant factors that may simultaneously affect both the unemployment and migration rates, such as the fact that more multicultural or higher wage districts (e.g. in London) attract both migrants and natives. However, this single-difference model does not account for macro month specific effects that may simultaneously affect both the unemployment and migration rates, such as interest rate changes or international shocks. Controlling for such macro effects is equivalent to a double-difference model, which produces a more negative, though still insignificant -0.051 estimate in row 3.

Further controlling for other demand and supply shocks in row 4 yields a 0.037 estimate, which however, remains insignificant. This suggests that the earlier negative sign was driven by omitted variables varying across district-month over and above district specific and month specific fixed effects. This indicates that our control variables (such as the length of unemployment spells, the proportion of women and young on a district, etc.) are important factors explaining the UK claimant unemployment rate.

The estimate remains positive and insignificant, 0.020 and 0.003, when we control for lagged working age population growth in row 5 and for native netflow rate in row 6. These estimates are still small – if anything, smaller – offering little evidence that natives’ mobility offset potentially more adverse effects, in line with our earlier descriptive analysis (see Sections 2.2, 3 and 5.3). The β^n estimate remained fairly robust across specifications (compare the more complete ones in rows 4-6). Thus, our results indicate little evidence of adverse claimant unemployment effects at the district level.

In addition to assessing the extent of any natives’ mobility omitted variable bias by explicitly controlling for lagged working age population growth and native netflow rate, we now assess whether they are area-bound by aggregating the data at the county and region levels, in turn. (We also re-estimate our models using instrumental variables in Section 5.2). If natives’ mobility is not exacerbated by the migration inflow, estimates at the district, county, and region levels should not differ much (see Section

3.2). Panels B and C show that the estimates at the county and region levels are also, in the main, positive and insignificant, and as before, get smaller in the more complete specifications. The region estimates are twice as large as the county estimates, which are twice as large as the district estimates (compare row 4 of Panels A to C). This may be interpreted as evidence of natives' mobility offsetting more adverse effects at the district and county levels (Borjas 2006). However, this evidence is weak. Firstly, because although the estimates are numerically larger the wider the aggregation level, they are small in magnitude and are statistically indifferent from zero. Although Figure 7 suggested that natives are not district-bound, we were unable to uncover larger and significant effects at the county and region levels.

Secondly, although larger estimates might be expected at wider aggregation levels as a result of theoretical predictions regarding natives' mobility (Borjas 2003 and 2006), they might also be expected as a result of modelling choices (Borjas 2006; Peri and Sparber 2008). One example is that region dummies do not control for as many area specific shocks as district dummies do, which may result in a larger β^n estimate at the region level. Moreover, serial correlation is more of a concern in more aggregate data, which again could result in a larger β^n estimate at the regional level (despite appropriate GLS corrections at each level). Another example is that implicit area weights differ across aggregation levels. For instance, at the district level, different parts of London receive different weights, and each district has a small weight; in contrast, at the county and region levels, London is treated as one single labour market (see Section 3.2). This could result on a larger β^n estimate at the region level, weighed towards London.

In sum, our main conclusion is that there is little evidence that an increase in the WRS migration rate adversely affected the claimant unemployment rate in the UK between 2004 and 2006. Our results are in line with the international literature, where adverse employment effects are small (Altonji and Card 1991; LaLonde and Topel 1991; Friedberg 2001; Card 1990 and 2001; Carrasco et al. 2008). They are also in line with the very limited evidence for the UK: Dustmann et al. (2005) reported insignificant employment and unemployment effects using LFS data for the 1980s and 1990s. They also reported insignificant effects for high and low-skilled workers, though small and significant adverse effects for the middle group. We

also estimate effects for the low-skilled in Section 5.4, and find no evidence of adverse effects.¹³ Although the evidence discussed is reassuring so far, we probe our results further in four different ways in Sections 5.2 through to 5.5.

5.2 Instrumental Variable Estimation

Our uninstrumented estimates in Section 5.1 suggest little evidence of adverse claimant unemployment effects. While these could be consistent estimates of an underlying true zero effect, they could also be biased estimates of an underlying positive effect. We thus further check the robustness of these estimates by using instrumental variable estimation techniques to correct for potential bias arising from non-zero correlation between the error term and the migration rate.

We begin by arguing that for the particular phenomenon we study here such correlation is potentially weak and thus any associated endogeneity bias is not too severe. Firstly, this correlation would potentially be strong if the unemployment and migration rates were jointly determined: if both migrants and unemployed natives made simultaneous decisions to join the labour market based on observed job opportunities. As we argued in Sections 2.2 and 3.1, the WRS migration inflow was a large, rapid, concentrated and relatively exogenous supply shock resulting mainly from political events. Secondly, this correlation would be potentially strong if variables driving both the migration and unemployment rates were omitted. Two such omitted variables are of particular concern: migrants' self-selection and natives' mobility. As we argue in Section 3, migrants' location choices are primarily driven by clusters and not by particularly favourable labour market conditions; and the correlation between the migration inflow and natives' netflow does not appear to be very large in our data (see Section 5.3). Furthermore, we use fairly stringent specifications, where we control for these (and other) omitted variables to some extent through fixed effects, demand and supply shifters, lagged working age population growth and native netflow rate. Finally, this correlation would be potentially strong in the presence of non-random measurement error. As discussed in Section 2.1, there is no *a priori* reason to expect non-random non-registration or outflow across areas in our data (see Section 5.4).

Although none of these sources of endogeneity appears strong enough to have severely biased our

¹³Although WRS migrants overwhelmingly concentrate in low-skilled elementary occupations, for completeness we also run robustness checks for middle and high-skilled occupations and found no evidence of adverse effects.

estimates in Section 5.1, we re-estimate Equation 1 using the Generalized Method of Moments (GMM). This requires instruments that are relevant, i.e. correlated with the migration rate, and not endogenous, i.e. uncorrelated with unobserved factors that drive the claimant unemployment rate.

Table 3 shows GMM β^n estimates. We begin by using the second to sixth lags of our migration rate, which is a typical instrument in the literature. These lags are obviously correlated with the migration rate but predetermined in relation to the claimant unemployment rate. The associated F test in the first step of the estimation, in row 1 of Panel A, confirms that the instruments are relevant, though the Hansen-Sargan test (Sargan 1958; Hansen 1982) shows that they are invalid.

We next use the second to fifth lags of the entry-migration rate. As discussed in Section 2.1, the typical migrant enters the UK, finds a job, and then applies to the WRS. We used "start of work date" to define our migration rate and now use "entry date" to define our instrument. Lags of the entry-migration rate are correlated with the migration rate but predetermined in relation to the claimant unemployment rate. Row 2 shows that the instruments are again relevant and now pass the Hansen-Sargan test. Furthermore the associated Hausman test (Hahn and Hausman 2002) shows no evidence of endogeneity in the model deriving from our migration rate. The resulting estimate is negative, small and insignificant (compare with row 4 of Panel A of Table 2).

We also use historic migration rate, defined as the pre-accession proportion of migrants in the population, which is another typical instrument in the literature (Altonji and Card 1991; Hunt 1992). We define this instrument using Census data for 1991 and 2001 and also using International Passenger Survey (IPS) data for the 1990s. Once again, these instruments are correlated with the migration rate but predetermined in relation to the claimant unemployment rate. The results show no evidence of endogeneity and confirm that the instruments are relevant and not endogenous. The resulting estimate is small, negative and significant (insignificant) in row 3 (4).

We next experiment with a more novel instrument using data from the Civil Aviation Authority (CAA). We interact a flight indicator variable – which is one if a flight between a particular A8 country and a particular UK district exists, and zero otherwise – with the distance between the two. This instrument is correlated with the migration rate because the more flights and the shorter the distance between an A8 country and a UK district, the larger the migration inflow. It is uncorrelated with the

claimant unemployment rate because there is no reason why the existence of flights or the distance between A8 countries and UK districts would be simultaneously determined with the number of claimants. The results in row 5 show no evidence of endogeneity and confirm that the instruments are relevant and not endogenous. The resulting estimate is small, negative and significant.¹⁴

Panels B and C show that the results at the county and region levels are qualitatively similar to those at the district level in Panel A, except that the β^n estimate is more often insignificant and that the instruments perform better.

In sum, although the significance and magnitude vary, the estimates remain small; the sign is reassuringly negative throughout. Therefore, the instrumented estimates here suggest, if anything, less – not more – adverse effects than their uninstrumented counterparts in Section 5.1 (compare with row 4 of each panel in Table 2). This is reassuring of our earlier conclusion of little evidence of adverse claimant unemployment effects. Dustmann et al. (2005) also reported close (small and insignificant) instrumented and uninstrumented unemployment effect estimates, suggesting that any endogeneity bias was not too severe.

5.3 Native Mobility Effects

Of the sources of endogeneity discussed in Section 5.2, natives' mobility is perhaps the one that has most occupied the literature (Chiswick 1991; Altonji and Card 1991; LaLonde and Topel 1991; Friedberg and Hunt 1995; Borjas 1999 and 2006; Card and DiNardo 2000; Card 2001). We have argued that the nature of the particular phenomenon we study here reduces concerns that any such bias is severe, which is confirmed by our results in Sections 5.1 and 5.2. As the severity of this bias depends on the extent of the correlation between the migrant inflow and natives' netflow (see Section 4), an alternative way to check the robustness of our results is to estimate this correlation.

We therefore estimate the effect of the WRS migration inflow on the UK natives' netflow using a

¹⁴We also experimented with other instruments derived from the CAA data, such as an alternative flight indicator to encompass neighbouring districts; the minimum, maximum and average air fare prices; the number of air fares (one way and two ways); and the number of passengers travelling (arriving and departing) between A8 countries and UK districts. In addition, we experimented with other instruments derived from the WRS (such as the number of days elapsed between entering the country-regionplaceUK and finding a job) and from the JSA (such as the lagged proportion of claimants switching occupations). Although the associated results were qualitatively similar, these instruments were less relevant and the estimates less precise. We further experimented with other instruments suggested in the literature, such as house prices, vacancies and temperature (Hatton and Tani 2005; Saiz 2006; Hunt 1992), however the poor quality of the data at the district and month level cast doubt on the results.

reduced form equation (Card and DiNardo 2000; Hatton and Tani 2005; Borjas 2006):

$$\Delta A_{it} = \beta^a \Delta M_{it} + \lambda^a \Delta X_{it}^a + f_t^a + \Delta \varepsilon_{it}^a \quad (2)$$

where ΔA_{it} and ΔM_{it} are our natives' netflow and migration variables, defined in Section 3.2; f_t^a is time fixed effects; ε_{it}^a is the error term; and X_{it}^a are controls, namely lagged working age population, log average wage, unemployment rate, average house price and vacancies. Thus, we separate the effect of a changing working age population from the effect of migration on natives' netflow (Wright et al. 1997; Card and DiNardo 2000; Hatton and Tani 2005). Similarly, we separate the effect of wages, unemployment, house prices and vacancies from the effect of migration on natives' netflow (Jackman and Savouri 1992; McCormick 1997; Hatton and Tani 2005; Borjas 2006). As before, we estimate Equation 2 in first-difference using GLS. The interpretation of our coefficient of interest is that a one percentage point increase in the migration rate changes the native netflow rate by β^a percentage points.

Row 1 of Panel A of Table 4 shows a -0.182 (unweighted OLS) significant β^a estimate, which corresponds to the raw data in Figure 7. Our baseline (GLS) estimate in row 2, where district fixed effects are controlled for, is a significant -0.282. Further controlling for month fixed effects in row 3 yields a significant and larger -0.301 estimate. Controlling for other demand and supply shocks in rows 4 and 5 dampens this effect slightly, which however, remains a significant -0.294. These estimates indicate that a one percentage point increase in the migration rate decreases the native netflow rate by around 0.3 percentage points. However, this effect is substantially smaller, -0.036, when we control for district specific growth rate effects, over and above district specific effects in row 6 (Wright et al. 1997). In row 6a we restrict the sample to exclude London, which is a high migration area that could be driving the significance of our results (Wright et al. 1997; Card 2001; Borjas 2006). However the -0.029 estimate remains significant.

Panels B and C show estimates at the county and region levels. When comparing the more complete specifications in row 5 (or 4) of each panel, the estimate is larger the smaller the aggregation level, as in Borjas (2006). However, when comparing row 6 of each panel, the estimate is larger the wider the aggregation level, suggesting that the earlier result was driven by omitted area specific growth rates.

In sum, the estimates in Table 4 are negative and significant but small (see most complete specifications in rows 5 and 6 of each panel). This is reassuring that the correlation between the migration inflow rate

and native netflow rate is not very large and any associated natives' mobility (omitted variable) bias is not too severe. This is in line with some evidence for the US, where little evidence was found that natives respond to migrants through mobility (Butcher and Card 1991; Wright et al. 1997; White and Liang 1998; Card and DiNardo 2000; Card 2001), though it is in contrast with other evidence where a stronger or larger association was found (Filer 1992; Frey 1995; Frey et al. 1996; Borjas et al. 1997; Borjas 2006). The estimates here are also in line with (though smaller than) the limited evidence for the UK, which uses either time series models or regional and annual data (Muellbauer and Murphy 1988; Hatton and Tani 2005). Finally, the estimates here are in line with evidence of relative persistence of employment and unemployment differentials across UK regions, which suggests that mobility only facilitates labour market adjustments to a limited extent (Pissarides and McMaster 1990; Friedberg and Hunt 1995).

5.4 Robustness Checks

Our estimates in Sections 5.1 and 5.2 suggest little evidence of adverse claimant unemployment effects. Having established that this is unlikely to be due to endogeneity severely biasing our estimates, we now further check the robustness of those estimates by restricting our sample to specific demographic groups. The motivation here is that those estimates are for the entire pool of unemployed workers, which may be diluting more adverse effects for low wage workers (LaLonde and Topel 1991; Altonji and Card 1991). Also, the mobility behaviour of low wage workers may be different, as we argue in Section 3 (Borjas 2006). We thus re-estimate Equation 1 for three groups, in turn: low-skilled (those in elementary occupations), young (those between 18 and 24 years of age) and women. These are workers likely to be competing directly with WRS migrants (see Section 2.2). For example, employers may substitute away from mothers with small children or unskilled young workers and towards male migrants (House of Lords 2008; The Guardian 2008; Coats 2008).

Table 5 shows the associated GLS β^n estimates. Row 1 shows an insignificant -0.021 estimate for low-skilled workers at the district level (compare with the insignificant 0.037 estimate in row 4 of Panel A of Table 2). This suggests, if anything, a less adverse effect for the low-skilled at the district level. The estimate is a more adverse but insignificant 0.043 when allowing low-skilled workers to search for jobs at the county or region level. This suggests that low-skilled are area-bound and offers little evidence that

migrants are substitutes for low-skilled natives (see Section 3).

Row 2 shows that for young workers, the estimates are more adverse the wider the aggregation level: an insignificant -0.30 (0.006) at the district (county) level, and a significant 0.106 at the region level. Thus an increase of one percentage point in the WRS migration rate increases UK youth claimant unemployment by 0.106 percentage points when young workers' local labour market is within a region. This suggests that migrant labour may be a substitute for youth labour. It also suggests that young natives may be more mobile than other natives, and that more adverse effects at the region level might have been offset at the district and county levels (see Sections 3 and 5.1).

In contrast, row 3 shows that for female workers the estimates do not change much across aggregation level. This suggests that women are area-bound, perhaps because they are tied movers/stayers (Borjas 2006). The insignificant 0.015 and 0.020 estimates offer little evidence that migrants are substitutes for native women.

We further check the robustness of our estimates by restricting our sample to areas with relatively high proportions of WRS migrants (see Figure 5). The motivation here is that our estimates for all areas may be diluting more adverse effects for affected areas. We thus estimate Equation 1, in turn for: London, the Southeast and Eastern areas and agricultural areas (comprising 5% or more of the working age population in agricultural jobs).

Row 4 shows, interestingly, that for London, the Southeast and Eastern areas the estimates are less adverse the wider the aggregation level. The estimate is an insignificant 0.051 (-0.166) at the district (region) level, though it is a significant -0.055 at the county level. Thus an increase of one percentage point in the WRS migration rate decreases claimant unemployment by 0.055 percentage points in the London, Southeast and Eastern areas when natives' local labour market is within a county.

Similarly, row 5 shows that for agricultural areas the estimates are less adverse the wider the aggregation level. The estimate is a significant 0.073 at the district level and an insignificant 0.043 and -0.014 at the county and region levels. Thus, an increase of one percentage point in the WRS migration rate increases claimant unemployment in UK agricultural areas by 0.073 percentage points when natives' local labour market is within a district. This suggests that competition among native agricultural workers and

migrants takes place in small neighbourhoods.¹⁵

Thus, our main conclusion from before is broadly maintained. We found only sparse evidence that an increase in the WRS migration rate adversely affected the claimant unemployment rate in the UK between 2004 and 2006. While low-skilled and female claimant unemployment was not adversely affected, we found a small adverse effect for young natives at the region level. Similarly, while claimant unemployment was not adversely affected in London, the Southeast and Eastern areas, we found a small adverse effect in agricultural areas at the district level.

5.5 National and Occupational Level Effects

A further way to check the robustness of our estimates in Sections 5.1 and 5.2 is by aggregating the data across occupations. As discussed in Section 3, stratification across occupations – as opposed to stratification across areas – is fruitful because migrants and natives compete more directly across occupations and because bias arising from natives’ mobility and migrants’ self-selection is less of a concern across occupations.

We therefore re-estimate Equation 1 replacing i with $j = 1, \dots, 9$ to mean occupations (see Section 2.2)¹⁶ and re-defining X_{jt} , due to data limitations, to include the lagged proportion of WRS migrants who are women, young and parents (along with average number of children); their lagged average hours worked; the lagged proportion of unemployed who are women and young; and the lagged average claim duration.

Row 1 of Panel A of Table 6 shows an insignificant 0.055 (unweighted OLS) β^n estimate, which corresponds to the raw data in Figure 7. Our baseline (GLS) estimate in row 2, where occupation fixed effects are controlled for, is an insignificant 0.019. Controlling for month fixed effects and demand and supply shocks in rows 3 and 4 yields insignificant 0.030 and 0.017 estimates. Restricting the sample in row 4a to exclude machine operative occupations, where self-selection bias may be a concern (see Section 3.1), yields an insignificant -0.049 estimate, which suggests, if anything, less adverse effects (see Section

¹⁵Here we address, to some extent, concerns that measurement error in our migration variable arising from non-random outflow could bias our estimates (see Sections 2.1 and 3.2). Even though outflows have a more systematic seasonal component in agriculture, these estimates do not suggest substantially more adverse effects than their unrestricted counterparts in Table 2.

¹⁶Results using sought occupation, which better captures labour market effects, were also robust to using usual occupation instead.

5.6).

Thus, our main conclusion from before of little evidence of adverse claimant unemployment effects is again maintained. This is in contrast with results in Borjas (2006), where more adverse effects were found at wider aggregation levels. Although our results were also successively larger at the district, county and region levels, they are smaller at the nation level – and they are insignificant throughout (see Tables 2 and 6). As we argued in Sections 3.2 and 5.1, natives' mobility may not fully explain larger effects in wider areas. Furthermore, our results in Sections 5.1 to 5.4 suggest that natives' mobility responses to the WRS migration shock were modest.

Nonetheless we check whether these small estimates at the national-occupation level are driven by omitted area fixed effects by aggregating the data at the regional-occupation level. As we argue in Section 3, the later may be more relevant, as low-skilled natives, who are more region-bound, are more likely to compete with WRS migrants. We re-estimate Equation 1, where i and j are defined as before, and X_{ijt} includes the same variables as X_{jt} .

Panel B shows that the 0.054, 0.020 and 0.030 estimates in rows 1 to 3 remain stubbornly close to their counterparts in Panel A, where region, time and occupation fixed effects, as well as their interactions, are controlled for. Further controlling for demand and supply shocks yields a larger but insignificant 0.056 estimate in row 4. Thus, our main conclusion from before of little evidence of adverse claimant unemployment effects is yet again maintained.

In sum, the estimates at the national-occupation and at the regional-occupational level do not differ much. This confirms that low-skilled natives are relatively region-bound; it also confirms that there is little evidence that native mobility offset more adverse effects (see Sections 5.1 to 5.4). Our results are again in contrast with those in Borjas (2003), who reports substantially smaller estimates when labour markets stratified by education-experience are limited by geographical boundaries. However, our results are in line with those in Card (2001), who reports small employment effects even when labour markets stratified by occupation are limited by geographical boundaries and does not find evidence that native mobility offset more adverse effects.

5.6 Wage Effects

One explanation for little evidence of adverse claimant unemployment effects is that the adjustment to the WRS inflow occurred through wages, as some have suggested (Blanchflower et al. 2007) and as theory predicts (see Sections 3.2 and 6). We thus estimate the effect of the WRS migration inflow on UK wages using a reduced form equation grounded on standard theory (Borjas 1999; Card 2001; Dustmann et al. 2005):

$$\Delta W_{iy} = \beta^w \Delta M_{iy} + \lambda^w \Delta X_{iy} + f_y^w + \Delta \varepsilon_{iy}^w \quad (3)$$

where ΔW_{iy} and ΔM_{iy} are our wage and migration variables, defined in Section 3.2, in district $i = 1, \dots, 409$ and year $y = 1, \dots, 3$; f_y^w is time fixed effects; ε_{iy}^w is the error term; and X_{iy} are labour demand and supply shifters that include the proportion of the total population who are women, young, ethnic minorities and migrants from outside the A8 countries; the lagged proportion of WRS migrants who are women, young and parents (along with average number of children). As before, we estimate Equation 3 in first-difference using GLS and thus area fixed effects were differenced out; time fixed effects are now modelled using year dummies. The interpretation of our coefficient of interest is that a one percentage point increase in the migration rate changes wages by $\beta^w \%$.

Row 1 of Panel A of Table 7 shows a 0.125 (unweighted OLS) β^w estimate, which corresponds to the raw data in Figure 7. Our baseline (GLS) estimate in Panel B, where district fixed effects are controlled for, is a larger but insignificant 0.216 estimate. Further controlling for respectively year fixed effects and demand and supply shocks in Panels C and D yields larger but still insignificant 0.252 and 0.246 estimates.

We re-estimate Equation 3 re-defining W_{iy} to mean, in turn, the 5th, 10th, 20th, 25th, 30th, 40th and 50th percentiles of the log hourly pay distribution. This is to uncover potential wage effects for lower paid workers that may have been masked by the average wage effect. Panel A shows negative estimates – except for the 5th percentile, where the operation of a higher minimum wage may be driving the results (see Figures 2 and 3). Some of these estimates remain negative and insignificant in our baseline specification in Panel B, but all turn positive, though remain insignificant, when we control for time effects in Panel C – the 5th percentile estimate is now less than a half, as the effect of the national minimum wage increase is controlled for. The estimates remain positive and insignificant when we control for demand and supply

shocks in Panel D. They are 0.110, 0.323 and 0.438 respectively for the 10th, 25th and 50th percentiles.¹⁷ This suggests that wage effects are smaller at the bottom of the distribution, where migrants and natives are more likely to be substitutes (e.g. those in elementary occupations are located around the 5th and 10th percentiles), and larger higher up, where migrants and natives are more likely to be complements (e.g. those in machine operative occupations are located around the 40th percentile).¹⁸ Nonetheless, as the estimates are insignificant throughout, our main conclusion is that there is little evidence that an increase in the WRS migration rate adversely affected wages in the UK between 2004 and 2006.

Our estimates are in line with some evidence in the international literature, where adverse wage effects are small (Grossman 1982; Friedberg 2001; Card 1990, 2001, 2005 and 2007; Carrasco et al. 2008), though in contrast with other evidence of more adverse wage effects (Borjas 1999, 2003 and 2006; Angrist and Kugler 2003; Orrenius and Zavodny 2007). They are also in line with the limited evidence available for the UK (Dustmann et al. 2005 and 2007; Manacorda et al. 2006). Using LFS data for the 1980s and 1990s, Dustmann et al. (2005) found no evidence of adverse wage effects and hinted that this may be in part because migrants' skill distribution resembles that of natives. However, Manacorda et al. (2006) argue that the associated relative labour supply change ought to have induced wage effects. Using LFS and BHPS data between the 1970s and 2000s they also found no adverse wage effects and argue that this is because natives and migrants are imperfect substitutes (Card 1990; Friedberg 2001). They then detected some adverse wage effects for earlier migrants (LaLonde and Topel 1991; Altonji and Card 1991). This is in line with findings in Dustmann et al. (2007) of negative wage effects at the bottom of the distribution – where migrants are more concentrated – and positive effects higher up the distribution, when using LFS data for the 1990s and 2000s.

Given that WRS migrants overwhelmingly concentrate around the 5th and 10th percentiles of the wage distribution, we also expected to find more adverse (or less favourable) effects there. Our estimates were indeed smaller at the bottom than higher up the distribution, but they were insignificant throughout. Although Dustmann et al. (2007) found significant instrumented estimates; their associated uninstru-

¹⁷We also run robustness checks controlling for lagged working age population growth and natives netflow rate, as in Section 5.1, but the estimates remained positive, small and insignificant, indicating, as before, that any natives' mobility omitted variable bias is not too severe.

¹⁸Claimant unemployment effects were not more adverse when we excluded machine operatives (see Table 6), as might have been expected if demand factors attracted both migrants and (claimant) natives (see Section 2.2). An explanation here is that such demand factors were controlled for in the model. Another explanation is that natives other than claimants were attracted. Yet another explanation is that adjustment happened mainly through higher wages.

mented estimates were also insignificant throughout the distribution. For example, our insignificant 0.246 estimate of the average effect is close to their insignificant 0.266 uninstrumented estimate, though smaller than their associated significant 0.396 instrumented estimate.¹⁹ In contrast with Dustmann et al. (2007), our instrumented estimates are often less precise than our uninstrumented estimates (see Tables 2 and 3). Also, endogeneity bias is less of a concern here because the supply shock we study is more exogenous (see Section 3).

6 Discussion

Our main conclusion is that there is little evidence that the WRS migration inflow adversely affected wages or claimant unemployment in the UK between 2004 and 2006. This conclusion is in line with the limited evidence available for the UK (Dustmann et al. 2005 and 2007; Manacorda et al. 2006) and with other evidence in the international literature. Our wage effect estimates are positive, small and insignificant, smaller at the bottom of the distribution. Our unemployment effect estimates are small and in the main insignificant. These estimates are in line with our earlier descriptive analysis and are robust to a number of specification checks and estimation methods as well as to several different stratifications of the labour market and to different sub-samples of workers. In particular, we have thoroughly checked the robustness of our estimates to two main identification issues that underline the debate in the literature: natives' mobility and migrants' self-selection.

The crucial point was to establish whether the location and occupation choice of migrants was strongly driven by local labour market conditions and whether natives strongly responded to migration inflows by moving to other areas, which would invalidate the cross-areas migration analysis. We established that neither source of endogeneity was strong enough to severely bias our estimates. We stratified labour markets in various dimensions (district, county, region, nation-occupation, region-occupation, agriculture, low-skilled, young and female) to test alternative assumptions on the substitutability between

¹⁹Our insignificant 0.323 and 0.438 estimates for the 25th and 50th percentiles are larger than their 0.136 and 0.234 insignificant estimates (their associated instrumented estimates are an insignificant 0.211 and a significant 0.660). Finally, our insignificant 0.110 estimate for the 10th percentile is again close to their insignificant uninstrumented -0.094 estimate (their associated significant instrumented estimate is -0.516), though in the opposite direction. One explanation here is that the minimum wage was in force and increasing throughout the period we study, possibly mitigating or offsetting more adverse wage effects for lower paid workers (see Figures 2 and 3). One fruitful avenue of research is to extend the sample period in Dustmann et al. (2007) accordingly. Another fruitful avenue of research is to estimate the effect of the WRS inflow on the wages of earlier migrants (unfeasible here because ASHE does not record nationality).

migrants and natives. Firstly, we allowed migrants and natives to compete across ever wider areas and found small positive and insignificant estimates. Secondly, our estimates were if anything smaller and insignificant when we allowed migrants and natives to compete on a national labour market across occupations. Thirdly, our estimates were still small positive and insignificant when we explicitly controlled for natives' mobility using two different proxies. Fourthly, our instrumented estimates remained small and insignificant (turned negative), when we corrected for potential correlation between the migration variable and omitted (migrants' self-selection and natives' mobility) variables. Finally, we estimated a small correlation (which is a measure of the extent of the potential bias) between the migration variable and natives' mobility.

In sum, our estimates are reassuringly small and insignificant across a number of specifications, subsamples and estimation methods and are not sensitive to the counterfactual underlying each model. In particular, our results do not appear to be driven by endogeneity bias – we found no evidence that migrants' self-selection or natives' mobility offset more adverse effects.

While our results are robust and are in line with other results in the literature, they are puzzling. This is because standard theory only predicts no adverse wages and employment effects when migrants' skill composition resembles that of natives – i.e. when the migration inflow is balanced across area or skill. If the inflow increases relative labour supply in a particular area or skill, then downward pressure on wages and employment is expected. In particular, the wage structure should be affected: competing (complement) workers should have lower (higher) wages. Given that the WRS inflow was large, rapid and not balanced across areas or occupations, and given the little evidence of adjustment in wages or claimant unemployment, the obvious question is how the UK labour market adjusted.

One answer is that as WRS migrants overwhelmingly compete with low-skilled workers, and as these workers were protected by a concurrently increasing minimum wage, more adverse wage effects for competing workers may have been mitigated or offset.

Other answers usual in the literature include factor equalization as well as industry structure and output mix adjustments. The first explanation is that internal flows of goods, capital and labour (i.e. natives' mobility) equalise labour market opportunities across areas or skills following a migration inflow (Card 1990 and 2005; Borjas 1999 and 2006; Friedberg 2001; Lewis 2003). Yet, evidence of persistency

in regional wage and employment differentials in the US and UK following other adverse shocks make it implausible that markets adjust instantaneously to migration shocks (Borjas 1994; Card 2001) – especially one as large, rapid and concentrated as the WRS. Furthermore, this explanation implies that there are unobserved factors correlated with the migration variable that would severely bias wage and employment coefficients away from adverse effects. Yet, despite some evidence of instrumental variable bias correction, adverse effects remain modest (Card 2001 and 2005; Dustmann and Glitz 2005) – in particular, we found little evidence of endogeneity severely biasing our estimates.

The second explanation is that firms adjust their production function and production mix to take advantage of the shift in the relative supply of labour. This might be an appealing explanation in a small open economy such as the UK (Friedberg 2001; Dustmann et al. 2005; Ottaviano and Peri 2006; Card 2007). Yet, the available (mostly US) evidence suggests that industry structure changes offer little explanation on how large migration inflows are absorbed (Card 1990 and 2005; Hunt 1992; Friedberg 2001; Lewis 2003) – again, it seems implausible that UK firms would adjust instantaneously to a migration shock as large, rapid and concentrated as the WRS.

Although neither explanation offers an immediate solution to the puzzle, a fruitful avenue for future research is more UK based evidence on both fronts. That would help to understand how native workers respond to competition from migrants and how firms alter their production function and production mix in response to the relative labour supply shift.

7 Conclusion

Following the enlargement of the EU in May 2004, there was a large, rapid and concentrated inflow of accession migrants into the UK. We described and evaluated the impact of this inflow on the UK labour market. Despite anecdotal evidence, we found little hard evidence that the inflow of accession migrants contributed to a fall in wages or a rise in claimant unemployment in the UK between 2004 and 2006.

This new evidence is an important contribution to the very limited UK migration literature – in particular, it helps to fill a gap in the literature on the effects of the recent EU enlargement. This new evidence is also an important contribution to the international literature because it applies a thorough and comprehensive empirical estimation approach to new and rich monthly micro datasets to study a

large, rapid and concentrated new migration inflow – which can be seen as a natural experiment that arguably corresponds more closely to an exogenous supply shock than most migration shocks studied in the literature – and this helps to circumvent identification issues that underline the debate in the literature.

Most crucially, this new evidence is an important contribution to informing policymaking on the face of further EU enlargements. Given the heated public debated on migration – and in particular on migration from current and future accession countries – this is a timely contribution. For example, the relatively benign evidence for the UK may have helped to influence policymakers’ decisions in ten other EU countries to either lift or alleviate restrictions to accession migrants in 2006, three years earlier than the final deadline.

References

- [1] ALTONJI, J., and D. CARD (1991): "The Effects of Immigration on the Labor Market Outcomes of Less-Skilled Natives," in *Immigration, Trade and the Labor Market*, ed. by J. Abowd, and R. Freeman. Chicago: University of Chicago Press, 201-234.
- [2] ANGRIST, J., and A. KUGLER (2003): "Protective or Counter-Productive? Labour Market Institutions and the Effect of Immigration on EU Natives," *The Economic Journal*, 113, F302-F331.
- [3] BARTEL, A., and M. KOCH (1991): "Internal Migration of U.S. Immigrants," in *Immigration Trade and the Labor Market*, ed. by J. Abowd, and T. Freeman. Chicago: University of Chicago Press, 121-134.
- [4] BLANCHFLOWER, D., J. SALEHEEN, and C. SHADFORTH (2007): "The Impact of the Recent Migration from Eastern Europe on the UK Economy," *IZA Discussion Paper*, 2615.
- [5] BORJAS, G. J. (1994): "The Economics of Immigration," *Journal of Economic Literature*, 32, 1667-1717.
- [6] BORJAS (1999): "The Economic Analysis of Immigration," in *Handbook of Labor Economics*, Vol. 3a, ed. by O. Ashenfelter, and D. Card. Amsterdam: North-Holland, 1697-1760.
- [7] BORJAS (2003): "The Labor Demand Curve Is Downward Sloping: Reexamining the Impact of Immigration on the Labor Market," *The Quarterly Journal of Economics*, 118, 1335-1374.
- [8] BORJAS (2006): "Native Internal Migration and the Labour Market Impact of Immigration," *The Journal of Human Resources*, XLI, 221-258.
- [9] BORJAS, G. J., R. B. FREEMAN, and L. F. KATZ (1997): "How Much Do Immigration and Trade Affect Labor Market Outcomes?," *Brookings Papers on Economic Activity*, 1997, 1-90.
- [10] BROWLEY, F. (2005): "A8 Migration and the Labour Market," *Unpublished Paper*.
- [11] BUTCHER, K. F., and D. CARD (1991): "Immigration and Wages: Evidence from the 1980's," *American Economic Review*, 81, 292-296.
- [12] CARD, D. (1990): "The Impact of the Mariel Boatlift on the Miami Labor Market," *Industrial and Labor Relations Review*, 43, 245-257.

- [13] CARD, D. (2001): "Immigrant Inflows, Native Outflows and the Local Labor Market Impacts of Higher Immigration," *Journal of Labor Economics*, 19, 22-64.
- [14] CARD, D. (2005): "Is the New Immigration Really So Bad?," *The Economic Journal*, 115, F300-F323.
- [15] CARD, D. (2007): "How Immigration Affects U.S. Cities," CReAM Discussion Paper 11/07.
- [16] CARD, D., and J. E. DINARDO (2000): "Do Immigrant Inflows Lead to Native Outflows?," *American Economic Review*, 90, 360-367.
- [17] CARRASCO, R., J. F. JIMENO, and A. C. ORTEGA (2008): "The Effect of Immigration on the Labor Market Performance of Native-Born Workers: Some Evidence for Spain," *Journal of Population Economics*, 21, 627-648.
- [18] CARRINGTON, W., and P. LIMA (1996): "The Impact of 1970s Repatriates from Africa on the Portuguese Labor Market," *Industrial and Labor Relations Review*, January, 330-347.
- [19] CHISWICK, B. R. (1978): "The Effects of Americanization on the Earnings of Foreign-Born Men," *Journal of Political Economy*, 86, 897-921.
- [20] CHISWICK, B. R. (1991): "Book Review of Friends or Strangers: The Impact of Immigrants on the Us Economy by George Borjas," *Journal of Economic Literature*, 29, 627-629.
- [21] CHISWICK, B. R., and T. J. HATTON (2003): "International Migration and the Integration of Labor Markets," in *Globalization in Historical Perspective*, ed. by M. Bordo, A. Taylor, and J. G. Williamson. Chicago/London: University of Chicago Press, 65-117.
- [22] CIPD (2005): "Quarterly Labour Market Outlook," Chartered Institute of Personnel and Development (CIPD) December.
- [23] COATS, D. (2008): "Migration Myths: Employment, Wages and Labour Market Performance," The Work Foundation Discussion Paper.
- [24] DOYLE, N., G. HUGHES, and E. WADENSJO (2006): "Freedom of Movement for Workers from Central and Eastern Europe – Experiences in Ireland and Sweden" Swedish Institute for European Policy Studies Discussion Paper 2006:5.

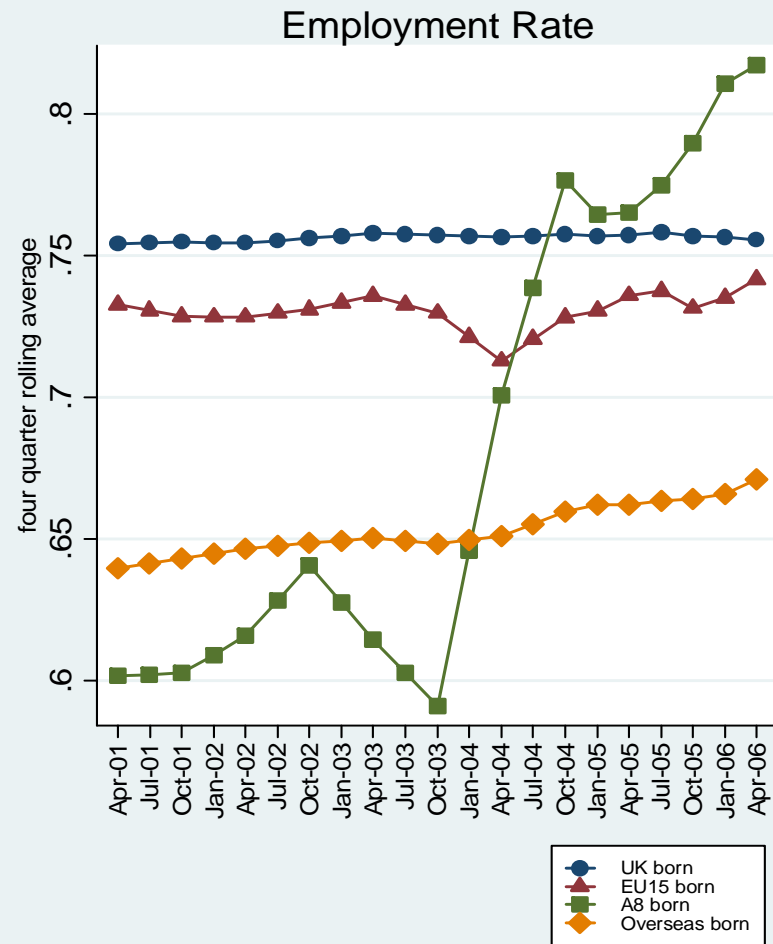
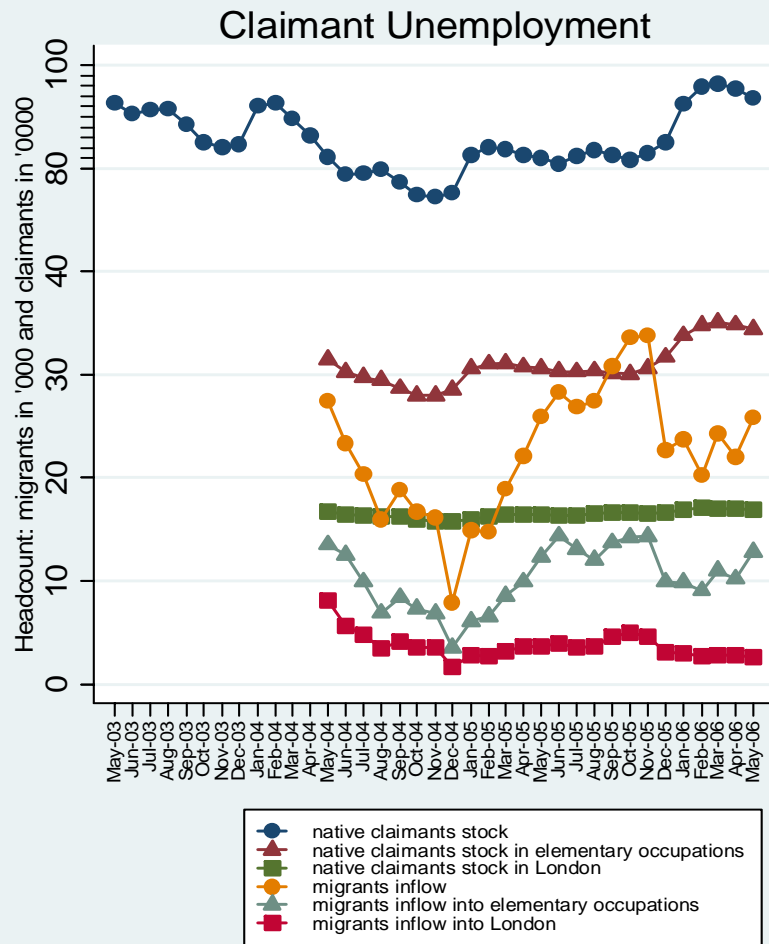
- [25] DRINKWATER, S., J. EADE, and M. GARAPICH (2006): "Poles Apart? EU Enlargement and the Labour Market Outcomes of Immigrants in the UK," IZA Discussion Paper, 2410.
- [26] DUSTMANN, C. (2003): "Return Migration, Wage Differentials, and the Optimal Migration Duration," *European Economic Review*, 47, 353-369.
- [27] DUSTMANN, C., M. CASANOVA, M. FERTIG, I. PRESTON, and C. M. SCHMIDT (2003a): "The Impact of EU Enlargement on Migration Flows," Home Office Online Report 25/03.
- [28] DUSTMANN, C., F. FABBRI, I. PRESTON, and J. WADSWORTH (2003b): "Labour Market Performance of Immigrants in the UK Labour Market," Home Office Report, 05/03.
- [29] DUSTMANN, C., F. FABBRI, and I. PRESTON (2005): "The Impact of Immigration on the British Labour Market," *The Economic Journal*, 115, F324-F341.
- [30] DUSTMANN, C., and A. GLITZ (2005): *Immigration, Jobs and Wages: Theory, Evidence and Opinion*. CEPR and CReAM.
- [31] DUSTMANN, C., T. FRATTINI, and I. PRESTON (2007): "A Study of Migrant Workers and the National Minimum Wage and Enforcement Issues That Arise," Low Pay Commission Report.
- [32] FILER, R. K. (1992): "The Impact of Immigrant Arrivals on Migratory Patterns of Native Workers," in *Immigration and the Workforce: Economic Consequences for the United States and Source Areas*, ed. by G. J. Borjas, and R. B. Freeman. Chicago: University of Chicago Press.
- [33] FREY, W. H. (1995): "Immigration and Internal Migration Flight from U.S. Metro Areas: Toward a New Demographic Balkanization," *Urban Studies*, 32, 733-757.
- [34] FREY, W. H., K. L. LIAW, Y. XIE, and M. J. CARLSON (1996): "Interstate Migration of the U.S. Poverty Population: Immigration Pushes and White Magnet Pulls," *Population and Environment*, 17, 491-533.
- [35] FRIEDBERG, R. M. (2001): "The Impact of Mass Migration on the Israeli Labor Market," *The Quarterly Journal of Economics*, November, 1373-1408.
- [36] FRIEDBERG, R. M., and J. HUNT (1995): "The Impact of Immigration on Host Country Wages, Employment and Growth," *Journal of Economic Perspectives*, 9, 23-44.

- [37] GILPIN, N., M. HENTY, S. LEMOS, J. PORTES, and C. BULLEN (2006): "The Impact of Free Movement of Workers from Central and Eastern Europe on the UK Labour Market," Department for Work and Pensions Working Paper 29.
- [38] GROSSMAN, J. B. (1982): "The Substitutability of Natives and Immigrants in Production," *The Review of Economics and Statistics*, 64, 596-603.
- [39] HAHN, J., and J. HAUSMAN (2002): "A New Specification Test for the Validity of Instrumental Variables," *Econometrica*, 70, 163-189.
- [40] HANSEN, L. (1982): "Large Sample Properties of Generalized Method of Moments Estimators," *Econometrica*, 50, 1029-1054.
- [41] HATTON, T. J., and M. TANI (2005): "Immigration and Inter-Regional Mobility in the UK, 1982-2000," *The Economic Journal*, 115, F342-F358.
- [42] HOME OFFICE (2004): "WRS Form," WRS1 application form, version 08/2004.
- [43] HOME OFFICE (2006): "Accession Monitoring Report May 2004 - June 2006," Home Office Report.
- [44] HOME OFFICE (2007): *The Economic and Fiscal Impact of Immigration*. Home Office Report. London: The Stationery Office.
- [45] HOUSE OF LORDS (2008): *The Economic Impact of Immigration*. House of Lord Select Committee on Economic Affairs. London: The Stationery Office.
- [46] HUNT, J. (1992): "The Impact of the 1962 Repatriates from Algeria on the French Labor Market," *Industrial and Labor Relations Review*, 45, 556-572.
- [47] JACKMAN, R., and S. SAVOURI (1992): "Regional Migration in Britain: An Analysis of Gross Flows Using NHS Central Register Data," *Economic Journal*, 102, 1433-1450.
- [48] LALONDE, R., and R. TOPEL (1991): "Labor Market Adjustments to Increased Immigration" in *Immigration, Trade and the Labor Market*, ed. by J. Abowd, and R. Freeman: Chicago: University of Chicago Press, 167-199.

- [49] LALONDE, R., and R. TOPEL (1997): "Economic Impact of International Migration and the Economic Performance of Migrants," in Handbook of Population and Family Economics, ed. by M. Oosenzweig, and O. Stark, 799-850.
- [50] LAYARD, R., S. NICKELL, and R. JACKMAN (1991): Unemployment. UK: Oxford University Press.
- [51] LEMOS, S., and J. PORTES (2008): "New Labour? The Impact of Migration from the New European Union Member States on the UK Labour Market," Department for Work and Pensions Working Paper 52.
- [52] LEWIS, E. (2003): "Local Open Economies within the US: How Do Industries Respond to Immigration?," Federal Reserve Bank of Philadelphia Working Paper, 04-1.
- [53] MACHIN, S., and A. MANNING (1999): "The Causes and Consequences of Long Term Unemployment in Europe," in Handbook of Labor Economics, ed. by O. Ashenfelter, and D. Card. Amsterdam; StateNew York and Oxford: Elsevier Science, North-Holland, 2101-2163.
- [54] MANACORDA, M., A. MANNING, and J. WADSWORTH (2006): "The Impact of Immigration on the Structure of Male Wages: Theory and Evidence from Britain," IZA Discussion Paper, 2352.
- [55] MCCORMICK, B. (1997): "Regional Unemployment and the Labour Mobility in the UK," European Economic Review, 41, 581-589.
- [56] MUELLBAUER, J., and A. MURPHY (1988): "U.K. House Prices and Migration: Economic and Investment Implications," Shearson Lehman Hutton Discussion Paper.
- [57] ONS (2003): "United Kingdom: Local Authority Districts, Counties and Unitary Authorities, 1998," ONS Geography GIS & Mapping Unit.
- [58] ORRENIUS, P., and M. ZAVODNY (2007): "Does Immigration Affect Wages? A Look at Occupation-Level Evidence," Labour Economics, 14, 757-773.
- [59] OTTAVIANO, G., and G. PERI (2006): "Rethinking the Effects of Immigration on Wages," NBER Working Paper, 12497.
- [60] PERI, G., and C. SPARBER (2008): "The Fallacy of Crowding-Out: A Note on Native Internal Migration and the Labor Market Impact of Immigration," Unpublished Paper.

- [61] PISCHKE, J., and J. VELLING (1997): "Employment Effects of Immigration to Germany: An Analysis Based on Labor Markets," *Review of Economics and Statistics*, 79, 594-604.
- [62] PISSARIDES, C. A., and I. MCMASTER (1990): "Regional Migration, Wages and Unemployment: Empirical Evidence and Implications for Policy," *Oxford Economic Papers*, 42, 812-831.
- [63] POLLARD, N., M. LATORRE, and D. SRISKANDARAJAH (2008): "Floodgates or Turnstiles? Post-EU Enlargement Migration Flows to (and from) the UK," Institute for Public Policy Discussion Paper.
- [64] SAIZ, A. (2006): "Immigration and Housing Rents in American Cities," IZA Discussion Paper, 2189.
- [65] SALT, J., and J. MILLER (2006): "Foreign Labour in the United Kingdom: Current Patterns and Trends," *Labour Market Trends*, October, 335-355.
- [66] SARGAN, J. (1958): "The Estimation of Economic Relationships Using Instrumental Variables," *Econometrica*, 26, 393-415.
- [67] SRISKANDARAJAH, D. (2004): "EU Enlargement and Labour Migration: An Ippr Factfile"
- [68] THE ECONOMIST (2006a): "Boringly Benign," February 18th.
- [69] THE ECONOMIST (2006b): "Second Thoughts," August 26th.
- [70] THE ECONOMIST (2007): "Fear of Foreigners," November 24th.
- [71] THE GUARDIAN (2008): "British Workers Lack Skills and Drive of East Europe's Migrants," June 12th.
- [72] THE TELEGRAPH (2006): "Never Have We Seen Immigration on This Scale: We Just Can't Cope," July 2nd.
- [73] WHITE, M. J., and Z. LIANG (1998): "The Effect of Immigration on the Internal Migration of the Native-Born Population, 1981-1990," *Population Research and Policy Review*, 73, 234-254.
- [74] WRIGHT, R., M. ELLIS, and M. REIBEL (1997): "The Linkage between Immigration and Internal Migration in Large Metropolitan Areas in the United States," *Economic Geography*, 73, 234-254.
- [75] ZAVODNY, M. (1999): "Determinants of Recent Immigrants' Location Choices," *International Migration Review*, 33, 1014-1030.

Figure 1 - Unemployment and Employment

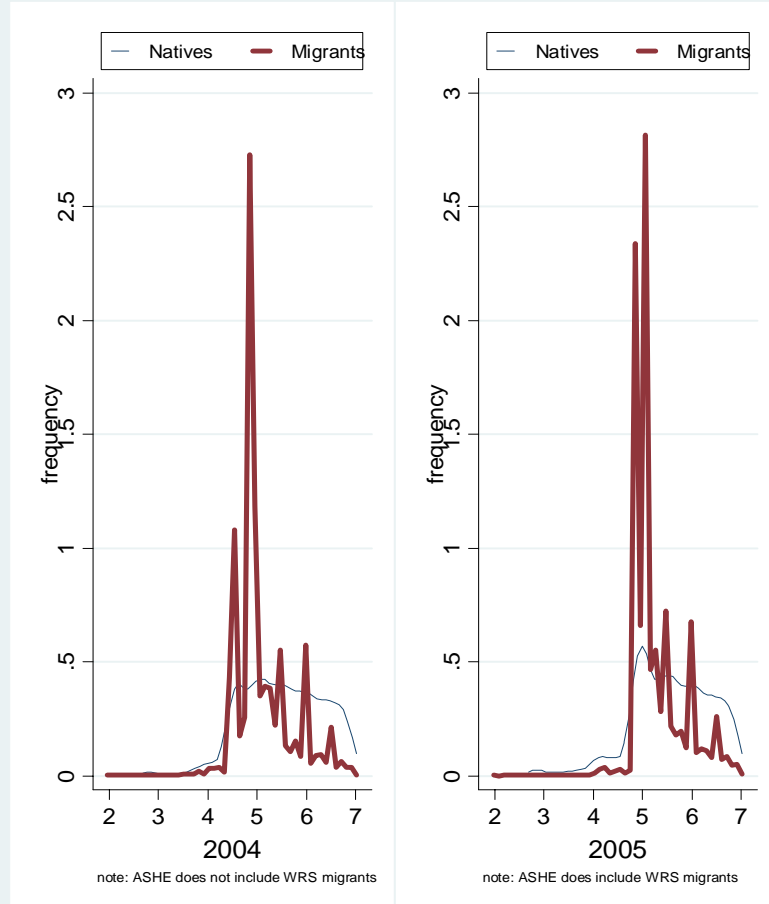


Source: Worker Registration Scheme data, Jobseeker's Allowance data and Labour Force Survey data

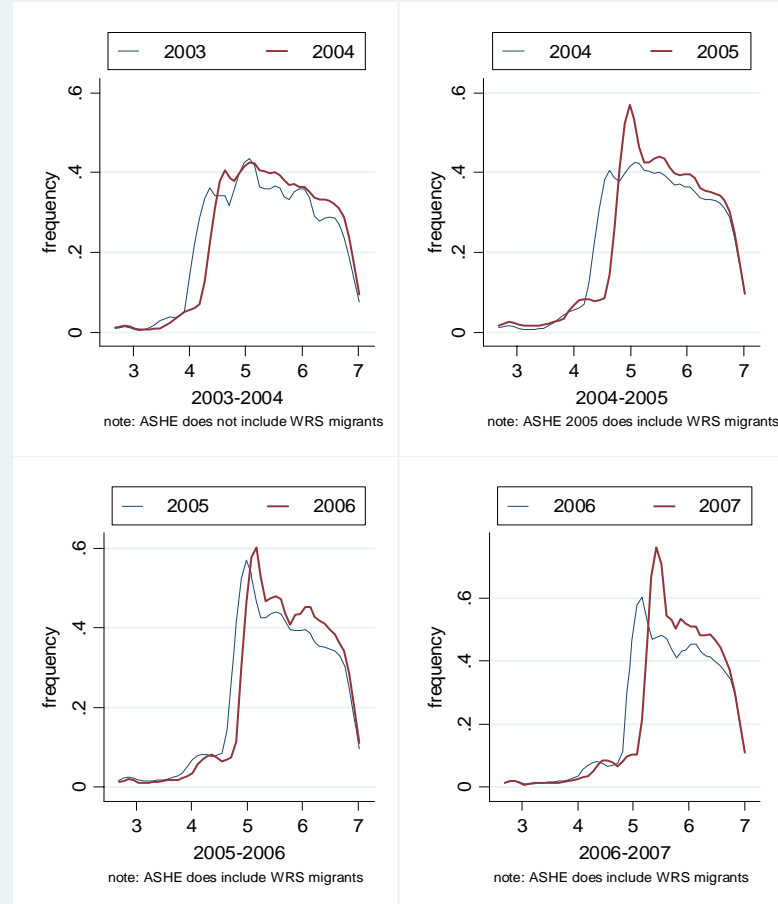
Figure 2 – Hourly Wage Distributions

Migrants and Natives at or below £7

comprises 90% of WRS migrants and 30% of ASHE native workers

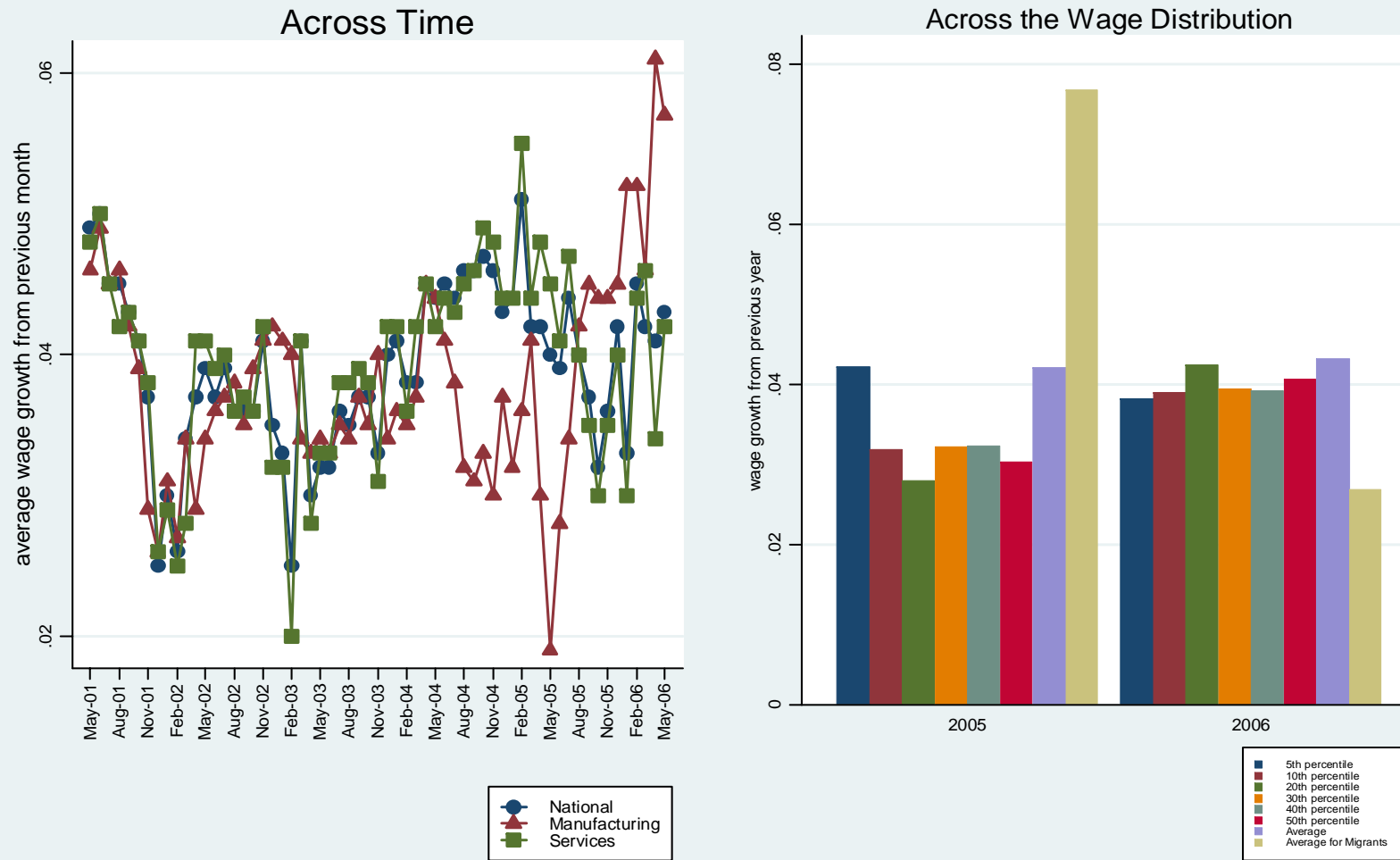


Natives at or below £7



Source: Worker Registration Scheme data and Annual Survey of Hours and Earnings data

Figure 3 - Wage Growth



Source: Average Earnings Index data (seasonally adjusted), Annual Survey of Hours and Earnings data and Worker Registration Scheme data

Figure 4 – Migration Inflow Rate by Regions

2004

2006

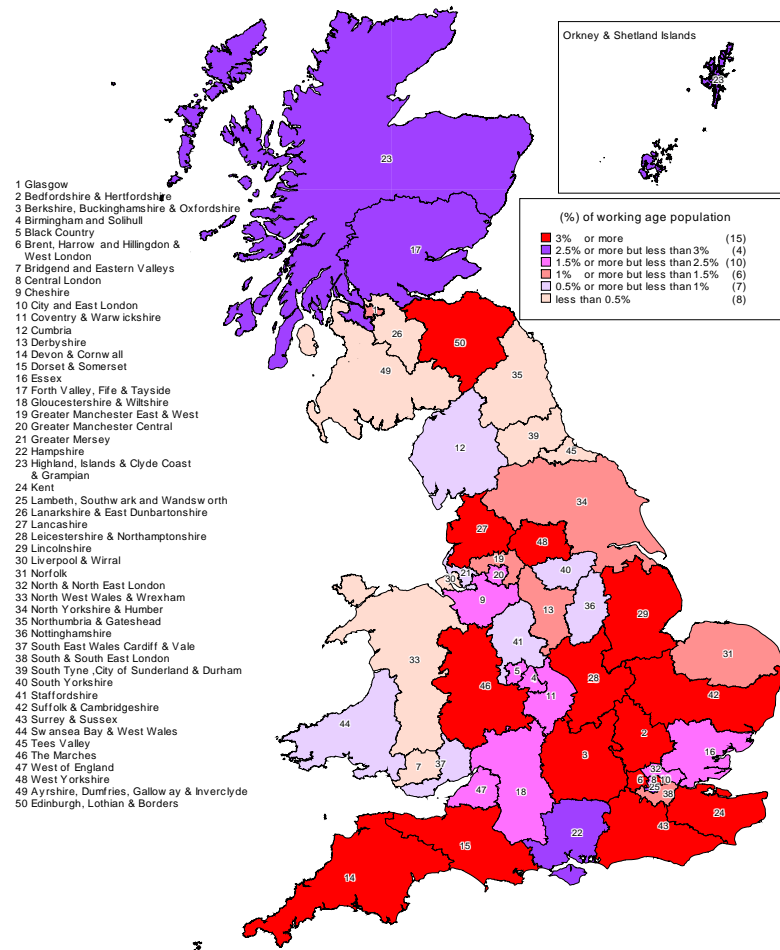
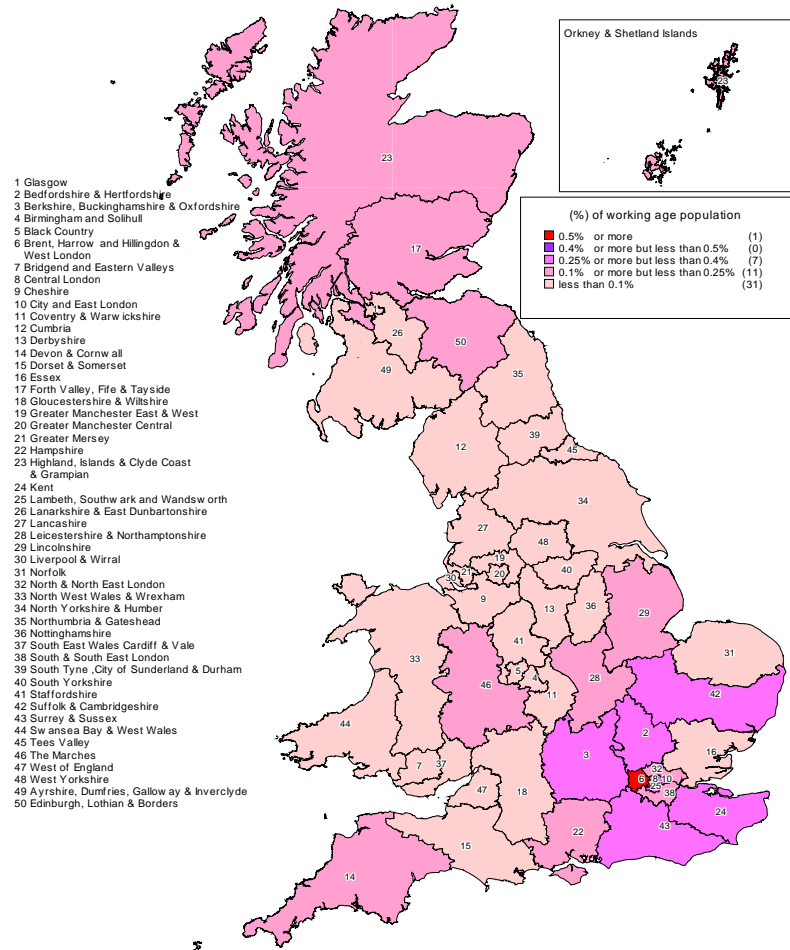
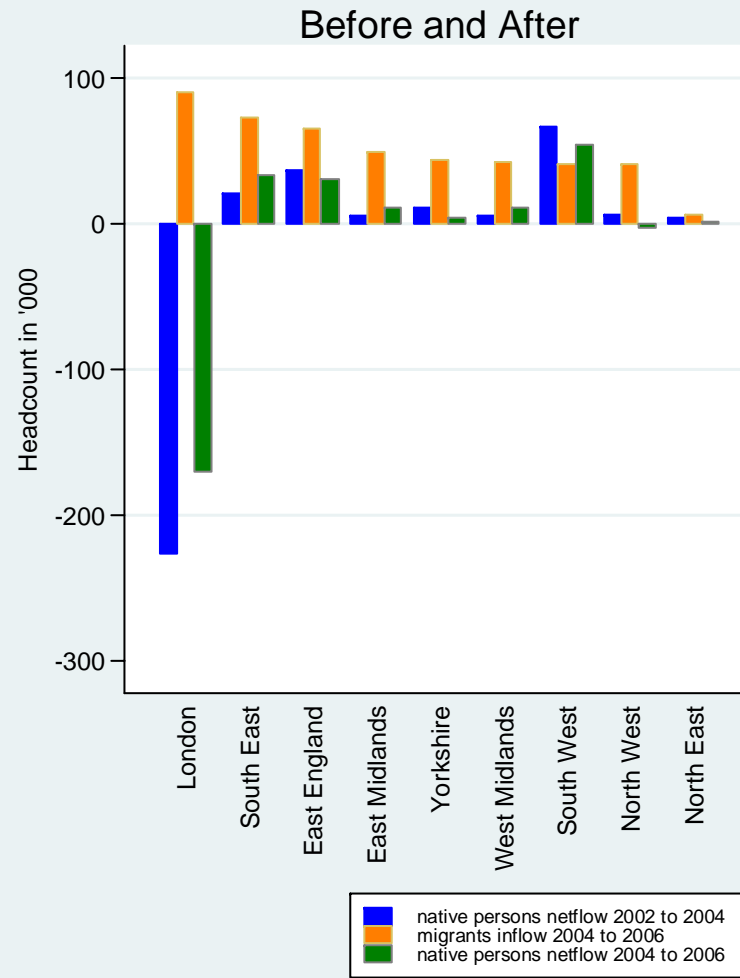
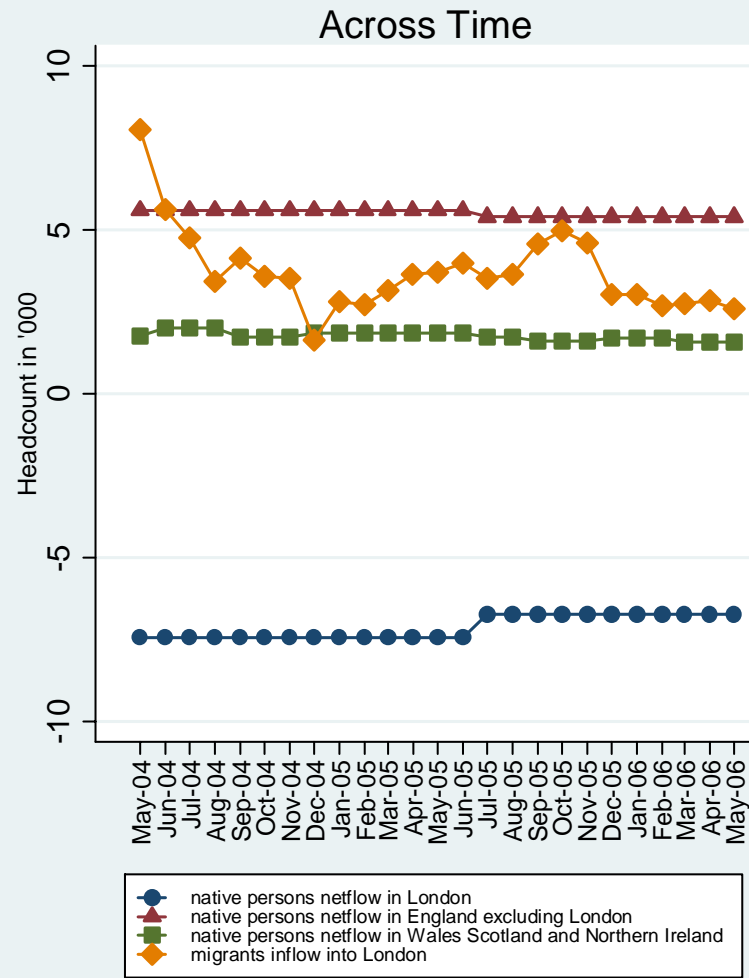
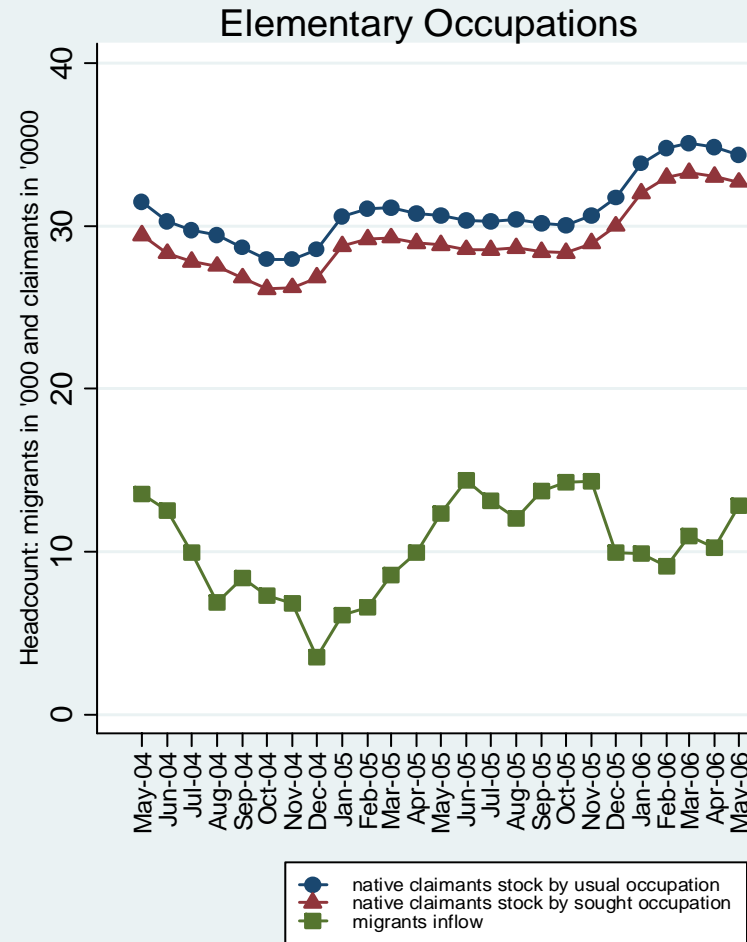
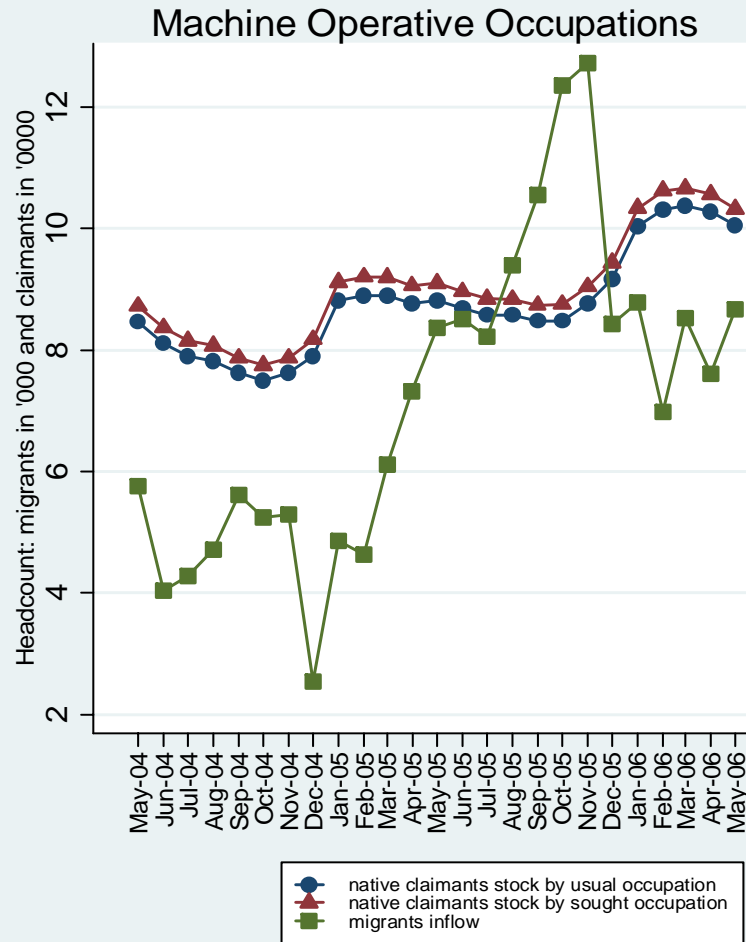


Figure 5 – Migrants and Natives by Regions



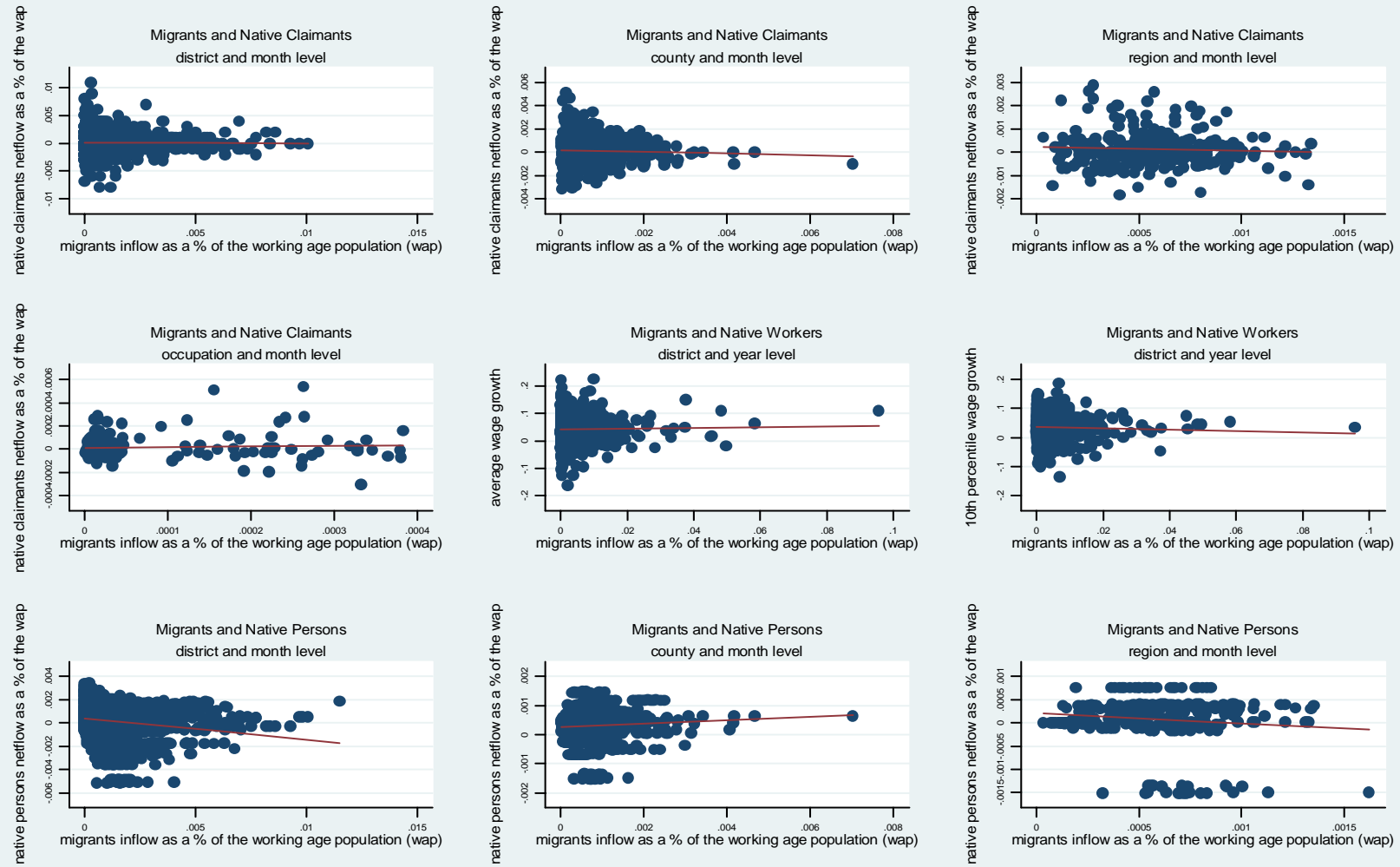
Source: Worker Registration Scheme data and Office for National Statistics Migration Indicators data

Figure 6 - Migrants and Claimants by Occupations



Source: Worker Registration Scheme data and Jobseeker's Allowance data

Figure 7 – Migration and Unemployment Rates and Wage Growth



Source: Worker Registration Scheme data, Jobseeker's Allowance data, Office for National Statistics Migration Indicators data and Annual Survey of Hours and Earnings data

Table 1 - DESCRIPTIVE STATISTICS

VARIABLES	WRS	JSA	ASHE		LFS	
	May 2004 - May 2006 migrants	May 2004 - May 2006 claimants	May 2004 - May 2006 workers	May 2004 - May 2006 workers	April 2004 - June 2006 UK born	April 2004 - June 2006 Overseas born
I - POPULATION VARIABLES - % of those who are:						
Aged:						
under 16 years old	0.00	-	na	na	0.21	0.08
16 to 24 years old	0.37	0.30	na	na	0.12	0.11
25 to 34 years old	0.45	0.24	na	na	0.12	0.24
35 to 64 years old	0.18	0.45	na	na	0.40	0.44
over 65 years old	0.00	0.00	na	na	0.16	0.13
Women	0.43	0.74	na	na	0.51	0.52
Parents (with dependent children)	0.06	na	na	na	0.27	0.32
Blacks	-	na	na	na	0.01	0.12
Asians	-	na	na	na	0.02	0.25
Nationality:						
Polish	0.61	na	na	na	-	0.02
Lithuanian	0.12	na	na	na	-	0.01
Slovakian	0.10	na	na	na	-	0.00
Latvian	0.07	na	na	na	-	0.00
Located in:						
London	0.17	0.19	na	na	0.09	0.41
South East	0.14	0.08	na	na	0.14	0.13
East of England	0.12	0.07	na	na	0.09	0.08
East Midlands	0.09	0.06	na	na	0.07	0.05
Yorkshire and the Humber	0.08	0.09	na	na	0.09	0.06
West Midlands	0.08	0.11	na	na	0.09	0.07
North West	0.08	0.12	na	na	0.12	0.07
South West	0.08	0.05	na	na	0.09	0.05
Scotland	0.08	0.10	na	na	0.09	0.04
Northern Ireland	0.04	0.03	na	na	0.03	0.01
Wales	0.03	0.05	na	na	0.05	0.02
North East	0.01	0.05	na	na	0.05	0.02
II - LABOUR MARKET VARIABLES - % of those who are in:						
Occupations:						
elementary occupations	0.46	0.35	na	na	0.11	0.14
machine operatives occupations	0.32	0.10	na	na	0.08	0.07
skilled trades occupations	0.06	0.11	na	na	0.12	0.08
personal services occupations	0.04	0.05	na	na	0.08	0.08
unknown occupation	0.04	0.01	na	na	0.00	0.00
sales and customer service occupations	0.03	0.13	na	na	0.08	0.07
administrative occupations	0.03	0.10	na	na	0.13	0.09
professional occupations	0.01	0.04	na	na	0.12	0.17
managers and senior officials	0.01	0.04	na	na	0.15	0.15
technical occupations	0.01	0.06	na	na	0.14	0.15
Sectors:						
manufacturing	0.31	na	na	na	0.13	0.11
distribution, hotels & restaurants	0.27	na	na	na	0.19	0.21
transport & communication	0.09	na	na	na	0.07	0.08
agriculture and Fishing	0.08	na	na	na	0.01	0.01
banking, finance & insurance etc	0.08	na	na	na	0.15	0.19
public admin, educ & health	0.06	na	na	na	0.28	0.28
construction	0.04	na	na	na	0.08	0.05
other services	0.02	na	na	na	0.06	0.06
energy and water	0.00	na	na	na	0.01	0.01
Part time	0.08	na	na	na	0.26	0.22
Employment rate	-	-	na	na	0.76	0.67
Unemployment rate	-	-	na	na	0.05	0.07
Average claim duration	-	31.32	na	na	-	-
Looking for a job in their usual occupation	-	0.84	na	na	-	-
Average hours worked	37.83	-	na	na	36.87	38.37
			2004	2006		
5th percentile hourly wage distribution	4.50	na	4.77	5.16	4.50	4.61
10th percentile hourly wage distribution	4.65	na	5.14	5.55	5.26	5.31
20th percentile hourly wage distribution	4.85	na	5.99	6.45	6.15	6.22
25th percentile hourly wage distribution	4.85	na	6.43	6.95	6.58	6.69
30th percentile hourly wage distribution	4.87	na	6.92	7.45	7.02	7.19
40th percentile hourly wage distribution	5.00	na	7.95	8.55	7.98	8.34
50th percentile hourly wage distribution	5.05	na	9.18	9.89	9.06	9.59
Average hourly wage distribution	5.56	na	12.04	13.09	11.02	11.88
Standard deviation hourly wage distribution	2.03	na	na	na	7.16	8.01
Adult minimum wage	4.80	na	4.50	5.05	4.80	4.80
number of observations	562830	22016120	21915	23725	201294305	21169990

Source: Worker Registration Scheme data, Jobseeker's Allowance data, Annual Survey of Hours and Earnings and Labour Force Survey

(1) Variables not available or not defined in a particular dataset are indicated by "na". For example, the employment and unemployment rates are not defined for the WRS ASHE or JSA, where all individuals are working/unemployed.

The proportion of parents from the LFS is for 2006 Q2, where the household weight used is based on 2003 population estimates as re-weighted household datasets are yet unavailable (the other figures are based on 2007 population estimates).

(2) As ASHE is not available at the micro level, we are unable to compute percentiles for the period 2004-2006; we instead report percentiles for 2004 and 2006 directly from the ASHE tables. Similarly, standard deviation is not available.

(3) As detailed in the text (see Section 2), the WRS measures inflows, whereas the JSA and LFS measure stocks. Therefore, the WRS figures are cumulative.

(4) National minimum wage (adult rate) is: £4.50 between 1 October 2003 and 30 September 2004; £4.85 between 1 October 2004 and 30 September 2005; £5.05 between 1 October 2005 and 30 September 2006.

Table 2 - UNEMPLOYMENT EFFECTS OF MIGRATION

Models	coefficient	standard errors
A - District Level		
(1) Raw coefficient	-0.015	0.015
(2) Baseline specification	-0.044	0.027
(3) Adding time effects	-0.051	0.054
(4) Adding demand and supply controls	0.037	0.087
(5) Adding working age population growth	0.020	0.075
(6) Adding native netflow rate	0.003	0.078
B - County Level		
(1) Raw coefficient	-0.072	0.045
(2) Baseline specification	-0.112	0.053
(3) Adding time effects	0.085	0.065
(4) Adding demand and supply controls	0.071	0.078
(5) Adding working age population growth	0.062	0.085
(6) Adding native netflow rate	0.057	0.086
C - Region Level		
(1) Raw coefficient	-0.161	0.166
(2) Baseline specification	0.047	0.078
(3) Adding time effects	0.274	0.053
(4) Adding demand and supply controls	0.134	0.081
(5) Adding working age population growth	0.119	0.108
(6) Adding native netflow rate	0.115	0.106

(a) These are GLS estimates weighted by the sample size used to calculate the dependent variable (except in row 1, where OLS unweighted estimates are shown).

(b) The dependent variable is the UK claimant unemployment rate and the independent variable of interest is the WRS migration rate (see Sections 3 and 4).

(c) Time fixed effects are modeled with month dummies; area fixed effects are differenced out. See Section 4 for discussion on demand and supply controls.

(d) The interpretation of the coefficient is that a 1 percentage point increase in the WRS migration rate changes the UK claimant unemployment rate by b percentage points.

Table 3 - UNEMPLOYMENT EFFECTS OF MIGRATION (Instrumented)

Models	coefficient	standard errors	Hansen-Sargan test		Hausman test		F test		
			statistic	df	statistic	df	statistic	df	df
A - District Level									
(1) Lagged migration rates	-0.029	0.020	21.95	4	0.02	1	337.75	5	7310
(2) Lagged entry-migration rates	-0.024	0.023	11.18	3	0.00	1	124.05	4	7718
(3) Historic migration rates (Census)	-0.144	0.071	0.03	1	3.47	1	109.84	2	8534
(4) Historic migration rates (IPS)	-0.102	0.140	2.74	1	0.28	1	20.65	2	8534
(5) Flight indicator interacted with distance between UK districts and A8 countries	-0.137	0.061	23.56	13	2.55	1	17.01	14	8522
B - County Level									
(1) Lagged migration rates	-0.104	0.054	11.36	4	0.00	1	122.77	5	1028
(2) Lagged entry-migration rates	-0.104	0.062	5.40	3	0.26	1	47.98	4	1087
(3) Historic migration rates (Census)	-0.106	0.202	3.70	1	0.06	1	15.25	2	1205
(4) Historic migration rates (IPS)	-0.087	0.244	1.45	1	0.01	1	12.30	2	1205
(5) Flight indicator interacted with distance between UK districts and A8 countries	-0.139	0.067	22.23	13	1.27	1	16.64	14	1193
C - Region Level									
(1) Lagged migration rates	-0.222	0.134	5.05	4	2.52	1	78.81	5	182
(2) Lagged entry-migration rates	-0.174	0.169	3.27	3	0.16	1	28.78	4	194
(3) Historic migration rates (Census)	-0.087	0.174	3.59	1	0.77	1	42.54	2	218
(4) Historic migration rates (IPS)	-0.045	0.220	0.49	1	0.11	1	22.07	2	218
(5) Flight indicator interacted with distance between UK districts and A8 countries	-0.072	0.107	9.55	10	2.88	1	24.50	11	211

(a) Notes as in Table 2, except that these are now GMM estimates.

(b) All estimates here to be compared with estimates in row (4) of each respective panel of Table 2.

Table 4 - NATIVE MOBILITY EFFECTS OF MIGRATION

Models	coefficient	standard errors
A - District Level		
(1) Raw coefficient	-0.182	0.012
(2) Baseline specificaiton	-0.282	0.005
(3) Adding time effects	-0.301	0.006
(4) Adding working age population growth, wage growth and unemployment rate change	-0.293	0.006
(5) Adding house prices inflation and vacancies change	-0.294	0.006
(6) Adding area specific growth rate	-0.036	0.001
<i>(6a) Excluding London</i>	-0.029	<i>0.002</i>
B - County Level		
(1) Raw coefficient	0.058	0.022
(2) Baseline specificaiton	-0.080	0.001
(3) Adding time effects	-0.098	0.001
(4) Adding working age population growth, wage growth and unemployment rate change	-0.056	0.002
(5) Adding house prices inflation and vacancies change	-0.088	0.003
(6) Adding area specific growth rate	-0.058	0.003
<i>(6a) Excluding London</i>	-0.045	<i>0.001</i>
C - Region Level		
(1) Raw coefficient	-0.210	0.109
(2) Baseline specificaiton	-0.323	0.011
(3) Adding time effects	-0.539	0.019
(4) Adding working age population growth, wage growth and unemployment rate change	-0.010	0.004
(5) Adding house prices inflation and vacancies change	-0.066	0.009
(6) Adding area specific growth rate	-0.124	0.013
<i>(6a) Excluding London</i>	-0.075	<i>0.010</i>

(a) Notes as in Table 2, except that the dependent variable is now the native netflow rate (see Section 5.3).

Table 5 - UNEMPLOYMENT EFFECTS OF MIGRATION (robustness checks)

Models	coefficient	standard errors
A - District Level		
(1) Low Skilled	-0.021	0.028
(2) Young	-0.030	0.033
(3) Female	0.015	0.017
(4) London Southeast and Eastern	0.051	0.057
(5) Agriculture	0.073	0.014
B - County Level		
(1) Low Skilled	0.043	0.029
(2) Young	0.006	0.028
(3) Female	0.020	0.013
(4) London Southeast and Eastern	-0.055	0.014
(5) Agriculture	0.043	0.037
C - Region Level		
(1) Low Skilled	0.043	0.041
(2) Young	0.106	0.038
(3) Female	0.015	0.024
(4) London Southeast and Eastern	-0.166	0.278
(5) Agriculture	-0.014	0.070

(a) Notes as in Table 2.

(b) All estimates here to be compared with estimates in row (4) of each respective panel of Table 2.

Table 6 - UNEMPLOYMENT EFFECTS OF MIGRATION (by occupation)

Models	coefficient	standard errors
A - Occupation Level		
(1) Raw coefficient	0.055	0.068
(2) Baseline specification	0.019	0.031
(3) Adding time effects	0.030	0.038
(4) Adding demand and supply controls	0.017	0.025
<i>(4a) Excluding machine operative occupations</i>	-0.049	0.089
B - Occupation-Region Level		
(1) Raw coefficient	0.054	0.022
(2) Baseline specification	0.020	0.018
(3) Adding time time-area and time-occupation fixed effects	0.030	0.096
(4) Adding demand and supply controls	0.056	0.066

(a) Notes as in Table 2. As before, time fixed effects are modeled with month dummies. Area and/or occupation fixed effects (and their interaction) are differenced out.

Table 7 - WAGE EFFECTS OF MIGRATION

Models	(A) Raw coefficient		(B) Baseline specification		(C) Adding time effects		(D) Adding demand and supply controls	
	coefficient	standard errors	coefficient	standard errors	coefficient	standard errors	coefficient	standard errors
(1) Average wage	0.125	0.230	0.216	0.237	0.252	0.278	0.246	0.276
(2) 5th percentile	0.265	0.195	0.380	0.286	0.145	0.187	0.212	0.190
(3) 10th percentile	-0.249	0.183	-0.383	0.234	0.086	0.226	0.110	0.220
(4) 20th percentile	-0.553	0.213	-0.428	0.281	0.168	0.299	0.162	0.305
(5) 25th percentile	-0.260	0.214	-0.135	0.270	0.315	0.305	0.323	0.313
(6) 30th percentile	-0.209	0.221	-0.030	0.214	0.346	0.234	0.365	0.239
(7) 40th percentile	-0.129	0.220	0.135	0.216	0.462	0.249	0.453	0.250
(8) 50th percentile	-0.261	0.241	0.007	0.260	0.469	0.308	0.438	0.307

(a) Notes as in Table 2, except that the dependent variable is now the average and various percentiles of the wage distribution across years and districts.